

UL MONROE AT GEORGIA SOUTHERN



2/4/2017

Statesboro, Ga. - Hanner Fieldhouse

FINAL STATS

Georgia Southern

(15-8, 8-2 SBC)

76

ULM

(7-16, 1-9 SBC)

62

Start Time: 5 p.m.

Officials: Gary Maxwell, Matt Martinez, Jerome Hall

Attendance: 2859

Official Basketball Box Score -- Game Totals -- Final Statistics
ULM vs Georgia Southern
2/4/2017 5 p.m. at Statesboro, Ga. - Hanner Fieldhouse

ULM 62 - 7-16, 1-9 SBC

##	Player	S	Total		3-Ptr	Rebounds			PF	TP	A	TO	Blk	Stl	Min
			FG-FGA	3PT FG-FGA	FT-FTA	Off Reb	Def Reb	Tot Reb							
01	MUNNINGS,TRAVIS	f	5-10	1-2	0-0	3	8	11	2	11	2	3	0	0	35
03	WASHINGTON,MARCUS	g	6-11	1-2	2-2	1	4	5	2	15	2	2	0	1	27
04	ALABAKIS,SAM	c	1-1	0-0	0-0	2	0	2	2	2	0	0	0	0	22
11	COPPOLA,NICK	g	2-8	1-5	0-0	0	3	3	2	5	3	0	0	0	36
30	MCDANIEL,SAM	f	4-12	0-4	0-0	1	5	6	1	8	3	2	0	0	28
05	JEAN-PIERRE,MARVIN		3-7	0-0	2-2	1	1	2	3	8	1	0	0	0	19
14	COOPER,PRINCE		4-7	0-1	0-1	1	1	2	1	8	0	0	0	0	13
24	TAYLOR,RODERICK		0-2	0-0	0-0	1	0	1	2	0	0	0	0	0	7
25	MARTIN,WADE		2-4	1-3	0-0	0	1	1	0	5	0	1	0	0	13
TEAM						0	1	1	0		0				
TOTALS			27-62	4-17	4-5	10	24	34	15	62	11	8	0	1	200

Deadball Rebounds: 0,0

FG %	1st Half:	11-27	40.7%	2nd Half:	16-35	45.7%	Game:	27-62	43.5%
3FG %	1st Half:	3-8	37.5%	2nd Half:	1-9	11.1%	Game:	4-17	23.5%
FT %	1st Half:	2-2	100.0%	2nd Half:	2-3	66.7%	Game:	4-5	80.0%

Georgia Southern 76 - 15-8, 8-2 SBC

##	Player	S	Total		3-Ptr	Rebounds			PF	TP	A	TO	Blk	Stl	Min
			FG-FGA	3PT FG-FGA	FT-FTA	Off Reb	Def Reb	Tot Reb							
00	GLENN.MONTAE	f	1-1	0-0	0-0	2	2	4	1	2	1	0	1	0	17
02	HUGHES.MIKE	g	6-11	5-6	0-0	0	6	6	1	17	2	1	0	0	32
03	SMITH.IKE	g	7-15	5-8	3-6	0	5	5	2	22	4	0	1	1	34
04	BROWN.TOOKIE	g	5-11	2-4	3-4	0	1	1	0	15	1	3	0	1	34
10	ALLSMILLER.JAKE	f	1-3	1-3	0-0	0	3	3	2	3	1	0	0	0	19
01	BOYKINS.DEVONTE		2-3	0-0	3-4	1	1	2	1	7	0	0	0	0	19
05	GLADDEN.BJ		0-1	0-0	2-4	0	1	1	0	2	0	1	0	1	16
11	O'CONNELL.SHAWN		1-1	0-0	0-0	0	1	1	3	2	0	1	0	0	4
12	MCRAE.AUBREY		0-1	0-1	0-0	0	0	0	0	0	0	0	0	0	2
14	SIMMONS.COYE		2-5	0-0	0-0	4	5	9	1	4	1	1	2	1	17
21	HOLDER.JAMES		0-1	0-0	0-0	0	0	0	0	0	0	0	0	0	2
24	WIMBERLY.BRANDON		0-0	0-0	2-2	0	0	0	0	2	0	0	0	0	2
25	GEORGIEV.DAVID		0-0	0-0	0-0	0	0	0	0	0	0	0	0	0	1
33	BULLOCK.DOMINIQUE		0-0	0-0	0-0	0	0	0	0	0	0	0	0	0	1
TEAM						0	1	1	0		0				
TOTALS			25-53	13-22	13-20	7	26	33	11	76	10	7	4	4	200

Deadball Rebounds: 4,0

FG %	1st Half:	16-28	57.1%	2nd Half:	9-25	36.0%	Game:	25-53	47.2%
3FG %	1st Half:	6-8	75.0%	2nd Half:	7-14	50.0%	Game:	13-22	59.1%
FT %	1st Half:	6-9	66.7%	2nd Half:	7-11	63.6%	Game:	13-20	65.0%

Officials: Gary Maxwell, Matt Martinez, Jerome Hall
 Technical Fouls: ULM- None. Georgia Southern- None.
 Attendance: 2859

Score by periods	1st	2nd	Total
ULM	27	35	62
Georgia Southern	44	32	76

Points	In		2nd	Fast	Bench
	Paint	Off T/O	2nd Chance	Fast Break	
ULM	30	8	10	0	21
GS	16	12	10	2	17

Last FG - ULM 2nd-00:08, GS 2nd-02:35.
 Largest lead - ULM by 3 1st-18:12; Georgia Southern by 21 2nd-09:26
 ULM led for 2:25. GS led for 35:31. Game was tied for 2:04.

Score tied - 1 times
 Lead changed - 3 times

Official Basketball Box Score -- Game Totals -- First Half Statistics
ULM vs Georgia Southern
2/4/2017 5 p.m. at Statesboro, Ga. - Hanner Fieldhouse

ULM 27 • 7-16, 1-9 SBC

##	Player	S	Total			Rebounds			PF	TP	A	TO	Blk	Stl	Min
			FG-FGA	3PT	FG-FGA	FT-FTA	Off Reb	Def Reb							
01	MUNNINGS,TRAVIS	f	1-3	1-1	0-0	0	2	2	1	3	1	2	0	0	15
03	WASHINGTON,MARCUS	g	3-4	0-0	0-0	1	1	2	1	6	1	2	0	0	14
04	ALABAKIS,SAM	c	1-1	0-0	0-0	0	0	0	1	2	0	0	0	0	15
11	COPPOLA,NICK	g	1-5	1-3	0-0	0	3	3	0	3	3	0	0	0	16
30	MCDANIEL,SAM	f	1-6	0-2	0-0	0	3	3	1	2	2	2	0	0	11
05	JEAN-PIERRE,MARVIN		1-2	0-0	2-2	0	0	0	1	4	0	0	0	0	8
14	COOPER,PRINCE		1-2	0-0	0-0	0	0	0	0	2	0	0	0	0	6
24	TAYLOR,RODERICK		0-1	0-0	0-0	0	0	0	1	0	0	0	0	0	5
25	MARTIN,WADE		2-3	1-2	0-0	0	1	1	0	5	0	0	0	0	10
TEAM						0	1	1	0		0				
Totals			11-27	3-8	2-2	1	11	12	6	27	7	6	0	0	100

FG % Half: 11-27 40.7%
 3FG % Half: 3-8 37.5%
 FT % Half: 2-2 100.0%

Georgia Southern 44 • 15-8, 8-2 SBC

##	Player	S	Total			Rebounds			PF	TP	A	TO	Blk	Stl	Min
			FG-FGA	3PT	FG-FGA	FT-FTA	Off Reb	Def Reb							
00	GLENN.MONTAE	f	1-1	0-0	0-0	1	2	3	0	2	0	0	0	0	8
02	HUGHES.MIKE	g	4-7	3-3	0-0	0	4	4	1	11	1	1	0	0	17
03	SMITH.IKE	g	3-7	2-3	2-3	0	2	2	1	10	1	0	0	0	18
04	BROWN.TOOKIE	g	3-6	1-1	2-2	0	1	1	0	9	1	1	0	1	15
10	ALLSMILLER.JAKE	f	0-1	0-1	0-0	0	2	2	1	0	0	0	0	0	10
01	BOYKINS.DEVONTE		2-2	0-0	0-0	0	0	0	0	4	0	0	0	0	9
05	GLADDEN.BJ		0-0	0-0	2-4	0	1	1	0	2	0	1	0	1	10
11	O'CONNELL.SHAWN		1-1	0-0	0-0	0	1	1	2	2	0	1	0	0	3
12	MCRAE.AUBREY		0-0	0-0	0-0	0	0	0	0	0	0	0	0	0	0
14	SIMMONS.COYE		2-3	0-0	0-0	2	1	3	0	4	1	0	1	1	10
21	HOLDER.JAMES		0-0	0-0	0-0	0	0	0	0	0	0	0	0	0	0
24	WIMBERLY.BRANDON		0-0	0-0	0-0	0	0	0	0	0	0	0	0	0	0
25	GEORGIEV.DAVID		0-0	0-0	0-0	0	0	0	0	0	0	0	0	0	0
33	BULLOCK.DOMINIQUE		0-0	0-0	0-0	0	0	0	0	0	0	0	0	0	0
TEAM						0	1	1	0		0				
Totals			16-28	6-8	6-9	3	15	18	5	44	4	4	1	3	100

FG % Half: 16-28 57.1%
 3FG % Half: 6-8 75.0%
 FT % Half: 6-9 66.7%

Officials: Gary Maxwell, Matt Martinez, Jerome Hall
 Technical Fouls: ULM- None. Georgia Southern- None.

Score by periods	1st	2nd	Total
ULM	27	35	62
Georgia Southern	44	32	76

Points	In Paint	Off T/O	2nd Chance	Fast Break	Bench
ULM	12	2	0	0	11
GS	14	9	4	2	12

Last FG - ULM 1st-00:43, GS 1st-01:01.
 ULM led for 2:25. GS led for 15:31. Game was tied for 2:04.

Score tied - 1 times
 Lead changed - 3 times

ULM vs Georgia Southern
2/4/2017; 5 p.m. at Statesboro, Ga. - Hanner Fieldhouse
Period 1 Play-By-Play

VISITORS: ULM	Time	Score	Margin	HOME: Georgia Southern
	19:47			MISSED JUMPER by SMITH,IKE
REBOUND (DEF) by MUNNINGS,TRAVIS	19:47			
MISSED JUMPER by COPPOLA,NICK	19:36			
	19:36			REBOUND (DEF) by GLENN,MONTAE
	19:19			TURNOVER by BROWN,TOOKIE
MISSED JUMPER by WASHINGTON,MARCUS	18:53			
	18:53			REBOUND (DEF) by HUGHES,MIKE
	18:31			MISSED JUMPER by SMITH,IKE
REBOUND (DEF) by WASHINGTON,MARCUS	18:31			
GOOD! 3PTR by COPPOLA,NICK	18:12	0-3	V 3	
ASSIST by MUNNINGS,TRAVIS	18:12			
	17:51	2-3	V 1	GOOD! JUMPER by BROWN,TOOKIE
MISSED 3PTR by MCDANIEL,SAM	17:26			
	17:26			REBOUND (DEF) by HUGHES,MIKE
	17:16			MISSED JUMPER by HUGHES,MIKE
REBOUND (DEF) by COPPOLA,NICK	17:16			
MISSED 3PTR by COPPOLA,NICK	16:57			
	16:57			REBOUND (DEF) by ALLSMILLER,JAKE
	16:46			MISSED JUMPER by BROWN,TOOKIE
REBOUND (DEF) by COPPOLA,NICK	16:46			
TURNOVER by MCDANIEL,SAM	16:31			
	16:31			SUB IN: SIMMONS,COYE
	16:31			SUB OUT: GLENN,MONTAE
	16:21	4-3	H 1	GOOD! LAYUP by SIMMONS,COYE [PNT]
	16:21			ASSIST by BROWN,TOOKIE
GOOD! LAYUP by ALABAKIS,SAM [PNT]	16:03	4-5	V 1	
ASSIST by MCDANIEL,SAM	16:03			
	15:54			TURNOVER by HUGHES,MIKE
TIMEOUT MEDIA	15:54			
	15:54			SUB IN: GLADDEN,BJ
	15:54			SUB IN: BOYKINS,DEVONTE
	15:54			SUB OUT: BROWN,TOOKIE
	15:54			SUB OUT: ALLSMILLER,JAKE
TURNOVER by WASHINGTON,MARCUS	15:38			
	15:29	7-5	H 2	GOOD! 3PTR by HUGHES,MIKE
GOOD! LAYUP by WASHINGTON,MARCUS [PNT]	15:07	7-7	T	
ASSIST by MCDANIEL,SAM	15:07			
	14:51	9-7	H 2	GOOD! LAYUP by HUGHES,MIKE [PNT]
MISSED 3PTR by MCDANIEL,SAM	14:29			
	14:29			REBOUND (DEF) by SIMMONS,COYE
	14:16	12-7	H 5	GOOD! 3PTR by SMITH,IKE
	14:16			ASSIST by HUGHES,MIKE
TURNOVER by MUNNINGS,TRAVIS	13:55			
FOUL by MUNNINGS,TRAVIS	13:55			
SUB IN: MARTIN,WADE	13:55			
SUB IN: JEAN-PIERRE,MARVIN	13:55			
SUB OUT: WASHINGTON,MARCUS	13:55			
SUB OUT: MCDANIEL,SAM	13:55			
	13:55			SUB IN: BROWN,TOOKIE
	13:55			SUB OUT: HUGHES,MIKE
	13:43			MISSED 3PTR by SMITH,IKE
	13:43			REBOUND (OFF) by SIMMONS,COYE
	13:26			MISSED JUMPER by SIMMONS,COYE

VISITORS: ULM	Time	Score	Margin	HOME: Georgia Southern
REBOUND (DEF) by MARTIN,WADE	13:26			
MISSED 3PTR by COPPOLA,NICK	13:10			
	13:10			REBOUND (DEF) by BROWN,TOOKIE
	12:57	14-7	H 7	GOOD! JUMPER by BROWN,TOOKIE
GOOD! 3PTR by MUNNINGS,TRAVIS	12:34	14-10	H 4	
ASSIST by COPPOLA,NICK	12:34			
	12:09			MISSED JUMPER by BROWN,TOOKIE
	12:09			REBOUND (OFF) by SIMMONS,COYE
	12:05	16-10	H 6	GOOD! LAYUP by SIMMONS,COYE [PNT]
MISSED JUMPER by MUNNINGS,TRAVIS	11:40			
	11:40			REBOUND (DEF) by SMITH,IKE
	11:31			TURNOVER by GLADDEN,BJ
TIMEOUT MEDIA	11:31			
	11:31			SUB IN: O'CONNELL,SHAWN
	11:31			SUB IN: GLENN,MONTAE
	11:31			SUB IN: ALLSMILLER,JAKE
	11:31			SUB OUT: SIMMONS,COYE
	11:31			SUB OUT: SMITH,IKE
	11:31			SUB OUT: GLADDEN,BJ
MISSED LAYUP by JEAN-PIERRE,MARVIN	11:16			
	11:16			REBOUND (DEF) by O'CONNELL,SHAWN
	11:07	18-10	H 8	GOOD! JUMPER by BOYKINS,DEVONTE
GOOD! JUMPER by JEAN-PIERRE,MARVIN [PNT]	10:47	18-12	H 6	
	10:32			TURNOVER by O'CONNELL,SHAWN
SUB IN: MCDANIEL,SAM	10:32			
SUB IN: TAYLOR,RODERICK	10:32			
SUB OUT: MUNNINGS,TRAVIS	10:32			
SUB OUT: ALABAKIS,SAM	10:32			
	10:32			SUB IN: HUGHES,MIKE
	10:32			SUB OUT: BOYKINS,DEVONTE
	10:19			FOUL by O'CONNELL,SHAWN
GOOD! FT by JEAN-PIERRE,MARVIN	10:18	18-13	H 5	
GOOD! FT by JEAN-PIERRE,MARVIN	10:18	18-14	H 4	
	10:18			SUB IN: GLADDEN,BJ
	10:18			SUB OUT: O'CONNELL,SHAWN
FOUL by JEAN-PIERRE,MARVIN	10:04			
	10:04			MISSED FT by GLADDEN,BJ
	10:04			REBOUND (DEADB) by TEAM
	10:04			MISSED FT by GLADDEN,BJ
REBOUND (DEF) by MCDANIEL,SAM	10:04			
MISSED JUMPER by MCDANIEL,SAM	09:47			
	09:47			REBOUND (DEF) by TEAM
	09:45			SUB IN: SMITH,IKE
	09:45			SUB OUT: ALLSMILLER,JAKE
	09:23			MISSED JUMPER by HUGHES,MIKE
REBOUND (DEF) by COPPOLA,NICK	09:23			
MISSED 3PTR by MARTIN,WADE	09:07			
	09:07			REBOUND (DEF) by GLENN,MONTAE
	08:57			MISSED LAYUP by BROWN,TOOKIE
	08:57			REBOUND (OFF) by GLENN,MONTAE
	08:52	20-14	H 6	GOOD! LAYUP by GLENN,MONTAE [PNT]
TIMEOUT 30SEC	08:52			
	08:52			SUB IN: BOYKINS,DEVONTE
	08:52			SUB OUT: SMITH,IKE
GOOD! JUMPER by MCDANIEL,SAM	08:40	20-16	H 4	
ASSIST by COPPOLA,NICK	08:40			
FOUL by TAYLOR,RODERICK	08:17			
	08:17	21-16	H 5	GOOD! FT by GLADDEN,BJ

VISITORS: ULM	Time	Score	Margin	HOME: Georgia Southern
	08:17	22-16	H 6	GOOD! FT by GLADDEN,BJ
SUB IN: WASHINGTON,MARCUS	08:17			
SUB OUT: MARTIN,WADE	08:17			
	08:17			SUB IN: SMITH,IKE
	08:17			SUB OUT: BROWN,TOOKIE
MISSED LAYUP by TAYLOR,RODERICK	08:06			
	08:06			REBOUND (DEF) by HUGHES,MIKE
	07:58			MISSED JUMPER by SMITH,IKE
REBOUND (DEF) by MCDANIEL,SAM	07:58			
TURNOVER by MCDANIEL,SAM	07:47			
	07:46			STEAL by GLADDEN,BJ
	07:41	24-16	H 8	GOOD! LAYUP by BOYKINS,DEVONTE [FB/PNT]
GOOD! LAYUP by WASHINGTON,MARCUS [PNT]	07:18	24-18	H 6	
ASSIST by COPPOLA,NICK	07:18			
	06:51			MISSED JUMPER by HUGHES,MIKE
REBOUND (DEF) by MCDANIEL,SAM	06:51			
MISSED JUMPER by MCDANIEL,SAM	06:36			
REBOUND (OFF) by WASHINGTON,MARCUS	06:36			
TIMEOUT MEDIA	06:33			
	06:33			SUB IN: SIMMONS,COYE
	06:33			SUB IN: ALLSMILLER,JAKE
	06:33			SUB IN: BROWN,TOOKIE
	06:33			SUB OUT: GLADDEN,BJ
	06:33			SUB OUT: GLENN,MONTAE
	06:33			SUB OUT: BOYKINS,DEVONTE
MISSED LAYUP by COPPOLA,NICK	06:08			
	06:08			BLOCK by SIMMONS,COYE
	06:05			REBOUND (DEF) by ALLSMILLER,JAKE
FOUL by MCDANIEL,SAM	05:44			
	05:44	25-18	H 7	GOOD! FT by SMITH,IKE
	05:44	26-18	H 8	GOOD! FT by SMITH,IKE
	05:44			MISSED FT by SMITH,IKE
REBOUND (DEF) by MUNNINGS,TRAVIS	05:44			
SUB IN: COOPER,PRINCE	05:44			
SUB IN: ALABAKIS,SAM	05:44			
SUB IN: MUNNINGS,TRAVIS	05:44			
SUB OUT: MCDANIEL,SAM	05:44			
SUB OUT: TAYLOR,RODERICK	05:44			
SUB OUT: JEAN-PIERRE,MARVIN	05:44			
MISSED LAYUP by MUNNINGS,TRAVIS	05:32			
	05:32			REBOUND (DEF) by HUGHES,MIKE
	05:25	29-18	H 11	GOOD! 3PTR by HUGHES,MIKE
	05:25			ASSIST by SMITH,IKE
TURNOVER by MUNNINGS,TRAVIS	05:01			
	04:59			STEAL by SIMMONS,COYE
	04:52			MISSED 3PTR by ALLSMILLER,JAKE
REBOUND (DEF) by TEAM	04:52			
TURNOVER by WASHINGTON,MARCUS	04:26			
	04:24			STEAL by BROWN,TOOKIE
FOUL by WASHINGTON,MARCUS	04:23			
SUB IN: MARTIN,WADE	04:23			
SUB OUT: COPPOLA,NICK	04:23			
	04:10	31-18	H 13	GOOD! LAYUP by SMITH,IKE [PNT]
TIMEOUT MEDIA	03:56			
	03:56			SUB IN: GLADDEN,BJ
	03:56			SUB IN: BOYKINS,DEVONTE
	03:56			SUB OUT: ALLSMILLER,JAKE
	03:56			SUB OUT: BROWN,TOOKIE

VISITORS: ULM	Time	Score	Margin	HOME: Georgia Southern
MISSED JUMPER by COOPER,PRINCE	03:39			
	03:39			REBOUND (DEF) by GLADDEN,BJ
	03:33	34-18	H 16	GOOD! 3PTR by HUGHES,MIKE
	03:20			FOUL by SMITH,IKE
	03:20			SUB IN: BROWN,TOOKIE
	03:20			SUB OUT: BOYKINS,DEVONTE
GOOD! DUNK by WASHINGTON,MARCUS [PNT]	03:12	34-20	H 14	
	02:52	37-20	H 17	GOOD! 3PTR by SMITH,IKE
	02:52			ASSIST by SIMMONS,COYE
	02:31			SUB IN: O'CONNELL,SHAWN
	02:31			SUB OUT: SIMMONS,COYE
GOOD! JUMPER by MARTIN,WADE [PNT]	02:24	37-22	H 15	
	02:01	39-22	H 17	GOOD! LAYUP by O'CONNELL,SHAWN [PNT]
	01:51			FOUL by HUGHES,MIKE
	01:51			SUB IN: ALLSMILLER,JAKE
	01:51			SUB OUT: GLADDEN,BJ
	01:39			FOUL by O'CONNELL,SHAWN
GOOD! 3PTR by MARTIN,WADE	01:19	39-25	H 14	
ASSIST by WASHINGTON,MARCUS	01:19			
	01:01	42-25	H 17	GOOD! 3PTR by BROWN,TOOKIE
	00:49			FOUL by ALLSMILLER,JAKE
	00:49			SUB IN: SIMMONS,COYE
	00:49			SUB OUT: O'CONNELL,SHAWN
GOOD! JUMPER by COOPER,PRINCE	00:43	42-27	H 15	
FOUL by ALABAKIS,SAM	00:14			
	00:14	43-27	H 16	GOOD! FT by BROWN,TOOKIE
	00:14	44-27	H 17	GOOD! FT by BROWN,TOOKIE
SUB IN: COPPOLA,NICK	00:14			
SUB IN: MCDANIEL,SAM	00:14			
SUB OUT: WASHINGTON,MARCUS	00:14			
SUB OUT: ALABAKIS,SAM	00:14			
	00:14			SUB IN: BOYKINS,DEVONTE
	00:14			SUB OUT: BROWN,TOOKIE
MISSED JUMPER by MCDANIEL,SAM	00:00			
	00:00			REBOUND (DEF) by SMITH,IKE

ULM 27, Georgia Southern 44

Period 1-only	In Paint	Off T/O	2nd Chance	Fast Break	Bench	
ULM	12	2	0	0	11	Score tied - 2 times
GS	14	9	4	2	12	Lead changed - 2 times

Official Basketball Box Score -- Game Totals -- Second Half Statistics
ULM vs Georgia Southern
2/4/2017 5 p.m. at Statesboro, Ga. - Hanner Fieldhouse

ULM 35 • 7-16, 1-9 SBC

##	Player	S	Total			Rebounds			PF	TP	A	TO	Blk	Stl	Min
			FG-FGA	3PT	FG-FGA	FT-FTA	Off Reb	Def Reb							
01	MUNNINGS,TRAVIS	f	4-7	0-1	0-0	3	6	9	1	8	1	1	0	0	20
03	WASHINGTON,MARCUS	g	3-7	1-2	2-2	0	3	3	1	9	1	0	0	1	13
04	ALABAKIS,SAM	c	0-0	0-0	0-0	2	0	2	1	0	0	0	0	7	
11	COPPOLA,NICK	g	1-3	0-2	0-0	0	0	0	2	2	0	0	0	20	
30	MCDANIEL,SAM	f	3-6	0-2	0-0	1	2	3	0	6	1	0	0	17	
05	JEAN-PIERRE,MARVIN		2-5	0-0	0-0	1	1	2	2	4	1	0	0	11	
14	COOPER,PRINCE		3-5	0-1	0-1	1	1	2	1	6	0	0	0	7	
24	TAYLOR,RODERICK		0-1	0-0	0-0	1	0	1	1	0	0	0	0	2	
25	MARTIN,WADE		0-1	0-1	0-0	0	0	0	0	0	0	1	0	3	
TEAM						0	0	0	0						
Totals			16-35	1-9	2-3	9	13	22	9	35	4	2	0	1	100

FG % Half: 16-35 45.7%
 3FG % Half: 1-9 37.5%
 FT % Half: 2-3 66.7%

Georgia Southern 32 • 15-8, 8-2 SBC

##	Player	S	Total			Rebounds			PF	TP	A	TO	Blk	Stl	Min
			FG-FGA	3PT	FG-FGA	FT-FTA	Off Reb	Def Reb							
00	GLENN.MONTAE	f	0-0	0-0	0-0	1	0	1	1	0	1	0	1	0	9
02	HUGHES.MIKE	g	2-4	2-3	0-0	0	2	2	0	6	1	0	0	15	
03	SMITH.IKE	g	4-8	3-5	1-3	0	3	3	1	12	3	0	1	16	
04	BROWN.TOOKIE	g	2-5	1-3	1-2	0	0	0	0	6	0	2	0	19	
10	ALLSMILLER.JAKE	f	1-2	1-2	0-0	0	1	1	1	3	1	0	0	9	
01	BOYKINS.DEVONTE		0-1	0-0	3-4	1	1	2	1	3	0	0	0	10	
05	GLADDEN.BJ		0-1	0-0	0-0	0	0	0	0	0	0	0	0	6	
11	O'CONNELL.SHAWN		0-0	0-0	0-0	0	0	0	1	0	0	0	0	1	
12	MCRAE.AUBREY		0-1	0-1	0-0	0	0	0	0	0	0	0	0	2	
14	SIMMONS.COYE		0-2	0-0	0-0	2	4	6	1	0	0	1	1	7	
21	HOLDER.JAMES		0-1	0-0	0-0	0	0	0	0	0	0	0	0	2	
24	WIMBERLY.BRANDON		0-0	0-0	2-2	0	0	0	0	2	0	0	0	2	
25	GEORGIEV.DAVID		0-0	0-0	0-0	0	0	0	0	0	0	0	0	1	
33	BULLOCK.DOMINIQUE		0-0	0-0	0-0	0	0	0	0	0	0	0	0	1	
TEAM						0	0	0	0						
Totals			9-25	7-14	7-11	4	11	15	6	32	6	3	3	1	100

FG % Half: 9-25 36.0%
 3FG % Half: 7-14 75.0%
 FT % Half: 7-11 63.6%

Officials: Gary Maxwell, Matt Martinez, Jerome Hall
 Technical Fouls: ULM- None. Georgia Southern- None.

Score by periods	1st	2nd	Total
ULM	27	35	62
Georgia Southern	44	32	76

Points	In Paint	Off T/O	2nd Chance	Fast Break	Bench
ULM	18	6	10	0	10
GS	2	3	5	0	5

Last FG - ULM 2nd-00:08, GS 2nd-02:35.
 ULM led for 0:00. GS led for 20:00. Game was tied for 0:00.

Score tied - 0 times
 Lead changed - 0 times

ULM vs Georgia Southern
2/4/2017; 5 p.m. at Statesboro, Ga. - Hanner Fieldhouse
Period 2 Play-By-Play

VISITORS: ULM	Time	Score	Margin	HOME: Georgia Southern
	19:46			MISSED JUMPER by SMITH,IKE
REBOUND (DEF) by MUNNINGS,TRAVIS	19:46			
GOOD! LAYUP by WASHINGTON,MARCUS [PNT]	19:28	44-29	H 15	
	19:06	46-29	H 17	GOOD! JUMPER by BROWN,TOOKIE
MISSED JUMPER by WASHINGTON,MARCUS	18:36			
REBOUND (OFF) by MUNNINGS,TRAVIS	18:36			
GOOD! LAYUP by MUNNINGS,TRAVIS [PNT]	18:32	46-31	H 15	
	18:15	49-31	H 18	GOOD! 3PTR by HUGHES,MIKE
	18:15			ASSIST by SMITH,IKE
GOOD! 3PTR by WASHINGTON,MARCUS	17:57	49-34	H 15	
ASSIST by MUNNINGS,TRAVIS	17:57			
TIMEOUT 30SEC	17:55			
	17:42			MISSED 3PTR by HUGHES,MIKE
REBOUND (DEF) by WASHINGTON,MARCUS	17:42			
MISSED JUMPER by MUNNINGS,TRAVIS	17:30			
	17:30			BLOCK by GLENN,MONTAE
REBOUND (OFF) by MUNNINGS,TRAVIS	17:28			
GOOD! LAYUP by MUNNINGS,TRAVIS [PNT]	17:26	49-36	H 13	
	17:12			MISSED 3PTR by ALLSMILLER,JAKE
REBOUND (DEF) by MCDANIEL,SAM	17:12			
GOOD! JUMPER by MUNNINGS,TRAVIS	16:59	49-38	H 11	
	16:56			TIMEOUT 30SEC
	16:56			SUB IN: GLADDEN,BJ
	16:56			SUB IN: BOYKINS,DEVONTE
	16:56			SUB IN: SIMMONS,COYE
	16:56			SUB OUT: GLENN,MONTAE
	16:56			SUB OUT: SMITH,IKE
	16:56			SUB OUT: ALLSMILLER,JAKE
FOUL by ALABAKIS,SAM	16:40			
	16:20			MISSED LAYUP by GLADDEN,BJ
	16:20			REBOUND (OFF) by SIMMONS,COYE
	16:17			MISSED JUMPER by SIMMONS,COYE
REBOUND (DEF) by MUNNINGS,TRAVIS	16:17			
MISSED LAYUP by WASHINGTON,MARCUS	15:50			
REBOUND (OFF) by ALABAKIS,SAM	15:50			
SUB IN: TAYLOR,RODERICK	15:50			
SUB OUT: ALABAKIS,SAM	15:50			
GOOD! JUMPER by COPPOLA,NICK	15:46	49-40	H 9	
FOUL by MUNNINGS,TRAVIS	15:27			
	15:27			MISSED FT by BOYKINS,DEVONTE
	15:27			REBOUND (DEADB) by TEAM
	15:27	50-40	H 10	GOOD! FT by BOYKINS,DEVONTE
	15:27			SUB IN: SMITH,IKE
	15:27			SUB OUT: HUGHES,MIKE
MISSED 3PTR by MCDANIEL,SAM	15:05			
REBOUND (OFF) by TAYLOR,RODERICK	15:05			
MISSED LAYUP by TAYLOR,RODERICK	15:01			
	15:01			REBOUND (DEF) by SIMMONS,COYE
	14:46			MISSED 3PTR by BROWN,TOOKIE
REBOUND (DEF) by MUNNINGS,TRAVIS	14:46			
MISSED 3PTR by COPPOLA,NICK	14:29			
	14:29			REBOUND (DEF) by BOYKINS,DEVONTE
	14:19			MISSED LAYUP by BROWN,TOOKIE

VISITORS: ULM	Time	Score	Margin	HOME: Georgia Southern
	14:19			REBOUND (OFF) by SIMMONS,COYE
	14:15			MISSED JUMPER by SIMMONS,COYE
REBOUND (DEF) by MUNNINGS,TRAVIS	14:15			
MISSED 3PTR by WASHINGTON,MARCUS	14:07			
	14:07			REBOUND (DEF) by SIMMONS,COYE
FOUL by TAYLOR,RODERICK	14:06			
SUB IN: ALABAKIS,SAM	14:06			
SUB IN: MARTIN,WADE	14:06			
SUB IN: JEAN-PIERRE,MARVIN	14:06			
SUB OUT: WASHINGTON,MARCUS	14:06			
SUB OUT: TAYLOR,RODERICK	14:06			
SUB OUT: MCDANIEL,SAM	14:06			
	14:06			SUB IN: ALLSMILLER,JAKE
	14:06			SUB IN: HUGHES,MIKE
	14:06			SUB IN: GLENN,MONTAE
	14:06			SUB OUT: GLADDEN,BJ
	14:06			SUB OUT: BOYKINS,DEVONTE
	14:06			SUB OUT: SIMMONS,COYE
	13:55	53-40	H 13	GOOD! 3PTR by SMITH,IKE
	13:55			ASSIST by ALLSMILLER,JAKE
	13:33			FOUL by ALLSMILLER,JAKE
	13:19			FOUL by GLENN,MONTAE
MISSED JUMPER by JEAN-PIERRE,MARVIN	13:02			
	13:02			REBOUND (DEF) by SMITH,IKE
	12:53	56-40	H 16	GOOD! 3PTR by ALLSMILLER,JAKE
TIMEOUT 30SEC	12:40			
MISSED 3PTR by COPPOLA,NICK	12:22			
REBOUND (OFF) by ALABAKIS,SAM	12:22			
TURNOVER by MARTIN,WADE	12:06			
	11:54			MISSED JUMPER by SMITH,IKE
	11:54			REBOUND (OFF) by GLENN,MONTAE
	11:45	59-40	H 19	GOOD! 3PTR by SMITH,IKE
	11:45			ASSIST by GLENN,MONTAE
MISSED 3PTR by MARTIN,WADE	11:28			
	11:28			REBOUND (DEF) by ALLSMILLER,JAKE
FOUL by JEAN-PIERRE,MARVIN	11:18			
	11:18			TIMEOUT MEDIA
	11:18			MISSED FT by BROWN,TOOKIE
	11:18			REBOUND (DEADB) by TEAM
	11:18	60-40	H 20	GOOD! FT by BROWN,TOOKIE
SUB IN: COOPER,PRINCE	11:18			
SUB IN: MCDANIEL,SAM	11:18			
SUB OUT: ALABAKIS,SAM	11:18			
SUB OUT: MARTIN,WADE	11:18			
GOOD! JUMPER by COOPER,PRINCE	11:04	60-42	H 18	
ASSIST by JEAN-PIERRE,MARVIN	11:04			
FOUL by COPPOLA,NICK	10:36			
	10:28			MISSED 3PTR by BROWN,TOOKIE
REBOUND (DEF) by COOPER,PRINCE	10:28			
MISSED JUMPER by MCDANIEL,SAM	10:09			
REBOUND (OFF) by JEAN-PIERRE,MARVIN	10:09			
MISSED LAYUP by JEAN-PIERRE,MARVIN	10:05			
	10:05			REBOUND (DEF) by SMITH,IKE
	09:54			MISSED JUMPER by HUGHES,MIKE
REBOUND (DEF) by JEAN-PIERRE,MARVIN	09:54			
MISSED JUMPER by MUNNINGS,TRAVIS	09:34			
	09:34			REBOUND (DEF) by HUGHES,MIKE
	09:26	63-42	H 21	GOOD! 3PTR by SMITH,IKE

VISITORS: ULM	Time	Score	Margin	HOME: Georgia Southern
	09:26			ASSIST by HUGHES,MIKE
MISSED 3PTR by COOPER,PRINCE	09:05			
	09:05			REBOUND (DEF) by SMITH,IKE
	08:37			MISSED 3PTR by SMITH,IKE
REBOUND (DEF) by MCDANIEL,SAM	08:37			
GOOD! LAYUP by JEAN-PIERRE,MARVIN [PNT]	08:14	63-44	H 19	
FOUL by JEAN-PIERRE,MARVIN	07:52			
	07:52			TIMEOUT MEDIA
	07:52			MISSED FT by SMITH,IKE
	07:52			REBOUND (DEADB) by TEAM
	07:52	64-44	H 20	GOOD! FT by SMITH,IKE
	07:52			SUB IN: SIMMONS,COYE
	07:52			SUB IN: BOYKINS,DEVONTE
	07:52			SUB IN: GLADDEN,BJ
	07:52			SUB OUT: ALLSMILLER,JAKE
	07:52			SUB OUT: HUGHES,MIKE
	07:52			SUB OUT: GLENN,MONTAE
MISSED 3PTR by MUNNINGS,TRAVIS	07:40			
REBOUND (OFF) by MCDANIEL,SAM	07:40			
GOOD! LAYUP by MCDANIEL,SAM [PNT]	07:35	64-46	H 18	
	07:16	67-46	H 21	GOOD! 3PTR by BROWN,TOOKIE
	07:16			ASSIST by SMITH,IKE
GOOD! JUMPER by COOPER,PRINCE	07:00	67-48	H 19	
	07:00			FOUL by SMITH,IKE
MISSED FT by COOPER,PRINCE	07:00			
	07:00			REBOUND (DEF) by SIMMONS,COYE
SUB IN: WASHINGTON,MARCUS	07:00			
SUB OUT: JEAN-PIERRE,MARVIN	07:00			
	06:48	69-48	H 21	GOOD! LAYUP by SMITH,IKE [PNT]
FOUL by WASHINGTON,MARCUS	06:48			
	06:47			MISSED FT by SMITH,IKE
REBOUND (DEF) by MUNNINGS,TRAVIS	06:47			
MISSED 3PTR by MCDANIEL,SAM	06:31			
REBOUND (OFF) by COOPER,PRINCE	06:31			
	06:23			FOUL by SIMMONS,COYE
GOOD! FT by WASHINGTON,MARCUS	06:23	69-49	H 20	
GOOD! FT by WASHINGTON,MARCUS	06:23	69-50	H 19	
	06:23			SUB IN: HUGHES,MIKE
	06:23			SUB IN: O'CONNELL,SHAWN
	06:23			SUB OUT: SMITH,IKE
	06:23			SUB OUT: GLADDEN,BJ
	05:59			TURNOVER by BROWN,TOOKIE
STEAL by WASHINGTON,MARCUS	05:58			
	05:56			FOUL by O'CONNELL,SHAWN
GOOD! LAYUP by COOPER,PRINCE [PNT]	05:43	69-52	H 17	
ASSIST by MCDANIEL,SAM	05:43			
	05:15			MISSED LAYUP by BOYKINS,DEVONTE
	05:15			REBOUND (OFF) by BOYKINS,DEVONTE
FOUL by COOPER,PRINCE	05:14			
	05:13	70-52	H 18	GOOD! FT by BOYKINS,DEVONTE
	05:13	71-52	H 19	GOOD! FT by BOYKINS,DEVONTE
	05:13			SUB IN: SMITH,IKE
	05:13			SUB OUT: O'CONNELL,SHAWN
MISSED LAYUP by COOPER,PRINCE	04:53			
	04:53			BLOCK by SIMMONS,COYE
	04:51			REBOUND (DEF) by SIMMONS,COYE
	04:30			TURNOVER by BROWN,TOOKIE
GOOD! LAYUP by WASHINGTON,MARCUS [PNT]	04:19	71-54	H 17	

VISITORS: ULM	Time	Score	Margin	HOME: Georgia Southern
SUB IN: JEAN-PIERRE,MARVIN	03:54			
SUB OUT: COOPER,PRINCE	03:54			
	03:54			SUB IN: GLADDEN,BJ
	03:54			SUB OUT: SIMMONS,COYE
	03:53			TURNOVER by SIMMONS,COYE
TIMEOUT MEDIA	03:54			
GOOD! JUMPER by JEAN-PIERRE,MARVIN	03:40	71-56	H 15	
	03:11			MISSED 3PTR by SMITH,IKE
REBOUND (DEF) by WASHINGTON,MARCUS	03:11			
MISSED LAYUP by WASHINGTON,MARCUS	03:03			
	03:03			BLOCK by SMITH,IKE
	03:01			REBOUND (DEF) by HUGHES,MIKE
	02:35	74-56	H 18	GOOD! 3PTR by HUGHES,MIKE
	02:35			ASSIST by SMITH,IKE
MISSED JUMPER by JEAN-PIERRE,MARVIN	02:11			
REBOUND (OFF) by MUNNINGS,TRAVIS	02:11			
TURNOVER by MUNNINGS,TRAVIS	02:02			
	02:01			STEAL by SMITH,IKE
	01:48			TIMEOUT 30SEC
	01:48			SUB IN: HOLDER,JAMES
	01:48			SUB IN: MCRAE,AUBREY
	01:48			SUB IN: WIMBERLY,BRANDON
	01:48			SUB OUT: GLADDEN,BJ
	01:48			SUB OUT: HUGHES,MIKE
	01:48			SUB OUT: SMITH,IKE
	01:34			MISSED 3PTR by MCRAE,AUBREY
REBOUND (DEF) by WASHINGTON,MARCUS	01:34			
	01:21			FOUL by BOYKINS,DEVONTE
GOOD! JUMPER by MCDANIEL,SAM	01:11	74-58	H 16	
ASSIST by WASHINGTON,MARCUS	01:11			
	00:50			TIMEOUT 30SEC
	00:50			SUB IN: BULLOCK,DOMINIQUE
	00:50			SUB IN: GEORGIEV,DAVID
	00:50			SUB OUT: BOYKINS,DEVONTE
	00:50			SUB OUT: BROWN,TOOKIE
	00:39			MISSED JUMPER by HOLDER,JAMES
REBOUND (DEF) by MUNNINGS,TRAVIS	00:39			
GOOD! JUMPER by MCDANIEL,SAM [PNT]	00:28	74-60	H 14	
FOUL by COPPOLA,NICK	00:17			
	00:17	75-60	H 15	GOOD! FT by WIMBERLY,BRANDON
	00:17	76-60	H 16	GOOD! FT by WIMBERLY,BRANDON
GOOD! LAYUP by MUNNINGS,TRAVIS [PNT]	00:08	76-62	H 14	

ULM 62, Georgia Southern 76

Period 2-only	In Paint	Off T/O	2nd Chance	Fast Break	Bench	
ULM	18	6	10	0	10	Score tied - 0 times
GS	2	3	5	0	5	Lead changed - 0 times

ULM vs Georgia Southern

2/4/2017; 5 p.m. at Statesboro, Ga. - Hanner Fieldhouse

Scoring/Runs Reference

Period 1

ULM	Score	Marg	Georgia Southern
18:12 - COPPOLA 3PTR	3	3-0	-3
		3-2	-1 2 BROWN JUMPER - 17:51
		3-4	1 2 SIMMONS LAYUP [P] - 16:21
16:03 - ALABAKIS LAYUP [P]	2	5-4	-1
		5-7	2 3 HUGHES 3PTR - 15:29
15:07 - WASHINGTON LAYUP [P]	2	7-7	0
		7-9	2 2 HUGHES LAYUP [P] - 14:51
		7-12	5 3 SMITH 3PTR - 14:16
		7-14	7 2 BROWN JUMPER - 12:57
12:34 - MUNNINGS 3PTR	3	10-14	4
		10-16	6 2 SIMMONS LAYUP [P] - 12:05
		10-18	8 2 BOYKINS JUMPER - 11:07
10:47 - JEAN-PIERRE JUMPER [P]	2	12-18	6
10:18 - JEAN-PIERRE FT	1	13-18	5
10:18 - JEAN-PIERRE FT	1	14-18	4
		14-20	6 2 GLENN LAYUP [P] - 08:52
08:40 - MCDANIEL JUMPER	2	16-20	4
		16-21	5 1 GLADDEN FT - 08:17
		16-22	6 1 GLADDEN FT - 08:17
		16-24	8 2 BOYKINS LAYUP [P] [F] - 07:41
07:18 - WASHINGTON LAYUP [P]	2	18-24	6
		18-25	7 1 SMITH FT - 05:44
		18-26	8 1 SMITH FT - 05:44
		18-29	11 3 HUGHES 3PTR - 05:25
		18-31	13 2 SMITH LAYUP [P] - 04:10
		18-34	16 3 HUGHES 3PTR - 03:33
03:12 - WASHINGTON DUNK [P]	2	20-34	14
		20-37	17 3 SMITH 3PTR - 02:52
02:24 - MARTIN JUMPER [P]	2	22-37	15
		22-39	17 2 O'CONNELL LAYUP [P] - 02:01
01:19 - MARTIN 3PTR	3	25-39	14
		25-42	17 3 BROWN 3PTR - 01:01
00:43 - COOPER JUMPER	2	27-42	15
		27-43	16 1 BROWN FT - 00:14
		27-44	17 1 BROWN FT - 00:14

Period 2

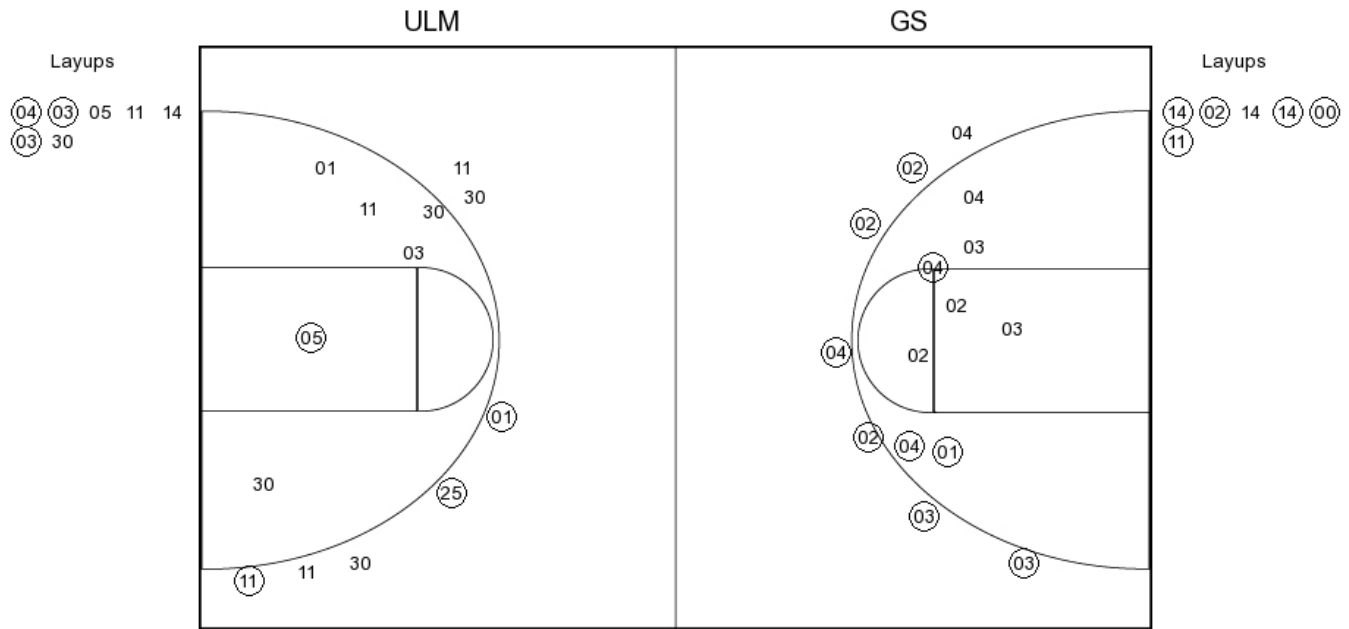
ULM	Score	Marg	Georgia Southern
19:28 - WASHINGTON LAYUP [P]	2	29-44	15
		29-46	17 2 BROWN JUMPER - 19:06
18:32 - MUNNINGS LAYUP [P]	2	31-46	15
		31-49	18 3 HUGHES 3PTR - 18:15
17:57 - WASHINGTON 3PTR	3	34-49	15
17:26 - MUNNINGS LAYUP [P]	2	36-49	13
16:59 - MUNNINGS JUMPER	2	38-49	11
15:46 - COPPOLA JUMPER	2	40-49	9
		40-50	10 1 BOYKINS FT - 15:27
		40-53	13 3 SMITH 3PTR - 13:55
		40-56	16 3 ALLSMILLER 3PTR - 12:53
		40-59	19 3 SMITH 3PTR - 11:45
		40-60	20 1 BROWN FT - 11:18
11:04 - COOPER JUMPER	2	42-60	18
		42-63	21 3 SMITH 3PTR - 09:26
08:14 - JEAN-PIERRE LAYUP [P]	2	44-63	19
		44-64	20 1 SMITH FT - 07:52
07:35 - MCDANIEL LAYUP [P]	2	46-64	18
		46-67	21 3 BROWN 3PTR - 07:16
07:00 - COOPER JUMPER	2	48-67	19
		48-69	21 2 SMITH LAYUP [P] - 06:48
06:23 - WASHINGTON FT	1	49-69	20
06:23 - WASHINGTON FT	1	50-69	19
05:43 - COOPER LAYUP [P]	2	52-69	17
		52-70	18 1 BOYKINS FT - 05:13
		52-71	19 1 BOYKINS FT - 05:13
04:19 - WASHINGTON LAYUP [P]	2	54-71	17
03:40 - JEAN-PIERRE JUMPER	2	56-71	15
		56-74	18 3 HUGHES 3PTR - 02:35
01:11 - MCDANIEL JUMPER	2	58-74	16
00:28 - MCDANIEL JUMPER [P]	2	60-74	14
		60-75	15 1 WIMBERLY FT - 00:17
		60-76	16 1 WIMBERLY FT - 00:17
00:08 - MUNNINGS LAYUP [P]	2	62-76	14

ULM vs Georgia Southern

OFFICIAL SHOT CHART

2/4/2017 at Statesboro, Ga. - Hanner Fieldhouse

PERIOD 1



ULM PERIOD 1

FG Made	11
FG Attempted	27
3PFG Made	3
3PFG Attempted	8

GS PERIOD 1

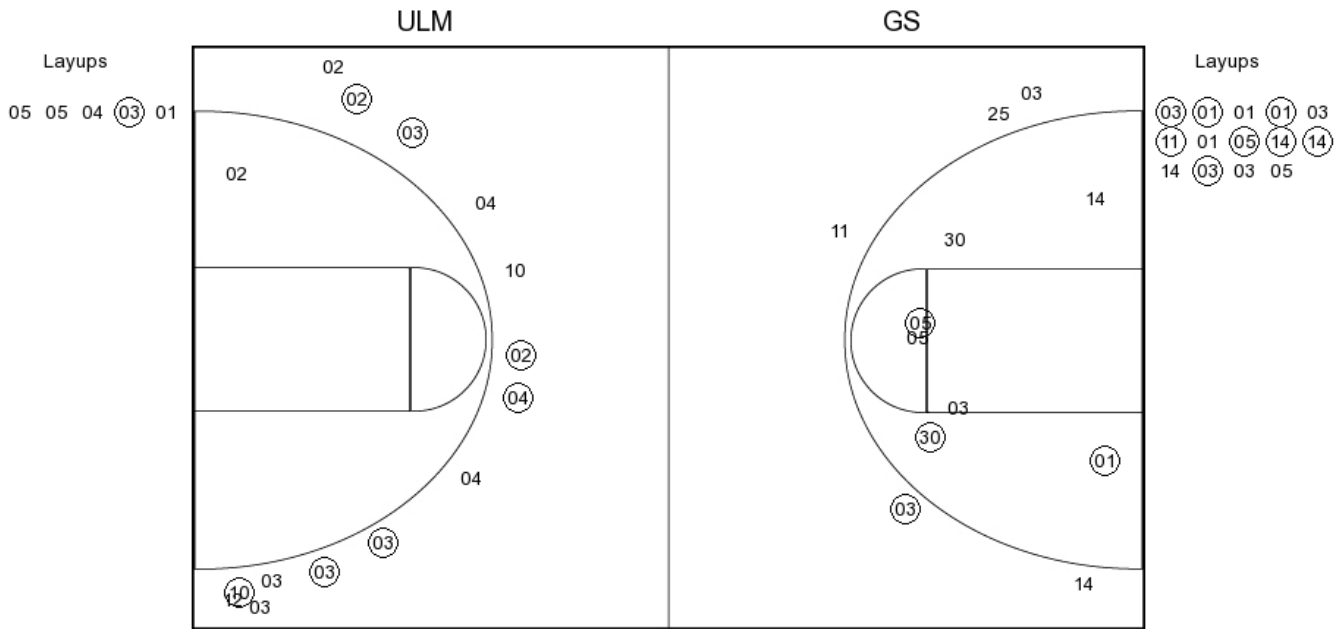
FG Made	16
FG Attempted	28
3PFG Made	6
3PFG Attempted	8

ULM vs Georgia Southern

OFFICIAL SHOT CHART

2/4/2017 at Statesboro, Ga. - Hanner Fieldhouse

PERIOD 2



ULM PERIOD 2

FG Made	16
FG Attempted	35
3PFG Made	1
3PFG Attempted	9

GS PERIOD 2

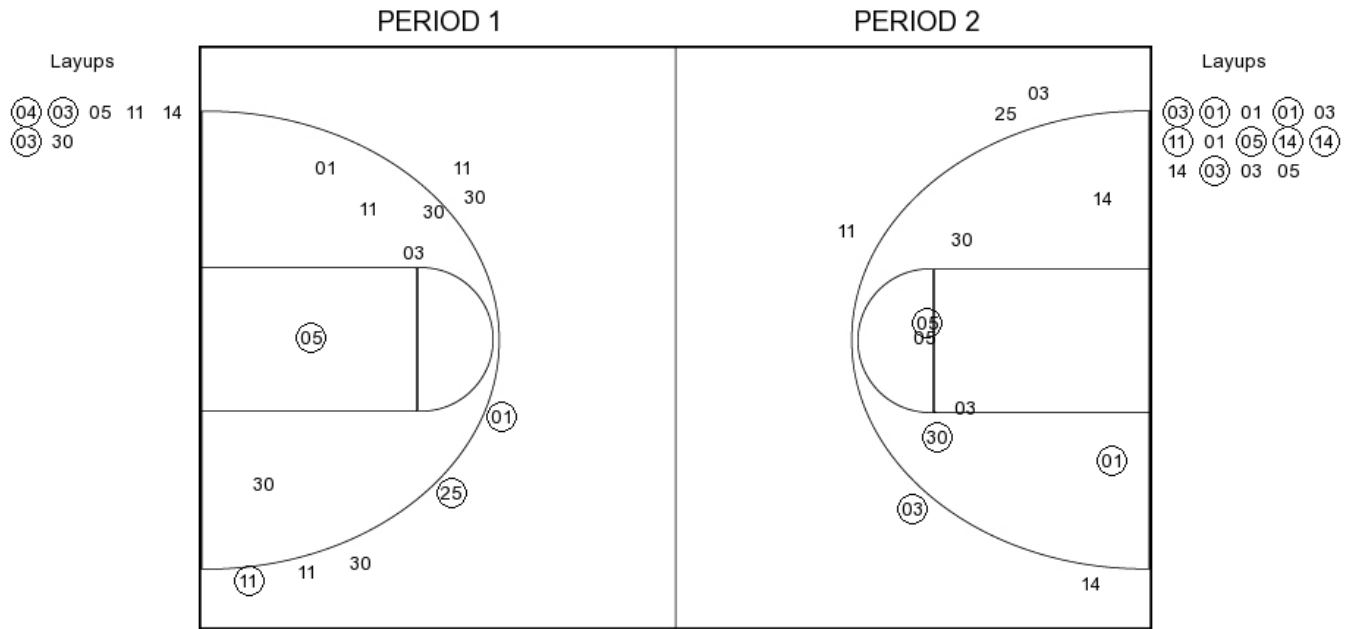
FG Made	9
FG Attempted	25
3PFG Made	7
3PFG Attempted	14

ULM vs Georgia Southern

OFFICIAL SHOT CHART

2/4/2017 at Statesboro, Ga. - Hanner Fieldhouse

ULM



ULM PERIOD 1

FG Made	11
FG Attempted	27
3PFG Made	3
3PFG Attempted	8

ULM PERIOD 2

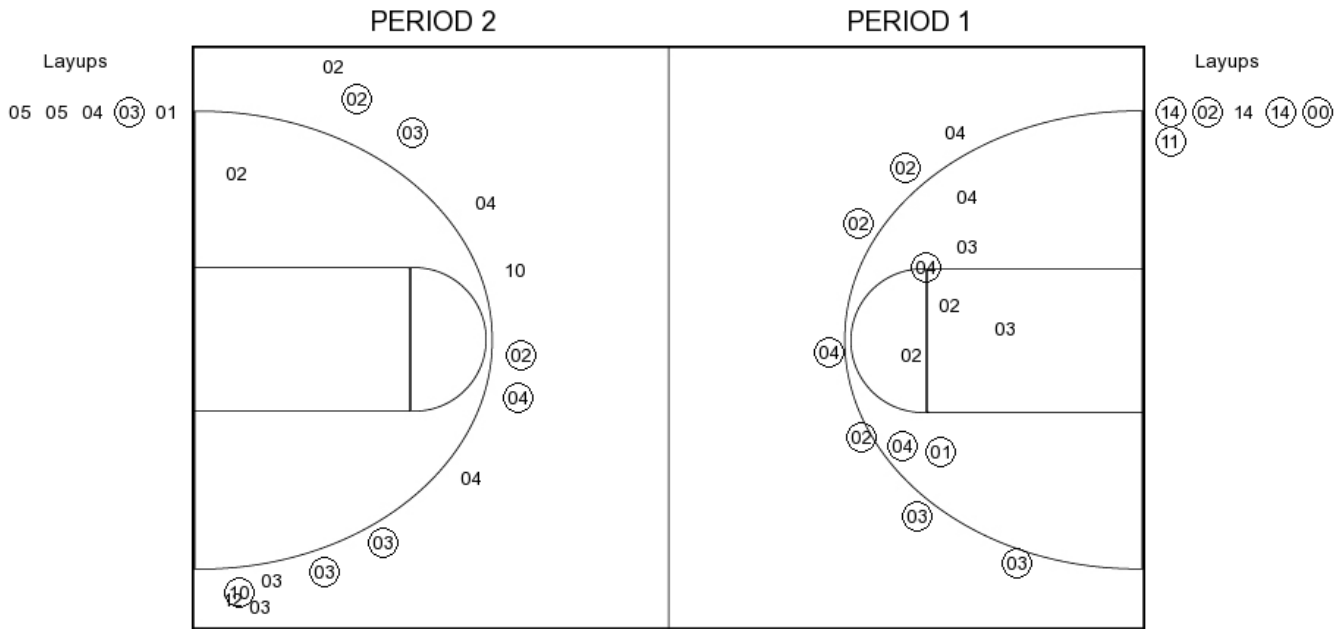
FG Made	16
FG Attempted	35
3PFG Made	1
3PFG Attempted	9

ULM vs Georgia Southern

OFFICIAL SHOT CHART

2/4/2017 at Statesboro, Ga. - Hanner Fieldhouse

Georgia Southern



GS PERIOD 1

FG Made	16
FG Attempted	28
3PFG Made	6
3PFG Attempted	8

GS PERIOD 2

FG Made	9
FG Attempted	25
3PFG Made	7
3PFG Attempted	14