

APPALACHIAN STATE AT GEORGIA SOUTHERN



1/21/2017

Statesboro, Ga. - Hanner Fieldhouse

FINAL STATS

Georgia Southern
(12-6, 5-0 SBC)

92

Appalachian State
(6-10, 1-4 SBC)

88

Start Time: 5 p.m.

Officials: Frankie Bordeaux, Kevin Mathis, Jerome Hall

Attendance: 0

Official Basketball Box Score -- Game Totals -- Final Statistics
Appalachian State vs Georgia Southern
1/21/2017 5 p.m. at Statesboro, Ga. - Hanner Fieldhouse

Appalachian State 88 - 6-10, 1-4 SBC

##	Player	*	Total	3-Ptr	FT-FTA	Rebounds			PF	TP	A	TO	Blk	Stl	Min
			FG-FGA	FG-FGA		Off	Def	Tot							
02	SHABAZZ, RONSHAD	*	13-24	6-12	4-6	1	6	7	4	36	3	3	0	0	38
05	KINNEY, GRIFFIN	*	1-4	0-0	3-4	1	3	4	4	5	2	2	0	0	22
11	LOGAN, EMARIUS	*	4-9	2-5	7-9	0	1	1	5	17	0	2	0	0	29
25	BABIC, JAKE	*	4-9	3-6	0-0	0	0	0	4	11	2	1	0	0	21
32	JOHNSON, TYRELL	*	2-6	0-0	0-1	3	3	6	1	4	0	3	0	1	21
00	JOHNSON, ISAAC		3-8	0-1	0-2	6	3	9	4	6	3	1	0	1	24
10	GOOD, PATRICK		0-4	0-3	0-0	0	2	2	3	0	0	0	0	0	22
14	HOLLEY, BENNETT		0-1	0-1	0-0	0	0	0	1	0	1	0	0	0	2
24	HINTON, CRAIG		4-6	1-3	0-0	1	6	7	5	9	0	0	0	0	21
TEAM						1	2	3	0		0				
TOTALS			31-71	12-31	14-22	13	26	39	31	88	11	12	0	2	200

Deadball Rebounds: 3,0

FG %	1st Half:	11-29	37.9%	2nd Half:	20-42	47.6%	Game:	31-71	43.7%
3FG %	1st Half:	5-13	38.5%	2nd Half:	7-18	38.9%	Game:	12-31	38.7%
FT %	1st Half:	5-6	83.3%	2nd Half:	9-16	56.3%	Game:	14-22	63.6%

Georgia Southern 92 - 12-6, 5-0 SBC

##	Player	*	Total	3-Ptr	FT-FTA	Rebounds			PF	TP	A	TO	Blk	Stl	Min
			FG-FGA	FG-FGA		Off	Def	Tot							
00	GLENN, MONTAE	*	1-2	0-0	1-2	2	2	4	4	3	0	1	0	0	14
02	HUGHES, MIKE	*	3-9	1-3	2-2	0	1	1	4	9	2	3	0	3	37
03	SMITH, IKE	*	7-10	2-3	9-12	1	5	6	3	25	2	1	0	1	31
04	BROWN, TOOKIE	*	7-16	1-4	17-23	0	4	4	3	32	2	0	1	1	33
10	ALLSMILLER, JAKE	*	2-3	2-3	0-0	0	4	4	3	6	0	0	0	1	33
01	BOYKINS, DEVONTE		0-1	0-0	1-2	0	2	2	1	1	1	3	0	0	17
05	GLADDEN, BJ		4-5	0-0	3-4	1	10	11	3	11	0	1	2	1	24
14	SIMMONS, COYE		2-3	0-0	1-2	1	2	3	4	5	0	2	0	0	12
TEAM						0	2	2	0		0				
TOTALS			26-49	6-13	34-47	5	32	37	25	92	7	11	3	7	201

Deadball Rebounds: 5,0

FG %	1st Half:	13-30	43.3%	2nd Half:	13-19	68.4%	Game:	26-49	53.1%
3FG %	1st Half:	4-9	44.4%	2nd Half:	2-4	50.0%	Game:	6-13	46.2%
FT %	1st Half:	7-13	53.8%	2nd Half:	27-34	79.4%	Game:	34-47	72.3%

Officials: Frankie Bordeaux, Kevin Mathis, Jerome Hall
 Technical Fouls: Appalachian State- None. Georgia Southern- None.
 Attendance: 0

Score by periods	1st	2nd	Total
Appalachian State	32	56	88
Georgia Southern	37	55	92

Points	In Paint	Off T/O	2nd Chance	Fast Break	Bench
APP	32	16	13	8	15
GS	24	18	13	4	17

Last FG - APP 2nd-00:09, GS 2nd-04:57.
 Largest lead - Appalachian State by 1 1st-09:45; Georgia Southern by 12 2nd-16:24
 APP led for 1:30. GS led for 37:00. Game was tied for 1:30.

Score tied - 1 times
 Lead changed - 2 times

Official Basketball Box Score -- Game Totals -- First Half Statistics
Appalachian State vs Georgia Southern
1/21/2017 5 p.m. at Statesboro, Ga. - Hanner Fieldhouse

Appalachian State 32 • 6-10, 1-4 SBC

##	Player	*	Total		FT-FTA	Rebounds			PF	TP	A	TO	Blk	Stl	Min
			FG-FGA	3-Ptr FG-FGA		Off	Def	Tot							
02	SHABAZZ, RONSHAD	*	4-9	3-6	1-1	1	5	6	1	12	1	3	0	0	19
05	KINNEY, GRIFFIN	*	1-3	0-0	0-0	1	2	3	2	2	2	2	0	0	15
11	LOGAN, EMARIUS	*	2-4	1-2	4-4	0	1	1	1	9	0	1	0	0	13
25	BABIC, JAKE	*	0-2	0-1	0-0	0	0	0	2	0	1	1	0	0	7
32	JOHNSON, TYRELL	*	2-4	0-0	0-1	1	1	2	0	4	0	2	0	0	14
00	JOHNSON, ISAAC		0-2	0-1	0-0	0	2	2	2	0	1	1	0	0	9
10	GOOD, PATRICK		0-1	0-0	0-0	0	2	2	0	0	0	0	0	0	12
14	HOLLEY, BENNETT		0-1	0-1	0-0	0	0	0	1	0	1	0	0	0	2
24	HINTON, CRAIG		2-3	1-2	0-0	0	1	1	2	5	0	0	0	0	9
TEAM						1	1	2	0			0			
Totals			11-29	5-13	5-6	4	15	19	11	32	6	10	0	0	100

FG % Half: 11-29 37.9%
 3FG % Half: 5-13 38.5%
 FT % Half: 5-6 83.3%

Georgia Southern 37 • 12-6, 5-0 SBC

##	Player	*	Total		FT-FTA	Rebounds			PF	TP	A	TO	Blk	Stl	Min
			FG-FGA	3-Ptr FG-FGA		Off	Def	Tot							
00	GLENN, MONTAE	*	1-2	0-0	1-2	2	2	4	2	3	0	1	0	0	10
02	HUGHES, MIKE	*	1-6	0-1	0-0	0	0	0	1	2	1	1	0	2	18
03	SMITH, IKE	*	5-7	1-1	4-6	1	3	4	2	15	1	1	0	1	13
04	BROWN, TOOKIE	*	1-7	1-4	0-0	0	1	1	2	3	1	0	1	1	14
10	ALLSMILLER, JAKE	*	2-3	2-3	0-0	0	2	2	0	6	0	0	0	1	16
01	BOYKINS, DEVONTE		0-1	0-0	1-2	0	1	1	0	1	1	0	0	0	11
05	GLADDEN, BJ		2-2	0-0	0-1	0	3	3	1	4	0	1	2	1	10
14	SIMMONS, COYE		1-2	0-0	1-2	1	2	3	1	3	0	1	0	0	8
TEAM						0	1	1	0			0			
Totals			13-30	4-9	7-13	4	15	19	9	37	4	5	3	6	100

FG % Half: 13-30 43.3%
 3FG % Half: 4-9 44.4%
 FT % Half: 7-13 53.8%

Officials: Frankie Bordeaux, Kevin Mathis, Jerome Hall
 Technical Fouls: Appalachian State- None. Georgia Southern- None.

Score by periods	1st	2nd	Total
Appalachian State	32	56	88
Georgia Southern	37	55	92

Points	In		Off		2nd		Fast	
	Paint	T/O	Paint	T/O	Chance	Break	Bench	
APP	6	9	3	2	3	2	5	
GS	12	14	7	2	7	2	8	

Last FG - APP 1st-03:41, GS 1st-01:46.
 APP led for 1:30. GS led for 17:00. Game was tied for 1:30.

Score tied - 1 times
 Lead changed - 2 times

Appalachian State vs Georgia Southern
1/21/2017; 5 p.m. at Statesboro, Ga. - Hanner Fieldhouse
Period 1 Play-By-Play

VISITORS: Appalachian State	Time	Score	Margin	HOME: Georgia Southern
MISSED LAYUP by JOHNSON, TYRELL	19:46			
REBOUND (OFF) by JOHNSON, TYRELL	19:46			
TURNOVER by JOHNSON, TYRELL	19:43			
	19:42			STEAL by HUGHES, MIKE
	19:34			MISSED LAYUP by HUGHES, MIKE
	19:34			REBOUND (OFF) by GLENN, MONTAE
	19:24	3-0	H 3	GOOD! 3PTR by BROWN, TOOKIE
	19:11			FOUL by BROWN, TOOKIE
MISSED JUMPER by LOGAN, EMARIUS	18:45			
	18:45			BLOCK by BROWN, TOOKIE
	18:44			REBOUND (DEF) by BROWN, TOOKIE
	18:27	6-0	H 6	GOOD! 3PTR by ALLSMILLER, JAKE
	18:27			ASSIST by SMITH, IKE
GOOD! 3PTR by SHABAZZ, RONSHAD	18:12	6-3	H 3	
ASSIST by BABIC, JAKE	18:12			
FOUL by BABIC, JAKE	17:46			
	17:46	7-3	H 4	GOOD! FT by SMITH, IKE
	17:46	8-3	H 5	GOOD! FT by SMITH, IKE
	17:46			MISSED FT by SMITH, IKE
REBOUND (DEF) by JOHNSON, ISAAC	17:46			
SUB IN: JOHNSON, ISAAC	17:46			
SUB OUT: JOHNSON, TYRELL	17:46			
	17:46			SUB IN: BOYKINS, DEVONTE
	17:46			SUB OUT: BROWN, TOOKIE
GOOD! LAYUP by KINNEY, GRIFFIN [PNT]	17:33	8-5	H 3	
	17:13			MISSED LAYUP by BOYKINS, DEVONTE
REBOUND (DEF) by KINNEY, GRIFFIN	17:13			
MISSED JUMPER by BABIC, JAKE	16:53			
	16:53			REBOUND (DEF) by GLENN, MONTAE
FOUL by JOHNSON, ISAAC	16:51			
SUB IN: HINTON, CRAIG	16:51			
SUB OUT: BABIC, JAKE	16:51			
	16:51			SUB IN: BROWN, TOOKIE
	16:51			SUB OUT: HUGHES, MIKE
	16:38			MISSED 3PTR by BROWN, TOOKIE
	16:38			REBOUND (OFF) by SMITH, IKE
	16:29	11-5	H 6	GOOD! 3PTR by ALLSMILLER, JAKE
	16:29			ASSIST by BOYKINS, DEVONTE
TURNOVER by KINNEY, GRIFFIN	16:01			
	15:59			STEAL by SMITH, IKE
	15:54	13-5	H 8	GOOD! LAYUP by SMITH, IKE [PNT]
TURNOVER by JOHNSON, ISAAC	15:37			
FOUL by JOHNSON, ISAAC	15:37			
	15:37			TIMEOUT MEDIA
SUB IN: GOOD, PATRICK	15:37			
SUB IN: JOHNSON, TYRELL	15:37			
SUB OUT: LOGAN, EMARIUS	15:37			
SUB OUT: JOHNSON, ISAAC	15:37			
	15:37			SUB IN: SIMMONS, COYE
	15:37			SUB IN: GLADDEN, BJ
	15:37			SUB OUT: GLENN, MONTAE
	15:37			SUB OUT: ALLSMILLER, JAKE
	15:21			TURNOVER by SMITH, IKE
MISSED 3PTR by SHABAZZ, RONSHAD	14:59			
	14:59			REBOUND (DEF) by BOYKINS, DEVONTE
	14:45			TURNOVER by GLADDEN, BJ
GOOD! LAYUP by HINTON, CRAIG [FB/PNT]	14:42	13-7	H 6	
ASSIST by HOLLEY, BENNETT	14:42			
	14:40			SUB IN: HUGHES, MIKE

VISITORS: Appalachian State	Time	Score	Margin	HOME: Georgia Southern
	14:40			SUB OUT: SMITH,IKE
GOOD! JUMPER by SHABAZZ,RONSHAD	14:17	13-9	H 4	
GOOD! FT by SHABAZZ,RONSHAD	14:17	13-10	H 3	
SUB IN: HOLLEY,BENNETT	14:17			
SUB OUT: KINNEY,GRIFFIN	14:17			
	14:17			SUB IN: GLENN,MONTAE
	14:17			SUB OUT: SIMMONS,COYE
	14:04			FOUL by SIMMONS,COYE
GOOD! JUMPER by JOHNSON,TYRELL	14:02	13-12	H 1	
	13:59	15-12	H 3	GOOD! JUMPER by GLENN,MONTAE
GOOD! LAYUP by JOHNSON,TYRELL [PNT]	13:54	15-14	H 1	
	13:39			MISSED JUMPER by BROWN,TOOKIE
REBOUND (DEF) by SHABAZZ,RONSHAD	13:39			
FOUL by HOLLEY,BENNETT	13:11			
	13:11			REBOUND (DEADB) by TEAM
	13:11			MISSED FT by GLENN,MONTAE
	13:11	16-14	H 2	GOOD! FT by GLENN,MONTAE
	13:11			SUB IN: ALLSMILLER,JAKE
	13:11			SUB IN: SMITH,IKE
	13:11			SUB OUT: BROWN,TOOKIE
	13:11			SUB OUT: GLADDEN,BJ
MISSED 3PTR by HOLLEY,BENNETT	12:44			
	12:44			REBOUND (DEF) by TEAM
	12:37	18-14	H 4	GOOD! LAYUP by SMITH,IKE [PNT]
MISSED LAYUP by SHABAZZ,RONSHAD	12:34			
	12:34			REBOUND (DEF) by GLENN,MONTAE
	12:22			MISSED JUMPER by SMITH,IKE
REBOUND (DEF) by GOOD,PATRICK	12:22			
MISSED 3PTR by HINTON,CRAIG	12:02			
	12:02			REBOUND (DEF) by SMITH,IKE
FOUL by SHABAZZ,RONSHAD	11:57			
	11:57			MISSED 3PTR by HUGHES,MIKE
REBOUND (DEF) by SHABAZZ,RONSHAD	11:57			
SUB IN: KINNEY,GRIFFIN	11:57			
SUB IN: JOHNSON,ISAAC	11:57			
SUB OUT: HOLLEY,BENNETT	11:57			
SUB OUT: JOHNSON,TYRELL	11:57			
	11:57			SUB IN: SIMMONS,COYE
	11:57			SUB IN: BROWN,TOOKIE
	11:57			SUB OUT: GLENN,MONTAE
	11:57			SUB OUT: BOYKINS,DEVONTE
GOOD! 3PTR by HINTON,CRAIG	11:35	18-17	H 1	
ASSIST by KINNEY,GRIFFIN	11:35			
	11:17	20-17	H 3	GOOD! JUMPER by SMITH,IKE
MISSED JUMPER by GOOD,PATRICK	11:02			
REBOUND (OFF) by KINNEY,GRIFFIN	11:02			
GOOD! 3PTR by SHABAZZ,RONSHAD	10:57	20-20	T	
ASSIST by KINNEY,GRIFFIN	10:57			
	10:41			MISSED LAYUP by SIMMONS,COYE
REBOUND (DEF) by SHABAZZ,RONSHAD	10:41			
MISSED JUMPER by KINNEY,GRIFFIN	10:16			
	10:16			REBOUND (DEF) by SMITH,IKE
	10:08			MISSED 3PTR by BROWN,TOOKIE
	10:08			REBOUND (OFF) by SIMMONS,COYE
FOUL by KINNEY,GRIFFIN	10:03			
	10:03			MISSED FT by SIMMONS,COYE
	10:03			REBOUND (DEADB) by TEAM
	10:03	21-20	H 1	GOOD! FT by SIMMONS,COYE
SUB IN: LOGAN,EMARIUS	10:03			
SUB IN: BABIC,JAKE	10:03			
SUB IN: JOHNSON,TYRELL	10:03			
SUB OUT: SHABAZZ,RONSHAD	10:03			
SUB OUT: HINTON,CRAIG	10:03			
SUB OUT: JOHNSON,ISAAC	10:03			

VISITORS: Appalachian State	Time	Score	Margin	HOME: Georgia Southern
	10:03			SUB IN: GLENN,MONTAE
	10:03			SUB IN: BOYKINS,DEVONTE
	10:03			SUB OUT: SIMMONS,COYE
	10:03			SUB OUT: SMITH,IKE
GOOD! JUMPER by LOGAN,EMARIUS	09:45	21-22	V 1	
	09:23			MISSED LAYUP by HUGHES,MIKE
	09:23			REBOUND (OFF) by GLENN,MONTAE
	09:20			MISSED JUMPER by GLENN,MONTAE
REBOUND (DEF) by GOOD,PATRICK	09:20			
	09:11			FOUL by GLENN,MONTAE
SUB IN: SHABAZZ,RONSHAD	09:11			
SUB OUT: GOOD,PATRICK	09:11			
	09:11			SUB IN: SMITH,IKE
	09:11			SUB OUT: BOYKINS,DEVONTE
TURNOVER by LOGAN,EMARIUS	09:02			
	09:01			STEAL by BROWN,TOOKIE
	08:41			MISSED 3PTR by BROWN,TOOKIE
REBOUND (DEF) by TEAM	08:41			
	08:38			FOUL by GLENN,MONTAE
	08:38			SUB IN: GLADDEN,BJ
	08:38			SUB OUT: GLENN,MONTAE
MISSED 3PTR by BABIC,JAKE	08:30			
	08:30			REBOUND (DEF) by SMITH,IKE
	08:15	23-22	H 1	GOOD! LAYUP by HUGHES,MIKE [PNT]
MISSED 3PTR by SHABAZZ,RONSHAD	07:55			
	07:55			REBOUND (DEF) by ALLSMILLER,JAKE
	07:46			MISSED LAYUP by SMITH,IKE
REBOUND (DEF) by KINNEY,GRIFFIN	07:46			
TURNOVER by BABIC,JAKE	07:40			
FOUL by BABIC,JAKE	07:40			
SUB IN: HINTON,CRAIG	07:40			
SUB OUT: KINNEY,GRIFFIN	07:40			
	07:29	26-22	H 4	GOOD! 3PTR by SMITH,IKE
	07:29			ASSIST by BROWN,TOOKIE
	07:16			FOUL by HUGHES,MIKE
TURNOVER by SHABAZZ,RONSHAD	07:06			
	07:05			STEAL by ALLSMILLER,JAKE
FOUL by HINTON,CRAIG	07:01			
	07:01			MISSED FT by SMITH,IKE
	07:01			REBOUND (DEADB) by TEAM
	07:01	27-22	H 5	GOOD! FT by SMITH,IKE
SUB IN: KINNEY,GRIFFIN	07:01			
SUB OUT: BABIC,JAKE	07:01			
	07:01			SUB IN: SIMMONS,COYE
	07:01			SUB OUT: GLADDEN,BJ
GOOD! 3PTR by LOGAN,EMARIUS	06:40	27-25	H 2	
ASSIST by SHABAZZ,RONSHAD	06:40			
	06:26			MISSED JUMPER by BROWN,TOOKIE
REBOUND (DEF) by LOGAN,EMARIUS	06:26			
	06:18			FOUL by BROWN,TOOKIE
	06:18			SUB IN: BOYKINS,DEVONTE
	06:18			SUB OUT: BROWN,TOOKIE
TURNOVER by KINNEY,GRIFFIN	06:16			
	06:15			STEAL by HUGHES,MIKE
	06:11	29-25	H 4	GOOD! LAYUP by SMITH,IKE [PNT]
	06:11			ASSIST by HUGHES,MIKE
FOUL by HINTON,CRAIG	06:11			
	06:11	30-25	H 5	GOOD! FT by SMITH,IKE
SUB IN: GOOD,PATRICK	06:11			
SUB OUT: HINTON,CRAIG	06:11			
	06:11			SUB IN: GLADDEN,BJ
	06:11			SUB OUT: ALLSMILLER,JAKE
	05:46			FOUL by SMITH,IKE
MISSED FT by JOHNSON,TYRELL	05:46			

VISITORS: Appalachian State	Time	Score	Margin	HOME: Georgia Southern
	05:46			REBOUND (DEF) by GLADDEN,BJ
	05:30	32-25	H 7	GOOD! JUMPER by SIMMONS,COYE
MISSED 3PTR by SHABAZZ,RONSHAD	05:17			
	05:17			REBOUND (DEF) by SIMMONS,COYE
	05:06			TURNOVER by HUGHES,MIKE
SUB IN: JOHNSON,ISAAC	05:06			
SUB OUT: GOOD,PATRICK	05:06			
	05:06			SUB IN: BROWN,TOOKIE
	05:06			SUB OUT: BOYKINS,DEVONTE
	04:49			FOUL by SMITH,IKE
GOOD! FT by LOGAN,EMARIUS	04:49	32-26	H 6	
GOOD! FT by LOGAN,EMARIUS	04:49	32-27	H 5	
SUB IN: GOOD,PATRICK	04:49			
SUB OUT: JOHNSON,TYRELL	04:49			
	04:49			SUB IN: ALLSMILLER,JAKE
	04:49			SUB OUT: SMITH,IKE
	04:34			TURNOVER by SIMMONS,COYE
MISSED 3PTR by LOGAN,EMARIUS	04:22			
REBOUND (OFF) by SHABAZZ,RONSHAD	04:22			
MISSED LAYUP by SHABAZZ,RONSHAD	04:17			
	04:17			BLOCK by GLADDEN,BJ
REBOUND (OFF) by TEAM	04:15			
	04:14			SUB IN: BOYKINS,DEVONTE
	04:14			SUB OUT: BROWN,TOOKIE
MISSED JUMPER by KINNEY,GRIFFIN	04:02			
	04:02			REBOUND (DEF) by SIMMONS,COYE
FOUL by LOGAN,EMARIUS	03:53			
	03:53			TIMEOUT MEDIA
	03:53			MISSED FT by BOYKINS,DEVONTE
	03:53			REBOUND (DEADB) by TEAM
	03:53	33-27	H 6	GOOD! FT by BOYKINS,DEVONTE
GOOD! 3PTR by SHABAZZ,RONSHAD	03:41	33-30	H 3	
ASSIST by JOHNSON,ISAAC	03:41			
	03:13			MISSED JUMPER by HUGHES,MIKE
REBOUND (DEF) by SHABAZZ,RONSHAD	03:13			
TURNOVER by SHABAZZ,RONSHAD	03:04			
	03:03			STEAL by GLADDEN,BJ
	03:00	35-30	H 5	GOOD! LAYUP by GLADDEN,BJ [FB/PNT]
FOUL by KINNEY,GRIFFIN	03:00			
	03:00			MISSED FT by GLADDEN,BJ
REBOUND (DEF) by JOHNSON,ISAAC	03:00			
MISSED 3PTR by JOHNSON,ISAAC	02:50			
	02:50			REBOUND (DEF) by ALLSMILLER,JAKE
	02:40			MISSED JUMPER by HUGHES,MIKE
REBOUND (DEF) by SHABAZZ,RONSHAD	02:40			
	02:27			FOUL by GLADDEN,BJ
GOOD! FT by LOGAN,EMARIUS	02:27	35-31	H 4	
GOOD! FT by LOGAN,EMARIUS	02:27	35-32	H 3	
SUB IN: JOHNSON,TYRELL	02:27			
SUB OUT: KINNEY,GRIFFIN	02:27			
	02:27			SUB IN: BROWN,TOOKIE
	02:27			SUB IN: GLENN,MONTAE
	02:27			SUB OUT: SIMMONS,COYE
	02:27			SUB OUT: BOYKINS,DEVONTE
	02:14			MISSED JUMPER by BROWN,TOOKIE
REBOUND (DEF) by JOHNSON,TYRELL	02:14			
MISSED JUMPER by JOHNSON,TYRELL	01:54			
	01:54			REBOUND (DEF) by GLADDEN,BJ
	01:46	37-32	H 5	GOOD! LAYUP by GLADDEN,BJ [PNT]
TURNOVER by JOHNSON,TYRELL	01:22			
	01:05			TURNOVER by GLENN,MONTAE
TIMEOUT 30SEC	01:05			
SUB IN: BABIC,JAKE	01:05			
SUB OUT: LOGAN,EMARIUS	01:05			

VISITORS: Appalachian State	Time	Score	Margin	HOME: Georgia Southern
	01:05			SUB IN: BOYKINS,DEVONTE
	01:05			SUB IN: SIMMONS,COYE
	01:05			SUB OUT: BROWN,TOOKIE
	01:05			SUB OUT: GLENN,MONTAE
MISSED JUMPER by JOHNSON,ISAAC	00:38			
	00:38			BLOCK by GLADDEN,BJ
	00:36			REBOUND (DEF) by GLADDEN,BJ
	00:25			TIMEOUT 30SEC
SUB IN: HINTON,CRAIG	00:25			
SUB OUT: GOOD,PATRICK	00:25			
	00:25			SUB IN: BROWN,TOOKIE
	00:25			SUB IN: GLENN,MONTAE
	00:25			SUB OUT: BOYKINS,DEVONTE
	00:25			SUB OUT: SIMMONS,COYE
	00:10			MISSED 3PTR by ALLSMILLER,JAKE
REBOUND (DEF) by HINTON,CRAIG	00:10			
TURNOVER by SHABAZZ,RONSHAD	00:00			

Appalachian State 32, Georgia Southern 37

Period 1-only	In Paint	Off T/O	2nd Chance	Fast Break	Bench	
APP	6	9	3	2	5	Score tied - 2 times
GS	12	14	7	2	8	Lead changed - 2 times

Official Basketball Box Score -- Game Totals -- Second Half Statistics
Appalachian State vs Georgia Southern
1/21/2017 5 p.m. at Statesboro, Ga. - Hanner Fieldhouse

Appalachian State 56 • 6-10, 1-4 SBC

##	Player	*	Total		3-Ptr	FT-FTA	Rebounds			PF	TP	A	TO	Blk	Stl	Min
			FG-FGA	FG-FGA	FG-FGA		Off	Def	Tot							
02	SHABAZZ, RONSHAD	*	9-15	3-6	3-5	3-5	0	1	1	3	24	2	0	0	0	19
05	KINNEY, GRIFFIN	*	0-1	0-0	3-4	3-4	0	1	1	2	3	0	0	0	0	7
11	LOGAN, EMARIUS	*	2-5	1-3	3-5	3-5	0	0	0	4	8	0	1	0	0	16
25	BABIC, JAKE	*	4-7	3-5	0-0	0-0	0	0	0	2	11	1	0	0	0	14
32	JOHNSON, TYRELL	*	0-2	0-0	0-0	0-0	2	2	4	1	0	0	1	0	1	7
00	JOHNSON, ISAAC		3-6	0-0	0-2	0-2	6	1	7	2	6	2	0	0	1	15
10	GOOD, PATRICK		0-3	0-3	0-0	0-0	0	0	0	3	0	0	0	0	0	10
14	HOLLEY, BENNETT		0-0	0-0	0-0	0-0	0	0	0	0	0	0	0	0	0	0
24	HINTON, CRAIG		2-3	0-1	0-0	0-0	1	5	6	3	4	0	0	0	0	12
TEAM							0	1	1	0						
Totals			20-42	7-18	9-16	9-16	9	11	20	20	56	5	2	0	2	100

FG % Half: 20-42 47.6%
 3FG % Half: 7-18 38.5%
 FT % Half: 9-16 56.3%

Georgia Southern 55 • 12-6, 5-0 SBC

##	Player	*	Total		3-Ptr	FT-FTA	Rebounds			PF	TP	A	TO	Blk	Stl	Min
			FG-FGA	FG-FGA	FG-FGA		Off	Def	Tot							
00	GLENN, MONTAE	*	0-0	0-0	0-0	0-0	0	0	0	2	0	0	0	0	0	4
02	HUGHES, MIKE	*	2-3	1-2	2-2	2-2	0	1	1	3	7	1	2	0	1	19
03	SMITH, IKE	*	2-3	1-2	5-6	5-6	0	2	2	1	10	1	0	0	0	18
04	BROWN, TOOKIE	*	6-9	0-0	17-23	17-23	0	3	3	1	29	1	0	0	0	19
10	ALLSMILLER, JAKE	*	0-0	0-0	0-0	0-0	0	2	2	3	0	0	0	0	0	17
01	BOYKINS, DEVONTE		0-0	0-0	0-0	0-0	0	1	1	1	0	0	3	0	0	6
05	GLADDEN, BJ		2-3	0-0	3-3	3-3	1	7	8	2	7	0	0	0	0	14
14	SIMMONS, COYE		1-1	0-0	0-0	0-0	0	0	0	3	2	0	1	0	0	4
TEAM							0	1	1	0						
Totals			13-19	2-4	27-34	27-34	1	17	18	16	55	3	6	0	1	101

FG % Half: 13-19 68.4%
 3FG % Half: 2-4 44.4%
 FT % Half: 27-34 79.4%

Officials: Frankie Bordeaux, Kevin Mathis, Jerome Hall
 Technical Fouls: Appalachian State- None. Georgia Southern- None.

Score by periods	1st	2nd	Total
Appalachian State	32	56	88
Georgia Southern	37	55	92

Points	In Paint	Off T/O	2nd Chance	Fast Break	Bench
APP	26	7	10	6	10
GS	12	4	2	2	9

Last FG - APP 2nd-00:09, GS 2nd-04:57.
 APP led for 0:00. GS led for 20:00. Game was tied for 0:00.

Score tied - 0 times
 Lead changed - 0 times

Appalachian State vs Georgia Southern
1/21/2017; 5 p.m. at Statesboro, Ga. - Hanner Fieldhouse
Period 2 Play-By-Play

VISITORS: Appalachian State	Time	Score	Margin	HOME: Georgia Southern
	19:46			FOUL by GLENN,MONTAE
	19:46			SUB IN: SIMMONS,COYE
	19:46			SUB OUT: GLENN,MONTAE
TURNOVER by LOGAN,EMARIUS	19:31			
	19:31			STEAL by HUGHES,MIKE
	19:17	39-32	H 7	GOOD! JUMPER by SMITH,IKE
TURNOVER by JOHNSON,TYRELL	18:49			
	18:24	41-32	H 9	GOOD! LAYUP by SIMMONS,COYE [PNT]
	18:24			ASSIST by BROWN,TOOKIE
GOOD! LAYUP by SHABAZZ,RONSHAD [PNT]	18:06	41-34	H 7	
	17:38	43-34	H 9	GOOD! JUMPER by BROWN,TOOKIE
MISSED JUMPER by KINNEY,GRIFFIN	17:25			
REBOUND (OFF) by JOHNSON,TYRELL	17:25			
MISSED LAYUP by JOHNSON,TYRELL	17:21			
	17:21			REBOUND (DEF) by ALLSMILLER,JAKE
	17:10			TURNOVER by SIMMONS,COYE
SUB IN: JOHNSON,ISAAC	17:10			
SUB OUT: KINNEY,GRIFFIN	17:10			
MISSED JUMPER by JOHNSON,TYRELL	16:56			
	16:56			REBOUND (DEF) by BROWN,TOOKIE
FOUL by SHABAZZ,RONSHAD	16:44			
	16:44	44-34	H 10	GOOD! FT by BROWN,TOOKIE
	16:44			MISSED FT by BROWN,TOOKIE
REBOUND (DEF) by HINTON,CRAIG	16:44			
SUB IN: HINTON,CRAIG	16:44			
SUB OUT: JOHNSON,TYRELL	16:44			
	16:44			SUB IN: BOYKINS,DEVONTE
	16:44			SUB OUT: BROWN,TOOKIE
	16:43			FOUL by SIMMONS,COYE
SUB IN: GOOD,PATRICK	16:43			
SUB OUT: BABIC,JAKE	16:43			
	16:43			SUB IN: GLADDEN,BJ
	16:43			SUB OUT: SIMMONS,COYE
MISSED JUMPER by SHABAZZ,RONSHAD	16:33			
	16:33			REBOUND (DEF) by ALLSMILLER,JAKE
	16:24	46-34	H 12	GOOD! LAYUP by BROWN,TOOKIE [FB/PNT]
GOOD! LAYUP by HINTON,CRAIG [FB/PNT]	16:18	46-36	H 10	
TIMEOUT 30SEC	16:15			
	16:15			SUB IN: BROWN,TOOKIE
	16:15			SUB OUT: BOYKINS,DEVONTE
FOUL by HINTON,CRAIG	15:59			
	15:59			SUB IN: GLENN,MONTAE
	15:59			SUB OUT: GLADDEN,BJ
FOUL by LOGAN,EMARIUS	15:57			
	15:57			TIMEOUT media
	15:57	47-36	H 11	GOOD! FT by SMITH,IKE
	15:57	48-36	H 12	GOOD! FT by SMITH,IKE
SUB IN: BABIC,JAKE	15:57			
SUB OUT: LOGAN,EMARIUS	15:57			
	15:57			SUB IN: GLADDEN,BJ
	15:57			SUB OUT: GLENN,MONTAE
MISSED 3PTR by SHABAZZ,RONSHAD	15:49			
REBOUND (OFF) by JOHNSON,ISAAC	15:49			
	15:43			FOUL by ALLSMILLER,JAKE
	15:43			SUB IN: SIMMONS,COYE
	15:43			SUB OUT: ALLSMILLER,JAKE
MISSED JUMPER by SHABAZZ,RONSHAD	15:40			
REBOUND (OFF) by JOHNSON,ISAAC	15:40			
GOOD! LAYUP by JOHNSON,ISAAC [PNT]	15:36	48-38	H 10	

VISITORS: Appalachian State	Time	Score	Margin	HOME: Georgia Southern
	15:20	50-38	H 12	GOOD! JUMPER by BROWN,TOOKIE
	14:59			FOUL by SIMMONS,COYE
	14:59			SUB IN: GLENN,MONTAE
	14:59			SUB OUT: SIMMONS,COYE
MISSED 3PTR by BABIC,JAKE	14:48			
	14:48			REBOUND (DEF) by GLADDEN,BJ
	14:28			MISSED 3PTR by HUGHES,MIKE
REBOUND (DEF) by TEAM	14:28			
	14:26			FOUL by GLENN,MONTAE
	14:26			SUB IN: ALLSMILLER,JAKE
	14:26			SUB OUT: GLENN,MONTAE
MISSED JUMPER by BABIC,JAKE	14:07			
REBOUND (OFF) by HINTON,CRAIG	14:07			
GOOD! 3PTR by SHABAZZ,RONSHAD	13:58	50-41	H 9	
	13:44	52-41	H 11	GOOD! LAYUP by BROWN,TOOKIE [PNT]
MISSED 3PTR by BABIC,JAKE	13:36			
	13:36			REBOUND (DEF) by GLADDEN,BJ
	13:23			MISSED LAYUP by BROWN,TOOKIE
REBOUND (DEF) by HINTON,CRAIG	13:23			
GOOD! 3PTR by SHABAZZ,RONSHAD	13:16	52-44	H 8	
ASSIST by BABIC,JAKE	13:16			
	12:55	54-44	H 10	GOOD! DUNK by BROWN,TOOKIE [PNT]
	12:44			FOUL by GLADDEN,BJ
SUB IN: LOGAN,EMARIUS	12:44			
SUB IN: KINNEY,GRIFFIN	12:44			
SUB OUT: JOHNSON,ISAAC	12:44			
SUB OUT: BABIC,JAKE	12:44			
	12:44			SUB IN: BOYKINS,DEVONTE
	12:44			SUB OUT: BROWN,TOOKIE
MISSED 3PTR by SHABAZZ,RONSHAD	12:42			
	12:42			REBOUND (DEF) by HUGHES,MIKE
	12:31			MISSED LAYUP by GLADDEN,BJ
	12:31			REBOUND (OFF) by GLADDEN,BJ
	12:28	56-44	H 12	GOOD! LAYUP by GLADDEN,BJ [PNT]
	12:19			FOUL by GLADDEN,BJ
GOOD! FT by KINNEY,GRIFFIN	12:19	56-45	H 11	
GOOD! FT by KINNEY,GRIFFIN	12:19	56-46	H 10	
SUB IN: JOHNSON,TYRELL	12:19			
SUB OUT: SHABAZZ,RONSHAD	12:19			
	12:07			TURNOVER by BOYKINS,DEVONTE
STEAL by JOHNSON,TYRELL	12:06			
GOOD! DUNK by HINTON,CRAIG [PNT]	12:02	56-48	H 8	
	11:49			TURNOVER by BOYKINS,DEVONTE
TIMEOUT MEDIA	11:49			
	11:49			SUB IN: BROWN,TOOKIE
	11:49			SUB IN: SIMMONS,COYE
	11:49			SUB OUT: GLADDEN,BJ
	11:49			SUB OUT: BOYKINS,DEVONTE
	11:30			FOUL by SIMMONS,COYE
MISSED FT by KINNEY,GRIFFIN	11:30			
REBOUND (DEADB) by TEAM	11:30			
GOOD! FT by KINNEY,GRIFFIN	11:30	56-49	H 7	
SUB IN: SHABAZZ,RONSHAD	11:30			
SUB OUT: GOOD,PATRICK	11:30			
	11:30			SUB IN: GLADDEN,BJ
	11:30			SUB OUT: SIMMONS,COYE
FOUL by JOHNSON,TYRELL	11:18			
	11:10	58-49	H 9	GOOD! JUMPER by HUGHES,MIKE
	10:56			FOUL by BROWN,TOOKIE
GOOD! FT by SHABAZZ,RONSHAD	10:56	58-50	H 8	
MISSED FT by SHABAZZ,RONSHAD	10:56			
REBOUND (OFF) by JOHNSON,TYRELL	10:56			
GOOD! 3PTR by LOGAN,EMARIUS	10:51	58-53	H 5	
ASSIST by SHABAZZ,RONSHAD	10:51			

VISITORS: Appalachian State	Time	Score	Margin	HOME: Georgia Southern
FOUL by KINNEY,GRIFFIN	10:35			
	10:35	59-53	H 6	GOOD! FT by BROWN,TOOKIE
	10:35	60-53	H 7	GOOD! FT by BROWN,TOOKIE
SUB IN: JOHNSON,ISAAC	10:35			
SUB OUT: JOHNSON,TYRELL	10:35			
MISSED 3PTR by HINTON,CRAIG	10:15			
REBOUND (OFF) by JOHNSON,ISAAC	10:15			
GOOD! LAYUP by JOHNSON,ISAAC [PNT]	10:08	60-55	H 5	
FOUL by HINTON,CRAIG	09:53			
	09:53	61-55	H 6	GOOD! FT by BROWN,TOOKIE
	09:53	62-55	H 7	GOOD! FT by BROWN,TOOKIE
SUB IN: GOOD,PATRICK	09:53			
SUB OUT: HINTON,CRAIG	09:53			
	09:53			SUB IN: BOYKINS,DEVONTE
	09:53			SUB OUT: HUGHES,MIKE
MISSED LAYUP by LOGAN,EMARIUS	09:30			
REBOUND (OFF) by JOHNSON,ISAAC	09:30			
	09:29			FOUL by SMITH,IKE
MISSED FT by JOHNSON,ISAAC	09:29			
REBOUND (DEADB) by TEAM	09:29			
MISSED FT by JOHNSON,ISAAC	09:29			
	09:29			REBOUND (DEF) by SMITH,IKE
	09:18	64-55	H 9	GOOD! LAYUP by GLADDEN,BJ [PNT]
	09:18			ASSIST by SMITH,IKE
FOUL by KINNEY,GRIFFIN	09:18			
	09:18	65-55	H 10	GOOD! FT by GLADDEN,BJ
SUB IN: JOHNSON,TYRELL	09:18			
SUB OUT: KINNEY,GRIFFIN	09:18			
	08:56			FOUL by ALLSMILLER,JAKE
GOOD! FT by SHABAZZ,RONSHAD	08:56	65-56	H 9	
MISSED FT by SHABAZZ,RONSHAD	08:56			
	08:56			REBOUND (DEF) by BROWN,TOOKIE
	08:47			MISSED LAYUP by BROWN,TOOKIE
REBOUND (DEF) by SHABAZZ,RONSHAD	08:47			
MISSED 3PTR by GOOD,PATRICK	08:41			
REBOUND (OFF) by JOHNSON,ISAAC	08:41			
MISSED 3PTR by LOGAN,EMARIUS	08:36			
	08:36			REBOUND (DEF) by SMITH,IKE
FOUL by SHABAZZ,RONSHAD	08:27			
	08:27	66-56	H 10	GOOD! FT by SMITH,IKE
	08:27	67-56	H 11	GOOD! FT by SMITH,IKE
	08:27			SUB IN: HUGHES,MIKE
	08:27			SUB OUT: SMITH,IKE
MISSED JUMPER by JOHNSON,ISAAC	08:11			
REBOUND (OFF) by JOHNSON,ISAAC	08:11			
MISSED JUMPER by JOHNSON,ISAAC	08:07			
	08:07			REBOUND (DEF) by BOYKINS,DEVONTE
	07:53			MISSED LAYUP by BROWN,TOOKIE
REBOUND (DEF) by JOHNSON,TYRELL	07:53			
MISSED 3PTR by GOOD,PATRICK	07:44			
	07:44			REBOUND (DEF) by GLADDEN,BJ
	07:18			TURNOVER by HUGHES,MIKE
TIMEOUT MEDIA	07:18			
SUB IN: BABIC,JAKE	07:18			
SUB OUT: JOHNSON,TYRELL	07:18			
	07:18			SUB IN: GLENN,MONTAE
	07:18			SUB OUT: ALLSMILLER,JAKE
MISSED 3PTR by GOOD,PATRICK	07:11			
	07:11			REBOUND (DEF) by GLADDEN,BJ
	07:00			TURNOVER by BOYKINS,DEVONTE
STEAL by JOHNSON,ISAAC	06:59			
GOOD! JUMPER by LOGAN,EMARIUS [PNT]	06:53	67-58	H 9	
	06:53			FOUL by BOYKINS,DEVONTE
MISSED FT by LOGAN,EMARIUS	06:53			

VISITORS: Appalachian State	Time	Score	Margin	HOME: Georgia Southern
	06:53			REBOUND (DEF) by GLADDEN,BJ
	06:53			SUB IN: SMITH,IKE
	06:53			SUB OUT: BOYKINS,DEVONTE
GOOD! 3PTR by BABIC,JAKE	06:39	70-58	H 12	GOOD! 3PTR by HUGHES,MIKE
ASSIST by JOHNSON,ISAAC	06:25	70-61	H 9	
	06:07	72-61	H 11	GOOD! JUMPER by BROWN,TOOKIE
GOOD! 3PTR by BABIC,JAKE	05:53	72-64	H 8	
ASSIST by JOHNSON,ISAAC	05:53			
FOUL by SHABAZZ,RONSHAD	05:32			
	05:32			MISSED FT by BROWN,TOOKIE
REBOUND (DEF) by HINTON,CRAIG	05:32			
SUB IN: HINTON,CRAIG	05:32			
SUB OUT: GOOD,PATRICK	05:32			
	05:32			SUB IN: ALLSMILLER,JAKE
	05:32			SUB OUT: GLADDEN,BJ
GOOD! LAYUP by BABIC,JAKE [PNT]	05:15	72-66	H 6	
	04:57	75-66	H 9	GOOD! 3PTR by SMITH,IKE
	04:57			ASSIST by HUGHES,MIKE
	04:52			TIMEOUT 30SEC
GOOD! LAYUP by JOHNSON,ISAAC [PNT]	04:24	75-68	H 7	
ASSIST by SHABAZZ,RONSHAD	04:24			
FOUL by JOHNSON,ISAAC	04:01			
	04:01	76-68	H 8	GOOD! FT by BROWN,TOOKIE
	04:01	77-68	H 9	GOOD! FT by BROWN,TOOKIE
	04:01			SUB IN: GLADDEN,BJ
	04:01			SUB OUT: GLENN,MONTAE
GOOD! JUMPER by SHABAZZ,RONSHAD [PNT]	03:49	77-70	H 7	
	03:24			MISSED 3PTR by SMITH,IKE
REBOUND (DEF) by HINTON,CRAIG	03:24			
MISSED JUMPER by JOHNSON,ISAAC	03:07			
	03:07			REBOUND (DEF) by GLADDEN,BJ
FOUL by BABIC,JAKE	02:43			
	02:43			TIMEOUT MEDIA
	02:43			MISSED FT by BROWN,TOOKIE
	02:43			REBOUND (DEADB) by TEAM
	02:43	78-70	H 8	GOOD! FT by BROWN,TOOKIE
MISSED 3PTR by LOGAN,EMARIUS	02:24			
	02:24			REBOUND (DEF) by GLADDEN,BJ
FOUL by LOGAN,EMARIUS	02:00			
	02:00	79-70	H 9	GOOD! FT by BROWN,TOOKIE
	02:00	80-70	H 10	GOOD! FT by BROWN,TOOKIE
	01:47			FOUL by HUGHES,MIKE
MISSED FT by LOGAN,EMARIUS	01:47			
REBOUND (DEADB) by TEAM	01:47			
GOOD! FT by LOGAN,EMARIUS	01:47	80-71	H 9	
FOUL by JOHNSON,ISAAC	01:45			
	01:45	81-71	H 10	GOOD! FT by GLADDEN,BJ
	01:45	82-71	H 11	GOOD! FT by GLADDEN,BJ
GOOD! LAYUP by SHABAZZ,RONSHAD [PNT]	01:33	82-73	H 9	
	01:33			FOUL by HUGHES,MIKE
GOOD! FT by SHABAZZ,RONSHAD	01:33	82-74	H 8	
FOUL by LOGAN,EMARIUS	01:33			
	01:33	83-74	H 9	GOOD! FT by BROWN,TOOKIE
	01:33			MISSED FT by BROWN,TOOKIE
REBOUND (DEF) by JOHNSON,ISAAC	01:33			
SUB IN: JOHNSON,TYRELL	01:33			
MISSED LAYUP by SHABAZZ,RONSHAD	01:24			
	01:24			REBOUND (DEF) by BROWN,TOOKIE
	01:17			TIMEOUT 30SEC
	01:17			SUB IN: BOYKINS,DEVONTE
	01:17			SUB OUT: GLADDEN,BJ
	00:59			TURNOVER by HUGHES,MIKE
	00:59			FOUL by HUGHES,MIKE

VISITORS: Appalachian State	Time	Score	Margin	HOME: Georgia Southern
	00:51			FOUL by ALLSMILLER,JAKE
GOOD! FT by LOGAN,EMARIUS	00:51	83-75	H 8	
GOOD! FT by LOGAN,EMARIUS	00:51	83-76	H 7	
SUB IN: GOOD,PATRICK	00:51			
SUB OUT: SHABAZZ,RONSHAD	00:51			
SUB OUT: JOHNSON,ISAAC	00:51			
FOUL by LOGAN,EMARIUS	00:49			
	00:49	84-76	H 8	GOOD! FT by BROWN,TOOKIE
	00:49			MISSED FT by BROWN,TOOKIE
REBOUND (DEF) by HINTON,CRAIG	00:49			
SUB IN: SHABAZZ,RONSHAD	00:49			
SUB IN: JOHNSON,ISAAC	00:49			
SUB OUT: LOGAN,EMARIUS	00:49			
SUB OUT: JOHNSON,TYRELL	00:49			
GOOD! JUMPER by SHABAZZ,RONSHAD [PNT]	00:39	84-78	H 6	
TIMEOUT TEAM	00:39			
SUB IN: JOHNSON,TYRELL	00:39			
SUB OUT: SHABAZZ,RONSHAD	00:39			
FOUL by HINTON,CRAIG	00:38			
	00:38	85-78	H 7	GOOD! FT by SMITH,IKE
	00:38			MISSED FT by SMITH,IKE
REBOUND (DEF) by JOHNSON,TYRELL	00:38			
SUB IN: SHABAZZ,RONSHAD	00:38			
SUB OUT: HINTON,CRAIG	00:38			
GOOD! 3PTR by BABIC,JAKE	00:31	85-81	H 4	
TIMEOUT 30SEC	00:30			
FOUL by BABIC,JAKE	00:29			
	00:29	86-81	H 5	GOOD! FT by HUGHES,MIKE
	00:29	87-81	H 6	GOOD! FT by HUGHES,MIKE
SUB IN: KINNEY,GRIFFIN	00:29			
SUB OUT: JOHNSON,TYRELL	00:29			
GOOD! DUNK by SHABAZZ,RONSHAD [FB/PNT]	00:22	87-83	H 4	
FOUL by GOOD,PATRICK	00:21			
	00:21	88-83	H 5	GOOD! FT by BROWN,TOOKIE
	00:21	89-83	H 6	GOOD! FT by BROWN,TOOKIE
	00:21			SUB IN: GLADDEN,BJ
	00:21			SUB OUT: SMITH,IKE
GOOD! 3PTR by SHABAZZ,RONSHAD	00:16	89-86	H 3	
	00:16			TIMEOUT TEAM
SUB IN: JOHNSON,TYRELL	00:16			
SUB OUT: SHABAZZ,RONSHAD	00:16			
	00:16			SUB IN: SMITH,IKE
	00:16			SUB OUT: GLADDEN,BJ
FOUL by GOOD,PATRICK	00:15			
	00:15	90-86	H 4	GOOD! FT by BROWN,TOOKIE
	00:15	91-86	H 5	GOOD! FT by BROWN,TOOKIE
SUB IN: SHABAZZ,RONSHAD	00:15			
SUB OUT: JOHNSON,TYRELL	00:15			
	00:15			SUB IN: GLADDEN,BJ
	00:15			SUB OUT: SMITH,IKE
GOOD! LAYUP by SHABAZZ,RONSHAD [FB/PNT]	00:09	91-88	H 3	
FOUL by GOOD,PATRICK	00:09			
	00:09	92-88	H 4	GOOD! FT by BROWN,TOOKIE
	00:09			MISSED FT by BROWN,TOOKIE
REBOUND (DEF) by KINNEY,GRIFFIN	00:09			
MISSED 3PTR by SHABAZZ,RONSHAD	00:03			
	00:03			REBOUND (DEF) by TEAM

Appalachian State 88, Georgia Southern 92

Period 2-only In Paint Off T/O 2nd Chance Fast Break Bench

Period 2-only	In Paint	Off T/O	2nd Chance	Fast Break	Bench	
APP	26	7	10	6	10	Score tied - 0 times
GS	12	4	2	2	9	Lead changed - 0 times

Appalachian State vs Georgia Southern

1/21/2017; 5 p.m. at Statesboro, Ga. - Hanner Fieldhouse

Scoring/Runs Reference

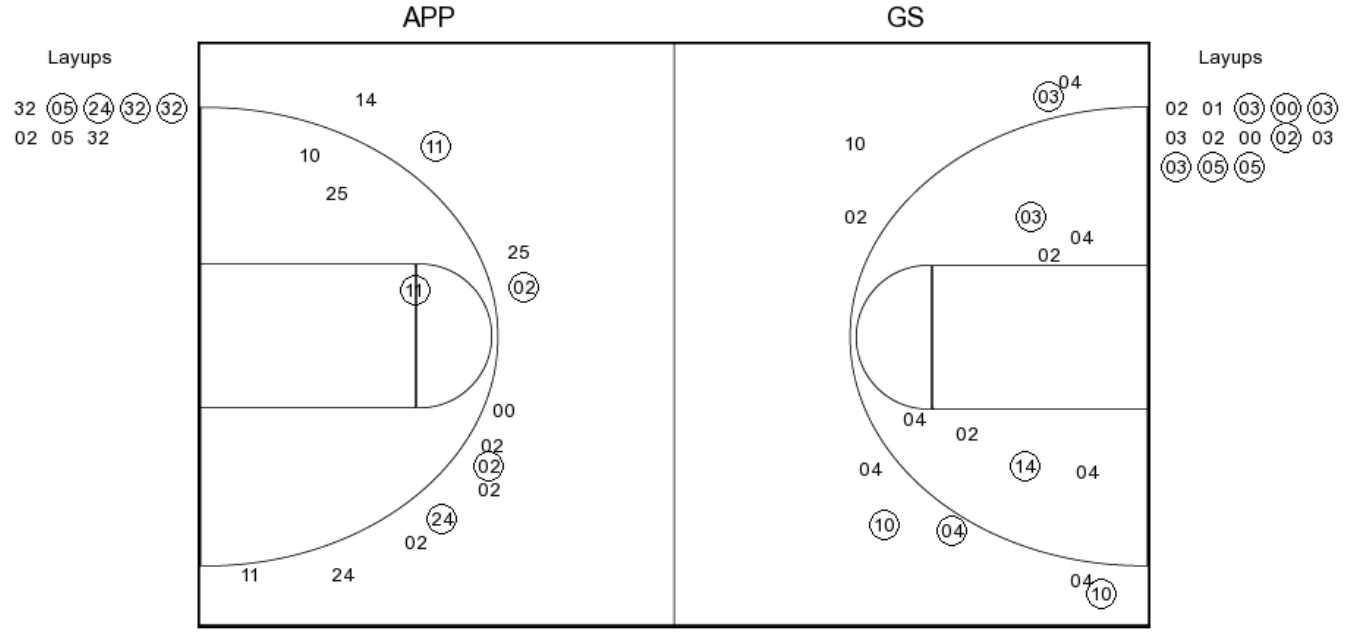
Period 1				Georgia Southern			
Appalachian State	Score	Marg		Georgia Southern			
	0-3	3	3	BROWN 3PTR - 19:24			
	0-6	6	3	ALLSMILLER 3PTR - 18:27			
18:12 - SHABAZZ 3PTR	3	3-6	3				
		3-7	4	1 SMITH FT - 17:46			
		3-8	5	1 SMITH FT - 17:46			
17:33 - KINNEY LAYUP [P]	2	5-8	3				
		5-11	6	3 ALLSMILLER 3PTR - 16:29			
		5-13	8	2 SMITH LAYUP [P] - 15:54			
14:42 - HINTON LAYUP [P] [F]	2	7-13	6				
14:17 - SHABAZZ JUMPER	2	9-13	4				
14:17 - SHABAZZ FT	1	10-13	3				
14:02 - JOHNSON JUMPER	2	12-13	1				
		12-15	3	2 GLENN JUMPER - 13:59			
13:54 - JOHNSON LAYUP [P]	2	14-15	1				
		14-16	2	1 GLENN FT - 13:11			
		14-18	4	2 SMITH LAYUP [P] - 12:37			
11:35 - HINTON 3PTR	3	17-18	1				
		17-20	3	2 SMITH JUMPER - 11:17			
10:57 - SHABAZZ 3PTR	3	20-20	0				
		20-21	1	1 SIMMONS FT - 10:03			
09:45 - LOGAN JUMPER	2	22-21	-1				
		22-23	1	2 HUGHES LAYUP [P] - 08:15			
		22-26	4	3 SMITH 3PTR - 07:29			
		22-27	5	1 SMITH FT - 07:01			
06:40 - LOGAN 3PTR	3	25-27	2				
		25-29	4	2 SMITH LAYUP [P] - 06:11			
		25-30	5	1 SMITH FT - 06:11			
		25-32	7	2 SIMMONS JUMPER - 05:30			
04:49 - LOGAN FT	1	26-32	6				
04:49 - LOGAN FT	1	27-32	5				
		27-33	6	1 BOYKINS FT - 03:53			
03:41 - SHABAZZ 3PTR	3	30-33	3				
		30-35	5	2 GLADDEN LAYUP [P] - 03:00			
02:27 - LOGAN FT	1	31-35	4				
02:27 - LOGAN FT	1	32-35	3				
		32-37	5	2 GLADDEN LAYUP [P] - 01:46			

Period 2				Georgia Southern			
Appalachian State	Score	Marg		Georgia Southern			
		32-39	7	2 SMITH JUMPER - 19:17			
		32-41	9	2 SIMMONS LAYUP [P] - 18:24			
18:06 - SHABAZZ LAYUP [P]	2	34-41	7				
		34-43	9	2 BROWN JUMPER - 17:38			
		34-44	10	1 BROWN FT - 16:44			
		34-46	12	2 BROWN LAYUP [P] - 16:24			
16:18 - HINTON LAYUP [P] [F]	2	36-46	10				
		36-47	11	1 SMITH FT - 15:57			
		36-48	12	1 SMITH FT - 15:57			
15:36 - JOHNSON LAYUP [P]	2	38-48	10				
		38-50	12	2 BROWN JUMPER - 15:20			
13:58 - SHABAZZ 3PTR	3	41-50	9				
		41-52	11	2 BROWN LAYUP [P] - 13:44			
13:16 - SHABAZZ 3PTR	3	44-52	8				
		44-54	10	2 BROWN DUNK [P] - 12:55			
		44-56	12	2 GLADDEN LAYUP [P] - 12:28			
12:19 - KINNEY FT	1	45-56	11				
12:19 - KINNEY FT	1	46-56	10				
12:02 - HINTON DUNK [P]	2	48-56	8				
11:30 - KINNEY FT	1	49-56	7				
		49-58	9	2 HUGHES JUMPER - 11:10			
10:56 - SHABAZZ FT	1	50-58	8				
10:51 - LOGAN 3PTR	3	53-58	5				
		53-59	6	1 BROWN FT - 10:35			
		53-60	7	1 BROWN FT - 10:35			
10:08 - JOHNSON LAYUP [P]	2	55-60	5				
		55-61	6	1 BROWN FT - 09:53			
		55-62	7	1 BROWN FT - 09:53			
		55-64	9	2 GLADDEN LAYUP [P] - 09:18			
		55-65	10	1 GLADDEN FT - 09:18			
08:56 - SHABAZZ FT	1	56-65	9				
		56-66	10	1 SMITH FT - 08:27			
		56-67	11	1 SMITH FT - 08:27			
06:53 - LOGAN JUMPER [P]	2	58-67	9				
		58-70	12	3 HUGHES 3PTR - 06:39			
06:25 - BABIC 3PTR	3	61-70	9				
		61-72	11	2 BROWN JUMPER - 06:07			
05:53 - BABIC 3PTR	3	64-72	8				
05:15 - BABIC LAYUP [P]	2	66-72	6				
		66-75	9	3 SMITH 3PTR - 04:57			
04:24 - JOHNSON LAYUP [P]	2	68-75	7				
		68-76	8	1 BROWN FT - 04:01			
		68-77	9	1 BROWN FT - 04:01			
03:49 - SHABAZZ JUMPER [P]	2	70-77	7				
		70-78	8	1 BROWN FT - 02:43			
		70-79	9	1 BROWN FT - 02:00			
		70-80	10	1 BROWN FT - 02:00			
01:47 - LOGAN FT	1	71-80	9				
		71-81	10	1 GLADDEN FT - 01:45			
		71-82	11	1 GLADDEN FT - 01:45			
01:33 - SHABAZZ LAYUP [P]	2	73-82	9				

01:33 - SHABAZZ FT	1	74-82 8		
		74-83 9	1	BROWN FT - 01:33
00:51 - LOGAN FT	1	75-83 8		
00:51 - LOGAN FT	1	76-83 7		
		76-84 8	1	BROWN FT - 00:49
00:39 - SHABAZZ JUMPER [P]	2	78-84 6		
		78-85 7	1	SMITH FT - 00:38
00:31 - BABIC 3PTR	3	81-85 4		
		81-86 5	1	HUGHES FT - 00:29
		81-87 6	1	HUGHES FT - 00:29
00:22 - SHABAZZ DUNK [P] [F]	2	83-87 4		
		83-88 5	1	BROWN FT - 00:21
		83-89 6	1	BROWN FT - 00:21
00:16 - SHABAZZ 3PTR	3	86-89 3		
		86-90 4	1	BROWN FT - 00:15
		86-91 5	1	BROWN FT - 00:15
00:09 - SHABAZZ LAYUP [P] [F]	2	88-91 3		
		88-92 4	1	BROWN FT - 00:09

Appalachian State vs Georgia Southern
OFFICIAL SHOT CHART
 1/21/2017 at Statesboro, Ga. - Hanner Fieldhouse

PERIOD 1



APP PERIOD 1

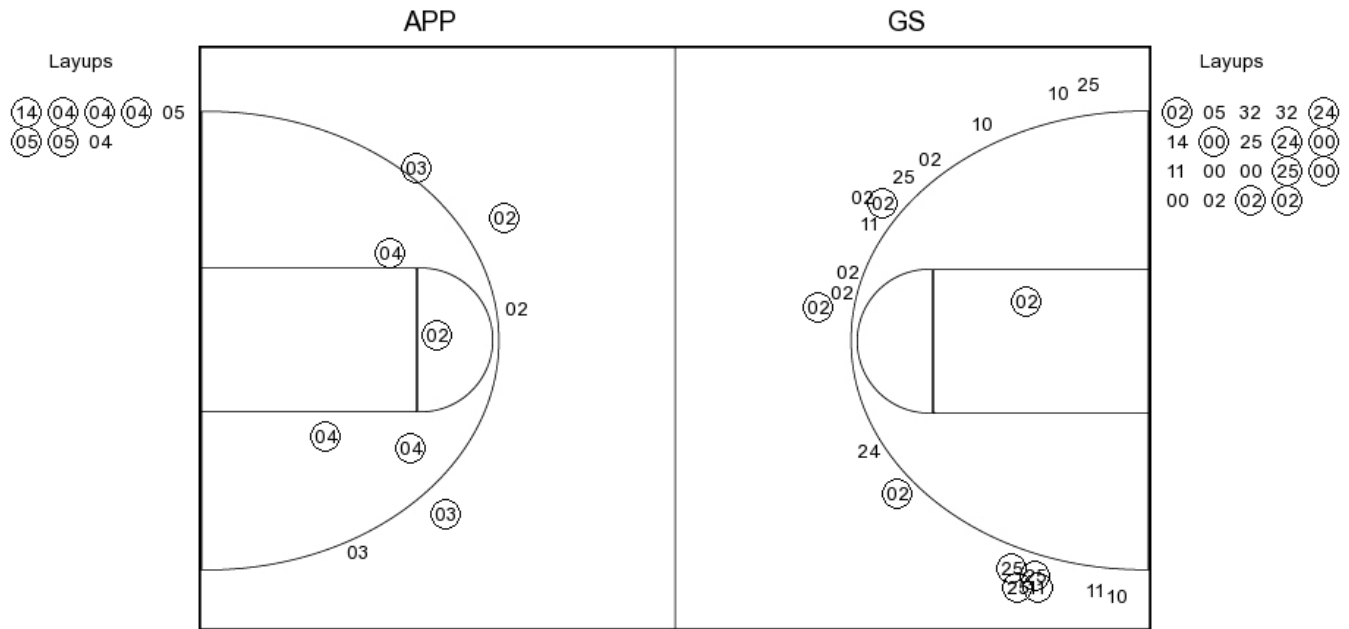
FG Made	11
FG Attempted	29
3PFG Made	5
3PFG Attempted	13

GS PERIOD 1

FG Made	13
FG Attempted	30
3PFG Made	4
3PFG Attempted	9

Appalachian State vs Georgia Southern
OFFICIAL SHOT CHART
 1/21/2017 at Statesboro, Ga. - Hanner Fieldhouse

PERIOD 2



APP PERIOD 2

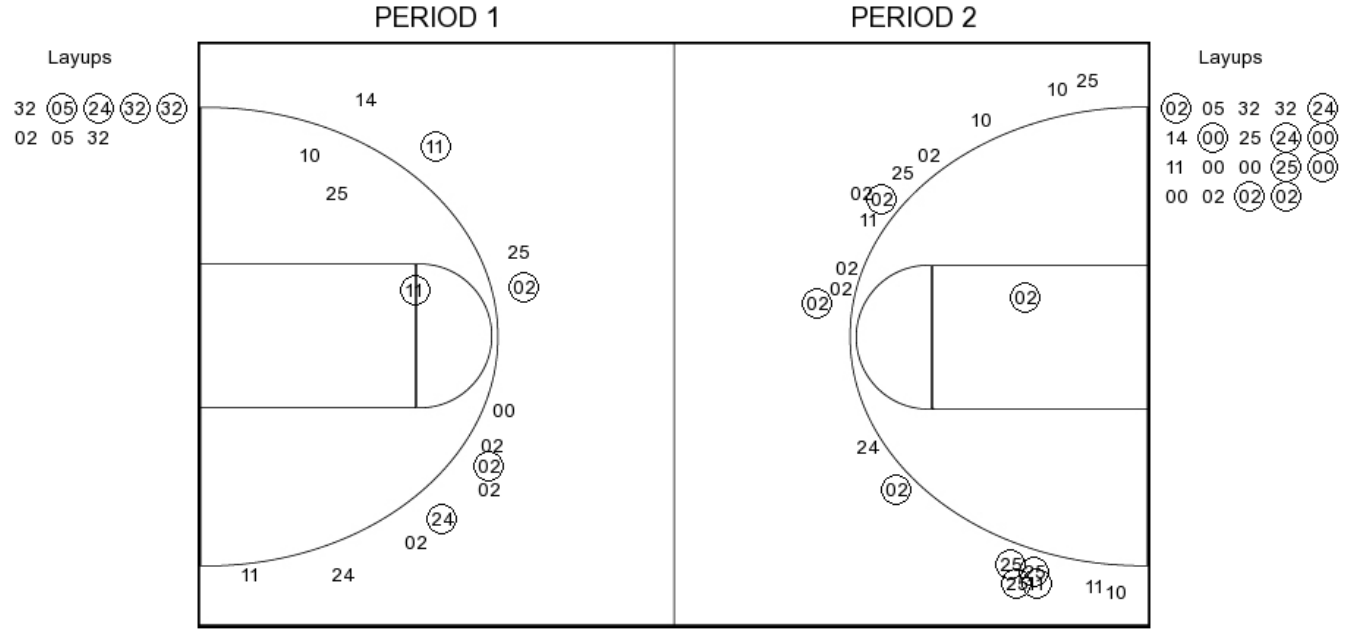
FG Made	20
FG Attempted	42
3PFG Made	7
3PFG Attempted	18

GS PERIOD 2

FG Made	13
FG Attempted	19
3PFG Made	2
3PFG Attempted	4

Appalachian State vs Georgia Southern
OFFICIAL SHOT CHART
 1/21/2017 at Statesboro, Ga. - Hanner Fieldhouse

Appalachian State



APP PERIOD 1

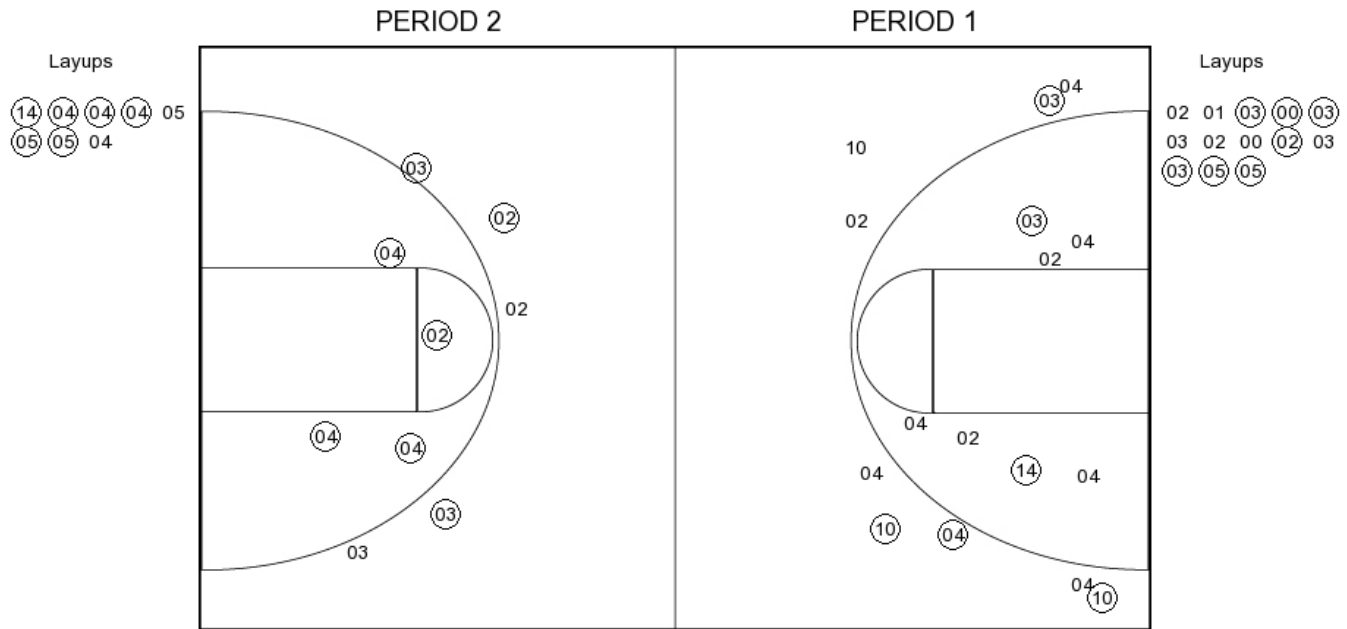
FG Made	11
FG Attempted	29
3PFG Made	5
3PFG Attempted	13

APP PERIOD 2

FG Made	20
FG Attempted	42
3PFG Made	7
3PFG Attempted	18

Appalachian State vs Georgia Southern
OFFICIAL SHOT CHART
 1/21/2017 at Statesboro, Ga. - Hanner Fieldhouse

Georgia Southern



GS PERIOD 1

FG Made	13
FG Attempted	30
3PFG Made	4
3PFG Attempted	9

GS PERIOD 2

FG Made	13
FG Attempted	19
3PFG Made	2
3PFG Attempted	4