



TEXAS TECH VS. KANSAS

2/11/2017

Lubbock, TX (United Supermarkets Arena)

FINAL STATS

#3 Kansas

(22-3 (10-2 B12))

80

Texas Tech

(16-9 (4-8 B12))

79

Start Time: 1:05 p.m.

Officials: Rick Crawford, Gary Maxwell, Chris Rastatter

Attendance: 13806

Official Basketball Box Score -- Game Totals -- Final Statistics
#3 Kansas vs Texas Tech
2/11/2017 1:05 p.m. at Lubbock, TX (United Supermarkets Arena)

#3 Kansas 80 - 22-3 (10-2 B12)

| ## | Player | S | Total | 3-Ptr | | Rebounds | | | PF | TP | A TO Blk Stl | | | | Min | |
|--------|-------------------|---|--------|-------|--------|----------|---------|---------|----|----|--------------|----|---|---|-----|---------|
| | | | FG-FGA | 3PT | FG-FGA | FT-FTA | Off Reb | Def Reb | | | | | | | | Tot Reb |
| 00 | MASON III,FRANK | g | 4-13 | 2-4 | 2-3 | 1 | 4 | 5 | 5 | 12 | 0 | 2 | 0 | 1 | 26 | |
| 04 | GRAHAM,DEVONTE' | g | 2-8 | 2-6 | 0-0 | 0 | 3 | 3 | 3 | 6 | 6 | 1 | 0 | 2 | 37 | |
| 10 | MYKHAILIUK,SVI | g | 3-10 | 3-8 | 0-0 | 1 | 1 | 2 | 0 | 9 | 2 | 1 | 0 | 2 | 30 | |
| 11 | JACKSON,JOSH | g | 12-15 | 2-4 | 5-7 | 4 | 7 | 11 | 2 | 31 | 4 | 1 | 0 | 1 | 40 | |
| 33 | LUCAS,LANDEN | c | 5-7 | 0-0 | 3-6 | 3 | 2 | 5 | 4 | 13 | 1 | 0 | 1 | 2 | 30 | |
| 02 | VICK,LAGERALD | | 2-4 | 1-3 | 2-3 | 0 | 1 | 1 | 1 | 7 | 0 | 1 | 0 | 0 | 25 | |
| 15 | BRAGG JR.,CARLTON | | 1-2 | 0-0 | 0-0 | 1 | 1 | 2 | 3 | 2 | 0 | 3 | 1 | 0 | 12 | |
| TEAM | | | | | | 1 | 2 | 3 | 0 | | 0 | | | | | |
| TOTALS | | | | 29-59 | 10-25 | 12-19 | 11 | 21 | 32 | 18 | 80 | 13 | 9 | 2 | 8 | 200 |

Deadball Rebounds: 2,0

| | | | | | | | | | |
|-------|-----------|-------|-------|-----------|-------|-------|-------|-------|-------|
| FG % | 1st Half: | 15-31 | 48.4% | 2nd Half: | 14-28 | 50.0% | Game: | 29-59 | 49.2% |
| 3FG % | 1st Half: | 6-15 | 40.0% | 2nd Half: | 4-10 | 40.0% | Game: | 10-25 | 40.0% |
| FT % | 1st Half: | 6-9 | 66.7% | 2nd Half: | 6-10 | 60.0% | Game: | 12-19 | 63.2% |

Texas Tech 79 - 16-9 (4-8 B12)

| ## | Player | S | Total | 3-Ptr | | FT-FTA | Rebounds | | | PF | TP | A TO Blk Stl | | | | Min | |
|--------|---------------------|---|--------|-------|--------|--------|----------|---------|---------|----|----|--------------|----|----|---|-----|-----|
| | | | FG-FGA | 3PT | FG-FGA | | Off Reb | Def Reb | Tot Reb | | | | | | | | |
| 05 | GRAY,JUSTIN | g | 3-4 | | 0-0 | 3-4 | 2 | 4 | 6 | 4 | 9 | 1 | 2 | 0 | 4 | 36 | |
| 10 | STEVENSON,NIEM | g | 8-17 | | 1-4 | 5-7 | 4 | 6 | 10 | 3 | 22 | 3 | 2 | 0 | 0 | 33 | |
| 11 | SMITH,ZACH | f | 9-17 | | 1-4 | 2-2 | 5 | 5 | 10 | 1 | 21 | 1 | 1 | 1 | 0 | 38 | |
| 12 | EVANS,KEENAN | g | 8-12 | | 4-5 | 5-5 | 0 | 4 | 4 | 2 | 25 | 2 | 1 | 0 | 0 | 35 | |
| 21 | LIVINGSTON,ANTHONY | f | 0-4 | | 0-4 | 0-0 | 0 | 4 | 4 | 1 | 0 | 2 | 1 | 0 | 0 | 24 | |
| 02 | THOMAS,DEVON | | 0-2 | | 0-0 | 0-2 | 0 | 0 | 0 | 1 | 0 | 0 | 0 | 0 | 0 | 10 | |
| 04 | MILLINGHAUS,SHADELL | | 0-0 | | 0-0 | 0-0 | 1 | 0 | 1 | 0 | 0 | 0 | 2 | 0 | 0 | 5 | |
| 15 | ROSS,AARON | | 1-4 | | 0-3 | 0-1 | 0 | 1 | 1 | 4 | 2 | 1 | 1 | 0 | 0 | 18 | |
| 34 | TEMPLE,MATTHEW | | 0-0 | | 0-0 | 0-0 | 0 | 0 | 0 | 1 | 0 | 0 | 0 | 0 | 0 | 1 | |
| TEAM | | | | | | | 2 | 0 | 2 | 0 | | 1 | | | | | |
| TOTALS | | | | 29-60 | | 6-20 | 15-21 | 14 | 24 | 38 | 17 | 79 | 10 | 11 | 1 | 4 | 200 |

Deadball Rebounds: 2,0

| | | | | | | | | | |
|-------|-----------|-------|-------|-----------|-------|-------|-------|-------|-------|
| FG % | 1st Half: | 14-27 | 51.9% | 2nd Half: | 15-33 | 45.5% | Game: | 29-60 | 48.3% |
| 3FG % | 1st Half: | 3-9 | 33.3% | 2nd Half: | 3-11 | 27.3% | Game: | 6-20 | 30.0% |
| FT % | 1st Half: | 4-8 | 50.0% | 2nd Half: | 11-13 | 84.6% | Game: | 15-21 | 71.4% |

Officials: Rick Crawford, Gary Maxwell, Chris Rastatter
 Technical Fouls: #3 Kansas- None. Texas Tech- None.
 Attendance: 13806

| Score by periods | 1st | 2nd | Total |
|------------------|-----|-----|-------|
| #3 Kansas | 42 | 38 | 80 |
| Texas Tech | 35 | 44 | 79 |

| Points | In Paint | Off T/O | 2nd 2nd Chance | Fast Fast Break | Bench |
|--------|----------|---------|----------------|-----------------|-------|
| KU | 30 | 9 | 13 | 2 | 9 |
| TTU | 28 | 14 | 13 | 2 | 2 |

Last FG - KU 2nd-01:32, TTU 2nd-01:15.
 Largest lead - #3 Kansas by 12 1st-04:23; Texas Tech by 4 2nd-07:54
 KU led for 26:46. TTU led for 8:11. Game was tied for 5:01.

Score tied - 11 times
 Lead changed - 14 times

Official Basketball Box Score -- Game Totals -- First Half Statistics

#3 Kansas vs Texas Tech

2/11/2017 1:05 p.m. at Lubbock, TX (United Supermarkets Arena)

#3 Kansas 42 • 22-3 (10-2 B12)

| ## | Player | S | Total | 3-Ptr | FT-FTA | Rebounds | | | PF | TP | A | TO | Blk | Stl | Min |
|--------|-------------------|---|--------|--------|--------|----------|---------|---------|----|----|---|----|-----|-----|-----|
| | | | FG-FGA | FG-FGA | | Off Reb | Def Reb | Tot Reb | | | | | | | |
| 00 | MASON III,FRANK | g | 0-3 | 0-0 | 1-2 | 0 | 0 | 0 | 2 | 1 | 0 | 1 | 0 | 1 | 13 |
| 04 | GRAHAM,DEVONTE' | g | 1-4 | 1-3 | 0-0 | 0 | 2 | 2 | 1 | 3 | 2 | 0 | 0 | 2 | 17 |
| 10 | MYKHAILIUK,SVI | g | 3-9 | 3-8 | 0-0 | 1 | 0 | 1 | 0 | 9 | 1 | 0 | 0 | 2 | 19 |
| 11 | JACKSON,JOSH | g | 6-7 | 1-2 | 0-0 | 2 | 4 | 6 | 0 | 13 | 2 | 0 | 0 | 0 | 20 |
| 33 | LUCAS,LANDEN | c | 3-5 | 0-0 | 3-4 | 1 | 2 | 3 | 1 | 9 | 1 | 0 | 0 | 2 | 12 |
| 02 | VICK,LAGERALD | | 1-2 | 1-2 | 2-3 | 0 | 0 | 0 | 0 | 5 | 0 | 0 | 0 | 0 | 11 |
| 15 | BRAGG JR.,CARLTON | | 1-1 | 0-0 | 0-0 | 1 | 1 | 2 | 1 | 2 | 0 | 2 | 1 | 0 | 8 |
| TEAM | | | | | | 0 | 1 | 1 | 0 | | | 0 | | | |
| Totals | | | 15-31 | 6-15 | 6-9 | 5 | 10 | 15 | 5 | 42 | 6 | 3 | 1 | 7 | 100 |

FG % Half: 15-31 48.4%
 3FG % Half: 6-15 40.0%
 FT % Half: 6-9 66.7%

Texas Tech 35 • 16-9 (4-8 B12)

| ## | Player | S | Total | 3-Ptr | FT-FTA | Rebounds | | | PF | TP | A | TO | Blk | Stl | Min |
|--------|---------------------|---|--------|--------|--------|----------|---------|---------|----|----|---|----|-----|-----|-----|
| | | | FG-FGA | FG-FGA | | Off Reb | Def Reb | Tot Reb | | | | | | | |
| 05 | GRAY,JUSTIN | g | 1-2 | 0-0 | 0-0 | 1 | 4 | 5 | 2 | 2 | 0 | 2 | 0 | 1 | 16 |
| 10 | STEVENSON,NIEM | g | 3-7 | 1-3 | 1-2 | 2 | 1 | 3 | 1 | 8 | 1 | 1 | 0 | 0 | 14 |
| 11 | SMITH,ZACH | f | 3-6 | 0-1 | 0-0 | 1 | 3 | 4 | 0 | 6 | 0 | 1 | 0 | 0 | 19 |
| 12 | EVANS,KEENAN | g | 6-7 | 2-2 | 3-3 | 0 | 1 | 1 | 1 | 17 | 1 | 0 | 0 | 0 | 16 |
| 21 | LIVINGSTON,ANTHONY | f | 0-2 | 0-2 | 0-0 | 0 | 3 | 3 | 0 | 0 | 2 | 1 | 0 | 0 | 17 |
| 02 | THOMAS,DEVON | | 0-1 | 0-0 | 0-2 | 0 | 0 | 0 | 1 | 0 | 0 | 0 | 0 | 0 | 7 |
| 04 | MILLINGHAUS,SHADELL | | 0-0 | 0-0 | 0-0 | 1 | 0 | 1 | 0 | 0 | 0 | 2 | 0 | 0 | 5 |
| 15 | ROSS,AARON | | 1-2 | 0-1 | 0-1 | 0 | 1 | 1 | 2 | 2 | 1 | 1 | 0 | 0 | 5 |
| 34 | TEMPLE,MATTHEW | | 0-0 | 0-0 | 0-0 | 0 | 0 | 0 | 1 | 0 | 0 | 0 | 0 | 0 | 1 |
| TEAM | | | | | | 1 | 0 | 1 | 0 | | | 1 | | | |
| Totals | | | 14-27 | 3-9 | 4-8 | 6 | 13 | 19 | 8 | 35 | 5 | 9 | 0 | 1 | 100 |

FG % Half: 14-27 51.9%
 3FG % Half: 3-9 33.3%
 FT % Half: 4-8 50.0%

Officials: Rick Crawford, Gary Maxwell, Chris Rastatter
 Technical Fouls: #3 Kansas- None. Texas Tech- None.

| Score by periods | 1st | 2nd | Total |
|------------------|-----|-----|-------|
| #3 Kansas | 42 | 38 | 80 |
| Texas Tech | 35 | 44 | 79 |

| Points | In Paint | Off T/O | 2nd 2nd Chance | Fast Fast Break | Bench |
|--------|----------|---------|----------------|-----------------|-------|
| KU | 14 | 7 | 5 | 0 | 7 |
| TTU | 12 | 3 | 7 | 0 | 2 |

Last FG - KU 1st-00:46, TTU 1st-00:56.
 KU led for 12:42. TTU led for 4:56. Game was tied for 2:22.

Score tied - 5 times
 Lead changed - 4 times

#3 Kansas vs Texas Tech
2/11/2017; 1:05 p.m. at Lubbock, TX (United Supermarkets Arena)
Period 1 Play-By-Play

| VISITORS: #3 Kansas | Time | Score | Margin | HOME: Texas Tech |
|-----------------------------------|-------|-------|--------|-------------------------------------|
| | 19:33 | | | MISSED JUMPER by EVANS,KEENAN |
| REBOUND (DEF) by JACKSON,JOSH | 19:33 | | | |
| MISSED LAYUP by MYKHAILIUK,SVI | 19:25 | | | |
| REBOUND (OFF) by JACKSON,JOSH | 19:25 | | | |
| GOOD! DUNK by JACKSON,JOSH [PNT] | 19:22 | 0-2 | V 2 | |
| | 19:11 | 2-2 | T | GOOD! LAYUP by GRAY,JUSTIN [PNT] |
| MISSED 3PTR by GRAHAM,DEVONTE' | 18:48 | | | |
| | 18:39 | | | REBOUND (DEF) by SMITH,ZACH |
| | 18:37 | | | MISSED LAYUP by SMITH,ZACH |
| | 18:37 | | | REBOUND (OFF) by STEVENSON,NIEM |
| | 18:33 | 4-2 | H 2 | GOOD! TIPIN by STEVENSON,NIEM [PNT] |
| MISSED 3PTR by MYKHAILIUK,SVI | 18:19 | | | |
| | 18:19 | | | REBOUND (DEF) by LIVINGSTON,ANTHONY |
| | 17:46 | | | TURNOVER by TEAM |
| GOOD! LAYUP by JACKSON,JOSH [PNT] | 17:35 | 4-4 | T | |
| | 17:25 | 6-4 | H 2 | GOOD! JUMPER by SMITH,ZACH |
| | 17:25 | | | ASSIST by EVANS,KEENAN |
| MISSED JUMPER by LUCAS,LANDEN | 17:10 | | | |
| REBOUND (OFF) by LUCAS,LANDEN | 17:10 | | | |
| MISSED JUMPER by LUCAS,LANDEN | 17:08 | | | |
| | 17:08 | | | REBOUND (DEF) by LIVINGSTON,ANTHONY |
| | 16:57 | | | SUB IN: THOMAS,DEVON |
| | 16:57 | | | SUB IN: ROSS,AARON |
| | 16:57 | | | SUB OUT: STEVENSON,NIEM |
| | 16:57 | | | SUB OUT: LIVINGSTON,ANTHONY |
| | 16:46 | | | MISSED 3PTR by SMITH,ZACH |
| REBOUND (DEF) by TEAM | 16:46 | | | |
| MISSED JUMPER by MASON III,FRANK | 16:34 | | | |
| | 16:34 | | | REBOUND (DEF) by GRAY,JUSTIN |
| | 16:28 | | | TURNOVER by GRAY,JUSTIN |
| GOOD! JUMPER by JACKSON,JOSH | 16:14 | 6-6 | T | |
| | 15:56 | 8-6 | H 2 | GOOD! JUMPER by EVANS,KEENAN |
| GOOD! LAYUP by LUCAS,LANDEN [PNT] | 15:43 | 8-8 | T | |
| | 15:43 | | | FOUL by ROSS,AARON |
| TIMEOUT MEDIA | 15:43 | | | |
| GOOD! FT by LUCAS,LANDEN | 15:43 | 8-9 | V 1 | |
| SUB IN: BRAGG JR.,CARLTON | 15:43 | | | |
| SUB OUT: LUCAS,LANDEN | 15:43 | | | |
| | 15:43 | | | SUB IN: LIVINGSTON,ANTHONY |
| | 15:43 | | | SUB OUT: ROSS,AARON |
| | 15:30 | 10-9 | H 1 | GOOD! LAYUP by EVANS,KEENAN [PNT] |
| | 15:30 | | | ASSIST by LIVINGSTON,ANTHONY |
| MISSED 3PTR by MYKHAILIUK,SVI | 15:10 | | | |
| | 15:10 | | | REBOUND (DEF) by EVANS,KEENAN |
| FOUL by GRAHAM,DEVONTE' | 15:03 | | | |
| | 15:03 | | | MISSED FT by THOMAS,DEVON |
| | 15:03 | | | REBOUND (DEADB) by TEAM |
| | 15:03 | | | MISSED FT by THOMAS,DEVON |
| REBOUND (DEF) by JACKSON,JOSH | 15:03 | | | |
| SUB IN: VICK,LAGERALD | 15:03 | | | |
| SUB OUT: GRAHAM,DEVONTE' | 15:03 | | | |
| | 14:41 | | | SUB IN: STEVENSON,NIEM |
| | 14:41 | | | SUB OUT: THOMAS,DEVON |

| VISITORS: #3 Kansas | Time | Score | Margin | HOME: Texas Tech |
|------------------------------------|-------|-------|--------|--------------------------------------|
| MISSED JUMPER by MASON III,FRANK | 14:34 | | | |
| REBOUND (OFF) by JACKSON,JOSH | 14:34 | | | |
| MISSED 3PTR by VICK,LAGERALD | 14:26 | | | |
| | 14:26 | | | REBOUND (DEF) by GRAY,JUSTIN |
| | 14:05 | 12-9 | H 3 | GOOD! LAYUP by STEVENSON,NIEM [PNT] |
| | 14:05 | | | ASSIST by LIVINGSTON,ANTHONY |
| MISSED 3PTR by MYKHAILIUK,SVI | 13:46 | | | |
| REBOUND (OFF) by BRAGG JR.,CARLTON | 13:46 | | | |
| | 13:44 | | | FOUL by STEVENSON,NIEM |
| SUB IN: GRAHAM,DEVONTE' | 13:44 | | | |
| SUB OUT: MYKHAILIUK,SVI | 13:44 | | | |
| | 13:44 | | | SUB IN: ROSS,AARON |
| | 13:44 | | | SUB IN: THOMAS,DEVON |
| | 13:44 | | | SUB IN: MILLINGHAUS,SHADELL |
| | 13:44 | | | SUB OUT: GRAY,JUSTIN |
| | 13:44 | | | SUB OUT: EVANS,KEENAN |
| | 13:44 | | | SUB OUT: LIVINGSTON,ANTHONY |
| MISSED LAYUP by MASON III,FRANK | 13:32 | | | |
| | 13:32 | | | REBOUND (DEF) by STEVENSON,NIEM |
| | 13:18 | | | MISSED LAYUP by THOMAS,DEVON |
| BLOCK by BRAGG JR.,CARLTON | 13:18 | | | |
| | 13:14 | | | REBOUND (OFF) by MILLINGHAUS,SHADELL |
| | 13:11 | | | MISSED 3PTR by STEVENSON,NIEM |
| REBOUND (DEF) by JACKSON,JOSH | 13:11 | | | |
| GOOD! 3PTR by GRAHAM,DEVONTE' | 12:56 | 12-12 | T | |
| ASSIST by JACKSON,JOSH | 12:56 | | | |
| | 12:31 | | | TURNOVER by MILLINGHAUS,SHADELL |
| STEAL by MASON III,FRANK | 12:29 | | | |
| | 12:18 | | | FOUL by THOMAS,DEVON |
| MISSED FT by MASON III,FRANK | 12:18 | | | |
| REBOUND (DEADB) by TEAM | 12:18 | | | |
| GOOD! FT by MASON III,FRANK | 12:18 | 12-13 | V 1 | |
| SUB IN: LUCAS,LANDEN | 12:18 | | | |
| SUB IN: MYKHAILIUK,SVI | 12:18 | | | |
| SUB OUT: MASON III,FRANK | 12:18 | | | |
| SUB OUT: BRAGG JR.,CARLTON | 12:18 | | | |
| | 12:18 | | | SUB IN: GRAY,JUSTIN |
| | 12:18 | | | SUB IN: TEMPLE,MATTHEW |
| | 12:18 | | | SUB IN: EVANS,KEENAN |
| | 12:18 | | | SUB OUT: STEVENSON,NIEM |
| | 12:18 | | | SUB OUT: SMITH,ZACH |
| | 12:18 | | | SUB OUT: THOMAS,DEVON |
| | 12:00 | | | TURNOVER by MILLINGHAUS,SHADELL |
| STEAL by MYKHAILIUK,SVI | 11:57 | | | |
| | 11:44 | | | FOUL by ROSS,AARON |
| TIMEOUT MEDIA | 11:44 | | | |
| GOOD! FT by VICK,LAGERALD | 11:44 | 12-14 | V 2 | |
| GOOD! FT by VICK,LAGERALD | 11:44 | 12-15 | V 3 | |
| | 11:44 | | | SUB IN: LIVINGSTON,ANTHONY |
| | 11:44 | | | SUB IN: SMITH,ZACH |
| | 11:44 | | | SUB IN: STEVENSON,NIEM |
| | 11:44 | | | SUB OUT: ROSS,AARON |
| | 11:44 | | | SUB OUT: TEMPLE,MATTHEW |
| | 11:44 | | | SUB OUT: MILLINGHAUS,SHADELL |
| | 11:28 | | | MISSED LAYUP by STEVENSON,NIEM |
| REBOUND (DEF) by GRAHAM,DEVONTE' | 11:28 | | | |
| TURNOVER by BRAGG JR.,CARLTON | 11:25 | | | |
| | 11:14 | | | MISSED JUMPER by SMITH,ZACH |

| VISITORS: #3 Kansas | Time | Score | Margin | HOME: Texas Tech |
|------------------------------------|-------|-------|--------|-------------------------------------|
| REBOUND (DEF) by BRAGG JR.,CARLTON | 11:14 | | | |
| GOOD! 3PTR by VICK,LAGERALD | 11:00 | 12-18 | V 6 | |
| | 10:45 | 14-18 | V 4 | GOOD! JUMPER by EVANS,KEENAN |
| MISSED LAYUP by GRAHAM,DEVONTE' | 10:25 | | | |
| REBOUND (OFF) by MYKHAILIUK,SVI | 10:25 | | | |
| GOOD! 3PTR by MYKHAILIUK,SVI | 10:15 | 14-21 | V 7 | |
| | 09:45 | | | MISSED 3PTR by LIVINGSTON,ANTHONY |
| | 09:45 | | | REBOUND (OFF) by GRAY,JUSTIN |
| | 09:42 | | | TURNOVER by GRAY,JUSTIN |
| STEAL by LUCAS,LANDEN | 09:41 | | | |
| MISSED 3PTR by MYKHAILIUK,SVI | 09:20 | | | |
| | 09:20 | | | REBOUND (DEF) by SMITH,ZACH |
| FOUL by LUCAS,LANDEN | 08:58 | | | |
| | 08:58 | 15-21 | V 6 | GOOD! FT by STEVENSON,NIEM |
| | 08:58 | | | MISSED FT by STEVENSON,NIEM |
| REBOUND (DEF) by LUCAS,LANDEN | 08:58 | | | |
| SUB IN: MASON III,FRANK | 08:58 | | | |
| SUB IN: BRAGG JR.,CARLTON | 08:58 | | | |
| SUB OUT: MYKHAILIUK,SVI | 08:58 | | | |
| | 08:58 | | | SUB IN: TEMPLE,MATTHEW |
| | 08:58 | | | SUB IN: ROSS,AARON |
| | 08:58 | | | SUB OUT: LIVINGSTON,ANTHONY |
| | 08:58 | | | SUB OUT: GRAY,JUSTIN |
| SUB IN: MYKHAILIUK,SVI | 08:57 | | | |
| SUB OUT: VICK,LAGERALD | 08:57 | | | |
| | 08:57 | | | SUB IN: GRAY,JUSTIN |
| | 08:57 | | | SUB IN: LIVINGSTON,ANTHONY |
| | 08:57 | | | SUB OUT: TEMPLE,MATTHEW |
| | 08:57 | | | SUB OUT: ROSS,AARON |
| GOOD! JUMPER by LUCAS,LANDEN [PNT] | 08:40 | 15-23 | V 8 | |
| | 08:15 | 17-23 | V 6 | GOOD! JUMPER by SMITH,ZACH |
| GOOD! LAYUP by LUCAS,LANDEN [PNT] | 07:56 | 17-25 | V 8 | |
| | 07:56 | | | FOUL by TEMPLE,MATTHEW |
| TIMEOUT media | 07:56 | | | |
| MISSED FT by LUCAS,LANDEN | 07:55 | | | |
| | 07:55 | | | REBOUND (DEF) by LIVINGSTON,ANTHONY |
| | 07:36 | | | TURNOVER by SMITH,ZACH |
| STEAL by LUCAS,LANDEN | 07:35 | | | |
| FOUL by MASON III,FRANK | 07:21 | | | |
| TURNOVER by MASON III,FRANK | 07:21 | | | |
| | 07:21 | | | MISSED 3PTR by LIVINGSTON,ANTHONY |
| | 07:21 | | | REBOUND (OFF) by STEVENSON,NIEM |
| SUB OUT: LUCAS,LANDEN | 07:21 | | | |
| | 07:00 | 20-25 | V 5 | GOOD! 3PTR by EVANS,KEENAN |
| GOOD! 3PTR by MYKHAILIUK,SVI | 06:35 | 20-28 | V 8 | |
| ASSIST by JACKSON,JOSH | 06:35 | | | |
| | 06:11 | 22-28 | V 6 | GOOD! LAYUP by EVANS,KEENAN [PNT] |
| GOOD! 3PTR by JACKSON,JOSH | 05:56 | 22-31 | V 9 | |
| ASSIST by MYKHAILIUK,SVI | 05:56 | | | |
| | 05:41 | | | TURNOVER by STEVENSON,NIEM |
| STEAL by GRAHAM,DEVONTE' | 05:40 | | | |
| TURNOVER by BRAGG JR.,CARLTON | 05:38 | | | |
| | 05:36 | | | STEAL by GRAY,JUSTIN |
| | 05:23 | | | TURNOVER by LIVINGSTON,ANTHONY |
| STEAL by GRAHAM,DEVONTE' | 05:22 | | | |
| | 05:18 | | | FOUL by GRAY,JUSTIN |
| SUB IN: VICK,LAGERALD | 05:18 | | | |
| SUB IN: LUCAS,LANDEN | 05:18 | | | |

| VISITORS: #3 Kansas | Time | Score | Margin | HOME: Texas Tech |
|--|-------|-------|--------|----------------------------------|
| SUB OUT: BRAGG JR.,CARLTON | 05:18 | | | |
| SUB OUT: MASON III,FRANK | 05:18 | | | |
| | 05:18 | | | SUB IN: THOMAS,DEVON |
| | 05:18 | | | SUB IN: MILLINGHAUS,SHADELL |
| | 05:18 | | | SUB OUT: EVANS,KEENAN |
| | 05:18 | | | SUB OUT: STEVENSON,NIEM |
| MISSED 3PTR by JACKSON,JOSH | 05:01 | | | |
| | 05:01 | | | REBOUND (DEF) by GRAY,JUSTIN |
| | 04:39 | | | MISSED JUMPER by GRAY,JUSTIN |
| REBOUND (DEF) by GRAHAM,DEVONTE' | 04:39 | | | |
| GOOD! 3PTR by MYKHAILIUK,SVI | 04:23 | 22-34 | V 12 | |
| ASSIST by LUCAS,LANDEN | 04:23 | | | |
| | 04:15 | | | TIMEOUT 30SEC |
| | 04:02 | 25-34 | V 9 | GOOD! 3PTR by STEVENSON,NIEM |
| | 04:02 | | | ASSIST by ROSS,AARON |
| GOOD! DUNK by JACKSON,JOSH [PNT] | 03:41 | 25-36 | V 11 | |
| ASSIST by GRAHAM,DEVONTE' | 03:41 | | | |
| | 03:21 | 28-36 | V 8 | GOOD! 3PTR by EVANS,KEENAN |
| | 03:21 | | | ASSIST by STEVENSON,NIEM |
| MISSED 3PTR by MYKHAILIUK,SVI | 03:04 | | | |
| | 03:04 | | | REBOUND (DEF) by GRAY,JUSTIN |
| | 02:47 | | | MISSED 3PTR by STEVENSON,NIEM |
| REBOUND (DEF) by LUCAS,LANDEN | 02:47 | | | |
| | 02:29 | | | FOUL by GRAY,JUSTIN |
| GOOD! FT by LUCAS,LANDEN | 02:29 | 28-37 | V 9 | |
| GOOD! FT by LUCAS,LANDEN | 02:29 | 28-38 | V 10 | |
| SUB IN: MASON III,FRANK | 02:29 | | | |
| SUB IN: BRAGG JR.,CARLTON | 02:29 | | | |
| SUB OUT: LUCAS,LANDEN | 02:29 | | | |
| SUB OUT: GRAHAM,DEVONTE' | 02:29 | | | |
| | 02:29 | | | SUB IN: ROSS,AARON |
| | 02:29 | | | SUB IN: EVANS,KEENAN |
| | 02:29 | | | SUB IN: STEVENSON,NIEM |
| | 02:29 | | | SUB OUT: GRAY,JUSTIN |
| | 02:29 | | | SUB OUT: THOMAS,DEVON |
| | 02:29 | | | SUB OUT: MILLINGHAUS,SHADELL |
| | 02:18 | | | MISSED 3PTR by ROSS,AARON |
| | 02:18 | | | REBOUND (OFF) by SMITH,ZACH |
| | 02:01 | 30-38 | V 8 | GOOD! JUMPER by ROSS,AARON |
| FOUL by BRAGG JR.,CARLTON | 02:01 | | | |
| | 02:01 | | | MISSED FT by ROSS,AARON |
| REBOUND (DEF) by JACKSON,JOSH | 02:01 | | | |
| GOOD! JUMPER by JACKSON,JOSH | 01:40 | 30-40 | V 10 | |
| FOUL by MASON III,FRANK | 01:17 | | | |
| | 01:17 | 31-40 | V 9 | GOOD! FT by EVANS,KEENAN |
| | 01:17 | 32-40 | V 8 | GOOD! FT by EVANS,KEENAN |
| | 01:17 | 33-40 | V 7 | GOOD! FT by EVANS,KEENAN |
| | 01:05 | | | FOUL by EVANS,KEENAN |
| MISSED FT by VICK,LAGERALD | 01:05 | | | |
| | 01:05 | | | REBOUND (DEF) by SMITH,ZACH |
| | 00:56 | 35-40 | V 5 | GOOD! JUMPER by SMITH,ZACH [PNT] |
| TIMEOUT 30SEC | 00:55 | | | |
| SUB IN: GRAHAM,DEVONTE' | 00:55 | | | |
| SUB OUT: MASON III,FRANK | 00:55 | | | |
| | 00:55 | | | SUB IN: THOMAS,DEVON |
| | 00:55 | | | SUB OUT: ROSS,AARON |
| GOOD! LAYUP by BRAGG JR.,CARLTON [PNT] | 00:46 | 35-42 | V 7 | |
| ASSIST by GRAHAM,DEVONTE' | 00:46 | | | |

| VISITORS: #3 Kansas | Time | Score | Margin | HOME: Texas Tech |
|--------------------------------|-------|-------|--------|--------------------------------|
| | 00:24 | | | MISSED LAYUP by STEVENSON,NIEM |
| | 00:24 | | | REBOUND (OFF) by TEAM |
| | 00:22 | | | SUB IN: ROSS,AARON |
| | 00:22 | | | SUB OUT: THOMAS,DEVON |
| | 00:14 | | | TURNOVER by ROSS,AARON |
| STEAL by MYKHAILIUK,SVI | 00:12 | | | |
| MISSED 3PTR by GRAHAM,DEVONTE' | 00:05 | | | |
| | 00:05 | | | REBOUND (DEF) by ROSS,AARON |

#3 Kansas 42, Texas Tech 35

| Period 1-only | In Paint | Off T/O | 2nd Chance | Fast Break | Bench | |
|---------------|-------------|------------|---------------|---------------|-------|------------------------|
| KU | 14 | 7 | 5 | 0 | 7 | Score tied - 8 times |
| TTU | 12 | 3 | 7 | 0 | 2 | Lead changed - 4 times |

Official Basketball Box Score -- Game Totals -- Second Half Statistics

#3 Kansas vs Texas Tech

2/11/2017 1:05 p.m. at Lubbock, TX (United Supermarkets Arena)

#3 Kansas 38 • 22-3 (10-2 B12)

| ## | Player | S | Total | 3-Ptr | FT-FTA | Rebounds | | | PF | TP | A TO Blk Stl | | | | Min |
|--------|-------------------|---|--------|------------|--------|----------|---------|---------|----|----|--------------|---|---|---|-----|
| | | | FG-FGA | 3PT FG-FGA | | Off Reb | Def Reb | Tot Reb | | | | | | | |
| 00 | MASON III,FRANK | g | 4-10 | 2-4 | 1-1 | 1 | 4 | 5 | 3 | 11 | 0 | 1 | 0 | 0 | 13 |
| 04 | GRAHAM,DEVONTE' | g | 1-4 | 1-3 | 0-0 | 0 | 1 | 1 | 2 | 3 | 4 | 1 | 0 | 0 | 20 |
| 10 | MYKHAILIUK,SVI | g | 0-1 | 0-0 | 0-0 | 0 | 1 | 1 | 0 | 0 | 1 | 1 | 0 | 0 | 11 |
| 11 | JACKSON,JOSH | g | 6-8 | 1-2 | 5-7 | 2 | 3 | 5 | 2 | 18 | 2 | 1 | 0 | 1 | 20 |
| 33 | LUCAS,LANDEN | c | 2-2 | 0-0 | 0-2 | 2 | 0 | 2 | 3 | 4 | 0 | 0 | 1 | 0 | 18 |
| 02 | VICK,LAGERALD | | 1-2 | 0-1 | 0-0 | 0 | 1 | 1 | 1 | 2 | 0 | 1 | 0 | 0 | 14 |
| 15 | BRAGG JR.,CARLTON | | 0-1 | 0-0 | 0-0 | 0 | 0 | 0 | 2 | 0 | 0 | 1 | 0 | 0 | 4 |
| TEAM | | | | | | 1 | 1 | 2 | 0 | | 0 | | | | |
| Totals | | | 14-28 | 4-10 | 6-10 | 6 | 11 | 17 | 13 | 38 | 7 | 6 | 1 | 1 | 100 |

FG % Half: 14-28 50.0%
 3FG % Half: 4-10 40.0%
 FT % Half: 6-10 60.0%

Texas Tech 44 • 16-9 (4-8 B12)

| ## | Player | S | Total | 3-Ptr | FT-FTA | Rebounds | | | PF | TP | A TO Blk Stl | | | | Min |
|--------|---------------------|---|--------|------------|--------|----------|---------|---------|----|----|--------------|---|---|---|-----|
| | | | FG-FGA | 3PT FG-FGA | | Off Reb | Def Reb | Tot Reb | | | | | | | |
| 05 | GRAY,JUSTIN | g | 2-2 | 0-0 | 3-4 | 1 | 0 | 1 | 2 | 7 | 1 | 0 | 0 | 3 | 20 |
| 10 | STEVENSON,NIEM | g | 5-10 | 0-1 | 4-5 | 2 | 5 | 7 | 2 | 14 | 2 | 1 | 0 | 0 | 19 |
| 11 | SMITH,ZACH | f | 6-11 | 1-3 | 2-2 | 4 | 2 | 6 | 1 | 15 | 1 | 0 | 1 | 0 | 19 |
| 12 | EVANS,KEENAN | g | 2-5 | 2-3 | 2-2 | 0 | 3 | 3 | 1 | 8 | 1 | 1 | 0 | 0 | 19 |
| 21 | LIVINGSTON,ANTHONY | f | 0-2 | 0-2 | 0-0 | 0 | 1 | 1 | 1 | 0 | 0 | 0 | 0 | 0 | 7 |
| 02 | THOMAS,DEVON | | 0-1 | 0-0 | 0-0 | 0 | 0 | 0 | 0 | 0 | 0 | 0 | 0 | 0 | 3 |
| 04 | MILLINGHAUS,SHADELL | | 0-0 | 0-0 | 0-0 | 0 | 0 | 0 | 0 | 0 | 0 | 0 | 0 | 0 | 0 |
| 15 | ROSS,AARON | | 0-2 | 0-2 | 0-0 | 0 | 0 | 0 | 2 | 0 | 0 | 0 | 0 | 0 | 13 |
| 34 | TEMPLE,MATTHEW | | 0-0 | 0-0 | 0-0 | 0 | 0 | 0 | 0 | 0 | 0 | 0 | 0 | 0 | 0 |
| TEAM | | | | | | 1 | 0 | 1 | 0 | | 0 | | | | |
| Totals | | | 15-33 | 3-11 | 11-13 | 8 | 11 | 19 | 9 | 44 | 5 | 2 | 1 | 3 | 100 |

FG % Half: 15-33 45.5%
 3FG % Half: 3-11 33.3%
 FT % Half: 11-13 84.6%

Officials: Rick Crawford, Gary Maxwell, Chris Rastatter
 Technical Fouls: #3 Kansas- None. Texas Tech- None.

| Score by periods | 1st | 2nd | Total |
|------------------|-----|-----|-------|
| #3 Kansas | 42 | 38 | 80 |
| Texas Tech | 35 | 44 | 79 |

| Points | In Paint | Off T/O | 2nd 2nd Chance | Fast Fast Break | Bench |
|--------|----------|---------|----------------|-----------------|-------|
| KU | 16 | 2 | 8 | 2 | 2 |
| TTU | 16 | 11 | 10 | 2 | 0 |

Last FG - KU 2nd-01:32, TTU 2nd-01:15.
 KU led for 14:04. TTU led for 3:15. Game was tied for 2:39.

Score tied - 6 times
 Lead changed - 10 times

#3 Kansas vs Texas Tech
2/11/2017; 1:05 p.m. at Lubbock, TX (United Supermarkets Arena)
Period 2 Play-By-Play

| VISITORS: #3 Kansas | Time | Score | Margin | HOME: Texas Tech |
|-----------------------------------|-------|-------|--------|-------------------------------------|
| GOOD! LAYUP by LUCAS,LANDEN [PNT] | 19:49 | 35-44 | V 9 | |
| ASSIST by JACKSON,JOSH | 19:49 | | | |
| | 19:32 | | | MISSED 3PTR by SMITH,ZACH |
| REBOUND (DEF) by MASON III,FRANK | 19:32 | | | |
| MISSED 3PTR by GRAHAM,DEVONTE' | 19:25 | | | |
| | 19:25 | | | REBOUND (DEF) by STEVENSON,NIEM |
| | 19:06 | | | MISSED JUMPER by EVANS,KEENAN |
| | 19:06 | | | REBOUND (OFF) by SMITH,ZACH |
| | 19:02 | | | SUB IN: ROSS,AARON |
| | 19:02 | | | SUB OUT: LIVINGSTON,ANTHONY |
| | 18:50 | 37-44 | V 7 | GOOD! JUMPER by GRAY,JUSTIN |
| MISSED JUMPER by JACKSON,JOSH | 18:26 | | | |
| | 18:26 | | | REBOUND (DEF) by STEVENSON,NIEM |
| FOUL by JACKSON,JOSH | 18:22 | | | |
| | 18:00 | | | MISSED LAYUP by SMITH,ZACH |
| REBOUND (DEF) by MASON III,FRANK | 18:00 | | | |
| MISSED LAYUP by MASON III,FRANK | 17:45 | | | |
| REBOUND (OFF) by JACKSON,JOSH | 17:45 | | | |
| GOOD! DUNK by JACKSON,JOSH [PNT] | 17:44 | 37-46 | V 9 | |
| | 17:30 | | | MISSED JUMPER by EVANS,KEENAN |
| | 17:30 | | | REBOUND (OFF) by SMITH,ZACH |
| | 17:10 | | | MISSED 3PTR by ROSS,AARON |
| | 17:10 | | | REBOUND (OFF) by SMITH,ZACH |
| | 17:09 | 39-46 | V 7 | GOOD! DUNK by SMITH,ZACH [PNT] |
| GOOD! 3PTR by GRAHAM,DEVONTE' | 16:45 | 39-49 | V 10 | |
| ASSIST by MYKHAILIUK,SVI | 16:45 | | | |
| | 16:28 | 41-49 | V 8 | GOOD! LAYUP by STEVENSON,NIEM [PNT] |
| TURNOVER by JACKSON,JOSH | 16:13 | | | |
| | 16:13 | | | SUB IN: THOMAS,DEVON |
| | 16:13 | | | SUB OUT: STEVENSON,NIEM |
| | 16:00 | | | MISSED JUMPER by SMITH,ZACH |
| REBOUND (DEF) by MYKHAILIUK,SVI | 16:00 | | | |
| GOOD! JUMPER by MASON III,FRANK | 15:45 | 41-51 | V 10 | |
| | 15:45 | | | FOUL by GRAY,JUSTIN |
| TIMEOUT media | 15:45 | | | |
| GOOD! FT by MASON III,FRANK | 15:45 | 41-52 | V 11 | |
| SUB IN: VICK,LAGERALD | 15:45 | | | |
| SUB IN: BRAGG JR.,CARLTON | 15:45 | | | |
| SUB OUT: MYKHAILIUK,SVI | 15:45 | | | |
| SUB OUT: LUCAS,LANDEN | 15:45 | | | |
| | 15:45 | | | SUB IN: STEVENSON,NIEM |
| | 15:45 | | | SUB OUT: THOMAS,DEVON |
| FOUL by GRAHAM,DEVONTE' | 15:33 | | | |
| | 15:22 | 44-52 | V 8 | GOOD! 3PTR by EVANS,KEENAN |
| | 15:22 | | | ASSIST by STEVENSON,NIEM |
| MISSED 3PTR by MASON III,FRANK | 14:55 | | | |
| REBOUND (OFF) by MASON III,FRANK | 14:55 | | | |
| MISSED JUMPER by MASON III,FRANK | 14:46 | | | |
| | 14:46 | | | REBOUND (DEF) by LIVINGSTON,ANTHONY |
| FOUL by BRAGG JR.,CARLTON | 14:38 | | | |
| | 14:38 | 45-52 | V 7 | GOOD! FT by STEVENSON,NIEM |
| | 14:38 | | | MISSED FT by STEVENSON,NIEM |
| REBOUND (DEF) by JACKSON,JOSH | 14:38 | | | |

| VISITORS: #3 Kansas | Time | Score | Margin | HOME: Texas Tech |
|--------------------------------------|-------|-------|--------|---------------------------------------|
| GOOD! 3PTR by JACKSON,JOSH | 14:23 | 45-55 | V 10 | |
| ASSIST by GRAHAM,DEVONTE' | 14:23 | | | |
| FOUL by MASON III,FRANK | 14:03 | | | |
| SUB IN: LUCAS,LANDEN | 14:03 | | | |
| SUB IN: MYKHAILIUK,SVI | 14:03 | | | |
| SUB OUT: MASON III,FRANK | 14:03 | | | |
| SUB OUT: BRAGG JR.,CARLTON | 14:03 | | | |
| | 14:03 | | | SUB IN: LIVINGSTON,ANTHONY |
| | 14:03 | | | SUB OUT: SMITH,ZACH |
| | 13:54 | | | MISSED 3PTR by LIVINGSTON,ANTHONY |
| REBOUND (DEF) by JACKSON,JOSH | 13:54 | | | |
| MISSED 3PTR by GRAHAM,DEVONTE' | 13:34 | | | |
| REBOUND (OFF) by TEAM | 13:34 | | | |
| | 13:30 | | | SUB IN: SMITH,ZACH |
| | 13:30 | | | SUB OUT: ROSS,AARON |
| MISSED JUMPER by MYKHAILIUK,SVI | 13:24 | | | |
| | 13:24 | | | REBOUND (DEF) by EVANS,KEENAN |
| | 13:07 | 47-55 | V 8 | GOOD! DUNK by SMITH,ZACH [PNT] |
| | 12:46 | | | FOUL by STEVENSON,NIEM |
| TURNOVER by VICK,LAGERALD | 12:35 | | | |
| | 12:32 | | | STEAL by GRAY,JUSTIN |
| | 12:20 | 49-55 | V 6 | GOOD! LAYUP by GRAY,JUSTIN [PNT] |
| | 12:20 | | | ASSIST by SMITH,ZACH |
| TIMEOUT 30SEC | 12:13 | | | |
| SUB IN: MASON III,FRANK | 12:13 | | | |
| SUB OUT: MYKHAILIUK,SVI | 12:13 | | | |
| | 12:13 | | | SUB IN: ROSS,AARON |
| | 12:13 | | | SUB OUT: LIVINGSTON,ANTHONY |
| MISSED JUMPER by GRAHAM,DEVONTE' | 11:58 | | | |
| | 11:58 | | | REBOUND (DEF) by EVANS,KEENAN |
| | 11:43 | | | MISSED 3PTR by SMITH,ZACH |
| REBOUND (DEF) by MASON III,FRANK | 11:43 | | | |
| | 11:33 | | | FOUL by STEVENSON,NIEM |
| TIMEOUT MEDIA | 11:33 | | | |
| GOOD! FT by JACKSON,JOSH | 11:33 | 49-56 | V 7 | |
| GOOD! FT by JACKSON,JOSH | 11:33 | 49-57 | V 8 | |
| | 11:14 | 52-57 | V 5 | GOOD! 3PTR by EVANS,KEENAN |
| | 11:14 | | | ASSIST by STEVENSON,NIEM |
| MISSED 3PTR by JACKSON,JOSH | 10:54 | | | |
| | 10:54 | | | REBOUND (DEF) by EVANS,KEENAN |
| | 10:44 | | | MISSED LAYUP by STEVENSON,NIEM |
| | 10:44 | | | REBOUND (OFF) by STEVENSON,NIEM |
| | 10:41 | 54-57 | V 3 | GOOD! LAYUP by STEVENSON,NIEM [PNT] |
| GOOD! LAYUP by MASON III,FRANK [PNT] | 10:21 | 54-59 | V 5 | |
| FOUL by MASON III,FRANK | 10:10 | | | |
| SUB IN: MYKHAILIUK,SVI | 10:10 | | | |
| SUB IN: BRAGG JR.,CARLTON | 10:10 | | | |
| SUB OUT: VICK,LAGERALD | 10:10 | | | |
| SUB OUT: MASON III,FRANK | 10:10 | | | |
| FOUL by LUCAS,LANDEN | 10:07 | | | |
| | 10:01 | 57-59 | V 2 | GOOD! 3PTR by SMITH,ZACH |
| | 10:01 | | | ASSIST by EVANS,KEENAN |
| TURNOVER by BRAGG JR.,CARLTON | 09:39 | | | |
| | 09:38 | | | STEAL by GRAY,JUSTIN |
| | 09:36 | 59-59 | T | GOOD! DUNK by STEVENSON,NIEM [FB/PNT] |
| | 09:36 | | | ASSIST by GRAY,JUSTIN |
| TURNOVER by MYKHAILIUK,SVI | 09:22 | | | |
| | 09:02 | | | MISSED LAYUP by STEVENSON,NIEM |

| VISITORS: #3 Kansas | Time | Score | Margin | HOME: Texas Tech |
|--------------------------------------|-------|-------|--------|-------------------------------------|
| | 09:02 | | | REBOUND (OFF) by SMITH,ZACH |
| FOUL by BRAGG JR.,CARLTON | 09:01 | | | |
| | 09:01 | 60-59 | H 1 | GOOD! FT by SMITH,ZACH |
| | 09:01 | 61-59 | H 2 | GOOD! FT by SMITH,ZACH |
| | 09:01 | | | SUB IN: THOMAS,DEVON |
| | 09:01 | | | SUB OUT: EVANS,KEENAN |
| GOOD! JUMPER by JACKSON,JOSH | 08:40 | 61-61 | T | |
| | 08:25 | 63-61 | H 2 | GOOD! LAYUP by STEVENSON,NIEM [PNT] |
| MISSED LAYUP by BRAGG JR.,CARLTON | 08:15 | | | |
| | 08:15 | | | BLOCK by SMITH,ZACH |
| | 08:14 | | | REBOUND (DEF) by STEVENSON,NIEM |
| FOUL by LUCAS,LANDEN | 07:54 | | | |
| | 07:54 | | | TIMEOUT media |
| | 07:54 | 64-61 | H 3 | GOOD! FT by STEVENSON,NIEM |
| | 07:54 | 65-61 | H 4 | GOOD! FT by STEVENSON,NIEM |
| SUB IN: VICK,LAGERALD | 07:54 | | | |
| SUB IN: MASON III,FRANK | 07:54 | | | |
| SUB OUT: MYKHAILIUK,SVI | 07:54 | | | |
| SUB OUT: BRAGG JR.,CARLTON | 07:54 | | | |
| | 07:54 | | | SUB IN: EVANS,KEENAN |
| | 07:54 | | | SUB OUT: STEVENSON,NIEM |
| MISSED JUMPER by MASON III,FRANK | 07:39 | | | |
| REBOUND (OFF) by LUCAS,LANDEN | 07:39 | | | |
| GOOD! 3PTR by MASON III,FRANK | 07:28 | 65-64 | H 1 | |
| | 07:07 | | | MISSED LAYUP by THOMAS,DEVON |
| | 07:07 | | | REBOUND (OFF) by TEAM |
| | 07:06 | | | SUB IN: STEVENSON,NIEM |
| | 07:06 | | | SUB OUT: THOMAS,DEVON |
| | 07:03 | | | MISSED 3PTR by STEVENSON,NIEM |
| REBOUND (DEF) by JACKSON,JOSH | 07:03 | | | |
| GOOD! DUNK by VICK,LAGERALD [FB/PNT] | 06:58 | 65-66 | V 1 | |
| ASSIST by GRAHAM,DEVONTE' | 06:58 | | | |
| | 06:46 | | | MISSED LAYUP by SMITH,ZACH |
| | 06:46 | | | REBOUND (OFF) by STEVENSON,NIEM |
| | 06:43 | | | MISSED LAYUP by STEVENSON,NIEM |
| REBOUND (DEF) by TEAM | 06:43 | | | |
| MISSED LAYUP by MASON III,FRANK | 06:32 | | | |
| | 06:32 | | | REBOUND (DEF) by STEVENSON,NIEM |
| FOUL by VICK,LAGERALD | 06:12 | | | |
| | 06:12 | 66-66 | T | GOOD! FT by EVANS,KEENAN |
| | 06:12 | 67-66 | H 1 | GOOD! FT by EVANS,KEENAN |
| GOOD! LAYUP by LUCAS,LANDEN [PNT] | 05:59 | 67-68 | V 1 | |
| ASSIST by GRAHAM,DEVONTE' | 05:59 | | | |
| | 05:59 | | | FOUL by ROSS,AARON |
| MISSED FT by LUCAS,LANDEN | 05:59 | | | |
| | 05:59 | | | REBOUND (DEF) by SMITH,ZACH |
| | 05:47 | 69-68 | H 1 | GOOD! JUMPER by SMITH,ZACH |
| | 05:27 | | | FOUL by ROSS,AARON |
| | 05:27 | | | SUB IN: LIVINGSTON,ANTHONY |
| | 05:27 | | | SUB OUT: ROSS,AARON |
| GOOD! LAYUP by JACKSON,JOSH [PNT] | 05:13 | 69-70 | V 1 | |
| | 04:51 | 71-70 | H 1 | GOOD! LAYUP by STEVENSON,NIEM [PNT] |
| FOUL by GRAHAM,DEVONTE' | 04:51 | | | |
| | 04:51 | 72-70 | H 2 | GOOD! FT by STEVENSON,NIEM |
| | 04:51 | | | TIMEOUT 30SEC |
| MISSED 3PTR by MASON III,FRANK | 04:32 | | | |
| REBOUND (OFF) by LUCAS,LANDEN | 04:32 | | | |
| MISSED 3PTR by VICK,LAGERALD | 04:27 | | | |

| VISITORS: #3 Kansas | Time | Score | Margin | HOME: Texas Tech |
|-----------------------------------|-------|-------|--------|-----------------------------------|
| REBOUND (OFF) by JACKSON,JOSH | 04:27 | | | |
| GOOD! 3PTR by MASON III,FRANK | 04:23 | 72-73 | V 1 | |
| ASSIST by JACKSON,JOSH | 04:23 | | | |
| | 04:02 | | | TURNOVER by EVANS,KEENAN |
| | 03:42 | | | FOUL by GRAY,JUSTIN |
| TIMEOUT media | 03:42 | | | |
| GOOD! FT by JACKSON,JOSH | 03:42 | 72-74 | V 2 | |
| GOOD! FT by JACKSON,JOSH | 03:42 | 72-75 | V 3 | |
| | 03:21 | | | MISSED LAYUP by STEVENSON,NIEM |
| BLOCK by LUCAS,LANDEN | 03:21 | | | |
| REBOUND (DEF) by MASON III,FRANK | 03:19 | | | |
| FOUL by MASON III,FRANK | 03:05 | | | |
| TURNOVER by MASON III,FRANK | 03:05 | | | |
| SUB IN: MYKHAILIUK,SVI | 03:05 | | | |
| SUB OUT: MASON III,FRANK | 03:05 | | | |
| | 02:46 | 74-75 | V 1 | GOOD! JUMPER by SMITH,ZACH |
| TURNOVER by GRAHAM,DEVONTE' | 02:26 | | | |
| | 02:24 | | | STEAL by GRAY,JUSTIN |
| FOUL by JACKSON,JOSH | 02:21 | | | |
| TIMEOUT 30SEC | 02:21 | | | |
| | 02:21 | 75-75 | T | GOOD! FT by GRAY,JUSTIN |
| | 02:21 | | | MISSED FT by GRAY,JUSTIN |
| | 02:21 | | | REBOUND (OFF) by GRAY,JUSTIN |
| FOUL by LUCAS,LANDEN | 02:17 | | | |
| | 02:17 | 76-75 | H 1 | GOOD! FT by GRAY,JUSTIN |
| | 02:17 | 77-75 | H 2 | GOOD! FT by GRAY,JUSTIN |
| GOOD! DUNK by JACKSON,JOSH [PNT] | 02:05 | 77-77 | T | |
| ASSIST by GRAHAM,DEVONTE' | 02:05 | | | |
| | 01:50 | | | MISSED 3PTR by LIVINGSTON,ANTHONY |
| REBOUND (DEF) by VICK,LAGERALD | 01:50 | | | |
| GOOD! LAYUP by JACKSON,JOSH [PNT] | 01:32 | 77-79 | V 2 | |
| | 01:15 | 79-79 | T | GOOD! JUMPER by SMITH,ZACH |
| | 01:13 | | | TIMEOUT 30SEC |
| | 00:59 | | | FOUL by LIVINGSTON,ANTHONY |
| MISSED FT by LUCAS,LANDEN | 00:59 | | | |
| | 00:59 | | | REBOUND (DEF) by SMITH,ZACH |
| | 00:59 | | | SUB IN: ROSS,AARON |
| | 00:59 | | | SUB OUT: LIVINGSTON,ANTHONY |
| | 00:39 | | | TURNOVER by STEVENSON,NIEM |
| STEAL by JACKSON,JOSH | 00:39 | | | |
| | 00:39 | | | FOUL by EVANS,KEENAN |
| MISSED FT by JACKSON,JOSH | 00:39 | | | |
| | 00:39 | | | REBOUND (DEF) by STEVENSON,NIEM |
| | 00:17 | | | MISSED 3PTR by ROSS,AARON |
| REBOUND (DEF) by GRAHAM,DEVONTE' | 00:17 | | | |
| TIMEOUT TEAM | 00:05 | | | |
| | 00:05 | | | TIMEOUT TEAM |
| | 00:03 | | | FOUL by SMITH,ZACH |
| MISSED FT by JACKSON,JOSH | 00:03 | | | |
| REBOUND (DEADB) by TEAM | 00:03 | | | |
| GOOD! FT by JACKSON,JOSH | 00:03 | 79-80 | V 1 | |
| | 00:01 | | | MISSED 3PTR by EVANS,KEENAN |
| | 00:01 | | | REBOUND (DEADB) by TEAM |

#3 Kansas 80, Texas Tech 79

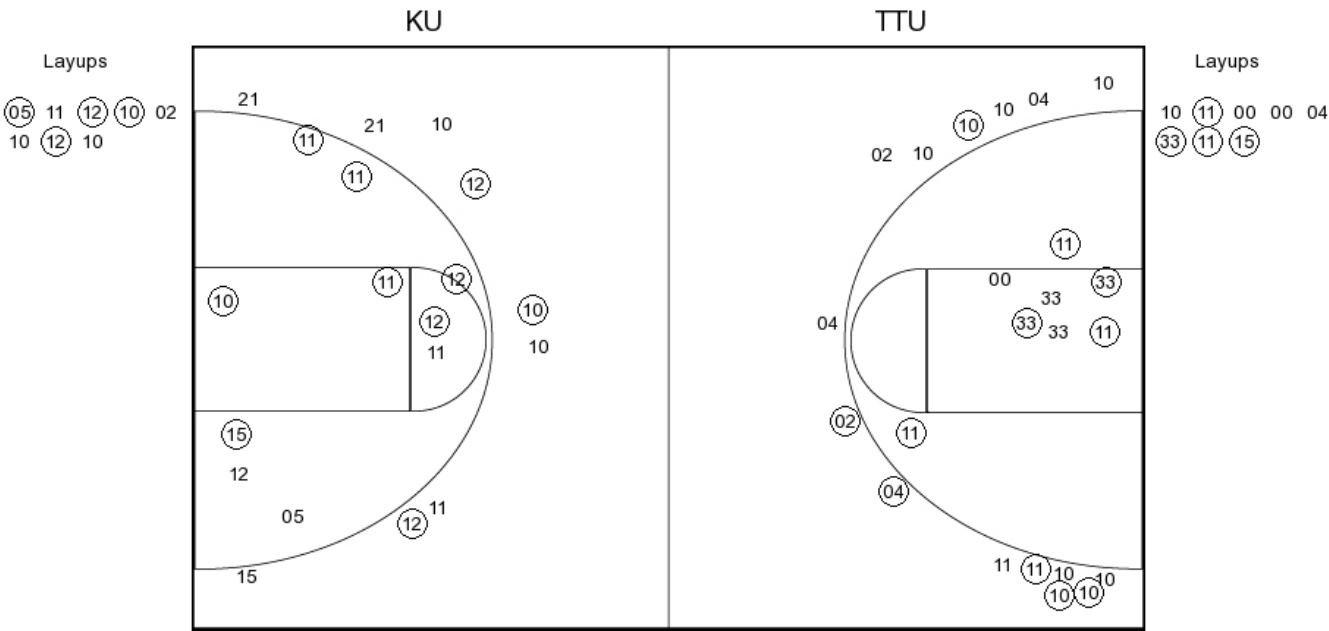
| | Period 2-only Period 2-only | In In Paint Paint | Off Off T/O T/O | 2nd 2nd Chance Chance | Fast Fast Break Break | Bench Bench | |
|-----|--------------------------------|----------------------------|--------------------------|--------------------------------|--------------------------------|----------------|-------------------------|
| KU | | 16 | 2 | 8 | 2 | 2 | Score tied - 4 times |
| TTU | | 16 | 11 | 10 | 2 | 0 | Lead changed - 10 times |

#3 Kansas vs Texas Tech
2/11/2017; 1:05 p.m. at Lubbock, TX (United Supermarkets Arena)
Scoring/Runs Reference

| Period 1 | | | | | |
|-----------------------------|---|-------|------|---|-----------------------------|
| #3 Kansas | | Score | Marg | | Texas Tech |
| 19:22 - JACKSON DUNK [P] | 2 | 2-0 | -2 | | |
| | | 2-2 | 0 | 2 | GRAY LAYUP [P] - 19:11 |
| | | 2-4 | 2 | 2 | STEVENSON TIPIN [P] - 18:33 |
| 17:35 - JACKSON LAYUP [P] | 2 | 4-4 | 0 | | |
| | | 4-6 | 2 | 2 | SMITH JUMPER - 17:25 |
| 16:14 - JACKSON JUMPER | 2 | 6-6 | 0 | | |
| | | 6-8 | 2 | 2 | EVANS JUMPER - 15:56 |
| 15:43 - LUCAS LAYUP [P] | 2 | 8-8 | 0 | | |
| 15:43 - LUCAS FT | 1 | 9-8 | -1 | | |
| | | 9-10 | 1 | 2 | EVANS LAYUP [P] - 15:30 |
| | | 9-12 | 3 | 2 | STEVENSON LAYUP [P] - 14:05 |
| 12:56 - GRAHAM 3PTR | 3 | 12-12 | 0 | | |
| 12:18 - MASON III FT | 1 | 13-12 | -1 | | |
| 11:44 - VICK FT | 1 | 14-12 | -2 | | |
| 11:44 - VICK FT | 1 | 15-12 | -3 | | |
| 11:00 - VICK 3PTR | 3 | 18-12 | -6 | | |
| | | 18-14 | -4 | 2 | EVANS JUMPER - 10:45 |
| 10:15 - MYKHAILIUK 3PTR | 3 | 21-14 | -7 | | |
| | | 21-15 | -6 | 1 | STEVENSON FT - 08:58 |
| 08:40 - LUCAS JUMPER [P] | 2 | 23-15 | -8 | | |
| | | 23-17 | -6 | 2 | SMITH JUMPER - 08:15 |
| 07:56 - LUCAS LAYUP [P] | 2 | 25-17 | -8 | | |
| | | 25-20 | -5 | 3 | EVANS 3PTR - 07:00 |
| 06:35 - MYKHAILIUK 3PTR | 3 | 28-20 | -8 | | |
| | | 28-22 | -6 | 2 | EVANS LAYUP [P] - 06:11 |
| 05:56 - JACKSON 3PTR | 3 | 31-22 | -9 | | |
| 04:23 - MYKHAILIUK 3PTR | 3 | 34-22 | -12 | | |
| | | 34-25 | -9 | 3 | STEVENSON 3PTR - 04:02 |
| 03:41 - JACKSON DUNK [P] | 2 | 36-25 | -11 | | |
| | | 36-28 | -8 | 3 | EVANS 3PTR - 03:21 |
| 02:29 - LUCAS FT | 1 | 37-28 | -9 | | |
| 02:29 - LUCAS FT | 1 | 38-28 | -10 | | |
| | | 38-30 | -8 | 2 | ROSS JUMPER - 02:01 |
| 01:40 - JACKSON JUMPER | 2 | 40-30 | -10 | | |
| | | 40-31 | -9 | 1 | EVANS FT - 01:17 |
| | | 40-32 | -8 | 1 | EVANS FT - 01:17 |
| | | 40-33 | -7 | 1 | EVANS FT - 01:17 |
| | | 40-35 | -5 | 2 | SMITH JUMPER [P] - 00:56 |
| 00:46 - BRAGG JR. LAYUP [P] | 2 | 42-35 | -7 | | |

| Period 2 | | | | | |
|-----------------------------|---|-------|------|---|--------------------------------|
| #3 Kansas | | Score | Marg | | Texas Tech |
| 19:49 - LUCAS LAYUP [P] | 2 | 44-35 | -9 | | |
| | | 44-37 | -7 | 2 | GRAY JUMPER - 18:50 |
| 17:44 - JACKSON DUNK [P] | 2 | 46-37 | -9 | | |
| | | 46-39 | -7 | 2 | SMITH DUNK [P] - 17:09 |
| 16:45 - GRAHAM 3PTR | 3 | 49-39 | -10 | | |
| | | 49-41 | -8 | 2 | STEVENSON LAYUP [P] - 16:28 |
| 15:45 - MASON III JUMPER | 2 | 51-41 | -10 | | |
| 15:45 - MASON III FT | 1 | 52-41 | -11 | | |
| | | 52-44 | -8 | 3 | EVANS 3PTR - 15:22 |
| | | 52-45 | -7 | 1 | STEVENSON FT - 14:38 |
| 14:23 - JACKSON 3PTR | 3 | 55-45 | -10 | | |
| | | 55-47 | -8 | 2 | SMITH DUNK [P] - 13:07 |
| | | 55-49 | -6 | 2 | GRAY LAYUP [P] - 12:20 |
| 11:33 - JACKSON FT | 1 | 56-49 | -7 | | |
| 11:33 - JACKSON FT | 1 | 57-49 | -8 | | |
| | | 57-52 | -5 | 3 | EVANS 3PTR - 11:14 |
| | | 57-54 | -3 | 2 | STEVENSON LAYUP [P] - 10:41 |
| 10:21 - MASON III LAYUP [P] | 2 | 59-54 | -5 | | |
| | | 59-57 | -2 | 3 | SMITH 3PTR - 10:01 |
| | | 59-59 | 0 | 2 | STEVENSON DUNK [P] [F] - 09:36 |
| | | 59-60 | 1 | 1 | SMITH FT - 09:01 |
| | | 59-61 | 2 | 1 | SMITH FT - 09:01 |
| 08:40 - JACKSON JUMPER | 2 | 61-61 | 0 | | |
| | | 61-63 | 2 | 2 | STEVENSON LAYUP [P] - 08:25 |
| | | 61-64 | 3 | 1 | STEVENSON FT - 07:54 |
| | | 61-65 | 4 | 1 | STEVENSON FT - 07:54 |
| 07:28 - MASON III 3PTR | 3 | 64-65 | 1 | | |
| 06:58 - VICK DUNK [P] [F] | 2 | 66-65 | -1 | | |
| | | 66-66 | 0 | 1 | EVANS FT - 06:12 |
| | | 66-67 | 1 | 1 | EVANS FT - 06:12 |
| 05:59 - LUCAS LAYUP [P] | 2 | 68-67 | -1 | | |
| | | 68-69 | 1 | 2 | SMITH JUMPER - 05:47 |
| 05:13 - JACKSON LAYUP [P] | 2 | 70-69 | -1 | | |
| | | 70-71 | 1 | 2 | STEVENSON LAYUP [P] - 04:51 |
| | | 70-72 | 2 | 1 | STEVENSON FT - 04:51 |
| 04:23 - MASON III 3PTR | 3 | 73-72 | -1 | | |
| 03:42 - JACKSON FT | 1 | 74-72 | -2 | | |
| 03:42 - JACKSON FT | 1 | 75-72 | -3 | | |
| | | 75-74 | -1 | 2 | SMITH JUMPER - 02:46 |
| | | 75-75 | 0 | 1 | GRAY FT - 02:21 |
| | | 75-76 | 1 | 1 | GRAY FT - 02:17 |
| | | 75-77 | 2 | 1 | GRAY FT - 02:17 |
| 02:05 - JACKSON DUNK [P] | 2 | 77-77 | 0 | | |
| 01:32 - JACKSON LAYUP [P] | 2 | 79-77 | -2 | | |
| | | 79-79 | 0 | 2 | SMITH JUMPER - 01:15 |
| 00:03 - JACKSON FT | 1 | 80-79 | -1 | | |

PERIOD 1



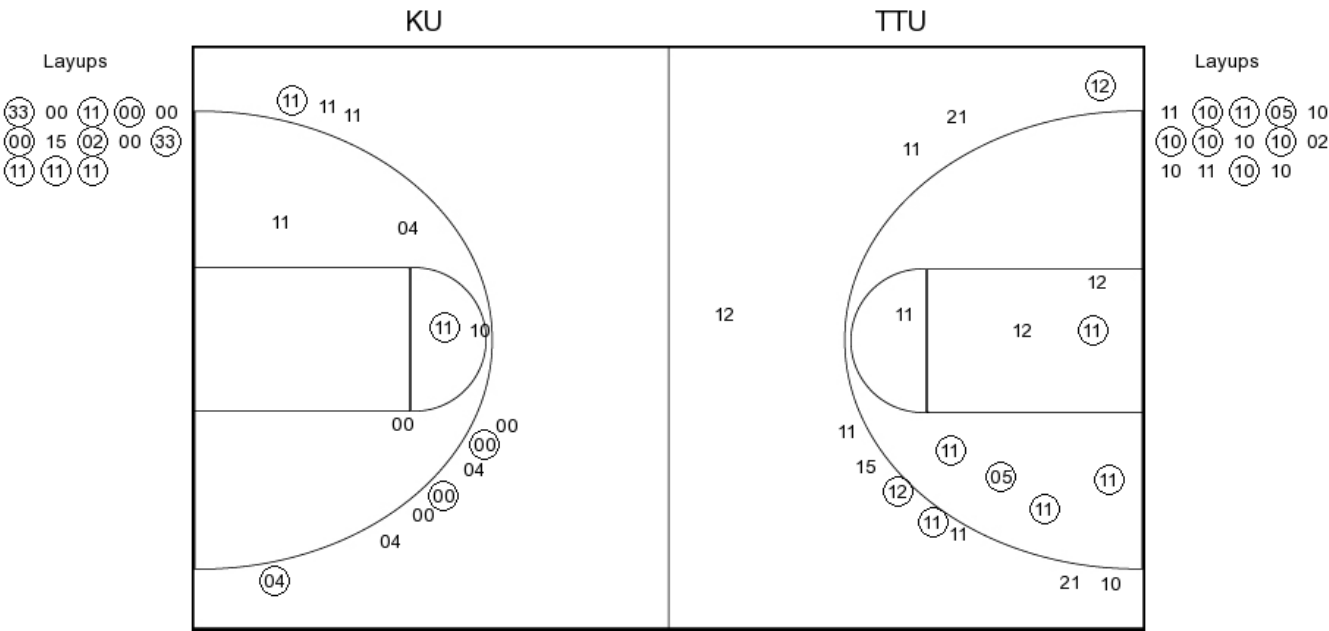
KU PERIOD 1

| | |
|----------------|----|
| FG Made | 15 |
| FG Attempted | 31 |
| 3PFG Made | 6 |
| 3PFG Attempted | 15 |

TTU PERIOD 1

| | |
|----------------|----|
| FG Made | 14 |
| FG Attempted | 27 |
| 3PFG Made | 3 |
| 3PFG Attempted | 9 |

PERIOD 2



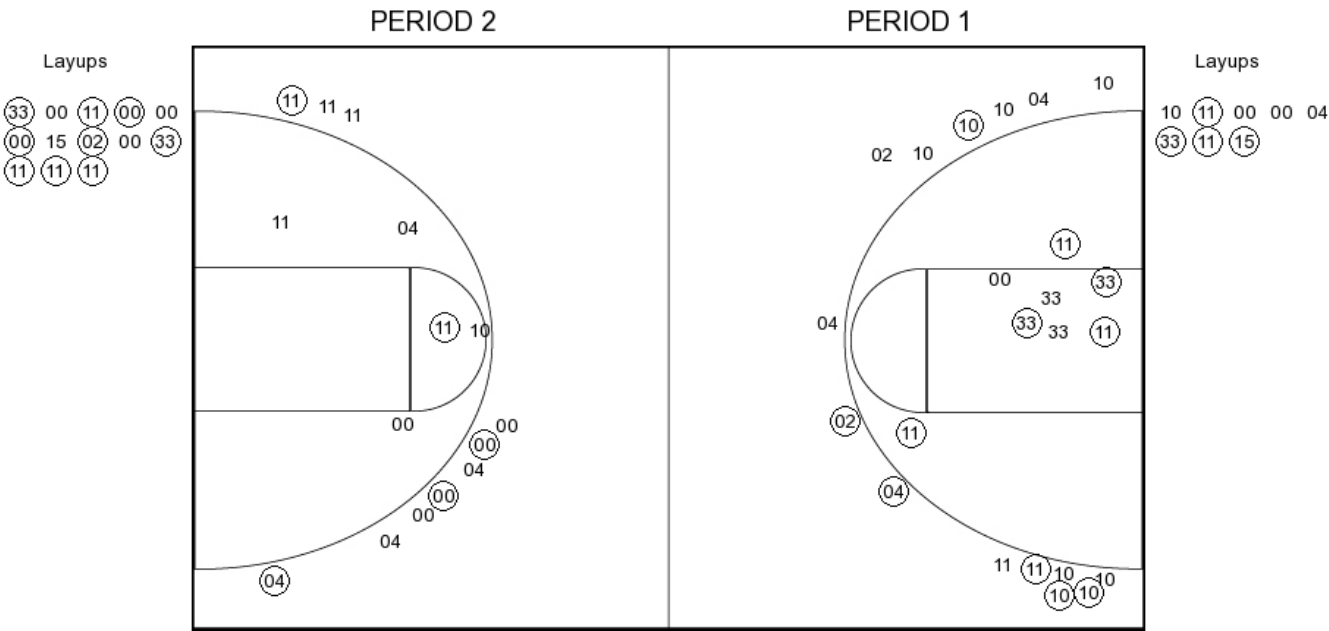
KU PERIOD 2

| | |
|----------------|----|
| FG Made | 14 |
| FG Attempted | 28 |
| 3PFG Made | 4 |
| 3PFG Attempted | 10 |

TTU PERIOD 2

| | |
|----------------|----|
| FG Made | 15 |
| FG Attempted | 33 |
| 3PFG Made | 3 |
| 3PFG Attempted | 11 |

#3 Kansas



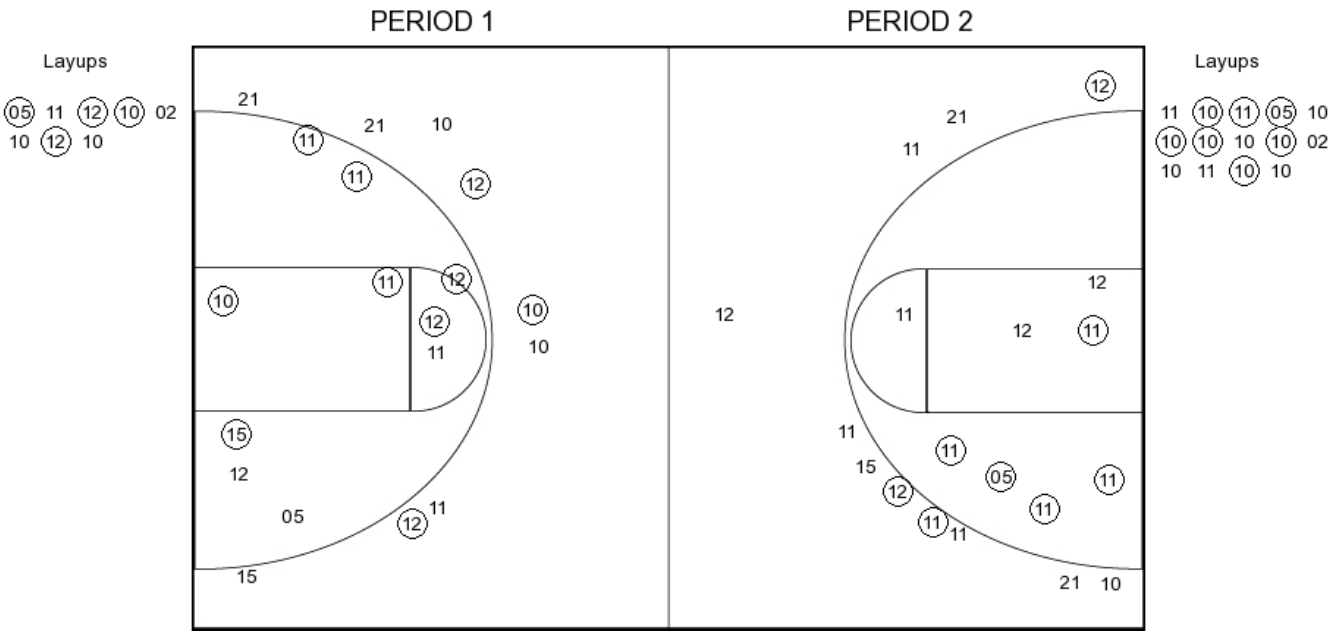
KU PERIOD 1

| | |
|----------------|----|
| FG Made | 15 |
| FG Attempted | 31 |
| 3PFG Made | 6 |
| 3PFG Attempted | 15 |

KU PERIOD 2

| | |
|----------------|----|
| FG Made | 14 |
| FG Attempted | 28 |
| 3PFG Made | 4 |
| 3PFG Attempted | 10 |

Texas Tech



TTU PERIOD 1

| | |
|----------------|----|
| FG Made | 14 |
| FG Attempted | 27 |
| 3PFG Made | 3 |
| 3PFG Attempted | 9 |

TTU PERIOD 2

| | |
|----------------|----|
| FG Made | 15 |
| FG Attempted | 33 |
| 3PFG Made | 3 |
| 3PFG Attempted | 11 |