



TEXAS TECH VS. LSU

1/28/2017

Lubbock, TX (United Supermarkets Arena)

FINAL STATS

Texas Tech

(15-6)

77

LSU

(9-11)

64

Start Time: 1:05 pm

Officials: Doug Simons, Gerry Pollard, Brooks Wells

Attendance: 11056

Official Basketball Box Score -- Game Totals -- Final Statistics
LSU vs Texas Tech
1/28/2017 1:05 pm at Lubbock, TX (United Supermarkets Arena)

LSU 64 - 9-11

##	Player	S	Total			Rebounds			PF	TP	A	TO	Blk	Stl	Min
			FG-FGA	3PT	FG-FGA	FT-FTA	Off Reb	Def Reb							
01	REATH,DUOP	f	5-7	0-1	2-4	1	10	11	3	12	3	4	1	0	33
02	BLAKENEY,ANTONIO	g	8-16	3-7	4-7	1	4	5	0	23	2	0	0	1	36
04	MAYS,SKYLAR	g	0-3	0-3	2-2	1	0	1	1	2	1	1	0	0	22
11	PATTERSON,JALYN	g	3-6	2-4	0-0	0	3	3	2	8	6	4	0	0	28
21	EPPE,AARON	f	2-4	1-1	1-1	0	2	2	4	6	0	1	1	0	17
00	SAMPSON,BRANDON		1-4	1-2	0-0	0	1	1	2	3	0	1	0	0	18
10	JENKINS,BRANDEN		0-1	0-0	0-2	0	0	0	1	0	0	0	0	0	10
20	BRIDGEWATER,BRIAN		0-0	0-0	0-0	0	0	0	3	0	0	1	0	0	7
44	SIMS,WAYDE		4-8	2-3	0-0	0	2	2	1	10	1	0	1	1	29
TEAM						0	0	0	0		0				
TOTALS			23-49	9-21	9-16	3	22	25	17	64	13	12	3	2	200

Deadball Rebounds: 6,0

FG %	1st Half:	11-26	42.3%	2nd Half:	12-23	52.2%	Game:	23-49	46.9%
3FG %	1st Half:	4-10	40.0%	2nd Half:	5-11	45.5%	Game:	9-21	42.9%
FT %	1st Half:	1-2	50.0%	2nd Half:	8-14	57.1%	Game:	9-16	56.3%

Texas Tech 77 - 15-6

##	Player	S	Total			Rebounds			PF	TP	A	TO	Blk	Stl	Min
			FG-FGA	3PT	FG-FGA	FT-FTA	Off Reb	Def Reb							
02	THOMAS,DEVON	g	2-4	0-1	2-2	0	1	1	3	6	4	2	0	1	25
05	GRAY,JUSTIN	g	1-6	0-0	2-4	0	7	7	2	4	5	4	0	0	34
11	SMITH,ZACH	f	8-10	2-2	7-9	3	5	8	0	25	2	1	1	1	36
15	ROSS,AARON	f	5-11	3-5	2-2	1	2	3	1	15	0	0	0	0	27
21	LIVINGSTON,ANTHONY	f	4-9	4-7	0-0	0	2	2	3	12	0	0	0	0	28
04	MILLINGHAUS,SHADELL		0-1	0-1	0-2	3	2	5	0	0	2	1	0	0	15
10	STEVENSON,NIEM		5-9	3-6	2-2	1	2	3	3	15	3	0	0	0	26
22	BRANDSMA,THOMAS		0-0	0-0	0-0	0	0	0	0	0	0	0	0	0	1
34	TEMPLE,MATTHEW		0-2	0-1	0-0	1	1	2	3	0	1	1	1	0	8
TEAM						0	2	2	0		1				
TOTALS			25-52	12-23	15-21	9	24	33	15	77	17	10	2	2	200

Deadball Rebounds: 2,0

FG %	1st Half:	12-28	42.9%	2nd Half:	13-24	54.2%	Game:	25-52	48.1%
3FG %	1st Half:	10-15	66.7%	2nd Half:	2-8	25.0%	Game:	12-23	52.2%
FT %	1st Half:	5-8	62.5%	2nd Half:	10-13	76.9%	Game:	15-21	71.4%

Officials: Doug Sirmons, Gerry Pollard, Brooks Wells
 Technical Fouls: LSU- None. Texas Tech- None.
 Attendance: 11056

Score by periods	1st	2nd	Total
LSU	27	37	64
Texas Tech	39	38	77

Points	In Paint	Off T/O	2nd 2nd Chance	Fast Fast Break	Bench
LSU	20	13	4	2	13
TTU	22	8	4	4	15

Last FG - LSU 2nd-00:21, TTU 2nd-00:32.
 Largest lead - LSU by ; Texas Tech by 21 2nd-03:58
 LSU led for 0:00. TTU led for 39:35. Game was tied for 0:25.

Score tied - 0 times
 Lead changed - 0 times

Official Basketball Box Score -- Game Totals -- First Half Statistics
LSU vs Texas Tech
1/28/2017 1:05 pm at Lubbock, TX (United Supermarkets Arena)

LSU 27 • 9-11

##	Player	S	Total			Rebounds			PF	TP	A	TO	Blk	Stl	Min
			FG-FGA	3PT FG-FGA	FT-FTA	Off Reb	Def Reb	Tot Reb							
01	REATH,DUOP	f	4-5	0-0	1-2	1	6	7	0	9	1	2	0	0	16
02	BLAKENEY,ANTONIO	g	4-7	2-4	0-0	1	3	4	0	10	1	0	0	0	16
04	MAYS,SKYLAR	g	0-1	0-1	0-0	1	0	1	0	0	0	1	0	0	8
11	PATTERSON,JALYN	g	0-3	0-2	0-0	0	1	1	1	0	2	3	0	0	14
21	EPPS,AARON	f	0-2	0-0	0-0	0	2	2	2	0	0	1	0	0	9
00	SAMPSON,BRANDON		0-2	0-1	0-0	0	1	1	2	0	0	0	0	0	9
10	JENKINS,BRANDEN		0-0	0-0	0-0	0	0	0	1	0	0	0	0	0	6
20	BRIDGEWATER,BRIAN		0-0	0-0	0-0	0	0	0	2	0	0	1	0	0	5
44	SIMS,WAYDE		3-6	2-2	0-0	0	2	2	0	8	1	0	1	0	17
TEAM						0	0	0	0		0				
Totals			11-26	4-10	1-2	3	15	18	8	27	5	8	1	0	100

FG % Half: 11-26 42.3%
 3FG % Half: 4-10 40.0%
 FT % Half: 1-2 50.0%

Texas Tech 39 • 15-6

##	Player	S	Total			Rebounds			PF	TP	A	TO	Blk	Stl	Min
			FG-FGA	3PT FG-FGA	FT-FTA	Off Reb	Def Reb	Tot Reb							
02	THOMAS,DEVON	g	0-1	0-0	2-2	0	0	0	1	2	3	1	0	0	14
05	GRAY,JUSTIN	g	1-4	0-0	0-0	0	2	2	2	2	2	0	0	0	16
11	SMITH,ZACH	f	3-4	2-2	1-2	1	2	3	0	9	1	0	1	1	18
15	ROSS,AARON	f	3-7	3-4	0-0	0	0	0	0	9	0	0	0	0	13
21	LIVINGSTON,ANTHONY	f	3-6	3-4	0-0	0	1	1	0	9	0	0	0	0	13
04	MILLINGHAUS,SHADELL		0-1	0-1	0-2	2	2	4	0	0	2	0	0	0	9
10	STEVENSON,NIEM		2-4	2-3	2-2	0	2	2	0	8	3	0	0	0	13
22	BRANDSMA,THOMAS		0-0	0-0	0-0	0	0	0	0	0	0	0	0	0	1
34	TEMPLE,MATTHEW		0-1	0-1	0-0	0	0	0	1	0	0	1	0	0	3
TEAM						0	2	2	0		0				
Totals			12-28	10-15	5-8	3	11	14	4	39	11	2	1	1	100

FG % Half: 12-28 42.9%
 3FG % Half: 10-15 66.7%
 FT % Half: 5-8 62.5%

Officials: Doug Sirmons, Gerry Pollard, Brooks Wells
 Technical Fouls: LSU- None. Texas Tech- None.

Score by periods	1st	2nd	Total
LSU	27	37	64
Texas Tech	39	38	77

Points	In Paint	Off T/O	2nd Chance	Fast Break	Bench
LSU	12	3	4	2	8
TTU	4	7	3	2	8

Last FG - LSU 1st-00:43, TTU 1st-00:17.
 LSU led for 0:00. TTU led for 19:35. Game was tied for 0:25.

Score tied - 0 times
 Lead changed - 0 times

LSU vs Texas Tech
1/28/2017; 1:05 pm at Lubbock, TX (United Supermarkets Arena)
Period 1 Play-By-Play

VISITORS: LSU	Time	Score	Margin	HOME: Texas Tech
	19:35	3-0	H 3	GOOD! 3PTR by LIVINGSTON,ANTHONY
	19:35			ASSIST by GRAY,JUSTIN
GOOD! JUMPER by BLAKENEY,ANTONIO	19:17	3-2	H 1	
	18:58	5-2	H 3	GOOD! JUMPER by SMITH,ZACH [PNT]
MISSED JUMPER by EPPS,AARON	18:42			
	18:42			REBOUND (DEF) by SMITH,ZACH
	18:34	8-2	H 6	GOOD! 3PTR by ROSS,AARON
	18:34			ASSIST by THOMAS,DEVON
TIMEOUT 30SEC	18:32			
MISSED JUMPER by BLAKENEY,ANTONIO	18:14			
	18:14			REBOUND (DEF) by TEAM
	17:51	11-2	H 9	GOOD! 3PTR by LIVINGSTON,ANTHONY
	17:51			ASSIST by THOMAS,DEVON
TURNOVER by MAYS,SKYLAR	17:31			
SUB IN: SIMS,WAYDE	17:31			
SUB OUT: MAYS,SKYLAR	17:31			
	16:59			MISSED LAYUP by ROSS,AARON
BLOCK by SIMS,WAYDE	16:59			
REBOUND (DEF) by PATTERSON,JALYN	16:57			
TURNOVER by REATH,DUOP	16:45			
FOUL by PATTERSON,JALYN	16:35			
SUB IN: SAMPSON,BRANDON	16:35			
SUB OUT: BLAKENEY,ANTONIO	16:35			
	16:35			SUB IN: STEVENSON,NIEM
	16:35			SUB IN: MILLINGHAUS,SHADELL
	16:35			SUB OUT: THOMAS,DEVON
	16:35			SUB OUT: ROSS,AARON
	16:25			MISSED JUMPER by GRAY,JUSTIN
REBOUND (DEF) by EPPS,AARON	16:25			
MISSED 3PTR by PATTERSON,JALYN	16:16			
	16:16			REBOUND (DEF) by MILLINGHAUS,SHADELL
	15:56			MISSED JUMPER by LIVINGSTON,ANTHONY
REBOUND (DEF) by SAMPSON,BRANDON	15:56			
GOOD! 3PTR by SIMS,WAYDE	15:42	11-5	H 6	
ASSIST by REATH,DUOP	15:42			
FOUL by EPPS,AARON	15:18			
	15:18			TIMEOUT MEDIA
	15:18			MISSED FT by MILLINGHAUS,SHADELL
	15:18			REBOUND (DEADB) by TEAM
	15:18			MISSED FT by MILLINGHAUS,SHADELL
REBOUND (DEF) by REATH,DUOP	15:18			
SUB IN: BRIDGEWATER,BRIAN	15:18			
SUB IN: MAYS,SKYLAR	15:18			
SUB OUT: EPPS,AARON	15:18			
	15:18			SUB IN: ROSS,AARON
	15:18			SUB OUT: LIVINGSTON,ANTHONY
MISSED JUMPER by SIMS,WAYDE	15:06			
	15:06			REBOUND (DEF) by GRAY,JUSTIN
	14:50	14-5	H 9	GOOD! 3PTR by ROSS,AARON
	14:50			ASSIST by STEVENSON,NIEM
MISSED LAYUP by SIMS,WAYDE	14:27			
REBOUND (OFF) by REATH,DUOP	14:27			
GOOD! LAYUP by REATH,DUOP [PNT]	14:23	14-7	H 7	

VISITORS: LSU	Time	Score	Margin	HOME: Texas Tech
	14:08			MISSED 3PTR by MILLINGHAUS,SHADELL
REBOUND (DEF) by SIMS,WAYDE	14:08			
GOOD! JUMPER by REATH,DUOP [FB/PNT]	14:02	14-9	H 5	
ASSIST by SIMS,WAYDE	14:02			
	13:42			MISSED LAYUP by STEVENSON,NIEM
REBOUND (DEF) by REATH,DUOP	13:42			
TURNOVER by PATTERSON,JALYN	13:36			
SUB IN: EPPS,AARON	13:36			
SUB OUT: REATH,DUOP	13:36			
SUB OUT: PATTERSON,JALYN	13:36			
	13:36			SUB IN: LIVINGSTON,ANTHONY
	13:36			SUB IN: THOMAS,DEVON
	13:36			SUB OUT: STEVENSON,NIEM
	13:36			SUB OUT: MILLINGHAUS,SHADELL
	13:18			MISSED 3PTR by LIVINGSTON,ANTHONY
REBOUND (DEF) by EPPS,AARON	13:18			
MISSED 3PTR by SAMPSON,BRANDON	12:50			
REBOUND (OFF) by MAYS,SKYLAR	12:42			
MISSED LAYUP by REATH,DUOP	12:40			
	12:40			REBOUND (DEF) by TEAM
	12:40			SUB IN: BRANDSMA,THOMAS
	12:40			SUB IN: TEMPLE,MATTHEW
	12:40			SUB OUT: GRAY,JUSTIN
	12:40			SUB OUT: SMITH,ZACH
	12:29			MISSED 3PTR by TEMPLE,MATTHEW
REBOUND (DEF) by SIMS,WAYDE	12:29			
MISSED JUMPER by SAMPSON,BRANDON	12:10			
	12:10			REBOUND (DEF) by LIVINGSTON,ANTHONY
FOUL by SAMPSON,BRANDON	12:06			
SUB IN: BLAKENEY,ANTONIO	12:06			
SUB OUT: SAMPSON,BRANDON	12:06			
	12:06			SUB IN: SMITH,ZACH
	12:06			SUB IN: STEVENSON,NIEM
	12:06			SUB OUT: BRANDSMA,THOMAS
	12:06			SUB OUT: ROSS,AARON
	11:43			FOUL by TEMPLE,MATTHEW
	11:43			TURNOVER by TEMPLE,MATTHEW
TIMEOUT MEDIA	11:43			
	11:43			SUB IN: GRAY,JUSTIN
	11:43			SUB OUT: TEMPLE,MATTHEW
TURNOVER by BRIDGEWATER,BRIAN	11:20			
SUB IN: REATH,DUOP	11:20			
SUB OUT: BRIDGEWATER,BRIAN	11:20			
	11:06	17-9	H 8	GOOD! 3PTR by STEVENSON,NIEM
	11:06			ASSIST by SMITH,ZACH
MISSED JUMPER by EPPS,AARON	10:45			
REBOUND (DEADB) by TEAM	10:45			
	10:44			FOUL by THOMAS,DEVON
GOOD! LAYUP by REATH,DUOP [PNT]	10:30	17-11	H 6	
	09:58			MISSED 3PTR by STEVENSON,NIEM
REBOUND (DEF) by BLAKENEY,ANTONIO	09:58			
	09:55			FOUL by GRAY,JUSTIN
MISSED FT by REATH,DUOP	09:55			
REBOUND (DEADB) by TEAM	09:55			
GOOD! FT by REATH,DUOP	09:55	17-12	H 5	
SUB IN: SAMPSON,BRANDON	09:55			
SUB OUT: SIMS,WAYDE	09:55			
	09:55			SUB IN: ROSS,AARON

VISITORS: LSU	Time	Score	Margin	HOME: Texas Tech
	09:55			SUB OUT: GRAY,JUSTIN
	09:42	20-12	H 8	GOOD! 3PTR by ROSS,AARON
	09:42			ASSIST by THOMAS,DEVON
MISSED 3PTR by BLAKENEY,ANTONIO	09:26			
	09:26			REBOUND (DEF) by SMITH,ZACH
	09:06			MISSED JUMPER by ROSS,AARON
REBOUND (DEF) by REATH,DUOP	09:06			
FOUL by EPPS,AARON	08:59			
TURNOVER by EPPS,AARON	08:59			
SUB IN: SIMS,WAYDE	08:59			
SUB OUT: EPPS,AARON	08:59			
	08:59			SUB IN: GRAY,JUSTIN
	08:59			SUB IN: MILLINGHAUS,SHADELL
	08:59			SUB OUT: LIVINGSTON,ANTHONY
	08:59			SUB OUT: STEVENSON,NIEM
	08:34			MISSED JUMPER by GRAY,JUSTIN
	08:34			REBOUND (OFF) by SMITH,ZACH
	08:28			MISSED LAYUP by SMITH,ZACH
REBOUND (DEF) by REATH,DUOP	08:28			
	08:15			SUB IN: TEMPLE,MATTHEW
	08:15			SUB IN: STEVENSON,NIEM
	08:15			SUB OUT: SMITH,ZACH
	08:15			SUB OUT: THOMAS,DEVON
MISSED 3PTR by MAYS,SKYLAR	08:01			
	08:01			REBOUND (DEF) by STEVENSON,NIEM
FOUL by SAMPSON,BRANDON	07:47			
	07:47			TIMEOUT MEDIA
	07:47	21-12	H 9	GOOD! FT by STEVENSON,NIEM
	07:47	22-12	H 10	GOOD! FT by STEVENSON,NIEM
SUB IN: PATTERSON,JALYN	07:47			
SUB OUT: MAYS,SKYLAR	07:47			
	07:47			SUB IN: THOMAS,DEVON
	07:47			SUB IN: SMITH,ZACH
	07:47			SUB OUT: TEMPLE,MATTHEW
	07:47			SUB OUT: STEVENSON,NIEM
MISSED 3PTR by PATTERSON,JALYN	07:17			
REBOUND (OFF) by BLAKENEY,ANTONIO	07:17			
GOOD! LAYUP by SIMS,WAYDE [PNT]	07:11	22-14	H 8	
ASSIST by BLAKENEY,ANTONIO	07:11			
	06:41			MISSED JUMPER by THOMAS,DEVON
REBOUND (DEF) by REATH,DUOP	06:41			
TURNOVER by REATH,DUOP	06:26			
	06:25			STEAL by SMITH,ZACH
	06:12			MISSED JUMPER by GRAY,JUSTIN
REBOUND (DEF) by BLAKENEY,ANTONIO	06:12			
SUB IN: JENKINS,BRANDEN	06:05			
SUB OUT: SAMPSON,BRANDON	06:05			
	06:05			SUB IN: LIVINGSTON,ANTHONY
	06:05			SUB IN: STEVENSON,NIEM
	06:05			SUB OUT: SMITH,ZACH
	06:05			SUB OUT: MILLINGHAUS,SHADELL
GOOD! LAYUP by BLAKENEY,ANTONIO [PNT]	05:58	22-16	H 6	
	05:44	25-16	H 9	GOOD! 3PTR by LIVINGSTON,ANTHONY
	05:44			ASSIST by STEVENSON,NIEM
MISSED 3PTR by BLAKENEY,ANTONIO	05:23			
	05:23			REBOUND (DEF) by GRAY,JUSTIN
FOUL by JENKINS,BRANDEN	05:17			
SUB IN: BRIDGEWATER,BRIAN	05:17			

VISITORS: LSU	Time	Score	Margin	HOME: Texas Tech
SUB OUT: REATH,DUOP	05:17			
	05:17			SUB IN: SMITH,ZACH
	05:17			SUB OUT: ROSS,AARON
FOUL by BRIDGEWATER,BRIAN	05:00			
	05:00	26-16	H 10	GOOD! FT by THOMAS,DEVON
	05:00	27-16	H 11	GOOD! FT by THOMAS,DEVON
	05:00			SUB IN: TEMPLE,MATTHEW
	05:00			SUB IN: MILLINGHAUS,SHADELL
	05:00			SUB OUT: THOMAS,DEVON
	05:00			SUB OUT: LIVINGSTON,ANTHONY
GOOD! 3PTR by SIMS,WAYDE	04:51	27-19	H 8	
ASSIST by PATTERSON,JALYN	04:51			
	04:29	30-19	H 11	GOOD! 3PTR by SMITH,ZACH
	04:29			ASSIST by MILLINGHAUS,SHADELL
TURNOVER by PATTERSON,JALYN	04:13			
	03:49			TIMEOUT MEDIA
	03:49			SUB IN: LIVINGSTON,ANTHONY
	03:49			SUB IN: THOMAS,DEVON
	03:49			SUB OUT: TEMPLE,MATTHEW
	03:49			SUB OUT: STEVENSON,NIEM
FOUL by BRIDGEWATER,BRIAN	03:48			
	03:48	31-19	H 12	GOOD! FT by SMITH,ZACH
	03:48			MISSED FT by SMITH,ZACH
	03:48			REBOUND (OFF) by MILLINGHAUS,SHADELL
SUB IN: REATH,DUOP	03:48			
SUB OUT: BRIDGEWATER,BRIAN	03:48			
	03:48			SUB IN: STEVENSON,NIEM
	03:48			SUB OUT: THOMAS,DEVON
	03:29			MISSED LAYUP by LIVINGSTON,ANTHONY
REBOUND (DEF) by REATH,DUOP	03:29			
TURNOVER by PATTERSON,JALYN	03:04			
	03:04			SUB IN: THOMAS,DEVON
	03:04			SUB OUT: MILLINGHAUS,SHADELL
	02:43	34-19	H 15	GOOD! 3PTR by SMITH,ZACH
	02:43			ASSIST by GRAY,JUSTIN
MISSED JUMPER by SIMS,WAYDE	02:19			
	02:19			BLOCK by SMITH,ZACH
	02:17			REBOUND (DEF) by STEVENSON,NIEM
	02:14	36-19	H 17	GOOD! LAYUP by GRAY,JUSTIN [FB/PNT]
	02:14			ASSIST by STEVENSON,NIEM
TIMEOUT 30SEC	02:09			
	02:09			SUB IN: ROSS,AARON
	02:09			SUB OUT: LIVINGSTON,ANTHONY
GOOD! 3PTR by BLAKENEY,ANTONIO	01:46	36-22	H 14	
	01:31			MISSED 3PTR by ROSS,AARON
REBOUND (DEF) by BLAKENEY,ANTONIO	01:31			
	01:27			FOUL by GRAY,JUSTIN
	01:27			SUB IN: MILLINGHAUS,SHADELL
	01:27			SUB IN: LIVINGSTON,ANTHONY
	01:27			SUB OUT: GRAY,JUSTIN
	01:27			SUB OUT: ROSS,AARON
GOOD! LAYUP by REATH,DUOP [PNT]	01:12	36-24	H 12	
ASSIST by PATTERSON,JALYN	01:12			
	01:02			TURNOVER by THOMAS,DEVON
	01:02			SUB IN: ROSS,AARON
	01:02			SUB OUT: LIVINGSTON,ANTHONY
GOOD! 3PTR by BLAKENEY,ANTONIO	00:43	36-27	H 9	
	00:34			TIMEOUT 30SEC

VISITORS: LSU

Time Score Margin

HOME: Texas Tech

	00:20				MISSED JUMPER by ROSS,AARON
	00:20				REBOUND (OFF) by MILLINGHAUS,SHADELL
	00:17	39-27	H 12		GOOD! 3PTR by STEVENSON,NIEM
	00:17				ASSIST by MILLINGHAUS,SHADELL
MISSED LAYUP by PATTERSON,JALYN	00:04				
	00:04				REBOUND (DEF) by MILLINGHAUS,SHADELL
	00:01				SUB IN: LIVINGSTON,ANTHONY
	00:01				SUB OUT: MILLINGHAUS,SHADELL

LSU 27, Texas Tech 39

Period 1-only	In Paint	Off T/O	2nd Chance	Fast Break	Bench	
LSU	12	3	4	2	8	Score tied - 0 times
TTU	4	7	3	2	8	Lead changed - 0 times

Official Basketball Box Score -- Game Totals -- Second Half Statistics

LSU vs Texas Tech

1/28/2017 1:05 pm at Lubbock, TX (United Supermarkets Arena)

LSU 37 • 9-11

##	Player	S	Total			Rebounds			PF	TP	A	TO	Blk	Stl	Min
			FG-FGA	3PT FG-FGA	FT-FTA	Off Reb	Def Reb	Tot Reb							
01	REATH,DUOP	f	1-2	0-1	1-2	0	4	4	3	3	2	2	1	0	17
02	BLAKENEY,ANTONIO	g	4-9	1-3	4-7	0	1	1	0	13	1	0	0	1	20
04	MAYS,SKYLAR	g	0-2	0-2	2-2	0	0	0	1	2	1	0	0	0	14
11	PATTERSON,JALYN	g	3-3	2-2	0-0	0	2	2	1	8	4	1	0	0	14
21	EPPS,AARON	f	2-2	1-1	1-1	0	0	0	2	6	0	0	1	0	8
00	SAMPSON,BRANDON		1-2	1-1	0-0	0	0	0	0	3	0	1	0	0	9
10	JENKINS,BRANDEN		0-1	0-0	0-2	0	0	0	0	0	0	0	0	0	4
20	BRIDGEWATER,BRIAN		0-0	0-0	0-0	0	0	0	1	0	0	0	0	0	2
44	SIMS,WAYDE		1-2	0-1	0-0	0	0	0	1	2	0	0	0	1	12
TEAM						0	0	0	0		0				
Totals			12-23	5-11	8-14	0	7	7	9	37	8	4	2	2	100

FG %	Half:	12-23	52.2%
3FG %	Half:	5-11	40.0%
FT %	Half:	8-14	57.1%

Texas Tech 38 • 15-6

##	Player	S	Total			Rebounds			PF	TP	A	TO	Blk	Stl	Min
			FG-FGA	3PT FG-FGA	FT-FTA	Off Reb	Def Reb	Tot Reb							
02	THOMAS,DEVON	g	2-3	0-1	0-0	0	1	1	2	4	1	1	0	1	11
05	GRAY,JUSTIN	g	0-2	0-0	2-4	0	5	5	0	2	3	4	0	0	18
11	SMITH,ZACH	f	5-6	0-0	6-7	2	3	5	0	16	1	1	0	0	18
15	ROSS,AARON	f	2-4	0-1	2-2	1	2	3	1	6	0	0	0	0	14
21	LIVINGSTON,ANTHONY	f	1-3	1-3	0-0	0	1	1	3	3	0	0	0	0	15
04	MILLINGHAUS,SHADELL		0-0	0-0	0-0	1	0	1	0	0	0	1	0	0	6
10	STEVENSON,NIEM		3-5	1-3	0-0	1	0	1	3	7	0	0	0	0	13
22	BRANDSMA,THOMAS		0-0	0-0	0-0	0	0	0	0	0	0	0	0	0	0
34	TEMPLE,MATTHEW		0-1	0-0	0-0	1	1	2	2	0	1	0	1	0	5
TEAM						0	0	0	0		1				
Totals			13-24	2-8	10-13	6	13	19	11	38	6	8	1	1	100

FG %	Half:	13-24	54.2%
3FG %	Half:	2-8	66.7%
FT %	Half:	10-13	76.9%

Officials: Doug Sirmons, Gerry Pollard, Brooks Wells
 Technical Fouls: LSU- None. Texas Tech- None.

Score by periods	1st	2nd	Total
LSU	27	37	64
Texas Tech	39	38	77

Points	In Paint	Off T/O	2nd Chance	Fast Break	Bench
LSU	8	10	0	0	5
TTU	18	1	12	2	7

Last FG - LSU 2nd-00:21, TTU 2nd-00:32.
 LSU led for 0:00. TTU led for 20:00. Game was tied for 0:00.

Score tied - 0 times
 Lead changed - 0 times

LSU vs Texas Tech
1/28/2017; 1:05 pm at Lubbock, TX (United Supermarkets Arena)
Period 2 Play-By-Play

VISITORS: LSU	Time	Score	Margin	HOME: Texas Tech
FOUL by REATH,DUOP	19:50			
TURNOVER by REATH,DUOP	19:50			
	19:30			MISSED JUMPER by ROSS,AARON
REBOUND (DEF) by BLAKENEY,ANTONIO	19:30			
MISSED 3PTR by MAYS,SKYLAR	19:22			
	19:22			REBOUND (DEF) by SMITH,ZACH
	19:10	41-27	H 14	GOOD! LAYUP by THOMAS,DEVON [PNT]
	19:10			ASSIST by GRAY,JUSTIN
	18:57			FOUL by THOMAS,DEVON
	18:57			SUB IN: TEMPLE,MATTHEW
	18:57			SUB IN: STEVENSON,NIEM
	18:57			SUB OUT: THOMAS,DEVON
	18:57			SUB OUT: LIVINGSTON,ANTHONY
GOOD! LAYUP by EPPS,AARON [PNT]	18:49	41-29	H 12	
ASSIST by PATTERSON,JALYN	18:49			
	18:49			FOUL by STEVENSON,NIEM
GOOD! FT by EPPS,AARON	18:49	41-30	H 11	
	18:25	43-30	H 13	GOOD! JUMPER by SMITH,ZACH
MISSED LAYUP by BLAKENEY,ANTONIO	18:06			
	18:06			BLOCK by TEMPLE,MATTHEW
	18:04			REBOUND (DEF) by TEMPLE,MATTHEW
	17:49			MISSED LAYUP by SMITH,ZACH
BLOCK by EPPS,AARON	17:49			
	17:48			REBOUND (OFF) by SMITH,ZACH
	17:47	45-30	H 15	GOOD! LAYUP by SMITH,ZACH [PNT]
FOUL by EPPS,AARON	17:47			
	17:47	46-30	H 16	GOOD! FT by SMITH,ZACH
	17:46			SUB IN: LIVINGSTON,ANTHONY
	17:46			SUB OUT: ROSS,AARON
GOOD! 3PTR by EPPS,AARON	17:34	46-33	H 13	
ASSIST by PATTERSON,JALYN	17:34			
	17:14			TURNOVER by GRAY,JUSTIN
SUB IN: SIMS,WAYDE	17:14			
SUB OUT: EPPS,AARON	17:14			
GOOD! 3PTR by BLAKENEY,ANTONIO	17:03	46-36	H 10	
ASSIST by PATTERSON,JALYN	17:03			
	16:45	49-36	H 13	GOOD! 3PTR by LIVINGSTON,ANTHONY
	16:45			ASSIST by SMITH,ZACH
	16:42			TIMEOUT 30SEC
	16:42			SUB IN: THOMAS,DEVON
	16:42			SUB OUT: STEVENSON,NIEM
MISSED 3PTR by SIMS,WAYDE	16:30			
	16:30			REBOUND (DEF) by THOMAS,DEVON
	16:20			TURNOVER by THOMAS,DEVON
	16:20			SUB IN: STEVENSON,NIEM
	16:20			SUB OUT: THOMAS,DEVON
MISSED 3PTR by MAYS,SKYLAR	16:10			
	16:10			REBOUND (DEF) by GRAY,JUSTIN
	15:59			MISSED LAYUP by TEMPLE,MATTHEW
	15:59			REBOUND (OFF) by TEMPLE,MATTHEW
FOUL by REATH,DUOP	15:58			
	15:58			TIMEOUT media
SUB IN: SAMPSON,BRANDON	15:58			

VISITORS: LSU	Time	Score	Margin	HOME: Texas Tech
SUB OUT: MAYS,SKYLAR	15:58			
	15:51			ASSIST by TEMPLE,MATTHEW
	15:51	52-36	H 16	GOOD! 3PTR by STEVENSON,NIEM
MISSED JUMPER by SAMPSON,BRANDON	15:21			
	15:21			REBOUND (DEF) by GRAY,JUSTIN
SUB IN: EPPS,AARON	14:57			
SUB OUT: REATH,DUOP	14:57			
	14:57			SUB IN: THOMAS,DEVON
	14:57			SUB IN: ROSS,AARON
	14:57			SUB OUT: TEMPLE,MATTHEW
	14:57			SUB OUT: STEVENSON,NIEM
	14:54			TURNOVER by GRAY,JUSTIN
STEAL by SIMS,WAYDE	14:53			
GOOD! LAYUP by PATTERSON,JALYN [PNT]	14:42	52-38	H 14	
FOUL by EPPS,AARON	14:14			
	14:14	53-38	H 15	GOOD! FT by ROSS,AARON
	14:14	54-38	H 16	GOOD! FT by ROSS,AARON
SUB IN: REATH,DUOP	14:14			
SUB OUT: EPPS,AARON	14:14			
	14:14			SUB IN: MILLINGHAUS,SHADELL
	14:14			SUB OUT: SMITH,ZACH
TURNOVER by PATTERSON,JALYN	14:00			
	13:58			STEAL by THOMAS,DEVON
FOUL by SIMS,WAYDE	13:56			
	13:56	55-38	H 17	GOOD! FT by GRAY,JUSTIN
	13:56			MISSED FT by GRAY,JUSTIN
REBOUND (DEF) by REATH,DUOP	13:56			
SUB IN: JENKINS,BRANDEN	13:56			
SUB OUT: SAMPSON,BRANDON	13:56			
GOOD! 3PTR by PATTERSON,JALYN	13:36	55-41	H 14	
ASSIST by REATH,DUOP	13:36			
	13:09			MISSED 3PTR by THOMAS,DEVON
REBOUND (DEF) by REATH,DUOP	13:09			
	13:00			FOUL by THOMAS,DEVON
MISSED FT by JENKINS,BRANDEN	13:00			
REBOUND (DEADB) by TEAM	13:00			
MISSED FT by JENKINS,BRANDEN	13:00			
	13:00			REBOUND (DEF) by LIVINGSTON,ANTHONY
	13:00			SUB IN: SMITH,ZACH
	13:00			SUB IN: STEVENSON,NIEM
	13:00			SUB OUT: THOMAS,DEVON
	13:00			SUB OUT: GRAY,JUSTIN
	12:51	57-41	H 16	GOOD! LAYUP by STEVENSON,NIEM [PNT]
GOOD! 3PTR by PATTERSON,JALYN	12:37	57-44	H 13	
ASSIST by REATH,DUOP	12:37			
	12:21	59-44	H 15	GOOD! DUNK by SMITH,ZACH [PNT]
GOOD! JUMPER by BLAKENEY,ANTONIO	12:00	59-46	H 13	
	11:50			MISSED 3PTR by ROSS,AARON
REBOUND (DEF) by REATH,DUOP	11:50			
MISSED JUMPER by BLAKENEY,ANTONIO	11:41			
	11:41			REBOUND (DEF) by ROSS,AARON
FOUL by REATH,DUOP	11:24			
	11:24			TIMEOUT MEDIA
	11:24	60-46	H 14	GOOD! FT by SMITH,ZACH
	11:24	61-46	H 15	GOOD! FT by SMITH,ZACH
SUB IN: BRIDGEWATER,BRIAN	11:24			
SUB IN: MAYS,SKYLAR	11:24			
SUB OUT: REATH,DUOP	11:24			

VISITORS: LSU	Time	Score	Margin	HOME: Texas Tech
SUB OUT: PATTERSON,JALYN	11:24			
	11:24			SUB IN: GRAY,JUSTIN
	11:24			SUB IN: THOMAS,DEVON
	11:24			SUB OUT: STEVENSON,NIEM
	11:24			SUB OUT: MILLINGHAUS,SHADELL
MISSED JUMPER by JENKINS,BRANDEN	10:58			
	10:58			REBOUND (DEF) by SMITH,ZACH
	10:53			TURNOVER by SMITH,ZACH
MISSED JUMPER by BLAKENEY,ANTONIO	10:27			
	10:27			REBOUND (DEF) by GRAY,JUSTIN
	10:20			TURNOVER by GRAY,JUSTIN
STEAL by BLAKENEY,ANTONIO	10:18			
	10:16			FOUL by LIVINGSTON,ANTHONY
GOOD! FT by BLAKENEY,ANTONIO	10:16	61-47	H 14	
GOOD! FT by BLAKENEY,ANTONIO	10:16	61-48	H 13	
SUB IN: EPPS,AARON	10:16			
SUB IN: SAMPSON,BRANDON	10:16			
SUB OUT: JENKINS,BRANDEN	10:16			
SUB OUT: SIMS,WAYDE	10:16			
	09:49			MISSED 3PTR by LIVINGSTON,ANTHONY
	09:49			REBOUND (OFF) by ROSS,AARON
FOUL by MAYS,SKYLAR	09:27			
	09:27	62-48	H 14	GOOD! FT by GRAY,JUSTIN
	09:27			MISSED FT by GRAY,JUSTIN
	09:27			REBOUND (OFF) by STEVENSON,NIEM
	09:27			SUB IN: STEVENSON,NIEM
	09:27			SUB OUT: THOMAS,DEVON
FOUL by BRIDGEWATER,BRIAN	09:10			
	09:10	63-48	H 15	GOOD! FT by SMITH,ZACH
	09:10	64-48	H 16	GOOD! FT by SMITH,ZACH
SUB IN: REATH,DUOP	09:10			
SUB OUT: BRIDGEWATER,BRIAN	09:10			
	09:10			SUB IN: TEMPLE,MATTHEW
	09:10			SUB OUT: SMITH,ZACH
	08:51			FOUL by TEMPLE,MATTHEW
	08:50			FOUL by STEVENSON,NIEM
MISSED 3PTR by BLAKENEY,ANTONIO	08:47			
	08:47			REBOUND (DEF) by ROSS,AARON
	08:26	66-48	H 18	GOOD! JUMPER by ROSS,AARON [PNT]
	08:26			ASSIST by GRAY,JUSTIN
	08:02			FOUL by TEMPLE,MATTHEW
GOOD! FT by MAYS,SKYLAR	08:02	66-49	H 17	
GOOD! FT by MAYS,SKYLAR	08:02	66-50	H 16	
	08:02			SUB IN: SMITH,ZACH
	08:02			SUB OUT: TEMPLE,MATTHEW
	07:36	68-50	H 18	GOOD! JUMPER by SMITH,ZACH
	07:11			FOUL by LIVINGSTON,ANTHONY
TIMEOUT MEDIA	07:11			
MISSED FT by BLAKENEY,ANTONIO	07:11			
REBOUND (DEADB) by TEAM	07:11			
MISSED FT by BLAKENEY,ANTONIO	07:11			
	07:11			REBOUND (DEF) by SMITH,ZACH
	07:11			SUB IN: MILLINGHAUS,SHADELL
	07:11			SUB IN: THOMAS,DEVON
	07:11			SUB OUT: STEVENSON,NIEM
	07:11			SUB OUT: ROSS,AARON
	06:42			MISSED 3PTR by LIVINGSTON,ANTHONY
	06:42			REBOUND (OFF) by MILLINGHAUS,SHADELL

VISITORS: LSU	Time	Score	Margin	HOME: Texas Tech
	06:18	70-50	H 20	GOOD! LAYUP by THOMAS,DEVON [PNT]
MISSED 3PTR by BLAKENEY,ANTONIO	06:04			
	06:04			REBOUND (DEF) by GRAY,JUSTIN
	05:30			TURNOVER by TEAM
SUB IN: PATTERSON,JALYN	05:30			
SUB IN: SIMS,WAYDE	05:30			
SUB OUT: EPPS,AARON	05:30			
SUB OUT: MAYS,SKYLAR	05:30			
	05:30			SUB IN: STEVENSON,NIEM
	05:30			SUB OUT: THOMAS,DEVON
TURNOVER by SAMPSON,BRANDON	05:24			
SUB IN: MAYS,SKYLAR	05:24			
SUB OUT: SAMPSON,BRANDON	05:24			
	05:02			MISSED JUMPER by GRAY,JUSTIN
REBOUND (DEF) by PATTERSON,JALYN	05:02			
MISSED 3PTR by REATH,DUOP	04:51			
	04:51			REBOUND (DEF) by GRAY,JUSTIN
	04:40			MISSED LAYUP by GRAY,JUSTIN
BLOCK by REATH,DUOP	04:40			
REBOUND (DEF) by REATH,DUOP	04:39			
TURNOVER by REATH,DUOP	04:38			
	04:31			TURNOVER by MILLINGHAUS,SHADELL
	04:31			SUB IN: THOMAS,DEVON
	04:31			SUB OUT: MILLINGHAUS,SHADELL
	04:06			FOUL by LIVINGSTON,ANTHONY
MISSED FT by REATH,DUOP	04:06			
REBOUND (DEADB) by TEAM	04:06			
GOOD! FT by REATH,DUOP	04:06	70-51	H 19	
	04:06			SUB IN: ROSS,AARON
	04:06			SUB OUT: LIVINGSTON,ANTHONY
	03:58	72-51	H 21	GOOD! LAYUP by ROSS,AARON [FB/PNT]
	03:58			ASSIST by GRAY,JUSTIN
GOOD! JUMPER by REATH,DUOP	03:44	72-53	H 19	
ASSIST by MAYS,SKYLAR	03:44			
	03:24			MISSED 3PTR by STEVENSON,NIEM
REBOUND (DEF) by PATTERSON,JALYN	03:24			
GOOD! LAYUP by BLAKENEY,ANTONIO [PNT]	03:16	72-55	H 17	
	03:16			FOUL by STEVENSON,NIEM
TIMEOUT MEDIA	03:16			
GOOD! FT by BLAKENEY,ANTONIO	03:16	72-56	H 16	
	02:53			MISSED 3PTR by STEVENSON,NIEM
	02:53			REBOUND (OFF) by SMITH,ZACH
FOUL by PATTERSON,JALYN	02:50			
	02:50			MISSED FT by SMITH,ZACH
	02:50			REBOUND (DEADB) by TEAM
	02:50	73-56	H 17	GOOD! FT by SMITH,ZACH
GOOD! JUMPER by SIMS,WAYDE [PNT]	02:33	73-58	H 15	
ASSIST by PATTERSON,JALYN	02:33			
	01:59	75-58	H 17	GOOD! LAYUP by STEVENSON,NIEM [PNT]
	01:39			FOUL by ROSS,AARON
MISSED FT by BLAKENEY,ANTONIO	01:39			
REBOUND (DEADB) by TEAM	01:39			
GOOD! FT by BLAKENEY,ANTONIO	01:39	75-59	H 16	
SUB IN: SAMPSON,BRANDON	01:39			
SUB OUT: MAYS,SKYLAR	01:39			
	01:12			TURNOVER by GRAY,JUSTIN
GOOD! JUMPER by BLAKENEY,ANTONIO	01:03	75-61	H 14	
	00:32	77-61	H 16	GOOD! DUNK by SMITH,ZACH [PNT]

VISITORS: LSU

Time Score Margin

HOME: Texas Tech

00:32

ASSIST by THOMAS,DEVON

GOOD! 3PTR by SAMPSON,BRANDON

00:21

77-64

H 13

ASSIST by BLAKENEY,ANTONIO

00:21

LSU 64, Texas Tech 77

Period 2-only	In Paint	Off T/O	2nd Chance	Fast Break	Bench	
LSU	8	10	0	0	5	Score tied - 0 times
TTU	18	1	12	2	7	Lead changed - 0 times

LSU vs Texas Tech
1/28/2017; 1:05 pm at Lubbock, TX (United Supermarkets Arena)
Scoring/Runs Reference

Period 1				
LSU	Score	Marg		Texas Tech
	0-3	3	3	LIVINGSTON 3PTR - 19:35
19:17 - BLAKENEY JUMPER 2	2-3	1		
	2-5	3	2	SMITH JUMPER [P] - 18:58
	2-8	6	3	ROSS 3PTR - 18:34
	2-11	9	3	LIVINGSTON 3PTR - 17:51
15:42 - SIMS 3PTR	3	5-11	6	
	5-14	9	3	ROSS 3PTR - 14:50
14:23 - REATH LAYUP [P]	2	7-14	7	
14:02 - REATH JUMPER [P] [F]	2	9-14	5	
	9-17	8	3	STEVENSON 3PTR - 11:06
10:30 - REATH LAYUP [P]	2	11-17	6	
09:55 - REATH FT	1	12-17	5	
	12-20	8	3	ROSS 3PTR - 09:42
	12-21	9	1	STEVENSON FT - 07:47
	12-22	10	1	STEVENSON FT - 07:47
07:11 - SIMS LAYUP [P]	2	14-22	8	
05:58 - BLAKENEY LAYUP [P]	2	16-22	6	
	16-25	9	3	LIVINGSTON 3PTR - 05:44
	16-26	10	1	THOMAS FT - 05:00
	16-27	11	1	THOMAS FT - 05:00
04:51 - SIMS 3PTR	3	19-27	8	
	19-30	11	3	SMITH 3PTR - 04:29
	19-31	12	1	SMITH FT - 03:48
	19-34	15	3	SMITH 3PTR - 02:43
	19-36	17	2	GRAY LAYUP [P][F] - 02:14
01:46 - BLAKENEY 3PTR	3	22-36	14	
01:12 - REATH LAYUP [P]	2	24-36	12	
00:43 - BLAKENEY 3PTR	3	27-36	9	
	27-39	12	3	STEVENSON 3PTR - 00:17

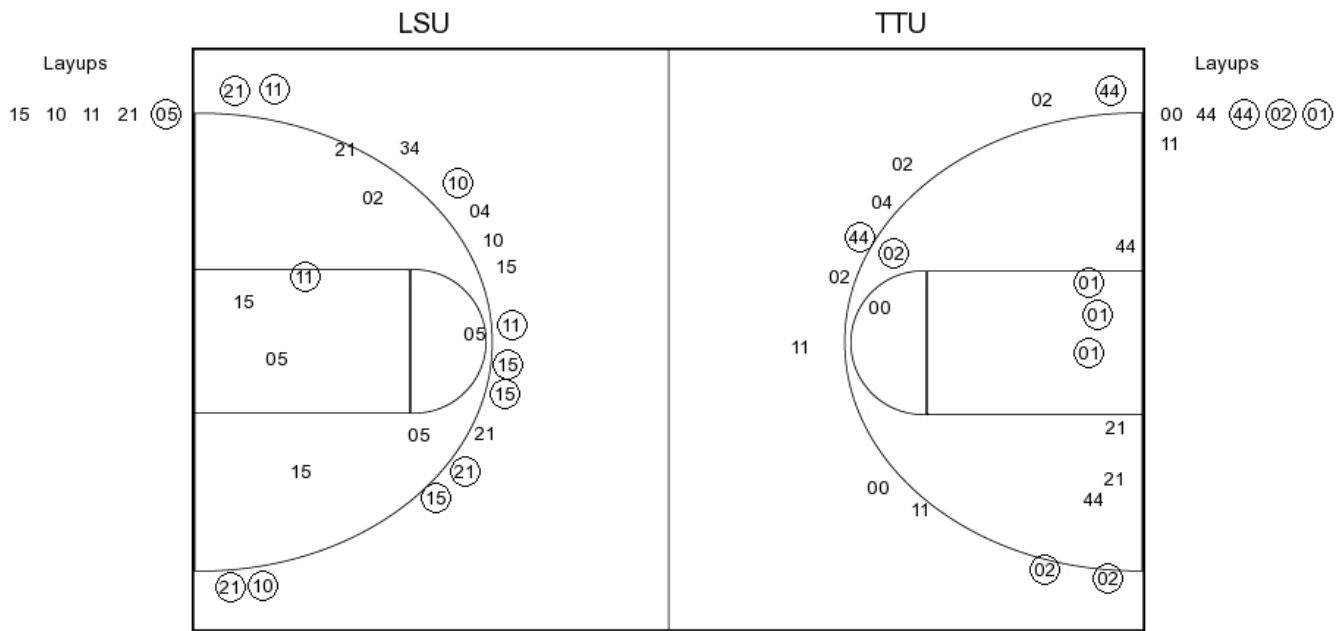
Period 2				
LSU	Score	Marg		Texas Tech
	27-41	14	2	THOMAS LAYUP [P] - 19:10
18:49 - EPPS LAYUP [P]	2	29-41	12	
18:49 - EPPS FT	1	30-41	11	
	30-43	13	2	SMITH JUMPER - 18:25
	30-45	15	2	SMITH LAYUP [P] - 17:47
	30-46	16	1	SMITH FT - 17:47
17:34 - EPPS 3PTR	3	33-46	13	
17:03 - BLAKENEY 3PTR	3	36-46	10	
	36-49	13	3	LIVINGSTON 3PTR - 16:45
	36-52	16	3	STEVENSON 3PTR - 15:51
14:42 - PATTERSON LAYUP [P]	2	38-52	14	
	38-53	15	1	ROSS FT - 14:14
	38-54	16	1	ROSS FT - 14:14
	38-55	17	1	GRAY FT - 13:56
13:36 - PATTERSON 3PTR	3	41-55	14	
	41-57	16	2	STEVENSON LAYUP [P] - 12:51
12:37 - PATTERSON 3PTR	3	44-57	13	
	44-59	15	2	SMITH DUNK [P] - 12:21
12:00 - BLAKENEY JUMPER 2	2	46-59	13	
	46-60	14	1	SMITH FT - 11:24
	46-61	15	1	SMITH FT - 11:24
10:16 - BLAKENEY FT	1	47-61	14	
10:16 - BLAKENEY FT	1	48-61	13	
	48-62	14	1	GRAY FT - 09:27
	48-63	15	1	SMITH FT - 09:10
	48-64	16	1	SMITH FT - 09:10
	48-66	18	2	ROSS JUMPER [P] - 08:26
08:02 - MAYS FT	1	49-66	17	
08:02 - MAYS FT	1	50-66	16	
	50-68	18	2	SMITH JUMPER - 07:36
	50-70	20	2	THOMAS LAYUP [P] - 06:18
04:06 - REATH FT	1	51-70	19	
	51-72	21	2	ROSS LAYUP [P][F] - 03:58
03:44 - REATH JUMPER	2	53-72	19	
03:16 - BLAKENEY LAYUP [P]	2	55-72	17	
03:16 - BLAKENEY FT	1	56-72	16	
	56-73	17	1	SMITH FT - 02:50
02:33 - SIMS JUMPER [P]	2	58-73	15	
	58-75	17	2	STEVENSON LAYUP [P] - 01:59
01:39 - BLAKENEY FT	1	59-75	16	
01:03 - BLAKENEY JUMPER 2	2	61-75	14	
	61-77	16	2	SMITH DUNK [P] - 00:32
00:21 - SAMPSON 3PTR	3	64-77	13	

LSU vs Texas Tech

OFFICIAL SHOT CHART

1/28/2017 at Lubbock, TX (United Supermarkets Arena)

PERIOD 1



LSU PERIOD 1

FG Made	11
FG Attempted	26
3PFG Made	4
3PFG Attempted	10

TTU PERIOD 1

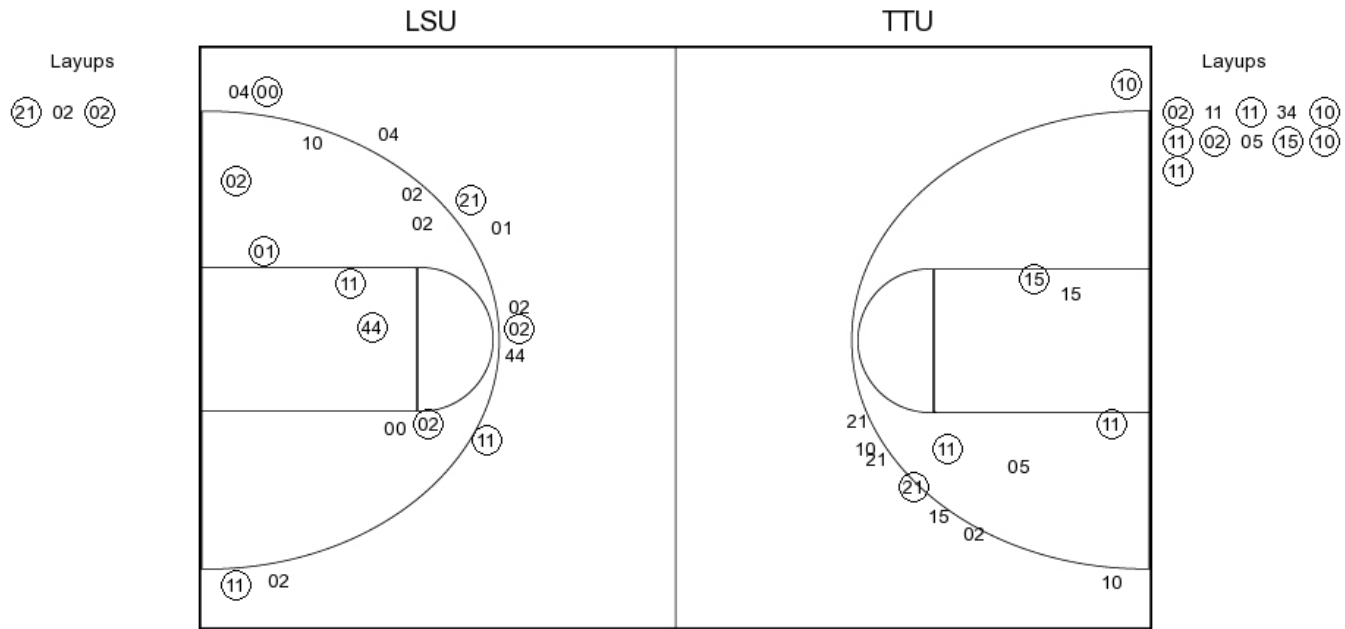
FG Made	12
FG Attempted	28
3PFG Made	10
3PFG Attempted	15

LSU vs Texas Tech

OFFICIAL SHOT CHART

1/28/2017 at Lubbock, TX (United Supermarkets Arena)

PERIOD 2



LSU PERIOD 2

FG Made	12
FG Attempted	23
3PFG Made	5
3PFG Attempted	11

TTU PERIOD 2

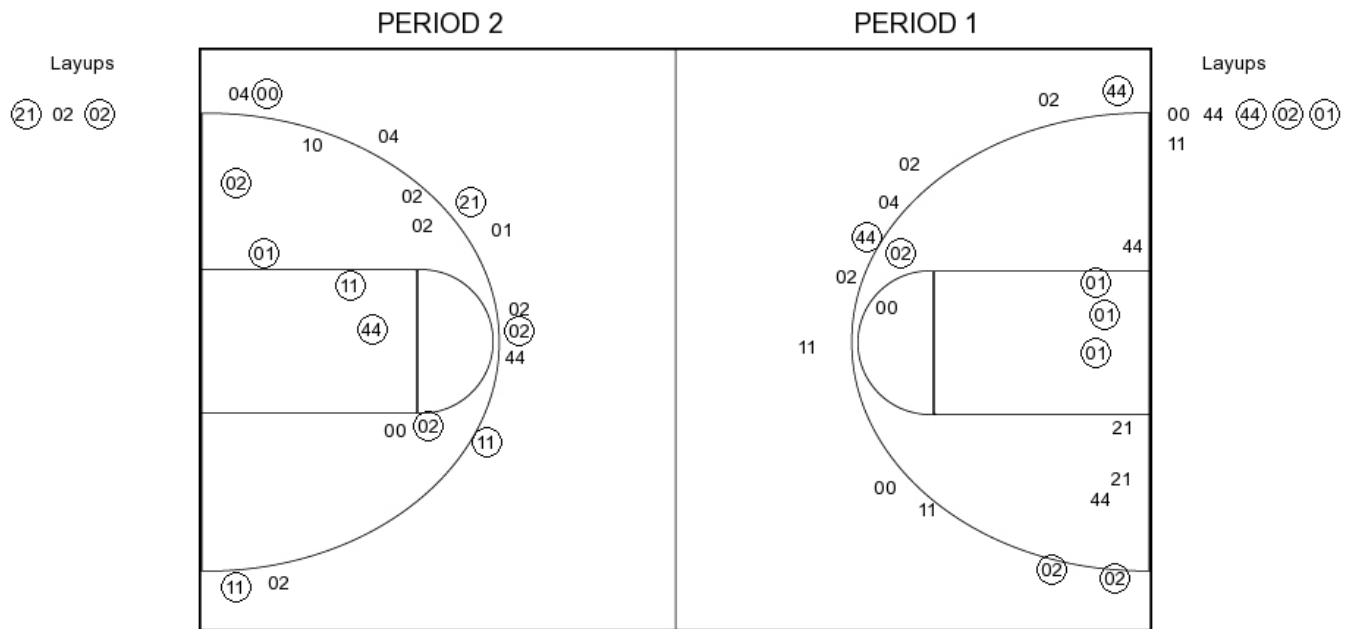
FG Made	13
FG Attempted	24
3PFG Made	2
3PFG Attempted	8

LSU vs Texas Tech

OFFICIAL SHOT CHART

1/28/2017 at Lubbock, TX (United Supermarkets Arena)

LSU



LSU PERIOD 1

FG Made	11
FG Attempted	26
3PFG Made	4
3PFG Attempted	10

LSU PERIOD 2

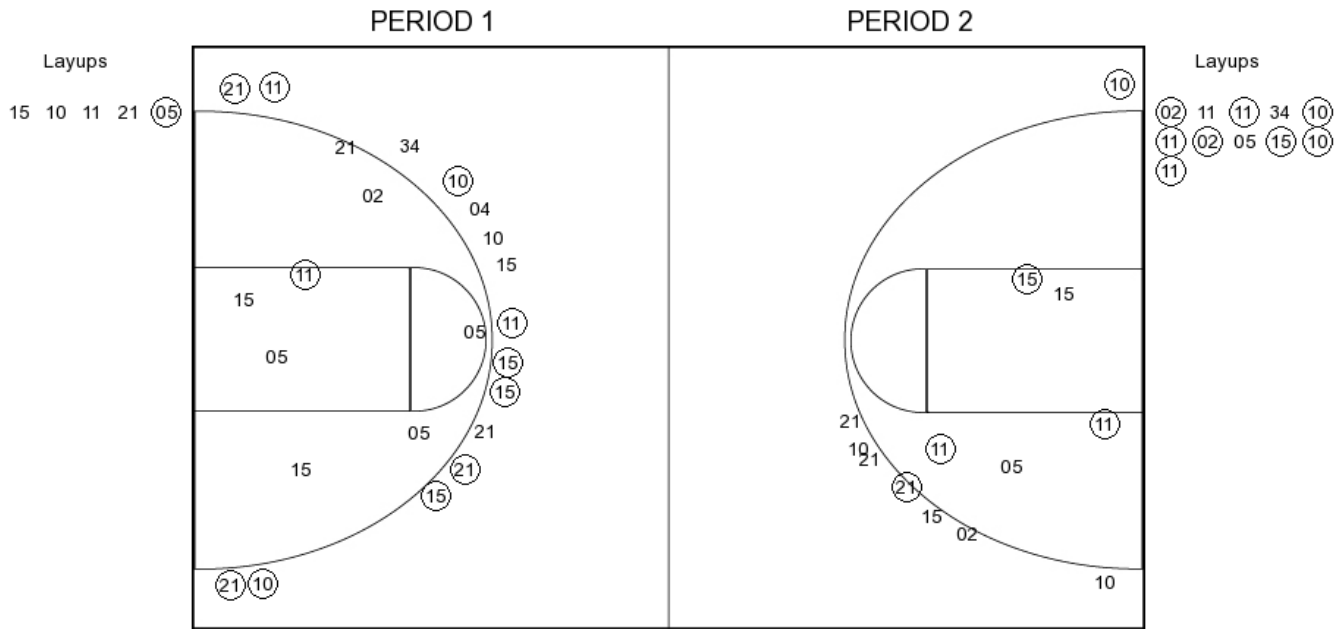
FG Made	12
FG Attempted	23
3PFG Made	5
3PFG Attempted	11

LSU vs Texas Tech

OFFICIAL SHOT CHART

1/28/2017 at Lubbock, TX (United Supermarkets Arena)

Texas Tech



TTU PERIOD 1

FG Made	12
FG Attempted	28
3PFG Made	10
3PFG Attempted	15

TTU PERIOD 2

FG Made	13
FG Attempted	24
3PFG Made	2
3PFG Attempted	8