



TEXAS TECH VS. KANSAS STATE

1/10/2016

Lubbock, TX (United Supermarkets Arena)

FINAL STATS

Texas Tech

(13-3 (2-2 B12))

66

#25 Kansas State

(13-3 (2-2 B12))

65

Start Time: 8:16 p.m.

Officials: Don Daily, Tony Padilla, Bret Smith

Attendance: 8217

Official Basketball Box Score -- Game Totals -- Final Statistics
#25 Kansas State vs Texas Tech
1/10/2016 8:16 p.m. at Lubbock, TX (United Supermarkets Arena)

#25 Kansas State 65 - 13-3 (2-2 B12)

##	Player	S	Total			Rebounds			PF	TP	A	TO	Blk	Stl	Min	
			FG-FGA	3PT	FG-FGA	FT-FTA	Off Reb	Def Reb								Tot Reb
03	STOKES,KAMAU	g	6-10		5-7	0-1	0	0	0	1	17	5	3	0	0	35
04	JOHNSON,DJ	f	3-6		0-0	5-7	3	4	7	5	11	0	4	0	1	29
05	BROWN,BARRY	g	3-10		2-6	1-2	0	6	6	2	9	2	0	0	2	37
25	IWUNDU,WESLEY	g	2-7		0-2	5-6	1	2	3	2	9	3	3	2	1	34
32	WADE,DEAN	f	5-6		2-3	0-0	0	1	1	5	12	2	1	0	0	29
01	ERVIN II,CARLBE		0-0		0-0	2-2	0	3	3	2	2	1	0	1	0	14
10	MAURICE,ISIAHAH		0-0		0-0	0-0	0	0	0	0	0	0	0	0	0	1
20	SNEED,XAVIER		2-3		1-2	0-0	1	1	2	3	5	0	1	0	1	19
35	BUDKE,AUSTIN		0-0		0-0	0-0	0	1	1	3	0	0	1	0	0	2
TEAM							2	1	3	0		2				
TOTALS			21-42		10-20	13-18	7	19	26	23	65	13	15	3	5	200

Deadball Rebounds: 4,0

FG %	1st Half:	8-22	36.4%	2nd Half:	13-20	65.0%	Game:	21-42	50.0%
3FG %	1st Half:	6-13	46.2%	2nd Half:	4-7	57.1%	Game:	10-20	50.0%
FT %	1st Half:	9-13	69.2%	2nd Half:	4-5	80.0%	Game:	13-18	72.2%

Texas Tech 66 - 13-3 (2-2 B12)

##	Player	S	Total			Rebounds			PF	TP	A	TO	Blk	Stl	Min	
			FG-FGA	3PT	FG-FGA	FT-FTA	Off Reb	Def Reb								Tot Reb
02	THOMAS,DEVON	g	3-5		0-1	0-0	1	0	1	3	6	5	0	0	3	35
05	GRAY,JUSTIN	g	2-2		0-0	0-0	0	3	3	2	4	0	1	0	0	25
11	SMITH,ZACH	f	4-10		1-3	7-11	3	4	7	0	16	3	1	1	0	37
12	EVANS,KEENAN	g	7-11		2-4	2-2	1	1	2	3	18	1	2	0	1	24
21	LIVINGSTON,ANTHONY	f	1-5		1-2	1-2	0	0	0	2	4	0	1	0	0	15
04	MILLINGHAUS,SHADELL		0-2		0-1	0-0	2	1	3	2	0	0	1	0	0	8
10	STEVENSON,NIEM		0-3		0-1	3-4	0	3	3	1	3	0	1	0	0	20
15	ROSS,AARON		2-6		1-2	5-5	0	1	1	3	10	0	0	0	0	21
22	BRANDSMA,THOMAS		0-0		0-0	0-0	0	0	0	0	0	0	0	0	0	2
34	TEMPLE,MATTHEW		1-2		1-1	2-2	1	1	2	1	5	0	1	1	0	13
TEAM							1	1	2	0		1				
TOTALS			20-46		6-15	20-26	9	15	24	17	66	9	9	2	4	200

Deadball Rebounds: 4,0

FG %	1st Half:	9-26	34.6%	2nd Half:	11-20	55.0%	Game:	20-46	43.5%
3FG %	1st Half:	2-8	25.0%	2nd Half:	4-7	57.1%	Game:	6-15	40.0%
FT %	1st Half:	8-9	88.9%	2nd Half:	12-17	70.6%	Game:	20-26	76.9%

Officials: Don Daily, Tony Padilla, Bret Smith
 Technical Fouls: #25 Kansas State- TEAM; Texas Tech- None.
 Attendance: 8217

Score by periods	1st	2nd	Total
#25 Kansas State	31	34	65
Texas Tech	28	38	66

Points	In Paint	Off T/O	2nd 2nd Chance	Fast Fast Break	Bench
KS	20	6	2	5	7
TTU	24	17	2	6	18

Last FG - KS 2nd-00:01, TTU 2nd-00:15.
 Largest lead - #25 Kansas State by 7 2nd-10:07; Texas Tech by 6 1st-11:30
 KS led for 24:22. TTU led for 12:55. Game was tied for 2:18.

Score tied - 3 times
 Lead changed - 7 times

Official Basketball Box Score -- Game Totals -- First Half Statistics
#25 Kansas State vs Texas Tech
1/10/2016 8:16 p.m. at Lubbock, TX (United Supermarkets Arena)

#25 Kansas State 31 • 13-3 (2-2 B12)

##	Player	S	Total			Rebounds			PF	TP	A	TO	Blk	Stl	Min
			FG-FGA	3PT FG-FGA	FT-FTA	Off Reb	Def Reb	Tot Reb							
03	STOKES,KAMAU	g	5-6	4-5	0-0	0	0	0	1	14	3	2	0	0	17
04	JOHNSON,DJ	f	1-4	0-0	5-7	3	2	5	2	7	0	1	0	1	15
05	BROWN,BARRY	g	1-6	1-4	1-2	0	4	4	0	4	2	0	0	1	19
25	IWUNDU,WESLEY	g	0-3	0-1	3-4	0	1	1	2	3	0	2	1	1	16
32	WADE,DEAN	f	0-1	0-1	0-0	0	1	1	2	0	2	1	0	0	14
01	ERVIN II,CARLBE		0-0	0-0	0-0	0	2	2	0	0	0	0	1	0	8
10	MAURICE,ISIAH		0-0	0-0	0-0	0	0	0	0	0	0	0	0	0	1
20	SNEED,XAVIER		1-2	1-2	0-0	0	0	0	1	3	0	1	0	0	8
35	BUDKE,AUSTIN		0-0	0-0	0-0	0	0	0	3	0	0	1	0	0	2
TEAM						2	1	3	0		1				
Totals			8-22	6-13	9-13	5	11	16	11	31	7	9	2	3	100

FG % Half: 8-22 36.4%
 3FG % Half: 6-13 46.2%
 FT % Half: 9-13 69.2%

Texas Tech 28 • 13-3 (2-2 B12)

##	Player	S	Total			Rebounds			PF	TP	A	TO	Blk	Stl	Min
			FG-FGA	3PT FG-FGA	FT-FTA	Off Reb	Def Reb	Tot Reb							
02	THOMAS,DEVON	g	2-4	0-1	0-0	1	0	1	1	4	3	0	0	2	18
05	GRAY,JUSTIN	g	1-1	0-0	0-0	0	2	2	0	2	0	1	0	0	13
11	SMITH,ZACH	f	2-6	0-2	5-6	2	2	4	0	9	1	0	1	0	18
12	EVANS,KEENAN	g	1-1	0-0	0-0	0	1	1	2	2	0	2	0	0	8
21	LIVINGSTON,ANTHONY	f	1-5	1-2	0-0	0	0	0	2	3	0	1	0	0	8
04	MILLINGHAUS,SHADELL		0-2	0-1	0-0	1	0	1	1	0	0	0	0	0	7
10	STEVENSON,NIEM		0-2	0-1	0-0	0	2	2	1	0	0	0	0	0	6
15	ROSS,AARON		1-3	0-0	1-1	0	0	0	1	3	0	0	0	0	10
22	BRANDSMA,THOMAS		0-0	0-0	0-0	0	0	0	0	0	0	0	0	0	2
34	TEMPLE,MATTHEW		1-2	1-1	2-2	1	1	2	1	5	0	1	1	0	10
TEAM						0	1	1	0		1				
Totals			9-26	2-8	8-9	5	9	14	9	28	4	6	2	2	100

FG % Half: 9-26 34.6%
 3FG % Half: 2-8 25.0%
 FT % Half: 8-9 88.9%

Officials: Don Daily, Tony Padilla, Bret Smith
 Technical Fouls: #25 Kansas State- None. Texas Tech- None.

Score by periods	1st	2nd	Total
#25 Kansas State	31	34	65
Texas Tech	28	38	66

Points	In Paint	Off T/O	2nd Chance	Fast Break	Bench
KS	4	6	0	3	3
TTU	12	8	6	4	8

Last FG - KS 1st-00:27, TTU 1st-01:28.
 KS led for 5:09. TTU led for 12:08. Game was tied for 2:18.

Score tied - 3 times
 Lead changed - 4 times

#25 Kansas State vs Texas Tech
1/10/2016; 8:16 p.m. at Lubbock, TX (United Supermarkets Arena)
Period 1 Play-By-Play

VISITORS: #25 Kansas State	Time	Score	Margin	HOME: Texas Tech
	19:34			MISSED JUMPER by LIVINGSTON,ANTHONY
REBOUND (DEF) by JOHNSON,DJ	19:34			
GOOD! LAYUP by JOHNSON,DJ [PNT]	19:18	0-2	V 2	
ASSIST by STOKES,KAMAU	19:18			
	19:18			FOUL by EVANS,KEENAN
GOOD! FT by JOHNSON,DJ	19:18	0-3	V 3	
	19:02	3-3	T	GOOD! 3PTR by LIVINGSTON,ANTHONY
	19:02			ASSIST by THOMAS,DEVON
MISSED 3PTR by BROWN,BARRY	18:43			
REBOUND (OFF) by JOHNSON,DJ	18:43			
TURNOVER by JOHNSON,DJ	18:37			
	18:14			MISSED LAYUP by THOMAS,DEVON
REBOUND (DEF) by WADE,DEAN	18:14			
TURNOVER by STOKES,KAMAU	18:09			
	18:08			STEAL by THOMAS,DEVON
	18:06	5-3	H 2	GOOD! DUNK by THOMAS,DEVON [FB/PNT]
GOOD! 3PTR by STOKES,KAMAU	17:49	5-6	V 1	
ASSIST by WADE,DEAN	17:49			
	17:36			MISSED JUMPER by LIVINGSTON,ANTHONY
	17:36			REBOUND (OFF) by SMITH,ZACH
	17:06	7-6	H 1	GOOD! LAYUP by EVANS,KEENAN [PNT]
TURNOVER by STOKES,KAMAU	16:51			
	16:50			STEAL by THOMAS,DEVON
	16:48	9-6	H 3	GOOD! DUNK by SMITH,ZACH [FB/PNT]
	16:48			ASSIST by THOMAS,DEVON
GOOD! LAYUP by STOKES,KAMAU [PNT]	16:31	9-8	H 1	
	16:31			SUB IN: ROSS,AARON
	16:31			SUB IN: STEVENSON,NIEM
	16:31			SUB IN: TEMPLE,MATTHEW
	16:31			SUB OUT: THOMAS,DEVON
	16:31			SUB OUT: GRAY,JUSTIN
	16:31			SUB OUT: LIVINGSTON,ANTHONY
	16:10			TURNOVER by EVANS,KEENAN
STEAL by BROWN,BARRY	16:09			
MISSED LAYUP by BROWN,BARRY	16:06			
	16:06			REBOUND (DEF) by TEAM
	16:04			SUB IN: THOMAS,DEVON
	16:04			SUB OUT: EVANS,KEENAN
	15:36			MISSED 3PTR by STEVENSON,NIEM
	15:36			REBOUND (OFF) by THOMAS,DEVON
	15:25	12-8	H 4	GOOD! 3PTR by TEMPLE,MATTHEW
	15:25			ASSIST by THOMAS,DEVON
MISSED LAYUP by JOHNSON,DJ	14:58			
	14:58			BLOCK by TEMPLE,MATTHEW
	14:54			REBOUND (DEF) by TEMPLE,MATTHEW
	14:28			MISSED JUMPER by ROSS,AARON
BLOCK by IWUNDU,WESLEY	14:28			
	14:26			REBOUND (OFF) by TEMPLE,MATTHEW
	14:26			TURNOVER by TEAM
TIMEOUT media	14:26			
SUB IN: SNEED,XAVIER	14:26			
SUB OUT: JOHNSON,DJ	14:26			
	14:26			SUB IN: LIVINGSTON,ANTHONY

VISITORS: #25 Kansas State	Time	Score	Margin	HOME: Texas Tech
	14:26			SUB IN: GRAY,JUSTIN
	14:26			SUB OUT: STEVENSON,NIEM
	14:26			SUB OUT: SMITH,ZACH
MISSED 3PTR by STOKES,KAMAU	14:17			
REBOUND (DEADB) by TEAM	14:17			
	14:15			FOUL by THOMAS,DEVON
	14:15			SUB IN: SMITH,ZACH
	14:15			SUB IN: EVANS,KEENAN
	14:15			SUB OUT: THOMAS,DEVON
	14:15			SUB OUT: TEMPLE,MATTHEW
GOOD! 3PTR by SNEED,XAVIER	13:52	12-11	H 1	
ASSIST by STOKES,KAMAU	13:52			
	13:20	14-11	H 3	GOOD! JUMPER by GRAY,JUSTIN
MISSED 3PTR by IWUNDU,WESLEY	13:03			
REBOUND (OFF) by TEAM	13:03			
SUB IN: ERVIN II,CARLBE	13:03			
SUB OUT: BROWN,BARRY	13:03			
	13:03			SUB IN: THOMAS,DEVON
	13:03			SUB OUT: ROSS,AARON
FOUL by SNEED,XAVIER	12:57			
TURNOVER by SNEED,XAVIER	12:57			
	12:30			TURNOVER by LIVINGSTON,ANTHONY
STEAL by IWUNDU,WESLEY	12:29			
	12:26			FOUL by LIVINGSTON,ANTHONY
GOOD! FT by IWUNDU,WESLEY	12:26	14-12	H 2	
MISSED FT by IWUNDU,WESLEY	12:26			
	12:26			REBOUND (DEF) by SMITH,ZACH
SUB IN: JOHNSON,DJ	12:26			
SUB OUT: WADE,DEAN	12:26			
	12:26			SUB IN: TEMPLE,MATTHEW
	12:26			SUB OUT: LIVINGSTON,ANTHONY
FOUL by JOHNSON,DJ	12:13			
	12:13	15-12	H 3	GOOD! FT by SMITH,ZACH
	12:13	16-12	H 4	GOOD! FT by SMITH,ZACH
SUB IN: BROWN,BARRY	12:13			
SUB OUT: STOKES,KAMAU	12:13			
	12:13			SUB IN: MILLINGHAUS,SHADELL
	12:13			SUB OUT: EVANS,KEENAN
MISSED JUMPER by BROWN,BARRY	11:43			
REBOUND (DEADB) by TEAM	11:43			
TURNOVER by TEAM	11:42			
	11:42			TIMEOUT media
	11:42			SUB IN: EVANS,KEENAN
	11:42			SUB OUT: THOMAS,DEVON
	11:30	18-12	H 6	GOOD! LAYUP by SMITH,ZACH [PNT]
MISSED 3PTR by SNEED,XAVIER	11:12			
	11:12			REBOUND (DEF) by GRAY,JUSTIN
	10:51			TURNOVER by GRAY,JUSTIN
SUB IN: WADE,DEAN	10:51			
SUB OUT: SNEED,XAVIER	10:51			
	10:51			SUB IN: LIVINGSTON,ANTHONY
	10:51			SUB IN: THOMAS,DEVON
	10:51			SUB OUT: TEMPLE,MATTHEW
	10:51			SUB OUT: MILLINGHAUS,SHADELL
MISSED LAYUP by IWUNDU,WESLEY	10:28			
	10:28			BLOCK by SMITH,ZACH
	10:26			REBOUND (DEF) by EVANS,KEENAN
	10:07			FOUL by EVANS,KEENAN

VISITORS: #25 Kansas State	Time	Score	Margin	HOME: Texas Tech
	10:07			TURNOVER by EVANS,KEENAN
	10:06			SUB IN: STEVENSON,NIEM
	10:06			SUB OUT: EVANS,KEENAN
MISSED 3PTR by WADE,DEAN	09:49			
	09:49			REBOUND (DEF) by STEVENSON,NIEM
	09:24			MISSED 3PTR by SMITH,ZACH
REBOUND (DEF) by BROWN,BARRY	09:24			
FOUL by WADE,DEAN	09:08			
TURNOVER by WADE,DEAN	09:08			
SUB IN: STOKES,KAMAU	09:08			
SUB OUT: IWUNDU,WESLEY	09:08			
	09:08			SUB IN: BRANDSMA,THOMAS
	09:08			SUB IN: ROSS,AARON
	09:08			SUB OUT: GRAY,JUSTIN
	09:08			SUB OUT: SMITH,ZACH
	08:51			MISSED LAYUP by LIVINGSTON,ANTHONY
BLOCK by ERVIN II,CARLBE	08:51			
REBOUND (DEF) by ERVIN II,CARLBE	08:48			
MISSED LAYUP by JOHNSON,DJ	08:34			
REBOUND (OFF) by JOHNSON,DJ	08:34			
MISSED LAYUP by JOHNSON,DJ	08:33			
REBOUND (OFF) by TEAM	08:33			
	08:32			SUB IN: SMITH,ZACH
	08:32			SUB IN: TEMPLE,MATTHEW
	08:32			SUB OUT: LIVINGSTON,ANTHONY
	08:32			SUB OUT: BRANDSMA,THOMAS
MISSED 3PTR by BROWN,BARRY	08:14			
REBOUND (OFF) by JOHNSON,DJ	08:14			
	08:14			FOUL by ROSS,AARON
MISSED FT by JOHNSON,DJ	08:14			
REBOUND (DEADB) by TEAM	08:14			
MISSED FT by JOHNSON,DJ	08:14			
	08:14			REBOUND (DEF) by STEVENSON,NIEM
	07:58			MISSED JUMPER by SMITH,ZACH
REBOUND (DEF) by ERVIN II,CARLBE	07:58			
GOOD! 3PTR by BROWN,BARRY	07:42	18-15	H 3	
ASSIST by STOKES,KAMAU	07:42			
	07:27	20-15	H 5	GOOD! LAYUP by THOMAS,DEVON [PNT]
	07:06			FOUL by STEVENSON,NIEM
TIMEOUT MEDIA	07:06			
MISSED FT by BROWN,BARRY	07:06			
REBOUND (DEADB) by TEAM	07:06			
GOOD! FT by BROWN,BARRY	07:06	20-16	H 4	
SUB IN: IWUNDU,WESLEY	07:06			
SUB OUT: ERVIN II,CARLBE	07:06			
	06:38			MISSED JUMPER by STEVENSON,NIEM
REBOUND (DEF) by BROWN,BARRY	06:38			
FOUL by IWUNDU,WESLEY	06:31			
TURNOVER by IWUNDU,WESLEY	06:31			
	06:31			SUB IN: LIVINGSTON,ANTHONY
	06:31			SUB IN: GRAY,JUSTIN
	06:31			SUB OUT: STEVENSON,NIEM
	06:31			SUB OUT: TEMPLE,MATTHEW
	06:17			MISSED 3PTR by LIVINGSTON,ANTHONY
REBOUND (DEF) by IWUNDU,WESLEY	06:17			
	06:03			FOUL by LIVINGSTON,ANTHONY
GOOD! FT by JOHNSON,DJ	06:03	20-17	H 3	
GOOD! FT by JOHNSON,DJ	06:03	20-18	H 2	

VISITORS: #25 Kansas State	Time	Score	Margin	HOME: Texas Tech
	06:03			SUB IN: TEMPLE,MATTHEW
	06:03			SUB OUT: LIVINGSTON,ANTHONY
	05:43			SUB IN: MILLINGHAUS,SHADELL
	05:43			SUB OUT: ROSS,AARON
	05:34			MISSED LAYUP by TEMPLE,MATTHEW
REBOUND (DEF) by TEAM	05:34			
GOOD! 3PTR by STOKES,KAMAU	05:15	20-21	V 1	
ASSIST by WADE,DEAN	05:15			
	05:04			TURNOVER by TEMPLE,MATTHEW
STEAL by JOHNSON,DJ	05:04			
	05:04			FOUL by TEMPLE,MATTHEW
GOOD! FT by JOHNSON,DJ	05:04	20-22	V 2	
GOOD! FT by JOHNSON,DJ	05:04	20-23	V 3	
	04:34			MISSED JUMPER by SMITH,ZACH
	04:34			REBOUND (OFF) by MILLINGHAUS,SHADELL
	04:30			MISSED LAYUP by MILLINGHAUS,SHADELL
	04:30			REBOUND (OFF) by SMITH,ZACH
FOUL by WADE,DEAN	04:30			
	04:30			MISSED FT by SMITH,ZACH
	04:30			REBOUND (DEADB) by TEAM
	04:30	21-23	V 2	GOOD! FT by SMITH,ZACH
SUB IN: SNEED,XAVIER	04:30			
SUB OUT: WADE,DEAN	04:30			
	04:30			SUB IN: BRANDSMA,THOMAS
	04:30			SUB IN: ROSS,AARON
	04:30			SUB OUT: TEMPLE,MATTHEW
	04:30			SUB OUT: SMITH,ZACH
MISSED JUMPER by IWUNDU,WESLEY	04:23			
	04:23			REBOUND (DEF) by GRAY,JUSTIN
FOUL by STOKES,KAMAU	04:07			
	03:43			MISSED JUMPER by ROSS,AARON
REBOUND (DEF) by JOHNSON,DJ	03:43			
TIMEOUT 30SEC	03:38			
	03:38			SUB IN: TEMPLE,MATTHEW
	03:38			SUB IN: SMITH,ZACH
	03:38			SUB OUT: BRANDSMA,THOMAS
	03:38			SUB OUT: GRAY,JUSTIN
MISSED 3PTR by BROWN,BARRY	03:18			
	03:18			REBOUND (DEF) by SMITH,ZACH
FOUL by JOHNSON,DJ	03:15			
	03:15	22-23	V 1	GOOD! FT by SMITH,ZACH
	03:15	23-23	T	GOOD! FT by SMITH,ZACH
SUB IN: BUDKE,AUSTIN	03:15			
SUB OUT: JOHNSON,DJ	03:15			
	02:58			FOUL by MILLINGHAUS,SHADELL
GOOD! FT by IWUNDU,WESLEY	02:58	23-24	V 1	
GOOD! FT by IWUNDU,WESLEY	02:58	23-25	V 2	
	02:34			MISSED 3PTR by MILLINGHAUS,SHADELL
REBOUND (DEF) by BROWN,BARRY	02:34			
FOUL by IWUNDU,WESLEY	02:15			
TURNOVER by IWUNDU,WESLEY	02:15			
SUB IN: ERVIN II,CARLBE	02:15			
SUB OUT: IWUNDU,WESLEY	02:15			
	02:15			SUB IN: STEVENSON,NIEM
	02:15			SUB OUT: MILLINGHAUS,SHADELL
	01:52			MISSED 3PTR by THOMAS,DEVON
REBOUND (DEF) by BROWN,BARRY	01:52			
GOOD! 3PTR by STOKES,KAMAU [FB]	01:45	23-28	V 5	

VISITORS: #25 Kansas State	Time	Score	Margin	HOME: Texas Tech
ASSIST by BROWN,BARRY	01:45			
	01:28	25-28	V 3	GOOD! LAYUP by ROSS,AARON [PNT]
	01:28			ASSIST by SMITH,ZACH
FOUL by BUDKE,AUSTIN	01:28			
	01:28	26-28	V 2	GOOD! FT by ROSS,AARON
	01:28			SUB IN: MILLINGHAUS,SHADELL
	01:28			SUB IN: GRAY,JUSTIN
	01:28			SUB OUT: ROSS,AARON
	01:28			SUB OUT: STEVENSON,NIEM
FOUL by BUDKE,AUSTIN	01:13			
TURNOVER by BUDKE,AUSTIN	01:13			
	01:13			TIMEOUT 30SEC
FOUL by BUDKE,AUSTIN	00:50			
	00:50	27-28	V 1	GOOD! FT by TEMPLE,MATTHEW
	00:50	28-28	T	GOOD! FT by TEMPLE,MATTHEW
SUB IN: MAURICE,ISAIAH	00:50			
SUB OUT: BUDKE,AUSTIN	00:50			
	00:50			SUB IN: BRANDSMA,THOMAS
	00:50			SUB OUT: TEMPLE,MATTHEW
GOOD! 3PTR by STOKES,KAMAU	00:27	28-31	V 3	
ASSIST by BROWN,BARRY	00:27			
	00:02			MISSED 3PTR by SMITH,ZACH
	00:02			REBOUND (DEADB) by TEAM

#25 Kansas State 31, Texas Tech 28

Period 1-only	In Paint	Off T/O	2nd Chance	Fast Break	Bench	
KS	4	6	0	3	3	Score tied - 0 times
TTU	12	8	6	4	8	Lead changed - 4 times

Official Basketball Box Score -- Game Totals -- Second Half Statistics

#25 Kansas State vs Texas Tech

1/10/2016 8:16 p.m. at Lubbock, TX (United Supermarkets Arena)

#25 Kansas State 34 • 13-3 (2-2 B12)

##	Player	S	Total			Rebounds			PF	TP	A	TO	Blk	Stl	Min
			FG-FGA	3PT FG-FGA	FT-FTA	Off Reb	Def Reb	Tot Reb							
03	STOKES,KAMAU	g	1-4	1-2	0-1	0	0	0	0	3	2	1	0	0	18
04	JOHNSON,DJ	f	2-2	0-0	0-0	0	2	2	3	4	0	3	0	0	14
05	BROWN,BARRY	g	2-4	1-2	0-0	0	2	2	2	5	0	0	0	1	18
25	IWUNDU,WESLEY	g	2-4	0-1	2-2	1	1	2	0	6	3	1	1	0	18
32	WADE,DEAN	f	5-5	2-2	0-0	0	0	0	3	12	0	0	0	0	15
01	ERVIN II,CARLBE		0-0	0-0	2-2	0	1	1	2	2	1	0	0	0	6
10	MAURICE,ISIAH		0-0	0-0	0-0	0	0	0	0	0	0	0	0	0	0
20	SNEED,XAVIER		1-1	0-0	0-0	1	1	2	2	2	0	0	0	1	11
35	BUDKE,AUSTIN		0-0	0-0	0-0	0	1	1	0	0	0	0	0	0	0
TEAM						0	0	0	0		1				
Totals			13-20	4-7	4-5	2	8	10	12	34	6	6	1	2	100

FG % Half: 13-20 65.0%
 3FG % Half: 4-7 46.2%
 FT % Half: 4-5 80.0%

Texas Tech 38 • 13-3 (2-2 B12)

##	Player	S	Total			Rebounds			PF	TP	A	TO	Blk	Stl	Min
			FG-FGA	3PT FG-FGA	FT-FTA	Off Reb	Def Reb	Tot Reb							
02	THOMAS,DEVON	g	1-1	0-0	0-0	0	0	0	2	2	2	0	0	1	17
05	GRAY,JUSTIN	g	1-1	0-0	0-0	0	1	1	2	2	0	0	0	0	12
11	SMITH,ZACH	f	2-4	1-1	2-5	1	2	3	0	7	2	1	0	0	19
12	EVANS,KEENAN	g	6-10	2-4	2-2	1	0	1	1	16	1	0	0	1	16
21	LIVINGSTON,ANTHONY	f	0-0	0-0	1-2	0	0	0	0	1	0	0	0	0	7
04	MILLINGHAUS,SHADELL		0-0	0-0	0-0	1	1	2	1	0	0	1	0	0	1
10	STEVENSON,NIEM		0-1	0-0	3-4	0	1	1	0	3	0	1	0	0	14
15	ROSS,AARON		1-3	1-2	4-4	0	1	1	2	7	0	0	0	0	11
22	BRANDSMA,THOMAS		0-0	0-0	0-0	0	0	0	0	0	0	0	0	0	0
34	TEMPLE,MATTHEW		0-0	0-0	0-0	0	0	0	0	0	0	0	0	0	3
TEAM						1	0	1	0		0				
Totals			11-20	4-7	12-17	4	6	10	8	38	5	3	0	2	100

FG % Half: 11-20 55.0%
 3FG % Half: 4-7 25.0%
 FT % Half: 12-17 70.6%

Officials: Don Daily, Tony Padilla, Bret Smith
 Technical Fouls: #25 Kansas State- TEAM; Texas Tech- None.

Score by periods	1st	2nd	Total
#25 Kansas State	31	34	65
Texas Tech	28	38	66

Points	In Paint	Off T/O	2nd Chance	Fast Break	Bench
KS	16	0	2	2	4
TTU	12	9	5	2	10

Last FG - KS 2nd-00:01, TTU 2nd-00:15.
 KS led for 19:13. TTU led for 0:47. Game was tied for 0:00.

Score tied - 0 times
 Lead changed - 3 times

#25 Kansas State vs Texas Tech
1/10/2016; 8:16 p.m. at Lubbock, TX (United Supermarkets Arena)
Period 2 Play-By-Play

VISITORS: #25 Kansas State	Time	Score	Margin	HOME: Texas Tech
GOOD! LAYUP by JOHNSON,DJ [PNT]	19:45	28-33	V 5	
ASSIST by STOKES,KAMAU	19:45			
	19:33	30-33	V 3	GOOD! LAYUP by EVANS,KEENAN [PNT]
	19:33			ASSIST by SMITH,ZACH
GOOD! LAYUP by WADE,DEAN [PNT]	19:11	30-35	V 5	
	18:52			TURNOVER by SMITH,ZACH
TURNOVER by JOHNSON,DJ	18:27			
	17:59	32-35	V 3	GOOD! JUMPER by THOMAS,DEVON [PNT]
MISSED LAYUP by IWUNDU,WESLEY	17:29			
REBOUND (OFF) by IWUNDU,WESLEY	17:29			
GOOD! LAYUP by IWUNDU,WESLEY [PNT]	17:25	32-37	V 5	
	17:15	35-37	V 2	GOOD! 3PTR by EVANS,KEENAN
	17:15			ASSIST by SMITH,ZACH
	16:53			FOUL by THOMAS,DEVON
	16:53			SUB IN: STEVENSON,NIEM
	16:53			SUB IN: TEMPLE,MATTHEW
	16:53			SUB IN: MILLINGHAUS,SHADELL
	16:53			SUB IN: ROSS,AARON
	16:53			SUB OUT: THOMAS,DEVON
	16:53			SUB OUT: GRAY,JUSTIN
	16:53			SUB OUT: SMITH,ZACH
	16:53			SUB OUT: LIVINGSTON,ANTHONY
GOOD! DUNK by JOHNSON,DJ [PNT]	16:44	35-39	V 4	
ASSIST by STOKES,KAMAU	16:44			
	16:19			MISSED 3PTR by EVANS,KEENAN
	16:19			REBOUND (OFF) by MILLINGHAUS,SHADELL
	16:15			TURNOVER by MILLINGHAUS,SHADELL
STEAL by BROWN,BARRY	16:14			
MISSED 3PTR by STOKES,KAMAU	16:11			
	16:11			REBOUND (DEF) by MILLINGHAUS,SHADELL
	16:00	38-39	V 1	GOOD! 3PTR by ROSS,AARON
	16:00			ASSIST by EVANS,KEENAN
	15:46			FOUL by MILLINGHAUS,SHADELL
TIMEOUT MEDIA	15:46			
	15:46			SUB IN: SMITH,ZACH
	15:46			SUB OUT: MILLINGHAUS,SHADELL
FOUL by JOHNSON,DJ	15:26			
TURNOVER by JOHNSON,DJ	15:26			
SUB IN: SNEED,XAVIER	15:26			
SUB OUT: JOHNSON,DJ	15:26			
	15:01			TURNOVER by STEVENSON,NIEM
STEAL by SNEED,XAVIER	15:00			
MISSED LAYUP by STOKES,KAMAU	14:50			
	14:50			REBOUND (DEF) by SMITH,ZACH
	14:30			MISSED LAYUP by EVANS,KEENAN
BLOCK by IWUNDU,WESLEY	14:30			
REBOUND (DEF) by IWUNDU,WESLEY	14:26			
GOOD! 3PTR by WADE,DEAN	14:18	38-42	V 4	
ASSIST by IWUNDU,WESLEY	14:18			
FOUL by BROWN,BARRY	14:04			
	14:04	39-42	V 3	GOOD! FT by STEVENSON,NIEM
	14:04	40-42	V 2	GOOD! FT by STEVENSON,NIEM
SUB IN: ERVIN II,CARLBE	14:04			

VISITORS: #25 Kansas State	Time	Score	Margin	HOME: Texas Tech
SUB OUT: BROWN,BARRY	14:04			
	14:04			SUB IN: THOMAS,DEVON
	14:04			SUB IN: GRAY,JUSTIN
	14:04			SUB OUT: TEMPLE,MATTHEW
	14:04			SUB OUT: EVANS,KEENAN
GOOD! JUMPER by WADE,DEAN	13:37	40-44	V 4	
ASSIST by IWUNDU,WESLEY	13:37			
	13:09			MISSED LAYUP by SMITH,ZACH
REBOUND (DEF) by SNEED,XAVIER	13:09			
MISSED 3PTR by IWUNDU,WESLEY	12:47			
REBOUND (OFF) by SNEED,XAVIER	12:47			
TURNOVER by STOKES,KAMAU	12:18			
	12:16			STEAL by THOMAS,DEVON
	12:14	42-44	V 2	GOOD! LAYUP by GRAY,JUSTIN [FB/PNT]
	12:14			ASSIST by THOMAS,DEVON
TIMEOUT 30SEC	11:52			
SUB IN: BROWN,BARRY	11:52			
SUB OUT: IWUNDU,WESLEY	11:52			
	11:52			SUB IN: LIVINGSTON,ANTHONY
	11:52			SUB OUT: ROSS,AARON
	11:45			FOUL by GRAY,JUSTIN
GOOD! FT by ERVIN II,CARLBE	11:44	42-45	V 3	
GOOD! FT by ERVIN II,CARLBE	11:44	42-46	V 4	
FOUL by SNEED,XAVIER	11:16			
FOUL by WADE,DEAN	10:55			
	10:55	43-46	V 3	GOOD! FT by LIVINGSTON,ANTHONY
	10:55			MISSED FT by LIVINGSTON,ANTHONY
REBOUND (DEF) by JOHNSON,DJ	10:55			
SUB IN: JOHNSON,DJ	10:55			
SUB OUT: WADE,DEAN	10:55			
GOOD! LAYUP by SNEED,XAVIER [PNT]	10:30	43-48	V 5	
	10:14			MISSED JUMPER by EVANS,KEENAN
REBOUND (DEF) by ERVIN II,CARLBE	10:14			
GOOD! LAYUP by BROWN,BARRY [FB/PNT]	10:07	43-50	V 7	
ASSIST by ERVIN II,CARLBE	10:07			
	10:03			TIMEOUT 30SEC
SUB IN: IWUNDU,WESLEY	10:03			
SUB OUT: STOKES,KAMAU	10:03			
	10:03			SUB IN: ROSS,AARON
	10:03			SUB IN: EVANS,KEENAN
	10:03			SUB OUT: GRAY,JUSTIN
	10:03			SUB OUT: LIVINGSTON,ANTHONY
FOUL by ERVIN II,CARLBE	09:58			
	09:36	45-50	V 5	GOOD! LAYUP by SMITH,ZACH [PNT]
FOUL by ERVIN II,CARLBE	09:36			
	09:36	46-50	V 4	GOOD! FT by SMITH,ZACH
MISSED 3PTR by BROWN,BARRY	09:11			
	09:11			REBOUND (DEF) by SMITH,ZACH
	08:47	48-50	V 2	GOOD! JUMPER by EVANS,KEENAN
TURNOVER by TEAM	08:14			
	08:14			SUB IN: MILLINGHAUS,SHADELL
	08:14			SUB IN: GRAY,JUSTIN
	08:14			SUB OUT: STEVENSON,NIEM
	08:14			SUB OUT: THOMAS,DEVON
	08:00			MISSED 3PTR by ROSS,AARON
	08:00			REBOUND (OFF) by SMITH,ZACH
	07:54			TIMEOUT media
SUB IN: STOKES,KAMAU	07:54			

VISITORS: #25 Kansas State	Time	Score	Margin	HOME: Texas Tech
SUB IN: WADE,DEAN	07:54			
SUB OUT: SNEED,XAVIER	07:54			
SUB OUT: ERVIN II,CARLBE	07:54			
	07:54			SUB IN: STEVENSON,NIEM
	07:54			SUB IN: THOMAS,DEVON
	07:54			SUB OUT: MILLINGHAUS,SHADELL
	07:54			SUB OUT: ROSS,AARON
	07:34	51-50	H 1	GOOD! 3PTR by EVANS,KEENAN
GOOD! 3PTR by WADE,DEAN	07:02	51-53	V 2	
ASSIST by IWUNDU,WESLEY	07:02			
	06:44			MISSED LAYUP by SMITH,ZACH
REBOUND (DEF) by BROWN,BARRY	06:44			
	06:42			SUB IN: ROSS,AARON
	06:42			SUB OUT: GRAY,JUSTIN
GOOD! DUNK by WADE,DEAN [PNT]	06:20	51-55	V 4	
	05:50	54-55	V 1	GOOD! 3PTR by SMITH,ZACH
	05:50			ASSIST by THOMAS,DEVON
	05:26			FOUL by THOMAS,DEVON
	05:26			SUB IN: LIVINGSTON,ANTHONY
	05:26			SUB OUT: ROSS,AARON
	05:06			FOUL by EVANS,KEENAN
GOOD! LAYUP by IWUNDU,WESLEY [PNT]	04:53	54-57	V 3	
	04:29	56-57	V 1	GOOD! JUMPER by EVANS,KEENAN [PNT]
FOUL by JOHNSON,DJ	04:04			
TURNOVER by JOHNSON,DJ	04:04			
SUB IN: SNEED,XAVIER	04:04			
SUB OUT: JOHNSON,DJ	04:04			
	04:04			SUB IN: GRAY,JUSTIN
	04:04			SUB IN: ROSS,AARON
	04:04			SUB OUT: STEVENSON,NIEM
	03:38			MISSED LAYUP by ROSS,AARON
	03:38			REBOUND (DEADB) by TEAM
	03:38			FOUL by ROSS,AARON
TIMEOUT MEDIA	03:38			
	03:38			SUB OUT: LIVINGSTON,ANTHONY
GOOD! 3PTR by STOKES,KAMAU	03:13	56-60	V 4	
FOUL by WADE,DEAN	02:52			
	02:52	57-60	V 3	GOOD! FT by ROSS,AARON
	02:52	58-60	V 2	GOOD! FT by ROSS,AARON
	02:37			FOUL by ROSS,AARON
GOOD! FT by IWUNDU,WESLEY	02:37	58-61	V 3	
GOOD! FT by IWUNDU,WESLEY	02:37	58-62	V 4	
SUB IN: JOHNSON,DJ	02:37			
SUB OUT: WADE,DEAN	02:37			
	02:25			MISSED 3PTR by EVANS,KEENAN
REBOUND (DEF) by BROWN,BARRY	02:25			
SUB IN: WADE,DEAN	02:03			
SUB OUT: SNEED,XAVIER	02:03			
	01:50			FOUL by GRAY,JUSTIN
MISSED FT by STOKES,KAMAU	01:50			
	01:50			REBOUND (DEF) by ROSS,AARON
SUB IN: SNEED,XAVIER	01:50			
SUB OUT: WADE,DEAN	01:50			
	01:50			SUB IN: STEVENSON,NIEM
	01:50			SUB OUT: GRAY,JUSTIN
FOUL by SNEED,XAVIER	01:28			
	01:28	59-62	V 3	GOOD! FT by EVANS,KEENAN
	01:28	60-62	V 2	GOOD! FT by EVANS,KEENAN

VISITORS: #25 Kansas State	Time	Score	Margin	HOME: Texas Tech
SUB IN: WADE,DEAN	01:28			
SUB OUT: SNEED,XAVIER	01:28			
	01:28			SUB IN: GRAY,JUSTIN
	01:28			SUB OUT: ROSS,AARON
MISSED JUMPER by STOKES,KAMAU	01:11			
	01:11			REBOUND (DEF) by GRAY,JUSTIN
FOUL by BROWN,BARRY	00:49			
	00:49	61-62	V 1	GOOD! FT by SMITH,ZACH
TIMEOUT 30SEC	00:49			
	00:49			MISSED FT by SMITH,ZACH
	00:49			REBOUND (OFF) by TEAM
	00:48			SUB IN: ROSS,AARON
	00:48			SUB OUT: GRAY,JUSTIN
FOUL by WADE,DEAN	00:45			
	00:45			MISSED FT by SMITH,ZACH
	00:45			REBOUND (DEADB) by TEAM
	00:45			MISSED FT by SMITH,ZACH
REBOUND (DEF) by JOHNSON,DJ	00:45			
SUB IN: SNEED,XAVIER	00:45			
SUB OUT: WADE,DEAN	00:45			
	00:45			SUB IN: GRAY,JUSTIN
	00:45			SUB OUT: ROSS,AARON
TURNOVER by IWUNDU,WESLEY	00:20			
	00:18			STEAL by EVANS,KEENAN
	00:15			MISSED LAYUP by STEVENSON,NIEM
	00:15			REBOUND (OFF) by EVANS,KEENAN
	00:15	63-62	H 1	GOOD! LAYUP by EVANS,KEENAN [PNT]
MISSED LAYUP by BROWN,BARRY	00:08			
	00:08			REBOUND (DEF) by STEVENSON,NIEM
FOUL by JOHNSON,DJ	00:05			
FOUL (TECH) by TEAM	00:05			
	00:05	64-62	H 2	GOOD! FT by ROSS,AARON
	00:05	65-62	H 3	GOOD! FT by ROSS,AARON
	00:05	66-62	H 4	GOOD! FT by STEVENSON,NIEM
	00:05			MISSED FT by STEVENSON,NIEM
REBOUND (DEF) by BUDKE,AUSTIN	00:05			
SUB IN: BUDKE,AUSTIN	00:05			
SUB OUT: JOHNSON,DJ	00:05			
	00:05			SUB IN: ROSS,AARON
	00:05			SUB OUT: GRAY,JUSTIN
GOOD! 3PTR by BROWN,BARRY	00:01	66-65	H 1	

#25 Kansas State 65, Texas Tech 66

Period 2-only	In Paint	Off T/O	2nd Chance	Fast Break	Bench	
KS	16	0	2	2	4	Score tied - 0 times
TTU	12	9	5	2	10	Lead changed - 2 times

#25 Kansas State vs Texas Tech
1/10/2016; 8:16 p.m. at Lubbock, TX (United Supermarkets Arena)
Scoring/Runs Reference

Period 1

#25 Kansas State	Score	Marg	Texas Tech
19:18 - JOHNSON LAYUP [P]	2	2-0 -2	
19:18 - JOHNSON FT	1	3-0 -3	
		3-3 0 3	LIVINGSTON 3PTR - 19:02
		3-5 2 2	THOMAS DUNK [P] [F] - 18:06
17:49 - STOKES 3PTR	3	6-5 -1	
		6-7 1 2	EVANS LAYUP [P] - 17:06
		6-9 3 2	SMITH DUNK [P] [F] - 16:48
16:31 - STOKES LAYUP [P]	2	8-9 1	
		8-12 4 3	TEMPLE 3PTR - 15:25
13:52 - SNEED 3PTR	3	11-12 1	
		11-14 3 2	GRAY JUMPER - 13:20
12:26 - IWUNDU FT	1	12-14 2	
		12-15 3 1	SMITH FT - 12:13
		12-16 4 1	SMITH FT - 12:13
		12-18 6 2	SMITH LAYUP [P] - 11:30
07:42 - BROWN 3PTR	3	15-18 3	
		15-20 5 2	THOMAS LAYUP [P] - 07:27
07:06 - BROWN FT	1	16-20 4	
06:03 - JOHNSON FT	1	17-20 3	
06:03 - JOHNSON FT	1	18-20 2	
05:15 - STOKES 3PTR	3	21-20 -1	
05:04 - JOHNSON FT	1	22-20 -2	
05:04 - JOHNSON FT	1	23-20 -3	
		23-21 -2 1	SMITH FT - 04:30
		23-22 -1 1	SMITH FT - 03:15
		23-23 0 1	SMITH FT - 03:15
02:58 - IWUNDU FT	1	24-23 -1	
02:58 - IWUNDU FT	1	25-23 -2	
01:45 - STOKES 3PTR [F]	3	28-23 -5	
		28-25 -3 2	ROSS LAYUP [P] - 01:28
		28-26 -2 1	ROSS FT - 01:28
		28-27 -1 1	TEMPLE FT - 00:50
		28-28 0 1	TEMPLE FT - 00:50
00:27 - STOKES 3PTR	3	31-28 -3	

Period 2

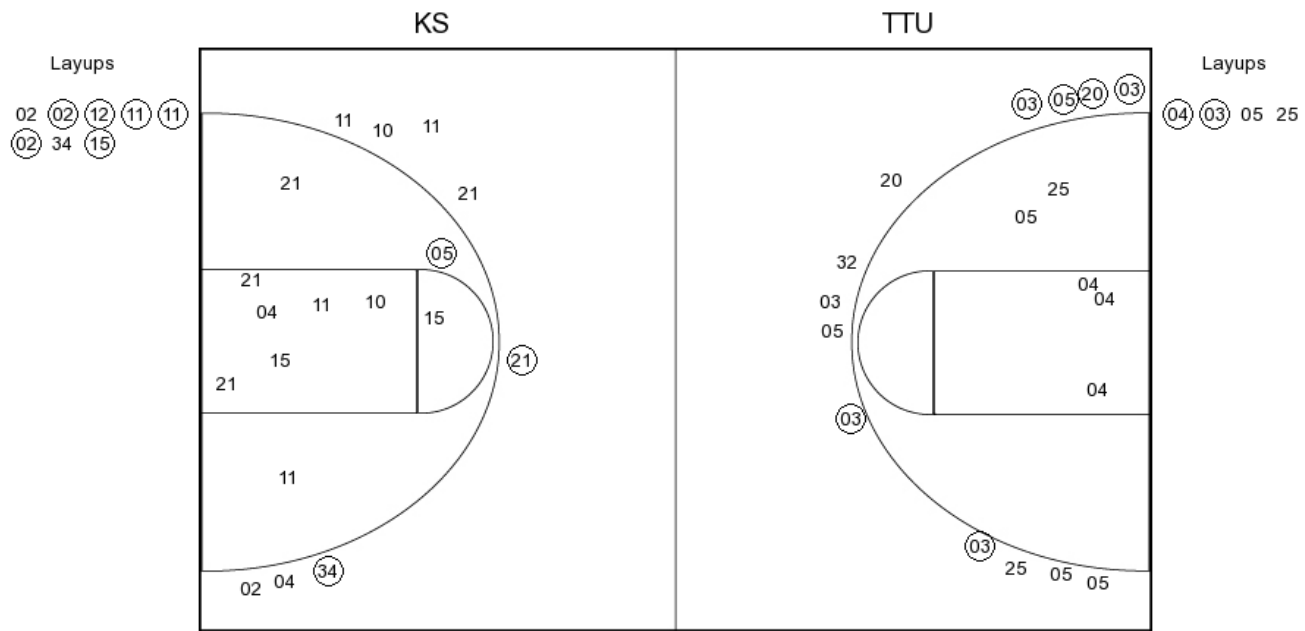
#25 Kansas State	Score	Marg	Texas Tech
19:45 - JOHNSON LAYUP [P]	2	33-28 -5	
		33-30 -3 2	EVANS LAYUP [P] - 19:33
19:11 - WADE LAYUP [P]	2	35-30 -5	
		35-32 -3 2	THOMAS JUMPER [P] - 17:59
17:25 - IWUNDU LAYUP [P]	2	37-32 -5	
		37-35 -2 3	EVANS 3PTR - 17:15
16:44 - JOHNSON DUNK [P]	2	39-35 -4	
		39-38 -1 3	ROSS 3PTR - 16:00
14:18 - WADE 3PTR	3	42-38 -4	
		42-39 -3 1	STEVENSON FT - 14:04
		42-40 -2 1	STEVENSON FT - 14:04
13:37 - WADE JUMPER	2	44-40 -4	
		44-42 -2 2	GRAY LAYUP [P] [F] - 12:14
11:44 - ERVIN II FT	1	45-42 -3	
11:44 - ERVIN II FT	1	46-42 -4	
		46-43 -3 1	LIVINGSTON FT - 10:55
10:30 - SNEED LAYUP [P]	2	48-43 -5	
10:07 - BROWN LAYUP [P] [F]	2	50-43 -7	
		50-45 -5 2	SMITH LAYUP [P] - 09:36
		50-46 -4 1	SMITH FT - 09:36
		50-48 -2 2	EVANS JUMPER - 08:47
		50-51 1 3	EVANS 3PTR - 07:34
07:02 - WADE 3PTR	3	53-51 -2	
06:20 - WADE DUNK [P]	2	55-51 -4	
		55-54 -1 3	SMITH 3PTR - 05:50
04:53 - IWUNDU LAYUP [P]	2	57-54 -3	
		57-56 -1 2	EVANS JUMPER [P] - 04:29
03:13 - STOKES 3PTR	3	60-56 -4	
		60-57 -3 1	ROSS FT - 02:52
		60-58 -2 1	ROSS FT - 02:52
02:37 - IWUNDU FT	1	61-58 -3	
02:37 - IWUNDU FT	1	62-58 -4	
		62-59 -3 1	EVANS FT - 01:28
		62-60 -2 1	EVANS FT - 01:28
		62-61 -1 1	SMITH FT - 00:49
		62-63 1 2	EVANS LAYUP [P] - 00:15
		62-64 2 1	ROSS FT - 00:05
		62-65 3 1	ROSS FT - 00:05
		62-66 4 1	STEVENSON FT - 00:05
00:01 - BROWN 3PTR	3	65-66 1	

#25 Kansas State vs Texas Tech

OFFICIAL SHOT CHART

1/10/2016 at Lubbock, TX (United Supermarkets Arena)

PERIOD 1



KS PERIOD 1

FG Made	8
FG Attempted	22
3PFG Made	6
3PFG Attempted	13

TTU PERIOD 1

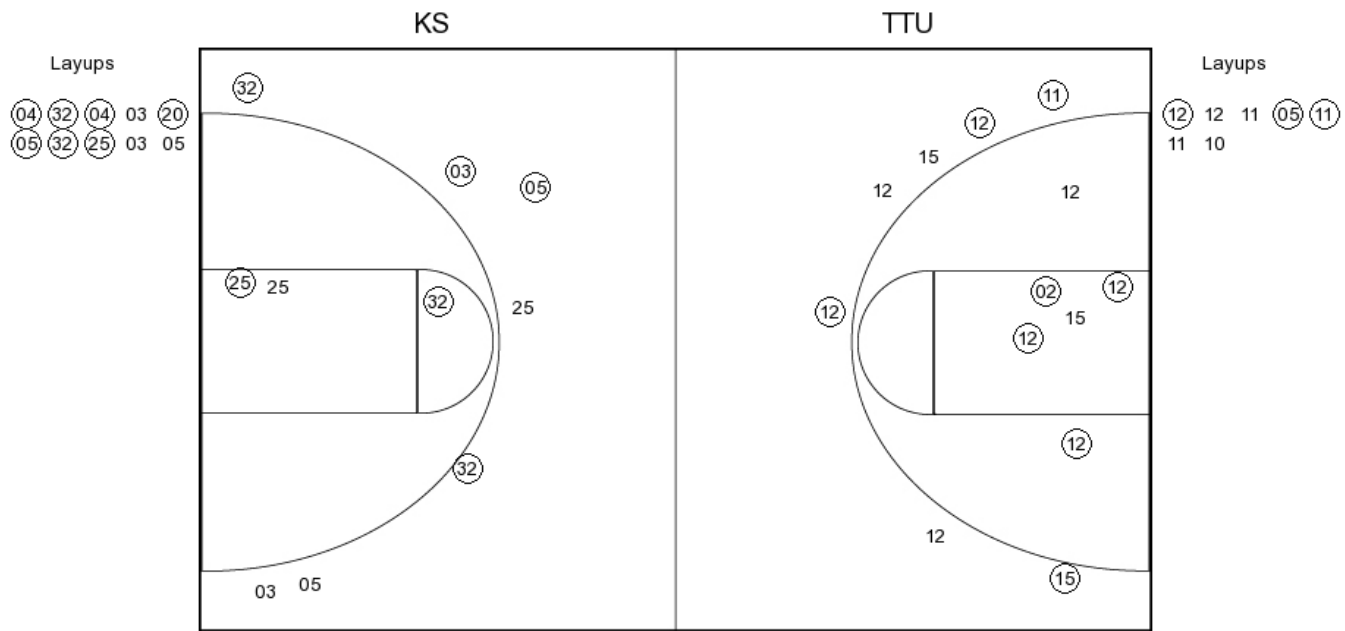
FG Made	9
FG Attempted	26
3PFG Made	2
3PFG Attempted	8

#25 Kansas State vs Texas Tech

OFFICIAL SHOT CHART

1/10/2016 at Lubbock, TX (United Supermarkets Arena)

PERIOD 2



KS PERIOD 2

FG Made	13
FG Attempted	20
3PFG Made	4
3PFG Attempted	7

TTU PERIOD 2

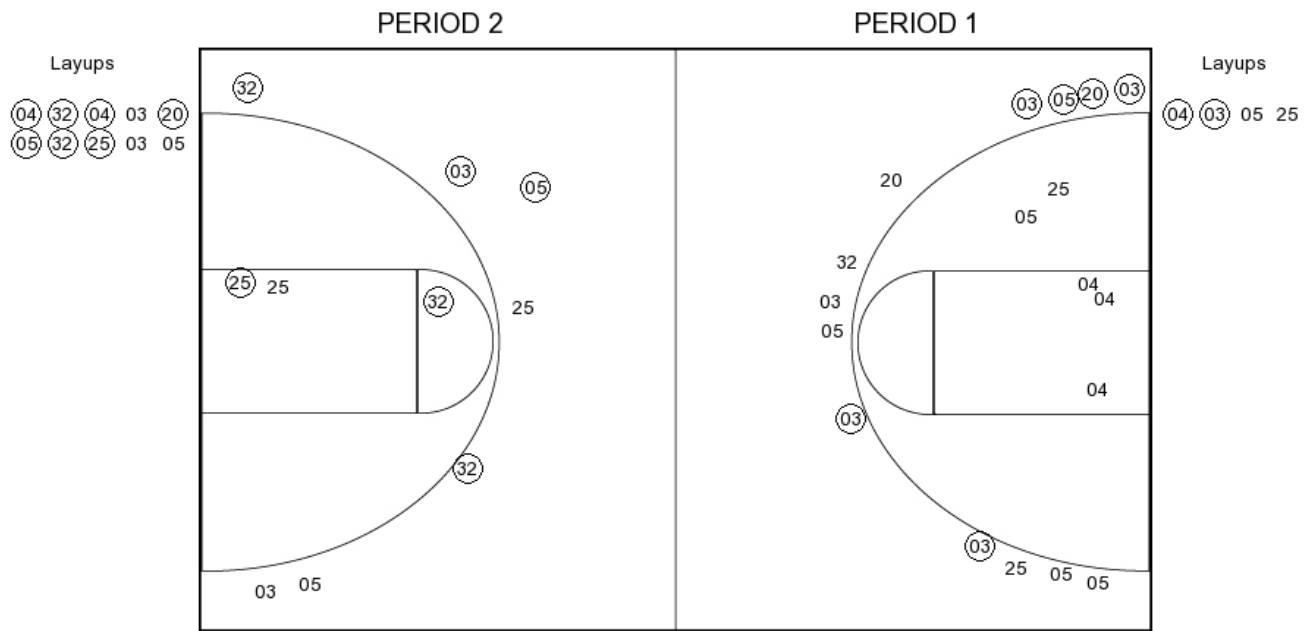
FG Made	11
FG Attempted	20
3PFG Made	4
3PFG Attempted	7

#25 Kansas State vs Texas Tech

OFFICIAL SHOT CHART

1/10/2016 at Lubbock, TX (United Supermarkets Arena)

#25 Kansas State



KS PERIOD 1

FG Made	8
FG Attempted	22
3PFG Made	6
3PFG Attempted	13

KS PERIOD 2

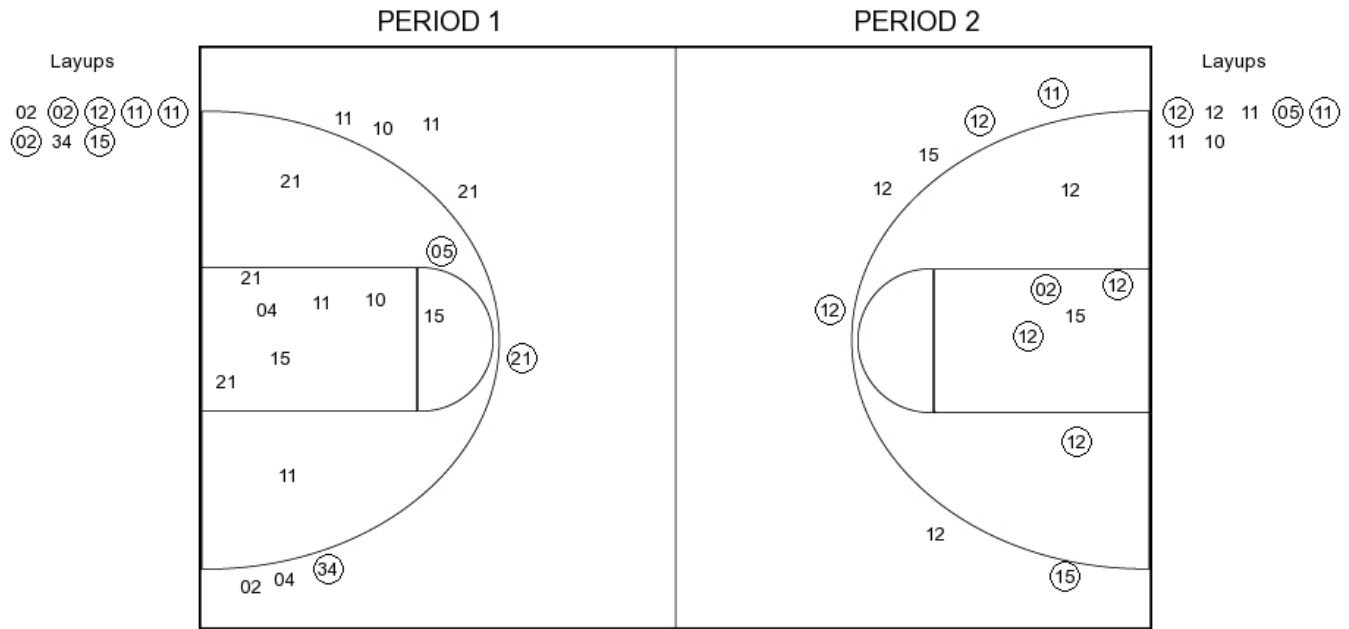
FG Made	13
FG Attempted	20
3PFG Made	4
3PFG Attempted	7

#25 Kansas State vs Texas Tech

OFFICIAL SHOT CHART

1/10/2016 at Lubbock, TX (United Supermarkets Arena)

Texas Tech



TTU PERIOD 1

FG Made	9
FG Attempted	26
3PFG Made	2
3PFG Attempted	8

TTU PERIOD 2

FG Made	11
FG Attempted	20
3PFG Made	4
3PFG Attempted	7