



NEBRASKA VS. INDIANA

2/19/2017

Pinnacle Bank Arena (Lincoln, Neb.)

FINAL STATS

Nebraska

(6-20, 2-12)

67

Indiana

(18-9, 8-6)

64

Start Time: 2:06 P.M.

Officials: Laura Morris, Frank Steratore, Doug Knight

Attendance: 4981

Official Basketball Box Score -- Game Totals -- Final Statistics

Indiana vs Nebraska

2/19/2017 2:06 P.M. at Pinnacle Bank Arena (Lincoln, Neb.)

Indiana 64 - 18-9, 8-6

##	Player	S	Total			Rebounds			PF	TP	A	TO	Blk	Stl	Min
			FG-FGA	3PT	FG-FGA	FT-FTA	Off Reb	Def Reb							
03	BUSS, TYRA	g	6-16	0-7	4-6	2	2	4	1	16	6	4	0	3	39
21	MCBRIDE, KARLEE	g	4-9	4-8	0-0	0	0	0	1	12	1	0	0	2	21
23	GASSION, ALEXIS	g	5-13	0-1	2-3	1	2	3	0	12	4	2	0	0	37
33	CAHILL, AMANDA	f	5-14	2-7	2-2	3	8	11	4	14	0	2	2	3	31
43	ANDERSON, JENN	c	2-4	0-0	0-0	4	4	8	1	4	0	2	0	1	27
05	GULLEY, RIA		2-3	1-2	0-0	0	0	0	0	5	1	0	0	0	19
11	ROYSTER, KYM		0-0	0-0	0-0	0	1	1	2	0	0	1	0	0	2
13	FOESMAN, DARBY		0-1	0-1	0-0	1	0	1	4	0	0	0	0	0	17
22	ELBERT, TIA		0-0	0-0	0-0	0	0	0	0	0	0	0	0	0	1
24	TOWNER, TYSHEE		0-0	0-0	0-0	0	0	0	1	0	0	0	0	0	3
31	WICKWARE, BRE		0-1	0-1	1-2	0	1	1	0	1	0	0	0	0	3
TEAM						1	2	3	0		0				
TOTALS			24-61	7-27	9-13	12	20	32	14	64	12	11	2	9	200

Deadball Rebounds: 3,0

FG %	1st Half: 12-32	37.5%	2nd Half: 12-29	41.4%	Game: 24-61	39.3%	4th Qtr	5-14	35.7%
	1st Qtr 3-16	18.8%	2nd Qtr 9-16	56.3%	3rd Qtr 7-15	46.7%			
3FG %	1st Half: 4-15	26.7%	2nd Half: 3-12	25.0%	Game: 7-27	25.9%			
	1st Qtr 1-7	14.3%	2nd Qtr 3-8	37.5%	3rd Qtr 1-5	20.0%	4th Qtr	2-7	28.6%
FT %	1st Half: 2-4	50.0%	2nd Half: 7-9	77.8%	Game: 9-13	69.2%			
	1st Qtr 1-2	50.0%	2nd Qtr 1-2	50.0%	3rd Qtr 3-3	100.0%	4th Qtr	4-6	66.7%

Nebraska 67 - 6-20, 2-12

##	Player	S	Total			Rebounds			PF	TP	A	TO	Blk	Stl	Min
			FG-FGA	3PT	FG-FGA	FT-FTA	Off Reb	Def Reb							
03	WHITISH, HANNAH	g	7-10	4-6	0-0	1	5	6	0	18	4	3	0	2	34
05	ELIELY, NICEA	g	5-8	3-4	0-0	1	0	1	3	13	6	0	1	3	32
22	HAVERS, ALLIE	c	6-10	0-2	1-1	2	6	8	4	13	2	2	1	1	29
32	SHEPARD, JESSICA	f	5-14	2-5	2-4	1	4	5	1	14	3	4	1	0	35
34	CINCORE, JASMINE	g	2-6	0-4	0-0	1	6	7	3	4	2	2	0	0	28
02	JENSEN, RYLIE CASCIO		1-2	1-2	0-0	0	1	1	3	3	0	1	0	0	14
11	RAMACIERI, ESTHER		0-0	0-0	0-0	0	1	1	0	0	0	1	0	0	1
12	WOOD, EMILY		0-2	0-2	0-0	1	0	1	2	0	0	2	0	0	10
14	MITCHELL, GRACE		1-2	0-0	0-0	1	2	3	1	2	1	0	0	0	15
24	SIMON, MADDIE		0-1	0-0	0-0	0	0	0	0	0	0	0	0	0	2
TEAM						0	1	1	0		0				
TOTALS			27-55	10-25	3-5	8	26	34	17	67	18	15	3	6	200

Deadball Rebounds: 2,0

FG %	1st Half: 13-29	44.8%	2nd Half: 14-26	53.8%	Game: 27-55	49.1%	4th Qtr	7-14	50.0%
	1st Qtr 7-16	43.8%	2nd Qtr 6-13	46.2%	3rd Qtr 7-12	58.3%			
3FG %	1st Half: 4-14	28.6%	2nd Half: 6-11	54.5%	Game: 10-25	40.0%			
	1st Qtr 3-9	33.3%	2nd Qtr 1-5	20.0%	3rd Qtr 3-5	60.0%	4th Qtr	3-6	50.0%
FT %	1st Half: 1-2	50.0%	2nd Half: 2-3	66.7%	Game: 3-5	60.0%			
	1st Qtr 0-0	0%	2nd Qtr 1-2	50.0%	3rd Qtr 1-1	100.0%	4th Qtr	1-2	50.0%

Officials: Laura Morris, Frank Steratore, Doug Knight

Technical Fouls: Indiana- None. Nebraska- None.

Attendance: 4981

Score by periods	1st	2nd	3rd	4th	Total
Indiana	8	22	18	16	64
Nebraska	17	14	18	18	67

Points	In Paint	Off T/O	2nd Chance	Fast Break	Bench
IND	26	17	6	2	6
NEB	24	12	6	0	5

Last FG - IND 4th-00:18, NEB 4th-00:07.

Largest lead - Indiana by 7 3rd-04:52; Nebraska by 12 2nd-07:39
IND led for 8:07. NEB led for 26:10. Game was tied for 5:43.

Score tied - 6 times
Lead changed - 10 times

Official Basketball Box Score -- Game Totals -- First Half Statistics

Indiana vs Nebraska

2/19/2017 2:06 P.M. at Pinnacle Bank Arena (Lincoln, Neb.)

Indiana 30 • 18-9, 8-6

##	Player	S	Total			Rebounds			PF	TP	A	TO	Blk	Stl	Min
			FG-FGA	3PT	FG-FGA	FT-FTA	Off Reb	Def Reb							
03	BUSS, TYRA	g	2-5	0-3	1-2	0	1	1	0	5	5	2	0	3	20
21	MCBRIDE, KARLEE	g	3-5	3-4	0-0	0	0	0	0	9	1	0	0	1	9
23	GASSION, ALEXIS	g	3-7	0-1	0-0	1	2	3	0	6	2	2	0	0	19
33	CAHILL, AMANDA	f	1-8	0-4	0-0	2	6	8	2	2	0	2	1	2	13
43	ANDERSON, JENN	c	1-3	0-0	0-0	2	0	2	1	2	0	1	0	1	12
05	GULLEY, RIA		2-2	1-1	0-0	0	0	0	0	5	0	0	0	0	11
11	ROYSTER, KYM		0-0	0-0	0-0	0	1	1	2	0	0	1	0	0	2
13	FOESMAN, DARBY		0-1	0-1	0-0	0	0	0	1	0	0	0	0	0	10
22	ELBERT, TIA		0-0	0-0	0-0	0	0	0	0	0	0	0	0	0	0
24	TOWNER, TYSHEE		0-0	0-0	0-0	0	0	0	0	0	0	0	0	0	1
31	WICKWARE, BRE		0-1	0-1	1-2	0	1	1	0	1	0	0	0	0	3
TEAM						1	1	2	0		0				
Totals			12-32	4-15	2-4	6	12	18	6	30	8	8	1	7	100
FG %	1st Qtr	3-16	18.8%	2nd Qtr	9-16	56.3%	Half:	12-32	37.5%						
3FG %	1st Qtr	1-7	14.3%	2nd Qtr	3-8	37.5%	Half:	4-15	26.7%						
FT %	1st Qtr	1-2	50.0%	2nd Qtr	1-2	50.0%	Half:	2-4	50.0%						

Nebraska 31 • 6-20, 2-12

##	Player	S	Total			Rebounds			PF	TP	A	TO	Blk	Stl	Min
			FG-FGA	3PT	FG-FGA	FT-FTA	Off Reb	Def Reb							
03	WHITISH, HANNAH	g	3-5	2-4	0-0	0	3	3	0	8	0	2	0	1	17
05	ELIELY, NICEA	g	2-3	1-1	0-0	0	0	0	1	5	4	0	0	3	16
22	HAVERS, ALLIE	c	2-4	0-1	0-0	0	6	6	0	4	0	1	1	1	13
32	SHEPARD, JESSICA	f	3-8	1-3	1-2	1	2	3	0	8	2	2	1	0	18
34	CINCORE, JASMINE	g	2-5	0-3	0-0	1	1	2	0	4	1	1	0	0	13
02	JENSEN, RYLIE CASCIO		0-0	0-0	0-0	0	1	1	1	0	0	0	0	0	7
11	RAMACIERI, ESTHER		0-0	0-0	0-0	0	1	1	0	0	0	1	0	0	1
12	WOOD, EMILY		0-2	0-2	0-0	1	0	1	2	0	0	2	0	0	5
14	MITCHELL, GRACE		1-1	0-0	0-0	1	1	2	1	2	0	0	0	0	8
24	SIMON, MADDIE		0-1	0-0	0-0	0	0	0	0	0	0	0	0	0	2
TEAM						0	0	0	0		0				
Totals			13-29	4-14	1-2	4	15	19	5	31	7	9	2	5	100
FG %	1st Qtr	7-16	43.8%	2nd Qtr	6-13	46.2%	Half:	13-29	44.8%						
3FG %	1st Qtr	3-9	33.3%	2nd Qtr	1-5	20.0%	Half:	4-14	28.6%						
FT %	1st Qtr	0-0	0%	2nd Qtr	1-2	50.0%	Half:	1-2	50.0%						

Officials: Laura Morris, Frank Steratore, Doug Knight

Technical Fouls: Indiana- None. Nebraska- None.

Score by periods	1st	2nd	3rd	4th	Total
Indiana	8	22	18	16	64
Nebraska	17	14	18	18	67

Points	In Paint	Off T/O	2nd Chance	Fast Break	Bench
IND	8	11	2	2	6
	12	9	4	0	2

Last FG - IND 2nd-00:21, NEB 2nd-01:29.

IND led for 0:00. NEB led for 18:12. Game was tied for 1:48.

Score tied - 1 times
Lead changed - 0 times

Indiana vs Nebraska
2/19/2017; 2:06 P.M. at Pinnacle Bank Arena (Lincoln, Neb.)
Period 1 Play-By-Play

VISITORS: Indiana	Time	Score	Margin	HOME: Nebraska
MISSED 3PTR by CAHILL,AMANDA	09:44			
	09:44			REBOUND (DEF) by WHITISH,HANNAH
	09:29			MISSED 3PTR by WHITISH,HANNAH
	09:29			REBOUND (OFF) by CINCORE,JASMINE
	09:05			MISSED 3PTR by CINCORE,JASMINE
REBOUND (DEF) by CAHILL,AMANDA	09:05			
TURNOVER by CAHILL,AMANDA	08:46			
	08:44			STEAL by ELIELY,NICEA
	08:42	3-0	H 3	GOOD! 3PTR by WHITISH,HANNAH
	08:42			ASSIST by SHEPARD,JESSICA
MISSED 3PTR by MCBRIDE,KARLEE	08:42			
	08:42			REBOUND (DEF) by HAVERS,ALLIE
	08:42			MISSED 3PTR by SHEPARD,JESSICA
REBOUND (DEF) by GASSION,ALEXIS	08:42			
MISSED JUMPER by MCBRIDE,KARLEE	08:42			
REBOUND (OFF) by TEAM	08:42			
TURNOVER by BUSS,TYRA	08:25			
	08:24			STEAL by ELIELY,NICEA
	08:20	5-0	H 5	GOOD! JUMPER by CINCORE,JASMINE [PNT]
	08:20			ASSIST by ELIELY,NICEA
MISSED 3PTR by BUSS,TYRA	08:00			
	08:00			REBOUND (DEF) by HAVERS,ALLIE
	07:49			TURNOVER by CINCORE,JASMINE
STEAL by BUSS,TYRA	07:48			
MISSED 3PTR by CAHILL,AMANDA	07:26			
	07:26			REBOUND (DEF) by WHITISH,HANNAH
	07:21	7-0	H 7	GOOD! JUMPER by SHEPARD,JESSICA [PNT]
	07:21			ASSIST by ELIELY,NICEA
MISSED JUMPER by GASSION,ALEXIS	07:01			
REBOUND (OFF) by CAHILL,AMANDA	07:01			
MISSED JUMPER by CAHILL,AMANDA	06:48			
	06:48			BLOCK by HAVERS,ALLIE
	06:46			REBOUND (DEF) by HAVERS,ALLIE
SUB IN: FORESMAN,DARBY	06:37			
SUB IN: GULLEY,RIA	06:37			
SUB OUT: MCBRIDE,KARLEE	06:37			
SUB OUT: ANDERSON,JENN	06:37			
	06:23	10-0	H 10	GOOD! 3PTR by WHITISH,HANNAH
	06:23			ASSIST by SHEPARD,JESSICA
MISSED JUMPER by GASSION,ALEXIS	05:53			
	05:53			REBOUND (DEF) by SHEPARD,JESSICA
	05:36			MISSED LAYUP by ELIELY,NICEA
REBOUND (DEF) by CAHILL,AMANDA	05:36			
GOOD! LAYUP by BUSS,TYRA [PNT]	05:28	10-2	H 8	
	05:13			TURNOVER by HAVERS,ALLIE
TIMEOUT MEDIA	04:57			
	04:57			SUB IN: MITCHELL,GRACE
	04:57			SUB IN: JENSEN,RYLIE CASCIO
	04:57			SUB IN: WOOD,EMILY
	04:57			SUB OUT: WHITISH,HANNAH
	04:57			SUB OUT: ELIELY,NICEA
	04:57			SUB OUT: HAVERS,ALLIE
GOOD! 3PTR by GULLEY,RIA	04:30	10-5	H 5	

VISITORS: Indiana	Time	Score	Margin	HOME: Nebraska
ASSIST by BUSS,TYRA	04:30			
	04:04			TURNOVER by SHEPARD,JESSICA
MISSED 3PTR by BUSS,TYRA	03:51			
	03:51			REBOUND (DEF) by SHEPARD,JESSICA
	03:43			MISSED 3PTR by WOOD,EMILY
	03:43			REBOUND (OFF) by MITCHELL,GRACE
	03:39	12-5	H 7	GOOD! JUMPER by MITCHELL,GRACE [PNT]
MISSED LAYUP by GASSION,ALEXIS	03:15			
REBOUND (OFF) by GASSION,ALEXIS	03:15			
TURNOVER by GASSION,ALEXIS	03:12			
SUB IN: ANDERSON,JENN	03:12			
SUB IN: TOWNER,TYSHEE	03:12			
SUB OUT: FORESMAN,DARBY	03:12			
SUB OUT: GASSION,ALEXIS	03:12			
	03:01			MISSED JUMPER by SHEPARD,JESSICA
REBOUND (DEF) by CAHILL,AMANDA	03:01			
MISSED JUMPER by ANDERSON,JENN	02:48			
	02:48			REBOUND (DEF) by MITCHELL,GRACE
FOUL by CAHILL,AMANDA	02:45			
	02:28			MISSED JUMPER by SHEPARD,JESSICA
	02:28			REBOUND (OFF) by WOOD,EMILY
	02:24			TURNOVER by WOOD,EMILY
STEAL by CAHILL,AMANDA	02:23			
	02:18			FOUL by WOOD,EMILY
GOOD! JUMPER by CAHILL,AMANDA	02:07	12-7	H 5	
ASSIST by BUSS,TYRA	02:07			
FOUL by CAHILL,AMANDA	01:54			
SUB IN: GASSION,ALEXIS	01:54			
SUB IN: WICKWARE,BRE	01:54			
SUB OUT: TOWNER,TYSHEE	01:54			
SUB OUT: CAHILL,AMANDA	01:54			
	01:54			SUB IN: WHITISH,HANNAH
	01:54			SUB IN: ELIELY,NICEA
	01:54			SUB OUT: WOOD,EMILY
	01:54			SUB OUT: CINCORE,JASMINE
	01:51	15-7	H 8	GOOD! 3PTR by SHEPARD,JESSICA
	01:51			ASSIST by ELIELY,NICEA
	01:28			FOUL by MITCHELL,GRACE
MISSED FT by WICKWARE,BRE	01:28			
REBOUND (DEADB) by TEAM	01:28			
GOOD! FT by WICKWARE,BRE	01:28	15-8	H 7	
	01:24			MISSED 3PTR by WHITISH,HANNAH
REBOUND (DEF) by WICKWARE,BRE	01:24			
MISSED JUMPER by ANDERSON,JENN	01:03			
	01:03			REBOUND (DEF) by JENSEN,RYLIE CASCIO
	00:52	17-8	H 9	GOOD! JUMPER by SHEPARD,JESSICA [PNT]
TURNOVER by GASSION,ALEXIS	00:37			
	00:36			STEAL by ELIELY,NICEA
	00:17			MISSED 3PTR by SHEPARD,JESSICA
REBOUND (DEF) by TEAM	00:17			
SUB IN: CAHILL,AMANDA	00:14			
SUB OUT: WICKWARE,BRE	00:14			
	00:14			SUB IN: HAVERS,ALLIE
	00:14			SUB IN: CINCORE,JASMINE
	00:14			SUB IN: RAMACIERI,ESTHER
	00:14			SUB OUT: JENSEN,RYLIE CASCIO
	00:14			SUB OUT: WHITISH,HANNAH
	00:14			SUB OUT: SHEPARD,JESSICA

VISITORS: Indiana	Time	Score	Margin	HOME: Nebraska
MISSED 3PTR by CAHILL,AMANDA	00:03			
REBOUND (OFF) by ANDERSON,JENN	00:03			
TURNOVER by ANDERSON,JENN	00:00			

Indiana 8, Nebraska 17

Period 1-only	In Paint	Off T/O	2nd Chance	Fast Break	Bench	
IND	2	5	0	0	4	Score tied - 0 times
NEB	8	5	2	0	2	Lead changed - 0 times

Indiana vs Nebraska
2/19/2017; 2:06 P.M. at Pinnacle Bank Arena (Lincoln, Neb.)
Period 2 Play-By-Play

VISITORS: Indiana	Time	Score	Margin	HOME: Nebraska
SUB OUT: ANDERSON,JENN	10:00			
SUB OUT: BUSS,TYRA	00:00			
SUB OUT: MCBRIDE,KARLEE	10:00			
SUB IN: TOWNER,TYSHEE	00:00			
SUB IN: GULLEY,RIA	10:00			
SUB IN: FORESMAN,DARBY	10:00			
	00:00			SUB OUT: ELIELY,NICEA
	00:00			SUB OUT: HAVERS,ALLIE
	00:00			SUB OUT: CINCORE,JASMINE
TURNOVER by CAHILL,AMANDA	09:50			
	09:49			STEAL by HAVERS,ALLIE
FOUL by FORESMAN,DARBY	09:40			
	09:40			MISSED FT by SHEPARD,JESSICA
	09:40			REBOUND (DEADB) by TEAM
	09:40	18-8	H 10	GOOD! FT by SHEPARD,JESSICA
GOOD! JUMPER by GULLEY,RIA	09:21	18-10	H 8	
ASSIST by BUSS,TYRA	09:21			
	09:04			MISSED 3PTR by CINCORE,JASMINE
REBOUND (DEF) by CAHILL,AMANDA	09:04			
MISSED 3PTR by CAHILL,AMANDA	08:46			
	08:46			REBOUND (DEF) by CINCORE,JASMINE
	08:33	20-10	H 10	GOOD! JUMPER by ELIELY,NICEA
MISSED 3PTR by GASSION,ALEXIS	08:14			
REBOUND (OFF) by CAHILL,AMANDA	08:14			
MISSED JUMPER by CAHILL,AMANDA	08:04			
	08:04			BLOCK by SHEPARD,JESSICA
	08:02			REBOUND (DEF) by HAVERS,ALLIE
	07:55			MISSED 3PTR by HAVERS,ALLIE
BLOCK by CAHILL,AMANDA	07:55			
	07:53			REBOUND (OFF) by SHEPARD,JESSICA
SUB IN: ANDERSON,JENN	07:52			
SUB IN: MCBRIDE,KARLEE	07:52			
SUB OUT: GULLEY,RIA	07:52			
SUB OUT: CAHILL,AMANDA	07:52			
	07:39	22-10	H 12	GOOD! JUMPER by WHITISH,HANNAH
	07:27			FOUL by ELIELY,NICEA
GOOD! FT by BUSS,TYRA	07:26	22-11	H 11	
MISSED FT by BUSS,TYRA	07:26			
	07:26			REBOUND (DEF) by HAVERS,ALLIE
SUB IN: WICKWARE,BRE	07:26			
SUB OUT: FORESMAN,DARBY	07:26			
	07:26			SUB IN: RAMACIERI,ESTHER
	07:00			TURNOVER by RAMACIERI,ESTHER
STEAL by MCBRIDE,KARLEE	06:59			
MISSED 3PTR by WICKWARE,BRE	06:54			
	06:54			REBOUND (DEF) by RAMACIERI,ESTHER
	06:45			TURNOVER by WHITISH,HANNAH
STEAL by BUSS,TYRA	06:44			
GOOD! LAYUP by GASSION,ALEXIS [FB/PNT]	06:39	22-13	H 9	
ASSIST by BUSS,TYRA	06:39			
	06:37			TIMEOUT 30SEC
	06:37			TIMEOUT MEDIA
SUB IN: CAHILL,AMANDA	06:37			

VISITORS: Indiana	Time	Score	Margin	HOME: Nebraska
SUB OUT: WICKWARE,BRE	06:37			
	06:37			SUB IN: JENSEN,RYLIE CASCIO
	06:37			SUB IN: ELIELY,NICEA
	06:37			SUB IN: SIMON,MADDIE
	06:37			SUB OUT: RAMACIERI,ESTHER
FOUL by ANDERSON,JENN	06:24			
	06:17			MISSED JUMPER by SHEPARD,JESSICA
REBOUND (DEF) by CAHILL,AMANDA	06:17			
GOOD! 3PTR by MCBRIDE,KARLEE	05:55	22-16	H 6	
ASSIST by GASSION,ALEXIS	05:55			
	05:22			TURNOVER by SHEPARD,JESSICA
STEAL by BUSS,TYRA	05:21			
GOOD! JUMPER by BUSS,TYRA	05:17	22-18	H 4	
ASSIST by MCBRIDE,KARLEE	05:17			
	05:02			MISSED JUMPER by SIMON,MADDIE
REBOUND (DEF) by CAHILL,AMANDA	05:02			
GOOD! 3PTR by MCBRIDE,KARLEE	04:55	22-21	H 1	
ASSIST by GASSION,ALEXIS	04:55			
	04:52			TIMEOUT 30SEC
SUB IN: FORESMAN,DARBY	04:52			
SUB OUT: ANDERSON,JENN	04:52			
	04:52			SUB IN: MITCHELL,GRACE
	04:52			SUB OUT: SIMON,MADDIE
	04:31	24-21	H 3	GOOD! JUMPER by HAVERS,ALLIE
	04:28			SUB IN: HAVERS,ALLIE
	04:28			SUB OUT: SHEPARD,JESSICA
	04:21			FOUL by JENSEN,RYLIE CASCIO
SUB IN: ROYSTER,KYM	04:21			
SUB OUT: CAHILL,AMANDA	04:21			
	04:21			SUB IN: CINCORE,JASMINE
	04:21			SUB OUT: JENSEN,RYLIE CASCIO
MISSED 3PTR by FORESMAN,DARBY	04:13			
	04:13			REBOUND (DEF) by HAVERS,ALLIE
	03:58	26-21	H 5	GOOD! JUMPER by CINCORE,JASMINE [PNT]
GOOD! 3PTR by MCBRIDE,KARLEE	03:39	26-24	H 2	
ASSIST by BUSS,TYRA	03:39			
FOUL by ROYSTER,KYM	03:28			
	03:22			MISSED 3PTR by CINCORE,JASMINE
REBOUND (DEF) by ROYSTER,KYM	03:22			
GOOD! LAYUP by GASSION,ALEXIS [PNT]	03:10	26-26	T	
	02:54			MISSED JUMPER by HAVERS,ALLIE
REBOUND (DEF) by BUSS,TYRA	02:54			
TURNOVER by BUSS,TYRA	02:48			
	02:47			STEAL by WHITISH,HANNAH
	02:40	29-26	H 3	GOOD! 3PTR by ELIELY,NICEA
	02:40			ASSIST by CINCORE,JASMINE
FOUL by ROYSTER,KYM	02:22			
TURNOVER by ROYSTER,KYM	02:22			
SUB IN: ANDERSON,JENN	02:22			
SUB IN: GULLEY,RIA	02:22			
SUB OUT: MCBRIDE,KARLEE	02:22			
SUB OUT: ROYSTER,KYM	02:22			
	02:22			SUB IN: WOOD,EMILY
	02:22			SUB IN: SHEPARD,JESSICA
	02:22			SUB OUT: CINCORE,JASMINE
	02:22			SUB OUT: MITCHELL,GRACE
	02:11			TURNOVER by WHITISH,HANNAH
STEAL by ANDERSON,JENN	02:10			

VISITORS: Indiana	Time	Score	Margin	HOME: Nebraska
MISSED 3PTR by BUSS,TYRA	01:46			
	01:46			REBOUND (DEF) by WHITISH,HANNAH
	01:29	31-26	H 5	GOOD! JUMPER by HAVERS,ALLIE [PNT]
	01:29			ASSIST by ELIELY,NICEA
	01:06			FOUL by WOOD,EMILY
SUB IN: CAHILL,AMANDA	01:06			
SUB OUT: FORESMAN,DARBY	01:06			
GOOD! JUMPER by GASSION,ALEXIS	00:59	31-28	H 3	
	00:41			TURNOVER by WOOD,EMILY
STEAL by CAHILL,AMANDA	00:39			
MISSED JUMPER by CAHILL,AMANDA	00:24			
REBOUND (OFF) by ANDERSON,JENN	00:24			
GOOD! JUMPER by ANDERSON,JENN [PNT]	00:21	31-30	H 1	
TIMEOUT 30SEC	00:19			
SUB IN: FORESMAN,DARBY	00:19			
SUB OUT: CAHILL,AMANDA	00:19			
	00:17			MISSED 3PTR by WOOD,EMILY
REBOUND (DEF) by GASSION,ALEXIS	00:17			

Indiana 30, Nebraska 31

Period 2-only	In Paint	Off T/O	2nd Chance	Fast Break	Bench	
IND	6	6	2	2	2	Score tied - 2 times
NEB	4	4	2	0	0	Lead changed - 0 times

Official Basketball Box Score -- Game Totals -- Second Half Statistics

Indiana vs Nebraska

2/19/2017 2:06 P.M. at Pinnacle Bank Arena (Lincoln, Neb.)

Indiana 34 • 18-9, 8-6

##	Player	S	Total			Rebounds			PF	TP	A	TO	Blk	Stl	Min
			FG-FGA	3PT	FG-FGA	FT-FTA	Off Reb	Def Reb							
03	BUSS, TYRA	g	4-11	0-4	3-4	2	1	3	1	11	1	2	0	0	19
21	MCBRIDE, KARLEE	g	1-4	1-4	0-0	0	0	0	1	3	0	0	0	1	12
23	GASSION, ALEXIS	g	2-6	0-0	2-3	0	0	0	0	6	2	0	0	0	18
33	CAHILL, AMANDA	f	4-6	2-3	2-2	1	2	3	2	12	0	0	1	1	18
43	ANDERSON, JENN	c	1-1	0-0	0-0	2	4	6	0	2	0	1	0	0	15
05	GULLEY, RIA		0-1	0-1	0-0	0	0	0	0	0	1	0	0	0	8
11	ROYSTER, KYM		0-0	0-0	0-0	0	0	0	0	0	0	0	0	0	0
13	FOESMAN, DARBY		0-0	0-0	0-0	1	0	1	3	0	0	0	0	0	7
22	ELBERT, TIA		0-0	0-0	0-0	0	0	0	0	0	0	0	0	0	1
24	TOWNER, TYSHEE		0-0	0-0	0-0	0	0	0	1	0	0	0	0	0	2
31	WICKWARE, BRE		0-0	0-0	0-0	0	0	0	0	0	0	0	0	0	0
TEAM						0	1	1	0		0				
Totals			12-29	3-12	7-9	6	8	14	8	34	4	3	1	2	100
FG %	3rd Qtr	7-15	46.7%	4th Qtr	5-14	35.7%	Half:	12-29	41.4%						
3FG %	3rd Qtr	1-5	20.0%	4th Qtr	2-7	28.6%	Half:	3-12	26.7%						
FT %	3rd Qtr	3-3	100.0%	4th Qtr	4-6	66.7%	Half:	7-9	77.8%						

Nebraska 36 • 6-20, 2-12

##	Player	S	Total			Rebounds			PF	TP	A	TO	Blk	Stl	Min
			FG-FGA	3PT	FG-FGA	FT-FTA	Off Reb	Def Reb							
03	WHITISH, HANNAH	g	4-5	2-2	0-0	1	2	3	0	10	4	1	0	1	17
05	ELIELY, NICEA	g	3-5	2-3	0-0	1	0	1	2	8	2	0	1	0	16
22	HAVERS, ALLIE	c	4-6	0-1	1-1	2	0	2	4	9	2	1	0	0	16
32	SHEPARD, JESSICA	f	2-6	1-2	1-2	0	2	2	1	6	1	2	0	0	17
34	CINCORE, JASMINE	g	0-1	0-1	0-0	0	5	5	3	0	1	1	0	0	15
02	JENSEN, RYLIE CASCIO		1-2	1-2	0-0	0	0	0	2	3	0	1	0	0	7
11	RAMACIERI, ESTHER		0-0	0-0	0-0	0	0	0	0	0	0	0	0	0	0
12	WOOD, EMILY		0-0	0-0	0-0	0	0	0	0	0	0	0	0	0	5
14	MITCHELL, GRACE		0-1	0-0	0-0	0	1	1	0	0	1	0	0	0	7
24	SIMON, MADDIE		0-0	0-0	0-0	0	0	0	0	0	0	0	0	0	0
TEAM						0	1	1	0		0				
Totals			14-26	6-11	2-3	4	11	15	12	36	11	6	1	1	100
FG %	3rd Qtr	7-12	58.3%	4th Qtr	7-14	50.0%	Half:	14-26	53.8%						
3FG %	3rd Qtr	3-5	60.0%	4th Qtr	3-6	50.0%	Half:	6-11	28.6%						
FT %	3rd Qtr	1-1	100.0%	4th Qtr	1-2	50.0%	Half:	2-3	66.7%						

Officials: Laura Morris, Frank Steratore, Doug Knight

Technical Fouls: Indiana- None. Nebraska- None.

Score by periods	1st	2nd	3rd	4th	Total
Indiana	8	22	18	16	64
Nebraska	17	14	18	18	67

Points	In Paint	Off T/O	2nd Chance	Fast Break	Bench
IND	18	6	4	0	0
NEB	12	3	3	0	3

Last FG - IND 4th-00:18, NEB 4th-00:07.

IND led for 8:07. NEB led for 7:58. Game was tied for 3:55.

Score tied - 5 times
Lead changed - 10 times

Indiana vs Nebraska
2/19/2017; 2:06 P.M. at Pinnacle Bank Arena (Lincoln, Neb.)
Period 3 Play-By-Play

VISITORS: Indiana	Time	Score	Margin	HOME: Nebraska
GOOD! LAYUP by BUSS,TYRA [PNT]	09:50	31-32	V 1	
	09:28	34-32	H 2	GOOD! 3PTR by WHITISH,HANNAH
	09:28			ASSIST by SHEPARD,JESSICA
	09:16			FOUL by ELIELY,NICEA
	09:10			FOUL by CINCORE,JASMINE
GOOD! FT by BUSS,TYRA	09:10	34-33	H 1	
GOOD! FT by BUSS,TYRA	09:10	34-34	T	
FOUL by MCBRIDE,KARLEE	08:44			
	08:36			MISSED 3PTR by ELIELY,NICEA
REBOUND (DEF) by ANDERSON,JENN	08:36			
	08:36			FOUL by HAVERS,ALLIE
MISSED 3PTR by MCBRIDE,KARLEE	08:17			
	08:17			REBOUND (DEF) by CINCORE,JASMINE
	08:13			TURNOVER by CINCORE,JASMINE
GOOD! JUMPER by ANDERSON,JENN [PNT]	07:59	34-36	V 2	
ASSIST by GASSION,ALEXIS	07:59			
	07:47	36-36	T	GOOD! JUMPER by SHEPARD,JESSICA [PNT]
	07:47			ASSIST by HAVERS,ALLIE
MISSED LAYUP by BUSS,TYRA	07:29			
	07:29			REBOUND (DEF) by SHEPARD,JESSICA
	07:17			MISSED JUMPER by SHEPARD,JESSICA
REBOUND (DEF) by ANDERSON,JENN	07:17			
GOOD! JUMPER by GASSION,ALEXIS [PNT]	07:12	36-38	V 2	
	06:39			TURNOVER by SHEPARD,JESSICA
STEAL by MCBRIDE,KARLEE	06:37			
MISSED LAYUP by BUSS,TYRA	06:33			
	06:33			BLOCK by ELIELY,NICEA
	06:32			REBOUND (DEF) by WHITISH,HANNAH
	06:26	39-38	H 1	GOOD! 3PTR by ELIELY,NICEA
	06:26			ASSIST by WHITISH,HANNAH
GOOD! JUMPER by GASSION,ALEXIS [PNT]	06:03	39-40	V 1	
	06:03			FOUL by HAVERS,ALLIE
GOOD! FT by GASSION,ALEXIS	06:03	39-41	V 2	
SUB IN: GULLEY,RIA	06:03			
SUB IN: FORESMAN,DARBY	06:03			
SUB IN: TOWNER,TYSHEE	06:03			
SUB OUT: MCBRIDE,KARLEE	06:03			
SUB OUT: GASSION,ALEXIS	06:03			
SUB OUT: ANDERSON,JENN	06:03			
	06:03			SUB IN: WOOD,EMILY
	06:03			SUB IN: JENSEN,RYLIE CASCIO
	06:03			SUB OUT: WHITISH,HANNAH
	06:03			SUB OUT: CINCORE,JASMINE
	05:38			MISSED 3PTR by HAVERS,ALLIE
REBOUND (DEF) by BUSS,TYRA	05:38			
GOOD! 3PTR by CAHILL,AMANDA	05:23	39-44	V 5	
ASSIST by GULLEY,RIA	05:23			
	05:10			TURNOVER by HAVERS,ALLIE
STEAL by CAHILL,AMANDA	05:08			
GOOD! LAYUP by CAHILL,AMANDA [PNT]	04:52	39-46	V 7	
	04:48			TIMEOUT 30SEC
	04:48			TIMEOUT MEDIA
	04:48			SUB IN: SIMON,MADDIE

VISITORS: Indiana	Time	Score	Margin	HOME: Nebraska
	04:48			SUB IN: MITCHELL,GRACE
	04:48			SUB OUT: HAVERS,ALLIE
	04:48			SUB OUT: SHEPARD,JESSICA
FOUL by TOWNER,TYSHEE	04:30			
	04:30			TIMEOUT MEDIA
SUB IN: GASSION,ALEXIS	04:30			
SUB OUT: TOWNER,TYSHEE	04:30			
	04:30			SUB IN: SHEPARD,JESSICA
	04:30			SUB OUT: SIMON,MADDIE
	04:17	42-46	V 4	GOOD! 3PTR by JENSEN,RYLIE CASCIO
	04:17			ASSIST by MITCHELL,GRACE
MISSED 3PTR by GULLEY,RIA	03:48			
REBOUND (OFF) by FORESMAN,DARBY	03:48			
GOOD! JUMPER by CAHILL,AMANDA [PNT]	03:19	42-48	V 6	
ASSIST by BUSS,TYRA	03:19			
	02:56			FOUL by JENSEN,RYLIE CASCIO
	02:56			TURNOVER by JENSEN,RYLIE CASCIO
SUB IN: ANDERSON,JENN	02:56			
SUB OUT: CAHILL,AMANDA	02:56			
	02:56			SUB IN: HAVERS,ALLIE
	02:56			SUB IN: CINCORE,JASMINE
	02:56			SUB IN: WHITISH,HANNAH
	02:56			SUB OUT: WOOD,EMILY
	02:56			SUB OUT: ELIELY,NICEA
	02:56			SUB OUT: SHEPARD,JESSICA
MISSED 3PTR by BUSS,TYRA	02:45			
	02:45			REBOUND (DEF) by CINCORE,JASMINE
	02:16	44-48	V 4	GOOD! JUMPER by HAVERS,ALLIE [PNT]
	02:16			ASSIST by WHITISH,HANNAH
FOUL by FORESMAN,DARBY	02:16			
	02:16	45-48	V 3	GOOD! FT by HAVERS,ALLIE
SUB IN: MCBRIDE,KARLEE	02:16			
SUB OUT: GULLEY,RIA	02:16			
MISSED JUMPER by GASSION,ALEXIS	02:01			
	02:01			REBOUND (DEF) by WHITISH,HANNAH
	01:45	47-48	V 1	GOOD! JUMPER by WHITISH,HANNAH
MISSED 3PTR by BUSS,TYRA	01:24			
	01:24			REBOUND (DEF) by CINCORE,JASMINE
FOUL by BUSS,TYRA	01:14			
SUB IN: ELBERT,TIA	01:14			
SUB IN: CAHILL,AMANDA	01:14			
SUB OUT: BUSS,TYRA	01:14			
SUB OUT: FORESMAN,DARBY	01:14			
	00:50	49-48	H 1	GOOD! JUMPER by HAVERS,ALLIE [PNT]
	00:50			ASSIST by WHITISH,HANNAH
MISSED JUMPER by GASSION,ALEXIS	00:30			
	00:30			REBOUND (DEF) by CINCORE,JASMINE
SUB IN: TOWNER,TYSHEE	00:25			
SUB OUT: MCBRIDE,KARLEE	00:25			
	00:00			MISSED JUMPER by HAVERS,ALLIE
	00:00			REBOUND (OFF) by WHITISH,HANNAH
	00:00			MISSED JUMPER by WHITISH,HANNAH
REBOUND (DEF) by TEAM	00:00			

Indiana 64, Nebraska 67

	Period 3-only Period 3-only	In In Paint Paint	Off Off T/O T/O	2nd 2nd Chance Chance	Fast Fast Break Break	Bench Bench	
IND		12	4	2	0	0	Score tied - 2 times
NEB		6	0	0	0	3	Lead changed - 6 times

Indiana vs Nebraska
2/19/2017; 2:06 P.M. at Pinnacle Bank Arena (Lincoln, Neb.)
Period 4 Play-By-Play

VISITORS: Indiana	Time	Score	Margin	HOME: Nebraska
	10:00			SUB IN: JENSEN,RYLIE CASCIO
	10:00			SUB OUT: ELIELY,NICEA
MISSED 3PTR by MCBRIDE,KARLEE	09:43			
REBOUND (OFF) by ANDERSON,JENN	09:43			
	09:41			FOUL by CINCORE,JASMINE
GOOD! LAYUP by BUSS,TYRA [PNT]	09:20	49-50	V 1	
	09:05			MISSED 3PTR by JENSEN,RYLIE CASCIO
REBOUND (DEF) by ANDERSON,JENN	09:05			
	08:33			FOUL by JENSEN,RYLIE CASCIO
	08:33			SUB IN: ELIELY,NICEA
	08:33			SUB OUT: JENSEN,RYLIE CASCIO
MISSED JUMPER by GASSION,ALEXIS	08:31			
	08:31			REBOUND (DEF) by SHEPARD,JESSICA
	08:15	52-50	H 2	GOOD! 3PTR by SHEPARD,JESSICA
	08:15			ASSIST by ELIELY,NICEA
MISSED 3PTR by MCBRIDE,KARLEE	07:55			
REBOUND (OFF) by BUSS,TYRA	07:55			
TURNOVER by BUSS,TYRA	07:40			
	07:39			STEAL by WHITISH,HANNAH
SUB IN: FORESMAN,DARBY	07:23			
SUB IN: GULLEY,RIA	07:23			
SUB OUT: MCBRIDE,KARLEE	07:23			
SUB OUT: ANDERSON,JENN	07:23			
	07:17			TURNOVER by WHITISH,HANNAH
	06:56			FOUL by HAVERS,ALLIE
GOOD! FT by CAHILL,AMANDA	06:56	52-51	H 1	
GOOD! FT by CAHILL,AMANDA	06:56	52-52	T	
	06:39	55-52	H 3	GOOD! 3PTR by ELIELY,NICEA
	06:39			ASSIST by CINCORE,JASMINE
MISSED JUMPER by CAHILL,AMANDA	06:13			
REBOUND (OFF) by CAHILL,AMANDA	06:13			
MISSED 3PTR by CAHILL,AMANDA	06:05			
	06:05			REBOUND (DEF) by CINCORE,JASMINE
	05:45			MISSED 3PTR by SHEPARD,JESSICA
	05:45			REBOUND (OFF) by HAVERS,ALLIE
FOUL by FORESMAN,DARBY	05:44			
SUB IN: ANDERSON,JENN	05:44			
SUB OUT: FORESMAN,DARBY	05:44			
	05:30			MISSED JUMPER by ELIELY,NICEA
	05:30			REBOUND (OFF) by HAVERS,ALLIE
FOUL by CAHILL,AMANDA	05:25			
FOUL by CAHILL,AMANDA	05:22			
SUB IN: FORESMAN,DARBY	05:22			
SUB OUT: ANDERSON,JENN	05:22			
FOUL by FORESMAN,DARBY	05:18			
	05:18			MISSED FT by SHEPARD,JESSICA
	05:18			REBOUND (DEADB) by TEAM
	05:18	56-52	H 4	GOOD! FT by SHEPARD,JESSICA
	05:03			FOUL by HAVERS,ALLIE
SUB IN: ANDERSON,JENN	05:03			
SUB OUT: FORESMAN,DARBY	05:03			
	05:03			SUB IN: MITCHELL,GRACE
	05:03			SUB OUT: HAVERS,ALLIE

VISITORS: Indiana	Time	Score	Margin	HOME: Nebraska
GOOD! 3PTR by CAHILL,AMANDA	05:02	56-55	H 1	
TIMEOUT 30SEC	04:59			
	04:59			TIMEOUT MEDIA
	04:48			MISSED JUMPER by SHEPARD,JESSICA
REBOUND (DEF) by CAHILL,AMANDA	04:48			
GOOD! JUMPER by BUSS,TYRA [PNT]	04:18	56-57	V 1	
	03:51			MISSED 3PTR by CINCORE,JASMINE
	03:51			REBOUND (OFF) by ELIELY,NICEA
	03:49	58-57	H 1	GOOD! JUMPER by ELIELY,NICEA [PNT]
MISSED JUMPER by GASSION,ALEXIS	03:29			
	03:29			REBOUND (DEF) by MITCHELL,GRACE
SUB IN: MCBRIDE,KARLEE	03:29			
SUB OUT: GULLEY,RIA	03:29			
	03:16			MISSED JUMPER by MITCHELL,GRACE
BLOCK by CAHILL,AMANDA	03:16			
REBOUND (DEF) by CAHILL,AMANDA	03:14			
	03:11			FOUL by CINCORE,JASMINE
MISSED FT by GASSION,ALEXIS	03:11			
REBOUND (DEADB) by TEAM	03:11			
GOOD! FT by GASSION,ALEXIS	03:11	58-58	T	
	03:11			SUB IN: HAVERS,ALLIE
	03:11			SUB OUT: MITCHELL,GRACE
	02:55			FOUL by SHEPARD,JESSICA
	02:55			TURNOVER by SHEPARD,JESSICA
MISSED JUMPER by BUSS,TYRA	02:27			
REBOUND (OFF) by ANDERSON,JENN	02:27			
TURNOVER by BUSS,TYRA	02:22			
	02:22			SUB IN: WOOD,EMILY
	02:22			SUB OUT: CINCORE,JASMINE
	02:09			MISSED JUMPER by SHEPARD,JESSICA
REBOUND (DEF) by ANDERSON,JENN	02:09			
TURNOVER by ANDERSON,JENN	01:53			
	01:36	61-58	H 3	GOOD! 3PTR by WHITISH,HANNAH
	01:36			ASSIST by HAVERS,ALLIE
GOOD! 3PTR by MCBRIDE,KARLEE	01:20	61-61	T	
ASSIST by GASSION,ALEXIS	01:20			
	01:03	63-61	H 2	GOOD! JUMPER by WHITISH,HANNAH
	00:41			SUB IN: CINCORE,JASMINE
	00:41			SUB OUT: WOOD,EMILY
	00:29			FOUL by ELIELY,NICEA
MISSED FT by BUSS,TYRA	00:29			
REBOUND (DEADB) by TEAM	00:29			
GOOD! FT by BUSS,TYRA	00:29	63-62	H 1	
SUB IN: WICKWARE,BRE	00:29			
SUB IN: TOWNER,TYSHEE	00:29			
SUB OUT: ANDERSON,JENN	00:29			
SUB OUT: MCBRIDE,KARLEE	00:29			
	00:28			TIMEOUT 30SEC
	00:25	65-62	H 3	GOOD! LAYUP by HAVERS,ALLIE [PNT]
	00:23			ASSIST by WHITISH,HANNAH
TIMEOUT 30SEC	00:21			
GOOD! LAYUP by BUSS,TYRA [PNT]	00:18	65-64	H 1	
TIMEOUT 30SEC	00:17			
SUB IN: MCBRIDE,KARLEE	00:08			
SUB IN: ANDERSON,JENN	00:08			
SUB OUT: WICKWARE,BRE	00:08			
SUB OUT: TOWNER,TYSHEE	00:08			
	00:08			SUB IN: WOOD,EMILY

VISITORS: Indiana	Time	Score	Margin	HOME: Nebraska
	00:07	67-64	H 3	GOOD! LAYUP by HAVERS,ALLIE [PNT]
	00:07			ASSIST by ELIELY,NICEA
SUB IN: WICKWARE,BRE	00:07			
SUB IN: TOWNER,TYSHEE	00:07			
SUB OUT: MCBRIDE,KARLEE	00:07			
SUB OUT: ANDERSON,JENN	00:07			
	00:07			SUB OUT: CINCORE,JASMINE
MISSED 3PTR by BUSS,TYRA	00:05			
REBOUND (OFF) by BUSS,TYRA	00:05			
MISSED 3PTR by BUSS,TYRA	00:01			
	00:01			REBOUND (DEF) by TEAM

Indiana 64, Nebraska 67

Period 4-only	In Paint	Off T/O	2nd Chance	Fast Break	Bench	
IND	6	2	2	0	0	Score tied - 6 times
NEB	6	3	3	0	0	Lead changed - 4 times

Indiana vs Nebraska
2/19/2017; 2:06 P.M. at Pinnacle Bank Arena (Lincoln, Neb.)
Scoring/Runs Reference

Period 1				
Indiana	Score	Marg		Nebraska
	0-3	3	3	WHITISH 3PTR - 08:42
	0-5	5	2	CINCORE JUMPER [P] - 08:20
	0-7	7	2	SHEPARD JUMPER [P] - 07:21
	0-10	10	3	WHITISH 3PTR - 06:23
05:28 - BUSS LAYUP [P]	2	2-10	8	
04:30 - GULLEY 3PTR	3	5-10	5	
	5-12	7	2	MITCHELL JUMPER [P] - 03:39
02:07 - CAHILL JUMPER	2	7-12	5	
	7-15	8	3	SHEPARD 3PTR - 01:51
01:28 - WICKWARE FT	1	8-15	7	
	8-17	9	2	SHEPARD JUMPER [P] - 00:52

Period 2				
Indiana	Score	Marg		Nebraska
	8-18	10	1	SHEPARD FT - 09:40
09:21 - GULLEY JUMPER	2	10-18	8	
	10-20	10	2	ELIELY JUMPER - 08:33
	10-22	12	2	WHITISH JUMPER - 07:39
07:26 - BUSS FT	1	11-22	11	
06:39 - GASSION LAYUP [P]	2	13-22	9	
05:55 - MCBRIDE 3PTR	3	16-22	6	
05:17 - BUSS JUMPER	2	18-22	4	
04:55 - MCBRIDE 3PTR	3	21-22	1	
	21-24	3	2	HAVERS JUMPER - 04:31
	21-26	5	2	CINCORE JUMPER [P] - 03:58
03:39 - MCBRIDE 3PTR	3	24-26	2	
03:10 - GASSION LAYUP [P]	2	26-26	0	
	26-29	3	3	ELIELY 3PTR - 02:40
	26-31	5	2	HAVERS JUMPER [P] - 01:29
00:59 - GASSION JUMPER	2	28-31	3	
00:21 - ANDERSON JUMPER [P]	2	30-31	1	

Period 3				
Indiana	Score	Marg		Nebraska
09:50 - BUSS LAYUP [P]	2	32-31	-1	
	32-34	2	3	WHITISH 3PTR - 09:28
09:10 - BUSS FT	1	33-34	1	
09:10 - BUSS FT	1	34-34	0	
07:59 - ANDERSON JUMPER [P]	2	36-34	-2	
	36-36	0	2	SHEPARD JUMPER [P] - 07:47
07:12 - GASSION JUMPER [P]	2	38-36	-2	
	38-39	1	3	ELIELY 3PTR - 06:26
06:03 - GASSION JUMPER [P]	2	40-39	-1	
06:03 - GASSION FT	1	41-39	-2	
05:23 - CAHILL 3PTR	3	44-39	-5	
04:52 - CAHILL LAYUP [P]	2	46-39	-7	
	46-42	-4	3	JENSEN 3PTR - 04:17
03:19 - CAHILL JUMPER [P]	2	48-42	-6	
	48-44	-4	2	HAVERS JUMPER [P] - 02:16
	48-45	-3	1	HAVERS FT - 02:16
	48-47	-1	2	WHITISH JUMPER - 01:45
	48-49	1	2	HAVERS JUMPER [P] - 00:50

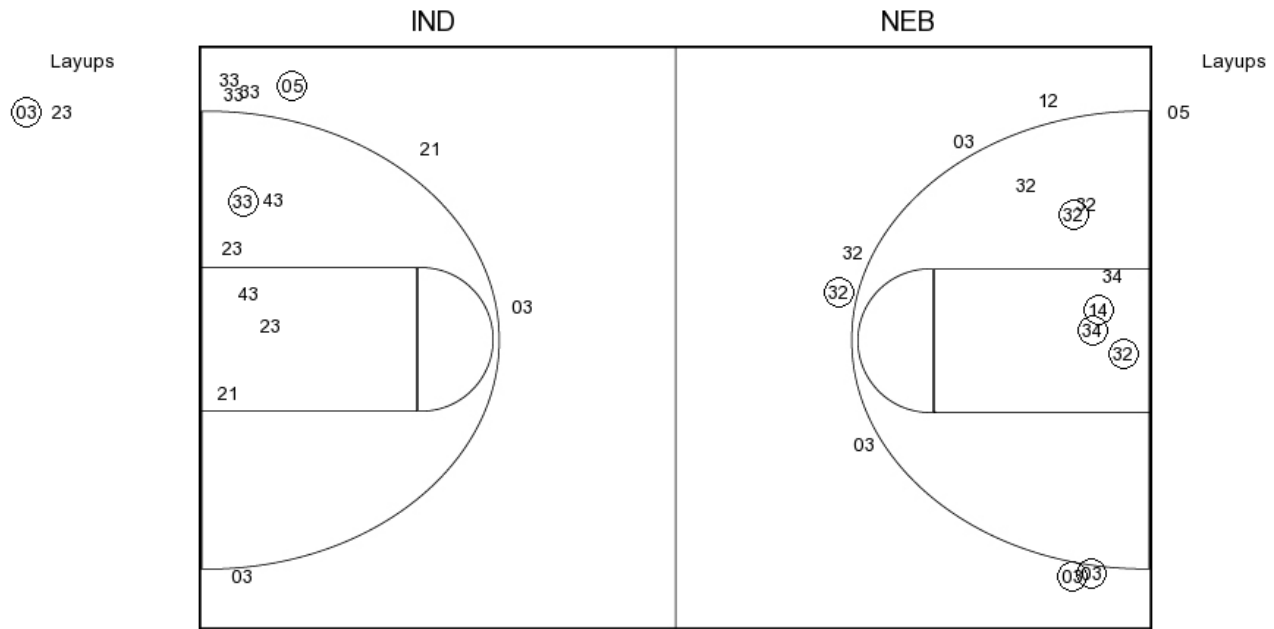
Period 4				
Indiana	Score	Marg		Nebraska
09:20 - BUSS LAYUP [P]	2	50-49	-1	
	50-52	2	3	SHEPARD 3PTR - 08:15
06:56 - CAHILL FT	1	51-52	1	
06:56 - CAHILL FT	1	52-52	0	
	52-55	3	3	ELIELY 3PTR - 06:39
	52-56	4	1	SHEPARD FT - 05:18
05:02 - CAHILL 3PTR	3	55-56	1	
04:18 - BUSS JUMPER [P]	2	57-56	-1	
	57-58	1	2	ELIELY JUMPER [P] - 03:49
03:11 - GASSION FT	1	58-58	0	
	58-61	3	3	WHITISH 3PTR - 01:36
01:20 - MCBRIDE 3PTR	3	61-61	0	
	61-63	2	2	WHITISH JUMPER - 01:03
00:29 - BUSS FT	1	62-63	1	
	62-65	3	2	HAVERS LAYUP [P] - 00:25
00:18 - BUSS LAYUP [P]	2	64-65	1	
	64-67	3	2	HAVERS LAYUP [P] - 00:07

Indiana vs Nebraska

OFFICIAL SHOT CHART

2/19/2017 at Pinnacle Bank Arena (Lincoln, Neb.)

PERIOD 1



IND PERIOD 1

FG Made	12
FG Attempted	32
3PFG Made	4
3PFG Attempted	15

NEB PERIOD 1

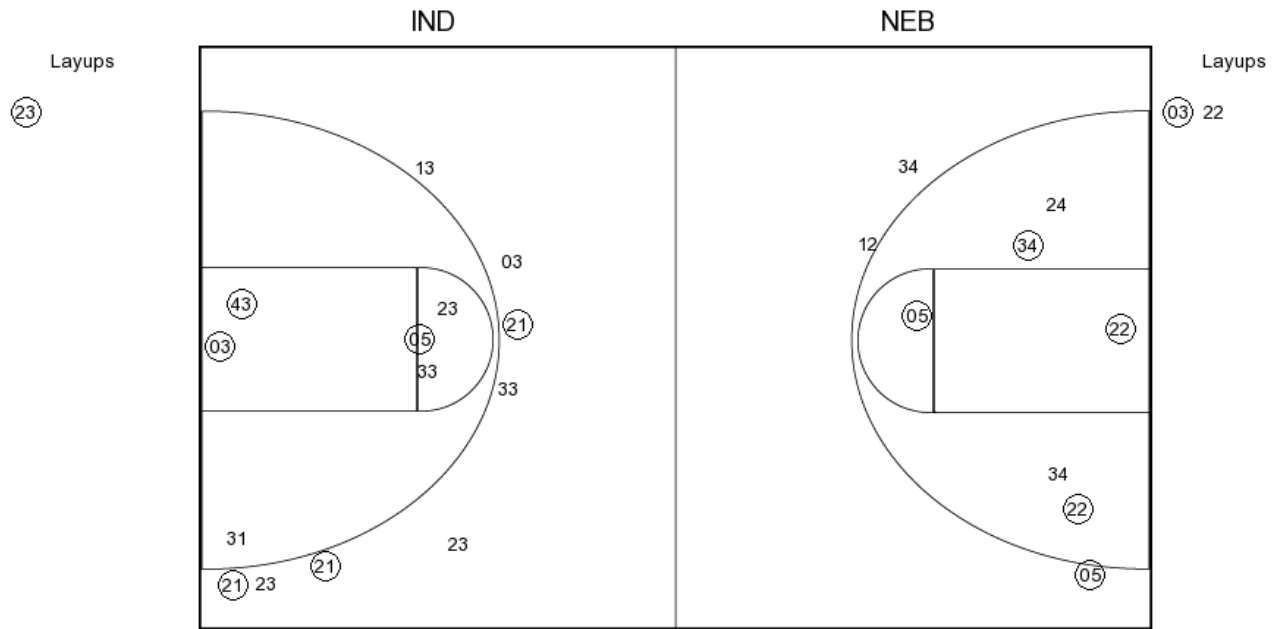
FG Made	13
FG Attempted	29
3PFG Made	4
3PFG Attempted	14

Indiana vs Nebraska

OFFICIAL SHOT CHART

2/19/2017 at Pinnacle Bank Arena (Lincoln, Neb.)

PERIOD 2



IND PERIOD 2

FG Made

FG Attempted

3PFG Made

3PFG Attempted

NEB PERIOD 2

FG Made

FG Attempted

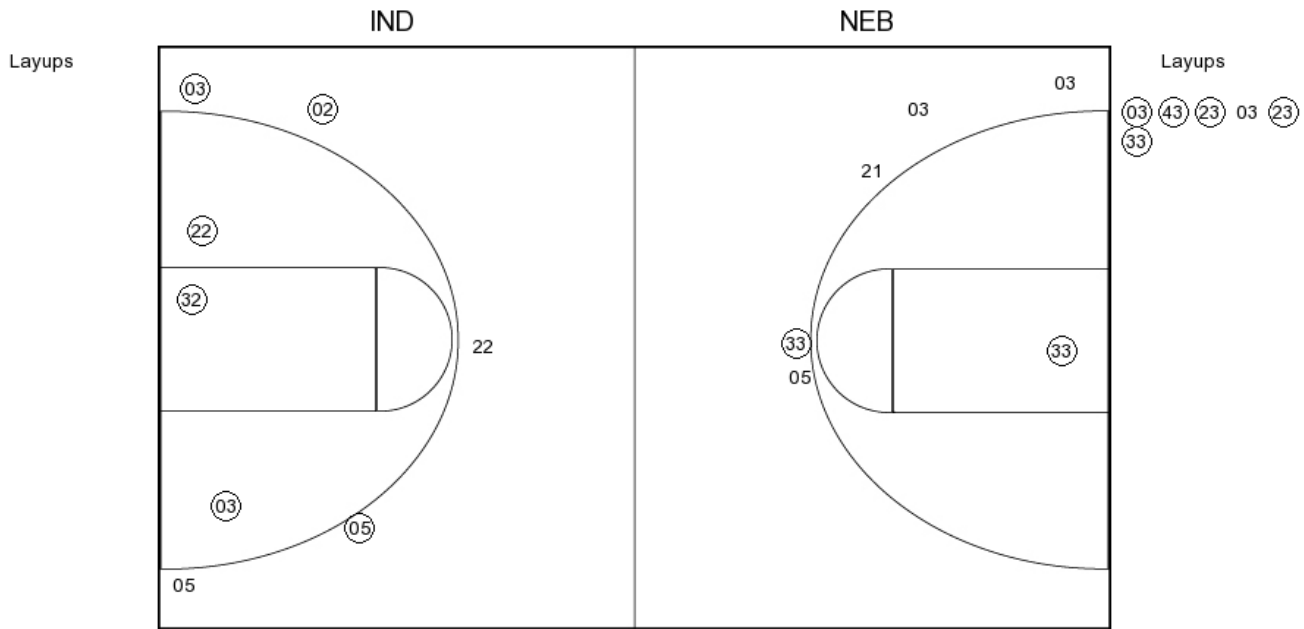
3PFG Made

3PFG Attempted

Indiana vs Nebraska
OFFICIAL SHOT CHART

2/19/2017 at Pinnacle Bank Arena (Lincoln, Neb.)

PERIOD 3



IND PERIOD 3

FG Made	12
FG Attempted	29
3PFG Made	3
3PFG Attempted	12

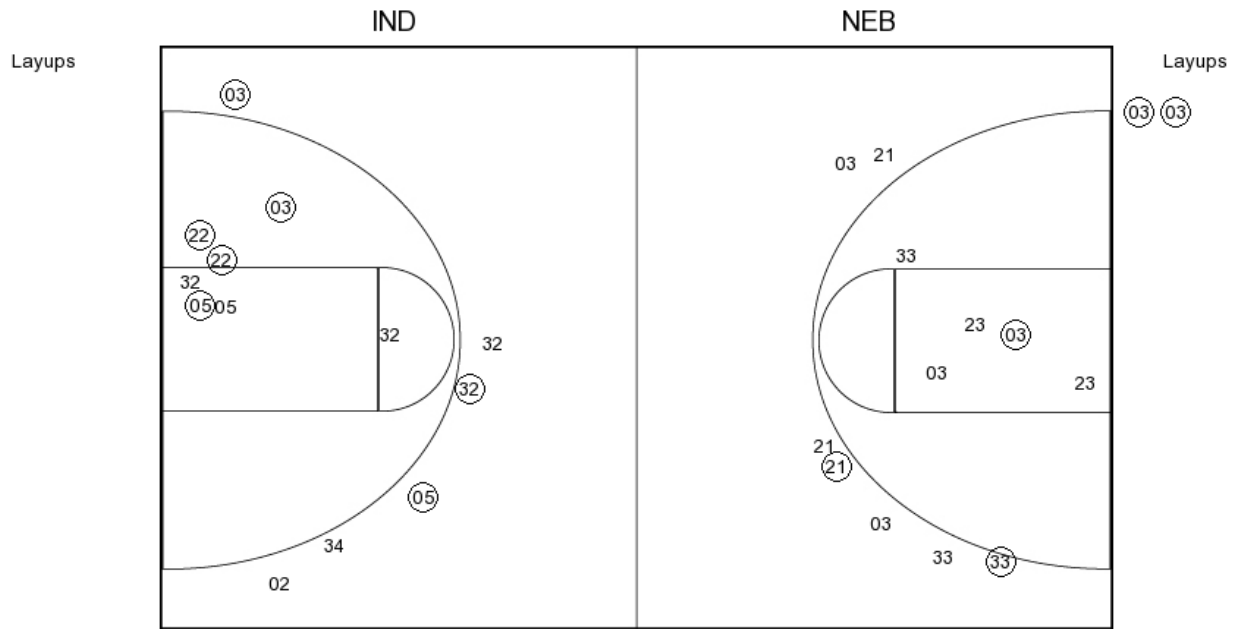
NEB PERIOD 3

FG Made	14
FG Attempted	26
3PFG Made	6
3PFG Attempted	11

Indiana vs Nebraska
OFFICIAL SHOT CHART

2/19/2017 at Pinnacle Bank Arena (Lincoln, Neb.)

PERIOD 4



IND PERIOD 4

FG Made
 FG Attempted
 3PFG Made
 3PFG Attempted

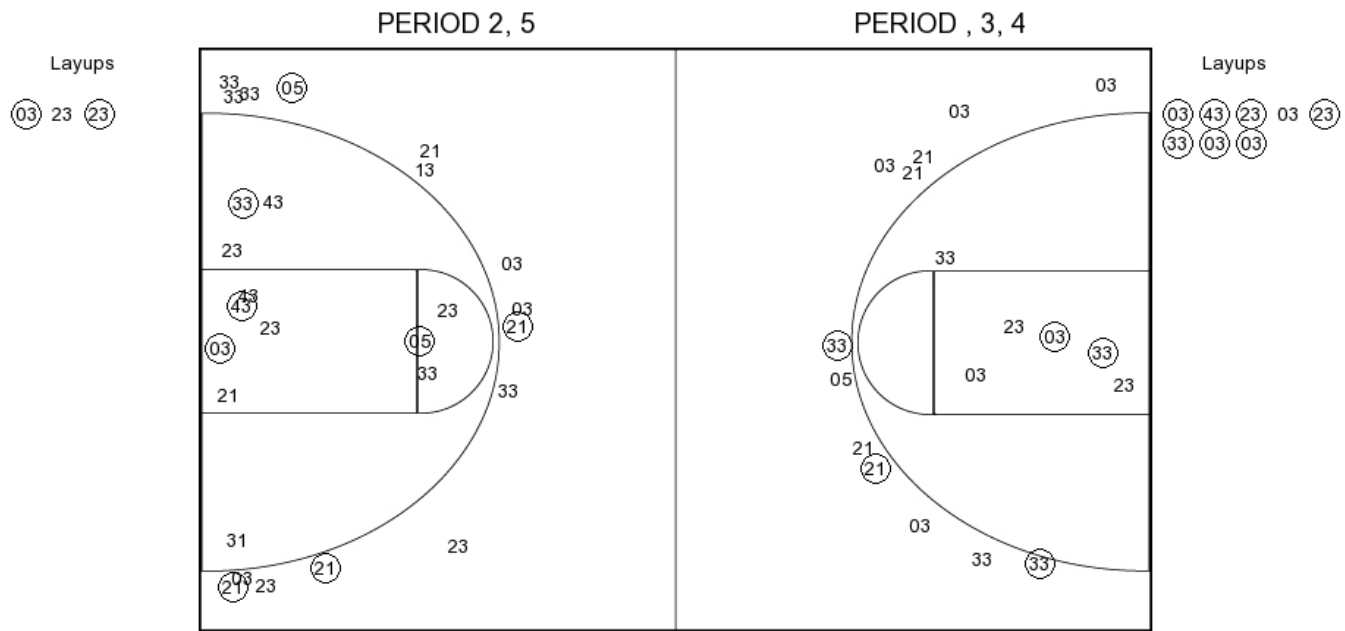
NEB PERIOD 4

FG Made
 FG Attempted
 3PFG Made
 3PFG Attempted

Indiana vs Nebraska
OFFICIAL SHOT CHART

2/19/2017 at Pinnacle Bank Arena (Lincoln, Neb.)

Indiana



IND PERIOD 1

FG Made	12
FG Attempted	32
3PFG Made	4
3PFG Attempted	15

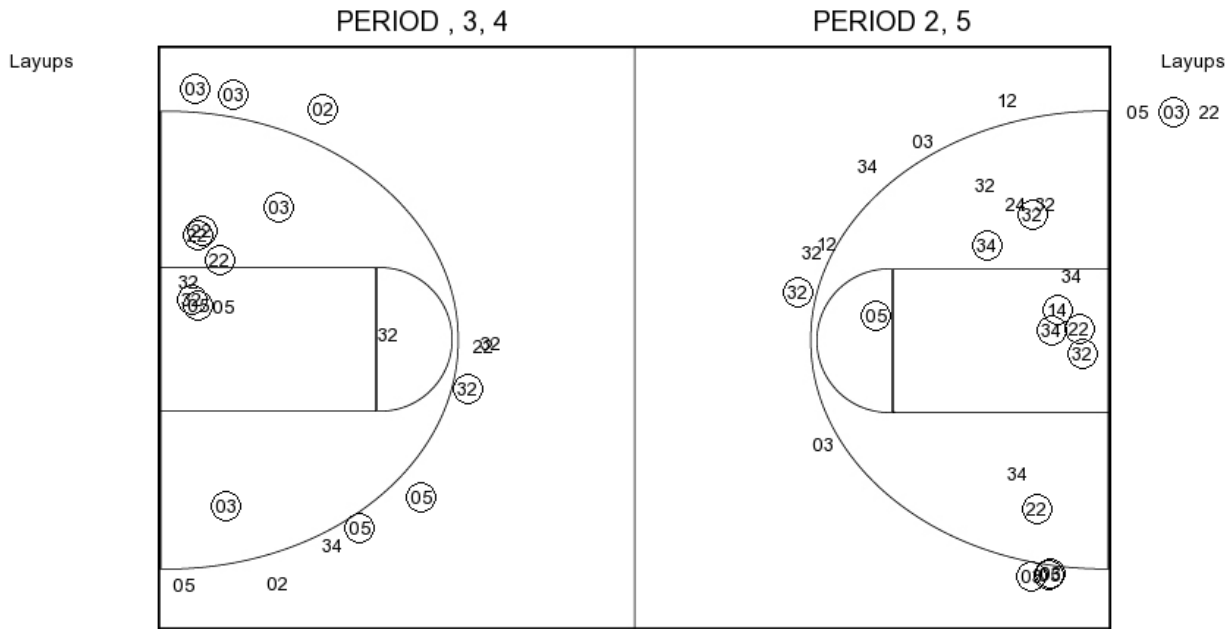
IND PERIOD 2

FG Made	
FG Attempted	
3PFG Made	
3PFG Attempted	

Indiana vs Nebraska
OFFICIAL SHOT CHART

2/19/2017 at Pinnacle Bank Arena (Lincoln, Neb.)

Nebraska



NEB PERIOD 1

FG Made	13
FG Attempted	29
3PFG Made	4
3PFG Attempted	14

NEB PERIOD 2

FG Made	
FG Attempted	
3PFG Made	
3PFG Attempted	