



NEBRASKA VS. OHIO STATE

2/16/2017

Pinnacle Bank Arena (Lincoln, Neb.)

FINAL STATS

Ohio State
(23-5, 13-1)

87

Nebraska
(5-20, 1-12)

69

Start Time: 7:06 P.M.

Officials: Mark Zentz, Bryan Enterline, Amy Bonner

Attendance: 4278

Official Basketball Box Score -- Game Totals -- Final Statistics

Ohio State vs Nebraska

2/16/2017 7:06 P.M. at Pinnacle Bank Arena (Lincoln, Neb.)

Ohio State 87 - 23-5, 13-1

| ## | Player | S | Total | | | Rebounds | | | PF | TP | A | TO | Blk | Stl | Min |
|--------|------------------|---|--------|-------|--------|----------|---------|---------|----|----|----|----|-----|-----|-----|
| | | | FG-FGA | 3PT | FG-FGA | FT-FTA | Off Reb | Def Reb | | | | | | | |
| 00 | MCCOY,TORI | f | 6-6 | 0-0 | 0-2 | 3 | 4 | 7 | 4 | 12 | 0 | 2 | 4 | 0 | 22 |
| 03 | MITCHELL,KELSEY | g | 10-18 | 5-9 | 2-2 | 0 | 3 | 3 | 2 | 27 | 3 | 2 | 0 | 1 | 33 |
| 04 | CALHOUN,SIERRA | g | 4-5 | 3-4 | 2-2 | 1 | 3 | 4 | 2 | 13 | 2 | 1 | 0 | 0 | 22 |
| 23 | LEWIS,KIARA | g | 3-9 | 1-3 | 2-2 | 1 | 3 | 4 | 2 | 9 | 2 | 4 | 0 | 1 | 23 |
| 32 | COOPER,SHAYLA | f | 3-8 | 0-1 | 2-2 | 1 | 8 | 9 | 2 | 8 | 2 | 3 | 0 | 1 | 27 |
| 15 | HARPER,LINNAE | | 4-11 | 0-1 | 1-2 | 2 | 3 | 5 | 0 | 9 | 1 | 1 | 0 | 2 | 20 |
| 20 | DOSS,ASIA | | 1-5 | 1-3 | 0-0 | 0 | 3 | 3 | 1 | 3 | 5 | 2 | 0 | 1 | 22 |
| 22 | HART,ALEXA | | 2-3 | 0-0 | 0-0 | 4 | 1 | 5 | 5 | 4 | 1 | 0 | 4 | 0 | 17 |
| 24 | WATERMAN,MAKAYLA | | 1-2 | 0-0 | 0-0 | 1 | 3 | 4 | 4 | 2 | 2 | 2 | 0 | 0 | 14 |
| TEAM | | | | | | 1 | 0 | 1 | 0 | | 0 | | | | |
| TOTALS | | | 34-67 | 10-21 | 9-12 | 14 | 31 | 45 | 22 | 87 | 18 | 17 | 8 | 6 | 200 |

Deadball Rebounds: 1,0

| | | | | | | | | | |
|-------|-----------------|-------|-----------------|-------|--------------|-------|---------|------|--------|
| FG % | 1st Half: 16-31 | 51.6% | 2nd Half: 18-36 | 50.0% | Game: 34-67 | 50.7% | 4th Qtr | 9-18 | 50.0% |
| | 1st Qtr 8-18 | 44.4% | 2nd Qtr 8-13 | 61.5% | 3rd Qtr 9-18 | 50.0% | | | |
| 3FG % | 1st Half: 6-10 | 60.0% | 2nd Half: 4-11 | 36.4% | Game: 10-21 | 47.6% | 4th Qtr | 3-5 | 60.0% |
| | 1st Qtr 3-5 | 60.0% | 2nd Qtr 3-5 | 60.0% | 3rd Qtr 1-6 | 16.7% | | | |
| FT % | 1st Half: 2-4 | 50.0% | 2nd Half: 7-8 | 87.5% | Game: 9-12 | 75.0% | 4th Qtr | 2-2 | 100.0% |
| | 1st Qtr 0-0 | 0% | 2nd Qtr 2-4 | 50.0% | 3rd Qtr 5-6 | 83.3% | | | |

Nebraska 69 - 5-20, 1-12

| ## | Player | S | Total | | | Rebounds | | | PF | TP | A | TO | Blk | Stl | Min |
|--------|---------------------|---|--------|------|--------|----------|---------|---------|----|----|----|----|-----|-----|-----|
| | | | FG-FGA | 3PT | FG-FGA | FT-FTA | Off Reb | Def Reb | | | | | | | |
| 03 | WHITISH,HANNAH | g | 2-8 | 1-3 | 3-4 | 1 | 3 | 4 | 4 | 8 | 5 | 1 | 1 | 0 | 30 |
| 05 | ELIELY,NICEA | g | 4-8 | 0-0 | 5-7 | 1 | 1 | 2 | 1 | 13 | 0 | 2 | 0 | 1 | 32 |
| 22 | HAVERS,ALLIE | c | 0-3 | 0-0 | 0-0 | 1 | 1 | 2 | 1 | 0 | 1 | 0 | 0 | 0 | 22 |
| 32 | SHEPARD,JESSICA | f | 11-27 | 1-3 | 5-9 | 2 | 8 | 10 | 2 | 28 | 0 | 3 | 0 | 2 | 33 |
| 34 | CINCORE,JASMINE | g | 1-9 | 0-1 | 3-6 | 3 | 2 | 5 | 2 | 5 | 1 | 3 | 0 | 0 | 26 |
| 02 | JENSEN,RYLIE CASCIO | | 0-0 | 0-0 | 0-0 | 0 | 1 | 1 | 0 | 0 | 1 | 1 | 0 | 0 | 9 |
| 11 | RAMACIERI,ESTHER | | 0-0 | 0-0 | 2-2 | 0 | 0 | 0 | 1 | 2 | 0 | 0 | 0 | 1 | 3 |
| 12 | WOOD,EMILY | | 3-3 | 3-3 | 0-0 | 2 | 0 | 2 | 2 | 9 | 2 | 0 | 0 | 0 | 20 |
| 14 | MITCHELL,GRACE | | 1-2 | 0-0 | 0-1 | 1 | 2 | 3 | 1 | 2 | 0 | 0 | 0 | 1 | 16 |
| 24 | SIMON,MADDIE | | 1-3 | 0-2 | 0-0 | 0 | 2 | 2 | 0 | 2 | 1 | 1 | 0 | 0 | 9 |
| TEAM | | | | | | 2 | 1 | 3 | 0 | | 1 | | | | |
| TOTALS | | | 23-63 | 5-12 | 18-29 | 13 | 21 | 34 | 14 | 69 | 11 | 12 | 1 | 5 | 200 |

Deadball Rebounds: 7,0

| | | | | | | | | | |
|-------|----------------|-------|-----------------|-------|--------------|-------|---------|------|-------|
| FG % | 1st Half: 9-32 | 28.1% | 2nd Half: 14-31 | 45.2% | Game: 23-63 | 36.5% | 4th Qtr | 7-15 | 46.7% |
| | 1st Qtr 4-14 | 28.6% | 2nd Qtr 5-18 | 27.8% | 3rd Qtr 7-16 | 43.8% | | | |
| 3FG % | 1st Half: 1-6 | 16.7% | 2nd Half: 4-6 | 66.7% | Game: 5-12 | 41.7% | 4th Qtr | 3-4 | 75.0% |
| | 1st Qtr 1-3 | 33.3% | 2nd Qtr 0-3 | 00.0% | 3rd Qtr 1-2 | 50.0% | | | |
| FT % | 1st Half: 4-9 | 44.4% | 2nd Half: 14-20 | 70.0% | Game: 18-29 | 62.1% | 4th Qtr | 6-11 | 54.5% |
| | 1st Qtr 1-3 | 33.3% | 2nd Qtr 3-6 | 50.0% | 3rd Qtr 8-9 | 88.9% | | | |

Officials: Mark Zentz, Bryan Enterline, Amy Bonner
 Technical Fouls: Ohio State- None. Nebraska- None.
 Attendance: 4278

| Score by periods | 1st | 2nd | 3rd | 4th | Total |
|------------------|-----|-----|-----|-----|-------|
| Ohio State | 19 | 21 | 24 | 23 | 87 |
| Nebraska | 10 | 13 | 23 | 23 | 69 |

| Points | In Paint | Off T/O | 2nd 2nd Chance | Fast Break | Bench |
|--------|----------|---------|----------------|------------|-------|
| OSU | 36 | 9 | 21 | 2 | 18 |
| NEB | 34 | 14 | 21 | 4 | 15 |

Last FG - OSU 4th-01:05, NEB 4th-03:17.
 Largest lead - Ohio State by 21 3rd-03:35; Nebraska by 2 1st-09:19
 OSU led for 37:41. NEB led for 0:08. Game was tied for 2:09.

Score tied - 1 times
 Lead changed - 1 times

Official Basketball Box Score -- Game Totals -- First Half Statistics

Ohio State vs Nebraska

2/16/2017 7:06 P.M. at Pinnacle Bank Arena (Lincoln, Neb.)

Ohio State 40 • 23-5, 13-1

| ## | Player | S | Total | | | Rebounds | | | PF | TP | A | TO | Blk | Stl | Min |
|--------|-------------------|---|--------|------|--------|----------|---------|---------|----|----|---|----|-----|-----|-----|
| | | | FG-FGA | 3PT | FG-FGA | FT-FTA | Off Reb | Def Reb | | | | | | | |
| 00 | MCCOY, TORI | f | 4-4 | 0-0 | 0-2 | 3 | 3 | 6 | 2 | 8 | 0 | 2 | 4 | 0 | 14 |
| 03 | MITCHELL, KELSEY | g | 5-8 | 3-4 | 2-2 | 0 | 2 | 2 | 1 | 15 | 2 | 1 | 0 | 0 | 18 |
| 04 | CALHOUN, SIERRA | g | 2-3 | 2-3 | 0-0 | 0 | 2 | 2 | 1 | 6 | 2 | 0 | 0 | 0 | 10 |
| 23 | LEWIS, KIARA | g | 0-2 | 0-0 | 0-0 | 0 | 1 | 1 | 1 | 0 | 2 | 1 | 0 | 0 | 10 |
| 32 | COOPER, SHAYLA | f | 3-5 | 0-1 | 0-0 | 0 | 3 | 3 | 0 | 6 | 2 | 2 | 0 | 0 | 16 |
| 15 | HARPER, LINNAE | | 0-4 | 0-0 | 0-0 | 1 | 1 | 2 | 0 | 0 | 0 | 0 | 0 | 1 | 10 |
| 20 | DOSS, ASIA | | 1-3 | 1-2 | 0-0 | 0 | 3 | 3 | 0 | 3 | 1 | 1 | 0 | 1 | 12 |
| 22 | HART, ALEXA | | 1-1 | 0-0 | 0-0 | 1 | 1 | 2 | 2 | 2 | 0 | 0 | 3 | 0 | 6 |
| 24 | WATERMAN, MAKAYLA | | 0-1 | 0-0 | 0-0 | 1 | 0 | 1 | 1 | 0 | 0 | 1 | 0 | 0 | 4 |
| TEAM | | | | | | 0 | 0 | 0 | 0 | | | | | | |
| Totals | | | 16-31 | 6-10 | 2-4 | 6 | 16 | 22 | 8 | 40 | 9 | 8 | 7 | 2 | 100 |

| | | | | | | | | | |
|-------|---------|------|-------|---------|------|-------|-------|-------|-------|
| FG % | 1st Qtr | 8-18 | 44.4% | 2nd Qtr | 8-13 | 61.5% | Half: | 16-31 | 51.6% |
| 3FG % | 1st Qtr | 3-5 | 60.0% | 2nd Qtr | 3-5 | 60.0% | Half: | 6-10 | 60.0% |
| FT % | 1st Qtr | 0-0 | 0% | 2nd Qtr | 2-4 | 50.0% | Half: | 2-4 | 50.0% |

Nebraska 23 • 5-20, 1-12

| ## | Player | S | Total | | | Rebounds | | | PF | TP | A | TO | Blk | Stl | Min |
|--------|----------------------|---|--------|-----|--------|----------|---------|---------|----|----|---|----|-----|-----|-----|
| | | | FG-FGA | 3PT | FG-FGA | FT-FTA | Off Reb | Def Reb | | | | | | | |
| 03 | WHITISH, HANNAH | g | 0-6 | 0-2 | 0-0 | 0 | 1 | 1 | 2 | 0 | 0 | 0 | 1 | 0 | 15 |
| 05 | ELIELY, NICEA | g | 3-5 | 0-0 | 0-0 | 1 | 0 | 1 | 0 | 6 | 0 | 1 | 0 | 1 | 14 |
| 22 | HAVERS, ALLIE | c | 0-2 | 0-0 | 0-0 | 0 | 1 | 1 | 0 | 0 | 1 | 0 | 0 | 0 | 14 |
| 32 | SHEPARD, JESSICA | f | 4-14 | 0-2 | 2-4 | 2 | 4 | 6 | 0 | 10 | 0 | 2 | 0 | 1 | 15 |
| 34 | CINCORE, JASMINE | g | 0-2 | 0-0 | 2-4 | 2 | 0 | 2 | 1 | 2 | 0 | 2 | 0 | 0 | 15 |
| 02 | JENSEN, RYLIE CASCIO | | 0-0 | 0-0 | 0-0 | 0 | 0 | 0 | 0 | 0 | 1 | 0 | 0 | 0 | 7 |
| 11 | RAMACIERI, ESTHER | | 0-0 | 0-0 | 0-0 | 0 | 0 | 0 | 0 | 0 | 0 | 0 | 0 | 0 | 0 |
| 12 | WOOD, EMILY | | 1-1 | 1-1 | 0-0 | 2 | 0 | 2 | 0 | 3 | 0 | 0 | 0 | 0 | 9 |
| 14 | MITCHELL, GRACE | | 1-1 | 0-0 | 0-1 | 0 | 2 | 2 | 0 | 2 | 0 | 0 | 0 | 0 | 7 |
| 24 | SIMON, MADDIE | | 0-1 | 0-1 | 0-0 | 0 | 1 | 1 | 0 | 0 | 0 | 0 | 0 | 0 | 4 |
| TEAM | | | | | | 1 | 1 | 2 | 0 | | | 1 | | | |
| Totals | | | 9-32 | 1-6 | 4-9 | 8 | 10 | 18 | 3 | 23 | 2 | 6 | 1 | 2 | 100 |

| | | | | | | | | | |
|-------|---------|------|-------|---------|------|-------|-------|------|-------|
| FG % | 1st Qtr | 4-14 | 28.6% | 2nd Qtr | 5-18 | 27.8% | Half: | 9-32 | 28.1% |
| 3FG % | 1st Qtr | 1-3 | 33.3% | 2nd Qtr | 0-3 | 00.0% | Half: | 1-6 | 16.7% |
| FT % | 1st Qtr | 1-3 | 33.3% | 2nd Qtr | 3-6 | 50.0% | Half: | 4-9 | 44.4% |

Officials: Mark Zentz, Bryan Enterline, Amy Bonner
 Technical Fouls: Ohio State- None. Nebraska- None.

| Score by periods | 1st | 2nd | 3rd | 4th | Total |
|------------------|-----|-----|-----|-----|-------|
| Ohio State | 19 | 21 | 24 | 23 | 87 |
| Nebraska | 10 | 13 | 23 | 23 | 69 |

| Points | In Paint | Off T/O | 2nd Chance | Fast Break | Bench |
|--------|----------|---------|------------|------------|-------|
| OSU | 16 | 7 | 6 | 0 | 5 |
| | 14 | 6 | 2 | 2 | 5 |

Last FG - OSU 2nd-01:08, NEB 2nd-00:00.
 OSU led for 17:43. NEB led for 0:08. Game was tied for 2:09.

Score tied - 1 times
 Lead changed - 1 times

Ohio State vs Nebraska
2/16/2017; 7:06 P.M. at Pinnacle Bank Arena (Lincoln, Neb.)
Period 1 Play-By-Play

| VISITORS: Ohio State | Time | Score | Margin | HOME: Nebraska |
|----------------------------------|-------|-------|--------|-----------------------------------|
| MISSED JUMPER by COOPER,SHAYLA | 09:36 | | | |
| | 09:36 | | | REBOUND (DEF) by SHEPARD,JESSICA |
| | 09:19 | 2-0 | H 2 | GOOD! LAYUP by ELIELY,NICEA [PNT] |
| GOOD! JUMPER by COOPER,SHAYLA | 09:11 | 2-2 | T | |
| | 08:53 | | | MISSED JUMPER by SHEPARD,JESSICA |
| | 08:53 | | | REBOUND (OFF) by ELIELY,NICEA |
| | 08:49 | | | MISSED 3PTR by WHITISH,HANNAH |
| | 08:49 | | | REBOUND (OFF) by CINCORE,JASMINE |
| | 08:45 | | | MISSED JUMPER by CINCORE,JASMINE |
| REBOUND (DEF) by COOPER,SHAYLA | 08:45 | | | |
| MISSED JUMPER by LEWIS,KIARA | 08:37 | | | |
| | 08:37 | | | BLOCK by WHITISH,HANNAH |
| | 08:36 | | | REBOUND (DEF) by SHEPARD,JESSICA |
| | 08:24 | | | MISSED JUMPER by SHEPARD,JESSICA |
| BLOCK by MCCOY,TORI | 08:24 | | | |
| REBOUND (DEF) by MCCOY,TORI | 08:22 | | | |
| TURNOVER by MITCHELL,KELSEY | 08:15 | | | |
| | 08:14 | | | STEAL by SHEPARD,JESSICA |
| | 07:57 | | | MISSED JUMPER by CINCORE,JASMINE |
| REBOUND (DEF) by LEWIS,KIARA | 07:57 | | | |
| | 07:55 | | | FOUL by CINCORE,JASMINE |
| GOOD! 3PTR by MITCHELL,KELSEY | 07:43 | 2-5 | V 3 | |
| | 07:28 | | | MISSED 3PTR by SHEPARD,JESSICA |
| REBOUND (DEF) by CALHOUN,SIERRA | 07:28 | | | |
| GOOD! JUMPER by COOPER,SHAYLA | 07:20 | 2-7 | V 5 | |
| ASSIST by CALHOUN,SIERRA | 07:20 | | | |
| | 07:00 | | | TURNOVER by ELIELY,NICEA |
| MISSED JUMPER by MITCHELL,KELSEY | 06:45 | | | |
| REBOUND (OFF) by MCCOY,TORI | 06:45 | | | |
| GOOD! JUMPER by MCCOY,TORI [PNT] | 06:41 | 2-9 | V 7 | |
| FOUL by MITCHELL,KELSEY | 06:30 | | | |
| SUB IN: HART,ALEXA | 06:30 | | | |
| SUB OUT: MCCOY,TORI | 06:30 | | | |
| FOUL by CALHOUN,SIERRA | 06:18 | | | |
| | 06:18 | | | MISSED FT by CINCORE,JASMINE |
| | 06:18 | | | REBOUND (DEADB) by TEAM |
| | 06:18 | 3-9 | V 6 | GOOD! FT by CINCORE,JASMINE |
| | 06:18 | | | SUB IN: WOOD,EMILY |
| | 06:18 | | | SUB IN: MITCHELL,GRACE |
| | 06:18 | | | SUB OUT: SHEPARD,JESSICA |
| | 06:18 | | | SUB OUT: CINCORE,JASMINE |
| GOOD! 3PTR by CALHOUN,SIERRA | 06:08 | 3-12 | V 9 | |
| ASSIST by LEWIS,KIARA | 06:08 | | | |
| | 05:37 | 6-12 | V 6 | GOOD! 3PTR by WOOD,EMILY |
| GOOD! 3PTR by MITCHELL,KELSEY | 05:11 | 6-15 | V 9 | |
| ASSIST by CALHOUN,SIERRA | 05:11 | | | |
| | 04:47 | | | MISSED JUMPER by HAVERS,ALLIE |
| REBOUND (DEF) by MITCHELL,KELSEY | 04:47 | | | |
| TURNOVER by COOPER,SHAYLA | 04:37 | | | |
| | 04:37 | | | TIMEOUT MEDIA |
| SUB IN: DOSS,ASIA | 04:37 | | | |
| SUB IN: HARPER,LINNAE | 04:37 | | | |
| SUB OUT: CALHOUN,SIERRA | 04:37 | | | |

| VISITORS: Ohio State | Time | Score | Margin | HOME: Nebraska |
|---------------------------------------|-------|-------|--------|--------------------------------------|
| SUB OUT: LEWIS,KIARA | 04:37 | | | |
| | 04:37 | | | SUB IN: SHEPARD,JESSICA |
| | 04:37 | | | SUB IN: SIMON,MADDIE |
| | 04:37 | | | SUB OUT: HAVERS,ALLIE |
| | 04:37 | | | SUB OUT: MITCHELL,GRACE |
| | 04:14 | 8-15 | V 7 | GOOD! LAYUP by ELIELY,NICEA [PNT] |
| GOOD! JUMPER by MITCHELL,KELSEY [PNT] | 03:53 | 8-17 | V 9 | |
| ASSIST by COOPER,SHAYLA | 03:53 | | | |
| | 03:39 | | | MISSED JUMPER by ELIELY,NICEA |
| REBOUND (DEF) by DOSS,ASIA | 03:39 | | | |
| TURNOVER by DOSS,ASIA | 03:35 | | | |
| | 03:35 | | | SUB IN: JENSEN,RYLIE CASCIO |
| | 03:35 | | | SUB IN: CINCORE,JASMINE |
| | 03:35 | | | SUB OUT: WHITISH,HANNAH |
| | 03:35 | | | SUB OUT: ELIELY,NICEA |
| | 03:26 | | | TURNOVER by CINCORE,JASMINE |
| MISSED 3PTR by COOPER,SHAYLA | 03:05 | | | |
| | 03:05 | | | REBOUND (DEF) by SIMON,MADDIE |
| | 02:42 | | | MISSED JUMPER by SHEPARD,JESSICA |
| REBOUND (DEF) by HARPER,LINNAE | 02:42 | | | |
| SUB IN: WATERMAN,MAKAYLA | 02:38 | | | |
| SUB OUT: COOPER,SHAYLA | 02:38 | | | |
| MISSED JUMPER by HARPER,LINNAE | 02:30 | | | |
| REBOUND (OFF) by HART,ALEXA | 02:30 | | | |
| GOOD! JUMPER by HART,ALEXA [PNT] | 02:27 | 8-19 | V 11 | |
| | 02:02 | | | TURNOVER by SHEPARD,JESSICA |
| SUB IN: MCCOY,TORI | 02:02 | | | |
| SUB OUT: HART,ALEXA | 02:02 | | | |
| | 02:02 | | | SUB IN: HAVERS,ALLIE |
| | 02:02 | | | SUB IN: MITCHELL,GRACE |
| | 02:02 | | | SUB OUT: SHEPARD,JESSICA |
| | 02:02 | | | SUB OUT: SIMON,MADDIE |
| TURNOVER by MCCOY,TORI | 01:51 | | | |
| | 01:47 | | | TURNOVER by CINCORE,JASMINE |
| STEAL by HARPER,LINNAE | 01:43 | | | |
| MISSED LAYUP by HARPER,LINNAE | 01:42 | | | |
| REBOUND (OFF) by WATERMAN,MAKAYLA | 01:42 | | | |
| TURNOVER by WATERMAN,MAKAYLA | 01:42 | | | |
| | 01:42 | | | SUB IN: WHITISH,HANNAH |
| | 01:42 | | | SUB IN: ELIELY,NICEA |
| | 01:42 | | | SUB OUT: CINCORE,JASMINE |
| | 01:42 | | | SUB OUT: WOOD,EMILY |
| | 01:23 | 10-19 | V 9 | GOOD! JUMPER by MITCHELL,GRACE [PNT] |
| FOUL by WATERMAN,MAKAYLA | 01:23 | | | |
| | 01:23 | | | MISSED FT by MITCHELL,GRACE |
| REBOUND (DEF) by MCCOY,TORI | 01:23 | | | |
| MISSED JUMPER by HARPER,LINNAE | 01:05 | | | |
| REBOUND (OFF) by MCCOY,TORI | 01:05 | | | |
| MISSED JUMPER by WATERMAN,MAKAYLA | 00:59 | | | |
| REBOUND (OFF) by HARPER,LINNAE | 00:59 | | | |
| MISSED JUMPER by HARPER,LINNAE | 00:56 | | | |
| | 00:56 | | | REBOUND (DEF) by MITCHELL,GRACE |
| | 00:22 | | | MISSED JUMPER by WHITISH,HANNAH |
| REBOUND (DEF) by DOSS,ASIA | 00:22 | | | |
| MISSED 3PTR by MITCHELL,KELSEY | 00:06 | | | |
| | 00:06 | | | REBOUND (DEF) by MITCHELL,GRACE |

| Period 1-only | In Paint | Off T/O | 2nd Chance | Fast Break | Bench | |
|----------------------|---------------------|--------------------|-----------------------|-----------------------|--------------|------------------------|
| OSU | 6 | 2 | 4 | 0 | 2 | Score tied - 2 times |
| NEB | 6 | 4 | 0 | 0 | 5 | Lead changed - 2 times |

Ohio State vs Nebraska
2/16/2017; 7:06 P.M. at Pinnacle Bank Arena (Lincoln, Neb.)
Period 2 Play-By-Play

| VISITORS: Ohio State | Time | Score | Margin | HOME: Nebraska |
|----------------------------------|-------|-------|--------|----------------------------------|
| SUB IN: HARPER,LINNAE | 10:00 | | | |
| SUB IN: WATERMAN,MAKAYLA | 10:00 | | | |
| SUB IN: DOSS,ASIA | 10:00 | | | |
| SUB OUT: CALHOUN,SIERRA | 10:00 | | | |
| SUB OUT: LEWIS,KIARA | 10:00 | | | |
| SUB OUT: COOPER,SHAYLA | 10:00 | | | |
| | 10:00 | | | SUB IN: JENSEN,RYLIE CASCIO |
| | 10:00 | | | SUB IN: MITCHELL,GRACE |
| | 10:00 | | | SUB OUT: SHEPARD,JESSICA |
| | 10:00 | | | SUB OUT: CINCORE,JASMINE |
| | 09:32 | | | MISSED JUMPER by ELIELY,NICEA |
| REBOUND (DEF) by DOSS,ASIA | 09:32 | | | |
| | 09:27 | | | FOUL by WHITISH,HANNAH |
| MISSED FT by MCCOY,TORI | 09:27 | | | |
| REBOUND (DEADB) by TEAM | 09:27 | | | |
| MISSED FT by MCCOY,TORI | 09:27 | | | |
| | 09:27 | | | REBOUND (DEF) by SHEPARD,JESSICA |
| | 09:27 | | | SUB IN: SHEPARD,JESSICA |
| | 09:27 | | | SUB OUT: HAVERS,ALLIE |
| FOUL by MCCOY,TORI | 08:59 | | | |
| | 08:59 | | | MISSED FT by SHEPARD,JESSICA |
| | 08:59 | | | REBOUND (DEADB) by TEAM |
| | 08:59 | 11-19 | V 8 | GOOD! FT by SHEPARD,JESSICA |
| SUB IN: CALHOUN,SIERRA | 08:59 | | | |
| SUB IN: LEWIS,KIARA | 08:59 | | | |
| SUB IN: COOPER,SHAYLA | 08:59 | | | |
| SUB OUT: HARPER,LINNAE | 08:59 | | | |
| SUB OUT: WATERMAN,MAKAYLA | 08:59 | | | |
| SUB OUT: DOSS,ASIA | 08:59 | | | |
| TURNOVER by MCCOY,TORI | 08:44 | | | |
| | 08:44 | | | SUB IN: CINCORE,JASMINE |
| | 08:44 | | | SUB OUT: JENSEN,RYLIE CASCIO |
| | 08:30 | | | MISSED 3PTR by WHITISH,HANNAH |
| | 08:30 | | | REBOUND (OFF) by SHEPARD,JESSICA |
| | 08:26 | | | MISSED JUMPER by SHEPARD,JESSICA |
| BLOCK by MCCOY,TORI | 08:26 | | | |
| REBOUND (DEF) by MITCHELL,KELSEY | 08:25 | | | |
| MISSED 3PTR by CALHOUN,SIERRA | 08:18 | | | |
| | 08:18 | | | REBOUND (DEF) by WHITISH,HANNAH |
| | 07:53 | | | MISSED JUMPER by SHEPARD,JESSICA |
| REBOUND (DEF) by COOPER,SHAYLA | 07:53 | | | |
| FOUL by LEWIS,KIARA | 07:44 | | | |
| TURNOVER by LEWIS,KIARA | 07:44 | | | |
| | 07:44 | | | SUB IN: WOOD,EMILY |
| | 07:44 | | | SUB OUT: ELIELY,NICEA |
| | 07:13 | | | MISSED JUMPER by WHITISH,HANNAH |
| BLOCK by MCCOY,TORI | 07:13 | | | |
| | 07:12 | | | REBOUND (OFF) by CINCORE,JASMINE |
| | 07:10 | | | TURNOVER by TEAM |
| | 07:09 | | | SUB IN: HAVERS,ALLIE |
| | 07:09 | | | SUB OUT: MITCHELL,GRACE |
| GOOD! 3PTR by MITCHELL,KELSEY | 06:56 | 11-22 | V 11 | |
| ASSIST by LEWIS,KIARA | 06:56 | | | |

| VISITORS: Ohio State | Time | Score | Margin | HOME: Nebraska |
|---------------------------------------|-------|-------|--------|---------------------------------------|
| | 06:44 | | | MISSED JUMPER by WHITISH,HANNAH |
| BLOCK by MCCOY,TORI | 06:44 | | | |
| REBOUND (DEF) by MCCOY,TORI | 06:43 | | | |
| MISSED JUMPER by LEWIS,KIARA | 06:35 | | | |
| | 06:35 | | | REBOUND (DEF) by HAVERS,ALLIE |
| | 06:12 | | | MISSED JUMPER by HAVERS,ALLIE |
| REBOUND (DEF) by COOPER,SHAYLA | 06:12 | | | |
| GOOD! LAYUP by MCCOY,TORI [PNT] | 06:01 | 11-24 | V 13 | |
| ASSIST by MITCHELL,KELSEY | 06:01 | | | |
| | 05:38 | | | MISSED 3PTR by SHEPARD,JESSICA |
| REBOUND (DEF) by CALHOUN,SIERRA | 05:38 | | | |
| SUB IN: DOSS,ASIA | 05:32 | | | |
| SUB IN: HART,ALEXA | 05:32 | | | |
| SUB OUT: MCCOY,TORI | 05:32 | | | |
| SUB OUT: MITCHELL,KELSEY | 05:32 | | | |
| | 05:32 | | | SUB IN: SIMON,MADDIE |
| | 05:32 | | | SUB IN: JENSEN,RYLIE CASCIO |
| | 05:32 | | | SUB OUT: WHITISH,HANNAH |
| | 05:32 | | | SUB OUT: HAVERS,ALLIE |
| MISSED 3PTR by DOSS,ASIA | 05:25 | | | |
| | 05:25 | | | REBOUND (DEF) by SHEPARD,JESSICA |
| | 05:07 | | | MISSED JUMPER by SHEPARD,JESSICA |
| BLOCK by HART,ALEXA | 05:07 | | | |
| | 05:06 | | | REBOUND (OFF) by WOOD,EMILY |
| | 05:00 | | | MISSED JUMPER by SHEPARD,JESSICA |
| | 05:00 | | | REBOUND (OFF) by WOOD,EMILY |
| | 04:54 | | | MISSED 3PTR by SIMON,MADDIE |
| BLOCK by HART,ALEXA | 04:54 | | | |
| | 04:54 | | | REBOUND (OFF) by TEAM |
| | 04:54 | | | TIMEOUT MEDIA |
| | 04:52 | | | SUB IN: HAVERS,ALLIE |
| | 04:52 | | | SUB OUT: SIMON,MADDIE |
| | 04:41 | | | MISSED JUMPER by SHEPARD,JESSICA |
| BLOCK by HART,ALEXA | 04:41 | | | |
| REBOUND (DEF) by HART,ALEXA | 04:40 | | | |
| GOOD! 3PTR by CALHOUN,SIERRA | 04:24 | 11-27 | V 16 | |
| ASSIST by COOPER,SHAYLA | 04:24 | | | |
| | 03:56 | 13-27 | V 14 | GOOD! JUMPER by SHEPARD,JESSICA [PNT] |
| | 03:56 | | | ASSIST by JENSEN,RYLIE CASCIO |
| SUB IN: HARPER,LINNAE | 03:46 | | | |
| SUB IN: MITCHELL,KELSEY | 03:46 | | | |
| SUB OUT: CALHOUN,SIERRA | 03:46 | | | |
| SUB OUT: LEWIS,KIARA | 03:46 | | | |
| | 03:46 | | | SUB IN: ELIELY,NICEA |
| | 03:46 | | | SUB OUT: WOOD,EMILY |
| GOOD! JUMPER by MITCHELL,KELSEY [PNT] | 03:38 | 13-29 | V 16 | |
| FOUL by HART,ALEXA | 03:12 | | | |
| FOUL by HART,ALEXA | 03:08 | | | |
| | 03:08 | | | MISSED FT by SHEPARD,JESSICA |
| | 03:08 | | | REBOUND (DEADB) by TEAM |
| | 03:07 | 14-29 | V 15 | GOOD! FT by SHEPARD,JESSICA |
| SUB IN: MCCOY,TORI | 03:07 | | | |
| SUB OUT: HART,ALEXA | 03:07 | | | |
| GOOD! JUMPER by MCCOY,TORI [PNT] | 02:53 | 14-31 | V 17 | |
| ASSIST by DOSS,ASIA | 02:53 | | | |
| FOUL by MCCOY,TORI | 02:45 | | | |
| | 02:45 | | | MISSED FT by CINCORE,JASMINE |
| | 02:45 | | | REBOUND (DEADB) by TEAM |

| VISITORS: Ohio State | Time | Score | Margin | HOME: Nebraska |
|-------------------------------------|-------|-------|--------|---------------------------------------|
| | 02:45 | 15-31 | V 16 | GOOD! FT by CINCORE,JASMINE |
| | 02:45 | | | SUB IN: WHITISH,HANNAH |
| | 02:45 | | | SUB OUT: JENSEN,RYLIE CASCIO |
| MISSED JUMPER by DOSS,ASIA | 02:24 | | | |
| REBOUND (OFF) by MCCOY,TORI | 02:24 | | | |
| GOOD! JUMPER by MCCOY,TORI [PNT] | 02:21 | 15-33 | V 18 | |
| | 02:05 | 17-33 | V 16 | GOOD! JUMPER by SHEPARD,JESSICA |
| | 02:05 | | | ASSIST by HAVERS,ALLIE |
| TURNOVER by COOPER,SHAYLA | 01:45 | | | |
| | 01:41 | | | STEAL by ELIELY,NICEA |
| | 01:40 | 19-33 | V 14 | GOOD! LAYUP by ELIELY,NICEA [FB/PNT] |
| GOOD! 3PTR by DOSS,ASIA | 01:16 | 19-36 | V 17 | |
| ASSIST by MITCHELL,KELSEY | 01:16 | | | |
| | 01:12 | | | TURNOVER by SHEPARD,JESSICA |
| STEAL by DOSS,ASIA | 01:10 | | | |
| GOOD! JUMPER by COOPER,SHAYLA [PNT] | 01:08 | 19-38 | V 19 | |
| | 00:50 | 21-38 | V 17 | GOOD! JUMPER by SHEPARD,JESSICA [PNT] |
| MISSED JUMPER by MITCHELL,KELSEY | 00:44 | | | |
| | 00:44 | | | REBOUND (DEF) by TEAM |
| | 00:13 | | | FOUL by WHITISH,HANNAH |
| GOOD! FT by MITCHELL,KELSEY | 00:13 | 21-39 | V 18 | |
| GOOD! FT by MITCHELL,KELSEY | 00:13 | 21-40 | V 19 | |
| SUB IN: LEWIS,KIARA | 00:13 | | | |
| SUB IN: WATERMAN,MAKAYLA | 00:13 | | | |
| SUB OUT: MCCOY,TORI | 00:13 | | | |
| SUB OUT: MITCHELL,KELSEY | 00:13 | | | |
| | 00:00 | | | MISSED JUMPER by WHITISH,HANNAH |
| | 00:00 | | | REBOUND (OFF) by SHEPARD,JESSICA |
| | 00:00 | 23-40 | V 17 | GOOD! JUMPER by SHEPARD,JESSICA [PNT] |

Ohio State 40, Nebraska 23

| Period 2-only | In Paint | Off T/O | 2nd Chance | Fast Break | Bench | |
|---------------|----------|---------|------------|------------|-------|------------------------|
| OSU | 10 | 5 | 2 | 0 | 3 | Score tied - 0 times |
| NEB | 8 | 2 | 2 | 2 | 0 | Lead changed - 0 times |

Official Basketball Box Score -- Game Totals -- Second Half Statistics
Ohio State vs Nebraska
2/16/2017 7:06 P.M. at Pinnacle Bank Arena (Lincoln, Neb.)

Ohio State 47 • 23-5, 13-1

| ## | Player | S | Total | | | Rebounds | | | PF | TP | A | TO | Blk | Stl | Min |
|--------|------------------|---|--------|------------|--------|----------|---------|---------|----|----|---|----|-----|-----|-----|
| | | | FG-FGA | 3PT FG-FGA | FT-FTA | Off Reb | Def Reb | Tot Reb | | | | | | | |
| 00 | MCCOY,TORI | f | 2-2 | 0-0 | 0-0 | 0 | 1 | 1 | 2 | 4 | 0 | 0 | 0 | 0 | 8 |
| 03 | MITCHELL,KELSEY | g | 5-10 | 2-5 | 0-0 | 0 | 1 | 1 | 1 | 12 | 1 | 1 | 0 | 1 | 15 |
| 04 | CALHOUN,SIERRA | g | 2-2 | 1-1 | 2-2 | 1 | 1 | 2 | 1 | 7 | 0 | 1 | 0 | 0 | 12 |
| 23 | LEWIS,KIARA | g | 3-7 | 1-3 | 2-2 | 1 | 2 | 3 | 1 | 9 | 0 | 3 | 0 | 1 | 13 |
| 32 | COOPER,SHAYLA | f | 0-3 | 0-0 | 2-2 | 1 | 5 | 6 | 2 | 2 | 0 | 1 | 0 | 1 | 11 |
| 15 | HARPER,LINNAE | | 4-7 | 0-1 | 1-2 | 1 | 2 | 3 | 0 | 9 | 1 | 1 | 0 | 1 | 10 |
| 20 | DOSS,ASIA | | 0-2 | 0-1 | 0-0 | 0 | 0 | 0 | 1 | 0 | 4 | 1 | 0 | 0 | 10 |
| 22 | HART,ALEXA | | 1-2 | 0-0 | 0-0 | 3 | 0 | 3 | 3 | 2 | 1 | 0 | 1 | 0 | 11 |
| 24 | WATERMAN,MAKAYLA | | 1-1 | 0-0 | 0-0 | 0 | 3 | 3 | 3 | 2 | 2 | 1 | 0 | 0 | 10 |
| TEAM | | | | | | 1 | 0 | 1 | 0 | | | | | | |
| Totals | | | 18-36 | 4-11 | 7-8 | 8 | 15 | 23 | 14 | 47 | 9 | 9 | 1 | 4 | 100 |

| | | | | | | | | | |
|-------|---------|------|-------|---------|------|--------|-------|-------|-------|
| FG % | 3rd Qtr | 9-18 | 50.0% | 4th Qtr | 9-18 | 50.0% | Half: | 18-36 | 50.0% |
| 3FG % | 3rd Qtr | 1-6 | 16.7% | 4th Qtr | 3-5 | 60.0% | Half: | 4-11 | 60.0% |
| FT % | 3rd Qtr | 5-6 | 83.3% | 4th Qtr | 2-2 | 100.0% | Half: | 7-8 | 87.5% |

Nebraska 46 • 5-20, 1-12

| ## | Player | S | Total | | | Rebounds | | | PF | TP | A | TO | Blk | Stl | Min |
|--------|---------------------|---|--------|------------|--------|----------|---------|---------|----|----|---|----|-----|-----|-----|
| | | | FG-FGA | 3PT FG-FGA | FT-FTA | Off Reb | Def Reb | Tot Reb | | | | | | | |
| 03 | WHITISH,HANNAH | g | 2-2 | 1-1 | 3-4 | 1 | 2 | 3 | 2 | 8 | 5 | 1 | 0 | 0 | 15 |
| 05 | ELIELY,NICEA | g | 1-3 | 0-0 | 5-7 | 0 | 1 | 1 | 1 | 7 | 0 | 1 | 0 | 0 | 18 |
| 22 | HAVERS,ALLIE | c | 0-1 | 0-0 | 0-0 | 1 | 0 | 1 | 1 | 0 | 0 | 0 | 0 | 0 | 8 |
| 32 | SHEPARD,JESSICA | f | 7-13 | 1-1 | 3-5 | 0 | 4 | 4 | 2 | 18 | 0 | 1 | 0 | 1 | 18 |
| 34 | CINCORE,JASMINE | g | 1-7 | 0-1 | 1-2 | 1 | 2 | 3 | 1 | 3 | 1 | 1 | 0 | 0 | 11 |
| 02 | JENSEN,RYLIE CASCIO | | 0-0 | 0-0 | 0-0 | 0 | 1 | 1 | 0 | 0 | 0 | 1 | 0 | 0 | 2 |
| 11 | RAMACIERI,ESTHER | | 0-0 | 0-0 | 2-2 | 0 | 0 | 0 | 1 | 2 | 0 | 0 | 0 | 1 | 3 |
| 12 | WOOD,EMILY | | 2-2 | 2-2 | 0-0 | 0 | 0 | 0 | 2 | 6 | 2 | 0 | 0 | 0 | 11 |
| 14 | MITCHELL,GRACE | | 0-1 | 0-0 | 0-0 | 1 | 0 | 1 | 1 | 0 | 0 | 0 | 0 | 1 | 9 |
| 24 | SIMON,MADDIE | | 1-2 | 0-1 | 0-0 | 0 | 1 | 1 | 0 | 2 | 1 | 1 | 0 | 0 | 5 |
| TEAM | | | | | | 1 | 0 | 1 | 0 | | | | | | |
| Totals | | | 14-31 | 4-6 | 14-20 | 5 | 11 | 16 | 11 | 46 | 9 | 6 | 0 | 3 | 100 |

| | | | | | | | | | |
|-------|---------|------|-------|---------|------|-------|-------|-------|-------|
| FG % | 3rd Qtr | 7-16 | 43.8% | 4th Qtr | 7-15 | 46.7% | Half: | 14-31 | 45.2% |
| 3FG % | 3rd Qtr | 1-2 | 50.0% | 4th Qtr | 3-4 | 75.0% | Half: | 4-6 | 16.7% |
| FT % | 3rd Qtr | 8-9 | 88.9% | 4th Qtr | 6-11 | 54.5% | Half: | 14-20 | 70.0% |

Officials: Mark Zentz, Bryan Enterline, Amy Bonner
 Technical Fouls: Ohio State- None. Nebraska- None.

| Score by periods | 1st | 2nd | 3rd | 4th | Total |
|------------------|-----|-----|-----|-----|-------|
| Ohio State | 19 | 21 | 24 | 23 | 87 |
| Nebraska | 10 | 13 | 23 | 23 | 69 |

| Points | In Paint | Off T/O | 2nd 2nd Chance | Fast Fast Break | Bench |
|--------|----------|---------|----------------|-----------------|-------|
| OSU | 20 | 2 | 15 | 2 | 13 |
| | 20 | 8 | 7 | 2 | 10 |

Last FG - OSU 4th-01:05, NEB 4th-03:17.
 OSU led for 19:58. NEB led for 0:00. Game was tied for 0:00.

Score tied - 0 times
 Lead changed - 0 times

Ohio State vs Nebraska
2/16/2017; 7:06 P.M. at Pinnacle Bank Arena (Lincoln, Neb.)
Period 3 Play-By-Play

| VISITORS: Ohio State | Time | Score | Margin | HOME: Nebraska |
|--------------------------------------|-------|-------|--------|---|
| MISSED 3PTR by LEWIS,KIARA | 09:47 | | | |
| | 09:47 | | | REBOUND (DEF) by WHITISH,HANNAH |
| | 09:33 | 25-40 | V 15 | GOOD! LAYUP by CINCORE,JASMINE [PNT] |
| TURNOVER by CALHOUN,SIERRA | 09:16 | | | |
| | 09:14 | | | STEAL by SHEPARD,JESSICA |
| | 09:11 | | | MISSED LAYUP by ELIELY,NICEA |
| | 09:11 | | | REBOUND (OFF) by WHITISH,HANNAH |
| | 09:07 | 27-40 | V 13 | GOOD! JUMPER by WHITISH,HANNAH [PNT] |
| TURNOVER by MITCHELL,KELSEY | 08:56 | | | |
| | 08:48 | | | MISSED LAYUP by CINCORE,JASMINE |
| REBOUND (DEF) by COOPER,SHAYLA | 08:48 | | | |
| TURNOVER by LEWIS,KIARA | 08:42 | | | |
| | 08:32 | 29-40 | V 11 | GOOD! LAYUP by ELIELY,NICEA [PNT] |
| FOUL by MCCOY,TORI | 08:32 | | | |
| TIMEOUT 30SEC | 08:32 | | | |
| | 08:32 | | | TIMEOUT MEDIA |
| | 08:28 | 30-40 | V 10 | GOOD! FT by ELIELY,NICEA |
| MISSED 3PTR by MITCHELL,KELSEY | 08:09 | | | |
| REBOUND (OFF) by LEWIS,KIARA | 08:09 | | | |
| GOOD! JUMPER by LEWIS,KIARA [PNT] | 08:05 | 30-42 | V 12 | |
| | 07:55 | 32-42 | V 10 | GOOD! LAYUP by SHEPARD,JESSICA [FB/PNT] |
| | 07:55 | | | ASSIST by WHITISH,HANNAH |
| GOOD! JUMPER by MCCOY,TORI [PNT] | 07:37 | 32-44 | V 12 | |
| | 07:11 | | | MISSED JUMPER by SHEPARD,JESSICA |
| | 07:11 | | | REBOUND (OFF) by CINCORE,JASMINE |
| | 07:05 | | | MISSED JUMPER by CINCORE,JASMINE |
| REBOUND (DEF) by COOPER,SHAYLA | 07:05 | | | |
| MISSED JUMPER by MITCHELL,KELSEY | 06:58 | | | |
| REBOUND (OFF) by CALHOUN,SIERRA | 06:58 | | | |
| | 06:56 | | | FOUL by SHEPARD,JESSICA |
| GOOD! JUMPER by CALHOUN,SIERRA [PNT] | 06:46 | 32-46 | V 14 | |
| | 06:31 | | | TURNOVER by CINCORE,JASMINE |
| MISSED JUMPER by COOPER,SHAYLA | 06:16 | | | |
| | 06:16 | | | REBOUND (DEF) by SHEPARD,JESSICA |
| FOUL by LEWIS,KIARA | 06:03 | | | |
| | 06:03 | 33-46 | V 13 | GOOD! FT by ELIELY,NICEA |
| | 06:03 | 34-46 | V 12 | GOOD! FT by ELIELY,NICEA |
| MISSED 3PTR by MITCHELL,KELSEY | 05:57 | | | |
| | 05:57 | | | REBOUND (DEF) by WHITISH,HANNAH |
| FOUL by COOPER,SHAYLA | 05:49 | | | |
| | 05:39 | | | TURNOVER by SHEPARD,JESSICA |
| STEAL by LEWIS,KIARA | 05:37 | | | |
| | 05:37 | | | FOUL by WHITISH,HANNAH |
| | 05:26 | | | FOUL by HAVERS,ALLIE |
| | 05:26 | | | SUB IN: RAMACIERI,ESTHER |
| | 05:26 | | | SUB OUT: WHITISH,HANNAH |
| | 05:19 | | | FOUL by ELIELY,NICEA |
| GOOD! FT by LEWIS,KIARA | 05:19 | 34-47 | V 13 | |
| GOOD! FT by LEWIS,KIARA | 05:19 | 34-48 | V 14 | |
| | 05:01 | | | MISSED JUMPER by HAVERS,ALLIE |
| REBOUND (DEF) by COOPER,SHAYLA | 05:01 | | | |
| | 04:55 | | | FOUL by RAMACIERI,ESTHER |
| TIMEOUT MEDIA | 04:55 | | | |

| VISITORS: Ohio State | Time | Score | Margin | HOME: Nebraska |
|---------------------------------------|-------|-------|--------|---------------------------------------|
| GOOD! FT by COOPER,SHAYLA | 04:55 | 34-49 | V 15 | |
| GOOD! FT by COOPER,SHAYLA | 04:55 | 34-50 | V 16 | |
| SUB IN: DOSS,ASIA | 04:55 | | | |
| SUB IN: HARPER,LINNAE | 04:55 | | | |
| SUB IN: WATERMAN,MAKAYLA | 04:55 | | | |
| SUB OUT: CALHOUN,SIERRA | 04:55 | | | |
| SUB OUT: LEWIS,KIARA | 04:55 | | | |
| SUB OUT: COOPER,SHAYLA | 04:55 | | | |
| | 04:40 | | | MISSED JUMPER by SHEPARD,JESSICA |
| REBOUND (DEF) by MCCOY,TORI | 04:40 | | | |
| GOOD! LAYUP by WATERMAN,MAKAYLA [PNT] | 04:28 | 34-52 | V 18 | |
| ASSIST by MITCHELL,KELSEY | 04:28 | | | |
| | 04:05 | | | MISSED JUMPER by SHEPARD,JESSICA |
| REBOUND (DEF) by HARPER,LINNAE | 04:05 | | | |
| GOOD! JUMPER by MITCHELL,KELSEY | 03:57 | 34-54 | V 20 | |
| FOUL by WATERMAN,MAKAYLA | 03:46 | | | |
| | 03:46 | | | MISSED FT by ELIELY,NICEA |
| | 03:46 | | | REBOUND (DEADB) by TEAM |
| | 03:46 | 35-54 | V 19 | GOOD! FT by ELIELY,NICEA |
| SUB IN: HART,ALEXA | 03:46 | | | |
| SUB OUT: MCCOY,TORI | 03:46 | | | |
| | 03:46 | | | SUB IN: SIMON,MADDIE |
| | 03:46 | | | SUB OUT: SHEPARD,JESSICA |
| GOOD! JUMPER by HARPER,LINNAE | 03:35 | 35-56 | V 21 | |
| FOUL by MITCHELL,KELSEY | 03:20 | | | |
| | 03:20 | 36-56 | V 20 | GOOD! FT by RAMACIERI,ESTHER |
| | 03:20 | 37-56 | V 19 | GOOD! FT by RAMACIERI,ESTHER |
| GOOD! LAYUP by HARPER,LINNAE [PNT] | 03:04 | 37-58 | V 21 | |
| ASSIST by WATERMAN,MAKAYLA | 03:04 | | | |
| | 02:52 | 39-58 | V 19 | GOOD! JUMPER by SIMON,MADDIE [PNT] |
| | 02:52 | | | ASSIST by CINCORE,JASMINE |
| MISSED 3PTR by MITCHELL,KELSEY | 02:45 | | | |
| | 02:45 | | | REBOUND (DEF) by CINCORE,JASMINE |
| SUB IN: CALHOUN,SIERRA | 02:36 | | | |
| SUB OUT: MITCHELL,KELSEY | 02:36 | | | |
| | 02:36 | | | SUB IN: WHITISH,HANNAH |
| | 02:36 | | | SUB IN: WOOD,EMILY |
| | 02:36 | | | SUB OUT: RAMACIERI,ESTHER |
| | 02:36 | | | SUB OUT: CINCORE,JASMINE |
| | 02:34 | | | MISSED 3PTR by SIMON,MADDIE |
| | 02:34 | | | REBOUND (OFF) by HAVERS,ALLIE |
| FOUL by WATERMAN,MAKAYLA | 02:14 | | | |
| | 02:14 | 40-58 | V 18 | GOOD! FT by WHITISH,HANNAH |
| | 02:14 | 41-58 | V 17 | GOOD! FT by WHITISH,HANNAH |
| | 02:14 | | | SUB IN: SHEPARD,JESSICA |
| | 02:14 | | | SUB OUT: HAVERS,ALLIE |
| GOOD! JUMPER by HARPER,LINNAE | 01:49 | 41-60 | V 19 | |
| | 01:33 | | | MISSED JUMPER by SHEPARD,JESSICA |
| REBOUND (DEF) by HARPER,LINNAE | 01:33 | | | |
| | 01:25 | | | FOUL by WHITISH,HANNAH |
| GOOD! FT by HARPER,LINNAE | 01:25 | 41-61 | V 20 | |
| MISSED FT by HARPER,LINNAE | 01:25 | | | |
| | 01:25 | | | REBOUND (DEF) by SIMON,MADDIE |
| | 01:25 | | | SUB IN: JENSEN,RYLIE CASCIO |
| | 01:25 | | | SUB OUT: WHITISH,HANNAH |
| | 00:57 | 43-61 | V 18 | GOOD! JUMPER by SHEPARD,JESSICA [PNT] |
| | 00:57 | | | ASSIST by WOOD,EMILY |
| GOOD! 3PTR by CALHOUN,SIERRA | 00:49 | 43-64 | V 21 | |

| VISITORS: Ohio State | Time | Score | Margin | HOME: Nebraska |
|--------------------------------|-------|-------|--------|--------------------------------------|
| ASSIST by HART,ALEXA | 00:49 | | | |
| | 00:35 | 46-64 | V 18 | GOOD! 3PTR by WOOD,EMILY |
| | 00:35 | | | ASSIST by SIMON,MADDIE |
| MISSED 3PTR by HARPER,LINNAE | 00:24 | | | |
| | 00:24 | | | REBOUND (DEF) by SHEPARD,JESSICA |
| | 00:14 | | | TURNOVER by JENSEN,RYLIE CASCIO |
| STEAL by HARPER,LINNAE | 00:13 | | | |
| MISSED LAYUP by HARPER,LINNAE | 00:09 | | | |
| REBOUND (OFF) by HARPER,LINNAE | 00:09 | | | |
| MISSED JUMPER by HARPER,LINNAE | 00:07 | | | |
| | 00:07 | | | REBOUND (DEF) by JENSEN,RYLIE CASCIO |

Ohio State 87, Nebraska 69

| Period 3-only | In Paint | Off T/O | 2nd Chance | Fast Break | Bench | |
|---------------|-------------|------------|---------------|---------------|-------|------------------------|
| OSU | 10 | 2 | 4 | 0 | 9 | Score tied - 0 times |
| NEB | 12 | 5 | 4 | 2 | 7 | Lead changed - 0 times |

Ohio State vs Nebraska
2/16/2017; 7:06 P.M. at Pinnacle Bank Arena (Lincoln, Neb.)
Period 4 Play-By-Play

| VISITORS: Ohio State | Time | Score | Margin | HOME: Nebraska |
|----------------------------------|-------|-------|--------|---------------------------------------|
| SUB IN: DOSS,ASIA | 10:00 | | | |
| SUB OUT: LEWIS,KIARA | 10:00 | | | |
| | 10:00 | | | SUB IN: SIMON,MADDIE |
| | 10:00 | | | SUB IN: WOOD,EMILY |
| | 10:00 | | | SUB IN: JENSEN,RYLIE CASCIO |
| | 10:00 | | | SUB OUT: WHITISH,HANNAH |
| | 10:00 | | | SUB OUT: HAVERS,ALLIE |
| | 10:00 | | | SUB OUT: CINCORE,JASMINE |
| GOOD! JUMPER by MCCOY,TORI [PNT] | 09:39 | 46-66 | V 20 | |
| ASSIST by DOSS,ASIA | 09:39 | | | |
| | 09:13 | | | TURNOVER by SIMON,MADDIE |
| STEAL by MITCHELL,KELSEY | 09:13 | | | |
| | 09:13 | | | FOUL by WOOD,EMILY |
| | 09:13 | | | SUB IN: MITCHELL,GRACE |
| | 09:13 | | | SUB OUT: SIMON,MADDIE |
| TURNOVER by COOPER,SHAYLA | 09:02 | | | |
| | 09:02 | | | SUB IN: CINCORE,JASMINE |
| | 09:02 | | | SUB IN: WHITISH,HANNAH |
| | 09:02 | | | SUB OUT: ELIELY,NICEA |
| | 09:02 | | | SUB OUT: JENSEN,RYLIE CASCIO |
| | 08:55 | 48-66 | V 18 | GOOD! LAYUP by SHEPARD,JESSICA [PNT] |
| | 08:55 | | | ASSIST by WHITISH,HANNAH |
| MISSED JUMPER by COOPER,SHAYLA | 08:39 | | | |
| | 08:39 | | | REBOUND (DEF) by SHEPARD,JESSICA |
| | 08:28 | | | MISSED JUMPER by CINCORE,JASMINE |
| | 08:28 | | | REBOUND (OFF) by MITCHELL,GRACE |
| | 08:15 | 50-66 | V 16 | GOOD! JUMPER by SHEPARD,JESSICA [PNT] |
| | 08:15 | | | ASSIST by WHITISH,HANNAH |
| FOUL by MCCOY,TORI | 08:15 | | | |
| | 08:15 | 51-66 | V 15 | GOOD! FT by SHEPARD,JESSICA |
| SUB IN: HART,ALEXA | 08:15 | | | |
| SUB OUT: MCCOY,TORI | 08:15 | | | |
| MISSED JUMPER by COOPER,SHAYLA | 07:58 | | | |
| | 07:58 | | | REBOUND (DEF) by CINCORE,JASMINE |
| | 07:47 | 53-66 | V 13 | GOOD! JUMPER by SHEPARD,JESSICA [PNT] |
| FOUL by HART,ALEXA | 07:47 | | | |
| | 07:47 | 54-66 | V 12 | GOOD! FT by SHEPARD,JESSICA |
| SUB IN: LEWIS,KIARA | 07:47 | | | |
| SUB OUT: CALHOUN,SIERRA | 07:47 | | | |
| MISSED JUMPER by DOSS,ASIA | 07:32 | | | |
| REBOUND (OFF) by COOPER,SHAYLA | 07:32 | | | |
| GOOD! 3PTR by LEWIS,KIARA | 07:25 | 54-69 | V 15 | |
| ASSIST by DOSS,ASIA | 07:25 | | | |
| | 07:10 | | | MISSED JUMPER by CINCORE,JASMINE |
| BLOCK by HART,ALEXA | 07:10 | | | |
| | 07:10 | | | REBOUND (OFF) by TEAM |
| | 07:08 | | | MISSED JUMPER by CINCORE,JASMINE |
| REBOUND (DEF) by COOPER,SHAYLA | 07:08 | | | |
| FOUL by DOSS,ASIA | 07:00 | | | |
| TURNOVER by DOSS,ASIA | 07:00 | | | |
| | 07:00 | | | SUB IN: ELIELY,NICEA |
| | 07:00 | | | SUB OUT: CINCORE,JASMINE |
| FOUL by COOPER,SHAYLA | 06:42 | | | |

| VISITORS: Ohio State | Time | Score | Margin | HOME: Nebraska |
|--------------------------------------|-------|-------|--------|---------------------------------------|
| | 06:42 | | | MISSED FT by ELIELY,NICEA |
| | 06:42 | | | REBOUND (DEADB) by TEAM |
| | 06:41 | 55-69 | V 14 | GOOD! FT by ELIELY,NICEA |
| GOOD! LAYUP by LEWIS,KIARA [PNT] | 06:24 | 55-71 | V 16 | |
| ASSIST by DOSS,ASIA | 06:24 | | | |
| | 06:10 | 58-71 | V 13 | GOOD! 3PTR by WOOD,EMILY |
| | 06:10 | | | ASSIST by WHITISH,HANNAH |
| MISSED 3PTR by DOSS,ASIA | 05:47 | | | |
| REBOUND (OFF) by HART,ALEXA | 05:47 | | | |
| GOOD! 3PTR by MITCHELL,KELSEY | 05:40 | 58-74 | V 16 | |
| ASSIST by DOSS,ASIA | 05:40 | | | |
| | 05:29 | 61-74 | V 13 | GOOD! 3PTR by WHITISH,HANNAH |
| | 05:29 | | | ASSIST by WOOD,EMILY |
| MISSED 3PTR by LEWIS,KIARA | 05:02 | | | |
| REBOUND (OFF) by HART,ALEXA | 05:02 | | | |
| MISSED LAYUP by LEWIS,KIARA | 04:54 | | | |
| REBOUND (OFF) by TEAM | 04:54 | | | |
| TIMEOUT MEDIA | 04:53 | | | |
| SUB IN: WATERMAN,MAKAYLA | 04:53 | | | |
| SUB IN: HARPER,LINNAE | 04:53 | | | |
| SUB OUT: DOSS,ASIA | 04:53 | | | |
| SUB OUT: COOPER,SHAYLA | 04:53 | | | |
| GOOD! 3PTR by MITCHELL,KELSEY | 04:39 | 61-77 | V 16 | |
| ASSIST by HARPER,LINNAE | 04:39 | | | |
| | 04:19 | 63-77 | V 14 | GOOD! JUMPER by SHEPARD,JESSICA [PNT] |
| FOUL by WATERMAN,MAKAYLA | 04:19 | | | |
| | 04:19 | | | MISSED FT by SHEPARD,JESSICA |
| REBOUND (DEF) by WATERMAN,MAKAYLA | 04:19 | | | |
| | 04:14 | | | FOUL by MITCHELL,GRACE |
| MISSED JUMPER by HART,ALEXA | 04:06 | | | |
| | 04:06 | | | REBOUND (DEF) by SHEPARD,JESSICA |
| | 03:59 | | | MISSED JUMPER by ELIELY,NICEA |
| REBOUND (DEF) by WATERMAN,MAKAYLA | 03:59 | | | |
| | 03:54 | | | FOUL by WOOD,EMILY |
| | 03:54 | | | SUB IN: CINCORE,JASMINE |
| | 03:54 | | | SUB OUT: WOOD,EMILY |
| MISSED JUMPER by LEWIS,KIARA | 03:37 | | | |
| REBOUND (OFF) by HART,ALEXA | 03:37 | | | |
| GOOD! JUMPER by HART,ALEXA [PNT] | 03:33 | 63-79 | V 16 | |
| | 03:17 | 66-79 | V 13 | GOOD! 3PTR by SHEPARD,JESSICA |
| | 03:17 | | | ASSIST by WHITISH,HANNAH |
| MISSED JUMPER by MITCHELL,KELSEY | 02:55 | | | |
| | 02:55 | | | REBOUND (DEF) by ELIELY,NICEA |
| | 02:52 | | | MISSED 3PTR by CINCORE,JASMINE |
| REBOUND (DEF) by MITCHELL,KELSEY | 02:52 | | | |
| GOOD! LAYUP by MITCHELL,KELSEY [PNT] | 02:43 | 66-81 | V 15 | |
| FOUL by HART,ALEXA | 02:25 | | | |
| | 02:25 | 67-81 | V 14 | GOOD! FT by CINCORE,JASMINE |
| | 02:25 | | | MISSED FT by CINCORE,JASMINE |
| REBOUND (DEF) by LEWIS,KIARA | 02:25 | | | |
| GOOD! JUMPER by MITCHELL,KELSEY | 02:08 | 67-83 | V 16 | |
| | 01:52 | | | MISSED JUMPER by SHEPARD,JESSICA |
| REBOUND (DEF) by LEWIS,KIARA | 01:52 | | | |
| | 01:49 | | | FOUL by SHEPARD,JESSICA |
| | 01:49 | | | TIMEOUT 30SEC |
| SUB IN: CALHOUN,SIERRA | 01:49 | | | |
| SUB OUT: MITCHELL,KELSEY | 01:49 | | | |
| | 01:49 | | | SUB IN: RAMACIERI,ESTHER |

| VISITORS: Ohio State | Time | Score | Margin | HOME: Nebraska |
|---------------------------------------|-------|-------|--------|----------------------------------|
| | 01:49 | | | SUB OUT: WHITISH,HANNAH |
| TURNOVER by HARPER,LINNAE | 01:47 | | | |
| | 01:44 | | | STEAL by RAMACIERI,ESTHER |
| | 01:44 | | | TURNOVER by ELIELY,NICEA |
| TURNOVER by LEWIS,KIARA | 01:44 | | | |
| | 01:44 | | | STEAL by MITCHELL,GRACE |
| | 01:41 | | | MISSED JUMPER by MITCHELL,GRACE |
| REBOUND (DEF) by CALHOUN,SIERRA | 01:41 | | | |
| | 01:36 | | | FOUL by CINCORE,JASMINE |
| GOOD! FT by CALHOUN,SIERRA | 01:31 | 67-84 | V 17 | |
| GOOD! FT by CALHOUN,SIERRA | 01:31 | 67-85 | V 18 | |
| | 01:31 | | | SUB IN: WOOD,EMILY |
| | 01:31 | | | SUB IN: WHITISH,HANNAH |
| | 01:31 | | | SUB OUT: CINCORE,JASMINE |
| | 01:31 | | | SUB OUT: RAMACIERI,ESTHER |
| FOUL by HART,ALEXA | 01:19 | | | |
| | 01:16 | 68-85 | V 17 | GOOD! FT by SHEPARD,JESSICA |
| | 01:16 | | | MISSED FT by SHEPARD,JESSICA |
| REBOUND (DEF) by WATERMAN,MAKAYLA | 01:16 | | | |
| SUB IN: COOPER,SHAYLA | 01:16 | | | |
| SUB OUT: HART,ALEXA | 01:16 | | | |
| GOOD! LAYUP by HARPER,LINNAE [FB/PNT] | 01:05 | 68-87 | V 19 | |
| ASSIST by WATERMAN,MAKAYLA | 01:05 | | | |
| FOUL by CALHOUN,SIERRA | 00:50 | | | |
| | 00:50 | | | MISSED FT by WHITISH,HANNAH |
| | 00:50 | | | REBOUND (DEADB) by TEAM |
| | 00:50 | 69-87 | V 18 | GOOD! FT by WHITISH,HANNAH |
| | 00:50 | | | SUB IN: CINCORE,JASMINE |
| | 00:50 | | | SUB IN: RAMACIERI,ESTHER |
| | 00:50 | | | SUB OUT: WOOD,EMILY |
| | 00:50 | | | SUB OUT: WHITISH,HANNAH |
| TURNOVER by LEWIS,KIARA | 00:46 | | | |
| | 00:46 | | | SUB IN: WOOD,EMILY |
| | 00:46 | | | SUB IN: WHITISH,HANNAH |
| | 00:46 | | | SUB OUT: CINCORE,JASMINE |
| | 00:46 | | | SUB OUT: RAMACIERI,ESTHER |
| | 00:38 | | | MISSED JUMPER by SHEPARD,JESSICA |
| REBOUND (DEF) by COOPER,SHAYLA | 00:38 | | | |
| TURNOVER by WATERMAN,MAKAYLA | 00:16 | | | |
| | 00:06 | | | TURNOVER by WHITISH,HANNAH |
| STEAL by COOPER,SHAYLA | 00:04 | | | |

Ohio State 87, Nebraska 69

| Period 4-only | In Paint | Off T/O | 2nd Chance | Fast Break | Bench | |
|---------------|-------------|------------|---------------|---------------|-------|------------------------|
| OSU | 10 | 0 | 11 | 2 | 4 | Score tied - 0 times |
| NEB | 8 | 3 | 3 | 0 | 3 | Lead changed - 0 times |

Ohio State vs Nebraska
2/16/2017; 7:06 P.M. at Pinnacle Bank Arena (Lincoln, Neb.)
Scoring/Runs Reference

Period 1

| Ohio State | Score | Marg | Nebraska |
|-----------------------------|-------|----------|-----------------------------|
| | 0-2 | 2 2 | ELIELY LAYUP [P] - 09:19 |
| 09:11 - COOPER JUMPER | 2 | 2-2 0 | |
| 07:43 - MITCHELL 3PTR | 3 | 5-2 -3 | |
| 07:20 - COOPER JUMPER | 2 | 7-2 -5 | |
| 06:41 - MCCOY JUMPER [P] | 2 | 9-2 -7 | |
| | 9-3 | -6 1 | CINCORE FT - 06:18 |
| 06:08 - CALHOUN 3PTR | 3 | 12-3 -9 | |
| | 12-6 | -6 3 | WOOD 3PTR - 05:37 |
| 05:11 - MITCHELL 3PTR | 3 | 15-6 -9 | |
| | 15-8 | -7 2 | ELIELY LAYUP [P] - 04:14 |
| 03:53 - MITCHELL JUMPER [P] | 2 | 17-8 -9 | |
| 02:27 - HART JUMPER [P] | 2 | 19-8 -11 | |
| | 19-10 | -9 2 | MITCHELL JUMPER [P] - 01:23 |

Period 2

| Ohio State | Score | Marg | Nebraska |
|-----------------------------|-------|-----------|---------------------------------|
| | 19-11 | -8 1 | SHEPARD FT - 08:59 |
| 06:56 - MITCHELL 3PTR | 3 | 22-11 -11 | |
| 06:01 - MCCOY LAYUP [P] | 2 | 24-11 -13 | |
| 04:24 - CALHOUN 3PTR | 3 | 27-11 -16 | |
| | 27-13 | -14 2 | SHEPARD JUMPER [P] - 03:56 |
| 03:38 - MITCHELL JUMPER [P] | 2 | 29-13 -16 | |
| | 29-14 | -15 1 | SHEPARD FT - 03:07 |
| 02:53 - MCCOY JUMPER [P] | 2 | 31-14 -17 | |
| | 31-15 | -16 1 | CINCORE FT - 02:45 |
| 02:21 - MCCOY JUMPER [P] | 2 | 33-15 -18 | |
| | 33-17 | -16 2 | SHEPARD JUMPER - 02:05 |
| | 33-19 | -14 2 | ELIELY LAYUP [P] [F] - 01:40 |
| 01:16 - DOSS 3PTR | 3 | 36-19 -17 | |
| 01:08 - COOPER JUMPER [P] | 2 | 38-19 -19 | |
| | 38-21 | -17 2 | SHEPARD JUMPER [P] - 00:50 |
| 00:13 - MITCHELL FT | 1 | 39-21 -18 | |
| 00:13 - MITCHELL FT | 1 | 40-21 -19 | |
| | 40-23 | -17 2 | SHEPARD JUMPER [P] - 00:00 |

Period 3

| Ohio State | Score | Marg | Nebraska |
|----------------------------|-------|-----------|----------------------------------|
| | 40-25 | -15 2 | CINCORE LAYUP [P] - 09:33 |
| | 40-27 | -13 2 | WHITISH JUMPER [P] - 09:07 |
| | 40-29 | -11 2 | ELIELY LAYUP [P] - 08:32 |
| | 40-30 | -10 1 | ELIELY FT - 08:28 |
| 08:05 - LEWIS JUMPER [P] | 2 | 42-30 -12 | |
| | 42-32 | -10 2 | SHEPARD LAYUP [P] [F] - 07:55 |
| 07:37 - MCCOY JUMPER [P] | 2 | 44-32 -12 | |
| 06:46 - CALHOUN JUMPER [P] | 2 | 46-32 -14 | |
| | 46-33 | -13 1 | ELIELY FT - 06:03 |
| | 46-34 | -12 1 | ELIELY FT - 06:03 |
| 05:19 - LEWIS FT | 1 | 47-34 -13 | |
| 05:19 - LEWIS FT | 1 | 48-34 -14 | |
| 04:55 - COOPER FT | 1 | 49-34 -15 | |
| 04:55 - COOPER FT | 1 | 50-34 -16 | |
| 04:28 - WATERMAN LAYUP [P] | 2 | 52-34 -18 | |
| 03:57 - MITCHELL JUMPER | 2 | 54-34 -20 | |
| | 54-35 | -19 1 | ELIELY FT - 03:46 |
| 03:35 - HARPER JUMPER | 2 | 56-35 -21 | |
| | 56-36 | -20 1 | RAMACIERI FT - 03:20 |
| | 56-37 | -19 1 | RAMACIERI FT - 03:20 |
| 03:04 - HARPER LAYUP [P] | 2 | 58-37 -21 | |
| | 58-39 | -19 2 | SIMON JUMPER [P] - 02:52 |
| | 58-40 | -18 1 | WHITISH FT - 02:14 |
| | 58-41 | -17 1 | WHITISH FT - 02:14 |
| 01:49 - HARPER JUMPER | 2 | 60-41 -19 | |
| 01:25 - HARPER FT | 1 | 61-41 -20 | |
| | 61-43 | -18 2 | SHEPARD JUMPER [P] - 00:57 |
| 00:49 - CALHOUN 3PTR | 3 | 64-43 -21 | |
| | 64-46 | -18 3 | WOOD 3PTR - 00:35 |

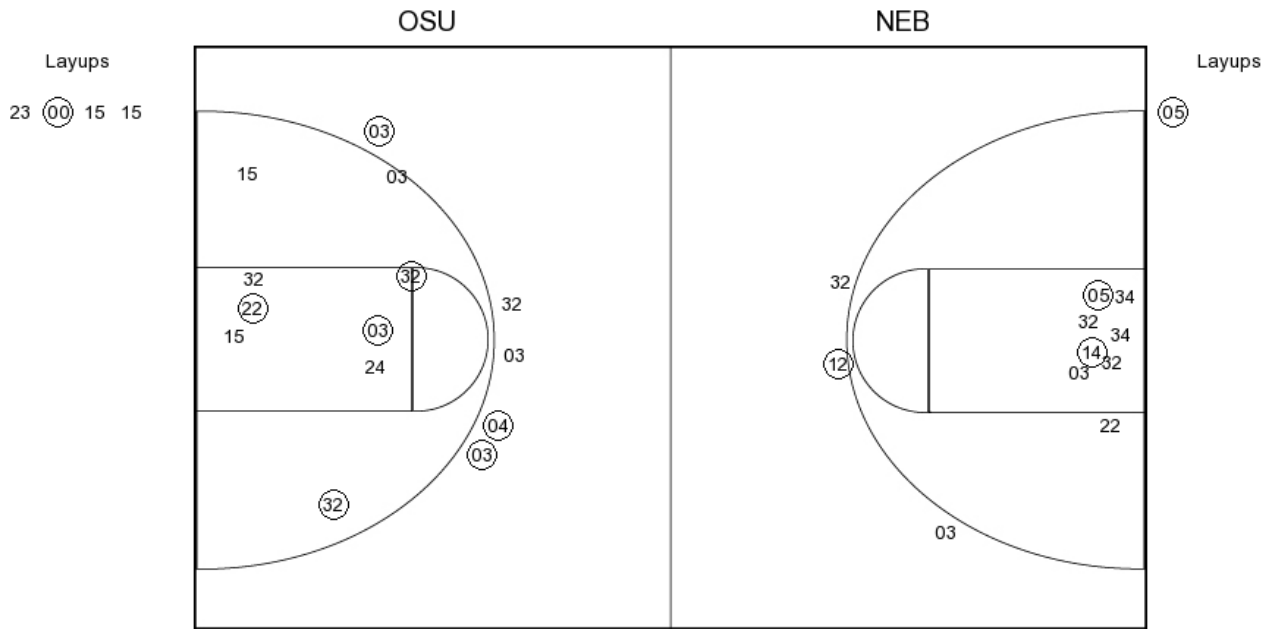
Period 4

| Ohio State | Score | Marg | Nebraska |
|----------------------------|-------|-----------|-------------------------------|
| 09:39 - MCCOY JUMPER [P] | 2 | 66-46 -20 | |
| | 66-48 | -18 2 | SHEPARD LAYUP [P] - 08:55 |
| | 66-50 | -16 2 | SHEPARD JUMPER [P] - 08:15 |
| | 66-51 | -15 1 | SHEPARD FT - 08:15 |
| | 66-53 | -13 2 | SHEPARD JUMPER [P] - 07:47 |
| | 66-54 | -12 1 | SHEPARD FT - 07:47 |
| 07:25 - LEWIS 3PTR | 3 | 69-54 -15 | |
| | 69-55 | -14 1 | ELIELY FT - 06:41 |
| 06:24 - LEWIS LAYUP [P] | 2 | 71-55 -16 | |
| | 71-58 | -13 3 | WOOD 3PTR - 06:10 |
| 05:40 - MITCHELL 3PTR | 3 | 74-58 -16 | |
| | 74-61 | -13 3 | WHITISH 3PTR - 05:29 |
| 04:39 - MITCHELL 3PTR | 3 | 77-61 -16 | |
| | 77-63 | -14 2 | SHEPARD JUMPER [P] - 04:19 |
| 03:33 - HART JUMPER [P] | 2 | 79-63 -16 | |
| | 79-66 | -13 3 | SHEPARD 3PTR - 03:17 |
| 02:43 - MITCHELL LAYUP [P] | 2 | 81-66 -15 | |
| | 81-67 | -14 1 | CINCORE FT - 02:25 |
| 02:08 - MITCHELL JUMPER | 2 | 83-67 -16 | |
| 01:31 - CALHOUN FT | 1 | 84-67 -17 | |
| 01:31 - CALHOUN FT | 1 | 85-67 -18 | |
| | 85-68 | -17 1 | SHEPARD FT - 01:16 |
| 01:05 - HARPER LAYUP [P] | 2 | 87-68 -19 | |
| | 87-69 | -18 1 | WHITISH FT - 00:50 |

Ohio State vs Nebraska
OFFICIAL SHOT CHART

2/16/2017 at Pinnacle Bank Arena (Lincoln, Neb.)

PERIOD 1



OSU PERIOD 1

| | |
|----------------|----|
| FG Made | 16 |
| FG Attempted | 31 |
| 3PFG Made | 6 |
| 3PFG Attempted | 10 |

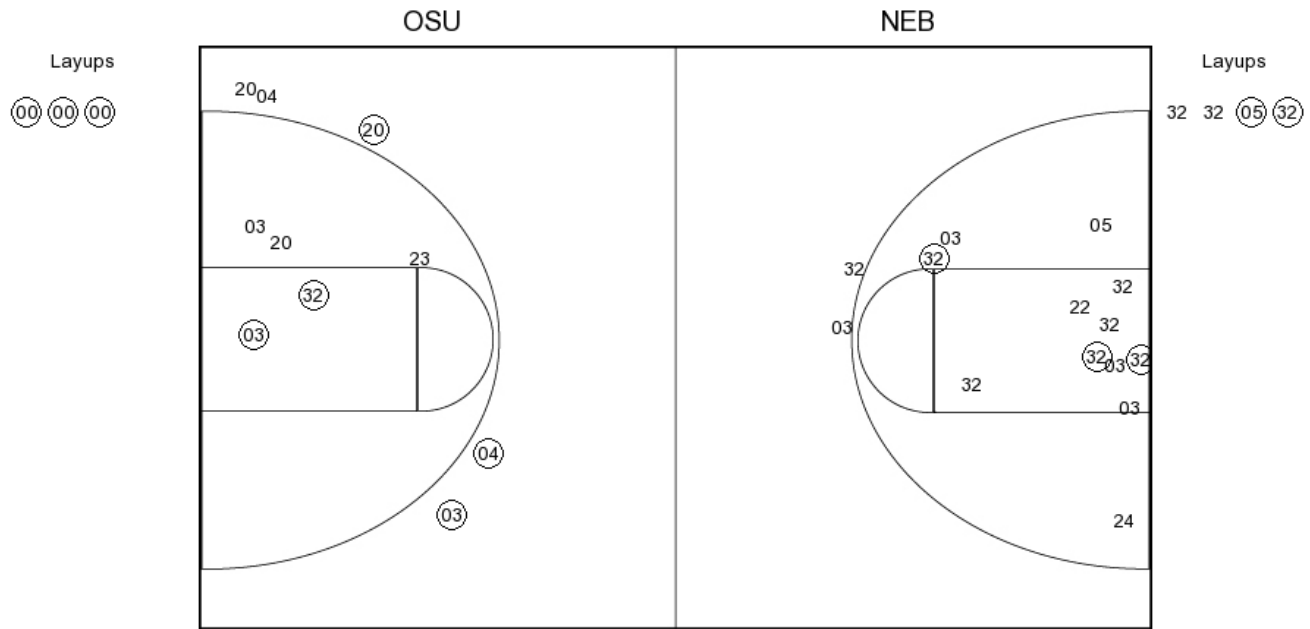
NEB PERIOD 1

| | |
|----------------|----|
| FG Made | 9 |
| FG Attempted | 32 |
| 3PFG Made | 1 |
| 3PFG Attempted | 6 |

Ohio State vs Nebraska
OFFICIAL SHOT CHART

2/16/2017 at Pinnacle Bank Arena (Lincoln, Neb.)

PERIOD 2



OSU PERIOD 2

- FG Made
- FG Attempted
- 3PFG Made
- 3PFG Attempted

NEB PERIOD 2

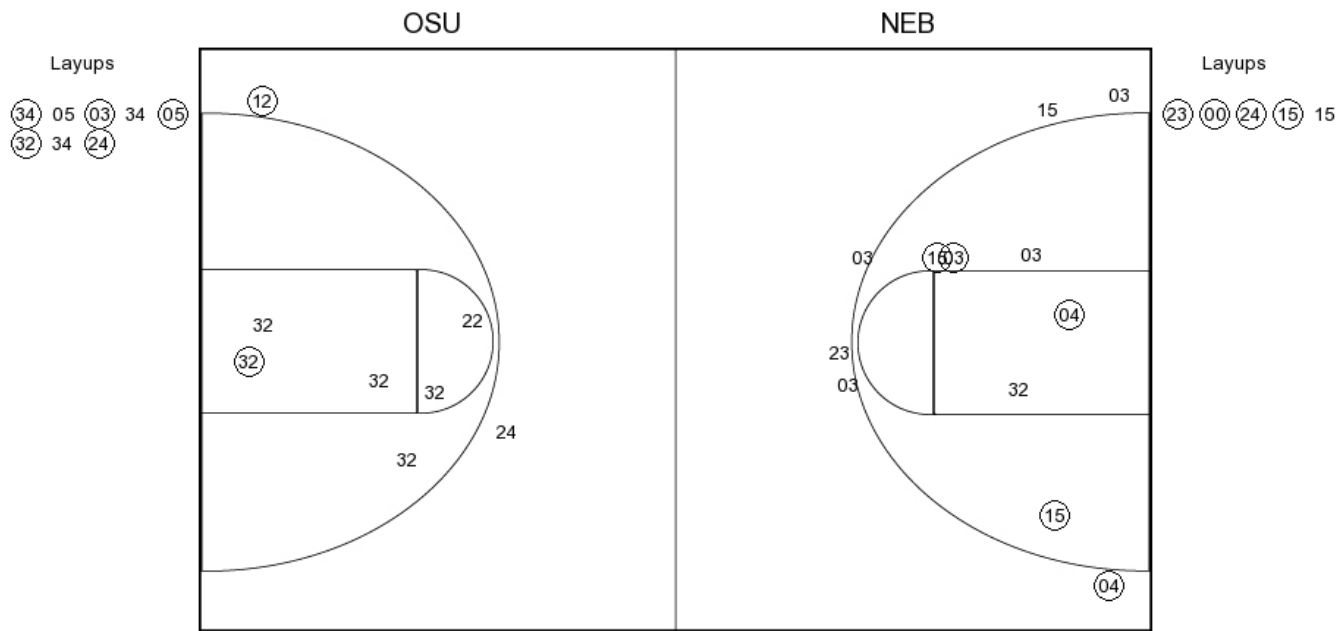
- FG Made
- FG Attempted
- 3PFG Made
- 3PFG Attempted

Ohio State vs Nebraska

OFFICIAL SHOT CHART

2/16/2017 at Pinnacle Bank Arena (Lincoln, Neb.)

PERIOD 3



OSU PERIOD 3

| | |
|----------------|----|
| FG Made | 18 |
| FG Attempted | 36 |
| 3PFG Made | 4 |
| 3PFG Attempted | 11 |

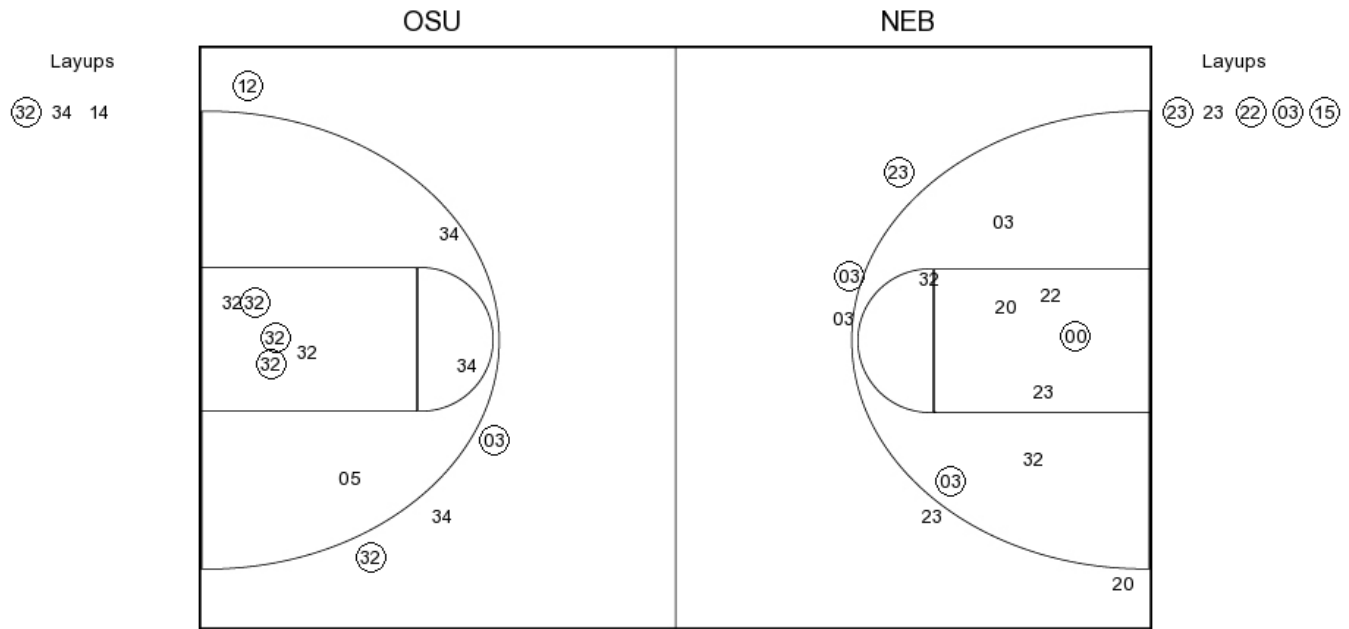
NEB PERIOD 3

| | |
|----------------|----|
| FG Made | 14 |
| FG Attempted | 31 |
| 3PFG Made | 4 |
| 3PFG Attempted | 6 |

Ohio State vs Nebraska
OFFICIAL SHOT CHART

2/16/2017 at Pinnacle Bank Arena (Lincoln, Neb.)

PERIOD 4



OSU PERIOD 4

- FG Made
- FG Attempted
- 3PFG Made
- 3PFG Attempted

NEB PERIOD 4

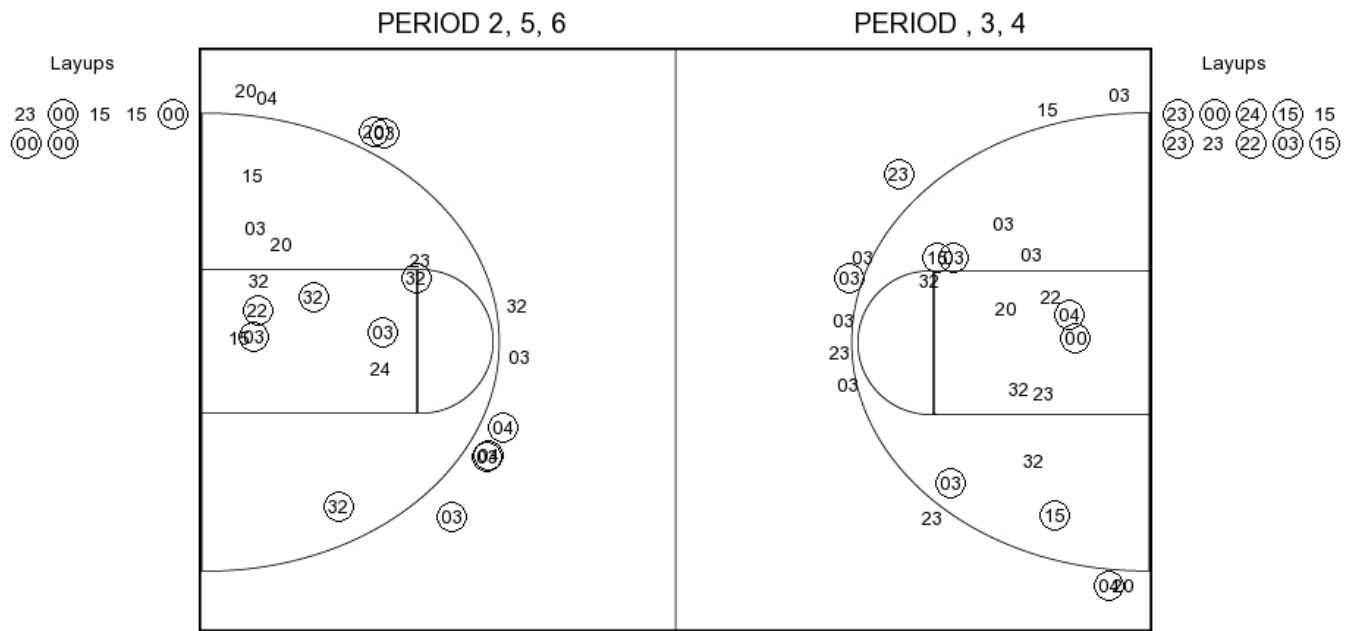
- FG Made
- FG Attempted
- 3PFG Made
- 3PFG Attempted

Ohio State vs Nebraska

OFFICIAL SHOT CHART

2/16/2017 at Pinnacle Bank Arena (Lincoln, Neb.)

Ohio State



OSU PERIOD 1

| | |
|----------------|----|
| FG Made | 16 |
| FG Attempted | 31 |
| 3PFG Made | 6 |
| 3PFG Attempted | 10 |

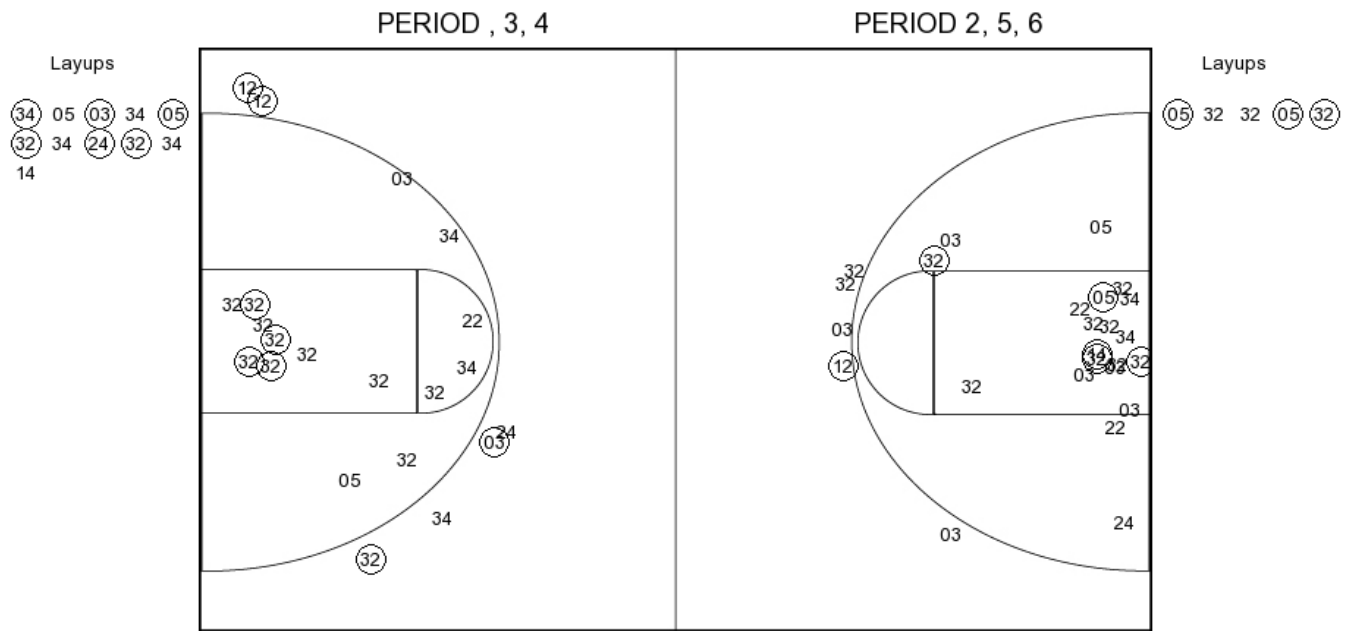
OSU PERIOD 2

| | |
|----------------|--|
| FG Made | |
| FG Attempted | |
| 3PFG Made | |
| 3PFG Attempted | |

Ohio State vs Nebraska
OFFICIAL SHOT CHART

2/16/2017 at Pinnacle Bank Arena (Lincoln, Neb.)

Nebraska



NEB PERIOD 1

| | |
|----------------|----|
| FG Made | 9 |
| FG Attempted | 32 |
| 3PFG Made | 1 |
| 3PFG Attempted | 6 |

NEB PERIOD 2

| | |
|----------------|--|
| FG Made | |
| FG Attempted | |
| 3PFG Made | |
| 3PFG Attempted | |