



# AUGUSTA UNIVERSITY AT WICHITA STATE

11/5/2016

Wichita, Kan./Charles Koch Arena

## FINAL STATS

**Wichita State**

*(0-0)*

**73**

**Augusta**

*(0-0)*

**67**

*Start Time: 2:00 pm*

*Officials: Winston Stith, K.C. Ely, Brian McNutt*

*Attendance: 10105*

Exhibition Game

# Official Basketball Box Score -- Game Totals -- Final Statistics

## Augusta vs Wichita State

11/5/2016 2:00 pm at Wichita, Kan./Charles Koch Arena

### Augusta 67 - 0-0

##	Player	S	Total			3-Ptr			Rebounds			PF	TP	A	TO	Blk	Stl	Min	
			FG	FGA	3PT	FG-FGA	FT	FTA	Off Reb	Def Reb	Tot Reb								
00	BROOKS,JA'SHAWN	*	0	3	0	2	0	0	0	0	0	2	0	0	1	0	0	12	
02	FIELDS,TAMYRIK	*	1	2	0	0	0	0	1	0	1	4	2	2	2	1	0	28	
10	SHERRILL,KESHUN	*	9	21	6	12	9	11	0	3	3	2	33	4	1	0	2	39	
15	URSICH,BEN	*	0	0	0	0	0	0	0	2	2	3	0	1	3	0	1	17	
24	WILLIAMS,DEANE	*	0	3	0	1	3	6	2	5	7	3	3	1	1	2	0	31	
03	BYRD,AARON		2	3	2	3	0	0	0	1	1	1	6	5	2	0	1	21	
12	OLIVER,DERECK		0	1	0	1	0	0	0	0	0	0	0	0	0	0	0	2	
13	MONROE,TYVEZ		5	12	2	6	4	5	1	3	4	2	16	0	1	0	0	31	
20	COBZARU,VLAD		0	0	0	0	0	0	1	1	2	4	0	0	0	1	0	9	
25	PARKER,ANDREW		3	5	0	0	1	2	2	1	3	1	7	0	0	1	1	10	
TEAM									2	2	4	0		1					
TOTALS				20-50		10-25		17-24		9	18	27	22	67	13	12	5	5	200

Deadball Rebounds: 2,0

FG %	1st Half:	8-23	34.8%	2nd Half:	12-27	44.4%	Game:	20-50	40.0%
3FG %	1st Half:	1-6	16.7%	2nd Half:	9-19	47.4%	Game:	10-25	40.0%
FT %	1st Half:	8-12	66.7%	2nd Half:	9-12	75.0%	Game:	17-24	70.8%

### Wichita State 73 - 0-0

##	Player	S	Total			3-Ptr			Rebounds			PF	TP	A	TO	Blk	Stl	Min	
			FG	FGA	3PT	FG-FGA	FT	FTA	Off Reb	Def Reb	Tot Reb								
00	KELLY,RASHARD	*	1	3	0	0	3	6	0	1	1	1	5	4	1	0	0	15	
01	BROWN,ZACH	*	1	1	1	1	0	0	0	0	0	3	3	0	1	0	0	6	
11	SHAMET,LANDRY	*	4	10	2	6	2	2	1	2	3	2	12	7	1	1	0	32	
20	NURGER,RAUNO	*	1	3	0	1	1	1	1	1	2	2	3	0	3	0	0	21	
32	MCDUFFIE,MARKIS	*	1	5	0	2	0	0	2	5	7	1	2	0	0	0	1	26	
02	SMITH,DAISHON		1	1	0	0	1	2	0	0	0	3	3	0	1	0	0	8	
03	KEYSER,CJ		1	1	1	1	0	0	0	0	0	2	3	1	1	0	0	8	
12	REAVES,AUSTIN		1	4	0	1	0	0	0	2	2	1	2	3	1	0	0	12	
14	SIMON,JOHN ROBERT		0	0	0	0	0	0	1	1	2	1	0	1	0	0	0	3	
21	WILLIS,DARRAL		1	6	0	0	0	0	1	3	4	1	2	0	2	0	0	15	
24	MORRIS,SHAQUILLE		9	11	0	1	6	10	4	3	7	1	24	0	2	2	0	21	
25	HAMILTON,ERIC		3	3	0	0	0	0	0	3	3	2	6	0	0	0	0	7	
33	FRANKAMP,CONNER		3	5	2	4	0	1	0	3	3	0	8	2	2	0	2	26	
TEAM									2	2	4	0		0					
TOTALS				27-53		6-17		13-22		12	26	38	20	73	18	15	3	3	200

Deadball Rebounds: 5,0

FG %	1st Half:	14-29	48.3%	2nd Half:	13-24	54.2%	Game:	27-53	50.9%
3FG %	1st Half:	4-10	40.0%	2nd Half:	2-7	28.6%	Game:	6-17	35.3%
FT %	1st Half:	9-14	64.3%	2nd Half:	4-8	50.0%	Game:	13-22	59.1%

Officials: Winston Stith, K.C. Ely, Brian McNutt  
 Technical Fouls: Augusta- None. Wichita State- None.  
 Attendance: 10105  
 Exhibition Game

Score by periods	1st	2nd	Total
Augusta	25	42	67
Wichita State	41	32	73

Points	In Paint	Off T/O	2nd 2nd Chance	Fast Fast Break	Bench
AUG	12	22	10	0	29
WSU	36	11	10	4	48

Last FG - AUG 2nd-04:01, WSU 2nd-00:45.  
 Largest lead - Augusta by 2 1st-18:53; Wichita State by 22 2nd-16:16  
 AUG led for 1:37. WSU led for 36:52. Game was tied for 1:29.

Score tied - 2 times  
 Lead changed - 3 times

**Official Basketball Box Score -- Game Totals -- First Half Statistics**  
**Augusta vs Wichita State**  
**11/5/2016 2:00 pm at Wichita, Kan./Charles Koch Arena**

**Augusta 25 • 0-0**

##	Player	S	Total			Rebounds			PF	TP	A	TO	Blk	Stl	Min
			FG-FGA	3PT	FG-FGA	FT-FTA	Off Reb	Def Reb							
00	BROOKS,JA'SHAWN	*	0-1	0-0	0-0	0	0	0	2	0	0	1	0	0	8
02	FIELDS,TAMYRIK	*	1-2	0-0	0-0	1	0	1	3	2	1	2	0	0	9
10	SHERRILL,KESHUN	*	1-8	0-3	3-4	0	2	2	1	5	2	1	0	0	19
15	URSICH,BEN	*	0-0	0-0	0-0	0	1	1	3	0	1	2	0	1	15
24	WILLIAMS,DEANE	*	0-3	0-1	2-4	1	3	4	1	2	1	1	1	0	16
03	BYRD,AARON		0-0	0-0	0-0	0	0	0	0	0	1	2	0	0	5
12	OLIVER,DERECK		0-1	0-1	0-0	0	0	0	0	0	0	0	0	0	2
13	MONROE,TYVEZ		3-4	1-1	2-2	0	1	1	0	9	0	1	0	0	13
20	COBZARU,VLAD		0-0	0-0	0-0	0	0	0	3	0	0	0	0	0	6
25	PARKER,ANDREW		3-4	0-0	1-2	1	1	2	0	7	0	0	1	0	7
TEAM						1	1	2	0			1			
Totals			8-23	1-6	8-12	4	9	13	13	25	6	11	2	1	100

FG % Half: 8-23 34.8%  
 3FG % Half: 1-6 16.7%  
 FT % Half: 8-12 66.7%

**Wichita State 41 • 0-0**

##	Player	S	Total			Rebounds			PF	TP	A	TO	Blk	Stl	Min
			FG-FGA	3PT	FG-FGA	FT-FTA	Off Reb	Def Reb							
00	KELLY.RASHARD	*	0-1	0-0	3-4	0	1	1	0	3	1	0	0	0	8
01	BROWN.ZACH	*	1-1	1-1	0-0	0	0	0	2	3	0	1	0	0	4
11	SHAMET.LANDRY	*	2-5	2-4	0-0	0	1	1	0	6	3	0	1	0	16
20	NURGER.RAUNO	*	1-3	0-1	1-1	1	1	2	2	3	0	3	0	0	9
32	MCDUFFIE.MARKIS	*	0-2	0-0	0-0	2	1	3	0	0	0	0	0	1	13
02	SMITH.DAISHON		1-1	0-0	1-2	0	0	0	2	3	0	1	0	0	4
03	KEYSER.CJ		0-0	0-0	0-0	0	0	0	1	0	1	0	0	0	3
12	REAVES.AUSTIN		0-1	0-1	0-0	0	1	1	1	0	2	0	0	0	7
14	SIMON.JOHN ROBERT		0-0	0-0	0-0	0	0	0	0	0	0	0	0	0	0
21	WILLIS.DARRAL		1-4	0-0	0-0	1	2	3	0	2	0	2	0	0	8
24	MORRIS.SHAQUILLE		4-6	0-1	4-7	2	1	3	0	12	0	0	1	0	9
25	HAMILTON.ERIC		3-3	0-0	0-0	0	3	3	2	6	0	0	0	0	5
33	FRANKAMP.CONNER		1-2	1-2	0-0	0	0	0	0	3	2	1	0	1	14
TEAM						1	2	3	0		0				
Totals			14-29	4-10	9-14	7	13	20	10	41	9	8	2	2	100

FG % Half: 14-29 48.3%  
 3FG % Half: 4-10 40.0%  
 FT % Half: 9-14 64.3%

Officials: Winston Stith, K.C. Ely, Brian McNutt  
 Technical Fouls: Augusta- None. Wichita State- None.  
 Exhibition Game

Score by periods	1st	2nd	Total
Augusta	25	42	67
Wichita State	41	32	73

Points	In Paint	Off T/O	2nd Chance	Fast Break	Bench
AUG	10	5	2	0	16
WSU	18	9	7	0	26

Last FG - AUG 1st-04:37, WSU 1st-00:34.  
 AUG led for 1:37. WSU led for 16:54. Game was tied for 1:29.

Score tied - 2 times  
 Lead changed - 3 times

**Augusta vs Wichita State**  
**11/5/2016; 2:00 pm at Wichita, Kan./Charles Koch Arena**  
**Period 1 Play-By-Play**

VISITORS: Augusta	Time	Score	Margin	HOME: Wichita State
	19:44			MISSED JUMPER by MCDUFFIE,MARKIS
REBOUND (DEF) by WILLIAMS,DEANE	19:44			
TURNOVER by URSICH,BEN	19:30			
	19:07			TURNOVER by NURGER,RAUNO
GOOD! JUMPER by SHERRILL,KESHUN	18:53	0-2	V 2	
ASSIST by FIELDS,TAMYRIK	18:53			
	18:32	3-2	H 1	GOOD! 3PTR by SHAMET,LANDRY
	18:32			ASSIST by KELLY,RASHARD
	18:10			FOUL by BROWN,ZACH
GOOD! FT by SHERRILL,KESHUN	18:10	3-3	T	
GOOD! FT by SHERRILL,KESHUN	18:10	3-4	V 1	
	18:10			SUB IN: FRANKAMP,CONNER
	18:10			SUB OUT: BROWN,ZACH
	17:56			MISSED JUMPER by KELLY,RASHARD
REBOUND (DEF) by SHERRILL,KESHUN	17:56			
FOUL by BROOKS,JA'SHAWN	17:47			
TURNOVER by BROOKS,JA'SHAWN	17:47			
	17:47			SUB IN: MORRIS,SHAQUILLE
	17:47			SUB OUT: KELLY,RASHARD
	17:21			MISSED JUMPER by SHAMET,LANDRY
REBOUND (DEF) by URSICH,BEN	17:21			
FOUL by FIELDS,TAMYRIK	17:14			
TURNOVER by FIELDS,TAMYRIK	17:14			
	16:59			MISSED 3PTR by FRANKAMP,CONNER
	16:59			REBOUND (OFF) by MORRIS,SHAQUILLE
	16:54	5-4	H 1	GOOD! TIPIN by MORRIS,SHAQUILLE [PNT]
MISSED JUMPER by SHERRILL,KESHUN	16:42			
	16:42			REBOUND (DEF) by SHAMET,LANDRY
	16:28			MISSED 3PTR by NURGER,RAUNO
	16:28			REBOUND (OFF) by MCDUFFIE,MARKIS
	16:22			MISSED 3PTR by SHAMET,LANDRY
	16:22			REBOUND (OFF) by MCDUFFIE,MARKIS
FOUL by BROOKS,JA'SHAWN	16:21			
SUB IN: MONROE,TYVEZ	16:21			
SUB IN: COBZARU,VLAD	16:21			
SUB OUT: BROOKS,JA'SHAWN	16:21			
SUB OUT: FIELDS,TAMYRIK	16:21			
	16:21			SUB IN: WILLIS,DARRAL
	16:21			SUB OUT: NURGER,RAUNO
	16:07			TURNOVER by WILLIS,DARRAL
STEAL by URSICH,BEN	16:05			
FOUL by URSICH,BEN	16:04			
TURNOVER by URSICH,BEN	16:04			
FOUL by COBZARU,VLAD	15:44			
	15:44			TIMEOUT MEDIA
	15:44			MISSED FT by MORRIS,SHAQUILLE
	15:44			REBOUND (DEADB) by TEAM
	15:44	6-4	H 2	GOOD! FT by MORRIS,SHAQUILLE
GOOD! LAYUP by MONROE,TYVEZ [PNT]	15:26	6-6	T	
	15:04	8-6	H 2	GOOD! JUMPER by MORRIS,SHAQUILLE
	15:04			ASSIST by FRANKAMP,CONNER
MISSED JUMPER by MONROE,TYVEZ	14:49			
REBOUND (OFF) by WILLIAMS,DEANE	14:49			

VISITORS: Augusta	Time	Score	Margin	HOME: Wichita State
MISSED LAYUP by WILLIAMS,DEANE	14:45			
	14:45			REBOUND (DEF) by WILLIS,DARRAL
	14:31			MISSED 3PTR by MORRIS,SHAQUILLE
	14:31			REBOUND (OFF) by WILLIS,DARRAL
	14:27	10-6	H 4	GOOD! JUMPER by WILLIS,DARRAL [PNT]
MISSED 3PTR by WILLIAMS,DEANE	14:14			
	14:14			REBOUND (DEF) by TEAM
FOUL by WILLIAMS,DEANE	14:12			
SUB IN: FIELDS,TAMYRIK	14:12			
SUB OUT: WILLIAMS,DEANE	14:12			
	14:12			SUB IN: NURGER,RAUNO
	14:12			SUB IN: SMITH,DAISHON
	14:12			SUB IN: BROWN,ZACH
	14:12			SUB OUT: MORRIS,SHAQUILLE
	14:12			SUB OUT: SHAMET,LANDRY
	14:12			SUB OUT: MCDUFFIE,MARKIS
SUB IN: BYRD,AARON	14:09			
SUB OUT: URSICH,BEN	14:09			
FOUL by COBZARU,VLAD	14:01			
	14:01	11-6	H 5	GOOD! FT by NURGER,RAUNO
	14:01			TURNOVER by NURGER,RAUNO
SUB IN: PARKER,ANDREW	14:01			
SUB OUT: COBZARU,VLAD	14:01			
	14:01			SUB IN: KELLY,RASHARD
	14:01			SUB OUT: SMITH,DAISHON
	14:01			SUB OUT: WILLIS,DARRAL
TURNOVER by TEAM	13:57			
	13:57			SUB IN: SMITH,DAISHON
	13:39			TURNOVER by BROWN,ZACH
GOOD! LAYUP by PARKER,ANDREW [PNT]	13:23	11-8	H 3	
ASSIST by BYRD,AARON	13:23			
	13:02	14-8	H 6	GOOD! 3PTR by BROWN,ZACH
	13:02			ASSIST by FRANKAMP,CONNER
GOOD! JUMPER by FIELDS,TAMYRIK [PNT]	12:41	14-10	H 4	
ASSIST by SHERRILL,KESHUN	12:41			
FOUL by FIELDS,TAMYRIK	12:28			
	12:28			MISSED FT by SMITH,DAISHON
	12:28			REBOUND (DEADB) by TEAM
	12:28	15-10	H 5	GOOD! FT by SMITH,DAISHON
SUB IN: WILLIAMS,DEANE	12:28			
SUB OUT: FIELDS,TAMYRIK	12:28			
	12:28			SUB IN: REAVES,AUSTIN
	12:28			SUB OUT: FRANKAMP,CONNER
	12:09			FOUL by BROWN,ZACH
	12:09			SUB IN: MCDUFFIE,MARKIS
	12:09			SUB IN: MORRIS,SHAQUILLE
	12:09			SUB OUT: KELLY,RASHARD
	12:09			SUB OUT: BROWN,ZACH
MISSED JUMPER by WILLIAMS,DEANE	12:08			
	12:08			REBOUND (DEF) by NURGER,RAUNO
	11:59			FOUL by SMITH,DAISHON
	11:59			TURNOVER by SMITH,DAISHON
TIMEOUT MEDIA	11:59			
SUB IN: URSICH,BEN	11:59			
SUB OUT: PARKER,ANDREW	11:59			
	11:46			FOUL by NURGER,RAUNO
MISSED FT by WILLIAMS,DEANE	11:46			
REBOUND (DEADB) by TEAM	11:46			

VISITORS: Augusta	Time	Score	Margin	HOME: Wichita State
GOOD! FT by WILLIAMS,DEANE	11:46	15-11	H 4	
SUB IN: OLIVER,DERECK	11:46			
SUB OUT: SHERRILL,KESHUN	11:46			
	11:46			SUB IN: WILLIS,DARRAL
	11:46			SUB OUT: NURGER,RAUNO
	11:34			TURNOVER by WILLIS,DARRAL
TURNOVER by BYRD,AARON	11:20			
	11:18			STEAL by MCDUFFIE,MARKIS
	10:59			MISSED JUMPER by WILLIS,DARRAL
	10:59			REBOUND (OFF) by MORRIS,SHAQUILLE
	10:56			MISSED LAYUP by MORRIS,SHAQUILLE
REBOUND (DEF) by MONROE,TYVEZ	10:56			
TURNOVER by BYRD,AARON	10:49			
SUB IN: FIELDS,TAMYRIK	10:49			
SUB IN: SHERRILL,KESHUN	10:49			
SUB IN: BROOKS,JA'SHAWN	10:49			
SUB OUT: URSICH,BEN	10:49			
SUB OUT: OLIVER,DERECK	10:49			
SUB OUT: BYRD,AARON	10:49			
	10:49			SUB IN: KELLY,RASHARD
	10:49			SUB OUT: MORRIS,SHAQUILLE
	10:38	17-11	H 6	GOOD! LAYUP by SMITH,DAISHON [PNT]
TURNOVER by MONROE,TYVEZ	10:22			
SUB IN: URSICH,BEN	10:22			
SUB OUT: MONROE,TYVEZ	10:22			
	10:09			MISSED LAYUP by WILLIS,DARRAL
REBOUND (DEF) by SHERRILL,KESHUN	10:09			
	09:53			FOUL by SMITH,DAISHON
MISSED FT by SHERRILL,KESHUN	09:53			
REBOUND (DEADB) by TEAM	09:53			
GOOD! FT by SHERRILL,KESHUN	09:53	17-12	H 5	
SUB IN: COBZARU,VLAD	09:53			
SUB OUT: WILLIAMS,DEANE	09:53			
	09:53			SUB IN: FRANKAMP,CONNER
	09:53			SUB IN: HAMILTON,ERIC
	09:53			SUB IN: SHAMET,LANDRY
	09:53			SUB OUT: WILLIS,DARRAL
	09:53			SUB OUT: MCDUFFIE,MARKIS
	09:53			SUB OUT: SMITH,DAISHON
	09:34	19-12	H 7	GOOD! LAYUP by HAMILTON,ERIC [PNT]
	09:34			ASSIST by SHAMET,LANDRY
MISSED 3PTR by SHERRILL,KESHUN	09:17			
	09:17			REBOUND (DEF) by KELLY,RASHARD
	09:02			MISSED 3PTR by REAVES,AUSTIN
	09:02			REBOUND (OFF) by TEAM
FOUL by SHERRILL,KESHUN	09:01			
	09:01			MISSED FT by KELLY,RASHARD
	09:01			REBOUND (DEADB) by TEAM
	09:01	20-12	H 8	GOOD! FT by KELLY,RASHARD
TURNOVER by FIELDS,TAMYRIK	08:44			
	08:43			STEAL by FRANKAMP,CONNER
	08:23	22-12	H 10	GOOD! LAYUP by HAMILTON,ERIC [PNT]
	08:23			ASSIST by REAVES,AUSTIN
	08:06			FOUL by HAMILTON,ERIC
	08:06			SUB IN: MORRIS,SHAQUILLE
	08:06			SUB OUT: KELLY,RASHARD
MISSED LAYUP by BROOKS,JA'SHAWN	08:03			
REBOUND (OFF) by FIELDS,TAMYRIK	08:03			

VISITORS: Augusta	Time	Score	Margin	HOME: Wichita State
MISSED LAYUP by FIELDS,TAMYRIK	08:00			
	08:00			BLOCK by MORRIS,SHAQUILLE
	07:58			REBOUND (DEF) by HAMILTON,ERIC
	07:50			TURNOVER by FRANKAMP,CONNER
TIMEOUT MEDIA	07:50			
MISSED 3PTR by SHERRILL,KESHUN	07:35			
	07:35			REBOUND (DEF) by HAMILTON,ERIC
	07:20	24-12	H 12	GOOD! JUMPER by MORRIS,SHAQUILLE [PNT]
	07:20			ASSIST by SHAMET,LANDRY
FOUL by FIELDS,TAMYRIK	07:20			
	07:20	25-12	H 13	GOOD! FT by MORRIS,SHAQUILLE
SUB IN: WILLIAMS,DEANE	07:20			
SUB IN: MONROE,TYVEZ	07:20			
SUB OUT: FIELDS,TAMYRIK	07:20			
SUB OUT: BROOKS,JA'SHAWN	07:20			
	07:20			SUB IN: MCDUFFIE,MARKIS
	07:20			SUB OUT: REAVES,AUSTIN
GOOD! JUMPER by MONROE,TYVEZ	07:12	25-14	H 11	
ASSIST by WILLIAMS,DEANE	07:12			
	06:39			MISSED 3PTR by SHAMET,LANDRY
REBOUND (DEF) by WILLIAMS,DEANE	06:39			
GOOD! 3PTR by MONROE,TYVEZ	06:23	25-17	H 8	
ASSIST by SHERRILL,KESHUN	06:23			
FOUL by COBZARU,VLAD	06:14			
	06:14	26-17	H 9	GOOD! FT by MORRIS,SHAQUILLE
	06:14			MISSED FT by MORRIS,SHAQUILLE
REBOUND (DEF) by WILLIAMS,DEANE	06:14			
SUB IN: PARKER,ANDREW	06:14			
SUB OUT: COBZARU,VLAD	06:14			
	06:14			SUB IN: WILLIS,DARRAL
	06:14			SUB OUT: HAMILTON,ERIC
GOOD! LAYUP by PARKER,ANDREW [PNT]	06:04	26-19	H 7	
ASSIST by URSICH,BEN	06:04			
	06:00			TIMEOUT TEAM
	06:00			SUB IN: NURGER,RAUNO
	06:00			SUB IN: KELLY,RASHARD
	06:00			SUB IN: KEYSER,CJ
	06:00			SUB OUT: MCDUFFIE,MARKIS
	06:00			SUB OUT: WILLIS,DARRAL
	06:00			SUB OUT: MORRIS,SHAQUILLE
	05:32	29-19	H 10	GOOD! 3PTR by FRANKAMP,CONNER
	05:32			ASSIST by KEYSER,CJ
	05:20			FOUL by KEYSER,CJ
GOOD! FT by MONROE,TYVEZ	05:20	29-20	H 9	
GOOD! FT by MONROE,TYVEZ	05:20	29-21	H 8	
	04:59			MISSED LAYUP by NURGER,RAUNO
BLOCK by WILLIAMS,DEANE	04:59			
	04:57			REBOUND (OFF) by NURGER,RAUNO
	04:55	31-21	H 10	GOOD! LAYUP by NURGER,RAUNO [PNT]
MISSED JUMPER by SHERRILL,KESHUN	04:40			
REBOUND (OFF) by PARKER,ANDREW	04:40			
GOOD! LAYUP by PARKER,ANDREW [PNT]	04:37	31-23	H 8	
FOUL by URSICH,BEN	04:12			
	04:12	32-23	H 9	GOOD! FT by KELLY,RASHARD
	04:12	33-23	H 10	GOOD! FT by KELLY,RASHARD
	04:12			SUB IN: MCDUFFIE,MARKIS
	04:12			SUB OUT: KELLY,RASHARD
MISSED LAYUP by SHERRILL,KESHUN	03:52			

VISITORS: Augusta	Time	Score	Margin	HOME: Wichita State
	03:52			BLOCK by SHAMET, LANDRY
REBOUND (OFF) by TEAM	03:52			
TIMEOUT MEDIA	03:52			
TURNOVER by SHERRILL, KESHUN	03:43			
	03:20			FOUL by NURGER, RAUNO
	03:20			TURNOVER by NURGER, RAUNO
SUB IN: OLIVER, DERECK	03:20			
SUB OUT: URSICH, BEN	03:20			
	03:20			SUB IN: WILLIS, DARRAL
	03:20			SUB IN: MORRIS, SHAQUILLE
	03:20			SUB OUT: NURGER, RAUNO
	03:20			SUB OUT: KEYSER, CJ
MISSED LAYUP by PARKER, ANDREW	03:13			
	03:13			REBOUND (DEF) by WILLIS, DARRAL
	03:06			MISSED JUMPER by MCDUFFIE, MARKIS
REBOUND (DEF) by TEAM	03:06			
MISSED 3PTR by SHERRILL, KESHUN	02:55			
	02:55			REBOUND (DEF) by MORRIS, SHAQUILLE
	02:44			MISSED LAYUP by WILLIS, DARRAL
BLOCK by PARKER, ANDREW	02:44			
REBOUND (DEF) by PARKER, ANDREW	02:42			
TURNOVER by WILLIAMS, DEANE	02:36			
SUB IN: URSICH, BEN	02:36			
SUB OUT: PARKER, ANDREW	02:36			
	02:25	35-23	H 12	GOOD! LAYUP by MORRIS, SHAQUILLE [PNT]
	02:25			ASSIST by SHAMET, LANDRY
MISSED 3PTR by OLIVER, DERECK	02:10			
	02:10			REBOUND (DEF) by TEAM
SUB IN: BYRD, AARON	02:09			
SUB OUT: OLIVER, DERECK	02:09			
FOUL by URSICH, BEN	01:46			
	01:46			MISSED FT by MORRIS, SHAQUILLE
	01:46			REBOUND (DEADB) by TEAM
	01:46	36-23	H 13	GOOD! FT by MORRIS, SHAQUILLE
SUB IN: PARKER, ANDREW	01:46			
SUB OUT: URSICH, BEN	01:46			
	01:46			SUB IN: HAMILTON, ERIC
	01:46			SUB IN: REAVES, AUSTIN
	01:46			SUB OUT: FRANKAMP, CONNER
	01:46			SUB OUT: MORRIS, SHAQUILLE
	01:41			FOUL by REAVES, AUSTIN
GOOD! FT by WILLIAMS, DEANE	01:41	36-24	H 12	
MISSED FT by WILLIAMS, DEANE	01:41			
	01:41			REBOUND (DEF) by HAMILTON, ERIC
	01:12	39-24	H 15	GOOD! 3PTR by SHAMET, LANDRY
	01:12			ASSIST by REAVES, AUSTIN
	00:55			FOUL by HAMILTON, ERIC
GOOD! FT by PARKER, ANDREW	00:55	39-25	H 14	
MISSED FT by PARKER, ANDREW	00:55			
	00:55			REBOUND (DEF) by MCDUFFIE, MARKIS
	00:34	41-25	H 16	GOOD! LAYUP by HAMILTON, ERIC [PNT]
MISSED JUMPER by SHERRILL, KESHUN	00:06			
	00:06			REBOUND (DEF) by REAVES, AUSTIN



	<b>Period 1-only</b>	<b>In In Paint</b>	<b>Off Off T/O</b>	<b>2nd 2nd Chance</b>	<b>Fast Fast Break</b>	<b>Bench Bench</b>	
AUG		10	5	2	0	16	Score tied - 4 times
WSU		18	9	7	0	26	Lead changed - 2 times

# Official Basketball Box Score -- Game Totals -- Second Half Statistics

## Augusta vs Wichita State

11/5/2016 2:00 pm at Wichita, Kan./Charles Koch Arena

### Augusta 42 • 0-0

##	Player	S	Total			Rebounds			PF	TP	A	TO	Blk	Stl	Min
			FG-FGA	3PT FG-FGA	FT-FTA	Off Reb	Def Reb	Tot Reb							
00	BROOKS,JA'SHAWN	*	0-2	0-2	0-0	0	0	0	0	0	0	0	0	0	4
02	FIELDS,TAMYRIK	*	0-0	0-0	0-0	0	0	0	1	0	1	0	1	0	19
10	SHERRILL,KESHUN	*	8-13	6-9	6-7	0	1	1	1	28	2	0	0	2	20
15	URSICH,BEN	*	0-0	0-0	0-0	0	1	1	0	0	0	1	0	0	2
24	WILLIAMS,DEANE	*	0-0	0-0	1-2	1	2	3	2	1	0	0	1	0	15
03	BYRD,AARON		2-3	2-3	0-0	0	1	1	1	6	4	0	0	1	16
12	OLIVER,DERECK		0-0	0-0	0-0	0	0	0	0	0	0	0	0	0	0
13	MONROE,TYVEZ		2-8	1-5	2-3	1	2	3	2	7	0	0	0	0	18
20	COBZARU,VLAD		0-0	0-0	0-0	1	1	2	1	0	0	0	1	0	3
25	PARKER,ANDREW		0-1	0-0	0-0	1	0	1	1	0	0	0	0	1	3
TEAM						1	1	2	0		0				
Totals			12-27	9-19	9-12	5	9	14	9	42	7	1	3	4	100

FG %	Half:	12-27	44.4%
3FG %	Half:	9-19	16.7%
FT %	Half:	9-12	75.0%

### Wichita State 32 • 0-0

##	Player	S	Total			Rebounds			PF	TP	A	TO	Blk	Stl	Min
			FG-FGA	3PT FG-FGA	FT-FTA	Off Reb	Def Reb	Tot Reb							
00	KELLY.RASHARD	*	1-2	0-0	0-2	0	0	0	1	2	3	1	0	0	7
01	BROWN.ZACH	*	0-0	0-0	0-0	0	0	0	1	0	0	0	0	0	2
11	SHAMET.LANDRY	*	2-5	0-2	2-2	1	1	2	2	6	4	1	0	0	16
20	NURGER.RAUNO	*	0-0	0-0	0-0	0	0	0	0	0	0	0	0	0	12
32	MCDUFFIE.MARKIS	*	1-3	0-2	0-0	0	4	4	1	2	0	0	0	0	13
02	SMITH.DAISHON		0-0	0-0	0-0	0	0	0	1	0	0	0	0	0	4
03	KEYSER.CJ		1-1	1-1	0-0	0	0	0	1	3	0	1	0	0	5
12	REAVES.AUSTIN		1-3	0-0	0-0	0	1	1	0	2	1	1	0	0	5
14	SIMON.JOHN ROBERT		0-0	0-0	0-0	1	1	2	1	0	1	0	0	0	3
21	WILLIS.DARRAL		0-2	0-0	0-0	0	1	1	1	0	0	0	0	0	7
24	MORRIS.SHAQUILLE		5-5	0-0	2-3	2	2	4	1	12	0	2	1	0	12
25	HAMILTON.ERIC		0-0	0-0	0-0	0	0	0	0	0	0	0	0	0	2
33	FRANKAMP.CONNER		2-3	1-2	0-1	0	3	3	0	5	0	1	0	1	12
TEAM						1	0	1	0		0				
Totals			13-24	2-7	4-8	5	13	18	10	32	9	7	1	1	100

FG %	Half:	13-24	54.2%
3FG %	Half:	2-7	40.0%
FT %	Half:	4-8	50.0%

Officials: Winston Stith, K.C. Ely, Brian McNutt  
 Technical Fouls: Augusta- None. Wichita State- None.  
 Exhibition Game

Score by periods	1st	2nd	Total
Augusta	25	42	67
Wichita State	41	32	73

Points	In Paint	Off T/O	2nd Chance	Fast Break	Bench
AUG	2	17	8	0	13
WSU	18	2	6	4	22

Last FG - AUG 2nd-04:01, WSU 2nd-00:45.  
 AUG led for 0:00. WSU led for 19:58. Game was tied for 0:00.

Score tied - 0 times  
 Lead changed - 0 times

**Augusta vs Wichita State**  
**11/5/2016; 2:00 pm at Wichita, Kan./Charles Koch Arena**  
**Period 2 Play-By-Play**

VISITORS: Augusta	Time	Score	Margin	HOME: Wichita State
	20:00			SUB IN: MORRIS,SHAQUILLE
	20:00			SUB IN: FRANKAMP,CONNER
	20:00			SUB OUT: BROWN,ZACH
	20:00			SUB OUT: NURGER,RAUNO
MISSED 3PTR by BROOKS,JA'SHAWN	19:44			
	19:44			REBOUND (DEF) by MORRIS,SHAQUILLE
	19:16			MISSED 3PTR by SHAMET,LANDRY
	19:16			REBOUND (OFF) by MORRIS,SHAQUILLE
FOUL by WILLIAMS,DEANE	19:04			
	19:04			MISSED FT by KELLY,RASHARD
	19:04			REBOUND (DEADB) by TEAM
	19:04			MISSED FT by KELLY,RASHARD
REBOUND (DEF) by URSICH,BEN	19:04			
TURNOVER by URSICH,BEN	18:50			
	18:49			STEAL by FRANKAMP,CONNER
	18:37	43-25	H 18	GOOD! DUNK by MORRIS,SHAQUILLE [PNT]
	18:37			ASSIST by KELLY,RASHARD
MISSED 3PTR by BROOKS,JA'SHAWN	18:18			
	18:18			REBOUND (DEF) by MORRIS,SHAQUILLE
	18:07	46-25	H 21	GOOD! 3PTR by FRANKAMP,CONNER
	18:07			ASSIST by KELLY,RASHARD
TIMEOUT TEAM	18:03			
	17:46			FOUL by KELLY,RASHARD
GOOD! FT by WILLIAMS,DEANE	17:46	46-26	H 20	
MISSED FT by WILLIAMS,DEANE	17:46			
	17:46			REBOUND (DEF) by MCDUFFIE,MARKIS
SUB IN: MONROE,TYVEZ	17:46			
SUB OUT: URSICH,BEN	17:46			
	17:31			TURNOVER by FRANKAMP,CONNER
MISSED LAYUP by MONROE,TYVEZ	17:12			
REBOUND (OFF) by MONROE,TYVEZ	17:12			
	17:09			FOUL by MORRIS,SHAQUILLE
GOOD! FT by MONROE,TYVEZ	17:09	46-27	H 19	
GOOD! FT by MONROE,TYVEZ	17:09	46-28	H 18	
	16:49	48-28	H 20	GOOD! LAYUP by MORRIS,SHAQUILLE [PNT]
	16:49			ASSIST by SHAMET,LANDRY
MISSED 3PTR by MONROE,TYVEZ	16:23			
	16:23			REBOUND (DEF) by SHAMET,LANDRY
	16:16	50-28	H 22	GOOD! LAYUP by KELLY,RASHARD [FB/PNT]
	16:16			ASSIST by SHAMET,LANDRY
MISSED 3PTR by MONROE,TYVEZ	15:53			
	15:53			REBOUND (DEF) by MCDUFFIE,MARKIS
	15:50			TIMEOUT MEDIA
SUB IN: BYRD,AARON	15:50			
SUB OUT: BROOKS,JA'SHAWN	15:50			
	15:50			SUB IN: WILLIS,DARRAL
	15:50			SUB IN: REAVES,AUSTIN
	15:50			SUB IN: SMITH,DAISHON
	15:50			SUB IN: BROWN,ZACH
	15:50			SUB IN: NURGER,RAUNO
	15:50			SUB OUT: KELLY,RASHARD
	15:50			SUB OUT: MORRIS,SHAQUILLE
	15:50			SUB OUT: SHAMET,LANDRY

VISITORS: Augusta	Time	Score	Margin	HOME: Wichita State
	15:50			SUB OUT: FRANKAMP,CONNER
	15:50			SUB OUT: MCDUFFIE,MARKIS
	15:39			TURNOVER by REAVES,AUSTIN
STEAL by SHERRILL,KESHUN	15:37			
	15:33			FOUL by BROWN,ZACH
	15:29			FOUL by SMITH,DAISHON
	15:13			FOUL by WILLIS,DARRAL
GOOD! 3PTR by SHERRILL,KESHUN	15:02	50-31	H 19	
ASSIST by BYRD,AARON	15:02			
	14:30			MISSED JUMPER by REAVES,AUSTIN
REBOUND (DEF) by MONROE,TYVEZ	14:30			
GOOD! 3PTR by SHERRILL,KESHUN	14:22	50-34	H 16	
FOUL by MONROE,TYVEZ	13:50			
	13:50			SUB IN: SHAMET,LANDRY
	13:50			SUB IN: KEYSER,CJ
	13:50			SUB OUT: SMITH,DAISHON
	13:50			SUB OUT: BROWN,ZACH
	13:45			MISSED JUMPER by WILLIS,DARRAL
REBOUND (DEF) by WILLIAMS,DEANE	13:45			
	13:38			FOUL by SHAMET,LANDRY
GOOD! FT by SHERRILL,KESHUN	13:38	50-35	H 15	
GOOD! FT by SHERRILL,KESHUN	13:38	50-36	H 14	
SUB IN: COBZARU,VLAD	13:38			
SUB OUT: WILLIAMS,DEANE	13:38			
	13:23	52-36	H 16	GOOD! LAYUP by REAVES,AUSTIN [PNT]
	13:23			ASSIST by SHAMET,LANDRY
MISSED 3PTR by SHERRILL,KESHUN	13:02			
	13:02			REBOUND (DEF) by REAVES,AUSTIN
	12:32			MISSED JUMPER by REAVES,AUSTIN
BLOCK by COBZARU,VLAD	12:32			
REBOUND (DEF) by COBZARU,VLAD	12:30			
	12:09			FOUL by KEYSER,CJ
MISSED FT by MONROE,TYVEZ	12:09			
REBOUND (OFF) by COBZARU,VLAD	12:09			
	12:09			SUB IN: HAMILTON,ERIC
	12:09			SUB OUT: NURGER,RAUNO
GOOD! 3PTR by BYRD,AARON	11:52	52-39	H 13	
ASSIST by SHERRILL,KESHUN	11:52			
	11:36	55-39	H 16	GOOD! 3PTR by KEYSER,CJ
	11:36			ASSIST by REAVES,AUSTIN
MISSED JUMPER by SHERRILL,KESHUN	11:13			
	11:13			REBOUND (DEF) by WILLIS,DARRAL
FOUL by SHERRILL,KESHUN	11:00			
	11:00			TIMEOUT MEDIA
	11:00			SUB IN: NURGER,RAUNO
	11:00			SUB IN: MORRIS,SHAQUILLE
	11:00			SUB IN: SIMON,JOHN ROBERT
	11:00			SUB OUT: WILLIS,DARRAL
	11:00			SUB OUT: REAVES,AUSTIN
	11:00			SUB OUT: HAMILTON,ERIC
	10:42			TURNOVER by KEYSER,CJ
GOOD! 3PTR by BYRD,AARON	10:27	55-42	H 13	
ASSIST by SHERRILL,KESHUN	10:27			
FOUL by COBZARU,VLAD	10:13			
SUB IN: PARKER,ANDREW	10:13			
SUB OUT: COBZARU,VLAD	10:13			
FOUL by PARKER,ANDREW	10:12			
	10:12	56-42	H 14	GOOD! FT by MORRIS,SHAQUILLE

VISITORS: Augusta	Time	Score	Margin	HOME: Wichita State
	10:12			MISSED FT by MORRIS,SHAQUILLE
REBOUND (DEF) by MONROE,TYVEZ	10:12			
MISSED LAYUP by MONROE,TYVEZ	10:07			
	10:07			REBOUND (DEF) by SIMON,JOHN ROBERT
	10:00	58-42	H 16	GOOD! JUMPER by SHAMET,LANDRY [FB]
	10:00			ASSIST by SIMON,JOHN ROBERT
GOOD! LAYUP by MONROE,TYVEZ [PNT]	09:51	58-44	H 14	
	09:22	60-44	H 16	GOOD! LAYUP by SHAMET,LANDRY [PNT]
MISSED 3PTR by MONROE,TYVEZ	09:07			
REBOUND (OFF) by PARKER,ANDREW	09:07			
MISSED JUMPER by PARKER,ANDREW	09:04			
	09:04			BLOCK by MORRIS,SHAQUILLE
REBOUND (OFF) by TEAM	09:04			
SUB IN: WILLIAMS,DEANE	09:04			
SUB OUT: FIELDS,TAMYRIK	09:04			
GOOD! 3PTR by SHERRILL,KESHUN	08:57	60-47	H 13	
ASSIST by BYRD,AARON	08:57			
FOUL by WILLIAMS,DEANE	08:32			
	08:32			SUB IN: HAMILTON,ERIC
	08:32			SUB IN: MCDUFFIE,MARKIS
	08:32			SUB OUT: MORRIS,SHAQUILLE
	08:32			SUB OUT: KEYSER,CJ
	08:18			MISSED 3PTR by SHAMET,LANDRY
	08:18			REBOUND (OFF) by SIMON,JOHN ROBERT
	08:12			MISSED 3PTR by MCDUFFIE,MARKIS
	08:12			REBOUND (OFF) by SHAMET,LANDRY
FOUL by BYRD,AARON	08:10			
	08:10	61-47	H 14	GOOD! FT by SHAMET,LANDRY
	08:10	62-47	H 15	GOOD! FT by SHAMET,LANDRY
GOOD! 3PTR by MONROE,TYVEZ	08:02	62-50	H 12	
ASSIST by BYRD,AARON	08:02			
	07:47			TURNOVER by SHAMET,LANDRY
STEAL by PARKER,ANDREW	07:45			
	07:42			FOUL by SIMON,JOHN ROBERT
TIMEOUT MEDIA	07:42			
GOOD! FT by SHERRILL,KESHUN	07:42	62-51	H 11	
GOOD! FT by SHERRILL,KESHUN	07:42	62-52	H 10	
SUB IN: FIELDS,TAMYRIK	07:42			
SUB OUT: PARKER,ANDREW	07:42			
	07:42			SUB IN: FRANKAMP,CONNER
	07:42			SUB IN: MORRIS,SHAQUILLE
	07:42			SUB IN: SMITH,DAISHON
	07:42			SUB IN: KELLY,RASHARD
	07:42			SUB OUT: NURGER,RAUNO
	07:42			SUB OUT: HAMILTON,ERIC
	07:42			SUB OUT: SHAMET,LANDRY
	07:42			SUB OUT: SIMON,JOHN ROBERT
	07:26			MISSED LAYUP by KELLY,RASHARD
BLOCK by WILLIAMS,DEANE	07:26			
	07:25			REBOUND (OFF) by TEAM
	07:16	64-52	H 12	GOOD! JUMPER by MCDUFFIE,MARKIS [PNT]
	07:16			ASSIST by KELLY,RASHARD
MISSED JUMPER by SHERRILL,KESHUN	06:57			
	06:57			REBOUND (DEF) by MCDUFFIE,MARKIS
	06:45			TURNOVER by MORRIS,SHAQUILLE
STEAL by BYRD,AARON	06:43			
GOOD! JUMPER by SHERRILL,KESHUN	06:29	64-54	H 10	
TIMEOUT TEAM	06:27			

VISITORS: Augusta	Time	Score	Margin	HOME: Wichita State
	06:12			TURNOVER by MORRIS,SHAQUILLE
STEAL by SHERRILL,KESHUN	06:10			
GOOD! 3PTR by SHERRILL,KESHUN	06:08	64-57	H 7	
	05:41			TURNOVER by KELLY,RASHARD
	05:41			SUB IN: NURGER,RAUNO
	05:41			SUB IN: WILLIS,DARRAL
	05:41			SUB OUT: MORRIS,SHAQUILLE
	05:41			SUB OUT: KELLY,RASHARD
GOOD! JUMPER by SHERRILL,KESHUN	05:27	64-59	H 5	
	05:18			TIMEOUT TEAM
	05:18			SUB IN: SHAMET,LANDRY
	05:18			SUB OUT: SMITH,DAISHON
	04:58	66-59	H 7	GOOD! JUMPER by FRANKAMP,CONNER
GOOD! 3PTR by SHERRILL,KESHUN	04:42	66-62	H 4	
ASSIST by FIELDS,TAMYRIK	04:42			
	04:25			MISSED LAYUP by WILLIS,DARRAL
BLOCK by FIELDS,TAMYRIK	04:25			
REBOUND (DEF) by WILLIAMS,DEANE	04:23			
GOOD! 3PTR by SHERRILL,KESHUN	04:01	66-65	H 1	
ASSIST by BYRD,AARON	04:01			
	03:46			TIMEOUT MEDIA
	03:46			SUB IN: MORRIS,SHAQUILLE
	03:46			SUB OUT: WILLIS,DARRAL
	03:38	68-65	H 3	GOOD! LAYUP by MORRIS,SHAQUILLE [PNT]
FOUL by FIELDS,TAMYRIK	03:38			
	03:38	69-65	H 4	GOOD! FT by MORRIS,SHAQUILLE
MISSED 3PTR by SHERRILL,KESHUN	03:14			
	03:14			REBOUND (DEF) by FRANKAMP,CONNER
	03:00			MISSED 3PTR by MCDUFFIE,MARKIS
REBOUND (DEF) by TEAM	03:00			
	02:45			FOUL by SHAMET,LANDRY
MISSED FT by SHERRILL,KESHUN	02:45			
REBOUND (OFF) by WILLIAMS,DEANE	02:45			
MISSED 3PTR by BYRD,AARON	02:42			
	02:42			REBOUND (DEF) by MCDUFFIE,MARKIS
	02:23	71-65	H 6	GOOD! LAYUP by MORRIS,SHAQUILLE [PNT]
	02:23			ASSIST by SHAMET,LANDRY
	02:03			FOUL by MCDUFFIE,MARKIS
GOOD! FT by SHERRILL,KESHUN	02:03	71-66	H 5	
GOOD! FT by SHERRILL,KESHUN	02:03	71-67	H 4	
	01:38			MISSED JUMPER by SHAMET,LANDRY
REBOUND (DEF) by BYRD,AARON	01:38			
MISSED 3PTR by MONROE,TYVEZ	01:12			
	01:12			REBOUND (DEF) by FRANKAMP,CONNER
	00:50			MISSED 3PTR by FRANKAMP,CONNER
	00:50			REBOUND (OFF) by MORRIS,SHAQUILLE
	00:45	73-67	H 6	GOOD! DUNK by MORRIS,SHAQUILLE [PNT]
MISSED 3PTR by SHERRILL,KESHUN	00:33			
	00:33			REBOUND (DEF) by FRANKAMP,CONNER
FOUL by MONROE,TYVEZ	00:15			
	00:15			MISSED FT by FRANKAMP,CONNER
REBOUND (DEF) by SHERRILL,KESHUN	00:15			
	00:15			SUB IN: BROWN,ZACH
	00:15			SUB OUT: NURGER,RAUNO
TIMEOUT TEAM	00:13			
	00:13			SUB IN: KELLY,RASHARD
	00:13			SUB OUT: MORRIS,SHAQUILLE

Augusta 67, Wichita State 73

<b>Period 2-only</b>	<b>In Paint</b>	<b>Off T/O</b>	<b>2nd Chance</b>	<b>Fast Break</b>	<b>Bench</b>	
AUG	2	17	8	0	13	Score tied - 0 times
WSU	18	2	6	4	22	Lead changed - 0 times

# Augusta vs Wichita State

## 11/5/2016; 2:00 pm at Wichita, Kan./Charles Koch Arena

### Scoring/Runs Reference

#### Period 1

Augusta	Score	Marg	Wichita State
18:53 - SHERRILL JUMPER 2	2-0	-2	
	2-3	1	3 SHAMET 3PTR - 18:32
18:10 - SHERRILL FT 1	3-3	0	
18:10 - SHERRILL FT 1	4-3	-1	
	4-5	1	2 MORRIS TIPIN [P] - 16:54
	4-6	2	1 MORRIS FT - 15:44
15:26 - MONROE LAYUP [P] 2	6-6	0	
	6-8	2	2 MORRIS JUMPER - 15:04
	6-10	4	2 WILLIS JUMPER [P] - 14:27
	6-11	5	1 NURGER FT - 14:01
13:23 - PARKER LAYUP [P] 2	8-11	3	
	8-14	6	3 BROWN 3PTR - 13:02
12:41 - FIELDS JUMPER [P] 2	10-14	4	
	10-15	5	1 SMITH FT - 12:28
11:46 - WILLIAMS FT 1	11-15	4	
	11-17	6	2 SMITH LAYUP [P] - 10:38
09:53 - SHERRILL FT 1	12-17	5	
	12-19	7	2 HAMILTON LAYUP [P] - 09:34
	12-20	8	1 KELLY FT - 09:01
	12-22	10	2 HAMILTON LAYUP [P] - 08:23
	12-24	12	2 MORRIS JUMPER [P] - 07:20
	12-25	13	1 MORRIS FT - 07:20
07:12 - MONROE JUMPER 2	14-25	11	
06:23 - MONROE 3PTR 3	17-25	8	
	17-26	9	1 MORRIS FT - 06:14
06:04 - PARKER LAYUP [P] 2	19-26	7	
	19-29	10	3 FRANKAMP 3PTR - 05:32
05:20 - MONROE FT 1	20-29	9	
05:20 - MONROE FT 1	21-29	8	
	21-31	10	2 NURGER LAYUP [P] - 04:55
04:37 - PARKER LAYUP [P] 2	23-31	8	
	23-32	9	1 KELLY FT - 04:12
	23-33	10	1 KELLY FT - 04:12
	23-35	12	2 MORRIS LAYUP [P] - 02:25
	23-36	13	1 MORRIS FT - 01:46
01:41 - WILLIAMS FT 1	24-36	12	
	24-39	15	3 SHAMET 3PTR - 01:12
00:55 - PARKER FT 1	25-39	14	
	25-41	16	2 HAMILTON LAYUP [P] - 00:34

#### Period 2

Augusta	Score	Marg	Wichita State
	25-43	18	2 MORRIS DUNK [P] - 18:37
	25-46	21	3 FRANKAMP 3PTR - 18:07
17:46 - WILLIAMS FT 1	26-46	20	
17:09 - MONROE FT 1	27-46	19	
17:09 - MONROE FT 1	28-46	18	
	28-48	20	2 MORRIS LAYUP [P] - 16:49
	28-50	22	2 KELLY LAYUP [P] [F] - 16:16
15:02 - SHERRILL 3PTR 3	31-50	19	
14:22 - SHERRILL 3PTR 3	34-50	16	
13:38 - SHERRILL FT 1	35-50	15	
13:38 - SHERRILL FT 1	36-50	14	
	36-52	16	2 REAVES LAYUP [P] - 13:23
11:52 - BYRD 3PTR 3	39-52	13	
	39-55	16	3 KEYSER 3PTR - 11:36
10:27 - BYRD 3PTR 3	42-55	13	
	42-56	14	1 MORRIS FT - 10:12
	42-58	16	2 SHAMET JUMPER [F] - 10:00
09:51 - MONROE LAYUP [P] 2	44-58	14	
	44-60	16	2 SHAMET LAYUP [P] - 09:22
08:57 - SHERRILL 3PTR 3	47-60	13	
	47-61	14	1 SHAMET FT - 08:10
	47-62	15	1 SHAMET FT - 08:10
08:02 - MONROE 3PTR 3	50-62	12	
07:42 - SHERRILL FT 1	51-62	11	
07:42 - SHERRILL FT 1	52-62	10	
	52-64	12	2 MCDUFFIE JUMPER [P] - 07:16
06:29 - SHERRILL JUMPER 2	54-64	10	
06:08 - SHERRILL 3PTR 3	57-64	7	
05:27 - SHERRILL JUMPER 2	59-64	5	
	59-66	7	2 FRANKAMP JUMPER - 04:58
04:42 - SHERRILL 3PTR 3	62-66	4	
04:01 - SHERRILL 3PTR 3	65-66	1	
	65-68	3	2 MORRIS LAYUP [P] - 03:38
	65-69	4	1 MORRIS FT - 03:38
	65-71	6	2 MORRIS LAYUP [P] - 02:23
02:03 - SHERRILL FT 1	66-71	5	
02:03 - SHERRILL FT 1	67-71	4	
	67-73	6	2 MORRIS DUNK [P] - 00:45

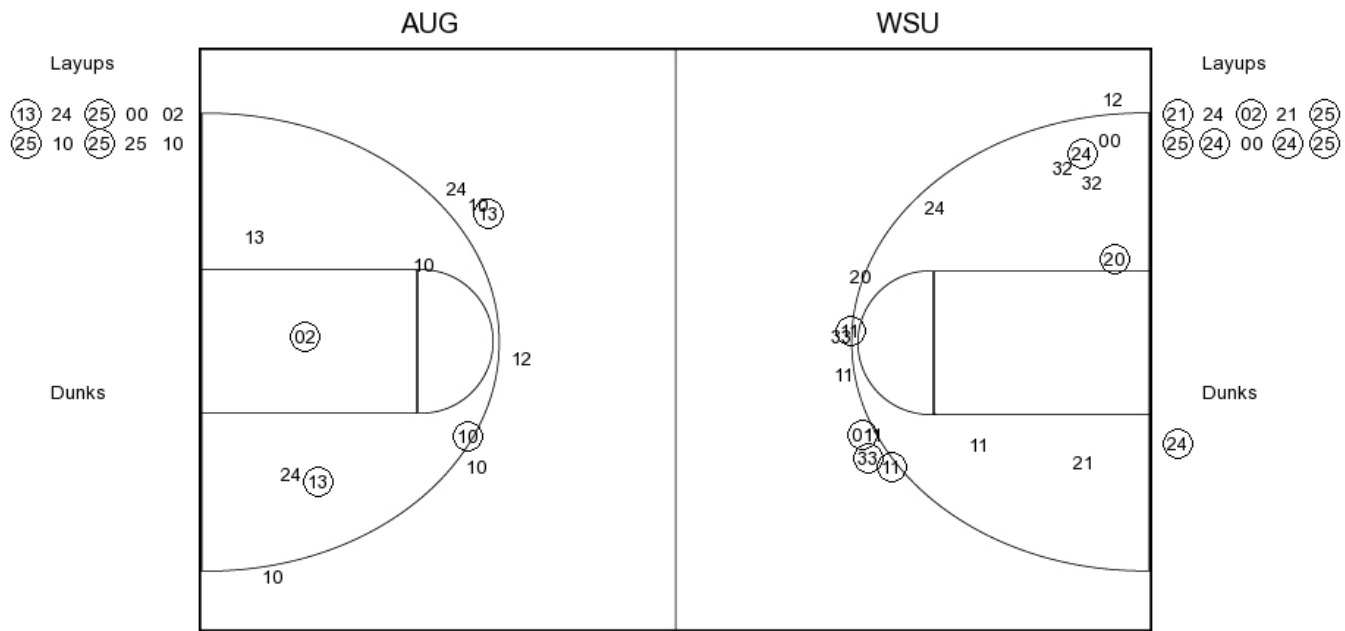


**Augusta vs Wichita State**

**OFFICIAL SHOT CHART**

11/5/2016 at Wichita, Kan./Charles Koch Arena

**PERIOD 1**



**AUG PERIOD 1**

FG Made	8
FG Attempted	23
3PFG Made	1
3PFG Attempted	6

**WSU PERIOD 1**

FG Made	14
FG Attempted	29
3PFG Made	4
3PFG Attempted	10



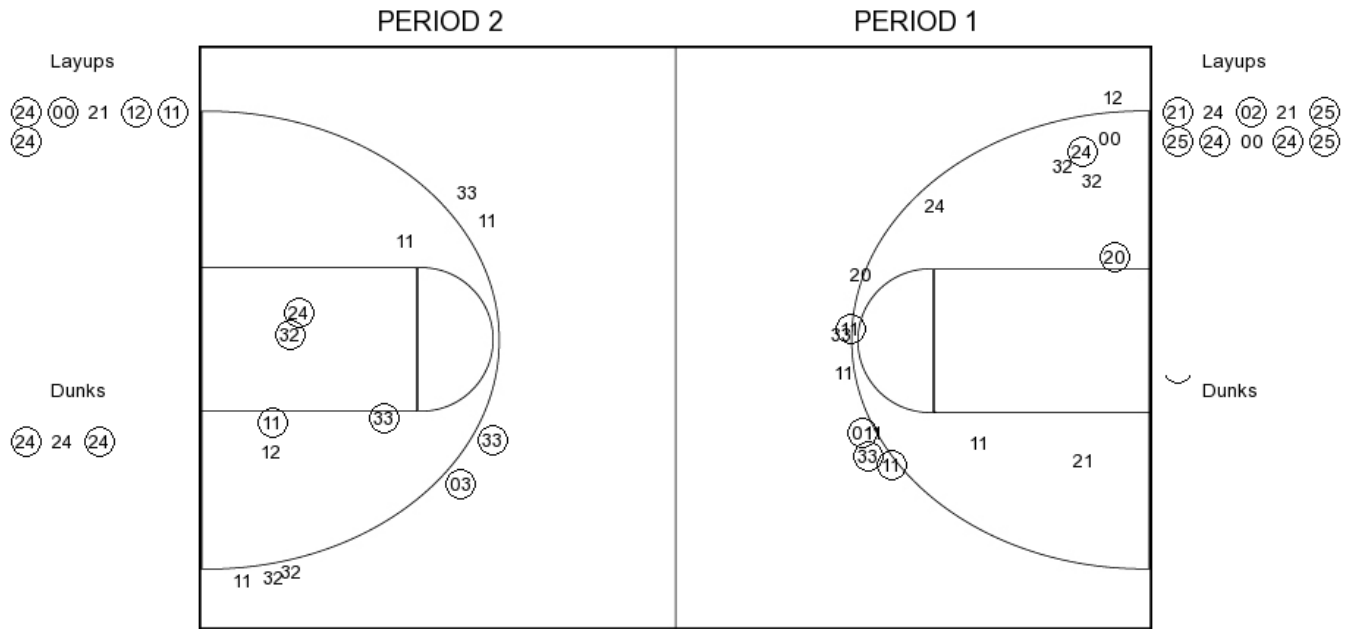


**Augusta vs Wichita State**

**OFFICIAL SHOT CHART**

11/5/2016 at Wichita, Kan./Charles Koch Arena

**Wichita State**



**WSU PERIOD 1**

FG Made	14
FG Attempted	29
3PFG Made	4
3PFG Attempted	10

**WSU PERIOD 2**

FG Made	13
FG Attempted	24
3PFG Made	2
3PFG Attempted	7