

ARKANSAS VS. VANDERBILT

WE BACK PAT



1/19/2017
Fayetteville, Ark. (Bud Walton Arena)

FINAL STATS

ARKANSAS
(12-6, 1-4 SEC)

59

Vanderbilt
(10-8, 0-5 SEC)

56

Start Time: 7 p.m.
Officials: Tina Napier, Ed Sidlasky, Bill Larance
Attendance: 1302

Estimated Actual Attendance: 778
Fouled Out: Vanderbilt, #0 Overbeck, at 4:11 4Q

Official Basketball Box Score -- Game Totals -- Final Statistics

Vanderbilt vs ARKANSAS

1/19/2017 7 p.m. at Fayetteville, Ark. (Bud Walton Arena)

Vanderbilt 56 - 10-8, 0-5 SEC

##	Player		Total		3-Ptr	Rebounds			PF	TP	A	TO	Blk	Stl	Min
			FG-FGA	FG-FGA	FT-FTA	Off	Def	Tot							
00	OVERBECK,KAYLA	f	1-2	0-1	0-0	1	1	2	5	2	1	2	0	1	15
03	BELL,RACHEL	g	4-11	1-3	2-3	0	0	0	4	11	1	5	0	0	34
22	WEBB,MARQU'ES	f	4-6	0-0	2-5	2	9	11	4	10	0	2	0	0	25
23	SPEARS,MINTA	g	3-6	1-3	0-0	0	3	3	0	7	3	0	0	0	29
33	REED,CHRISTA	g	4-9	2-4	2-6	1	2	3	3	12	2	3	0	2	31
01	DAHLMAN,REBEKAH		0-0	0-0	0-0	0	0	0	0	0	0	1	0	0	3
12	DANCY,MYKA		0-0	0-0	0-0	0	0	0	1	0	0	1	0	0	3
21	WHALEN,ERIN		3-7	1-2	2-2	3	2	5	1	9	1	2	1	0	20
30	CARTER,LEALEA		1-4	0-1	0-0	0	0	0	0	2	1	1	0	0	8
35	CLEMONS-GREEN,KALEI		0-3	0-0	2-2	0	0	0	0	2	1	0	0	0	13
41	SEAWRIGHT,MIAYA		0-1	0-1	1-2	0	4	4	1	1	0	0	0	2	19
TEAM						3	2	5	0			0			
TOTALS			20-49	5-15	11-20	10	23	33	19	56	10	17	1	5	200

Deadball Rebounds: 4,1

FG %	1st Half: 11-26	42.3%	2nd Half: 9-23	39.1%	Game: 20-49	40.8%									
	1st Qtr: 7-14	50.0%	2nd Qtr: 4-12	33.3%	3rd Qtr: 7-16	43.8%	4th Qtr: 2-7	28.6%							
3FG %	1st Half: 5-9	55.6%	2nd Half: 0-6	00.0%	Game: 5-15	33.3%									
	1st Qtr: 3-6	50.0%	2nd Qtr: 2-3	66.7%	3rd Qtr: 0-4	00.0%	4th Qtr: 0-2	00.0%							
FT %	1st Half: 5-5	100.0%	2nd Half: 6-15	40.0%	Game: 11-20	55.0%									
	1st Qtr: 3-3	100.0%	2nd Qtr: 2-2	100.0%	3rd Qtr: 2-5	40.0%	4th Qtr: 4-10	40.0%							

ARKANSAS 59 - 12-6, 1-4 SEC

##	Player		Total		3-Ptr	Rebounds			PF	TP	A	TO	Blk	Stl	Min
			FG-FGA	FG-FGA	FT-FTA	Off	Def	Tot							
03	MONK,MALICA	g	3-7	0-1	2-4	1	3	4	3	8	3	2	0	0	31
04	SWENSON,KEIRYN	f	3-4	1-2	1-1	0	4	4	4	8	1	1	0	0	19
14	MASON,JAILYN	g	6-11	3-6	2-2	2	4	6	4	17	1	3	1	1	34
21	COSPER,DEVIN	g	3-11	1-4	4-4	1	3	4	3	11	3	3	0	4	33
35	COOLEY,ALECIA	c	1-2	0-0	1-2	0	3	3	1	3	0	0	1	0	17
00	JACKSON,JESSICA		3-11	0-3	0-2	3	3	6	2	6	1	3	3	2	29
02	WILSON,AALIYAH		0-3	0-1	0-0	2	1	3	1	0	1	1	0	0	10
10	WILLIAMS,KIARA		1-1	0-0	0-2	2	0	2	1	2	0	0	0	0	15
22	ZIMMERMAN,BAILEY		2-6	0-3	0-0	1	1	2	0	4	0	2	0	0	12
TEAM						1	1	2	0		1				
TOTALS			22-56	5-20	10-17	13	23	36	19	59	10	16	5	7	200

Deadball Rebounds: 4,1

FG %	1st Half: 13-33	39.4%	2nd Half: 9-23	39.1%	Game: 22-56	39.3%									
	1st Qtr: 6-16	37.5%	2nd Qtr: 7-17	41.2%	3rd Qtr: 3-12	25.0%	4th Qtr: 6-11	54.5%							
3FG %	1st Half: 3-13	23.1%	2nd Half: 2-7	28.6%	Game: 5-20	25.0%									
	1st Qtr: 1-8	12.5%	2nd Qtr: 2-5	40.0%	3rd Qtr: 1-4	25.0%	4th Qtr: 1-3	33.3%							
FT %	1st Half: 5-7	71.4%	2nd Half: 5-10	50.0%	Game: 10-17	58.8%									
	1st Qtr: 2-2	100.0%	2nd Qtr: 3-5	60.0%	3rd Qtr: 0-0	0%	4th Qtr: 5-10	50.0%							

Officials: Tina Napier, Ed Sidlasky, Bill Larence
 Technical Fouls: Vanderbilt- None. ARKANSAS- None.

Attendance: 1302

Estimated Actual Attendance: 778

Fouled Out: Vanderbilt, #0 Overbeck, at 4:11 4Q

Score by periods	1st	2nd	3rd	4th	Total
Vanderbilt	20	12	16	8	56
ARKANSAS	15	19	7	18	59

Points	In Paint	Off T/O	2nd Chance	Fast Break	Bench
VANDY	28	13	8	2	14
AR	22	12	8	4	12

Last FG - VANDY 4th-02:58, AR 4th-02:24.

Largest lead - Vanderbilt by 7 3rd-01:37; ARKANSAS by 5 1st-05:41

VANDY led for 16:54. AR led for 13:26. Game was tied for 9:40.

Score tied - 9 times
 Lead changed - 10 times

Official Basketball Box Score -- Game Totals -- First Half Statistics

Vanderbilt vs ARKANSAS

1/19/2017 7 p.m. at Fayetteville, Ark. (Bud Walton Arena)

Vanderbilt 32 • 10-8, 0-5 SEC

##	Player	f	Total			3-Ptr			Rebounds			PF	TP	A	TO	Blk	Stl	Min
			FG-FGA	FG-FGA	FT-FTA	FG-FGA	FG-FGA	FT-FTA	Off	Def	Tot							
00	OVERBECK, KAYLA	f	1-2	0-1	0-0	0	1	1	2	2	1	2	0	1	11			
03	BELL, RACHEL	g	2-6	1-3	1-1	0	0	0	2	6	0	3	0	14				
22	WEBB, MARQU'ES	f	0-2	0-0	0-0	1	4	5	2	0	0	1	0	10				
23	SPEARS, MINTA	g	1-1	1-1	0-0	0	0	0	0	3	1	0	0	14				
33	REED, CHRISTA	g	4-5	2-2	2-2	1	1	2	1	12	1	2	0	19				
01	DAHLMAN, REBEKAH		0-0	0-0	0-0	0	0	0	0	0	0	1	0	3				
12	DANCY, MYKA		0-0	0-0	0-0	0	0	0	1	0	0	1	0	3				
21	WHALEN, ERIN		2-4	1-1	2-2	2	1	3	0	7	1	1	1	10				
30	CARTER, LEALEA		1-4	0-1	0-0	0	0	0	0	2	1	1	0	8				
35	CLEMONS-GREEN, KALE		0-2	0-0	0-0	0	0	0	0	0	1	0	0	8				
41	SEAWRIGHT, MIAYA		0-0	0-0	0-0	0	0	0	0	0	0	0	0	0				
TEAM						3	2	5	0			0						
Totals			11-26	5-9	5-5	7	9	16	8	32	6	12	1	3	100			

FG % 1st Qtr 7-14 50.0% 2nd Qtr 4-12 33.3% Half: 11-26 42.3%
 3FG % 1st Qtr 3-6 50.0% 2nd Qtr 2-3 66.7% Half: 5-9 55.6%
 FT % 1st Qtr 3-3 100.0% 2nd Qtr 2-2 100.0% Half: 5-5 100.0%

ARKANSAS 34 • 12-6, 1-4 SEC

##	Player	f	Total			3-Ptr			Rebounds			PF	TP	A	TO	Blk	Stl	Min
			FG-FGA	FG-FGA	FT-FTA	FG-FGA	FG-FGA	FT-FTA	Off	Def	Tot							
03	MONK, MALICA	g	2-4	0-1	0-0	0	2	2	2	4	2	1	0	13				
04	SWENSON, KEIRYN	f	2-3	1-2	1-1	0	1	1	1	6	1	1	0	8				
14	MASON, JAILYN	g	3-5	2-4	2-2	2	0	2	2	10	0	1	1	14				
21	COSPER, DEVIN	g	1-6	0-1	2-2	0	2	2	1	4	2	2	0	17				
35	COOLEY, ALECIA	c	0-0	0-0	0-0	0	1	1	0	0	0	0	0	7				
00	JACKSON, JESSICA		2-7	0-2	0-0	3	1	4	1	4	0	2	2	14				
02	WILSON, AALIYAH		0-3	0-1	0-0	2	0	2	1	0	1	1	0	8				
10	WILLIAMS, KIARA		1-1	0-0	0-2	2	0	2	0	2	0	0	0	11				
22	ZIMMERMAN, BAILEY		2-4	0-2	0-0	1	1	2	0	4	0	2	0	8				
TEAM						1	0	1	0			0						
Totals			13-33	3-13	5-7	11	8	19	8	34	6	10	3	4	100			

FG % 1st Qtr 6-16 37.5% 2nd Qtr 7-17 41.2% Half: 13-33 39.4%
 3FG % 1st Qtr 1-8 12.5% 2nd Qtr 2-5 40.0% Half: 3-13 23.1%
 FT % 1st Qtr 2-2 100.0% 2nd Qtr 3-5 60.0% Half: 5-7 71.4%

Officials: Tina Napier, Ed Sidlasky, Bill Larance
 Technical Fouls: Vanderbilt- None. ARKANSAS- None.
 Estimated Actual Attendance: 778
 Fouled Out: Vanderbilt, #0 Overbeck, at 4:11 4Q

Score by periods	1st	2nd	3rd	4th	Total
Vanderbilt	20	12	16	8	56
ARKANSAS	15	19	7	18	59

Points	In	Off	2nd	Fast	Bench
	Paint	T/O	Chance	Break	
VANDY	12	8	4	2	9
	14	6	13	2	10

Last FG - VANDY 2nd-02:41, AR 2nd-00:48.
 VANDY led for 5:25. AR led for 10:30. Game was tied for 4:05.

Score tied - 4 times
 Lead changed - 6 times

Vanderbilt vs ARKANSAS
1/19/2017; 7 p.m. at Fayetteville, Ark. (Bud Walton Arena)
Period 1 Play-By-Play

VISITORS: Vanderbilt	Time	Score	Margin	HOME: ARKANSAS
	09:30			MISSED 3PTR by COSPER,DEVIN
REBOUND (DEF) by WEBB,MARQU'ES	09:30			
MISSED 3PTR by OVERBECK,KAYLA	08:57			
	08:57			REBOUND (DEF) by COSPER,DEVIN
FOUL by WEBB,MARQU'ES	08:40			
	08:40	1-0	H 1	GOOD! FT by COSPER,DEVIN
	08:40	2-0	H 2	GOOD! FT by COSPER,DEVIN
GOOD! LAYUP by OVERBECK,KAYLA [PNT]	08:23	2-2	T	
	07:53			MISSED 3PTR by MASON,JAILYN
REBOUND (DEF) by WEBB,MARQU'ES	07:53			
MISSED JUMPER by BELL,RACHEL	07:36			
	07:36			REBOUND (DEF) by COOLEY,ALECIA
	07:24	5-2	H 3	GOOD! 3PTR by SWENSON,KEIRYN
	07:24			ASSIST by MONK,MALICA
	07:01			FOUL by MONK,MALICA
TURNOVER by BELL,RACHEL	07:00			
	06:53			MISSED LAYUP by MONK,MALICA
REBOUND (DEF) by TEAM	06:53			
	06:45			FOUL by MASON,JAILYN
MISSED JUMPER by WEBB,MARQU'ES	06:34			
	06:34			REBOUND (DEF) by SWENSON,KEIRYN
	06:27			MISSED JUMPER by COSPER,DEVIN
	06:27			REBOUND (OFF) by MASON,JAILYN
	06:11			TURNOVER by SWENSON,KEIRYN
STEAL by OVERBECK,KAYLA	06:10			
MISSED 3PTR by BELL,RACHEL	05:56			
	05:56			REBOUND (DEF) by MONK,MALICA
FOUL by WEBB,MARQU'ES	05:43			
SUB IN: WHALEN,ERIN	05:43			
SUB IN: CARTER,LEALEA	05:43			
SUB OUT: BELL,RACHEL	05:43			
SUB OUT: WEBB,MARQU'ES	05:43			
	05:43			SUB IN: JACKSON,JESSICA
	05:43			SUB OUT: SWENSON,KEIRYN
	05:41	7-2	H 5	GOOD! JUMPER by MONK,MALICA [PNT]
	05:41			ASSIST by COSPER,DEVIN
GOOD! 3PTR by WHALEN,ERIN	05:28	7-5	H 2	
ASSIST by SPEARS,MINTA	05:28			
	05:07			TURNOVER by JACKSON,JESSICA
	05:07			SUB IN: STOUT,SYDNEY
	05:07			SUB OUT: COOLEY,ALECIA
TURNOVER by WHALEN,ERIN	04:51			
	04:51			TIMEOUT MEDIA
	04:36	9-5	H 4	GOOD! JUMPER by JACKSON,JESSICA
GOOD! LAYUP by CARTER,LEALEA [PNT]	04:07	9-7	H 2	
	03:44	11-7	H 4	GOOD! JUMPER by COSPER,DEVIN
GOOD! 3PTR by REED,CHRISTA	03:35	11-10	H 1	
ASSIST by OVERBECK,KAYLA	03:35			
	03:12			MISSED 3PTR by MONK,MALICA
	03:12			REBOUND (OFF) by WILLIAMS,KIARA
	03:09	13-10	H 3	GOOD! JUMPER by WILLIAMS,KIARA [PNT]
TURNOVER by OVERBECK,KAYLA	02:54			
	02:54			SUB IN: ZIMMERMAN,BAILEY
	02:54			SUB IN: WILSON,AALIYAH
	02:54			SUB OUT: MASON,JAILYN
	02:54			SUB OUT: COSPER,DEVIN
	02:48			MISSED 3PTR by WILSON,AALIYAH
	02:48			REBOUND (OFF) by WILSON,AALIYAH
FOUL by OVERBECK,KAYLA	02:35			

VISITORS: Vanderbilt	Time	Score	Margin	HOME: ARKANSAS
SUB IN: CLEMONS-GREEN,KALEI	02:35			
SUB IN: BELL,RACHEL	02:35			
SUB OUT: CARTER,LEALEA	02:35			
SUB OUT: SPEARS,MINTA	02:35			
	02:26			MISSED 3PTR by JACKSON,JESSICA
REBOUND (DEF) by REED,CHRISTA	02:26			
GOOD! 3PTR by BELL,RACHEL	02:15	13-13	T	
ASSIST by WHALEN,ERIN	02:15			
	01:54			MISSED 3PTR by ZIMMERMAN,BAILEY
REBOUND (DEF) by OVERBECK,KAYLA	01:54			
	01:42			FOUL by JACKSON,JESSICA
GOOD! FT by WHALEN,ERIN	01:42	13-14	V 1	
GOOD! FT by WHALEN,ERIN	01:42	13-15	V 2	
	01:42			SUB IN: MASON,JAILYN
	01:42			SUB OUT: MONK,MALICA
	01:20	15-15	T	GOOD! JUMPER by MASON,JAILYN
MISSED 3PTR by BELL,RACHEL	01:11			
REBOUND (OFF) by WHALEN,ERIN	01:11			
MISSED JUMPER by CLEMONS-GREEN,KALEI	00:55			
	00:55			BLOCK by MASON,JAILYN
REBOUND (OFF) by TEAM	00:53			
MISSED JUMPER by WHALEN,ERIN	00:51			
REBOUND (OFF) by WHALEN,ERIN	00:51			
GOOD! LAYUP by WHALEN,ERIN [PNT]	00:48	15-17	V 2	
	00:29			TURNOVER by ZIMMERMAN,BAILEY
STEAL by REED,CHRISTA	00:28			
GOOD! LAYUP by BELL,RACHEL [FB/PNT]	00:26	15-19	V 4	
	00:25			FOUL by WILSON,AALIYAH
GOOD! FT by BELL,RACHEL	00:25	15-20	V 5	
SUB IN: DAHLMAN,REBEKAH	00:25			
SUB OUT: REED,CHRISTA	00:25			
	00:04			MISSED 3PTR by MASON,JAILYN
	00:04			REBOUND (OFF) by WILSON,AALIYAH
	00:01			MISSED JUMPER by WILSON,AALIYAH
REBOUND (DEADB) by TEAM	00:01			

Vanderbilt 20, ARKANSAS 15

Period 1-only	In Paint	Off T/O	2nd Chance	Fast Break	Bench	
VANDY	8	3	2	2	9	Score tied - 4 times
AR	4	2	2	0	4	Lead changed - 2 times

Vanderbilt vs ARKANSAS
1/19/2017; 7 p.m. at Fayetteville, Ark. (Bud Walton Arena)
Period 2 Play-By-Play

VISITORS: Vanderbilt	Time	Score	Margin	HOME: ARKANSAS
SUB IN: CLEMONS-GREEN,KALEI	10:00			
SUB IN: DAHLMAN,REBEKAH	10:00			
SUB IN: WHALEN,ERIN	10:00			
SUB OUT: WEBB,MARQU'ES	10:00			
SUB OUT: SPEARS,MINTA	10:00			
SUB OUT: REED,CHRISTA	10:00			
	09:36			MISSED 3PTR by SWENSON,KEIRYN
	09:36			REBOUND (OFF) by MASON,JAILYN
FOUL by OVERBECK,KAYLA	09:36			
	09:36	16-20	V 4	GOOD! FT by MASON,JAILYN
	09:36	17-20	V 3	GOOD! FT by MASON,JAILYN
SUB IN: REED,CHRISTA	09:35			
SUB OUT: OVERBECK,KAYLA	09:35			
TURNOVER by BELL,RACHEL	09:24			
	09:24			STEAL by MASON,JAILYN
	09:10			MISSED JUMPER by COSPER,DEVIN
REBOUND (DEF) by WHALEN,ERIN	09:10			
MISSED JUMPER by WHALEN,ERIN	09:02			
REBOUND (OFF) by REED,CHRISTA	09:02			
GOOD! LAYUP by REED,CHRISTA [PNT]	08:58	17-22	V 5	
	08:30	20-22	V 2	GOOD! 3PTR by MASON,JAILYN
	08:30			ASSIST by MONK,MALICA
	08:11			FOUL by SWENSON,KEIRYN
GOOD! FT by REED,CHRISTA	08:11	20-23	V 3	
GOOD! FT by REED,CHRISTA	08:11	20-24	V 4	
SUB IN: DANCY,MYKA	08:11			
SUB OUT: BELL,RACHEL	08:11			
	08:11			SUB IN: JACKSON,JESSICA
	08:11			SUB OUT: COOLEY,ALECIA
	07:59			MISSED JUMPER by JACKSON,JESSICA
BLOCK by WHALEN,ERIN	07:59			
	07:58			REBOUND (OFF) by TEAM
	07:56	22-24	V 2	GOOD! LAYUP by SWENSON,KEIRYN [PNT]
	07:56			ASSIST by COSPER,DEVIN
FOUL by REED,CHRISTA	07:56			
	07:56	23-24	V 1	GOOD! FT by SWENSON,KEIRYN
FOUL by DANCY,MYKA	07:45			
TURNOVER by DANCY,MYKA	07:45			
	07:34			MISSED JUMPER by COSPER,DEVIN
	07:34			REBOUND (OFF) by JACKSON,JESSICA
	07:33	25-24	H 1	GOOD! JUMPER by JACKSON,JESSICA [PNT]
TURNOVER by DAHLMAN,REBEKAH	07:28			
	07:27			STEAL by COSPER,DEVIN
	07:23			TURNOVER by MASON,JAILYN
SUB IN: SPEARS,MINTA	07:21			
SUB OUT: DAHLMAN,REBEKAH	07:21			
MISSED JUMPER by REED,CHRISTA	07:04			
	07:04			REBOUND (DEF) by JACKSON,JESSICA
	06:57			TURNOVER by JACKSON,JESSICA
GOOD! LAYUP by REED,CHRISTA [PNT]	06:41	25-26	V 1	
ASSIST by CLEMONS-GREEN,KALEI	06:41			
	06:05	28-26	H 2	GOOD! 3PTR by MASON,JAILYN
	06:05			ASSIST by SWENSON,KEIRYN
TURNOVER by REED,CHRISTA	05:35			
	05:35			STEAL by JACKSON,JESSICA
	05:31			TURNOVER by COSPER,DEVIN
SUB IN: WEBB,MARQU'ES	05:31			
SUB OUT: WHALEN,ERIN	05:31			
	05:31			SUB IN: WILLIAMS,KIARA

VISITORS: Vanderbilt	Time	Score	Margin	HOME: ARKANSAS
	05:31			SUB OUT: SWENSON,KEIRYN
MISSED JUMPER by CLEMONS-GREEN,KALEI	05:20			
	05:20			REBOUND (DEF) by MONK,MALICA
	05:13	30-26	H 4	GOOD! LAYUP by MONK,MALICA [FB/PNT]
	05:03			FOUL by MASON,JAILYN
SUB IN: BELL,RACHEL	05:03			
SUB IN: CARTER,LEALEA	05:03			
SUB OUT: DANCY,MYKA	05:03			
SUB OUT: CLEMONS-GREEN,KALEI	05:03			
	05:03			SUB IN: ZIMMERMAN,BAILEY
	05:03			SUB OUT: MASON,JAILYN
TURNOVER by CARTER,LEALEA	04:53			
	04:50			FOUL by MONK,MALICA
	04:50			TURNOVER by MONK,MALICA
TIMEOUT MEDIA	04:50			
	04:50			SUB IN: WILSON,AALIYAH
	04:50			SUB OUT: MONK,MALICA
TURNOVER by REED,CHRISTA	04:40			
	04:23			TURNOVER by ZIMMERMAN,BAILEY
STEAL by REED,CHRISTA	04:23			
GOOD! 3PTR by REED,CHRISTA	04:15	30-29	H 1	
ASSIST by CARTER,LEALEA	04:15			
	03:59			MISSED JUMPER by COSPER,DEVIN
REBOUND (DEF) by WEBB,MARQU'ES	03:59			
MISSED JUMPER by CARTER,LEALEA	03:51			
	03:51			REBOUND (DEF) by COSPER,DEVIN
	03:25			TURNOVER by WILSON,AALIYAH
FOUL by BELL,RACHEL	03:19			
TURNOVER by BELL,RACHEL	03:19			
FOUL by BELL,RACHEL	02:59			
	02:59			MISSED FT by WILLIAMS,KIARA
	02:59			REBOUND (DEADB) by TEAM
	02:59			MISSED FT by WILLIAMS,KIARA
REBOUND (DEF) by TEAM	02:59			
GOOD! 3PTR by SPEARS,MINTA	02:41	30-32	V 2	
ASSIST by REED,CHRISTA	02:41			
	02:16			MISSED JUMPER by JACKSON,JESSICA
	02:16			REBOUND (OFF) by JACKSON,JESSICA
	02:12			MISSED JUMPER by JACKSON,JESSICA
REBOUND (DEF) by WEBB,MARQU'ES	02:12			
TURNOVER by WEBB,MARQU'ES	01:43			
	01:31			MISSED JUMPER by WILSON,AALIYAH
	01:31			REBOUND (OFF) by ZIMMERMAN,BAILEY
	01:29	32-32	T	GOOD! JUMPER by ZIMMERMAN,BAILEY [PNT]
MISSED 3PTR by CARTER,LEALEA	01:10			
	01:10			REBOUND (DEF) by ZIMMERMAN,BAILEY
	01:01			MISSED 3PTR by JACKSON,JESSICA
	01:01			REBOUND (OFF) by JACKSON,JESSICA
	00:53			MISSED 3PTR by ZIMMERMAN,BAILEY
	00:53			REBOUND (OFF) by WILLIAMS,KIARA
	00:48	34-32	H 2	GOOD! LAYUP by ZIMMERMAN,BAILEY [PNT]
	00:48			ASSIST by WILSON,AALIYAH
TIMEOUT 30SEC	00:45			
SUB IN: OVERBECK,KAYLA	00:45			
SUB OUT: REED,CHRISTA	00:45			
MISSED JUMPER by CARTER,LEALEA	00:34			
	00:34			BLOCK by JACKSON,JESSICA
REBOUND (OFF) by TEAM	00:34			
MISSED JUMPER by BELL,RACHEL	00:29			
REBOUND (OFF) by WEBB,MARQU'ES	00:29			
MISSED JUMPER by WEBB,MARQU'ES	00:25			
	00:25			BLOCK by JACKSON,JESSICA
REBOUND (OFF) by TEAM	00:25			
TURNOVER by OVERBECK,KAYLA	00:17			

VISITORS: Vanderbilt

Time Score Margin

HOME: ARKANSAS

00:17

STEAL by COSPER,DEVIN

00:02

FOUL by COSPER,DEVIN

00:02

TURNOVER by COSPER,DEVIN

Vanderbilt 32, ARKANSAS 34

Period 2-only	In Paint	Off T/O	2nd Chance	Fast Break	Bench	
VANDY	4	5	2	0	0	Score tied - 0 times
AR	10	4	11	2	6	Lead changed - 4 times

Official Basketball Box Score -- Game Totals -- Second Half Statistics
Vanderbilt vs ARKANSAS
1/19/2017 7 p.m. at Fayetteville, Ark. (Bud Walton Arena)

Vanderbilt 24 • 10-8, 0-5 SEC

##	Player		Total		3-Ptr	Rebounds			PF	TP	A	TO	Blk	Stl	Min
			FG-FGA	FG-FGA	FT-FTA	Off	Def	Tot							
00	OVERBECK,KAYLA	f	0-0	0-0	0-0	1	0	1	3	0	0	0	0	0	4
03	BELL,RACHEL	g	2-5	0-0	1-2	0	0	0	2	5	1	2	0	0	20
22	WEBB,MARQU'ES	f	4-4	0-0	2-5	1	5	6	2	10	0	1	0	0	15
23	SPEARS,MINTA	g	2-5	0-2	0-0	0	3	3	0	4	2	0	0	0	15
33	REED,CHRISTA	g	0-4	0-2	0-4	0	1	1	2	0	1	1	0	0	12
01	DAHLMAN,REBEKAH		0-0	0-0	0-0	0	0	0	0	0	0	0	0	0	0
12	DANCY,MYKA		0-0	0-0	0-0	0	0	0	0	0	0	0	0	0	0
21	WHALEN,ERIN		1-3	0-1	0-0	1	1	2	1	2	0	1	0	0	10
30	CARTER,LEALEA		0-0	0-0	0-0	0	0	0	0	0	0	0	0	0	0
35	CLEMONS-GREEN,KALE		0-1	0-0	2-2	0	0	0	0	2	0	0	0	0	5
41	SEAWRIGHT,MIAYA		0-1	0-1	1-2	0	4	4	1	1	0	0	0	2	19
TEAM						0	0	0	0		0				
Totals			9-23	0-6	6-15	3	14	17	11	24	4	5	0	2	100

FG % 3rd Qtr 7-16 43.8% 4th Qtr 2-7 28.6% Half: 9-23 39.1%
 3FG % 3rd Qtr 0-4 00.0% 4th Qtr 0-2 00.0% Half: 0-6 55.6%
 FT % 3rd Qtr 2-5 40.0% 4th Qtr 4-10 40.0% Half: 6-15 40.0%

ARKANSAS 25 • 12-6, 1-4 SEC

##	Player		Total		3-Ptr	Rebounds			PF	TP	A	TO	Blk	Stl	Min
			FG-FGA	FG-FGA	FT-FTA	Off	Def	Tot							
03	MONK,MALICA	g	1-3	0-0	2-4	1	1	2	1	4	1	1	0	0	18
04	SWENSON,KEIRYN	f	1-1	0-0	0-0	0	3	3	3	2	0	0	0	0	11
14	MASON,JAILYN	g	3-6	1-2	0-0	0	4	4	2	7	1	2	0	0	20
21	COSPER,DEVIN	g	2-5	1-3	2-2	1	1	2	2	7	1	1	0	2	16
35	COOLEY,ALECIA	c	1-2	0-0	1-2	0	2	2	1	3	0	0	1	0	10
00	JACKSON,JESSICA		1-4	0-1	0-2	0	2	2	1	2	1	1	1	1	15
02	WILSON,AALIYAH		0-0	0-0	0-0	0	1	1	0	0	0	0	0	0	2
10	WILLIAMS,KIARA		0-0	0-0	0-0	0	0	0	1	0	0	0	0	0	4
22	ZIMMERMAN,BAILEY		0-2	0-1	0-0	0	0	0	0	0	0	0	0	0	4
TEAM						0	1	1	0		1				
Totals			9-23	2-7	5-10	2	15	17	11	25	4	6	2	3	100

FG % 3rd Qtr 3-12 25.0% 4th Qtr 6-11 54.5% Half: 9-23 39.1%
 3FG % 3rd Qtr 1-4 25.0% 4th Qtr 1-3 33.3% Half: 2-7 23.1%
 FT % 3rd Qtr 0-0 0% 4th Qtr 5-10 50.0% Half: 5-10 50.0%

Officials: Tina Napier, Ed Sidlasky, Bill Larance
 Technical Fouls: Vanderbilt- None. ARKANSAS- None.
 Estimated Actual Attendance: 778
 Fouled Out: Vanderbilt, #0 Overbeck, at 4:11 4Q

Score by periods	1st	2nd	3rd	4th	Total
Vanderbilt	20	12	16	8	56
ARKANSAS	15	19	7	18	59

Points	In	Off	2nd	Fast	Bench
	Paint	T/O	Chance	Break	
VANDY	16	5	4	0	5
	8	6	0	2	2

Last FG - VANDY 4th-02:58, AR 4th-02:24.
 VANDY led for 11:29. AR led for 2:56. Game was tied for 5:35.

Score tied - 5 times
 Lead changed - 4 times

Vanderbilt vs ARKANSAS
1/19/2017; 7 p.m. at Fayetteville, Ark. (Bud Walton Arena)
Period 3 Play-By-Play

VISITORS: Vanderbilt	Time	Score	Margin	HOME: ARKANSAS
GOOD! JUMPER by BELL,RACHEL [PNT]	09:41	34-34	T	
	09:07			MISSED JUMPER by MASON,JAILYN
REBOUND (DEF) by WEBB,MARQU'ES	09:07			
MISSED 3PTR by SPEARS,MINTA	08:58			
REBOUND (OFF) by OVERBECK,KAYLA	08:58			
	08:48			FOUL by SWENSON,KEIRYN
MISSED JUMPER by BELL,RACHEL	08:45			
	08:45			REBOUND (DEF) by COOLEY,ALECIA
FOUL by OVERBECK,KAYLA	08:35			
SUB IN: WHALEN,ERIN	08:35			
SUB IN: SEAWRIGHT,MIAYA	08:35			
SUB OUT: OVERBECK,KAYLA	08:35			
SUB OUT: REED,CHRISTA	08:35			
	08:12			MISSED JUMPER by COOLEY,ALECIA
REBOUND (DEF) by SEAWRIGHT,MIAYA	08:12			
MISSED 3PTR by SPEARS,MINTA	07:59			
	07:59			REBOUND (DEF) by MONK,MALICA
	07:38	36-34	H 2	GOOD! JUMPER by MONK,MALICA
	07:38			ASSIST by MASON,JAILYN
GOOD! JUMPER by WHALEN,ERIN	07:24	36-36	T	
ASSIST by SPEARS,MINTA	07:24			
	06:53	38-36	H 2	GOOD! JUMPER by MASON,JAILYN
GOOD! LAYUP by WEBB,MARQU'ES [PNT]	06:37	38-38	T	
ASSIST by SPEARS,MINTA	06:37			
	06:17			MISSED JUMPER by MONK,MALICA
	06:17			REBOUND (OFF) by MONK,MALICA
	06:02			SUB IN: ZIMMERMAN,BAILEY
	06:02			SUB IN: JACKSON,JESSICA
	06:02			SUB IN: WILLIAMS,KIARA
	06:02			SUB OUT: SWENSON,KEIRYN
	06:02			SUB OUT: COSPER,DEVIN
	06:02			SUB OUT: COOLEY,ALECIA
	05:50			MISSED 3PTR by ZIMMERMAN,BAILEY
REBOUND (DEF) by SPEARS,MINTA	05:50			
MISSED JUMPER by BELL,RACHEL	05:34			
	05:34			REBOUND (DEF) by MASON,JAILYN
	05:28			MISSED JUMPER by MASON,JAILYN
REBOUND (DEF) by SPEARS,MINTA	05:28			
GOOD! LAYUP by SPEARS,MINTA [PNT]	05:16	38-40	V 2	
	04:57			TURNOVER by MONK,MALICA
STEAL by SEAWRIGHT,MIAYA	04:56			
	04:52			FOUL by MONK,MALICA
TIMEOUT MEDIA	04:52			
MISSED FT by SEAWRIGHT,MIAYA	04:52			
REBOUND (DEADB) by TEAM	04:52			
GOOD! FT by SEAWRIGHT,MIAYA	04:52	38-41	V 3	
SUB IN: REED,CHRISTA	04:52			
SUB OUT: WEBB,MARQU'ES	04:52			
	04:52			SUB OUT: MONK,MALICA
	04:23			TURNOVER by JACKSON,JESSICA
MISSED JUMPER by WHALEN,ERIN	04:13			
REBOUND (OFF) by WHALEN,ERIN	04:13			
	04:08			SUB IN: SWENSON,KEIRYN
	04:08			SUB OUT: WILLIAMS,KIARA
GOOD! LAYUP by BELL,RACHEL [PNT]	04:03	38-43	V 5	
	03:45			MISSED JUMPER by ZIMMERMAN,BAILEY
REBOUND (DEF) by WHALEN,ERIN	03:45			
MISSED JUMPER by REED,CHRISTA	03:24			
	03:24			REBOUND (DEF) by SWENSON,KEIRYN

VISITORS: Vanderbilt	Time	Score	Margin	HOME: ARKANSAS
	03:13			MISSED JUMPER by JACKSON,JESSICA
REBOUND (DEF) by SPEARS,MINTA	03:13			
MISSED 3PTR by REED,CHRISTA	03:01			
	03:01			REBOUND (DEF) by WILSON,AALIYAH
FOUL by REED,CHRISTA	02:47			
SUB IN: CLEMONS-GREEN,KALEI	02:47			
SUB OUT: SPEARS,MINTA	02:47			
	02:47			SUB IN: MONK,MALICA
	02:37			MISSED 3PTR by MASON,JAILYN
REBOUND (DEF) by SEAWRIGHT,MIAYA	02:37			
MISSED JUMPER by CLEMONS-GREEN,KALEI	02:27			
	02:27			REBOUND (DEF) by SWENSON,KEIRYN
SUB IN: WEBB,MARQU'ES	02:12			
SUB OUT: REED,CHRISTA	02:12			
	02:12			SUB IN: WILLIAMS,KIARA
	02:12			SUB OUT: JACKSON,JESSICA
	01:56			TURNOVER by TEAM
	01:56			SUB IN: COSPER,DEVIN
	01:56			SUB OUT: ZIMMERMAN,BAILEY
MISSED 3PTR by SEAWRIGHT,MIAYA	01:40			
REBOUND (OFF) by WEBB,MARQU'ES	01:40			
GOOD! LAYUP by WEBB,MARQU'ES [PNT]	01:37	38-45	V 7	
	01:14	41-45	V 4	GOOD! 3PTR by MASON,JAILYN
	01:14			ASSIST by COSPER,DEVIN
	01:13			TIMEOUT 30SEC
SUB IN: SPEARS,MINTA	01:13			
	01:13			SUB IN: COOLEY,ALECIA
	01:13			SUB IN: JACKSON,JESSICA
	01:13			SUB OUT: SWENSON,KEIRYN
	01:13			SUB OUT: WILLIAMS,KIARA
SUB OUT: CLEMONS-GREEN,KALEI	00:57			
GOOD! LAYUP by WEBB,MARQU'ES [PNT]	00:47	41-47	V 6	
ASSIST by BELL,RACHEL	00:47			
	00:47			FOUL by COOLEY,ALECIA
MISSED FT by WEBB,MARQU'ES	00:47			
	00:47			REBOUND (DEADB) by TEAM
	00:47			SUB IN: WILLIAMS,KIARA
	00:47			SUB OUT: COOLEY,ALECIA
	00:18			MISSED 3PTR by COSPER,DEVIN
REBOUND (DEF) by WEBB,MARQU'ES	00:18			
	00:01			FOUL by WILLIAMS,KIARA
GOOD! FT by WEBB,MARQU'ES	00:01	41-48	V 7	
MISSED FT by WEBB,MARQU'ES	00:01			
	00:01			REBOUND (DEF) by JACKSON,JESSICA

Vanderbilt 56, ARKANSAS 59

Period 3-only	In Paint	Off T/O	2nd Chance	Fast Break	Bench	
VANDY	12	5	4	0	3	Score tied - 6 times
AR	0	0	0	0	0	Lead changed - 2 times

Vanderbilt vs ARKANSAS
1/19/2017; 7 p.m. at Fayetteville, Ark. (Bud Walton Arena)
Period 4 Play-By-Play

VISITORS: Vanderbilt	Time	Score	Margin	HOME: ARKANSAS
SUB IN: WHALEN,ERIN	10:00			
SUB IN: SEAWRIGHT,MIAYA	10:00			
SUB OUT: OVERBECK,KAYLA	10:00			
SUB OUT: REED,CHRISTA	10:00			
	10:00			SUB IN: JACKSON,JESSICA
	10:00			SUB OUT: COOLEY,ALECIA
MISSED 3PTR by WHALEN,ERIN	09:42			
	09:42			REBOUND (DEF) by MASON,JAILYN
FOUL by WHALEN,ERIN	09:33			
	09:27	43-48	V 5	GOOD! JUMPER by MASON,JAILYN
TURNOVER by WHALEN,ERIN	09:09			
	09:09			STEAL by COSPER,DEVIN
	09:06	45-48	V 3	GOOD! LAYUP by COSPER,DEVIN [FB/PNT]
	08:40			FOUL by SWENSON,KEIRYN
GOOD! FT by WEBB,MARQU'ES	08:40	45-49	V 4	
MISSED FT by WEBB,MARQU'ES	08:40			
	08:40			REBOUND (DEF) by SWENSON,KEIRYN
SUB IN: REED,CHRISTA	08:40			
SUB OUT: WHALEN,ERIN	08:40			
	08:10			MISSED JUMPER by MONK,MALICA
REBOUND (DEF) by WEBB,MARQU'ES	08:10			
MISSED LAYUP by SPEARS,MINTA	07:57			
	07:57			REBOUND (DEF) by MASON,JAILYN
	07:51			TURNOVER by MASON,JAILYN
	07:41			FOUL by MASON,JAILYN
TURNOVER by BELL,RACHEL	07:32			
	07:32			STEAL by COSPER,DEVIN
FOUL by BELL,RACHEL	07:21			
SUB IN: CLEMONS-GREEN,KALEI	07:21			
SUB IN: OVERBECK,KAYLA	07:21			
SUB OUT: WEBB,MARQU'ES	07:21			
SUB OUT: SPEARS,MINTA	07:21			
	07:18	47-49	V 2	GOOD! LAYUP by SWENSON,KEIRYN [PNT]
	07:05			FOUL by COSPER,DEVIN
	06:50			FOUL by JACKSON,JESSICA
GOOD! FT by CLEMONS-GREEN,KALEI	06:50	47-50	V 3	
GOOD! FT by CLEMONS-GREEN,KALEI	06:50	47-51	V 4	
	06:40	49-51	V 2	GOOD! LAYUP by JACKSON,JESSICA [PNT]
	06:40			ASSIST by MONK,MALICA
	06:23			FOUL by SWENSON,KEIRYN
MISSED FT by REED,CHRISTA	06:23			
REBOUND (DEADB) by TEAM	06:23			
MISSED FT by REED,CHRISTA	06:23			
	06:23			REBOUND (DEF) by JACKSON,JESSICA
	06:23			SUB IN: COOLEY,ALECIA
	06:23			SUB OUT: SWENSON,KEIRYN
FOUL by SEAWRIGHT,MIAYA	06:07			
	06:04	52-51	H 1	GOOD! 3PTR by COSPER,DEVIN
	06:04			ASSIST by JACKSON,JESSICA
MISSED JUMPER by REED,CHRISTA	05:44			
	05:44			BLOCK by JACKSON,JESSICA
	05:44			REBOUND (DEF) by TEAM
	05:21			MISSED 3PTR by COSPER,DEVIN
	05:21			REBOUND (OFF) by COSPER,DEVIN
	05:17			TURNOVER by COSPER,DEVIN
SUB IN: WEBB,MARQU'ES	05:17			
SUB OUT: REED,CHRISTA	05:17			
TURNOVER by WEBB,MARQU'ES	05:02			
	04:46			MISSED JUMPER by COSPER,DEVIN

VISITORS: Vanderbilt	Time	Score	Margin	HOME: ARKANSAS
REBOUND (DEF) by SEAWRIGHT,MIAYA	04:46			
	04:33			FOUL by COSPER,DEVIN
TIMEOUT media	04:33			
MISSED FT by BELL,RACHEL	04:33			
REBOUND (DEADB) by TEAM	04:33			
GOOD! FT by BELL,RACHEL	04:33	52-52	T	
SUB IN: SPEARS,MINTA	04:33			
SUB OUT: CLEMONS-GREEN,KALEI	04:33			
FOUL by OVERBECK,KAYLA	04:13			
FOUL by OVERBECK,KAYLA	04:11			
	04:11			MISSED FT by COOLEY,ALECIA
	04:11			REBOUND (DEADB) by TEAM
	04:11	53-52	H 1	GOOD! FT by COOLEY,ALECIA
SUB IN: REED,CHRISTA	04:11			
SUB OUT: OVERBECK,KAYLA	04:11			
GOOD! LAYUP by SPEARS,MINTA [PNT]	03:46	53-54	V 1	
	03:20			MISSED 3PTR by JACKSON,JESSICA
REBOUND (DEF) by WEBB,MARQU'ES	03:20			
GOOD! LAYUP by WEBB,MARQU'ES [PNT]	02:58	53-56	V 3	
ASSIST by REED,CHRISTA	02:58			
	02:24	55-56	V 1	GOOD! LAYUP by COOLEY,ALECIA [PNT]
MISSED 3PTR by REED,CHRISTA	01:57			
	01:57			REBOUND (DEF) by COSPER,DEVIN
FOUL by WEBB,MARQU'ES	01:29			
	01:29	56-56	T	GOOD! FT by MONK,MALICA
	01:29			MISSED FT by MONK,MALICA
REBOUND (DEF) by REED,CHRISTA	01:29			
TIMEOUT 30SEC	01:22			
TURNOVER by BELL,RACHEL	01:09			
	00:59			MISSED JUMPER by JACKSON,JESSICA
	00:58			REBOUND (DEADB) by TEAM
FOUL by WEBB,MARQU'ES	00:58			
	00:58			MISSED FT by JACKSON,JESSICA
	00:58			REBOUND (DEADB) by TEAM
	00:58			MISSED FT by JACKSON,JESSICA
REBOUND (DEF) by SEAWRIGHT,MIAYA	00:58			
TIMEOUT TEAM	00:47			
MISSED JUMPER by BELL,RACHEL	00:41			
	00:41			BLOCK by COOLEY,ALECIA
	00:40			REBOUND (DEF) by COOLEY,ALECIA
	00:26			TURNOVER by MASON,JAILYN
STEAL by SEAWRIGHT,MIAYA	00:26			
	00:20			FOUL by MASON,JAILYN
MISSED FT by REED,CHRISTA	00:20			
REBOUND (DEADB) by TEAM	00:20			
MISSED FT by REED,CHRISTA	00:20			
	00:20			REBOUND (DEF) by MASON,JAILYN
FOUL by REED,CHRISTA	00:11			
	00:11	57-56	H 1	GOOD! FT by MONK,MALICA
	00:11			MISSED FT by MONK,MALICA
REBOUND (DEF) by WEBB,MARQU'ES	00:11			
TIMEOUT 30SEC	00:10			
	00:10			TIMEOUT 30SEC
TURNOVER by REED,CHRISTA	00:05			
	00:05			STEAL by JACKSON,JESSICA
	00:05			TIMEOUT TEAM
SUB IN: CARTER,LEALEA	00:05			
SUB OUT: WEBB,MARQU'ES	00:05			
	00:05			SUB IN: SWENSON,KEIRYN
	00:05			SUB OUT: COOLEY,ALECIA
FOUL by BELL,RACHEL	00:04			
	00:04	58-56	H 2	GOOD! FT by COSPER,DEVIN
	00:04	59-56	H 3	GOOD! FT by COSPER,DEVIN
SUB IN: WEBB,MARQU'ES	00:04			

VISITORS: Vanderbilt
SUB OUT: CARTER,LEALEA

Time Score Margin
00:04

HOME: ARKANSAS

Vanderbilt 56, ARKANSAS 59

Period 4-only	In Paint	Off T/O	2nd Chance	Fast Break	Bench	
VANDY	4	0	0	0	2	Score tied - 2 times
AR	8	6	0	2	2	Lead changed - 2 times

Vanderbilt vs ARKANSAS
1/19/2017; 7 p.m. at Fayetteville, Ark. (Bud Walton Arena)
Scoring/Runs Reference

Period 1

Vanderbilt	Score	Marg	ARKANSAS
	0-1	1 1	COSPER FT - 08:40
	0-2	2 1	COSPER FT - 08:40
08:23 - OVERBECK LAYUP [P]	2	2-2 0	
	2-5	3 3	SWENSON 3PTR - 07:24
	2-7	5 2	MONK JUMPER [P] - 05:41
05:28 - WHALEN 3PTR	3	5-7 2	
	5-9	4 2	JACKSON JUMPER - 04:36
04:07 - CARTER LAYUP [P]	2	7-9 2	
	7-11	4 2	COSPER JUMPER - 03:44
03:35 - REED 3PTR	3	10-11 1	
	10-13	3 2	WILLIAMS JUMPER [P] - 03:09
02:15 - BELL 3PTR	3	13-13 0	
01:42 - WHALEN FT	1	14-13 -1	
01:42 - WHALEN FT	1	15-13 -2	
	15-15	0 2	MASON JUMPER - 01:20
00:48 - WHALEN LAYUP [P]	2	17-15 -2	
00:26 - BELL LAYUP [P] [F]	2	19-15 -4	
00:25 - BELL FT	1	20-15 -5	

Period 3

Vanderbilt	Score	Marg	ARKANSAS
09:41 - BELL JUMPER [P]	2	34-34 0	
	34-36	2 2	MONK JUMPER - 07:38
07:24 - WHALEN JUMPER	2	36-36 0	
	36-38	2 2	MASON JUMPER - 06:53
06:37 - WEBB LAYUP [P]	2	38-38 0	
05:16 - SPEARS LAYUP [P]	2	40-38 -2	
04:52 - SEAWRIGHT FT	1	41-38 -3	
04:03 - BELL LAYUP [P]	2	43-38 -5	
01:37 - WEBB LAYUP [P]	2	45-38 -7	
	45-41	-4 3	MASON 3PTR - 01:14
00:47 - WEBB LAYUP [P]	2	47-41 -6	
00:01 - WEBB FT	1	48-41 -7	

Period 2

Vanderbilt	Score	Marg	ARKANSAS
	20-16	-4 1	MASON FT - 09:36
	20-17	-3 1	MASON FT - 09:36
08:58 - REED LAYUP [P]	2	22-17 -5	
	22-20	-2 3	MASON 3PTR - 08:30
08:11 - REED FT	1	23-20 -3	
08:11 - REED FT	1	24-20 -4	
	24-22	-2 2	SWENSON LAYUP [P] - 07:56
	24-23	-1 1	SWENSON FT - 07:56
	24-25	1 2	JACKSON JUMPER [P] - 07:33
06:41 - REED LAYUP [P]	2	26-25 -1	
	26-28	2 3	MASON 3PTR - 06:05
	26-30	4 2	MONK LAYUP [P] [F] - 05:13
04:15 - REED 3PTR	3	29-30 1	
02:41 - SPEARS 3PTR	3	32-30 -2	
	32-32	0 2	ZIMMERMAN JUMPER [P] - 01:29
	32-34	2 2	ZIMMERMAN LAYUP [P] - 00:48

Period 4

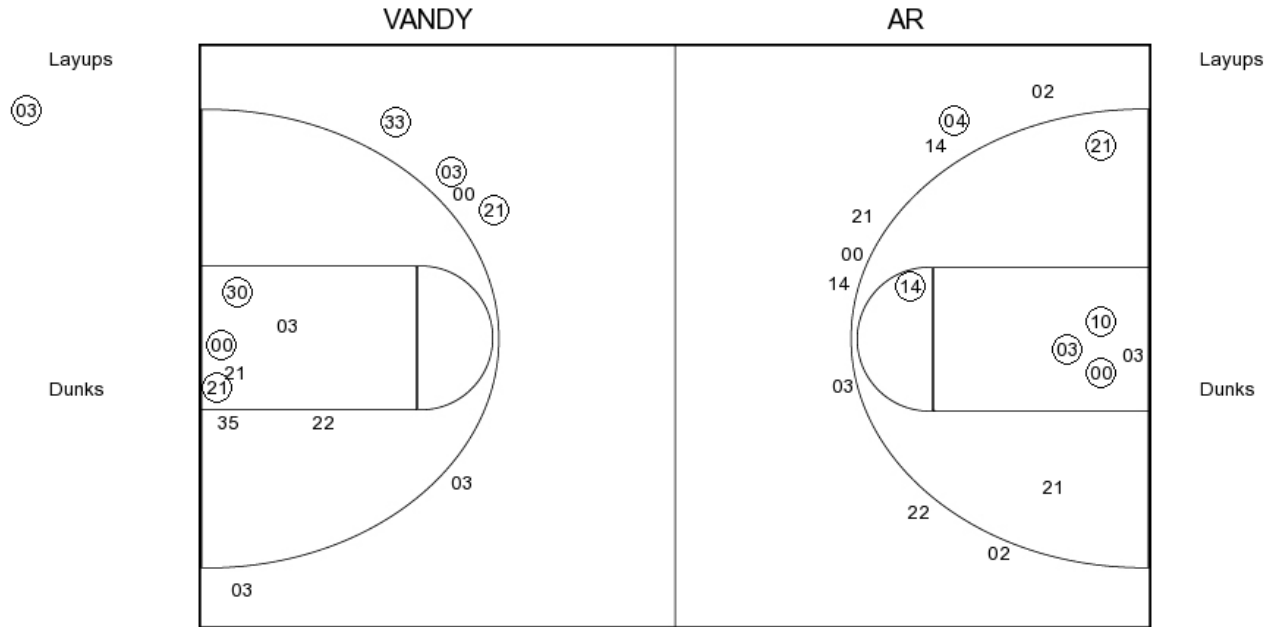
Vanderbilt	Score	Marg	ARKANSAS
	48-43	-5 2	MASON JUMPER - 09:27
	48-45	-3 2	COSPER LAYUP [P] [F] - 09:06
08:40 - WEBB FT	1	49-45 -4	
	49-47	-2 2	SWENSON LAYUP [P] - 07:18
06:50 - CLEMONS-GREEN FT	1	50-47 -3	
06:50 - CLEMONS-GREEN FT	1	51-47 -4	
	51-49	-2 2	JACKSON LAYUP [P] - 06:40
	51-52	1 3	COSPER 3PTR - 06:04
04:33 - BELL FT	1	52-52 0	
	52-53	1 1	COOLEY FT - 04:11
03:46 - SPEARS LAYUP [P]	2	54-53 -1	
02:58 - WEBB LAYUP [P]	2	56-53 -3	
	56-55	-1 2	COOLEY LAYUP [P] - 02:24
	56-56	0 1	MONK FT - 01:29
	56-57	1 1	MONK FT - 00:11
	56-58	2 1	COSPER FT - 00:04
	56-59	3 1	COSPER FT - 00:04

Vanderbilt vs ARKANSAS

OFFICIAL SHOT CHART

1/19/2017 at Fayetteville, Ark. (Bud Walton Arena)

PERIOD 1



VANDY PERIOD 1

FG Made	11
FG Attempted	26
3PFG Made	5
3PFG Attempted	9

AR PERIOD 1

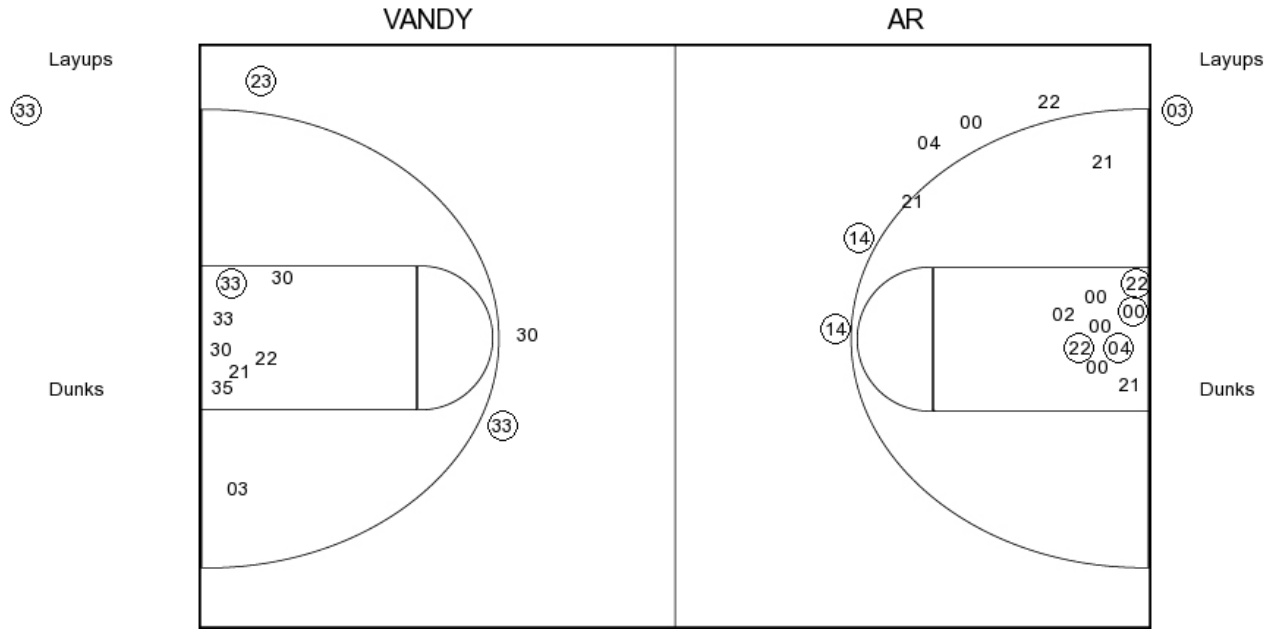
FG Made	13
FG Attempted	33
3PFG Made	3
3PFG Attempted	13

Vanderbilt vs ARKANSAS

OFFICIAL SHOT CHART

1/19/2017 at Fayetteville, Ark. (Bud Walton Arena)

PERIOD 2



VANDY PERIOD 2

- FG Made
- FG Attempted
- 3PFG Made
- 3PFG Attempted

AR PERIOD 2

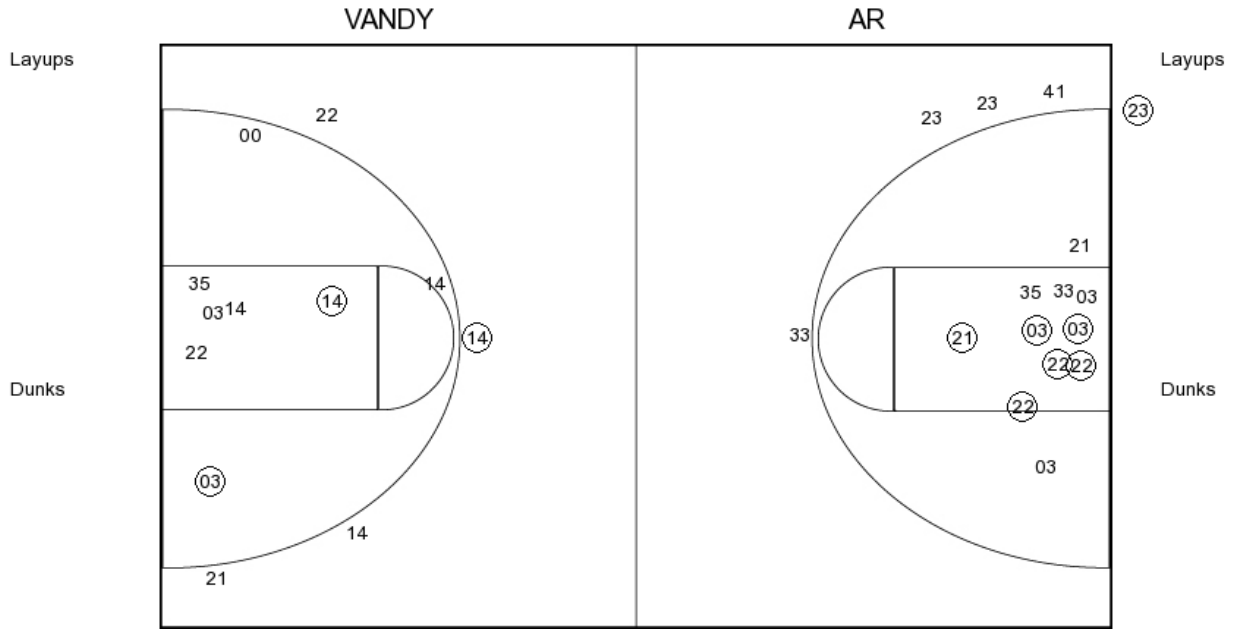
- FG Made
- FG Attempted
- 3PFG Made
- 3PFG Attempted

Vanderbilt vs ARKANSAS

OFFICIAL SHOT CHART

1/19/2017 at Fayetteville, Ark. (Bud Walton Arena)

PERIOD 3



VANDY PERIOD 3

FG Made	9
FG Attempted	23
3PFG Made	0
3PFG Attempted	6

AR PERIOD 3

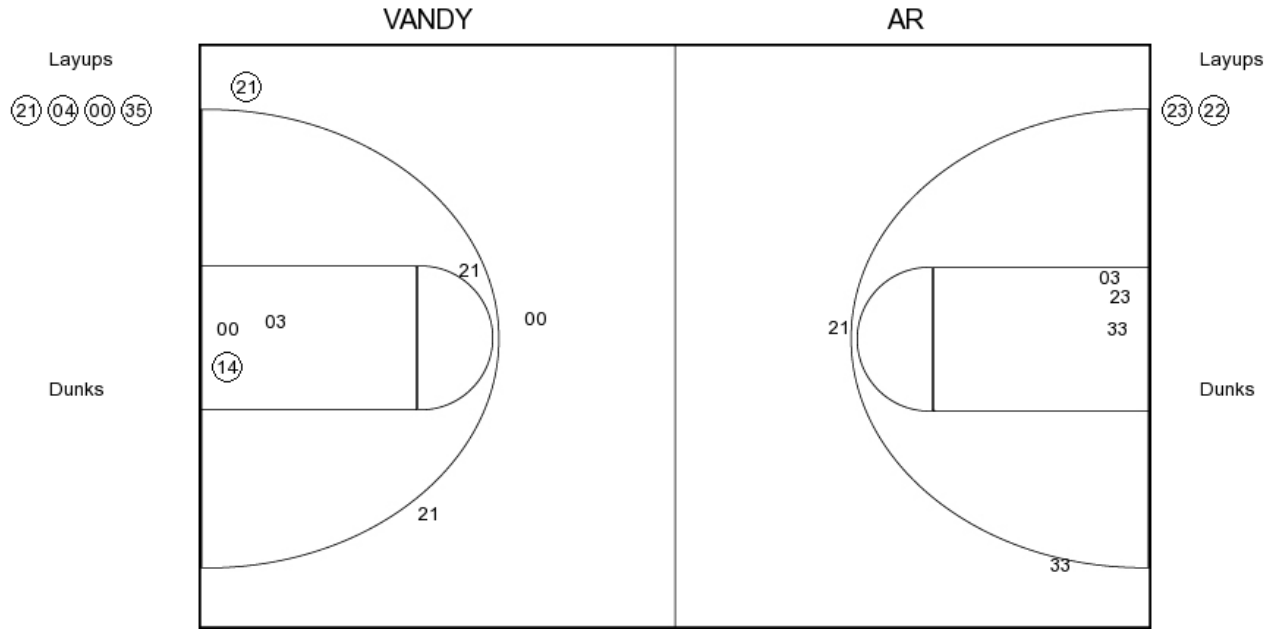
FG Made	9
FG Attempted	23
3PFG Made	2
3PFG Attempted	7

Vanderbilt vs ARKANSAS

OFFICIAL SHOT CHART

1/19/2017 at Fayetteville, Ark. (Bud Walton Arena)

PERIOD 4



VANDY PERIOD 4

FG Made
 FG Attempted
 3PFG Made
 3PFG Attempted

AR PERIOD 4

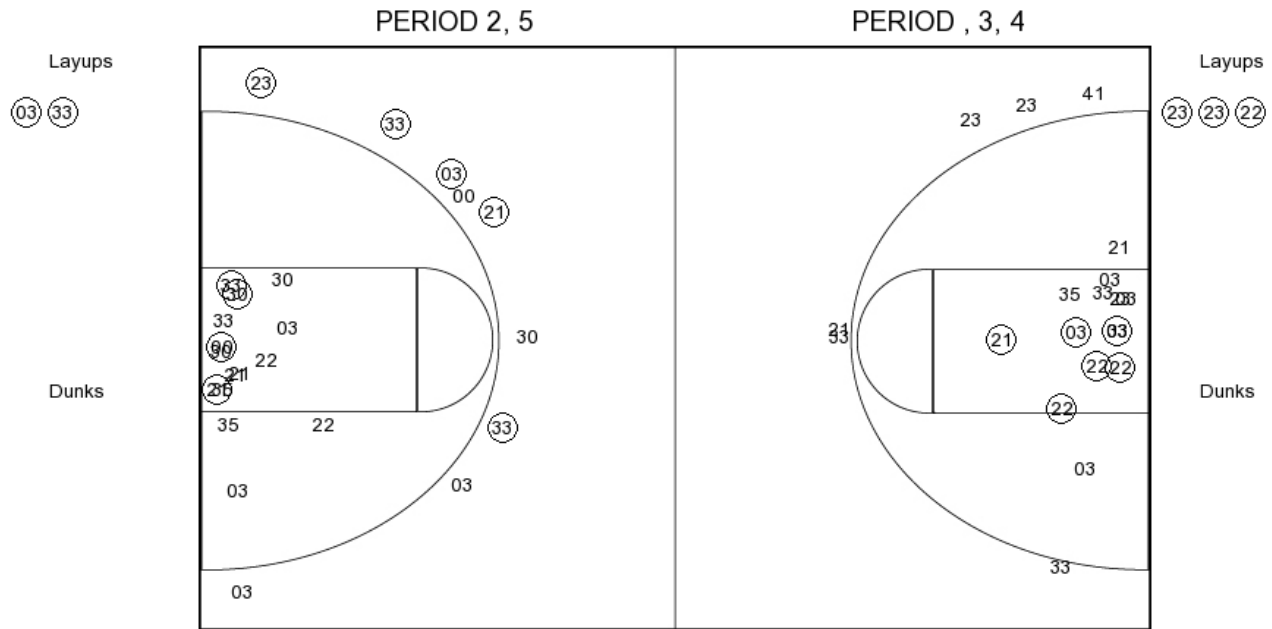
FG Made
 FG Attempted
 3PFG Made
 3PFG Attempted

Vanderbilt vs ARKANSAS

OFFICIAL SHOT CHART

1/19/2017 at Fayetteville, Ark. (Bud Walton Arena)

Vanderbilt



VANDY PERIOD 1

FG Made	11
FG Attempted	26
3PFG Made	5
3PFG Attempted	9

VANDY PERIOD 2

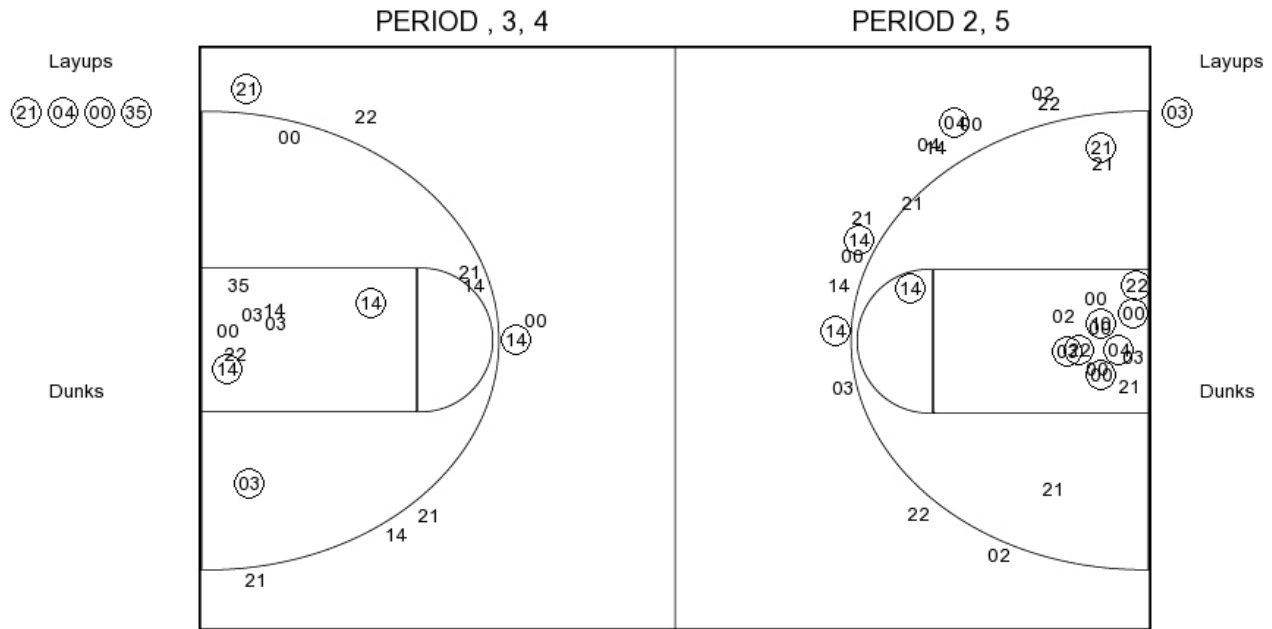
FG Made	
FG Attempted	
3PFG Made	
3PFG Attempted	

Vanderbilt vs ARKANSAS

OFFICIAL SHOT CHART

1/19/2017 at Fayetteville, Ark. (Bud Walton Arena)

ARKANSAS



AR PERIOD 1

FG Made	13
FG Attempted	33
3PFG Made	3
3PFG Attempted	13

AR PERIOD 2

FG Made	
FG Attempted	
3PFG Made	
3PFG Attempted	