

ARKANSAS VS. ORAL ROBERTS



12/21/2016
Fayetteville, Ark. (Bud Walton Arena)

FINAL STATS

ORU
(8-5)

70

ARKANSAS
(10-2)

60

Start Time: 1 p.m.
Officials: Ed Sidlasky, Wesley Dean, Frank Steratore
Attendance: 1721

Estimated Actual Attendance: 1,303

Official Basketball Box Score -- Game Totals -- Final Statistics

ORU vs ARKANSAS

12/21/2016 1 p.m. at Fayetteville, Ark. (Bud Walton Arena)

ORU 70 - 8-5

##	Player	g	Total			Rebounds			PF	TP	A	TO	Blk	Stl	Min
			FG-FGA	3-Ptr FG-FGA	FT-FTA	Off	Def	Tot							
01	MAYBERRY, KAYLAN	g	4-13	1-3	0-0	0	5	5	4	9	5	3	0	0	33
15	IHIM, FAITH	f	4-9	0-0	2-4	3	4	7	3	10	0	1	0	1	24
22	GILBERT, JORDAN	g	1-4	0-0	0-0	0	3	3	4	2	0	2	0	1	23
23	BEATTY, ASHLEY	g	1-4	0-2	0-0	0	3	3	0	2	1	0	0	0	22
44	MARTIANEZ, MARIA	f	7-13	1-2	0-0	0	6	6	0	15	2	3	1	2	34
10	SCOTT, ALEXA		0-0	0-0	0-0	0	0	0	1	0	0	0	0	0	2
11	BEATTY, LAKOTA		9-12	5-6	0-0	0	3	3	0	23	3	1	0	1	29
13	SKALNIK, RACHEL		1-2	1-1	0-0	1	0	1	0	3	2	0	0	1	18
24	BROTONS, MONTSERRA		3-9	0-0	0-0	2	3	5	3	6	1	0	0	0	15
TEAM						3	2	5	0			0			
TOTALS			30-66	8-14	2-4	9	29	38	15	70	14	10	1	6	200

Deadball Rebounds: 1, 1

FG %	1st Half: 19-35	54.3%	2nd Half: 11-31	35.5%	Game: 30-66	45.5%							
	1st Qtr: 8-17	47.1%	2nd Qtr: 11-18	61.1%	3rd Qtr: 8-17	47.1%	4th Qtr: 3-14	21.4%					
3FG %	1st Half: 5-7	71.4%	2nd Half: 3-7	42.9%	Game: 8-14	57.1%							
	1st Qtr: 0-1	00.0%	2nd Qtr: 5-6	83.3%	3rd Qtr: 3-5	60.0%	4th Qtr: 0-2	00.0%					
FT %	1st Half: 0-0	0%	2nd Half: 2-4	50.0%	Game: 2-4	50.0%							
	1st Qtr: 0-0	0%	2nd Qtr: 0-0	0%	3rd Qtr: 0-0	0%	4th Qtr: 2-4	50.0%					

ARKANSAS 60 - 10-2

##	Player	g	Total			Rebounds			PF	TP	A	TO	Blk	Stl	Min
			FG-FGA	3-Ptr FG-FGA	FT-FTA	Off	Def	Tot							
00	JACKSON, JESSICA	f	6-16	1-2	4-4	1	2	3	3	17	1	3	3	2	37
14	MASON, JAILYN	g	9-15	0-1	1-2	0	6	6	2	19	3	1	0	0	40
21	COSPER, DEVIN	g	5-14	0-3	0-0	0	3	3	0	10	6	2	1	2	37
22	ZIMMERMAN, BAILEY	f	1-4	0-1	1-4	1	5	6	0	3	0	1	1	0	29
35	COOLEY, ALECIA	c	3-6	0-0	5-5	2	2	4	0	11	0	1	0	1	20
02	WILSON, AALIYAH		0-3	0-0	0-0	0	3	3	1	0	0	1	0	1	14
04	SWENSON, KEIRYN		0-2	0-1	0-0	1	2	3	3	0	0	0	2	0	23
TEAM						3	3	6	0			1			
TOTALS			24-60	1-8	11-15	8	26	34	9	60	10	10	7	6	200

Deadball Rebounds: 2, 2

FG %	1st Half: 13-27	48.1%	2nd Half: 11-33	33.3%	Game: 24-60	40.0%							
	1st Qtr: 8-14	57.1%	2nd Qtr: 5-13	38.5%	3rd Qtr: 7-16	43.8%	4th Qtr: 4-17	23.5%					
3FG %	1st Half: 1-3	33.3%	2nd Half: 0-5	00.0%	Game: 1-8	12.5%							
	1st Qtr: 0-0	0%	2nd Qtr: 1-3	33.3%	3rd Qtr: 0-0	0%	4th Qtr: 0-5	00.0%					
FT %	1st Half: 4-7	57.1%	2nd Half: 7-8	87.5%	Game: 11-15	73.3%							
	1st Qtr: 2-2	100.0%	2nd Qtr: 2-5	40.0%	3rd Qtr: 5-6	83.3%	4th Qtr: 2-2	100.0%					

Officials: Ed Sidlasky, Wesley Dean, Frank Steratore

Technical Fouls: ORU- None. ARKANSAS- None.

Attendance: 1721

Estimated Actual Attendance: 1,303

Score by periods	1st	2nd	3rd	4th	Total
ORU	16	27	19	8	70
ARKANSAS	18	13	19	10	60

Points	In Paint	Off T/O	2nd Chance	Fast Break	Bench
ORU	24	6	7	4	32
AR	28	7	7	2	0

Last FG - ORU 4th-01:06, AR 4th-00:12.

Largest lead - ORU by 15 3rd-06:16; ARKANSAS by 4 1st-06:51
ORU led for 31:35. AR led for 3:05. Game was tied for 5:20.

Score tied - 7 times
Lead changed - 3 times

Official Basketball Box Score -- Game Totals -- First Half Statistics

ORU vs ARKANSAS

12/21/2016 1 p.m. at Fayetteville, Ark. (Bud Walton Arena)

ORU 43 • 8-5

##	Player	g	Total FG-FGA	3-Ptr FG-FGA	FT-FTA	Rebounds			PF	TP	A	TO	Blk	Stl	Min
						Off	Def	Tot							
01	MAYBERRY,KAYLAN	g	3-6	1-1	0-0	0	2	2	2	7	2	2	0	0	16
15	IHIM,FAITH	f	1-3	0-0	0-0	1	0	1	2	2	0	0	0	0	12
22	GILBERT,JORDAN	g	1-3	0-0	0-0	0	2	2	2	2	0	2	0	1	11
23	BEATTY,ASHLEY	g	1-2	0-1	0-0	0	1	1	0	2	1	0	0	0	12
44	MARTIANEZ,MARIA	f	5-8	1-1	0-0	0	2	2	0	11	2	0	1	2	15
10	SCOTT,ALEXA		0-0	0-0	0-0	0	0	0	1	0	0	0	0	0	2
11	BEATTY,LAKOTA		6-7	2-3	0-0	0	1	1	0	14	1	0	0	1	13
13	SKALNIK,RACHEL		1-1	1-1	0-0	0	0	0	0	3	1	0	0	1	11
24	BROTONS,MONTSERRA		1-5	0-0	0-0	2	2	4	0	2	0	0	0	0	8
TEAM						2	2	4	0		0				
Totals			19-35	5-7	0-0	5	12	17	7	43	7	4	1	5	100

FG %	1st Qtr	8-17	47.1%	2nd Qtr	11-18	61.1%	Half:	19-35	54.3%
3FG %	1st Qtr	0-1	00.0%	2nd Qtr	5-6	83.3%	Half:	5-7	71.4%
FT %	1st Qtr	0-0	0%	2nd Qtr	0-0	0%	Half:	0-0	0%

ARKANSAS 31 • 10-2

##	Player	g	Total FG-FGA	3-Ptr FG-FGA	FT-FTA	Rebounds			PF	TP	A	TO	Blk	Stl	Min
						Off	Def	Tot							
00	JACKSON,JESSICA	f	3-7	1-1	2-2	0	1	1	1	9	0	2	2	1	17
14	MASON,JAILYN	g	2-5	0-0	1-2	0	2	2	1	5	2	1	0	0	20
21	COSPER,DEVIN	g	4-5	0-0	0-0	0	2	2	0	8	4	1	0	0	17
22	ZIMMERMAN,BAILEY	f	1-3	0-1	0-2	0	2	2	0	2	0	1	0	0	13
35	COOLEY,ALECIA	c	3-4	0-0	1-1	1	0	1	0	7	0	1	0	1	11
02	WILSON,AALIYAH		0-1	0-0	0-0	0	3	3	1	0	0	1	0	1	10
04	SWENSON,KEIRYN		0-2	0-1	0-0	0	0	0	0	0	0	0	1	0	12
TEAM						2	1	3	0		0				
Totals			13-27	1-3	4-7	3	11	14	3	31	6	7	3	3	100

FG %	1st Qtr	8-14	57.1%	2nd Qtr	5-13	38.5%	Half:	13-27	48.1%
3FG %	1st Qtr	0-0	0%	2nd Qtr	1-3	33.3%	Half:	1-3	33.3%
FT %	1st Qtr	2-2	100.0%	2nd Qtr	2-5	40.0%	Half:	4-7	57.1%

Officials: Ed Sidlasky, Wesley Dean, Frank Steratore
 Technical Fouls: ORU- None. ARKANSAS- None.
 Estimated Actual Attendance: 1,303

Score by periods	1st	2nd	3rd	4th	Total
ORU	16	27	19	8	70
ARKANSAS	18	13	19	10	60

Points	In Paint	Off T/O	2nd Chance	Fast Break	Bench
ORU	16	6	5	4	19
ARKANSAS	18	2	0	0	0

Last FG - ORU 2nd-00:06, AR 2nd-00:18.
 ORU led for 11:35. AR led for 3:05. Game was tied for 5:20.

Score tied - 7 times
 Lead changed - 3 times

ORU vs ARKANSAS
12/21/2016; 1 p.m. at Fayetteville, Ark. (Bud Walton Arena)
Period 1 Play-By-Play

VISITORS: ORU	Time	Score	Margin	HOME: ARKANSAS
	09:46	2-0	H 2	GOOD! LAYUP by COSPER,DEVIN [PNT]
GOOD! LAYUP by MARTIANEZ,MARIA [PNT]	09:30	2-2	T	
	09:02			MISSED JUMPER by JACKSON,JESSICA
REBOUND (DEF) by MAYBERRY,KAYLAN	09:02			
MISSED JUMPER by MAYBERRY,KAYLAN	08:52			
	08:51			BLOCK by JACKSON,JESSICA
	08:50			REBOUND (DEF) by MASON,JAILYN
	08:39	4-2	H 2	GOOD! LAYUP by JACKSON,JESSICA [PNT]
	08:39			ASSIST by COSPER,DEVIN
MISSED LAYUP by GILBERT,JORDAN	08:17			
	08:17			REBOUND (DEF) by COSPER,DEVIN
	07:55			MISSED JUMPER by MASON,JAILYN
	07:55			REBOUND (OFF) by TEAM
	07:52			TURNOVER by JACKSON,JESSICA
STEAL by MARTIANEZ,MARIA	07:49			
GOOD! LAYUP by IHIM,FAITH [PNT]	07:43	4-4	T	
ASSIST by MAYBERRY,KAYLAN	07:43			
	07:11	6-4	H 2	GOOD! LAYUP by COOLEY,ALECIA [PNT]
	07:11			ASSIST by COSPER,DEVIN
MISSED JUMPER by IHIM,FAITH	07:00			
	07:00			REBOUND (DEF) by MASON,JAILYN
	06:51	8-4	H 4	GOOD! LAYUP by COSPER,DEVIN [PNT]
	06:51			ASSIST by MASON,JAILYN
GOOD! JUMPER by MARTIANEZ,MARIA	06:30	8-6	H 2	
	06:18			MISSED JUMPER by MASON,JAILYN
REBOUND (DEF) by BEATTY,ASHLEY	06:18			
GOOD! JUMPER by MAYBERRY,KAYLAN	05:53	8-8	T	
	05:35			MISSED JUMPER by COOLEY,ALECIA
	05:35			REBOUND (OFF) by COOLEY,ALECIA
FOUL by IHIM,FAITH	05:31			
SUB IN: BROTONS,MONTSEERRAT	05:31			
SUB IN: BEATTY,LAKOTA	05:31			
SUB OUT: IHIM,FAITH	05:31			
SUB OUT: BEATTY,ASHLEY	05:31			
	05:31			SUB IN: SWENSON,KEIRYN
	05:31			SUB OUT: COOLEY,ALECIA
	05:28			FOUL by JACKSON,JESSICA
	05:28			TURNOVER by JACKSON,JESSICA
MISSED LAYUP by BROTONS,MONTSEERRAT	05:13			
	05:13			BLOCK by JACKSON,JESSICA
REBOUND (OFF) by BROTONS,MONTSEERRAT	05:10			
MISSED JUMPER by GILBERT,JORDAN	05:00			
	05:00			REBOUND (DEF) by JACKSON,JESSICA
FOUL by MAYBERRY,KAYLAN	04:45			
	04:45			TIMEOUT media
	04:45	9-8	H 1	GOOD! FT by JACKSON,JESSICA
	04:45	10-8	H 2	GOOD! FT by JACKSON,JESSICA
SUB IN: IHIM,FAITH	04:45			
SUB IN: SKALNIK,RACHEL	04:45			
SUB IN: BEATTY,ASHLEY	04:45			
SUB OUT: MAYBERRY,KAYLAN	04:45			
SUB OUT: GILBERT,JORDAN	04:45			
SUB OUT: MARTIANEZ,MARIA	04:45			
	04:45			SUB IN: WILSON,AALIYAH
	04:45			SUB OUT: ZIMMERMAN,BAILEY
MISSED JUMPER by IHIM,FAITH	04:33			
REBOUND (OFF) by IHIM,FAITH	04:33			
GOOD! LAYUP by BEATTY,ASHLEY [PNT]	04:25	10-10	T	
	03:53			MISSED LAYUP by COSPER,DEVIN

VISITORS: ORU	Time	Score	Margin	HOME: ARKANSAS
REBOUND (DEF) by BROTONS,MONTSEERRAT	03:53			
	03:32			FOUL by MASON,JAILYN
GOOD! JUMPER by BEATTY,LAKOTA	03:24	10-12	V 2	
	03:04			MISSED JUMPER by WILSON,AALIYAH
REBOUND (DEF) by TEAM	03:04			
MISSED JUMPER by BROTONS,MONTSEERRAT	02:45			
	02:45			REBOUND (DEF) by WILSON,AALIYAH
	02:25	12-12	T	GOOD! JUMPER by COSPER,DEVIN
MISSED 3PTR by BEATTY,ASHLEY	02:09			
	02:09			REBOUND (DEF) by WILSON,AALIYAH
	02:02			TURNOVER by WILSON,AALIYAH
STEAL by BEATTY,LAKOTA	02:02			
GOOD! JUMPER by BEATTY,LAKOTA [FB]	01:57	12-14	V 2	
	01:30	14-14	T	GOOD! JUMPER by COSPER,DEVIN
SUB IN: GILBERT,JORDAN	01:10			
SUB IN: MAYBERRY,KAYLAN	01:10			
SUB IN: MARTIANEZ,MARIA	01:10			
SUB OUT: BROTONS,MONTSEERRAT	01:10			
SUB OUT: SKALNIK,RACHEL	01:10			
SUB OUT: BEATTY,ASHLEY	01:10			
	01:10			SUB IN: ZIMMERMAN,BAILEY
	01:10			SUB IN: COOLEY,ALECIA
	01:10			SUB OUT: JACKSON,JESSICA
	01:10			SUB OUT: COSPER,DEVIN
GOOD! JUMPER by GILBERT,JORDAN	01:04	14-16	V 2	
ASSIST by MARTIANEZ,MARIA	01:04			
	00:44	16-16	T	GOOD! LAYUP by ZIMMERMAN,BAILEY [PNT]
MISSED LAYUP by MAYBERRY,KAYLAN	00:33			
	00:33			REBOUND (DEF) by ZIMMERMAN,BAILEY
	00:04	18-16	H 2	GOOD! JUMPER by MASON,JAILYN

ORU 16, ARKANSAS 18

Period 1-only	In Paint	Off T/O	2nd Chance	Fast Break	Bench	
ORU	6	4	2	2	4	Score tied - 8 times
AR	10	0	0	0	0	Lead changed - 2 times

ORU vs ARKANSAS
12/21/2016; 1 p.m. at Fayetteville, Ark. (Bud Walton Arena)
Period 2 Play-By-Play

VISITORS: ORU	Time	Score	Margin	HOME: ARKANSAS
SUB IN: BEATTY,LAKOTA	10:00			
SUB OUT: BEATTY,ASHLEY	10:00			
	10:00			SUB IN: WILSON,AALIYAH
	10:00			SUB IN: SWENSON,KEIRYN
	10:00			SUB OUT: JACKSON,JESSICA
	10:00			SUB OUT: COSPER,DEVIN
GOOD! 3PTR by BEATTY,LAKOTA	09:49	18-19	V 1	
ASSIST by MARTIANEZ,MARIA	09:49			
	09:33			MISSED 3PTR by ZIMMERMAN,BAILEY
REBOUND (DEF) by TEAM	09:33			
GOOD! LAYUP by MARTIANEZ,MARIA [PNT]	09:19	18-21	V 3	
	09:05			SUB IN: JACKSON,JESSICA
	09:05			SUB OUT: COOLEY,ALECIA
FOUL by GILBERT,JORDAN	08:49			
	08:49			MISSED FT by ZIMMERMAN,BAILEY
	08:49			REBOUND (DEADB) by TEAM
	08:49			MISSED FT by ZIMMERMAN,BAILEY
REBOUND (DEF) by MARTIANEZ,MARIA	08:49			
GOOD! 3PTR by MARTIANEZ,MARIA	08:39	18-24	V 6	
ASSIST by BEATTY,LAKOTA	08:39			
	08:21			MISSED LAYUP by ZIMMERMAN,BAILEY
REBOUND (DEF) by GILBERT,JORDAN	08:21			
TURNOVER by GILBERT,JORDAN	08:16			
	08:13			STEAL by WILSON,AALIYAH
	08:13			TURNOVER by ZIMMERMAN,BAILEY
	08:13			SUB IN: COSPER,DEVIN
	08:13			SUB OUT: ZIMMERMAN,BAILEY
MISSED JUMPER by MARTIANEZ,MARIA	08:02			
	08:02			REBOUND (DEF) by TEAM
	07:37			TURNOVER by MASON,JAILYN
STEAL by MARTIANEZ,MARIA	07:36			
GOOD! LAYUP by BEATTY,LAKOTA [FB/PNT]	07:31	18-26	V 8	
	07:29			TIMEOUT 30SEC
SUB IN: BEATTY,ASHLEY	07:29			
SUB IN: SKALNIK,RACHEL	07:29			
SUB IN: BROTONS,MONTSEERRAT	07:29			
SUB OUT: MAYBERRY,KAYLAN	07:29			
SUB OUT: IHIM,FAITH	07:29			
SUB OUT: BEATTY,LAKOTA	07:29			
	07:06			MISSED JUMPER by JACKSON,JESSICA
REBOUND (DEF) by BROTONS,MONTSEERRAT	07:06			
	06:36			FOUL by WILSON,AALIYAH
SUB IN: MAYBERRY,KAYLAN	06:36			
SUB OUT: GILBERT,JORDAN	06:36			
MISSED LAYUP by BROTONS,MONTSEERRAT	06:28			
REBOUND (OFF) by BROTONS,MONTSEERRAT	06:28			
MISSED JUMPER by BROTONS,MONTSEERRAT	06:24			
	06:24			BLOCK by SWENSON,KEIRYN
REBOUND (OFF) by TEAM	06:24			
GOOD! 3PTR by MAYBERRY,KAYLAN	06:11	18-29	V 11	
ASSIST by SKALNIK,RACHEL	06:11			
	05:50			MISSED 3PTR by SWENSON,KEIRYN
REBOUND (DEF) by MAYBERRY,KAYLAN	05:50			
MISSED LAYUP by MAYBERRY,KAYLAN	05:40			
	05:40			REBOUND (DEF) by WILSON,AALIYAH
	05:27			MISSED JUMPER by SWENSON,KEIRYN
BLOCK by MARTIANEZ,MARIA	05:27			
	05:27			REBOUND (OFF) by TEAM
SUB IN: BEATTY,LAKOTA	05:26			

VISITORS: ORU	Time	Score	Margin	HOME: ARKANSAS
SUB IN: IHIM,FAITH	05:26			
SUB OUT: BEATTY,ASHLEY	05:26			
SUB OUT: BROTONS,MONTSEERRAT	05:26			
	05:26			SUB IN: COOLEY,ALECIA
	05:26			SUB IN: ZIMMERMAN,BAILEY
	05:26			SUB OUT: WILSON,AALIYAH
	05:26			SUB OUT: SWENSON,KEIRYN
	05:23			MISSED JUMPER by MASON,JAILYN
REBOUND (DEF) by BEATTY,LAKOTA	05:23			
GOOD! JUMPER by BEATTY,LAKOTA	05:12	18-31	V 13	
FOUL by IHIM,FAITH	04:55			
SUB IN: GILBERT,JORDAN	04:55			
SUB IN: BROTONS,MONTSEERRAT	04:55			
SUB OUT: IHIM,FAITH	04:55			
SUB OUT: MARTIANEZ,MARIA	04:55			
	04:52	20-31	V 11	GOOD! LAYUP by COOLEY,ALECIA [PNT]
TURNOVER by MAYBERRY,KAYLAN	04:39			
	04:37			STEAL by COOLEY,ALECIA
	04:33			TURNOVER by COSPER,DEVIN
STEAL by GILBERT,JORDAN	04:31			
FOUL by GILBERT,JORDAN	04:13			
TURNOVER by GILBERT,JORDAN	04:13			
SUB IN: MARTIANEZ,MARIA	04:13			
SUB OUT: BROTONS,MONTSEERRAT	04:13			
	04:02	22-31	V 9	GOOD! LAYUP by MASON,JAILYN [PNT]
GOOD! 3PTR by SKALNIK,RACHEL	03:41	22-34	V 12	
ASSIST by MAYBERRY,KAYLAN	03:41			
	03:19			MISSED JUMPER by JACKSON,JESSICA
REBOUND (DEF) by GILBERT,JORDAN	03:19			
TIMEOUT 30SEC	03:16			
SUB IN: SCOTT,ALEXA	03:16			
SUB OUT: GILBERT,JORDAN	03:16			
MISSED JUMPER by MARTIANEZ,MARIA	03:01			
REBOUND (OFF) by TEAM	03:01			
MISSED JUMPER by MARTIANEZ,MARIA	02:56			
	02:56			REBOUND (DEF) by COSPER,DEVIN
	02:47	25-34	V 9	GOOD! 3PTR by JACKSON,JESSICA
	02:47			ASSIST by MASON,JAILYN
GOOD! LAYUP by MAYBERRY,KAYLAN [PNT]	02:29	25-36	V 11	
	02:13			TURNOVER by COOLEY,ALECIA
STEAL by SKALNIK,RACHEL	02:12			
MISSED 3PTR by BEATTY,LAKOTA	02:07			
	02:07			REBOUND (DEF) by ZIMMERMAN,BAILEY
	01:55	27-36	V 9	GOOD! LAYUP by COOLEY,ALECIA [PNT]
	01:55			ASSIST by COSPER,DEVIN
FOUL by SCOTT,ALEXA	01:55			
	01:55	28-36	V 8	GOOD! FT by COOLEY,ALECIA
SUB IN: BEATTY,ASHLEY	01:55			
SUB OUT: BEATTY,LAKOTA	01:55			
TURNOVER by MAYBERRY,KAYLAN	01:44			
	01:44			STEAL by JACKSON,JESSICA
	01:32			MISSED LAYUP by JACKSON,JESSICA
REBOUND (DEF) by MARTIANEZ,MARIA	01:32			
GOOD! LAYUP by MARTIANEZ,MARIA [PNT]	01:14	28-38	V 10	
FOUL by MAYBERRY,KAYLAN	01:03			
	01:03			MISSED FT by MASON,JAILYN
	01:03			REBOUND (DEADB) by TEAM
	01:03	29-38	V 9	GOOD! FT by MASON,JAILYN
SUB IN: BROTONS,MONTSEERRAT	01:03			
SUB IN: BEATTY,LAKOTA	01:03			
SUB OUT: MAYBERRY,KAYLAN	01:03			
SUB OUT: SCOTT,ALEXA	01:03			
	01:03			SUB IN: SWENSON,KEIRYN
	01:03			SUB OUT: COOLEY,ALECIA

VISITORS: ORU	Time	Score	Margin	HOME: ARKANSAS
GOOD! LAYUP by BROTONS,MONTSERRAT [PNT]	00:43	29-40	V 11	
ASSIST by BEATTY,ASHLEY	00:43			
	00:18	31-40	V 9	GOOD! JUMPER by JACKSON,JESSICA [PNT]
	00:18			ASSIST by COSPER,DEVIN
GOOD! 3PTR by BEATTY,LAKOTA	00:06	31-43	V 12	

ORU 43, ARKANSAS 31

Period 2-only	In Paint	Off T/O	2nd Chance	Fast Break	Bench	
ORU	10	2	3	2	15	Score tied - 0 times
AR	8	2	0	0	0	Lead changed - 2 times

Official Basketball Box Score -- Game Totals -- Second Half Statistics
ORU vs ARKANSAS
12/21/2016 1 p.m. at Fayetteville, Ark. (Bud Walton Arena)

ORU 27 • 8-5

##	Player	g	Total FG-FGA	3-Ptr FG-FGA	FT-FTA	Rebounds			PF	TP	A	TO	Blk	Stl	Min
						Off	Def	Tot							
01	MAYBERRY,KAYLAN	g	1-7	0-2	0-0	0	3	3	2	2	3	1	0	0	17
15	IHIM,FAITH	f	3-6	0-0	2-4	2	4	6	1	8	0	1	0	1	12
22	GILBERT,JORDAN	g	0-1	0-0	0-0	0	1	1	2	0	0	0	0	0	12
23	BEATTY,ASHLEY	g	0-2	0-1	0-0	0	2	2	0	0	0	0	0	0	10
44	MARTIANEZ,MARIA	f	2-5	0-1	0-0	0	4	4	0	4	0	3	0	0	19
10	SCOTT,ALEXA		0-0	0-0	0-0	0	0	0	0	0	0	0	0	0	0
11	BEATTY,LAKOTA		3-5	3-3	0-0	0	2	2	0	9	2	1	0	0	16
13	SKALNIK,RACHEL		0-1	0-0	0-0	1	0	1	0	0	1	0	0	0	7
24	BROTONS,MONTSERRA		2-4	0-0	0-0	0	1	1	3	4	1	0	0	0	7
TEAM						1	0	1	0		0				
Totals			11-31	3-7	2-4	4	17	21	8	27	7	6	0	1	100

FG % 3rd Qtr 8-17 47.1% 4th Qtr 3-14 21.4% Half: 11-31 35.5%
 3FG % 3rd Qtr 3-5 60.0% 4th Qtr 0-2 00.0% Half: 3-7 71.4%
 FT % 3rd Qtr 0-0 0% 4th Qtr 2-4 50.0% Half: 2-4 50.0%

ARKANSAS 29 • 10-2

##	Player	g	Total FG-FGA	3-Ptr FG-FGA	FT-FTA	Rebounds			PF	TP	A	TO	Blk	Stl	Min
						Off	Def	Tot							
00	JACKSON,JESSICA	f	3-9	0-1	2-2	1	1	2	2	8	1	1	1	1	20
14	MASON,JAILYN	g	7-10	0-1	0-0	0	4	4	1	14	1	0	0	0	20
21	COSPER,DEVIN	g	1-9	0-3	0-0	0	1	1	0	2	2	1	1	2	20
22	ZIMMERMAN,BAILEY	f	0-1	0-0	1-2	1	3	4	0	1	0	0	1	0	16
35	COOLEY,ALECIA	c	0-2	0-0	4-4	1	2	3	0	4	0	0	0	0	9
02	WILSON,AALIYAH		0-2	0-0	0-0	0	0	0	0	0	0	0	0	0	4
04	SWENSON,KEIRYN		0-0	0-0	0-0	1	2	3	3	0	0	0	1	0	11
TEAM						1	2	3	0		1				
Totals			11-33	0-5	7-8	5	15	20	6	29	4	3	4	3	100

FG % 3rd Qtr 7-16 43.8% 4th Qtr 4-17 23.5% Half: 11-33 33.3%
 3FG % 3rd Qtr 0-0 0% 4th Qtr 0-5 00.0% Half: 0-5 33.3%
 FT % 3rd Qtr 5-6 83.3% 4th Qtr 2-2 100.0% Half: 7-8 87.5%

Officials: Ed Sidlasky, Wesley Dean, Frank Steratore
 Technical Fouls: ORU- None. ARKANSAS- None.
 Estimated Actual Attendance: 1,303

Score by periods	1st	2nd	3rd	4th	Total
ORU	16	27	19	8	70
ARKANSAS	18	13	19	10	60

Points	In Paint	Off T/O	2nd Chance	Fast Break	Bench
ORU	8	0	2	0	13
	10	5	2	2	0

Last FG - ORU 4th-01:06, AR 4th-00:12.
 ORU led for 20:00. AR led for 0:00. Game was tied for 0:00.

Score tied - 0 times
 Lead changed - 0 times

ORU vs ARKANSAS
12/21/2016; 1 p.m. at Fayetteville, Ark. (Bud Walton Arena)
Period 3 Play-By-Play

VISITORS: ORU	Time	Score	Margin	HOME: ARKANSAS
	09:51			MISSED LAYUP by COSPER,DEVIN
REBOUND (DEF) by IHIM,FAITH	09:51			
MISSED JUMPER by MARTIANEZ,MARIA	09:33			
	09:33			REBOUND (DEF) by ZIMMERMAN,BAILEY
FOUL by GILBERT,JORDAN	09:10			
	09:04	33-43	V 10	GOOD! JUMPER by JACKSON,JESSICA [PNT]
	09:04			ASSIST by COSPER,DEVIN
MISSED JUMPER by MARTIANEZ,MARIA	08:46			
	08:46			REBOUND (DEF) by COOLEY,ALECIA
	08:27			MISSED JUMPER by COSPER,DEVIN
REBOUND (DEF) by BEATTY,ASHLEY	08:27			
FOUL by MAYBERRY,KAYLAN	08:18			
TURNOVER by MAYBERRY,KAYLAN	08:18			
SUB IN: BEATTY,LAKOTA	08:18			
SUB OUT: GILBERT,JORDAN	08:18			
FOUL by IHIM,FAITH	08:07			
	08:02	35-43	V 8	GOOD! JUMPER by JACKSON,JESSICA
MISSED 3PTR by MAYBERRY,KAYLAN	07:41			
	07:41			REBOUND (DEF) by ZIMMERMAN,BAILEY
	07:27			MISSED LAYUP by ZIMMERMAN,BAILEY
REBOUND (DEF) by MARTIANEZ,MARIA	07:27			
MISSED JUMPER by BEATTY,ASHLEY	07:10			
REBOUND (OFF) by IHIM,FAITH	07:10			
GOOD! LAYUP by IHIM,FAITH [PNT]	07:07	35-45	V 10	
SUB IN: SKALNIK,RACHEL	06:56			
SUB OUT: BEATTY,ASHLEY	06:56			
	06:56			SUB IN: SWENSON,KEIRYN
	06:56			SUB IN: WILSON,AALIYAH
	06:56			SUB OUT: ZIMMERMAN,BAILEY
	06:56			SUB OUT: COOLEY,ALECIA
	06:55			MISSED JUMPER by COSPER,DEVIN
REBOUND (DEF) by MARTIANEZ,MARIA	06:55			
GOOD! LAYUP by IHIM,FAITH [PNT]	06:44	35-47	V 12	
ASSIST by SKALNIK,RACHEL	06:44			
	06:26			MISSED JUMPER by MASON,JAILYN
REBOUND (DEF) by IHIM,FAITH	06:26			
GOOD! 3PTR by BEATTY,LAKOTA	06:16	35-50	V 15	
ASSIST by MAYBERRY,KAYLAN	06:16			
	05:46	37-50	V 13	GOOD! JUMPER by MASON,JAILYN
	05:33			FOUL by SWENSON,KEIRYN
SUB IN: BROTONS,MONTSEERRAT	05:33			
SUB OUT: IHIM,FAITH	05:33			
MISSED JUMPER by BROTONS,MONTSEERRAT	05:24			
	05:24			REBOUND (DEF) by SWENSON,KEIRYN
	05:09			MISSED JUMPER by WILSON,AALIYAH
REBOUND (DEF) by BROTONS,MONTSEERRAT	05:09			
MISSED JUMPER by BEATTY,LAKOTA	04:54			
	04:54			REBOUND (DEF) by MASON,JAILYN
	04:45	39-50	V 11	GOOD! JUMPER by MASON,JAILYN
	04:45			ASSIST by JACKSON,JESSICA
GOOD! 3PTR by BEATTY,LAKOTA	04:16	39-53	V 14	
ASSIST by BROTONS,MONTSEERRAT	04:16			
	03:55	41-53	V 12	GOOD! JUMPER by MASON,JAILYN [PNT]
MISSED JUMPER by MAYBERRY,KAYLAN	03:44			
REBOUND (OFF) by SKALNIK,RACHEL	03:44			
MISSED LAYUP by SKALNIK,RACHEL	03:37			
	03:37			REBOUND (DEF) by JACKSON,JESSICA
	03:29	43-53	V 10	GOOD! LAYUP by JACKSON,JESSICA [FB/PNT]
	03:29			ASSIST by COSPER,DEVIN

VISITORS: ORU	Time	Score	Margin	HOME: ARKANSAS
TURNOVER by MARTIANEZ,MARIA	03:12			
	03:07			MISSED LAYUP by WILSON,AALIYAH
REBOUND (DEF) by MARTIANEZ,MARIA	03:07			
TURNOVER by BEATTY,LAKOTA	02:58			
	02:58			STEAL by JACKSON,JESSICA
	02:58			TIMEOUT media
SUB IN: BEATTY,ASHLEY	02:58			
SUB OUT: MAYBERRY,KAYLAN	02:58			
	02:58			SUB IN: ZIMMERMAN,BAILEY
	02:58			SUB IN: COOLEY,ALECIA
	02:58			SUB OUT: SWENSON,KEIRYN
	02:58			SUB OUT: WILSON,AALIYAH
FOUL by BROTONS,MONTSEERRAT	02:44			
	02:44	44-53	V 9	GOOD! FT by ZIMMERMAN,BAILEY
	02:44			MISSED FT by ZIMMERMAN,BAILEY
REBOUND (DEF) by MARTIANEZ,MARIA	02:44			
GOOD! JUMPER by BROTONS,MONTSEERRAT	02:30	44-55	V 11	
	02:13	46-55	V 9	GOOD! JUMPER by COSPER,DEVIN
	02:13			ASSIST by MASON,JAILYN
GOOD! JUMPER by MARTIANEZ,MARIA	01:55	46-57	V 11	
FOUL by BROTONS,MONTSEERRAT	01:29			
	01:29	47-57	V 10	GOOD! FT by COOLEY,ALECIA
	01:29	48-57	V 9	GOOD! FT by COOLEY,ALECIA
GOOD! 3PTR by BEATTY,LAKOTA	01:12	48-60	V 12	
	00:56			MISSED JUMPER by COSPER,DEVIN
REBOUND (DEF) by BEATTY,LAKOTA	00:56			
GOOD! LAYUP by BROTONS,MONTSEERRAT [PNT]	00:34	48-62	V 14	
ASSIST by BEATTY,LAKOTA	00:34			
	00:10			MISSED LAYUP by COOLEY,ALECIA
	00:10			REBOUND (OFF) by COOLEY,ALECIA
FOUL by BROTONS,MONTSEERRAT	00:07			
	00:07	49-62	V 13	GOOD! FT by COOLEY,ALECIA
	00:07	50-62	V 12	GOOD! FT by COOLEY,ALECIA
SUB IN: MAYBERRY,KAYLAN	00:07			
SUB OUT: SKALNIK,RACHEL	00:07			
MISSED 3PTR by MARTIANEZ,MARIA	00:00			
	00:00			REBOUND (DEADB) by TEAM

ORU 70, ARKANSAS 60

Period 3-only	In Paint	Off T/O	2nd Chance	Fast Break	Bench	
ORU	6	0	2	0	13	Score tied - 0 times
AR	6	3	2	2	0	Lead changed - 0 times

ORU vs ARKANSAS
12/21/2016; 1 p.m. at Fayetteville, Ark. (Bud Walton Arena)
Period 4 Play-By-Play

VISITORS: ORU	Time	Score	Margin	HOME: ARKANSAS
SUB IN: BROTONS,MONTSEERRAT	10:00			
SUB IN: BEATTY,LAKOTA	10:00			
SUB OUT: BEATTY,ASHLEY	10:00			
SUB OUT: MARTIANEZ,MARIA	10:00			
MISSED JUMPER by BROTONS,MONTSEERRAT	09:43			
	09:43			BLOCK by JACKSON,JESSICA
	09:41			REBOUND (DEF) by COOLEY,ALECIA
	09:34			TURNOVER by TEAM
MISSED LAYUP by IHIM,FAITH	09:22			
REBOUND (OFF) by IHIM,FAITH	09:22			
MISSED JUMPER by MAYBERRY,KAYLAN	09:12			
	09:12			BLOCK by COSPER,DEVIN
REBOUND (OFF) by TEAM	09:12			
MISSED JUMPER by BEATTY,LAKOTA	09:10			
	09:10			BLOCK by ZIMMERMAN,BAILEY
	09:08			REBOUND (DEF) by ZIMMERMAN,BAILEY
	09:03			TURNOVER by COSPER,DEVIN
STEAL by IHIM,FAITH	09:01			
TURNOVER by IHIM,FAITH	08:45			
	08:44			STEAL by COSPER,DEVIN
	08:34			TURNOVER by JACKSON,JESSICA
SUB IN: BEATTY,ASHLEY	08:34			
SUB IN: MARTIANEZ,MARIA	08:34			
SUB OUT: BROTONS,MONTSEERRAT	08:34			
SUB OUT: BEATTY,LAKOTA	08:34			
MISSED JUMPER by IHIM,FAITH	08:15			
	08:15			REBOUND (DEF) by COSPER,DEVIN
	08:03			MISSED LAYUP by COOLEY,ALECIA
REBOUND (DEF) by MAYBERRY,KAYLAN	08:03			
	07:56			FOUL by MASON,JAILYN
GOOD! JUMPER by MARTIANEZ,MARIA	07:53	50-64	V 14	
ASSIST by MAYBERRY,KAYLAN	07:53			
	07:34	52-64	V 12	GOOD! JUMPER by MASON,JAILYN
TURNOVER by MARTIANEZ,MARIA	07:20			
	07:20			SUB IN: SWENSON,KEIRYN
	07:20			SUB OUT: COOLEY,ALECIA
	07:12	54-64	V 10	GOOD! JUMPER by MASON,JAILYN
MISSED JUMPER by MAYBERRY,KAYLAN	06:49			
	06:49			REBOUND (DEF) by MASON,JAILYN
	06:29	56-64	V 8	GOOD! JUMPER by MASON,JAILYN [PNT]
	06:03			FOUL by JACKSON,JESSICA
GOOD! FT by IHIM,FAITH	06:03	56-65	V 9	
MISSED FT by IHIM,FAITH	06:03			
	06:03			REBOUND (DEF) by SWENSON,KEIRYN
SUB IN: BEATTY,LAKOTA	06:03			
SUB OUT: BEATTY,ASHLEY	06:03			
	05:49			MISSED JUMPER by JACKSON,JESSICA
REBOUND (DEF) by MAYBERRY,KAYLAN	05:49			
MISSED JUMPER by IHIM,FAITH	05:22			
	05:22			REBOUND (DEF) by TEAM
	05:06			MISSED JUMPER by JACKSON,JESSICA
REBOUND (DEF) by GILBERT,JORDAN	05:06			
GOOD! JUMPER by MAYBERRY,KAYLAN	04:56	56-67	V 11	
ASSIST by BEATTY,LAKOTA	04:56			
	04:36			MISSED 3PTR by MASON,JAILYN
REBOUND (DEF) by BEATTY,LAKOTA	04:36			
TURNOVER by MARTIANEZ,MARIA	04:17			
	04:16			STEAL by COSPER,DEVIN
	04:14			MISSED LAYUP by COSPER,DEVIN

VISITORS: ORU	Time	Score	Margin	HOME: ARKANSAS
	04:14			REBOUND (OFF) by TEAM
	04:11			TIMEOUT MEDIA
SUB IN: BEATTY,ASHLEY	04:11			
SUB OUT: IHIM,FAITH	04:11			
	04:10			MISSED JUMPER by JACKSON,JESSICA
	04:10			REBOUND (OFF) by SWENSON,KEIRYN
	04:02			MISSED JUMPER by MASON,JAILYN
REBOUND (DEADB) by TEAM	04:02			
	04:01			FOUL by SWENSON,KEIRYN
MISSED 3PTR by BEATTY,ASHLEY	03:48			
	03:48			REBOUND (DEF) by MASON,JAILYN
	03:26			MISSED 3PTR by COSPER,DEVIN
REBOUND (DEF) by BEATTY,ASHLEY	03:26			
MISSED 3PTR by MAYBERRY,KAYLAN	03:08			
	03:08			REBOUND (DEF) by TEAM
	02:47			MISSED LAYUP by JACKSON,JESSICA
REBOUND (DEF) by MAYBERRY,KAYLAN	02:47			
MISSED JUMPER by MAYBERRY,KAYLAN	02:30			
	02:30			BLOCK by SWENSON,KEIRYN
	02:29			REBOUND (DEF) by MASON,JAILYN
FOUL by GILBERT,JORDAN	02:14			
	02:14	57-67	V 10	GOOD! FT by JACKSON,JESSICA
	02:14	58-67	V 9	GOOD! FT by JACKSON,JESSICA
	02:14			TIMEOUT 30SEC
SUB IN: IHIM,FAITH	02:14			
SUB OUT: BEATTY,ASHLEY	02:14			
	02:07			FOUL by JACKSON,JESSICA
	02:05			FOUL by SWENSON,KEIRYN
MISSED FT by IHIM,FAITH	02:05			
REBOUND (DEADB) by TEAM	02:05			
GOOD! FT by IHIM,FAITH	02:05	58-68	V 10	
	01:50			MISSED JUMPER by JACKSON,JESSICA
	01:50			REBOUND (OFF) by ZIMMERMAN,BAILEY
	01:45			MISSED 3PTR by COSPER,DEVIN
	01:45			REBOUND (OFF) by JACKSON,JESSICA
FOUL by MAYBERRY,KAYLAN	01:31			
	01:23			MISSED 3PTR by COSPER,DEVIN
REBOUND (DEF) by IHIM,FAITH	01:23			
GOOD! LAYUP by IHIM,FAITH [PNT]	01:06	58-70	V 12	
ASSIST by MAYBERRY,KAYLAN	01:06			
	00:54			MISSED 3PTR by JACKSON,JESSICA
REBOUND (DEF) by IHIM,FAITH	00:54			
MISSED JUMPER by GILBERT,JORDAN	00:21			
	00:21			REBOUND (DEADB) by TEAM
	00:12	60-70	V 10	GOOD! LAYUP by MASON,JAILYN [PNT]

ORU 70, ARKANSAS 60

Period 4-only	In Paint	Off T/O	2nd Chance	Fast Break	Bench	
ORU	2	0	0	0	0	Score tied - 0 times
AR	4	2	0	0	0	Lead changed - 0 times

ORU vs ARKANSAS
12/21/2016; 1 p.m. at Fayetteville, Ark. (Bud Walton Arena)
Scoring/Runs Reference

Period 1

ORU	Score	Marg	ARKANSAS
	0-2	2 2	COSPER LAYUP [P] - 09:46
09:30 - MARTIANEZ LAYUP [P]	2	2-2 0	
	2-4	2 2	JACKSON LAYUP [P] - 08:39
07:43 - IHIM LAYUP [P]	2	4-4 0	
	4-6	2 2	COOLEY LAYUP [P] - 07:11
	4-8	4 2	COSPER LAYUP [P] - 06:51
06:30 - MARTIANEZ JUMPER 2	6-8	2	
05:53 - MAYBERRY JUMPER 2	8-8	0	
	8-9	1 1	JACKSON FT - 04:45
	8-10	2 1	JACKSON FT - 04:45
04:25 - BEATTY LAYUP [P]	2	10-10 0	
03:24 - BEATTY JUMPER 2	12-10 -2		
	12-12	0 2	COSPER JUMPER - 02:25
01:57 - BEATTY JUMPER [F]	2	14-12 -2	
	14-14	0 2	COSPER JUMPER - 01:30
01:04 - GILBERT JUMPER 2	16-14 -2		
	16-16	0 2	ZIMMERMAN LAYUP [P] - 00:44
	16-18	2 2	MASON JUMPER - 00:04

Period 3

ORU	Score	Marg	ARKANSAS
	43-33 -10	2	JACKSON JUMPER [P] - 09:04
	43-35 -8	2	JACKSON JUMPER - 08:02
07:07 - IHIM LAYUP [P]	2	45-35 -10	
06:44 - IHIM LAYUP [P]	2	47-35 -12	
06:16 - BEATTY 3PTR 3	50-35 -15		
	50-37 -13	2	MASON JUMPER - 05:46
	50-39 -11	2	MASON JUMPER - 04:45
04:16 - BEATTY 3PTR 3	53-39 -14		
	53-41 -12	2	MASON JUMPER [P] - 03:55
	53-43 -10	2	JACKSON LAYUP [P] [F] - 03:29
	53-44 -9	1	ZIMMERMAN FT - 02:44
02:30 - BROTONS JUMPER 2	55-44 -11		
	55-46 -9	2	COSPER JUMPER - 02:13
01:55 - MARTIANEZ JUMPER 2	57-46 -11		
	57-47 -10	1	COOLEY FT - 01:29
	57-48 -9	1	COOLEY FT - 01:29
01:12 - BEATTY 3PTR 3	60-48 -12		
00:34 - BROTONS LAYUP [P]	2	62-48 -14	
	62-49 -13	1	COOLEY FT - 00:07
	62-50 -12	1	COOLEY FT - 00:07

Period 2

ORU	Score	Marg	ARKANSAS
09:49 - BEATTY 3PTR 3	19-18 -1		
09:19 - MARTIANEZ LAYUP [P]	2	21-18 -3	
08:39 - MARTIANEZ 3PTR 3	24-18 -6		
07:31 - BEATTY LAYUP [P] [F]	2	26-18 -8	
06:11 - MAYBERRY 3PTR 3	29-18 -11		
05:12 - BEATTY JUMPER 2	31-18 -13		
	31-20 -11	2	COOLEY LAYUP [P] - 04:52
	31-22 -9	2	MASON LAYUP [P] - 04:02
03:41 - SKALNIK 3PTR 3	34-22 -12		
	34-25 -9	3	JACKSON 3PTR - 02:47
02:29 - MAYBERRY LAYUP [P]	2	36-25 -11	
	36-27 -9	2	COOLEY LAYUP [P] - 01:55
	36-28 -8	1	COOLEY FT - 01:55
01:14 - MARTIANEZ LAYUP [P]	2	38-28 -10	
	38-29 -9	1	MASON FT - 01:03
00:43 - BROTONS LAYUP [P]	2	40-29 -11	
	40-31 -9	2	JACKSON JUMPER [P] - 00:18
00:06 - BEATTY 3PTR 3	43-31 -12		

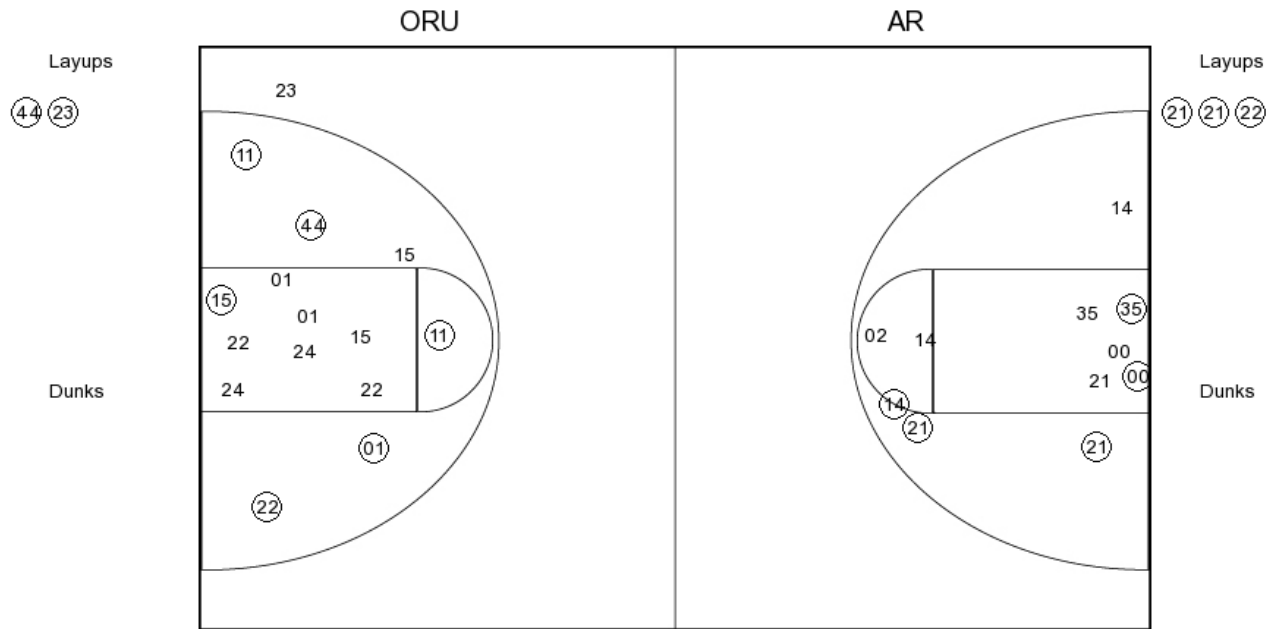
Period 4

ORU	Score	Marg	ARKANSAS
07:53 - MARTIANEZ JUMPER 2	64-50 -14		
	64-52 -12	2	MASON JUMPER - 07:34
	64-54 -10	2	MASON JUMPER - 07:12
	64-56 -8	2	MASON JUMPER [P] - 06:29
06:03 - IHIM FT 1	65-56 -9		
04:56 - MAYBERRY JUMPER 2	67-56 -11		
	67-57 -10	1	JACKSON FT - 02:14
	67-58 -9	1	JACKSON FT - 02:14
02:05 - IHIM FT 1	68-58 -10		
01:06 - IHIM LAYUP [P]	2	70-58 -12	
	70-60 -10	2	MASON LAYUP [P] - 00:12

**ORU vs ARKANSAS
OFFICIAL SHOT CHART**

12/21/2016 at Fayetteville, Ark. (Bud Walton Arena)

PERIOD 1



ORU PERIOD 1

FG Made	19
FG Attempted	35
3PFG Made	5
3PFG Attempted	7

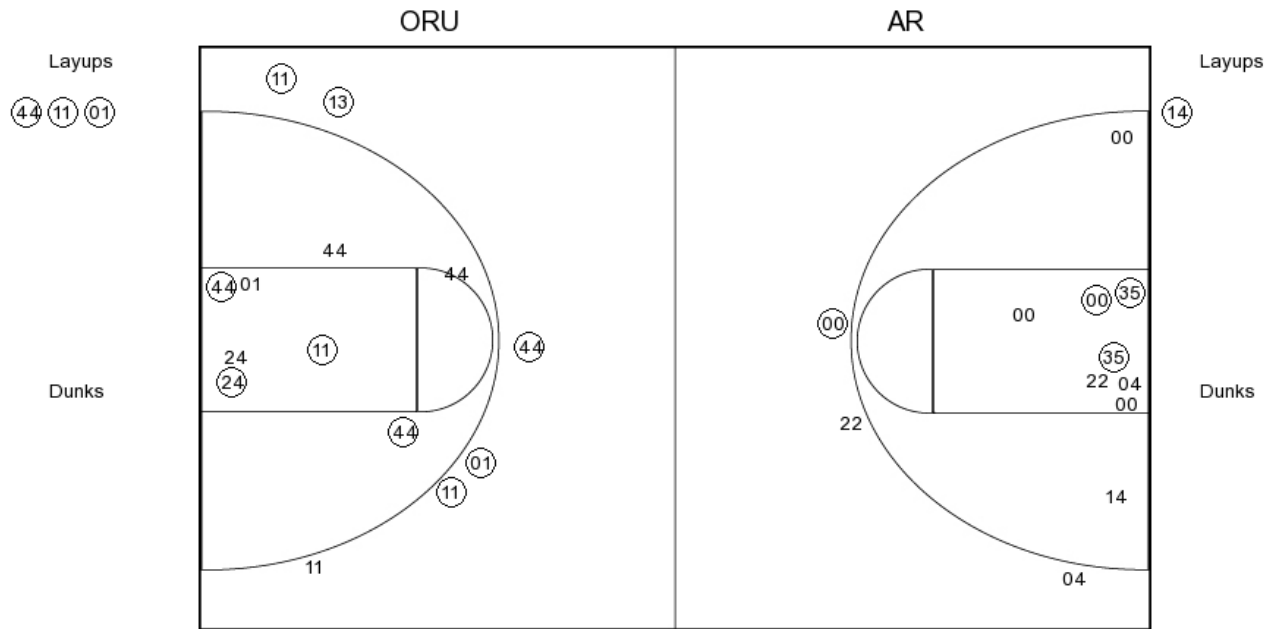
AR PERIOD 1

FG Made	13
FG Attempted	27
3PFG Made	1
3PFG Attempted	3

**ORU vs ARKANSAS
OFFICIAL SHOT CHART**

12/21/2016 at Fayetteville, Ark. (Bud Walton Arena)

PERIOD 2



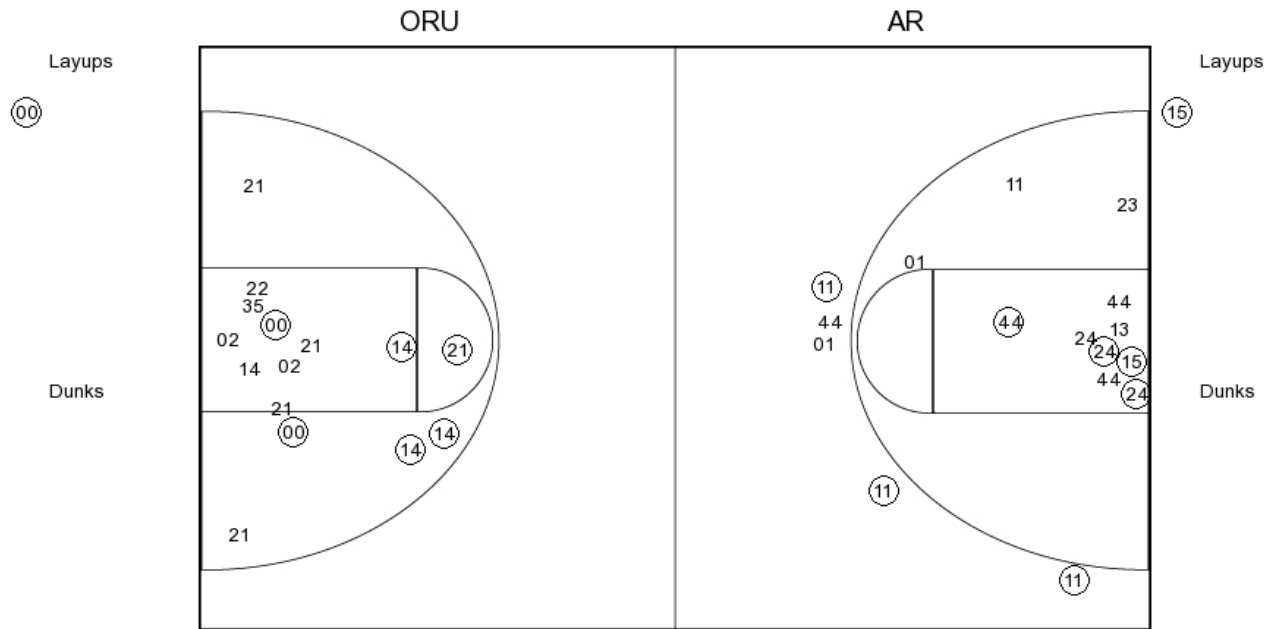
ORU PERIOD 2
 FG Made
 FG Attempted
 3PFG Made
 3PFG Attempted

AR PERIOD 2
 FG Made
 FG Attempted
 3PFG Made
 3PFG Attempted

**ORU vs ARKANSAS
OFFICIAL SHOT CHART**

12/21/2016 at Fayetteville, Ark. (Bud Walton Arena)

PERIOD 3



ORU PERIOD 3

FG Made	11
FG Attempted	31
3PFG Made	3
3PFG Attempted	7

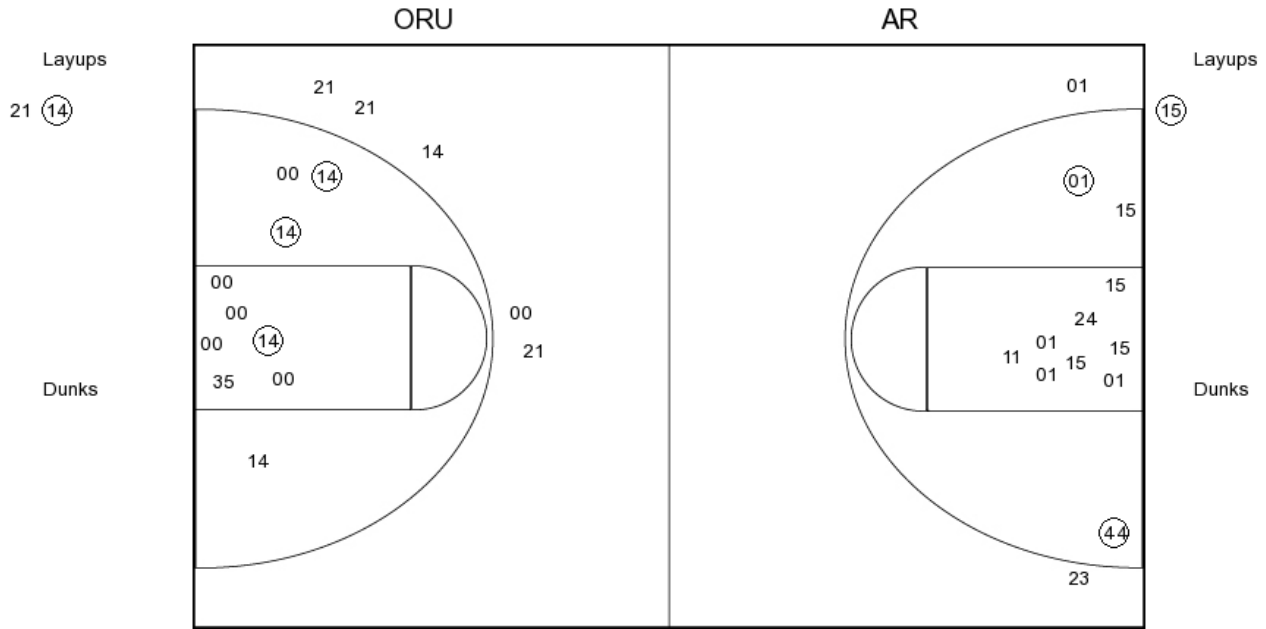
AR PERIOD 3

FG Made	11
FG Attempted	33
3PFG Made	0
3PFG Attempted	5

**ORU vs ARKANSAS
OFFICIAL SHOT CHART**

12/21/2016 at Fayetteville, Ark. (Bud Walton Arena)

PERIOD 4



ORU PERIOD 4

FG Made
FG Attempted
3PFG Made
3PFG Attempted

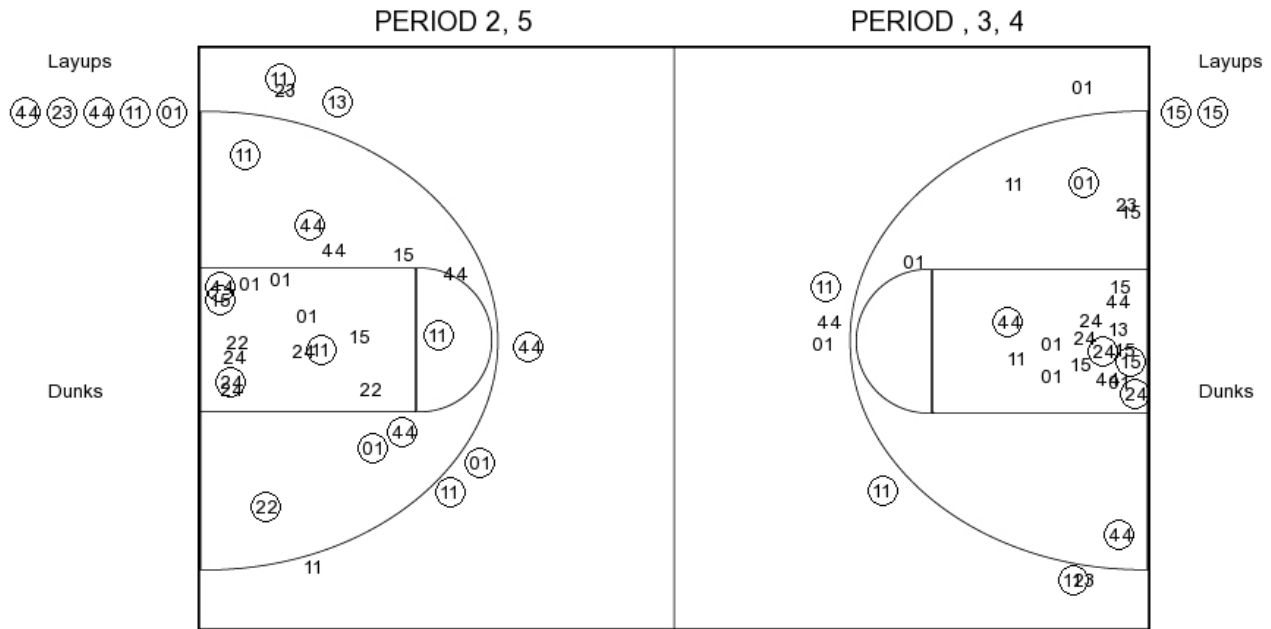
AR PERIOD 4

FG Made
FG Attempted
3PFG Made
3PFG Attempted

ORU vs ARKANSAS
OFFICIAL SHOT CHART

12/21/2016 at Fayetteville, Ark. (Bud Walton Arena)

ORU



ORU PERIOD 1

FG Made	19
FG Attempted	35
3PFG Made	5
3PFG Attempted	7

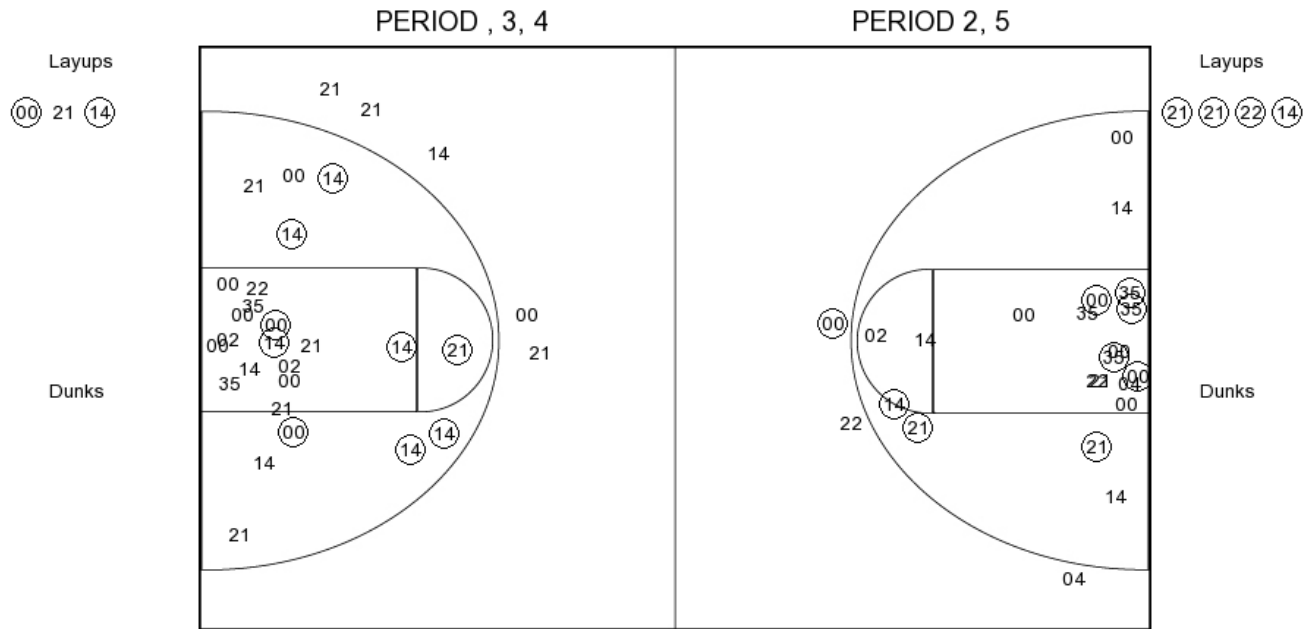
ORU PERIOD 2

FG Made	
FG Attempted	
3PFG Made	
3PFG Attempted	

ORU vs ARKANSAS
OFFICIAL SHOT CHART

12/21/2016 at Fayetteville, Ark. (Bud Walton Arena)

ARKANSAS



AR PERIOD 1

FG Made	13
FG Attempted	27
3PFG Made	1
3PFG Attempted	3

AR PERIOD 2

FG Made	
FG Attempted	
3PFG Made	
3PFG Attempted	