

ARKANSAS VS. NORTHWESTERN STATE UNIVERSITY



12/18/2016
Fayetteville, Ark. (Bud Walton Arena)

FINAL STATS

ARKANSAS
(9-1)

65

NWST
(5-3)

36

Start Time: 2 p.m.
Officials: Denise Brooks, Kevin Pethtel, Missy Brooks
Attendance: 1025

Official Basketball Box Score -- Game Totals -- Final Statistics

NWST vs ARKANSAS

12/18/2016 2 p.m. at Fayetteville, Ark. (Bud Walton Arena)

NWST 36 - 5-3

##	Player		Total		3-Ptr		Rebounds			PF	TP	A	TO	Blk	Stl	Min
			FG-FGA	FG-FGA	FT-FTA	Off	Def	Tot								
05	THOMAS,SAMI	g	2-8	0-1	0-0	0	1	1	1	4	1	1	0	1	21	
12	ABBOUD,SHAHD	g	4-10	0-1	3-4	0	1	1	0	11	1	0	0	2	28	
30	ATTURA,BEATRICE	g	4-16	2-9	1-2	0	3	3	1	11	0	5	0	2	36	
31	MILLER,VICTORIA	f	1-2	0-0	0-0	1	0	1	4	2	0	2	0	0	9	
32	BROWN,CHEYENNE	c	1-7	0-0	2-2	5	4	9	2	4	3	0	0	1	24	
01	BELL,GABBY		0-6	0-2	0-0	1	3	4	0	0	1	3	1	1	19	
15	JOHNSON,JASMYN		0-0	0-0	0-0	0	0	0	0	0	0	1	0	0	6	
21	SCOTT,JOCELYN		1-2	0-0	0-0	0	1	1	1	2	1	0	0	0	10	
22	GILLIAM,LIBBA		0-1	0-0	0-0	0	0	0	2	0	1	2	0	1	12	
23	JACKSON,GABBY		0-1	0-0	0-0	3	0	3	2	0	0	0	0	0	10	
44	YOUNGBLOOD,TIA		1-3	0-0	0-0	1	1	2	3	2	1	1	0	2	25	
TEAM						4	2	6	0		4					
TOTALS			14-56	2-13	6-8	15	16	31	16	36	9	19	1	10	200	

Deadball Rebounds: 2,1

FG %	1st Half:	6-24	25.0%	2nd Half:	8-32	25.0%	Game:	14-56	25.0%						
	1st Qtr	3-12	25.0%	2nd Qtr	3-12	25.0%	3rd Qtr	6-15	40.0%	4th Qtr	2-17	11.8%			
3FG %	1st Half:	1-4	25.0%	2nd Half:	1-9	11.1%	Game:	2-13	15.4%						
	1st Qtr	1-1	100.0%	2nd Qtr	0-3	00.0%	3rd Qtr	1-5	20.0%	4th Qtr	0-4	00.0%			
FT %	1st Half:	0-0	0%	2nd Half:	6-8	75.0%	Game:	6-8	75.0%						
	1st Qtr	0-0	0%	2nd Qtr	0-0	0%	3rd Qtr	1-2	50.0%	4th Qtr	5-6	83.3%			

ARKANSAS 65 - 9-1

##	Player		Total		3-Ptr		Rebounds			PF	TP	A	TO	Blk	Stl	Min
			FG-FGA	FG-FGA	FT-FTA	Off	Def	Tot								
00	JACKSON,JESSICA	f	9-15	3-5	2-2	3	3	6	3	23	1	2	0	0	33	
03	MONK,MALICA	g	1-2	0-0	0-0	0	1	1	1	2	2	0	0	1	10	
14	MASON,JAILYN	g	3-7	1-3	0-0	2	3	5	0	7	3	4	1	3	36	
22	ZIMMERMAN,BAILEY	f	3-5	0-2	0-2	1	2	3	1	6	1	2	0	2	26	
35	COOLEY,ALECIA	c	1-2	0-0	5-6	1	2	3	1	7	0	2	2	0	13	
02	WILSON,AALIYAH		0-4	0-3	0-0	0	3	3	1	0	5	2	0	0	17	
04	SWENSON,KEIRYN		4-9	1-3	2-2	3	6	9	3	11	2	0	0	0	25	
10	WILLIAMS,KIARA		0-2	0-0	0-2	0	1	1	4	0	1	3	1	0	20	
21	COSPER,DEVIN		4-6	1-2	0-0	0	2	2	0	9	3	2	1	1	21	
TEAM						3	3	6	0		0					
TOTALS			25-52	6-18	9-14	13	26	39	14	65	18	17	5	7	201	

Deadball Rebounds: 2,1

FG %	1st Half:	16-32	50.0%	2nd Half:	9-20	45.0%	Game:	25-52	48.1%						
	1st Qtr	10-18	55.6%	2nd Qtr	6-14	42.9%	3rd Qtr	6-11	54.5%	4th Qtr	3-9	33.3%			
3FG %	1st Half:	5-13	38.5%	2nd Half:	1-5	20.0%	Game:	6-18	33.3%						
	1st Qtr	3-7	42.9%	2nd Qtr	2-6	33.3%	3rd Qtr	1-2	50.0%	4th Qtr	0-3	00.0%			
FT %	1st Half:	4-6	66.7%	2nd Half:	5-8	62.5%	Game:	9-14	64.3%						
	1st Qtr	0-2	00.0%	2nd Qtr	4-4	100.0%	3rd Qtr	3-4	75.0%	4th Qtr	2-4	50.0%			

Officials: Denise Brooks, Kevin Pethtel, Missy Brooks

Technical Fouls: NWST- None. ARKANSAS- None.

Attendance: 1025

Score by periods	1st	2nd	3rd	4th	Total
NWST	7	6	14	9	36
ARKANSAS	23	18	16	8	65

Points	In Paint	Off T/O	2nd Chance	Fast Break	Bench
NWST	20	11	8	2	4
AR	28	19	8	8	20

Last FG - NWST 4th-00:46, AR 4th-00:21.

Largest lead - NWST by ; ARKANSAS by 30 3rd-07:09

NWST led for 0:00. AR led for 39:07. Game was tied for 0:53.

Score tied - 0 times

Lead changed - 0 times

Official Basketball Box Score -- Game Totals -- First Half Statistics

NWST vs ARKANSAS

12/18/2016 2 p.m. at Fayetteville, Ark. (Bud Walton Arena)

NWST 13 • 5-3

##	Player		Total		3-Ptr	FT-FTA	Rebounds			PF	TP	A	TO	Blk	Stl	Min
			FG-FGA	FG-FGA	FG-FGA		Off	Def	Tot							
05	THOMAS,SAMI	g	2-7	0-1	0-0	0	0	0	1	4	1	1	0	0	12	
12	ABBOUD,SHAHD	g	0-3	0-0	0-0	0	1	1	0	0	1	0	0	1	11	
30	ATTURA,BEATRICE	g	2-5	1-3	0-0	0	2	2	0	5	0	2	0	1	18	
31	MILLER,VICTORIA	f	1-2	0-0	0-0	1	0	1	3	2	0	2	0	0	9	
32	BROWN,CHEYENNE	c	1-1	0-0	0-0	0	3	3	0	2	0	0	0	0	12	
01	BELL,GABBY		0-2	0-0	0-0	0	0	0	0	0	1	2	1	0	8	
15	JOHNSON,JASMYN		0-0	0-0	0-0	0	0	0	0	0	0	1	0	0	6	
21	SCOTT,JOCELYN		0-1	0-0	0-0	0	1	1	1	0	0	0	0	0	5	
22	GILLIAM,LIBBA		0-1	0-0	0-0	0	0	0	1	0	0	1	0	1	4	
23	JACKSON,GABBY		0-1	0-0	0-0	3	0	3	1	0	0	0	0	0	7	
44	YOUNGBLOOD,TIA		0-1	0-0	0-0	0	0	0	1	0	0	0	0	0	8	
TEAM						1	1	2	0			3				
Totals			6-24	1-4	0-0	5	8	13	8	13	3	12	1	3	100	

FG %	1st Qtr	3-12	25.0%	2nd Qtr	3-12	25.0%	Half:	6-24	25.0%
3FG %	1st Qtr	1-1	100.0%	2nd Qtr	0-3	00.0%	Half:	1-4	25.0%
FT %	1st Qtr	0-0	0%	2nd Qtr	0-0	0%	Half:	0-0	0%

ARKANSAS 41 • 9-1

##	Player		Total		3-Ptr	FT-FTA	Rebounds			PF	TP	A	TO	Blk	Stl	Min
			FG-FGA	FG-FGA	FG-FGA		Off	Def	Tot							
00	JACKSON,JESSICA	f	7-10	3-3	0-0	2	2	4	1	17	0	0	0	0	14	
03	MONK,MALICA	g	1-2	0-0	0-0	0	1	1	1	2	2	0	0	1	10	
14	MASON,JAILYN	g	3-5	1-3	0-0	2	1	3	0	7	2	1	0	2	16	
22	ZIMMERMAN,BAILEY	f	1-3	0-2	0-2	1	0	1	1	2	1	0	0	0	13	
35	COOLEY,ALECIA	c	1-1	0-0	2-2	1	2	3	1	4	0	0	1	0	10	
02	WILSON,AALIYAH		0-3	0-2	0-0	0	2	2	1	0	4	1	0	0	12	
04	SWENSON,KEIRYN		1-4	0-1	2-2	1	2	3	0	4	1	0	0	0	10	
10	WILLIAMS,KIARA		0-0	0-0	0-0	0	0	0	2	0	0	1	0	0	2	
21	COSPER,DEVIN		2-4	1-2	0-0	0	2	2	0	5	3	1	0	1	13	
TEAM						1	1	2	0			0				
Totals			16-32	5-13	4-6	8	13	21	7	41	13	4	1	4	100	

FG %	1st Qtr	10-18	55.6%	2nd Qtr	6-14	42.9%	Half:	16-32	50.0%
3FG %	1st Qtr	3-7	42.9%	2nd Qtr	2-6	33.3%	Half:	5-13	38.5%
FT %	1st Qtr	0-2	00.0%	2nd Qtr	4-4	100.0%	Half:	4-6	66.7%

Officials: Denise Brooks, Kevin Pethtel, Missy Brooks

Technical Fouls: NWST- None. ARKANSAS- None.

Score by periods	1st	2nd	3rd	4th	Total
NWST	7	6	14	9	36
ARKANSAS	23	18	16	8	65

Points	In	Off	2nd	Fast	Bench
	Paint	T/O	Chance	Break	
NWST	6	2	4	0	0
ARKANSAS	18	15	8	6	9

Last FG - NWST 2nd-02:38, AR 2nd-00:01.
NWST led for 0:00. AR led for 19:07. Game was tied for 0:53.

Score tied - 0 times
Lead changed - 0 times

NWST vs ARKANSAS
12/18/2016; 2 p.m. at Fayetteville, Ark. (Bud Walton Arena)
Period 1 Play-By-Play

VISITORS: NWST	Time	Score	Margin	HOME: ARKANSAS
TURNOVER by THOMAS,SAMI	09:32			
	09:09			MISSED JUMPER by JACKSON,JESSICA
	09:09			REBOUND (OFF) by ZIMMERMAN,BAILEY
	09:07	2-0	H 2	GOOD! LAYUP by ZIMMERMAN,BAILEY [PNT]
MISSED JUMPER by ABBOUD,SHAHD	08:51			
	08:51			REBOUND (DEF) by MONK,MALICA
	08:43	4-0	H 4	GOOD! LAYUP by JACKSON,JESSICA [PNT]
	08:43			ASSIST by MONK,MALICA
MISSED JUMPER by THOMAS,SAMI	08:10			
REBOUND (OFF) by MILLER,VICTORIA	08:10			
GOOD! JUMPER by MILLER,VICTORIA	07:56	4-2	H 2	
ASSIST by ABBOUD,SHAHD	07:56			
	07:37			MISSED 3PTR by ZIMMERMAN,BAILEY
	07:37			REBOUND (OFF) by MASON,JAILYN
	07:31			MISSED LAYUP by JACKSON,JESSICA
	07:31			REBOUND (OFF) by JACKSON,JESSICA
	07:30	6-2	H 4	GOOD! LAYUP by JACKSON,JESSICA [PNT]
TURNOVER by ATTURA,BEATRICE	07:10			
	07:07			STEAL by MONK,MALICA
	07:05	8-2	H 6	GOOD! LAYUP by MONK,MALICA [FB/PNT]
MISSED JUMPER by MILLER,VICTORIA	06:43			
	06:43			REBOUND (DEF) by COOLEY,ALECIA
FOUL by THOMAS,SAMI	06:37			
SUB IN: BELL,GABBY	06:37			
SUB OUT: THOMAS,SAMI	06:37			
	06:26	11-2	H 9	GOOD! 3PTR by JACKSON,JESSICA
	06:26			ASSIST by MONK,MALICA
TURNOVER by ATTURA,BEATRICE	06:04			
TIMEOUT 30SEC	06:04			
	06:04			SUB IN: WILLIAMS,KIARA
	06:04			SUB IN: COSPER,DEVIN
	06:04			SUB IN: SWENSON,KEIRYN
	06:04			SUB IN: WILSON,AALIYAH
	06:04			SUB OUT: JACKSON,JESSICA
	06:04			SUB OUT: MASON,JAILYN
	06:04			SUB OUT: ZIMMERMAN,BAILEY
	06:04			SUB OUT: COOLEY,ALECIA
	05:55			TURNOVER by WILSON,AALIYAH
STEAL by ABBOUD,SHAHD	05:54			
FOUL by MILLER,VICTORIA	05:35			
TURNOVER by MILLER,VICTORIA	05:35			
	05:27			MISSED 3PTR by SWENSON,KEIRYN
REBOUND (DEF) by ATTURA,BEATRICE	05:27			
MISSED LAYUP by ABBOUD,SHAHD	05:13			
	05:13			REBOUND (DEF) by COSPER,DEVIN
	04:56			FOUL by WILLIAMS,KIARA
	04:56			TURNOVER by WILLIAMS,KIARA
GOOD! LAYUP by BROWN,CHEYENNE [PNT]	04:41	11-4	H 7	
ASSIST by BELL,GABBY	04:41			
	04:27			MISSED 3PTR by WILSON,AALIYAH
	04:27			REBOUND (OFF) by TEAM
	04:08			MISSED JUMPER by MONK,MALICA
	04:08			REBOUND (OFF) by SWENSON,KEIRYN
	04:06			MISSED JUMPER by SWENSON,KEIRYN
BLOCK by BELL,GABBY	04:05			
REBOUND (DEF) by BROWN,CHEYENNE	04:04			
	03:53			FOUL by WILLIAMS,KIARA
SUB IN: GILLIAM,LIBBA	03:53			
SUB OUT: MILLER,VICTORIA	03:53			

VISITORS: NWST	Time	Score	Margin	HOME: ARKANSAS
	03:53			SUB IN: MASON,JAILYN
	03:53			SUB IN: JACKSON,JESSICA
	03:53			SUB OUT: WILLIAMS,KIARA
	03:53			SUB OUT: MONK,MALICA
MISSED JUMPER by ABBOUD,SHAHD	03:29			
	03:29			REBOUND (DEF) by TEAM
	03:14	14-4	H 10	GOOD! 3PTR by MASON,JAILYN
	03:14			ASSIST by COSPER,DEVIN
	03:05			FOUL by JACKSON,JESSICA
MISSED LAYUP by BELL,GABBY	02:57			
	02:57			REBOUND (DEF) by SWENSON,KEIRYN
	02:43	17-4	H 13	GOOD! 3PTR by COSPER,DEVIN
	02:43			ASSIST by SWENSON,KEIRYN
GOOD! 3PTR by ATTURA,BEATRICE	02:15	17-7	H 10	
	01:53	19-7	H 12	GOOD! LAYUP by SWENSON,KEIRYN [PNT]
	01:53			ASSIST by COSPER,DEVIN
TURNOVER by BELL,GABBY	01:47			
	01:45			STEAL by COSPER,DEVIN
	01:41	21-7	H 14	GOOD! JUMPER by MASON,JAILYN [FB]
	01:41			ASSIST by COSPER,DEVIN
TURNOVER by GILLIAM,LIBBA	01:35			
	01:34			STEAL by MASON,JAILYN
	01:33	23-7	H 16	GOOD! LAYUP by JACKSON,JESSICA [PNT]
	01:33			ASSIST by MASON,JAILYN
TURNOVER by BELL,GABBY	01:21			
	01:20			STEAL by MASON,JAILYN
	01:12			TURNOVER by MASON,JAILYN
STEAL by GILLIAM,LIBBA	01:12			
	01:03			FOUL by WILSON,AALIYAH
SUB IN: THOMAS,SAMI	01:03			
SUB IN: SCOTT,JOCELYN	01:03			
SUB OUT: BELL,GABBY	01:03			
SUB OUT: ABBOUD,SHAHD	01:03			
	01:03			SUB IN: ZIMMERMAN,BAILEY
	01:03			SUB OUT: COSPER,DEVIN
MISSED JUMPER by THOMAS,SAMI	00:44			
	00:44			REBOUND (DEF) by JACKSON,JESSICA
	00:31			MISSED 3PTR by ZIMMERMAN,BAILEY
REBOUND (DEF) by BROWN,CHEYENNE	00:31			
MISSED JUMPER by SCOTT,JOCELYN	00:23			
	00:23			REBOUND (DEF) by WILSON,AALIYAH
FOUL by GILLIAM,LIBBA	00:16			
	00:16			MISSED FT by ZIMMERMAN,BAILEY
	00:16			REBOUND (DEADB) by TEAM
	00:16			MISSED FT by ZIMMERMAN,BAILEY
REBOUND (DEF) by BROWN,CHEYENNE	00:16			
MISSED JUMPER by GILLIAM,LIBBA	00:01			
	00:01			REBOUND (DEF) by MASON,JAILYN

NWST 7, ARKANSAS 23

Period 1-only	In Paint	Off T/O	2nd Chance	Fast Break	Bench	
NWST	2	2	2	0	0	Score tied - 0 times
AR	12	8	4	4	5	Lead changed - 0 times

NWST vs ARKANSAS
12/18/2016; 2 p.m. at Fayetteville, Ark. (Bud Walton Arena)
Period 2 Play-By-Play

VISITORS: NWST	Time	Score	Margin	HOME: ARKANSAS
SUB IN: YOUNGBLOOD,TIA	10:00			
SUB IN: SCOTT,JOCELYN	10:00			
SUB OUT: ABBOUD,SHAHD	10:00			
SUB OUT: BROWN,CHEYENNE	10:00			
	10:00			SUB IN: WILSON,AALIYAH
	10:00			SUB OUT: ZIMMERMAN,BAILEY
	09:39			MISSED 3PTR by MASON,JAILYN
REBOUND (DEF) by ATTURA,BEATRICE	09:39			
TURNOVER by TEAM	09:06			
	08:41			MISSED 3PTR by WILSON,AALIYAH
	08:41			REBOUND (OFF) by JACKSON,JESSICA
	08:38			MISSED JUMPER by JACKSON,JESSICA
	08:38			REBOUND (OFF) by COOLEY,ALECIA
FOUL by MILLER,VICTORIA	08:38			
SUB IN: JACKSON,GABBY	08:38			
SUB OUT: MILLER,VICTORIA	08:38			
	08:37	25-7	H 18	GOOD! LAYUP by JACKSON,JESSICA [PNT]
	08:37			ASSIST by WILSON,AALIYAH
MISSED 3PTR by ATTURA,BEATRICE	08:08			
	08:08			REBOUND (DEF) by JACKSON,JESSICA
	07:58	28-7	H 21	GOOD! 3PTR by JACKSON,JESSICA
	07:58			ASSIST by WILSON,AALIYAH
	07:46			FOUL by MONK,MALICA
	07:46			SUB IN: ZIMMERMAN,BAILEY
	07:46			SUB IN: COSPER,DEVIN
	07:46			SUB IN: SWENSON,KEIRYN
	07:46			SUB OUT: MASON,JAILYN
	07:46			SUB OUT: WILSON,AALIYAH
	07:46			SUB OUT: COOLEY,ALECIA
GOOD! JUMPER by THOMAS,SAMI [PNT]	07:18	28-9	H 19	
	07:00			MISSED JUMPER by SWENSON,KEIRYN
REBOUND (DEF) by SCOTT,JOCELYN	07:00			
MISSED 3PTR by ATTURA,BEATRICE	06:48			
	06:48			REBOUND (DEF) by COSPER,DEVIN
FOUL by SCOTT,JOCELYN	06:39			
	06:39	29-9	H 20	GOOD! FT by SWENSON,KEIRYN
	06:39	30-9	H 21	GOOD! FT by SWENSON,KEIRYN
	06:26			FOUL by ZIMMERMAN,BAILEY
MISSED JUMPER by YOUNGBLOOD,TIA	06:06			
REBOUND (OFF) by JACKSON,GABBY	06:06			
	06:03			SUB IN: WILSON,AALIYAH
	06:03			SUB IN: COOLEY,ALECIA
	06:03			SUB OUT: JACKSON,JESSICA
	06:03			SUB OUT: SWENSON,KEIRYN
MISSED JUMPER by THOMAS,SAMI	05:49			
REBOUND (OFF) by JACKSON,GABBY	05:49			
MISSED JUMPER by JACKSON,GABBY	05:47			
	05:47			BLOCK by COOLEY,ALECIA
	05:45			REBOUND (DEF) by COOLEY,ALECIA
FOUL by YOUNGBLOOD,TIA	05:41			
SUB IN: JOHNSON,JASMYN	05:41			
SUB OUT: SCOTT,JOCELYN	05:41			
	05:41			SUB IN: MASON,JAILYN
	05:41			SUB OUT: MONK,MALICA
	05:16	32-9	H 23	GOOD! JUMPER by COSPER,DEVIN
	05:16			ASSIST by WILSON,AALIYAH
MISSED 3PTR by THOMAS,SAMI	04:55			
REBOUND (OFF) by JACKSON,GABBY	04:55			
GOOD! JUMPER by THOMAS,SAMI	04:44	32-11	H 21	

VISITORS: NWST	Time	Score	Margin	HOME: ARKANSAS
	04:19			MISSED JUMPER by WILSON,AALIYAH
	04:19			REBOUND (OFF) by MASON,JAILYN
FOUL by JACKSON,GABBY	04:15			
	04:15			TIMEOUT MEDIA
	04:15	33-11	H 22	GOOD! FT by COOLEY,ALECIA
	04:15	34-11	H 23	GOOD! FT by COOLEY,ALECIA
TURNOVER by TEAM	03:44			
	03:27			MISSED 3PTR by MASON,JAILYN
REBOUND (DEADB) by TEAM	03:27			
	03:26			FOUL by COOLEY,ALECIA
TURNOVER by JOHNSON,JASMYN	03:08			
	02:58	36-11	H 25	GOOD! LAYUP by COOLEY,ALECIA [PNT]
	02:58			ASSIST by ZIMMERMAN,BAILEY
GOOD! LAYUP by ATTURA,BEATRICE [PNT]	02:38	36-13	H 23	
ASSIST by THOMAS,SAMI	02:38			
	02:25			TURNOVER by COSPER,DEVIN
STEAL by ATTURA,BEATRICE	02:24			
MISSED JUMPER by THOMAS,SAMI	02:18			
	02:18			REBOUND (DEF) by WILSON,AALIYAH
	02:12	38-13	H 25	GOOD! LAYUP by MASON,JAILYN [FB/PNT]
	02:12			ASSIST by WILSON,AALIYAH
MISSED JUMPER by ATTURA,BEATRICE	01:57			
REBOUND (OFF) by TEAM	01:57			
SUB IN: BROWN,CHEYENNE	01:53			
SUB IN: MILLER,VICTORIA	01:53			
SUB IN: BELL,GABBY	01:53			
SUB OUT: THOMAS,SAMI	01:53			
SUB OUT: YOUNGBLOOD,TIA	01:53			
SUB OUT: JACKSON,GABBY	01:53			
	01:53			SUB IN: SWENSON,KEIRYN
	01:53			SUB IN: JACKSON,JESSICA
	01:53			SUB OUT: WILSON,AALIYAH
	01:53			SUB OUT: COOLEY,ALECIA
MISSED JUMPER by BELL,GABBY	01:40			
	01:40			REBOUND (DEF) by SWENSON,KEIRYN
SUB IN: ABBOD,SHAHD	01:38			
SUB OUT: ATTURA,BEATRICE	01:38			
	01:12			MISSED 3PTR by COSPER,DEVIN
REBOUND (DEF) by TEAM	01:12			
TURNOVER by TEAM	01:01			
	00:43			MISSED JUMPER by COSPER,DEVIN
REBOUND (DEF) by ABBOD,SHAHD	00:43			
FOUL by MILLER,VICTORIA	00:17			
TURNOVER by MILLER,VICTORIA	00:17			
SUB IN: YOUNGBLOOD,TIA	00:17			
SUB OUT: MILLER,VICTORIA	00:17			
	00:01	41-13	H 28	GOOD! 3PTR by JACKSON,JESSICA
	00:01			ASSIST by MASON,JAILYN

NWST 13, ARKANSAS 41

Period 2-only	In Paint	Off T/O	2nd Chance	Fast Break	Bench	
NWST	4	0	2	0	0	Score tied - 0 times
AR	6	7	4	2	4	Lead changed - 0 times

Official Basketball Box Score -- Game Totals -- Second Half Statistics
NWST vs ARKANSAS
12/18/2016 2 p.m. at Fayetteville, Ark. (Bud Walton Arena)

NWST 23 • 5-3

##	Player		Total		3-Ptr	Rebounds			PF	TP	A	TO	Blk	Stl	Min
			FG-FGA	FG-FGA	FT-FTA	Off	Def	Tot							
05	THOMAS,SAMI	g	0-1	0-0	0-0	0	1	1	0	0	0	0	0	1	9
12	ABBOUD,SHAH	g	4-7	0-1	3-4	0	0	0	0	11	0	0	0	1	17
30	ATTURA,BEATRICE	g	2-11	1-6	1-2	0	1	1	1	6	0	3	0	1	18
31	MILLER,VICTORIA	f	0-0	0-0	0-0	0	0	0	1	0	0	0	0	0	0
32	BROWN,CHEYENNE	c	0-6	0-0	2-2	5	1	6	2	2	3	0	0	1	12
01	BELL,GABBY		0-4	0-2	0-0	1	3	4	0	0	0	1	0	1	11
15	JOHNSON,JASMYN		0-0	0-0	0-0	0	0	0	0	0	0	0	0	0	0
21	SCOTT,JOCELYN		1-1	0-0	0-0	0	0	0	0	2	1	0	0	0	5
22	GILLIAM,LIBBA		0-0	0-0	0-0	0	0	0	1	0	1	1	0	0	8
23	JACKSON,GABBY		0-0	0-0	0-0	0	0	0	1	0	0	0	0	0	3
44	YOUNGBLOOD,TIA		1-2	0-0	0-0	1	1	2	2	2	1	1	0	2	17
TEAM						3	1	4	0			1			
Totals			8-32	1-9	6-8	10	8	18	8	23	6	7	0	7	100

FG % 3rd Qtr 6-15 40.0% 4th Qtr 2-17 11.8% Half: 8-32 25.0%
 3FG % 3rd Qtr 1-5 20.0% 4th Qtr 0-4 00.0% Half: 1-9 25.0%
 FT % 3rd Qtr 1-2 50.0% 4th Qtr 5-6 83.3% Half: 6-8 75.0%

ARKANSAS 24 • 9-1

##	Player		Total		3-Ptr	Rebounds			PF	TP	A	TO	Blk	Stl	Min
			FG-FGA	FG-FGA	FT-FTA	Off	Def	Tot							
00	JACKSON,JESSICA	f	2-5	0-2	2-2	1	1	2	2	6	1	2	0	0	19
03	MONK,MALICA	g	0-0	0-0	0-0	0	0	0	0	0	0	0	0	0	0
14	MASON,JAILYN	g	0-2	0-0	0-0	0	2	2	0	0	1	3	1	1	20
22	ZIMMERMAN,BAILEY	f	2-2	0-0	0-0	0	2	2	0	4	0	2	0	2	13
35	COOLEY,ALECIA	c	0-1	0-0	3-4	0	0	0	0	3	0	2	1	0	3
02	WILSON,AALIYAH		0-1	0-1	0-0	0	1	1	0	0	1	1	0	0	5
04	SWENSON,KEIRYN		3-5	1-2	0-0	2	4	6	3	7	1	0	0	0	15
10	WILLIAMS,KIARA		0-2	0-0	0-2	0	1	1	2	0	1	2	1	0	18
21	COSPER,DEVIN		2-2	0-0	0-0	0	0	0	0	4	0	1	1	0	8
TEAM						2	2	4	0			0			
Totals			9-20	1-5	5-8	5	13	18	7	24	5	13	4	3	101

FG % 3rd Qtr 6-11 54.5% 4th Qtr 3-9 33.3% Half: 9-20 45.0%
 3FG % 3rd Qtr 1-2 50.0% 4th Qtr 0-3 00.0% Half: 1-5 38.5%
 FT % 3rd Qtr 3-4 75.0% 4th Qtr 2-4 50.0% Half: 5-8 62.5%

Officials: Denise Brooks, Kevin Pethtel, Missy Brooks
 Technical Fouls: NWST- None. ARKANSAS- None.

Score by periods	1st	2nd	3rd	4th	Total
NWST	7	6	14	9	36
ARKANSAS	23	18	16	8	65

Points	In Paint	Off T/O	2nd Chance	Fast Break	Bench
NWST	14	9	4	2	4
ARKANSAS	10	4	6	2	11

Last FG - NWST 4th-00:46, AR 4th-00:21.
 NWST led for 0:00. AR led for 20:00. Game was tied for 0:00.

Score tied - 0 times
 Lead changed - 0 times

NWST vs ARKANSAS
12/18/2016; 2 p.m. at Fayetteville, Ark. (Bud Walton Arena)
Period 3 Play-By-Play

VISITORS: NWST	Time	Score	Margin	HOME: ARKANSAS
SUB IN: YOUNGBLOOD,TIA	10:00			
SUB OUT: MILLER,VICTORIA	10:00			
	10:00			SUB IN: WILSON,AALIYAH
	10:00			SUB OUT: MONK,MALICA
GOOD! JUMPER by ABBOUD,SHAHD [PNT]	09:55	41-15	H 26	
ASSIST by BROWN,CHEYENNE	09:55			
FOUL by BROWN,CHEYENNE	09:37			
	09:37	42-15	H 27	GOOD! FT by COOLEY,ALECIA
	09:37			MISSED FT by COOLEY,ALECIA
REBOUND (DEF) by YOUNGBLOOD,TIA	09:37			
	09:13			FOUL by JACKSON,JESSICA
MISSED FT by ATTURA,BEATRICE	09:13			
REBOUND (DEADB) by TEAM	09:13			
GOOD! FT by ATTURA,BEATRICE	09:13	42-16	H 26	
	08:53			TURNOVER by COOLEY,ALECIA
STEAL by YOUNGBLOOD,TIA	08:51			
TURNOVER by ATTURA,BEATRICE	08:49			
	08:48			STEAL by MASON,JAILYN
	08:42			TURNOVER by MASON,JAILYN
TURNOVER by TEAM	08:12			
SUB IN: BELL,GABBY	08:12			
SUB OUT: THOMAS,SAMI	08:12			
	08:02			MISSED LAYUP by JACKSON,JESSICA
	08:02			REBOUND (OFF) by TEAM
	07:56			TURNOVER by ZIMMERMAN,BAILEY
STEAL by YOUNGBLOOD,TIA	07:55			
MISSED 3PTR by ATTURA,BEATRICE	07:50			
	07:50			REBOUND (DEF) by ZIMMERMAN,BAILEY
	07:40	44-16	H 28	GOOD! LAYUP by ZIMMERMAN,BAILEY [PNT]
	07:40			ASSIST by WILSON,AALIYAH
MISSED JUMPER by BELL,GABBY	07:24			
REBOUND (OFF) by BROWN,CHEYENNE	07:24			
MISSED JUMPER by BROWN,CHEYENNE	07:20			
	07:20			BLOCK by COOLEY,ALECIA
REBOUND (OFF) by YOUNGBLOOD,TIA	07:19			
MISSED JUMPER by YOUNGBLOOD,TIA	07:17			
	07:17			REBOUND (DEF) by JACKSON,JESSICA
FOUL by YOUNGBLOOD,TIA	07:09			
	07:09	45-16	H 29	GOOD! FT by COOLEY,ALECIA
	07:09	46-16	H 30	GOOD! FT by COOLEY,ALECIA
MISSED 3PTR by ATTURA,BEATRICE	06:56			
REBOUND (OFF) by BELL,GABBY	06:56			
GOOD! LAYUP by YOUNGBLOOD,TIA [PNT]	06:36	46-18	H 28	
	06:20			MISSED JUMPER by COOLEY,ALECIA
REBOUND (DEF) by BROWN,CHEYENNE	06:20			
GOOD! LAYUP by ABBOUD,SHAHD [PNT]	06:06	46-20	H 26	
ASSIST by YOUNGBLOOD,TIA	06:06			
	05:50			SUB IN: WILLIAMS,KIARA
	05:50			SUB OUT: COOLEY,ALECIA
	05:48			MISSED 3PTR by WILSON,AALIYAH
REBOUND (DEF) by ATTURA,BEATRICE	05:48			
MISSED JUMPER by ATTURA,BEATRICE	05:41			
	05:41			REBOUND (DEF) by WILSON,AALIYAH
	05:34			TURNOVER by WILSON,AALIYAH
STEAL by BROWN,CHEYENNE	05:33			
GOOD! LAYUP by ATTURA,BEATRICE [FB/PNT]	05:30	46-22	H 24	
ASSIST by BROWN,CHEYENNE	05:30			
SUB IN: SCOTT,JOCELYN	05:13			
SUB OUT: ABBOUD,SHAHD	05:13			

VISITORS: NWST	Time	Score	Margin	HOME: ARKANSAS
	05:13			SUB IN: COSPER,DEVIN
	05:13			SUB IN: SWENSON,KEIRYN
	05:13			SUB OUT: JACKSON,JESSICA
	05:13			SUB OUT: WILSON,AALIYAH
SUB IN: GILLIAM,LIBBA	05:09			
SUB OUT: BROWN,CHEYENNE	05:09			
	04:54			MISSED JUMPER by MASON,JAILYN
	04:54			REBOUND (OFF) by SWENSON,KEIRYN
	04:52	48-22	H 26	GOOD! LAYUP by SWENSON,KEIRYN [PNT]
TIMEOUT MEDIA	04:43			
GOOD! LAYUP by SCOTT,JOCELYN [PNT]	04:38	48-24	H 24	
ASSIST by GILLIAM,LIBBA	04:38			
	04:25			TURNOVER by COSPER,DEVIN
STEAL by BELL,GABBY	04:24			
GOOD! 3PTR by ATTURA,BEATRICE	04:11	48-27	H 21	
ASSIST by SCOTT,JOCELYN	04:11			
	04:06			TIMEOUT 30SEC
	04:06			SUB IN: JACKSON,JESSICA
	04:06			SUB OUT: COSPER,DEVIN
	03:54	51-27	H 24	GOOD! 3PTR by SWENSON,KEIRYN
	03:54			ASSIST by JACKSON,JESSICA
TURNOVER by ATTURA,BEATRICE	03:42			
	03:41			STEAL by ZIMMERMAN,BAILEY
	03:40			TURNOVER by ZIMMERMAN,BAILEY
STEAL by ATTURA,BEATRICE	03:39			
TURNOVER by ATTURA,BEATRICE	03:11			
	03:11			STEAL by ZIMMERMAN,BAILEY
	03:02			MISSED JUMPER by WILLIAMS,KIARA
REBOUND (DEF) by BELL,GABBY	03:02			
MISSED LAYUP by ATTURA,BEATRICE	02:56			
	02:56			REBOUND (DEF) by ZIMMERMAN,BAILEY
	02:46	53-27	H 26	GOOD! LAYUP by JACKSON,JESSICA [FB/PNT]
	02:46			ASSIST by SWENSON,KEIRYN
MISSED 3PTR by ATTURA,BEATRICE	02:25			
	02:25			REBOUND (DEF) by TEAM
SUB IN: ABBOD,SHAHD	02:21			
SUB OUT: SCOTT,JOCELYN	02:21			
	02:01			FOUL by WILLIAMS,KIARA
	02:01			TURNOVER by WILLIAMS,KIARA
FOUL by GILLIAM,LIBBA	01:48			
TURNOVER by GILLIAM,LIBBA	01:48			
	01:19	55-27	H 28	GOOD! LAYUP by ZIMMERMAN,BAILEY [PNT]
MISSED 3PTR by BELL,GABBY	00:46			
REBOUND (OFF) by TEAM	00:46			
	00:46			SUB IN: COSPER,DEVIN
	00:46			SUB OUT: ZIMMERMAN,BAILEY
TURNOVER by BELL,GABBY	00:32			
	00:09	57-27	H 30	GOOD! JUMPER by JACKSON,JESSICA
	00:09			ASSIST by MASON,JAILYN

NWST 36, ARKANSAS 65

Period 3-only	In Paint	Off T/O	2nd Chance	Fast Break	Bench	
NWST	10	5	2	2	4	Score tied - 0 times
AR	8	4	2	2	5	Lead changed - 0 times

NWST vs ARKANSAS
12/18/2016; 2 p.m. at Fayetteville, Ark. (Bud Walton Arena)
Period 4 Play-By-Play

VISITORS: NWST	Time	Score	Margin	HOME: ARKANSAS
SUB IN: BELL,GABBY	10:00			
SUB OUT: THOMAS,SAMI	10:00			
	10:00			SUB IN: COSPER,DEVIN
	10:00			SUB IN: SWENSON,KEIRYN
	10:00			SUB IN: WILLIAMS,KIARA
	10:00			SUB OUT: MONK,MALICA
	10:00			SUB OUT: ZIMMERMAN,BAILEY
	10:00			SUB OUT: COOLEY,ALECIA
MISSED JUMPER by BROWN,CHEYENNE	09:49			
REBOUND (OFF) by BROWN,CHEYENNE	09:49			
MISSED 3PTR by BELL,GABBY	09:45			
	09:45			REBOUND (DEF) by SWENSON,KEIRYN
FOUL by MILLER,VICTORIA	09:33			
	09:33			MISSED FT by WILLIAMS,KIARA
	09:33			REBOUND (DEADB) by TEAM
	09:33			MISSED FT by WILLIAMS,KIARA
REBOUND (DEF) by BELL,GABBY	09:33			
SUB IN: YOUNGBLOOD,TIA	09:33			
SUB OUT: MILLER,VICTORIA	09:33			
TURNOVER by YOUNGBLOOD,TIA	09:24			
	09:16			FOUL by WILLIAMS,KIARA
	09:16			TURNOVER by WILLIAMS,KIARA
MISSED JUMPER by BROWN,CHEYENNE	09:08			
	09:07			BLOCK by WILLIAMS,KIARA
REBOUND (OFF) by BROWN,CHEYENNE	09:06			
	09:05			FOUL by JACKSON,JESSICA
GOOD! FT by BROWN,CHEYENNE	09:05	57-28	H 29	
GOOD! FT by BROWN,CHEYENNE	09:05	57-29	H 28	
	08:53			MISSED 3PTR by JACKSON,JESSICA
	08:53			REBOUND (OFF) by TEAM
	08:47			TURNOVER by JACKSON,JESSICA
STEAL by ABOUD,SHAHD	08:47			
	08:39			FOUL by SWENSON,KEIRYN
MISSED 3PTR by ATTURA,BEATRICE	08:23			
	08:23			REBOUND (DEF) by MASON,JAILYN
FOUL by BROWN,CHEYENNE	08:21			
	07:58			MISSED JUMPER by MASON,JAILYN
REBOUND (DEF) by BELL,GABBY	07:58			
MISSED LAYUP by BELL,GABBY	07:51			
REBOUND (OFF) by BROWN,CHEYENNE	07:51			
MISSED JUMPER by BROWN,CHEYENNE	07:49			
	07:49			BLOCK by COSPER,DEVIN
REBOUND (OFF) by TEAM	07:49			
MISSED LAYUP by BROWN,CHEYENNE	07:39			
	07:39			REBOUND (DEF) by SWENSON,KEIRYN
	07:06			TURNOVER by MASON,JAILYN
MISSED 3PTR by ATTURA,BEATRICE	06:56			
	06:56			REBOUND (DEF) by SWENSON,KEIRYN
	06:33			TURNOVER by COOLEY,ALECIA
SUB IN: THOMAS,SAMI	06:31			
SUB OUT: BELL,GABBY	06:31			
	06:31			SUB IN: ZIMMERMAN,BAILEY
	06:31			SUB OUT: COSPER,DEVIN
MISSED 3PTR by ABOUD,SHAHD	06:12			
REBOUND (OFF) by TEAM	06:12			
MISSED JUMPER by ABOUD,SHAHD	06:01			
	06:01			BLOCK by MASON,JAILYN
	06:00			REBOUND (DEF) by MASON,JAILYN
FOUL by ATTURA,BEATRICE	05:57			

VISITORS: NWST	Time	Score	Margin	HOME: ARKANSAS
	05:30			TURNOVER by MASON,JAILYN
STEAL by THOMAS,SAMI	05:30			
MISSED JUMPER by ABOUD,SHAHD	05:00			
REBOUND (OFF) by BROWN,CHEYENNE	05:00			
MISSED LAYUP by BROWN,CHEYENNE	04:57			
	04:57			REBOUND (DEF) by TEAM
	04:55			TIMEOUT media
	04:47			TURNOVER by JACKSON,JESSICA
GOOD! JUMPER by ABOUD,SHAHD [PNT]	04:27	57-31	H 26	
ASSIST by BROWN,CHEYENNE	04:27			
	04:07			MISSED 3PTR by SWENSON,KEIRYN
REBOUND (DEF) by THOMAS,SAMI	04:07			
MISSED JUMPER by ATTURA,BEATRICE	03:49			
	03:49			REBOUND (DEF) by SWENSON,KEIRYN
	03:25			MISSED 3PTR by JACKSON,JESSICA
REBOUND (DEF) by TEAM	03:25			
	03:08			FOUL by SWENSON,KEIRYN
MISSED FT by ABOUD,SHAHD	03:08			
REBOUND (DEADB) by TEAM	03:08			
GOOD! FT by ABOUD,SHAHD	03:08	57-32	H 25	
	03:05			SUB IN: COOLEY,ALECIA
	03:05			SUB OUT: WILLIAMS,KIARA
FOUL by YOUNGBLOOD,TIA	02:56			
SUB IN: JACKSON,GABBY	02:56			
SUB IN: GILLIAM,LIBBA	02:56			
SUB OUT: YOUNGBLOOD,TIA	02:56			
SUB OUT: BROWN,CHEYENNE	02:56			
	02:56			SUB IN: COSPER,DEVIN
	02:56			SUB OUT: ZIMMERMAN,BAILEY
	02:33	59-32	H 27	GOOD! JUMPER by COSPER,DEVIN
	02:33			ASSIST by WILLIAMS,KIARA
MISSED JUMPER by ATTURA,BEATRICE	02:17			
	02:17			REBOUND (DEF) by WILLIAMS,KIARA
	02:07			MISSED JUMPER by SWENSON,KEIRYN
	02:07			REBOUND (OFF) by JACKSON,JESSICA
FOUL by JACKSON,GABBY	02:06			
	02:06	60-32	H 28	GOOD! FT by JACKSON,JESSICA
	02:06	61-32	H 29	GOOD! FT by JACKSON,JESSICA
SUB IN: SCOTT,JOCELYN	02:06			
SUB OUT: ATTURA,BEATRICE	02:06			
	01:47			FOUL by SWENSON,KEIRYN
GOOD! FT by ABOUD,SHAHD	01:47	61-33	H 28	
GOOD! FT by ABOUD,SHAHD	01:47	61-34	H 27	
	01:20			MISSED JUMPER by WILLIAMS,KIARA
	01:20			REBOUND (OFF) by SWENSON,KEIRYN
	01:18	63-34	H 29	GOOD! LAYUP by SWENSON,KEIRYN [PNT]
TIMEOUT 30SEC	01:07			
GOOD! LAYUP by ABOUD,SHAHD [PNT]	00:46	63-36	H 27	
	00:21	65-36	H 29	GOOD! JUMPER by COSPER,DEVIN
MISSED JUMPER by THOMAS,SAMI	00:02			
	00:00			REBOUND (DEADB) by TEAM

NWST 36, ARKANSAS 65

Period 4-only	In Paint	Off T/O	2nd Chance	Fast Break	Bench	
NWST	4	4	2	0	0	Score tied - 0 times
AR	2	0	4	0	6	Lead changed - 0 times

NWST vs ARKANSAS
12/18/2016; 2 p.m. at Fayetteville, Ark. (Bud Walton Arena)
Scoring/Runs Reference

Period 1

NWST	Score	Marg	ARKANSAS
	0-2	2 2	ZIMMERMAN LAYUP [P] - 09:07
	0-4	4 2	JACKSON LAYUP [P] - 08:43
07:56 - MILLER JUMPER 2	2-4	2	
	2-6	4 2	JACKSON LAYUP [P] - 07:30
	2-8	6 2	MONK LAYUP [P] [F] - 07:05
	2-11	9 3	JACKSON 3PTR - 06:26
04:41 - BROWN LAYUP [P] 2	4-11	7	
	4-14	10 3	MASON 3PTR - 03:14
	4-17	13 3	COSPER 3PTR - 02:43
02:15 - ATTURA 3PTR 3	7-17	10	
	7-19	12 2	SWENSON LAYUP [P] - 01:53
	7-21	14 2	MASON JUMPER [F] - 01:41
	7-23	16 2	JACKSON LAYUP [P] - 01:33

Period 3

NWST	Score	Marg	ARKANSAS
09:55 - ABBOUD JUMPER [P] 2	15-41	26	
	15-42	27 1	COOLEY FT - 09:37
09:13 - ATTURA FT 1	16-42	26	
	16-44	28 2	ZIMMERMAN LAYUP [P] - 07:40
	16-45	29 1	COOLEY FT - 07:09
	16-46	30 1	COOLEY FT - 07:09
06:36 - YOUNGBLOOD LAYUP [P] 2	18-46	28	
06:06 - ABBOUD LAYUP [P] 2	20-46	26	
05:30 - ATTURA LAYUP [P] [F] 2	22-46	24	
	22-48	26 2	SWENSON LAYUP [P] - 04:52
04:38 - SCOTT LAYUP [P] 2	24-48	24	
04:11 - ATTURA 3PTR 3	27-48	21	
	27-51	24 3	SWENSON 3PTR - 03:54
	27-53	26 2	JACKSON LAYUP [P] [F] - 02:46
	27-55	28 2	ZIMMERMAN LAYUP [P] - 01:19
	27-57	30 2	JACKSON JUMPER - 00:09

Period 2

NWST	Score	Marg	ARKANSAS
	7-25	18 2	JACKSON LAYUP [P] - 08:37
	7-28	21 3	JACKSON 3PTR - 07:58
07:18 - THOMAS JUMPER [P] 2	9-28	19	
	9-29	20 1	SWENSON FT - 06:39
	9-30	21 1	SWENSON FT - 06:39
	9-32	23 2	COSPER JUMPER - 05:16
04:44 - THOMAS JUMPER 2	11-32	21	
	11-33	22 1	COOLEY FT - 04:15
	11-34	23 1	COOLEY FT - 04:15
	11-36	25 2	COOLEY LAYUP [P] - 02:58
02:38 - ATTURA LAYUP [P] 2	13-36	23	
	13-38	25 2	MASON LAYUP [P] [F] - 02:12
	13-41	28 3	JACKSON 3PTR - 00:01

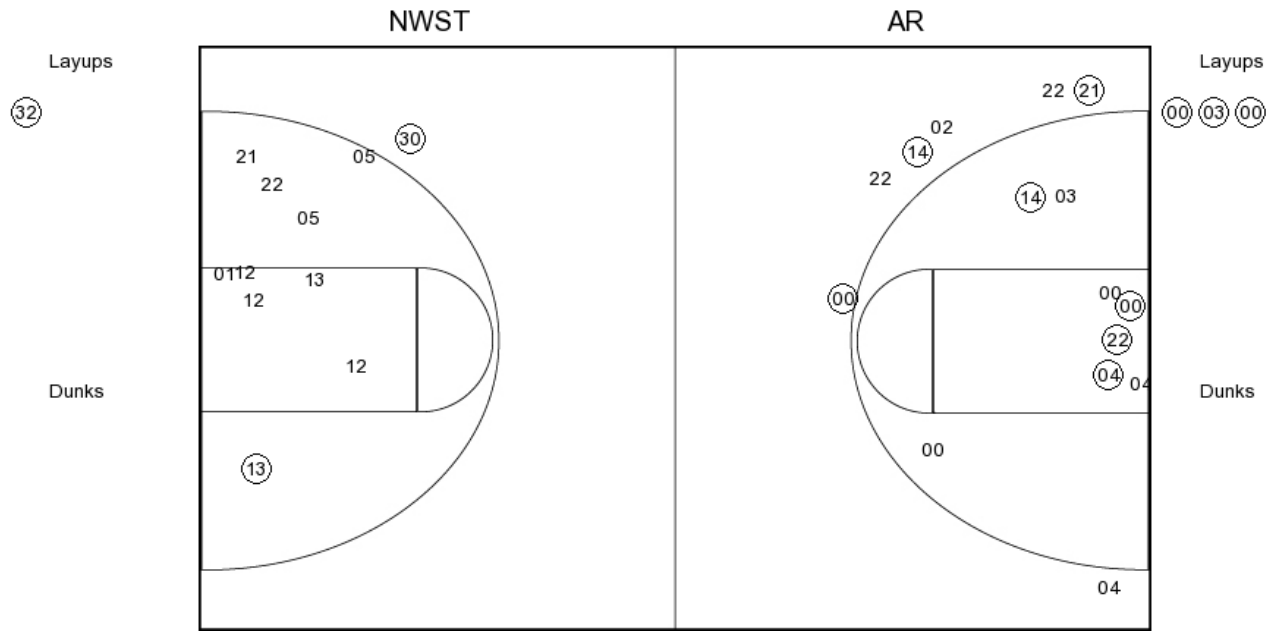
Period 4

NWST	Score	Marg	ARKANSAS
09:05 - BROWN FT 1	28-57	29	
09:05 - BROWN FT 1	29-57	28	
04:27 - ABBOUD JUMPER [P] 2	31-57	26	
03:08 - ABBOUD FT 1	32-57	25	
	32-59	27 2	COSPER JUMPER - 02:33
	32-60	28 1	JACKSON FT - 02:06
	32-61	29 1	JACKSON FT - 02:06
01:47 - ABBOUD FT 1	33-61	28	
01:47 - ABBOUD FT 1	34-61	27	
	34-63	29 2	SWENSON LAYUP [P] - 01:18
00:46 - ABBOUD LAYUP [P] 2	36-63	27	
	36-65	29 2	COSPER JUMPER - 00:21

**NWST vs ARKANSAS
OFFICIAL SHOT CHART**

12/18/2016 at Fayetteville, Ark. (Bud Walton Arena)

PERIOD 1



NWST PERIOD 1

FG Made	6
FG Attempted	24
3PFG Made	1
3PFG Attempted	4

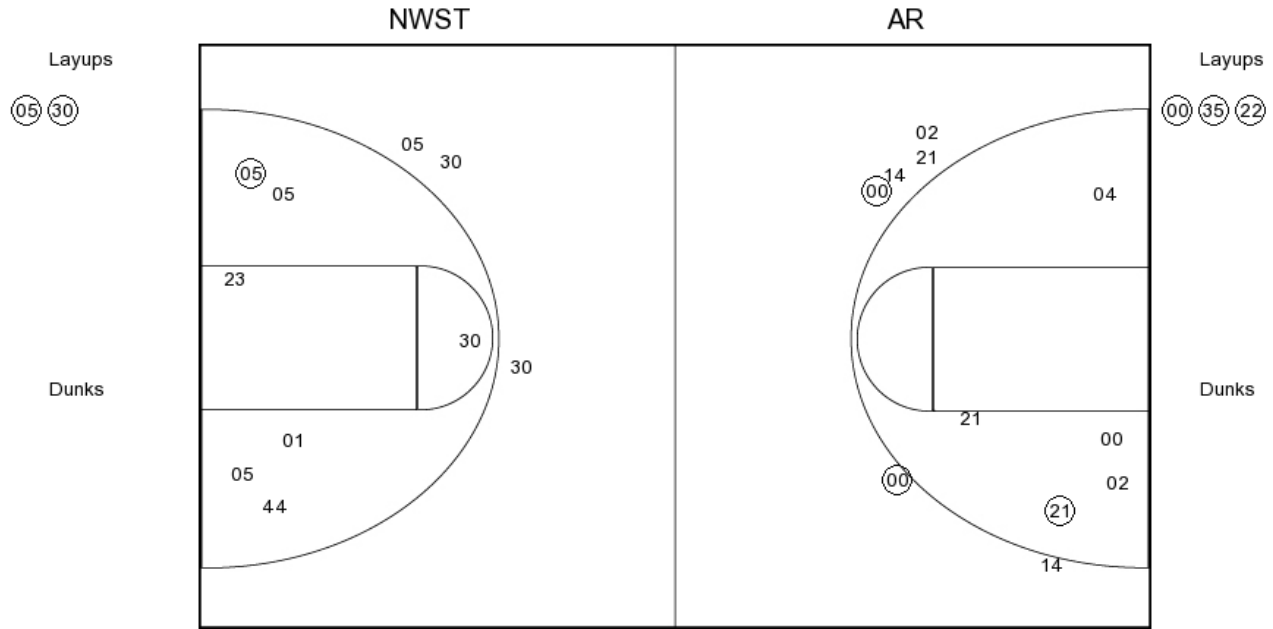
AR PERIOD 1

FG Made	16
FG Attempted	32
3PFG Made	5
3PFG Attempted	13

NWST vs ARKANSAS
OFFICIAL SHOT CHART

12/18/2016 at Fayetteville, Ark. (Bud Walton Arena)

PERIOD 2



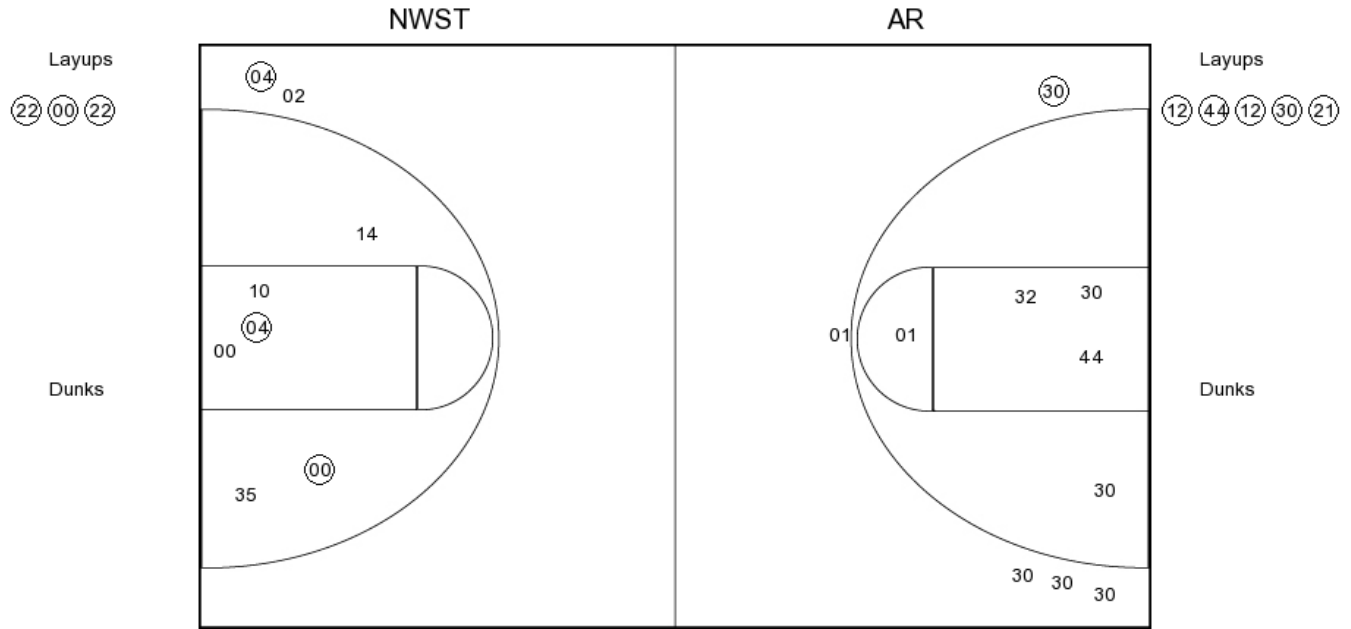
NWST PERIOD 2
 FG Made
 FG Attempted
 3PFG Made
 3PFG Attempted

AR PERIOD 2
 FG Made
 FG Attempted
 3PFG Made
 3PFG Attempted

**NWST vs ARKANSAS
OFFICIAL SHOT CHART**

12/18/2016 at Fayetteville, Ark. (Bud Walton Arena)

PERIOD 3



NWST PERIOD 3

FG Made	8
FG Attempted	32
3PFG Made	1
3PFG Attempted	9

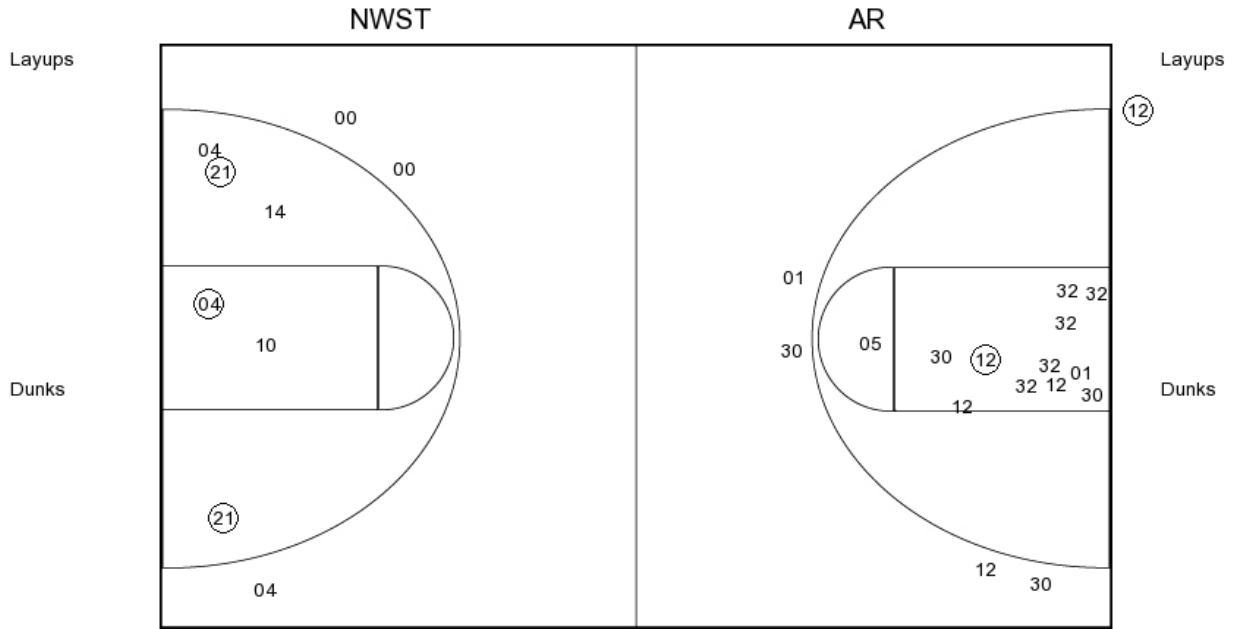
AR PERIOD 3

FG Made	9
FG Attempted	20
3PFG Made	1
3PFG Attempted	5

NWST vs ARKANSAS
OFFICIAL SHOT CHART

12/18/2016 at Fayetteville, Ark. (Bud Walton Arena)

PERIOD 4



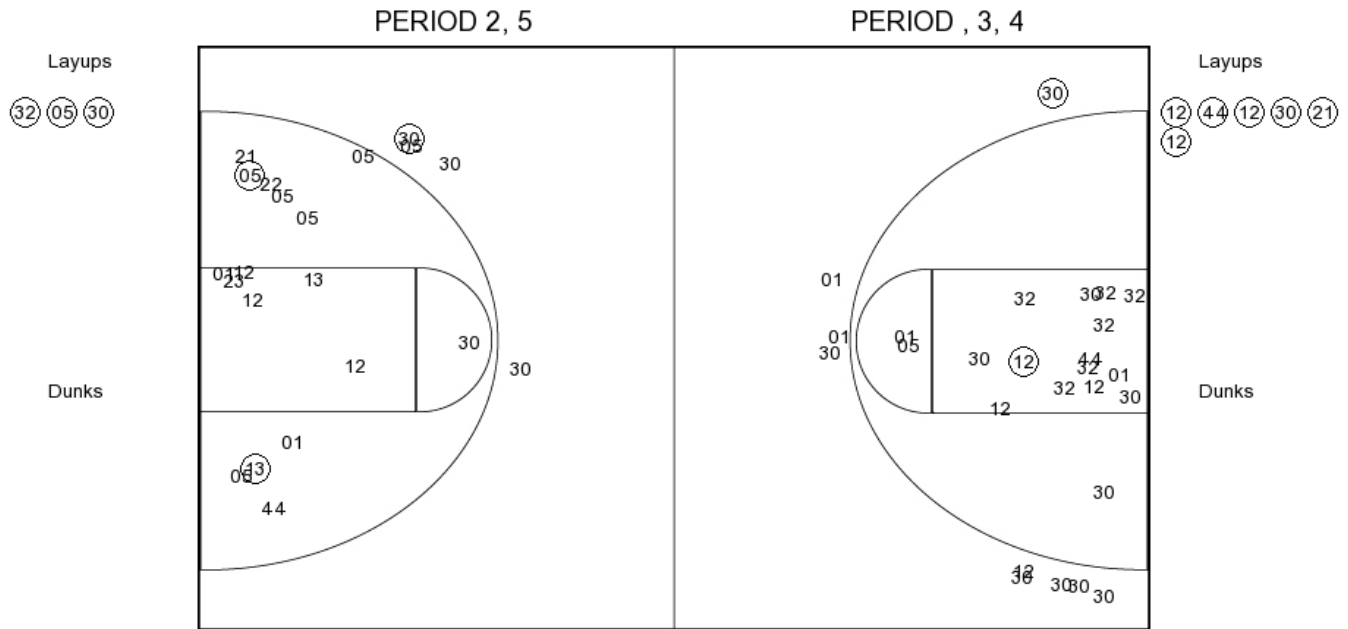
NWST PERIOD 4
 FG Made
 FG Attempted
 3PFG Made
 3PFG Attempted

AR PERIOD 4
 FG Made
 FG Attempted
 3PFG Made
 3PFG Attempted

NWST vs ARKANSAS
OFFICIAL SHOT CHART

12/18/2016 at Fayetteville, Ark. (Bud Walton Arena)

NWST



NWST PERIOD 1

FG Made	6
FG Attempted	24
3PFG Made	1
3PFG Attempted	4

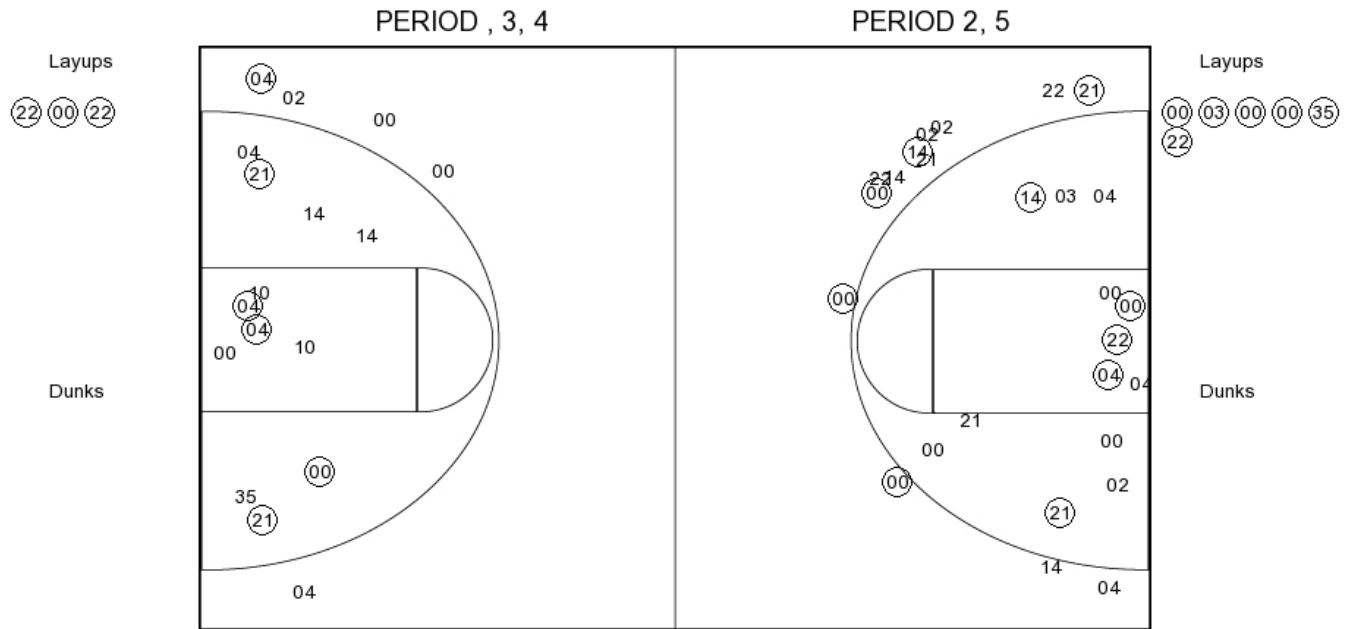
NWST PERIOD 2

FG Made	
FG Attempted	
3PFG Made	
3PFG Attempted	

NWST vs ARKANSAS
OFFICIAL SHOT CHART

12/18/2016 at Fayetteville, Ark. (Bud Walton Arena)

ARKANSAS



AR PERIOD 1

FG Made	16
FG Attempted	32
3PFG Made	5
3PFG Attempted	13

AR PERIOD 2

FG Made	
FG Attempted	
3PFG Made	
3PFG Attempted	