

# ARKANSAS VS. BUTLER



12/7/2016  
Fayetteville, Ark. (Bud Walton Arena)

## FINAL STATS

**ARKANSAS**  
*(8-0)*

**68**

**Butler**  
*(2-6)*

**50**

*Start Time: 7:02 p.m.*  
*Officials: Bryan Enterline, Susan Blauch, Jennifer Rezac*  
*Attendance: 1017*

Estimated Actual Attendance: 530

# Official Basketball Box Score -- Game Totals -- Final Statistics

## Butler vs ARKANSAS

12/7/2016 7:02 p.m. at Fayetteville, Ark. (Bud Walton Arena)

### Butler 50 - 2-6

##	Player		Total			3-Ptr			Rebounds			PF	TP	A	TO	Blk	Stl	Min
			FG-FGA	FG-FGA	FT-FTA	FG-FGA	FG-FGA	FT-FTA	Off	Def	Tot							
22	BAILEY,ALEXA	g	0-2	0-1	0-0	0	3	3	1	0	1	2	0	0	0	0	26	
23	BREY,SHAE	f	1-4	0-1	0-0	0	1	1	2	2	2	3	1	0	0	18		
24	SPOLYAR,KRISTEN	g	3-9	1-1	1-2	0	1	1	3	8	3	2	1	3	25			
30	SHELTON,SYDNEY	g	0-3	0-0	0-0	0	2	2	4	0	1	3	0	0	23			
34	SCHICKEL,TORI	f	7-11	0-0	2-4	4	3	7	4	16	1	3	0	5	30			
02	HODGES,KAELA		0-1	0-0	0-0	0	0	0	1	0	0	0	0	1	10			
03	WARD,BRITTANY		3-6	0-1	1-2	1	0	1	2	7	1	4	1	0	19			
04	BUFORD,TAYLOR		3-5	3-4	2-4	1	2	3	1	11	1	1	1	2	19			
11	WEAVER,MICHELLE		2-6	0-1	2-3	0	4	4	1	6	1	2	0	3	30			
14	HUMPHREY,SARAH		0-0	0-0	0-0	0	0	0	0	0	0	0	0	0	0			
TEAM						1	0	1	0			1						
TOTALS			19-47	4-9	8-15	7	16	23	19	50	11	21	4	14	200			

Deadball Rebounds: 4,2

FG %	1st Half: 8-22	36.4%	2nd Half: 11-25	44.0%	Game: 19-47	40.4%											
	1st Qtr 4-11	36.4%	2nd Qtr 4-11	36.4%	3rd Qtr 6-13	46.2%	4th Qtr 5-12	41.7%									
3FG %	1st Half: 2-5	40.0%	2nd Half: 2-4	50.0%	Game: 4-9	44.4%											
	1st Qtr 0-1	00.0%	2nd Qtr 2-4	50.0%	3rd Qtr 0-0	0%	4th Qtr 2-4	50.0%									
FT %	1st Half: 3-6	50.0%	2nd Half: 5-9	55.6%	Game: 8-15	53.3%											
	1st Qtr 0-0	0%	2nd Qtr 3-6	50.0%	3rd Qtr 4-6	66.7%	4th Qtr 1-3	33.3%									

### ARKANSAS 68 - 8-0

##	Player		Total			3-Ptr			Rebounds			PF	TP	A	TO	Blk	Stl	Min
			FG-FGA	FG-FGA	FT-FTA	FG-FGA	FG-FGA	FT-FTA	Off	Def	Tot							
00	JACKSON,JESSICA	f	5-11	1-3	8-10	5	4	9	2	19	1	5	1	3	30			
03	MONK,MALICA	g	4-8	0-0	3-4	0	2	2	4	11	5	1	0	1	35			
14	MASON,JAILYN	g	0-4	0-0	0-0	2	4	6	0	0	5	3	0	1	34			
22	ZIMMERMAN,BAILEY	f	1-4	1-3	1-4	1	2	3	3	4	3	1	0	1	25			
35	COOLEY,ALECIA	c	2-3	0-0	0-0	1	3	4	1	4	4	1	1	0	16			
02	WILSON,AALIYAH		0-2	0-2	0-0	0	1	1	2	0	0	3	0	0	6			
04	SWENSON,KEIRYN		6-7	3-3	0-0	0	3	3	0	15	0	1	2	1	23			
10	WILLIAMS,KIARA		1-1	0-0	0-0	1	2	3	2	2	0	1	0	1	10			
21	COSPER,DEVIN		5-9	1-1	2-4	0	2	2	0	13	0	3	0	2	21			
TEAM						1	0	1	0		0							
TOTALS			24-49	6-12	14-22	11	23	34	14	68	18	19	4	10	200			

Deadball Rebounds: 4,1

FG %	1st Half: 14-23	60.9%	2nd Half: 10-26	38.5%	Game: 24-49	49.0%											
	1st Qtr 8-13	61.5%	2nd Qtr 6-10	60.0%	3rd Qtr 7-15	46.7%	4th Qtr 3-11	27.3%									
3FG %	1st Half: 4-7	57.1%	2nd Half: 2-5	40.0%	Game: 6-12	50.0%											
	1st Qtr 2-4	50.0%	2nd Qtr 2-3	66.7%	3rd Qtr 2-4	50.0%	4th Qtr 0-1	00.0%									
FT %	1st Half: 2-4	50.0%	2nd Half: 12-18	66.7%	Game: 14-22	63.6%											
	1st Qtr 1-2	50.0%	2nd Qtr 1-2	50.0%	3rd Qtr 6-8	75.0%	4th Qtr 6-10	60.0%									

Officials: Bryan Enterline, Susan Blauch, Jennifer Rezac

Technical Fouls: Butler- None. ARKANSAS- None.

Attendance: 1017

Estimated Actual Attendance: 530

Score by periods	1st	2nd	3rd	4th	Total
Butler	8	13	16	13	50
ARKANSAS	19	15	22	12	68

Points	In Paint	Off T/O	2nd Chance	Fast Break	Bench
BU	26	15	4	6	24
AR	26	21	4	8	30

Last FG - BU 4th-03:38, AR 4th-01:52.

Largest lead - Butler by ; ARKANSAS by 21 4th-07:58

BU led for 0:00. AR led for 38:48. Game was tied for 1:12.

Score tied - 0 times

Lead changed - 0 times

# Official Basketball Box Score -- Game Totals -- First Half Statistics

## Butler vs ARKANSAS

12/7/2016 7:02 p.m. at Fayetteville, Ark. (Bud Walton Arena)

### Butler 21 • 2-6

##	Player		Total		3-Ptr	FT-FTA	Rebounds			PF	TP	A	TO	Blk	Stl	Min
			FG-FGA	FG-FGA	FG-FGA		Off	Def	Tot							
22	BAILEY, ALEXA	g	0-2	0-1	0-0	0	1	1	0	0	0	2	0	0	14	
23	BREY, SHAE	f	1-3	0-1	0-0	0	1	1	1	2	1	2	1	0	11	
24	SPLYAR, KRISTEN	g	0-3	0-0	0-0	0	0	0	1	0	1	1	0	2	10	
30	SHELTON, SYDNEY	g	0-1	0-0	0-0	0	1	1	1	0	0	1	0	0	11	
34	SCHICKEL, TORI	f	2-5	0-0	1-2	1	2	3	2	5	1	3	0	3	18	
02	HODGES, KAELA		0-0	0-0	0-0	0	0	0	0	0	0	0	0	0	5	
03	WARD, BRITTANY		2-4	0-0	0-0	1	0	1	1	4	1	2	0	0	10	
04	BUFORD, TAYLOR		2-2	2-2	2-4	1	1	2	0	8	0	1	1	1	7	
11	WEAVER, MICHELLE		1-2	0-1	0-0	0	1	1	1	2	0	1	0	3	14	
14	HUMPHREY, SARAH		0-0	0-0	0-0	0	0	0	0	0	0	0	0	0	0	
TEAM						0	0	0	0		0					
Totals			8-22	2-5	3-6	3	7	10	7	21	4	13	2	9	100	

FG %	1st Qtr	4-11	36.4%	2nd Qtr	4-11	36.4%	Half:	8-22	36.4%
3FG %	1st Qtr	0-1	00.0%	2nd Qtr	2-4	50.0%	Half:	2-5	40.0%
FT %	1st Qtr	0-0	0%	2nd Qtr	3-6	50.0%	Half:	3-6	50.0%

### ARKANSAS 34 • 8-0

##	Player		Total		3-Ptr	FT-FTA	Rebounds			PF	TP	A	TO	Blk	Stl	Min
			FG-FGA	FG-FGA	FG-FGA		Off	Def	Tot							
00	JACKSON, JESSICA	f	2-6	1-2	1-2	1	2	3	1	6	0	3	0	1	16	
03	MONK, MALICA	g	3-4	0-0	1-2	0	1	1	1	7	4	0	0	0	17	
14	MASON, JAILYN	g	0-1	0-0	0-0	0	1	1	0	0	3	2	0	1	17	
22	ZIMMERMAN, BAILEY	f	1-3	1-2	0-0	0	1	1	2	3	3	1	0	1	13	
35	COOLEY, ALECIA	c	1-1	0-0	0-0	0	3	3	0	2	2	1	1	0	11	
02	WILSON, AALIYAH		0-1	0-1	0-0	0	1	1	2	0	0	3	0	0	3	
04	SWENSON, KEIRYN		5-5	2-2	0-0	0	2	2	0	12	0	1	0	0	13	
10	WILLIAMS, KIARA		0-0	0-0	0-0	1	0	1	0	0	0	0	0	1	4	
21	COSPER, DEVIN		2-2	0-0	0-0	0	0	0	0	4	0	2	0	2	6	
TEAM						1	0	1	0		0					
Totals			14-23	4-7	2-4	3	11	14	6	34	12	13	1	6	100	

FG %	1st Qtr	8-13	61.5%	2nd Qtr	6-10	60.0%	Half:	14-23	60.9%
3FG %	1st Qtr	2-4	50.0%	2nd Qtr	2-3	66.7%	Half:	4-7	57.1%
FT %	1st Qtr	1-2	50.0%	2nd Qtr	1-2	50.0%	Half:	2-4	50.0%

Officials: Bryan Enterline, Susan Blauch, Jennifer Rezac

Technical Fouls: Butler- None. ARKANSAS- None.

Estimated Actual Attendance: 530

Score by periods	1st	2nd	3rd	4th	Total
Butler	8	13	16	13	50
ARKANSAS	19	15	22	12	68

	In	Off	2nd	Fast	
Points	Paint	T/O	Chance	Break	Bench
BU	12	12	1	4	14
	12	13	2	6	16

Last FG - BU 2nd-01:37, AR 2nd-00:42.

BU led for 0:00. AR led for 18:48. Game was tied for 1:12.

Score tied - 0 times  
Lead changed - 0 times

**Butler vs ARKANSAS**  
**12/7/2016; 7:02 p.m. at Fayetteville, Ark. (Bud Walton Arena)**  
**Period 1 Play-By-Play**

VISITORS: Butler	Time	Score	Margin	HOME: ARKANSAS
MISSED JUMPER by SPOLYAR,KRISTEN	09:40			
	09:40			REBOUND (DEF) by ZIMMERMAN,BAILEY
	09:20			MISSED JUMPER by JACKSON,JESSICA
REBOUND (DEF) by SCHICKEL,TORI	09:20			
FOUL by SHELTON,SYDNEY	09:09			
TURNOVER by SHELTON,SYDNEY	09:09			
	08:48	2-0	H 2	GOOD! LAYUP by COOLEY,ALECIA [PNT]
	08:48			ASSIST by ZIMMERMAN,BAILEY
FOUL by SPOLYAR,KRISTEN	08:17			
TURNOVER by SPOLYAR,KRISTEN	08:17			
	08:01			MISSED JUMPER by MONK,MALICA
BLOCK by BREY,SHAE	08:01			
	08:00			REBOUND (OFF) by TEAM
	07:47			MISSED 3PTR by ZIMMERMAN,BAILEY
REBOUND (DEF) by SHELTON,SYDNEY	07:47			
MISSED JUMPER by SCHICKEL,TORI	07:34			
	07:34			REBOUND (DEF) by JACKSON,JESSICA
	07:16			MISSED JUMPER by JACKSON,JESSICA
REBOUND (DEF) by SCHICKEL,TORI	07:16			
TURNOVER by BREY,SHAE	06:52			
	06:51			STEAL by ZIMMERMAN,BAILEY
FOUL by BREY,SHAE	06:46			
	06:46			MISSED FT by JACKSON,JESSICA
	06:46			REBOUND (DEADB) by TEAM
	06:46	3-0	H 3	GOOD! FT by JACKSON,JESSICA
SUB IN: WEAVER,MICHELLE	06:46			
SUB OUT: BREY,SHAE	06:46			
SUB OUT: SPOLYAR,KRISTEN	06:46			
MISSED JUMPER by BAILEY,ALEXA	06:30			
	06:30			REBOUND (DEF) by COOLEY,ALECIA
	06:22	5-0	H 5	GOOD! LAYUP by MONK,MALICA [FB/PNT]
	06:22			ASSIST by COOLEY,ALECIA
MISSED JUMPER by SCHICKEL,TORI	05:56			
	05:56			REBOUND (DEF) by COOLEY,ALECIA
	05:49	8-0	H 8	GOOD! 3PTR by JACKSON,JESSICA
	05:49			ASSIST by MONK,MALICA
TURNOVER by BAILEY,ALEXA	05:30			
	05:29			STEAL by MASON,JAILYN
	05:27	10-0	H 10	GOOD! LAYUP by MONK,MALICA [FB/PNT]
	05:27			ASSIST by MASON,JAILYN
TIMEOUT 30SEC	05:26			
SUB IN: BREY,SHAE	05:26			
SUB OUT: SHELTON,SYDNEY	05:26			
	05:20			FOUL by MONK,MALICA
GOOD! LAYUP by WARD,BRITTANY [PNT]	05:03	10-2	H 8	
	04:41	13-2	H 11	GOOD! 3PTR by ZIMMERMAN,BAILEY
	04:41			ASSIST by MASON,JAILYN
GOOD! LAYUP by SCHICKEL,TORI [PNT]	04:11	13-4	H 9	
ASSIST by WARD,BRITTANY	04:11			
	03:47	15-4	H 11	GOOD! JUMPER by JACKSON,JESSICA [PNT]
	03:47			ASSIST by MONK,MALICA
MISSED JUMPER by SCHICKEL,TORI	03:28			
	03:28			BLOCK by COOLEY,ALECIA
	03:26			REBOUND (DEF) by MONK,MALICA
	03:22			TURNOVER by ZIMMERMAN,BAILEY
	03:22			SUB IN: WILLIAMS,KIARA
	03:22			SUB OUT: COOLEY,ALECIA
TURNOVER by WEAVER,MICHELLE	03:08			
	03:08			SUB IN: COSPER,DEVIN

VISITORS: Butler	Time	Score	Margin	HOME: ARKANSAS
	03:08			SUB IN: SWENSON,KEIRYN
	03:08			SUB IN: WILSON,AALIYAH
	03:08			SUB OUT: JACKSON,JESSICA
	03:08			SUB OUT: MASON,JAILYN
	03:08			SUB OUT: ZIMMERMAN,BAILEY
	02:57			TURNOVER by WILSON,AALIYAH
STEAL by SCHICKEL,TORI	02:56			
TURNOVER by BAILEY,ALEXA	02:34			
	02:34			STEAL by WILLIAMS,KIARA
	02:31			TURNOVER by WILSON,AALIYAH
STEAL by WEAVER,MICHELLE	02:30			
MISSED JUMPER by BREY,SHAE	02:24			
	02:24			REBOUND (DEADB) by TEAM
FOUL by SCHICKEL,TORI	02:21			
SUB IN: HODGES,KAELA	02:21			
SUB IN: SPOLYAR,KRISTEN	02:21			
SUB OUT: SCHICKEL,TORI	02:21			
	02:00			TURNOVER by WILSON,AALIYAH
STEAL by SPOLYAR,KRISTEN	01:59			
GOOD! LAYUP by WEAVER,MICHELLE [FB/PNT]	01:54	15-6	H 9	
ASSIST by SPOLYAR,KRISTEN	01:54			
	01:36			TURNOVER by COSPER,DEVIN
STEAL by SPOLYAR,KRISTEN	01:36			
SUB IN: SHELTON,SYDNEY	01:36			
SUB OUT: BAILEY,ALEXA	01:36			
MISSED 3PTR by BREY,SHAE	01:20			
	01:20			REBOUND (DEF) by WILSON,AALIYAH
	01:10	17-6	H 11	GOOD! JUMPER by SWENSON,KEIRYN
	01:10			ASSIST by MONK,MALICA
	00:51			FOUL by WILSON,AALIYAH
SUB IN: SCHICKEL,TORI	00:51			
SUB OUT: BREY,SHAE	00:51			
GOOD! LAYUP by SCHICKEL,TORI [PNT]	00:45	17-8	H 9	
	00:22			MISSED 3PTR by WILSON,AALIYAH
	00:22			REBOUND (OFF) by WILLIAMS,KIARA
	00:04	19-8	H 11	GOOD! JUMPER by MONK,MALICA [PNT]

Butler 8, ARKANSAS 19

Period 1-only	In Paint	Off T/O	2nd Chance	Fast Break	Bench	
BU	8	2	0	2	4	Score tied - 0 times
AR	10	5	2	4	2	Lead changed - 0 times

**Butler vs ARKANSAS**  
**12/7/2016; 7:02 p.m. at Fayetteville, Ark. (Bud Walton Arena)**  
**Period 2 Play-By-Play**

VISITORS: Butler	Time	Score	Margin	HOME: ARKANSAS
SUB IN: HODGES,KAELA	10:00			
SUB OUT: BREY,SHAE	10:00			
	10:00			SUB IN: WILLIAMS,KIARA
	10:00			SUB IN: COSPER,DEVIN
	10:00			SUB IN: SWENSON,KEIRYN
	10:00			SUB IN: WILSON,AALIYAH
	10:00			SUB OUT: JACKSON,JESSICA
	10:00			SUB OUT: MONK,MALICA
	10:00			SUB OUT: ZIMMERMAN,BAILEY
	10:00			SUB OUT: COOLEY,ALECIA
MISSED JUMPER by SPOLYAR,KRISTEN	09:31			
REBOUND (OFF) by SCHICKEL,TORI	09:31			
	09:31			FOUL by WILSON,AALIYAH
MISSED FT by SCHICKEL,TORI	09:31			
REBOUND (DEADB) by TEAM	09:31			
GOOD! FT by SCHICKEL,TORI	09:31	19-9	H 10	
	09:31			SUB IN: ZIMMERMAN,BAILEY
	09:31			SUB OUT: WILSON,AALIYAH
	09:15	21-9	H 12	GOOD! JUMPER by COSPER,DEVIN
	09:15			ASSIST by ZIMMERMAN,BAILEY
FOUL by SCHICKEL,TORI	08:57			
TURNOVER by SCHICKEL,TORI	08:57			
	08:57			SUB IN: JACKSON,JESSICA
	08:57			SUB OUT: WILLIAMS,KIARA
	08:45	23-9	H 14	GOOD! JUMPER by SWENSON,KEIRYN
	08:45			ASSIST by MASON,JAILYN
TURNOVER by SCHICKEL,TORI	08:26			
	08:26			STEAL by COSPER,DEVIN
	08:20	25-9	H 16	GOOD! LAYUP by COSPER,DEVIN [FB/PNT]
SUB IN: WEAVER,MICHELLE	08:05			
SUB IN: WARD,BRITTANY	08:05			
SUB OUT: HODGES,KAELA	08:05			
SUB OUT: SHELTON,SYDNEY	08:05			
MISSED 3PTR by WEAVER,MICHELLE	07:48			
REBOUND (OFF) by WARD,BRITTANY	07:48			
MISSED JUMPER by SPOLYAR,KRISTEN	07:43			
	07:43			REBOUND (DEF) by SWENSON,KEIRYN
	07:33	28-9	H 19	GOOD! 3PTR by SWENSON,KEIRYN
	07:33			ASSIST by ZIMMERMAN,BAILEY
TURNOVER by WARD,BRITTANY	07:09			
	07:08			STEAL by COSPER,DEVIN
	07:04			TURNOVER by COSPER,DEVIN
STEAL by WEAVER,MICHELLE	07:04			
MISSED 3PTR by BAILEY,ALEXA	06:57			
	06:57			REBOUND (DEF) by SWENSON,KEIRYN
SUB IN: BUFORD,TAYLOR	06:49			
SUB OUT: SPOLYAR,KRISTEN	06:49			
	06:49			SUB IN: MONK,MALICA
	06:49			SUB OUT: COSPER,DEVIN
	06:40			TURNOVER by MASON,JAILYN
	06:29			FOUL by ZIMMERMAN,BAILEY
GOOD! FT by BUFORD,TAYLOR	06:29	28-10	H 18	
GOOD! FT by BUFORD,TAYLOR	06:29	28-11	H 17	
	06:03			MISSED JUMPER by MASON,JAILYN
REBOUND (DEF) by BAILEY,ALEXA	06:03			
GOOD! LAYUP by WARD,BRITTANY [PNT]	05:53	28-13	H 15	
	05:29			MISSED 3PTR by JACKSON,JESSICA
REBOUND (DEF) by BUFORD,TAYLOR	05:29			
TURNOVER by SCHICKEL,TORI	05:09			

VISITORS: Butler	Time	Score	Margin	HOME: ARKANSAS
	04:51			MISSED JUMPER by ZIMMERMAN,BAILEY
BLOCK by BUFORD,TAYLOR	04:51			
	04:49			REBOUND (OFF) by JACKSON,JESSICA
	04:48			MISSED JUMPER by JACKSON,JESSICA
REBOUND (DEF) by WEAVER,MICHELLE	04:48			
MISSED JUMPER by WARD,BRITTANY	04:38			
	04:38			REBOUND (DEF) by MASON,JAILYN
	04:18	30-13	H 17	GOOD! JUMPER by SWENSON,KEIRYN
	04:18			ASSIST by MONK,MALICA
	04:02			FOUL by ZIMMERMAN,BAILEY
TIMEOUT MEDIA	04:02			
MISSED FT by BUFORD,TAYLOR	04:02			
REBOUND (DEADB) by TEAM	04:02			
MISSED FT by BUFORD,TAYLOR	04:02			
	04:02			REBOUND (DEF) by JACKSON,JESSICA
SUB IN: BREY,SHAE	04:02			
SUB OUT: WARD,BRITTANY	04:02			
	04:02			SUB IN: COOLEY,ALECIA
	04:02			SUB OUT: SWENSON,KEIRYN
SUB IN: SHELTON,SYDNEY	03:52			
SUB OUT: BAILEY,ALEXA	03:52			
	03:52			SUB IN: SWENSON,KEIRYN
	03:52			SUB OUT: ZIMMERMAN,BAILEY
	03:46			FOUL by JACKSON,JESSICA
	03:46			TURNOVER by JACKSON,JESSICA
TURNOVER by BREY,SHAE	03:36			
	03:35			STEAL by JACKSON,JESSICA
FOUL by WEAVER,MICHELLE	03:31			
	03:31	31-13	H 18	GOOD! FT by MONK,MALICA
	03:31			MISSED FT by MONK,MALICA
REBOUND (DEF) by BREY,SHAE	03:31			
MISSED JUMPER by SHELTON,SYDNEY	03:03			
	03:03			REBOUND (DEF) by COOLEY,ALECIA
	02:46			TURNOVER by COOLEY,ALECIA
STEAL by WEAVER,MICHELLE	02:45			
GOOD! LAYUP by BREY,SHAE [FB/PNT]	02:37	31-15	H 16	
	02:24			TURNOVER by MASON,JAILYN
STEAL by SCHICKEL,TORI	02:23			
GOOD! 3PTR by BUFORD,TAYLOR	02:12	31-18	H 13	
ASSIST by SCHICKEL,TORI	02:12			
	01:51			TURNOVER by JACKSON,JESSICA
STEAL by SCHICKEL,TORI	01:49			
GOOD! 3PTR by BUFORD,TAYLOR	01:37	31-21	H 10	
ASSIST by BREY,SHAE	01:37			
	01:17			TURNOVER by JACKSON,JESSICA
SUB IN: SPOLYAR,KRISTEN	01:17			
SUB IN: WARD,BRITTANY	01:17			
SUB OUT: WEAVER,MICHELLE	01:17			
SUB OUT: BREY,SHAE	01:17			
MISSED JUMPER by WARD,BRITTANY	00:56			
REBOUND (OFF) by BUFORD,TAYLOR	00:56			
TURNOVER by BUFORD,TAYLOR	00:54			
SUB IN: HODGES,KAELA	00:54			
SUB OUT: SCHICKEL,TORI	00:54			
	00:42	34-21	H 13	GOOD! 3PTR by SWENSON,KEIRYN
	00:42			ASSIST by COOLEY,ALECIA
FOUL by WARD,BRITTANY	00:21			
TURNOVER by WARD,BRITTANY	00:21			
SUB IN: BAILEY,ALEXA	00:21			
SUB OUT: SHELTON,SYDNEY	00:21			
	00:01			TURNOVER by SWENSON,KEIRYN
STEAL by BUFORD,TAYLOR	00:01			

<b>Period 2-only</b>	<b>In Paint</b>	<b>Off T/O</b>	<b>2nd Chance</b>	<b>Fast Break</b>	<b>Bench</b>	
BU	4	10	1	2	10	Score tied - 0 times
AR	2	8	0	2	14	Lead changed - 0 times



**Official Basketball Box Score -- Game Totals -- Second Half Statistics**  
**Butler vs ARKANSAS**  
**12/7/2016 7:02 p.m. at Fayetteville, Ark. (Bud Walton Arena)**

**Butler 29 • 2-6**

##	Player		Total		3-Ptr	FT-FTA	Rebounds			PF	TP	A	TO	Blk	Stl	Min
			FG-FGA	FG-FGA	FG-FGA		Off	Def	Tot							
22	BAILEY,ALEXA	g	0-0	0-0	0-0	0-0	0	2	2	1	0	1	0	0	0	12
23	BREY,SHAE	f	0-1	0-0	0-0	0-0	0	0	0	1	0	1	1	0	0	7
24	SPLYAR,KRISTEN	g	3-6	1-1	1-2	1-2	0	1	1	2	8	2	1	1	1	15
30	SHELTON,SYDNEY	g	0-2	0-0	0-0	0-0	0	1	1	3	0	1	2	0	0	12
34	SCHICKEL,TORI	f	5-6	0-0	1-2	1-2	3	1	4	2	11	0	0	0	2	12
02	HODGES,KAELA		0-1	0-0	0-0	0-0	0	0	0	1	0	0	0	0	1	5
03	WARD,BRITTANY		1-2	0-1	1-2	1-2	0	0	0	1	3	0	2	1	0	9
04	BUFORD,TAYLOR		1-3	1-2	0-0	0-0	0	1	1	1	3	1	0	0	1	12
11	WEAVER,MICHELLE		1-4	0-0	2-3	2-3	0	3	3	0	4	1	1	0	0	16
14	HUMPHREY,SARAH		0-0	0-0	0-0	0-0	0	0	0	0	0	0	0	0	0	0
TEAM							1	0	1	0		1				
Totals			11-25	2-4	5-9	5-9	4	9	13	12	29	7	8	2	5	100
FG %	3rd Qtr	6-13	46.2%	4th Qtr	5-12	41.7%	Half:	11-25	44.0%							
3FG %	3rd Qtr	0-0	0%	4th Qtr	2-4	50.0%	Half:	2-4	40.0%							
FT %	3rd Qtr	4-6	66.7%	4th Qtr	1-3	33.3%	Half:	5-9	55.6%							

**ARKANSAS 34 • 8-0**

##	Player		Total		3-Ptr	FT-FTA	Rebounds			PF	TP	A	TO	Blk	Stl	Min
			FG-FGA	FG-FGA	FG-FGA		Off	Def	Tot							
00	JACKSON,JESSICA	f	3-5	0-1	7-8	7-8	4	2	6	1	13	1	2	1	2	14
03	MONK,MALICA	g	1-4	0-0	2-2	2-2	0	1	1	3	4	1	1	0	1	18
14	MASON,JAILYN	g	0-3	0-0	0-0	0-0	2	3	5	0	0	2	1	0	0	17
22	ZIMMERMAN,BAILEY	f	0-1	0-1	1-4	1-4	1	1	2	1	1	0	0	0	0	12
35	COOLEY,ALECIA	c	1-2	0-0	0-0	0-0	1	0	1	1	2	2	0	0	0	5
02	WILSON,AALIYAH		0-1	0-1	0-0	0-0	0	0	0	0	0	0	0	0	0	3
04	SWENSON,KEIRYN		1-2	1-1	0-0	0-0	0	1	1	0	3	0	0	2	1	10
10	WILLIAMS,KIARA		1-1	0-0	0-0	0-0	0	2	2	2	2	0	1	0	0	6
21	COSPER,DEVIN		3-7	1-1	2-4	2-4	0	2	2	0	9	0	1	0	0	15
TEAM							0	0	0	0		0				
Totals			10-26	2-5	12-18	12-18	8	12	20	8	34	6	6	3	4	100
FG %	3rd Qtr	7-15	46.7%	4th Qtr	3-11	27.3%	Half:	10-26	38.5%							
3FG %	3rd Qtr	2-4	50.0%	4th Qtr	0-1	00.0%	Half:	2-5	57.1%							
FT %	3rd Qtr	6-8	75.0%	4th Qtr	6-10	60.0%	Half:	12-18	66.7%							

Officials: Bryan Enterline, Susan Blauch, Jennifer Rezac  
 Technical Fouls: Butler- None. ARKANSAS- None.  
 Estimated Actual Attendance: 530

Score by periods	1st	2nd	3rd	4th	Total
Butler	8	13	16	13	50
ARKANSAS	19	15	22	12	68

Points	In	Off	2nd	Fast	Bench
	Paint	T/O	Chance	Break	
BU	14	3	3	2	10
	14	8	5	2	14

Last FG - BU 4th-03:38, AR 4th-01:52.  
 BU led for 0:00. AR led for 20:00. Game was tied for 0:00.

Score tied - 0 times  
 Lead changed - 0 times

**Butler vs ARKANSAS**  
**12/7/2016; 7:02 p.m. at Fayetteville, Ark. (Bud Walton Arena)**  
**Period 3 Play-By-Play**

VISITORS: Butler	Time	Score	Margin	HOME: ARKANSAS
SUB IN: WEAVER,MICHELLE	10:00			
SUB IN: WARD,BRITTANY	10:00			
SUB OUT: BREY,SHAE	10:00			
SUB OUT: SHELTON,SYDNEY	10:00			
GOOD! JUMPER by SPOLYAR,KRISTEN	09:44	34-23	H 11	
	09:23			MISSED JUMPER by MASON,JAILYN
REBOUND (DEF) by BAILEY,ALEXA	09:23			
GOOD! JUMPER by SCHICKEL,TORI	09:12	34-25	H 9	
ASSIST by SPOLYAR,KRISTEN	09:12			
FOUL by SCHICKEL,TORI	08:49			
	08:49			MISSED FT by ZIMMERMAN,BAILEY
	08:49			REBOUND (DEADB) by TEAM
	08:49	35-25	H 10	GOOD! FT by ZIMMERMAN,BAILEY
	08:32			FOUL by JACKSON,JESSICA
MISSED FT by SPOLYAR,KRISTEN	08:32			
REBOUND (DEADB) by TEAM	08:32			
GOOD! FT by SPOLYAR,KRISTEN	08:32	35-26	H 9	
	08:12			MISSED JUMPER by MASON,JAILYN
	08:12			REBOUND (OFF) by JACKSON,JESSICA
FOUL by BAILEY,ALEXA	08:07			
	08:01			MISSED JUMPER by COOLEY,ALECIA
	08:01			REBOUND (OFF) by JACKSON,JESSICA
FOUL by WARD,BRITTANY	07:57			
	07:57	36-26	H 10	GOOD! FT by JACKSON,JESSICA
	07:57			MISSED FT by JACKSON,JESSICA
REBOUND (DEADB) by TEAM	07:57			
	07:56			FOUL by ZIMMERMAN,BAILEY
	07:56			SUB IN: WILSON,AALIYAH
	07:56			SUB OUT: ZIMMERMAN,BAILEY
GOOD! LAYUP by SPOLYAR,KRISTEN [FB/PNT]	07:52	36-28	H 8	
ASSIST by BAILEY,ALEXA	07:52			
	07:34	38-28	H 10	GOOD! JUMPER by MONK,MALICA
	07:34			ASSIST by COOLEY,ALECIA
TURNOVER by WARD,BRITTANY	07:06			
	07:05			STEAL by JACKSON,JESSICA
	07:00			MISSED 3PTR by WILSON,AALIYAH
	07:00			REBOUND (OFF) by COOLEY,ALECIA
	06:54	40-28	H 12	GOOD! LAYUP by JACKSON,JESSICA [PNT]
	06:54			ASSIST by COOLEY,ALECIA
MISSED JUMPER by SPOLYAR,KRISTEN	06:31			
	06:31			REBOUND (DEF) by MONK,MALICA
FOUL by SPOLYAR,KRISTEN	06:26			
SUB IN: BREY,SHAE	06:26			
SUB OUT: WARD,BRITTANY	06:26			
	06:23			MISSED JUMPER by JACKSON,JESSICA
	06:23			REBOUND (OFF) by JACKSON,JESSICA
	06:02	42-28	H 14	GOOD! LAYUP by COOLEY,ALECIA [PNT]
TURNOVER by BREY,SHAE	05:41			
SUB IN: SHELTON,SYDNEY	05:41			
SUB OUT: BAILEY,ALEXA	05:41			
FOUL by BREY,SHAE	05:21			
	05:21	43-28	H 15	GOOD! FT by JACKSON,JESSICA
	05:21	44-28	H 16	GOOD! FT by JACKSON,JESSICA
GOOD! LAYUP by WEAVER,MICHELLE [PNT]	05:07	44-30	H 14	
ASSIST by BREY,SHAE	05:07			
	05:06			FOUL by MONK,MALICA
GOOD! FT by WEAVER,MICHELLE	05:06	44-31	H 13	
	04:52			TURNOVER by JACKSON,JESSICA
STEAL by SCHICKEL,TORI	04:51			

VISITORS: Butler	Time	Score	Margin	HOME: ARKANSAS
MISSED JUMPER by WEAVER,MICHELLE	04:37			
REBOUND (OFF) by SCHICKEL,TORI	04:37			
GOOD! LAYUP by SCHICKEL,TORI [PNT]	04:37	44-33	H 11	
	04:36			FOUL by COOLEY,ALECIA
TIMEOUT media	04:36			
GOOD! FT by SCHICKEL,TORI	04:36	44-34	H 10	
	04:36			SUB IN: SWENSON,KEIRYN
	04:36			SUB IN: COSPER,DEVIN
	04:36			SUB OUT: WILSON,AALIYAH
	04:36			SUB OUT: COOLEY,ALECIA
	04:26			MISSED 3PTR by JACKSON,JESSICA
REBOUND (DEF) by SHELTON,SYDNEY	04:26			
GOOD! LAYUP by SCHICKEL,TORI [PNT]	04:09	44-36	H 8	
ASSIST by WEAVER,MICHELLE	04:09			
	03:49	46-36	H 10	GOOD! LAYUP by JACKSON,JESSICA [PNT]
	03:49			ASSIST by MASON,JAILYN
MISSED JUMPER by BREY,SHAE	03:31			
	03:31			BLOCK by SWENSON,KEIRYN
	03:30			REBOUND (DEF) by SWENSON,KEIRYN
	03:11			MISSED JUMPER by COSPER,DEVIN
REBOUND (DEF) by WEAVER,MICHELLE	03:11			
MISSED JUMPER by WEAVER,MICHELLE	02:55			
REBOUND (OFF) by SCHICKEL,TORI	02:55			
MISSED JUMPER by SCHICKEL,TORI	02:53			
	02:53			REBOUND (DEF) by MASON,JAILYN
	02:45	49-36	H 13	GOOD! 3PTR by SWENSON,KEIRYN
	02:45			ASSIST by MASON,JAILYN
MISSED JUMPER by SPOLYAR,KRISTEN	02:11			
REBOUND (OFF) by SCHICKEL,TORI	02:11			
TURNOVER by TEAM	02:09			
SUB IN: BUFORD,TAYLOR	02:09			
SUB IN: WARD,BRITTANY	02:09			
SUB IN: HODGES,KAELA	02:09			
SUB IN: BAILEY,ALEXA	02:09			
SUB OUT: WEAVER,MICHELLE	02:09			
SUB OUT: SPOLYAR,KRISTEN	02:09			
SUB OUT: BREY,SHAE	02:09			
SUB OUT: SCHICKEL,TORI	02:09			
	01:53			MISSED JUMPER by COSPER,DEVIN
	01:53			REBOUND (OFF) by JACKSON,JESSICA
	01:48			TURNOVER by JACKSON,JESSICA
STEAL by HODGES,KAELA	01:48			
TURNOVER by WARD,BRITTANY	01:38			
	01:36			STEAL by SWENSON,KEIRYN
	01:31	51-36	H 15	GOOD! LAYUP by COSPER,DEVIN [FB/PNT]
MISSED JUMPER by BUFORD,TAYLOR	01:15			
	01:15			REBOUND (DEF) by MASON,JAILYN
FOUL by SHELTON,SYDNEY	00:50			
	00:50	52-36	H 16	GOOD! FT by MONK,MALICA
	00:50	53-36	H 17	GOOD! FT by MONK,MALICA
SUB IN: WEAVER,MICHELLE	00:50			
SUB OUT: SHELTON,SYDNEY	00:50			
	00:50			SUB IN: WILLIAMS,KIARA
	00:50			SUB OUT: JACKSON,JESSICA
	00:30			FOUL by WILLIAMS,KIARA
MISSED FT by WARD,BRITTANY	00:30			
REBOUND (DEADB) by TEAM	00:30			
GOOD! FT by WARD,BRITTANY	00:30	53-37	H 16	
	00:02	56-37	H 19	GOOD! 3PTR by COSPER,DEVIN

Butler 50, ARKANSAS 68

	Period 3-only	In Paint	Off TO	2nd Chance	Fast Break	Bench	
BU	Period 3-only	8	6	5	2	8	Score tied - 0 times
AR							Lead changed - 0 times

**Butler vs ARKANSAS**  
**12/7/2016; 7:02 p.m. at Fayetteville, Ark. (Bud Walton Arena)**  
**Period 4 Play-By-Play**

VISITORS: Butler	Time	Score	Margin	HOME: ARKANSAS
SUB IN: BUFORD,TAYLOR	10:00			
SUB IN: WEAVER,MICHELLE	10:00			
SUB IN: HODGES,KAELA	10:00			
SUB IN: WARD,BRITTANY	10:00			
SUB OUT: BREY,SHAE	10:00			
SUB OUT: SPOLYAR,KRISTEN	10:00			
SUB OUT: SHELTON,SYDNEY	10:00			
SUB OUT: SCHICKEL,TORI	10:00			
	10:00			SUB IN: SWENSON,KEIRYN
	10:00			SUB IN: COSPER,DEVIN
	10:00			SUB IN: WILLIAMS,KIARA
	10:00			SUB OUT: JACKSON,JESSICA
	10:00			SUB OUT: MASON,JAILYN
	10:00			SUB OUT: COOLEY,ALECIA
	09:47			MISSED JUMPER by SWENSON,KEIRYN
BLOCK by WARD,BRITTANY	09:47			
REBOUND (DEF) by WEAVER,MICHELLE	09:45			
TURNOVER by WEAVER,MICHELLE	09:26			
	09:15			TURNOVER by COSPER,DEVIN
STEAL by BUFORD,TAYLOR	09:14			
MISSED 3PTR by WARD,BRITTANY	08:58			
	08:58			REBOUND (DEF) by ZIMMERMAN,BAILEY
	08:41			MISSED JUMPER by MONK,MALICA
REBOUND (DEF) by BAILEY,ALEXA	08:41			
MISSED JUMPER by HODGES,KAELA	08:23			
	08:23			BLOCK by SWENSON,KEIRYN
	08:20			REBOUND (DEF) by WILLIAMS,KIARA
	07:58	58-37	H 21	GOOD! LAYUP by WILLIAMS,KIARA [PNT]
GOOD! JUMPER by WARD,BRITTANY [PNT]	07:24	58-39	H 19	
FOUL by HODGES,KAELA	06:51			
	06:51	59-39	H 20	GOOD! FT by COSPER,DEVIN
	06:51	60-39	H 21	GOOD! FT by COSPER,DEVIN
SUB IN: SPOLYAR,KRISTEN	06:51			
SUB IN: SHELTON,SYDNEY	06:51			
SUB IN: SCHICKEL,TORI	06:51			
SUB OUT: BAILEY,ALEXA	06:51			
SUB OUT: HODGES,KAELA	06:51			
SUB OUT: WARD,BRITTANY	06:51			
	06:51			SUB IN: MASON,JAILYN
	06:51			SUB OUT: MONK,MALICA
GOOD! LAYUP by SCHICKEL,TORI [PNT]	06:27	60-41	H 19	
	06:27			FOUL by WILLIAMS,KIARA
MISSED FT by SCHICKEL,TORI	06:27			
	06:27			REBOUND (DEF) by WILLIAMS,KIARA
FOUL by SHELTON,SYDNEY	06:14			
FOUL by SPOLYAR,KRISTEN	06:13			
	06:13			MISSED FT by COSPER,DEVIN
	06:13			REBOUND (DEADB) by TEAM
	06:13			MISSED FT by COSPER,DEVIN
REBOUND (DEF) by BUFORD,TAYLOR	06:13			
GOOD! 3PTR by SPOLYAR,KRISTEN	06:01	60-44	H 16	
ASSIST by BUFORD,TAYLOR	06:01			
	05:46			TURNOVER by WILLIAMS,KIARA
STEAL by SPOLYAR,KRISTEN	05:46			
MISSED JUMPER by SHELTON,SYDNEY	05:37			
	05:37			REBOUND (DEF) by MASON,JAILYN
	05:18			MISSED 3PTR by ZIMMERMAN,BAILEY
REBOUND (DEF) by SCHICKEL,TORI	05:18			
MISSED JUMPER by SPOLYAR,KRISTEN	05:04			

VISITORS: Butler	Time	Score	Margin	HOME: ARKANSAS
REBOUND (OFF) by TEAM	05:04			
SUB IN: BAILEY,ALEXA	05:02			
SUB OUT: WEAVER,MICHELLE	05:02			
	05:02			SUB IN: JACKSON,JESSICA
	05:02			SUB IN: MONK,MALICA
	05:02			SUB OUT: MASON,JAILYN
	05:02			SUB OUT: WILLIAMS,KIARA
TURNOVER by SPOLYAR,KRISTEN	04:57			
	04:52			MISSED JUMPER by COSPER,DEVIN
	04:52			REBOUND (OFF) by ZIMMERMAN,BAILEY
FOUL by SHELTON,SYDNEY	04:51			
	04:51			TIMEOUT MEDIA
	04:51			MISSED FT by ZIMMERMAN,BAILEY
	04:51			REBOUND (DEADB) by TEAM
	04:51			MISSED FT by ZIMMERMAN,BAILEY
	04:51			REBOUND (OFF) by MASON,JAILYN
	04:51			SUB IN: MASON,JAILYN
	04:51			SUB OUT: SWENSON,KEIRYN
	04:21			MISSED JUMPER by MONK,MALICA
BLOCK by SPOLYAR,KRISTEN	04:21			
REBOUND (DEADB) by TEAM	04:21			
GOOD! LAYUP by SCHICKEL,TORI [PNT]	04:09	60-46	H 14	
ASSIST by SHELTON,SYDNEY	04:09			
	03:46			MISSED JUMPER by COSPER,DEVIN
REBOUND (DEF) by SPOLYAR,KRISTEN	03:46			
GOOD! 3PTR by BUFORD,TAYLOR	03:38	60-49	H 11	
ASSIST by SPOLYAR,KRISTEN	03:38			
FOUL by SCHICKEL,TORI	03:26			
	03:26	61-49	H 12	GOOD! FT by JACKSON,JESSICA
	03:26	62-49	H 13	GOOD! FT by JACKSON,JESSICA
MISSED JUMPER by SHELTON,SYDNEY	03:13			
	03:13			REBOUND (DEF) by COSPER,DEVIN
	03:04			TURNOVER by MASON,JAILYN
STEAL by SCHICKEL,TORI	03:03			
MISSED 3PTR by BUFORD,TAYLOR	02:53			
	02:53			REBOUND (DEF) by JACKSON,JESSICA
FOUL by BUFORD,TAYLOR	02:39			
	02:39	63-49	H 14	GOOD! FT by JACKSON,JESSICA
	02:39	64-49	H 15	GOOD! FT by JACKSON,JESSICA
SUB IN: WEAVER,MICHELLE	02:39			
SUB OUT: BAILEY,ALEXA	02:39			
TURNOVER by SHELTON,SYDNEY	02:30			
	02:30			STEAL by JACKSON,JESSICA
SUB IN: BREY,SHAE	02:30			
SUB OUT: SCHICKEL,TORI	02:30			
	02:12	66-49	H 17	GOOD! LAYUP by COSPER,DEVIN [PNT]
	02:12			ASSIST by JACKSON,JESSICA
	02:02			FOUL by MONK,MALICA
GOOD! FT by WEAVER,MICHELLE	02:02	66-50	H 16	
MISSED FT by WEAVER,MICHELLE	02:02			
	02:02			REBOUND (DEF) by COSPER,DEVIN
	01:52	68-50	H 18	GOOD! LAYUP by JACKSON,JESSICA [PNT]
	01:52			ASSIST by MONK,MALICA
MISSED JUMPER by WEAVER,MICHELLE	01:38			
	01:38			BLOCK by JACKSON,JESSICA
	01:37			REBOUND (DEF) by JACKSON,JESSICA
	01:09			TURNOVER by MONK,MALICA
TURNOVER by SHELTON,SYDNEY	01:05			
	01:04			STEAL by MONK,MALICA
	00:39			MISSED JUMPER by MASON,JAILYN
	00:39			REBOUND (OFF) by MASON,JAILYN
	00:08			MISSED JUMPER by MONK,MALICA
REBOUND (DEF) by WEAVER,MICHELLE	00:08			
	00:08			FOUL by MONK,MALICA

VISITORS: Butler	Time	Score	Margin	HOME: ARKANSAS
SUB IN: HUMPHREY,SARAH	00:08			
SUB IN: HODGES,KAELA	00:08			
SUB OUT: SPOLYAR,KRISTEN	00:08			
SUB OUT: WEAVER,MICHELLE	00:08			

Butler 50, ARKANSAS 68

Period 4-only	In Paint	Off T/O	2nd Chance	Fast Break	Bench	
BU	6	0	0	0	6	Score tied - 0 times
AR	6	2	0	0	6	Lead changed - 0 times

**Butler vs ARKANSAS**  
**12/7/2016; 7:02 p.m. at Fayetteville, Ark. (Bud Walton Arena)**  
**Scoring/Runs Reference**

Period 1

Butler	Score	Marg	ARKANSAS
	0-2	2 2	COOLEY LAYUP [P] - 08:48
	0-3	3 1	JACKSON FT - 06:46
	0-5	5 2	MONK LAYUP [P] [F] - 06:22
	0-8	8 3	JACKSON 3PTR - 05:49
	0-10	10 2	MONK LAYUP [P] [F] - 05:27
05:03 - WARD LAYUP [P]	2	2-10 8	
	2-13	11 3	ZIMMERMAN 3PTR - 04:41
04:11 - SCHICKEL LAYUP [P]	2	4-13 9	
	4-15	11 2	JACKSON JUMPER [P] - 03:47
01:54 - WEAVER LAYUP [P] [F]	2	6-15 9	
	6-17	11 2	SWENSON JUMPER - 01:10
00:45 - SCHICKEL LAYUP [P]	2	8-17 9	
	8-19	11 2	MONK JUMPER [P] - 00:04

Period 3

Butler	Score	Marg	ARKANSAS
09:44 - SPOLYAR JUMPER	2	23-34 11	
09:12 - SCHICKEL JUMPER	2	25-34 9	
	25-35	10 1	ZIMMERMAN FT - 08:49
08:32 - SPOLYAR FT	1	26-35 9	
	26-36	10 1	JACKSON FT - 07:57
07:52 - SPOLYAR LAYUP [P] [F]	2	28-36 8	
	28-38	10 2	MONK JUMPER - 07:34
	28-40	12 2	JACKSON LAYUP [P] - 06:54
	28-42	14 2	COOLEY LAYUP [P] - 06:02
	28-43	15 1	JACKSON FT - 05:21
	28-44	16 1	JACKSON FT - 05:21
05:07 - WEAVER LAYUP [P]	2	30-44 14	
05:06 - WEAVER FT	1	31-44 13	
04:37 - SCHICKEL LAYUP [P]	2	33-44 11	
04:36 - SCHICKEL FT	1	34-44 10	
04:09 - SCHICKEL LAYUP [P]	2	36-44 8	
	36-46	10 2	JACKSON LAYUP [P] - 03:49
	36-49	13 3	SWENSON 3PTR - 02:45
	36-51	15 2	COSPER LAYUP [P] [F] - 01:31
	36-52	16 1	MONK FT - 00:50
	36-53	17 1	MONK FT - 00:50
00:30 - WARD FT	1	37-53 16	
	37-56	19 3	COSPER 3PTR - 00:02

Period 2

Butler	Score	Marg	ARKANSAS
09:31 - SCHICKEL FT	1	9-19 10	
	9-21	12 2	COSPER JUMPER - 09:15
	9-23	14 2	SWENSON JUMPER - 08:45
	9-25	16 2	COSPER LAYUP [P] [F] - 08:20
	9-28	19 3	SWENSON 3PTR - 07:33
06:29 - BUFORD FT	1	10-28 18	
06:29 - BUFORD FT	1	11-28 17	
05:53 - WARD LAYUP [P]	2	13-28 15	
	13-30	17 2	SWENSON JUMPER - 04:18
	13-31	18 1	MONK FT - 03:31
02:37 - BREY LAYUP [P] [F]	2	15-31 16	
02:12 - BUFORD 3PTR	3	18-31 13	
01:37 - BUFORD 3PTR	3	21-31 10	
	21-34	13 3	SWENSON 3PTR - 00:42

Period 4

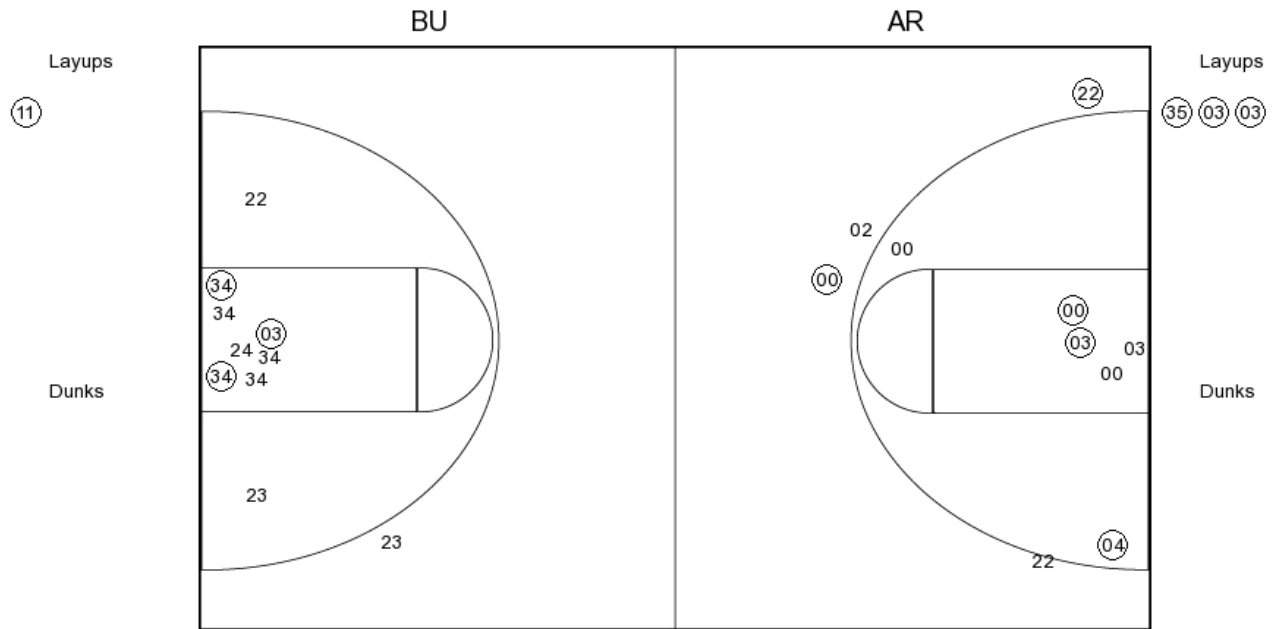
Butler	Score	Marg	ARKANSAS
	37-58	21 2	WILLIAMS LAYUP [P] - 07:58
07:24 - WARD JUMPER [P]	2	39-58 19	
	39-59	20 1	COSPER FT - 06:51
	39-60	21 1	COSPER FT - 06:51
06:27 - SCHICKEL LAYUP [P]	2	41-60 19	
06:01 - SPOLYAR 3PTR	3	44-60 16	
04:09 - SCHICKEL LAYUP [P]	2	46-60 14	
03:38 - BUFORD 3PTR	3	49-60 11	
	49-61	12 1	JACKSON FT - 03:26
	49-62	13 1	JACKSON FT - 03:26
	49-63	14 1	JACKSON FT - 02:39
	49-64	15 1	JACKSON FT - 02:39
	49-66	17 2	COSPER LAYUP [P] - 02:12
02:02 - WEAVER FT	1	50-66 16	
	50-68	18 2	JACKSON LAYUP [P] - 01:52



**Butler vs ARKANSAS**  
**OFFICIAL SHOT CHART**

12/7/2016 at Fayetteville, Ark. (Bud Walton Arena)

**PERIOD 1**



**BU PERIOD 1**

FG Made	8
FG Attempted	22
3PFG Made	2
3PFG Attempted	5

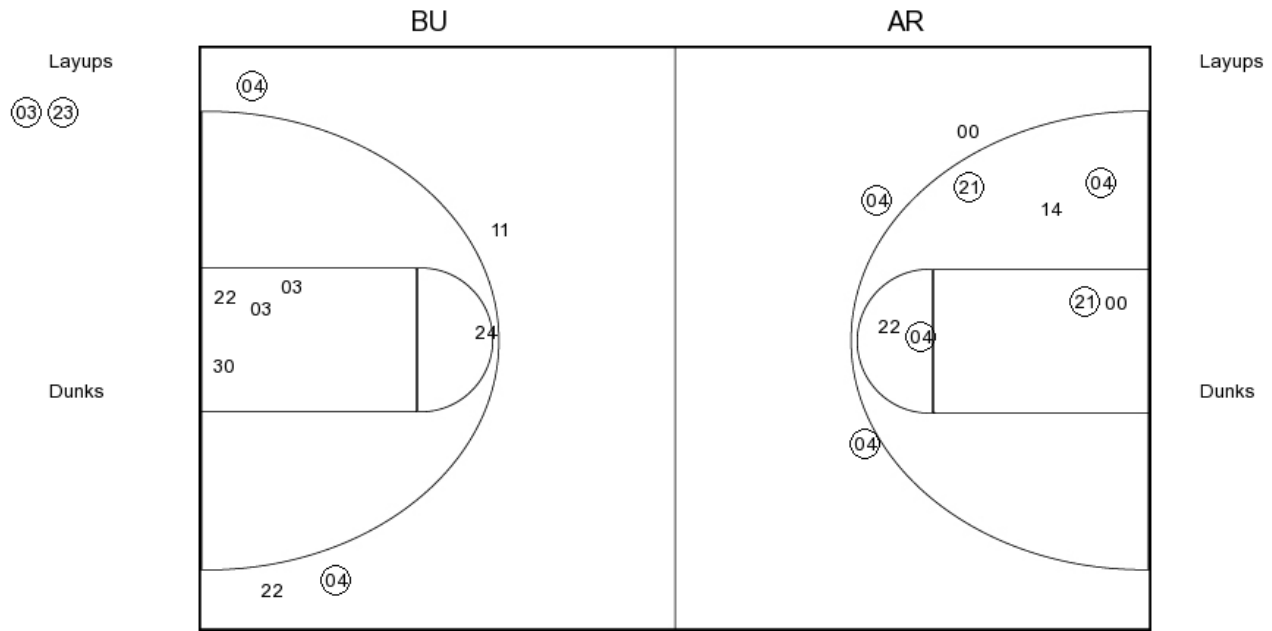
**AR PERIOD 1**

FG Made	14
FG Attempted	23
3PFG Made	4
3PFG Attempted	7

**Butler vs ARKANSAS  
OFFICIAL SHOT CHART**

12/7/2016 at Fayetteville, Ark. (Bud Walton Arena)

**PERIOD 2**



**BU PERIOD 2**

FG Made  
FG Attempted  
3PFG Made  
3PFG Attempted

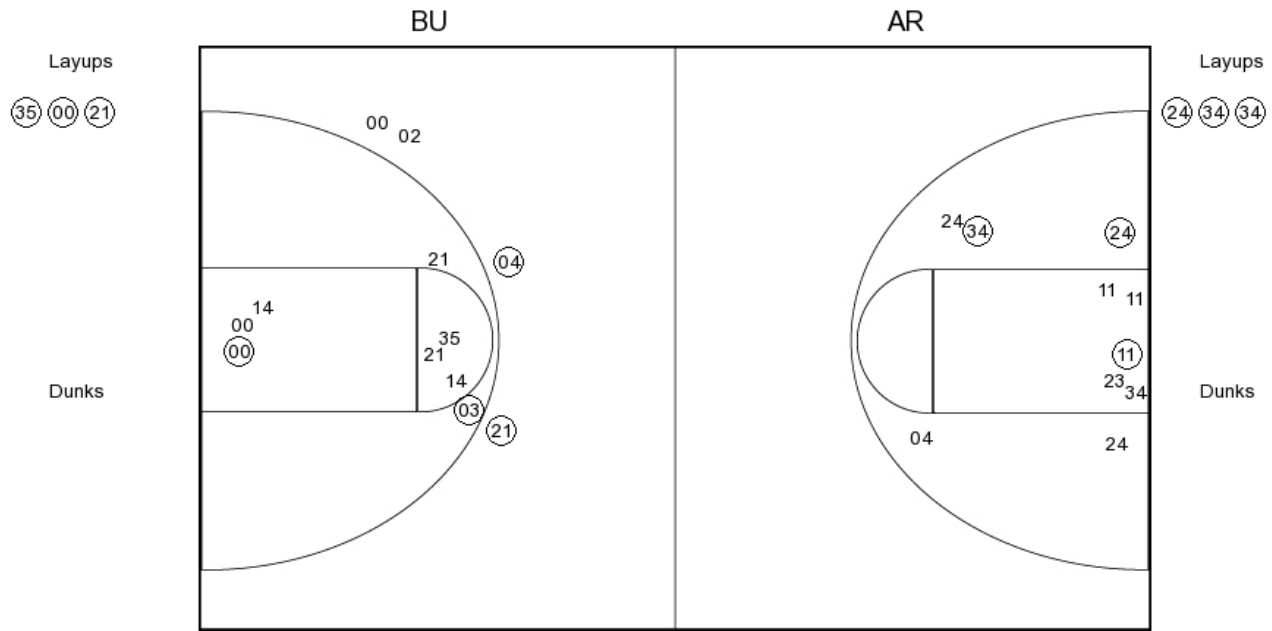
**AR PERIOD 2**

FG Made  
FG Attempted  
3PFG Made  
3PFG Attempted

**Butler vs ARKANSAS**  
**OFFICIAL SHOT CHART**

12/7/2016 at Fayetteville, Ark. (Bud Walton Arena)

**PERIOD 3**



**BU PERIOD 3**

FG Made	11
FG Attempted	25
3PFG Made	2
3PFG Attempted	4

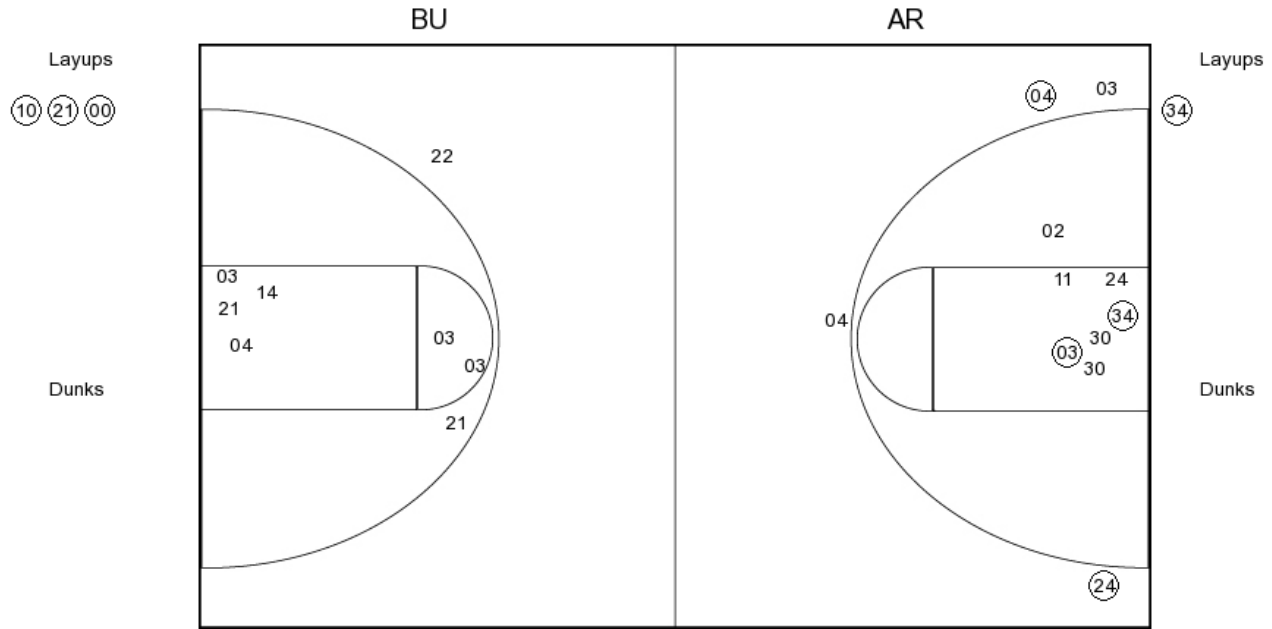
**AR PERIOD 3**

FG Made	10
FG Attempted	26
3PFG Made	2
3PFG Attempted	5

**Butler vs ARKANSAS**  
**OFFICIAL SHOT CHART**

12/7/2016 at Fayetteville, Ark. (Bud Walton Arena)

**PERIOD 4**



**BU PERIOD 4**

FG Made  
 FG Attempted  
 3PFG Made  
 3PFG Attempted

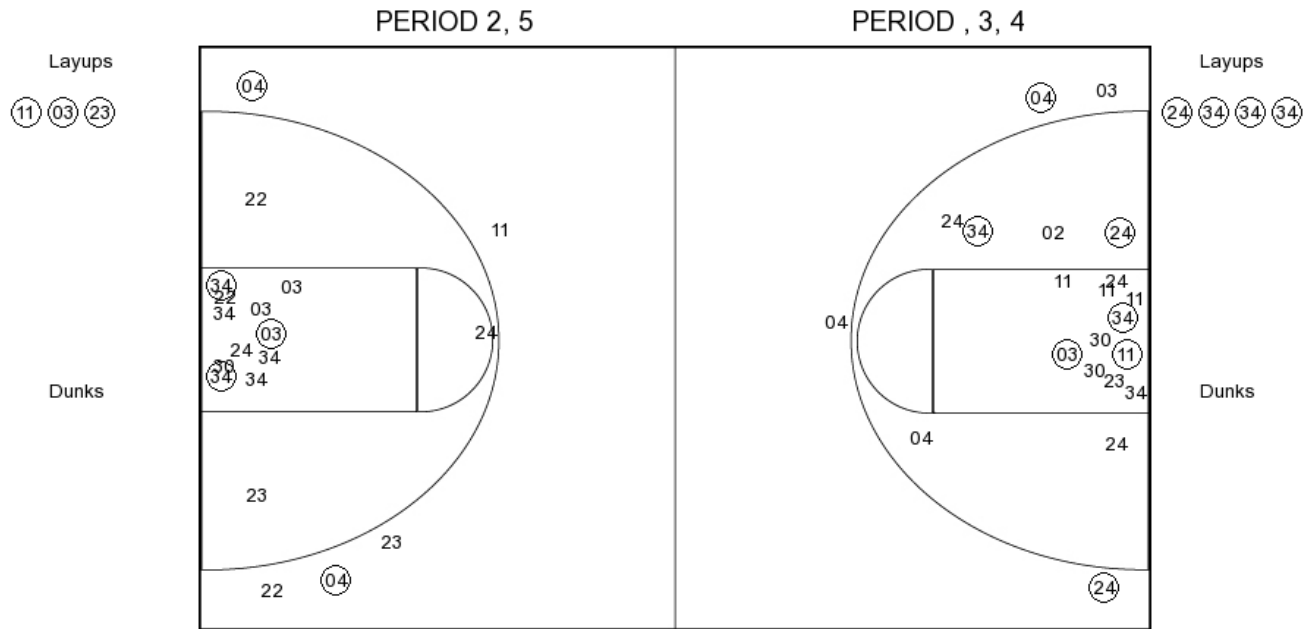
**AR PERIOD 4**

FG Made  
 FG Attempted  
 3PFG Made  
 3PFG Attempted

**Butler vs ARKANSAS**  
**OFFICIAL SHOT CHART**

12/7/2016 at Fayetteville, Ark. (Bud Walton Arena)

**Butler**



**BU PERIOD 1**

FG Made	8
FG Attempted	22
3PFG Made	2
3PFG Attempted	5

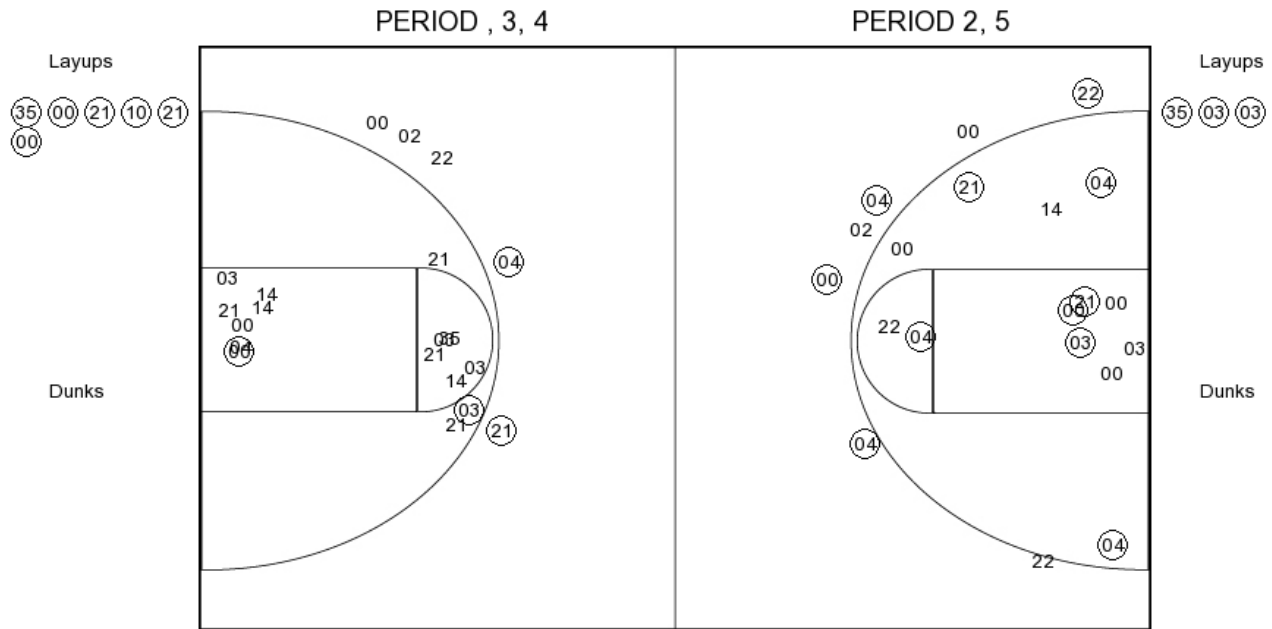
**BU PERIOD 2**

FG Made	
FG Attempted	
3PFG Made	
3PFG Attempted	

**Butler vs ARKANSAS**  
**OFFICIAL SHOT CHART**

12/7/2016 at Fayetteville, Ark. (Bud Walton Arena)

**ARKANSAS**



**AR PERIOD 1**

FG Made	14
FG Attempted	23
3PFG Made	4
3PFG Attempted	7

**AR PERIOD 2**

FG Made	
FG Attempted	
3PFG Made	
3PFG Attempted	