

# ARKANSAS VS. STETSON



11/21/2016  
Fayetteville, Ark. (Bud Walton Arena)

## FINAL STATS

**ARKANSAS**  
*(4-0)*

**79**

**Stetson**  
*(4-1)*

**62**

*Start Time: 7 p.m.*  
*Officials: Tina Napier, Beverly Roberts, Dawn Marsh*  
*Attendance: 1179*

Estimated Actual Attendance: 733

# Official Basketball Box Score -- Game Totals -- Final Statistics

## Stetson vs ARKANSAS

11/21/2016 7 p.m. at Fayetteville, Ark. (Bud Walton Arena)

### Stetson 62 - 4-1

##	Player	f	g	Total FG-FGA	3-Ptr FG-FGA	FT-FTA	Rebounds			PF	TP	A	TO	Blk	Stl	Min
							Off	Def	Tot							
01	SAGERER,SARAH	f		2-7	1-3	1-2	0	3	3	3	6	0	1	1	0	27
10	SAUNDERS,BRIANTI	g		5-14	3-8	4-4	0	1	1	3	17	0	2	0	2	33
21	JOHNSON-MATTHEWS,M	g		1-3	0-0	0-0	0	2	2	2	2	2	1	0	0	31
23	BEY,BREANA	f		6-12	0-1	2-2	1	4	5	4	14	1	1	0	0	29
30	CHAMBERS,BRITTNEY	g		4-11	0-5	1-1	0	2	2	1	9	1	0	0	3	26
02	BEACH,MCKENNA			1-5	0-2	3-4	0	3	3	1	5	5	1	0	0	22
04	MCMILLAN,JOHANNA			1-2	1-2	0-0	0	0	0	1	3	0	0	0	0	16
15	BEAL,DEASIA			1-1	0-0	0-0	0	0	0	0	2	0	0	0	0	4
24	COLCLOUGH,KENNEDI			2-2	0-0	0-0	0	2	2	3	4	0	0	0	0	12
TEAM							1	1	2	0		1				
TOTALS				23-57	5-21	11-13	2	18	20	18	62	9	7	1	5	200

Deadball Rebounds: 1,1

FG %	1st Half: 10-27 37.0%	2nd Half: 13-30 43.3%	Game: 23-57 40.4%
1st Qtr	6-15 40.0%	4-12 33.3%	3rd Qtr 6-15 40.0%
3FG %	1st Half: 1-9 11.1%	2nd Half: 4-12 33.3%	Game: 5-21 23.8%
1st Qtr	0-5 00.0%	2nd Qtr 1-4 25.0%	3rd Qtr 3-5 60.0%
FT %	1st Half: 8-10 80.0%	2nd Half: 3-3 100.0%	Game: 11-13 84.6%
1st Qtr	3-4 75.0%	2nd Qtr 5-6 83.3%	3rd Qtr 0-0 0%

### ARKANSAS 79 - 4-0

##	Player	f	g	Total FG-FGA	3-Ptr FG-FGA	FT-FTA	Rebounds			PF	TP	A	TO	Blk	Stl	Min
							Off	Def	Tot							
00	JACKSON,JESSICA	f		7-16	2-5	3-4	3	4	7	3	19	2	0	1	0	35
03	MONK,MALICA	g		6-10	0-1	6-6	0	3	3	2	18	4	3	0	1	36
14	MASON,JAILYN	g		5-10	1-1	0-1	1	5	6	1	11	2	0	0	0	31
22	ZIMMERMAN,BAILEY	f		2-4	1-3	0-0	0	4	4	1	5	1	2	0	0	24
35	COOLEY,ALECIA	c		1-3	0-0	5-6	3	6	9	3	7	3	4	0	1	24
02	WILSON,AALIYAH			1-4	1-1	0-0	1	2	3	0	3	2	1	0	0	7
04	SWENSON,KEIRYN			3-5	2-2	1-2	1	1	2	2	9	0	1	0	1	20
10	WILLIAMS,KIARA			0-0	0-0	0-0	0	0	0	0	0	0	0	0	0	0
21	COSPER,DEVIN			0-2	0-2	0-0	0	0	0	0	0	1	0	0	0	9
24	DANBERRY,JORDAN			3-6	0-0	1-2	2	6	8	3	7	1	1	0	0	14
TEAM							3	0	3	0		0				
TOTALS				28-60	7-15	16-21	14	31	45	15	79	16	12	1	3	200

Deadball Rebounds: 4,2

FG %	1st Half: 15-31 48.4%	2nd Half: 13-29 44.8%	Game: 28-60 46.7%
1st Qtr	7-17 41.2%	2nd Qtr 8-14 57.1%	3rd Qtr 6-15 40.0%
3FG %	1st Half: 7-11 63.6%	2nd Half: 0-4 00.0%	Game: 7-15 46.7%
1st Qtr	3-6 50.0%	2nd Qtr 4-5 80.0%	3rd Qtr 0-2 00.0%
FT %	1st Half: 8-10 80.0%	2nd Half: 8-11 72.7%	Game: 16-21 76.2%
1st Qtr	3-4 75.0%	2nd Qtr 5-6 83.3%	3rd Qtr 1-2 50.0%

Officials: Tina Napier, Beverly Roberts, Dawn Marsh

Technical Fouls: Stetson- None. ARKANSAS- None.

Attendance: 1179

Estimated Actual Attendance: 733

Score by periods	1st	2nd	3rd	4th	Total
Stetson	15	14	15	18	62
ARKANSAS	20	25	13	21	79

Points	In Paint	Off T/O	2nd Chance	Fast Break	Bench
STET	30	14	2	6	14
AR	30	2	2	6	19

Last FG - STET 4th-00:58, AR 4th-00:22.

Largest lead - Stetson by ; ARKANSAS by 18 3rd-09:15

STET led for 0:00. AR led for 39:23. Game was tied for 0:37.

Score tied - 0 times

Lead changed - 0 times

# Official Basketball Box Score -- Game Totals -- First Half Statistics

## Stetson vs ARKANSAS

11/21/2016 7 p.m. at Fayetteville, Ark. (Bud Walton Arena)

### Stetson 29 • 4-1

##	Player	f	Total FG-FGA	3-Ptr FG-FGA	FT-FTA	Rebounds			PF	TP	A	TO	Blk	Stl	Min
						Off	Def	Tot							
01	SAGERER,SARAH	f	1-2	0-0	1-2	0	1	1	2	3	0	0	0	0	14
10	SAUNDERS,BRIANTI	g	0-5	0-3	2-2	0	0	0	2	2	0	1	0	1	14
21	JOHNSON-MATTHEWS,M	g	1-2	0-0	0-0	0	1	1	1	2	0	1	0	0	13
23	BEY,BREANA	f	2-4	0-1	2-2	1	2	3	1	6	0	0	0	0	13
30	CHAMBERS,BRITTNEY	g	2-7	0-3	0-0	0	1	1	0	4	1	0	0	2	13
02	BEACH,MCKENNA		1-4	0-1	3-4	0	1	1	1	5	4	1	0	0	15
04	MCMILLAN,JOHANNA		1-1	1-1	0-0	0	0	0	0	3	0	0	0	0	8
15	BEAL,DEASIA		1-1	0-0	0-0	0	0	0	0	2	0	0	0	0	4
24	COLCLOUGH,KENNEDI		1-1	0-0	0-0	0	1	1	2	2	0	0	0	0	6
TEAM						0	1	1	0		0				
Totals			10-27	1-9	8-10	1	8	9	9	29	5	3	0	3	100

FG % 1st Qtr 6-15 40.0% 2nd Qtr 4-12 33.3% Half: 10-27 37.0%  
 3FG % 1st Qtr 0-5 00.0% 2nd Qtr 1-4 25.0% Half: 1-9 11.1%  
 FT % 1st Qtr 3-4 75.0% 2nd Qtr 5-6 83.3% Half: 8-10 80.0%

### ARKANSAS 45 • 4-0

##	Player	f	Total FG-FGA	3-Ptr FG-FGA	FT-FTA	Rebounds			PF	TP	A	TO	Blk	Stl	Min
						Off	Def	Tot							
00	JACKSON,JESSICA	f	4-9	2-3	1-2	2	0	2	1	11	0	0	0	0	15
03	MONK,MALICA	g	1-4	0-0	4-4	0	3	3	1	6	3	2	0	1	19
14	MASON,JAILYN	g	3-6	1-1	0-0	0	3	3	0	7	2	0	0	0	16
22	ZIMMERMAN,BAILEY	f	2-3	1-2	0-0	0	4	4	0	5	0	1	0	0	14
35	COOLEY,ALECIA	c	1-2	0-0	3-4	2	4	6	2	5	2	3	0	1	17
02	WILSON,AALIYAH		1-2	1-1	0-0	0	1	1	0	3	1	0	0	0	4
04	SWENSON,KEIRYN		2-2	2-2	0-0	0	0	0	2	6	0	0	0	0	7
10	WILLIAMS,KIARA		0-0	0-0	0-0	0	0	0	0	0	0	0	0	0	0
21	COSPER,DEVIN		0-2	0-2	0-0	0	0	0	0	0	1	0	0	0	4
24	DANBERRY,JORDAN		1-1	0-0	0-0	0	1	1	1	2	0	0	0	0	4
TEAM						3	0	3	0		0				
Totals			15-31	7-11	8-10	7	16	23	7	45	9	6	0	2	100

FG % 1st Qtr 7-17 41.2% 2nd Qtr 8-14 57.1% Half: 15-31 48.4%  
 3FG % 1st Qtr 3-6 50.0% 2nd Qtr 4-5 80.0% Half: 7-11 63.6%  
 FT % 1st Qtr 3-4 75.0% 2nd Qtr 5-6 83.3% Half: 8-10 80.0%

Officials: Tina Napier, Beverly Roberts, Dawn Marsh  
 Technical Fouls: Stetson- None. ARKANSAS- None.  
 Estimated Actual Attendance: 733

Score by periods	1st	2nd	3rd	4th	Total
Stetson	15	14	15	18	62
ARKANSAS	20	25	13	21	79

Points	In	Off	2nd	Fast	Bench
	Paint	T/O	Chance	Break	
STET	14	4	2	2	12
	10	2	8	2	11

Last FG - STET 2nd-04:12, AR 2nd-00:51.  
 STET led for 0:00. AR led for 19:23. Game was tied for 0:37.

Score tied - 0 times  
 Lead changed - 0 times

**Stetson vs ARKANSAS**  
**11/21/2016; 7 p.m. at Fayetteville, Ark. (Bud Walton Arena)**  
**Period 1 Play-By-Play**

VISITORS: Stetson	Time	Score	Margin	HOME: ARKANSAS
	09:45			TURNOVER by COOLEY,ALECIA
STEAL by CHAMBERS,BRITTNEY	09:44			
MISSED 3PTR by CHAMBERS,BRITTNEY	09:38			
	09:38			REBOUND (DEF) by COOLEY,ALECIA
	09:29			MISSED JUMPER by JACKSON,JESSICA
	09:29			REBOUND (OFF) by TEAM
	09:23	3-0	H 3	GOOD! 3PTR by JACKSON,JESSICA
	09:23			ASSIST by MASON,JAILYN
GOOD! JUMPER by SAGERER,SARAH [PNT]	08:49	3-2	H 1	
	08:32			MISSED JUMPER by MASON,JAILYN
	08:32			REBOUND (OFF) by TEAM
	08:25			MISSED LAYUP by COOLEY,ALECIA
REBOUND (DEF) by CHAMBERS,BRITTNEY	08:25			
TURNOVER by JOHNSON-MATTHEWS,MYK	08:18			
	08:17			STEAL by MONK,MALICA
	08:14			TURNOVER by MONK,MALICA
STEAL by CHAMBERS,BRITTNEY	08:14			
TURNOVER by SAUNDERS,BRIANTI	08:11			
	08:10			STEAL by COOLEY,ALECIA
FOUL by BEY,BREANA	08:04			
	08:04	4-2	H 2	GOOD! FT by MONK,MALICA
	08:04	5-2	H 3	GOOD! FT by MONK,MALICA
MISSED 3PTR by CHAMBERS,BRITTNEY	08:01			
	08:01			REBOUND (DEF) by MONK,MALICA
FOUL by SAUNDERS,BRIANTI	07:52			
	07:46			MISSED JUMPER by MONK,MALICA
REBOUND (DEF) by TEAM	07:46			
MISSED 3PTR by SAUNDERS,BRIANTI	07:28			
	07:28			REBOUND (DEF) by ZIMMERMAN,BAILEY
FOUL by JOHNSON-MATTHEWS,MYK	07:24			
	07:12			MISSED JUMPER by MASON,JAILYN
REBOUND (DEF) by BEY,BREANA	07:12			
MISSED 3PTR by BEY,BREANA	06:54			
	06:54			REBOUND (DEF) by ZIMMERMAN,BAILEY
	06:44			TURNOVER by ZIMMERMAN,BAILEY
STEAL by SAUNDERS,BRIANTI	06:43			
GOOD! LAYUP by JOHNSON-MATTHEWS,MYK [PNT]	06:31	5-4	H 1	
ASSIST by CHAMBERS,BRITTNEY	06:31			
FOUL by SAUNDERS,BRIANTI	06:20			
SUB IN: BEAL,DEASIA	06:20			
SUB IN: BEACH,MCKENNA	06:20			
SUB OUT: SAUNDERS,BRIANTI	06:20			
SUB OUT: BEY,BREANA	06:20			
	06:17	7-4	H 3	GOOD! LAYUP by JACKSON,JESSICA [PNT]
	06:17			ASSIST by MASON,JAILYN
MISSED JUMPER by SAGERER,SARAH	05:56			
	05:56			REBOUND (DEF) by COOLEY,ALECIA
	05:35			MISSED 3PTR by ZIMMERMAN,BAILEY
REBOUND (DEF) by JOHNSON-MATTHEWS,MYK	05:35			
MISSED 3PTR by BEACH,MCKENNA	05:24			
	05:24			REBOUND (DEF) by ZIMMERMAN,BAILEY
	05:12	9-4	H 5	GOOD! LAYUP by JACKSON,JESSICA [PNT]
	05:12			ASSIST by MONK,MALICA
MISSED JUMPER by BEACH,MCKENNA	04:44			
	04:44			REBOUND (DEF) by MASON,JAILYN
	04:35	12-4	H 8	GOOD! 3PTR by JACKSON,JESSICA
	04:35			ASSIST by COOLEY,ALECIA
TIMEOUT 30SEC	04:32			
	04:32			SUB IN: DANBERRY,JORDAN

VISITORS: Stetson	Time	Score	Margin	HOME: ARKANSAS
	04:32			SUB IN: SWENSON,KEIRYN
	04:32			SUB IN: COSPER,DEVIN
	04:32			SUB OUT: JACKSON,JESSICA
	04:32			SUB OUT: MONK,MALICA
	04:32			SUB OUT: MASON,JAILYN
GOOD! LAYUP by CHAMBERS,BRITTNEY [PNT]	04:14	12-6	H 6	
ASSIST by BEACH,MCKENNA	04:14			
FOUL by SAGERER,SARAH	03:55			
	03:55			MISSED FT by COOLEY,ALECIA
	03:55			REBOUND (DEADB) by TEAM
	03:55	13-6	H 7	GOOD! FT by COOLEY,ALECIA
	03:55			FOUL by DANBERRY,JORDAN
	03:40			FOUL by SWENSON,KEIRYN
GOOD! FT by BEACH,MCKENNA	03:40	13-7	H 6	
GOOD! FT by BEACH,MCKENNA	03:40	13-8	H 5	
	03:27			TURNOVER by COOLEY,ALECIA
	03:27			SUB IN: MONK,MALICA
	03:27			SUB IN: JACKSON,JESSICA
	03:27			SUB OUT: ZIMMERMAN,BAILEY
	03:27			SUB OUT: COOLEY,ALECIA
GOOD! JUMPER by BEAL,DEASIA	03:06	13-10	H 3	
	02:46	15-10	H 5	GOOD! LAYUP by DANBERRY,JORDAN [PNT]
SUB IN: BEY,BREANA	02:45			
SUB OUT: BEAL,DEASIA	02:45			
MISSED LAYUP by JOHNSON-MATTHEWS,MYK	02:22			
REBOUND (OFF) by BEY,BREANA	02:22			
GOOD! LAYUP by BEY,BREANA [PNT]	02:19	15-12	H 3	
	01:56	18-12	H 6	GOOD! 3PTR by SWENSON,KEIRYN
	01:56			ASSIST by COSPER,DEVIN
GOOD! LAYUP by CHAMBERS,BRITTNEY [PNT]	01:39	18-14	H 4	
	01:21			MISSED 3PTR by COSPER,DEVIN
	01:21			REBOUND (OFF) by JACKSON,JESSICA
	01:17			MISSED JUMPER by JACKSON,JESSICA
REBOUND (DEF) by SAGERER,SARAH	01:17			
MISSED JUMPER by CHAMBERS,BRITTNEY	00:56			
	00:56			REBOUND (DEF) by DANBERRY,JORDAN
	00:49			MISSED 3PTR by COSPER,DEVIN
	00:49			REBOUND (OFF) by TEAM
SUB IN: COLCLOUGH,KENNEDI	00:45			
SUB IN: MCMILLAN,JOHANNA	00:45			
SUB OUT: SAGERER,SARAH	00:45			
SUB OUT: CHAMBERS,BRITTNEY	00:45			
	00:45			SUB IN: WILSON,AALIYAH
	00:45			SUB IN: MASON,JAILYN
	00:45			SUB OUT: DANBERRY,JORDAN
	00:45			SUB OUT: COSPER,DEVIN
	00:37	20-14	H 6	GOOD! JUMPER by MASON,JAILYN
	00:37			ASSIST by WILSON,AALIYAH
	00:14			FOUL by SWENSON,KEIRYN
GOOD! FT by BEACH,MCKENNA	00:14	20-15	H 5	
MISSED FT by BEACH,MCKENNA	00:14			
	00:14			REBOUND (DEF) by WILSON,AALIYAH
	00:14			SUB IN: ZIMMERMAN,BAILEY
	00:14			SUB OUT: SWENSON,KEIRYN
	00:02			MISSED JUMPER by WILSON,AALIYAH
REBOUND (DEADB) by TEAM	00:02			
	00:02			FOUL by JACKSON,JESSICA

Stetson 15, ARKANSAS 20

Period 1-only      In    Off    2nd    Fast  
Paint    T/O    Chance    Break    Bench

<b>Period 1-only</b>	<b>In Paint</b>	<b>Off T/O</b>	<b>2nd Chance</b>	<b>Fast Break</b>	<b>Bench</b>	
STET	10	4	2	0	5	Score tied - 0 times
AR	6	2	5	0	5	Lead changed - 0 times

**Stetson vs ARKANSAS**  
**11/21/2016; 7 p.m. at Fayetteville, Ark. (Bud Walton Arena)**  
**Period 2 Play-By-Play**

VISITORS: Stetson	Time	Score	Margin	HOME: ARKANSAS
SUB IN: MCMILLAN,JOHANNA	10:00			
SUB IN: BEACH,MCKENNA	10:00			
SUB IN: COLCLOUGH,KENNEDI	10:00			
SUB OUT: SAGERER,SARAH	10:00			
SUB OUT: JOHNSON-MATTHEWS,MYK	10:00			
SUB OUT: CHAMBERS,BRITTNEY	10:00			
	10:00			SUB IN: WILSON,AALIYAH
	10:00			SUB OUT: ZIMMERMAN,BAILEY
	09:42	23-15	H 8	GOOD! 3PTR by MASON,JAILYN
	09:42			ASSIST by MONK,MALICA
GOOD! JUMPER by BEACH,MCKENNA	09:24	23-17	H 6	
	08:57			MISSED JUMPER by JACKSON,JESSICA
REBOUND (DEF) by COLCLOUGH,KENNEDI	08:57			
GOOD! 3PTR by MCMILLAN,JOHANNA	08:48	23-20	H 3	
ASSIST by BEACH,MCKENNA	08:48			
	08:24	26-20	H 6	GOOD! 3PTR by WILSON,AALIYAH
MISSED 3PTR by SAUNDERS,BRIANTI	08:05			
	08:05			REBOUND (DEF) by MASON,JAILYN
	07:55			MISSED 3PTR by JACKSON,JESSICA
REBOUND (DEF) by BEACH,MCKENNA	07:55			
GOOD! LAYUP by COLCLOUGH,KENNEDI [FB/PNT]	07:48	26-22	H 4	
ASSIST by BEACH,MCKENNA	07:48			
	07:30			MISSED JUMPER by MONK,MALICA
	07:29			REBOUND (OFF) by COOLEY,ALECIA
FOUL by COLCLOUGH,KENNEDI	07:28			
	07:28	27-22	H 5	GOOD! FT by COOLEY,ALECIA
	07:28	28-22	H 6	GOOD! FT by COOLEY,ALECIA
SUB IN: SAGERER,SARAH	07:28			
SUB IN: CHAMBERS,BRITTNEY	07:28			
SUB OUT: BEACH,MCKENNA	07:28			
SUB OUT: COLCLOUGH,KENNEDI	07:28			
	07:28			SUB IN: ZIMMERMAN,BAILEY
	07:28			SUB OUT: WILSON,AALIYAH
MISSED 3PTR by SAUNDERS,BRIANTI	07:02			
	06:57			REBOUND (DEF) by COOLEY,ALECIA
	06:31			MISSED JUMPER by MASON,JAILYN
REBOUND (DEF) by BEY,BREANA	06:31			
	06:04			SUB IN: SWENSON,KEIRYN
	06:04			SUB OUT: JACKSON,JESSICA
	06:00			FOUL by COOLEY,ALECIA
GOOD! FT by BEY,BREANA	06:00	28-23	H 5	
GOOD! FT by BEY,BREANA	06:00	28-24	H 4	
SUB IN: BEACH,MCKENNA	06:00			
SUB OUT: MCMILLAN,JOHANNA	06:00			
	05:44	31-24	H 7	GOOD! 3PTR by ZIMMERMAN,BAILEY
	05:44			ASSIST by COOLEY,ALECIA
MISSED JUMPER by BEY,BREANA	05:17			
	05:17			REBOUND (DEF) by COOLEY,ALECIA
	05:02	34-24	H 10	GOOD! 3PTR by SWENSON,KEIRYN
	05:01			ASSIST by MONK,MALICA
TIMEOUT 30SEC	04:59			
MISSED 3PTR by CHAMBERS,BRITTNEY	04:46			
	04:46			REBOUND (DEF) by MONK,MALICA
	04:39	36-24	H 12	GOOD! JUMPER by MASON,JAILYN [FB]
	04:39			ASSIST by MONK,MALICA
GOOD! LAYUP by BEY,BREANA [PNT]	04:12	36-26	H 10	
ASSIST by BEACH,MCKENNA	04:12			
	03:52	38-26	H 12	GOOD! LAYUP by ZIMMERMAN,BAILEY [PNT]
MISSED LAYUP by CHAMBERS,BRITTNEY	03:35			

VISITORS: Stetson	Time	Score	Margin	HOME: ARKANSAS
	03:35			REBOUND (DEF) by ZIMMERMAN,BAILEY
	03:08			MISSED JUMPER by MONK,MALICA
	03:08			REBOUND (OFF) by COOLEY,ALECIA
	03:05			TURNOVER by MONK,MALICA
SUB IN: MCMILLAN,JOHANNA	03:03			
SUB IN: COLCLOUGH,KENNEDI	03:03			
SUB IN: JOHNSON-MATTHEWS,MYK	03:03			
SUB OUT: SAGERER,SARAH	03:03			
SUB OUT: BEY,BREANA	03:03			
SUB OUT: CHAMBERS,BRITTNEY	03:03			
	03:03			SUB IN: JACKSON,JESSICA
	03:03			SUB OUT: SWENSON,KEIRYN
TURNOVER by BEACH,MCKENNA	02:51			
	02:36			TURNOVER by COOLEY,ALECIA
MISSED JUMPER by BEACH,MCKENNA	02:18			
	02:18			REBOUND (DEF) by MASON,JAILYN
	02:02			MISSED JUMPER by JACKSON,JESSICA
	02:02			REBOUND (OFF) by JACKSON,JESSICA
FOUL by COLCLOUGH,KENNEDI	02:01			
	02:01			MISSED FT by JACKSON,JESSICA
	02:01			REBOUND (DEADB) by TEAM
	02:01	39-26	H 13	GOOD! FT by JACKSON,JESSICA
	01:44			FOUL by MONK,MALICA
GOOD! FT by SAUNDERS,BRIANTI	01:44	39-27	H 12	
GOOD! FT by SAUNDERS,BRIANTI	01:44	39-28	H 11	
	01:28	41-28	H 13	GOOD! LAYUP by COOLEY,ALECIA [PNT]
MISSED JUMPER by SAUNDERS,BRIANTI	01:12			
	01:12			REBOUND (DEF) by MONK,MALICA
FOUL by BEACH,MCKENNA	00:56			
	00:51	43-28	H 15	GOOD! JUMPER by MONK,MALICA
	00:29			FOUL by COOLEY,ALECIA
MISSED FT by SAGERER,SARAH	00:29			
REBOUND (DEADB) by TEAM	00:29			
GOOD! FT by SAGERER,SARAH	00:29	43-29	H 14	
	00:29			SUB IN: WILLIAMS,KIARA
	00:29			SUB OUT: COOLEY,ALECIA
FOUL by SAGERER,SARAH	00:08			
	00:08	44-29	H 15	GOOD! FT by MONK,MALICA
	00:08	45-29	H 16	GOOD! FT by MONK,MALICA
SUB IN: BEY,BREANA	00:08			
SUB OUT: COLCLOUGH,KENNEDI	00:08			
MISSED JUMPER by SAUNDERS,BRIANTI	00:02			
	00:02			REBOUND (DEADB) by TEAM

Stetson 29, ARKANSAS 45

Period 2-only	In Paint	Off T/O	2nd Chance	Fast Break	Bench	
STET	4	0	0	2	7	Score tied - 0 times
AR	4	0	3	2	6	Lead changed - 0 times



**Official Basketball Box Score -- Game Totals -- Second Half Statistics**  
**Stetson vs ARKANSAS**  
**11/21/2016 7 p.m. at Fayetteville, Ark. (Bud Walton Arena)**

**Stetson 33 • 4-1**

##	Player		Total			Rebounds			PF	TP	A	TO	Blk	Stl	Min
			FG-FGA	3-Ptr FG-FGA	FT-FTA	Off	Def	Tot							
01	SAGERER,SARAH	f	1-5	1-3	0-0	0	2	2	1	3	0	1	1	0	13
10	SAUNDERS,BRIANTI	g	5-9	3-5	2-2	0	1	1	1	15	0	1	0	1	19
21	JOHNSON-MATTHEWS,M	g	0-1	0-0	0-0	0	1	1	1	0	2	0	0	0	18
23	BEY,BREANA	f	4-8	0-0	0-0	0	2	2	3	8	1	1	0	0	16
30	CHAMBERS,BRITTNEY	g	2-4	0-2	1-1	0	1	1	1	5	0	0	0	1	13
02	BEACH,MCKENNA		0-1	0-1	0-0	0	2	2	0	0	1	0	0	0	7
04	MCMILLAN,JOHANNA		0-1	0-1	0-0	0	0	0	1	0	0	0	0	0	8
15	BEAL,DEASIA		0-0	0-0	0-0	0	0	0	0	0	0	0	0	0	0
24	COLCLOUGH,KENNEDI		1-1	0-0	0-0	0	1	1	1	2	0	0	0	0	6
TEAM						1	0	1	0		1				
Totals			13-30	4-12	3-3	1	10	11	9	33	4	4	1	2	100

FG % 3rd Qtr 6-15 40.0% 4th Qtr 7-15 46.7% Half: 13-30 43.3%  
 3FG % 3rd Qtr 3-5 60.0% 4th Qtr 1-7 14.3% Half: 4-12 11.1%  
 FT % 3rd Qtr 0-0 0% 4th Qtr 3-3 100.0% Half: 3-3 100.0%

**ARKANSAS 34 • 4-0**

##	Player		Total			Rebounds			PF	TP	A	TO	Blk	Stl	Min
			FG-FGA	3-Ptr FG-FGA	FT-FTA	Off	Def	Tot							
00	JACKSON,JESSICA	f	3-7	0-2	2-2	1	4	5	2	8	2	0	1	0	20
03	MONK,MALICA	g	5-6	0-1	2-2	0	0	0	1	12	1	1	0	0	17
14	MASON,JAILYN	g	2-4	0-0	0-1	1	2	3	1	4	0	0	0	0	15
22	ZIMMERMAN,BAILEY	f	0-1	0-1	0-0	0	0	0	1	0	1	1	0	0	10
35	COOLEY,ALECIA	c	0-1	0-0	2-2	1	2	3	1	2	1	1	0	0	7
02	WILSON,AALIYAH		0-2	0-0	0-0	1	1	2	0	0	1	1	0	0	3
04	SWENSON,KEIRYN		1-3	0-0	1-2	1	1	2	0	3	0	1	0	1	13
10	WILLIAMS,KIARA		0-0	0-0	0-0	0	0	0	0	0	0	0	0	0	0
21	COSPER,DEVIN		0-0	0-0	0-0	0	0	0	0	0	0	0	0	0	5
24	DANBERRY,JORDAN		2-5	0-0	1-2	2	5	7	2	5	1	1	0	0	10
TEAM						0	0	0	0		0				
Totals			13-29	0-4	8-11	7	15	22	8	34	7	6	1	1	100

FG % 3rd Qtr 6-15 40.0% 4th Qtr 7-14 50.0% Half: 13-29 44.8%  
 3FG % 3rd Qtr 0-2 00.0% 4th Qtr 0-2 00.0% Half: 0-4 63.6%  
 FT % 3rd Qtr 1-2 50.0% 4th Qtr 7-9 77.8% Half: 8-11 72.7%

Officials: Tina Napier, Beverly Roberts, Dawn Marsh  
 Technical Fouls: Stetson- None. ARKANSAS- None.  
 Estimated Actual Attendance: 733

Score by periods	1st	2nd	3rd	4th	Total
Stetson	15	14	15	18	62
ARKANSAS	20	25	13	21	79

Points	In Paint	Off T/O	2nd Chance	Fast Break	Bench
STET	16	10	0	4	2
	20	0	6	4	8

Last FG - STET 4th-00:58, AR 4th-00:22.  
 STET led for 0:00. AR led for 20:00. Game was tied for 0:00.

Score tied - 0 times  
 Lead changed - 0 times

**Stetson vs ARKANSAS**  
**11/21/2016; 7 p.m. at Fayetteville, Ark. (Bud Walton Arena)**  
**Period 3 Play-By-Play**

VISITORS: Stetson	Time	Score	Margin	HOME: ARKANSAS
MISSED JUMPER by SAUNDERS,BRIANTI	09:51			
	09:51			BLOCK by JACKSON,JESSICA
	09:50			REBOUND (DEF) by JACKSON,JESSICA
FOUL by BEY,BREANA	09:33			
	09:15	47-29	H 18	GOOD! JUMPER by MONK,MALICA
GOOD! LAYUP by BEY,BREANA [PNT]	09:01	47-31	H 16	
	08:36			MISSED 3PTR by ZIMMERMAN,BAILEY
REBOUND (DEF) by JOHNSON-MATTHEWS,MYK	08:36			
GOOD! 3PTR by SAGERER,SARAH	08:27	47-34	H 13	
ASSIST by JOHNSON-MATTHEWS,MYK	08:27			
	08:01	49-34	H 15	GOOD! JUMPER by MASON,JAILYN
	07:48			FOUL by COOLEY,ALECIA
MISSED JUMPER by SAGERER,SARAH	07:45			
	07:45			REBOUND (DEF) by COOLEY,ALECIA
	07:36			FOUL by MONK,MALICA
	07:36			TURNOVER by WILSON,AALIYAH
	07:36			SUB IN: SWENSON,KEIRYN
	07:36			SUB OUT: COOLEY,ALECIA
GOOD! LAYUP by BEY,BREANA [PNT]	07:23	49-36	H 13	
	07:00	51-36	H 15	GOOD! LAYUP by JACKSON,JESSICA [PNT]
	07:00			ASSIST by ZIMMERMAN,BAILEY
GOOD! 3PTR by SAUNDERS,BRIANTI	06:42	51-39	H 12	
ASSIST by BEY,BREANA	06:42			
	06:21	53-39	H 14	GOOD! LAYUP by MONK,MALICA [PNT]
	06:21			ASSIST by JACKSON,JESSICA
	05:50			FOUL by JACKSON,JESSICA
MISSED LAYUP by BEY,BREANA	05:45			
	05:44			REBOUND (DEF) by SWENSON,KEIRYN
	05:38			TURNOVER by MONK,MALICA
STEAL by SAUNDERS,BRIANTI	05:38			
GOOD! LAYUP by SAUNDERS,BRIANTI [FB/PNT]	05:33	53-41	H 12	
FOUL by BEY,BREANA	05:16			
SUB IN: COLCLOUGH,KENNEDI	05:16			
SUB OUT: BEY,BREANA	05:16			
	05:13			TURNOVER by SWENSON,KEIRYN
MISSED LAYUP by JOHNSON-MATTHEWS,MYK	04:56			
REBOUND (OFF) by TEAM	04:56			
TIMEOUT media	04:51			
	04:51			SUB IN: WILSON,AALIYAH
	04:51			SUB IN: COSPER,DEVIN
	04:51			SUB IN: DANBERRY,JORDAN
	04:51			SUB OUT: MONK,MALICA
	04:51			SUB OUT: MASON,JAILYN
	04:51			SUB OUT: ZIMMERMAN,BAILEY
MISSED 3PTR by SAUNDERS,BRIANTI	04:38			
	04:38			REBOUND (DEF) by WILSON,AALIYAH
	04:28			MISSED JUMPER by WILSON,AALIYAH
REBOUND (DEF) by SAUNDERS,BRIANTI	04:28			
MISSED JUMPER by SAGERER,SARAH	04:17			
	04:17			REBOUND (DEF) by DANBERRY,JORDAN
	04:11			MISSED JUMPER by DANBERRY,JORDAN
	04:11			REBOUND (OFF) by DANBERRY,JORDAN
	04:08			MISSED JUMPER by DANBERRY,JORDAN
BLOCK by SAGERER,SARAH	04:08			
	04:07			REBOUND (OFF) by WILSON,AALIYAH
	04:03			MISSED 3PTR by JACKSON,JESSICA
	04:03			REBOUND (OFF) by SWENSON,KEIRYN
	04:00			MISSED JUMPER by SWENSON,KEIRYN
	04:00			REBOUND (OFF) by DANBERRY,JORDAN

VISITORS: Stetson	Time	Score	Margin	HOME: ARKANSAS
SUB IN: MCMILLAN,JOHANNA	03:57			
SUB OUT: CHAMBERS,BRITTNEY	03:57			
	03:50	55-41	H 14	GOOD! LAYUP by SWENSON,KEIRYN [PNT]
	03:46			ASSIST by WILSON,AALIYAH
MISSED 3PTR by MCMILLAN,JOHANNA	03:32			
	03:32			REBOUND (DEF) by DANBERRY,JORDAN
	03:23	57-41	H 16	GOOD! JUMPER by DANBERRY,JORDAN
TURNOVER by SAUNDERS,BRIANTI	02:55			
	02:44			MISSED JUMPER by WILSON,AALIYAH
REBOUND (DEF) by COLCLOUGH,KENNEDI	02:44			
TURNOVER by SAGERER,SARAH	02:36			
	02:35			STEAL by SWENSON,KEIRYN
	02:31			FOUL by DANBERRY,JORDAN
	02:31			TURNOVER by DANBERRY,JORDAN
SUB IN: BEY,BREANA	02:31			
SUB IN: BEACH,MCKENNA	02:31			
SUB OUT: SAGERER,SARAH	02:31			
SUB OUT: JOHNSON-MATTHEWS,MYK	02:31			
TURNOVER by TEAM	02:01			
	01:48			MISSED JUMPER by JACKSON,JESSICA
REBOUND (DEF) by BEACH,MCKENNA	01:48			
MISSED JUMPER by BEY,BREANA	01:37			
	01:37			REBOUND (DEF) by JACKSON,JESSICA
	01:25			TIMEOUT 30SEC
SUB IN: JOHNSON-MATTHEWS,MYK	01:25			
SUB OUT: COLCLOUGH,KENNEDI	01:25			
	01:25			SUB IN: MONK,MALICA
	01:25			SUB OUT: WILSON,AALIYAH
FOUL by MCMILLAN,JOHANNA	01:24			
	01:24			MISSED FT by SWENSON,KEIRYN
	01:24			REBOUND (DEADB) by TEAM
	01:24	58-41	H 17	GOOD! FT by SWENSON,KEIRYN
MISSED JUMPER by BEY,BREANA	00:53			
	00:53			REBOUND (DEADB) by TEAM
	00:37			MISSED JUMPER by DANBERRY,JORDAN
REBOUND (DEF) by BEY,BREANA	00:37			
GOOD! 3PTR by SAUNDERS,BRIANTI	00:09	58-44	H 14	
ASSIST by BEACH,MCKENNA	00:09			

Stetson 62, ARKANSAS 79

Period 3-only	In Paint	Off T/O	2nd Chance	Fast Break	Bench	
STET	6	4	0	2	0	Score tied - 0 times
AR	6	0	2	0	5	Lead changed - 0 times

**Stetson vs ARKANSAS**  
**11/21/2016; 7 p.m. at Fayetteville, Ark. (Bud Walton Arena)**  
**Period 4 Play-By-Play**

VISITORS: Stetson	Time	Score	Margin	HOME: ARKANSAS
SUB IN: BEACH,MCKENNA	10:00			
SUB IN: MCMILLAN,JOHANNA	10:00			
SUB OUT: SAGERER,SARAH	10:00			
SUB OUT: CHAMBERS,BRITTNEY	10:00			
MISSED JUMPER by SAUNDERS,BRIANTI	09:50			
	09:50			REBOUND (DEF) by COOLEY,ALECIA
	09:32			FOUL by ZIMMERMAN,BAILEY
	09:32			TURNOVER by ZIMMERMAN,BAILEY
GOOD! 3PTR by SAUNDERS,BRIANTI	09:22	58-47	H 11	
	08:57			MISSED JUMPER by MASON,JAILYN
	08:57			REBOUND (OFF) by JACKSON,JESSICA
FOUL by JOHNSON-MATTHEWS,MYK	08:52			
	08:52	59-47	H 12	GOOD! FT by JACKSON,JESSICA
	08:52	60-47	H 13	GOOD! FT by JACKSON,JESSICA
TURNOVER by BEY,BREANA	08:38			
	08:24			MISSED JUMPER by COOLEY,ALECIA
REBOUND (DEF) by BEACH,MCKENNA	08:24			
MISSED 3PTR by BEACH,MCKENNA	08:02			
	08:02			REBOUND (DEF) by JACKSON,JESSICA
	07:38	62-47	H 15	GOOD! LAYUP by JACKSON,JESSICA [PNT]
	07:38			ASSIST by MONK,MALICA
	07:16			FOUL by JACKSON,JESSICA
GOOD! FT by SAUNDERS,BRIANTI	07:16	62-48	H 14	
GOOD! FT by SAUNDERS,BRIANTI	07:16	62-49	H 13	
SUB IN: COLCLOUGH,KENNEDI	07:16			
SUB IN: CHAMBERS,BRITTNEY	07:16			
SUB OUT: BEACH,MCKENNA	07:16			
SUB OUT: MCMILLAN,JOHANNA	07:16			
	07:09	64-49	H 15	GOOD! LAYUP by JACKSON,JESSICA [PNT]
	07:09			ASSIST by COOLEY,ALECIA
TIMEOUT 30SEC	07:06			
MISSED 3PTR by CHAMBERS,BRITTNEY	06:53			
	06:53			REBOUND (DEF) by JACKSON,JESSICA
	06:35			MISSED JUMPER by JACKSON,JESSICA
REBOUND (DEF) by BEY,BREANA	06:35			
GOOD! JUMPER by COLCLOUGH,KENNEDI	06:23	64-51	H 13	
FOUL by COLCLOUGH,KENNEDI	06:04			
	06:04	65-51	H 14	GOOD! FT by COOLEY,ALECIA
	06:04	66-51	H 15	GOOD! FT by COOLEY,ALECIA
SUB IN: SAGERER,SARAH	06:04			
SUB OUT: COLCLOUGH,KENNEDI	06:04			
GOOD! LAYUP by SAUNDERS,BRIANTI [PNT]	05:34	66-53	H 13	
	05:09			MISSED 3PTR by JACKSON,JESSICA
	05:09			REBOUND (OFF) by COOLEY,ALECIA
	05:05			TURNOVER by COOLEY,ALECIA
STEAL by CHAMBERS,BRITTNEY	05:04			
GOOD! LAYUP by CHAMBERS,BRITTNEY [FB/PNT]	05:01	66-55	H 11	
	05:01			FOUL by MASON,JAILYN
GOOD! FT by CHAMBERS,BRITTNEY	05:01	66-56	H 10	
	05:01			SUB IN: DANBERRY,JORDAN
	05:01			SUB OUT: ZIMMERMAN,BAILEY
	04:45			SUB IN: SWENSON,KEIRYN
	04:45			SUB OUT: COOLEY,ALECIA
	04:38	68-56	H 12	GOOD! LAYUP by MONK,MALICA [PNT]
GOOD! JUMPER by BEY,BREANA [PNT]	04:23	68-58	H 10	
FOUL by SAUNDERS,BRIANTI	03:58			
	03:58	70-58	H 12	GOOD! JUMPER by MASON,JAILYN [PNT]
	03:58			ASSIST by JACKSON,JESSICA
	03:58			MISSED FT by MASON,JAILYN

VISITORS: Stetson	Time	Score	Margin	HOME: ARKANSAS
REBOUND (DEF) by SAGERER,SARAH	03:58			
MISSED 3PTR by SAGERER,SARAH	03:42			
	03:42			REBOUND (DEF) by MASON,JAILYN
	03:34			MISSED JUMPER by MASON,JAILYN
REBOUND (DEF) by CHAMBERS,BRITTNEY	03:34			
GOOD! JUMPER by BEY,BREANA [PNT]	03:09	70-60	H 10	
ASSIST by JOHNSON-MATTHEWS,MYK	03:09			
FOUL by SAGERER,SARAH	02:50			
	02:31			MISSED 3PTR by MONK,MALICA
	02:31			REBOUND (DEADB) by TEAM
FOUL by CHAMBERS,BRITTNEY	02:30			
	02:30	71-60	H 11	GOOD! FT by DANBERRY,JORDAN
	02:30			MISSED FT by DANBERRY,JORDAN
REBOUND (DEF) by SAGERER,SARAH	02:30			
MISSED 3PTR by CHAMBERS,BRITTNEY	02:25			
	02:25			REBOUND (DEF) by DANBERRY,JORDAN
	02:18	73-60	H 13	GOOD! LAYUP by MONK,MALICA [FB/PNT]
	02:18			ASSIST by DANBERRY,JORDAN
MISSED JUMPER by BEY,BREANA	01:52			
	01:52			REBOUND (DEF) by DANBERRY,JORDAN
FOUL by BEY,BREANA	01:44			
	01:44	74-60	H 14	GOOD! FT by MONK,MALICA
	01:44	75-60	H 15	GOOD! FT by MONK,MALICA
MISSED 3PTR by SAUNDERS,BRIANTI	01:31			
	01:31			REBOUND (DEF) by DANBERRY,JORDAN
	01:25	77-60	H 17	GOOD! LAYUP by DANBERRY,JORDAN [FB/PNT]
GOOD! LAYUP by CHAMBERS,BRITTNEY [PNT]	00:58	77-62	H 15	
SUB IN: MCMILLAN,JOHANNA	00:57			
SUB IN: COLCLOUGH,KENNEDI	00:57			
SUB IN: BEACH,MCKENNA	00:57			
SUB OUT: SAUNDERS,BRIANTI	00:57			
SUB OUT: JOHNSON-MATTHEWS,MYK	00:57			
SUB OUT: BEY,BREANA	00:57			
	00:49			MISSED LAYUP by SWENSON,KEIRYN
	00:49			REBOUND (OFF) by MASON,JAILYN
	00:22	79-62	H 17	GOOD! LAYUP by MONK,MALICA [PNT]
	00:08			FOUL by DANBERRY,JORDAN
MISSED 3PTR by SAGERER,SARAH	00:02			
	00:02			REBOUND (DEF) by MASON,JAILYN

Stetson 62, ARKANSAS 79

Period 4-only	In Paint	Off T/O	2nd Chance	Fast Break	Bench	
STET	10	6	0	2	2	Score tied - 0 times
AR	14	0	4	4	3	Lead changed - 0 times

**Stetson vs ARKANSAS**  
**11/21/2016; 7 p.m. at Fayetteville, Ark. (Bud Walton Arena)**  
**Scoring/Runs Reference**

Period 1

Stetson	Score	Marg	ARKANSAS
	0-3	3 3	JACKSON 3PTR - 09:23
08:49 - SAGERER JUMPER [P]	2	2-3 1	
	2-4	2 1	MONK FT - 08:04
	2-5	3 1	MONK FT - 08:04
06:31 - JOHNSON-MATTHEWS LAYUP [P]	2	4-5 1	
	4-7	3 2	JACKSON LAYUP [P] - 06:17
	4-9	5 2	JACKSON LAYUP [P] - 05:12
	4-12	8 3	JACKSON 3PTR - 04:35
04:14 - CHAMBERS LAYUP [P]	2	6-12 6	
	6-13	7 1	COOLEY FT - 03:55
03:40 - BEACH FT	1	7-13 6	
03:40 - BEACH FT	1	8-13 5	
03:06 - BEAL JUMPER	2	10-13 3	
	10-15	5 2	DANBERRY LAYUP [P] - 02:46
02:19 - BEY LAYUP [P]	2	12-15 3	
	12-18	6 3	SWENSON 3PTR - 01:56
01:39 - CHAMBERS LAYUP [P]	2	14-18 4	
	14-20	6 2	MASON JUMPER - 00:37
00:14 - BEACH FT	1	15-20 5	

Period 3

Stetson	Score	Marg	ARKANSAS
	29-47	18 2	MONK JUMPER - 09:15
09:01 - BEY LAYUP [P]	2	31-47 16	
08:27 - SAGERER 3PTR	3	34-47 13	
	34-49	15 2	MASON JUMPER - 08:01
07:23 - BEY LAYUP [P]	2	36-49 13	
	36-51	15 2	JACKSON LAYUP [P] - 07:00
06:42 - SAUNDERS 3PTR	3	39-51 12	
	39-53	14 2	MONK LAYUP [P] - 06:21
05:33 - SAUNDERS LAYUP [P] [F]	2	41-53 12	
	41-55	14 2	SWENSON LAYUP [P] - 03:50
	41-57	16 2	DANBERRY JUMPER - 03:23
	41-58	17 1	SWENSON FT - 01:24
00:09 - SAUNDERS 3PTR	3	44-58 14	

Period 2

Stetson	Score	Marg	ARKANSAS
	15-23	8 3	MASON 3PTR - 09:42
09:24 - BEACH JUMPER	2	17-23 6	
08:48 - MCMILLAN 3PTR	3	20-23 3	
	20-26	6 3	WILSON 3PTR - 08:24
07:48 - COLCLOUGH LAYUP [P] [F]	2	22-26 4	
	22-27	5 1	COOLEY FT - 07:28
	22-28	6 1	COOLEY FT - 07:28
06:00 - BEY FT	1	23-28 5	
06:00 - BEY FT	1	24-28 4	
	24-31	7 3	ZIMMERMAN 3PTR - 05:44
	24-34	10 3	SWENSON 3PTR - 05:02
	24-36	12 2	MASON JUMPER [F] - 04:39
04:12 - BEY LAYUP [P]	2	26-36 10	
	26-38	12 2	ZIMMERMAN LAYUP [P] - 03:52
	26-39	13 1	JACKSON FT - 02:01
01:44 - SAUNDERS FT	1	27-39 12	
01:44 - SAUNDERS FT	1	28-39 11	
	28-41	13 2	COOLEY LAYUP [P] - 01:28
	28-43	15 2	MONK JUMPER - 00:51
00:29 - SAGERER FT	1	29-43 14	
	29-44	15 1	MONK FT - 00:08
	29-45	16 1	MONK FT - 00:08

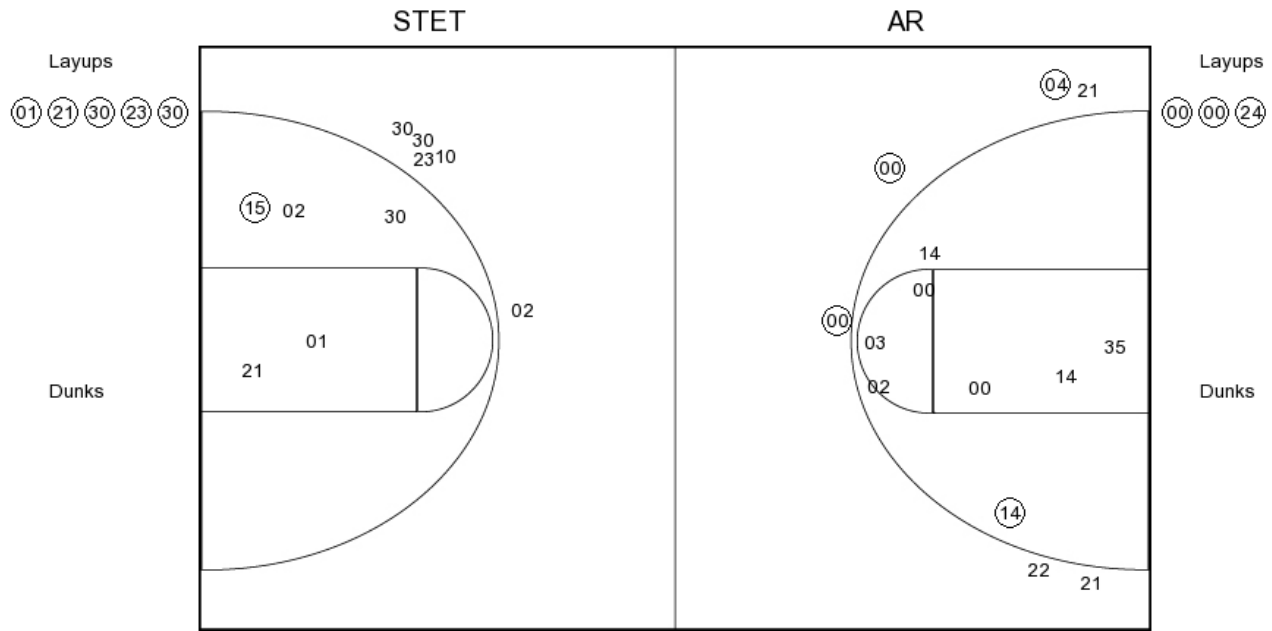
Period 4

Stetson	Score	Marg	ARKANSAS
09:22 - SAUNDERS 3PTR	3	47-58 11	
	47-59	12 1	JACKSON FT - 08:52
	47-60	13 1	JACKSON FT - 08:52
	47-62	15 2	JACKSON LAYUP [P] - 07:38
07:16 - SAUNDERS FT	1	48-62 14	
07:16 - SAUNDERS FT	1	49-62 13	
	49-64	15 2	JACKSON LAYUP [P] - 07:09
06:23 - COLCLOUGH JUMPER	2	51-64 13	
	51-65	14 1	COOLEY FT - 06:04
	51-66	15 1	COOLEY FT - 06:04
05:34 - SAUNDERS LAYUP [P]	2	53-66 13	
05:01 - CHAMBERS LAYUP [P] [F]	2	55-66 11	
05:01 - CHAMBERS FT	1	56-66 10	
	56-68	12 2	MONK LAYUP [P] - 04:38
04:23 - BEY JUMPER [P]	2	58-68 10	
	58-70	12 2	MASON JUMPER [P] - 03:58
03:09 - BEY JUMPER [P]	2	60-70 10	
	60-71	11 1	DANBERRY FT - 02:30
	60-73	13 2	MONK LAYUP [P] [F] - 02:18
	60-74	14 1	MONK FT - 01:44
	60-75	15 1	MONK FT - 01:44
	60-77	17 2	DANBERRY LAYUP [P] [F] - 01:25
00:58 - CHAMBERS LAYUP [P]	2	62-77 15	
	62-79	17 2	MONK LAYUP [P] - 00:22

**Stetson vs ARKANSAS**  
**OFFICIAL SHOT CHART**

11/21/2016 at Fayetteville, Ark. (Bud Walton Arena)

**PERIOD 1**



**STET PERIOD 1**

FG Made	10
FG Attempted	27
3PFG Made	1
3PFG Attempted	9

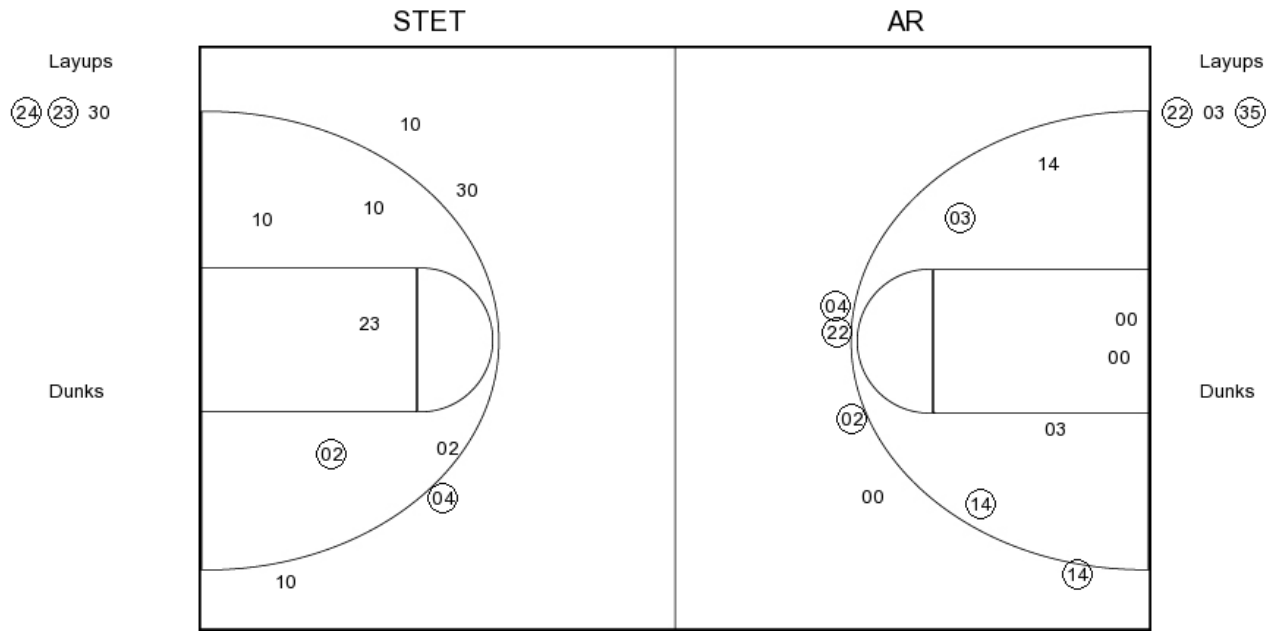
**AR PERIOD 1**

FG Made	15
FG Attempted	31
3PFG Made	7
3PFG Attempted	11

**Stetson vs ARKANSAS**  
**OFFICIAL SHOT CHART**

11/21/2016 at Fayetteville, Ark. (Bud Walton Arena)

**PERIOD 2**



**STET PERIOD 2**

FG Made  
 FG Attempted  
 3PFG Made  
 3PFG Attempted

**AR PERIOD 2**

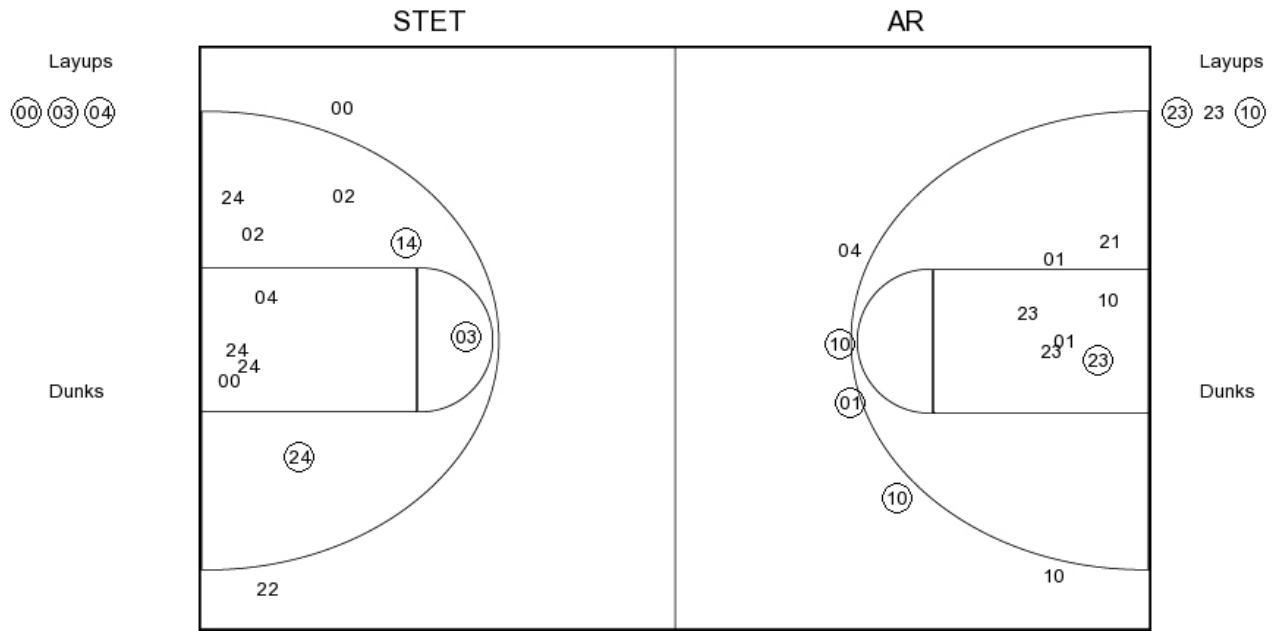
FG Made  
 FG Attempted  
 3PFG Made  
 3PFG Attempted



**Stetson vs ARKANSAS**  
**OFFICIAL SHOT CHART**

11/21/2016 at Fayetteville, Ark. (Bud Walton Arena)

**PERIOD 3**



**STET PERIOD 3**

FG Made	13
FG Attempted	30
3PFG Made	4
3PFG Attempted	12

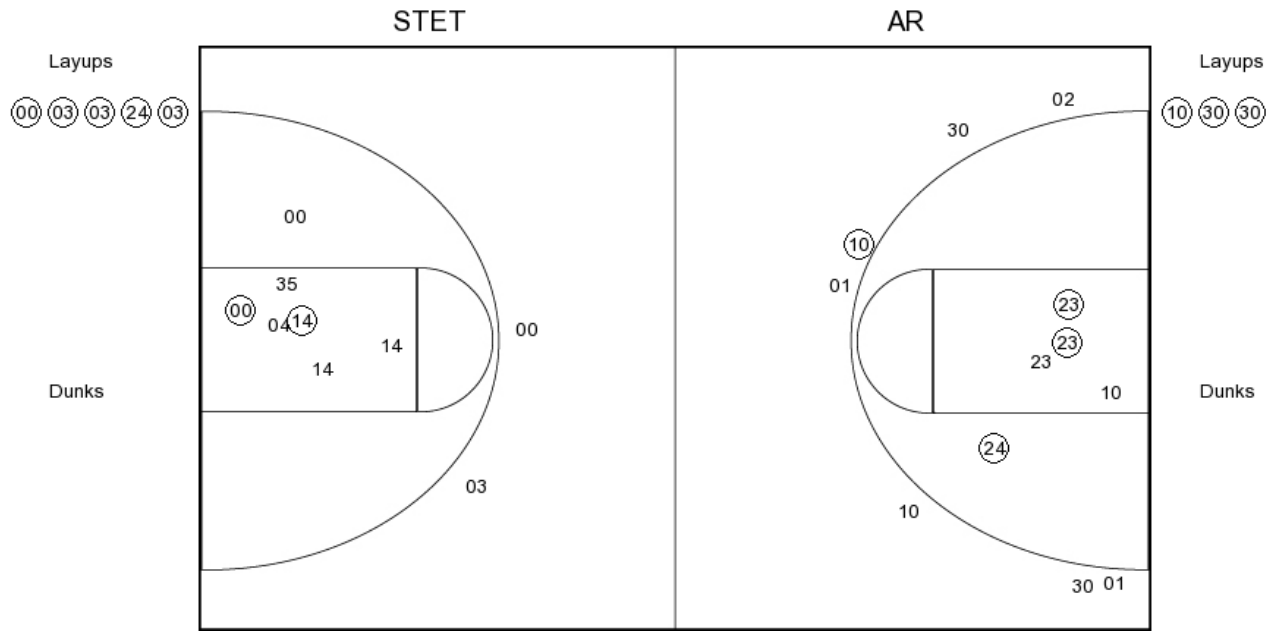
**AR PERIOD 3**

FG Made	13
FG Attempted	29
3PFG Made	0
3PFG Attempted	4

**Stetson vs ARKANSAS**  
**OFFICIAL SHOT CHART**

11/21/2016 at Fayetteville, Ark. (Bud Walton Arena)

**PERIOD 4**



**STET PERIOD 4**

FG Made  
 FG Attempted  
 3PFG Made  
 3PFG Attempted

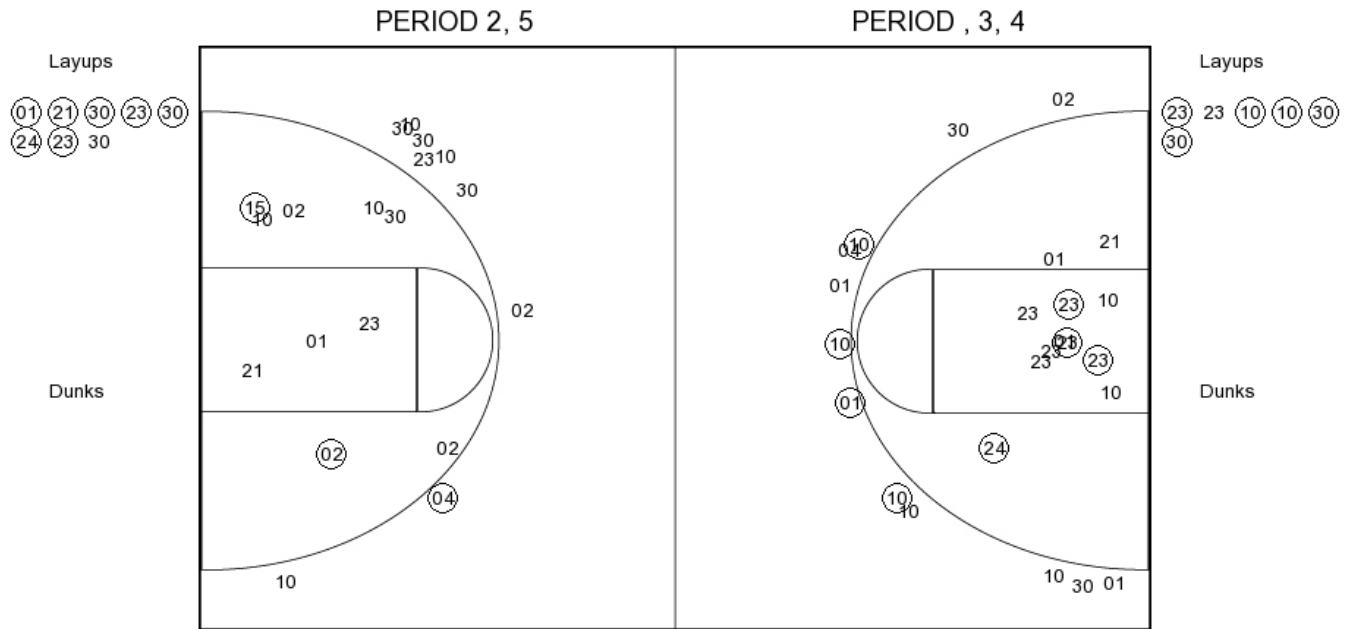
**AR PERIOD 4**

FG Made  
 FG Attempted  
 3PFG Made  
 3PFG Attempted

**Stetson vs ARKANSAS**  
**OFFICIAL SHOT CHART**

11/21/2016 at Fayetteville, Ark. (Bud Walton Arena)

**Stetson**



**STET PERIOD 1**

FG Made	10
FG Attempted	27
3PFG Made	1
3PFG Attempted	9

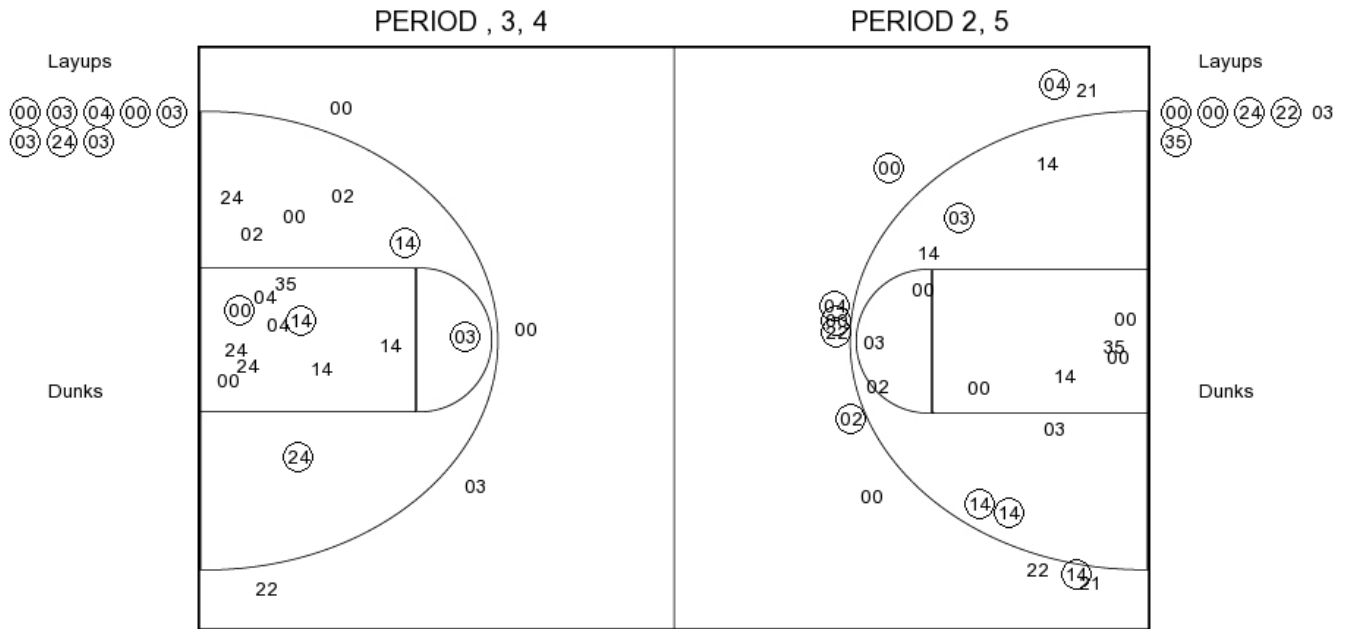
**STET PERIOD 2**

FG Made	
FG Attempted	
3PFG Made	
3PFG Attempted	

**Stetson vs ARKANSAS**  
**OFFICIAL SHOT CHART**

11/21/2016 at Fayetteville, Ark. (Bud Walton Arena)

**ARKANSAS**



**AR PERIOD 1**

FG Made	15
FG Attempted	31
3PFG Made	7
3PFG Attempted	11

**AR PERIOD 2**

FG Made	
FG Attempted	
3PFG Made	
3PFG Attempted	