

# ARKANSAS VS. ULM



11/13/2016  
Fayetteville, Ark. (Bud Walton Arena)

## FINAL STATS

**ARKANSAS**

*(1-0)*

**92**

**ULM**

*(1-0)*

**46**

*Start Time: 2 p.m.*

*Officials: Bryan Enterline, Carla Fountain, Douglas Knight*

*Attendance: 3156*

Estimated Actual Attendance: 2,257

Fouled Out ULM: #35 Archer at 5:07 Q4

# Official Basketball Box Score -- Game Totals -- Final Statistics

## ULM vs ARKANSAS

11/13/2016 2 p.m. at Fayetteville, Ark. (Bud Walton Arena)

### ULM 46 - 1-0

##	Player		Total		3-Ptr	Rebounds			PF	TP	A	TO	Blk	Stl	Min
			FG-FGA	FG-FGA	FT-FTA	Off	Def	Tot							
01	COLLINS,ALEXIS	g	3-8	0-1	4-4	0	3	3	2	10	3	3	0	0	29
10	MARKER,LAUREN	g	1-11	1-6	1-2	1	0	1	1	4	0	0	0	0	28
23	MOODY,CARISSA	g	0-7	0-4	0-0	1	4	5	2	0	0	4	0	0	23
25	RATLIFF,STEPHANIE	c	3-8	0-0	0-0	7	3	10	4	6	0	0	4	1	20
34	CORTEZ,GABRIELLA	f	1-11	1-6	0-0	2	1	3	1	3	1	2	0	1	24
14	JACKSON,ANDREANNA		4-16	0-1	1-3	2	3	5	2	9	0	5	0	0	21
20	OESTRIECH,LOGAN		1-3	0-1	2-2	3	4	7	3	4	0	1	0	1	23
24	BRIGGS,TANISHA		0-0	0-0	0-0	0	0	0	1	0	0	0	0	0	2
35	ARCHER,LONDON		1-2	0-0	3-4	1	0	1	5	5	0	1	0	0	17
41	ANDERSON,DANI		1-2	0-0	3-4	2	1	3	2	5	1	0	0	0	13
TEAM						1	4	5	0			1			
TOTALS			15-68	2-19	14-19	20	23	43	23	46	5	17	4	3	200

Deadball Rebounds: 5,0

FG %	1st Half: 9-39	23.1%	2nd Half: 6-29	20.7%	Game: 15-68	22.1%									
	1st Qtr 5-20	25.0%	2nd Qtr 4-19	21.1%	3rd Qtr 3-13	23.1%	4th Qtr 3-16	18.8%							
3FG %	1st Half: 1-14	07.1%	2nd Half: 1-5	20.0%	Game: 2-19	10.5%									
	1st Qtr 0-6	00.0%	2nd Qtr 1-8	12.5%	3rd Qtr 0-2	00.0%	4th Qtr 1-3	33.3%							
FT %	1st Half: 1-2	50.0%	2nd Half: 13-17	76.5%	Game: 14-19	73.7%									
	1st Qtr 0-0	0%	2nd Qtr 1-2	50.0%	3rd Qtr 9-11	81.8%	4th Qtr 4-6	66.7%							

### ARKANSAS 92 - 1-0

##	Player		Total		3-Ptr	Rebounds			PF	TP	A	TO	Blk	Stl	Min
			FG-FGA	FG-FGA	FT-FTA	Off	Def	Tot							
00	JACKSON,JESSICA	f	5-14	3-5	0-0	2	4	6	2	13	0	2	0	2	23
03	MONK,MALICA	g	2-3	0-0	5-6	3	2	5	1	9	2	1	1	3	25
14	MASON,JAILYN	g	2-4	0-1	0-0	0	0	0	4	4	2	1	0	0	18
22	ZIMMERMAN,BAILEY	f	1-7	0-3	1-2	2	5	7	0	3	2	0	0	1	18
35	COOLEY,ALECIA	c	3-5	0-0	7-12	1	5	6	1	13	2	1	1	0	18
04	SWENSON,KEIRYN		5-7	2-3	1-1	2	4	6	0	13	1	0	1	1	23
10	WILLIAMS,KIARA		4-6	0-0	1-4	2	3	5	4	9	0	0	0	0	14
12	FREEMAN,BRIUNNA		5-7	0-0	2-2	3	1	4	3	12	1	1	0	1	22
20	STOUT,SYDNEY		0-2	0-2	0-0	0	0	0	1	0	0	0	1	0	6
21	COSPER,DEVIN		2-5	0-2	2-2	0	1	1	0	6	5	0	1	4	18
24	DANBERRY,JORDAN		3-5	2-2	2-2	0	4	4	1	10	1	2	0	0	15
TEAM						1	2	3	0			0			
TOTALS			32-65	7-18	21-31	16	31	47	17	92	16	8	5	12	200

Deadball Rebounds: 4,2

FG %	1st Half: 14-31	45.2%	2nd Half: 18-34	52.9%	Game: 32-65	49.2%									
	1st Qtr 9-18	50.0%	2nd Qtr 5-13	38.5%	3rd Qtr 11-16	68.8%	4th Qtr 7-18	38.9%							
3FG %	1st Half: 4-7	57.1%	2nd Half: 3-11	27.3%	Game: 7-18	38.9%									
	1st Qtr 1-3	33.3%	2nd Qtr 3-4	75.0%	3rd Qtr 2-4	50.0%	4th Qtr 1-7	14.3%							
FT %	1st Half: 10-13	76.9%	2nd Half: 11-18	61.1%	Game: 21-31	67.7%									
	1st Qtr 3-5	60.0%	2nd Qtr 7-8	87.5%	3rd Qtr 10-14	71.4%	4th Qtr 1-4	25.0%							

Officials: Bryan Enterline, Carla Fountain, Douglas Knight

Technical Fouls: ULM- None. ARKANSAS- None.

Attendance: 3156

Estimated Actual Attendance: 2,257

Fouled Out ULM: #35 Archer at 5:07 Q4

Score by periods	1st	2nd	3rd	4th	Total
ULM	10	10	15	11	46
ARKANSAS	22	20	34	16	92

Points	In Paint	Off T/O	2nd Chance	Fast Break	Bench
ULM	22	2	13	0	23
AR	40	27	13	10	50

Last FG - ULM 4th-04:41, AR 4th-02:33.

Largest lead - ULM by 2 1st-09:13; ARKANSAS by 48 4th-02:33

ULM led for 0:20. AR led for 37:04. Game was tied for 2:36.

Score tied - 2 times  
Lead changed - 1 times

# Official Basketball Box Score -- Game Totals -- First Half Statistics

## ULM vs ARKANSAS

11/13/2016 2 p.m. at Fayetteville, Ark. (Bud Walton Arena)

### ULM 20 • 1-0

##	Player		Total		3-Ptr		FT-FTA		Rebounds			PF	TP	A	TO	Blk	Stl	Min
			FG-FGA	FG-FGA	FG-FGA	FT-FTA	Off	Def	Tot									
01	COLLINS,ALEXIS	g	3-6	0-1	0-0	0	3	3	1	6	3	1	0	0			18	
10	MARKER,LAUREN	g	1-8	1-6	0-0	1	0	1	0	3	0	0	0	0			15	
23	MOODY,CARISSA	g	0-4	0-2	0-0	0	2	2	0	0	0	2	0	0			13	
25	RATLIFF,STEPHANIE	c	3-6	0-0	0-0	6	1	7	2	6	0	0	2	1			11	
34	CORTEZ,GABRIELLA	f	0-8	0-4	0-0	2	1	3	1	0	1	1	0	1			14	
14	JACKSON,ANDREANNA		1-5	0-1	0-0	1	0	1	0	2	0	2	0	0			10	
20	OESTRIECH,LOGAN		1-1	0-0	0-0	1	1	2	1	2	0	0	0	0			8	
24	BRIGGS,TANISHA		0-0	0-0	0-0	0	0	0	0	0	0	0	0	0			0	
35	ARCHER,LONDON		0-1	0-0	0-0	0	0	0	3	0	0	1	0	0			9	
41	ANDERSON,DANI		0-0	0-0	1-2	1	0	1	0	1	0	0	0	0			2	
TEAM						0	3	3	0					1				
Totals			9-39	1-14	1-2	12	11	23	8	20	4	8	2	2			100	
FG %	1st Qtr	5-20	25.0%	2nd Qtr	4-19	21.1%	Half:	9-39	23.1%									
3FG %	1st Qtr	0-6	00.0%	2nd Qtr	1-8	12.5%	Half:	1-14	07.1%									
FT %	1st Qtr	0-0	0%	2nd Qtr	1-2	50.0%	Half:	1-2	50.0%									

### ARKANSAS 42 • 1-0

##	Player		Total		3-Ptr		FT-FTA		Rebounds			PF	TP	A	TO	Blk	Stl	Min
			FG-FGA	FG-FGA	FG-FGA	FT-FTA	Off	Def	Tot									
00	JACKSON,JESSICA	f	3-10	2-3	0-0	0	2	2	0	8	0	1	0	1			14	
03	MONK,MALICA	g	1-2	0-0	3-4	2	1	3	0	5	0	0	0	1			14	
14	MASON,JAILYN	g	1-1	0-0	0-0	0	0	0	2	2	1	1	0	0			9	
22	ZIMMERMAN,BAILEY	f	0-4	0-2	0-0	1	3	4	0	0	0	0	0	0			9	
35	COOLEY,ALECIA	c	2-4	0-0	5-7	1	4	5	1	9	1	1	1	0			14	
04	SWENSON,KEIRYN		1-1	0-0	0-0	1	1	2	0	2	1	0	0	1			12	
10	WILLIAMS,KIARA		0-0	0-0	0-0	0	0	0	0	0	0	0	0	0			0	
12	FREEMAN,BRIUNNA		2-4	0-0	2-2	2	1	3	1	6	1	0	0	0			11	
20	STOUT,SYDNEY		0-0	0-0	0-0	0	0	0	0	0	0	0	0	0			0	
21	COSPER,DEVIN		1-1	0-0	0-0	0	1	1	0	2	3	0	0	2			6	
24	DANBERRY,JORDAN		3-4	2-2	0-0	0	4	4	1	8	1	2	0	0			11	
TEAM						0	0	0	0					0				
Totals			14-31	4-7	10-13	7	17	24	5	42	8	5	1	5			100	
FG %	1st Qtr	9-18	50.0%	2nd Qtr	5-13	38.5%	Half:	14-31	45.2%									
3FG %	1st Qtr	1-3	33.3%	2nd Qtr	3-4	75.0%	Half:	4-7	57.1%									
FT %	1st Qtr	3-5	60.0%	2nd Qtr	7-8	87.5%	Half:	10-13	76.9%									

Officials: Bryan Enterline, Carla Fountain, Douglas Knight

Technical Fouls: ULM- None. ARKANSAS- None.

Estimated Actual Attendance: 2,257

Fouled Out ULM: #35 Archer at 5:07 Q4

Score by periods	1st	2nd	3rd	4th	Total
ULM	10	10	15	11	46
ARKANSAS	22	20	34	16	92

Points	In		2nd		Fast	
	Paint	T/O	Chance	Break	Bench	
ULM	14	2	5	0	5	
	14	8	9	4	18	

Last FG - ULM 2nd-00:33, AR 2nd-01:32.

ULM led for 0:20. AR led for 17:04. Game was tied for 2:36.

Score tied - 2 times  
Lead changed - 1 times

**ULM vs ARKANSAS**  
**11/13/2016; 2 p.m. at Fayetteville, Ark. (Bud Walton Arena)**  
**Period 1 Play-By-Play**

VISITORS: ULM	Time	Score	Margin	HOME: ARKANSAS
	09:47			FOUL by COOLEY,ALECIA
	09:47			TURNOVER by COOLEY,ALECIA
GOOD! JUMPER by COLLINS,ALEXIS [PNT]	09:13	0-2	V 2	
	08:53	2-2	T	GOOD! JUMPER by MASON,JAILYN
	08:53			ASSIST by COOLEY,ALECIA
MISSED JUMPER by MOODY,CARISSA	08:29			
REBOUND (OFF) by RATLIFF,STEPHANIE	08:29			
MISSED 3PTR by CORTEZ,GABRIELLA	08:06			
	08:06			REBOUND (DEF) by ZIMMERMAN,BAILEY
	07:57			TURNOVER by MASON,JAILYN
STEAL by CORTEZ,GABRIELLA	07:56			
MISSED JUMPER by CORTEZ,GABRIELLA	07:52			
REBOUND (OFF) by RATLIFF,STEPHANIE	07:52			
MISSED 3PTR by MOODY,CARISSA	07:47			
REBOUND (OFF) by CORTEZ,GABRIELLA	07:47			
MISSED JUMPER by CORTEZ,GABRIELLA	07:43			
	07:43			REBOUND (DEF) by JACKSON,JESSICA
	07:23	4-2	H 2	GOOD! JUMPER by MONK,MALICA
GOOD! LAYUP by RATLIFF,STEPHANIE [PNT]	07:04	4-4	T	
ASSIST by COLLINS,ALEXIS	07:04			
	06:47			MISSED 3PTR by ZIMMERMAN,BAILEY
	06:47			REBOUND (OFF) by MONK,MALICA
FOUL by CORTEZ,GABRIELLA	06:45			
	06:45			MISSED FT by MONK,MALICA
	06:45			REBOUND (DEADB) by TEAM
	06:45	5-4	H 1	GOOD! FT by MONK,MALICA
MISSED 3PTR by MARKER,LAUREN	06:21			
	06:21			REBOUND (DEF) by ZIMMERMAN,BAILEY
	06:09			MISSED JUMPER by COOLEY,ALECIA
	06:09			REBOUND (OFF) by ZIMMERMAN,BAILEY
	06:06			MISSED JUMPER by ZIMMERMAN,BAILEY
REBOUND (DEF) by COLLINS,ALEXIS	06:06			
MISSED JUMPER by RATLIFF,STEPHANIE	05:53			
	05:53			REBOUND (DEF) by ZIMMERMAN,BAILEY
	05:43	7-4	H 3	GOOD! LAYUP by COOLEY,ALECIA [PNT]
	05:43			ASSIST by MASON,JAILYN
FOUL by RATLIFF,STEPHANIE	05:42			
	05:42	8-4	H 4	GOOD! FT by COOLEY,ALECIA
SUB IN: OESTRIECH,LOGAN	05:42			
SUB IN: ARCHER,LONDON	05:42			
SUB IN: JACKSON,ANDREANNA	05:42			
SUB OUT: MARKER,LAUREN	05:42			
SUB OUT: RATLIFF,STEPHANIE	05:42			
SUB OUT: CORTEZ,GABRIELLA	05:42			
	05:31			FOUL by MASON,JAILYN
GOOD! JUMPER by COLLINS,ALEXIS [PNT]	05:25	8-6	H 2	
	05:01			MISSED JUMPER by JACKSON,JESSICA
	05:01			REBOUND (OFF) by COOLEY,ALECIA
	04:56	10-6	H 4	GOOD! LAYUP by COOLEY,ALECIA [PNT]
TURNOVER by MOODY,CARISSA	04:38			
	04:38			STEAL by JACKSON,JESSICA
	04:34			MISSED JUMPER by JACKSON,JESSICA
REBOUND (DEF) by MOODY,CARISSA	04:34			
MISSED JUMPER by COLLINS,ALEXIS	04:24			
	04:24			REBOUND (DEF) by COOLEY,ALECIA
	04:14			MISSED LAYUP by MONK,MALICA
REBOUND (DEF) by OESTRIECH,LOGAN	04:14			
TURNOVER by TEAM	04:03			
	04:03			TIMEOUT MEDIA

VISITORS: ULM	Time	Score	Margin	HOME: ARKANSAS
SUB IN: MARKER,LAUREN	04:03			
SUB OUT: MOODY,CARISSA	04:03			
	04:03			SUB IN: DANBERRY,JORDAN
	04:03			SUB IN: FREEMAN,BRIUNNA
	04:03			SUB OUT: MONK,MALICA
	04:03			SUB OUT: ZIMMERMAN,BAILEY
	03:42			MISSED JUMPER by DANBERRY,JORDAN
	03:42			REBOUND (OFF) by FREEMAN,BRIUNNA
	03:39	12-6	H 6	GOOD! JUMPER by FREEMAN,BRIUNNA [PNT]
MISSED 3PTR by MARKER,LAUREN	03:22			
	03:22			REBOUND (DEF) by COOLEY,ALECIA
	03:04			MISSED 3PTR by JACKSON,JESSICA
REBOUND (DEF) by TEAM	03:04			
GOOD! JUMPER by JACKSON,ANDREANNA [PNT]	02:36	12-8	H 4	
FOUL by OESTRIECH,LOGAN	02:18			
	02:18			MISSED FT by COOLEY,ALECIA
	02:18			REBOUND (DEADB) by TEAM
	02:18	13-8	H 5	GOOD! FT by COOLEY,ALECIA
	02:18			SUB IN: SWENSON,KEIRYN
	02:18			SUB IN: COSPER,DEVIN
	02:18			SUB OUT: JACKSON,JESSICA
	02:18			SUB OUT: MASON,JAILYN
MISSED LAYUP by JACKSON,ANDREANNA	02:08			
	02:08			REBOUND (DEF) by COSPER,DEVIN
	02:01	15-8	H 7	GOOD! LAYUP by FREEMAN,BRIUNNA [FB/PNT]
	02:01			ASSIST by COSPER,DEVIN
MISSED 3PTR by JACKSON,ANDREANNA	01:40			
	01:40			REBOUND (DEF) by DANBERRY,JORDAN
	01:30			MISSED JUMPER by FREEMAN,BRIUNNA
	01:30			REBOUND (OFF) by SWENSON,KEIRYN
	01:28	17-8	H 9	GOOD! LAYUP by SWENSON,KEIRYN [PNT]
SUB IN: CORTEZ,GABRIELLA	01:26			
SUB IN: RATLIFF,STEPHANIE	01:26			
SUB OUT: OESTRIECH,LOGAN	01:26			
SUB OUT: ARCHER,LONDON	01:26			
MISSED 3PTR by MARKER,LAUREN	01:12			
REBOUND (OFF) by RATLIFF,STEPHANIE	01:11			
MISSED JUMPER by RATLIFF,STEPHANIE	01:08			
	01:07			BLOCK by COOLEY,ALECIA
REBOUND (OFF) by RATLIFF,STEPHANIE	01:06			
GOOD! JUMPER by RATLIFF,STEPHANIE	00:53	17-10	H 7	
	00:39	20-10	H 10	GOOD! 3PTR by DANBERRY,JORDAN
	00:39			ASSIST by COSPER,DEVIN
MISSED JUMPER by JACKSON,ANDREANNA	00:19			
	00:19			REBOUND (DEF) by DANBERRY,JORDAN
	00:14	22-10	H 12	GOOD! LAYUP by COSPER,DEVIN [FB/PNT]
MISSED JUMPER by RATLIFF,STEPHANIE	00:00			
	00:00			REBOUND (DEF) by COOLEY,ALECIA

ULM 10, ARKANSAS 22

Period 1-only	In Paint	Off T/O	2nd Chance	Fast Break	Bench	
ULM	8	2	2	0	2	Score tied - 2 times
AR	12	2	7	4	11	Lead changed - 0 times

**ULM vs ARKANSAS**  
**11/13/2016; 2 p.m. at Fayetteville, Ark. (Bud Walton Arena)**  
**Period 2 Play-By-Play**

VISITORS: ULM	Time	Score	Margin	HOME: ARKANSAS
SUB IN: ARCHER,LONDON	10:00			
SUB OUT: RATLIFF,STEPHANIE	10:00			
	10:00			SUB IN: FREEMAN,BRIUNNA
	10:00			SUB IN: COSPER,DEVIN
	10:00			SUB IN: DANBERRY,JORDAN
	10:00			SUB IN: SWENSON,KEIRYN
	10:00			SUB OUT: MONK,MALICA
	10:00			SUB OUT: MASON,JAILYN
	10:00			SUB OUT: ZIMMERMAN,BAILEY
	10:00			SUB OUT: COOLEY,ALECIA
MISSED 3PTR by CORTEZ,GABRIELLA	09:38			
	09:38			REBOUND (DEF) by FREEMAN,BRIUNNA
	09:26	24-10	H 14	GOOD! JUMPER by JACKSON,JESSICA
	09:26			ASSIST by DANBERRY,JORDAN
TURNOVER by COLLINS,ALEXIS	09:00			
	08:46			TURNOVER by JACKSON,JESSICA
STEAL by RATLIFF,STEPHANIE	08:44			
MISSED JUMPER by MARKER,LAUREN	08:40			
REBOUND (OFF) by MARKER,LAUREN	08:40			
MISSED JUMPER by MARKER,LAUREN	08:38			
REBOUND (OFF) by CORTEZ,GABRIELLA	08:38			
MISSED JUMPER by CORTEZ,GABRIELLA	08:30			
	08:30			REBOUND (DEF) by JACKSON,JESSICA
	08:24	27-10	H 17	GOOD! 3PTR by JACKSON,JESSICA
	08:24			ASSIST by COSPER,DEVIN
TIMEOUT 30SEC	08:22			
SUB IN: JACKSON,ANDREANNA	08:22			
SUB IN: RATLIFF,STEPHANIE	08:22			
SUB OUT: MARKER,LAUREN	08:22			
SUB OUT: ARCHER,LONDON	08:22			
	08:22			SUB IN: ZIMMERMAN,BAILEY
	08:22			SUB IN: MONK,MALICA
	08:22			SUB OUT: FREEMAN,BRIUNNA
	08:22			SUB OUT: DANBERRY,JORDAN
GOOD! LAYUP by COLLINS,ALEXIS [PNT]	08:09	27-12	H 15	
ASSIST by CORTEZ,GABRIELLA	08:09			
	07:55			MISSED JUMPER by JACKSON,JESSICA
BLOCK by RATLIFF,STEPHANIE	07:55			
REBOUND (DEF) by TEAM	07:55			
TURNOVER by JACKSON,ANDREANNA	07:43			
	07:42			STEAL by SWENSON,KEIRYN
	07:38			MISSED 3PTR by ZIMMERMAN,BAILEY
REBOUND (DEF) by MOODY,CARISSA	07:38			
TURNOVER by MOODY,CARISSA	07:31			
	07:30			STEAL by COSPER,DEVIN
	07:28			MISSED JUMPER by JACKSON,JESSICA
REBOUND (DEF) by TEAM	07:28			
TURNOVER by JACKSON,ANDREANNA	07:12			
	07:09			STEAL by COSPER,DEVIN
	07:02	30-12	H 18	GOOD! 3PTR by JACKSON,JESSICA
	07:02			ASSIST by SWENSON,KEIRYN
MISSED JUMPER by MOODY,CARISSA	06:35			
REBOUND (OFF) by RATLIFF,STEPHANIE	06:35			
MISSED JUMPER by JACKSON,ANDREANNA	06:29			
	06:29			REBOUND (DEF) by MONK,MALICA
FOUL by COLLINS,ALEXIS	06:24			
	06:24	31-12	H 19	GOOD! FT by MONK,MALICA
	06:24	32-12	H 20	GOOD! FT by MONK,MALICA
SUB IN: ANDERSON,DANI	06:24			

VISITORS: ULM	Time	Score	Margin	HOME: ARKANSAS
SUB IN: ARCHER,LONDON	06:24			
SUB OUT: RATLIFF,STEPHANIE	06:24			
SUB OUT: CORTEZ,GABRIELLA	06:24			
	06:24			SUB IN: COOLEY,ALECIA
	06:24			SUB IN: MASON,JAILYN
	06:24			SUB OUT: JACKSON,JESSICA
	06:24			SUB OUT: COSPER,DEVIN
FOUL by ARCHER,LONDON	05:57			
TURNOVER by ARCHER,LONDON	05:57			
	05:41			MISSED JUMPER by ZIMMERMAN,BAILEY
REBOUND (DEF) by COLLINS,ALEXIS	05:41			
MISSED 3PTR by MOODY,CARISSA	05:32			
	05:32			REBOUND (DEF) by COOLEY,ALECIA
FOUL by ARCHER,LONDON	05:11			
	05:11	33-12	H 21	GOOD! FT by COOLEY,ALECIA
	05:11	34-12	H 22	GOOD! FT by COOLEY,ALECIA
	05:11			SUB IN: FREEMAN,BRIUNNA
	05:11			SUB OUT: ZIMMERMAN,BAILEY
	05:01			FOUL by MASON,JAILYN
SUB IN: MARKER,LAUREN	05:01			
SUB OUT: COLLINS,ALEXIS	05:01			
	05:01			SUB IN: DANBERRY,JORDAN
	05:01			SUB OUT: MASON,JAILYN
MISSED 3PTR by MARKER,LAUREN	04:59			
	04:59			REBOUND (DEF) by SWENSON,KEIRYN
	04:52	37-12	H 25	GOOD! 3PTR by DANBERRY,JORDAN
	04:52			ASSIST by FREEMAN,BRIUNNA
MISSED 3PTR by MARKER,LAUREN	04:29			
REBOUND (OFF) by JACKSON,ANDREANNA	04:29			
MISSED JUMPER by ARCHER,LONDON	04:24			
REBOUND (OFF) by ANDERSON,DANI	04:24			
	04:21			FOUL by FREEMAN,BRIUNNA
MISSED FT by ANDERSON,DANI	04:21			
REBOUND (DEADB) by TEAM	04:21			
GOOD! FT by ANDERSON,DANI	04:21	37-13	H 24	
SUB IN: CORTEZ,GABRIELLA	04:21			
SUB IN: OESTRIECH,LOGAN	04:21			
SUB OUT: JACKSON,ANDREANNA	04:21			
SUB OUT: ANDERSON,DANI	04:21			
	03:52			MISSED JUMPER by COOLEY,ALECIA
REBOUND (DEF) by CORTEZ,GABRIELLA	03:52			
MISSED JUMPER by CORTEZ,GABRIELLA	03:24			
REBOUND (OFF) by OESTRIECH,LOGAN	03:24			
TURNOVER by CORTEZ,GABRIELLA	03:16			
	03:14			STEAL by MONK,MALICA
FOUL by ARCHER,LONDON	03:01			
	03:01	38-13	H 25	GOOD! FT by COOLEY,ALECIA
	03:01			MISSED FT by COOLEY,ALECIA
	03:01			REBOUND (OFF) by MONK,MALICA
SUB IN: RATLIFF,STEPHANIE	03:01			
SUB OUT: ARCHER,LONDON	03:01			
SUB IN: COLLINS,ALEXIS	02:51			
SUB OUT: MOODY,CARISSA	02:51			
	02:51			SUB IN: JACKSON,JESSICA
	02:51			SUB OUT: COOLEY,ALECIA
	02:46			MISSED JUMPER by JACKSON,JESSICA
BLOCK by RATLIFF,STEPHANIE	02:46			
	02:46			REBOUND (OFF) by FREEMAN,BRIUNNA
FOUL by RATLIFF,STEPHANIE	02:45			
	02:45	39-13	H 26	GOOD! FT by FREEMAN,BRIUNNA
	02:45	40-13	H 27	GOOD! FT by FREEMAN,BRIUNNA
MISSED 3PTR by CORTEZ,GABRIELLA	02:30			
	02:30			REBOUND (DEF) by DANBERRY,JORDAN
	02:24			TURNOVER by DANBERRY,JORDAN

VISITORS: ULM	Time	Score	Margin	HOME: ARKANSAS
MISSED 3PTR by COLLINS,ALEXIS	02:15			
	02:15			REBOUND (DEF) by DANBERRY,JORDAN
	02:03			MISSED JUMPER by JACKSON,JESSICA
REBOUND (DEF) by COLLINS,ALEXIS	02:03			
GOOD! 3PTR by MARKER,LAUREN	01:55	40-16	H 24	
ASSIST by COLLINS,ALEXIS	01:55			
	01:32	42-16	H 26	GOOD! JUMPER by DANBERRY,JORDAN [PNT]
GOOD! LAYUP by OESTRIECH,LOGAN [PNT]	01:16	42-18	H 24	
ASSIST by COLLINS,ALEXIS	01:16			
	00:55			MISSED JUMPER by FREEMAN,BRIUNNA
REBOUND (DEF) by RATLIFF,STEPHANIE	00:55			
MISSED 3PTR by CORTEZ,GABRIELLA	00:39			
REBOUND (OFF) by RATLIFF,STEPHANIE	00:39			
GOOD! LAYUP by RATLIFF,STEPHANIE [PNT]	00:33	42-20	H 22	
	00:05			TURNOVER by DANBERRY,JORDAN
	00:05			FOUL by DANBERRY,JORDAN
SUB IN: JACKSON,ANDREANNA	00:05			
SUB OUT: CORTEZ,GABRIELLA	00:05			
	00:05			SUB IN: COSPER,DEVIN
	00:05			SUB IN: WILLIAMS,KIARA
	00:05			SUB OUT: JACKSON,JESSICA
	00:05			SUB OUT: MONK,MALICA
MISSED JUMPER by COLLINS,ALEXIS	00:00			
	00:00			REBOUND (DEADB) by TEAM

ULM 20, ARKANSAS 42

Period 2-only	In Paint	Off T/O	2nd Chance	Fast Break	Bench	
ULM	6	0	3	0	3	Score tied - 0 times
AR	2	6	2	0	7	Lead changed - 0 times



# Official Basketball Box Score -- Game Totals -- Second Half Statistics

## ULM vs ARKANSAS

11/13/2016 2 p.m. at Fayetteville, Ark. (Bud Walton Arena)

### ULM 26 • 1-0

##	Player		Total		3-Ptr		FT-FTA		Rebounds			PF	TP	A	TO	Blk	Stl	Min
			FG-FGA	FG-FGA	FG-FGA	FT-FTA	Off	Def	Tot									
01	COLLINS,ALEXIS	g	0-2	0-0	4-4	0	0	0	1	4	0	2	0	0	0	0	11	
10	MARKER,LAUREN	g	0-3	0-0	1-2	0	0	0	1	1	0	0	0	0	0	13		
23	MOODY,CARISSA	g	0-3	0-2	0-0	1	2	3	2	0	0	2	0	0	0	10		
25	RATLIFF,STEPHANIE	c	0-2	0-0	0-0	1	2	3	2	0	0	0	2	0	9			
34	CORTEZ,GABRIELLA	f	1-3	1-2	0-0	0	0	0	0	3	0	1	0	0	10			
14	JACKSON,ANDREANNA		3-11	0-0	1-3	1	3	4	2	7	0	3	0	0	11			
20	OESTRIECH,LOGAN		0-2	0-1	2-2	2	3	5	2	2	0	1	0	1	15			
24	BRIGGS,TANISHA		0-0	0-0	0-0	0	0	0	1	0	0	0	0	0	2			
35	ARCHER,LONDON		1-1	0-0	3-4	1	0	1	2	5	0	0	0	0	8			
41	ANDERSON,DANI		1-2	0-0	2-2	1	1	2	2	4	1	0	0	0	11			
TEAM						1	1	2	0			0						
Totals			6-29	1-5	13-17	8	12	20	15	26	1	9	2	1	100			

FG % 3rd Qtr 3-13 23.1% 4th Qtr 3-16 18.8% Half: 6-29 20.7%  
 3FG % 3rd Qtr 0-2 00.0% 4th Qtr 1-3 33.3% Half: 1-5 07.1%  
 FT % 3rd Qtr 9-11 81.8% 4th Qtr 4-6 66.7% Half: 13-17 76.5%

### ARKANSAS 50 • 1-0

##	Player		Total		3-Ptr		FT-FTA		Rebounds			PF	TP	A	TO	Blk	Stl	Min
			FG-FGA	FG-FGA	FG-FGA	FT-FTA	Off	Def	Tot									
00	JACKSON,JESSICA	f	2-4	1-2	0-0	2	2	4	2	5	0	1	0	1	9			
03	MONK,MALICA	g	1-1	0-0	2-2	1	1	2	1	4	2	1	1	2	11			
14	MASON,JAILYN	g	1-3	0-1	0-0	0	0	0	2	2	1	0	0	0	9			
22	ZIMMERMAN,BAILEY	f	1-3	0-1	1-2	1	2	3	0	3	2	0	0	1	9			
35	COOLEY,ALECIA	c	1-1	0-0	2-5	0	1	1	0	4	1	0	0	0	4			
04	SWENSON,KEIRYN		4-6	2-3	1-1	1	3	4	0	11	0	0	1	0	11			
10	WILLIAMS,KIARA		4-6	0-0	1-4	2	3	5	4	9	0	0	0	0	14			
12	FREEMAN,BRIUNNA		3-3	0-0	0-0	1	0	1	2	6	0	1	0	1	11			
20	STOUT,SYDNEY		0-2	0-2	0-0	0	0	0	1	0	0	0	1	0	6			
21	COSPER,DEVIN		1-4	0-2	2-2	0	0	0	0	4	2	0	1	2	12			
24	DANBERRY,JORDAN		0-1	0-0	2-2	0	0	0	0	2	0	0	0	0	4			
TEAM						1	2	3	0			0						
Totals			18-34	3-11	11-18	9	14	23	12	50	8	3	4	7	100			

FG % 3rd Qtr 11-16 68.8% 4th Qtr 7-18 38.9% Half: 18-34 52.9%  
 3FG % 3rd Qtr 2-4 50.0% 4th Qtr 1-7 14.3% Half: 3-11 57.1%  
 FT % 3rd Qtr 10-14 71.4% 4th Qtr 1-4 25.0% Half: 11-18 61.1%

Officials: Bryan Enterline, Carla Fountain, Douglas Knight

Technical Fouls: ULM- None. ARKANSAS- None.

Estimated Actual Attendance: 2,257

Fouled Out ULM: #35 Archer at 5:07 Q4

Score by periods	1st	2nd	3rd	4th	Total
ULM	10	10	15	11	46
ARKANSAS	22	20	34	16	92

Points	In	Off	2nd	Fast	Bench
	Paint	T/O	Chance	Break	
ULM	8	0	8	0	18
	26	19	15	6	32

Last FG - ULM 4th-04:41, AR 4th-02:33.

ULM led for 0:00. AR led for 20:00. Game was tied for 0:00.

Score tied - 0 times  
 Lead changed - 0 times

**ULM vs ARKANSAS**  
**11/13/2016; 2 p.m. at Fayetteville, Ark. (Bud Walton Arena)**  
**Period 3 Play-By-Play**

VISITORS: ULM	Time	Score	Margin	HOME: ARKANSAS
SUB IN: OESTRIECH,LOGAN	10:00			
SUB OUT: CORTEZ,GABRIELLA	10:00			
	09:35			TURNOVER by JACKSON,JESSICA
MISSED 3PTR by MOODY,CARISSA	09:18			
	09:18			REBOUND (DEF) by ZIMMERMAN,BAILEY
FOUL by OESTRIECH,LOGAN	09:06			
	09:06	43-20	H 23	GOOD! FT by COOLEY,ALECIA
	09:06			MISSED FT by COOLEY,ALECIA
REBOUND (DEF) by RATLIFF,STEPHANIE	09:06			
	09:06			SUB IN: SWENSON,KEIRYN
	09:06			SUB OUT: JACKSON,JESSICA
MISSED 3PTR by OESTRIECH,LOGAN	08:36			
	08:36			REBOUND (DEF) by ZIMMERMAN,BAILEY
	08:26			MISSED JUMPER by MASON,JAILYN
REBOUND (DEF) by OESTRIECH,LOGAN	08:26			
MISSED JUMPER by COLLINS,ALEXIS	08:07			
REBOUND (OFF) by OESTRIECH,LOGAN	08:07			
	08:04			FOUL by MASON,JAILYN
GOOD! FT by OESTRIECH,LOGAN	08:04	43-21	H 22	
GOOD! FT by OESTRIECH,LOGAN	08:04	43-22	H 21	
FOUL by COLLINS,ALEXIS	07:52			
	07:46	45-22	H 23	GOOD! JUMPER by COOLEY,ALECIA [PNT]
FOUL by RATLIFF,STEPHANIE	07:46			
	07:46			MISSED FT by COOLEY,ALECIA
REBOUND (DEF) by OESTRIECH,LOGAN	07:46			
	07:46			SUB IN: DANBERRY,JORDAN
	07:46			SUB OUT: MASON,JAILYN
	07:37			SUB IN: FREEMAN,BRIUNNA
	07:37			SUB OUT: ZIMMERMAN,BAILEY
MISSED JUMPER by RATLIFF,STEPHANIE	07:23			
	07:23			REBOUND (DEF) by COOLEY,ALECIA
	07:15			MISSED JUMPER by DANBERRY,JORDAN
	07:15			REBOUND (OFF) by SWENSON,KEIRYN
	07:15	47-22	H 25	GOOD! LAYUP by SWENSON,KEIRYN [PNT]
FOUL by MARKER,LAUREN	07:14			
	07:14	48-22	H 26	GOOD! FT by SWENSON,KEIRYN
SUB IN: JACKSON,ANDREANNA	07:14			
SUB OUT: MARKER,LAUREN	07:14			
TURNOVER by OESTRIECH,LOGAN	07:10			
	07:08			STEAL by FREEMAN,BRIUNNA
	07:03	51-22	H 29	GOOD! 3PTR by SWENSON,KEIRYN
	07:03			ASSIST by COOLEY,ALECIA
GOOD! JUMPER by JACKSON,ANDREANNA [PNT]	06:41	51-24	H 27	
	06:40			FOUL by FREEMAN,BRIUNNA
MISSED FT by JACKSON,ANDREANNA	06:40			
	06:40			REBOUND (DEF) by SWENSON,KEIRYN
FOUL by RATLIFF,STEPHANIE	06:31			
	06:31	52-24	H 28	GOOD! FT by COOLEY,ALECIA
	06:31			MISSED FT by COOLEY,ALECIA
REBOUND (DEF) by JACKSON,ANDREANNA	06:31			
SUB IN: ARCHER,LONDON	06:31			
SUB OUT: RATLIFF,STEPHANIE	06:31			
MISSED JUMPER by JACKSON,ANDREANNA	06:22			
	06:22			BLOCK by MONK,MALICA
	06:20			REBOUND (DEF) by MONK,MALICA
	06:17			TURNOVER by MONK,MALICA
TURNOVER by MOODY,CARISSA	06:15			
	06:15			STEAL by MONK,MALICA
	06:11	55-24	H 31	GOOD! 3PTR by SWENSON,KEIRYN

VISITORS: ULM	Time	Score	Margin	HOME: ARKANSAS
	06:11			ASSIST by MONK,MALICA
TIMEOUT 30SEC	06:10			
	06:07			SUB IN: WILLIAMS,KIARA
	06:07			SUB IN: COSPER,DEVIN
	06:07			SUB OUT: MONK,MALICA
	06:07			SUB OUT: COOLEY,ALECIA
	05:53			FOUL by FREEMAN,BRIUNNA
GOOD! FT by COLLINS,ALEXIS	05:53	55-25	H 30	
GOOD! FT by COLLINS,ALEXIS	05:53	55-26	H 29	
	05:38	57-26	H 31	GOOD! JUMPER by SWENSON,KEIRYN [PNT]
	05:27			FOUL by WILLIAMS,KIARA
GOOD! FT by COLLINS,ALEXIS	05:27	57-27	H 30	
GOOD! FT by COLLINS,ALEXIS	05:27	57-28	H 29	
	05:00			MISSED JUMPER by WILLIAMS,KIARA
REBOUND (DEF) by MOODY,CARISSA	05:00			
MISSED JUMPER by JACKSON,ANDREANNA	04:50			
	04:50			REBOUND (DEF) by WILLIAMS,KIARA
FOUL by MOODY,CARISSA	04:43			
	04:43			TIMEOUT MEDIA
	04:43	58-28	H 30	GOOD! FT by DANBERRY,JORDAN
	04:43	59-28	H 31	GOOD! FT by DANBERRY,JORDAN
SUB IN: MARKER,LAUREN	04:43			
SUB IN: ANDERSON,DANI	04:43			
SUB OUT: COLLINS,ALEXIS	04:43			
SUB OUT: OESTRIECH,LOGAN	04:43			
MISSED JUMPER by MARKER,LAUREN	04:33			
REBOUND (OFF) by MOODY,CARISSA	04:33			
FOUL by JACKSON,ANDREANNA	04:25			
TURNOVER by JACKSON,ANDREANNA	04:25			
	03:56			MISSED 3PTR by COSPER,DEVIN
REBOUND (DEF) by JACKSON,ANDREANNA	03:56			
MISSED JUMPER by JACKSON,ANDREANNA	03:49			
	03:49			BLOCK by COSPER,DEVIN
	03:46			REBOUND (DEF) by SWENSON,KEIRYN
FOUL by MOODY,CARISSA	03:43			
	03:43	60-28	H 32	GOOD! FT by COSPER,DEVIN
	03:43	61-28	H 33	GOOD! FT by COSPER,DEVIN
SUB IN: CORTEZ,GABRIELLA	03:43			
SUB OUT: MOODY,CARISSA	03:43			
	03:43			SUB IN: JACKSON,JESSICA
	03:43			SUB IN: ZIMMERMAN,BAILEY
	03:43			SUB IN: MONK,MALICA
	03:43			SUB OUT: SWENSON,KEIRYN
	03:43			SUB OUT: DANBERRY,JORDAN
	03:43			SUB OUT: FREEMAN,BRIUNNA
GOOD! JUMPER by JACKSON,ANDREANNA	03:31	61-30	H 31	
	03:14	63-30	H 33	GOOD! LAYUP by MONK,MALICA [PNT]
	02:52			FOUL by MONK,MALICA
MISSED FT by ARCHER,LONDON	02:52			
REBOUND (DEADB) by TEAM	02:52			
GOOD! FT by ARCHER,LONDON	02:52	63-31	H 32	
	02:35			MISSED 3PTR by JACKSON,JESSICA
	02:35			REBOUND (OFF) by ZIMMERMAN,BAILEY
	02:31	65-31	H 34	GOOD! LAYUP by ZIMMERMAN,BAILEY [PNT]
TURNOVER by JACKSON,ANDREANNA	02:23			
	02:23			STEAL by MONK,MALICA
FOUL by JACKSON,ANDREANNA	02:19			
	02:19	66-31	H 35	GOOD! FT by ZIMMERMAN,BAILEY
	02:19			MISSED FT by ZIMMERMAN,BAILEY
	02:19			REBOUND (OFF) by MONK,MALICA
FOUL by ARCHER,LONDON	02:18			
	02:18	67-31	H 36	GOOD! FT by MONK,MALICA
	02:18	68-31	H 37	GOOD! FT by MONK,MALICA
	02:06			FOUL by JACKSON,JESSICA

VISITORS: ULM	Time	Score	Margin	HOME: ARKANSAS
GOOD! FT by ARCHER,LONDON	02:06	68-32	H 36	
GOOD! FT by ARCHER,LONDON	02:06	68-33	H 35	
	01:39	70-33	H 37	GOOD! LAYUP by JACKSON,JESSICA [PNT]
TURNOVER by CORTEZ,GABRIELLA	01:27			
	01:26			STEAL by ZIMMERMAN,BAILEY
	01:23	72-33	H 39	GOOD! LAYUP by COSPER,DEVIN [FB/PNT]
	01:23			ASSIST by ZIMMERMAN,BAILEY
MISSED JUMPER by JACKSON,ANDREANNA	01:00			
	01:00			REBOUND (DEF) by JACKSON,JESSICA
	00:53	74-33	H 41	GOOD! LAYUP by WILLIAMS,KIARA [FB/PNT]
	00:53			ASSIST by MONK,MALICA
TURNOVER by JACKSON,ANDREANNA	00:35			
	00:35			STEAL by JACKSON,JESSICA
	00:28	76-33	H 43	GOOD! LAYUP by WILLIAMS,KIARA [FB/PNT]
	00:28			ASSIST by ZIMMERMAN,BAILEY
MISSED JUMPER by ANDERSON,DANI	00:04			
REBOUND (OFF) by ARCHER,LONDON	00:04			
GOOD! LAYUP by ARCHER,LONDON [PNT]	00:01	76-35	H 41	

ULM 46, ARKANSAS 92

Period 3-only	In Paint	Off T/O	2nd Chance	Fast Break	Bench	
ULM	4	0	4	0	11	Score tied - 0 times
AR	18	13	7	6	21	Lead changed - 0 times

**ULM vs ARKANSAS**  
**11/13/2016; 2 p.m. at Fayetteville, Ark. (Bud Walton Arena)**  
**Period 4 Play-By-Play**

VISITORS: ULM	Time	Score	Margin	HOME: ARKANSAS
SUB IN: OESTRIECH,LOGAN	10:00			
SUB IN: ANDERSON,DANI	10:00			
SUB OUT: MARKER,LAUREN	10:00			
SUB OUT: MOODY,CARISSA	10:00			
	10:00			SUB IN: WILLIAMS,KIARA
	10:00			SUB IN: COSPER,DEVIN
	10:00			SUB OUT: MASON,JAILYN
	10:00			SUB OUT: COOLEY,ALECIA
MISSED JUMPER by CORTEZ,GABRIELLA	09:47			
REBOUND (OFF) by ANDERSON,DANI	09:47			
GOOD! LAYUP by ANDERSON,DANI [PNT]	09:42	76-37	H 39	
	09:19			MISSED JUMPER by WILLIAMS,KIARA
	09:19			REBOUND (OFF) by JACKSON,JESSICA
FOUL by ANDERSON,DANI	09:16			
	09:08	79-37	H 42	GOOD! 3PTR by JACKSON,JESSICA
	09:08			ASSIST by COSPER,DEVIN
GOOD! 3PTR by CORTEZ,GABRIELLA	08:39	79-40	H 39	
ASSIST by ANDERSON,DANI	08:39			
	08:17			MISSED 3PTR by ZIMMERMAN,BAILEY
REBOUND (DEF) by OESTRIECH,LOGAN	08:17			
MISSED JUMPER by COLLINS,ALEXIS	08:08			
	08:08			REBOUND (DEF) by JACKSON,JESSICA
	07:57			MISSED 3PTR by COSPER,DEVIN
	07:57			REBOUND (OFF) by JACKSON,JESSICA
	07:53			MISSED JUMPER by JACKSON,JESSICA
	07:53			REBOUND (OFF) by WILLIAMS,KIARA
	07:49	81-40	H 41	GOOD! LAYUP by WILLIAMS,KIARA [PNT]
TURNOVER by COLLINS,ALEXIS	07:19			
	07:18			STEAL by COSPER,DEVIN
	07:14			MISSED JUMPER by ZIMMERMAN,BAILEY
	07:14			REBOUND (OFF) by WILLIAMS,KIARA
	07:11	83-40	H 43	GOOD! LAYUP by WILLIAMS,KIARA [PNT]
	06:45			FOUL by JACKSON,JESSICA
SUB IN: MOODY,CARISSA	06:45			
SUB IN: JACKSON,ANDREANNA	06:45			
SUB OUT: ANDERSON,DANI	06:45			
SUB OUT: CORTEZ,GABRIELLA	06:45			
	06:45			SUB IN: FREEMAN,BRIUNNA
	06:45			SUB IN: MASON,JAILYN
	06:45			SUB OUT: MONK,MALICA
	06:45			SUB OUT: ZIMMERMAN,BAILEY
MISSED JUMPER by JACKSON,ANDREANNA	06:39			
REBOUND (OFF) by OESTRIECH,LOGAN	06:39			
MISSED JUMPER by OESTRIECH,LOGAN	06:36			
	06:36			REBOUND (DEF) by WILLIAMS,KIARA
	06:26			MISSED JUMPER by COSPER,DEVIN
REBOUND (DEF) by MOODY,CARISSA	06:26			
TURNOVER by MOODY,CARISSA	06:21			
	06:20			STEAL by COSPER,DEVIN
	06:17	85-40	H 45	GOOD! LAYUP by FREEMAN,BRIUNNA [PNT]
	06:16			ASSIST by COSPER,DEVIN
TURNOVER by COLLINS,ALEXIS	05:59			
SUB IN: ARCHER,LONDON	05:59			
SUB OUT: RATLIFF,STEPHANIE	05:59			
	05:59			SUB IN: SWENSON,KEIRYN
	05:59			SUB IN: STOUT,SYDNEY
	05:59			SUB OUT: JACKSON,JESSICA
	05:59			SUB OUT: WILLIAMS,KIARA
	05:46	87-40	H 47	GOOD! JUMPER by MASON,JAILYN

VISITORS: ULM	Time	Score	Margin	HOME: ARKANSAS
MISSED JUMPER by JACKSON,ANDREANNA	05:26			
	05:26			REBOUND (DEF) by TEAM
SUB IN: MARKER,LAUREN	05:24			
SUB OUT: COLLINS,ALEXIS	05:24			
FOUL by ARCHER,LONDON	05:07			
SUB IN: RATLIFF,STEPHANIE	05:07			
SUB OUT: ARCHER,LONDON	05:07			
	05:05			MISSED JUMPER by SWENSON,KEIRYN
BLOCK by RATLIFF,STEPHANIE	05:05			
REBOUND (DEF) by RATLIFF,STEPHANIE	05:03			
MISSED JUMPER by RATLIFF,STEPHANIE	04:46			
	04:46			BLOCK by SWENSON,KEIRYN
REBOUND (OFF) by JACKSON,ANDREANNA	04:43			
GOOD! LAYUP by JACKSON,ANDREANNA [PNT]	04:41	87-42	H 45	
	04:24			MISSED 3PTR by STOUT,SYDNEY
BLOCK by RATLIFF,STEPHANIE	04:24			
REBOUND (DEF) by TEAM	04:22			
	04:20			TIMEOUT media
	04:20			SUB IN: WILLIAMS,KIARA
	04:20			SUB OUT: COSPER,DEVIN
	04:15			FOUL by WILLIAMS,KIARA
MISSED FT by JACKSON,ANDREANNA	04:15			
REBOUND (DEADB) by TEAM	04:15			
GOOD! FT by JACKSON,ANDREANNA	04:15	87-43	H 44	
	03:53			MISSED 3PTR by SWENSON,KEIRYN
REBOUND (DEF) by JACKSON,ANDREANNA	03:53			
MISSED JUMPER by JACKSON,ANDREANNA	03:33			
REBOUND (OFF) by RATLIFF,STEPHANIE	03:33			
MISSED 3PTR by MOODY,CARISSA	03:30			
REBOUND (DEADB) by TEAM	03:30			
	03:30			FOUL by STOUT,SYDNEY
MISSED JUMPER by JACKSON,ANDREANNA	03:27			
	03:27			REBOUND (DEF) by WILLIAMS,KIARA
	03:19	89-43	H 46	GOOD! LAYUP by FREEMAN,BRIUNNA [PNT]
	03:19			ASSIST by MASON,JAILYN
	03:07			FOUL by MASON,JAILYN
SUB IN: ANDERSON,DANI	03:07			
SUB IN: CORTEZ,GABRIELLA	03:07			
SUB OUT: RATLIFF,STEPHANIE	03:07			
SUB OUT: JACKSON,ANDREANNA	03:07			
MISSED JUMPER by MOODY,CARISSA	02:54			
	02:54			REBOUND (DEF) by SWENSON,KEIRYN
	02:33	91-43	H 48	GOOD! JUMPER by FREEMAN,BRIUNNA
	02:17			FOUL by WILLIAMS,KIARA
GOOD! FT by ANDERSON,DANI	02:17	91-44	H 47	
GOOD! FT by ANDERSON,DANI	02:17	91-45	H 46	
SUB IN: BRIGGS,TANISHA	02:17			
SUB OUT: MOODY,CARISSA	02:17			
FOUL by OESTRIECH,LOGAN	02:07			
	02:07			MISSED FT by WILLIAMS,KIARA
	02:07			REBOUND (DEADB) by TEAM
	02:07			MISSED FT by WILLIAMS,KIARA
	02:07			REBOUND (OFF) by TEAM
FOUL by BRIGGS,TANISHA	01:51			
	01:37			TURNOVER by FREEMAN,BRIUNNA
STEAL by OESTRIECH,LOGAN	01:36			
MISSED 3PTR by CORTEZ,GABRIELLA	01:29			
	01:29			REBOUND (DEF) by TEAM
	01:04			MISSED 3PTR by STOUT,SYDNEY
REBOUND (DEF) by ANDERSON,DANI	01:04			
	00:44			FOUL by WILLIAMS,KIARA
MISSED FT by MARKER,LAUREN	00:44			
REBOUND (DEADB) by TEAM	00:44			
GOOD! FT by MARKER,LAUREN	00:44	91-46	H 45	

VISITORS: ULM	Time	Score	Margin	HOME: ARKANSAS
	00:15			MISSED 3PTR by MASON,JAILYN
	00:15			REBOUND (OFF) by FREEMAN,BRIUNNA
FOUL by ANDERSON,DANI	00:11			
	00:11			MISSED FT by WILLIAMS,KIARA
	00:11			REBOUND (DEADB) by TEAM
	00:11	92-46	H 46	GOOD! FT by WILLIAMS,KIARA
MISSED JUMPER by MARKER,LAUREN	00:01			
	00:01			BLOCK by STOUT,SYDNEY
REBOUND (OFF) by TEAM	00:01			
MISSED JUMPER by MARKER,LAUREN	00:00			
	00:00			REBOUND (DEADB) by TEAM

ULM 46, ARKANSAS 92

Period 4-only	In Paint	Off T/O	2nd Chance	Fast Break	Bench	
ULM	4	0	4	0	7	Score tied - 0 times
AR	8	6	8	0	11	Lead changed - 0 times

**ULM vs ARKANSAS**  
**11/13/2016; 2 p.m. at Fayetteville, Ark. (Bud Walton Arena)**  
**Scoring/Runs Reference**

Period 1

ULM	Score	Marg	ARKANSAS
09:13 - COLLINS JUMPER [P]	2	2-0	-2
	2-2	0	2 MASON JUMPER - 08:53
	2-4	2	2 MONK JUMPER - 07:23
07:04 - RATLIFF LAYUP [P]	2	4-4	0
	4-5	1	1 MONK FT - 06:45
	4-7	3	2 COOLEY LAYUP [P] - 05:43
	4-8	4	1 COOLEY FT - 05:42
05:25 - COLLINS JUMPER [P]	2	6-8	2
	6-10	4	2 COOLEY LAYUP [P] - 04:56
	6-12	6	2 FREEMAN JUMPER [P] - 03:39
02:36 - JACKSON JUMPER [P]	2	8-12	4
	8-13	5	1 COOLEY FT - 02:18
	8-15	7	2 FREEMAN LAYUP [P] [F] - 02:01
	8-17	9	2 SWENSON LAYUP [P] - 01:28
00:53 - RATLIFF JUMPER	2	10-17	7
	10-20	10	3 DANBERRY 3PTR - 00:39
	10-22	12	2 COSPER LAYUP [P] [F] - 00:14

Period 2

ULM	Score	Marg	ARKANSAS
	10-24	14	2 JACKSON JUMPER - 09:26
	10-27	17	3 JACKSON 3PTR - 08:24
08:09 - COLLINS LAYUP [P]	2	12-27	15
	12-30	18	3 JACKSON 3PTR - 07:02
	12-31	19	1 MONK FT - 06:24
	12-32	20	1 MONK FT - 06:24
	12-33	21	1 COOLEY FT - 05:11
	12-34	22	1 COOLEY FT - 05:11
	12-37	25	3 DANBERRY 3PTR - 04:52
04:21 - ANDERSON FT	1	13-37	24
	13-38	25	1 COOLEY FT - 03:01
	13-39	26	1 FREEMAN FT - 02:45
	13-40	27	1 FREEMAN FT - 02:45
01:55 - MARKER 3PTR	3	16-40	24
	16-42	26	2 DANBERRY JUMPER [P] - 01:32
01:16 - OESTRIECH LAYUP [P]	2	18-42	24
00:33 - RATLIFF LAYUP [P]	2	20-42	22



Period 3

ULM	Score	Marg	ARKANSAS
	20-43	23 1	COOLEY FT - 09:06
08:04 - OESTRIECH FT	1	21-43 22	
08:04 - OESTRIECH FT	1	22-43 21	
	22-45	23 2	COOLEY JUMPER [P] - 07:46
	22-47	25 2	SWENSON LAYUP [P] - 07:15
	22-48	26 1	SWENSON FT - 07:14
	22-51	29 3	SWENSON 3PTR - 07:03
06:41 - JACKSON JUMPER [P]	2	24-51 27	
	24-52	28 1	COOLEY FT - 06:31
	24-55	31 3	SWENSON 3PTR - 06:11
05:53 - COLLINS FT	1	25-55 30	
05:53 - COLLINS FT	1	26-55 29	
	26-57	31 2	SWENSON JUMPER [P] - 05:38
05:27 - COLLINS FT	1	27-57 30	
05:27 - COLLINS FT	1	28-57 29	
	28-58	30 1	DANBERRY FT - 04:43
	28-59	31 1	DANBERRY FT - 04:43
	28-60	32 1	COSPER FT - 03:43
	28-61	33 1	COSPER FT - 03:43
03:31 - JACKSON JUMPER	2	30-61 31	
	30-63	33 2	MONK LAYUP [P] - 03:14
02:52 - ARCHER FT	1	31-63 32	
	31-65	34 2	ZIMMERMAN LAYUP [P] - 02:31
	31-66	35 1	ZIMMERMAN FT - 02:19
	31-67	36 1	MONK FT - 02:18
	31-68	37 1	MONK FT - 02:18
02:06 - ARCHER FT	1	32-68 36	
02:06 - ARCHER FT	1	33-68 35	
	33-70	37 2	JACKSON LAYUP [P] - 01:39
	33-72	39 2	COSPER LAYUP [P] [F] - 01:23
	33-74	41 2	WILLIAMS LAYUP [P] [F] - 00:53
	33-76	43 2	WILLIAMS LAYUP [P] [F] - 00:28
00:01 - ARCHER LAYUP [P]	2	35-76 41	

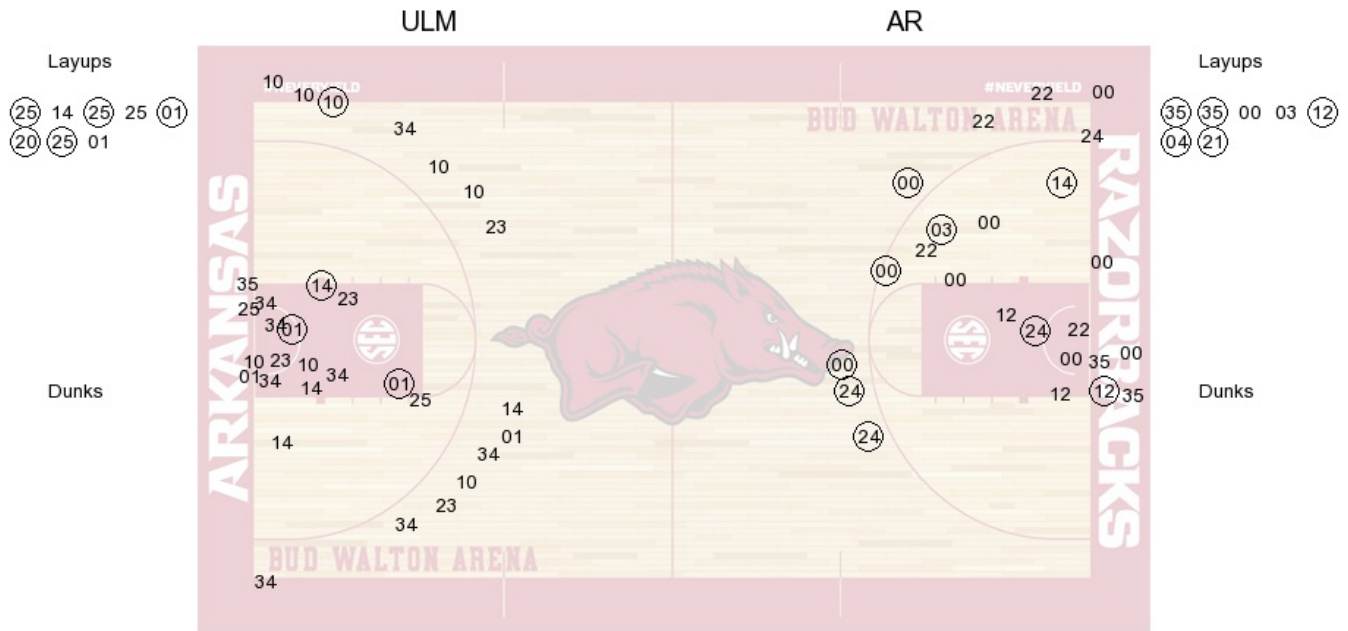
Period 4

ULM	Score	Marg	ARKANSAS
09:42 - ANDERSON LAYUP [P]	2	37-76 39	
	37-79	42 3	JACKSON 3PTR - 09:08
08:39 - CORTEZ 3PTR	3	40-79 39	
	40-81	41 2	WILLIAMS LAYUP [P] - 07:49
	40-83	43 2	WILLIAMS LAYUP [P] - 07:11
	40-85	45 2	FREEMAN LAYUP [P] - 06:17
	40-87	47 2	MASON JUMPER - 05:46
04:41 - JACKSON LAYUP [P]	2	42-87 45	
04:15 - JACKSON FT	1	43-87 44	
	43-89	46 2	FREEMAN LAYUP [P] - 03:19
	43-91	48 2	FREEMAN JUMPER - 02:33
02:17 - ANDERSON FT	1	44-91 47	
02:17 - ANDERSON FT	1	45-91 46	
00:44 - MARKER FT	1	46-91 45	
	46-92	46 1	WILLIAMS FT - 00:11

**ULM vs ARKANSAS**  
**OFFICIAL SHOT CHART**

11/13/2016 at Fayetteville, Ark. (Bud Walton Arena)

**PERIOD 1**



**ULM PERIOD 1**

FG Made	9
FG Attempted	39
3PFG Made	1
3PFG Attempted	14

**AR PERIOD 1**

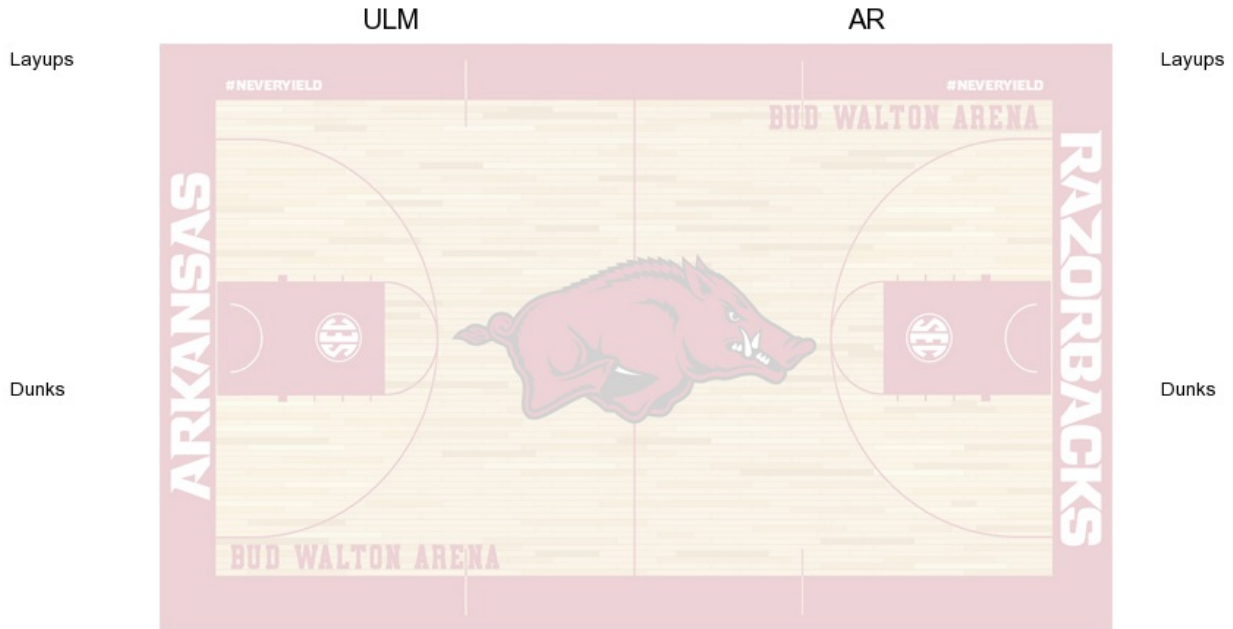
FG Made	14
FG Attempted	31
3PFG Made	4
3PFG Attempted	7

**ULM vs ARKANSAS  
OFFICIAL SHOT CHART**

11/13/2016 at Fayetteville, Ark. (Bud Walton Arena)

---

**PERIOD 2**



**ULM PERIOD 2**

FG Made  
FG Attempted  
3PFG Made  
3PFG Attempted

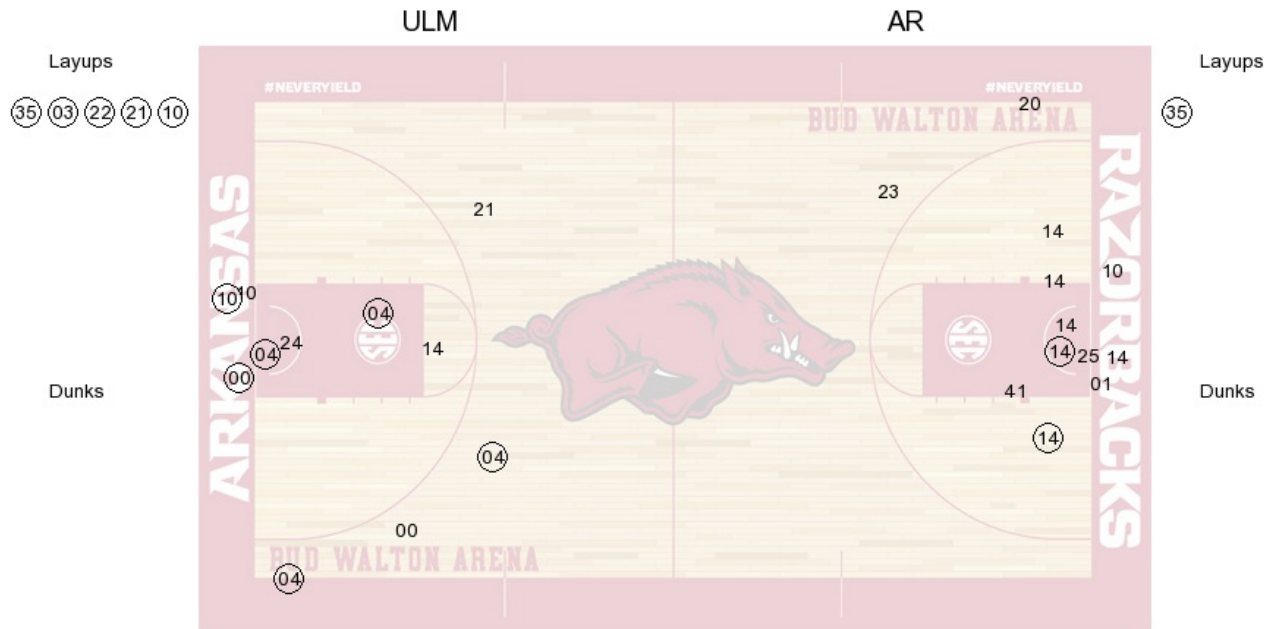
**AR PERIOD 2**

FG Made  
FG Attempted  
3PFG Made  
3PFG Attempted

**ULM vs ARKANSAS**  
**OFFICIAL SHOT CHART**

11/13/2016 at Fayetteville, Ark. (Bud Walton Arena)

**PERIOD 3**



**ULM PERIOD 3**

FG Made	6
FG Attempted	29
3PFG Made	1
3PFG Attempted	5

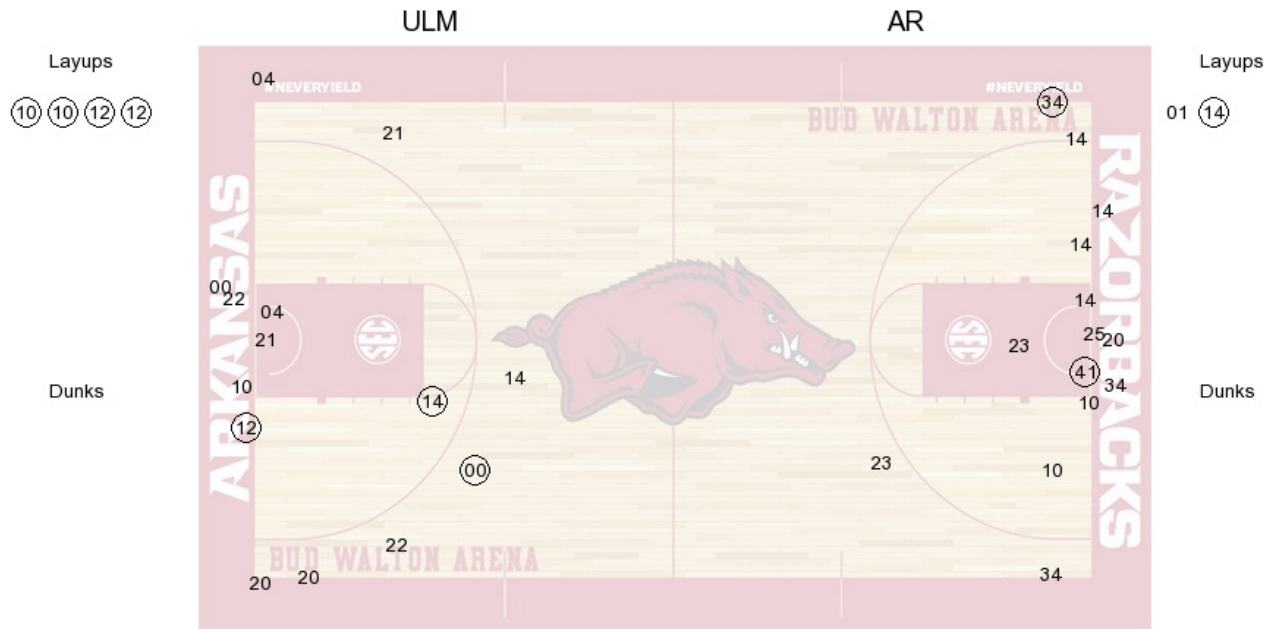
**AR PERIOD 3**

FG Made	18
FG Attempted	34
3PFG Made	3
3PFG Attempted	11

**ULM vs ARKANSAS**  
**OFFICIAL SHOT CHART**

11/13/2016 at Fayetteville, Ark. (Bud Walton Arena)

**PERIOD 4**



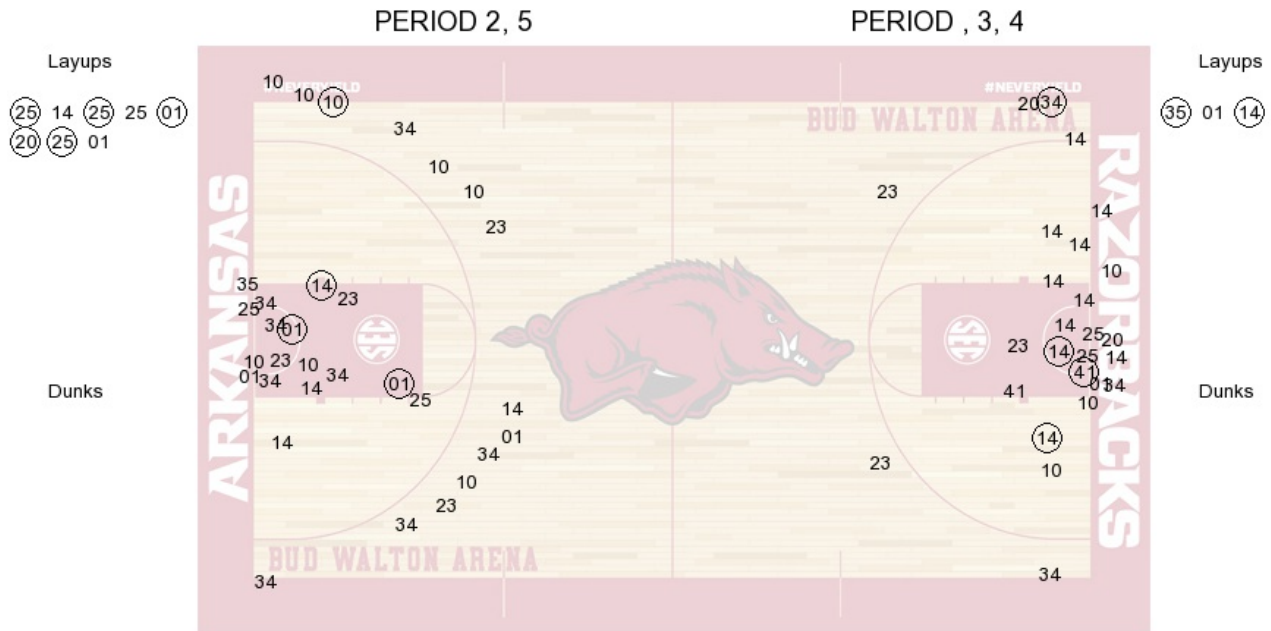
**ULM PERIOD 4**  
 FG Made  
 FG Attempted  
 3PFG Made  
 3PFG Attempted

**AR PERIOD 4**  
 FG Made  
 FG Attempted  
 3PFG Made  
 3PFG Attempted

**ULM vs ARKANSAS**  
**OFFICIAL SHOT CHART**

11/13/2016 at Fayetteville, Ark. (Bud Walton Arena)

**ULM**



**ULM PERIOD 1**

FG Made	9
FG Attempted	39
3PFG Made	1
3PFG Attempted	14

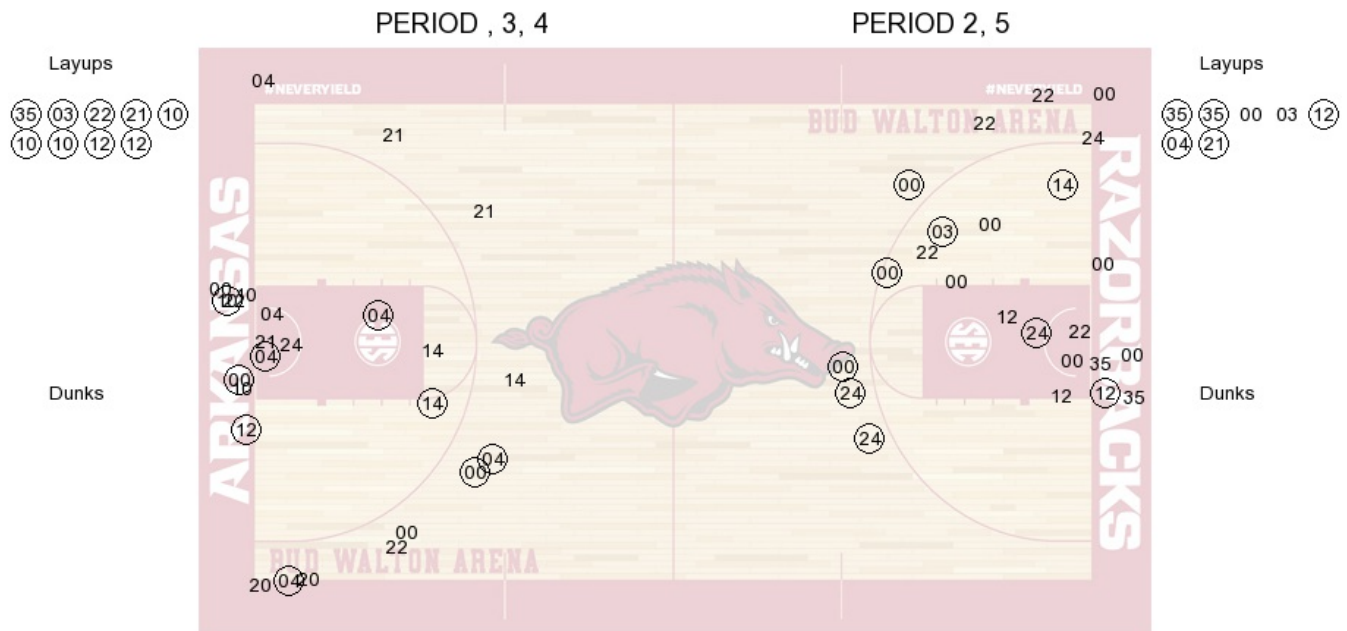
**ULM PERIOD 2**

FG Made	
FG Attempted	
3PFG Made	
3PFG Attempted	

**ULM vs ARKANSAS**  
**OFFICIAL SHOT CHART**

11/13/2016 at Fayetteville, Ark. (Bud Walton Arena)

**ARKANSAS**



**AR PERIOD 1**

FG Made	14
FG Attempted	31
3PFG Made	4
3PFG Attempted	7

**AR PERIOD 2**

FG Made	
FG Attempted	
3PFG Made	
3PFG Attempted	