

**ARKANSAS VS. SAM HOUSTON
STATE
ELEMENTARY DAY**



11/11/2016
Fayetteville, Ark. (Bud Walton Arena)

FINAL STATS

ARKANSAS
(0-0)

71

Sam Houston State
(0-0)

39

Start Time: 10:30 a.m.
Officials: Brian Hall, Meadow Overstreet, Eric Baker
Attendance: 4330

Elementary Day
Estimated Actual Attendance: 4,277

Official Basketball Box Score -- Game Totals -- Final Statistics

Sam Houston State vs ARKANSAS

11/11/2016 10:30 a.m. at Fayetteville, Ark. (Bud Walton Arena)

Sam Houston State 39 - 0-0

##	Player		Total		3-Ptr		FT-FTA	Rebounds			PF	TP	A	TO	Blk	Stl	Min
			FG	FGA	FG	FGA		Off	Def	Tot							
01	ORAMAS,JENNIFER	g	1-8		0-6		0-0	1	1	2	1	2	2	6	0	0	30
05	DAY,MORGHEN	g	1-6		1-3		2-2	0	1	1	2	5	1	1	0	0	36
22	MCCANTS,JASMINE	c	4-7		0-0		3-4	3	1	4	5	11	0	5	1	0	19
34	HARRELL,RACHEL	g	3-7		3-5		0-0	1	7	8	3	9	2	1	0	2	36
35	COOPER,ASHLEIGH	f	0-5		0-1		0-0	1	4	5	3	0	1	3	0	0	17
10	DELANEY,ANGELA		3-6		0-2		0-0	3	4	7	1	6	1	4	0	2	24
12	NWOSAH,ANN		1-3		0-0		0-0	2	1	3	0	2	0	1	0	0	6
15	HARSTON,TIA		0-6		0-4		0-0	1	0	1	1	0	0	2	0	0	13
21	BAXTER,LYDIA		0-2		0-0		2-2	1	4	5	1	2	0	1	1	0	12
23	SOLOMON-POWELL,E		0-0		0-0		0-0	0	0	0	0	0	0	1	0	0	0
30	BORDEN,CHELSEY		0-0		0-0		0-0	0	0	0	0	0	0	0	0	0	2
42	MCKINNEY,KIERA		1-2		0-0		0-0	0	0	0	1	2	0	0	0	0	4
TEAM								0	2	2	0			2			
TOTALS			14-52		4-21		7-8	13	25	38	18	39	7	27	2	4	199

Deadball Rebounds: 0,0

FG %	1st Half:	6-26	23.1%	2nd Half:	8-26	30.8%	Game:	14-52	26.9%								
	1st Qtr	3-12	25.0%		3-14	21.4%		2-12	16.7%	4th Qtr	6-14	42.9%					
3FG %	1st Half:	0-8	00.0%	2nd Half:	4-13	30.8%	Game:	4-21	19.0%								
	1st Qtr	0-4	00.0%		0-4	00.0%		2-7	28.6%	4th Qtr	2-6	33.3%					
FT %	1st Half:	2-2	100.0%	2nd Half:	5-6	83.3%	Game:	7-8	87.5%								
	1st Qtr	0-0	0%		2-2	100.0%		3rd Qtr	4-4	100.0%	4th Qtr	1-2	50.0%				

ARKANSAS 71 - 0-0

##	Player		Total		3-Ptr		FT-FTA	Rebounds			PF	TP	A	TO	Blk	Stl	Min
			FG	FGA	FG	FGA		Off	Def	Tot							
00	JACKSON,JESSICA	f	6-14		3-4		5-7	3	5	8	3	20	4	0	1	0	27
03	MONK,MALICA	g	5-7		0-0		2-2	0	2	2	2	12	3	1	0	2	27
14	MASON,JAILYN	g	2-9		1-2		0-0	0	4	4	1	5	5	2	0	3	36
22	ZIMMERMAN,BAILEY	f	3-6		2-5		1-2	2	3	5	1	9	3	1	0	1	32
35	COOLEY,ALECIA	c	4-8		0-0		4-6	2	3	5	0	12	0	2	4	1	26
04	SWENSON,KEIRYN		2-6		1-3		0-0	0	5	5	3	5	1	2	0	1	23
10	WILLIAMS,KIARA		0-1		0-0		0-0	0	1	1	0	0	0	1	0	1	5
12	FREEMAN,BRIUNNA		2-3		0-0		2-2	2	1	3	2	6	0	0	0	1	9
20	STOUT,SYDNEY		0-0		0-0		0-0	0	0	0	0	0	0	0	0	0	3
24	DANBERRY,JORDAN		0-1		0-0		2-4	1	0	1	2	2	0	2	0	0	12
TEAM								0	1	1	0			0			
TOTALS			24-55		7-14		16-23	10	25	35	14	71	16	11	5	10	200

Deadball Rebounds: 3,1

FG %	1st Half:	13-30	43.3%	2nd Half:	11-25	44.0%	Game:	24-55	43.6%								
	1st Qtr	9-15	60.0%		4-15	26.7%		4-11	36.4%	4th Qtr	7-14	50.0%					
3FG %	1st Half:	3-7	42.9%	2nd Half:	4-7	57.1%	Game:	7-14	50.0%								
	1st Qtr	2-5	40.0%		1-2	50.0%		2-3	66.7%	4th Qtr	2-4	50.0%					
FT %	1st Half:	5-9	55.6%	2nd Half:	11-14	78.6%	Game:	16-23	69.6%								
	1st Qtr	5-9	55.6%		0-0	0%		3rd Qtr	5-6	83.3%	4th Qtr	6-8	75.0%				

Officials: Brian Hall, Meadow Overstreet, Eric Baker

Technical Fouls: Sam Houston State- None. ARKANSAS- None.

Attendance: 4330

Elementary Day

Estimated Actual Attendance: 4,277

Score by periods	1st	2nd	3rd	4th	Total
Sam Houston State	6	8	10	15	39
ARKANSAS	25	9	15	22	71

	In	Off	2nd	Fast	
Points	Paint	T/O	Chance	Break	Bench
SHSU	16	13	13	2	12
AR	30	23	13	8	13

Last FG - SHSU 4th-01:41, AR 4th-00:56.

Largest lead - Sam Houston State by ; ARKANSAS by 35 4th-03:01

SHSU led for 0:00. AR led for 39:41. Game was tied for 0:17.

Score tied - 0 times

Lead changed - 0 times

Official Basketball Box Score -- Game Totals -- First Half Statistics

Sam Houston State vs ARKANSAS

11/11/2016 10:30 a.m. at Fayetteville, Ark. (Bud Walton Arena)

Sam Houston State 14 • 0-0

##	Player		Total		3-Ptr		FT-FTA	Rebounds			PF	TP	A	TO	Blk	Stl	Min
			FG	FGA	FG	FGA		Off	Def	Tot							
01	ORAMAS,JENNIFER	g	1	6	0	4	0-0	1	1	2	0	2	0	4	0	0	16
05	DAY,MORGHEN	g	0	2	0	1	0-0	0	1	1	2	0	0	1	0	0	16
22	MCCANTS,JASMINE	c	3	6	0	0	0-0	2	1	3	3	6	0	5	1	0	14
34	HARRELL,RACHEL	g	0	1	0	1	0-0	0	4	4	0	0	1	0	0	0	17
35	COOPER,ASHLEIGH	f	0	4	0	1	0-0	0	2	2	1	0	0	2	0	0	7
10	DELANEY,ANGELA		1	1	0	0	0-0	1	2	3	1	2	0	2	0	1	9
12	NWOSA,ANN		1	3	0	0	0-0	2	1	3	0	2	0	1	0	0	6
15	HARSTON,TIA		0	3	0	1	0-0	1	0	1	0	0	0	1	0	0	7
21	BAXTER,LYDIA		0	0	0	0	2-2	0	2	2	0	2	0	1	0	0	4
23	SOLOMON-POWELL,E		0	0	0	0	0-0	0	0	0	0	0	0	0	0	0	0
30	BORDEN,CHELSEY		0	0	0	0	0-0	0	0	0	0	0	0	0	0	0	2
42	MCKINNEY,KIERA		0	0	0	0	0-0	0	0	0	1	0	0	0	0	0	2
TEAM								0	1	1	0			0			
Totals			6	26	0	8	2-2	7	15	22	8	14	1	17	1	1	100
FG %			1st Qtr	3-12	25.0%	2nd Qtr	3-14	21.4%	Half:	6-26	23.1%						
3FG %			1st Qtr	0-4	00.0%	2nd Qtr	0-4	00.0%	Half:	0-8	00.0%						
FT %			1st Qtr	0-0	0%	2nd Qtr	2-2	100.0%	Half:	2-2	100.0%						

ARKANSAS 34 • 0-0

##	Player		Total		3-Ptr		FT-FTA	Rebounds			PF	TP	A	TO	Blk	Stl	Min
			FG	FGA	FG	FGA		Off	Def	Tot							
00	JACKSON,JESSICA	f	2	6	1	1	0-1	3	2	5	2	5	3	0	1	0	14
03	MONK,MALICA	g	4	4	0	0	2-2	0	1	1	0	10	2	0	0	1	15
14	MASON,JAILYN	g	1	4	0	1	0-0	0	2	2	0	2	2	2	0	3	17
22	ZIMMERMAN,BAILEY	f	2	4	1	3	0-0	0	2	2	1	5	3	1	0	1	19
35	COOLEY,ALECIA	c	2	5	0	0	1-2	0	1	1	0	5	0	0	2	1	12
04	SWENSON,KEIRYN		2	5	1	2	0-0	0	3	3	1	5	0	1	0	0	12
10	WILLIAMS,KIARA		0	0	0	0	0-0	0	1	1	0	0	0	0	0	0	2
12	FREEMAN,BRIUNNA		0	1	0	0	0-0	0	1	1	2	0	0	0	0	0	1
20	STOUT,SYDNEY		0	0	0	0	0-0	0	0	0	0	0	0	0	0	0	0
24	DANBERRY,JORDAN		0	1	0	0	2-4	1	0	1	2	2	0	2	0	0	8
TEAM								0	0	0	0			0			
Totals			13	30	3	7	5-9	4	13	17	8	34	10	6	3	6	100
FG %			1st Qtr	9-15	60.0%	2nd Qtr	4-15	26.7%	Half:	13-30	43.3%						
3FG %			1st Qtr	2-5	40.0%	2nd Qtr	1-2	50.0%	Half:	3-7	42.9%						
FT %			1st Qtr	5-9	55.6%	2nd Qtr	0-0	0%	Half:	5-9	55.6%						

Officials: Brian Hall, Meadow Overstreet, Eric Baker
 Technical Fouls: Sam Houston State- None. ARKANSAS- None.
 Elementary Day
 Estimated Actual Attendance: 4,277

Score by periods	1st	2nd	3rd	4th	Total
Sam Houston State	6	8	10	15	39
ARKANSAS	25	9	15	22	71

Points	In	Off	2nd	Fast	Bench
	Paint	T/O	Chance	Break	
SHSU	10	6	6	0	6
	18	9	4	6	7

Last FG - SHSU 2nd-01:35, AR 2nd-01:20.
 SHSU led for 0:00. AR led for 19:43. Game was tied for 0:17.

Score tied - 0 times
 Lead changed - 0 times

Sam Houston State vs ARKANSAS
11/11/2016; 10:30 a.m. at Fayetteville, Ark. (Bud Walton Arena)
Period 1 Play-By-Play

VISITORS: Sam Houston State	Time	Score	Margin	HOME: ARKANSAS
	09:43	3-0	H 3	GOOD! 3PTR by ZIMMERMAN,BAILEY
	09:43			ASSIST by JACKSON,JESSICA
GOOD! LAYUP by MCCANTS,JASMINE [PNT]	09:21	3-2	H 1	
FOUL by COOPER,ASHLEIGH	09:06			
	09:06			MISSED FT by COOLEY,ALECIA
	09:06			REBOUND (DEADB) by TEAM
	09:06	4-2	H 2	GOOD! FT by COOLEY,ALECIA
MISSED 3PTR by ORAMAS,JENNIFER	08:45			
	08:45			REBOUND (DEF) by ZIMMERMAN,BAILEY
	08:37	7-2	H 5	GOOD! 3PTR by JACKSON,JESSICA
	08:37			ASSIST by MONK,MALICA
GOOD! JUMPER by ORAMAS,JENNIFER	08:02	7-4	H 3	
	07:44	9-4	H 5	GOOD! JUMPER by MASON,JAILYN [PNT]
	07:44			ASSIST by ZIMMERMAN,BAILEY
MISSED 3PTR by ORAMAS,JENNIFER	07:20			
	07:20			REBOUND (DEF) by MASON,JAILYN
	07:10			MISSED 3PTR by ZIMMERMAN,BAILEY
REBOUND (DEF) by COOPER,ASHLEIGH	07:10			
MISSED 3PTR by COOPER,ASHLEIGH	06:49			
	06:49			REBOUND (DEF) by MASON,JAILYN
	06:41			MISSED JUMPER by MASON,JAILYN
REBOUND (DEF) by ORAMAS,JENNIFER	06:41			
MISSED JUMPER by COOPER,ASHLEIGH	06:22			
	06:22			REBOUND (DEF) by JACKSON,JESSICA
	06:14	11-4	H 7	GOOD! LAYUP by MONK,MALICA [FB/PNT]
	06:14			ASSIST by JACKSON,JESSICA
TURNOVER by MCCANTS,JASMINE	05:50			
SUB IN: NWOSAH,ANN	05:50			
SUB IN: DELANEY,ANGELA	05:50			
SUB OUT: COOPER,ASHLEIGH	05:50			
	05:27	13-4	H 9	GOOD! LAYUP by COOLEY,ALECIA [PNT]
	05:27			ASSIST by ZIMMERMAN,BAILEY
TURNOVER by MCCANTS,JASMINE	05:01			
	05:00			STEAL by MASON,JAILYN
FOUL by DAY,MORGHEN	04:57			
	04:57			TIMEOUT MEDIA
	04:57	14-4	H 10	GOOD! FT by MONK,MALICA
	04:57	15-4	H 11	GOOD! FT by MONK,MALICA
SUB IN: HARSTON,TIA	04:57			
SUB IN: BAXTER,LYDIA	04:57			
SUB OUT: MCCANTS,JASMINE	04:57			
SUB OUT: HARRELL,RACHEL	04:57			
	04:57			SUB IN: SWENSON,KEIRYN
	04:57			SUB IN: DANBERRY,JORDAN
	04:57			SUB OUT: JACKSON,JESSICA
	04:57			SUB OUT: MONK,MALICA
TURNOVER by DELANEY,ANGELA	04:32			
	04:30			STEAL by COOLEY,ALECIA
FOUL by DAY,MORGHEN	04:12			
	04:12	16-4	H 12	GOOD! FT by DANBERRY,JORDAN
	04:12			MISSED FT by DANBERRY,JORDAN
REBOUND (DEF) by NWOSAH,ANN	04:12			
SUB OUT: DAY,MORGHEN	04:12			
	04:12			SUB IN: FREEMAN,BRIUNNA
	04:12			SUB OUT: ZIMMERMAN,BAILEY
	04:11			FOUL by FREEMAN,BRIUNNA
MISSED JUMPER by NWOSAH,ANN	04:03			
	04:03			BLOCK by COOLEY,ALECIA
	04:01			REBOUND (DEF) by COOLEY,ALECIA

VISITORS: Sam Houston State	Time	Score	Margin	HOME: ARKANSAS
	03:51	18-4	H 14	GOOD! LAYUP by COOLEY,ALECIA [PNT]
	03:51			ASSIST by MASON,JAILYN
MISSED 3PTR by HARSTON,TIA	03:33			
	03:33			REBOUND (DEF) by FREEMAN,BRIUNNA
	03:24			FOUL by DANBERRY,JORDAN
	03:24			TURNOVER by DANBERRY,JORDAN
SUB IN: MCKINNEY,KIERA	03:24			
SUB OUT: NWOSAH,ANN	03:24			
TURNOVER by BAXTER,LYDIA	03:08			
	03:06			STEAL by MASON,JAILYN
	03:03			MISSED LAYUP by FREEMAN,BRIUNNA
REBOUND (DEF) by BAXTER,LYDIA	03:03			
	02:54			FOUL by FREEMAN,BRIUNNA
SUB IN: MCCANTS,JASMINE	02:54			
SUB OUT: BAXTER,LYDIA	02:54			
	02:54			SUB IN: ZIMMERMAN,BAILEY
	02:54			SUB IN: JACKSON,JESSICA
	02:54			SUB OUT: FREEMAN,BRIUNNA
	02:54			SUB OUT: COOLEY,ALECIA
TURNOVER by ORAMAS,JENNIFER	02:48			
	02:37			MISSED 3PTR by MASON,JAILYN
	02:37			REBOUND (OFF) by JACKSON,JESSICA
	02:34	20-4	H 16	GOOD! LAYUP by JACKSON,JESSICA [PNT]
FOUL by MCKINNEY,KIERA	02:34			
	02:34			MISSED FT by JACKSON,JESSICA
	02:34			REBOUND (OFF) by DANBERRY,JORDAN
	02:34			SUB IN: MONK,MALICA
	02:34			SUB OUT: MASON,JAILYN
	02:29			MISSED 3PTR by SWENSON,KEIRYN
BLOCK by MCCANTS,JASMINE	02:29			
REBOUND (DEF) by DELANEY,ANGELA	02:26			
MISSED LAYUP by MCCANTS,JASMINE	02:17			
REBOUND (OFF) by ORAMAS,JENNIFER	02:17			
MISSED JUMPER by ORAMAS,JENNIFER	02:14			
	02:14			REBOUND (DEF) by SWENSON,KEIRYN
FOUL by DELANEY,ANGELA	02:06			
	02:06			MISSED FT by DANBERRY,JORDAN
	02:06			REBOUND (DEADB) by TEAM
	02:06	21-4	H 17	GOOD! FT by DANBERRY,JORDAN
SUB IN: HARRELL,RACHEL	02:06			
SUB OUT: DELANEY,ANGELA	02:06			
TURNOVER by ORAMAS,JENNIFER	01:43			
	01:41			STEAL by MONK,MALICA
	01:39	23-4	H 19	GOOD! LAYUP by MONK,MALICA [FB/PNT]
TURNOVER by MCCANTS,JASMINE	01:17			
SUB IN: COOPER,ASHLEIGH	01:17			
SUB IN: BORDEN,CHELSEY	01:17			
SUB OUT: MCKINNEY,KIERA	01:17			
SUB OUT: HARSTON,TIA	01:17			
	01:05			MISSED LAYUP by DANBERRY,JORDAN
REBOUND (DEF) by HARRELL,RACHEL	01:05			
	01:04			FOUL by DANBERRY,JORDAN
MISSED LAYUP by COOPER,ASHLEIGH	00:51			
REBOUND (OFF) by MCCANTS,JASMINE	00:51			
GOOD! LAYUP by MCCANTS,JASMINE [PNT]	00:47	23-6	H 17	
	00:28	25-6	H 19	GOOD! JUMPER by SWENSON,KEIRYN
	00:28			ASSIST by ZIMMERMAN,BAILEY
TURNOVER by COOPER,ASHLEIGH	00:01			
	00:01			STEAL by ZIMMERMAN,BAILEY

	Period 1-only Period 1-only	In Paint Paint	Off TO TO	2nd Chance Chance	Fast Break Break	Bench Bench	
SHSU							Score tied - 0 times
AR		12	9	2	4	4	Lead changed - 0 times

Sam Houston State vs ARKANSAS
11/11/2016; 10:30 a.m. at Fayetteville, Ark. (Bud Walton Arena)
Period 2 Play-By-Play

VISITORS: Sam Houston State	Time	Score	Margin	HOME: ARKANSAS
SUB IN: DELANEY,ANGELA	10:00			
SUB OUT: MCCANTS,JASMINE	10:00			
	10:00			SUB IN: SWENSON,KEIRYN
	10:00			SUB OUT: COOLEY,ALECIA
MISSED LAYUP by COOPER,ASHLEIGH	09:43			
	09:43			REBOUND (DEF) by SWENSON,KEIRYN
	09:18			MISSED JUMPER by MASON,JAILYN
REBOUND (DEF) by COOPER,ASHLEIGH	09:18			
TURNOVER by ORAMAS,JENNIFER	09:06			
	08:49			MISSED JUMPER by JACKSON,JESSICA
REBOUND (DEF) by DAY,MORGHEN	08:49			
TURNOVER by COOPER,ASHLEIGH	08:24			
	08:23			STEAL by MASON,JAILYN
SUB IN: MCCANTS,JASMINE	08:18			
SUB OUT: COOPER,ASHLEIGH	08:18			
	08:12			MISSED 3PTR by ZIMMERMAN,BAILEY
REBOUND (DEF) by TEAM	08:12			
MISSED JUMPER by MCCANTS,JASMINE	07:49			
	07:49			BLOCK by JACKSON,JESSICA
REBOUND (OFF) by MCCANTS,JASMINE	07:48			
TURNOVER by MCCANTS,JASMINE	07:47			
FOUL by MCCANTS,JASMINE	07:37			
	07:37			SUB IN: COOLEY,ALECIA
	07:37			SUB OUT: SWENSON,KEIRYN
	07:35			MISSED LAYUP by JACKSON,JESSICA
REBOUND (DEF) by MCCANTS,JASMINE	07:35			
MISSED LAYUP by DAY,MORGHEN	07:27			
	07:27			REBOUND (DEF) by MONK,MALICA
	07:21	27-6	H 21	GOOD! LAYUP by MONK,MALICA [FB/PNT]
MISSED 3PTR by HARRELL,RACHEL	07:06			
	07:06			REBOUND (DEF) by JACKSON,JESSICA
	06:46			MISSED LAYUP by COOLEY,ALECIA
	06:46			REBOUND (OFF) by JACKSON,JESSICA
	06:44			MISSED LAYUP by JACKSON,JESSICA
	06:44			REBOUND (OFF) by JACKSON,JESSICA
	06:41	29-6	H 23	GOOD! LAYUP by ZIMMERMAN,BAILEY [PNT]
	06:41			ASSIST by JACKSON,JESSICA
TURNOVER by DAY,MORGHEN	06:34			
SUB IN: NWOSAH,ANN	06:34			
SUB OUT: DELANEY,ANGELA	06:34			
	06:34			SUB IN: WILLIAMS,KIARA
	06:34			SUB OUT: JACKSON,JESSICA
	06:19			TURNOVER by MASON,JAILYN
MISSED 3PTR by DAY,MORGHEN	06:12			
	06:12			REBOUND (DEF) by WILLIAMS,KIARA
	06:03	31-6	H 25	GOOD! LAYUP by MONK,MALICA [PNT]
	06:03			ASSIST by MASON,JAILYN
MISSED 3PTR by ORAMAS,JENNIFER	05:42			
	05:42			REBOUND (DEF) by ZIMMERMAN,BAILEY
	05:28			MISSED JUMPER by COOLEY,ALECIA
REBOUND (DEF) by HARRELL,RACHEL	05:28			
MISSED LAYUP by NWOSAH,ANN	05:03			
REBOUND (OFF) by NWOSAH,ANN	05:03			
TURNOVER by NWOSAH,ANN	04:58			
	04:58			TIMEOUT MEDIA
SUB IN: HARSTON,TIA	04:58			
SUB OUT: ORAMAS,JENNIFER	04:58			
	04:58			SUB IN: SWENSON,KEIRYN
	04:58			SUB IN: DANBERRY,JORDAN

VISITORS: Sam Houston State	Time	Score	Margin	HOME: ARKANSAS
	04:58			SUB OUT: WILLIAMS,KIARA
	04:58			SUB OUT: MONK,MALICA
	04:49			TURNOVER by SWENSON,KEIRYN
MISSED JUMPER by HARSTON,TIA	04:34			
	04:34			BLOCK by COOLEY,ALECIA
REBOUND (OFF) by NWOSAH,ANN	04:32			
GOOD! LAYUP by NWOSAH,ANN [PNT]	04:30	31-8	H 23	
	04:02			FOUL by ZIMMERMAN,BAILEY
	04:02			TURNOVER by ZIMMERMAN,BAILEY
GOOD! LAYUP by MCCANTS,JASMINE [PNT]	03:43	31-10	H 21	
ASSIST by HARRELL,RACHEL	03:43			
	03:21			MISSED LAYUP by COOLEY,ALECIA
REBOUND (DEF) by HARRELL,RACHEL	03:21			
	03:10			FOUL by SWENSON,KEIRYN
	03:10			SUB IN: JACKSON,JESSICA
	03:10			SUB OUT: COOLEY,ALECIA
	02:58			FOUL by JACKSON,JESSICA
TURNOVER by HARSTON,TIA	02:48			
FOUL by MCCANTS,JASMINE	02:39			
SUB IN: DELANEY,ANGELA	02:39			
SUB OUT: NWOSAH,ANN	02:39			
	02:37			TURNOVER by DANBERRY,JORDAN
MISSED JUMPER by MCCANTS,JASMINE	02:29			
REBOUND (OFF) by HARSTON,TIA	02:29			
MISSED JUMPER by HARSTON,TIA	02:26			
	02:26			REBOUND (DEF) by SWENSON,KEIRYN
	02:12			MISSED JUMPER by SWENSON,KEIRYN
REBOUND (DEF) by HARRELL,RACHEL	02:12			
FOUL by MCCANTS,JASMINE	02:05			
TURNOVER by MCCANTS,JASMINE	02:05			
TIMEOUT 30SEC	02:05			
SUB IN: ORAMAS,JENNIFER	02:05			
SUB IN: BAXTER,LYDIA	02:05			
SUB OUT: HARSTON,TIA	02:05			
SUB OUT: MCCANTS,JASMINE	02:05			
	02:05			SUB IN: MONK,MALICA
	02:05			SUB OUT: DANBERRY,JORDAN
	01:50			MISSED LAYUP by JACKSON,JESSICA
REBOUND (DEF) by DELANEY,ANGELA	01:50			
MISSED 3PTR by ORAMAS,JENNIFER	01:40			
REBOUND (OFF) by DELANEY,ANGELA	01:40			
GOOD! JUMPER by DELANEY,ANGELA [PNT]	01:35	31-12	H 19	
	01:20	34-12	H 22	GOOD! 3PTR by SWENSON,KEIRYN
	01:20			ASSIST by MONK,MALICA
TURNOVER by DELANEY,ANGELA	00:48			
	00:42			TURNOVER by MASON,JAILYN
STEAL by DELANEY,ANGELA	00:40			
	00:36			FOUL by JACKSON,JESSICA
GOOD! FT by BAXTER,LYDIA	00:36	34-13	H 21	
GOOD! FT by BAXTER,LYDIA	00:36	34-14	H 20	
SUB IN: BORDEN,CHELSEY	00:36			
SUB OUT: DELANEY,ANGELA	00:36			
	00:36			SUB IN: COOLEY,ALECIA
	00:36			SUB OUT: JACKSON,JESSICA
	00:09			MISSED LAYUP by SWENSON,KEIRYN
REBOUND (DEF) by BAXTER,LYDIA	00:09			
TURNOVER by ORAMAS,JENNIFER	00:01			

Sam Houston State 14, ARKANSAS 34

Period 2-only In Off 2nd Fast
Paint T/O Chance Break Bench

Period 2-only	In Paint	Off T/O	2nd Chance	Fast Break	Bench	
SHSU	6	6	4	0	6	Score tied - 0 times
AR	6	0	2	2	3	Lead changed - 0 times

Official Basketball Box Score -- Game Totals -- Second Half Statistics

Sam Houston State vs ARKANSAS

11/11/2016 10:30 a.m. at Fayetteville, Ark. (Bud Walton Arena)

Sam Houston State 25 • 0-0

##	Player		Total		3-Ptr		FT-FTA	Rebounds			PF	TP	A	TO	Blk	Stl	Min
			FG-FGA		FG-FGA			Off	Def	Tot							
01	ORAMAS,JENNIFER	g	0-2		0-2		0-0	0	0	0	1	0	2	2	0	0	14
05	DAY,MORGHEN	g	1-4		1-2		2-2	0	0	0	0	5	1	0	0	0	20
22	MCCANTS,JASMINE	c	1-1		0-0		3-4	1	0	1	2	5	0	0	0	0	5
34	HARRELL,RACHEL	g	3-6		3-4		0-0	1	3	4	3	9	1	1	0	2	19
35	COOPER,ASHLEIGH	f	0-1		0-0		0-0	1	2	3	2	0	1	1	0	0	10
10	DELANEY,ANGELA		2-5		0-2		0-0	2	2	4	0	4	1	2	0	1	15
12	NWOSA,ANN		0-0		0-0		0-0	0	0	0	0	0	0	0	0	0	0
15	HARSTON,TIA		0-3		0-3		0-0	0	0	0	1	0	0	1	0	0	6
21	BAXTER,LYDIA		0-2		0-0		0-0	1	2	3	1	0	0	0	1	0	8
23	SOLOMON-POWELL,E		0-0		0-0		0-0	0	0	0	0	0	0	1	0	0	0
30	BORDEN,CHELSEY		0-0		0-0		0-0	0	0	0	0	0	0	0	0	0	0
42	MCKINNEY,KIERA		1-2		0-0		0-0	0	0	0	0	2	0	0	0	0	2
TEAM								0	1	1	0			2			
Totals			8-26		4-13		5-6	6	10	16	10	25	6	10	1	3	99
FG %			3rd Qtr	2-12	16.7%	4th Qtr	6-14	42.9%	Half:		8-26	30.8%					
3FG %			3rd Qtr	2-7	28.6%	4th Qtr	2-6	33.3%	Half:		4-13	00.0%					
FT %			3rd Qtr	4-4	100.0%	4th Qtr	1-2	50.0%	Half:		5-6	83.3%					

ARKANSAS 37 • 0-0

##	Player		Total		3-Ptr		FT-FTA	Rebounds			PF	TP	A	TO	Blk	Stl	Min
			FG-FGA		FG-FGA			Off	Def	Tot							
00	JACKSON,JESSICA	f	4-8		2-3		5-6	0	3	3	1	15	1	0	0	0	13
03	MONK,MALICA	g	1-3		0-0		0-0	0	1	1	2	2	1	1	0	1	12
14	MASON,JAILYN	g	1-5		1-1		0-0	0	2	2	1	3	3	0	0	0	19
22	ZIMMERMAN,BAILEY	f	1-2		1-2		1-2	2	1	3	0	4	0	0	0	0	13
35	COOLEY,ALECIA	c	2-3		0-0		3-4	2	2	4	0	7	0	2	2	0	14
04	SWENSON,KEIRYN		0-1		0-1		0-0	0	2	2	2	0	1	1	0	1	11
10	WILLIAMS,KIARA		0-1		0-0		0-0	0	0	0	0	0	0	1	0	1	3
12	FREEMAN,BRIUNNA		2-2		0-0		2-2	2	0	2	0	6	0	0	0	1	8
20	STOUT,SYDNEY		0-0		0-0		0-0	0	0	0	0	0	0	0	0	0	3
24	DANBERRY,JORDAN		0-0		0-0		0-0	0	0	0	0	0	0	0	0	0	4
TEAM								0	1	1	0			0			
Totals			11-25		4-7		11-14	6	12	18	6	37	6	5	2	4	100
FG %			3rd Qtr	4-11	36.4%	4th Qtr	7-14	50.0%	Half:		11-25	44.0%					
3FG %			3rd Qtr	2-3	66.7%	4th Qtr	2-4	50.0%	Half:		4-7	42.9%					
FT %			3rd Qtr	5-6	83.3%	4th Qtr	6-8	75.0%	Half:		11-14	78.6%					

Officials: Brian Hall, Meadow Overstreet, Eric Baker
 Technical Fouls: Sam Houston State- None. ARKANSAS- None.
 Elementary Day
 Estimated Actual Attendance: 4,277

Score by periods	1st	2nd	3rd	4th	Total
Sam Houston State	6	8	10	15	39
ARKANSAS	25	9	15	22	71

Points	In	Off	2nd	Fast	Bench
	Paint	T/O	Chance	Break	
SHSU	6	7	7	2	6
	12	14	7	2	6

Last FG - SHSU 4th-01:41, AR 4th-00:56.
 SHSU led for 0:00. AR led for 19:58. Game was tied for 0:00.

Score tied - 0 times
 Lead changed - 0 times

Sam Houston State vs ARKANSAS
11/11/2016; 10:30 a.m. at Fayetteville, Ark. (Bud Walton Arena)
Period 3 Play-By-Play

VISITORS: Sam Houston State	Time	Score	Margin	HOME: ARKANSAS
SUB IN: DELANEY,ANGELA	10:00			
SUB OUT: MCCANTS,JASMINE	10:00			
MISSED JUMPER by HARRELL,RACHEL	09:30			
	09:30			REBOUND (DEF) by JACKSON,JESSICA
	09:09			TURNOVER by COOLEY,ALECIA
	08:59			FOUL by MONK,MALICA
GOOD! FT by DAY,MORGHEN	08:59	34-15	H 19	
GOOD! FT by DAY,MORGHEN	08:59	34-16	H 18	
	08:46			MISSED LAYUP by JACKSON,JESSICA
REBOUND (DEF) by HARRELL,RACHEL	08:46			
FOUL by ORAMAS,JENNIFER	08:37			
TURNOVER by ORAMAS,JENNIFER	08:37			
	08:20	37-16	H 21	GOOD! 3PTR by JACKSON,JESSICA
	08:20			ASSIST by MASON,JAILYN
	07:53			FOUL by MASON,JAILYN
SUB IN: NWOSAH,ANN	07:53			
SUB OUT: COOPER,ASHLEIGH	07:53			
TURNOVER by DELANEY,ANGELA	07:46			
	07:39	39-16	H 23	GOOD! JUMPER by JACKSON,JESSICA
TURNOVER by ORAMAS,JENNIFER	07:29			
SUB IN: HARSTON,TIA	07:29			
SUB IN: BAXTER,LYDIA	07:29			
SUB OUT: DELANEY,ANGELA	07:29			
SUB OUT: NWOSAH,ANN	07:29			
	07:25	41-16	H 25	GOOD! LAYUP by JACKSON,JESSICA [PNT]
MISSED 3PTR by HARSTON,TIA	07:02			
REBOUND (OFF) by BAXTER,LYDIA	07:02			
MISSED JUMPER by BAXTER,LYDIA	06:59			
	06:59			BLOCK by COOLEY,ALECIA
	06:56			REBOUND (DEF) by COOLEY,ALECIA
	06:52			MISSED LAYUP by MONK,MALICA
REBOUND (DEF) by TEAM	06:52			
	06:39			FOUL by MONK,MALICA
MISSED 3PTR by DAY,MORGHEN	06:23			
	06:23			REBOUND (DEF) by JACKSON,JESSICA
	06:14			MISSED JUMPER by MASON,JAILYN
REBOUND (DEF) by HARRELL,RACHEL	06:14			
MISSED 3PTR by HARSTON,TIA	05:49			
	05:49			REBOUND (DEF) by ZIMMERMAN,BAILEY
SUB IN: MCCANTS,JASMINE	05:39			
SUB OUT: ORAMAS,JENNIFER	05:39			
	05:39			SUB IN: SWENSON,KEIRYN
	05:39			SUB OUT: JACKSON,JESSICA
	05:18	44-16	H 28	GOOD! 3PTR by ZIMMERMAN,BAILEY
	05:18			ASSIST by SWENSON,KEIRYN
MISSED JUMPER by DAY,MORGHEN	04:43			
	04:43			REBOUND (DEADB) by TEAM
	04:42			TIMEOUT media
	04:42			SUB IN: DANBERRY,JORDAN
	04:42			SUB OUT: MASON,JAILYN
FOUL by HARRELL,RACHEL	04:27			
	04:27	45-16	H 29	GOOD! FT by COOLEY,ALECIA
	04:27	46-16	H 30	GOOD! FT by COOLEY,ALECIA
	04:02			FOUL by SWENSON,KEIRYN
GOOD! FT by MCCANTS,JASMINE	04:02	46-17	H 29	
GOOD! FT by MCCANTS,JASMINE	04:02	46-18	H 28	
	03:46			MISSED 3PTR by ZIMMERMAN,BAILEY
	03:46			REBOUND (OFF) by ZIMMERMAN,BAILEY
	03:33			TURNOVER by MONK,MALICA

VISITORS: Sam Houston State	Time	Score	Margin	HOME: ARKANSAS
	03:15			SUB IN: MASON,JAILYN
	03:15			SUB OUT: DANBERRY,JORDAN
MISSED 3PTR by HARSTON,TIA	03:10			
	03:10			REBOUND (DEF) by MONK,MALICA
FOUL by MCCANTS,JASMINE	03:02			
SUB IN: DELANEY,ANGELA	03:02			
SUB IN: ORAMAS,JENNIFER	03:02			
SUB OUT: MCCANTS,JASMINE	03:02			
SUB OUT: HARSTON,TIA	03:02			
	02:56			MISSED JUMPER by MONK,MALICA
REBOUND (DEF) by BAXTER,LYDIA	02:56			
MISSED JUMPER by BAXTER,LYDIA	02:23			
	02:23			REBOUND (DEF) by SWENSON,KEIRYN
	02:08			MISSED LAYUP by COOLEY,ALECIA
BLOCK by BAXTER,LYDIA	02:08			
	02:07			REBOUND (OFF) by ZIMMERMAN,BAILEY
FOUL by HARRELL,RACHEL	02:07			
	02:07	47-18	H 29	GOOD! FT by ZIMMERMAN,BAILEY
	02:07			MISSED FT by ZIMMERMAN,BAILEY
REBOUND (DEF) by DELANEY,ANGELA	02:07			
SUB IN: COOPER,ASHLEIGH	02:07			
SUB OUT: BAXTER,LYDIA	02:07			
	02:07			SUB IN: JACKSON,JESSICA
	02:07			SUB IN: FREEMAN,BRIUNNA
	02:07			SUB IN: WILLIAMS,KIARA
	02:07			SUB OUT: SWENSON,KEIRYN
	02:07			SUB OUT: MONK,MALICA
	02:07			SUB OUT: COOLEY,ALECIA
MISSED JUMPER by COOPER,ASHLEIGH	01:44			
REBOUND (OFF) by COOPER,ASHLEIGH	01:44			
GOOD! 3PTR by HARRELL,RACHEL	01:40	47-21	H 26	
	01:16			MISSED JUMPER by WILLIAMS,KIARA
REBOUND (DEF) by HARRELL,RACHEL	01:16			
MISSED 3PTR by ORAMAS,JENNIFER	01:07			
	01:07			REBOUND (DEF) by MASON,JAILYN
	00:52			TURNOVER by WILLIAMS,KIARA
STEAL by HARRELL,RACHEL	00:51			
GOOD! 3PTR by HARRELL,RACHEL	00:45	47-24	H 23	
ASSIST by ORAMAS,JENNIFER	00:45			
FOUL by COOPER,ASHLEIGH	00:18			
SUB IN: SOLOMON-POWELL,E	00:18			
SUB OUT: DAY,MORGHEN	00:18			
	00:14	48-24	H 24	GOOD! FT by JACKSON,JESSICA
	00:14	49-24	H 25	GOOD! FT by JACKSON,JESSICA
TURNOVER by SOLOMON-POWELL,E	00:06			
	00:04			STEAL by WILLIAMS,KIARA

Sam Houston State 39, ARKANSAS 71

Period 3-only	In Paint	Off T/O	2nd Chance	Fast Break	Bench	
SHSU	0	5	3	0	0	Score tied - 0 times
AR	2	7	1	0	0	Lead changed - 0 times

Sam Houston State vs ARKANSAS
11/11/2016; 10:30 a.m. at Fayetteville, Ark. (Bud Walton Arena)
Period 4 Play-By-Play

VISITORS: Sam Houston State	Time	Score	Margin	HOME: ARKANSAS
SUB IN: DELANEY,ANGELA	10:00			
SUB OUT: MCCANTS,JASMINE	10:00			
	10:00			SUB IN: WILLIAMS,KIARA
	10:00			SUB IN: FREEMAN,BRIUNNA
	10:00			SUB OUT: MONK,MALICA
	10:00			SUB OUT: COOLEY,ALECIA
TURNOVER by HARRELL,RACHEL	09:58			
	09:57			STEAL by FREEMAN,BRIUNNA
FOUL by COOPER,ASHLEIGH	09:39			
	09:22			MISSED JUMPER by JACKSON,JESSICA
REBOUND (DEF) by DELANEY,ANGELA	09:22			
MISSED JUMPER by DELANEY,ANGELA	08:50			
REBOUND (OFF) by DELANEY,ANGELA	08:50			
TURNOVER by TEAM	08:48			
	08:48			SUB IN: COOLEY,ALECIA
	08:48			SUB OUT: WILLIAMS,KIARA
	08:32			MISSED JUMPER by MASON,JAILYN
	08:32			REBOUND (OFF) by FREEMAN,BRIUNNA
FOUL by HARRELL,RACHEL	08:31			
	08:31	50-24	H 26	GOOD! FT by FREEMAN,BRIUNNA
	08:31	51-24	H 27	GOOD! FT by FREEMAN,BRIUNNA
SUB IN: MCCANTS,JASMINE	08:31			
SUB OUT: ORAMAS,JENNIFER	08:31			
GOOD! 3PTR by HARRELL,RACHEL	08:17	51-27	H 24	
ASSIST by DAY,MORGHEN	08:17			
	08:05	54-27	H 27	GOOD! 3PTR by JACKSON,JESSICA
	08:05			ASSIST by MASON,JAILYN
MISSED 3PTR by DELANEY,ANGELA	07:41			
	07:41			REBOUND (DEF) by JACKSON,JESSICA
	07:33			MISSED 3PTR by JACKSON,JESSICA
	07:33			REBOUND (OFF) by COOLEY,ALECIA
	07:13			MISSED LAYUP by JACKSON,JESSICA
REBOUND (DEF) by COOPER,ASHLEIGH	07:13			
	07:02			FOUL by JACKSON,JESSICA
GOOD! FT by MCCANTS,JASMINE	07:02	54-28	H 26	
MISSED FT by MCCANTS,JASMINE	07:02			
REBOUND (OFF) by MCCANTS,JASMINE	07:02			
SUB IN: BAXTER,LYDIA	07:02			
SUB OUT: COOPER,ASHLEIGH	07:02			
	07:02			SUB IN: SWENSON,KEIRYN
	07:02			SUB IN: MONK,MALICA
	07:02			SUB OUT: ZIMMERMAN,BAILEY
	07:02			SUB OUT: FREEMAN,BRIUNNA
GOOD! LAYUP by MCCANTS,JASMINE [PNT]	07:00	54-30	H 24	
FOUL by MCCANTS,JASMINE	06:33			
	06:33	55-30	H 25	GOOD! FT by JACKSON,JESSICA
	06:33			MISSED FT by JACKSON,JESSICA
REBOUND (DEF) by BAXTER,LYDIA	06:33			
SUB IN: MCKINNEY,KIERA	06:33			
SUB OUT: MCCANTS,JASMINE	06:33			
	06:21			FOUL by SWENSON,KEIRYN
MISSED JUMPER by MCKINNEY,KIERA	05:56			
	05:56			REBOUND (DEF) by SWENSON,KEIRYN
	05:45	57-30	H 27	GOOD! LAYUP by COOLEY,ALECIA [PNT]
	05:45			ASSIST by MONK,MALICA
MISSED LAYUP by DAY,MORGHEN	05:32			
REBOUND (OFF) by DELANEY,ANGELA	05:32			
GOOD! LAYUP by MCKINNEY,KIERA [PNT]	05:27	57-32	H 25	
ASSIST by DELANEY,ANGELA	05:27			

VISITORS: Sam Houston State	Time	Score	Margin	HOME: ARKANSAS
	05:02	60-32	H 28	GOOD! 3PTR by MASON,JAILYN
	05:02			ASSIST by JACKSON,JESSICA
TURNOVER by TEAM	04:46			
	04:46			TIMEOUT MEDIA
SUB IN: ORAMAS,JENNIFER	04:46			
SUB IN: HARSTON,TIA	04:46			
SUB OUT: DELANEY,ANGELA	04:46			
SUB OUT: HARRELL,RACHEL	04:46			
FOUL by HARSTON,TIA	04:35			
	04:35			MISSED FT by COOLEY,ALECIA
	04:35			REBOUND (DEADB) by TEAM
	04:35	61-32	H 29	GOOD! FT by COOLEY,ALECIA
TURNOVER by HARSTON,TIA	04:30			
	04:29			STEAL by SWENSON,KEIRYN
FOUL by BAXTER,LYDIA	04:11			
	04:11	62-32	H 30	GOOD! FT by JACKSON,JESSICA
	04:11	63-32	H 31	GOOD! FT by JACKSON,JESSICA
SUB IN: DELANEY,ANGELA	04:11			
SUB IN: HARRELL,RACHEL	04:11			
SUB OUT: MCKINNEY,KIERA	04:11			
SUB OUT: BAXTER,LYDIA	04:11			
TURNOVER by DELANEY,ANGELA	03:58			
	03:56			STEAL by MONK,MALICA
	03:54	65-32	H 33	GOOD! LAYUP by MONK,MALICA [FB/PNT]
MISSED 3PTR by DELANEY,ANGELA	03:30			
	03:30			REBOUND (DEF) by COOLEY,ALECIA
	03:24			TURNOVER by COOLEY,ALECIA
STEAL by DELANEY,ANGELA	03:23			
MISSED JUMPER by HARRELL,RACHEL	03:21			
	03:21			BLOCK by COOLEY,ALECIA
REBOUND (OFF) by HARRELL,RACHEL	03:19			
MISSED 3PTR by HARRELL,RACHEL	03:17			
	03:17			REBOUND (DEF) by MASON,JAILYN
	03:09			MISSED 3PTR by SWENSON,KEIRYN
	03:09			REBOUND (OFF) by COOLEY,ALECIA
	03:01	67-32	H 35	GOOD! LAYUP by COOLEY,ALECIA [PNT]
	03:01			ASSIST by MASON,JAILYN
	02:56			TIMEOUT 30SEC
SUB IN: COOPER,ASHLEIGH	02:56			
SUB OUT: HARSTON,TIA	02:56			
	02:56			SUB IN: STOUT,SYDNEY
	02:56			SUB IN: DANBERRY,JORDAN
	02:56			SUB IN: FREEMAN,BRIUNNA
	02:56			SUB OUT: JACKSON,JESSICA
	02:56			SUB OUT: COOLEY,ALECIA
	02:56			SUB OUT: MONK,MALICA
GOOD! JUMPER by DELANEY,ANGELA	02:52	67-34	H 33	
ASSIST by ORAMAS,JENNIFER	02:52			
	02:30	69-34	H 35	GOOD! JUMPER by FREEMAN,BRIUNNA [PNT]
GOOD! 3PTR by DAY,MORGHEN	02:12	69-37	H 32	
ASSIST by COOPER,ASHLEIGH	02:12			
	01:45			TURNOVER by SWENSON,KEIRYN
STEAL by HARRELL,RACHEL	01:44			
GOOD! LAYUP by DELANEY,ANGELA [FB/PNT]	01:41	69-39	H 30	
ASSIST by HARRELL,RACHEL	01:41			
	01:10			MISSED JUMPER by MASON,JAILYN
	00:58			REBOUND (OFF) by FREEMAN,BRIUNNA
	00:56	71-39	H 32	GOOD! LAYUP by FREEMAN,BRIUNNA [PNT]
MISSED 3PTR by ORAMAS,JENNIFER	00:38			
	00:38			REBOUND (DEF) by TEAM
	00:07			MISSED JUMPER by MASON,JAILYN
REBOUND (DEF) by COOPER,ASHLEIGH	00:07			
TURNOVER by COOPER,ASHLEIGH	00:04			

Sam Houston State 39, ARKANSAS 71

Period 4-only	In Paint	Off T/O	2nd Chance	Fast Break	Bench	
SHSU	6	2	4	2	6	Score tied - 0 times
AR	10	7	6	2	6	Lead changed - 0 times

Sam Houston State vs ARKANSAS

11/11/2016; 10:30 a.m. at Fayetteville, Ark. (Bud Walton Arena)

Scoring/Runs Reference

Period 1

Sam Houston State	Score	Marg	ARKANSAS
	0-3	3	ZIMMERMAN 3PTR - 09:43
09:21 - MCCANTS LAYUP [P]	2	2-3	1
	2-4	2	1
	2-7	5	3
08:02 - ORAMAS JUMPER 2	4-7	3	
	4-9	5	2
	4-11	7	2
	4-13	9	2
	4-14	10	1
	4-15	11	1
	4-16	12	1
	4-18	14	2
	4-20	16	2
	4-21	17	1
	4-23	19	2
00:47 - MCCANTS LAYUP [P]	2	6-23	17
	6-25	19	2

Period 3

Sam Houston State	Score	Marg	ARKANSAS
08:59 - DAY FT	1	15-34	19
08:59 - DAY FT	1	16-34	18
	16-37	21	3
	16-39	23	2
	16-41	25	2
	16-44	28	3
	16-45	29	1
	16-46	30	1
04:02 - MCCANTS FT	1	17-46	29
04:02 - MCCANTS FT	1	18-46	28
	18-47	29	1
01:40 - HARRELL 3PTR 3	21-47	26	
00:45 - HARRELL 3PTR 3	24-47	23	
	24-48	24	1
	24-49	25	1

Period 2

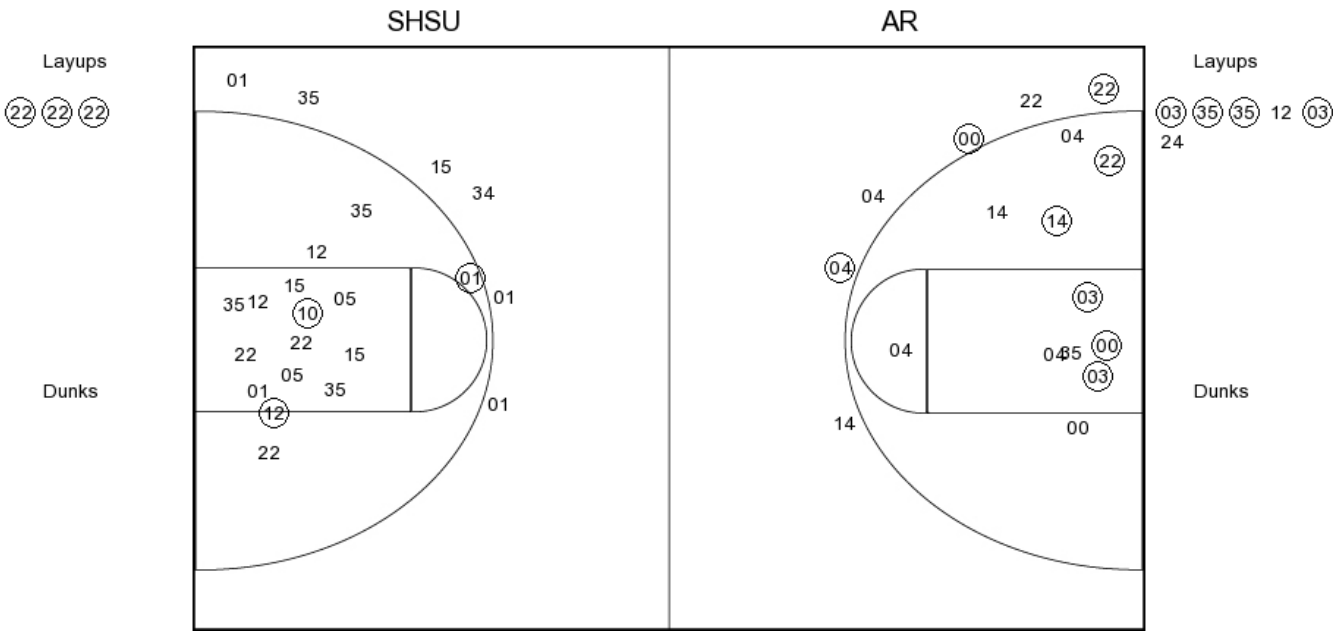
Sam Houston State	Score	Marg	ARKANSAS
	6-27	21	2
	6-29	23	2
	6-31	25	2
04:30 - NWOSAH LAYUP [P]	2	8-31	23
03:43 - MCCANTS LAYUP [P]	2	10-31	21
01:35 - DELANEY JUMPER [P]	2	12-31	19
	12-34	22	3
00:36 - BAXTER FT	1	13-34	21
00:36 - BAXTER FT	1	14-34	20

Period 4

Sam Houston State	Score	Marg	ARKANSAS
	24-50	26	1
	24-51	27	1
08:17 - HARRELL 3PTR	3	27-51	24
	27-54	27	3
07:02 - MCCANTS FT	1	28-54	26
07:00 - MCCANTS LAYUP [P]	2	30-54	24
	30-55	25	1
	30-57	27	2
05:27 - MCKINNEY LAYUP [P]	2	32-57	25
	32-60	28	3
	32-61	29	1
	32-62	30	1
	32-63	31	1
	32-65	33	2
	32-67	35	2
02:52 - DELANEY JUMPER 2	34-67	33	
	34-69	35	2
02:12 - DAY 3PTR	3	37-69	32
01:41 - DELANEY LAYUP [P] [F]	2	39-69	30
	39-71	32	2

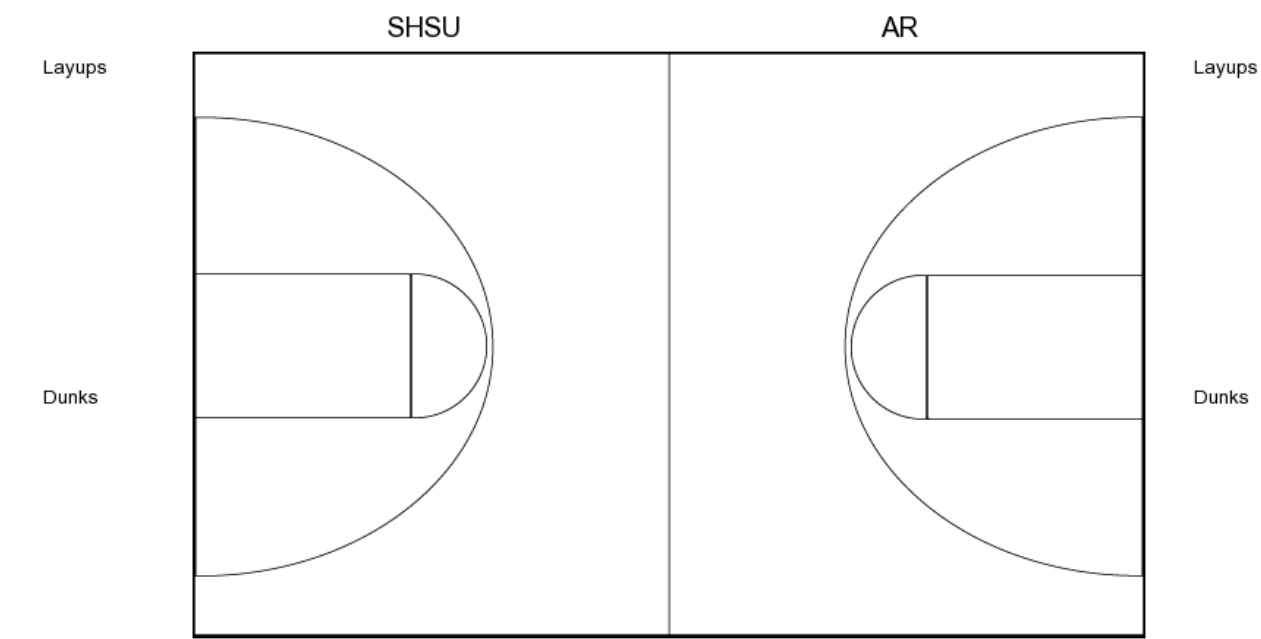
Sam Houston State vs ARKANSAS
OFFICIAL SHOT CHART
11/11/2016 at Fayetteville, Ark. (Bud Walton Arena)

PERIOD 1



SHSU PERIOD 1		AR PERIOD 1	
FG Made	6	FG Made	13
FG Attempted	26	FG Attempted	30
3PFG Made	0	3PFG Made	3
3PFG Attempted	8	3PFG Attempted	7

PERIOD 2



SHSU PERIOD 2

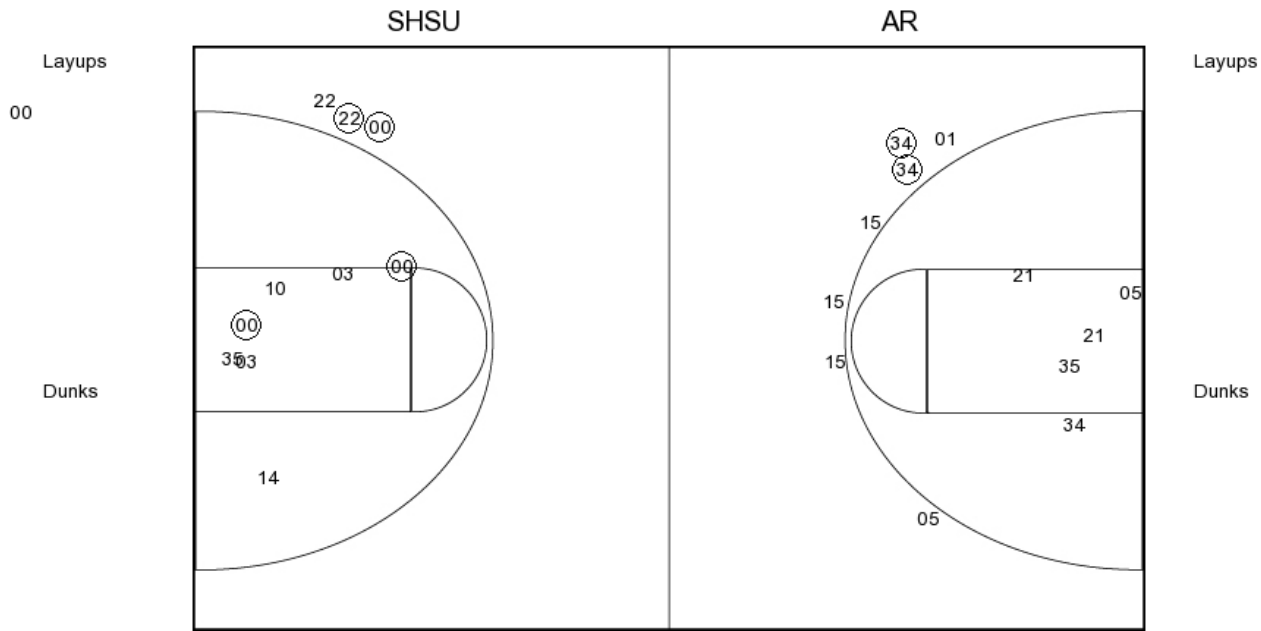
FG Made
FG Attempted
3PFG Made
3PFG Attempted

AR PERIOD 2

FG Made
FG Attempted
3PFG Made
3PFG Attempted

Sam Houston State vs ARKANSAS
OFFICIAL SHOT CHART
11/11/2016 at Fayetteville, Ark. (Bud Walton Arena)

PERIOD 3



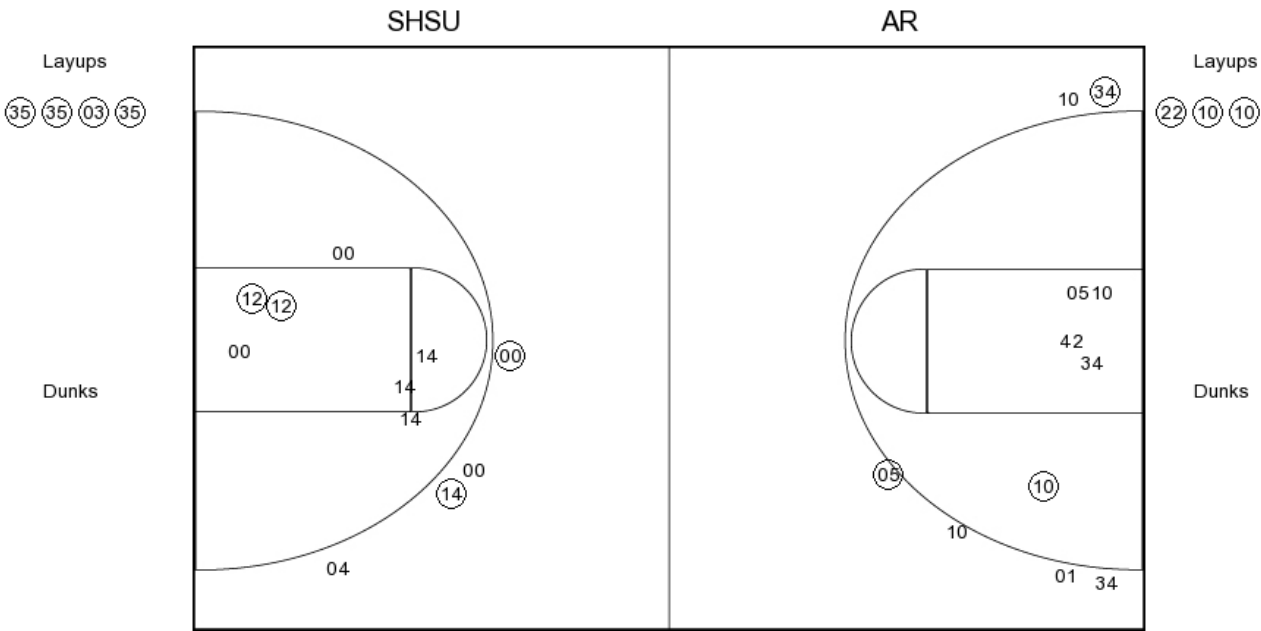
SHSU PERIOD 3

FG Made	8
FG Attempted	26
3PFG Made	4
3PFG Attempted	13

AR PERIOD 3

FG Made	11
FG Attempted	25
3PFG Made	4
3PFG Attempted	7

PERIOD 4



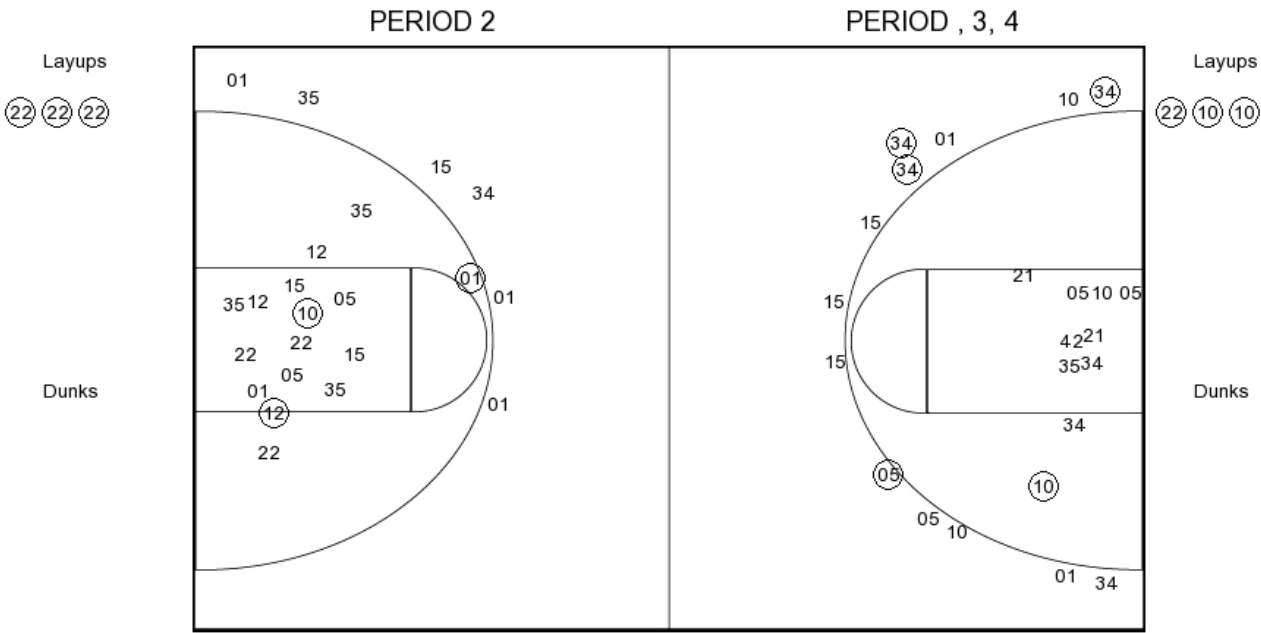
SHSU PERIOD 4

FG Made
FG Attempted
3PFG Made
3PFG Attempted

AR PERIOD 4

FG Made
FG Attempted
3PFG Made
3PFG Attempted

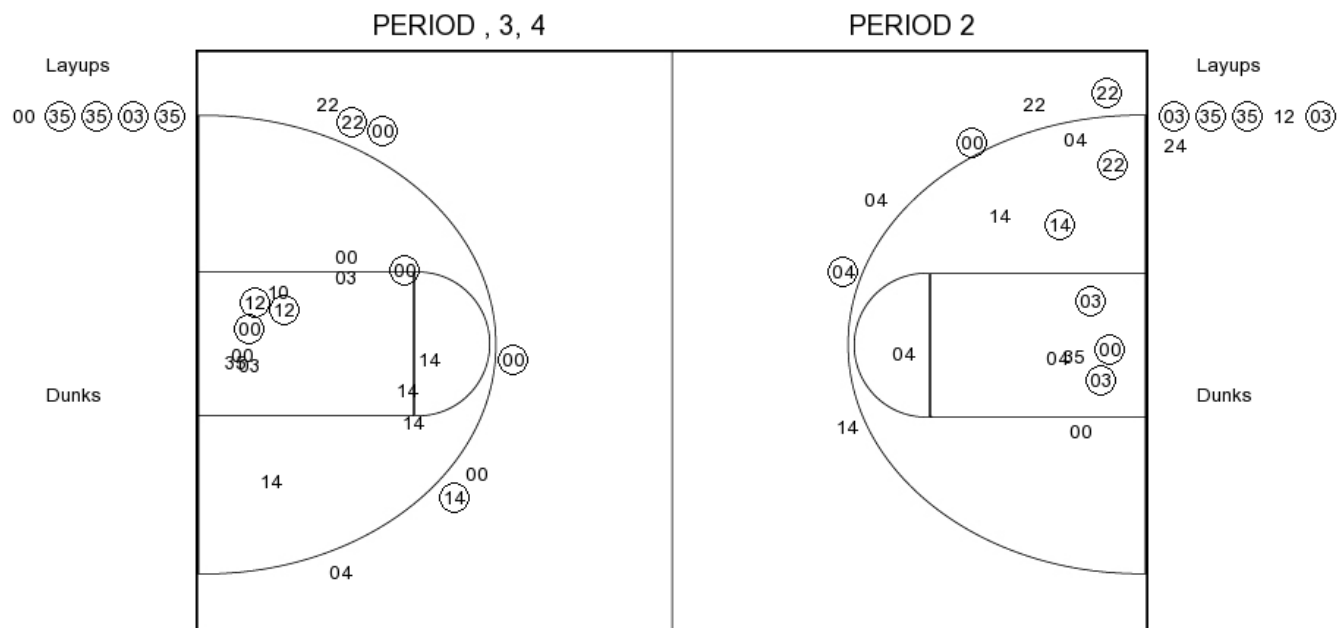
Sam Houston State



SHSU PERIOD 1		SHSU PERIOD 2	
FG Made	6	FG Made	
FG Attempted	26	FG Attempted	
3PFG Made	0	3PFG Made	
3PFG Attempted	8	3PFG Attempted	

OFFICIAL SHOT CHART

ARKANSAS



FG Made	13
FG Attempted	30
3PFG Made	3
3PFG Attempted	7

FG Made
FG Attempted
3PFG Made
3PFG Attempted