

# ARKANSAS VS. OKLAHOMA BAPTIST\* EXHIBITION



11/3/2016  
Bud Walton Arena (Fayetteville, Ark.)

## FINAL STATS

**ARKANSAS**  
(0-0)

**79**

**OKLABAP**  
(0-0)

**32**

*Start Time:* 7 p.m.  
*Officials:* Greg Small, Missy Brooks, Nick Marshall  
*Attendance:* 1238

Estimated Actual Attendance: 801  
Oklahoma Baptist Foul Out: #10, Graves at 3:41 (4Q)  
Arkansas Foul Out: #10, Williams at 42.6 (4Q)

# Official Basketball Box Score -- Game Totals -- Final Statistics

## OKLABAP vs ARKANSAS

11/3/2016 7 p.m. at Bud Walton Arena (Fayetteville, Ark.)

### OKLABAP 32 - 0-0

##	Player		Total		3-Ptr	FT-FTA	Rebounds			PF	TP	A	TO	Blk	Stl	Min
			FG-FGA	FG-FGA	FG-FGA		Off	Def	Tot							
10	GRAVES,CAMEERAH	g	1-3	0-1	2-6	1	3	4	5	4	3	4	0	1		28
20	COOPER,MCKENZIE	g	0-7	0-3	0-0	0	3	3	3	0	1	2	0	0		33
21	EDGE,TASHA	f	4-9	1-2	0-0	4	3	7	1	9	0	3	0	1		34
22	CUSTER,KATY	f	1-3	0-1	0-2	0	0	0	1	2	0	3	0	0		21
33	WHITE,ALIYAH	f	3-6	0-0	1-3	0	3	3	4	7	0	4	0	2		23
03	MBROH,ALEXIS		0-1	0-1	0-0	0	0	0	1	0	0	0	0	0		7
05	FARQUHAR,RALEY		0-0	0-0	0-0	0	1	1	1	0	0	0	0	0		3
13	SMITH,MONAE		0-0	0-0	0-0	0	0	0	0	0	0	0	0	0		5
14	DAVENPORT,MORGAN		0-2	0-0	0-0	0	1	1	3	0	0	1	0	0		9
23	AVINA,AUTUMN		2-12	1-2	3-4	2	2	4	3	8	0	5	2	2		19
25	WILLIAMS,LEXI		1-6	0-1	0-0	1	0	1	2	2	0	2	0	1		18
TEAM						1	5	6	0			2				
TOTALS			12-49	2-11	6-15	9	21	30	24	32	4	26	2	7		200

Deadball Rebounds: 4,1

FG %	1st Half:	7-25	28.0%	2nd Half:	5-24	20.8%	Game:	12-49	24.5%							
	1st Qtr	5-12	41.7%	2nd Qtr	2-13	15.4%	3rd Qtr	2-16	12.5%	4th Qtr	3-8				37.5%	
3FG %	1st Half:	2-5	40.0%	2nd Half:	0-6	00.0%	Game:	2-11	18.2%							
	1st Qtr	1-1	100.0%	2nd Qtr	1-4	25.0%	3rd Qtr	0-5	00.0%	4th Qtr	0-1				00.0%	
FT %	1st Half:	1-6	16.7%	2nd Half:	5-9	55.6%	Game:	6-15	40.0%							
	1st Qtr	0-2	00.0%	2nd Qtr	1-4	25.0%	3rd Qtr	2-2	100.0%	4th Qtr	3-7				42.9%	

### ARKANSAS 79 - 0-0

##	Player		Total		3-Ptr	FT-FTA	Rebounds			PF	TP	A	TO	Blk	Stl	Min
			FG-FGA	FG-FGA	FG-FGA		Off	Def	Tot							
00	JACKSON,JESSICA	f	4-9	2-5	4-4	4	2	6	1	14	0	3	1	1		24
03	MONK,MALICA	g	5-12	0-1	3-6	2	0	2	3	13	2	2	0	3		24
14	MASON,JAILYN	g	5-10	0-1	0-0	0	5	5	3	10	4	1	1	3		32
22	ZIMMERMAN,BAILEY	f	1-5	1-3	2-6	4	4	8	1	5	1	1	1	0		26
35	COOLEY,ALECIA	c	2-6	0-0	1-2	5	6	11	1	5	1	2	1	0		20
04	SWENSON,KEIRYN		2-5	1-3	1-2	2	8	10	1	6	2	2	1	0		22
10	WILLIAMS,KIARA		1-3	0-0	3-7	1	1	2	5	5	0	0	1	0		9
12	FREEMAN,BRIUNNA		3-8	0-0	0-0	2	1	3	0	6	1	0	0	2		17
20	STOUT,SYDNEY		0-0	0-0	1-2	0	1	1	0	1	0	0	0	1		6
24	DANBERRY,JORDAN		6-10	1-1	1-2	2	2	4	2	14	0	2	0	2		20
TEAM						1	2	3	0			0				
TOTALS			29-68	5-14	16-31	23	32	55	17	79	11	13	6	12		200

Deadball Rebounds: 9,1

FG %	1st Half:	12-36	33.3%	2nd Half:	17-32	53.1%	Game:	29-68	42.6%							
	1st Qtr	7-22	31.8%	2nd Qtr	5-14	35.7%	3rd Qtr	8-14	57.1%	4th Qtr	9-18				50.0%	
3FG %	1st Half:	2-8	25.0%	2nd Half:	3-6	50.0%	Game:	5-14	35.7%							
	1st Qtr	1-6	16.7%	2nd Qtr	1-2	50.0%	3rd Qtr	3-5	60.0%	4th Qtr	0-1				00.0%	
FT %	1st Half:	3-10	30.0%	2nd Half:	13-21	61.9%	Game:	16-31	51.6%							
	1st Qtr	2-6	33.3%	2nd Qtr	1-4	25.0%	3rd Qtr	7-10	70.0%	4th Qtr	6-11				54.5%	

Officials: Greg Small, Missy Brooks, Nick Marshall

Technical Fouls: OKLABAP- None. ARKANSAS- None.

Attendance: 1238

Estimated Actual Attendance: 801

Oklahoma Baptist Foul Out: #10, Graves at 3:41 (4Q)

Arkansas Foul Out: #10, Williams at 42.6 (4Q)

Score by periods	1st	2nd	3rd	4th	Total
OKLABAP	11	6	6	9	32
ARKANSAS	17	12	26	24	79

Points	Off	2nd	Bench
	T/O	Chance	
OKLABAP	4	4	10
AR	29	4	32

Last FG - OKLABAP 4th-04:22, AR 4th-00:05.

Largest lead - OKLABAP by 5 1st-06:45; ARKANSAS by 47 4th-00:05

OKLABAP led for 6:04. AR led for 32:50. Game was tied for 1:06.

Score tied - 1 times  
Lead changed - 3 times

# Official Basketball Box Score -- Game Totals -- First Half Statistics

## OKLABAP vs ARKANSAS

11/3/2016 7 p.m. at Bud Walton Arena (Fayetteville, Ark.)

### OKLABAP 17 • 0-0

##	Player		Total		3-Ptr	FT-FTA	Rebounds			PF	TP	A	TO	Blk	Stl	Min
			FG-FGA	FG-FGA	FG-FGA		Off	Def	Tot							
10	GRAVES,CAMEERAH	g	1-3	0-1	1-4	0	1	1	2	3	2	3	0	1		16
20	COOPER,MCKENZIE	g	0-4	0-1	0-0	0	2	2	2	0	1	0	0	0		18
21	EDGE,TASHA	f	2-5	1-2	0-0	2	3	5	1	5	0	1	0	0		19
22	CUSTER,KATY	f	0-1	0-0	0-2	0	0	0	1	0	0	0	0	0		16
33	WHITE,ALIYAH	f	2-5	0-0	0-0	0	2	2	2	4	0	2	0	1		10
03	MBROH,ALEXIS		0-0	0-0	0-0	0	0	0	0	0	0	0	0	0		0
05	FARQUHAR,RALEY		0-0	0-0	0-0	0	0	0	0	0	0	0	0	0		0
13	SMITH,MONAE		0-0	0-0	0-0	0	0	0	0	0	0	0	0	0		0
14	DAVENPORT,MORGAN		0-0	0-0	0-0	0	0	0	1	0	0	0	0	0		3
23	AVINA,AUTUMN		2-6	1-1	0-0	2	1	3	0	5	0	2	0	1		10
25	WILLIAMS,LEXI		0-1	0-0	0-0	0	0	0	0	0	0	2	0	0		8
TEAM						1	3	4	0			1				
Totals			7-25	2-5	1-6	5	12	17	9	17	3	11	0	3		100

FG % 1st Qtr 5-12 41.7% 2nd Qtr 2-13 15.4% Half: 7-25 28.0%  
 3FG % 1st Qtr 1-1 100.0% 2nd Qtr 1-4 25.0% Half: 2-5 40.0%  
 FT % 1st Qtr 0-2 00.0% 2nd Qtr 1-4 25.0% Half: 1-6 16.7%

### ARKANSAS 29 • 0-0

##	Player		Total		3-Ptr	FT-FTA	Rebounds			PF	TP	A	TO	Blk	Stl	Min
			FG-FGA	FG-FGA	FG-FGA		Off	Def	Tot							
00	JACKSON,JESSICA	f	3-7	1-3	0-0	4	1	5	1	7	0	2	1	0		14
03	MONK,MALICA	g	1-5	0-1	1-2	1	0	1	2	3	1	2	0	1		12
14	MASON,JAILYN	g	2-4	0-1	0-0	0	2	2	1	4	0	0	1	0		15
22	ZIMMERMAN,BAILEY	f	0-3	0-1	1-4	2	2	4	1	1	0	1	1	0		14
35	COOLEY,ALECIA	c	2-5	0-0	1-2	4	4	8	1	5	1	1	0	0		14
04	SWENSON,KEIRYN		0-1	0-1	0-0	0	3	3	0	0	1	1	0	0		9
10	WILLIAMS,KIARA		0-1	0-0	0-2	0	0	0	2	0	0	0	0	0		3
12	FREEMAN,BRIUNNA		1-4	0-0	0-0	2	1	3	0	2	1	0	0	0		9
20	STOUT,SYDNEY		0-0	0-0	0-0	0	0	0	0	0	0	0	0	0		0
24	DANBERRY,JORDAN		3-6	1-1	0-0	1	1	2	1	7	0	1	0	2		10
TEAM						0	1	1	0			0				
Totals			12-36	2-8	3-10	14	15	29	9	29	4	8	3	3		100

FG % 1st Qtr 7-22 31.8% 2nd Qtr 5-14 35.7% Half: 12-36 33.3%  
 3FG % 1st Qtr 1-6 16.7% 2nd Qtr 1-2 50.0% Half: 2-8 25.0%  
 FT % 1st Qtr 2-6 33.3% 2nd Qtr 1-4 25.0% Half: 3-10 30.0%

Officials: Greg Small, Missy Brooks, Nick Marshall  
 Technical Fouls: OKLABAP- None. ARKANSAS- None.  
 Estimated Actual Attendance: 801  
 Oklahoma Baptist Foul Out: #10, Graves at 3:41 (4Q)  
 Arkansas Foul Out: #10, Williams at 42.6 (4Q)

Score by periods	1st	2nd	3rd	4th	Total
OKLABAP	11	6	6	9	32
ARKANSAS	17	12	26	24	79

Points	Off T/O	2nd Chance	Bench
OKLABAP	2	4	5
	7	6	9

Last FG - OKLABAP 2nd-02:19, AR 2nd-01:48.  
 OKLABAP led for 6:04. AR led for 12:50. Game was tied for 1:06.

Score tied - 1 times  
 Lead changed - 3 times

# OKLABAP vs ARKANSAS

11/3/2016; 7 p.m. at Bud Walton Arena (Fayetteville, Ark.)

## Period 1 Play-By-Play

VISITORS: OKLABAP	Time	Score	Margin	HOME: ARKANSAS
	09:44			MISSED 3PTR by MONK,MALICA
REBOUND (DEF) by GRAVES,CAMEERAH	09:44			
TURNOVER by GRAVES,CAMEERAH	09:38			
	09:35			TURNOVER by COOLEY,ALECIA
GOOD! JUMPER by WHITE,ALIYAH	09:25	0-2	V 2	
	09:13			MISSED 3PTR by ZIMMERMAN,BAILEY
	09:13			REBOUND (OFF) by COOLEY,ALECIA
	09:04			MISSED JUMPER by JACKSON,JESSICA
REBOUND (DEF) by WHITE,ALIYAH	09:04			
TURNOVER by WHITE,ALIYAH	08:47			
	08:36			MISSED 3PTR by JACKSON,JESSICA
	08:36			REBOUND (OFF) by COOLEY,ALECIA
FOUL by EDGE,TASHA	08:27			
	08:27	1-2	V 1	GOOD! FT by ZIMMERMAN,BAILEY
	08:27			MISSED FT by ZIMMERMAN,BAILEY
REBOUND (DEF) by EDGE,TASHA	08:27			
GOOD! LAYUP by GRAVES,CAMEERAH [PNT]	08:16	1-4	V 3	
	07:51			TURNOVER by MONK,MALICA
STEAL by GRAVES,CAMEERAH	07:50			
	07:46			FOUL by MASON,JAILYN
MISSED FT by GRAVES,CAMEERAH	07:46			
REBOUND (DEADB) by TEAM	07:46			
MISSED FT by GRAVES,CAMEERAH	07:46			
	07:46			REBOUND (DEF) by MASON,JAILYN
	07:46			SUB IN: DANBERRY,JORDAN
	07:46			SUB OUT: MONK,MALICA
	07:25			MISSED 3PTR by JACKSON,JESSICA
	07:25			REBOUND (OFF) by DANBERRY,JORDAN
	07:15			MISSED JUMPER by DANBERRY,JORDAN
	07:15			REBOUND (OFF) by JACKSON,JESSICA
	07:13			MISSED JUMPER by JACKSON,JESSICA
REBOUND (DEF) by TEAM	07:13			
MISSED JUMPER by EDGE,TASHA	06:52			
	06:52			BLOCK by ZIMMERMAN,BAILEY
REBOUND (OFF) by EDGE,TASHA	06:48			
GOOD! LAYUP by EDGE,TASHA [PNT]	06:45	1-6	V 5	
	06:38	3-6	V 3	GOOD! JUMPER by MASON,JAILYN
GOOD! JUMPER by WHITE,ALIYAH	06:23	3-8	V 5	
ASSIST by GRAVES,CAMEERAH	06:23			
	06:06	5-8	V 3	GOOD! JUMPER by COOLEY,ALECIA [PNT]
	05:57			FOUL by DANBERRY,JORDAN
MISSED LAYUP by GRAVES,CAMEERAH	05:34			
	05:34			BLOCK by MASON,JAILYN
REBOUND (OFF) by EDGE,TASHA	05:33			
MISSED LAYUP by COOPER,MCKENZIE	05:18			
	05:18			REBOUND (DEF) by COOLEY,ALECIA
FOUL by WHITE,ALIYAH	05:18			
SUB IN: AVINA,AUTUMN	05:18			
SUB OUT: CUSTER,KATY	05:18			
	05:18			SUB IN: MONK,MALICA
	05:18			SUB OUT: MASON,JAILYN
	05:03	8-8	T	GOOD! 3PTR by DANBERRY,JORDAN
	05:03			ASSIST by COOLEY,ALECIA
TIMEOUT MEDIA	04:42			
MISSED JUMPER by AVINA,AUTUMN	04:39			
	04:39			REBOUND (DEF) by COOLEY,ALECIA
	04:32	10-8	H 2	GOOD! LAYUP by DANBERRY,JORDAN [PNT]
	04:18			FOUL by COOLEY,ALECIA
GOOD! 3PTR by EDGE,TASHA	04:16	10-11	V 1	

VISITORS: OKLABAP	Time	Score	Margin	HOME: ARKANSAS
ASSIST by GRAVES,CAMEERAH	04:16			
	03:56			TURNOVER by ZIMMERMAN,BAILEY
TURNOVER by WHITE,ALIYAH	03:39			
SUB IN: DAVENPORT,MORGAN	03:39			
SUB IN: WILLIAMS,LEXI	03:39			
SUB IN: CUSTER,KATY	03:39			
SUB OUT: GRAVES,CAMEERAH	03:39			
SUB OUT: EDGE,TASHA	03:39			
SUB OUT: WHITE,ALIYAH	03:39			
	03:39			SUB IN: SWENSON,KEIRYN
	03:39			SUB OUT: JACKSON,JESSICA
	03:26			MISSED JUMPER by MONK,MALICA
REBOUND (DEF) by TEAM	03:26			
TIMEOUT 30SEC	03:05			
TURNOVER by TEAM	03:05			
FOUL by COOPER,MCKENZIE	02:55			
	02:55			MISSED FT by ZIMMERMAN,BAILEY
	02:55			REBOUND (DEADB) by TEAM
	02:55			MISSED FT by ZIMMERMAN,BAILEY
	02:55			REBOUND (OFF) by ZIMMERMAN,BAILEY
	02:55			MISSED LAYUP by ZIMMERMAN,BAILEY
REBOUND (DEF) by TEAM	02:55			
SUB IN: EDGE,TASHA	02:55			
SUB OUT: COOPER,MCKENZIE	02:55			
	02:55			SUB IN: JACKSON,JESSICA
	02:55			SUB OUT: COOLEY,ALECIA
	02:50			SUB IN: FREEMAN,BRIUNNA
	02:50			SUB OUT: ZIMMERMAN,BAILEY
TURNOVER by WILLIAMS,LEXI	02:43			
	02:41			STEAL by DANBERRY,JORDAN
	02:34	12-11	H 1	GOOD! LAYUP by JACKSON,JESSICA [PNT]
	02:34			ASSIST by SWENSON,KEIRYN
TURNOVER by AVINA,AUTUMN	02:24			
	02:22			STEAL by MONK,MALICA
	02:22	14-11	H 3	GOOD! LAYUP by MONK,MALICA [PNT]
SUB IN: COOPER,MCKENZIE	02:17			
SUB IN: GRAVES,CAMEERAH	02:17			
SUB IN: WHITE,ALIYAH	02:17			
SUB OUT: DAVENPORT,MORGAN	02:17			
SUB OUT: WILLIAMS,LEXI	02:17			
SUB OUT: AVINA,AUTUMN	02:17			
MISSED JUMPER by WHITE,ALIYAH	01:53			
	01:53			REBOUND (DEF) by SWENSON,KEIRYN
	01:44			MISSED JUMPER by DANBERRY,JORDAN
	01:44			REBOUND (OFF) by FREEMAN,BRIUNNA
	01:40			MISSED JUMPER by FREEMAN,BRIUNNA
	01:40			REBOUND (OFF) by JACKSON,JESSICA
	01:38	16-11	H 5	GOOD! TIPIN by JACKSON,JESSICA [PNT]
MISSED LAYUP by WHITE,ALIYAH	01:18			
	01:18			BLOCK by JACKSON,JESSICA
REBOUND (OFF) by TEAM	01:18			
MISSED JUMPER by EDGE,TASHA	01:15			
	01:15			REBOUND (DEF) by SWENSON,KEIRYN
	01:07			MISSED JUMPER by FREEMAN,BRIUNNA
	01:07			REBOUND (OFF) by FREEMAN,BRIUNNA
	01:06			MISSED JUMPER by FREEMAN,BRIUNNA
	01:05			REBOUND (OFF) by MONK,MALICA
FOUL by CUSTER,KATY	01:04			
	01:04			MISSED FT by MONK,MALICA
	01:04			REBOUND (DEADB) by TEAM
	01:04	17-11	H 6	GOOD! FT by MONK,MALICA
FOUL by GRAVES,CAMEERAH	01:00			
TURNOVER by GRAVES,CAMEERAH	01:00			
	00:48			MISSED 3PTR by SWENSON,KEIRYN

VISITORS: OKLABAP	Time	Score	Margin	HOME: ARKANSAS
	00:48			REBOUND (OFF) by JACKSON,JESSICA
	00:35			TURNOVER by SWENSON,KEIRYN
STEAL by WHITE,ALIYAH	00:35			
	00:35			SUB IN: MASON,JAILYN
	00:35			SUB OUT: DANBERRY,JORDAN
TURNOVER by GRAVES,CAMEERAH	00:21			
	00:06			MISSED LAYUP by MONK,MALICA
REBOUND (DEF) by WHITE,ALIYAH	00:06			

OKLABAP 11, ARKANSAS 17

Period 1-only	In Paint	Off T/O	2nd Chance	Fast Break	Bench	
OKLABAP		2	2		0	Score tied - 0 times
AR		5	4		5	Lead changed - 2 times

# OKLABAP vs ARKANSAS

11/3/2016; 7 p.m. at Bud Walton Arena (Fayetteville, Ark.)

## Period 2 Play-By-Play

VISITORS: OKLABAP	Time	Score	Margin	HOME: ARKANSAS
SUB IN: WILLIAMS,LEXI	10:00			
SUB OUT: CUSTER,KATY	10:00			
	10:00			SUB IN: FREEMAN,BRIUNNA
	10:00			SUB OUT: ZIMMERMAN,BAILEY
	09:36			MISSED LAYUP by COOLEY,ALECIA
	09:36			REBOUND (OFF) by COOLEY,ALECIA
	09:30	19-11	H 8	GOOD! TIPIN by COOLEY,ALECIA [PNT]
MISSED JUMPER by WHITE,ALIYAH	09:17			
	09:17			REBOUND (DEF) by MASON,JAILYN
FOUL by WHITE,ALIYAH	08:59			
SUB IN: CUSTER,KATY	08:59			
SUB OUT: WHITE,ALIYAH	08:59			
	08:43	21-11	H 10	GOOD! JUMPER by MASON,JAILYN
	08:43			ASSIST by MONK,MALICA
	08:20			FOUL by MONK,MALICA
MISSED LAYUP by CUSTER,KATY	08:14			
	08:14			REBOUND (DEF) by COOLEY,ALECIA
	07:59	23-11	H 12	GOOD! LAYUP by FREEMAN,BRIUNNA [PNT]
MISSED JUMPER by COOPER,MCKENZIE	07:24			
	07:24			REBOUND (DEF) by FREEMAN,BRIUNNA
	07:16			MISSED JUMPER by MONK,MALICA
	07:16			REBOUND (OFF) by JACKSON,JESSICA
	07:10			FOUL by JACKSON,JESSICA
	07:10			TURNOVER by JACKSON,JESSICA
SUB IN: AVINA,AUTUMN	07:10			
SUB IN: DAVENPORT,MORGAN	07:10			
SUB OUT: GRAVES,CAMEERAH	07:10			
SUB OUT: CUSTER,KATY	07:10			
	07:10			SUB IN: ZIMMERMAN,BAILEY
	07:10			SUB IN: SWENSON,KEIRYN
	07:10			SUB OUT: JACKSON,JESSICA
	07:10			SUB OUT: FREEMAN,BRIUNNA
MISSED LAYUP by AVINA,AUTUMN	06:48			
	06:48			REBOUND (DEF) by COOLEY,ALECIA
	06:42			MISSED JUMPER by MASON,JAILYN
REBOUND (DEF) by EDGE,TASHA	06:42			
MISSED 3PTR by COOPER,MCKENZIE	06:29			
REBOUND (OFF) by AVINA,AUTUMN	06:29			
MISSED LAYUP by COOPER,MCKENZIE	06:19			
	06:19			REBOUND (DEF) by SWENSON,KEIRYN
FOUL by COOPER,MCKENZIE	06:16			
	06:16			SUB IN: DANBERRY,JORDAN
	06:16			SUB OUT: MONK,MALICA
FOUL by DAVENPORT,MORGAN	05:54			
	05:54			MISSED FT by COOLEY,ALECIA
	05:54			REBOUND (DEADB) by TEAM
	05:54	24-11	H 13	GOOD! FT by COOLEY,ALECIA
SUB IN: CUSTER,KATY	05:54			
SUB OUT: DAVENPORT,MORGAN	05:54			
TURNOVER by EDGE,TASHA	05:34			
	05:22			TURNOVER by DANBERRY,JORDAN
STEAL by AVINA,AUTUMN	05:20			
TURNOVER by WILLIAMS,LEXI	05:17			
	05:16			STEAL by DANBERRY,JORDAN
	05:14	26-11	H 15	GOOD! LAYUP by DANBERRY,JORDAN [FB/PNT]
MISSED JUMPER by AVINA,AUTUMN	04:53			
	04:53			REBOUND (DEF) by DANBERRY,JORDAN
	04:46			MISSED LAYUP by DANBERRY,JORDAN
REBOUND (DEF) by COOPER,MCKENZIE	04:46			

VISITORS: OKLABAP	Time	Score	Margin	HOME: ARKANSAS
MISSED JUMPER by WILLIAMS,LEXI	04:37			
REBOUND (OFF) by AVINA,AUTUMN	04:29			
GOOD! JUMPER by AVINA,AUTUMN	04:25	26-13	H 13	
	04:10			MISSED JUMPER by COOLEY,ALECIA
	04:10			REBOUND (OFF) by COOLEY,ALECIA
	04:07			MISSED JUMPER by COOLEY,ALECIA
	04:07			REBOUND (OFF) by ZIMMERMAN,BAILEY
	04:04			MISSED JUMPER by ZIMMERMAN,BAILEY
REBOUND (DEF) by COOPER,MCKENZIE	04:04			
MISSED 3PTR by EDGE,TASHA	03:41			
	03:41			REBOUND (DEF) by TEAM
	03:39			TIMEOUT MEDIA
SUB IN: GRAVES,CAMEERAH	03:39			
SUB OUT: WILLIAMS,LEXI	03:39			
	03:39			SUB IN: WILLIAMS,KIARA
	03:39			SUB IN: FREEMAN,BRIUNNA
	03:39			SUB OUT: DANBERRY,JORDAN
	03:39			SUB OUT: COOLEY,ALECIA
	03:11			MISSED 3PTR by MASON,JAILYN
REBOUND (DEF) by AVINA,AUTUMN	03:11			
TURNOVER by AVINA,AUTUMN	02:59			
	02:49			MISSED JUMPER by WILLIAMS,KIARA
REBOUND (DEADB) by TEAM	02:49			
	02:46			FOUL by ZIMMERMAN,BAILEY
	02:46			SUB IN: JACKSON,JESSICA
	02:46			SUB OUT: SWENSON,KEIRYN
GOOD! 3PTR by AVINA,AUTUMN	02:19	26-16	H 10	
ASSIST by COOPER,MCKENZIE	02:19			
	01:48	29-16	H 13	GOOD! 3PTR by JACKSON,JESSICA
	01:48			ASSIST by FREEMAN,BRIUNNA
SUB IN: WILLIAMS,LEXI	01:20			
SUB OUT: AVINA,AUTUMN	01:20			
	01:18			FOUL by WILLIAMS,KIARA
MISSED FT by CUSTER,KATY	01:18			
REBOUND (DEADB) by TEAM	01:18			
MISSED FT by CUSTER,KATY	01:18			
	01:18			REBOUND (DEF) by JACKSON,JESSICA
FOUL by GRAVES,CAMEERAH	01:13			
	01:13			MISSED FT by WILLIAMS,KIARA
	01:13			REBOUND (DEADB) by TEAM
	01:13			MISSED FT by WILLIAMS,KIARA
REBOUND (DEF) by EDGE,TASHA	01:13			
	00:59			FOUL by WILLIAMS,KIARA
GOOD! FT by GRAVES,CAMEERAH	00:59	29-17	H 12	
MISSED FT by GRAVES,CAMEERAH	00:59			
	00:59			REBOUND (DEF) by ZIMMERMAN,BAILEY
SUB IN: AVINA,AUTUMN	00:59			
SUB OUT: COOPER,MCKENZIE	00:59			
	00:59			SUB IN: SWENSON,KEIRYN
	00:59			SUB OUT: WILLIAMS,KIARA
	00:40			TURNOVER by JACKSON,JESSICA
MISSED JUMPER by AVINA,AUTUMN	00:16			
	00:16			REBOUND (DEF) by ZIMMERMAN,BAILEY
	00:12			FOUL by MONK,MALICA
	00:12			TURNOVER by MONK,MALICA
SUB IN: COOPER,MCKENZIE	00:12			
SUB OUT: WILLIAMS,LEXI	00:12			
	00:12			SUB IN: MONK,MALICA
	00:12			SUB IN: COOLEY,ALECIA
	00:12			SUB IN: DANBERRY,JORDAN
	00:12			SUB OUT: MASON,JAILYN
	00:12			SUB OUT: JACKSON,JESSICA
MISSED 3PTR by GRAVES,CAMEERAH	00:00			
REBOUND (DEADB) by TEAM	00:00			



OKLABAP 17, ARKANSAS 29

Period 2-only	In Paint	Off T/O	2nd Chance	Fast Break	Bench	
OKLABAP		0	2		5	Score tied - 0 times
AR		2	2		4	Lead changed - 0 times

# Official Basketball Box Score -- Game Totals -- Second Half Statistics

## OKLABAP vs ARKANSAS

11/3/2016 7 p.m. at Bud Walton Arena (Fayetteville, Ark.)

### OKLABAP 15 • 0-0

##	Player		Total		3-Ptr		FT-FTA	Rebounds			PF	TP	A	TO	Blk	Stl	Min
			FG-FGA		FG-FGA			Off	Def	Tot							
10	GRAVES,CAMEERAH	g	0-0		0-0		1-2	1	2	3	3	1	1	1	0	0	12
20	COOPER,MCKENZIE	g	0-3		0-2		0-0	0	1	1	1	0	0	2	0	0	15
21	EDGE,TASHA	f	2-4		0-0		0-0	2	0	2	0	4	0	2	0	1	15
22	CUSTER,KATY	f	1-2		0-1		0-0	0	0	0	0	2	0	3	0	0	5
33	WHITE,ALIYAH	f	1-1		0-0		1-3	0	1	1	2	3	0	2	0	1	13
03	MBROH,ALEXIS		0-1		0-1		0-0	0	0	0	1	0	0	0	0	0	7
05	FARQUHAR,RALEY		0-0		0-0		0-0	0	1	1	1	0	0	0	0	0	3
13	SMITH,MONAE		0-0		0-0		0-0	0	0	0	0	0	0	0	0	0	5
14	DAVENPORT,MORGAN		0-2		0-0		0-0	0	1	1	2	0	0	1	0	0	6
23	AVINA,AUTUMN		0-6		0-1		3-4	0	1	1	3	3	0	3	2	1	9
25	WILLIAMS,LEXI		1-5		0-1		0-0	1	0	1	2	2	0	0	0	1	10
TEAM								0	2	2	0			1			
Totals			5-24		0-6		5-9	4	9	13	15	15	1	15	2	4	100

FG % 3rd Qtr 2-16 12.5% 4th Qtr 3-8 37.5% Half: 5-24 20.8%  
 3FG % 3rd Qtr 0-5 00.0% 4th Qtr 0-1 00.0% Half: 0-6 40.0%  
 FT % 3rd Qtr 2-2 100.0% 4th Qtr 3-7 42.9% Half: 5-9 55.6%

### ARKANSAS 50 • 0-0

##	Player		Total		3-Ptr		FT-FTA	Rebounds			PF	TP	A	TO	Blk	Stl	Min
			FG-FGA		FG-FGA			Off	Def	Tot							
00	JACKSON,JESSICA	f	1-2		1-2		4-4	0	1	1	0	7	0	1	0	1	10
03	MONK,MALICA	g	4-7		0-0		2-4	1	0	1	1	10	1	0	0	2	12
14	MASON,JAILYN	g	3-6		0-0		0-0	0	3	3	2	6	4	1	0	3	17
22	ZIMMERMAN,BAILEY	f	1-2		1-2		1-2	2	2	4	0	4	1	0	0	0	12
35	COOLEY,ALECIA	c	0-1		0-0		0-0	1	2	3	0	0	0	1	1	0	6
04	SWENSON,KEIRYN		2-4		1-2		1-2	2	5	7	1	6	1	1	1	0	13
10	WILLIAMS,KIARA		1-2		0-0		3-5	1	1	2	3	5	0	0	1	0	6
12	FREEMAN,BRIUNNA		2-4		0-0		0-0	0	0	0	0	4	0	0	0	2	8
20	STOUT,SYDNEY		0-0		0-0		1-2	0	1	1	0	1	0	0	0	1	6
24	DANBERRY,JORDAN		3-4		0-0		1-2	1	1	2	1	7	0	1	0	0	10
TEAM								1	1	2	0			0			
Totals			17-32		3-6		13-21	9	17	26	8	50	7	5	3	9	100

FG % 3rd Qtr 8-14 57.1% 4th Qtr 9-18 50.0% Half: 17-32 53.1%  
 3FG % 3rd Qtr 3-5 60.0% 4th Qtr 0-1 00.0% Half: 3-6 25.0%  
 FT % 3rd Qtr 7-10 70.0% 4th Qtr 6-11 54.5% Half: 13-21 61.9%

Officials: Greg Small, Missy Brooks, Nick Marshall  
 Technical Fouls: OKLABAP- None. ARKANSAS- None.  
 Estimated Actual Attendance: 801  
 Oklahoma Baptist Foul Out: #10, Graves at 3:41 (4Q)  
 Arkansas Foul Out: #10, Williams at 42.6 (4Q)

Score by periods	1st	2nd	3rd	4th	Total
OKLABAP	11	6	6	9	32
ARKANSAS	17	12	26	24	79

Points	Off T/O	2nd Chance	Bench
OKLABAP	2	0	5
	22	8	23

Last FG - OKLABAP 4th-04:22, AR 4th-00:05.  
 OKLABAP led for 0:00. AR led for 20:00. Game was tied for 0:00.

Score tied - 0 times  
 Lead changed - 0 times

**OKLABAP vs ARKANSAS**  
**11/3/2016; 7 p.m. at Bud Walton Arena (Fayetteville, Ark.)**  
**Period 3 Play-By-Play**

VISITORS: OKLABAP	Time	Score	Margin	HOME: ARKANSAS
MISSED LAYUP by COOPER,MCKENZIE	09:51			
	09:51			REBOUND (DEF) by COOLEY,ALECIA
	09:40			MISSED LAYUP by MONK,MALICA
REBOUND (DEF) by GRAVES,CAMEERAH	09:40			
MISSED 3PTR by CUSTER,KATY	09:29			
	09:29			REBOUND (DEF) by MASON,JAILYN
	09:20			TURNOVER by JACKSON,JESSICA
STEAL by WHITE,ALIYAH	09:16			
	09:06			SUB IN: SWENSON,KEIRYN
	09:06			SUB OUT: JACKSON,JESSICA
MISSED 3PTR by COOPER,MCKENZIE	08:51			
	08:51			REBOUND (DEF) by COOLEY,ALECIA
	08:34	32-17	H 15	GOOD! 3PTR by SWENSON,KEIRYN
	08:34			ASSIST by MASON,JAILYN
TURNOVER by CUSTER,KATY	08:12			
	08:10			STEAL by MASON,JAILYN
	08:08	34-17	H 17	GOOD! LAYUP by MONK,MALICA [FB/PNT]
	08:08			ASSIST by MASON,JAILYN
GOOD! JUMPER by EDGE,TASHA	07:55	34-19	H 15	
	07:27	37-19	H 18	GOOD! 3PTR by ZIMMERMAN,BAILEY
	07:27			ASSIST by SWENSON,KEIRYN
GOOD! JUMPER by CUSTER,KATY	06:53	37-21	H 16	
	06:38			MISSED 3PTR by SWENSON,KEIRYN
REBOUND (DEF) by GRAVES,CAMEERAH	06:38			
SUB IN: AVINA,AUTUMN	06:16			
SUB OUT: CUSTER,KATY	06:16			
MISSED JUMPER by EDGE,TASHA	06:14			
	06:14			BLOCK by COOLEY,ALECIA
REBOUND (OFF) by EDGE,TASHA	06:12			
TURNOVER by EDGE,TASHA	06:09			
	06:08			STEAL by MONK,MALICA
FOUL by GRAVES,CAMEERAH	06:08			
SUB IN: WILLIAMS,LEXI	06:08			
SUB OUT: GRAVES,CAMEERAH	06:08			
	06:08			SUB IN: JACKSON,JESSICA
	06:08			SUB OUT: COOLEY,ALECIA
	05:56	39-21	H 18	GOOD! JUMPER by MASON,JAILYN [PNT]
MISSED 3PTR by COOPER,MCKENZIE	05:27			
	05:27			REBOUND (DEF) by ZIMMERMAN,BAILEY
FOUL by AVINA,AUTUMN	05:23			
FOUL by WILLIAMS,LEXI	05:11			
	05:11	40-21	H 19	GOOD! FT by MONK,MALICA
	05:11			MISSED FT by MONK,MALICA
	05:11			REBOUND (OFF) by ZIMMERMAN,BAILEY
	05:07	43-21	H 22	GOOD! 3PTR by JACKSON,JESSICA
	05:07			ASSIST by MASON,JAILYN
TURNOVER by TEAM	04:27			
	04:27			TIMEOUT MEDIA
	04:27			SUB IN: FREEMAN,BRIUNNA
	04:27			SUB IN: DANBERRY,JORDAN
	04:27			SUB OUT: MONK,MALICA
	04:27			SUB OUT: ZIMMERMAN,BAILEY
FOUL by AVINA,AUTUMN	04:13			
	04:13	44-21	H 23	GOOD! FT by JACKSON,JESSICA
	04:13	45-21	H 24	GOOD! FT by JACKSON,JESSICA
MISSED 3PTR by WILLIAMS,LEXI	04:01			
REBOUND (OFF) by WILLIAMS,LEXI	04:01			
MISSED JUMPER by WILLIAMS,LEXI	03:58			
	03:58			BLOCK by SWENSON,KEIRYN

VISITORS: OKLABAP	Time	Score	Margin	HOME: ARKANSAS
REBOUND (OFF) by EDGE,TASHA	03:55			
MISSED JUMPER by EDGE,TASHA	03:52			
	03:52			REBOUND (DEF) by SWENSON,KEIRYN
FOUL by WILLIAMS,LEXI	03:49			
	03:49	46-21	H 25	GOOD! FT by SWENSON,KEIRYN
	03:49			MISSED FT by SWENSON,KEIRYN
	03:49			REBOUND (OFF) by DANBERRY,JORDAN
	03:49	48-21	H 27	GOOD! LAYUP by DANBERRY,JORDAN [PNT]
SUB IN: CUSTER,KATY	03:49			
SUB IN: GRAVES,CAMEERAH	03:49			
SUB OUT: COOPER,MCKENZIE	03:49			
SUB OUT: WHITE,ALIYAH	03:49			
TURNOVER by CUSTER,KATY	03:26			
	03:25			STEAL by FREEMAN,BRIUNNA
	03:22	50-21	H 29	GOOD! LAYUP by FREEMAN,BRIUNNA [FB/PNT]
TURNOVER by CUSTER,KATY	03:10			
	03:09			STEAL by MASON,JAILYN
	03:03			MISSED JUMPER by DANBERRY,JORDAN
BLOCK by AVINA,AUTUMN	03:03			
REBOUND (DEF) by AVINA,AUTUMN	03:02			
MISSED LAYUP by AVINA,AUTUMN	02:57			
	02:57			REBOUND (DEF) by TEAM
SUB IN: WHITE,ALIYAH	02:54			
SUB OUT: CUSTER,KATY	02:54			
FOUL by WHITE,ALIYAH	02:34			
	02:34	51-21	H 30	GOOD! FT by JACKSON,JESSICA
	02:34	52-21	H 31	GOOD! FT by JACKSON,JESSICA
	02:34			SUB IN: MONK,MALICA
	02:34			SUB OUT: MASON,JAILYN
MISSED JUMPER by WILLIAMS,LEXI	02:29			
	02:29			REBOUND (DEF) by SWENSON,KEIRYN
	02:19			MISSED JUMPER by FREEMAN,BRIUNNA
REBOUND (DEF) by TEAM	02:19			
SUB IN: COOPER,MCKENZIE	02:13			
SUB OUT: EDGE,TASHA	02:13			
MISSED 3PTR by AVINA,AUTUMN	02:02			
REBOUND (OFF) by GRAVES,CAMEERAH	02:02			
TURNOVER by WHITE,ALIYAH	01:53			
	01:49			MISSED 3PTR by JACKSON,JESSICA
REBOUND (DEF) by WHITE,ALIYAH	01:49			
	01:45			FOUL by DANBERRY,JORDAN
MISSED LAYUP by AVINA,AUTUMN	01:41			
	01:41			REBOUND (DEF) by JACKSON,JESSICA
FOUL by GRAVES,CAMEERAH	01:34			
	01:34	53-21	H 32	GOOD! FT by MONK,MALICA
	01:34			MISSED FT by MONK,MALICA
REBOUND (DEF) by COOPER,MCKENZIE	01:34			
SUB IN: SMITH,MONAE	01:34			
SUB OUT: GRAVES,CAMEERAH	01:34			
TURNOVER by AVINA,AUTUMN	01:23			
	01:22			STEAL by JACKSON,JESSICA
	01:08	55-21	H 34	GOOD! JUMPER by FREEMAN,BRIUNNA [PNT]
MISSED LAYUP by AVINA,AUTUMN	00:57			
	00:57			REBOUND (DEF) by SWENSON,KEIRYN
	00:30			MISSED LAYUP by SWENSON,KEIRYN
	00:30			REBOUND (OFF) by SWENSON,KEIRYN
	00:25			TURNOVER by SWENSON,KEIRYN
STEAL by WILLIAMS,LEXI	00:25			
SUB IN: EDGE,TASHA	00:25			
SUB OUT: WILLIAMS,LEXI	00:25			
MISSED LAYUP by AVINA,AUTUMN	00:13			
	00:13			REBOUND (DEF) by SWENSON,KEIRYN
	00:07			TURNOVER by DANBERRY,JORDAN
STEAL by AVINA,AUTUMN	00:06			

VISITORS: OKLABAP	Time	Score	Margin	HOME: ARKANSAS
	00:03			FOUL by SWENSON,KEIRYN
GOOD! FT by AVINA,AUTUMN	00:03	55-22	H 33	
GOOD! FT by AVINA,AUTUMN	00:03	55-23	H 32	
	00:03			SUB IN: ZIMMERMAN,BAILEY
	00:03			SUB OUT: FREEMAN,BRIUNNA

OKLABAP 32, ARKANSAS 79

Period 3-only	In Paint	Off T/O	2nd Chance	Fast Break	Bench	
OKLABAP		2	0		2	Score tied - 0 times
AR		10	5		10	Lead changed - 0 times

**OKLABAP vs ARKANSAS**  
**11/3/2016; 7 p.m. at Bud Walton Arena (Fayetteville, Ark.)**  
**Period 4 Play-By-Play**

VISITORS: OKLABAP	Time	Score	Margin	HOME: ARKANSAS
SUB IN: DAVENPORT,MORGAN	10:00			
SUB IN: MBROH,ALEXIS	10:00			
SUB OUT: CUSTER,KATY	10:00			
SUB OUT: WHITE,ALIYAH	10:00			
	09:47			MISSED JUMPER by MONK,MALICA
	09:47			REBOUND (OFF) by TEAM
	09:41			MISSED 3PTR by ZIMMERMAN,BAILEY
	09:41			REBOUND (OFF) by ZIMMERMAN,BAILEY
FOUL by DAVENPORT,MORGAN	09:38			
	09:38			MISSED FT by ZIMMERMAN,BAILEY
	09:38			REBOUND (DEADB) by TEAM
	09:38	56-23	H 33	GOOD! FT by ZIMMERMAN,BAILEY
	09:35			FOUL by MASON,JAILYN
GOOD! LAYUP by EDGE,TASHA [PNT]	09:13	56-25	H 31	
ASSIST by GRAVES,CAMEERAH	09:13			
	08:45			TURNOVER by COOLEY,ALECIA
STEAL by EDGE,TASHA	08:45			
TURNOVER by COOPER,MCKENZIE	08:39			
	08:38			STEAL by MONK,MALICA
	08:37	58-25	H 33	GOOD! LAYUP by MONK,MALICA [PNT]
MISSED JUMPER by DAVENPORT,MORGAN	08:14			
	08:14			REBOUND (DEF) by MASON,JAILYN
	08:04			MISSED JUMPER by MASON,JAILYN
	08:02			REBOUND (OFF) by COOLEY,ALECIA
	08:01			MISSED JUMPER by COOLEY,ALECIA
REBOUND (DEF) by DAVENPORT,MORGAN	08:01			
FOUL by COOPER,MCKENZIE	07:53			
TURNOVER by COOPER,MCKENZIE	07:53			
	07:53			SUB IN: WILLIAMS,KIARA
	07:53			SUB IN: SWENSON,KEIRYN
	07:53			SUB OUT: JACKSON,JESSICA
	07:53			SUB OUT: COOLEY,ALECIA
	07:39	60-25	H 35	GOOD! LAYUP by SWENSON,KEIRYN [PNT]
	07:39			ASSIST by MONK,MALICA
	07:25			FOUL by MONK,MALICA
MISSED FT by GRAVES,CAMEERAH	07:25			
REBOUND (DEADB) by TEAM	07:25			
GOOD! FT by GRAVES,CAMEERAH	07:25	60-26	H 34	
SUB IN: WHITE,ALIYAH	07:25			
SUB OUT: DAVENPORT,MORGAN	07:25			
	07:08	62-26	H 36	GOOD! LAYUP by MONK,MALICA [PNT]
	07:08			ASSIST by MASON,JAILYN
	07:00			FOUL by WILLIAMS,KIARA
GOOD! FT by WHITE,ALIYAH	07:00	62-27	H 35	
MISSED FT by WHITE,ALIYAH	07:00			REBOUND (DEF) by WILLIAMS,KIARA
	06:49	64-27	H 37	GOOD! LAYUP by MONK,MALICA [PNT]
TURNOVER by WHITE,ALIYAH	06:32			
SUB IN: WILLIAMS,LEXI	06:32			
SUB OUT: MBROH,ALEXIS	06:32			
	06:11			MISSED JUMPER by MONK,MALICA
	06:11			REBOUND (OFF) by SWENSON,KEIRYN
	05:54			MISSED JUMPER by MASON,JAILYN
	05:54			REBOUND (OFF) by MONK,MALICA
FOUL by WHITE,ALIYAH	05:35			
	05:35			MISSED FT by WILLIAMS,KIARA
	05:35			REBOUND (DEADB) by TEAM
	05:35	65-27	H 38	GOOD! FT by WILLIAMS,KIARA
	05:35			SUB IN: STOUT,SYDNEY

VISITORS: OKLABAP	Time	Score	Margin	HOME: ARKANSAS
	05:35			SUB IN: DANBERRY,JORDAN
	05:35			SUB OUT: MONK,MALICA
	05:35			SUB OUT: SWENSON,KEIRYN
TURNOVER by EDGE,TASHA	05:24			
	05:24			STEAL by STOUT,SYDNEY
	05:17	67-27	H 40	GOOD! JUMPER by MASON,JAILYN
	05:17			ASSIST by ZIMMERMAN,BAILEY
GOOD! LAYUP by WHITE,ALIYAH [PNT]	05:05	67-29	H 38	
	05:05			FOUL by WILLIAMS,KIARA
MISSED FT by WHITE,ALIYAH	05:05			
	05:05			REBOUND (DEF) by ZIMMERMAN,BAILEY
	05:05			SUB IN: SWENSON,KEIRYN
	05:05			SUB OUT: WILLIAMS,KIARA
	04:42	69-29	H 40	GOOD! JUMPER by MASON,JAILYN [PNT]
GOOD! JUMPER by WILLIAMS,LEXI [PNT]	04:22	69-31	H 38	
	04:04	71-31	H 40	GOOD! LAYUP by DANBERRY,JORDAN [PNT]
FOUL by GRAVES,CAMEERAH	03:41			
TURNOVER by GRAVES,CAMEERAH	03:41			
	03:41			TIMEOUT media
SUB IN: MBROH,ALEXIS	03:41			
SUB OUT: GRAVES,CAMEERAH	03:41			
	03:41			SUB IN: WILLIAMS,KIARA
	03:41			SUB IN: FREEMAN,BRIUNNA
	03:41			SUB OUT: SWENSON,KEIRYN
	03:41			SUB OUT: ZIMMERMAN,BAILEY
	03:11			MISSED JUMPER by MASON,JAILYN
REBOUND (DEF) by TEAM	03:11			
MISSED JUMPER by WILLIAMS,LEXI	02:59			
	02:59			REBOUND (DEF) by DANBERRY,JORDAN
FOUL by MBROH,ALEXIS	02:57			
	02:57			MISSED FT by DANBERRY,JORDAN
	02:57			REBOUND (DEADB) by TEAM
	02:57	72-31	H 41	GOOD! FT by DANBERRY,JORDAN
SUB IN: FARQUHAR,RALEY	02:57			
SUB IN: DAVENPORT,MORGAN	02:57			
SUB IN: AVINA,AUTUMN	02:57			
SUB IN: SMITH,MONAE	02:57			
SUB OUT: COOPER,MCKENZIE	02:57			
SUB OUT: EDGE,TASHA	02:57			
SUB OUT: WHITE,ALIYAH	02:57			
SUB OUT: WILLIAMS,LEXI	02:57			
TURNOVER by AVINA,AUTUMN	02:39			
	02:37			STEAL by MASON,JAILYN
	02:33			MISSED LAYUP by FREEMAN,BRIUNNA
REBOUND (DEF) by FARQUHAR,RALEY	02:33			
MISSED JUMPER by DAVENPORT,MORGAN	02:15			
	02:15			REBOUND (DEF) by MASON,JAILYN
FOUL by FARQUHAR,RALEY	02:07			
	02:07			MISSED FT by STOUT,SYDNEY
	02:07			REBOUND (DEADB) by TEAM
	02:07	73-31	H 42	GOOD! FT by STOUT,SYDNEY
TURNOVER by DAVENPORT,MORGAN	01:57			
	01:42	75-31	H 44	GOOD! LAYUP by WILLIAMS,KIARA [PNT]
FOUL by DAVENPORT,MORGAN	01:42			
	01:42	76-31	H 45	GOOD! FT by WILLIAMS,KIARA
MISSED JUMPER by AVINA,AUTUMN	01:16			
	01:16			BLOCK by WILLIAMS,KIARA
	01:15			REBOUND (DEF) by STOUT,SYDNEY
	01:03			MISSED JUMPER by WILLIAMS,KIARA
BLOCK by AVINA,AUTUMN	01:03			
	01:02			REBOUND (OFF) by WILLIAMS,KIARA
FOUL by AVINA,AUTUMN	00:59			
	00:59			MISSED FT by WILLIAMS,KIARA
	00:59			REBOUND (DEADB) by TEAM

VISITORS: OKLABAP	Time	Score	Margin	HOME: ARKANSAS
	00:59	77-31	H 46	GOOD! FT by WILLIAMS,KIARA
	00:42			FOUL by WILLIAMS,KIARA
GOOD! FT by AVINA,AUTUMN	00:42	77-32	H 45	
MISSED FT by AVINA,AUTUMN	00:42			
	00:42			REBOUND (DEF) by SWENSON,KEIRYN
	00:42			SUB IN: SWENSON,KEIRYN
	00:42			SUB OUT: WILLIAMS,KIARA
	00:29			FOUL by MASON,JAILYN
	00:29			TURNOVER by MASON,JAILYN
TURNOVER by AVINA,AUTUMN	00:10			
	00:09			STEAL by FREEMAN,BRIUNNA
	00:05	79-32	H 47	GOOD! LAYUP by DANBERRY,JORDAN [FB/PNT]
MISSED 3PTR by MBROH,ALEXIS	00:00			
	00:00			REBOUND (DEADB) by TEAM

OKLABAP 32, ARKANSAS 79

Period 4-only	In Paint	Off T/O	2nd Chance	Fast Break	Bench	
OKLABAP		0	0		3	Score tied - 0 times
AR		12	3		13	Lead changed - 0 times



# OKLABAP vs ARKANSAS

## 11/3/2016; 7 p.m. at Bud Walton Arena (Fayetteville, Ark.)

### Scoring/Runs Reference

#### Period 1

OKLABAP	Score	Marg	ARKANSAS
09:25 - WHITE JUMPER 2	2-0	-2	
	2-1	-1	1 ZIMMERMAN FT - 08:27
08:16 - GRAVES LAYUP [P] 2	4-1	-3	
06:45 - EDGE LAYUP [P] 2	6-1	-5	
	6-3	-3	2 MASON JUMPER - 06:38
06:23 - WHITE JUMPER 2	8-3	-5	
	8-5	-3	2 COOLEY JUMPER [P] - 06:06
	8-8	0	3 DANBERRY 3PTR - 05:03
	8-10	2	2 DANBERRY LAYUP [P] - 04:32
04:16 - EDGE 3PTR 3	11-10	-1	
	11-12	1	2 JACKSON LAYUP [P] - 02:34
	11-14	3	2 MONK LAYUP [P] - 02:22
	11-16	5	2 JACKSON TIPIN [P] - 01:38
	11-17	6	1 MONK FT - 01:04

#### Period 3

OKLABAP	Score	Marg	ARKANSAS
	17-32	15	3 SWENSON 3PTR - 08:34
	17-34	17	2 MONK LAYUP [P] [F] - 08:08
07:55 - EDGE JUMPER 2	19-34	15	
	19-37	18	3 ZIMMERMAN 3PTR - 07:27
06:53 - CUSTER JUMPER 2	21-37	16	
	21-39	18	2 MASON JUMPER [P] - 05:56
	21-40	19	1 MONK FT - 05:11
	21-43	22	3 JACKSON 3PTR - 05:07
	21-44	23	1 JACKSON FT - 04:13
	21-45	24	1 JACKSON FT - 04:13
	21-46	25	1 SWENSON FT - 03:49
	21-48	27	2 DANBERRY LAYUP [P] - 03:49
	21-50	29	2 FREEMAN LAYUP [P] [F] - 03:22
	21-51	30	1 JACKSON FT - 02:34
	21-52	31	1 JACKSON FT - 02:34
	21-53	32	1 MONK FT - 01:34
	21-55	34	2 FREEMAN JUMPER [P] - 01:08
00:03 - AVINA FT 1	22-55	33	
00:03 - AVINA FT 1	23-55	32	

#### Period 2

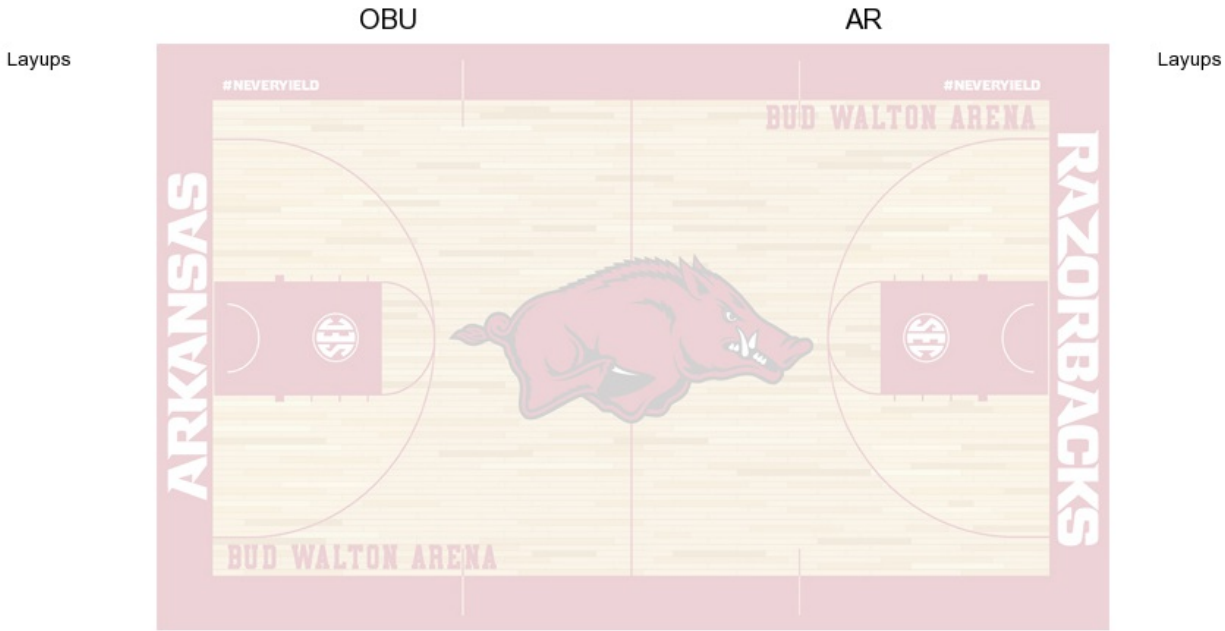
OKLABAP	Score	Marg	ARKANSAS
	11-19	8	2 COOLEY TIPIN [P] - 09:30
	11-21	10	2 MASON JUMPER - 08:43
	11-23	12	2 FREEMAN LAYUP [P] - 07:59
	11-24	13	1 COOLEY FT - 05:54
	11-26	15	2 DANBERRY LAYUP [P] [F] - 05:14
04:25 - AVINA JUMPER 2	13-26	13	
02:19 - AVINA 3PTR 3	16-26	10	
	16-29	13	3 JACKSON 3PTR - 01:48
00:59 - GRAVES FT 1	17-29	12	

#### Period 4

OKLABAP	Score	Marg	ARKANSAS
	23-56	33	1 ZIMMERMAN FT - 09:38
09:13 - EDGE LAYUP [P] 2	25-56	31	
	25-58	33	2 MONK LAYUP [P] - 08:37
	25-60	35	2 SWENSON LAYUP [P] - 07:39
07:25 - GRAVES FT 1	26-60	34	
	26-62	36	2 MONK LAYUP [P] - 07:08
07:00 - WHITE FT 1	27-62	35	
	27-64	37	2 MONK LAYUP [P] - 06:49
	27-65	38	1 WILLIAMS FT - 05:35
	27-67	40	2 MASON JUMPER - 05:17
05:05 - WHITE LAYUP [P] 2	29-67	38	
	29-69	40	2 MASON JUMPER [P] - 04:42
04:22 - WILLIAMS JUMPER [P] 2	31-69	38	
	31-71	40	2 DANBERRY LAYUP [P] - 04:04
	31-72	41	1 DANBERRY FT - 02:57
	31-73	42	1 STOUT FT - 02:07
	31-75	44	2 WILLIAMS LAYUP [P] - 01:42
	31-76	45	1 WILLIAMS FT - 01:42
	31-77	46	1 WILLIAMS FT - 00:59
00:42 - AVINA FT 1	32-77	45	
	32-79	47	2 DANBERRY LAYUP [P] [F] - 00:05

OKLABAP vs ARKANSAS  
OFFICIAL SHOT CHART  
11/3/2016 at Bud Walton Arena (Fayetteville, Ark.)

PERIOD 1



OKLABAP PERIOD 1

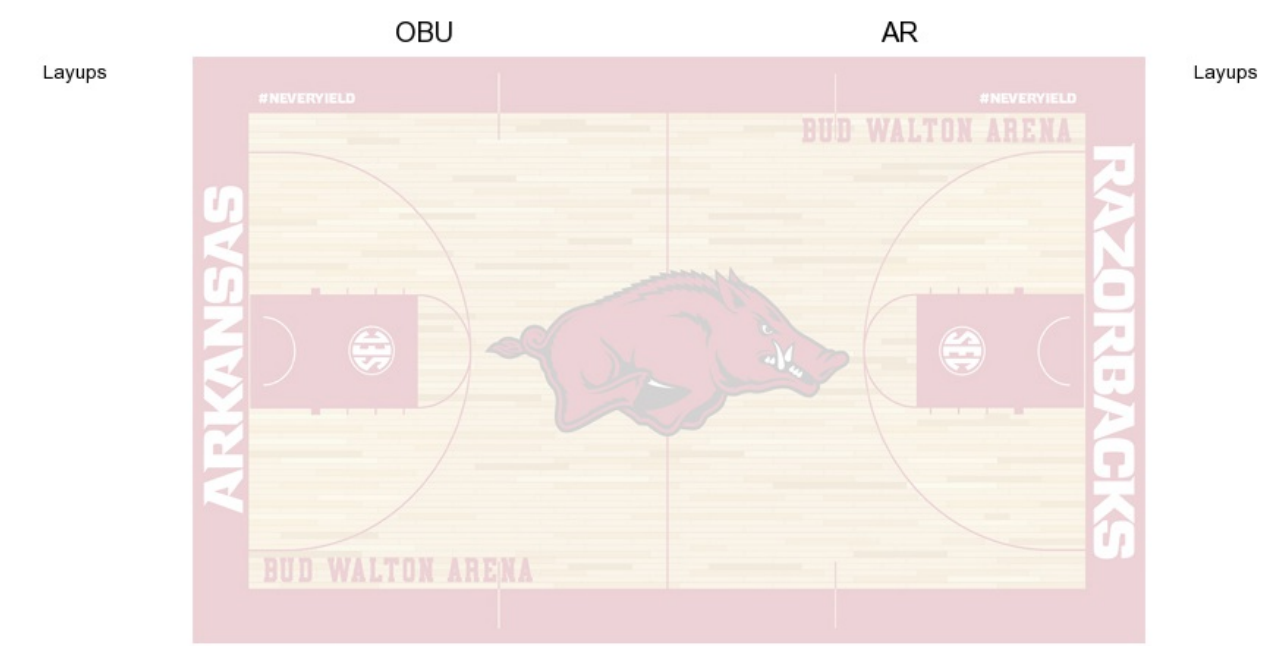
FG Made	7
FG Attempted	25
3PFG Made	2
3PFG Attempted	5

AR PERIOD 1

FG Made	12
FG Attempted	36
3PFG Made	2
3PFG Attempted	8

OKLABAP vs ARKANSAS  
OFFICIAL SHOT CHART  
11/3/2016 at Bud Walton Arena (Fayetteville, Ark.)

PERIOD 2

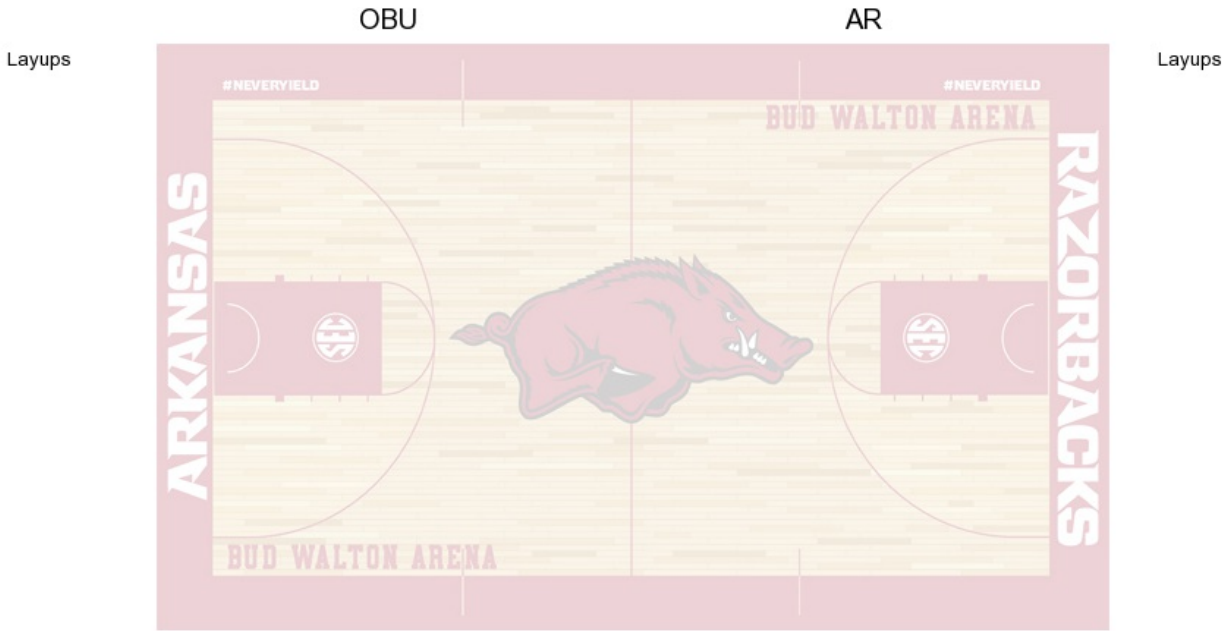


**OKLABAP PERIOD 2**  
FG Made  
FG Attempted  
3PFG Made  
3PFG Attempted

**AR PERIOD 2**  
FG Made  
FG Attempted  
3PFG Made  
3PFG Attempted

OKLABAP vs ARKANSAS  
OFFICIAL SHOT CHART  
11/3/2016 at Bud Walton Arena (Fayetteville, Ark.)

PERIOD 3



**OKLABAP PERIOD 3**

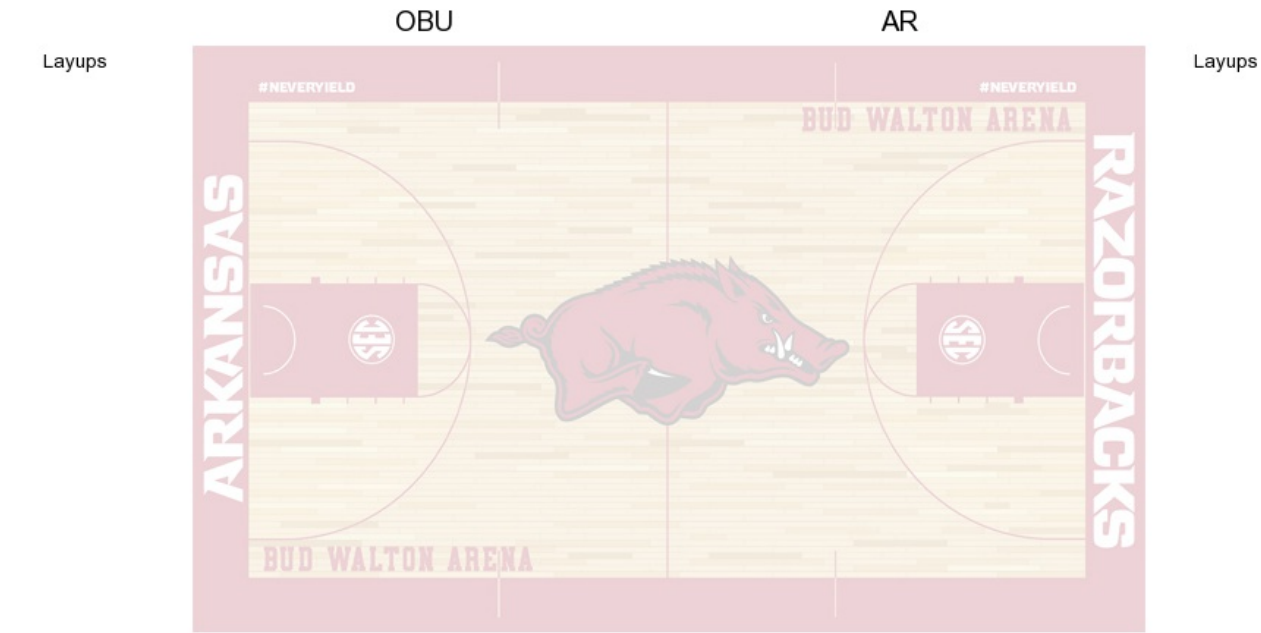
FG Made	5
FG Attempted	24
3PFG Made	0
3PFG Attempted	6

**AR PERIOD 3**

FG Made	17
FG Attempted	32
3PFG Made	3
3PFG Attempted	6

OKLABAP vs ARKANSAS  
OFFICIAL SHOT CHART  
11/3/2016 at Bud Walton Arena (Fayetteville, Ark.)

PERIOD 4



**OKLABAP PERIOD 4**

FG Made  
FG Attempted  
3PFG Made  
3PFG Attempted

**AR PERIOD 4**

FG Made  
FG Attempted  
3PFG Made  
3PFG Attempted

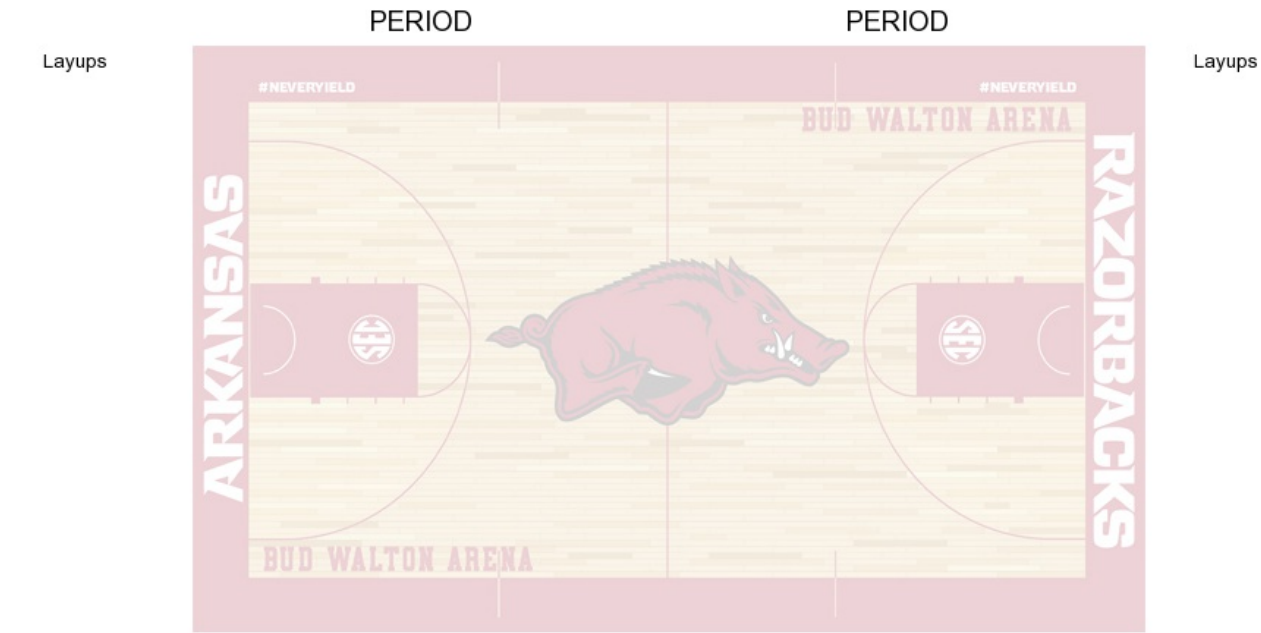
OKLABAP vs ARKANSAS

OFFICIAL SHOT CHART

11/3/2016 at Bud Walton Arena (Fayetteville, Ark.)

---

OKLABAP



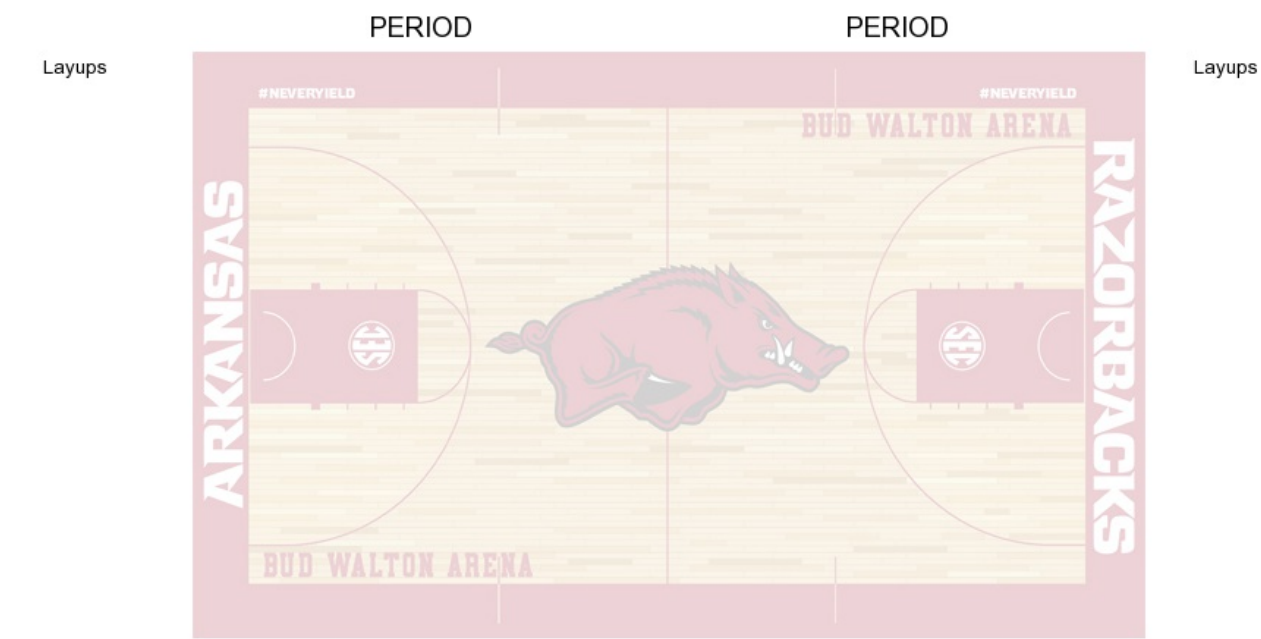
OKLABAP vs ARKANSAS

OFFICIAL SHOT CHART

11/3/2016 at Bud Walton Arena (Fayetteville, Ark.)

---

ARKANSAS



AR PERIOD 1		AR PERIOD 2	
FG Made	12	FG Made	
FG Attempted	36	FG Attempted	
3PFG Made	2	3PFG Made	
3PFG Attempted	8	3PFG Attempted	