



TENNESSEE VS. MISSOURI

2/18/2017

Knoxville, Tenn. (Thompson-Boling Arena)

FINAL STATS

Tennessee

(14-12, 6-7 SEC)

90

Missouri

(7-17, 2-10 SEC)

70

Start Time: 1:01 p.m.

Officials: Olandis Poole, Marc Ellard, Bart Lenox

Attendance: 14680

Official Basketball Box Score -- Game Totals -- Final Statistics
Missouri vs Tennessee
2/18/2017 1:01 p.m. at Knoxville, Tenn. (Thompson-Boling Arena)

Missouri 70 - 7-17, 2-10 SEC

##	Player	S	Total			Rebounds			PF	TP	A	TO	Blk	Stl	Min
			FG-FGA	3PT	FG-FGA	FT-FTA	Off Reb	Def Reb							
1	PHILLIPS,TERRENCE	g	6-9	4-6	2-3	0	3	3	2	18	3	4	0	2	34
11	WALTON,KJ	g	2-7	1-2	3-5	0	4	4	2	8	2	2	0	2	31
24	PURYEAR,KEVIN	f	4-9	0-3	2-2	0	2	2	4	10	0	1	0	0	30
25	WOODS,RUSSELL	f	0-2	0-0	1-2	2	0	2	4	1	0	0	0	0	13
33	VANLEER,CULLEN	g	1-3	0-2	2-2	0	2	2	3	4	1	0	0	3	18
3	HUGHES,FRANKIE		2-4	1-3	0-0	0	1	1	3	5	1	2	0	0	13
13	GLASSMAN,TREVOR		0-2	0-1	0-0	0	0	0	0	0	0	0	0	0	1
14	NIKKO,REED		2-3	0-0	1-3	1	5	6	2	5	1	0	1	0	18
15	GEIST,JORDAN		0-2	0-0	6-6	0	2	2	3	6	2	2	0	0	15
21	BARNETT,JORDAN		2-6	1-3	6-7	0	1	1	2	11	1	3	0	0	24
32	WOLF,ADAM		1-3	0-1	0-0	2	0	2	1	2	0	0	0	0	3
TEAM						3	2	5	1		0				
TOTALS			20-50	7-21	23-30	8	22	30	27	70	11	14	1	7	200

Deadball Rebounds: 2,0

FG %	1st Half:	9-24	37.5%	2nd Half:	11-26	42.3%	Game:	20-50	40.0%
3FG %	1st Half:	3-10	30.0%	2nd Half:	4-11	36.4%	Game:	7-21	33.3%
FT %	1st Half:	7-10	70.0%	2nd Half:	16-20	80.0%	Game:	23-30	76.7%

Tennessee 90 - 14-12, 6-7 SEC

##	Player	S	Total			Rebounds			PF	TP	A	TO	Blk	Stl	Min
			FG-FGA	3PT	FG-FGA	FT-FTA	Off Reb	Def Reb							
0	BONE,JORDAN	g	1-4	1-3	5-6	0	1	1	3	8	6	1	0	0	25
2	WILLIAMS,GRANT	f	6-12	1-1	12-13	3	2	5	3	25	2	1	1	0	29
3	HUBBS III,ROBERT	g	9-17	1-2	2-4	0	8	8	1	21	2	0	0	0	33
11	ALEXANDER,KYLE	f	1-3	0-0	0-1	3	3	6	3	2	0	2	0	0	14
23	BOWDEN,JORDAN	g	0-0	0-0	0-0	0	0	0	0	0	0	0	0	0	1
1	TURNER,LAMONTE		1-7	1-5	0-0	1	2	3	3	3	2	1	0	1	19
5	SCHOFIELD,ADMIRAL		4-6	2-4	7-10	1	4	5	3	17	1	1	0	1	28
12	PARKER,KWE		0-0	0-0	0-0	0	2	2	0	0	0	1	0	0	3
21	EVANS,LEW		0-0	0-0	0-0	1	2	3	1	0	2	1	0	1	16
24	CAMPBELL,LUCAS		0-0	0-0	2-3	0	0	0	0	2	0	0	0	0	1
25	PHILLIPS,SHEMBARI		4-7	2-5	0-0	0	2	2	3	10	3	1	1	0	28
32	WOODSON,BRAD		1-2	0-1	0-0	0	0	0	1	2	1	0	1	0	3
TEAM						2	1	3	0		0				
TOTALS			27-58	8-21	28-37	11	27	38	21	90	19	9	3	3	200

Deadball Rebounds: 7,0

FG %	1st Half:	10-25	40.0%	2nd Half:	17-33	51.5%	Game:	27-58	46.6%
3FG %	1st Half:	5-9	55.6%	2nd Half:	3-12	25.0%	Game:	8-21	38.1%
FT %	1st Half:	16-19	84.2%	2nd Half:	12-18	66.7%	Game:	28-37	75.7%

Officials: Olandis Poole, Marc Ellard, Bart Lenox
 Technical Fouls: Missouri- PHILLIPS,TERRENCE; TEAM; Tennessee- None.
 Attendance: 14680

Score by periods	1st	2nd	Total
Missouri	28	42	70
Tennessee	41	49	90

Points	In Paint	Off T/O	2nd Chance	Fast Break	Bench
MU	18	6	9	4	29
UT	32	24	9	6	34

Last FG - MU 2nd-00:34, UT 2nd-00:01.
 Largest lead - Missouri by 2 1st-19:06; Tennessee by 24 2nd-07:32
 MU led for 1:32. UT led for 36:46. Game was tied for 1:10.

Score tied - 2 times
 Lead changed - 1 times

Official Basketball Box Score -- Game Totals -- First Half Statistics
Missouri vs Tennessee
2/18/2017 1:01 p.m. at Knoxville, Tenn. (Thompson-Boling Arena)

Missouri 28 • 7-17, 2-10 SEC

##	Player	S	Total			Rebounds			PF	TP	A	TO	Blk	Stl	Min
			FG-FGA	3PT	FG-FGA	FT-FTA	Off Reb	Def Reb							
1	PHILLIPS,TERRENCE	g	0-1	0-0	1-2	0	2	2	1	1	2	2	0	1	19
11	WALTON,KJ	g	2-7	1-2	1-1	0	2	2	2	6	1	2	0	1	18
24	PURYEAR,KEVIN	f	2-5	0-2	0-0	0	1	1	2	4	0	1	0	0	15
25	WOODS,RUSSELL	f	0-1	0-0	1-2	1	0	1	2	1	0	0	0	0	8
33	VANLEER,CULLEN	g	1-3	0-2	0-0	0	1	1	2	2	1	0	0	1	9
3	HUGHES,FRANKIE		1-1	1-1	0-0	0	0	0	3	3	1	1	0	0	5
13	GLASSMAN,TREVOR		0-0	0-0	0-0	0	0	0	0	0	0	0	0	0	0
14	NIKKO,REED		0-0	0-0	0-0	1	2	3	0	0	1	0	0	0	9
15	GEIST,JORDAN		0-0	0-0	0-0	0	1	1	2	0	0	1	0	0	1
21	BARNETT,JORDAN		2-3	1-2	4-5	0	0	0	1	9	1	2	0	0	14
32	WOLF,ADAM		1-3	0-1	0-0	2	0	2	0	2	0	0	0	0	2
	TEAM					3	1	4	0		0				
Totals			9-24	3-10	7-10	7	10	17	15	28	7	9	0	3	100
FG %	Half:	9-24	37.5%												
3FG %	Half:	3-10	30.0%												
FT %	Half:	7-10	70.0%												

Tennessee 41 • 14-12, 6-7 SEC

##	Player	S	Total			Rebounds			PF	TP	A	TO	Blk	Stl	Min
			FG-FGA	3PT	FG-FGA	FT-FTA	Off Reb	Def Reb							
0	BONE,JORDAN	g	1-4	1-3	5-6	0	0	0	1	8	3	0	0	0	17
2	WILLIAMS,GRANT	f	1-3	1-1	6-6	0	0	0	1	9	1	0	1	0	13
3	HUBBS III,ROBERT	g	4-9	1-1	2-2	0	4	4	1	11	1	0	0	0	18
11	ALEXANDER,KYLE	f	0-2	0-0	0-1	2	0	2	1	0	0	1	0	0	7
23	BOWDEN,JORDAN	g	0-0	0-0	0-0	0	0	0	0	0	0	0	0	0	1
1	TURNER,LAMONTE		1-3	1-2	0-0	0	1	1	2	3	0	1	0	1	7
5	SCHOFIELD,ADMIRAL		1-1	0-0	3-4	1	2	3	0	5	0	0	0	1	13
12	PARKER,KWE		0-0	0-0	0-0	0	1	1	0	0	0	0	0	0	2
21	EVANS,LEW		0-0	0-0	0-0	1	1	2	0	0	1	1	0	0	7
24	CAMPBELL,LUCAS		0-0	0-0	0-0	0	0	0	0	0	0	0	0	0	0
25	PHILLIPS,SHEMBARI		2-3	1-2	0-0	0	0	0	0	5	1	0	1	0	14
32	WOODSON,BRAD		0-0	0-0	0-0	0	0	0	1	0	1	0	0	0	1
	TEAM					2	1	3	0		0				
Totals			10-25	5-9	16-19	6	10	16	7	41	8	3	2	2	100
FG %	Half:	10-25	40.0%												
3FG %	Half:	5-9	55.6%												
FT %	Half:	16-19	84.2%												

Officials: Olandis Poole, Marc Ellard, Bart Lenox
 Technical Fouls: Missouri- None. Tennessee- None.

Score by periods	1st	2nd	Total
Missouri	28	42	70
Tennessee	41	49	90

Points	In Paint	Off T/O	2nd 2nd Chance	Fast Fast Break	Bench
MU	6	2	9	0	14
UT	4	14	7	0	13

Last FG - MU 1st-01:32, UT 1st-00:33.
 MU led for 1:32. UT led for 16:46. Game was tied for 1:10.

Score tied - 2 times
 Lead changed - 1 times

Missouri vs Tennessee
2/18/2017; 1:01 p.m. at Knoxville, Tenn. (Thompson-Boling Arena)
Period 1 Play-By-Play

VISITORS: Missouri	Time	Score	Margin	HOME: Tennessee
	19:41			MISSED JUMPER by BONE,JORDAN
REBOUND (DEF) by WALTON,KJ	19:41			
MISSED LAYUP by WALTON,KJ	19:10			
REBOUND (OFF) by TEAM	19:10			
GOOD! JUMPER by VANLEER,CULLEN	19:06	0-2	V 2	
	18:49			MISSED JUMPER by WILLIAMS,GRANT
	18:49			REBOUND (OFF) by ALEXANDER,KYLE
	18:46			MISSED LAYUP by ALEXANDER,KYLE
	18:46			REBOUND (OFF) by TEAM
	18:44			SUB IN: PHILLIPS,SHEMBARI
	18:44			SUB OUT: BOWDEN,JORDAN
	18:22			TURNOVER by ALEXANDER,KYLE
STEAL by WALTON,KJ	18:22			
TURNOVER by WALTON,KJ	18:00			
	17:34	2-2	T	GOOD! JUMPER by HUBBS III,ROBERT
FOUL by WALTON,KJ	17:34			
	17:34	3-2	H 1	GOOD! FT by HUBBS III,ROBERT
	17:22			FOUL by ALEXANDER,KYLE
MISSED FT by WOODS,RUSSELL	17:22			
REBOUND (DEADB) by TEAM	17:22			
GOOD! FT by WOODS,RUSSELL	17:22	3-3	T	
	17:06	6-3	H 3	GOOD! 3PTR by PHILLIPS,SHEMBARI
	17:06			ASSIST by HUBBS III,ROBERT
MISSED 3PTR by WALTON,KJ	16:37			
	16:37			REBOUND (DEF) by HUBBS III,ROBERT
	16:28	9-3	H 6	GOOD! 3PTR by WILLIAMS,GRANT
	16:28			ASSIST by BONE,JORDAN
MISSED 3PTR by PURYEAR,KEVIN	15:55			
	15:55			REBOUND (DEF) by HUBBS III,ROBERT
	15:34			MISSED JUMPER by HUBBS III,ROBERT
REBOUND (DEF) by WALTON,KJ	15:34			
MISSED 3PTR by VANLEER,CULLEN	15:26			
	15:26			REBOUND (DEF) by HUBBS III,ROBERT
FOUL by PHILLIPS,TERRENCE	15:17			
	15:17			TIMEOUT MEDIA
	15:17	10-3	H 7	GOOD! FT by BONE,JORDAN
	15:17	11-3	H 8	GOOD! FT by BONE,JORDAN
SUB IN: BARNETT,JORDAN	15:17			
SUB IN: HUGHES,FRANKIE	15:17			
SUB OUT: WOODS,RUSSELL	15:17			
SUB OUT: VANLEER,CULLEN	15:17			
	15:17			SUB IN: TURNER,LAMONTE
	15:17			SUB IN: SCHOFIELD,ADMIRAL
	15:17			SUB IN: EVANS,LEW
	15:17			SUB OUT: BONE,JORDAN
	15:17			SUB OUT: WILLIAMS,GRANT
	15:17			SUB OUT: ALEXANDER,KYLE
MISSED LAYUP by PURYEAR,KEVIN	14:55			
	14:55			REBOUND (DEF) by TURNER,LAMONTE
FOUL by HUGHES,FRANKIE	14:28			
	14:28	13-3	H 10	GOOD! JUMPER by HUBBS III,ROBERT
ASSIST by HUGHES,FRANKIE	14:28			
	14:28	14-3	H 11	GOOD! FT by HUBBS III,ROBERT

VISITORS: Missouri	Time	Score	Margin	HOME: Tennessee
TURNOVER by PHILLIPS,TERRENCE	14:19			
	13:57			MISSED JUMPER by HUBBS III,ROBERT
REBOUND (DEF) by PHILLIPS,TERRENCE	13:57			
MISSED 3PTR by PURYEAR,KEVIN	13:49			
	13:48			REBOUND (DEF) by TEAM
SUB IN: GEIST,JORDAN	13:45			
SUB OUT: PHILLIPS,TERRENCE	13:45			
FOUL by GEIST,JORDAN	13:27			
	13:27			SUB IN: BONE,JORDAN
	13:27			SUB OUT: HUBBS III,ROBERT
	13:20			MISSED JUMPER by TURNER,LAMONTE
REBOUND (DEF) by GEIST,JORDAN	13:20			
FOUL by GEIST,JORDAN	12:56			
TURNOVER by GEIST,JORDAN	12:56			
SUB IN: PHILLIPS,TERRENCE	12:56			
SUB OUT: GEIST,JORDAN	12:56			
	12:36			MISSED 3PTR by PHILLIPS,SHEMBARI
	12:36			REBOUND (OFF) by EVANS,LEW
	12:06	16-3	H 13	GOOD! JUMPER by SCHOFIELD,ADMIRAL
	12:06			ASSIST by EVANS,LEW
TIMEOUT 30SEC	12:03			
TIMEOUT media	12:03			
SUB IN: VANLEER,CULLEN	12:03			
SUB IN: WOODS,RUSSELL	12:03			
SUB OUT: WALTON,KJ	12:03			
SUB OUT: PURYEAR,KEVIN	12:03			
	11:56			FOUL by TURNER,LAMONTE
	11:37			FOUL by TURNER,LAMONTE
GOOD! FT by BARNETT,JORDAN	11:37	16-4	H 12	
GOOD! FT by BARNETT,JORDAN	11:37	16-5	H 11	
	11:37			SUB IN: HUBBS III,ROBERT
	11:37			SUB IN: WILLIAMS,GRANT
	11:37			SUB OUT: TURNER,LAMONTE
	11:37			SUB OUT: SCHOFIELD,ADMIRAL
	11:25	18-5	H 13	GOOD! LAYUP by PHILLIPS,SHEMBARI [PNT]
	11:25			ASSIST by WILLIAMS,GRANT
MISSED 3PTR by BARNETT,JORDAN	11:05			
REBOUND (OFF) by WOODS,RUSSELL	11:05			
GOOD! 3PTR by HUGHES,FRANKIE	10:58	18-8	H 10	
ASSIST by VANLEER,CULLEN	10:58			
FOUL by WOODS,RUSSELL	10:42			
	10:42	19-8	H 11	GOOD! FT by WILLIAMS,GRANT
	10:42	20-8	H 12	GOOD! FT by WILLIAMS,GRANT
	10:42			SUB IN: PARKER,KWE
	10:42			SUB OUT: PHILLIPS,SHEMBARI
MISSED 3PTR by VANLEER,CULLEN	10:32			
	10:32			REBOUND (DEF) by PARKER,KWE
FOUL by HUGHES,FRANKIE	10:25			
	10:25			MISSED FT by BONE,JORDAN
	10:25			REBOUND (DEADB) by TEAM
	10:25	21-8	H 13	GOOD! FT by BONE,JORDAN
SUB IN: WALTON,KJ	10:25			
SUB OUT: HUGHES,FRANKIE	10:25			
	10:09			FOUL by WILLIAMS,GRANT
GOOD! FT by PHILLIPS,TERRENCE	10:09	21-9	H 12	
MISSED FT by PHILLIPS,TERRENCE	10:09			
	10:09			REBOUND (DEF) by EVANS,LEW
	09:51			TURNOVER by EVANS,LEW

VISITORS: Missouri	Time	Score	Margin	HOME: Tennessee
STEAL by VANLEER,CULLEN	09:50			
MISSED LAYUP by PHILLIPS,TERRENCE	09:45			
	09:45			BLOCK by WILLIAMS,GRANT
REBOUND (OFF) by TEAM	09:45			
	09:45			SUB IN: SCHOFIELD,ADMIRAL
	09:45			SUB IN: ALEXANDER,KYLE
	09:45			SUB OUT: WILLIAMS,GRANT
	09:45			SUB OUT: EVANS,LEW
MISSED JUMPER by WOODS,RUSSELL	09:30			
	09:30			REBOUND (DEF) by SCHOFIELD,ADMIRAL
	09:24			MISSED JUMPER by HUBBS III,ROBERT
	09:24			REBOUND (OFF) by ALEXANDER,KYLE
FOUL by BARNETT,JORDAN	09:04			
	09:04	22-9	H 13	GOOD! FT by SCHOFIELD,ADMIRAL
	09:04	23-9	H 14	GOOD! FT by SCHOFIELD,ADMIRAL
SUB IN: NIKKO,REED	09:04			
SUB IN: PURYEAR,KEVIN	09:04			
SUB OUT: BARNETT,JORDAN	09:04			
	09:04			SUB IN: PHILLIPS,SHEMBARI
	09:04			SUB OUT: PARKER,KWE
GOOD! JUMPER by PURYEAR,KEVIN [PNT]	08:40	23-11	H 12	
ASSIST by WALTON,KJ	08:40			
FOUL by VANLEER,CULLEN	08:24			
	08:24			MISSED FT by ALEXANDER,KYLE
REBOUND (DEF) by VANLEER,CULLEN	08:24			
TURNOVER by PHILLIPS,TERRENCE	08:11			
	07:52			MISSED JUMPER by ALEXANDER,KYLE
	07:52			REBOUND (OFF) by SCHOFIELD,ADMIRAL
FOUL by VANLEER,CULLEN	07:52			
	07:52			TIMEOUT media
	07:52			MISSED FT by SCHOFIELD,ADMIRAL
	07:52			REBOUND (DEADB) by TEAM
	07:52	24-11	H 13	GOOD! FT by SCHOFIELD,ADMIRAL
SUB IN: BARNETT,JORDAN	07:52			
SUB OUT: VANLEER,CULLEN	07:52			
	07:52			SUB IN: WILLIAMS,GRANT
	07:52			SUB OUT: ALEXANDER,KYLE
FOUL by WALTON,KJ	07:36			
TURNOVER by WALTON,KJ	07:36			
	07:25	26-11	H 15	GOOD! JUMPER by HUBBS III,ROBERT [PNT]
	07:24			ASSIST by BONE,JORDAN
GOOD! JUMPER by BARNETT,JORDAN	07:09	26-13	H 13	
	06:55			MISSED 3PTR by BONE,JORDAN
REBOUND (DEF) by PHILLIPS,TERRENCE	06:55			
	06:52			FOUL by BONE,JORDAN
SUB IN: HUGHES,FRANKIE	06:52			
SUB OUT: NIKKO,REED	06:52			
SUB OUT: WALTON,KJ	06:52			
TURNOVER by BARNETT,JORDAN	06:40			
	06:39			STEAL by SCHOFIELD,ADMIRAL
FOUL by WOODS,RUSSELL	06:30			
	06:30	27-13	H 14	GOOD! FT by WILLIAMS,GRANT
	06:30	28-13	H 15	GOOD! FT by WILLIAMS,GRANT
SUB IN: NIKKO,REED	06:30			
SUB OUT: WOODS,RUSSELL	06:30			
FOUL by HUGHES,FRANKIE	06:07			
TURNOVER by HUGHES,FRANKIE	06:07			
SUB IN: WALTON,KJ	06:07			

VISITORS: Missouri	Time	Score	Margin	HOME: Tennessee
SUB OUT: HUGHES,FRANKIE	06:07			
	05:55			MISSED JUMPER by HUBBS III,ROBERT
	05:55			REBOUND (OFF) by TEAM
FOUL by PURYEAR,KEVIN	05:34			
	05:34	29-13	H 16	GOOD! FT by BONE,JORDAN
	05:34	30-13	H 17	GOOD! FT by BONE,JORDAN
MISSED JUMPER by WALTON,KJ	05:18			
	05:18			BLOCK by PHILLIPS,SHEMBARI
REBOUND (OFF) by TEAM	05:18			
	05:16			FOUL by HUBBS III,ROBERT
GOOD! FT by BARNETT,JORDAN	05:16	30-14	H 16	
GOOD! FT by BARNETT,JORDAN	05:16	30-15	H 15	
MISSED FT by BARNETT,JORDAN	05:16			
	05:16			REBOUND (DEF) by SCHOFIELD,ADMIRAL
	04:49	33-15	H 18	GOOD! 3PTR by BONE,JORDAN
	04:48			ASSIST by PHILLIPS,SHEMBARI
GOOD! 3PTR by BARNETT,JORDAN	04:23	33-18	H 15	
ASSIST by PHILLIPS,TERRENCE	04:23			
	04:04			MISSED JUMPER by HUBBS III,ROBERT
REBOUND (DEF) by NIKKO,REED	04:04			
GOOD! 3PTR by WALTON,KJ	03:44	33-21	H 12	
ASSIST by PHILLIPS,TERRENCE	03:44			
	03:10			MISSED 3PTR by BONE,JORDAN
REBOUND (DEF) by NIKKO,REED	03:10			
GOOD! JUMPER by PURYEAR,KEVIN	02:59	33-23	H 10	
ASSIST by BARNETT,JORDAN	02:59			
	02:53			TIMEOUT 30SEC
	02:53			TIMEOUT MEDIA
	02:53			SUB IN: TURNER,LAMONTE
	02:53			SUB IN: WOODSON,BRAD
	02:53			SUB OUT: BONE,JORDAN
	02:53			SUB OUT: PHILLIPS,SHEMBARI
	02:45			MISSED JUMPER by WILLIAMS,GRANT
REBOUND (DEF) by PURYEAR,KEVIN	02:45			
GOOD! LAYUP by WALTON,KJ [PNT]	02:20	33-25	H 8	
ASSIST by NIKKO,REED	02:20			
	02:20			FOUL by WOODSON,BRAD
GOOD! FT by WALTON,KJ	02:20	33-26	H 7	
	02:04	36-26	H 10	GOOD! 3PTR by TURNER,LAMONTE
	02:03			ASSIST by WOODSON,BRAD
FOUL by PURYEAR,KEVIN	02:01			
TURNOVER by PURYEAR,KEVIN	02:01			
	02:01	37-26	H 11	GOOD! FT by WILLIAMS,GRANT
	02:01	38-26	H 12	GOOD! FT by WILLIAMS,GRANT
SUB IN: WOLF,ADAM	02:01			
SUB OUT: PURYEAR,KEVIN	02:01			
	02:01			SUB IN: EVANS,LEW
	02:01			SUB IN: BONE,JORDAN
	02:01			SUB OUT: WILLIAMS,GRANT
	02:01			SUB OUT: WOODSON,BRAD
TURNOVER by BARNETT,JORDAN	01:50			
	01:49			STEAL by TURNER,LAMONTE
	01:48			TURNOVER by TURNER,LAMONTE
STEAL by PHILLIPS,TERRENCE	01:46			
MISSED LAYUP by WALTON,KJ	01:35			
REBOUND (OFF) by WOLF,ADAM	01:35			
GOOD! LAYUP by WOLF,ADAM [PNT]	01:32	38-28	H 10	
	01:14			MISSED 3PTR by TURNER,LAMONTE

VISITORS: Missouri	Time	Score	Margin	HOME: Tennessee
REBOUND (DEF) by TEAM	01:14			
MISSED 3PTR by WOLF,ADAM	00:57			
	00:57			REBOUND (DEF) by HUBBS III,ROBERT
	00:52			SUB IN: WILLIAMS,GRANT
	00:52			SUB OUT: EVANS,LEW
	00:33	41-28	H 13	GOOD! 3PTR by HUBBS III,ROBERT
	00:33			ASSIST by BONE,JORDAN
MISSED LAYUP by WALTON,KJ	00:03			
REBOUND (OFF) by WOLF,ADAM	00:02			
MISSED LAYUP by WOLF,ADAM	00:01			
REBOUND (OFF) by NIKKO,REED	00:01			

Missouri 28, Tennessee 41

Period 1-only	In Paint	Off T/O	2nd Chance	Fast Break	Bench	
MU	6	2	9	0	14	Score tied - 2 times
UT	4	14	7	0	13	Lead changed - 0 times

Official Basketball Box Score -- Game Totals -- Second Half Statistics
Missouri vs Tennessee
2/18/2017 1:01 p.m. at Knoxville, Tenn. (Thompson-Boling Arena)

Missouri 42 • 7-17, 2-10 SEC

##	Player	S	Total			Rebounds			PF	TP	A	T	O	Blk	Stl	Min		
			FG	FGA	3PT	FG-FGA	FT	FTA									Off	Def
1	PHILLIPS,TERRENCE	g	6	8	4	6	1	1	0	1	1	17	1	2	0	1	15	
11	WALTON,KJ	g	0	0	0	0	2	2	0	2	1	0	0	0	1	13		
24	PURYEAR,KEVIN	f	2	4	0	1	2	2	0	1	1	6	0	0	0	15		
25	WOODS,RUSSELL	f	0	1	0	0	0	0	1	0	1	0	0	0	0	5		
33	VANLEER,CULLEN	g	0	0	0	0	2	2	0	1	1	2	0	0	2	9		
3	HUGHES,FRANKIE		1	3	0	2	0	0	0	1	1	2	0	1	0	8		
13	GLASSMAN,TREVOR		0	2	0	1	0	0	0	0	0	0	0	0	0	1		
14	NIKKO,REED		2	3	0	0	1	3	0	3	3	5	0	0	1	9		
15	GEIST,JORDAN		0	2	0	0	6	6	0	1	1	6	2	1	0	14		
21	BARNETT,JORDAN		0	3	0	1	2	2	0	1	1	2	0	1	0	10		
32	WOLF,ADAM		0	0	0	0	0	0	0	0	0	0	0	0	0	1		
TEAM									0	1	1							
Totals			11	26	4	11	16	20	1	12	13	12	42	4	5	1	4	100
FG %	Half:	11-26	42.3%															
3FG %	Half:	4-11	30.0%															
FT %	Half:	16-20	80.0%															

Tennessee 49 • 14-12, 6-7 SEC

##	Player	S	Total			Rebounds			PF	TP	A	T	O	Blk	Stl	Min		
			FG	FGA	3PT	FG-FGA	FT	FTA									Off	Def
0	BONE,JORDAN	g	0	0	0	0	0	0	0	1	1	2	0	3	1	0	8	
2	WILLIAMS,GRANT	f	5	9	0	0	6	7	3	2	5	2	16	1	1	0	16	
3	HUBBS III,ROBERT	g	5	8	0	1	0	2	0	4	4	0	10	1	0	0	15	
11	ALEXANDER,KYLE	f	1	1	0	0	0	0	1	3	4	2	2	0	1	0	7	
23	BOWDEN,JORDAN	g	0	0	0	0	0	0	0	0	0	0	0	0	0	0	0	
1	TURNER,LAMONTE		0	4	0	3	0	0	1	1	2	1	0	2	0	0	12	
5	SCHOFIELD,ADMIRAL		3	5	2	4	4	6	0	2	2	3	12	1	1	0	15	
12	PARKER,KWE		0	0	0	0	0	0	0	1	1	0	0	0	1	0	1	
21	EVANS,LEW		0	0	0	0	0	0	0	1	1	1	0	1	0	0	9	
24	CAMPBELL,LUCAS		0	0	0	0	2	3	0	0	0	2	0	0	0	0	1	
25	PHILLIPS,SHEMBARI		2	4	1	3	0	0	0	2	2	3	5	2	1	0	14	
32	WOODSON,BRAD		1	2	0	1	0	0	0	0	0	0	2	0	0	1	2	
TEAM									0	0	0	0						
Totals			17	33	3	12	12	18	5	17	22	14	49	11	6	1	1	100
FG %	Half:	17-33	51.5%															
3FG %	Half:	3-12	55.6%															
FT %	Half:	12-18	66.7%															

Officials: Olandis Poole, Marc Ellard, Bart Lenox
 Technical Fouls: Missouri- PHILLIPS,TERRENCE; TEAM; Tennessee- None.

Score by periods	1st	2nd	Total
Missouri	28	42	70
Tennessee	41	49	90

Points	In	Off	2nd	Fast	Bench
	Paint	Off	2nd	Fast	
		T/O	Chance	Break	
MU	12	4	0	4	15
UT	28	10	4	6	21

Last FG - MU 2nd-00:34, UT 2nd-00:01.
 MU led for 0:00. UT led for 20:00. Game was tied for 0:00.

Score tied - 0 times
 Lead changed - 0 times

Missouri vs Tennessee
2/18/2017; 1:01 p.m. at Knoxville, Tenn. (Thompson-Boling Arena)
Period 2 Play-By-Play

VISITORS: Missouri	Time	Score	Margin	HOME: Tennessee
	20:00			SUB IN: PHILLIPS,SHEMBARI
	20:00			SUB OUT: BOWDEN,JORDAN
	19:41			MISSED 3PTR by HUBBS III,ROBERT
REBOUND (DEF) by WALTON,KJ	19:41			
MISSED 3PTR by PURYEAR,KEVIN	19:26			
	19:26			REBOUND (DEF) by PHILLIPS,SHEMBARI
	19:13	43-28	H 15	GOOD! JUMPER by HUBBS III,ROBERT [PNT]
	19:13			ASSIST by PHILLIPS,SHEMBARI
GOOD! 3PTR by PHILLIPS,TERRENCE	19:01	43-31	H 12	
	18:42			MISSED JUMPER by WILLIAMS,GRANT
	18:42			REBOUND (OFF) by ALEXANDER,KYLE
	18:40	45-31	H 14	GOOD! LAYUP by ALEXANDER,KYLE [PNT]
MISSED JUMPER by PURYEAR,KEVIN	18:13			
	18:13			REBOUND (DEF) by ALEXANDER,KYLE
FOUL by WOODS,RUSSELL	18:12			
SUB IN: BARNETT,JORDAN	18:12			
SUB OUT: WOODS,RUSSELL	18:12			
	18:12			SUB IN: TURNER,LAMONTE
	18:12			SUB OUT: BONE,JORDAN
	18:00			SUB IN: SCHOFIELD,ADMIRAL
	18:00			SUB OUT: WILLIAMS,GRANT
	17:46	47-31	H 16	GOOD! JUMPER by HUBBS III,ROBERT [PNT]
TURNOVER by PHILLIPS,TERRENCE	17:31			
	17:11			TURNOVER by ALEXANDER,KYLE
STEAL by WALTON,KJ	17:09			
	17:07			FOUL by ALEXANDER,KYLE
GOOD! FT by WALTON,KJ	17:07	47-32	H 15	
GOOD! FT by WALTON,KJ	17:07	47-33	H 14	
	17:07			SUB IN: WILLIAMS,GRANT
	17:07			SUB OUT: ALEXANDER,KYLE
	16:53	49-33	H 16	GOOD! LAYUP by WILLIAMS,GRANT [PNT]
	16:53			ASSIST by PHILLIPS,SHEMBARI
GOOD! LAYUP by PHILLIPS,TERRENCE [PNT]	16:28	49-35	H 14	
	16:28			FOUL by TURNER,LAMONTE
GOOD! FT by PHILLIPS,TERRENCE	16:28	49-36	H 13	
	16:28			SUB IN: BONE,JORDAN
	16:28			SUB OUT: TURNER,LAMONTE
	16:09			TURNOVER by WILLIAMS,GRANT
STEAL by VANLEER,CULLEN	16:07			
TURNOVER by BARNETT,JORDAN	16:05			
	15:55	52-36	H 16	GOOD! 3PTR by SCHOFIELD,ADMIRAL
	15:55			ASSIST by BONE,JORDAN
	15:31			FOUL by SCHOFIELD,ADMIRAL
TIMEOUT media	15:31			
GOOD! JUMPER by PURYEAR,KEVIN	15:13	52-38	H 14	
	14:57	54-38	H 16	GOOD! JUMPER by SCHOFIELD,ADMIRAL [PNT]
	14:57			ASSIST by HUBBS III,ROBERT
GOOD! 3PTR by PHILLIPS,TERRENCE	14:30	54-41	H 13	
ASSIST by WALTON,KJ	14:30			
	14:11			MISSED 3PTR by PHILLIPS,SHEMBARI
	14:11			REBOUND (OFF) by WILLIAMS,GRANT
FOUL by VANLEER,CULLEN	14:10			
SUB IN: GEIST,JORDAN	14:10			

VISITORS: Missouri	Time	Score	Margin	HOME: Tennessee
SUB OUT: VANLEER,CULLEN	14:10			
	14:09			TURNOVER by PHILLIPS,SHEMBARI
FOUL (TECH) by TEAM	14:09			
FOUL by TEAM	14:09			
	14:09			MISSED FT by HUBBS III,ROBERT
	14:09			REBOUND (DEADB) by TEAM
	14:09			MISSED FT by HUBBS III,ROBERT
	14:09			REBOUND (DEADB) by TEAM
	13:56			FOUL by PHILLIPS,SHEMBARI
	13:56			SUB IN: EVANS,LEW
	13:56			SUB OUT: HUBBS III,ROBERT
	13:44			FOUL by BONE,JORDAN
GOOD! 3PTR by PHILLIPS,TERRENCE	13:43	54-44	H 10	
	13:12	57-44	H 13	GOOD! 3PTR by SCHOFIELD,ADMIRAL
	13:12			ASSIST by WILLIAMS,GRANT
FOUL by PURYEAR,KEVIN	12:59			
FOUL (TECH) by PHILLIPS,TERRENCE	12:59			
FOUL by PHILLIPS,TERRENCE	12:59			
	12:59			MISSED FT by SCHOFIELD,ADMIRAL
	12:59			REBOUND (DEADB) by TEAM
	12:59	58-44	H 14	GOOD! FT by SCHOFIELD,ADMIRAL
	12:59			SUB IN: TURNER,LAMONTE
	12:59			SUB OUT: BONE,JORDAN
	12:42			MISSED 3PTR by SCHOFIELD,ADMIRAL
	12:42			REBOUND (OFF) by TURNER,LAMONTE
	12:39			FOUL by PHILLIPS,SHEMBARI
MISSED FT by WALTON,KJ	12:39			
REBOUND (DEADB) by TEAM	12:39			
MISSED FT by WALTON,KJ	12:39			
	12:39			REBOUND (DEF) by WILLIAMS,GRANT
	12:09			MISSED 3PTR by TURNER,LAMONTE
REBOUND (DEF) by TEAM	12:09			
MISSED 3PTR by BARNETT,JORDAN	11:53			
	11:53			REBOUND (DEF) by EVANS,LEW
	11:33			TIMEOUT media
	11:33			MISSED FT by SCHOFIELD,ADMIRAL
REBOUND (DEF) by WALTON,KJ	11:33			
	11:33	59-44	H 15	GOOD! FT by SCHOFIELD,ADMIRAL
FOUL by BARNETT,JORDAN	11:33			
SUB IN: HUGHES,FRANKIE	11:33			
SUB IN: WOODS,RUSSELL	11:33			
SUB OUT: PHILLIPS,TERRENCE	11:33			
SUB OUT: PURYEAR,KEVIN	11:33			
	11:33			SUB IN: HUBBS III,ROBERT
	11:33			SUB OUT: WILLIAMS,GRANT
MISSED JUMPER by BARNETT,JORDAN	11:22			
REBOUND (OFF) by WOODS,RUSSELL	11:22			
MISSED LAYUP by WOODS,RUSSELL	11:17			
	11:17			REBOUND (DEF) by HUBBS III,ROBERT
	10:57			MISSED JUMPER by HUBBS III,ROBERT
REBOUND (DEF) by BARNETT,JORDAN	10:57			
MISSED 3PTR by HUGHES,FRANKIE	10:44			
	10:44			REBOUND (DEF) by HUBBS III,ROBERT
	10:37	61-44	H 17	GOOD! JUMPER by HUBBS III,ROBERT [PNT]
TURNOVER by HUGHES,FRANKIE	10:16			
	10:15			STEAL by EVANS,LEW
	10:12	63-44	H 19	GOOD! JUMPER by HUBBS III,ROBERT [PNT]
	10:10			ASSIST by TURNER,LAMONTE

VISITORS: Missouri	Time	Score	Margin	HOME: Tennessee
TIMEOUT 30SEC	10:10			
SUB IN: PURYEAR,KEVIN	10:09			
SUB IN: PHILLIPS,TERRENCE	10:09			
SUB OUT: HUGHES,FRANKIE	10:09			
SUB OUT: BARNETT,JORDAN	10:09			
	10:09			SUB IN: WILLIAMS,GRANT
	10:09			SUB OUT: PHILLIPS,SHEMBARI
	09:54			FOUL by EVANS,LEW
GOOD! FT by PURYEAR,KEVIN	09:54	63-45	H 18	
GOOD! FT by PURYEAR,KEVIN	09:54	63-46	H 17	
FOUL by GEIST,JORDAN	09:48			
	09:48	64-46	H 18	GOOD! FT by WILLIAMS,GRANT
	09:48	65-46	H 19	GOOD! FT by WILLIAMS,GRANT
MISSED 3PTR by PHILLIPS,TERRENCE	09:32			
	09:32			REBOUND (DEF) by TURNER,LAMONTE
FOUL by WOODS,RUSSELL	09:26			
	09:26	66-46	H 20	GOOD! FT by SCHOFIELD,ADMIRAL
	09:26	67-46	H 21	GOOD! FT by SCHOFIELD,ADMIRAL
GOOD! LAYUP by PURYEAR,KEVIN [PNT]	09:12	67-48	H 19	
FOUL by PURYEAR,KEVIN	08:51			
	08:51	68-48	H 20	GOOD! FT by WILLIAMS,GRANT
	08:51	69-48	H 21	GOOD! FT by WILLIAMS,GRANT
SUB IN: NIKKO,REED	08:51			
SUB IN: BARNETT,JORDAN	08:51			
SUB OUT: PURYEAR,KEVIN	08:51			
SUB OUT: WOODS,RUSSELL	08:51			
	08:38			FOUL by SCHOFIELD,ADMIRAL
GOOD! FT by GEIST,JORDAN	08:38	69-49	H 20	
GOOD! FT by GEIST,JORDAN	08:38	69-50	H 19	
	08:38			SUB IN: BONE,JORDAN
	08:38			SUB OUT: SCHOFIELD,ADMIRAL
	08:11	71-50	H 21	GOOD! JUMPER by WILLIAMS,GRANT [PNT]
	08:11			ASSIST by EVANS,LEW
GOOD! LAYUP by NIKKO,REED [FB/PNT]	08:06	71-52	H 19	
ASSIST by PHILLIPS,TERRENCE	08:06			
	07:55			MISSED 3PTR by TURNER,LAMONTE
REBOUND (DEF) by GEIST,JORDAN	07:55			
TURNOVER by GEIST,JORDAN	07:51			
	07:51			TIMEOUT media
	07:46	73-52	H 21	GOOD! JUMPER by WILLIAMS,GRANT [PNT]
FOUL by NIKKO,REED	07:46			
	07:46	74-52	H 22	GOOD! FT by WILLIAMS,GRANT
MISSED JUMPER by BARNETT,JORDAN	07:37			
	07:37			REBOUND (DEF) by BONE,JORDAN
	07:32	76-52	H 24	GOOD! LAYUP by WILLIAMS,GRANT [FB/PNT]
	07:32			ASSIST by BONE,JORDAN
	07:03			FOUL by WILLIAMS,GRANT
GOOD! FT by BARNETT,JORDAN	07:03	76-53	H 23	
GOOD! FT by BARNETT,JORDAN	07:03	76-54	H 22	
SUB IN: HUGHES,FRANKIE	07:03			
SUB OUT: WALTON,KJ	07:03			
	06:59	78-54	H 24	GOOD! JUMPER by HUBBS III,ROBERT [FB/PNT]
	06:59			ASSIST by BONE,JORDAN
MISSED LAYUP by NIKKO,REED	06:46			
	06:46			REBOUND (DEF) by HUBBS III,ROBERT
	06:33			MISSED LAYUP by TURNER,LAMONTE
BLOCK by NIKKO,REED	06:33			
	06:31			REBOUND (OFF) by WILLIAMS,GRANT

VISITORS: Missouri	Time	Score	Margin	HOME: Tennessee
	06:29			MISSED LAYUP by WILLIAMS,GRANT
REBOUND (DEF) by PHILLIPS,TERRENCE	06:29			
	06:27			FOUL by BONE,JORDAN
GOOD! FT by GEIST,JORDAN	06:27	78-55	H 23	
GOOD! FT by GEIST,JORDAN	06:27	78-56	H 22	
SUB IN: PURYEAR,KEVIN	06:27			
SUB OUT: BARNETT,JORDAN	06:27			
	06:12			MISSED LAYUP by WILLIAMS,GRANT
REBOUND (DEF) by NIKKO,REED	06:12			
GOOD! 3PTR by PHILLIPS,TERRENCE	06:01	78-59	H 19	
FOUL by NIKKO,REED	05:38			
	05:38			MISSED FT by WILLIAMS,GRANT
	05:38			REBOUND (DEADB) by TEAM
	05:38	79-59	H 20	GOOD! FT by WILLIAMS,GRANT
	05:38			SUB IN: SCHOFIELD,ADMIRAL
	05:38			SUB OUT: EVANS,LEW
MISSED 3PTR by PHILLIPS,TERRENCE	05:22			
	05:22			REBOUND (DEF) by HUBBS III,ROBERT
	05:14			TURNOVER by BONE,JORDAN
STEAL by PHILLIPS,TERRENCE	05:13			
GOOD! LAYUP by PHILLIPS,TERRENCE [FB/PNT]	05:10	79-61	H 18	
TIMEOUT 30SEC	05:10			
	05:10			SUB IN: PHILLIPS,SHEMBARI
	05:10			SUB OUT: BONE,JORDAN
	04:44			MISSED 3PTR by SCHOFIELD,ADMIRAL
REBOUND (DEF) by PURYEAR,KEVIN	04:44			
MISSED JUMPER by GEIST,JORDAN	04:24			
	04:24			REBOUND (DEF) by SCHOFIELD,ADMIRAL
	04:04	82-61	H 21	GOOD! 3PTR by PHILLIPS,SHEMBARI
	04:04			ASSIST by TURNER,LAMONTE
TURNOVER by PHILLIPS,TERRENCE	03:52			
	03:52			TIMEOUT media
SUB IN: VANLEER,CULLEN	03:52			
SUB OUT: PHILLIPS,TERRENCE	03:52			
	03:52			SUB IN: ALEXANDER,KYLE
	03:52			SUB OUT: TURNER,LAMONTE
	03:35			MISSED 3PTR by PHILLIPS,SHEMBARI
	03:35			REBOUND (OFF) by WILLIAMS,GRANT
	03:32	84-61	H 23	GOOD! LAYUP by WILLIAMS,GRANT [PNT]
MISSED 3PTR by HUGHES,FRANKIE	02:59			
	02:59			REBOUND (DEF) by PHILLIPS,SHEMBARI
	02:52			MISSED JUMPER by HUBBS III,ROBERT
REBOUND (DEF) by HUGHES,FRANKIE	02:52			
	02:42			FOUL by SCHOFIELD,ADMIRAL
GOOD! FT by GEIST,JORDAN	02:42	84-62	H 22	
GOOD! FT by GEIST,JORDAN	02:42	84-63	H 21	
	02:42			SUB IN: EVANS,LEW
	02:42			SUB OUT: HUBBS III,ROBERT
	02:28	86-63	H 23	GOOD! LAYUP by PHILLIPS,SHEMBARI [PNT]
GOOD! LAYUP by NIKKO,REED [PNT]	02:19	86-65	H 21	
ASSIST by GEIST,JORDAN	02:19			
	02:19			FOUL by PHILLIPS,SHEMBARI
MISSED FT by NIKKO,REED	02:19			
	02:19			REBOUND (DEF) by WILLIAMS,GRANT
	02:19			SUB IN: TURNER,LAMONTE
	02:19			SUB OUT: EVANS,LEW
	02:00			MISSED JUMPER by WILLIAMS,GRANT
REBOUND (DEF) by VANLEER,CULLEN	02:00			

VISITORS: Missouri	Time	Score	Margin	HOME: Tennessee
	01:57			FOUL by WILLIAMS,GRANT
GOOD! FT by VANLEER,CULLEN	01:57	86-66	H 20	
GOOD! FT by VANLEER,CULLEN	01:57	86-67	H 19	
	01:57			SUB IN: WOODSON,BRAD
	01:57			SUB OUT: WILLIAMS,GRANT
	01:38			TURNOVER by SCHOFIELD,ADMIRAL
STEAL by VANLEER,CULLEN	01:37			
MISSED LAYUP by GEIST,JORDAN	01:34			
	01:34			REBOUND (DEF) by ALEXANDER,KYLE
	01:25			TIMEOUT 30SEC
SUB IN: WOLF,ADAM	01:25			
SUB OUT: PURYEAR,KEVIN	01:25			
	01:25			SUB IN: CAMPBELL,LUCAS
	01:25			SUB OUT: PHILLIPS,SHEMBARI
	01:11			MISSED 3PTR by TURNER,LAMONTE
REBOUND (DEF) by NIKKO,REED	01:11			
	01:09			FOUL by ALEXANDER,KYLE
GOOD! FT by NIKKO,REED	01:09	86-68	H 18	
MISSED FT by NIKKO,REED	01:09			
	01:09			REBOUND (DEF) by ALEXANDER,KYLE
	01:09			SUB IN: PARKER,KWE
	01:09			SUB OUT: TURNER,LAMONTE
FOUL by WOLF,ADAM	00:53			
	00:53			MISSED FT by CAMPBELL,LUCAS
	00:53			REBOUND (DEADB) by TEAM
	00:53	87-68	H 19	GOOD! FT by CAMPBELL,LUCAS
	00:53	88-68	H 20	GOOD! FT by CAMPBELL,LUCAS
SUB IN: GLASSMAN,TREVOR	00:53			
SUB OUT: VANLEER,CULLEN	00:53			
GOOD! DUNK by HUGHES,FRANKIE [PNT]	00:34	88-70	H 18	
ASSIST by GEIST,JORDAN	00:34			
	00:23			MISSED 3PTR by WOODSON,BRAD
REBOUND (DEF) by NIKKO,REED	00:23			
MISSED 3PTR by GLASSMAN,TREVOR	00:09			
	00:09			REBOUND (DEF) by PARKER,KWE
	00:09			TURNOVER by PARKER,KWE
MISSED JUMPER by GLASSMAN,TREVOR	00:06			
	00:06			BLOCK by WOODSON,BRAD
	00:04			REBOUND (DEF) by SCHOFIELD,ADMIRAL
	00:01	90-70	H 20	GOOD! LAYUP by WOODSON,BRAD [FB/PNT]
	00:01			ASSIST by SCHOFIELD,ADMIRAL

Missouri 70, Tennessee 90

Period 2-only	In Paint	Off T/O	2nd Chance	Fast Break	Bench	
MU	12	4	0	4	15	Score tied - 0 times
UT	28	10	4	6	21	Lead changed - 0 times

Missouri vs Tennessee

2/18/2017; 1:01 p.m. at Knoxville, Tenn. (Thompson-Boling Arena)

Scoring/Runs Reference

Period 1			
Missouri	Score	Marg	Tennessee
19:06 - VANLEER JUMPER 2	2-0	-2	
	2-2	0	HUBBS III JUMPER - 17:34
	2-3	1	HUBBS III FT - 17:34
17:22 - WOODS FT 1	3-3	0	
	3-6	3	PHILLIPS 3PTR - 17:06
	3-9	6	WILLIAMS 3PTR - 16:28
	3-10	7	BONE FT - 15:17
	3-11	8	BONE FT - 15:17
	3-13	10	HUBBS III JUMPER - 14:28
	3-14	11	HUBBS III FT - 14:28
	3-16	13	SCHOFIELD JUMPER - 12:06
11:37 - BARNETT FT 1	4-16	12	
11:37 - BARNETT FT 1	5-16	11	
	5-18	13	PHILLIPS LAYUP [P] - 11:25
10:58 - HUGHES 3PTR 3	8-18	10	
	8-19	11	WILLIAMS FT - 10:42
	8-20	12	WILLIAMS FT - 10:42
	8-21	13	BONE FT - 10:25
10:09 - PHILLIPS FT 1	9-21	12	
	9-22	13	SCHOFIELD FT - 09:04
	9-23	14	SCHOFIELD FT - 09:04
08:40 - PURYEAR JUMPER [P] 2	11-23	12	
	11-24	13	SCHOFIELD FT - 07:52
	11-26	15	HUBBS III JUMPER [P] - 07:25
07:09 - BARNETT JUMPER 2	13-26	13	
	13-27	14	WILLIAMS FT - 06:30
	13-28	15	WILLIAMS FT - 06:30
	13-29	16	BONE FT - 05:34
	13-30	17	BONE FT - 05:34
05:16 - BARNETT FT 1	14-30	16	
05:16 - BARNETT FT 1	15-30	15	
	15-33	18	BONE 3PTR - 04:49
04:23 - BARNETT 3PTR 3	18-33	15	
03:44 - WALTON 3PTR 3	21-33	12	
02:59 - PURYEAR JUMPER 2	23-33	10	
02:20 - WALTON LAYUP [P] 2	25-33	8	
02:20 - WALTON FT 1	26-33	7	
	26-36	10	TURNER 3PTR - 02:04
	26-37	11	WILLIAMS FT - 02:01
	26-38	12	WILLIAMS FT - 02:01
01:32 - WOLF LAYUP [P] 2	28-38	10	
	28-41	13	HUBBS III 3PTR - 00:33

Period 2			
Missouri	Score	Marg	Tennessee
	28-43	15	HUBBS III JUMPER [P] - 19:13
19:01 - PHILLIPS 3PTR 3	31-43	12	
	31-45	14	ALEXANDER LAYUP [P] - 18:40
	31-47	16	HUBBS III JUMPER [P] - 17:46
17:07 - WALTON FT 1	32-47	15	
17:07 - WALTON FT 1	33-47	14	
	33-49	16	WILLIAMS LAYUP [P] - 16:53
16:28 - PHILLIPS LAYUP [P] 2	35-49	14	
16:28 - PHILLIPS FT 1	36-49	13	
	36-52	16	SCHOFIELD 3PTR - 15:55
15:13 - PURYEAR JUMPER 2	38-52	14	
	38-54	16	SCHOFIELD JUMPER [P] - 14:57
14:30 - PHILLIPS 3PTR 3	41-54	13	
13:43 - PHILLIPS 3PTR 3	44-54	10	
	44-57	13	SCHOFIELD 3PTR - 13:12
	44-58	14	SCHOFIELD FT - 12:59
	44-59	15	SCHOFIELD FT - 11:33
	44-61	17	HUBBS III JUMPER [P] - 10:37
	44-63	19	HUBBS III JUMPER [P] - 10:12
09:54 - PURYEAR FT 1	45-63	18	
09:54 - PURYEAR FT 1	46-63	17	
	46-64	18	WILLIAMS FT - 09:48
	46-65	19	WILLIAMS FT - 09:48
	46-66	20	SCHOFIELD FT - 09:26
	46-67	21	SCHOFIELD FT - 09:26
09:12 - PURYEAR LAYUP [P] 2	48-67	19	
	48-68	20	WILLIAMS FT - 08:51
	48-69	21	WILLIAMS FT - 08:51
08:38 - GEIST FT 1	49-69	20	
08:38 - GEIST FT 1	50-69	19	
	50-71	21	WILLIAMS JUMPER [P] - 08:11
08:06 - NIKKO LAYUP [P] [F] 2	52-71	19	
	52-73	21	WILLIAMS JUMPER [P] - 07:46
	52-74	22	WILLIAMS FT - 07:46
	52-76	24	WILLIAMS LAYUP [P] [F] - 07:32
07:03 - BARNETT FT 1	53-76	23	
07:03 - BARNETT FT 1	54-76	22	
	54-78	24	HUBBS III JUMPER [P] [F] - 06:59
06:27 - GEIST FT 1	55-78	23	
06:27 - GEIST FT 1	56-78	22	
06:01 - PHILLIPS 3PTR 3	59-78	19	
	59-79	20	WILLIAMS FT - 05:38

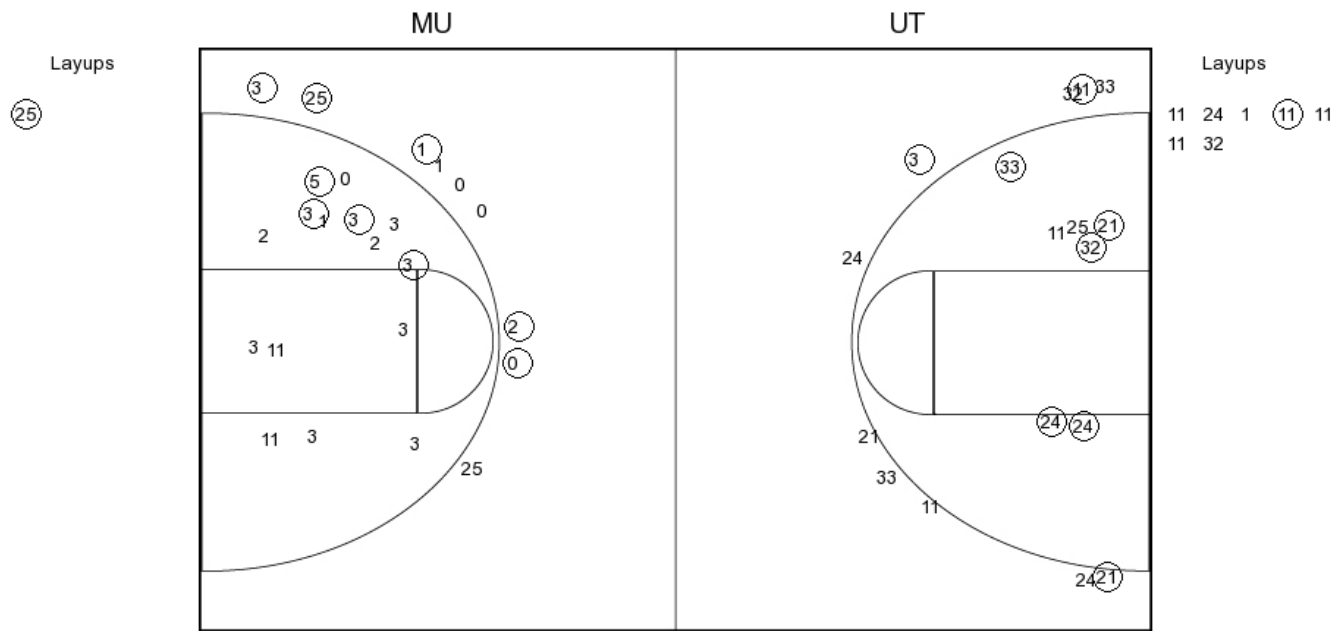
05:10 - PHILLIPS LAYUP [P] [F]	2	61-79 18		
		61-82 21	3	PHILLIPS 3PTR - 04:04
		61-84 23	2	WILLIAMS LAYUP [P] - 03:32
02:42 - GEIST FT	1	62-84 22		
02:42 - GEIST FT	1	63-84 21		
		63-86 23	2	PHILLIPS LAYUP [P] - 02:28
02:19 - NIKKO LAYUP [P]	2	65-86 21		
01:57 - VANLEER FT	1	66-86 20		
01:57 - VANLEER FT	1	67-86 19		
01:09 - NIKKO FT	1	68-86 18		
		68-87 19	1	CAMPBELL FT - 00:53
		68-88 20	1	CAMPBELL FT - 00:53
00:34 - HUGHES DUNK [P]	2	70-88 18		
		70-90 20	2	WOODSON LAYUP [P] [F] - 00:01

Missouri vs Tennessee

OFFICIAL SHOT CHART

2/18/2017 at Knoxville, Tenn. (Thompson-Boling Arena)

PERIOD 1



MU PERIOD 1

FG Made	9
FG Attempted	24
3PFG Made	3
3PFG Attempted	10

UT PERIOD 1

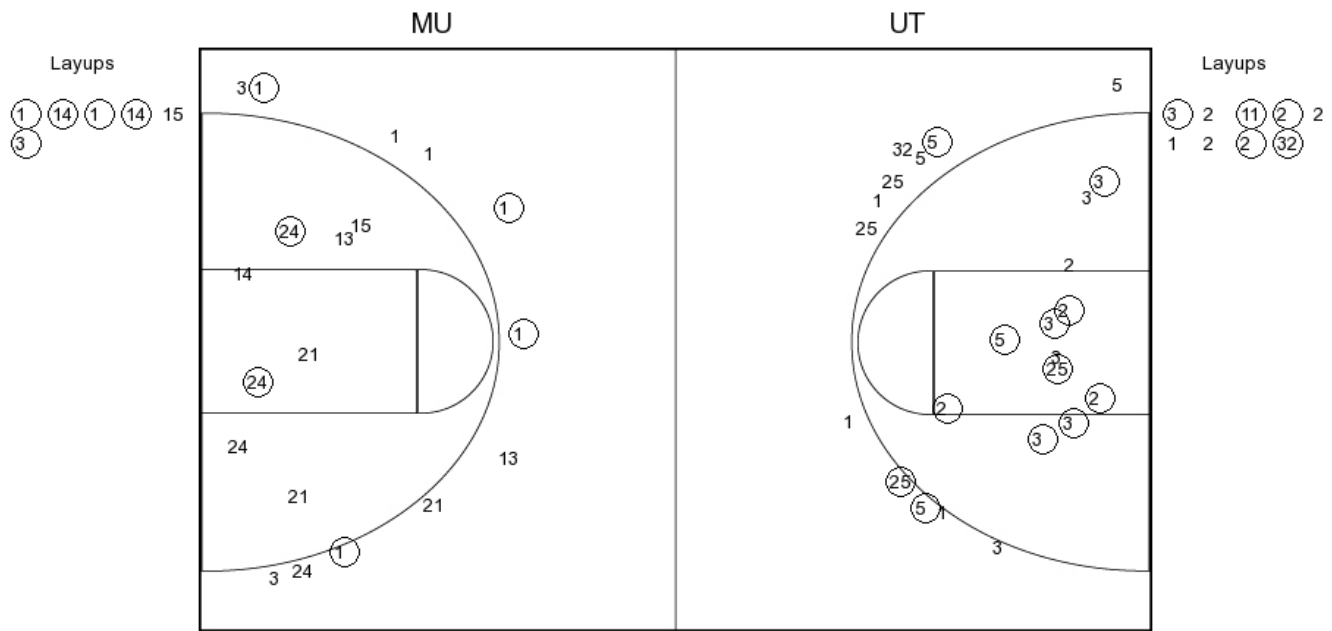
FG Made	10
FG Attempted	25
3PFG Made	5
3PFG Attempted	9

Missouri vs Tennessee

OFFICIAL SHOT CHART

2/18/2017 at Knoxville, Tenn. (Thompson-Boling Arena)

PERIOD 2



MU PERIOD 2

FG Made	11
FG Attempted	26
3PFG Made	4
3PFG Attempted	11

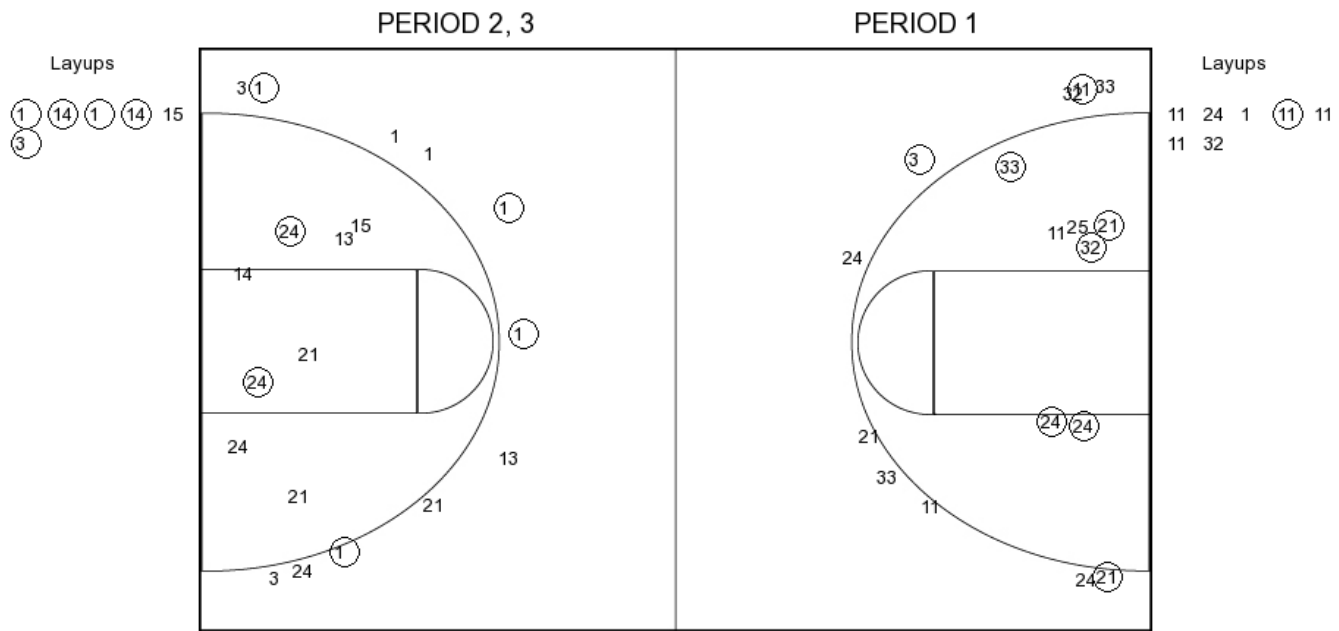
UT PERIOD 2

FG Made	17
FG Attempted	33
3PFG Made	3
3PFG Attempted	12

Missouri vs Tennessee
OFFICIAL SHOT CHART

2/18/2017 at Knoxville, Tenn. (Thompson-Boling Arena)

Missouri



MU PERIOD 1

FG Made	9
FG Attempted	24
3PFG Made	3
3PFG Attempted	10

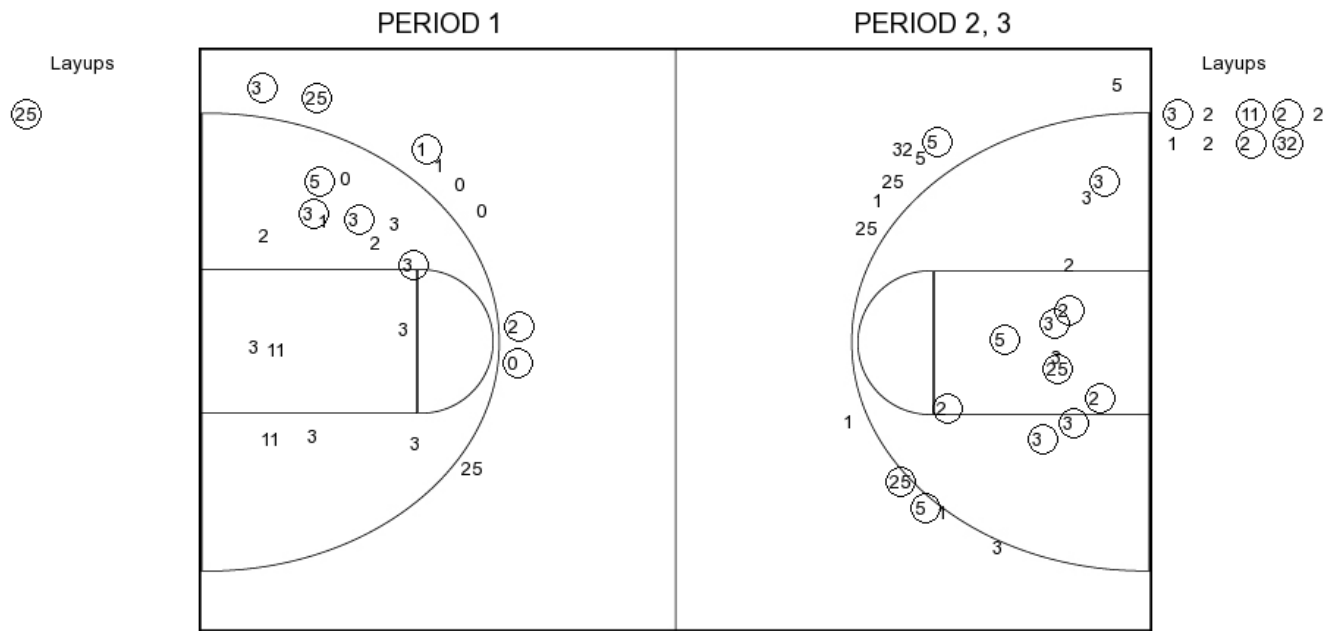
MU PERIOD 2

FG Made	11
FG Attempted	26
3PFG Made	4
3PFG Attempted	11

Missouri vs Tennessee
OFFICIAL SHOT CHART

2/18/2017 at Knoxville, Tenn. (Thompson-Boling Arena)

Tennessee



UT PERIOD 1

FG Made	10
FG Attempted	25
3PFG Made	5
3PFG Attempted	9

UT PERIOD 2

FG Made	17
FG Attempted	33
3PFG Made	3
3PFG Attempted	12