



TENNESSEE VS. KANSAS STATE

SEC/BIG 12 CHALLENGE

1/28/2017

Knoxville, Tenn. (Thompson-Boling Arena)

FINAL STATS

Tennessee

(12-9, 4-4 SEC)

70

Kansas State

(15-6, 4-4 Big 12)

58

Start Time: 2:06 p.m.

Officials: Pat Adams, Antinio Petty, Tony Henderson

Attendance: 14398

2017 SEC/Big 12 Challenge, presented by Sonic

Official Basketball Box Score -- Game Totals -- Final Statistics
Kansas State vs Tennessee
1/28/2017 2:06 p.m. at Knoxville, Tenn. (Thompson-Boling Arena)

Kansas State 58 - 15-6, 4-4 Big 12

##	Player	S	Total			Rebounds			PF	TP	A	TO	Blk	Stl	Min
			FG-FGA	3PT	FG-FGA	FT-FTA	Off Reb	Def Reb							
3	STOKES,KAMAU	g	3-7	0-2	5-7	1	2	3	3	11	3	0	0	0	30
4	JOHNSON,DJ	f	2-6	0-0	0-0	3	6	9	2	4	0	2	0	0	28
5	BROWN,BARRY	g	6-16	3-7	2-2	0	1	1	2	17	4	4	0	2	34
25	IWUNDU,WESLEY	f	5-8	0-2	4-7	0	6	6	0	14	3	2	1	1	35
32	WADE,DEAN	f	1-2	1-1	0-0	1	0	1	4	3	0	1	0	0	12
1	ERVIN II,CARLBE		0-0	0-0	0-0	1	3	4	0	0	1	2	0	0	19
10	MAURICE,ISIAH		0-1	0-0	1-2	1	0	1	4	1	1	0	1	0	9
11	PATRICK,BRIAN		0-0	0-0	0-0	0	0	0	0	0	0	0	0	0	6
20	SNEED,XAVIER		1-6	1-3	3-5	0	3	3	4	6	0	2	2	1	19
35	BUDKE,AUSTIN		1-2	0-1	0-0	0	0	0	0	2	0	0	0	1	8
TEAM						0	1	1	0		0				
TOTALS			19-48	5-16	15-23	7	22	29	19	58	12	13	4	5	200

Deadball Rebounds: 3,0

FG %	1st Half:	8-22	36.4%	2nd Half:	11-26	42.3%	Game:	19-48	39.6%
3FG %	1st Half:	0-6	00.0%	2nd Half:	5-10	50.0%	Game:	5-16	31.3%
FT %	1st Half:	6-11	54.5%	2nd Half:	9-12	75.0%	Game:	15-23	65.2%

Tennessee 70 - 12-9, 4-4 SEC

##	Player	S	Total			Rebounds			PF	TP	A	TO	Blk	Stl	Min
			FG-FGA	3PT	FG-FGA	FT-FTA	Off Reb	Def Reb							
0	BONE,JORDAN	g	2-8	0-0	0-1	2	1	3	1	4	5	1	0	1	18
2	WILLIAMS,GRANT	f	7-10	1-1	2-4	4	2	6	4	17	2	2	0	0	34
3	HUBBS III,ROBERT	g	5-10	0-0	0-0	1	6	7	3	10	1	1	0	1	31
11	ALEXANDER,KYLE	f	3-4	0-0	2-3	5	4	9	3	8	0	1	2	0	18
23	BOWDEN,JORDAN	g	3-9	2-5	5-7	1	0	1	3	13	1	1	0	1	32
1	TURNER,LAMONTE		3-6	1-3	0-0	0	3	3	2	7	5	2	1	1	27
5	SCHOFIELD,ADMIRAL		1-3	0-0	0-1	0	3	3	0	2	1	2	0	0	16
21	EVANS,LEW		2-7	1-4	4-5	0	5	5	2	9	1	1	1	2	19
25	PHILLIPS,SHEMBARI		0-1	0-1	0-0	0	0	0	0	0	0	0	0	0	5
TEAM						3	3	6	0		1				
TOTALS			26-58	5-14	13-21	16	27	43	18	70	16	12	4	6	200

Deadball Rebounds: 2,0

FG %	1st Half:	15-28	53.6%	2nd Half:	11-30	36.7%	Game:	26-58	44.8%
3FG %	1st Half:	4-10	40.0%	2nd Half:	1-4	25.0%	Game:	5-14	35.7%
FT %	1st Half:	5-10	50.0%	2nd Half:	8-11	72.7%	Game:	13-21	61.9%

Officials: Pat Adams, Antinio Petty, Tony Henderson
 Technical Fouls: Kansas State- None. Tennessee- None.

Attendance: 14398

2017 SEC/Big 12 Challenge, presented by Sonic

Score by periods	1st	2nd	Total
Kansas State	22	36	58
Tennessee	39	31	70

Points	In Paint	Off T/O	2nd 2nd Chance	Fast Fast Break	Bench
KS	20	12	6	8	9
UT	34	15	6	4	18

Last FG - KS 2nd-00:45, UT 2nd-01:30.

Largest lead - Kansas State by ; Tennessee by 19 2nd-18:09

KS led for 0:00. UT led for 38:59. Game was tied for 1:01.

Score tied - 1 times

Lead changed - 0 times

Official Basketball Box Score -- Game Totals -- First Half Statistics
Kansas State vs Tennessee
1/28/2017 2:06 p.m. at Knoxville, Tenn. (Thompson-Boling Arena)

Kansas State 22 • 15-6, 4-4 Big 12

##	Player	S	Total			Rebounds			PF	TP	A	T	O	B	S	Min		
			FG	F	A	3PT	FG	F									A	Off
3	STOKES,KAMAU	g	2	3		0	1		0	0	0	2	5	0	0	0	10	
4	JOHNSON,DJ	f	2	3		0	0		2	1	3	1	4	0	2	0	14	
5	BROWN,BARRY	g	0	5		0	1		0	0	0	1	2	3	1	0	15	
25	IWUNDU,WESLEY	f	3	6		0	2		0	3	3	0	8	0	1	1	17	
32	WADE,DEAN	f	0	1		0	0		1	0	1	2	0	0	1	0	6	
1	ERVIN II,CARLBE		0	0		0	0		0	3	3	0	0	1	1	0	13	
10	MAURICE,ISAIAH		0	0		0	0		1	0	1	2	1	0	0	0	4	
11	PATRICK,BRIAN		0	0		0	0		0	0	0	0	0	0	0	0	6	
20	SNEED,XAVIER		0	2		0	1		0	0	0	2	0	0	1	0	7	
35	BUDKE,AUSTIN		1	2		0	1		0	0	0	0	2	0	0	0	8	
TEAM						0	0		0	1	1	0		0				
Totals			8	22		0	6		4	8	12	10	22	4	7	1	3	100

FG % Half: 8-22 36.4%
 3FG % Half: 0-6 00.0%
 FT % Half: 6-11 54.5%

Tennessee 39 • 12-9, 4-4 SEC

##	Player	S	Total			Rebounds			PF	TP	A	T	O	B	S	Min		
			FG	F	A	3PT	FG	F									A	Off
0	BONE,JORDAN	g	1	4		0	0		1	1	2	1	2	2	1	0	9	
2	WILLIAMS,GRANT	f	2	3		0	0		2	0	2	0	5	2	0	0	15	
3	HUBBS III,ROBERT	g	3	5		0	0		1	3	4	2	6	1	1	0	17	
11	ALEXANDER,KYLE	f	2	2		0	0		4	2	6	2	5	0	0	0	8	
23	BOWDEN,JORDAN	g	3	6		2	5		1	0	1	1	11	1	1	0	16	
1	TURNER,LAMONTE		2	3		1	2		0	1	1	1	5	3	0	0	12	
5	SCHOFIELD,ADMIRAL		1	2		0	0		0	1	1	0	2	1	2	0	12	
21	EVANS,LEW		1	3		1	3		0	2	2	1	3	0	0	0	9	
25	PHILLIPS,SHEMBARI		0	0		0	0		0	0	0	0	0	0	0	0	2	
TEAM						0	0		0	3	3	0		0				
Totals			15	28		4	10		9	13	22	8	39	10	5	0	2	100

FG % Half: 15-28 53.6%
 3FG % Half: 4-10 40.0%
 FT % Half: 5-10 50.0%

Officials: Pat Adams, Antinio Petty, Tony Henderson
 Technical Fouls: Kansas State- None. Tennessee- None.
 2017 SEC/Big 12 Challenge, presented by Sonic

Score by periods	1st	2nd	Total
Kansas State	22	36	58
Tennessee	39	31	70

Points	In Paint	Off T/O	2nd 2nd Chance	Fast Fast Break	Bench
KS	8	3	3	2	3
UT	16	13	13	2	10

Last FG - KS 1st-03:28, UT 1st-00:58.
 KS led for 0:00. UT led for 18:59. Game was tied for 1:01.

Score tied - 1 times
 Lead changed - 0 times

Kansas State vs Tennessee
1/28/2017; 2:06 p.m. at Knoxville, Tenn. (Thompson-Boling Arena)
Period 1 Play-By-Play

VISITORS: Kansas State	Time	Score	Margin	HOME: Tennessee
FOUL by BROWN,BARRY	19:37			
TURNOVER by BROWN,BARRY	19:37			
	19:09	2-0	H 2	GOOD! LAYUP by WILLIAMS,GRANT [PNT]
	19:09			ASSIST by BONE,JORDAN
GOOD! JUMPER by STOKES,KAMAU	18:47	2-2	T	
ASSIST by BROWN,BARRY	18:47			
	18:37	4-2	H 2	GOOD! JUMPER by ALEXANDER,KYLE
	18:37			ASSIST by BONE,JORDAN
TURNOVER by WADE,DEAN	18:12			
FOUL by STOKES,KAMAU	17:50			
	17:50	5-2	H 3	GOOD! FT by BOWDEN,JORDAN
	17:50	6-2	H 4	GOOD! FT by BOWDEN,JORDAN
MISSED JUMPER by IWUNDU,WESLEY	17:19			
	17:19			REBOUND (DEF) by TEAM
	17:06			MISSED 3PTR by BOWDEN,JORDAN
	17:06			REBOUND (OFF) by WILLIAMS,GRANT
	16:51			MISSED LAYUP by BONE,JORDAN
	16:51			REBOUND (OFF) by ALEXANDER,KYLE
	16:48	8-2	H 6	GOOD! LAYUP by ALEXANDER,KYLE [PNT]
	16:36			FOUL by BONE,JORDAN
GOOD! FT by STOKES,KAMAU	16:36	8-3	H 5	
MISSED FT by STOKES,KAMAU	16:36			
REBOUND (DEADB) by TEAM	16:36			
MISSED FT by STOKES,KAMAU	16:36			
	16:36			REBOUND (DEF) by ALEXANDER,KYLE
SUB IN: SNEED,XAVIER	16:36			
SUB OUT: WADE,DEAN	16:36			
	16:28			MISSED JUMPER by BONE,JORDAN
	16:28			REBOUND (OFF) by ALEXANDER,KYLE
	16:11			MISSED JUMPER by HUBBS III,ROBERT
	16:11			REBOUND (OFF) by ALEXANDER,KYLE
	15:50	10-3	H 7	GOOD! LAYUP by BOWDEN,JORDAN [PNT]
	15:50			ASSIST by WILLIAMS,GRANT
TIMEOUT 30SEC	15:49			
TIMEOUT MEDIA	15:49			
	15:49			SUB IN: TURNER,LAMONTE
	15:49			SUB OUT: BONE,JORDAN
	15:37			SUB IN: SCHOFIELD,ADMIRAL
	15:37			SUB OUT: HUBBS III,ROBERT
MISSED JUMPER by BROWN,BARRY	15:25			
REBOUND (OFF) by JOHNSON,DJ	15:25			
GOOD! LAYUP by JOHNSON,DJ [PNT]	15:18	10-5	H 5	
	15:10	13-5	H 8	GOOD! 3PTR by BOWDEN,JORDAN
	15:09			ASSIST by TURNER,LAMONTE
TURNOVER by SNEED,XAVIER	14:54			
SUB IN: ERVIN II,CARLBE	14:54			
SUB OUT: BROWN,BARRY	14:54			
	14:54			SUB IN: EVANS,LEW
	14:54			SUB OUT: ALEXANDER,KYLE
	14:30			MISSED JUMPER by WILLIAMS,GRANT
REBOUND (DEF) by IWUNDU,WESLEY	14:30			
	14:21			FOUL by TURNER,LAMONTE
	14:21			SUB IN: PHILLIPS,SHEMBARI

VISITORS: Kansas State	Time	Score	Margin	HOME: Tennessee
	14:21			SUB OUT: BOWDEN,JORDAN
GOOD! JUMPER by STOKES,KAMAU	14:17	13-7	H 6	
	14:05	15-7	H 8	GOOD! JUMPER by SCHOFIELD,ADMIRAL
	14:05			ASSIST by TURNER,LAMONTE
MISSED JUMPER by JOHNSON,DJ	13:54			
	13:54			REBOUND (DEF) by EVANS,LEW
	13:35			MISSED 3PTR by EVANS,LEW
REBOUND (DEF) by ERVIN II,CARLBE	13:35			
MISSED 3PTR by STOKES,KAMAU	13:24			
	13:24			REBOUND (DEF) by EVANS,LEW
	13:11	18-7	H 11	GOOD! 3PTR by TURNER,LAMONTE
	13:11			ASSIST by WILLIAMS,GRANT
TIMEOUT 30SEC	13:10			
SUB IN: WADE,DEAN	13:10			
SUB IN: BROWN,BARRY	13:10			
SUB OUT: STOKES,KAMAU	13:10			
SUB OUT: JOHNSON,DJ	13:10			
	13:10			SUB IN: HUBBS III,ROBERT
	13:10			SUB OUT: WILLIAMS,GRANT
GOOD! JUMPER by IWUNDU,WESLEY	12:52	18-9	H 9	
ASSIST by BROWN,BARRY	12:52			
	12:43			MISSED JUMPER by SCHOFIELD,ADMIRAL
REBOUND (DEF) by ERVIN II,CARLBE	12:43			
MISSED 3PTR by SNEED,XAVIER	12:27			
REBOUND (OFF) by WADE,DEAN	12:27			
	12:24			FOUL by EVANS,LEW
MISSED JUMPER by BROWN,BARRY	12:07			
	12:07			REBOUND (DEF) by HUBBS III,ROBERT
FOUL by WADE,DEAN	12:06			
	12:06			SUB IN: BOWDEN,JORDAN
	12:06			SUB OUT: PHILLIPS,SHEMBARI
	11:42			TURNOVER by BOWDEN,JORDAN
STEAL by SNEED,XAVIER	11:41			
MISSED JUMPER by SNEED,XAVIER	11:27			
	11:27			REBOUND (DEF) by TURNER,LAMONTE
	11:11			TURNOVER by SCHOFIELD,ADMIRAL
SUB IN: JOHNSON,DJ	11:11			
SUB IN: STOKES,KAMAU	11:11			
SUB OUT: IWUNDU,WESLEY	11:11			
SUB OUT: SNEED,XAVIER	11:11			
	11:11			SUB IN: WILLIAMS,GRANT
	11:11			SUB OUT: SCHOFIELD,ADMIRAL
MISSED JUMPER by WADE,DEAN	10:51			
	10:51			REBOUND (DEF) by HUBBS III,ROBERT
	10:27			MISSED 3PTR by EVANS,LEW
REBOUND (DEF) by TEAM	10:27			
	10:26			SUB IN: ALEXANDER,KYLE
	10:26			SUB IN: BONE,JORDAN
	10:26			SUB OUT: TURNER,LAMONTE
	10:26			SUB OUT: EVANS,LEW
	10:13			FOUL by ALEXANDER,KYLE
GOOD! FT by BROWN,BARRY	10:13	18-10	H 8	
GOOD! FT by BROWN,BARRY	10:13	18-11	H 7	
	10:10			MISSED LAYUP by BONE,JORDAN
	10:10			REBOUND (OFF) by ALEXANDER,KYLE
FOUL by WADE,DEAN	10:07			
	10:07	19-11	H 8	GOOD! FT by ALEXANDER,KYLE
	10:07			MISSED FT by ALEXANDER,KYLE

VISITORS: Kansas State	Time	Score	Margin	HOME: Tennessee
	10:07			REBOUND (OFF) by HUBBS III,ROBERT
SUB IN: SNEED,XAVIER	10:07			
SUB OUT: WADE,DEAN	10:07			
	09:39	21-11	H 10	GOOD! JUMPER by BONE,JORDAN [PNT]
FOUL by STOKES,KAMAU	09:39			
	09:39			MISSED FT by BONE,JORDAN
	09:39			REBOUND (OFF) by BONE,JORDAN
	09:23	24-11	H 13	GOOD! 3PTR by BOWDEN,JORDAN
	09:23			ASSIST by HUBBS III,ROBERT
MISSED 3PTR by IWUNDU,WESLEY	09:03			
	09:03			REBOUND (DEF) by ALEXANDER,KYLE
FOUL by SNEED,XAVIER	08:52			
SUB IN: MAURICE,ISAIAH	08:52			
SUB OUT: JOHNSON,DJ	08:52			
	08:50			MISSED JUMPER by HUBBS III,ROBERT
BLOCK by IWUNDU,WESLEY	08:50			
REBOUND (DEF) by ERVIN II,CARLBE	08:46			
	08:31			FOUL by BOWDEN,JORDAN
MISSED JUMPER by BROWN,BARRY	08:28			
	08:28			REBOUND (DEF) by HUBBS III,ROBERT
FOUL by SNEED,XAVIER	08:20			
	08:20	25-11	H 14	GOOD! FT by WILLIAMS,GRANT
	08:20			MISSED FT by WILLIAMS,GRANT
REBOUND (DEF) by IWUNDU,WESLEY	08:20			
SUB IN: BUDKE,AUSTIN	08:20			
SUB OUT: SNEED,XAVIER	08:20			
	08:00			FOUL by ALEXANDER,KYLE
GOOD! FT by IWUNDU,WESLEY	08:00	25-12	H 13	
GOOD! FT by IWUNDU,WESLEY	08:00	25-13	H 12	
SUB IN: PATRICK,BRIAN	08:00			
SUB OUT: ERVIN II,CARLBE	08:00			
	08:00			SUB IN: SCHOFIELD,ADMIRAL
	08:00			SUB OUT: ALEXANDER,KYLE
	07:51			MISSED 3PTR by BOWDEN,JORDAN
	07:51			REBOUND (OFF) by BOWDEN,JORDAN
FOUL by MAURICE,ISAIAH	07:46			
	07:46			TIMEOUT MEDIA
	07:46			MISSED FT by BOWDEN,JORDAN
	07:46			REBOUND (DEADB) by TEAM
	07:46	26-13	H 13	GOOD! FT by BOWDEN,JORDAN
SUB IN: IWUNDU,WESLEY	07:46			
SUB OUT: STOKES,KAMAU	07:46			
	07:46			SUB IN: TURNER,LAMONTE
	07:46			SUB OUT: BOWDEN,JORDAN
GOOD! JUMPER by BUDKE,AUSTIN	07:16	26-15	H 11	
ASSIST by BROWN,BARRY	07:16			
	07:00			TURNOVER by HUBBS III,ROBERT
MISSED LAYUP by BROWN,BARRY	06:34			
REBOUND (OFF) by MAURICE,ISAIAH	06:34			
	06:34			FOUL by HUBBS III,ROBERT
GOOD! FT by MAURICE,ISAIAH	06:34	26-16	H 10	
MISSED FT by MAURICE,ISAIAH	06:34			
	06:34			REBOUND (DEF) by TEAM
	06:26			TURNOVER by BONE,JORDAN
STEAL by BUDKE,AUSTIN	06:25			
MISSED 3PTR by BROWN,BARRY	06:09			
	06:09			REBOUND (DEF) by TEAM
SUB IN: ERVIN II,CARLBE	06:03			

VISITORS: Kansas State	Time	Score	Margin	HOME: Tennessee
SUB OUT: BROWN,BARRY	06:03			
	05:44			TURNOVER by SCHOFIELD,ADMIRAL
STEAL by IWUNDU,WESLEY	05:42			
GOOD! LAYUP by IWUNDU,WESLEY [FB/PNT]	05:41	26-18	H 8	
	05:40			TIMEOUT 30SEC
	05:40			SUB IN: BOWDEN,JORDAN
	05:40			SUB OUT: BONE,JORDAN
FOUL by MAURICE,ISAIAH	05:19			
	05:19			MISSED FT by SCHOFIELD,ADMIRAL
REBOUND (DEF) by JOHNSON,DJ	05:19			
SUB IN: JOHNSON,DJ	05:19			
SUB OUT: MAURICE,ISAIAH	05:19			
GOOD! LAYUP by IWUNDU,WESLEY [PNT]	05:04	26-20	H 6	
	04:32			MISSED 3PTR by TURNER,LAMONTE
	04:32			REBOUND (OFF) by WILLIAMS,GRANT
	04:17	28-20	H 8	GOOD! JUMPER by WILLIAMS,GRANT [PNT]
	04:17			ASSIST by TURNER,LAMONTE
TURNOVER by IWUNDU,WESLEY	04:03			
	04:03			SUB IN: EVANS,LEW
	04:03			SUB OUT: WILLIAMS,GRANT
	03:43	30-20	H 10	GOOD! JUMPER by HUBBS III,ROBERT [PNT]
TIMEOUT 30SEC	03:38			
TIMEOUT MEDIA	03:38			
GOOD! LAYUP by JOHNSON,DJ [PNT]	03:28	30-22	H 8	
ASSIST by ERVIN II,CARLBE	03:28			
	02:58	32-22	H 10	GOOD! JUMPER by TURNER,LAMONTE
TURNOVER by ERVIN II,CARLBE	02:43			
	02:42			STEAL by EVANS,LEW
	02:39	34-22	H 12	GOOD! JUMPER by HUBBS III,ROBERT [FB/PNT]
FOUL by JOHNSON,DJ	02:28			
TURNOVER by JOHNSON,DJ	02:28			
SUB IN: BROWN,BARRY	02:28			
SUB OUT: PATRICK,BRIAN	02:28			
	02:00	37-22	H 15	GOOD! 3PTR by EVANS,LEW
	02:00			ASSIST by SCHOFIELD,ADMIRAL
MISSED 3PTR by BUDKE,AUSTIN	01:32			
REBOUND (OFF) by JOHNSON,DJ	01:32			
TURNOVER by JOHNSON,DJ	01:27			
	01:26			STEAL by TURNER,LAMONTE
	00:58	39-22	H 17	GOOD! JUMPER by HUBBS III,ROBERT [PNT]
	00:58			ASSIST by BOWDEN,JORDAN
	00:47			FOUL by HUBBS III,ROBERT
MISSED FT by IWUNDU,WESLEY	00:47			
REBOUND (DEADB) by TEAM	00:47			
MISSED FT by IWUNDU,WESLEY	00:47			
	00:47			REBOUND (DEF) by SCHOFIELD,ADMIRAL
	00:47			SUB IN: BONE,JORDAN
	00:47			SUB IN: WILLIAMS,GRANT
	00:47			SUB OUT: HUBBS III,ROBERT
	00:47			SUB OUT: TURNER,LAMONTE
	00:31			MISSED 3PTR by BOWDEN,JORDAN
REBOUND (DEF) by IWUNDU,WESLEY	00:31			
MISSED 3PTR by IWUNDU,WESLEY	00:03			
	00:03			REBOUND (DEF) by BONE,JORDAN

Period 1-only	In Paint	Off T/O	2nd Chance	Fast Break	Bench	
KS	8	3	3	2	3	Score tied - 2 times
UT	16	13	13	2	10	Lead changed - 0 times

Official Basketball Box Score -- Game Totals -- Second Half Statistics
Kansas State vs Tennessee
1/28/2017 2:06 p.m. at Knoxville, Tenn. (Thompson-Boling Arena)

Kansas State 36 • 15-6, 4-4 Big 12

##	Player	S	Total			Rebounds			PF	TP	A	TO	Blk	Stl	Min
			FG-FGA	3PT FG-FGA	FT-FTA	Off Reb	Def Reb	Tot Reb							
3	STOKES,KAMAU	g	1-4	0-1	4-4	1	2	3	1	6	3	0	0	0	20
4	JOHNSON,DJ	f	0-3	0-0	0-0	1	5	6	1	0	0	0	0	0	14
5	BROWN,BARRY	g	6-11	3-6	0-0	0	1	1	1	15	1	3	0	2	19
25	IWUNDU,WESLEY	f	2-2	0-0	2-3	0	3	3	0	6	3	1	0	0	18
32	WADE,DEAN	f	1-1	1-1	0-0	0	0	0	2	3	0	0	0	0	6
1	ERVIN II,CARLBE		0-0	0-0	0-0	1	0	1	0	0	0	1	0	0	6
10	MAURICE,ISAIAH		0-1	0-0	0-0	0	0	0	2	0	1	0	1	0	5
11	PATRICK,BRIAN		0-0	0-0	0-0	0	0	0	0	0	0	0	0	0	0
20	SNEED,XAVIER		1-4	1-2	3-5	0	3	3	2	6	0	1	2	0	12
35	BUDKE,AUSTIN		0-0	0-0	0-0	0	0	0	0	0	0	0	0	0	0
TEAM						0	0	0	0	0	0	0	0	0	
Totals			11-26	5-10	9-12	3	14	17	9	36	8	6	3	2	100

FG % Half: 11-26 42.3%
 3FG % Half: 5-10 00.0%
 FT % Half: 9-12 75.0%

Tennessee 31 • 12-9, 4-4 SEC

##	Player	S	Total			Rebounds			PF	TP	A	TO	Blk	Stl	Min
			FG-FGA	3PT FG-FGA	FT-FTA	Off Reb	Def Reb	Tot Reb							
0	BONE,JORDAN	g	1-4	0-0	0-0	1	0	1	0	2	3	0	0	1	9
2	WILLIAMS,GRANT	f	5-7	1-1	1-2	2	2	4	4	12	0	2	0	0	19
3	HUBBS III,ROBERT	g	2-5	0-0	0-0	0	3	3	1	4	0	0	0	1	14
11	ALEXANDER,KYLE	f	1-2	0-0	1-1	1	2	3	1	3	0	1	2	0	10
23	BOWDEN,JORDAN	g	0-3	0-0	2-3	0	0	0	2	2	0	0	0	1	16
1	TURNER,LAMONTE		1-3	0-1	0-0	0	2	2	1	2	2	2	1	0	15
5	SCHOFIELD,ADMIRAL		0-1	0-0	0-0	0	2	2	0	0	0	0	0	0	4
21	EVANS,LEW		1-4	0-1	4-5	0	3	3	1	6	1	1	1	1	10
25	PHILLIPS,SHEMBARI		0-1	0-1	0-0	0	0	0	0	0	0	0	0	0	3
TEAM						3	0	3	0	0	1	0	0	0	
Totals			11-30	1-4	8-11	7	14	21	10	31	6	7	4	4	100

FG % Half: 11-30 36.7%
 3FG % Half: 1-4 40.0%
 FT % Half: 8-11 72.7%

Officials: Pat Adams, Antinio Petty, Tony Henderson
 Technical Fouls: Kansas State- None. Tennessee- None.
 2017 SEC/Big 12 Challenge, presented by Sonic

Score by periods	1st	2nd	Total
Kansas State	22	36	58
Tennessee	39	31	70

Points	In Paint	Off T/O	2nd 2nd Chance	Fast Fast Break	Bench
KS	12	9	3	6	6
UT	18	2	10	2	8

Last FG - KS 2nd-00:45, UT 2nd-01:30.
 KS led for 0:00. UT led for 20:00. Game was tied for 0:00.

Score tied - 0 times
 Lead changed - 0 times

Kansas State vs Tennessee
1/28/2017; 2:06 p.m. at Knoxville, Tenn. (Thompson-Boling Arena)
Period 2 Play-By-Play

VISITORS: Kansas State	Time	Score	Margin	HOME: Tennessee
GOOD! 3PTR by BROWN,BARRY	19:42	39-25	H 14	
ASSIST by STOKES,KAMAU	19:42			
	19:15	41-25	H 16	GOOD! JUMPER by WILLIAMS,GRANT [PNT]
	19:15			ASSIST by BONE,JORDAN
MISSED JUMPER by BROWN,BARRY	18:54			
	18:54			REBOUND (DEF) by HUBBS III,ROBERT
	18:39			MISSED JUMPER by HUBBS III,ROBERT
	18:39			REBOUND (OFF) by BONE,JORDAN
	18:09	44-25	H 19	GOOD! 3PTR by WILLIAMS,GRANT
	18:09			ASSIST by BONE,JORDAN
MISSED 3PTR by STOKES,KAMAU	17:41			
REBOUND (OFF) by JOHNSON,DJ	17:41			
GOOD! 3PTR by BROWN,BARRY	17:28	44-28	H 16	
ASSIST by IWUNDU,WESLEY	17:28			
	17:12	46-28	H 18	GOOD! LAYUP by WILLIAMS,GRANT [PNT]
FOUL by WADE,DEAN	17:12			
	17:12	47-28	H 19	GOOD! FT by WILLIAMS,GRANT
	17:12			SUB IN: TURNER,LAMONTE
	17:12			SUB OUT: BONE,JORDAN
	16:57			FOUL by BOWDEN,JORDAN
TURNOVER by BROWN,BARRY	16:50			
	16:35			TURNOVER by ALEXANDER,KYLE
GOOD! 3PTR by WADE,DEAN	16:16	47-31	H 16	
ASSIST by IWUNDU,WESLEY	16:16			
	16:05			TURNOVER by WILLIAMS,GRANT
MISSED JUMPER by JOHNSON,DJ	15:41			
	15:41			REBOUND (DEF) by HUBBS III,ROBERT
	15:31	49-31	H 18	GOOD! LAYUP by ALEXANDER,KYLE [PNT]
	15:31			ASSIST by TURNER,LAMONTE
GOOD! 3PTR by BROWN,BARRY	15:20	49-34	H 15	
ASSIST by IWUNDU,WESLEY	15:20			
	14:56			MISSED JUMPER by ALEXANDER,KYLE
REBOUND (DEF) by JOHNSON,DJ	14:56			
TURNOVER by IWUNDU,WESLEY	14:42			
	14:42			TIMEOUT media
SUB IN: SNEED,XAVIER	14:42			
SUB OUT: WADE,DEAN	14:42			
	14:42			SUB IN: PHILLIPS,SHEMBARI
	14:42			SUB IN: EVANS,LEW
	14:42			SUB IN: SCHOFIELD,ADMIRAL
	14:42			SUB OUT: WILLIAMS,GRANT
	14:42			SUB OUT: ALEXANDER,KYLE
	14:42			SUB OUT: BOWDEN,JORDAN
FOUL by SNEED,XAVIER	14:35			
	14:21	51-34	H 17	GOOD! LAYUP by HUBBS III,ROBERT [PNT]
	14:21			ASSIST by EVANS,LEW
GOOD! 3PTR by SNEED,XAVIER	14:05	51-37	H 14	
ASSIST by BROWN,BARRY	14:05			
	13:35			FOUL by TURNER,LAMONTE
	13:35			TURNOVER by TURNER,LAMONTE
	13:25			FOUL by HUBBS III,ROBERT
GOOD! FT by IWUNDU,WESLEY	13:25	51-38	H 13	
GOOD! FT by IWUNDU,WESLEY	13:25	51-39	H 12	

VISITORS: Kansas State	Time	Score	Margin	HOME: Tennessee
	13:25			SUB IN: BOWDEN,JORDAN
	13:25			SUB IN: WILLIAMS,GRANT
	13:25			SUB OUT: HUBBS III,ROBERT
	13:25			SUB OUT: SCHOFIELD,ADMIRAL
	13:09			MISSED JUMPER by TURNER,LAMONTE
REBOUND (DEF) by JOHNSON,DJ	13:09			
TURNOVER by SNEED,XAVIER	12:59			
	12:57			STEAL by EVANS,LEW
	12:29			MISSED JUMPER by EVANS,LEW
REBOUND (DEF) by JOHNSON,DJ	12:29			
MISSED 3PTR by SNEED,XAVIER	12:22			
	12:22			REBOUND (DEF) by TURNER,LAMONTE
	12:10			MISSED 3PTR by EVANS,LEW
REBOUND (DEF) by IWUNDU,WESLEY	12:10			
GOOD! LAYUP by IWUNDU,WESLEY [PNT]	12:03	51-41	H 10	
	11:41			MISSED 3PTR by PHILLIPS,SHEMBARI
REBOUND (DEF) by JOHNSON,DJ	11:41			
	11:39			FOUL by WILLIAMS,GRANT
TIMEOUT media	11:39			
SUB IN: ERVIN II,CARLBE	11:39			
SUB IN: MAURICE,ISAIAH	11:39			
SUB OUT: JOHNSON,DJ	11:39			
SUB OUT: BROWN,BARRY	11:39			
	11:39			SUB IN: ALEXANDER,KYLE
	11:39			SUB IN: BONE,JORDAN
	11:39			SUB OUT: PHILLIPS,SHEMBARI
	11:39			SUB OUT: EVANS,LEW
MISSED JUMPER by SNEED,XAVIER	11:25			
	11:25			REBOUND (DEF) by ALEXANDER,KYLE
	11:15			MISSED LAYUP by BONE,JORDAN
BLOCK by MAURICE,ISAIAH	11:15			
	11:14			REBOUND (OFF) by WILLIAMS,GRANT
FOUL by MAURICE,ISAIAH	11:14			
	11:14	53-41	H 12	GOOD! LAYUP by WILLIAMS,GRANT [PNT]
ASSIST by MAURICE,ISAIAH	11:14			
	11:14			MISSED FT by WILLIAMS,GRANT
REBOUND (DEF) by IWUNDU,WESLEY	11:14			
GOOD! LAYUP by IWUNDU,WESLEY [PNT]	11:12	53-43	H 10	
	11:07	55-43	H 12	GOOD! LAYUP by BONE,JORDAN [PNT]
MISSED LAYUP by STOKES,KAMAU	11:02			
	11:02			BLOCK by ALEXANDER,KYLE
	11:01			REBOUND (DEF) by WILLIAMS,GRANT
FOUL by MAURICE,ISAIAH	10:24			
	10:24	56-43	H 13	GOOD! FT by BOWDEN,JORDAN
	10:24			MISSED FT by BOWDEN,JORDAN
	10:24			REBOUND (DEADB) by TEAM
	10:24	57-43	H 14	GOOD! FT by BOWDEN,JORDAN
SUB IN: BROWN,BARRY	10:24			
SUB IN: JOHNSON,DJ	10:24			
SUB OUT: MAURICE,ISAIAH	10:24			
SUB OUT: IWUNDU,WESLEY	10:24			
	10:04			FOUL by BOWDEN,JORDAN
MISSED FT by SNEED,XAVIER	10:04			
REBOUND (DEADB) by TEAM	10:04			
GOOD! FT by SNEED,XAVIER	10:04	57-44	H 13	
MISSED FT by SNEED,XAVIER	10:04			
	10:04			REBOUND (DEF) by SCHOFIELD,ADMIRAL
	10:04			SUB IN: SCHOFIELD,ADMIRAL

VISITORS: Kansas State	Time	Score	Margin	HOME: Tennessee
	10:04			SUB OUT: BOWDEN,JORDAN
	09:39			MISSED LAYUP by WILLIAMS,GRANT
REBOUND (DEF) by SNEED,XAVIER	09:39			
	09:30			FOUL by WILLIAMS,GRANT
GOOD! FT by STOKES,KAMAU	09:30	57-45	H 12	
GOOD! FT by STOKES,KAMAU	09:30	57-46	H 11	
SUB IN: WADE,DEAN	09:30			
SUB OUT: SNEED,XAVIER	09:30			
	09:09			TURNOVER by TURNER,LAMONTE
STEAL by BROWN,BARRY	09:08			
GOOD! LAYUP by BROWN,BARRY [FB/PNT]	09:06	57-48	H 9	
	08:37			MISSED JUMPER by SCHOFIELD,ADMIRAL
	08:37			REBOUND (OFF) by ALEXANDER,KYLE
FOUL by WADE,DEAN	08:36			
	08:36	58-48	H 10	GOOD! FT by ALEXANDER,KYLE
	08:36			TURNOVER by WILLIAMS,GRANT
SUB IN: IWUNDU,WESLEY	08:36			
SUB OUT: WADE,DEAN	08:36			
MISSED 3PTR by BROWN,BARRY	08:25			
REBOUND (OFF) by ERVIN II,CARLBE	08:25			
TURNOVER by ERVIN II,CARLBE	08:18			
	08:17			STEAL by BONE,JORDAN
	08:15			MISSED LAYUP by BONE,JORDAN
REBOUND (DEF) by STOKES,KAMAU	08:15			
MISSED LAYUP by JOHNSON,DJ	08:04			
	08:04			REBOUND (DEF) by ALEXANDER,KYLE
	07:33			MISSED JUMPER by BONE,JORDAN
REBOUND (DEF) by JOHNSON,DJ	07:33			
MISSED LAYUP by BROWN,BARRY	07:20			
	07:20			BLOCK by ALEXANDER,KYLE
	07:17			REBOUND (DEF) by SCHOFIELD,ADMIRAL
FOUL by STOKES,KAMAU	06:55			
	06:55			FOUL by ALEXANDER,KYLE
TIMEOUT media	06:55			
SUB IN: SNEED,XAVIER	06:55			
SUB OUT: ERVIN II,CARLBE	06:55			
	06:55			SUB IN: BOWDEN,JORDAN
	06:55			SUB IN: EVANS,LEW
	06:55			SUB IN: HUBBS III,ROBERT
	06:55			SUB OUT: ALEXANDER,KYLE
	06:55			SUB OUT: SCHOFIELD,ADMIRAL
	06:55			SUB OUT: BONE,JORDAN
	06:51			MISSED LAYUP by EVANS,LEW
BLOCK by SNEED,XAVIER	06:51			
	06:51			REBOUND (OFF) by TEAM
	06:49			MISSED 3PTR by TURNER,LAMONTE
REBOUND (DEF) by BROWN,BARRY	06:49			
MISSED JUMPER by SNEED,XAVIER	06:40			
	06:40			REBOUND (DEF) by WILLIAMS,GRANT
	06:22			MISSED LAYUP by BOWDEN,JORDAN
	06:22			REBOUND (OFF) by TEAM
FOUL by JOHNSON,DJ	06:13			
	06:13	59-48	H 11	GOOD! FT by EVANS,LEW
	06:13	60-48	H 12	GOOD! FT by EVANS,LEW
	05:57			FOUL by WILLIAMS,GRANT
GOOD! FT by SNEED,XAVIER	05:57	60-49	H 11	
GOOD! FT by SNEED,XAVIER	05:57	60-50	H 10	
	05:42			MISSED JUMPER by HUBBS III,ROBERT

VISITORS: Kansas State	Time	Score	Margin	HOME: Tennessee
	05:42			REBOUND (OFF) by WILLIAMS,GRANT
	05:39	62-50	H 12	GOOD! LAYUP by WILLIAMS,GRANT [PNT]
MISSED LAYUP by JOHNSON,DJ	05:13			
	05:13			BLOCK by EVANS,LEW
	05:11			REBOUND (DEF) by HUBBS III,ROBERT
	05:05	64-50	H 14	GOOD! DUNK by EVANS,LEW [FB/PNT]
	05:04			ASSIST by TURNER,LAMONTE
TIMEOUT TEAM	05:03			
SUB IN: MAURICE,ISIAIAH	05:03			
SUB OUT: JOHNSON,DJ	05:03			
	05:03			SUB IN: BONE,JORDAN
	05:03			SUB OUT: TURNER,LAMONTE
	04:36			FOUL by EVANS,LEW
MISSED FT by IWUNDU,WESLEY	04:36			
	04:36			REBOUND (DEF) by EVANS,LEW
	04:07	66-50	H 16	GOOD! JUMPER by HUBBS III,ROBERT
	04:07			ASSIST by BONE,JORDAN
TURNOVER by BROWN,BARRY	03:53			
	03:51			STEAL by HUBBS III,ROBERT
	03:49			MISSED LAYUP by BOWDEN,JORDAN
REBOUND (DEF) by SNEED,XAVIER	03:49			
GOOD! LAYUP by BROWN,BARRY [FB/PNT]	03:43	66-52	H 14	
ASSIST by STOKES,KAMAU	03:43			
	03:12			MISSED LAYUP by HUBBS III,ROBERT
REBOUND (DEF) by STOKES,KAMAU	03:12			
GOOD! LAYUP by BROWN,BARRY [FB/PNT]	03:04	66-54	H 12	
ASSIST by STOKES,KAMAU	03:04			
	03:01			TIMEOUT media
	03:01			SUB IN: TURNER,LAMONTE
	03:01			SUB OUT: BONE,JORDAN
	02:48			TURNOVER by EVANS,LEW
STEAL by BROWN,BARRY	02:47			
TURNOVER by BROWN,BARRY	02:34			
	02:32			STEAL by BOWDEN,JORDAN
	02:28			MISSED LAYUP by BOWDEN,JORDAN
BLOCK by SNEED,XAVIER	02:28			
	02:28			REBOUND (OFF) by TEAM
	02:09			MISSED JUMPER by WILLIAMS,GRANT
REBOUND (DEF) by IWUNDU,WESLEY	02:09			
MISSED JUMPER by MAURICE,ISIAIAH	02:01			
	02:01			REBOUND (DEF) by EVANS,LEW
	01:30	68-54	H 14	GOOD! LAYUP by TURNER,LAMONTE [PNT]
	01:21			FOUL by WILLIAMS,GRANT
GOOD! FT by STOKES,KAMAU	01:21	68-55	H 13	
GOOD! FT by STOKES,KAMAU	01:21	68-56	H 12	
SUB IN: ERVIN II,CARLBE	01:21			
SUB OUT: MAURICE,ISIAIAH	01:21			
	00:51			TURNOVER by TEAM
GOOD! LAYUP by STOKES,KAMAU [PNT]	00:45	68-58	H 10	
FOUL by BROWN,BARRY	00:37			
	00:37			MISSED FT by EVANS,LEW
REBOUND (DEF) by SNEED,XAVIER	00:37			
MISSED LAYUP by STOKES,KAMAU	00:31			
	00:31			BLOCK by TURNER,LAMONTE
REBOUND (OFF) by STOKES,KAMAU	00:29			
MISSED 3PTR by BROWN,BARRY	00:27			
	00:27			REBOUND (DEF) by EVANS,LEW
FOUL by SNEED,XAVIER	00:25			

VISITORS: Kansas State	Time	Score	Margin	HOME: Tennessee
	00:25	69-58	H 11	GOOD! FT by EVANS,LEW
	00:25	70-58	H 12	GOOD! FT by EVANS,LEW
	00:25			TIMEOUT 30SEC
MISSED 3PTR by BROWN,BARRY	00:16			
	00:16			REBOUND (DEF) by TURNER,LAMONTE

Kansas State 58, Tennessee 70

Period 2-only	In Paint	Off T/O	2nd Chance	Fast Break	Bench	
KS	12	9	3	6	6	Score tied - 0 times
UT	18	2	10	2	8	Lead changed - 0 times

Kansas State vs Tennessee
1/28/2017; 2:06 p.m. at Knoxville, Tenn. (Thompson-Boling Arena)
Scoring/Runs Reference

Period 1			
Kansas State	Score	Marg	Tennessee
	0-2	2	2 WILLIAMS LAYUP [P] - 19:09
18:47 - STOKES JUMPER	2	2-2	0
	2-4	2	2 ALEXANDER JUMPER - 18:37
	2-5	3	1 BOWDEN FT - 17:50
	2-6	4	1 BOWDEN FT - 17:50
	2-8	6	2 ALEXANDER LAYUP [P] - 16:48
16:36 - STOKES FT	1	3-8	5
	3-10	7	2 BOWDEN LAYUP [P] - 15:50
15:18 - JOHNSON LAYUP [P]	2	5-10	5
	5-13	8	3 BOWDEN 3PTR - 15:10
14:17 - STOKES JUMPER	2	7-13	6
	7-15	8	2 SCHOFIELD JUMPER - 14:05
	7-18	11	3 TURNER 3PTR - 13:11
12:52 - IWUNDU JUMPER	2	9-18	9
10:13 - BROWN FT	1	10-18	8
10:13 - BROWN FT	1	11-18	7
	11-19	8	1 ALEXANDER FT - 10:07
	11-21	10	2 BONE JUMPER [P] - 09:39
	11-24	13	3 BOWDEN 3PTR - 09:23
	11-25	14	1 WILLIAMS FT - 08:20
08:00 - IWUNDU FT	1	12-25	13
08:00 - IWUNDU FT	1	13-25	12
	13-26	13	1 BOWDEN FT - 07:46
07:16 - BUDKE JUMPER	2	15-26	11
06:34 - MAURICE FT	1	16-26	10
05:41 - IWUNDU LAYUP [P] [F]	2	18-26	8
05:04 - IWUNDU LAYUP [P]	2	20-26	6
	20-28	8	2 WILLIAMS JUMPER [P] - 04:17
	20-30	10	2 HUBBS III JUMPER [P] - 03:43
03:28 - JOHNSON LAYUP [P]	2	22-30	8
	22-32	10	2 TURNER JUMPER - 02:58
	22-34	12	2 HUBBS III JUMPER [P] [F] - 02:39
	22-37	15	3 EVANS 3PTR - 02:00
	22-39	17	2 HUBBS III JUMPER [P] - 00:58

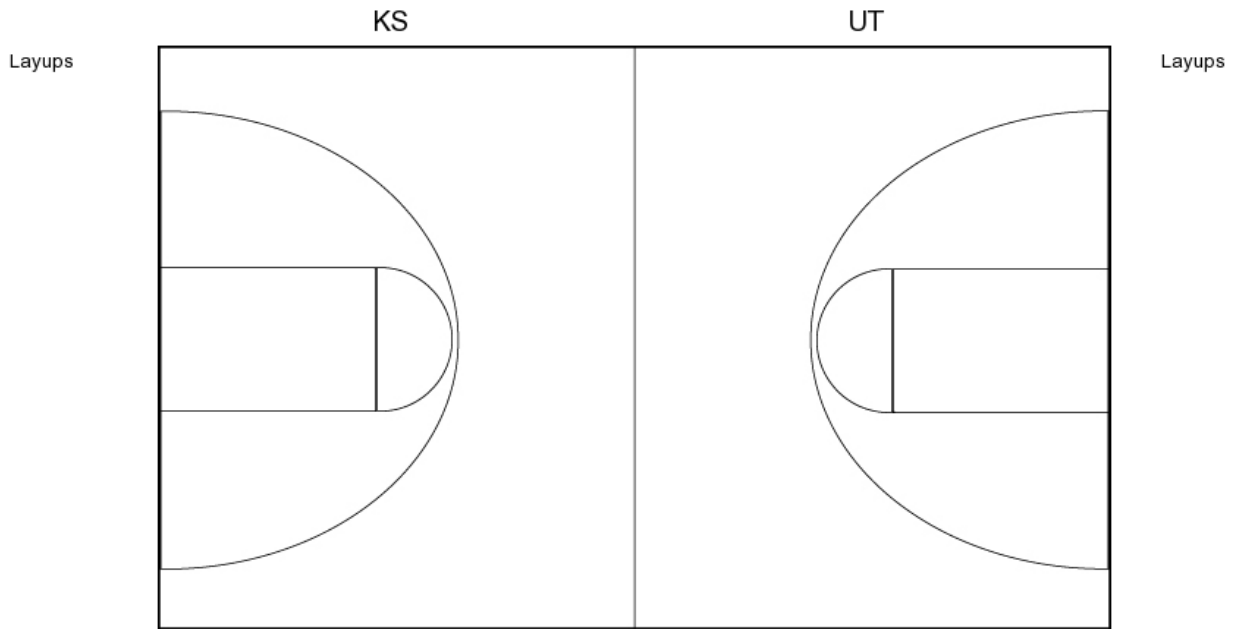
Period 2			
Kansas State	Score	Marg	Tennessee
19:42 - BROWN 3PTR	3	25-39	14
	25-41	16	2 WILLIAMS JUMPER [P] - 19:15
	25-44	19	3 WILLIAMS 3PTR - 18:09
17:28 - BROWN 3PTR	3	28-44	16
	28-46	18	2 WILLIAMS LAYUP [P] - 17:12
	28-47	19	1 WILLIAMS FT - 17:12
16:16 - WADE 3PTR	3	31-47	16
	31-49	18	2 ALEXANDER LAYUP [P] - 15:31
15:20 - BROWN 3PTR	3	34-49	15
	34-51	17	2 HUBBS III LAYUP [P] - 14:21
14:05 - SNEED 3PTR	3	37-51	14
13:25 - IWUNDU FT	1	38-51	13
13:25 - IWUNDU FT	1	39-51	12
12:03 - IWUNDU LAYUP [P]	2	41-51	10
	41-53	12	2 WILLIAMS LAYUP [P] - 11:14
11:12 - IWUNDU LAYUP [P]	2	43-53	10
	43-55	12	2 BONE LAYUP [P] - 11:07
	43-56	13	1 BOWDEN FT - 10:24
	43-57	14	1 BOWDEN FT - 10:24
10:04 - SNEED FT	1	44-57	13
09:30 - STOKES FT	1	45-57	12
09:30 - STOKES FT	1	46-57	11
09:06 - BROWN LAYUP [P] [F]	2	48-57	9
	48-58	10	1 ALEXANDER FT - 08:36
	48-59	11	1 EVANS FT - 06:13
	48-60	12	1 EVANS FT - 06:13
05:57 - SNEED FT	1	49-60	11
05:57 - SNEED FT	1	50-60	10
	50-62	12	2 WILLIAMS LAYUP [P] - 05:39
	50-64	14	2 EVANS DUNK [P] [F] - 05:05
	50-66	16	2 HUBBS III JUMPER - 04:07
03:43 - BROWN LAYUP [P] [F]	2	52-66	14
03:04 - BROWN LAYUP [P] [F]	2	54-66	12
	54-68	14	2 TURNER LAYUP [P] - 01:30
01:21 - STOKES FT	1	55-68	13
01:21 - STOKES FT	1	56-68	12
00:45 - STOKES LAYUP [P]	2	58-68	10
	58-69	11	1 EVANS FT - 00:25
	58-70	12	1 EVANS FT - 00:25

Kansas State vs Tennessee

OFFICIAL SHOT CHART

1/28/2017 at Knoxville, Tenn. (Thompson-Boling Arena)

PERIOD 1



KS PERIOD 1

FG Made	8
FG Attempted	22
3PFG Made	0
3PFG Attempted	6

UT PERIOD 1

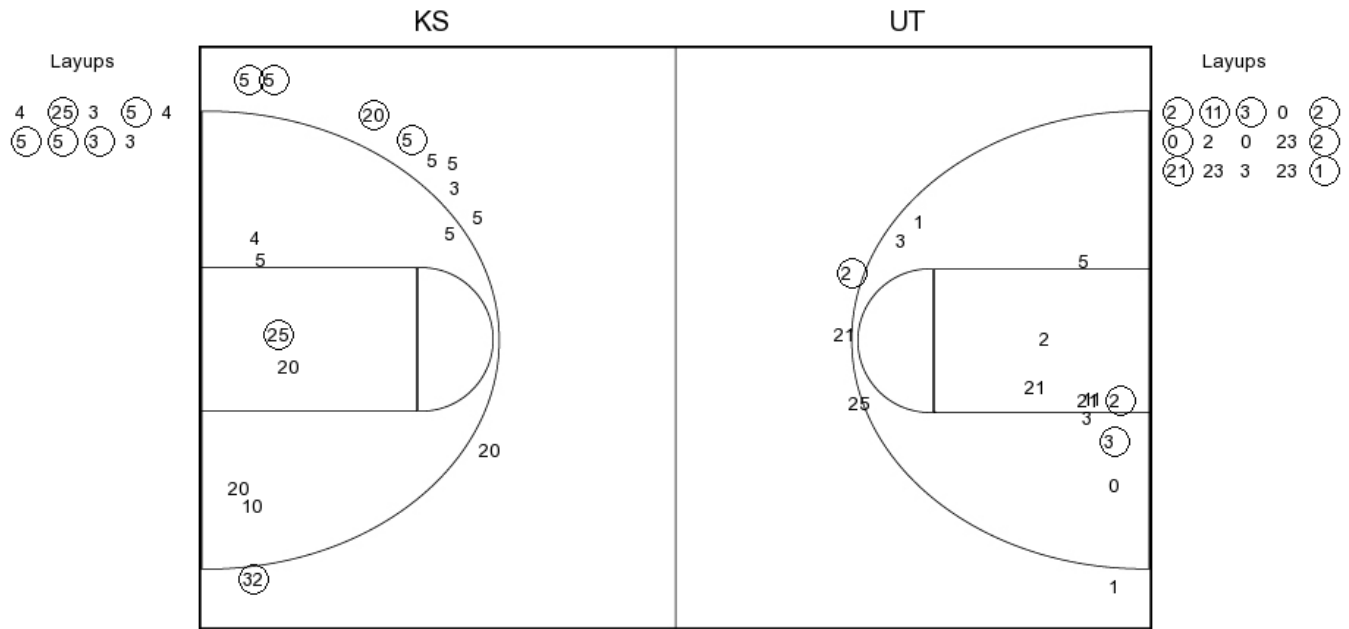
FG Made	15
FG Attempted	28
3PFG Made	4
3PFG Attempted	10

Kansas State vs Tennessee

OFFICIAL SHOT CHART

1/28/2017 at Knoxville, Tenn. (Thompson-Boling Arena)

PERIOD 2



KS PERIOD 2

FG Made	11
FG Attempted	26
3PFG Made	5
3PFG Attempted	10

UT PERIOD 2

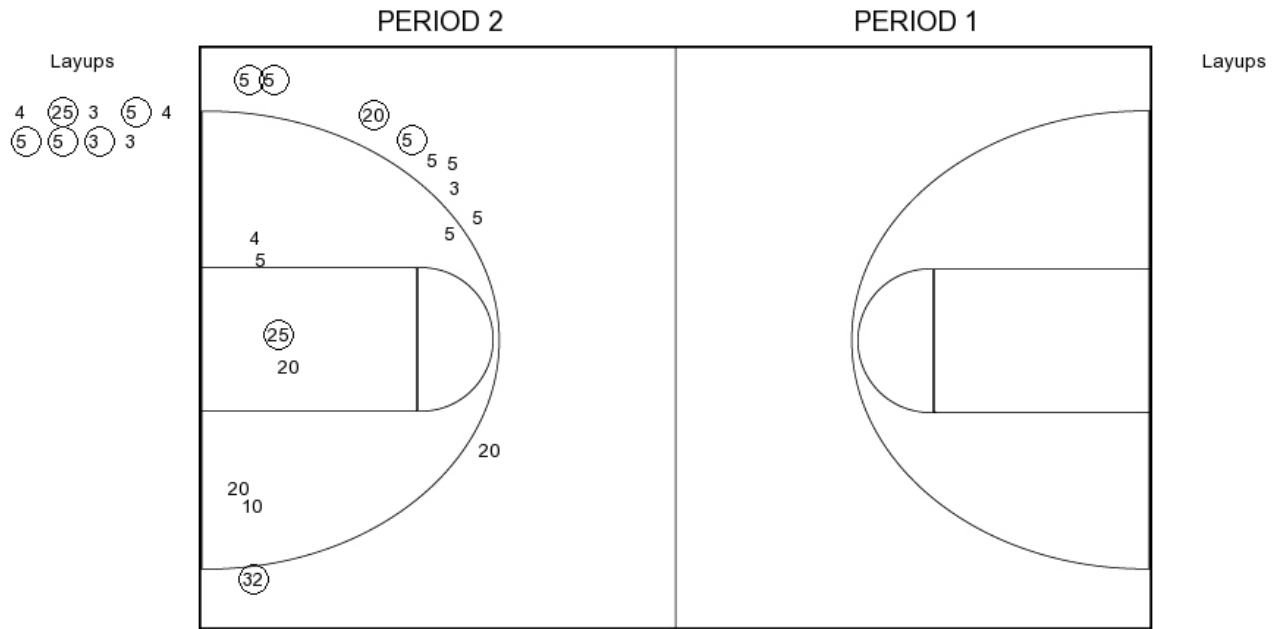
FG Made	11
FG Attempted	30
3PFG Made	1
3PFG Attempted	4

Kansas State vs Tennessee

OFFICIAL SHOT CHART

1/28/2017 at Knoxville, Tenn. (Thompson-Boling Arena)

Kansas State



KS PERIOD 1

FG Made	8
FG Attempted	22
3PFG Made	0
3PFG Attempted	6

KS PERIOD 2

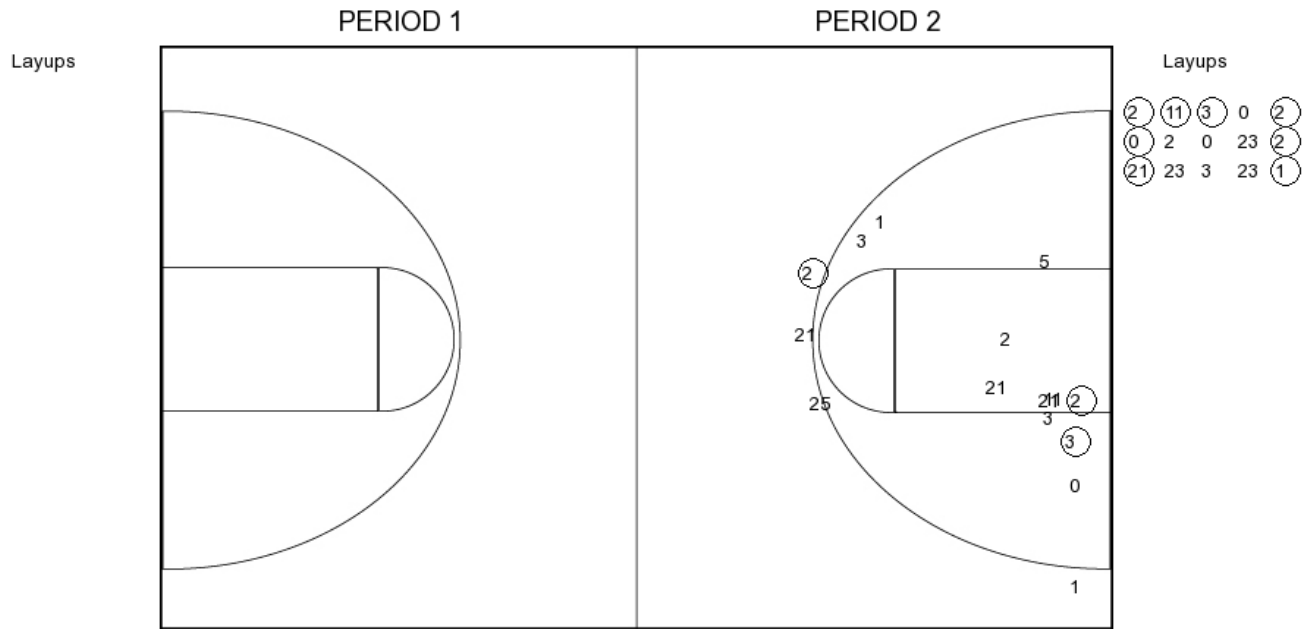
FG Made	11
FG Attempted	26
3PFG Made	5
3PFG Attempted	10

Kansas State vs Tennessee

OFFICIAL SHOT CHART

1/28/2017 at Knoxville, Tenn. (Thompson-Boling Arena)

Tennessee



UT PERIOD 1

FG Made	15
FG Attempted	28
3PFG Made	4
3PFG Attempted	10

UT PERIOD 2

FG Made	11
FG Attempted	30
3PFG Made	1
3PFG Attempted	4