



TENNESSEE VS. APPALACHIAN STATE

11/15/2016

Knoxville, Tenn. (Thompson-Boling Arena)

FINAL STATS

Tennessee

(1-1)

103

Appalachian State

(0-2)

94

Start Time: 7:02 p.m.

Officials: Anthony Jordan, Tony Henderson, John Hampton

Attendance: 11758

Official Basketball Box Score -- Game Totals -- Final Statistics
Appalachian State vs Tennessee
11/15/2016 7:02 p.m. at Knoxville, Tenn. (Thompson-Boling Arena)

Appalachian State 94 - 0-2

##	Player	S	Total		3-Ptr		Rebounds		PF	TP	A	TO	Blk	Stl	Min
			FG	FGA	3PT	FG-FGA	FT	FTA							
1	ROBINSON,KELVIN	g	5	9	1	2	1	2	3	12	2	4	0	0	18
2	SHABAZZ,RONSHAD	g	7	17	3	9	4	5	1	21	2	3	0	2	30
5	KINNEY,GRIFFIN	f	3	6	0	0	7	10	2	13	1	2	0	1	25
11	LOGAN,EMARIUS	g	2	6	0	0	2	3	1	6	3	3	0	0	23
32	JOHNSON,TYRELL	f	2	7	0	1	5	9	1	9	0	2	0	0	20
0	JOHNSON,ISAAC		0	0	0	0	2	4	0	2	0	1	0	0	14
10	GOOD,PATRICK		8	10	5	7	0	1	0	21	2	0	0	1	27
14	HOLLEY,BENNETT		1	3	0	2	3	3	0	5	0	0	0	0	8
15	WILSON,JAKE		0	0	0	0	0	0	0	0	0	1	1	0	7
22	O'BOYLE,MATT		0	1	0	1	0	0	0	0	2	1	0	0	6
24	HINTON,CRAIG		0	1	0	1	0	0	1	0	1	0	0	0	6
25	BABIC,JAKE		1	3	1	2	0	0	1	3	0	1	0	0	10
34	COTTRELL,ZACH		1	2	0	1	0	0	1	2	1	0	0	0	6
TEAM									6	0	0	0	0	0	
TOTALS			30	65	10	26	24	37	17	22	39	27	94	14	200

Deadball Rebounds: 8,1

FG %	1st Half:	13-29	44.8%	2nd Half:	17-36	47.2%	Game:	30-65	46.2%
3FG %	1st Half:	4-8	50.0%	2nd Half:	6-18	33.3%	Game:	10-26	38.5%
FT %	1st Half:	8-13	61.5%	2nd Half:	16-24	66.7%	Game:	24-37	64.9%

Tennessee 103 - 1-1

##	Player	S	Total		3-Ptr		Rebounds		PF	TP	A	TO	Blk	Stl	Min
			FG	FGA	3PT	FG-FGA	FT	FTA							
0	BONE,JORDAN	g	3	6	0	2	1	2	0	7	8	2	0	2	18
3	HUBBS III,ROBERT	f	6	8	0	1	4	4	0	16	3	4	0	0	27
11	ALEXANDER,KYLE	f	5	8	0	1	3	6	1	13	0	0	2	0	23
23	BOWDEN,JORDAN	g	4	9	4	8	2	2	0	14	2	0	0	0	22
25	PHILLIPS,SHEMBARI	g	4	5	2	2	1	2	2	11	2	2	1	1	25
1	TURNER,LAMONTE		4	8	1	2	6	6	2	15	5	1	0	1	23
2	WILLIAMS,GRANT		5	8	1	1	2	4	1	13	2	1	2	1	21
5	SCHOFIELD,ADMIRAL		2	6	0	0	1	1	1	5	2	0	0	0	14
10	FULKERSON,JOHN		1	1	0	0	2	2	2	4	1	0	0	2	7
15	MOSTELLA,DETRICK		1	3	0	1	3	4	0	5	0	2	0	0	11
21	EVANS,LEW		0	1	0	1	0	1	1	0	1	0	0	0	9
TEAM									0	3	0	0	0	0	
TOTALS			35	63	8	19	25	34	10	23	33	29	103	26	200

Deadball Rebounds: 4,0

FG %	1st Half:	17-34	50.0%	2nd Half:	18-29	62.1%	Game:	35-63	55.6%
3FG %	1st Half:	6-12	50.0%	2nd Half:	2-7	28.6%	Game:	8-19	42.1%
FT %	1st Half:	10-13	76.9%	2nd Half:	15-21	71.4%	Game:	25-34	73.5%

Officials: Anthony Jordan, Tony Henderson, John Hampton
 Technical Fouls: Appalachian State- None. Tennessee- None.
 Attendance: 11758

Score by periods	1st	2nd	Total
Appalachian State	38	56	94
Tennessee	50	53	103

Points	In Paint	Off T/O	2nd Chance	Fast Break	Bench
APP	36	16	15	18	33
UT	42	28	15	12	42

Last FG - APP 2nd-00:15, UT 2nd-02:26.
 Largest lead - Appalachian State by 4 1st-18:40; Tennessee by 26 1st-05:00
 APP led for 4:24. UT led for 33:30. Game was tied for 2:06.

Score tied - 3 times
 Lead changed - 2 times

Official Basketball Box Score -- Game Totals -- First Half Statistics
Appalachian State vs Tennessee
11/15/2016 7:02 p.m. at Knoxville, Tenn. (Thompson-Boling Arena)

Appalachian State 38 • 0-2

##	Player	S	Total	3-Ptr		Rebounds			PF	TP	A	TO	Blk	Stl	Min
			FG-FGA	3PT	FG-FGA	FT-FTA	Off Reb	Def Reb							
1	ROBINSON,KELVIN	g	1-1	0-0	0-0	1	0	1	2	2	2	4	0	0	9
2	SHABAZZ,RONSHAD	g	6-12	2-5	1-1	1	2	3	1	15	1	2	0	2	18
5	KINNEY,GRIFFIN	f	0-2	0-0	4-6	1	2	3	2	4	0	2	0	1	14
11	LOGAN,EMARIUS	g	1-5	0-0	0-0	1	3	4	1	2	2	2	0	0	14
32	JOHNSON,TYRELL	f	1-4	0-1	2-5	1	2	3	1	4	0	2	0	0	14
0	JOHNSON,ISAAC		0-0	0-0	0-0	0	0	0	1	0	0	1	0	0	5
10	GOOD,PATRICK		3-3	2-2	0-0	0	0	0	1	8	0	0	0	0	11
14	HOLLEY,BENNETT		1-1	0-0	1-1	0	0	0	0	3	0	0	0	0	1
15	WILSON,JAKE		0-0	0-0	0-0	0	3	3	2	0	0	1	1	0	6
22	O'BOYLE,MATT		0-0	0-0	0-0	0	0	0	1	0	0	1	0	0	2
24	HINTON,CRAIG		0-0	0-0	0-0	0	0	0	0	0	0	0	0	0	0
25	BABIC,JAKE		0-1	0-0	0-0	0	1	1	1	0	0	0	0	0	6
34	COTTRELL,ZACH		0-0	0-0	0-0	0	0	0	0	0	0	0	0	0	0
TEAM						3	0	3	0			0			
Totals			13-29	4-8	8-13	8	13	21	13	38	5	15	1	3	100

FG % Half: 13-29 44.8%
 3FG % Half: 4-8 50.0%
 FT % Half: 8-13 61.5%

Tennessee 50 • 1-1

##	Player	S	Total	3-Ptr	FT-FTA	Rebounds			PF	TP	A TO	Blk	Stl	Min		
			FG-FGA	3PT		FG-FGA	Off Reb	Def Reb							Tot Reb	
0	BONE,JORDAN	g	3-5	0-1	1-2	0	0	0	1	7	6	1	0	1	13	
3	HUBBS III,ROBERT	f	3-5	0-1	4-4	0	1	1	2	10	1	3	0	0	12	
11	ALEXANDER,KYLE	f	1-2	0-0	0-0	1	2	3	0	2	0	0	1	0	9	
23	BOWDEN,JORDAN	g	4-7	4-6	0-0	0	0	0	1	12	1	0	0	0	13	
25	PHILLIPS,SHEMBARI	g	1-2	1-1	0-0	1	1	2	1	3	0	2	0	0	12	
1	TURNER,LAMONTE		1-3	0-1	0-0	0	0	0	0	2	2	0	0	1	9	
2	WILLIAMS,GRANT		3-4	1-1	0-2	0	0	0	1	7	1	0	1	1	9	
5	SCHOFIELD,ADMIRAL		1-4	0-0	1-1	1	0	1	0	3	0	0	0	0	6	
10	FULKERSON,JOHN		0-0	0-0	2-2	2	1	3	3	2	1	0	0	2	5	
15	MOSTELLA,DETRICK		0-2	0-1	2-2	0	1	1	2	2	0	2	0	0	6	
21	EVANS,LEW		0-0	0-0	0-0	1	1	2	1	0	1	0	0	0	6	
TEAM						0	3	3	0		0					
Totals				17-34	6-12	10-13	6	10	16	12	50	13	8	2	5	100

FG % Half: 17-34 50.0%
 3FG % Half: 6-12 50.0%
 FT % Half: 10-13 76.9%

Officials: Anthony Jordan, Tony Henderson, John Hampton
 Technical Fouls: Appalachian State- None. Tennessee- None.

Score by periods	1st	2nd	Total
Appalachian State	38	56	94
Tennessee	50	53	103

Points	In Paint	Off T/O	2nd 2nd Chance	Fast Fast Break	Bench
APP	14	8	5	7	11
UT	18	22	6	4	16

Last FG - APP 1st-00:33, UT 1st-00:10.
 APP led for 4:24. UT led for 13:30. Game was tied for 2:06.

Score tied - 3 times
 Lead changed - 2 times

Appalachian State vs Tennessee

11/15/2016; 7:02 p.m. at Knoxville, Tenn. (Thompson-Boling Arena)

Period 1 Play-By-Play

VISITORS: Appalachian State	Time	Score	Margin	HOME: Tennessee
	19:56	3-0	H 3	GOOD! 3PTR by BOWDEN,JORDAN
	19:56			ASSIST by BONE,JORDAN
GOOD! 3PTR by SHABAZZ,RONSHAD	19:47	3-3	T	
ASSIST by ROBINSON,KELVIN	19:47			
	19:31			MISSED JUMPER by BONE,JORDAN
REBOUND (DEF) by KINNEY,GRIFFIN	19:31			
MISSED 3PTR by JOHNSON,TYRELL	19:23			
REBOUND (OFF) by SHABAZZ,RONSHAD	19:23			
GOOD! JUMPER by SHABAZZ,RONSHAD	19:17	3-5	V 2	
	18:52			MISSED LAYUP by PHILLIPS,SHEMBARI
	18:52			REBOUND (OFF) by ALEXANDER,KYLE
	18:50			MISSED LAYUP by ALEXANDER,KYLE
REBOUND (DEF) by LOGAN,EMARIUS	18:50			
GOOD! LAYUP by LOGAN,EMARIUS [PNT]	18:40	3-7	V 4	
	18:29			TURNOVER by BONE,JORDAN
STEAL by SHABAZZ,RONSHAD	18:28			
	18:26			FOUL by PHILLIPS,SHEMBARI
MISSED LAYUP by LOGAN,EMARIUS	18:04			
	18:04			BLOCK by ALEXANDER,KYLE
REBOUND (OFF) by TEAM	18:04			
MISSED DUNK by JOHNSON,TYRELL	18:00			
REBOUND (OFF) by LOGAN,EMARIUS	18:00			
MISSED JUMPER by LOGAN,EMARIUS	17:57			
	17:57			REBOUND (DEF) by TEAM
	17:49	5-7	V 2	GOOD! LAYUP by HUBBS III,ROBERT [PNT]
TURNOVER by JOHNSON,TYRELL	17:40			
	17:33			SUB IN: TURNER,LAMONTE
	17:33			SUB OUT: BONE,JORDAN
	17:24	7-7	T	GOOD! JUMPER by HUBBS III,ROBERT
	17:24			ASSIST by BOWDEN,JORDAN
GOOD! LAYUP by ROBINSON,KELVIN [PNT]	17:03	7-9	V 2	
	16:55	9-9	T	GOOD! JUMPER by ALEXANDER,KYLE [PNT]
	16:55			ASSIST by TURNER,LAMONTE
FOUL by ROBINSON,KELVIN	16:45			
TURNOVER by ROBINSON,KELVIN	16:45			
SUB IN: BABIC,JAKE	16:45			
SUB OUT: ROBINSON,KELVIN	16:45			
	16:45			SUB IN: WILLIAMS,GRANT
	16:45			SUB IN: MOSTELLA,DETRICK
	16:45			SUB OUT: ALEXANDER,KYLE
	16:45			SUB OUT: PHILLIPS,SHEMBARI
	16:35			TURNOVER by HUBBS III,ROBERT
MISSED DUNK by JOHNSON,TYRELL	16:19			
	16:19			REBOUND (DEF) by TEAM
	16:03			MISSED JUMPER by MOSTELLA,DETRICK
REBOUND (DEF) by SHABAZZ,RONSHAD	16:03			
	15:44			FOUL by HUBBS III,ROBERT
TIMEOUT MEDIA	15:44			
GOOD! FT by KINNEY,GRIFFIN	15:44	9-10	V 1	
GOOD! FT by KINNEY,GRIFFIN	15:44	9-11	V 2	
SUB IN: GOOD,PATRICK	15:44			
SUB IN: WILSON,JAKE	15:44			
SUB IN: JOHNSON,ISAAC	15:44			

VISITORS: Appalachian State	Time	Score	Margin	HOME: Tennessee
SUB OUT: KINNEY,GRIFFIN	15:44			
SUB OUT: LOGAN,EMARIUS	15:44			
SUB OUT: JOHNSON,TYRELL	15:44			
	15:44			SUB IN: EVANS,LEW
	15:44			SUB OUT: HUBBS III,ROBERT
	15:31			MISSED LAYUP by TURNER,LAMONTE
BLOCK by WILSON,JAKE	15:31			
REBOUND (DEF) by BABIC,JAKE	15:30			
MISSED LAYUP by BABIC,JAKE	15:27			
	15:27			REBOUND (DEF) by MOSTELLA,DETRICK
	14:59			MISSED JUMPER by WILLIAMS,GRANT
REBOUND (DEF) by WILSON,JAKE	14:59			
	14:47			FOUL by BOWDEN,JORDAN
	14:47			SUB IN: BONE,JORDAN
	14:47			SUB IN: PHILLIPS,SHEMBARI
	14:47			SUB OUT: TURNER,LAMONTE
	14:47			SUB OUT: MOSTELLA,DETRICK
TURNOVER by WILSON,JAKE	14:34			
	14:34			SUB IN: TURNER,LAMONTE
	14:34			SUB OUT: BOWDEN,JORDAN
FOUL by BABIC,JAKE	14:26			
FOUL by WILSON,JAKE	14:20			
	14:20	10-11	V 1	GOOD! FT by BONE,JORDAN
	14:20			MISSED FT by BONE,JORDAN
	14:20			REBOUND (OFF) by EVANS,LEW
	14:16			MISSED 3PTR by TURNER,LAMONTE
REBOUND (DEF) by WILSON,JAKE	14:16			
MISSED 3PTR by SHABAZZ,RONSHAD	14:09			
	14:09			REBOUND (DEF) by TEAM
FOUL by JOHNSON,ISAAC	13:37			
SUB IN: ROBINSON,KELVIN	13:37			
SUB IN: O'BOYLE,MATT	13:37			
SUB IN: JOHNSON,TYRELL	13:37			
SUB OUT: BABIC,JAKE	13:37			
SUB OUT: SHABAZZ,RONSHAD	13:37			
SUB OUT: JOHNSON,ISAAC	13:37			
	13:21	13-11	H 2	GOOD! 3PTR by WILLIAMS,GRANT
	13:21			ASSIST by EVANS,LEW
TURNOVER by JOHNSON,TYRELL	12:52			
	12:51			STEAL by TURNER,LAMONTE
	12:49	15-11	H 4	GOOD! LAYUP by BONE,JORDAN [FB/PNT]
	12:49			ASSIST by TURNER,LAMONTE
FOUL by O'BOYLE,MATT	12:37			
TURNOVER by O'BOYLE,MATT	12:37			
SUB IN: KINNEY,GRIFFIN	12:37			
SUB OUT: WILSON,JAKE	12:37			
	12:37			SUB IN: HUBBS III,ROBERT
	12:37			SUB IN: SCHOFIELD,ADMIRAL
	12:37			SUB OUT: EVANS,LEW
	12:37			SUB OUT: TURNER,LAMONTE
	12:30	18-11	H 7	GOOD! 3PTR by PHILLIPS,SHEMBARI
	12:30			ASSIST by BONE,JORDAN
TIMEOUT 30SEC	12:27			
TIMEOUT media	12:27			
SUB IN: SHABAZZ,RONSHAD	12:27			
SUB OUT: GOOD,PATRICK	12:27			
TURNOVER by ROBINSON,KELVIN	12:12			
FOUL by SHABAZZ,RONSHAD	11:59			

VISITORS: Appalachian State	Time	Score	Margin	HOME: Tennessee
	11:45	20-11	H 9	GOOD! LAYUP by WILLIAMS,GRANT [PNT]
	11:45			ASSIST by BONE,JORDAN
SUB IN: LOGAN,EMARIUS	11:45			
SUB OUT: O'BOYLE,MATT	11:45			
TURNOVER by ROBINSON,KELVIN	11:37			
	11:36			STEAL by WILLIAMS,GRANT
	11:33			TURNOVER by HUBBS III,ROBERT
TURNOVER by SHABAZZ,RONSHAD	11:22			
	11:15	22-11	H 11	GOOD! LAYUP by BONE,JORDAN [PNT]
TURNOVER by KINNEY,GRIFFIN	11:00			
	11:00			SUB IN: TURNER,LAMONTE
	11:00			SUB OUT: BONE,JORDAN
FOUL by KINNEY,GRIFFIN	10:41			
	10:41	23-11	H 12	GOOD! FT by HUBBS III,ROBERT
	10:41	24-11	H 13	GOOD! FT by HUBBS III,ROBERT
	10:41			SUB IN: ALEXANDER,KYLE
	10:41			SUB OUT: WILLIAMS,GRANT
MISSED 3PTR by SHABAZZ,RONSHAD	10:27			
	10:27			REBOUND (DEF) by ALEXANDER,KYLE
	10:01			MISSED LAYUP by SCHOFIELD,ADMIRAL
REBOUND (DEF) by LOGAN,EMARIUS	10:01			
MISSED JUMPER by LOGAN,EMARIUS	09:57			
	09:57			REBOUND (DEF) by ALEXANDER,KYLE
	09:47			MISSED 3PTR by HUBBS III,ROBERT
	09:47			REBOUND (OFF) by SCHOFIELD,ADMIRAL
	09:43			MISSED LAYUP by SCHOFIELD,ADMIRAL
REBOUND (DEF) by JOHNSON,TYRELL	09:43			
MISSED 3PTR by SHABAZZ,RONSHAD	09:22			
	09:22			REBOUND (DEF) by HUBBS III,ROBERT
	09:18	26-11	H 15	GOOD! LAYUP by SCHOFIELD,ADMIRAL [FB/PNT]
	09:18			ASSIST by HUBBS III,ROBERT
FOUL by LOGAN,EMARIUS	09:18			
	09:18	27-11	H 16	GOOD! FT by SCHOFIELD,ADMIRAL
	09:18			SUB IN: BOWDEN,JORDAN
	09:18			SUB OUT: TURNER,LAMONTE
MISSED LAYUP by KINNEY,GRIFFIN	09:01			
	09:01			REBOUND (DEF) by PHILLIPS,SHEMBARI
	08:47			TURNOVER by PHILLIPS,SHEMBARI
TIMEOUT 30SEC	08:47			
SUB IN: BABIC,JAKE	08:47			
SUB IN: JOHNSON,ISAAC	08:47			
SUB OUT: ROBINSON,KELVIN	08:47			
SUB OUT: KINNEY,GRIFFIN	08:47			
	08:47			SUB IN: BONE,JORDAN
	08:47			SUB IN: FULKERSON,JOHN
	08:47			SUB OUT: SCHOFIELD,ADMIRAL
	08:47			SUB OUT: PHILLIPS,SHEMBARI
TURNOVER by SHABAZZ,RONSHAD	08:39			
	08:37			STEAL by FULKERSON,JOHN
	08:26			MISSED 3PTR by BOWDEN,JORDAN
	08:26			REBOUND (OFF) by FULKERSON,JOHN
	08:22	30-11	H 19	GOOD! 3PTR by BOWDEN,JORDAN
	08:22			ASSIST by FULKERSON,JOHN
GOOD! LAYUP by SHABAZZ,RONSHAD [PNT]	08:13	30-13	H 17	
	07:53	32-13	H 19	GOOD! JUMPER by HUBBS III,ROBERT [PNT]
	07:31			FOUL by FULKERSON,JOHN
TIMEOUT MEDIA	07:31			
SUB IN: GOOD,PATRICK	07:31			

VISITORS: Appalachian State	Time	Score	Margin	HOME: Tennessee
SUB OUT: LOGAN,EMARIUS	07:31			
	07:31			SUB IN: MOSTELLA,DETRICK
	07:31			SUB OUT: HUBBS III,ROBERT
	07:30			FOUL by BONE,JORDAN
MISSED FT by JOHNSON,TYRELL	07:30			
REBOUND (DEADB) by TEAM	07:30			
GOOD! FT by JOHNSON,TYRELL	07:30	32-14	H 18	
	07:22	35-14	H 21	GOOD! 3PTR by BOWDEN,JORDAN
	07:22			ASSIST by BONE,JORDAN
TURNOVER by JOHNSON,ISAAC	07:09			
FOUL by GOOD,PATRICK	06:58			
	06:58	36-14	H 22	GOOD! FT by MOSTELLA,DETRICK
	06:58	37-14	H 23	GOOD! FT by MOSTELLA,DETRICK
SUB IN: KINNEY,GRIFFIN	06:58			
SUB OUT: JOHNSON,TYRELL	06:58			
GOOD! JUMPER by GOOD,PATRICK	06:38	37-16	H 21	
	06:12	39-16	H 23	GOOD! LAYUP by BONE,JORDAN [PNT]
TURNOVER by KINNEY,GRIFFIN	05:57			
SUB IN: WILSON,JAKE	05:57			
SUB OUT: JOHNSON,ISAAC	05:57			
SUB IN: LOGAN,EMARIUS	05:42			
SUB OUT: BABIC,JAKE	05:42			
	05:24			MISSED 3PTR by BONE,JORDAN
REBOUND (DEF) by WILSON,JAKE	05:24			
TURNOVER by LOGAN,EMARIUS	05:10			
	05:09			STEAL by FULKERSON,JOHN
	05:06			MISSED LAYUP by BOWDEN,JORDAN
	05:06			REBOUND (OFF) by FULKERSON,JOHN
	05:00	42-16	H 26	GOOD! 3PTR by BOWDEN,JORDAN
	05:00			ASSIST by BONE,JORDAN
GOOD! LAYUP by SHABAZZ,RONSHAD [FB/PNT]	04:52	42-18	H 24	
	04:52			FOUL by FULKERSON,JOHN
GOOD! FT by SHABAZZ,RONSHAD	04:52	42-19	H 23	
SUB IN: ROBINSON,KELVIN	04:50			
SUB OUT: SHABAZZ,RONSHAD	04:50			
	04:50			SUB IN: WILLIAMS,GRANT
	04:50			SUB IN: EVANS,LEW
	04:50			SUB OUT: ALEXANDER,KYLE
	04:50			SUB OUT: FULKERSON,JOHN
	04:29			MISSED 3PTR by MOSTELLA,DETRICK
REBOUND (DEF) by LOGAN,EMARIUS	04:29			
	04:14			FOUL by MOSTELLA,DETRICK
MISSED FT by KINNEY,GRIFFIN	04:14			
REBOUND (DEADB) by TEAM	04:14			
MISSED FT by KINNEY,GRIFFIN	04:14			
REBOUND (OFF) by ROBINSON,KELVIN	04:14			
FOUL by ROBINSON,KELVIN	04:13			
TURNOVER by ROBINSON,KELVIN	04:13			
	04:01			TURNOVER by MOSTELLA,DETRICK
STEAL by KINNEY,GRIFFIN	04:00			
GOOD! 3PTR by GOOD,PATRICK	03:56	42-22	H 20	
ASSIST by ROBINSON,KELVIN	03:56			
	03:51			FOUL by MOSTELLA,DETRICK
	03:51			TURNOVER by MOSTELLA,DETRICK
TIMEOUT media	03:51			
GOOD! FT by KINNEY,GRIFFIN	03:51	42-23	H 19	
GOOD! FT by KINNEY,GRIFFIN	03:51	42-24	H 18	
	03:51			SUB IN: TURNER,LAMONTE

VISITORS: Appalachian State	Time	Score	Margin	HOME: Tennessee
	03:51			SUB IN: HUBBS III,ROBERT
	03:51			SUB IN: PHILLIPS,SHEMBARI
	03:51			SUB OUT: BOWDEN,JORDAN
	03:51			SUB OUT: MOSTELLA,DETRICK
	03:51			SUB OUT: BONE,JORDAN
FOUL by WILSON,JAKE	03:33			
	03:33	43-24	H 19	GOOD! FT by HUBBS III,ROBERT
	03:33	44-24	H 20	GOOD! FT by HUBBS III,ROBERT
SUB IN: JOHNSON,TYRELL	03:33			
SUB IN: SHABAZZ,RONSHAD	03:33			
SUB OUT: ROBINSON,KELVIN	03:33			
SUB OUT: WILSON,JAKE	03:33			
MISSED LAYUP by SHABAZZ,RONSHAD	03:25			
REBOUND (OFF) by TEAM	03:25			
MISSED LAYUP by KINNEY,GRIFFIN	03:18			
	03:18			BLOCK by WILLIAMS,GRANT
REBOUND (OFF) by TEAM	03:17			
GOOD! LAYUP by JOHNSON,TYRELL [PNT]	03:14	44-26	H 18	
ASSIST by SHABAZZ,RONSHAD	03:14			
	03:06			MISSED LAYUP by HUBBS III,ROBERT
REBOUND (DEF) by JOHNSON,TYRELL	03:06			
	03:06			FOUL by EVANS,LEW
MISSED FT by JOHNSON,TYRELL	03:06			
	03:06			REBOUND (DEF) by EVANS,LEW
	02:46	46-26	H 20	GOOD! JUMPER by TURNER,LAMONTE
	02:46			ASSIST by WILLIAMS,GRANT
GOOD! 3PTR by SHABAZZ,RONSHAD	02:33	46-29	H 17	
FOUL by JOHNSON,TYRELL	02:08			
	02:08			MISSED FT by WILLIAMS,GRANT
REBOUND (DEADB) by TEAM	02:08			
	02:08			MISSED FT by WILLIAMS,GRANT
REBOUND (DEF) by KINNEY,GRIFFIN	02:08			
	02:08			SUB IN: BOWDEN,JORDAN
	02:08			SUB IN: BONE,JORDAN
	02:08			SUB OUT: TURNER,LAMONTE
	02:08			SUB OUT: EVANS,LEW
MISSED LAYUP by LOGAN,EMARIUS	02:01			
REBOUND (OFF) by JOHNSON,TYRELL	02:01			
	02:00			FOUL by WILLIAMS,GRANT
MISSED FT by JOHNSON,TYRELL	02:00			
REBOUND (DEADB) by TEAM	02:00			
GOOD! FT by JOHNSON,TYRELL	02:00	46-30	H 16	
	02:00			SUB IN: SCHOFIELD,ADMIRAL
	02:00			SUB OUT: WILLIAMS,GRANT
	01:43			MISSED JUMPER by SCHOFIELD,ADMIRAL
REBOUND (DEF) by SHABAZZ,RONSHAD	01:43			
GOOD! LAYUP by SHABAZZ,RONSHAD [FB/PNT]	01:37	46-32	H 14	
	01:36			TIMEOUT 30SEC
	01:36			SUB IN: TURNER,LAMONTE
	01:36			SUB OUT: BONE,JORDAN
	01:25			FOUL by HUBBS III,ROBERT
	01:25			TURNOVER by HUBBS III,ROBERT
	01:25			SUB IN: FULKERSON,JOHN
	01:25			SUB OUT: HUBBS III,ROBERT
MISSED JUMPER by SHABAZZ,RONSHAD	01:10			
REBOUND (OFF) by KINNEY,GRIFFIN	01:10			
MISSED LAYUP by SHABAZZ,RONSHAD	01:04			
	01:04			REBOUND (DEF) by FULKERSON,JOHN

VISITORS: Appalachian State	Time	Score	Margin	HOME: Tennessee
	00:58			MISSED 3PTR by BOWDEN,JORDAN
	00:58			REBOUND (OFF) by PHILLIPS,SHEMBARI
	00:54			TURNOVER by PHILLIPS,SHEMBARI
STEAL by SHABAZZ,RONSHAD	00:53			
GOOD! 3PTR by GOOD,PATRICK [FB]	00:50	46-35	H 11	
ASSIST by LOGAN,EMARIUS	00:50			
FOUL by KINNEY,GRIFFIN	00:41			
	00:40	47-35	H 12	GOOD! FT by FULKERSON,JOHN
	00:40	48-35	H 13	GOOD! FT by FULKERSON,JOHN
SUB IN: HOLLEY,BENNETT	00:40			
SUB OUT: KINNEY,GRIFFIN	00:40			
	00:40			SUB IN: MOSTELLA,DETRICK
	00:40			SUB OUT: PHILLIPS,SHEMBARI
GOOD! LAYUP by HOLLEY,BENNETT [PNT]	00:33	48-37	H 11	
ASSIST by LOGAN,EMARIUS	00:33			
	00:33			FOUL by FULKERSON,JOHN
GOOD! FT by HOLLEY,BENNETT	00:33	48-38	H 10	
	00:33			SUB IN: BONE,JORDAN
	00:33			SUB IN: WILLIAMS,GRANT
	00:33			SUB OUT: FULKERSON,JOHN
	00:33			SUB OUT: TURNER,LAMONTE
	00:10	50-38	H 12	GOOD! LAYUP by WILLIAMS,GRANT [PNT]
	00:10			ASSIST by BONE,JORDAN
TURNOVER by LOGAN,EMARIUS	00:00			
	00:00			STEAL by BONE,JORDAN

Appalachian State 38, Tennessee 50

Period 1-only	In Paint	Off T/O	2nd Chance	Fast Break	Bench	
APP	14	8	5	7	11	Score tied - 2 times
UT	18	22	6	4	16	Lead changed - 2 times

Official Basketball Box Score -- Game Totals -- Second Half Statistics
Appalachian State vs Tennessee
11/15/2016 7:02 p.m. at Knoxville, Tenn. (Thompson-Boling Arena)

Appalachian State 56 • 0-2

##	Player	S	Total		3-Ptr		FT-FTA		Rebounds			PF	TP	A	T	O	Blk	Stl	Min
			FG	FGA	3PT	FG-FGA	FT	FTA	Off Reb	Def Reb	Tot Reb								
1	ROBINSON,KELVIN	g	4	8	1	2	1	2	2	0	2	1	10	0	0	0	0	0	9
2	SHABAZZ,RONSHAD	g	1	5	1	4	3	4	0	0	0	1	6	1	1	0	0	0	12
5	KINNEY,GRIFFIN	f	3	4	0	0	3	4	1	1	2	1	9	1	0	0	0	0	11
11	LOGAN,EMARIUS	g	1	1	0	0	2	3	0	0	0	0	4	1	1	0	0	0	9
32	JOHNSON,TYRELL	f	1	3	0	0	3	4	0	1	1	1	5	0	0	0	0	0	6
0	JOHNSON,ISAAC		0	0	0	0	2	4	0	4	4	3	2	0	0	0	0	0	9
10	GOOD,PATRICK		5	7	3	5	0	1	0	2	2	1	13	2	0	0	1	1	16
14	HOLLEY,BENNETT		0	2	0	2	2	2	0	0	0	1	2	0	0	0	0	0	7
15	WILSON,JAKE		0	0	0	0	0	0	0	0	0	3	0	0	0	0	0	0	1
22	O'BOYLE,MATT		0	1	0	1	0	0	0	0	0	0	0	2	0	0	0	0	4
24	HINTON,CRAIG		0	1	0	1	0	0	1	1	2	1	0	1	0	0	0	0	6
25	BABIC,JAKE		1	2	1	2	0	0	1	0	1	0	3	0	1	0	0	0	4
34	COTTRELL,ZACH		1	2	0	1	0	0	1	0	1	1	2	1	0	0	0	0	6
TEAM									3	0	3	0			0				
Totals			17	36	6	18	16	24	9	9	18	14	56	9	3	0	1	1	100

FG % Half: 17-36 47.2%
 3FG % Half: 6-18 50.0%
 FT % Half: 16-24 66.7%

Tennessee 53 • 1-1

##	Player	S	Total		3-Ptr		FT-FTA		Rebounds			PF	TP	A	T	O	Blk	Stl	Min
			FG	FGA	3PT	FG-FGA	FT	FTA	Off Reb	Def Reb	Tot Reb								
0	BONE,JORDAN	g	0	1	0	1	0	0	0	0	0	0	0	2	1	0	1	0	5
3	HUBBS III,ROBERT	f	3	3	0	0	0	0	0	0	0	0	6	2	1	0	0	0	15
11	ALEXANDER,KYLE	f	4	6	0	1	3	6	0	4	4	2	11	0	0	1	0	0	14
23	BOWDEN,JORDAN	g	0	2	0	2	2	2	0	1	1	3	2	1	0	0	0	0	9
25	PHILLIPS,SHEMBARI	g	3	3	1	1	1	2	1	1	2	2	8	2	0	1	1	0	13
1	TURNER,LAMONTE		3	5	1	1	6	6	2	1	3	3	13	3	1	0	0	0	14
2	WILLIAMS,GRANT		2	4	0	0	2	2	1	0	1	1	6	1	1	1	0	0	12
5	SCHOFIELD,ADMIRAL		1	2	0	0	0	0	0	1	1	2	2	2	0	0	0	0	8
10	FULKERSON,JOHN		1	1	0	0	0	0	0	0	0	1	2	0	0	0	0	0	2
15	MOSTELLA,DETRICK		1	1	0	0	1	2	0	5	5	2	3	0	0	0	0	0	5
21	EVANS,LEW		0	1	0	1	0	1	0	0	0	1	0	0	0	0	0	0	3
TEAM									0	0	0	0			0				
Totals			18	29	2	7	15	21	4	13	17	17	53	13	4	3	2	2	100

FG % Half: 18-29 62.1%
 3FG % Half: 2-7 50.0%
 FT % Half: 15-21 71.4%

Officials: Anthony Jordan, Tony Henderson, John Hampton
 Technical Fouls: Appalachian State- None. Tennessee- None.

Score by periods	1st	2nd	Total
Appalachian State	38	56	94
Tennessee	50	53	103

Points	In Paint	Off T/O	2nd 2nd Chance	Fast Fast Break	Bench
APP	22	8	10	11	22
UT	24	6	2	8	26

Last FG - APP 2nd-00:15, UT 2nd-02:26.
 APP led for 0:00. UT led for 20:00. Game was tied for 0:00.

Score tied - 0 times
 Lead changed - 0 times

Appalachian State vs Tennessee

11/15/2016; 7:02 p.m. at Knoxville, Tenn. (Thompson-Boling Arena)

Period 2 Play-By-Play

VISITORS: Appalachian State	Time	Score	Margin	HOME: Tennessee
TURNOVER by SHABAZZ,RONSHAD	19:47			
	19:46			STEAL by PHILLIPS,SHEMBARI
	19:44	52-38	H 14	GOOD! DUNK by HUBBS III,ROBERT [FB/PNT]
	19:44			ASSIST by PHILLIPS,SHEMBARI
MISSED 3PTR by SHABAZZ,RONSHAD	19:28			
	19:28			REBOUND (DEF) by ALEXANDER,KYLE
	19:09	54-38	H 16	GOOD! JUMPER by ALEXANDER,KYLE
	19:09			ASSIST by BONE,JORDAN
MISSED JUMPER by JOHNSON,TYRELL	18:58			
	18:58			REBOUND (DEF) by PHILLIPS,SHEMBARI
	18:49			TURNOVER by BONE,JORDAN
	18:49			SUB IN: TURNER,LAMONTE
	18:49			SUB OUT: BONE,JORDAN
	18:36			FOUL by BOWDEN,JORDAN
GOOD! JUMPER by KINNEY,GRIFFIN [PNT]	18:20	54-40	H 14	
ASSIST by LOGAN,EMARIUS	18:20			
	18:00	56-40	H 16	GOOD! JUMPER by ALEXANDER,KYLE [PNT]
	17:47			FOUL by ALEXANDER,KYLE
GOOD! FT by JOHNSON,TYRELL	17:47	56-41	H 15	
GOOD! FT by JOHNSON,TYRELL	17:47	56-42	H 14	
	17:29			MISSED JUMPER by ALEXANDER,KYLE
REBOUND (DEF) by JOHNSON,TYRELL	17:29			
	17:17			FOUL by BOWDEN,JORDAN
	17:17			SUB IN: WILLIAMS,GRANT
	17:17			SUB OUT: BOWDEN,JORDAN
MISSED LAYUP by KINNEY,GRIFFIN	17:13			
	17:13			BLOCK by WILLIAMS,GRANT
	17:11			REBOUND (DEF) by TURNER,LAMONTE
	17:09	58-42	H 16	GOOD! LAYUP by TURNER,LAMONTE [FB/PNT]
GOOD! DUNK by JOHNSON,TYRELL [PNT]	16:54	58-44	H 14	
ASSIST by KINNEY,GRIFFIN	16:54			
	16:35	60-44	H 16	GOOD! JUMPER by WILLIAMS,GRANT [PNT]
	16:35			ASSIST by PHILLIPS,SHEMBARI
	16:30			FOUL by PHILLIPS,SHEMBARI
GOOD! FT by SHABAZZ,RONSHAD	16:30	60-45	H 15	
GOOD! FT by SHABAZZ,RONSHAD	16:30	60-46	H 14	
FOUL by JOHNSON,TYRELL	16:08			
FOUL by ROBINSON,KELVIN	16:07			
	16:07			MISSED FT by PHILLIPS,SHEMBARI
	16:07			REBOUND (DEADB) by TEAM
	16:07	61-46	H 15	GOOD! FT by PHILLIPS,SHEMBARI
SUB IN: BABIC,JAKE	16:07			
SUB OUT: ROBINSON,KELVIN	16:07			
	16:07			SUB IN: SCHOFIELD,ADMIRAL
	16:07			SUB OUT: ALEXANDER,KYLE
TURNOVER by LOGAN,EMARIUS	15:55			
	15:55			TIMEOUT media
SUB IN: HOLLEY,BENNETT	15:55			
SUB IN: GOOD,PATRICK	15:55			
SUB OUT: LOGAN,EMARIUS	15:55			
SUB OUT: JOHNSON,TYRELL	15:55			
	15:39	63-46	H 17	GOOD! JUMPER by TURNER,LAMONTE
	15:39			ASSIST by WILLIAMS,GRANT

VISITORS: Appalachian State	Time	Score	Margin	HOME: Tennessee
MISSED 3PTR by SHABAZZ,RONSHAD	15:23			
REBOUND (OFF) by BABIC,JAKE	15:23			
	15:14			FOUL by TURNER,LAMONTE
GOOD! FT by HOLLEY,BENNETT	15:14	63-47	H 16	
GOOD! FT by HOLLEY,BENNETT	15:14	63-48	H 15	
	14:56	65-48	H 17	GOOD! DUNK by HUBBS III,ROBERT [PNT]
	14:56			ASSIST by SCHOFIELD,ADMIRAL
GOOD! JUMPER by KINNEY,GRIFFIN [PNT]	14:31	65-50	H 15	
	14:21	68-50	H 18	GOOD! 3PTR by PHILLIPS,SHEMBARI
	14:21			ASSIST by TURNER,LAMONTE
GOOD! 3PTR by BABIC,JAKE	14:06	68-53	H 15	
	13:46			MISSED JUMPER by TURNER,LAMONTE
	13:46			REBOUND (OFF) by TURNER,LAMONTE
SUB IN: WILSON,JAKE	13:44			
SUB OUT: KINNEY,GRIFFIN	13:44			
	13:44			SUB IN: ALEXANDER,KYLE
	13:44			SUB OUT: WILLIAMS,GRANT
	13:39	70-53	H 17	GOOD! JUMPER by PHILLIPS,SHEMBARI
	13:24			FOUL by PHILLIPS,SHEMBARI
	13:24			SUB IN: MOSTELLA,DETRICK
	13:24			SUB OUT: PHILLIPS,SHEMBARI
MISSED 3PTR by HOLLEY,BENNETT	13:18			
	13:17			REBOUND (DEF) by MOSTELLA,DETRICK
FOUL by WILSON,JAKE	13:17			
	13:00	72-53	H 19	GOOD! DUNK by ALEXANDER,KYLE [PNT]
	13:00			ASSIST by HUBBS III,ROBERT
	12:53			FOUL by SCHOFIELD,ADMIRAL
GOOD! FT by SHABAZZ,RONSHAD	12:53	72-54	H 18	
MISSED FT by SHABAZZ,RONSHAD	12:53			
	12:53			REBOUND (DEF) by MOSTELLA,DETRICK
FOUL by WILSON,JAKE	12:53			
	12:41			MISSED 3PTR by ALEXANDER,KYLE
REBOUND (DEF) by GOOD,PATRICK	12:41			
MISSED 3PTR by BABIC,JAKE	12:29			
	12:29			REBOUND (DEF) by MOSTELLA,DETRICK
FOUL by WILSON,JAKE	12:18			
	12:18	73-54	H 19	GOOD! FT by TURNER,LAMONTE
	12:18	74-54	H 20	GOOD! FT by TURNER,LAMONTE
SUB IN: JOHNSON,TYRELL	12:18			
SUB OUT: WILSON,JAKE	12:18			
	12:18			SUB IN: FULKERSON,JOHN
	12:18			SUB IN: BONE,JORDAN
	12:18			SUB OUT: TURNER,LAMONTE
	12:18			SUB OUT: HUBBS III,ROBERT
TURNOVER by BABIC,JAKE	12:10			
	12:08			STEAL by BONE,JORDAN
	12:05	76-54	H 22	GOOD! LAYUP by MOSTELLA,DETRICK [FB/PNT]
	12:05			ASSIST by BONE,JORDAN
GOOD! LAYUP by GOOD,PATRICK [FB/PNT]	12:00	76-56	H 20	
	12:00			FOUL by FULKERSON,JOHN
MISSED FT by GOOD,PATRICK	12:00			
	12:00			REBOUND (DEF) by ALEXANDER,KYLE
SUB IN: LOGAN,EMARIUS	12:00			
SUB OUT: BABIC,JAKE	12:00			
FOUL by HOLLEY,BENNETT	11:53			
	11:53			TIMEOUT MEDIA
	11:53			MISSED FT by MOSTELLA,DETRICK
	11:53			REBOUND (DEADB) by TEAM

VISITORS: Appalachian State	Time	Score	Margin	HOME: Tennessee
	11:53	77-56	H 21	GOOD! FT by MOSTELLA,DETRICK
SUB IN: JOHNSON,ISAAC	11:53			
SUB OUT: HOLLEY,BENNETT	11:53			
	11:53			SUB IN: BOWDEN,JORDAN
	11:53			SUB OUT: SCHOFIELD,ADMIRAL
MISSED JUMPER by JOHNSON,TYRELL	11:33			
	11:33			REBOUND (DEF) by MOSTELLA,DETRICK
	11:10	79-56	H 23	GOOD! LAYUP by FULKERSON,JOHN [PNT]
	11:10			ASSIST by BOWDEN,JORDAN
	10:48			FOUL by MOSTELLA,DETRICK
MISSED FT by JOHNSON,TYRELL	10:48			
REBOUND (DEADB) by TEAM	10:48			
GOOD! FT by JOHNSON,TYRELL	10:48	79-57	H 22	
SUB IN: KINNEY,GRIFFIN	10:48			
SUB OUT: JOHNSON,TYRELL	10:48			
	10:48			SUB IN: EVANS,LEW
	10:48			SUB OUT: FULKERSON,JOHN
	10:33			MISSED 3PTR by BONE,JORDAN
REBOUND (DEF) by JOHNSON,ISAAC	10:33			
GOOD! 3PTR by GOOD,PATRICK [FB]	10:26	79-60	H 19	
ASSIST by SHABAZZ,RONSHAD	10:26			
FOUL by SHABAZZ,RONSHAD	10:14			
	10:14	80-60	H 20	GOOD! FT by BOWDEN,JORDAN
	10:14	81-60	H 21	GOOD! FT by BOWDEN,JORDAN
MISSED JUMPER by SHABAZZ,RONSHAD	10:14			
	10:14			REBOUND (DEF) by MOSTELLA,DETRICK
	10:14			SUB IN: TURNER,LAMONTE
	10:14			SUB OUT: BONE,JORDAN
FOUL by JOHNSON,ISAAC	09:32			
	09:32			MISSED FT by EVANS,LEW
REBOUND (DEF) by JOHNSON,ISAAC	09:32			
SUB IN: O'BOYLE,MATT	09:32			
SUB OUT: SHABAZZ,RONSHAD	09:32			
	09:32			SUB IN: WILLIAMS,GRANT
	09:32			SUB OUT: ALEXANDER,KYLE
GOOD! LAYUP by LOGAN,EMARIUS [FB/PNT]	09:27	81-62	H 19	
	09:27			FOUL by MOSTELLA,DETRICK
GOOD! FT by LOGAN,EMARIUS	09:27	81-63	H 18	
	09:27			SUB IN: PHILLIPS,SHEMBARI
	09:27			SUB OUT: MOSTELLA,DETRICK
	09:17			MISSED LAYUP by TURNER,LAMONTE
	09:17			REBOUND (OFF) by WILLIAMS,GRANT
	09:10			MISSED 3PTR by BOWDEN,JORDAN
	09:10			REBOUND (OFF) by PHILLIPS,SHEMBARI
	08:53			MISSED 3PTR by EVANS,LEW
REBOUND (DEF) by KINNEY,GRIFFIN	08:53			
	08:48			FOUL by BOWDEN,JORDAN
MISSED FT by LOGAN,EMARIUS	08:48			
REBOUND (DEADB) by TEAM	08:48			
GOOD! FT by LOGAN,EMARIUS	08:48	81-64	H 17	
SUB IN: HOLLEY,BENNETT	08:48			
SUB OUT: JOHNSON,ISAAC	08:48			
	08:48			SUB IN: HUBBS III,ROBERT
	08:48			SUB OUT: BOWDEN,JORDAN
FOUL by KINNEY,GRIFFIN	08:33			
	08:33	82-64	H 18	GOOD! FT by WILLIAMS,GRANT
	08:33	83-64	H 19	GOOD! FT by WILLIAMS,GRANT
MISSED 3PTR by O'BOYLE,MATT	08:20			

VISITORS: Appalachian State	Time	Score	Margin	HOME: Tennessee
REBOUND (OFF) by KINNEY,GRIFFIN	08:20			
MISSED 3PTR by HOLLEY,BENNETT	08:01			
REBOUND (OFF) by TEAM	08:01			
	07:59			FOUL by EVANS,LEW
TIMEOUT MEDIA	07:59			
MISSED FT by KINNEY,GRIFFIN	07:59			
REBOUND (DEADB) by TEAM	07:59			
GOOD! FT by KINNEY,GRIFFIN	07:59	83-65	H 18	
	07:59			SUB IN: SCHOFIELD,ADMIRAL
	07:59			SUB OUT: EVANS,LEW
	07:32	86-65	H 21	GOOD! 3PTR by TURNER,LAMONTE
	07:32			ASSIST by SCHOFIELD,ADMIRAL
	07:17			FOUL by TURNER,LAMONTE
GOOD! FT by KINNEY,GRIFFIN	07:17	86-66	H 20	
GOOD! FT by KINNEY,GRIFFIN	07:17	86-67	H 19	
SUB IN: SHABAZZ,RONSHAD	07:17			
SUB OUT: LOGAN,EMARIUS	07:17			
	07:08	88-67	H 21	GOOD! LAYUP by PHILLIPS,SHEMBARI [PNT]
GOOD! LAYUP by KINNEY,GRIFFIN [PNT]	06:59	88-69	H 19	
ASSIST by GOOD,PATRICK	06:59			
	06:50	90-69	H 21	GOOD! LAYUP by SCHOFIELD,ADMIRAL [PNT]
	06:50			ASSIST by TURNER,LAMONTE
MISSED 3PTR by SHABAZZ,RONSHAD	06:37			
	06:37			REBOUND (DEF) by SCHOFIELD,ADMIRAL
	06:28	92-69	H 23	GOOD! LAYUP by WILLIAMS,GRANT [FB/PNT]
	06:28			ASSIST by TURNER,LAMONTE
GOOD! 3PTR by GOOD,PATRICK	06:13	92-72	H 20	
ASSIST by O'BOYLE,MATT	06:13			
	05:51			MISSED JUMPER by WILLIAMS,GRANT
REBOUND (DEF) by GOOD,PATRICK	05:51			
GOOD! 3PTR by SHABAZZ,RONSHAD	05:38	92-75	H 17	
ASSIST by O'BOYLE,MATT	05:38			
TIMEOUT 30SEC	05:35			
SUB IN: ROBINSON,KELVIN	05:35			
SUB IN: JOHNSON,ISAAC	05:35			
SUB IN: COTTRELL,ZACH	05:35			
SUB IN: HINTON,CRAIG	05:35			
SUB OUT: SHABAZZ,RONSHAD	05:35			
SUB OUT: O'BOYLE,MATT	05:35			
SUB OUT: KINNEY,GRIFFIN	05:35			
SUB OUT: HOLLEY,BENNETT	05:35			
	05:35			SUB IN: MOSTELLA,DETRICK
	05:35			SUB IN: BOWDEN,JORDAN
	05:35			SUB IN: ALEXANDER,KYLE
	05:35			SUB IN: BONE,JORDAN
	05:35			SUB OUT: TURNER,LAMONTE
	05:35			SUB OUT: HUBBS III,ROBERT
	05:35			SUB OUT: WILLIAMS,GRANT
	05:35			SUB OUT: PHILLIPS,SHEMBARI
FOUL by JOHNSON,ISAAC	05:21			
	05:21			MISSED FT by ALEXANDER,KYLE
	05:21			REBOUND (DEADB) by TEAM
	05:21	93-75	H 18	GOOD! FT by ALEXANDER,KYLE
	05:03			FOUL by SCHOFIELD,ADMIRAL
GOOD! FT by JOHNSON,ISAAC	05:03	93-76	H 17	
MISSED FT by JOHNSON,ISAAC	05:03			
	05:03			REBOUND (DEF) by BOWDEN,JORDAN
	04:49			MISSED JUMPER by SCHOFIELD,ADMIRAL

VISITORS: Appalachian State	Time	Score	Margin	HOME: Tennessee
REBOUND (DEF) by HINTON,CRAIG	04:49			
MISSED 3PTR by HINTON,CRAIG	04:41			
REBOUND (OFF) by COTTRELL,ZACH	04:41			
GOOD! LAYUP by COTTRELL,ZACH [PNT]	04:37	93-78	H 15	
	04:23			MISSED 3PTR by BOWDEN,JORDAN
REBOUND (DEF) by JOHNSON,ISAAC	04:23			
GOOD! LAYUP by ROBINSON,KELVIN [PNT]	04:15	93-80	H 13	
	04:07			TIMEOUT 30SEC
	04:07			TIMEOUT MEDIA
	04:07			SUB IN: WILLIAMS,GRANT
	04:07			SUB IN: HUBBS III,ROBERT
	04:07			SUB OUT: SCHOFIELD,ADMIRAL
	04:07			SUB OUT: MOSTELLA,DETRICK
	03:57			MISSED JUMPER by WILLIAMS,GRANT
REBOUND (DEF) by JOHNSON,ISAAC	03:57			
GOOD! LAYUP by ROBINSON,KELVIN [FB/PNT]	03:53	93-82	H 11	
	03:29	95-82	H 13	GOOD! JUMPER by HUBBS III,ROBERT [PNT]
	03:14			FOUL by ALEXANDER,KYLE
MISSED FT by JOHNSON,ISAAC	03:14			
REBOUND (DEADB) by TEAM	03:14			
GOOD! FT by JOHNSON,ISAAC	03:14	95-83	H 12	
	03:14			SUB IN: TURNER,LAMONTE
	03:14			SUB OUT: BONE,JORDAN
	02:59			FOUL by WILLIAMS,GRANT
	02:59			TURNOVER by WILLIAMS,GRANT
	02:49			FOUL by TURNER,LAMONTE
MISSED FT by ROBINSON,KELVIN	02:49			
REBOUND (DEADB) by TEAM	02:49			
GOOD! FT by ROBINSON,KELVIN	02:49	95-84	H 11	
	02:49			SUB IN: PHILLIPS,SHEMBARI
	02:49			SUB OUT: BOWDEN,JORDAN
	02:26	97-84	H 13	GOOD! JUMPER by ALEXANDER,KYLE
	02:26			ASSIST by HUBBS III,ROBERT
MISSED LAYUP by ROBINSON,KELVIN	02:05			
	02:05			BLOCK by PHILLIPS,SHEMBARI
REBOUND (OFF) by TEAM	02:05			
GOOD! LAYUP by ROBINSON,KELVIN [PNT]	02:04	97-86	H 11	
ASSIST by COTTRELL,ZACH	02:04			
FOUL by GOOD,PATRICK	02:00			
	02:00	98-86	H 12	GOOD! FT by TURNER,LAMONTE
	02:00	99-86	H 13	GOOD! FT by TURNER,LAMONTE
GOOD! 3PTR by ROBINSON,KELVIN	01:47	99-89	H 10	
ASSIST by GOOD,PATRICK	01:47			
	01:27			TURNOVER by HUBBS III,ROBERT
MISSED 3PTR by GOOD,PATRICK	01:18			
REBOUND (OFF) by ROBINSON,KELVIN	01:18			
MISSED LAYUP by ROBINSON,KELVIN	01:10			
REBOUND (OFF) by HINTON,CRAIG	01:10			
GOOD! 3PTR by GOOD,PATRICK	00:58	99-92	H 7	
ASSIST by HINTON,CRAIG	00:58			
TIMEOUT TEAM	00:57			
FOUL by HINTON,CRAIG	00:51			
	00:51	100-92	H 8	GOOD! FT by TURNER,LAMONTE
	00:51	101-92	H 9	GOOD! FT by TURNER,LAMONTE
MISSED LAYUP by ROBINSON,KELVIN	00:44			
	00:44			BLOCK by ALEXANDER,KYLE
REBOUND (OFF) by TEAM	00:43			
MISSED 3PTR by GOOD,PATRICK	00:40			

VISITORS: Appalachian State	Time	Score	Margin	HOME: Tennessee
REBOUND (OFF) by ROBINSON,KELVIN	00:40			
MISSED 3PTR by COTTRELL,ZACH	00:35			
	00:35			REBOUND (DEF) by ALEXANDER,KYLE
FOUL by JOHNSON,ISAAC	00:33			
	00:33			MISSED FT by ALEXANDER,KYLE
	00:33			REBOUND (DEADB) by TEAM
	00:33	102-92	H 10	GOOD! FT by ALEXANDER,KYLE
MISSED 3PTR by ROBINSON,KELVIN	00:21			
	00:21			REBOUND (DEF) by ALEXANDER,KYLE
FOUL by COTTRELL,ZACH	00:20			
	00:20	103-92	H 11	GOOD! FT by ALEXANDER,KYLE
	00:20			MISSED FT by ALEXANDER,KYLE
	00:20			REBOUND (OFF) by TURNER,LAMONTE
	00:18			TURNOVER by TURNER,LAMONTE
STEAL by GOOD,PATRICK	00:16			
GOOD! LAYUP by GOOD,PATRICK [FB/PNT]	00:15	103-94	H 9	

Appalachian State 94, Tennessee 103

Period 2-only	In Paint	Off T/O	2nd Chance	Fast Break	Bench	
APP	22	8	10	11	22	Score tied - 0 times
UT	24	6	2	8	26	Lead changed - 0 times

Appalachian State vs Tennessee
11/15/2016; 7:02 p.m. at Knoxville, Tenn. (Thompson-Boling Arena)
Scoring/Runs Reference

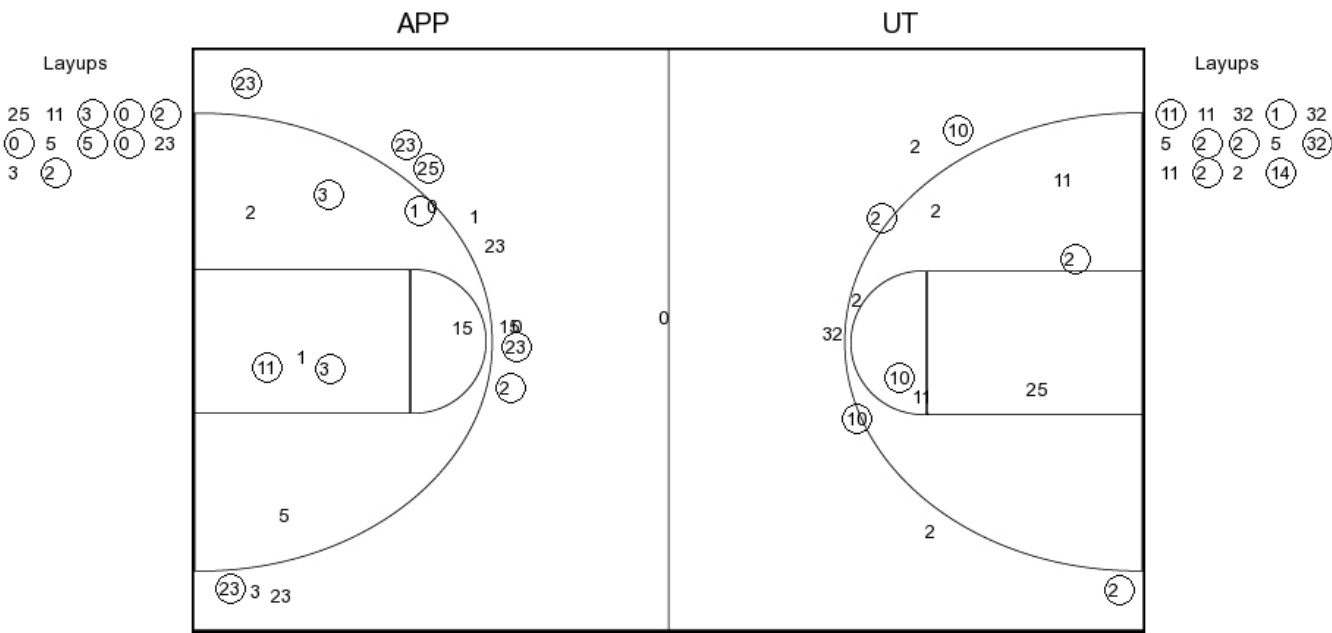
Period 1					
Appalachian State	Score			Marg	Tennessee
	0-3	3	3		BOWDEN 3PTR - 19:56
19:47 - SHABAZZ 3PTR	3	3-3	0		
19:17 - SHABAZZ JUMPER	2	5-3	-2		
18:40 - LOGAN LAYUP [P]	2	7-3	-4		
	7-5	-2	2		HUBBS III LAYUP [P] - 17:49
	7-7	0	2		HUBBS III JUMPER - 17:24
17:03 - ROBINSON LAYUP [P]	2	9-7	-2		
	9-9	0	2		ALEXANDER JUMPER [P] - 16:55
15:44 - KINNEY FT	1	10-9	-1		
15:44 - KINNEY FT	1	11-9	-2		
	11-10	-1	1		BONE FT - 14:20
	11-13	2	3		WILLIAMS 3PTR - 13:21
	11-15	4	2		BONE LAYUP [P] [F] - 12:49
	11-18	7	3		PHILLIPS 3PTR - 12:30
	11-20	9	2		WILLIAMS LAYUP [P] - 11:45
	11-22	11	2		BONE LAYUP [P] - 11:15
	11-23	12	1		HUBBS III FT - 10:41
	11-24	13	1		HUBBS III FT - 10:41
	11-26	15	2		SCHOFIELD LAYUP [P] [F] - 09:18
	11-27	16	1		SCHOFIELD FT - 09:18
	11-30	19	3		BOWDEN 3PTR - 08:22
08:13 - SHABAZZ LAYUP [P]	2	13-30	17		
	13-32	19	2		HUBBS III JUMPER [P] - 07:53
07:30 - JOHNSON FT	1	14-32	18		
	14-35	21	3		BOWDEN 3PTR - 07:22
	14-36	22	1		MOSTELLA FT - 06:58
	14-37	23	1		MOSTELLA FT - 06:58
06:38 - GOOD JUMPER	2	16-37	21		
	16-39	23	2		BONE LAYUP [P] - 06:12
	16-42	26	3		BOWDEN 3PTR - 05:00
04:52 - SHABAZZ LAYUP [P] [F]	2	18-42	24		
04:52 - SHABAZZ FT	1	19-42	23		
03:56 - GOOD 3PTR	3	22-42	20		
03:51 - KINNEY FT	1	23-42	19		
03:51 - KINNEY FT	1	24-42	18		
	24-43	19	1		HUBBS III FT - 03:33
	24-44	20	1		HUBBS III FT - 03:33
03:14 - JOHNSON LAYUP [P]	2	26-44	18		
	26-46	20	2		TURNER JUMPER - 02:46
02:33 - SHABAZZ 3PTR	3	29-46	17		
02:00 - JOHNSON FT	1	30-46	16		
01:37 - SHABAZZ LAYUP [P] [F]	2	32-46	14		
00:50 - GOOD 3PTR [F]	3	35-46	11		
	35-47	12	1		FULKERSON FT - 00:40
	35-48	13	1		FULKERSON FT - 00:40

Period 2					
Appalachian State	Score			Marg	Tennessee
	38-52	14	2		HUBBS III DUNK [P] [F] - 19:44
	38-54	16	2		ALEXANDER JUMPER - 19:09
18:20 - KINNEY JUMPER [P]	2	40-54	14		
	40-56	16	2		ALEXANDER JUMPER [P] - 18:00
17:47 - JOHNSON FT	1	41-56	15		
17:47 - JOHNSON FT	1	42-56	14		
	42-58	16	2		TURNER LAYUP [P] [F] - 17:09
16:54 - JOHNSON DUNK [P]	2	44-58	14		
	44-60	16	2		WILLIAMS JUMPER [P] - 16:35
16:30 - SHABAZZ FT	1	45-60	15		
16:30 - SHABAZZ FT	1	46-60	14		
	46-61	15	1		PHILLIPS FT - 16:07
	46-63	17	2		TURNER JUMPER - 15:39
15:14 - HOLLEY FT	1	47-63	16		
15:14 - HOLLEY FT	1	48-63	15		
	48-65	17	2		HUBBS III DUNK [P] - 14:56
14:31 - KINNEY JUMPER [P]	2	50-65	15		
	50-68	18	3		PHILLIPS 3PTR - 14:21
14:06 - BABIC 3PTR	3	53-68	15		
	53-70	17	2		PHILLIPS JUMPER - 13:39
	53-72	19	2		ALEXANDER DUNK [P] - 13:00
12:53 - SHABAZZ FT	1	54-72	18		
	54-73	19	1		TURNER FT - 12:18
	54-74	20	1		TURNER FT - 12:18
	54-76	22	2		MOSTELLA LAYUP [P] [F] - 12:05
12:00 - GOOD LAYUP [P] [F]	2	56-76	20		
	56-77	21	1		MOSTELLA FT - 11:53
	56-79	23	2		FULKERSON LAYUP [P] - 11:10
10:48 - JOHNSON FT	1	57-79	22		
10:26 - GOOD 3PTR [F]	3	60-79	19		
	60-80	20	1		BOWDEN FT - 10:14
	60-81	21	1		BOWDEN FT - 10:14
09:27 - LOGAN LAYUP [P] [F]	2	62-81	19		
09:27 - LOGAN FT	1	63-81	18		
08:48 - LOGAN FT	1	64-81	17		
	64-82	18	1		WILLIAMS FT - 08:33
	64-83	19	1		WILLIAMS FT - 08:33
07:59 - KINNEY FT	1	65-83	18		
	65-86	21	3		TURNER 3PTR - 07:32
07:17 - KINNEY FT	1	66-86	20		
07:17 - KINNEY FT	1	67-86	19		
	67-88	21	2		PHILLIPS LAYUP [P] - 07:08
06:59 - KINNEY LAYUP [P]	2	69-88	19		
	69-90	21	2		SCHOFIELD LAYUP [P] - 06:50

00:33 - HOLLEY LAYUP [P] 2	37-48 11		
00:33 - HOLLEY FT 1	38-48 10		
	38-50 12 2	WILLIAMS LAYUP [P]	- 00:10

	69-92 23 2	WILLIAMS LAYUP [P] [F]	- 06:28
06:13 - GOOD 3PTR 3	72-92 20		
05:38 - SHABAZZ 3PTR 3	75-92 17		
	75-93 18 1	ALEXANDER FT - 05:21	
05:03 - JOHNSON FT 1	76-93 17		
04:37 - COTTRELL LAYUP [P] 2	78-93 15		
04:15 - ROBINSON LAYUP [P] 2	80-93 13		
03:53 - ROBINSON LAYUP [P] [F] 2	82-93 11		
	82-95 13 2	HUBBS III JUMPER [P] - 03:29	
03:14 - JOHNSON FT 1	83-95 12		
02:49 - ROBINSON FT 1	84-95 11		
	84-97 13 2	ALEXANDER JUMPER - 02:26	
02:04 - ROBINSON LAYUP [P] 2	86-97 11		
	86-98 12 1	TURNER FT - 02:00	
	86-99 13 1	TURNER FT - 02:00	
01:47 - ROBINSON 3PTR 3	89-99 10		
00:58 - GOOD 3PTR 3	92-99 7		
	92-100 8 1	TURNER FT - 00:51	
	92-101 9 1	TURNER FT - 00:51	
	92-102 10 1	ALEXANDER FT - 00:33	
	92-103 11 1	ALEXANDER FT - 00:20	
00:15 - GOOD LAYUP [P] [F] 2	94-103 9		

PERIOD 1



APP PERIOD 1

FG Made	13
FG Attempted	29
3PFG Made	4
3PFG Attempted	8

UT PERIOD 1

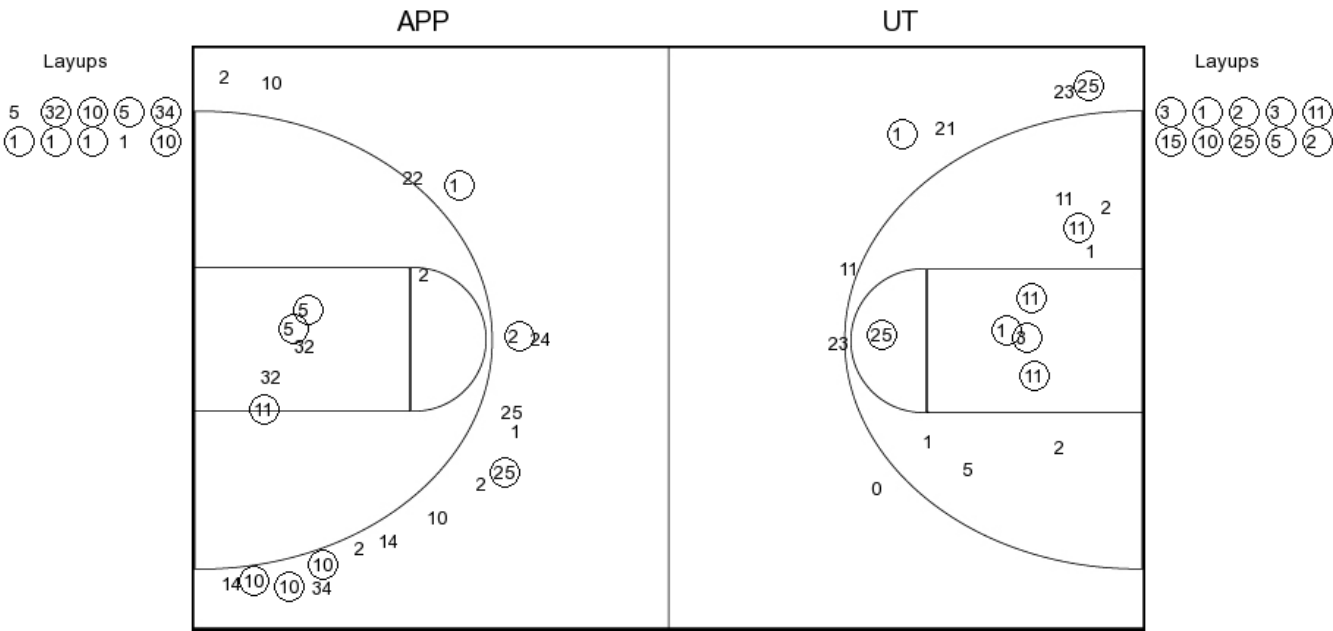
FG Made	17
FG Attempted	34
3PFG Made	6
3PFG Attempted	12

Appalachian State vs Tennessee

OFFICIAL SHOT CHART

11/15/2016 at Knoxville, Tenn. (Thompson-Boling Arena)

PERIOD 2



APP PERIOD 2

FG Made	17
FG Attempted	36
3PFG Made	6
3PFG Attempted	18

UT PERIOD 2

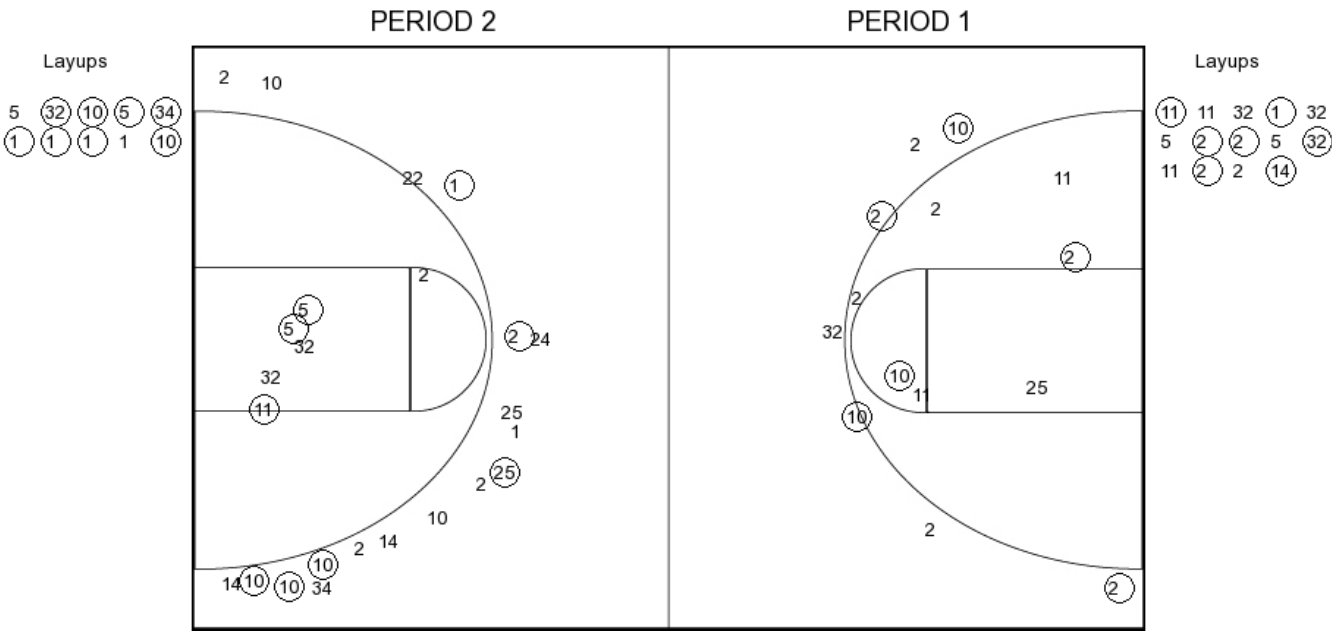
FG Made	18
FG Attempted	29
3PFG Made	2
3PFG Attempted	7

Appalachian State vs Tennessee

OFFICIAL SHOT CHART

11/15/2016 at Knoxville, Tenn. (Thompson-Boling Arena)

Appalachian State



APP PERIOD 1

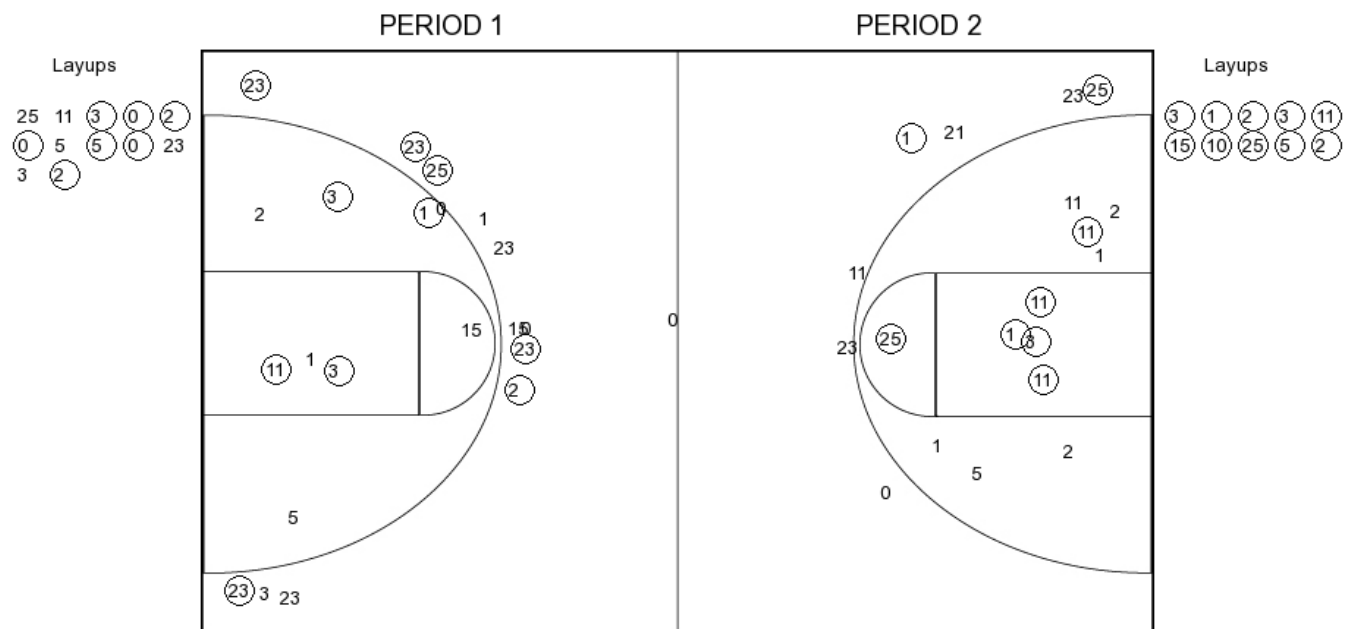
FG Made	13
FG Attempted	29
3PFG Made	4
3PFG Attempted	8

APP PERIOD 2

FG Made	17
FG Attempted	36
3PFG Made	6
3PFG Attempted	18

OFFICIAL SHOT CHART

Tennessee



FG Made	17
FG Attempted	34
3PFG Made	6
3PFG Attempted	12

FG Made	18
FG Attempted	29
3PFG Made	2
3PFG Attempted	7