



HARDING VS. OUACHITA

2/9/2017

Searcy, Ark. (Rhodes-Reaves Field House)

FINAL STATS

Harding

(18-3, 15-1 GAC)

85

Ouachita Baptist

(9-13, 6-10 GAC)

54

Start Time: 5:30 p.m.

Officials: Felicia Davis, Denise Tyus and Herb Burl

Attendance: 782

Official Basketball Box Score -- Game Totals -- Final Statistics
Ouachita Baptist vs Harding
2/9/2017 5:30 p.m. at Searcy, Ark. (Rhodes-Reaves Field House)

Ouachita Baptist 54 - 9-13, 6-10 GAC

| ## | Player | | Total | | 3-Ptr | FT-FTA | Rebounds | | | PF | TP | A | TO | Blk | Stl | Min |
|--------|------------------|---|--------|--------|--------|--------|----------|-----|-----|----|----|----|----|-----|-----|-----|
| | | | FG-FGA | FG-FGA | FG-FGA | | Off | Def | Tot | | | | | | | |
| 13 | MILLER,MORGAN | g | 0-1 | 0-1 | 0-0 | 0-0 | 1 | 2 | 3 | 1 | 0 | 4 | 0 | 3 | 2 | 18 |
| 20 | CALDWELL,BRIA | g | 1-5 | 0-2 | 3-4 | 0-0 | 0 | 1 | 1 | 2 | 5 | 1 | 5 | 0 | 1 | 15 |
| 21 | BEGNAUD,SHAKYLA | f | 1-6 | 0-1 | 0-2 | 0-0 | 0 | 5 | 5 | 2 | 2 | 0 | 1 | 1 | 2 | 15 |
| 23 | HUELL,ALIVIA | g | 0-2 | 0-0 | 0-0 | 0-0 | 0 | 1 | 1 | 5 | 0 | 1 | 1 | 0 | 0 | 12 |
| 33 | BULLARD,KORI | f | 3-8 | 2-5 | 0-0 | 0-0 | 0 | 2 | 2 | 0 | 8 | 0 | 0 | 1 | 0 | 15 |
| 03 | BOWLES,TAYLOR | | 1-9 | 0-4 | 8-8 | 0-0 | 1 | 4 | 5 | 3 | 10 | 4 | 2 | 0 | 0 | 22 |
| 04 | CROSBY,HAILEE | | 0-2 | 0-2 | 0-0 | 0-0 | 0 | 2 | 2 | 0 | 0 | 2 | 0 | 0 | 0 | 22 |
| 10 | MCCANN,STEPHANIE | | 0-1 | 0-0 | 0-0 | 0-0 | 1 | 2 | 3 | 0 | 0 | 0 | 0 | 0 | 0 | 9 |
| 24 | OWENS,CHASIDEE | | 5-10 | 1-2 | 0-0 | 0-0 | 0 | 2 | 2 | 0 | 11 | 1 | 1 | 1 | 0 | 20 |
| 25 | BYRAM,SHELBI | | 1-2 | 0-1 | 0-1 | 0-1 | 1 | 0 | 1 | 0 | 2 | 0 | 1 | 0 | 0 | 8 |
| 30 | BRITTAIN,MADISON | | 5-11 | 3-6 | 3-4 | 0-0 | 0 | 2 | 2 | 2 | 16 | 0 | 3 | 0 | 1 | 19 |
| 45 | SPRADLIN,LAURA | | 0-1 | 0-0 | 0-0 | 0-0 | 0 | 1 | 1 | 2 | 0 | 0 | 0 | 0 | 0 | 5 |
| 50 | KAPLER,KATIE | | 0-3 | 0-1 | 0-0 | 0-0 | 1 | 4 | 5 | 4 | 0 | 1 | 2 | 1 | 1 | 20 |
| TEAM | | | | | | | 4 | 0 | 4 | 0 | | | 1 | | | |
| TOTALS | | | 17-61 | 6-25 | 14-19 | | 9 | 28 | 37 | 21 | 54 | 14 | 17 | 7 | 7 | 200 |

Deadball Rebounds: 1,0

| | | | | | | | | | | | | | | | | |
|-------|-----------|------|-------|-----------|------|-------|---------|-------|--------|---------|------|--|--|--|-------|--|
| FG % | 1st Half: | 8-31 | 25.8% | 2nd Half: | 9-30 | 30.0% | Game: | 17-61 | 27.9% | | | | | | | |
| | 1st Qtr | 2-12 | 16.7% | 2nd Qtr | 6-19 | 31.6% | 3rd Qtr | 5-14 | 35.7% | 4th Qtr | 4-16 | | | | 25.0% | |
| 3FG % | 1st Half: | 3-10 | 30.0% | 2nd Half: | 3-15 | 20.0% | Game: | 6-25 | 24.0% | | | | | | | |
| | 1st Qtr | 1-4 | 25.0% | 2nd Qtr | 2-6 | 33.3% | 3rd Qtr | 2-6 | 33.3% | 4th Qtr | 1-9 | | | | 11.1% | |
| FT % | 1st Half: | 6-10 | 60.0% | 2nd Half: | 8-9 | 88.9% | Game: | 14-19 | 73.7% | | | | | | | |
| | 1st Qtr | 4-6 | 66.7% | 2nd Qtr | 2-4 | 50.0% | 3rd Qtr | 4-4 | 100.0% | 4th Qtr | 4-5 | | | | 80.0% | |

Harding 85 - 18-3, 15-1 GAC

| ## | Player | | Total | | 3-Ptr | FT-FTA | Rebounds | | | PF | TP | A | TO | Blk | Stl | Min |
|--------|---------------------|---|--------|--------|--------|--------|----------|-----|-----|----|----|----|----|-----|-----|-----|
| | | | FG-FGA | FG-FGA | FG-FGA | | Off | Def | Tot | | | | | | | |
| 03 | MILLER,FALAN | g | 2-6 | 1-4 | 2-2 | 0-0 | 1 | 1 | 2 | 4 | 7 | 2 | 1 | 1 | 0 | 18 |
| 13 | PADGETT,PEYTON | g | 3-7 | 1-1 | 0-0 | 0-0 | 2 | 7 | 9 | 3 | 7 | 4 | 2 | 1 | 1 | 34 |
| 14 | HANEY,A'NDREA | g | 2-7 | 0-0 | 6-7 | 0-0 | 2 | 0 | 2 | 4 | 10 | 7 | 0 | 0 | 0 | 16 |
| 21 | LAYROCK,SYDNEY | f | 5-13 | 2-6 | 3-5 | 0-0 | 3 | 10 | 13 | 0 | 15 | 1 | 3 | 0 | 1 | 30 |
| 33 | JONES,SYDNIE | f | 6-12 | 0-0 | 2-2 | 0-0 | 2 | 8 | 10 | 2 | 14 | 2 | 4 | 3 | 1 | 31 |
| 00 | NADEAU,JENNI | | 0-2 | 0-0 | 0-0 | 0-0 | 0 | 0 | 0 | 1 | 0 | 0 | 0 | 0 | 0 | 3 |
| 01 | MOYER,CORREY | | 2-6 | 1-2 | 1-2 | 0-0 | 2 | 2 | 4 | 3 | 6 | 0 | 1 | 0 | 0 | 19 |
| 15 | JAMESON,HANNAH | | 0-0 | 0-0 | 1-2 | 0-0 | 0 | 0 | 0 | 0 | 1 | 1 | 0 | 0 | 0 | 9 |
| 23 | HEIDEBRECHT,CHELSE/ | | 0-4 | 0-3 | 2-4 | 0-0 | 1 | 1 | 2 | 3 | 2 | 2 | 1 | 0 | 2 | 17 |
| 30 | HOGUE,CAROLINE | | 10-15 | 2-4 | 1-2 | 0-0 | 1 | 7 | 8 | 0 | 23 | 1 | 3 | 3 | 3 | 23 |
| TEAM | | | | | | | 4 | 3 | 7 | 0 | | | 0 | | | |
| TOTALS | | | 30-72 | 7-20 | 18-26 | | 18 | 39 | 57 | 20 | 85 | 20 | 15 | 8 | 8 | 200 |

Deadball Rebounds: 4,0

| | | | | | | | | | | | | | | | | |
|-------|-----------|-------|-------|-----------|-------|-------|---------|-------|-------|---------|------|--|--|--|-------|--|
| FG % | 1st Half: | 17-39 | 43.6% | 2nd Half: | 13-33 | 39.4% | Game: | 30-72 | 41.7% | | | | | | | |
| | 1st Qtr | 11-20 | 55.0% | 2nd Qtr | 6-19 | 31.6% | 3rd Qtr | 8-19 | 42.1% | 4th Qtr | 5-14 | | | | 35.7% | |
| 3FG % | 1st Half: | 4-12 | 33.3% | 2nd Half: | 3-8 | 37.5% | Game: | 7-20 | 35.0% | | | | | | | |
| | 1st Qtr | 3-5 | 60.0% | 2nd Qtr | 1-7 | 14.3% | 3rd Qtr | 1-4 | 25.0% | 4th Qtr | 2-4 | | | | 50.0% | |
| FT % | 1st Half: | 10-16 | 62.5% | 2nd Half: | 8-10 | 80.0% | Game: | 18-26 | 69.2% | | | | | | | |
| | 1st Qtr | 6-9 | 66.7% | 2nd Qtr | 4-7 | 57.1% | 3rd Qtr | 5-6 | 83.3% | 4th Qtr | 3-4 | | | | 75.0% | |

Officials: Felicia Davis, Denise Tyus and Herb Burl
 Technical Fouls: Ouachita Baptist- TEAM; Harding- None.
 Attendance: 782

| Score by periods | 1st | 2nd | 3rd | 4th | Total |
|------------------|-----|-----|-----|-----|-------|
| Ouachita Baptist | 9 | 16 | 16 | 13 | 54 |
| Harding | 31 | 17 | 22 | 15 | 85 |

| | In | Off | 2nd | Fast | |
|--------|-------|-----|--------|-------|-------|
| Points | Paint | T/O | Chance | Break | Bench |
| OUA | 16 | 9 | 7 | 4 | 39 |
| HU | 42 | 20 | 7 | 8 | 32 |

Last FG - OUA 4th-01:58, HU 4th-00:39.
 Largest lead - Ouachita Baptist by ; Harding by 33 3rd-01:30
 OUA led for 0:00. HU led for 39:19. Game was tied for 0:41.

Score tied - 0 times
 Lead changed - 0 times

Official Basketball Box Score -- Game Totals -- First Half Statistics
Ouachita Baptist vs Harding
2/9/2017 5:30 p.m. at Searcy, Ark. (Rhodes-Reaves Field House)

Ouachita Baptist 25 • 9-13, 6-10 GAC

| ## | Player | | Total | | 3-Ptr | FT-FTA | Rebounds | | | PF | TP | A | TO | Blk | Stl | Min |
|--------|------------------|---|---------|--------|--------|---------|----------|-------|-------|------|-------|---|----|-----|-----|-----|
| | | | FG-FGA | FG-FGA | FG-FGA | | Off | Def | Tot | | | | | | | |
| 13 | MILLER,MORGAN | g | 0-0 | 0-0 | 0-0 | 0-0 | 1 | 1 | 2 | 0 | 0 | 3 | 0 | 1 | 2 | 10 |
| 20 | CALDWELL,BRIA | g | 0-3 | 0-1 | 1-2 | 0-0 | 0 | 1 | 1 | 1 | 1 | 0 | 3 | 0 | 0 | 10 |
| 21 | BEGNAUD,SHAKYLA | f | 1-5 | 0-1 | 0-2 | 0-0 | 0 | 5 | 5 | 2 | 2 | 0 | 1 | 0 | 1 | 10 |
| 23 | HUELL,ALIVIA | g | 0-2 | 0-0 | 0-0 | 0-0 | 0 | 1 | 1 | 3 | 0 | 1 | 1 | 0 | 0 | 10 |
| 33 | BULLARD,KORI | f | 3-6 | 2-3 | 0-0 | 0-0 | 0 | 1 | 1 | 0 | 8 | 0 | 0 | 1 | 0 | 10 |
| 03 | BOWLES,TAYLOR | | 0-4 | 0-2 | 4-4 | 0-0 | 0 | 2 | 2 | 3 | 4 | 3 | 0 | 0 | 0 | 10 |
| 04 | CROSBY,HAILEE | | 0-0 | 0-0 | 0-0 | 0-0 | 0 | 1 | 1 | 0 | 0 | 0 | 0 | 0 | 0 | 10 |
| 10 | MCCANN,STEPHANIE | | 0-0 | 0-0 | 0-0 | 0-0 | 0 | 0 | 0 | 0 | 0 | 0 | 0 | 0 | 0 | 0 |
| 24 | OWENS,CHASIDEE | | 3-7 | 0-1 | 0-0 | 0-0 | 0 | 2 | 2 | 0 | 6 | 0 | 1 | 0 | 0 | 10 |
| 25 | BYRAM,SHELBI | | 0-0 | 0-0 | 0-0 | 0-0 | 0 | 0 | 0 | 0 | 0 | 0 | 0 | 0 | 0 | 0 |
| 30 | BRITTAIN,MADISON | | 1-3 | 1-2 | 1-2 | 0-0 | 0 | 1 | 1 | 1 | 4 | 0 | 1 | 0 | 1 | 10 |
| 45 | SPRADLIN,LAURA | | 0-0 | 0-0 | 0-0 | 0-0 | 0 | 0 | 0 | 0 | 0 | 0 | 0 | 0 | 0 | 0 |
| 50 | KAPLER,KATIE | | 0-1 | 0-0 | 0-0 | 0-0 | 0 | 2 | 2 | 3 | 0 | 0 | 1 | 0 | 0 | 10 |
| TEAM | | | | | | | 2 | 0 | 2 | 0 | | | 0 | | | |
| Totals | | | 8-31 | 3-10 | 6-10 | | 3 | 17 | 20 | 13 | 25 | 7 | 8 | 2 | 4 | 100 |
| FG % | | | 1st Qtr | 2-12 | 16.7% | 2nd Qtr | 6-19 | 31.6% | Half: | 8-31 | 25.8% | | | | | |
| 3FG % | | | 1st Qtr | 1-4 | 25.0% | 2nd Qtr | 2-6 | 33.3% | Half: | 3-10 | 30.0% | | | | | |
| FT % | | | 1st Qtr | 4-6 | 66.7% | 2nd Qtr | 2-4 | 50.0% | Half: | 6-10 | 60.0% | | | | | |

Harding 48 • 18-3, 15-1 GAC

| ## | Player | | Total | | 3-Ptr | FT-FTA | Rebounds | | | PF | TP | A | TO | Blk | Stl | Min |
|--------|---------------------|---|---------|--------|--------|---------|----------|-------|-------|-------|-------|----|----|-----|-----|-----|
| | | | FG-FGA | FG-FGA | FG-FGA | | Off | Def | Tot | | | | | | | |
| 03 | MILLER,FALAN | g | 1-3 | 1-2 | 0-0 | 0-0 | 0 | 0 | 0 | 3 | 3 | 1 | 0 | 1 | 0 | 9 |
| 13 | PADGETT,PEYTON | g | 2-5 | 1-1 | 0-0 | 0-0 | 1 | 5 | 6 | 1 | 5 | 4 | 1 | 0 | 0 | 19 |
| 14 | HANEY,A'NDREA | g | 2-3 | 0-0 | 2-3 | 0-0 | 0 | 0 | 0 | 2 | 6 | 2 | 0 | 0 | 0 | 5 |
| 21 | LAYROCK,SYDNEY | f | 4-8 | 1-3 | 3-5 | 0-0 | 3 | 7 | 10 | 0 | 12 | 0 | 1 | 0 | 0 | 18 |
| 33 | JONES,SYDNIE | f | 1-3 | 0-0 | 2-2 | 0-0 | 0 | 3 | 3 | 1 | 4 | 1 | 1 | 2 | 1 | 13 |
| 00 | NADEAU,JENNI | | 0-0 | 0-0 | 0-0 | 0-0 | 0 | 0 | 0 | 0 | 0 | 0 | 0 | 0 | 0 | 0 |
| 01 | MOYER,CORREY | | 1-4 | 0-1 | 1-2 | 0-0 | 2 | 1 | 3 | 1 | 3 | 0 | 0 | 0 | 0 | 11 |
| 15 | JAMESON,HANNAH | | 0-0 | 0-0 | 0-0 | 0-0 | 0 | 0 | 0 | 0 | 0 | 0 | 0 | 0 | 0 | 0 |
| 23 | HEIDEBRECHT,CHELSE/ | | 0-4 | 0-3 | 2-4 | 0-0 | 1 | 1 | 2 | 3 | 2 | 2 | 1 | 0 | 0 | 13 |
| 30 | HOGUE,CAROLINE | | 6-9 | 1-2 | 0-0 | 0-0 | 0 | 6 | 6 | 0 | 13 | 0 | 2 | 1 | 2 | 12 |
| TEAM | | | | | | | 2 | 0 | 2 | 0 | | | 0 | | | |
| Totals | | | 17-39 | 4-12 | 10-16 | | 9 | 23 | 32 | 11 | 48 | 10 | 6 | 4 | 3 | 100 |
| FG % | | | 1st Qtr | 11-20 | 55.0% | 2nd Qtr | 6-19 | 31.6% | Half: | 17-39 | 43.6% | | | | | |
| 3FG % | | | 1st Qtr | 3-5 | 60.0% | 2nd Qtr | 1-7 | 14.3% | Half: | 4-12 | 33.3% | | | | | |
| FT % | | | 1st Qtr | 6-9 | 66.7% | 2nd Qtr | 4-7 | 57.1% | Half: | 10-16 | 62.5% | | | | | |

Officials: Felicia Davis, Denise Tyus and Herb Burl
 Technical Fouls: Ouachita Baptist- None. Harding- None.

| Score by periods | 1st | 2nd | 3rd | 4th | Total |
|------------------|-----|-----|-----|-----|-------|
| Ouachita Baptist | 9 | 16 | 16 | 13 | 54 |
| Harding | 31 | 17 | 22 | 15 | 85 |

| Points | In | Off | 2nd | Fast | Bench |
|--------|-------|-----|--------|-------|-------|
| | Paint | T/O | Chance | Break | |
| OUA | 8 | 5 | 5 | 4 | 14 |
| | 26 | 12 | 7 | 6 | 18 |

Last FG - OUA 2nd-00:19, HU 2nd-00:54.
 OUA led for 0:00. HU led for 19:19. Game was tied for 0:41.

Score tied - 0 times
 Lead changed - 0 times

Ouachita Baptist vs Harding
2/9/2017; 5:30 p.m. at Searcy, Ark. (Rhodes-Reaves Field House)
Period 1 Play-By-Play

| VISITORS: Ouachita Baptist | Time | Score | Margin | HOME: Harding |
|----------------------------------|-------|-------|--------|--|
| | 09:43 | | | FOUL by HANEY,A'NDREA |
| MISSED JUMPER by HUELL,ALIVIA | 09:33 | | | |
| | 09:33 | | | BLOCK by MILLER,FALAN |
| | 09:31 | | | REBOUND (DEF) by LAYROCK,SYDNEY |
| | 09:19 | | | MISSED LAYUP by MILLER,FALAN |
| REBOUND (DEF) by MILLER,MORGAN | 09:19 | | | |
| | 09:07 | | | FOUL by JONES,SYDNIE |
| | 09:02 | | | FOUL by MILLER,FALAN |
| | 08:49 | 2-0 | H 2 | GOOD! LAYUP by JONES,SYDNIE [PNT] |
| MISSED JUMPER by BULLARD,KORI | 08:45 | | | |
| | 08:45 | | | REBOUND (DEF) by LAYROCK,SYDNEY |
| | 08:38 | 5-0 | H 5 | GOOD! 3PTR by LAYROCK,SYDNEY |
| | 08:38 | | | ASSIST by JONES,SYDNIE |
| TURNOVER by HUELL,ALIVIA | 08:38 | | | |
| FOUL by HUELL,ALIVIA | 07:58 | | | |
| | 07:55 | | | MISSED LAYUP by JONES,SYDNIE |
| REBOUND (DEF) by HUELL,ALIVIA | 07:55 | | | |
| FOUL by CALDWELL,BRIA | 07:51 | | | |
| TURNOVER by CALDWELL,BRIA | 07:51 | | | |
| FOUL by HUELL,ALIVIA | 07:44 | | | |
| | 07:44 | | | MISSED FT by HANEY,A'NDREA |
| | 07:44 | | | REBOUND (DEADB) by TEAM |
| | 07:44 | 6-0 | H 6 | GOOD! FT by HANEY,A'NDREA |
| | 07:44 | | | SUB IN: HOGUE,CAROLINE |
| | 07:44 | | | SUB OUT: MILLER,FALAN |
| | 07:38 | | | FOUL by PADGETT,PEYTON |
| MISSED 3PTR by CALDWELL,BRIA | 07:27 | | | |
| | 07:27 | | | REBOUND (DEF) by LAYROCK,SYDNEY |
| | 07:23 | 8-0 | H 8 | GOOD! LAYUP by PADGETT,PEYTON [FB/PNT] |
| | 07:23 | | | ASSIST by HANEY,A'NDREA |
| GOOD! JUMPER by BULLARD,KORI | 07:08 | 8-2 | H 6 | |
| ASSIST by MILLER,MORGAN | 07:08 | | | |
| | 06:55 | | | TURNOVER by HOGUE,CAROLINE |
| STEAL by BEGNAUD,SHAKYLA | 06:54 | | | |
| TURNOVER by BEGNAUD,SHAKYLA | 06:41 | | | |
| | 06:40 | | | STEAL by JONES,SYDNIE |
| | 06:35 | 11-2 | H 9 | GOOD! 3PTR by PADGETT,PEYTON |
| | 06:35 | | | ASSIST by HANEY,A'NDREA |
| MISSED JUMPER by BEGNAUD,SHAKYLA | 06:18 | | | |
| | 06:18 | | | REBOUND (DEF) by PADGETT,PEYTON |
| | 06:09 | | | MISSED LAYUP by HANEY,A'NDREA |
| REBOUND (DEF) by BEGNAUD,SHAKYLA | 06:09 | | | |
| | 06:07 | | | FOUL by HANEY,A'NDREA |
| MISSED FT by BEGNAUD,SHAKYLA | 06:07 | | | |
| REBOUND (DEADB) by TEAM | 06:07 | | | |
| MISSED FT by BEGNAUD,SHAKYLA | 06:07 | | | |
| | 06:07 | | | REBOUND (DEF) by HOGUE,CAROLINE |
| | 06:07 | | | SUB IN: MILLER,FALAN |
| | 06:07 | | | SUB IN: HEIDEBRECHT,CHELSEA |
| | 06:07 | | | SUB OUT: HANEY,A'NDREA |
| | 06:07 | | | SUB OUT: JONES,SYDNIE |
| | 05:46 | 13-2 | H 11 | GOOD! LAYUP by LAYROCK,SYDNEY [PNT] |
| | 05:46 | | | ASSIST by PADGETT,PEYTON |
| TURNOVER by CALDWELL,BRIA | 05:32 | | | |
| SUB IN: CROSBY,HAILEE | 05:32 | | | |
| SUB IN: OWENS,CHASIDEE | 05:32 | | | |
| SUB IN: BRITTA,MADISON | 05:32 | | | |
| SUB IN: BOWLES,TAYLOR | 05:32 | | | |
| SUB IN: KAPLER,KATIE | 05:32 | | | |

| VISITORS: Ouachita Baptist | Time | Score | Margin | HOME: Harding |
|----------------------------------|-------|-------|--------|--------------------------------------|
| SUB OUT: MILLER,MORGAN | 05:32 | | | |
| SUB OUT: CALDWELL,BRIA | 05:32 | | | |
| SUB OUT: BEGNAUD,SHAKYLA | 05:32 | | | |
| SUB OUT: HUELL,ALIVIA | 05:32 | | | |
| SUB OUT: BULLARD,KORI | 05:32 | | | |
| | 05:15 | 15-2 | H 13 | GOOD! LAYUP by HOGUE,CAROLINE [PNT] |
| | 05:15 | | | ASSIST by PADGETT,PEYTON |
| TURNOVER by OWENS,CHASIDEE | 04:59 | | | |
| | 04:56 | | | TIMEOUT MEDIA |
| | 04:43 | 17-2 | H 15 | GOOD! LAYUP by HOGUE,CAROLINE [PNT] |
| | 04:43 | | | ASSIST by PADGETT,PEYTON |
| MISSED 3PTR by BOWLES,TAYLOR | 04:30 | | | |
| | 04:30 | | | REBOUND (DEF) by PADGETT,PEYTON |
| | 04:17 | 20-2 | H 18 | GOOD! 3PTR by HOGUE,CAROLINE |
| | 04:17 | | | ASSIST by HEIDEBRECHT,CHELSEA |
| FOUL by BRITTAİN,MADISON | 04:05 | | | |
| TURNOVER by BRITTAİN,MADISON | 04:05 | | | |
| | 04:05 | | | SUB IN: MOYER,CORREY |
| | 04:05 | | | SUB OUT: LAYROCK,SYDNEY |
| | 03:53 | | | MISSED 3PTR by HEIDEBRECHT,CHELSEA |
| | 03:53 | | | REBOUND (OFF) by HEIDEBRECHT,CHELSEA |
| | 03:48 | | | MISSED LAYUP by HEIDEBRECHT,CHELSEA |
| REBOUND (DEF) by KAPLER,KATIE | 03:48 | | | |
| GOOD! 3PTR by BRITTAİN,MADISON | 03:41 | 20-5 | H 15 | |
| ASSIST by BOWLES,TAYLOR | 03:41 | | | |
| | 03:17 | | | MISSED 3PTR by MILLER,FALAN |
| REBOUND (DEF) by OWENS,CHASIDEE | 03:17 | | | |
| MISSED LAYUP by OWENS,CHASIDEE | 03:08 | | | |
| | 03:08 | | | BLOCK by HOGUE,CAROLINE |
| REBOUND (OFF) by TEAM | 03:08 | | | |
| | 03:08 | | | SUB IN: JONES,SYDNEI |
| | 03:08 | | | SUB OUT: HOGUE,CAROLINE |
| | 02:59 | | | FOUL by MOYER,CORREY |
| GOOD! FT by BOWLES,TAYLOR | 02:59 | 20-6 | H 14 | |
| GOOD! FT by BOWLES,TAYLOR | 02:59 | 20-7 | H 13 | |
| FOUL by BOWLES,TAYLOR | 02:48 | | | |
| | 02:48 | 21-7 | H 14 | GOOD! FT by HEIDEBRECHT,CHELSEA |
| | 02:48 | 22-7 | H 15 | GOOD! FT by HEIDEBRECHT,CHELSEA |
| MISSED 3PTR by BOWLES,TAYLOR | 02:34 | | | |
| | 02:34 | | | REBOUND (DEF) by JONES,SYDNEI |
| | 02:22 | | | MISSED LAYUP by MOYER,CORREY |
| | 02:22 | | | REBOUND (OFF) by MOYER,CORREY |
| | 02:20 | 24-7 | H 17 | GOOD! LAYUP by MOYER,CORREY [PNT] |
| MISSED LAYUP by BRITTAİN,MADISON | 01:59 | | | |
| | 01:59 | | | REBOUND (DEF) by MOYER,CORREY |
| | 01:50 | | | TURNOVER by HEIDEBRECHT,CHELSEA |
| | 01:50 | | | SUB IN: LAYROCK,SYDNEI |
| | 01:50 | | | SUB OUT: HEIDEBRECHT,CHELSEA |
| MISSED LAYUP by OWENS,CHASIDEE | 01:32 | | | |
| | 01:32 | | | REBOUND (DEF) by LAYROCK,SYDNEI |
| | 01:11 | | | MISSED LAYUP by PADGETT,PEYTON |
| | 01:11 | | | REBOUND (OFF) by PADGETT,PEYTON |
| | 01:09 | | | MISSED LAYUP by PADGETT,PEYTON |
| | 01:09 | | | REBOUND (OFF) by LAYROCK,SYDNEI |
| FOUL by KAPLER,KATIE | 01:06 | | | |
| | 01:06 | 25-7 | H 18 | GOOD! FT by LAYROCK,SYDNEI |
| | 01:06 | | | MISSED FT by LAYROCK,SYDNEI |
| REBOUND (DEF) by OWENS,CHASIDEE | 01:06 | | | |
| MISSED LAYUP by BOWLES,TAYLOR | 00:56 | | | |
| | 00:56 | | | BLOCK by JONES,SYDNEI |
| | 00:54 | | | REBOUND (DEF) by JONES,SYDNEI |
| FOUL by BOWLES,TAYLOR | 00:52 | | | |
| | 00:52 | 26-7 | H 19 | GOOD! FT by JONES,SYDNEI |
| | 00:52 | 27-7 | H 20 | GOOD! FT by JONES,SYDNEI |

| VISITORS: Ouachita Baptist | Time | Score | Margin | HOME: Harding |
|--------------------------------|-------|-------|--------|--|
| | 00:52 | | | SUB IN: HOGUE,CAROLINE |
| | 00:52 | | | SUB OUT: MOYER,CORREY |
| TURNOVER by KAPLER,KATIE | 00:32 | | | |
| | 00:31 | | | STEAL by HOGUE,CAROLINE |
| | 00:26 | 29-7 | H 22 | GOOD! LAYUP by LAYROCK,SYDNEY [FB/PNT] |
| | 00:26 | | | ASSIST by MILLER,FALAN |
| FOUL by KAPLER,KATIE | 00:26 | | | |
| | 00:26 | | | MISSED FT by LAYROCK,SYDNEY |
| REBOUND (DEF) by BOWLES,TAYLOR | 00:26 | | | |
| | 00:26 | | | SUB IN: HANEY,A'NDREA |
| | 00:26 | | | SUB OUT: PADGETT,PEYTON |
| | 00:03 | | | FOUL by MILLER,FALAN |
| GOOD! FT by BOWLES,TAYLOR | 00:03 | 29-8 | H 21 | |
| GOOD! FT by BOWLES,TAYLOR | 00:03 | 29-9 | H 20 | |
| | 00:01 | 31-9 | H 22 | GOOD! LAYUP by HANEY,A'NDREA [PNT] |

Ouachita Baptist 9, Harding 31

| Period 1-only | In Paint | Off T/O | 2nd Chance | Fast Break | Bench | |
|---------------|-------------|------------|---------------|---------------|-------|------------------------|
| QUA | 0 | 0 | 2 | 0 | 7 | Score tied - 0 times |
| HU | 16 | 10 | 3 | 4 | 11 | Lead changed - 0 times |

Ouachita Baptist vs Harding
2/9/2017; 5:30 p.m. at Searcy, Ark. (Rhodes-Reaves Field House)
Period 2 Play-By-Play

| VISITORS: Ouachita Baptist | Time | Score | Margin | HOME: Harding |
|----------------------------------|-------|-------|--------|--|
| | 10:00 | | | SUB IN: HOGUE,CAROLINE |
| | 10:00 | | | SUB IN: HEIDEBRECHT,CHELSEA |
| | 10:00 | | | SUB OUT: MILLER,FALAN |
| | 10:00 | | | SUB OUT: HANEY,A'NDREA |
| | 09:46 | | | MISSED LAYUP by LAYROCK,SYDNEY |
| BLOCK by MILLER,MORGAN | 09:46 | | | |
| REBOUND (DEF) by BEGNAUD,SHAKYLA | 09:44 | | | |
| MISSED 3PTR by BEGNAUD,SHAKYLA | 09:32 | | | |
| | 09:32 | | | REBOUND (DEF) by HOGUE,CAROLINE |
| | 09:11 | | | MISSED 3PTR by HOGUE,CAROLINE |
| REBOUND (DEF) by BEGNAUD,SHAKYLA | 09:11 | | | |
| MISSED LAYUP by BEGNAUD,SHAKYLA | 09:03 | | | |
| | 09:03 | | | REBOUND (DEF) by JONES,SYDNEIE |
| | 08:41 | | | MISSED LAYUP by HOGUE,CAROLINE |
| BLOCK by BULLARD,KORI | 08:41 | | | |
| | 08:39 | | | REBOUND (OFF) by TEAM |
| | 08:34 | | | MISSED LAYUP by LAYROCK,SYDNEY |
| | 08:34 | | | REBOUND (OFF) by LAYROCK,SYDNEY |
| FOUL by BEGNAUD,SHAKYLA | 08:31 | | | |
| | 08:31 | 32-9 | H 23 | GOOD! FT by LAYROCK,SYDNEY |
| | 08:31 | 33-9 | H 24 | GOOD! FT by LAYROCK,SYDNEY |
| MISSED JUMPER by HUELL,ALIVIA | 08:21 | | | |
| | 08:21 | | | REBOUND (DEF) by LAYROCK,SYDNEY |
| | 08:07 | | | MISSED JUMPER by HOGUE,CAROLINE |
| REBOUND (DEF) by BULLARD,KORI | 08:07 | | | |
| MISSED 3PTR by BULLARD,KORI | 07:58 | | | |
| | 07:58 | | | REBOUND (DEF) by PADGETT,PEYTON |
| | 07:47 | | | MISSED 3PTR by LAYROCK,SYDNEY |
| REBOUND (DEF) by CALDWELL,BRIA | 07:47 | | | |
| | 07:44 | | | FOUL by HEIDEBRECHT,CHELSEA |
| | 07:44 | | | SUB IN: MOYER,CORREY |
| | 07:44 | | | SUB OUT: HEIDEBRECHT,CHELSEA |
| TURNOVER by CALDWELL,BRIA | 07:28 | | | |
| | 07:27 | | | STEAL by HOGUE,CAROLINE |
| | 07:25 | 35-9 | H 26 | GOOD! LAYUP by HOGUE,CAROLINE [FB/PNT] |
| MISSED JUMPER by BULLARD,KORI | 07:10 | | | |
| | 07:10 | | | REBOUND (DEF) by LAYROCK,SYDNEY |
| | 06:52 | | | TURNOVER by HOGUE,CAROLINE |
| STEAL by MILLER,MORGAN | 06:51 | | | |
| MISSED LAYUP by CALDWELL,BRIA | 06:48 | | | |
| | 06:48 | | | REBOUND (DEF) by HOGUE,CAROLINE |
| FOUL by BEGNAUD,SHAKYLA | 06:36 | | | |
| | 06:36 | 36-9 | H 27 | GOOD! FT by MOYER,CORREY |
| | 06:36 | | | MISSED FT by MOYER,CORREY |
| REBOUND (DEF) by BEGNAUD,SHAKYLA | 06:36 | | | |
| | 06:36 | | | SUB IN: HANEY,A'NDREA |
| | 06:36 | | | SUB IN: HEIDEBRECHT,CHELSEA |
| | 06:36 | | | SUB OUT: HOGUE,CAROLINE |
| | 06:36 | | | SUB OUT: PADGETT,PEYTON |
| | 06:21 | | | FOUL by HEIDEBRECHT,CHELSEA |
| GOOD! FT by CALDWELL,BRIA | 06:21 | 36-10 | H 26 | |
| MISSED FT by CALDWELL,BRIA | 06:21 | | | |
| | 06:21 | | | REBOUND (DEF) by HEIDEBRECHT,CHELSEA |
| | 06:05 | 38-10 | H 28 | GOOD! LAYUP by HANEY,A'NDREA [PNT] |
| FOUL by HUELL,ALIVIA | 06:05 | | | |
| | 06:05 | 39-10 | H 29 | GOOD! FT by HANEY,A'NDREA |
| MISSED JUMPER by BEGNAUD,SHAKYLA | 05:50 | | | |
| REBOUND (OFF) by MILLER,MORGAN | 05:50 | | | |
| MISSED LAYUP by CALDWELL,BRIA | 05:38 | | | |

| VISITORS: Ouachita Baptist | Time | Score | Margin | HOME: Harding |
|--|-------|-------|--------|-------------------------------------|
| | 05:38 | | | BLOCK by JONES,SYDNIE |
| REBOUND (OFF) by TEAM | 05:37 | | | |
| | 05:37 | | | SUB IN: PADGETT,PEYTON |
| | 05:37 | | | SUB OUT: HANEY,A'NDREA |
| GOOD! 3PTR by BULLARD,KORI | 05:33 | 39-13 | H 26 | |
| ASSIST by MILLER,MORGAN | 05:33 | | | |
| | 05:13 | | | TURNOVER by JONES,SYDNIE |
| STEAL by MILLER,MORGAN | 05:12 | | | |
| GOOD! 3PTR by BULLARD,KORI | 05:07 | 39-16 | H 23 | |
| ASSIST by HUELL,ALIVIA | 05:07 | | | |
| | 05:02 | | | TIMEOUT MEDIA |
| | 05:02 | | | TIMEOUT 30SEC |
| | 05:02 | | | SUB IN: MILLER,FALAN |
| | 05:02 | | | SUB OUT: MOYER,CORREY |
| | 04:43 | 42-16 | H 26 | GOOD! 3PTR by MILLER,FALAN |
| | 04:43 | | | ASSIST by PADGETT,PEYTON |
| GOOD! JUMPER by BEGNAUD,SHAKYLA [PNT] | 04:27 | 42-18 | H 24 | |
| ASSIST by MILLER,MORGAN | 04:27 | | | |
| | 04:02 | | | MISSED LAYUP by JONES,SYDNIE |
| REBOUND (DEF) by BEGNAUD,SHAKYLA | 04:02 | | | |
| | 04:01 | | | FOUL by MILLER,FALAN |
| SUB IN: CROSBY,HAILEE | 04:01 | | | |
| SUB IN: OWENS,CHASIDEE | 04:01 | | | |
| SUB IN: BRITTAIN,MADISON | 04:01 | | | |
| SUB IN: KAPLER,KATIE | 04:01 | | | |
| SUB IN: BOWLES,TAYLOR | 04:01 | | | |
| SUB OUT: MILLER,MORGAN | 04:01 | | | |
| SUB OUT: CALDWELL,BRIA | 04:01 | | | |
| SUB OUT: BEGNAUD,SHAKYLA | 04:01 | | | |
| SUB OUT: HUELL,ALIVIA | 04:01 | | | |
| SUB OUT: BULLARD,KORI | 04:01 | | | |
| | 04:01 | | | SUB IN: HOGUE,CAROLINE |
| | 04:01 | | | SUB OUT: JONES,SYDNIE |
| | 03:50 | | | FOUL by HEIDEBRECHT,CHELSEA |
| GOOD! FT by BRITTAIN,MADISON | 03:50 | 42-19 | H 23 | |
| MISSED FT by BRITTAIN,MADISON | 03:50 | | | |
| | 03:50 | | | REBOUND (DEF) by HOGUE,CAROLINE |
| | 03:50 | | | SUB IN: MOYER,CORREY |
| | 03:50 | | | SUB OUT: MILLER,FALAN |
| | 03:43 | | | MISSED 3PTR by LAYROCK,SYDNEY |
| REBOUND (DEF) by BOWLES,TAYLOR | 03:43 | | | |
| GOOD! LAYUP by OWENS,CHASIDEE [FB/PNT] | 03:35 | 42-21 | H 21 | |
| ASSIST by BOWLES,TAYLOR | 03:35 | | | |
| | 03:26 | | | MISSED LAYUP by MOYER,CORREY |
| REBOUND (DEF) by KAPLER,KATIE | 03:26 | | | |
| MISSED LAYUP by BOWLES,TAYLOR | 03:19 | | | |
| | 03:19 | | | REBOUND (DEF) by LAYROCK,SYDNEY |
| | 02:56 | | | MISSED 3PTR by HEIDEBRECHT,CHELSEA |
| | 02:56 | | | REBOUND (OFF) by TEAM |
| FOUL by KAPLER,KATIE | 02:49 | | | |
| FOUL by BOWLES,TAYLOR | 02:41 | | | |
| | 02:41 | | | MISSED FT by HEIDEBRECHT,CHELSEA |
| | 02:41 | | | REBOUND (DEADB) by TEAM |
| | 02:41 | | | MISSED FT by HEIDEBRECHT,CHELSEA |
| | 02:41 | | | REBOUND (OFF) by MOYER,CORREY |
| | 02:35 | | | MISSED 3PTR by HEIDEBRECHT,CHELSEA |
| | 02:35 | | | REBOUND (OFF) by LAYROCK,SYDNEY |
| | 02:32 | 44-21 | H 23 | GOOD! LAYUP by LAYROCK,SYDNEY [PNT] |
| MISSED 3PTR by BRITTAIN,MADISON | 02:20 | | | |
| | 02:20 | | | REBOUND (DEF) by PADGETT,PEYTON |
| | 02:07 | | | TURNOVER by LAYROCK,SYDNEY |
| STEAL by BRITTAIN,MADISON | 02:06 | | | |
| MISSED LAYUP by OWENS,CHASIDEE | 02:04 | | | |
| | 02:04 | | | REBOUND (DEF) by HOGUE,CAROLINE |

| VISITORS: Ouachita Baptist | Time | Score | Margin | HOME: Harding |
|--|-------|-------|--------|--------------------------------------|
| | 01:54 | | | TURNOVER by PADGETT,PEYTON |
| GOOD! LAYUP by OWENS,CHASIDEE [PNT] | 01:45 | 44-23 | H 21 | |
| ASSIST by BOWLES,TAYLOR | 01:45 | | | |
| | 01:28 | 46-23 | H 23 | GOOD! JUMPER by HOGUE,CAROLINE [PNT] |
| | 01:28 | | | ASSIST by HEIDEBRECHT,CHELSEA |
| MISSED JUMPER by KAPLER,KATIE | 01:16 | | | |
| | 01:16 | | | REBOUND (DEF) by HOGUE,CAROLINE |
| | 00:54 | 48-23 | H 25 | GOOD! LAYUP by HOGUE,CAROLINE [PNT] |
| MISSED 3PTR by OWENS,CHASIDEE | 00:44 | | | |
| | 00:44 | | | REBOUND (DEF) by PADGETT,PEYTON |
| | 00:28 | | | MISSED 3PTR by MOYER,CORREY |
| REBOUND (DEF) by BRITTAIN,MADISON | 00:28 | | | |
| GOOD! LAYUP by OWENS,CHASIDEE [FB/PNT] | 00:19 | 48-25 | H 23 | |
| | 00:00 | | | MISSED LAYUP by PADGETT,PEYTON |
| REBOUND (DEF) by CROSBY,HAILEE | 00:00 | | | |

Ouachita Baptist 25, Harding 48

| Period 2-only | In Paint | Off T/O | 2nd Chance | Fast Break | Bench | |
|---------------|-------------|------------|---------------|---------------|-------|------------------------|
| QUA | 8 | 5 | 3 | 4 | 7 | Score tied - 0 times |
| HU | 10 | 2 | 4 | 2 | 7 | Lead changed - 0 times |

Official Basketball Box Score -- Game Totals -- Second Half Statistics
Ouachita Baptist vs Harding
2/9/2017 5:30 p.m. at Searcy, Ark. (Rhodes-Reaves Field House)

Ouachita Baptist 29 • 9-13, 6-10 GAC

| ## | Player | | Total | | 3-Ptr | FT-FTA | Rebounds | | | PF | TP | A | TO | Blk | Stl | Min |
|--------|------------------|---|---------|------|--------|---------|----------|-------|-------|------|-------|---|----|-----|-----|-----|
| | | | FG-FGA | | FG-FGA | | Off | Def | Tot | | | | | | | |
| 13 | MILLER,MORGAN | g | 0-1 | | 0-1 | 0-0 | 0 | 1 | 1 | 1 | 0 | 1 | 0 | 2 | 0 | 8 |
| 20 | CALDWELL,BRIA | g | 1-2 | | 0-1 | 2-2 | 0 | 0 | 0 | 1 | 4 | 1 | 2 | 0 | 1 | 5 |
| 21 | BEGNAUD,SHAKYLA | f | 0-1 | | 0-0 | 0-0 | 0 | 0 | 0 | 0 | 0 | 0 | 0 | 1 | 1 | 5 |
| 23 | HUELL,ALIVIA | g | 0-0 | | 0-0 | 0-0 | 0 | 0 | 0 | 2 | 0 | 0 | 0 | 0 | 0 | 2 |
| 33 | BULLARD,KORI | f | 0-2 | | 0-2 | 0-0 | 0 | 1 | 1 | 0 | 0 | 0 | 0 | 0 | 0 | 5 |
| 03 | BOWLES,TAYLOR | | 1-5 | | 0-2 | 4-4 | 1 | 2 | 3 | 0 | 6 | 1 | 2 | 0 | 0 | 12 |
| 04 | CROSBY,HAILEE | | 0-2 | | 0-2 | 0-0 | 0 | 1 | 1 | 0 | 0 | 2 | 0 | 0 | 0 | 12 |
| 10 | MCCANN,STEPHANIE | | 0-1 | | 0-0 | 0-0 | 1 | 2 | 3 | 0 | 0 | 0 | 0 | 0 | 0 | 9 |
| 24 | OWENS,CHASIDEE | | 2-3 | | 1-1 | 0-0 | 0 | 0 | 0 | 0 | 5 | 1 | 0 | 1 | 0 | 10 |
| 25 | BYRAM,SHELBY | | 1-2 | | 0-1 | 0-1 | 1 | 0 | 1 | 0 | 2 | 0 | 1 | 0 | 0 | 8 |
| 30 | BRITTAİN,MADISON | | 4-8 | | 2-4 | 2-2 | 0 | 1 | 1 | 1 | 12 | 0 | 2 | 0 | 0 | 9 |
| 45 | SPRADLIN,LAURA | | 0-1 | | 0-0 | 0-0 | 0 | 1 | 1 | 2 | 0 | 0 | 0 | 0 | 0 | 5 |
| 50 | KAPLER,KATIE | | 0-2 | | 0-1 | 0-0 | 1 | 2 | 3 | 1 | 0 | 1 | 1 | 1 | 1 | 10 |
| TEAM | | | | | | | 2 | 0 | 2 | 0 | | | 1 | | | |
| Totals | | | 9-30 | | 3-15 | 8-9 | 6 | 11 | 17 | 8 | 29 | 7 | 9 | 5 | 3 | 100 |
| FG % | | | 3rd Qtr | 5-14 | 35.7% | 4th Qtr | 4-16 | 25.0% | Half: | 9-30 | 30.0% | | | | | |
| 3FG % | | | 3rd Qtr | 2-6 | 33.3% | 4th Qtr | 1-9 | 11.1% | Half: | 3-15 | 30.0% | | | | | |
| FT % | | | 3rd Qtr | 4-4 | 100.0% | 4th Qtr | 4-5 | 80.0% | Half: | 8-9 | 88.9% | | | | | |

Harding 37 • 18-3, 15-1 GAC

| ## | Player | | Total | | 3-Ptr | FT-FTA | Rebounds | | | PF | TP | A | TO | Blk | Stl | Min |
|--------|---------------------|---|---------|------|--------|---------|----------|-------|-------|-------|-------|----|----|-----|-----|-----|
| | | | FG-FGA | | FG-FGA | | Off | Def | Tot | | | | | | | |
| 03 | MILLER,FALAN | g | 1-3 | | 0-2 | 2-2 | 1 | 1 | 2 | 1 | 4 | 1 | 1 | 0 | 0 | 9 |
| 13 | PADGETT,PEYTON | g | 1-2 | | 0-0 | 0-0 | 1 | 2 | 3 | 2 | 2 | 0 | 1 | 1 | 1 | 15 |
| 14 | HANEY,A'NDREA | g | 0-4 | | 0-0 | 4-4 | 2 | 0 | 2 | 2 | 4 | 5 | 0 | 0 | 0 | 11 |
| 21 | LAYROCK,SYDNEY | f | 1-5 | | 1-3 | 0-0 | 0 | 3 | 3 | 0 | 3 | 1 | 2 | 0 | 1 | 12 |
| 33 | JONES,SYDNIE | f | 5-9 | | 0-0 | 0-0 | 2 | 5 | 7 | 1 | 10 | 1 | 3 | 1 | 0 | 18 |
| 00 | NADEAU,JENNI | | 0-2 | | 0-0 | 0-0 | 0 | 0 | 0 | 1 | 0 | 0 | 0 | 0 | 0 | 3 |
| 01 | MOYER,CORREY | | 1-2 | | 1-1 | 0-0 | 0 | 1 | 1 | 2 | 3 | 0 | 1 | 0 | 0 | 8 |
| 15 | JAMESON,HANNAH | | 0-0 | | 0-0 | 1-2 | 0 | 0 | 0 | 0 | 1 | 1 | 0 | 0 | 0 | 9 |
| 23 | HEIDEBRECHT,CHELSE/ | | 0-0 | | 0-0 | 0-0 | 0 | 0 | 0 | 0 | 0 | 0 | 0 | 0 | 2 | 4 |
| 30 | HOGUE,CAROLINE | | 4-6 | | 1-2 | 1-2 | 1 | 1 | 2 | 0 | 10 | 1 | 1 | 2 | 1 | 11 |
| TEAM | | | | | | | 2 | 3 | 5 | 0 | | | 0 | | | |
| Totals | | | 13-33 | | 3-8 | 8-10 | 9 | 16 | 25 | 9 | 37 | 10 | 9 | 4 | 5 | 100 |
| FG % | | | 3rd Qtr | 8-19 | 42.1% | 4th Qtr | 5-14 | 35.7% | Half: | 13-33 | 39.4% | | | | | |
| 3FG % | | | 3rd Qtr | 1-4 | 25.0% | 4th Qtr | 2-4 | 50.0% | Half: | 3-8 | 33.3% | | | | | |
| FT % | | | 3rd Qtr | 5-6 | 83.3% | 4th Qtr | 3-4 | 75.0% | Half: | 8-10 | 80.0% | | | | | |

Officials: Felicia Davis, Denise Tyus and Herb Burl
Technical Fouls: Ouachita Baptist- TEAM; Harding- None.

| Score by periods | 1st | 2nd | 3rd | 4th | Total |
|------------------|-----|-----|-----|-----|-------|
| Ouachita Baptist | 9 | 16 | 16 | 13 | 54 |
| Harding | 31 | 17 | 22 | 15 | 85 |

| Points | In | Off | 2nd | Fast | Bench |
|--------|-------|-----|--------|-------|-------|
| | Paint | T/O | Chance | Break | |
| OUA | 8 | 4 | 2 | 0 | 25 |
| | 16 | 8 | 10 | 2 | 14 |

Last FG - OUA 4th-01:58, HU 4th-00:39.
OUA led for 0:00. HU led for 20:00. Game was tied for 0:00.

Score tied - 0 times
Lead changed - 0 times

Ouachita Baptist vs Harding
2/9/2017; 5:30 p.m. at Searcy, Ark. (Rhodes-Reaves Field House)
Period 3 Play-By-Play

| VISITORS: Ouachita Baptist | Time | Score | Margin | HOME: Harding |
|---------------------------------------|-------|-------|--------|-----------------------------------|
| SUB IN: KAPLER,KATIE | 10:00 | | | |
| SUB IN: BRITTAIN,MADISON | 10:00 | | | |
| SUB IN: OWENS,CHASIDEE | 10:00 | | | |
| SUB IN: CROSBY,HAILEE | 10:00 | | | |
| SUB IN: BOWLES,TAYLOR | 10:00 | | | |
| SUB OUT: MILLER,MORGAN | 10:00 | | | |
| SUB OUT: CALDWELL,BRIA | 10:00 | | | |
| SUB OUT: BEGNAUD,SHAKYLA | 10:00 | | | |
| SUB OUT: HUELL,ALIVIA | 10:00 | | | |
| SUB OUT: BULLARD,KORI | 10:00 | | | |
| | 09:40 | | | MISSED LAYUP by JONES,SYDNIE |
| REBOUND (DEF) by BOWLES,TAYLOR | 09:40 | | | |
| MISSED 3PTR by BRITTAIN,MADISON | 09:31 | | | |
| REBOUND (OFF) by KAPLER,KATIE | 09:31 | | | |
| MISSED LAYUP by BRITTAIN,MADISON | 09:15 | | | |
| | 09:15 | | | REBOUND (DEF) by JONES,SYDNIE |
| | 08:53 | | | TURNOVER by JONES,SYDNIE |
| GOOD! JUMPER by OWENS,CHASIDEE [PNT] | 08:40 | 48-27 | H 21 | |
| | 08:25 | | | MISSED LAYUP by HANEY,A'NDREA |
| | 08:25 | | | REBOUND (OFF) by HANEY,A'NDREA |
| | 08:23 | | | MISSED LAYUP by HANEY,A'NDREA |
| REBOUND (DEF) by KAPLER,KATIE | 08:23 | | | |
| TURNOVER by KAPLER,KATIE | 08:21 | | | |
| | 08:21 | | | STEAL by LAYROCK,SYDNEY |
| FOUL by KAPLER,KATIE | 08:21 | | | |
| | 08:16 | | | MISSED 3PTR by LAYROCK,SYDNEY |
| | 08:16 | | | REBOUND (OFF) by TEAM |
| | 07:58 | 50-27 | H 23 | GOOD! LAYUP by JONES,SYDNIE [PNT] |
| | 07:58 | | | ASSIST by MILLER,FALAN |
| GOOD! LAYUP by BRITTAIN,MADISON [PNT] | 07:34 | 50-29 | H 21 | |
| ASSIST by KAPLER,KATIE | 07:34 | | | |
| | 07:18 | | | TURNOVER by JONES,SYDNIE |
| | 07:18 | | | SUB IN: HOGUE,CAROLINE |
| | 07:18 | | | SUB OUT: LAYROCK,SYDNEY |
| TURNOVER by BOWLES,TAYLOR | 07:08 | | | |
| | 07:07 | | | STEAL by HOGUE,CAROLINE |
| | 07:01 | | | MISSED LAYUP by HANEY,A'NDREA |
| | 07:01 | | | REBOUND (OFF) by JONES,SYDNIE |
| | 06:59 | | | MISSED LAYUP by JONES,SYDNIE |
| BLOCK by KAPLER,KATIE | 06:59 | | | |
| REBOUND (DEF) by KAPLER,KATIE | 06:58 | | | |
| GOOD! 3PTR by BRITTAIN,MADISON | 06:49 | 50-32 | H 18 | |
| ASSIST by CROSBY,HAILEE | 06:49 | | | |
| | 06:31 | | | MISSED 3PTR by MILLER,FALAN |
| | 06:31 | | | REBOUND (OFF) by HOGUE,CAROLINE |
| | 06:25 | | | TURNOVER by MILLER,FALAN |
| | 06:25 | | | SUB IN: HEIDEBRECHT,CHELSEA |
| | 06:25 | | | SUB OUT: MILLER,FALAN |
| MISSED LAYUP by KAPLER,KATIE | 06:06 | | | |
| | 06:06 | | | BLOCK by HOGUE,CAROLINE |
| REBOUND (OFF) by TEAM | 06:04 | | | |
| TURNOVER by BRITTAIN,MADISON | 06:03 | | | |
| | 06:02 | | | STEAL by PADGETT,PEYTON |
| | 05:58 | | | TURNOVER by PADGETT,PEYTON |
| | 05:58 | | | SUB IN: LAYROCK,SYDNEY |
| | 05:58 | | | SUB OUT: PADGETT,PEYTON |
| TURNOVER by BOWLES,TAYLOR | 05:51 | | | |
| | 05:42 | | | TURNOVER by LAYROCK,SYDNEY |
| STEAL by KAPLER,KATIE | 05:41 | | | |

| VISITORS: Ouachita Baptist | Time | Score | Margin | HOME: Harding |
|-----------------------------------|-------|-------|--------|--------------------------------------|
| MISSED LAYUP by OWENS,CHASIDEE | 05:35 | | | |
| | 05:35 | | | REBOUND (DEF) by JONES,SYDNIE |
| | 05:12 | 53-32 | H 21 | GOOD! 3PTR by HOGUE,CAROLINE |
| | 05:12 | | | ASSIST by LAYROCK,SYDNEY |
| GOOD! 3PTR by BRITTAIN,MADISON | 04:59 | 53-35 | H 18 | |
| ASSIST by OWENS,CHASIDEE | 04:59 | | | |
| | 04:41 | | | MISSED 3PTR by HOGUE,CAROLINE |
| | 04:41 | | | REBOUND (OFF) by HANEY,A'NDREA |
| | 04:36 | 55-35 | H 20 | GOOD! LAYUP by JONES,SYDNIE [PNT] |
| | 04:36 | | | ASSIST by HANEY,A'NDREA |
| TURNOVER by BRITTAIN,MADISON | 04:23 | | | |
| | 04:22 | | | STEAL by HEIDEBRECHT,CHELSEA |
| | 04:14 | | | MISSED LAYUP by HANEY,A'NDREA |
| BLOCK by OWENS,CHASIDEE | 04:14 | | | |
| | 04:13 | | | REBOUND (OFF) by JONES,SYDNIE |
| | 04:11 | 57-35 | H 22 | GOOD! LAYUP by JONES,SYDNIE [PNT] |
| MISSED 3PTR by CROSBY,HAILEE | 03:57 | | | |
| | 03:57 | | | REBOUND (DEF) by LAYROCK,SYDNEY |
| | 03:39 | 59-35 | H 24 | GOOD! LAYUP by JONES,SYDNIE [PNT] |
| | 03:39 | | | ASSIST by HANEY,A'NDREA |
| MISSED JUMPER by BRITTAIN,MADISON | 03:29 | | | |
| | 03:29 | | | REBOUND (DEF) by JONES,SYDNIE |
| | 03:11 | 61-35 | H 26 | GOOD! LAYUP by HOGUE,CAROLINE [PNT] |
| | 03:11 | | | ASSIST by HANEY,A'NDREA |
| TIMEOUT 30SEC | 03:08 | | | |
| SUB IN: HUELL,ALIVIA | 03:08 | | | |
| SUB IN: BEGNAUD,SHAKYLA | 03:08 | | | |
| SUB IN: CALDWELL,BRIA | 03:08 | | | |
| SUB IN: BULLARD,KORI | 03:08 | | | |
| SUB IN: MILLER,MORGAN | 03:08 | | | |
| SUB OUT: KAPLER,KATIE | 03:08 | | | |
| SUB OUT: BRITTAIN,MADISON | 03:08 | | | |
| SUB OUT: OWENS,CHASIDEE | 03:08 | | | |
| SUB OUT: CROSBY,HAILEE | 03:08 | | | |
| SUB OUT: BOWLES,TAYLOR | 03:08 | | | |
| | 03:03 | | | FOUL by HANEY,A'NDREA |
| TIMEOUT media | 03:03 | | | |
| TURNOVER by CALDWELL,BRIA | 03:01 | | | |
| | 03:00 | | | STEAL by HEIDEBRECHT,CHELSEA |
| FOUL by CALDWELL,BRIA | 02:44 | | | |
| | 02:44 | | | SUB IN: MILLER,FALAN |
| | 02:44 | | | SUB OUT: HEIDEBRECHT,CHELSEA |
| | 02:40 | | | MISSED LAYUP by LAYROCK,SYDNEY |
| BLOCK by MILLER,MORGAN | 02:40 | | | |
| | 02:39 | | | REBOUND (OFF) by TEAM |
| FOUL by HUELL,ALIVIA | 02:28 | | | |
| | 02:27 | 63-35 | H 28 | GOOD! JUMPER by HOGUE,CAROLINE |
| | 02:27 | | | ASSIST by HANEY,A'NDREA |
| MISSED 3PTR by BULLARD,KORI | 02:12 | | | |
| | 02:12 | | | REBOUND (DEF) by MILLER,FALAN |
| | 02:00 | 65-35 | H 30 | GOOD! LAYUP by JONES,SYDNIE [FB/PNT] |
| | 02:00 | | | ASSIST by HANEY,A'NDREA |
| MISSED LAYUP by BEGNAUD,SHAKYLA | 01:45 | | | |
| | 01:45 | | | BLOCK by JONES,SYDNIE |
| | 01:43 | | | REBOUND (DEF) by HOGUE,CAROLINE |
| FOUL by HUELL,ALIVIA | 01:30 | | | |
| FOUL (TECH) by TEAM | 01:30 | | | |
| | 01:30 | 66-35 | H 31 | GOOD! FT by HANEY,A'NDREA |
| | 01:30 | 67-35 | H 32 | GOOD! FT by HANEY,A'NDREA |
| | 01:30 | | | MISSED FT by HOGUE,CAROLINE |
| | 01:30 | | | REBOUND (DEADB) by TEAM |
| | 01:30 | 68-35 | H 33 | GOOD! FT by HOGUE,CAROLINE |
| SUB IN: BRITTAIN,MADISON | 01:30 | | | |
| SUB OUT: HUELL,ALIVIA | 01:30 | | | |

| VISITORS: Ouachita Baptist | Time | Score | Margin | HOME: Harding |
|---------------------------------------|-------|-------|--------|-------------------------------|
| | 01:30 | | | SUB IN: JAMESON,HANNAH |
| | 01:30 | | | SUB IN: MOYER,CORREY |
| | 01:30 | | | SUB IN: PADGETT,PEYTON |
| | 01:30 | | | SUB OUT: LAYROCK,SYDNEY |
| | 01:30 | | | SUB OUT: HANEY,A'NDREA |
| | 01:30 | | | SUB OUT: JONES,SYDNIE |
| GOOD! LAYUP by BRITTAIN,MADISON [PNT] | 01:21 | 68-37 | H 31 | |
| ASSIST by CALDWELL,BRIA | 01:21 | | | |
| | 01:08 | | | TURNOVER by HOGUE,CAROLINE |
| STEAL by BEGNAUD,SHAKYLA | 01:07 | | | |
| | 00:58 | | | FOUL by MILLER,FALAN |
| GOOD! FT by CALDWELL,BRIA | 00:58 | 68-38 | H 30 | |
| GOOD! FT by CALDWELL,BRIA | 00:58 | 68-39 | H 29 | |
| | 00:58 | | | SUB IN: HANEY,A'NDREA |
| | 00:58 | | | SUB OUT: MILLER,FALAN |
| | 00:41 | | | MISSED LAYUP by MOYER,CORREY |
| REBOUND (DEF) by BULLARD,KORI | 00:41 | | | |
| MISSED 3PTR by CALDWELL,BRIA | 00:33 | | | |
| | 00:33 | | | REBOUND (DEF) by MOYER,CORREY |
| FOUL by BRITTAIN,MADISON | 00:13 | | | |
| | 00:13 | 69-39 | H 30 | GOOD! FT by HANEY,A'NDREA |
| | 00:13 | 70-39 | H 31 | GOOD! FT by HANEY,A'NDREA |
| | 00:05 | | | FOUL by HANEY,A'NDREA |
| GOOD! FT by BRITTAIN,MADISON | 00:05 | 70-40 | H 30 | |
| GOOD! FT by BRITTAIN,MADISON | 00:05 | 70-41 | H 29 | |
| | 00:05 | | | SUB IN: LAYROCK,SYDNEY |
| | 00:05 | | | SUB OUT: HANEY,A'NDREA |

Ouachita Baptist 54, Harding 85

| Period 3-only | In Paint | Off T/O | 2nd Chance | Fast Break | Bench | |
|---------------|-------------|------------|---------------|---------------|-------|------------------------|
| OUA | 6 | 4 | 0 | 0 | 14 | Score tied - 0 times |
| HU | 12 | 6 | 8 | 2 | 8 | Lead changed - 0 times |

Ouachita Baptist vs Harding
2/9/2017; 5:30 p.m. at Searcy, Ark. (Rhodes-Reaves Field House)
Period 4 Play-By-Play

| VISITORS: Ouachita Baptist | Time | Score | Margin | HOME: Harding |
|-----------------------------------|-------|-------|--------|---------------------------------|
| SUB IN: BRITTAIN,MADISON | 10:00 | | | |
| SUB OUT: HUELL,ALIVIA | 10:00 | | | |
| | 10:00 | | | SUB IN: HOGUE,CAROLINE |
| | 10:00 | | | SUB IN: JAMESON,HANNAH |
| | 10:00 | | | SUB IN: MOYER,CORREY |
| | 10:00 | | | SUB OUT: MILLER,FALAN |
| | 10:00 | | | SUB OUT: HANEY,A'NDREA |
| | 10:00 | | | SUB OUT: JONES,SYDNIE |
| | 09:48 | | | MISSED LAYUP by HOGUE,CAROLINE |
| REBOUND (DEF) by BRITTAIN,MADISON | 09:48 | | | |
| MISSED 3PTR by BRITTAIN,MADISON | 09:33 | | | |
| | 09:33 | | | REBOUND (DEF) by LAYROCK,SYDNEY |
| | 09:16 | | | MISSED LAYUP by LAYROCK,SYDNEY |
| BLOCK by MILLER,MORGAN | 09:16 | | | |
| REBOUND (DEF) by MILLER,MORGAN | 09:14 | | | |
| GOOD! JUMPER by CALDWELL,BRIA | 09:09 | 70-43 | H 27 | |
| ASSIST by MILLER,MORGAN | 09:09 | | | |
| | 08:52 | | | TURNOVER by LAYROCK,SYDNEY |
| STEAL by CALDWELL,BRIA | 08:51 | | | |
| TURNOVER by CALDWELL,BRIA | 08:51 | | | |
| | 08:51 | | | SUB IN: JONES,SYDNIE |
| | 08:51 | | | SUB OUT: HOGUE,CAROLINE |
| SUB IN: MCCANN,STEPHANIE | 08:49 | | | |
| SUB OUT: BRITTAIN,MADISON | 08:49 | | | |
| | 08:33 | | | TURNOVER by MOYER,CORREY |
| MISSED 3PTR by BULLARD,KORI | 08:26 | | | |
| | 08:26 | | | REBOUND (DEF) by TEAM |
| | 08:23 | | | SUB IN: MILLER,FALAN |
| | 08:23 | | | SUB OUT: JAMESON,HANNAH |
| | 08:00 | | | MISSED LAYUP by JONES,SYDNIE |
| BLOCK by BEGNAUD,SHAKYLA | 08:00 | | | |
| | 07:58 | | | REBOUND (OFF) by PADGETT,PEYTON |
| | 07:56 | | | MISSED LAYUP by PADGETT,PEYTON |
| REBOUND (DEF) by MCCANN,STEPHANIE | 07:56 | | | |
| | 07:45 | | | FOUL by PADGETT,PEYTON |
| SUB IN: BYRAM,SHELBI | 07:45 | | | |
| SUB IN: OWENS,CHASIDEE | 07:45 | | | |
| SUB IN: KAPLER,KATIE | 07:45 | | | |
| SUB IN: BOWLES,TAYLOR | 07:45 | | | |
| SUB OUT: MILLER,MORGAN | 07:45 | | | |
| SUB OUT: CALDWELL,BRIA | 07:45 | | | |
| SUB OUT: BEGNAUD,SHAKYLA | 07:45 | | | |
| SUB OUT: BULLARD,KORI | 07:45 | | | |
| | 07:45 | | | SUB IN: HOGUE,CAROLINE |
| | 07:45 | | | SUB OUT: MOYER,CORREY |
| MISSED 3PTR by KAPLER,KATIE | 07:36 | | | |
| | 07:36 | | | REBOUND (DEF) by TEAM |
| | 07:09 | 72-43 | H 29 | GOOD! JUMPER by HOGUE,CAROLINE |
| MISSED LAYUP by BOWLES,TAYLOR | 06:50 | | | |
| REBOUND (OFF) by BOWLES,TAYLOR | 06:50 | | | |
| MISSED LAYUP by BOWLES,TAYLOR | 06:48 | | | |
| | 06:48 | | | BLOCK by HOGUE,CAROLINE |
| | 06:47 | | | REBOUND (DEF) by LAYROCK,SYDNEY |
| | 06:40 | | | MISSED 3PTR by MILLER,FALAN |
| REBOUND (DEF) by BOWLES,TAYLOR | 06:40 | | | |
| GOOD! 3PTR by OWENS,CHASIDEE | 06:30 | 72-46 | H 26 | |
| ASSIST by BOWLES,TAYLOR | 06:30 | | | |
| | 06:25 | | | TIMEOUT 30SEC |
| | 06:25 | | | TIMEOUT MEDIA |

| VISITORS: Ouachita Baptist | Time | Score | Margin | HOME: Harding |
|-------------------------------------|-------|-------|--------|-----------------------------------|
| | 06:06 | | | MISSED 3PTR by LAYROCK,SYDNEY |
| | 06:06 | | | REBOUND (OFF) by MILLER,FALAN |
| | 06:02 | 74-46 | H 28 | GOOD! LAYUP by MILLER,FALAN [PNT] |
| MISSED 3PTR by BOWLES,TAYLOR | 05:49 | | | |
| | 05:49 | | | REBOUND (DEF) by JONES,SYDNIE |
| | 05:24 | 77-46 | H 31 | GOOD! 3PTR by LAYROCK,SYDNEY |
| | 05:24 | | | ASSIST by HOGUE,CAROLINE |
| GOOD! LAYUP by BYRAM,SHELBBIE [PNT] | 05:10 | 77-48 | H 29 | |
| | 05:10 | | | FOUL by PADGETT,PEYTON |
| MISSED FT by BYRAM,SHELBBIE | 05:10 | | | |
| | 05:10 | | | REBOUND (DEF) by JONES,SYDNIE |
| SUB IN: MILLER,MORGAN | 05:10 | | | |
| SUB IN: SPRADLIN,LAURA | 05:10 | | | |
| SUB IN: CROSBY,HAILEE | 05:10 | | | |
| SUB OUT: OWENS,CHASIDEE | 05:10 | | | |
| SUB OUT: KAPLER,KATIE | 05:10 | | | |
| SUB OUT: BOWLES,TAYLOR | 05:10 | | | |
| | 05:10 | | | SUB IN: JAMESON,HANNAH |
| | 05:10 | | | SUB IN: HANEY,A'NDREA |
| | 05:10 | | | SUB IN: MOYER,CORREY |
| | 05:10 | | | SUB OUT: PADGETT,PEYTON |
| | 05:10 | | | SUB OUT: LAYROCK,SYDNEY |
| | 05:10 | | | SUB OUT: HOGUE,CAROLINE |
| FOUL by MILLER,MORGAN | 04:52 | | | |
| | 04:47 | | | MISSED LAYUP by JONES,SYDNIE |
| REBOUND (DEF) by MCCANN,STEPHANIE | 04:47 | | | |
| MISSED 3PTR by MILLER,MORGAN | 04:36 | | | |
| | 04:36 | | | REBOUND (DEF) by TEAM |
| | 04:09 | | | TURNOVER by JONES,SYDNIE |
| TURNOVER by BYRAM,SHELBBIE | 03:55 | | | |
| FOUL by SPRADLIN,LAURA | 03:40 | | | |
| | 03:40 | 78-48 | H 30 | GOOD! FT by MILLER,FALAN |
| | 03:40 | 79-48 | H 31 | GOOD! FT by MILLER,FALAN |
| | 03:40 | | | SUB IN: NADEAU,JENNI |
| | 03:40 | | | SUB IN: PADGETT,PEYTON |
| | 03:40 | | | SUB OUT: MILLER,FALAN |
| | 03:40 | | | SUB OUT: HANEY,A'NDREA |
| MISSED 3PTR by BYRAM,SHELBBIE | 03:30 | | | |
| REBOUND (OFF) by BYRAM,SHELBBIE | 03:30 | | | |
| MISSED LAYUP by SPRADLIN,LAURA | 03:23 | | | |
| | 03:23 | | | REBOUND (DEF) by PADGETT,PEYTON |
| | 03:06 | | | MISSED JUMPER by NADEAU,JENNI |
| REBOUND (DEF) by CROSBY,HAILEE | 03:06 | | | |
| SUB IN: BOWLES,TAYLOR | 02:49 | | | |
| SUB OUT: MILLER,MORGAN | 02:49 | | | |
| | 02:43 | | | FOUL by MOYER,CORREY |
| | 02:41 | | | FOUL by NADEAU,JENNI |
| | 02:36 | | | FOUL by JONES,SYDNIE |
| GOOD! FT by BOWLES,TAYLOR | 02:36 | 79-49 | H 30 | |
| GOOD! FT by BOWLES,TAYLOR | 02:36 | 79-50 | H 29 | |
| | 02:17 | 82-50 | H 32 | GOOD! 3PTR by MOYER,CORREY |
| | 02:17 | | | ASSIST by JONES,SYDNIE |
| MISSED 3PTR by CROSBY,HAILEE | 02:06 | | | |
| REBOUND (OFF) by MCCANN,STEPHANIE | 02:06 | | | |
| GOOD! JUMPER by BOWLES,TAYLOR | 01:58 | 82-52 | H 30 | |
| ASSIST by CROSBY,HAILEE | 01:58 | | | |
| | 01:42 | | | MISSED LAYUP by NADEAU,JENNI |
| REBOUND (DEF) by SPRADLIN,LAURA | 01:42 | | | |
| | 01:32 | | | FOUL by MOYER,CORREY |
| GOOD! FT by BOWLES,TAYLOR | 01:32 | 82-53 | H 29 | |
| GOOD! FT by BOWLES,TAYLOR | 01:32 | 82-54 | H 28 | |
| FOUL by SPRADLIN,LAURA | 01:17 | | | |
| | 01:17 | | | MISSED FT by JAMESON,HANNAH |
| | 01:17 | | | REBOUND (DEADB) by TEAM |

| VISITORS: Ouachita Baptist | Time | Score | Margin | HOME: Harding |
|----------------------------------|-------|-------|--------|-------------------------------------|
| | 01:17 | 83-54 | H 29 | GOOD! FT by JAMESON,HANNAH |
| MISSED 3PTR by BOWLES,TAYLOR | 01:08 | | | |
| | 01:08 | | | REBOUND (DEF) by PADGETT,PEYTON |
| | 00:39 | 85-54 | H 31 | GOOD! LAYUP by PADGETT,PEYTON [PNT] |
| | 00:39 | | | ASSIST by JAMESON,HANNAH |
| MISSED LAYUP by MCCANN,STEPHANIE | 00:22 | | | |
| | 00:22 | | | BLOCK by PADGETT,PEYTON |
| REBOUND (OFF) by TEAM | 00:20 | | | |
| TURNOVER by TEAM | 00:03 | | | |

Ouachita Baptist 54, Harding 85

| Period 4-only | In Paint | Off T/O | 2nd Chance | Fast Break | Bench | |
|---------------|-------------|------------|---------------|---------------|-------|------------------------|
| QUA | 2 | 0 | 2 | 0 | 11 | Score tied - 0 times |
| HU | 4 | 2 | 2 | 0 | 6 | Lead changed - 0 times |

Ouachita Baptist vs Harding

2/9/2017; 5:30 p.m. at Searcy, Ark. (Rhodes-Reaves Field House)

Scoring/Runs Reference

Period 1

| Ouachita Baptist | Score | Marg | Harding |
|--------------------------|-------|------|-------------------------------|
| | 0-2 | 2 2 | JONES LAYUP [P] - 08:49 |
| | 0-5 | 5 3 | LAYROCK 3PTR - 08:38 |
| | 0-6 | 6 1 | HANEY FT - 07:44 |
| | 0-8 | 8 2 | PADGETT LAYUP [P] [F] - 07:23 |
| 07:08 - BULLARD JUMPER 2 | 2-8 | 6 | |
| | 2-11 | 9 3 | PADGETT 3PTR - 06:35 |
| | 2-13 | 11 2 | LAYROCK LAYUP [P] - 05:46 |
| | 2-15 | 13 2 | HOGUE LAYUP [P] - 05:15 |
| | 2-17 | 15 2 | HOGUE LAYUP [P] - 04:43 |
| | 2-20 | 18 3 | HOGUE 3PTR - 04:17 |
| 03:41 - BRITTAINE 3PTR 3 | 5-20 | 15 | |
| 02:59 - BOWLES FT 1 | 6-20 | 14 | |
| 02:59 - BOWLES FT 1 | 7-20 | 13 | |
| | 7-21 | 14 1 | HEIDEBRECHT FT - 02:48 |
| | 7-22 | 15 1 | HEIDEBRECHT FT - 02:48 |
| | 7-24 | 17 2 | MOYER LAYUP [P] - 02:20 |
| | 7-25 | 18 1 | LAYROCK FT - 01:06 |
| | 7-26 | 19 1 | JONES FT - 00:52 |
| | 7-27 | 20 1 | JONES FT - 00:52 |
| | 7-29 | 22 2 | LAYROCK LAYUP [P] [F] - 00:26 |
| 00:03 - BOWLES FT 1 | 8-29 | 21 | |
| 00:03 - BOWLES FT 1 | 9-29 | 20 | |
| | 9-31 | 22 2 | HANEY LAYUP [P] - 00:01 |

Period 3

| Ouachita Baptist | Score | Marg | Harding |
|-------------------------------|-------|------|-----------------------------|
| 08:40 - OWENS JUMPER [P] 2 | 27-48 | 21 | |
| | 27-50 | 23 2 | JONES LAYUP [P] - 07:58 |
| 07:34 - BRITTAINE LAYUP [P] 2 | 29-50 | 21 | |
| 06:49 - BRITTAINE 3PTR 3 | 32-50 | 18 | |
| | 32-53 | 21 3 | HOGUE 3PTR - 05:12 |
| 04:59 - BRITTAINE 3PTR 3 | 35-53 | 18 | |
| | 35-55 | 20 2 | JONES LAYUP [P] - 04:36 |
| | 35-57 | 22 2 | JONES LAYUP [P] - 04:11 |
| | 35-59 | 24 2 | JONES LAYUP [P] - 03:39 |
| | 35-61 | 26 2 | HOGUE LAYUP [P] - 03:11 |
| | 35-63 | 28 2 | HOGUE JUMPER - 02:27 |
| | 35-65 | 30 2 | JONES LAYUP [P] [F] - 02:00 |
| | 35-66 | 31 1 | HANEY FT - 01:30 |
| | 35-67 | 32 1 | HANEY FT - 01:30 |
| | 35-68 | 33 1 | HOGUE FT - 01:30 |
| 01:21 - BRITTAINE LAYUP [P] 2 | 37-68 | 31 | |
| 00:58 - CALDWELL FT 1 | 38-68 | 30 | |
| 00:58 - CALDWELL FT 1 | 39-68 | 29 | |
| | 39-69 | 30 1 | HANEY FT - 00:13 |
| | 39-70 | 31 1 | HANEY FT - 00:13 |
| 00:05 - BRITTAINE FT 1 | 40-70 | 30 | |
| 00:05 - BRITTAINE FT 1 | 41-70 | 29 | |

Period 2

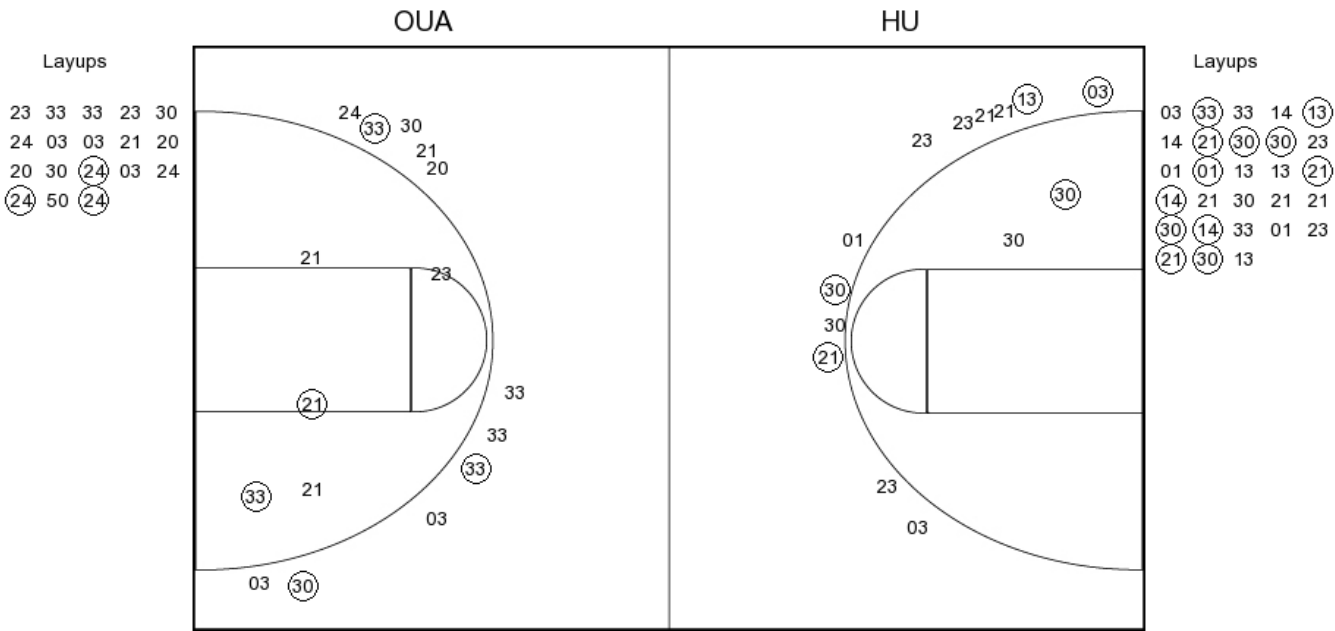
| Ouachita Baptist | Score | Marg | Harding |
|-------------------------------|-------|------|-----------------------------|
| | 9-32 | 23 1 | LAYROCK FT - 08:31 |
| | 9-33 | 24 1 | LAYROCK FT - 08:31 |
| | 9-35 | 26 2 | HOGUE LAYUP [P] [F] - 07:25 |
| | 9-36 | 27 1 | MOYER FT - 06:36 |
| 06:21 - CALDWELL FT 1 | 10-36 | 26 | |
| | 10-38 | 28 2 | HANEY LAYUP [P] - 06:05 |
| | 10-39 | 29 1 | HANEY FT - 06:05 |
| 05:33 - BULLARD 3PTR 3 | 13-39 | 26 | |
| 05:07 - BULLARD 3PTR 3 | 16-39 | 23 | |
| | 16-42 | 26 3 | MILLER 3PTR - 04:43 |
| 04:27 - BEGNAUD JUMPER [P] 2 | 18-42 | 24 | |
| 03:50 - BRITTAINE FT 1 | 19-42 | 23 | |
| 03:35 - OWENS LAYUP [P] [F] 2 | 21-42 | 21 | |
| | 21-44 | 23 2 | LAYROCK LAYUP [P] - 02:32 |
| 01:45 - OWENS LAYUP [P] 2 | 23-44 | 21 | |
| | 23-46 | 23 2 | HOGUE JUMPER [P] - 01:28 |
| | 23-48 | 25 2 | HOGUE LAYUP [P] - 00:54 |
| 00:19 - OWENS LAYUP [P] [F] 2 | 25-48 | 23 | |

Period 4

| Ouachita Baptist | Score | Marg | Harding |
|---------------------------|-------|------|---------------------------|
| 09:09 - CALDWELL JUMPER 2 | 43-70 | 27 | |
| | 43-72 | 29 2 | HOGUE JUMPER - 07:09 |
| 06:30 - OWENS 3PTR 3 | 46-72 | 26 | |
| | 46-74 | 28 2 | MILLER LAYUP [P] - 06:02 |
| | 46-77 | 31 3 | LAYROCK 3PTR - 05:24 |
| 05:10 - BYRAM LAYUP [P] 2 | 48-77 | 29 | |
| | 48-78 | 30 1 | MILLER FT - 03:40 |
| | 48-79 | 31 1 | MILLER FT - 03:40 |
| 02:36 - BOWLES FT 1 | 49-79 | 30 | |
| 02:36 - BOWLES FT 1 | 50-79 | 29 | |
| | 50-82 | 32 3 | MOYER 3PTR - 02:17 |
| 01:58 - BOWLES JUMPER 2 | 52-82 | 30 | |
| 01:32 - BOWLES FT 1 | 53-82 | 29 | |
| 01:32 - BOWLES FT 1 | 54-82 | 28 | |
| | 54-83 | 29 1 | JAMESON FT - 01:17 |
| | 54-85 | 31 2 | PADGETT LAYUP [P] - 00:39 |

Ouachita Baptist vs Harding
OFFICIAL SHOT CHART
2/9/2017 at Searcy, Ark. (Rhodes-Reaves Field House)

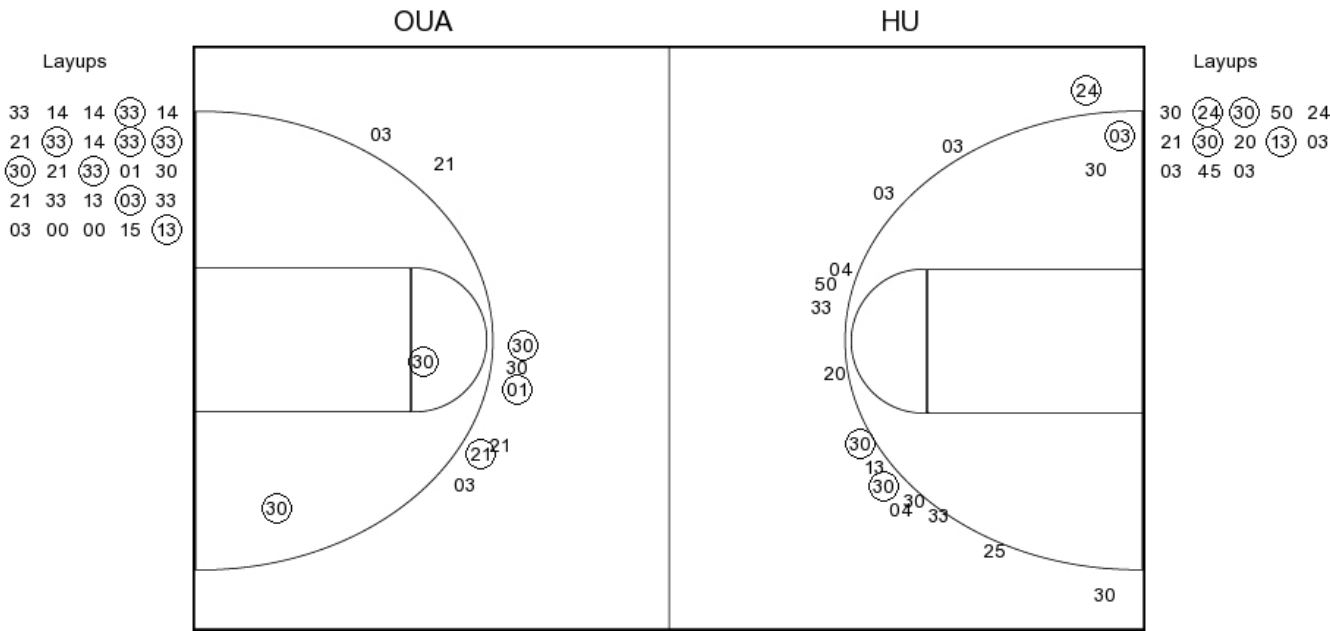
PERIOD 1



| OUA PERIOD 1 | | HU PERIOD 1 | |
|----------------|----|----------------|----|
| FG Made | 8 | FG Made | 17 |
| FG Attempted | 31 | FG Attempted | 39 |
| 3PFG Made | 3 | 3PFG Made | 4 |
| 3PFG Attempted | 10 | 3PFG Attempted | 12 |

Ouachita Baptist vs Harding
OFFICIAL SHOT CHART
2/9/2017 at Searcy, Ark. (Rhodes-Reaves Field House)

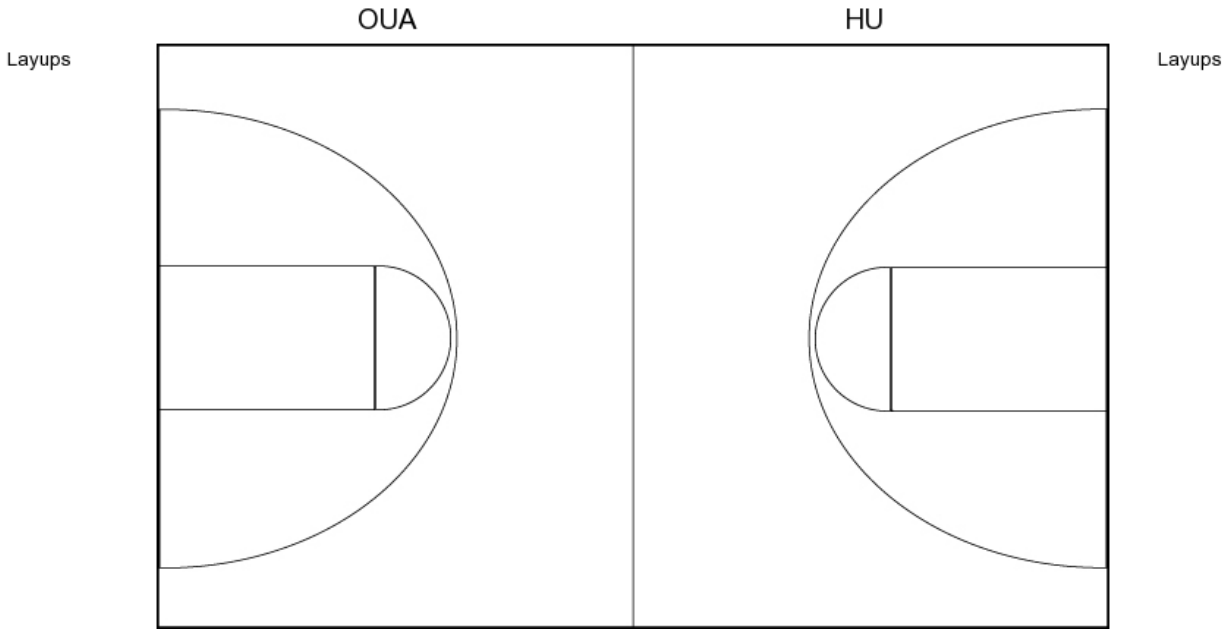
PERIOD 2



OUA PERIOD 2
FG Made
FG Attempted
3PFG Made
3PFG Attempted

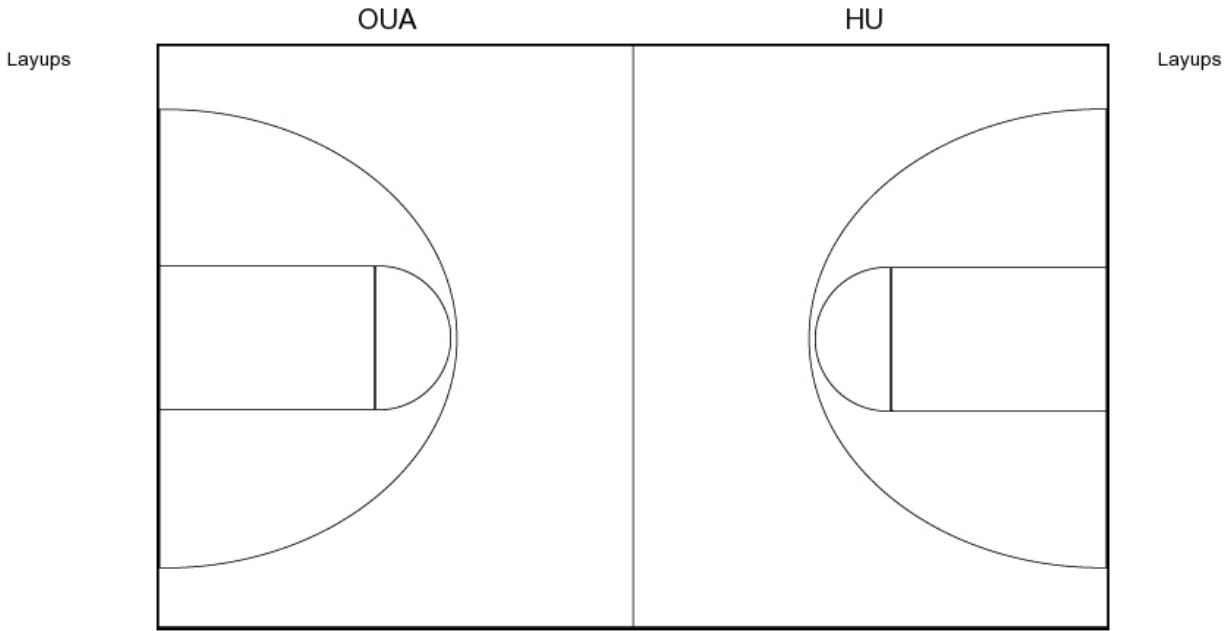
HU PERIOD 2
FG Made
FG Attempted
3PFG Made
3PFG Attempted

PERIOD 3



| OUA PERIOD 3 | | HU PERIOD 3 | |
|----------------|----|----------------|----|
| FG Made | 9 | FG Made | 13 |
| FG Attempted | 30 | FG Attempted | 33 |
| 3PFG Made | 3 | 3PFG Made | 3 |
| 3PFG Attempted | 15 | 3PFG Attempted | 8 |

PERIOD 4

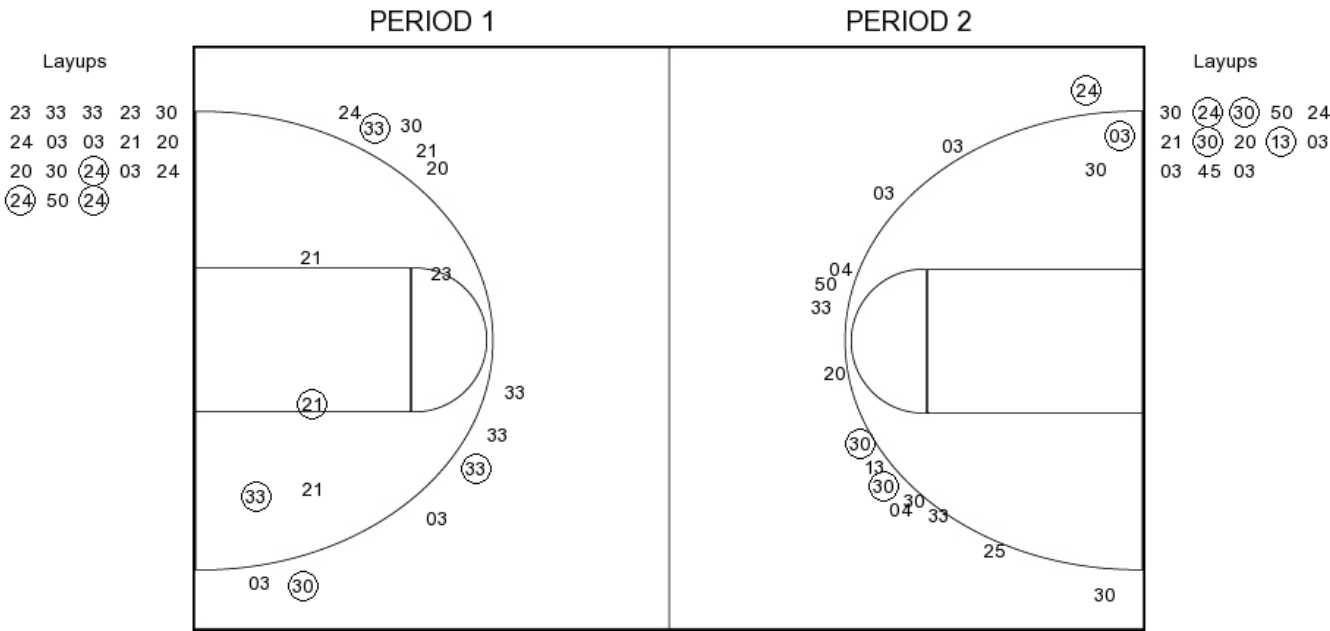


OUA PERIOD 4
FG Made
FG Attempted
3PFG Made
3PFG Attempted

HU PERIOD 4
FG Made
FG Attempted
3PFG Made
3PFG Attempted

Ouachita Baptist vs Harding
OFFICIAL SHOT CHART
2/9/2017 at Searcy, Ark. (Rhodes-Reaves Field House)

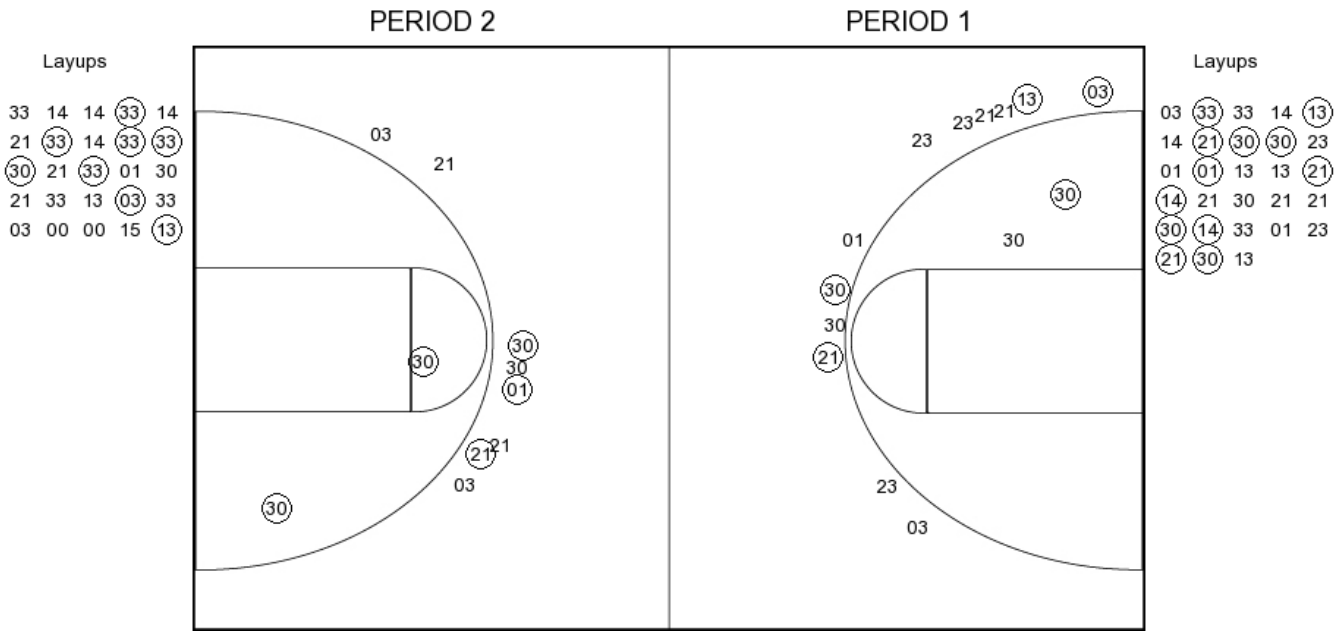
Ouachita Baptist



| | | | |
|----------------------------|----|----------------------------|--|
| <u>OUA PERIOD 1</u> | | <u>OUA PERIOD 2</u> | |
| FG Made | 8 | FG Made | |
| FG Attempted | 31 | FG Attempted | |
| 3PFG Made | 3 | 3PFG Made | |
| 3PFG Attempted | 10 | 3PFG Attempted | |

Ouachita Baptist vs Harding
OFFICIAL SHOT CHART
2/9/2017 at Searcy, Ark. (Rhodes-Reaves Field House)

Harding



| HU PERIOD 1 | |
|----------------|----|
| FG Made | 17 |
| FG Attempted | 39 |
| 3PFG Made | 4 |
| 3PFG Attempted | 12 |

| HU PERIOD 2 | |
|----------------|--|
| FG Made | |
| FG Attempted | |
| 3PFG Made | |
| 3PFG Attempted | |