

HARDING VS. OKLAHOMA BAPTIST



2/2/2017

Searcy, Ark. (Rhodes-Reaves Field House)

FINAL STATS

Harding

(15-3, 12-1 GAC)

72

Okla. Baptist

(6-13, 3-10 GAC)

55

Start Time: 5:30 p.m.

Officials: Ernie Murry, Shane Boozer and Aaron Bailey

Attendance: 502

Official Basketball Box Score -- Game Totals -- Final Statistics
Okla. Baptist vs Harding
2/2/2017 5:30 p.m. at Searcy, Ark. (Rhodes-Reaves Field House)

Okla. Baptist 55 - 6-13, 3-10 GAC

##	Player		Total		3-Ptr	FT-FTA	Rebounds			PF	TP	A	TO	Blk	Stl	Min
			FG-FGA	FG-FGA	FG-FGA		Off	Def	Tot							
10	GRAVES,CAMEERAH	g	3-8	1-3	4-6	2	3	5	2	11	4	3	1	4	31	
13	SMITH,MONAE	g	1-5	0-0	3-5	3	2	5	1	5	0	1	0	1	18	
21	EDGE,TASHA	f	2-7	1-1	2-2	0	10	10	3	7	0	4	2	0	33	
22	CUSTER,KATY	f	5-15	4-6	2-2	4	3	7	4	16	0	1	0	0	23	
23	AVINA,AUTUMN	g	6-12	0-0	0-2	1	1	2	0	12	4	2	2	1	35	
11	RICHARDS,ALEXA		0-0	0-0	0-0	0	0	0	0	0	0	0	0	0	1	
12	SMALL,CARRINGTON		0-5	0-3	0-0	1	1	2	3	0	0	0	2	0	19	
14	DAVENPORT,MORGAN		0-3	0-1	0-0	1	4	5	1	0	0	2	1	0	7	
25	WILLIAMS,LEXI		2-11	0-2	0-0	1	0	1	0	4	0	1	1	0	26	
32	BANKS,KAYDEE		0-1	0-1	0-0	1	0	1	0	0	0	0	0	0	7	
TEAM						7	1	8	0			0				
TOTALS			19-67	6-17	11-17	21	25	46	14	55	8	14	9	6	200	

Deadball Rebounds: 3,0

FG %	1st Half: 7-33	21.2%	2nd Half: 12-34	35.3%	Game: 19-67	28.4%									
	1st Qtr 3-15	20.0%	2nd Qtr 4-18	22.2%	3rd Qtr 5-15	33.3%	4th Qtr 7-19	36.8%							
3FG %	1st Half: 1-8	12.5%	2nd Half: 5-9	55.6%	Game: 6-17	35.3%									
	1st Qtr 1-3	33.3%	2nd Qtr 0-5	00.0%	3rd Qtr 2-3	66.7%	4th Qtr 3-6	50.0%							
FT %	1st Half: 4-6	66.7%	2nd Half: 7-11	63.6%	Game: 11-17	64.7%									
	1st Qtr 3-4	75.0%	2nd Qtr 1-2	50.0%	3rd Qtr 6-7	85.7%	4th Qtr 1-4	25.0%							

Harding 72 - 15-3, 12-1 GAC

##	Player		Total		3-Ptr	FT-FTA	Rebounds			PF	TP	A	TO	Blk	Stl	Min
			FG-FGA	FG-FGA	FG-FGA		Off	Def	Tot							
03	MILLER,FALAN	g	3-10	2-6	0-0	2	3	5	1	8	2	2	1	0	29	
13	PADGETT,PEYTON	g	3-7	0-1	0-0	0	2	2	0	6	7	2	0	1	29	
14	HANEY,A'NDREA	g	6-9	1-2	1-2	1	1	2	4	14	5	4	0	1	28	
21	LAYROCK,SYDNEY	f	3-9	0-3	2-2	0	5	5	4	8	3	1	0	0	29	
30	HOGUE,CAROLINE	f	9-19	0-1	6-9	2	8	10	4	24	2	0	9	0	29	
00	NADEAU,JENNI		0-0	0-0	0-0	0	0	0	0	0	0	0	0	0	1	
01	MOYER,CORREY		2-3	0-0	0-0	1	2	3	1	4	1	0	0	0	16	
15	JAMESON,HANNAH		0-0	0-0	0-0	0	0	0	0	0	0	0	0	0	1	
23	HEIDEBRECHT,CHELSE/		1-5	0-2	0-0	0	2	2	0	2	1	1	0	0	18	
33	JONES,SYDNIE		3-8	0-0	0-0	4	4	8	4	6	1	1	2	2	20	
TEAM						6	0	6	0			0				
TOTALS			30-70	3-15	9-13	16	27	43	18	72	22	11	12	4	200	

Deadball Rebounds: 3,3

FG %	1st Half: 14-34	41.2%	2nd Half: 16-36	44.4%	Game: 30-70	42.9%									
	1st Qtr 8-17	47.1%	2nd Qtr 6-17	35.3%	3rd Qtr 7-19	36.8%	4th Qtr 9-17	52.9%							
3FG %	1st Half: 2-7	28.6%	2nd Half: 1-8	12.5%	Game: 3-15	20.0%									
	1st Qtr 0-4	00.0%	2nd Qtr 2-3	66.7%	3rd Qtr 1-4	25.0%	4th Qtr 0-4	00.0%							
FT %	1st Half: 4-5	80.0%	2nd Half: 5-8	62.5%	Game: 9-13	69.2%									
	1st Qtr 2-2	100.0%	2nd Qtr 2-3	66.7%	3rd Qtr 2-3	66.7%	4th Qtr 3-5	60.0%							

Officials: Ernie Murry, Shane Boozer and Aaron Bailey
 Technical Fouls: Okla. Baptist- None. Harding- None.
 Attendance: 502

Score by periods	1st	2nd	3rd	4th	Total
Okla. Baptist	10	9	18	18	55
Harding	18	16	17	21	72

Points	In Paint	Off T/O	2nd Chance	Fast Break	Bench
OBU	16	12	16	2	4
HU	52	11	16	6	12

Last FG - OBU 4th-01:56, HU 4th-01:41.
 Largest lead - Okla. Baptist by 1 1st-08:30; Harding by 20 4th-02:29
 OBU led for 0:14. HU led for 37:24. Game was tied for 2:22.

Score tied - 2 times
 Lead changed - 2 times

Official Basketball Box Score -- Game Totals -- First Half Statistics
Okla. Baptist vs Harding
2/2/2017 5:30 p.m. at Searcy, Ark. (Rhodes-Reaves Field House)

Okla. Baptist 19 • 6-13, 3-10 GAC

##	Player	g	Total			Rebounds			PF	TP	A	TO	Blk	Stl	Min
			FG-FGA	3-Ptr FG-FGA	FT-FTA	Off	Def	Tot							
10	GRAVES,CAMEERAH	g	0-2	0-0	2-2	2	2	4	2	2	0	1	0	2	13
13	SMITH,MONAE	g	0-2	0-0	2-4	2	1	3	1	2	0	1	0	1	7
21	EDGE,TASHA	f	1-3	1-1	0-0	0	6	6	1	3	0	2	1	0	17
22	CUSTER,KATY	f	0-6	0-1	0-0	2	1	3	2	0	0	1	0	0	12
23	AVINA,AUTUMN	g	5-10	0-0	0-0	0	0	0	0	10	1	2	2	1	18
11	RICHARDS,ALEXA		0-0	0-0	0-0	0	0	0	0	0	0	0	0	0	0
12	SMALL,CARRINGTON		0-3	0-3	0-0	1	1	2	1	0	0	0	0	0	9
14	DAVENPORT,MORGAN		0-1	0-1	0-0	0	3	3	0	0	0	0	0	0	4
25	WILLIAMS,LEXI		1-5	0-1	0-0	0	0	0	0	2	0	1	0	0	14
32	BANKS,KAYDEE		0-1	0-1	0-0	1	0	1	0	0	0	0	0	0	6
TEAM						2	0	2	0		0				
Totals			7-33	1-8	4-6	10	14	24	7	19	1	8	3	4	100
FG %	1st Qtr	3-15	20.0%	2nd Qtr	4-18	22.2%	Half:	7-33	21.2%						
3FG %	1st Qtr	1-3	33.3%	2nd Qtr	0-5	00.0%	Half:	1-8	12.5%						
FT %	1st Qtr	3-4	75.0%	2nd Qtr	1-2	50.0%	Half:	4-6	66.7%						

Harding 34 • 15-3, 12-1 GAC

##	Player	g	Total			Rebounds			PF	TP	A	TO	Blk	Stl	Min
			FG-FGA	3-Ptr FG-FGA	FT-FTA	Off	Def	Tot							
03	MILLER,FALAN	g	1-3	1-2	0-0	1	1	2	1	3	0	1	0	0	12
13	PADGETT,PEYTON	g	2-3	0-0	0-0	0	0	0	0	4	5	1	0	0	15
14	HANEY,A'NDREA	g	2-4	1-2	0-0	0	1	1	2	5	3	2	0	1	14
21	LAYROCK,SYDNEY	f	2-6	0-2	2-2	0	3	3	1	6	1	0	0	0	14
30	HOGUE,CAROLINE	f	4-9	0-0	2-3	0	4	4	1	10	2	0	6	0	15
00	NADEAU,JENNI		0-0	0-0	0-0	0	0	0	0	0	0	0	0	0	0
01	MOYER,CORREY		0-1	0-0	0-0	0	2	2	1	0	0	0	0	0	8
15	JAMESON,HANNAH		0-0	0-0	0-0	0	0	0	0	0	0	0	0	0	0
23	HEIDEBRECHT,CHELSE/		1-3	0-1	0-0	0	2	2	0	2	1	1	0	0	13
33	JONES,SYDNIE		2-5	0-0	0-0	3	2	5	2	4	0	0	0	2	9
TEAM						2	0	2	0		0				
Totals			14-34	2-7	4-5	6	15	21	8	34	12	5	6	3	100
FG %	1st Qtr	8-17	47.1%	2nd Qtr	6-17	35.3%	Half:	14-34	41.2%						
3FG %	1st Qtr	0-4	00.0%	2nd Qtr	2-3	66.7%	Half:	2-7	28.6%						
FT %	1st Qtr	2-2	100.0%	2nd Qtr	2-3	66.7%	Half:	4-5	80.0%						

Officials: Ernie Murry, Shane Boozer and Aaron Bailey
 Technical Fouls: Okla. Baptist- None. Harding- None.

Score by periods	1st	2nd	3rd	4th	Total
Okla. Baptist	10	9	18	18	55
Harding	18	16	17	21	72

Points	In Paint	Off T/O	2nd Chance	Fast Break	Bench
OBU	6	6	4	0	2
	24	6	0	6	6

Last FG - OBU 2nd-00:10, HU 2nd-01:53.
 OBU led for 0:14. HU led for 17:24. Game was tied for 2:22.

Score tied - 2 times
 Lead changed - 2 times

Okla. Baptist vs Harding
2/2/2017; 5:30 p.m. at Searcy, Ark. (Rhodes-Reaves Field House)
Period 1 Play-By-Play

VISITORS: Okla. Baptist	Time	Score	Margin	HOME: Harding
	09:38			MISSED LAYUP by HANEY,A'NDREA
BLOCK by AVINA,AUTUMN	09:38			
REBOUND (DEF) by EDGE,TASHA	09:37			
TURNOVER by EDGE,TASHA	09:25			
	09:10			MISSED LAYUP by HOGUE,CAROLINE
REBOUND (DEF) by EDGE,TASHA	09:10			
MISSED LAYUP by SMITH,MONAE	09:01			
REBOUND (OFF) by CUSTER,KATY	09:01			
MISSED LAYUP by CUSTER,KATY	08:56			
	08:56			BLOCK by HOGUE,CAROLINE
	08:54			REBOUND (DEF) by HANEY,A'NDREA
	08:50	2-0	H 2	GOOD! LAYUP by PADGETT,PEYTON [FB/PNT]
	08:50			ASSIST by HANEY,A'NDREA
GOOD! 3PTR by EDGE,TASHA	08:30	2-3	V 1	
ASSIST by AVINA,AUTUMN	08:30			
	08:16	4-3	H 1	GOOD! LAYUP by HANEY,A'NDREA [PNT]
MISSED LAYUP by EDGE,TASHA	07:49			
	07:49			BLOCK by HOGUE,CAROLINE
REBOUND (OFF) by CUSTER,KATY	07:47			
MISSED LAYUP by CUSTER,KATY	07:45			
REBOUND (OFF) by SMITH,MONAE	07:45			
	07:43			FOUL by MILLER,FALAN
GOOD! FT by SMITH,MONAE	07:43	4-4	T	
MISSED FT by SMITH,MONAE	07:43			
	07:43			REBOUND (DEF) by HOGUE,CAROLINE
	07:43			SUB IN: JONES,SYDNIE
	07:43			SUB OUT: PADGETT,PEYTON
	07:16			MISSED 3PTR by LAYROCK,SYDNEY
	07:16			REBOUND (OFF) by JONES,SYDNIE
FOUL by GRAVES,CAMEERAH	07:11			
	07:09			MISSED JUMPER by LAYROCK,SYDNEY
	07:09			REBOUND (OFF) by JONES,SYDNIE
	07:07			MISSED LAYUP by JONES,SYDNIE
REBOUND (DEF) by EDGE,TASHA	07:07			
TURNOVER by SMITH,MONAE	06:58			
	06:58			STEAL by JONES,SYDNIE
SUB IN: WILLIAMS,LEXI	06:58			
SUB OUT: SMITH,MONAE	06:58			
	06:48	6-4	H 2	GOOD! LAYUP by HOGUE,CAROLINE [PNT]
GOOD! JUMPER by AVINA,AUTUMN	06:34	6-6	T	
	06:17	8-6	H 2	GOOD! LAYUP by HOGUE,CAROLINE [PNT]
	06:17			ASSIST by HANEY,A'NDREA
	06:04			FOUL by HANEY,A'NDREA
	06:04			SUB IN: HEIDEBRECHT,CHELSEA
	06:04			SUB IN: PADGETT,PEYTON
	06:04			SUB OUT: HANEY,A'NDREA
	06:04			SUB OUT: HOGUE,CAROLINE
TURNOVER by EDGE,TASHA	05:59			
	05:49	10-6	H 4	GOOD! LAYUP by JONES,SYDNIE [PNT]
	05:49			ASSIST by PADGETT,PEYTON
MISSED 3PTR by CUSTER,KATY	05:14			
REBOUND (OFF) by GRAVES,CAMEERAH	05:14			
TURNOVER by GRAVES,CAMEERAH	05:08			
	05:06			STEAL by JONES,SYDNIE
	05:03	12-6	H 6	GOOD! LAYUP by LAYROCK,SYDNEY [FB/PNT]
	05:03			ASSIST by PADGETT,PEYTON
TIMEOUT 30SEC	05:01			
TIMEOUT MEDIA	05:01			
MISSED JUMPER by AVINA,AUTUMN	04:49			

VISITORS: Okla. Baptist	Time	Score	Margin	HOME: Harding
	04:49			REBOUND (DEF) by MILLER,FALAN
FOUL by EDGE,TASHA	04:23			
	04:23	13-6	H 7	GOOD! FT by LAYROCK,SYDNEY
	04:23	14-6	H 8	GOOD! FT by LAYROCK,SYDNEY
SUB IN: SMALL,CARRINGTON	04:23			
SUB OUT: GRAVES,CAMEERAH	04:23			
MISSED JUMPER by CUSTER,KATY	04:01			
	04:01			REBOUND (DEF) by JONES,SYDNIE
	03:47			MISSED 3PTR by HEIDEBRECHT,CHELSEA
	03:47			REBOUND (OFF) by TEAM
	03:43			SUB IN: HANEY,A'NDREA
	03:43			SUB IN: MOYER,CORREY
	03:43			SUB OUT: MILLER,FALAN
	03:43			SUB OUT: LAYROCK,SYDNEY
	03:18			MISSED LAYUP by JONES,SYDNIE
REBOUND (DEF) by CUSTER,KATY	03:18			
	03:17			FOUL by JONES,SYDNIE
SUB IN: GRAVES,CAMEERAH	03:17			
SUB OUT: AVINA,AUTUMN	03:17			
	03:17			SUB IN: HOGUE,CAROLINE
	03:17			SUB OUT: JONES,SYDNIE
MISSED LAYUP by GRAVES,CAMEERAH	02:59			
REBOUND (OFF) by SMALL,CARRINGTON	02:59			
MISSED 3PTR by SMALL,CARRINGTON	02:49			
	02:49			BLOCK by HOGUE,CAROLINE
	02:48			REBOUND (DEF) by MOYER,CORREY
	02:35			TURNOVER by HANEY,A'NDREA
SUB IN: AVINA,AUTUMN	02:35			
SUB OUT: CUSTER,KATY	02:35			
MISSED JUMPER by WILLIAMS,LEXI	02:20			
	02:20			REBOUND (DEF) by HEIDEBRECHT,CHELSEA
	02:03	16-6	H 10	GOOD! LAYUP by HEIDEBRECHT,CHELSEA [PNT]
	02:03			ASSIST by PADGETT,PEYTON
GOOD! JUMPER by WILLIAMS,LEXI	01:47	16-8	H 8	
	01:39	18-8	H 10	GOOD! LAYUP by PADGETT,PEYTON [PNT]
	01:39			ASSIST by HANEY,A'NDREA
TIMEOUT 30SEC	01:36			
MISSED JUMPER by AVINA,AUTUMN	01:11			
	01:11			REBOUND (DEF) by HOGUE,CAROLINE
	01:04			MISSED 3PTR by MILLER,FALAN
REBOUND (DEF) by GRAVES,CAMEERAH	01:04			
	01:01			FOUL by MOYER,CORREY
SUB IN: CUSTER,KATY	01:01			
SUB OUT: EDGE,TASHA	01:01			
	01:01			SUB IN: LAYROCK,SYDNEY
	01:01			SUB OUT: PADGETT,PEYTON
TURNOVER by AVINA,AUTUMN	00:51			
	00:50			STEAL by HANEY,A'NDREA
	00:45			TURNOVER by HANEY,A'NDREA
STEAL by GRAVES,CAMEERAH	00:42			
MISSED JUMPER by GRAVES,CAMEERAH	00:29			
REBOUND (OFF) by GRAVES,CAMEERAH	00:29			
	00:27			FOUL by LAYROCK,SYDNEY
GOOD! FT by GRAVES,CAMEERAH	00:27	18-9	H 9	
GOOD! FT by GRAVES,CAMEERAH	00:27	18-10	H 8	
	00:27			SUB IN: JONES,SYDNIE
	00:27			SUB OUT: MOYER,CORREY
	00:06			MISSED 3PTR by HANEY,A'NDREA
REBOUND (DEF) by GRAVES,CAMEERAH	00:06			

Okla. Baptist 10, Harding 18

	Period 1-only	In Paint	Off T/O	2nd Chance	Fast Break	Bench Bench	
OBU	Period 1-only						Score tied - 4 times
HU		16	6	0	4	4	Lead changed - 2 times

Okla. Baptist vs Harding
2/2/2017; 5:30 p.m. at Searcy, Ark. (Rhodes-Reaves Field House)
Period 2 Play-By-Play

VISITORS: Okla. Baptist	Time	Score	Margin	HOME: Harding
SUB IN: SMALL,CARRINGTON	10:00			
SUB OUT: CUSTER,KATY	10:00			
	10:00			SUB IN: JONES,SYDNEIE
	10:00			SUB OUT: PADGETT,PEYTON
MISSED 3PTR by SMALL,CARRINGTON	09:51			
REBOUND (OFF) by SMITH,MONAE	09:51			
	09:48			FOUL by HANEY,A'NDREA
MISSED FT by SMITH,MONAE	09:48			
REBOUND (DEADB) by TEAM	09:48			
GOOD! FT by SMITH,MONAE	09:48	18-11	H 7	
	09:48			SUB IN: PADGETT,PEYTON
	09:48			SUB OUT: HANEY,A'NDREA
	09:33	20-11	H 9	GOOD! LAYUP by JONES,SYDNEIE [PNT]
	09:33			ASSIST by HOGUE,CAROLINE
GOOD! LAYUP by AVINA,AUTUMN [PNT]	09:22	20-13	H 7	
	09:01			TURNOVER by PADGETT,PEYTON
STEAL by SMITH,MONAE	08:57			
GOOD! LAYUP by AVINA,AUTUMN [PNT]	08:46	20-15	H 5	
	08:27	22-15	H 7	GOOD! LAYUP by HOGUE,CAROLINE [PNT]
	08:27			ASSIST by LAYROCK,SYDNEY
FOUL by SMALL,CARRINGTON	08:27			
	08:27	23-15	H 8	GOOD! FT by HOGUE,CAROLINE
SUB IN: CUSTER,KATY	08:27			
SUB OUT: SMALL,CARRINGTON	08:27			
TURNOVER by AVINA,AUTUMN	08:15			
	07:55			MISSED LAYUP by JONES,SYDNEIE
	07:55			REBOUND (OFF) by JONES,SYDNEIE
	07:50			MISSED 3PTR by LAYROCK,SYDNEY
REBOUND (DEF) by EDGE,TASHA	07:50			
MISSED LAYUP by CUSTER,KATY	07:36			
	07:36			BLOCK by HOGUE,CAROLINE
REBOUND (OFF) by TEAM	07:35			
	07:35			SUB IN: MOYER,CORREY
	07:35			SUB OUT: HOGUE,CAROLINE
MISSED LAYUP by SMITH,MONAE	07:25			
	07:25			REBOUND (DEF) by JONES,SYDNEIE
	07:05			TURNOVER by MILLER,FALAN
STEAL by GRAVES,CAMEERAH	07:05			
MISSED JUMPER by AVINA,AUTUMN	07:01			
	07:01			REBOUND (DEF) by LAYROCK,SYDNEY
FOUL by GRAVES,CAMEERAH	06:51			
SUB IN: WILLIAMS,LEXI	06:51			
SUB OUT: AVINA,AUTUMN	06:51			
	06:51			SUB IN: HEIDEBRECHT,CHELSEA
	06:51			SUB OUT: LAYROCK,SYDNEY
	06:32			MISSED LAYUP by MILLER,FALAN
BLOCK by EDGE,TASHA	06:32			
	06:29			REBOUND (OFF) by MILLER,FALAN
SUB IN: BANKS,KAYDEE	06:27			
SUB OUT: GRAVES,CAMEERAH	06:27			
	06:19			MISSED JUMPER by MOYER,CORREY
REBOUND (DEF) by SMITH,MONAE	06:19			
FOUL by CUSTER,KATY	06:09			
TURNOVER by CUSTER,KATY	06:09			
	05:52			MISSED LAYUP by HEIDEBRECHT,CHELSEA
REBOUND (DEF) by EDGE,TASHA	05:52			
	05:42			FOUL by JONES,SYDNEIE
	05:42			SUB IN: HOGUE,CAROLINE
	05:42			SUB OUT: JONES,SYDNEIE

VISITORS: Okla. Baptist	Time	Score	Margin	HOME: Harding
MISSED JUMPER by WILLIAMS,LEXI	05:37			
	05:37			REBOUND (DEADB) by TEAM
FOUL by SMITH,MONAE	05:35			
SUB IN: AVINA,AUTUMN	05:35			
SUB OUT: SMITH,MONAE	05:35			
	05:35			SUB IN: HANEY,A'NDREA
	05:35			SUB OUT: PADGETT,PEYTON
	05:21			TURNOVER by HEIDEBRECHT,CHELSEA
STEAL by AVINA,AUTUMN	05:20			
GOOD! LAYUP by AVINA,AUTUMN [PNT]	05:14	23-17	H 6	
	04:59	25-17	H 8	GOOD! LAYUP by HOGUE,CAROLINE [PNT]
	04:59			ASSIST by HEIDEBRECHT,CHELSEA
MISSED LAYUP by CUSTER,KATY	04:44			
	04:44			BLOCK by HOGUE,CAROLINE
	04:42			REBOUND (DEF) by MOYER,CORREY
	04:31	28-17	H 11	GOOD! 3PTR by MILLER,FALAN
	04:31			ASSIST by HOGUE,CAROLINE
MISSED 3PTR by WILLIAMS,LEXI	04:12			
	04:12			REBOUND (DEADB) by TEAM
FOUL by CUSTER,KATY	04:11			
	04:10			TIMEOUT MEDIA
	04:10	29-17	H 12	GOOD! FT by HOGUE,CAROLINE
	04:10			MISSED FT by HOGUE,CAROLINE
REBOUND (DEF) by EDGE,TASHA	04:10			
SUB IN: DAVENPORT,MORGAN	04:10			
SUB OUT: CUSTER,KATY	04:10			
	04:10			SUB IN: LAYROCK,SYDNEY
	04:10			SUB OUT: MOYER,CORREY
TURNOVER by WILLIAMS,LEXI	03:54			
	03:54			SUB IN: PADGETT,PEYTON
	03:54			SUB OUT: MILLER,FALAN
	03:42			MISSED LAYUP by HOGUE,CAROLINE
REBOUND (DEF) by DAVENPORT,MORGAN	03:42			
	03:41			FOUL by HOGUE,CAROLINE
MISSED LAYUP by EDGE,TASHA	03:28			
	03:28			BLOCK by HOGUE,CAROLINE
REBOUND (OFF) by TEAM	03:27			
MISSED JUMPER by AVINA,AUTUMN	03:16			
	03:16			REBOUND (DEF) by HEIDEBRECHT,CHELSEA
	03:03	32-17	H 15	GOOD! 3PTR by HANEY,A'NDREA
	03:03			ASSIST by PADGETT,PEYTON
MISSED JUMPER by AVINA,AUTUMN	02:40			
	02:40			REBOUND (DEF) by LAYROCK,SYDNEY
	02:36			TIMEOUT 30SEC
	02:12			MISSED JUMPER by HOGUE,CAROLINE
REBOUND (DEF) by SMALL,CARRINGTON	02:12			
MISSED 3PTR by SMALL,CARRINGTON	02:02			
	02:02			REBOUND (DEF) by HOGUE,CAROLINE
	01:53	34-17	H 17	GOOD! LAYUP by LAYROCK,SYDNEY [FB/PNT]
	01:53			ASSIST by PADGETT,PEYTON
SUB IN: SMALL,CARRINGTON	01:49			
SUB OUT: EDGE,TASHA	01:49			
MISSED LAYUP by WILLIAMS,LEXI	01:37			
	01:37			REBOUND (DEF) by HOGUE,CAROLINE
	01:22			MISSED LAYUP by HOGUE,CAROLINE
REBOUND (DEF) by DAVENPORT,MORGAN	01:22			
MISSED 3PTR by DAVENPORT,MORGAN	00:59			
REBOUND (OFF) by BANKS,KAYDEE	00:59			
MISSED 3PTR by BANKS,KAYDEE	00:53			
	00:53			REBOUND (DEF) by LAYROCK,SYDNEY
	00:31			MISSED LAYUP by HOGUE,CAROLINE
REBOUND (DEF) by DAVENPORT,MORGAN	00:31			
GOOD! JUMPER by AVINA,AUTUMN	00:10	34-19	H 15	
	00:01			MISSED LAYUP by PADGETT,PEYTON

VISITORS: Okla. Baptist	Time	Score	Margin	HOME: Harding
BLOCK by AVINA,AUTUMN	00:01			
	00:00			REBOUND (OFF) by TEAM
	00:00			MISSED JUMPER by LAYROCK,SYDNEY
	00:00			REBOUND (DEADB) by TEAM
SUB IN: SMITH,MONAE	00:00			
SUB IN: EDGE,TASHA	00:00			
SUB OUT: BANKS,KAYDEE	00:00			
SUB OUT: DAVENPORT,MORGAN	00:00			
	00:00			SUB IN: MOYER,CORREY
	00:00			SUB OUT: HOGUE,CAROLINE

Okla. Baptist 19, Harding 34

Period 2-only	In Paint	Off T/O	2nd Chance	Fast Break	Bench	
OBU	6	4	1	0	0	Score tied - 0 times
HU	8	0	0	2	2	Lead changed - 0 times

Official Basketball Box Score -- Game Totals -- Second Half Statistics
Okla. Baptist vs Harding
2/2/2017 5:30 p.m. at Searcy, Ark. (Rhodes-Reaves Field House)

Okla. Baptist 36 • 6-13, 3-10 GAC

##	Player	g	Total FG-FGA	3-Ptr FG-FGA	FT-FTA	Rebounds			PF	TP	A	TO	Blk	Stl	Min
						Off	Def	Tot							
10	GRAVES,CAMEERAH	g	3-6	1-3	2-4	0	1	1	0	9	4	2	1	2	18
13	SMITH,MONAE	g	1-3	0-0	1-1	1	1	2	0	3	0	0	0	0	11
21	EDGE,TASHA	f	1-4	0-0	2-2	0	4	4	2	4	0	2	1	0	16
22	CUSTER,KATY	f	5-9	4-5	2-2	2	2	4	2	16	0	0	0	0	11
23	AVINA,AUTUMN	g	1-2	0-0	0-2	1	1	2	0	2	3	0	0	0	17
11	RICHARDS,ALEXA		0-0	0-0	0-0	0	0	0	0	0	0	0	0	0	1
12	SMALL,CARRINGTON		0-2	0-0	0-0	0	0	0	2	0	0	0	2	0	10
14	DAVENPORT,MORGAN		0-2	0-0	0-0	1	1	2	1	0	0	2	1	0	3
25	WILLIAMS,LEXI		1-6	0-1	0-0	1	0	1	0	2	0	0	1	0	12
32	BANKS,KAYDEE		0-0	0-0	0-0	0	0	0	0	0	0	0	0	0	1
TEAM						5	1	6	0		0				
Totals			12-34	5-9	7-11	11	11	22	7	36	7	6	6	2	100
FG %	3rd Qtr	5-15	33.3%	4th Qtr	7-19	36.8%	Half:	12-34	35.3%						
3FG %	3rd Qtr	2-3	66.7%	4th Qtr	3-6	50.0%	Half:	5-9	12.5%						
FT %	3rd Qtr	6-7	85.7%	4th Qtr	1-4	25.0%	Half:	7-11	63.6%						

Harding 38 • 15-3, 12-1 GAC

##	Player	g	Total FG-FGA	3-Ptr FG-FGA	FT-FTA	Rebounds			PF	TP	A	TO	Blk	Stl	Min
						Off	Def	Tot							
03	MILLER,FALAN	g	2-7	1-4	0-0	1	2	3	0	5	2	1	1	0	17
13	PADGETT,PEYTON	g	1-4	0-1	0-0	0	2	2	0	2	2	1	0	1	14
14	HANEY,A'NDREA	g	4-5	0-0	1-2	1	0	1	2	9	2	2	0	0	14
21	LAYROCK,SYDNEY	f	1-3	0-1	0-0	0	2	2	3	2	2	1	0	0	15
30	HOGUE,CAROLINE	f	5-10	0-1	4-6	2	4	6	3	14	0	0	3	0	14
00	NADEAU,JENNI		0-0	0-0	0-0	0	0	0	0	0	0	0	0	0	1
01	MOYER,CORREY		2-2	0-0	0-0	1	0	1	0	4	1	0	0	0	8
15	JAMESON,HANNAH		0-0	0-0	0-0	0	0	0	0	0	0	0	0	0	1
23	HEIDEBRECHT,CHELSE/		0-2	0-1	0-0	0	0	0	0	0	0	0	0	0	5
33	JONES,SYDNIE		1-3	0-0	0-0	1	2	3	2	2	1	1	2	0	11
TEAM						4	0	4	0		0				
Totals			16-36	1-8	5-8	10	12	22	10	38	10	6	6	1	100
FG %	3rd Qtr	7-19	36.8%	4th Qtr	9-17	52.9%	Half:	16-36	44.4%						
3FG %	3rd Qtr	1-4	25.0%	4th Qtr	0-4	00.0%	Half:	1-8	28.6%						
FT %	3rd Qtr	2-3	66.7%	4th Qtr	3-5	60.0%	Half:	5-8	62.5%						

Officials: Ernie Murry, Shane Boozer and Aaron Bailey
 Technical Fouls: Okla. Baptist- None. Harding- None.

Score by periods	1st	2nd	3rd	4th	Total
Okla. Baptist	10	9	18	18	55
Harding	18	16	17	21	72

Points	In Paint	Off T/O	2nd Chance	Fast Break	Bench
Okla. Baptist	10	6	12	2	2
Harding	28	5	12	0	6

Last FG - OBU 4th-01:56, HU 4th-01:41.
 OBU led for 0:00. HU led for 20:00. Game was tied for 0:00.

Score tied - 0 times
 Lead changed - 0 times

Okla. Baptist vs Harding
2/2/2017; 5:30 p.m. at Searcy, Ark. (Rhodes-Reaves Field House)
Period 3 Play-By-Play

VISITORS: Okla. Baptist	Time	Score	Margin	HOME: Harding
GOOD! 3PTR by CUSTER,KATY	09:49	34-22	H 12	
ASSIST by GRAVES,CAMEERAH	09:49			
	09:33			MISSED LAYUP by HOGUE,CAROLINE
REBOUND (DEF) by AVINA,AUTUMN	09:33			
GOOD! 3PTR by CUSTER,KATY	09:26	34-25	H 9	
ASSIST by AVINA,AUTUMN	09:26			
	09:13	36-25	H 11	GOOD! LAYUP by HOGUE,CAROLINE [PNT]
	09:13			ASSIST by HANEY,A'NDREA
MISSED LAYUP by SMITH,MONAE	08:55			
	08:55			BLOCK by HOGUE,CAROLINE
REBOUND (OFF) by TEAM	08:53			
GOOD! JUMPER by EDGE,TASHA	08:49	36-27	H 9	
ASSIST by AVINA,AUTUMN	08:49			
	08:37	38-27	H 11	GOOD! LAYUP by HANEY,A'NDREA [PNT]
	08:19			FOUL by LAYROCK,SYDNEY
GOOD! FT by CUSTER,KATY	08:19	38-28	H 10	
GOOD! FT by CUSTER,KATY	08:19	38-29	H 9	
	08:08	41-29	H 12	GOOD! 3PTR by MILLER,FALAN
	08:08			ASSIST by PADGETT,PEYTON
MISSED 3PTR by GRAVES,CAMEERAH	07:41			
	07:41			REBOUND (DEF) by MILLER,FALAN
	07:29			MISSED 3PTR by MILLER,FALAN
REBOUND (DEF) by CUSTER,KATY	07:29			
	07:27			FOUL by HOGUE,CAROLINE
SUB IN: WILLIAMS,LEXI	07:27			
SUB OUT: SMITH,MONAE	07:27			
	07:27			SUB IN: JONES,SYDNIE
	07:27			SUB OUT: PADGETT,PEYTON
MISSED LAYUP by WILLIAMS,LEXI	07:10			
	07:10			BLOCK by MILLER,FALAN
REBOUND (OFF) by TEAM	07:10			
TURNOVER by EDGE,TASHA	07:10			
FOUL by CUSTER,KATY	06:57			
	06:52			MISSED LAYUP by HOGUE,CAROLINE
REBOUND (DEF) by EDGE,TASHA	06:52			
FOUL by EDGE,TASHA	06:41			
TURNOVER by EDGE,TASHA	06:41			
	06:41			SUB IN: PADGETT,PEYTON
	06:41			SUB OUT: HOGUE,CAROLINE
	06:19			MISSED LAYUP by LAYROCK,SYDNEY
BLOCK by WILLIAMS,LEXI	06:19			
REBOUND (DEF) by TEAM	06:17			
SUB IN: SMALL,CARRINGTON	06:17			
SUB OUT: CUSTER,KATY	06:17			
TURNOVER by GRAVES,CAMEERAH	05:57			
	05:56			STEAL by PADGETT,PEYTON
	05:42			MISSED LAYUP by PADGETT,PEYTON
BLOCK by SMALL,CARRINGTON	05:42			
	05:41			REBOUND (OFF) by TEAM
	05:36			MISSED 3PTR by PADGETT,PEYTON
REBOUND (DEF) by EDGE,TASHA	05:36			
MISSED JUMPER by SMALL,CARRINGTON	05:12			
	05:12			REBOUND (DEF) by LAYROCK,SYDNEY
	05:02			MISSED 3PTR by MILLER,FALAN
	05:02			REBOUND (OFF) by HANEY,A'NDREA
	04:51			MISSED LAYUP by MILLER,FALAN
BLOCK by GRAVES,CAMEERAH	04:51			
	04:51			REBOUND (OFF) by TEAM
	04:51			TIMEOUT MEDIA

VISITORS: Okla. Baptist	Time	Score	Margin	HOME: Harding
SUB IN: SMITH,MONAE	04:51			
SUB OUT: AVINA,AUTUMN	04:51			
	04:51			SUB IN: MOYER,CORREY
	04:51			SUB OUT: LAYROCK,SYDNEY
	04:33			MISSED LAYUP by HANEY,A'NDREA
BLOCK by EDGE,TASHA	04:33			
	04:32			REBOUND (OFF) by TEAM
	04:30			MISSED JUMPER by MILLER,FALAN
	04:30			REBOUND (OFF) by JONES,SYDNIE
	04:24	43-29	H 14	GOOD! LAYUP by MILLER,FALAN [PNT]
	04:24			ASSIST by JONES,SYDNIE
MISSED JUMPER by EDGE,TASHA	03:59			
	03:59			BLOCK by JONES,SYDNIE
REBOUND (OFF) by SMITH,MONAE	03:58			
GOOD! LAYUP by SMITH,MONAE [PNT]	03:57	43-31	H 12	
	03:57			FOUL by HANEY,A'NDREA
GOOD! FT by SMITH,MONAE	03:57	43-32	H 11	
	03:57			SUB IN: HEIDEBRECHT,CHELSEA
	03:57			SUB OUT: HANEY,A'NDREA
	03:34	45-32	H 13	GOOD! LAYUP by JONES,SYDNIE [PNT]
	03:34			ASSIST by MOYER,CORREY
MISSED JUMPER by SMALL,CARRINGTON	03:10			
	03:10			BLOCK by JONES,SYDNIE
REBOUND (OFF) by TEAM	03:09			
GOOD! JUMPER by CUSTER,KATY [PNT]	03:09	45-34	H 11	
ASSIST by GRAVES,CAMEERAH	03:09			
SUB IN: AVINA,AUTUMN	03:09			
SUB IN: CUSTER,KATY	03:09			
SUB IN: DAVENPORT,MORGAN	03:09			
SUB OUT: WILLIAMS,LEXI	03:09			
SUB OUT: EDGE,TASHA	03:09			
SUB OUT: SMALL,CARRINGTON	03:09			
	03:04			SUB IN: HANEY,A'NDREA
	03:04			SUB OUT: MILLER,FALAN
	02:58			FOUL by JONES,SYDNIE
	02:55			TURNOVER by JONES,SYDNIE
	02:50			SUB IN: LAYROCK,SYDNEY
	02:50			SUB IN: HOGUE,CAROLINE
	02:50			SUB OUT: JONES,SYDNIE
	02:50			SUB OUT: MOYER,CORREY
MISSED LAYUP by DAVENPORT,MORGAN	02:34			
REBOUND (OFF) by DAVENPORT,MORGAN	02:34			
MISSED LAYUP by DAVENPORT,MORGAN	02:33			
	02:33			REBOUND (DEF) by PADGETT,PEYTON
FOUL by CUSTER,KATY	02:24			
	02:24			MISSED FT by HANEY,A'NDREA
	02:24			REBOUND (DEADB) by TEAM
	02:24	46-34	H 12	GOOD! FT by HANEY,A'NDREA
SUB IN: EDGE,TASHA	02:24			
SUB OUT: CUSTER,KATY	02:24			
TURNOVER by DAVENPORT,MORGAN	02:14			
	02:03			TURNOVER by HANEY,A'NDREA
MISSED LAYUP by SMITH,MONAE	01:46			
	01:46			BLOCK by HOGUE,CAROLINE
REBOUND (OFF) by TEAM	01:46			
	01:46			SUB IN: MILLER,FALAN
	01:46			SUB OUT: PADGETT,PEYTON
TURNOVER by DAVENPORT,MORGAN	01:42			
	01:30			MISSED LAYUP by HOGUE,CAROLINE
	01:30			REBOUND (OFF) by HOGUE,CAROLINE
	01:28	48-34	H 14	GOOD! LAYUP by HOGUE,CAROLINE [PNT]
FOUL by DAVENPORT,MORGAN	01:28			
	01:28	49-34	H 15	GOOD! FT by HOGUE,CAROLINE
SUB IN: WILLIAMS,LEXI	01:28			

VISITORS: Okla. Baptist	Time	Score	Margin	HOME: Harding
SUB IN: SMALL,CARRINGTON	01:28			
SUB OUT: DAVENPORT,MORGAN	01:28			
SUB OUT: SMITH,MONAE	01:28			
	01:28			SUB IN: JONES,SYDNIE
	01:28			SUB OUT: HEIDEBRECHT,CHELSEA
	01:19			FOUL by HOGUE,CAROLINE
MISSED FT by GRAVES,CAMEERAH	01:19			
REBOUND (DEADB) by TEAM	01:19			
GOOD! FT by GRAVES,CAMEERAH	01:19	49-35	H 14	
	01:03	51-35	H 16	GOOD! LAYUP by HOGUE,CAROLINE [PNT]
	01:03			ASSIST by MILLER,FALAN
MISSED LAYUP by WILLIAMS,LEXI	00:34			
	00:34			REBOUND (DEF) by HOGUE,CAROLINE
	00:27			FOUL by HANEY,A'NDREA
	00:27			TURNOVER by HANEY,A'NDREA
	00:27			SUB IN: PADGETT,PEYTON
	00:27			SUB IN: HEIDEBRECHT,CHELSEA
	00:27			SUB OUT: HANEY,A'NDREA
	00:27			SUB OUT: HOGUE,CAROLINE
	00:13			FOUL by LAYROCK,SYDNEY
GOOD! FT by EDGE,TASHA	00:13	51-36	H 15	
GOOD! FT by EDGE,TASHA	00:13	51-37	H 14	
	00:00			MISSED LAYUP by HEIDEBRECHT,CHELSEA
REBOUND (DEF) by EDGE,TASHA	00:00			

Okla. Baptist 55, Harding 72

Period 3-only	In Paint	Off T/O	2nd Chance	Fast Break	Bench	
OBU	4	2	7	0	0	Score tied - 0 times
HU	12	3	5	0	2	Lead changed - 0 times

Okla. Baptist vs Harding
2/2/2017; 5:30 p.m. at Searcy, Ark. (Rhodes-Reaves Field House)
Period 4 Play-By-Play

VISITORS: Okla. Baptist	Time	Score	Margin	HOME: Harding
SUB IN: WILLIAMS,LEXI	10:00			
SUB IN: SMALL,CARRINGTON	10:00			
SUB OUT: SMITH,MONAE	10:00			
SUB OUT: CUSTER,KATY	10:00			
	10:00			SUB IN: JONES,SYDNIE
	10:00			SUB IN: HEIDEBRECHT,CHELSEA
	10:00			SUB OUT: HANEY,A'NDREA
	10:00			SUB OUT: HOGUE,CAROLINE
	09:51			MISSED 3PTR by MILLER,FALAN
REBOUND (DEF) by GRAVES,CAMEERAH	09:51			
GOOD! LAYUP by GRAVES,CAMEERAH [PNT]	09:42	51-39	H 12	
	09:39			TURNOVER by PADGETT,PEYTON
MISSED LAYUP by WILLIAMS,LEXI	09:38			
REBOUND (OFF) by WILLIAMS,LEXI	09:38			
GOOD! JUMPER by WILLIAMS,LEXI	09:35	51-41	H 10	
	09:17			TURNOVER by LAYROCK,SYDNEY
STEAL by GRAVES,CAMEERAH	09:15			
MISSED 3PTR by WILLIAMS,LEXI	09:11			
	09:11			REBOUND (DEF) by JONES,SYDNIE
	09:00			MISSED LAYUP by PADGETT,PEYTON
BLOCK by SMALL,CARRINGTON	09:00			
	09:00			REBOUND (OFF) by TEAM
	09:00			SUB IN: HOGUE,CAROLINE
	09:00			SUB OUT: HEIDEBRECHT,CHELSEA
	08:59	53-41	H 12	GOOD! LAYUP by HOGUE,CAROLINE [PNT]
	08:59			ASSIST by PADGETT,PEYTON
FOUL by EDGE,TASHA	08:57			
	08:57	54-41	H 13	GOOD! FT by HOGUE,CAROLINE
MISSED LAYUP by EDGE,TASHA	08:38			
	08:38			REBOUND (DEF) by JONES,SYDNIE
	08:27			MISSED 3PTR by LAYROCK,SYDNEY
	08:27			REBOUND (OFF) by MILLER,FALAN
SUB IN: SMITH,MONAE	08:23			
SUB IN: CUSTER,KATY	08:23			
SUB OUT: WILLIAMS,LEXI	08:23			
SUB OUT: EDGE,TASHA	08:23			
FOUL by SMALL,CARRINGTON	08:11			
	08:11	55-41	H 14	GOOD! FT by HOGUE,CAROLINE
	08:11			MISSED FT by HOGUE,CAROLINE
REBOUND (DEF) by CUSTER,KATY	08:11			
GOOD! LAYUP by AVINA,AUTUMN [PNT]	07:57	55-43	H 12	
ASSIST by GRAVES,CAMEERAH	07:57			
	07:40	57-43	H 14	GOOD! JUMPER by PADGETT,PEYTON
MISSED JUMPER by AVINA,AUTUMN	07:28			
	07:28			REBOUND (DEF) by HOGUE,CAROLINE
	07:18			MISSED LAYUP by HOGUE,CAROLINE
	07:18			REBOUND (OFF) by HOGUE,CAROLINE
FOUL by SMALL,CARRINGTON	07:16			
	07:16			MISSED FT by HOGUE,CAROLINE
	07:16			REBOUND (DEADB) by TEAM
	07:16	58-43	H 15	GOOD! FT by HOGUE,CAROLINE
SUB IN: WILLIAMS,LEXI	07:16			
SUB IN: EDGE,TASHA	07:16			
SUB OUT: SMALL,CARRINGTON	07:16			
SUB OUT: AVINA,AUTUMN	07:16			
	07:16			SUB IN: MOYER,CORREY
	07:16			SUB OUT: LAYROCK,SYDNEY
MISSED 3PTR by CUSTER,KATY	07:00			
	07:00			REBOUND (DEF) by MILLER,FALAN

VISITORS: Okla. Baptist	Time	Score	Margin	HOME: Harding
	06:37			MISSED LAYUP by JONES,SYDNIE
REBOUND (DEF) by SMITH,MONAE	06:37			
MISSED LAYUP by EDGE,TASHA	06:26			
	06:26			REBOUND (DEF) by HOGUE,CAROLINE
	06:19			TIMEOUT 30SEC
SUB IN: AVINA,AUTUMN	06:19			
SUB OUT: GRAVES,CAMEERAH	06:19			
	06:19			SUB IN: HANEY,A'NDREA
	06:19			SUB OUT: JONES,SYDNIE
	05:57	60-43	H 17	GOOD! LAYUP by HOGUE,CAROLINE [PNT]
	05:57			ASSIST by HANEY,A'NDREA
MISSED JUMPER by WILLIAMS,LEXI	05:48			
REBOUND (OFF) by AVINA,AUTUMN	05:48			
GOOD! 3PTR by CUSTER,KATY	05:44	60-46	H 14	
ASSIST by AVINA,AUTUMN	05:44			
	05:24			MISSED 3PTR by HOGUE,CAROLINE
	05:24			REBOUND (OFF) by MOYER,CORREY
	05:21	62-46	H 16	GOOD! LAYUP by MOYER,CORREY [PNT]
SUB IN: SMALL,CARRINGTON	05:19			
SUB IN: GRAVES,CAMEERAH	05:19			
SUB OUT: WILLIAMS,LEXI	05:19			
SUB OUT: EDGE,TASHA	05:19			
	05:19			SUB IN: LAYROCK,SYDNEY
	05:19			SUB OUT: PADGETT,PEYTON
TURNOVER by GRAVES,CAMEERAH	05:02			
	04:47	64-46	H 18	GOOD! LAYUP by HANEY,A'NDREA [PNT]
	04:47			ASSIST by MILLER,FALAN
	04:35			FOUL by LAYROCK,SYDNEY
TIMEOUT media	04:35			
GOOD! 3PTR by GRAVES,CAMEERAH	04:21	64-49	H 15	
	04:00	66-49	H 17	GOOD! LAYUP by MOYER,CORREY [PNT]
	04:00			ASSIST by LAYROCK,SYDNEY
	03:37			FOUL by HOGUE,CAROLINE
GOOD! FT by GRAVES,CAMEERAH	03:37	66-50	H 16	
MISSED FT by GRAVES,CAMEERAH	03:37			
	03:37			REBOUND (DEF) by HOGUE,CAROLINE
SUB IN: EDGE,TASHA	03:37			
SUB IN: WILLIAMS,LEXI	03:37			
SUB OUT: SMITH,MONAE	03:37			
SUB OUT: SMALL,CARRINGTON	03:37			
	03:19	68-50	H 18	GOOD! LAYUP by LAYROCK,SYDNEY [PNT]
MISSED LAYUP by GRAVES,CAMEERAH	02:55			
REBOUND (OFF) by CUSTER,KATY	02:55			
MISSED LAYUP by CUSTER,KATY	02:52			
REBOUND (OFF) by CUSTER,KATY	02:52			
MISSED LAYUP by CUSTER,KATY	02:50			
	02:50			REBOUND (DEF) by LAYROCK,SYDNEY
	02:29	70-50	H 20	GOOD! LAYUP by HANEY,A'NDREA [PNT]
GOOD! 3PTR by CUSTER,KATY	02:12	70-53	H 17	
ASSIST by GRAVES,CAMEERAH	02:12			
	01:58			TURNOVER by MILLER,FALAN
STEAL by GRAVES,CAMEERAH	01:57			
GOOD! LAYUP by GRAVES,CAMEERAH [FB/PNT]	01:56	70-55	H 15	
	01:41	72-55	H 17	GOOD! LAYUP by HANEY,A'NDREA [PNT]
	01:41			ASSIST by LAYROCK,SYDNEY
MISSED LAYUP by CUSTER,KATY	01:13			
	01:13			BLOCK by HOGUE,CAROLINE
REBOUND (OFF) by TEAM	01:13			
SUB IN: SMITH,MONAE	01:13			
SUB OUT: WILLIAMS,LEXI	01:13			
	01:13			SUB IN: JAMESON,HANNAH
	01:13			SUB IN: HEIDEBRECHT,CHELSEA
	01:13			SUB IN: PADGETT,PEYTON
	01:13			SUB IN: NADEAU,JENNI

VISITORS: Okla. Baptist	Time	Score	Margin	HOME: Harding
	01:13			SUB IN: JONES,SYDNIE
	01:13			SUB OUT: MILLER,FALAN
	01:13			SUB OUT: LAYROCK,SYDNEY
	01:13			SUB OUT: HANEY,A'NDREA
	01:13			SUB OUT: MOYER,CORREY
	01:13			SUB OUT: HOGUE,CAROLINE
SUB IN: SMALL,CARRINGTON	01:11			
SUB OUT: CUSTER,KATY	01:11			
MISSED 3PTR by GRAVES,CAMEERAH	01:06			
	01:06			REBOUND (DEADB) by TEAM
	00:52			MISSED 3PTR by HEIDEBRECHT,CHELSEA
REBOUND (DEF) by EDGE,TASHA	00:52			
	00:35			FOUL by JONES,SYDNIE
MISSED FT by AVINA,AUTUMN	00:35			
REBOUND (DEADB) by TEAM	00:35			
MISSED FT by AVINA,AUTUMN	00:35			
	00:35			REBOUND (DEF) by PADGETT,PEYTON
SUB IN: BANKS,KAYDEE	00:35			
SUB IN: RICHARDS,ALEXA	00:35			
SUB IN: DAVENPORT,MORGAN	00:35			
SUB OUT: EDGE,TASHA	00:35			
SUB OUT: SMITH,MONAE	00:35			
SUB OUT: GRAVES,CAMEERAH	00:35			
	00:13			MISSED LAYUP by JONES,SYDNIE
BLOCK by DAVENPORT,MORGAN	00:13			
REBOUND (DEF) by DAVENPORT,MORGAN	00:12			

Okla. Baptist 55, Harding 72

Period 4-only	In Paint	Off T/O	2nd Chance	Fast Break	Bench	
OBU	6	4	5	2	2	Score tied - 0 times
HU	16	2	7	0	4	Lead changed - 0 times

Okla. Baptist vs Harding
2/2/2017; 5:30 p.m. at Searcy, Ark. (Rhodes-Reaves Field House)
Scoring/Runs Reference

Period 1

Okla. Baptist	Score	Marg	Harding
	0-2	2 2	PADGETT LAYUP [P] [F] - 08:50
08:30 - EDGE 3PTR	3	3-2 -1	
	3-4	1 2	HANEY LAYUP [P] - 08:16
07:43 - SMITH FT	1	4-4 0	
	4-6	2 2	HOGUE LAYUP [P] - 06:48
06:34 - AVINA JUMPER	2	6-6 0	
	6-8	2 2	HOGUE LAYUP [P] - 06:17
	6-10	4 2	JONES LAYUP [P] - 05:49
	6-12	6 2	LAYROCK LAYUP [P] [F] - 05:03
	6-13	7 1	LAYROCK FT - 04:23
	6-14	8 1	LAYROCK FT - 04:23
	6-16	10 2	HEIDEBRECHT LAYUP [P] - 02:03
01:47 - WILLIAMS JUMPER	2	8-16 8	
	8-18	10 2	PADGETT LAYUP [P] - 01:39
00:27 - GRAVES FT	1	9-18 9	
00:27 - GRAVES FT	1	10-18 8	

Period 3

Okla. Baptist	Score	Marg	Harding
09:49 - CUSTER 3PTR	3	22-34 12	
09:26 - CUSTER 3PTR	3	25-34 9	
	25-36	11 2	HOGUE LAYUP [P] - 09:13
08:49 - EDGE JUMPER	2	27-36 9	
	27-38	11 2	HANEY LAYUP [P] - 08:37
08:19 - CUSTER FT	1	28-38 10	
08:19 - CUSTER FT	1	29-38 9	
	29-41	12 3	MILLER 3PTR - 08:08
	29-43	14 2	MILLER LAYUP [P] - 04:24
03:57 - SMITH LAYUP [P]	2	31-43 12	
03:57 - SMITH FT	1	32-43 11	
	32-45	13 2	JONES LAYUP [P] - 03:34
03:09 - CUSTER JUMPER [P]	2	34-45 11	
	34-46	12 1	HANEY FT - 02:24
	34-48	14 2	HOGUE LAYUP [P] - 01:28
	34-49	15 1	HOGUE FT - 01:28
01:19 - GRAVES FT	1	35-49 14	
	35-51	16 2	HOGUE LAYUP [P] - 01:03
00:13 - EDGE FT	1	36-51 15	
00:13 - EDGE FT	1	37-51 14	

Period 2

Okla. Baptist	Score	Marg	Harding
09:48 - SMITH FT	1	11-18 7	
	11-20	9 2	JONES LAYUP [P] - 09:33
09:22 - AVINA LAYUP [P]	2	13-20 7	
08:46 - AVINA LAYUP [P]	2	15-20 5	
	15-22	7 2	HOGUE LAYUP [P] - 08:27
	15-23	8 1	HOGUE FT - 08:27
05:14 - AVINA LAYUP [P]	2	17-23 6	
	17-25	8 2	HOGUE LAYUP [P] - 04:59
	17-28	11 3	MILLER 3PTR - 04:31
	17-29	12 1	HOGUE FT - 04:10
	17-32	15 3	HANEY 3PTR - 03:03
	17-34	17 2	LAYROCK LAYUP [P] [F] - 01:53
00:10 - AVINA JUMPER	2	19-34 15	

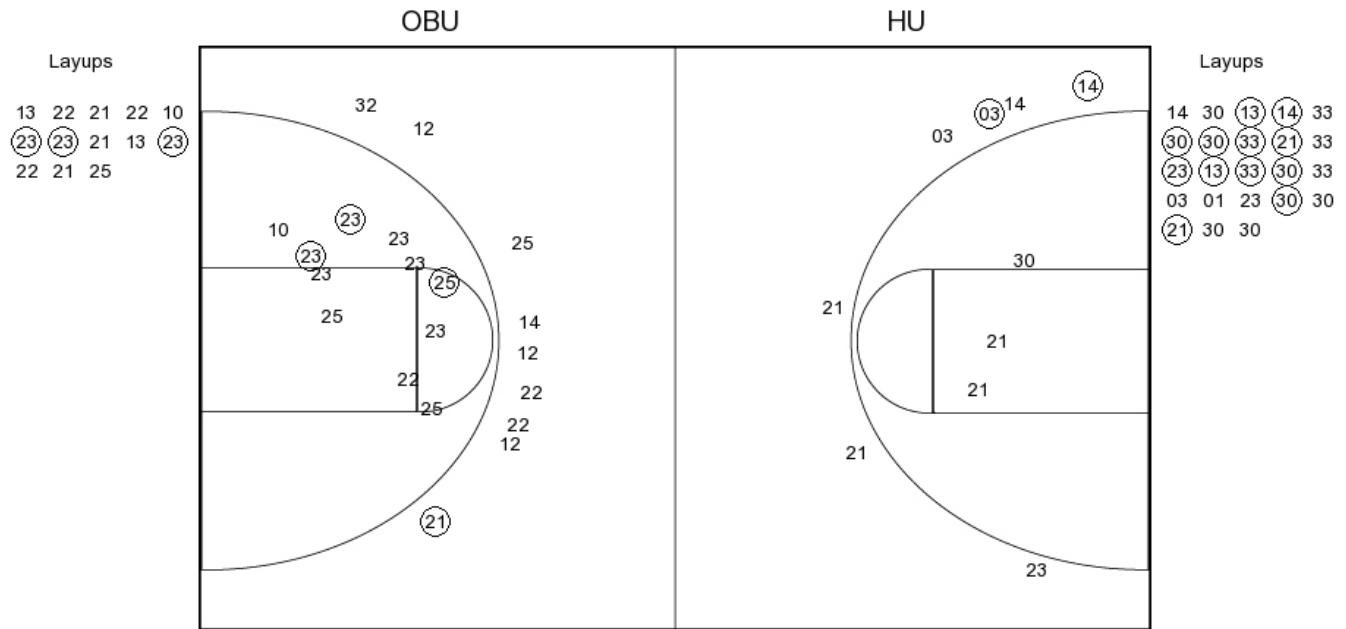
Period 4

Okla. Baptist	Score	Marg	Harding
09:42 - GRAVES LAYUP [P]	2	39-51 12	
09:35 - WILLIAMS JUMPER	2	41-51 10	
	41-53	12 2	HOGUE LAYUP [P] - 08:59
	41-54	13 1	HOGUE FT - 08:57
	41-55	14 1	HOGUE FT - 08:11
07:57 - AVINA LAYUP [P]	2	43-55 12	
	43-57	14 2	PADGETT JUMPER - 07:40
	43-58	15 1	HOGUE FT - 07:16
	43-60	17 2	HOGUE LAYUP [P] - 05:57
05:44 - CUSTER 3PTR	3	46-60 14	
	46-62	16 2	MOYER LAYUP [P] - 05:21
	46-64	18 2	HANEY LAYUP [P] - 04:47
04:21 - GRAVES 3PTR	3	49-64 15	
	49-66	17 2	MOYER LAYUP [P] - 04:00
03:37 - GRAVES FT	1	50-66 16	
	50-68	18 2	LAYROCK LAYUP [P] - 03:19
	50-70	20 2	HANEY LAYUP [P] - 02:29
02:12 - CUSTER 3PTR	3	53-70 17	
01:56 - GRAVES LAYUP [P] [F]	2	55-70 15	
	55-72	17 2	HANEY LAYUP [P] - 01:41

Okla. Baptist vs Harding
OFFICIAL SHOT CHART

2/2/2017 at Searcy, Ark. (Rhodes-Reaves Field House)

PERIOD 1



OBU PERIOD 1

FG Made	7
FG Attempted	33
3PFG Made	1
3PFG Attempted	8

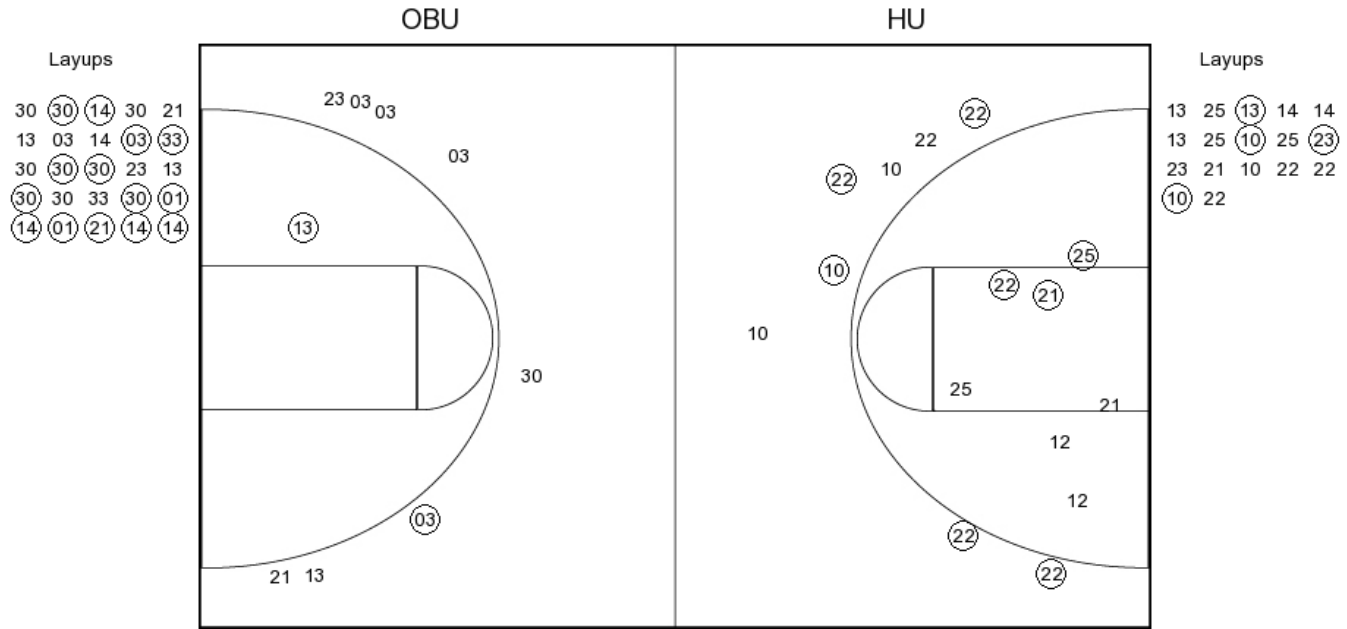
HU PERIOD 1

FG Made	14
FG Attempted	34
3PFG Made	2
3PFG Attempted	7

Okla. Baptist vs Harding
OFFICIAL SHOT CHART

2/2/2017 at Searcy, Ark. (Rhodes-Reaves Field House)

PERIOD 2



OBU PERIOD 2
 FG Made
 FG Attempted
 3PFG Made
 3PFG Attempted

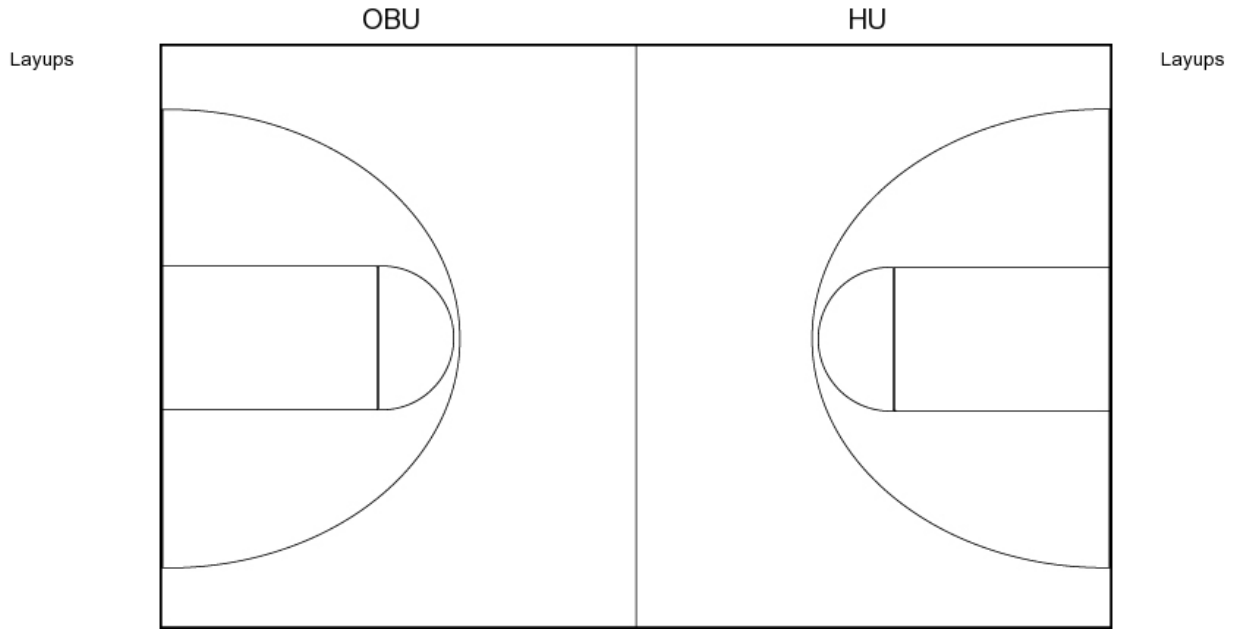
HU PERIOD 2
 FG Made
 FG Attempted
 3PFG Made
 3PFG Attempted

Okla. Baptist vs Harding

OFFICIAL SHOT CHART

2/2/2017 at Searcy, Ark. (Rhodes-Reaves Field House)

PERIOD 3



OBU PERIOD 3

FG Made	12
FG Attempted	34
3PFG Made	5
3PFG Attempted	9

HU PERIOD 3

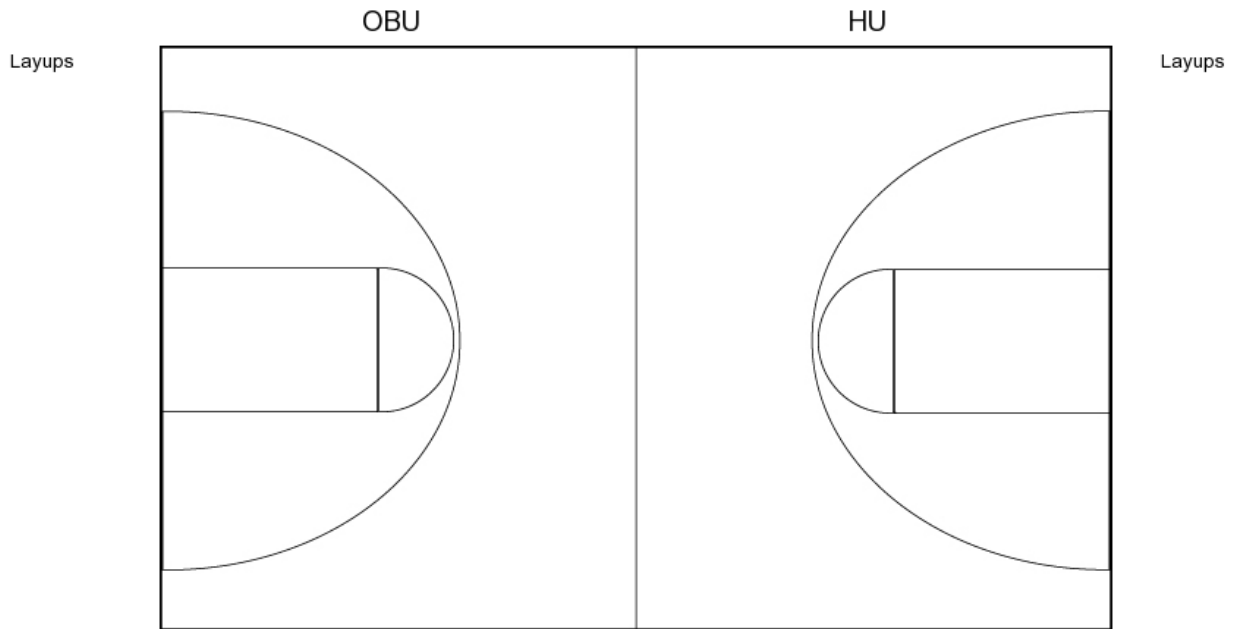
FG Made	16
FG Attempted	36
3PFG Made	1
3PFG Attempted	8

Okla. Baptist vs Harding

OFFICIAL SHOT CHART

2/2/2017 at Searcy, Ark. (Rhodes-Reaves Field House)

PERIOD 4



OBU PERIOD 4

FG Made

FG Attempted

3PFG Made

3PFG Attempted

HU PERIOD 4

FG Made

FG Attempted

3PFG Made

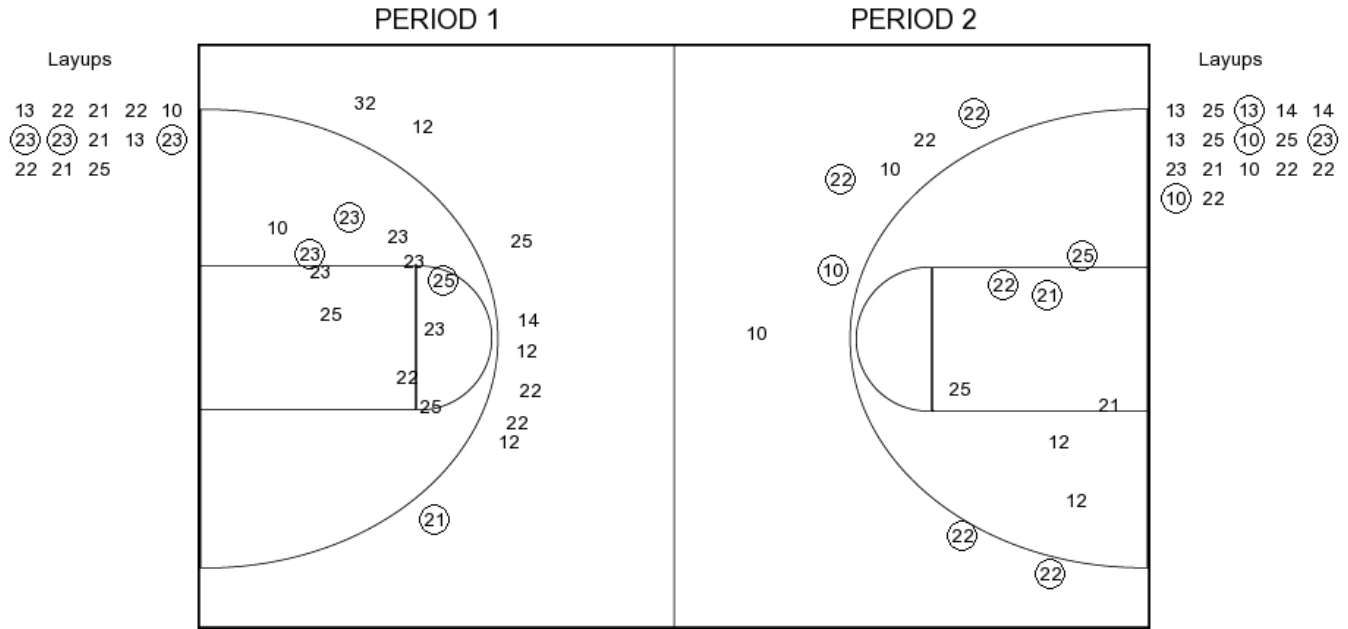
3PFG Attempted

Okla. Baptist vs Harding

OFFICIAL SHOT CHART

2/2/2017 at Searcy, Ark. (Rhodes-Reaves Field House)

Okla. Baptist



OBU PERIOD 1

FG Made	7
FG Attempted	33
3PFG Made	1
3PFG Attempted	8

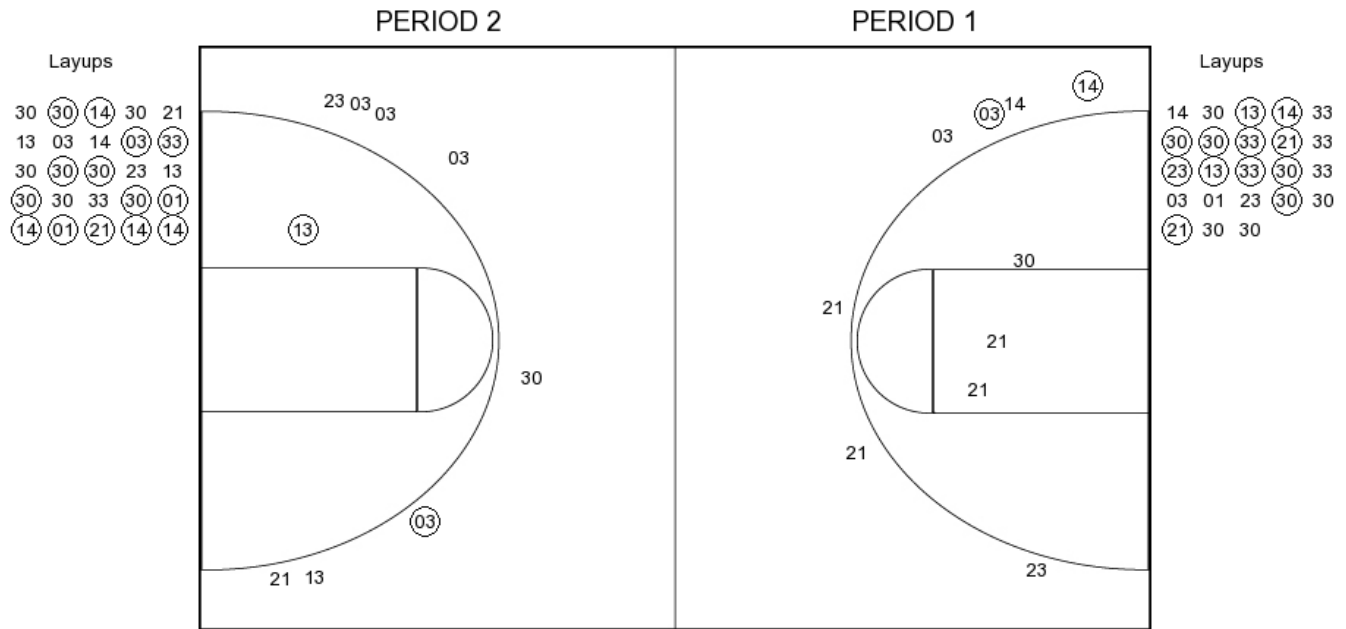
OBU PERIOD 2

FG Made	
FG Attempted	
3PFG Made	
3PFG Attempted	

Okla. Baptist vs Harding
OFFICIAL SHOT CHART

2/2/2017 at Searcy, Ark. (Rhodes-Reaves Field House)

Harding



HU PERIOD 1

FG Made	14
FG Attempted	34
3PFG Made	2
3PFG Attempted	7

HU PERIOD 2

FG Made	
FG Attempted	
3PFG Made	
3PFG Attempted	