

# HARDING VS. SOUTHWESTERN OKLA.



11/19/2016

Searcy, Ark. (Rhodes-Reaves Field House)

## FINAL STATS

**Harding**

*(3-1, 2-0 GAC)*

**77**

**Southwestern Okla.**

*(0-4, 0-2 GAC)*

**50**

*Start Time: 6 p.m.*

*Officials: Barry Sturges, Luke Chittum and Daniel Brown*

*Attendance: 968*

**Official Basketball Box Score -- Game Totals -- Final Statistics**  
**Southwestern Okla. vs Harding**  
**11/19/2016 6 p.m. at Searcy, Ark. (Rhodes-Reaves Field House)**

**Southwestern Okla. 50 - 0-4, 0-2 GAC**

##	Player		Total			3-Ptr			Rebounds			PF	TP	A	TO	Blk	Stl	Min
			FG-FGA	FG-FGA	FT-FTA	FG-FGA	FG-FGA	FT-FTA	Off	Def	Tot							
01	CHAMPION,MARKEISE	g	5-12	3-8	0-0	1	1	2	1	13	1	1	0	1			30	
05	HARRIS,RESHARDD	f	5-9	0-0	2-4	0	2	2	0	12	1	1	0	2			28	
15	PUGH,DEVIN	g	3-17	1-8	1-2	2	3	5	2	8	0	1	0	1			36	
22	JENNINGS,COLLIN	g	3-7	1-3	1-1	3	5	8	2	8	4	1	1	1			29	
33	DAVIS,ALTEZ	f	2-4	0-0	0-0	1	2	3	3	4	3	1	1	1			15	
03	EIBEL,DANIEL		0-3	0-1	0-0	1	0	1	0	0	0	0	0	0			7	
04	HAMMONDS,GARRETT		0-0	0-0	0-0	0	0	0	0	0	0	0	0	0			1	
10	THOMAS,RASHON		1-3	0-1	0-0	2	2	4	0	2	1	1	0	0			10	
13	LUBIN,DOMINIQUE		0-2	0-0	0-0	1	0	1	0	0	0	0	0	0			7	
20	LEWALLEN,LUKE		1-1	1-1	0-0	0	3	3	0	3	0	1	0	0			6	
21	SHOEMAKER,NICK		0-3	0-3	0-1	0	1	1	3	0	0	0	0	0			12	
32	FINCHER,NEVILLE		0-4	0-1	0-0	0	2	2	3	0	0	3	1	0			10	
50	HIGHTOWER,GEOFFERY		0-1	0-0	0-0	0	0	0	2	0	0	1	1	0			9	
TEAM						1	1	2	0									
TOTALS			20-66	6-26	4-8	12	22	34	16	50	10	11	4	6			200	

Deadball Rebounds: 1,1

FG %	1st Half:	11-35	31.4%	2nd Half:	9-31	29.0%	Game:	20-66	30.3%
3FG %	1st Half:	3-12	25.0%	2nd Half:	3-14	21.4%	Game:	6-26	23.1%
FT %	1st Half:	3-6	50.0%	2nd Half:	1-2	50.0%	Game:	4-8	50.0%

**Harding 77 - 3-1, 2-0 GAC**

##	Player		Total			3-Ptr			Rebounds			PF	TP	A	TO	Blk	Stl	Min
			FG-FGA	FG-FGA	FT-FTA	FG-FGA	FG-FGA	FT-FTA	Off	Def	Tot							
01	WAGNER,TIM	g	9-17	2-6	1-1	0	5	5	3	21	2	2	0	0			38	
02	MEDJO,FILIP	g	2-7	0-1	0-1	4	5	9	0	4	4	4	0	2			22	
21	FRANCIS,WILL	g	7-8	6-7	0-0	0	8	8	1	20	4	3	1	0			36	
24	EGGLESTON,BRADEN	f	1-1	1-1	0-0	0	3	3	3	3	2	1	0	1			16	
42	ANDELKOVIC,STEFAN	f	3-12	2-7	2-2	1	6	7	1	10	1	2	0	0			30	
04	WARD,ZAC		0-1	0-0	0-0	0	5	5	3	0	5	0	1	1			26	
12	MANKIN,AUSTIN		2-5	1-2	3-4	1	2	3	0	8	1	0	0	0			13	
14	DJOKOVIC,GOJKO		2-3	0-0	1-1	1	1	2	1	5	2	1	0	0			6	
34	HORN,ADAM		0-0	0-0	0-0	0	0	0	1	0	1	0	0	0			2	
40	KIRBY,MITCHELL		0-1	0-1	0-0	0	0	0	0	0	0	0	0	0			1	
44	BRANDON,JP		3-4	0-0	0-0	1	2	3	0	6	0	1	0	0			10	
TEAM						1	0	1	0									
TOTALS			29-59	12-25	7-9	9	37	46	13	77	22	14	2	4			200	

Deadball Rebounds: 0,0

FG %	1st Half:	14-29	48.3%	2nd Half:	15-30	50.0%	Game:	29-59	49.2%
3FG %	1st Half:	6-11	54.5%	2nd Half:	6-14	42.9%	Game:	12-25	48.0%
FT %	1st Half:	2-3	66.7%	2nd Half:	5-6	83.3%	Game:	7-9	77.8%

Officials: Barry Sturges, Luke Chittum and Daniel Brown  
 Technical Fouls: Southwestern Okla.- None. Harding- None.  
 Attendance: 968

Score by periods	1st	2nd	Total
Southwestern Okla.	28	22	50
Harding	36	41	77

Points	Off	2nd	Bench
	T/O	Chance	
SWOSU	8	9	5
HU	14	9	19

Last FG - SWOSU 2nd-00:53, HU 2nd-01:34.  
 Largest lead - Southwestern Okla. by 2 1st-17:37; Harding by 30  
 2nd-01:03  
 SWOSU led for 1:41. HU led for 36:37. Game was tied for 1:42.

Score tied - 2 times  
 Lead changed - 4 times

**Official Basketball Box Score -- Game Totals -- First Half Statistics**  
**Southwestern Okla. vs Harding**  
**11/19/2016 6 p.m. at Searcy, Ark. (Rhodes-Reaves Field House)**

**Southwestern Okla. 28 • 0-4, 0-2 GAC**

##	Player	g	Total	3-Ptr	FT-FTA	Rebounds			PF	TP	A	TO	Blk	Stl	Min
			FG-FGA	FG-FGA		Off	Def	Tot							
01	CHAMPION,MARKEISE	g	3-7	2-5	0-0	0	0	0	1	8	0	0	0	1	16
05	HARRIS,RESHARDD	f	2-5	0-0	1-2	0	1	1	0	5	1	0	0	2	16
15	PUGH,DEVIN	g	2-10	1-4	1-2	1	2	3	1	6	0	0	0	1	18
22	JENNINGS,COLLIN	g	2-5	0-2	1-1	3	3	6	1	5	4	0	1	1	18
33	DAVIS,ALTEZ	f	1-2	0-0	0-0	0	0	0	2	2	1	0	1	1	6
03	EIBEL,DANIEL		0-0	0-0	0-0	1	0	1	0	0	0	0	0	0	1
04	HAMMONDS,GARRETT		0-0	0-0	0-0	0	0	0	0	0	0	0	0	0	0
10	THOMAS,RASHON		1-2	0-0	0-0	2	0	2	0	2	0	1	0	0	4
13	LUBIN,DOMINIQUE		0-2	0-0	0-0	1	0	1	0	0	0	0	0	0	6
20	LEWALLEN,LUKE		0-0	0-0	0-0	0	2	2	0	0	0	1	0	0	2
21	SHOEMAKER,NICK		0-1	0-1	0-1	0	1	1	0	0	0	0	0	0	4
32	FINCHER,NEVILLE		0-1	0-0	0-0	0	1	1	2	0	0	2	1	0	5
50	HIGHTOWER,GEOFFERY		0-0	0-0	0-0	0	0	0	1	0	0	1	1	0	4
TEAM						0	0	0	0		0				
Totals			11-35	3-12	3-6	8	10	18	8	28	6	5	4	6	100

FG % Half: 11-35 31.4%  
 3FG % Half: 3-12 25.0%  
 FT % Half: 3-6 50.0%

**Harding 36 • 3-1, 2-0 GAC**

##	Player	g	Total	3-Ptr	FT-FTA	Rebounds			PF	TP	A	TO	Blk	Stl	Min
			FG-FGA	FG-FGA		Off	Def	Tot							
01	WAGNER,TIM	g	4-9	2-4	1-1	0	4	4	0	11	1	2	0	0	19
02	MEDJO,FILIP	g	1-2	0-0	0-1	1	1	2	0	2	2	3	0	0	8
21	FRANCIS,WILL	g	1-1	1-1	0-0	0	3	3	1	3	2	2	0	0	18
24	EGGLESTON,BRADEN	f	1-1	1-1	0-0	0	2	2	2	3	1	0	0	0	9
42	ANDELKOVIC,STEFAN	f	2-5	2-4	0-0	0	5	5	1	6	0	1	0	0	12
04	WARD,ZAC		0-1	0-0	0-0	0	0	0	2	0	2	0	0	1	13
12	MANKIN,AUSTIN		1-4	0-1	0-0	1	0	1	0	2	0	0	0	0	7
14	DJOKOVIC,GOJKO		2-3	0-0	1-1	1	1	2	1	5	2	1	0	0	6
34	HORN,ADAM		0-0	0-0	0-0	0	0	0	0	0	0	0	0	0	0
40	KIRBY,MITCHELL		0-0	0-0	0-0	0	0	0	0	0	0	0	0	0	0
44	BRANDON,JP		2-3	0-0	0-0	1	2	3	0	4	0	1	0	0	8
TEAM						1	0	1	0		0				
Totals			14-29	6-11	2-3	5	18	23	7	36	10	10	0	1	100

FG % Half: 14-29 48.3%  
 3FG % Half: 6-11 54.5%  
 FT % Half: 2-3 66.7%

Officials: Barry Sturges, Luke Chittum and Daniel Brown  
 Technical Fouls: Southwestern Okla.- None. Harding- None.

Score by periods	1st	2nd	Total
Southwestern Okla.	28	22	50
Harding	36	41	77

Points	In Paint	Off T/O	2nd Chance	Bench
SWOSU	0	8	7	2
HU	0	6	4	11

Last FG - SWOSU 1st-00:03, HU 1st-01:09.  
 SWOSU led for 1:41. HU led for 16:37. Game was tied for 1:42.

Score tied - 2 times  
 Lead changed - 4 times

**Southwestern Okla. vs Harding**  
**11/19/2016; 6 p.m. at Searcy, Ark. (Rhodes-Reaves Field House)**  
**Period 1 Play-By-Play**

VISITORS: Southwestern Okla.	Time	Score	Margin	HOME: Harding
MISSED 3PTR by PUGH,DEVIN	19:49			
	19:49			REBOUND (DEF) by WAGNER,TIM
	19:25	3-0	H 3	GOOD! 3PTR by ANDELKOVIC,STEFAN
	19:25			ASSIST by MEDJO,FILIP
GOOD! LAYUP by DAVIS,ALTEZ [PNT]	18:54	3-2	H 1	
ASSIST by JENNINGS,COLLIN	18:54			
	18:30			TURNOVER by FRANCIS,WILL
STEAL by DAVIS,ALTEZ	18:28			
	18:21			FOUL by EGGLESTON,BRADEN
GOOD! FT by HARRIS,RESHARDD	18:21	3-3	T	
MISSED FT by HARRIS,RESHARDD	18:21			
	18:21			REBOUND (DEF) by ANDELKOVIC,STEFAN
	18:02			MISSED LAYUP by WAGNER,TIM
REBOUND (DEF) by JENNINGS,COLLIN	18:02			
MISSED 3PTR by CHAMPION,MARKEISE	17:53			
	17:53			REBOUND (DEF) by MEDJO,FILIP
	17:42			TURNOVER by FRANCIS,WILL
STEAL by HARRIS,RESHARDD	17:41			
GOOD! LAYUP by HARRIS,RESHARDD [FB/PNT]	17:37	3-5	V 2	
	17:19			MISSED LAYUP by MEDJO,FILIP
BLOCK by JENNINGS,COLLIN	17:19			
	17:19			REBOUND (OFF) by TEAM
SUB IN: THOMAS,RASHON	17:19			
SUB OUT: CHAMPION,MARKEISE	17:19			
	17:10			TURNOVER by WAGNER,TIM
STEAL by HARRIS,RESHARDD	17:08			
MISSED 3PTR by PUGH,DEVIN	17:02			
	17:02			REBOUND (DEF) by EGGLESTON,BRADEN
	16:40	6-5	H 1	GOOD! 3PTR by ANDELKOVIC,STEFAN
	16:40			ASSIST by MEDJO,FILIP
GOOD! LAYUP by PUGH,DEVIN [PNT]	16:20	6-7	V 1	
ASSIST by DAVIS,ALTEZ	16:20			
	16:07			TURNOVER by MEDJO,FILIP
SUB IN: FINCHER,NEVILLE	16:07			
SUB OUT: DAVIS,ALTEZ	16:07			
	16:07			SUB IN: WARD,ZAC
	16:07			SUB OUT: MEDJO,FILIP
TURNOVER by THOMAS,RASHON	15:50			
	15:50			TIMEOUT MEDIA
	15:36	9-7	H 2	GOOD! 3PTR by EGGLESTON,BRADEN
	15:36			ASSIST by WAGNER,TIM
MISSED JUMPER by HARRIS,RESHARDD	15:14			
	15:14			REBOUND (DEF) by ANDELKOVIC,STEFAN
	15:02			MISSED 3PTR by ANDELKOVIC,STEFAN
REBOUND (DEF) by JENNINGS,COLLIN	15:02			
MISSED JUMPER by JENNINGS,COLLIN	14:54			
REBOUND (OFF) by JENNINGS,COLLIN	14:54			
MISSED LAYUP by PUGH,DEVIN	14:50			
REBOUND (OFF) by PUGH,DEVIN	14:50			
MISSED LAYUP by PUGH,DEVIN	14:46			
REBOUND (OFF) by THOMAS,RASHON	14:46			
MISSED LAYUP by THOMAS,RASHON	14:44			
REBOUND (OFF) by THOMAS,RASHON	14:44			
MISSED LAYUP by FINCHER,NEVILLE	14:24			
	14:24			REBOUND (DEF) by ANDELKOVIC,STEFAN
	14:10	12-7	H 5	GOOD! 3PTR by WAGNER,TIM
	14:10			ASSIST by EGGLESTON,BRADEN
GOOD! LAYUP by THOMAS,RASHON [PNT]	13:49	12-9	H 3	
SUB IN: CHAMPION,MARKEISE	13:47			

VISITORS: Southwestern Okla.	Time	Score	Margin	HOME: Harding
SUB IN: DAVIS,ALTEZ	13:47			
SUB OUT: THOMAS,RASHON	13:47			
SUB OUT: FINCHER,NEVILLE	13:47			
	13:47			SUB IN: MANKIN,AUSTIN
	13:47			SUB OUT: ANDELKOVIC,STEFAN
	13:39			MISSED LAYUP by WAGNER,TIM
BLOCK by DAVIS,ALTEZ	13:39			
	13:37			REBOUND (OFF) by MANKIN,AUSTIN
	13:36			MISSED LAYUP by MANKIN,AUSTIN
REBOUND (DEF) by PUGH,DEVIN	13:36			
MISSED 3PTR by JENNINGS,COLLIN	13:11			
	13:11			REBOUND (DEF) by EGGLESTON,BRADEN
FOUL by CHAMPION,MARKEISE	12:53			
	12:43	14-9	H 5	GOOD! LAYUP by MANKIN,AUSTIN [PNT]
	12:43			ASSIST by FRANCIS,WILL
GOOD! 3PTR by CHAMPION,MARKEISE	12:27	14-12	H 2	
ASSIST by HARRIS,RESHARDD	12:27			
	12:05			MISSED 3PTR by WAGNER,TIM
REBOUND (DEF) by HARRIS,RESHARDD	12:05			
MISSED JUMPER by DAVIS,ALTEZ	11:53			
	11:53			REBOUND (DEF) by FRANCIS,WILL
FOUL by DAVIS,ALTEZ	11:45			
	11:45			TIMEOUT MEDIA
SUB IN: SHOEMAKER,NICK	11:45			
SUB IN: LEWALLEN,LUKE	11:45			
SUB OUT: HARRIS,RESHARDD	11:45			
SUB OUT: JENNINGS,COLLIN	11:45			
	11:45			SUB IN: MEDJO,FILIP
	11:45			SUB IN: ANDELKOVIC,STEFAN
	11:45			SUB OUT: WAGNER,TIM
	11:45			SUB OUT: EGGLESTON,BRADEN
FOUL by DAVIS,ALTEZ	11:44			
SUB IN: FINCHER,NEVILLE	11:44			
SUB OUT: DAVIS,ALTEZ	11:44			
	11:30			MISSED 3PTR by ANDELKOVIC,STEFAN
	11:30			REBOUND (OFF) by MEDJO,FILIP
	11:26	16-12	H 4	GOOD! LAYUP by MEDJO,FILIP [PNT]
FOUL by PUGH,DEVIN	11:26			
	11:24			MISSED FT by MEDJO,FILIP
REBOUND (DEF) by LEWALLEN,LUKE	11:24			
	11:08			FOUL by ANDELKOVIC,STEFAN
MISSED FT by PUGH,DEVIN	11:08			
REBOUND (DEADB) by TEAM	11:08			
GOOD! FT by PUGH,DEVIN	11:08	16-13	H 3	
	11:03			MISSED LAYUP by MANKIN,AUSTIN
REBOUND (DEF) by LEWALLEN,LUKE	11:03			
TURNOVER by LEWALLEN,LUKE	10:48			
	10:33			MISSED LAYUP by WARD,ZAC
REBOUND (DEF) by FINCHER,NEVILLE	10:33			
FOUL by FINCHER,NEVILLE	10:08			
TURNOVER by FINCHER,NEVILLE	10:08			
SUB IN: EIBEL,DANIEL	10:08			
SUB IN: JENNINGS,COLLIN	10:08			
SUB OUT: PUGH,DEVIN	10:08			
SUB OUT: LEWALLEN,LUKE	10:08			
	10:08			SUB IN: WAGNER,TIM
	10:08			SUB OUT: FRANCIS,WILL
	09:48			MISSED LAYUP by ANDELKOVIC,STEFAN
BLOCK by FINCHER,NEVILLE	09:48			
REBOUND (DEF) by SHOEMAKER,NICK	09:46			
MISSED 3PTR by SHOEMAKER,NICK	09:41			
REBOUND (OFF) by EIBEL,DANIEL	09:41			
FOUL by FINCHER,NEVILLE	09:11			
TURNOVER by FINCHER,NEVILLE	09:11			

VISITORS: Southwestern Okla.	Time	Score	Margin	HOME: Harding
SUB IN: HARRIS,RESHARDD	09:11			
SUB IN: HIGHTOWER,GEOFFERY	09:11			
SUB OUT: EIBEL,DANIEL	09:11			
SUB OUT: FINCHER,NEVILLE	09:11			
	09:11			SUB IN: BRANDON,JP
	09:11			SUB IN: DJOKOVIC,GOJKO
	09:11			SUB OUT: ANDELKOVIC,STEFAN
	09:11			SUB OUT: MANKIN,AUSTIN
	09:06			TURNOVER by MEDJO,FILIP
TURNOVER by HIGHTOWER,GEOFFERY	08:50			
	08:49			STEAL by WARD,ZAC
	08:44	19-13	H 6	GOOD! 3PTR by WAGNER,TIM
	08:44			ASSIST by WARD,ZAC
	08:18			FOUL by WARD,ZAC
SUB IN: PUGH,DEVIN	08:18			
SUB IN: LUBIN,DOMINIQUE	08:18			
SUB OUT: SHOEMAKER,NICK	08:18			
SUB OUT: HIGHTOWER,GEOFFERY	08:18			
MISSED LAYUP by HARRIS,RESHARDD	08:07			
REBOUND (OFF) by LUBIN,DOMINIQUE	08:07			
	08:06			FOUL by DJOKOVIC,GOJKO
GOOD! LAYUP by HARRIS,RESHARDD [PNT]	08:00	19-15	H 4	
ASSIST by JENNINGS,COLLIN	08:00			
	07:38			TURNOVER by MEDJO,FILIP
TIMEOUT MEDIA	07:38			
	07:38			SUB IN: FRANCIS,WILL
	07:38			SUB OUT: MEDJO,FILIP
MISSED LAYUP by CHAMPION,MARKEISE	07:26			
	07:26			REBOUND (DEF) by DJOKOVIC,GOJKO
	07:08			TURNOVER by DJOKOVIC,GOJKO
STEAL by CHAMPION,MARKEISE	07:07			
MISSED LAYUP by PUGH,DEVIN	07:04			
REBOUND (OFF) by JENNINGS,COLLIN	07:04			
GOOD! LAYUP by JENNINGS,COLLIN [PNT]	07:01	19-17	H 2	
	07:01			FOUL by FRANCIS,WILL
GOOD! FT by JENNINGS,COLLIN	07:01	19-18	H 1	
	06:37			MISSED LAYUP by WAGNER,TIM
REBOUND (DEF) by PUGH,DEVIN	06:37			
MISSED JUMPER by LUBIN,DOMINIQUE	06:29			
	06:29			REBOUND (DEF) by FRANCIS,WILL
	06:18	22-18	H 4	GOOD! 3PTR by FRANCIS,WILL
	06:18			ASSIST by WARD,ZAC
	05:57			FOUL by WARD,ZAC
GOOD! 3PTR by PUGH,DEVIN	05:42	22-21	H 1	
ASSIST by JENNINGS,COLLIN	05:42			
	05:20	24-21	H 3	GOOD! LAYUP by BRANDON,JP [PNT]
	05:20			ASSIST by DJOKOVIC,GOJKO
MISSED JUMPER by PUGH,DEVIN	05:01			
	05:01			REBOUND (DEF) by WAGNER,TIM
	04:52			MISSED 3PTR by WAGNER,TIM
REBOUND (DEF) by JENNINGS,COLLIN	04:52			
GOOD! JUMPER by CHAMPION,MARKEISE	04:44	24-23	H 1	
	04:20	26-23	H 3	GOOD! DUNK by BRANDON,JP [PNT]
	04:20			ASSIST by DJOKOVIC,GOJKO
GOOD! 3PTR by CHAMPION,MARKEISE	04:01	26-26	T	
ASSIST by JENNINGS,COLLIN	04:01			
	03:41			MISSED LAYUP by DJOKOVIC,GOJKO
	03:41			REBOUND (OFF) by DJOKOVIC,GOJKO
	03:38	28-26	H 2	GOOD! LAYUP by DJOKOVIC,GOJKO [PNT]
MISSED 3PTR by PUGH,DEVIN	03:20			
	03:20			REBOUND (DEF) by WAGNER,TIM
	03:11			TURNOVER by WAGNER,TIM
STEAL by JENNINGS,COLLIN	03:10			
MISSED JUMPER by LUBIN,DOMINIQUE	03:03			

VISITORS: Southwestern Okla.	Time	Score	Margin	HOME: Harding
	03:03			REBOUND (DEF) by BRANDON,JP
	02:48	30-26	H 4	GOOD! LAYUP by DJOKOVIC,GOJKO [PNT]
	02:48			ASSIST by FRANCIS,WILL
FOUL by JENNINGS,COLLIN	02:48			
	02:48			TIMEOUT MEDIA
	02:48	31-26	H 5	GOOD! FT by DJOKOVIC,GOJKO
SUB IN: HIGHTOWER,GEOFFERY	02:48			
SUB IN: LEWALLEN,LUKE	02:48			
SUB OUT: HARRIS,RESHARDD	02:48			
SUB OUT: LUBIN,DOMINIQUE	02:48			
	02:48			SUB IN: ANDELKOVIC,STEFAN
	02:48			SUB IN: MANKIN,AUSTIN
	02:48			SUB IN: EGGLESTON,BRADEN
	02:48			SUB OUT: WARD,ZAC
	02:48			SUB OUT: BRANDON,JP
	02:48			SUB OUT: DJOKOVIC,GOJKO
MISSED 3PTR by CHAMPION,MARKEISE	02:34			
	02:34			REBOUND (DEF) by FRANCIS,WILL
	02:21	33-26	H 7	GOOD! LAYUP by WAGNER,TIM [PNT]
FOUL by HIGHTOWER,GEOFFERY	02:21			
	02:21	34-26	H 8	GOOD! FT by WAGNER,TIM
SUB IN: SHOEMAKER,NICK	02:21			
SUB OUT: LEWALLEN,LUKE	02:21			
MISSED LAYUP by PUGH,DEVIN	02:01			
	02:01			REBOUND (DEF) by ANDELKOVIC,STEFAN
	01:49			MISSED 3PTR by MANKIN,AUSTIN
REBOUND (DEADB) by TEAM	01:49			
	01:47			FOUL by EGGLESTON,BRADEN
MISSED FT by SHOEMAKER,NICK	01:47			
	01:47			REBOUND (DEF) by ANDELKOVIC,STEFAN
	01:47			SUB IN: BRANDON,JP
	01:47			SUB OUT: EGGLESTON,BRADEN
	01:27			TURNOVER by ANDELKOVIC,STEFAN
SUB IN: HARRIS,RESHARDD	01:27			
SUB OUT: SHOEMAKER,NICK	01:27			
MISSED 3PTR by JENNINGS,COLLIN	01:19			
	01:19			REBOUND (DEF) by BRANDON,JP
	01:09	36-26	H 10	GOOD! JUMPER by WAGNER,TIM
MISSED LAYUP by HARRIS,RESHARDD	00:51			
	00:51			REBOUND (DEF) by WAGNER,TIM
	00:39			MISSED LAYUP by BRANDON,JP
BLOCK by HIGHTOWER,GEOFFERY	00:39			
	00:36			REBOUND (OFF) by BRANDON,JP
	00:34			TURNOVER by BRANDON,JP
STEAL by PUGH,DEVIN	00:33			
MISSED 3PTR by CHAMPION,MARKEISE	00:06			
REBOUND (OFF) by JENNINGS,COLLIN	00:06			
GOOD! JUMPER by JENNINGS,COLLIN	00:03	36-28	H 8	

Southwestern Okla. 28, Harding 36

Period 1-only	In Paint	Off T/O	2nd Chance	Fast Break	Bench	
SWOSU		8	7		2	Score tied - 4 times
HU		6	4		11	Lead changed - 4 times

**Official Basketball Box Score -- Game Totals -- Second Half Statistics**  
**Southwestern Okla. vs Harding**  
**11/19/2016 6 p.m. at Searcy, Ark. (Rhodes-Reaves Field House)**

**Southwestern Okla. 22 • 0-4, 0-2 GAC**

##	Player	g	Total FG-FGA	3-Ptr FG-FGA	FT-FTA	Rebounds			PF	TP	A	TO	Blk	Stl	Min
						Off	Def	Tot							
01	CHAMPION,MARKEISE	g	2-5	1-3	0-0	1	1	2	0	5	1	1	0	0	14
05	HARRIS,RESHARDD	f	3-4	0-0	1-2	0	1	1	0	7	0	1	0	0	12
15	PUGH,DEVIN	g	1-7	0-4	0-0	1	1	2	1	2	0	1	0	0	18
22	JENNINGS,COLLIN	g	1-2	1-1	0-0	0	2	2	1	3	0	1	0	0	11
33	DAVIS,ALTEZ	f	1-2	0-0	0-0	1	2	3	1	2	2	1	0	0	9
03	EIBEL,DANIEL		0-3	0-1	0-0	0	0	0	0	0	0	0	0	0	6
04	HAMMONDS,GARRETT		0-0	0-0	0-0	0	0	0	0	0	0	0	0	0	1
10	THOMAS,RASHON		0-1	0-1	0-0	0	2	2	0	0	1	0	0	0	6
13	LUBIN,DOMINIQUE		0-0	0-0	0-0	0	0	0	0	0	0	0	0	0	1
20	LEWALLEN,LUKE		1-1	1-1	0-0	0	1	1	0	3	0	0	0	0	4
21	SHOEMAKER,NICK		0-2	0-2	0-0	0	0	0	3	0	0	0	0	0	8
32	FINCHER,NEVILLE		0-3	0-1	0-0	0	1	1	1	0	0	1	0	0	5
50	HIGHTOWER,GEOFFERY		0-1	0-0	0-0	0	0	0	1	0	0	0	0	0	5
	TEAM					1	1	2	0		0				
Totals			9-31	3-14	1-2	4	12	16	8	22	4	6	0	0	100

FG % Half: 9-31 29.0%  
 3FG % Half: 3-14 25.0%  
 FT % Half: 1-2 50.0%

**Harding 41 • 3-1, 2-0 GAC**

##	Player	g	Total FG-FGA	3-Ptr FG-FGA	FT-FTA	Rebounds			PF	TP	A	TO	Blk	Stl	Min
						Off	Def	Tot							
01	WAGNER,TIM	g	5-8	0-2	0-0	0	1	1	3	10	1	0	0	0	19
02	MEDJO,FILIP	g	1-5	0-1	0-0	3	4	7	0	2	2	1	0	2	14
21	FRANCIS,WILL	g	6-7	5-6	0-0	0	5	5	0	17	2	1	1	0	18
24	EGGLESTON,BRADEN	f	0-0	0-0	0-0	0	1	1	1	0	1	1	0	1	7
42	ANDELKOVIC,STEFAN	f	1-7	0-3	2-2	1	1	2	0	4	1	1	0	0	18
04	WARD,ZAC		0-0	0-0	0-0	0	5	5	1	0	3	0	1	0	13
12	MANKIN,AUSTIN		1-1	1-1	3-4	0	2	2	0	6	1	0	0	0	6
14	DJOKOVIC,GOJKO		0-0	0-0	0-0	0	0	0	0	0	0	0	0	0	0
34	HORN,ADAM		0-0	0-0	0-0	0	0	0	1	0	1	0	0	0	2
40	KIRBY,MITCHELL		0-1	0-1	0-0	0	0	0	0	0	0	0	0	0	1
44	BRANDON,JP		1-1	0-0	0-0	0	0	0	0	2	0	0	0	0	2
	TEAM					0	0	0	0		0				
Totals			15-30	6-14	5-6	4	19	23	6	41	12	4	2	3	100

FG % Half: 15-30 50.0%  
 3FG % Half: 6-14 54.5%  
 FT % Half: 5-6 83.3%

Officials: Barry Sturges, Luke Chittum and Daniel Brown  
 Technical Fouls: Southwestern Okla.- None. Harding- None.

Score by periods	1st	2nd	Total
Southwestern Okla.	28	22	50
Harding	36	41	77

Points	In Paint	Off T/O	2nd Chance	Bench
SWOSU	0	0	2	3
HU	0	8	2	8

Last FG - SWOSU 2nd-00:53, HU 2nd-01:34.  
 SWOSU led for 0:00. HU led for 20:00. Game was tied for 0:00.

Score tied - 0 times  
 Lead changed - 0 times



**Southwestern Okla. vs Harding**  
**11/19/2016; 6 p.m. at Searcy, Ark. (Rhodes-Reaves Field House)**  
**Period 2 Play-By-Play**

VISITORS: Southwestern Okla.	Time	Score	Margin	HOME: Harding
MISSED 3PTR by PUGH,DEVIN	19:56			
REBOUND (OFF) by CHAMPION,MARKEISE	19:56			
GOOD! LAYUP by CHAMPION,MARKEISE [PNT]	19:32	36-30	H 6	
	19:16			MISSED 3PTR by ANDELKOVIC,STEFAN
REBOUND (DEF) by CHAMPION,MARKEISE	19:16			
GOOD! 3PTR by JENNINGS,COLLIN	19:08	36-33	H 3	
ASSIST by CHAMPION,MARKEISE	19:08			
	18:52	39-33	H 6	GOOD! 3PTR by FRANCIS,WILL
	18:52			ASSIST by EGGLESTON,BRADEN
GOOD! JUMPER by HARRIS,RESHARDD	18:31	39-35	H 4	
ASSIST by DAVIS,ALTEZ	18:31			
	18:15	42-35	H 7	GOOD! 3PTR by FRANCIS,WILL
	18:15			ASSIST by MEDJO,FILIP
GOOD! LAYUP by DAVIS,ALTEZ [PNT]	17:51	42-37	H 5	
	17:32	44-37	H 7	GOOD! LAYUP by ANDELKOVIC,STEFAN [PNT]
	17:32			ASSIST by FRANCIS,WILL
GOOD! JUMPER by HARRIS,RESHARDD	17:15	44-39	H 5	
	17:01			MISSED LAYUP by WAGNER,TIM
REBOUND (DEF) by DAVIS,ALTEZ	17:01			
GOOD! LAYUP by HARRIS,RESHARDD [PNT]	16:55	44-41	H 3	
ASSIST by DAVIS,ALTEZ	16:55			
FOUL by DAVIS,ALTEZ	16:44			
SUB IN: FINCHER,NEVILLE	16:44			
SUB OUT: DAVIS,ALTEZ	16:44			
	16:37	46-41	H 5	GOOD! LAYUP by FRANCIS,WILL [PNT]
	16:23			FOUL by WAGNER,TIM
MISSED JUMPER by HARRIS,RESHARDD	16:02			
	16:02			REBOUND (DEF) by FRANCIS,WILL
	15:52			MISSED 3PTR by FRANCIS,WILL
REBOUND (DEF) by PUGH,DEVIN	15:52			
FOUL by FINCHER,NEVILLE	15:42			
TURNOVER by FINCHER,NEVILLE	15:42			
	15:42			TIMEOUT MEDIA
SUB IN: HIGHTOWER,GEOFFERY	15:42			
SUB OUT: FINCHER,NEVILLE	15:42			
	15:21			MISSED 3PTR by MEDJO,FILIP
REBOUND (DEF) by JENNINGS,COLLIN	15:21			
MISSED JUMPER by PUGH,DEVIN	15:07			
	15:07			BLOCK by FRANCIS,WILL
	15:05			REBOUND (DEF) by ANDELKOVIC,STEFAN
	14:52			TURNOVER by FRANCIS,WILL
TURNOVER by JENNINGS,COLLIN	14:42			
	14:42			STEAL by EGGLESTON,BRADEN
SUB IN: THOMAS,RASHON	14:42			
SUB OUT: JENNINGS,COLLIN	14:42			
	14:28			MISSED LAYUP by ANDELKOVIC,STEFAN
	14:28			REBOUND (OFF) by MEDJO,FILIP
	14:24	48-41	H 7	GOOD! TIPIN by MEDJO,FILIP [PNT]
TURNOVER by HARRIS,RESHARDD	14:09			
	14:08			STEAL by MEDJO,FILIP
	14:05			MISSED LAYUP by MEDJO,FILIP
	14:05			REBOUND (OFF) by MEDJO,FILIP
	14:03			MISSED LAYUP by MEDJO,FILIP
	14:03			REBOUND (OFF) by MEDJO,FILIP
SUB IN: EIBEL,DANIEL	14:01			
SUB IN: LEWALLEN,LUKE	14:01			
SUB OUT: CHAMPION,MARKEISE	14:01			
SUB OUT: HARRIS,RESHARDD	14:01			
	13:56			FOUL by EGGLESTON,BRADEN

VISITORS: Southwestern Okla.	Time	Score	Margin	HOME: Harding
	13:56			TURNOVER by EGGLESTON,BRADEN
MISSED 3PTR by THOMAS,RASHON	13:35			
	13:35			REBOUND (DEF) by EGGLESTON,BRADEN
	13:09			MISSED JUMPER by ANDELKOVIC,STEFAN
REBOUND (DEF) by THOMAS,RASHON	13:09			
TURNOVER by PUGH,DEVIN	13:01			
SUB IN: CHAMPION,MARKEISE	13:00			
SUB OUT: THOMAS,RASHON	13:00			
	13:00			SUB IN: WARD,ZAC
	13:00			SUB OUT: EGGLESTON,BRADEN
	12:54	51-41	H 10	GOOD! 3PTR by FRANCIS,WILL
	12:54			ASSIST by WARD,ZAC
TIMEOUT 30SEC	12:47			
MISSED JUMPER by HIGHTOWER,GEOFFERY	12:22			
	12:22			REBOUND (DEF) by MEDJO,FILIP
SUB IN: JENNINGS,COLLIN	12:13			
SUB IN: DAVIS,ALTEZ	12:13			
SUB OUT: LEWALLEN,LUKE	12:13			
SUB OUT: HIGHTOWER,GEOFFERY	12:13			
FOUL by JENNINGS,COLLIN	12:07			
	12:06			TURNOVER by MEDJO,FILIP
	11:50			FOUL by WARD,ZAC
TIMEOUT MEDIA	11:50			
TURNOVER by CHAMPION,MARKEISE	11:37			
	11:35			STEAL by MEDJO,FILIP
	11:27	54-41	H 13	GOOD! 3PTR by FRANCIS,WILL
	11:27			ASSIST by ANDELKOVIC,STEFAN
MISSED JUMPER by EIBEL,DANIEL	11:10			
	11:10			REBOUND (DEF) by FRANCIS,WILL
	11:00			TURNOVER by ANDELKOVIC,STEFAN
SUB IN: HARRIS,RESHARDD	11:00			
SUB OUT: EIBEL,DANIEL	11:00			
TURNOVER by DAVIS,ALTEZ	10:42			
SUB IN: FINCHER,NEVILLE	10:42			
SUB OUT: DAVIS,ALTEZ	10:42			
	10:25			MISSED 3PTR by WAGNER,TIM
REBOUND (DEF) by HARRIS,RESHARDD	10:25			
MISSED LAYUP by FINCHER,NEVILLE	10:06			
	10:06			REBOUND (DEF) by MEDJO,FILIP
	09:43	56-41	H 15	GOOD! LAYUP by WAGNER,TIM [PNT]
MISSED 3PTR by PUGH,DEVIN	09:23			
	09:23			REBOUND (DEF) by WAGNER,TIM
	09:05	58-41	H 17	GOOD! LAYUP by WAGNER,TIM [PNT]
	09:05			ASSIST by WARD,ZAC
TIMEOUT 30SEC	09:03			
SUB IN: SHOEMAKER,NICK	09:03			
SUB IN: LUBIN,DOMINIQUE	09:03			
SUB OUT: HARRIS,RESHARDD	09:03			
SUB OUT: FINCHER,NEVILLE	09:03			
MISSED JUMPER by JENNINGS,COLLIN	08:53			
	08:53			REBOUND (DEF) by MEDJO,FILIP
FOUL by PUGH,DEVIN	08:29			
	08:29	59-41	H 18	GOOD! FT by ANDELKOVIC,STEFAN
	08:29	60-41	H 19	GOOD! FT by ANDELKOVIC,STEFAN
SUB IN: HIGHTOWER,GEOFFERY	08:29			
SUB OUT: LUBIN,DOMINIQUE	08:29			
MISSED LAYUP by CHAMPION,MARKEISE	08:17			
	08:17			REBOUND (DEF) by FRANCIS,WILL
	07:52			MISSED LAYUP by MEDJO,FILIP
	07:52			REBOUND (OFF) by ANDELKOVIC,STEFAN
	07:48			MISSED LAYUP by ANDELKOVIC,STEFAN
REBOUND (DEF) by JENNINGS,COLLIN	07:48			
MISSED 3PTR by SHOEMAKER,NICK	07:41			
	07:41			REBOUND (DEF) by WARD,ZAC

VISITORS: Southwestern Okla.	Time	Score	Margin	HOME: Harding
	07:20			MISSED 3PTR by ANDELKOVIC,STEFAN
REBOUND (DEF) by TEAM	07:20			
TIMEOUT MEDIA	07:17			
MISSED 3PTR by CHAMPION,MARKEISE	07:07			
	07:07			REBOUND (DEF) by FRANCIS,WILL
FOUL by HIGHTOWER,GEOFFERY	06:48			
SUB IN: HARRIS,RESHARDD	06:48			
SUB IN: DAVIS,ALTEZ	06:48			
SUB OUT: JENNINGS,COLLIN	06:48			
SUB OUT: HIGHTOWER,GEOFFERY	06:48			
	06:33	63-41	H 22	GOOD! 3PTR by FRANCIS,WILL
	06:33			ASSIST by WAGNER,TIM
	06:19			FOUL by WAGNER,TIM
GOOD! FT by HARRIS,RESHARDD	06:19	63-42	H 21	
MISSED FT by HARRIS,RESHARDD	06:19			
REBOUND (OFF) by PUGH,DEVIN	06:19			
MISSED LAYUP by PUGH,DEVIN	06:18			
REBOUND (OFF) by DAVIS,ALTEZ	06:18			
MISSED 3PTR by CHAMPION,MARKEISE	06:13			
	06:13			REBOUND (DEF) by MEDJO,FILIP
	06:00	65-42	H 23	GOOD! LAYUP by WAGNER,TIM [PNT]
	06:00			ASSIST by MEDJO,FILIP
	05:41			SUB IN: MANKIN,AUSTIN
	05:41			SUB OUT: MEDJO,FILIP
MISSED 3PTR by PUGH,DEVIN	05:35			
	05:35			REBOUND (DEF) by FRANCIS,WILL
FOUL by SHOEMAKER,NICK	05:20			
	05:19	67-42	H 25	GOOD! LAYUP by WAGNER,TIM [PNT]
	05:19			ASSIST by FRANCIS,WILL
GOOD! 3PTR by CHAMPION,MARKEISE	05:02	67-45	H 22	
	04:40	69-45	H 24	GOOD! LAYUP by WAGNER,TIM [PNT]
	04:40			ASSIST by MANKIN,AUSTIN
	04:22			FOUL by WAGNER,TIM
SUB IN: THOMAS,RASHON	04:22			
SUB OUT: CHAMPION,MARKEISE	04:22			
MISSED LAYUP by DAVIS,ALTEZ	04:17			
	04:17			REBOUND (DEF) by MANKIN,AUSTIN
	04:01			MISSED 3PTR by WAGNER,TIM
REBOUND (DEF) by DAVIS,ALTEZ	04:01			
MISSED 3PTR by PUGH,DEVIN	03:41			
	03:41			REBOUND (DEF) by WARD,ZAC
	03:33	72-45	H 27	GOOD! 3PTR by MANKIN,AUSTIN
	03:33			ASSIST by WARD,ZAC
GOOD! JUMPER by PUGH,DEVIN	03:08	72-47	H 25	
	02:52			MISSED 3PTR by ANDELKOVIC,STEFAN
REBOUND (DEF) by THOMAS,RASHON	02:52			
MISSED 3PTR by SHOEMAKER,NICK	02:41			
	02:41			REBOUND (DEF) by WARD,ZAC
	02:29			TIMEOUT MEDIA
SUB IN: EIBEL,DANIEL	02:29			
SUB IN: FINCHER,NEVILLE	02:29			
SUB IN: LEWALLEN,LUKE	02:29			
SUB OUT: HARRIS,RESHARDD	02:29			
SUB OUT: PUGH,DEVIN	02:29			
SUB OUT: DAVIS,ALTEZ	02:29			
	02:29			SUB IN: HORN,ADAM
	02:29			SUB IN: BRANDON,JP
	02:29			SUB OUT: FRANCIS,WILL
	02:29			SUB OUT: ANDELKOVIC,STEFAN
FOUL by SHOEMAKER,NICK	02:14			
	02:14	73-47	H 26	GOOD! FT by MANKIN,AUSTIN
	02:14			MISSED FT by MANKIN,AUSTIN
REBOUND (DEF) by LEWALLEN,LUKE	02:14			
	02:04			FOUL by HORN,ADAM

VISITORS: Southwestern Okla.	Time	Score	Margin	HOME: Harding
MISSED LAYUP by EIBEL,DANIEL	01:55			
	01:55			BLOCK by WARD,ZAC
REBOUND (OFF) by TEAM	01:55			
MISSED LAYUP by FINCHER,NEVILLE	01:54			
	01:54			REBOUND (DEF) by MANKIN,AUSTIN
	01:34	75-47	H 28	GOOD! JUMPER by BRANDON,JP [PNT]
	01:34			ASSIST by HORN,ADAM
MISSED 3PTR by EIBEL,DANIEL	01:25			
	01:25			REBOUND (DEF) by WARD,ZAC
	01:15			SUB IN: KIRBY,MITCHELL
	01:15			SUB OUT: WAGNER,TIM
FOUL by SHOEMAKER,NICK	01:03			
	01:03	76-47	H 29	GOOD! FT by MANKIN,AUSTIN
	01:03	77-47	H 30	GOOD! FT by MANKIN,AUSTIN
SUB IN: HAMMONDS,GARRETT	01:03			
SUB OUT: SHOEMAKER,NICK	01:03			
GOOD! 3PTR by LEWALLEN,LUKE	00:53	77-50	H 27	
ASSIST by THOMAS,RASHON	00:53			
	00:40			MISSED 3PTR by KIRBY,MITCHELL
REBOUND (DEF) by FINCHER,NEVILLE	00:40			
MISSED 3PTR by FINCHER,NEVILLE	00:17			
	00:17			REBOUND (DEF) by WARD,ZAC

Southwestern Okla. 50, Harding 77

Period 2-only	In Paint	Off T/O	2nd Chance	Fast Break	Bench	
SWOSU		0	2		3	Score tied - 0 times
HU		8	2		8	Lead changed - 0 times

**Southwestern Okla. vs Harding**  
**11/19/2016; 6 p.m. at Searcy, Ark. (Rhodes-Reaves Field House)**  
**Scoring/Runs Reference**

Period 1

Southwestern Okla.	Score	Marg	Harding
	0-3	3	3 ANDELKOVIC 3PTR - 19:25
18:54 - DAVIS LAYUP [P]	2	2-3	1
18:21 - HARRIS FT	1	3-3	0
17:37 - HARRIS LAYUP [P] [F]	2	5-3	-2
	5-6	1	3 ANDELKOVIC 3PTR - 16:40
16:20 - PUGH LAYUP [P]	2	7-6	-1
	7-9	2	3 EGGLESTON 3PTR - 15:36
	7-12	5	3 WAGNER 3PTR - 14:10
13:49 - THOMAS LAYUP [P]	2	9-12	3
	9-14	5	2 MANKIN LAYUP [P] - 12:43
12:27 - CHAMPION 3PTR	3	12-14	2
	12-16	4	2 MEDJO LAYUP [P] - 11:26
11:08 - PUGH FT	1	13-16	3
	13-19	6	3 WAGNER 3PTR - 08:44
08:00 - HARRIS LAYUP [P]	2	15-19	4
07:01 - JENNINGS LAYUP [P]	2	17-19	2
07:01 - JENNINGS FT	1	18-19	1
	18-22	4	3 FRANCIS 3PTR - 06:18
05:42 - PUGH 3PTR	3	21-22	1
	21-24	3	2 BRANDON LAYUP [P] - 05:20
04:44 - CHAMPION JUMPER	2	23-24	1
	23-26	3	2 BRANDON DUNK [P] - 04:20
04:01 - CHAMPION 3PTR	3	26-26	0
	26-28	2	2 DJOKOVIC LAYUP [P] - 03:38
	26-30	4	2 DJOKOVIC LAYUP [P] - 02:48
	26-31	5	1 DJOKOVIC FT - 02:48
	26-33	7	2 WAGNER LAYUP [P] - 02:21
	26-34	8	1 WAGNER FT - 02:21
	26-36	10	2 WAGNER JUMPER - 01:09
00:03 - JENNINGS JUMPER	2	28-36	8

Period 2

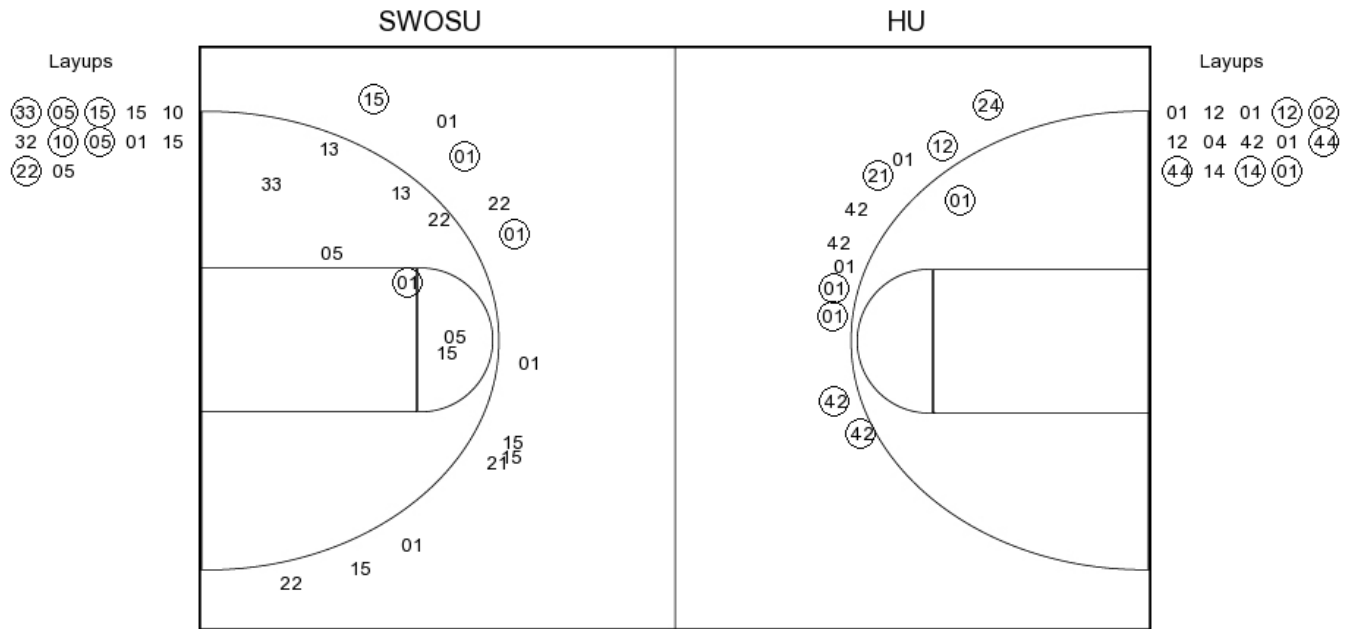
Southwestern Okla.	Score	Marg	Harding
19:32 - CHAMPION LAYUP [P]	2	30-36	6
19:08 - JENNINGS 3PTR	3	33-36	3
		33-39	6
		3	3 FRANCIS 3PTR - 18:52
18:31 - HARRIS JUMPER	2	35-39	4
		35-42	7
		3	3 FRANCIS 3PTR - 18:15
17:51 - DAVIS LAYUP [P]	2	37-42	5
		37-44	7
		2	2 ANDELKOVIC LAYUP [P] - 17:32
17:15 - HARRIS JUMPER	2	39-44	5
16:55 - HARRIS LAYUP [P]	2	41-44	3
		41-46	5
		2	2 FRANCIS LAYUP [P] - 16:37
		41-48	7
		2	2 MEDJO TIPIN [P] - 14:24
		41-51	10
		3	3 FRANCIS 3PTR - 12:54
		41-54	13
		3	3 FRANCIS 3PTR - 11:27
		41-56	15
		2	2 WAGNER LAYUP [P] - 09:43
		41-58	17
		2	2 WAGNER LAYUP [P] - 09:05
		41-59	18
		1	1 ANDELKOVIC FT - 08:29
		41-60	19
		1	1 ANDELKOVIC FT - 08:29
		41-63	22
		3	3 FRANCIS 3PTR - 06:33
06:19 - HARRIS FT	1	42-63	21
		42-65	23
		2	2 WAGNER LAYUP [P] - 06:00
		42-67	25
		2	2 WAGNER LAYUP [P] - 05:19
05:02 - CHAMPION 3PTR	3	45-67	22
		45-69	24
		2	2 WAGNER LAYUP [P] - 04:40
		45-72	27
		3	3 MANKIN 3PTR - 03:33
03:08 - PUGH JUMPER	2	47-72	25
		47-73	26
		1	1 MANKIN FT - 02:14
		47-75	28
		2	2 BRANDON JUMPER [P] - 01:34
		47-76	29
		1	1 MANKIN FT - 01:03
		47-77	30
		1	1 MANKIN FT - 01:03
00:53 - LEWALLEN 3PTR	3	50-77	27

**Southwestern Okla. vs Harding**

**OFFICIAL SHOT CHART**

11/19/2016 at Searcy, Ark. (Rhodes-Reaves Field House)

**PERIOD 1**



**SWOSU PERIOD 1**

FG Made	11
FG Attempted	35
3PFG Made	3
3PFG Attempted	12

**HU PERIOD 1**

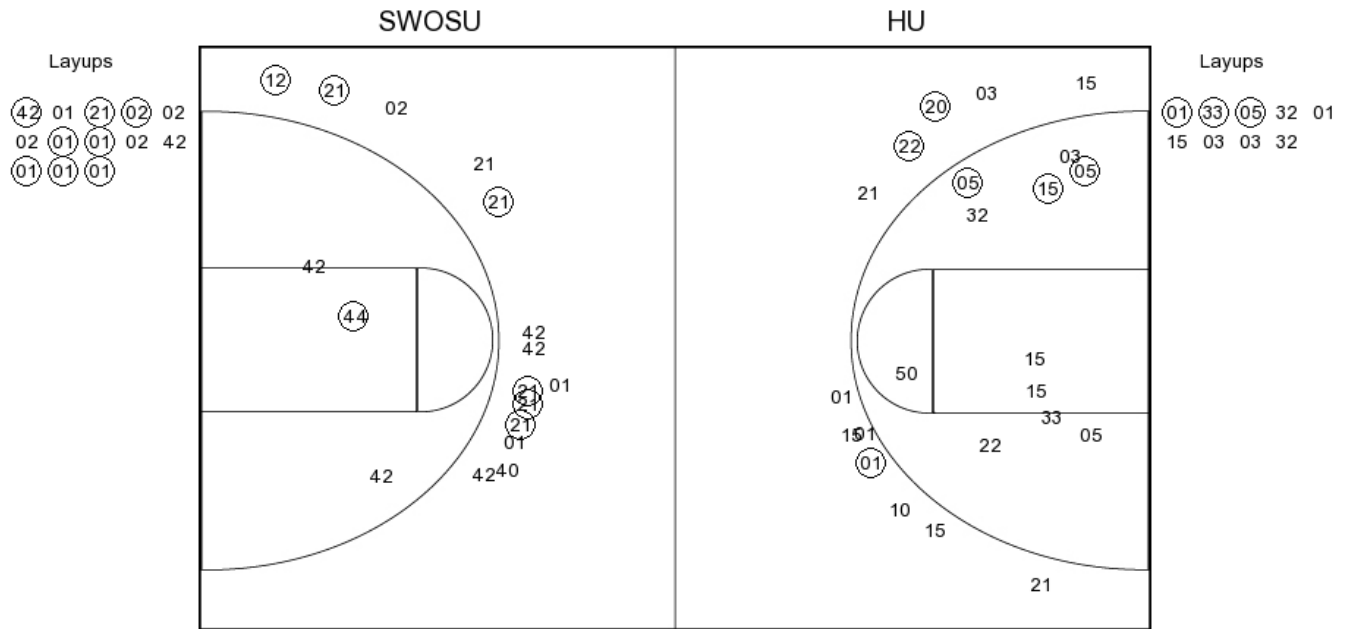
FG Made	14
FG Attempted	29
3PFG Made	6
3PFG Attempted	11

**Southwestern Okla. vs Harding**

**OFFICIAL SHOT CHART**

11/19/2016 at Searcy, Ark. (Rhodes-Reaves Field House)

**PERIOD 2**



**SWOSU PERIOD 2**

FG Made	9
FG Attempted	31
3PFG Made	3
3PFG Attempted	14

**HU PERIOD 2**

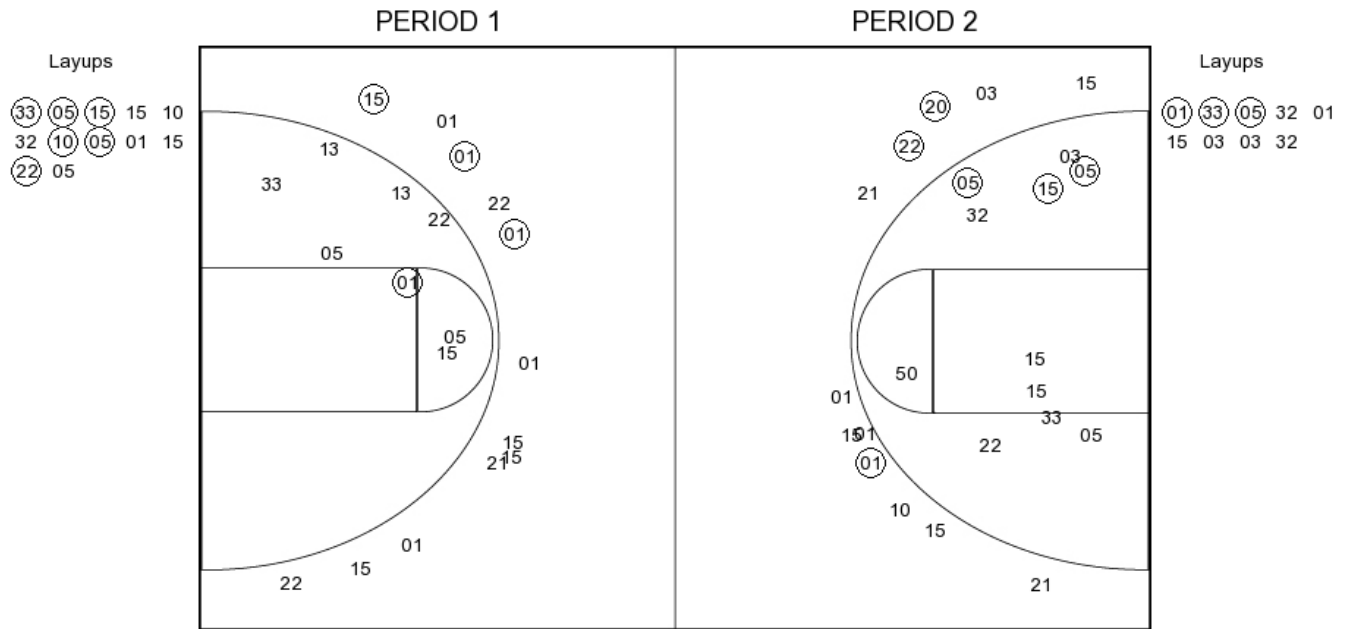
FG Made	15
FG Attempted	30
3PFG Made	6
3PFG Attempted	14

**Southwestern Okla. vs Harding**

**OFFICIAL SHOT CHART**

11/19/2016 at Searcy, Ark. (Rhodes-Reaves Field House)

**Southwestern Okla.**



**SWOSU PERIOD 1**

FG Made	11
FG Attempted	35
3PFG Made	3
3PFG Attempted	12

**SWOSU PERIOD 2**

FG Made	9
FG Attempted	31
3PFG Made	3
3PFG Attempted	14

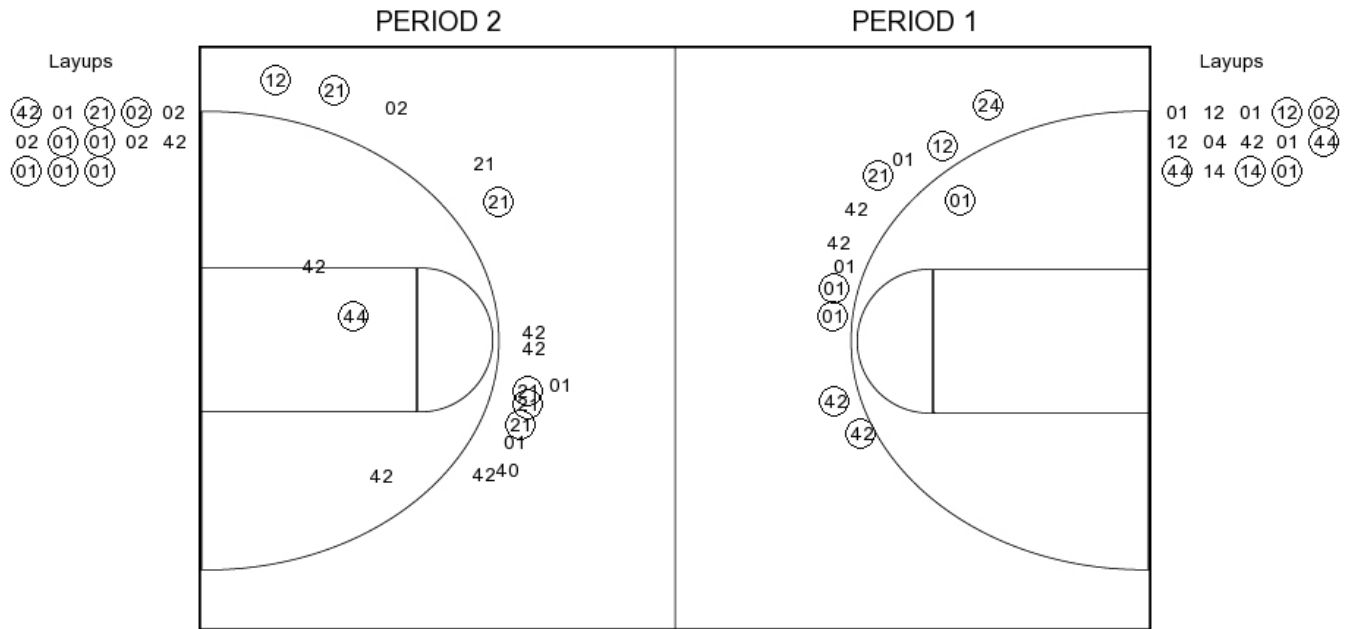


**Southwestern Okla. vs Harding**

**OFFICIAL SHOT CHART**

11/19/2016 at Searcy, Ark. (Rhodes-Reaves Field House)

**Harding**



**HU PERIOD 1**

FG Made	14
FG Attempted	29
3PFG Made	6
3PFG Attempted	11

**HU PERIOD 2**

FG Made	15
FG Attempted	30
3PFG Made	6
3PFG Attempted	14