



# WEST VIRGINIA VS. KANSAS

2/27/2017

WVU Coliseum, Morgantown, W.Va.

## FINAL STATS

**West Virginia**

*(20-10/8-10)*

**73**

**Kansas**

*(8-21/2-16)*

**54**

*Start Time: 7:00 p.m.*

*Officials: Laura Morris, Bryan Enterline, Roy Gulbeyan*

*Attendance: 2661*

**Official Basketball Box Score -- Game Totals -- Final Statistics**  
**Kansas vs West Virginia**  
**2/27/2017 7:00 p.m. at WVU Coliseum, Morgantown, W.Va.**

**Kansas 54 - 8-21/2-16**

##	Player	S	Total			Rebounds			PF	TP	A	TO	Blk	Stl	Min
			FG-FGA	3PT	FG-FGA	FT-FTA	Off Reb	Def Reb							
00	UMERI, SYDNEY	f	3-5	0-0	2-2	1	1	2	1	8	0	1	0	1	21
03	WASHINGTON, JESSICA	f	7-22	0-4	4-4	1	3	4	2	18	2	4	0	1	29
20	CHRISTOPHER, JAYDE	g	2-7	0-1	3-4	0	1	1	2	7	4	4	0	1	28
22	CHEADLE, CHAYLA	g	1-5	1-4	1-2	0	2	2	3	4	1	0	0	1	23
33	KOPATICH, KYLEE	g	0-3	0-2	0-0	3	1	4	1	0	0	4	1	3	29
04	BROWN, JADA		1-2	1-1	2-2	1	3	4	1	5	0	0	0	1	17
12	O'NEAL, TIMEKA		2-7	1-4	0-0	0	1	1	0	5	0	1	0	1	16
15	ROBERTSON, AISIA		0-4	0-0	2-2	2	2	4	4	2	1	3	0	0	19
25	MANNINGALLEN, CAELYI		2-6	0-0	1-1	1	4	5	1	5	0	0	0	1	18
TEAM						3	3	6	0		0				
TOTALS			18-61	3-16	15-17	12	21	33	15	54	8	17	1	10	200

Deadball Rebounds: 1,0

FG %	1st Half: 6-29	20.7%	2nd Half: 12-32	37.5%	Game: 18-61	29.5%	4th Qtr	5-15	33.3%
	1st Qtr 2-14	14.3%	2nd Qtr 4-15	26.7%	3rd Qtr 7-17	41.2%			
3FG %	1st Half: 2-9	22.2%	2nd Half: 1-7	14.3%	Game: 3-16	18.8%	4th Qtr	1-5	20.0%
	1st Qtr 1-4	25.0%	2nd Qtr 1-5	20.0%	3rd Qtr 0-2	00.0%			
FT %	1st Half: 4-5	80.0%	2nd Half: 11-12	91.7%	Game: 15-17	88.2%	4th Qtr	5-6	83.3%
	1st Qtr 3-4	75.0%	2nd Qtr 1-1	100.0%	3rd Qtr 6-6	100.0%			

**West Virginia 73 - 20-10/8-10**

##	Player	S	Total			Rebounds			PF	TP	A	TO	Blk	Stl	Min
			FG-FGA	3PT	FG-FGA	FT-FTA	Off Reb	Def Reb							
05	MARTIN, TYNICE	g	6-15	1-3	4-4	1	5	6	2	17	1	4	0	1	37
12	RAY, CHANIA	g	5-8	1-3	0-0	0	5	5	2	11	5	7	1	1	31
15	MONTGOMERY, LANAY	c	1-2	0-0	5-6	2	7	9	3	7	0	1	4	1	19
20	RHODES, DESIREE	f	0-1	0-1	0-0	1	1	2	0	0	1	1	0	0	8
22	PARDEE, KATRINA	g	1-5	0-4	1-2	0	0	0	3	3	0	0	0	0	10
02	BREWER, ALEXIS		2-9	1-5	2-2	1	3	4	1	7	2	2	0	0	34
11	MULDROW, TEANA		7-11	0-1	1-2	4	7	11	4	15	1	2	1	0	28
13	KING, KRISTINA		6-7	0-1	1-4	2	3	5	2	13	1	1	0	1	24
14	THOMAS, BAILEY		0-0	0-0	0-0	0	0	0	0	0	0	0	0	0	1
24	MARTIN, ANJA		0-0	0-0	0-0	0	0	0	0	0	0	1	0	0	7
45	SCHMIDT, MARLENA		0-0	0-0	0-0	0	0	0	0	0	0	0	0	0	1
TEAM						1	1	2	0		0				
TOTALS			28-58	3-18	14-20	12	32	44	17	73	11	19	6	4	200

Deadball Rebounds: 3,0

FG %	1st Half: 18-31	58.1%	2nd Half: 10-27	37.0%	Game: 28-58	48.3%	4th Qtr	3-15	20.0%
	1st Qtr 10-15	66.7%	2nd Qtr 8-16	50.0%	3rd Qtr 7-12	58.3%			
3FG %	1st Half: 2-8	25.0%	2nd Half: 1-10	10.0%	Game: 3-18	16.7%	4th Qtr	0-5	00.0%
	1st Qtr 1-4	25.0%	2nd Qtr 1-4	25.0%	3rd Qtr 1-5	20.0%			
FT %	1st Half: 3-4	75.0%	2nd Half: 11-16	68.8%	Game: 14-20	70.0%	4th Qtr	5-6	83.3%
	1st Qtr 3-4	75.0%	2nd Qtr 0-0	0%	3rd Qtr 6-10	60.0%			

Officials: Laura Morris, Bryan Enterline, Roy Gulbeyan  
 Technical Fouls: Kansas- None. West Virginia- None.  
 Attendance: 2661

Score by periods	1st	2nd	3rd	4th	Total
Kansas	8	10	20	16	54
West Virginia	24	17	21	11	73

Points	In Paint	Off T/O	2nd 2nd Chance	Fast Break	Bench
KU	26	23	16	6	17
WVU	38	18	16	6	35

Last FG - KU 4th-01:21, WVU 4th-06:43.  
 Largest lead - Kansas by 1 1st-08:14; West Virginia by 29 3rd-03:48  
 KU led for 0:12. WVU led for 37:40. Game was tied for 2:08.

Score tied - 1 times  
 Lead changed - 1 times

**Official Basketball Box Score -- Game Totals -- First Half Statistics**  
**Kansas vs West Virginia**  
**2/27/2017 7:00 p.m. at WVU Coliseum, Morgantown, W.Va.**

**Kansas 18 • 8-21/2-16**

##	Player	S	Total			Rebounds			PF	TP	A	TO	Blk	Stl	Min
			FG-FGA	3PT FG-FGA	FT-FTA	Off Reb	Def Reb	Tot Reb							
00	UMERI, SYDNEY	f	0-1	0-0	0-0	0	0	0	0	0	1	0	0	9	
03	WASHINGTON, JESSICA	f	2-10	0-3	0-0	0	1	1	4	1	3	0	0	14	
20	CHRISTOPHER, JAYDE	g	0-3	0-1	1-2	0	1	1	1	2	0	0	0	14	
22	CHEADLE, CHAYLA	g	1-1	1-1	0-0	0	0	0	3	1	0	0	0	11	
33	KOPATICH, KYLEE	g	0-2	0-1	0-0	2	1	3	0	0	1	1	1	14	
04	BROWN, JADA		0-0	0-0	0-0	0	2	2	0	0	0	0	0	9	
12	O'NEAL, TIMEKA		1-5	1-3	0-0	0	1	1	3	0	0	0	0	8	
15	ROBERTSON, AISIA		0-2	0-0	2-2	1	1	2	2	1	2	0	0	11	
25	MANNINGALLEN, CAELYI		2-5	0-0	1-1	0	1	1	5	0	0	0	1	10	
TEAM						1	1	2	0		0				
Totals			6-29	2-9	4-5	4	9	13	5	18	5	7	1	2	100
FG %	1st Qtr	2-14	14.3%	2nd Qtr	4-15	26.7%	Half:	6-29	20.7%						
3FG %	1st Qtr	1-4	25.0%	2nd Qtr	1-5	20.0%	Half:	2-9	22.2%						
FT %	1st Qtr	3-4	75.0%	2nd Qtr	1-1	100.0%	Half:	4-5	80.0%						

**West Virginia 41 • 20-10/8-10**

##	Player	S	Total			Rebounds			PF	TP	A	TO	Blk	Stl	Min
			FG-FGA	3PT FG-FGA	FT-FTA	Off Reb	Def Reb	Tot Reb							
05	MARTIN, TYNICE	g	3-9	0-1	0-0	0	3	3	0	6	1	2	0	0	19
12	RAY, CHANIA	g	4-4	1-1	0-0	0	3	3	1	9	3	4	1	0	18
15	MONTGOMERY, LANAY	c	0-0	0-0	0-0	0	4	4	2	0	0	0	1	1	7
20	RHODES, DESIREE	f	0-1	0-1	0-0	1	0	1	0	0	0	0	0	0	1
22	PARDEE, KATRINA	g	0-1	0-1	0-0	0	0	0	2	0	0	0	0	0	2
02	BREWER, ALEXIS		1-5	1-3	2-2	0	2	2	1	5	1	0	0	0	16
11	MULDROW, TEANA		6-6	0-0	0-0	2	5	7	2	12	1	1	0	0	18
13	KING, KRISTINA		4-5	0-1	1-2	1	2	3	0	9	0	0	0	0	14
14	THOMAS, BAILEY		0-0	0-0	0-0	0	0	0	0	0	0	0	0	0	0
24	MARTIN, ANJA		0-0	0-0	0-0	0	0	0	0	0	0	0	0	0	5
45	SCHMIDT, MARLENA		0-0	0-0	0-0	0	0	0	0	0	0	0	0	0	0
TEAM						1	1	2	0		0				
Totals			18-31	2-8	3-4	5	20	25	8	41	6	7	2	1	100
FG %	1st Qtr	10-15	66.7%	2nd Qtr	8-16	50.0%	Half:	18-31	58.1%						
3FG %	1st Qtr	1-4	25.0%	2nd Qtr	1-4	25.0%	Half:	2-8	25.0%						
FT %	1st Qtr	3-4	75.0%	2nd Qtr	0-0	0%	Half:	3-4	75.0%						

Officials: Laura Morris, Bryan Enterline, Roy Gulbeyan  
 Technical Fouls: Kansas- None. West Virginia- None.

Score by periods	1st	2nd	3rd	4th	Total
Kansas	8	10	20	16	54
West Virginia	24	17	21	11	73

Points	In Paint	Off T/O	2nd Chance	Fast Break	Bench
KU	8	9	7	0	10
	26	10	6	2	26

Last FG - KU 2nd-00:20, WVU 2nd-01:17.  
 KU led for 0:12. WVU led for 17:40. Game was tied for 2:08.

Score tied - 1 times  
 Lead changed - 1 times

**Kansas vs West Virginia**  
**2/27/2017; 7:00 p.m. at WVU Coliseum, Morgantown, W.Va.**  
**Period 1 Play-By-Play**

VISITORS: Kansas	Time	Score	Margin	HOME: West Virginia
	09:37			MISSED 3PTR by PARDEE,KATRINA
	09:37			REBOUND (OFF) by RHODES,DESIREE
	09:20			MISSED 3PTR by RHODES,DESIREE
REBOUND (DEF) by WASHINGTON,JESSICA	09:20			
MISSED JUMPER by WASHINGTON,JESSICA	09:13			
	09:13			REBOUND (DEF) by RAY,CHANIA
	08:51			TURNOVER by MARTIN,TYNICE
STEAL by KOPATICH,KYLEE	08:50			
	08:50			FOUL by PARDEE,KATRINA
	08:50			SUB IN: MULDROW,TEANA
	08:50			SUB OUT: RHODES,DESIREE
MISSED JUMPER by UMERI,SYDNEY	08:42			
REBOUND (OFF) by KOPATICH,KYLEE	08:42			
	08:14			FOUL by PARDEE,KATRINA
GOOD! FT by CHRISTOPHER,JAYDE	08:14	0-1	V 1	
MISSED FT by CHRISTOPHER,JAYDE	08:14			
	08:14			REBOUND (DEF) by MULDROW,TEANA
	08:14			SUB IN: BREWER,ALEXIS
	08:14			SUB OUT: PARDEE,KATRINA
	08:02	2-1	H 1	GOOD! LAYUP by MULDROW,TEANA [PNT]
	08:02			ASSIST by RAY,CHANIA
MISSED JUMPER by WASHINGTON,JESSICA	07:42			
	07:42			REBOUND (DEF) by MONTGOMERY,LANAY
	07:29	4-1	H 3	GOOD! JUMPER by RAY,CHANIA [PNT]
MISSED 3PTR by CHRISTOPHER,JAYDE	07:05			
REBOUND (OFF) by KOPATICH,KYLEE	07:05			
GOOD! 3PTR by CHEADLE,CHAYLA	06:56	4-4	T	
ASSIST by CHRISTOPHER,JAYDE	06:56			
	06:34	6-4	H 2	GOOD! JUMPER by MARTIN,TYNICE [PNT]
MISSED JUMPER by CHRISTOPHER,JAYDE	06:21			
	06:21			BLOCK by MONTGOMERY,LANAY
	06:19			REBOUND (DEF) by MONTGOMERY,LANAY
	06:05	8-4	H 4	GOOD! JUMPER by RAY,CHANIA
MISSED 3PTR by WASHINGTON,JESSICA	05:47			
	05:47			REBOUND (DEF) by TEAM
SUB IN: ROBERTSON,AISIA	05:43			
SUB OUT: CHRISTOPHER,JAYDE	05:43			
FOUL by CHEADLE,CHAYLA	05:35			
	05:22	10-4	H 6	GOOD! LAYUP by MULDROW,TEANA [PNT]
	05:22			ASSIST by MARTIN,TYNICE
TURNOVER by KOPATICH,KYLEE	05:10			
SUB IN: MANNINGALLEN,CAELYNN	05:09			
SUB OUT: UMERI,SYDNEY	05:09			
TIMEOUT MEDIA	04:50			
	04:50			TURNOVER by RAY,CHANIA
MISSED JUMPER by WASHINGTON,JESSICA	04:37			
	04:37			REBOUND (DEF) by MONTGOMERY,LANAY
	04:25			TURNOVER by RAY,CHANIA
STEAL by MANNINGALLEN,CAELYNN	04:24			
TURNOVER by WASHINGTON,JESSICA	04:16			
	04:14			STEAL by MONTGOMERY,LANAY
	03:54	13-4	H 9	GOOD! 3PTR by BREWER,ALEXIS
	03:54			ASSIST by MULDROW,TEANA

VISITORS: Kansas	Time	Score	Margin	HOME: West Virginia
SUB IN: BROWN,JADA	03:34			
SUB OUT: CHEADLE,CHAYLA	03:34			
	03:34			SUB IN: KING,KRISTINA
	03:34			SUB OUT: MONTGOMERY,LANAY
MISSED JUMPER by WASHINGTON,JESSICA	03:30			
	03:30			BLOCK by RAY,CHANIA
	03:29			REBOUND (DEF) by MULDROW,TEANA
FOUL by KOPATICH,KYLEE	03:24			
	03:24	14-4	H 10	GOOD! FT by BREWER,ALEXIS
	03:24	15-4	H 11	GOOD! FT by BREWER,ALEXIS
SUB IN: O'NEAL,TIMEKA	03:24			
SUB IN: CHRISTOPHER,JAYDE	03:24			
SUB OUT: WASHINGTON,JESSICA	03:24			
SUB OUT: KOPATICH,KYLEE	03:24			
GOOD! JUMPER by MANNINGALLEN,CAELYNN [PNT]	02:59	15-6	H 9	
ASSIST by CHRISTOPHER,JAYDE	02:59			
	02:41	17-6	H 11	GOOD! JUMPER by KING,KRISTINA
TURNOVER by ROBERTSON,AISIA	02:23			
	02:12			MISSED JUMPER by MARTIN,TYNICE
REBOUND (DEF) by MANNINGALLEN,CAELYNN	02:12			
MISSED 3PTR by O'NEAL,TIMEKA	02:04			
	02:04			REBOUND (DEF) by MULDROW,TEANA
FOUL by CHRISTOPHER,JAYDE	01:54			
	01:54	18-6	H 12	GOOD! FT by KING,KRISTINA
	01:54			MISSED FT by KING,KRISTINA
REBOUND (DEF) by BROWN,JADA	01:54			
	01:54			SUB IN: MONTGOMERY,LANAY
	01:54			SUB OUT: MULDROW,TEANA
MISSED LAYUP by MANNINGALLEN,CAELYNN	01:45			
	01:45			REBOUND (DEF) by MONTGOMERY,LANAY
	01:37	20-6	H 14	GOOD! LAYUP by KING,KRISTINA [FB/PNT]
	01:37			ASSIST by RAY,CHANIA
TIMEOUT 30SEC	01:34			
	01:20			FOUL by BREWER,ALEXIS
	01:12			FOUL by MONTGOMERY,LANAY
MISSED LAYUP by ROBERTSON,AISIA	01:09			
	01:09			REBOUND (DEF) by MARTIN,TYNICE
	01:02			MISSED JUMPER by MARTIN,TYNICE
REBOUND (DEF) by ROBERTSON,AISIA	01:02			
	01:00			FOUL by MONTGOMERY,LANAY
GOOD! FT by ROBERTSON,AISIA	01:00	20-7	H 13	
GOOD! FT by ROBERTSON,AISIA	01:00	20-8	H 12	
SUB IN: KOPATICH,KYLEE	01:00			
SUB OUT: O'NEAL,TIMEKA	01:00			
	01:00			SUB IN: MULDROW,TEANA
	01:00			SUB OUT: MONTGOMERY,LANAY
	00:44			MISSED 3PTR by MARTIN,TYNICE
	00:44			REBOUND (OFF) by MULDROW,TEANA
	00:37	22-8	H 14	GOOD! LAYUP by MULDROW,TEANA [PNT]
MISSED LAYUP by KOPATICH,KYLEE	00:20			
	00:20			REBOUND (DEF) by BREWER,ALEXIS
	00:00	24-8	H 16	GOOD! LAYUP by MULDROW,TEANA [PNT]

Kansas 8, West Virginia 24

	In	Off	2nd	Fast	Bench
Period 1-only	Paint	T/O	Chance	Break	
KU	In	Off	2nd	Fast	
Period 1-only	2	1	4	0	4
WVU	Paint	T/O	Chance	Break	Bench
	14	3	2	2	18

Score tied - 2 times  
Lead changed - 0 times

**Kansas vs West Virginia**  
**2/27/2017; 7:00 p.m. at WVU Coliseum, Morgantown, W.Va.**  
**Period 2 Play-By-Play**

VISITORS: Kansas	Time	Score	Margin	HOME: West Virginia
	10:00			SUB IN: KING,KRISTINA
	10:00			SUB IN: MULDROW,TEANA
	10:00			SUB IN: BREWER,ALEXIS
	10:00			SUB OUT: MONTGOMERY,LANAY
	10:00			SUB OUT: RHODES,DESIREE
	10:00			SUB OUT: PARDEE,KATRINA
MISSED LAYUP by CHRISTOPHER,JAYDE	09:32			
	09:32			REBOUND (DEF) by MULDROW,TEANA
FOUL by WASHINGTON,JESSICA	09:28			
	09:01	26-8	H 18	GOOD! LAYUP by KING,KRISTINA [PNT]
MISSED 3PTR by WASHINGTON,JESSICA	08:43			
	08:43			REBOUND (DEF) by MARTIN,TYNICE
	08:37			TURNOVER by MARTIN,TYNICE
GOOD! LAYUP by WASHINGTON,JESSICA [PNT]	08:26	26-10	H 16	
ASSIST by CHEADLE,CHAYLA	08:26			
	08:14			MISSED JUMPER by BREWER,ALEXIS
REBOUND (DEF) by TEAM	08:14			
TURNOVER by UMERI,SYDNEY	07:56			
	07:56			SUB IN: MARTIN,ANJA
	07:56			SUB OUT: MARTIN,TYNICE
	07:39			MISSED JUMPER by BREWER,ALEXIS
BLOCK by KOPATICH,KYLEE	07:39			
REBOUND (DEF) by CHRISTOPHER,JAYDE	07:37			
MISSED JUMPER by WASHINGTON,JESSICA	07:31			
	07:31			REBOUND (DEF) by RAY,CHANIA
	07:26			MISSED 3PTR by BREWER,ALEXIS
	07:26			REBOUND (OFF) by TEAM
SUB IN: MANNINGALLEN,CAELYNN	07:23			
SUB OUT: UMERI,SYDNEY	07:23			
	07:08	28-10	H 18	GOOD! LAYUP by KING,KRISTINA [PNT]
	07:08			ASSIST by RAY,CHANIA
MISSED 3PTR by WASHINGTON,JESSICA	06:48			
	06:48			REBOUND (DEF) by MULDROW,TEANA
	06:41			TURNOVER by RAY,CHANIA
SUB IN: O'NEAL,TIMEKA	06:41			
SUB OUT: WASHINGTON,JESSICA	06:41			
	06:41			SUB IN: MARTIN,TYNICE
	06:41			SUB OUT: BREWER,ALEXIS
MISSED 3PTR by KOPATICH,KYLEE	06:25			
	06:25			REBOUND (DEF) by RAY,CHANIA
	06:00	30-10	H 20	GOOD! JUMPER by MULDROW,TEANA [PNT]
MISSED JUMPER by MANNINGALLEN,CAELYNN	05:43			
	05:43			REBOUND (DEF) by KING,KRISTINA
	05:36			MISSED JUMPER by MARTIN,TYNICE
REBOUND (DEF) by O'NEAL,TIMEKA	05:36			
MISSED LAYUP by O'NEAL,TIMEKA	05:22			
REBOUND (OFF) by TEAM	05:22			
SUB IN: ROBERTSON,AISIA	05:22			
SUB OUT: KOPATICH,KYLEE	05:22			
	05:21			FOUL by MULDROW,TEANA
MISSED 3PTR by O'NEAL,TIMEKA	05:17			
	05:17			REBOUND (DEF) by KING,KRISTINA
	04:57			TURNOVER by RAY,CHANIA

VISITORS: Kansas	Time	Score	Margin	HOME: West Virginia
TIMEOUT MEDIA	04:57			
SUB IN: BROWN,JADA	04:57			
SUB IN: UMERI,SYDNEY	04:57			
SUB IN: WASHINGTON,JESSICA	04:57			
SUB OUT: MANNINGALLEN,CAELYNN	04:57			
SUB OUT: CHRISTOPHER,JAYDE	04:57			
SUB OUT: CHEADLE,CHAYLA	04:57			
	04:57			SUB IN: BREWER,ALEXIS
	04:57			SUB OUT: RAY,CHANIA
GOOD! 3PTR by O'NEAL,TIMEKA	04:49	30-13	H 17	
ASSIST by WASHINGTON,JESSICA	04:49			
	04:21			MISSED 3PTR by BREWER,ALEXIS
	04:21			REBOUND (OFF) by KING,KRISTINA
	04:14			MISSED JUMPER by MARTIN,TYNICE
	04:14			REBOUND (OFF) by MULDROW,TEANA
	04:08	32-13	H 19	GOOD! LAYUP by MULDROW,TEANA [PNT]
GOOD! LAYUP by WASHINGTON,JESSICA [PNT]	04:00	32-15	H 17	
	03:28			MISSED 3PTR by KING,KRISTINA
REBOUND (DEF) by BROWN,JADA	03:28			
TURNOVER by ROBERTSON,AISIA	03:16			
FOUL by ROBERTSON,AISIA	03:16			
	03:16			SUB IN: RAY,CHANIA
	03:16			SUB OUT: MARTIN,ANJA
	02:55	34-15	H 19	GOOD! LAYUP by RAY,CHANIA [PNT]
MISSED JUMPER by O'NEAL,TIMEKA	02:40			
	02:40			REBOUND (DEF) by BREWER,ALEXIS
SUB IN: MANNINGALLEN,CAELYNN	02:36			
SUB OUT: UMERI,SYDNEY	02:36			
	02:25	36-15	H 21	GOOD! JUMPER by MARTIN,TYNICE [PNT]
	02:16			FOUL by RAY,CHANIA
TURNOVER by WASHINGTON,JESSICA	02:07			
	01:52	39-15	H 24	GOOD! 3PTR by RAY,CHANIA
TURNOVER by WASHINGTON,JESSICA	01:29			
SUB IN: KOPATICH,KYLEE	01:26			
SUB IN: CHRISTOPHER,JAYDE	01:26			
SUB OUT: O'NEAL,TIMEKA	01:26			
SUB OUT: WASHINGTON,JESSICA	01:26			
	01:17	41-15	H 26	GOOD! JUMPER by MARTIN,TYNICE
	01:17			ASSIST by BREWER,ALEXIS
MISSED JUMPER by MANNINGALLEN,CAELYNN	01:03			
	01:03			REBOUND (DEF) by MARTIN,TYNICE
	00:52			TURNOVER by MULDROW,TEANA
MISSED JUMPER by ROBERTSON,AISIA	00:23			
REBOUND (OFF) by ROBERTSON,AISIA	00:23			
GOOD! LAYUP by MANNINGALLEN,CAELYNN [PNT]	00:20	41-17	H 24	
ASSIST by ROBERTSON,AISIA	00:20			
	00:20			FOUL by MULDROW,TEANA
GOOD! FT by MANNINGALLEN,CAELYNN	00:20	41-18	H 23	
	00:04			MISSED JUMPER by MARTIN,TYNICE
REBOUND (DEF) by KOPATICH,KYLEE	00:04			

Kansas 18, West Virginia 41

Period 2-only	In Paint	Off T/O	2nd Chance	Fast Break	Bench	
KU	6	8	3	0	6	Score tied - 0 times



<b>Period 2-only</b>	<b>In Paint</b>	<b>Off T/O</b>	<b>2nd Chance</b>	<b>Fast Break</b>	<b>Bench</b>	
WVU	12	7	4	0	8	Lead changed - 0 times

**Official Basketball Box Score -- Game Totals -- Second Half Statistics**  
**Kansas vs West Virginia**  
**2/27/2017 7:00 p.m. at WVU Coliseum, Morgantown, W.Va.**

**Kansas 36 • 8-21/2-16**

##	Player	S	Total			Rebounds			PF	TP	A	TO	Blk	Stl	Min
			FG-FGA	3PT	FG-FGA	FT-FTA	Off Reb	Def Reb							
00	UMERI, SYDNEY	f	3-4	0-0	2-2	1	1	2	1	8	0	0	0	1	12
03	WASHINGTON, JESSICA	f	5-12	0-1	4-4	1	2	3	1	14	1	1	0	1	15
20	CHRISTOPHER, JAYDE	g	2-4	0-0	2-2	0	0	0	1	6	2	4	0	1	14
22	CHEADLE, CHAYLA	g	0-4	0-3	1-2	0	2	2	2	1	0	0	0	1	12
33	KOPATICH, KYLEE	g	0-1	0-1	0-0	1	0	1	0	0	0	3	0	2	15
04	BROWN, JADA		1-2	1-1	2-2	1	1	2	1	5	0	0	0	1	8
12	O'NEAL, TIMEKA		1-2	0-1	0-0	0	0	0	0	2	0	1	0	1	8
15	ROBERTSON, AISIA		0-2	0-0	0-0	1	1	2	3	0	0	1	0	0	8
25	MANNINGALLEN, CAELYI		0-1	0-0	0-0	1	3	4	1	0	0	0	0	0	8
TEAM						2	2	4	0		0				
Totals			12-32	1-7	11-12	8	12	20	10	36	3	10	0	8	100

FG %	3rd Qtr	7-17	41.2%	4th Qtr	5-15	33.3%	Half:	12-32	37.5%
3FG %	3rd Qtr	0-2	00.0%	4th Qtr	1-5	20.0%	Half:	1-7	22.2%
FT %	3rd Qtr	6-6	100.0%	4th Qtr	5-6	83.3%	Half:	11-12	91.7%

**West Virginia 32 • 20-10/8-10**

##	Player	S	Total			Rebounds			PF	TP	A	TO	Blk	Stl	Min
			FG-FGA	3PT	FG-FGA	FT-FTA	Off Reb	Def Reb							
05	MARTIN, TYNICE	g	3-6	1-2	4-4	1	2	3	2	11	0	2	0	1	18
12	RAY, CHANIA	g	1-4	0-2	0-0	0	2	2	1	2	2	3	0	1	13
15	MONTGOMERY, LANAY	c	1-2	0-0	5-6	2	3	5	1	7	0	1	3	0	12
20	RHODES, DESIREE	f	0-0	0-0	0-0	0	1	1	0	0	1	1	0	0	7
22	PARDEE, KATRINA	g	1-4	0-3	1-2	0	0	0	1	3	0	0	0	0	8
02	BREWER, ALEXIS		1-4	0-2	0-0	1	1	2	0	2	1	2	0	0	18
11	MULDROW, TEANA		1-5	0-1	1-2	2	2	4	2	3	0	1	1	0	10
13	KING, KRISTINA		2-2	0-0	0-2	1	1	2	2	4	1	1	0	1	10
14	THOMAS, BAILEY		0-0	0-0	0-0	0	0	0	0	0	0	0	0	0	1
24	MARTIN, ANJA		0-0	0-0	0-0	0	0	0	0	0	0	1	0	0	2
45	SCHMIDT, MARLENA		0-0	0-0	0-0	0	0	0	0	0	0	0	0	0	1
TEAM						0	0	0	0		0				
Totals			10-27	1-10	11-16	7	12	19	9	32	5	12	4	3	100

FG %	3rd Qtr	7-12	58.3%	4th Qtr	3-15	20.0%	Half:	10-27	37.0%
3FG %	3rd Qtr	1-5	20.0%	4th Qtr	0-5	00.0%	Half:	1-10	25.0%
FT %	3rd Qtr	6-10	60.0%	4th Qtr	5-6	83.3%	Half:	11-16	68.8%

Officials: Laura Morris, Bryan Enterline, Roy Gulbeyan  
 Technical Fouls: Kansas- None. West Virginia- None.

Score by periods	1st	2nd	3rd	4th	Total
Kansas	8	10	20	16	54
West Virginia	24	17	21	11	73

Points	In Paint	Off T/O	2nd Chance	Fast Break	Bench
KU	18	14	9	6	7
	12	8	6	4	9

Last FG - KU 4th-01:21, WVU 4th-06:43.  
 KU led for 0:00. WVU led for 20:00. Game was tied for 0:00.

Score tied - 0 times  
 Lead changed - 0 times

**Kansas vs West Virginia**  
**2/27/2017; 7:00 p.m. at WVU Coliseum, Morgantown, W.Va.**  
**Period 3 Play-By-Play**

VISITORS: Kansas	Time	Score	Margin	HOME: West Virginia
	10:00			SUB IN: MULDRROW,TEANA
	10:00			SUB OUT: RHODES,DESIREE
MISSED JUMPER by CHRISTOPHER,JAYDE	09:35			
	09:35			REBOUND (DEF) by MULDRROW,TEANA
	09:20			MISSED 3PTR by PARDEE,KATRINA
REBOUND (DEF) by UMERI,SYDNEY	09:20			
	09:05			FOUL by MULDRROW,TEANA
GOOD! FT by UMERI,SYDNEY	09:05	41-19	H 22	
GOOD! FT by UMERI,SYDNEY	09:05	41-20	H 21	
	09:05			SUB IN: KING,KRISTINA
	09:05			SUB IN: BREWER,ALEXIS
	09:05			SUB OUT: MULDRROW,TEANA
	09:05			SUB OUT: PARDEE,KATRINA
	08:56	43-20	H 23	GOOD! LAYUP by MONTGOMERY,LANAY [PNT]
	08:56			ASSIST by KING,KRISTINA
MISSED 3PTR by KOPATICH,KYLEE	08:34			
	08:34			REBOUND (DEF) by MARTIN,TYNICE
	08:27	45-20	H 25	GOOD! LAYUP by BREWER,ALEXIS [FB/PNT]
	08:27			ASSIST by RAY,CHANIA
GOOD! LAYUP by WASHINGTON,JESSICA [PNT]	08:14	45-22	H 23	
	07:57			TURNOVER by BREWER,ALEXIS
STEAL by CHEADLE,CHAYLA	07:55			
	07:51			FOUL by KING,KRISTINA
MISSED LAYUP by WASHINGTON,JESSICA	07:45			
	07:45			BLOCK by MONTGOMERY,LANAY
REBOUND (OFF) by TEAM	07:45			
GOOD! JUMPER by WASHINGTON,JESSICA	07:37	45-24	H 21	
	07:27			MISSED 3PTR by RAY,CHANIA
	07:27			REBOUND (OFF) by MONTGOMERY,LANAY
FOUL by WASHINGTON,JESSICA	07:24			
	07:24	46-24	H 22	GOOD! FT by MONTGOMERY,LANAY
	07:24	47-24	H 23	GOOD! FT by MONTGOMERY,LANAY
MISSED LAYUP by WASHINGTON,JESSICA	07:07			
REBOUND (OFF) by UMERI,SYDNEY	07:07			
GOOD! LAYUP by UMERI,SYDNEY [PNT]	07:05	47-26	H 21	
FOUL by UMERI,SYDNEY	06:51			
	06:51			MISSED FT by MONTGOMERY,LANAY
	06:51			REBOUND (DEADB) by TEAM
	06:51	48-26	H 22	GOOD! FT by MONTGOMERY,LANAY
TURNOVER by KOPATICH,KYLEE	06:41			
	06:39			STEAL by KING,KRISTINA
	06:38	50-26	H 24	GOOD! LAYUP by KING,KRISTINA [FB/PNT]
MISSED LAYUP by CHEADLE,CHAYLA	06:18			
	06:18			BLOCK by MONTGOMERY,LANAY
REBOUND (OFF) by TEAM	06:18			
SUB IN: MANNINGALLEN,CAELYNN	06:18			
SUB IN: ROBERTSON,AISIA	06:18			
SUB OUT: UMERI,SYDNEY	06:18			
SUB OUT: KOPATICH,KYLEE	06:18			
TURNOVER by CHRISTOPHER,JAYDE	06:15			
SUB IN: BROWN,JADA	06:15			
SUB OUT: CHEADLE,CHAYLA	06:15			
	05:55	53-26	H 27	GOOD! 3PTR by MARTIN,TYNICE

VISITORS: Kansas	Time	Score	Margin	HOME: West Virginia
	05:55			ASSIST by RAY,CHANIA
MISSED LAYUP by MANNINGALLEN,CAELYNN	05:46			
	05:46			REBOUND (DEF) by MONTGOMERY,LANAY
	05:37			TURNOVER by MONTGOMERY,LANAY
	05:37			FOUL by MONTGOMERY,LANAY
	05:37			SUB IN: RHODES,DESIREE
	05:37			SUB OUT: MONTGOMERY,LANAY
MISSED JUMPER by BROWN,JADA	05:16			
	05:16			REBOUND (DEF) by KING,KRISTINA
FOUL by ROBERTSON,AISIA	05:12			
	05:12			MISSED FT by KING,KRISTINA
	05:12			REBOUND (DEADB) by TEAM
	05:12			MISSED FT by KING,KRISTINA
REBOUND (DEF) by MANNINGALLEN,CAELYNN	05:12			
TURNOVER by CHRISTOPHER,JAYDE	05:05			
SUB IN: O'NEAL,TIMEKA	05:04			
SUB OUT: CHRISTOPHER,JAYDE	05:04			
	04:40			MISSED JUMPER by RAY,CHANIA
	04:40			REBOUND (OFF) by KING,KRISTINA
	04:34			MISSED 3PTR by RAY,CHANIA
REBOUND (DEF) by MANNINGALLEN,CAELYNN	04:34			
MISSED LAYUP by ROBERTSON,AISIA	04:26			
	04:26			REBOUND (DEF) by RHODES,DESIREE
	04:14			TURNOVER by BREWER,ALEXIS
TIMEOUT MEDIA	04:14			
	04:14			SUB IN: PARDEE,KATRINA
	04:14			SUB OUT: RAY,CHANIA
TIMEOUT 30SEC	04:00			
TURNOVER by WASHINGTON,JESSICA	03:55			
	03:53			STEAL by MARTIN,TYNICE
	03:48	55-26	H 29	GOOD! JUMPER by PARDEE,KATRINA
	03:48			ASSIST by BREWER,ALEXIS
	03:40			FOUL by PARDEE,KATRINA
GOOD! FT by WASHINGTON,JESSICA	03:40	55-27	H 28	
GOOD! FT by WASHINGTON,JESSICA	03:40	55-28	H 27	
	03:27			TURNOVER by MARTIN,TYNICE
STEAL by BROWN,JADA	03:25			
TURNOVER by ROBERTSON,AISIA	03:21			
	03:10			MISSED 3PTR by PARDEE,KATRINA
REBOUND (DEF) by TEAM	03:10			
GOOD! JUMPER by WASHINGTON,JESSICA	02:59	55-30	H 25	
FOUL by ROBERTSON,AISIA	02:49			
	02:49			MISSED FT by PARDEE,KATRINA
	02:49			REBOUND (DEADB) by TEAM
	02:49	56-30	H 26	GOOD! FT by PARDEE,KATRINA
SUB IN: WATTS,EBONI	02:49			
SUB IN: CHEADLE,CHAYLA	02:49			
SUB IN: UMERI,SYDNEY	02:49			
SUB IN: KOPATICH,KYLEE	02:49			
SUB OUT: MANNINGALLEN,CAELYNN	02:49			
SUB OUT: BROWN,JADA	02:49			
SUB OUT: ROBERTSON,AISIA	02:49			
MISSED JUMPER by WASHINGTON,JESSICA	02:35			
	02:35			REBOUND (DEF) by MARTIN,TYNICE
FOUL by CHEADLE,CHAYLA	02:31			
	02:31	57-30	H 27	GOOD! FT by MARTIN,TYNICE
	02:31	58-30	H 28	GOOD! FT by MARTIN,TYNICE
	02:31			SUB IN: RAY,CHANIA

VISITORS: Kansas	Time	Score	Margin	HOME: West Virginia
	02:31			SUB OUT: BREWER,ALEXIS
MISSED 3PTR by CHEADLE,CHAYLA	02:17			
	02:17			REBOUND (DEF) by RAY,CHANIA
	02:01			TURNOVER by KING,KRISTINA
STEAL by UMERI,SYDNEY	02:00			
GOOD! LAYUP by UMERI,SYDNEY [PNT]	01:50	58-32	H 26	
ASSIST by WASHINGTON,JESSICA	01:50			
	01:37			TIMEOUT 30SEC
	01:36			TURNOVER by MARTIN,TYNICE
STEAL by O'NEAL,TIMEKA	01:34			
GOOD! LAYUP by O'NEAL,TIMEKA [FB/PNT]	01:33	58-34	H 24	
	01:07	60-34	H 26	GOOD! LAYUP by KING,KRISTINA [PNT]
	01:07			ASSIST by RHODES,DESIREE
	00:53			FOUL by KING,KRISTINA
GOOD! FT by WASHINGTON,JESSICA	00:53	60-35	H 25	
GOOD! FT by WASHINGTON,JESSICA	00:53	60-36	H 24	
	00:53			SUB IN: BREWER,ALEXIS
	00:53			SUB OUT: PARDEE,KATRINA
	00:33			TURNOVER by RHODES,DESIREE
STEAL by WASHINGTON,JESSICA	00:31			
GOOD! JUMPER by WASHINGTON,JESSICA [PNT]	00:29	60-38	H 22	
	00:01	62-38	H 24	GOOD! LAYUP by RAY,CHANIA [PNT]

Kansas 54, West Virginia 73

Period 3-only	In Paint	Off T/O	2nd Chance	Fast Break	Bench	
KU	10	8	4	2	2	Score tied - 0 times
WVU	10	7	2	4	6	Lead changed - 0 times

**Kansas vs West Virginia**  
**2/27/2017; 7:00 p.m. at WVU Coliseum, Morgantown, W.Va.**  
**Period 4 Play-By-Play**

VISITORS: Kansas	Time	Score	Margin	HOME: West Virginia
SUB IN: O'NEAL,TIMEKA	10:00			
SUB OUT: CHRISTOPHER,JAYDE	10:00			
	10:00			SUB IN: BREWER,ALEXIS
	10:00			SUB IN: MULDROW,TEANA
	10:00			SUB OUT: RHODES,DESIREE
	10:00			SUB OUT: PARDEE,KATRINA
	09:53			MISSED 3PTR by BREWER,ALEXIS
	09:53			REBOUND (OFF) by MULDROW,TEANA
	09:50	64-38	H 26	GOOD! LAYUP by MULDROW,TEANA [PNT]
MISSED 3PTR by O'NEAL,TIMEKA	09:40			
REBOUND (OFF) by KOPATICH,KYLEE	09:40			
TURNOVER by KOPATICH,KYLEE	09:32			
	09:31			STEAL by RAY,CHANIA
	09:24			TURNOVER by RAY,CHANIA
MISSED 3PTR by CHEADLE,CHAYLA	09:18			
	09:18			REBOUND (DEF) by BREWER,ALEXIS
	08:58			MISSED 3PTR by MARTIN,TYNICE
REBOUND (DEF) by TEAM	08:58			
SUB IN: CHRISTOPHER,JAYDE	08:52			
SUB IN: ROBERTSON,AISIA	08:52			
SUB OUT: WASHINGTON,JESSICA	08:52			
SUB OUT: O'NEAL,TIMEKA	08:52			
GOOD! LAYUP by UMERI,SYDNEY [PNT]	08:40	64-40	H 24	
ASSIST by CHRISTOPHER,JAYDE	08:40			
	08:24			MISSED LAYUP by MONTGOMERY,LANAY
	08:24			REBOUND (OFF) by MULDROW,TEANA
	08:20			MISSED JUMPER by MULDROW,TEANA
REBOUND (DEF) by ROBERTSON,AISIA	08:20			
MISSED LAYUP by UMERI,SYDNEY	08:12			
REBOUND (OFF) by ROBERTSON,AISIA	08:12			
TURNOVER by KOPATICH,KYLEE	08:04			
	08:00			TURNOVER by MULDROW,TEANA
STEAL by CHRISTOPHER,JAYDE	07:58			
GOOD! LAYUP by CHRISTOPHER,JAYDE [FB/PNT]	07:56	64-42	H 22	
	07:32	66-42	H 24	GOOD! JUMPER by MARTIN,TYNICE
MISSED 3PTR by CHEADLE,CHAYLA	07:19			
	07:19			REBOUND (DEF) by RAY,CHANIA
	07:13			TURNOVER by RAY,CHANIA
STEAL by KOPATICH,KYLEE	07:10			
	07:06			FOUL by RAY,CHANIA
GOOD! FT by CHRISTOPHER,JAYDE	07:06	66-43	H 23	
GOOD! FT by CHRISTOPHER,JAYDE	07:06	66-44	H 22	
SUB IN: BROWN,JADA	07:06			
SUB IN: MANNINGALLEN,CAELYNN	07:06			
SUB OUT: UMERI,SYDNEY	07:06			
SUB OUT: CHEADLE,CHAYLA	07:06			
	07:06			SUB IN: PARDEE,KATRINA
	07:06			SUB OUT: RAY,CHANIA
	06:43	68-44	H 24	GOOD! JUMPER by MARTIN,TYNICE
MISSED JUMPER by ROBERTSON,AISIA	06:26			
	06:26			REBOUND (DEF) by MONTGOMERY,LANAY
	06:05			MISSED JUMPER by MARTIN,TYNICE
	06:05			REBOUND (OFF) by BREWER,ALEXIS

VISITORS: Kansas	Time	Score	Margin	HOME: West Virginia
FOUL by BROWN,JADA	05:59			
FOUL by ROBERTSON,AISIA	05:59			
SUB IN: WASHINGTON,JESSICA	05:59			
SUB OUT: ROBERTSON,AISIA	05:59			
FOUL by CHRISTOPHER,JAYDE	05:58			
	05:58	69-44	H 25	GOOD! FT by MARTIN,TYNICE
	05:58	70-44	H 26	GOOD! FT by MARTIN,TYNICE
GOOD! LAYUP by WASHINGTON,JESSICA [PNT]	05:38	70-46	H 24	
	05:23			MISSED 3PTR by MULDROW,TEANA
REBOUND (DEF) by WASHINGTON,JESSICA	05:23			
MISSED JUMPER by WASHINGTON,JESSICA	05:13			
	05:13			BLOCK by MULDROW,TEANA
REBOUND (OFF) by WASHINGTON,JESSICA	05:13			
	05:13			SUB IN: RAY,CHANIA
	05:13			SUB OUT: PARDEE,KATRINA
MISSED JUMPER by WASHINGTON,JESSICA	05:08			
	05:08			REBOUND (DEF) by MONTGOMERY,LANAY
	04:49			MISSED 3PTR by BREWER,ALEXIS
	04:49			REBOUND (OFF) by MARTIN,TYNICE
	04:37			MISSED JUMPER by BREWER,ALEXIS
	04:37			REBOUND (OFF) by MONTGOMERY,LANAY
	04:31			MISSED JUMPER by MULDROW,TEANA
REBOUND (DEF) by BROWN,JADA	04:31			
MISSED JUMPER by CHRISTOPHER,JAYDE	04:19			
	04:19			BLOCK by MONTGOMERY,LANAY
REBOUND (OFF) by MANNINGALLEN,CAELYNN	04:17			
GOOD! 3PTR by BROWN,JADA	04:15	70-49	H 21	
ASSIST by CHRISTOPHER,JAYDE	04:15			
	03:47			MISSED JUMPER by MARTIN,TYNICE
REBOUND (DEF) by WASHINGTON,JESSICA	03:47			
	03:46			FOUL by MULDROW,TEANA
TIMEOUT media	03:46			
	03:46			SUB IN: KING,KRISTINA
	03:46			SUB OUT: MULDROW,TEANA
TURNOVER by CHRISTOPHER,JAYDE	03:37			
	03:11			TURNOVER by RAY,CHANIA
STEAL by KOPATICH,KYLEE	03:09			
MISSED 3PTR by WASHINGTON,JESSICA	03:05			
REBOUND (OFF) by BROWN,JADA	03:05			
	02:59			FOUL by MARTIN,TYNICE
GOOD! FT by BROWN,JADA	02:59	70-50	H 20	
GOOD! FT by BROWN,JADA	02:59	70-51	H 19	
	02:59			SUB IN: PARDEE,KATRINA
	02:59			SUB IN: MULDROW,TEANA
	02:59			SUB OUT: RAY,CHANIA
	02:59			SUB OUT: KING,KRISTINA
	02:39			MISSED 3PTR by PARDEE,KATRINA
REBOUND (DEF) by MANNINGALLEN,CAELYNN	02:39			
MISSED JUMPER by WASHINGTON,JESSICA	02:10			
	02:10			REBOUND (DEF) by MULDROW,TEANA
FOUL by MANNINGALLEN,CAELYNN	01:58			
	01:58	71-51	H 20	GOOD! FT by MONTGOMERY,LANAY
	01:58	72-51	H 21	GOOD! FT by MONTGOMERY,LANAY
SUB IN: ROBERTSON,AISIA	01:58			
SUB IN: CHEADLE,CHAYLA	01:58			
SUB IN: O'NEAL,TIMEKA	01:58			
SUB IN: UMERI,SYDNEY	01:58			
SUB OUT: BROWN,JADA	01:58			

VISITORS: Kansas	Time	Score	Margin	HOME: West Virginia
SUB OUT: WASHINGTON,JESSICA	01:58			
SUB OUT: MANNINGALLEN,CAELYNN	01:58			
SUB OUT: KOPATICH,KYLEE	01:58			
	01:58			SUB IN: RHODES,DESIREE
	01:58			SUB OUT: MONTGOMERY,LANAY
	01:45			FOUL by MARTIN,TYNICE
MISSED FT by CHEADLE,CHAYLA	01:45			
REBOUND (DEADB) by TEAM	01:45			
GOOD! FT by CHEADLE,CHAYLA	01:45	72-52	H 20	
	01:30			SUB IN: MARTIN,ANJA
	01:30			SUB OUT: MARTIN,TYNICE
	01:27			MISSED JUMPER by MULDROW,TEANA
REBOUND (DEF) by CHEADLE,CHAYLA	01:27			
GOOD! LAYUP by CHRISTOPHER,JAYDE [FB/PNT]	01:21	72-54	H 18	
	01:03			TURNOVER by MARTIN,ANJA
	01:03			SUB IN: THOMAS,BAILEY
	01:03			SUB IN: SCHMIDT,MARLENA
	01:03			SUB OUT: PARDEE,KATRINA
	01:03			SUB OUT: RHODES,DESIREE
TURNOVER by O'NEAL,TIMEKA	00:54			
FOUL by CHEADLE,CHAYLA	00:28			
	00:28	73-54	H 19	GOOD! FT by MULDROW,TEANA
	00:28			MISSED FT by MULDROW,TEANA
REBOUND (DEF) by CHEADLE,CHAYLA	00:28			
TURNOVER by CHRISTOPHER,JAYDE	00:13			

Kansas 54, West Virginia 73

Period 4-only	In Paint	Off T/O	2nd Chance	Fast Break	Bench	
KU	8	6	5	4	5	Score tied - 0 times
WVU	2	1	4	0	3	Lead changed - 0 times



**Kansas vs West Virginia**  
**2/27/2017; 7:00 p.m. at WVU Coliseum, Morgantown, W.Va.**  
**Scoring/Runs Reference**

Period 1				
Kansas	Score	Marg	West Virginia	
08:14 - CHRISTOPHER FT	1	1-0	-1	
		1-2	1	MULDROW LAYUP [P] - 08:02
		1-4	3	RAY JUMPER [P] - 07:29
06:56 - CHEADLE 3PTR	3	4-4	0	
		4-6	2	MARTIN JUMPER [P] - 06:34
		4-8	4	RAY JUMPER - 06:05
		4-10	6	MULDROW LAYUP [P] - 05:22
		4-13	9	BREWER 3PTR - 03:54
		4-14	10	BREWER FT - 03:24
		4-15	11	BREWER FT - 03:24
02:59 - MANNINGALLEN JUMPER [P]	2	6-15	9	
		6-17	11	KING JUMPER - 02:41
		6-18	12	KING FT - 01:54
		6-20	14	KING LAYUP [P] [F] - 01:37
01:00 - ROBERTSON FT	1	7-20	13	
01:00 - ROBERTSON FT	1	8-20	12	
		8-22	14	MULDROW LAYUP [P] - 00:37
		8-24	16	MULDROW LAYUP [P] - 00:00

Period 2				
Kansas	Score	Marg	West Virginia	
		8-26	18	2 KING LAYUP [P] - 09:01
08:26 - WASHINGTON LAYUP [P]	2	10-26	16	
		10-28	18	2 KING LAYUP [P] - 07:08
		10-30	20	2 MULDROW JUMPER [P] - 06:00
04:49 - O'NEAL 3PTR	3	13-30	17	
		13-32	19	2 MULDROW LAYUP [P] - 04:08
04:00 - WASHINGTON LAYUP [P]	2	15-32	17	
		15-34	19	2 RAY LAYUP [P] - 02:55
		15-36	21	2 MARTIN JUMPER [P] - 02:25
		15-39	24	3 RAY 3PTR - 01:52
		15-41	26	2 MARTIN JUMPER - 01:17
00:20 - MANNINGALLEN LAYUP [P]	2	17-41	24	
00:20 - MANNINGALLEN FT	1	18-41	23	

Period 3

Kansas	Score	Marg	West Virginia
09:05 - UMERI FT	1	19-41 22	
09:05 - UMERI FT	1	20-41 21	
		20-43 23	2 MONTGOMERY LAYUP [P] - 08:56
		20-45 25	2 BREWER LAYUP [P] [F] - 08:27
08:14 - WASHINGTON LAYUP [P]	2	22-45 23	
07:37 - WASHINGTON JUMPER	2	24-45 21	
		24-46 22	1 MONTGOMERY FT - 07:24
		24-47 23	1 MONTGOMERY FT - 07:24
07:05 - UMERI LAYUP [P]	2	26-47 21	
		26-48 22	1 MONTGOMERY FT - 06:51
		26-50 24	2 KING LAYUP [P] [F] - 06:38
		26-53 27	3 MARTIN 3PTR - 05:55
		26-55 29	2 PARDEE JUMPER - 03:48
03:40 - WASHINGTON FT	1	27-55 28	
03:40 - WASHINGTON FT	1	28-55 27	
02:59 - WASHINGTON JUMPER	2	30-55 25	
		30-56 26	1 PARDEE FT - 02:49
		30-57 27	1 MARTIN FT - 02:31
		30-58 28	1 MARTIN FT - 02:31
01:50 - UMERI LAYUP [P]	2	32-58 26	
01:33 - ONEAL LAYUP [P] [F]	2	34-58 24	
		34-60 26	2 KING LAYUP [P] - 01:07
00:53 - WASHINGTON FT	1	35-60 25	
00:53 - WASHINGTON FT	1	36-60 24	
00:29 - WASHINGTON JUMPER [P]	2	38-60 22	
		38-62 24	2 RAY LAYUP [P] - 00:01

Period 4

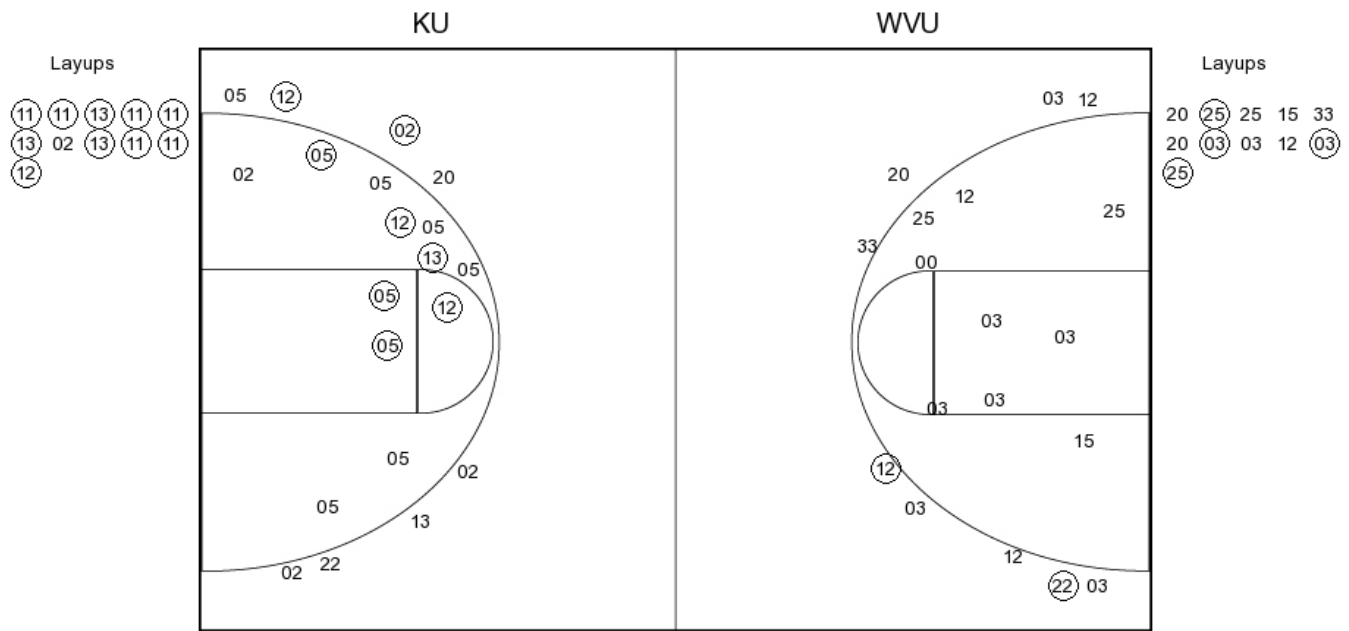
Kansas	Score	Marg	West Virginia
		38-64 26	2 MULDROW LAYUP [P] - 09:50
08:40 - UMERI LAYUP [P]	2	40-64 24	
07:56 - CHRISTOPHER LAYUP [P] [F]	2	42-64 22	
		42-66 24	2 MARTIN JUMPER - 07:32
07:06 - CHRISTOPHER FT	1	43-66 23	
07:06 - CHRISTOPHER FT	1	44-66 22	
		44-68 24	2 MARTIN JUMPER - 06:43
		44-69 25	1 MARTIN FT - 05:58
		44-70 26	1 MARTIN FT - 05:58
05:38 - WASHINGTON LAYUP [P]	2	46-70 24	
04:15 - BROWN 3PTR	3	49-70 21	
02:59 - BROWN FT	1	50-70 20	
02:59 - BROWN FT	1	51-70 19	
		51-71 20	1 MONTGOMERY FT - 01:58
		51-72 21	1 MONTGOMERY FT - 01:58
01:45 - CHEADLE FT	1	52-72 20	
01:21 - CHRISTOPHER LAYUP [P] [F]	2	54-72 18	
		54-73 19	1 MULDROW FT - 00:28

**Kansas vs West Virginia**

**OFFICIAL SHOT CHART**

2/27/2017 at WVU Coliseum, Morgantown, W.Va.

**PERIOD 1**



**KU PERIOD 1**

FG Made	6
FG Attempted	29
3PFG Made	2
3PFG Attempted	9

**WVU PERIOD 1**

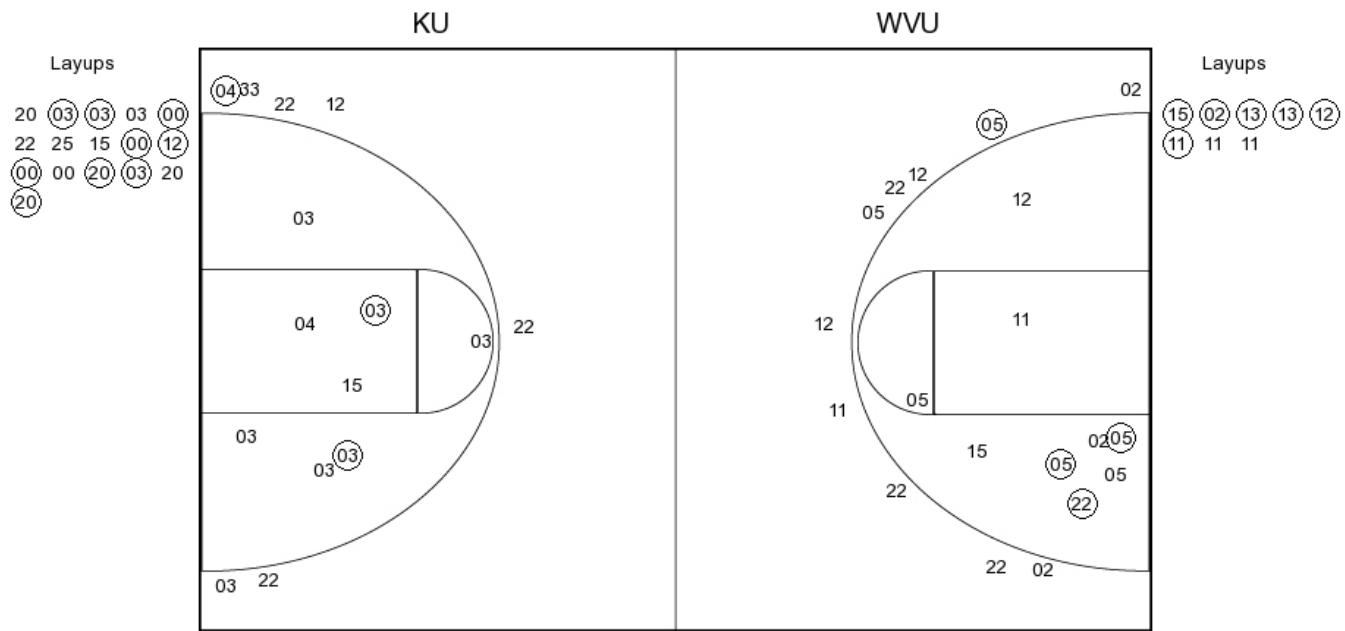
FG Made	18
FG Attempted	31
3PFG Made	2
3PFG Attempted	8

**Kansas vs West Virginia**

**OFFICIAL SHOT CHART**

2/27/2017 at WVU Coliseum, Morgantown, W.Va.

**PERIOD 2**



**KU PERIOD 2**

FG Made

FG Attempted

3PFG Made

3PFG Attempted

**WVU PERIOD 2**

FG Made

FG Attempted

3PFG Made

3PFG Attempted

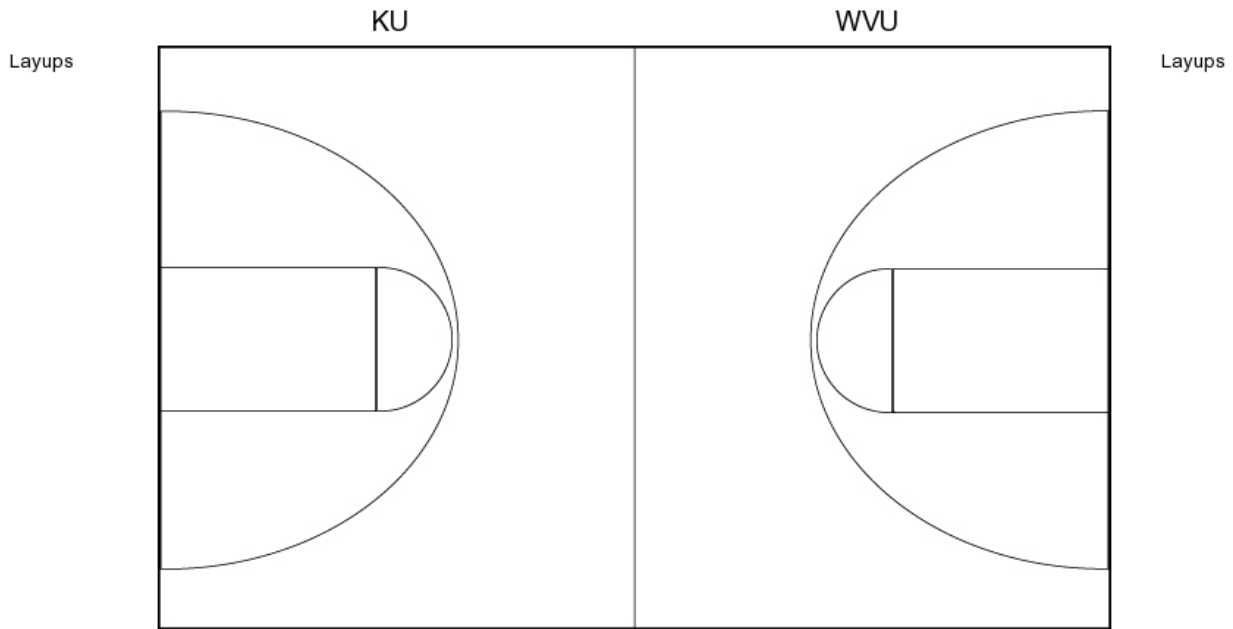
**Kansas vs West Virginia**

**OFFICIAL SHOT CHART**

2/27/2017 at WVU Coliseum, Morgantown, W.Va.

---

**PERIOD 3**



**KU PERIOD 3**

FG Made	12
FG Attempted	32
3PFG Made	1
3PFG Attempted	7

**WVU PERIOD 3**

FG Made	10
FG Attempted	27
3PFG Made	1
3PFG Attempted	10

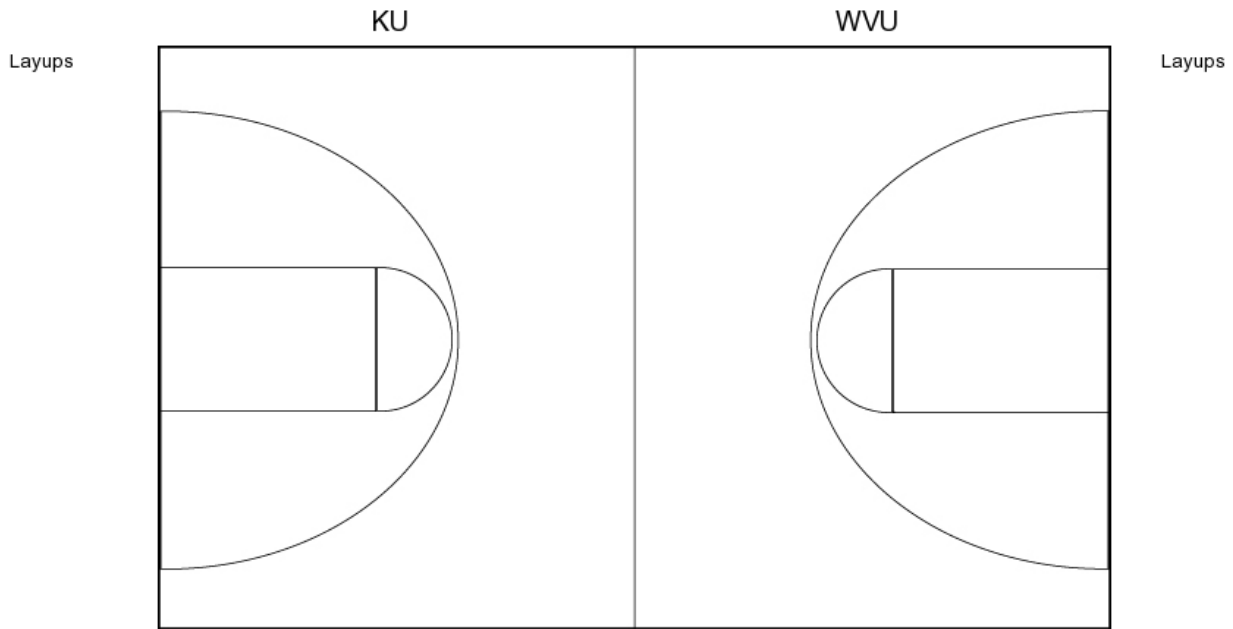
**Kansas vs West Virginia**

**OFFICIAL SHOT CHART**

2/27/2017 at WVU Coliseum, Morgantown, W.Va.

---

**PERIOD 4**



**KU PERIOD 4**

FG Made  
FG Attempted  
3PFG Made  
3PFG Attempted

**WVU PERIOD 4**

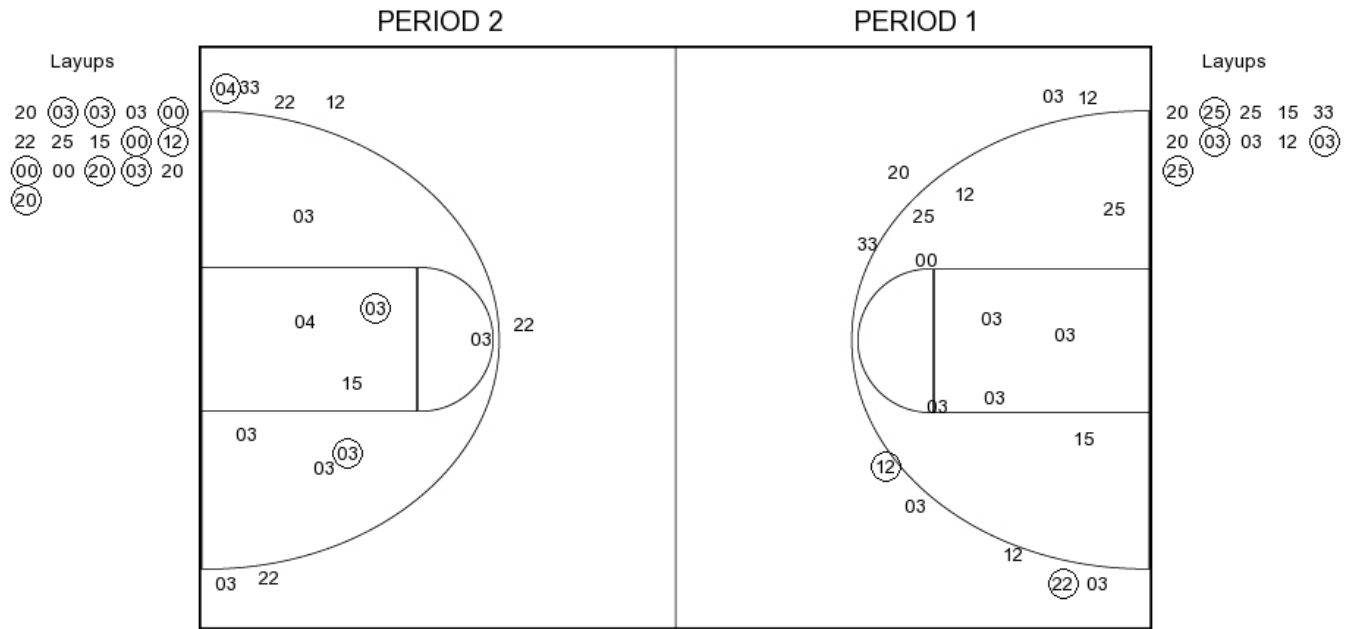
FG Made  
FG Attempted  
3PFG Made  
3PFG Attempted

**Kansas vs West Virginia**

**OFFICIAL SHOT CHART**

2/27/2017 at WVU Coliseum, Morgantown, W.Va.

**Kansas**



**KU PERIOD 1**

FG Made	6
FG Attempted	29
3PFG Made	2
3PFG Attempted	9

**KU PERIOD 2**

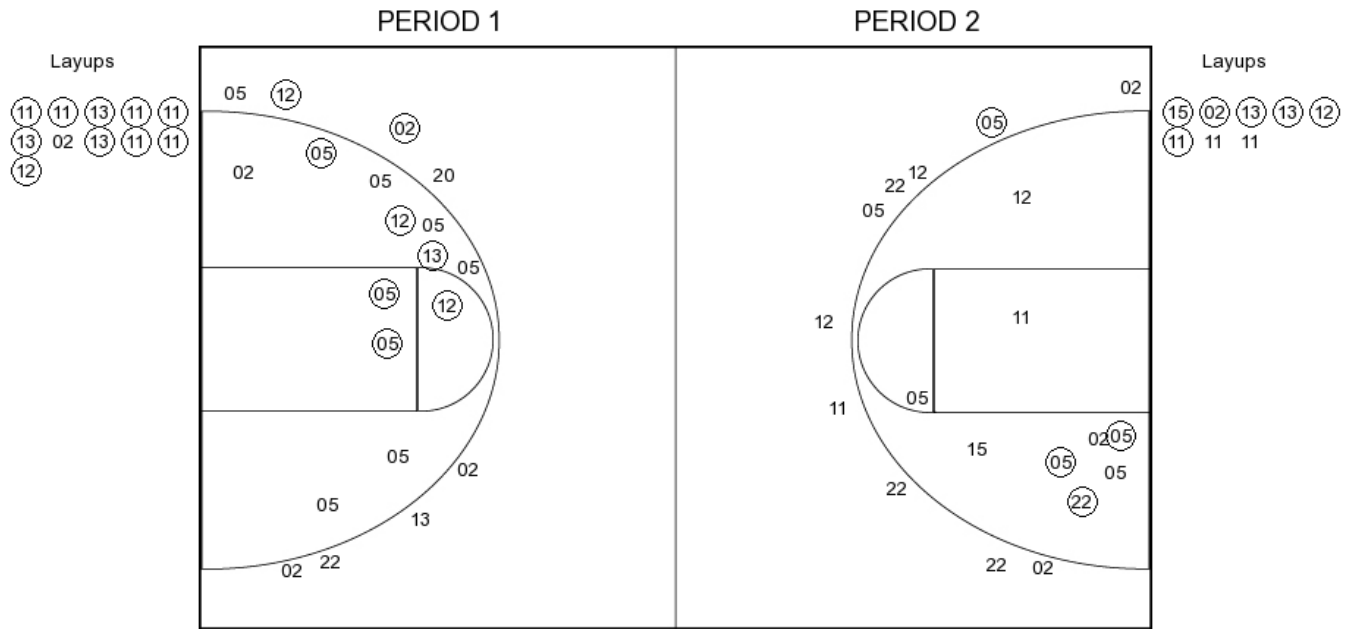
FG Made	
FG Attempted	
3PFG Made	
3PFG Attempted	

**Kansas vs West Virginia**

**OFFICIAL SHOT CHART**

2/27/2017 at WVU Coliseum, Morgantown, W.Va.

**West Virginia**



**WVU PERIOD 1**

FG Made	18
FG Attempted	31
3PFG Made	2
3PFG Attempted	8

**WVU PERIOD 2**

FG Made	
FG Attempted	
3PFG Made	
3PFG Attempted	