



# WEST VIRGINIA VS. KANSAS STATE

2/15/2017

WVU Coliseum, Morgantown, W.Va.

## FINAL STATS

**West Virginia**

*(18-8/6-8)*

**66**

**Kansas State**

*(18-9/8-6)*

**59**

*Start Time: 7:00 p.m.*

*Officials: Bob Trammell, Felicia Grinter, Amy Bonner*

*Attendance: 1642*

**Official Basketball Box Score -- Game Totals -- Final Statistics**  
**Kansas State vs West Virginia**  
**2/15/2017 7:00 p.m. at WVU Coliseum, Morgantown, W.Va.**

**Kansas State 59 - 18-9/8-6**

##	Player	S	Total			Rebounds			PF	TP	A	TO	Blk	Stl	Min
			FG-FGA	3PT	FG-FGA	FT-FTA	Off Reb	Def Reb							
01	PAGE,KAYLEE	f	4-7	3-5	1-2	0	0	0	1	12	2	1	0	1	28
21	MIDDLEBROOK,KARYLA	g	2-3	1-1	0-0	1	1	2	3	5	1	4	0	1	17
22	LEWIS,BREANNA	c	4-8	0-0	1-1	4	3	7	4	9	0	0	3	1	32
24	WESEMANN,KINDRED	g	5-16	3-9	1-3	2	3	5	2	14	4	5	0	2	31
50	MARTIN,SHAELYN	g	1-6	1-4	0-2	1	5	6	2	3	7	2	1	3	34
00	SHEBLE,JESSICA		0-0	0-0	0-0	0	0	0	0	0	0	0	0	0	3
03	PAGE,LANIE		1-3	0-2	0-0	0	1	1	1	2	0	2	0	1	8
10	GOTH,KAYLA		2-4	0-1	0-0	0	1	1	1	4	0	1	0	4	16
11	WILLIAMS,PEYTON		0-0	0-0	1-2	0	1	1	0	1	1	0	1	0	11
12	THOMSON,KELLY		0-0	0-0	0-0	0	0	0	1	0	0	0	0	0	0
13	WILLOCK,ETERNATI		4-9	0-0	1-1	2	0	2	1	9	0	4	0	1	20
TEAM						1	3	4	0			0			
TOTALS			23-56	8-22	5-11	11	18	29	16	59	15	19	5	14	200

Deadball Rebounds: 4,0

FG %	1st Half: 11-24 45.8%	2nd Half: 12-32 37.5%	Game: 23-56 41.1%
	1st Qtr 5-13 38.5%	2nd Qtr 6-11 54.5%	3rd Qtr 4-15 26.7%
3FG %	1st Half: 1-8 12.5%	2nd Half: 7-14 50.0%	Game: 8-22 36.4%
	1st Qtr 1-5 20.0%	2nd Qtr 0-3 00.0%	3rd Qtr 1-4 25.0%
FT %	1st Half: 2-2 100.0%	2nd Half: 3-9 33.3%	Game: 5-11 45.5%
	1st Qtr 1-1 100.0%	2nd Qtr 1-1 100.0%	3rd Qtr 2-5 40.0%
			4th Qtr 1-4 25.0%

**West Virginia 66 - 18-8/6-8**

##	Player	S	Total			Rebounds			PF	TP	A	TO	Blk	Stl	Min
			FG-FGA	3PT	FG-FGA	FT-FTA	Off Reb	Def Reb							
05	MARTIN,TYNICE	g	2-6	0-2	0-0	0	3	3	2	4	0	2	0	3	33
11	MULDROW,TEANA	f	3-8	0-2	4-6	1	5	6	3	10	2	5	0	1	38
12	RAY,CHANIA	g	4-9	2-6	4-4	1	1	2	1	14	10	5	0	1	36
15	MONTGOMERY,LANAY	c	6-8	0-0	0-0	6	6	12	4	12	1	2	1	1	23
22	PARDEE,KATRINA	g	5-14	4-7	0-0	0	0	0	0	14	1	2	0	3	23
02	BREWER,ALEXIS		2-6	2-5	0-0	1	1	2	1	6	5	2	0	1	28
13	KING,KRISTINA		3-3	0-0	0-0	1	2	3	0	6	1	2	1	0	14
20	RHODES,DESIREE		0-1	0-0	0-0	0	1	1	1	0	0	0	1	0	5
TEAM						4	5	9	0			1			
TOTALS			25-55	8-22	8-10	14	24	38	12	66	20	21	3	10	200

Deadball Rebounds: 0,0

FG %	1st Half: 15-32 46.9%	2nd Half: 10-23 43.5%	Game: 25-55 45.5%
	1st Qtr 9-17 52.9%	2nd Qtr 6-15 40.0%	3rd Qtr 4-13 30.8%
3FG %	1st Half: 7-18 38.9%	2nd Half: 1-4 25.0%	Game: 8-22 36.4%
	1st Qtr 4-11 36.4%	2nd Qtr 3-7 42.9%	3rd Qtr 0-2 00.0%
FT %	1st Half: 2-2 100.0%	2nd Half: 6-8 75.0%	Game: 8-10 80.0%
	1st Qtr 1-1 100.0%	2nd Qtr 1-1 100.0%	3rd Qtr 0-0 0%
			4th Qtr 6-8 75.0%

Officials: Bob Trammell, Felicia Grinter, Amy Bonner  
 Technical Fouls: Kansas State- None. West Virginia- None.  
 Attendance: 1642

Score by periods	1st	2nd	3rd	4th	Total
Kansas State	12	13	11	23	59
West Virginia	23	16	8	19	66

Points	In Paint	Off T/O	2nd 2nd Chance	Fast Break	Bench
K-STATE	22	13	12	6	16
WVU	28	19	12	6	12

Last FG - K-STATE 4th-00:14, WVU 4th-01:42.  
 Largest lead - Kansas State by 2 1st-09:06; West Virginia by 19 2nd-07:11  
 K-STATE led for 2:43. WVU led for 35:15. Game was tied for 2:02.

Score tied - 2 times  
 Lead changed - 5 times

**Official Basketball Box Score -- Game Totals -- First Half Statistics**  
**Kansas State vs West Virginia**  
**2/15/2017 7:00 p.m. at WVU Coliseum, Morgantown, W.Va.**

**Kansas State 25 • 18-9/8-6**

##	Player	S	Total			3-Ptr			Rebounds			PF	TP	A	TO	Blk	Stl	Min
			FG	FGA	3PT	FG-FGA	FT	FTA	Off Reb	Def Reb	Tot Reb							
01	PAGE,KAYLEE	f	2	3	1	2	0	0	0	0	0	1	5	1	0	0	1	15
21	MIDDLEBROOK,KARYLA	g	1	2	0	0	0	0	0	1	1	2	0	3	0	1	11	
22	LEWIS,BREANNA	c	2	3	0	0	1	1	1	1	2	1	5	0	0	1	1	17
24	WESEMANN,KINDRED	g	1	6	0	3	0	0	1	1	2	2	2	1	3	0	0	13
50	MARTIN,SHAELYN	g	0	1	0	1	0	0	0	2	2	0	0	4	1	1	1	16
00	SHEBLE,JESSICA		0	0	0	0	0	0	0	0	0	0	0	0	0	0	0	3
03	PAGE,LANIE		1	3	0	2	0	0	0	1	1	0	2	0	2	0	0	6
10	GOTH,KAYLA		0	0	0	0	0	0	0	1	1	0	0	0	0	0	0	4
11	WILLIAMS,PEYTON		0	0	0	0	0	0	0	1	1	0	0	1	0	0	0	6
12	THOMSON,KELLY		0	0	0	0	0	0	0	0	0	0	0	0	0	0	0	0
13	WILLOCK,ETERNATI		4	6	0	0	1	1	0	0	0	1	9	0	3	0	0	9
TEAM									0	0	0	0		0				
Totals			11	24	1	8	2	2	2	8	10	6	25	7	12	2	4	100
FG %	1st Qtr	5-13	38.5%	2nd Qtr	6-11	54.5%	Half:	11-24	45.8%									
3FG %	1st Qtr	1-5	20.0%	2nd Qtr	0-3	00.0%	Half:	1-8	12.5%									
FT %	1st Qtr	1-1	100.0%	2nd Qtr	1-1	100.0%	Half:	2-2	100.0%									

**West Virginia 39 • 18-8/6-8**

##	Player	S	Total			3-Ptr			Rebounds			PF	TP	A	TO	Blk	Stl	Min
			FG	FGA	3PT	FG-FGA	FT	FTA	Off Reb	Def Reb	Tot Reb							
05	MARTIN,TYNICE	g	0	1	0	1	0	0	0	1	1	2	0	0	0	0	0	13
11	MULDROW,TEANA	f	2	3	0	1	0	0	1	0	1	4	0	1	0	1	18	
12	RAY,CHANIA	g	4	8	2	6	2	2	0	0	0	12	7	3	0	1	17	
15	MONTGOMERY,LANAY	c	3	4	0	0	0	0	4	6	10	6	1	2	1	0	16	
22	PARDEE,KATRINA	g	5	12	4	7	0	0	0	0	0	14	0	1	0	2	15	
02	BREWER,ALEXIS		1	4	1	3	0	0	1	0	1	3	4	1	0	1	15	
13	KING,KRISTINA		0	0	0	0	0	0	1	2	3	0	0	1	1	0	6	
20	RHODES,DESIREE		0	0	0	0	0	0	0	0	0	0	0	0	0	0	0	
TEAM									2	2	4	0		1				
Totals			15	32	7	18	2	2	9	11	20	4	39	13	10	1	5	100
FG %	1st Qtr	9-17	52.9%	2nd Qtr	6-15	40.0%	Half:	15-32	46.9%									
3FG %	1st Qtr	4-11	36.4%	2nd Qtr	3-7	42.9%	Half:	7-18	38.9%									
FT %	1st Qtr	1-1	100.0%	2nd Qtr	1-1	100.0%	Half:	2-2	100.0%									

Officials: Bob Trammell, Felicia Grinter, Amy Bonner  
 Technical Fouls: Kansas State- None. West Virginia- None.

Score by periods	1st	2nd	3rd	4th	Total
Kansas State	12	13	11	23	59
West Virginia	23	16	8	19	66

Points	In Paint	Off T/O	2nd Chance	Fast Break	Bench
K-STATE	12	8	5	0	11
WVU	14	15	11	4	3

Last FG - K-STATE 2nd-01:52, WVU 2nd-02:18.  
 K-STATE led for 2:43. WVU led for 15:15. Game was tied for 2:02.

Score tied - 2 times  
 Lead changed - 5 times

**Kansas State vs West Virginia**  
**2/15/2017; 7:00 p.m. at WVU Coliseum, Morgantown, W.Va.**  
**Period 1 Play-By-Play**

VISITORS: Kansas State	Time	Score	Margin	HOME: West Virginia
TURNOVER by MIDDLEBROOK,KARYLA	09:50			
	09:29			TURNOVER by PARDEE,KATRINA
STEAL by MIDDLEBROOK,KARYLA	09:27			
GOOD! JUMPER by MIDDLEBROOK,KARYLA [PNT]	09:06	0-2	V 2	
	08:56	2-2	T	GOOD! JUMPER by MONTGOMERY,LANAY
	08:56			ASSIST by RAY,CHANIA
MISSED JUMPER by MIDDLEBROOK,KARYLA	08:40			
	08:40			REBOUND (DEF) by MONTGOMERY,LANAY
	08:36	5-2	H 3	GOOD! 3PTR by PARDEE,KATRINA
	08:36			ASSIST by RAY,CHANIA
TURNOVER by MIDDLEBROOK,KARYLA	08:21			
	08:20			STEAL by RAY,CHANIA
	08:17			TURNOVER by RAY,CHANIA
STEAL by MARTIN,SHAELYN	08:15			
GOOD! LAYUP by PAGE,KAYLEE [PNT]	08:01	5-4	H 1	
	07:34			MISSED 3PTR by RAY,CHANIA
REBOUND (DEF) by MARTIN,SHAELYN	07:34			
GOOD! 3PTR by PAGE,KAYLEE	07:24	5-7	V 2	
ASSIST by WESEMANN,KINDRED	07:24			
	07:09			MISSED 3PTR by RAY,CHANIA
	07:09			REBOUND (OFF) by MONTGOMERY,LANAY
	06:56			MISSED JUMPER by PARDEE,KATRINA
REBOUND (DEF) by MIDDLEBROOK,KARYLA	06:56			
MISSED LAYUP by LEWIS,BREANNA	06:35			
	06:35			BLOCK by MONTGOMERY,LANAY
	06:34			REBOUND (DEF) by MONTGOMERY,LANAY
	06:29			MISSED 3PTR by PARDEE,KATRINA
REBOUND (DEF) by MARTIN,SHAELYN	06:29			
TURNOVER by WESEMANN,KINDRED	06:00			
SUB IN: GOTH,KAYLA	05:59			
SUB OUT: MIDDLEBROOK,KARYLA	05:59			
	05:59			SUB IN: BREWER,ALEXIS
	05:59			SUB OUT: PARDEE,KATRINA
FOUL by LEWIS,BREANNA	05:46			
	05:46	6-7	V 1	GOOD! FT by RAY,CHANIA
	05:45	8-7	H 1	GOOD! LAYUP by RAY,CHANIA [PNT]
GOOD! LAYUP by LEWIS,BREANNA [PNT]	05:31	8-9	V 1	
ASSIST by MARTIN,SHAELYN	05:31			
	05:31			FOUL by MARTIN,TYNICE
GOOD! FT by LEWIS,BREANNA	05:31	8-10	V 2	
SUB IN: WILLOCK,ETERNATI	05:31			
SUB OUT: PAGE,KAYLEE	05:31			
	05:14			TURNOVER by BREWER,ALEXIS
STEAL by LEWIS,BREANNA	05:12			
TURNOVER by WILLOCK,ETERNATI	04:54			
	04:55			TIMEOUT MEDIA
	04:41			MISSED 3PTR by MARTIN,TYNICE
	04:41			REBOUND (OFF) by MULDROW,TEANA
	04:36	10-10	T	GOOD! LAYUP by MULDROW,TEANA [PNT]
TURNOVER by MARTIN,SHAELYN	04:26			
SUB IN: PAGE,LANIE	04:26			
SUB OUT: MARTIN,SHAELYN	04:26			
	04:13			MISSED 3PTR by BREWER,ALEXIS

VISITORS: Kansas State	Time	Score	Margin	HOME: West Virginia
REBOUND (DEF) by WESEMANN,KINDRED	04:13			
MISSED JUMPER by WILLOCK,ETERNATI	03:56			
	03:56			REBOUND (DEF) by MONTGOMERY,LANAY
	03:48	13-10	H 3	GOOD! 3PTR by RAY,CHANIA
	03:48			ASSIST by BREWER,ALEXIS
MISSED JUMPER by WESEMANN,KINDRED	03:34			
	03:34			REBOUND (DEF) by MONTGOMERY,LANAY
	03:16	15-10	H 5	GOOD! LAYUP by MONTGOMERY,LANAY [PNT]
	03:16			ASSIST by RAY,CHANIA
TIMEOUT MEDIA	03:14			
SUB IN: MIDDLEBROOK,KARYLA	03:14			
SUB IN: WILLIAMS,PEYTON	03:14			
SUB OUT: WILLOCK,ETERNATI	03:14			
SUB OUT: WESEMANN,KINDRED	03:14			
MISSED 3PTR by PAGE,LANIE	03:02			
	03:02			REBOUND (DEF) by MONTGOMERY,LANAY
	02:52			MISSED 3PTR by MULDROW,TEANA
REBOUND (DEF) by GOTH,KAYLA	02:52			
GOOD! LAYUP by PAGE,LANIE [PNT]	02:40	15-12	H 3	
ASSIST by WILLIAMS,PEYTON	02:40			
	02:30			SUB IN: KING,KRISTINA
	02:30			SUB OUT: MONTGOMERY,LANAY
	02:29			TURNOVER by RAY,CHANIA
MISSED 3PTR by PAGE,LANIE	02:05			
	02:05			REBOUND (DEF) by TEAM
SUB IN: MARTIN,SHAELYN	02:01			
SUB OUT: GOTH,KAYLA	02:01			
	01:43	18-12	H 6	GOOD! 3PTR by BREWER,ALEXIS
	01:43			ASSIST by RAY,CHANIA
MISSED 3PTR by MARTIN,SHAELYN	01:28			
	01:28			REBOUND (DEF) by MARTIN,TYNICE
	01:21			MISSED 3PTR by BREWER,ALEXIS
REBOUND (DEF) by WILLIAMS,PEYTON	01:21			
TURNOVER by MIDDLEBROOK,KARYLA	01:06			
	01:05			STEAL by BREWER,ALEXIS
	01:01	20-12	H 8	GOOD! LAYUP by RAY,CHANIA [FB/PNT]
	01:01			ASSIST by BREWER,ALEXIS
SUB IN: WESEMANN,KINDRED	00:43			
SUB IN: PAGE,KAYLEE	00:43			
SUB IN: SHEBLE,JESSICA	00:43			
SUB OUT: MIDDLEBROOK,KARYLA	00:43			
SUB OUT: LEWIS,BREANNA	00:43			
SUB OUT: PAGE,LANIE	00:43			
	00:43			SUB IN: MONTGOMERY,LANAY
	00:43			SUB IN: PARDEE,KATRINA
	00:43			SUB OUT: MULDROW,TEANA
	00:43			SUB OUT: RAY,CHANIA
TURNOVER by PAGE,LANIE	00:41			
	00:29	23-12	H 11	GOOD! 3PTR by PARDEE,KATRINA
	00:29			ASSIST by BREWER,ALEXIS
MISSED 3PTR by WESEMANN,KINDRED	00:03			
	00:03			REBOUND (DEF) by KING,KRISTINA

Kansas State 12, West Virginia 23

	In	Off	2nd	Fast	
<b>Period 1-only</b>	<b>Paint</b>	<b>T/O</b>	<b>Chance</b>	<b>Break</b>	<b>Bench</b>
<b>Start</b>	<b>In</b>	<b>Off</b>	<b>2nd</b>	<b>Fast</b>	<b>2</b>
K-State	8	4	0	0	2
<b>Paint</b>	<b>T/O</b>	<b>Chance</b>	<b>Break</b>	<b>Bench</b>	
WVU	8	10	2	2	3

Score tied - 0 times  
Lead changed - 4 times

**Kansas State vs West Virginia**  
**2/15/2017; 7:00 p.m. at WVU Coliseum, Morgantown, W.Va.**  
**Period 2 Play-By-Play**

VISITORS: Kansas State	Time	Score	Margin	HOME: West Virginia
SUB IN: WILLIAMS,PEYTON	10:00			
SUB IN: SHEBLE,JESSICA	10:00			
SUB OUT: MIDDLEBROOK,KARYLA	10:00			
SUB OUT: LEWIS,BREANNA	10:00			
	10:00			SUB IN: BREWER,ALEXIS
	10:00			SUB IN: KING,KRISTINA
	10:00			SUB OUT: MULDROW,TEANA
	10:00			SUB OUT: RAY,CHANIA
	09:48	25-12	H 13	GOOD! LAYUP by MONTGOMERY,LANAY [PNT]
	09:48			ASSIST by KING,KRISTINA
TURNOVER by WESEMANN,KINDRED	09:35			
	09:23	28-12	H 16	GOOD! 3PTR by PARDEE,KATRINA
	09:23			ASSIST by BREWER,ALEXIS
MISSED 3PTR by WESEMANN,KINDRED	09:04			
	09:04			REBOUND (DEF) by KING,KRISTINA
	08:46			MISSED 3PTR by PARDEE,KATRINA
	08:46			REBOUND (OFF) by KING,KRISTINA
	08:38			MISSED LAYUP by MONTGOMERY,LANAY
BLOCK by MARTIN,SHAELYN	08:38			
	08:36			REBOUND (OFF) by BREWER,ALEXIS
FOUL by WESEMANN,KINDRED	08:26			
	08:26	30-12	H 18	GOOD! JUMPER by MULDROW,TEANA [PNT]
	08:26			ASSIST by RAY,CHANIA
SUB IN: LEWIS,BREANNA	08:26			
SUB OUT: SHEBLE,JESSICA	08:26			
	08:26			SUB IN: RAY,CHANIA
	08:26			SUB IN: MULDROW,TEANA
	08:26			SUB OUT: MARTIN,TYNICE
	08:26			SUB OUT: KING,KRISTINA
	08:07			FOUL by BREWER,ALEXIS
SUB IN: WILLOCK,ETERNATI	08:07			
SUB OUT: WILLIAMS,PEYTON	08:07			
GOOD! JUMPER by WILLOCK,ETERNATI	07:58	30-14	H 16	
ASSIST by PAGE,KAYLEE	07:58			
	07:40			MISSED LAYUP by PARDEE,KATRINA
	07:40			REBOUND (OFF) by TEAM
FOUL by WESEMANN,KINDRED	07:39			
	07:37			MISSED 3PTR by RAY,CHANIA
	07:37			REBOUND (OFF) by MONTGOMERY,LANAY
	07:30			MISSED 3PTR by RAY,CHANIA
	07:30			REBOUND (OFF) by MONTGOMERY,LANAY
	07:11	33-14	H 19	GOOD! 3PTR by PARDEE,KATRINA
	07:11			ASSIST by RAY,CHANIA
TURNOVER by WILLOCK,ETERNATI	06:43			
	06:42			STEAL by PARDEE,KATRINA
	06:28			MISSED 3PTR by PARDEE,KATRINA
REBOUND (DEF) by LEWIS,BREANNA	06:28			
GOOD! JUMPER by WESEMANN,KINDRED	06:14	33-16	H 17	
	05:39			TURNOVER by TEAM
	05:39			SUB IN: KING,KRISTINA
	05:39			SUB IN: MARTIN,TYNICE
	05:39			SUB OUT: BREWER,ALEXIS
	05:39			SUB OUT: MONTGOMERY,LANAY

VISITORS: Kansas State	Time	Score	Margin	HOME: West Virginia
TURNOVER by WESEMANN,KINDRED	05:25			
	05:24			STEAL by MULDRROW,TEANA
	05:20	35-16	H 19	GOOD! LAYUP by PARDEE,KATRINA [FB/PNT]
	05:20			ASSIST by RAY,CHANIA
MISSED JUMPER by WESEMANN,KINDRED	05:04			
REBOUND (OFF) by WESEMANN,KINDRED	05:04			
	05:00			FOUL by MULDRROW,TEANA
TIMEOUT MEDIA	05:00			
SUB IN: MIDDLEBROOK,KARYLA	05:00			
SUB OUT: WESEMANN,KINDRED	05:00			
GOOD! LAYUP by WILLOCK,ETERNATI [PNT]	04:56	35-18	H 17	
ASSIST by MARTIN,SHAELYN	04:56			
	04:56			FOUL by MARTIN,TYNICE
GOOD! FT by WILLOCK,ETERNATI	04:56	35-19	H 16	
	04:40			TURNOVER by KING,KRISTINA
	04:40			SUB IN: BREWER,ALEXIS
	04:40			SUB OUT: MARTIN,TYNICE
GOOD! JUMPER by WILLOCK,ETERNATI	04:24	35-21	H 14	
ASSIST by MARTIN,SHAELYN	04:24			
	03:56			MISSED JUMPER by BREWER,ALEXIS
BLOCK by LEWIS,BREANNA	03:56			
	03:56			REBOUND (OFF) by TEAM
	03:55			SUB IN: MONTGOMERY,LANAY
	03:55			SUB OUT: KING,KRISTINA
FOUL by PAGE,KAYLEE	03:54			
	03:50			TURNOVER by MONTGOMERY,LANAY
MISSED 3PTR by PAGE,KAYLEE	03:41			
REBOUND (OFF) by LEWIS,BREANNA	03:41			
GOOD! JUMPER by LEWIS,BREANNA [PNT]	03:34	35-23	H 12	
	03:21			TURNOVER by MULDRROW,TEANA
	03:21			TIMEOUT 30SEC
TURNOVER by WILLOCK,ETERNATI	03:12			
FOUL by WILLOCK,ETERNATI	03:12			
	02:54			TURNOVER by RAY,CHANIA
STEAL by PAGE,KAYLEE	02:53			
MISSED LAYUP by WILLOCK,ETERNATI	02:46			
	02:46			REBOUND (DEF) by MONTGOMERY,LANAY
	02:20			MISSED JUMPER by PARDEE,KATRINA
	02:20			REBOUND (OFF) by MONTGOMERY,LANAY
	02:18	38-23	H 15	GOOD! 3PTR by RAY,CHANIA
	02:18			ASSIST by MONTGOMERY,LANAY
FOUL by MIDDLEBROOK,KARYLA	02:18			
	02:18	39-23	H 16	GOOD! FT by RAY,CHANIA
GOOD! JUMPER by WILLOCK,ETERNATI	01:52	39-25	H 14	
ASSIST by MARTIN,SHAELYN	01:52			
SUB IN: PAGE,LANIE	01:31			
SUB IN: WILLIAMS,PEYTON	01:31			
SUB OUT: WILLOCK,ETERNATI	01:31			
SUB OUT: MARTIN,SHAELYN	01:31			
	01:19			MISSED JUMPER by PARDEE,KATRINA
REBOUND (DEF) by PAGE,LANIE	01:19			
SUB IN: WESEMANN,KINDRED	01:00			
SUB OUT: MIDDLEBROOK,KARYLA	01:00			
TURNOVER by PAGE,LANIE	00:54			
	00:53			STEAL by PARDEE,KATRINA
	00:28			TURNOVER by MONTGOMERY,LANAY
MISSED 3PTR by WESEMANN,KINDRED	00:03			
	00:03			REBOUND (DEF) by TEAM



Kansas State 25, West Virginia 39

<b>Period 2-only</b>	<b>In Paint</b>	<b>Off T/O</b>	<b>2nd Chance</b>	<b>Fast Break</b>	<b>Bench</b>	
K-STATE	4	4	5	0	9	Score tied - 0 times
WVU	6	5	9	2	0	Lead changed - 0 times

**Official Basketball Box Score -- Game Totals -- Second Half Statistics**  
**Kansas State vs West Virginia**  
**2/15/2017 7:00 p.m. at WVU Coliseum, Morgantown, W.Va.**

**Kansas State 34 • 18-9/8-6**

##	Player	S	Total			Rebounds			PF	TP	A	TO	Blk	Stl	Min
			FG-FGA	3PT	FG-FGA	FT-FTA	Off Reb	Def Reb							
01	PAGE,KAYLEE	f	2-4	2-3	1-2	0	0	0	0	7	1	1	0	0	13
21	MIDDLEBROOK,KARYLA	g	1-1	1-1	0-0	1	0	1	2	3	1	1	0	0	6
22	LEWIS,BREANNA	c	2-5	0-0	0-0	3	2	5	3	4	0	0	2	0	15
24	WESEMANN,KINDRED	g	4-10	3-6	1-3	1	2	3	0	12	3	2	0	2	18
50	MARTIN,SHAELYN	g	1-5	1-3	0-2	1	3	4	2	3	3	1	0	2	18
00	SHEBLE,JESSICA		0-0	0-0	0-0	0	0	0	0	0	0	0	0	0	0
03	PAGE,LANIE		0-0	0-0	0-0	0	0	0	1	0	0	0	0	1	2
10	GOTH,KAYLA		2-4	0-1	0-0	0	0	0	1	4	0	1	0	4	12
11	WILLIAMS,PEYTON		0-0	0-0	1-2	0	0	0	0	1	0	0	1	0	5
12	THOMSON,KELLY		0-0	0-0	0-0	0	0	0	1	0	0	0	0	0	
13	WILLOCK,ETERNATI		0-3	0-0	0-0	2	0	2	0	0	0	1	0	1	11
TEAM						1	3	4	0		0				
Totals			12-32	7-14	3-9	9	10	19	10	34	8	7	3	10	100
FG %	3rd Qtr	4-15	26.7%	4th Qtr	8-17	47.1%	Half:	12-32	37.5%						
3FG %	3rd Qtr	1-4	25.0%	4th Qtr	6-10	60.0%	Half:	7-14	12.5%						
FT %	3rd Qtr	2-5	40.0%	4th Qtr	1-4	25.0%	Half:	3-9	33.3%						

**West Virginia 27 • 18-8/6-8**

##	Player	S	Total			Rebounds			PF	TP	A	TO	Blk	Stl	Min
			FG-FGA	3PT	FG-FGA	FT-FTA	Off Reb	Def Reb							
05	MARTIN,TYNICE	g	2-5	0-1	0-0	0	2	2	0	4	0	2	0	3	20
11	MULDROW,TEANA	f	1-5	0-1	4-6	0	5	5	2	6	2	4	0	0	20
12	RAY,CHANIA	g	0-1	0-0	2-2	1	1	2	1	2	3	2	0	0	19
15	MONTGOMERY,LANAY	c	3-4	0-0	0-0	2	0	2	4	6	0	0	0	1	7
22	PARDEE,KATRINA	g	0-2	0-0	0-0	0	0	0	0	0	1	1	0	1	8
02	BREWER,ALEXIS		1-2	1-2	0-0	0	1	1	0	3	1	1	0	0	13
13	KING,KRISTINA		3-3	0-0	0-0	0	0	0	0	6	0	1	1	0	8
20	RHODES,DESIREE		0-1	0-0	0-0	0	1	1	1	0	0	0	1	0	5
TEAM						2	3	5	0		0				
Totals			10-23	1-4	6-8	5	13	18	8	27	7	11	2	5	100
FG %	3rd Qtr	4-13	30.8%	4th Qtr	6-10	60.0%	Half:	10-23	43.5%						
3FG %	3rd Qtr	0-2	00.0%	4th Qtr	1-2	50.0%	Half:	1-4	38.9%						
FT %	3rd Qtr	0-0	0%	4th Qtr	6-8	75.0%	Half:	6-8	75.0%						

Officials: Bob Trammell, Felicia Grinter, Amy Bonner  
 Technical Fouls: Kansas State- None. West Virginia- None.

Score by periods	1st	2nd	3rd	4th	Total
Kansas State	12	13	11	23	59
West Virginia	23	16	8	19	66

Points	In Paint	Off T/O	2nd Chance	Fast Break	Bench
K-STATE	10	5	7	6	5
WVU	14	4	4	2	9

Last FG - K-STATE 4th-00:14, WVU 4th-01:42.  
 K-STATE led for 0:00. WVU led for 20:00. Game was tied for 0:00.

Score tied - 0 times  
 Lead changed - 0 times

**Kansas State vs West Virginia**  
**2/15/2017; 7:00 p.m. at WVU Coliseum, Morgantown, W.Va.**  
**Period 3 Play-By-Play**

VISITORS: Kansas State	Time	Score	Margin	HOME: West Virginia
	09:40			MISSED 3PTR by MARTIN,TYNICE
REBOUND (DEF) by TEAM	09:40			
TURNOVER by PAGE,KAYLEE	09:18			
	09:17			STEAL by MONTGOMERY,LANAY
	09:11			TURNOVER by MULDROW,TEANA
TURNOVER by MIDDLEBROOK,KARYLA	09:02			
	09:01			STEAL by PARDEE,KATRINA
	08:41	41-25	H 16	GOOD! LAYUP by MONTGOMERY,LANAY [PNT]
	08:41			ASSIST by MULDROW,TEANA
	08:19			FOUL by MULDROW,TEANA
	08:14			FOUL by MONTGOMERY,LANAY
GOOD! 3PTR by PAGE,KAYLEE	08:07	41-28	H 13	
ASSIST by MARTIN,SHAELYN	08:07			
	07:38			MISSED JUMPER by MARTIN,TYNICE
REBOUND (DEF) by MARTIN,SHAELYN	07:38			
GOOD! LAYUP by LEWIS,BREANNA [PNT]	07:15	41-30	H 11	
ASSIST by MARTIN,SHAELYN	07:15			
	06:48			MISSED LAYUP by PARDEE,KATRINA
	06:48			REBOUND (OFF) by MONTGOMERY,LANAY
	06:43	43-30	H 13	GOOD! LAYUP by MONTGOMERY,LANAY [PNT]
	06:28			FOUL by MONTGOMERY,LANAY
GOOD! FT by WESEMANN,KINDRED	06:28	43-31	H 12	
SUB IN: WILLOCK,ETERNATI	06:28			
SUB OUT: MIDDLEBROOK,KARYLA	06:28			
GOOD! LAYUP by WESEMANN,KINDRED [PNT]	06:27	43-33	H 10	
	06:09			MISSED LAYUP by MARTIN,TYNICE
	06:09			REBOUND (OFF) by TEAM
	06:04			TURNOVER by PARDEE,KATRINA
STEAL by MARTIN,SHAELYN	06:03			
MISSED LAYUP by WESEMANN,KINDRED	05:55			
REBOUND (OFF) by LEWIS,BREANNA	05:55			
	05:53			FOUL by MONTGOMERY,LANAY
	05:53			SUB IN: BREWER,ALEXIS
	05:53			SUB OUT: PARDEE,KATRINA
MISSED 3PTR by WESEMANN,KINDRED	05:48			
	05:48			REBOUND (DEF) by MULDROW,TEANA
	05:33			MISSED 3PTR by BREWER,ALEXIS
	05:33			REBOUND (OFF) by TEAM
	05:23			MISSED JUMPER by MULDROW,TEANA
	05:23			REBOUND (OFF) by MONTGOMERY,LANAY
	05:20			MISSED LAYUP by MONTGOMERY,LANAY
REBOUND (DEF) by MARTIN,SHAELYN	05:20			
	05:07			FOUL by RAY,CHANIA
MISSED FT by WESEMANN,KINDRED	05:07			
REBOUND (DEADB) by TEAM	05:07			
MISSED FT by WESEMANN,KINDRED	05:07			
	05:07			REBOUND (DEF) by MULDROW,TEANA
SUB IN: GOTH,KAYLA	05:07			
SUB OUT: PAGE,KAYLEE	05:07			
	05:07			SUB IN: KING,KRISTINA
	05:07			SUB OUT: MONTGOMERY,LANAY
	04:56	45-33	H 12	GOOD! JUMPER by MARTIN,TYNICE [PNT]
	04:56			ASSIST by BREWER,ALEXIS

VISITORS: Kansas State	Time	Score	Margin	HOME: West Virginia
TIMEOUT MEDIA	04:50			
MISSED JUMPER by LEWIS,BREANNA	04:19			
REBOUND (OFF) by WILLOCK,ETERNATI	04:19			
MISSED JUMPER by WILLOCK,ETERNATI	04:17			
REBOUND (OFF) by WESEMANN,KINDRED	04:17			
TURNOVER by WESEMANN,KINDRED	04:12			
	04:11			STEAL by MARTIN,TYNICE
	04:07			MISSED LAYUP by MULDROW,TEANA
REBOUND (DEF) by WESEMANN,KINDRED	04:07			
GOOD! LAYUP by LEWIS,BREANNA [FB/PNT]	04:00	45-35	H 10	
ASSIST by WESEMANN,KINDRED	04:00			
	03:34			TURNOVER by KING,KRISTINA
STEAL by MARTIN,SHAELYN	03:33			
MISSED 3PTR by GOTH,KAYLA	03:25			
REBOUND (OFF) by LEWIS,BREANNA	03:25			
MISSED LAYUP by LEWIS,BREANNA	03:20			
	03:20			REBOUND (DEF) by MULDROW,TEANA
FOUL by LEWIS,BREANNA	03:04			
	03:04			TURNOVER by RAY,CHANIA
SUB IN: WILLIAMS,PEYTON	03:04			
SUB OUT: LEWIS,BREANNA	03:04			
	03:04			SUB IN: RHODES,DESIREE
	03:04			SUB OUT: KING,KRISTINA
STEAL by GOTH,KAYLA	03:02			
TURNOVER by GOTH,KAYLA	03:02			
	03:01			SUB IN: PARDEE,KATRINA
	03:01			SUB OUT: RAY,CHANIA
	02:49			TURNOVER by MARTIN,TYNICE
STEAL by GOTH,KAYLA	02:48			
MISSED JUMPER by WESEMANN,KINDRED	02:29			
	02:29			REBOUND (DEF) by MARTIN,TYNICE
	02:07			TURNOVER by BREWER,ALEXIS
STEAL by WESEMANN,KINDRED	02:06			
TURNOVER by MARTIN,SHAELYN	01:44			
SUB IN: PAGE,LANIE	01:43			
SUB OUT: MARTIN,SHAELYN	01:43			
	01:43			SUB IN: RAY,CHANIA
	01:43			SUB OUT: BREWER,ALEXIS
	01:34			MISSED JUMPER by RHODES,DESIREE
BLOCK by WILLIAMS,PEYTON	01:34			
REBOUND (DEF) by TEAM	01:32			
TIMEOUT 30SEC	01:10			
MISSED 3PTR by WESEMANN,KINDRED	01:08			
REBOUND (OFF) by WILLOCK,ETERNATI	01:08			
MISSED JUMPER by WILLOCK,ETERNATI	01:05			
	01:05			REBOUND (DEF) by RHODES,DESIREE
	00:53	47-35	H 12	GOOD! JUMPER by MARTIN,TYNICE
	00:53			ASSIST by PARDEE,KATRINA
MISSED JUMPER by GOTH,KAYLA	00:35			
	00:35			REBOUND (DEF) by TEAM
FOUL by PAGE,LANIE	00:12			
SUB IN: THOMSON,KELLY	00:12			
SUB OUT: WESEMANN,KINDRED	00:12			
FOUL by GOTH,KAYLA	00:11			
FOUL by THOMSON,KELLY	00:07			
	00:07			TURNOVER by MULDROW,TEANA
STEAL by PAGE,LANIE	00:07			
SUB IN: WESEMANN,KINDRED	00:07			

VISITORS: Kansas State	Time	Score	Margin	HOME: West Virginia
SUB OUT: THOMSON,KELLY	00:07			
	00:02			BLOCK by RHODES,DESIREE
MISSED LAYUP by WESEMANN,KINDRED	00:02			
MISSED FT by WILLIAMS,PEYTON	00:01			
REBOUND (DEADB) by TEAM	00:01			
	00:01			FOUL by RHODES,DESIREE
REBOUND (OFF) by TEAM	00:01			
GOOD! FT by WILLIAMS,PEYTON	00:01	47-36	H 11	

Kansas State 59, West Virginia 66

Period 3-only	In Paint	Off T/O	2nd Chance	Fast Break	Bench	
K-STATE	6	1	1	2	1	Score tied - 0 times
WVU	6	2	2	0	0	Lead changed - 0 times

**Kansas State vs West Virginia**  
**2/15/2017; 7:00 p.m. at WVU Coliseum, Morgantown, W.Va.**  
**Period 4 Play-By-Play**

VISITORS: Kansas State	Time	Score	Margin	HOME: West Virginia
SUB IN: WILLOCK,ETERNATI	10:00			
SUB IN: WILLIAMS,PEYTON	10:00			
SUB IN: GOTH,KAYLA	10:00			
SUB IN: PAGE,LANIE	10:00			
SUB OUT: PAGE,KAYLEE	10:00			
SUB OUT: MIDDLEBROOK,KARYLA	10:00			
	10:00			SUB IN: RHODES,DESIREE
	10:00			SUB IN: KING,KRISTINA
	10:00			SUB OUT: MONTGOMERY,LANAY
GOOD! 3PTR by WESEMANN,KINDRED	09:58	47-39	H 8	
	09:22			TURNOVER by MARTIN,TYNICE
STEAL by GOTH,KAYLA	09:20			
GOOD! LAYUP by GOTH,KAYLA [FB/PNT]	09:18	47-41	H 6	
	08:59			MISSED JUMPER by PARDEE,KATRINA
BLOCK by LEWIS,BREANNA	08:59			
REBOUND (DEF) by TEAM	08:58			
	08:57			SUB IN: MONTGOMERY,LANAY
	08:57			SUB IN: BREWER,ALEXIS
	08:57			SUB OUT: PARDEE,KATRINA
	08:57			SUB OUT: KING,KRISTINA
GOOD! 3PTR by WESEMANN,KINDRED	08:40	47-44	H 3	
ASSIST by MARTIN,SHAELYN	08:40			
	08:35			TIMEOUT 30SEC
	08:12			MISSED JUMPER by MULDROW,TEANA
BLOCK by LEWIS,BREANNA	08:12			
	08:11			REBOUND (OFF) by RAY,CHANIA
	08:07	49-44	H 5	GOOD! LAYUP by MONTGOMERY,LANAY [PNT]
	08:07			ASSIST by RAY,CHANIA
TURNOVER by WILLOCK,ETERNATI	07:53			
	07:51			STEAL by MARTIN,TYNICE
	07:47			MISSED 3PTR by MULDROW,TEANA
REBOUND (DEF) by WESEMANN,KINDRED	07:47			
SUB IN: PAGE,KAYLEE	07:22			
SUB OUT: WILLOCK,ETERNATI	07:22			
	07:15			FOUL by MONTGOMERY,LANAY
MISSED FT by PAGE,KAYLEE	07:15			
REBOUND (DEADB) by TEAM	07:15			
GOOD! FT by PAGE,KAYLEE	07:15	49-45	H 4	
	07:15			SUB OUT: MONTGOMERY,LANAY
	06:49			MISSED JUMPER by RAY,CHANIA
REBOUND (DEF) by LEWIS,BREANNA	06:49			
	06:39			FOUL by MULDROW,TEANA
MISSED FT by MARTIN,SHAELYN	06:39			
REBOUND (DEADB) by TEAM	06:39			
MISSED FT by MARTIN,SHAELYN	06:39			
	06:39			REBOUND (DEF) by RAY,CHANIA
FOUL by LEWIS,BREANNA	06:24			
	06:24			TURNOVER by RAY,CHANIA
STEAL by WESEMANN,KINDRED	06:24			
GOOD! LAYUP by GOTH,KAYLA [FB/PNT]	06:24	49-47	H 2	
ASSIST by WESEMANN,KINDRED	06:24			
	06:05			TURNOVER by MULDROW,TEANA
STEAL by GOTH,KAYLA	06:03			

VISITORS: Kansas State	Time	Score	Margin	HOME: West Virginia
TURNOVER by WESEMANN,KINDRED	05:55			
	05:53			STEAL by MARTIN,TYNICE
FOUL by MARTIN,SHAELYN	05:30			
	05:30	50-47	H 3	GOOD! FT by MULDROW,TEANA
	05:30	51-47	H 4	GOOD! FT by MULDROW,TEANA
MISSED 3PTR by WESEMANN,KINDRED	05:08			
	05:08			REBOUND (DEF) by TEAM
FOUL by LEWIS,BREANNA	04:47			
	04:47	52-47	H 5	GOOD! FT by MULDROW,TEANA
	04:47			MISSED FT by MULDROW,TEANA
REBOUND (DEF) by MARTIN,SHAELYN	04:47			
SUB OUT: LEWIS,BREANNA	04:47			
	04:47			SUB IN: KING,KRISTINA
	04:47			SUB OUT: RHODES,DESIREE
GOOD! 3PTR by PAGE,KAYLEE	04:34	52-50	H 2	
ASSIST by WESEMANN,KINDRED	04:34			
	04:19	54-50	H 4	GOOD! LAYUP by MULDROW,TEANA [PNT]
MISSED LAYUP by PAGE,KAYLEE	03:54			
	03:54			REBOUND (DEF) by MULDROW,TEANA
	03:48	56-50	H 6	GOOD! LAYUP by KING,KRISTINA [FB/PNT]
	03:48			ASSIST by RAY,CHANIA
TIMEOUT 30SEC	03:41			
MISSED JUMPER by MARTIN,SHAELYN	03:31			
	03:31			REBOUND (DEF) by BREWER,ALEXIS
	03:10	59-50	H 9	GOOD! 3PTR by BREWER,ALEXIS
	03:10			ASSIST by MULDROW,TEANA
MISSED 3PTR by MARTIN,SHAELYN	02:48			
	02:48			REBOUND (DEF) by TEAM
SUB IN: LEWIS,BREANNA	02:45			
SUB IN: WILLOCK,ETERNATI	02:45			
SUB OUT: WILLIAMS,PEYTON	02:45			
SUB OUT: GOTH,KAYLA	02:45			
	02:22	61-50	H 11	GOOD! LAYUP by KING,KRISTINA [PNT]
SUB IN: MIDDLEBROOK,KARYLA	02:14			
SUB OUT: WESEMANN,KINDRED	02:14			
MISSED JUMPER by WILLOCK,ETERNATI	02:09			
	02:09			BLOCK by KING,KRISTINA
REBOUND (OFF) by MIDDLEBROOK,KARYLA	02:07			
GOOD! 3PTR by MIDDLEBROOK,KARYLA	02:04	61-53	H 8	
	01:42	63-53	H 10	GOOD! JUMPER by KING,KRISTINA
	01:42			ASSIST by RAY,CHANIA
MISSED JUMPER by MARTIN,SHAELYN	01:24			
REBOUND (OFF) by LEWIS,BREANNA	01:24			
GOOD! 3PTR by MARTIN,SHAELYN	01:09	63-56	H 7	
ASSIST by MIDDLEBROOK,KARYLA	01:09			
TIMEOUT TEAM	01:04			
	01:04			SUB IN: MONTGOMERY,LANAY
	01:04			SUB OUT: KING,KRISTINA
	00:56			TURNOVER by MULDROW,TEANA
STEAL by WILLOCK,ETERNATI	00:52			
MISSED LAYUP by LEWIS,BREANNA	00:45			
	00:45			REBOUND (DEF) by MARTIN,TYNICE
FOUL by MARTIN,SHAELYN	00:44			
FOUL by MIDDLEBROOK,KARYLA	00:43			
	00:43	64-56	H 8	GOOD! FT by RAY,CHANIA
	00:43	65-56	H 9	GOOD! FT by RAY,CHANIA
SUB IN: WESEMANN,KINDRED	00:43			
SUB OUT: WILLOCK,ETERNATI	00:43			

VISITORS: Kansas State	Time	Score	Margin	HOME: West Virginia
MISSED 3PTR by PAGE,KAYLEE	00:36			
REBOUND (OFF) by MARTIN,SHAELYN	00:36			
MISSED 3PTR by MARTIN,SHAELYN	00:26			
	00:26			REBOUND (DEF) by MULDROW,TEANA
FOUL by MIDDLEBROOK,KARYLA	00:22			
	00:22	66-56	H 10	GOOD! FT by MULDROW,TEANA
	00:22			MISSED FT by MULDROW,TEANA
REBOUND (DEF) by LEWIS,BREANNA	00:22			
	00:22			SUB IN: KING,KRISTINA
	00:22			SUB OUT: MONTGOMERY,LANAY
GOOD! 3PTR by WESEMANN,KINDRED	00:14	66-59	H 7	
ASSIST by PAGE,KAYLEE	00:14			

Kansas State 59, West Virginia 66

Period 4-only	In Paint	Off T/O	2nd Chance	Fast Break	Bench	
K-STATE	4	4	6	4	4	Score tied - 0 times
WVU	8	2	2	2	9	Lead changed - 0 times



# Kansas State vs West Virginia

## 2/15/2017; 7:00 p.m. at WVU Coliseum, Morgantown, W.Va.

### Scoring/Runs Reference

#### Period 1

Kansas State	Score	Marg	West Virginia
09:06 - MIDDLEBROOK JUMPER [P]	2	2-0 -2	
		2-2 0 2	MONTGOMERY JUMPER - 08:56
		2-5 3 3	PARDEE 3PTR - 08:36
08:01 - PAGE LAYUP [P]	2	4-5 1	
07:24 - PAGE 3PTR	3	7-5 -2	
		7-6 -1 1	RAY FT - 05:46
		7-8 1 2	RAY LAYUP [P] - 05:45
05:31 - LEWIS LAYUP [P]	2	9-8 -1	
05:31 - LEWIS FT	1	10-8 -2	
		10-10 0 2	MULDROW LAYUP [P] - 04:36
		10-13 3 3	RAY 3PTR - 03:48
		10-15 5 2	MONTGOMERY LAYUP [P] - 03:16
02:40 - PAGE LAYUP [P]	2	12-15 3	
		12-18 6 3	BREWER 3PTR - 01:43
		12-20 8 2	RAY LAYUP [P] [F] - 01:01
		12-23 11 3	PARDEE 3PTR - 00:29

#### Period 3

Kansas State	Score	Marg	West Virginia
		25-41 16 2	MONTGOMERY LAYUP [P] - 08:41
08:07 - PAGE 3PTR	3	28-41 13	
07:15 - LEWIS LAYUP [P]	2	30-41 11	
		30-43 13 2	MONTGOMERY LAYUP [P] - 06:43
06:28 - WESEMANN FT	1	31-43 12	
06:27 - WESEMANN LAYUP [P] 2		33-43 10	
		33-45 12 2	MARTIN JUMPER [P] - 04:56
04:00 - LEWIS LAYUP [P] [F]	2	35-45 10	
		35-47 12 2	MARTIN JUMPER - 00:53
00:01 - WILLIAMS FT	1	36-47 11	

#### Period 2

Kansas State	Score	Marg	West Virginia
		12-25 13 2	MONTGOMERY LAYUP [P] - 09:48
		12-28 16 3	PARDEE 3PTR - 09:23
		12-30 18 2	MULDROW JUMPER [P] - 08:26
07:58 - WILLOCK JUMPER	2	14-30 16	
		14-33 19 3	PARDEE 3PTR - 07:11
06:14 - WESEMANN JUMPER	2	16-33 17	
		16-35 19 2	PARDEE LAYUP [P] [F] - 05:20
04:56 - WILLOCK LAYUP [P]	2	18-35 17	
04:56 - WILLOCK FT	1	19-35 16	
04:24 - WILLOCK JUMPER	2	21-35 14	
03:34 - LEWIS JUMPER [P]	2	23-35 12	
		23-38 15 3	RAY 3PTR - 02:18
		23-39 16 1	RAY FT - 02:18
01:52 - WILLOCK JUMPER	2	25-39 14	

#### Period 4

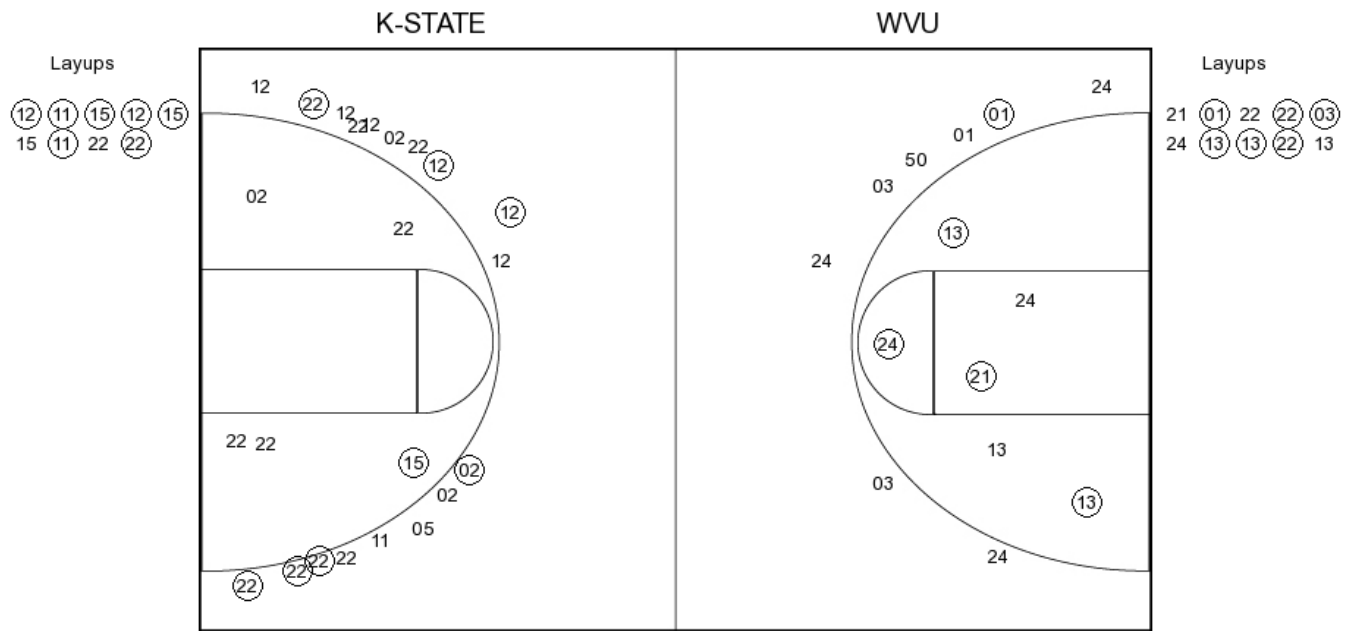
Kansas State	Score	Marg	West Virginia
09:58 - WESEMANN 3PTR	3	39-47 8	
09:18 - GOTH LAYUP [P] [F]	2	41-47 6	
08:40 - WESEMANN 3PTR	3	44-47 3	
		44-49 5 2	MONTGOMERY LAYUP [P] - 08:07
07:15 - PAGE FT	1	45-49 4	
06:24 - GOTH LAYUP [P] [F]	2	47-49 2	
		47-50 3 1	MULDROW FT - 05:30
		47-51 4 1	MULDROW FT - 05:30
		47-52 5 1	MULDROW FT - 04:47
04:34 - PAGE 3PTR	3	50-52 2	
		50-54 4 2	MULDROW LAYUP [P] - 04:19
		50-56 6 2	KING LAYUP [P] [F] - 03:48
		50-59 9 3	BREWER 3PTR - 03:10
		50-61 11 2	KING LAYUP [P] - 02:22
02:04 - MIDDLEBROOK 3PTR	3	53-61 8	
		53-63 10 2	KING JUMPER - 01:42
01:09 - MARTIN 3PTR	3	56-63 7	
		56-64 8 1	RAY FT - 00:43
		56-65 9 1	RAY FT - 00:43
		56-66 10 1	MULDROW FT - 00:22
00:14 - WESEMANN 3PTR	3	59-66 7	

**Kansas State vs West Virginia**

**OFFICIAL SHOT CHART**

2/15/2017 at WVU Coliseum, Morgantown, W.Va.

**PERIOD 1**



**K-STATE PERIOD 1**

FG Made	11
FG Attempted	24
3PFG Made	1
3PFG Attempted	8

**WVU PERIOD 1**

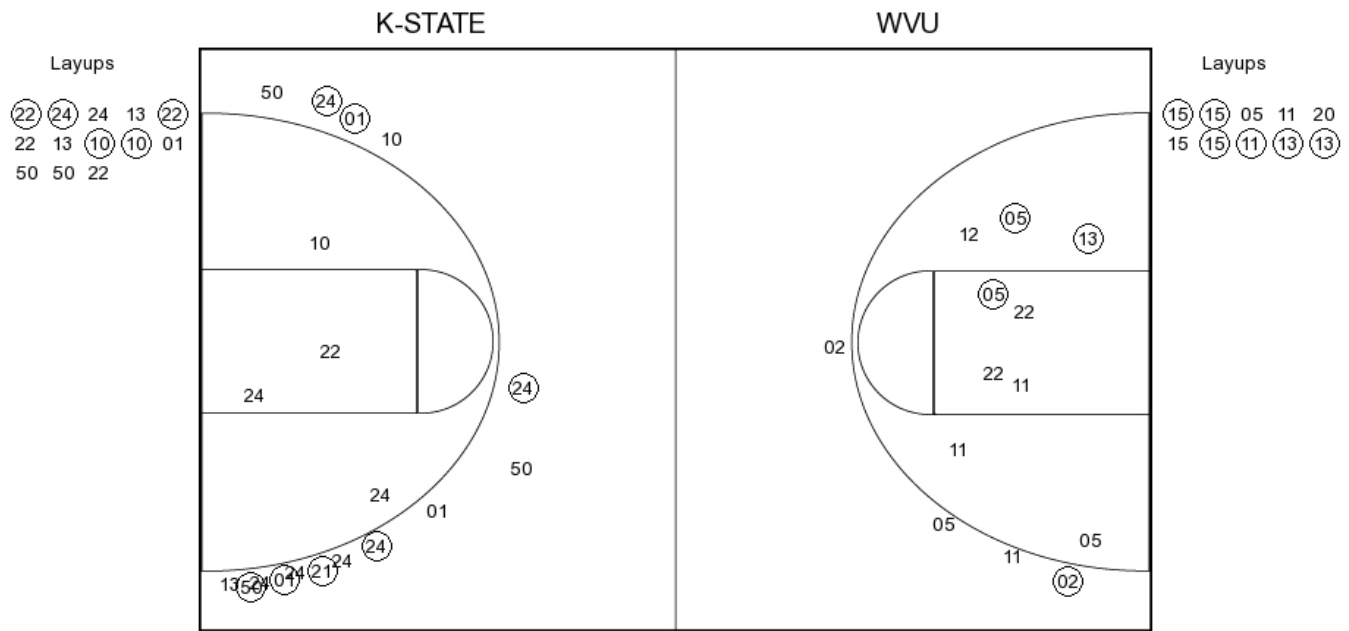
FG Made	15
FG Attempted	32
3PFG Made	7
3PFG Attempted	18

**Kansas State vs West Virginia**

**OFFICIAL SHOT CHART**

2/15/2017 at WVU Coliseum, Morgantown, W.Va.

**PERIOD 2**



**K-STATE PERIOD 2**

FG Made  
 FG Attempted  
 3PFG Made  
 3PFG Attempted

**WVU PERIOD 2**

FG Made  
 FG Attempted  
 3PFG Made  
 3PFG Attempted

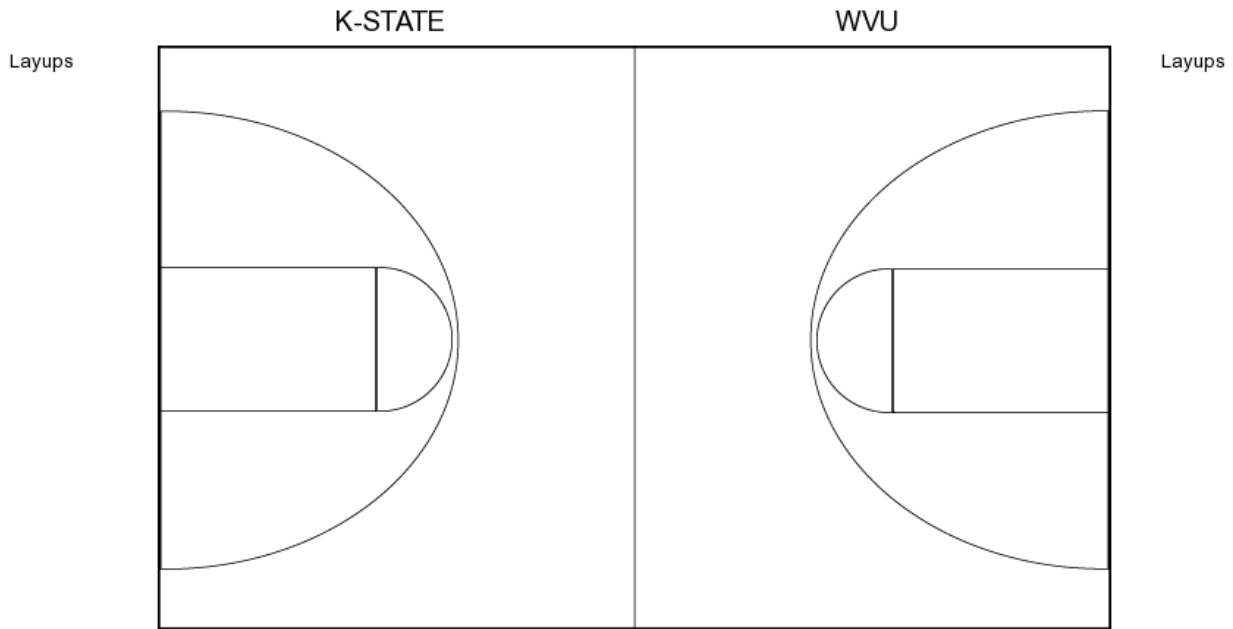
**Kansas State vs West Virginia**

**OFFICIAL SHOT CHART**

2/15/2017 at WVU Coliseum, Morgantown, W.Va.

---

**PERIOD 3**



**K-STATE PERIOD 3**

FG Made	12
FG Attempted	32
3PFG Made	7
3PFG Attempted	14

**WVU PERIOD 3**

FG Made	10
FG Attempted	23
3PFG Made	1
3PFG Attempted	4

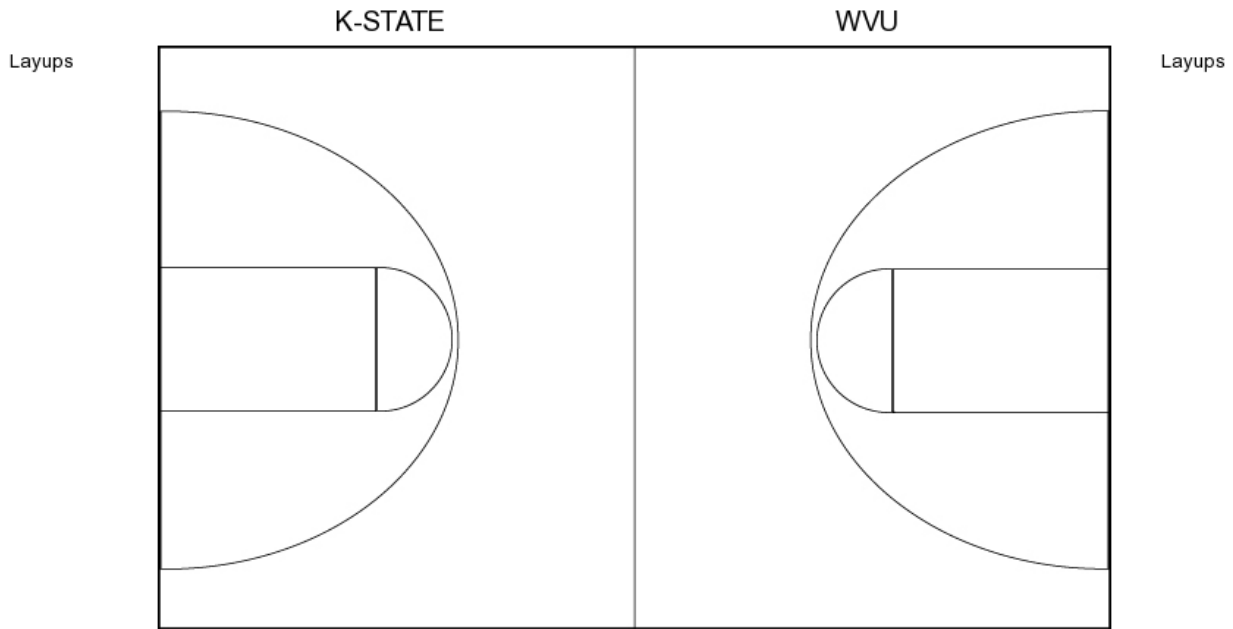
**Kansas State vs West Virginia**

**OFFICIAL SHOT CHART**

2/15/2017 at WVU Coliseum, Morgantown, W.Va.

---

**PERIOD 4**



**K-STATE PERIOD 4**

FG Made  
FG Attempted  
3PFG Made  
3PFG Attempted

**WVU PERIOD 4**

FG Made  
FG Attempted  
3PFG Made  
3PFG Attempted

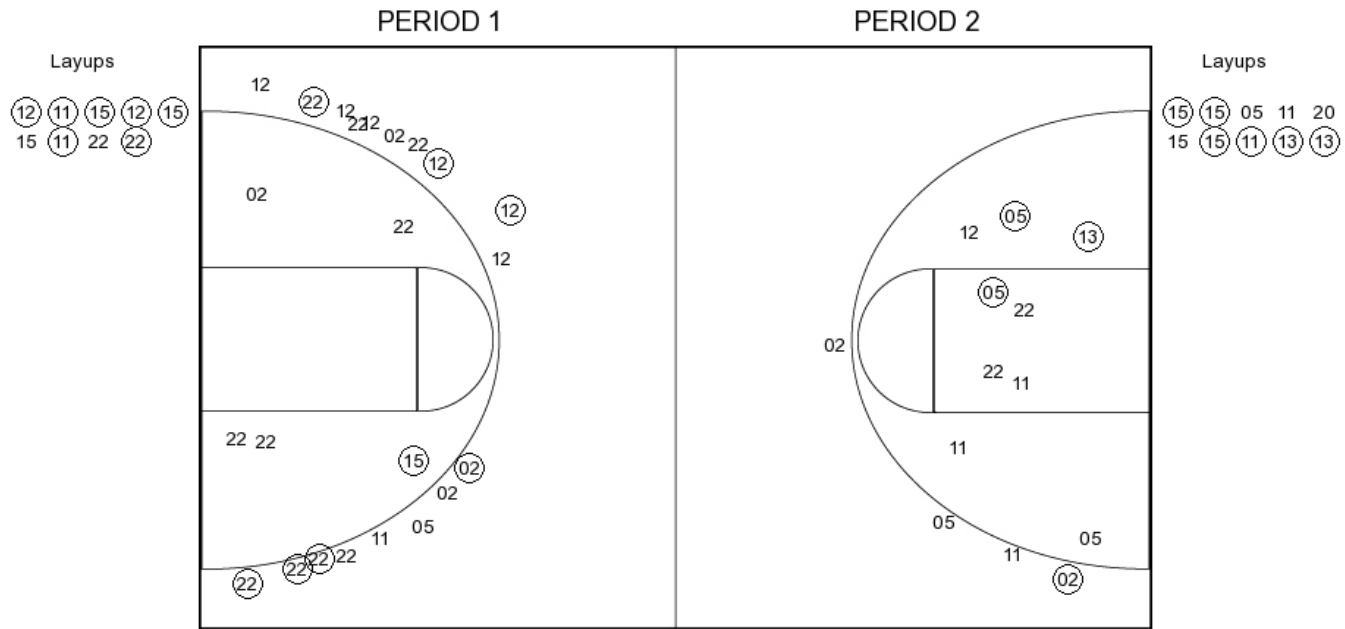


**Kansas State vs West Virginia**

**OFFICIAL SHOT CHART**

2/15/2017 at WVU Coliseum, Morgantown, W.Va.

**West Virginia**



**WVU PERIOD 1**

FG Made	15
FG Attempted	32
3PFG Made	7
3PFG Attempted	18

**WVU PERIOD 2**

FG Made	
FG Attempted	
3PFG Made	
3PFG Attempted	