



WEST VIRGINIA VS. OKLAHOMA STATE

2/11/2017

WVU Coliseum, Morgantown, W.Va.

FINAL STATS

West Virginia

(17-8/5-8)

79

Oklahoma State

(13-11/3-10)

53

Start Time: 6:30 p.m.

Officials: Lisa Mattingly, Laura Morris, Jesse Dickerson

Attendance: 4024

Official Basketball Box Score -- Game Totals -- Final Statistics
Oklahoma State vs West Virginia
2/11/2017 6:30 p.m. at WVU Coliseum, Morgantown, W.Va.

Oklahoma State 53 - 13-11/3-10

##	Player	S	Total			Rebounds			PF	TP	A	TO	Blk	Stl	Min
			FG-FGA	3PT	FG-FGA	FT-FTA	Off Reb	Def Reb							
03	COLEMAN,MANDY	f	8-12	1-1	0-4	0	2	2	0	17	0	4	0	1	30
11	COMBS,AREANNA	g	0-1	0-0	1-2	0	3	3	1	1	1	1	0	0	15
24	WHEELER,KARLI	g	2-13	0-7	4-4	0	1	1	1	8	4	1	0	0	33
45	LOECKER,KATELYN	f	0-2	0-1	2-2	2	2	4	2	2	3	2	1	0	31
54	JENSEN,KAYLEE	c	6-10	1-2	2-2	1	9	10	1	15	0	3	1	1	34
02	MERCADO,MADISON		0-0	0-0	0-0	0	1	1	2	0	0	0	0	1	5
05	OMOZEE,DIANA		2-8	0-0	2-2	2	2	4	3	6	2	1	0	1	29
13	HOLT,JENTRY		1-3	0-0	2-2	0	2	2	2	4	0	0	0	0	13
15	ECHOLS,RODREA		0-2	0-1	0-0	0	0	0	1	0	0	0	0	0	6
20	JONES,LATASHIA		0-0	0-0	0-0	0	0	0	0	0	0	0	0	0	2
22	BRYANT,ALEXES		0-0	0-0	0-0	0	0	0	0	0	0	0	0	0	2
TEAM						1	4	5	0		0				
TOTALS			19-51	2-12	13-18	6	26	32	13	53	10	12	2	4	200

Deadball Rebounds: 2,0

FG %	1st Half: 11-25	44.0%	2nd Half: 8-26	30.8%	Game: 19-51	37.3%	4th Qtr	4-15	26.7%
	1st Qtr 6-12	50.0%	2nd Qtr 5-13	38.5%	3rd Qtr 4-11	36.4%			
3FG %	1st Half: 0-3	00.0%	2nd Half: 2-9	22.2%	Game: 2-12	16.7%			
	1st Qtr 0-2	00.0%	2nd Qtr 0-1	00.0%	3rd Qtr 1-3	33.3%	4th Qtr	1-6	16.7%
FT %	1st Half: 2-4	50.0%	2nd Half: 11-14	78.6%	Game: 13-18	72.2%			
	1st Qtr 0-0	0%	2nd Qtr 2-4	50.0%	3rd Qtr 7-10	70.0%	4th Qtr	4-4	100.0%

West Virginia 79 - 17-8/5-8

##	Player	S	Total			Rebounds			PF	TP	A	TO	Blk	Stl	Min
			FG-FGA	3PT	FG-FGA	FT-FTA	Off Reb	Def Reb							
05	MARTIN,TYNICE	g	11-22	7-10	1-1	1	7	8	2	30	2	2	0	0	35
11	MULDROW,TEANA	f	5-11	3-4	1-2	4	9	13	3	14	2	6	2	1	34
12	RAY,CHANIA	g	2-8	1-6	0-0	0	4	4	1	5	7	2	0	0	36
15	MONTGOMERY,LANAY	c	1-4	0-0	0-0	1	5	6	2	2	1	1	1	1	29
22	PARDEE,KATRINA	g	4-7	4-5	0-0	0	0	0	1	12	1	0	0	1	24
02	BREWER,ALEXIS		4-8	2-4	2-2	0	1	1	3	12	2	0	0	0	21
13	KING,KRISTINA		2-3	0-0	0-0	1	0	1	2	4	1	0	0	1	16
14	THOMAS,BAILEY		0-0	0-0	0-0	0	0	0	0	0	0	0	0	0	1
20	RHODES,DESIREE		0-0	0-0	0-0	0	0	0	0	0	0	0	0	0	1
24	MARTIN,ANJA		0-0	0-0	0-0	0	0	0	0	0	0	0	0	0	2
45	SCHMIDT,MARLENA		0-0	0-0	0-0	0	0	0	1	0	0	0	0	0	1
TEAM						1	3	4	0		0				
TOTALS			29-63	17-29	4-5	8	29	37	15	79	16	11	3	4	200

Deadball Rebounds: 1,0

FG %	1st Half: 15-33	45.5%	2nd Half: 14-30	46.7%	Game: 29-63	46.0%	4th Qtr	7-14	50.0%
	1st Qtr 6-17	35.3%	2nd Qtr 9-16	56.3%	3rd Qtr 7-16	43.8%			
3FG %	1st Half: 9-18	50.0%	2nd Half: 8-11	72.7%	Game: 17-29	58.6%			
	1st Qtr 2-8	25.0%	2nd Qtr 7-10	70.0%	3rd Qtr 3-5	60.0%	4th Qtr	5-6	83.3%
FT %	1st Half: 0-0	0%	2nd Half: 4-5	80.0%	Game: 4-5	80.0%			
	1st Qtr 0-0	0%	2nd Qtr 0-0	0%	3rd Qtr 2-3	66.7%	4th Qtr	2-2	100.0%

Officials: Lisa Mattingly, Laura Morris, Jesse Dickerson
 Technical Fouls: Oklahoma State- None. West Virginia- None.
 Attendance: 4024

Score by periods	1st	2nd	3rd	4th	Total
Oklahoma State	12	12	16	13	53
West Virginia	14	25	19	21	79

Points	In Paint	Off T/O	2nd 2nd Chance	Fast Break	Bench
OSU	24	7	4	6	10
WVU	10	9	4	2	16

Last FG - OSU 4th-02:55, WVU 4th-01:22.
 Largest lead - Oklahoma State by ; West Virginia by 28 4th-00:43
 OSU led for 0:00. WVU led for 38:32. Game was tied for 1:28.

Score tied - 1 times
 Lead changed - 0 times

Official Basketball Box Score -- Game Totals -- First Half Statistics
Oklahoma State vs West Virginia
2/11/2017 6:30 p.m. at WVU Coliseum, Morgantown, W.Va.

Oklahoma State 24 • 13-11/3-10

##	Player	S	Total			Rebounds			PF	TP	A	TO	Blk	Stl	Min
			FG-FGA	3PT	FG-FGA	FT-FTA	Off Reb	Def Reb							
03	COLEMAN,MANDY	f	5-7	0-0	0-2	0	2	2	0	10	0	1	0	0	19
11	COMBS,AREANNA	g	0-1	0-0	0-0	0	2	2	1	0	1	1	0	0	8
24	WHEELER,KARLI	g	1-3	0-1	0-0	0	1	1	1	2	3	1	0	0	19
45	LOECKER,KATELYN	f	0-0	0-0	2-2	0	1	1	0	2	2	1	1	0	16
54	JENSEN,KAYLEE	c	3-7	0-1	0-0	0	6	6	1	6	0	1	1	1	19
02	MERCADO,MADISON		0-0	0-0	0-0	0	0	0	0	0	0	0	0	0	0
05	OMOZEE,DIANA		2-5	0-0	0-0	0	0	0	1	4	0	1	0	1	15
13	HOLT,JENTRY		0-0	0-0	0-0	0	1	1	0	0	0	0	0	0	1
15	ECHOLS,RODREA		0-2	0-1	0-0	0	0	0	0	0	0	0	0	0	1
20	JONES,LATASHIA		0-0	0-0	0-0	0	0	0	0	0	0	0	0	0	2
22	BRYANT,ALEXES		0-0	0-0	0-0	0	0	0	0	0	0	0	0	0	0
TEAM						1	0	1	0		0				
Totals			11-25	0-3	2-4	1	13	14	4	24	6	6	2	2	100
FG %	1st Qtr	6-12	50.0%	2nd Qtr	5-13	38.5%	Half:	11-25	44.0%						
3FG %	1st Qtr	0-2	00.0%	2nd Qtr	0-1	00.0%	Half:	0-3	00.0%						
FT %	1st Qtr	0-0	0%	2nd Qtr	2-4	50.0%	Half:	2-4	50.0%						

West Virginia 39 • 17-8/5-8

##	Player	S	Total			Rebounds			PF	TP	A	TO	Blk	Stl	Min
			FG-FGA	3PT	FG-FGA	FT-FTA	Off Reb	Def Reb							
05	MARTIN,TYNICE	g	5-11	2-5	0-0	1	3	4	0	12	2	1	0	0	17
11	MULDROW,TEANA	f	4-5	3-3	0-0	3	5	8	1	11	1	3	0	0	17
12	RAY,CHANIA	g	0-5	0-4	0-0	0	1	1	0	0	5	1	0	0	18
15	MONTGOMERY,LANAY	c	1-3	0-0	0-0	0	3	3	1	2	1	0	1	1	16
22	PARDEE,KATRINA	g	3-5	3-3	0-0	0	0	0	0	9	1	0	0	1	13
02	BREWER,ALEXIS		2-4	1-3	0-0	0	0	0	2	5	1	0	0	0	12
13	KING,KRISTINA		0-0	0-0	0-0	0	0	0	1	0	0	0	0	0	7
14	THOMAS,BAILEY		0-0	0-0	0-0	0	0	0	0	0	0	0	0	0	0
20	RHODES,DESIREE		0-0	0-0	0-0	0	0	0	0	0	0	0	0	0	0
24	MARTIN,ANJA		0-0	0-0	0-0	0	0	0	0	0	0	0	0	0	0
45	SCHMIDT,MARLENA		0-0	0-0	0-0	0	0	0	0	0	0	0	0	0	0
TEAM						1	2	3	0		0				
Totals			15-33	9-18	0-0	5	14	19	5	39	11	5	1	2	100
FG %	1st Qtr	6-17	35.3%	2nd Qtr	9-16	56.3%	Half:	15-33	45.5%						
3FG %	1st Qtr	2-8	25.0%	2nd Qtr	7-10	70.0%	Half:	9-18	50.0%						
FT %	1st Qtr	0-0	0%	2nd Qtr	0-0	0%	Half:	0-0	0%						

Officials: Lisa Mattingly, Laura Morris, Jesse Dickerson
 Technical Fouls: Oklahoma State- None. West Virginia- None.

Score by periods	1st	2nd	3rd	4th	Total
Oklahoma State	12	12	16	13	53
West Virginia	14	25	19	21	79

Points	In Paint	Off T/O	2nd 2nd Chance	Fast Fast Break	Bench
OSU	18	2	0	6	4
	4	7	4	2	5

Last FG - OSU 2nd-00:08, WVU 2nd-00:02.
 OSU led for 0:00. WVU led for 18:32. Game was tied for 1:28.

Score tied - 1 times
 Lead changed - 0 times

Oklahoma State vs West Virginia
2/11/2017; 6:30 p.m. at WVU Coliseum, Morgantown, W.Va.
Period 1 Play-By-Play

VISITORS: Oklahoma State	Time	Score	Margin	HOME: West Virginia
	09:55	2-0	H 2	GOOD! JUMPER by MARTIN, TYNICE
	09:55			ASSIST by RAY, CHANIA
MISSED JUMPER by JENSEN, KAYLEE	09:29			
	09:29			REBOUND (DEF) by MARTIN, TYNICE
	09:16			MISSED JUMPER by MARTIN, TYNICE
REBOUND (DEF) by JENSEN, KAYLEE	09:16			
TURNOVER by COMBS, AREANNA	08:50			
	08:49			STEAL by PARDEE, KATRINA
	08:35	4-0	H 4	GOOD! JUMPER by MARTIN, TYNICE
GOOD! LAYUP by COLEMAN, MANDY [PNT]	08:07	4-2	H 2	
ASSIST by COMBS, AREANNA	08:07			
FOUL by JENSEN, KAYLEE	07:57			
SUB IN: OMOZEE, DIANA	07:57			
SUB OUT: COMBS, AREANNA	07:57			
	07:51			MISSED 3PTR by MARTIN, TYNICE
REBOUND (DEF) by JENSEN, KAYLEE	07:51			
MISSED 3PTR by JENSEN, KAYLEE	07:36			
	07:36			REBOUND (DEF) by MARTIN, TYNICE
	07:15			TURNOVER by MULDROW, TEANA
TURNOVER by OMOZEE, DIANA	06:57			
FOUL by OMOZEE, DIANA	06:57			
	06:39	7-2	H 5	GOOD! 3PTR by MULDROW, TEANA
	06:39			ASSIST by PARDEE, KATRINA
GOOD! JUMPER by JENSEN, KAYLEE [PNT]	06:12	7-4	H 3	
ASSIST by LOECKER, KATELYN	06:12			
	05:54			MISSED 3PTR by RAY, CHANIA
REBOUND (DEF) by COLEMAN, MANDY	05:54			
GOOD! LAYUP by OMOZEE, DIANA [FB/PNT]	05:45	7-6	H 1	
	05:29			MISSED JUMPER by MARTIN, TYNICE
REBOUND (DEF) by LOECKER, KATELYN	05:29			
MISSED LAYUP by COLEMAN, MANDY	05:05			
	05:05			REBOUND (DEF) by MULDROW, TEANA
	05:00			TURNOVER by RAY, CHANIA
TIMEOUT MEDIA	04:59			
	04:59			SUB IN: BREWER, ALEXIS
	04:59			SUB OUT: PARDEE, KATRINA
TURNOVER by JENSEN, KAYLEE	04:31			
	04:10			MISSED 3PTR by MARTIN, TYNICE
	04:10			REBOUND (OFF) by MULDROW, TEANA
	03:53			MISSED JUMPER by RAY, CHANIA
	03:53			REBOUND (OFF) by MULDROW, TEANA
GOOD! JUMPER by COLEMAN, MANDY	03:49	9-6	H 3	GOOD! LAYUP by MULDROW, TEANA [PNT]
	03:36	9-8	H 1	
	03:28	12-8	H 4	GOOD! 3PTR by MARTIN, TYNICE
GOOD! JUMPER by WHEELER, KARLI	03:10	12-10	H 2	
	03:02			TURNOVER by MULDROW, TEANA
SUB IN: COMBS, AREANNA	02:58			
SUB OUT: LOECKER, KATELYN	02:58			
TURNOVER by COLEMAN, MANDY	02:38			
	02:20			TURNOVER by MULDROW, TEANA
STEAL by OMOZEE, DIANA	02:18			
GOOD! LAYUP by OMOZEE, DIANA [FB/PNT]	02:15	12-12	T	
	02:01			MISSED 3PTR by BREWER, ALEXIS

VISITORS: Oklahoma State	Time	Score	Margin	HOME: West Virginia
	02:01			REBOUND (OFF) by MULDROW,TEANA
	01:55			MISSED 3PTR by RAY,CHANIA
REBOUND (DEF) by JENSEN,KAYLEE	01:55			
MISSED JUMPER by JENSEN,KAYLEE	01:35			
	01:35			BLOCK by MONTGOMERY,LANAY
	01:34			REBOUND (DEF) by MONTGOMERY,LANAY
	01:18			MISSED JUMPER by MONTGOMERY,LANAY
REBOUND (DEF) by COMBS,AREANNA	01:18			
MISSED LAYUP by OMOZEE,DIANA	00:59			
	00:59			REBOUND (DEF) by MULDROW,TEANA
	00:52	14-12	H 2	GOOD! LAYUP by BREWER,ALEXIS [FB/PNT]
	00:52			ASSIST by MARTIN,TYNICE
MISSED 3PTR by WHEELER,KARLI	00:37			
	00:37			REBOUND (DEF) by TEAM
SUB IN: HOLT,JENTRY	00:35			
SUB IN: LOECKER,KATELYN	00:35			
SUB OUT: OMOZEE,DIANA	00:35			
SUB OUT: JENSEN,KAYLEE	00:35			
	00:35			SUB IN: PARDEE,KATRINA
	00:35			SUB IN: KING,KRISTINA
	00:35			SUB OUT: RAY,CHANIA
	00:35			SUB OUT: MONTGOMERY,LANAY
FOUL by COMBS,AREANNA	00:12			
	00:04			MISSED 3PTR by MARTIN,TYNICE
	00:04			REBOUND (OFF) by MARTIN,TYNICE
	00:00			MISSED JUMPER by MARTIN,TYNICE
REBOUND (DEF) by HOLT,JENTRY	00:00			

Oklahoma State 12, West Virginia 14

Period 1-only	In Paint	Off T/O	2nd Chance	Fast Break	Bench	
OSU	8	2	0	4	4	Score tied - 2 times
WVU	4	7	2	2	2	Lead changed - 0 times

Oklahoma State vs West Virginia
2/11/2017; 6:30 p.m. at WVU Coliseum, Morgantown, W.Va.
Period 2 Play-By-Play

VISITORS: Oklahoma State	Time	Score	Margin	HOME: West Virginia
SUB IN: ECHOLS,RODREA	10:00			
SUB IN: HOLT,JENTRY	10:00			
SUB OUT: WHEELER,KARLI	10:00			
SUB OUT: JENSEN,KAYLEE	10:00			
	10:00			SUB IN: BREWER,ALEXIS
	10:00			SUB IN: KING,KRISTINA
	10:00			SUB OUT: RAY,CHANIA
	10:00			SUB OUT: MONTGOMERY,LANAY
	09:54			FOUL by BREWER,ALEXIS
SUB IN: JENSEN,KAYLEE	09:54			
SUB OUT: HOLT,JENTRY	09:54			
MISSED 3PTR by ECHOLS,RODREA	09:26			
	09:26			REBOUND (DEF) by MULDROW,TEANA
	08:58			MISSED JUMPER by PARDEE,KATRINA
REBOUND (DEF) by JENSEN,KAYLEE	08:58			
MISSED LAYUP by ECHOLS,RODREA	08:47			
	08:47			REBOUND (DEF) by TEAM
SUB IN: WHEELER,KARLI	08:42			
SUB OUT: ECHOLS,RODREA	08:42			
	08:42			SUB IN: RAY,CHANIA
	08:42			SUB IN: MONTGOMERY,LANAY
	08:42			SUB OUT: MULDROW,TEANA
	08:42			SUB OUT: BREWER,ALEXIS
	08:30			MISSED JUMPER by PARDEE,KATRINA
BLOCK by JENSEN,KAYLEE	08:30			
REBOUND (DEF) by WHEELER,KARLI	08:29			
	08:11			FOUL by MONTGOMERY,LANAY
SUB IN: JONES,LATASHIA	08:11			
SUB IN: OMOZEE,DIANA	08:11			
SUB OUT: COLEMAN,MANDY	08:11			
SUB OUT: LOECKER,KATELYN	08:11			
	08:11			SUB IN: BREWER,ALEXIS
	08:11			SUB OUT: PARDEE,KATRINA
MISSED LAYUP by OMOZEE,DIANA	08:04			
REBOUND (OFF) by TEAM	08:04			
MISSED JUMPER by OMOZEE,DIANA	07:57			
	07:57			REBOUND (DEF) by MONTGOMERY,LANAY
	07:51	17-12	H 5	GOOD! 3PTR by MARTIN,TYNICE
	07:51			ASSIST by RAY,CHANIA
MISSED JUMPER by COMBS,AREANNA	07:28			
	07:28			REBOUND (DEF) by MONTGOMERY,LANAY
	07:09			MISSED 3PTR by BREWER,ALEXIS
REBOUND (DEF) by COMBS,AREANNA	07:09			
GOOD! LAYUP by JENSEN,KAYLEE [PNT]	06:49	17-14	H 3	
ASSIST by WHEELER,KARLI	06:49			
	06:37			MISSED 3PTR by RAY,CHANIA
	06:37			REBOUND (OFF) by TEAM
SUB IN: LOECKER,KATELYN	06:34			
SUB IN: COLEMAN,MANDY	06:34			
SUB OUT: JONES,LATASHIA	06:34			
SUB OUT: COMBS,AREANNA	06:34			
	06:21	19-14	H 5	GOOD! JUMPER by MONTGOMERY,LANAY
	06:21			ASSIST by BREWER,ALEXIS

VISITORS: Oklahoma State	Time	Score	Margin	HOME: West Virginia
	06:06			FOUL by KING,KRISTINA
MISSED FT by COLEMAN,MANDY	06:06			
REBOUND (DEADB) by TEAM	06:06			
MISSED FT by COLEMAN,MANDY	06:06			
	06:06			REBOUND (DEF) by MULDRROW,TEANA
	06:06			SUB IN: MULDRROW,TEANA
	06:06			SUB OUT: KING,KRISTINA
	05:59	22-14	H 8	GOOD! 3PTR by MULDRROW,TEANA
	05:59			ASSIST by MARTIN,TYNICE
MISSED JUMPER by WHEELER,KARLI	05:43			
	05:43			REBOUND (DEF) by MULDRROW,TEANA
FOUL by WHEELER,KARLI	05:40			
	05:23			MISSED JUMPER by MULDRROW,TEANA
BLOCK by LOECKER,KATELYN	05:23			
REBOUND (DEF) by JENSEN,KAYLEE	05:21			
GOOD! LAYUP by COLEMAN,MANDY [FB/PNT]	05:17	22-16	H 6	
ASSIST by WHEELER,KARLI	05:17			
	05:01			TURNOVER by MARTIN,TYNICE
STEAL by JENSEN,KAYLEE	05:01			
	05:01			FOUL by MULDRROW,TEANA
	05:01			SUB IN: PARDEE,KATRINA
	05:01			SUB OUT: MARTIN,TYNICE
TURNOVER by WHEELER,KARLI	04:52			
	04:50			STEAL by MONTGOMERY,LANAY
	04:27			MISSED 3PTR by RAY,CHANIA
REBOUND (DEF) by COLEMAN,MANDY	04:27			
TURNOVER by LOECKER,KATELYN	04:03			
	04:03			TIMEOUT MEDIA
	03:34			MISSED JUMPER by MONTGOMERY,LANAY
REBOUND (DEF) by JENSEN,KAYLEE	03:34			
GOOD! LAYUP by JENSEN,KAYLEE [PNT]	03:14	22-18	H 4	
ASSIST by LOECKER,KATELYN	03:14			
	02:55	25-18	H 7	GOOD! 3PTR by PARDEE,KATRINA
	02:55			ASSIST by RAY,CHANIA
MISSED JUMPER by JENSEN,KAYLEE	02:37			
	02:37			REBOUND (DEF) by RAY,CHANIA
	02:20	28-18	H 10	GOOD! 3PTR by BREWER,ALEXIS
	02:20			ASSIST by MONTGOMERY,LANAY
TIMEOUT 30SEC	02:18			
	02:18			SUB IN: MARTIN,TYNICE
	02:18			SUB OUT: PARDEE,KATRINA
	02:08			FOUL by BREWER,ALEXIS
GOOD! FT by LOECKER,KATELYN	02:08	28-19	H 9	
GOOD! FT by LOECKER,KATELYN	02:08	28-20	H 8	
	02:08			SUB IN: PARDEE,KATRINA
	02:08			SUB IN: KING,KRISTINA
	02:08			SUB OUT: MONTGOMERY,LANAY
	02:08			SUB OUT: BREWER,ALEXIS
	01:55	31-20	H 11	GOOD! 3PTR by PARDEE,KATRINA
	01:55			ASSIST by RAY,CHANIA
GOOD! LAYUP by COLEMAN,MANDY [PNT]	01:37	31-22	H 9	
ASSIST by WHEELER,KARLI	01:37			
	01:13	33-22	H 11	GOOD! JUMPER by MARTIN,TYNICE
MISSED JUMPER by COLEMAN,MANDY	00:50			
	00:50			REBOUND (DEF) by MARTIN,TYNICE
	00:34	36-22	H 14	GOOD! 3PTR by PARDEE,KATRINA
	00:34			ASSIST by MULDRROW,TEANA
GOOD! LAYUP by COLEMAN,MANDY [PNT]	00:08	36-24	H 12	

VISITORS: Oklahoma State

Time Score Margin

HOME: West Virginia

00:02 39-24 H 15

GOOD! 3PTR by MULDROW,TEANA

00:02

ASSIST by RAY,CHANIA

Oklahoma State 24, West Virginia 39

Period 2-only	In Paint	Off T/O	2nd Chance	Fast Break	Bench	
OSU	10	0	0	2	0	Score tied - 0 times
WVU	0	0	2	0	3	Lead changed - 0 times

Official Basketball Box Score -- Game Totals -- Second Half Statistics
Oklahoma State vs West Virginia
2/11/2017 6:30 p.m. at WVU Coliseum, Morgantown, W.Va.

Oklahoma State 29 • 13-11/3-10

##	Player	S	Total			Rebounds			PF	TP	A	TO	Blk	Stl	Min
			FG-FGA	3PT FG-FGA	FT-FTA	Off Reb	Def Reb	Tot Reb							
03	COLEMAN,MANDY	f	3-5	1-1	0-2	0	0	0	0	7	0	3	0	1	11
11	COMBS,AREANNA	g	0-0	0-0	1-2	0	1	1	0	1	0	0	0	0	7
24	WHEELER,KARLI	g	1-10	0-6	4-4	0	0	0	0	6	1	0	0	0	14
45	LOECKER,KATELYN	f	0-2	0-1	0-0	2	1	3	2	0	1	1	0	0	15
54	JENSEN,KAYLEE	c	3-3	1-1	2-2	1	3	4	0	9	0	2	0	0	15
02	MERCADO,MADISON		0-0	0-0	0-0	0	1	1	2	0	0	0	0	1	5
05	OMOZEE,DIANA		0-3	0-0	2-2	2	2	4	2	2	2	0	0	0	14
13	HOLT,JENTRY		1-3	0-0	2-2	0	1	1	2	4	0	0	0	0	12
15	ECHOLS,RODREA		0-0	0-0	0-0	0	0	0	1	0	0	0	0	0	5
20	JONES,LATASHIA		0-0	0-0	0-0	0	0	0	0	0	0	0	0	0	0
22	BRYANT,ALEXES		0-0	0-0	0-0	0	0	0	0	0	0	0	0	0	2
TEAM						0	4	4	0		0				
Totals			8-26	2-9	11-14	5	13	18	9	29	4	6	0	2	100
FG %	3rd Qtr	4-11	36.4%	4th Qtr	4-15	26.7%	Half:	8-26	30.8%						
3FG %	3rd Qtr	1-3	33.3%	4th Qtr	1-6	16.7%	Half:	2-9	00.0%						
FT %	3rd Qtr	7-10	70.0%	4th Qtr	4-4	100.0%	Half:	11-14	78.6%						

West Virginia 40 • 17-8/5-8

##	Player	S	Total			Rebounds			PF	TP	A	TO	Blk	Stl	Min
			FG-FGA	3PT FG-FGA	FT-FTA	Off Reb	Def Reb	Tot Reb							
05	MARTIN,TYNICE	g	6-11	5-5	1-1	0	4	4	2	18	0	1	0	0	18
11	MULDROW,TEANA	f	1-6	0-1	1-2	1	4	5	2	3	1	3	2	1	17
12	RAY,CHANIA	g	2-3	1-2	0-0	0	3	3	1	5	2	1	0	0	18
15	MONTGOMERY,LANAY	c	0-1	0-0	0-0	1	2	3	1	0	0	1	0	0	13
22	PARDEE,KATRINA	g	1-2	1-2	0-0	0	0	0	1	3	0	0	0	0	11
02	BREWER,ALEXIS		2-4	1-1	2-2	0	1	1	1	7	1	0	0	0	9
13	KING,KRISTINA		2-3	0-0	0-0	1	0	1	1	4	1	0	0	1	9
14	THOMAS,BAILEY		0-0	0-0	0-0	0	0	0	0	0	0	0	0	0	1
20	RHODES,DESIREE		0-0	0-0	0-0	0	0	0	0	0	0	0	0	0	1
24	MARTIN,ANJA		0-0	0-0	0-0	0	0	0	0	0	0	0	0	0	2
45	SCHMIDT,MARLENA		0-0	0-0	0-0	0	0	0	1	0	0	0	0	0	1
TEAM						0	1	1	0		0				
Totals			14-30	8-11	4-5	3	15	18	10	40	5	6	2	2	100
FG %	3rd Qtr	7-16	43.8%	4th Qtr	7-14	50.0%	Half:	14-30	46.7%						
3FG %	3rd Qtr	3-5	60.0%	4th Qtr	5-6	83.3%	Half:	8-11	50.0%						
FT %	3rd Qtr	2-3	66.7%	4th Qtr	2-2	100.0%	Half:	4-5	80.0%						

Officials: Lisa Mattingly, Laura Morris, Jesse Dickerson
 Technical Fouls: Oklahoma State- None. West Virginia- None.

Score by periods	1st	2nd	3rd	4th	Total
Oklahoma State	12	12	16	13	53
West Virginia	14	25	19	21	79

Points	In Paint	Off T/O	2nd 2nd Chance	Fast Fast Break	Bench
OSU	6	5	4	0	6
	6	2	4	0	11

Last FG - OSU 4th-02:55, WVU 4th-01:22.
 OSU led for 0:00. WVU led for 20:00. Game was tied for 0:00.

Score tied - 0 times
 Lead changed - 0 times

Oklahoma State vs West Virginia
2/11/2017; 6:30 p.m. at WVU Coliseum, Morgantown, W.Va.
Period 3 Play-By-Play

VISITORS: Oklahoma State	Time	Score	Margin	HOME: West Virginia
SUB IN: OMOZEE,DIANA	10:00			
SUB OUT: COMBS,AREANNA	10:00			
	09:51	42-24	H 18	GOOD! 3PTR by MARTIN,TYNICE
	09:35			FOUL by RAY,CHANIA
GOOD! FT by WHEELER,KARLI	09:35	42-25	H 17	
GOOD! FT by WHEELER,KARLI	09:35	42-26	H 16	
	09:27	45-26	H 19	GOOD! 3PTR by MARTIN,TYNICE
	09:27			ASSIST by RAY,CHANIA
MISSED 3PTR by WHEELER,KARLI	09:09			
	09:09			REBOUND (DEF) by MULDROW,TEANA
	09:02	47-26	H 21	GOOD! JUMPER by RAY,CHANIA
TIMEOUT 30SEC	08:57			
TURNOVER by COLEMAN,MANDY	08:42			
	08:39			STEAL by MULDROW,TEANA
	08:37			MISSED 3PTR by RAY,CHANIA
REBOUND (DEF) by TEAM	08:37			
SUB IN: HOLT,JENTRY	08:33			
SUB OUT: COLEMAN,MANDY	08:33			
MISSED JUMPER by HOLT,JENTRY	08:14			
	08:14			BLOCK by MULDROW,TEANA
	08:13			REBOUND (DEF) by RAY,CHANIA
	08:04			MISSED JUMPER by MONTGOMERY,LANAY
REBOUND (DEF) by TEAM	08:04			
GOOD! 3PTR by JENSEN,KAYLEE	07:54	47-29	H 18	
ASSIST by WHEELER,KARLI	07:54			
	07:40			MISSED JUMPER by MARTIN,TYNICE
REBOUND (DEF) by JENSEN,KAYLEE	07:40			
MISSED LAYUP by OMOZEE,DIANA	07:31			
	07:31			REBOUND (DEF) by RAY,CHANIA
	07:21	50-29	H 21	GOOD! 3PTR by PARDEE,KATRINA
	07:21			ASSIST by RAY,CHANIA
MISSED JUMPER by WHEELER,KARLI	07:05			
	07:05			REBOUND (DEF) by MULDROW,TEANA
FOUL by LOECKER,KATELYN	06:50			
SUB IN: COMBS,AREANNA	06:50			
SUB OUT: OMOZEE,DIANA	06:50			
	06:50			SUB IN: KING,KRISTINA
	06:50			SUB OUT: MONTGOMERY,LANAY
	06:27			MISSED JUMPER by MULDROW,TEANA
REBOUND (DEF) by HOLT,JENTRY	06:27			
TURNOVER by LOECKER,KATELYN	06:08			
	06:06			STEAL by KING,KRISTINA
	05:50			MISSED JUMPER by MARTIN,TYNICE
REBOUND (DEF) by JENSEN,KAYLEE	05:50			
	05:41			FOUL by PARDEE,KATRINA
GOOD! FT by WHEELER,KARLI	05:41	50-30	H 20	
GOOD! FT by WHEELER,KARLI	05:41	50-31	H 19	
SUB IN: COLEMAN,MANDY	05:41			
SUB OUT: JENSEN,KAYLEE	05:41			
	05:41			SUB IN: BREWER,ALEXIS
	05:41			SUB OUT: PARDEE,KATRINA
FOUL by HOLT,JENTRY	05:35			
	05:35			MISSED FT by MULDROW,TEANA

VISITORS: Oklahoma State	Time	Score	Margin	HOME: West Virginia
	05:35			REBOUND (DEADB) by TEAM
	05:35	51-31	H 20	GOOD! FT by MULDRROW,TEANA
GOOD! LAYUP by COLEMAN,MANDY [PNT]	05:18	51-33	H 18	
FOUL by LOECKER,KATELYN	05:05			
SUB IN: OMOZEE,DIANA	05:05			
SUB OUT: LOECKER,KATELYN	05:05			
	04:43	53-33	H 20	GOOD! LAYUP by KING,KRISTINA [PNT]
MISSED 3PTR by WHEELER,KARLI	04:28			
	04:28			REBOUND (DEF) by MULDRROW,TEANA
	04:16			MISSED JUMPER by MULDRROW,TEANA
	04:16			REBOUND (OFF) by KING,KRISTINA
FOUL by HOLT,JENTRY	04:16			
	04:16			TIMEOUT MEDIA
SUB IN: ECHOLS,RODREA	04:16			
SUB IN: JENSEN,KAYLEE	04:16			
SUB OUT: HOLT,JENTRY	04:16			
SUB OUT: WHEELER,KARLI	04:16			
	04:16			SUB IN: MONTGOMERY,LANAY
	04:16			SUB OUT: MULDRROW,TEANA
	04:11	55-33	H 22	GOOD! JUMPER by KING,KRISTINA
GOOD! JUMPER by COLEMAN,MANDY [PNT]	03:49	55-35	H 20	
	03:35	57-35	H 22	GOOD! JUMPER by MARTIN,TYNICE [PNT]
FOUL by OMOZEE,DIANA	03:34			
	03:34	58-35	H 23	GOOD! FT by MARTIN,TYNICE
GOOD! JUMPER by JENSEN,KAYLEE	03:10	58-37	H 21	
ASSIST by OMOZEE,DIANA	03:10			
	02:46			MISSED JUMPER by BREWER,ALEXIS
REBOUND (DEF) by COMBS,AREANNA	02:46			
	02:38			FOUL by BREWER,ALEXIS
GOOD! FT by COMBS,AREANNA	02:38	58-38	H 20	
MISSED FT by COMBS,AREANNA	02:38			
	02:38			REBOUND (DEF) by MARTIN,TYNICE
	02:38			SUB IN: MULDRROW,TEANA
	02:38			SUB IN: PARDEE,KATRINA
	02:38			SUB OUT: KING,KRISTINA
	02:38			SUB OUT: BREWER,ALEXIS
	02:22			TURNOVER by MULDRROW,TEANA
SUB IN: LOECKER,KATELYN	02:20			
SUB OUT: COMBS,AREANNA	02:20			
	02:06			FOUL by MULDRROW,TEANA
MISSED FT by COLEMAN,MANDY	02:06			
REBOUND (DEADB) by TEAM	02:06			
MISSED FT by COLEMAN,MANDY	02:06			
REBOUND (OFF) by LOECKER,KATELYN	02:06			
MISSED JUMPER by COLEMAN,MANDY	02:05			
REBOUND (OFF) by LOECKER,KATELYN	02:05			
TURNOVER by JENSEN,KAYLEE	01:48			
	01:33			TURNOVER by MULDRROW,TEANA
	01:33			FOUL by MULDRROW,TEANA
SUB IN: WHEELER,KARLI	01:33			
SUB OUT: ECHOLS,RODREA	01:33			
	01:33			SUB IN: KING,KRISTINA
	01:33			SUB OUT: MULDRROW,TEANA
	01:09			FOUL by KING,KRISTINA
GOOD! FT by OMOZEE,DIANA	01:09	58-39	H 19	
GOOD! FT by OMOZEE,DIANA	01:09	58-40	H 18	
	00:59			TURNOVER by MARTIN,TYNICE
	00:59			FOUL by MARTIN,TYNICE

VISITORS: Oklahoma State	Time	Score	Margin	HOME: West Virginia
TURNOVER by COLEMAN,MANDY	00:46			
	00:35			MISSED 3PTR by PARDEE,KATRINA
	00:35			REBOUND (OFF) by MONTGOMERY,LANAY
	00:32			TURNOVER by MONTGOMERY,LANAY
	00:32			FOUL by MONTGOMERY,LANAY
SUB IN: HOLT,JENTRY	00:32			
SUB OUT: COLEMAN,MANDY	00:32			
MISSED JUMPER by WHEELER,KARLI	00:22			
REBOUND (OFF) by OMOZEE,DIANA	00:22			
TURNOVER by JENSEN,KAYLEE	00:15			
	00:04			MISSED JUMPER by MARTIN,TYNICE
REBOUND (DEF) by TEAM	00:04			

Oklahoma State 53, West Virginia 79

Period 3-only	In Paint	Off T/O	2nd Chance	Fast Break	Bench	
OSU	4	2	0	0	2	Score tied - 0 times
WVU	4	0	2	0	4	Lead changed - 0 times

Oklahoma State vs West Virginia
2/11/2017; 6:30 p.m. at WVU Coliseum, Morgantown, W.Va.
Period 4 Play-By-Play

VISITORS: Oklahoma State	Time	Score	Margin	HOME: West Virginia
SUB IN: OMOZEE,DIANA	10:00			
SUB IN: HOLT,JENTRY	10:00			
SUB OUT: COLEMAN,MANDY	10:00			
SUB OUT: COMBS,AREANNA	10:00			
MISSED 3PTR by LOECKER,KATELYN	09:37			
	09:37			REBOUND (DEF) by MARTIN,TYNICE
	09:25	61-40	H 21	GOOD! 3PTR by MARTIN,TYNICE
	09:25			ASSIST by MULDROW,TEANA
MISSED 3PTR by WHEELER,KARLI	09:11			
	09:11			REBOUND (DEF) by RAY,CHANIA
	08:47	64-40	H 24	GOOD! 3PTR by RAY,CHANIA
MISSED 3PTR by WHEELER,KARLI	08:29			
	08:29			REBOUND (DEF) by MARTIN,TYNICE
	08:08			MISSED JUMPER by MULDROW,TEANA
REBOUND (DEF) by JENSEN,KAYLEE	08:08			
MISSED 3PTR by WHEELER,KARLI	07:51			
REBOUND (OFF) by OMOZEE,DIANA	07:51			
GOOD! JUMPER by JENSEN,KAYLEE	07:45	64-42	H 22	
ASSIST by LOECKER,KATELYN	07:45			
FOUL by OMOZEE,DIANA	07:26			
SUB IN: COLEMAN,MANDY	07:26			
SUB IN: MERCADO,MADISON	07:26			
SUB OUT: HOLT,JENTRY	07:26			
SUB OUT: WHEELER,KARLI	07:26			
	07:11			TURNOVER by MULDROW,TEANA
STEAL by MERCADO,MADISON	07:09			
GOOD! 3PTR by COLEMAN,MANDY	06:54	64-45	H 19	
ASSIST by OMOZEE,DIANA	06:54			
	06:42			TIMEOUT 30SEC
	06:42			SUB IN: BREWER,ALEXIS
	06:42			SUB OUT: PARDEE,KATRINA
FOUL by MERCADO,MADISON	06:35			
FOUL by MERCADO,MADISON	06:32			
	06:22	66-45	H 21	GOOD! JUMPER by BREWER,ALEXIS
MISSED LAYUP by COLEMAN,MANDY	05:55			
	05:55			BLOCK by MULDROW,TEANA
	05:52			REBOUND (DEF) by MONTGOMERY,LANAY
	05:30			MISSED JUMPER by MARTIN,TYNICE
REBOUND (DEF) by OMOZEE,DIANA	05:30			
MISSED LAYUP by OMOZEE,DIANA	05:23			
	05:23			REBOUND (DEF) by BREWER,ALEXIS
	05:00			MISSED JUMPER by MARTIN,TYNICE
REBOUND (DEF) by OMOZEE,DIANA	05:00			
MISSED LAYUP by OMOZEE,DIANA	04:53			
	04:53			REBOUND (DEF) by MONTGOMERY,LANAY
	04:36			MISSED LAYUP by MULDROW,TEANA
REBOUND (DEF) by LOECKER,KATELYN	04:36			
MISSED LAYUP by LOECKER,KATELYN	04:29			
REBOUND (OFF) by JENSEN,KAYLEE	04:29			
	04:29			FOUL by MARTIN,TYNICE
GOOD! FT by JENSEN,KAYLEE	04:29	66-46	H 20	
GOOD! FT by JENSEN,KAYLEE	04:29	66-47	H 19	
SUB IN: HOLT,JENTRY	04:29			

VISITORS: Oklahoma State	Time	Score	Margin	HOME: West Virginia
SUB IN: WHEELER,KARLI	04:29			
SUB OUT: OMOZEE,DIANA	04:29			
SUB OUT: JENSEN,KAYLEE	04:29			
	04:29			SUB IN: KING,KRISTINA
	04:29			SUB OUT: MONTGOMERY,LANAY
	04:15	69-47	H 22	GOOD! 3PTR by MARTIN,TYNICE
	04:15			ASSIST by BREWER,ALEXIS
MISSED LAYUP by WHEELER,KARLI	04:04			
	04:04			REBOUND (DEF) by MARTIN,TYNICE
	03:41			MISSED JUMPER by KING,KRISTINA
REBOUND (DEF) by MERCADO,MADISON	03:41			
GOOD! LAYUP by HOLT,JENTRY [PNT]	03:29	69-49	H 20	
	03:08	72-49	H 23	GOOD! 3PTR by MARTIN,TYNICE
GOOD! JUMPER by WHEELER,KARLI	02:55	72-51	H 21	
	02:29	75-51	H 24	GOOD! 3PTR by BREWER,ALEXIS
	02:29			ASSIST by KING,KRISTINA
MISSED 3PTR by WHEELER,KARLI	02:20			
	02:20			REBOUND (DEF) by MULDROW,TEANA
	01:55			TURNOVER by RAY,CHANIA
STEAL by COLEMAN,MANDY	01:53			
TURNOVER by COLEMAN,MANDY	01:48			
SUB IN: ECHOLS,RODREA	01:48			
SUB IN: COMBS,AREANNA	01:48			
SUB IN: BRYANT,ALEXES	01:48			
SUB OUT: COLEMAN,MANDY	01:48			
SUB OUT: MERCADO,MADISON	01:48			
SUB OUT: LOECKER,KATELYN	01:48			
	01:48			SUB IN: MARTIN,ANJA
	01:48			SUB OUT: MARTIN,TYNICE
	01:24			MISSED 3PTR by MULDROW,TEANA
	01:24			REBOUND (OFF) by MULDROW,TEANA
	01:22	77-51	H 26	GOOD! LAYUP by MULDROW,TEANA [PNT]
MISSED JUMPER by HOLT,JENTRY	01:10			
	01:10			REBOUND (DEF) by TEAM
	01:06			SUB IN: RHODES,DESIREE
	01:06			SUB IN: PARDEE,KATRINA
	01:06			SUB OUT: MULDROW,TEANA
	01:06			SUB OUT: RAY,CHANIA
FOUL by ECHOLS,RODREA	00:43			
	00:43	78-51	H 27	GOOD! FT by BREWER,ALEXIS
	00:43	79-51	H 28	GOOD! FT by BREWER,ALEXIS
	00:43			SUB IN: THOMAS,BAILEY
	00:43			SUB IN: SCHMIDT,MARLENA
	00:43			SUB OUT: PARDEE,KATRINA
	00:43			SUB OUT: KING,KRISTINA
	00:32			FOUL by SCHMIDT,MARLENA
GOOD! FT by HOLT,JENTRY	00:32	79-52	H 27	
GOOD! FT by HOLT,JENTRY	00:32	79-53	H 26	
	00:01			MISSED JUMPER by BREWER,ALEXIS
REBOUND (DEF) by TEAM	00:01			

Oklahoma State 53, West Virginia 79

Period 4-only	In Paint	Off T/O	2nd Chance	Fast Break	Bench	
OSU	2	3	4	0	4	Score tied - 0 times

Period 4-only	In Paint	Off T/O	2nd Chance	Fast Break	Bench	
WVU	2	2	2	0	7	Lead changed - 0 times

Oklahoma State vs West Virginia
2/11/2017; 6:30 p.m. at WVU Coliseum, Morgantown, W.Va.
Scoring/Runs Reference

Period 1

Oklahoma State	Score	Marg	West Virginia
	0-2	2	MARTIN JUMPER - 09:55
	0-4	4	MARTIN JUMPER - 08:35
08:07 - COLEMAN LAYUP [P]	2	2-4	2
	2-7	5	3
			MULDROW 3PTR - 06:39
06:12 - JENSEN JUMPER [P]	2	4-7	3
05:45 - OMOZEE LAYUP [P] [F]	2	6-7	1
	6-9	3	2
			MULDROW LAYUP [P] - 03:49
03:36 - COLEMAN JUMPER	2	8-9	1
	8-12	4	3
			MARTIN 3PTR - 03:28
03:10 - WHEELER JUMPER	2	10-12	2
02:15 - OMOZEE LAYUP [P] [F]	2	12-12	0
	12-14	2	2
			BREWER LAYUP [P] [F] - 00:52

Period 3

Oklahoma State	Score	Marg	West Virginia
	24-42	18	3
			MARTIN 3PTR - 09:51
09:35 - WHEELER FT	1	25-42	17
09:35 - WHEELER FT	1	26-42	16
	26-45	19	3
			MARTIN 3PTR - 09:27
	26-47	21	2
			RAY JUMPER - 09:02
07:54 - JENSEN 3PTR	3	29-47	18
	29-50	21	3
			PARDEE 3PTR - 07:21
05:41 - WHEELER FT	1	30-50	20
05:41 - WHEELER FT	1	31-50	19
	31-51	20	1
			MULDROW FT - 05:35
05:18 - COLEMAN LAYUP [P]	2	33-51	18
	33-53	20	2
			KING LAYUP [P] - 04:43
	33-55	22	2
			KING JUMPER - 04:11
03:49 - COLEMAN JUMPER [P]	2	35-55	20
	35-57	22	2
			MARTIN JUMPER [P] - 03:35
	35-58	23	1
			MARTIN FT - 03:34
03:10 - JENSEN JUMPER	2	37-58	21
02:38 - COMBS FT	1	38-58	20
01:09 - OMOZEE FT	1	39-58	19
01:09 - OMOZEE FT	1	40-58	18

Period 2

Oklahoma State	Score	Marg	West Virginia
	12-17	5	3
			MARTIN 3PTR - 07:51
06:49 - JENSEN LAYUP [P]	2	14-17	3
	14-19	5	2
			MONTGOMERY JUMPER - 06:21
	14-22	8	3
			MULDROW 3PTR - 05:59
05:17 - COLEMAN LAYUP [P] [F]	2	16-22	6
03:14 - JENSEN LAYUP [P]	2	18-22	4
	18-25	7	3
			PARDEE 3PTR - 02:55
	18-28	10	3
			BREWER 3PTR - 02:20
02:08 - LOECKER FT	1	19-28	9
02:08 - LOECKER FT	1	20-28	8
	20-31	11	3
			PARDEE 3PTR - 01:55
01:37 - COLEMAN LAYUP [P]	2	22-31	9
	22-33	11	2
			MARTIN JUMPER - 01:13
	22-36	14	3
			PARDEE 3PTR - 00:34
00:08 - COLEMAN LAYUP [P]	2	24-36	12
	24-39	15	3
			MULDROW 3PTR - 00:02

Period 4

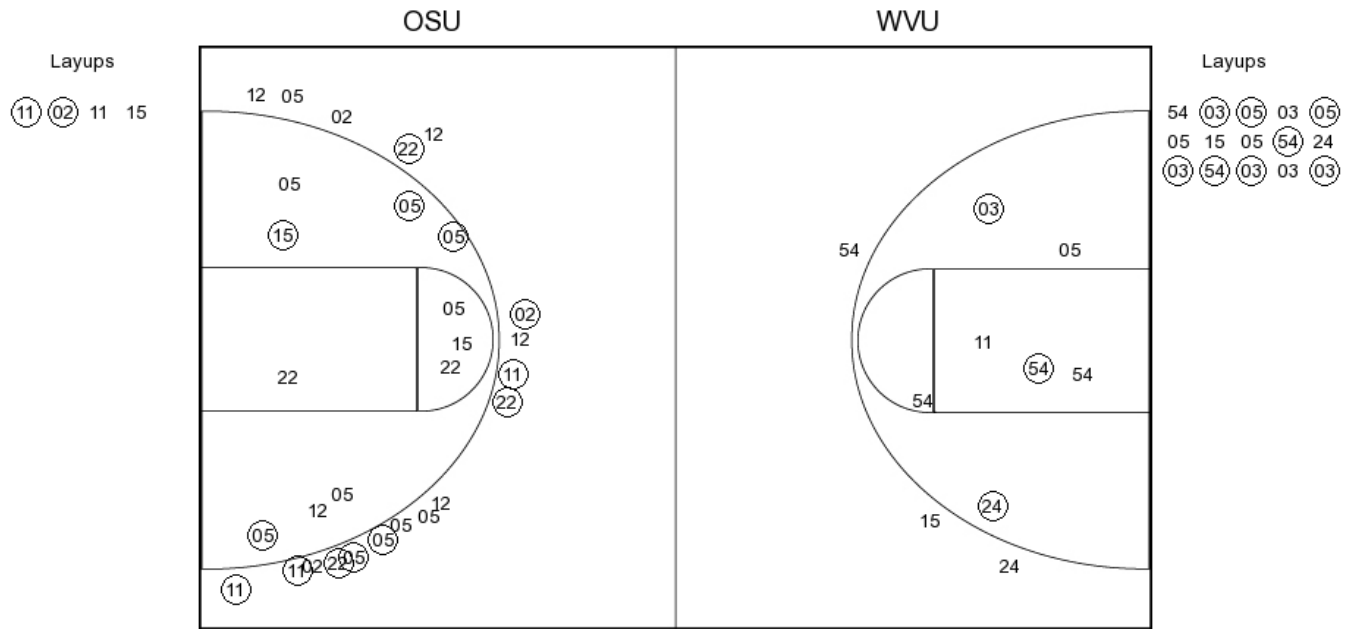
Oklahoma State	Score	Marg	West Virginia
	40-61	21	3
			MARTIN 3PTR - 09:25
	40-64	24	3
			RAY 3PTR - 08:47
07:45 - JENSEN JUMPER	2	42-64	22
06:54 - COLEMAN 3PTR	3	45-64	19
	45-66	21	2
			BREWER JUMPER - 06:22
04:29 - JENSEN FT	1	46-66	20
04:29 - JENSEN FT	1	47-66	19
	47-69	22	3
			MARTIN 3PTR - 04:15
03:29 - HOLT LAYUP [P]	2	49-69	20
	49-72	23	3
			MARTIN 3PTR - 03:08
02:55 - WHEELER JUMPER	2	51-72	21
	51-75	24	3
			BREWER 3PTR - 02:29
	51-77	26	2
			MULDROW LAYUP [P] - 01:22
	51-78	27	1
			BREWER FT - 00:43
	51-79	28	1
			BREWER FT - 00:43
00:32 - HOLT FT	1	52-79	27
00:32 - HOLT FT	1	53-79	26

Oklahoma State vs West Virginia

OFFICIAL SHOT CHART

2/11/2017 at WVU Coliseum, Morgantown, W.Va.

PERIOD 1



OSU PERIOD 1

FG Made	11
FG Attempted	25
3PFG Made	0
3PFG Attempted	3

WVU PERIOD 1

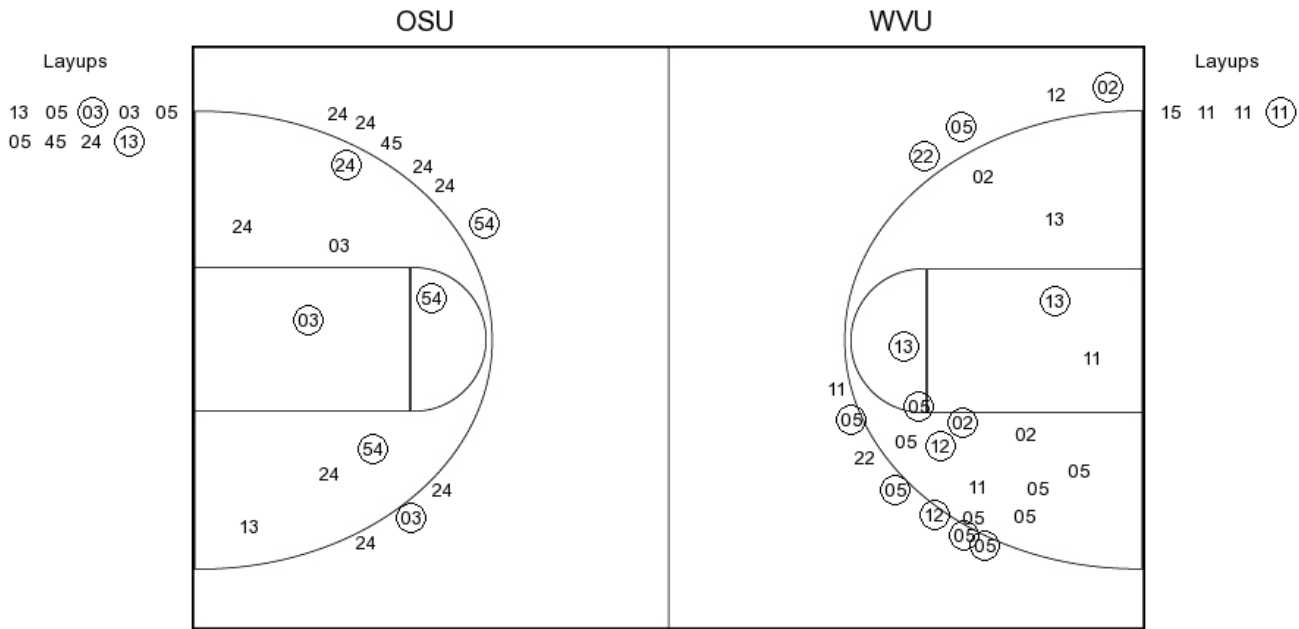
FG Made	15
FG Attempted	33
3PFG Made	9
3PFG Attempted	18

Oklahoma State vs West Virginia

OFFICIAL SHOT CHART

2/11/2017 at WVU Coliseum, Morgantown, W.Va.

PERIOD 2



OSU PERIOD 2

FG Made
FG Attempted
3PFG Made
3PFG Attempted

WVU PERIOD 2

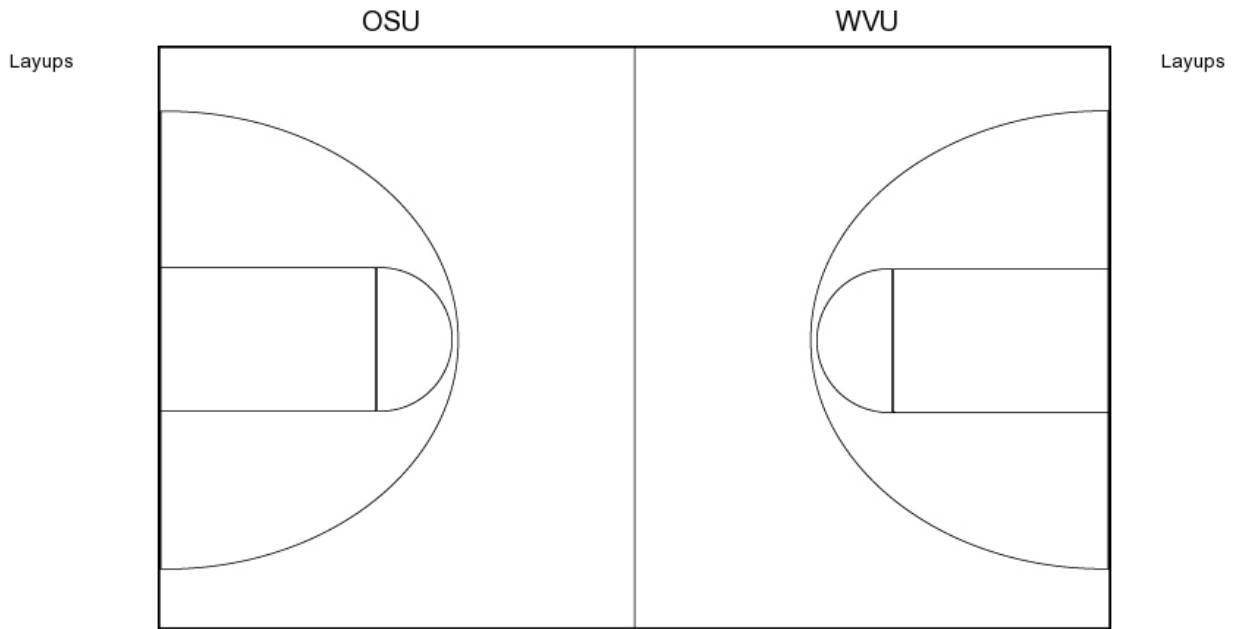
FG Made
FG Attempted
3PFG Made
3PFG Attempted

Oklahoma State vs West Virginia

OFFICIAL SHOT CHART

2/11/2017 at WVU Coliseum, Morgantown, W.Va.

PERIOD 3



OSU PERIOD 3

FG Made	8
FG Attempted	26
3PFG Made	2
3PFG Attempted	9

WVU PERIOD 3

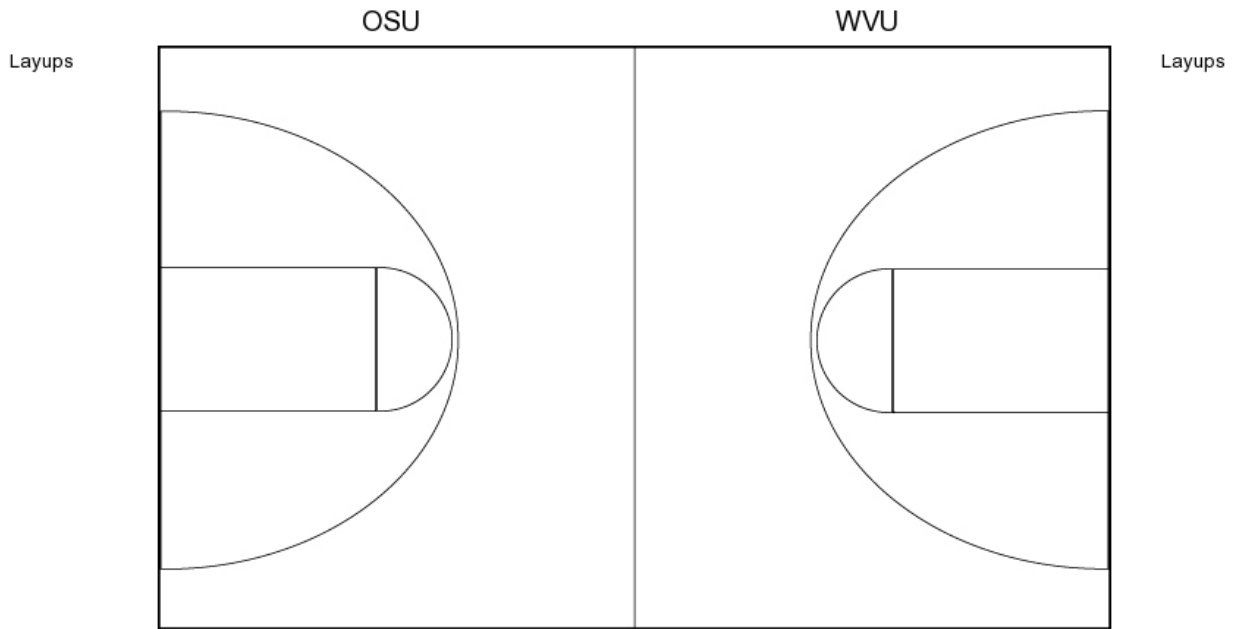
FG Made	14
FG Attempted	30
3PFG Made	8
3PFG Attempted	11

Oklahoma State vs West Virginia

OFFICIAL SHOT CHART

2/11/2017 at WVU Coliseum, Morgantown, W.Va.

PERIOD 4



OSU PERIOD 4

FG Made
FG Attempted
3PFG Made
3PFG Attempted

WVU PERIOD 4

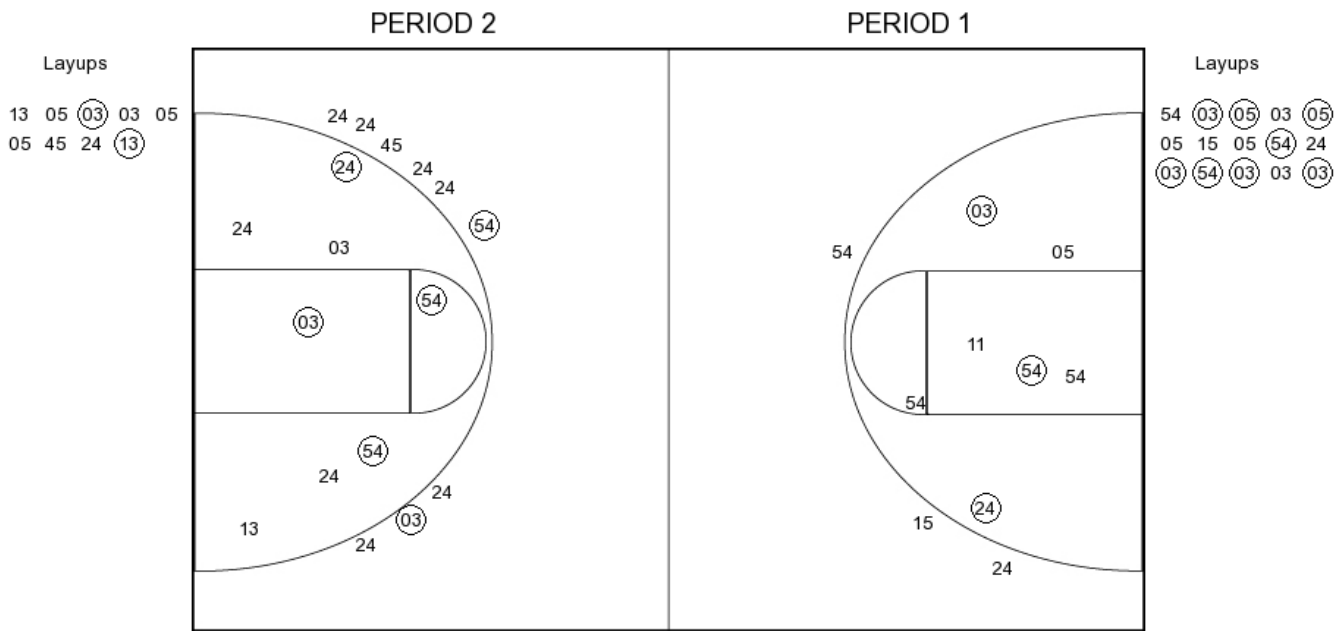
FG Made
FG Attempted
3PFG Made
3PFG Attempted

Oklahoma State vs West Virginia

OFFICIAL SHOT CHART

2/11/2017 at WVU Coliseum, Morgantown, W.Va.

Oklahoma State



OSU PERIOD 1

FG Made	11
FG Attempted	25
3PFG Made	0
3PFG Attempted	3

OSU PERIOD 2

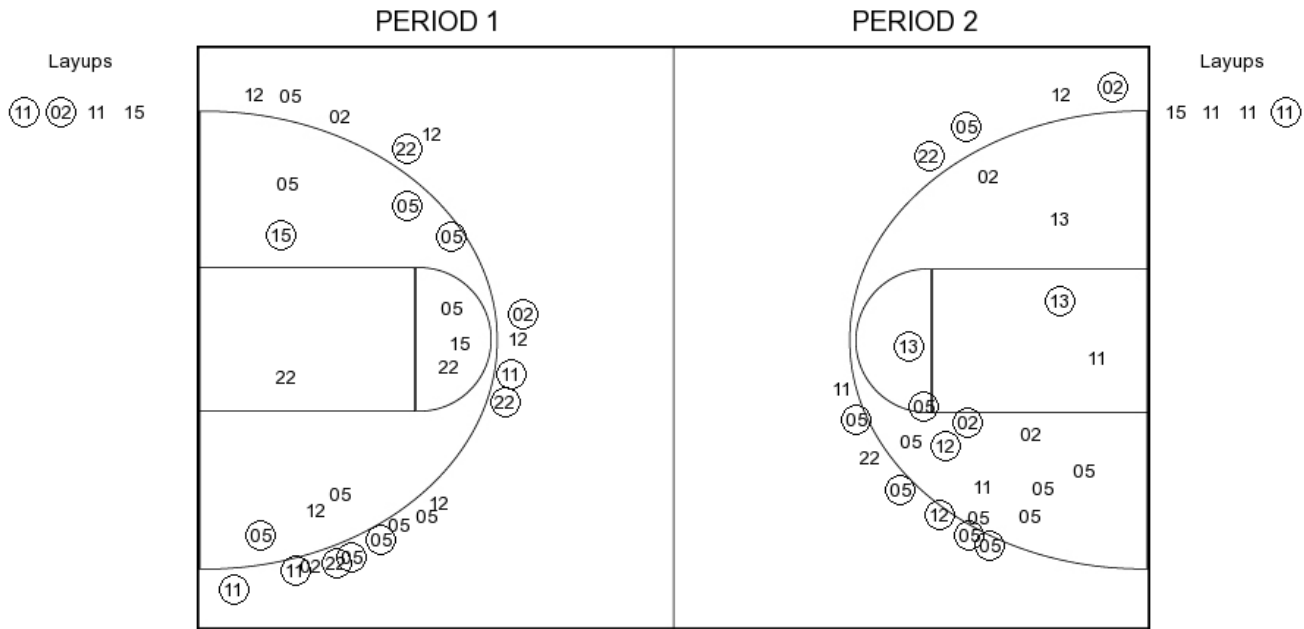
FG Made	
FG Attempted	
3PFG Made	
3PFG Attempted	

Oklahoma State vs West Virginia

OFFICIAL SHOT CHART

2/11/2017 at WVU Coliseum, Morgantown, W.Va.

West Virginia



WVU PERIOD 1

FG Made	15
FG Attempted	33
3PFG Made	9
3PFG Attempted	18

WVU PERIOD 2

FG Made	
FG Attempted	
3PFG Made	
3PFG Attempted	