



WEST VIRGINIA VS. TEXAS

1/14/2017

WVU Coliseum, Morgantown, W.Va.

FINAL STATS

Texas

(12-4/6-0)

73

West Virginia

(14-4/2-4)

63

Start Time: 4:00 p.m.

Officials: Dee Kantner, Felicia Grinter, Metta Roberts

Attendance: 4118

Ray (WVU) fouled out with 0:10.9 remaining in the game.

Official Basketball Box Score -- Game Totals -- Final Statistics

Texas vs West Virginia

1/14/2017 4:00 p.m. at WVU Coliseum, Morgantown, W.Va.

Texas 73 - 12-4/6-0

##	Player	S	Total			Rebounds			PF	TP	A	TO	Blk	Stl	Min
			FG-FGA	3PT FG-FGA	FT-FTA	Off Reb	Def Reb	Tot Reb							
11	MCCARTY,BROOKE	g	5-13	0-4	1-2	0	2	2	0	11	3	1	0	1	33
20	TAYLOR,BRIANNA	g	1-3	0-0	2-4	0	2	2	2	4	1	2	0	1	30
23	ATKINS,ARIEL	g	6-7	0-0	3-3	1	1	2	3	15	1	2	0	3	24
24	HOLMES,JOYNER	f	7-12	0-0	1-1	2	2	4	3	15	1	3	0	1	29
40	LANG,KELSEY	c	5-7	0-0	0-0	4	4	8	4	10	1	0	2	1	29
01	SUTTON,ALECIA		3-9	0-2	0-1	0	0	0	2	6	1	0	0	1	13
05	HOSEY,JORDAN		0-1	0-0	0-0	0	0	0	0	0	0	0	0	0	3
10	HIGGS,LASHANN		4-7	0-1	2-2	3	1	4	1	10	1	1	0	2	20
30	CARON-GOUDREAU,K		0-1	0-1	0-0	0	0	0	0	0	0	0	0	1	5
31	CARON-GOUDREAU,A		1-4	0-2	0-0	2	1	3	2	2	0	2	0	0	14
TEAM						2	1	3	0		0				
TOTALS			32-64	0-10	9-13	14	14	28	17	73	9	11	2	11	200

Deadball Rebounds: 2,0

FG %	1st Half: 17-36	47.2%	2nd Half: 15-28	53.6%	Game: 32-64	50.0%	4th Qtr	6-14	42.9%
	1st Qtr 8-15	53.3%	2nd Qtr 9-21	42.9%	3rd Qtr 9-14	64.3%			
3FG %	1st Half: 0-8	00.0%	2nd Half: 0-2	00.0%	Game: 0-10	00.0%	4th Qtr	0-1	00.0%
	1st Qtr 0-3	00.0%	2nd Qtr 0-5	00.0%	3rd Qtr 0-1	00.0%		0-1	00.0%
FT %	1st Half: 0-0	0%	2nd Half: 9-13	69.2%	Game: 9-13	69.2%	4th Qtr	2-3	66.7%
	1st Qtr 0-0	0%	2nd Qtr 0-0	0%	3rd Qtr 7-10	70.0%			

West Virginia 63 - 14-4/2-4

##	Player	S	Total			Rebounds			PF	TP	A	TO	Blk	Stl	Min
			FG-FGA	3PT FG-FGA	FT-FTA	Off Reb	Def Reb	Tot Reb							
05	MARTIN,TYNICE	g	6-11	1-1	1-2	0	5	5	1	14	2	1	0	1	37
11	MULDROW,TEANA	f	7-13	4-7	4-5	2	5	7	2	22	2	3	1	0	34
12	RAY,CHANIA	g	4-12	0-3	4-4	1	1	2	5	12	3	3	0	0	32
15	MONTGOMERY,LANAY	c	5-8	0-0	2-2	6	8	14	4	12	2	6	3	1	38
22	PARDEE,KATRINA	g	0-2	0-1	0-0	1	1	2	3	0	0	3	0	1	26
02	BREWER,ALEXIS		1-3	1-1	0-2	0	0	0	2	3	1	2	0	1	20
13	KING,KRISTINA		0-1	0-0	0-0	0	0	0	0	0	0	3	0	0	8
24	MARTIN,ANJA		0-1	0-0	0-0	0	0	0	0	0	0	0	0	0	5
TEAM						5	0	5	0		0				
TOTALS			23-51	6-13	11-15	15	20	35	17	63	10	21	4	4	200

Deadball Rebounds: 3,0

FG %	1st Half: 9-26	34.6%	2nd Half: 14-25	56.0%	Game: 23-51	45.1%	4th Qtr	8-11	72.7%
	1st Qtr 7-14	50.0%	2nd Qtr 2-12	16.7%	3rd Qtr 6-14	42.9%			
3FG %	1st Half: 3-8	37.5%	2nd Half: 3-5	60.0%	Game: 6-13	46.2%	4th Qtr	1-2	50.0%
	1st Qtr 3-6	50.0%	2nd Qtr 0-2	00.0%	3rd Qtr 2-3	66.7%			
FT %	1st Half: 4-7	57.1%	2nd Half: 7-8	87.5%	Game: 11-15	73.3%	4th Qtr	5-6	83.3%
	1st Qtr 0-0	0%	2nd Qtr 4-7	57.1%	3rd Qtr 2-2	100.0%			

Officials: Dee Kantner, Felicia Grinter, Metta Roberts

Technical Fouls: Texas- None. West Virginia- None.

Attendance: 4118

Ray (WVU) fouled out with 0:10.9 remaining in the game.

Score by periods	1st	2nd	3rd	4th	Total
Texas	16	18	25	14	73
West Virginia	17	8	16	22	63

Points	In Paint	Off T/O	2nd Chance	Fast Break	Bench
UT	48	30	16	16	18
WVU	24	10	16	6	3

Last FG - UT 4th-00:55, WVU 4th-01:02.

Largest lead - Texas by 22 4th-06:37; West Virginia by 6 1st-06:40

UT led for 29:06. WVU led for 9:14. Game was tied for 1:35.

Score tied - 2 times
Lead changed - 1 times

Official Basketball Box Score -- Game Totals -- First Half Statistics

Texas vs West Virginia

1/14/2017 4:00 p.m. at WVU Coliseum, Morgantown, W.Va.

Texas 34 • 12-4/6-0

##	Player	S	Total			Rebounds			PF	TP	A	TO	Blk	Stl	Min
			FG-FGA	3PT FG-FGA	FT-FTA	Off Reb	Def Reb	Tot Reb							
11	MCCARTY,BROOKE	g	2-6	0-2	0-0	0	2	2	0	4	2	1	0	0	16
20	TAYLOR,BRIANNA	g	0-2	0-0	0-0	0	1	1	1	0	1	1	0	1	15
23	ATKINS,ARIEL	g	2-2	0-0	0-0	1	0	1	2	4	1	2	0	3	13
24	HOLMES,JOYNER	f	4-7	0-0	0-0	2	1	3	2	8	1	1	0	0	12
40	LANG,KELSEY	c	4-4	0-0	0-0	2	2	4	1	8	1	0	2	1	18
01	SUTTON,ALECIA		1-4	0-2	0-0	0	0	0	0	2	1	0	0	0	4
05	HOSEY,JORDAN		0-0	0-0	0-0	0	0	0	0	0	0	0	0	0	0
10	HIGGS,LASHANN		3-6	0-1	0-0	2	1	3	1	6	0	0	0	1	12
30	CARON-GOUDREAU,K		0-1	0-1	0-0	0	0	0	0	0	0	0	0	1	5
31	CARON-GOUDREAU,A		1-4	0-2	0-0	1	0	1	1	2	0	1	0	0	5
TEAM						1	0	1	0		0				
Totals			17-36	0-8	0-0	9	7	16	8	34	7	6	2	7	100

FG %	1st Qtr	8-15	53.3%	2nd Qtr	9-21	42.9%	Half:	17-36	47.2%
3FG %	1st Qtr	0-3	00.0%	2nd Qtr	0-5	00.0%	Half:	0-8	00.0%
FT %	1st Qtr	0-0	0%	2nd Qtr	0-0	0%	Half:	0-0	0%

West Virginia 25 • 14-4/2-4

##	Player	S	Total			Rebounds			PF	TP	A	TO	Blk	Stl	Min
			FG-FGA	3PT FG-FGA	FT-FTA	Off Reb	Def Reb	Tot Reb							
05	MARTIN,TYNICE	g	0-2	0-0	0-0	0	2	2	1	0	2	1	0	1	17
11	MULDROW,TEANA	f	5-10	2-5	4-5	1	2	3	1	16	0	1	0	0	17
12	RAY,CHANIA	g	1-5	0-1	0-0	0	0	0	2	2	2	1	0	0	17
15	MONTGOMERY,LANAY	c	2-4	0-0	0-0	4	5	9	0	4	1	4	2	1	18
22	PARDEE,KATRINA	g	0-2	0-1	0-0	1	1	2	1	0	0	2	0	0	11
02	BREWER,ALEXIS		1-2	1-1	0-2	0	0	0	1	3	1	2	0	1	12
13	KING,KRISTINA		0-0	0-0	0-0	0	0	0	0	0	0	2	0	0	5
24	MARTIN,ANJA		0-1	0-0	0-0	0	0	0	0	0	0	0	0	0	3
TEAM						5	0	5	0		0				
Totals			9-26	3-8	4-7	11	10	21	6	25	6	13	2	3	100

FG %	1st Qtr	7-14	50.0%	2nd Qtr	2-12	16.7%	Half:	9-26	34.6%
3FG %	1st Qtr	3-6	50.0%	2nd Qtr	0-2	00.0%	Half:	3-8	37.5%
FT %	1st Qtr	0-0	0%	2nd Qtr	4-7	57.1%	Half:	4-7	57.1%

Officials: Dee Kantner, Felicia Grinter, Metta Roberts
 Technical Fouls: Texas- None. West Virginia- None.
 Ray (WVU) fouled out with 0:10.9 remaining in the game.

Score by periods	1st	2nd	3rd	4th	Total
Texas	16	18	25	14	73
West Virginia	17	8	16	22	63

Points	In Paint	Off T/O	2nd Chance	Fast Break	Bench
UT	26	18	10	10	10
	10	3	7	2	3

Last FG - UT 2nd-01:53, WVU 2nd-00:25.
 UT led for 9:11. WVU led for 9:14. Game was tied for 1:35.

Score tied - 2 times
 Lead changed - 1 times

Texas vs West Virginia
1/14/2017; 4:00 p.m. at WVU Coliseum, Morgantown, W.Va.
Period 1 Play-By-Play

VISITORS: Texas	Time	Score	Margin	HOME: West Virginia
TURNOVER by ATKINS,ARIEL	09:54			
	09:37	2-0	H 2	GOOD! JUMPER by RAY,CHANIA [PNT]
TURNOVER by TAYLOR,BRIANNA	09:13			
	09:12			STEAL by MARTIN,TYNICE
	09:00			TURNOVER by MONTGOMERY,LANAY
STEAL by ATKINS,ARIEL	08:58			
MISSED JUMPER by HOLMES,JOYNER	08:43			
	08:43			REBOUND (DEF) by MULDROW,TEANA
FOUL by TAYLOR,BRIANNA	08:31			
	08:25			TURNOVER by MARTIN,TYNICE
	08:00			FOUL by RAY,CHANIA
MISSED 3PTR by MCCARTY,BROOKE	07:52			
REBOUND (OFF) by HOLMES,JOYNER	07:52			
MISSED LAYUP by HOLMES,JOYNER	07:48			
REBOUND (OFF) by HOLMES,JOYNER	07:48			
GOOD! LAYUP by HOLMES,JOYNER [PNT]	07:42	2-2	T	
	07:36	5-2	H 3	GOOD! 3PTR by MULDROW,TEANA
	07:36			ASSIST by RAY,CHANIA
MISSED JUMPER by TAYLOR,BRIANNA	07:19			
	07:19			BLOCK by MONTGOMERY,LANAY
	07:19			REBOUND (DEF) by MONTGOMERY,LANAY
FOUL by ATKINS,ARIEL	07:19			
	07:06			MISSED 3PTR by PARDEE,KATRINA
	07:06			REBOUND (OFF) by TEAM
	06:53			MISSED JUMPER by MARTIN,TYNICE
	06:53			REBOUND (OFF) by MONTGOMERY,LANAY
	06:40	8-2	H 6	GOOD! 3PTR by MULDROW,TEANA
TURNOVER by HOLMES,JOYNER	06:30			
SUB IN: CARON-GOUDREAU,K	06:29			
SUB OUT: HOLMES,JOYNER	06:29			
	06:06			TURNOVER by MULDROW,TEANA
	06:06			FOUL by MULDROW,TEANA
	05:53			FOUL by PARDEE,KATRINA
GOOD! JUMPER by ATKINS,ARIEL	05:40	8-4	H 4	
	05:22			MISSED JUMPER by MONTGOMERY,LANAY
	05:22			REBOUND (OFF) by MULDROW,TEANA
	05:03	10-4	H 6	GOOD! LAYUP by MULDROW,TEANA [PNT]
	05:03			ASSIST by MONTGOMERY,LANAY
MISSED JUMPER by MCCARTY,BROOKE	04:50			
	04:50			REBOUND (DEF) by PARDEE,KATRINA
	04:41			TURNOVER by RAY,CHANIA
STEAL by TAYLOR,BRIANNA	04:38			
GOOD! LAYUP by LANG,KELSEY [FB/PNT]	04:34	10-6	H 4	
ASSIST by MCCARTY,BROOKE	04:34			
	04:08			MISSED LAYUP by PARDEE,KATRINA
	04:08			REBOUND (OFF) by MONTGOMERY,LANAY
	04:07			TURNOVER by MONTGOMERY,LANAY
TIMEOUT MEDIA	04:07			
SUB IN: HIGGS,LASHANN	04:07			
SUB OUT: TAYLOR,BRIANNA	04:07			
	04:07			SUB IN: KING,KRISTINA
	04:07			SUB IN: BREWER,ALEXIS
	04:07			SUB OUT: MONTGOMERY,LANAY

VISITORS: Texas	Time	Score	Margin	HOME: West Virginia
	04:07			SUB OUT: PARDEE,KATRINA
GOOD! LAYUP by LANG,KELSEY [PNT]	03:50	10-8	H 2	
ASSIST by ATKINS,ARIEL	03:50			
	03:19			MISSED JUMPER by MULDROW,TEANA
	03:19			REBOUND (OFF) by TEAM
	03:16			MISSED 3PTR by MULDROW,TEANA
REBOUND (DEF) by MCCARTY,BROOKE	03:16			
GOOD! LAYUP by HIGGS,LASHANN [FB/PNT]	03:11	10-10	T	
ASSIST by LANG,KELSEY	03:11			
	02:51			TURNOVER by BREWER,ALEXIS
STEAL by CARON-GOUDREAU,K	02:50			
TURNOVER by MCCARTY,BROOKE	02:44			
	02:44			MISSED 3PTR by MULDROW,TEANA
REBOUND (DEF) by LANG,KELSEY	02:44			
MISSED 3PTR by CARON-GOUDREAU,K	02:10			
	02:10			REBOUND (DEF) by MARTIN,TYNICE
	02:05	12-10	H 2	GOOD! LAYUP by MULDROW,TEANA [FB/PNT]
	02:05			ASSIST by RAY,CHANIA
	01:55			FOUL by BREWER,ALEXIS
SUB IN: HOLMES,JOYNER	01:55			
SUB OUT: CARON-GOUDREAU,K	01:55			
	01:55			SUB IN: MONTGOMERY,LANAY
	01:55			SUB OUT: MULDROW,TEANA
MISSED 3PTR by MCCARTY,BROOKE	01:47			
	01:47			REBOUND (DEF) by MONTGOMERY,LANAY
FOUL by HIGGS,LASHANN	01:33			
	01:23	15-10	H 5	GOOD! 3PTR by BREWER,ALEXIS
	01:23			ASSIST by MARTIN,TYNICE
GOOD! JUMPER by HOLMES,JOYNER	01:07	15-12	H 3	
ASSIST by MCCARTY,BROOKE	01:07			
	00:46			TURNOVER by KING,KRISTINA
STEAL by HIGGS,LASHANN	00:45			
GOOD! LAYUP by HIGGS,LASHANN [FB/PNT]	00:43	15-14	H 1	
	00:16	17-14	H 3	GOOD! LAYUP by MONTGOMERY,LANAY [PNT]
	00:16			ASSIST by BREWER,ALEXIS
GOOD! LAYUP by LANG,KELSEY [PNT]	00:02	17-16	H 1	
ASSIST by HOLMES,JOYNER	00:02			

Texas 16, West Virginia 17

Period 1-only	In Paint	Off T/O	2nd Chance	Fast Break	Bench	
UT	12	10	2	6	4	Score tied - 4 times
WVU	8	2	5	2	3	Lead changed - 0 times

Texas vs West Virginia
1/14/2017; 4:00 p.m. at WVU Coliseum, Morgantown, W.Va.
Period 2 Play-By-Play

VISITORS: Texas	Time	Score	Margin	HOME: West Virginia
SUB IN: SUTTON,ALECIA	10:00			
SUB IN: HIGGS,LASHANN	10:00			
SUB OUT: MCCARTY,BROOKE	10:00			
SUB OUT: TAYLOR,BRIANNA	10:00			
	10:00			SUB IN: KING,KRISTINA
	10:00			SUB IN: BREWER,ALEXIS
	10:00			SUB OUT: MULDROW,TEANA
	10:00			SUB OUT: PARDEE,KATRINA
MISSED LAYUP by HIGGS,LASHANN	09:51			
	09:51			REBOUND (DEF) by MONTGOMERY,LANAY
	09:26			TURNOVER by BREWER,ALEXIS
STEAL by LANG,KELSEY	09:25			
GOOD! LAYUP by HOLMES,JOYNER [PNT]	09:11	17-18	V 1	
ASSIST by SUTTON,ALECIA	09:11			
	08:55			TURNOVER by KING,KRISTINA
STEAL by ATKINS,ARIEL	08:54			
GOOD! LAYUP by SUTTON,ALECIA [FB/PNT]	08:51	17-20	V 3	
	08:50			TIMEOUT 30SEC
SUB IN: TAYLOR,BRIANNA	08:50			
SUB OUT: ATKINS,ARIEL	08:50			
	08:50			SUB IN: MULDROW,TEANA
	08:50			SUB OUT: KING,KRISTINA
	08:29			MISSED LAYUP by BREWER,ALEXIS
	08:29			REBOUND (OFF) by MONTGOMERY,LANAY
FOUL by LANG,KELSEY	08:19			
	08:19			SUB IN: PARDEE,KATRINA
	08:19			SUB OUT: RAY,CHANIA
	08:09			TURNOVER by MONTGOMERY,LANAY
MISSED 3PTR by HIGGS,LASHANN	07:44			
	07:44			REBOUND (DEF) by MONTGOMERY,LANAY
	07:36			TURNOVER by PARDEE,KATRINA
SUB IN: MCCARTY,BROOKE	07:35			
SUB IN: ATKINS,ARIEL	07:35			
SUB OUT: SUTTON,ALECIA	07:35			
SUB OUT: HIGGS,LASHANN	07:35			
MISSED JUMPER by TAYLOR,BRIANNA	07:18			
REBOUND (OFF) by ATKINS,ARIEL	07:18			
GOOD! LAYUP by ATKINS,ARIEL [PNT]	07:13	17-22	V 5	
	06:58			MISSED 3PTR by MULDROW,TEANA
	06:58			REBOUND (OFF) by PARDEE,KATRINA
	06:53			TURNOVER by PARDEE,KATRINA
STEAL by ATKINS,ARIEL	06:52			
TURNOVER by ATKINS,ARIEL	06:50			
	06:50			STEAL by MONTGOMERY,LANAY
	06:50			SUB IN: RAY,CHANIA
	06:50			SUB OUT: PARDEE,KATRINA
	06:40			MISSED JUMPER by MARTIN,TYNICE
	06:40			REBOUND (OFF) by MONTGOMERY,LANAY
	06:38			TURNOVER by MONTGOMERY,LANAY
MISSED JUMPER by MCCARTY,BROOKE	06:27			
REBOUND (OFF) by LANG,KELSEY	06:27			
	06:26			FOUL by MARTIN,TYNICE
GOOD! JUMPER by MCCARTY,BROOKE	06:11	17-24	V 7	

VISITORS: Texas	Time	Score	Margin	HOME: West Virginia
	05:59			MISSED LAYUP by RAY,CHANIA
BLOCK by LANG,KELSEY	05:59			
	05:59			REBOUND (OFF) by TEAM
FOUL by ATKINS,ARIEL	05:51			
	05:51			MISSED FT by BREWER,ALEXIS
	05:51			REBOUND (DEADB) by TEAM
	05:51			MISSED FT by BREWER,ALEXIS
	05:51			REBOUND (OFF) by TEAM
SUB IN: HIGGS,LASHANN	05:51			
SUB OUT: ATKINS,ARIEL	05:51			
	05:51			SUB IN: MARTIN,ANJA
	05:51			SUB OUT: MARTIN,TYNICE
	05:43			MISSED JUMPER by MARTIN,ANJA
REBOUND (DEF) by MCCARTY,BROOKE	05:43			
GOOD! LAYUP by MCCARTY,BROOKE [FB/PNT]	05:35	17-26	V 9	
SUB IN: CARON-GOUDREAU,A	05:19			
SUB OUT: LANG,KELSEY	05:19			
	05:03			MISSED 3PTR by RAY,CHANIA
REBOUND (DEF) by HOLMES,JOYNER	05:03			
GOOD! LAYUP by HOLMES,JOYNER [PNT]	04:37	17-28	V 11	
	04:18			MISSED JUMPER by MULDROW,TEANA
REBOUND (DEF) by TAYLOR,BRIANNA	04:18			
MISSED 3PTR by CARON-GOUDREAU,A	04:03			
REBOUND (OFF) by HIGGS,LASHANN	04:03			
TURNOVER by CARON-GOUDREAU,A	03:30			
	03:28			STEAL by BREWER,ALEXIS
FOUL by HOLMES,JOYNER	03:08			
	03:08			MISSED FT by MULDROW,TEANA
	03:08			REBOUND (DEADB) by TEAM
	03:08	18-28	V 10	GOOD! FT by MULDROW,TEANA
SUB IN: LANG,KELSEY	03:08			
SUB OUT: HOLMES,JOYNER	03:08			
	03:08			SUB IN: PARDEE,KATRINA
	03:08			SUB IN: MARTIN,TYNICE
	03:08			SUB OUT: MARTIN,ANJA
	03:08			SUB OUT: BREWER,ALEXIS
MISSED JUMPER by HIGGS,LASHANN	02:56			
REBOUND (OFF) by LANG,KELSEY	02:56			
GOOD! LAYUP by LANG,KELSEY [PNT]	02:53	18-30	V 12	
	02:43			MISSED JUMPER by RAY,CHANIA
REBOUND (DEF) by HIGGS,LASHANN	02:43			
GOOD! LAYUP by CARON-GOUDREAU,A [PNT]	02:29	18-32	V 14	
	02:29			TIMEOUT 30SEC
SUB IN: SUTTON,ALECIA	02:29			
SUB OUT: HIGGS,LASHANN	02:29			
	02:21			MISSED LAYUP by RAY,CHANIA
BLOCK by LANG,KELSEY	02:21			
	02:21			REBOUND (OFF) by TEAM
SUB IN: HIGGS,LASHANN	02:17			
SUB OUT: MCCARTY,BROOKE	02:17			
FOUL by CARON-GOUDREAU,A	02:16			
	02:16	19-32	V 13	GOOD! FT by MULDROW,TEANA
	02:16	20-32	V 12	GOOD! FT by MULDROW,TEANA
MISSED 3PTR by SUTTON,ALECIA	01:57			
REBOUND (OFF) by HIGGS,LASHANN	01:57			
	01:56			FOUL by RAY,CHANIA
	01:56			SUB IN: BREWER,ALEXIS
	01:56			SUB OUT: RAY,CHANIA

VISITORS: Texas	Time	Score	Margin	HOME: West Virginia
GOOD! JUMPER by HIGGS,LASHANN	01:53	20-34	V 14	
ASSIST by TAYLOR,BRIANNA	01:53			
	01:31	22-34	V 12	GOOD! LAYUP by MONTGOMERY,LANAY [PNT]
	01:31			ASSIST by MARTIN,TYNICE
MISSED 3PTR by CARON-GOUDREAU,A	01:02			
	01:02			REBOUND (DEF) by MARTIN,TYNICE
	00:49			MISSED JUMPER by MONTGOMERY,LANAY
REBOUND (DEF) by LANG,KELSEY	00:49			
MISSED LAYUP by SUTTON,ALECIA	00:39			
REBOUND (OFF) by CARON-GOUDREAU,A	00:39			
SUB IN: MCCARTY,BROOKE	00:37			
SUB IN: HOLMES,JOYNER	00:37			
SUB OUT: HIGGS,LASHANN	00:37			
SUB OUT: CARON-GOUDREAU,A	00:37			
MISSED JUMPER by CARON-GOUDREAU,A	00:36			
	00:36			BLOCK by MONTGOMERY,LANAY
REBOUND (OFF) by TEAM	00:36			
MISSED JUMPER by HOLMES,JOYNER	00:30			
	00:30			REBOUND (DEF) by MULDROW,TEANA
	00:25	24-34	V 10	GOOD! JUMPER by MULDROW,TEANA
FOUL by HOLMES,JOYNER	00:22			
	00:19	25-34	V 9	GOOD! FT by MULDROW,TEANA
SUB IN: HIGGS,LASHANN	00:19			
SUB OUT: TAYLOR,BRIANNA	00:19			
MISSED 3PTR by SUTTON,ALECIA	00:04			
	00:04			REBOUND (DEF) by MONTGOMERY,LANAY

Texas 34, West Virginia 25

Period 2-only	In Paint	Off T/O	2nd Chance	Fast Break	Bench	
UT	14	8	8	4	6	Score tied - 0 times
WVU	2	1	2	0	0	Lead changed - 2 times

Official Basketball Box Score -- Game Totals -- Second Half Statistics

Texas vs West Virginia

1/14/2017 4:00 p.m. at WVU Coliseum, Morgantown, W.Va.

Texas 39 • 12-4/6-0

##	Player	S	Total			Rebounds			PF	TP	A	TO	Blk	Stl	Min
			FG-FGA	3PT FG-FGA	FT-FTA	Off Reb	Def Reb	Tot Reb							
11	MCCARTY,BROOKE	g	3-7	0-2	1-2	0	0	0	0	7	1	0	0	1	17
20	TAYLOR,BRIANNA	g	1-1	0-0	2-4	0	1	1	1	4	0	1	0	0	15
23	ATKINS,ARIEL	g	4-5	0-0	3-3	0	1	1	1	11	0	0	0	0	11
24	HOLMES,JOYNER	f	3-5	0-0	1-1	0	1	1	1	7	0	2	0	1	17
40	LANG,KELSEY	c	1-3	0-0	0-0	2	2	4	3	2	0	0	0	0	11
01	SUTTON,ALECIA		2-5	0-0	0-1	0	0	0	2	4	0	0	0	1	9
05	HOSEY,JORDAN		0-1	0-0	0-0	0	0	0	0	0	0	0	0	0	3
10	HIGGS,LASHANN		1-1	0-0	2-2	1	0	1	0	4	1	1	0	1	8
30	CARON-GOUDREAU,K		0-0	0-0	0-0	0	0	0	0	0	0	0	0	0	0
31	CARON-GOUDREAU,A		0-0	0-0	0-0	1	1	2	1	0	0	1	0	0	9
TEAM						1	1	2	0		0				
Totals			15-28	0-2	9-13	5	7	12	9	39	2	5	0	4	100

FG %	3rd Qtr	9-14	64.3%	4th Qtr	6-14	42.9%	Half:	15-28	53.6%
3FG %	3rd Qtr	0-1	00.0%	4th Qtr	0-1	00.0%	Half:	0-2	00.0%
FT %	3rd Qtr	7-10	70.0%	4th Qtr	2-3	66.7%	Half:	9-13	69.2%

West Virginia 38 • 14-4/2-4

##	Player	S	Total			Rebounds			PF	TP	A	TO	Blk	Stl	Min
			FG-FGA	3PT FG-FGA	FT-FTA	Off Reb	Def Reb	Tot Reb							
05	MARTIN,TYNICE	g	6-9	1-1	1-2	0	3	3	0	14	0	0	0	0	20
11	MULDROW,TEANA	f	2-3	2-2	0-0	1	3	4	1	6	2	2	1	0	17
12	RAY,CHANIA	g	3-7	0-2	4-4	1	1	2	3	10	1	2	0	0	15
15	MONTGOMERY,LANAY	c	3-4	0-0	2-2	2	3	5	4	8	1	2	1	0	20
22	PARDEE,KATRINA	g	0-0	0-0	0-0	0	0	0	2	0	0	1	0	1	15
02	BREWER,ALEXIS		0-1	0-0	0-0	0	0	0	1	0	0	0	0	0	8
13	KING,KRISTINA		0-1	0-0	0-0	0	0	0	0	0	0	1	0	0	3
24	MARTIN,ANJA		0-0	0-0	0-0	0	0	0	0	0	0	0	0	0	2
TEAM						0	0	0	0		0				
Totals			14-25	3-5	7-8	4	10	14	11	38	4	8	2	1	100

FG %	3rd Qtr	6-14	42.9%	4th Qtr	8-11	72.7%	Half:	14-25	56.0%
3FG %	3rd Qtr	2-3	66.7%	4th Qtr	1-2	50.0%	Half:	3-5	37.5%
FT %	3rd Qtr	2-2	100.0%	4th Qtr	5-6	83.3%	Half:	7-8	87.5%

Officials: Dee Kantner, Felicia Grinter, Metta Roberts
 Technical Fouls: Texas- None. West Virginia- None.
 Ray (WVU) fouled out with 0:10.9 remaining in the game.

Score by periods	1st	2nd	3rd	4th	Total
Texas	16	18	25	14	73
West Virginia	17	8	16	22	63

Points	In Paint	Off T/O	2nd Chance	Fast Break	Bench
UT	22	12	6	6	8
	14	7	2	4	0

Last FG - UT 4th-00:55, WVU 4th-01:02.
 UT led for 19:55. WVU led for 0:00. Game was tied for 0:00.

Score tied - 0 times
 Lead changed - 0 times

Texas vs West Virginia
1/14/2017; 4:00 p.m. at WVU Coliseum, Morgantown, W.Va.
Period 3 Play-By-Play

VISITORS: Texas	Time	Score	Margin	HOME: West Virginia
	09:46			FOUL by MONTGOMERY,LANAY
GOOD! FT by ATKINS,ARIEL	09:46	25-35	V 10	
GOOD! FT by ATKINS,ARIEL	09:46	25-36	V 11	
	09:35	27-36	V 9	GOOD! LAYUP by MONTGOMERY,LANAY [PNT]
	09:35			ASSIST by MULDROW,TEANA
	09:10			FOUL by PARDEE,KATRINA
MISSED FT by TAYLOR,BRIANNA	09:10			
REBOUND (DEADB) by TEAM	09:10			
GOOD! FT by TAYLOR,BRIANNA	09:10	27-37	V 10	
	08:50			MISSED JUMPER by MARTIN,TYNICE
	08:50			REBOUND (OFF) by MONTGOMERY,LANAY
FOUL by ATKINS,ARIEL	08:48			
SUB IN: HIGGS,LASHANN	08:48			
SUB OUT: ATKINS,ARIEL	08:48			
	08:44			MISSED JUMPER by RAY,CHANIA
	08:44			REBOUND (OFF) by MULDROW,TEANA
	08:37			MISSED JUMPER by RAY,CHANIA
	08:37			REBOUND (OFF) by RAY,CHANIA
	08:32			MISSED 3PTR by RAY,CHANIA
REBOUND (DEF) by TAYLOR,BRIANNA	08:32			
TURNOVER by HIGGS,LASHANN	08:27			
	08:10	30-37	V 7	GOOD! 3PTR by MULDROW,TEANA
	08:10			ASSIST by MONTGOMERY,LANAY
MISSED JUMPER by MCCARTY,BROOKE	07:41			
REBOUND (OFF) by LANG,KELSEY	07:41			
GOOD! LAYUP by LANG,KELSEY [PNT]	07:38	30-39	V 9	
	07:09	32-39	V 7	GOOD! LAYUP by RAY,CHANIA [PNT]
GOOD! JUMPER by TAYLOR,BRIANNA	07:01	32-41	V 9	
	06:41			TURNOVER by MONTGOMERY,LANAY
	06:41			FOUL by MONTGOMERY,LANAY
SUB IN: SUTTON,ALECIA	06:41			
SUB OUT: HIGGS,LASHANN	06:41			
	06:41			SUB IN: BREWER,ALEXIS
	06:41			SUB OUT: PARDEE,KATRINA
GOOD! JUMPER by MCCARTY,BROOKE	06:27	32-43	V 11	
	06:08			MISSED JUMPER by MARTIN,TYNICE
REBOUND (DEF) by LANG,KELSEY	06:08			
MISSED JUMPER by SUTTON,ALECIA	05:58			
	05:58			REBOUND (DEF) by MULDROW,TEANA
FOUL by LANG,KELSEY	05:33			
	05:33	33-43	V 10	GOOD! FT by RAY,CHANIA
	05:33	34-43	V 9	GOOD! FT by RAY,CHANIA
SUB IN: HIGGS,LASHANN	05:33			
SUB OUT: TAYLOR,BRIANNA	05:33			
	05:30			FOUL by RAY,CHANIA
MISSED FT by MCCARTY,BROOKE	05:30			
REBOUND (DEADB) by TEAM	05:30			
GOOD! FT by MCCARTY,BROOKE	05:30	34-44	V 10	
	05:30			SUB IN: PARDEE,KATRINA
	05:30			SUB OUT: RAY,CHANIA
	05:12			MISSED JUMPER by MONTGOMERY,LANAY
	05:12			REBOUND (OFF) by MONTGOMERY,LANAY
	05:10	36-44	V 8	GOOD! JUMPER by MONTGOMERY,LANAY [PNT]

VISITORS: Texas	Time	Score	Margin	HOME: West Virginia
GOOD! LAYUP by HOLMES,JOYNER [PNT]	04:51	36-46	V 10	
	04:51			FOUL by MULDROW,TEANA
TIMEOUT MEDIA	04:51			
GOOD! FT by HOLMES,JOYNER	04:51	36-47	V 11	
SUB IN: CARON-GOUDREAU,A	04:51			
SUB OUT: LANG,KELSEY	04:51			
	04:35			TURNOVER by MULDROW,TEANA
STEAL by HIGGS,LASHANN	04:34			
GOOD! LAYUP by HOLMES,JOYNER [FB/PNT]	04:29	36-49	V 13	
ASSIST by HIGGS,LASHANN	04:29			
	03:59			MISSED JUMPER by BREWER,ALEXIS
REBOUND (DEF) by HOLMES,JOYNER	03:59			
GOOD! JUMPER by MCCARTY,BROOKE	03:49	36-51	V 15	
FOUL by CARON-GOUDREAU,A	03:26			
	03:26			SUB IN: KING,KRISTINA
	03:26			SUB OUT: MONTGOMERY,LANAY
	03:21			TURNOVER by KING,KRISTINA
STEAL by SUTTON,ALECIA	03:16			
MISSED 3PTR by MCCARTY,BROOKE	03:13			
REBOUND (OFF) by CARON-GOUDREAU,A	03:13			
	02:59			FOUL by BREWER,ALEXIS
GOOD! FT by HIGGS,LASHANN	02:59	36-52	V 16	
GOOD! FT by HIGGS,LASHANN	02:59	36-53	V 17	
SUB IN: TAYLOR,BRIANNA	02:59			
SUB IN: HOSEY,JORDAN	02:59			
SUB OUT: MCCARTY,BROOKE	02:59			
SUB OUT: HOLMES,JOYNER	02:59			
	02:59			SUB IN: MONTGOMERY,LANAY
	02:59			SUB OUT: MULDROW,TEANA
FOUL by SUTTON,ALECIA	02:48			
	02:35	38-53	V 15	GOOD! JUMPER by MARTIN,TYNICE
GOOD! JUMPER by SUTTON,ALECIA [PNT]	02:19	38-55	V 17	
	02:03			MISSED JUMPER by KING,KRISTINA
REBOUND (DEF) by CARON-GOUDREAU,A	02:03			
MISSED JUMPER by HOSEY,JORDAN	01:34			
	01:34			REBOUND (DEF) by MARTIN,TYNICE
	01:17			TURNOVER by PARDEE,KATRINA
MISSED JUMPER by SUTTON,ALECIA	00:54			
REBOUND (OFF) by HIGGS,LASHANN	00:54			
GOOD! LAYUP by HIGGS,LASHANN [PNT]	00:49	38-57	V 19	
	00:30	41-57	V 16	GOOD! 3PTR by MARTIN,TYNICE
GOOD! LAYUP by SUTTON,ALECIA [PNT]	00:05	41-59	V 18	
	00:05			FOUL by PARDEE,KATRINA
MISSED FT by SUTTON,ALECIA	00:05			
	00:05			REBOUND (DEF) by MONTGOMERY,LANAY
SUB IN: MCCARTY,BROOKE	00:05			
SUB OUT: HIGGS,LASHANN	00:05			

Texas 73, West Virginia 63

Period 3-only	In Paint	Off T/O	2nd Chance	Fast Break	Bench	
UT	12	8	6	2	8	Score tied - 0 times
WVU	6	3	2	0	0	Lead changed - 0 times

Texas vs West Virginia
1/14/2017; 4:00 p.m. at WVU Coliseum, Morgantown, W.Va.
Period 4 Play-By-Play

VISITORS: Texas	Time	Score	Margin	HOME: West Virginia
	10:00			SUB IN: BREWER,ALEXIS
	10:00			SUB OUT: PARDEE,KATRINA
	09:53	43-59	V 16	GOOD! JUMPER by MARTIN,TYNICE
GOOD! JUMPER by ATKINS,ARIEL [PNT]	09:36	43-61	V 18	
	09:09			TURNOVER by MULDROW,TEANA
STEAL by MCCARTY,BROOKE	09:07			
GOOD! LAYUP by ATKINS,ARIEL [FB/PNT]	09:03	43-63	V 20	
ASSIST by MCCARTY,BROOKE	09:03			
	08:40			MISSED JUMPER by MULDROW,TEANA
REBOUND (DEF) by LANG,KELSEY	08:40			
MISSED JUMPER by HOLMES,JOYNER	08:13			
	08:13			REBOUND (DEF) by MARTIN,TYNICE
FOUL by LANG,KELSEY	07:50			
	07:50			SUB IN: MARTIN,ANJA
	07:50			SUB OUT: BREWER,ALEXIS
FOUL by LANG,KELSEY	07:41			
	07:41	44-63	V 19	GOOD! FT by MONTGOMERY,LANAY
	07:41	45-63	V 18	GOOD! FT by MONTGOMERY,LANAY
SUB IN: CARON-GOUDREAU,A	07:41			
SUB OUT: LANG,KELSEY	07:41			
TURNOVER by TAYLOR,BRIANNA	07:18			
	07:02			MISSED JUMPER by MARTIN,TYNICE
REBOUND (DEF) by TEAM	07:02			
GOOD! LAYUP by MCCARTY,BROOKE [PNT]	06:49	45-65	V 20	
	06:41			TURNOVER by RAY,CHANIA
STEAL by HOLMES,JOYNER	06:39			
GOOD! LAYUP by HOLMES,JOYNER [FB/PNT]	06:37	45-67	V 22	
	06:07	48-67	V 19	GOOD! 3PTR by MULDROW,TEANA
	05:39			FOUL by RAY,CHANIA
GOOD! FT by TAYLOR,BRIANNA	05:39	48-68	V 20	
MISSED FT by TAYLOR,BRIANNA	05:39			
	05:39			REBOUND (DEF) by MULDROW,TEANA
	05:39			SUB IN: PARDEE,KATRINA
	05:39			SUB OUT: MARTIN,ANJA
	05:31	50-68	V 18	GOOD! LAYUP by RAY,CHANIA [PNT]
MISSED JUMPER by HOLMES,JOYNER	05:14			
	05:14			REBOUND (DEF) by MULDROW,TEANA
SUB IN: SUTTON,ALECIA	05:05			
SUB OUT: CARON-GOUDREAU,A	05:05			
	04:53	52-68	V 16	GOOD! JUMPER by RAY,CHANIA
TURNOVER by HOLMES,JOYNER	04:44			
	04:44			TIMEOUT MEDIA
	04:31			TURNOVER by MONTGOMERY,LANAY
	04:31			FOUL by MONTGOMERY,LANAY
SUB IN: CARON-GOUDREAU,A	04:31			
SUB OUT: TAYLOR,BRIANNA	04:31			
TURNOVER by CARON-GOUDREAU,A	04:06			
	04:05			STEAL by PARDEE,KATRINA
	03:54	54-68	V 14	GOOD! LAYUP by MONTGOMERY,LANAY [PNT]
	03:54			ASSIST by MULDROW,TEANA
MISSED JUMPER by MCCARTY,BROOKE	03:36			
	03:36			BLOCK by MULDROW,TEANA
	03:35			REBOUND (DEF) by MONTGOMERY,LANAY

VISITORS: Texas	Time	Score	Margin	HOME: West Virginia
FOUL by SUTTON,ALECIA	03:33			
	03:33	55-68	V 13	GOOD! FT by RAY,CHANIA
	03:33	56-68	V 12	GOOD! FT by RAY,CHANIA
SUB IN: LANG,KELSEY	03:33			
SUB OUT: CARON-GOUDREAU,A	03:33			
MISSED JUMPER by LANG,KELSEY	03:17			
	03:17			BLOCK by MONTGOMERY,LANAY
REBOUND (OFF) by TEAM	03:17			
MISSED 3PTR by MCCARTY,BROOKE	03:11			
	03:11			REBOUND (DEF) by RAY,CHANIA
	03:04	58-68	V 10	GOOD! JUMPER by MARTIN,TYNICE [FB/PNT]
	03:04			ASSIST by RAY,CHANIA
MISSED LAYUP by SUTTON,ALECIA	02:45			
REBOUND (OFF) by LANG,KELSEY	02:45			
MISSED JUMPER by LANG,KELSEY	02:22			
	02:22			REBOUND (DEF) by MONTGOMERY,LANAY
	02:13	60-68	V 8	GOOD! LAYUP by MARTIN,TYNICE [FB/PNT]
TIMEOUT 30SEC	02:06			
SUB IN: TAYLOR,BRIANNA	02:06			
SUB OUT: SUTTON,ALECIA	02:06			
GOOD! JUMPER by ATKINS,ARIEL [PNT]	01:49	60-70	V 10	
	01:22			TURNOVER by RAY,CHANIA
TURNOVER by HOLMES,JOYNER	01:10			
FOUL by HOLMES,JOYNER	01:10			
	01:02	62-70	V 8	GOOD! JUMPER by MARTIN,TYNICE
GOOD! JUMPER by ATKINS,ARIEL	00:55	62-72	V 10	
	00:55			FOUL by MONTGOMERY,LANAY
GOOD! FT by ATKINS,ARIEL	00:55	62-73	V 11	
	00:55			TIMEOUT 30SEC
FOUL by TAYLOR,BRIANNA	00:50			
	00:50			MISSED FT by MARTIN,TYNICE
	00:50			REBOUND (DEADB) by TEAM
	00:50	63-73	V 10	GOOD! FT by MARTIN,TYNICE
MISSED JUMPER by ATKINS,ARIEL	00:27			
	00:27			REBOUND (DEF) by MARTIN,TYNICE
	00:16			MISSED 3PTR by RAY,CHANIA
REBOUND (DEF) by ATKINS,ARIEL	00:16			
	00:11			FOUL by RAY,CHANIA
	00:11			SUB IN: MARTIN,ANJA
	00:11			SUB OUT: RAY,CHANIA

Texas 73, West Virginia 63

Period 4-only	In Paint	Off T/O	2nd Chance	Fast Break	Bench	
UT	10	4	0	4	0	Score tied - 0 times
WVU	8	4	0	4	0	Lead changed - 0 times

Texas vs West Virginia
1/14/2017; 4:00 p.m. at WVU Coliseum, Morgantown, W.Va.
Scoring/Runs Reference

Period 1

Texas	Score	Marg	West Virginia
	0-2	2 2	RAY JUMPER [P] - 09:37
07:42 - HOLMES LAYUP [P]	2	2-2 0	
	2-5	3 3	MULDROW 3PTR - 07:36
	2-8	6 3	MULDROW 3PTR - 06:40
05:40 - ATKINS JUMPER	2	4-8 4	
	4-10	6 2	MULDROW LAYUP [P] - 05:03
04:34 - LANG LAYUP [P] [F]	2	6-10 4	
03:50 - LANG LAYUP [P]	2	8-10 2	
03:11 - HIGGS LAYUP [P] [F]	2	10-10 0	
	10-12	2 2	MULDROW LAYUP [P] [F] - 02:05
	10-15	5 3	BREWER 3PTR - 01:23
01:07 - HOLMES JUMPER	2	12-15 3	
00:43 - HIGGS LAYUP [P] [F]	2	14-15 1	
	14-17	3 2	MONTGOMERY LAYUP [P] - 00:16
00:02 - LANG LAYUP [P]	2	16-17 1	

Period 3

Texas	Score	Marg	West Virginia
09:46 - ATKINS FT	1	35-25 -10	
09:46 - ATKINS FT	1	36-25 -11	
		36-27 -9 2	MONTGOMERY LAYUP [P] - 09:35
09:10 - TAYLOR FT	1	37-27 -10	
		37-30 -7 3	MULDROW 3PTR - 08:10
07:38 - LANG LAYUP [P]	2	39-30 -9	
		39-32 -7 2	RAY LAYUP [P] - 07:09
07:01 - TAYLOR JUMPER	2	41-32 -9	
06:27 - MCCARTY JUMPER	2	43-32 -11	
		43-33 -10 1	RAY FT - 05:33
		43-34 -9 1	RAY FT - 05:33
05:30 - MCCARTY FT	1	44-34 -10	
		44-36 -8 2	MONTGOMERY JUMPER [P] - 05:10
04:51 - HOLMES LAYUP [P]	2	46-36 -10	
04:51 - HOLMES FT	1	47-36 -11	
04:29 - HOLMES LAYUP [P] [F]	2	49-36 -13	
03:49 - MCCARTY JUMPER	2	51-36 -15	
02:59 - HIGGS FT	1	52-36 -16	
02:59 - HIGGS FT	1	53-36 -17	
		53-38 -15 2	MARTIN JUMPER - 02:35
02:19 - SUTTON JUMPER [P]	2	55-38 -17	
00:49 - HIGGS LAYUP [P]	2	57-38 -19	
		57-41 -16 3	MARTIN 3PTR - 00:30
00:05 - SUTTON LAYUP [P]	2	59-41 -18	

Period 2

Texas	Score	Marg	West Virginia
09:11 - HOLMES LAYUP [P]	2	18-17 -1	
08:51 - SUTTON LAYUP [P] [F]	2	20-17 -3	
07:13 - ATKINS LAYUP [P]	2	22-17 -5	
06:11 - MCCARTY JUMPER	2	24-17 -7	
05:35 - MCCARTY LAYUP [P] [F]	2	26-17 -9	
04:37 - HOLMES LAYUP [P]	2	28-17 -11	
		28-18 -10 1	MULDROW FT - 03:08
02:53 - LANG LAYUP [P]	2	30-18 -12	
02:29 - CARON-GOUDREAU LAYUP [P]	2	32-18 -14	
		32-19 -13 1	MULDROW FT - 02:16
		32-20 -12 1	MULDROW FT - 02:16
01:53 - HIGGS JUMPER	2	34-20 -14	
		34-22 -12 2	MONTGOMERY LAYUP [P] - 01:31
		34-24 -10 2	MULDROW JUMPER - 00:25
		34-25 -9 1	MULDROW FT - 00:19

Period 4

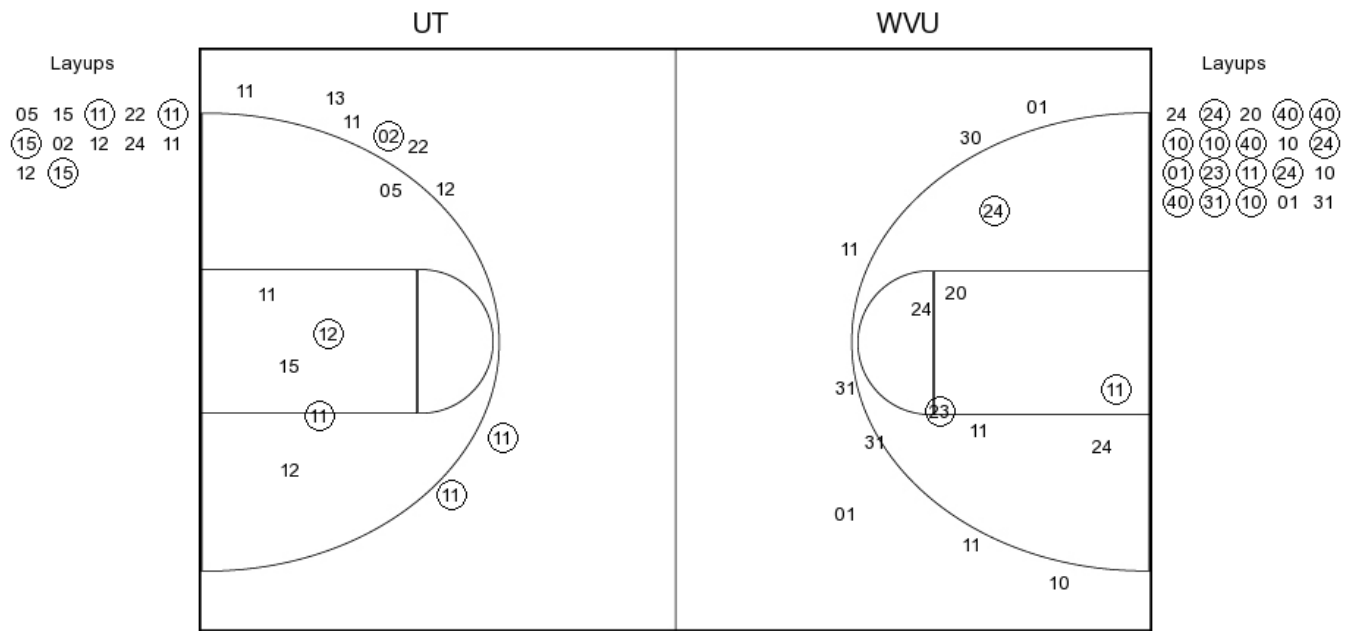
Texas	Score	Marg	West Virginia
		59-43 -16 2	MARTIN JUMPER - 09:53
09:36 - ATKINS JUMPER [P]	2	61-43 -18	
09:03 - ATKINS LAYUP [P] [F]	2	63-43 -20	
		63-44 -19 1	MONTGOMERY FT - 07:41
		63-45 -18 1	MONTGOMERY FT - 07:41
06:49 - MCCARTY LAYUP [P]	2	65-45 -20	
06:37 - HOLMES LAYUP [P] [F]	2	67-45 -22	
		67-48 -19 3	MULDROW 3PTR - 06:07
05:39 - TAYLOR FT	1	68-48 -20	
		68-50 -18 2	RAY LAYUP [P] - 05:31
		68-52 -16 2	RAY JUMPER - 04:53
		68-54 -14 2	MONTGOMERY LAYUP [P] - 03:54
		68-55 -13 1	RAY FT - 03:33
		68-56 -12 1	RAY FT - 03:33
		68-58 -10 2	MARTIN JUMPER [P] [F] - 03:04
		68-60 -8 2	MARTIN LAYUP [P] [F] - 02:13
01:49 - ATKINS JUMPER [P]	2	70-60 -10	
		70-62 -8 2	MARTIN JUMPER - 01:02
00:55 - ATKINS JUMPER	2	72-62 -10	
00:55 - ATKINS FT	1	73-62 -11	
		73-63 -10 1	MARTIN FT - 00:50

Texas vs West Virginia

OFFICIAL SHOT CHART

1/14/2017 at WVU Coliseum, Morgantown, W.Va.

PERIOD 1



UT PERIOD 1

FG Made	17
FG Attempted	36
3PFG Made	0
3PFG Attempted	8

WVU PERIOD 1

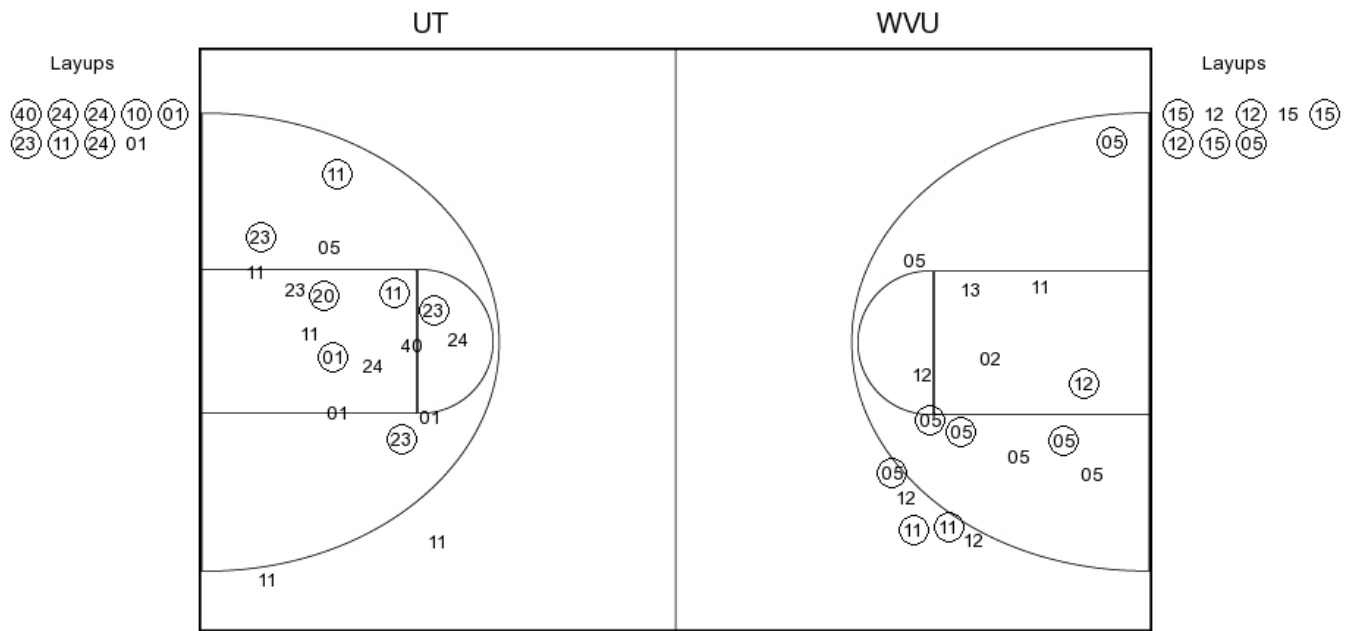
FG Made	9
FG Attempted	26
3PFG Made	3
3PFG Attempted	8

Texas vs West Virginia

OFFICIAL SHOT CHART

1/14/2017 at WVU Coliseum, Morgantown, W.Va.

PERIOD 2



UT PERIOD 2

FG Made

FG Attempted

3PFG Made

3PFG Attempted

WVU PERIOD 2

FG Made

FG Attempted

3PFG Made

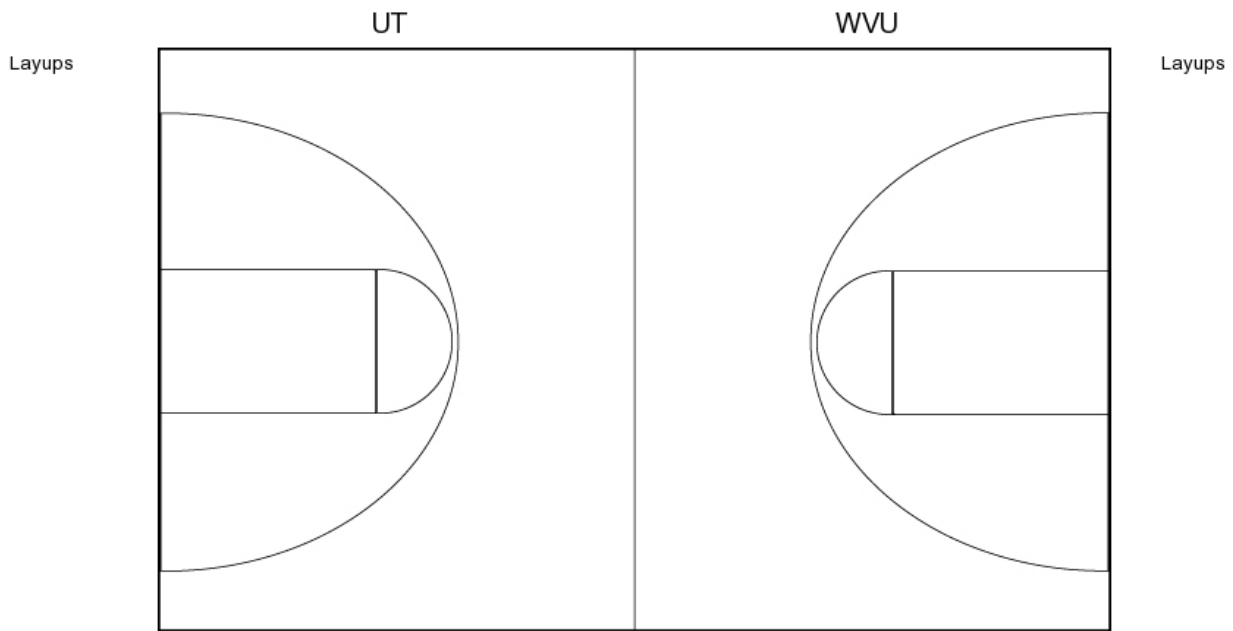
3PFG Attempted

Texas vs West Virginia

OFFICIAL SHOT CHART

1/14/2017 at WVU Coliseum, Morgantown, W.Va.

PERIOD 3



UT PERIOD 3

FG Made	15
FG Attempted	28
3PFG Made	0
3PFG Attempted	2

WVU PERIOD 3

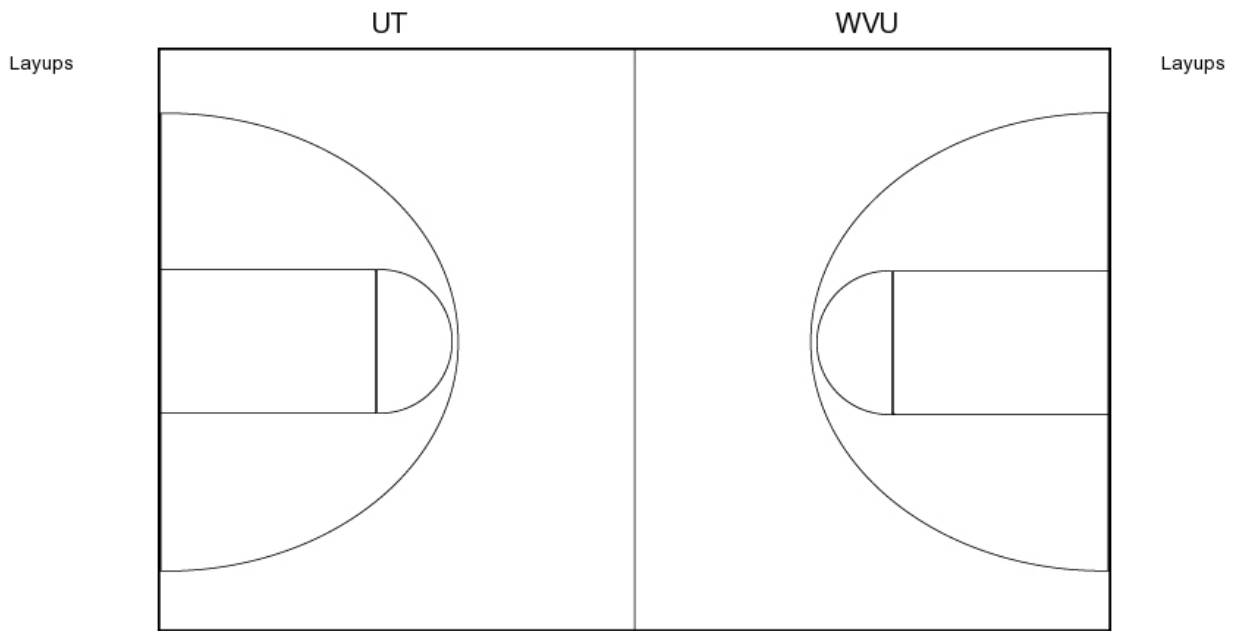
FG Made	14
FG Attempted	25
3PFG Made	3
3PFG Attempted	5

Texas vs West Virginia

OFFICIAL SHOT CHART

1/14/2017 at WVU Coliseum, Morgantown, W.Va.

PERIOD 4



UT PERIOD 4

FG Made
FG Attempted
3PFG Made
3PFG Attempted

WVU PERIOD 4

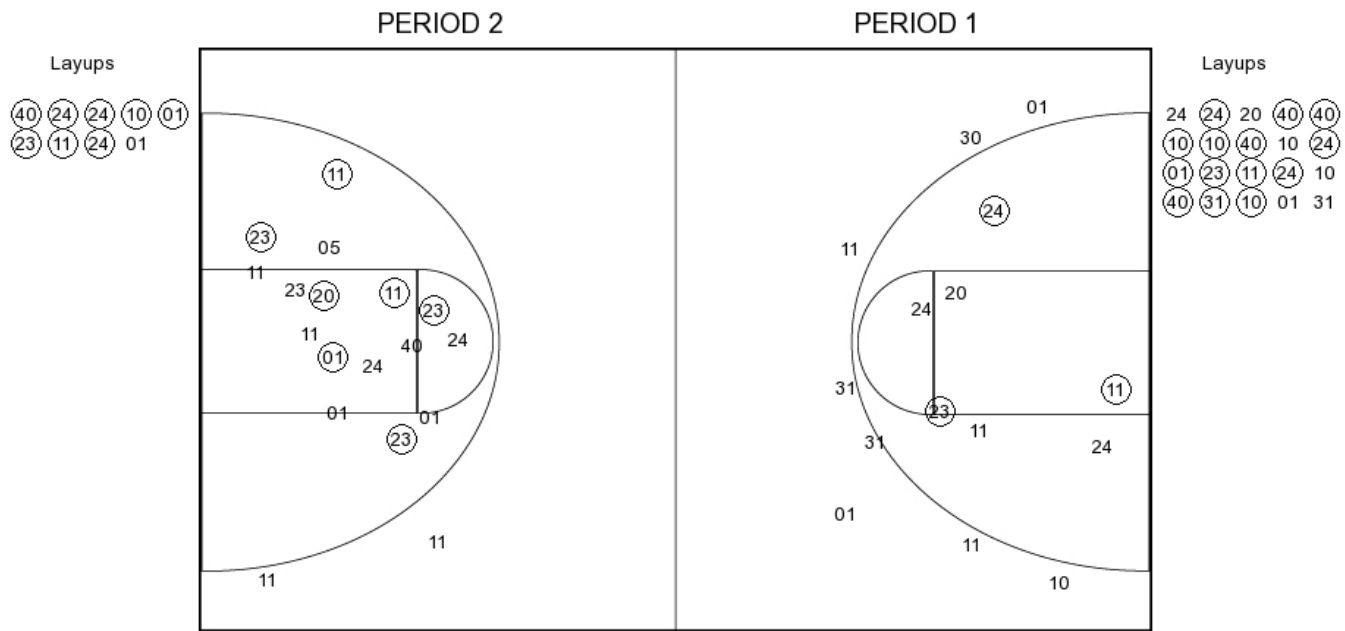
FG Made
FG Attempted
3PFG Made
3PFG Attempted

Texas vs West Virginia

OFFICIAL SHOT CHART

1/14/2017 at WVU Coliseum, Morgantown, W.Va.

Texas



UT PERIOD 1

FG Made	17
FG Attempted	36
3PFG Made	0
3PFG Attempted	8

UT PERIOD 2

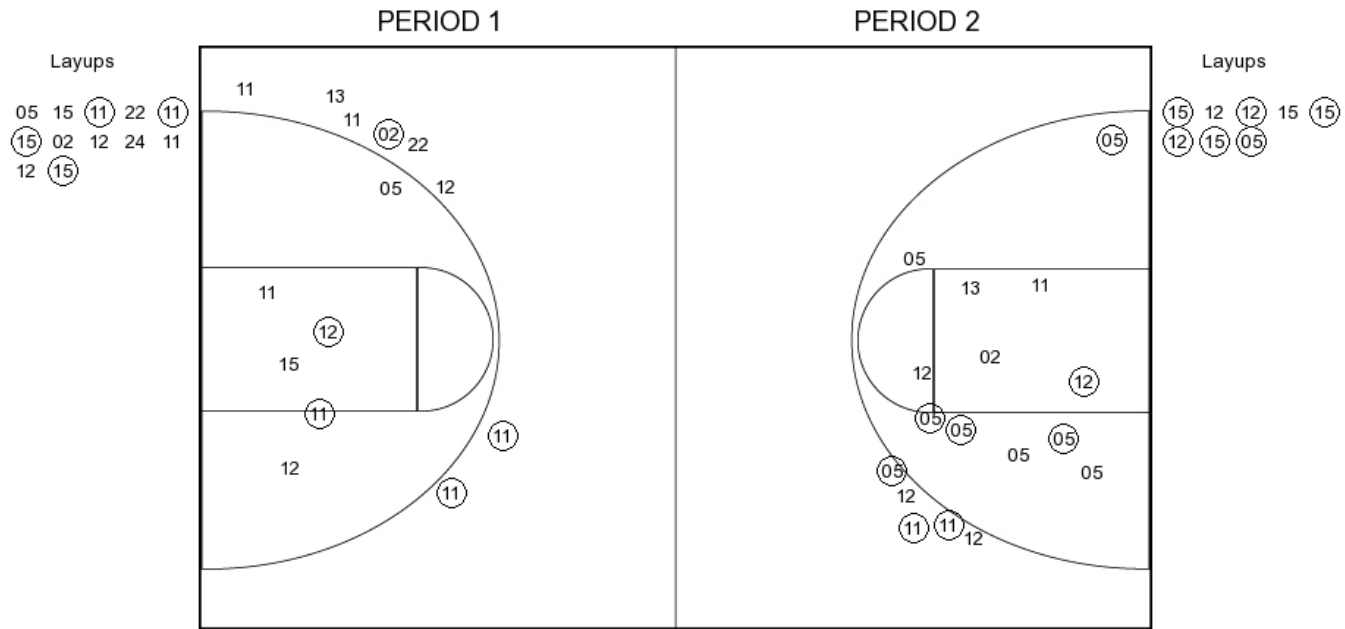
FG Made	
FG Attempted	
3PFG Made	
3PFG Attempted	

Texas vs West Virginia

OFFICIAL SHOT CHART

1/14/2017 at WVU Coliseum, Morgantown, W.Va.

West Virginia



WVU PERIOD 1

FG Made	9
FG Attempted	26
3PFG Made	3
3PFG Attempted	8

WVU PERIOD 2

FG Made	
FG Attempted	
3PFG Made	
3PFG Attempted	