



WEST VIRGINIA VS. BAYLOR

1/4/2017

WVU Coliseum, Morgantown, W.Va.

FINAL STATS

Baylor

(14-1/3-0)

91

West Virginia

(13-2/1-2)

56

Start Time: 7:00 p.m.

Officials: Jesse Dickerson, Gina Cross, Amy Bonner

Attendance: 2466

Cox (BU) fouled out with 1:01 remaining in the game.

Official Basketball Box Score -- Game Totals -- Final Statistics

Baylor vs West Virginia

1/4/2017 7:00 p.m. at WVU Coliseum, Morgantown, W.Va.

Baylor 91 - 14-1/3-0

##	Player	S	Total		3-Ptr		FT-FTA		Rebounds			PF	TP	A	TO	Blk	Stl	Min
			FG-FGA	3PT FG-FGA	FT-FTA	Off Reb	Def Reb	Tot Reb										
04	WALLACE, KRISTY	g	1-5	0-0	4-4	1	2	3	3	6	4	4	0	1			26	
12	PRINCE, ALEXIS	g	6-10	1-2	0-0	2	5	7	1	13	1	0	0	3			32	
13	DAVIS, NINA	f	3-8	0-0	2-3	2	3	5	0	8	0	2	1	0			16	
21	BROWN, KALANI	c	6-8	0-0	4-6	5	6	11	2	16	0	2	1	0			22	
30	JONES, ALEXIS	g	7-20	3-7	4-4	2	4	6	2	21	3	2	0	1			33	
01	COHEN, DEKEIYA		1-1	0-0	0-0	1	5	6	2	2	0	0	0	0			9	
15	COX, LAUREN		3-8	1-1	2-2	2	3	5	5	9	3	0	1	0			17	
20	LANDRUM, CALVEION		0-0	0-0	0-0	0	0	0	0	0	2	0	0	0			4	
24	CHOU, NATALIE		2-5	0-2	0-0	0	2	2	1	4	1	0	0	0			16	
32	MOMPRIER, BEATRIC		5-9	0-0	2-2	4	4	8	0	12	0	1	2	0			17	
55	CAVE, KHADIJAH		0-3	0-0	0-0	1	1	2	0	0	0	0	1	1			8	
TEAM						2	3	5	0			0						
TOTALS			34-77	5-12	18-21	22	38	60	16	91	14	11	6	6			200	

Deadball Rebounds: 0,0

FG %	1st Half: 18-44	40.9%	2nd Half: 16-33	48.5%	Game: 34-77	44.2%	3rd Qtr: 8-14	57.1%	4th Qtr: 8-19	42.1%
3FG %	1st Half: 3-8	37.5%	2nd Half: 2-4	50.0%	Game: 5-12	41.7%	3rd Qtr: 1-2	50.0%	4th Qtr: 1-2	50.0%
FT %	1st Half: 3-5	60.0%	2nd Half: 15-16	93.8%	Game: 18-21	85.7%	3rd Qtr: 13-14	92.9%	4th Qtr: 2-2	100.0%

West Virginia 56 - 13-2/1-2

##	Player	S	Total		3-Ptr		FT-FTA		Rebounds			PF	TP	A	TO	Blk	Stl	Min
			FG-FGA	3PT FG-FGA	FT-FTA	Off Reb	Def Reb	Tot Reb										
05	MARTIN, TYNICE	g	2-14	2-3	5-6	0	2	2	0	11	2	1	0	2			36	
11	MULDROW, TEANA	f	6-11	2-3	2-2	0	7	7	2	16	1	1	2	1			38	
12	RAY, CHANIA	g	3-14	0-5	3-4	1	5	6	4	9	8	4	0	1			38	
15	MONTGOMERY, LANAY	c	4-10	0-0	3-5	2	2	4	2	11	1	0	4	0			35	
22	PARDEE, KATRINA	g	1-4	1-2	0-0	1	1	2	1	3	0	1	0	1			18	
13	KING, KRISTINA		2-6	0-0	0-2	1	3	4	1	4	0	4	0	0			12	
14	THOMAS, BAILEY		0-0	0-0	0-0	0	0	0	0	0	0	0	0	0			2	
20	RHODES, DESIREE		0-0	0-0	0-0	0	0	0	1	0	0	0	0	0			5	
24	MARTIN, ANJA		1-2	0-0	0-2	1	0	1	3	2	0	0	0	1			16	
TEAM						1	3	4	1			0						
TOTALS			19-61	5-13	13-21	7	23	30	15	56	12	11	6	6			200	

Deadball Rebounds: 5,1

FG %	1st Half: 10-29	34.5%	2nd Half: 9-32	28.1%	Game: 19-61	31.1%	3rd Qtr: 5-14	35.7%	4th Qtr: 4-18	22.2%
3FG %	1st Half: 2-6	33.3%	2nd Half: 3-7	42.9%	Game: 5-13	38.5%	3rd Qtr: 2-4	50.0%	4th Qtr: 1-3	33.3%
FT %	1st Half: 5-7	71.4%	2nd Half: 8-14	57.1%	Game: 13-21	61.9%	3rd Qtr: 4-6	66.7%	4th Qtr: 4-8	50.0%

Officials: Jesse Dickerson, Gina Cross, Amy Bonner

Technical Fouls: Baylor- None. West Virginia- TEAM;

Attendance: 2466

Cox (BU) fouled out with 1:01 remaining in the game.

Score by periods	1st	2nd	3rd	4th	Total
Baylor	20	22	30	19	91
West Virginia	14	13	16	13	56

Points	In Paint	Off T/O	2nd 2nd Chance	Fast Break	Bench
BU	46	12	33	4	27
WVU	26	11	33	8	6

Last FG - BU 4th-00:52, WVU 4th-00:20.

Largest lead - Baylor by 37 4th-00:52; West Virginia by 1 1st-09:06

BU led for 39:09. WVU led for 0:46. Game was tied for 0:05.

Score tied - 0 times
Lead changed - 2 times

Official Basketball Box Score -- Game Totals -- First Half Statistics

Baylor vs West Virginia

1/4/2017 7:00 p.m. at WVU Coliseum, Morgantown, W.Va.

Baylor 42 • 14-1/3-0

##	Player	S	Total			Rebounds			PF	TP	A	TO	Blk	Stl	Min
			FG-FGA	3PT FG-FGA	FT-FTA	Off Reb	Def Reb	Tot Reb							
04	WALLACE, KRISTY	g	0-3	0-0	0-0	0	0	0	2	0	3	1	0	1	15
12	PRINCE, ALEXIS	g	2-5	0-0	0-0	2	1	3	0	4	1	0	0	1	18
13	DAVIS, NINA	f	2-6	0-0	0-1	1	2	3	0	4	0	1	1	0	10
21	BROWN, KALANI	c	6-7	0-0	3-4	5	5	10	2	15	0	1	0	0	16
30	JONES, ALEXIS	g	6-16	3-7	0-0	2	4	6	0	15	0	1	0	0	19
01	COHEN, DEKEIYA		0-0	0-0	0-0	0	0	0	0	0	0	0	0	0	2
15	COX, LAUREN		0-2	0-0	0-0	1	1	2	1	0	1	0	0	0	4
20	LANDRUM, CALVEION		0-0	0-0	0-0	0	0	0	0	0	0	0	0	0	0
24	CHOU, NATALIE		1-2	0-1	0-0	0	1	1	0	2	0	0	0	0	6
32	MOMPRIER, BEATRIC		1-2	0-0	0-0	1	2	3	0	2	0	0	0	0	8
55	CAVE, KHADIJAH		0-1	0-0	0-0	0	1	1	0	0	0	0	1	1	2
TEAM						1	0	1	0		0				
Totals			18-44	3-8	3-5	13	17	30	5	42	5	4	2	3	100
FG %	1st Qtr	9-20	45.0%	2nd Qtr	9-24	37.5%	Half:	18-44	40.9%						
3FG %	1st Qtr	1-3	33.3%	2nd Qtr	2-5	40.0%	Half:	3-8	37.5%						
FT %	1st Qtr	1-2	50.0%	2nd Qtr	2-3	66.7%	Half:	3-5	60.0%						

West Virginia 27 • 13-2/1-2

##	Player	S	Total			Rebounds			PF	TP	A	TO	Blk	Stl	Min
			FG-FGA	3PT FG-FGA	FT-FTA	Off Reb	Def Reb	Tot Reb							
05	MARTIN, TYNICE	g	1-6	1-1	0-0	0	2	2	0	3	2	1	0	2	18
11	MULDROW, TEANA	f	3-5	1-1	0-0	0	4	4	1	7	1	0	2	0	20
12	RAY, CHANIA	g	3-8	0-3	3-4	0	2	2	1	9	4	3	0	0	20
15	MONTGOMERY, LANAY	c	2-5	0-0	2-3	2	1	3	1	6	0	0	3	0	19
22	PARDEE, KATRINA	g	0-2	0-1	0-0	1	1	2	0	0	0	0	0	1	13
13	KING, KRISTINA		1-3	0-0	0-0	0	1	1	1	2	0	3	0	0	5
14	THOMAS, BAILEY		0-0	0-0	0-0	0	0	0	0	0	0	0	0	0	0
20	RHODES, DESIREE		0-0	0-0	0-0	0	0	0	1	0	0	0	0	0	1
24	MARTIN, ANJA		0-0	0-0	0-0	0	0	0	1	0	0	0	0	0	4
TEAM						0	3	3	0		0				
Totals			10-29	2-6	5-7	3	14	17	6	27	7	7	5	3	100
FG %	1st Qtr	6-18	33.3%	2nd Qtr	4-11	36.4%	Half:	10-29	34.5%						
3FG %	1st Qtr	2-4	50.0%	2nd Qtr	0-2	00.0%	Half:	2-6	33.3%						
FT %	1st Qtr	0-0	0%	2nd Qtr	5-7	71.4%	Half:	5-7	71.4%						

Officials: Jesse Dickerson, Gina Cross, Amy Bonner
 Technical Fouls: Baylor- None. West Virginia- None.
 Cox (BU) fouled out with 1:01 remaining in the game.

Score by periods	1st	2nd	3rd	4th	Total
Baylor	20	22	30	19	91
West Virginia	14	13	16	13	56

Points	In Paint	Off T/O	2nd Chance	Fast Break	Bench
BU	26	4	19	0	4
	14	5	2	6	2

Last FG - BU 2nd-00:24, WVU 2nd-00:00.
 BU led for 19:09. WVU led for 0:46. Game was tied for 0:05.

Score tied - 0 times
 Lead changed - 2 times

Baylor vs West Virginia
1/4/2017; 7:00 p.m. at WVU Coliseum, Morgantown, W.Va.
Period 1 Play-By-Play

VISITORS: Baylor	Time	Score	Margin	HOME: West Virginia
GOOD! LAYUP by BROWN,KALANI [PNT]	09:55	0-2	V 2	
ASSIST by WALLACE,KRISTY	09:55			
	09:44			TURNOVER by RAY,CHANIA
TURNOVER by BROWN,KALANI	09:32			
	09:06	3-2	H 1	GOOD! 3PTR by MARTIN,TYNICE
MISSED JUMPER by DAVIS,NINA	08:51			
	08:51			REBOUND (DEF) by RAY,CHANIA
	08:44			MISSED JUMPER by RAY,CHANIA
REBOUND (DEF) by DAVIS,NINA	08:44			
MISSED LAYUP by DAVIS,NINA	08:28			
	08:28			BLOCK by MULDROW,TEANA
REBOUND (OFF) by JONES,ALEXIS	08:25			
GOOD! 3PTR by JONES,ALEXIS	08:20	3-5	V 2	
	08:10			MISSED JUMPER by MARTIN,TYNICE
	08:10			REBOUND (OFF) by PARDEE,KATRINA
	08:06			MISSED JUMPER by PARDEE,KATRINA
REBOUND (DEF) by BROWN,KALANI	08:06			
SUB IN: MOMPREMIER,BEATRICE	08:02			
SUB OUT: DAVIS,NINA	08:02			
MISSED 3PTR by JONES,ALEXIS	07:49			
	07:49			REBOUND (DEADB) by TEAM
	07:34			MISSED JUMPER by MARTIN,TYNICE
REBOUND (DEF) by BROWN,KALANI	07:34			
MISSED LAYUP by JONES,ALEXIS	07:28			
REBOUND (OFF) by MOMPREMIER,BEATRICE	07:28			
GOOD! LAYUP by MOMPREMIER,BEATRICE [PNT]	07:24	3-7	V 4	
	07:08	5-7	V 2	GOOD! JUMPER by MULDROW,TEANA
	07:08			ASSIST by RAY,CHANIA
MISSED JUMPER by BROWN,KALANI	06:53			
REBOUND (OFF) by BROWN,KALANI	06:53			
MISSED JUMPER by JONES,ALEXIS	06:35			
REBOUND (OFF) by BROWN,KALANI	06:35			
	06:22			FOUL by MONTGOMERY,LANAY
GOOD! FT by BROWN,KALANI	06:22	5-8	V 3	
MISSED FT by BROWN,KALANI	06:22			
	06:22			REBOUND (DEF) by MARTIN,TYNICE
	06:10			MISSED JUMPER by MARTIN,TYNICE
	06:10			REBOUND (OFF) by MONTGOMERY,LANAY
FOUL by WALLACE,KRISTY	06:00			
	05:49	7-8	V 1	GOOD! JUMPER by RAY,CHANIA [PNT]
GOOD! LAYUP by BROWN,KALANI [PNT]	05:31	7-10	V 3	
	05:04			MISSED JUMPER by RAY,CHANIA
	05:04			REBOUND (OFF) by MONTGOMERY,LANAY
	04:58			MISSED 3PTR by RAY,CHANIA
REBOUND (DEF) by PRINCE,ALEXIS	04:58			
MISSED JUMPER by WALLACE,KRISTY	04:31			
REBOUND (OFF) by BROWN,KALANI	04:31			
GOOD! LAYUP by BROWN,KALANI [PNT]	04:28	7-12	V 5	
	04:13			MISSED JUMPER by MARTIN,TYNICE
REBOUND (DEF) by BROWN,KALANI	04:13			
GOOD! JUMPER by BROWN,KALANI	04:01	7-14	V 7	
	03:59			TIMEOUT 30SEC
SUB IN: CHOU,NATALIE	03:59			

VISITORS: Baylor	Time	Score	Margin	HOME: West Virginia
SUB OUT: WALLACE,KRISTY	03:59			
	03:42			MISSED LAYUP by MULDROW,TEANA
REBOUND (DEF) by BROWN,KALANI	03:42			
MISSED 3PTR by JONES,ALEXIS	03:34			
REBOUND (OFF) by BROWN,KALANI	03:34			
GOOD! JUMPER by BROWN,KALANI [PNT]	03:29	7-16	V 9	
	03:15			MISSED 3PTR by PARDEE,KATRINA
REBOUND (DEF) by MOMPREMIER,BEATRICE	03:15			
GOOD! JUMPER by PRINCE,ALEXIS [PNT]	02:51	7-18	V 11	
	02:20	9-18	V 9	GOOD! LAYUP by MONTGOMERY,LANAY [PNT]
	02:20			ASSIST by MULDROW,TEANA
MISSED JUMPER by PRINCE,ALEXIS	02:04			
	02:04			REBOUND (DEF) by MONTGOMERY,LANAY
	01:46	12-18	V 6	GOOD! 3PTR by MULDROW,TEANA
	01:46			ASSIST by RAY,CHANIA
GOOD! LAYUP by CHOU,NATALIE [PNT]	01:20	12-20	V 8	
	01:02			MISSED JUMPER by MONTGOMERY,LANAY
REBOUND (DEF) by JONES,ALEXIS	01:02			
TURNOVER by JONES,ALEXIS	00:55			
	00:54			STEAL by PARDEE,KATRINA
	00:51	14-20	V 6	GOOD! LAYUP by RAY,CHANIA [FB/PNT]
	00:51			ASSIST by MARTIN,TYNICE
MISSED JUMPER by MOMPREMIER,BEATRICE	00:33			
	00:33			REBOUND (DEF) by MULDROW,TEANA
	00:27			MISSED JUMPER by MARTIN,TYNICE
REBOUND (DEF) by MOMPREMIER,BEATRICE	00:27			
MISSED JUMPER by JONES,ALEXIS	00:05			
	00:05			REBOUND (DEF) by TEAM
SUB IN: WALLACE,KRISTY	00:05			
SUB IN: COX,LAUREN	00:05			
SUB IN: DAVIS,NINA	00:05			
SUB OUT: MOMPREMIER,BEATRICE	00:05			
SUB OUT: BROWN,KALANI	00:05			
SUB OUT: JONES,ALEXIS	00:05			
	00:05			SUB IN: KING,KRISTINA
	00:05			SUB OUT: PARDEE,KATRINA
SUB OUT: WALLACE,KRISTY	00:00			

Baylor 20, West Virginia 14

Period 1-only	In Paint	Off T/O	2nd Chance	Fast Break	Bench	
BU	14	0	10	0	4	Score tied - 0 times
WVU	6	5	2	2	0	Lead changed - 2 times

Baylor vs West Virginia
1/4/2017; 7:00 p.m. at WVU Coliseum, Morgantown, W.Va.
Period 2 Play-By-Play

VISITORS: Baylor	Time	Score	Margin	HOME: West Virginia
SUB OUT: JONES,ALEXIS	10:00			
SUB OUT: BROWN,KALANI	10:00			
SUB OUT: PRINCE,ALEXIS	00:00			
SUB OUT: DAVIS,NINA	00:00			
SUB IN: COX,LAUREN	10:00			
SUB IN: CHOU,NATALIE	10:00			
	00:00			SUB OUT: MARTIN,TYNICE
	00:00			SUB OUT: MULDROW,TEANA
	00:00			SUB OUT: RAY,CHANIA
	00:00			SUB OUT: MONTGOMERY,LANAY
	10:00			SUB IN: KING,KRISTINA
	10:00			SUB OUT: PARDEE,KATRINA
MISSED JUMPER by COX,LAUREN	09:37			
	09:37			BLOCK by MONTGOMERY,LANAY
REBOUND (OFF) by DAVIS,NINA	09:35			
MISSED 3PTR by CHOU,NATALIE	09:33			
	09:33			REBOUND (DEF) by TEAM
	09:06			MISSED LAYUP by MONTGOMERY,LANAY
REBOUND (DEF) by CHOU,NATALIE	09:06			
TURNOVER by DAVIS,NINA	09:00			
	08:58			STEAL by MARTIN,TYNICE
	08:49			TURNOVER by KING,KRISTINA
SUB IN: JONES,ALEXIS	08:47			
SUB OUT: CHOU,NATALIE	08:47			
GOOD! JUMPER by JONES,ALEXIS [PNT]	08:35	14-22	V 8	
FOUL by COX,LAUREN	08:14			
	08:14	15-22	V 7	GOOD! FT by MONTGOMERY,LANAY
	08:14			MISSED FT by MONTGOMERY,LANAY
REBOUND (DEF) by DAVIS,NINA	08:14			
	08:14			FOUL by KING,KRISTINA
	08:14			SUB IN: RHODES,DESIREE
MISSED LAYUP by DAVIS,NINA	08:03			
REBOUND (OFF) by TEAM	08:03			
MISSED JUMPER by WALLACE,KRISTY	07:52			
	07:52			REBOUND (DEF) by TEAM
	07:35			MISSED JUMPER by KING,KRISTINA
BLOCK by DAVIS,NINA	07:35			
REBOUND (DEF) by COX,LAUREN	07:33			
	07:26			FOUL by RHODES,DESIREE
SUB IN: BROWN,KALANI	07:26			
SUB OUT: COX,LAUREN	07:26			
	07:26			SUB IN: MONTGOMERY,LANAY
	07:26			SUB OUT: RHODES,DESIREE
MISSED LAYUP by JONES,ALEXIS	07:21			
	07:21			REBOUND (DEF) by KING,KRISTINA
	07:17			TURNOVER by KING,KRISTINA
STEAL by WALLACE,KRISTY	07:17			
	07:17			FOUL by RAY,CHANIA
	07:17			SUB IN: PARDEE,KATRINA
	07:17			SUB OUT: KING,KRISTINA
GOOD! LAYUP by BROWN,KALANI [PNT]	07:03	15-24	V 9	
ASSIST by WALLACE,KRISTY	07:03			
	06:40			MISSED JUMPER by MONTGOMERY,LANAY

VISITORS: Baylor	Time	Score	Margin	HOME: West Virginia
REBOUND (DEF) by JONES,ALEXIS	06:40			
GOOD! LAYUP by DAVIS,NINA [PNT]	06:19	15-26	V 11	
	05:59			MISSED 3PTR by RAY,CHANIA
REBOUND (DEF) by JONES,ALEXIS	05:59			
MISSED LAYUP by JONES,ALEXIS	05:50			
	05:50			BLOCK by MONTGOMERY,LANAY
	05:48			REBOUND (DEF) by RAY,CHANIA
	05:44			TURNOVER by RAY,CHANIA
	05:43			SUB IN: MARTIN,ANJA
MISSED LAYUP by WALLACE,KRISTY	05:34			
	05:34			REBOUND (DEF) by PARDEE,KATRINA
	05:25			MISSED LAYUP by MULDROW,TEANA
REBOUND (DEF) by BROWN,KALANI	05:25			
GOOD! LAYUP by JONES,ALEXIS [PNT]	05:18	15-28	V 13	
ASSIST by WALLACE,KRISTY	05:18			
	05:17			TIMEOUT 30SEC
SUB IN: COHEN,DEKEIYA	05:17			
	04:52			MISSED 3PTR by RAY,CHANIA
REBOUND (DEF) by JONES,ALEXIS	04:52			
GOOD! JUMPER by JONES,ALEXIS	04:25	15-30	V 15	
	04:11	17-30	V 13	GOOD! LAYUP by MULDROW,TEANA [PNT]
MISSED JUMPER by DAVIS,NINA	03:55			
	03:55			BLOCK by MONTGOMERY,LANAY
REBOUND (OFF) by BROWN,KALANI	03:55			
	03:55			FOUL by MARTIN,ANJA
GOOD! FT by BROWN,KALANI	03:52	17-31	V 14	
GOOD! FT by BROWN,KALANI	03:52	17-32	V 15	
SUB IN: CAVE,KHADIJIAH	03:52			
	03:52			SUB IN: MARTIN,TYNICE
	03:52			SUB IN: KING,KRISTINA
	03:52			SUB OUT: PARDEE,KATRINA
	03:52			SUB OUT: MARTIN,ANJA
	03:32			TURNOVER by KING,KRISTINA
STEAL by CAVE,KHADIJIAH	03:30			
TURNOVER by WALLACE,KRISTY	03:21			
	03:19			STEAL by MARTIN,TYNICE
	03:16			MISSED LAYUP by KING,KRISTINA
BLOCK by CAVE,KHADIJIAH	03:16			
REBOUND (DEF) by CAVE,KHADIJIAH	03:14			
MISSED JUMPER by CAVE,KHADIJIAH	03:00			
	03:00			REBOUND (DEF) by MULDROW,TEANA
	02:53	19-32	V 13	GOOD! LAYUP by KING,KRISTINA [FB/PNT]
	02:53			ASSIST by RAY,CHANIA
TIMEOUT 30SEC	02:52			
SUB IN: PRINCE,ALEXIS	02:52			
SUB OUT: COHEN,DEKEIYA	02:52			
GOOD! 3PTR by JONES,ALEXIS	02:37	19-35	V 16	
ASSIST by PRINCE,ALEXIS	02:37			
	02:12			TURNOVER by MARTIN,TYNICE
STEAL by PRINCE,ALEXIS	02:11			
MISSED JUMPER by JONES,ALEXIS	02:07			
	02:07			BLOCK by MULDROW,TEANA
REBOUND (OFF) by JONES,ALEXIS	02:04			
	01:58			SUB IN: MARTIN,ANJA
	01:58			SUB OUT: KING,KRISTINA
MISSED 3PTR by JONES,ALEXIS	01:38			
	01:38			REBOUND (DEF) by MULDROW,TEANA
FOUL by BROWN,KALANI	01:28			

VISITORS: Baylor	Time	Score	Margin	HOME: West Virginia
	01:28			MISSED FT by RAY,CHANIA
	01:28			REBOUND (DEADB) by TEAM
	01:28	20-35	V 15	GOOD! FT by RAY,CHANIA
SUB IN: DAVIS,NINA	01:28			
SUB OUT: CAVE,KHADIJAH	01:28			
	01:17			FOUL by MULDROW,TEANA
MISSED FT by DAVIS,NINA	01:17			
REBOUND (OFF) by PRINCE,ALEXIS	01:17			
GOOD! LAYUP by DAVIS,NINA [PNT]	01:16	20-37	V 17	
MISSED JUMPER by PRINCE,ALEXIS	01:15			
	01:15			REBOUND (DEF) by MULDROW,TEANA
	01:04	22-37	V 15	GOOD! JUMPER by MONTGOMERY,LANAY [PNT]
	01:04			ASSIST by RAY,CHANIA
FOUL by BROWN,KALANI	01:03			
	01:03	23-37	V 14	GOOD! FT by MONTGOMERY,LANAY
SUB IN: COX,LAUREN	01:03			
SUB OUT: BROWN,KALANI	01:03			
MISSED JUMPER by COX,LAUREN	00:53			
REBOUND (OFF) by PRINCE,ALEXIS	00:53			
GOOD! JUMPER by PRINCE,ALEXIS [PNT]	00:49	23-39	V 16	
FOUL by WALLACE,KRISTY	00:41			
	00:41	24-39	V 15	GOOD! FT by RAY,CHANIA
	00:41	25-39	V 14	GOOD! FT by RAY,CHANIA
SUB IN: CHOU,NATALIE	00:41			
SUB OUT: WALLACE,KRISTY	00:41			
MISSED JUMPER by PRINCE,ALEXIS	00:29			
REBOUND (OFF) by COX,LAUREN	00:29			
GOOD! 3PTR by JONES,ALEXIS	00:24	25-42	V 17	
ASSIST by COX,LAUREN	00:24			
	00:17			TURNOVER by RAY,CHANIA
MISSED 3PTR by JONES,ALEXIS	00:05			
	00:05			REBOUND (DEF) by MARTIN,TYNICE
	00:00	27-42	V 15	GOOD! LAYUP by RAY,CHANIA [FB/PNT]
	00:00			ASSIST by MARTIN,TYNICE

Baylor 42, West Virginia 27

Period 2-only	In Paint	Off T/O	2nd Chance	Fast Break	Bench	
BU	12	4	9	0	0	Score tied - 0 times
WVU	8	0	0	4	2	Lead changed - 0 times

Official Basketball Box Score -- Game Totals -- Second Half Statistics

Baylor vs West Virginia

1/4/2017 7:00 p.m. at WVU Coliseum, Morgantown, W.Va.

Baylor 49 • 14-1/3-0

##	Player	S	Total			Rebounds			PF	TP	A	TO	Blk	Stl	Min
			FG-FGA	3PT FG-FGA	FT-FTA	Off Reb	Def Reb	Tot Reb							
04	WALLACE, KRISTY	g	1-2	0-0	4-4	1	2	3	1	6	1	3	0	0	11
12	PRINCE, ALEXIS	g	4-5	1-2	0-0	0	4	4	1	9	0	0	0	2	14
13	DAVIS, NINA	f	1-2	0-0	2-2	1	1	2	0	4	0	1	0	0	6
21	BROWN, KALANI	c	0-1	0-0	1-2	0	1	1	0	1	0	1	1	0	6
30	JONES, ALEXIS	g	1-4	0-0	4-4	0	0	0	2	6	3	1	0	1	14
01	COHEN, DEKEIYA		1-1	0-0	0-0	1	5	6	2	2	0	0	0	0	7
15	COX, LAUREN		3-6	1-1	2-2	1	2	3	4	9	2	0	1	0	13
20	LANDRUM, CALVEION		0-0	0-0	0-0	0	0	0	0	0	2	0	0	0	4
24	CHOU, NATALIE		1-3	0-1	0-0	0	1	1	1	2	1	0	0	0	10
32	MOMPRIER, BEATRIC		4-7	0-0	2-2	3	2	5	0	10	0	1	2	0	9
55	CAVE, KHADIJAH		0-2	0-0	0-0	1	0	1	0	0	0	0	0	0	6
TEAM						1	3	4	0		0				
Totals			16-33	2-4	15-16	9	21	30	11	49	9	7	4	3	100
FG %	3rd Qtr	8-14	57.1%	4th Qtr	8-19	42.1%	Half:	16-33	48.5%						
3FG %	3rd Qtr	1-2	50.0%	4th Qtr	1-2	50.0%	Half:	2-4	37.5%						
FT %	3rd Qtr	13-14	92.9%	4th Qtr	2-2	100.0%	Half:	15-16	93.8%						

West Virginia 29 • 13-2/1-2

##	Player	S	Total			Rebounds			PF	TP	A	TO	Blk	Stl	Min
			FG-FGA	3PT FG-FGA	FT-FTA	Off Reb	Def Reb	Tot Reb							
05	MARTIN, TYNICE	g	1-8	1-2	5-6	0	0	0	0	8	0	0	0	0	18
11	MULDROW, TEANA	f	3-6	1-2	2-2	0	3	3	1	9	0	1	0	1	18
12	RAY, CHANIA	g	0-6	0-2	0-0	1	3	4	3	0	4	1	0	1	18
15	MONTGOMERY, LANAY	c	2-5	0-0	1-2	0	1	1	1	5	1	0	1	0	16
22	PARDEE, KATRINA	g	1-2	1-1	0-0	0	0	0	1	3	0	1	0	0	5
13	KING, KRISTINA		1-3	0-0	0-2	1	2	3	0	2	0	1	0	0	7
14	THOMAS, BAILEY		0-0	0-0	0-0	0	0	0	0	0	0	0	0	0	2
20	RHODES, DESIREE		0-0	0-0	0-0	0	0	0	0	0	0	0	0	0	4
24	MARTIN, ANJA		1-2	0-0	0-2	1	0	1	2	2	0	0	0	1	12
TEAM						1	0	1	1		0				
Totals			9-32	3-7	8-14	4	9	13	9	29	5	4	1	3	100
FG %	3rd Qtr	5-14	35.7%	4th Qtr	4-18	22.2%	Half:	9-32	28.1%						
3FG %	3rd Qtr	2-4	50.0%	4th Qtr	1-3	33.3%	Half:	3-7	33.3%						
FT %	3rd Qtr	4-6	66.7%	4th Qtr	4-8	50.0%	Half:	8-14	57.1%						

Officials: Jesse Dickerson, Gina Cross, Amy Bonner
 Technical Fouls: Baylor- None. West Virginia- TEAM;
 Cox (BU) fouled out with 1:01 remaining in the game.

Score by periods	1st	2nd	3rd	4th	Total
Baylor	20	22	30	19	91
West Virginia	14	13	16	13	56

Points	In Paint	Off T/O	2nd Chance	Fast Break	Bench
BU	20	8	14	4	23
	12	6	5	2	4

Last FG - BU 4th-00:52, WVU 4th-00:20.
 BU led for 20:00. WVU led for 0:00. Game was tied for 0:00.

Score tied - 0 times
 Lead changed - 0 times

Baylor vs West Virginia
1/4/2017; 7:00 p.m. at WVU Coliseum, Morgantown, W.Va.
Period 3 Play-By-Play

VISITORS: Baylor	Time	Score	Margin	HOME: West Virginia
	09:48			MISSED 3PTR by MARTIN, TYNICE
REBOUND (DEF) by DAVIS, NINA	09:48			
	09:32			FOUL by MULDRROW, TEANA
GOOD! FT by DAVIS, NINA	09:32	27-43	V 16	
GOOD! FT by DAVIS, NINA	09:32	27-44	V 17	
	09:11	30-44	V 14	GOOD! 3PTR by PARDEE, KATRINA
	09:11			ASSIST by MONTGOMERY, LANAY
TURNOVER by BROWN, KALANI	08:46			
	08:29			MISSED LAYUP by MULDRROW, TEANA
BLOCK by BROWN, KALANI	08:29			
REBOUND (DEF) by PRINCE, ALEXIS	08:27			
MISSED LAYUP by DAVIS, NINA	08:20			
	08:20			REBOUND (DEF) by MULDRROW, TEANA
	08:03			TURNOVER by MULDRROW, TEANA
STEAL by JONES, ALEXIS	08:02			
	07:59			FOUL by PARDEE, KATRINA
GOOD! FT by JONES, ALEXIS	07:59	30-45	V 15	
GOOD! FT by JONES, ALEXIS	07:59	30-46	V 16	
	07:43			TURNOVER by PARDEE, KATRINA
STEAL by PRINCE, ALEXIS	07:42			
GOOD! LAYUP by PRINCE, ALEXIS [FB/PNT]	07:38	30-48	V 18	
	07:19			MISSED 3PTR by MULDRROW, TEANA
REBOUND (DEF) by PRINCE, ALEXIS	07:19			
MISSED 3PTR by PRINCE, ALEXIS	07:03			
REBOUND (OFF) by WALLACE, KRISTY	07:03			
GOOD! LAYUP by WALLACE, KRISTY [PNT]	06:58	30-50	V 20	
	06:50			TIMEOUT 30SEC
	06:50			SUB IN: MARTIN, ANJA
	06:50			SUB OUT: PARDEE, KATRINA
	06:42			MISSED JUMPER by MARTIN, TYNICE
REBOUND (DEF) by PRINCE, ALEXIS	06:42			
	06:29			FOUL by MARTIN, ANJA
GOOD! FT by BROWN, KALANI	06:29	30-51	V 21	
MISSED FT by BROWN, KALANI	06:29			
REBOUND (OFF) by DAVIS, NINA	06:29			
	06:15			FOUL by RAY, CHANIA
	06:15			FOUL (TECH) by TEAM
	06:15			FOUL by TEAM
GOOD! FT by WALLACE, KRISTY	06:15	30-52	V 22	
GOOD! FT by WALLACE, KRISTY	06:15	30-53	V 23	
GOOD! FT by WALLACE, KRISTY	06:15	30-54	V 24	
GOOD! FT by WALLACE, KRISTY	06:15	30-55	V 25	
	06:00	32-55	V 23	GOOD! LAYUP by MONTGOMERY, LANAY [PNT]
TURNOVER by DAVIS, NINA	05:49			
	05:35			MISSED JUMPER by MARTIN, TYNICE
REBOUND (DEF) by TEAM	05:35			
GOOD! JUMPER by JONES, ALEXIS	05:17	32-57	V 25	
	05:06			MISSED JUMPER by RAY, CHANIA
REBOUND (DEF) by BROWN, KALANI	05:06			
GOOD! LAYUP by DAVIS, NINA [PNT]	04:59	32-59	V 27	
ASSIST by JONES, ALEXIS	04:59			
	04:31			MISSED LAYUP by MONTGOMERY, LANAY
REBOUND (DEF) by WALLACE, KRISTY	04:31			

VISITORS: Baylor	Time	Score	Margin	HOME: West Virginia
MISSED JUMPER by BROWN,KALANI	04:21			
	04:21			BLOCK by MONTGOMERY,LANAY
	04:20			REBOUND (DEF) by RAY,CHANIA
FOUL by PRINCE,ALEXIS	04:14			
	04:14			TIMEOUT MEDIA
	04:14	33-59	V 26	GOOD! FT by MARTIN,TYNICE
	04:14	34-59	V 25	GOOD! FT by MARTIN,TYNICE
SUB IN: MOMPREMIER,BEATRICE	04:14			
SUB IN: COX,LAUREN	04:14			
SUB OUT: DAVIS,NINA	04:14			
SUB OUT: BROWN,KALANI	04:14			
	04:14			SUB IN: KING,KRISTINA
	04:14			SUB OUT: MARTIN,ANJA
MISSED LAYUP by MOMPREMIER,BEATRICE	03:59			
	03:59			REBOUND (DEF) by KING,KRISTINA
	03:48	37-59	V 22	GOOD! 3PTR by MULDROW,TEANA
	03:48			ASSIST by RAY,CHANIA
GOOD! LAYUP by PRINCE,ALEXIS [PNT]	03:28	37-61	V 24	
	03:21	39-61	V 22	GOOD! LAYUP by MULDROW,TEANA [FB/PNT]
	03:21			ASSIST by RAY,CHANIA
GOOD! 3PTR by PRINCE,ALEXIS	03:01	39-64	V 25	
ASSIST by WALLACE,KRISTY	03:01			
	02:47			MISSED LAYUP by RAY,CHANIA
BLOCK by MOMPREMIER,BEATRICE	02:47			
	02:45			REBOUND (OFF) by TEAM
	02:45			SUB IN: MARTIN,ANJA
	02:45			SUB OUT: KING,KRISTINA
	02:31	41-64	V 23	GOOD! JUMPER by MULDROW,TEANA [PNT]
TURNOVER by WALLACE,KRISTY	02:26			
	02:26			STEAL by RAY,CHANIA
FOUL by WALLACE,KRISTY	02:26			
SUB IN: CHOU,NATALIE	02:26			
SUB OUT: WALLACE,KRISTY	02:26			
FOUL by COX,LAUREN	02:17			
	02:17	42-64	V 22	GOOD! FT by MULDROW,TEANA
	02:17	43-64	V 21	GOOD! FT by MULDROW,TEANA
MISSED JUMPER by MOMPREMIER,BEATRICE	02:04			
REBOUND (OFF) by MOMPREMIER,BEATRICE	02:04			
GOOD! LAYUP by MOMPREMIER,BEATRICE [PNT]	01:49	43-66	V 23	
ASSIST by COX,LAUREN	01:49			
	01:32			TURNOVER by RAY,CHANIA
STEAL by PRINCE,ALEXIS	01:31			
	01:28			FOUL by MARTIN,ANJA
GOOD! FT by MOMPREMIER,BEATRICE	01:28	43-67	V 24	
GOOD! FT by MOMPREMIER,BEATRICE	01:28	43-68	V 25	
	01:11			MISSED LAYUP by MULDROW,TEANA
BLOCK by MOMPREMIER,BEATRICE	01:11			
REBOUND (DEF) by TEAM	01:10			
MISSED JUMPER by JONES,ALEXIS	00:57			
REBOUND (OFF) by MOMPREMIER,BEATRICE	00:57			
GOOD! LAYUP by MOMPREMIER,BEATRICE [PNT]	00:52	43-70	V 27	
ASSIST by JONES,ALEXIS	00:52			
FOUL by CHOU,NATALIE	00:29			
	00:29			MISSED FT by MARTIN,ANJA
	00:29			REBOUND (DEADB) by TEAM
	00:29			MISSED FT by MARTIN,ANJA
REBOUND (DEF) by MOMPREMIER,BEATRICE	00:29			
	00:03			FOUL by RAY,CHANIA

VISITORS: Baylor

Time Score Margin

HOME: West Virginia

GOOD! FT by JONES,ALEXIS

00:03 43-71 V 28

GOOD! FT by JONES,ALEXIS

00:03 43-72 V 29

Baylor 91, West Virginia 56

Period 3-only	In Paint	Off T/O	2nd Chance	Fast Break	Bench	
BU	12	6	10	2	6	Score tied - 0 times
WVU	6	2	2	2	0	Lead changed - 0 times

Baylor vs West Virginia
1/4/2017; 7:00 p.m. at WVU Coliseum, Morgantown, W.Va.
Period 4 Play-By-Play

VISITORS: Baylor	Time	Score	Margin	HOME: West Virginia
SUB IN: COX,LAUREN	10:00			
SUB IN: CHOU,NATALIE	10:00			
SUB IN: MOMPREMIER,BEATRICE	10:00			
SUB OUT: WALLACE,KRISTY	10:00			
SUB OUT: DAVIS,NINA	10:00			
SUB OUT: BROWN,KALANI	10:00			
	10:00			SUB IN: KING,KRISTINA
	10:00			SUB OUT: PARDEE,KATRINA
	09:57			MISSED JUMPER by MONTGOMERY,LANAY
REBOUND (DEF) by COX,LAUREN	09:57			
MISSED JUMPER by COX,LAUREN	09:36			
REBOUND (OFF) by COX,LAUREN	09:36			
MISSED JUMPER by COX,LAUREN	09:33			
	09:33			REBOUND (DEF) by MONTGOMERY,LANAY
	09:05			MISSED JUMPER by KING,KRISTINA
REBOUND (DEF) by MOMPREMIER,BEATRICE	09:05			
	08:53			FOUL by RAY,CHANIA
MISSED JUMPER by COX,LAUREN	08:43			
	08:43			REBOUND (DEF) by MULDROW,TEANA
	08:33	45-72	V 27	GOOD! LAYUP by KING,KRISTINA [PNT]
TURNOVER by MOMPREMIER,BEATRICE	08:13			
	08:12			SUB IN: PARDEE,KATRINA
	08:12			SUB OUT: RAY,CHANIA
	08:02			MISSED JUMPER by PARDEE,KATRINA
REBOUND (DEF) by CHOU,NATALIE	08:02			
MISSED JUMPER by JONES,ALEXIS	07:51			
	07:51			REBOUND (DEF) by MULDROW,TEANA
	07:36			MISSED JUMPER by MARTIN,TYNICE
REBOUND (DEF) by COX,LAUREN	07:36			
MISSED 3PTR by CHOU,NATALIE	07:30			
REBOUND (OFF) by MOMPREMIER,BEATRICE	07:30			
MISSED JUMPER by MOMPREMIER,BEATRICE	07:25			
	07:25			REBOUND (DEF) by KING,KRISTINA
	07:17			TURNOVER by KING,KRISTINA
	07:17			SUB IN: MARTIN,ANJA
	07:17			SUB OUT: KING,KRISTINA
GOOD! LAYUP by PRINCE,ALEXIS [PNT]	07:06	45-74	V 29	
ASSIST by COX,LAUREN	07:06			
	06:49			MISSED LAYUP by MARTIN,ANJA
BLOCK by COX,LAUREN	06:49			
REBOUND (DEF) by PRINCE,ALEXIS	06:47			
GOOD! LAYUP by MOMPREMIER,BEATRICE [FB/PNT]	06:40	45-76	V 31	
ASSIST by JONES,ALEXIS	06:40			
FOUL by JONES,ALEXIS	06:26			
SUB IN: CAVE,KHADIJIAH	06:26			
SUB IN: COHEN,DEKEIYA	06:26			
SUB OUT: PRINCE,ALEXIS	06:26			
SUB OUT: MOMPREMIER,BEATRICE	06:26			
	06:26			SUB IN: RAY,CHANIA
	06:26			SUB OUT: PARDEE,KATRINA
	06:20			MISSED LAYUP by MONTGOMERY,LANAY
REBOUND (DEF) by COHEN,DEKEIYA	06:20			
MISSED JUMPER by JONES,ALEXIS	05:59			

VISITORS: Baylor	Time	Score	Margin	HOME: West Virginia
	05:59			REBOUND (DEF) by RAY,CHANIA
	05:51			MISSED LAYUP by MARTIN,TYNICE
REBOUND (DEF) by COHEN,DEKEIYA	05:51			
TURNOVER by JONES,ALEXIS	05:46			
	05:44			STEAL by MARTIN,ANJA
	05:40			MISSED LAYUP by RAY,CHANIA
	05:40			REBOUND (OFF) by MARTIN,ANJA
FOUL by JONES,ALEXIS	05:40			
SUB IN: WALLACE,KRISTY	05:40			
SUB OUT: JONES,ALEXIS	05:40			
	05:31			MISSED JUMPER by MARTIN,TYNICE
REBOUND (DEF) by WALLACE,KRISTY	05:31			
MISSED LAYUP by CAVE,KHADIJIAH	05:24			
REBOUND (OFF) by TEAM	05:24			
	05:19			FOUL by MONTGOMERY,LANAY
GOOD! FT by COX,LAUREN	05:19	45-77	V 32	
GOOD! FT by COX,LAUREN	05:19	45-78	V 33	
	05:01			MISSED 3PTR by RAY,CHANIA
REBOUND (DEF) by COHEN,DEKEIYA	05:01			
GOOD! 3PTR by COX,LAUREN	04:52	45-81	V 36	
	04:37	47-81	V 34	GOOD! LAYUP by MONTGOMERY,LANAY [PNT]
TURNOVER by WALLACE,KRISTY	04:26			
	04:24			STEAL by MULDROW,TEANA
FOUL by COX,LAUREN	04:10			
	04:10			TIMEOUT MEDIA
	04:10			MISSED FT by MONTGOMERY,LANAY
	04:10			REBOUND (DEADB) by TEAM
	04:10	48-81	V 33	GOOD! FT by MONTGOMERY,LANAY
SUB IN: LANDRUM,CALVEION	04:10			
SUB OUT: CHOU,NATALIE	04:10			
TURNOVER by WALLACE,KRISTY	04:07			
	04:07			SUB IN: RHODES,DESIREE
	04:07			SUB OUT: MONTGOMERY,LANAY
FOUL by COHEN,DEKEIYA	03:46			
	03:45			MISSED JUMPER by MARTIN,TYNICE
	03:45			REBOUND (OFF) by RAY,CHANIA
	03:39	51-81	V 30	GOOD! 3PTR by MARTIN,TYNICE
	03:39			ASSIST by RAY,CHANIA
MISSED LAYUP by WALLACE,KRISTY	03:10			
REBOUND (OFF) by CAVE,KHADIJIAH	03:10			
MISSED JUMPER by CAVE,KHADIJIAH	03:07			
REBOUND (OFF) by COHEN,DEKEIYA	03:07			
GOOD! LAYUP by COHEN,DEKEIYA [PNT]	03:03	51-83	V 32	
	02:45			MISSED JUMPER by RAY,CHANIA
REBOUND (DEF) by COHEN,DEKEIYA	02:45			
GOOD! JUMPER by COX,LAUREN	02:29	51-85	V 34	
ASSIST by LANDRUM,CALVEION	02:29			
SUB IN: CHOU,NATALIE	02:21			
SUB OUT: WALLACE,KRISTY	02:21			
FOUL by COX,LAUREN	02:10			
	02:10	52-85	V 33	GOOD! FT by MARTIN,TYNICE
	02:10	53-85	V 32	GOOD! FT by MARTIN,TYNICE
	02:10			SUB IN: KING,KRISTINA
	02:10			SUB OUT: MULDROW,TEANA
GOOD! JUMPER by CHOU,NATALIE	02:01	53-87	V 34	
FOUL by COHEN,DEKEIYA	01:39			
	01:39			MISSED FT by MARTIN,TYNICE
	01:39			REBOUND (DEADB) by TEAM

VISITORS: Baylor	Time	Score	Margin	HOME: West Virginia
	01:39	54-87	V 33	GOOD! FT by MARTIN,TYNICE
	01:39			SUB IN: THOMAS,BAILEY
	01:39			SUB OUT: MARTIN,TYNICE
GOOD! JUMPER by COX,LAUREN	01:30	54-89	V 35	
ASSIST by CHOU,NATALIE	01:30			
	01:03			MISSED 3PTR by RAY,CHANIA
	01:03			REBOUND (OFF) by KING,KRISTINA
FOUL by COX,LAUREN	01:01			
	01:01			MISSED FT by KING,KRISTINA
	01:01			REBOUND (DEADB) by TEAM
	01:01			MISSED FT by KING,KRISTINA
REBOUND (DEF) by TEAM	01:01			
SUB IN: MOMPRESIER,BEATRICE	01:01			
SUB OUT: COX,LAUREN	01:01			
GOOD! LAYUP by MOMPRESIER,BEATRICE [PNT]	00:52	54-91	V 37	
ASSIST by LANDRUM,CALVEION	00:52			
	00:35			MISSED JUMPER by KING,KRISTINA
REBOUND (DEF) by COHEN,DEKEIYA	00:35			
MISSED JUMPER by CHOU,NATALIE	00:27			
	00:27			REBOUND (DEF) by RAY,CHANIA
	00:20	56-91	V 35	GOOD! LAYUP by MARTIN,ANJA [PNT]
	00:20			ASSIST by RAY,CHANIA

Baylor 91, West Virginia 56

Period 4-only	In Paint	Off T/O	2nd Chance	Fast Break	Bench	
BU	8	2	4	2	17	Score tied - 0 times
WVU	6	4	3	0	4	Lead changed - 0 times

Baylor vs West Virginia
1/4/2017; 7:00 p.m. at WVU Coliseum, Morgantown, W.Va.
Scoring/Runs Reference

Period 1					
Baylor		Score	Marg		West Virginia
09:55 - BROWN LAYUP [P]	2	2-0	-2		
		2-3	1	3	MARTIN 3PTR - 09:06
08:20 - JONES 3PTR	3	5-3	-2		
07:24 - MOMPremier LAYUP [P]	2	7-3	-4		
		7-5	-2	2	MULDROW JUMPER - 07:08
06:22 - BROWN FT	1	8-5	-3		
		8-7	-1	2	RAY JUMPER [P] - 05:49
05:31 - BROWN LAYUP [P]	2	10-7	-3		
04:28 - BROWN LAYUP [P]	2	12-7	-5		
04:01 - BROWN JUMPER	2	14-7	-7		
03:29 - BROWN JUMPER [P]	2	16-7	-9		
02:51 - PRINCE JUMPER [P]	2	18-7	-11		
		18-9	-9	2	MONTGOMERY LAYUP [P] - 02:20
		18-12	-6	3	MULDROW 3PTR - 01:46
01:20 - CHOU LAYUP [P]	2	20-12	-8		
		20-14	-6	2	RAY LAYUP [P][F] - 00:51

Period 2					
Baylor		Score	Marg		West Virginia
08:35 - JONES JUMPER [P]	2	22-14	-8		
		22-15	-7	1	MONTGOMERY FT - 08:14
07:03 - BROWN LAYUP [P]	2	24-15	-9		
06:19 - DAVIS LAYUP [P]	2	26-15	-11		
05:18 - JONES LAYUP [P]	2	28-15	-13		
04:25 - JONES JUMPER	2	30-15	-15		
		30-17	-13	2	MULDROW LAYUP [P] - 04:11
03:52 - BROWN FT	1	31-17	-14		
03:52 - BROWN FT	1	32-17	-15		
		32-19	-13	2	KING LAYUP [P][F] - 02:53
02:37 - JONES 3PTR	3	35-19	-16		
		35-20	-15	1	RAY FT - 01:28
01:16 - DAVIS LAYUP [P]	2	37-20	-17		
		37-22	-15	2	MONTGOMERY JUMPER [P] - 01:04
		37-23	-14	1	MONTGOMERY FT - 01:03
00:49 - PRINCE JUMPER [P]	2	39-23	-16		
		39-24	-15	1	RAY FT - 00:41
		39-25	-14	1	RAY FT - 00:41
00:24 - JONES 3PTR	3	42-25	-17		
		42-27	-15	2	RAY LAYUP [P][F] - 00:00

Period 3

Baylor	Score	Marg	West Virginia
09:32 - DAVIS FT	1	43-27 -16	
09:32 - DAVIS FT	1	44-27 -17	
		44-30 -14	3 PARDEE 3PTR - 09:11
07:59 - JONES FT	1	45-30 -15	
07:59 - JONES FT	1	46-30 -16	
07:38 - PRINCE LAYUP [P] [F]	2	48-30 -18	
06:58 - WALLACE LAYUP [P]	2	50-30 -20	
06:29 - BROWN FT	1	51-30 -21	
06:15 - WALLACE FT	1	52-30 -22	
06:15 - WALLACE FT	1	53-30 -23	
06:15 - WALLACE FT	1	54-30 -24	
06:15 - WALLACE FT	1	55-30 -25	
		55-32 -23	2 MONTGOMERY LAYUP [P] - 06:00
05:17 - JONES JUMPER	2	57-32 -25	
04:59 - DAVIS LAYUP [P]	2	59-32 -27	
		59-33 -26	1 MARTIN FT - 04:14
		59-34 -25	1 MARTIN FT - 04:14
		59-37 -22	3 MULDROW 3PTR - 03:48
03:28 - PRINCE LAYUP [P]	2	61-37 -24	
		61-39 -22	2 MULDROW LAYUP [P] [F] - 03:21
03:01 - PRINCE 3PTR	3	64-39 -25	
		64-41 -23	2 MULDROW JUMPER [P] - 02:31
		64-42 -22	1 MULDROW FT - 02:17
		64-43 -21	1 MULDROW FT - 02:17
01:49 - MOMPREMIE LAYUP [P]	2	66-43 -23	
01:28 - MOMPREMIE FT	1	67-43 -24	
01:28 - MOMPREMIE FT	1	68-43 -25	
00:52 - MOMPREMIE LAYUP [P]	2	70-43 -27	
00:03 - JONES FT	1	71-43 -28	
00:03 - JONES FT	1	72-43 -29	

Period 4

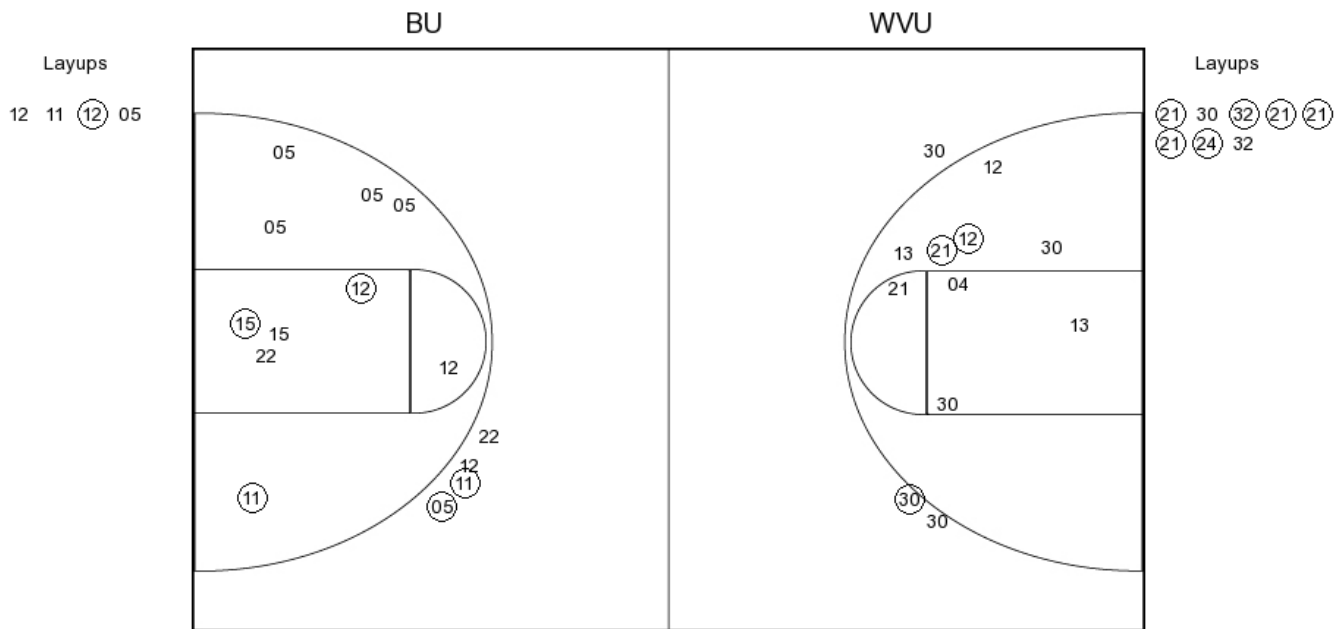
Baylor	Score	Marg	West Virginia
		72-45 -27	2 KING LAYUP [P] - 08:33
07:06 - PRINCE LAYUP [P]	2	74-45 -29	
06:40 - MOMPREMIE LAYUP [P] [F]	2	76-45 -31	
05:19 - COX FT	1	77-45 -32	
05:19 - COX FT	1	78-45 -33	
04:52 - COX 3PTR	3	81-45 -36	
		81-47 -34	2 MONTGOMERY LAYUP [P] - 04:37
		81-48 -33	1 MONTGOMERY FT - 04:10
		81-51 -30	3 MARTIN 3PTR - 03:39
03:03 - COHEN LAYUP [P]	2	83-51 -32	
02:29 - COX JUMPER	2	85-51 -34	
		85-52 -33	1 MARTIN FT - 02:10
		85-53 -32	1 MARTIN FT - 02:10
02:01 - CHOU JUMPER	2	87-53 -34	
		87-54 -33	1 MARTIN FT - 01:39
01:30 - COX JUMPER	2	89-54 -35	
00:52 - MOMPREMIE LAYUP [P]	2	91-54 -37	
		91-56 -35	2 MARTIN LAYUP [P] - 00:20

Baylor vs West Virginia

OFFICIAL SHOT CHART

1/4/2017 at WVU Coliseum, Morgantown, W.Va.

PERIOD 1



BU PERIOD 1

FG Made	18
FG Attempted	44
3PFG Made	3
3PFG Attempted	8

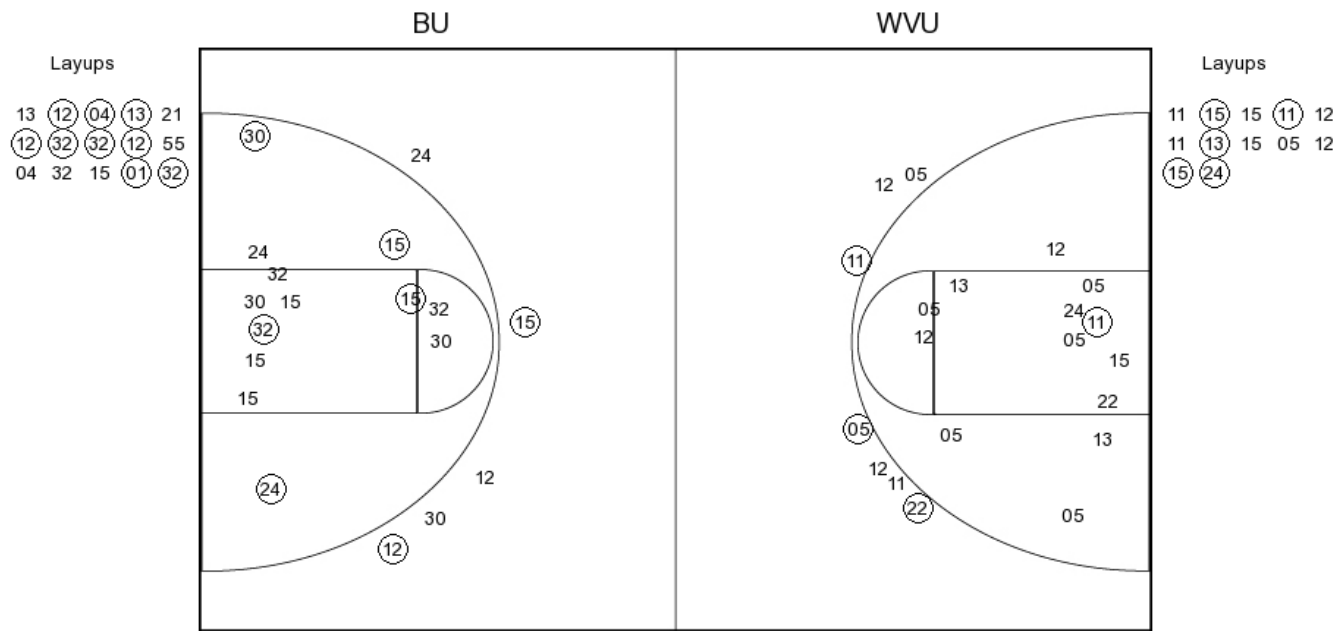
WVU PERIOD 1

FG Made	10
FG Attempted	29
3PFG Made	2
3PFG Attempted	6

Baylor vs West Virginia
OFFICIAL SHOT CHART

1/4/2017 at WVU Coliseum, Morgantown, W.Va.

PERIOD 2



BU PERIOD 2

FG Made
 FG Attempted
 3PFG Made
 3PFG Attempted

WVU PERIOD 2

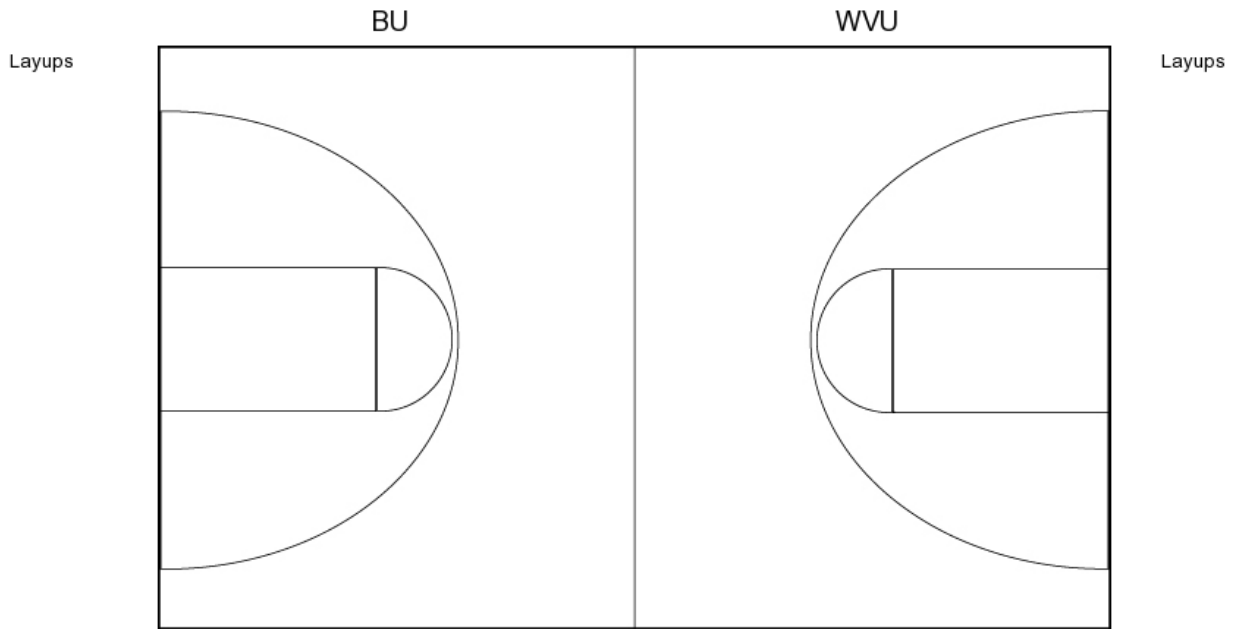
FG Made
 FG Attempted
 3PFG Made
 3PFG Attempted

Baylor vs West Virginia

OFFICIAL SHOT CHART

1/4/2017 at WVU Coliseum, Morgantown, W.Va.

PERIOD 3



BU PERIOD 3

FG Made	16
FG Attempted	33
3PFG Made	2
3PFG Attempted	4

WVU PERIOD 3

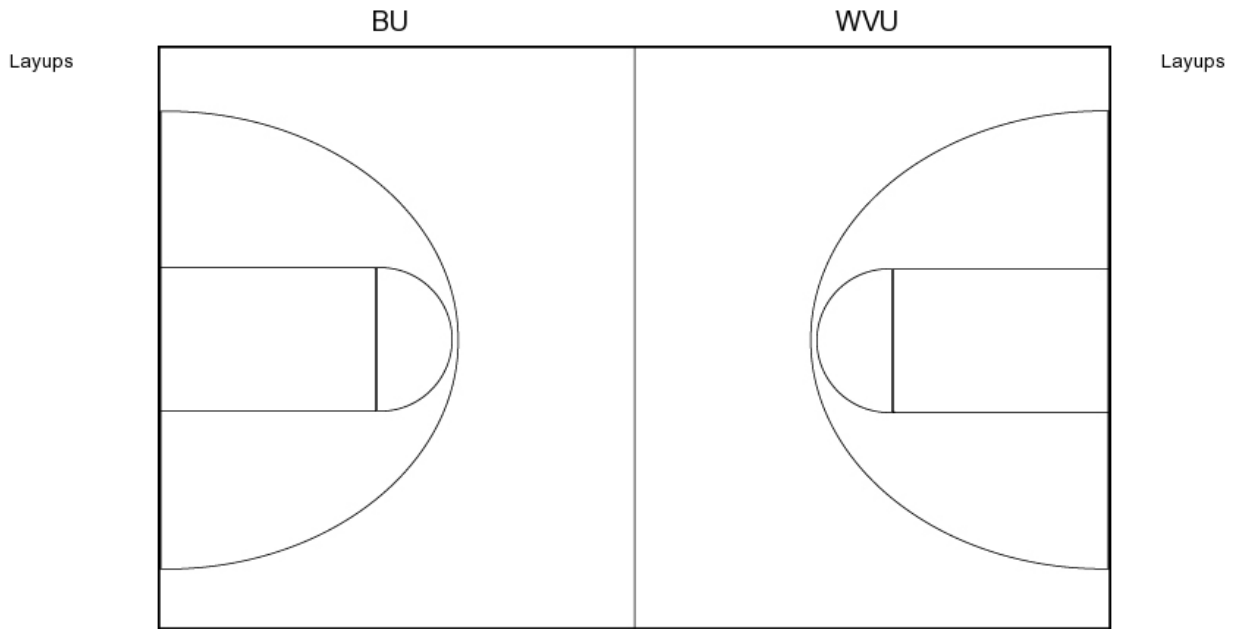
FG Made	9
FG Attempted	32
3PFG Made	3
3PFG Attempted	7

Baylor vs West Virginia

OFFICIAL SHOT CHART

1/4/2017 at WVU Coliseum, Morgantown, W.Va.

PERIOD 4



BU PERIOD 4

FG Made
FG Attempted
3PFG Made
3PFG Attempted

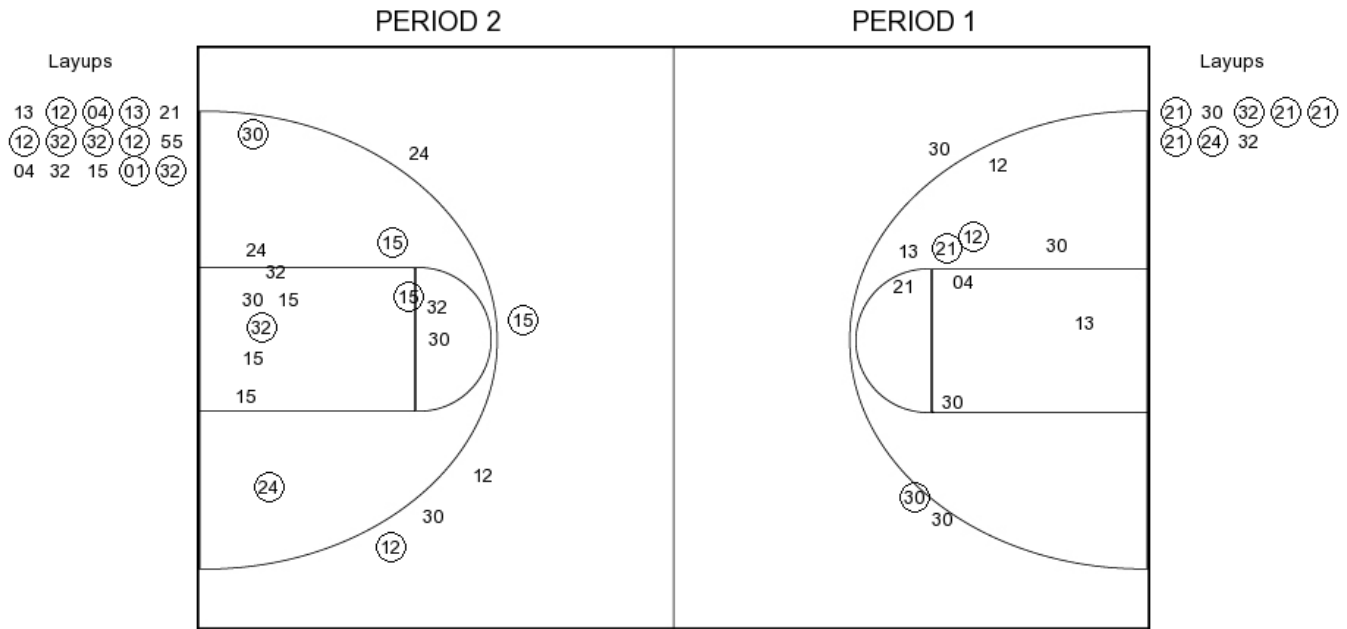
WVU PERIOD 4

FG Made
FG Attempted
3PFG Made
3PFG Attempted

Baylor vs West Virginia
OFFICIAL SHOT CHART

1/4/2017 at WVU Coliseum, Morgantown, W.Va.

Baylor



BU PERIOD 1

FG Made	18
FG Attempted	44
3PFG Made	3
3PFG Attempted	8

BU PERIOD 2

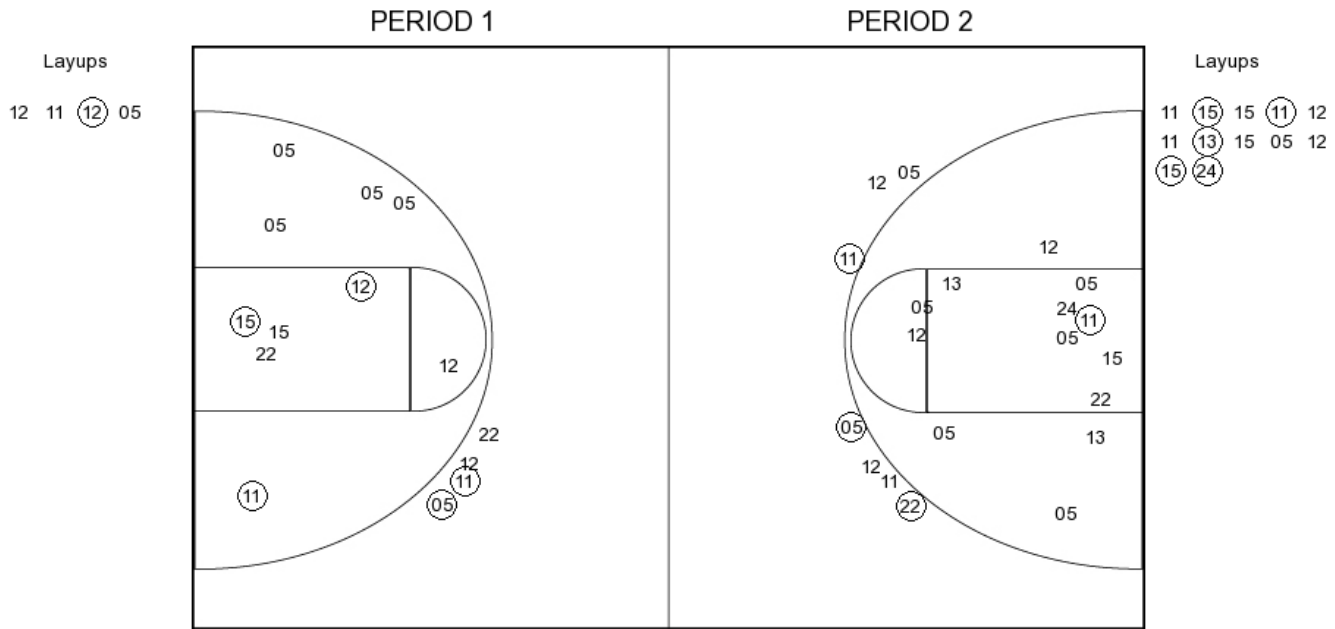
FG Made	
FG Attempted	
3PFG Made	
3PFG Attempted	

Baylor vs West Virginia

OFFICIAL SHOT CHART

1/4/2017 at WVU Coliseum, Morgantown, W.Va.

West Virginia



WVU PERIOD 1

FG Made	10
FG Attempted	29
3PFG Made	2
3PFG Attempted	6

WVU PERIOD 2

FG Made	
FG Attempted	
3PFG Made	
3PFG Attempted	