



WYOMING @ AIR FORCE

12/29/2016

Clune Arena - USAF Academy, Colo.

FINAL STATS

Wyoming

(8-3, 0-0 MW)

66

Air Force

(2-8, 0-0 MW)

54

Start Time: 7 pm

Officials: In'Fini Robinson, Robert Strong, Wanda Szeremeta

Attendance: 386

Official Basketball Box Score -- Game Totals -- Final Statistics

Wyoming vs Air Force

12/29/2016 7 pm at Clune Arena - USAF Academy, Colo.

Wyoming 66 - 8-3, 0-0 MW

##	Player	S	Total			Rebounds			PF	TP	A	TO	Blk	Stl	Min
			FG-FGA	3PT	FG-FGA	FT-FTA	Off Reb	Def Reb							
13	ROBERTS,LIV	g	6-13	2-3	0-0	0	7	7	2	14	1	1	0	0	30
14	BAKER,NATALIE	f	0-3	0-1	2-2	2	9	11	2	2	1	1	0	1	19
22	TAPIA,CLARA	g	1-4	0-1	2-2	0	1	1	3	4	7	5	0	2	35
23	COTTON,BAILEE	f	2-5	0-0	0-1	1	2	3	3	4	1	1	0	0	15
33	LIGOCKI,HAILEY	g	3-6	0-0	4-4	0	1	1	1	10	3	2	0	0	28
04	RUSK,TAYLOR		2-6	1-2	2-4	1	6	7	3	7	1	0	1	2	27
12	GOMEZ,MARTA		5-7	2-2	5-6	0	2	2	1	17	2	2	2	0	26
42	CAMPBELL,MARLEAH		1-1	0-0	0-0	0	1	1	2	2	1	0	0	0	8
44	TUCKER,RACHELLE		3-6	0-0	0-0	0	5	5	1	6	0	0	0	0	12
TEAM						2	1	3	0		1				
TOTALS			23-51	5-9	15-19	6	35	41	18	66	17	13	3	5	200

Deadball Rebounds: 2,0

FG %	1st Half: 9-23	39.1%	2nd Half: 14-28	50.0%	Game: 23-51	45.1%							
	1st Qtr 3-10	30.0%	2nd Qtr 6-13	46.2%	3rd Qtr 8-17	47.1%	4th Qtr 6-11	54.5%					
3FG %	1st Half: 1-3	33.3%	2nd Half: 4-6	66.7%	Game: 5-9	55.6%							
	1st Qtr 0-0	0%	2nd Qtr 1-3	33.3%	3rd Qtr 2-3	66.7%	4th Qtr 2-3	66.7%					
FT %	1st Half: 5-7	71.4%	2nd Half: 10-12	83.3%	Game: 15-19	78.9%							
	1st Qtr 2-2	100.0%	2nd Qtr 3-5	60.0%	3rd Qtr 2-2	100.0%	4th Qtr 8-10	80.0%					

Air Force 54 - 2-8, 0-0 MW

##	Player	S	Total			Rebounds			PF	TP	A	TO	Blk	Stl	Min
			FG-FGA	3PT	FG-FGA	FT-FTA	Off Reb	Def Reb							
00	BENNETT,DEE	f	1-10	0-1	2-2	1	12	13	3	4	2	2	2	0	35
10	ITUGBU,VENESSANNAH	g	1-4	0-0	0-1	2	1	3	2	2	4	0	0	1	22
11	PORTER,CORTNEY	g	10-18	0-1	4-7	1	3	4	3	24	2	3	0	3	31
33	FORDE,MARIAH	g	3-11	1-6	0-0	0	1	1	4	7	1	2	0	0	24
55	HUFFMAN,KASSADY	f	5-12	0-0	3-5	1	2	3	2	13	0	0	3	0	27
05	FALVEY,SARAH		0-1	0-0	0-0	0	1	1	2	0	0	0	0	0	14
12	DAVIS,KAILIN		2-4	0-0	0-0	0	1	1	2	4	2	2	0	0	21
25	CHAPMAN,ERIKKA		0-4	0-0	0-0	0	1	1	2	0	1	0	0	1	19
32	GLAAB,DARBY		0-0	0-0	0-0	0	2	2	1	0	0	0	0	0	7
TEAM						5	0	5	0		0				
TOTALS			22-64	1-8	9-15	10	24	34	21	54	12	9	5	5	200

Deadball Rebounds: 3,0

FG %	1st Half: 8-29	27.6%	2nd Half: 14-35	40.0%	Game: 22-64	34.4%							
	1st Qtr 5-14	35.7%	2nd Qtr 3-15	20.0%	3rd Qtr 5-19	26.3%	4th Qtr 9-16	56.3%					
3FG %	1st Half: 0-3	00.0%	2nd Half: 1-5	20.0%	Game: 1-8	12.5%							
	1st Qtr 0-1	00.0%	2nd Qtr 0-2	00.0%	3rd Qtr 1-4	25.0%	4th Qtr 0-1	00.0%					
FT %	1st Half: 6-10	60.0%	2nd Half: 3-5	60.0%	Game: 9-15	60.0%							
	1st Qtr 4-8	50.0%	2nd Qtr 2-2	100.0%	3rd Qtr 2-3	66.7%	4th Qtr 1-2	50.0%					

Officials: In'Fini Robinson, Robert Strong, Wanda Szeremeta

Technical Fouls: Wyoming- None. Air Force- None.

Attendance: 386

Score by periods	1st	2nd	3rd	4th	Total
Wyoming	8	16	20	22	66
Air Force	14	8	13	19	54

Points	In		Off		Fast	Bench
	Paint	T/O	Paint	T/O		
WY	22	9	4	4	4	32
AF	24	9	4	8	8	4

Last FG - WY 4th-01:28, AF 4th-00:16.

Largest lead - Wyoming by 12 4th-00:32; Air Force by 10 2nd-08:22

WY led for 18:01. AF led for 18:16. Game was tied for 3:34.

Score tied - 3 times
Lead changed - 5 times

Official Basketball Box Score -- Game Totals -- First Half Statistics

Wyoming vs Air Force

12/29/2016 7 pm at Clune Arena - USAF Academy, Colo.

Wyoming 24 • 8-3, 0-0 MW

##	Player	S	Total			Rebounds			PF	TP	A	TO	Blk	Stl	Min
			FG-FGA	3PT FG-FGA	FT-FTA	Off Reb	Def Reb	Tot Reb							
13	ROBERTS,LIV	g	2-4	0-1	0-0	0	4	4	2	4	0	1	0	0	13
14	BAKER,NATALIE	f	0-1	0-0	0-0	2	4	6	2	0	1	0	0	0	9
22	TAPIA,CLARA	g	0-1	0-1	2-2	0	0	0	1	2	1	5	0	1	16
23	COTTON,BAILEE	f	2-4	0-0	0-1	1	1	2	2	4	1	1	0	0	10
33	LIGOCKI,HAILEY	g	2-5	0-0	2-2	0	0	0	1	6	3	2	0	0	17
04	RUSK,TAYLOR		1-3	0-0	1-2	0	4	4	1	3	1	0	1	1	14
12	GOMEZ,MARTA		1-1	1-1	0-0	0	1	1	1	3	0	2	0	0	11
42	CAMPBELL,MARLEAH		0-0	0-0	0-0	0	0	0	1	0	0	0	0	0	2
44	TUCKER,RACHELLE		1-4	0-0	0-0	0	3	3	0	2	0	0	0	0	8
TEAM						2	1	3	0		1				
Totals			9-23	1-3	5-7	5	18	23	11	24	7	12	1	2	100

FG %	1st Qtr	3-10	30.0%	2nd Qtr	6-13	46.2%	Half:	9-23	39.1%
3FG %	1st Qtr	0-0	0%	2nd Qtr	1-3	33.3%	Half:	1-3	33.3%
FT %	1st Qtr	2-2	100.0%	2nd Qtr	3-5	60.0%	Half:	5-7	71.4%

Air Force 22 • 2-8, 0-0 MW

##	Player	S	Total			Rebounds			PF	TP	A	TO	Blk	Stl	Min
			FG-FGA	3PT FG-FGA	FT-FTA	Off Reb	Def Reb	Tot Reb							
00	BENNETT,DEE	f	1-6	0-0	2-2	0	6	6	0	4	0	0	2	0	17
10	ITUGBU,VENESSANNAH	g	1-2	0-0	0-1	1	1	2	2	2	1	0	0	1	12
11	PORTER,CORTNEY	g	5-9	0-1	2-3	1	0	1	0	12	0	2	0	2	16
33	FORDE,MARIAH	g	1-4	0-2	0-0	0	0	0	2	2	0	1	0	0	7
55	HUFFMAN,KASSADY	f	0-3	0-0	2-4	0	0	0	2	2	0	0	2	0	9
05	FALVEY,SARAH		0-1	0-0	0-0	0	1	1	1	0	0	0	0	0	10
12	DAVIS,KAILIN		0-1	0-0	0-0	0	1	1	2	0	2	2	0	0	11
25	CHAPMAN,ERIKA		0-3	0-0	0-0	0	1	1	2	0	0	0	0	1	13
32	GLAAB,DARBY		0-0	0-0	0-0	0	0	0	1	0	0	0	0	0	5
TEAM						3	0	3	0		0				
Totals			8-29	0-3	6-10	5	10	15	12	22	3	5	4	4	100

FG %	1st Qtr	5-14	35.7%	2nd Qtr	3-15	20.0%	Half:	8-29	27.6%
3FG %	1st Qtr	0-1	00.0%	2nd Qtr	0-2	00.0%	Half:	0-3	00.0%
FT %	1st Qtr	4-8	50.0%	2nd Qtr	2-2	100.0%	Half:	6-10	60.0%

Officials: In'Fini Robinson, Robert Strong, Wanda Szeremeta
 Technical Fouls: Wyoming- None. Air Force- None.

Score by periods	1st	2nd	3rd	4th	Total
Wyoming	8	16	20	22	66
Air Force	14	8	13	19	54

Points	In Paint	Off T/O	2nd Chance	Fast Break	Bench
WY	12	5	2	2	8
	12	9	5	6	0

Last FG - WY 2nd-00:26, AF 2nd-03:17.
 WY led for 0:51. AF led for 17:53. Game was tied for 1:16.

Score tied - 1 times
 Lead changed - 3 times

Wyoming vs Air Force
12/29/2016; 7 pm at Clune Arena - USAF Academy, Colo.
Period 1 Play-By-Play

VISITORS: Wyoming	Time	Score	Margin	HOME: Air Force
TURNOVER by TAPIA,CLARA	09:55			
FOUL by BAKER,NATALIE	09:33			
	09:33	1-0	H 1	GOOD! FT by HUFFMAN,KASSADY
	09:33	2-0	H 2	GOOD! FT by HUFFMAN,KASSADY
MISSED LAYUP by COTTON,BAILEE	09:19			
	09:19			BLOCK by BENNETT,DEE
REBOUND (OFF) by TEAM	09:18			
	09:16			FOUL by FORDE,MARIAH
MISSED JUMPER by ROBERTS,LIV	09:15			
REBOUND (OFF) by BAKER,NATALIE	09:15			
MISSED LAYUP by LIGOCKI,HAILEY	09:02			
	09:02			REBOUND (DEF) by ITUGBU,VENESSANNAH
	08:55	4-0	H 4	GOOD! LAYUP by FORDE,MARIAH [FB/PNT]
	08:55			ASSIST by ITUGBU,VENESSANNAH
TURNOVER by LIGOCKI,HAILEY	08:30			
	08:28			STEAL by PORTER,CORTNEY
	08:24	6-0	H 6	GOOD! LAYUP by PORTER,CORTNEY [FB/PNT]
MISSED LAYUP by COTTON,BAILEE	08:06			
	08:06			BLOCK by HUFFMAN,KASSADY
REBOUND (OFF) by TEAM	08:05			
TURNOVER by TEAM	08:04			
SUB IN: TUCKER,RACHELLE	07:49			
SUB OUT: COTTON,BAILEE	07:49			
	07:33			MISSED JUMPER by HUFFMAN,KASSADY
	07:33			REBOUND (OFF) by TEAM
	07:27			MISSED 3PTR by FORDE,MARIAH
REBOUND (DEF) by TEAM	07:27			
TURNOVER by TAPIA,CLARA	07:03			
	07:02			STEAL by ITUGBU,VENESSANNAH
	06:41			MISSED LAYUP by HUFFMAN,KASSADY
	06:41			REBOUND (OFF) by ITUGBU,VENESSANNAH
SUB IN: GOMEZ,MARTA	06:33			
SUB OUT: BAKER,NATALIE	06:33			
	06:33			SUB IN: DAVIS,KAILIN
	06:33			SUB OUT: FORDE,MARIAH
	06:32	8-0	H 8	GOOD! LAYUP by PORTER,CORTNEY [PNT]
FOUL by BAKER,NATALIE	06:32			
	06:32	9-0	H 9	GOOD! FT by PORTER,CORTNEY
GOOD! LAYUP by TUCKER,RACHELLE [PNT]	06:18	9-2	H 7	
ASSIST by COTTON,BAILEE	06:18			
	05:56	11-2	H 9	GOOD! LAYUP by ITUGBU,VENESSANNAH [PNT]
FOUL by ROBERTS,LIV	05:56			
	05:56			MISSED FT by ITUGBU,VENESSANNAH
REBOUND (DEF) by ROBERTS,LIV	05:56			
	05:56			FOUL by HUFFMAN,KASSADY
	05:56			SUB IN: CHAPMAN,ERIKA
	05:56			SUB OUT: HUFFMAN,KASSADY
TURNOVER by TAPIA,CLARA	05:45			
	05:37			TURNOVER by PORTER,CORTNEY
STEAL by TAPIA,CLARA	05:35			
MISSED LAYUP by TUCKER,RACHELLE	05:34			
	05:34			BLOCK by BENNETT,DEE
	05:32			REBOUND (DEF) by BENNETT,DEE

VISITORS: Wyoming	Time	Score	Margin	HOME: Air Force
	05:07			MISSED JUMPER by PORTER,CORTNEY
REBOUND (DEF) by TUCKER,RACHELLE	05:07			
	05:04			FOUL by CHAPMAN,ERIKA
MISSED LAYUP by TUCKER,RACHELLE	04:55			
	04:55			REBOUND (DEF) by CHAPMAN,ERIKA
	04:38			TURNOVER by DAVIS,KAILIN
TIMEOUT MEDIA	04:37			
GOOD! LAYUP by ROBERTS,LIV [PNT]	04:28	11-4	H 7	
ASSIST by LIGOCKI,HAILEY	04:28			
	04:06			SUB IN: FALVEY,SARAH
	04:06			SUB IN: FORDE,MARIAH
	04:06			SUB OUT: ITUGBU,VENESSANNAH
	04:06			SUB OUT: PORTER,CORTNEY
	04:04			MISSED JUMPER by CHAPMAN,ERIKA
REBOUND (DEF) by ROBERTS,LIV	04:04			
TURNOVER by ROBERTS,LIV	03:50			
	03:42			MISSED LAYUP by BENNETT,DEE
REBOUND (DEF) by TUCKER,RACHELLE	03:42			
TURNOVER by TAPIA,CLARA	03:34			
SUB IN: RUSK,TAYLOR	03:34			
SUB OUT: TAPIA,CLARA	03:34			
	03:34			SUB IN: HUFFMAN,KASSADY
	03:34			SUB OUT: BENNETT,DEE
	03:03			MISSED JUMPER by HUFFMAN,KASSADY
REBOUND (DEF) by TUCKER,RACHELLE	03:03			
GOOD! JUMPER by ROBERTS,LIV	02:42	11-6	H 5	
ASSIST by LIGOCKI,HAILEY	02:42			
	02:18			MISSED JUMPER by FORDE,MARIAH
REBOUND (DEF) by GOMEZ,MARTA	02:18			
	02:08			FOUL by FALVEY,SARAH
TURNOVER by GOMEZ,MARTA	01:57			
	01:35			MISSED JUMPER by DAVIS,KAILIN
BLOCK by RUSK,TAYLOR	01:35			
REBOUND (DEF) by RUSK,TAYLOR	01:34			
	01:23			FOUL by FORDE,MARIAH
GOOD! FT by LIGOCKI,HAILEY	01:23	11-7	H 4	
GOOD! FT by LIGOCKI,HAILEY	01:23	11-8	H 3	
FOUL by LIGOCKI,HAILEY	01:16			
	01:16			SUB IN: PORTER,CORTNEY
	01:16			SUB IN: ITUGBU,VENESSANNAH
	01:16			SUB IN: BENNETT,DEE
	01:16			SUB OUT: FORDE,MARIAH
	01:16			SUB OUT: DAVIS,KAILIN
	01:16			SUB OUT: CHAPMAN,ERIKA
FOUL by ROBERTS,LIV	01:04			
	01:04			MISSED FT by HUFFMAN,KASSADY
	01:04			REBOUND (DEADB) by TEAM
	01:04			MISSED FT by HUFFMAN,KASSADY
	01:04			REBOUND (OFF) by PORTER,CORTNEY
	00:38	13-8	H 5	GOOD! JUMPER by BENNETT,DEE
MISSED JUMPER by TUCKER,RACHELLE	00:15			
	00:13			BLOCK by HUFFMAN,KASSADY
	00:12			REBOUND (DEF) by BENNETT,DEE
FOUL by RUSK,TAYLOR	00:01			
	00:01			MISSED FT by PORTER,CORTNEY
	00:01			REBOUND (DEADB) by TEAM
	00:01	14-8	H 6	GOOD! FT by PORTER,CORTNEY
SUB IN: TAPIA,CLARA	00:01			

VISITORS: Wyoming	Time	Score	Margin	HOME: Air Force
SUB IN: COTTON,BAILEE	00:01			
SUB OUT: ROBERTS,LIV	00:01			
SUB OUT: TUCKER,RACHELLE	00:01			

Wyoming 8, Air Force 14

Period 1-only	In Paint	Off T/O	2nd Chance	Fast Break	Bench	
WY	4	2	0	0	2	Score tied - 0 times
AF	8	7	5	4	0	Lead changed - 0 times

Wyoming vs Air Force
12/29/2016; 7 pm at Clune Arena - USAF Academy, Colo.
Period 2 Play-By-Play

VISITORS: Wyoming	Time	Score	Margin	HOME: Air Force
SUB IN: GOMEZ,MARTA	10:00			
SUB IN: RUSK,TAYLOR	10:00			
SUB OUT: ROBERTS,LIV	10:00			
SUB OUT: BAKER,NATALIE	10:00			
	10:00			SUB IN: FALVEY,SARAH
	10:00			SUB OUT: FORDE,MARIAH
	09:47			FOUL by HUFFMAN,KASSADY
TURNOVER by LIGOCKI,HAILEY	09:36			
	09:33			STEAL by PORTER,CORTNEY
	09:31	16-8	H 8	GOOD! LAYUP by PORTER,CORTNEY [FB/PNT]
TURNOVER by GOMEZ,MARTA	09:18			
FOUL by GOMEZ,MARTA	09:18			
	09:18			SUB IN: GLAAB,DARBY
	09:18			SUB OUT: HUFFMAN,KASSADY
	08:55			MISSED JUMPER by FALVEY,SARAH
REBOUND (DEF) by RUSK,TAYLOR	08:55			
	08:45			SUB IN: DAVIS,KAILIN
	08:45			SUB OUT: FALVEY,SARAH
MISSED JUMPER by RUSK,TAYLOR	08:31			
	08:31			REBOUND (DEF) by DAVIS,KAILIN
	08:22	18-8	H 10	GOOD! JUMPER by PORTER,CORTNEY
	08:22			ASSIST by DAVIS,KAILIN
	07:54			FOUL by ITUGBU,VENESSANNAH
SUB IN: BAKER,NATALIE	07:54			
SUB IN: ROBERTS,LIV	07:54			
SUB OUT: GOMEZ,MARTA	07:54			
SUB OUT: LIGOCKI,HAILEY	07:54			
	07:54			SUB IN: CHAPMAN,ERIKA
	07:54			SUB OUT: ITUGBU,VENESSANNAH
MISSED 3PTR by ROBERTS,LIV	07:49			
	07:49			REBOUND (DEF) by BENNETT,DEE
	07:41			MISSED JUMPER by BENNETT,DEE
REBOUND (DEF) by BAKER,NATALIE	07:41			
	07:29			FOUL by GLAAB,DARBY
GOOD! FT by TAPIA,CLARA	07:29	18-9	H 9	
GOOD! FT by TAPIA,CLARA	07:29	18-10	H 8	
FOUL by TAPIA,CLARA	07:19			
	07:19			SUB IN: ITUGBU,VENESSANNAH
	07:19			SUB OUT: BENNETT,DEE
	06:53			MISSED 3PTR by PORTER,CORTNEY
REBOUND (DEF) by COTTON,BAILEE	06:53			
GOOD! LAYUP by RUSK,TAYLOR [FB/PNT]	06:45	18-12	H 6	
ASSIST by TAPIA,CLARA	06:45			
	06:25			MISSED JUMPER by CHAPMAN,ERIKA
REBOUND (DEF) by ROBERTS,LIV	06:25			
	06:14			FOUL by ITUGBU,VENESSANNAH
TURNOVER by COTTON,BAILEE	06:01			
FOUL by COTTON,BAILEE	06:01			
	05:38			MISSED JUMPER by PORTER,CORTNEY
REBOUND (DEF) by BAKER,NATALIE	05:38			
GOOD! LAYUP by COTTON,BAILEE [PNT]	05:30	18-14	H 4	
ASSIST by BAKER,NATALIE	05:30			
	05:30			FOUL by CHAPMAN,ERIKA

VISITORS: Wyoming	Time	Score	Margin	HOME: Air Force
MISSED FT by COTTON,BAILEE	05:30			
	05:30			REBOUND (DEF) by BENNETT,DEE
	05:30			SUB IN: BENNETT,DEE
	05:30			SUB OUT: GLAAB,DARBY
	05:04			MISSED LAYUP by ITUGBU,VENESSANNAH
REBOUND (DEF) by BAKER,NATALIE	05:04			
TURNOVER by TAPIA,CLARA	04:57			
	04:56			STEAL by CHAPMAN,ERIKA
	04:52			MISSED LAYUP by CHAPMAN,ERIKA
REBOUND (DEF) by ROBERTS,LIV	04:52			
MISSED LAYUP by BAKER,NATALIE	04:38			
REBOUND (OFF) by COTTON,BAILEE	04:38			
GOOD! LAYUP by COTTON,BAILEE [PNT]	04:34	18-16	H 2	
	04:34			TIMEOUT media
SUB IN: LIGOCKI,HAILEY	04:34			
SUB OUT: ROBERTS,LIV	04:34			
	04:34			SUB IN: FORDE,MARIAH
	04:34			SUB OUT: PORTER,CORTNEY
FOUL by COTTON,BAILEE	04:19			
	04:19			SUB IN: FALVEY,SARAH
	04:19			SUB OUT: ITUGBU,VENESSANNAH
	04:18			TURNOVER by FORDE,MARIAH
STEAL by RUSK,TAYLOR	04:16			
	04:16			FOUL by DAVIS,KAILIN
MISSED FT by RUSK,TAYLOR	04:16			
REBOUND (DEADB) by TEAM	04:16			
GOOD! FT by RUSK,TAYLOR	04:16	18-17	H 1	
	03:57			TURNOVER by DAVIS,KAILIN
	03:57			FOUL by DAVIS,KAILIN
	03:57			SUB IN: PORTER,CORTNEY
	03:57			SUB OUT: FORDE,MARIAH
GOOD! JUMPER by LIGOCKI,HAILEY	03:42	18-19	V 1	
ASSIST by RUSK,TAYLOR	03:42			
	03:17	20-19	H 1	GOOD! JUMPER by PORTER,CORTNEY [PNT]
	03:17			ASSIST by DAVIS,KAILIN
MISSED 3PTR by TAPIA,CLARA	03:02			
	03:02			REBOUND (DEF) by FALVEY,SARAH
	02:49			MISSED JUMPER by BENNETT,DEE
REBOUND (DEF) by BAKER,NATALIE	02:49			
MISSED JUMPER by RUSK,TAYLOR	02:35			
	02:35			REBOUND (DEF) by BENNETT,DEE
	02:16			TURNOVER by PORTER,CORTNEY
SUB IN: CAMPBELL,MARLEAH	02:16			
SUB OUT: COTTON,BAILEE	02:16			
	02:16			SUB IN: HUFFMAN,KASSADY
	02:16			SUB OUT: DAVIS,KAILIN
MISSED JUMPER by LIGOCKI,HAILEY	01:46			
REBOUND (OFF) by BAKER,NATALIE	01:46			
SUB IN: GOMEZ,MARTA	01:45			
SUB OUT: BAKER,NATALIE	01:45			
MISSED LAYUP by LIGOCKI,HAILEY	01:37			
	01:37			REBOUND (DEF) by BENNETT,DEE
FOUL by CAMPBELL,MARLEAH	01:34			
	01:34	21-19	H 2	GOOD! FT by BENNETT,DEE
	01:34	22-19	H 3	GOOD! FT by BENNETT,DEE
	01:34			SUB IN: GLAAB,DARBY
	01:34			SUB OUT: HUFFMAN,KASSADY
GOOD! 3PTR by GOMEZ,MARTA	01:15	22-22	T	

VISITORS: Wyoming	Time	Score	Margin	HOME: Air Force
ASSIST by LIGOCKI,HAILEY	01:15			
	00:53			MISSED JUMPER by PORTER,CORTNEY
	00:53			REBOUND (OFF) by TEAM
	00:39			MISSED JUMPER by BENNETT,DEE
REBOUND (DEF) by RUSK,TAYLOR	00:39			
GOOD! LAYUP by LIGOCKI,HAILEY [PNT]	00:26	22-24	V 2	
	00:20			TIMEOUT 30SEC
	00:20			SUB IN: FORDE,MARIAH
	00:20			SUB OUT: CHAPMAN,ERIKA
	00:06			MISSED 3PTR by FORDE,MARIAH
	00:06			REBOUND (OFF) by TEAM
TIMEOUT 30SEC	00:03			
	00:01			MISSED JUMPER by BENNETT,DEE
REBOUND (DEF) by RUSK,TAYLOR	00:01			

Wyoming 24, Air Force 22

Period 2-only	In Paint	Off T/O	2nd Chance	Fast Break	Bench	
WY	8	3	2	2	6	Score tied - 2 times
AF	4	2	0	2	0	Lead changed - 4 times

Official Basketball Box Score -- Game Totals -- Second Half Statistics

Wyoming vs Air Force

12/29/2016 7 pm at Clune Arena - USAF Academy, Colo.

Wyoming 42 • 8-3, 0-0 MW

##	Player	S	Total			3-Ptr			Rebounds			PF	TP	A	T	O	Blk	Stl	Min
			FG	F	FGA	3PT	FG	F	FGA	FT	F								
13	ROBERTS,LIV	g	4	9	2	2	0	0	0	3	3	0	10	1	0	0	0	0	17
14	BAKER,NATALIE	f	0	2	0	1	2	2	0	5	5	0	2	0	1	0	1	0	10
22	TAPIA,CLARA	g	1	3	0	0	0	0	0	1	1	2	2	6	0	0	1	0	19
23	COTTON,BAILEE	f	0	1	0	0	0	0	0	1	1	1	0	0	0	0	0	0	5
33	LIGOCKI,HAILEY	g	1	1	0	0	2	2	0	1	1	0	4	0	0	0	0	0	11
04	RUSK,TAYLOR		1	3	1	2	1	2	1	2	3	2	4	0	0	0	1	0	13
12	GOMEZ,MARTA		4	6	1	1	5	6	0	1	1	0	14	2	0	2	0	0	15
42	CAMPBELL,MARLEAH		1	1	0	0	0	0	0	1	1	1	2	1	0	0	0	0	6
44	TUCKER,RACHELLE		2	2	0	0	0	0	0	2	2	1	4	0	0	0	0	0	4
TEAM									0	0	0	0		0					
Totals			14	28	4	6	10	12	1	17	18	7	42	10	1	2	3		100

FG %	3rd Qtr	8-17	47.1%	4th Qtr	6-11	54.5%	Half:	14-28	50.0%
3FG %	3rd Qtr	2-3	66.7%	4th Qtr	2-3	66.7%	Half:	4-6	33.3%
FT %	3rd Qtr	2-2	100.0%	4th Qtr	8-10	80.0%	Half:	10-12	83.3%

Air Force 32 • 2-8, 0-0 MW

##	Player	S	Total			3-Ptr			Rebounds			PF	TP	A	T	O	Blk	Stl	Min
			FG	F	FGA	3PT	FG	F	FGA	FT	F								
00	BENNETT,DEE	f	0	4	0	1	0	0	1	6	7	3	0	2	2	0	0	0	18
10	ITUGBU,VENESSANNAH	g	0	2	0	0	0	0	1	0	1	0	0	3	0	0	0	0	10
11	PORTER,CORTNEY	g	5	9	0	0	2	4	0	3	3	3	12	2	1	0	1	0	15
33	FORDE,MARIAH	g	2	7	1	4	0	0	0	1	1	2	5	1	1	0	0	0	17
55	HUFFMAN,KASSADY	f	5	9	0	0	1	1	1	2	3	0	11	0	0	1	0	0	18
05	FALVEY,SARAH		0	0	0	0	0	0	0	0	0	1	0	0	0	0	0	0	4
12	DAVIS,KAILIN		2	3	0	0	0	0	0	0	0	0	4	0	0	0	0	0	10
25	CHAPMAN,ERIKA		0	1	0	0	0	0	0	0	0	0	0	1	0	0	0	0	6
32	GLAAB,DARBY		0	0	0	0	0	0	0	2	2	0	0	0	0	0	0	0	2
TEAM									2	0	2	0		0					
Totals			14	35	1	5	3	5	5	14	19	9	32	9	4	1	1		100

FG %	3rd Qtr	5-19	26.3%	4th Qtr	9-16	56.3%	Half:	14-35	40.0%
3FG %	3rd Qtr	1-4	25.0%	4th Qtr	0-1	00.0%	Half:	1-5	00.0%
FT %	3rd Qtr	2-3	66.7%	4th Qtr	1-2	50.0%	Half:	3-5	60.0%

Officials: In'Fini Robinson, Robert Strong, Wanda Szeremeta
 Technical Fouls: Wyoming- None. Air Force- None.

Score by periods	1st	2nd	3rd	4th	Total
Wyoming	8	16	20	22	66
Air Force	14	8	13	19	54

Points	In Paint	Off T/O	2nd Chance	Fast Break	Bench
WY	10	4	2	2	24
	12	0	4	2	4

Last FG - WY 4th-01:28, AF 4th-00:16.
 WY led for 17:10. AF led for 0:23. Game was tied for 2:18.

Score tied - 2 times
 Lead changed - 2 times

Wyoming vs Air Force
12/29/2016; 7 pm at Clune Arena - USAF Academy, Colo.
Period 3 Play-By-Play

VISITORS: Wyoming	Time	Score	Margin	HOME: Air Force
	09:42			MISSED JUMPER by BENNETT,DEE
REBOUND (DEF) by LIGOCKI,HAILEY	09:42			
TURNOVER by BAKER,NATALIE	09:29			
	09:27			STEAL by PORTER,CORTNEY
	09:21			MISSED JUMPER by PORTER,CORTNEY
REBOUND (DEF) by BAKER,NATALIE	09:21			
MISSED JUMPER by ROBERTS,LIV	09:08			
	09:08			REBOUND (DEF) by HUFFMAN,KASSADY
	08:58	24-24	T	GOOD! JUMPER by HUFFMAN,KASSADY
	08:58			ASSIST by ITUGBU,VENESSANNAH
MISSED LAYUP by COTTON,BAILEE	08:35			
	08:35			REBOUND (DEF) by BENNETT,DEE
	08:24	27-24	H 3	GOOD! 3PTR by FORDE,MARIAH
	08:24			ASSIST by ITUGBU,VENESSANNAH
GOOD! 3PTR by ROBERTS,LIV	08:01	27-27	T	
ASSIST by TAPIA,CLARA	08:01			
	07:36			MISSED 3PTR by FORDE,MARIAH
	07:36			REBOUND (OFF) by ITUGBU,VENESSANNAH
FOUL by COTTON,BAILEE	07:35			
	07:34			MISSED JUMPER by FORDE,MARIAH
REBOUND (DEF) by BAKER,NATALIE	07:34			
MISSED JUMPER by ROBERTS,LIV	07:23			
	07:23			REBOUND (DEF) by PORTER,CORTNEY
	07:15			MISSED LAYUP by PORTER,CORTNEY
REBOUND (DEF) by COTTON,BAILEE	07:15			
MISSED 3PTR by BAKER,NATALIE	07:00			
	07:00			REBOUND (DEF) by BENNETT,DEE
	06:46			MISSED JUMPER by BENNETT,DEE
	06:46			REBOUND (OFF) by TEAM
SUB IN: GOMEZ,MARTA	06:44			
SUB IN: TUCKER,RACHELLE	06:44			
SUB OUT: BAKER,NATALIE	06:44			
SUB OUT: COTTON,BAILEE	06:44			
	06:25			MISSED LAYUP by HUFFMAN,KASSADY
REBOUND (DEF) by TUCKER,RACHELLE	06:25			
GOOD! 3PTR by GOMEZ,MARTA	06:17	27-30	V 3	
ASSIST by TAPIA,CLARA	06:17			
	05:54			MISSED LAYUP by ITUGBU,VENESSANNAH
REBOUND (DEF) by TUCKER,RACHELLE	05:54			
MISSED JUMPER by ROBERTS,LIV	05:27			
	05:27			BLOCK by HUFFMAN,KASSADY
	05:27			REBOUND (DEF) by PORTER,CORTNEY
	05:15	29-30	V 1	GOOD! JUMPER by PORTER,CORTNEY
GOOD! JUMPER by LIGOCKI,HAILEY	05:03	29-32	V 3	
	04:44			TURNOVER by FORDE,MARIAH
STEAL by TAPIA,CLARA	04:43			
GOOD! JUMPER by TUCKER,RACHELLE [FB/PNT]	04:41	29-34	V 5	
ASSIST by TAPIA,CLARA	04:41			
	04:27			MISSED 3PTR by BENNETT,DEE
REBOUND (DEF) by ROBERTS,LIV	04:27			
GOOD! JUMPER by TUCKER,RACHELLE	04:05	29-36	V 7	
ASSIST by GOMEZ,MARTA	04:05			
	03:57			MISSED 3PTR by FORDE,MARIAH

VISITORS: Wyoming	Time	Score	Margin	HOME: Air Force
REBOUND (DEF) by TAPIA,CLARA	03:57			
	03:48			FOUL by FORDE,MARIAH
TIMEOUT media	03:48			
GOOD! FT by LIGOCKI,HAILEY	03:48	29-37	V 8	
GOOD! FT by LIGOCKI,HAILEY	03:48	29-38	V 9	
	03:48			SUB IN: CHAPMAN,ERIKA
	03:48			SUB IN: DAVIS,KAILIN
	03:48			SUB OUT: BENNETT,DEE
	03:48			SUB OUT: ITUGBU,VENESSANNAH
	03:33	31-38	V 7	GOOD! LAYUP by HUFFMAN,KASSADY [PNT]
	03:33			ASSIST by CHAPMAN,ERIKA
FOUL by TUCKER,RACHELLE	03:33			
	03:33	32-38	V 6	GOOD! FT by HUFFMAN,KASSADY
GOOD! LAYUP by GOMEZ,MARTA [PNT]	03:21	32-40	V 8	
	03:13			MISSED LAYUP by CHAPMAN,ERIKA
REBOUND (DEF) by ROBERTS,LIV	03:13			
SUB IN: RUSK,TAYLOR	03:12			
SUB OUT: TAPIA,CLARA	03:12			
MISSED JUMPER by GOMEZ,MARTA	02:47			
	02:47			REBOUND (DEF) by PORTER,CORTNEY
FOUL by RUSK,TAYLOR	02:40			
	02:40			MISSED FT by PORTER,CORTNEY
	02:40			REBOUND (DEADB) by TEAM
	02:40	33-40	V 7	GOOD! FT by PORTER,CORTNEY
SUB IN: CAMPBELL,MARLEAH	02:40			
SUB OUT: TUCKER,RACHELLE	02:40			
MISSED LAYUP by ROBERTS,LIV	02:20			
REBOUND (OFF) by RUSK,TAYLOR	02:20			
GOOD! LAYUP by CAMPBELL,MARLEAH [PNT]	02:10	33-42	V 9	
ASSIST by GOMEZ,MARTA	02:10			
SUB IN: TAPIA,CLARA	01:48			
SUB OUT: LIGOCKI,HAILEY	01:48			
	01:48			SUB IN: FALVEY,SARAH
	01:48			SUB OUT: FORDE,MARIAH
	01:47			MISSED JUMPER by HUFFMAN,KASSADY
REBOUND (DEF) by ROBERTS,LIV	01:47			
GOOD! JUMPER by GOMEZ,MARTA	01:34	33-44	V 11	
ASSIST by CAMPBELL,MARLEAH	01:34			
FOUL by TAPIA,CLARA	01:26			
	01:26			SUB IN: BENNETT,DEE
	01:26			SUB OUT: DAVIS,KAILIN
	01:16			MISSED LAYUP by BENNETT,DEE
BLOCK by GOMEZ,MARTA	01:16			
	01:16			REBOUND (OFF) by TEAM
	00:59	35-44	V 9	GOOD! JUMPER by PORTER,CORTNEY
MISSED JUMPER by ROBERTS,LIV	00:45			
	00:45			REBOUND (DEF) by BENNETT,DEE
	00:39			MISSED JUMPER by PORTER,CORTNEY
REBOUND (DEF) by RUSK,TAYLOR	00:39			
MISSED JUMPER by TAPIA,CLARA	00:11			
	00:11			REBOUND (DEF) by BENNETT,DEE
	00:03			TURNOVER by PORTER,CORTNEY
STEAL by RUSK,TAYLOR	00:02			

	Period 3-only Period 3-only	In In Paint Paint	Off Off T/O T/O	2nd 2nd Chance Chance	Fast Fast Break Break	Bench Bench	
WY		6	2	2	2	13	Score tied - 2 times
AF		2	0	2	0	0	Lead changed - 2 times

Wyoming vs Air Force
12/29/2016; 7 pm at Clune Arena - USAF Academy, Colo.
Period 4 Play-By-Play

VISITORS: Wyoming	Time	Score	Margin	HOME: Air Force
SUB IN: GOMEZ,MARTA	10:00			
SUB IN: RUSK,TAYLOR	10:00			
SUB IN: CAMPBELL,MARLEAH	10:00			
SUB OUT: ROBERTS,LIV	10:00			
SUB OUT: BAKER,NATALIE	10:00			
SUB OUT: COTTON,BAILEE	10:00			
	10:00			SUB IN: CHAPMAN,ERIKA
	10:00			SUB IN: FALVEY,SARAH
	10:00			SUB OUT: ITUGBU,VENESSANNAH
	10:00			SUB OUT: FORDE,MARIAH
	09:28			MISSED LAYUP by HUFFMAN,KASSADY
REBOUND (DEF) by CAMPBELL,MARLEAH	09:28			
	09:10			FOUL by FALVEY,SARAH
	09:10			SUB IN: FORDE,MARIAH
	09:10			SUB OUT: PORTER,CORTNEY
MISSED JUMPER by TAPIA,CLARA	08:42			
	08:42			REBOUND (DEF) by BENNETT,DEE
FOUL by CAMPBELL,MARLEAH	08:19			
	08:18			SUB IN: DAVIS,KAILIN
	08:18			SUB IN: ITUGBU,VENESSANNAH
	08:18			SUB OUT: CHAPMAN,ERIKA
	08:18			SUB OUT: FALVEY,SARAH
	08:01			MISSED JUMPER by ITUGBU,VENESSANNAH
REBOUND (DEF) by GOMEZ,MARTA	08:01			
MISSED LAYUP by RUSK,TAYLOR	07:43			
	07:43			REBOUND (DEF) by FORDE,MARIAH
	07:24	37-44	V 7	GOOD! LAYUP by HUFFMAN,KASSADY [PNT]
	07:24			ASSIST by ITUGBU,VENESSANNAH
MISSED JUMPER by GOMEZ,MARTA	07:04			
	07:04			REBOUND (DEF) by HUFFMAN,KASSADY
	06:53	39-44	V 5	GOOD! JUMPER by DAVIS,KAILIN
	06:53			ASSIST by FORDE,MARIAH
TIMEOUT 30SEC	06:45			
SUB IN: COTTON,BAILEE	06:45			
SUB IN: ROBERTS,LIV	06:45			
SUB IN: BAKER,NATALIE	06:45			
SUB OUT: GOMEZ,MARTA	06:45			
SUB OUT: CAMPBELL,MARLEAH	06:45			
SUB OUT: LIGOCKI,HAILEY	06:45			
	06:45			SUB IN: GLAAB,DARBY
	06:45			SUB OUT: HUFFMAN,KASSADY
	06:22			FOUL by BENNETT,DEE
GOOD! FT by RUSK,TAYLOR	06:22	39-45	V 6	
MISSED FT by RUSK,TAYLOR	06:22			
	06:22			REBOUND (DEF) by GLAAB,DARBY
	06:04	41-45	V 4	GOOD! JUMPER by DAVIS,KAILIN
	06:04			ASSIST by BENNETT,DEE
MISSED 3PTR by RUSK,TAYLOR	05:33			
	05:33			REBOUND (DEF) by GLAAB,DARBY
	05:23	43-45	V 2	GOOD! LAYUP by FORDE,MARIAH [FB/PNT]
GOOD! 3PTR by RUSK,TAYLOR	05:07	43-48	V 5	
ASSIST by ROBERTS,LIV	05:07			
	04:39			TURNOVER by BENNETT,DEE

VISITORS: Wyoming	Time	Score	Margin	HOME: Air Force
	04:39			FOUL by BENNETT,DEE
TIMEOUT MEDIA	04:39			
SUB IN: GOMEZ,MARTA	04:39			
SUB OUT: COTTON,BAILEE	04:39			
	04:39			SUB IN: HUFFMAN,KASSADY
	04:39			SUB IN: PORTER,CORTNEY
	04:39			SUB OUT: ITUGBU,VENESSANNAH
	04:39			SUB OUT: GLAAB,DARBY
GOOD! JUMPER by GOMEZ,MARTA	04:15	43-50	V 7	
ASSIST by TAPIA,CLARA	04:15			
	03:46	45-50	V 5	GOOD! LAYUP by HUFFMAN,KASSADY [PNT]
	03:46			ASSIST by PORTER,CORTNEY
GOOD! JUMPER by ROBERTS,LIV	03:21	45-52	V 7	
	03:04			MISSED JUMPER by DAVIS,KAILIN
REBOUND (DEF) by BAKER,NATALIE	03:04			
	02:52			TIMEOUT 30SEC
GOOD! LAYUP by ROBERTS,LIV [PNT]	02:35	45-54	V 9	
ASSIST by TAPIA,CLARA	02:35			
	02:19	47-54	V 7	GOOD! JUMPER by PORTER,CORTNEY
GOOD! LAYUP by TAPIA,CLARA [PNT]	02:01	47-56	V 9	
	01:52			MISSED 3PTR by FORDE,MARIAH
	01:52			REBOUND (OFF) by BENNETT,DEE
	01:49	49-56	V 7	GOOD! JUMPER by PORTER,CORTNEY [PNT]
	01:49			ASSIST by BENNETT,DEE
GOOD! 3PTR by ROBERTS,LIV	01:28	49-59	V 10	
ASSIST by TAPIA,CLARA	01:28			
	01:18			MISSED JUMPER by FORDE,MARIAH
BLOCK by GOMEZ,MARTA	01:18			
REBOUND (DEF) by RUSK,TAYLOR	01:17			
MISSED JUMPER by BAKER,NATALIE	00:53			
	00:53			REBOUND (DEF) by BENNETT,DEE
FOUL by TAPIA,CLARA	00:47			
	00:47	50-59	V 9	GOOD! FT by PORTER,CORTNEY
TIMEOUT 30SEC	00:47			
	00:47			MISSED FT by PORTER,CORTNEY
REBOUND (DEF) by BAKER,NATALIE	00:47			
	00:45			FOUL by PORTER,CORTNEY
	00:41			FOUL by BENNETT,DEE
MISSED FT by GOMEZ,MARTA	00:41			
REBOUND (DEADB) by TEAM	00:41			
GOOD! FT by GOMEZ,MARTA	00:41	50-60	V 10	
	00:39			MISSED JUMPER by PORTER,CORTNEY
	00:39			REBOUND (OFF) by HUFFMAN,KASSADY
	00:37			MISSED JUMPER by HUFFMAN,KASSADY
REBOUND (DEF) by BAKER,NATALIE	00:37			
	00:32			FOUL by PORTER,CORTNEY
GOOD! FT by BAKER,NATALIE	00:32	50-61	V 11	
GOOD! FT by BAKER,NATALIE	00:32	50-62	V 12	
	00:32			TIMEOUT 30SEC
	00:26	52-62	V 10	GOOD! LAYUP by HUFFMAN,KASSADY [PNT]
	00:26			ASSIST by PORTER,CORTNEY
	00:25			FOUL by FORDE,MARIAH
GOOD! FT by GOMEZ,MARTA	00:25	52-63	V 11	
GOOD! FT by GOMEZ,MARTA	00:25	52-64	V 12	
FOUL by RUSK,TAYLOR	00:22			
	00:16	54-64	V 10	GOOD! JUMPER by PORTER,CORTNEY
	00:12			FOUL by PORTER,CORTNEY
GOOD! FT by GOMEZ,MARTA	00:12	54-65	V 11	

VISITORS: Wyoming	Time	Score	Margin	HOME: Air Force
GOOD! FT by GOMEZ,MARTA	00:12	54-66	V 12	
	00:12			TIMEOUT TEAM
SUB IN: LIGOCKI,HAILEY	00:12			
SUB OUT: GOMEZ,MARTA	00:12			
	00:05			TURNOVER by BENNETT,DEE
STEAL by BAKER,NATALIE	00:04			

Wyoming 66, Air Force 54

Period 4-only	In Paint	Off T/O	2nd Chance	Fast Break	Bench	
WY	4	2	0	0	11	Score tied - 0 times
AF	10	0	2	2	4	Lead changed - 0 times

Wyoming vs Air Force
12/29/2016; 7 pm at Clune Arena - USAF Academy, Colo.
Scoring/Runs Reference

Period 1

Wyoming	Score	Marg	Air Force
	0-1	1 1	HUFFMAN FT - 09:33
	0-2	2 1	HUFFMAN FT - 09:33
	0-4	4 2	FORDE LAYUP [P] [F] - 08:55
	0-6	6 2	PORTER LAYUP [P] [F] - 08:24
	0-8	8 2	PORTER LAYUP [P] - 06:32
	0-9	9 1	PORTER FT - 06:32
06:18 - TUCKER LAYUP [P] 2	2-9	7	
	2-11	9 2	ITUGBU LAYUP [P] - 05:56
04:28 - ROBERTS LAYUP [P] 2	4-11	7	
02:42 - ROBERTS JUMPER 2	6-11	5	
01:23 - LIGOCKI FT 1	7-11	4	
01:23 - LIGOCKI FT 1	8-11	3	
	8-13	5 2	BENNETT JUMPER - 00:38
	8-14	6 1	PORTER FT - 00:01

Period 3

Wyoming	Score	Marg	Air Force
	24-24	0 2	HUFFMAN JUMPER - 08:58
	24-27	3 3	FORDE 3PTR - 08:24
08:01 - ROBERTS 3PTR 3	27-27	0	
06:17 - GOMEZ 3PTR 3	30-27	-3	
	30-29	-1 2	PORTER JUMPER - 05:15
05:03 - LIGOCKI JUMPER 2	32-29	-3	
04:41 - TUCKER JUMPER [P] [F] 2	34-29	-5	
04:05 - TUCKER JUMPER 2	36-29	-7	
03:48 - LIGOCKI FT 1	37-29	-8	
03:48 - LIGOCKI FT 1	38-29	-9	
	38-31	-7 2	HUFFMAN LAYUP [P] - 03:33
	38-32	-6 1	HUFFMAN FT - 03:33
03:21 - GOMEZ LAYUP [P] 2	40-32	-8	
	40-33	-7 1	PORTER FT - 02:40
02:10 - CAMPBELL LAYUP [P] 2	42-33	-9	
01:34 - GOMEZ JUMPER 2	44-33	-11	
	44-35	-9 2	PORTER JUMPER - 00:59

Period 2

Wyoming	Score	Marg	Air Force
	8-16	8 2	PORTER LAYUP [P] [F] - 09:31
	8-18	10 2	PORTER JUMPER - 08:22
07:29 - TAPIA FT 1	9-18	9	
07:29 - TAPIA FT 1	10-18	8	
06:45 - RUSK LAYUP [P] [F] 2	12-18	6	
05:30 - COTTON LAYUP [P] 2	14-18	4	
04:34 - COTTON LAYUP [P] 2	16-18	2	
04:16 - RUSK FT 1	17-18	1	
03:42 - LIGOCKI JUMPER 2	19-18	-1	
	19-20	1 2	PORTER JUMPER [P] - 03:17
	19-21	2 1	BENNETT FT - 01:34
	19-22	3 1	BENNETT FT - 01:34
01:15 - GOMEZ 3PTR 3	22-22	0	
00:26 - LIGOCKI LAYUP [P] 2	24-22	-2	

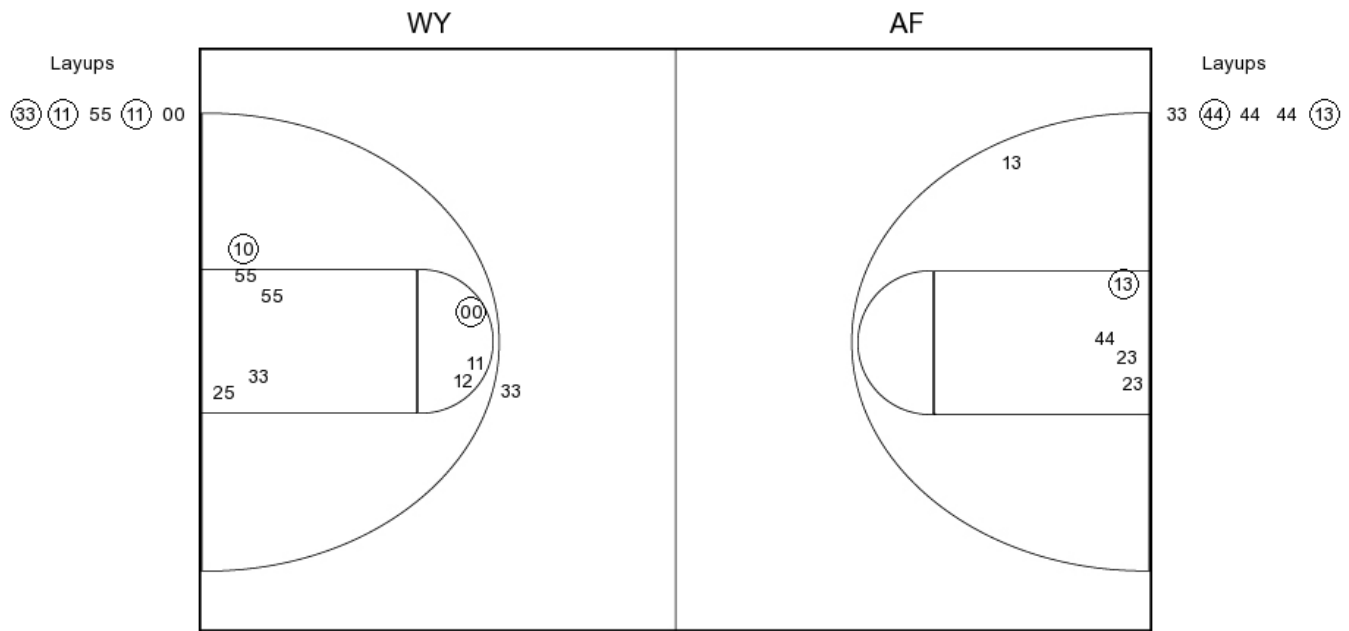
Period 4

Wyoming	Score	Marg	Air Force
	44-37	-7 2	HUFFMAN LAYUP [P] - 07:24
	44-39	-5 2	DAVIS JUMPER - 06:53
06:22 - RUSK FT 1	45-39	-6	
	45-41	-4 2	DAVIS JUMPER - 06:04
	45-43	-2 2	FORDE LAYUP [P] [F] - 05:23
05:07 - RUSK 3PTR 3	48-43	-5	
04:15 - GOMEZ JUMPER 2	50-43	-7	
	50-45	-5 2	HUFFMAN LAYUP [P] - 03:46
03:21 - ROBERTS JUMPER 2	52-45	-7	
02:35 - ROBERTS LAYUP [P] 2	54-45	-9	
	54-47	-7 2	PORTER JUMPER - 02:19
02:01 - TAPIA LAYUP [P] 2	56-47	-9	
	56-49	-7 2	PORTER JUMPER [P] - 01:49
01:28 - ROBERTS 3PTR 3	59-49	-10	
	59-50	-9 1	PORTER FT - 00:47
00:41 - GOMEZ FT 1	60-50	-10	
00:32 - BAKER FT 1	61-50	-11	
00:32 - BAKER FT 1	62-50	-12	
	62-52	-10 2	HUFFMAN LAYUP [P] - 00:26
00:25 - GOMEZ FT 1	63-52	-11	
00:25 - GOMEZ FT 1	64-52	-12	
	64-54	-10 2	PORTER JUMPER - 00:16
00:12 - GOMEZ FT 1	65-54	-11	
00:12 - GOMEZ FT 1	66-54	-12	

Wyoming vs Air Force
OFFICIAL SHOT CHART

12/29/2016 at Clune Arena - USAF Academy, Colo.

PERIOD 1



WY PERIOD 1

FG Made	9
FG Attempted	23
3PFG Made	1
3PFG Attempted	3

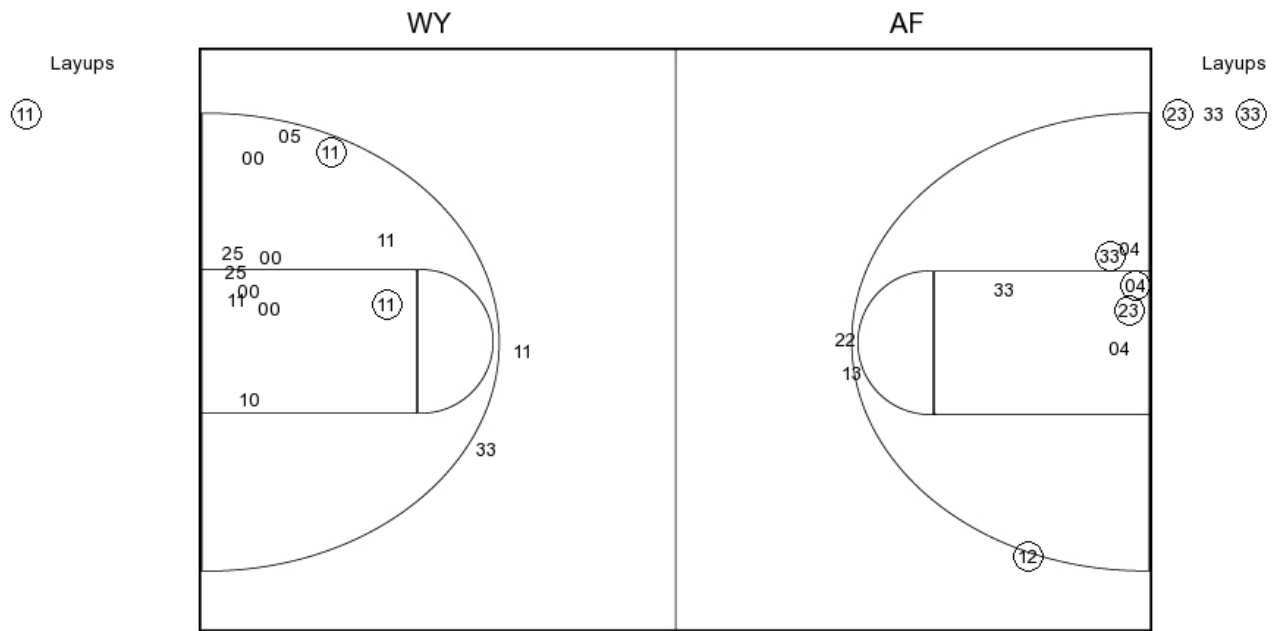
AF PERIOD 1

FG Made	8
FG Attempted	29
3PFG Made	0
3PFG Attempted	3

Wyoming vs Air Force
OFFICIAL SHOT CHART

12/29/2016 at Clune Arena - USAF Academy, Colo.

PERIOD 2



WY PERIOD 2

FG Made
 FG Attempted
 3PFG Made
 3PFG Attempted

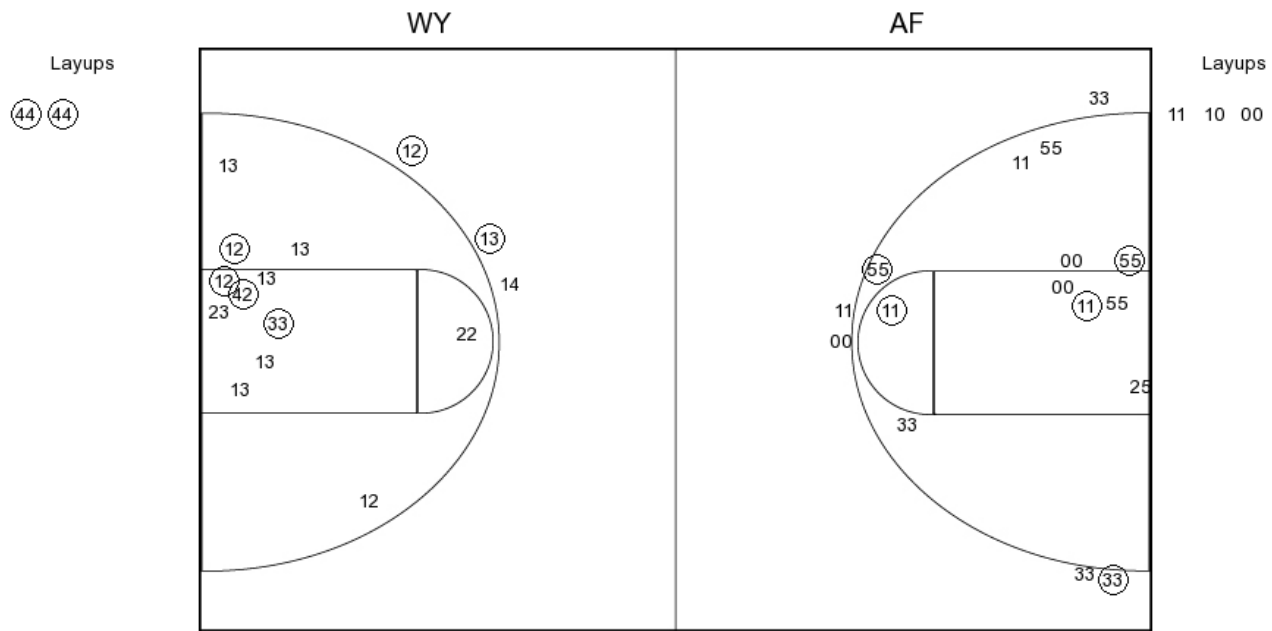
AF PERIOD 2

FG Made
 FG Attempted
 3PFG Made
 3PFG Attempted

Wyoming vs Air Force
OFFICIAL SHOT CHART

12/29/2016 at Clune Arena - USAF Academy, Colo.

PERIOD 3



WY PERIOD 3

FG Made	14
FG Attempted	28
3PFG Made	4
3PFG Attempted	6

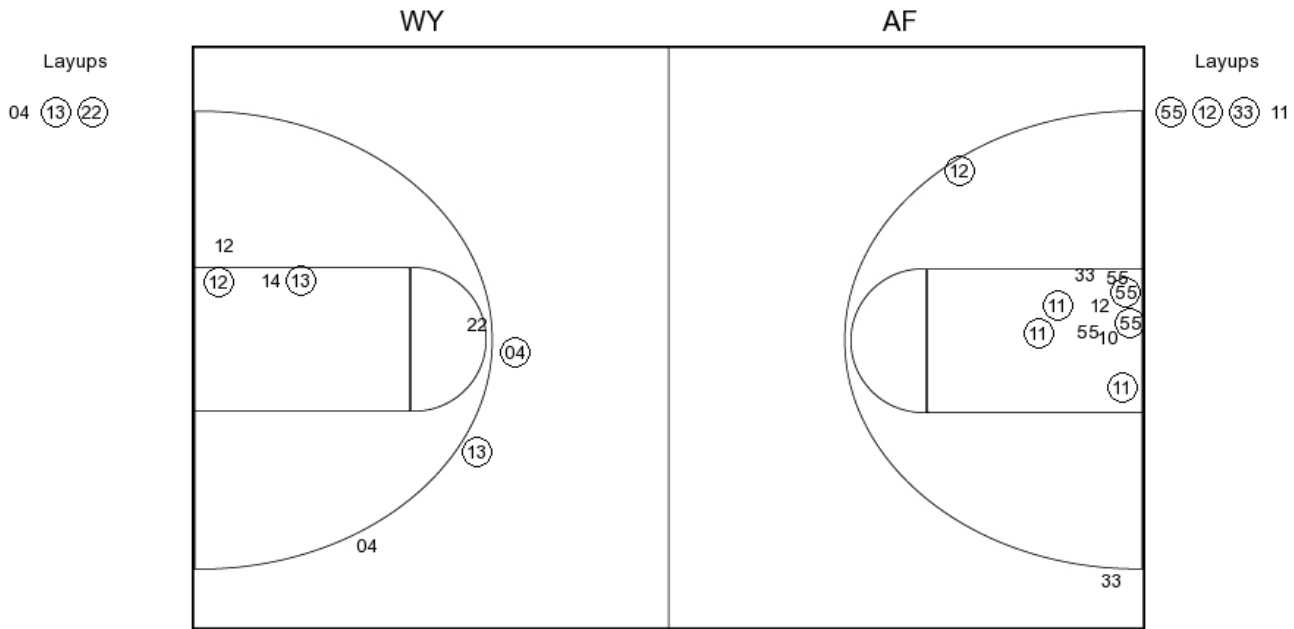
AF PERIOD 3

FG Made	14
FG Attempted	35
3PFG Made	1
3PFG Attempted	5

Wyoming vs Air Force
OFFICIAL SHOT CHART

12/29/2016 at Clune Arena - USAF Academy, Colo.

PERIOD 4



WY PERIOD 4

- FG Made
- FG Attempted
- 3PFG Made
- 3PFG Attempted

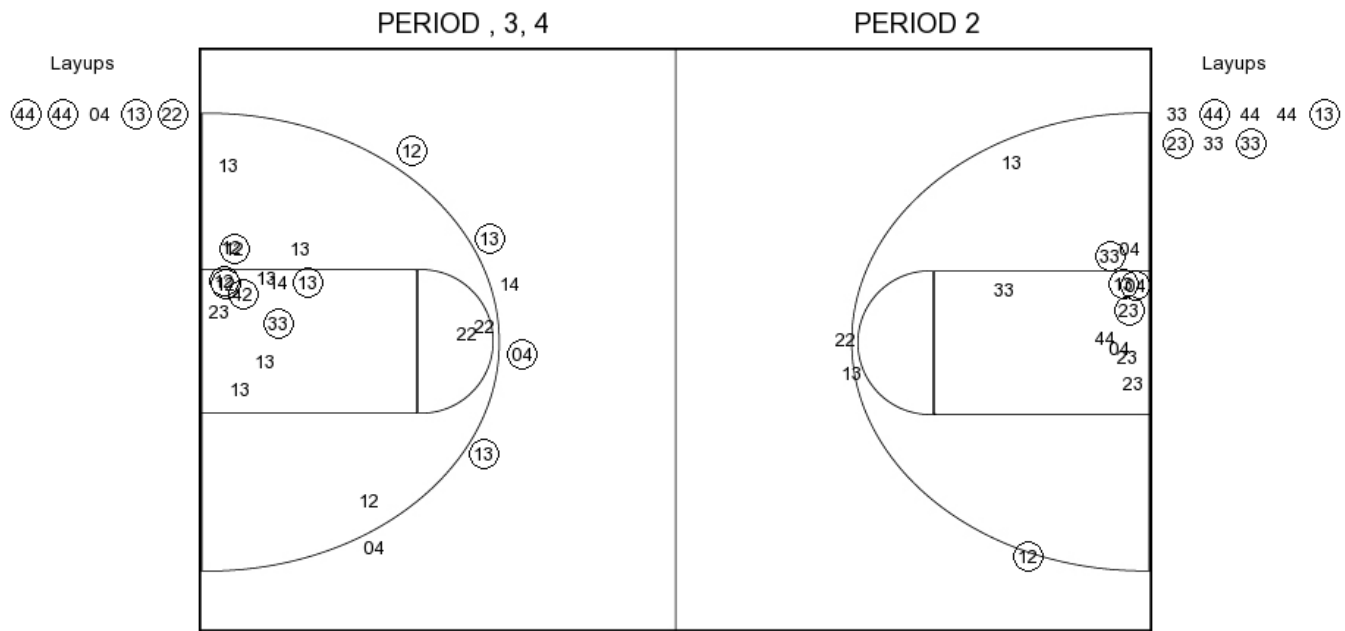
AF PERIOD 4

- FG Made
- FG Attempted
- 3PFG Made
- 3PFG Attempted

Wyoming vs Air Force
OFFICIAL SHOT CHART

12/29/2016 at Clune Arena - USAF Academy, Colo.

Wyoming



WY PERIOD 1

FG Made	9
FG Attempted	23
3PFG Made	1
3PFG Attempted	3

WY PERIOD 2

FG Made	
FG Attempted	
3PFG Made	
3PFG Attempted	

