



VANDERBILT @ AIR FORCE

12/2/2016

Clune Arena - USAF Academy, Colo.

FINAL STATS

Vanderbilt

(6-1)

75

Air Force

(1-6)

49

Start Time: 7 pm MT

Officials: Kyle Bacon, Julie Krommenhoek, Cheryll Blue

Attendance: 312

2016 Air Force Classic - Game Two

Official Basketball Box Score -- Game Totals -- Final Statistics

Vanderbilt vs Air Force

12/2/2016 7 pm MT at Clune Arena - USAF Academy, colo.

Vanderbilt 75 - 6-1

##	Player	S	Total			Rebounds			PF	TP	A	TO	Blk	Stl	Min
			FG-FGA	3PT	FG-FGA	FT-FTA	Off Reb	Def Reb							
03	BELL, RACHEL	g	5-12	0-3	0-0	1	5	6	1	10	0	1	0	1	25
10	WALKER, CIERRA	g	3-6	0-2	1-1	1	2	3	2	7	5	0	0	1	30
22	WEBB, MARQU'ES	f	1-4	0-0	2-2	3	5	8	4	4	0	2	0	0	15
33	REED, CHRISTA	g	2-7	1-4	2-2	1	1	2	3	7	0	2	0	1	19
35	CLEMONS-GREEN, KALE	g	1-4	0-0	4-4	0	4	4	3	6	4	1	0	0	24
00	OVERBECK, KAYLA		2-6	0-0	11-13	2	5	7	4	15	0	2	2	0	25
12	DANCY, MYKA		1-1	0-0	0-0	0	0	0	1	2	0	0	0	0	9
21	WHALEN, ERIN		7-8	1-1	4-4	2	3	5	5	19	1	4	0	2	24
30	CARTER, LEALEA		1-5	0-1	2-4	0	0	0	3	4	1	1	0	0	14
41	SEAWRIGHT, MIAYA		0-1	0-0	1-2	1	0	1	1	1	0	1	0	0	15
TEAM						6	1	7	0		1				
TOTALS			23-54	2-11	27-32	17	26	43	27	75	11	15	2	5	200

Deadball Rebounds: 3,0

FG %	1st Half: 10-29	34.5%	2nd Half: 13-25	52.0%	Game: 23-54	42.6%	4th Qtr	5-11	45.5%
	1st Qtr 5-14	35.7%	2nd Qtr 5-15	33.3%	3rd Qtr 8-14	57.1%			
3FG %	1st Half: 1-6	16.7%	2nd Half: 1-5	20.0%	Game: 2-11	18.2%	4th Qtr	0-2	00.0%
	1st Qtr 1-4	25.0%	2nd Qtr 0-2	00.0%	3rd Qtr 1-3	33.3%			
FT %	1st Half: 13-14	92.9%	2nd Half: 14-18	77.8%	Game: 27-32	84.4%	4th Qtr	7-9	77.8%
	1st Qtr 7-8	87.5%	2nd Qtr 6-6	100.0%	3rd Qtr 7-9	77.8%			

Air Force 49 - 1-6

##	Player	S	Total			Rebounds			PF	TP	A	TO	Blk	Stl	Min
			FG-FGA	3PT	FG-FGA	FT-FTA	Off Reb	Def Reb							
00	BENNETT, DEE	f	2-9	1-1	2-4	1	3	4	5	7	1	0	0	2	26
10	ITUGBU, VENESSANNAH	g	0-3	0-0	0-0	1	2	3	0	0	1	3	0	1	16
11	PORTER, CORTNEY	g	3-10	0-1	0-0	3	1	4	2	6	2	1	0	0	27
33	FORDE, MARIAH	g	1-6	0-4	1-2	1	0	1	2	3	2	4	0	0	23
55	HUFFMAN, KASSADY	f	4-6	0-0	3-5	3	4	7	0	11	0	1	2	0	23
05	FALVEY, SARAH		0-1	0-0	0-0	0	1	1	3	0	1	3	0	0	16
12	DAVIS, KAILIN		5-11	3-7	4-5	1	3	4	4	17	0	2	1	1	24
15	EMEKA, IFEOMA		0-2	0-0	5-9	1	2	3	4	5	1	1	0	1	18
32	GLAAB, DARBY		0-2	0-0	0-0	3	0	3	4	0	0	1	0	0	22
34	ROSICH, PATRICIA		0-4	0-0	0-0	1	0	1	2	0	0	0	0	0	5
TEAM						2	0	2	1		1				
TOTALS			15-54	4-13	15-25	17	16	33	27	49	8	17	3	5	200

Deadball Rebounds: 6,0

FG %	1st Half: 9-28	32.1%	2nd Half: 6-26	23.1%	Game: 15-54	27.8%	4th Qtr	3-14	21.4%
	1st Qtr 6-17	35.3%	2nd Qtr 3-11	27.3%	3rd Qtr 3-12	25.0%			
3FG %	1st Half: 3-6	50.0%	2nd Half: 1-7	14.3%	Game: 4-13	30.8%	4th Qtr	0-4	00.0%
	1st Qtr 2-3	66.7%	2nd Qtr 1-3	33.3%	3rd Qtr 1-3	33.3%			
FT %	1st Half: 2-3	66.7%	2nd Half: 13-22	59.1%	Game: 15-25	60.0%	4th Qtr	6-9	66.7%
	1st Qtr 2-2	100.0%	2nd Qtr 0-1	00.0%	3rd Qtr 7-13	53.8%			

Officials: Kyle Bacon, Julie Krommenhoek, Cheryll Blue

Technical Fouls: Vanderbilt- None. Air Force- TEAM;

Attendance: 312

2016 Air Force Classic - Game Two

Score by periods	1st	2nd	3rd	4th	Total
Vanderbilt	18	16	24	17	75
Air Force	16	7	14	12	49

Points	In Paint	Off T/O	2nd Chance	Fast Break	Bench
VANDY	30	21	15	10	41
AF	12	9	15	2	22

Last FG - VANDY 4th-01:08, AF 4th-00:04.

Largest lead - Vanderbilt by 29 4th-00:21; Air Force by VANDY led for 38:08. AF led for 0:00. Game was tied for 1:52.

Score tied - 2 times
Lead changed - 0 times

Official Basketball Box Score -- Game Totals -- First Half Statistics
Vanderbilt vs Air Force
12/2/2016 7 pm MT at Clune Arena - USAF Academy, colo.

Vanderbilt 34 • 6-1

##	Player	S	Total		3-Ptr		Rebounds			PF	TP	A	TO	Blk	Stl	Min
			FG-FGA	3PT FG-FGA	FT-FTA	Off Reb	Def Reb	Tot Reb								
03	BELL,RACHEL	g	3-6	0-1	0-0	0	4	4	0	6	0	0	0	0	0	16
10	WALKER,CIERRA	g	1-2	0-1	0-0	0	0	0	0	2	2	0	0	1	16	
22	WEBB,MARQU'ES	f	0-3	0-0	2-2	3	2	5	0	2	0	1	0	0	8	
33	REED,CHRISTA	g	2-6	1-3	0-0	1	1	2	2	5	0	2	0	0	12	
35	CLEMONS-GREEN,KALE	g	1-3	0-0	4-4	0	2	2	1	6	2	1	0	0	12	
00	OVERBECK,KAYLA		0-1	0-0	5-6	2	1	3	2	5	0	1	1	0	12	
12	DANCY,MYKA		0-0	0-0	0-0	0	0	0	0	0	0	0	0	0	0	
21	WHALEN,ERIN		3-4	0-0	2-2	1	0	1	1	8	0	1	0	2	12	
30	CARTER,LEALEA		0-4	0-1	0-0	0	0	0	2	0	1	0	0	0	8	
41	SEAWRIGHT,MIAYA		0-0	0-0	0-0	0	0	0	0	0	0	0	0	0	4	
TEAM						2	1	3	0		0					
Totals			10-29	1-6	13-14	9	11	20	8	34	5	6	1	3	100	

FG %	1st Qtr	5-14	35.7%	2nd Qtr	5-15	33.3%	Half:	10-29	34.5%
3FG %	1st Qtr	1-4	25.0%	2nd Qtr	0-2	00.0%	Half:	1-6	16.7%
FT %	1st Qtr	7-8	87.5%	2nd Qtr	6-6	100.0%	Half:	13-14	92.9%

Air Force 23 • 1-6

##	Player	S	Total		3-Ptr		Rebounds			PF	TP	A	TO	Blk	Stl	Min
			FG-FGA	3PT FG-FGA	FT-FTA	Off Reb	Def Reb	Tot Reb								
00	BENNETT,DEE	f	2-6	1-1	0-0	1	1	2	1	5	1	0	0	0	16	
10	ITUGBU,VENESSANNAH	g	0-1	0-0	0-0	1	2	3	0	0	1	2	0	1	11	
11	PORTER,CORTNEY	g	2-6	0-1	0-0	1	1	2	0	4	1	1	0	0	15	
33	FORDE,MARIAH	g	1-4	0-2	0-0	0	0	0	2	2	1	3	0	0	12	
55	HUFFMAN,KASSADY	f	2-4	0-0	2-2	1	3	4	0	6	0	0	1	0	13	
05	FALVEY,SARAH		0-1	0-0	0-0	0	1	1	1	0	1	2	0	0	7	
12	DAVIS,KAILIN		2-3	2-2	0-0	0	1	1	2	6	0	1	0	1	6	
15	EMEKA,IFEOMA		0-0	0-0	0-1	0	1	1	2	0	0	1	0	0	7	
32	GLAAB,DARBY		0-1	0-0	0-0	3	0	3	2	0	0	1	0	0	11	
34	ROSICH,PATRICIA		0-2	0-0	0-0	0	0	0	2	0	0	0	0	0	2	
TEAM						1	0	1	0		0					
Totals			9-28	3-6	2-3	8	10	18	12	23	5	11	1	2	100	

FG %	1st Qtr	6-17	35.3%	2nd Qtr	3-11	27.3%	Half:	9-28	32.1%
3FG %	1st Qtr	2-3	66.7%	2nd Qtr	1-3	33.3%	Half:	3-6	50.0%
FT %	1st Qtr	2-2	100.0%	2nd Qtr	0-1	00.0%	Half:	2-3	66.7%

Officials: Kyle Bacon, Julie Krommenhoek, Cheryll Blue
 Technical Fouls: Vanderbilt- None. Air Force- None.
 2016 Air Force Classic - Game Two

Score by periods	1st	2nd	3rd	4th	Total
Vanderbilt	18	16	24	17	75
Air Force	16	7	14	12	49

Points	In Paint	Off T/O	2nd 2nd Chance	Fast Fast Break	Bench
VANDY	12	11	7	2	13
	6	2	2	2	6

Last FG - VANDY 2nd-02:05, AF 2nd-01:41.
 VANDY led for 18:08. AF led for 0:00. Game was tied for 1:52.

Score tied - 2 times
 Lead changed - 0 times

Vanderbilt vs Air Force
12/2/2016; 7 pm MT at Clune Arena - USAF Academy, colo.
Period 1 Play-By-Play

VISITORS: Vanderbilt	Time	Score	Margin	HOME: Air Force
	09:54			MISSED LAYUP by PORTER,CORTNEY
	09:54			REBOUND (OFF) by PORTER,CORTNEY
	09:34			MISSED JUMPER by BENNETT,DEE
REBOUND (DEF) by WEBB,MARQU'ES	09:34			
GOOD! JUMPER by REED,CHRISTA [PNT]	09:17	0-2	V 2	
	09:02	2-2	T	GOOD! JUMPER by PORTER,CORTNEY
	09:02			ASSIST by BENNETT,DEE
TURNOVER by CLEMONS-GREEN,KALEI	08:52			
	08:52			STEAL by ITUGBU,VENESSANNAH
	08:52			TURNOVER by ITUGBU,VENESSANNAH
GOOD! JUMPER by BELL,RACHEL	08:33	2-4	V 2	
ASSIST by CLEMONS-GREEN,KALEI	08:33			
	08:17			TURNOVER by ITUGBU,VENESSANNAH
GOOD! 3PTR by REED,CHRISTA	08:09	2-7	V 5	
ASSIST by CLEMONS-GREEN,KALEI	08:09			
	07:52			MISSED JUMPER by HUFFMAN,KASSADY
	07:52			REBOUND (OFF) by BENNETT,DEE
	07:48			MISSED JUMPER by BENNETT,DEE
REBOUND (DEF) by CLEMONS-GREEN,KALEI	07:48			
TURNOVER by WEBB,MARQU'ES	07:39			
FOUL by CLEMONS-GREEN,KALEI	07:27			
	07:27			SUB IN: EMEKA,IFEOMA
	07:27			SUB OUT: ITUGBU,VENESSANNAH
	07:12			MISSED JUMPER by PORTER,CORTNEY
REBOUND (DEF) by BELL,RACHEL	07:12			
	07:08			FOUL by EMEKA,IFEOMA
MISSED JUMPER by REED,CHRISTA	06:57			
REBOUND (OFF) by TEAM	06:57			
MISSED 3PTR by REED,CHRISTA	06:31			
REBOUND (OFF) by WEBB,MARQU'ES	06:20			
MISSED JUMPER by REED,CHRISTA	06:18			
	06:18			REBOUND (DEF) by EMEKA,IFEOMA
	06:07			MISSED JUMPER by PORTER,CORTNEY
	06:07			REBOUND (OFF) by HUFFMAN,KASSADY
	06:03	4-7	V 3	GOOD! JUMPER by HUFFMAN,KASSADY
SUB IN: OVERBECK,KAYLA	05:58			
SUB IN: CARTER,LEALEA	05:58			
SUB OUT: BELL,RACHEL	05:58			
SUB OUT: WEBB,MARQU'ES	05:58			
	05:58			SUB IN: GLAAB,DARBY
	05:58			SUB IN: DAVIS,KAILIN
	05:58			SUB OUT: FORDE,MARIAH
	05:58			SUB OUT: HUFFMAN,KASSADY
	05:53			FOUL by GLAAB,DARBY
GOOD! FT by CLEMONS-GREEN,KALEI	05:53	4-8	V 4	
GOOD! FT by CLEMONS-GREEN,KALEI	05:53	4-9	V 5	
	05:28	6-9	V 3	GOOD! JUMPER by BENNETT,DEE [PNT]
SUB IN: WHALEN,ERIN	05:05			
SUB OUT: REED,CHRISTA	05:05			
MISSED JUMPER by WHALEN,ERIN	04:49			
REBOUND (OFF) by OVERBECK,KAYLA	04:49			
	04:48			FOUL by EMEKA,IFEOMA
TIMEOUT media	04:48			

VISITORS: Vanderbilt	Time	Score	Margin	HOME: Air Force
MISSED FT by OVERBECK,KAYLA	04:48			
REBOUND (DEADB) by TEAM	04:48			
GOOD! FT by OVERBECK,KAYLA	04:48	6-10	V 4	
SUB IN: BELL,RACHEL	04:48			
SUB OUT: WALKER,CIERRA	04:48			
	04:48			SUB IN: FORDE,MARIAH
	04:48			SUB IN: ITUGBU,VENESSANNAH
	04:48			SUB OUT: EMEKA,IFEOMA
	04:48			SUB OUT: PORTER,CORTNEY
	04:26			MISSED JUMPER by BENNETT,DEE
	04:26			REBOUND (OFF) by ITUGBU,VENESSANNAH
	04:22			MISSED 3PTR by FORDE,MARIAH
	04:22			REBOUND (OFF) by GLAAB,DARBY
FOUL by WHALEN,ERIN	04:20			
SUB IN: WALKER,CIERRA	04:20			
SUB OUT: CLEMONS-GREEN,KALEI	04:20			
	04:11			MISSED JUMPER by DAVIS,KAILIN
BLOCK by OVERBECK,KAYLA	04:11			
REBOUND (DEF) by OVERBECK,KAYLA	04:10			
MISSED LAYUP by BELL,RACHEL	04:07			
	04:07			REBOUND (DEF) by ITUGBU,VENESSANNAH
	03:47			MISSED LAYUP by GLAAB,DARBY
REBOUND (DEF) by BELL,RACHEL	03:47			
GOOD! LAYUP by WHALEN,ERIN [PNT]	03:39	6-12	V 6	
ASSIST by CARTER,LEALEA	03:39			
	03:20	9-12	V 3	GOOD! 3PTR by DAVIS,KAILIN
	03:20			ASSIST by FORDE,MARIAH
FOUL by OVERBECK,KAYLA	03:10			
TURNOVER by OVERBECK,KAYLA	03:10			
	03:10			SUB IN: HUFFMAN,KASSADY
	03:10			SUB OUT: GLAAB,DARBY
	02:47	11-12	V 1	GOOD! JUMPER by FORDE,MARIAH
	02:33			FOUL by BENNETT,DEE
GOOD! FT by OVERBECK,KAYLA	02:33	11-13	V 2	
GOOD! FT by OVERBECK,KAYLA	02:33	11-14	V 3	
SUB IN: CLEMONS-GREEN,KALEI	02:33			
SUB IN: REED,CHRISTA	02:33			
SUB OUT: CARTER,LEALEA	02:33			
SUB OUT: WALKER,CIERRA	02:33			
	02:33			SUB IN: PORTER,CORTNEY
	02:33			SUB IN: GLAAB,DARBY
	02:33			SUB OUT: BENNETT,DEE
	02:33			SUB OUT: FORDE,MARIAH
	02:04	14-14	T	GOOD! 3PTR by DAVIS,KAILIN
	02:04			ASSIST by PORTER,CORTNEY
MISSED JUMPER by CLEMONS-GREEN,KALEI	01:55			
	01:55			REBOUND (DEF) by HUFFMAN,KASSADY
	01:36			MISSED JUMPER by ROSICH,PATRICIA
REBOUND (DEF) by CLEMONS-GREEN,KALEI	01:36			
	01:24			FOUL by ROSICH,PATRICIA
GOOD! FT by OVERBECK,KAYLA	01:24	14-15	V 1	
GOOD! FT by OVERBECK,KAYLA	01:24	14-16	V 2	
	01:24			SUB IN: EMEKA,IFEOMA
	01:24			SUB OUT: ITUGBU,VENESSANNAH
	01:05			TURNOVER by EMEKA,IFEOMA
STEAL by WHALEN,ERIN	01:04			
MISSED 3PTR by REED,CHRISTA	00:58			
REBOUND (OFF) by OVERBECK,KAYLA	00:58			

VISITORS: Vanderbilt	Time	Score	Margin	HOME: Air Force
MISSED JUMPER by OVERBECK,KAYLA	00:53			
	00:53			REBOUND (DEF) by DAVIS,KAILIN
	00:46			FOUL by DAVIS,KAILIN
	00:46			TURNOVER by DAVIS,KAILIN
SUB IN: WALKER,CIERRA	00:46			
SUB OUT: CLEMONS-GREEN,KALEI	00:46			
GOOD! LAYUP by BELL,RACHEL [FB/PNT]	00:38	14-18	V 4	
FOUL by OVERBECK,KAYLA	00:23			
	00:23	15-18	V 3	GOOD! FT by HUFFMAN,KASSADY
	00:23	16-18	V 2	GOOD! FT by HUFFMAN,KASSADY
SUB IN: WEBB,MARQU'ES	00:23			
SUB OUT: OVERBECK,KAYLA	00:23			
MISSED 3PTR by WALKER,CIERRA	00:06			
REBOUND (OFF) by REED,CHRISTA	00:06			
TURNOVER by REED,CHRISTA	00:01			
	00:00			STEAL by DAVIS,KAILIN

Vanderbilt 18, Air Force 16

Period 1-only	In Paint	Off T/O	2nd Chance	Fast Break	Bench	
VANDY	6	7	1	2	7	Score tied - 0 times
AF	2	2	2	0	6	Lead changed - 0 times

Vanderbilt vs Air Force
12/2/2016; 7 pm MT at Clune Arena - USAF Academy, colo.
Period 2 Play-By-Play

VISITORS: Vanderbilt	Time	Score	Margin	HOME: Air Force
SUB IN: WHALEN,ERIN	10:00			
SUB OUT: CLEMONS-GREEN,KALEI	10:00			
GOOD! LAYUP by BELL,RACHEL [PNT]	09:37	16-20	V 4	
FOUL by REED,CHRISTA	09:15			
SUB IN: SEAWRIGHT,MIAYA	09:15			
SUB OUT: WHALEN,ERIN	09:15			
	09:12			TURNOVER by FORDE,MARIAH
STEAL by WALKER,CIERRA	09:11			
MISSED JUMPER by BELL,RACHEL	09:05			
	09:05			REBOUND (DEF) by HUFFMAN,KASSADY
	08:43			FOUL by FORDE,MARIAH
	08:43			TURNOVER by FORDE,MARIAH
SUB IN: CLEMONS-GREEN,KALEI	08:43			
SUB OUT: BELL,RACHEL	08:43			
	08:43			SUB IN: DAVIS,KAILIN
	08:43			SUB OUT: ITUGBU,VENESSANNAH
MISSED LAYUP by WEBB,MARQU'ES	08:19			
REBOUND (OFF) by WEBB,MARQU'ES	08:19			
MISSED LAYUP by WEBB,MARQU'ES	08:16			
	08:16			BLOCK by HUFFMAN,KASSADY
REBOUND (OFF) by WEBB,MARQU'ES	08:15			
	08:15			FOUL by DAVIS,KAILIN
GOOD! FT by WEBB,MARQU'ES	08:14	16-21	V 5	
GOOD! FT by WEBB,MARQU'ES	08:14	16-22	V 6	
	08:14			SUB IN: ROSICH,PATRICIA
	08:14			SUB OUT: DAVIS,KAILIN
	07:55			MISSED LAYUP by ROSICH,PATRICIA
REBOUND (DEF) by WEBB,MARQU'ES	07:55			
MISSED LAYUP by CLEMONS-GREEN,KALEI	07:47			
	07:47			REBOUND (DEF) by HUFFMAN,KASSADY
	07:38			FOUL by FORDE,MARIAH
	07:38			TURNOVER by FORDE,MARIAH
	07:38			SUB IN: FALVEY,SARAH
	07:38			SUB OUT: FORDE,MARIAH
GOOD! LAYUP by WALKER,CIERRA [PNT]	07:29	16-24	V 8	
	07:14	19-24	V 5	GOOD! 3PTR by BENNETT,DEE
	07:14			ASSIST by FALVEY,SARAH
MISSED JUMPER by WEBB,MARQU'ES	07:01			
	07:01			REBOUND (DEF) by PORTER,CORTNEY
	06:54	21-24	V 3	GOOD! LAYUP by PORTER,CORTNEY [FB/PNT]
GOOD! JUMPER by CLEMONS-GREEN,KALEI [PNT]	06:37	21-26	V 5	
ASSIST by WALKER,CIERRA	06:34			
	06:30			TURNOVER by PORTER,CORTNEY
SUB IN: OVERBECK,KAYLA	06:30			
SUB OUT: WEBB,MARQU'ES	06:30			
	06:30			SUB IN: GLAAB,DARBY
	06:30			SUB IN: EMEKA,IFEOMA
	06:30			SUB OUT: ROSICH,PATRICIA
	06:30			SUB OUT: HUFFMAN,KASSADY
SUB IN: CARTER,LEALEA	06:02			
SUB OUT: WALKER,CIERRA	06:02			
MISSED JUMPER by CARTER,LEALEA	05:58			
	05:58			REBOUND (DEF) by BENNETT,DEE

VISITORS: Vanderbilt	Time	Score	Margin	HOME: Air Force
	05:26			MISSED 3PTR by PORTER,CORTNEY
REBOUND (DEF) by REED,CHRISTA	05:26			
MISSED LAYUP by CARTER,LEALEA	05:17			
REBOUND (OFF) by TEAM	05:17			
	05:17			FOUL by GLAAB,DARBY
SUB IN: WHALEN,ERIN	05:17			
SUB OUT: REED,CHRISTA	05:17			
SUB IN: BELL,RACHEL	05:16			
SUB OUT: SEAWRIGHT,MIAYA	05:16			
	05:10			FOUL by FALVEY,SARAH
GOOD! FT by CLEMONS-GREEN,KALEI	05:10	21-27	V 6	
GOOD! FT by CLEMONS-GREEN,KALEI	05:10	21-28	V 7	
	05:10			SUB IN: FORDE,MARIAH
	05:10			SUB OUT: PORTER,CORTNEY
	04:48			MISSED JUMPER by FALVEY,SARAH
	04:48			REBOUND (OFF) by TEAM
FOUL by CARTER,LEALEA	04:46			
	04:45			TIMEOUT MEDIA
FOUL by CARTER,LEALEA	04:44			
	04:44			MISSED FT by EMEKA,IFEOMA
	04:44			REBOUND (DEADB) by TEAM
	04:21			TURNOVER by FALVEY,SARAH
MISSED JUMPER by CARTER,LEALEA	04:10			
	04:10			REBOUND (DEF) by FALVEY,SARAH
	03:49			MISSED JUMPER by FORDE,MARIAH
	03:49			REBOUND (OFF) by GLAAB,DARBY
	03:45			TURNOVER by GLAAB,DARBY
SUB IN: WALKER,CIERRA	03:45			
SUB OUT: CLEMONS-GREEN,KALEI	03:45			
	03:45			SUB IN: ITUGBU,VENESSANNAH
	03:45			SUB OUT: EMEKA,IFEOMA
TURNOVER by WHALEN,ERIN	03:31			
	03:09			MISSED JUMPER by BENNETT,DEE
	03:09			REBOUND (OFF) by GLAAB,DARBY
	03:02			MISSED 3PTR by FORDE,MARIAH
REBOUND (DEF) by BELL,RACHEL	03:02			
GOOD! JUMPER by WHALEN,ERIN	02:45	21-30	V 9	
	02:20			MISSED JUMPER by ITUGBU,VENESSANNAH
REBOUND (DEF) by BELL,RACHEL	02:20			
GOOD! JUMPER by WHALEN,ERIN	02:05	21-32	V 11	
ASSIST by WALKER,CIERRA	02:05			
	02:00			TIMEOUT 30SEC
	02:00			SUB IN: ROSICH,PATRICIA
	02:00			SUB IN: PORTER,CORTNEY
	02:00			SUB IN: HUFFMAN,KASSADY
	02:00			SUB OUT: BENNETT,DEE
	02:00			SUB OUT: GLAAB,DARBY
	02:00			SUB OUT: FORDE,MARIAH
	01:41	23-32	V 9	GOOD! LAYUP by HUFFMAN,KASSADY [PNT]
	01:41			ASSIST by ITUGBU,VENESSANNAH
MISSED 3PTR by CARTER,LEALEA	01:27			
REBOUND (OFF) by WHALEN,ERIN	01:27			
	01:26			FOUL by ROSICH,PATRICIA
GOOD! FT by WHALEN,ERIN	01:26	23-33	V 10	
GOOD! FT by WHALEN,ERIN	01:26	23-34	V 11	
	01:26			SUB IN: GLAAB,DARBY
	01:26			SUB OUT: ROSICH,PATRICIA
	01:13			TURNOVER by FALVEY,SARAH

VISITORS: Vanderbilt	Time	Score	Margin	HOME: Air Force
STEAL by WHALEN,ERIN	01:11			
MISSED 3PTR by BELL,RACHEL	01:05			
	01:05			REBOUND (DEF) by ITUGBU,VENESSANNAH
	00:38			MISSED JUMPER by HUFFMAN,KASSADY
REBOUND (DEF) by TEAM	00:38			
TIMEOUT 30SEC	00:37			
SUB IN: WEBB,MARQU'ES	00:37			
SUB IN: REED,CHRISTA	00:37			
SUB OUT: CARTER,LEALEA	00:37			
SUB OUT: OVERBECK,KAYLA	00:37			
FOUL by REED,CHRISTA	00:11			
TURNOVER by REED,CHRISTA	00:11			
	00:11			SUB IN: BENNETT,DEE
	00:11			SUB OUT: GLAAB,DARBY

Vanderbilt 34, Air Force 23

Period 2-only	In Paint	Off T/O	2nd Chance	Fast Break	Bench	
VANDY	6	4	6	0	6	Score tied - 0 times
AF	4	0	0	2	0	Lead changed - 0 times

Official Basketball Box Score -- Game Totals -- Second Half Statistics
Vanderbilt vs Air Force
12/2/2016 7 pm MT at Clune Arena - USAF Academy, colo.

Vanderbilt 41 • 6-1

##	Player	S	Total			Rebounds			PF	TP	A	TO	Blk	Stl	Min
			FG-FGA	3PT FG-FGA	FT-FTA	Off Reb	Def Reb	Tot Reb							
03	BELL,RACHEL	g	2-6	0-2	0-0	1	1	2	1	4	0	1	0	1	9
10	WALKER,CIERRA	g	2-4	0-1	1-1	1	2	3	2	5	3	0	0	0	14
22	WEBB,MARQU'ES	f	1-1	0-0	0-0	0	3	3	4	2	0	1	0	0	7
33	REED,CHRISTA	g	0-1	0-1	2-2	0	0	0	1	2	0	0	0	1	7
35	CLEMONS-GREEN,KALE	g	0-1	0-0	0-0	0	2	2	2	0	2	0	0	0	12
00	OVERBECK,KAYLA		2-5	0-0	6-7	0	4	4	2	10	0	1	1	0	13
12	DANCY,MYKA		1-1	0-0	0-0	0	0	0	1	2	0	0	0	0	9
21	WHALEN,ERIN		4-4	1-1	2-2	1	3	4	4	11	1	3	0	0	12
30	CARTER,LEALEA		1-1	0-0	2-4	0	0	0	1	4	0	1	0	0	6
41	SEAWRIGHT,MIAYA		0-1	0-0	1-2	1	0	1	1	1	0	1	0	0	11
TEAM						4	0	4	0		1				
Totals			13-25	1-5	14-18	8	15	23	19	41	6	9	1	2	100

FG %	3rd Qtr	8-14	57.1%	4th Qtr	5-11	45.5%	Half:	13-25	52.0%
3FG %	3rd Qtr	1-3	33.3%	4th Qtr	0-2	00.0%	Half:	1-5	16.7%
FT %	3rd Qtr	7-9	77.8%	4th Qtr	7-9	77.8%	Half:	14-18	77.8%

Air Force 26 • 1-6

##	Player	S	Total			Rebounds			PF	TP	A	TO	Blk	Stl	Min
			FG-FGA	3PT FG-FGA	FT-FTA	Off Reb	Def Reb	Tot Reb							
00	BENNETT,DEE	f	0-3	0-0	2-4	0	2	2	4	2	0	0	0	2	10
10	ITUGBU,VENESSANNAH	g	0-2	0-0	0-0	0	0	0	0	0	0	1	0	0	5
11	PORTER,CORTNEY	g	1-4	0-0	0-0	2	0	2	2	2	1	0	0	0	12
33	FORDE,MARIAH	g	0-2	0-2	1-2	1	0	1	0	1	1	1	0	0	11
55	HUFFMAN,KASSADY	f	2-2	0-0	1-3	2	1	3	0	5	0	1	1	0	10
05	FALVEY,SARAH		0-0	0-0	0-0	0	0	0	2	0	0	1	0	0	9
12	DAVIS,KAILIN		3-8	1-5	4-5	1	2	3	2	11	0	1	1	0	18
15	EMEKA,IFEOMA		0-2	0-0	5-8	1	1	2	2	5	1	0	0	1	11
32	GLAAB,DARBY		0-1	0-0	0-0	0	0	0	2	0	0	0	0	0	11
34	ROSICH,PATRICIA		0-2	0-0	0-0	1	0	1	0	0	0	0	0	0	3
TEAM						1	0	1	1		1				
Totals			6-26	1-7	13-22	9	6	15	15	26	3	6	2	3	100

FG %	3rd Qtr	3-12	25.0%	4th Qtr	3-14	21.4%	Half:	6-26	23.1%
3FG %	3rd Qtr	1-3	33.3%	4th Qtr	0-4	00.0%	Half:	1-7	50.0%
FT %	3rd Qtr	7-13	53.8%	4th Qtr	6-9	66.7%	Half:	13-22	59.1%

Officials: Kyle Bacon, Julie Krommenhoek, Cheryl Blue
 Technical Fouls: Vanderbilt- None. Air Force- TEAM;
 2016 Air Force Classic - Game Two

Score by periods	1st	2nd	3rd	4th	Total
Vanderbilt	18	16	24	17	75
Air Force	16	7	14	12	49

Points	In Paint	Off T/O	2nd Chance	Fast Break	Bench
VANDY	18	10	8	8	28
	6	7	7	0	16

Last FG - VANDY 4th-01:08, AF 4th-00:04.
 VANDY led for 20:00. AF led for 0:00. Game was tied for 0:00.

Score tied - 0 times
 Lead changed - 0 times

Vanderbilt vs Air Force
12/2/2016; 7 pm MT at Clune Arena - USAF Academy, colo.
Period 3 Play-By-Play

VISITORS: Vanderbilt	Time	Score	Margin	HOME: Air Force
GOOD! LAYUP by WEBB,MARQU'ES [PNT]	09:49	23-36	V 13	
	09:30			TURNOVER by ITUGBU,VENESSANNAH
STEAL by BELL,RACHEL	09:29			
GOOD! LAYUP by BELL,RACHEL [FB/PNT]	09:28	23-38	V 15	
	09:18			FOUL (TECH) by TEAM
	09:18			FOUL by TEAM
GOOD! FT by REED,CHRISTA	09:18	23-39	V 16	
GOOD! FT by REED,CHRISTA	09:18	23-40	V 17	
	09:06	25-40	V 15	GOOD! JUMPER by PORTER,CORTNEY
	08:50			FOUL by BENNETT,DEE
TURNOVER by TEAM	08:46			
	08:29			MISSED JUMPER by ITUGBU,VENESSANNAH
	08:29			REBOUND (OFF) by HUFFMAN,KASSADY
FOUL by REED,CHRISTA	08:28			
SUB IN: WHALEN,ERIN	08:28			
SUB IN: CARTER,LEALEA	08:28			
SUB OUT: REED,CHRISTA	08:28			
SUB OUT: CLEMONS-GREEN,KALEI	08:28			
	08:28			SUB IN: DAVIS,KAILIN
	08:28			SUB OUT: ITUGBU,VENESSANNAH
FOUL by WEBB,MARQU'ES	08:15			
FOUL by WALKER,CIERRA	08:14			
	08:14			MISSED FT by BENNETT,DEE
	08:14			REBOUND (DEADB) by TEAM
	08:14	26-40	V 14	GOOD! FT by BENNETT,DEE
FOUL by WEBB,MARQU'ES	08:06			
TURNOVER by WEBB,MARQU'ES	08:06			
	07:40			MISSED JUMPER by BENNETT,DEE
REBOUND (DEF) by WHALEN,ERIN	07:40			
GOOD! LAYUP by WHALEN,ERIN [FB/PNT]	07:33	26-42	V 16	
	07:16			MISSED 3PTR by DAVIS,KAILIN
REBOUND (DEF) by WEBB,MARQU'ES	07:16			
	07:07			FOUL by BENNETT,DEE
GOOD! FT by CARTER,LEALEA	07:07	26-43	V 17	
MISSED FT by CARTER,LEALEA	07:07			
	07:07			REBOUND (DEF) by BENNETT,DEE
SUB IN: OVERBECK,KAYLA	07:07			
SUB OUT: WEBB,MARQU'ES	07:07			
	07:07			SUB IN: GLAAB,DARBY
	07:07			SUB IN: EMEKA,IFEOMA
	07:07			SUB OUT: PORTER,CORTNEY
	07:07			SUB OUT: HUFFMAN,KASSADY
	06:48			MISSED LAYUP by EMEKA,IFEOMA
	06:48			REBOUND (OFF) by EMEKA,IFEOMA
	06:46			MISSED LAYUP by EMEKA,IFEOMA
REBOUND (DEF) by WALKER,CIERRA	06:46			
TURNOVER by BELL,RACHEL	06:40			
FOUL by BELL,RACHEL	06:34			
	06:32	27-43	V 16	GOOD! FT by BENNETT,DEE
	06:32			MISSED FT by BENNETT,DEE
REBOUND (DEF) by OVERBECK,KAYLA	06:32			
TURNOVER by CARTER,LEALEA	06:24			
	06:22			STEAL by BENNETT,DEE

VISITORS: Vanderbilt	Time	Score	Margin	HOME: Air Force
	05:59			MISSED 3PTR by FORDE,MARIAH
REBOUND (DEF) by WHALEN,ERIN	05:59			
TURNOVER by WHALEN,ERIN	05:52			
	05:50			STEAL by BENNETT,DEE
	05:44			TURNOVER by FORDE,MARIAH
SUB IN: CLEMONS-GREEN,KALEI	05:44			
SUB IN: SEAWRIGHT,MIAYA	05:44			
SUB OUT: BELL,RACHEL	05:44			
SUB OUT: CARTER,LEALEA	05:44			
	05:44			SUB IN: FALVEY,SARAH
	05:44			SUB IN: PORTER,CORTNEY
	05:44			SUB OUT: FORDE,MARIAH
	05:44			SUB OUT: BENNETT,DEE
TURNOVER by SEAWRIGHT,MIAYA	05:25			
	05:25			STEAL by EMEKA,IFEOMA
FOUL by WHALEN,ERIN	05:25			
	05:25	28-43	V 15	GOOD! FT by EMEKA,IFEOMA
	05:25	29-43	V 14	GOOD! FT by EMEKA,IFEOMA
	05:10			FOUL by FALVEY,SARAH
FOUL by WHALEN,ERIN	05:06			
TURNOVER by WHALEN,ERIN	05:06			
	04:39			MISSED JUMPER by PORTER,CORTNEY
REBOUND (DEF) by CLEMONS-GREEN,KALEI	04:39			
MISSED LAYUP by SEAWRIGHT,MIAYA	04:33			
	04:33			BLOCK by DAVIS,KAILIN
REBOUND (OFF) by TEAM	04:33			
TIMEOUT MEDIA	04:31			
SUB IN: REED,CHRISTA	04:31			
SUB OUT: WHALEN,ERIN	04:31			
MISSED JUMPER by OVERBECK,KAYLA	04:15			
REBOUND (OFF) by SEAWRIGHT,MIAYA	04:15			
MISSED 3PTR by WALKER,CIERRA	04:05			
REBOUND (OFF) by TEAM	04:05			
	04:05			FOUL by GLAAB,DARBY
GOOD! FT by OVERBECK,KAYLA	04:05	29-44	V 15	
GOOD! FT by OVERBECK,KAYLA	04:05	29-45	V 16	
FOUL by WALKER,CIERRA	03:48			
	03:48			MISSED FT by EMEKA,IFEOMA
	03:48			REBOUND (DEADB) by TEAM
	03:48			MISSED FT by EMEKA,IFEOMA
	03:48			REBOUND (OFF) by PORTER,CORTNEY
	03:37			SUB IN: HUFFMAN,KASSADY
	03:37			SUB OUT: GLAAB,DARBY
	03:35	32-45	V 13	GOOD! 3PTR by DAVIS,KAILIN
	03:35			ASSIST by PORTER,CORTNEY
MISSED JUMPER by OVERBECK,KAYLA	03:11			
	03:11			REBOUND (DEF) by EMEKA,IFEOMA
FOUL by OVERBECK,KAYLA	03:09			
	03:09			MISSED FT by EMEKA,IFEOMA
	03:09			REBOUND (DEADB) by TEAM
	03:09	33-45	V 12	GOOD! FT by EMEKA,IFEOMA
SUB IN: WEBB,MARQU'ES	03:09			
SUB IN: BELL,RACHEL	03:09			
SUB OUT: OVERBECK,KAYLA	03:09			
SUB OUT: SEAWRIGHT,MIAYA	03:09			
MISSED LAYUP by BELL,RACHEL	02:59			
	02:59			BLOCK by HUFFMAN,KASSADY
	02:57			REBOUND (DEF) by HUFFMAN,KASSADY

VISITORS: Vanderbilt	Time	Score	Margin	HOME: Air Force
	02:51			TURNOVER by FALVEY,SARAH
	02:51			SUB IN: BENNETT,DEE
	02:51			SUB IN: FORDE,MARIAH
	02:51			SUB OUT: EMEKA,IFEOMA
	02:51			SUB OUT: FALVEY,SARAH
GOOD! JUMPER by WALKER,CIERRA [PNT]	02:34	33-47	V 14	
	02:34			FOUL by PORTER,CORTNEY
GOOD! FT by WALKER,CIERRA	02:34	33-48	V 15	
	02:13			MISSED JUMPER by BENNETT,DEE
REBOUND (DEF) by WEBB,MARQU'ES	02:13			
MISSED 3PTR by BELL,RACHEL	02:05			
	02:05			REBOUND (DEF) by BENNETT,DEE
	01:44			MISSED JUMPER by DAVIS,KAILIN
REBOUND (DEF) by BELL,RACHEL	01:37			
GOOD! LAYUP by BELL,RACHEL [FB/PNT]	01:37	33-50	V 17	
	01:37			TIMEOUT TEAM
SUB IN: CARTER,LEALEA	01:36			
SUB OUT: BELL,RACHEL	01:36			
	01:36			SUB IN: ITUGBU,VENESSANNAH
	01:36			SUB OUT: PORTER,CORTNEY
	01:06			TURNOVER by TEAM
	00:59			FOUL by DAVIS,KAILIN
MISSED FT by CARTER,LEALEA	00:59			
REBOUND (DEADB) by TEAM	00:59			
GOOD! FT by CARTER,LEALEA	00:59	33-51	V 18	
FOUL by CLEMONS-GREEN,KALEI	00:58			
	00:58			MISSED FT by FORDE,MARIAH
	00:58			REBOUND (DEADB) by TEAM
	00:58	34-51	V 17	GOOD! FT by FORDE,MARIAH
SUB IN: WHALEN,ERIN	00:58			
SUB OUT: CLEMONS-GREEN,KALEI	00:58			
GOOD! LAYUP by CARTER,LEALEA [PNT]	00:50	34-53	V 19	
	00:30			TURNOVER by HUFFMAN,KASSADY
STEAL by REED,CHRISTA	00:28			
GOOD! JUMPER by WHALEN,ERIN	00:21	34-55	V 21	
ASSIST by WALKER,CIERRA	00:21			
	00:08	36-55	V 19	GOOD! JUMPER by HUFFMAN,KASSADY [PNT]
FOUL by WEBB,MARQU'ES	00:08			
	00:07	37-55	V 18	GOOD! FT by HUFFMAN,KASSADY
GOOD! 3PTR by WHALEN,ERIN	00:00	37-58	V 21	
ASSIST by WALKER,CIERRA	00:00			

Vanderbilt 75, Air Force 49

Period 3-only	In Paint	Off T/O	2nd Chance	Fast Break	Bench	
VANDY	12	10	2	6	13	Score tied - 0 times
AF	2	4	4	0	6	Lead changed - 0 times

Vanderbilt vs Air Force
12/2/2016; 7 pm MT at Clune Arena - USAF Academy, colo.
Period 4 Play-By-Play

VISITORS: Vanderbilt	Time	Score	Margin	HOME: Air Force
SUB IN: WHALEN,ERIN	10:00			
SUB IN: CARTER,LEALEA	10:00			
SUB OUT: BELL,RACHEL	10:00			
SUB OUT: CLEMONS-GREEN,KALEI	10:00			
	10:00			SUB IN: DAVIS,KAILIN
	10:00			SUB OUT: ITUGBU,VENESSANNAH
	09:30			MISSED JUMPER by PORTER,CORTNEY
	09:30			REBOUND (OFF) by PORTER,CORTNEY
	09:26			MISSED 3PTR by FORDE,MARIAH
	09:26			REBOUND (OFF) by FORDE,MARIAH
SUB IN: CLEMONS-GREEN,KALEI	09:21			
SUB OUT: WALKER,CIERRA	09:21			
	09:21			SUB IN: EMEKA,IFEOMA
	09:21			SUB OUT: FORDE,MARIAH
	09:17			MISSED 3PTR by DAVIS,KAILIN
REBOUND (DEF) by WEBB,MARQU'ES	09:17			
MISSED 3PTR by REED,CHRISTA	08:58			
	08:58			REBOUND (DEF) by DAVIS,KAILIN
FOUL by WEBB,MARQU'ES	08:43			
TIMEOUT 30SEC	08:43			
	08:43			TIMEOUT MEDIA
SUB IN: DANCY,MYKA	08:43			
SUB IN: BELL,RACHEL	08:43			
SUB IN: OVERBECK,KAYLA	08:43			
SUB IN: SEAWRIGHT,MIAYA	08:43			
SUB IN: WALKER,CIERRA	08:43			
SUB OUT: WHALEN,ERIN	08:43			
SUB OUT: CLEMONS-GREEN,KALEI	08:43			
SUB OUT: WEBB,MARQU'ES	08:43			
SUB OUT: REED,CHRISTA	08:43			
SUB OUT: CARTER,LEALEA	08:43			
	08:43			SUB IN: GLAAB,DARBY
	08:43			SUB OUT: HUFFMAN,KASSADY
	08:30	39-58	V 19	GOOD! JUMPER by DAVIS,KAILIN
	08:25			ASSIST by EMEKA,IFEOMA
	08:12			FOUL by BENNETT,DEE
GOOD! FT by OVERBECK,KAYLA	08:12	39-59	V 20	
GOOD! FT by OVERBECK,KAYLA	08:12	39-60	V 21	
	07:55			MISSED JUMPER by BENNETT,DEE
REBOUND (DEF) by OVERBECK,KAYLA	07:55			
MISSED JUMPER by WALKER,CIERRA	07:35			
REBOUND (OFF) by WALKER,CIERRA	07:35			
MISSED 3PTR by BELL,RACHEL	07:28			
REBOUND (OFF) by TEAM	07:28			
	07:16			FOUL by EMEKA,IFEOMA
GOOD! JUMPER by WALKER,CIERRA	07:09	39-62	V 23	
	06:40			MISSED 3PTR by DAVIS,KAILIN
REBOUND (DEF) by WALKER,CIERRA	06:40			
MISSED JUMPER by BELL,RACHEL	06:20			
REBOUND (OFF) by BELL,RACHEL	06:20			
	06:09			SUB IN: FALVEY,SARAH
	06:09			SUB OUT: BENNETT,DEE
	06:05			FOUL by PORTER,CORTNEY

VISITORS: Vanderbilt	Time	Score	Margin	HOME: Air Force
MISSED LAYUP by OVERBECK,KAYLA	05:56			
REBOUND (OFF) by TEAM	05:56			
SUB IN: WHALEN,ERIN	05:46			
SUB OUT: BELL,RACHEL	05:46			
	05:46			SUB IN: BENNETT,DEE
	05:46			SUB OUT: GLAAB,DARBY
	05:40			FOUL by BENNETT,DEE
	05:40			SUB IN: HUFFMAN,KASSADY
	05:40			SUB OUT: BENNETT,DEE
GOOD! LAYUP by WHALEN,ERIN [PNT]	05:38	39-64	V 25	
ASSIST by WALKER,CIERRA	05:38			
	05:17			MISSED JUMPER by PORTER,CORTNEY
	05:17			REBOUND (OFF) by HUFFMAN,KASSADY
SUB IN: CLEMONS-GREEN,KALEI	05:13			
SUB IN: CARTER,LEALEA	05:13			
SUB OUT: SEAWRIGHT,MIAYA	05:13			
SUB OUT: WALKER,CIERRA	05:13			
	05:13			SUB IN: FORDE,MARIAH
	05:13			SUB OUT: PORTER,CORTNEY
FOUL by CARTER,LEALEA	04:50			
SUB IN: SEAWRIGHT,MIAYA	04:50			
SUB OUT: CARTER,LEALEA	04:50			
FOUL by CLEMONS-GREEN,KALEI	04:23			
	04:23			MISSED FT by HUFFMAN,KASSADY
	04:23			REBOUND (DEADB) by TEAM
	04:23			MISSED FT by HUFFMAN,KASSADY
REBOUND (DEF) by OVERBECK,KAYLA	04:23			
GOOD! LAYUP by DANCY,MYKA [FB/PNT]	04:16	39-66	V 27	
ASSIST by WHALEN,ERIN	04:16			
	03:57	41-66	V 25	GOOD! LAYUP by HUFFMAN,KASSADY [PNT]
	03:57			ASSIST by FORDE,MARIAH
TIMEOUT TEAM	03:48			
	03:48			SUB IN: GLAAB,DARBY
	03:48			SUB OUT: HUFFMAN,KASSADY
FOUL by OVERBECK,KAYLA	03:44			
TURNOVER by OVERBECK,KAYLA	03:44			
	03:27			TIMEOUT 30SEC
FOUL by WHALEN,ERIN	03:21			
	03:21	42-66	V 24	GOOD! FT by EMEKA,IFEOMA
	03:21	43-66	V 23	GOOD! FT by EMEKA,IFEOMA
	03:14			FOUL by FALVEY,SARAH
GOOD! FT by OVERBECK,KAYLA	03:14	43-67	V 24	
MISSED FT by OVERBECK,KAYLA	03:13			
	03:13			REBOUND (DEF) by DAVIS,KAILIN
	03:11			TURNOVER by DAVIS,KAILIN
TURNOVER by WHALEN,ERIN	03:10			
	03:04			MISSED 3PTR by DAVIS,KAILIN
	03:04			REBOUND (OFF) by DAVIS,KAILIN
FOUL by DANCY,MYKA	03:02			
	03:01	44-67	V 23	GOOD! FT by DAVIS,KAILIN
	03:01			MISSED FT by DAVIS,KAILIN
REBOUND (DEF) by OVERBECK,KAYLA	03:01			
GOOD! JUMPER by OVERBECK,KAYLA	02:47	44-69	V 25	
ASSIST by CLEMONS-GREEN,KALEI	02:47			
	02:47			FOUL by EMEKA,IFEOMA
GOOD! FT by OVERBECK,KAYLA	02:47	44-70	V 26	
	02:47			SUB IN: ROSICH,PATRICIA
	02:47			SUB OUT: EMEKA,IFEOMA

VISITORS: Vanderbilt	Time	Score	Margin	HOME: Air Force
	02:26			MISSED LAYUP by GLAAB,DARBY
BLOCK by OVERBECK,KAYLA	02:26			
	02:26			REBOUND (OFF) by TEAM
	02:20			MISSED JUMPER by ROSICH,PATRICIA
	02:20			REBOUND (OFF) by ROSICH,PATRICIA
FOUL by SEAWRIGHT,MIAYA	02:05			
	02:05	45-70	V 25	GOOD! FT by DAVIS,KAILIN
	02:05	46-70	V 24	GOOD! FT by DAVIS,KAILIN
	01:48			FOUL by GLAAB,DARBY
MISSED FT by SEAWRIGHT,MIAYA	01:48			
REBOUND (DEADB) by TEAM	01:48			
GOOD! FT by SEAWRIGHT,MIAYA	01:48	46-71	V 25	
	01:48			SUB IN: ITUGBU,VENESSANNAH
	01:48			SUB OUT: FORDE,MARIAH
	01:19			MISSED LAYUP by ITUGBU,VENESSANNAH
REBOUND (DEF) by CLEMONS-GREEN,KALEI	01:19			
GOOD! LAYUP by OVERBECK,KAYLA [PNT]	01:08	46-73	V 27	
ASSIST by CLEMONS-GREEN,KALEI	01:08			
	00:49			MISSED JUMPER by ROSICH,PATRICIA
REBOUND (DEF) by WHALEN,ERIN	00:49			
MISSED LAYUP by CLEMONS-GREEN,KALEI	00:22			
REBOUND (OFF) by WHALEN,ERIN	00:22			
	00:22			FOUL by DAVIS,KAILIN
GOOD! FT by WHALEN,ERIN	00:21	46-74	V 28	
GOOD! FT by WHALEN,ERIN	00:21	46-75	V 29	
	00:04	48-75	V 27	GOOD! JUMPER by DAVIS,KAILIN [PNT]
FOUL by WHALEN,ERIN	00:04			
	00:04	49-75	V 26	GOOD! FT by DAVIS,KAILIN
SUB IN: CARTER,LEALEA	00:04			
SUB OUT: WHALEN,ERIN	00:04			

Vanderbilt 75, Air Force 49

Period 4-only	In Paint	Off T/O	2nd Chance	Fast Break	Bench	
VANDY	6	0	6	2	15	Score tied - 0 times
AF	4	3	3	0	10	Lead changed - 0 times

Vanderbilt vs Air Force
12/2/2016; 7 pm MT at Clune Arena - USAF Academy, colo.
Scoring/Runs Reference

Period 1

Vanderbilt	Score	Marg	Air Force
09:17 - REED JUMPER [P]	2	2-0 -2	
	2-2	0 2	PORTER JUMPER - 09:02
08:33 - BELL JUMPER	2	4-2 -2	
08:09 - REED 3PTR	3	7-2 -5	
	7-4	-3 2	HUFFMAN JUMPER - 06:03
05:53 - CLEMONS-GREEN FT	1	8-4 -4	
05:53 - CLEMONS-GREEN FT	1	9-4 -5	
	9-6	-3 2	BENNETT JUMPER [P] - 05:28
04:48 - OVERBECK FT	1	10-6 -4	
03:39 - WHALEN LAYUP [P]	2	12-6 -6	
	12-9	-3 3	DAVIS 3PTR - 03:20
	12-11	-1 2	FORDE JUMPER - 02:47
02:33 - OVERBECK FT	1	13-11 -2	
02:33 - OVERBECK FT	1	14-11 -3	
	14-14	0 3	DAVIS 3PTR - 02:04
01:24 - OVERBECK FT	1	15-14 -1	
01:24 - OVERBECK FT	1	16-14 -2	
00:38 - BELL LAYUP [P] [F]	2	18-14 -4	
	18-15	-3 1	HUFFMAN FT - 00:23
	18-16	-2 1	HUFFMAN FT - 00:23

Period 2

Vanderbilt	Score	Marg	Air Force
09:37 - BELL LAYUP [P]	2	20-16 -4	
08:14 - WEBB FT	1	21-16 -5	
08:14 - WEBB FT	1	22-16 -6	
07:29 - WALKER LAYUP [P]	2	24-16 -8	
	24-19	-5 3	BENNETT 3PTR - 07:14
	24-21	-3 2	PORTER LAYUP [P] [F] - 06:54
06:37 - CLEMONS-GREEN JUMPER [P]	2	26-21 -5	
05:10 - CLEMONS-GREEN FT	1	27-21 -6	
05:10 - CLEMONS-GREEN FT	1	28-21 -7	
02:45 - WHALEN JUMPER	2	30-21 -9	
02:05 - WHALEN JUMPER	2	32-21 -11	
	32-23	-9 2	HUFFMAN LAYUP [P] - 01:41
01:26 - WHALEN FT	1	33-23 -10	
01:26 - WHALEN FT	1	34-23 -11	

Period 3

Vanderbilt	Score	Marg	Air Force
09:49 - WEBB LAYUP [P]	2	36-23 -13	
09:28 - BELL LAYUP [P] [F]	2	38-23 -15	
09:18 - REED FT	1	39-23 -16	
09:18 - REED FT	1	40-23 -17	
		40-25 -15 2	PORTER JUMPER - 09:06
		40-26 -14 1	BENNETT FT - 08:14
07:33 - WHALEN LAYUP [P] [F]	2	42-26 -16	
07:07 - CARTER FT	1	43-26 -17	
		43-27 -16 1	BENNETT FT - 06:32
		43-28 -15 1	EMEKA FT - 05:25
		43-29 -14 1	EMEKA FT - 05:25
04:05 - OVERBECK FT	1	44-29 -15	
04:05 - OVERBECK FT	1	45-29 -16	
		45-32 -13 3	DAVIS 3PTR - 03:35
		45-33 -12 1	EMEKA FT - 03:09
02:34 - WALKER JUMPER [P]	2	47-33 -14	
02:34 - WALKER FT	1	48-33 -15	
01:37 - BELL LAYUP [P] [F]	2	50-33 -17	
00:59 - CARTER FT	1	51-33 -18	
		51-34 -17 1	FORDE FT - 00:58
00:50 - CARTER LAYUP [P]	2	53-34 -19	
00:21 - WHALEN JUMPER	2	55-34 -21	
		55-36 -19 2	HUFFMAN JUMPER [P] - 00:08
		55-37 -18 1	HUFFMAN FT - 00:07
00:00 - WHALEN 3PTR	3	58-37 -21	

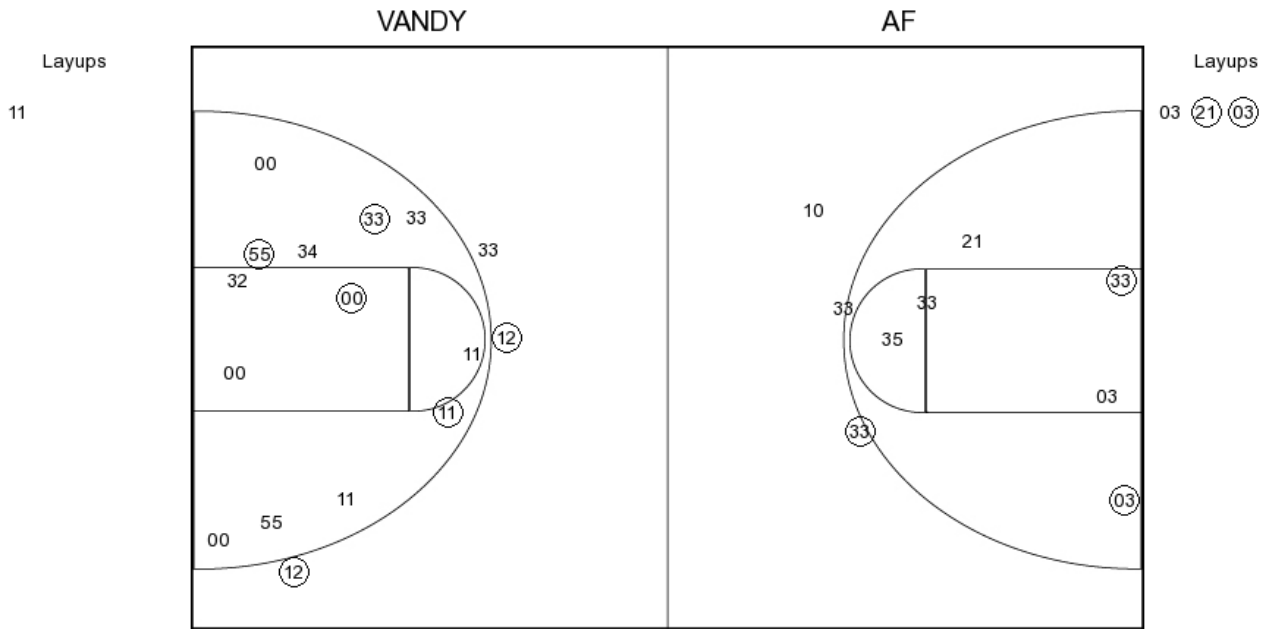
Period 4

Vanderbilt	Score	Marg	Air Force
		58-39 -19 2	DAVIS JUMPER - 08:30
08:12 - OVERBECK FT	1	59-39 -20	
08:12 - OVERBECK FT	1	60-39 -21	
07:09 - WALKER JUMPER	2	62-39 -23	
05:38 - WHALEN LAYUP [P]	2	64-39 -25	
04:16 - DANCY LAYUP [P] [F]	2	66-39 -27	
		66-41 -25 2	HUFFMAN LAYUP [P] - 03:57
		66-42 -24 1	EMEKA FT - 03:21
		66-43 -23 1	EMEKA FT - 03:21
03:14 - OVERBECK FT	1	67-43 -24	
		67-44 -23 1	DAVIS FT - 03:01
02:47 - OVERBECK JUMPER	2	69-44 -25	
02:47 - OVERBECK FT	1	70-44 -26	
		70-45 -25 1	DAVIS FT - 02:05
		70-46 -24 1	DAVIS FT - 02:05
01:48 - SEAWRIGHT FT	1	71-46 -25	
01:08 - OVERBECK LAYUP [P]	2	73-46 -27	
00:21 - WHALEN FT	1	74-46 -28	
00:21 - WHALEN FT	1	75-46 -29	
		75-48 -27 2	DAVIS JUMPER [P] - 00:04
		75-49 -26 1	DAVIS FT - 00:04

Vanderbilt vs Air Force
OFFICIAL SHOT CHART

12/2/2016 at Clune Arena - USAF Academy, Colo.

PERIOD 1



VANDY PERIOD 1

FG Made	10
FG Attempted	29
3PFG Made	1
3PFG Attempted	6

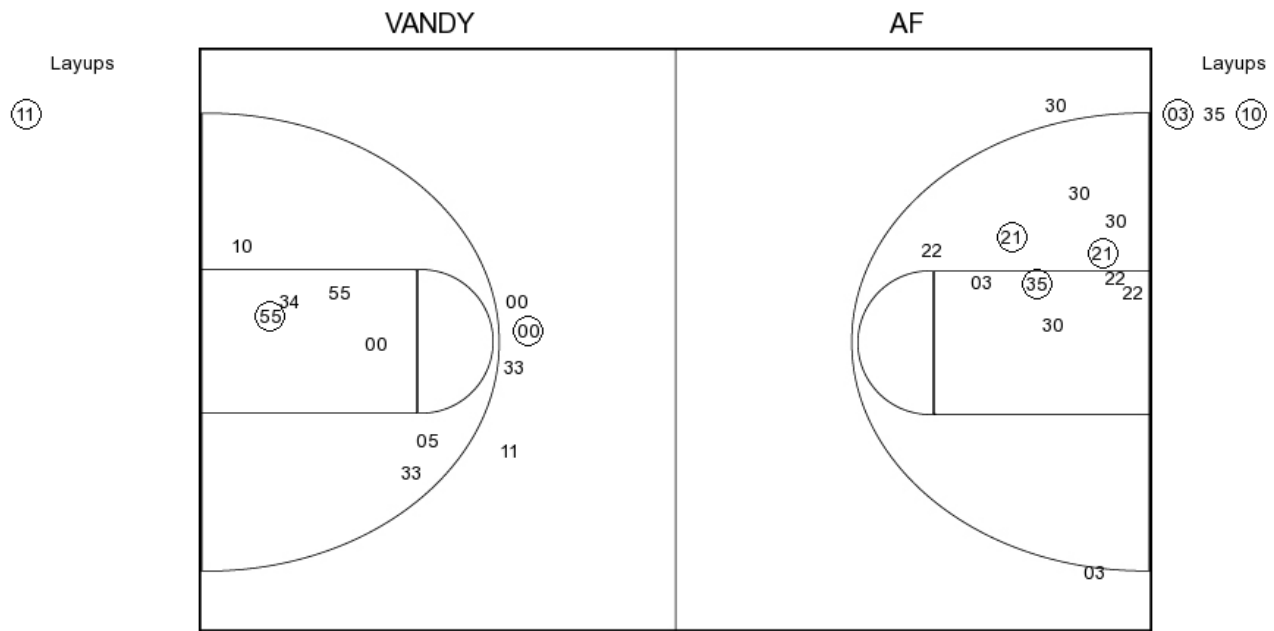
AF PERIOD 1

FG Made	9
FG Attempted	28
3PFG Made	3
3PFG Attempted	6

Vanderbilt vs Air Force
OFFICIAL SHOT CHART

12/2/2016 at Clune Arena - USAF Academy, Colo.

PERIOD 2



VANDY PERIOD 2

FG Made
 FG Attempted
 3PFG Made
 3PFG Attempted

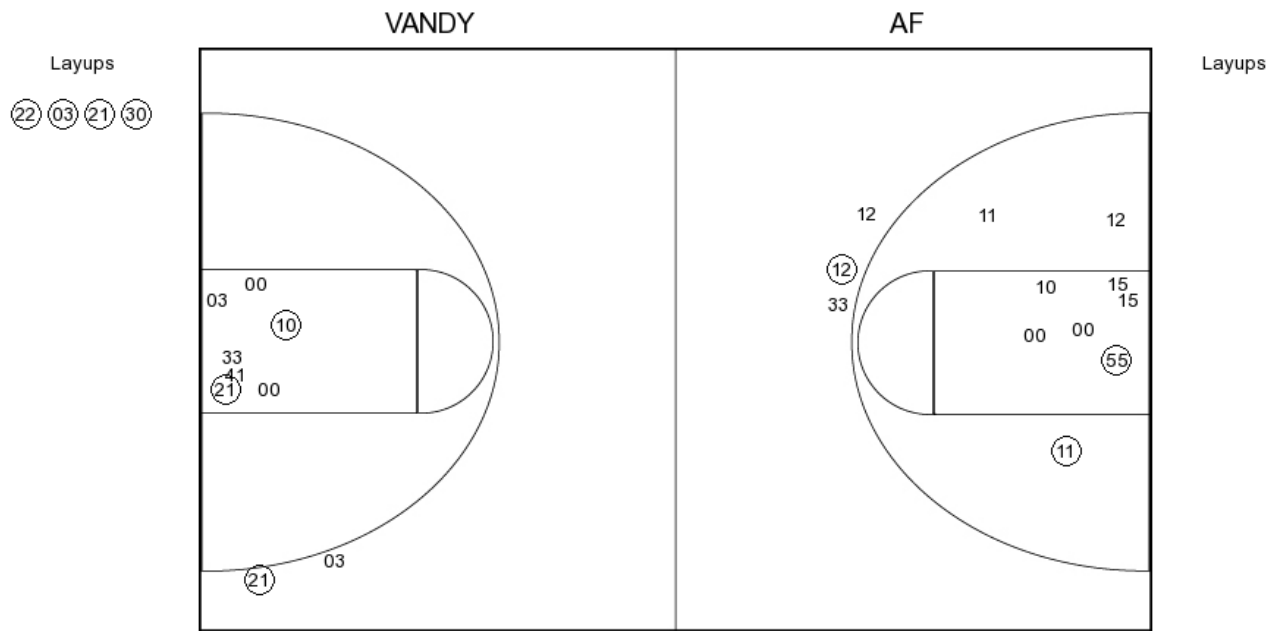
AF PERIOD 2

FG Made
 FG Attempted
 3PFG Made
 3PFG Attempted

Vanderbilt vs Air Force
OFFICIAL SHOT CHART

12/2/2016 at Clune Arena - USAF Academy, Colo.

PERIOD 3



VANDY PERIOD 3

FG Made	13
FG Attempted	25
3PFG Made	1
3PFG Attempted	5

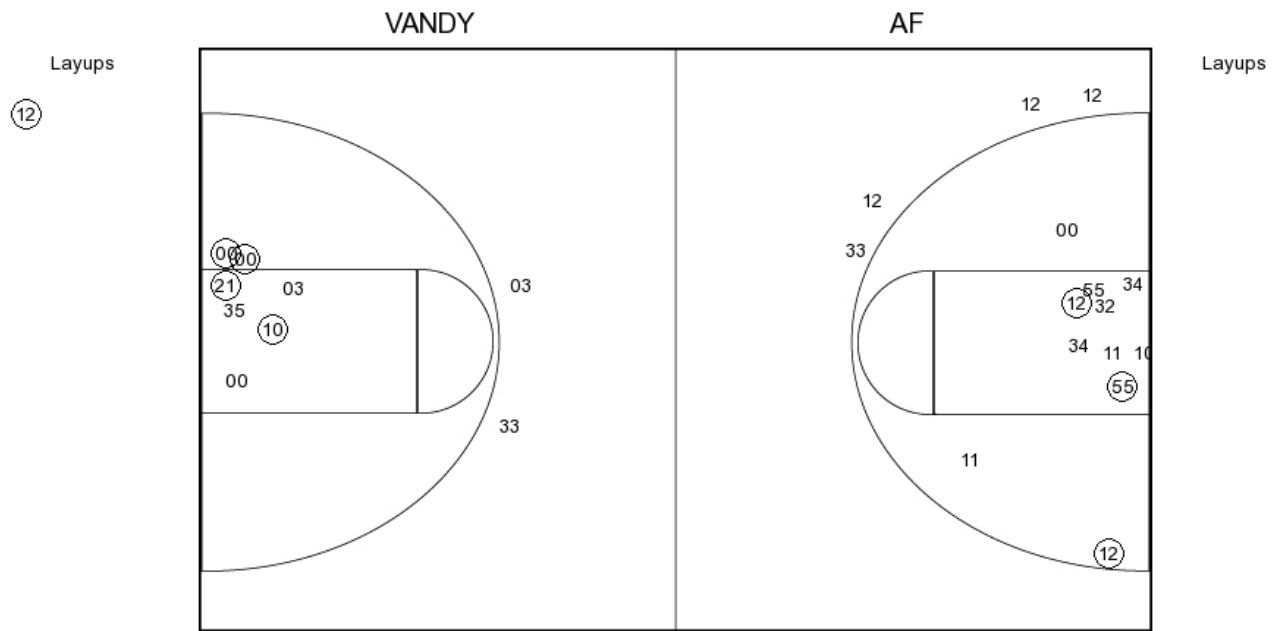
AF PERIOD 3

FG Made	6
FG Attempted	26
3PFG Made	1
3PFG Attempted	7

Vanderbilt vs Air Force
OFFICIAL SHOT CHART

12/2/2016 at Clune Arena - USAF Academy, Colo.

PERIOD 4



VANDY PERIOD 4

FG Made
 FG Attempted
 3PFG Made
 3PFG Attempted

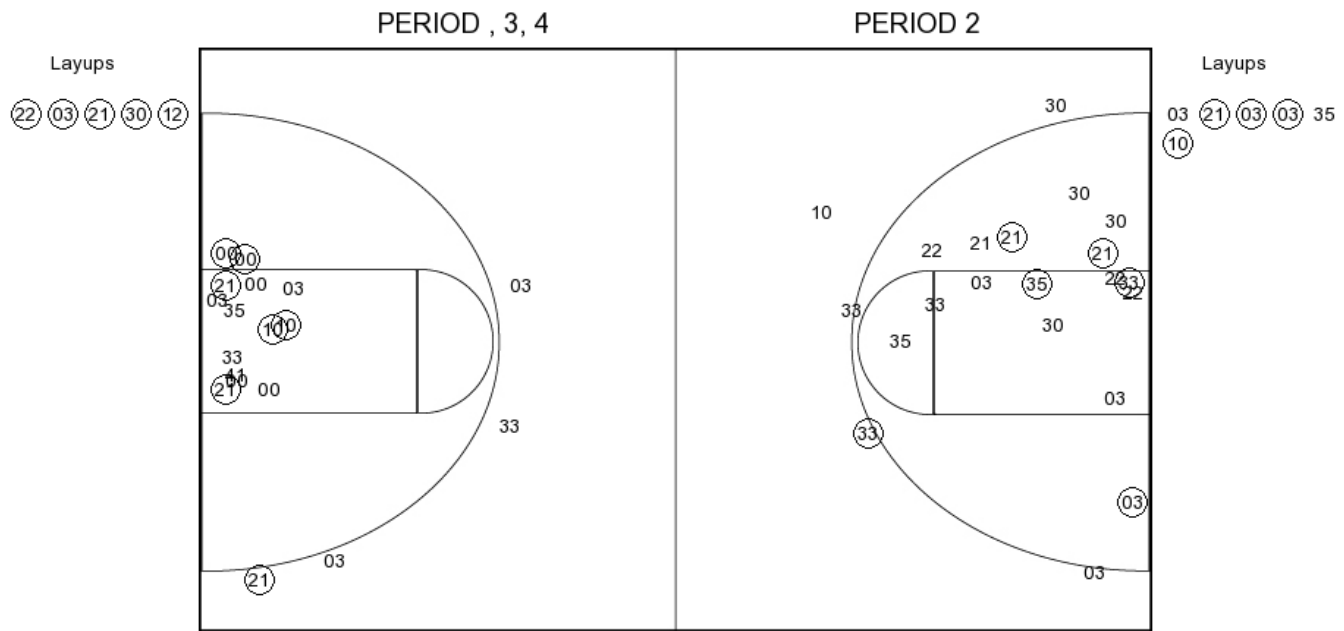
AF PERIOD 4

FG Made
 FG Attempted
 3PFG Made
 3PFG Attempted

Vanderbilt vs Air Force
OFFICIAL SHOT CHART

12/2/2016 at Clune Arena - USAF Academy, colo.

Vanderbilt



VANDY PERIOD 1

FG Made	10
FG Attempted	29
3PFG Made	1
3PFG Attempted	6

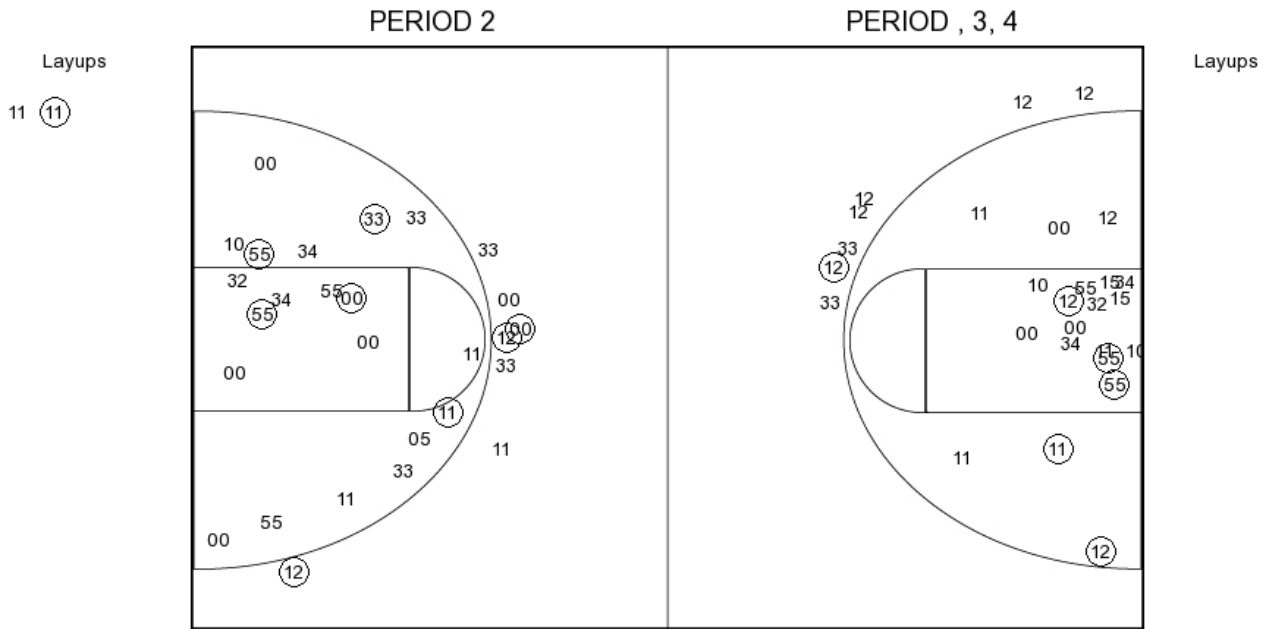
VANDY PERIOD 2

FG Made	
FG Attempted	
3PFG Made	
3PFG Attempted	

Vanderbilt vs Air Force
OFFICIAL SHOT CHART

12/2/2016 at Clune Arena - USAF Academy, Colo.

Air Force



AF PERIOD 1

FG Made	9
FG Attempted	28
3PFG Made	3
3PFG Attempted	6

AF PERIOD 2

FG Made	
FG Attempted	
3PFG Made	
3PFG Attempted	