

ARIZONA STATE @ SAN DIEGO STATE



12/10/2016

Steve Fisher Court at Viejas Arena

FINAL STATS

ARIZONA STATE

(6-4)

74

SAN DIEGO STATE

(4-4)

63

Start Time: 4:05 pm PST

Officials: Randy McCall, Steve Olson, Bill Vinovich

Attendance: 12414

Official Basketball Box Score -- Game Totals -- Final Statistics
ARIZONA STATE vs SAN DIEGO STATE
12/10/2016 4:05 pm PST at Steve Fisher Court at Viejas Arena

ARIZONA STATE 74 - 6-4

##	Player	S	Total			Rebounds			PF	TP	A	TO	Blk	Stl	Min
			FG-FGA	3PT	FG-FGA	FT-FTA	Off Reb	Def Reb							
00	HOLDER,TRA	g	5-12	1-5	6-6	3	2	5	0	17	4	4	0	1	36
03	CUNLIFFE,SAM	f	1-7	1-2	0-0	1	5	6	3	3	2	3	0	0	28
11	EVANS II,SHANNON	g	5-9	4-6	2-2	0	1	1	2	16	3	2	0	1	32
33	VILA,RAMON	f	0-0	0-0	0-0	0	0	0	1	0	0	1	0	1	5
44	JUSTICE,KODI	g	2-4	2-3	0-0	1	1	2	4	6	2	4	0	1	21
04	GRAHAM,TORIAN		6-11	1-5	2-2	2	3	5	2	15	0	1	0	1	28
05	OLEKA,OBINNA		4-9	1-2	6-8	4	8	12	1	15	1	1	1	2	29
42	TSHISUMPA,JETHRO		1-2	0-0	0-0	2	1	3	3	2	0	0	5	0	21
TEAM						0	0	0	0			2			
TOTALS			24-54	10-23	16-18	13	21	34	16	74	12	18	6	7	200

Deadball Rebounds: 1,1

FG %	1st Half:	9-24	37.5%	2nd Half:	15-30	50.0%	Game:	24-54	44.4%
3FG %	1st Half:	3-9	33.3%	2nd Half:	7-14	50.0%	Game:	10-23	43.5%
FT %	1st Half:	4-6	66.7%	2nd Half:	12-12	100.0%	Game:	16-18	88.9%

SAN DIEGO STATE 63 - 4-4

##	Player	S	Total			Rebounds			PF	TP	A	TO	Blk	Stl	Min
			FG-FGA	3PT	FG-FGA	FT-FTA	Off Reb	Def Reb							
03	KELL,TREY	g	7-15	2-6	4-4	1	3	4	1	20	1	2	0	5	33
04	ALLEN,DAKARAI	g	4-7	0-2	0-0	1	7	8	2	8	2	2	1	1	29
14	CHEATHAM,ZYLAN	f	2-5	0-0	3-4	3	2	5	5	7	2	4	1	2	26
21	POPE,MALIK	f	2-6	0-1	0-0	1	2	3	2	4	1	2	0	2	20
42	HEMSLEY,JEREMY	g	2-3	0-1	6-8	0	0	0	2	10	1	3	0	0	29
10	HOETZEL,MAX		4-12	4-8	0-0	2	2	4	4	12	0	1	1	1	21
20	SHRIGLEY,MATT		0-4	0-4	0-0	1	0	1	0	0	1	2	0	1	19
23	GILL-CAESAR,MONTAQI		0-3	0-2	2-2	0	1	1	0	2	1	1	0	0	10
45	IZUNDU,VALENTINE		0-2	0-0	0-0	1	0	1	1	0	0	0	0	0	13
TEAM						2	1	3	0			0			
TOTALS			21-57	6-24	15-18	12	18	30	17	63	9	17	3	12	200

Deadball Rebounds: 5,0

FG %	1st Half:	12-26	46.2%	2nd Half:	9-31	29.0%	Game:	21-57	36.8%
3FG %	1st Half:	2-11	18.2%	2nd Half:	4-13	30.8%	Game:	6-24	25.0%
FT %	1st Half:	6-6	100.0%	2nd Half:	9-12	75.0%	Game:	15-18	83.3%

Officials: Randy McCall, Steve Olson, Bill Vinovich
 Technical Fouls: ARIZONA STATE- None. SAN DIEGO STATE- None.
 Attendance: 12414

Score by periods	1st	2nd	Total
ARIZONA STATE	25	49	74
SAN DIEGO STATE	32	31	63

Points	In Paint	Off T/O	2nd 2nd Chance	Fast Fast Break	Bench
ASU	24	16	4	6	32
SDSU	30	20	4	8	14

Last FG - ASU 2nd-00:46, SDSU 2nd-00:52.
 Largest lead - ARIZONA STATE by 12 2nd-08:24; SAN DIEGO STATE by 10 1st-14:50
 ASU led for 16:37. SDSU led for 22:38. Game was tied for 0:45.

Score tied - 2 times
 Lead changed - 1 times

Official Basketball Box Score -- Game Totals -- First Half Statistics

ARIZONA STATE vs SAN DIEGO STATE

12/10/2016 4:05 pm PST at Steve Fisher Court at Viejas Arena

ARIZONA STATE 25 • 6-4

##	Player	S	Total			Rebounds			PF	TP	A	TO	Blk	Stl	Min
			FG-FGA	3PT FG-FGA	FT-FTA	Off Reb	Def Reb	Tot Reb							
00	HOLDER, TRA	g	1-3	0-1	2-2	3	0	3	0	4	1	3	0	0	18
03	CUNLIFFE, SAM	f	1-5	1-2	0-0	0	3	3	1	3	1	2	0	0	15
11	EVANS II, SHANNON	g	2-3	1-1	0-0	0	0	0	0	5	0	2	0	1	14
33	VILA, RAMON	f	0-0	0-0	0-0	0	0	0	1	0	0	1	0	1	5
44	JUSTICE, KODI	g	1-2	1-1	0-0	1	0	1	2	3	1	1	0	1	9
04	GRAHAM, TORIAN		2-6	0-3	0-0	2	1	3	1	4	0	1	0	1	15
05	OLEKA, OBINNA		2-4	0-1	2-4	1	3	4	1	6	0	1	0	0	14
42	TSHISUMPA, JETHRO		0-1	0-0	0-0	1	1	2	1	0	0	0	2	0	10
TEAM						0	0	0	0			2			
Totals			9-24	3-9	4-6	8	8	16	7	25	3	13	2	4	100

FG % Half: 9-24 37.5%
 3FG % Half: 3-9 33.3%
 FT % Half: 4-6 66.7%

SAN DIEGO STATE 32 • 4-4

##	Player	S	Total			Rebounds			PF	TP	A	TO	Blk	Stl	Min
			FG-FGA	3PT FG-FGA	FT-FTA	Off Reb	Def Reb	Tot Reb							
03	KELL, TREY	g	3-7	0-3	4-4	0	0	0	0	10	1	1	0	4	16
04	ALLEN, DAKARAI	g	1-4	0-2	0-0	0	4	4	0	2	2	1	0	1	14
14	CHEATHAM, ZYLAN	f	2-2	0-0	0-0	2	1	3	1	4	1	0	1	0	12
21	POPE, MALIK	f	2-3	0-0	0-0	0	1	1	2	4	0	1	0	2	10
42	HEMSLEY, JEREMY	g	2-2	0-0	0-0	0	0	0	1	4	1	2	0	0	15
10	HOETZEL, MAX		2-4	2-3	0-0	0	1	1	2	6	0	1	1	0	10
20	SHRIGLEY, MATT		0-2	0-2	0-0	0	0	0	0	0	0	1	0	1	8
23	GILL-CAESAR, MONTAQL		0-1	0-1	2-2	0	0	0	0	2	1	1	0	0	7
45	IZUNDU, VALENTINE		0-1	0-0	0-0	0	0	0	1	0	0	0	0	0	8
TEAM						1	1	2	0			0			
Totals			12-26	2-11	6-6	3	8	11	7	32	6	8	2	8	100

FG % Half: 12-26 46.2%
 3FG % Half: 2-11 18.2%
 FT % Half: 6-6 100.0%

Officials: Randy McCall, Steve Olson, Bill Vinovich
 Technical Fouls: ARIZONA STATE- None. SAN DIEGO STATE- None.

Score by periods	1st	2nd	Total
ARIZONA STATE	25	49	74
SAN DIEGO STATE	32	31	63

Points	In Paint	Off T/O	2nd 2nd Chance	Fast Fast Break	Bench
ASU	10	4	0	2	10
SDSU	20	15	7	8	8

Last FG - ASU 1st-00:54, SDSU 1st-01:13.
 ASU led for 0:00. SDSU led for 19:46. Game was tied for 0:14.

Score tied - 0 times
 Lead changed - 0 times

ARIZONA STATE vs SAN DIEGO STATE
12/10/2016; 4:05 pm PST at Steve Fisher Court at Viejas Arena
Period 1 Play-By-Play

VISITORS: ARIZONA STATE	Time	Score	Margin	HOME: SAN DIEGO STATE
	19:46	2-0	H 2	GOOD! LAYUP by POPE,MALIK [PNT]
	19:46			ASSIST by KELL,TREY
TURNOVER by JUSTICE,KODI	19:30			
	19:14			MISSED JUMPER by POPE,MALIK
	19:14			REBOUND (OFF) by CHEATHAM,ZYLAN
	19:11	4-0	H 4	GOOD! TIPIN by CHEATHAM,ZYLAN [PNT]
MISSED 3PTR by HOLDER,TRA	18:45			
	18:45			REBOUND (DEF) by CHEATHAM,ZYLAN
	18:32			MISSED 3PTR by KELL,TREY
	18:32			REBOUND (DEADB) by TEAM
FOUL by JUSTICE,KODI	18:29			
SUB IN: GRAHAM,TORIAN	18:29			
SUB OUT: CUNLIFFE,SAM	18:29			
	18:28			TURNOVER by HEMSLEY,JEREMY
STEAL by JUSTICE,KODI	18:27			
TURNOVER by GRAHAM,TORIAN	17:56			
	17:55			STEAL by POPE,MALIK
	17:52	6-0	H 6	GOOD! DUNK by CHEATHAM,ZYLAN [FB/PNT]
	17:52			ASSIST by HEMSLEY,JEREMY
	17:42			FOUL by CHEATHAM,ZYLAN
GOOD! JUMPER by GRAHAM,TORIAN	17:41	6-2	H 4	
	17:21	8-2	H 6	GOOD! LAYUP by POPE,MALIK [PNT]
	17:20			ASSIST by CHEATHAM,ZYLAN
GOOD! LAYUP by EVANS II,SHANNON [PNT]	17:01	8-4	H 4	
	16:44			MISSED 3PTR by ALLEN,DAKARAI
REBOUND (DEADB) by TEAM	16:44			
	16:41			FOUL by POPE,MALIK
SUB IN: OLEKA,OBINNA	16:41			
SUB IN: TSHISUMPA,JETHRO	16:41			
SUB OUT: VILA,RAMON	16:41			
SUB OUT: JUSTICE,KODI	16:41			
MISSED JUMPER by HOLDER,TRA	16:17			
	16:17			REBOUND (DEF) by TEAM
	16:00			MISSED JUMPER by ALLEN,DAKARAI
	16:00			REBOUND (OFF) by CHEATHAM,ZYLAN
	15:34	10-4	H 6	GOOD! JUMPER by ALLEN,DAKARAI [PNT]
MISSED 3PTR by GRAHAM,TORIAN	15:19			
REBOUND (OFF) by TSHISUMPA,JETHRO	15:19			
MISSED JUMPER by TSHISUMPA,JETHRO	15:14			
	15:14			REBOUND (DEF) by ALLEN,DAKARAI
FOUL by TSHISUMPA,JETHRO	15:08			
	15:08			TIMEOUT media
	15:08	11-4	H 7	GOOD! FT by KELL,TREY
	15:08	12-4	H 8	GOOD! FT by KELL,TREY
SUB IN: CUNLIFFE,SAM	15:08			
SUB OUT: HOLDER,TRA	15:08			
	15:08			SUB IN: SHRIGLEY,MATT
	15:08			SUB IN: IZUNDU,VALENTINE
	15:08			SUB OUT: KELL,TREY
	15:08			SUB OUT: CHEATHAM,ZYLAN
TURNOVER by OLEKA,OBINNA	14:56			
	14:55			STEAL by POPE,MALIK
	14:50	14-4	H 10	GOOD! JUMPER by HEMSLEY,JEREMY [PNT]

VISITORS: ARIZONA STATE	Time	Score	Margin	HOME: SAN DIEGO STATE
MISSED 3PTR by OLEKA,OBINNA	14:20			
	14:20			REBOUND (DEF) by POPE,MALIK
	14:08			MISSED 3PTR by ALLEN,DAKARAI
REBOUND (DEF) by OLEKA,OBINNA	14:08			
GOOD! JUMPER by GRAHAM,TORIAN [PNT]	13:52	14-6	H 8	
	13:33			FOUL by HEMSLEY,JEREMY
	13:33			TURNOVER by HEMSLEY,JEREMY
SUB IN: JUSTICE,KODI	13:33			
SUB IN: HOLDER,TRA	13:33			
SUB OUT: EVANS II,SHANNON	13:33			
SUB OUT: TSHISUMPA,JETHRO	13:33			
	13:33			SUB IN: HOETZEL,MAX
	13:33			SUB OUT: POPE,MALIK
MISSED JUMPER by CUNLIFFE,SAM	13:19			
	13:19			REBOUND (DEF) by ALLEN,DAKARAI
	13:10			MISSED 3PTR by HOETZEL,MAX
REBOUND (DEF) by OLEKA,OBINNA	13:10			
	12:59			FOUL by IZUNDU,VALENTINE
GOOD! FT by HOLDER,TRA	12:59	14-7	H 7	
GOOD! FT by HOLDER,TRA	12:59	14-8	H 6	
	12:59			SUB IN: GILL-CAESAR,MONTAQU
	12:59			SUB IN: KELL,TREY
	12:59			SUB OUT: ALLEN,DAKARAI
	12:59			SUB OUT: HEMSLEY,JEREMY
	12:32			MISSED LAYUP by HOETZEL,MAX
REBOUND (DEF) by CUNLIFFE,SAM	12:32			
GOOD! DUNK by OLEKA,OBINNA [FB/PNT]	12:27	14-10	H 4	
ASSIST by CUNLIFFE,SAM	12:27			
FOUL by GRAHAM,TORIAN	12:15			
	12:06			TURNOVER by HOETZEL,MAX
GOOD! JUMPER by OLEKA,OBINNA [PNT]	11:50	14-12	H 2	
ASSIST by JUSTICE,KODI	11:50			
	11:34			MISSED 3PTR by KELL,TREY
REBOUND (DEF) by GRAHAM,TORIAN	11:34			
TURNOVER by HOLDER,TRA	11:23			
	11:22			STEAL by KELL,TREY
	11:14			MISSED 3PTR by SHRIGLEY,MATT
REBOUND (DEF) by OLEKA,OBINNA	11:14			
TURNOVER by CUNLIFFE,SAM	10:52			
	10:51			STEAL by KELL,TREY
	10:48	16-12	H 4	GOOD! LAYUP by KELL,TREY [FB/PNT]
	10:26			FOUL by HOETZEL,MAX
SUB IN: EVANS II,SHANNON	10:26			
SUB IN: TSHISUMPA,JETHRO	10:26			
SUB OUT: GRAHAM,TORIAN	10:26			
SUB OUT: JUSTICE,KODI	10:26			
	10:26			SUB IN: ALLEN,DAKARAI
	10:26			SUB IN: CHEATHAM,ZYLAN
	10:26			SUB IN: POPE,MALIK
	10:26			SUB OUT: SHRIGLEY,MATT
	10:26			SUB OUT: IZUNDU,VALENTINE
	10:26			SUB OUT: HOETZEL,MAX
GOOD! 3PTR by CUNLIFFE,SAM	10:02	16-15	H 1	
	09:48			MISSED JUMPER by KELL,TREY
BLOCK by TSHISUMPA,JETHRO	09:48			
REBOUND (DEF) by CUNLIFFE,SAM	09:46			
MISSED LAYUP by EVANS II,SHANNON	09:43			
	09:43			BLOCK by CHEATHAM,ZYLAN

VISITORS: ARIZONA STATE	Time	Score	Margin	HOME: SAN DIEGO STATE
	09:42			REBOUND (DEF) by ALLEN,DAKARAI
	09:39	18-15	H 3	GOOD! DUNK by KELL,TREY [FB/PNT]
	09:39			ASSIST by ALLEN,DAKARAI
TURNOVER by TEAM	09:12			
	09:12			SUB IN: HEMSLEY,JEREMY
	09:12			SUB OUT: KELL,TREY
	08:56			TURNOVER by POPE,MALIK
TURNOVER by HOLDER,TRA	08:33			
	08:33			STEAL by ALLEN,DAKARAI
FOUL by CUNLIFFE,SAM	08:29			
	08:29	19-15	H 4	GOOD! FT by GILL-CAESAR,MONTAQU
	08:29	20-15	H 5	GOOD! FT by GILL-CAESAR,MONTAQU
MISSED 3PTR by CUNLIFFE,SAM	08:10			
REBOUND (OFF) by HOLDER,TRA	08:10			
TURNOVER by CUNLIFFE,SAM	07:54			
	07:54			TIMEOUT MEDIA
SUB IN: GRAHAM,TORIAN	07:54			
SUB OUT: CUNLIFFE,SAM	07:54			
	07:38			TURNOVER by GILL-CAESAR,MONTAQU
STEAL by EVANS II,SHANNON	07:36			
MISSED 3PTR by GRAHAM,TORIAN	07:30			
REBOUND (OFF) by HOLDER,TRA	07:30			
MISSED 3PTR by GRAHAM,TORIAN	07:12			
REBOUND (OFF) by OLEKA,OBINNA	07:12			
	07:08			FOUL by POPE,MALIK
MISSED FT by OLEKA,OBINNA	07:08			
REBOUND (DEADB) by TEAM	07:08			
MISSED FT by OLEKA,OBINNA	07:08			
	07:08			REBOUND (DEF) by ALLEN,DAKARAI
SUB IN: CUNLIFFE,SAM	07:08			
SUB OUT: HOLDER,TRA	07:08			
	07:08			SUB IN: KELL,TREY
	07:08			SUB IN: HOETZEL,MAX
	07:08			SUB OUT: POPE,MALIK
	07:08			SUB OUT: HEMSLEY,JEREMY
	06:42	23-15	H 8	GOOD! 3PTR by HOETZEL,MAX
	06:42			ASSIST by GILL-CAESAR,MONTAQU
TURNOVER by EVANS II,SHANNON	06:14			
	06:13			STEAL by KELL,TREY
	06:07			MISSED 3PTR by GILL-CAESAR,MONTAQU
REBOUND (DEF) by TSHISUMPA,JETHRO	06:07			
	05:44			FOUL by HOETZEL,MAX
GOOD! FT by OLEKA,OBINNA	05:44	23-16	H 7	
GOOD! FT by OLEKA,OBINNA	05:44	23-17	H 6	
SUB IN: VILA,RAMON	05:44			
SUB IN: HOLDER,TRA	05:44			
SUB IN: JUSTICE,KODI	05:44			
SUB OUT: EVANS II,SHANNON	05:44			
SUB OUT: TSHISUMPA,JETHRO	05:44			
SUB OUT: OLEKA,OBINNA	05:44			
	05:44			SUB IN: HEMSLEY,JEREMY
	05:44			SUB OUT: GILL-CAESAR,MONTAQU
	05:27			TURNOVER by ALLEN,DAKARAI
STEAL by GRAHAM,TORIAN	05:26			
FOUL by VILA,RAMON	05:09			
TURNOVER by VILA,RAMON	05:09			
	05:09			SUB IN: SHRIGLEY,MATT
	05:09			SUB OUT: ALLEN,DAKARAI

VISITORS: ARIZONA STATE	Time	Score	Margin	HOME: SAN DIEGO STATE
	04:55			TURNOVER by SHRIGLEY,MATT
STEAL by VILA,RAMON	04:54			
GOOD! JUMPER by HOLDER,TRA [PNT]	04:33	23-19	H 4	
	04:12	25-19	H 6	GOOD! LAYUP by KELL,TREY [PNT]
MISSED JUMPER by CUNLIFFE,SAM	03:55			
REBOUND (OFF) by JUSTICE,KODI	03:55			
MISSED LAYUP by JUSTICE,KODI	03:51			
REBOUND (OFF) by GRAHAM,TORIAN	03:51			
MISSED LAYUP by GRAHAM,TORIAN	03:49			
	03:49			REBOUND (DEF) by HOETZEL,MAX
	03:36			TIMEOUT media
SUB IN: TSHISUMPA,JETHRO	03:36			
SUB OUT: VILA,RAMON	03:36			
	03:36			SUB IN: IZUNDU,VALENTINE
	03:36			SUB OUT: CHEATHAM,ZYLAN
	03:29			MISSED 3PTR by SHRIGLEY,MATT
REBOUND (DEF) by CUNLIFFE,SAM	03:29			
GOOD! 3PTR by JUSTICE,KODI	03:08	25-22	H 3	
ASSIST by HOLDER,TRA	03:08			
FOUL by JUSTICE,KODI	02:54			
SUB IN: OLEKA,OBINNA	02:54			
SUB IN: EVANS II,SHANNON	02:54			
SUB OUT: TSHISUMPA,JETHRO	02:54			
SUB OUT: JUSTICE,KODI	02:54			
FOUL by OLEKA,OBINNA	02:38			
	02:38	26-22	H 4	GOOD! FT by KELL,TREY
	02:38	27-22	H 5	GOOD! FT by KELL,TREY
MISSED JUMPER by OLEKA,OBINNA	02:24			
	02:24			BLOCK by HOETZEL,MAX
REBOUND (OFF) by HOLDER,TRA	02:22			
TURNOVER by HOLDER,TRA	02:10			
	02:09			STEAL by SHRIGLEY,MATT
	02:05	29-22	H 7	GOOD! LAYUP by HEMSLEY,JEREMY [FB/PNT]
TIMEOUT 30SEC	02:03			
MISSED JUMPER by CUNLIFFE,SAM	01:40			
REBOUND (OFF) by GRAHAM,TORIAN	01:40			
	01:35			SUB IN: ALLEN,DAKARAI
	01:35			SUB OUT: SHRIGLEY,MATT
TURNOVER by TEAM	01:33			
SUB IN: TSHISUMPA,JETHRO	01:33			
SUB OUT: GRAHAM,TORIAN	01:33			
	01:19			MISSED LAYUP by IZUNDU,VALENTINE
BLOCK by TSHISUMPA,JETHRO	01:19			
	01:19			REBOUND (OFF) by TEAM
	01:17			TIMEOUT 30SEC
	01:13	32-22	H 10	GOOD! 3PTR by HOETZEL,MAX
	01:13			ASSIST by ALLEN,DAKARAI
GOOD! 3PTR by EVANS II,SHANNON	00:54	32-25	H 7	
	00:34			TURNOVER by KELL,TREY
SUB IN: GRAHAM,TORIAN	00:34			
SUB OUT: CUNLIFFE,SAM	00:34			
	00:34			SUB IN: CHEATHAM,ZYLAN
	00:34			SUB OUT: HOETZEL,MAX
TURNOVER by EVANS II,SHANNON	00:26			
	00:25			STEAL by KELL,TREY
	00:01			MISSED 3PTR by KELL,TREY
	00:00			REBOUND (DEADB) by TEAM

ARIZONA STATE 25, SAN DIEGO STATE 32

Period 1-only	In Paint	Off T/O	2nd Chance	Fast Break	Bench	
ASU	10	4	0	2	10	Score tied - 0 times
SDSU	20	15	7	8	8	Lead changed - 0 times

Official Basketball Box Score -- Game Totals -- Second Half Statistics

ARIZONA STATE vs SAN DIEGO STATE

12/10/2016 4:05 pm PST at Steve Fisher Court at Viejas Arena

ARIZONA STATE 49 • 6-4

##	Player	S	Total			Rebounds			PF	TP	A	TO	Blk	Stl	Min
			FG-FGA	3PT FG-FGA	FT-FTA	Off Reb	Def Reb	Tot Reb							
00	HOLDER,TRA	g	4-9	1-4	4-4	0	2	2	0	13	3	1	0	1	18
03	CUNLIFFE,SAM	f	0-2	0-0	0-0	1	2	3	2	0	1	1	0	0	13
11	EVANS II,SHANNON	g	3-6	3-5	2-2	0	1	1	2	11	3	0	0	0	18
33	VILA,RAMON	f	0-0	0-0	0-0	0	0	0	0	0	0	0	0	0	0
44	JUSTICE,KODI	g	1-2	1-2	0-0	0	1	1	2	3	1	3	0	0	12
04	GRAHAM,TORIAN		4-5	1-2	2-2	0	2	2	1	11	0	0	0	0	13
05	OLEKA,OBINNA		2-5	1-1	4-4	3	5	8	0	9	1	0	1	2	15
42	TSHISUMPA,JETHRO		1-1	0-0	0-0	1	0	1	2	2	0	0	3	0	11
TEAM						0	0	0	0		0				
Totals			15-30	7-14	12-12	5	13	18	9	49	9	5	4	3	100

FG % Half: 15-30 50.0%
 3FG % Half: 7-14 33.3%
 FT % Half: 12-12 100.0%

SAN DIEGO STATE 31 • 4-4

##	Player	S	Total			Rebounds			PF	TP	A	TO	Blk	Stl	Min
			FG-FGA	3PT FG-FGA	FT-FTA	Off Reb	Def Reb	Tot Reb							
03	KELL,TREY	g	4-8	2-3	0-0	1	3	4	1	10	0	1	0	1	17
04	ALLEN,DAKARAI	g	3-3	0-0	0-0	1	3	4	2	6	0	1	1	0	15
14	CHEATHAM,ZYLAN	f	0-3	0-0	3-4	1	1	2	4	3	1	4	0	2	14
21	POPE,MALIK	f	0-3	0-1	0-0	1	1	2	0	0	1	1	0	0	10
42	HEMSLEY,JEREMY	g	0-1	0-1	6-8	0	0	0	1	6	0	1	0	0	14
10	HOETZEL,MAX		2-8	2-5	0-0	2	1	3	2	6	0	0	0	1	11
20	SHRIGLEY,MATT		0-2	0-2	0-0	1	0	1	0	0	1	1	0	0	11
23	GILL-CAESAR,MONTAQL		0-2	0-1	0-0	0	1	1	0	0	0	0	0	0	3
45	IZUNDU,VALENTINE		0-1	0-0	0-0	1	0	1	0	0	0	0	0	0	5
TEAM						1	0	1	0		0				
Totals			9-31	4-13	9-12	9	10	19	10	31	3	9	1	4	100

FG % Half: 9-31 29.0%
 3FG % Half: 4-13 18.2%
 FT % Half: 9-12 75.0%

Officials: Randy McCall, Steve Olson, Bill Vinovich
 Technical Fouls: ARIZONA STATE- None. SAN DIEGO STATE- None.

Score by periods	1st	2nd	Total
ARIZONA STATE	25	49	74
SAN DIEGO STATE	32	31	63

Points	In Paint	Off T/O	2nd 2nd Chance	Fast Fast Break	Bench
ASU	14	12	4	4	22
SDSU	10	5	6	0	6

Last FG - ASU 2nd-00:46, SDSU 2nd-00:52.
 ASU led for 16:37. SDSU led for 2:52. Game was tied for 0:31.

Score tied - 2 times
 Lead changed - 1 times

ARIZONA STATE vs SAN DIEGO STATE
12/10/2016; 4:05 pm PST at Steve Fisher Court at Viejas Arena
Period 2 Play-By-Play

VISITORS: ARIZONA STATE	Time	Score	Margin	HOME: SAN DIEGO STATE
SUB IN: TSHISUMPA,JETHRO	20:00			
SUB OUT: VILA,RAMON	20:00			
	19:36			MISSED LAYUP by CHEATHAM,ZYLAN
BLOCK by TSHISUMPA,JETHRO	19:35			
REBOUND (DEF) by JUSTICE,KODI	19:34			
GOOD! 3PTR by EVANS II,SHANNON	19:12	32-28	H 4	
ASSIST by HOLDER,TRA	19:12			
	18:53	34-28	H 6	GOOD! LAYUP by KELL,TREY [PNT]
GOOD! 3PTR by HOLDER,TRA	18:32	34-31	H 3	
	18:02			MISSED 3PTR by POPE,MALIK
REBOUND (DEF) by CUNLIFFE,SAM	18:02			
GOOD! 3PTR by JUSTICE,KODI	17:51	34-34	T	
ASSIST by EVANS II,SHANNON	17:51			
FOUL by JUSTICE,KODI	17:38			
	17:38			MISSED FT by HEMSLEY,JEREMY
	17:38			REBOUND (DEADB) by TEAM
	17:38	35-34	H 1	GOOD! FT by HEMSLEY,JEREMY
SUB IN: OLEKA,OBINNA	17:38			
SUB OUT: JUSTICE,KODI	17:38			
MISSED 3PTR by HOLDER,TRA	17:20			
	17:20			REBOUND (DEF) by ALLEN,DAKARAI
	16:59			TURNOVER by POPE,MALIK
STEAL by HOLDER,TRA	16:58			
GOOD! LAYUP by HOLDER,TRA [FB/PNT]	16:55	35-36	V 1	
	16:43			TURNOVER by CHEATHAM,ZYLAN
MISSED JUMPER by HOLDER,TRA	16:39			
	16:39			REBOUND (DEF) by POPE,MALIK
	16:32			MISSED LAYUP by KELL,TREY
	16:32			REBOUND (OFF) by POPE,MALIK
FOUL by CUNLIFFE,SAM	16:29			
	16:17			MISSED JUMPER by POPE,MALIK
REBOUND (DEF) by CUNLIFFE,SAM	16:17			
MISSED JUMPER by EVANS II,SHANNON	15:55			
REBOUND (OFF) by TSHISUMPA,JETHRO	15:55			
GOOD! TIPIN by TSHISUMPA,JETHRO [PNT]	15:51	35-38	V 3	
	15:20			TIMEOUT media
	15:20			SUB IN: IZUNDU,VALENTINE
	15:20			SUB IN: GILL-CAESAR,MONTAQU
	15:20			SUB IN: HOETZEL,MAX
	15:20			SUB IN: SHRIGLEY,MATT
	15:20			SUB OUT: ALLEN,DAKARAI
	15:20			SUB OUT: CHEATHAM,ZYLAN
	15:20			SUB OUT: POPE,MALIK
	15:20			SUB OUT: HEMSLEY,JEREMY
	15:17			MISSED 3PTR by HOETZEL,MAX
	15:17			REBOUND (OFF) by TEAM
	15:10			MISSED 3PTR by HOETZEL,MAX
	15:10			REBOUND (OFF) by IZUNDU,VALENTINE
	15:06			MISSED JUMPER by IZUNDU,VALENTINE
BLOCK by TSHISUMPA,JETHRO	15:05			
	15:04			REBOUND (OFF) by HOETZEL,MAX
	15:03			MISSED JUMPER by HOETZEL,MAX
BLOCK by TSHISUMPA,JETHRO	15:03			

VISITORS: ARIZONA STATE	Time	Score	Margin	HOME: SAN DIEGO STATE
	15:02			REBOUND (OFF) by SHRIGLEY,MATT
	14:59	38-38	T	GOOD! 3PTR by HOETZEL,MAX
	14:59			ASSIST by SHRIGLEY,MATT
GOOD! 3PTR by EVANS II,SHANNON	14:41	38-41	V 3	
ASSIST by CUNLIFFE,SAM	14:41			
	14:12			MISSED JUMPER by GILL-CAESAR,MONTAQU
REBOUND (DEF) by OLEKA,OBINNA	14:12			
GOOD! JUMPER by HOLDER,TRA [PNT]	13:53	38-43	V 5	
	13:36	40-43	V 3	GOOD! JUMPER by KELL,TREY [PNT]
SUB IN: GRAHAM,TORIAN	13:35			
SUB OUT: TSHISUMPA,JETHRO	13:35			
TURNOVER by CUNLIFFE,SAM	13:11			
	13:10			STEAL by HOETZEL,MAX
	13:02			MISSED JUMPER by KELL,TREY
REBOUND (DEF) by OLEKA,OBINNA	13:02			
MISSED JUMPER by CUNLIFFE,SAM	12:53			
REBOUND (OFF) by CUNLIFFE,SAM	12:53			
MISSED LAYUP by CUNLIFFE,SAM	12:51			
REBOUND (OFF) by OLEKA,OBINNA	12:51			
MISSED LAYUP by OLEKA,OBINNA	12:48			
REBOUND (OFF) by OLEKA,OBINNA	12:48			
MISSED 3PTR by GRAHAM,TORIAN	12:42			
	12:42			REBOUND (DEF) by GILL-CAESAR,MONTAQU
FOUL by CUNLIFFE,SAM	12:40			
SUB IN: JUSTICE,KODI	12:40			
SUB OUT: CUNLIFFE,SAM	12:40			
	12:40			SUB IN: HEMSLEY,JEREMY
	12:40			SUB OUT: KELL,TREY
	12:11			MISSED 3PTR by GILL-CAESAR,MONTAQU
REBOUND (DEF) by OLEKA,OBINNA	12:11			
GOOD! LAYUP by GRAHAM,TORIAN [FB/PNT]	12:02	40-45	V 5	
ASSIST by EVANS II,SHANNON	12:02			
FOUL by EVANS II,SHANNON	11:56			
	11:56			TIMEOUT media
	11:56			SUB IN: CHEATHAM,ZYLAN
	11:56			SUB IN: KELL,TREY
	11:56			SUB OUT: IZUNDU,VALENTINE
	11:56			SUB OUT: GILL-CAESAR,MONTAQU
	11:51			MISSED JUMPER by KELL,TREY
	11:51			REBOUND (OFF) by KELL,TREY
	11:46			TURNOVER by KELL,TREY
GOOD! LAYUP by OLEKA,OBINNA [PNT]	11:28	40-47	V 7	
ASSIST by HOLDER,TRA	11:28			
	11:07			MISSED LAYUP by CHEATHAM,ZYLAN
REBOUND (DEF) by EVANS II,SHANNON	11:07			
MISSED 3PTR by JUSTICE,KODI	10:56			
	10:56			REBOUND (DEF) by CHEATHAM,ZYLAN
	10:32			MISSED JUMPER by CHEATHAM,ZYLAN
BLOCK by OLEKA,OBINNA	10:32			
REBOUND (DEF) by OLEKA,OBINNA	10:30			
MISSED LAYUP by OLEKA,OBINNA	10:11			
	10:11			REBOUND (DEF) by KELL,TREY
	10:02			MISSED 3PTR by SHRIGLEY,MATT
	10:02			REBOUND (OFF) by CHEATHAM,ZYLAN
FOUL by GRAHAM,TORIAN	09:56			
	09:56			MISSED FT by CHEATHAM,ZYLAN
	09:56			REBOUND (DEADB) by TEAM
	09:56	41-47	V 6	GOOD! FT by CHEATHAM,ZYLAN

VISITORS: ARIZONA STATE	Time	Score	Margin	HOME: SAN DIEGO STATE
SUB IN: TSHISUMPA,JETHRO	09:56			
SUB IN: CUNLIFFE,SAM	09:56			
SUB OUT: HOLDER,TRA	09:56			
SUB OUT: OLEKA,OBINNA	09:56			
	09:56			SUB IN: POPE,MALIK
	09:56			SUB IN: ALLEN,DAKARAI
	09:56			SUB OUT: KELL,TREY
	09:56			SUB OUT: HOETZEL,MAX
TURNOVER by JUSTICE,KODI	09:41			
	09:13			TURNOVER by CHEATHAM,ZYLAN
GOOD! 3PTR by EVANS II,SHANNON	09:03	41-50	V 9	
	08:37			TURNOVER by SHRIGLEY,MATT
	08:30			FOUL by HEMSLEY,JEREMY
GOOD! 3PTR by GRAHAM,TORIAN	08:24	41-53	V 12	
ASSIST by EVANS II,SHANNON	08:24			
	08:18			TIMEOUT 30SEC
	08:18			TIMEOUT MEDIA
FOUL by TSHISUMPA,JETHRO	08:00			
	08:00	42-53	V 11	GOOD! FT by CHEATHAM,ZYLAN
	08:00	43-53	V 10	GOOD! FT by CHEATHAM,ZYLAN
MISSED 3PTR by EVANS II,SHANNON	07:54			
	07:54			REBOUND (DEF) by ALLEN,DAKARAI
FOUL by TSHISUMPA,JETHRO	07:44			
	07:44			TIMEOUT media
	07:44	44-53	V 9	GOOD! FT by HEMSLEY,JEREMY
	07:44	45-53	V 8	GOOD! FT by HEMSLEY,JEREMY
SUB IN: OLEKA,OBINNA	07:44			
SUB IN: HOLDER,TRA	07:44			
SUB OUT: EVANS II,SHANNON	07:44			
SUB OUT: CUNLIFFE,SAM	07:44			
	07:44			SUB IN: KELL,TREY
	07:44			SUB OUT: SHRIGLEY,MATT
TURNOVER by JUSTICE,KODI	07:37			
	07:36			STEAL by CHEATHAM,ZYLAN
	07:29	47-53	V 6	GOOD! LAYUP by ALLEN,DAKARAI [PNT]
	07:29			ASSIST by CHEATHAM,ZYLAN
GOOD! 3PTR by OLEKA,OBINNA	07:06	47-56	V 9	
ASSIST by JUSTICE,KODI	07:06			
	06:39			MISSED JUMPER by POPE,MALIK
REBOUND (DEF) by HOLDER,TRA	06:39			
TURNOVER by HOLDER,TRA	06:20			
	06:18			STEAL by CHEATHAM,ZYLAN
	06:14			TURNOVER by CHEATHAM,ZYLAN
STEAL by OLEKA,OBINNA	06:13			
TURNOVER by JUSTICE,KODI	06:11			
	06:10			STEAL by KELL,TREY
	06:08	50-56	V 6	GOOD! 3PTR by KELL,TREY
TIMEOUT 30SEC	06:04			
SUB IN: EVANS II,SHANNON	06:04			
SUB IN: CUNLIFFE,SAM	06:04			
SUB OUT: JUSTICE,KODI	06:04			
SUB OUT: GRAHAM,TORIAN	06:04			
	06:04			SUB IN: HOETZEL,MAX
	06:04			SUB IN: IZUNDU,VALENTINE
	06:04			SUB OUT: CHEATHAM,ZYLAN
	06:04			SUB OUT: POPE,MALIK
MISSED JUMPER by OLEKA,OBINNA	05:43			
REBOUND (OFF) by OLEKA,OBINNA	05:43			

VISITORS: ARIZONA STATE	Time	Score	Margin	HOME: SAN DIEGO STATE
	05:42			FOUL by HOETZEL,MAX
GOOD! FT by OLEKA,OBINNA	05:42	50-57	V 7	
GOOD! FT by OLEKA,OBINNA	05:42	50-58	V 8	
SUB IN: GRAHAM,TORIAN	05:42			
SUB OUT: TSHISUMPA,JETHRO	05:42			
	05:23	52-58	V 6	GOOD! LAYUP by ALLEN,DAKARAI [PNT]
GOOD! JUMPER by HOLDER,TRA [PNT]	05:05	52-60	V 8	
FOUL by EVANS II,SHANNON	04:56			
	04:56	53-60	V 7	GOOD! FT by HEMSLEY,JEREMY
	04:56	54-60	V 6	GOOD! FT by HEMSLEY,JEREMY
SUB IN: JUSTICE,KODI	04:56			
SUB OUT: CUNLIFFE,SAM	04:56			
	04:56			SUB IN: CHEATHAM,ZYLAN
	04:56			SUB OUT: IZUNDU,VALENTINE
	04:38			FOUL by HOETZEL,MAX
GOOD! JUMPER by GRAHAM,TORIAN	04:38	54-62	V 8	
ASSIST by HOLDER,TRA	04:38			
	04:21			MISSED 3PTR by HEMSLEY,JEREMY
	04:21			REBOUND (OFF) by HOETZEL,MAX
	04:17			MISSED JUMPER by HOETZEL,MAX
REBOUND (DEF) by GRAHAM,TORIAN	04:17			
MISSED 3PTR by EVANS II,SHANNON	04:09			
	04:09			REBOUND (DEF) by KELL,TREY
	04:00			FOUL by CHEATHAM,ZYLAN
	04:00			TURNOVER by CHEATHAM,ZYLAN
	03:45			FOUL by CHEATHAM,ZYLAN
TIMEOUT MEDIA	03:45			
GOOD! FT by OLEKA,OBINNA	03:45	54-63	V 9	
GOOD! FT by OLEKA,OBINNA	03:45	54-64	V 10	
	03:27			TURNOVER by HEMSLEY,JEREMY
STEAL by OLEKA,OBINNA	03:27			
MISSED 3PTR by HOLDER,TRA	03:09			
	03:09			REBOUND (DEF) by KELL,TREY
FOUL by JUSTICE,KODI	03:05			
	03:05			MISSED FT by HEMSLEY,JEREMY
	03:05			REBOUND (DEADB) by TEAM
	03:05	55-64	V 9	GOOD! FT by HEMSLEY,JEREMY
	03:05			TIMEOUT 30SEC
SUB IN: CUNLIFFE,SAM	03:05			
SUB OUT: JUSTICE,KODI	03:05			
	03:05			SUB IN: SHRIGLEY,MATT
	03:05			SUB OUT: HEMSLEY,JEREMY
	03:04			FOUL by CHEATHAM,ZYLAN
MISSED 3PTR by HOLDER,TRA	02:37			
	02:37			REBOUND (DEF) by ALLEN,DAKARAI
	02:28			TURNOVER by ALLEN,DAKARAI
MISSED JUMPER by HOLDER,TRA	02:06			
	02:06			BLOCK by ALLEN,DAKARAI
	02:04			REBOUND (DEF) by HOETZEL,MAX
	02:00			MISSED JUMPER by HOETZEL,MAX
	02:00			REBOUND (OFF) by ALLEN,DAKARAI
	01:54	57-64	V 7	GOOD! LAYUP by ALLEN,DAKARAI [PNT]
	01:46			FOUL by ALLEN,DAKARAI
GOOD! FT by EVANS II,SHANNON	01:46	57-65	V 8	
GOOD! FT by EVANS II,SHANNON	01:46	57-66	V 9	
SUB IN: JUSTICE,KODI	01:46			
SUB OUT: CUNLIFFE,SAM	01:46			
	01:34			MISSED 3PTR by KELL,TREY

VISITORS: ARIZONA STATE	Time	Score	Margin	HOME: SAN DIEGO STATE
REBOUND (DEF) by OLEKA,OBINNA	01:34			
	01:25			FOUL by CHEATHAM,ZYLAN
GOOD! FT by HOLDER,TRA	01:25	57-67	V 10	
GOOD! FT by HOLDER,TRA	01:25	57-68	V 11	
SUB IN: CUNLIFFE,SAM	01:25			
SUB OUT: GRAHAM,TORIAN	01:25			
	01:25			SUB IN: POPE,MALIK
	01:25			SUB OUT: CHEATHAM,ZYLAN
	01:14	60-68	V 8	GOOD! 3PTR by HOETZEL,MAX
	01:14			ASSIST by POPE,MALIK
	01:10			TIMEOUT TEAM
SUB IN: GRAHAM,TORIAN	01:10			
SUB OUT: OLEKA,OBINNA	01:10			
	01:00			FOUL by KELL,TREY
GOOD! FT by GRAHAM,TORIAN	01:00	60-69	V 9	
GOOD! FT by GRAHAM,TORIAN	01:00	60-70	V 10	
SUB IN: OLEKA,OBINNA	01:00			
SUB OUT: JUSTICE,KODI	01:00			
	00:52	63-70	V 7	GOOD! 3PTR by KELL,TREY
GOOD! DUNK by GRAHAM,TORIAN [PNT]	00:46	63-72	V 9	
ASSIST by OLEKA,OBINNA	00:46			
	00:41			MISSED 3PTR by HOETZEL,MAX
REBOUND (DEF) by HOLDER,TRA	00:41			
	00:33			FOUL by ALLEN,DAKARAI
GOOD! FT by HOLDER,TRA	00:33	63-73	V 10	
GOOD! FT by HOLDER,TRA	00:33	63-74	V 11	
	00:24			MISSED 3PTR by SHRIGLEY,MATT
REBOUND (DEF) by GRAHAM,TORIAN	00:24			

ARIZONA STATE 74, SAN DIEGO STATE 63

Period 2-only	In Paint	Off T/O	2nd Chance	Fast Break	Bench	
ASU	14	12	4	4	22	Score tied - 2 times
SDSU	10	5	6	0	6	Lead changed - 2 times

ARIZONA STATE vs SAN DIEGO STATE
12/10/2016; 4:05 pm PST at Steve Fisher Court at Viejas Arena
Scoring/Runs Reference

Period 1

ARIZONA STATE	Score	Marg	SAN DIEGO STATE
	0-2	2 2	POPE LAYUP [P] - 19:46
	0-4	4 2	CHEATHAM TIPIN [P] - 19:11
	0-6	6 2	CHEATHAM DUNK [P] [F] - 17:52
17:41 - GRAHAM JUMPER 2	2-6	4	
	2-8	6 2	POPE LAYUP [P] - 17:21
17:01 - EVANS II LAYUP [P]	2	4-8 4	
	4-10	6 2	ALLEN JUMPER [P] - 15:34
	4-11	7 1	KELL FT - 15:08
	4-12	8 1	KELL FT - 15:08
	4-14	10 2	HEMSLEY JUMPER [P] - 14:50
13:52 - GRAHAM JUMPER [P]	2	6-14 8	
12:59 - HOLDER FT	1	7-14 7	
12:59 - HOLDER FT	1	8-14 6	
12:27 - OLEKA DUNK [P] [F]	2	10-14 4	
11:50 - OLEKA JUMPER [P]	2	12-14 2	
	12-16	4 2	KELL LAYUP [P] [F] - 10:48
10:02 - CUNLIFFE 3PTR	3	15-16 1	
	15-18	3 2	KELL DUNK [P] [F] - 09:39
	15-19	4 1	GILL-CAESAR FT - 08:29
	15-20	5 1	GILL-CAESAR FT - 08:29
	15-23	8 3	HOETZEL 3PTR - 06:42
05:44 - OLEKA FT	1	16-23 7	
05:44 - OLEKA FT	1	17-23 6	
04:33 - HOLDER JUMPER [P]	2	19-23 4	
	19-25	6 2	KELL LAYUP [P] - 04:12
03:08 - JUSTICE 3PTR	3	22-25 3	
	22-26	4 1	KELL FT - 02:38
	22-27	5 1	KELL FT - 02:38
	22-29	7 2	HEMSLEY LAYUP [P] [F] - 02:05
	22-32	10 3	HOETZEL 3PTR - 01:13
00:54 - EVANS II 3PTR	3	25-32 7	

Period 2

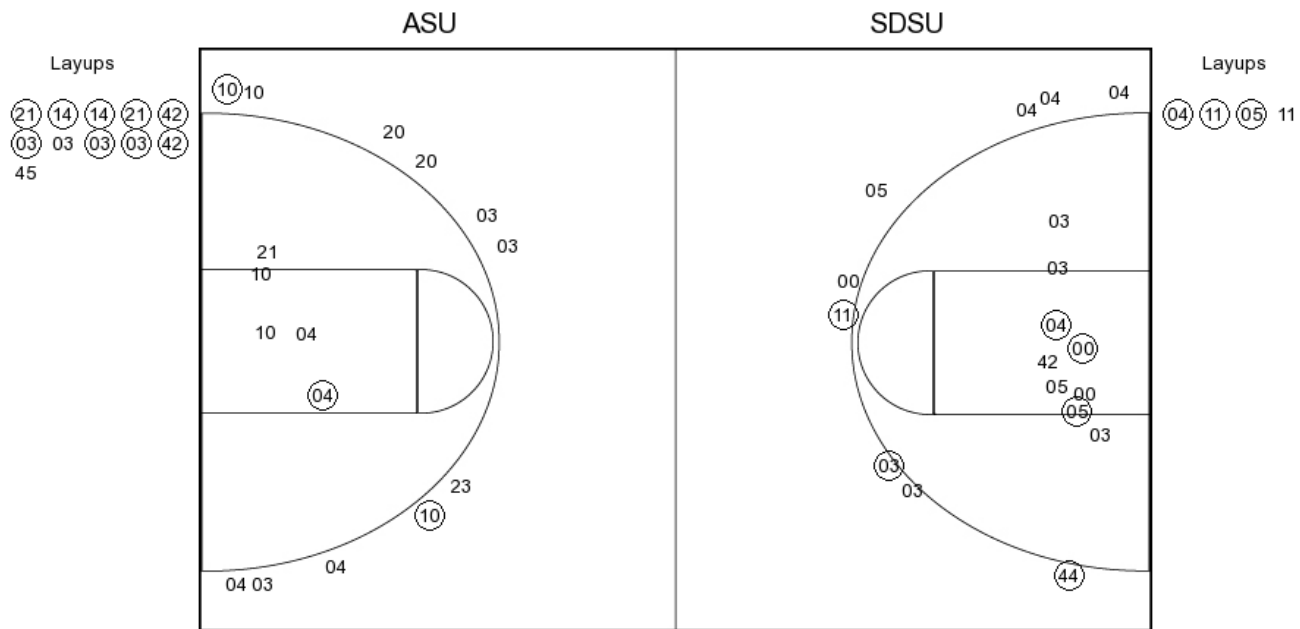
ARIZONA STATE	Score	Marg	SAN DIEGO STATE
19:12 - EVANS II 3PTR	3	28-32 4	
		28-34 6 2	KELL LAYUP [P] - 18:53
18:32 - HOLDER 3PTR	3	31-34 3	
17:51 - JUSTICE 3PTR	3	34-34 0	
		34-35 1 1	HEMSLEY FT - 17:38
16:55 - HOLDER LAYUP [P] [F]	2	36-35 -1	
15:51 - TSHISUMPA TIPIN [P]	2	38-35 -3	
		38-38 0 3	HOETZEL 3PTR - 14:59
14:41 - EVANS II 3PTR	3	41-38 -3	
13:53 - HOLDER JUMPER [P]	2	43-38 -5	
		43-40 -3 2	KELL JUMPER [P] - 13:36
12:02 - GRAHAM LAYUP [P] [F]	2	45-40 -5	
11:28 - OLEKA LAYUP [P]	2	47-40 -7	
		47-41 -6 1	CHEATHAM FT - 09:56
09:03 - EVANS II 3PTR	3	50-41 -9	
08:24 - GRAHAM 3PTR	3	53-41 -12	
		53-42 -11 1	CHEATHAM FT - 08:00
		53-43 -10 1	CHEATHAM FT - 08:00
		53-44 -9 1	HEMSLEY FT - 07:44
		53-45 -8 1	HEMSLEY FT - 07:44
		53-47 -6 2	ALLEN LAYUP [P] - 07:29
07:06 - OLEKA 3PTR	3	56-47 -9	
		56-50 -6 3	KELL 3PTR - 06:08
05:42 - OLEKA FT	1	57-50 -7	
05:42 - OLEKA FT	1	58-50 -8	
		58-52 -6 2	ALLEN LAYUP [P] - 05:23
05:05 - HOLDER JUMPER [P]	2	60-52 -8	
		60-53 -7 1	HEMSLEY FT - 04:56
		60-54 -6 1	HEMSLEY FT - 04:56
04:38 - GRAHAM JUMPER 2	2	62-54 -8	
03:45 - OLEKA FT	1	63-54 -9	
03:45 - OLEKA FT	1	64-54 -10	
		64-55 -9 1	HEMSLEY FT - 03:05
		64-57 -7 2	ALLEN LAYUP [P] - 01:54
01:46 - EVANS II FT	1	65-57 -8	
01:46 - EVANS II FT	1	66-57 -9	
01:25 - HOLDER FT	1	67-57 -10	
01:25 - HOLDER FT	1	68-57 -11	
		68-60 -8 3	HOETZEL 3PTR - 01:14
01:00 - GRAHAM FT	1	69-60 -9	
01:00 - GRAHAM FT	1	70-60 -10	
		70-63 -7 3	KELL 3PTR - 00:52
00:46 - GRAHAM DUNK [P]	2	72-63 -9	
00:33 - HOLDER FT	1	73-63 -10	
00:33 - HOLDER FT	1	74-63 -11	

ARIZONA STATE vs SAN DIEGO STATE

OFFICIAL SHOT CHART

12/10/2016 at Steve Fisher Court at Viejas Arena

PERIOD 1



ASU PERIOD 1

FG Made	9
FG Attempted	24
3PFG Made	3
3PFG Attempted	9

SDSU PERIOD 1

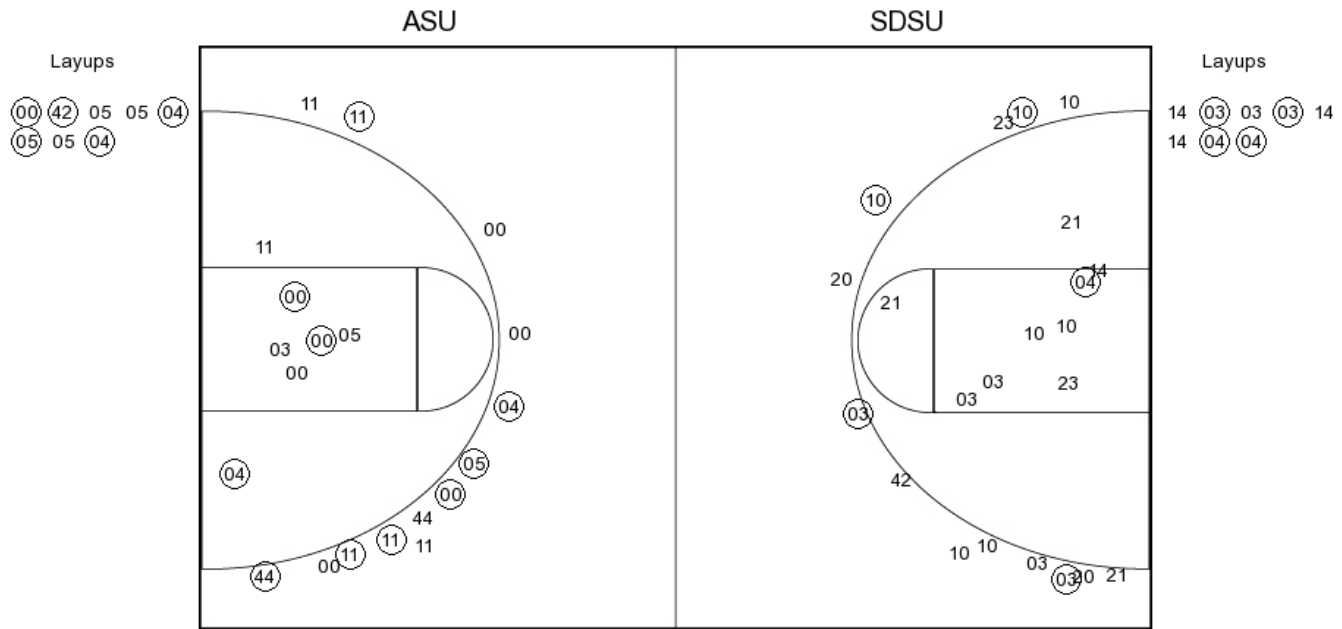
FG Made	12
FG Attempted	26
3PFG Made	2
3PFG Attempted	11

ARIZONA STATE vs SAN DIEGO STATE

OFFICIAL SHOT CHART

12/10/2016 at Steve Fisher Court at Viejas Arena

PERIOD 2



ASU PERIOD 2

FG Made	15
FG Attempted	30
3PFG Made	7
3PFG Attempted	14

SDSU PERIOD 2

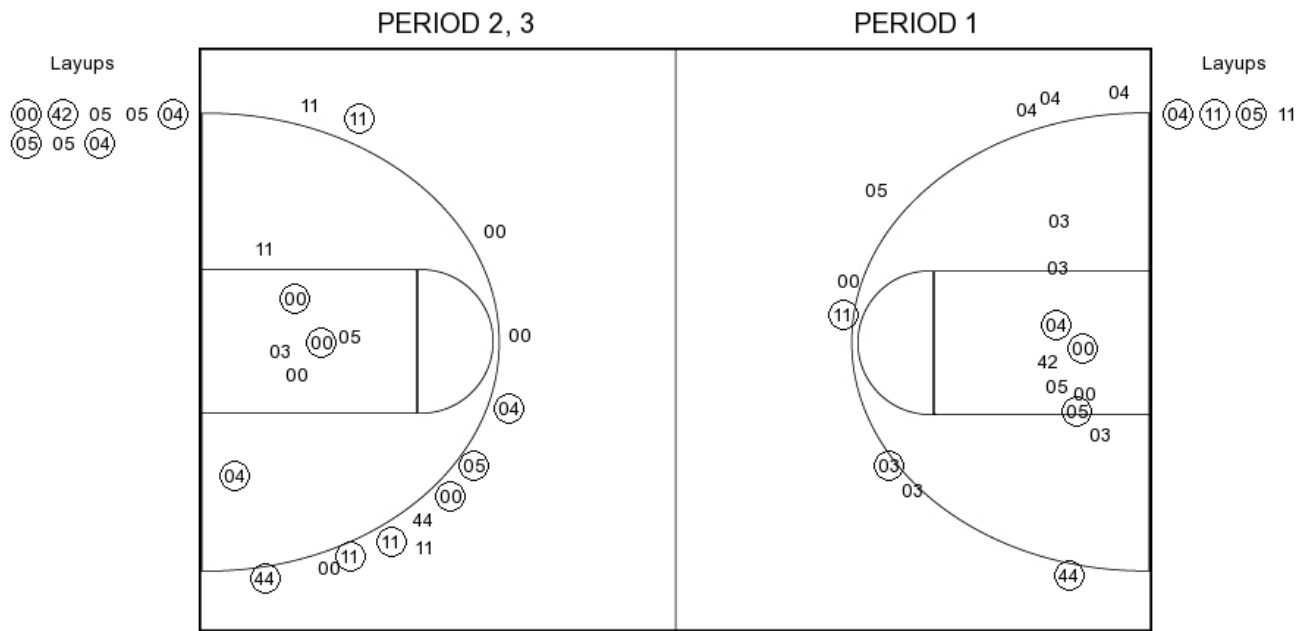
FG Made	9
FG Attempted	31
3PFG Made	4
3PFG Attempted	13

ARIZONA STATE vs SAN DIEGO STATE

OFFICIAL SHOT CHART

12/10/2016 at Steve Fisher Court at Viejas Arena

ARIZONA STATE



ASU PERIOD 1

FG Made	9
FG Attempted	24
3PFG Made	3
3PFG Attempted	9

ASU PERIOD 2

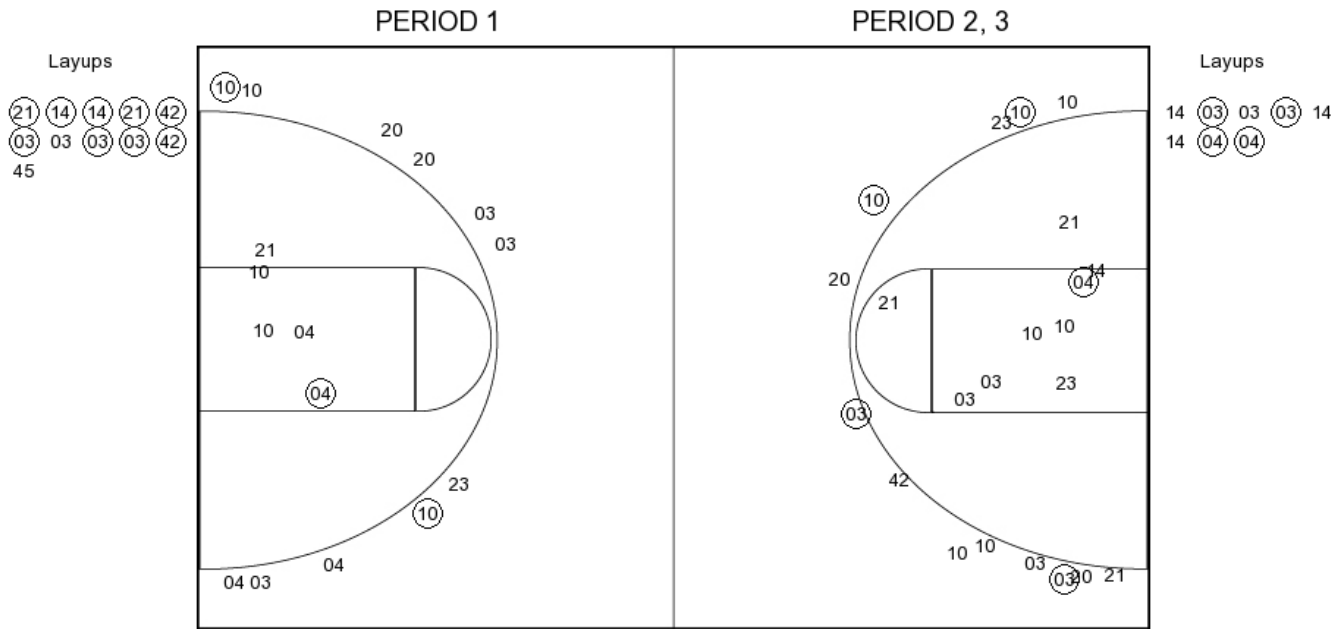
FG Made	15
FG Attempted	30
3PFG Made	7
3PFG Attempted	14

ARIZONA STATE vs SAN DIEGO STATE

OFFICIAL SHOT CHART

12/10/2016 at Steve Fisher Court at Viejas Arena

SAN DIEGO STATE



SDSU PERIOD 1

FG Made	12
FG Attempted	26
3PFG Made	2
3PFG Attempted	11

SDSU PERIOD 2

FG Made	9
FG Attempted	31
3PFG Made	4
3PFG Attempted	13