



NEBRASKA VS. SAN JOSE STATE

12/9/2016

Pinnacle Bank Arena (Lincoln, Neb.)

FINAL STATS

Nebraska

(4-6)

83

San Jose State

(2-8)

61

Start Time: 7:06 p.m

Officials: Dee Kanter, John Whitson, Tiffany Bird

Attendance: 4205

Official Basketball Box Score -- Game Totals -- Final Statistics

San Jose State vs Nebraska

12/9/2016 7:06 p.m at Pinnacle Bank Arena (Lincoln, Neb.)

San Jose State 61 - 2-8

##	Player	S	Total			Rebounds			PF	TP	A	TO	Blk	Stl	Min
			FG-FGA	3PT	FG-FGA	FT-FTA	Off Reb	Def Reb							
01	LADD,MYZHANIQUE	g	2-7	0-2	0-0	5	6	11	2	4	3	2	0	1	31
03	BAIRD,PARIS	f	2-6	1-3	2-2	1	0	1	3	7	1	2	2	0	25
11	SMITH,JASMINE	f	4-10	0-0	0-2	4	5	9	4	8	1	4	0	7	31
20	WEST,RACHOL	g	3-7	3-6	0-2	1	1	2	4	9	0	1	1	1	24
21	RAMOS,DEZZ	g	8-24	2-10	6-6	3	0	3	1	24	6	2	0	1	32
02	KOHLHAAS,ANDREA		1-3	1-3	0-0	0	2	2	3	3	1	0	0	2	13
04	HAFOKA,FIEME'A		2-4	0-0	0-0	0	2	2	0	4	0	0	0	2	9
05	BENALLY,ANALYSS		0-3	0-3	0-0	0	0	0	2	0	0	0	0	0	7
23	GENNETT,HALLIE		0-5	0-3	0-0	0	1	1	0	0	0	1	0	1	13
24	HARRIS,ALEXIS		0-1	0-0	0-0	0	0	0	1	0	0	0	0	0	7
30	TURNEY,TAYLOR		0-1	0-0	2-2	0	0	0	0	2	0	1	0	0	8
TEAM						0	0	0	0		0				
TOTALS			22-71	7-30	10-14	14	17	31	20	61	12	13	3	15	200

Deadball Rebounds: 2,0

FG %	1st Half: 12-36	33.3%	2nd Half: 10-35	28.6%	Game: 22-71	31.0%	4th Qtr	3-16	18.8%
	1st Qtr 5-18	27.8%	2nd Qtr 7-18	38.9%	3rd Qtr 7-19	36.8%			
3FG %	1st Half: 6-19	31.6%	2nd Half: 1-11	9.1%	Game: 7-30	23.3%	4th Qtr	0-7	00.0%
	1st Qtr 4-8	50.0%	2nd Qtr 2-11	18.2%	3rd Qtr 1-4	25.0%			
FT %	1st Half: 4-6	66.7%	2nd Half: 6-8	75.0%	Game: 10-14	71.4%	4th Qtr	0-0	0%
	1st Qtr 2-4	50.0%	2nd Qtr 2-2	100.0%	3rd Qtr 6-8	75.0%			

Nebraska 83 - 4-6

##	Player	S	Total			Rebounds			PF	TP	A	TO	Blk	Stl	Min
			FG-FGA	3PT	FG-FGA	FT-FTA	Off Reb	Def Reb							
05	ELIELY,NICEA	g	6-9	1-2	0-0	3	4	7	3	13	4	2	1	1	27
11	RAMACIERI,ESTHER	g	2-5	1-3	0-0	2	4	6	4	5	3	1	0	0	21
22	HAVERS,ALLIE	f	4-9	0-1	0-0	1	3	4	3	8	2	1	1	0	22
32	SHEPARD,JESSICA	f	12-21	0-3	4-6	5	9	14	0	28	1	4	0	0	27
34	CINCORE,JASMINE	g	2-7	0-2	0-0	2	2	4	4	4	6	4	0	1	25
02	JENSEN,RYLIE CASCIO		2-4	2-3	0-2	0	2	2	1	6	3	1	0	0	19
03	WHITISH,HANNAH		1-2	1-2	0-0	0	5	5	1	3	0	3	0	0	8
12	WOOD,EMILY		2-2	1-1	2-3	0	1	1	0	7	1	1	0	2	15
14	MITCHELL,GRACE		0-1	0-0	0-0	2	2	4	0	0	0	5	0	0	17
24	SIMON,MADDIE		1-2	0-0	0-0	1	0	1	0	2	0	1	0	0	4
50	WASHINGTON,DARRIEN		3-3	0-0	1-4	1	5	6	4	7	0	3	0	0	15
TEAM						1	0	1	0		0				
TOTALS			35-65	6-17	7-15	18	37	55	20	83	20	26	2	4	200

Deadball Rebounds: 3,0

FG %	1st Half: 15-32	46.9%	2nd Half: 20-33	60.6%	Game: 35-65	53.8%	4th Qtr	7-12	58.3%
	1st Qtr 7-17	41.2%	2nd Qtr 8-15	53.3%	3rd Qtr 13-21	61.9%			
3FG %	1st Half: 5-9	55.6%	2nd Half: 1-8	12.5%	Game: 6-17	35.3%	4th Qtr	1-3	33.3%
	1st Qtr 1-2	50.0%	2nd Qtr 4-7	57.1%	3rd Qtr 0-5	00.0%			
FT %	1st Half: 2-6	33.3%	2nd Half: 5-9	55.6%	Game: 7-15	46.7%	4th Qtr	5-8	62.5%
	1st Qtr 1-2	50.0%	2nd Qtr 1-4	25.0%	3rd Qtr 0-1	00.0%			

Officials: Dee Kanter, John Whitson, Tiffany Bird
 Technical Fouls: San Jose State- None. Nebraska- None.
 Attendance: 4205

Score by periods	1st	2nd	3rd	4th	Total
San Jose State	16	18	21	6	61
Nebraska	16	21	26	20	83

Points	In Paint	Off T/O	2nd Chance	Fast Break	Bench
SJ	20	27	7	6	9
NEB	50	18	7	4	25

Last FG - SJ 4th-02:18, NEB 4th-04:50.

Largest lead - San Jose State by 7 1st-03:12; Nebraska by 22 4th-04:50

SJ led for 6:11. NEB led for 28:09. Game was tied for 5:28.

Score tied - 5 times
 Lead changed - 6 times

Official Basketball Box Score -- Game Totals -- First Half Statistics

San Jose State vs Nebraska

12/9/2016 7:06 p.m at Pinnacle Bank Arena (Lincoln, Neb.)

San Jose State 34 • 2-8

##	Player	S	Total			Rebounds			PF	TP	A	TO	Blk	Stl	Min
			FG-FGA	3PT	FG-FGA	FT-FTA	Off Reb	Def Reb							
01	LADD,MYZHANIQUE	g	1-4	0-1	0-0	3	5	8	0	2	1	2	0	0	18
03	BAIRD,PARIS	f	2-4	1-3	0-0	0	0	0	2	5	0	0	1	0	11
11	SMITH,JASMINE	f	0-2	0-0	0-0	2	4	6	2	0	1	4	0	6	19
20	WEST,RACHOL	g	2-6	2-5	0-2	0	0	0	3	6	0	0	0	0	13
21	RAMOS,DEZZ	g	6-14	2-7	2-2	1	0	1	1	16	4	1	0	1	17
02	KOHLHAAS,ANDREA		1-1	1-1	0-0	0	2	2	1	3	1	0	0	0	8
04	HAFOKA,FIEME'A		0-1	0-0	0-0	0	1	1	0	0	0	0	0	1	2
05	BENALLY,ANALYSS		0-1	0-1	0-0	0	0	0	0	0	0	0	0	0	3
23	GENNETT,HALLIE		0-2	0-1	0-0	0	1	1	0	0	0	1	0	0	5
24	HARRIS,ALEXIS		0-1	0-0	0-0	0	0	0	0	0	0	0	0	0	1
30	TURNNEY,TAYLOR		0-0	0-0	2-2	0	0	0	0	2	0	0	0	0	3
TEAM						0	0	0	0		0				
Totals			12-36	6-19	4-6	6	13	19	9	34	7	8	1	8	100
FG %	1st Qtr	5-18	27.8%	2nd Qtr	7-18	38.9%	Half:	12-36	33.3%						
3FG %	1st Qtr	4-8	50.0%	2nd Qtr	2-11	18.2%	Half:	6-19	31.6%						
FT %	1st Qtr	2-4	50.0%	2nd Qtr	2-2	100.0%	Half:	4-6	66.7%						

Nebraska 37 • 4-6

##	Player	S	Total			Rebounds			PF	TP	A	TO	Blk	Stl	Min
			FG-FGA	3PT	FG-FGA	FT-FTA	Off Reb	Def Reb							
05	ELIELY,NICEA	g	4-5	1-1	0-0	2	3	5	2	9	2	2	1	1	13
11	RAMACIERI,ESTHER	g	1-2	1-1	0-0	0	1	1	3	3	0	0	0	0	8
22	HAVERS,ALLIE	f	0-5	0-1	0-0	0	2	2	1	0	0	0	0	0	13
32	SHEPARD,JESSICA	f	2-9	0-2	1-2	2	5	7	0	5	1	2	0	0	14
34	CINCORE,JASMINE	g	1-2	0-0	0-0	0	1	1	1	2	3	1	0	1	13
02	JENSEN,RYLIE CASCIO		2-3	2-3	0-0	0	1	1	1	6	3	0	0	0	13
03	WHITISH,HANNAH		0-0	0-0	0-0	0	2	2	0	0	0	2	0	0	1
12	WOOD,EMILY		2-2	1-1	0-1	0	0	0	0	5	0	1	0	2	9
14	MITCHELL,GRACE		0-0	0-0	0-0	0	1	1	0	0	0	3	0	0	6
24	SIMON,MADDIE		1-2	0-0	0-0	1	0	1	0	2	0	1	0	0	2
50	WASHINGTON,DARRIEN		2-2	0-0	1-3	0	3	3	1	5	0	1	0	0	8
TEAM						1	0	1	0		0				
Totals			15-32	5-9	2-6	6	19	25	9	37	9	13	1	4	100
FG %	1st Qtr	7-17	41.2%	2nd Qtr	8-15	53.3%	Half:	15-32	46.9%						
3FG %	1st Qtr	1-2	50.0%	2nd Qtr	4-7	57.1%	Half:	5-9	55.6%						
FT %	1st Qtr	1-2	50.0%	2nd Qtr	1-4	25.0%	Half:	2-6	33.3%						

Officials: Dee Kanter, John Whitson, Tiffany Bird

Technical Fouls: San Jose State- None. Nebraska- None.

Score by periods	1st	2nd	3rd	4th	Total
San Jose State	16	18	21	6	61
Nebraska	16	21	26	20	83

Points	In Paint	Off T/O	2nd 2nd Chance	Fast Fast Break	Bench
SJ	6	14	2	2	5
	16	13	9	2	18

Last FG - SJ 2nd-01:46, NEB 2nd-00:29.

SJ led for 6:11. NEB led for 8:21. Game was tied for 5:28.

Score tied - 5 times
Lead changed - 6 times

San Jose State vs Nebraska
12/9/2016; 7:06 p.m at Pinnacle Bank Arena (Lincoln, Neb.)
Period 1 Play-By-Play

VISITORS: San Jose State	Time	Score	Margin	HOME: Nebraska
	09:49			MISSED JUMPER by SHEPARD,JESSICA
BLOCK by BAIRD,PARIS	09:49			
REBOUND (DEF) by LADD,MYZHANIQUE	09:46			
MISSED 3PTR by WEST,RACHOL	09:42			
	09:42			REBOUND (DEF) by ELIELY,NICEA
	09:24			MISSED JUMPER by HAVERS,ALLIE
	09:24			REBOUND (OFF) by SHEPARD,JESSICA
	09:19			TURNOVER by SHEPARD,JESSICA
STEAL by RAMOS,DEZZ	09:18			
TURNOVER by LADD,MYZHANIQUE	09:13			
	09:13			STEAL by CINCORE,JASMINE
	09:00			TURNOVER by SHEPARD,JESSICA
STEAL by SMITH,JASMINE	08:58			
TURNOVER by SMITH,JASMINE	08:46			
	08:26	2-0	H 2	GOOD! JUMPER by ELIELY,NICEA
MISSED JUMPER by SMITH,JASMINE	08:10			
	08:10			REBOUND (DEF) by CINCORE,JASMINE
	07:57			MISSED JUMPER by SHEPARD,JESSICA
REBOUND (DEF) by LADD,MYZHANIQUE	07:57			
MISSED JUMPER by LADD,MYZHANIQUE	07:50			
REBOUND (OFF) by LADD,MYZHANIQUE	07:50			
	07:48			FOUL by RAMACIERI,ESTHER
MISSED FT by WEST,RACHOL	07:48			
REBOUND (DEADB) by TEAM	07:48			
MISSED FT by WEST,RACHOL	07:48			
	07:48			REBOUND (DEF) by HAVERS,ALLIE
	07:48			SUB IN: WASHINGTON,DARRIEN
	07:35			MISSED JUMPER by RAMACIERI,ESTHER
REBOUND (DEF) by LADD,MYZHANIQUE	07:35			
	07:32			FOUL by ELIELY,NICEA
MISSED 3PTR by RAMOS,DEZZ	07:21			
	07:21			REBOUND (DEF) by WASHINGTON,DARRIEN
	07:02			MISSED JUMPER by HAVERS,ALLIE
	07:02			REBOUND (OFF) by TEAM
SUB IN: KOHLHAAS,ANDREA	06:59			
SUB OUT: WEST,RACHOL	06:59			
FOUL by BAIRD,PARIS	06:55			
	06:55			MISSED FT by WASHINGTON,DARRIEN
	06:55			REBOUND (DEADB) by TEAM
	06:55	3-0	H 3	GOOD! FT by WASHINGTON,DARRIEN
MISSED JUMPER by RAMOS,DEZZ	06:49			
	06:49			REBOUND (DEF) by WASHINGTON,DARRIEN
	06:32			TURNOVER by ELIELY,NICEA
MISSED JUMPER by LADD,MYZHANIQUE	06:13			
	06:13			REBOUND (DEF) by ELIELY,NICEA
	06:04			TURNOVER by ELIELY,NICEA
STEAL by SMITH,JASMINE	06:02			
GOOD! 3PTR by KOHLHAAS,ANDREA	05:57	3-3	T	
ASSIST by RAMOS,DEZZ	05:57			
	05:29	5-3	H 2	GOOD! JUMPER by WASHINGTON,DARRIEN [PNT]
	05:29			ASSIST by CINCORE,JASMINE
GOOD! 3PTR by BAIRD,PARIS	05:16	5-6	V 1	
ASSIST by KOHLHAAS,ANDREA	05:16			

VISITORS: San Jose State	Time	Score	Margin	HOME: Nebraska
FOUL by KOHLHAAS,ANDREA	05:08			
SUB IN: WEST,RACHOL	05:08			
SUB IN: HAFOKA,FIEME'A	05:08			
SUB OUT: LADD,MYZHANIQUE	05:08			
SUB OUT: KOHLHAAS,ANDREA	05:08			
	05:08			SUB IN: WHITISH,HANNAH
	05:08			SUB IN: MITCHELL,GRACE
	05:08			SUB IN: SIMON,MADDIE
	05:08			SUB OUT: RAMACIERI,ESTHER
	05:08			SUB OUT: HAVERS,ALLIE
	05:08			SUB OUT: CINCORE,JASMINE
	05:08			SUB OUT: WASHINGTON,DARRIEN
	05:07			TURNOVER by MITCHELL,GRACE
MISSED JUMPER by RAMOS,DEZZ	05:02			
	05:02			BLOCK by ELIELY,NICEA
	05:01			REBOUND (DEF) by WHITISH,HANNAH
	04:58			TURNOVER by WHITISH,HANNAH
STEAL by HAFOKA,FIEME'A	04:58			
GOOD! 3PTR by WEST,RACHOL	04:52	5-9	V 4	
ASSIST by RAMOS,DEZZ	04:52			
	04:40			MISSED LAYUP by ELIELY,NICEA
REBOUND (DEF) by HAFOKA,FIEME'A	04:40			
MISSED LAYUP by HAFOKA,FIEME'A	04:33			
	04:33			REBOUND (DEF) by WHITISH,HANNAH
FOUL by SMITH,JASMINE	04:32			
	04:32			TIMEOUT MEDIA
	04:12			TURNOVER by WHITISH,HANNAH
STEAL by SMITH,JASMINE	04:10			
GOOD! LAYUP by BAIRD,PARIS [PNT]	03:58	5-11	V 6	
	03:49			MISSED LAYUP by SIMON,MADDIE
REBOUND (DEF) by SMITH,JASMINE	03:49			
MISSED 3PTR by RAMOS,DEZZ	03:41			
REBOUND (OFF) by SMITH,JASMINE	03:41			
TURNOVER by SMITH,JASMINE	03:33			
SUB IN: LADD,MYZHANIQUE	03:33			
SUB IN: HARRIS,ALEXIS	03:33			
SUB OUT: SMITH,JASMINE	03:33			
SUB OUT: HAFOKA,FIEME'A	03:33			
	03:33			SUB IN: JENSEN,RYLIE CASCIO
	03:33			SUB OUT: WHITISH,HANNAH
	03:26			MISSED 3PTR by SHEPARD,JESSICA
	03:26			REBOUND (OFF) by SIMON,MADDIE
FOUL by WEST,RACHOL	03:20			
	03:18	7-11	V 4	GOOD! JUMPER by SIMON,MADDIE [PNT]
	03:18			ASSIST by JENSEN,RYLIE CASCIO
GOOD! 3PTR by WEST,RACHOL	03:12	7-14	V 7	
ASSIST by RAMOS,DEZZ	03:12			
	02:57			TURNOVER by SIMON,MADDIE
SUB IN: GENNETT,HALLIE	02:57			
SUB OUT: BAIRD,PARIS	02:57			
	02:57			SUB IN: HAVERS,ALLIE
	02:57			SUB IN: CINCORE,JASMINE
	02:57			SUB OUT: SHEPARD,JESSICA
	02:57			SUB OUT: SIMON,MADDIE
MISSED JUMPER by HARRIS,ALEXIS	02:52			
	02:52			REBOUND (DEF) by SHEPARD,JESSICA
	02:46	9-14	V 5	GOOD! JUMPER by CINCORE,JASMINE
	02:33			SUB IN: SHEPARD,JESSICA

VISITORS: San Jose State	Time	Score	Margin	HOME: Nebraska
	02:33			SUB OUT: HAVERS,ALLIE
TURNOVER by GENNETT,HALLIE	02:22			
	02:22			SUB IN: RAMACIERI,ESTHER
	02:22			SUB IN: HAVERS,ALLIE
	02:22			SUB OUT: ELIELY,NICEA
	02:22			SUB OUT: MITCHELL,GRACE
SUB IN: SMITH,JASMINE	02:08			
SUB OUT: HARRIS,ALEXIS	02:08			
	02:07			MISSED JUMPER by HAVERS,ALLIE
REBOUND (DEF) by GENNETT,HALLIE	02:07			
MISSED JUMPER by RAMOS,DEZZ	01:55			
REBOUND (OFF) by SMITH,JASMINE	01:55			
	01:50			FOUL by CINCORE,JASMINE
SUB IN: TURNEY,TAYLOR	01:49			
SUB OUT: RAMOS,DEZZ	01:49			
MISSED 3PTR by GENNETT,HALLIE	01:41			
	01:41			REBOUND (DEF) by RAMACIERI,ESTHER
	01:30	11-14	V 3	GOOD! JUMPER by SHEPARD,JESSICA [PNT]
	01:12			FOUL by HAVERS,ALLIE
SUB IN: KOHLHAAS,ANDREA	01:12			
SUB IN: BAIRD,PARIS	01:12			
SUB OUT: WEST,RACHOL	01:12			
SUB OUT: GENNETT,HALLIE	01:12			
	01:10			FOUL by RAMACIERI,ESTHER
GOOD! FT by TURNEY,TAYLOR	01:10	11-15	V 4	
GOOD! FT by TURNEY,TAYLOR	01:10	11-16	V 5	
	01:10			SUB IN: ELIELY,NICEA
	01:10			SUB OUT: RAMACIERI,ESTHER
	00:51	14-16	V 2	GOOD! 3PTR by JENSEN,RYLIE CASCIO
	00:51			ASSIST by ELIELY,NICEA
MISSED JUMPER by SMITH,JASMINE	00:32			
	00:32			REBOUND (DEF) by SHEPARD,JESSICA
	00:04			MISSED JUMPER by HAVERS,ALLIE
	00:04			REBOUND (OFF) by ELIELY,NICEA
	00:00	16-16	T	GOOD! JUMPER by ELIELY,NICEA [PNT]

San Jose State 16, Nebraska 16

Period 1-only	In Paint	Off T/O	2nd Chance	Fast Break	Bench	
SJ	2	8	0	0	5	Score tied - 2 times
NEB	8	4	5	0	8	Lead changed - 2 times

San Jose State vs Nebraska
12/9/2016; 7:06 p.m at Pinnacle Bank Arena (Lincoln, Neb.)
Period 2 Play-By-Play

VISITORS: San Jose State	Time	Score	Margin	HOME: Nebraska
SUB IN: KOHLHAAS,ANDREA	10:00			
SUB OUT: WEST,RACHOL	10:00			
	10:00			SUB IN: JENSEN,RYLIE CASCIO
	10:00			SUB OUT: RAMACIERI,ESTHER
MISSED 3PTR by BAIRD,PARIS	09:53			
	09:53			REBOUND (DEF) by HAVERS,ALLIE
	09:38	19-16	H 3	GOOD! 3PTR by ELIELY,NICEA
	09:38			ASSIST by CINCORE,JASMINE
	09:26			FOUL by ELIELY,NICEA
GOOD! FT by RAMOS,DEZZ	09:26	19-17	H 2	
GOOD! FT by RAMOS,DEZZ	09:26	19-18	H 1	
	09:26			SUB IN: WOOD,EMILY
	09:26			SUB OUT: ELIELY,NICEA
	09:16			MISSED JUMPER by SHEPARD,JESSICA
	09:16			REBOUND (OFF) by SHEPARD,JESSICA
FOUL by BAIRD,PARIS	09:14			
	09:14			MISSED FT by SHEPARD,JESSICA
	09:14			REBOUND (DEADB) by TEAM
	09:14	20-18	H 2	GOOD! FT by SHEPARD,JESSICA
SUB IN: WEST,RACHOL	09:14			
SUB OUT: BAIRD,PARIS	09:14			
GOOD! JUMPER by LADD,MYZHANIQUE [PNT]	09:06	20-20	T	
ASSIST by RAMOS,DEZZ	09:06			
FOUL by RAMOS,DEZZ	08:58			
	08:48	22-20	H 2	GOOD! JUMPER by SHEPARD,JESSICA [PNT]
	08:48			ASSIST by CINCORE,JASMINE
TURNOVER by SMITH,JASMINE	08:31			
	08:21			TURNOVER by CINCORE,JASMINE
STEAL by SMITH,JASMINE	08:19			
MISSED 3PTR by RAMOS,DEZZ	08:16			
	08:16			REBOUND (DEF) by JENSEN,RYLIE CASCIO
	08:05			MISSED 3PTR by HAVERS,ALLIE
REBOUND (DEF) by KOHLHAAS,ANDREA	08:05			
GOOD! LAYUP by RAMOS,DEZZ [FB/PNT]	07:55	22-22	T	
FOUL by WEST,RACHOL	07:45			
SUB IN: GENNETT,HALLIE	07:45			
SUB OUT: KOHLHAAS,ANDREA	07:45			
	07:45			SUB IN: RAMACIERI,ESTHER
	07:45			SUB OUT: CINCORE,JASMINE
	07:38			MISSED JUMPER by SHEPARD,JESSICA
REBOUND (DEF) by SMITH,JASMINE	07:38			
MISSED LAYUP by GENNETT,HALLIE	07:24			
	07:24			REBOUND (DEF) by SHEPARD,JESSICA
	07:16			MISSED 3PTR by SHEPARD,JESSICA
REBOUND (DEF) by LADD,MYZHANIQUE	07:16			
	07:12			SUB IN: WASHINGTON,DARRIEN
	07:12			SUB OUT: HAVERS,ALLIE
GOOD! JUMPER by RAMOS,DEZZ	06:58	22-24	V 2	
	06:46	25-24	H 1	GOOD! 3PTR by RAMACIERI,ESTHER
	06:46			ASSIST by JENSEN,RYLIE CASCIO
MISSED JUMPER by WEST,RACHOL	06:29			
REBOUND (OFF) by LADD,MYZHANIQUE	06:29			
	06:26			FOUL by JENSEN,RYLIE CASCIO

VISITORS: San Jose State	Time	Score	Margin	HOME: Nebraska
	06:26			FOUL by RAMACIERI,ESTHER
GOOD! JUMPER by RAMOS,DEZZ	06:23	25-26	V 1	
	05:55			MISSED 3PTR by JENSEN,RYLIE CASCIO
REBOUND (DEF) by LADD,MYZHANIQUE	05:55			
MISSED 3PTR by WEST,RACHOL	05:43			
	05:43			REBOUND (DEF) by WASHINGTON,DARRIEN
	05:24			FOUL by WASHINGTON,DARRIEN
	05:24			TURNOVER by WASHINGTON,DARRIEN
SUB IN: TURNEY,TAYLOR	05:24			
SUB IN: KOHLHAAS,ANDREA	05:24			
SUB OUT: GENNETT,HALLIE	05:24			
SUB OUT: RAMOS,DEZZ	05:24			
	05:24			SUB IN: ELIELY,NICEA
	05:24			SUB IN: MITCHELL,GRACE
	05:24			SUB OUT: SHEPARD,JESSICA
	05:24			SUB OUT: RAMACIERI,ESTHER
TURNOVER by LADD,MYZHANIQUE	05:13			
	05:12			STEAL by WOOD,EMILY
	05:08	27-26	H 1	GOOD! LAYUP by WOOD,EMILY [FB/PNT]
FOUL by WEST,RACHOL	05:08			
	05:08			MISSED FT by WOOD,EMILY
REBOUND (DEF) by KOHLHAAS,ANDREA	05:08			
SUB IN: BENALLY,ANALYSS	05:08			
SUB OUT: WEST,RACHOL	05:08			
MISSED 3PTR by LADD,MYZHANIQUE	04:53			
	04:53			REBOUND (DEF) by ELIELY,NICEA
	04:32			TURNOVER by MITCHELL,GRACE
TIMEOUT media	04:32			
SUB IN: RAMOS,DEZZ	04:32			
SUB OUT: TURNEY,TAYLOR	04:32			
TURNOVER by RAMOS,DEZZ	04:25			
	04:24			STEAL by ELIELY,NICEA
	04:22	29-26	H 3	GOOD! JUMPER by ELIELY,NICEA [PNT]
MISSED 3PTR by RAMOS,DEZZ	04:11			
REBOUND (OFF) by RAMOS,DEZZ	04:11			
TURNOVER by SMITH,JASMINE	03:54			
	03:53			STEAL by WOOD,EMILY
	03:39	31-26	H 5	GOOD! JUMPER by WASHINGTON,DARRIEN [PNT]
	03:39			ASSIST by JENSEN,RYLIE CASCIO
FOUL by SMITH,JASMINE	03:39			
	03:39			MISSED FT by WASHINGTON,DARRIEN
	03:39			REBOUND (OFF) by ELIELY,NICEA
	03:32	34-26	H 8	GOOD! 3PTR by WOOD,EMILY
	03:32			ASSIST by ELIELY,NICEA
MISSED 3PTR by BENALLY,ANALYSS	03:23			
	03:23			REBOUND (DEF) by MITCHELL,GRACE
	03:00			TURNOVER by WOOD,EMILY
STEAL by SMITH,JASMINE	02:59			
GOOD! 3PTR by RAMOS,DEZZ	02:52	34-29	H 5	
ASSIST by SMITH,JASMINE	02:52			
	02:25			TURNOVER by MITCHELL,GRACE
STEAL by SMITH,JASMINE	02:25			
GOOD! 3PTR by RAMOS,DEZZ	02:17	34-32	H 2	
ASSIST by LADD,MYZHANIQUE	02:16			
	02:15			TIMEOUT 30SEC
SUB IN: BAIRD,PARIS	02:15			
SUB IN: WEST,RACHOL	02:15			
SUB OUT: BENALLY,ANALYSS	02:15			

VISITORS: San Jose State	Time	Score	Margin	HOME: Nebraska
SUB OUT: KOHLHAAS,ANDREA	02:15			
	02:15			SUB IN: CINCORE,JASMINE
	02:15			SUB IN: HAVERS,ALLIE
	02:15			SUB IN: SHEPARD,JESSICA
	02:15			SUB OUT: WASHINGTON,DARRIEN
	02:15			SUB OUT: ELIELY,NICEA
	02:15			SUB OUT: MITCHELL,GRACE
	02:05			MISSED JUMPER by SHEPARD,JESSICA
REBOUND (DEF) by SMITH,JASMINE	02:05			
GOOD! JUMPER by RAMOS,DEZZ	01:46	34-34	T	
	01:16			MISSED JUMPER by CINCORE,JASMINE
REBOUND (DEF) by SMITH,JASMINE	01:16			
MISSED 3PTR by BAIRD,PARIS	00:47			
REBOUND (OFF) by LADD,MYZHANIQUE	00:47			
MISSED 3PTR by WEST,RACHOL	00:42			
	00:42			REBOUND (DEF) by SHEPARD,JESSICA
	00:29	37-34	H 3	GOOD! 3PTR by JENSEN,RYLIE CASCIO
	00:29			ASSIST by SHEPARD,JESSICA
TIMEOUT 30SEC	00:24			
SUB IN: GENNETT,HALLIE	00:24			
SUB OUT: BAIRD,PARIS	00:24			
MISSED 3PTR by RAMOS,DEZZ	00:03			
	00:03			REBOUND (DEF) by SHEPARD,JESSICA

San Jose State 34, Nebraska 37

Period 2-only	In Paint	Off T/O	2nd Chance	Fast Break	Bench	
SJ	4	6	2	2	0	Score tied - 6 times
NEB	8	9	4	2	10	Lead changed - 4 times

Official Basketball Box Score -- Game Totals -- Second Half Statistics
San Jose State vs Nebraska
12/9/2016 7:06 p.m at Pinnacle Bank Arena (Lincoln, Neb.)

San Jose State 27 • 2-8

##	Player	S	Total			3-Ptr			Rebounds			PF	TP	A	TO	Blk	Stl	Min
			FG-FGA	3PT	FG-FGA	FT-FTA	Off Reb	Def Reb	Tot Reb									
01	LADD,MYZHANIQUE	g	1-3	0-1	0-0	2	1	3	2	2	2	0	0	1			13	
03	BAIRD,PARIS	f	0-2	0-0	2-2	1	0	1	1	2	1	2	1	0			14	
11	SMITH,JASMINE	f	4-8	0-0	0-2	2	1	3	2	8	0	0	0	1			12	
20	WEST,RACHOL	g	1-1	1-1	0-0	1	1	2	1	3	0	1	1	1			11	
21	RAMOS,DEZZ	g	2-10	0-3	4-4	2	0	2	0	8	2	1	0	0			15	
02	KOHLHAAS,ANDREA		0-2	0-2	0-0	0	0	0	2	0	0	0	0	2			5	
04	HAFOKA,FIEME'A		2-3	0-0	0-0	0	1	1	0	4	0	0	0	1			7	
05	BENALLY,ANALYSS		0-2	0-2	0-0	0	0	0	2	0	0	0	0	0			4	
23	GENNETT,HALLIE		0-3	0-2	0-0	0	0	0	0	0	0	0	0	1			8	
24	HARRIS,ALEXIS		0-0	0-0	0-0	0	0	0	1	0	0	0	0	0			6	
30	TURNEY,TAYLOR		0-1	0-0	0-0	0	0	0	0	0	0	1	0	0			5	
TEAM						0	0	0	0					0				
Totals			10-35	1-11	6-8	8	4	12	11	27	5	5	2	7			100	
FG %	3rd Qtr	7-19	36.8%	4th Qtr	3-16	18.8%	Half:	10-35	28.6%									
3FG %	3rd Qtr	1-4	25.0%	4th Qtr	0-7	00.0%	Half:	1-11	31.6%									
FT %	3rd Qtr	6-8	75.0%	4th Qtr	0-0	0%	Half:	6-8	75.0%									

Nebraska 46 • 4-6

##	Player	S	Total			3-Ptr			Rebounds			PF	TP	A	TO	Blk	Stl	Min
			FG-FGA	3PT	FG-FGA	FT-FTA	Off Reb	Def Reb	Tot Reb									
05	ELIELY,NICEA	g	2-4	0-1	0-0	1	1	2	1	4	2	0	0	0			14	
11	RAMACIERI,ESTHER	g	1-3	0-2	0-0	2	3	5	1	2	3	1	0	0			13	
22	HAVERS,ALLIE	f	4-4	0-0	0-0	1	1	2	2	8	2	1	1	0			9	
32	SHEPARD,JESSICA	f	10-12	0-1	3-4	3	4	7	0	23	0	2	0	0			13	
34	CINCORE,JASMINE	g	1-5	0-2	0-0	2	1	3	3	2	3	3	0	0			12	
02	JENSEN,RYLIE CASCIO		0-1	0-0	0-2	0	1	1	0	0	0	1	0	0			6	
03	WHITISH,HANNAH		1-2	1-2	0-0	0	3	3	1	3	0	1	0	0			7	
12	WOOD,EMILY		0-0	0-0	2-2	0	1	1	0	2	1	0	0	0			6	
14	MITCHELL,GRACE		0-1	0-0	0-0	2	1	3	0	0	0	2	0	0			11	
24	SIMON,MADDIE		0-0	0-0	0-0	0	0	0	0	0	0	0	0	0			2	
50	WASHINGTON,DARRIEN		1-1	0-0	0-1	1	2	3	3	2	0	2	0	0			7	
TEAM						0	0	0	0					0				
Totals			20-33	1-8	5-9	12	18	30	11	46	11	13	1	0			100	
FG %	3rd Qtr	13-21	61.9%	4th Qtr	7-12	58.3%	Half:	20-33	60.6%									
3FG %	3rd Qtr	0-5	00.0%	4th Qtr	1-3	33.3%	Half:	1-8	55.6%									
FT %	3rd Qtr	0-1	00.0%	4th Qtr	5-8	62.5%	Half:	5-9	55.6%									

Officials: Dee Kanter, John Whitson, Tiffany Bird
 Technical Fouls: San Jose State- None. Nebraska- None.

Score by periods	1st	2nd	3rd	4th	Total
San Jose State	16	18	21	6	61
Nebraska	16	21	26	20	83

Points	In Paint	Off T/O	2nd 2nd Chance	Fast Fast Break	Bench
SJ	14	13	5	4	4
	34	5	12	2	7

Last FG - SJ 4th-02:18, NEB 4th-04:50.
 SJ led for 0:00. NEB led for 19:48. Game was tied for 0:00.

Score tied - 0 times
 Lead changed - 0 times

San Jose State vs Nebraska
12/9/2016; 7:06 p.m at Pinnacle Bank Arena (Lincoln, Neb.)
Period 3 Play-By-Play

VISITORS: San Jose State	Time	Score	Margin	HOME: Nebraska
	09:48			MISSED JUMPER by CINCORE,JASMINE
BLOCK by BAIRD,PARIS	09:48			
	09:45			REBOUND (OFF) by CINCORE,JASMINE
	09:40	39-34	H 5	GOOD! JUMPER by SHEPARD,JESSICA [PNT]
MISSED JUMPER by SMITH,JASMINE	09:22			
	09:22			REBOUND (DEF) by SHEPARD,JESSICA
	09:14	41-34	H 7	GOOD! JUMPER by HAVERS,ALLIE [PNT]
	09:14			ASSIST by ELIELY,NICEA
GOOD! JUMPER by LADD,MYZHANIQUE	09:04	41-36	H 5	
	08:49	43-36	H 7	GOOD! JUMPER by SHEPARD,JESSICA [PNT]
	08:49			ASSIST by CINCORE,JASMINE
GOOD! LAYUP by SMITH,JASMINE [PNT]	08:35	43-38	H 5	
ASSIST by RAMOS,DEZZ	08:35			
FOUL by SMITH,JASMINE	08:26			
	08:22			TURNOVER by SHEPARD,JESSICA
STEAL by SMITH,JASMINE	08:21			
	08:13			FOUL by HAVERS,ALLIE
GOOD! FT by BAIRD,PARIS	08:13	43-39	H 4	
GOOD! FT by BAIRD,PARIS	08:13	43-40	H 3	
	08:03	45-40	H 5	GOOD! JUMPER by SHEPARD,JESSICA [PNT]
	08:03			ASSIST by HAVERS,ALLIE
GOOD! JUMPER by SMITH,JASMINE	07:55	45-42	H 3	
ASSIST by LADD,MYZHANIQUE	07:55			
	07:43			MISSED JUMPER by CINCORE,JASMINE
	07:43			REBOUND (OFF) by HAVERS,ALLIE
	07:28	47-42	H 5	GOOD! LAYUP by RAMACIERI,ESTHER [PNT]
GOOD! LAYUP by SMITH,JASMINE [PNT]	07:19	47-44	H 3	
ASSIST by BAIRD,PARIS	07:19			
TIMEOUT TEAM	07:17			
	07:01	49-44	H 5	GOOD! JUMPER by SHEPARD,JESSICA [PNT]
	07:01			ASSIST by RAMACIERI,ESTHER
MISSED JUMPER by SMITH,JASMINE	06:46			
	06:46			REBOUND (DEF) by RAMACIERI,ESTHER
	06:37			MISSED 3PTR by SHEPARD,JESSICA
	06:37			REBOUND (OFF) by SHEPARD,JESSICA
	06:30	51-44	H 7	GOOD! LAYUP by SHEPARD,JESSICA [PNT]
MISSED 3PTR by RAMOS,DEZZ	06:20			
	06:20			REBOUND (DEF) by SHEPARD,JESSICA
	06:12	53-44	H 9	GOOD! LAYUP by ELIELY,NICEA [FB/PNT]
MISSED JUMPER by RAMOS,DEZZ	05:53			
REBOUND (OFF) by RAMOS,DEZZ	05:53			
	05:49			FOUL by CINCORE,JASMINE
GOOD! FT by RAMOS,DEZZ	05:49	53-45	H 8	
GOOD! FT by RAMOS,DEZZ	05:49	53-46	H 7	
SUB IN: GENNETT,HALLIE	05:49			
SUB IN: KOHLHAAS,ANDREA	05:49			
SUB OUT: BAIRD,PARIS	05:49			
SUB OUT: WEST,RACHOL	05:49			
	05:49			SUB IN: WOOD,EMILY
	05:49			SUB OUT: CINCORE,JASMINE
	05:36	55-46	H 9	GOOD! LAYUP by HAVERS,ALLIE [PNT]
	05:36			ASSIST by RAMACIERI,ESTHER
MISSED LAYUP by LADD,MYZHANIQUE	05:19			

VISITORS: San Jose State	Time	Score	Margin	HOME: Nebraska
	05:19			BLOCK by HAVERS,ALLIE
REBOUND (OFF) by LADD,MYZHANIQUE	05:17			
MISSED 3PTR by KOHLHAAS,ANDREA	05:13			
	05:13			REBOUND (DEF) by RAMACIERI,ESTHER
	05:06			MISSED 3PTR by ELIELY,NICEA
REBOUND (DEF) by SMITH,JASMINE	05:06			
GOOD! LAYUP by RAMOS,DEZZ [FB/PNT]	04:57	55-48	H 7	
FOUL by LADD,MYZHANIQUE	04:47			
	04:47			TIMEOUT MEDIA
SUB IN: HAFOKA,FIEME'A	04:47			
SUB OUT: LADD,MYZHANIQUE	04:47			
	04:47			SUB IN: MITCHELL,GRACE
	04:47			SUB OUT: HAVERS,ALLIE
	04:45			MISSED 3PTR by RAMACIERI,ESTHER
	04:45			REBOUND (OFF) by ELIELY,NICEA
	04:31			MISSED 3PTR by RAMACIERI,ESTHER
	04:31			REBOUND (OFF) by RAMACIERI,ESTHER
	04:15			MISSED JUMPER by MITCHELL,GRACE
	04:15			REBOUND (OFF) by SHEPARD,JESSICA
	04:13	57-48	H 9	GOOD! JUMPER by SHEPARD,JESSICA [PNT]
FOUL by KOHLHAAS,ANDREA	04:13			
	04:13			MISSED FT by SHEPARD,JESSICA
	04:13			REBOUND (OFF) by MITCHELL,GRACE
SUB IN: LADD,MYZHANIQUE	04:13			
SUB IN: BAIRD,PARIS	04:13			
SUB OUT: HAFOKA,FIEME'A	04:13			
SUB OUT: GENNETT,HALLIE	04:13			
	04:10			TURNOVER by MITCHELL,GRACE
STEAL by KOHLHAAS,ANDREA	04:09			
TURNOVER by BAIRD,PARIS	04:00			
SUB IN: WEST,RACHOL	04:00			
SUB OUT: KOHLHAAS,ANDREA	04:00			
	04:00			SUB IN: CINCORE,JASMINE
	04:00			SUB OUT: ELIELY,NICEA
	03:46			MISSED 3PTR by CINCORE,JASMINE
REBOUND (DEF) by LADD,MYZHANIQUE	03:46			
MISSED LAYUP by BAIRD,PARIS	03:36			
REBOUND (OFF) by SMITH,JASMINE	03:36			
	03:34			FOUL by CINCORE,JASMINE
MISSED FT by SMITH,JASMINE	03:34			
REBOUND (DEADB) by TEAM	03:34			
MISSED FT by SMITH,JASMINE	03:34			
	03:34			REBOUND (DEF) by SHEPARD,JESSICA
	03:20	59-48	H 11	GOOD! JUMPER by SHEPARD,JESSICA [PNT]
MISSED JUMPER by SMITH,JASMINE	03:01			
	03:01			REBOUND (DEF) by SHEPARD,JESSICA
	02:36	61-48	H 13	GOOD! JUMPER by CINCORE,JASMINE
	02:36			ASSIST by WOOD,EMILY
MISSED LAYUP by SMITH,JASMINE	02:17			
REBOUND (OFF) by WEST,RACHOL	02:17			
MISSED 3PTR by LADD,MYZHANIQUE	02:11			
	02:11			REBOUND (DEF) by RAMACIERI,ESTHER
	02:07			TURNOVER by RAMACIERI,ESTHER
STEAL by LADD,MYZHANIQUE	02:06			
GOOD! LAYUP by SMITH,JASMINE [FB/PNT]	02:01	61-50	H 11	
ASSIST by RAMOS,DEZZ	02:01			
	01:49			FOUL by CINCORE,JASMINE
	01:49			TURNOVER by CINCORE,JASMINE

VISITORS: San Jose State	Time	Score	Margin	HOME: Nebraska
SUB IN: HARRIS,ALEXIS	01:49			
SUB OUT: SMITH,JASMINE	01:49			
	01:49			SUB IN: SIMON,MADDIE
	01:49			SUB IN: ELIELY,NICEA
	01:49			SUB IN: JENSEN,RYLIE CASCIO
	01:49			SUB IN: WASHINGTON,DARRIEN
	01:49			SUB OUT: CINCORE,JASMINE
	01:49			SUB OUT: RAMACIERI,ESTHER
	01:49			SUB OUT: SHEPARD,JESSICA
	01:49			SUB OUT: WOOD,EMILY
	01:23			FOUL by WASHINGTON,DARRIEN
GOOD! FT by RAMOS,DEZZ	01:23	61-51	H 10	
GOOD! FT by RAMOS,DEZZ	01:23	61-52	H 9	
SUB IN: TURNEY,TAYLOR	01:23			
SUB OUT: RAMOS,DEZZ	01:23			
	01:14			TURNOVER by JENSEN,RYLIE CASCIO
TURNOVER by TURNEY,TAYLOR	00:58			
	00:41			FOUL by WASHINGTON,DARRIEN
	00:41			TURNOVER by WASHINGTON,DARRIEN
SUB IN: SMITH,JASMINE	00:41			
SUB IN: RAMOS,DEZZ	00:41			
SUB OUT: HARRIS,ALEXIS	00:41			
SUB OUT: TURNEY,TAYLOR	00:41			
MISSED JUMPER by RAMOS,DEZZ	00:31			
REBOUND (OFF) by LADD,MYZHANIQUE	00:31			
GOOD! 3PTR by WEST,RACHOL	00:26	61-55	H 6	
ASSIST by LADD,MYZHANIQUE	00:26			
	00:14	63-55	H 8	GOOD! JUMPER by ELIELY,NICEA [PNT]
MISSED JUMPER by RAMOS,DEZZ	00:02			
REBOUND (OFF) by SMITH,JASMINE	00:02			

San Jose State 61, Nebraska 83

Period 3-only	In Paint	Off T/O	2nd Chance	Fast Break	Bench	
SJ	8	9	5	4	0	Score tied - 0 times
NEB	24	0	8	2	0	Lead changed - 0 times

San Jose State vs Nebraska
12/9/2016; 7:06 p.m at Pinnacle Bank Arena (Lincoln, Neb.)
Period 4 Play-By-Play

VISITORS: San Jose State	Time	Score	Margin	HOME: Nebraska
	09:50			MISSED JUMPER by SHEPARD,JESSICA
BLOCK by WEST,RACHOL	09:50			
	09:48			REBOUND (OFF) by SHEPARD,JESSICA
	09:47	65-55	H 10	GOOD! JUMPER by SHEPARD,JESSICA [PNT]
FOUL by WEST,RACHOL	09:34			
TURNOVER by WEST,RACHOL	09:34			
	09:14	67-55	H 12	GOOD! JUMPER by SHEPARD,JESSICA [PNT]
	09:14			ASSIST by RAMACIERI,ESTHER
FOUL by SMITH,JASMINE	09:14			
	09:14	68-55	H 13	GOOD! FT by SHEPARD,JESSICA
SUB IN: KOHLHAAS,ANDREA	09:14			
SUB IN: HARRIS,ALEXIS	09:14			
SUB OUT: SMITH,JASMINE	09:14			
SUB OUT: WEST,RACHOL	09:14			
	08:47			FOUL by ELIELY,NICEA
MISSED JUMPER by RAMOS,DEZZ	08:39			
REBOUND (OFF) by BAIRD,PARIS	08:39			
MISSED 3PTR by RAMOS,DEZZ	08:34			
	08:34			REBOUND (DEF) by ELIELY,NICEA
FOUL by LADD,MYZHANIQUE	08:31			
	08:14	70-55	H 15	GOOD! JUMPER by SHEPARD,JESSICA [PNT]
	08:14			ASSIST by HAVERS,ALLIE
FOUL by BAIRD,PARIS	08:05			
TURNOVER by BAIRD,PARIS	08:05			
SUB IN: GENNETT,HALLIE	08:05			
SUB OUT: HARRIS,ALEXIS	08:05			
	07:46	72-55	H 17	GOOD! JUMPER by HAVERS,ALLIE [PNT]
	07:46			ASSIST by CINCORE,JASMINE
TURNOVER by RAMOS,DEZZ	07:34			
	07:23			TURNOVER by CINCORE,JASMINE
STEAL by KOHLHAAS,ANDREA	07:22			
MISSED 3PTR by GENNETT,HALLIE	07:10			
REBOUND (OFF) by RAMOS,DEZZ	07:10			
	07:07			FOUL by RAMACIERI,ESTHER
	07:07			SUB IN: WHITISH,HANNAH
	07:07			SUB OUT: RAMACIERI,ESTHER
	06:59			FOUL by WHITISH,HANNAH
	06:59			SUB IN: WASHINGTON,DARRIEN
	06:59			SUB OUT: SHEPARD,JESSICA
	06:56			FOUL by HAVERS,ALLIE
MISSED JUMPER by GENNETT,HALLIE	06:54			
	06:54			REBOUND (DEF) by WASHINGTON,DARRIEN
	06:45	74-55	H 19	GOOD! JUMPER by HAVERS,ALLIE
	06:45			ASSIST by ELIELY,NICEA
MISSED 3PTR by KOHLHAAS,ANDREA	06:36			
	06:36			REBOUND (DEF) by HAVERS,ALLIE
	06:32			TURNOVER by HAVERS,ALLIE
STEAL by GENNETT,HALLIE	06:32			
SUB IN: SMITH,JASMINE	06:32			
SUB OUT: GENNETT,HALLIE	06:32			
MISSED LAYUP by BAIRD,PARIS	06:31			
	06:31			REBOUND (DEF) by WASHINGTON,DARRIEN
	06:07			MISSED JUMPER by ELIELY,NICEA

VISITORS: San Jose State	Time	Score	Margin	HOME: Nebraska
	06:07			REBOUND (OFF) by WASHINGTON,DARRIEN
	06:03	76-55	H 21	GOOD! JUMPER by WASHINGTON,DARRIEN [PNT]
FOUL by KOHLHAAS,ANDREA	06:03			
	06:03			MISSED FT by WASHINGTON,DARRIEN
	06:03			REBOUND (OFF) by CINCORE,JASMINE
	06:03			SUB IN: MITCHELL,GRACE
	06:03			SUB OUT: HAVERS,ALLIE
	05:57			FOUL by WASHINGTON,DARRIEN
	05:57			TURNOVER by WASHINGTON,DARRIEN
SUB IN: HAFOKA,FIEME'A	05:57			
SUB IN: WEST,RACHOL	05:57			
SUB OUT: LADD,MYZHANIQUE	05:57			
SUB OUT: KOHLHAAS,ANDREA	05:57			
MISSED JUMPER by HAFOKA,FIEME'A	05:45			
	05:45			REBOUND (DEF) by WHITISH,HANNAH
	05:25			MISSED 3PTR by CINCORE,JASMINE
REBOUND (DEF) by WEST,RACHOL	05:25			
MISSED 3PTR by RAMOS,DEZZ	05:16			
	05:16			REBOUND (DEF) by CINCORE,JASMINE
	05:11			TURNOVER by CINCORE,JASMINE
STEAL by WEST,RACHOL	05:10			
GOOD! LAYUP by RAMOS,DEZZ [PNT]	05:06	76-57	H 19	
	04:50	79-57	H 22	GOOD! 3PTR by WHITISH,HANNAH
	04:50			ASSIST by CINCORE,JASMINE
MISSED LAYUP by RAMOS,DEZZ	04:29			
	04:29			REBOUND (DEF) by MITCHELL,GRACE
	04:11			TURNOVER by WHITISH,HANNAH
STEAL by HAFOKA,FIEME'A	04:09			
TIMEOUT MEDIA	04:07			
SUB IN: TURNEY,TAYLOR	04:07			
SUB IN: GENNETT,HALLIE	04:07			
SUB IN: HARRIS,ALEXIS	04:07			
SUB IN: BENALLY,ANALYSS	04:07			
SUB OUT: BAIRD,PARIS	04:07			
SUB OUT: WEST,RACHOL	04:07			
SUB OUT: SMITH,JASMINE	04:07			
SUB OUT: RAMOS,DEZZ	04:07			
	04:07			SUB IN: JENSEN,RYLIE CASCIO
	04:07			SUB IN: SHEPARD,JESSICA
	04:07			SUB IN: RAMACIERI,ESTHER
	04:07			SUB OUT: ELIELY,NICEA
	04:07			SUB OUT: WASHINGTON,DARRIEN
	04:07			SUB OUT: CINCORE,JASMINE
GOOD! LAYUP by HAFOKA,FIEME'A [PNT]	03:55	79-59	H 20	
	03:22			MISSED JUMPER by JENSEN,RYLIE CASCIO
	03:22			REBOUND (OFF) by MITCHELL,GRACE
	02:50			MISSED 3PTR by WHITISH,HANNAH
	02:50			REBOUND (OFF) by RAMACIERI,ESTHER
FOUL by BENALLY,ANALYSS	02:32			
	02:32			MISSED FT by JENSEN,RYLIE CASCIO
	02:32			REBOUND (DEADB) by TEAM
	02:32			MISSED FT by JENSEN,RYLIE CASCIO
REBOUND (DEF) by HAFOKA,FIEME'A	02:32			
GOOD! LAYUP by HAFOKA,FIEME'A [PNT]	02:18	79-61	H 18	
FOUL by HARRIS,ALEXIS	01:58			
	01:58	80-61	H 19	GOOD! FT by SHEPARD,JESSICA
	01:58	81-61	H 20	GOOD! FT by SHEPARD,JESSICA
	01:58			SUB IN: WASHINGTON,DARRIEN

VISITORS: San Jose State	Time	Score	Margin	HOME: Nebraska
	01:58			SUB IN: WOOD,EMILY
	01:58			SUB OUT: MITCHELL,GRACE
	01:58			SUB OUT: RAMACIERI,ESTHER
MISSED 3PTR by BENALLY,ANALYSS	01:53			
	01:53			REBOUND (DEF) by WHITISH,HANNAH
	01:45			TURNOVER by SHEPARD,JESSICA
	01:45			SUB IN: MITCHELL,GRACE
	01:45			SUB OUT: SHEPARD,JESSICA
MISSED 3PTR by GENNETT,HALLIE	01:33			
	01:33			REBOUND (DEF) by WHITISH,HANNAH
FOUL by BENALLY,ANALYSS	01:03			
	01:03	82-61	H 21	GOOD! FT by WOOD,EMILY
	01:03	83-61	H 22	GOOD! FT by WOOD,EMILY
MISSED JUMPER by TURNEY,TAYLOR	00:47			
	00:47			REBOUND (DEF) by JENSEN,RYLIE CASCIO
	00:26			TURNOVER by MITCHELL,GRACE
MISSED 3PTR by BENALLY,ANALYSS	00:11			
	00:11			REBOUND (DEF) by WOOD,EMILY

San Jose State 61, Nebraska 83

Period 4-only	In Paint	Off T/O	2nd Chance	Fast Break	Bench	
SJ	6	4	0	0	4	Score tied - 0 times
NEB	10	5	4	0	7	Lead changed - 0 times

San Jose State vs Nebraska
12/9/2016; 7:06 p.m at Pinnacle Bank Arena (Lincoln, Neb.)
Scoring/Runs Reference

Period 1

San Jose State	Score	Marg	Nebraska
	0-2	2 2	ELIELY JUMPER - 08:26
	0-3	3 1	WASHINGTON FT - 06:55
05:57 - KOHLHAAS 3PTR 3	3-3	0	
	3-5	2 2	WASHINGTON JUMPER [P] - 05:29
05:16 - BAIRD 3PTR 3	6-5	-1	
04:52 - WEST 3PTR 3	9-5	-4	
03:58 - BAIRD LAYUP [P] 2	11-5	-6	
	11-7	-4 2	SIMON JUMPER [P] - 03:18
03:12 - WEST 3PTR 3	14-7	-7	
	14-9	-5 2	CINCORE JUMPER - 02:46
	14-11	-3 2	SHEPARD JUMPER [P] - 01:30
01:10 - TURNEY FT 1	15-11	-4	
01:10 - TURNEY FT 1	16-11	-5	
	16-14	-2 3	JENSEN 3PTR - 00:51
	16-16	0 2	ELIELY JUMPER [P] - 00:00

Period 2

San Jose State	Score	Marg	Nebraska
	16-19	3 3	ELIELY 3PTR - 09:38
09:26 - RAMOS FT 1	17-19	2	
09:26 - RAMOS FT 1	18-19	1	
	18-20	2 1	SHEPARD FT - 09:14
09:06 - LADD JUMPER [P] 2	20-20	0	
	20-22	2 2	SHEPARD JUMPER [P] - 08:48
07:55 - RAMOS LAYUP [P] [F] 2	22-22	0	
06:58 - RAMOS JUMPER 2	24-22	-2	
	24-25	1 3	RAMACIERI 3PTR - 06:46
06:23 - RAMOS JUMPER 2	26-25	-1	
	26-27	1 2	WOOD LAYUP [P] [F] - 05:08
	26-29	3 2	ELIELY JUMPER [P] - 04:22
	26-31	5 2	WASHINGTON JUMPER [P] - 03:39
	26-34	8 3	WOOD 3PTR - 03:32
02:52 - RAMOS 3PTR 3	29-34	5	
02:17 - RAMOS 3PTR 3	32-34	2	
01:46 - RAMOS JUMPER 2	34-34	0	
	34-37	3 3	JENSEN 3PTR - 00:29

Period 3

San Jose State	Score	Marg	Nebraska
	34-39	5 2	SHEPARD JUMPER [P] - 09:40
	34-41	7 2	HAVERS JUMPER [P] - 09:14
09:04 - LADD JUMPER	2	36-41 5	
	36-43	7 2	SHEPARD JUMPER [P] - 08:49
08:35 - SMITH LAYUP [P]	2	38-43 5	
08:13 - BAIRD FT	1	39-43 4	
08:13 - BAIRD FT	1	40-43 3	
	40-45	5 2	SHEPARD JUMPER [P] - 08:03
07:55 - SMITH JUMPER	2	42-45 3	
	42-47	5 2	RAMACIERI LAYUP [P] - 07:28
07:19 - SMITH LAYUP [P]	2	44-47 3	
	44-49	5 2	SHEPARD JUMPER [P] - 07:01
	44-51	7 2	SHEPARD LAYUP [P] - 06:30
	44-53	9 2	ELIELY LAYUP [P] [F] - 06:12
05:49 - RAMOS FT	1	45-53 8	
05:49 - RAMOS FT	1	46-53 7	
	46-55	9 2	HAVERS LAYUP [P] - 05:36
04:57 - RAMOS LAYUP [P] [F]	2	48-55 7	
	48-57	9 2	SHEPARD JUMPER [P] - 04:13
	48-59	11 2	SHEPARD JUMPER [P] - 03:20
	48-61	13 2	CINCORE JUMPER - 02:36
02:01 - SMITH LAYUP [P] [F]	2	50-61 11	
01:23 - RAMOS FT	1	51-61 10	
01:23 - RAMOS FT	1	52-61 9	
00:26 - WEST 3PTR	3	55-61 6	
	55-63	8 2	ELIELY JUMPER [P] - 00:14

Period 4

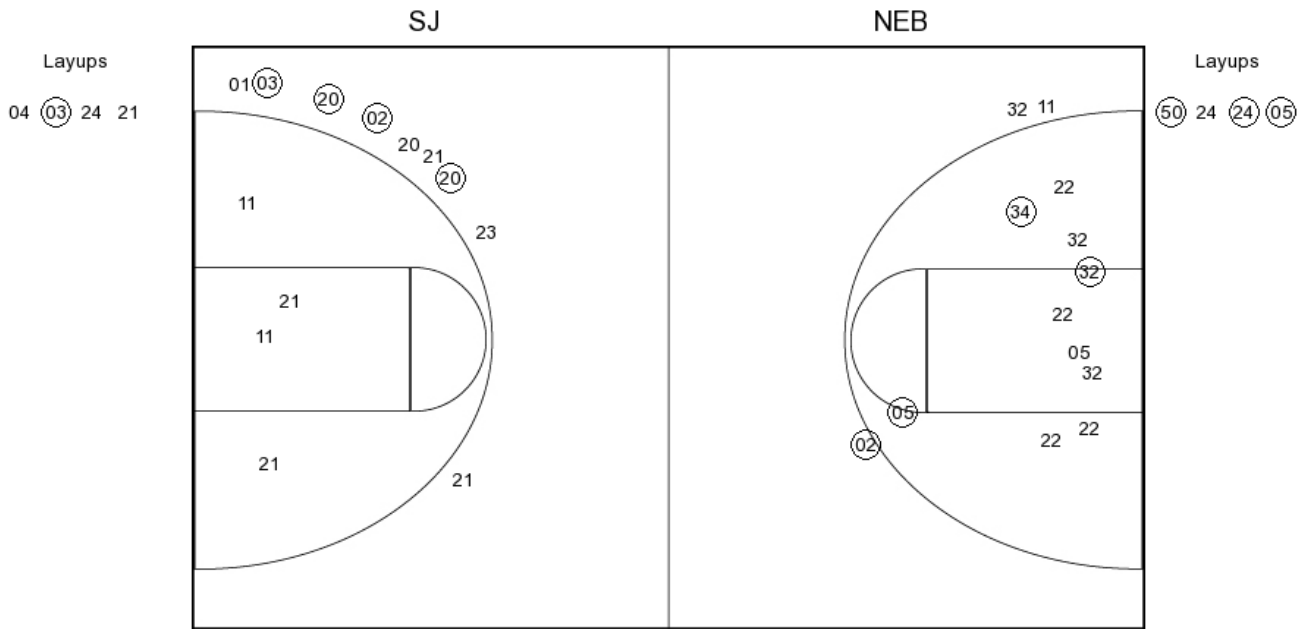
San Jose State	Score	Marg	Nebraska
	55-65	10 2	SHEPARD JUMPER [P] - 09:47
	55-67	12 2	SHEPARD JUMPER [P] - 09:14
	55-68	13 1	SHEPARD FT - 09:14
	55-70	15 2	SHEPARD JUMPER [P] - 08:14
	55-72	17 2	HAVERS JUMPER [P] - 07:46
	55-74	19 2	HAVERS JUMPER - 06:45
	55-76	21 2	WASHINGTON JUMPER [P] - 06:03
05:06 - RAMOS LAYUP [P]	2	57-76 19	
	57-79	22 3	WHITISH 3PTR - 04:50
03:55 - HAFOKA LAYUP [P]	2	59-79 20	
02:18 - HAFOKA LAYUP [P]	2	61-79 18	
	61-80	19 1	SHEPARD FT - 01:58
	61-81	20 1	SHEPARD FT - 01:58
	61-82	21 1	WOOD FT - 01:03
	61-83	22 1	WOOD FT - 01:03

San Jose State vs Nebraska

OFFICIAL SHOT CHART

12/9/2016 at Pinnacle Bank Arena (Lincoln, Neb.)

PERIOD 1



SJ PERIOD 1

FG Made	12
FG Attempted	36
3PFG Made	6
3PFG Attempted	19

NEB PERIOD 1

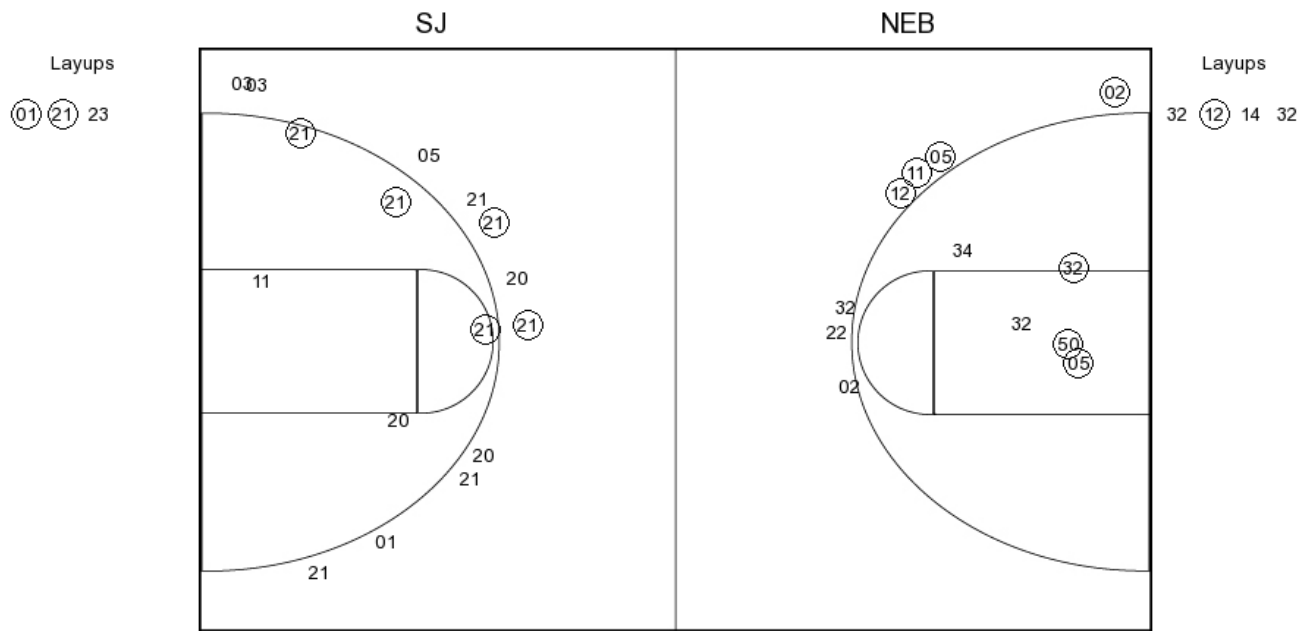
FG Made	15
FG Attempted	32
3PFG Made	5
3PFG Attempted	9

San Jose State vs Nebraska

OFFICIAL SHOT CHART

12/9/2016 at Pinnacle Bank Arena (Lincoln, Neb.)

PERIOD 2



SJ PERIOD 2

FG Made

FG Attempted

3PFG Made

3PFG Attempted

NEB PERIOD 2

FG Made

FG Attempted

3PFG Made

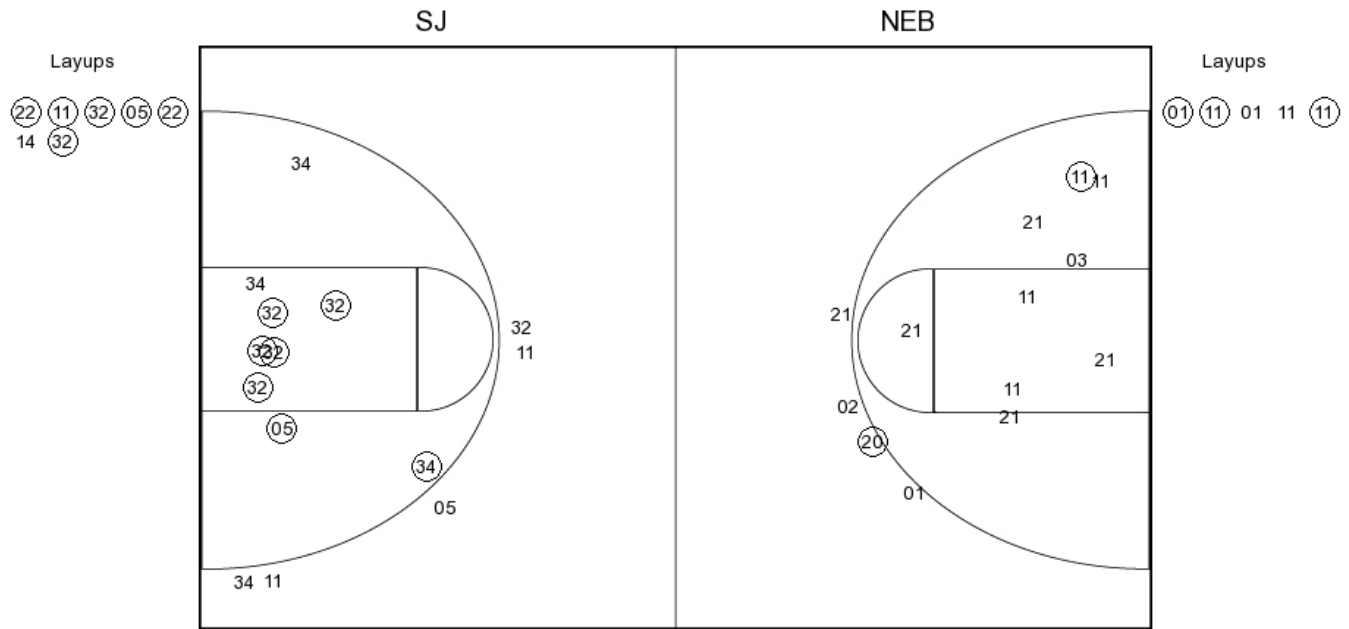
3PFG Attempted

San Jose State vs Nebraska

OFFICIAL SHOT CHART

12/9/2016 at Pinnacle Bank Arena (Lincoln, Neb.)

PERIOD 3



SJ PERIOD 3

FG Made	10
FG Attempted	35
3PFG Made	1
3PFG Attempted	11

NEB PERIOD 3

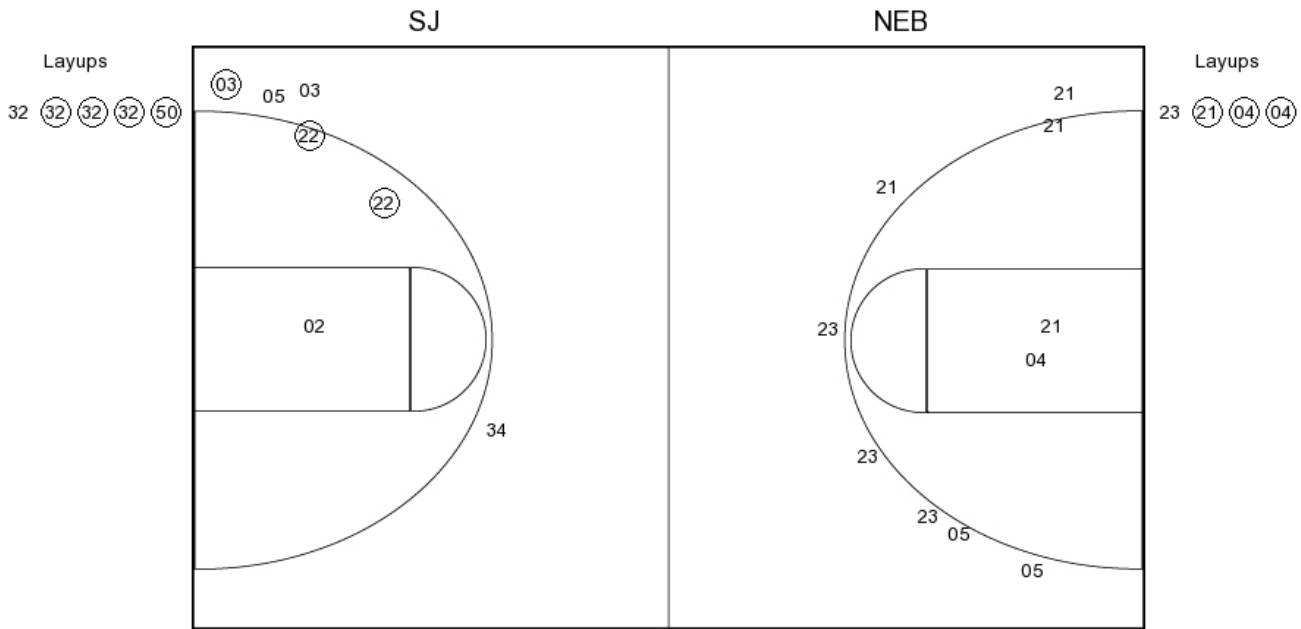
FG Made	20
FG Attempted	33
3PFG Made	1
3PFG Attempted	8

San Jose State vs Nebraska

OFFICIAL SHOT CHART

12/9/2016 at Pinnacle Bank Arena (Lincoln, Neb.)

PERIOD 4



SJ PERIOD 4

FG Made

FG Attempted

3PFG Made

3PFG Attempted

NEB PERIOD 4

FG Made

FG Attempted

3PFG Made

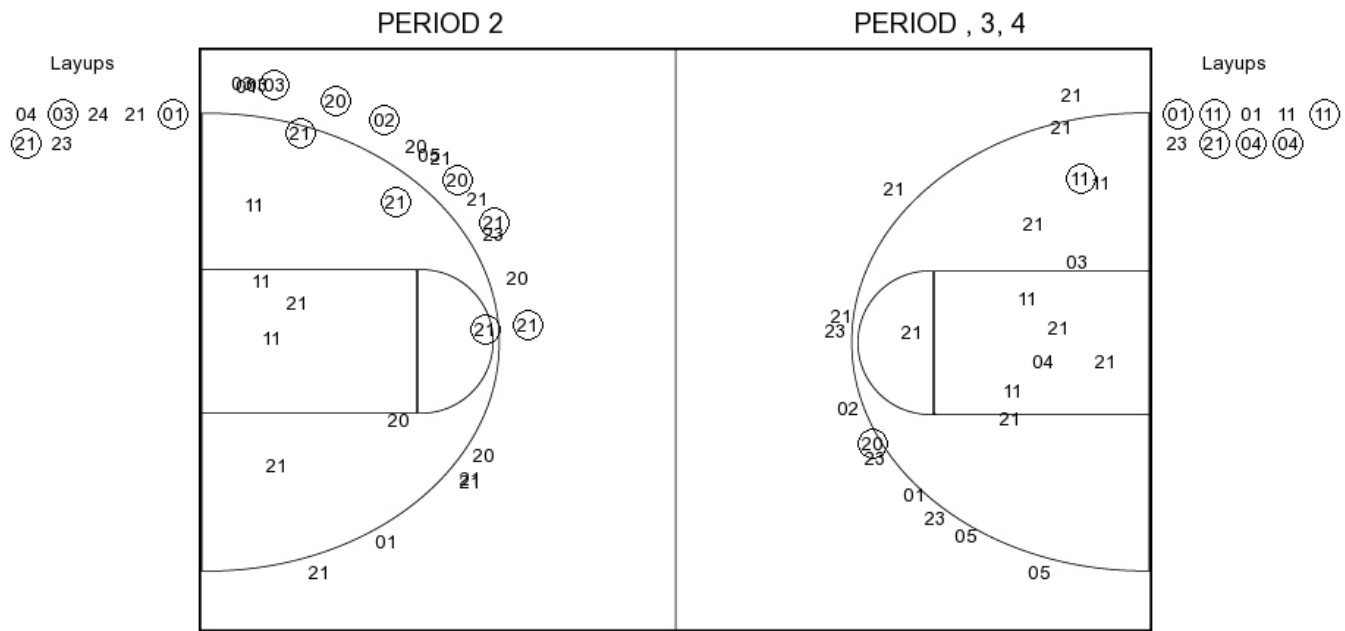
3PFG Attempted

San Jose State vs Nebraska

OFFICIAL SHOT CHART

12/9/2016 at Pinnacle Bank Arena (Lincoln, Neb.)

San Jose State



SJ PERIOD 1

FG Made	12
FG Attempted	36
3PFG Made	6
3PFG Attempted	19

SJ PERIOD 2

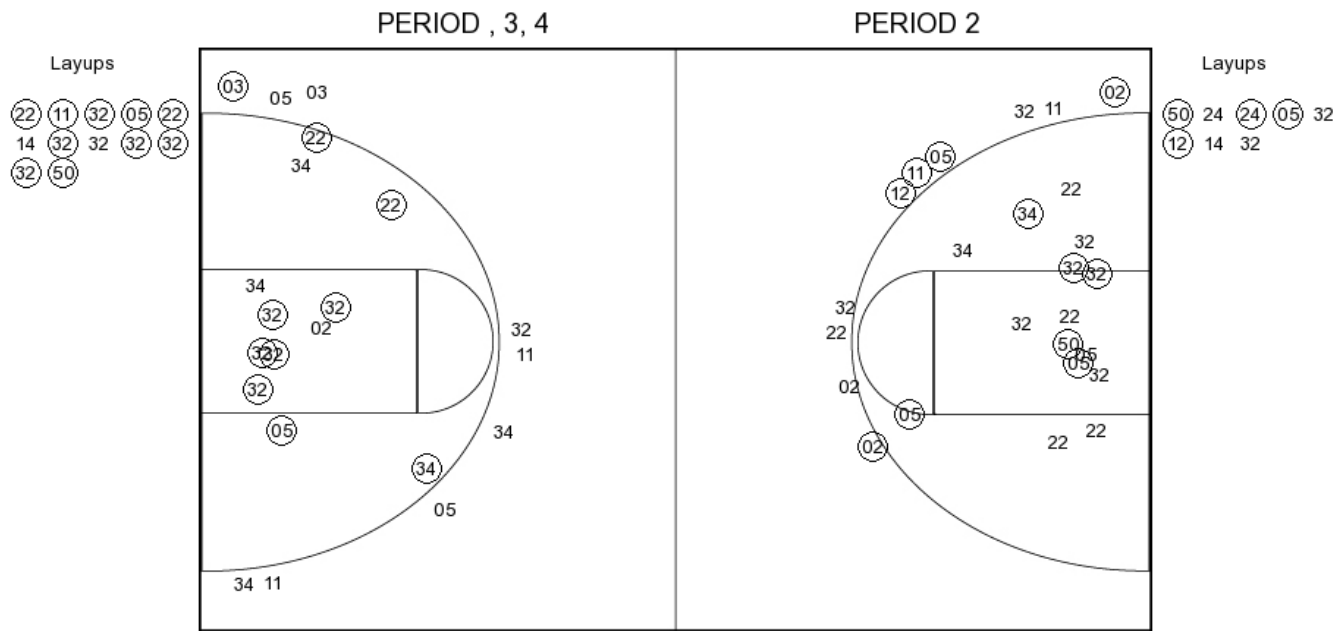
FG Made	
FG Attempted	
3PFG Made	
3PFG Attempted	

San Jose State vs Nebraska

OFFICIAL SHOT CHART

12/9/2016 at Pinnacle Bank Arena (Lincoln, Neb.)

Nebraska



NEB PERIOD 1

FG Made	15
FG Attempted	32
3PFG Made	5
3PFG Attempted	9

NEB PERIOD 2

FG Made	
FG Attempted	
3PFG Made	
3PFG Attempted	