



NEBRASKA VS. DRAKE

12/6/2016

Pinnacle Bank Arena (Lincoln, Neb.)

FINAL STATS

Drake

(3-3)

84

Nebraska

(3-5)

70

Start Time: 7:06 p.m.

Officials: Tina Napier, Mark Zentz, Gina Cross

Attendance: 4200

Official Basketball Box Score -- Game Totals -- Final Statistics

Drake vs Nebraska

12/6/2016 7:06 p.m. at Pinnacle Bank Arena (Lincoln, Neb.)

Drake 84 - 3-3

##	Player	S	Total		3-Ptr		Rebounds			PF	TP	A	TO	Blk	Stl	Min
			FG-FGA	3PT FG-FGA	FT-FTA	Off Reb	Def Reb	Tot Reb								
03	WENDELL, LIZZY	f	8-23	0-6	2-5	0	6	6	3	18	4	3	0	5	27	
05	HITTNER, BECCA	g	3-5	2-3	0-0	1	3	4	2	8	2	2	1	0	18	
21	BACHRODT, SAMMIE	g	3-6	2-3	0-0	1	2	3	5	8	3	0	1	2	28	
22	INGLE, CAITLIN	g	5-8	1-3	2-2	0	3	3	3	13	13	4	0	3	30	
35	JONAS, BECCA	f	4-7	1-2	0-0	0	5	5	1	9	2	3	0	0	24	
12	ROSE, BRENNI		4-6	2-4	0-0	2	1	3	1	10	0	1	0	1	12	
15	GREINER, PAIGE		0-1	0-1	0-0	0	1	1	0	0	0	2	0	0	7	
24	MILLER, NICOLE		1-2	1-2	4-4	0	3	3	2	7	0	2	0	1	21	
34	RUSH, CORTNI		0-0	0-0	4-4	1	0	1	0	4	0	0	0	0	6	
40	MERTZ, MYA		0-0	0-0	0-2	0	1	1	2	0	0	0	0	1	4	
50	RHINE, SARA		3-6	0-0	1-2	0	5	5	2	7	1	1	1	0	23	
TEAM						6	1	7	0		0					
TOTALS			31-64	9-24	13-19	11	31	42	21	84	25	18	3	13	200	

Deadball Rebounds: 4,0

FG %	1st Half: 10-32	31.3%	2nd Half: 21-32	65.6%	Game: 31-64	48.4%							
	1st Qtr 5-17	29.4%	2nd Qtr 5-15	33.3%	3rd Qtr 12-17	70.6%	4th Qtr 9-15	60.0%					
3FG %	1st Half: 4-14	28.6%	2nd Half: 5-10	50.0%	Game: 9-24	37.5%							
	1st Qtr 2-7	28.6%	2nd Qtr 2-7	28.6%	3rd Qtr 3-5	60.0%	4th Qtr 2-5	40.0%					
FT %	1st Half: 8-11	72.7%	2nd Half: 5-8	62.5%	Game: 13-19	68.4%							
	1st Qtr 1-2	50.0%	2nd Qtr 7-9	77.8%	3rd Qtr 2-2	100.0%	4th Qtr 3-6	50.0%					

Nebraska 70 - 3-5

##	Player	S	Total		3-Ptr		Rebounds			PF	TP	A	TO	Blk	Stl	Min
			FG-FGA	3PT FG-FGA	FT-FTA	Off Reb	Def Reb	Tot Reb								
05	ELIELY, NICEA	g	3-6	0-2	0-0	1	3	4	2	6	2	3	1	1	32	
11	RAMACIERI, ESTHER	g	0-2	0-2	0-0	0	3	3	2	0	6	2	0	0	21	
22	HAVERS, ALLIE	c	6-9	0-0	2-5	1	0	1	3	14	1	2	0	1	27	
32	SHEPARD, JESSICA	f	8-18	1-3	6-10	5	11	16	4	23	3	4	2	1	32	
34	CINCORE, JASMINE	g	2-6	1-3	2-2	0	0	0	2	7	2	1	4	1	22	
02	JENSEN, RYLIE CASCIO		1-4	1-4	0-0	0	0	0	1	3	1	0	0	0	13	
03	WHITISH, HANNAH		2-4	0-2	0-0	0	0	0	1	4	3	2	0	1	16	
12	WOOD, EMILY		0-1	0-1	0-0	0	0	0	1	0	0	0	0	0	6	
14	MITCHELL, GRACE		3-9	1-1	0-0	0	1	1	3	7	0	0	0	2	16	
24	SIMON, MADDIE		2-4	2-2	0-0	0	3	3	1	6	2	2	1	0	11	
50	WASHINGTON, DARRIEN		0-1	0-0	0-0	1	1	2	2	0	0	0	0	0	3	
TEAM						2	2	4	0		0					
TOTALS			27-64	6-20	10-17	10	24	34	22	70	20	16	8	7	199	

Deadball Rebounds: 3,0

FG %	1st Half: 14-33	42.4%	2nd Half: 13-31	41.9%	Game: 27-64	42.2%							
	1st Qtr 4-17	23.5%	2nd Qtr 10-16	62.5%	3rd Qtr 6-13	46.2%	4th Qtr 7-18	38.9%					
3FG %	1st Half: 3-10	30.0%	2nd Half: 3-10	30.0%	Game: 6-20	30.0%							
	1st Qtr 1-5	20.0%	2nd Qtr 2-5	40.0%	3rd Qtr 3-7	42.9%	4th Qtr 0-3	00.0%					
FT %	1st Half: 2-4	50.0%	2nd Half: 8-13	61.5%	Game: 10-17	58.8%							
	1st Qtr 0-0	0%	2nd Qtr 2-4	50.0%	3rd Qtr 2-6	33.3%	4th Qtr 6-7	85.7%					

Officials: Tina Napier, Mark Zentz, Gina Cross
 Technical Fouls: Drake- None. Nebraska- None.
 Attendance: 4200

Score by periods	1st	2nd	3rd	4th	Total
Drake	13	19	29	23	84
Nebraska	9	24	17	20	70

Points	In Paint	Off T/O	2nd 2nd Chance	Fast Break	Bench
DU	42	11	12	4	28
NEB	32	14	12	6	20

Last FG - DU 4th-00:20, NEB 4th-00:20.
 Largest lead - Drake by 16 4th-01:23; Nebraska by 3 2nd-01:22
 DU led for 35:59. NEB led for 2:48. Game was tied for 1:13.

Score tied - 3 times
 Lead changed - 4 times

Official Basketball Box Score -- Game Totals -- First Half Statistics

Drake vs Nebraska

12/6/2016 7:06 p.m. at Pinnacle Bank Arena (Lincoln, Neb.)

Drake 32 • 3-3

##	Player	S	Total			Rebounds			PF	TP	A	TO	Blk	Stl	Min
			FG-FGA	3PT	FG-FGA	FT-FTA	Off Reb	Def Reb							
03	WENDELL, LIZZY	f	2-12	0-4	1-3	0	4	4	2	5	1	1	0	3	14
05	HITTNER, BECCA	g	2-3	1-2	0-0	0	0	0	2	5	0	0	0	0	6
21	BACHRODT, SAMMIE	g	2-5	1-2	0-0	1	0	1	0	5	1	0	0	1	16
22	INGLE, CAITLIN	g	1-3	0-1	0-0	0	1	1	2	2	6	1	0	3	12
35	JONAS, BECCA	f	1-3	0-1	0-0	0	4	4	1	2	0	3	0	0	11
12	ROSE, BRENNI		1-2	1-2	0-0	1	1	2	0	3	0	1	0	1	8
15	GREINER, PAIGE		0-1	0-1	0-0	0	1	1	0	0	0	2	0	0	5
24	MILLER, NICOLE		1-1	1-1	2-2	0	1	1	2	5	0	1	0	0	11
34	RUSH, CORTNI		0-0	0-0	4-4	1	0	1	0	4	0	0	0	0	4
40	MERTZ, MYA		0-0	0-0	0-0	0	1	1	1	0	0	0	0	1	2
50	RHINE, SARA		0-2	0-0	1-2	0	2	2	0	1	1	1	0	0	11
TEAM						3	0	3	0		0				
Totals			10-32	4-14	8-11	6	15	21	10	32	9	10	0	9	100
FG %	1st Qtr	5-17	29.4%	2nd Qtr	5-15	33.3%	Half:	10-32	31.3%						
3FG %	1st Qtr	2-7	28.6%	2nd Qtr	2-7	28.6%	Half:	4-14	28.6%						
FT %	1st Qtr	1-2	50.0%	2nd Qtr	7-9	77.8%	Half:	8-11	72.7%						

Nebraska 33 • 3-5

##	Player	S	Total			Rebounds			PF	TP	A	TO	Blk	Stl	Min
			FG-FGA	3PT	FG-FGA	FT-FTA	Off Reb	Def Reb							
05	ELIELY, NICEA	g	2-3	0-1	0-0	0	3	3	1	4	2	1	1	1	16
11	RAMACIERI, ESTHER	g	0-2	0-2	0-0	0	1	1	1	0	3	1	0	0	9
22	HAVERS, ALLIE	c	5-6	0-0	1-2	1	0	1	2	11	0	2	0	0	13
32	SHEPARD, JESSICA	f	0-4	0-1	1-2	3	7	10	2	1	1	2	1	0	13
34	CINCORE, JASMINE	g	1-3	0-1	0-0	0	0	0	0	2	1	1	3	1	11
02	JENSEN, RYLIE CASCIO		1-1	1-1	0-0	0	0	0	1	3	0	0	0	0	5
03	WHITISH, HANNAH		2-4	0-2	0-0	0	0	0	1	4	1	2	0	1	9
12	WOOD, EMILY		0-0	0-0	0-0	0	0	0	0	0	0	0	0	0	3
14	MITCHELL, GRACE		2-6	1-1	0-0	0	1	1	0	5	0	0	0	2	10
24	SIMON, MADDIE		1-3	1-1	0-0	0	3	3	1	3	2	1	1	0	8
50	WASHINGTON, DARRIEN		0-1	0-0	0-0	1	1	2	2	0	0	0	0	0	3
TEAM						0	1	1	0		0				
Totals			14-33	3-10	2-4	5	17	22	11	33	10	10	6	5	100
FG %	1st Qtr	4-17	23.5%	2nd Qtr	10-16	62.5%	Half:	14-33	42.4%						
3FG %	1st Qtr	1-5	20.0%	2nd Qtr	2-5	40.0%	Half:	3-10	30.0%						
FT %	1st Qtr	0-0	0%	2nd Qtr	2-4	50.0%	Half:	2-4	50.0%						

Officials: Tina Napier, Mark Zentz, Gina Cross
 Technical Fouls: Drake- None. Nebraska- None.

Score by periods	1st	2nd	3rd	4th	Total
Drake	13	19	29	23	84
Nebraska	9	24	17	20	70

Points	In Paint	Off T/O	2nd 2nd Chance	Fast Break	Bench
DU	10	4	4	2	13
	14	6	3	6	15

Last FG - DU 2nd-01:10, NEB 2nd-00:28.
 DU led for 17:39. NEB led for 1:24. Game was tied for 0:57.

Score tied - 2 times
 Lead changed - 3 times

Drake vs Nebraska
12/6/2016; 7:06 p.m. at Pinnacle Bank Arena (Lincoln, Neb.)
Period 1 Play-By-Play

VISITORS: Drake	Time	Score	Margin	HOME: Nebraska
MISSED LAYUP by WENDELL,LIZZY	09:46			
	09:46			REBOUND (DEF) by SHEPARD,JESSICA
	09:42			TURNOVER by SHEPARD,JESSICA
STEAL by INGLE,CAITLIN	09:41			
GOOD! 3PTR by HITTNER,BECCA	09:39	0-3	V 3	
ASSIST by INGLE,CAITLIN	09:39			
FOUL by JONAS,BECCA	09:25			
	09:22	2-3	V 1	GOOD! JUMPER by HAVERS,ALLIE
	09:22			ASSIST by RAMACIERI,ESTHER
MISSED 3PTR by WENDELL,LIZZY	09:09			
	09:09			REBOUND (DEF) by SHEPARD,JESSICA
	08:45			MISSED JUMPER by HAVERS,ALLIE
REBOUND (DEF) by JONAS,BECCA	08:45			
SUB IN: RHINE,SARA	08:41			
SUB OUT: JONAS,BECCA	08:41			
MISSED 3PTR by HITTNER,BECCA	08:28			
	08:28			REBOUND (DEF) by RAMACIERI,ESTHER
	08:04			MISSED 3PTR by RAMACIERI,ESTHER
REBOUND (DEF) by WENDELL,LIZZY	08:04			
MISSED JUMPER by RHINE,SARA	07:56			
	07:56			REBOUND (DEF) by SHEPARD,JESSICA
	07:47			MISSED LAYUP by CINCORE,JASMINE
	07:47			REBOUND (OFF) by HAVERS,ALLIE
	07:34			MISSED JUMPER by SHEPARD,JESSICA
REBOUND (DEF) by WENDELL,LIZZY	07:34			
	07:34			FOUL by HAVERS,ALLIE
SUB IN: MILLER,NICOLE	07:34			
SUB OUT: HITTNER,BECCA	07:34			
GOOD! JUMPER by INGLE,CAITLIN	07:17	2-5	V 3	
ASSIST by WENDELL,LIZZY	07:17			
	06:51	4-5	V 1	GOOD! JUMPER by HAVERS,ALLIE [PNT]
	06:51			ASSIST by RAMACIERI,ESTHER
GOOD! 3PTR by MILLER,NICOLE	06:45	4-8	V 4	
ASSIST by INGLE,CAITLIN	06:45			
	06:25			MISSED JUMPER by SHEPARD,JESSICA
REBOUND (DEF) by INGLE,CAITLIN	06:25			
TURNOVER by WENDELL,LIZZY	06:18			
	06:18			STEAL by CINCORE,JASMINE
SUB IN: JONAS,BECCA	06:18			
SUB OUT: WENDELL,LIZZY	06:18			
	06:18			SUB IN: SIMON,MADDIE
	06:18			SUB IN: MITCHELL,GRACE
	06:18			SUB IN: WHITISH,HANNAH
	06:18			SUB OUT: RAMACIERI,ESTHER
	06:18			SUB OUT: HAVERS,ALLIE
	06:18			SUB OUT: CINCORE,JASMINE
	06:07			MISSED JUMPER by MITCHELL,GRACE
	06:07			REBOUND (OFF) by SHEPARD,JESSICA
	06:04			MISSED JUMPER by SHEPARD,JESSICA
REBOUND (DEF) by MILLER,NICOLE	06:04			
MISSED 3PTR by INGLE,CAITLIN	05:49			
	05:49			BLOCK by ELIELY,NICEA
	05:46			REBOUND (DEF) by ELIELY,NICEA

VISITORS: Drake	Time	Score	Margin	HOME: Nebraska
	05:43	6-8	V 2	GOOD! LAYUP by WHITISH,HANNAH [FB/PNT]
	05:43			ASSIST by ELIELY,NICEA
MISSED JUMPER by JONAS,BECCA	05:25			
REBOUND (OFF) by BACHRODT,SAMMIE	05:25			
GOOD! JUMPER by BACHRODT,SAMMIE [PNT]	05:22	6-10	V 4	
	05:12			MISSED 3PTR by SHEPARD,JESSICA
	05:12			REBOUND (OFF) by SHEPARD,JESSICA
	05:08			MISSED JUMPER by SIMON,MADDIE
REBOUND (DEF) by JONAS,BECCA	05:08			
TURNOVER by INGLE,CAITLIN	05:00			
	04:58			STEAL by WHITISH,HANNAH
	04:49			TURNOVER by ELIELY,NICEA
STEAL by INGLE,CAITLIN	04:47			
MISSED 3PTR by JONAS,BECCA	04:36			
	04:36			REBOUND (DEF) by SHEPARD,JESSICA
	04:25			TURNOVER by SIMON,MADDIE
STEAL by INGLE,CAITLIN	04:24			
MISSED 3PTR by BACHRODT,SAMMIE	04:20			
	04:20			REBOUND (DEF) by MITCHELL,GRACE
	03:57			MISSED JUMPER by MITCHELL,GRACE
REBOUND (DEF) by JONAS,BECCA	03:57			
MISSED JUMPER by BACHRODT,SAMMIE	03:37			
	03:37			BLOCK by SIMON,MADDIE
	03:36			REBOUND (DEF) by SIMON,MADDIE
	03:32			MISSED 3PTR by WHITISH,HANNAH
	03:32			REBOUND (OFF) by SHEPARD,JESSICA
FOUL by INGLE,CAITLIN	03:29			
	03:29			TIMEOUT MEDIA
SUB IN: WENDELL,LIZZY	03:29			
SUB IN: HITTNER,BECCA	03:29			
SUB IN: GREINER,PAIGE	03:29			
SUB OUT: MILLER,NICOLE	03:29			
SUB OUT: INGLE,CAITLIN	03:29			
SUB OUT: RHINE,SARA	03:29			
	03:29			SUB IN: CINCORE,JASMINE
	03:29			SUB IN: HAVERS,ALLIE
	03:29			SUB IN: RAMACIERI,ESTHER
	03:29			SUB OUT: ELIELY,NICEA
	03:29			SUB OUT: MITCHELL,GRACE
	03:29			SUB OUT: SHEPARD,JESSICA
	03:07	9-10	V 1	GOOD! 3PTR by SIMON,MADDIE
	03:07			ASSIST by RAMACIERI,ESTHER
	02:52			FOUL by RAMACIERI,ESTHER
MISSED JUMPER by WENDELL,LIZZY	02:44			
	02:44			REBOUND (DEF) by SIMON,MADDIE
	02:34			MISSED JUMPER by SIMON,MADDIE
REBOUND (DEF) by JONAS,BECCA	02:34			
TURNOVER by JONAS,BECCA	02:19			
SUB IN: MERTZ,MYA	02:19			
SUB IN: INGLE,CAITLIN	02:19			
SUB OUT: JONAS,BECCA	02:19			
SUB OUT: BACHRODT,SAMMIE	02:19			
	02:19			SUB IN: WASHINGTON,DARRIEN
	02:19			SUB OUT: SIMON,MADDIE
	02:07			MISSED 3PTR by WHITISH,HANNAH
REBOUND (DEF) by MERTZ,MYA	02:07			
GOOD! LAYUP by WENDELL,LIZZY [FB/PNT]	02:01	9-12	V 3	
ASSIST by INGLE,CAITLIN	02:01			

VISITORS: Drake	Time	Score	Margin	HOME: Nebraska
FOUL by MERTZ,MYA	01:50			
	01:50			TURNOVER by RAMACIERI,ESTHER
SUB IN: ROSE,BRENNI	01:50			
SUB OUT: HITTNER,BECCA	01:50			
STEAL by WENDELL,LIZZY	01:49			
TURNOVER by GREINER,PAIGE	01:45			
	01:23			TURNOVER by CINCORE,JASMINE
SUB IN: RHINE,SARA	01:23			
SUB OUT: MERTZ,MYA	01:23			
	01:23			SUB IN: ELIELY,NICEA
	01:23			SUB IN: SHEPARD,JESSICA
	01:23			SUB OUT: CINCORE,JASMINE
	01:23			SUB OUT: WASHINGTON,DARRIEN
TURNOVER by GREINER,PAIGE	01:05			
SUB IN: MILLER,NICOLE	01:05			
SUB OUT: GREINER,PAIGE	01:05			
	00:52			TURNOVER by HAVERS,ALLIE
STEAL by ROSE,BRENNI	00:48			
MISSED JUMPER by WENDELL,LIZZY	00:38			
REBOUND (OFF) by ROSE,BRENNI	00:38			
MISSED JUMPER by WENDELL,LIZZY	00:07			
	00:07			BLOCK by SHEPARD,JESSICA
	00:05			REBOUND (DEF) by SHEPARD,JESSICA
	00:02			TURNOVER by SHEPARD,JESSICA
STEAL by WENDELL,LIZZY	00:02			
	00:00			FOUL by SHEPARD,JESSICA
MISSED FT by WENDELL,LIZZY	00:00			
REBOUND (DEADB) by TEAM	00:00			
GOOD! FT by WENDELL,LIZZY	00:00	9-13	V 4	
	00:00			TURNOVER by WHITISH,HANNAH
STEAL by WENDELL,LIZZY	00:00			

Drake 13, Nebraska 9

Period 1-only	In Paint	Off T/O	2nd Chance	Fast Break	Bench	
DU	4	4	2	2	3	Score tied - 0 times
NEB	4	0	3	2	5	Lead changed - 0 times

Drake vs Nebraska
12/6/2016; 7:06 p.m. at Pinnacle Bank Arena (Lincoln, Neb.)
Period 2 Play-By-Play

VISITORS: Drake	Time	Score	Margin	HOME: Nebraska
SUB IN: RHINE,SARA	10:00			
SUB IN: ROSE,BRENNI	10:00			
SUB IN: MILLER,NICOLE	10:00			
SUB OUT: WENDELL,LIZZY	10:00			
SUB OUT: BACHRODT,SAMMIE	10:00			
SUB OUT: JONAS,BECCA	10:00			
	10:00			SUB IN: JENSEN,RYLIE CASCIO
	10:00			SUB OUT: RAMACIERI,ESTHER
GOOD! 3PTR by ROSE,BRENNI	09:48	9-16	V 7	
ASSIST by INGLE,CAITLIN	09:48			
FOUL by HITTNER,BECCA	09:30			
	09:30			MISSED FT by HAVERS,ALLIE
	09:30			REBOUND (DEADB) by TEAM
	09:30	10-16	V 6	GOOD! FT by HAVERS,ALLIE
GOOD! LAYUP by HITTNER,BECCA [PNT]	09:20	10-18	V 8	
ASSIST by INGLE,CAITLIN	09:20			
FOUL by MILLER,NICOLE	09:13			
SUB IN: JONAS,BECCA	09:13			
SUB IN: BACHRODT,SAMMIE	09:13			
SUB OUT: RHINE,SARA	09:13			
SUB OUT: INGLE,CAITLIN	09:13			
	09:13			SUB IN: MITCHELL,GRACE
	09:13			SUB OUT: HAVERS,ALLIE
	09:10			MISSED 3PTR by ELIELY,NICEA
REBOUND (DEF) by ROSE,BRENNI	09:10			
TURNOVER by JONAS,BECCA	09:00			
	08:41	12-18	V 6	GOOD! JUMPER by CINCORE,JASMINE
TURNOVER by ROSE,BRENNI	08:25			
	08:24			STEAL by ELIELY,NICEA
	08:22	14-18	V 4	GOOD! LAYUP by ELIELY,NICEA [FB/PNT]
	08:05			FOUL by JENSEN,RYLIE CASCIO
GOOD! FT by MILLER,NICOLE	08:05	14-19	V 5	
GOOD! FT by MILLER,NICOLE	08:05	14-20	V 6	
SUB IN: WENDELL,LIZZY	08:05			
SUB IN: INGLE,CAITLIN	08:05			
SUB IN: RUSH,CORTNI	08:05			
SUB OUT: HITTNER,BECCA	08:05			
SUB OUT: ROSE,BRENNI	08:05			
SUB OUT: MILLER,NICOLE	08:05			
	07:50	16-20	V 4	GOOD! JUMPER by ELIELY,NICEA [PNT]
GOOD! 3PTR by BACHRODT,SAMMIE	07:43	16-23	V 7	
ASSIST by INGLE,CAITLIN	07:43			
	07:30	19-23	V 4	GOOD! 3PTR by JENSEN,RYLIE CASCIO
	07:30			ASSIST by SHEPARD,JESSICA
MISSED JUMPER by WENDELL,LIZZY	07:19			
	07:19			BLOCK by CINCORE,JASMINE
REBOUND (OFF) by TEAM	07:19			
	07:19			SUB IN: SIMON,MADDIE
	07:19			SUB OUT: CINCORE,JASMINE
	07:07			FOUL by SHEPARD,JESSICA
	07:07			SUB IN: WASHINGTON,DARRIEN
	07:07			SUB OUT: SHEPARD,JESSICA
MISSED 3PTR by WENDELL,LIZZY	07:02			

VISITORS: Drake	Time	Score	Margin	HOME: Nebraska
REBOUND (OFF) by RUSH,CORTNI	07:02			
	06:41			FOUL by SIMON,MADDIE
	06:23			FOUL by WASHINGTON,DARRIEN
GOOD! FT by RUSH,CORTNI	06:23	19-24	V 5	
GOOD! FT by RUSH,CORTNI	06:23	19-25	V 6	
SUB IN: RHINE,SARA	06:23			
SUB IN: GREINER,PAIGE	06:23			
SUB OUT: JONAS,BECCA	06:23			
SUB OUT: BACHRODT,SAMMIE	06:23			
	06:05	21-25	V 4	GOOD! JUMPER by MITCHELL,GRACE [PNT]
	06:05			ASSIST by SIMON,MADDIE
MISSED 3PTR by GREINER,PAIGE	05:58			
	05:58			REBOUND (DEF) by WASHINGTON,DARRIEN
	05:38			MISSED JUMPER by WASHINGTON,DARRIEN
	05:38			REBOUND (OFF) by WASHINGTON,DARRIEN
FOUL by INGLE,CAITLIN	05:35			
FOUL by HITTNER,BECCA	05:35			
SUB IN: BACHRODT,SAMMIE	05:35			
SUB IN: MERTZ,MYA	05:35			
SUB IN: HITTNER,BECCA	05:35			
SUB IN: MILLER,NICOLE	05:35			
SUB OUT: WENDELL,LIZZY	05:35			
SUB OUT: INGLE,CAITLIN	05:35			
SUB OUT: RUSH,CORTNI	05:35			
	05:35			SUB IN: RAMACIERI,ESTHER
	05:35			SUB OUT: ELIELY,NICEA
	05:31			MISSED JUMPER by MITCHELL,GRACE
REBOUND (DEF) by GREINER,PAIGE	05:31			
	05:14			FOUL by WASHINGTON,DARRIEN
MISSED FT by RHINE,SARA	05:14			
REBOUND (DEADB) by TEAM	05:14			
GOOD! FT by RHINE,SARA	05:14	21-26	V 5	
	05:14			SUB IN: HAVERS,ALLIE
	05:14			SUB OUT: WASHINGTON,DARRIEN
	05:00			TURNOVER by HAVERS,ALLIE
STEAL by MERTZ,MYA	04:58			
TURNOVER by RHINE,SARA	04:49			
	04:49			TIMEOUT MEDIA
SUB IN: JONAS,BECCA	04:49			
SUB IN: WENDELL,LIZZY	04:49			
SUB OUT: RHINE,SARA	04:49			
SUB OUT: MERTZ,MYA	04:49			
	04:49			SUB IN: WOOD,EMILY
	04:49			SUB OUT: JENSEN,RYLIE CASCIO
	04:48			MISSED 3PTR by RAMACIERI,ESTHER
REBOUND (DEF) by WENDELL,LIZZY	04:48			
MISSED 3PTR by WENDELL,LIZZY	04:42			
	04:42			REBOUND (DEF) by SIMON,MADDIE
	04:20	23-26	V 3	GOOD! JUMPER by HAVERS,ALLIE
	04:20			ASSIST by SIMON,MADDIE
TURNOVER by MILLER,NICOLE	03:53			
	03:52			STEAL by MITCHELL,GRACE
FOUL by MILLER,NICOLE	03:49			
SUB IN: ROSE,BRENNI	03:43			
SUB OUT: GREINER,PAIGE	03:43			
	03:43			SUB IN: ELIELY,NICEA
	03:43			SUB IN: WHITISH,HANNAH
	03:43			SUB OUT: RAMACIERI,ESTHER

VISITORS: Drake	Time	Score	Margin	HOME: Nebraska
	03:43			SUB OUT: SIMON,MADDIE
	03:07	25-26	V 1	GOOD! JUMPER by HAVERS,ALLIE
	03:07			ASSIST by WHITISH,HANNAH
TURNOVER by JONAS,BECCA	02:57			
	02:55			STEAL by MITCHELL,GRACE
	02:39			MISSED JUMPER by MITCHELL,GRACE
REBOUND (DEF) by WENDELL,LIZZY	02:39			
GOOD! JUMPER by JONAS,BECCA [PNT]	02:29	25-28	V 3	
ASSIST by BACHRODT,SAMMIE	02:29			
	02:15	28-28	T	GOOD! 3PTR by MITCHELL,GRACE
MISSED 3PTR by WENDELL,LIZZY	02:01			
	02:01			REBOUND (DEF) by TEAM
SUB IN: RUSH,CORTNI	01:58			
SUB IN: RHINE,SARA	01:58			
SUB OUT: JONAS,BECCA	01:58			
SUB OUT: MILLER,NICOLE	01:58			
	01:58			SUB IN: CINCORE,JASMINE
	01:58			SUB IN: SHEPARD,JESSICA
	01:58			SUB OUT: WOOD,EMILY
	01:58			SUB OUT: MITCHELL,GRACE
	01:48			TURNOVER by WHITISH,HANNAH
STEAL by BACHRODT,SAMMIE	01:47			
MISSED LAYUP by BACHRODT,SAMMIE	01:43			
	01:43			BLOCK by CINCORE,JASMINE
REBOUND (OFF) by TEAM	01:42			
MISSED JUMPER by RHINE,SARA	01:40			
	01:40			REBOUND (DEF) by SHEPARD,JESSICA
FOUL by WENDELL,LIZZY	01:39			
	01:39	29-28	H 1	GOOD! FT by SHEPARD,JESSICA
	01:39			MISSED FT by SHEPARD,JESSICA
REBOUND (DEF) by RHINE,SARA	01:39			
MISSED 3PTR by ROSE,BRENNI	01:27			
	01:27			REBOUND (DEF) by ELIELY,NICEA
	01:22	31-28	H 3	GOOD! LAYUP by WHITISH,HANNAH [FB/PNT]
	01:22			ASSIST by ELIELY,NICEA
GOOD! JUMPER by WENDELL,LIZZY [PNT]	01:10	31-30	H 1	
ASSIST by RHINE,SARA	01:10			
	01:10			FOUL by ELIELY,NICEA
MISSED FT by WENDELL,LIZZY	01:10			
	01:10			REBOUND (DEF) by SHEPARD,JESSICA
	00:53			MISSED 3PTR by CINCORE,JASMINE
REBOUND (DEF) by RHINE,SARA	00:53			
	00:43			FOUL by WHITISH,HANNAH
GOOD! FT by RUSH,CORTNI	00:43	31-31	T	
GOOD! FT by RUSH,CORTNI	00:43	31-32	V 1	
	00:43			FOUL by HAVERS,ALLIE
FOUL by WENDELL,LIZZY	00:43			
	00:28	33-32	H 1	GOOD! JUMPER by HAVERS,ALLIE [PNT]
	00:28			ASSIST by CINCORE,JASMINE
MISSED LAYUP by WENDELL,LIZZY	00:03			
	00:03			BLOCK by CINCORE,JASMINE
REBOUND (OFF) by TEAM	00:03			
TIMEOUT 30SEC	00:03			
SUB IN: JONAS,BECCA	00:03			
SUB IN: INGLE,CAITLIN	00:03			
SUB OUT: RUSH,CORTNI	00:03			
SUB OUT: RHINE,SARA	00:03			
	00:03			SUB IN: SIMON,MADDIE

VISITORS: Drake

Time Score Margin

HOME: Nebraska

00:03

SUB OUT: SHEPARD,JESSICA

MISSED JUMPER by INGLE,CAITLIN

00:00

00:00

REBOUND (DEF) by ELIELY,NICEA

Drake 32, Nebraska 33

Period 2-only	In Paint	Off T/O	2nd Chance	Fast Break	Bench	
DU	6	0	2	0	10	Score tied - 2 times
NEB	10	6	0	4	10	Lead changed - 2 times

Official Basketball Box Score -- Game Totals -- Second Half Statistics

Drake vs Nebraska

12/6/2016 7:06 p.m. at Pinnacle Bank Arena (Lincoln, Neb.)

Drake 52 • 3-3

##	Player	S	Total		3-Ptr		Rebounds		PF	TP	A	T	O	Blk	Stl	Min
			FG-FGA	3PT FG-FGA	FT-FTA	Off Reb	Def Reb	Tot Reb								
03	WENDELL, LIZZY	f	6-11	0-2	1-2	0	2	2	1	13	3	2	0	2	13	
05	HITTNER, BECCA	g	1-2	1-1	0-0	1	3	4	0	3	2	2	1	0	12	
21	BACHRODT, SAMMIE	g	1-1	1-1	0-0	0	2	2	5	3	2	0	1	1	12	
22	INGLE, CAITLIN	g	4-5	1-2	2-2	0	2	2	1	11	7	3	0	0	18	
35	JONAS, BECCA	f	3-4	1-1	0-0	0	1	1	0	7	2	0	0	0	13	
12	ROSE, BRENNI		3-4	1-2	0-0	1	0	1	1	7	0	0	0	0	4	
15	GREINER, PAIGE		0-0	0-0	0-0	0	0	0	0	0	0	0	0	0	2	
24	MILLER, NICOLE		0-1	0-1	2-2	0	2	2	0	2	0	1	0	1	10	
34	RUSH, CORTNI		0-0	0-0	0-0	0	0	0	0	0	0	0	0	0	2	
40	MERTZ, MYA		0-0	0-0	0-2	0	0	0	1	0	0	0	0	0	2	
50	RHINE, SARA		3-4	0-0	0-0	0	3	3	2	6	0	0	1	0	12	
TEAM						3	1	4	0		0					
Totals			21-32	5-10	5-8	5	16	21	11	52	16	8	3	4	100	
FG %	3rd Qtr	12-17	70.6%	4th Qtr	9-15	60.0%	Half:	21-32	65.6%							
3FG %	3rd Qtr	3-5	60.0%	4th Qtr	2-5	40.0%	Half:	5-10	28.6%							
FT %	3rd Qtr	2-2	100.0%	4th Qtr	3-6	50.0%	Half:	5-8	62.5%							

Nebraska 37 • 3-5

##	Player	S	Total		3-Ptr		Rebounds		PF	TP	A	T	O	Blk	Stl	Min
			FG-FGA	3PT FG-FGA	FT-FTA	Off Reb	Def Reb	Tot Reb								
05	ELIELY, NICEA	g	1-3	0-1	0-0	1	0	1	1	2	0	2	0	0	16	
11	RAMACIERI, ESTHER	g	0-0	0-0	0-0	0	2	2	1	0	3	1	0	0	12	
22	HAVERS, ALLIE	c	1-3	0-0	1-3	0	0	0	1	3	1	0	0	1	14	
32	SHEPARD, JESSICA	f	8-14	1-2	5-8	2	4	6	2	22	2	2	1	1	19	
34	CINCORE, JASMINE	g	1-3	1-2	2-2	0	0	0	2	5	1	0	1	0	11	
02	JENSEN, RYLIE CASCIO		0-3	0-3	0-0	0	0	0	0	0	1	0	0	0	8	
03	WHITISH, HANNAH		0-0	0-0	0-0	0	0	0	0	0	2	0	0	0	7	
12	WOOD, EMILY		0-1	0-1	0-0	0	0	0	1	0	0	0	0	0	3	
14	MITCHELL, GRACE		1-3	0-0	0-0	0	0	0	3	2	0	0	0	0	6	
24	SIMON, MADDIE		1-1	1-1	0-0	0	0	0	0	3	0	1	0	0	3	
50	WASHINGTON, DARRIEN		0-0	0-0	0-0	0	0	0	0	0	0	0	0	0	0	
TEAM						2	1	3	0		0					
Totals			13-31	3-10	8-13	5	7	12	11	37	10	6	2	2	99	
FG %	3rd Qtr	6-13	46.2%	4th Qtr	7-18	38.9%	Half:	13-31	41.9%							
3FG %	3rd Qtr	3-7	42.9%	4th Qtr	0-3	00.0%	Half:	3-10	30.0%							
FT %	3rd Qtr	2-6	33.3%	4th Qtr	6-7	85.7%	Half:	8-13	61.5%							

Officials: Tina Napier, Mark Zentz, Gina Cross
 Technical Fouls: Drake- None. Nebraska- None.

Score by periods	1st	2nd	3rd	4th	Total
Drake	13	19	29	23	84
Nebraska	9	24	17	20	70

Points	In Paint	Off T/O	2nd 2nd Chance	Fast Fast Break	Bench
DU	32	7	8	2	15
	18	8	6	0	5

Last FG - DU 4th-00:20, NEB 4th-00:20.
 DU led for 18:20. NEB led for 1:24. Game was tied for 0:16.

Score tied - 1 times
 Lead changed - 1 times

Drake vs Nebraska
12/6/2016; 7:06 p.m. at Pinnacle Bank Arena (Lincoln, Neb.)
Period 3 Play-By-Play

VISITORS: Drake	Time	Score	Margin	HOME: Nebraska
MISSED 3PTR by WENDELL,LIZZY	09:36			
	09:36			REBOUND (DEF) by RAMACIERI,ESTHER
FOUL by BACHRODT,SAMMIE	09:35			
	09:16			MISSED JUMPER by SHEPARD,JESSICA
REBOUND (DEF) by WENDELL,LIZZY	09:16			
TURNOVER by HITTNER,BECCA	09:10			
	08:55			MISSED JUMPER by SHEPARD,JESSICA
REBOUND (DEF) by WENDELL,LIZZY	08:55			
	08:51			FOUL by RAMACIERI,ESTHER
GOOD! LAYUP by WENDELL,LIZZY [PNT]	08:36	33-34	V 1	
	08:21			TURNOVER by ELIELY,NICEA
STEAL by BACHRODT,SAMMIE	08:20			
GOOD! LAYUP by INGLE,CAITLIN [PNT]	08:15	33-36	V 3	
SUB IN: RHINE,SARA	08:05			
SUB IN: MILLER,NICOLE	08:05			
SUB OUT: HITTNER,BECCA	08:05			
SUB OUT: JONAS,BECCA	08:05			
	07:48			TURNOVER by SHEPARD,JESSICA
MISSED LAYUP by WENDELL,LIZZY	07:39			
REBOUND (OFF) by TEAM	07:39			
GOOD! JUMPER by INGLE,CAITLIN [PNT]	07:30	33-38	V 5	
	07:12	35-38	V 3	GOOD! JUMPER by SHEPARD,JESSICA
	07:07			ASSIST by RAMACIERI,ESTHER
TURNOVER by WENDELL,LIZZY	07:00			
SUB IN: JONAS,BECCA	07:00			
SUB IN: HITTNER,BECCA	07:00			
SUB OUT: WENDELL,LIZZY	07:00			
SUB OUT: BACHRODT,SAMMIE	07:00			
	07:00			SUB IN: WHITISH,HANNAH
	07:00			SUB OUT: RAMACIERI,ESTHER
	06:43	38-38	T	GOOD! 3PTR by CINCORE,JASMINE
	06:43			ASSIST by WHITISH,HANNAH
GOOD! LAYUP by RHINE,SARA [PNT]	06:27	38-40	V 2	
ASSIST by INGLE,CAITLIN	06:27			
FOUL by RHINE,SARA	06:15			
	06:15			MISSED FT by HAVERS,ALLIE
	06:15			REBOUND (DEADB) by TEAM
	06:15			MISSED FT by HAVERS,ALLIE
REBOUND (DEF) by JONAS,BECCA	06:15			
GOOD! 3PTR by HITTNER,BECCA	06:07	38-43	V 5	
ASSIST by INGLE,CAITLIN	06:07			
	05:49	40-43	V 3	GOOD! JUMPER by SHEPARD,JESSICA [PNT]
GOOD! JUMPER by RHINE,SARA [PNT]	05:39	40-45	V 5	
ASSIST by INGLE,CAITLIN	05:39			
	05:32			MISSED 3PTR by SHEPARD,JESSICA
REBOUND (DEF) by RHINE,SARA	05:32			
SUB IN: MERTZ,MYA	05:21			
SUB IN: WENDELL,LIZZY	05:21			
SUB IN: BACHRODT,SAMMIE	05:21			
SUB OUT: JONAS,BECCA	05:21			
SUB OUT: HITTNER,BECCA	05:21			
SUB OUT: MILLER,NICOLE	05:21			
	05:21			SUB IN: SIMON,MADDIE

VISITORS: Drake	Time	Score	Margin	HOME: Nebraska
	05:21			SUB IN: MITCHELL,GRACE
	05:21			SUB OUT: HAVERS,ALLIE
	05:21			SUB OUT: CINCORE,JASMINE
GOOD! JUMPER by WENDELL,LIZZY [PNT]	05:19	40-47	V 7	
ASSIST by INGLE,CAITLIN	05:16			
	05:04	43-47	V 4	GOOD! 3PTR by SIMON,MADDIE
	05:04			ASSIST by WHITISH,HANNAH
GOOD! JUMPER by WENDELL,LIZZY [PNT]	04:49	43-49	V 6	
ASSIST by BACHRODT,SAMMIE	04:49			
FOUL by BACHRODT,SAMMIE	04:37			
	04:37			TIMEOUT MEDIA
SUB IN: JONAS,BECCA	04:37			
SUB IN: ROSE,BRENNI	04:37			
SUB OUT: MERTZ,MYA	04:37			
SUB OUT: BACHRODT,SAMMIE	04:37			
	04:16			TURNOVER by SIMON,MADDIE
STEAL by WENDELL,LIZZY	04:15			
GOOD! 3PTR by ROSE,BRENNI	04:08	43-52	V 9	
ASSIST by WENDELL,LIZZY	04:08			
FOUL by INGLE,CAITLIN	03:53			
	03:53	44-52	V 8	GOOD! FT by SHEPARD,JESSICA
	03:53	45-52	V 7	GOOD! FT by SHEPARD,JESSICA
SUB IN: BACHRODT,SAMMIE	03:53			
SUB IN: HITTNER,BECCA	03:53			
SUB OUT: RHINE,SARA	03:53			
SUB OUT: INGLE,CAITLIN	03:53			
	03:53			SUB IN: JENSEN,RYLIE CASCIO
	03:53			SUB IN: CINCORE,JASMINE
	03:53			SUB OUT: WHITISH,HANNAH
	03:53			SUB OUT: SIMON,MADDIE
MISSED JUMPER by HITTNER,BECCA	03:36			
	03:36			REBOUND (DEF) by SHEPARD,JESSICA
	03:24			MISSED 3PTR by ELIELY,NICEA
REBOUND (DEF) by HITTNER,BECCA	03:24			
	03:15			FOUL by MITCHELL,GRACE
SUB IN: INGLE,CAITLIN	03:15			
SUB OUT: ROSE,BRENNI	03:15			
GOOD! JUMPER by JONAS,BECCA [PNT]	03:13	45-54	V 9	
ASSIST by INGLE,CAITLIN	03:13			
	02:59	48-54	V 6	GOOD! 3PTR by SHEPARD,JESSICA
	02:59			ASSIST by CINCORE,JASMINE
MISSED LAYUP by WENDELL,LIZZY	02:45			
	02:45			REBOUND (DEF) by SHEPARD,JESSICA
	02:35	50-54	V 4	GOOD! JUMPER by ELIELY,NICEA [PNT]
GOOD! 3PTR by JONAS,BECCA	02:13	50-57	V 7	
ASSIST by HITTNER,BECCA	02:13			
	02:05			MISSED 3PTR by JENSEN,RYLIE CASCIO
REBOUND (DEF) by HITTNER,BECCA	02:05			
GOOD! JUMPER by WENDELL,LIZZY [PNT]	01:47	50-59	V 9	
ASSIST by INGLE,CAITLIN	01:47			
	01:36			MISSED JUMPER by MITCHELL,GRACE
REBOUND (DEF) by INGLE,CAITLIN	01:36			
TURNOVER by WENDELL,LIZZY	01:31			
SUB IN: RHINE,SARA	01:31			
SUB IN: MILLER,NICOLE	01:31			
SUB IN: GREINER,PAIGE	01:31			
SUB OUT: JONAS,BECCA	01:31			
SUB OUT: WENDELL,LIZZY	01:31			

VISITORS: Drake	Time	Score	Margin	HOME: Nebraska
SUB OUT: HITTNER,BECCA	01:31			
	01:31			SUB IN: HAVERS,ALLIE
	01:31			SUB IN: WOOD,EMILY
	01:31			SUB OUT: ELIELY,NICEA
	01:31			SUB OUT: SHEPARD,JESSICA
	01:07			MISSED 3PTR by WOOD,EMILY
BLOCK by BACHRODT,SAMMIE	01:07			
REBOUND (DEF) by BACHRODT,SAMMIE	01:04			
	01:00			FOUL by WOOD,EMILY
	01:00			FOUL by MITCHELL,GRACE
	00:55			FOUL by CINCORE,JASMINE
GOOD! FT by INGLE,CAITLIN	00:55	50-60	V 10	
GOOD! FT by INGLE,CAITLIN	00:55	50-61	V 11	
	00:55			SUB IN: SHEPARD,JESSICA
	00:55			SUB IN: SIMON,MADDIE
	00:55			SUB OUT: CINCORE,JASMINE
	00:55			SUB OUT: MITCHELL,GRACE
FOUL by BACHRODT,SAMMIE	00:47			
	00:47			MISSED FT by SHEPARD,JESSICA
	00:47			REBOUND (DEADB) by TEAM
	00:47			MISSED FT by SHEPARD,JESSICA
REBOUND (DEF) by HITTNER,BECCA	00:47			
SUB IN: HITTNER,BECCA	00:47			
SUB OUT: BACHRODT,SAMMIE	00:47			
MISSED 3PTR by INGLE,CAITLIN	00:16			
	00:16			REBOUND (DEF) by SHEPARD,JESSICA

Drake 84, Nebraska 70

Period 3-only	In Paint	Off T/O	2nd Chance	Fast Break	Bench	
DU	18	7	2	0	7	Score tied - 0 times
NEB	4	3	0	0	3	Lead changed - 2 times

Drake vs Nebraska
12/6/2016; 7:06 p.m. at Pinnacle Bank Arena (Lincoln, Neb.)
Period 4 Play-By-Play

VISITORS: Drake	Time	Score	Margin	HOME: Nebraska
SUB IN: GREINER,PAIGE	10:00			
SUB IN: MILLER,NICOLE	10:00			
SUB OUT: BACHRODT,SAMMIE	10:00			
SUB OUT: JONAS,BECCA	10:00			
	10:00			SUB IN: WOOD,EMILY
	10:00			SUB IN: JENSEN,RYLIE CASCIO
	10:00			SUB IN: SIMON,MADDIE
	10:00			SUB OUT: ELIELY,NICEA
	10:00			SUB OUT: RAMACIERI,ESTHER
	10:00			SUB OUT: CINCORE,JASMINE
	09:48			FOUL by HAVERS,ALLIE
SUB IN: JONAS,BECCA	09:48			
SUB OUT: GREINER,PAIGE	09:48			
MISSED 3PTR by MILLER,NICOLE	09:36			
REBOUND (OFF) by HITTNER,BECCA	09:36			
	09:33			FOUL by SHEPARD,JESSICA
	09:33			SUB IN: RAMACIERI,ESTHER
	09:33			SUB OUT: WOOD,EMILY
GOOD! JUMPER by JONAS,BECCA [PNT]	09:27	50-63	V 13	
	09:12	52-63	V 11	GOOD! JUMPER by SHEPARD,JESSICA [PNT]
	09:12			ASSIST by RAMACIERI,ESTHER
GOOD! LAYUP by WENDELL,LIZZY [PNT]	08:57	52-65	V 13	
ASSIST by JONAS,BECCA	08:57			
SUB IN: BACHRODT,SAMMIE	08:35			
SUB OUT: MILLER,NICOLE	08:35			
	08:35			SUB IN: ELIELY,NICEA
	08:35			SUB OUT: SIMON,MADDIE
	08:29			MISSED JUMPER by ELIELY,NICEA
REBOUND (DEF) by INGLE,CAITLIN	08:29			
TURNOVER by HITTNER,BECCA	08:20			
SUB IN: RHINE,SARA	08:20			
SUB OUT: HITTNER,BECCA	08:20			
	08:06			FOUL by ELIELY,NICEA
	08:06			TURNOVER by ELIELY,NICEA
TURNOVER by INGLE,CAITLIN	07:37			
	07:37			STEAL by HAVERS,ALLIE
	07:24			MISSED JUMPER by SHEPARD,JESSICA
REBOUND (DEF) by BACHRODT,SAMMIE	07:24			
GOOD! LAYUP by RHINE,SARA [PNT]	07:02	52-67	V 15	
ASSIST by WENDELL,LIZZY	07:02			
	06:56			MISSED 3PTR by JENSEN,RYLIE CASCIO
	06:56			REBOUND (OFF) by ELIELY,NICEA
	06:42	54-67	V 13	GOOD! JUMPER by SHEPARD,JESSICA [PNT]
	06:42			ASSIST by JENSEN,RYLIE CASCIO
MISSED 3PTR by WENDELL,LIZZY	06:27			
	06:27			REBOUND (DEF) by TEAM
SUB IN: ROSE,BRENNI	06:24			
SUB IN: RUSH,CORTNI	06:24			
SUB IN: MILLER,NICOLE	06:24			
SUB OUT: WENDELL,LIZZY	06:24			
SUB OUT: JONAS,BECCA	06:24			
SUB OUT: INGLE,CAITLIN	06:24			
	06:24			SUB IN: WHITISH,HANNAH

VISITORS: Drake	Time	Score	Margin	HOME: Nebraska
	06:24			SUB OUT: JENSEN,RYLIE CASCIO
	06:01			TURNOVER by SHEPARD,JESSICA
STEAL by MILLER,NICOLE	06:00			
MISSED 3PTR by ROSE,BRENNI	05:53			
	05:53			REBOUND (DEF) by SHEPARD,JESSICA
	05:45			MISSED JUMPER by HAVERS,ALLIE
REBOUND (DEF) by RHINE,SARA	05:45			
TURNOVER by MILLER,NICOLE	05:34			
SUB IN: MERTZ,MYA	05:34			
SUB OUT: RHINE,SARA	05:34			
	05:34			SUB IN: MITCHELL,GRACE
	05:34			SUB OUT: HAVERS,ALLIE
FOUL by MERTZ,MYA	05:10			
	05:10	55-67	V 12	GOOD! FT by SHEPARD,JESSICA
	05:10	56-67	V 11	GOOD! FT by SHEPARD,JESSICA
SUB IN: INGLE,CAITLIN	05:10			
SUB OUT: BACHRODT,SAMMIE	05:10			
	05:00			FOUL by MITCHELL,GRACE
MISSED FT by MERTZ,MYA	05:00			
REBOUND (DEADB) by TEAM	05:00			
MISSED FT by MERTZ,MYA	05:00			
REBOUND (OFF) by ROSE,BRENNI	05:00			
GOOD! JUMPER by ROSE,BRENNI [PNT]	04:57	56-69	V 13	
	04:38			MISSED LAYUP by MITCHELL,GRACE
	04:38			REBOUND (OFF) by SHEPARD,JESSICA
	04:38			TIMEOUT MEDIA
SUB IN: HITTNER,BECCA	04:38			
SUB IN: JONAS,BECCA	04:38			
SUB OUT: MERTZ,MYA	04:38			
SUB OUT: RUSH,CORTNI	04:38			
	04:28	58-69	V 11	GOOD! JUMPER by SHEPARD,JESSICA [PNT]
GOOD! LAYUP by ROSE,BRENNI [PNT]	03:58	58-71	V 13	
ASSIST by HITTNER,BECCA	03:58			
	03:43	60-71	V 11	GOOD! JUMPER by MITCHELL,GRACE [PNT]
	03:43			ASSIST by SHEPARD,JESSICA
MISSED JUMPER by JONAS,BECCA	03:34			
	03:34			BLOCK by SHEPARD,JESSICA
REBOUND (OFF) by TEAM	03:34			
SUB IN: WENDELL,LIZZY	03:34			
SUB OUT: MILLER,NICOLE	03:34			
	03:34			SUB IN: CINCORE,JASMINE
	03:34			SUB OUT: WHITISH,HANNAH
GOOD! JUMPER by INGLE,CAITLIN [PNT]	03:21	60-73	V 13	
ASSIST by WENDELL,LIZZY	03:21			
FOUL by ROSE,BRENNI	03:11			
SUB IN: BACHRODT,SAMMIE	03:11			
SUB IN: RHINE,SARA	03:11			
SUB OUT: ROSE,BRENNI	03:11			
SUB OUT: HITTNER,BECCA	03:11			
	03:11			SUB IN: HAVERS,ALLIE
	03:11			SUB OUT: MITCHELL,GRACE
FOUL by BACHRODT,SAMMIE	03:07			
	03:07	61-73	V 12	GOOD! FT by CINCORE,JASMINE
	03:07	62-73	V 11	GOOD! FT by CINCORE,JASMINE
TIMEOUT 30SEC	03:07			
TIMEOUT MEDIA	03:07			
GOOD! 3PTR by BACHRODT,SAMMIE	02:52	62-76	V 14	
ASSIST by JONAS,BECCA	02:52			

VISITORS: Drake	Time	Score	Margin	HOME: Nebraska
	02:40	64-76	V 12	GOOD! LAYUP by SHEPARD,JESSICA [PNT]
	02:40			ASSIST by HAVERS,ALLIE
GOOD! 3PTR by INGLE,CAITLIN	02:27	64-79	V 15	
ASSIST by BACHRODT,SAMMIE	02:27			
	02:10			MISSED JUMPER by SHEPARD,JESSICA
REBOUND (DEF) by RHINE,SARA	02:10			
TIMEOUT 30SEC	02:00			
SUB IN: HITTNER,BECCA	02:00			
SUB OUT: JONAS,BECCA	02:00			
TURNOVER by INGLE,CAITLIN	01:53			
FOUL by WENDELL,LIZZY	01:53			
	01:52			MISSED JUMPER by SHEPARD,JESSICA
BLOCK by RHINE,SARA	01:52			
	01:49			REBOUND (OFF) by TEAM
	01:47			TURNOVER by RAMACIERI,ESTHER
STEAL by WENDELL,LIZZY	01:46			
MISSED JUMPER by RHINE,SARA	01:42			
	01:42			BLOCK by CINCORE,JASMINE
REBOUND (OFF) by TEAM	01:42			
MISSED JUMPER by WENDELL,LIZZY	01:36			
	01:36			REBOUND (DEF) by RAMACIERI,ESTHER
FOUL by BACHRODT,SAMMIE	01:29			
	01:29	65-79	V 14	GOOD! FT by SHEPARD,JESSICA
	01:29			MISSED FT by SHEPARD,JESSICA
	01:29			REBOUND (OFF) by SHEPARD,JESSICA
SUB IN: MILLER,NICOLE	01:29			
SUB OUT: BACHRODT,SAMMIE	01:29			
	01:29			SUB IN: JENSEN,RYLIE CASCIO
	01:29			SUB OUT: RAMACIERI,ESTHER
	01:23			MISSED JUMPER by CINCORE,JASMINE
BLOCK by HITTNER,BECCA	01:23			
REBOUND (DEF) by MILLER,NICOLE	01:23			
	01:23			FOUL by CINCORE,JASMINE
GOOD! FT by MILLER,NICOLE	01:23	65-80	V 15	
GOOD! FT by MILLER,NICOLE	01:23	65-81	V 16	
	01:07			MISSED 3PTR by JENSEN,RYLIE CASCIO
REBOUND (DEF) by TEAM	01:07			
	01:07			SUB IN: RAMACIERI,ESTHER
	01:07			SUB OUT: JENSEN,RYLIE CASCIO
TURNOVER by INGLE,CAITLIN	01:06			
	01:05			STEAL by SHEPARD,JESSICA
	01:02	67-81	V 14	GOOD! JUMPER by HAVERS,ALLIE [PNT]
	01:02			ASSIST by SHEPARD,JESSICA
FOUL by RHINE,SARA	01:02			
	01:02	68-81	V 13	GOOD! FT by HAVERS,ALLIE
	00:57			FOUL by SHEPARD,JESSICA
MISSED FT by WENDELL,LIZZY	00:50			
REBOUND (DEADB) by TEAM	00:50			
GOOD! FT by WENDELL,LIZZY	00:37	68-82	V 14	
	00:23			MISSED 3PTR by CINCORE,JASMINE
	00:23			REBOUND (OFF) by TEAM
	00:20	70-82	V 12	GOOD! JUMPER by SHEPARD,JESSICA [PNT]
	00:20			ASSIST by RAMACIERI,ESTHER
GOOD! LAYUP by WENDELL,LIZZY [FB/PNT]	00:20	70-84	V 14	
ASSIST by INGLE,CAITLIN	00:20			
	00:20			SUB IN: WOOD,EMILY
	00:20			SUB IN: JENSEN,RYLIE CASCIO
	00:20			SUB OUT: CINCORE,JASMINE

VISITORS: Drake

Time Score Margin

HOME: Nebraska

00:20

SUB OUT: ELIELY,NICEA

00:18

MISSED JUMPER by HAVERS,ALLIE

REBOUND (DEF) by MILLER,NICOLE

00:18

Drake 84, Nebraska 70

Period 4-only	In Paint	Off T/O	2nd Chance	Fast Break	Bench	
DU	14	0	6	2	8	Score tied - 0 times
NEB	14	5	6	0	2	Lead changed - 0 times

Drake vs Nebraska
12/6/2016; 7:06 p.m. at Pinnacle Bank Arena (Lincoln, Neb.)
Scoring/Runs Reference

Period 1

Drake	Score	Marg	Nebraska
09:39 - HITTNER 3PTR	3	3-0 -3	
		3-2 -1 2	HAVERS JUMPER - 09:22
07:17 - INGLE JUMPER	2	5-2 -3	
		5-4 -1 2	HAVERS JUMPER [P] - 06:51
06:45 - MILLER 3PTR	3	8-4 -4	
		8-6 -2 2	WHITISH LAYUP [P] [F] - 05:43
05:22 - BACHRODT JUMPER [P]	2	10-6 -4	
		10-9 -1 3	SIMON 3PTR - 03:07
02:01 - WENDELL LAYUP [P] [F]	2	12-9 -3	
00:00 - WENDELL FT	1	13-9 -4	

Period 2

Drake	Score	Marg	Nebraska
09:48 - ROSE 3PTR	3	16-9 -7	
		16-10 -6 1	HAVERS FT - 09:30
09:20 - HITTNER LAYUP [P] 2	2	18-10 -8	
		18-12 -6 2	CINCORE JUMPER - 08:41
		18-14 -4 2	ELIELY LAYUP [P] [F] - 08:22
08:05 - MILLER FT	1	19-14 -5	
08:05 - MILLER FT	1	20-14 -6	
		20-16 -4 2	ELIELY JUMPER [P] - 07:50
07:43 - BACHRODT 3PTR	3	23-16 -7	
		23-19 -4 3	JENSEN 3PTR - 07:30
06:23 - RUSH FT	1	24-19 -5	
06:23 - RUSH FT	1	25-19 -6	
		25-21 -4 2	MITCHELL JUMPER [P] - 06:05
05:14 - RHINE FT	1	26-21 -5	
		26-23 -3 2	HAVERS JUMPER - 04:20
		26-25 -1 2	HAVERS JUMPER - 03:07
02:29 - JONAS JUMPER [P] 2	2	28-25 -3	
		28-28 0 3	MITCHELL 3PTR - 02:15
		28-29 1 1	SHEPARD FT - 01:39
		28-31 3 2	WHITISH LAYUP [P] [F] - 01:22
01:10 - WENDELL JUMPER [P]	2	30-31 1	
00:43 - RUSH FT	1	31-31 0	
00:43 - RUSH FT	1	32-31 -1	
		32-33 1 2	HAVERS JUMPER [P] - 00:28

Period 3

Drake	Score	Marg	Nebraska
08:36 - WENDELL LAYUP [P]	2	34-33 -1	
08:15 - INGLE LAYUP [P]	2	36-33 -3	
07:30 - INGLE JUMPER [P]	2	38-33 -5	
		38-35 -3	2 SHEPARD JUMPER - 07:12
		38-38 0	3 CINCORE 3PTR - 06:43
06:27 - RHINE LAYUP [P]	2	40-38 -2	
06:07 - HITTNER 3PTR	3	43-38 -5	
		43-40 -3	2 SHEPARD JUMPER [P] - 05:49
05:39 - RHINE JUMPER [P]	2	45-40 -5	
05:19 - WENDELL JUMPER [P]	2	47-40 -7	
		47-43 -4	3 SIMON 3PTR - 05:04
04:49 - WENDELL JUMPER [P]	2	49-43 -6	
04:08 - ROSE 3PTR	3	52-43 -9	
		52-44 -8	1 SHEPARD FT - 03:53
		52-45 -7	1 SHEPARD FT - 03:53
03:13 - JONAS JUMPER [P]	2	54-45 -9	
		54-48 -6	3 SHEPARD 3PTR - 02:59
		54-50 -4	2 ELIELY JUMPER [P] - 02:35
02:13 - JONAS 3PTR	3	57-50 -7	
01:47 - WENDELL JUMPER [P]	2	59-50 -9	
00:55 - INGLE FT	1	60-50 -10	
00:55 - INGLE FT	1	61-50 -11	

Period 4

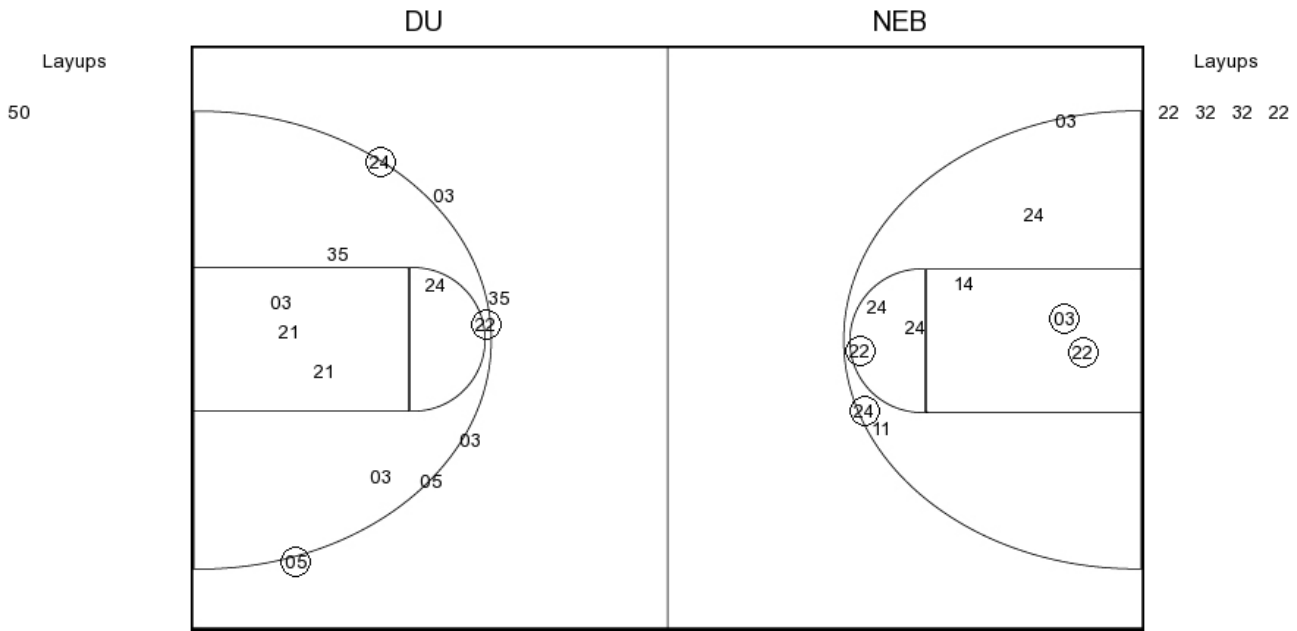
Drake	Score	Marg	Nebraska
09:27 - JONAS JUMPER [P]	2	63-50 -13	
		63-52 -11	2 SHEPARD JUMPER [P] - 09:12
08:57 - WENDELL LAYUP [P]	2	65-52 -13	
07:02 - RHINE LAYUP [P]	2	67-52 -15	
		67-54 -13	2 SHEPARD JUMPER [P] - 06:42
		67-55 -12	1 SHEPARD FT - 05:10
		67-56 -11	1 SHEPARD FT - 05:10
04:57 - ROSE JUMPER [P]	2	69-56 -13	
		69-58 -11	2 SHEPARD JUMPER [P] - 04:28
03:58 - ROSE LAYUP [P]	2	71-58 -13	
		71-60 -11	2 MITCHELL JUMPER [P] - 03:43
03:21 - INGLE JUMPER [P]	2	73-60 -13	
		73-61 -12	1 CINCORE FT - 03:07
		73-62 -11	1 CINCORE FT - 03:07
02:52 - BACHRODT 3PTR	3	76-62 -14	
		76-64 -12	2 SHEPARD LAYUP [P] - 02:40
02:27 - INGLE 3PTR	3	79-64 -15	
		79-65 -14	1 SHEPARD FT - 01:29
01:23 - MILLER FT	1	80-65 -15	
01:23 - MILLER FT	1	81-65 -16	
		81-67 -14	2 HAVERS JUMPER [P] - 01:02
		81-68 -13	1 HAVERS FT - 01:02
00:37 - WENDELL FT	1	82-68 -14	
		82-70 -12	2 SHEPARD JUMPER [P] - 00:20
00:20 - WENDELL LAYUP [P] [F]	2	84-70 -14	

Drake vs Nebraska

OFFICIAL SHOT CHART

12/6/2016 at Pinnacle Bank Arena (Lincoln, Neb.)

PERIOD 1



DU PERIOD 1

FG Made	10
FG Attempted	32
3PFG Made	4
3PFG Attempted	14

NEB PERIOD 1

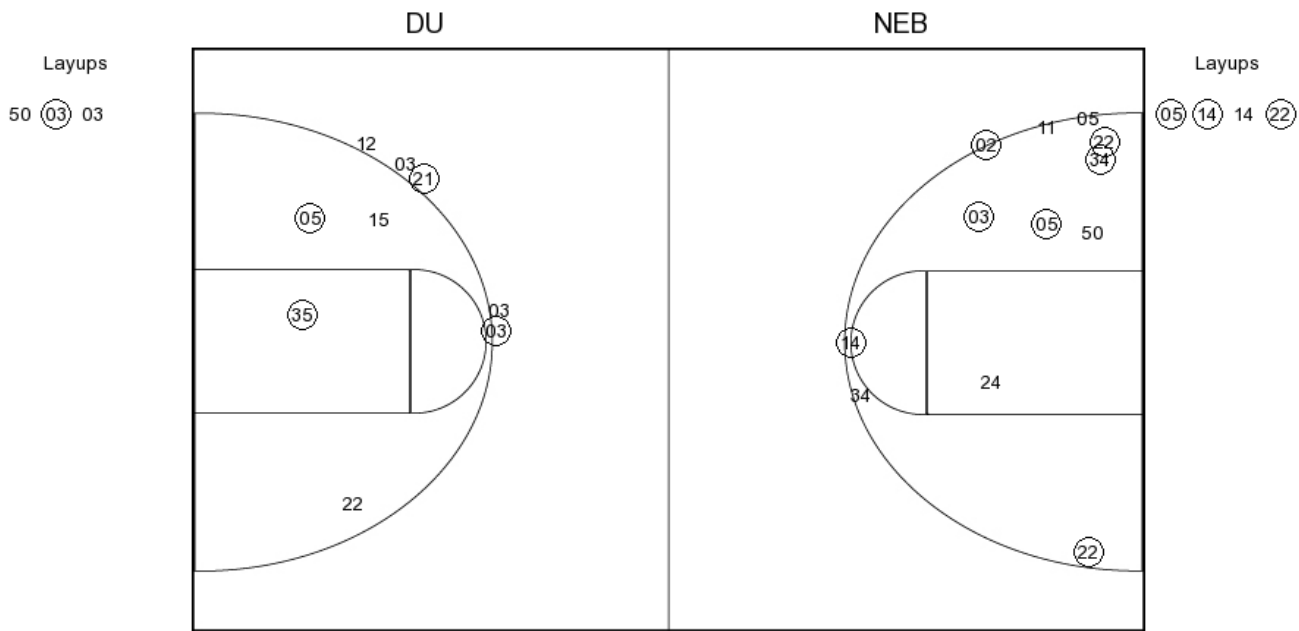
FG Made	14
FG Attempted	33
3PFG Made	3
3PFG Attempted	10

Drake vs Nebraska

OFFICIAL SHOT CHART

12/6/2016 at Pinnacle Bank Arena (Lincoln, Neb.)

PERIOD 2



DU PERIOD 2

FG Made

FG Attempted

3PFG Made

3PFG Attempted

NEB PERIOD 2

FG Made

FG Attempted

3PFG Made

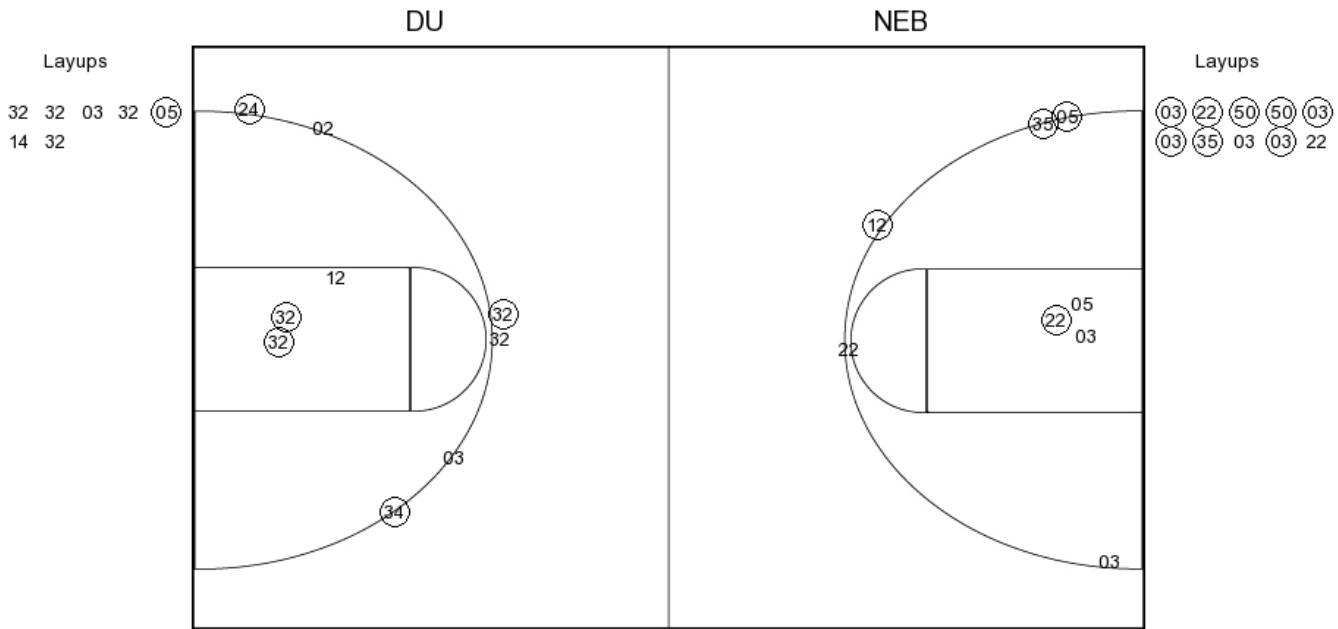
3PFG Attempted

Drake vs Nebraska

OFFICIAL SHOT CHART

12/6/2016 at Pinnacle Bank Arena (Lincoln, Neb.)

PERIOD 3



DU PERIOD 3

FG Made	21
FG Attempted	32
3PFG Made	5
3PFG Attempted	10

NEB PERIOD 3

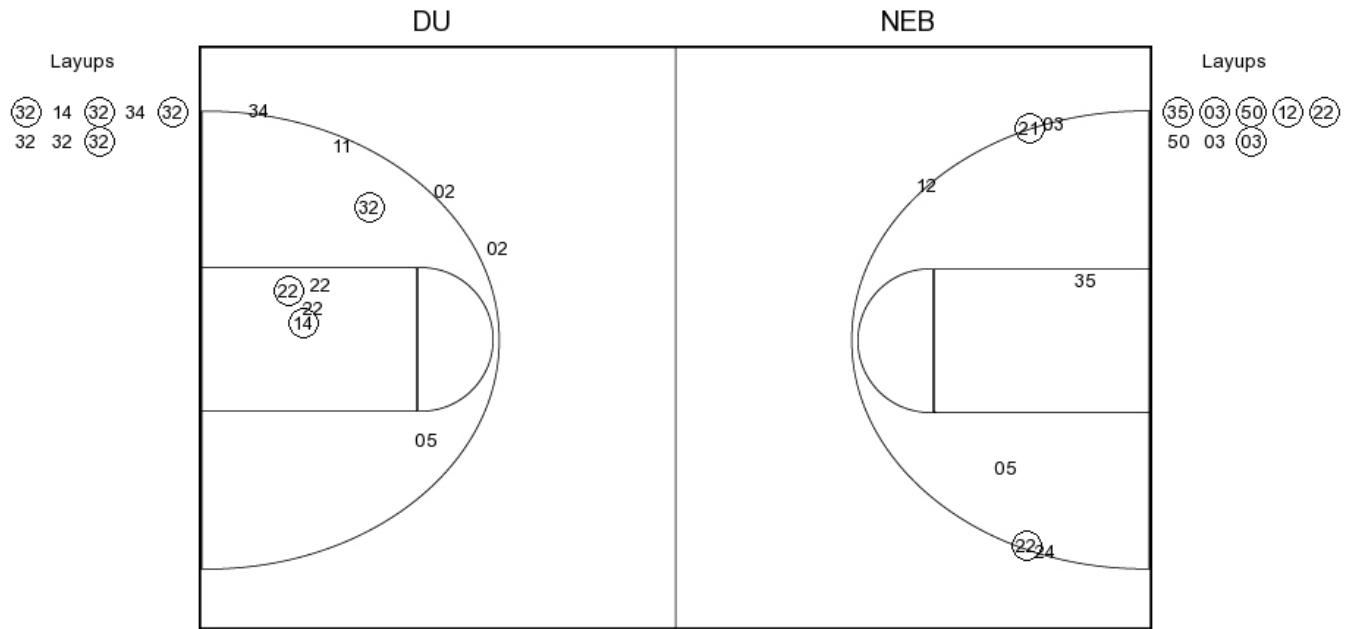
FG Made	13
FG Attempted	31
3PFG Made	3
3PFG Attempted	10

Drake vs Nebraska

OFFICIAL SHOT CHART

12/6/2016 at Pinnacle Bank Arena (Lincoln, Neb.)

PERIOD 4



DU PERIOD 4

FG Made

FG Attempted

3PFG Made

3PFG Attempted

NEB PERIOD 4

FG Made

FG Attempted

3PFG Made

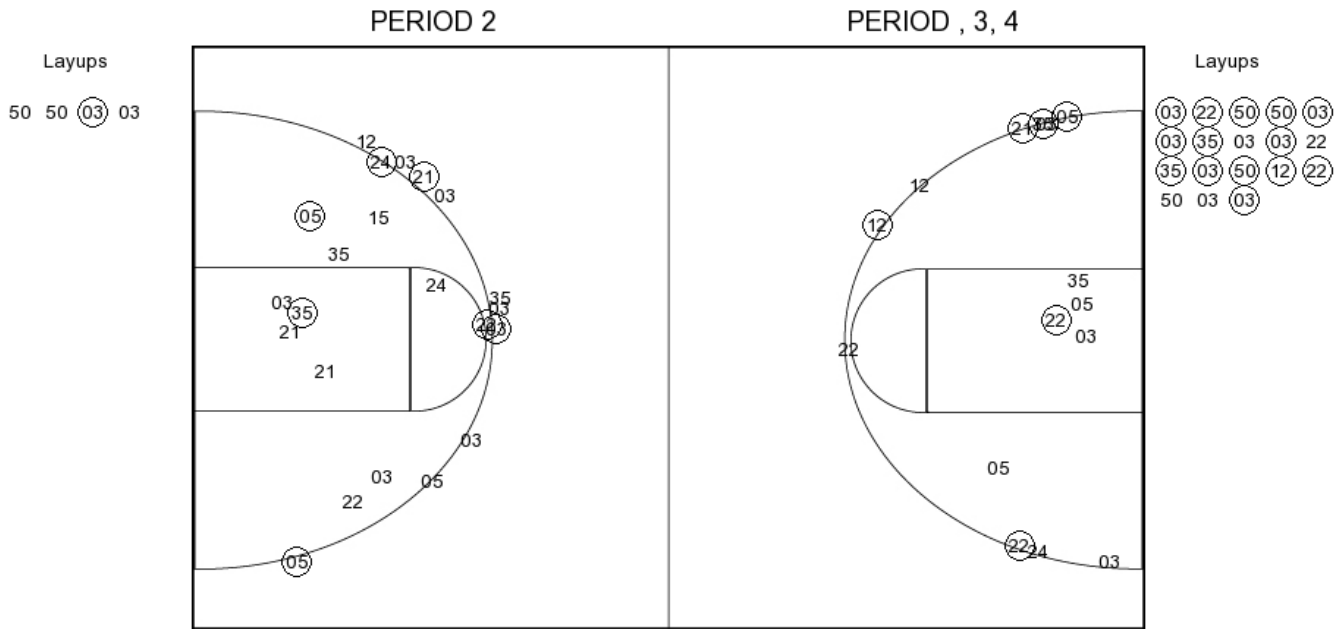
3PFG Attempted

Drake vs Nebraska

OFFICIAL SHOT CHART

12/6/2016 at Pinnacle Bank Arena (Lincoln, Neb.)

Drake



DU PERIOD 1

FG Made	10
FG Attempted	32
3PFG Made	4
3PFG Attempted	14

DU PERIOD 2

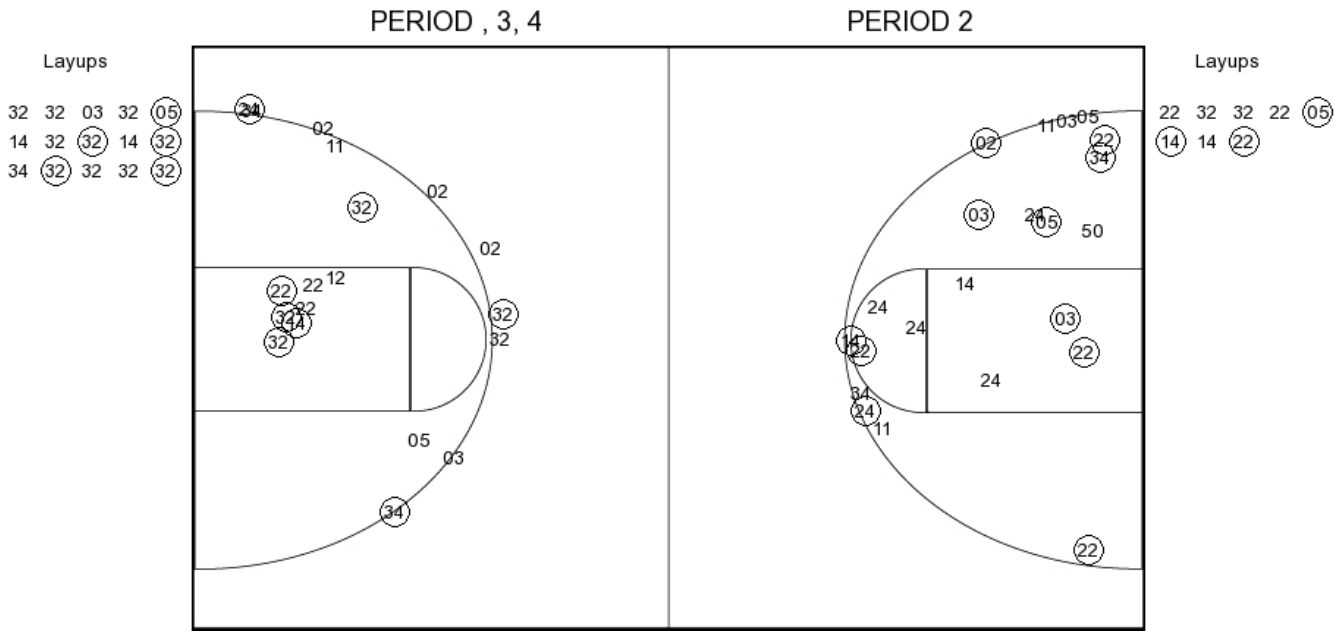
FG Made	
FG Attempted	
3PFG Made	
3PFG Attempted	

Drake vs Nebraska

OFFICIAL SHOT CHART

12/6/2016 at Pinnacle Bank Arena (Lincoln, Neb.)

Nebraska



NEB PERIOD 1

FG Made	14
FG Attempted	33
3PFG Made	3
3PFG Attempted	10

NEB PERIOD 2

FG Made	
FG Attempted	
3PFG Made	
3PFG Attempted	