



# NEBRASKA VS. CAL

12/4/2016

Pinnacle Bank Arena (Lincoln, Neb.)

## FINAL STATS

**California**

*(7-0)*

**86**

**Nebraska**

*(3-5)*

**65**

*Start Time: 3:01 p.m.*

*Officials: Cameron Inouye, Amy Bonner, Julie Krommenhoek*

*Attendance: 5573*

# Official Basketball Box Score -- Game Totals -- Final Statistics

## California vs Nebraska

12/4/2016 3:01 p.m. at Pinnacle Bank Arena (Lincoln, Neb.)

### California 86 - 7-0

##	Player	S	Total			Rebounds			PF	TP	A	TO	Blk	Stl	Min
			FG-FGA	3PT	FG-FGA	FT-FTA	Off Reb	Def Reb							
01	THOMAS,ASHA	g	4-6	3-4	0-0	0	2	2	0	11	2	1	0	3	27
03	COWLING,MIKAYLA	f	1-6	0-3	0-0	1	2	3	1	2	5	2	2	7	27
12	DAVIDSON,PENINA	f	2-5	0-1	0-0	3	3	6	2	4	2	5	2	0	20
24	RANGE,COURTNEY	f	4-12	0-6	0-0	1	4	5	1	8	1	2	0	1	22
31	ANIGWE,KRISTINE	c	10-13	0-1	5-5	3	1	4	3	25	0	1	4	0	26
05	YUE,CHEN		1-1	0-0	0-0	0	0	0	0	2	0	0	0	0	5
20	MOSLEY,MO		0-2	0-0	0-0	0	1	1	1	0	0	1	0	1	10
21	CAYTON,MI'COLE		5-8	1-2	0-2	0	1	1	1	11	5	1	0	1	26
30	WEST,CJ		5-8	0-0	0-0	0	5	5	3	10	0	1	1	1	17
33	BROWN,JAELYN		4-5	2-2	3-6	2	3	5	4	13	1	2	1	4	20
TEAM						1	2	3	0		0				
TOTALS			36-66	6-19	8-13	11	24	35	16	86	16	16	10	18	200

Deadball Rebounds: 2,0

FG %	1st Half: 19-34	55.9%	2nd Half: 17-32	53.1%	Game: 36-66	54.5%	4th Qtr	8-15	53.3%
	1st Qtr 9-17	52.9%	2nd Qtr 10-17	58.8%	3rd Qtr 9-17	52.9%			
3FG %	1st Half: 4-13	30.8%	2nd Half: 2-6	33.3%	Game: 6-19	31.6%	4th Qtr	0-1	00.0%
	1st Qtr 2-8	25.0%	2nd Qtr 2-5	40.0%	3rd Qtr 2-5	40.0%			
FT %	1st Half: 5-7	71.4%	2nd Half: 3-6	50.0%	Game: 8-13	61.5%	4th Qtr	1-4	25.0%
	1st Qtr 5-7	71.4%	2nd Qtr 0-0	0%	3rd Qtr 2-2	100.0%			

### Nebraska 65 - 3-5

##	Player	S	Total			Rebounds			PF	TP	A	TO	Blk	Stl	Min
			FG-FGA	3PT	FG-FGA	FT-FTA	Off Reb	Def Reb							
05	ELIELY,NICEA	g	8-13	2-3	1-2	1	1	2	3	19	2	3	0	2	31
11	RAMACIERI,ESTHER	g	1-4	0-0	0-0	2	4	6	1	2	6	6	0	1	30
22	HAVERS,ALLIE	c	4-11	1-2	0-0	0	1	1	2	9	1	1	2	0	30
32	SHEPARD,JESSICA	f	3-14	1-3	1-2	3	5	8	5	8	3	3	0	0	26
34	CINCORE,JASMINE	g	2-8	2-3	1-2	2	1	3	3	7	3	3	0	2	23
02	JENSEN,RYLIE CASCIO		1-1	1-1	0-0	0	0	0	0	3	2	1	0	0	8
03	WHITISH,HANNAH		1-4	1-4	0-0	0	1	1	0	3	1	2	0	0	12
12	WOOD,EMILY		0-0	0-0	0-0	0	1	1	1	0	0	1	0	0	1
14	MITCHELL,GRACE		0-0	0-0	1-2	1	3	4	1	1	0	0	0	0	11
24	SIMON,MADDIE		3-6	2-3	3-5	3	1	4	0	11	0	3	0	2	19
50	WASHINGTON,DARRIEN		1-2	0-0	0-0	0	2	2	1	2	0	1	0	0	9
TEAM						6	2	8	0		2				
TOTALS			24-63	10-19	7-13	18	22	40	17	65	18	26	2	7	200

Deadball Rebounds: 3,0

FG %	1st Half: 11-33	33.3%	2nd Half: 13-30	43.3%	Game: 24-63	38.1%	4th Qtr	5-16	31.3%
	1st Qtr 7-18	38.9%	2nd Qtr 4-15	26.7%	3rd Qtr 8-14	57.1%			
3FG %	1st Half: 5-10	50.0%	2nd Half: 5-9	55.6%	Game: 10-19	52.6%	4th Qtr	3-6	50.0%
	1st Qtr 4-7	57.1%	2nd Qtr 1-3	33.3%	3rd Qtr 2-3	66.7%			
FT %	1st Half: 1-2	50.0%	2nd Half: 6-11	54.5%	Game: 7-13	53.8%	4th Qtr	3-6	50.0%
	1st Qtr 1-2	50.0%	2nd Qtr 0-0	0%	3rd Qtr 3-5	60.0%			

Officials: Cameron Inouye, Amy Bonner, Julie Krommenhoek

Technical Fouls: California- None. Nebraska- None.

Attendance: 5573

Score by periods	1st	2nd	3rd	4th	Total
California	25	22	22	17	86
Nebraska	19	9	21	16	65

Points	In Paint	Off T/O	2nd 2nd Chance	Fast Break	Bench
CAL	52	33	15	12	36
NEB	28	19	15	4	20

Last FG - CAL 4th-00:14, NEB 4th-01:18.

Largest lead - California by 28 4th-05:32; Nebraska by 4 1st-04:21

CAL led for 34:49. NEB led for 4:08. Game was tied for 1:03.

Score tied - 3 times  
Lead changed - 2 times

# Official Basketball Box Score -- Game Totals -- First Half Statistics

## California vs Nebraska

12/4/2016 3:01 p.m. at Pinnacle Bank Arena (Lincoln, Neb.)

### California 47 • 7-0

##	Player	S	Total			Rebounds			PF	TP	A	TO	Blk	Stl	Min
			FG-FGA	3PT FG-FGA	FT-FTA	Off Reb	Def Reb	Tot Reb							
01	THOMAS,ASHA	g	3-4	3-4	0-0	0	1	1	0	9	1	1	0	2	15
03	COWLING,MIKAYLA	f	1-3	0-2	0-0	0	2	2	0	2	3	0	1	4	17
12	DAVIDSON,PENINA	f	1-2	0-0	0-0	1	1	2	2	2	1	2	0	0	10
24	RANGE,COURTNEY	f	2-8	0-4	0-0	0	3	3	1	4	1	0	0	1	14
31	ANIGWE,KRISTINE	c	5-6	0-1	3-3	1	0	1	2	13	0	0	4	0	14
05	YUE,CHEN		0-0	0-0	0-0	0	0	0	0	0	0	0	0	0	1
20	MOSLEY,MO		0-2	0-0	0-0	0	1	1	0	0	0	0	0	1	4
21	CAYTON,MI'COLE		3-4	1-2	0-2	0	0	0	0	7	2	0	0	0	12
30	WEST,CJ		4-5	0-0	0-0	0	2	2	0	8	0	0	1	0	5
33	BROWN,JAELYN		0-0	0-0	2-2	0	1	1	1	2	1	0	0	2	8
TEAM						1	2	3	0		0				
Totals			19-34	4-13	5-7	3	13	16	6	47	9	3	6	10	100

FG %	1st Qtr	9-17	52.9%	2nd Qtr	10-17	58.8%	Half:	19-34	55.9%
3FG %	1st Qtr	2-8	25.0%	2nd Qtr	2-5	40.0%	Half:	4-13	30.8%
FT %	1st Qtr	5-7	71.4%	2nd Qtr	0-0	0%	Half:	5-7	71.4%

### Nebraska 28 • 3-5

##	Player	S	Total			Rebounds			PF	TP	A	TO	Blk	Stl	Min
			FG-FGA	3PT FG-FGA	FT-FTA	Off Reb	Def Reb	Tot Reb							
05	ELIELY,NICEA	g	4-6	1-2	0-0	1	1	2	2	9	2	3	0	0	13
11	RAMACIERI,ESTHER	g	0-3	0-0	0-0	1	2	3	1	0	2	2	0	0	15
22	HAVERS,ALLIE	c	2-5	1-1	0-0	0	0	0	0	5	0	1	2	0	13
32	SHEPARD,JESSICA	f	2-12	1-3	1-2	3	4	7	2	6	1	1	0	0	16
34	CINCORE,JASMINE	g	0-2	0-1	0-0	1	1	2	2	0	2	2	0	0	12
02	JENSEN,RYLIE CASCIO		1-1	1-1	0-0	0	0	0	0	3	1	0	0	0	6
03	WHITISH,HANNAH		1-2	1-2	0-0	0	1	1	0	3	1	1	0	0	6
12	WOOD,EMILY		0-0	0-0	0-0	0	1	1	1	0	0	1	0	0	1
14	MITCHELL,GRACE		0-0	0-0	0-0	1	0	1	0	0	0	0	0	0	4
24	SIMON,MADDIE		0-0	0-0	0-0	0	0	0	0	0	0	1	0	0	7
50	WASHINGTON,DARRIEN		1-2	0-0	0-0	0	1	1	1	2	0	1	0	0	7
TEAM						3	2	5	0		0				
Totals			11-33	5-10	1-2	10	13	23	9	28	9	13	2	0	100

FG %	1st Qtr	7-18	38.9%	2nd Qtr	4-15	26.7%	Half:	11-33	33.3%
3FG %	1st Qtr	4-7	57.1%	2nd Qtr	1-3	33.3%	Half:	5-10	50.0%
FT %	1st Qtr	1-2	50.0%	2nd Qtr	0-0	0%	Half:	1-2	50.0%

Officials: Cameron Inouye, Amy Bonner, Julie Krommenhoek  
 Technical Fouls: California- None. Nebraska- None.

Score by periods	1st	2nd	3rd	4th	Total
California	25	22	22	17	86
Nebraska	19	9	21	16	65

Points	In Paint	Off T/O	2nd Chance	Fast Break	Bench
CAL	24	19	4	6	17
	12	4	4	2	8

Last FG - CAL 2nd-00:29, NEB 2nd-00:00.  
 CAL led for 14:49. NEB led for 4:08. Game was tied for 1:03.

Score tied - 3 times  
 Lead changed - 2 times

**California vs Nebraska**  
**12/4/2016; 3:01 p.m. at Pinnacle Bank Arena (Lincoln, Neb.)**  
**Period 1 Play-By-Play**

VISITORS: California	Time	Score	Margin	HOME: Nebraska
GOOD! JUMPER by ANIGWE,KRISTINE [PNT]	09:44	0-2	V 2	
ASSIST by DAVIDSON,PENINA	09:44			
	09:20			TURNOVER by CINCORE,JASMINE
STEAL by COWLING,MIKAYLA	09:19			
GOOD! 3PTR by THOMAS,ASHA	09:16	0-5	V 5	
ASSIST by RANGE,COURTNEY	09:16			
	08:59	2-5	V 3	GOOD! JUMPER by ELIELY,NICEA [PNT]
MISSED 3PTR by RANGE,COURTNEY	08:45			
	08:45			REBOUND (DEF) by SHEPARD,JESSICA
	08:22	5-5	T	GOOD! 3PTR by HAVERS,ALLIE
	08:22			ASSIST by CINCORE,JASMINE
MISSED 3PTR by ANIGWE,KRISTINE	08:04			
	08:04			REBOUND (DEF) by SHEPARD,JESSICA
	07:57	7-5	H 2	GOOD! LAYUP by ELIELY,NICEA [PNT]
	07:57			ASSIST by RAMACIERI,ESTHER
MISSED 3PTR by COWLING,MIKAYLA	07:37			
	07:37			REBOUND (DEF) by RAMACIERI,ESTHER
	07:07			MISSED 3PTR by SHEPARD,JESSICA
REBOUND (DEF) by COWLING,MIKAYLA	07:07			
MISSED 3PTR by RANGE,COURTNEY	06:59			
	06:59			REBOUND (DEF) by TEAM
SUB IN: CAYTON,MI'COLE	06:59			
SUB OUT: RANGE,COURTNEY	06:59			
FOUL by ANIGWE,KRISTINE	06:32			
	06:30			MISSED JUMPER by SHEPARD,JESSICA
BLOCK by ANIGWE,KRISTINE	06:30			
	06:29			REBOUND (OFF) by ELIELY,NICEA
	06:23			MISSED JUMPER by SHEPARD,JESSICA
BLOCK by COWLING,MIKAYLA	06:23			
	06:22			REBOUND (OFF) by SHEPARD,JESSICA
	06:20			MISSED JUMPER by SHEPARD,JESSICA
REBOUND (DEF) by DAVIDSON,PENINA	06:20			
MISSED JUMPER by DAVIDSON,PENINA	06:06			
	06:06			BLOCK by HAVERS,ALLIE
REBOUND (OFF) by DAVIDSON,PENINA	06:05			
GOOD! LAYUP by DAVIDSON,PENINA [PNT]	06:03	7-7	T	
	05:41	10-7	H 3	GOOD! 3PTR by SHEPARD,JESSICA
	05:41			ASSIST by ELIELY,NICEA
	05:22			FOUL by ELIELY,NICEA
GOOD! FT by ANIGWE,KRISTINE	05:22	10-8	H 2	
GOOD! FT by ANIGWE,KRISTINE	05:22	10-9	H 1	
SUB IN: BROWN,JAELYN	05:22			
SUB OUT: DAVIDSON,PENINA	05:22			
	05:22			SUB IN: WHITISH,HANNAH
	05:22			SUB IN: SIMON,MADDIE
	05:22			SUB IN: WASHINGTON,DARRIEN
	05:22			SUB OUT: RAMACIERI,ESTHER
	05:22			SUB OUT: SHEPARD,JESSICA
	05:22			SUB OUT: CINCORE,JASMINE
	05:18			TURNOVER by ELIELY,NICEA
STEAL by THOMAS,ASHA	05:17			
MISSED 3PTR by COWLING,MIKAYLA	04:57			
	04:57			REBOUND (DEF) by WHITISH,HANNAH

VISITORS: California	Time	Score	Margin	HOME: Nebraska
	04:52			TURNOVER by WHITISH,HANNAH
STEAL by BROWN,JAELYN	04:51			
TURNOVER by THOMAS,ASHA	04:46			
	04:46			TIMEOUT MEDIA
	04:26			MISSED LAYUP by ELIELY,NICEA
BLOCK by ANIGWE,KRISTINE	04:26			
	04:24			REBOUND (OFF) by TEAM
	04:21	13-9	H 4	GOOD! 3PTR by ELIELY,NICEA
	04:21			ASSIST by WHITISH,HANNAH
GOOD! LAYUP by CAYTON,MI'COLE [PNT]	03:59	13-11	H 2	
	03:44			TURNOVER by WASHINGTON,DARRIEN
SUB IN: RANGE,COURTNEY	03:44			
SUB OUT: THOMAS,ASHA	03:44			
	03:44			SUB IN: SHEPARD,JESSICA
	03:44			SUB OUT: HAVERS,ALLIE
GOOD! JUMPER by ANIGWE,KRISTINE	03:27	13-13	T	
	03:27			FOUL by WASHINGTON,DARRIEN
GOOD! FT by ANIGWE,KRISTINE	03:27	13-14	V 1	
	03:17			TURNOVER by ELIELY,NICEA
STEAL by COWLING,MIKAYLA	03:17			
	03:17			FOUL by ELIELY,NICEA
GOOD! FT by BROWN,JAELYN	03:17	13-15	V 2	
GOOD! FT by BROWN,JAELYN	03:17	13-16	V 3	
	03:17			SUB IN: CINCORE,JASMINE
	03:17			SUB IN: JENSEN,RYLIE CASCIO
	03:17			SUB OUT: ELIELY,NICEA
	03:17			SUB OUT: WHITISH,HANNAH
	03:08			TURNOVER by CINCORE,JASMINE
STEAL by RANGE,COURTNEY	02:53			
GOOD! JUMPER by ANIGWE,KRISTINE	02:47	13-18	V 5	
	02:45			MISSED 3PTR by CINCORE,JASMINE
REBOUND (DEF) by TEAM	02:45			
MISSED 3PTR by CAYTON,MI'COLE	02:31			
	02:31			REBOUND (DEF) by SHEPARD,JESSICA
	02:21			MISSED 3PTR by SHEPARD,JESSICA
REBOUND (DEF) by TEAM	02:21			
SUB IN: WEST,CJ	02:18			
SUB OUT: ANIGWE,KRISTINE	02:18			
MISSED JUMPER by WEST,CJ	02:05			
	02:05			REBOUND (DEF) by WASHINGTON,DARRIEN
	01:44	15-18	V 3	GOOD! LAYUP by WASHINGTON,DARRIEN [PNT]
	01:44			ASSIST by JENSEN,RYLIE CASCIO
GOOD! LAYUP by WEST,CJ [FB/PNT]	01:34	15-20	V 5	
ASSIST by CAYTON,MI'COLE	01:34			
	01:17	18-20	V 2	GOOD! 3PTR by JENSEN,RYLIE CASCIO
	01:17			ASSIST by SHEPARD,JESSICA
GOOD! LAYUP by WEST,CJ [FB/PNT]	01:07	18-22	V 4	
ASSIST by CAYTON,MI'COLE	01:07			
	00:55			TURNOVER by SIMON,MADDIE
STEAL by BROWN,JAELYN	00:54			
	00:52			FOUL by CINCORE,JASMINE
MISSED FT by CAYTON,MI'COLE	00:52			
REBOUND (DEADB) by TEAM	00:52			
MISSED FT by CAYTON,MI'COLE	00:52			
	00:52			REBOUND (DEF) by SHEPARD,JESSICA
SUB IN: DAVIDSON,PENINA	00:52			
SUB IN: THOMAS,ASHA	00:52			
SUB IN: MOSLEY,MO	00:52			

VISITORS: California	Time	Score	Margin	HOME: Nebraska
SUB OUT: RANGE,COURTNEY	00:52			
SUB OUT: COWLING,MIKAYLA	00:52			
SUB OUT: BROWN,JAELYN	00:52			
	00:52			SUB IN: HAVERS,ALLIE
	00:52			SUB IN: RAMACIERI,ESTHER
	00:52			SUB IN: ELIELY,NICEA
	00:52			SUB OUT: JENSEN,RYLIE CASCIO
	00:52			SUB OUT: SIMON,MADDIE
	00:52			SUB OUT: WASHINGTON,DARRIEN
	00:42			MISSED JUMPER by HAVERS,ALLIE
REBOUND (DEF) by MOSLEY,MO	00:42			
TURNOVER by DAVIDSON,PENINA	00:34			
	00:30			MISSED JUMPER by SHEPARD,JESSICA
	00:30			REBOUND (OFF) by SHEPARD,JESSICA
FOUL by DAVIDSON,PENINA	00:27			
	00:23	19-22	V 3	GOOD! FT by SHEPARD,JESSICA
	00:23			MISSED FT by SHEPARD,JESSICA
	00:23			REBOUND (OFF) by SHEPARD,JESSICA
SUB IN: RANGE,COURTNEY	00:23			
SUB IN: ANIGWE,KRISTINE	00:23			
SUB OUT: MOSLEY,MO	00:23			
SUB OUT: WEST,CJ	00:23			
	00:21			MISSED JUMPER by SHEPARD,JESSICA
	00:21			REBOUND (OFF) by CINCORE,JASMINE
	00:16			MISSED JUMPER by HAVERS,ALLIE
REBOUND (DEF) by RANGE,COURTNEY	00:16			
GOOD! 3PTR by THOMAS,ASHA	00:03	19-25	V 6	

California 25, Nebraska 19

Period 1-only	In Paint	Off T/O	2nd Chance	Fast Break	Bench	
CAL	10	10	2	4	8	Score tied - 4 times
NEB	6	4	4	0	5	Lead changed - 2 times

**California vs Nebraska**  
**12/4/2016; 3:01 p.m. at Pinnacle Bank Arena (Lincoln, Neb.)**  
**Period 2 Play-By-Play**

VISITORS: California	Time	Score	Margin	HOME: Nebraska
	09:39	21-25	V 4	GOOD! JUMPER by HAVERS,ALLIE [PNT]
	09:39			ASSIST by CINCORE,JASMINE
TURNOVER by DAVIDSON,PENINA	09:23			
	09:07			FOUL by SHEPARD,JESSICA
	09:07			TURNOVER by SHEPARD,JESSICA
GOOD! 3PTR by THOMAS,ASHA	08:42	21-28	V 7	
ASSIST by COWLING,MIKAYLA	08:42			
	08:30			TURNOVER by RAMACIERI,ESTHER
STEAL by COWLING,MIKAYLA	08:28			
SUB IN: BROWN,JAELYN	08:27			
SUB OUT: DAVIDSON,PENINA	08:27			
	08:27			SUB IN: JENSEN,RYLIE CASCIO
	08:27			SUB OUT: ELIELY,NICEA
GOOD! JUMPER by RANGE,COURTNEY [PNT]	08:12	21-30	V 9	
	07:57			TURNOVER by HAVERS,ALLIE
STEAL by COWLING,MIKAYLA	07:56			
	07:51			FOUL by CINCORE,JASMINE
	07:51			FOUL by SHEPARD,JESSICA
	07:51			SUB IN: SIMON,MADDIE
	07:51			SUB OUT: CINCORE,JASMINE
MISSED 3PTR by RANGE,COURTNEY	07:44			
REBOUND (OFF) by ANIGWE,KRISTINE	07:44			
GOOD! JUMPER by ANIGWE,KRISTINE [PNT]	07:35	21-32	V 11	
	07:25	23-32	V 9	GOOD! JUMPER by SHEPARD,JESSICA [PNT]
GOOD! JUMPER by ANIGWE,KRISTINE [PNT]	07:04	23-34	V 11	
SUB IN: WEST,CJ	06:54			
SUB OUT: ANIGWE,KRISTINE	06:54			
	06:54			SUB IN: WASHINGTON,DARRIEN
	06:54			SUB OUT: SHEPARD,JESSICA
	06:29			MISSED JUMPER by RAMACIERI,ESTHER
REBOUND (DEF) by THOMAS,ASHA	06:29			
GOOD! LAYUP by WEST,CJ [FB/PNT]	06:22	23-36	V 13	
ASSIST by BROWN,JAELYN	06:22			
	06:19			TIMEOUT 30SEC
	06:19			TIMEOUT MEDIA
	06:19			SUB IN: CINCORE,JASMINE
	06:19			SUB IN: WHITISH,HANNAH
	06:19			SUB OUT: JENSEN,RYLIE CASCIO
	06:19			SUB OUT: SIMON,MADDIE
	06:03			MISSED JUMPER by WASHINGTON,DARRIEN
	06:03			REBOUND (OFF) by RAMACIERI,ESTHER
	05:59			MISSED 3PTR by WHITISH,HANNAH
REBOUND (DEF) by BROWN,JAELYN	05:59			
MISSED 3PTR by RANGE,COURTNEY	05:47			
	05:47			REBOUND (DEF) by CINCORE,JASMINE
	05:22			MISSED JUMPER by CINCORE,JASMINE
REBOUND (DEF) by WEST,CJ	05:22			
GOOD! JUMPER by RANGE,COURTNEY [PNT]	05:12	23-38	V 15	
ASSIST by THOMAS,ASHA	05:12			
FOUL by BROWN,JAELYN	05:06			
SUB IN: CAYTON,MI'COLE	05:06			
SUB IN: ANIGWE,KRISTINE	05:06			
SUB IN: MOSLEY,MO	05:06			

VISITORS: California	Time	Score	Margin	HOME: Nebraska
SUB OUT: THOMAS,ASHA	05:06			
SUB OUT: BROWN,JAELYN	05:06			
SUB OUT: WEST,CJ	05:06			
	04:52			MISSED JUMPER by HAVERS,ALLIE
BLOCK by ANIGWE,KRISTINE	04:52			
REBOUND (DEF) by RANGE,COURTNEY	04:50			
MISSED JUMPER by MOSLEY,MO	04:44			
	04:44			BLOCK by HAVERS,ALLIE
REBOUND (OFF) by TEAM	04:44			
MISSED JUMPER by RANGE,COURTNEY	04:38			
	04:38			REBOUND (DEF) by TEAM
	04:38			SUB IN: ELIELY,NICEA
	04:38			SUB OUT: CINCORE,JASMINE
	04:30			MISSED LAYUP by RAMACIERI,ESTHER
	04:30			REBOUND (OFF) by TEAM
FOUL by RANGE,COURTNEY	04:29			
	04:29			SUB IN: MITCHELL,GRACE
	04:29			SUB IN: SHEPARD,JESSICA
	04:29			SUB OUT: HAVERS,ALLIE
	04:29			SUB OUT: WASHINGTON,DARRIEN
	04:24			MISSED JUMPER by SHEPARD,JESSICA
BLOCK by ANIGWE,KRISTINE	04:24			
	04:24			REBOUND (OFF) by TEAM
	03:58			MISSED JUMPER by RAMACIERI,ESTHER
REBOUND (DEF) by RANGE,COURTNEY	03:58			
MISSED JUMPER by RANGE,COURTNEY	03:33			
	03:33			REBOUND (DEF) by RAMACIERI,ESTHER
	03:27	25-38	V 13	GOOD! LAYUP by ELIELY,NICEA [FB/PNT]
	03:27			ASSIST by RAMACIERI,ESTHER
GOOD! 3PTR by CAYTON,MI'COLE	03:04	25-41	V 16	
ASSIST by COWLING,MIKAYLA	03:04			
TIMEOUT 30SEC	02:59			
SUB IN: DAVIDSON,PENINA	02:59			
SUB IN: THOMAS,ASHA	02:59			
SUB OUT: COWLING,MIKAYLA	02:59			
SUB OUT: RANGE,COURTNEY	02:59			
	02:59			SUB IN: JENSEN,RYLIE CASCIO
	02:59			SUB OUT: WHITISH,HANNAH
	02:47			FOUL by RAMACIERI,ESTHER
	02:47			TURNOVER by RAMACIERI,ESTHER
MISSED 3PTR by THOMAS,ASHA	02:26			
	02:26			REBOUND (DEF) by ELIELY,NICEA
FOUL by DAVIDSON,PENINA	02:24			
FOUL by ANIGWE,KRISTINE	02:08			
SUB IN: WEST,CJ	02:08			
SUB OUT: ANIGWE,KRISTINE	02:08			
	02:08			SUB IN: WOOD,EMILY
	02:08			SUB OUT: RAMACIERI,ESTHER
	02:06			MISSED JUMPER by SHEPARD,JESSICA
BLOCK by WEST,CJ	02:06			
REBOUND (DEF) by WEST,CJ	02:05			
GOOD! LAYUP by CAYTON,MI'COLE [PNT]	01:52	25-43	V 18	
	01:41			MISSED 3PTR by ELIELY,NICEA
	01:41			REBOUND (OFF) by MITCHELL,GRACE
	01:34			TURNOVER by WOOD,EMILY
STEAL by MOSLEY,MO	01:33			
MISSED JUMPER by MOSLEY,MO	01:27			
	01:27			REBOUND (DEF) by WOOD,EMILY



VISITORS: California	Time	Score	Margin	HOME: Nebraska
SUB IN: COWLING,MIKAYLA	01:17			
SUB OUT: MOSLEY,MO	01:17			
	01:07			MISSED JUMPER by SHEPARD,JESSICA
REBOUND (DEF) by COWLING,MIKAYLA	01:07			
GOOD! JUMPER by WEST,CJ [PNT]	00:56	25-45	V 20	
ASSIST by COWLING,MIKAYLA	00:56			
	00:43			TURNOVER by ELIELY,NICEA
STEAL by THOMAS,ASHA	00:43			
	00:43			FOUL by WOOD,EMILY
SUB IN: RANGE,COURTNEY	00:43			
SUB IN: YUE,CHEN	00:43			
SUB OUT: DAVIDSON,PENINA	00:43			
SUB OUT: WEST,CJ	00:43			
	00:43			SUB IN: WHITISH,HANNAH
	00:43			SUB IN: RAMACIERI,ESTHER
	00:43			SUB OUT: WOOD,EMILY
	00:43			SUB OUT: JENSEN,RYLIE CASCIO
GOOD! JUMPER by COWLING,MIKAYLA	00:29	25-47	V 22	
	00:00	28-47	V 19	GOOD! 3PTR by WHITISH,HANNAH
	00:00			ASSIST by ELIELY,NICEA

California 47, Nebraska 28

Period 2-only	In Paint	Off T/O	2nd Chance	Fast Break	Bench	
CAL	14	9	2	2	9	Score tied - 0 times
NEB	6	0	0	2	3	Lead changed - 0 times

**Official Basketball Box Score -- Game Totals -- Second Half Statistics**  
**California vs Nebraska**  
**12/4/2016 3:01 p.m. at Pinnacle Bank Arena (Lincoln, Neb.)**

**California 39 • 7-0**

##	Player	S	Total			3-Ptr			Rebounds			PF	TP	A	TO	Blk	Stl	Min	
			FG	FGA	3PT	FGA	FT	FTA	Off Reb	Def Reb	Tot Reb								
01	THOMAS,ASHA	g	1	2	0	0	0	0	0	1	1	0	2	1	0	0	1	12	
03	COWLING,MIKAYLA	f	0	3	0	1	0	0	1	0	1	1	0	2	2	1	3	10	
12	DAVIDSON,PENINA	f	1	3	0	1	0	0	2	2	4	0	2	1	3	2	0	10	
24	RANGE,COURTNEY	f	2	4	0	2	0	0	1	1	2	0	4	0	2	0	0	8	
31	ANIGWE,KRISTINE	c	5	7	0	0	2	2	2	1	3	1	12	0	1	0	0	12	
05	YUE,CHEN		1	1	0	0	0	0	0	0	0	0	2	0	0	0	0	4	
20	MOSLEY,MO		0	0	0	0	0	0	0	0	0	1	0	0	1	0	0	6	
21	CAYTON,MI'COLE		2	4	0	0	0	0	0	1	1	1	4	3	1	0	1	14	
30	WEST,CJ		1	3	0	0	0	0	0	3	3	3	2	0	1	0	1	12	
33	BROWN,JAELYN		4	5	2	2	1	4	2	2	4	3	11	0	2	1	2	12	
TEAM									0	0	0	0		0					
Totals				17-32		2-6		3-6		8	11	19	10	39	7	13	4	8	100

FG %	3rd Qtr	9-17	52.9%	4th Qtr	8-15	53.3%	Half:	17-32	53.1%
3FG %	3rd Qtr	2-5	40.0%	4th Qtr	0-1	00.0%	Half:	2-6	30.8%
FT %	3rd Qtr	2-2	100.0%	4th Qtr	1-4	25.0%	Half:	3-6	50.0%

**Nebraska 37 • 3-5**

##	Player	S	Total			3-Ptr			Rebounds			PF	TP	A	TO	Blk	Stl	Min	
			FG	FGA	3PT	FGA	FT	FTA	Off Reb	Def Reb	Tot Reb								
05	ELIELY,NICEA	g	4	7	1	1	1	2	0	0	0	1	10	0	0	0	2	18	
11	RAMACIERI,ESTHER	g	1	1	0	0	0	0	1	2	3	0	2	4	4	0	1	15	
22	HAVERS,ALLIE	c	2	6	0	1	0	0	0	1	1	2	4	1	0	0	0	17	
32	SHEPARD,JESSICA	f	1	2	0	0	0	0	0	1	1	3	2	2	2	0	0	10	
34	CINCORE,JASMINE	g	2	6	2	2	1	2	1	0	1	1	7	1	1	0	2	11	
02	JENSEN,RYLIE CASCIO		0	0	0	0	0	0	0	0	0	0	0	1	1	0	0	2	
03	WHITISH,HANNAH		0	2	0	2	0	0	0	0	0	0	0	0	1	0	0	6	
12	WOOD,EMILY		0	0	0	0	0	0	0	0	0	0	0	0	0	0	0	0	
14	MITCHELL,GRACE		0	0	0	0	1	2	0	3	3	1	1	0	0	0	0	7	
24	SIMON,MADDIE		3	6	2	3	3	5	3	1	4	0	11	0	2	0	2	12	
50	WASHINGTON,DARRIEN		0	0	0	0	0	0	0	1	1	0	0	0	0	0	0	2	
TEAM									3	0	3	0		2					
Totals				13-30		5-9		6-11		8	9	17	8	37	9	13	0	7	100

FG %	3rd Qtr	8-14	57.1%	4th Qtr	5-16	31.3%	Half:	13-30	43.3%
3FG %	3rd Qtr	2-3	66.7%	4th Qtr	3-6	50.0%	Half:	5-9	50.0%
FT %	3rd Qtr	3-5	60.0%	4th Qtr	3-6	50.0%	Half:	6-11	54.5%

Officials: Cameron Inouye, Amy Bonner, Julie Krommenhoek  
 Technical Fouls: California- None. Nebraska- None.

Score by periods	1st	2nd	3rd	4th	Total
California	25	22	22	17	86
Nebraska	19	9	21	16	65

Points	In Paint	Off T/O	2nd Chance	Fast Break	Bench
CAL	28	14	11	6	19
	16	15	11	2	12

Last FG - CAL 4th-00:14, NEB 4th-01:18.  
 CAL led for 20:00. NEB led for 0:00. Game was tied for 0:00.

Score tied - 0 times  
 Lead changed - 0 times

**California vs Nebraska**  
**12/4/2016; 3:01 p.m. at Pinnacle Bank Arena (Lincoln, Neb.)**  
**Period 3 Play-By-Play**

VISITORS: California	Time	Score	Margin	HOME: Nebraska
MISSED 3PTR by RANGE,COURTNEY	09:41			
	09:41			REBOUND (DEF) by RAMACIERI,ESTHER
	09:21	31-47	V 16	GOOD! 3PTR by ELIELY,NICEA
	09:21			ASSIST by SHEPARD,JESSICA
MISSED 3PTR by COWLING,MIKAYLA	08:54			
REBOUND (OFF) by ANIGWE,KRISTINE	08:54			
GOOD! JUMPER by ANIGWE,KRISTINE [PNT]	08:49	31-49	V 18	
	08:49			FOUL by HAVERS,ALLIE
GOOD! FT by ANIGWE,KRISTINE	08:49	31-50	V 19	
	08:27	34-50	V 16	GOOD! 3PTR by CINCORE,JASMINE
	08:27			ASSIST by RAMACIERI,ESTHER
MISSED LAYUP by DAVIDSON,PENINA	08:09			
REBOUND (OFF) by DAVIDSON,PENINA	08:09			
	08:05			FOUL by SHEPARD,JESSICA
MISSED JUMPER by COWLING,MIKAYLA	07:58			
	07:58			REBOUND (DEF) by RAMACIERI,ESTHER
	07:47			MISSED JUMPER by CINCORE,JASMINE
REBOUND (DEF) by RANGE,COURTNEY	07:47			
TURNOVER by RANGE,COURTNEY	07:42			
	07:41			STEAL by CINCORE,JASMINE
	07:27			TURNOVER by RAMACIERI,ESTHER
STEAL by COWLING,MIKAYLA	07:27			
	07:27			FOUL by HAVERS,ALLIE
TURNOVER by DAVIDSON,PENINA	07:09			
	06:54	36-50	V 14	GOOD! LAYUP by SHEPARD,JESSICA [PNT]
	06:54			ASSIST by RAMACIERI,ESTHER
GOOD! JUMPER by RANGE,COURTNEY [PNT]	06:33	36-52	V 16	
ASSIST by COWLING,MIKAYLA	06:33			
	06:20			MISSED JUMPER by ELIELY,NICEA
BLOCK by DAVIDSON,PENINA	06:20			
REBOUND (DEF) by DAVIDSON,PENINA	06:19			
TURNOVER by DAVIDSON,PENINA	06:17			
	06:16			STEAL by ELIELY,NICEA
SUB IN: BROWN,JAELYN	06:15			
SUB OUT: DAVIDSON,PENINA	06:15			
	06:09	38-52	V 14	GOOD! LAYUP by ELIELY,NICEA [PNT]
	06:09			ASSIST by SHEPARD,JESSICA
FOUL by BROWN,JAELYN	06:09			
	06:09			TURNOVER by SHEPARD,JESSICA
GOOD! 3PTR by BROWN,JAELYN	05:46	38-55	V 17	
ASSIST by THOMAS,ASHA	05:46			
	05:36			TURNOVER by CINCORE,JASMINE
STEAL by COWLING,MIKAYLA	05:35			
GOOD! LAYUP by RANGE,COURTNEY [FB/PNT]	05:33	38-57	V 19	
ASSIST by COWLING,MIKAYLA	05:33			
	05:14			MISSED JUMPER by SHEPARD,JESSICA
REBOUND (DEF) by ANIGWE,KRISTINE	05:14			
MISSED JUMPER by ANIGWE,KRISTINE	04:52			
REBOUND (OFF) by ANIGWE,KRISTINE	04:52			
GOOD! JUMPER by ANIGWE,KRISTINE [PNT]	04:49	38-59	V 21	
FOUL by COWLING,MIKAYLA	04:33			
	04:33			TIMEOUT MEDIA
	04:33			MISSED FT by CINCORE,JASMINE

VISITORS: California	Time	Score	Margin	HOME: Nebraska
	04:33			REBOUND (DEADB) by TEAM
	04:33	39-59	V 20	GOOD! FT by CINCORE,JASMINE
SUB IN: CAYTON,MI'COLE	04:33			
SUB IN: WEST,CJ	04:33			
SUB OUT: THOMAS,ASHA	04:33			
SUB OUT: RANGE,COURTNEY	04:33			
TURNOVER by COWLING,MIKAYLA	04:22			
	04:20			STEAL by ELIELY,NICEA
	04:17			MISSED JUMPER by ELIELY,NICEA
BLOCK by COWLING,MIKAYLA	04:17			
REBOUND (DEF) by BROWN,JAELYN	04:16			
TURNOVER by BROWN,JAELYN	04:12			
	04:11			STEAL by RAMACIERI,ESTHER
	04:10	41-59	V 18	GOOD! JUMPER by RAMACIERI,ESTHER [PNT]
GOOD! 3PTR by BROWN,JAELYN	03:52	41-62	V 21	
ASSIST by CAYTON,MI'COLE	03:52			
FOUL by BROWN,JAELYN	03:39			
	03:23	43-62	V 19	GOOD! JUMPER by HAVERS,ALLIE [PNT]
	03:23			ASSIST by CINCORE,JASMINE
TURNOVER by COWLING,MIKAYLA	03:04			
	03:03			STEAL by CINCORE,JASMINE
	02:59	45-62	V 17	GOOD! LAYUP by ELIELY,NICEA [FB/PNT]
	02:59			ASSIST by RAMACIERI,ESTHER
TIMEOUT TEAM	02:52			
	02:52			SUB IN: WASHINGTON,DARRIEN
	02:52			SUB OUT: SHEPARD,JESSICA
TURNOVER by ANIGWE,KRISTINE	02:47			
	02:31			TURNOVER by RAMACIERI,ESTHER
STEAL by BROWN,JAELYN	02:30			
MISSED LAYUP by CAYTON,MI'COLE	02:26			
REBOUND (OFF) by COWLING,MIKAYLA	02:26			
GOOD! JUMPER by ANIGWE,KRISTINE [PNT]	02:21	45-64	V 19	
	02:07			TURNOVER by TEAM
SUB IN: THOMAS,ASHA	02:07			
SUB IN: MOSLEY,MO	02:07			
SUB OUT: COWLING,MIKAYLA	02:07			
SUB OUT: BROWN,JAELYN	02:07			
	01:59			FOUL by CINCORE,JASMINE
	01:59			SUB IN: SIMON,MADDIE
	01:59			SUB IN: SHEPARD,JESSICA
	01:59			SUB IN: MITCHELL,GRACE
	01:59			SUB IN: WHITISH,HANNAH
	01:59			SUB OUT: RAMACIERI,ESTHER
	01:59			SUB OUT: HAVERS,ALLIE
	01:59			SUB OUT: WASHINGTON,DARRIEN
	01:59			SUB OUT: CINCORE,JASMINE
GOOD! JUMPER by ANIGWE,KRISTINE [PNT]	01:41	45-66	V 21	
	01:38			FOUL by SHEPARD,JESSICA
GOOD! FT by ANIGWE,KRISTINE	01:16	45-67	V 22	
	01:04			MISSED FT by MITCHELL,GRACE
	01:04			REBOUND (DEADB) by TEAM
	01:04	46-67	V 21	GOOD! FT by MITCHELL,GRACE
	00:50			MISSED 3PTR by SIMON,MADDIE
	00:50			REBOUND (OFF) by SIMON,MADDIE
FOUL by WEST,CJ	00:44	48-67	V 19	GOOD! JUMPER by SIMON,MADDIE [PNT]
	00:44	49-67	V 18	GOOD! FT by SIMON,MADDIE
SUB IN: RANGE,COURTNEY	00:44			

VISITORS: California	Time	Score	Margin	HOME: Nebraska
SUB OUT: ANIGWE,KRISTINE	00:44			
	00:44			SUB IN: HAVERS,ALLIE
	00:44			SUB OUT: SHEPARD,JESSICA
MISSED JUMPER by WEST,CJ	00:42			
	00:42			REBOUND (DEF) by MITCHELL,GRACE
FOUL by WEST,CJ	00:42			
MISSED 3PTR by RANGE,COURTNEY	00:40			
REBOUND (OFF) by RANGE,COURTNEY	00:40			
TURNOVER by RANGE,COURTNEY	00:34			
	00:34			SUB IN: SHEPARD,JESSICA
	00:34			SUB OUT: MITCHELL,GRACE
	00:23			MISSED LAYUP by SIMON,MADDIE
REBOUND (DEF) by WEST,CJ	00:23			
GOOD! JUMPER by WEST,CJ [PNT]	00:01	49-69	V 20	
ASSIST by CAYTON,MI'COLE	00:01			

California 86, Nebraska 65

Period 3-only	In Paint	Off T/O	2nd Chance	Fast Break	Bench	
CAL	14	10	7	2	8	Score tied - 0 times
NEB	12	8	3	2	4	Lead changed - 0 times

**California vs Nebraska**  
**12/4/2016; 3:01 p.m. at Pinnacle Bank Arena (Lincoln, Neb.)**  
**Period 4 Play-By-Play**

VISITORS: California	Time	Score	Margin	HOME: Nebraska
SUB IN: CAYTON,MI'COLE	10:00			
SUB IN: BROWN,JAELYN	10:00			
SUB OUT: COWLING,MIKAYLA	10:00			
SUB OUT: DAVIDSON,PENINA	10:00			
	10:00			SUB IN: SIMON,MADDIE
	10:00			SUB IN: WHITISH,HANNAH
	10:00			SUB OUT: RAMACIERI,ESTHER
	10:00			SUB OUT: CINCORE,JASMINE
MISSED JUMPER by BROWN,JAELYN	09:48			
REBOUND (OFF) by BROWN,JAELYN	09:48			
	09:47			FOUL by ELIELY,NICEA
MISSED FT by BROWN,JAELYN	09:47			
REBOUND (DEADB) by TEAM	09:47			
MISSED FT by BROWN,JAELYN	09:47			
	09:47			REBOUND (DEF) by SHEPARD,JESSICA
	09:47			SUB IN: MITCHELL,GRACE
	09:47			SUB OUT: HAVERS,ALLIE
FOUL by BROWN,JAELYN	09:41			
	09:36			TURNOVER by WHITISH,HANNAH
STEAL by CAYTON,MI'COLE	09:35			
GOOD! LAYUP by CAYTON,MI'COLE [FB/PNT]	09:32	49-71	V 22	
	09:18	51-71	V 20	GOOD! LAYUP by ELIELY,NICEA [PNT]
MISSED JUMPER by THOMAS,ASHA	08:45			
	08:45			REBOUND (DEF) by MITCHELL,GRACE
	08:45			FOUL by SHEPARD,JESSICA
	08:45			TURNOVER by SHEPARD,JESSICA
	08:45			SUB IN: WASHINGTON,DARRIEN
	08:45			SUB IN: RAMACIERI,ESTHER
	08:45			SUB OUT: SHEPARD,JESSICA
	08:45			SUB OUT: WHITISH,HANNAH
MISSED JUMPER by ANIGWE,KRISTINE	08:38			
	08:38			REBOUND (DEF) by WASHINGTON,DARRIEN
FOUL by ANIGWE,KRISTINE	08:30			
	08:30			MISSED FT by SIMON,MADDIE
	08:30			REBOUND (DEADB) by TEAM
	08:30	52-71	V 19	GOOD! FT by SIMON,MADDIE
SUB IN: DAVIDSON,PENINA	08:30			
SUB IN: COWLING,MIKAYLA	08:30			
SUB OUT: BROWN,JAELYN	08:30			
SUB OUT: RANGE,COURTNEY	08:30			
GOOD! JUMPER by ANIGWE,KRISTINE [PNT]	08:18	52-73	V 21	
ASSIST by DAVIDSON,PENINA	08:18			
	08:03			TURNOVER by RAMACIERI,ESTHER
STEAL by THOMAS,ASHA	08:02			
GOOD! LAYUP by THOMAS,ASHA [FB/PNT]	07:59	52-75	V 23	
	07:46			TIMEOUT 30SEC
	07:46			TIMEOUT MEDIA
	07:34			MISSED JUMPER by ELIELY,NICEA
REBOUND (DEF) by CAYTON,MI'COLE	07:34			
MISSED JUMPER by COWLING,MIKAYLA	07:24			
REBOUND (OFF) by DAVIDSON,PENINA	07:24			
GOOD! JUMPER by DAVIDSON,PENINA [PNT]	07:20	52-77	V 25	
	07:20			SUB IN: HAVERS,ALLIE

VISITORS: California	Time	Score	Margin	HOME: Nebraska
	07:20			SUB OUT: WASHINGTON,DARRIEN
	07:06			TURNOVER by SIMON,MADDIE
STEAL by COWLING,MIKAYLA	07:05			
TURNOVER by CAYTON,MI'COLE	07:01			
	07:00			STEAL by SIMON,MADDIE
FOUL by CAYTON,MI'COLE	06:56			
	06:56	53-77	V 24	GOOD! FT by SIMON,MADDIE
	06:56			MISSED FT by SIMON,MADDIE
REBOUND (DEF) by BROWN,JAELYN	06:56			
SUB IN: BROWN,JAELYN	06:56			
SUB IN: WEST,CJ	06:56			
SUB OUT: COWLING,MIKAYLA	06:56			
SUB OUT: ANIGWE,KRISTINE	06:56			
GOOD! LAYUP by CAYTON,MI'COLE [PNT]	06:48	53-79	V 26	
	06:29			MISSED JUMPER by HAVERS,ALLIE
	06:29			REBOUND (OFF) by TEAM
	06:26			SUB IN: CINCORE,JASMINE
	06:26			SUB OUT: MITCHELL,GRACE
	06:21			MISSED JUMPER by CINCORE,JASMINE
REBOUND (DEF) by DAVIDSON,PENINA	06:21			
TURNOVER by BROWN,JAELYN	06:15			
	05:57			MISSED JUMPER by CINCORE,JASMINE
BLOCK by DAVIDSON,PENINA	05:57			
REBOUND (DEF) by THOMAS,ASHA	05:56			
MISSED 3PTR by DAVIDSON,PENINA	05:35			
REBOUND (OFF) by BROWN,JAELYN	05:35			
GOOD! JUMPER by BROWN,JAELYN	05:32	53-81	V 28	
TIMEOUT 30SEC	05:30			
SUB IN: MOSLEY,MO	05:30			
SUB OUT: CAYTON,MI'COLE	05:30			
	05:15			TURNOVER by SIMON,MADDIE
STEAL by BROWN,JAELYN	05:14			
TURNOVER by DAVIDSON,PENINA	04:49			
	04:29			MISSED 3PTR by HAVERS,ALLIE
	04:29			REBOUND (OFF) by CINCORE,JASMINE
	04:27			MISSED JUMPER by CINCORE,JASMINE
	04:27			REBOUND (OFF) by TEAM
SUB IN: YUE,CHEN	04:26			
SUB IN: CAYTON,MI'COLE	04:26			
SUB OUT: THOMAS,ASHA	04:26			
SUB OUT: DAVIDSON,PENINA	04:26			
	04:14	56-81	V 25	GOOD! 3PTR by SIMON,MADDIE
	04:14			ASSIST by RAMACIERI,ESTHER
MISSED JUMPER by WEST,CJ	03:52			
	03:52			REBOUND (DEF) by HAVERS,ALLIE
	03:32	59-81	V 22	GOOD! 3PTR by CINCORE,JASMINE
	03:32			ASSIST by HAVERS,ALLIE
TURNOVER by MOSLEY,MO	03:23			
	03:21			STEAL by SIMON,MADDIE
FOUL by MOSLEY,MO	03:04			
TIMEOUT TEAM	03:04			
	03:04	60-81	V 21	GOOD! FT by ELIELY,NICEA
	03:04			MISSED FT by ELIELY,NICEA
REBOUND (DEF) by WEST,CJ	03:04			
	03:04			SUB IN: WHITISH,HANNAH
	03:04			SUB IN: MITCHELL,GRACE
	03:04			SUB OUT: CINCORE,JASMINE
	02:44			FOUL by MITCHELL,GRACE

VISITORS: California	Time	Score	Margin	HOME: Nebraska
GOOD! FT by BROWN,JAELYN	02:44	60-82	V 22	
MISSED FT by BROWN,JAELYN	02:44			
	02:44			REBOUND (DEF) by SIMON,MADDIE
	02:44			SUB OUT: ELIELY,NICEA
	02:26			TURNOVER by RAMACIERI,ESTHER
STEAL by WEST,CJ	02:25			
	02:25			TURNOVER by TEAM
MISSED JUMPER by CAYTON,M'COLE	02:19			
	02:19			REBOUND (DEF) by MITCHELL,GRACE
	02:04			MISSED JUMPER by HAVERS,ALLIE
	02:04			REBOUND (OFF) by RAMACIERI,ESTHER
	02:02			MISSED 3PTR by WHITISH,HANNAH
	02:02			REBOUND (OFF) by SIMON,MADDIE
	01:58	63-82	V 19	GOOD! 3PTR by SIMON,MADDIE
SUB IN: DAVIDSON,PENINA	01:49			
SUB OUT: MOSLEY,MO	01:49			
	01:49			SUB IN: JENSEN,RYLIE CASCIO
	01:49			SUB OUT: RAMACIERI,ESTHER
FOUL by WEST,CJ	01:39			
TURNOVER by WEST,CJ	01:39			
	01:26			MISSED JUMPER by HAVERS,ALLIE
	01:26			REBOUND (OFF) by SIMON,MADDIE
	01:20			MISSED JUMPER by SIMON,MADDIE
BLOCK by BROWN,JAELYN	01:20			
	01:20			REBOUND (OFF) by TEAM
	01:18	65-82	V 17	GOOD! JUMPER by HAVERS,ALLIE [PNT]
	01:18			ASSIST by JENSEN,RYLIE CASCIO
GOOD! JUMPER by YUE,CHEN [PNT]	00:50	65-84	V 19	
	00:37			MISSED 3PTR by WHITISH,HANNAH
REBOUND (DEF) by WEST,CJ	00:37			
GOOD! LAYUP by BROWN,JAELYN [PNT]	00:14	65-86	V 21	
ASSIST by CAYTON,M'COLE	00:14			
	00:11			TURNOVER by JENSEN,RYLIE CASCIO

California 86, Nebraska 65

Period 4-only	In Paint	Off T/O	2nd Chance	Fast Break	Bench	
CAL	14	4	4	4	11	Score tied - 0 times
NEB	4	7	8	0	8	Lead changed - 0 times



**California vs Nebraska**  
**12/4/2016; 3:01 p.m. at Pinnacle Bank Arena (Lincoln, Neb.)**  
**Scoring/Runs Reference**

Period 1

California	Score	Marg	Nebraska
09:44 - ANIGWE JUMPER [P]	2	2-0 -2	
09:16 - THOMAS 3PTR	3	5-0 -5	
		5-2 -3 2	ELIELY JUMPER [P] - 08:59
		5-5 0 3	HAVERS 3PTR - 08:22
		5-7 2 2	ELIELY LAYUP [P] - 07:57
06:03 - DAVIDSON LAYUP [P]	2	7-7 0	
		7-10 3 3	SHEPARD 3PTR - 05:41
05:22 - ANIGWE FT	1	8-10 2	
05:22 - ANIGWE FT	1	9-10 1	
		9-13 4 3	ELIELY 3PTR - 04:21
03:59 - CAYTON LAYUP [P]	2	11-13 2	
03:27 - ANIGWE JUMPER	2	13-13 0	
03:27 - ANIGWE FT	1	14-13 -1	
03:17 - BROWN FT	1	15-13 -2	
03:17 - BROWN FT	1	16-13 -3	
02:47 - ANIGWE JUMPER	2	18-13 -5	
		18-15 -3 2	WASHINGTON LAYUP [P] - 01:44
01:34 - WEST LAYUP [P] [F]	2	20-15 -5	
		20-18 -2 3	JENSEN 3PTR - 01:17
01:07 - WEST LAYUP [P] [F]	2	22-18 -4	
		22-19 -3 1	SHEPARD FT - 00:23
00:03 - THOMAS 3PTR	3	25-19 -6	

Period 2

California	Score	Marg	Nebraska
		25-21 -4 2	HAVERS JUMPER [P] - 09:39
08:42 - THOMAS 3PTR	3	28-21 -7	
08:12 - RANGE JUMPER [P]	2	30-21 -9	
07:35 - ANIGWE JUMPER [P]	2	32-21 -11	
		32-23 -9 2	SHEPARD JUMPER [P] - 07:25
07:04 - ANIGWE JUMPER [P]	2	34-23 -11	
06:22 - WEST LAYUP [P] [F]	2	36-23 -13	
05:12 - RANGE JUMPER [P]	2	38-23 -15	
		38-25 -13 2	ELIELY LAYUP [P] [F] - 03:27
03:04 - CAYTON 3PTR	3	41-25 -16	
01:52 - CAYTON LAYUP [P]	2	43-25 -18	
00:56 - WEST JUMPER [P]	2	45-25 -20	
00:29 - COWLING JUMPER	2	47-25 -22	
		47-28 -19 3	WHITISH 3PTR - 00:00

Period 3

California	Score	Marg	Nebraska
	47-31	-16 3	ELIELY 3PTR - 09:21
08:49 - ANIGWE JUMPER [P]	2	49-31 -18	
08:49 - ANIGWE FT	1	50-31 -19	
	50-34	-16 3	CINCORE 3PTR - 08:27
	50-36	-14 2	SHEPARD LAYUP [P] - 06:54
06:33 - RANGE JUMPER [P]	2	52-36 -16	
	52-38	-14 2	ELIELY LAYUP [P] - 06:09
05:46 - BROWN 3PTR	3	55-38 -17	
05:33 - RANGE LAYUP [P] [F]	2	57-38 -19	
04:49 - ANIGWE JUMPER [P]	2	59-38 -21	
	59-39	-20 1	CINCORE FT - 04:33
	59-41	-18 2	RAMACIERI JUMPER [P] - 04:10
03:52 - BROWN 3PTR	3	62-41 -21	
	62-43	-19 2	HAVERS JUMPER [P] - 03:23
	62-45	-17 2	ELIELY LAYUP [P] [F] - 02:59
02:21 - ANIGWE JUMPER [P]	2	64-45 -19	
01:41 - ANIGWE JUMPER [P]	2	66-45 -21	
01:16 - ANIGWE FT	1	67-45 -22	
	67-46	-21 1	MITCHELL FT - 01:04
	67-48	-19 2	SIMON JUMPER [P] - 00:44
	67-49	-18 1	SIMON FT - 00:44
00:01 - WEST JUMPER [P]	2	69-49 -20	

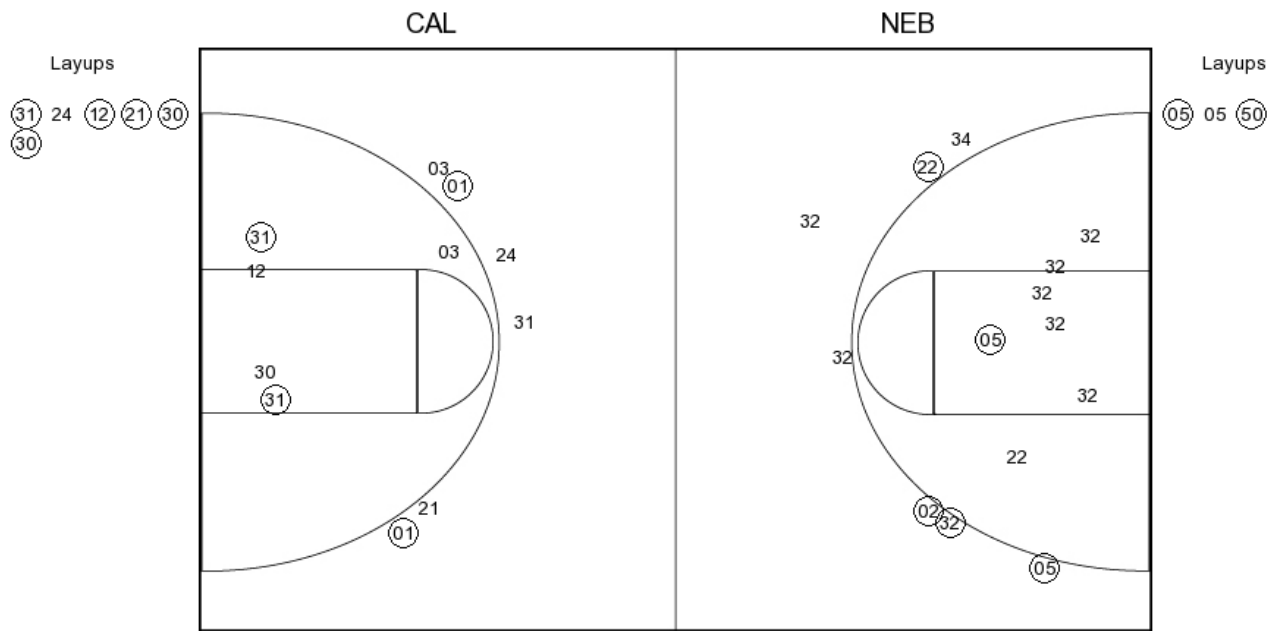
Period 4

California	Score	Marg	Nebraska
09:32 - CAYTON LAYUP [P] [F]	2	71-49 -22	
	71-51	-20 2	ELIELY LAYUP [P] - 09:18
	71-52	-19 1	SIMON FT - 08:30
08:18 - ANIGWE JUMPER [P]	2	73-52 -21	
07:59 - THOMAS LAYUP [P] [F]	2	75-52 -23	
07:20 - DAVIDSON JUMPER [P]	2	77-52 -25	
	77-53	-24 1	SIMON FT - 06:56
06:48 - CAYTON LAYUP [P]	2	79-53 -26	
05:32 - BROWN JUMPER	2	81-53 -28	
	81-56	-25 3	SIMON 3PTR - 04:14
	81-59	-22 3	CINCORE 3PTR - 03:32
	81-60	-21 1	ELIELY FT - 03:04
02:44 - BROWN FT	1	82-60 -22	
	82-63	-19 3	SIMON 3PTR - 01:58
	82-65	-17 2	HAVERS JUMPER [P] - 01:18
00:50 - YUE JUMPER [P]	2	84-65 -19	
00:14 - BROWN LAYUP [P]	2	86-65 -21	

**California vs Nebraska**  
**OFFICIAL SHOT CHART**

12/4/2016 at Pinnacle Bank Arena (Lincoln, Neb.)

**PERIOD 1**



**CAL PERIOD 1**

FG Made	19
FG Attempted	34
3PFG Made	4
3PFG Attempted	13

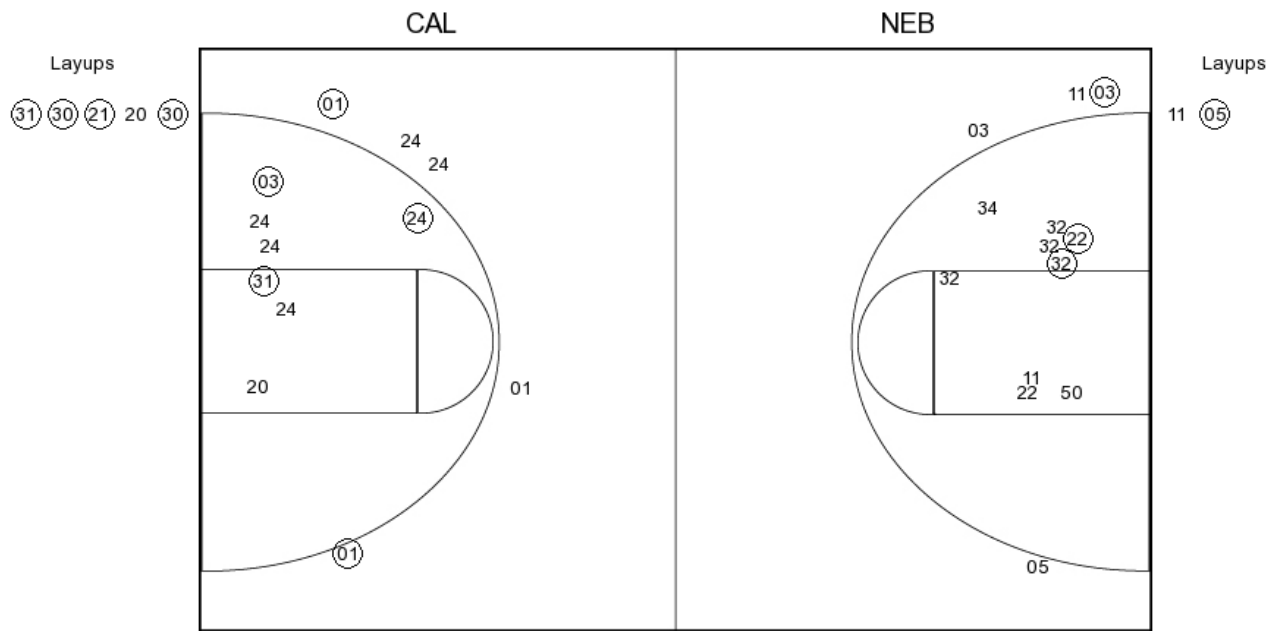
**NEB PERIOD 1**

FG Made	11
FG Attempted	33
3PFG Made	5
3PFG Attempted	10

**California vs Nebraska**  
**OFFICIAL SHOT CHART**

12/4/2016 at Pinnacle Bank Arena (Lincoln, Neb.)

**PERIOD 2**



**CAL PERIOD 2**

FG Made  
 FG Attempted  
 3PFG Made  
 3PFG Attempted

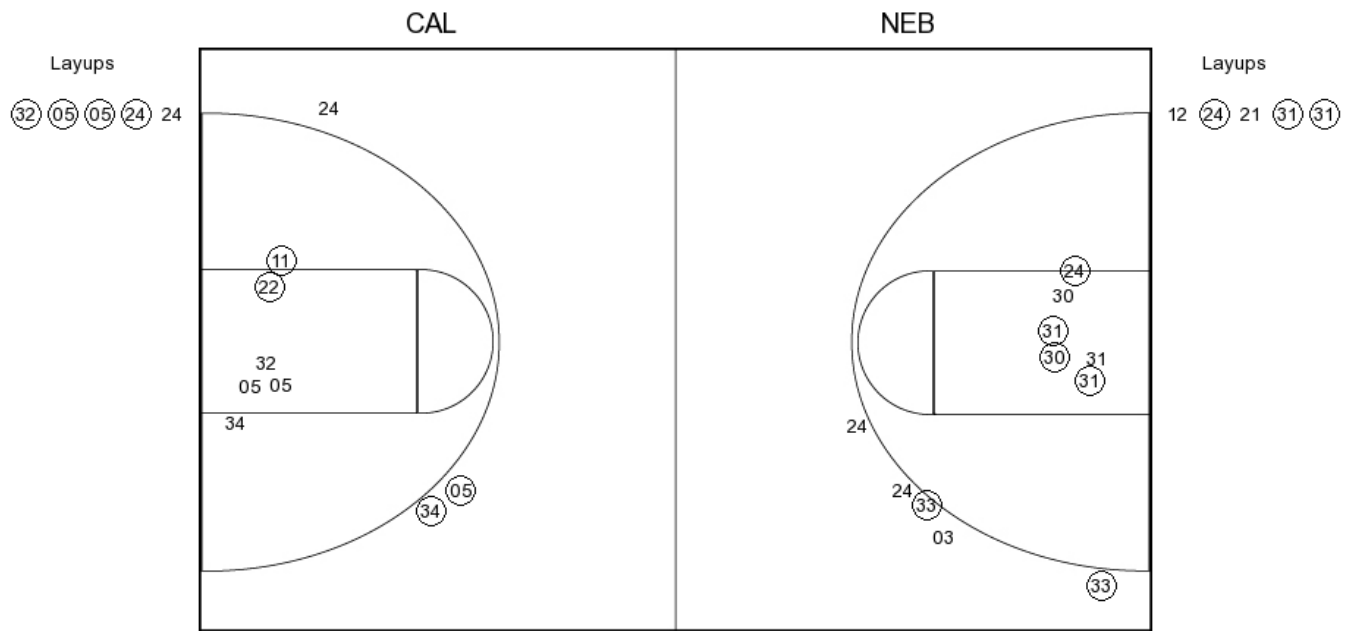
**NEB PERIOD 2**

FG Made  
 FG Attempted  
 3PFG Made  
 3PFG Attempted

**California vs Nebraska**  
**OFFICIAL SHOT CHART**

12/4/2016 at Pinnacle Bank Arena (Lincoln, Neb.)

**PERIOD 3**



**CAL PERIOD 3**

FG Made	17
FG Attempted	32
3PFG Made	2
3PFG Attempted	6

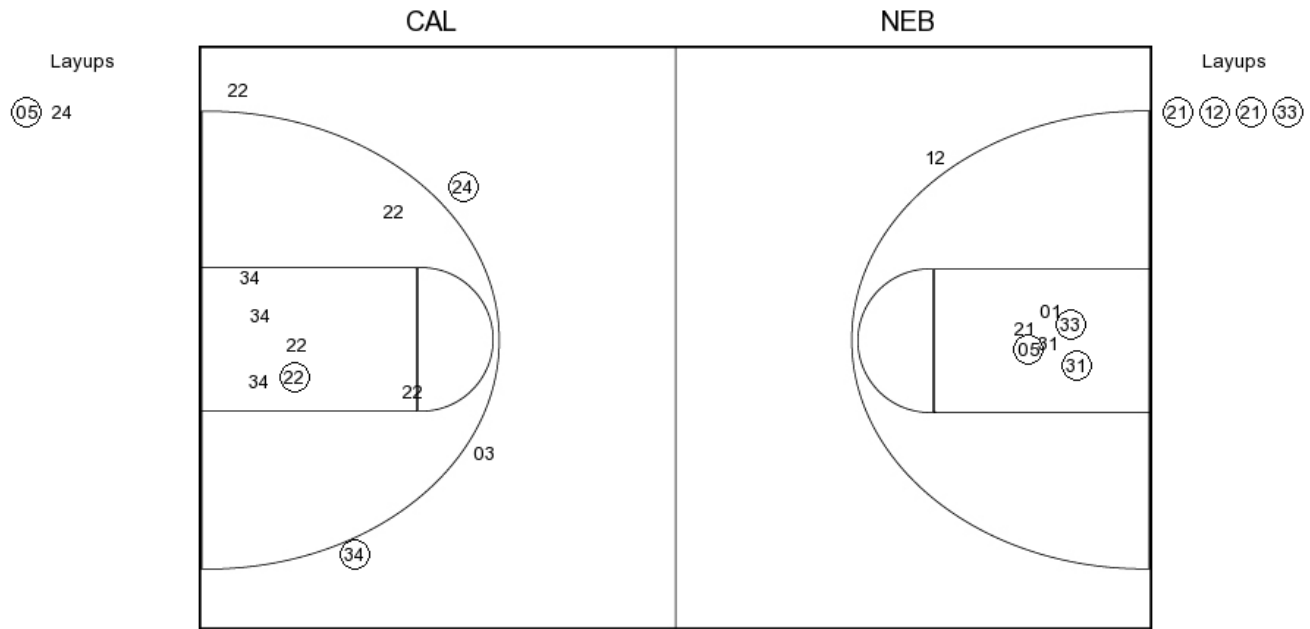
**NEB PERIOD 3**

FG Made	13
FG Attempted	30
3PFG Made	5
3PFG Attempted	9

**California vs Nebraska**  
**OFFICIAL SHOT CHART**

12/4/2016 at Pinnacle Bank Arena (Lincoln, Neb.)

**PERIOD 4**



**CAL PERIOD 4**

FG Made  
 FG Attempted  
 3PFG Made  
 3PFG Attempted

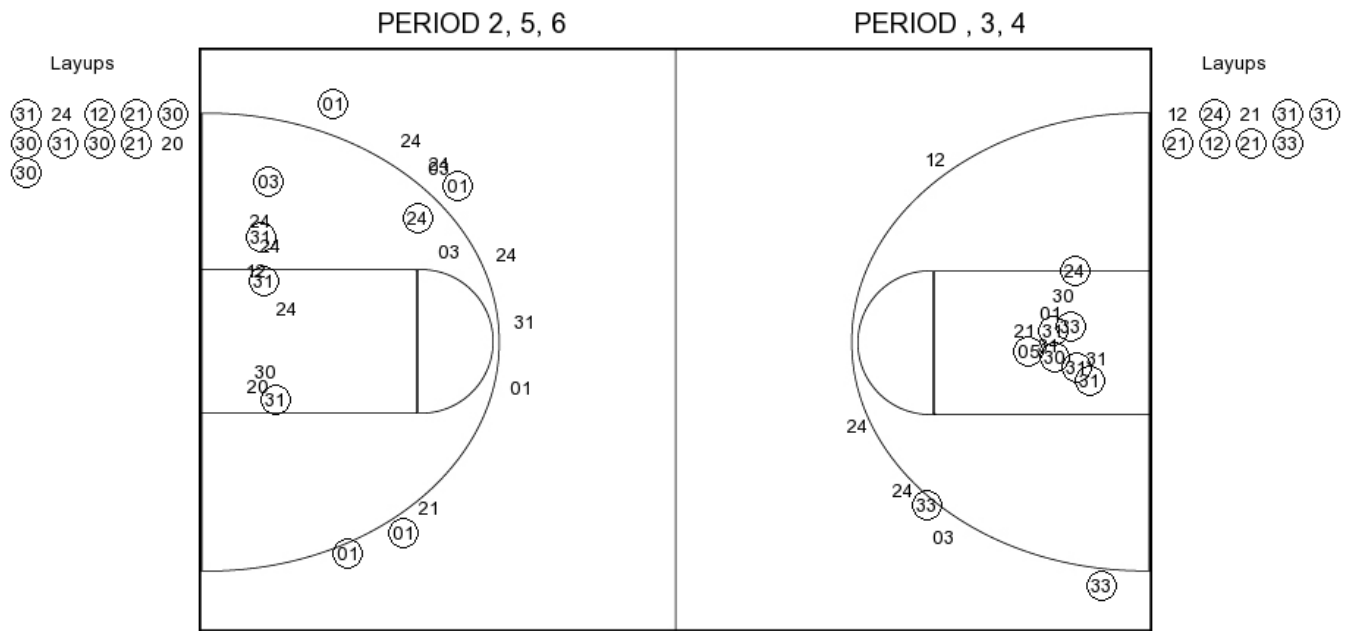
**NEB PERIOD 4**

FG Made  
 FG Attempted  
 3PFG Made  
 3PFG Attempted

**California vs Nebraska**  
**OFFICIAL SHOT CHART**

12/4/2016 at Pinnacle Bank Arena (Lincoln, Neb.)

**California**



**CAL PERIOD 1**

FG Made	19
FG Attempted	34
3PFG Made	4
3PFG Attempted	13

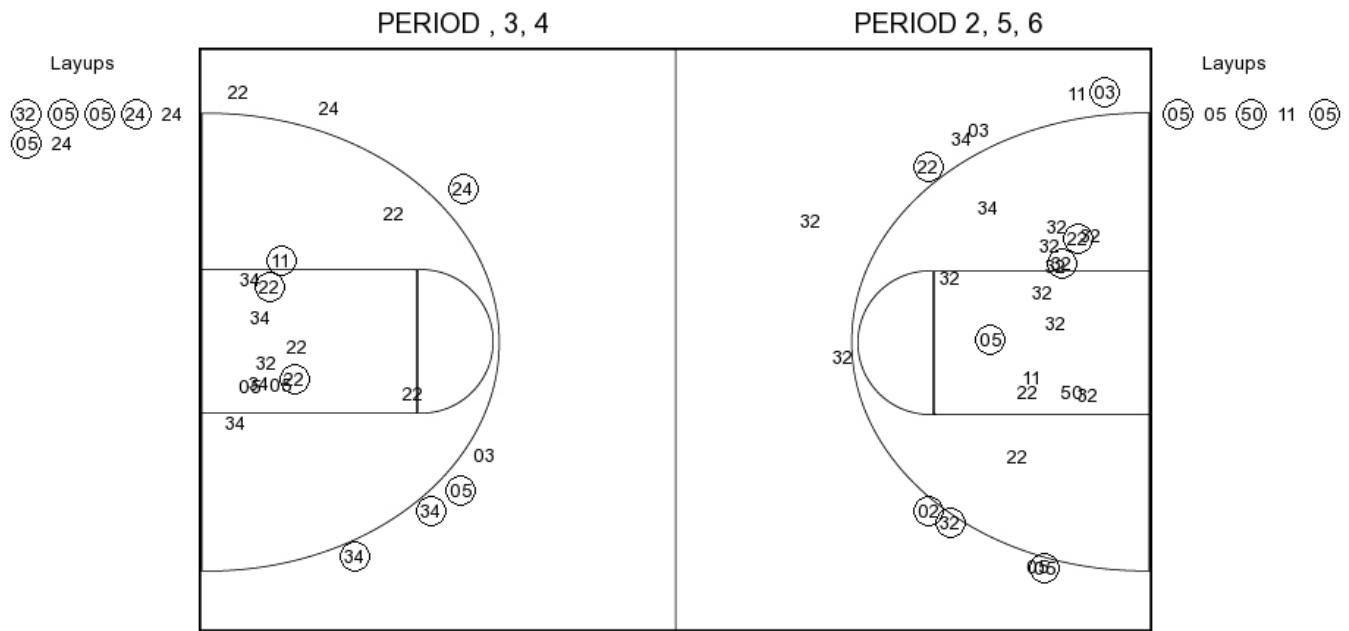
**CAL PERIOD 2**

FG Made	
FG Attempted	
3PFG Made	
3PFG Attempted	

**California vs Nebraska**  
**OFFICIAL SHOT CHART**

12/4/2016 at Pinnacle Bank Arena (Lincoln, Neb.)

**Nebraska**



**NEB PERIOD 1**

FG Made	11
FG Attempted	33
3PFG Made	5
3PFG Attempted	10

**NEB PERIOD 2**

FG Made	
FG Attempted	
3PFG Made	
3PFG Attempted	