

HARDING VS. NORTHWESTERN OKLAHOMA



1/5/2013

Searcy, Ark. (Rhodes Field House)

FINAL STATS

Harding

(6-4, 2-2 GAC)

60

NW Oklahoma State

(3-7, 2-2 GAC)

46

Start Time: 2 p.m.

Officials: Rusty Gilbert, Montrel Simmons and Heather Hawk

Attendance: 0

Official Basketball Box Score -- Game Totals -- Final Statistics

NW Oklahoma State vs Harding

1/5/2013 2 p.m. at Searcy, Ark. (Rhodes Field House)

NW Oklahoma State 46 - 3-7, 2-2 GAC

##	Player	Total FG-FGA	3-Ptr FG-FGA	FT-FTA	Rebounds			PF	TP	A	TO	Blk	Stl	Min
					Off	Def	Tot							
04	GREGORY,JONNA	f 1-7	0-1	5-6	2	2	4	2	7	0	2	0	1	31
05	GOLLIDAY,RENEE	g 3-5	0-0	0-0	1	3	4	0	6	0	1	0	0	17
22	SIMMONS,TITANIA	f 2-11	1-3	5-7	1	2	3	1	10	0	2	0	2	37
25	NEWSOME,LAPARIS	g 1-3	0-0	0-0	0	4	4	2	2	1	3	0	1	15
33	NORMAN,MANDY	g 0-3	0-1	0-0	0	2	2	1	0	1	1	0	0	15
01	BACA,ERICA	0-0	0-0	0-0	0	0	0	0	0	0	0	0	0	6
03	GIBSON,MACY	2-4	0-0	1-1	0	3	3	5	5	0	1	0	0	22
10	EATON,EMILY	0-0	0-0	0-0	0	1	1	0	0	0	1	0	0	5
11	GILMORE,KIERRA	4-11	2-5	1-2	0	1	1	3	11	4	3	0	3	26
12	GILMORE,DIERRA	1-4	0-3	3-4	0	2	2	4	5	2	0	0	4	23
13	CATLETT,ASHLEY	0-2	0-0	0-0	0	0	0	1	0	0	0	0	0	3
TEAM					1	3	4	0			1			
Totals		14-50	3-13	15-20	5	23	28	19	46	8	15	0	11	200

FG % 1st Half:	8-27	29.6%	2nd Half:	6-23	26.1%	Game:	14-50	28.0%	Deadball
3FG % 1st Half:	2-8	25.0%	2nd Half:	1-5	20.0%	Game:	3-13	23.1%	Rebounds
FT % 1st Half:	5-6	83.3%	2nd Half:	10-14	71.4%	Game:	15-20	75.0%	1,3

Harding 60 - 6-4, 2-2 GAC

##	Player	Total FG-FGA	3-Ptr FG-FGA	FT-FTA	Rebounds			PF	TP	A	TO	Blk	Stl	Min
					Off	Def	Tot							
00	LEWIS.MONTANA	g 4-10	0-1	3-3	4	1	5	3	11	3	2	0	1	30
05	HOLMES,SHANA	g 1-12	1-7	3-4	1	2	3	2	6	1	4	0	1	35
10	HANEY,TABITHA	g 3-7	2-5	0-0	0	2	2	3	8	2	1	0	0	20
32	SAUNDERS,ARIELLE	f 4-7	0-0	2-5	1	8	9	4	10	1	1	2	1	39
40	CELSOR,KRISTEN	f 3-9	2-4	0-2	3	12	15	3	8	1	3	0	2	36
11	CRENSHAW,LAUREN	2-5	1-4	4-4	1	1	2	1	9	1	3	0	0	22
15	ISAAC-BOYCE,D	3-7	0-0	2-4	4	3	7	3	8	1	2	0	3	17
23	STRICKLAND,ANNA	0-0	0-0	0-0	0	0	0	0	0	0	1	0	0	3
TEAM					1	5	6	0			2			
Totals		20-57	6-21	14-22	15	34	49	19	60	10	19	2	8	202

FG % 1st Half:	10-29	34.5%	2nd Half:	10-28	35.7%	Game:	20-57	35.1%	Deadball
3FG % 1st Half:	4-13	30.8%	2nd Half:	2-8	25.0%	Game:	6-21	28.6%	Rebounds
FT % 1st Half:	5-8	62.5%	2nd Half:	9-14	64.3%	Game:	14-22	63.6%	4,1

Officials: Rusty Gilbert, Montrel Simmons and Heather Hawk

Technical Fouls: NW Oklahoma State- None. Harding- None.

Attendance: 0

Score by periods	1st	2nd	Total
NW Oklahoma State	23	23	46
Harding	29	31	60

	In	Off	2nd	Fast	
Points	Paint	T/O	Chance	Break	Bench
NW Oklahoma State	22	14	7	4	21
Harding	20	13	7	2	17

Largest lead - NW Oklahoma State by ;
Harding by 23 2nd-10:38

Score tied - 0 times
Lead changed - 0 times

Official Basketball Box Score -- Game Totals -- First Half Statistics

NW Oklahoma State vs Harding

1/5/2013 2 p.m. at Searcy, Ark. (Rhodes Field House)

NW Oklahoma State 23 • 3-7, 2-2 GAC

##	Player	Total FG-FGA	3-Ptr FG-FGA	FT-FTA	Rebounds			PF	TP	A	TO	Blk	Stl	Min	
					Off	Def	Tot								
04	GREGORY,JONNA	f	1-7	0-1	5-6	2	2	4	2	7	0	2	0	1	31
05	GOLLIDAY,RENEE	g	3-5	0-0	0-0	1	3	4	0	6	0	1	0	0	17
22	SIMMONS,TITANIA	f	2-11	1-3	5-7	1	2	3	1	10	0	2	0	2	37
25	NEWSOME,LAPARIS	g	1-3	0-0	0-0	0	4	4	2	2	1	3	0	1	15
33	NORMAN,MANDY	g	0-3	0-1	0-0	0	2	2	1	0	1	1	0	0	15
01	BACA,ERICA		0-0	0-0	0-0	0	0	0	0	0	0	0	0	0	6
03	GIBSON,MACY		2-4	0-0	1-1	0	3	3	5	5	0	1	0	0	22
10	EATON,EMILY		0-0	0-0	0-0	0	1	1	0	0	0	1	0	0	5
11	GILMORE,KIERRA		4-11	2-5	1-2	0	1	1	3	11	4	3	0	3	26
12	GILMORE,DIERRA		1-4	0-3	3-4	0	2	2	4	5	2	0	0	4	23
13	CATLETT,ASHLEY		0-2	0-0	0-0	0	0	0	1	0	0	0	0	0	3
TEAM						0	2	2	0		1				
Totals			8-27	2-8	5-6	1	13	14	8		4	7	0	6	

FG %	Half:	8-27	29.6%
3FG %	Half:	2-8	25.0%
FT %	Half:	5-6	83.3%

Harding 29 • 6-4, 2-2 GAC

##	Player	Total FG-FGA	3-Ptr FG-FGA	FT-FTA	Rebounds			PF	TP	A	TO	Blk	Stl	Min	
					Off	Def	Tot								
00	LEWIS,MONTANA	g	4-10	0-1	3-3	4	1	5	3	11	3	2	0	1	30
05	HOLMES,SHANA	g	1-12	1-7	3-4	1	2	3	2	6	1	4	0	1	35
10	HANEY,TABITHA	g	3-7	2-5	0-0	0	2	2	3	8	2	1	0	0	20
32	SAUNDERS,ARIELLE	f	4-7	0-0	2-5	1	8	9	4	10	1	1	2	1	39
40	CELSOR,KRISTEN	f	3-9	2-4	0-2	3	12	15	3	8	1	3	0	2	36
11	CRENSHAW,LAUREN		2-5	1-4	4-4	1	1	2	1	9	1	3	0	0	22
15	ISAAC-BOYCE,D		3-7	0-0	2-4	4	3	7	3	8	1	2	0	3	17
23	STRICKLAND,ANNA		0-0	0-0	0-0	0	0	0	0	0	0	1	0	0	3
TEAM						1	4	5	0		1				
Totals			10-29	4-13	5-8	6	18	24	7		6	9	2	3	

FG %	Half:	10-29	34.5%
3FG %	Half:	4-13	30.8%
FT %	Half:	5-8	62.5%

Officials: Rusty Gilbert, Montrel Simmons and Heather Hawk
 Technical Fouls: NW Oklahoma State- None. Harding- None.

	In	Off	2nd	Fast	
Points	Paint	T/O	Chance	Break	Bench
NW Oklahoma State	12	12	2	4	11
Harding	10	7	7	0	6

Score tied - 0 times
 Lead changed - 0 times

NW Oklahoma State vs Harding

1/5/2013; 2 p.m. at Searcy, Ark. (Rhodes Field House)

Period 1 Play-By-Play

HOME: Harding	Time	Score	Margin	VISITORS: NW Oklahoma State
	19:48			MISSED LAYUP by SAUNDERS,ARIELLE
	19:48			REBOUND (OFF) by CELSOR,KRISTEN
	19:44			MISSED JUMPER by HOLMES,SHANA
REBOUND (DEF) by TEAM	19:44			
TURNOVER by TEAM	19:10			
	19:00	3-0	H 3	GOOD! 3PTR by HANEY,TABITHA
	19:00			ASSIST by HOLMES,SHANA
TURNOVER by SIMMONS,TITANIA	18:42			
	18:23			MISSED JUMPER by SAUNDERS,ARIELLE
REBOUND (DEF) by SIMMONS,TITANIA	18:23			
MISSED LAYUP by NORMAN,MANDY	18:04			
	18:04			REBOUND (DEF) by CELSOR,KRISTEN
	17:49	5-0	H 5	GOOD! LAYUP by LEWIS,MONTANA
FOUL by NORMAN,MANDY	17:33			
TURNOVER by NORMAN,MANDY	17:33			
	17:20			MISSED 3PTR by HANEY,TABITHA
REBOUND (DEADB) by TEAM	17:20			
	17:15			FOUL by SAUNDERS,ARIELLE
MISSED LAYUP by NORMAN,MANDY	16:59			
	16:59			REBOUND (DEF) by HANEY,TABITHA
	16:36	7-0	H 7	GOOD! JUMPER by LEWIS,MONTANA
	16:36			ASSIST by CELSOR,KRISTEN
TURNOVER by NEWSOME,LAPARIS	16:15			
	16:13			STEAL by CELSOR,KRISTEN
	16:12			MISSED LAYUP by CELSOR,KRISTEN
REBOUND (DEF) by NEWSOME,LAPARIS	16:12			
TURNOVER by GOLLIDAY,RENEE	16:03			
SUB IN: GILMORE,DIERRA	16:03			
SUB OUT: NORMAN,MANDY	16:03			
FOUL by NEWSOME,LAPARIS	15:53			
	15:53			TIMEOUT media
	15:53	8-0	H 8	GOOD! FT by HOLMES,SHANA
	15:53	9-0	H 9	GOOD! FT by HOLMES,SHANA
MISSED 3PTR by SIMMONS,TITANIA	15:32			
	15:32			REBOUND (DEF) by TEAM
SUB IN: GILMORE,KIERRA	15:29			
SUB OUT: NEWSOME,LAPARIS	15:29			
	15:16	12-0	H 12	GOOD! 3PTR by HANEY,TABITHA
	15:16			ASSIST by SAUNDERS,ARIELLE
MISSED JUMPER by GILMORE,KIERRA	14:44			
	14:44			REBOUND (DEF) by SAUNDERS,ARIELLE
FOUL by GILMORE,KIERRA	14:41			
SUB IN: GIBSON,MACY	14:41			
SUB OUT: GOLLIDAY,RENEE	14:41			
	14:26			TURNOVER by HANEY,TABITHA
MISSED LAYUP by SIMMONS,TITANIA	14:08			
	14:08			REBOUND (DEF) by CELSOR,KRISTEN
	13:59			MISSED 3PTR by HANEY,TABITHA

REBOUND (DEF) by GILMORE,KIERRA	13:59			
GOOD! LAYUP by GILMORE,KIERRA	13:51	12-2	H 10	
	13:43			MISSED 3PTR by LEWIS,MONTANA
REBOUND (DEF) by GREGORY,JONNA	13:43			
GOOD! LAYUP by SIMMONS,TITANIA	13:35	12-4	H 8	
ASSIST by GILMORE,KIERRA	13:35			
FOUL by GILMORE,DIERRA	13:26			
	13:26			SUB IN: ISAAC-BOYCE,D
	13:26			SUB IN: CRENSHAW,LAUREN
	13:26			SUB OUT: HOLMES,SHANA
	13:26			SUB OUT: HANEY,TABITHA
	13:10			TURNOVER by LEWIS,MONTANA
STEAL by GILMORE,DIERRA	13:08			
	13:04			FOUL by CELSOR,KRISTEN
GOOD! FT by GREGORY,JONNA	13:04	12-5	H 7	
GOOD! FT by GREGORY,JONNA	13:04	12-6	H 6	
SUB IN: CATLETT,ASHLEY	13:04			
SUB OUT: SIMMONS,TITANIA	13:04			
	12:55			MISSED 3PTR by CRENSHAW,LAUREN
	12:55			REBOUND (OFF) by SAUNDERS,ARIELLE
	12:51	14-6	H 8	GOOD! LAYUP by SAUNDERS,ARIELLE
MISSED LAYUP by GILMORE,KIERRA	12:43			
	12:43			REBOUND (DEF) by SAUNDERS,ARIELLE
	12:28			MISSED JUMPER by LEWIS,MONTANA
	12:28			REBOUND (OFF) by ISAAC-BOYCE,D
	12:24	16-6	H 10	GOOD! LAYUP by ISAAC-BOYCE,D
MISSED LAYUP by GREGORY,JONNA	12:04			
	12:04			BLOCK by SAUNDERS,ARIELLE
REBOUND (OFF) by GREGORY,JONNA	12:03			
	12:02			FOUL by LEWIS,MONTANA
GOOD! FT by GREGORY,JONNA	12:02	16-7	H 9	
GOOD! FT by GREGORY,JONNA	12:02	16-8	H 8	
	12:02			SUB IN: HOLMES,SHANA
	12:02			SUB OUT: LEWIS,MONTANA
	11:47			FOUL by CELSOR,KRISTEN
	11:47			TURNOVER by CELSOR,KRISTEN
TIMEOUT MEDIA	11:47			
MISSED LAYUP by GREGORY,JONNA	11:35			
	11:35			REBOUND (DEF) by SAUNDERS,ARIELLE
FOUL by GIBSON,MACY	11:12			
	11:12			MISSED FT by ISAAC-BOYCE,D
	11:12			REBOUND (DEADB) by TEAM
	11:12	17-8	H 9	GOOD! FT by ISAAC-BOYCE,D
MISSED LAYUP by CATLETT,ASHLEY	11:02			
	11:02			REBOUND (DEF) by ISAAC-BOYCE,D
SUB IN: SIMMONS,TITANIA	10:50			
SUB OUT: CATLETT,ASHLEY	10:50			
	10:43			TURNOVER by HOLMES,SHANA
STEAL by GILMORE,KIERRA	10:41			
TURNOVER by GILMORE,KIERRA	10:39			
	10:38			STEAL by HOLMES,SHANA
	10:31			MISSED 3PTR by HOLMES,SHANA
REBOUND (DEF) by GIBSON,MACY	10:31			
MISSED 3PTR by GILMORE,DIERRA	10:21			

	10:21			REBOUND (DEADB) by TEAM
	10:02			MISSED 3PTR by HOLMES,SHANA
	10:02			REBOUND (OFF) by ISAAC-BOYCE,D
	09:58	20-8	H 12	GOOD! 3PTR by CRENSHAW,LAUREN
	09:58			ASSIST by ISAAC-BOYCE,D
GOOD! LAYUP by GILMORE,DIERRA	09:32	20-10	H 10	
	09:12	23-10	H 13	GOOD! 3PTR by HOLMES,SHANA
	09:12			ASSIST by LEWIS,MONTANA
MISSED LAYUP by SIMMONS,TITANIA	08:42			
	08:42			REBOUND (DEF) by SAUNDERS,ARIELLE
	08:32			MISSED LAYUP by HOLMES,SHANA
REBOUND (DEF) by GIBSON,MACY	08:32			
MISSED 3PTR by GILMORE,DIERRA	08:16			
	08:16			REBOUND (DEF) by ISAAC-BOYCE,D
	08:09			TURNOVER by ISAAC-BOYCE,D
STEAL by GILMORE,DIERRA	08:07			
GOOD! 3PTR by GILMORE,KIERRA	07:42	23-13	H 10	
ASSIST by GILMORE,DIERRA	07:42			
FOUL by GILMORE,KIERRA	07:27			
	07:27			TIMEOUT MEDIA
SUB IN: GOLLIDAY,RENEE	07:27			
SUB IN: NORMAN,MANDY	07:27			
SUB IN: EATON,EMILY	07:27			
SUB OUT: GREGORY,JONNA	07:27			
SUB OUT: GILMORE,DIERRA	07:27			
SUB OUT: GILMORE,KIERRA	07:27			
	07:27			SUB IN: STRICKLAND,ANNA
	07:27			SUB IN: HANEY,TABITHA
	07:27			SUB OUT: CELSOR,KRISTEN
	07:27			SUB OUT: CRENSHAW,LAUREN
	07:11			MISSED 3PTR by HOLMES,SHANA
REBOUND (DEF) by TEAM	07:11			
	06:56			FOUL by HOLMES,SHANA
MISSED LAYUP by GOLLIDAY,RENEE	06:35			
	06:35			BLOCK by SAUNDERS,ARIELLE
	06:33			REBOUND (DEF) by TEAM
	06:07			MISSED JUMPER by ISAAC-BOYCE,D
REBOUND (DEF) by EATON,EMILY	06:07			
TURNOVER by EATON,EMILY	06:03			
	06:00			STEAL by SAUNDERS,ARIELLE
	05:58	25-13	H 12	GOOD! LAYUP by SAUNDERS,ARIELLE
	05:47			FOUL by HANEY,TABITHA
	05:47			SUB IN: CRENSHAW,LAUREN
	05:47			SUB OUT: ISAAC-BOYCE,D
MISSED JUMPER by SIMMONS,TITANIA	05:35			
	05:35			REBOUND (DEF) by SAUNDERS,ARIELLE
	05:15			TURNOVER by STRICKLAND,ANNA
STEAL by SIMMONS,TITANIA	05:14			
GOOD! LAYUP by GOLLIDAY,RENEE	05:01	25-15	H 10	
ASSIST by NORMAN,MANDY	05:01			
	04:43			MISSED LAYUP by SAUNDERS,ARIELLE
REBOUND (DEF) by NORMAN,MANDY	04:43			
MISSED 3PTR by NORMAN,MANDY	04:25			
	04:25			REBOUND (DEF) by TEAM

SUB IN: NORMAN,MANDY	00:15			
SUB IN: NEWSOME,LAPARIS	00:15			
SUB OUT: SIMMONS,TITANIA	00:15			
SUB OUT: GREGORY,JONNA	00:15			
GOOD! LAYUP by NEWSOME,LAPARIS	00:03	29-23		H 6

NW Oklahoma State 23, Harding 29

Period 1-only	In Paint	Off T/O	2nd Chance	Fast Break	Bench	
NW Oklahoma State	12	12	2	4	11	Score tied - 0 times
Harding	10	7	7	0	6	Lead changed - 0 times

Official Basketball Box Score -- Game Totals -- Second Half Statistics

NW Oklahoma State vs Harding

1/5/2013 2 p.m. at Searcy, Ark. (Rhodes Field House)

NW Oklahoma State 23 • 3-7, 2-2 GAC

##	Player	Total FG-FGA	3-Ptr FG-FGA	FT-FTA	Rebounds			PF	TP	A	TO	Blk	Stl	Min	
					Off	Def	Tot								
04	GREGORY,JONNA	f	1-7	0-1	5-6	2	2	4	2	7	0	2	0	1	31
05	GOLLIDAY,RENEE	g	3-5	0-0	0-0	1	3	4	0	6	0	1	0	0	17
22	SIMMONS,TITANIA	f	2-11	1-3	5-7	1	2	3	1	10	0	2	0	2	37
25	NEWSOME,LAPARIS	g	1-3	0-0	0-0	0	4	4	2	2	1	3	0	1	15
33	NORMAN,MANDY	g	0-3	0-1	0-0	0	2	2	1	0	1	1	0	0	15
01	BACA,ERICA		0-0	0-0	0-0	0	0	0	0	0	0	0	0	0	6
03	GIBSON,MACY		2-4	0-0	1-1	0	3	3	5	5	0	1	0	0	22
10	EATON,EMILY		0-0	0-0	0-0	0	1	1	0	0	0	1	0	0	5
11	GILMORE,KIERRA		4-11	2-5	1-2	0	1	1	3	11	4	3	0	3	26
12	GILMORE,DIERRA		1-4	0-3	3-4	0	2	2	4	5	2	0	0	4	23
13	CATLETT,ASHLEY		0-2	0-0	0-0	0	0	0	1	0	0	0	0	0	3
TEAM						1	1	2	0		0				
Totals			6-23	1-5	10-14	4	10	14	11		4	8	0	5	

FG %	Half:	6-23	26.1%
3FG %	Half:	1-5	25.0%
FT %	Half:	10-14	71.4%

Harding 31 • 6-4, 2-2 GAC

##	Player	Total FG-FGA	3-Ptr FG-FGA	FT-FTA	Rebounds			PF	TP	A	TO	Blk	Stl	Min	
					Off	Def	Tot								
00	LEWIS,MONTANA	g	4-10	0-1	3-3	4	1	5	3	11	3	2	0	1	30
05	HOLMES,SHANA	g	1-12	1-7	3-4	1	2	3	2	6	1	4	0	1	35
10	HANEY,TABITHA	g	3-7	2-5	0-0	0	2	2	3	8	2	1	0	0	20
32	SAUNDERS,ARIELLE	f	4-7	0-0	2-5	1	8	9	4	10	1	1	2	1	39
40	CELSOR,KRISTEN	f	3-9	2-4	0-2	3	12	15	3	8	1	3	0	2	36
11	CRENSHAW,LAUREN		2-5	1-4	4-4	1	1	2	1	9	1	3	0	0	22
15	ISAAC-BOYCE,D		3-7	0-0	2-4	4	3	7	3	8	1	2	0	3	17
23	STRICKLAND,ANNA		0-0	0-0	0-0	0	0	0	0	0	0	1	0	0	3
TEAM						0	1	1	0		1				
Totals			10-28	2-8	9-14	9	16	25	12		4	10	0	5	

FG %	Half:	10-28	35.7%
3FG %	Half:	2-8	30.8%
FT %	Half:	9-14	64.3%

Officials: Rusty Gilbert, Montrel Simmons and Heather Hawk
 Technical Fouls: NW Oklahoma State- None. Harding- None.

	In	Off	2nd	Fast	
Points	Paint	T/O	Chance	Break	Bench
NW Oklahoma State	10	2	5	0	10
Harding	10	6	8	2	11

Score tied - 0 times
 Lead changed - 0 times

NW Oklahoma State vs Harding

1/5/2013; 2 p.m. at Searcy, Ark. (Rhodes Field House)

Period 2 Play-By-Play

HOME: Harding	Time	Score	Margin	VISITORS: NW Oklahoma State
SUB IN: GIBSON,MACY	20:00			
SUB IN: GILMORE,DIERRA	20:00			
SUB IN: GILMORE,KIERRA	20:00			
SUB OUT: GOLLIDAY,RENEE	20:00			
SUB OUT: NEWSOME,LAPARIS	20:00			
SUB OUT: NORMAN,MANDY	20:00			
	19:36			MISSED 3PTR by HOLMES,SHANA
REBOUND (DEF) by GIBSON,MACY	19:36			
MISSED LAYUP by GIBSON,MACY	19:15			
	19:15			REBOUND (DEF) by CELSOR,KRISTEN
	18:51			MISSED JUMPER by CELSOR,KRISTEN
	18:51			REBOUND (OFF) by LEWIS,MONTANA
	18:45	31-23	H 8	GOOD! JUMPER by LEWIS,MONTANA
MISSED LAYUP by GREGORY,JONNA	18:25			
	18:25			REBOUND (DEF) by HANEY,TABITHA
	18:17			MISSED LAYUP by HOLMES,SHANA
REBOUND (DEADB) by TEAM	18:17			
MISSED LAYUP by SIMMONS,TITANIA	17:45			
REBOUND (OFF) by GREGORY,JONNA	17:45			
	17:40			FOUL by HANEY,TABITHA
MISSED JUMPER by GREGORY,JONNA	17:36			
	17:36			REBOUND (DEF) by SAUNDERS,ARIELLE
	17:10	34-23	H 11	GOOD! 3PTR by CELSOR,KRISTEN
	17:10			ASSIST by HANEY,TABITHA
SUB IN: NEWSOME,LAPARIS	16:41			
SUB OUT: GIBSON,MACY	16:41			
MISSED 3PTR by GILMORE,KIERRA	16:36			
	16:36			REBOUND (DEF) by CELSOR,KRISTEN
	16:13			MISSED 3PTR by HANEY,TABITHA
	16:13			REBOUND (OFF) by HOLMES,SHANA
	16:08			MISSED LAYUP by HOLMES,SHANA
REBOUND (DEF) by NEWSOME,LAPARIS	16:08			
MISSED 3PTR by GILMORE,DIERRA	15:59			
	15:59			REBOUND (DEF) by CELSOR,KRISTEN
FOUL by GILMORE,DIERRA	15:55			
	15:55			TIMEOUT MEDIA
SUB IN: NORMAN,MANDY	15:55			
SUB OUT: GREGORY,JONNA	15:55			
SUB OUT: NEWSOME,LAPARIS	15:55			
SUB OUT: SIMMONS,TITANIA	15:55			
SUB OUT: GILMORE,DIERRA	15:55			
SUB OUT: GILMORE,KIERRA	15:55			
	15:55			SUB IN: CRENSHAW,LAUREN
	15:55			SUB OUT: LEWIS,MONTANA
	15:55			SUB OUT: HOLMES,SHANA
	15:55			SUB OUT: HANEY,TABITHA
	15:55			SUB OUT: SAUNDERS,ARIELLE
	15:55			SUB OUT: CELSOR,KRISTEN

	15:30	37-23	H 14	GOOD! 3PTR by CELSOR,KRISTEN
	15:30			ASSIST by HANEY,TABITHA
TURNOVER by GREGORY,JONNA	15:16			
	15:16			STEAL by CELSOR,KRISTEN
FOUL by GREGORY,JONNA	15:06			
	15:00			TURNOVER by CRENSHAW,LAUREN
MISSED 3PTR by GREGORY,JONNA	14:55			
	14:55			REBOUND (DEF) by CELSOR,KRISTEN
	14:34			TIMEOUT 30SEC
SUB IN: GIBSON,MACY	14:34			
	14:30	39-23	H 16	GOOD! JUMPER by HANEY,TABITHA
GOOD! LAYUP by GIBSON,MACY	14:17	39-25	H 14	
	14:17			FOUL by LEWIS,MONTANA
GOOD! FT by GIBSON,MACY	14:17	39-26	H 13	
SUB IN: GILMORE,DIERRA	14:17			
SUB OUT: NORMAN,MANDY	14:17			
	14:05	41-26	H 15	GOOD! LAYUP by LEWIS,MONTANA
	14:05			ASSIST by CRENSHAW,LAUREN
FOUL by GIBSON,MACY	14:05			
	14:05	42-26	H 16	GOOD! FT by LEWIS,MONTANA
MISSED LAYUP by GIBSON,MACY	13:47			
	13:47			REBOUND (DEF) by CRENSHAW,LAUREN
	13:42			TURNOVER by CRENSHAW,LAUREN
STEAL by GILMORE,KIERRA	13:41			
	13:41			FOUL by CELSOR,KRISTEN
SUB IN: BACA,ERICA	13:41			
	13:41			SUB IN: ISAAC-BOYCE,D
	13:41			SUB IN: HOLMES,SHANA
	13:41			SUB OUT: CRENSHAW,LAUREN
MISSED LAYUP by NEWSOME,LAPARIS	13:29			
	13:29			REBOUND (DEF) by TEAM
	13:06			TURNOVER by HOLMES,SHANA
	13:00			TURNOVER by HOLMES,SHANA
TURNOVER by GIBSON,MACY	12:48			
	12:47			STEAL by LEWIS,MONTANA
	12:44			TURNOVER by LEWIS,MONTANA
STEAL by NEWSOME,LAPARIS	12:42			
MISSED LAYUP by SIMMONS,TITANIA	12:33			
	12:33			REBOUND (DEF) by CELSOR,KRISTEN
FOUL by GIBSON,MACY	12:21			
	12:21	43-26	H 17	GOOD! FT by ISAAC-BOYCE,D
	12:21			MISSED FT by ISAAC-BOYCE,D
REBOUND (DEF) by GREGORY,JONNA	12:21			
SUB IN: CATLETT,ASHLEY	12:21			
SUB IN: GREGORY,JONNA	12:21			
SUB OUT: GIBSON,MACY	12:21			
MISSED LAYUP by NEWSOME,LAPARIS	12:12			
	12:12			REBOUND (DEF) by CELSOR,KRISTEN
	11:46			MISSED JUMPER by LEWIS,MONTANA
	11:46			REBOUND (OFF) by ISAAC-BOYCE,D
	11:41			MISSED LAYUP by ISAAC-BOYCE,D
	11:41			REBOUND (OFF) by CELSOR,KRISTEN
	11:36			MISSED LAYUP by CELSOR,KRISTEN
REBOUND (DEF) by NEWSOME,LAPARIS	11:36			

MISSED LAYUP by CATLETT,ASHLEY	11:33			
	11:33			REBOUND (DEF) by LEWIS,MONTANA
	11:29			TIMEOUT 30SEC
	11:18	45-26	H 19	GOOD! LAYUP by SAUNDERS,ARIELLE
	11:18			ASSIST by LEWIS,MONTANA
FOUL by GILMORE,DIERRA	11:18			
	11:18			TIMEOUT MEDIA
	11:18			MISSED FT by SAUNDERS,ARIELLE
	11:18			REBOUND (OFF) by LEWIS,MONTANA
SUB IN: GILMORE,KIERRA	11:18			
SUB OUT: GILMORE,DIERRA	11:18			
	11:05			MISSED LAYUP by HANEY,TABITHA
	11:05			REBOUND (OFF) by LEWIS,MONTANA
FOUL by GREGORY,JONNA	10:57			
FOUL by CATLETT,ASHLEY	10:57			
	10:57	46-26	H 20	GOOD! FT by LEWIS,MONTANA
	10:57	47-26	H 21	GOOD! FT by LEWIS,MONTANA
SUB IN: SIMMONS,TITANIA	10:57			
SUB OUT: CATLETT,ASHLEY	10:57			
	10:57			SUB IN: HANEY,TABITHA
TURNOVER by NEWSOME,LAPARIS	10:48			
	10:46			STEAL by ISAAC-BOYCE,D
	10:38	49-26	H 23	GOOD! JUMPER by ISAAC-BOYCE,D
GOOD! LAYUP by GREGORY,JONNA	10:20	49-28	H 21	
ASSIST by GILMORE,KIERRA	10:20			
	10:02			TIMEOUT 30SEC
	09:44			TURNOVER by TEAM
	09:32			FOUL by HANEY,TABITHA
SUB IN: NORMAN,MANDY	09:32			
	09:32			SUB IN: SAUNDERS,ARIELLE
	09:32			SUB OUT: HANEY,TABITHA
TURNOVER by SIMMONS,TITANIA	09:28			
	09:27			STEAL by ISAAC-BOYCE,D
	09:22			MISSED LAYUP by CELSOR,KRISTEN
	09:22			REBOUND (OFF) by LEWIS,MONTANA
	09:19			MISSED LAYUP by LEWIS,MONTANA
REBOUND (DEF) by NORMAN,MANDY	09:19			
	09:08			FOUL by ISAAC-BOYCE,D
GOOD! FT by SIMMONS,TITANIA	09:08	49-29	H 20	
GOOD! FT by SIMMONS,TITANIA	09:08	49-30	H 19	
	09:08			SUB IN: CRENSHAW,LAUREN
	08:45			MISSED 3PTR by CRENSHAW,LAUREN
REBOUND (DEF) by GOLLIDAY,RENEE	08:45			
TURNOVER by GILMORE,KIERRA	08:33			
	08:19	51-30	H 21	GOOD! LAYUP by CELSOR,KRISTEN
GOOD! LAYUP by GOLLIDAY,RENEE	08:05	51-32	H 19	
ASSIST by GILMORE,KIERRA	08:05			
TIMEOUT 30SEC	08:02			
	07:53			TURNOVER by HOLMES,SHANA
STEAL by GREGORY,JONNA	07:50			
MISSED LAYUP by GREGORY,JONNA	07:49			
	07:49			REBOUND (DEF) by ISAAC-BOYCE,D
	07:43			MISSED JUMPER by ISAAC-BOYCE,D
REBOUND (DEF) by GOLLIDAY,RENEE	07:43			

MISSED 3PTR by GILMORE,KIERRA	07:24				
	07:24			REBOUND (DEF) by CELSOR,KRISTEN	
	07:12			TIMEOUT MEDIA	
SUB IN: GIBSON,MACY	07:12				
SUB IN: GOLLIDAY,RENEE	07:12				
SUB OUT: BACA,ERICA	07:12				
SUB OUT: GREGORY,JONNA	07:12				
	06:57			FOUL by ISAAC-BOYCE,D	
	06:57			TURNOVER by ISAAC-BOYCE,D	
TURNOVER by GILMORE,KIERRA	06:38				
	06:38			SUB IN: LEWIS,MONTANA	
	06:38			SUB OUT: ISAAC-BOYCE,D	
	06:20			MISSED 3PTR by CELSOR,KRISTEN	
REBOUND (DEF) by GOLLIDAY,RENEE	06:20				
GOOD! LAYUP by GIBSON,MACY	05:53	51-34	H 17		
ASSIST by GILMORE,KIERRA	05:53				
	05:38			TURNOVER by SAUNDERS,ARIELLE	
STEAL by GILMORE,KIERRA	05:37				
	05:33			FOUL by SAUNDERS,ARIELLE	
MISSED FT by SIMMONS,TITANIA	05:33				
REBOUND (DEADB) by TEAM	05:33				
GOOD! FT by SIMMONS,TITANIA	05:33	51-35	H 16		
TIMEOUT 30SEC	05:32				
FOUL by GIBSON,MACY	05:14				
	05:14	52-35	H 17	GOOD! FT by CRENSHAW,LAUREN	
	05:14	53-35	H 18	GOOD! FT by CRENSHAW,LAUREN	
MISSED LAYUP by GOLLIDAY,RENEE	05:14				
REBOUND (OFF) by GOLLIDAY,RENEE	05:14				
GOOD! LAYUP by GILMORE,KIERRA	04:36	53-37	H 16		
	04:26	55-37	H 18	GOOD! JUMPER by CRENSHAW,LAUREN	
	03:57			FOUL by SAUNDERS,ARIELLE	
TIMEOUT MEDIA	03:57				
GOOD! FT by SIMMONS,TITANIA	03:57	55-38	H 17		
GOOD! FT by SIMMONS,TITANIA	03:57	55-39	H 16		
SUB IN: GILMORE,DIERRA	03:57				
SUB OUT: NORMAN,MANDY	03:57				
	03:31			MISSED JUMPER by LEWIS,MONTANA	
REBOUND (DEF) by TEAM	03:31				
MISSED LAYUP by GILMORE,KIERRA	03:11				
REBOUND (OFF) by SIMMONS,TITANIA	03:11				
	03:10			FOUL by HOLMES,SHANA	
MISSED FT by SIMMONS,TITANIA	03:10				
	03:10			REBOUND (DEF) by CELSOR,KRISTEN	
FOUL by GIBSON,MACY	02:58				
	02:58			MISSED FT by HOLMES,SHANA	
	02:58			REBOUND (DEADB) by TEAM	
	02:58	56-39	H 17	GOOD! FT by HOLMES,SHANA	
SUB IN: GREGORY,JONNA	02:58				
SUB OUT: GIBSON,MACY	02:58				
TURNOVER by GREGORY,JONNA	02:56				
	02:40			MISSED 3PTR by HOLMES,SHANA	
	02:40			REBOUND (OFF) by CRENSHAW,LAUREN	
FOUL by GILMORE,KIERRA	02:36				
	02:36	57-39	H 18	GOOD! FT by CRENSHAW,LAUREN	

	02:36	58-39	H 19	GOOD! FT by CRENSHAW,LAUREN
SUB IN: NEWSOME,LAPARIS	02:36			
SUB OUT: GILMORE,KIERRA	02:36			
	02:28			FOUL by SAUNDERS,ARIELLE
GOOD! FT by GREGORY,JONNA	02:28	58-40	H 18	
MISSED FT by GREGORY,JONNA	02:28			
REBOUND (OFF) by TEAM	02:28			
GOOD! 3PTR by SIMMONS,TITANIA	02:24	58-43	H 15	
ASSIST by NEWSOME,LAPARIS	02:24			
TIMEOUT 30SEC	02:17			
	01:54			TURNOVER by CRENSHAW,LAUREN
STEAL by GILMORE,DIERRA	01:52			
	01:52			FOUL by LEWIS,MONTANA
GOOD! FT by GILMORE,DIERRA	01:52	58-44	H 14	
MISSED FT by GILMORE,DIERRA	01:52			
	01:52			REBOUND (DEF) by SAUNDERS,ARIELLE
	01:52			SUB IN: ISAAC-BOYCE,D
	01:52			SUB OUT: CRENSHAW,LAUREN
	01:24			MISSED 3PTR by CELSOR,KRISTEN
REBOUND (DEADB) by TEAM	01:24			
	01:15			FOUL by ISAAC-BOYCE,D
GOOD! FT by GILMORE,DIERRA	01:15	58-45	H 13	
GOOD! FT by GILMORE,DIERRA	01:15	58-46	H 12	
TIMEOUT 30SEC	01:15			
SUB IN: GILMORE,KIERRA	01:15			
SUB OUT: GOLLIDAY,RENEE	01:15			
FOUL by NEWSOME,LAPARIS	00:49			
	00:49			MISSED FT by CELSOR,KRISTEN
	00:49			REBOUND (DEADB) by TEAM
	00:49			MISSED FT by CELSOR,KRISTEN
REBOUND (DEF) by NEWSOME,LAPARIS	00:49			
MISSED LAYUP by SIMMONS,TITANIA	00:40			
	00:40			REBOUND (DEF) by CELSOR,KRISTEN
	00:13			MISSED LAYUP by ISAAC-BOYCE,D
	00:13			REBOUND (OFF) by ISAAC-BOYCE,D
	00:10	60-46	H 14	GOOD! LAYUP by ISAAC-BOYCE,D
TURNOVER by NEWSOME,LAPARIS	00:03			
	00:01			STEAL by ISAAC-BOYCE,D

NW Oklahoma State 46, Harding 60

Period 2-only	In Paint	Off T/O	2nd Chance	Fast Break	Bench	
NW Oklahoma State	10	2	5	0	10	Score tied - 0 times
Harding	10	6	8	2	11	Lead changed - 0 times

NW Oklahoma State vs Harding

1/5/2013; 2 p.m. at Searcy, Ark. (Rhodes Field House)

Scoring/Runs Reference

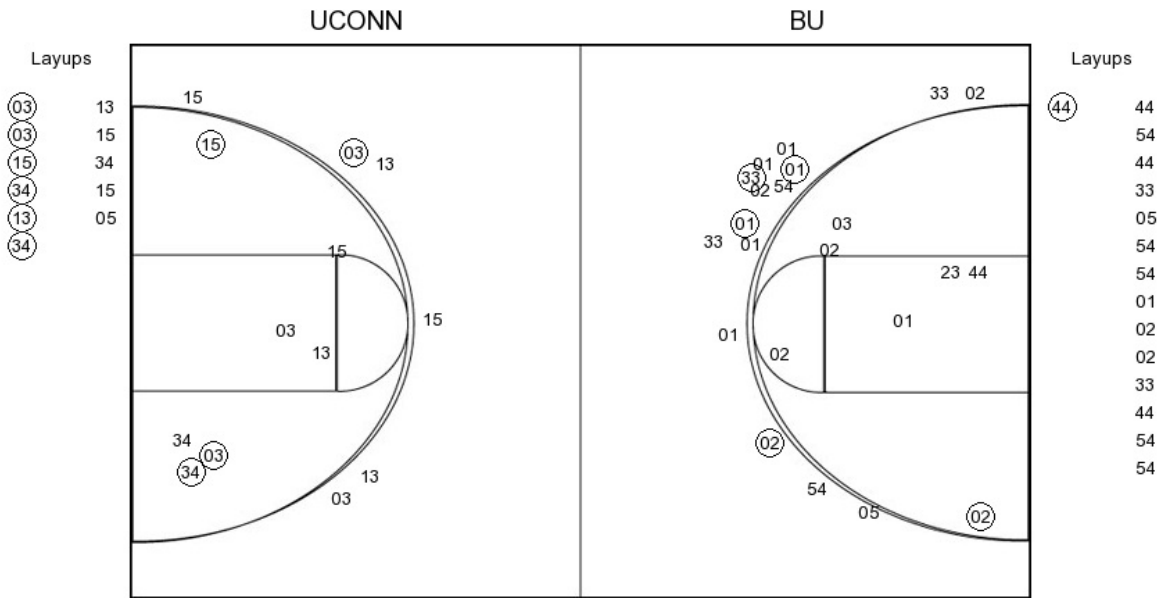
Period 1 Scoring			Period 2 Scoring		
NW Oklahoma State	Score	Harding	NW Oklahoma State	Score	Harding
	0-3 3	HANEY - 19:00		23-31 8	2 ^P LEWIS - 18:45
	0-5 5	LEWIS - 17:49		23-34 11	3 CELSOR - 17:10
	0-7 7	LEWIS - 16:36		23-37 14	3 CELSOR - 15:30
	0-8 8	HOLMES - 15:53		23-39 16	2 HANEY - 14:30
	0-9 9	HOLMES - 15:53	14:17 - GIBSON	2 ^P 25-39 14	
	0-12 12	HANEY - 15:16	14:17 - GIBSON	1 26-39 13	
13:51 - GILMORE	2 ^{PF} 2-12 10			26-41 15	2 ^{PF} LEWIS - 14:05
13:35 - SIMMONS	2 ^{PF} 4-12 8			26-42 16	1 LEWIS - 14:05
13:04 - GREGORY	1 5-12 7			26-43 17	1 ISAAC-BOYCE - 12:21
13:04 - GREGORY	1 6-12 6			26-45 19	2 ^P SAUNDERS - 11:18
	6-14 8	2 ^P SAUNDERS - 12:51		26-46 20	1 LEWIS - 10:57
	6-16 10	2 ^P ISAAC-BOYCE - 12:24		26-47 21	1 LEWIS - 10:57
12:02 - GREGORY	1 7-16 9			26-49 23	2 ISAAC-BOYCE - 10:38
12:02 - GREGORY	1 8-16 8		10:20 - GREGORY	2 ^P 28-49 21	
	8-17 9	1 ISAAC-BOYCE - 11:12	09:08 - SIMMONS	1 29-49 20	
	8-20 12	3 CRENSHAW - 09:58	09:08 - SIMMONS	1 30-49 19	
09:32 - GILMORE	2 ^P 10-20 10			30-51 21	2 ^P CELSOR - 08:19
	10-23 13	3 HOLMES - 09:12		32-51 19	2 ^P 08:05 - GOLLIDAY
07:42 - GILMORE	3 13-23 10		05:53 - GIBSON	2 ^P 34-51 17	
	13-25 12	2 ^P SAUNDERS - 05:58	05:33 - SIMMONS	1 35-51 16	
05:01 - GOLLIDAY	2 ^P 15-25 10			35-52 17	1 CRENSHAW - 05:14
02:49 - GOLLIDAY	2 ^P 17-25 8			35-53 18	1 CRENSHAW - 05:14
	17-27 10	2 ^P SAUNDERS - 02:38	04:36 - GILMORE	2 ^P 37-53 16	
02:21 - GILMORE	3 20-27 7			37-55 18	2 CRENSHAW - 04:26
02:08 - GILMORE	1 21-27 6		03:57 - SIMMONS	1 38-55 17	
	21-28 7	1 SAUNDERS - 01:56	03:57 - SIMMONS	1 39-55 16	
	21-29 8	1 SAUNDERS - 01:56		39-56 17	1 HOLMES - 02:58
00:03 - NEWSOME	2 ^P 23-29 6			39-57 18	1 CRENSHAW - 02:36
				39-58 19	1 CRENSHAW - 02:36
			02:28 - GREGORY	1 40-58 18	
			02:24 - SIMMONS	3 43-58 15	
			01:52 - GILMORE	1 44-58 14	
			01:15 - GILMORE	1 45-58 13	
			01:15 - GILMORE	1 46-58 12	
				46-60 14	2 ^P ISAAC-BOYCE - 00:10

NW Oklahoma State vs Harding

OFFICIAL SHOT CHART

1/5/2013 at Searcy, Ark. (Rhodes Field House)

PERIOD 2



NWOSUW PERIOD 2

FG Made	6
FG Attempted	23
3PFG Made	1
3PFG Attempted	5

HU PERIOD 2

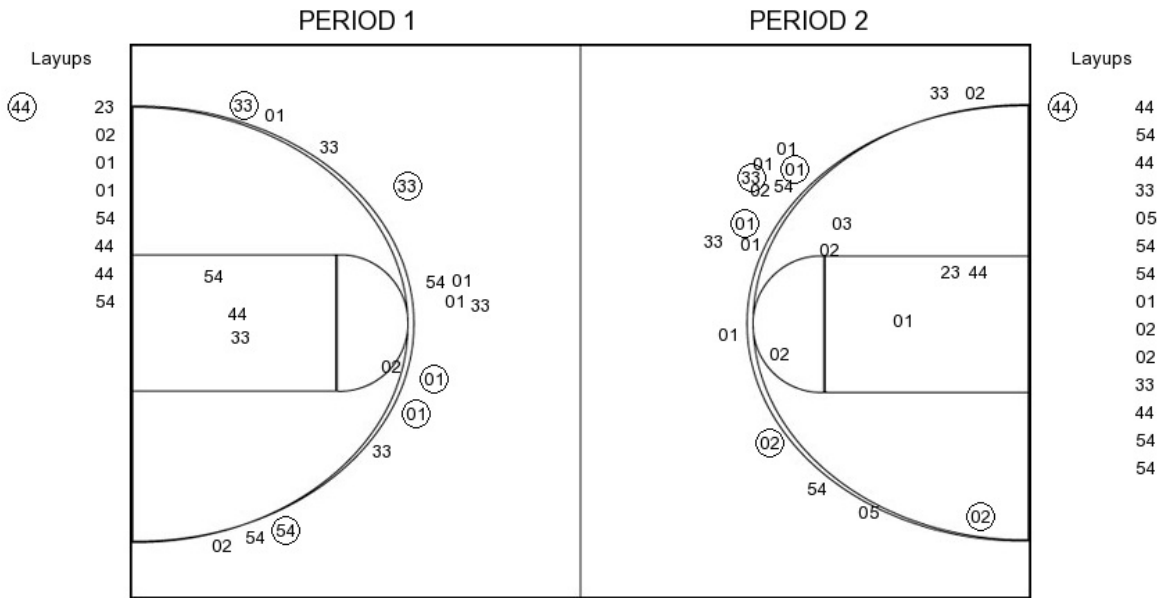
FG Made	10
FG Attempted	28
3PFG Made	2
3PFG Attempted	8

NW Oklahoma State vs Harding

OFFICIAL SHOT CHART

1/5/2013 at Searcy, Ark. (Rhodes Field House)

NW Oklahoma State



NWOSUW PERIOD 1

FG Made	8
FG Attempted	27
3PFG Made	2
3PFG Attempted	8

NWOSUW PERIOD 2

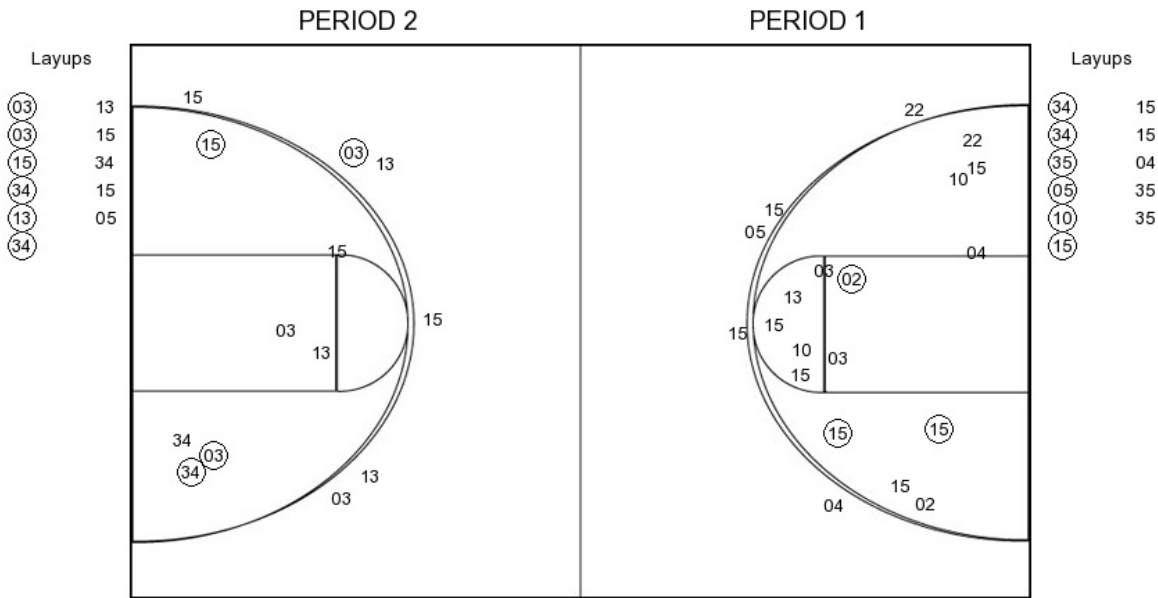
FG Made	6
FG Attempted	23
3PFG Made	1
3PFG Attempted	5

NW Oklahoma State vs Harding

OFFICIAL SHOT CHART

1/5/2013 at Searcy, Ark. (Rhodes Field House)

Harding



HU PERIOD 1

FG Made	10
FG Attempted	29
3PFG Made	4
3PFG Attempted	13

HU PERIOD 2

FG Made	10
FG Attempted	28
3PFG Made	2
3PFG Attempted	8