



# HARDING VS. MISSOURI SOUTHERN

12/15/2012  
Searcy, Ark. (Rhodes Field House)

## FINAL STATS

**Harding**  
(4-4)

**72**

**Missouri Southern St**  
(6-3)

**53**

**Official Basketball Box Score -- Game Totals -- Final Statistics**  
**Missouri Southern St vs Harding**  
**12/15/2012 2 p.m. at Searcy, Ark. (Rhodes Field House)**

**Missouri Southern St 53 - 6-3**

##	Player	g	Total			3-Ptr			Rebounds			PF	TP	A	TO	Blk	Stl	Min
			FG-FGA	FG-FGA	FT-FTA	FG-FGA	FG-FGA	FT-FTA	Off	Def	Tot							
01	TENBERGE,JOHNNA	g	0-3	0-1	0-0	0	1	1	1	0	1	4	0	1	4	0	1	17
22	SHARP,JOLEE	g	0-1	0-1	0-0	0	1	1	3	0	0	0	0	0	0	0	0	4
23	SINGLETON,TEE	g	1-2	0-1	1-2	1	1	2	0	3	0	4	0	4	0	2	22	
25	SOYEZ,SAMANTHA	f	1-4	0-2	0-0	1	2	3	1	2	0	4	1	1	1	1	19	
34	CLAY,SHONTE	f	3-7	0-0	0-1	2	0	2	3	6	0	2	0	1	0	1	21	
04	HARTZOG,NICOLE		1-7	0-2	5-6	1	4	5	4	7	1	5	0	5	5	26		
13	HANNA,KRISTEN		1-1	0-0	0-0	0	1	1	2	2	1	0	0	0	0	5		
21	RICE,ERIN		3-8	1-1	3-3	2	1	3	3	10	0	1	0	1	1	23		
33	STONE,SHATARA		4-8	0-0	2-2	2	3	5	2	10	3	3	0	1	22			
44	JONES,SHARESE		2-7	0-2	5-6	1	2	3	2	9	0	1	0	0	29			
53	MOSLEY,DOMINIQUE		2-3	0-0	0-1	1	0	1	0	4	0	1	1	0	12			
TEAM						1	6	7	0		0							
Totals			18-51	1-10	16-21	12	22	34	21	53	6	25	2	12	200			

FG %	1st Half:	5-21	23.8%	2nd Half:	13-30	43.3%	Game:	18-51	35.3%	Deadball
3FG %	1st Half:	0-6	00.0%	2nd Half:	1-4	25.0%	Game:	1-10	10.0%	Rebounds
FT %	1st Half:	8-11	72.7%	2nd Half:	8-10	80.0%	Game:	16-21	76.2%	3,0

**Harding 72 - 4-4**

##	Player	g	Total			3-Ptr			Rebounds			PF	TP	A	TO	Blk	Stl	Min
			FG-FGA	FG-FGA	FT-FTA	FG-FGA	FG-FGA	FT-FTA	Off	Def	Tot							
00	LEWIS,MONTANA	g	0-6	0-0	2-3	2	2	4	3	2	1	1	0	1	24			
05	HOLMES,SHANA	g	1-6	1-1	5-6	0	2	2	2	8	2	5	0	3	24			
10	HANEY,TABITHA	g	0-1	0-1	0-0	1	0	1	0	0	2	3	0	0	19			
32	SAUNDERS,ARIELLE	f	4-8	0-1	2-3	4	6	10	3	10	5	2	4	6	35			
40	CELSOR,KRISTEN	f	12-18	1-3	8-8	1	5	6	3	33	3	3	1	6	31			
01	BROWN,MICHAELA		2-3	1-2	2-2	1	2	3	0	7	1	1	0	1	18			
11	CRENSHAW,LAUREN		2-4	2-3	0-0	0	1	1	4	6	1	0	0	0	12			
13	WIEDOWER,KAYLEE		0-1	0-1	0-0	0	0	0	0	0	0	0	0	0	4			
15	ISAAC-BOYCE,D		2-2	0-0	0-2	0	2	2	2	4	2	1	0	0	20			
20	DUNN,KATIE		0-1	0-1	0-0	0	0	0	0	0	0	2	0	0	3			
21	HARRISON,LAUREN		0-1	0-0	0-0	0	0	0	0	0	0	0	0	0	3			
23	STRICKLAND,ANNA		0-0	0-0	2-4	0	0	0	1	2	0	0	1	0	4			
33	BRAMER,AMELIA		0-0	0-0	0-0	0	0	0	0	0	0	1	0	0	3			
TEAM						2	2	4	0		1							
Totals			23-51	5-13	21-28	11	22	33	18	72	17	20	6	17	200			

FG %	1st Half:	8-25	32.0%	2nd Half:	15-26	57.7%	Game:	23-51	45.1%	Deadball
3FG %	1st Half:	2-7	28.6%	2nd Half:	3-6	50.0%	Game:	5-13	38.5%	Rebounds
FT %	1st Half:	12-17	70.6%	2nd Half:	9-11	81.8%	Game:	21-28	75.0%	2,1

Officials: Carey Smith, Barry Hickingbotham and Tim Hackett  
 Technical Fouls: Missouri Southern St- None. Harding- None.  
 Attendance: 302

Score by periods	1st	2nd	Total
Missouri Southern St	18	35	<b>53</b>
Harding	30	42	<b>72</b>

	In	Off	2nd	Fast	
Points	Paint	T/O	Chance	Break	Bench
Missouri Southern St	32	16	13	6	42
Harding	36	26	13	10	19

Largest lead - Missouri Southern St by ;  
 Harding by 28 2nd-04:22

Score tied - 0 times  
 Lead changed - 0 times

Official Basketball Box Score -- Game Totals -- First Half Statistics  
 Missouri Southern St vs Harding  
 12/15/2012 2 p.m. at Searcy, Ark. (Rhodes Field House)

Missouri Southern St 18 • 6-3

##	Player	g	Total			3-Ptr			Rebounds			PF	TP	A	TO	Blk	Stl	Min
			FG-FGA	FG-FGA	FT-FTA	FG-FGA	FG-FGA	FT-FTA	Off	Def	Tot							
01	TENBERGE,JOHNNA	g	0-3	0-1	0-0	0	1	1	1	0	1	4	0	1	0	1	17	
22	SHARP,JOLEE	g	0-1	0-1	0-0	0	1	1	3	0	0	0	0	0	0	4		
23	SINGLETON,TEE	g	1-2	0-1	1-2	1	1	2	0	3	0	4	0	2	22			
25	SOYEZ,SAMANTHA	f	1-4	0-2	0-0	1	2	3	1	2	0	4	1	1	19			
34	CLAY,SHONTE	f	3-7	0-0	0-1	2	0	2	3	6	0	2	0	1	21			
04	HARTZOG,NICOLE		1-7	0-2	5-6	1	4	5	4	7	1	5	0	5	26			
13	HANNA,KRISTEN		1-1	0-0	0-0	0	1	1	2	2	1	0	0	0	5			
21	RICE,ERIN		3-8	1-1	3-3	2	1	3	3	10	0	1	0	1	23			
33	STONE,SHATARA		4-8	0-0	2-2	2	3	5	2	10	3	3	0	1	22			
44	JONES,SHARESE		2-7	0-2	5-6	1	2	3	2	9	0	1	0	0	29			
53	MOSLEY,DOMINIQUE		2-3	0-0	0-1	1	0	1	0	4	0	1	1	0	12			
TEAM						1	4	5	0		0							
Totals			5-21	0-6	8-11	4	14	18	12		1	13	2	5				
FG %			Half:			5-21			23.8%									
3FG %			Half:			0-6			00.0%									
FT %			Half:			8-11			72.7%									

Harding 30 • 4-4

##	Player	g	Total			3-Ptr			Rebounds			PF	TP	A	TO	Blk	Stl	Min
			FG-FGA	FG-FGA	FT-FTA	FG-FGA	FG-FGA	FT-FTA	Off	Def	Tot							
00	LEWIS,MONTANA	g	0-6	0-0	2-3	2	2	4	3	2	1	1	0	1	24			
05	HOLMES,SHANA	g	1-6	1-1	5-6	0	2	2	2	8	2	5	0	3	24			
10	HANEY,TABITHA	g	0-1	0-1	0-0	1	0	1	0	0	2	3	0	0	19			
32	SAUNDERS,ARIELLE	f	4-8	0-1	2-3	4	6	10	3	10	5	2	4	6	35			
40	CELSOR,KRISTEN	f	12-18	1-3	8-8	1	5	6	3	33	3	3	1	6	31			
01	BROWN,MICHAELA		2-3	1-2	2-2	1	2	3	0	7	1	1	0	1	18			
11	CRENSHAW,LAUREN		2-4	2-3	0-0	0	1	1	4	6	1	0	0	0	12			
13	WIEDOWER,KAYLEE		0-1	0-1	0-0	0	0	0	0	0	0	0	0	0	4			
15	ISAAC-BOYCE,D		2-2	0-0	0-2	0	2	2	2	4	2	1	0	0	20			
20	DUNN,KATIE		0-1	0-1	0-0	0	0	0	0	0	0	2	0	0	3			
21	HARRISON,LAUREN		0-1	0-0	0-0	0	0	0	0	0	0	0	0	0	3			
23	STRICKLAND,ANNA		0-0	0-0	2-4	0	0	0	1	2	0	0	1	0	4			
33	BRAMER,AMELIA		0-0	0-0	0-0	0	0	0	0	0	0	1	0	0	3			
TEAM						1	0	1	0		0							
Totals			8-25	2-7	12-17	6	12	18	8		5	8	2	9				
FG %			Half:			8-25			32.0%									
3FG %			Half:			2-7			28.6%									
FT %			Half:			12-17			70.6%									

Officials: Carey Smith, Barry Hickingbotham and Tim Hackett  
 Technical Fouls: Missouri Southern St- None. Harding- None.

	In	Off	2nd	Fast	
Points	Paint	T/O	Chance	Break	Bench
Missouri Southern St	10	4	4	4	15
Harding	12	9	9	2	8

Score tied - 0 times  
 Lead changed - 0 times

**Missouri Southern St vs Harding**  
**12/15/2012; 2 p.m. at Searcy, Ark. (Rhodes Field House)**  
**Period 1 Play-By-Play**

HOME: Harding	Time	Score	Margin	VISITORS: Missouri Southern St
TURNOVER by TENBERGE,JOHNNA	19:54			
	19:52			STEAL by HOLMES,SHANA
	19:49			MISSED LAYUP by HOLMES,SHANA
REBOUND (DEF) by SHARP,JOLEE	19:49			
TURNOVER by CLAY,SHONTE	19:39			
	19:37			STEAL by HOLMES,SHANA
	19:35			TURNOVER by HOLMES,SHANA
STEAL by SINGLETON,TEE	19:34			
MISSED JUMPER by SOYEZ,SAMANTHA	19:11			
	19:11			REBOUND (DEF) by CELSOR,KRISTEN
	18:48	2-0	H 2	GOOD! LAYUP by CELSOR,KRISTEN
	18:34			FOUL by CELSOR,KRISTEN
MISSED FT by SINGLETON,TEE	18:34			
REBOUND (DEADB) by TEAM	18:34			
GOOD! FT by SINGLETON,TEE	18:34	2-1	H 1	
	18:17			MISSED 3PTR by SAUNDERS,ARIELLE
REBOUND (DEF) by TEAM	18:17			
MISSED LAYUP by CLAY,SHONTE	17:56			
	17:56			REBOUND (DEF) by SAUNDERS,ARIELLE
FOUL by SHARP,JOLEE	17:55			
	17:40			MISSED JUMPER by LEWIS,MONTANA
	17:40			REBOUND (OFF) by CELSOR,KRISTEN
FOUL by SHARP,JOLEE	17:27			
	17:27	3-1	H 2	GOOD! FT by CELSOR,KRISTEN
	17:27	4-1	H 3	GOOD! FT by CELSOR,KRISTEN
SUB IN: STONE,SHATARA	17:27			
SUB OUT: SHARP,JOLEE	17:27			
TURNOVER by SOYEZ,SAMANTHA	17:15			
	17:13			STEAL by SAUNDERS,ARIELLE
	17:07			MISSED JUMPER by HOLMES,SHANA
REBOUND (DEF) by TEAM	17:07			
SUB IN: RICE,ERIN	17:02			
SUB OUT: SOYEZ,SAMANTHA	17:02			
MISSED JUMPER by TENBERGE,JOHNNA	16:39			
	16:39			REBOUND (DEADB) by TEAM
FOUL by STONE,SHATARA	16:36			
	16:12			MISSED 3PTR by CELSOR,KRISTEN
REBOUND (DEF) by STONE,SHATARA	16:12			
GOOD! LAYUP by STONE,SHATARA	16:03	4-3	H 1	
FOUL by RICE,ERIN	15:44			
	15:44			TIMEOUT MEDIA
	15:44	5-3	H 2	GOOD! FT by CELSOR,KRISTEN
	15:44	6-3	H 3	GOOD! FT by CELSOR,KRISTEN
SUB IN: MOSLEY,DOMINIQUE	15:44			
SUB OUT: CLAY,SHONTE	15:44			
MISSED 3PTR by TENBERGE,JOHNNA	15:22			
	15:22			REBOUND (DEF) by LEWIS,MONTANA
	15:03	8-3	H 5	GOOD! LAYUP by SAUNDERS,ARIELLE
	15:03			ASSIST by CELSOR,KRISTEN
TURNOVER by SINGLETON,TEE	14:44			
	14:42			STEAL by SAUNDERS,ARIELLE
	14:37			MISSED JUMPER by HOLMES,SHANA
REBOUND (DEF) by RICE,ERIN	14:37			
MISSED JUMPER by STONE,SHATARA	14:16			
	14:16			REBOUND (DEF) by HOLMES,SHANA
	14:08			TURNOVER by HOLMES,SHANA
STEAL by RICE,ERIN	14:06			
MISSED LAYUP by TENBERGE,JOHNNA	13:45			
	13:45			REBOUND (DEF) by CELSOR,KRISTEN
	13:38			MISSED LAYUP by LEWIS,MONTANA
	13:38			REBOUND (OFF) by SAUNDERS,ARIELLE
	13:36	10-3	H 7	GOOD! TIPIN by SAUNDERS,ARIELLE
SUB IN: HARTZOG,NICOLE	13:32			
SUB IN: CLAY,SHONTE	13:32			
SUB IN: JONES,SHARESE	13:32			
SUB OUT: TENBERGE,JOHNNA	13:32			
SUB OUT: SINGLETON,TEE	13:32			
SUB OUT: MOSLEY,DOMINIQUE	13:32			
	13:32			SUB IN: BROWN,MICHAELA
	13:32			SUB IN: CRENSHAW,LAUREN
	13:32			SUB OUT: HOLMES,SHANA
	13:32			SUB OUT: HANEY,TABITHA
FOUL by STONE,SHATARA	13:21			
TURNOVER by STONE,SHATARA	13:21			
	13:05			MISSED LAYUP by LEWIS,MONTANA
REBOUND (DEF) by JONES,SHARESE	13:05			
MISSED LAYUP by JONES,SHARESE	12:57			
	12:57			BLOCK by SAUNDERS,ARIELLE
REBOUND (OFF) by TEAM	12:57			
	12:55			FOUL by CRENSHAW,LAUREN
GOOD! LAYUP by CLAY,SHONTE	12:40	10-5	H 5	
	12:24	13-5	H 8	GOOD! 3PTR by CRENSHAW,LAUREN
	12:24			ASSIST by SAUNDERS,ARIELLE
	11:58			FOUL by LEWIS,MONTANA
TIMEOUT MEDIA	11:58			
GOOD! FT by JONES,SHARESE	11:58	13-6	H 7	
GOOD! FT by JONES,SHARESE	11:58	13-7	H 6	
	11:58			SUB IN: ISAAC-BOYCE,D
	11:58			SUB OUT: LEWIS,MONTANA

	11:58			SUB OUT: BROWN,MICHAELA
	11:58			SUB OUT: SAUNDERS,ARIELLE
	11:58			SUB OUT: CELSOR,KRISTEN
	11:58			SUB OUT: CRENSHAW,LAUREN
FOUL by JONES,SHARESE	11:35			
	11:35	14-7	H 7	GOOD! FT by LEWIS,MONTANA
	11:35	15-7	H 8	GOOD! FT by LEWIS,MONTANA
SUB IN: SHARP,JOLEE	11:35			
SUB OUT: STONE,SHATARA	11:35			
MISSED 3PTR by SHARP,JOLEE	11:24			
	11:24			REBOUND (DEF) by BROWN,MICHAELA
FOUL by RICE,ERIN	11:16			
	11:16			MISSED FT by LEWIS,MONTANA
	11:16			REBOUND (OFF) by LEWIS,MONTANA
SUB IN: SOYEZ,SAMANTHA	11:16			
SUB OUT: RICE,ERIN	11:16			
	11:04			MISSED 3PTR by CRENSHAW,LAUREN
REBOUND (DEF) by TEAM	11:04			
SUB IN: TENBERGE,JOHNNA	11:00			
SUB OUT: SHARP,JOLEE	11:00			
GOOD! LAYUP by JONES,SHARESE	10:50	15-9	H 6	
	10:38			MISSED LAYUP by LEWIS,MONTANA
BLOCK by SOYEZ,SAMANTHA	10:38			
REBOUND (DEF) by JONES,SHARESE	10:33			
MISSED LAYUP by CLAY,SHONTE	10:22			
	10:22			REBOUND (DEF) by SAUNDERS,ARIELLE
FOUL by HARTZOG,NICOLE	10:01			
	10:01	16-9	H 7	GOOD! FT by BROWN,MICHAELA
	10:01	17-9	H 8	GOOD! FT by BROWN,MICHAELA
	10:01			SUB IN: CELSOR,KRISTEN
	10:01			SUB IN: HOLMES,SHANA
	09:41			FOUL by SAUNDERS,ARIELLE
GOOD! FT by JONES,SHARESE	09:41	17-10	H 7	
GOOD! FT by JONES,SHARESE	09:41	17-11	H 6	
FOUL by CLAY,SHONTE	09:29			
	09:29			MISSED FT by ISAAC-BOYCE,D
	09:29			REBOUND (DEADB) by TEAM
	09:29			MISSED FT by ISAAC-BOYCE,D
REBOUND (DEF) by SOYEZ,SAMANTHA	09:29			
SUB IN: MOSLEY,DOMINIQUE	09:29			
SUB IN: SINGLETON,TEE	09:29			
SUB OUT: CLAY,SHONTE	09:29			
SUB OUT: TENBERGE,JOHNNA	09:29			
TURNOVER by MOSLEY,DOMINIQUE	09:15			
	09:15			STEAL by BROWN,MICHAELA
FOUL by SOYEZ,SAMANTHA	08:47			
	08:47	18-11	H 7	GOOD! FT by CELSOR,KRISTEN
	08:47	19-11	H 8	GOOD! FT by CELSOR,KRISTEN
TURNOVER by SOYEZ,SAMANTHA	08:31			
	08:20			MISSED LAYUP by SAUNDERS,ARIELLE
BLOCK by MOSLEY,DOMINIQUE	08:20			
REBOUND (DEF) by HARTZOG,NICOLE	08:18			
TURNOVER by SINGLETON,TEE	08:09			
SUB IN: STONE,SHATARA	08:09			
SUB OUT: SINGLETON,TEE	08:09			
	08:09			SUB IN: HANEY,TABITHA
	08:09			SUB IN: LEWIS,MONTANA
	08:09			SUB OUT: ISAAC-BOYCE,D
	07:54			MISSED 3PTR by BROWN,MICHAELA
REBOUND (DEF) by STONE,SHATARA	07:54			
	07:41			FOUL by LEWIS,MONTANA
TIMEOUT MEDIA	07:41			
MISSED FT by HARTZOG,NICOLE	07:41			
REBOUND (DEADB) by TEAM	07:41			
GOOD! FT by HARTZOG,NICOLE	07:41	19-12	H 7	
SUB IN: SHARP,JOLEE	07:41			
SUB OUT: STONE,SHATARA	07:41			
	07:41			SUB IN: SAUNDERS,ARIELLE
	07:41			SUB OUT: LEWIS,MONTANA
	07:29			TURNOVER by HANEY,TABITHA
STEAL by HARTZOG,NICOLE	07:27			
TURNOVER by HARTZOG,NICOLE	07:22			
	07:20			STEAL by CELSOR,KRISTEN
	07:17			MISSED LAYUP by CELSOR,KRISTEN
	07:17			REBOUND (OFF) by HANEY,TABITHA
	07:13	21-12	H 9	GOOD! JUMPER by CELSOR,KRISTEN
	07:13			ASSIST by HANEY,TABITHA
MISSED JUMPER by HARTZOG,NICOLE	06:56			
	06:56			REBOUND (DEF) by HOLMES,SHANA
FOUL by SHARP,JOLEE	06:47			
	06:47			MISSED FT by HOLMES,SHANA
	06:47			REBOUND (DEADB) by TEAM
	06:47	22-12	H 10	GOOD! FT by HOLMES,SHANA
SUB IN: CLAY,SHONTE	06:47			
SUB IN: SINGLETON,TEE	06:47			
SUB OUT: MOSLEY,DOMINIQUE	06:47			
SUB OUT: SHARP,JOLEE	06:47			
MISSED 3PTR by JONES,SHARESE	06:38			
REBOUND (OFF) by SINGLETON,TEE	06:38			
TURNOVER by SINGLETON,TEE	06:23			
	06:22			STEAL by CELSOR,KRISTEN
	06:19	24-12	H 12	GOOD! LAYUP by CELSOR,KRISTEN
TIMEOUT 30SEC	06:10			
MISSED 3PTR by JONES,SHARESE	05:57			
REBOUND (OFF) by HARTZOG,NICOLE	05:57			

GOOD! LAYUP by JONES,SHARESE	05:49	24-14	H 10	
ASSIST by HARTZOG,NICOLE	05:49			
	05:19			TURNOVER by BROWN,MICHAELA
STEAL by HARTZOG,NICOLE	05:17			
GOOD! LAYUP by HARTZOG,NICOLE	05:13	24-16	H 8	
	05:03			FOUL by HOLMES,SHANA
	05:03			TURNOVER by HOLMES,SHANA
TURNOVER by SINGLETON,TEE	04:51			
	04:50			STEAL by CELSOR,KRISTEN
	04:41			TURNOVER by HOLMES,SHANA
	04:41			SUB IN: CRENSHAW,LAUREN
	04:41			SUB IN: ISAAC-BOYCE,D
	04:41			SUB OUT: HOLMES,SHANA
MISSED 3PTR by SINGLETON,TEE	04:19			
	04:19			REBOUND (DEF) by CRENSHAW,LAUREN
	04:04			TURNOVER by HANEY,TABITHA
STEAL by HARTZOG,NICOLE	04:04			
SUB IN: TENBERGE,JOHNNA	04:04			
SUB OUT: SOYEZ,SAMANTHA	04:04			
	03:45			FOUL by CRENSHAW,LAUREN
TIMEOUT MEDIA	03:45			
GOOD! FT by HARTZOG,NICOLE	03:45	24-17	H 7	
GOOD! FT by HARTZOG,NICOLE	03:45	24-18	H 6	
SUB IN: SOYEZ,SAMANTHA	03:45			
SUB OUT: SINGLETON,TEE	03:45			
	03:45			SUB IN: LEWIS,MONTANA
	03:45			SUB OUT: HANEY,TABITHA
FOUL by CLAY,SHONTE	03:25			
	03:25	25-18	H 7	
	03:25			GOOD! FT by SAUNDERS,ARIELLE
	03:25			MISSED FT by SAUNDERS,ARIELLE
REBOUND (DEF) by TENBERGE,JOHNNA	03:25			
TURNOVER by CLAY,SHONTE	03:10			
	02:43			MISSED JUMPER by CELSOR,KRISTEN
	02:43			REBOUND (OFF) by TEAM
	02:20			MISSED JUMPER by SAUNDERS,ARIELLE
	02:20			REBOUND (OFF) by SAUNDERS,ARIELLE
	02:17	28-18	H 10	
	02:17			GOOD! 3PTR by CRENSHAW,LAUREN
	02:17			ASSIST by SAUNDERS,ARIELLE
MISSED 3PTR by HARTZOG,NICOLE	01:57			
REBOUND (OFF) by CLAY,SHONTE	01:57			
	01:53			FOUL by CRENSHAW,LAUREN
MISSED FT by CLAY,SHONTE	01:53			
	01:53			REBOUND (DEF) by SAUNDERS,ARIELLE
	01:28	30-18	H 12	
	01:28			GOOD! JUMPER by SAUNDERS,ARIELLE
	01:28			ASSIST by CELSOR,KRISTEN
MISSED LAYUP by JONES,SHARESE	01:10			
	01:10			BLOCK by SAUNDERS,ARIELLE
	01:08			REBOUND (DEF) by SAUNDERS,ARIELLE
	01:03			MISSED 3PTR by CELSOR,KRISTEN
REBOUND (DEF) by HARTZOG,NICOLE	01:03			
MISSED JUMPER by CLAY,SHONTE	00:52			
	00:52			REBOUND (DEF) by ISAAC-BOYCE,D
	00:44			TIMEOUT 30SEC
SUB IN: MOSLEY,DOMINIQUE	00:44			
SUB OUT: CLAY,SHONTE	00:44			
	00:44			SUB IN: HOLMES,SHANA
	00:44			SUB OUT: CRENSHAW,LAUREN
	00:32			TURNOVER by CELSOR,KRISTEN
TURNOVER by TENBERGE,JOHNNA	00:20			
	00:18			STEAL by CELSOR,KRISTEN
	00:03			MISSED JUMPER by LEWIS,MONTANA
REBOUND (DEF) by TEAM	00:03			

Missouri Southern St 18, Harding 30

Period 1-only	In Paint	Off T/O	2nd Chance	Fast Break	Bench	
Missouri Southern St	10	4	4	4	15	Score tied - 0 times
Harding	12	9	9	2	8	Lead changed - 0 times

Official Basketball Box Score -- Game Totals -- Second Half Statistics  
 Missouri Southern St vs Harding  
 12/15/2012 2 p.m. at Searcy, Ark. (Rhodes Field House)

Missouri Southern St 35 • 6-3

##	Player	g	Total			3-Ptr			Rebounds			PF	TP	A	TO	Blk	Stl	Min
			FG-FGA	FG-FGA	FT-FTA	FG-FGA	FG-FGA	FT-FTA	Off	Def	Tot							
01	TENBERGE,JOHNNA	g	0-3	0-1	0-0	0	1	1	1	0	1	4	0	1	4	0	1	17
22	SHARP,JOLEE	g	0-1	0-1	0-0	0	1	1	3	0	0	0	0	0	0	0	4	
23	SINGLETON,TEE	g	1-2	0-1	1-2	1	1	2	0	3	0	4	0	2	2	2	22	
25	SOYEZ,SAMANTHA	f	1-4	0-2	0-0	1	2	3	1	2	0	4	1	1	1	1	19	
34	CLAY,SHONTE	f	3-7	0-0	0-1	2	0	2	3	6	0	2	0	1	2	1	21	
04	HARTZOG,NICOLE		1-7	0-2	5-6	1	4	5	4	7	1	5	0	5	5	26		
13	HANNA,KRISTEN		1-1	0-0	0-0	0	1	1	2	2	1	0	0	0	0	5		
21	RICE,ERIN		3-8	1-1	3-3	2	1	3	3	10	0	1	0	1	23			
33	STONE,SHATARA		4-8	0-0	2-2	2	3	5	2	10	3	3	0	1	22			
44	JONES,SHARESE		2-7	0-2	5-6	1	2	3	2	9	0	1	0	0	29			
53	MOSLEY,DOMINIQUE		2-3	0-0	0-1	1	0	1	0	4	0	1	1	0	12			
TEAM						0	2	2	0		0							
Totals			13-30	1-4	8-10	8	8	16	9		5	12	0	7				
FG %			Half:			13-30			43.3%									
3FG %			Half:			1-4			00.0%									
FT %			Half:			8-10			80.0%									

Harding 42 • 4-4

##	Player	g	Total			3-Ptr			Rebounds			PF	TP	A	TO	Blk	Stl	Min
			FG-FGA	FG-FGA	FT-FTA	FG-FGA	FG-FGA	FT-FTA	Off	Def	Tot							
00	LEWIS,MONTANA	g	0-6	0-0	2-3	2	2	4	3	2	1	1	0	1	24			
05	HOLMES,SHANA	g	1-6	1-1	5-6	0	2	2	2	8	2	5	0	3	24			
10	HANEY,TABITHA	g	0-1	0-1	0-0	1	0	1	0	0	2	3	0	0	19			
32	SAUNDERS,ARIELLE	f	4-8	0-1	2-3	4	6	10	3	10	5	2	4	6	35			
40	CELSOR,KRISTEN	f	12-18	1-3	8-8	1	5	6	3	33	3	3	1	6	31			
01	BROWN,MICHAELA		2-3	1-2	2-2	1	2	3	0	7	1	1	0	1	18			
11	CRENSHAW,LAUREN		2-4	2-3	0-0	0	1	1	4	6	1	0	0	0	12			
13	WIEDOWER,KAYLEE		0-1	0-1	0-0	0	0	0	0	0	0	0	0	0	4			
15	ISAAC-BOYCE,D		2-2	0-0	0-2	0	2	2	2	4	2	1	0	0	20			
20	DUNN,KATIE		0-1	0-1	0-0	0	0	0	0	0	0	2	0	0	3			
21	HARRISON,LAUREN		0-1	0-0	0-0	0	0	0	0	0	0	0	0	0	3			
23	STRICKLAND,ANNA		0-0	0-0	2-4	0	0	0	1	2	0	0	1	0	4			
33	BRAMER,AMELIA		0-0	0-0	0-0	0	0	0	0	0	0	1	0	0	3			
TEAM						1	2	3	0		1							
Totals			15-26	3-6	9-11	5	10	15	10		12	12	4	8				
FG %			Half:			15-26			57.7%									
3FG %			Half:			3-6			28.6%									
FT %			Half:			9-11			81.8%									

Officials: Carey Smith, Barry Hickingbotham and Tim Hackett  
 Technical Fouls: Missouri Southern St- None. Harding- None.

	In	Off	2nd	Fast	
Points	Paint	T/O	Chance	Break	Bench
Missouri Southern St	22	12	9	2	27
Harding	24	17	2	8	11

Score tied - 0 times  
 Lead changed - 0 times

**Missouri Southern St vs Harding**  
**12/15/2012; 2 p.m. at Searcy, Ark. (Rhodes Field House)**  
**Period 2 Play-By-Play**

HOME: Harding	Time	Score	Margin	VISITORS: Missouri Southern St
SUB IN: JONES,SHARESE	20:00			
SUB IN: RICE,ERIN	20:00			
SUB IN: HARTZOG,NICOLE	20:00			
SUB OUT: TENBERGE,JOHNNA	20:00			
SUB OUT: SHARP,JOLEE	20:00			
SUB OUT: SOYEZ,SAMANTHA	20:00			
	19:41			FOUL by SAUNDERS,ARIELLE
GOOD! FT by RICE,ERIN	19:41	30-19	H 11	
GOOD! FT by RICE,ERIN	19:41	30-20	H 10	
	19:31			MISSED LAYUP by HOLMES,SHANA
REBOUND (DEF) by SINGLETON,TEE	19:31			
MISSED JUMPER by HARTZOG,NICOLE	19:19			
	19:19			REBOUND (DEF) by CELSOR,KRISTEN
	18:57	32-20	H 12	GOOD! LAYUP by CELSOR,KRISTEN
	18:57			ASSIST by SAUNDERS,ARIELLE
TURNOVER by RICE,ERIN	18:32			
	18:31			STEAL by SAUNDERS,ARIELLE
	18:27	34-20	H 14	GOOD! LAYUP by CELSOR,KRISTEN
	18:27			ASSIST by HANEY,TABITHA
MISSED JUMPER by CLAY,SHONTE	18:02			
	18:02			BLOCK by CELSOR,KRISTEN
	18:01			REBOUND (DEF) by LEWIS,MONTANA
	17:45			TURNOVER by CELSOR,KRISTEN
STEAL by HARTZOG,NICOLE	17:44			
	17:26			FOUL by CELSOR,KRISTEN
SUB IN: MOSLEY,DOMINIQUE	17:26			
SUB OUT: RICE,ERIN	17:26			
MISSED JUMPER by MOSLEY,DOMINIQUE	17:23			
	17:23			REBOUND (DEF) by CELSOR,KRISTEN
	17:13			TURNOVER by LEWIS,MONTANA
STEAL by CLAY,SHONTE	17:11			
MISSED JUMPER by JONES,SHARESE	16:51			
	16:51			BLOCK by SAUNDERS,ARIELLE
REBOUND (OFF) by MOSLEY,DOMINIQUE	16:48			
GOOD! JUMPER by MOSLEY,DOMINIQUE	16:45	34-22	H 12	
	16:41	36-22	H 14	GOOD! LAYUP by CELSOR,KRISTEN
	16:41			ASSIST by HOLMES,SHANA
SUB IN: RICE,ERIN	16:38			
SUB IN: SOYEZ,SAMANTHA	16:38			
SUB OUT: MOSLEY,DOMINIQUE	16:38			
SUB OUT: CLAY,SHONTE	16:38			
	16:38			SUB IN: ISAAC-BOYCE,D
	16:38			SUB OUT: LEWIS,MONTANA
TURNOVER by JONES,SHARESE	16:25			
	16:24			STEAL by CELSOR,KRISTEN
	16:20	38-22	H 16	GOOD! JUMPER by CELSOR,KRISTEN
MISSED LAYUP by RICE,ERIN	16:04			
REBOUND (OFF) by RICE,ERIN	16:04			
	16:02			FOUL by CELSOR,KRISTEN
SUB IN: STONE,SHATARA	16:02			
SUB OUT: SINGLETON,TEE	16:02			
	16:02			SUB IN: LEWIS,MONTANA
	16:02			SUB OUT: CELSOR,KRISTEN
TURNOVER by HARTZOG,NICOLE	16:00			
	15:59			STEAL by SAUNDERS,ARIELLE
	15:48			MISSED 3PTR by HANEY,TABITHA
REBOUND (DEF) by SOYEZ,SAMANTHA	15:48			
TURNOVER by SOYEZ,SAMANTHA	15:43			
	15:42			STEAL by SAUNDERS,ARIELLE
FOUL by HARTZOG,NICOLE	15:41			
	15:41			TIMEOUT MEDIA
	15:40			TURNOVER by HANEY,TABITHA
STEAL by SOYEZ,SAMANTHA	15:38			
MISSED JUMPER by RICE,ERIN	15:24			
REBOUND (OFF) by STONE,SHATARA	15:24			
TURNOVER by HARTZOG,NICOLE	15:21			
FOUL by JONES,SHARESE	15:15			
	15:13			TURNOVER by SAUNDERS,ARIELLE
TURNOVER by STONE,SHATARA	15:04			
	15:04			STEAL by HOLMES,SHANA
FOUL by HARTZOG,NICOLE	15:03			
	15:03	39-22	H 17	GOOD! FT by HOLMES,SHANA
	15:03	40-22	H 18	GOOD! FT by HOLMES,SHANA
SUB IN: SINGLETON,TEE	15:03			
SUB IN: TENBERGE,JOHNNA	15:03			
SUB OUT: JONES,SHARESE	15:03			
SUB OUT: HARTZOG,NICOLE	15:03			
	15:03			SUB IN: CRENSHAW,LAUREN
	15:03			SUB OUT: HOLMES,SHANA
MISSED 3PTR by SOYEZ,SAMANTHA	14:51			
REBOUND (OFF) by SOYEZ,SAMANTHA	14:51			
GOOD! LAYUP by SOYEZ,SAMANTHA	14:42	40-24	H 16	
	14:24			MISSED JUMPER by LEWIS,MONTANA
	14:24			REBOUND (OFF) by LEWIS,MONTANA
	14:16			TURNOVER by SAUNDERS,ARIELLE
STEAL by TENBERGE,JOHNNA	14:14			
MISSED 3PTR by SOYEZ,SAMANTHA	14:01			
	14:01			REBOUND (DEF) by ISAAC-BOYCE,D
	13:42			MISSED JUMPER by SAUNDERS,ARIELLE



REBOUND (DEF) by STONE,SHATARA	13:42			
GOOD! LAYUP by RICE,ERIN	13:33	40-26	H 14	
ASSIST by STONE,SHATARA	13:33			
	13:33			FOUL by SAUNDERS,ARIELLE
GOOD! FT by RICE,ERIN	13:33	40-27	H 13	
SUB IN: CLAY,SHONTE	13:33			
SUB OUT: SOYEZ,SAMANTHA	13:33			
	13:33			SUB IN: CELSOR,KRISTEN
	13:33			SUB OUT: SAUNDERS,ARIELLE
	13:18	42-27	H 15	GOOD! LAYUP by CELSOR,KRISTEN
	12:54			FOUL by LEWIS,MONTANA
FOUL by TENBERGE,JOHNNA	12:48			
TURNOVER by TENBERGE,JOHNNA	12:48			
	12:48			SUB IN: BROWN,MICHAELA
	12:48			SUB OUT: HANEY,TABITHA
	12:41			TURNOVER by ISAAC-BOYCE,D
STEAL by STONE,SHATARA	12:40			
MISSED LAYUP by RICE,ERIN	12:24			
REBOUND (OFF) by RICE,ERIN	12:24			
MISSED LAYUP by RICE,ERIN	12:22			
REBOUND (OFF) by CLAY,SHONTE	12:22			
GOOD! LAYUP by CLAY,SHONTE	12:18	42-29	H 13	
	12:00			MISSED JUMPER by CRENSHAW,LAUREN
	12:00			REBOUND (OFF) by BROWN,MICHAELA
	11:47			TURNOVER by CELSOR,KRISTEN
TIMEOUT MEDIA	11:47			
GOOD! LAYUP by CLAY,SHONTE	11:33	42-31	H 11	
ASSIST by TENBERGE,JOHNNA	11:33			
	11:26			MISSED LAYUP by CELSOR,KRISTEN
REBOUND (DEF) by TEAM	11:26			
TURNOVER by TENBERGE,JOHNNA	11:09			
	11:09			SUB IN: SAUNDERS,ARIELLE
	11:09			SUB OUT: LEWIS,MONTANA
	10:55	44-31	H 13	GOOD! LAYUP by BROWN,MICHAELA
MISSED LAYUP by STONE,SHATARA	10:32			
	10:32			REBOUND (DEF) by SAUNDERS,ARIELLE
	10:25	46-31	H 15	GOOD! LAYUP by ISAAC-BOYCE,D
	10:25			ASSIST by CRENSHAW,LAUREN
	10:14			FOUL by CRENSHAW,LAUREN
SUB IN: JONES,SHARESE	10:14			
SUB OUT: TENBERGE,JOHNNA	10:14			
	10:14			SUB IN: HOLMES,SHANA
	10:14			SUB OUT: CRENSHAW,LAUREN
MISSED JUMPER by RICE,ERIN	09:59			
	09:59			REBOUND (DEF) by TEAM
	09:33	48-31	H 17	GOOD! LAYUP by SAUNDERS,ARIELLE
	09:33			ASSIST by ISAAC-BOYCE,D
FOUL by CLAY,SHONTE	09:33			
	09:33	49-31	H 18	GOOD! FT by SAUNDERS,ARIELLE
SUB IN: MOSLEY,DOMINIQUE	09:33			
SUB OUT: CLAY,SHONTE	09:33			
	09:15			FOUL by ISAAC-BOYCE,D
GOOD! FT by STONE,SHATARA	09:15	49-32	H 17	
GOOD! FT by STONE,SHATARA	09:15	49-33	H 16	
TIMEOUT TEAM	09:15			
	08:59	52-33	H 19	GOOD! 3PTR by CELSOR,KRISTEN
	08:59			ASSIST by BROWN,MICHAELA
GOOD! LAYUP by STONE,SHATARA	08:36	52-35	H 17	
	08:19			TURNOVER by HOLMES,SHANA
STEAL by SINGLETON,TEE	08:19			
GOOD! LAYUP by SINGLETON,TEE	08:08	52-37	H 15	
	07:55	55-37	H 18	GOOD! 3PTR by HOLMES,SHANA
	07:55			ASSIST by ISAAC-BOYCE,D
GOOD! LAYUP by MOSLEY,DOMINIQUE	07:39	55-39	H 16	
ASSIST by STONE,SHATARA	07:39			
	07:39			FOUL by ISAAC-BOYCE,D
TIMEOUT MEDIA	07:39			
MISSED FT by MOSLEY,DOMINIQUE	07:39			
	07:39			REBOUND (DEF) by CELSOR,KRISTEN
SUB IN: HARTZOG,NICOLE	07:39			
SUB OUT: SINGLETON,TEE	07:39			
FOUL by HARTZOG,NICOLE	07:32			
	07:32	56-39	H 17	GOOD! FT by HOLMES,SHANA
	07:32	57-39	H 18	GOOD! FT by HOLMES,SHANA
TURNOVER by HARTZOG,NICOLE	07:19			
	07:18			STEAL by CELSOR,KRISTEN
	07:15	59-39	H 20	GOOD! LAYUP by ISAAC-BOYCE,D
	07:15			ASSIST by CELSOR,KRISTEN
MISSED LAYUP by HARTZOG,NICOLE	07:04			
	07:04			BLOCK by SAUNDERS,ARIELLE
	07:02			REBOUND (DEF) by SAUNDERS,ARIELLE
	06:57	61-39	H 22	GOOD! LAYUP by CELSOR,KRISTEN
	06:57			ASSIST by HOLMES,SHANA
TIMEOUT 30SEC	06:49			
GOOD! 3PTR by RICE,ERIN	06:37	61-42	H 19	
ASSIST by STONE,SHATARA	06:37			
	06:09			MISSED LAYUP by CELSOR,KRISTEN
	06:09			REBOUND (OFF) by SAUNDERS,ARIELLE
	06:06			TIMEOUT 30SEC
FOUL by RICE,ERIN	06:06			
	06:06	62-42	H 20	GOOD! FT by CELSOR,KRISTEN
	06:06	63-42	H 21	GOOD! FT by CELSOR,KRISTEN
SUB IN: SOYEZ,SAMANTHA	06:06			
SUB OUT: RICE,ERIN	06:06			
	06:06			SUB IN: LEWIS,MONTANA

	06:06				SUB OUT: ISAAC-BOYCE,D
TURNOVER by STONE,SHATARA	05:53				
	05:38	66-42	H 24		GOOD! 3PTR by BROWN,MICHAELA
	05:38				ASSIST by SAUNDERS,ARIELLE
MISSED 3PTR by HARTZOG,NICOLE	05:19				
	05:19				REBOUND (DEF) by BROWN,MICHAELA
	05:08				MISSED LAYUP by HOLMES,SHANA
REBOUND (DEF) by HARTZOG,NICOLE	05:08				
TURNOVER by SOYEZ,SAMANTHA	04:51				
	04:50				STEAL by SAUNDERS,ARIELLE
	04:44	68-42	H 26		GOOD! LAYUP by CELSOR,KRISTEN
	04:44				ASSIST by SAUNDERS,ARIELLE
TURNOVER by HARTZOG,NICOLE	04:27				
	04:26				STEAL by LEWIS,MONTANA
	04:22	70-42	H 28		GOOD! LAYUP by CELSOR,KRISTEN
	04:22				ASSIST by LEWIS,MONTANA
	04:10				FOUL by HOLMES,SHANA
GOOD! FT by HARTZOG,NICOLE	04:10	70-43	H 27		
GOOD! FT by HARTZOG,NICOLE	04:10	70-44	H 26		
SUB IN: RICE,ERIN	04:10				
SUB IN: HANNA,KRISTEN	04:10				
SUB OUT: MOSLEY,DOMINIQUE	04:10				
SUB OUT: SOYEZ,SAMANTHA	04:10				
	04:10				SUB IN: STRICKLAND,ANNA
	04:10				SUB IN: WIEDOWER,KAYLEE
	04:10				SUB IN: HANEY,TABITHA
	04:10				SUB OUT: LEWIS,MONTANA
	04:10				SUB OUT: HOLMES,SHANA
	04:10				SUB OUT: CELSOR,KRISTEN
	03:55				MISSED 3PTR by WIEDOWER,KAYLEE
	03:55				REBOUND (OFF) by SAUNDERS,ARIELLE
	03:48				TURNOVER by TEAM
TIMEOUT MEDIA	03:32				
GOOD! LAYUP by RICE,ERIN	03:16	70-46	H 24		
ASSIST by HANNA,KRISTEN	03:16				
FOUL by HANNA,KRISTEN	03:04				
	03:04	71-46	H 25		GOOD! FT by STRICKLAND,ANNA
	03:04				MISSED FT by STRICKLAND,ANNA
REBOUND (DEF) by TEAM	03:04				
	03:04				SUB IN: HARRISON,LAUREN
	03:04				SUB OUT: SAUNDERS,ARIELLE
GOOD! LAYUP by HANNA,KRISTEN	02:55	71-48	H 23		
	02:30				SUB IN: DUNN,KATIE
	02:30				SUB IN: BRAMER,AMELIA
	02:30				SUB OUT: BROWN,MICHAELA
	02:30				SUB OUT: HANEY,TABITHA
	02:25				MISSED 3PTR by DUNN,KATIE
	02:25				REBOUND (OFF) by TEAM
	02:11				TURNOVER by DUNN,KATIE
STEAL by HARTZOG,NICOLE	02:09				
MISSED LAYUP by HARTZOG,NICOLE	02:07				
	02:07				BLOCK by STRICKLAND,ANNA
	02:07				REBOUND (DEF) by TEAM
FOUL by HANNA,KRISTEN	01:52				
	01:52	72-48	H 24		GOOD! FT by STRICKLAND,ANNA
	01:52				MISSED FT by STRICKLAND,ANNA
REBOUND (DEF) by HARTZOG,NICOLE	01:52				
GOOD! JUMPER by STONE,SHATARA	01:39	72-50	H 22		
	01:37				TIMEOUT 30SEC
	01:18				MISSED JUMPER by HARRISON,LAUREN
REBOUND (DEF) by HANNA,KRISTEN	01:18				
MISSED JUMPER by STONE,SHATARA	00:47				
REBOUND (OFF) by JONES,SHARESE	00:47				
	00:44				FOUL by STRICKLAND,ANNA
MISSED FT by JONES,SHARESE	00:44				
REBOUND (DEADB) by TEAM	00:44				
GOOD! FT by JONES,SHARESE	00:44	72-51	H 21		
	00:37				TURNOVER by BRAMER,AMELIA
MISSED LAYUP by STONE,SHATARA	00:23				
REBOUND (OFF) by STONE,SHATARA	00:23				
GOOD! LAYUP by STONE,SHATARA	00:20	72-53	H 19		
	00:04				TURNOVER by DUNN,KATIE

Missouri Southern St 53, Harding 72

Period 2-only	In Paint	Off T/O	2nd Chance	Fast Break	Bench	
Missouri Southern St	22	12	9	2	27	Score tied - 0 times
Harding	24	17	2	8	11	Lead changed - 0 times

**Missouri Southern St vs Harding**  
**12/15/2012; 2 p.m. at Searcy, Ark. (Rhodes Field House)**  
**Scoring/Runs Reference**

Period 1 Scoring			Period 2 Scoring		
Missouri Southern St	Score	Harding	Missouri Southern St	Score	Harding
	0-2 2	2 <sup>P</sup>		19-30 11	
18:34 - SINGLETON	1	1-2 1		20-30 10	
		1-3 2		20-32 12	2 <sup>P</sup>
		1-4 3		20-34 14	2 <sup>P</sup>
16:03 - STONE	2PF	3-4 1	16:45 - MOSLEY	2P	22-34 12
		3-5 2		22-36 14	2 <sup>P</sup>
		3-6 3		22-38 16	2 <sup>PF</sup>
		3-8 5		22-39 17	1
		3-10 7		22-40 18	1
12:40 - CLAY	2P	5-10 5	14:42 - SOYEZ	2P	24-40 16
		5-13 8	13:33 - RICE	2PF	26-40 14
11:58 - JONES	1	6-13 7	13:33 - RICE	1	27-40 13
11:58 - JONES	1	7-13 6		27-42 15	2 <sup>P</sup>
		7-14 7	12:18 - CLAY	2P	29-42 13
		7-15 8	11:33 - CLAY	2P	31-42 11
10:50 - JONES	2P	9-15 6		31-44 13	2 <sup>P</sup>
		9-16 7		31-46 15	2 <sup>PF</sup>
		9-17 8		31-48 17	2 <sup>P</sup>
09:41 - JONES	1	10-17 7		31-49 18	1
09:41 - JONES	1	11-17 6	09:15 - STONE	1	32-49 17
		11-18 7	09:15 - STONE	1	33-49 16
		11-19 8		33-52 19	3
07:41 - HARTZOG	1	12-19 7	08:36 - STONE	2P	35-52 17
		12-21 9	08:08 - SINGLETON	2P	37-52 15
		12-22 10		37-55 18	3
		12-24 12	07:39 - MOSLEY	2P	39-55 16
05:49 - JONES	2P	14-24 10		39-56 17	1
05:13 - HARTZOG	2PF	16-24 8		39-57 18	1
03:45 - HARTZOG	1	17-24 7		39-59 20	2 <sup>PF</sup>
03:45 - HARTZOG	1	18-24 6		39-61 22	2 <sup>P</sup>
		18-25 7	06:37 - RICE	3	42-61 19
		18-28 10		42-62 20	1
		18-30 12		42-63 21	1
				42-66 24	3
				42-68 26	2 <sup>P</sup>
				42-70 28	2 <sup>PF</sup>
			04:10 - HARTZOG	1	43-70 27
			04:10 - HARTZOG	1	44-70 26
			03:16 - RICE	2P	46-70 24
				46-71 25	1
			02:55 - HANNA	2P	48-71 23
				48-72 24	1
			01:39 - STONE	2	50-72 22
			00:44 - JONES	1	51-72 21
			00:20 - STONE	2P	53-72 19

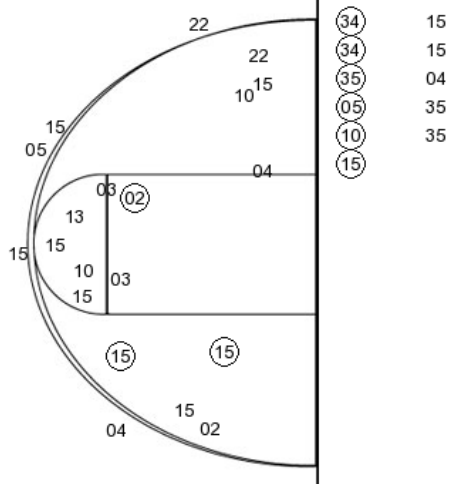
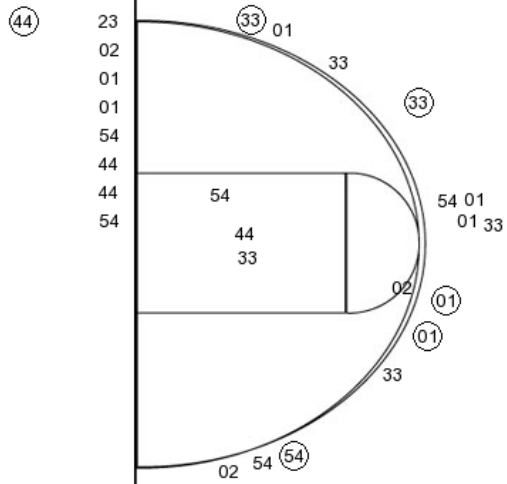
PERIOD 1

BU

UCONN

Layups

Layups



**MSSU PERIOD 1**

FG Made	5
FG Attempted	21
3PFG Made	0
3PFG Attempted	6

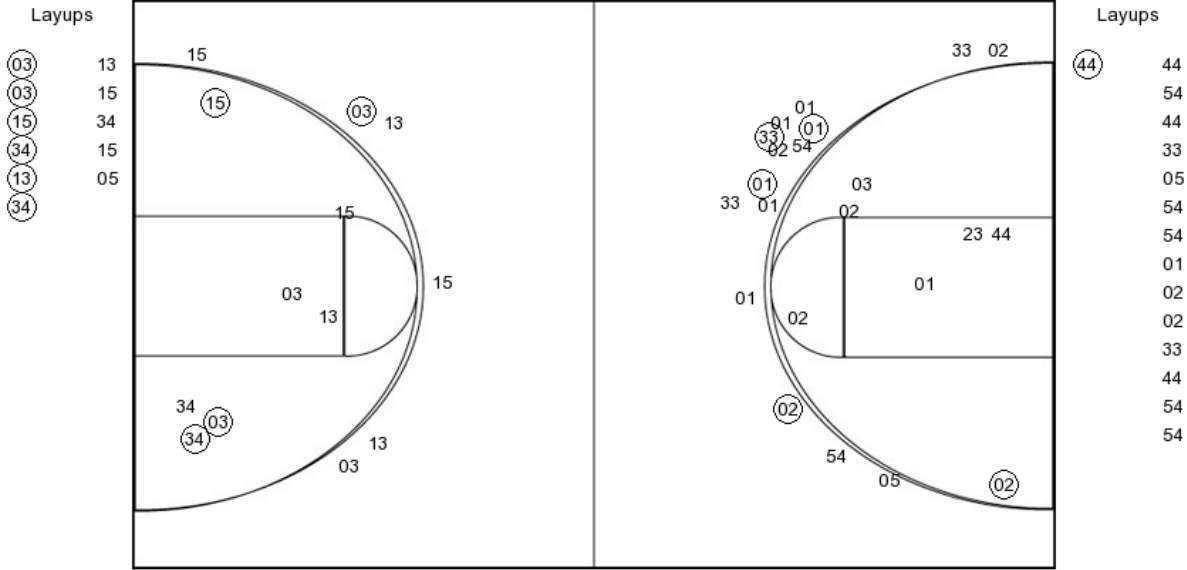
**HU PERIOD 1**

FG Made	8
FG Attempted	25
3PFG Made	2
3PFG Attempted	7

**PERIOD 2**

UCONN

BU



**MSSU PERIOD 2**

FG Made	13
FG Attempted	30
3PFG Made	1
3PFG Attempted	4

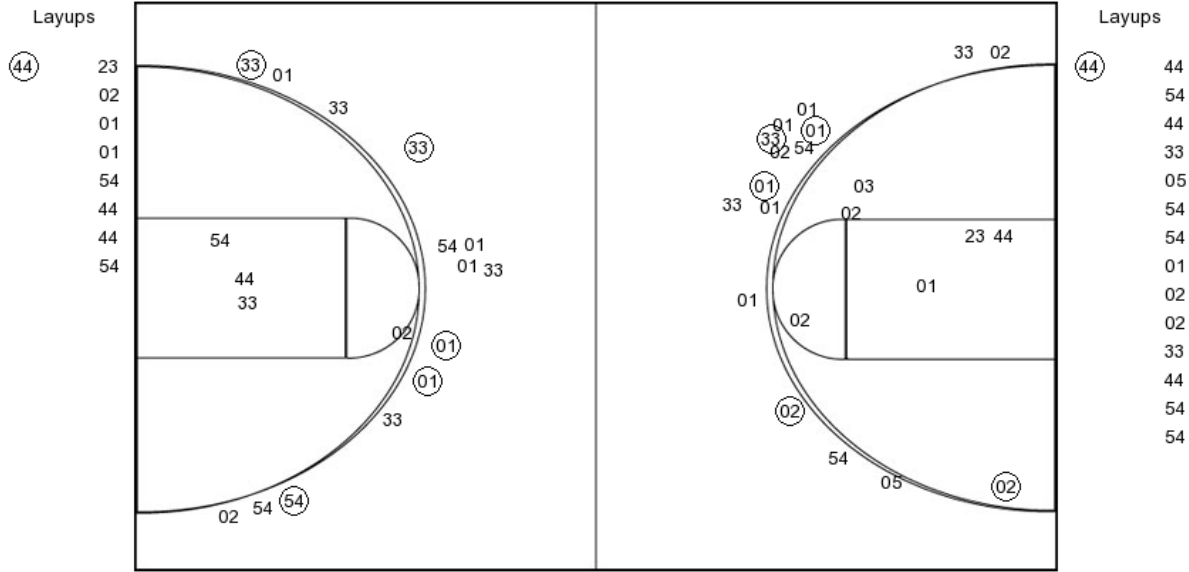
**HU PERIOD 2**

FG Made	15
FG Attempted	26
3PFG Made	3
3PFG Attempted	6

Missouri Southern St

PERIOD 1

PERIOD 2



**MSSU PERIOD 1**

FG Made	5
FG Attempted	21
3PFG Made	0
3PFG Attempted	6

**MSSU PERIOD 2**

FG Made	13
FG Attempted	30
3PFG Made	1
3PFG Attempted	4

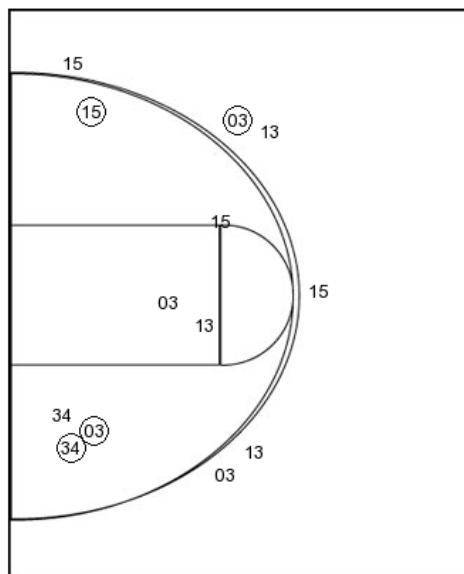
Harding

PERIOD 2

PERIOD 1

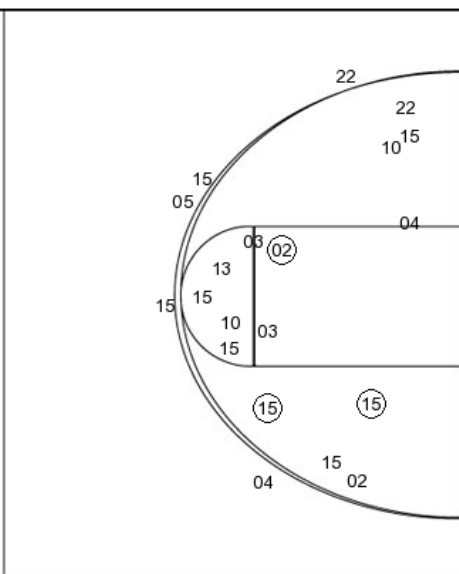
Layups

- (03) 13
- (03) 15
- (15) 34
- (34) 15
- (13) 05
- (34)



Layups

- (34) 15
- (34) 15
- (35) 04
- (05) 35
- (10) 35
- (15)



**HU PERIOD 1**

FG Made	8
FG Attempted	25
3PFG Made	2
3PFG Attempted	7

**HU PERIOD 2**

FG Made	15
FG Attempted	26
3PFG Made	3
3PFG Attempted	6