

LOUISIANA TECH VS. RICE

LA TECH VS. RICE



2/4/2016

Thomas Assembly Center (Ruston, La.)

FINAL STATS

LA Tech

(11-9, 6-3 C-USA)

63

Rice

(4-16, 3-6 C-USA)

61

Start Time: 6:35 PM

Officials: Kim Thebo, Marc Merritt, Travis Jones

Attendance: 1925

Official Basketball Box Score -- Game Totals -- Final Statistics

Rice vs LA Tech

2/4/2016 6:35 PM at Thomas Assembly Center (Ruston, La.)

Rice 61 - 4-16, 3-6 C-USA

##	Player	S	Total			Rebounds			PF	TP	A	TO	Blk	Stl	Min
			FG-FGA	3PT	FG-FGA	FT-FTA	Off Reb	Def Reb							
03	HAWKINS,MAYA	g	0-8	0-3	0-0	0	2	2	1	0	9	3	0	1	36
10	KNIGHT,WENDY	g	2-6	1-3	0-0	2	2	4	0	5	1	4	1	2	37
20	RAINEY,SHANI	g	4-8	0-1	0-4	0	3	3	4	8	1	0	0	1	20
32	LANG,ALYSSA	f	2-4	0-0	2-4	3	1	4	5	6	1	2	0	0	26
33	GOODWINE,JASMINE	f	9-17	1-3	9-11	1	4	5	4	28	1	3	0	0	36
05	GRIGSBY,LAUREN		1-2	1-2	2-2	1	3	4	0	5	4	3	0	3	20
11	DUCAT,LEXIE		2-2	0-0	0-2	0	1	1	2	4	0	0	0	0	15
21	STANTON,GABRIELLE		2-4	1-2	0-0	0	1	1	1	5	0	1	0	0	7
40	PALMER,MEGAN		0-0	0-0	0-0	0	0	0	0	0	0	0	0	0	0
44	OBINNAH,ADAEZE		0-0	0-0	0-0	0	0	0	0	0	0	0	0	0	3
TEAM						4	2	6	0		2				
TOTALS			22-51	4-14	13-23	11	19	30	17	61	17	18	1	7	200

Deadball Rebounds: 5,0

FG %	1st Half: 11-24 45.8%	2nd Half: 11-27 40.7%	Game: 22-51 43.1%	4th Qtr	6-15 40.0%
	1st Qtr 6-14 42.9%	2nd Qtr 5-10 50.0%	3rd Qtr 5-12 41.7%		
3FG %	1st Half: 1-5 20.0%	2nd Half: 3-9 33.3%	Game: 4-14 28.6%	4th Qtr	1-3 33.3%
	1st Qtr 0-1 00.0%	2nd Qtr 1-4 25.0%	3rd Qtr 2-6 33.3%		
FT %	1st Half: 6-8 75.0%	2nd Half: 7-15 46.7%	Game: 13-23 56.5%	4th Qtr	3-10 30.0%
	1st Qtr 0-0 0%	2nd Qtr 6-8 75.0%	3rd Qtr 4-5 80.0%		

LA Tech 63 - 11-9, 6-3 C-USA

##	Player	S	Total			Rebounds			PF	TP	A	TO	Blk	Stl	Min
			FG-FGA	3PT	FG-FGA	FT-FTA	Off Reb	Def Reb							
02	VASQUEZ,ROCHELLE	g	1-4	0-1	2-2	1	2	3	2	4	0	2	0	1	26
23	CLEAVER,REAUNA	f	1-4	0-0	0-0	2	0	2	5	2	2	3	0	2	17
24	DAVENPORT, TIARA	f	3-7	0-1	1-1	1	1	2	4	7	0	4	0	1	23
25	WINGATE,BRANDI	f	7-15	0-0	6-6	1	8	9	3	20	1	1	0	0	30
30	SANTOS,ASHLEY	g	5-10	0-3	2-2	2	3	5	2	12	4	2	0	1	35
01	GIPSON,DAWN		0-0	0-0	0-0	0	1	1	1	0	0	1	0	0	4
03	RICHIE,RUBY		0-1	0-1	0-0	0	0	0	3	0	1	0	1	0	14
04	ANTHONY,KIERRA		0-4	0-0	2-2	0	3	3	1	2	3	3	0	0	17
22	LEBLANC,JASMINE		5-9	0-0	0-2	1	3	4	4	10	2	2	1	1	21
32	MOTEN,KEVIONE		3-3	0-0	0-2	4	0	4	3	6	0	0	0	1	13
TEAM						2	2	4	0		1				
TOTALS			25-57	0-6	13-17	14	23	37	28	63	13	19	2	7	200

Deadball Rebounds: 3,0

FG %	1st Half: 12-32 37.5%	2nd Half: 13-25 52.0%	Game: 25-57 43.9%	4th Qtr	6-10 60.0%
	1st Qtr 6-16 37.5%	2nd Qtr 6-16 37.5%	3rd Qtr 7-15 46.7%		
3FG %	1st Half: 0-4 00.0%	2nd Half: 0-2 00.0%	Game: 0-6 00.0%	4th Qtr	0-0 0%
	1st Qtr 0-1 00.0%	2nd Qtr 0-3 00.0%	3rd Qtr 0-2 00.0%		
FT %	1st Half: 6-6 100.0%	2nd Half: 7-11 63.6%	Game: 13-17 76.5%	4th Qtr	7-9 77.8%
	1st Qtr 0-0 0%	2nd Qtr 6-6 100.0%	3rd Qtr 0-2 00.0%		

Officials: Kim Thebo, Marc Merritt, Travis Jones

Technical Fouls: Rice- None. LA Tech- None.

Attendance: 1925

Score by periods	1st	2nd	3rd	4th	Total
Rice	12	17	16	16	61
LA Tech	12	18	14	19	63

Points	In Paint	Off T/O	2nd 2nd Chance	Fast Break	Bench
RICE	24	15	8	6	14
LATECH	28	16	8	2	18

Last FG - RICE 4th-05:32, LATECH 4th-01:13.

Largest lead - Rice by 4 1st-03:53; LA Tech by 7 3rd-06:59

RICE led for 14:51. LATECH led for 14:45. Game was tied for 10:24.

Score tied - 19 times

Lead changed - 20 times

Official Basketball Box Score -- Game Totals -- First Half Statistics

Rice vs LA Tech

2/4/2016 6:35 PM at Thomas Assembly Center (Ruston, La.)

Rice 29 • 4-16, 3-6 C-USA

##	Player	S	Total			Rebounds			PF	TP	A	TO	Blk	Stl	Min
			FG-FGA	3PT	FG-FGA	FT-FTA	Off Reb	Def Reb							
03	HAWKINS,MAYA	g	0-4	0-2	0-0	0	2	2	1	0	7	3	0	1	17
10	KNIGHT,WENDY	g	2-4	1-2	0-0	1	1	2	0	5	0	2	1	1	19
20	RAINEY,SHANI	g	1-3	0-0	0-0	0	0	0	2	2	0	0	0	8	
32	LANG,ALYSSA	f	1-1	0-0	0-0	1	0	1	2	2	1	1	0	7	
33	GOODWINE,JASMINE	f	4-7	0-0	6-6	0	3	3	0	14	1	0	0	18	
05	GRIGSBY,LAUREN		0-1	0-1	0-0	0	3	3	0	0	2	3	0	12	
11	DUCAT,LEXIE		2-2	0-0	0-2	0	0	0	1	4	0	0	0	12	
21	STANTON,GABRIELLE		1-2	0-0	0-0	0	1	1	0	2	0	1	0	4	
40	PALMER,MEGAN		0-0	0-0	0-0	0	0	0	0	0	0	0	0	0	
44	OBINNAH,ADAEZE		0-0	0-0	0-0	0	0	0	0	0	0	0	0	3	
TEAM						1	1	2	0		1				
Totals			11-24	1-5	6-8	3	11	14	6	29	11	11	1	2	100

FG %	1st Qtr	6-14	42.9%	2nd Qtr	5-10	50.0%	Half:	11-24	45.8%
3FG %	1st Qtr	0-1	00.0%	2nd Qtr	1-4	25.0%	Half:	1-5	20.0%
FT %	1st Qtr	0-0	0%	2nd Qtr	6-8	75.0%	Half:	6-8	75.0%

LA Tech 30 • 11-9, 6-3 C-USA

##	Player	S	Total			Rebounds			PF	TP	A	TO	Blk	Stl	Min
			FG-FGA	3PT	FG-FGA	FT-FTA	Off Reb	Def Reb							
02	VASQUEZ,ROCHELLE	g	1-2	0-0	2-2	0	0	0	0	4	0	1	0	14	
23	CLEAVER,REAUNA	f	1-4	0-0	0-0	2	0	2	2	2	1	2	0	10	
24	DAVENPORT,TIARA	f	0-1	0-1	0-0	0	1	1	3	0	0	2	0	10	
25	WINGATE,BRANDI	f	2-6	0-0	0-0	1	2	3	2	4	1	0	0	11	
30	SANTOS,ASHLEY	g	3-8	0-3	2-2	2	1	3	0	8	3	0	0	18	
01	GIPSON,DAWN		0-0	0-0	0-0	0	1	1	1	0	0	1	0	4	
03	RICHIE,RUBY		0-0	0-0	0-0	0	0	0	1	0	0	0	0	4	
04	ANTHONY,KIERRA		0-4	0-0	2-2	0	3	3	0	2	2	1	0	12	
22	LEBLANC,JASMINE		3-5	0-0	0-0	0	1	1	1	6	0	1	0	9	
32	MOTEN,KEVIONE		2-2	0-0	0-0	2	0	2	2	4	0	0	0	8	
TEAM						2	2	4	0		1				
Totals			12-32	0-4	6-6	9	11	20	12	30	7	9	0	5	100

FG %	1st Qtr	6-16	37.5%	2nd Qtr	6-16	37.5%	Half:	12-32	37.5%
3FG %	1st Qtr	0-1	00.0%	2nd Qtr	0-3	00.0%	Half:	0-4	00.0%
FT %	1st Qtr	0-0	0%	2nd Qtr	6-6	100.0%	Half:	6-6	100.0%

Officials: Kim Thebo, Marc Merritt, Travis Jones

Technical Fouls: Rice- None. LA Tech- None.

Score by periods	1st	2nd	3rd	4th	Total
Rice	12	17	16	16	61
LA Tech	12	18	14	19	63

Points	In Paint	Off T/O	2nd Chance	Fast Break	Bench
RICE	12	7	2	4	6
	18	12	10	0	12

Last FG - RICE 2nd-01:09, LATECH 2nd-00:06.
RICE led for 8:30. LATECH led for 4:16. Game was tied for 7:14.

Score tied - 11 times
Lead changed - 10 times

Rice vs LA Tech
2/4/2016; 6:35 PM at Thomas Assembly Center (Ruston, La.)
Period 1 Play-By-Play

VISITORS: Rice	Time	Score	Margin	HOME: LA Tech
FOUL by LANG,ALYSSA	09:44			
TURNOVER by LANG,ALYSSA	09:44			
	09:34			TURNOVER by CLEAVER,REAUNA
TURNOVER by TEAM	09:03			
SUB IN: GRIGSBY,LAUREN	09:03			
SUB OUT: RAINEY,SHANI	09:03			
	08:33	2-0	H 2	GOOD! LAYUP by VASQUEZ,ROCHELLE [PNT]
GOOD! JUMPER by GOODWINE,JASMINE	08:06	2-2	T	
ASSIST by HAWKINS,MAYA	08:06			
	07:41			MISSED 3PTR by SANTOS,ASHLEY
REBOUND (DEF) by HAWKINS,MAYA	07:41			
GOOD! LAYUP by LANG,ALYSSA [PNT]	07:29	2-4	V 2	
ASSIST by GOODWINE,JASMINE	07:29			
	07:18			MISSED LAYUP by CLEAVER,REAUNA
BLOCK by KNIGHT,WENDY	07:18			
	07:14			REBOUND (OFF) by TEAM
	07:14			SUB IN: ANTHONY,KIERRA
	07:14			SUB OUT: VASQUEZ,ROCHELLE
	06:57			TURNOVER by DAVENPORT,TIARA
SUB IN: RAINEY,SHANI	06:57			
SUB OUT: GRIGSBY,LAUREN	06:57			
	06:57			SUB IN: LEBLANC,JASMINE
	06:57			SUB OUT: CLEAVER,REAUNA
MISSED JUMPER by GOODWINE,JASMINE	06:46			
	06:46			REBOUND (DEF) by DAVENPORT,TIARA
	06:36			MISSED JUMPER by LEBLANC,JASMINE
REBOUND (DEF) by GOODWINE,JASMINE	06:36			
	06:34			FOUL by DAVENPORT,TIARA
MISSED LAYUP by RAINEY,SHANI	06:18			
	06:18			REBOUND (DEF) by LEBLANC,JASMINE
	06:08	4-4	T	GOOD! JUMPER by SANTOS,ASHLEY [PNT]
GOOD! JUMPER by GOODWINE,JASMINE	05:58	4-6	V 2	
ASSIST by HAWKINS,MAYA	05:58			
	05:48			MISSED JUMPER by LEBLANC,JASMINE
	05:48			REBOUND (OFF) by TEAM
	05:46	6-6	T	GOOD! JUMPER by WINGATE,BRANDI
	05:46			ASSIST by ANTHONY,KIERRA
MISSED LAYUP by GOODWINE,JASMINE	05:16			
REBOUND (OFF) by LANG,ALYSSA	05:16			
GOOD! JUMPER by KNIGHT,WENDY	05:09	6-8	V 2	
ASSIST by LANG,ALYSSA	05:09			
	04:58			MISSED JUMPER by SANTOS,ASHLEY
	04:58			REBOUND (OFF) by WINGATE,BRANDI
FOUL by RAINEY,SHANI	04:54			
	04:54			TIMEOUT TEAM
SUB IN: DUCAT,LEXIE	04:54			
SUB OUT: LANG,ALYSSA	04:54			
	04:54			SUB IN: CLEAVER,REAUNA
	04:54			SUB IN: VASQUEZ,ROCHELLE
	04:54			SUB OUT: DAVENPORT,TIARA
	04:54			SUB OUT: SANTOS,ASHLEY
	04:40			MISSED LAYUP by WINGATE,BRANDI
	04:40			REBOUND (OFF) by CLEAVER,REAUNA

VISITORS: Rice	Time	Score	Margin	HOME: LA Tech
FOUL by DUCAT,LEXIE	04:37			
	04:20	8-8	T	GOOD! LAYUP by LEBLANC,JASMINE [PNT]
	04:20			ASSIST by CLEAVER,REAUNA
GOOD! JUMPER by DUCAT,LEXIE [PNT]	04:08	8-10	V 2	
ASSIST by HAWKINS,MAYA	04:08			
	03:59			MISSED LAYUP by CLEAVER,REAUNA
REBOUND (DEF) by HAWKINS,MAYA	03:59			
GOOD! LAYUP by RAINEY,SHANI [FB/PNT]	03:53	8-12	V 4	
ASSIST by HAWKINS,MAYA	03:53			
	03:35			TURNOVER by VASQUEZ,ROCHELLE
STEAL by KNIGHT,WENDY	03:33			
MISSED JUMPER by GOODWINE,JASMINE	03:08			
	03:08			REBOUND (DEF) by WINGATE,BRANDI
	02:58	10-12	V 2	GOOD! LAYUP by CLEAVER,REAUNA [PNT]
	02:58			ASSIST by WINGATE,BRANDI
MISSED JUMPER by HAWKINS,MAYA	02:50			
	02:50			REBOUND (DEF) by TEAM
SUB IN: STANTON,GABRIELLE	02:47			
SUB OUT: HAWKINS,MAYA	02:47			
	02:47			SUB IN: RICHIE,RUBY
	02:47			SUB IN: DAVENPORT,TIARA
	02:47			SUB IN: SANTOS,ASHLEY
	02:47			SUB OUT: LEBLANC,JASMINE
	02:47			SUB OUT: WINGATE,BRANDI
	02:47			SUB OUT: VASQUEZ,ROCHELLE
	02:34			MISSED JUMPER by ANTHONY,KIERRA
REBOUND (DEF) by GOODWINE,JASMINE	02:34			
MISSED LAYUP by KNIGHT,WENDY	02:09			
	02:09			REBOUND (DEF) by ANTHONY,KIERRA
	02:00	12-12	T	GOOD! LAYUP by SANTOS,ASHLEY [PNT]
	02:00			ASSIST by ANTHONY,KIERRA
	01:49			FOUL by CLEAVER,REAUNA
SUB IN: GRIGSBY,LAUREN	01:49			
SUB OUT: RAINEY,SHANI	01:49			
	01:49			SUB IN: WINGATE,BRANDI
	01:49			SUB OUT: CLEAVER,REAUNA
TURNOVER by GRIGSBY,LAUREN	01:35			
	01:33			STEAL by DAVENPORT,TIARA
	01:15			MISSED JUMPER by WINGATE,BRANDI
REBOUND (DEF) by GRIGSBY,LAUREN	01:15			
TURNOVER by GRIGSBY,LAUREN	01:11			
	01:11			SUB IN: VASQUEZ,ROCHELLE
	01:11			SUB OUT: ANTHONY,KIERRA
	00:58			MISSED JUMPER by WINGATE,BRANDI
REBOUND (DEF) by STANTON,GABRIELLE	00:58			
MISSED JUMPER by STANTON,GABRIELLE	00:52			
REBOUND (OFF) by TEAM	00:52			
	00:50			FOUL by WINGATE,BRANDI
SUB IN: LANG,ALYSSA	00:50			
SUB OUT: GOODWINE,JASMINE	00:50			
	00:50			SUB IN: MOTEN,KEVIONE
	00:50			SUB OUT: WINGATE,BRANDI
	00:49			FOUL by RICHIE,RUBY
TURNOVER by STANTON,GABRIELLE	00:39			
	00:36			STEAL by MOTEN,KEVIONE
	00:12			FOUL by DAVENPORT,TIARA
	00:12			TURNOVER by DAVENPORT,TIARA
SUB IN: HAWKINS,MAYA	00:12			

VISITORS: Rice	Time	Score	Margin	HOME: LA Tech
SUB OUT: KNIGHT,WENDY	00:12			
	00:12			SUB IN: CLEAVER,REAUNA
	00:12			SUB OUT: DAVENPORT,TIARA
MISSED 3PTR by HAWKINS,MAYA	00:02			
	00:01			REBOUND (DEF) by TEAM

Rice 12, LA Tech 12

Period 1-only	In Paint	Off T/O	2nd Chance	Fast Break	Bench	
RICE	6	0	2	2	2	Score tied - 2 times
LATECH	10	2	4	0	2	Lead changed - 2 times

Rice vs LA Tech
2/4/2016; 6:35 PM at Thomas Assembly Center (Ruston, La.)
Period 2 Play-By-Play

VISITORS: Rice	Time	Score	Margin	HOME: LA Tech
SUB IN: DUCAT,LEXIE	10:00			
SUB IN: GRIGSBY,LAUREN	10:00			
SUB IN: STANTON,GABRIELLE	10:00			
SUB OUT: KNIGHT,WENDY	10:00			
SUB OUT: RAINEY,SHANI	10:00			
SUB OUT: GOODWINE,JASMINE	10:00			
	10:00			SUB IN: ANTHONY,KIERRA
	10:00			SUB OUT: DAVENPORT,TIARA
TURNOVER by HAWKINS,MAYA	09:49			
	09:26			TURNOVER by CLEAVER,REAUNA
STEAL by HAWKINS,MAYA	09:25			
GOOD! LAYUP by STANTON,GABRIELLE [FB/PNT]	09:22	12-14	V 2	
ASSIST by HAWKINS,MAYA	09:22			
	09:08			MISSED JUMPER by WINGATE,BRANDI
REBOUND (DEF) by GRIGSBY,LAUREN	09:08			
TURNOVER by GRIGSBY,LAUREN	09:01			
	08:57			STEAL by CLEAVER,REAUNA
FOUL by LANG,ALYSSA	08:55			
	08:55	13-14	V 1	GOOD! FT by ANTHONY,KIERRA
	08:55	14-14	T	GOOD! FT by ANTHONY,KIERRA
SUB IN: GOODWINE,JASMINE	08:55			
SUB IN: KNIGHT,WENDY	08:55			
SUB IN: RAINEY,SHANI	08:55			
SUB OUT: GRIGSBY,LAUREN	08:55			
SUB OUT: LANG,ALYSSA	08:55			
SUB OUT: STANTON,GABRIELLE	08:55			
	08:55			SUB IN: LEBLANC,JASMINE
	08:55			SUB OUT: VASQUEZ,ROCHELLE
TURNOVER by HAWKINS,MAYA	08:54			
	08:52			STEAL by CLEAVER,REAUNA
	08:38	16-14	H 2	GOOD! JUMPER by SANTOS,ASHLEY
TURNOVER by KNIGHT,WENDY	08:25			
	08:23			STEAL by SANTOS,ASHLEY
	08:19	18-14	H 4	GOOD! LAYUP by LEBLANC,JASMINE [PNT]
	08:19			ASSIST by SANTOS,ASHLEY
MISSED LAYUP by RAINEY,SHANI	07:56			
	07:56			REBOUND (DEF) by WINGATE,BRANDI
	07:50			FOUL by LEBLANC,JASMINE
	07:50			TURNOVER by LEBLANC,JASMINE
	07:39			FOUL by WINGATE,BRANDI
GOOD! FT by GOODWINE,JASMINE	07:39	18-15	H 3	
GOOD! FT by GOODWINE,JASMINE	07:39	18-16	H 2	
	07:39			SUB IN: DAVENPORT,TIARA
	07:39			SUB OUT: WINGATE,BRANDI
	07:33			MISSED JUMPER by ANTHONY,KIERRA
	07:33			REBOUND (OFF) by CLEAVER,REAUNA
	07:29			MISSED LAYUP by CLEAVER,REAUNA
REBOUND (DEF) by TEAM	07:29			
	07:27			SUB IN: VASQUEZ,ROCHELLE
	07:27			SUB OUT: SANTOS,ASHLEY
GOOD! LAYUP by DUCAT,LEXIE [PNT]	07:20	18-18	T	
ASSIST by HAWKINS,MAYA	07:20			
	07:07			MISSED 3PTR by DAVENPORT,TIARA

VISITORS: Rice	Time	Score	Margin	HOME: LA Tech
REBOUND (DEF) by GOODWINE,JASMINE	07:07			
	07:04			FOUL by CLEAVER,REAUNA
	07:04			SUB IN: SANTOS,ASHLEY
	07:04			SUB IN: MOTEN,KEVIONE
	07:04			SUB OUT: LEBLANC,JASMINE
	07:04			SUB OUT: CLEAVER,REAUNA
GOOD! JUMPER by GOODWINE,JASMINE	06:43	18-20	V 2	
ASSIST by HAWKINS,MAYA	06:43			
	06:33			MISSED 3PTR by SANTOS,ASHLEY
	06:33			REBOUND (OFF) by SANTOS,ASHLEY
FOUL by RAINEY,SHANI	06:27			
	06:27	19-20	V 1	GOOD! FT by SANTOS,ASHLEY
	06:27	20-20	T	GOOD! FT by SANTOS,ASHLEY
SUB IN: GRIGSBY,LAUREN	06:27			
SUB OUT: RAINEY,SHANI	06:27			
MISSED 3PTR by KNIGHT,WENDY	06:02			
	06:02			REBOUND (DEF) by ANTHONY,KIERRA
	05:51			MISSED LAYUP by SANTOS,ASHLEY
	05:51			REBOUND (OFF) by MOTEN,KEVIONE
	05:48	22-20	H 2	GOOD! LAYUP by MOTEN,KEVIONE [PNT]
MISSED 3PTR by HAWKINS,MAYA	05:33			
	05:33			REBOUND (DEF) by ANTHONY,KIERRA
	05:25			MISSED LAYUP by ANTHONY,KIERRA
REBOUND (DEF) by KNIGHT,WENDY	05:25			
	05:22			FOUL by DAVENPORT,TIARA
SUB IN: OBINNAH,ADAEZE	05:22			
SUB OUT: DUCAT,LEXIE	05:22			
	05:22			SUB IN: CLEAVER,REAUNA
	05:22			SUB OUT: DAVENPORT,TIARA
MISSED 3PTR by GRIGSBY,LAUREN	05:05			
REBOUND (OFF) by KNIGHT,WENDY	05:05			
MISSED JUMPER by HAWKINS,MAYA	04:45			
	04:45			REBOUND (DEF) by SANTOS,ASHLEY
	04:39			MISSED JUMPER by ANTHONY,KIERRA
	04:39			REBOUND (OFF) by SANTOS,ASHLEY
	04:33			TIMEOUT TEAM
	04:33			SUB IN: RICHIE,RUBY
	04:33			SUB IN: GIPSON,DAWN
	04:33			SUB OUT: CLEAVER,REAUNA
	04:33			SUB OUT: VASQUEZ,ROCHELLE
	04:11			TURNOVER by TEAM
GOOD! 3PTR by KNIGHT,WENDY	03:56	22-23	V 1	
ASSIST by GRIGSBY,LAUREN	03:56			
	03:36			TURNOVER by ANTHONY,KIERRA
	03:36			SUB IN: LEBLANC,JASMINE
	03:36			SUB IN: VASQUEZ,ROCHELLE
	03:36			SUB OUT: ANTHONY,KIERRA
	03:36			SUB OUT: RICHIE,RUBY
TURNOVER by KNIGHT,WENDY	03:12			
	02:52			MISSED JUMPER by VASQUEZ,ROCHELLE
	02:52			REBOUND (OFF) by MOTEN,KEVIONE
	02:49	24-23	H 1	GOOD! LAYUP by MOTEN,KEVIONE [PNT]
	02:42			FOUL by MOTEN,KEVIONE
GOOD! FT by GOODWINE,JASMINE	02:42	24-24	T	
GOOD! FT by GOODWINE,JASMINE	02:42	24-25	V 1	
SUB IN: DUCAT,LEXIE	02:42			
SUB OUT: OBINNAH,ADAEZE	02:42			
FOUL by HAWKINS,MAYA	02:15			

VISITORS: Rice	Time	Score	Margin	HOME: LA Tech
	02:15	25-25	T	GOOD! FT by VASQUEZ,ROCHELLE
	02:15	26-25	H 1	GOOD! FT by VASQUEZ,ROCHELLE
	01:49			FOUL by MOTEN,KEVIONE
GOOD! FT by GOODWINE,JASMINE	01:49	26-26	T	
GOOD! FT by GOODWINE,JASMINE	01:49	26-27	V 1	
	01:41			TURNOVER by GIPSON,DAWN
	01:29			FOUL by GIPSON,DAWN
MISSED FT by DUCAT,LEXIE	01:29			
REBOUND (DEADB) by TEAM	01:29			
MISSED FT by DUCAT,LEXIE	01:29			
	01:29			REBOUND (DEF) by GIPSON,DAWN
	01:22			MISSED 3PTR by SANTOS,ASHLEY
REBOUND (DEF) by GRIGSBY,LAUREN	01:22			
GOOD! LAYUP by GOODWINE,JASMINE [PNT]	01:09	26-29	V 3	
ASSIST by GRIGSBY,LAUREN	01:09			
	00:44	28-29	V 1	GOOD! JUMPER by LEBLANC,JASMINE
	00:44			ASSIST by SANTOS,ASHLEY
TURNOVER by HAWKINS,MAYA	00:15			
	00:15			TIMEOUT TEAM
SUB IN: PALMER,MEGAN	00:15			
SUB OUT: DUCAT,LEXIE	00:15			
	00:15			SUB IN: CLEAVER,REAUNA
	00:15			SUB IN: WINGATE,BRANDI
	00:15			SUB OUT: MOTEN,KEVIONE
	00:15			SUB OUT: GIPSON,DAWN
	00:06	30-29	H 1	GOOD! JUMPER by WINGATE,BRANDI [PNT]
	00:06			ASSIST by SANTOS,ASHLEY

Rice 29, LA Tech 30

Period 2-only	In Paint	Off T/O	2nd Chance	Fast Break	Bench	
RICE	6	7	0	2	4	Score tied - 6 times
LATECH	8	10	6	0	10	Lead changed - 8 times

Official Basketball Box Score -- Game Totals -- Second Half Statistics

Rice vs LA Tech

2/4/2016 6:35 PM at Thomas Assembly Center (Ruston, La.)

Rice 32 • 4-16, 3-6 C-USA

##	Player	S	Total			Rebounds			PF	TP	A	TO	Blk	Stl	Min
			FG-FGA	3PT FG-FGA	FT-FTA	Off Reb	Def Reb	Tot Reb							
03	HAWKINS,MAYA	g	0-4	0-1	0-0	0	0	0	0	0	2	0	0	0	19
10	KNIGHT,WENDY	g	0-2	0-1	0-0	1	1	2	0	0	1	2	0	1	18
20	RAINEY,SHANI	g	3-5	0-1	0-4	0	3	3	2	6	1	0	0	1	12
32	LANG,ALYSSA	f	1-3	0-0	2-4	2	1	3	3	4	0	1	0	0	19
33	GOODWINE,JASMINE	f	5-10	1-3	3-5	1	1	2	4	14	0	3	0	0	18
05	GRIGSBY,LAUREN		1-1	1-1	2-2	1	0	1	0	5	2	0	0	3	8
11	DUCAT,LEXIE		0-0	0-0	0-0	0	1	1	1	0	0	0	0	0	3
21	STANTON,GABRIELLE		1-2	1-2	0-0	0	0	0	1	3	0	0	0	0	3
40	PALMER,MEGAN		0-0	0-0	0-0	0	0	0	0	0	0	0	0	0	0
44	OBINNAH,ADAEZE		0-0	0-0	0-0	0	0	0	0	0	0	0	0	0	0
TEAM						3	1	4	0		1				
Totals			11-27	3-9	7-15	8	8	16	11	32	6	7	0	5	100

FG %	3rd Qtr	5-12	41.7%	4th Qtr	6-15	40.0%	Half:	11-27	40.7%
3FG %	3rd Qtr	2-6	33.3%	4th Qtr	1-3	33.3%	Half:	3-9	20.0%
FT %	3rd Qtr	4-5	80.0%	4th Qtr	3-10	30.0%	Half:	7-15	46.7%

LA Tech 33 • 11-9, 6-3 C-USA

##	Player	S	Total			Rebounds			PF	TP	A	TO	Blk	Stl	Min
			FG-FGA	3PT FG-FGA	FT-FTA	Off Reb	Def Reb	Tot Reb							
02	VASQUEZ,ROCHELLE	g	0-2	0-1	0-0	1	2	3	2	0	0	1	0	1	12
23	CLEAVER,REAUNA	f	0-0	0-0	0-0	0	0	0	3	0	1	1	0	0	7
24	DAVENPORT,TIARA	f	3-6	0-0	1-1	1	0	1	1	7	0	2	0	0	13
25	WINGATE,BRANDI	f	5-9	0-0	6-6	0	6	6	1	16	0	1	0	0	19
30	SANTOS,ASHLEY	g	2-2	0-0	0-0	0	2	2	2	4	1	2	0	0	17
01	GIPSON,DAWN		0-0	0-0	0-0	0	0	0	0	0	0	0	0	0	0
03	RICHIE,RUBY		0-1	0-1	0-0	0	0	0	2	0	1	0	1	0	10
04	ANTHONY,KIERRA		0-0	0-0	0-0	0	0	0	1	0	1	2	0	0	5
22	LEBLANC,JASMINE		2-4	0-0	0-2	1	2	3	3	4	2	1	1	1	12
32	MOTEN,KEVIONE		1-1	0-0	0-2	2	0	2	1	2	0	0	0	0	5
TEAM						0	0	0	0		0				
Totals			13-25	0-2	7-11	5	12	17	16	33	6	10	2	2	100

FG %	3rd Qtr	7-15	46.7%	4th Qtr	6-10	60.0%	Half:	13-25	52.0%
3FG %	3rd Qtr	0-2	00.0%	4th Qtr	0-0	0%	Half:	0-2	00.0%
FT %	3rd Qtr	0-2	00.0%	4th Qtr	7-9	77.8%	Half:	7-11	63.6%

Officials: Kim Thebo, Marc Merritt, Travis Jones

Technical Fouls: Rice- None. LA Tech- None.

Score by periods	1st	2nd	3rd	4th	Total
Rice	12	17	16	16	61
LA Tech	12	18	14	19	63

Points	In Paint	Off T/O	2nd Chance	Fast Break	Bench
RICE	12	8	6	2	8
	10	4	8	2	6

Last FG - RICE 4th-05:32, LATECH 4th-01:13.
RICE led for 6:21. LATECH led for 10:29. Game was tied for 3:10.

Score tied - 8 times
Lead changed - 10 times

Rice vs LA Tech
2/4/2016; 6:35 PM at Thomas Assembly Center (Ruston, La.)
Period 3 Play-By-Play

VISITORS: Rice	Time	Score	Margin	HOME: LA Tech
	10:00			SUB IN: LEBLANC,JASMINE
	10:00			SUB OUT: DAVENPORT,TIARA
TURNOVER by TEAM	09:29			
	09:15			MISSED LAYUP by WINGATE,BRANDI
REBOUND (DEF) by KNIGHT,WENDY	09:15			
TURNOVER by KNIGHT,WENDY	08:48			
	08:46			STEAL by LEBLANC,JASMINE
	08:43			MISSED LAYUP by LEBLANC,JASMINE
	08:43			REBOUND (OFF) by LEBLANC,JASMINE
	08:40	32-29	H 3	GOOD! LAYUP by LEBLANC,JASMINE [PNT]
TIMEOUT TEAM	08:40			
	08:40			SUB IN: MOTEN,KEVIONE
	08:40			SUB OUT: VASQUEZ,ROCHELLE
MISSED 3PTR by RAINEY,SHANI	08:26			
	08:26			REBOUND (DEF) by VASQUEZ,ROCHELLE
	08:16			TURNOVER by SANTOS,ASHLEY
MISSED LAYUP by LANG,ALYSSA	07:59			
	07:59			BLOCK by LEBLANC,JASMINE
REBOUND (OFF) by TEAM	07:59			
MISSED 3PTR by HAWKINS,MAYA	07:56			
	07:56			REBOUND (DEF) by WINGATE,BRANDI
	07:41	34-29	H 5	GOOD! JUMPER by WINGATE,BRANDI
	07:41			ASSIST by SANTOS,ASHLEY
TURNOVER by KNIGHT,WENDY	07:04			
	07:02			STEAL by VASQUEZ,ROCHELLE
	06:59	36-29	H 7	GOOD! JUMPER by WINGATE,BRANDI
	06:59			ASSIST by LEBLANC,JASMINE
GOOD! 3PTR by GOODWINE,JASMINE	06:49	36-32	H 4	
ASSIST by HAWKINS,MAYA	06:49			
	06:42			TURNOVER by VASQUEZ,ROCHELLE
STEAL by KNIGHT,WENDY	06:40			
MISSED 3PTR by GOODWINE,JASMINE	06:36			
	06:36			REBOUND (DEF) by LEBLANC,JASMINE
	06:16			MISSED JUMPER by WINGATE,BRANDI
REBOUND (DEF) by RAINEY,SHANI	06:16			
MISSED LAYUP by LANG,ALYSSA	05:50			
	05:50			REBOUND (DEF) by WINGATE,BRANDI
	05:33			MISSED JUMPER by VASQUEZ,ROCHELLE
REBOUND (DEF) by TEAM	05:33			
TURNOVER by LANG,ALYSSA	05:24			
SUB IN: GRIGSBY,LAUREN	05:24			
SUB IN: STANTON,GABRIELLE	05:24			
SUB OUT: HAWKINS,MAYA	05:24			
SUB OUT: RAINEY,SHANI	05:24			
	05:24			SUB IN: DAVENPORT,TIARA
	05:24			SUB IN: ANTHONY,KIERRA
	05:24			SUB IN: VASQUEZ,ROCHELLE
	05:24			SUB IN: RICHIE,RUBY
	05:24			SUB OUT: MOTEN,KEVIONE
	05:24			SUB OUT: LEBLANC,JASMINE
	05:24			SUB OUT: WINGATE,BRANDI
	05:24			SUB OUT: SANTOS,ASHLEY
	05:12			FOUL by CLEAVER,REAUNA

VISITORS: Rice	Time	Score	Margin	HOME: LA Tech
	05:12			TURNOVER by CLEAVER,REAUNA
	05:12			SUB IN: WINGATE,BRANDI
	05:12			SUB OUT: CLEAVER,REAUNA
TURNOVER by GOODWINE,JASMINE	05:03			
	05:03			SUB IN: SANTOS,ASHLEY
	05:03			SUB IN: LEBLANC,JASMINE
	05:03			SUB OUT: VASQUEZ,ROCHELLE
	05:03			SUB OUT: RICHIE,RUBY
	04:59			TIMEOUT TEAM
FOUL by STANTON,GABRIELLE	04:41			
SUB IN: HAWKINS,MAYA	04:41			
SUB OUT: STANTON,GABRIELLE	04:41			
FOUL by GOODWINE,JASMINE	04:34			
	04:24			TURNOVER by ANTHONY,KIERRA
STEAL by GRIGSBY,LAUREN	04:22			
GOOD! 3PTR by GRIGSBY,LAUREN	04:06	36-35	H 1	
ASSIST by KNIGHT,WENDY	04:06			
	03:55			MISSED LAYUP by DAVENPORT,TIARA
	03:55			REBOUND (OFF) by DAVENPORT,TIARA
	03:51	38-35	H 3	GOOD! JUMPER by DAVENPORT,TIARA [PNT]
	03:42			FOUL by SANTOS,ASHLEY
GOOD! FT by GRIGSBY,LAUREN	03:42	38-36	H 2	
GOOD! FT by GRIGSBY,LAUREN	03:42	38-37	H 1	
	03:42			SUB IN: VASQUEZ,ROCHELLE
	03:42			SUB OUT: ANTHONY,KIERRA
	03:34			TURNOVER by DAVENPORT,TIARA
STEAL by GRIGSBY,LAUREN	03:33			
	03:17			FOUL by VASQUEZ,ROCHELLE
MISSED LAYUP by KNIGHT,WENDY	03:15			
REBOUND (OFF) by TEAM	03:15			
GOOD! LAYUP by GOODWINE,JASMINE [PNT]	03:08	38-39	V 1	
	03:00	40-39	H 1	GOOD! JUMPER by SANTOS,ASHLEY
	03:00			ASSIST by LEBLANC,JASMINE
FOUL by GOODWINE,JASMINE	02:51			
TURNOVER by GOODWINE,JASMINE	02:51			
	02:51			SUB IN: RICHIE,RUBY
	02:51			SUB OUT: LEBLANC,JASMINE
	02:39			FOUL by DAVENPORT,TIARA
	02:39			TURNOVER by DAVENPORT,TIARA
	02:39			SUB IN: CLEAVER,REAUNA
	02:39			SUB OUT: DAVENPORT,TIARA
TURNOVER by GOODWINE,JASMINE	02:21			
	02:04			TIMEOUT TEAM
	02:01			MISSED 3PTR by RICHIE,RUBY
REBOUND (DEF) by LANG,ALYSSA	02:01			
	01:55			FOUL by CLEAVER,REAUNA
	01:55			SUB IN: MOTEN,KEVIONE
	01:55			SUB OUT: CLEAVER,REAUNA
MISSED FT by LANG,ALYSSA	01:52			
REBOUND (DEADB) by TEAM	01:52			
GOOD! FT by LANG,ALYSSA	01:52	40-40	T	
	01:27			MISSED JUMPER by WINGATE,BRANDI
	01:27			REBOUND (OFF) by MOTEN,KEVIONE
FOUL by LANG,ALYSSA	01:25			
	01:25			MISSED FT by MOTEN,KEVIONE
	01:25			REBOUND (DEADB) by TEAM
	01:25			MISSED FT by MOTEN,KEVIONE
REBOUND (DEF) by DUCAT,LEXIE	01:25			

VISITORS: Rice	Time	Score	Margin	HOME: LA Tech
SUB IN: DUCAT,LEXIE	01:25			
SUB OUT: LANG,ALYSSA	01:25			
GOOD! JUMPER by GOODWINE,JASMINE	01:04	40-42	V 2	
ASSIST by GRIGSBY,LAUREN	01:04			
	00:43			MISSED 3PTR by VASQUEZ,ROCHELLE
	00:43			REBOUND (OFF) by MOTEN,KEVIONE
	00:38	42-42	T	GOOD! LAYUP by MOTEN,KEVIONE [PNT]
GOOD! LAYUP by GOODWINE,JASMINE [PNT]	00:31	42-44	V 2	
ASSIST by HAWKINS,MAYA	00:31			
	00:31			FOUL by MOTEN,KEVIONE
GOOD! FT by GOODWINE,JASMINE	00:31	42-45	V 3	
	00:17	44-45	V 1	GOOD! JUMPER by WINGATE,BRANDI
MISSED 3PTR by GOODWINE,JASMINE	00:07			
	00:07			REBOUND (DEF) by VASQUEZ,ROCHELLE

Rice 61, LA Tech 63

Period 3-only	In Paint	Off T/O	2nd Chance	Fast Break	Bench	
RICE	4	5	2	0	5	Score tied - 2 times
LATECH	6	4	6	0	4	Lead changed - 4 times

Rice vs LA Tech
2/4/2016; 6:35 PM at Thomas Assembly Center (Ruston, La.)
Period 4 Play-By-Play

VISITORS: Rice	Time	Score	Margin	HOME: LA Tech
	10:00			SUB IN: MOTEN,KEVIONE
	10:00			SUB IN: RICHIE,RUBY
	10:00			SUB OUT: CLEAVER,REAUNA
	10:00			SUB OUT: DAVENPORT,TIARA
FOUL by RAINEY,SHANI	09:45			
	09:45	45-45	T	GOOD! FT by WINGATE,BRANDI
	09:45	46-45	H 1	GOOD! FT by WINGATE,BRANDI
	09:45			FOUL by SANTOS,ASHLEY
	09:45			SUB IN: DAVENPORT,TIARA
	09:45			SUB OUT: MOTEN,KEVIONE
TIMEOUT TEAM	09:36			
GOOD! LAYUP by RAINEY,SHANI [PNT]	09:24	46-47	V 1	
	09:11	48-47	H 1	GOOD! JUMPER by WINGATE,BRANDI
GOOD! LAYUP by RAINEY,SHANI [PNT]	08:45	48-49	V 1	
	08:17			MISSED JUMPER by WINGATE,BRANDI
REBOUND (DEF) by RAINEY,SHANI	08:17			
MISSED LAYUP by RAINEY,SHANI	08:08			
	08:08			REBOUND (DEF) by WINGATE,BRANDI
	08:01	50-49	H 1	GOOD! LAYUP by DAVENPORT,TIARA [FB/PNT]
	08:01			ASSIST by RICHIE,RUBY
FOUL by GOODWINE,JASMINE	08:01			
	08:01	51-49	H 2	GOOD! FT by DAVENPORT,TIARA
	08:01			SUB IN: ANTHONY,KIERRA
	08:01			SUB IN: LEBLANC,JASMINE
	08:01			SUB OUT: RICHIE,RUBY
	08:01			SUB OUT: SANTOS,ASHLEY
GOOD! JUMPER by GOODWINE,JASMINE	07:32	51-51	T	
ASSIST by RAINEY,SHANI	07:32			
	07:23			MISSED LAYUP by LEBLANC,JASMINE
	07:23			REBOUND (OFF) by VASQUEZ,ROCHELLE
	07:12	53-51	H 2	GOOD! LAYUP by LEBLANC,JASMINE [PNT]
GOOD! LAYUP by LANG,ALYSSA [PNT]	06:50	53-53	T	
FOUL by GOODWINE,JASMINE	06:41			
SUB IN: DUCAT,LEXIE	06:41			
SUB OUT: GOODWINE,JASMINE	06:41			
	06:41			SUB IN: RICHIE,RUBY
	06:41			SUB OUT: VASQUEZ,ROCHELLE
	06:33			TURNOVER by ANTHONY,KIERRA
STEAL by RAINEY,SHANI	06:32			
GOOD! LAYUP by RAINEY,SHANI [FB/PNT]	06:28	53-55	V 2	
	06:10	55-55	T	GOOD! JUMPER by DAVENPORT,TIARA
	06:10			ASSIST by ANTHONY,KIERRA
	05:56			FOUL by RICHIE,RUBY
SUB IN: GRIGSBY,LAUREN	05:56			
SUB IN: STANTON,GABRIELLE	05:56			
SUB OUT: KNIGHT,WENDY	05:56			
SUB OUT: RAINEY,SHANI	05:56			
	05:56			SUB IN: CLEAVER,REAUNA
	05:56			SUB IN: VASQUEZ,ROCHELLE
	05:56			SUB IN: SANTOS,ASHLEY
	05:56			SUB OUT: ANTHONY,KIERRA
	05:56			SUB OUT: WINGATE,BRANDI
	05:56			SUB OUT: LEBLANC,JASMINE

VISITORS: Rice	Time	Score	Margin	HOME: LA Tech
MISSED LAYUP by HAWKINS,MAYA	05:49			
REBOUND (OFF) by LANG,ALYSSA	05:49			
	05:44			FOUL by VASQUEZ,ROCHELLE
GOOD! 3PTR by STANTON,GABRIELLE	05:32	55-58	V 3	
ASSIST by GRIGSBY,LAUREN	05:32			
	05:02	57-58	V 1	GOOD! JUMPER by SANTOS,ASHLEY
	05:02			ASSIST by CLEAVER,REAUNA
	04:58			FOUL by CLEAVER,REAUNA
FOUL by DUCAT,LEXIE	04:58			
	04:58			SUB IN: WINGATE,BRANDI
	04:58			SUB OUT: CLEAVER,REAUNA
MISSED 3PTR by STANTON,GABRIELLE	04:36			
	04:36			REBOUND (DEF) by SANTOS,ASHLEY
	04:26			TURNOVER by SANTOS,ASHLEY
STEAL by GRIGSBY,LAUREN	04:24			
SUB IN: RAINEY,SHANI	04:20			
SUB IN: GOODWINE,JASMINE	04:20			
SUB IN: KNIGHT,WENDY	04:20			
SUB OUT: GRIGSBY,LAUREN	04:20			
SUB OUT: STANTON,GABRIELLE	04:20			
SUB OUT: DUCAT,LEXIE	04:20			
	04:20			SUB IN: ANTHONY,KIERRA
	04:20			SUB OUT: VASQUEZ,ROCHELLE
MISSED 3PTR by KNIGHT,WENDY	03:59			
	03:59			REBOUND (DEF) by WINGATE,BRANDI
	03:38			MISSED JUMPER by DAVENPORT,TIARA
REBOUND (DEF) by RAINEY,SHANI	03:38			
	03:12			FOUL by ANTHONY,KIERRA
GOOD! FT by LANG,ALYSSA	03:12	57-59	V 2	
MISSED FT by LANG,ALYSSA	03:12			
	03:12			REBOUND (DEF) by WINGATE,BRANDI
	03:12			SUB IN: LEBLANC,JASMINE
	03:12			SUB OUT: RICHIE,RUBY
	03:05			FOUL by LEBLANC,JASMINE
	03:05			TURNOVER by LEBLANC,JASMINE
MISSED JUMPER by HAWKINS,MAYA	02:38			
REBOUND (OFF) by KNIGHT,WENDY	02:38			
MISSED JUMPER by GOODWINE,JASMINE	02:19			
REBOUND (OFF) by LANG,ALYSSA	02:19			
MISSED JUMPER by GOODWINE,JASMINE	02:12			
	02:12			REBOUND (DEF) by LEBLANC,JASMINE
	02:02			MISSED JUMPER by DAVENPORT,TIARA
REBOUND (DEF) by GOODWINE,JASMINE	02:02			
FOUL by RAINEY,SHANI	01:58			
	01:58			MISSED FT by LEBLANC,JASMINE
	01:58			REBOUND (DEADB) by TEAM
	01:58			MISSED FT by LEBLANC,JASMINE
	01:58			REBOUND (DEADB) by TEAM
FOUL by LANG,ALYSSA	01:58			
	01:58	58-59	V 1	GOOD! FT by WINGATE,BRANDI
	01:58	59-59	T	GOOD! FT by WINGATE,BRANDI
SUB IN: GRIGSBY,LAUREN	01:58			
SUB OUT: RAINEY,SHANI	01:58			
	01:58			SUB IN: RICHIE,RUBY
	01:58			SUB IN: VASQUEZ,ROCHELLE
	01:58			SUB OUT: ANTHONY,KIERRA
	01:58			SUB OUT: SANTOS,ASHLEY
MISSED JUMPER by HAWKINS,MAYA	01:32			

VISITORS: Rice	Time	Score	Margin	HOME: LA Tech
	01:32			BLOCK by RICHIE,RUBY
	01:27			REBOUND (DEF) by WINGATE,BRANDI
	01:13	61-59	H 2	GOOD! JUMPER by WINGATE,BRANDI
	00:46			FOUL by RICHIE,RUBY
MISSED FT by GOODWINE,JASMINE	00:46			
REBOUND (DEADB) by TEAM	00:46			
GOOD! FT by GOODWINE,JASMINE	00:46	61-60	H 1	
SUB IN: RAINEY,SHANI	00:46			
SUB OUT: GRIGSBY,LAUREN	00:46			
	00:46			SUB IN: SANTOS,ASHLEY
	00:46			SUB OUT: RICHIE,RUBY
	00:35			TURNOVER by WINGATE,BRANDI
	00:18			FOUL by LEBLANC,JASMINE
MISSED FT by RAINEY,SHANI	00:18			
REBOUND (DEADB) by TEAM	00:18			
MISSED FT by RAINEY,SHANI	00:18			
REBOUND (OFF) by GOODWINE,JASMINE	00:18			
MISSED JUMPER by GOODWINE,JASMINE	00:14			
REBOUND (OFF) by TEAM	00:14			
	00:13			FOUL by WINGATE,BRANDI
GOOD! FT by GOODWINE,JASMINE	00:13	61-61	T	
	00:13			TIMEOUT TEAM
MISSED FT by GOODWINE,JASMINE	00:13			
	00:13			REBOUND (DEF) by SANTOS,ASHLEY
	00:11			TIMEOUT TEAM
	00:03	62-61	H 1	GOOD! FT by WINGATE,BRANDI
	00:03	63-61	H 2	GOOD! FT by WINGATE,BRANDI
TIMEOUT TEAM	00:03			
SUB IN: GRIGSBY,LAUREN	00:03			
SUB OUT: LANG,ALYSSA	00:03			
FOUL by LANG,ALYSSA	00:01			
	00:01			FOUL by LEBLANC,JASMINE
MISSED FT by RAINEY,SHANI	00:01			
REBOUND (DEADB) by TEAM	00:01			
MISSED FT by RAINEY,SHANI	00:01			
REBOUND (OFF) by GRIGSBY,LAUREN	00:01			
	00:01			SUB IN: MOTEN,KEVIONE
	00:01			SUB OUT: LEBLANC,JASMINE

Rice 61, LA Tech 63

Period 4-only	In Paint	Off T/O	2nd Chance	Fast Break	Bench	
RICE	8	3	4	2	3	Score tied - 6 times
LATECH	4	0	2	2	2	Lead changed - 6 times

Rice vs LA Tech
2/4/2016; 6:35 PM at Thomas Assembly Center (Ruston, La.)
Scoring/Runs Reference

Period 1			Period 2		
Rice	Score	LA Tech	Rice	Score	LA Tech
09:44 - LANG TURN	TO		09:49 - HAWKINS TURN	TO	
		TO CLEAVER TURN - 09:34			TO CLEAVER TURN - 09:26
09:03 - TEAM TURN	TO		09:22 - STANTON LAYUP	2 ^{PF} 14-12 -2	X WINGATE JUMPER - 09:08
		0-2 2 2 ^P VASQUEZ LAYUP - 08:33			
08:06 - GOODWINE JUMPER	2	2-2 0 X SANTOS 3PTR - 07:41	09:01 - GRIGSBY TURN	TO	
					14-13 -1 1 ANTHONY FT - 08:55
07:29 - LANG LAYUP	2 ^P 4-2 -2 X CLEAVER LAYUP - 07:18		08:54 - HAWKINS TURN	TO	
		TO DAVENPORT TURN - 06:57			14-14 0 1 ANTHONY FT - 08:55
06:46 - GOODWINE JUMPER	X		08:25 - KNIGHT TURN	TO	
		X LEBLANC JUMPER - 06:36			14-16 2 2 SANTOS JUMPER - 08:38
06:18 - RAINEY LAYUP	X		07:56 - RAINEY LAYUP	X	
					14-18 4 2 ^P LEBLANC LAYUP - 08:19
05:58 - GOODWINE JUMPER	2	4-4 0 2 ^P SANTOS JUMPER - 06:08	07:39 - GOODWINE FT	1	15-18 3 TO LEBLANC TURN - 07:50
			07:39 - GOODWINE FT	1	16-18 2
05:16 - GOODWINE LAYUP	X	6-6 0 2 WINGATE JUMPER - 05:46			X ANTHONY JUMPER - 07:33
05:09 - KNIGHT JUMPER	2	8-6 -2 X SANTOS JUMPER - 04:58	07:20 - DUCAT LAYUP	2 ^P 18-18 0 X DAVENPORT 3PTR - 07:07	
					X CLEAVER LAYUP - 07:29
		X WINGATE LAYUP - 04:40	06:43 - GOODWINE JUMPER	2	20-18 -2 X SANTOS 3PTR - 06:33
		8-8 0 2 ^P LEBLANC LAYUP - 04:20			20-19 -1 1 SANTOS FT - 06:27
04:08 - DUCAT JUMPER	2 ^P 10-8 -2 X CLEAVER LAYUP - 03:59		06:02 - KNIGHT 3PTR	X	20-20 0 1 SANTOS FT - 06:27
					X SANTOS LAYUP - 05:51
03:53 - RAINEY LAYUP	2 ^{PF} 12-8 -4 TO VASQUEZ TURN - 03:35		05:33 - HAWKINS 3PTR	X	20-22 2 2 ^P MOTEN LAYUP - 05:48
03:08 - GOODWINE JUMPER	X				X ANTHONY LAYUP - 05:25
		12-10 -2 2 ^P CLEAVER LAYUP - 02:58	05:05 - GRIGSBY 3PTR	X	
02:50 - HAWKINS JUMPER	X		04:45 - HAWKINS JUMPER	X	
		X ANTHONY JUMPER - 02:34			X ANTHONY JUMPER - 04:39
02:09 - KNIGHT LAYUP	X				TO TEAM TURN - 04:11
		12-12 0 2 ^P SANTOS LAYUP - 02:00	03:56 - KNIGHT 3PTR	3	23-22 -1 TO ANTHONY TURN - 03:36
01:35 - GRIGSBY TURN	TO	X WINGATE JUMPER - 01:15			
01:11 - GRIGSBY TURN	TO	X WINGATE JUMPER - 00:58	03:12 - KNIGHT TURN	TO	
					X VASQUEZ JUMPER - 02:52
00:52 - STANTON JUMPER	X				23-24 1 2 ^P MOTEN LAYUP - 02:49
00:39 - STANTON TURN	TO		02:42 - GOODWINE FT	1	24-24 0
		TO DAVENPORT TURN - 00:12	02:42 - GOODWINE FT	1	25-24 -1
00:02 - HAWKINS 3PTR	X				25-25 0 1 VASQUEZ FT - 02:15
			01:49 - GOODWINE FT	1	25-26 1 1 VASQUEZ FT - 02:15
			01:49 - GOODWINE FT	1	26-26 0
			01:29 - DUCAT FT	X	27-26 -1 TO GIPSON TURN - 01:41

01:29 - DUCAT FT

X

X

SANTOS 3PTR - 01:22

01:09 - GOODWINE LAYUP

2^P

29-26
-3

29-28
-1

2

LEBLANC JUMPER - 00:44

00:15 - HAWKINS TURN

TO

29-30
1

2^P

WINGATE JUMPER - 00:06

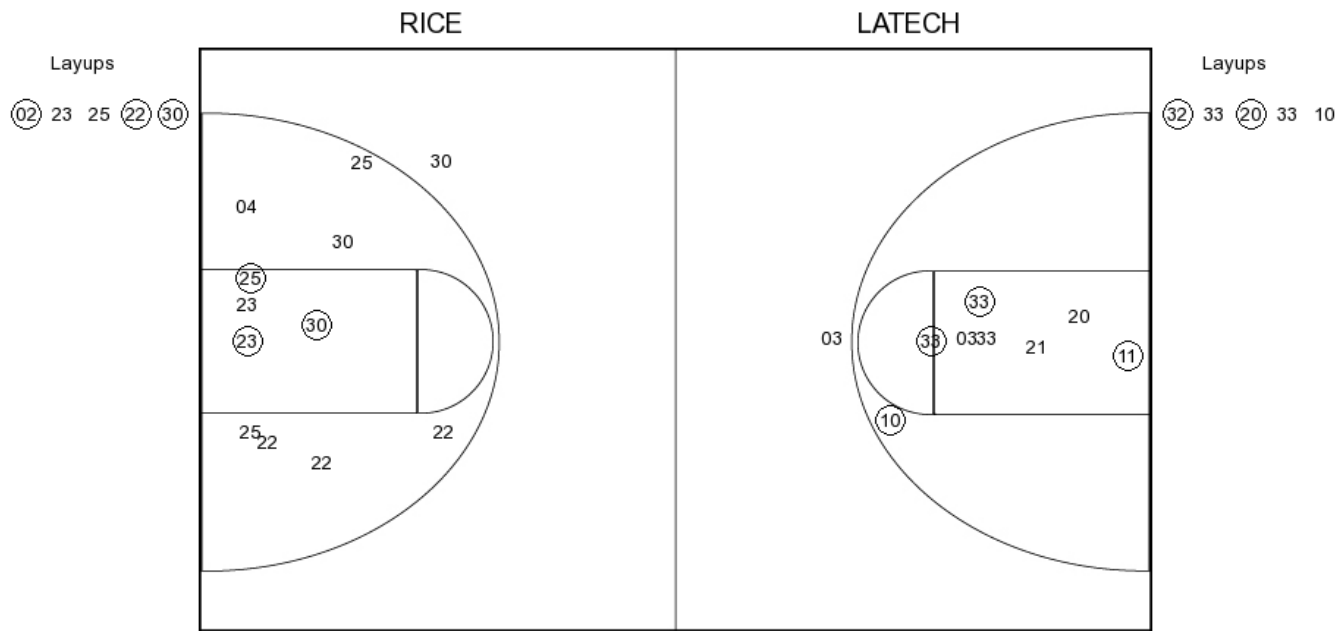
Period 3			Period 4				
Rice	Score	LA Tech	Rice	Score	LA Tech		
09:29 - TEAM TURN	TO			45-45 0	1	WINGATE FT - 09:45	
	X	WINGATE LAYUP - 09:15		45-46 1	1	WINGATE FT - 09:45	
08:48 - KNIGHT TURN	TO		09:24 - RAINEY LAYUP	2 ^P	47-46 -1		
	X	LEBLANC LAYUP - 08:43		47-48 1	2	WINGATE JUMPER - 09:11	
	29-32 3	LEBLANC LAYUP - 08:40	08:45 - RAINEY LAYUP	2 ^P	49-48 -1		
08:26 - RAINEY 3PTR	X				X	WINGATE JUMPER - 08:17	
	TO	SANTOS TURN - 08:16	08:08 - RAINEY LAYUP	X			
07:59 - LANG LAYUP	X			49-50 1	2 ^{PF}	DAVENPORT LAYUP - 08:01	
07:56 - HAWKINS 3PTR	X			49-51 2	1	DAVENPORT FT - 08:01	
	29-34 5	WINGATE JUMPER - 07:41	07:32 - GOODWINE JUMPER	2	51-51 0		
07:04 - KNIGHT TURN	TO				X	LEBLANC LAYUP - 07:23	
	29-36 7	WINGATE JUMPER - 06:59			51-53 2	2 ^P	LEBLANC LAYUP - 07:12
06:49 - GOODWINE 3PTR	3	32-36 4	06:50 - LANG LAYUP	2 ^P	53-53 0		
	TO	VASQUEZ TURN - 06:42			TO	ANTHONY TURN - 06:33	
06:36 - GOODWINE 3PTR	X		06:28 - RAINEY LAYUP	2 ^{PF}	55-53 -2		
	X	WINGATE JUMPER - 06:16		55-55 0	2	DAVENPORT JUMPER - 06:10	
05:50 - LANG LAYUP	X		05:49 - HAWKINS LAYUP	X			
	X	VASQUEZ JUMPER - 05:33	05:32 - STANTON 3PTR	3	58-55 -3		
05:24 - LANG TURN	TO			58-57 -1	2	SANTOS JUMPER - 05:02	
	TO	CLEAVER TURN - 05:12	04:36 - STANTON 3PTR	X			
05:03 - GOODWINE TURN	TO				TO	SANTOS TURN - 04:26	
	TO	ANTHONY TURN - 04:24	03:59 - KNIGHT 3PTR	X			
04:06 - GRIGSBY 3PTR	3	35-36 1			X	DAVENPORT JUMPER - 03:38	
	X	DAVENPORT LAYUP - 03:55	03:12 - LANG FT	1	59-57 -2		
	35-38 3	2 ^P	03:12 - LANG FT	X			
03:42 - GRIGSBY FT	1	36-38 2			TO	LEBLANC TURN - 03:05	
03:42 - GRIGSBY FT	1	37-38 1	02:38 - HAWKINS JUMPER	X			
	TO	DAVENPORT TURN - 03:34	02:19 - GOODWINE JUMPER	X			
03:15 - KNIGHT LAYUP	X		02:12 - GOODWINE JUMPER	X			
03:08 - GOODWINE LAYUP	2 ^P	39-38 -1			X	DAVENPORT JUMPER - 02:02	
		39-40 1			X	LEBLANC FT - 01:58	
02:51 - GOODWINE TURN	TO	SANTOS JUMPER - 03:00			X	LEBLANC FT - 01:58	
	TO	DAVENPORT TURN - 02:39		59-58 -1	1	WINGATE FT - 01:58	
02:21 - GOODWINE TURN	TO			59-59 0	1	WINGATE FT - 01:58	
	X	RICHIE 3PTR - 02:01	01:32 - HAWKINS JUMPER	X			
01:52 - LANG FT	X			59-61 2	2	WINGATE JUMPER - 01:13	
01:52 - LANG FT	1	40-40 0	00:46 - GOODWINE FT	X			
	X	WINGATE JUMPER - 01:27	00:46 - GOODWINE FT	1	60-61 1		
	X	MOTEN FT - 01:25			TO	WINGATE TURN - 00:35	
	X	MOTEN FT - 01:25	00:18 - RAINEY FT	X			
01:04 - GOODWINE JUMPER	2	42-40 -2	00:18 - RAINEY FT	X			
	X	VASQUEZ 3PTR - 00:43	00:14 - GOODWINE JUMPER	X			
	42-42 0	2 ^P	00:13 - GOODWINE FT	1	61-61 0		
00:31 - GOODWINE LAYUP	2 ^P	44-42 -2	00:13 - GOODWINE FT	X			
00:31 - GOODWINE FT	1	45-42 -3		61-62 1	1	WINGATE FT - 00:03	
	45-44 -1	2		61-63 2	1	WINGATE FT - 00:03	
00:07 - GOODWINE 3PTR	X	WINGATE JUMPER - 00:17	00:01 - RAINEY FT	X			
			00:01 - RAINEY FT	X			

Rice vs LA Tech

OFFICIAL SHOT CHART

2/4/2016 at Thomas Assembly Center (Ruston, La.)

PERIOD 1



RICE PERIOD 1

FG Made	11
FG Attempted	24
3PFG Made	1
3PFG Attempted	5

LATECH PERIOD 1

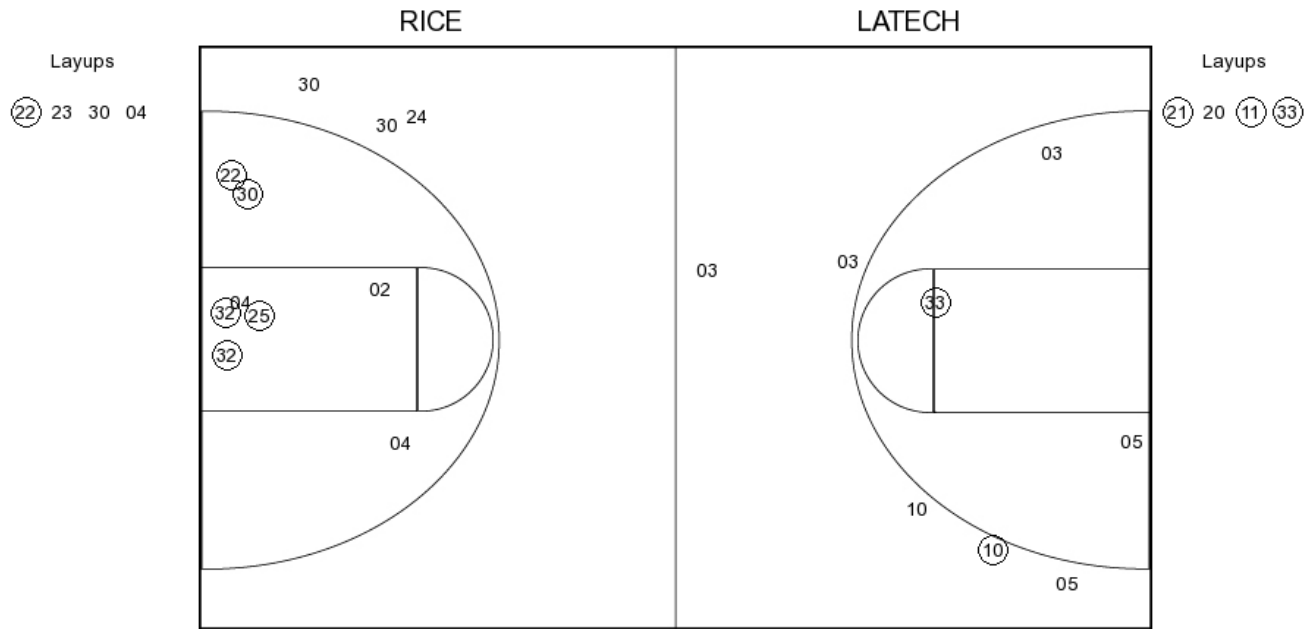
FG Made	12
FG Attempted	32
3PFG Made	0
3PFG Attempted	4

Rice vs LA Tech

OFFICIAL SHOT CHART

2/4/2016 at Thomas Assembly Center (Ruston, La.)

PERIOD 2



RICE PERIOD 2

FG Made

FG Attempted

3PFG Made

3PFG Attempted

LATECH PERIOD 2

FG Made

FG Attempted

3PFG Made

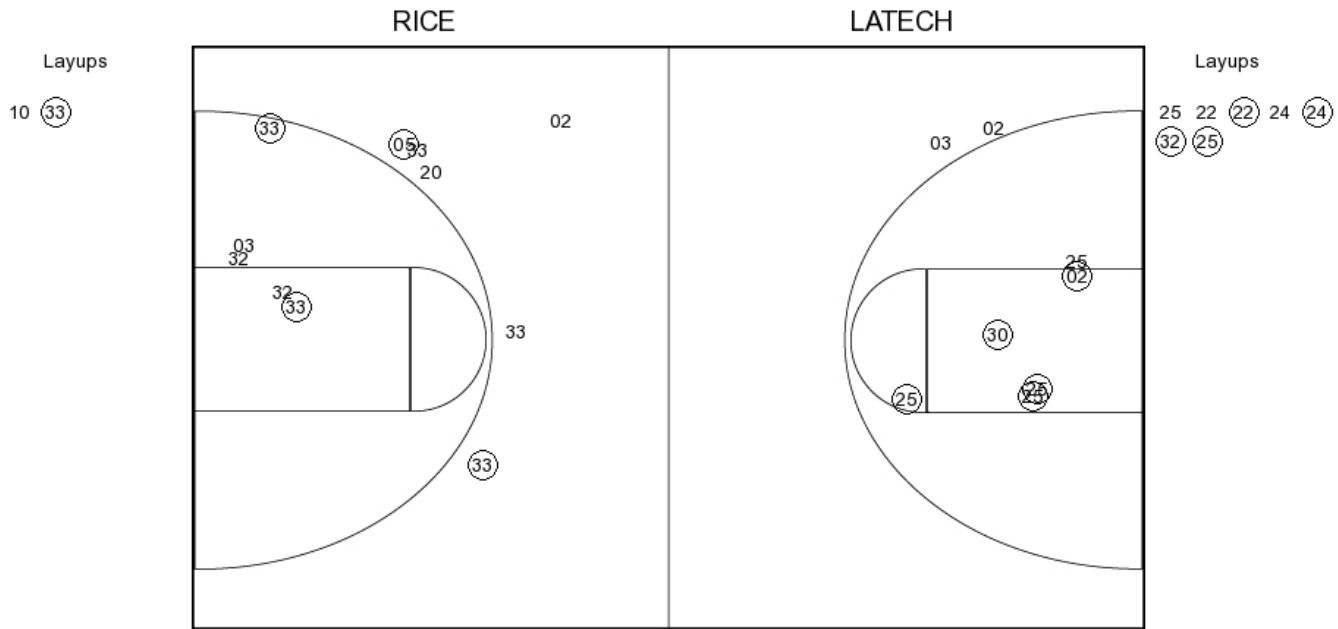
3PFG Attempted

Rice vs LA Tech

OFFICIAL SHOT CHART

2/4/2016 at Thomas Assembly Center (Ruston, La.)

PERIOD 3



RICE PERIOD 3

FG Made	11
FG Attempted	27
3PFG Made	3
3PFG Attempted	9

LATECH PERIOD 3

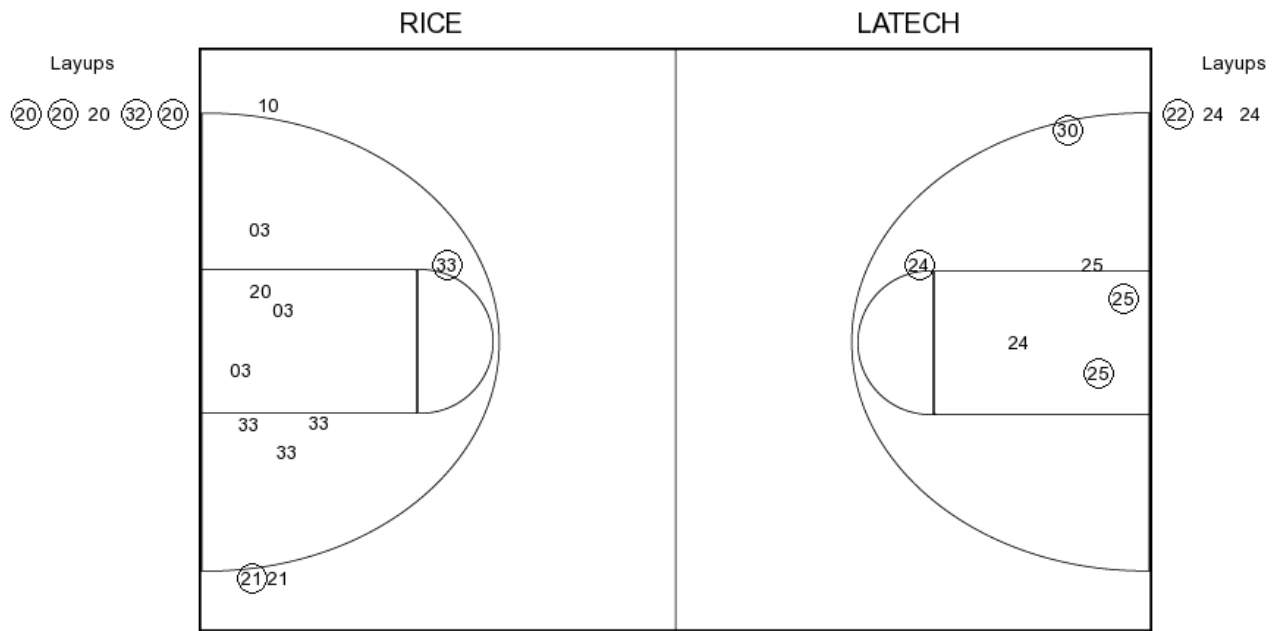
FG Made	13
FG Attempted	25
3PFG Made	0
3PFG Attempted	2

Rice vs LA Tech

OFFICIAL SHOT CHART

2/4/2016 at Thomas Assembly Center (Ruston, La.)

PERIOD 4



RICE PERIOD 4

FG Made
FG Attempted
3PFG Made
3PFG Attempted

LATECH PERIOD 4

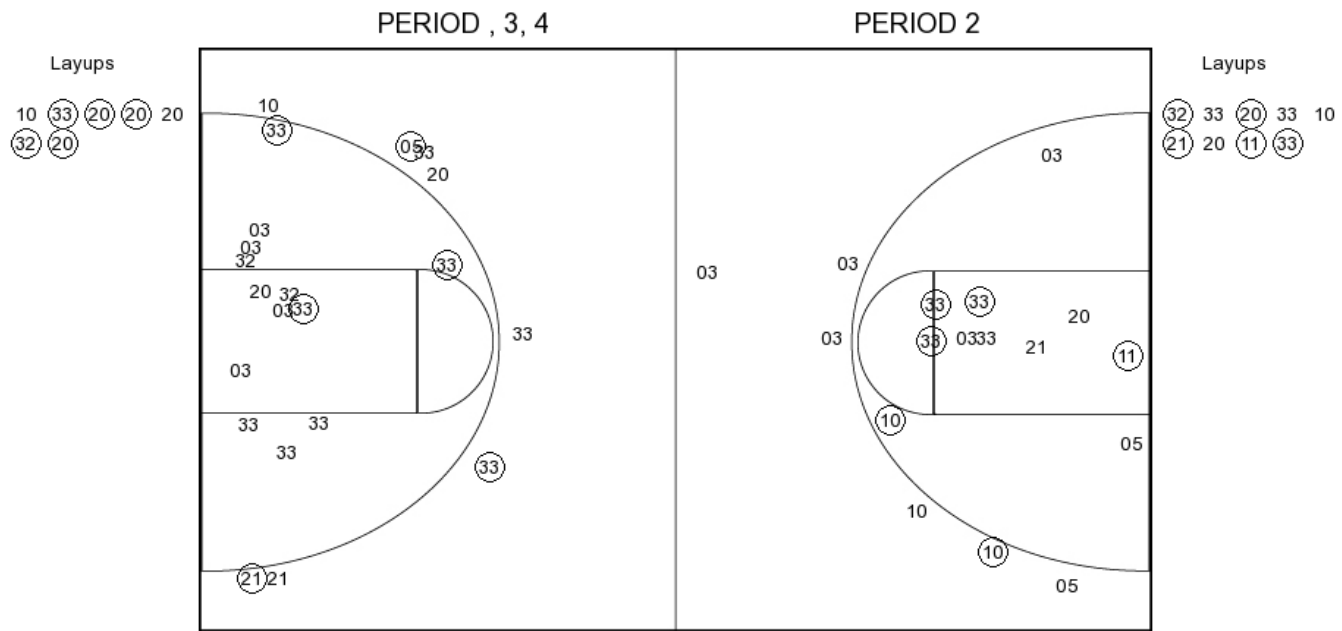
FG Made
FG Attempted
3PFG Made
3PFG Attempted

Rice vs LA Tech

OFFICIAL SHOT CHART

2/4/2016 at Thomas Assembly Center (Ruston, La.)

Rice



RICE PERIOD 1

FG Made	11
FG Attempted	24
3PFG Made	1
3PFG Attempted	5

RICE PERIOD 2

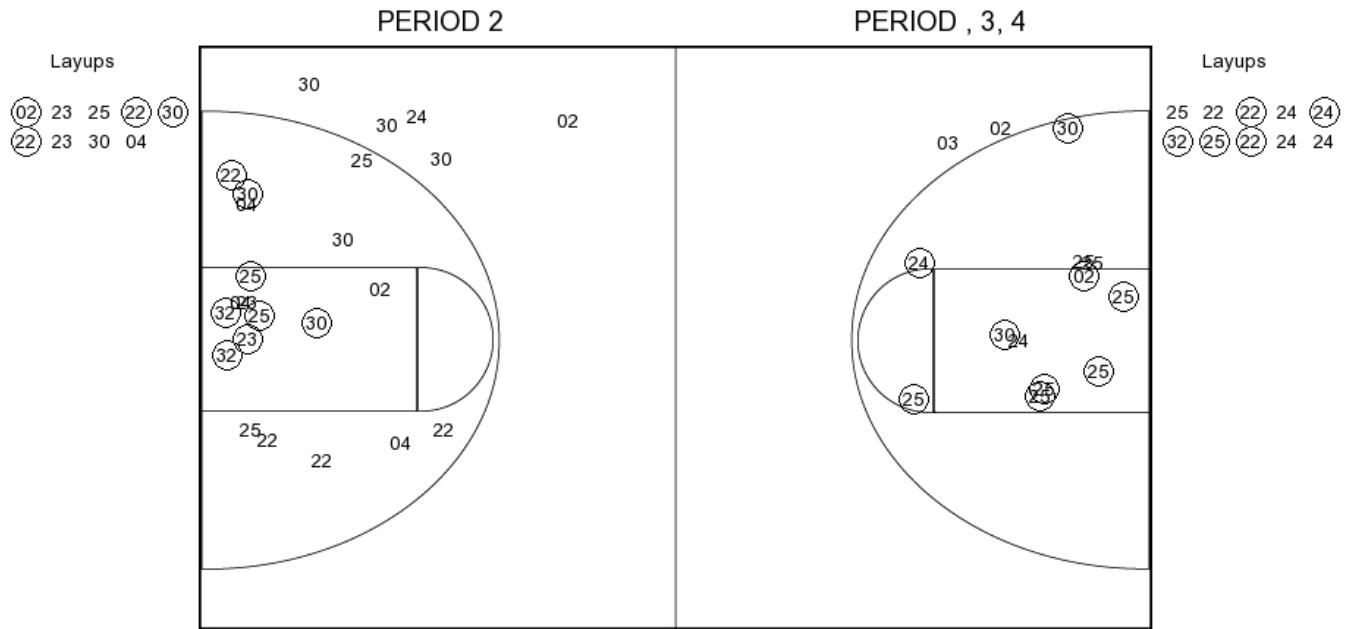
FG Made	11
FG Attempted	24
3PFG Made	1
3PFG Attempted	5

Rice vs LA Tech

OFFICIAL SHOT CHART

2/4/2016 at Thomas Assembly Center (Ruston, La.)

LA Tech



LATECH PERIOD 1

FG Made	12
FG Attempted	32
3PFG Made	0
3PFG Attempted	4

LATECH PERIOD 2

FG Made	
FG Attempted	
3PFG Made	
3PFG Attempted	