



TEXAS TECH VS. OKLAHOMA

3/1/2016

Lubbock, TX (United Supermarkets Arena)

FINAL STATS

Oklahoma

(20-9, 11-7)

70

Texas Tech

(12-17, 3-15)

60

Start Time: 6:30 p.m.

Officials: Gina Cross, Amy Bonner, Michael McConnell

Attendance: 3116

Official Basketball Box Score -- Game Totals -- Final Statistics
Oklahoma vs Texas Tech
3/1/2016 6:30 p.m. at Lubbock, TX (United Supermarkets Arena)

Oklahoma 70 - 20-9, 11-7

##	Player	S	Total			Rebounds			PF	TP	A	TO	Blk	Stl	Min
			FG-FGA	3PT	FG-FGA	FT-FTA	Off Reb	Def Reb							
10	LITTLE, PEYTON	g	2-6	2-4	4-4	1	3	4	0	10	2	2	0	2	24
21	ORTIZ, GABBI	g	1-5	0-2	0-0	1	4	5	1	2	2	3	0	1	25
23	MANNING, MADDIE	g	4-6	3-4	0-1	0	1	1	4	11	2	1	0	0	32
25	CARTER, GIOYA	g	5-11	3-3	2-2	1	3	4	3	15	1	3	0	1	27
42	WILLIAMS, KAYLON	f	4-7	0-0	1-2	2	6	8	2	9	1	2	1	2	23
00	PIERRE-LOUIS, VIONISE		4-6	0-0	3-4	1	0	1	2	11	1	4	2	1	17
02	EDWARDS, T'ONA		3-7	0-0	4-4	2	1	3	3	10	3	3	0	3	24
11	WYATT, DERICA		0-1	0-1	0-0	0	0	0	0	0	0	0	0	1	7
30	TREECE, MCKENNA		1-3	0-2	0-0	1	5	6	1	2	1	3	1	0	19
32	WILLIAMS, LANESIA		0-1	0-1	0-0	0	0	0	0	0	0	0	0	0	2
TEAM						0	1	1	0			0			
TOTALS			24-53	8-17	14-17	9	24	33	16	70	13	21	4	11	200

Deadball Rebounds: 3,0

FG %	1st Half:	11-28	39.3%	2nd Half:	13-25	52.0%	Game:	24-53	45.3%
3FG %	1st Half:	4-11	36.4%	2nd Half:	4-6	66.7%	Game:	8-17	47.1%
FT %	1st Half:	5-7	71.4%	2nd Half:	9-10	90.0%	Game:	14-17	82.4%

Texas Tech 60 - 12-17, 3-15

##	Player	S	Total			Rebounds			PF	TP	A	TO	Blk	Stl	Min
			FG-FGA	3PT	FG-FGA	FT-FTA	Off Reb	Def Reb							
02	COOKTAYLOR, IVONNE	g	8-17	0-0	2-3	1	0	1	2	18	1	1	1	1	32
04	BOWSER, RYANN	g	5-9	3-7	0-0	1	2	3	3	13	2	4	0	5	35
24	DEAN, JAPREECE	g	6-13	0-2	2-2	1	3	4	4	14	2	9	0	3	36
25	GRANT, LEASHJA	c	0-1	0-0	0-0	2	4	6	5	0	2	0	0	0	19
30	SANDERS, ZURI	f	1-6	0-1	4-5	5	4	9	1	6	2	2	0	3	33
00	BLAIRE, BRIELLE		2-5	0-0	0-0	1	1	2	2	4	0	0	0	0	4
11	BROOKS, RAYVEN		0-1	0-1	1-4	1	1	2	1	1	1	2	0	1	17
32	OLABODE, DAYO		2-7	0-3	0-0	0	1	1	2	4	0	0	0	0	12
35	ROE, JAMIE		0-1	0-1	0-0	0	1	1	1	0	0	1	0	0	3
42	MCKENZIE, IONNA		0-0	0-0	0-0	0	0	0	1	0	0	2	0	1	9
TEAM						1	3	4	0			0			
TOTALS			24-60	3-15	9-14	13	20	33	22	60	10	21	1	14	200

Deadball Rebounds: 4,0

FG %	1st Half:	10-24	41.7%	2nd Half:	14-36	38.9%	Game:	24-60	40.0%
3FG %	1st Half:	1-7	14.3%	2nd Half:	2-8	25.0%	Game:	3-15	20.0%
FT %	1st Half:	4-8	50.0%	2nd Half:	5-6	83.3%	Game:	9-14	64.3%

Officials: Gina Cross, Amy Bonner, Michael McConnell
 Technical Fouls: Oklahoma- None. Texas Tech- None.
 Attendance: 3116

Score by periods	1st	2nd	3rd	4th	Total
Oklahoma	23	8	14	25	70
Texas Tech	15	10	14	21	60

Points	In Paint	Off T/O	2nd Chance	Fast Break	Bench
OU	30	13	5	4	23
TTU	24	15	5	2	9

Last FG - OU 4th-00:50, TTU 4th-00:12.
 Largest lead - Oklahoma by 13 4th-02:17; Texas Tech by
 OU led for NaN:0. TTU led for NaN:0. Game was tied for NaN:0.

Score tied - 0 times
 Lead changed - 0 times

Official Basketball Box Score -- Game Totals -- First Half Statistics
Oklahoma vs Texas Tech
3/1/2016 6:30 p.m. at Lubbock, TX (United Supermarkets Arena)

Oklahoma 31 • 20-9, 11-7

##	Player	S	Total			Rebounds			PF	TP	A	TO	Blk	Stl	Min
			FG-FGA	3PT FG-FGA	FT-FTA	Off Reb	Def Reb	Tot Reb							
10	LITTLE, PEYTON	g	1-4	1-3	2-2	1	1	2	0	5	0	1	0	2	13
21	ORTIZ, GABBI	g	1-5	0-2	0-0	1	3	4	0	2	1	1	0	0	14
23	MANNING, MADDIE	g	4-4	3-3	0-1	0	0	0	2	11	1	1	0	0	15
25	CARTER, GIOYA	g	0-2	0-0	0-0	0	0	0	2	0	0	1	0	0	9
42	WILLIAMS, KAYLON	f	1-1	0-0	1-2	0	3	3	2	3	1	0	1	1	10
00	PIERRE-LOUIS, VIONISE		2-4	0-0	2-2	1	0	1	2	6	0	2	1	0	10
02	EDWARDS, T'ONA		2-5	0-0	0-0	2	1	3	1	4	1	3	0	1	11
11	WYATT, DERICA		0-1	0-1	0-0	0	0	0	0	0	0	0	0	1	7
30	TREECE, MCKENNA		0-1	0-1	0-0	1	2	3	0	0	1	1	0	0	9
32	WILLIAMS, LANESIA		0-1	0-1	0-0	0	0	0	0	0	0	0	0	2	
TEAM						0	0	0	0		0				
Totals			11-28	4-11	5-7	6	10	16	9	31	5	10	2	5	100

FG % Half: 11-28 39.3%
 3FG % Half: 4-11 36.4%
 FT % Half: 5-7 71.4%

Texas Tech 25 • 12-17, 3-15

##	Player	S	Total			Rebounds			PF	TP	A	TO	Blk	Stl	Min
			FG-FGA	3PT FG-FGA	FT-FTA	Off Reb	Def Reb	Tot Reb							
02	COOKTAYLOR, IVONNE	g	4-9	0-0	0-1	1	0	1	0	8	1	0	0	0	14
04	BOWSER, RYANN	g	2-4	1-3	0-0	0	2	2	2	5	0	2	0	1	18
24	DEAN, JAPREECE	g	2-4	0-1	0-0	0	1	1	2	4	0	5	0	1	16
25	GRANT, LEASHJA	c	0-0	0-0	0-0	1	2	3	2	0	0	0	0	0	7
30	SANDERS, ZURI	f	1-4	0-1	4-5	3	1	4	1	6	1	1	0	3	17
00	BLAIRE, BRIELLE		1-1	0-0	0-0	0	1	1	1	2	0	0	0	0	2
11	BROOKS, RAYVEN		0-0	0-0	0-2	0	1	1	1	0	0	2	0	1	12
32	OLABODE, DAYO		0-1	0-1	0-0	0	0	0	2	0	0	0	0	0	2
35	ROE, JAMIE		0-1	0-1	0-0	0	1	1	1	0	0	1	0	0	3
42	MCKENZIE, IONNA		0-0	0-0	0-0	0	0	0	1	0	0	2	0	1	9
TEAM						0	2	2	0		0				
Totals			10-24	1-7	4-8	5	11	16	13	25	2	13	0	7	100

FG % Half: 10-24 41.7%
 3FG % Half: 1-7 14.3%
 FT % Half: 4-8 50.0%

Officials: Gina Cross, Amy Bonner, Michael McConnell
 Technical Fouls: Oklahoma- None. Texas Tech- None.

Score by periods	1st	2nd	3rd	4th	Total
Oklahoma	23	8	14	25	70
Texas Tech	15	10	14	21	60

Points	In Paint	Off T/O	2nd Chance	Fast Break	Bench
OU	14	6	5	2	10
	8	7	5	0	2

Last FG - OU 2nd-02:02, TTU 2nd-00:41.
 OU led for 0:00. TTU led for 0:00. Game was tied for 0:00.

Score tied - 0 times
 Lead changed - 0 times

Oklahoma vs Texas Tech
3/1/2016; 6:30 p.m. at Lubbock, TX (United Supermarkets Arena)
Period 1 Play-By-Play

VISITORS: Oklahoma	Time	Score	Margin	HOME: Texas Tech
	09:42			TURNOVER by DEAN,JAPREECE
MISSED JUMPER by CARTER,GIOYA	09:18			
	09:18			REBOUND (DEF) by GRANT,LEASHJA
	08:53			MISSED JUMPER by COOKTAYLOR,IVONNE
REBOUND (DEF) by LITTLE,PEYTON	08:53			
GOOD! JUMPER by WILLIAMS,KAYLON [PNT]	08:37	0-2	V 2	
ASSIST by ORTIZ,GABBI	08:37			
	08:16			MISSED LAYUP by SANDERS,ZURI
BLOCK by WILLIAMS,KAYLON	08:16			
REBOUND (DEF) by WILLIAMS,KAYLON	08:15			
	08:15			FOUL by GRANT,LEASHJA
GOOD! 3PTR by MANNING,MADDIE	07:55	0-5	V 5	
ASSIST by WILLIAMS,KAYLON	07:55			
	07:36	2-5	V 3	GOOD! JUMPER by COOKTAYLOR,IVONNE
MISSED LAYUP by LITTLE,PEYTON	07:29			
	07:29			REBOUND (DEF) by BOWSER,RYANN
	07:23			MISSED JUMPER by COOKTAYLOR,IVONNE
REBOUND (DEF) by ORTIZ,GABBI	07:23			
GOOD! 3PTR by MANNING,MADDIE	07:09	2-8	V 6	
	06:42	4-8	V 4	GOOD! JUMPER by DEAN,JAPREECE
MISSED JUMPER by ORTIZ,GABBI	06:22			
REBOUND (OFF) by LITTLE,PEYTON	06:22			
GOOD! 3PTR by LITTLE,PEYTON	06:18	4-11	V 7	
	06:05			MISSED JUMPER by COOKTAYLOR,IVONNE
REBOUND (DEF) by WILLIAMS,KAYLON	06:05			
	05:49			FOUL by GRANT,LEASHJA
MISSED FT by WILLIAMS,KAYLON	05:49			
REBOUND (DEADB) by TEAM	05:49			
GOOD! FT by WILLIAMS,KAYLON	05:49	4-12	V 8	
SUB IN: PIERRE-LOUIS,VIONISE	05:49			
SUB IN: EDWARDS,T'ONA	05:49			
SUB OUT: ORTIZ,GABBI	05:49			
SUB OUT: WILLIAMS,KAYLON	05:49			
	05:49			SUB IN: OLABODE,DAYO
	05:49			SUB OUT: GRANT,LEASHJA
	05:36			MISSED JUMPER by COOKTAYLOR,IVONNE
	05:36			REBOUND (OFF) by SANDERS,ZURI
	05:34			MISSED JUMPER by SANDERS,ZURI
BLOCK by PIERRE-LOUIS,VIONISE	05:34			
	05:33			REBOUND (OFF) by SANDERS,ZURI
FOUL by PIERRE-LOUIS,VIONISE	05:33			
	05:33	5-12	V 7	GOOD! FT by SANDERS,ZURI
	05:33	6-12	V 6	GOOD! FT by SANDERS,ZURI
	05:33			SUB IN: BROOKS,RAYVEN
	05:33			SUB OUT: COOKTAYLOR,IVONNE
MISSED 3PTR by LITTLE,PEYTON	05:24			
	05:24			REBOUND (DEF) by DEAN,JAPREECE
	05:03			MISSED 3PTR by OLABODE,DAYO
REBOUND (DEF) by EDWARDS,T'ONA	05:03			
	04:46			FOUL by OLABODE,DAYO
TIMEOUT MEDIA	04:46			
GOOD! 3PTR by MANNING,MADDIE	04:43	6-15	V 9	
	04:29			TURNOVER by DEAN,JAPREECE

VISITORS: Oklahoma	Time	Score	Margin	HOME: Texas Tech
MISSED JUMPER by EDWARDS,T'ONA	04:16			
REBOUND (OFF) by EDWARDS,T'ONA	04:16			
TURNOVER by LITTLE,PEYTON	04:05			
	04:03			FOUL by OLABODE,DAYO
MISSED JUMPER by CARTER,GIOYA	03:43			
REBOUND (OFF) by PIERRE-LOUIS,VIONISE	03:43			
GOOD! LAYUP by EDWARDS,T'ONA [PNT]	03:35	6-17	V 11	
ASSIST by MANNING,MADDIE	03:35			
	03:31			TIMEOUT 30SEC
SUB IN: WYATT,DERICA	03:31			
SUB IN: TREECE,MCKENNA	03:31			
SUB OUT: LITTLE,PEYTON	03:31			
SUB OUT: CARTER,GIOYA	03:31			
	03:31			SUB IN: BLAIRE,BRIELLE
	03:31			SUB OUT: OLABODE,DAYO
FOUL by EDWARDS,T'ONA	03:24			
	03:18	8-17	V 9	GOOD! LAYUP by DEAN,JAPREECE [PNT]
GOOD! LAYUP by PIERRE-LOUIS,VIONISE [PNT]	03:04	8-19	V 11	
	02:43	10-19	V 9	GOOD! JUMPER by BLAIRE,BRIELLE [PNT]
MISSED JUMPER by PIERRE-LOUIS,VIONISE	02:38			
	02:38			REBOUND (DEF) by BLAIRE,BRIELLE
	02:30			TURNOVER by DEAN,JAPREECE
	02:30			FOUL by DEAN,JAPREECE
SUB IN: WILLIAMS,KAYLON	02:30			
SUB OUT: PIERRE-LOUIS,VIONISE	02:30			
GOOD! JUMPER by MANNING,MADDIE [PNT]	02:21	10-21	V 11	
ASSIST by EDWARDS,T'ONA	02:21			
	02:21			FOUL by BLAIRE,BRIELLE
MISSED FT by MANNING,MADDIE	02:21			
	02:21			REBOUND (DEF) by ROE,JAMIE
	02:20			SUB IN: COOKTAYLOR,IVONNE
	02:20			SUB IN: ROE,JAMIE
	02:20			SUB IN: MCKENZIE,IONNA
	02:20			SUB OUT: BLAIRE,BRIELLE
	02:20			SUB OUT: DEAN,JAPREECE
	02:20			SUB OUT: SANDERS,ZURI
	02:03			TURNOVER by BOWSER,RYANN
STEAL by WILLIAMS,KAYLON	02:03			
TURNOVER by EDWARDS,T'ONA	01:42			
	01:42			STEAL by MCKENZIE,IONNA
SUB IN: PIERRE-LOUIS,VIONISE	01:42			
SUB OUT: WILLIAMS,KAYLON	01:42			
	01:32			TURNOVER by ROE,JAMIE
	01:32			FOUL by ROE,JAMIE
TURNOVER by EDWARDS,T'ONA	01:26			
	01:11	12-21	V 9	GOOD! JUMPER by BOWSER,RYANN
MISSED 3PTR by WYATT,DERICA	00:59			
REBOUND (OFF) by EDWARDS,T'ONA	00:59			
MISSED 3PTR by TREECE,MCKENNA	00:45			
	00:45			REBOUND (DEF) by BOWSER,RYANN
	00:35	15-21	V 6	GOOD! 3PTR by BOWSER,RYANN
	00:35			ASSIST by COOKTAYLOR,IVONNE
	00:05			FOUL by BOWSER,RYANN
GOOD! FT by PIERRE-LOUIS,VIONISE	00:05	15-22	V 7	
GOOD! FT by PIERRE-LOUIS,VIONISE	00:05	15-23	V 8	
SUB IN: ORTIZ,GABBI	00:05			
SUB IN: CARTER,GIOYA	00:05			
SUB OUT: MANNING,MADDIE	00:05			

VISITORS: Oklahoma	Time	Score	Margin	HOME: Texas Tech
SUB OUT: EDWARDS,T'ONA	00:05			
	00:05			SUB IN: DEAN,JAPREECE
	00:05			SUB OUT: BROOKS,RAYVEN
	00:00			MISSED 3PTR by DEAN,JAPREECE
	00:00			REBOUND (DEADB) by TEAM

Oklahoma 23, Texas Tech 15

Period 1-only	In Paint	Off T/O	2nd Chance	Fast Break	Bench	
OU	8	2	5	0	6	Score tied - 0 times
TTU	4	2	2	0	2	Lead changed - 0 times

Oklahoma vs Texas Tech
3/1/2016; 6:30 p.m. at Lubbock, TX (United Supermarkets Arena)
Period 2 Play-By-Play

VISITORS: Oklahoma	Time	Score	Margin	HOME: Texas Tech
SUB IN: PIERRE-LOUIS,VIONISE	10:00			
SUB IN: WYATT,DERICA	10:00			
SUB IN: TREECE,MCKENNA	10:00			
SUB OUT: LITTLE,PEYTON	10:00			
SUB OUT: MANNING,MADDIE	10:00			
SUB OUT: WILLIAMS,KAYLON	10:00			
	10:00			SUB IN: MCKENZIE,IONNA
	10:00			SUB IN: ROE,JAMIE
	10:00			SUB OUT: GRANT,LEASHJA
	10:00			SUB OUT: SANDERS,ZURI
GOOD! JUMPER by PIERRE-LOUIS,VIONISE [PNT]	09:49	15-25	V 10	
ASSIST by TREECE,MCKENNA	09:49			
	09:25			MISSED 3PTR by ROE,JAMIE
REBOUND (DEF) by ORTIZ,GABBI	09:25			
MISSED LAYUP by PIERRE-LOUIS,VIONISE	09:05			
REBOUND (OFF) by TREECE,MCKENNA	09:05			
TURNOVER by CARTER,GIOYA	08:47			
	08:47			STEAL by BOWSER,RYANN
SUB IN: LITTLE,PEYTON	08:47			
SUB IN: WILLIAMS,KAYLON	08:47			
SUB OUT: PIERRE-LOUIS,VIONISE	08:47			
SUB OUT: WYATT,DERICA	08:47			
	08:47			SUB IN: SANDERS,ZURI
	08:47			SUB OUT: ROE,JAMIE
	08:30			TURNOVER by DEAN,JAPREECE
	08:30			FOUL by BOWSER,RYANN
	08:30			SUB IN: BROOKS,RAYVEN
	08:30			SUB OUT: BOWSER,RYANN
TURNOVER by TREECE,MCKENNA	08:20			
	08:20			STEAL by SANDERS,ZURI
SUB IN: MANNING,MADDIE	08:20			
SUB OUT: TREECE,MCKENNA	08:20			
FOUL by CARTER,GIOYA	07:57			
	07:56	17-25	V 8	GOOD! JUMPER by COOKTAYLOR,IVONNE
FOUL by CARTER,GIOYA	07:56			
	07:56			MISSED FT by COOKTAYLOR,IVONNE
REBOUND (DEF) by TREECE,MCKENNA	07:56			
SUB IN: TREECE,MCKENNA	07:56			
SUB OUT: MANNING,MADDIE	07:56			
GOOD! JUMPER by ORTIZ,GABBI [PNT]	07:48	17-27	V 10	
	07:31			TURNOVER by MCKENZIE,IONNA
	07:31			FOUL by MCKENZIE,IONNA
SUB IN: WILLIAMS,LANESIA	07:31			
SUB OUT: CARTER,GIOYA	07:31			
	07:21			FOUL by DEAN,JAPREECE
MISSED 3PTR by WILLIAMS,LANESIA	07:00			
	07:00			REBOUND (DEF) by GRANT,LEASHJA
	06:36			MISSED JUMPER by DEAN,JAPREECE
REBOUND (DEF) by TREECE,MCKENNA	06:36			
MISSED JUMPER by ORTIZ,GABBI	06:30			
REBOUND (OFF) by ORTIZ,GABBI	06:30			
MISSED 3PTR by LITTLE,PEYTON	06:25			
	06:25			REBOUND (DEF) by TEAM

VISITORS: Oklahoma	Time	Score	Margin	HOME: Texas Tech
	06:23			SUB IN: BOWSER,RYANN
	06:23			SUB OUT: DEAN,JAPREECE
	05:57	19-27	V 8	GOOD! JUMPER by COOKTAYLOR,IVONNE
MISSED 3PTR by ORTIZ,GABBI	05:30			
	05:30			REBOUND (DEF) by TEAM
SUB IN: WYATT,DERICA	05:29			
SUB IN: EDWARDS,T'ONA	05:29			
SUB OUT: LITTLE,PEYTON	05:29			
SUB OUT: WILLIAMS,LANESIA	05:29			
	05:11			TURNOVER by BOWSER,RYANN
STEAL by WYATT,DERICA	05:10			
TURNOVER by ORTIZ,GABBI	05:06			
	05:06			STEAL by SANDERS,ZURI
FOUL by WILLIAMS,KAYLON	04:57			
	04:57			TIMEOUT media
SUB IN: MANNING,MADDIE	04:57			
SUB OUT: TREECE,MCKENNA	04:57			
	04:57			SUB IN: GRANT,LEASHJA
	04:57			SUB OUT: MCKENZIE,IONNA
	04:47			MISSED 3PTR by BOWSER,RYANN
	04:47			REBOUND (OFF) by GRANT,LEASHJA
FOUL by MANNING,MADDIE	04:39			
	04:39			MISSED FT by BROOKS,RAYVEN
	04:39			REBOUND (DEADB) by TEAM
	04:39			MISSED FT by BROOKS,RAYVEN
REBOUND (DEF) by WILLIAMS,KAYLON	04:39			
	04:39			SUB IN: DEAN,JAPREECE
	04:39			SUB OUT: COOKTAYLOR,IVONNE
MISSED 3PTR by ORTIZ,GABBI	04:08			
	04:08			REBOUND (DEF) by SANDERS,ZURI
	04:03			TURNOVER by BROOKS,RAYVEN
	04:03			FOUL by BROOKS,RAYVEN
MISSED JUMPER by EDWARDS,T'ONA	03:30			
	03:30			REBOUND (DEF) by BROOKS,RAYVEN
	03:21			MISSED 3PTR by BOWSER,RYANN
	03:21			REBOUND (OFF) by SANDERS,ZURI
	03:19	21-27	V 6	GOOD! JUMPER by SANDERS,ZURI [PNT]
FOUL by WILLIAMS,KAYLON	03:19			
	03:19	22-27	V 5	GOOD! FT by SANDERS,ZURI
SUB IN: PIERRE-LOUIS,VIONISE	03:19			
SUB IN: LITTLE,PEYTON	03:19			
SUB OUT: WILLIAMS,KAYLON	03:19			
SUB OUT: WYATT,DERICA	03:19			
TURNOVER by PIERRE-LOUIS,VIONISE	02:49			
	02:47			STEAL by BROOKS,RAYVEN
	02:44			TURNOVER by DEAN,JAPREECE
	02:44			SUB IN: MCKENZIE,IONNA
	02:44			SUB OUT: GRANT,LEASHJA
TURNOVER by MANNING,MADDIE	02:25			
	02:23			STEAL by SANDERS,ZURI
	02:22			TURNOVER by SANDERS,ZURI
STEAL by LITTLE,PEYTON	02:22			
	02:21			FOUL by SANDERS,ZURI
GOOD! FT by LITTLE,PEYTON	02:21	22-28	V 6	
GOOD! FT by LITTLE,PEYTON	02:21	22-29	V 7	
	02:08			TURNOVER by MCKENZIE,IONNA
STEAL by EDWARDS,T'ONA	02:06			
GOOD! LAYUP by EDWARDS,T'ONA [FB/PNT]	02:02	22-31	V 9	

VISITORS: Oklahoma	Time	Score	Margin	HOME: Texas Tech
	01:36			TURNOVER by BROOKS,RAYVEN
STEAL by LITTLE,PEYTON	01:35			
TIMEOUT 30SEC	01:28			
	01:28			SUB IN: COOKTAYLOR,IVONNE
	01:28			SUB OUT: BROOKS,RAYVEN
TURNOVER by PIERRE-LOUIS,VIONISE	01:22			
	01:09			MISSED 3PTR by SANDERS,ZURI
	01:09			REBOUND (OFF) by COOKTAYLOR,IVONNE
	01:06			MISSED JUMPER by COOKTAYLOR,IVONNE
REBOUND (DEF) by ORTIZ,GABBI	01:06			
TURNOVER by EDWARDS,T'ONA	00:48			
	00:47			STEAL by DEAN,JAPREECE
	00:41	24-31	V 7	GOOD! JUMPER by COOKTAYLOR,IVONNE [PNT]
	00:41			ASSIST by SANDERS,ZURI
FOUL by PIERRE-LOUIS,VIONISE	00:28			
SUB IN: TREECE,MCKENNA	00:28			
SUB OUT: PIERRE-LOUIS,VIONISE	00:28			
	00:28			SUB IN: GRANT,LEASHJA
	00:28			SUB OUT: MCKENZIE,IONNA
FOUL by MANNING,MADDIE	00:04			
	00:04			MISSED FT by SANDERS,ZURI
	00:04			REBOUND (DEADB) by TEAM
	00:04	25-31	V 6	GOOD! FT by SANDERS,ZURI
	00:04			SUB IN: BROOKS,RAYVEN
	00:04			SUB IN: MCKENZIE,IONNA
	00:04			SUB IN: ROE,JAMIE
	00:04			SUB OUT: DEAN,JAPREECE
	00:04			SUB OUT: GRANT,LEASHJA
	00:04			SUB OUT: BOWSER,RYANN
MISSED JUMPER by EDWARDS,T'ONA	00:00			
REBOUND (DEADB) by TEAM	00:00			

Oklahoma 31, Texas Tech 25

Period 2-only	In Paint	Off T/O	2nd Chance	Fast Break	Bench	
OU	6	4	0	2	4	Score tied - 0 times
TTU	4	5	3	0	0	Lead changed - 0 times

Official Basketball Box Score -- Game Totals -- Second Half Statistics
Oklahoma vs Texas Tech
3/1/2016 6:30 p.m. at Lubbock, TX (United Supermarkets Arena)

Oklahoma 39 • 20-9, 11-7

##	Player	S	Total			3-Ptr			Rebounds			PF	TP	A	TO	Blk	Stl	Min
			FG-FGA	3PT	FG-FGA	FT-FTA	Off Reb	Def Reb	Tot Reb									
10	LITTLE, PEYTON	g	1-2	1-1	2-2	0	2	2	0	5	2	1	0	0	11			
21	ORTIZ, GABBI	g	0-0	0-0	0-0	0	1	1	1	0	1	2	0	1	11			
23	MANNING, MADDIE	g	0-2	0-1	0-0	0	1	1	2	0	1	0	0	17				
25	CARTER, GIOYA	g	5-9	3-3	2-2	1	3	4	1	15	1	2	0	1	18			
42	WILLIAMS, KAYLON	f	3-6	0-0	0-0	2	3	5	0	6	0	2	0	1	13			
00	PIERRE-LOUIS, VIONISE		2-2	0-0	1-2	0	0	0	0	5	1	2	1	1	7			
02	EDWARDS, T'ONA		1-2	0-0	4-4	0	0	0	2	6	2	0	0	2	13			
11	WYATT, DERICA		0-0	0-0	0-0	0	0	0	0	0	0	0	0	0				
30	TREECE, MCKENNA		1-2	0-1	0-0	0	3	3	1	2	0	2	1	0	10			
32	WILLIAMS, LANESIA		0-0	0-0	0-0	0	0	0	0	0	0	0	0	0				
TEAM						0	1	1	0		0							
Totals			13-25	4-6	9-10	3	14	17	7	39	8	11	2	6	100			

FG % Half: 13-25 52.0%
 3FG % Half: 4-6 36.4%
 FT % Half: 9-10 90.0%

Texas Tech 35 • 12-17, 3-15

##	Player	S	Total			3-Ptr			Rebounds			PF	TP	A	TO	Blk	Stl	Min
			FG-FGA	3PT	FG-FGA	FT-FTA	Off Reb	Def Reb	Tot Reb									
02	COOKTAYLOR, IVONNE	g	4-8	0-0	2-2	0	0	0	2	10	0	1	1	1	18			
04	BOWSER, RYANN	g	3-5	2-4	0-0	1	0	1	1	8	2	2	0	4	17			
24	DEAN, JAPREECE	g	4-9	0-1	2-2	1	2	3	2	10	2	4	0	2	20			
25	GRANT, LEASHJA	c	0-1	0-0	0-0	1	2	3	3	0	2	0	0	0	12			
30	SANDERS, ZURI	f	0-2	0-0	0-0	2	3	5	0	0	1	1	0	0	16			
00	BLAIRE, BRIELLE		1-4	0-0	0-0	1	0	1	1	2	0	0	0	0	2			
11	BROOKS, RAYVEN		0-1	0-1	1-2	1	0	1	0	1	1	0	0	0	5			
32	OLABODE, DAYO		2-6	0-2	0-0	0	1	1	0	4	0	0	0	0	10			
35	ROE, JAMIE		0-0	0-0	0-0	0	0	0	0	0	0	0	0	0				
42	MCKENZIE, IONNA		0-0	0-0	0-0	0	0	0	0	0	0	0	0	0				
TEAM						1	1	2	0		0							
Totals			14-36	2-8	5-6	8	9	17	9	35	8	8	1	7	100			

FG % Half: 14-36 38.9%
 3FG % Half: 2-8 14.3%
 FT % Half: 5-6 83.3%

Officials: Gina Cross, Amy Bonner, Michael McConnell
 Technical Fouls: Oklahoma- None. Texas Tech- None.

Score by periods	1st	2nd	3rd	4th	Total
Oklahoma	23	8	14	25	70
Texas Tech	15	10	14	21	60

Points	In Paint	Off T/O	2nd Chance	Fast Break	Bench
OU	16	7	0	2	13
	16	8	6	2	7

Last FG - OU 4th-00:50, TTU 4th-00:12.
 OU led for 0:00. TTU led for 0:00. Game was tied for 0:00.

Score tied - 0 times
 Lead changed - 0 times

Oklahoma vs Texas Tech
3/1/2016; 6:30 p.m. at Lubbock, TX (United Supermarkets Arena)
Period 3 Play-By-Play

VISITORS: Oklahoma	Time	Score	Margin	HOME: Texas Tech
TURNOVER by LITTLE,PEYTON	09:53			
	09:36	27-31	V 4	GOOD! JUMPER by COOKTAYLOR,IVONNE
	09:36			ASSIST by SANDERS,ZURI
GOOD! 3PTR by CARTER,GIOYA	09:18	27-34	V 7	
ASSIST by LITTLE,PEYTON	09:18			
	08:57	30-34	V 4	GOOD! 3PTR by BOWSER,RYANN
	08:57			ASSIST by DEAN,JAPREECE
MISSED JUMPER by MANNING,MADDIE	08:26			
	08:26			REBOUND (DEF) by SANDERS,ZURI
	08:13	32-34	V 2	GOOD! LAYUP by DEAN,JAPREECE [PNT]
TIMEOUT 30SEC	08:01			
SUB IN: TREECE,MCKENNA	08:01			
SUB OUT: LITTLE,PEYTON	08:01			
GOOD! LAYUP by TREECE,MCKENNA [PNT]	07:50	32-36	V 4	
	07:29			TURNOVER by BOWSER,RYANN
MISSED JUMPER by CARTER,GIOYA	07:16			
	07:16			REBOUND (DEF) by TEAM
	07:01			MISSED JUMPER by GRANT,LEASHJA
REBOUND (DEF) by TREECE,MCKENNA	07:01			
TURNOVER by TREECE,MCKENNA	06:58			
	06:57			STEAL by BOWSER,RYANN
	06:35			MISSED 3PTR by DEAN,JAPREECE
REBOUND (DEF) by CARTER,GIOYA	06:35			
MISSED JUMPER by CARTER,GIOYA	06:26			
	06:26			REBOUND (DEF) by GRANT,LEASHJA
	06:20			TURNOVER by SANDERS,ZURI
	06:04			FOUL by GRANT,LEASHJA
	06:04			SUB IN: OLABODE,DAYO
	06:04			SUB OUT: GRANT,LEASHJA
TURNOVER by TREECE,MCKENNA	06:02			
	06:01			STEAL by BOWSER,RYANN
	05:58			MISSED LAYUP by DEAN,JAPREECE
BLOCK by TREECE,MCKENNA	05:58			
REBOUND (DEF) by CARTER,GIOYA	05:56			
GOOD! LAYUP by WILLIAMS,KAYLON [FB/PNT]	05:53	32-38	V 6	
ASSIST by CARTER,GIOYA	05:53			
	05:36			MISSED JUMPER by OLABODE,DAYO
REBOUND (DEF) by TEAM	05:36			
GOOD! LAYUP by WILLIAMS,KAYLON [PNT]	05:19	32-40	V 8	
ASSIST by ORTIZ,GABBI	05:19			
	04:55			MISSED JUMPER by SANDERS,ZURI
REBOUND (DEF) by WILLIAMS,KAYLON	04:55			
MISSED 3PTR by TREECE,MCKENNA	04:43			
REBOUND (OFF) by CARTER,GIOYA	04:43			
TURNOVER by WILLIAMS,KAYLON	04:29			
	04:29			TIMEOUT MEDIA
	04:16			MISSED JUMPER by COOKTAYLOR,IVONNE
REBOUND (DEF) by CARTER,GIOYA	04:16			
TURNOVER by CARTER,GIOYA	04:11			
	04:10			STEAL by DEAN,JAPREECE
	04:03			MISSED 3PTR by BOWSER,RYANN
REBOUND (DEF) by TREECE,MCKENNA	04:03			
	03:47			SUB IN: MCKENZIE,IONNA

VISITORS: Oklahoma	Time	Score	Margin	HOME: Texas Tech
	03:47			SUB OUT: SANDERS,ZURI
TURNOVER by ORTIZ,GABBI	03:45			
	03:44			SUB IN: GRANT,LEASHJA
	03:44			SUB OUT: MCKENZIE,IONNA
	03:30			TURNOVER by COOKTAYLOR,IVONNE
STEAL by ORTIZ,GABBI	03:29			
TURNOVER by ORTIZ,GABBI	03:26			
	03:25			STEAL by COOKTAYLOR,IVONNE
FOUL by ORTIZ,GABBI	03:21			
	03:21	33-40	V 7	GOOD! FT by COOKTAYLOR,IVONNE
	03:21	34-40	V 6	GOOD! FT by COOKTAYLOR,IVONNE
SUB IN: EDWARDS,T'ONA	03:21			
SUB OUT: ORTIZ,GABBI	03:21			
	03:01			FOUL by GRANT,LEASHJA
	03:01			SUB IN: SANDERS,ZURI
	03:01			SUB OUT: GRANT,LEASHJA
MISSED JUMPER by CARTER,GIOYA	02:57			
	02:57			REBOUND (DEF) by SANDERS,ZURI
	02:44			MISSED JUMPER by COOKTAYLOR,IVONNE
REBOUND (DEF) by TREECE,MCKENNA	02:44			
MISSED LAYUP by WILLIAMS,KAYLON	02:28			
	02:28			REBOUND (DEF) by OLABODE,DAYO
	02:18			MISSED JUMPER by COOKTAYLOR,IVONNE
	02:18			REBOUND (OFF) by SANDERS,ZURI
	02:13	36-40	V 4	GOOD! LAYUP by COOKTAYLOR,IVONNE [PNT]
MISSED 3PTR by MANNING,MADDIE	01:53			
REBOUND (OFF) by WILLIAMS,KAYLON	01:53			
TURNOVER by WILLIAMS,KAYLON	01:43			
	01:43			STEAL by BOWSER,RYANN
SUB IN: PIERRE-LOUIS,VIONISE	01:43			
SUB OUT: WILLIAMS,KAYLON	01:43			
	01:43			SUB IN: BROOKS,RAYVEN
	01:43			SUB OUT: COOKTAYLOR,IVONNE
FOUL by MANNING,MADDIE	01:30			
SUB IN: LITTLE,PEYTON	01:30			
SUB OUT: TREECE,MCKENNA	01:30			
	01:19	38-40	V 2	GOOD! JUMPER by BOWSER,RYANN [PNT]
GOOD! LAYUP by PIERRE-LOUIS,VIONISE [PNT]	01:09	38-42	V 4	
ASSIST by EDWARDS,T'ONA	01:09			
FOUL by CARTER,GIOYA	00:45			
	00:45			MISSED FT by BROOKS,RAYVEN
	00:45			REBOUND (DEADB) by TEAM
	00:45	39-42	V 3	GOOD! FT by BROOKS,RAYVEN
GOOD! 3PTR by CARTER,GIOYA	00:35	39-45	V 6	
ASSIST by PIERRE-LOUIS,VIONISE	00:35			
	00:01			MISSED 3PTR by BROOKS,RAYVEN
REBOUND (DEF) by LITTLE,PEYTON	00:01			

Oklahoma 70, Texas Tech 60

Period 3-only	In Paint	Off T/O	2nd Chance	Fast Break	Bench	
OU	8	0	0	2	4	Score tied - 0 times
TTU	6	6	2	0	1	Lead changed - 0 times

Oklahoma vs Texas Tech
3/1/2016; 6:30 p.m. at Lubbock, TX (United Supermarkets Arena)
Period 4 Play-By-Play

VISITORS: Oklahoma	Time	Score	Margin	HOME: Texas Tech
SUB IN: EDWARDS,T'ONA	10:00			
SUB IN: PIERRE-LOUIS,VIONISE	10:00			
SUB OUT: ORTIZ,GABBI	10:00			
SUB OUT: WILLIAMS,KAYLON	10:00			
	10:00			SUB IN: BROOKS,RAYVEN
	10:00			SUB IN: OLABODE,DAYO
	10:00			SUB OUT: COOKTAYLOR,IVONNE
	10:00			SUB OUT: GRANT,LEASHJA
TURNOVER by PIERRE-LOUIS,VIONISE	09:50			
	09:48			STEAL by DEAN,JAPREECE
	09:41			MISSED 3PTR by OLABODE,DAYO
REBOUND (DEF) by MANNING,MADDIE	09:41			
SUB IN: WILLIAMS,KAYLON	09:39			
SUB OUT: PIERRE-LOUIS,VIONISE	09:39			
	09:39			SUB IN: COOKTAYLOR,IVONNE
	09:39			SUB OUT: BOWSER,RYANN
GOOD! 3PTR by CARTER,GIOYA	09:14	39-48	V 9	
ASSIST by LITTLE,PEYTON	09:14			
	08:59			MISSED JUMPER by COOKTAYLOR,IVONNE
REBOUND (DEF) by LITTLE,PEYTON	08:59			
MISSED JUMPER by LITTLE,PEYTON	08:50			
	08:50			REBOUND (DEF) by SANDERS,ZURI
	08:31	41-48	V 7	GOOD! LAYUP by DEAN,JAPREECE [PNT]
	08:31			ASSIST by BROOKS,RAYVEN
FOUL by MANNING,MADDIE	08:31			
	08:31	42-48	V 6	GOOD! FT by DEAN,JAPREECE
SUB IN: TREECE,MCKENNA	08:31			
SUB OUT: MANNING,MADDIE	08:31			
	08:31			SUB IN: GRANT,LEASHJA
	08:31			SUB OUT: SANDERS,ZURI
GOOD! JUMPER by WILLIAMS,KAYLON [PNT]	08:10	42-50	V 8	
	07:52			MISSED JUMPER by OLABODE,DAYO
REBOUND (DEF) by WILLIAMS,KAYLON	07:52			
	07:45			SUB IN: BLAIRE,BRIELLE
	07:45			SUB OUT: OLABODE,DAYO
GOOD! JUMPER by CARTER,GIOYA	07:40	42-52	V 10	
	07:21			MISSED JUMPER by BLAIRE,BRIELLE
REBOUND (DEF) by WILLIAMS,KAYLON	07:21			
	07:20			FOUL by BLAIRE,BRIELLE
MISSED JUMPER by CARTER,GIOYA	07:09			
REBOUND (OFF) by WILLIAMS,KAYLON	07:09			
MISSED JUMPER by WILLIAMS,KAYLON	07:07			
	07:07			BLOCK by COOKTAYLOR,IVONNE
	07:04			REBOUND (DEF) by DEAN,JAPREECE
	06:55			MISSED JUMPER by DEAN,JAPREECE
	06:55			REBOUND (OFF) by BROOKS,RAYVEN
FOUL by TREECE,MCKENNA	06:53			
SUB IN: PIERRE-LOUIS,VIONISE	06:53			
SUB OUT: WILLIAMS,KAYLON	06:53			
	06:53			SUB IN: BOWSER,RYANN
	06:53			SUB OUT: BROOKS,RAYVEN
	06:47	44-52	V 8	GOOD! JUMPER by BLAIRE,BRIELLE
	06:47			ASSIST by GRANT,LEASHJA

VISITORS: Oklahoma	Time	Score	Margin	HOME: Texas Tech
TURNOVER by PIERRE-LOUIS,VIONISE	06:33			
SUB IN: ORTIZ,GABBI	06:33			
SUB OUT: CARTER,GIOYA	06:33			
	06:19			MISSED 3PTR by BOWSER,RYANN
REBOUND (DEF) by ORTIZ,GABBI	06:19			
	06:08			FOUL by BOWSER,RYANN
GOOD! FT by LITTLE,PEYTON	06:08	44-53	V 9	
GOOD! FT by LITTLE,PEYTON	06:08	44-54	V 10	
	05:51			MISSED JUMPER by BLAIRE,BRIELLE
	05:51			REBOUND (OFF) by GRANT,LEASHJA
	05:42			MISSED JUMPER by DEAN,JAPREECE
	05:42			REBOUND (OFF) by BLAIRE,BRIELLE
	05:32			MISSED JUMPER by BLAIRE,BRIELLE
	05:32			REBOUND (OFF) by DEAN,JAPREECE
	05:27			TURNOVER by DEAN,JAPREECE
STEAL by EDWARDS,T'ONA	05:27			
	05:25			FOUL by COOKTAYLOR,IVONNE
GOOD! FT by EDWARDS,T'ONA	05:25	44-55	V 11	
GOOD! FT by EDWARDS,T'ONA	05:25	44-56	V 12	
SUB IN: WILLIAMS,KAYLON	05:25			
SUB IN: MANNING,MADDIE	05:25			
SUB OUT: PIERRE-LOUIS,VIONISE	05:25			
SUB OUT: TREECE,MCKENNA	05:25			
	05:25			SUB IN: SANDERS,ZURI
	05:25			SUB OUT: BLAIRE,BRIELLE
	05:05	46-56	V 10	GOOD! JUMPER by DEAN,JAPREECE [PNT]
	05:05			ASSIST by GRANT,LEASHJA
GOOD! LAYUP by EDWARDS,T'ONA [PNT]	04:42	46-58	V 12	
	04:31			TIMEOUT 30SEC
SUB IN: CARTER,GIOYA	04:31			
SUB OUT: ORTIZ,GABBI	04:31			
	04:23	48-58	V 10	GOOD! JUMPER by COOKTAYLOR,IVONNE
MISSED JUMPER by WILLIAMS,KAYLON	04:04			
	04:04			REBOUND (DEF) by GRANT,LEASHJA
	03:55			TURNOVER by DEAN,JAPREECE
STEAL by WILLIAMS,KAYLON	03:54			
MISSED JUMPER by EDWARDS,T'ONA	03:29			
	03:29			REBOUND (DEF) by DEAN,JAPREECE
	03:19	50-58	V 8	GOOD! JUMPER by COOKTAYLOR,IVONNE [FB]
	03:08			ASSIST by BOWSER,RYANN
SUB IN: PIERRE-LOUIS,VIONISE	02:51			
SUB OUT: WILLIAMS,KAYLON	02:51			
GOOD! LAYUP by CARTER,GIOYA [PNT]	02:47	50-60	V 10	
	02:23			TURNOVER by DEAN,JAPREECE
STEAL by EDWARDS,T'ONA	02:22			
GOOD! 3PTR by LITTLE,PEYTON	02:17	50-63	V 13	
ASSIST by EDWARDS,T'ONA	02:17			
	01:54	53-63	V 10	GOOD! 3PTR by BOWSER,RYANN
	01:54			ASSIST by DEAN,JAPREECE
	01:52			TIMEOUT 30SEC
	01:52			FOUL by DEAN,JAPREECE
SUB IN: ORTIZ,GABBI	01:52			
SUB OUT: LITTLE,PEYTON	01:52			
	01:43			FOUL by GRANT,LEASHJA
MISSED FT by PIERRE-LOUIS,VIONISE	01:43			
REBOUND (DEADB) by TEAM	01:43			
GOOD! FT by PIERRE-LOUIS,VIONISE	01:43	53-64	V 11	
	01:43			SUB IN: OLABODE,DAYO

VISITORS: Oklahoma	Time	Score	Margin	HOME: Texas Tech
	01:43			SUB OUT: GRANT,LEASHJA
	01:36			MISSED 3PTR by OLABODE,DAYO
	01:36			REBOUND (OFF) by BOWSER,RYANN
	01:32			TURNOVER by BOWSER,RYANN
STEAL by PIERRE-LOUIS,VIONISE	01:30			
TURNOVER by CARTER,GIOYA	01:17			
	01:16			STEAL by BOWSER,RYANN
	01:04	55-64	V 9	GOOD! LAYUP by OLABODE,DAYO [PNT]
	01:01			TIMEOUT 30SEC
TIMEOUT 30SEC	01:01			
GOOD! LAYUP by PIERRE-LOUIS,VIONISE [PNT]	00:50	55-66	V 11	
ASSIST by MANNING,MADDIE	00:50			
FOUL by EDWARDS,T'ONA	00:33			
	00:31			TURNOVER by DEAN,JAPREECE
STEAL by CARTER,GIOYA	00:30			
	00:30			FOUL by COOKTAYLOR,IVONNE
GOOD! FT by CARTER,GIOYA	00:30	55-67	V 12	
GOOD! FT by CARTER,GIOYA	00:30	55-68	V 13	
	00:23	57-68	V 11	GOOD! JUMPER by DEAN,JAPREECE [PNT]
FOUL by EDWARDS,T'ONA	00:23			
	00:23	58-68	V 10	GOOD! FT by DEAN,JAPREECE
	00:23			FOUL by DEAN,JAPREECE
GOOD! FT by EDWARDS,T'ONA	00:23	58-69	V 11	
GOOD! FT by EDWARDS,T'ONA	00:23	58-70	V 12	
	00:15			MISSED LAYUP by DEAN,JAPREECE
	00:15			REBOUND (OFF) by SANDERS,ZURI
	00:13			MISSED LAYUP by SANDERS,ZURI
BLOCK by PIERRE-LOUIS,VIONISE	00:13			
	00:13			REBOUND (OFF) by TEAM
	00:12	60-70	V 10	GOOD! LAYUP by OLABODE,DAYO [PNT]
	00:12			ASSIST by BOWSER,RYANN

Oklahoma 70, Texas Tech 60

Period 4-only	In Paint	Off T/O	2nd Chance	Fast Break	Bench	
OU	8	7	0	0	9	Score tied - 0 times
TTU	10	2	4	2	6	Lead changed - 0 times

Oklahoma vs Texas Tech
3/1/2016; 6:30 p.m. at Lubbock, TX (United Supermarkets Arena)
Scoring/Runs Reference

Oklahoma		Period 1	Texas Tech	Oklahoma	Period 2	Texas Tech
		Score		Score		
09:18 - CARTER JUMPER	X		DEAN TURN - 09:42	09:49 - PIERRE-LOUIS JUMPER	2 ^P 25-15 -10	
		X	COOKTAYLOR JUMPER - 08:53			X
08:37 - WILLIAMS JUMPER	2 ^P 2-0 -2			09:05 - PIERRE-LOUIS LAYUP	X	
		X	SANDERS LAYUP - 08:16	08:47 - CARTER TURN	TO	
07:55 - MANNING 3PTR	3 5-0 -5				TO	DEAN TURN - 08:30
		2	COOKTAYLOR JUMPER - 07:36	08:20 - TREECE TURN	TO	
07:29 - LITTLE LAYUP	X				25-17 -8	2
		X	COOKTAYLOR JUMPER - 07:23			X
07:09 - MANNING 3PTR	3 8-2 -6			07:48 - ORTIZ JUMPER	2 ^P 27-17 -10	
		2	DEAN JUMPER - 06:42		TO	MCKENZIE TURN - 07:31
06:22 - ORTIZ JUMPER	X			07:00 - WILLIAMS 3PTR	X	
06:18 - LITTLE 3PTR	3 11-4 -7					X
		X	COOKTAYLOR JUMPER - 06:05	06:30 - ORTIZ JUMPER	X	
05:49 - WILLIAMS FT	X			06:25 - LITTLE 3PTR	X	
05:49 - WILLIAMS FT	1 12-4 -8					27-19 -8
		X	COOKTAYLOR JUMPER - 05:36	05:30 - ORTIZ 3PTR	X	2
		X	SANDERS JUMPER - 05:34			TO
		1	SANDERS FT - 05:33	05:06 - ORTIZ TURN	TO	
		1	SANDERS FT - 05:33			X
05:24 - LITTLE 3PTR	X					X
		X	OLABODE 3PTR - 05:03			X
04:43 - MANNING 3PTR	3 15-6 -9			04:08 - ORTIZ 3PTR	X	
		TO	DEAN TURN - 04:29			TO
04:16 - EDWARDS JUMPER	X			03:30 - EDWARDS JUMPER	X	
04:05 - LITTLE TURN	TO					X
03:43 - CARTER JUMPER	X					27-21 -6
03:35 - EDWARDS LAYUP	2 ^P 17-6 -11					2 ^P
		2 ^P	DEAN LAYUP - 03:18	02:49 - PIERRE-LOUIS TURN	TO	1
03:04 - PIERRE-LOUIS LAYUP	2 ^P 19-8 -11					TO
		2 ^P	BLAIRE JUMPER - 02:43	02:25 - MANNING TURN	TO	
02:38 - PIERRE-LOUIS JUMPER	X					TO
		TO	DEAN TURN - 02:30	02:21 - LITTLE FT	1 28-22 -6	
02:21 - MANNING JUMPER	2 ^P 21-10 -11			02:21 - LITTLE FT	1 29-22 -7	
02:21 - MANNING FT	X					TO
		TO	BOWSER TURN - 02:03	02:02 - EDWARDS LAYUP	2 ^{PF} 31-22 -9	
01:42 - EDWARDS TURN	TO					TO
		TO	ROE TURN - 01:32	01:22 - PIERRE-LOUIS TURN	TO	
01:26 - EDWARDS TURN	TO					X
		21-12 -9	2			X
00:59 - WYATT 3PTR	X		BOWSER JUMPER - 01:11	00:48 - EDWARDS TURN	TO	
00:45 - TREECE 3PTR	X					31-24 -7
		21-15 -6	3			2 ^P
00:05 - PIERRE-LOUIS FT	1 22-15 -7		BOWSER 3PTR - 00:35			X
00:05 - PIERRE-LOUIS FT	1 23-15 -8					31-25 -6
		X	DEAN 3PTR - 00:00	00:00 - EDWARDS JUMPER	X	1

Period 3			Period 4		
Oklahoma	Score	Texas Tech	Oklahoma	Score	Texas Tech
09:53 - LITTLE TURN	TO		09:50 - PIERRE-LOUIS TURN	TO	
	$\frac{31-27}{-4}$ 2	COOKTAYLOR JUMPER - 09:36		X	OLABODE 3PTR - 09:41
09:18 - CARTER 3PTR	3 $\frac{34-27}{-7}$		09:14 - CARTER 3PTR	3 $\frac{48-39}{-9}$	
	$\frac{34-30}{-4}$ 3	BOWSER 3PTR - 08:57		X	COOKTAYLOR JUMPER - 08:59
08:26 - MANNING JUMPER	X		08:50 - LITTLE JUMPER	X	
	$\frac{34-32}{-2}$ 2 ^P	DEAN LAYUP - 08:13		$\frac{48-41}{-7}$ 2 ^P	DEAN LAYUP - 08:31
07:50 - TREECE LAYUP	2 ^P $\frac{36-32}{-4}$	TO BOWSER TURN - 07:29		$\frac{48-42}{-6}$ 1	DEAN FT - 08:31
	TO		08:10 - WILLIAMS JUMPER	2 ^P $\frac{50-42}{-8}$	
07:16 - CARTER JUMPER	X	GRANT JUMPER - 07:01		X	OLABODE JUMPER - 07:52
	X		07:40 - CARTER JUMPER	2 $\frac{52-42}{-10}$	
06:58 - TREECE TURN	TO	DEAN 3PTR - 06:35		X	BLAIRE JUMPER - 07:21
	X		07:09 - CARTER JUMPER	X	
06:26 - CARTER JUMPER	X	TO SANDERS TURN - 06:20	07:07 - WILLIAMS JUMPER	X	
	TO			X	DEAN JUMPER - 06:55
06:02 - TREECE TURN	TO	DEAN LAYUP - 05:58		$\frac{52-44}{-8}$ 2	BLAIRE JUMPER - 06:47
	X		06:33 - PIERRE-LOUIS TURN	TO	
05:53 - WILLIAMS LAYUP	2 ^{PF} $\frac{38-32}{-6}$	OLABODE JUMPER - 05:36		X	BOWSER 3PTR - 06:19
	X		06:08 - LITTLE FT	1 $\frac{53-44}{-9}$	
05:19 - WILLIAMS LAYUP	2 ^P $\frac{40-32}{-8}$	SANDERS JUMPER - 04:55	06:08 - LITTLE FT	1 $\frac{54-44}{-10}$	
	X			X	BLAIRE JUMPER - 05:51
04:43 - TREECE 3PTR	X			X	DEAN JUMPER - 05:42
04:29 - WILLIAMS TURN	TO	COOKTAYLOR JUMPER - 04:16		X	BLAIRE JUMPER - 05:32
	X			TO	DEAN TURN - 05:27
04:11 - CARTER TURN	TO	BOWSER 3PTR - 04:03	05:25 - EDWARDS FT	1 $\frac{55-44}{-11}$	
	X		05:25 - EDWARDS FT	1 $\frac{56-44}{-12}$	
03:45 - ORTIZ TURN	TO	COOKTAYLOR TURN - 03:30		$\frac{56-46}{-10}$ 2 ^P	DEAN JUMPER - 05:05
	TO		04:42 - EDWARDS LAYUP	2 ^P $\frac{58-46}{-12}$	
03:26 - ORTIZ TURN	TO	COOKTAYLOR FT - 03:21		$\frac{58-48}{-10}$ 2	COOKTAYLOR JUMPER - 04:23
	$\frac{40-33}{-7}$ 1		04:04 - WILLIAMS JUMPER	X	
	$\frac{40-34}{-6}$ 1	COOKTAYLOR FT - 03:21		TO	DEAN TURN - 03:55
02:57 - CARTER JUMPER	X		03:29 - EDWARDS JUMPER	X	
	X	COOKTAYLOR JUMPER - 02:44		$\frac{58-50}{-8}$ 2 ^F	COOKTAYLOR JUMPER - 03:19
02:28 - WILLIAMS LAYUP	X	COOKTAYLOR JUMPER - 02:18	02:47 - CARTER LAYUP	2 ^P $\frac{60-50}{-10}$	
	$\frac{40-36}{-4}$ 2 ^P	COOKTAYLOR LAYUP - 02:13		TO	DEAN TURN - 02:23
01:53 - MANNING 3PTR	X		02:17 - LITTLE 3PTR	3 $\frac{63-50}{-13}$	
	$\frac{42-38}{-4}$ 2 ^P	BOWSER JUMPER - 01:19		$\frac{63-53}{-10}$ 3	BOWSER 3PTR - 01:54
01:09 - PIERRE-LOUIS LAYUP	2 ^P $\frac{42-38}{-4}$		01:43 - PIERRE-LOUIS FT	X	
	X	BROOKS FT - 00:45	01:43 - PIERRE-LOUIS FT	1 $\frac{64-53}{-11}$	
	$\frac{42-39}{-3}$ 1	BROOKS FT - 00:45		X	OLABODE 3PTR - 01:36
00:35 - CARTER 3PTR	3 $\frac{45-39}{-6}$			TO	BOWSER TURN - 01:32
	X	BROOKS 3PTR - 00:01	01:17 - CARTER TURN	TO	
				$\frac{64-55}{-9}$ 2 ^P	OLABODE LAYUP - 01:04
			00:50 - PIERRE-LOUIS LAYUP	2 ^P $\frac{66-55}{-11}$	
				TO	DEAN TURN - 00:31
			00:30 - CARTER FT	1 $\frac{67-55}{-12}$	
			00:30 - CARTER FT	1 $\frac{68-55}{-13}$	

00:23 - EDWARDS FT
00:23 - EDWARDS FT

	68-57 -11	2 ^P
	68-58 -10	1
1	69-58 -11	
1	70-58 -12	
		X
		X
	70-60 -10	2 ^P

DEAN JUMPER - 00:23
DEAN FT - 00:23

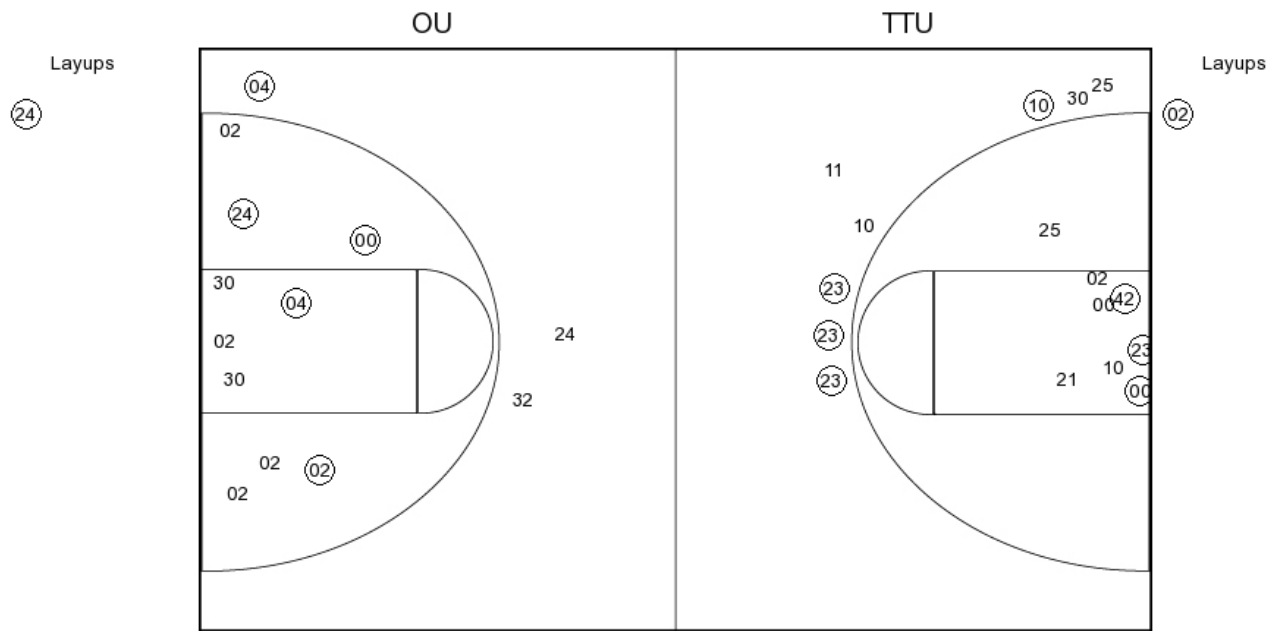
DEAN LAYUP - 00:15
SANDERS LAYUP - 00:13
OLABODE LAYUP - 00:12

Oklahoma vs Texas Tech

OFFICIAL SHOT CHART

3/1/2016 at Lubbock, TX (United Supermarkets Arena)

PERIOD 1



OU PERIOD 1

FG Made	11
FG Attempted	28
3PFG Made	4
3PFG Attempted	11

TTU PERIOD 1

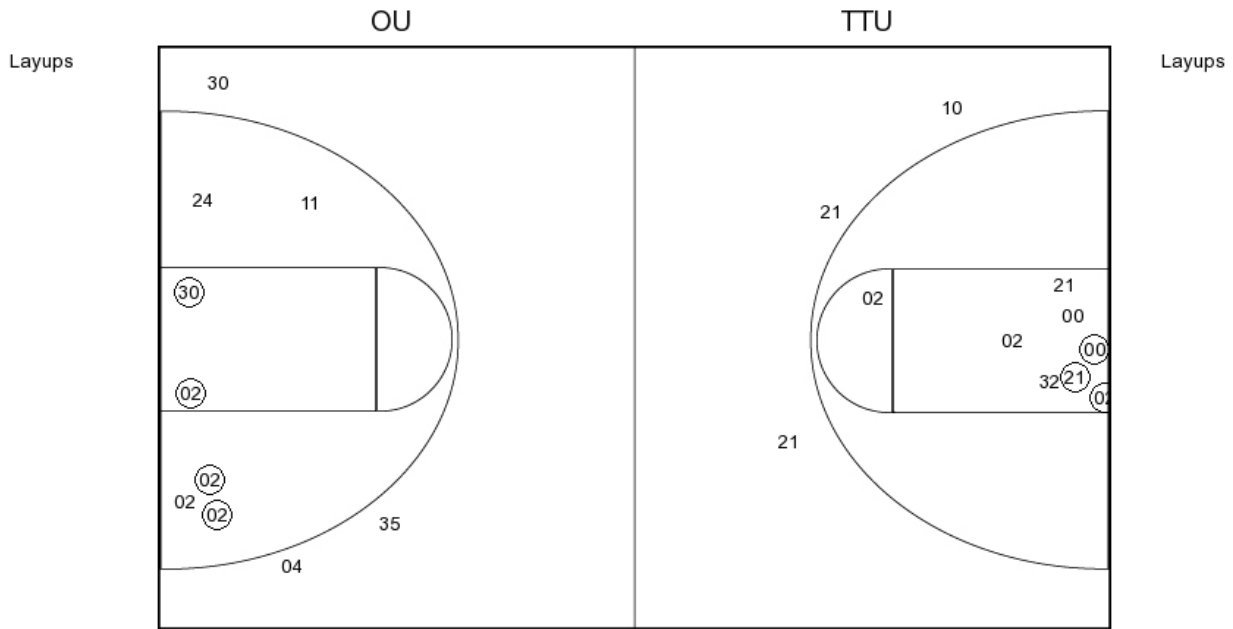
FG Made	10
FG Attempted	24
3PFG Made	1
3PFG Attempted	7

Oklahoma vs Texas Tech

OFFICIAL SHOT CHART

3/1/2016 at Lubbock, TX (United Supermarkets Arena)

PERIOD 2



OU PERIOD 2

FG Made

FG Attempted

3PFG Made

3PFG Attempted

TTU PERIOD 2

FG Made

FG Attempted

3PFG Made

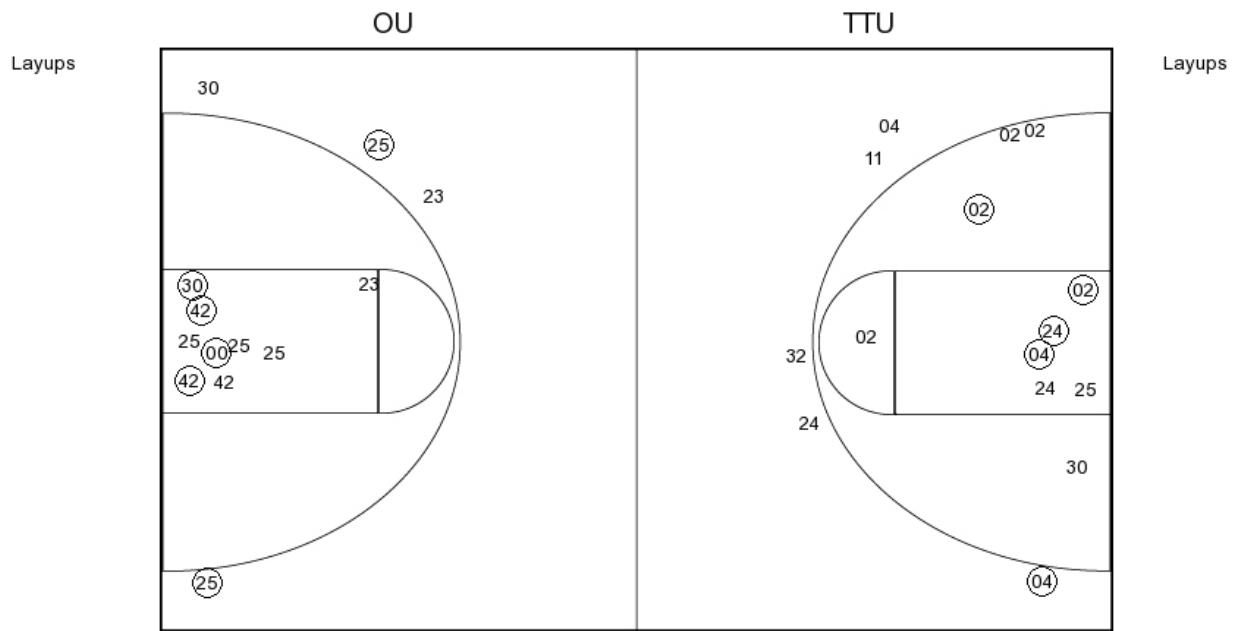
3PFG Attempted

Oklahoma vs Texas Tech

OFFICIAL SHOT CHART

3/1/2016 at Lubbock, TX (United Supermarkets Arena)

PERIOD 3



OU PERIOD 3

FG Made	13
FG Attempted	25
3PFG Made	4
3PFG Attempted	6

TTU PERIOD 3

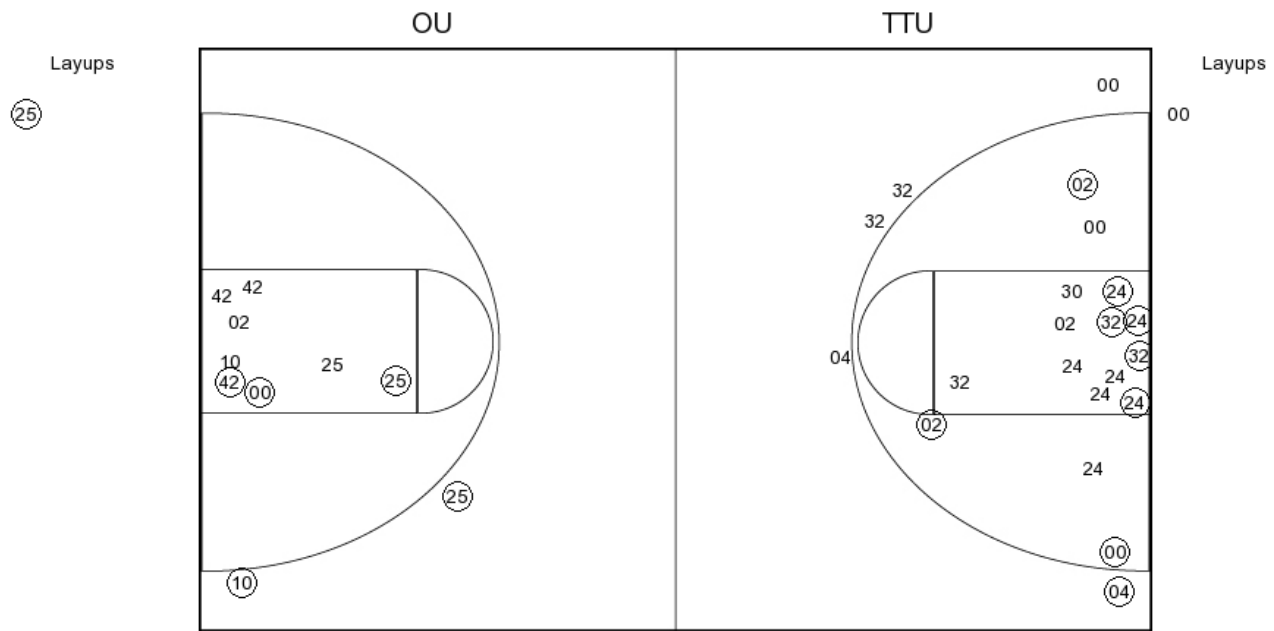
FG Made	14
FG Attempted	36
3PFG Made	2
3PFG Attempted	8

Oklahoma vs Texas Tech

OFFICIAL SHOT CHART

3/1/2016 at Lubbock, TX (United Supermarkets Arena)

PERIOD 4



OU PERIOD 4

FG Made
FG Attempted
3PFG Made
3PFG Attempted

TTU PERIOD 4

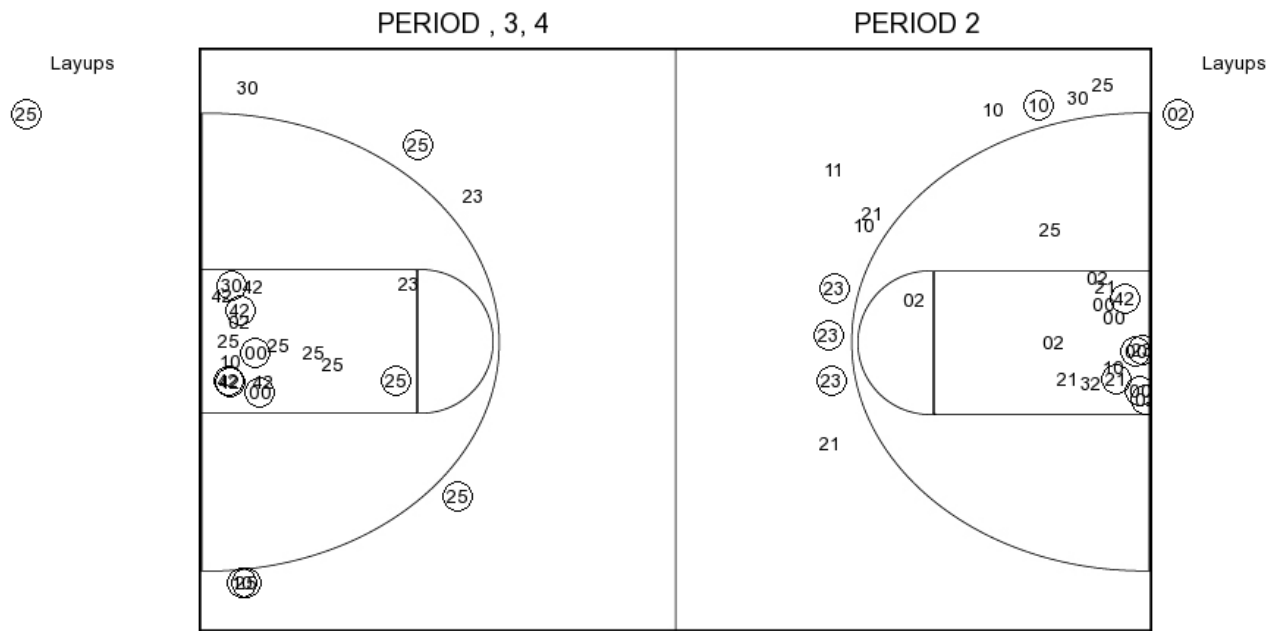
FG Made
FG Attempted
3PFG Made
3PFG Attempted

Oklahoma vs Texas Tech

OFFICIAL SHOT CHART

3/1/2016 at Lubbock, TX (United Supermarkets Arena)

Oklahoma



OU PERIOD 1

FG Made	11
FG Attempted	28
3PFG Made	4
3PFG Attempted	11

OU PERIOD 2

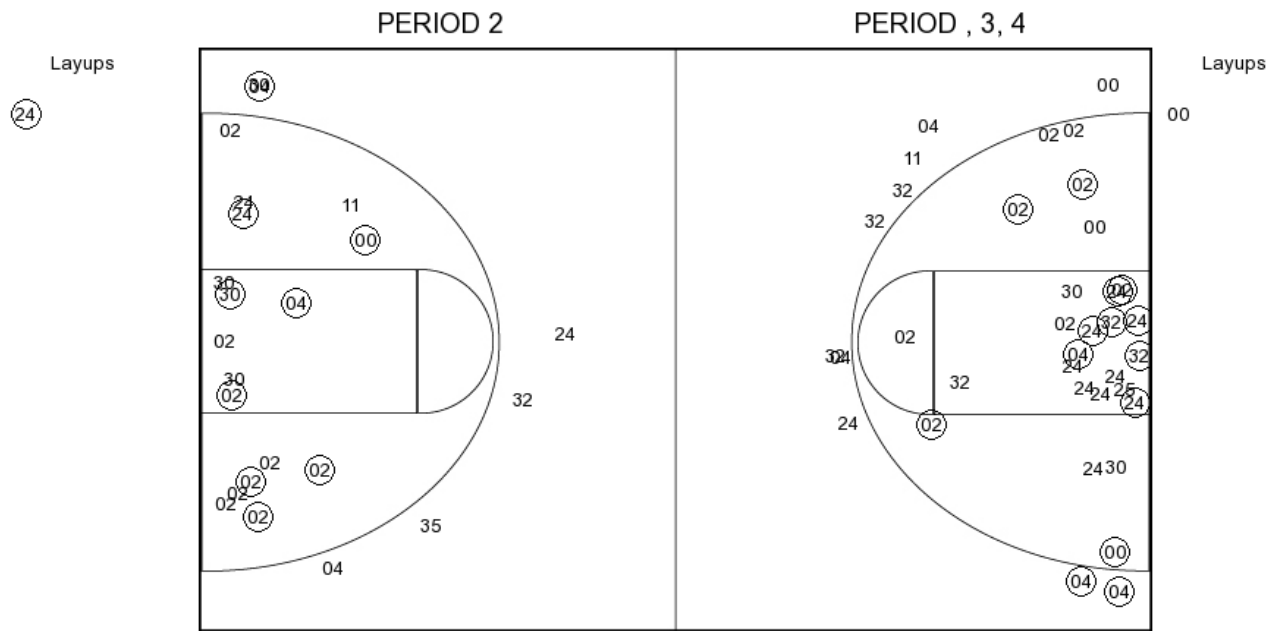
FG Made	
FG Attempted	
3PFG Made	
3PFG Attempted	

Oklahoma vs Texas Tech

OFFICIAL SHOT CHART

3/1/2016 at Lubbock, TX (United Supermarkets Arena)

Texas Tech



TTU PERIOD 1

FG Made	10
FG Attempted	24
3PFG Made	1
3PFG Attempted	7

TTU PERIOD 2

FG Made	
FG Attempted	
3PFG Made	
3PFG Attempted	