



# TEXAS TECH VS. WEST VIRGINIA

2/2/2016

Lubbock, TX (United Supermarkets Arena)

## FINAL STATS

**West Virginia**

*(17-6, 6-4)*

**69**

**Texas Tech**

*(11-11, 2-9)*

**42**

*Start Time: 6:00 p.m.*

*Officials: Felicia Grinter, Mark Zentz, Lisa Jones*

*Attendance: 2842*

**Official Basketball Box Score -- Game Totals -- Final Statistics**  
**West Virginia vs Texas Tech**  
**2/2/2016 6:00 p.m. at Lubbock, TX (United Supermarkets Arena)**

**West Virginia 69 - 17-6, 6-4**

##	Player	S	Total			Rebounds			PF	TP	A	TO	Blk	Stl	Min	
			FG	FGA	3PT	FG-FGA	FT	FTA								Off
12	RAY, CHANIA	g	0-2		0-1	0-0	1	2	3	0	0	3	2	0	0	18
15	MONTGOMERY, LANAY	c	8-11		0-0	1-1	2	8	10	4	17	0	1	1	0	19
22	PARDEE, KATRINA	g	3-7		2-4	0-0	0	2	2	3	8	2	2	0	0	16
23	HOLMES, BRIA	g	6-12		2-4	2-3	3	4	7	1	16	3	5	0	3	33
32	ROBERSON, ARIELLE	f	5-8		0-1	0-0	4	3	7	2	10	1	3	1	5	30
02	BREWER, ALEXIS		0-0		0-0	0-0	0	0	0	1	0	0	1	0	0	9
03	SEGGIE, OLIVIA		0-0		0-0	0-0	0	0	0	0	0	0	0	0	1	1
05	MARTIN, TYNICE		3-8		3-4	0-0	1	2	3	1	9	2	1	0	1	23
11	MULDROW, TEANA		3-7		0-0	1-2	1	7	8	4	7	1	2	2	2	28
20	RHODES, DESIREE		0-0		0-0	0-0	0	0	0	0	0	0	0	0	0	1
21	MORTON, JESSICA		1-6		0-3	0-0	0	2	2	1	2	0	1	1	0	21
24	MARTIN, ANJA		0-0		0-0	0-0	0	0	0	0	0	0	0	0	0	1
TEAM							1	6	7	0		0				
TOTALS			29-61		7-17	4-6	13	36	49	17	69	12	18	5	12	200

Deadball Rebounds: 2,0

FG %	1st Half:	13-31	41.9%	2nd Half:	16-30	53.3%	Game:	29-61	47.5%					
	1st Qtr	10-20	50.0%	2nd Qtr	3-11	27.3%	3rd Qtr	7-15	46.7%	4th Qtr	9-15	60.0%		
3FG %	1st Half:	2-7	28.6%	2nd Half:	5-10	50.0%	Game:	7-17	41.2%					
	1st Qtr	1-5	20.0%	2nd Qtr	1-2	50.0%	3rd Qtr	1-4	25.0%	4th Qtr	4-6	66.7%		
FT %	1st Half:	3-4	75.0%	2nd Half:	1-2	50.0%	Game:	4-6	66.7%					
	1st Qtr	3-4	75.0%	2nd Qtr	0-0	0%	3rd Qtr	1-2	50.0%	4th Qtr	0-0	0%		

**Texas Tech 42 - 11-11, 2-9**

##	Player	S	Total			Rebounds			PF	TP	A	TO	Blk	Stl	Min	
			FG	FGA	3PT	FG-FGA	FT	FTA								Off
02	COOKTAYLOR, IVONNE	g	3-12		0-1	0-0	0	5	5	3	6	1	3	1	3	30
11	BROOKS, RAYVEN	g	3-7		0-1	0-0	0	1	1	3	6	0	3	0	3	23
24	DEAN, JAPREECE	g	5-18		2-5	4-6	1	2	3	0	16	2	3	0	2	37
25	GRANT, LEASHJA	c	0-5		0-0	0-2	2	4	6	2	0	1	0	0	0	14
35	ROE, JAMIE	f	0-0		0-0	0-0	0	0	0	0	0	0	1	0	1	12
00	BLAIRE, BRIELLE		0-2		0-0	3-4	0	4	4	0	3	0	1	1	1	23
04	BOWSER, RYANN		1-2		1-1	0-0	0	0	0	0	3	1	0	0	0	21
30	SANDERS, ZURI		0-1		0-0	0-0	2	1	3	0	0	1	1	0	0	9
32	OLABODE, DAYO		4-8		0-1	0-0	0	1	1	1	8	0	1	1	0	21
42	MCKENZIE, IONNA		0-1		0-0	0-0	0	1	1	1	0	0	2	0	0	10
TEAM							1	0	1	0		0				
TOTALS			16-56		3-9	7-12	6	19	25	10	42	6	15	3	10	200

Deadball Rebounds: 3,0

FG %	1st Half:	8-31	25.8%	2nd Half:	8-25	32.0%	Game:	16-56	28.6%					
	1st Qtr	2-14	14.3%	2nd Qtr	6-17	35.3%	3rd Qtr	3-11	27.3%	4th Qtr	5-14	35.7%		
3FG %	1st Half:	1-3	33.3%	2nd Half:	2-6	33.3%	Game:	3-9	33.3%					
	1st Qtr	0-1	00.0%	2nd Qtr	1-2	50.0%	3rd Qtr	1-3	33.3%	4th Qtr	1-3	33.3%		
FT %	1st Half:	0-2	00.0%	2nd Half:	7-10	70.0%	Game:	7-12	58.3%					
	1st Qtr	0-2	00.0%	2nd Qtr	0-0	0%	3rd Qtr	4-6	66.7%	4th Qtr	3-4	75.0%		

Officials: Felicia Grinter, Mark Zentz, Lisa Jones  
 Technical Fouls: West Virginia- None. Texas Tech- None.  
 Attendance: 2842

Score by periods	1st	2nd	3rd	4th	Total
West Virginia	24	7	16	22	69
Texas Tech	4	13	11	14	42

Points	In Paint	Off T/O	2nd Chance	Fast Break	Bench
WVU	40	10	11	2	18
TTU	22	15	11	12	14

Last FG - WVU 4th-00:38, TTU 4th-01:37.

Largest lead - West Virginia by 27 4th-00:38; Texas Tech by WVU led for 38:44. TTU led for 0:00. Game was tied for 1:02.

Score tied - 0 times  
 Lead changed - 0 times

**Official Basketball Box Score -- Game Totals -- First Half Statistics**  
**West Virginia vs Texas Tech**  
**2/2/2016 6:00 p.m. at Lubbock, TX (United Supermarkets Arena)**

**West Virginia 31 • 17-6, 6-4**

##	Player	S	Total			3-Ptr			Rebounds			PF	TP	A	TO	Blk	Stl	Min	
			FG	FGA	3PT	FG-FGA	FT	FTA	Off Reb	Def Reb	Tot Reb								
12	RAY,CHANIA	g	0	2	0	1	0	0	0	2	2	0	0	1	0	0	0	9	
15	MONTGOMERY,LANAY	c	4	7	0	0	1	1	1	5	6	2	9	0	0	1	0	11	
22	PARDEE,KATRINA	g	2	6	1	3	0	0	0	2	2	1	5	1	2	0	0	11	
23	HOLMES,BRIA	g	2	6	0	1	1	1	3	3	6	0	5	2	4	0	1	16	
32	ROBERSON,ARIELLE	f	2	2	0	0	0	0	1	1	2	2	4	0	2	0	3	13	
02	BREWER,ALEXIS		0	0	0	0	0	0	0	0	0	0	0	1	0	0	4		
03	SEGGIE,OLIVIA		0	0	0	0	0	0	0	0	0	0	0	0	0	0	0		
05	MARTIN,TYNICE		1	4	1	2	0	0	1	1	2	1	3	2	1	0	1	10	
11	MULDROW,TEANA		2	2	0	0	1	2	1	5	6	1	5	0	1	2	1	15	
20	RHODES,DESIREE		0	0	0	0	0	0	0	0	0	0	0	0	0	0	0		
21	MORTON,JESSICA		0	2	0	0	0	0	0	2	2	0	0	0	1	0	0	11	
24	MARTIN,ANJA		0	0	0	0	0	0	0	0	0	0	0	0	0	0	0		
TEAM									0	1	1	0		0					
Totals				13-31		2-7		3-4		7	22	29	7	31	6	12	3	6	100
FG %	1st Qtr	10-20	50.0%	2nd Qtr	3-11	27.3%	Half:	13-31	41.9%										
3FG %	1st Qtr	1-5	20.0%	2nd Qtr	1-2	50.0%	Half:	2-7	28.6%										
FT %	1st Qtr	3-4	75.0%	2nd Qtr	0-0	0%	Half:	3-4	75.0%										

**Texas Tech 17 • 11-11, 2-9**

##	Player	S	Total			3-Ptr			Rebounds			PF	TP	A	TO	Blk	Stl	Min	
			FG	FGA	3PT	FG-FGA	FT	FTA	Off Reb	Def Reb	Tot Reb								
02	COOKTAYLOR,IVONNE	g	1	8	0	1	0	0	0	4	4	2	2	1	2	0	2	15	
11	BROOKS,RAYVEN	g	2	4	0	0	0	0	0	1	1	1	4	0	2	0	2	11	
24	DEAN,JAPREECE	g	1	9	0	1	0	0	1	0	1	0	2	2	2	0	1	17	
25	GRANT,LEASHJA	c	0	2	0	0	0	2	0	2	2	2	0	0	0	0	0	9	
35	ROE,JAMIE	f	0	0	0	0	0	0	0	0	0	0	0	1	0	1	9		
00	BLAIRE,BRIELLE		0	0	0	0	0	0	0	1	1	0	0	0	0	1	1	9	
04	BOWSER,RYANN		1	2	1	1	0	0	0	0	0	0	3	0	0	0	0	11	
30	SANDERS,ZURI		0	1	0	0	0	0	1	1	2	0	0	1	0	0	0	7	
32	OLABODE,DAYO		3	4	0	0	0	0	0	1	1	1	6	0	0	1	0	8	
42	MCKENZIE,IONNA		0	1	0	0	0	0	0	1	1	0	0	0	1	0	0	4	
TEAM									0	0	0	0		0					
Totals				8-31		1-3		0-2		2	11	13	6	17	4	8	2	7	100
FG %	1st Qtr	2-14	14.3%	2nd Qtr	6-17	35.3%	Half:	8-31	25.8%										
3FG %	1st Qtr	0-1	00.0%	2nd Qtr	1-2	50.0%	Half:	1-3	33.3%										
FT %	1st Qtr	0-2	00.0%	2nd Qtr	0-0	0%	Half:	0-2	00.0%										

Officials: Felicia Grinter, Mark Zentz, Lisa Jones  
 Technical Fouls: West Virginia- None. Texas Tech- None.

Score by periods	1st	2nd	3rd	4th	Total
West Virginia	24	7	16	22	<b>69</b>
Texas Tech	4	13	11	14	<b>42</b>

Points	In Paint	Off T/O	2nd 2nd Chance	Fast Fast Break	Bench
WVU	20	4	7	0	8
	10	8	0	6	9

Last FG - WVU 2nd-00:46, TTU 2nd-02:32.  
 WVU led for 18:46. TTU led for 0:00. Game was tied for 1:02.

Score tied - 0 times  
 Lead changed - 0 times

**West Virginia vs Texas Tech**  
**2/2/2016; 6:00 p.m. at Lubbock, TX (United Supermarkets Arena)**  
**Period 1 Play-By-Play**

VISITORS: West Virginia	Time	Score	Margin	HOME: Texas Tech
	09:39			MISSED LAYUP by GRANT,LEASHJA
REBOUND (DEF) by RAY,CHANIA	09:39			
TURNOVER by PARDEE,KATRINA	09:29			
	09:12			MISSED 3PTR by DEAN,JAPREECE
REBOUND (DEF) by HOLMES,BRIA	09:12			
GOOD! JUMPER by ROBERSON,ARIELLE [PNT]	08:58	0-2	V 2	
	08:50			TURNOVER by BROOKS,RAYVEN
STEAL by ROBERSON,ARIELLE	08:50			
GOOD! JUMPER by ROBERSON,ARIELLE	08:38	0-4	V 4	
ASSIST by RAY,CHANIA	08:38			
	08:23			MISSED JUMPER by DEAN,JAPREECE
REBOUND (DEF) by PARDEE,KATRINA	08:23			
GOOD! JUMPER by MONTGOMERY,LANAY [PNT]	08:08	0-6	V 6	
ASSIST by PARDEE,KATRINA	08:08			
	07:44			MISSED JUMPER by COOKTAYLOR,IVONNE
REBOUND (DEF) by ROBERSON,ARIELLE	07:44			
MISSED 3PTR by PARDEE,KATRINA	07:26			
	07:26			REBOUND (DEF) by COOKTAYLOR,IVONNE
FOUL by PARDEE,KATRINA	07:18			
	07:18			MISSED FT by GRANT,LEASHJA
	07:18			REBOUND (DEADB) by TEAM
	07:18			MISSED FT by GRANT,LEASHJA
REBOUND (DEF) by MONTGOMERY,LANAY	07:18			
MISSED 3PTR by HOLMES,BRIA	07:01			
	07:01			REBOUND (DEF) by BROOKS,RAYVEN
	06:51			TURNOVER by ROE,JAMIE
STEAL by ROBERSON,ARIELLE	06:51			
TURNOVER by ROBERSON,ARIELLE	06:51			
	06:51			SUB OUT: ROE,JAMIE
	06:50			MISSED JUMPER by OLABODE,DAYO
REBOUND (DEF) by RAY,CHANIA	06:50			
MISSED JUMPER by MONTGOMERY,LANAY	06:37			
REBOUND (OFF) by MONTGOMERY,LANAY	06:37			
GOOD! JUMPER by MONTGOMERY,LANAY [PNT]	06:35	0-8	V 8	
	06:35			FOUL by GRANT,LEASHJA
GOOD! FT by MONTGOMERY,LANAY	06:35	0-9	V 9	
	06:35			SUB IN: BOWSER,RYANN
	06:35			SUB IN: SANDERS,ZURI
	06:35			SUB OUT: BROOKS,RAYVEN
	06:35			SUB OUT: GRANT,LEASHJA
FOUL by ROBERSON,ARIELLE	06:21			
	06:16			TURNOVER by COOKTAYLOR,IVONNE
STEAL by ROBERSON,ARIELLE	06:15			
GOOD! LAYUP by PARDEE,KATRINA [PNT]	06:02	0-11	V 11	
	06:00			TIMEOUT 30SEC
SUB IN: MORTON,JESSICA	06:00			
SUB OUT: RAY,CHANIA	06:00			
	05:40			TURNOVER by DEAN,JAPREECE
STEAL by HOLMES,BRIA	05:38			
MISSED JUMPER by HOLMES,BRIA	05:33			
	05:33			REBOUND (DEF) by SANDERS,ZURI
FOUL by MONTGOMERY,LANAY	05:33			
SUB IN: MULDROW,TEANA	05:33			

VISITORS: West Virginia	Time	Score	Margin	HOME: Texas Tech
SUB OUT: MONTGOMERY,LANAY	05:33			
	05:05			MISSED JUMPER by DEAN,JAPREECE
REBOUND (DEF) by MULDROW,TEANA	05:05			
GOOD! 3PTR by PARDEE,KATRINA	04:53	0-14	V 14	
	04:28	2-14	V 12	GOOD! LAYUP by OLABODE,DAYO [PNT]
	04:28			ASSIST by SANDERS,ZURI
MISSED 3PTR by PARDEE,KATRINA	04:06			
REBOUND (OFF) by HOLMES,BRIA	04:06			
MISSED JUMPER by HOLMES,BRIA	04:02			
REBOUND (OFF) by HOLMES,BRIA	04:02			
MISSED JUMPER by HOLMES,BRIA	04:01			
REBOUND (OFF) by MULDROW,TEANA	04:01			
	04:00			FOUL by OLABODE,DAYO
GOOD! FT by MULDROW,TEANA	04:00	2-15	V 13	
MISSED FT by MULDROW,TEANA	04:00			
REBOUND (OFF) by HOLMES,BRIA	04:00			
SUB IN: MARTIN,TYNICE	04:00			
SUB IN: MONTGOMERY,LANAY	04:00			
SUB OUT: PARDEE,KATRINA	04:00			
SUB OUT: ROBERSON,ARIELLE	04:00			
	04:00			SUB IN: BROOKS,RAYVEN
	04:00			SUB OUT: DEAN,JAPREECE
GOOD! JUMPER by HOLMES,BRIA [PNT]	03:58	2-17	V 15	
	03:58			FOUL by COOKTAYLOR,IVONNE
GOOD! FT by HOLMES,BRIA	03:58	2-18	V 16	
	03:58			SUB IN: BLAIRE,BRIELLE
	03:42			TURNOVER by BROOKS,RAYVEN
	03:42			SUB IN: GRANT,LEASHJA
	03:42			SUB OUT: SANDERS,ZURI
TURNOVER by HOLMES,BRIA	03:31			
	03:30			STEAL by BLAIRE,BRIELLE
	03:22			MISSED LAYUP by COOKTAYLOR,IVONNE
REBOUND (DEF) by MORTON,JESSICA	03:22			
MISSED JUMPER by MORTON,JESSICA	03:09			
	03:09			REBOUND (DEF) by GRANT,LEASHJA
SUB IN: RAY,CHANIA	02:45			
SUB OUT: MORTON,JESSICA	02:45			
	02:37			MISSED JUMPER by BROOKS,RAYVEN
REBOUND (DEF) by MONTGOMERY,LANAY	02:37			
GOOD! LAYUP by MULDROW,TEANA [PNT]	02:28	2-20	V 18	
	02:09			MISSED JUMPER by COOKTAYLOR,IVONNE
REBOUND (DEF) by TEAM	02:09			
	02:07			SUB IN: DEAN,JAPREECE
	02:07			SUB OUT: BOWSER,RYANN
GOOD! JUMPER by MONTGOMERY,LANAY [PNT]	01:54	2-22	V 20	
ASSIST by HOLMES,BRIA	01:54			
FOUL by MARTIN,TYNICE	01:31			
SUB IN: BREWER,ALEXIS	01:31			
SUB OUT: HOLMES,BRIA	01:31			
	01:25			MISSED JUMPER by DEAN,JAPREECE
REBOUND (DEF) by MARTIN,TYNICE	01:25			
	01:23			FOUL by BROOKS,RAYVEN
MISSED 3PTR by RAY,CHANIA	01:06			
	01:06			REBOUND (DEF) by GRANT,LEASHJA
	00:55			MISSED JUMPER by COOKTAYLOR,IVONNE
REBOUND (DEF) by MULDROW,TEANA	00:55			
GOOD! JUMPER by MONTGOMERY,LANAY [PNT]	00:43	2-24	V 22	
ASSIST by MARTIN,TYNICE	00:43			

VISITORS: West Virginia	Time	Score	Margin	HOME: Texas Tech
	00:13			MISSED JUMPER by DEAN,JAPREECE
BLOCK by MULDROW,TEANA	00:13			
REBOUND (DEF) by MULDROW,TEANA	00:12			
MISSED LAYUP by MARTIN,TYNICE	00:08			
	00:08			REBOUND (DEF) by COOKTAYLOR,IVONNE
	00:02	4-24	V 20	GOOD! LAYUP by COOKTAYLOR,IVONNE [FB/PNT]

West Virginia 24, Texas Tech 4

Period 1-only	In Paint	Off T/O	2nd Chance	Fast Break	Bench	
WVU	16	4	7	0	3	Score tied - 0 times
TTU	4	0	0	2	2	Lead changed - 0 times

**West Virginia vs Texas Tech**  
**2/2/2016; 6:00 p.m. at Lubbock, TX (United Supermarkets Arena)**  
**Period 2 Play-By-Play**

VISITORS: West Virginia	Time	Score	Margin	HOME: Texas Tech
SUB IN: MULDROW,TEANA	10:00			
SUB IN: MARTIN,TYNICE	10:00			
SUB IN: MORTON,JESSICA	10:00			
SUB IN: BREWER,ALEXIS	10:00			
SUB OUT: RAY,CHANIA	10:00			
SUB OUT: PARDEE,KATRINA	10:00			
SUB OUT: HOLMES,BRIA	10:00			
SUB OUT: ROBERSON,ARIELLE	10:00			
	10:00			SUB IN: BLAIRE,BRIELLE
	10:00			SUB OUT: ROE,JAMIE
TURNOVER by MARTIN,TYNICE	09:48			
	09:47			STEAL by COOKTAYLOR,IVONNE
	09:34			MISSED JUMPER by GRANT,LEASHJA
REBOUND (DEF) by MONTGOMERY,LANAY	09:34			
MISSED JUMPER by MONTGOMERY,LANAY	09:15			
	09:15			BLOCK by BLAIRE,BRIELLE
	09:13			REBOUND (DEF) by COOKTAYLOR,IVONNE
	08:56			MISSED JUMPER by COOKTAYLOR,IVONNE
REBOUND (DEF) by MONTGOMERY,LANAY	08:56			
TURNOVER by BREWER,ALEXIS	08:45			
	08:43			STEAL by BROOKS,RAYVEN
	08:42	6-24	V 18	GOOD! LAYUP by BROOKS,RAYVEN [FB/PNT]
	08:24			FOUL by GRANT,LEASHJA
SUB IN: ROBERSON,ARIELLE	08:24			
SUB IN: HOLMES,BRIA	08:24			
SUB IN: PARDEE,KATRINA	08:24			
SUB OUT: MONTGOMERY,LANAY	08:24			
SUB OUT: MARTIN,TYNICE	08:24			
SUB OUT: BREWER,ALEXIS	08:24			
	08:24			SUB IN: SANDERS,ZURI
	08:24			SUB OUT: GRANT,LEASHJA
TURNOVER by PARDEE,KATRINA	08:15			
	08:14			STEAL by COOKTAYLOR,IVONNE
	08:09			MISSED LAYUP by COOKTAYLOR,IVONNE
REBOUND (DEF) by HOLMES,BRIA	08:09			
GOOD! JUMPER by HOLMES,BRIA [PNT]	08:02	6-26	V 20	
	07:40			MISSED 3PTR by COOKTAYLOR,IVONNE
REBOUND (DEF) by MULDROW,TEANA	07:40			
TURNOVER by HOLMES,BRIA	07:32			
	07:03			TURNOVER by DEAN,JAPREECE
STEAL by MULDROW,TEANA	07:02			
TURNOVER by ROBERSON,ARIELLE	06:59			
	06:58			STEAL by BROOKS,RAYVEN
	06:53	8-26	V 18	GOOD! JUMPER by BROOKS,RAYVEN [FB/PNT]
TURNOVER by MORTON,JESSICA	06:29			
SUB IN: RAY,CHANIA	06:29			
SUB OUT: MORTON,JESSICA	06:29			
	06:29			SUB IN: BOWSER,RYANN
	06:29			SUB OUT: DEAN,JAPREECE
	06:14			MISSED JUMPER by BROOKS,RAYVEN
REBOUND (DEF) by PARDEE,KATRINA	06:14			
MISSED JUMPER by PARDEE,KATRINA	06:08			
REBOUND (OFF) by ROBERSON,ARIELLE	06:08			

VISITORS: West Virginia	Time	Score	Margin	HOME: Texas Tech
MISSED JUMPER by RAY,CHANIA	06:02			
	06:02			REBOUND (DEF) by COOKTAYLOR,IVONNE
	05:45			TURNOVER by COOKTAYLOR,IVONNE
	05:45			FOUL by COOKTAYLOR,IVONNE
SUB IN: MONTGOMERY,LANAY	05:45			
SUB OUT: MULDROW,TEANA	05:45			
	05:45			SUB IN: ROE,JAMIE
	05:45			SUB IN: DEAN,JAPREECE
	05:45			SUB OUT: COOKTAYLOR,IVONNE
	05:45			SUB OUT: BROOKS,RAYVEN
MISSED JUMPER by PARDEE,KATRINA	05:43			
	05:43			REBOUND (DEF) by BLAIRE,BRIELLE
	05:23			MISSED JUMPER by DEAN,JAPREECE
	05:23			REBOUND (OFF) by SANDERS,ZURI
	05:21			MISSED JUMPER by SANDERS,ZURI
	05:21			SUB IN: OLABODE,DAYO
	05:21			SUB OUT: BLAIRE,BRIELLE
BLOCK by MONTGOMERY,LANAY	05:20			
REBOUND (DEF) by MONTGOMERY,LANAY	05:19			
MISSED JUMPER by MONTGOMERY,LANAY	05:05			
	05:05			BLOCK by OLABODE,DAYO
	05:03			REBOUND (DEF) by OLABODE,DAYO
	04:38	11-26	V 15	GOOD! 3PTR by BOWSER,RYANN
	04:38			ASSIST by DEAN,JAPREECE
	04:28			SUB IN: MCKENZIE,IONNA
	04:28			SUB OUT: SANDERS,ZURI
FOUL by MONTGOMERY,LANAY	04:13			
SUB IN: MORTON,JESSICA	04:13			
SUB IN: MARTIN,TYNICE	04:13			
SUB IN: MULDROW,TEANA	04:13			
SUB OUT: RAY,CHANIA	04:13			
SUB OUT: PARDEE,KATRINA	04:13			
	04:08	13-26	V 13	GOOD! JUMPER by OLABODE,DAYO
	04:08			ASSIST by DEAN,JAPREECE
TURNOVER by MULDROW,TEANA	03:42			
	03:25	15-26	V 11	GOOD! JUMPER by OLABODE,DAYO
	03:17			ASSIST by COOKTAYLOR,IVONNE
TURNOVER by HOLMES,BRIA	02:56			
	02:54			STEAL by ROE,JAMIE
	02:49			TURNOVER by MCKENZIE,IONNA
STEAL by MARTIN,TYNICE	02:48			
TURNOVER by HOLMES,BRIA	02:43			
	02:33			STEAL by DEAN,JAPREECE
	02:32	17-26	V 9	GOOD! JUMPER by DEAN,JAPREECE [PNT]
TIMEOUT 30SEC	02:32			
MISSED JUMPER by MORTON,JESSICA	02:15			
	02:15			REBOUND (DEF) by MCKENZIE,IONNA
FOUL by MULDROW,TEANA	02:14			
	02:00			MISSED JUMPER by BOWSER,RYANN
REBOUND (DEF) by HOLMES,BRIA	02:00			
GOOD! 3PTR by MARTIN,TYNICE	01:40	17-29	V 12	
ASSIST by HOLMES,BRIA	01:40			
FOUL by ROBERSON,ARIELLE	01:07			
SUB IN: PARDEE,KATRINA	01:07			
SUB OUT: ROBERSON,ARIELLE	01:07			
	00:59			MISSED JUMPER by DEAN,JAPREECE
BLOCK by MULDROW,TEANA	00:59			
	00:58			REBOUND (OFF) by DEAN,JAPREECE



VISITORS: West Virginia	Time	Score	Margin	HOME: Texas Tech
	00:57			MISSED JUMPER by DEAN,JAPREECE
REBOUND (DEF) by MORTON,JESSICA	00:57			
GOOD! JUMPER by MULDROW,TEANA [PNT]	00:46	17-31	V 14	
ASSIST by MARTIN,TYNICE	00:46			
	00:14			MISSED JUMPER by MCKENZIE,IONNA
REBOUND (DEF) by MULDROW,TEANA	00:14			
MISSED 3PTR by MARTIN,TYNICE	00:05			
REBOUND (OFF) by MARTIN,TYNICE	00:05			
MISSED JUMPER by MARTIN,TYNICE	00:02			
REBOUND (DEADB) by TEAM	00:02			

West Virginia 31, Texas Tech 17

Period 2-only	In Paint	Off T/O	2nd Chance	Fast Break	Bench	
WVU	4	0	0	0	5	Score tied - 0 times
TTU	6	8	0	4	7	Lead changed - 0 times

**Official Basketball Box Score -- Game Totals -- Second Half Statistics**  
**West Virginia vs Texas Tech**  
**2/2/2016 6:00 p.m. at Lubbock, TX (United Supermarkets Arena)**

**West Virginia 38 • 17-6, 6-4**

##	Player	S	Total			3-Ptr			Rebounds			PF	TP	A	TO	Blk	Stl	Min	
			FG	FGA	3PT	FG	FGA	FT	FTA	Off Reb	Def Reb								Tot Reb
12	RAY,CHANIA	g	0-0		0-0		0-0		1	0	1	0	0	2	2	0	0	9	
15	MONTGOMERY,LANAY	c	4-4		0-0		0-0		1	3	4	2	8	0	1	0	0	8	
22	PARDEE,KATRINA	g	1-1		1-1		0-0		0	0	0	2	3	1	0	0	0	5	
23	HOLMES,BRIA	g	4-6		2-3		1-2		0	1	1	1	11	1	1	0	2	17	
32	ROBERSON,ARIELLE	f	3-6		0-1		0-0		3	2	5	0	6	1	1	1	2	17	
02	BREWER,ALEXIS		0-0		0-0		0-0		0	0	0	1	0	0	0	0	0	5	
03	SEGGIE,OLIVIA		0-0		0-0		0-0		0	0	0	0	0	0	0	0	1	1	
05	MARTIN,TYNICE		2-4		2-2		0-0		0	1	1	0	6	0	0	0	0	13	
11	MULDROW,TEANA		1-5		0-0		0-0		0	2	2	3	2	1	1	0	1	13	
20	RHODES,DESIREE		0-0		0-0		0-0		0	0	0	0	0	0	0	0	0	1	
21	MORTON,JESSICA		1-4		0-3		0-0		0	0	0	1	2	0	0	1	0	10	
24	MARTIN,ANJA		0-0		0-0		0-0		0	0	0	0	0	0	0	0	0	1	
TEAM									1	5	6	0		0					
Totals				16-30		5-10		1-2		6	14	20	10	38	6	6	2	6	100
FG %	3rd Qtr	7-15	46.7%	4th Qtr	9-15	60.0%	Half:	16-30	53.3%										
3FG %	3rd Qtr	1-4	25.0%	4th Qtr	4-6	66.7%	Half:	5-10	28.6%										
FT %	3rd Qtr	1-2	50.0%	4th Qtr	0-0	0%	Half:	1-2	50.0%										

**Texas Tech 25 • 11-11, 2-9**

##	Player	S	Total			3-Ptr			Rebounds			PF	TP	A	TO	Blk	Stl	Min	
			FG	FGA	3PT	FG	FGA	FT	FTA	Off Reb	Def Reb								Tot Reb
02	COOKTAYLOR,IVONNE	g	2-4		0-0		0-0		0	1	1	1	4	0	1	1	1	15	
11	BROOKS,RAYVEN	g	1-3		0-1		0-0		0	0	0	2	2	0	1	0	1	12	
24	DEAN,JAPREECE	g	4-9		2-4		4-6		0	2	2	0	14	0	1	0	1	20	
25	GRANT,LEASHJA	c	0-3		0-0		0-0		2	2	4	0	0	1	0	0	0	5	
35	ROE,JAMIE	f	0-0		0-0		0-0		0	0	0	0	0	0	0	0	0	3	
00	BLAIRE,BRIELLE		0-2		0-0		3-4		0	3	3	0	3	0	1	0	0	14	
04	BOWSER,RYANN		0-0		0-0		0-0		0	0	0	0	0	1	0	0	0	10	
30	SANDERS,ZURI		0-0		0-0		0-0		1	0	1	0	0	0	1	0	0	2	
32	OLABODE,DAYO		1-4		0-1		0-0		0	0	0	0	2	0	1	0	0	13	
42	MCKENZIE,IONNA		0-0		0-0		0-0		0	0	0	1	0	0	1	0	0	6	
TEAM									1	0	1	0		0					
Totals				8-25		2-6		7-10		4	8	12	4	25	2	7	1	3	100
FG %	3rd Qtr	3-11	27.3%	4th Qtr	5-14	35.7%	Half:	8-25	32.0%										
3FG %	3rd Qtr	1-3	33.3%	4th Qtr	1-3	33.3%	Half:	2-6	33.3%										
FT %	3rd Qtr	4-6	66.7%	4th Qtr	3-4	75.0%	Half:	7-10	70.0%										

Officials: Felicia Grinter, Mark Zentz, Lisa Jones  
 Technical Fouls: West Virginia- None. Texas Tech- None.

Score by periods	1st	2nd	3rd	4th	Total
West Virginia	24	7	16	22	<b>69</b>
Texas Tech	4	13	11	14	<b>42</b>

Points	In Paint	Off T/O	2nd 2nd Chance	Fast Fast Break	Bench
WVU	20	6	4	2	10
	12	7	3	6	5

Last FG - WVU 4th-00:38, TTU 4th-01:37.  
 WVU led for 19:58. TTU led for 0:00. Game was tied for 0:00.

Score tied - 0 times  
 Lead changed - 0 times

**West Virginia vs Texas Tech**  
**2/2/2016; 6:00 p.m. at Lubbock, TX (United Supermarkets Arena)**  
**Period 3 Play-By-Play**

VISITORS: West Virginia	Time	Score	Margin	HOME: Texas Tech
	10:00			SUB IN: OLABODE, DAYO
	10:00			SUB IN: MCKENZIE, IONNA
	10:00			SUB OUT: GRANT, LEASHJA
	10:00			SUB OUT: ROE, JAMIE
	09:37			MISSED JUMPER by BROOKS, RAYVEN
REBOUND (DEF) by MONTGOMERY, LANAY	09:37			
TURNOVER by RAY, CHANIA	09:30			
	09:29			STEAL by BROOKS, RAYVEN
	09:26	19-31	V 12	GOOD! LAYUP by BROOKS, RAYVEN [FB/PNT]
MISSED JUMPER by ROBERSON, ARIELLE	08:54			
REBOUND (OFF) by MONTGOMERY, LANAY	08:54			
GOOD! JUMPER by ROBERSON, ARIELLE [PNT]	08:49	19-33	V 14	
FOUL by PARDEE, KATRINA	08:33			
	08:33			MISSED FT by DEAN, JAPREECE
	08:33			REBOUND (DEADB) by TEAM
	08:33	20-33	V 13	GOOD! FT by DEAN, JAPREECE
GOOD! JUMPER by MONTGOMERY, LANAY	08:13	20-35	V 15	
	08:05			MISSED JUMPER by COOKTAYLOR, IVONNE
REBOUND (DEF) by MONTGOMERY, LANAY	08:05			
TURNOVER by HOLMES, BRIA	07:58			
FOUL by HOLMES, BRIA	07:58			
FOUL by PARDEE, KATRINA	07:46			
SUB IN: MARTIN, TYNICE	07:46			
SUB OUT: PARDEE, KATRINA	07:46			
	07:27			TURNOVER by MCKENZIE, IONNA
	07:27			FOUL by MCKENZIE, IONNA
	07:11			FOUL by BROOKS, RAYVEN
	07:11			SUB IN: GRANT, LEASHJA
	07:11			SUB OUT: MCKENZIE, IONNA
GOOD! LAYUP by MONTGOMERY, LANAY [PNT]	06:53	20-37	V 17	
ASSIST by HOLMES, BRIA	06:53			
	06:32			MISSED LAYUP by DEAN, JAPREECE
REBOUND (DEF) by TEAM	06:32			
MISSED JUMPER by MARTIN, TYNICE	06:18			
REBOUND (OFF) by ROBERSON, ARIELLE	06:18			
	06:17			FOUL by COOKTAYLOR, IVONNE
TURNOVER by MONTGOMERY, LANAY	06:07			
FOUL by MONTGOMERY, LANAY	06:07			
SUB IN: MORTON, JESSICA	06:07			
SUB IN: MULDROW, TEANA	06:07			
SUB OUT: RAY, CHANIA	06:07			
SUB OUT: MONTGOMERY, LANAY	06:07			
	06:07			SUB IN: BOWSER, RYANN
	06:07			SUB OUT: COOKTAYLOR, IVONNE
	05:51			TURNOVER by OLABODE, DAYO
STEAL by HOLMES, BRIA	05:50			
MISSED 3PTR by MORTON, JESSICA	05:46			
	05:46			REBOUND (DEF) by GRANT, LEASHJA
	05:12	22-37	V 15	GOOD! LAYUP by OLABODE, DAYO [PNT]
	05:12			ASSIST by GRANT, LEASHJA
MISSED 3PTR by MORTON, JESSICA	04:58			
	04:58			REBOUND (DEF) by DEAN, JAPREECE
	04:48			MISSED 3PTR by OLABODE, DAYO

VISITORS: West Virginia	Time	Score	Margin	HOME: Texas Tech
REBOUND (DEF) by HOLMES,BRIA	04:48			
	04:39			FOUL by BROOKS,RAYVEN
TIMEOUT MEDIA	04:39			
MISSED FT by HOLMES,BRIA	04:39			
REBOUND (DEADB) by TEAM	04:39			
GOOD! FT by HOLMES,BRIA	04:39	22-38	V 16	
	04:39			SUB IN: SANDERS,ZURI
	04:39			SUB IN: BLAIRE,BRIELLE
	04:39			SUB IN: COOKTAYLOR,IVONNE
	04:39			SUB OUT: BROOKS,RAYVEN
	04:39			SUB OUT: OLABODE,DAYO
	04:39			SUB OUT: GRANT,LEASHJA
	04:24			MISSED JUMPER by BLAIRE,BRIELLE
	04:24			REBOUND (OFF) by SANDERS,ZURI
	04:05	25-38	V 13	GOOD! 3PTR by DEAN,JAPREECE
	04:00			ASSIST by BOWSER,RYANN
MISSED JUMPER by MULDROW,TEANA	03:51			
	03:51			REBOUND (DEF) by BLAIRE,BRIELLE
SUB IN: BREWER,ALEXIS	03:45			
SUB OUT: MARTIN,TYNICE	03:45			
	03:41			TURNOVER by DEAN,JAPREECE
STEAL by HOLMES,BRIA	03:39			
GOOD! LAYUP by HOLMES,BRIA [FB/PNT]	03:37	25-40	V 15	
	03:13			TURNOVER by SANDERS,ZURI
STEAL by MULDROW,TEANA	03:12			
MISSED JUMPER by MULDROW,TEANA	03:04			
REBOUND (OFF) by ROBERSON,ARIELLE	03:04			
GOOD! LAYUP by ROBERSON,ARIELLE [PNT]	03:01	25-42	V 17	
	02:55			TIMEOUT 30SEC
	02:55			SUB IN: OLABODE,DAYO
	02:55			SUB OUT: SANDERS,ZURI
	02:29			MISSED 3PTR by DEAN,JAPREECE
REBOUND (DEF) by MULDROW,TEANA	02:29			
GOOD! 3PTR by HOLMES,BRIA	02:09	25-45	V 20	
ASSIST by ROBERSON,ARIELLE	02:09			
	01:48			MISSED JUMPER by OLABODE,DAYO
BLOCK by ROBERSON,ARIELLE	01:48			
REBOUND (DEF) by ROBERSON,ARIELLE	01:45			
MISSED 3PTR by MORTON,JESSICA	01:18			
	01:18			REBOUND (DEF) by BLAIRE,BRIELLE
FOUL by BREWER,ALEXIS	01:11			
	01:11	26-45	V 19	GOOD! FT by DEAN,JAPREECE
	01:11	27-45	V 18	GOOD! FT by DEAN,JAPREECE
	01:11			SUB IN: BROOKS,RAYVEN
	01:11			SUB OUT: BOWSER,RYANN
GOOD! LAYUP by ROBERSON,ARIELLE [PNT]	00:55	27-47	V 20	
	00:37			MISSED JUMPER by DEAN,JAPREECE
BLOCK by MORTON,JESSICA	00:37			
	00:37			REBOUND (OFF) by TEAM
	00:32			TURNOVER by COOKTAYLOR,IVONNE
STEAL by ROBERSON,ARIELLE	00:31			
MISSED JUMPER by ROBERSON,ARIELLE	00:01			
REBOUND (OFF) by TEAM	00:01			
TURNOVER by MULDROW,TEANA	00:01			
FOUL by MORTON,JESSICA	00:01			
	00:01	28-47	V 19	GOOD! FT by DEAN,JAPREECE
	00:01			MISSED FT by DEAN,JAPREECE
REBOUND (DEF) by TEAM	00:01			

VISITORS: West Virginia

Time

Score

Margin

HOME: Texas Tech

SUB IN: RAY,CHANIA

00:01

SUB OUT: MORTON,JESSICA

00:01

West Virginia 69, Texas Tech 42

<b>Period 3-only</b>	<b>In Paint</b>	<b>Off T/O</b>	<b>2nd Chance</b>	<b>Fast Break</b>	<b>Bench</b>	
WVU	10	6	4	2	0	Score tied - 0 times
TTU	4	3	3	2	2	Lead changed - 0 times

**West Virginia vs Texas Tech**  
**2/2/2016; 6:00 p.m. at Lubbock, TX (United Supermarkets Arena)**  
**Period 4 Play-By-Play**

VISITORS: West Virginia	Time	Score	Margin	HOME: Texas Tech
SUB IN: BREWER,ALEXIS	10:00			
SUB IN: MULDROW,TEANA	10:00			
SUB OUT: MONTGOMERY,LANAY	10:00			
SUB OUT: PARDEE,KATRINA	10:00			
	10:00			SUB IN: OLABODE,DAYO
	10:00			SUB IN: BLAIRE,BRIELLE
	10:00			SUB OUT: GRANT,LEASHJA
	10:00			SUB OUT: ROE,JAMIE
	09:45			MISSED JUMPER by OLABODE,DAYO
REBOUND (DEF) by TEAM	09:45			
MISSED 3PTR by HOLMES,BRIA	09:27			
REBOUND (OFF) by RAY,CHANIA	09:27			
MISSED JUMPER by MULDROW,TEANA	09:10			
REBOUND (OFF) by ROBERSON,ARIELLE	09:10			
TURNOVER by ROBERSON,ARIELLE	08:57			
	08:56			STEAL by DEAN,JAPREECE
FOUL by MULDROW,TEANA	08:40			
SUB IN: MARTIN,TYNICE	08:40			
SUB OUT: BREWER,ALEXIS	08:40			
FOUL by MULDROW,TEANA	08:36			
	08:36	29-47	V 18	GOOD! FT by BLAIRE,BRIELLE
	08:36	30-47	V 17	GOOD! FT by BLAIRE,BRIELLE
GOOD! 3PTR by MARTIN,TYNICE	08:22	30-50	V 20	
ASSIST by RAY,CHANIA	08:22			
	08:11			TURNOVER by BROOKS,RAYVEN
STEAL by ROBERSON,ARIELLE	08:10			
MISSED JUMPER by HOLMES,BRIA	08:05			
	08:05			REBOUND (DEF) by BLAIRE,BRIELLE
	07:55	32-50	V 18	GOOD! JUMPER by DEAN,JAPREECE [PNT]
GOOD! JUMPER by HOLMES,BRIA [PNT]	07:36	32-52	V 20	
ASSIST by RAY,CHANIA	07:36			
	07:03			MISSED 3PTR by BROOKS,RAYVEN
REBOUND (DEF) by MULDROW,TEANA	07:03			
TURNOVER by RAY,CHANIA	06:44			
	06:43			STEAL by COOKTAYLOR,IVONNE
	06:40	34-52	V 18	GOOD! LAYUP by COOKTAYLOR,IVONNE [FB/PNT]
GOOD! 3PTR by MARTIN,TYNICE	06:19	34-55	V 21	
	05:49			MISSED JUMPER by BLAIRE,BRIELLE
REBOUND (DEF) by MARTIN,TYNICE	05:49			
MISSED 3PTR by ROBERSON,ARIELLE	05:43			
	05:43			REBOUND (DEF) by COOKTAYLOR,IVONNE
	05:36	36-55	V 19	GOOD! LAYUP by COOKTAYLOR,IVONNE [FB/PNT]
MISSED JUMPER by MULDROW,TEANA	05:17			
	05:17			REBOUND (DEF) by DEAN,JAPREECE
	05:09			MISSED LAYUP by DEAN,JAPREECE
REBOUND (DEF) by TEAM	05:09			
SUB IN: MORTON,JESSICA	05:07			
SUB IN: MONTGOMERY,LANAY	05:07			
SUB OUT: RAY,CHANIA	05:07			
SUB OUT: MULDROW,TEANA	05:07			
	05:07			SUB IN: BOWSER,RYANN
	05:07			SUB IN: GRANT,LEASHJA
	05:07			SUB OUT: BROOKS,RAYVEN

VISITORS: West Virginia	Time	Score	Margin	HOME: Texas Tech
	05:07			SUB OUT: OLABODE,DAYO
MISSED JUMPER by MARTIN,TYNICE	04:45			
	04:45			BLOCK by COOKTAYLOR,IVONNE
	04:43			REBOUND (DEF) by GRANT,LEASHJA
	04:24			MISSED JUMPER by COOKTAYLOR,IVONNE
	04:24			REBOUND (OFF) by GRANT,LEASHJA
	04:21			MISSED JUMPER by GRANT,LEASHJA
REBOUND (DEF) by ROBERSON,ARIELLE	04:21			
GOOD! JUMPER by MORTON,JESSICA [PNT]	03:56	36-57	V 21	
	03:35			MISSED JUMPER by GRANT,LEASHJA
	03:35			REBOUND (OFF) by GRANT,LEASHJA
	03:33			MISSED JUMPER by GRANT,LEASHJA
REBOUND (DEF) by MONTGOMERY,LANAY	03:33			
GOOD! 3PTR by HOLMES,BRIA	03:23	36-60	V 24	
	03:13			TIMEOUT 30SEC
SUB IN: MULDROW,TEANA	03:13			
SUB IN: PARDEE,KATRINA	03:13			
SUB OUT: HOLMES,BRIA	03:13			
SUB OUT: ROBERSON,ARIELLE	03:13			
	03:13			SUB IN: MCKENZIE,IONNA
	03:13			SUB IN: ROE,JAMIE
	03:13			SUB OUT: COOKTAYLOR,IVONNE
	03:13			SUB OUT: GRANT,LEASHJA
FOUL by MONTGOMERY,LANAY	03:10			
	03:04	38-60	V 22	GOOD! JUMPER by DEAN,JAPREECE [PNT]
GOOD! JUMPER by MULDROW,TEANA [PNT]	02:36	38-62	V 24	
	02:16			MISSED 3PTR by DEAN,JAPREECE
REBOUND (DEF) by TEAM	02:16			
GOOD! LAYUP by MONTGOMERY,LANAY [PNT]	01:58	38-64	V 26	
ASSIST by PARDEE,KATRINA	01:54			
	01:37	41-64	V 23	GOOD! 3PTR by DEAN,JAPREECE
GOOD! LAYUP by MONTGOMERY,LANAY [PNT]	01:15	41-66	V 25	
ASSIST by MULDROW,TEANA	01:15			
FOUL by MULDROW,TEANA	00:54			
	00:54			MISSED FT by BLAIRE,BRIELLE
	00:54			REBOUND (DEADB) by TEAM
	00:54	42-66	V 24	GOOD! FT by BLAIRE,BRIELLE
SUB IN: SEGGIE,OLIVIA	00:54			
SUB IN: RHODES,DESIREE	00:54			
SUB IN: MARTIN,ANJA	00:54			
SUB OUT: MORTON,JESSICA	00:54			
SUB OUT: MONTGOMERY,LANAY	00:54			
SUB OUT: MULDROW,TEANA	00:54			
GOOD! 3PTR by PARDEE,KATRINA	00:38	42-69	V 27	
	00:23			TURNOVER by BLAIRE,BRIELLE
STEAL by SEGGIE,OLIVIA	00:21			

West Virginia 69, Texas Tech 42

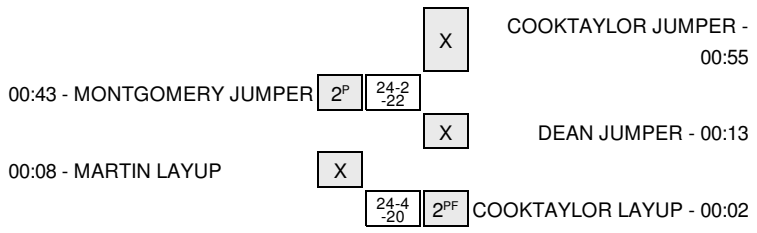
Period 4-only	In Paint	Off T/O	2nd Chance	Fast Break	Bench	
WVU	10	0	0	0	10	Score tied - 0 times
TTU	8	4	0	4	3	Lead changed - 0 times





**West Virginia vs Texas Tech**  
**2/2/2016; 6:00 p.m. at Lubbock, TX (United Supermarkets Arena)**  
**Scoring/Runs Reference**

Period 1		Period 2	
West Virginia	Score	West Virginia	Score
	X	GRANT LAYUP - 09:39	TO
09:29 - PARDEE TURN	TO	09:48 - MARTIN TURN	X
	X	GRANT JUMPER - 1	
08:58 - ROBERSON JUMPER	2P 2-0 -2	DEAN 3PTR - 09:12	X
	TO	09:15 - MONTGOMERY JUMPER	X
08:38 - ROBERSON JUMPER	2 4-0 -4	BROOKS TURN - 08:50	X
	X	COOKTAYLOR JUMPER - 08:23	TO
08:08 - MONTGOMERY JUMPER	2P 6-0 -6	DEAN JUMPER - 08:23	24-6 -18
	X	COOKTAYLOR JUMPER - 07:44	2PF
07:26 - PARDEE 3PTR	X	08:15 - PARDEE TURN	TO
	X	08:02 - HOLMES JUMPER	2P 26-6 -20
	X	07:32 - HOLMES TURN	X
07:01 - HOLMES 3PTR	X	06:59 - ROBERSON TURN	TO
	TO	06:29 - MORTON TURN	TO
06:51 - ROBERSON TURN	TO	06:08 - PARDEE JUMPER	26-8 -18
	X	06:02 - RAY JUMPER	2PF
06:37 - MONTGOMERY JUMPER	X	05:43 - PARDEE JUMPER	TO
06:35 - MONTGOMERY JUMPER	2P 8-0 -8		X
06:35 - MONTGOMERY FT	1 9-0 -9	DEAN TURN - 05:40	X
	TO	DEAN JUMPER - 05:05	TO
06:02 - PARDEE LAYUP	2P 11-0 -11	OLABODE JUMPER - 06:50	COOKTAYLOR TURN - 1
	TO	06:29 - MORTON TURN	TO
05:33 - HOLMES JUMPER	X	06:08 - PARDEE JUMPER	X
	X	06:02 - RAY JUMPER	X
04:53 - PARDEE 3PTR	3 14-0 -14	05:43 - PARDEE JUMPER	X
	14-2 -12	05:05 - MONTGOMERY JUMPER	X
	2P	05:05 - MONTGOMERY JUMPER	26-11 -15
04:06 - PARDEE 3PTR	X	BOWSER 3PTR - 1	3
04:02 - HOLMES JUMPER	X	OLABODE JUMPER - 1	26-13 -13
04:01 - HOLMES JUMPER	X	03:42 - MULDROW TURN	2
04:00 - MULDROW FT	1 15-2 -13	02:56 - HOLMES TURN	TO
04:00 - MULDROW FT	X	02:43 - HOLMES TURN	TO
03:58 - HOLMES JUMPER	2P 17-2 -15	02:15 - MORTON JUMPER	TO
03:58 - HOLMES FT	1 18-2 -16		26-17 -9
	TO	DEAN JUMPER - 1	2P
03:31 - HOLMES TURN	TO	02:15 - MORTON JUMPER	X
	X	01:40 - MARTIN 3PTR	X
03:09 - MORTON JUMPER	X		3 29-17 -12
	X	DEAN JUMPER - 1	X
02:28 - MULDROW LAYUP	2P 20-2 -18	DEAN JUMPER - 1	X
	X	00:46 - MULDROW JUMPER	2P 31-17 -14
01:54 - MONTGOMERY JUMPER	2P 22-2 -20		X
	X	00:05 - MARTIN 3PTR	X
01:06 - RAY 3PTR	X	00:02 - MARTIN JUMPER	X



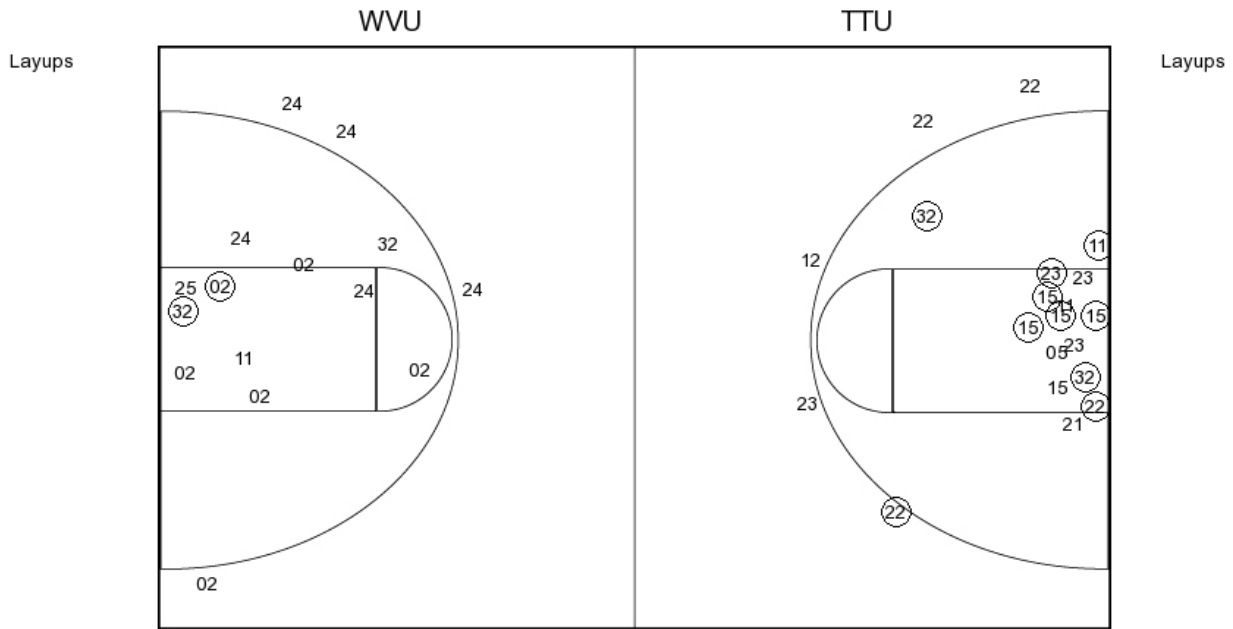
West Virginia		Period 3	Texas Tech	West Virginia	Period 4	Texas
		Score		Score		
		X	BROOKS JUMPER - 09:37		X	OLABODE JUMPER - 09:37
09:30 - RAY TURN	TO			09:27 - HOLMES 3PTR	X	
		31-19 -12	BROOKS LAYUP - 09:26	09:10 - MULDROW JUMPER	X	
08:54 - ROBERSON JUMPER		X		08:57 - ROBERSON TURN	TO	
08:49 - ROBERSON JUMPER		2P			47-29 -18	1
		33-19 -14	DEAN FT - 08:33		47-30 -17	1
		X	DEAN FT - 08:33	08:22 - MARTIN 3PTR	3	50-30 -20
08:13 - MONTGOMERY JUMPER	2	33-20 -13			TO	BROOKS TURN - 08:22
		35-20 -15	COOKTAYLOR JUMPER - 08:05	08:05 - HOLMES JUMPER	X	
		X			50-32 -18	2P
07:58 - HOLMES TURN	TO		MCKENZIE TURN - 07:27	07:36 - HOLMES JUMPER	2P	52-32 -20
		TO				X
06:53 - MONTGOMERY LAYUP	2P	37-20 -17	DEAN LAYUP - 06:32	06:44 - RAY TURN	TO	
		X			52-34 -18	2PF
06:18 - MARTIN JUMPER	X			06:19 - MARTIN 3PTR	3	55-34 -21
06:07 - MONTGOMERY TURN	TO		OLABODE TURN - 05:51			X
		TO		05:43 - ROBERSON 3PTR	X	
05:46 - MORTON 3PTR	X		OLABODE LAYUP - 05:12		55-36 -19	2PF
		37-22 -15		05:17 - MULDROW JUMPER	X	
04:58 - MORTON 3PTR	X		OLABODE 3PTR - 04:48			X
		X		04:45 - MARTIN JUMPER	X	
04:39 - HOLMES FT	X		BLAIRE JUMPER - 04:24			X
04:39 - HOLMES FT	1	38-22 -16	DEAN 3PTR - 04:05			X
		X		03:56 - MORTON JUMPER	2P	57-36 -21
03:51 - MULDROW JUMPER	X		DEAN TURN - 03:41			X
		38-25 -13				X
03:37 - HOLMES LAYUP	2PF	40-25 -15	SANDERS TURN - 03:13	03:23 - HOLMES 3PTR	3	60-36 -24
		X				60-38 -22
03:04 - MULDROW JUMPER	X		DEAN 3PTR - 02:29	02:36 - MULDROW JUMPER	2P	62-38 -24
03:01 - ROBERSON LAYUP	2P	42-25 -17				X
		X		01:58 - MONTGOMERY LAYUP	2P	64-38 -26
02:09 - HOLMES 3PTR	3	45-25 -20	OLABODE JUMPER - 01:48			64-41 -23
		X		01:15 - MONTGOMERY LAYUP	2P	66-41 -25
01:18 - MORTON 3PTR	X		DEAN FT - 01:11			X
		45-26 -19	DEAN FT - 01:11	00:38 - PARDEE 3PTR	3	66-42 -24
		45-27 -18				69-42 -27
00:55 - ROBERSON LAYUP	2P	47-27 -20	DEAN JUMPER - 00:37			TO
		X	COOKTAYLOR TURN - 00:32			BLAIRE TURN - 00:38
00:01 - ROBERSON JUMPER	X					
00:01 - MULDROW TURN	TO		DEAN FT - 00:01			
		47-28 -19	DEAN FT - 00:01			
		X				

West Virginia vs Texas Tech

OFFICIAL SHOT CHART

2/2/2016 at Lubbock, TX (United Supermarkets Arena)

PERIOD 1



**WVU PERIOD 1**

FG Made	13
FG Attempted	31
3PG Made	2
3PG Attempted	7

**TTU PERIOD 1**

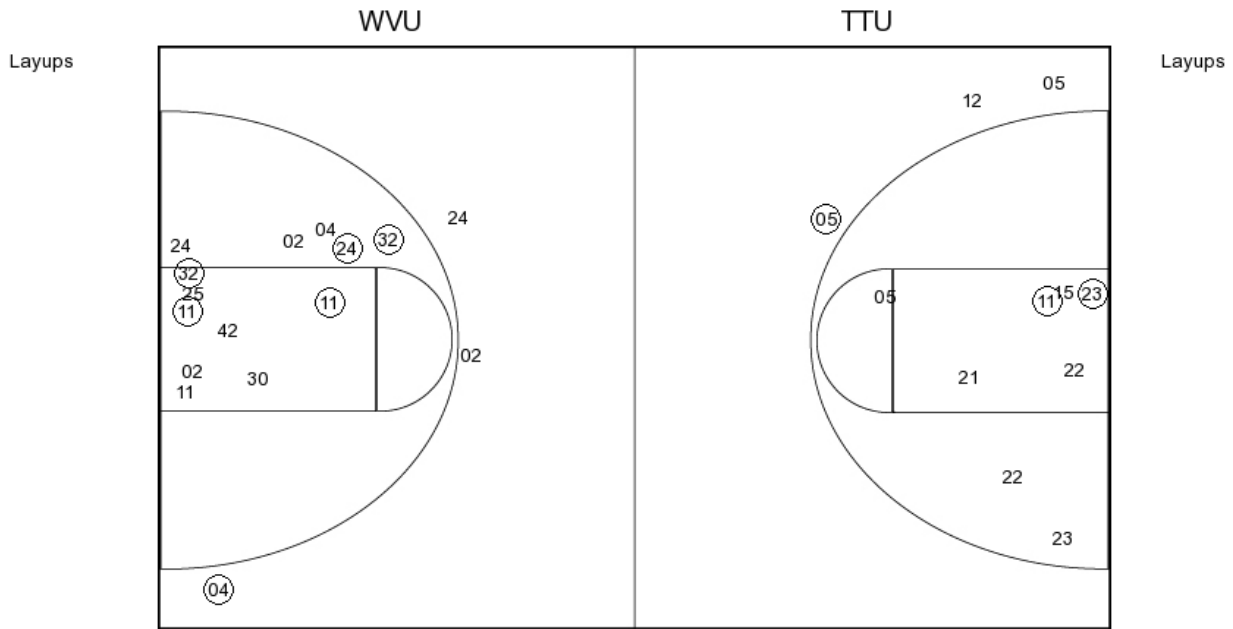
FG Made	8
FG Attempted	31
3PG Made	1
3PG Attempted	3

West Virginia vs Texas Tech

OFFICIAL SHOT CHART

2/2/2016 at Lubbock, TX (United Supermarkets Arena)

PERIOD 2



**WVU PERIOD 2**

FG Made

FG Attempted

3PFG Made

3PFG Attempted

**TTU PERIOD 2**

FG Made

FG Attempted

3PFG Made

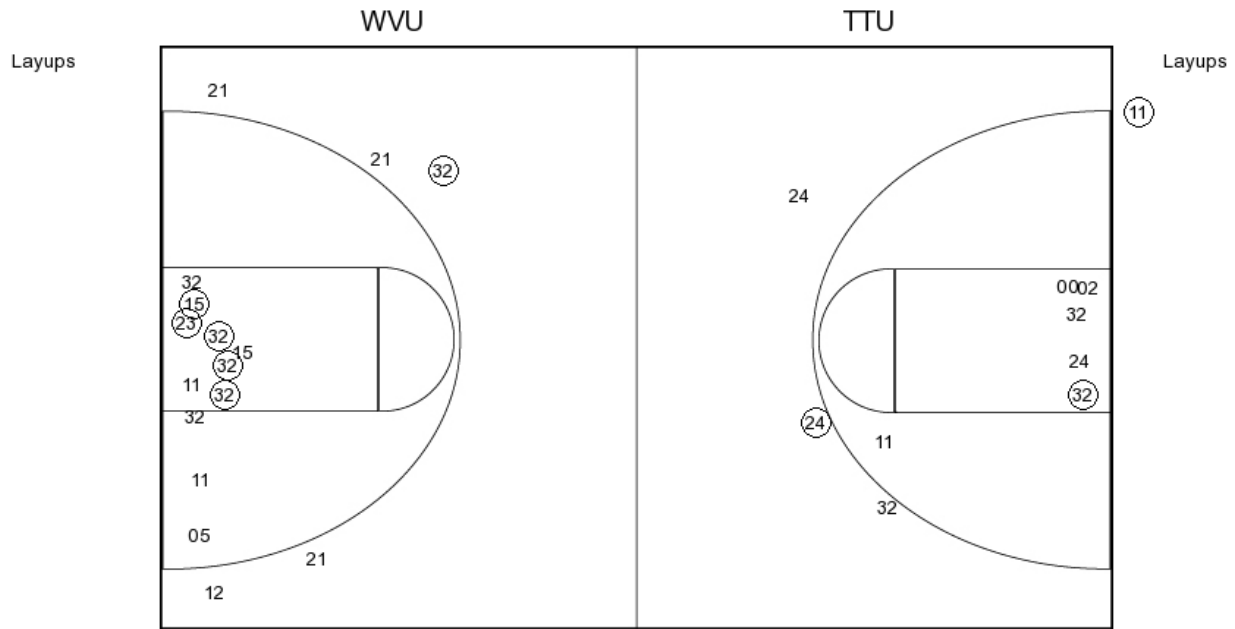
3PFG Attempted

**West Virginia vs Texas Tech**

**OFFICIAL SHOT CHART**

2/2/2016 at Lubbock, TX (United Supermarkets Arena)

**PERIOD 3**



**WVU PERIOD 3**

FG Made	16
FG Attempted	30
3PFG Made	5
3PFG Attempted	10

**TTU PERIOD 3**

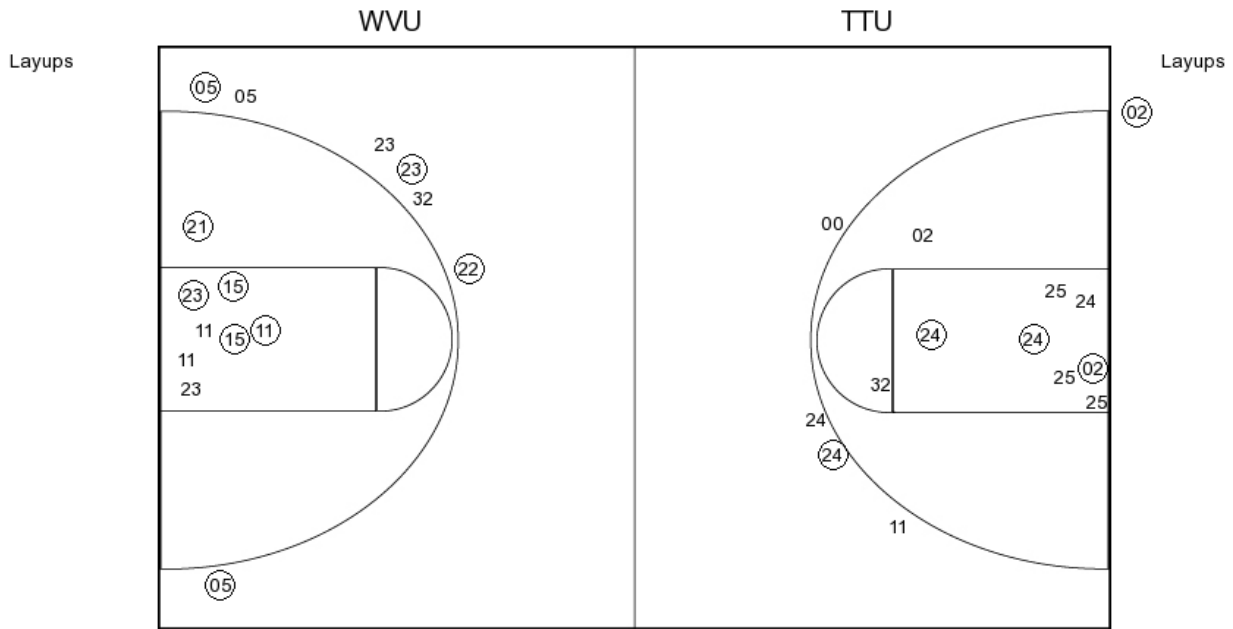
FG Made	8
FG Attempted	25
3PFG Made	2
3PFG Attempted	6

West Virginia vs Texas Tech

OFFICIAL SHOT CHART

2/2/2016 at Lubbock, TX (United Supermarkets Arena)

PERIOD 4



**WVU PERIOD 4**

- FG Made
- FG Attempted
- 3PFG Made
- 3PFG Attempted

**TTU PERIOD 4**

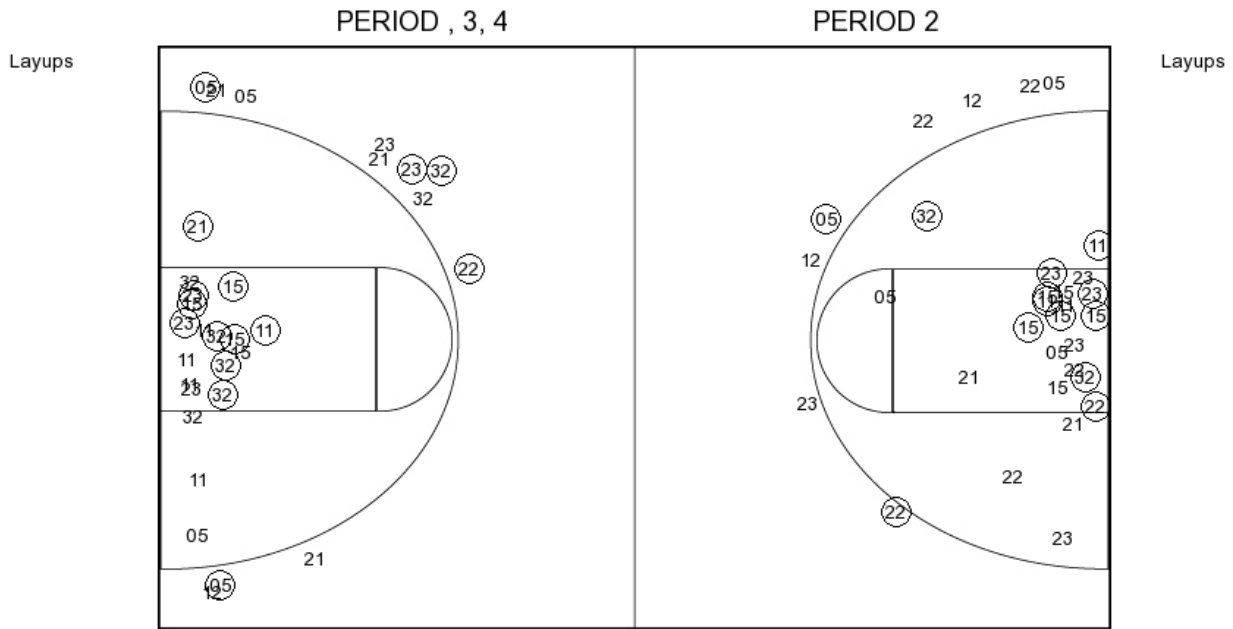
- FG Made
- FG Attempted
- 3PFG Made
- 3PFG Attempted

**West Virginia vs Texas Tech**

**OFFICIAL SHOT CHART**

2/2/2016 at Lubbock, TX (United Supermarkets Arena)

**West Virginia**



**WVU PERIOD 1**

FG Made	13
FG Attempted	31
3PFG Made	2
3PFG Attempted	7

**WVU PERIOD 2**

FG Made	
FG Attempted	
3PFG Made	
3PFG Attempted	

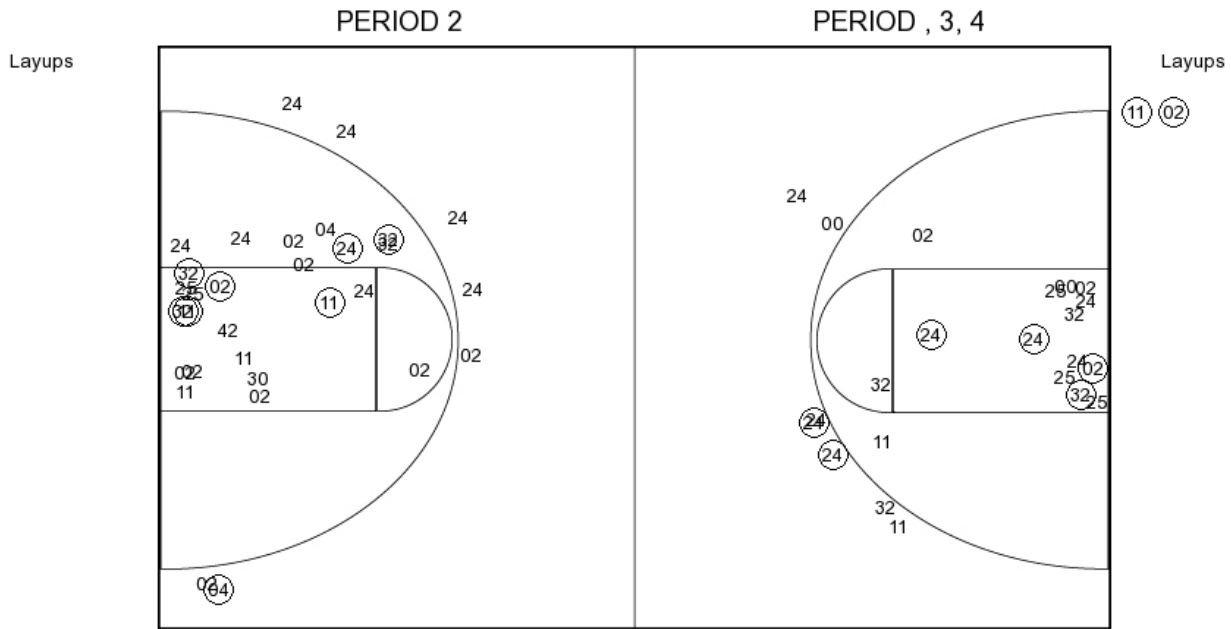


West Virginia vs Texas Tech

OFFICIAL SHOT CHART

2/2/2016 at Lubbock, TX (United Supermarkets Arena)

Texas Tech



**TTU PERIOD 1**

FG Made	8
FG Attempted	31
3PFG Made	1
3PFG Attempted	3

**TTU PERIOD 2**

FG Made	
FG Attempted	
3PFG Made	
3PFG Attempted	