



TEXAS TECH VS. KANSAS

1/30/2016

Lubbock, TX (United Supermarkets Arena)

FINAL STATS

Texas Tech

(11-10, 2-8)

54

Kansas

(5-16, 0-10)

44

Start Time: 5:00 pm

Officials: Michael Price, Bob Trammell, Michael McConnell

Attendance: 3671

Official Basketball Box Score -- Game Totals -- Final Statistics
Kansas vs Texas Tech
1/30/2016 5:00 pm at Lubbock, TX (United Supermarkets Arena)

Kansas 44 - 5-16, 0-10

##	Player	S	Total		3-Ptr		Rebounds			PF	TP	A	TO	Blk	Stl	Min		
			FG	FGA	3PT	FGA	FT	FTA	Off Reb								Def Reb	Tot Reb
03	ALDRIDGE,LAUREN	g	1	13	1	9	0	0	1	2	3	2	3	5	3	0	1	38
15	ROBERTSON,AISIA	g	2	7	0	0	0	0	0	3	3	4	4	2	3	0	1	21
22	CHEADLE,CHAYLA	g	5	10	1	2	0	0	4	1	5	2	11	1	2	0	1	24
25	MANNINGALLEN,CAELYI	f	2	7	0	0	4	4	1	3	4	3	8	0	6	1	1	18
33	KOPATICH,KYLEE	g	1	7	1	3	0	0	1	3	4	3	3	1	2	1	3	35
04	BROWN,JADA		1	2	0	0	1	1	1	8	9	3	3	0	1	1	0	18
12	O'NEAL,TIMEKA		0	2	0	1	0	0	0	1	1	2	0	0	0	0	0	13
20	CHRISTOPHER,JAYDE		0	1	0	1	0	0	0	1	1	2	0	1	1	0	0	12
55	JOHNSON,TYLER		6	9	0	0	0	0	1	2	3	4	12	0	1	1	0	21
TEAM									4	0	4	0		1				
TOTALS			18	58	3	16	5	5	13	24	37	25	44	10	20	4	7	200

Deadball Rebounds: 1,0

FG %	1st Half:	8-28	28.6%	2nd Half:	10-30	33.3%	Game:	18-58	31.0%									
	1st Qtr	4-16	25.0%	2nd Qtr	4-12	33.3%	3rd Qtr	5-11	45.5%	4th Qtr	5-19	26.3%						
3FG %	1st Half:	0-7	00.0%	2nd Half:	3-9	33.3%	Game:	3-16	18.8%									
	1st Qtr	0-4	00.0%	2nd Qtr	0-3	00.0%	3rd Qtr	1-3	33.3%	4th Qtr	2-6	33.3%						
FT %	1st Half:	3-3	100.0%	2nd Half:	2-2	100.0%	Game:	5-5	100.0%									
	1st Qtr	3-3	100.0%	2nd Qtr	0-0	0%	3rd Qtr	2-2	100.0%	4th Qtr	0-0	0%						

Texas Tech 54 - 11-10, 2-8

##	Player	S	Total		3-Ptr		Rebounds			PF	TP	A	TO	Blk	Stl	Min		
			FG	FGA	3PT	FGA	FT	FTA	Off Reb								Def Reb	Tot Reb
02	COOKTAYLOR,IVONNE	g	8	14	0	0	0	0	1	2	3	2	16	0	3	0	0	35
11	BROOKS,RAYVEN	g	2	5	1	3	5	6	0	5	5	1	10	1	1	2	2	30
24	DEAN,JAPREECE	g	4	13	2	5	11	12	2	6	8	0	21	4	4	1	0	36
25	GRANT,LEASHJA	c	1	4	0	0	1	2	1	3	4	3	3	1	5	1	0	22
35	ROE,JAMIE	f	0	0	0	0	0	0	0	2	2	1	0	0	2	0	1	24
04	BOWSER,RYANN		0	2	0	1	0	0	0	3	3	2	0	1	2	0	0	20
30	SANDERS,ZURI		1	2	0	0	0	0	0	2	2	0	2	0	0	0	0	10
32	OLABODE,DAYO		1	4	0	2	0	0	2	1	3	2	2	0	2	1	1	23
42	MCKENZIE,IONNA		0	0	0	0	0	0	0	0	0	0	0	0	0	0	0	0
TEAM									0	2	2	0		1				
TOTALS			17	44	3	11	17	20	6	26	32	11	54	7	20	5	4	200

Deadball Rebounds: 0,0

FG %	1st Half:	10-22	45.5%	2nd Half:	7-22	31.8%	Game:	17-44	38.6%									
	1st Qtr	6-12	50.0%	2nd Qtr	4-10	40.0%	3rd Qtr	6-14	42.9%	4th Qtr	1-8	12.5%						
3FG %	1st Half:	2-6	33.3%	2nd Half:	1-5	20.0%	Game:	3-11	27.3%									
	1st Qtr	2-4	50.0%	2nd Qtr	0-2	00.0%	3rd Qtr	1-3	33.3%	4th Qtr	0-2	00.0%						
FT %	1st Half:	5-6	83.3%	2nd Half:	12-14	85.7%	Game:	17-20	85.0%									
	1st Qtr	3-4	75.0%	2nd Qtr	2-2	100.0%	3rd Qtr	2-2	100.0%	4th Qtr	10-12	83.3%						

Officials: Michael Price, Bob Trammell, Michael McConnell
 Technical Fouls: Kansas- None. Texas Tech- None.
 Attendance: 3671

Score by periods	1st	2nd	3rd	4th	Total
Kansas	11	8	13	12	44
Texas Tech	17	10	15	12	54

Points	In Paint	Off T/O	2nd Chance	Fast Break	Bench
KU	24	10	4	4	15
TTU	12	17	4	2	4

Last FG - KU 4th-00:11, TTU 4th-02:43.
 Largest lead - Kansas by ; Texas Tech by 13 4th-00:31
 KU led for 0:00. TTU led for 38:22. Game was tied for 1:03.

Score tied - 0 times
 Lead changed - 0 times

Official Basketball Box Score -- Game Totals -- First Half Statistics
Kansas vs Texas Tech
1/30/2016 5:00 pm at Lubbock, TX (United Supermarkets Arena)

Kansas 19 • 5-16, 0-10

##	Player	S	Total			Rebounds			PF	TP	A	TO	Blk	Stl	Min
			FG-FGA	3PT FG-FGA	FT-FTA	Off Reb	Def Reb	Tot Reb							
03	ALDRIDGE,LAUREN	g	0-5	0-5	0-0	1	1	2	0	0	1	2	0	1	18
15	ROBERTSON,AISIA	g	0-2	0-0	0-0	0	1	1	2	0	1	1	0	0	12
22	CHEADLE,CHAYLA	g	2-3	0-0	0-0	3	0	3	1	4	1	0	0	0	11
25	MANNINGALLEN,CAELYI	f	2-7	0-0	2-2	1	0	1	1	6	0	4	1	1	10
33	KOPATICH,KYLEE	g	0-3	0-1	0-0	1	0	1	1	0	0	1	0	3	15
04	BROWN,JADA		1-2	0-0	1-1	1	3	4	2	3	0	1	0	0	9
12	O'NEAL,TIMEKA		0-1	0-0	0-0	0	1	1	1	0	0	0	0	0	7
20	CHRISTOPHER,JAYDE		0-1	0-1	0-0	0	1	1	0	0	1	0	0	0	8
55	JOHNSON,TYLER		3-4	0-0	0-0	0	2	2	1	6	0	1	1	0	10
TEAM						1	0	1	0		1				
Totals			8-28	0-7	3-3	8	9	17	9	19	4	11	2	5	100

FG %	1st Qtr	4-16	25.0%	2nd Qtr	4-12	33.3%	Half:	8-28	28.6%
3FG %	1st Qtr	0-4	00.0%	2nd Qtr	0-3	00.0%	Half:	0-7	00.0%
FT %	1st Qtr	3-3	100.0%	2nd Qtr	0-0	0%	Half:	3-3	100.0%

Texas Tech 27 • 11-10, 2-8

##	Player	S	Total			Rebounds			PF	TP	A	TO	Blk	Stl	Min
			FG-FGA	3PT FG-FGA	FT-FTA	Off Reb	Def Reb	Tot Reb							
02	COOKTAYLOR,IVONNE	g	5-8	0-0	0-0	1	0	1	0	10	0	3	0	0	18
11	BROOKS,RAYVEN	g	2-3	1-2	0-0	0	3	3	0	5	0	0	1	1	17
24	DEAN,JAPREECE	g	2-5	1-3	4-4	1	3	4	0	9	2	4	0	0	17
25	GRANT,LEASHJA	c	0-2	0-0	1-2	1	0	1	2	1	1	1	1	0	7
35	ROE,JAMIE	f	0-0	0-0	0-0	0	2	2	1	0	0	1	0	0	14
04	BOWSER,RYANN		0-1	0-0	0-0	0	3	3	1	0	1	2	0	0	9
30	SANDERS,ZURI		1-1	0-0	0-0	0	0	0	0	2	0	0	0	0	5
32	OLABODE,DAYO		0-2	0-1	0-0	1	0	1	0	0	0	1	0	1	13
42	MCKENZIE,IONNA		0-0	0-0	0-0	0	0	0	0	0	0	0	0	0	0
TEAM						0	1	1	0		0				
Totals			10-22	2-6	5-6	4	12	16	4	27	4	12	2	2	100

FG %	1st Qtr	6-12	50.0%	2nd Qtr	4-10	40.0%	Half:	10-22	45.5%
3FG %	1st Qtr	2-4	50.0%	2nd Qtr	0-2	00.0%	Half:	2-6	33.3%
FT %	1st Qtr	3-4	75.0%	2nd Qtr	2-2	100.0%	Half:	5-6	83.3%

Officials: Michael Price, Bob Trammell, Michael McConnell
 Technical Fouls: Kansas- None. Texas Tech- None.

Score by periods	1st	2nd	3rd	4th	Total
Kansas	11	8	13	12	44
Texas Tech	17	10	15	12	54

Points	In Paint	Off T/O	2nd Chance	Fast Break	Bench
KU	16	8	2	0	9
	10	9	4	2	2

Last FG - KU 2nd-00:39, TTU 2nd-00:22.
 KU led for 0:00. TTU led for 18:22. Game was tied for 1:03.

Score tied - 0 times
 Lead changed - 0 times

Kansas vs Texas Tech
1/30/2016; 5:00 pm at Lubbock, TX (United Supermarkets Arena)
Period 1 Play-By-Play

VISITORS: Kansas	Time	Score	Margin	HOME: Texas Tech
	09:45			TURNOVER by DEAN,JAPREECE
STEAL by MANNINGALLEN,CAELYNN	09:44			
MISSED JUMPER by KOPATICH,KYLEE	09:26			
REBOUND (OFF) by KOPATICH,KYLEE	09:26			
MISSED LAYUP by KOPATICH,KYLEE	09:16			
	09:16			REBOUND (DEF) by ROE,JAMIE
FOUL by MANNINGALLEN,CAELYNN	08:57			
	08:57	1-0	H 1	GOOD! FT by GRANT,LEASHJA
	08:57			MISSED FT by GRANT,LEASHJA
REBOUND (DEF) by JOHNSON,TYLER	08:57			
SUB IN: JOHNSON,TYLER	08:57			
MISSED JUMPER by CHEADLE,CHAYLA	08:35			
	08:35			BLOCK by GRANT,LEASHJA
	08:35			REBOUND (DEF) by TEAM
	08:15			MISSED LAYUP by GRANT,LEASHJA
	08:15			REBOUND (OFF) by GRANT,LEASHJA
	08:10	3-0	H 3	GOOD! JUMPER by COOKTAYLOR,IVONNE
	08:10			ASSIST by GRANT,LEASHJA
GOOD! LAYUP by CHEADLE,CHAYLA [PNT]	07:43	3-2	H 1	
	07:20	6-2	H 4	GOOD! 3PTR by BROOKS,RAYVEN
	07:20			ASSIST by DEAN,JAPREECE
TURNOVER by JOHNSON,TYLER	06:59			
FOUL by JOHNSON,TYLER	06:59			
SUB IN: O'NEAL,TIMEKA	06:59			
SUB OUT: KOPATICH,KYLEE	06:59			
	06:46	8-2	H 6	GOOD! JUMPER by COOKTAYLOR,IVONNE
TIMEOUT 30SEC	06:43			
SUB OUT: JOHNSON,TYLER	06:43			
MISSED 3PTR by ALDRIDGE,LAUREN	06:25			
	06:25			REBOUND (DEF) by ROE,JAMIE
	06:00			TURNOVER by DEAN,JAPREECE
MISSED JUMPER by ROBERTSON,AISIA	05:44			
REBOUND (OFF) by CHEADLE,CHAYLA	05:44			
GOOD! LAYUP by MANNINGALLEN,CAELYNN [PNT]	05:34	8-4	H 4	
FOUL by CHEADLE,CHAYLA	05:23			
SUB IN: BROWN,JADA	05:23			
SUB OUT: CHEADLE,CHAYLA	05:23			
	05:18			MISSED 3PTR by DEAN,JAPREECE
REBOUND (DEF) by BROWN,JADA	05:18			
MISSED JUMPER by ROBERTSON,AISIA	05:07			
	05:07			REBOUND (DEF) by DEAN,JAPREECE
	05:02			TURNOVER by COOKTAYLOR,IVONNE
SUB IN: KOPATICH,KYLEE	05:02			
SUB OUT: ROBERTSON,AISIA	05:02			
	05:02			SUB IN: BOWSER,RYANN
	05:02			SUB OUT: DEAN,JAPREECE
MISSED JUMPER by MANNINGALLEN,CAELYNN	04:51			
	04:51			REBOUND (DEF) by BROOKS,RAYVEN
	04:32			TURNOVER by GRANT,LEASHJA
	04:32			FOUL by GRANT,LEASHJA
	04:32			SUB IN: OLABODE,DAYO
	04:32			SUB OUT: ROE,JAMIE
MISSED 3PTR by ALDRIDGE,LAUREN	04:14			

VISITORS: Kansas	Time	Score	Margin	HOME: Texas Tech
	04:14			REBOUND (DEF) by BOWSER,RYANN
	04:04			MISSED JUMPER by GRANT,LEASHJA
BLOCK by MANNINGALLEN,CAELYNN	04:04			
REBOUND (DEF) by O'NEAL,TIMEKA	04:02			
TURNOVER by ALDRIDGE,LAUREN	03:52			
	03:51			STEAL by BROOKS,RAYVEN
	03:38			TURNOVER by OLABODE,DAYO
STEAL by ALDRIDGE,LAUREN	03:37			
MISSED 3PTR by ALDRIDGE,LAUREN	03:33			
	03:33			REBOUND (DEF) by BOWSER,RYANN
SUB IN: ROBERTSON,AISIA	03:24			
SUB IN: CHRISTOPHER,JAYDE	03:24			
SUB OUT: ALDRIDGE,LAUREN	03:24			
SUB OUT: O'NEAL,TIMEKA	03:24			
	03:24			SUB IN: SANDERS,ZURI
	03:24			SUB IN: DEAN,JAPREECE
	03:24			SUB OUT: BROOKS,RAYVEN
	03:24			SUB OUT: GRANT,LEASHJA
	03:23	10-4	H 6	GOOD! LAYUP by COOKTAYLOR,IVONNE [PNT]
	03:23			ASSIST by BOWSER,RYANN
TURNOVER by MANNINGALLEN,CAELYNN	02:53			
SUB IN: JOHNSON,TYLER	02:53			
SUB OUT: MANNINGALLEN,CAELYNN	02:53			
FOUL by ROBERTSON,AISIA	02:39			
	02:39	11-4	H 7	GOOD! FT by DEAN,JAPREECE
	02:39	12-4	H 8	GOOD! FT by DEAN,JAPREECE
GOOD! LAYUP by JOHNSON,TYLER [PNT]	02:26	12-6	H 6	
ASSIST by CHRISTOPHER,JAYDE	02:26			
	02:19	14-6	H 8	GOOD! LAYUP by SANDERS,ZURI [FB/PNT]
	02:19			ASSIST by DEAN,JAPREECE
MISSED JUMPER by JOHNSON,TYLER	02:00			
	02:00			REBOUND (DEF) by BOWSER,RYANN
	01:45			MISSED JUMPER by DEAN,JAPREECE
REBOUND (DEF) by JOHNSON,TYLER	01:45			
GOOD! JUMPER by BROWN,JADA [PNT]	01:32	14-8	H 6	
ASSIST by ROBERTSON,AISIA	01:32			
	01:32			FOUL by BOWSER,RYANN
GOOD! FT by BROWN,JADA	01:32	14-9	H 5	
SUB IN: CHEADLE,CHAYLA	01:32			
SUB IN: MANNINGALLEN,CAELYNN	01:32			
SUB IN: ALDRIDGE,LAUREN	01:32			
SUB OUT: BROWN,JADA	01:32			
SUB OUT: JOHNSON,TYLER	01:32			
SUB OUT: CHRISTOPHER,JAYDE	01:32			
	01:32			SUB IN: BROOKS,RAYVEN
	01:32			SUB OUT: COOKTAYLOR,IVONNE
	01:16			MISSED 3PTR by OLABODE,DAYO
REBOUND (DEF) by ALDRIDGE,LAUREN	01:16			
MISSED 3PTR by ALDRIDGE,LAUREN	01:02			
REBOUND (OFF) by MANNINGALLEN,CAELYNN	01:02			
MISSED JUMPER by MANNINGALLEN,CAELYNN	01:00			
REBOUND (OFF) by ALDRIDGE,LAUREN	01:00			
TURNOVER by MANNINGALLEN,CAELYNN	00:55			
	00:55			SUB IN: GRANT,LEASHJA
	00:55			SUB OUT: SANDERS,ZURI
	00:36	17-9	H 8	GOOD! 3PTR by DEAN,JAPREECE
	00:07			FOUL by GRANT,LEASHJA
GOOD! FT by MANNINGALLEN,CAELYNN	00:07	17-10	H 7	

VISITORS: Kansas	Time	Score	Margin	HOME: Texas Tech
GOOD! FT by MANNINGALLEN,CAELYNN	00:07	17-11	H 6	
SUB IN: BROWN,JADA	00:07			
SUB OUT: MANNINGALLEN,CAELYNN	00:07			
	00:07			SUB IN: MCKENZIE,IONNA
	00:07			SUB OUT: GRANT,LEASHJA
	00:00			MISSED JUMPER by BOWSER,RYANN
REBOUND (DEF) by ROBERTSON,AISIA	00:00			

Kansas 11, Texas Tech 17

Period 1-only	In Paint	Off T/O	2nd Chance	Fast Break	Bench	
KU	8	2	2	0	5	Score tied - 0 times
TTU	4	7	2	2	2	Lead changed - 0 times

Kansas vs Texas Tech
1/30/2016; 5:00 pm at Lubbock, TX (United Supermarkets Arena)
Period 2 Play-By-Play

VISITORS: Kansas	Time	Score	Margin	HOME: Texas Tech
SUB IN: JOHNSON, TYLER	10:00			
SUB OUT: MANNINGALLEN, CAELYNN	10:00			
	10:00			SUB IN: OLABODE, DAYO
	10:00			SUB IN: BOWSER, RYANN
	10:00			SUB OUT: COOKTAYLOR, IVONNE
	10:00			SUB OUT: GRANT, LEASHJA
TURNOVER by ROBERTSON, AISIA	09:43			
FOUL by ROBERTSON, AISIA	09:43			
	09:43			SUB IN: COOKTAYLOR, IVONNE
	09:43			SUB OUT: BOWSER, RYANN
	09:34			TURNOVER by DEAN, JAPREECE
STEAL by KOPATICH, KYLEE	09:32			
MISSED 3PTR by ALDRIDGE, LAUREN	09:05			
REBOUND (OFF) by CHEADLE, CHAYLA	09:05			
TURNOVER by TEAM	09:03			
SUB IN: O'NEAL, TIMEKA	09:03			
SUB OUT: ROBERTSON, AISIA	09:03			
	08:37			TURNOVER by DEAN, JAPREECE
GOOD! LAYUP by CHEADLE, CHAYLA [PNT]	08:10	17-13	H 4	
ASSIST by ALDRIDGE, LAUREN	08:10			
FOUL by O'NEAL, TIMEKA	07:49			
	07:49	18-13	H 5	GOOD! FT by DEAN, JAPREECE
	07:49	19-13	H 6	GOOD! FT by DEAN, JAPREECE
GOOD! LAYUP by JOHNSON, TYLER [PNT]	07:26	19-15	H 4	
	07:08	21-15	H 6	GOOD! JUMPER by DEAN, JAPREECE [PNT]
MISSED JUMPER by O'NEAL, TIMEKA	06:51			
	06:51			REBOUND (DEF) by DEAN, JAPREECE
	06:45			MISSED JUMPER by COOKTAYLOR, IVONNE
	06:45			REBOUND (OFF) by COOKTAYLOR, IVONNE
	06:42	23-15	H 8	GOOD! JUMPER by COOKTAYLOR, IVONNE [PNT]
MISSED 3PTR by KOPATICH, KYLEE	06:29			
	06:29			REBOUND (DEF) by BROOKS, RAYVEN
	06:20			TURNOVER by ROE, JAMIE
	06:20			FOUL by ROE, JAMIE
SUB IN: CHRISTOPHER, JAYDE	06:20			
SUB IN: MANNINGALLEN, CAELYNN	06:20			
SUB IN: BROWN, JADA	06:20			
SUB OUT: O'NEAL, TIMEKA	06:20			
SUB OUT: CHEADLE, CHAYLA	06:20			
SUB OUT: JOHNSON, TYLER	06:20			
	06:20			SUB IN: SANDERS, ZURI
	06:20			SUB IN: BOWSER, RYANN
	06:20			SUB OUT: DEAN, JAPREECE
	06:20			SUB OUT: ROE, JAMIE
GOOD! JUMPER by MANNINGALLEN, CAELYNN [PNT]	05:52	23-17	H 6	
	05:38			TURNOVER by BOWSER, RYANN
STEAL by KOPATICH, KYLEE	05:37			
TURNOVER by KOPATICH, KYLEE	05:35			
FOUL by KOPATICH, KYLEE	05:35			
	05:25	25-17	H 8	GOOD! LAYUP by COOKTAYLOR, IVONNE [PNT]
TURNOVER by MANNINGALLEN, CAELYNN	05:13			
	05:13			STEAL by OLABODE, DAYO
	05:13			SUB IN: ROE, JAMIE

VISITORS: Kansas	Time	Score	Margin	HOME: Texas Tech
	05:13			SUB IN: DEAN,JAPREECE
	05:13			SUB OUT: OLABODE,DAYO
	05:13			SUB OUT: BROOKS,RAYVEN
	04:58			MISSED JUMPER by COOKTAYLOR,IVONNE
	04:58			REBOUND (OFF) by DEAN,JAPREECE
	04:30			TURNOVER by BOWSER,RYANN
STEAL by KOPATICH,KYLEE	04:29			
TURNOVER by ALDRIDGE,LAUREN	04:26			
	04:26			TIMEOUT MEDIA
SUB IN: ROBERTSON,AISIA	04:26			
SUB OUT: KOPATICH,KYLEE	04:26			
	04:26			SUB IN: BROOKS,RAYVEN
	04:26			SUB OUT: BOWSER,RYANN
	04:04			MISSED JUMPER by COOKTAYLOR,IVONNE
REBOUND (DEF) by CHRISTOPHER,JAYDE	04:04			
MISSED JUMPER by MANNINGALLEN,CAELYNN	03:43			
REBOUND (OFF) by TEAM	03:43			
	03:41			SUB IN: OLABODE,DAYO
	03:41			SUB OUT: SANDERS,ZURI
MISSED JUMPER by BROWN,JADA	03:23			
	03:23			BLOCK by BROOKS,RAYVEN
REBOUND (OFF) by BROWN,JADA	03:21			
MISSED JUMPER by MANNINGALLEN,CAELYNN	03:14			
	03:14			REBOUND (DEF) by DEAN,JAPREECE
	03:02			MISSED 3PTR by BROOKS,RAYVEN
REBOUND (DEF) by BROWN,JADA	03:02			
MISSED JUMPER by MANNINGALLEN,CAELYNN	02:45			
	02:45			REBOUND (DEF) by BROOKS,RAYVEN
	02:20			MISSED 3PTR by DEAN,JAPREECE
REBOUND (DEF) by BROWN,JADA	02:20			
TURNOVER by MANNINGALLEN,CAELYNN	01:58			
SUB IN: JOHNSON,TYLER	01:58			
SUB OUT: MANNINGALLEN,CAELYNN	01:58			
	01:54			MISSED JUMPER by OLABODE,DAYO
BLOCK by JOHNSON,TYLER	01:54			
	01:53			REBOUND (OFF) by OLABODE,DAYO
FOUL by BROWN,JADA	01:32			
SUB IN: KOPATICH,KYLEE	01:32			
SUB OUT: ROBERTSON,AISIA	01:32			
	01:32			SUB IN: BOWSER,RYANN
	01:32			SUB OUT: BROOKS,RAYVEN
	01:27			TURNOVER by COOKTAYLOR,IVONNE
TURNOVER by BROWN,JADA	01:15			
FOUL by BROWN,JADA	01:15			
SUB IN: CHEADLE,CHAYLA	01:15			
SUB OUT: BROWN,JADA	01:15			
	00:50			TURNOVER by COOKTAYLOR,IVONNE
GOOD! LAYUP by JOHNSON,TYLER [PNT]	00:39	25-19	H 6	
ASSIST by CHEADLE,CHAYLA	00:39			
	00:38			TIMEOUT 30SEC
	00:38			SUB IN: BROOKS,RAYVEN
	00:38			SUB OUT: COOKTAYLOR,IVONNE
	00:22	27-19	H 8	GOOD! JUMPER by BROOKS,RAYVEN
MISSED 3PTR by CHRISTOPHER,JAYDE	00:03			
REBOUND (OFF) by CHEADLE,CHAYLA	00:03			

Period 2-only	In Paint	Off T/O	2nd Chance	Fast Break	Bench	
KU	8	6	0	0	4	Score tied - 0 times
TTU	6	2	2	0	0	Lead changed - 0 times

Official Basketball Box Score -- Game Totals -- Second Half Statistics
Kansas vs Texas Tech
1/30/2016 5:00 pm at Lubbock, TX (United Supermarkets Arena)

Kansas 25 • 5-16, 0-10

##	Player	S	Total			Rebounds			PF	TP	A	TO	Blk	Stl	Min			
			FG	FGA	3PT	FT	FTA	Off								Def	Tot	
03	ALDRIDGE,LAUREN	g	1	8	1	4	0	0	0	1	1	2	3	4	1	0	0	20
15	ROBERTSON,AISIA	g	2	5	0	0	0	0	0	2	2	2	4	1	2	0	1	9
22	CHEADLE,CHAYLA	g	3	7	1	2	0	0	1	1	2	1	7	0	2	0	1	13
25	MANNINGALLEN,CAELYI	f	0	0	0	0	2	2	0	3	3	2	2	0	2	0	0	8
33	KOPATICH,KYLEE	g	1	4	1	2	0	0	0	3	3	2	3	1	1	1	0	20
04	BROWN,JADA		0	0	0	0	0	0	0	5	5	1	0	0	0	1	0	9
12	O'NEAL,TIMEKA		0	1	0	1	0	0	0	0	0	1	0	0	0	0	0	6
20	CHRISTOPHER,JAYDE		0	0	0	0	0	0	0	0	0	2	0	0	1	0	0	4
55	JOHNSON,TYLER		3	5	0	0	0	0	1	0	1	3	6	0	0	0	0	11
TEAM									3	0	3	0		0				
Totals				10-30	3-9	2-2		5	15	20	16	25	6	9	2	2		100

FG %	3rd Qtr	5-11	45.5%	4th Qtr	5-19	26.3%	Half:	10-30	33.3%
3FG %	3rd Qtr	1-3	33.3%	4th Qtr	2-6	33.3%	Half:	3-9	00.0%
FT %	3rd Qtr	2-2	100.0%	4th Qtr	0-0	0%	Half:	2-2	100.0%

Texas Tech 27 • 11-10, 2-8

##	Player	S	Total			Rebounds			PF	TP	A	TO	Blk	Stl	Min			
			FG	FGA	3PT	FT	FTA	Off								Def	Tot	
02	COOKTAYLOR,IVONNE	g	3	6	0	0	0	0	0	2	2	2	6	0	0	0	0	17
11	BROOKS,RAYVEN	g	0	2	0	1	5	6	0	2	2	1	5	1	1	1	1	13
24	DEAN,JAPREECE	g	2	8	1	2	7	8	1	3	4	0	12	2	0	1	0	19
25	GRANT,LEASHJA	c	1	2	0	0	0	0	0	3	3	1	2	0	4	0	0	15
35	ROE,JAMIE	f	0	0	0	0	0	0	0	0	0	0	0	0	1	0	1	10
04	BOWSER,RYANN		0	1	0	1	0	0	0	0	0	1	0	0	0	0	0	11
30	SANDERS,ZURI		0	1	0	0	0	0	0	2	2	0	0	0	0	0	0	5
32	OLABODE,DAYO		1	2	0	1	0	0	1	1	2	2	2	0	1	1	0	10
42	MCKENZIE,IONNA		0	0	0	0	0	0	0	0	0	0	0	0	0	0	0	0
TEAM									0	1	1	0		1				
Totals				7-22	1-5	12-14		2	14	16	7	27	3	8	3	2		100

FG %	3rd Qtr	6-14	42.9%	4th Qtr	1-8	12.5%	Half:	7-22	31.8%
3FG %	3rd Qtr	1-3	33.3%	4th Qtr	0-2	00.0%	Half:	1-5	33.3%
FT %	3rd Qtr	2-2	100.0%	4th Qtr	10-12	83.3%	Half:	12-14	85.7%

Officials: Michael Price, Bob Trammell, Michael McConnell
 Technical Fouls: Kansas- None. Texas Tech- None.

Score by periods	1st	2nd	3rd	4th	Total
Kansas	11	8	13	12	44
Texas Tech	17	10	15	12	54

Points	In Paint	Off T/O	2nd Chance	Fast Break	Bench
KU	8	2	2	4	6
	2	8	2	0	2

Last FG - KU 4th-00:11, TTU 4th-02:43.
 KU led for 0:00. TTU led for 20:00. Game was tied for 0:00.

Score tied - 0 times
 Lead changed - 0 times

Kansas vs Texas Tech
1/30/2016; 5:00 pm at Lubbock, TX (United Supermarkets Arena)
Period 3 Play-By-Play

VISITORS: Kansas	Time	Score	Margin	HOME: Texas Tech
TURNOVER by ROBERTSON,AISIA	09:40			
	09:38			STEAL by BROOKS,RAYVEN
	09:15	29-19	H 10	GOOD! JUMPER by GRANT,LEASHJA
	09:15			ASSIST by DEAN,JAPREECE
GOOD! JUMPER by CHEADLE,CHAYLA	08:48	29-21	H 8	
ASSIST by ROBERTSON,AISIA	08:48			
	08:15			MISSED 3PTR by DEAN,JAPREECE
BLOCK by KOPATICH,KYLEE	08:15			
REBOUND (DEF) by MANNINGALLEN,CAELYNN	08:14			
TURNOVER by CHEADLE,CHAYLA	07:56			
	07:37	31-21	H 10	GOOD! JUMPER by COOKTAYLOR,IVONNE [PNT]
GOOD! JUMPER by CHEADLE,CHAYLA	07:19	31-23	H 8	
	07:06			MISSED JUMPER by BROOKS,RAYVEN
REBOUND (DEF) by MANNINGALLEN,CAELYNN	07:06			
FOUL by ROBERTSON,AISIA	06:57			
SUB IN: JOHNSON,TYLER	06:57			
SUB OUT: MANNINGALLEN,CAELYNN	06:57			
	06:57			SUB IN: OLABODE,DAYO
	06:57			SUB OUT: ROE,JAMIE
	06:44			TURNOVER by OLABODE,DAYO
	06:44			FOUL by OLABODE,DAYO
MISSED JUMPER by CHEADLE,CHAYLA	06:30			
	06:30			BLOCK by OLABODE,DAYO
REBOUND (OFF) by TEAM	06:30			
MISSED JUMPER by ALDRIDGE,LAUREN	06:28			
	06:28			REBOUND (DEF) by GRANT,LEASHJA
	06:21			MISSED LAYUP by GRANT,LEASHJA
REBOUND (DEF) by ROBERTSON,AISIA	06:21			
GOOD! LAYUP by ROBERTSON,AISIA [FB/PNT]	06:15	31-25	H 6	
	06:05			TIMEOUT 30SEC
SUB IN: BROWN,JADA	06:05			
SUB OUT: CHEADLE,CHAYLA	06:05			
	05:49	33-25	H 8	GOOD! JUMPER by COOKTAYLOR,IVONNE
	05:49			ASSIST by BROOKS,RAYVEN
TURNOVER by ROBERTSON,AISIA	05:33			
FOUL by ROBERTSON,AISIA	05:33			
SUB IN: CHRISTOPHER,JAYDE	05:33			
SUB OUT: ROBERTSON,AISIA	05:33			
	05:33			SUB IN: BOWSER,RYANN
	05:33			SUB OUT: COOKTAYLOR,IVONNE
	05:11			MISSED JUMPER by DEAN,JAPREECE
REBOUND (DEF) by BROWN,JADA	05:11			
GOOD! JUMPER by JOHNSON,TYLER [PNT]	04:59	33-27	H 6	
ASSIST by ALDRIDGE,LAUREN	04:59			
FOUL by JOHNSON,TYLER	04:44			
	04:44			TIMEOUT MEDIA
	04:44			SUB IN: COOKTAYLOR,IVONNE
	04:44			SUB OUT: DEAN,JAPREECE
	04:43			TURNOVER by GRANT,LEASHJA
	04:20			FOUL by COOKTAYLOR,IVONNE
TURNOVER by CHRISTOPHER,JAYDE	04:07			
SUB IN: O'NEAL,TIMEKA	04:07			
SUB OUT: CHRISTOPHER,JAYDE	04:07			

VISITORS: Kansas	Time	Score	Margin	HOME: Texas Tech
FOUL by JOHNSON,TYLER	03:54			
SUB IN: MANNINGALLEN,CAELYNN	03:54			
SUB OUT: JOHNSON,TYLER	03:54			
	03:53			MISSED JUMPER by COOKTAYLOR,IVONNE
	03:53			REBOUND (OFF) by OLABODE,DAYO
	03:49	35-27	H 8	GOOD! JUMPER by OLABODE,DAYO
	03:39			FOUL by BOWSER,RYANN
GOOD! FT by MANNINGALLEN,CAELYNN	03:39	35-28	H 7	
GOOD! FT by MANNINGALLEN,CAELYNN	03:39	35-29	H 6	
SUB IN: CHEADLE,CHAYLA	03:39			
SUB OUT: BROWN,JADA	03:39			
	03:39			SUB IN: SANDERS,ZURI
	03:39			SUB IN: DEAN,JAPREECE
	03:39			SUB OUT: BROOKS,RAYVEN
	03:39			SUB OUT: GRANT,LEASHJA
	03:27	37-29	H 8	GOOD! JUMPER by COOKTAYLOR,IVONNE
	03:27			ASSIST by DEAN,JAPREECE
TURNOVER by MANNINGALLEN,CAELYNN	02:59			
FOUL by MANNINGALLEN,CAELYNN	02:59			
	02:44			MISSED 3PTR by OLABODE,DAYO
REBOUND (DEF) by MANNINGALLEN,CAELYNN	02:44			
MISSED 3PTR by O'NEAL,TIMEKA	02:24			
	02:24			REBOUND (DEF) by SANDERS,ZURI
	01:59			MISSED JUMPER by COOKTAYLOR,IVONNE
REBOUND (DEF) by KOPATICH,KYLEE	01:59			
MISSED JUMPER by ALDRIDGE,LAUREN	01:38			
	01:38			REBOUND (DEF) by DEAN,JAPREECE
FOUL by O'NEAL,TIMEKA	01:31			
	01:31	38-29	H 9	GOOD! FT by DEAN,JAPREECE
	01:31	39-29	H 10	GOOD! FT by DEAN,JAPREECE
GOOD! 3PTR by ALDRIDGE,LAUREN	01:11	39-32	H 7	
ASSIST by KOPATICH,KYLEE	01:11			
	00:48			MISSED JUMPER by COOKTAYLOR,IVONNE
REBOUND (DEF) by ALDRIDGE,LAUREN	00:48			
MISSED LAYUP by ALDRIDGE,LAUREN	00:40			
	00:40			REBOUND (DEF) by COOKTAYLOR,IVONNE
	00:09	42-32	H 10	GOOD! 3PTR by DEAN,JAPREECE
MISSED 3PTR by ALDRIDGE,LAUREN	00:00			
REBOUND (DEADB) by TEAM	00:00			

Kansas 44, Texas Tech 54

Period 3-only	In Paint	Off T/O	2nd Chance	Fast Break	Bench	
KU	4	0	0	2	2	Score tied - 0 times
TTU	2	6	2	0	2	Lead changed - 0 times

Kansas vs Texas Tech
1/30/2016; 5:00 pm at Lubbock, TX (United Supermarkets Arena)
Period 4 Play-By-Play

VISITORS: Kansas	Time	Score	Margin	HOME: Texas Tech
SUB IN: O'NEAL,TIMEKA	10:00			
SUB OUT: ROBERTSON,AISIA	10:00			
	10:00			SUB IN: OLABODE,DAYO
	10:00			SUB IN: BOWSER,RYANN
	10:00			SUB OUT: COOKTAYLOR,IVONNE
	10:00			SUB OUT: ROE,JAMIE
	09:47			TURNOVER by GRANT,LEASHJA
TURNOVER by MANNINGALLEN,CAELYNN	09:36			
FOUL by MANNINGALLEN,CAELYNN	09:36			
SUB IN: JOHNSON,TYLER	09:36			
SUB OUT: MANNINGALLEN,CAELYNN	09:36			
	09:23			TURNOVER by GRANT,LEASHJA
	09:23			FOUL by GRANT,LEASHJA
SUB IN: CHRISTOPHER,JAYDE	09:23			
SUB OUT: O'NEAL,TIMEKA	09:23			
MISSED JUMPER by KOPATICH,KYLEE	09:06			
	09:06			BLOCK by BROOKS,RAYVEN
REBOUND (OFF) by TEAM	09:06			
MISSED JUMPER by JOHNSON,TYLER	08:52			
	08:52			REBOUND (DEF) by DEAN,JAPREECE
	08:45			MISSED LAYUP by DEAN,JAPREECE
REBOUND (DEF) by CHEADLE,CHAYLA	08:45			
	08:45			FOUL by OLABODE,DAYO
MISSED JUMPER by ALDRIDGE,LAUREN	08:32			
	08:32			REBOUND (DEF) by OLABODE,DAYO
FOUL by ALDRIDGE,LAUREN	08:27			
	08:27	43-32	H 11	GOOD! FT by BROOKS,RAYVEN
	08:27			MISSED FT by BROOKS,RAYVEN
REBOUND (DEF) by BROWN,JADA	08:27			
	08:20			FOUL by COOKTAYLOR,IVONNE
SUB IN: BROWN,JADA	08:20			
SUB OUT: CHEADLE,CHAYLA	08:20			
	08:20			SUB IN: COOKTAYLOR,IVONNE
	08:20			SUB OUT: BOWSER,RYANN
MISSED 3PTR by ALDRIDGE,LAUREN	08:01			
	08:01			REBOUND (DEF) by COOKTAYLOR,IVONNE
	07:49			MISSED JUMPER by DEAN,JAPREECE
REBOUND (DEF) by BROWN,JADA	07:49			
GOOD! JUMPER by JOHNSON,TYLER	07:26	43-34	H 9	
ASSIST by ALDRIDGE,LAUREN	07:26			
FOUL by KOPATICH,KYLEE	07:06			
SUB IN: ROBERTSON,AISIA	07:06			
SUB OUT: CHRISTOPHER,JAYDE	07:06			
	07:06			SUB IN: ROE,JAMIE
	07:06			SUB OUT: OLABODE,DAYO
	07:02			TURNOVER by GRANT,LEASHJA
STEAL by ROBERTSON,AISIA	07:00			
GOOD! LAYUP by ROBERTSON,AISIA [FB/PNT]	06:58	43-36	H 7	
FOUL by JOHNSON,TYLER	06:37			
	06:37	44-36	H 8	GOOD! FT by BROOKS,RAYVEN
	06:37	45-36	H 9	GOOD! FT by BROOKS,RAYVEN
SUB IN: MANNINGALLEN,CAELYNN	06:37			
SUB OUT: JOHNSON,TYLER	06:37			

VISITORS: Kansas	Time	Score	Margin	HOME: Texas Tech
	06:37			SUB IN: BOWSER,RYANN
	06:37			SUB IN: SANDERS,ZURI
	06:37			SUB OUT: BROOKS,RAYVEN
	06:37			SUB OUT: GRANT,LEASHJA
MISSED JUMPER by ROBERTSON,AISIA	06:11			
	06:11			REBOUND (DEF) by SANDERS,ZURI
	05:45			MISSED JUMPER by SANDERS,ZURI
REBOUND (DEF) by BROWN,JADA	05:45			
MISSED JUMPER by JOHNSON,TYLER	05:37			
	05:37			BLOCK by DEAN,JAPREECE
	05:36			REBOUND (DEF) by TEAM
SUB IN: JOHNSON,TYLER	05:36			
SUB OUT: MANNINGALLEN,CAELYNN	05:36			
	05:36			SUB IN: GRANT,LEASHJA
	05:36			SUB OUT: SANDERS,ZURI
	05:14			MISSED JUMPER by DEAN,JAPREECE
REBOUND (DEF) by BROWN,JADA	05:14			
MISSED 3PTR by KOPATICH,KYLEE	05:01			
	05:01			REBOUND (DEF) by GRANT,LEASHJA
	04:31			MISSED 3PTR by BOWSER,RYANN
REBOUND (DEF) by ROBERTSON,AISIA	04:31			
MISSED JUMPER by ROBERTSON,AISIA	04:17			
	04:17			REBOUND (DEF) by GRANT,LEASHJA
	03:48			MISSED JUMPER by DEAN,JAPREECE
BLOCK by BROWN,JADA	03:48			
	03:47			REBOUND (OFF) by DEAN,JAPREECE
	03:44			TURNOVER by TEAM
TIMEOUT MEDIA	03:44			
	03:44			SUB IN: BROOKS,RAYVEN
	03:44			SUB OUT: COOKTAYLOR,IVONNE
MISSED JUMPER by ROBERTSON,AISIA	03:15			
REBOUND (OFF) by TEAM	03:15			
SUB IN: CHEADLE,CHAYLA	03:12			
SUB OUT: BROWN,JADA	03:12			
	03:12			SUB IN: COOKTAYLOR,IVONNE
	03:12			SUB OUT: BOWSER,RYANN
TURNOVER by ALDRIDGE,LAUREN	03:09			
	03:08			STEAL by ROE,JAMIE
	02:43	47-36	H 11	GOOD! JUMPER by DEAN,JAPREECE
GOOD! 3PTR by KOPATICH,KYLEE	02:22	47-39	H 8	
ASSIST by ALDRIDGE,LAUREN	02:22			
	01:54			MISSED 3PTR by BROOKS,RAYVEN
REBOUND (DEF) by KOPATICH,KYLEE	01:54			
TURNOVER by CHEADLE,CHAYLA	01:44			
FOUL by CHEADLE,CHAYLA	01:44			
TIMEOUT TEAM	01:44			
SUB IN: BROWN,JADA	01:44			
SUB IN: O'NEAL,TIMEKA	01:44			
SUB OUT: ROBERTSON,AISIA	01:44			
SUB OUT: JOHNSON,TYLER	01:44			
	01:15			TURNOVER by BROOKS,RAYVEN
	01:15			FOUL by BROOKS,RAYVEN
SUB IN: JOHNSON,TYLER	01:15			
SUB OUT: BROWN,JADA	01:15			
TURNOVER by KOPATICH,KYLEE	01:04			
FOUL by KOPATICH,KYLEE	01:04			
SUB IN: BROWN,JADA	01:04			
SUB OUT: JOHNSON,TYLER	01:04			

VISITORS: Kansas	Time	Score	Margin	HOME: Texas Tech
	01:01			TURNOVER by ROE,JAMIE
STEAL by CHEADLE,CHAYLA	01:00			
MISSED JUMPER by CHEADLE,CHAYLA	00:59			
	00:59			REBOUND (DEF) by DEAN,JAPREECE
FOUL by BROWN,JADA	00:56			
	00:56	48-39	H 9	GOOD! FT by DEAN,JAPREECE
	00:56	49-39	H 10	GOOD! FT by DEAN,JAPREECE
TIMEOUT 30SEC	00:56			
SUB IN: CHRISTOPHER,JAYDE	00:56			
SUB IN: JOHNSON,TYLER	00:56			
SUB OUT: BROWN,JADA	00:56			
SUB OUT: O'NEAL,TIMEKA	00:56			
MISSED 3PTR by CHEADLE,CHAYLA	00:51			
REBOUND (OFF) by CHEADLE,CHAYLA	00:51			
MISSED JUMPER by KOPATICH,KYLEE	00:41			
	00:41			REBOUND (DEF) by BROOKS,RAYVEN
FOUL by CHRISTOPHER,JAYDE	00:38			
	00:38	50-39	H 11	GOOD! FT by DEAN,JAPREECE
	00:38			MISSED FT by DEAN,JAPREECE
REBOUND (DEF) by KOPATICH,KYLEE	00:38			
TIMEOUT 30SEC	00:38			
MISSED 3PTR by ALDRIDGE,LAUREN	00:35			
	00:35			REBOUND (DEF) by BROOKS,RAYVEN
FOUL by CHRISTOPHER,JAYDE	00:31			
	00:31	51-39	H 12	GOOD! FT by BROOKS,RAYVEN
	00:31	52-39	H 13	GOOD! FT by BROOKS,RAYVEN
SUB IN: O'NEAL,TIMEKA	00:31			
SUB OUT: CHRISTOPHER,JAYDE	00:31			
GOOD! 3PTR by CHEADLE,CHAYLA	00:22	52-42	H 10	
ASSIST by ALDRIDGE,LAUREN	00:22			
FOUL by ALDRIDGE,LAUREN	00:22			
	00:22	53-42	H 11	GOOD! FT by DEAN,JAPREECE
	00:22	54-42	H 12	GOOD! FT by DEAN,JAPREECE
MISSED JUMPER by CHEADLE,CHAYLA	00:13			
REBOUND (OFF) by JOHNSON,TYLER	00:13			
GOOD! JUMPER by JOHNSON,TYLER [PNT]	00:11	54-44	H 10	

Kansas 44, Texas Tech 54

Period 4-only	In Paint	Off T/O	2nd Chance	Fast Break	Bench	
KU	4	2	2	2	4	Score tied - 0 times
TTU	0	2	0	0	0	Lead changed - 0 times

Kansas vs Texas Tech
1/30/2016; 5:00 pm at Lubbock, TX (United Supermarkets Arena)
Scoring/Runs Reference

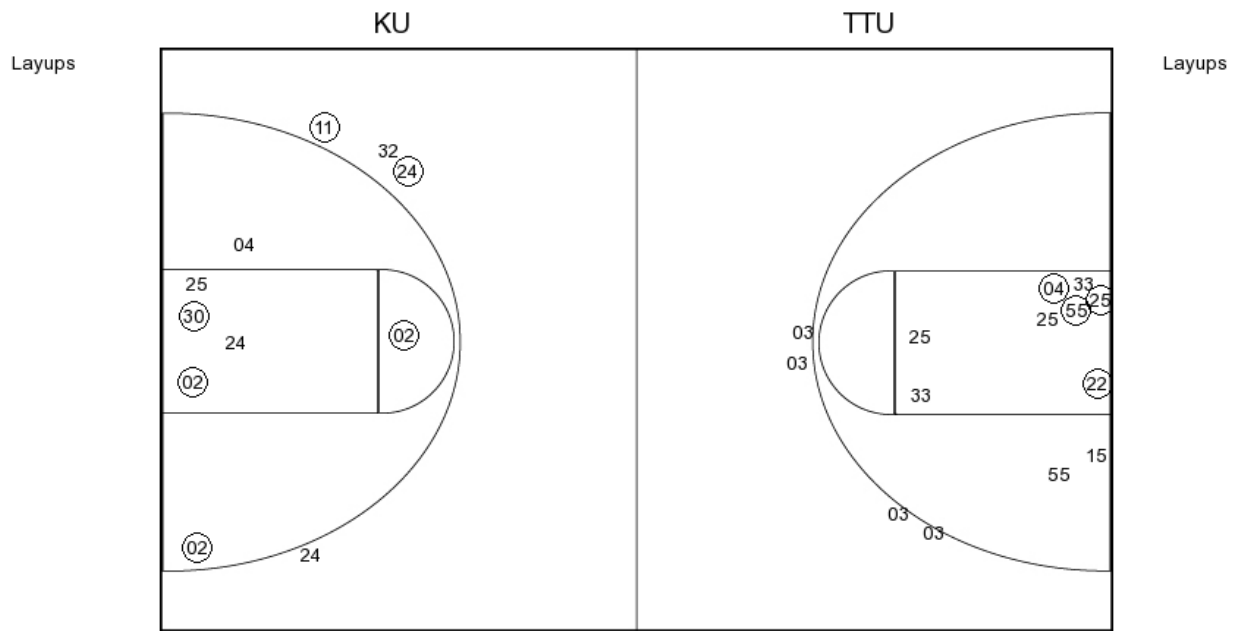
Kansas	Period 1 Score	Texas Tech	Kansas	Period 2 Score
	TO	DEAN TURN - 09:45	09:43 - ROBERTSON TURN	TO
09:26 - KOPATICH JUMPER	X			TO
09:16 - KOPATICH LAYUP	X		09:05 - ALDRIDGE 3PTR	X
	0-1 1	GRANT FT - 08:57	09:03 - TEAM TURN	TO
	X	GRANT FT - 08:57		TO
08:35 - CHEADLE JUMPER	X		08:10 - CHEADLE LAYUP	2P 13-17 4
	X	GRANT LAYUP - 08:15		13-18 5 1
	0-3 3	COOKTAYLOR JUMPER - 08:10		13-19 6 1
07:43 - CHEADLE LAYUP	2P 2-3 1		07:26 - JOHNSON LAYUP	2P 15-19 4
	2-6 4 3	BROOKS 3PTR - 07:20		15-21 6 2P
06:59 - JOHNSON TURN	TO		06:51 - O'NEAL JUMPER	X
	2-8 6 2	COOKTAYLOR JUMPER - 06:46		X
06:25 - ALDRIDGE 3PTR	X			15-23 8 2P
	TO	DEAN TURN - 06:00	06:29 - KOPATICH 3PTR	X
05:44 - ROBERTSON JUMPER	X			TO
05:34 - MANNINGALLEN LAYUP	2P 4-8 4		05:52 - MANNINGALLEN JUMPER	2P 17-23 6
	X	DEAN 3PTR - 05:18		TO
05:07 - ROBERTSON JUMPER	X		05:35 - KOPATICH TURN	TO
	TO	COOKTAYLOR TURN - 05:02		17-25 8 2P
04:51 - MANNINGALLEN JUMPER	X		05:13 - MANNINGALLEN TURN	TO
	TO	GRANT TURN - 04:32		X
04:14 - ALDRIDGE 3PTR	X			TO
	X	GRANT JUMPER - 04:04	04:26 - ALDRIDGE TURN	TO
03:52 - ALDRIDGE TURN	TO			X
	TO	OLABODE TURN - 03:38	03:43 - MANNINGALLEN JUMPER	X
03:33 - ALDRIDGE 3PTR	X		03:23 - BROWN JUMPER	X
	4-10 6 2P	COOKTAYLOR LAYUP - 03:23	03:14 - MANNINGALLEN JUMPER	X
02:53 - MANNINGALLEN TURN	TO			X
	4-11 7 1	DEAN FT - 02:39	02:45 - MANNINGALLEN JUMPER	X
	4-12 8 1	DEAN FT - 02:39		X
02:26 - JOHNSON LAYUP	2P 6-12 6		01:58 - MANNINGALLEN TURN	TO
	6-14 8 2PF	SANDERS LAYUP - 02:19		X
02:00 - JOHNSON JUMPER	X			TO
	X	DEAN JUMPER - 01:45	01:15 - BROWN TURN	TO
01:32 - BROWN JUMPER	2P 8-14 6			TO
01:32 - BROWN FT	1 9-14 5		00:39 - JOHNSON LAYUP	2P 19-25 6
	X	OLABODE 3PTR - 01:16		19-27 8 2
01:02 - ALDRIDGE 3PTR	X		00:03 - CHRISTOPHER 3PTR	X
01:00 - MANNINGALLEN JUMPER	X			
00:55 - MANNINGALLEN TURN	TO			
	9-17 8 3	DEAN 3PTR - 00:36		
00:07 - MANNINGALLEN FT	1 10-17 7			
00:07 - MANNINGALLEN FT	1 11-17 6			
	X	BOWSER JUMPER - 00:00		

Kansas		Period 3	Texas Tech	Kansas	Period 4	
		Score		Score		
09:40 - ROBERTSON TURN	TO				TO	GRANT TL
		19-29 10	2	GRANT JUMPER - 09:15		
08:48 - CHEADLE JUMPER	2	21-29 8		09:36 - MANNINGALLEN TURN	TO	GRANT TL
			X	DEAN 3PTR - 08:15		
07:56 - CHEADLE TURN	TO			09:06 - KOPATICH JUMPER	X	
		21-31 10	2P	08:52 - JOHNSON JUMPER	X	
07:19 - CHEADLE JUMPER	2	23-31 8				X
			X	COOKTAYLOR JUMPER - 07:37		DEAN LAY
	TO			08:32 - ALDRIDGE JUMPER	X	
06:30 - CHEADLE JUMPER	X					32-43 11
06:28 - ALDRIDGE JUMPER	X					1
			X	BROOKS JUMPER - 07:06		BROOKS
	TO			OLABODE TURN - 06:44		X
06:15 - ROBERTSON LAYUP	2PF	25-31 6		08:01 - ALDRIDGE 3PTR	X	
		25-33 8	2			X
05:33 - ROBERTSON TURN	TO			DEAN JUMF		
			X	GRANT LAYUP - 06:21		
04:59 - JOHNSON JUMPER	2P	27-33 6		07:26 - JOHNSON JUMPER	2	34-43 9
	TO					
04:07 - CHRISTOPHER TURN	TO			06:58 - ROBERTSON LAYUP	2PF	36-43 7
			X			
		27-35 8	2	36-44 8		1
03:39 - MANNINGALLEN FT	1	28-35 7		DEAN JUMPER - 05:11		BROOKS
03:39 - MANNINGALLEN FT	1	29-35 6				36-45 9
		29-37 8	2	GRANT TURN - 04:43		1
02:59 - MANNINGALLEN TURN	TO					
			X	06:11 - ROBERTSON JUMPER	X	
02:24 - O'NEAL 3PTR	X					X
			X	05:37 - JOHNSON JUMPER	X	
01:38 - ALDRIDGE JUMPER	X			05:01 - KOPATICH 3PTR	X	
		29-38 9	1			X
		29-39 10	1	04:17 - ROBERTSON JUMPER	X	
01:11 - ALDRIDGE 3PTR	3	32-39 7				X
			X	03:15 - ROBERTSON JUMPER	X	
00:40 - ALDRIDGE LAYUP	X			03:09 - ALDRIDGE TURN	TO	
		32-42 10	3			36-47 11
00:00 - ALDRIDGE 3PTR	X			02:22 - KOPATICH 3PTR	3	39-47 8
				01:44 - CHEADLE TURN	TO	X
				01:04 - KOPATICH TURN	TO	
				00:59 - CHEADLE JUMPER	X	
						39-48 9
				00:51 - CHEADLE 3PTR	X	
				00:41 - KOPATICH JUMPER	X	
						39-49 10
						39-50 11
				00:35 - ALDRIDGE 3PTR	X	
						39-51 12
						1
						39-52 13
						1
				00:22 - CHEADLE 3PTR	3	
						42-52 10
						42-53 11
						1
				00:13 - CHEADLE JUMPER	X	
				00:11 - JOHNSON JUMPER	2P	44-54 10

Kansas vs Texas Tech
OFFICIAL SHOT CHART

1/30/2016 at Lubbock, TX (United Supermarkets Arena)

PERIOD 1



KU PERIOD 1

FG Made	8
FG Attempted	28
3PFG Made	0
3PFG Attempted	7

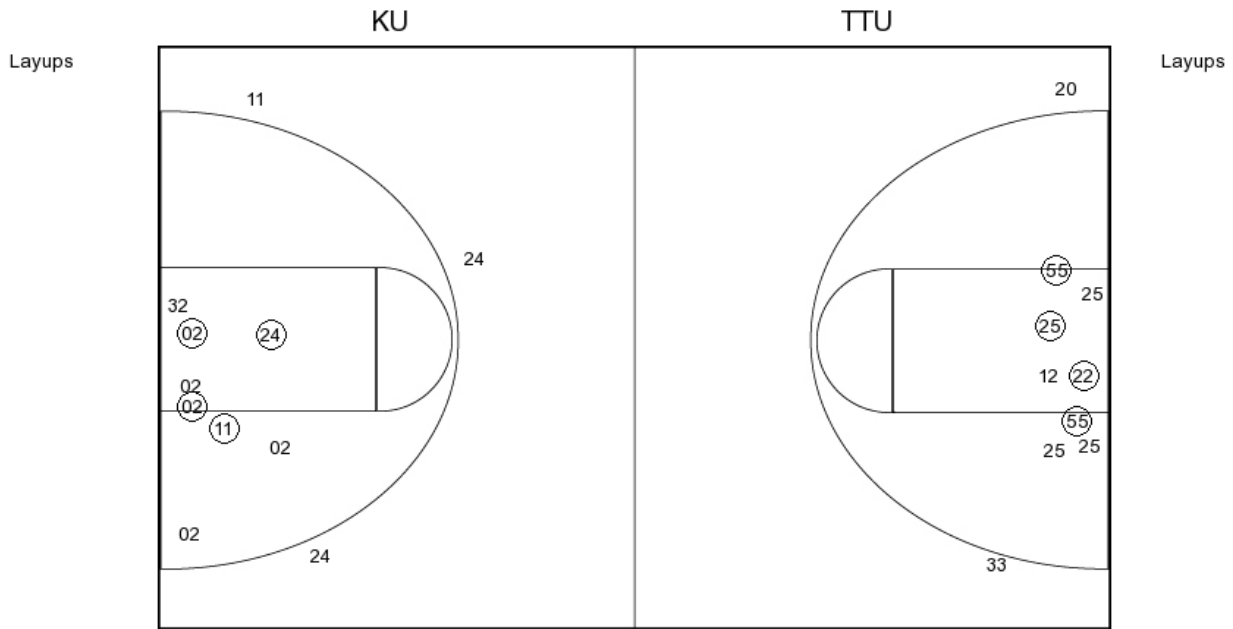
TTU PERIOD 1

FG Made	10
FG Attempted	22
3PFG Made	2
3PFG Attempted	6

Kansas vs Texas Tech
OFFICIAL SHOT CHART

1/30/2016 at Lubbock, TX (United Supermarkets Arena)

PERIOD 2



KU PERIOD 2

- FG Made
- FG Attempted
- 3PFG Made
- 3PFG Attempted

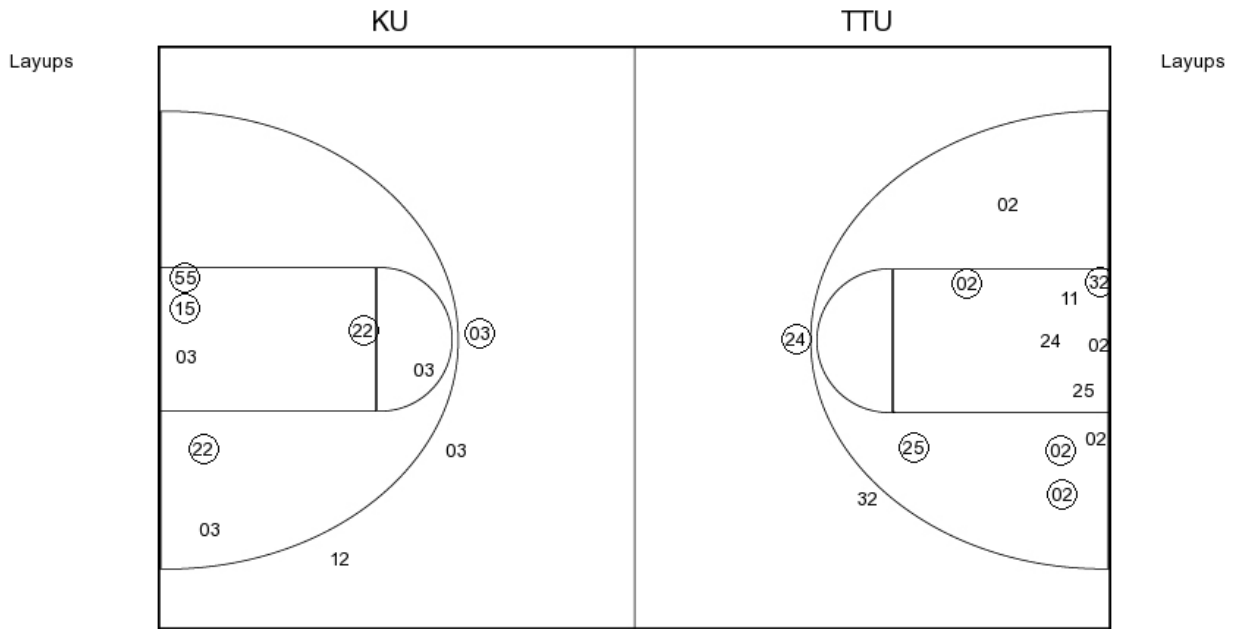
TTU PERIOD 2

- FG Made
- FG Attempted
- 3PFG Made
- 3PFG Attempted

Kansas vs Texas Tech
OFFICIAL SHOT CHART

1/30/2016 at Lubbock, TX (United Supermarkets Arena)

PERIOD 3



KU PERIOD 3

FG Made	10
FG Attempted	30
3PFG Made	3
3PFG Attempted	9

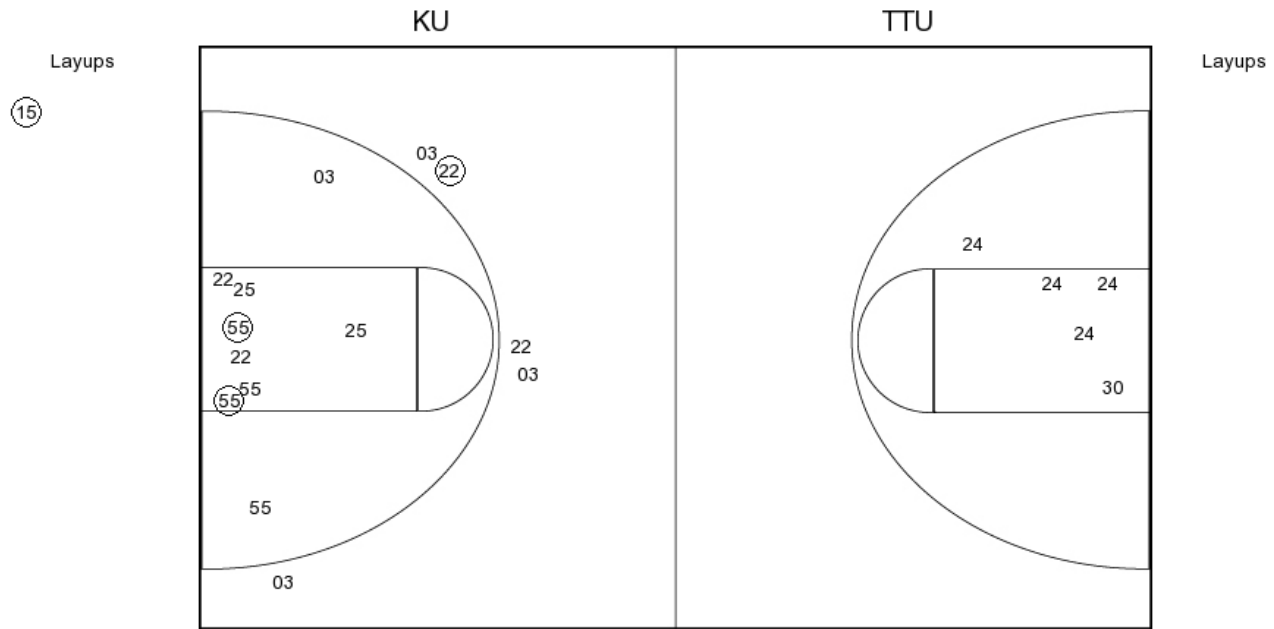
TTU PERIOD 3

FG Made	7
FG Attempted	22
3PFG Made	1
3PFG Attempted	5

Kansas vs Texas Tech
OFFICIAL SHOT CHART

1/30/2016 at Lubbock, TX (United Supermarkets Arena)

PERIOD 4



KU PERIOD 4

- FG Made
- FG Attempted
- 3PFG Made
- 3PFG Attempted

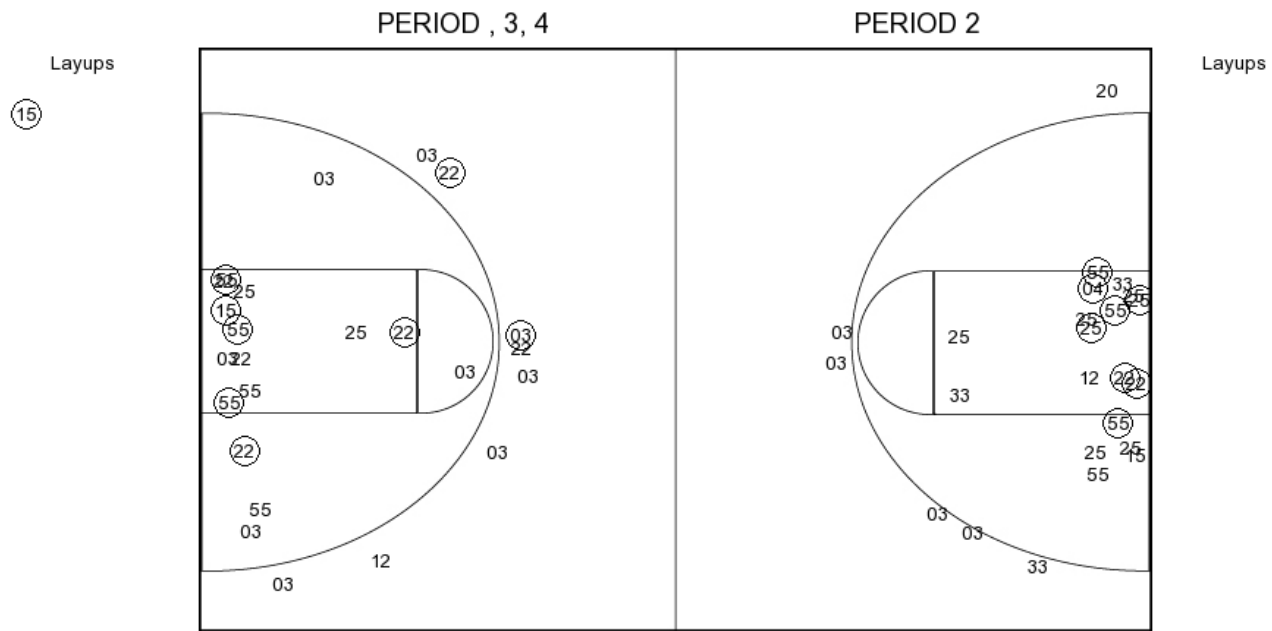
TTU PERIOD 4

- FG Made
- FG Attempted
- 3PFG Made
- 3PFG Attempted

Kansas vs Texas Tech
OFFICIAL SHOT CHART

1/30/2016 at Lubbock, TX (United Supermarkets Arena)

Kansas



KU PERIOD 1

FG Made	8
FG Attempted	28
3PFG Made	0
3PFG Attempted	7

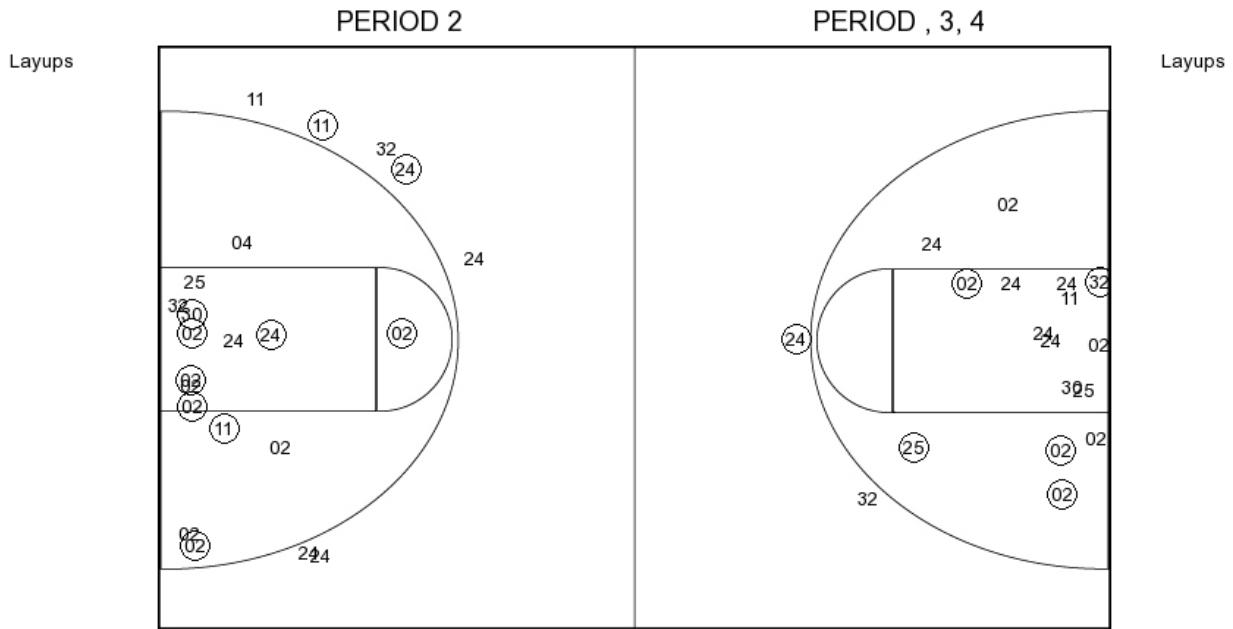
KU PERIOD 2

FG Made	
FG Attempted	
3PFG Made	
3PFG Attempted	

Kansas vs Texas Tech
OFFICIAL SHOT CHART

1/30/2016 at Lubbock, TX (United Supermarkets Arena)

Texas Tech



TTU PERIOD 1

FG Made	10
FG Attempted	22
3PFG Made	2
3PFG Attempted	6

TTU PERIOD 2

FG Made	
FG Attempted	
3PFG Made	
3PFG Attempted	