



TEXAS TECH VS. OKLAHOMA STATE

1/6/2016

Lubbock, TX (United Supermarkets Arena)

FINAL STATS

Oklahoma State

(12-2, 2-1)

69

Texas Tech

(9-5, 0-3)

46

Start Time: 6:30 p.m.

Officials: Laura Morris, Bryan Enterline, Kevin Pethtel

Attendance: 4121

Official Basketball Box Score -- Game Totals -- Final Statistics
Oklahoma State vs Texas Tech
1/6/2016 6:30 p.m. at Lubbock, TX (United Supermarkets Arena)

Oklahoma State 69 - 12-2, 2-1

##	Player	S	Total		3-Ptr		FT-FTA	Rebounds			PF	TP	A	TO	Blk	Stl	Min
			FG	FGA	3PT	FG-FGA		Off Reb	Def Reb	Tot Reb							
03	COLEMAN,MANDY	f	4	8	1	3	0-0	0	3	3	4	9	3	0	0	2	29
22	MARTIN,BRITTNEY	g	8	15	0	0	0-0	6	3	9	2	16	1	1	2	4	40
23	PATTON,RODDRICKA	g	1	5	1	5	0-0	0	1	1	3	3	14	1	0	2	38
45	LOECKER,KATELYN	f	0	2	0	1	0-0	0	1	1	1	0	0	0	0	0	14
54	JENSEN,KAYLEE	c	4	6	0	0	5-6	3	9	12	5	13	1	3	1	0	27
01	SIMON,ALANA		0	3	0	2	0-0	0	0	0	0	0	0	0	0	0	4
05	OMOZEE,DIANA		1	3	0	1	0-0	0	1	1	0	2	0	0	0	0	2
10	WALTON,SYDNEY		0	0	0	0	0-0	0	0	0	0	0	0	0	0	0	0
13	HOLT,JENTRY		0	1	0	0	1-2	0	2	2	0	1	0	1	0	0	3
20	JONES,LATASHIA		3	6	0	1	0-2	0	3	3	2	6	0	0	0	0	21
21	SWANSON,RYLIE		0	0	0	0	0-0	0	0	0	0	0	0	0	0	0	0
24	WHEELER,KARLI		7	13	5	9	0-0	1	3	4	0	19	1	0	0	0	22
TEAM								0	1	1	0			0			
TOTALS			28	62	7	22	6-10	10	27	37	17	69	20	6	3	8	200

Deadball Rebounds: 2,0

FG %	1st Half:	11-34	32.4%	2nd Half:	17-28	60.7%	Game:	28-62	45.2%
3FG %	1st Half:	1-9	11.1%	2nd Half:	6-13	46.2%	Game:	7-22	31.8%
FT %	1st Half:	3-4	75.0%	2nd Half:	3-6	50.0%	Game:	6-10	60.0%

Texas Tech 46 - 9-5, 0-3

##	Player	S	Total		3-Ptr		FT-FTA	Rebounds			PF	TP	A	TO	Blk	Stl	Min
			FG	FGA	3PT	FG-FGA		Off Reb	Def Reb	Tot Reb							
02	COOKTAYLOR,IVONNE	g	4	16	0	1	0-0	2	4	6	1	8	1	5	0	1	30
11	BROOKS,RAYVEN	g	5	12	2	5	4-4	0	7	7	2	16	2	3	1	0	33
24	DEAN,JAPREECE	g	5	12	1	3	2-2	1	2	3	2	13	4	3	0	0	36
25	GRANT,LEASHJA	c	0	2	0	0	0-2	2	3	5	3	0	0	2	0	0	28
32	OLABODE,DAYO	f	1	3	1	2	0-0	0	1	1	3	3	0	2	0	0	18
00	BLAIRE,BRIELLE		1	3	1	1	1-6	1	4	5	0	4	0	1	1	0	19
04	BOWSER,RYANN		0	1	0	1	0-0	0	1	1	0	0	0	0	0	0	4
30	SANDERS,ZURI		1	1	0	0	0-0	0	1	1	0	2	0	0	0	0	3
35	ROE,JAMIE		0	2	0	1	0-0	1	1	2	2	0	0	0	0	0	20
42	MCKENZIE,IONNA		0	0	0	0	0-0	2	0	2	2	0	0	0	0	0	9
TEAM								2	2	4	0			0			
TOTALS			17	52	5	14	7-14	11	26	37	15	46	7	16	2	1	200

Deadball Rebounds: 4,0

FG %	1st Half:	7-27	25.9%	2nd Half:	10-25	40.0%	Game:	17-52	32.7%
3FG %	1st Half:	0-4	00.0%	2nd Half:	5-10	50.0%	Game:	5-14	35.7%
FT %	1st Half:	3-6	50.0%	2nd Half:	4-8	50.0%	Game:	7-14	50.0%

Officials: Laura Morris, Bryan Enterline, Kevin Pethtel
 Technical Fouls: Oklahoma State- None. Texas Tech- None.
 Attendance: 4121

Score by periods	1st	2nd	3rd	4th	Total
Oklahoma State	11	15	22	21	69
Texas Tech	12	5	14	15	46

Points	In	Off	2nd	Fast	Bench
	Paint	Off T/O	2nd Chance	Fast Break	
OSU	20	17	6	2	28
TTU	12	6	6	0	6

Last FG - OSU 4th-00:35, TTU 4th-02:38.
 Largest lead - Oklahoma State by 23 4th-04:40; Texas Tech by 2 1st-09:39
 OSU led for 36:06. TTU led for 1:16. Game was tied for 2:38.

Score tied - 3 times
 Lead changed - 3 times

Official Basketball Box Score -- Game Totals -- First Half Statistics
Oklahoma State vs Texas Tech
1/6/2016 6:30 p.m. at Lubbock, TX (United Supermarkets Arena)

Oklahoma State 26 • 12-2, 2-1

##	Player	S	Total	3-Ptr	FT-FTA	Rebounds			PF	TP	A	TO	Blk	Stl	Min
			FG-FGA	FG-FGA		Off Reb	Def Reb	Tot Reb							
03	COLEMAN,MANDY	f	1-4	0-2	0-0	0	2	2	0	2	2	0	0	2	17
22	MARTIN,BRITTNEY	g	5-11	0-0	0-0	5	0	5	2	10	1	1	0	2	20
23	PATTON,RODDRICKA	g	1-2	1-2	0-0	0	0	0	1	3	5	1	0	1	18
45	LOECKER,KATELYN	f	0-2	0-1	0-0	0	1	1	1	0	0	0	0	0	9
54	JENSEN,KAYLEE	c	1-2	0-0	2-2	2	5	7	2	4	0	3	1	0	12
01	SIMON,ALANA		0-3	0-2	0-0	0	0	0	0	0	0	0	0	0	4
05	OMOZEE,DIANA		1-3	0-1	0-0	0	0	0	0	2	0	0	0	0	2
10	WALTON,SYDNEY		0-0	0-0	0-0	0	0	0	0	0	0	0	0	0	0
13	HOLT,JENTRY		0-1	0-0	1-2	0	2	2	0	1	0	1	0	0	3
20	JONES,LATASHIA		2-3	0-0	0-0	0	2	2	1	4	0	0	0	0	8
21	SWANSON,RYLIE		0-0	0-0	0-0	0	0	0	0	0	0	0	0	0	0
24	WHEELER,KARLI		0-3	0-1	0-0	1	3	4	0	0	0	0	0	0	7
TEAM						0	0	0	0			0			
Totals			11-34	1-9	3-4	8	15	23	7	26	8	6	1	5	100

FG % Half: 11-34 32.4%
 3FG % Half: 1-9 11.1%
 FT % Half: 3-4 75.0%

Texas Tech 17 • 9-5, 0-3

##	Player	S	Total	3-Ptr	FT-FTA	Rebounds			PF	TP	A	TO	Blk	Stl	Min
			FG-FGA	FG-FGA		Off Reb	Def Reb	Tot Reb							
02	COOKTAYLOR,IVONNE	g	4-11	0-0	0-0	1	4	5	0	8	0	2	0	1	18
11	BROOKS,RAYVEN	g	2-4	0-1	2-2	0	2	2	0	6	2	2	1	0	19
24	DEAN,JAPREECE	g	0-5	0-2	0-0	1	0	1	2	0	0	2	0	0	16
25	GRANT,LEASHJA	c	0-2	0-0	0-0	2	1	3	1	0	0	1	0	0	12
32	OLABODE,DAYO	f	0-0	0-0	0-0	0	0	0	3	0	0	2	0	0	5
00	BLAIRE,BRIELLE		0-2	0-0	1-4	1	4	5	0	1	0	1	1	0	11
04	BOWSER,RYANN		0-1	0-1	0-0	0	1	1	0	0	0	0	0	0	4
30	SANDERS,ZURI		1-1	0-0	0-0	0	1	1	0	2	0	0	0	0	3
35	ROE,JAMIE		0-1	0-0	0-0	0	0	0	0	0	0	0	0	0	7
42	MCKENZIE,IONNA		0-0	0-0	0-0	0	0	0	1	0	0	0	0	0	5
TEAM						1	2	3	0			0			
Totals			7-27	0-4	3-6	6	15	21	7	17	2	10	2	1	100

FG % Half: 7-27 25.9%
 3FG % Half: 0-4 00.0%
 FT % Half: 3-6 50.0%

Officials: Laura Morris, Bryan Enterline, Kevin Pethel
 Technical Fouls: Oklahoma State- None. Texas Tech- None.

Score by periods	1st	2nd	3rd	4th	Total
Oklahoma State	11	15	22	21	69
Texas Tech	12	5	14	15	46

Last FG - OSU 2nd-00:05, TTU 2nd-02:48.
 OSU led for 16:06. TTU led for 1:16. Game was tied for 2:38.

Points	In Paint	Off T/O	2nd 2nd Chance	Fast Fast Break	Bench
OSU	8	8	4	0	7
	10	6	5	0	3

Score tied - 3 times
 Lead changed - 3 times

Oklahoma State vs Texas Tech
1/6/2016; 6:30 p.m. at Lubbock, TX (United Supermarkets Arena)
Period 1 Play-By-Play

VISITORS: Oklahoma State	Time	Score	Margin	HOME: Texas Tech
TURNOVER by JENSEN,KAYLEE	09:57			
	09:43			MISSED 3PTR by DEAN,JAPREECE
	09:43			REBOUND (OFF) by TEAM
	09:39	2-0	H 2	GOOD! JUMPER by COOKTAYLOR,IVONNE
	09:39			ASSIST by BROOKS,RAYVEN
MISSED 3PTR by COLEMAN,MANDY	09:19			
REBOUND (OFF) by JENSEN,KAYLEE	09:19			
GOOD! JUMPER by JENSEN,KAYLEE [PNT]	09:16	2-2	T	
	08:56			MISSED JUMPER by DEAN,JAPREECE
	08:56			REBOUND (OFF) by DEAN,JAPREECE
	08:50			MISSED JUMPER by COOKTAYLOR,IVONNE
	08:50			REBOUND (OFF) by GRANT,LEASHJA
	08:44			MISSED JUMPER by GRANT,LEASHJA
REBOUND (DEF) by JENSEN,KAYLEE	08:44			
TURNOVER by MARTIN,BRITTNEY	08:27			
	08:25			STEAL by COOKTAYLOR,IVONNE
	08:23			MISSED JUMPER by DEAN,JAPREECE
	08:23			REBOUND (OFF) by COOKTAYLOR,IVONNE
	08:21	4-2	H 2	GOOD! JUMPER by COOKTAYLOR,IVONNE [PNT]
MISSED JUMPER by JENSEN,KAYLEE	08:00			
REBOUND (OFF) by JENSEN,KAYLEE	08:00			
	07:59			FOUL by OLABODE,DAYO
GOOD! FT by JENSEN,KAYLEE	07:59	4-3	H 1	
GOOD! FT by JENSEN,KAYLEE	07:59	4-4	T	
	07:47			TURNOVER by OLABODE,DAYO
MISSED 3PTR by PATTON,RODDRICKA	07:35			
	07:35			REBOUND (DEF) by COOKTAYLOR,IVONNE
	07:30			TURNOVER by GRANT,LEASHJA
	07:30			FOUL by GRANT,LEASHJA
MISSED LAYUP by MARTIN,BRITTNEY	07:15			
REBOUND (OFF) by MARTIN,BRITTNEY	07:15			
MISSED 3PTR by LOECKER,KATELYN	07:11			
REBOUND (OFF) by MARTIN,BRITTNEY	07:11			
MISSED JUMPER by MARTIN,BRITTNEY	07:07			
REBOUND (OFF) by MARTIN,BRITTNEY	07:07			
	07:06			FOUL by OLABODE,DAYO
	07:06			SUB IN: ROE,JAMIE
	07:06			SUB OUT: OLABODE,DAYO
MISSED JUMPER by MARTIN,BRITTNEY	07:04			
	07:04			REBOUND (DEF) by COOKTAYLOR,IVONNE
	06:45			MISSED JUMPER by COOKTAYLOR,IVONNE
REBOUND (DEF) by JENSEN,KAYLEE	06:45			
GOOD! JUMPER by COLEMAN,MANDY	06:37	4-6	V 2	
ASSIST by PATTON,RODDRICKA	06:37			
	06:19			MISSED LAYUP by ROE,JAMIE
REBOUND (DEF) by JENSEN,KAYLEE	06:19			
GOOD! JUMPER by MARTIN,BRITTNEY	05:52	4-8	V 4	
	05:34			TURNOVER by BROOKS,RAYVEN
STEAL by PATTON,RODDRICKA	05:32			
	05:11			FOUL by DEAN,JAPREECE
SUB IN: HOLT,JENTRY	05:11			
SUB IN: SIMON,ALANA	05:11			
SUB OUT: LOECKER,KATELYN	05:11			

VISITORS: Oklahoma State	Time	Score	Margin	HOME: Texas Tech
SUB OUT: JENSEN,KAYLEE	05:11			
	05:11			SUB IN: MCKENZIE,IONNA
	05:11			SUB OUT: GRANT,LEASHJA
TURNOVER by HOLT,JENTRY	04:53			
	04:53			TIMEOUT MEDIA
	04:48			SUB IN: BOWSER,RYANN
	04:48			SUB OUT: BROOKS,RAYVEN
	04:30			MISSED JUMPER by COOKTAYLOR,IVONNE
REBOUND (DEF) by COLEMAN,MANDY	04:30			
GOOD! JUMPER by MARTIN,BRITTNEY [PNT]	04:22	4-10	V 6	
ASSIST by PATTON,RODDRICKA	04:22			
	04:01			MISSED 3PTR by BOWSER,RYANN
REBOUND (DEF) by HOLT,JENTRY	04:01			
	03:57			FOUL by MCKENZIE,IONNA
MISSED FT by HOLT,JENTRY	03:57			
REBOUND (DEADB) by TEAM	03:57			
GOOD! FT by HOLT,JENTRY	03:57	4-11	V 7	
SUB IN: JENSEN,KAYLEE	03:57			
SUB IN: JONES,LATASHIA	03:57			
SUB OUT: COLEMAN,MANDY	03:57			
SUB OUT: HOLT,JENTRY	03:57			
	03:57			SUB IN: BROOKS,RAYVEN
	03:57			SUB IN: BLAIRE,BRIELLE
	03:57			SUB OUT: DEAN,JAPREECE
	03:57			SUB OUT: ROE,JAMIE
	03:36	6-11	V 5	GOOD! JUMPER by COOKTAYLOR,IVONNE
MISSED 3PTR by SIMON,ALANA	03:07			
REBOUND (OFF) by MARTIN,BRITTNEY	03:07			
SUB IN: WHEELER,KARLI	03:05			
SUB OUT: PATTON,RODDRICKA	03:05			
MISSED JUMPER by SIMON,ALANA	03:00			
REBOUND (OFF) by WHEELER,KARLI	03:00			
MISSED JUMPER by WHEELER,KARLI	02:55			
	02:55			REBOUND (DEF) by BLAIRE,BRIELLE
FOUL by JONES,LATASHIA	02:55			
	02:29			MISSED JUMPER by BLAIRE,BRIELLE
BLOCK by JENSEN,KAYLEE	02:29			
REBOUND (DEF) by JENSEN,KAYLEE	02:28			
MISSED 3PTR by SIMON,ALANA	02:16			
	02:16			REBOUND (DEF) by COOKTAYLOR,IVONNE
	02:05			MISSED 3PTR by BROOKS,RAYVEN
REBOUND (DEF) by WHEELER,KARLI	02:05			
TURNOVER by JENSEN,KAYLEE	01:43			
	01:26	8-11	V 3	GOOD! LAYUP by BROOKS,RAYVEN [PNT]
MISSED JUMPER by WHEELER,KARLI	00:57			
	00:57			BLOCK by BLAIRE,BRIELLE
	00:56			REBOUND (DEF) by BOWSER,RYANN
FOUL by MARTIN,BRITTNEY	00:56			
SUB IN: PATTON,RODDRICKA	00:56			
SUB IN: LOECKER,KATELYN	00:56			
SUB IN: COLEMAN,MANDY	00:56			
SUB OUT: WHEELER,KARLI	00:56			
SUB OUT: SIMON,ALANA	00:56			
SUB OUT: JONES,LATASHIA	00:56			
	00:56			SUB IN: ROE,JAMIE
	00:56			SUB IN: DEAN,JAPREECE
	00:56			SUB OUT: COOKTAYLOR,IVONNE
	00:56			SUB OUT: BOWSER,RYANN

VISITORS: Oklahoma State	Time	Score	Margin	HOME: Texas Tech
	00:46	10-11	V 1	GOOD! LAYUP by BROOKS,RAYVEN [PNT]
MISSED JUMPER by MARTIN,BRITTNEY	00:28			
	00:28			REBOUND (DEF) by BROOKS,RAYVEN
FOUL by LOECKER,KATELYN	00:03			
	00:03	11-11	T	GOOD! FT by BROOKS,RAYVEN
	00:03	12-11	H 1	GOOD! FT by BROOKS,RAYVEN

Oklahoma State 11, Texas Tech 12

Period 1-only	In Paint	Off T/O	2nd Chance	Fast Break	Bench	
OSU	4	0	4	0	1	Score tied - 4 times
TTU	6	6	4	0	0	Lead changed - 2 times

Oklahoma State vs Texas Tech
1/6/2016; 6:30 p.m. at Lubbock, TX (United Supermarkets Arena)
Period 2 Play-By-Play

VISITORS: Oklahoma State	Time	Score	Margin	HOME: Texas Tech
SUB IN: OMOZEE,DIANA	10:00			
SUB OUT: LOECKER,KATELYN	10:00			
	10:00			SUB IN: ROE,JAMIE
	10:00			SUB IN: BLAIRE,BRIELLE
	10:00			SUB OUT: COOKTAYLOR,IVONNE
	10:00			SUB OUT: OLABODE,DAYO
	09:51			TURNOVER by DEAN,JAPREECE
	09:51			FOUL by DEAN,JAPREECE
GOOD! JUMPER by OMOZEE,DIANA	09:32	12-13	V 1	
ASSIST by PATTON,RODDRICKA	09:32			
	09:10			MISSED JUMPER by BLAIRE,BRIELLE
REBOUND (DEF) by JENSEN,KAYLEE	09:10			
MISSED JUMPER by OMOZEE,DIANA	08:49			
	08:49			REBOUND (DEF) by BLAIRE,BRIELLE
	08:37			SUB IN: COOKTAYLOR,IVONNE
	08:37			SUB OUT: DEAN,JAPREECE
	08:26			TURNOVER by COOKTAYLOR,IVONNE
STEAL by MARTIN,BRITTNEY	08:25			
GOOD! JUMPER by MARTIN,BRITTNEY	08:07	12-15	V 3	
ASSIST by PATTON,RODDRICKA	08:07			
	07:57			TIMEOUT 30SEC
	07:57			SUB IN: DEAN,JAPREECE
	07:57			SUB OUT: ROE,JAMIE
	07:45	14-15	V 1	GOOD! JUMPER by COOKTAYLOR,IVONNE [PNT]
MISSED 3PTR by OMOZEE,DIANA	07:28			
	07:28			REBOUND (DEF) by BLAIRE,BRIELLE
FOUL by JENSEN,KAYLEE	07:16			
	07:16			MISSED FT by BLAIRE,BRIELLE
	07:16			REBOUND (DEADB) by TEAM
	07:16			MISSED FT by BLAIRE,BRIELLE
REBOUND (DEF) by COLEMAN,MANDY	07:16			
SUB IN: LOECKER,KATELYN	07:16			
SUB OUT: OMOZEE,DIANA	07:16			
TURNOVER by JENSEN,KAYLEE	06:58			
FOUL by JENSEN,KAYLEE	06:58			
SUB IN: HOLT,JENTRY	06:58			
SUB OUT: JENSEN,KAYLEE	06:58			
	06:46			TURNOVER by BLAIRE,BRIELLE
STEAL by MARTIN,BRITTNEY	06:44			
MISSED 3PTR by COLEMAN,MANDY	06:39			
	06:39			REBOUND (DEF) by BLAIRE,BRIELLE
	06:21			MISSED JUMPER by GRANT,LEASHJA
REBOUND (DEF) by HOLT,JENTRY	06:21			
MISSED JUMPER by COLEMAN,MANDY	06:02			
	06:02			REBOUND (DEF) by COOKTAYLOR,IVONNE
	05:49			TURNOVER by DEAN,JAPREECE
	05:48			SUB IN: SANDERS,ZURI
	05:48			SUB IN: OLABODE,DAYO
	05:48			SUB OUT: GRANT,LEASHJA
	05:48			SUB OUT: BLAIRE,BRIELLE
MISSED JUMPER by HOLT,JENTRY	05:35			
	05:35			BLOCK by BROOKS,RAYVEN
	05:34			REBOUND (DEF) by TEAM

VISITORS: Oklahoma State	Time	Score	Margin	HOME: Texas Tech
	05:19			TURNOVER by BROOKS,RAYVEN
STEAL by COLEMAN,MANDY	05:18			
GOOD! JUMPER by MARTIN,BRITTNEY	05:06	14-17	V 3	
	04:45			MISSED JUMPER by BROOKS,RAYVEN
REBOUND (DEF) by LOECKER,KATELYN	04:45			
MISSED JUMPER by LOECKER,KATELYN	04:34			
	04:34			REBOUND (DEF) by TEAM
SUB IN: WHEELER,KARLI	04:32			
SUB IN: JONES,LATASHIA	04:32			
SUB OUT: LOECKER,KATELYN	04:32			
SUB OUT: HOLT,JENTRY	04:32			
	04:18			TURNOVER by COOKTAYLOR,IVONNE
STEAL by COLEMAN,MANDY	04:17			
GOOD! JUMPER by MARTIN,BRITTNEY	04:12	14-19	V 5	
ASSIST by PATTON,RODDRICKA	04:12			
FOUL by PATTON,RODDRICKA	03:59			
	03:50			TURNOVER by OLABODE,DAYO
	03:50			FOUL by OLABODE,DAYO
	03:37			SUB IN: BLAIRE,BRIELLE
	03:37			SUB OUT: OLABODE,DAYO
MISSED JUMPER by JONES,LATASHIA	03:28			
	03:28			REBOUND (DEF) by SANDERS,ZURI
	03:20			MISSED 3PTR by DEAN,JAPREECE
REBOUND (DEF) by JONES,LATASHIA	03:20			
GOOD! JUMPER by JONES,LATASHIA [PNT]	03:02	14-21	V 7	
ASSIST by MARTIN,BRITTNEY	03:02			
	02:48	16-21	V 5	GOOD! LAYUP by SANDERS,ZURI [PNT]
	02:48			ASSIST by BROOKS,RAYVEN
MISSED JUMPER by MARTIN,BRITTNEY	02:26			
REBOUND (OFF) by MARTIN,BRITTNEY	02:26			
MISSED JUMPER by MARTIN,BRITTNEY	02:24			
	02:24			REBOUND (DEF) by BROOKS,RAYVEN
	02:19			SUB IN: GRANT,LEASHJA
	02:19			SUB OUT: SANDERS,ZURI
	02:04			MISSED JUMPER by COOKTAYLOR,IVONNE
	02:04			REBOUND (OFF) by BLAIRE,BRIELLE
FOUL by MARTIN,BRITTNEY	02:00			
	02:00			MISSED FT by BLAIRE,BRIELLE
	02:00			REBOUND (DEADB) by TEAM
	02:00	17-21	V 4	GOOD! FT by BLAIRE,BRIELLE
MISSED 3PTR by WHEELER,KARLI	01:48			
	01:48			REBOUND (DEF) by GRANT,LEASHJA
	01:37			MISSED LAYUP by COOKTAYLOR,IVONNE
REBOUND (DEF) by WHEELER,KARLI	01:37			
GOOD! JUMPER by JONES,LATASHIA [PNT]	01:26	17-23	V 6	
ASSIST by COLEMAN,MANDY	01:26			
	01:04			MISSED JUMPER by COOKTAYLOR,IVONNE
REBOUND (DEF) by WHEELER,KARLI	01:04			
TURNOVER by PATTON,RODDRICKA	00:51			
	00:35			MISSED LAYUP by COOKTAYLOR,IVONNE
	00:35			REBOUND (OFF) by GRANT,LEASHJA
	00:31			MISSED JUMPER by DEAN,JAPREECE
REBOUND (DEF) by JONES,LATASHIA	00:31			
TIMEOUT 30SEC	00:27			
	00:27			SUB IN: ROE,JAMIE
	00:27			SUB OUT: DEAN,JAPREECE
GOOD! 3PTR by PATTON,RODDRICKA	00:05	17-26	V 9	
ASSIST by COLEMAN,MANDY	00:05			

Oklahoma State 26, Texas Tech 17

Period 2-only	In Paint	Off T/O	2nd Chance	Fast Break	Bench	
OSU	4	8	0	0	6	Score tied - 0 times
TTU	4	0	1	0	3	Lead changed - 2 times

Official Basketball Box Score -- Game Totals -- Second Half Statistics
Oklahoma State vs Texas Tech
1/6/2016 6:30 p.m. at Lubbock, TX (United Supermarkets Arena)

Oklahoma State 43 • 12-2, 2-1

##	Player	S	Total		3-Ptr		Rebounds		PF	TP	A TO Blk Stl				Min
			FG-FGA	3PT FG-FGA	FT-FTA	Off Reb	Def Reb	Tot Reb							
03	COLEMAN,MANDY	f	3-4	1-1	0-0	0	1	1	4	7	1	0	0	0	12
22	MARTIN,BRITTNEY	g	3-4	0-0	0-0	1	3	4	0	6	0	0	2	2	20
23	PATTON,RODDRICKA	g	0-3	0-3	0-0	0	1	1	2	0	9	0	0	1	20
45	LOECKER,KATELYN	f	0-0	0-0	0-0	0	0	0	0	0	0	0	0	0	5
54	JENSEN,KAYLEE	c	3-4	0-0	3-4	1	4	5	3	9	1	0	0	0	15
01	SIMON,ALANA		0-0	0-0	0-0	0	0	0	0	0	0	0	0	0	0
05	OMOZEE,DIANA		0-0	0-0	0-0	0	1	1	0	0	0	0	0	0	0
10	WALTON,SYDNEY		0-0	0-0	0-0	0	0	0	0	0	0	0	0	0	0
13	HOLT,JENTRY		0-0	0-0	0-0	0	0	0	0	0	0	0	0	0	0
20	JONES,LATASHIA		1-3	0-1	0-2	0	1	1	1	2	0	0	0	0	13
21	SWANSON,RYLIE		0-0	0-0	0-0	0	0	0	0	0	0	0	0	0	0
24	WHEELER,KARLI		7-10	5-8	0-0	0	0	0	0	19	1	0	0	0	15
TEAM						0	1	1	0		0				
Totals			17-28	6-13	3-6	2	12	14	10	43	12	0	2	3	100

FG % Half: 17-28 60.7%
 3FG % Half: 6-13 11.1%
 FT % Half: 3-6 50.0%

Texas Tech 29 • 9-5, 0-3

##	Player	S	Total		3-Ptr		Rebounds		PF	TP	A TO Blk Stl				Min
			FG-FGA	3PT FG-FGA	FT-FTA	Off Reb	Def Reb	Tot Reb							
02	COOKTAYLOR,IVONNE	g	0-5	0-1	0-0	1	0	1	1	0	1	3	0	0	12
11	BROOKS,RAYVEN	g	3-8	2-4	2-2	0	5	5	2	10	0	1	0	0	14
24	DEAN,JAPREECE	g	5-7	1-1	2-2	0	2	2	0	13	4	1	0	0	20
25	GRANT,LEASHJA	c	0-0	0-0	0-2	0	2	2	2	0	0	1	0	0	16
32	OLABODE,DAYO	f	1-3	1-2	0-0	0	1	1	0	3	0	0	0	0	13
00	BLAIRE,BRIELLE		1-1	1-1	0-2	0	0	0	0	3	0	0	0	0	8
04	BOWSER,RYANN		0-0	0-0	0-0	0	0	0	0	0	0	0	0	0	0
30	SANDERS,ZURI		0-0	0-0	0-0	0	0	0	0	0	0	0	0	0	0
35	ROE,JAMIE		0-1	0-1	0-0	1	1	2	2	0	0	0	0	0	13
42	MCKENZIE,IONNA		0-0	0-0	0-0	2	0	2	1	0	0	0	0	0	4
TEAM						1	0	1	0		0				
Totals			10-25	5-10	4-8	5	11	16	8	29	5	6	0	0	100

FG % Half: 10-25 40.0%
 3FG % Half: 5-10 00.0%
 FT % Half: 4-8 50.0%

Officials: Laura Morris, Bryan Enterline, Kevin Pethel
 Technical Fouls: Oklahoma State- None. Texas Tech- None.

Score by periods	1st	2nd	3rd	4th	Total
Oklahoma State	11	15	22	21	69
Texas Tech	12	5	14	15	46

Last FG - OSU 4th-00:35, TTU 4th-02:38.
 OSU led for 20:00. TTU led for 0:00. Game was tied for 0:00.

Points	In Paint	Off Off T/O	2nd 2nd Chance	Fast Fast Break	Bench
OSU	12	9	2	2	21
	2	0	5	0	3

Score tied - 0 times
 Lead changed - 0 times

Oklahoma State vs Texas Tech
1/6/2016; 6:30 p.m. at Lubbock, TX (United Supermarkets Arena)
Period 3 Play-By-Play

VISITORS: Oklahoma State	Time	Score	Margin	HOME: Texas Tech
	10:00			SUB IN: BLAIRE,BRIELLE
	10:00			SUB OUT: OLABODE,DAYO
GOOD! JUMPER by JENSEN,KAYLEE [PNT]	09:54	17-28	V 11	
ASSIST by COLEMAN,MANDY	09:54			
	09:27			MISSED JUMPER by DEAN,JAPREECE
REBOUND (DEF) by MARTIN,BRITTNEY	09:27			
	09:26			FOUL by GRANT,LEASHJA
MISSED JUMPER by COLEMAN,MANDY	09:15			
	09:15			REBOUND (DEF) by DEAN,JAPREECE
FOUL by COLEMAN,MANDY	08:52			
	08:52			MISSED FT by BLAIRE,BRIELLE
	08:52			REBOUND (DEADB) by TEAM
	08:52			MISSED FT by BLAIRE,BRIELLE
REBOUND (DEF) by MARTIN,BRITTNEY	08:52			
MISSED 3PTR by PATTON,RODDRICKA	08:35			
REBOUND (OFF) by JENSEN,KAYLEE	08:35			
GOOD! JUMPER by JENSEN,KAYLEE	08:32	17-30	V 13	
	08:05	19-30	V 11	GOOD! JUMPER by BROOKS,RAYVEN [PNT]
GOOD! JUMPER by JENSEN,KAYLEE	07:49	19-32	V 13	
ASSIST by PATTON,RODDRICKA	07:49			
FOUL by PATTON,RODDRICKA	07:26			
	07:26			SUB IN: MCKENZIE,IONNA
	07:26			SUB OUT: GRANT,LEASHJA
	07:15			MISSED JUMPER by COOKTAYLOR,IVONNE
	07:15			REBOUND (OFF) by MCKENZIE,IONNA
FOUL by COLEMAN,MANDY	07:14			
	07:09			TURNOVER by COOKTAYLOR,IVONNE
	06:48			FOUL by MCKENZIE,IONNA
GOOD! FT by JENSEN,KAYLEE	06:48	19-33	V 14	
GOOD! FT by JENSEN,KAYLEE	06:48	19-34	V 15	
	06:48			SUB IN: OLABODE,DAYO
	06:48			SUB OUT: BLAIRE,BRIELLE
	06:32			MISSED JUMPER by OLABODE,DAYO
REBOUND (DEF) by COLEMAN,MANDY	06:32			
MISSED JUMPER by JENSEN,KAYLEE	06:14			
	06:14			REBOUND (DEF) by BROOKS,RAYVEN
	06:00			TURNOVER by COOKTAYLOR,IVONNE
STEAL by PATTON,RODDRICKA	05:59			
GOOD! JUMPER by MARTIN,BRITTNEY [FB/PNT]	05:55	19-36	V 17	
ASSIST by PATTON,RODDRICKA	05:55			
	05:54			TIMEOUT 30SEC
SUB IN: JONES,LATASHIA	05:54			
SUB OUT: JENSEN,KAYLEE	05:54			
	05:43			TURNOVER by COOKTAYLOR,IVONNE
	05:27			FOUL by COOKTAYLOR,IVONNE
MISSED FT by JONES,LATASHIA	05:27			
REBOUND (DEADB) by TEAM	05:27			
MISSED FT by JONES,LATASHIA	05:27			
	05:27			REBOUND (DEF) by BROOKS,RAYVEN
	05:27			SUB IN: ROE,JAMIE
	05:27			SUB OUT: COOKTAYLOR,IVONNE
	05:12			MISSED LAYUP by BROOKS,RAYVEN
	05:12			REBOUND (OFF) by MCKENZIE,IONNA

VISITORS: Oklahoma State	Time	Score	Margin	HOME: Texas Tech
FOUL by JONES,LATASHIA	05:12			
	05:10	22-36	V 14	GOOD! 3PTR by BROOKS,RAYVEN
	05:10			ASSIST by DEAN,JAPREECE
MISSED 3PTR by PATTON,RODDRICKA	04:43			
	04:43			REBOUND (DEF) by BROOKS,RAYVEN
FOUL by COLEMAN,MANDY	04:40			
	04:40			TIMEOUT media
	04:40	23-36	V 13	GOOD! FT by BROOKS,RAYVEN
	04:40	24-36	V 12	GOOD! FT by BROOKS,RAYVEN
SUB IN: WHEELER,KARLI	04:40			
SUB IN: JENSEN,KAYLEE	04:40			
SUB OUT: COLEMAN,MANDY	04:40			
SUB OUT: LOECKER,KATELYN	04:40			
MISSED 3PTR by WHEELER,KARLI	04:33			
	04:33			REBOUND (DEF) by DEAN,JAPREECE
	04:20	27-36	V 9	GOOD! 3PTR by OLABODE,DAYO
	04:20			ASSIST by DEAN,JAPREECE
MISSED 3PTR by WHEELER,KARLI	04:03			
REBOUND (OFF) by MARTIN,BRITTNEY	04:03			
MISSED 3PTR by PATTON,RODDRICKA	03:54			
	03:54			REBOUND (DEF) by BROOKS,RAYVEN
	03:36			MISSED 3PTR by BROOKS,RAYVEN
REBOUND (DEF) by JENSEN,KAYLEE	03:36			
GOOD! LAYUP by WHEELER,KARLI [PNT]	03:30	27-38	V 11	
ASSIST by PATTON,RODDRICKA	03:30			
	03:12			MISSED 3PTR by BROOKS,RAYVEN
REBOUND (DEF) by MARTIN,BRITTNEY	03:12			
	02:59			FOUL by ROE,JAMIE
GOOD! FT by JENSEN,KAYLEE	02:59	27-39	V 12	
MISSED FT by JENSEN,KAYLEE	02:59			
	02:59			REBOUND (DEF) by GRANT,LEASHJA
	02:59			SUB IN: COOKTAYLOR,IVONNE
	02:59			SUB IN: GRANT,LEASHJA
	02:59			SUB OUT: BROOKS,RAYVEN
	02:59			SUB OUT: MCKENZIE,IONNA
	02:39	29-39	V 10	GOOD! JUMPER by DEAN,JAPREECE
MISSED 3PTR by JONES,LATASHIA	02:30			
	02:29			REBOUND (DEF) by BROOKS,RAYVEN
	01:58	31-39	V 8	GOOD! JUMPER by DEAN,JAPREECE
GOOD! 3PTR by WHEELER,KARLI	01:23	31-42	V 11	
ASSIST by PATTON,RODDRICKA	01:21			
	01:10			MISSED 3PTR by ROE,JAMIE
REBOUND (DEF) by PATTON,RODDRICKA	01:05			
GOOD! 3PTR by WHEELER,KARLI	01:02	31-45	V 14	
	00:38			MISSED 3PTR by OLABODE,DAYO
REBOUND (DEF) by JENSEN,KAYLEE	00:38			
	00:13			SUB IN: BROOKS,RAYVEN
	00:13			SUB OUT: DEAN,JAPREECE
GOOD! 3PTR by WHEELER,KARLI	00:07	31-48	V 17	
ASSIST by PATTON,RODDRICKA	00:07			

Oklahoma State 69, Texas Tech 46

Period 3-only	In Paint	Off T/O	2nd Chance	Fast Break	Bench	
OSU	6	4	2	2	11	Score tied - 0 times

Period 3-only	In Paint	Off T/O	2nd Chance	Fast Break	Bench	
TTU	2	0	3	0	0	Lead changed - 0 times

Oklahoma State vs Texas Tech
1/6/2016; 6:30 p.m. at Lubbock, TX (United Supermarkets Arena)
Period 4 Play-By-Play

VISITORS: Oklahoma State	Time	Score	Margin	HOME: Texas Tech
SUB IN: JONES,LATASHIA	10:00			
SUB IN: WHEELER,KARLI	10:00			
SUB OUT: COLEMAN,MANDY	10:00			
SUB OUT: LOECKER,KATELYN	10:00			
	09:51	34-48	V 14	GOOD! 3PTR by DEAN,JAPREECE
	09:51			ASSIST by COOKTAYLOR,IVONNE
MISSED JUMPER by JONES,LATASHIA	09:26			
	09:26			REBOUND (DEF) by OLABODE,DAYO
	09:16	37-48	V 11	GOOD! 3PTR by BROOKS,RAYVEN
	09:16			ASSIST by DEAN,JAPREECE
	08:59			FOUL by BROOKS,RAYVEN
SUB IN: COLEMAN,MANDY	08:59			
SUB OUT: JONES,LATASHIA	08:59			
GOOD! JUMPER by WHEELER,KARLI [PNT]	08:49	37-50	V 13	
	08:25			TURNOVER by GRANT,LEASHJA
	08:25			FOUL by GRANT,LEASHJA
	08:15			FOUL by BROOKS,RAYVEN
	08:15			SUB IN: ROE,JAMIE
	08:15			SUB OUT: COOKTAYLOR,IVONNE
GOOD! 3PTR by COLEMAN,MANDY	07:51	37-53	V 16	
ASSIST by PATTON,RODDRICKA	07:51			
FOUL by COLEMAN,MANDY	07:37			
SUB IN: JONES,LATASHIA	07:37			
SUB OUT: COLEMAN,MANDY	07:37			
	07:36			TURNOVER by DEAN,JAPREECE
STEAL by MARTIN,BRITTNEY	07:35			
GOOD! LAYUP by JONES,LATASHIA [PNT]	07:10	37-55	V 18	
FOUL by JENSEN,KAYLEE	06:39			
	06:30			MISSED JUMPER by BROOKS,RAYVEN
REBOUND (DEF) by JENSEN,KAYLEE	06:30			
GOOD! JUMPER by MARTIN,BRITTNEY	06:10	37-57	V 20	
ASSIST by PATTON,RODDRICKA	06:10			
	05:49			TURNOVER by BROOKS,RAYVEN
STEAL by MARTIN,BRITTNEY	05:49			
FOUL by JENSEN,KAYLEE	05:49			
SUB IN: COLEMAN,MANDY	05:49			
SUB OUT: JENSEN,KAYLEE	05:49			
	05:44			MISSED JUMPER by DEAN,JAPREECE
REBOUND (DEF) by JONES,LATASHIA	05:44			
	05:25			FOUL by ROE,JAMIE
GOOD! JUMPER by MARTIN,BRITTNEY	05:10	37-59	V 22	
ASSIST by WHEELER,KARLI	05:10			
	04:51			MISSED JUMPER by BROOKS,RAYVEN
BLOCK by MARTIN,BRITTNEY	04:51			
	04:51			REBOUND (OFF) by TEAM
	04:51			TIMEOUT media
	04:51	39-59	V 20	GOOD! JUMPER by DEAN,JAPREECE
	04:51			SUB IN: BLAIRE,BRIELLE
	04:51			SUB OUT: ROE,JAMIE
GOOD! 3PTR by WHEELER,KARLI	04:40	39-62	V 23	
ASSIST by PATTON,RODDRICKA	04:40			
	04:30	41-62	V 21	GOOD! JUMPER by DEAN,JAPREECE
	04:27			SUB IN: ROE,JAMIE

VISITORS: Oklahoma State	Time	Score	Margin	HOME: Texas Tech
	04:27			SUB OUT: OLABODE,DAYO
GOOD! JUMPER by COLEMAN,MANDY	03:37	41-64	V 23	
FOUL by PATTON,RODDRICKA	03:13			
	03:13	42-64	V 22	GOOD! FT by DEAN,JAPREECE
	03:13	43-64	V 21	GOOD! FT by DEAN,JAPREECE
MISSED 3PTR by WHEELER,KARLI	02:48			
	02:48			REBOUND (DEF) by GRANT,LEASHJA
	02:38	46-64	V 18	GOOD! 3PTR by BLAIRE,BRIELLE
	02:38			ASSIST by DEAN,JAPREECE
SUB IN: JENSEN,KAYLEE	02:33			
SUB OUT: JONES,LATASHIA	02:33			
	02:33			SUB IN: COOKTAYLOR,IVONNE
	02:33			SUB OUT: BROOKS,RAYVEN
GOOD! JUMPER by COLEMAN,MANDY [PNT]	02:08	46-66	V 20	
ASSIST by PATTON,RODDRICKA	02:08			
	01:45			MISSED JUMPER by COOKTAYLOR,IVONNE
BLOCK by MARTIN,BRITTNEY	01:45			
REBOUND (DEF) by TEAM	01:44			
MISSED JUMPER by MARTIN,BRITTNEY	01:27			
	01:27			REBOUND (DEF) by ROE,JAMIE
	01:01			MISSED 3PTR by COOKTAYLOR,IVONNE
REBOUND (DEF) by JENSEN,KAYLEE	01:01			
GOOD! 3PTR by WHEELER,KARLI	00:35	46-69	V 23	
ASSIST by JENSEN,KAYLEE	00:35			
	00:17			MISSED JUMPER by COOKTAYLOR,IVONNE
	00:17			REBOUND (OFF) by ROE,JAMIE
FOUL by JENSEN,KAYLEE	00:17			
	00:17			MISSED FT by GRANT,LEASHJA
	00:17			REBOUND (DEADB) by TEAM
	00:17			MISSED FT by GRANT,LEASHJA
	00:17			REBOUND (OFF) by COOKTAYLOR,IVONNE
SUB IN: SIMON,ALANA	00:17			
SUB IN: OMOZEE,DIANA	00:17			
SUB IN: WALTON,SYDNEY	00:17			
SUB IN: HOLT,JENTRY	00:17			
SUB IN: SWANSON,RYLIE	00:17			
SUB OUT: MARTIN,BRITTNEY	00:17			
SUB OUT: PATTON,RODDRICKA	00:17			
SUB OUT: COLEMAN,MANDY	00:17			
SUB OUT: JENSEN,KAYLEE	00:17			
SUB OUT: WHEELER,KARLI	00:17			
	00:08			MISSED JUMPER by COOKTAYLOR,IVONNE
REBOUND (DEF) by OMOZEE,DIANA	00:08			

Oklahoma State 69, Texas Tech 46

Period 4-only	In Paint	Off T/O	2nd Chance	Fast Break	Bench	
OSU	6	5	0	0	10	Score tied - 0 times
TTU	0	0	2	0	3	Lead changed - 0 times

Oklahoma State vs Texas Tech
1/6/2016; 6:30 p.m. at Lubbock, TX (United Supermarkets Arena)
Scoring/Runs Reference

	Period 1		
Oklahoma State	Score		Texas Tech
09:57 - JENSEN TURN	TO		
		X	DEAN 3PTR - 09:43
		0-2 2	2 COOKTAYLOR JUMPER - 09:39
09:19 - COLEMAN 3PTR	X		
09:16 - JENSEN JUMPER	2 ^P	2-2 0	
		X	DEAN JUMPER - 08:56
		X	COOKTAYLOR JUMPER - 08:50
		X	GRANT JUMPER - 08:44
08:27 - MARTIN TURN	TO		
		X	DEAN JUMPER - 08:23
		2-4 2	2 ^P COOKTAYLOR JUMPER - 08:21
08:00 - JENSEN JUMPER	X		
07:59 - JENSEN FT	1	3-4 1	
07:59 - JENSEN FT	1	4-4 0	
		TO	OLABODE TURN - 07:47
07:35 - PATTON 3PTR	X		
		TO	GRANT TURN - 07:30
07:15 - MARTIN LAYUP	X		
07:11 - LOECKER 3PTR	X		
07:07 - MARTIN JUMPER	X		
07:04 - MARTIN JUMPER	X		
		X	COOKTAYLOR JUMPER - 06:45
06:37 - COLEMAN JUMPER	2	6-4 -2	
		X	ROE LAYUP - 06:19
05:52 - MARTIN JUMPER	2	8-4 -4	
		TO	BROOKS TURN - 05:34
04:53 - HOLT TURN	TO		
		X	COOKTAYLOR JUMPER - 04:30
04:22 - MARTIN JUMPER	2 ^P	10-4 -6	
		X	BOWSER 3PTR - 04:01
03:57 - HOLT FT	X		
03:57 - HOLT FT	1	11-4 -7	
		11-6 -5	2 COOKTAYLOR JUMPER - 03:36
03:07 - SIMON 3PTR	X		
03:00 - SIMON JUMPER	X		
02:55 - WHEELER JUMPER	X		
		X	BLAIRE JUMPER - 02:29
02:16 - SIMON 3PTR	X		
		X	BROOKS 3PTR - 02:05
01:43 - JENSEN TURN	TO		
		11-8 -3	2 ^P BROOKS LAYUP - 01:26
00:57 - WHEELER JUMPER	X		
		11-10 -1	2 ^P BROOKS LAYUP - 00:46
00:28 - MARTIN JUMPER	X		
		11-11 0	1 BROOKS FT - 00:03
		11-12 1	1 BROOKS FT - 00:03

	Period 2		
Oklahoma State	Score		Texas Tech
09:32 - OMOZEE JUMPER	2	13-12 -1	
		X	BLAIRE JUMPER - 09:10
08:49 - OMOZEE JUMPER	X		
		TO	COOKTAYLOR TURN - 08:26
08:07 - MARTIN JUMPER	2	15-12 -3	
		15-14 -1	2 ^P COOKTAYLOR JUMPER - 07:45
07:28 - OMOZEE 3PTR	X		
		X	BLAIRE FT - 07:16
		X	BLAIRE FT - 07:16
06:58 - JENSEN TURN	TO		
		TO	BLAIRE TURN - 06:46
06:39 - COLEMAN 3PTR	X		
		X	GRANT JUMPER - 06:21
06:02 - COLEMAN JUMPER	X		
		TO	DEAN TURN - 05:49
05:35 - HOLT JUMPER	X		
		TO	BROOKS TURN - 05:19
05:06 - MARTIN JUMPER	2	17-14 -3	
		X	BROOKS JUMPER - 04:45
04:34 - LOECKER JUMPER	X		
		TO	COOKTAYLOR TURN - 04:18
04:12 - MARTIN JUMPER	2	19-14 -5	
		TO	OLABODE TURN - 03:50
03:28 - JONES JUMPER	X		
		X	DEAN 3PTR - 03:20
03:02 - JONES JUMPER	2 ^P	21-14 -7	
		21-16 -5	2 ^P SANDERS LAYUP - 02:48
02:26 - MARTIN JUMPER	X		
02:24 - MARTIN JUMPER	X		
		X	COOKTAYLOR JUMPER - 02:04
		X	BLAIRE FT - 02:00
		21-17 -4	1 BLAIRE FT - 02:00
01:48 - WHEELER 3PTR	X		
		X	COOKTAYLOR LAYUP - 01:37
01:26 - JONES JUMPER	2 ^P	23-17 -6	
		X	COOKTAYLOR JUMPER - 01:04
00:51 - PATTON TURN	TO		
		X	COOKTAYLOR LAYUP - 00:35
		X	DEAN JUMPER - 00:31
00:05 - PATTON 3PTR	3	26-17 -9	

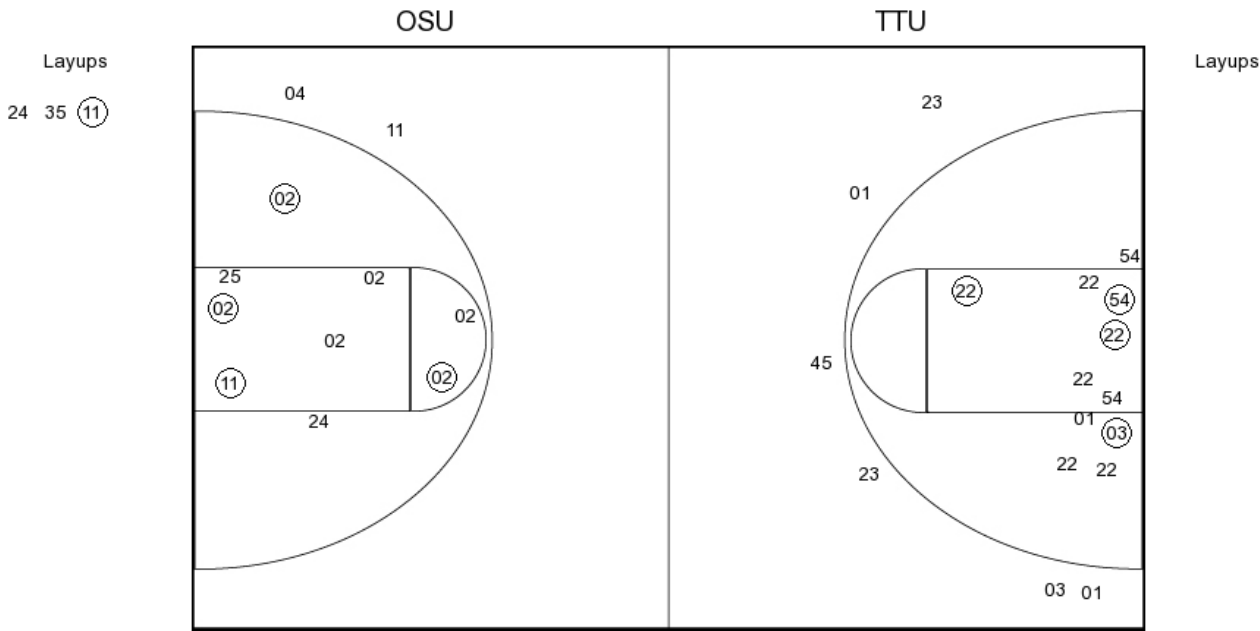
Period 3			Period 4		
Oklahoma State	Score	Texas Tech	Oklahoma State	Score	Texas Tech
09:54 - JENSEN JUMPER	2 ^P 28-17 -11			48-34 -14	3
		DEAN JUMPER - 09:27	09:26 - JONES JUMPER	X	
09:15 - COLEMAN JUMPER	X			48-37 -11	3
		BLAIRE FT - 08:52	08:49 - WHEELER JUMPER	2 ^P 50-37 -13	
		BLAIRE FT - 08:52		TO	GRANT TURN - 08:25
08:35 - PATTON 3PTR	X		07:51 - COLEMAN 3PTR	3 53-37 -16	
08:32 - JENSEN JUMPER	2 30-17 -13			TO	DEAN TURN - 07:36
	30-19 -11	2 ^P	07:10 - JONES LAYUP	2 ^P 55-37 -18	
07:49 - JENSEN JUMPER	2 32-19 -13				X
		COOKTAYLOR JUMPER - 07:15	06:10 - MARTIN JUMPER	2 57-37 -20	
		TO COOKTAYLOR TURN - 07:09		TO	BROOKS TURN - 05:49
06:48 - JENSEN FT	1 33-19 -14				X
06:48 - JENSEN FT	1 34-19 -15		05:10 - MARTIN JUMPER	2 59-37 -22	
		OLABODE JUMPER - 06:32			X
06:14 - JENSEN JUMPER	X			59-39 -20	2
		COOKTAYLOR TURN - 06:00	04:40 - WHEELER 3PTR	3 62-39 -23	
05:55 - MARTIN JUMPER	2 ^{PF} 36-19 -17			62-41 -21	2
		COOKTAYLOR TURN - 05:43	03:37 - COLEMAN JUMPER	2 64-41 -23	
05:27 - JONES FT	X			64-42 -22	1
05:27 - JONES FT	X			64-43 -21	1
		BROOKS LAYUP - 05:12	02:48 - WHEELER 3PTR	X	
		BROOKS 3PTR - 05:10		64-46 -18	3
04:43 - PATTON 3PTR	X		02:08 - COLEMAN JUMPER	2 ^P 66-46 -20	
		BROOKS FT - 04:40			X
		BROOKS FT - 04:40	01:27 - MARTIN JUMPER	X	
04:33 - WHEELER 3PTR	X				X
		OLABODE 3PTR - 04:20	00:35 - WHEELER 3PTR	3 69-46 -23	
04:03 - WHEELER 3PTR	X				X
03:54 - PATTON 3PTR	X				X
		BROOKS 3PTR - 03:36			X
03:30 - WHEELER LAYUP	2 ^P 38-27 -11				X
		BROOKS 3PTR - 03:12			X
02:59 - JENSEN FT	1 39-27 -12				X
02:59 - JENSEN FT	X				
		DEAN JUMPER - 02:39			
02:30 - JONES 3PTR	X				
		DEAN JUMPER - 01:58			
01:23 - WHEELER 3PTR	3 42-31 -11				
		ROE 3PTR - 01:10			
01:02 - WHEELER 3PTR	3 45-31 -14				
		OLABODE 3PTR - 00:38			
00:07 - WHEELER 3PTR	3 48-31 -17				

Oklahoma State vs Texas Tech

OFFICIAL SHOT CHART

1/6/2016 at Lubbock, TX (United Supermarkets Arena)

PERIOD 1



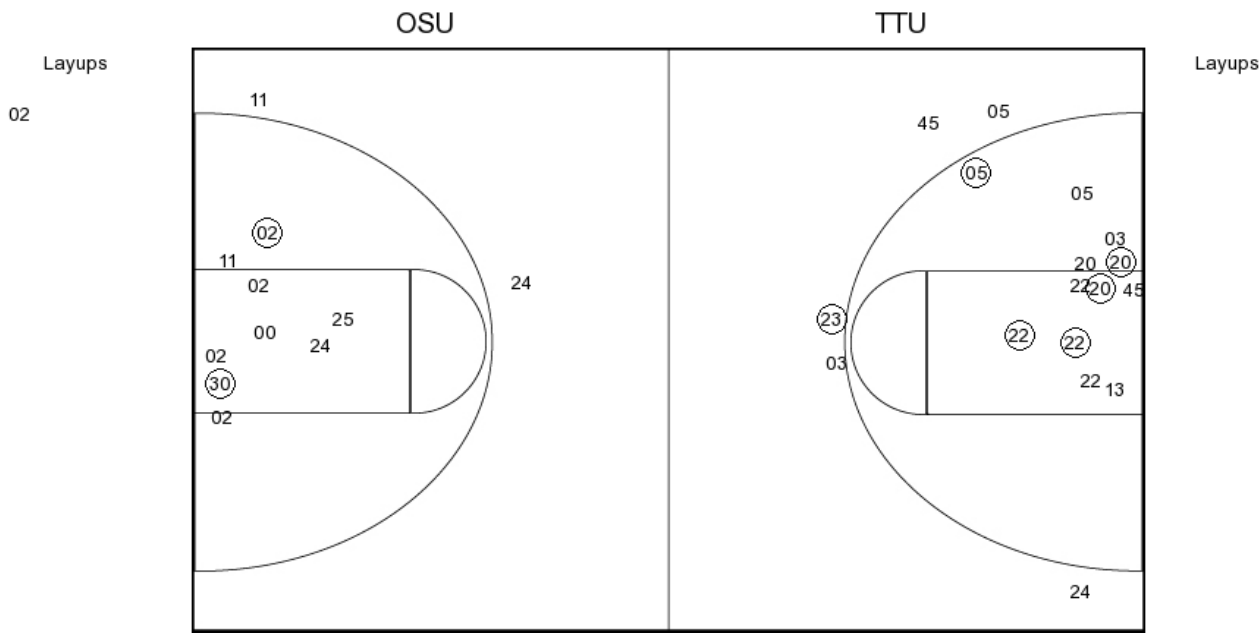
OSU PERIOD 1

FG Made	11
FG Attempted	34
3PFG Made	1
3PFG Attempted	9

TTU PERIOD 1

FG Made	7
FG Attempted	27
3PFG Made	0
3PFG Attempted	4

PERIOD 2



OSU PERIOD 2

FG Made
FG Attempted
3PFG Made
3PFG Attempted

TTU PERIOD 2

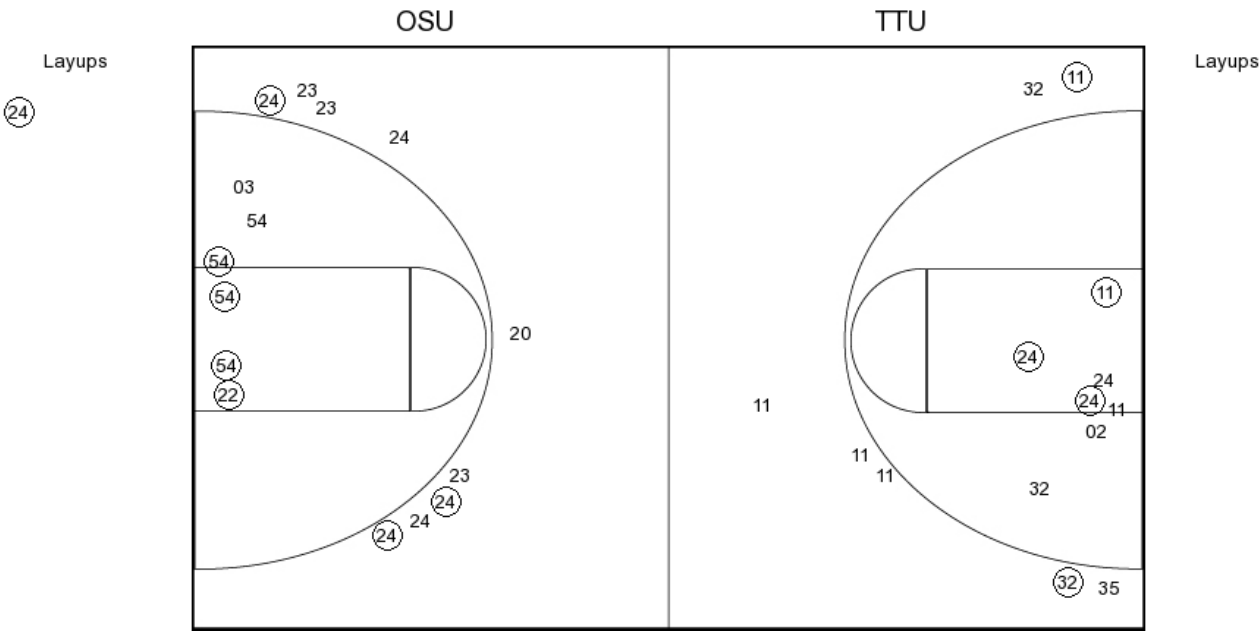
FG Made
FG Attempted
3PFG Made
3PFG Attempted

Oklahoma State vs Texas Tech

OFFICIAL SHOT CHART

1/6/2016 at Lubbock, TX (United Supermarkets Arena)

PERIOD 3



OSU PERIOD 3

FG Made	17
FG Attempted	28
3PFG Made	6
3PFG Attempted	13

TTU PERIOD 3

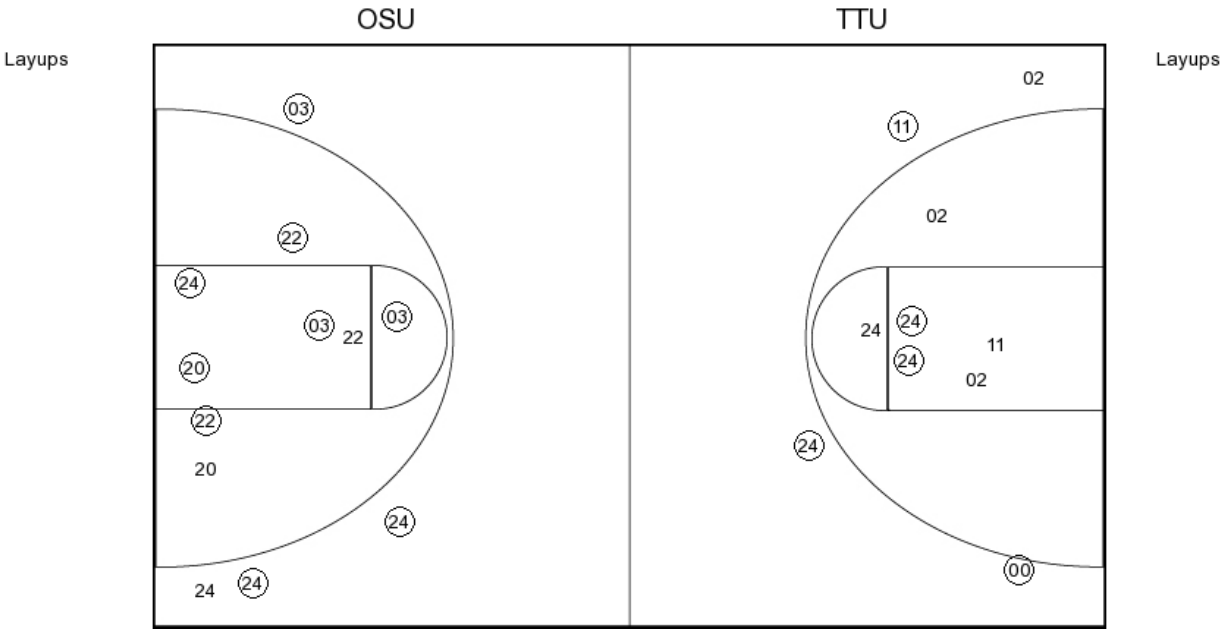
FG Made	10
FG Attempted	25
3PFG Made	5
3PFG Attempted	10

Oklahoma State vs Texas Tech

OFFICIAL SHOT CHART

1/6/2016 at Lubbock, TX (United Supermarkets Arena)

PERIOD 4



OSU PERIOD 4

FG Made
FG Attempted
3PFG Made
3PFG Attempted

TTU PERIOD 4

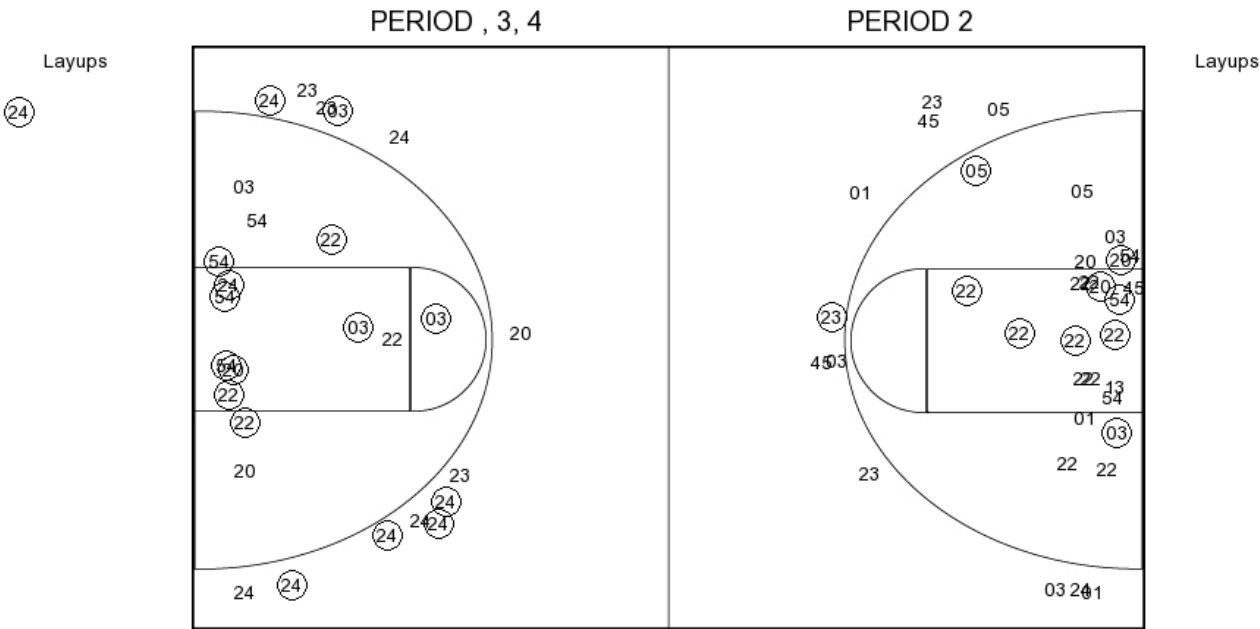
FG Made
FG Attempted
3PFG Made
3PFG Attempted

Oklahoma State vs Texas Tech

OFFICIAL SHOT CHART

1/6/2016 at Lubbock, TX (United Supermarkets Arena)

Oklahoma State



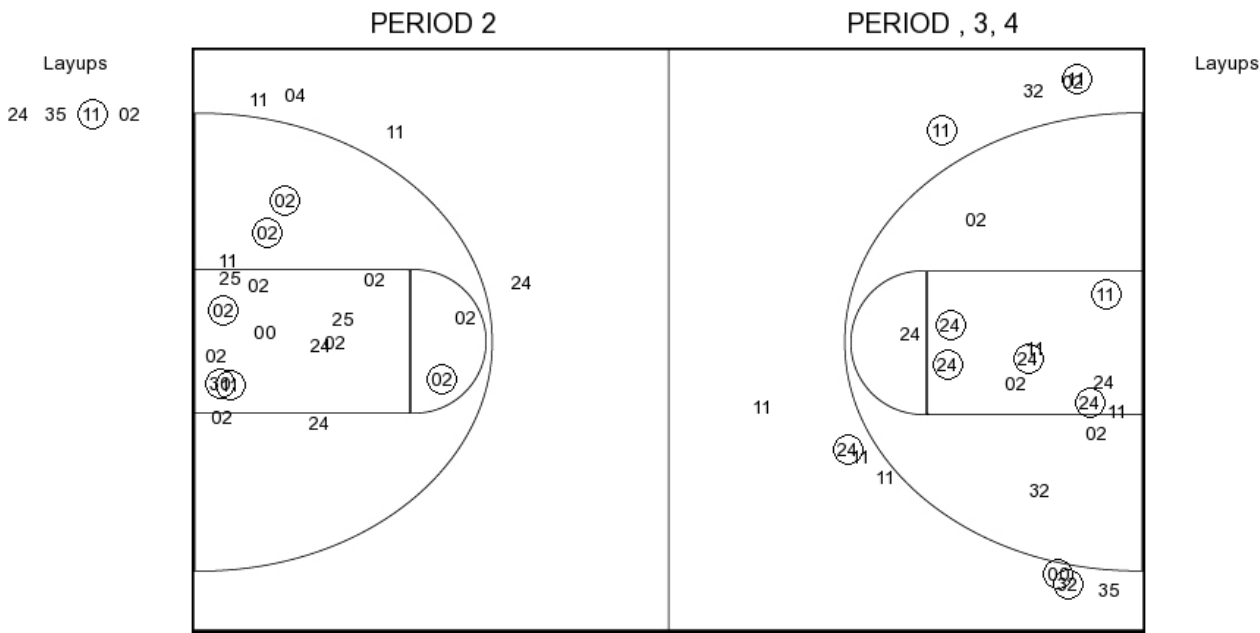
OSU PERIOD 1

FG Made	11
FG Attempted	34
3PFG Made	1
3PFG Attempted	9

OSU PERIOD 2

FG Made	
FG Attempted	
3PFG Made	
3PFG Attempted	

Texas Tech



TTU PERIOD 1

FG Made	7
FG Attempted	27
3PFG Made	0
3PFG Attempted	4

TTU PERIOD 2

FG Made	
FG Attempted	
3PFG Made	
3PFG Attempted	