



# TEXAS TECH VS. GRAMBLING STATE

12/18/2015

Lubbock, TX (United Supermarkets Arena)

## FINAL STATS

**Texas Tech**

*(8-2)*

**70**

**Grambling State**

*(2-7)*

**55**

*Start Time: 6:30 p.m.*

*Officials: Felicia Grinter, Amy Bonner, Billy Smith*

*Attendance: 3707*

**Official Basketball Box Score -- Game Totals -- Final Statistics**  
**Grambling State vs Texas Tech**  
**12/18/2015 6:30 p.m. at Lubbock, TX (United Supermarkets Arena)**

**Grambling State 55 - 2-7**

##	Player	S	Total		3-Ptr		FT-FTA	Rebounds			PF	TP	A	TO	Blk	Stl	Min
			FG	FGA	3PT	FG-FGA		Off Reb	Def Reb	Tot Reb							
04	NEAL, MONISHA	g	4	10	1	3	0-4	2	5	7	2	9	2	3	0	3	38
12	ANDREWS, BRE'NAE	g	4	14	1	7	3-4	0	3	3	2	12	1	0	0	2	40
13	BOYD, JAZMINE	g	0	6	0	5	0-0	1	3	4	3	0	3	1	0	1	22
23	TAYLOR, DARAE	g	1	2	0	0	1-2	0	0	0	1	3	0	1	0	1	8
33	THOMPSON, JOHN'EA	f	3	9	1	1	1-1	2	3	5	3	8	1	0	0	2	24
05	HILL, SHAKYLA		6	7	0	0	2-2	1	4	5	3	14	2	1	0	4	24
10	JONES, KIANA		0	1	0	0	0-0	0	0	0	0	0	0	0	0	0	6
11	LEWIS, CHANTIARA		2	7	1	3	0-0	2	2	4	3	5	1	4	0	1	26
20	PARSONS, TAKERRA		0	0	0	0	2-2	0	0	0	0	2	0	2	0	0	7
24	SMITH, JANAE		0	0	0	0	0-0	0	0	0	0	0	0	0	0	0	0
25	KENNEDY, ALIAH		1	3	0	0	0-0	0	1	1	1	2	0	1	0	0	5
TEAM								2	0	2	0			0			
TOTALS			21	59	4	19	9-15	10	21	31	18	55	10	13	0	14	200

FG % 1st Half: 7-25 28.0% 2nd Half: 14-34 41.2% Game: 21-59 35.6% Deadball  
 3FG % 1st Half: 2-10 20.0% 2nd Half: 2-9 22.2% Game: 4-19 21.1% Rebounds  
 FT % 1st Half: 2-2 100.0% 2nd Half: 7-13 53.8% Game: 9-15 60.0% 4,0

**Texas Tech 70 - 8-2**

##	Player	S	Total		3-Ptr		FT-FTA	Rebounds			PF	TP	A	TO	Blk	Stl	Min
			FG	FGA	3PT	FG-FGA		Off Reb	Def Reb	Tot Reb							
02	COOKTAYLOR, IVONNE	g	3	15	0	1	1-1	2	7	9	2	7	1	4	0	1	32
11	BROOKS, RAYVEN	g	3	15	2	10	5-6	2	3	5	4	13	4	3	1	1	36
24	DEAN, JAPREECE	g	8	13	1	2	3-3	3	2	5	4	20	4	1	0	0	35
25	GRANT, LEASHJA	c	9	14	0	0	0-0	5	3	8	1	18	0	2	1	1	19
35	ROE, JAMIE	f	0	0	0	0	0-0	3	3	6	3	0	2	3	0	1	14
00	BLAIRE, BRIELLE		2	3	0	1	0-0	0	0	0	0	4	0	0	0	0	8
04	BOWSER, RYANN		0	0	0	0	0-0	0	0	0	0	0	1	3	0	0	19
30	SANDERS, ZURI		0	4	0	0	0-0	4	3	7	1	0	0	2	0	0	12
32	OLABODE, DAYO		3	5	2	2	0-0	1	7	8	3	8	0	2	0	0	25
TEAM								1	2	3	0			0			
TOTALS			28	69	5	16	9-10	21	30	51	18	70	12	20	2	4	200

FG % 1st Half: 13-38 34.2% 2nd Half: 15-31 48.4% Game: 28-69 40.6% Deadball  
 3FG % 1st Half: 2-9 22.2% 2nd Half: 3-7 42.9% Game: 5-16 31.3% Rebounds  
 FT % 1st Half: 3-3 100.0% 2nd Half: 6-7 85.7% Game: 9-10 90.0% 0,0

Officials: Felicia Grinter, Amy Bonner, Billy Smith  
 Technical Fouls: Grambling State- None. Texas Tech- None.  
 Attendance: 3707

Score by periods	1st	2nd	3rd	4th	Total
Grambling State	14	4	17	20	55
Texas Tech	14	17	16	23	70

Points	In	Off	2nd	Fast	Bench
	Paint	Off T/O	2nd Chance	Fast Break	
GSU	24	21	12	2	23
TTU	34	14	12	4	12

Last FG - GSU 4th-02:06, TTU 4th-01:07.  
 Largest lead - Grambling State by 4 1st-01:03; Texas Tech by 20 3rd-07:00  
 GSU led for 4:47. TTU led for 33:45. Game was tied for 1:28.

Score tied - 1 times  
 Lead changed - 4 times

**Official Basketball Box Score -- Game Totals -- First Half Statistics**  
**Grambling State vs Texas Tech**  
**12/18/2015 6:30 p.m. at Lubbock, TX (United Supermarkets Arena)**

**Grambling State 18 • 2-7**

##	Player	S	Total	3-Ptr	FT-FTA	Rebounds			PF	TP	A	TO	Blk	Stl	Min
			FG-FGA	3PT FG-FGA		Off Reb	Def Reb	Tot Reb							
04	NEAL, MONISHA	g	2-4	1-2	0-0	0	2	2	1	5	0	2	0	1	18
12	ANDREWS, BRE'NAE	g	2-8	1-4	0-0	0	3	3	2	5	0	0	0	1	20
13	BOYD, JAZMINE	g	0-3	0-3	0-0	0	2	2	1	0	2	0	0	1	15
23	TAYLOR, DARAE	g	1-2	0-0	0-0	0	0	0	1	2	0	1	0	1	7
33	THOMPSON, JOHN'EA	f	0-3	0-0	0-0	1	2	3	1	0	0	0	0	0	10
05	HILL, SHAKYLA		1-1	0-0	0-0	0	1	1	1	2	2	1	0	0	7
10	JONES, KIANA		0-0	0-0	0-0	0	0	0	0	0	0	0	0	0	5
11	LEWIS, CHANTIARA		1-4	0-1	0-0	1	2	3	0	2	0	4	0	1	14
20	PARSONS, TAKERRA		0-0	0-0	2-2	0	0	0	0	2	0	1	0	0	4
24	SMITH, JANAE		0-0	0-0	0-0	0	0	0	0	0	0	0	0	0	0
25	KENNEDY, ALIAH		0-0	0-0	0-0	0	0	0	0	0	0	0	0	0	0
	TEAM					1	0	1	0			0			
Totals			7-25	2-10	2-2	3	12	15	7	18	4	9	0	5	100

FG %      Half:      7-25                      28.0%  
3FG %     Half:      2-10                      20.0%  
FT %      Half:      2-2                        100.0%

**Texas Tech 31 • 8-2**

##	Player	S	Total	3-Ptr	FT-FTA	Rebounds			PF	TP	A	TO	Blk	Stl	Min
			FG-FGA	3PT FG-FGA		Off Reb	Def Reb	Tot Reb							
02	COOKTAYLOR, IVONNE	g	3-11	0-1	1-1	0	4	4	1	7	1	2	0	1	15
11	BROOKS, RAYVEN	g	2-8	1-5	2-2	2	3	5	2	7	1	1	1	0	18
24	DEAN, JAPREECE	g	3-4	1-2	0-0	2	0	2	0	7	4	0	0	0	17
25	GRANT, LEASHJA	c	3-6	0-0	0-0	2	0	2	1	6	0	1	0	0	5
35	ROE, JAMIE	f	0-0	0-0	0-0	1	2	3	2	0	1	1	0	0	7
00	BLAIRE, BRIELLE		2-3	0-1	0-0	0	0	0	0	4	0	0	0	0	5
04	BOWSER, RYANN		0-0	0-0	0-0	0	0	0	0	0	1	0	0	0	10
30	SANDERS, ZURI		0-4	0-0	0-0	4	3	7	0	0	0	2	0	0	11
32	OLABODE, DAYO		0-2	0-0	0-0	1	1	2	1	0	0	0	0	0	12
	TEAM					1	2	3	0			0			
Totals			13-38	2-9	3-3	13	15	28	7	31	8	7	1	1	100

FG %      Half:      13-38                      34.2%  
3FG %     Half:      2-9                        22.2%  
FT %      Half:      3-3                        100.0%

Officials: Felicia Grinter, Amy Bonner, Billy Smith  
Technical Fouls: Grambling State- None. Texas Tech- None.

**Grambling State vs Texas Tech**  
**12/18/2015; 6:30 p.m. at Lubbock, TX (United Supermarkets Arena)**  
**Period 1 Play-By-Play**

VISITORS: Grambling State	Time	Score	Margin	HOME: Texas Tech
	09:34			MISSED JUMPER by COOKTAYLOR,IVONNE
	09:34			REBOUND (OFF) by ROE,JAMIE
	09:30			TURNOVER by ROE,JAMIE
STEAL by TAYLOR,DARAE	09:27			
MISSED 3PTR by BOYD,JAZMINE	09:17			
	09:17			REBOUND (DEF) by TEAM
	09:05	2-0	H 2	GOOD! LAYUP by GRANT,LEASHJA [PNT]
	09:05			ASSIST by BROOKS,RAYVEN
MISSED JUMPER by ANDREWS,BRE'NAE	08:42			
	08:42			REBOUND (DEF) by ROE,JAMIE
	08:24	4-0	H 4	GOOD! LAYUP by GRANT,LEASHJA [PNT]
	08:24			ASSIST by ROE,JAMIE
GOOD! JUMPER by ANDREWS,BRE'NAE [PNT]	08:08	4-2	H 2	
ASSIST by BOYD,JAZMINE	08:08			
	07:56			MISSED LAYUP by GRANT,LEASHJA
	07:56			REBOUND (OFF) by BROOKS,RAYVEN
	07:54			TURNOVER by BROOKS,RAYVEN
STEAL by BOYD,JAZMINE	07:53			
MISSED JUMPER by THOMPSON,JOHN'EA	07:44			
	07:44			REBOUND (DEF) by BROOKS,RAYVEN
	07:40	6-2	H 4	GOOD! JUMPER by COOKTAYLOR,IVONNE
	07:40			ASSIST by DEAN,JAPREECE
MISSED 3PTR by NEAL,MONISHA	07:07			
	07:07			REBOUND (DEF) by COOKTAYLOR,IVONNE
	06:49			TURNOVER by GRANT,LEASHJA
	06:49			FOUL by GRANT,LEASHJA
SUB OUT: THOMPSON,JOHN'EA	06:49			
	06:49			SUB IN: SANDERS,ZURI
	06:49			SUB OUT: GRANT,LEASHJA
GOOD! JUMPER by TAYLOR,DARAE	06:33	6-4	H 2	
	06:14	8-4	H 4	GOOD! JUMPER by DEAN,JAPREECE [PNT]
MISSED JUMPER by TAYLOR,DARAE	06:11			
	06:11			REBOUND (DEF) by COOKTAYLOR,IVONNE
	06:00			MISSED JUMPER by COOKTAYLOR,IVONNE
REBOUND (DEF) by ANDREWS,BRE'NAE	06:00			
GOOD! JUMPER by NEAL,MONISHA	05:37	8-6	H 2	
	05:34			MISSED 3PTR by BROOKS,RAYVEN
REBOUND (DEF) by LEWIS,CHANTIARA	05:34			
	05:29			FOUL by ROE,JAMIE
SUB IN: JONES,KIANA	05:29			
SUB OUT: TAYLOR,DARAE	05:29			
	05:29			SUB IN: OLABODE,DAYO
	05:29			SUB OUT: ROE,JAMIE
MISSED JUMPER by NEAL,MONISHA	05:07			
	05:07			REBOUND (DEF) by SANDERS,ZURI
	04:47			MISSED JUMPER by COOKTAYLOR,IVONNE
	04:47			REBOUND (OFF) by SANDERS,ZURI
	04:37			MISSED 3PTR by BROOKS,RAYVEN
REBOUND (DEF) by BOYD,JAZMINE	04:37			
GOOD! 3PTR by NEAL,MONISHA	04:17	8-9	V 1	
ASSIST by BOYD,JAZMINE	04:17			
	04:13			MISSED 3PTR by BROOKS,RAYVEN
REBOUND (DEF) by NEAL,MONISHA	04:13			

VISITORS: Grambling State	Time	Score	Margin	HOME: Texas Tech
TURNOVER by LEWIS,CHANTIARA	04:05			
	04:05			TIMEOUT MEDIA
	04:05			SUB IN: BOWSER,RYANN
	04:05			SUB OUT: DEAN,JAPREECE
	03:45			MISSED LAYUP by SANDERS,ZURI
REBOUND (DEF) by LEWIS,CHANTIARA	03:45			
	03:43			FOUL by BROOKS,RAYVEN
MISSED 3PTR by ANDREWS,BRE'NAE	03:22			
	03:22			REBOUND (DEF) by BROOKS,RAYVEN
	03:06			MISSED LAYUP by OLABODE,DAYO
	03:06			REBOUND (OFF) by SANDERS,ZURI
	03:02			MISSED LAYUP by SANDERS,ZURI
	03:02			REBOUND (OFF) by SANDERS,ZURI
	02:57			TURNOVER by SANDERS,ZURI
STEAL by LEWIS,CHANTIARA	02:57			
MISSED LAYUP by LEWIS,CHANTIARA	02:53			
	02:53			REBOUND (DEF) by COOKTAYLOR,IVONNE
	02:45			TURNOVER by COOKTAYLOR,IVONNE
STEAL by ANDREWS,BRE'NAE	02:43			
TURNOVER by LEWIS,CHANTIARA	02:22			
SUB IN: HILL,SHAKYLA	02:22			
SUB OUT: JONES,KIANA	02:22			
	02:22			SUB IN: BLAIRE,BRIELLE
	02:22			SUB IN: DEAN,JAPREECE
	02:22			SUB OUT: COOKTAYLOR,IVONNE
	02:22			SUB OUT: SANDERS,ZURI
	02:17	10-9	H 1	GOOD! LAYUP by BLAIRE,BRIELLE [PNT]
	02:16			ASSIST by DEAN,JAPREECE
GOOD! JUMPER by LEWIS,CHANTIARA [PNT]	01:52	10-11	V 1	
ASSIST by HILL,SHAKYLA	01:52			
FOUL by ANDREWS,BRE'NAE	01:32			
	01:15			MISSED 3PTR by BLAIRE,BRIELLE
REBOUND (DEF) by ANDREWS,BRE'NAE	01:15			
MISSED JUMPER by ANDREWS,BRE'NAE	01:10			
	01:10			BLOCK by BROOKS,RAYVEN
REBOUND (OFF) by TEAM	01:10			
GOOD! 3PTR by ANDREWS,BRE'NAE	01:03	10-14	V 4	
ASSIST by HILL,SHAKYLA	01:03			
	00:40	12-14	V 2	GOOD! LAYUP by BLAIRE,BRIELLE [PNT]
MISSED JUMPER by ANDREWS,BRE'NAE	00:14			
	00:14			REBOUND (DEF) by BROOKS,RAYVEN
	00:04	14-14	T	GOOD! JUMPER by DEAN,JAPREECE [PNT]

Grambling State 14, Texas Tech 14

Period 1-only	In Paint	Off T/O	2nd Chance	Fast Break	Bench	
GSU	4	2	3	0	2	Score tied - 0 times
TTU	12	2	0	0	4	Lead changed - 4 times

**Grambling State vs Texas Tech**  
**12/18/2015; 6:30 p.m. at Lubbock, TX (United Supermarkets Arena)**  
**Period 2 Play-By-Play**

VISITORS: Grambling State	Time	Score	Margin	HOME: Texas Tech
SUB IN: LEWIS,CHANTIARA	10:00			
SUB IN: HILL,SHAKYLA	10:00			
SUB OUT: BOYD,JAZMINE	10:00			
SUB OUT: TAYLOR,DARAE	10:00			
	10:00			SUB IN: BLAIRE,BRIELLE
	10:00			SUB IN: BOWSER,RYANN
	10:00			SUB IN: OLABODE,DAYO
	10:00			SUB OUT: COOKTAYLOR,IVONNE
	10:00			SUB OUT: GRANT,LEASHJA
	10:00			SUB OUT: ROE,JAMIE
GOOD! JUMPER by HILL,SHAKYLA [PNT]	09:31	14-16	V 2	
	09:17			MISSED JUMPER by BROOKS,RAYVEN
	09:17			REBOUND (OFF) by BROOKS,RAYVEN
	09:16			MISSED JUMPER by BROOKS,RAYVEN
REBOUND (DEF) by NEAL,MONISHA	09:16			
MISSED 3PTR by LEWIS,CHANTIARA	09:03			
	09:03			REBOUND (DEF) by TEAM
	09:01			SUB IN: COOKTAYLOR,IVONNE
	09:01			SUB IN: ROE,JAMIE
	09:01			SUB OUT: BLAIRE,BRIELLE
	09:01			SUB OUT: BOWSER,RYANN
	08:33			TURNOVER by COOKTAYLOR,IVONNE
STEAL by NEAL,MONISHA	08:33			
TURNOVER by NEAL,MONISHA	08:33			
	08:32	17-16	H 1	GOOD! 3PTR by DEAN,JAPREECE
TURNOVER by LEWIS,CHANTIARA	08:14			
	08:12			STEAL by COOKTAYLOR,IVONNE
	08:09			MISSED 3PTR by COOKTAYLOR,IVONNE
	08:09			REBOUND (OFF) by OLABODE,DAYO
	07:57	19-16	H 3	GOOD! LAYUP by BROOKS,RAYVEN [PNT]
	07:54			ASSIST by COOKTAYLOR,IVONNE
TIMEOUT 30SEC	07:49			
SUB IN: PARSONS,TAKERRA	07:49			
SUB OUT: NEAL,MONISHA	07:49			
TURNOVER by PARSONS,TAKERRA	07:34			
	07:24			MISSED JUMPER by COOKTAYLOR,IVONNE
REBOUND (DEF) by THOMPSON,JOHN'EA	07:24			
MISSED 3PTR by ANDREWS,BRE'NAE	07:13			
	07:13			REBOUND (DEF) by ROE,JAMIE
	07:09			FOUL by ROE,JAMIE
	07:09			SUB IN: SANDERS,ZURI
	07:09			SUB OUT: ROE,JAMIE
	06:57			MISSED 3PTR by BROOKS,RAYVEN
	06:57			REBOUND (OFF) by DEAN,JAPREECE
	06:36	21-16	H 5	GOOD! JUMPER by COOKTAYLOR,IVONNE
	06:36			ASSIST by DEAN,JAPREECE
	06:18			FOUL by OLABODE,DAYO
SUB IN: NEAL,MONISHA	06:18			
SUB OUT: LEWIS,CHANTIARA	06:18			
	06:18			SUB IN: BLAIRE,BRIELLE
	06:18			SUB OUT: OLABODE,DAYO
TURNOVER by NEAL,MONISHA	06:13			
FOUL by NEAL,MONISHA	06:13			

VISITORS: Grambling State	Time	Score	Margin	HOME: Texas Tech
	06:05			MISSED LAYUP by COOKTAYLOR,IVONNE
	06:05			REBOUND (OFF) by TEAM
SUB IN: BOYD,JAZMINE	06:05			
SUB OUT: PARSONS,TAKERRA	06:05			
FOUL by THOMPSON,JOHN'EA	06:02			
SUB IN: JONES,KIANA	06:02			
SUB OUT: HILL,SHAKYLA	06:02			
	06:01			MISSED JUMPER by SANDERS,ZURI
	05:56			REBOUND (OFF) by SANDERS,ZURI
	05:55			MISSED JUMPER by SANDERS,ZURI
REBOUND (DEF) by THOMPSON,JOHN'EA	05:55			
	05:37			FOUL by COOKTAYLOR,IVONNE
	05:28			SUB IN: GRANT,LEASHJA
	05:28			SUB OUT: BLAIRE,BRIELLE
	05:16			SUB IN: BOWSER,RYANN
	05:16			SUB OUT: BROOKS,RAYVEN
MISSED 3PTR by BOYD,JAZMINE	04:57			
	04:57			REBOUND (DEF) by SANDERS,ZURI
	04:47			MISSED JUMPER by COOKTAYLOR,IVONNE
REBOUND (DEF) by BOYD,JAZMINE	04:47			
MISSED JUMPER by THOMPSON,JOHN'EA	04:29			
	04:29			REBOUND (DEF) by COOKTAYLOR,IVONNE
	04:11			MISSED LAYUP by GRANT,LEASHJA
	04:11			REBOUND (OFF) by DEAN,JAPREECE
	03:49			MISSED 3PTR by DEAN,JAPREECE
	03:49			REBOUND (OFF) by GRANT,LEASHJA
	03:42			MISSED LAYUP by GRANT,LEASHJA
	03:42			REBOUND (OFF) by GRANT,LEASHJA
FOUL by ANDREWS,BRE'NAE	03:41			
SUB IN: TAYLOR,DARAE	03:41			
SUB IN: LEWIS,CHANTIARA	03:41			
SUB OUT: BOYD,JAZMINE	03:41			
SUB OUT: JONES,KIANA	03:41			
	03:40	23-16	H 7	GOOD! LAYUP by GRANT,LEASHJA [PNT]
	03:40			ASSIST by BOWSER,RYANN
MISSED 3PTR by ANDREWS,BRE'NAE	03:28			
REBOUND (OFF) by LEWIS,CHANTIARA	03:28			
MISSED JUMPER by LEWIS,CHANTIARA	03:24			
REBOUND (OFF) by THOMPSON,JOHN'EA	03:24			
MISSED JUMPER by THOMPSON,JOHN'EA	03:22			
	03:22			REBOUND (DEF) by SANDERS,ZURI
	03:12	25-16	H 9	GOOD! LAYUP by COOKTAYLOR,IVONNE [FB/PNT]
FOUL by TAYLOR,DARAE	03:12			
TIMEOUT 30SEC	03:12			
	03:12	26-16	H 10	GOOD! FT by COOKTAYLOR,IVONNE
SUB IN: BOYD,JAZMINE	03:12			
SUB OUT: THOMPSON,JOHN'EA	03:12			
	03:12			SUB IN: OLABODE,DAYO
	03:12			SUB IN: BROOKS,RAYVEN
	03:12			SUB OUT: COOKTAYLOR,IVONNE
	03:12			SUB OUT: GRANT,LEASHJA
MISSED 3PTR by BOYD,JAZMINE	02:19			
	02:19			REBOUND (DEF) by OLABODE,DAYO
	02:09	29-16	H 13	GOOD! 3PTR by BROOKS,RAYVEN
	02:09			ASSIST by DEAN,JAPREECE
TURNOVER by TAYLOR,DARAE	01:58			
SUB IN: PARSONS,TAKERRA	01:58			
SUB OUT: TAYLOR,DARAE	01:58			

VISITORS: Grambling State	Time	Score	Margin	HOME: Texas Tech
	01:39			TURNOVER by SANDERS,ZURI
TURNOVER by LEWIS,CHANTIARA	01:16			
FOUL by BOYD,JAZMINE	01:04			
	01:04	30-16	H 14	GOOD! FT by BROOKS,RAYVEN
	01:04	31-16	H 15	GOOD! FT by BROOKS,RAYVEN
SUB IN: HILL,SHAKYLA	01:04			
SUB OUT: BOYD,JAZMINE	01:04			
	01:04			SUB IN: COOKTAYLOR,IVONNE
	01:04			SUB OUT: DEAN,JAPREECE
TURNOVER by HILL,SHAKYLA	00:51			
FOUL by HILL,SHAKYLA	00:51			
	00:23			MISSED JUMPER by COOKTAYLOR,IVONNE
REBOUND (DEF) by HILL,SHAKYLA	00:23			
	00:22			FOUL by BROOKS,RAYVEN
GOOD! FT by PARSONS,TAKERRA	00:22	31-17	H 14	
GOOD! FT by PARSONS,TAKERRA	00:22	31-18	H 13	
	00:22			TIMEOUT 30SEC
SUB IN: SMITH,JANAE	00:22			
SUB OUT: NEAL,MONISHA	00:22			
	00:22			SUB IN: DEAN,JAPREECE
	00:22			SUB OUT: BROOKS,RAYVEN
	00:05			MISSED JUMPER by OLABODE,DAYO
REBOUND (DEF) by ANDREWS,BRE'NAE	00:05			

Grambling State 18, Texas Tech 31

Period 2-only	In Paint	Off T/O	2nd Chance	Fast Break	Bench	
GSU	2	0	0	0	4	Score tied - 0 times
TTU	6	7	6	2	0	Lead changed - 0 times



**Official Basketball Box Score -- Game Totals -- Second Half Statistics**  
**Grambling State vs Texas Tech**  
**12/18/2015 6:30 p.m. at Lubbock, TX (United Supermarkets Arena)**

**Grambling State 37 • 2-7**

##	Player	S	Total		3-Ptr		FT-FTA		Rebounds			PF	TP	A	TO	Blk	Stl	Min
			FG	FGA	3PT	FGA	FT	FTA	Off Reb	Def Reb	Tot Reb							
04	NEAL, MONISHA	g	2	6	0	1	0	4	2	3	5	1	4	2	1	0	2	20
12	ANDREWS, BRE'NAE	g	2	6	0	3	3	4	0	0	0	0	7	1	0	0	1	20
13	BOYD, JAZMINE	g	0	3	0	2	0	0	1	1	2	2	0	1	1	0	0	7
23	TAYLOR, DARAE	g	0	0	0	0	1	2	0	0	0	0	1	0	0	0	0	1
33	THOMPSON, JOHN'EA	f	3	6	1	1	1	1	1	1	2	2	8	1	0	0	2	14
05	HILL, SHAKYLA		5	6	0	0	2	2	1	3	4	2	12	0	0	0	4	17
10	JONES, KIANA		0	1	0	0	0	0	0	0	0	0	0	0	0	0	0	1
11	LEWIS, CHANTIARA		1	3	1	2	0	0	1	0	1	3	3	1	0	0	0	12
20	PARSONS, TAKERRA		0	0	0	0	0	0	0	0	0	0	0	0	1	0	0	3
24	SMITH, JANAE		0	0	0	0	0	0	0	0	0	0	0	0	0	0	0	0
25	KENNEDY, ALIAH		1	3	0	0	0	0	0	1	1	1	2	0	1	0	0	5
TEAM									1	0	1	0			0			
Totals			14	34	2	9	7	13	7	9	16	11	37	6	4	0	9	100

FG %      Half:      14-34                      41.2%  
 3FG %    Half:      2-9                        20.0%  
 FT %      Half:      7-13                      53.8%

**Texas Tech 39 • 8-2**

##	Player	S	Total		3-Ptr		FT-FTA		Rebounds			PF	TP	A	TO	Blk	Stl	Min
			FG	FGA	3PT	FGA	FT	FTA	Off Reb	Def Reb	Tot Reb							
02	COOKTAYLOR, IVONNE	g	0	4	0	0	0	0	2	3	5	1	0	0	2	0	0	17
11	BROOKS, RAYVEN	g	1	7	1	5	3	4	0	0	0	2	6	3	2	0	1	18
24	DEAN, JAPREECE	g	5	9	0	0	3	3	1	2	3	4	13	0	1	0	0	18
25	GRANT, LEASHJA	c	6	8	0	0	0	0	3	3	6	0	12	0	1	1	1	14
35	ROE, JAMIE	f	0	0	0	0	0	0	2	1	3	1	0	1	2	0	1	7
00	BLAIRE, BRIELLE		0	0	0	0	0	0	0	0	0	0	0	0	0	0	0	3
04	BOWSER, RYANN		0	0	0	0	0	0	0	0	0	0	0	0	3	0	0	9
30	SANDERS, ZURI		0	0	0	0	0	0	0	0	0	1	0	0	0	0	0	1
32	OLABODE, DAYO		3	3	2	2	0	0	0	6	6	2	8	0	2	0	0	13
TEAM									0	0	0	0			0			
Totals			15	31	3	7	6	7	8	15	23	11	39	4	13	1	3	100

FG %      Half:      15-31                      48.4%  
 3FG %    Half:      3-7                        22.2%  
 FT %      Half:      6-7                        85.7%

Officials: Felicia Grinter, Amy Bonner, Billy Smith  
 Technical Fouls: Grambling State- None. Texas Tech- None.

**Grambling State vs Texas Tech**  
**12/18/2015; 6:30 p.m. at Lubbock, TX (United Supermarkets Arena)**  
**Period 3 Play-By-Play**

VISITORS: Grambling State	Time	Score	Margin	HOME: Texas Tech
SUB IN: JONES,KIANA	10:00			
SUB OUT: TAYLOR,DARAE	10:00			
	10:00			SUB IN: BOWSER,RYANN
	10:00			SUB OUT: DEAN,JAPREECE
	09:48			MISSED JUMPER by GRANT,LEASHJA
	09:48			REBOUND (OFF) by GRANT,LEASHJA
	09:45	33-18	H 15	GOOD! JUMPER by GRANT,LEASHJA [PNT]
MISSED JUMPER by JONES,KIANA	09:23			
	09:23			REBOUND (DEF) by ROE,JAMIE
	09:14			MISSED 3PTR by BROOKS,RAYVEN
	09:14			REBOUND (OFF) by ROE,JAMIE
	09:10	35-18	H 17	GOOD! JUMPER by DEAN,JAPREECE
TIMEOUT 30SEC	09:07			
SUB IN: KENNEDY,ALIAH	09:07			
SUB IN: LEWIS,CHANTIARA	09:07			
SUB OUT: JONES,KIANA	09:07			
SUB OUT: THOMPSON,JOHN'EA	09:07			
	08:58			SUB IN: DEAN,JAPREECE
	08:58			SUB OUT: BOWSER,RYANN
MISSED JUMPER by NEAL,MONISHA	08:55			
REBOUND (OFF) by LEWIS,CHANTIARA	08:55			
TURNOVER by KENNEDY,ALIAH	08:50			
	08:49			STEAL by GRANT,LEASHJA
	08:44			MISSED LAYUP by DEAN,JAPREECE
	08:44			REBOUND (OFF) by COOKTAYLOR,IVONNE
FOUL by NEAL,MONISHA	08:39			
	08:28			MISSED JUMPER by DEAN,JAPREECE
REBOUND (DEF) by KENNEDY,ALIAH	08:28			
GOOD! LAYUP by KENNEDY,ALIAH [PNT]	08:18	35-20	H 15	
ASSIST by BOYD,JAZMINE	08:18			
	08:04			MISSED JUMPER by GRANT,LEASHJA
	08:04			REBOUND (OFF) by COOKTAYLOR,IVONNE
	08:02			MISSED JUMPER by COOKTAYLOR,IVONNE
REBOUND (DEF) by NEAL,MONISHA	08:02			
MISSED 3PTR by ANDREWS,BRE'NAE	07:58			
	07:58			REBOUND (DEF) by COOKTAYLOR,IVONNE
FOUL by LEWIS,CHANTIARA	07:56			
	07:43	37-20	H 17	GOOD! JUMPER by DEAN,JAPREECE [PNT]
TURNOVER by BOYD,JAZMINE	07:17			
SUB IN: HILL,SHAKYLA	07:17			
SUB OUT: BOYD,JAZMINE	07:17			
	07:00	40-20	H 20	GOOD! 3PTR by BROOKS,RAYVEN
MISSED JUMPER by KENNEDY,ALIAH	06:42			
REBOUND (OFF) by NEAL,MONISHA	06:42			
GOOD! 3PTR by LEWIS,CHANTIARA	06:36	40-23	H 17	
ASSIST by ANDREWS,BRE'NAE	06:36			
	06:05			SUB IN: OLABODE,DAYO
	06:05			SUB OUT: ROE,JAMIE
	05:58			MISSED 3PTR by BROOKS,RAYVEN
REBOUND (DEF) by HILL,SHAKYLA	05:58			
GOOD! LAYUP by HILL,SHAKYLA [PNT]	05:49	40-25	H 15	
	05:30			TIMEOUT 30SEC
	05:20	43-25	H 18	GOOD! 3PTR by OLABODE,DAYO

VISITORS: Grambling State	Time	Score	Margin	HOME: Texas Tech
GOOD! JUMPER by ANDREWS,BRE'NAE	04:58	43-27	H 16	
	04:41			MISSED JUMPER by COOKTAYLOR,IVONNE
REBOUND (DEF) by HILL,SHAKYLA	04:41			
	04:40			FOUL by COOKTAYLOR,IVONNE
	04:40			SUB IN: SANDERS,ZURI
	04:40			SUB IN: BOWSER,RYANN
	04:40			SUB OUT: BROOKS,RAYVEN
	04:40			SUB OUT: GRANT,LEASHJA
	04:26			FOUL by SANDERS,ZURI
MISSED 3PTR by LEWIS,CHANTIARA	04:18			
	04:18			REBOUND (DEF) by DEAN,JAPREECE
	04:07			MISSED JUMPER by DEAN,JAPREECE
REBOUND (DEF) by NEAL,MONISHA	04:07			
MISSED JUMPER by KENNEDY,ALIAH	03:58			
	03:58			REBOUND (DEF) by OLABODE,DAYO
FOUL by KENNEDY,ALIAH	03:58			
	03:46			TURNOVER by OLABODE,DAYO
	03:46			FOUL by OLABODE,DAYO
SUB IN: THOMPSON,JOHN'EA	03:46			
SUB OUT: KENNEDY,ALIAH	03:46			
GOOD! JUMPER by HILL,SHAKYLA [PNT]	03:35	43-29	H 14	
ASSIST by THOMPSON,JOHN'EA	03:35			
	03:15			TURNOVER by BOWSER,RYANN
	03:15			SUB IN: BLAIRE,BRIELLE
	03:15			SUB OUT: SANDERS,ZURI
MISSED 3PTR by NEAL,MONISHA	03:06			
	03:06			REBOUND (DEF) by COOKTAYLOR,IVONNE
FOUL by LEWIS,CHANTIARA	02:51			
SUB IN: PARSONS,TAKERRA	02:51			
SUB OUT: LEWIS,CHANTIARA	02:51			
	02:51			SUB IN: BROOKS,RAYVEN
	02:51			SUB OUT: DEAN,JAPREECE
	02:28			MISSED JUMPER by COOKTAYLOR,IVONNE
REBOUND (DEF) by HILL,SHAKYLA	02:28			
GOOD! LAYUP by THOMPSON,JOHN'EA [PNT]	02:18	43-31	H 12	
ASSIST by NEAL,MONISHA	02:18			
	02:09			TIMEOUT 30SEC
	01:50			TURNOVER by BOWSER,RYANN
STEAL by ANDREWS,BRE'NAE	01:48			
GOOD! JUMPER by ANDREWS,BRE'NAE	01:37	43-33	H 10	
	01:29			TURNOVER by OLABODE,DAYO
	01:29			SUB IN: ROE,JAMIE
	01:29			SUB IN: DEAN,JAPREECE
	01:29			SUB OUT: BOWSER,RYANN
	01:29			SUB OUT: OLABODE,DAYO
MISSED JUMPER by NEAL,MONISHA	01:22			
REBOUND (OFF) by THOMPSON,JOHN'EA	01:22			
MISSED JUMPER by THOMPSON,JOHN'EA	01:18			
REBOUND (OFF) by HILL,SHAKYLA	01:18			
GOOD! JUMPER by HILL,SHAKYLA [PNT]	01:15	43-35	H 8	
	01:01			TURNOVER by COOKTAYLOR,IVONNE
STEAL by THOMPSON,JOHN'EA	01:01			
	01:01			SUB IN: GRANT,LEASHJA
	01:01			SUB OUT: BLAIRE,BRIELLE
MISSED 3PTR by ANDREWS,BRE'NAE	00:52			
	00:52			REBOUND (DEF) by GRANT,LEASHJA
	00:29			MISSED JUMPER by COOKTAYLOR,IVONNE
	00:29			REBOUND (OFF) by GRANT,LEASHJA

VISITORS: Grambling State	Time	Score	Margin	HOME: Texas Tech
	00:25	45-35	H 10	GOOD! JUMPER by GRANT,LEASHJA [PNT]
TURNOVER by PARSONS,TAKERRA	00:18			
	00:17			STEAL by BROOKS,RAYVEN
	00:14			MISSED JUMPER by BROOKS,RAYVEN
	00:14			REBOUND (OFF) by DEAN,JAPREECE
	00:11	47-35	H 12	GOOD! LAYUP by DEAN,JAPREECE [PNT]

Grambling State 55, Texas Tech 70

Period 3-only	In Paint	Off T/O	2nd Chance	Fast Break	Bench	
GSU	10	6	5	0	11	Score tied - 0 times
TTU	8	5	8	0	3	Lead changed - 0 times

**Grambling State vs Texas Tech**  
**12/18/2015; 6:30 p.m. at Lubbock, TX (United Supermarkets Arena)**  
**Period 4 Play-By-Play**

VISITORS: Grambling State	Time	Score	Margin	HOME: Texas Tech
SUB IN: LEWIS,CHANTIARA	10:00			
SUB IN: HILL,SHAKYLA	10:00			
SUB OUT: BOYD,JAZMINE	10:00			
SUB OUT: TAYLOR,DARAE	10:00			
	09:53	49-35	H 14	GOOD! JUMPER by GRANT,LEASHJA [PNT]
	09:53			ASSIST by ROE,JAMIE
TURNOVER by NEAL,MONISHA	09:29			
	09:28			STEAL by ROE,JAMIE
	09:06			TURNOVER by ROE,JAMIE
	09:06			FOUL by ROE,JAMIE
MISSED 3PTR by ANDREWS,BRE'NAE	08:42			
REBOUND (OFF) by NEAL,MONISHA	08:42			
GOOD! JUMPER by NEAL,MONISHA	08:39	49-37	H 12	
	08:22			MISSED 3PTR by BROOKS,RAYVEN
	08:22			REBOUND (OFF) by ROE,JAMIE
	08:18			TURNOVER by ROE,JAMIE
STEAL by THOMPSON,JOHN'EA	08:17			
GOOD! LAYUP by THOMPSON,JOHN'EA [PNT]	08:13	49-39	H 10	
	08:13			FOUL by BROOKS,RAYVEN
GOOD! FT by THOMPSON,JOHN'EA	08:13	49-40	H 9	
SUB IN: BOYD,JAZMINE	08:13			
SUB OUT: LEWIS,CHANTIARA	08:13			
	08:13			SUB IN: OLABODE,DAYO
	08:13			SUB IN: BOWSER,RYANN
	08:13			SUB OUT: COOKTAYLOR,IVONNE
	08:13			SUB OUT: ROE,JAMIE
	08:06	51-40	H 11	GOOD! LAYUP by GRANT,LEASHJA [FB/PNT]
	08:06			ASSIST by BROOKS,RAYVEN
MISSED JUMPER by THOMPSON,JOHN'EA	07:44			
	07:44			BLOCK by GRANT,LEASHJA
	07:42			REBOUND (DEF) by GRANT,LEASHJA
	07:31			MISSED JUMPER by BROOKS,RAYVEN
REBOUND (DEF) by THOMPSON,JOHN'EA	07:31			
MISSED 3PTR by BOYD,JAZMINE	07:18			
	07:18			REBOUND (DEF) by OLABODE,DAYO
FOUL by HILL,SHAKYLA	07:15			
	06:56			TURNOVER by GRANT,LEASHJA
STEAL by HILL,SHAKYLA	06:54			
	06:52			FOUL by DEAN,JAPREECE
MISSED FT by ANDREWS,BRE'NAE	06:52			
REBOUND (DEADB) by TEAM	06:52			
GOOD! FT by ANDREWS,BRE'NAE	06:52	51-41	H 10	
	06:39			TURNOVER by BOWSER,RYANN
STEAL by HILL,SHAKYLA	06:38			
MISSED JUMPER by ANDREWS,BRE'NAE	06:37			
REBOUND (OFF) by TEAM	06:37			
	06:37			FOUL by DEAN,JAPREECE
GOOD! FT by ANDREWS,BRE'NAE	06:37	51-42	H 9	
GOOD! FT by ANDREWS,BRE'NAE	06:37	51-43	H 8	
FOUL by BOYD,JAZMINE	06:37			
FOUL by BOYD,JAZMINE	06:36			
FOUL by THOMPSON,JOHN'EA	06:14			
	06:14	52-43	H 9	GOOD! FT by BROOKS,RAYVEN

VISITORS: Grambling State	Time	Score	Margin	HOME: Texas Tech
	06:14			MISSED FT by BROOKS,RAYVEN
	06:14			REBOUND (OFF) by GRANT,LEASHJA
SUB IN: TAYLOR,DARAE	06:14			
SUB OUT: BOYD,JAZMINE	06:14			
	06:12	54-43	H 11	GOOD! JUMPER by GRANT,LEASHJA [PNT]
	05:51			FOUL by OLABODE,DAYO
MISSED FT by NEAL,MONISHA	05:51			
REBOUND (DEADB) by TEAM	05:51			
MISSED FT by NEAL,MONISHA	05:51			
	05:51			REBOUND (DEF) by GRANT,LEASHJA
	05:42	56-43	H 13	GOOD! JUMPER by OLABODE,DAYO
MISSED JUMPER by NEAL,MONISHA	05:21			
	05:21			REBOUND (DEF) by OLABODE,DAYO
	05:09			TURNOVER by BROOKS,RAYVEN
STEAL by HILL,SHAKYLA	05:08			
	05:04			FOUL by DEAN,JAPREECE
MISSED FT by TAYLOR,DARAE	05:04			
REBOUND (DEADB) by TEAM	05:04			
GOOD! FT by TAYLOR,DARAE	05:04	56-44	H 12	
SUB IN: LEWIS,CHANTIARA	05:04			
SUB OUT: TAYLOR,DARAE	05:04			
	05:04			SUB IN: COOKTAYLOR,IVONNE
	05:04			SUB OUT: BOWSER,RYANN
	04:58			TURNOVER by COOKTAYLOR,IVONNE
STEAL by NEAL,MONISHA	04:57			
GOOD! JUMPER by NEAL,MONISHA [PNT]	04:54	56-46	H 10	
	04:43			TIMEOUT media
	04:23	58-46	H 12	GOOD! JUMPER by GRANT,LEASHJA
	04:23			ASSIST by BROOKS,RAYVEN
GOOD! 3PTR by THOMPSON,JOHN'EA	04:09	58-49	H 9	
ASSIST by NEAL,MONISHA	04:09			
FOUL by LEWIS,CHANTIARA	03:54			
	03:54	59-49	H 10	GOOD! FT by BROOKS,RAYVEN
	03:54	60-49	H 11	GOOD! FT by BROOKS,RAYVEN
MISSED JUMPER by THOMPSON,JOHN'EA	03:24			
	03:24			REBOUND (DEF) by OLABODE,DAYO
	03:13			TURNOVER by DEAN,JAPREECE
STEAL by HILL,SHAKYLA	03:12			
GOOD! LAYUP by HILL,SHAKYLA [FB/PNT]	03:10	60-51	H 9	
	02:52	63-51	H 12	GOOD! 3PTR by OLABODE,DAYO
	02:52			ASSIST by BROOKS,RAYVEN
MISSED JUMPER by LEWIS,CHANTIARA	02:36			
	02:36			REBOUND (DEF) by OLABODE,DAYO
	02:19	65-51	H 14	GOOD! JUMPER by DEAN,JAPREECE
FOUL by THOMPSON,JOHN'EA	02:19			
	02:19	66-51	H 15	GOOD! FT by DEAN,JAPREECE
SUB IN: BOYD,JAZMINE	02:19			
SUB OUT: LEWIS,CHANTIARA	02:19			
SUB OUT: THOMPSON,JOHN'EA	02:19			
	02:19			SUB IN: SANDERS,ZURI
	02:19			SUB OUT: GRANT,LEASHJA
GOOD! JUMPER by HILL,SHAKYLA [PNT]	02:06	66-53	H 13	
ASSIST by LEWIS,CHANTIARA	02:06			
	01:51			TURNOVER by BROOKS,RAYVEN
STEAL by NEAL,MONISHA	01:51			
	01:51			FOUL by BROOKS,RAYVEN
MISSED FT by NEAL,MONISHA	01:51			
REBOUND (DEADB) by TEAM	01:51			

VISITORS: Grambling State	Time	Score	Margin	HOME: Texas Tech
MISSED FT by NEAL,MONISHA	01:51			
	01:51			REBOUND (DEF) by OLABODE,DAYO
SUB IN: THOMPSON,JOHN'EA	01:51			
	01:51			SUB IN: BOWSER,RYANN
	01:51			SUB OUT: SANDERS,ZURI
	01:34			MISSED 3PTR by BROOKS,RAYVEN
REBOUND (DEF) by NEAL,MONISHA	01:34			
SUB IN: LEWIS,CHANTIARA	01:32			
SUB OUT: THOMPSON,JOHN'EA	01:32			
	01:29			FOUL by DEAN,JAPREECE
GOOD! FT by HILL,SHAKYLA	01:29	66-54	H 12	
GOOD! FT by HILL,SHAKYLA	01:29	66-55	H 11	
SUB IN: THOMPSON,JOHN'EA	01:29			
SUB OUT: LEWIS,CHANTIARA	01:29			
	01:07	68-55	H 13	GOOD! LAYUP by DEAN,JAPREECE [PNT]
MISSED JUMPER by HILL,SHAKYLA	00:56			
	00:56			REBOUND (DEF) by COOKTAYLOR,IVONNE
FOUL by HILL,SHAKYLA	00:45			
	00:45	69-55	H 14	GOOD! FT by DEAN,JAPREECE
	00:45	70-55	H 15	GOOD! FT by DEAN,JAPREECE
SUB IN: LEWIS,CHANTIARA	00:45			
SUB OUT: THOMPSON,JOHN'EA	00:45			
MISSED 3PTR by BOYD,JAZMINE	00:29			
REBOUND (OFF) by BOYD,JAZMINE	00:29			
MISSED JUMPER by BOYD,JAZMINE	00:25			
	00:25			REBOUND (DEF) by DEAN,JAPREECE
	00:06			MISSED JUMPER by DEAN,JAPREECE
REBOUND (DEF) by BOYD,JAZMINE	00:06			

Grambling State 55, Texas Tech 70

Period 4-only	In Paint	Off T/O	2nd Chance	Fast Break	Bench	
GSU	8	13	4	2	6	Score tied - 0 times
TTU	8	0	2	2	5	Lead changed - 0 times

**Grambling State vs Texas Tech**  
**12/18/2015; 6:30 p.m. at Lubbock, TX (United Supermarkets Arena)**  
**Scoring/Runs Reference**



Period 1			Period 2		
Grambling State	Score	Texas Tech	Grambling State	Score	Texas Tech
	X	COOKTAYLOR JUMPER - 09:34	09:31 - HILL JUMPER	2 <sup>P</sup> 16-14 -2	
	TO	ROE TURN - 09:30		X	BROOKS JUMPER - 09:17
09:17 - BOYD 3PTR	X			X	BROOKS JUMPER - 09:16
	0-2 2	2 <sup>P</sup> GRANT LAYUP - 09:05	09:03 - LEWIS 3PTR	X	
08:42 - ANDREWS JUMPER	X			TO	COOKTAYLOR TURN - 08:33
	0-4 4	2 <sup>P</sup> GRANT LAYUP - 08:24	08:33 - NEAL TURN	TO	
08:08 - ANDREWS JUMPER	2 <sup>P</sup> 2-4 2			16-17 1	3 DEAN 3PTR - 08:32
	X	GRANT LAYUP - 07:56	08:14 - LEWIS TURN	TO	
	TO	BROOKS TURN - 07:54		X	COOKTAYLOR 3PTR - 08:09
07:44 - THOMPSON JUMPER	X			16-19 3	2 <sup>P</sup> BROOKS LAYUP - 07:57
	2-6 4	2 COOKTAYLOR JUMPER - 07:40	07:34 - PARSONS TURN	TO	
07:07 - NEAL 3PTR	X			X	COOKTAYLOR JUMPER - 07:24
	TO	GRANT TURN - 06:49	07:13 - ANDREWS 3PTR	X	
06:33 - TAYLOR JUMPER	2 4-6 2			X	BROOKS 3PTR - 06:57
	4-8 4	2 <sup>P</sup> DEAN JUMPER - 06:14		16-21 5	2 COOKTAYLOR JUMPER - 06:36
06:11 - TAYLOR JUMPER	X		06:13 - NEAL TURN	TO	
	X	COOKTAYLOR JUMPER - 06:00		X	COOKTAYLOR LAYUP - 06:05
05:37 - NEAL JUMPER	2 6-8 2			X	SANDERS JUMPER - 06:01
	X	BROOKS 3PTR - 05:34		X	SANDERS JUMPER - 05:55
05:07 - NEAL JUMPER	X		04:57 - BOYD 3PTR	X	
	X	COOKTAYLOR JUMPER - 04:47		X	COOKTAYLOR JUMPER - 04:47
	X	BROOKS 3PTR - 04:37	04:29 - THOMPSON JUMPER	X	
04:17 - NEAL 3PTR	3 9-8 -1			X	GRANT LAYUP - 04:11
	X	BROOKS 3PTR - 04:13		X	DEAN 3PTR - 03:49
04:05 - LEWIS TURN	TO			X	GRANT LAYUP - 03:42
	X	SANDERS LAYUP - 03:45		16-23 7	2 <sup>P</sup> GRANT LAYUP - 03:40
03:22 - ANDREWS 3PTR	X		03:28 - ANDREWS 3PTR	X	
	X	OLABODE LAYUP - 03:06	03:24 - LEWIS JUMPER	X	
	X	SANDERS LAYUP - 03:02	03:22 - THOMPSON JUMPER	X	
	TO	SANDERS TURN - 02:57		16-25 9	2 <sup>PF</sup> COOKTAYLOR LAYUP - 03:12
02:53 - LEWIS LAYUP	X			16-26 10	1 COOKTAYLOR FT - 03:12
	TO	COOKTAYLOR TURN - 02:45	02:19 - BOYD 3PTR	X	
02:22 - LEWIS TURN	TO			16-29 13	3 BROOKS 3PTR - 02:09
	9-10 1	2 <sup>P</sup> BLAIRE LAYUP - 02:17	01:58 - TAYLOR TURN	TO	
01:52 - LEWIS JUMPER	2 <sup>P</sup> 11-10 -1			TO	SANDERS TURN - 01:39
	X	BLAIRE 3PTR - 01:15	01:16 - LEWIS TURN	TO	
01:10 - ANDREWS JUMPER	X			16-30 14	1 BROOKS FT - 01:04
01:03 - ANDREWS 3PTR	3 14-10 -4			16-31 15	1 BROOKS FT - 01:04
	14-12 -2	2 <sup>P</sup> BLAIRE LAYUP - 00:40	00:51 - HILL TURN	TO	
00:14 - ANDREWS JUMPER	X			X	COOKTAYLOR JUMPER - 00:23
	14-14 0	2 <sup>P</sup> DEAN JUMPER - 00:04	00:22 - PARSONS FT	1 17-31 14	
			00:22 - PARSONS FT	1 18-31 13	
				X	OLABODE JUMPER - 00:05
Period 3			Period 4		

Grambling State	Score	Texas Tech	Grambling State	Score	Texas Tech	
	X	GRANT JUMPER - 09:48	35-49 14	2 <sup>P</sup>	GRANT JUMPER - 09:53	
	18-33 15	GRANT JUMPER - 09:45	09:29 - NEAL TURN	TO		
09:23 - JONES JUMPER	X			TO	ROE TURN - 09:06	
	X	BROOKS 3PTR - 09:14	08:42 - ANDREWS 3PTR	X		
	18-35 17	DEAN JUMPER - 09:10	08:39 - NEAL JUMPER	2	37-49 12	
08:55 - NEAL JUMPER	X			X	BROOKS 3PTR - 08:22	
08:50 - KENNEDY TURN	TO			TO	ROE TURN - 08:18	
	X	DEAN LAYUP - 08:44	08:13 - THOMPSON LAYUP	2 <sup>P</sup>	39-49 10	
	X	DEAN JUMPER - 08:28	08:13 - THOMPSON FT	1	40-49 9	
08:18 - KENNEDY LAYUP	2 <sup>P</sup>			40-51 11	2 <sup>PF</sup>	GRANT LAYUP - 08:06
	20-35 15	GRANT JUMPER - 08:04	07:44 -	X		
	X	COOKTAYLOR JUMPER -	THOMPSON JUMPER		X	BROOKS JUMPER - 07:31
	X	08:02				
07:58 - ANDREWS 3PTR	X	DEAN JUMPER - 07:43	07:18 - BOYD 3PTR	X		
	20-37 17		TO		GRANT TURN - 06:56	
07:17 - BOYD TURN	TO	BROOKS 3PTR - 07:00	06:52 - ANDREWS FT	X		
	20-40 20		06:52 - ANDREWS FT	1	41-51 10	
06:42 - KENNEDY JUMPER	X		TO		BOWSER TURN - 06:39	
06:36 - LEWIS 3PTR	3	BROOKS 3PTR - 05:58	06:37 -	X		
	23-40 17		ANDREWS JUMPER			
	X	OLABODE 3PTR - 05:20	06:37 - ANDREWS FT	1	42-51 9	
05:49 - HILL LAYUP	2 <sup>P</sup>		06:37 - ANDREWS FT	1	43-51 8	
	25-40 15			43-52 9	1	BROOKS FT - 06:14
04:58 - ANDREWS JUMPER	2	COOKTAYLOR JUMPER -		X		BROOKS FT - 06:14
	25-43 18	04:41		43-54 11	2 <sup>P</sup>	GRANT JUMPER - 06:12
	27-43 16					
	X					
04:18 - LEWIS 3PTR	X	DEAN JUMPER - 04:07	05:51 - NEAL FT	X		
	X		05:51 - NEAL FT	X		
03:58 - KENNEDY JUMPER	X	OLABODE TURN - 03:46		43-56 13	2	OLABODE JUMPER - 05:42
	TO		05:21 - NEAL JUMPER	X		
03:35 - HILL JUMPER	2 <sup>P</sup>	BOWSER TURN - 03:15	TO		BROOKS TURN - 05:09	
	29-43 14		05:04 - TAYLOR FT	X		
03:06 - NEAL 3PTR	X	COOKTAYLOR JUMPER -	05:04 - TAYLOR FT	1	44-56 12	
	X	02:28	TO		COOKTAYLOR TURN	
02:18 - THOMPSON LAYUP	2 <sup>P</sup>	BOWSER TURN - 01:50			- 04:58	
	31-43 12		04:54 - NEAL JUMPER	2 <sup>P</sup>	46-56 10	
01:37 - ANDREWS JUMPER	2	OLABODE TURN - 01:29		46-58 12	2	GRANT JUMPER - 04:23
	33-43 10		04:09 - THOMPSON 3PTR	3	49-58 9	
01:22 - NEAL JUMPER	X			49-59 10	1	BROOKS FT - 03:54
01:18 -	X			49-60 11	1	BROOKS FT - 03:54
THOMPSON JUMPER		COOKTAYLOR TURN - 01:01	03:24 -	X		
01:15 - HILL JUMPER	2 <sup>P</sup>		THOMPSON JUMPER			
	35-43 8		TO		DEAN TURN - 03:13	
00:52 - ANDREWS 3PTR	X		03:10 - HILL LAYUP	2 <sup>PF</sup>	51-60 9	
	TO	COOKTAYLOR JUMPER -		51-63 12	3	OLABODE 3PTR - 02:52
	X	00:29	02:36 - LEWIS JUMPER	X		
	35-45 10	GRANT JUMPER - 00:25		51-65 14	2	DEAN JUMPER - 02:19
00:18 - PARSONS TURN	TO	BROOKS JUMPER - 00:14		51-66 15	1	DEAN FT - 02:19
	X	DEAN LAYUP - 00:11	02:06 - HILL JUMPER	2 <sup>P</sup>	53-66 13	
	35-47 12		TO		BROOKS TURN - 01:51	
	2 <sup>P</sup>		01:51 - NEAL FT	X		
			01:51 - NEAL FT	X		

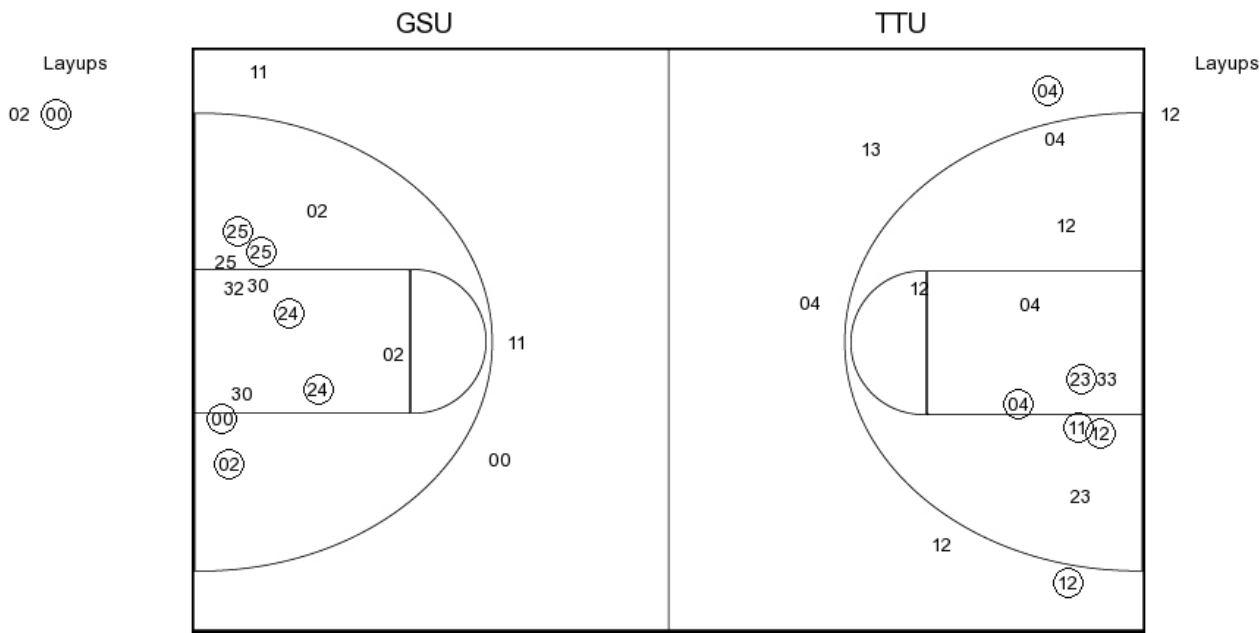
			X	BROOKS 3PTR - 01:34
01:29 - HILL FT	1	54-66 12		
01:29 - HILL FT	1	55-66 11		
		55-68 13	2P	DEAN LAYUP - 01:07
00:56 - HILL JUMPER	X			
		55-69 14	1	DEAN FT - 00:45
		55-70 15	1	DEAN FT - 00:45
00:29 - BOYD 3PTR	X			
00:25 - BOYD JUMPER	X			
			X	DEAN JUMPER - 00:06

Grambling State vs Texas Tech

OFFICIAL SHOT CHART

12/18/2015 at Lubbock, TX (United Supermarkets Arena)

PERIOD 1



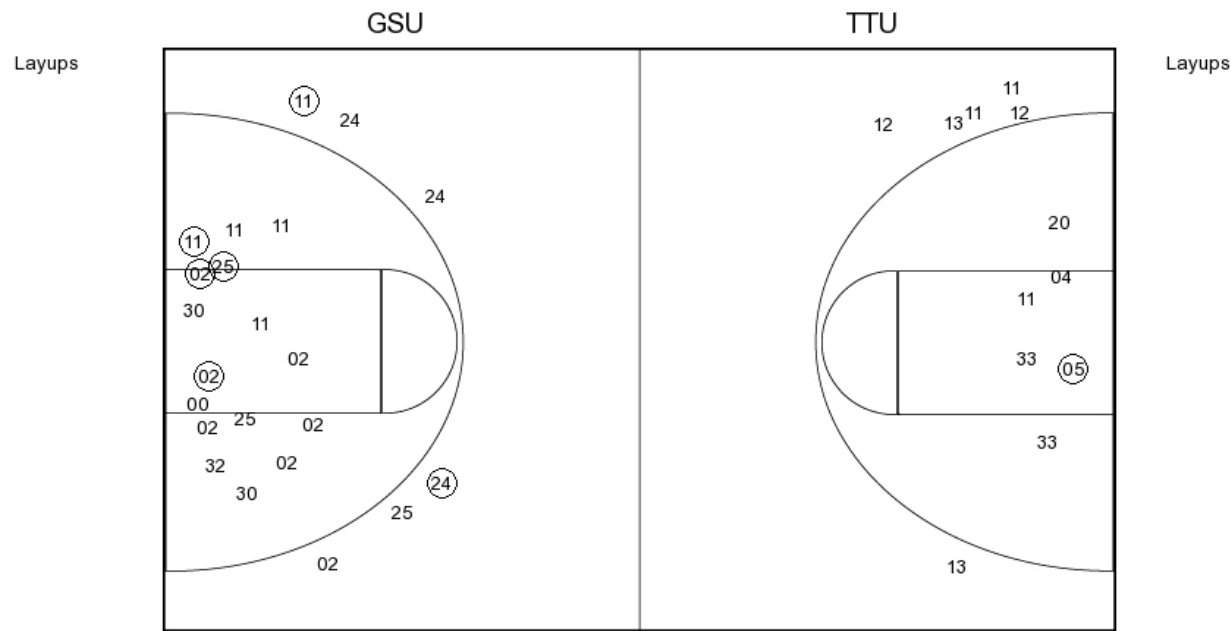
GSU PERIOD 1

FG Made	7
FG Attempted	25
3PFG Made	2
3PFG Attempted	10

TTU PERIOD 1

FG Made	13
FG Attempted	38
3PFG Made	2
3PFG Attempted	9

PERIOD 2



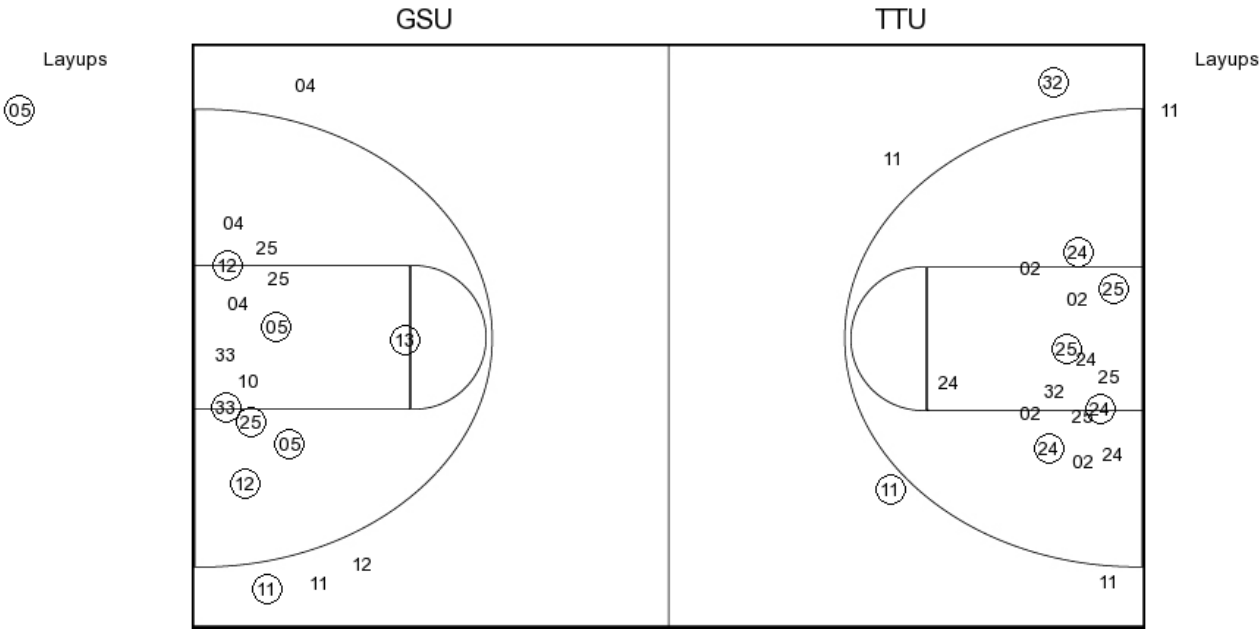
GSU PERIOD 2

FG Made  
FG Attempted  
3PFG Made  
3PFG Attempted

TTU PERIOD 2

FG Made  
FG Attempted  
3PFG Made  
3PFG Attempted

PERIOD 3



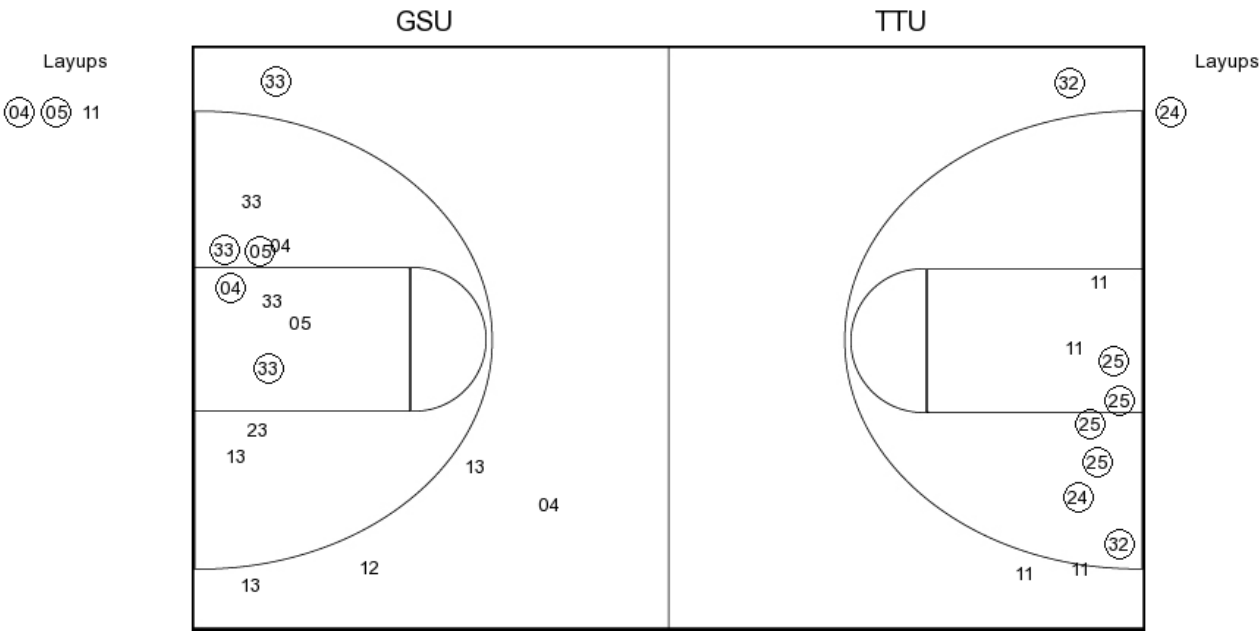
**GSU PERIOD 3**

FG Made	14
FG Attempted	34
3PFG Made	2
3PFG Attempted	9

**TTU PERIOD 3**

FG Made	15
FG Attempted	31
3PFG Made	3
3PFG Attempted	7

PERIOD 4



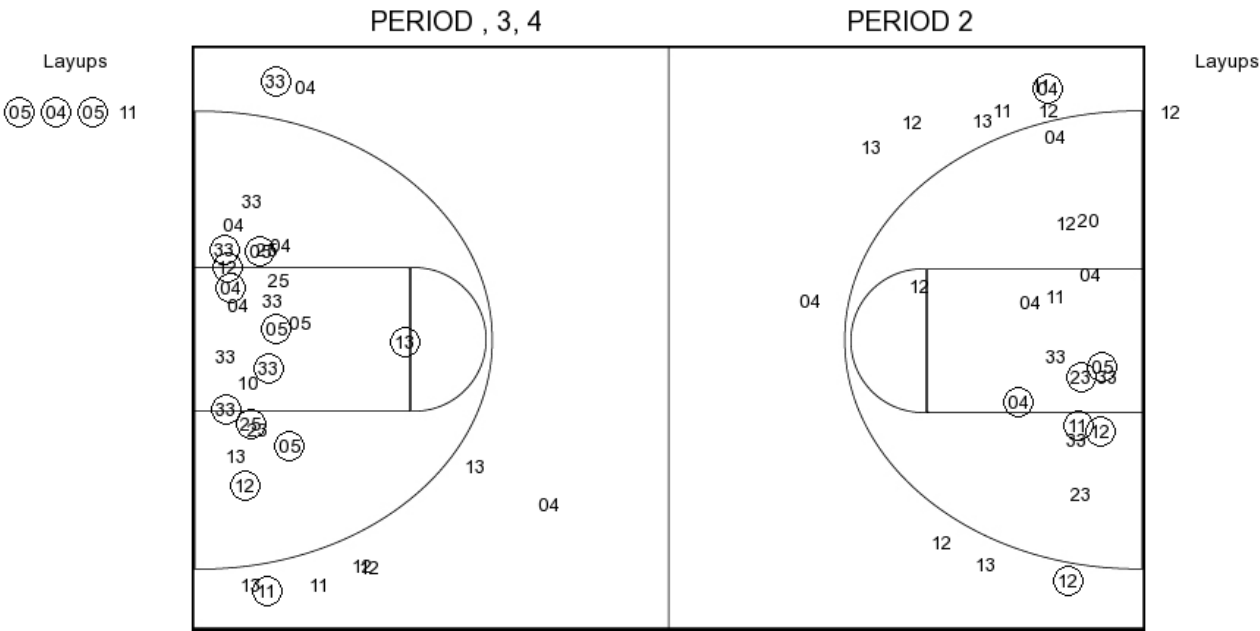
**GSU PERIOD 4**

FG Made  
FG Attempted  
3PFG Made  
3PFG Attempted

**TTU PERIOD 4**

FG Made  
FG Attempted  
3PFG Made  
3PFG Attempted

Grambling State



GSU PERIOD 1

FG Made	7
FG Attempted	25
3PFG Made	2
3PFG Attempted	10

GSU PERIOD 2

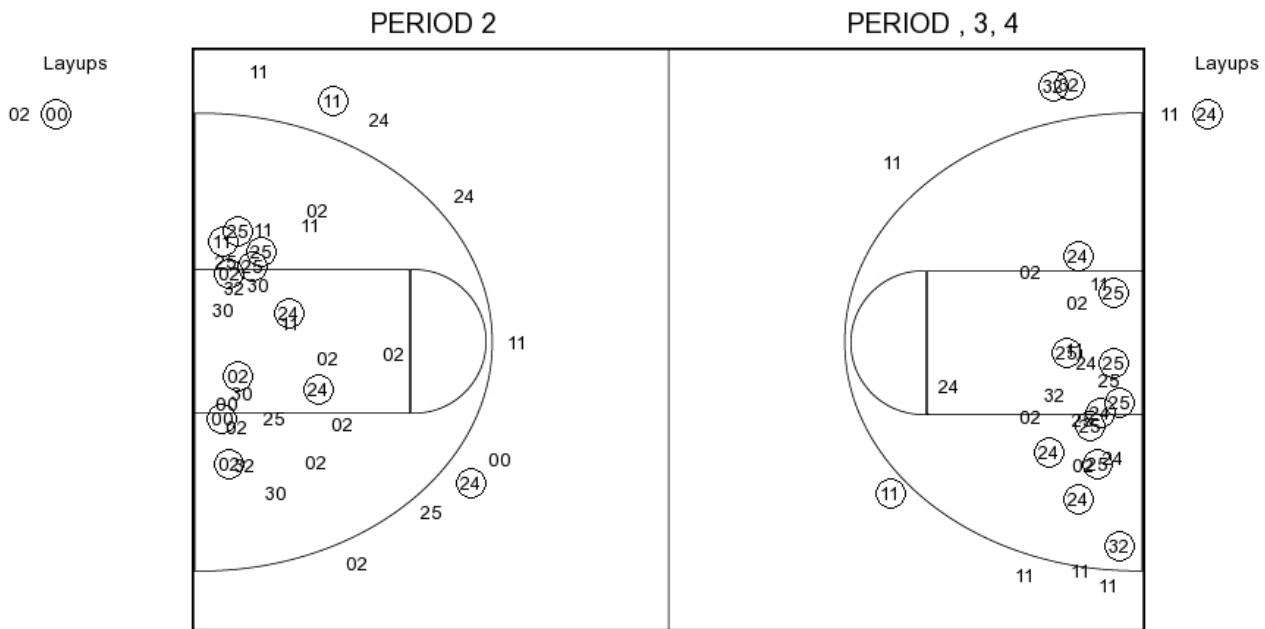
FG Made	
FG Attempted	
3PFG Made	
3PFG Attempted	



## OFFICIAL SHOT CHART

12/18/2015 at Lubbock, TX (United Supermarkets Arena)

**Texas Tech**

TTU PERIOD 1

FG Made	13
FG Attempted	38
3PFG Made	2
3PFG Attempted	9

TTU PERIOD 2

FG Made  
FG Attempted  
3PFG Made  
3PFG Attempted