



TEXAS TECH VS. EASTERN NEW MEXICO

11/7/2015
Lubbock, Texas

FINAL STATS

Texas Tech

(0-0)

77

Eastern New Mexico

(0-0)

43

Start Time: 2:00 p.m.

Officials: Brian Hall, Esrael Silva, Mark Merritt

Attendance: 0

Official Basketball Box Score -- Game Totals -- Final Statistics
Eastern New Mexico vs Texas Tech
11/7/2015 2:00 p.m. at Lubbock, Texas

Eastern New Mexico 43 - 0-0

##	Player	S	Total			Rebounds			PF	TP	A	TO	Blk	Stl	Min
			FG-FGA	3PT FG-FGA	FT-FTA	Off Reb	Def Reb	Tot Reb							
03	MOORE.MIRANDA	g	3-8	0-1	0-2	1	4	5	3	6	2	2	0	2	23
05	STINNETT.SARAH	g	6-16	1-3	0-2	0	3	3	3	13	1	4	0	3	26
13	HARRIS.KASSANDRA	f	0-1	0-0	0-2	0	0	0	5	0	1	5	0	0	11
33	CONNOR.MIKAEHLA	f	0-4	0-2	2-2	1	0	1	2	2	2	2	1	2	23
44	MARTINEZ.ELIZA	c	0-1	0-1	2-2	2	2	4	0	2	0	0	0	1	18
00	MCCLELLAND.JOHNA		2-4	0-0	0-0	0	0	0	1	4	0	0	0	0	10
02	JOHNSON.DASIA		1-5	0-3	0-0	0	0	0	1	2	0	2	0	0	9
04	COOPER.JORDYN		1-2	1-2	0-0	0	1	1	1	3	0	1	1	1	13
11	MANZANAREZ.MARISSA		0-0	0-0	0-0	0	0	0	0	0	0	0	0	0	1
12	HOTCHKINS.JASMINE		0-1	0-0	0-0	0	1	1	1	0	0	3	0	0	7
14	MONTOYA.DANIELLE		0-0	0-0	0-0	0	0	0	0	0	0	1	0	1	1
15	TURNER.AUBREE		0-0	0-0	0-0	0	0	0	0	0	0	0	0	0	1
20	DILLARD.TAYLOR		0-0	0-0	0-0	0	0	0	0	0	0	0	0	0	1
22	WHITE.BRIANA		2-7	1-3	0-0	1	1	2	2	5	1	1	2	0	16
23	LEEPER.JULIANNE		0-0	0-0	0-0	0	1	1	0	0	1	0	0	0	11
24	COOPER.JAYLYN		1-6	0-1	0-0	1	0	1	0	2	0	0	0	2	17
32	GUTIERREZ.BRITTANY		2-5	0-1	0-0	1	3	4	2	4	0	0	0	0	12
TEAM						2	0	2	0		0				
Totals			18-60	3-17	4-10	9	16	25	21	43	8	21	4	12	200

FG % 1st Half: 10-27 37.0% 2nd Half: 8-33 24.2% Game: 18-60 30.0% Deadball
 3FG % 1st Half: 1-4 25.0% 2nd Half: 2-13 15.4% Game: 3-17 17.6% Rebounds
 FT % 1st Half: 2-4 50.0% 2nd Half: 2-6 33.3% Game: 4-10 40.0% 4,0

Texas Tech 77 - 0-0

##	Player	S	Total			Rebounds			PF	TP	A	TO	Blk	Stl	Min
			FG-FGA	3PT FG-FGA	FT-FTA	Off Reb	Def Reb	Tot Reb							
02	COOKTAYLOR.IVONNE	g	5-11	0-0	0-0	0	6	6	2	10	1	3	1	0	20
04	BOWSER.RYANN	g	2-5	0-3	1-2	1	1	2	3	5	4	2	0	1	29
11	BROOKS.RAYVEN	g	6-8	2-4	4-6	1	4	5	2	18	4	8	0	3	27
32	OLABODE.DAYO	f	2-6	0-1	2-2	1	4	5	3	6	0	2	1	0	23
35	ROE.JAMIE	f	2-5	0-2	0-0	2	2	4	2	4	6	4	2	2	27
24	DEAN.JAPREECE		1-4	0-2	1-1	1	1	2	0	3	2	2	0	1	15
25	GRANT.LEASHJA		5-8	0-0	3-4	3	5	8	1	13	0	0	0	1	20
30	SANDERS.ZURI		4-9	0-0	1-1	3	9	12	2	9	2	1	0	2	29
34	PARLIAMENT.PAIGE		3-4	3-4	0-0	1	2	3	1	9	0	1	0	1	10
TEAM						2	1	3	0		0				
Totals			30-60	5-16	12-16	15	35	50	16	77	19	23	4	11	200

FG % 1st Half: 14-30 46.7% 2nd Half: 16-30 53.3% Game: 30-60 50.0% Deadball
 3FG % 1st Half: 1-8 12.5% 2nd Half: 4-8 50.0% Game: 5-16 31.3% Rebounds
 FT % 1st Half: 4-4 100.0% 2nd Half: 8-12 66.7% Game: 12-16 75.0% 3,0

Officials: Brian Hall, Esrael Silva, Mark Merritt
 Technical Fouls: Eastern New Mexico- None. Texas Tech- None.
 Attendance: 0

Score by periods	1st	2nd	3rd	4th	Total
Eastern New Mexico	14	9	13	7	43
Texas Tech	14	19	28	16	77

Points	In Paint	Off T/O	2nd Chance	Fast Break	Bench
ENMU	18	18	4	6	20
TTU	36	27	4	12	34

Last FG - ENMU 4th-03:35, TTU 4th-01:02.
 Largest lead - Eastern New Mexico by 4 1st-07:25; Texas Tech by 34 4th-01:02
 ENMU led for 5:47. TTU led for 29:28. Game was tied for 4:44.

Score tied - 4 times
 Lead changed - 1 times

Official Basketball Box Score -- Game Totals -- First Half Statistics
Eastern New Mexico vs Texas Tech
11/7/2015 2:00 p.m. at Lubbock, Texas

Eastern New Mexico 23 • 0-0

##	Player	S	Total			Rebounds			PF	TP	A	TO	Blk	Stl	Min
			FG-FGA	3PT FG-FGA	FT-FTA	Off Reb	Def Reb	Tot Reb							
03	MOORE.MIRANDA	g	2-4	0-0	0-0	0	3	3	1	4	2	1	0	2	12
05	STINNETT.SARAH	g	3-7	0-0	0-0	0	2	2	2	6	0	3	0	1	13
13	HARRIS.KASSANDRA	f	0-0	0-0	0-2	0	0	0	1	0	1	2	0	0	8
33	CONNOR.MIKAEHLA	f	0-2	0-1	2-2	1	0	1	0	2	0	1	0	2	13
44	MARTINEZ.ELIZA	c	0-0	0-0	0-0	0	0	0	0	0	0	0	0	0	9
00	MCCLELLAND.JOHN		0-0	0-0	0-0	0	0	0	1	0	0	0	0	0	3
02	JOHNSON.DASIA		1-3	0-2	0-0	0	0	0	0	2	0	1	0	0	5
04	COOPER.JORDYN		1-1	1-1	0-0	0	1	1	1	3	0	1	0	0	7
11	MANZANAREZ.MARISSA		0-0	0-0	0-0	0	0	0	0	0	0	0	0	0	0
12	HOTCHKINS.JASMINE		0-1	0-0	0-0	0	1	1	1	0	0	1	0	0	3
14	MONTOYA.DANIELLE		0-0	0-0	0-0	0	0	0	0	0	0	0	0	0	0
15	TURNER.AUBREE		0-0	0-0	0-0	0	0	0	0	0	0	0	0	0	0
20	DILLARD.TAYLOR		0-0	0-0	0-0	0	0	0	0	0	0	0	0	0	0
22	WHITE.BRIANA		1-2	0-0	0-0	0	0	0	1	2	1	1	1	0	7
23	LEEPER.JULIANNE		0-0	0-0	0-0	0	1	1	0	0	0	0	0	0	5
24	COOPER.JAYLYN		0-3	0-0	0-0	0	0	0	0	0	0	0	0	1	7
32	GUTIERREZ.BRITTANY		2-4	0-0	0-0	1	1	2	0	4	0	0	0	0	8
TEAM						1	0	1	0		0				
Totals			10-27	1-4	2-4	3	9	12	8	23	4	11	1	6	100

FG % Half: 10-27 37.0%
 3FG % Half: 1-4 25.0%
 FT % Half: 2-4 50.0%

Texas Tech 33 • 0-0

##	Player	S	Total			Rebounds			PF	TP	A	TO	Blk	Stl	Min
			FG-FGA	3PT FG-FGA	FT-FTA	Off Reb	Def Reb	Tot Reb							
02	COOKTAYLOR.IVONNE	g	4-8	0-0	0-0	0	3	3	2	8	1	2	0	0	12
04	BOWSER.RYANN	g	2-5	0-3	0-0	1	0	1	0	4	1	1	0	0	13
11	BROOKS.RAYVEN	g	1-2	1-2	0-0	1	2	3	1	3	3	5	0	1	16
32	OLABODE.DAYO	f	1-2	0-0	2-2	0	3	3	2	4	0	2	1	0	12
35	ROE.JAMIE	f	0-1	0-1	0-0	1	1	2	2	0	2	2	2	1	11
24	DEAN.JAPREECE		0-3	0-2	0-0	1	1	2	0	0	1	1	0	1	11
25	GRANT.LEASHJA		3-4	0-0	2-2	1	1	2	0	8	0	0	0	1	11
30	SANDERS.ZURI		3-5	0-0	0-0	2	4	6	0	6	2	0	0	1	14
34	PARLIAMENT.PAIGE		0-0	0-0	0-0	0	0	0	0	0	0	0	0	0	0
TEAM						0	0	0	0		0				
Totals			14-30	1-8	4-4	7	15	22	7	33	10	13	3	5	100

FG % Half: 14-30 46.7%
 3FG % Half: 1-8 12.5%
 FT % Half: 4-4 100.0%

Officials: Brian Hall, Esrael Silva, Mark Merritt
 Technical Fouls: Eastern New Mexico- None. Texas Tech- None.

Eastern New Mexico vs Texas Tech
11/7/2015; 2:00 p.m. at Lubbock, Texas
Period 1 Play-By-Play

VISITORS: Eastern New Mexico	Time	Score	Margin	HOME: Texas Tech
	09:46			MISSED 3PTR by BOWSER,RYANN
	09:46			REBOUND (OFF) by BOWSER,RYANN
	09:38			MISSED JUMPER by OLABODE,DAYO
REBOUND (DEF) by MOORE,MIRANDA	09:38			
TURNOVER by STINNETT,SARAH	09:29			
	09:12			TURNOVER by OLABODE,DAYO
MISSED JUMPER by MOORE,MIRANDA	09:00			
	09:00			REBOUND (DEF) by OLABODE,DAYO
	08:46			TURNOVER by COOKTAYLOR,IVONNE
STEAL by MOORE,MIRANDA	08:46			
GOOD! JUMPER by STINNETT,SARAH	08:41	0-2	V 2	
ASSIST by MOORE,MIRANDA	08:41			
	08:24			TURNOVER by ROE,JAMIE
	08:24			FOUL by ROE,JAMIE
MISSED LAYUP by MOORE,MIRANDA	08:02			
	08:02			BLOCK by ROE,JAMIE
REBOUND (OFF) by CONNOR,MIKAEHLA	08:00			
	07:50			FOUL by ROE,JAMIE
	07:50			SUB IN: GRANT,LEASHJA
	07:50			SUB OUT: ROE,JAMIE
MISSED LAYUP by CONNOR,MIKAEHLA	07:39			
	07:39			REBOUND (DEF) by GRANT,LEASHJA
	07:29			TURNOVER by BOWSER,RYANN
STEAL by MOORE,MIRANDA	07:28			
GOOD! LAYUP by STINNETT,SARAH [FB/PNT]	07:25	0-4	V 4	
ASSIST by MOORE,MIRANDA	07:25			
	07:24			TIMEOUT 30SEC
	07:24			SUB IN: DEAN,JAPREECE
	07:24			SUB OUT: BOWSER,RYANN
	07:10	2-4	V 2	GOOD! JUMPER by COOKTAYLOR,IVONNE
	07:10			ASSIST by BOWSER,RYANN
TURNOVER by STINNETT,SARAH	06:59			
	06:37	4-4	T	GOOD! JUMPER by COOKTAYLOR,IVONNE [PNT]
	06:37			ASSIST by BROOKS,RAYVEN
	06:28			FOUL by OLABODE,DAYO
GOOD! FT by CONNOR,MIKAEHLA	06:28	4-5	V 1	
GOOD! FT by CONNOR,MIKAEHLA	06:28	4-6	V 2	
SUB IN: WHITE,BRIANA	06:28			
SUB IN: GUTIERREZ,BRITTANY	06:28			
SUB OUT: CONNOR,MIKAEHLA	06:28			
SUB OUT: MARTINEZ,ELIZA	06:28			
	06:13			TURNOVER by BROOKS,RAYVEN
STEAL by STINNETT,SARAH	06:13			
GOOD! JUMPER by GUTIERREZ,BRITTANY [FB/PNT]	06:09	4-8	V 4	
	05:52			TURNOVER by OLABODE,DAYO
SUB IN: COOPER,JORDYN	05:52			
SUB OUT: STINNETT,SARAH	05:52			
TURNOVER by HARRIS,KASSANDRA	05:41			
FOUL by HARRIS,KASSANDRA	05:22			
	05:22	5-8	V 3	GOOD! FT by GRANT,LEASHJA
	05:22	6-8	V 2	GOOD! FT by GRANT,LEASHJA
SUB IN: HOTCHKINS,JASMINE	05:22			
SUB OUT: MOORE,MIRANDA	05:22			

VISITORS: Eastern New Mexico	Time	Score	Margin	HOME: Texas Tech
	05:22			SUB IN: SANDERS,ZURI
	05:22			SUB OUT: OLABODE,DAYO
GOOD! JUMPER by GUTIERREZ,BRITTANY	05:07	6-10	V 4	
ASSIST by HARRIS,KASSANDRA	05:07			
	04:52	8-10	V 2	GOOD! JUMPER by COOKTAYLOR,IVONNE
	04:52			ASSIST by BROOKS,RAYVEN
TURNOVER by HOTCHKINS,JASMINE	04:42			
	04:41			STEAL by DEAN,JAPREECE
	04:39	10-10	T	GOOD! LAYUP by SANDERS,ZURI [FB/PNT]
	04:39			ASSIST by DEAN,JAPREECE
MISSED LAYUP by HOTCHKINS,JASMINE	04:17			
	04:17			REBOUND (DEF) by DEAN,JAPREECE
	04:11			TURNOVER by COOKTAYLOR,IVONNE
SUB IN: COOPER,JAYLYN	04:11			
SUB OUT: HARRIS,KASSANDRA	04:11			
	04:11			SUB IN: BOWSER,RYANN
	04:11			SUB OUT: BROOKS,RAYVEN
TIMEOUT 30SEC	03:55			
GOOD! JUMPER by WHITE,BRIANA [PNT]	03:48	10-12	V 2	
	03:28			MISSED JUMPER by GRANT,LEASHJA
REBOUND (DEF) by HOTCHKINS,JASMINE	03:28			
MISSED JUMPER by COOPER,JAYLYN	03:19			
	03:19			REBOUND (DEF) by SANDERS,ZURI
FOUL by HOTCHKINS,JASMINE	03:15			
SUB IN: MCCLELLAND,JOHNA	03:15			
SUB OUT: GUTIERREZ,BRITTANY	03:15			
	03:01	12-12	T	GOOD! LAYUP by GRANT,LEASHJA [PNT]
	03:01			ASSIST by COOKTAYLOR,IVONNE
MISSED JUMPER by WHITE,BRIANA	02:48			
	02:48			REBOUND (DEF) by SANDERS,ZURI
FOUL by WHITE,BRIANA	02:41			
SUB IN: STINNETT,SARAH	02:41			
SUB IN: MOORE,MIRANDA	02:41			
SUB OUT: HOTCHKINS,JASMINE	02:41			
SUB OUT: COOPER,JORDYN	02:41			
	02:41			SUB IN: BROOKS,RAYVEN
	02:41			SUB OUT: COOKTAYLOR,IVONNE
	02:32			MISSED 3PTR by BROOKS,RAYVEN
REBOUND (DEF) by MOORE,MIRANDA	02:32			
GOOD! JUMPER by MOORE,MIRANDA [PNT]	02:18	12-14	V 2	
	02:14			SUB IN: OLABODE,DAYO
	02:14			SUB OUT: GRANT,LEASHJA
	01:53			MISSED 3PTR by DEAN,JAPREECE
REBOUND (DEF) by STINNETT,SARAH	01:53			
TURNOVER by STINNETT,SARAH	01:32			
FOUL by STINNETT,SARAH	01:32			
FOUL by MCCLELLAND,JOHNA	01:11			
	01:11	13-14	V 1	GOOD! FT by OLABODE,DAYO
	01:11	14-14	T	GOOD! FT by OLABODE,DAYO
SUB IN: LEEPER,JULIANNE	01:11			
SUB IN: CONNOR,MIKAEHLA	01:11			
SUB OUT: COOPER,JAYLYN	01:11			
SUB OUT: WHITE,BRIANA	01:11			
TURNOVER by CONNOR,MIKAEHLA	00:59			
	00:49			MISSED 3PTR by BOWSER,RYANN
REBOUND (DEF) by MOORE,MIRANDA	00:49			
MISSED JUMPER by STINNETT,SARAH	00:36			
	00:36			REBOUND (DEF) by BROOKS,RAYVEN

Eastern New Mexico 14, Texas Tech 14

Period 1-only	In Paint	Off T/O	2nd Chance	Fast Break	Bench	
ENMU	8	8	0	4	6	Score tied - 0 times
TTU	6	8	0	2	6	Lead changed - 0 times

Eastern New Mexico vs Texas Tech
11/7/2015; 2:00 p.m. at Lubbock, Texas
Period 2 Play-By-Play

VISITORS: Eastern New Mexico	Time	Score	Margin	HOME: Texas Tech
	10:00			SUB IN: SANDERS,ZURI
	10:00			SUB OUT: ROE,JAMIE
MISSED JUMPER by STINNETT,SARAH	09:44			
	09:44			REBOUND (DEF) by COOKTAYLOR,IVONNE
	09:32			MISSED JUMPER by COOKTAYLOR,IVONNE
	09:32			REBOUND (OFF) by SANDERS,ZURI
	09:29	16-14	H 2	GOOD! LAYUP by SANDERS,ZURI [PNT]
	09:13			FOUL by COOKTAYLOR,IVONNE
	08:59			FOUL by COOKTAYLOR,IVONNE
MISSED FT by HARRIS,KASSANDRA	08:59			
REBOUND (DEADB) by TEAM	08:59			
MISSED FT by HARRIS,KASSANDRA	08:59			
	08:59			REBOUND (DEF) by OLABODE,DAYO
	08:59			SUB IN: ROE,JAMIE
	08:59			SUB OUT: COOKTAYLOR,IVONNE
	08:47			TURNOVER by ROE,JAMIE
	08:36			FOUL by OLABODE,DAYO
TURNOVER by HARRIS,KASSANDRA	08:36			
	08:36			SUB IN: GRANT,LEASHJA
	08:36			SUB OUT: OLABODE,DAYO
FOUL by MOORE,MIRANDA	08:25			
SUB IN: COOPER,JAYLYN	08:25			
SUB OUT: HARRIS,KASSANDRA	08:25			
	08:22	18-14	H 4	GOOD! JUMPER by BOWSER,RYANN [PNT]
	08:22			ASSIST by BROOKS,RAYVEN
TURNOVER by MOORE,MIRANDA	08:06			
	08:05			STEAL by GRANT,LEASHJA
	08:02			MISSED JUMPER by SANDERS,ZURI
REBOUND (DEF) by STINNETT,SARAH	08:02			
	08:00			FOUL by BROOKS,RAYVEN
GOOD! JUMPER by MOORE,MIRANDA	07:45	18-16	H 2	
	07:25			TURNOVER by BROOKS,RAYVEN
STEAL by CONNOR,MIKAEHLA	07:22			
MISSED JUMPER by STINNETT,SARAH	07:14			
	07:14			REBOUND (DEF) by BROOKS,RAYVEN
	07:09			TURNOVER by BROOKS,RAYVEN
	07:08			SUB IN: COOKTAYLOR,IVONNE
	07:08			SUB IN: DEAN,JAPREECE
	07:08			SUB OUT: BOWSER,RYANN
	07:08			SUB OUT: BROOKS,RAYVEN
MISSED 3PTR by CONNOR,MIKAEHLA	06:52			
	06:52			BLOCK by ROE,JAMIE
	06:48			REBOUND (DEF) by COOKTAYLOR,IVONNE
	06:38	20-16	H 4	GOOD! LAYUP by GRANT,LEASHJA [PNT]
	06:38			ASSIST by ROE,JAMIE
MISSED JUMPER by COOPER,JAYLYN	06:17			
	06:17			REBOUND (DEF) by SANDERS,ZURI
	06:03			MISSED 3PTR by ROE,JAMIE
	06:03			REBOUND (OFF) by DEAN,JAPREECE
	05:58			TURNOVER by DEAN,JAPREECE
STEAL by COOPER,JAYLYN	05:57			
GOOD! JUMPER by STINNETT,SARAH	05:55	20-18	H 2	
	05:32	22-18	H 4	GOOD! JUMPER by COOKTAYLOR,IVONNE

VISITORS: Eastern New Mexico	Time	Score	Margin	HOME: Texas Tech
	05:32			ASSIST by SANDERS,ZURI
MISSED JUMPER by STINNETT,SARAH	05:15			
	05:15			REBOUND (DEF) by ROE,JAMIE
FOUL by STINNETT,SARAH	05:08			
SUB IN: GUTIERREZ,BRITTANY	05:08			
SUB IN: JOHNSON,DASIA	05:08			
SUB OUT: MOORE,MIRANDA	05:08			
SUB OUT: MARTINEZ,ELIZA	05:08			
	04:55			MISSED JUMPER by DEAN,JAPREECE
	04:55			REBOUND (OFF) by SANDERS,ZURI
	04:53	24-18	H 6	GOOD! LAYUP by SANDERS,ZURI [PNT]
MISSED JUMPER by COOPER,JAYLYN	04:36			
	04:36			REBOUND (DEF) by SANDERS,ZURI
	04:15			MISSED 3PTR by DEAN,JAPREECE
	04:15			REBOUND (OFF) by GRANT,LEASHJA
	04:10	26-18	H 8	GOOD! LAYUP by GRANT,LEASHJA [PNT]
	04:08			TIMEOUT media
SUB IN: LEEPER,JULIANNE	04:08			
SUB OUT: COOPER,JAYLYN	04:08			
MISSED JUMPER by GUTIERREZ,BRITTANY	03:56			
REBOUND (OFF) by GUTIERREZ,BRITTANY	03:56			
MISSED 3PTR by JOHNSON,DASIA	03:51			
	03:51			REBOUND (DEF) by COOKTAYLOR,IVONNE
	03:43			MISSED JUMPER by COOKTAYLOR,IVONNE
REBOUND (DEF) by LEEPER,JULIANNE	03:43			
SUB IN: COOPER,JORDYN	03:42			
SUB OUT: STINNETT,SARAH	03:42			
	03:42			SUB IN: OLABODE,DAYO
	03:42			SUB IN: BROOKS,RAYVEN
	03:42			SUB OUT: GRANT,LEASHJA
	03:42			SUB OUT: COOKTAYLOR,IVONNE
	03:35			SUB IN: BOWSER,RYANN
	03:35			SUB OUT: DEAN,JAPREECE
MISSED 3PTR by JOHNSON,DASIA	03:27			
	03:27			REBOUND (DEF) by OLABODE,DAYO
	03:07			TURNOVER by BROOKS,RAYVEN
STEAL by CONNOR,MIKAEHLA	03:06			
GOOD! JUMPER by JOHNSON,DASIA [PNT]	02:53	26-20	H 6	
	02:29	28-20	H 8	GOOD! LAYUP by OLABODE,DAYO [PNT]
	02:29			ASSIST by ROE,JAMIE
MISSED LAYUP by GUTIERREZ,BRITTANY	02:15			
	02:15			BLOCK by OLABODE,DAYO
REBOUND (OFF) by TEAM	02:13			
SUB IN: WHITE,BRIANA	02:13			
SUB OUT: CONNOR,MIKAEHLA	02:13			
TURNOVER by WHITE,BRIANA	01:58			
	01:57			STEAL by SANDERS,ZURI
	01:53			MISSED LAYUP by SANDERS,ZURI
	01:53			REBOUND (OFF) by BROOKS,RAYVEN
FOUL by COOPER,JORDYN	01:53			
	01:45	31-20	H 11	GOOD! 3PTR by BROOKS,RAYVEN
	01:45			ASSIST by SANDERS,ZURI
GOOD! 3PTR by COOPER,JORDYN	01:23	31-23	H 8	
ASSIST by WHITE,BRIANA	01:23			
	01:14			SUB IN: COOKTAYLOR,IVONNE
	01:14			SUB OUT: SANDERS,ZURI
	00:57			MISSED JUMPER by COOKTAYLOR,IVONNE
BLOCK by WHITE,BRIANA	00:57			

VISITORS: Eastern New Mexico	Time	Score	Margin	HOME: Texas Tech
	00:55			REBOUND (OFF) by ROE,JAMIE
	00:52			MISSED JUMPER by COOKTAYLOR,IVONNE
REBOUND (DEF) by COOPER,JORDYN	00:52			
TURNOVER by COOPER,JORDYN	00:42			
	00:41			STEAL by ROE,JAMIE
	00:37	33-23	H 10	GOOD! LAYUP by BOWSER,RYANN [FB/PNT]
TURNOVER by JOHNSON,DASIA	00:30			
	00:29			STEAL by BROOKS,RAYVEN
	00:04			MISSED 3PTR by BOWSER,RYANN
REBOUND (DEF) by GUTIERREZ,BRITTANY	00:04			

Eastern New Mexico 23, Texas Tech 33

Period 2-only	In Paint	Off T/O	2nd Chance	Fast Break	Bench	
ENMU	2	4	0	0	5	Score tied - 0 times
TTU	14	7	9	2	8	Lead changed - 0 times

Official Basketball Box Score -- Game Totals -- Second Half Statistics
Eastern New Mexico vs Texas Tech
11/7/2015 2:00 p.m. at Lubbock, Texas

Eastern New Mexico 20 • 0-0

##	Player	S	Total			Rebounds			PF	TP	A	TO	Blk	Stl	Min
			FG-FGA	3PT	FG-FGA	FT-FTA	Off Reb	Def Reb							
03	MOORE.MIRANDA	g	1-4	0-1	0-2	1	1	2	2	2	0	1	0	0	11
05	STINNETT.SARAH	g	3-9	1-3	0-2	0	1	1	1	7	1	1	0	2	13
13	HARRIS.KASSANDRA	f	0-1	0-0	0-0	0	0	0	4	0	0	3	0	0	3
33	CONNOR.MIKAEHLA	f	0-2	0-1	0-0	0	0	0	2	0	2	1	1	0	10
44	MARTINEZ.ELIZA	c	0-1	0-1	2-2	2	2	4	0	2	0	0	0	1	9
00	MCCLELLAND.JOHNA		2-4	0-0	0-0	0	0	0	0	4	0	0	0	0	7
02	JOHNSON.DASIA		0-2	0-1	0-0	0	0	0	1	0	0	1	0	0	4
04	COOPER.JORDYN		0-1	0-1	0-0	0	0	0	0	0	0	0	1	1	6
11	MANZANAREZ.MARISSA		0-0	0-0	0-0	0	0	0	0	0	0	0	0	0	1
12	HOTCHKINS.JASMINE		0-0	0-0	0-0	0	0	0	0	0	0	2	0	0	4
14	MONTOYA.DANIELLE		0-0	0-0	0-0	0	0	0	0	0	0	1	0	1	1
15	TURNER.AUBREE		0-0	0-0	0-0	0	0	0	0	0	0	0	0	0	1
20	DILLARD.TAYLOR		0-0	0-0	0-0	0	0	0	0	0	0	0	0	0	1
22	WHITE.BRIANA		1-5	1-3	0-0	1	1	2	1	3	0	0	1	0	9
23	LEEPER.JULIANNE		0-0	0-0	0-0	0	0	0	0	0	1	0	0	0	6
24	COOPER.JAYLYN		1-3	0-1	0-0	1	0	1	0	2	0	0	0	1	10
32	GUTIERREZ.BRITTANY		0-1	0-1	0-0	0	2	2	2	0	0	0	0	0	4
TEAM						1	0	1	0		0				
Totals			8-33	2-13	2-6	6	7	13	13	20	4	10	3	6	100

FG % Half: 8-33 24.2%
 3FG % Half: 2-13 25.0%
 FT % Half: 2-6 33.3%

Texas Tech 44 • 0-0

##	Player	S	Total			Rebounds			PF	TP	A	TO	Blk	Stl	Min
			FG-FGA	3PT	FG-FGA	FT-FTA	Off Reb	Def Reb							
02	COOKTAYLOR.IVONNE	g	1-3	0-0	0-0	0	3	3	0	2	0	1	1	0	8
04	BOWSER.RYANN	g	0-0	0-0	1-2	0	1	1	3	1	3	1	0	1	16
11	BROOKS.RAYVEN	g	5-6	1-2	4-6	0	2	2	1	15	1	3	0	2	11
32	OLABODE.DAYO	f	1-4	0-1	0-0	1	1	2	1	2	0	0	0	0	11
35	ROE.JAMIE	f	2-4	0-1	0-0	1	1	2	0	4	4	2	0	1	16
24	DEAN.JAPREECE		1-1	0-0	1-1	0	0	0	0	3	1	1	0	0	4
25	GRANT.LEASHJA		2-4	0-0	1-2	2	4	6	1	5	0	0	0	0	9
30	SANDERS.ZURI		1-4	0-0	1-1	1	5	6	2	3	0	1	0	1	15
34	PARLIAMENT.PAIGE		3-4	3-4	0-0	1	2	3	1	9	0	1	0	1	10
TEAM						2	1	3	0		0				
Totals			16-30	4-8	8-12	8	20	28	9	44	9	10	1	6	100

FG % Half: 16-30 53.3%
 3FG % Half: 4-8 12.5%
 FT % Half: 8-12 66.7%

Officials: Brian Hall, Esrael Silva, Mark Merritt
 Technical Fouls: Eastern New Mexico- None. Texas Tech- None.

Eastern New Mexico vs Texas Tech
11/7/2015; 2:00 p.m. at Lubbock, Texas
Period 3 Play-By-Play

VISITORS: Eastern New Mexico	Time	Score	Margin	HOME: Texas Tech
	09:51			SUB IN: DEAN,JAPREECE
	09:51			SUB IN: SANDERS,ZURI
	09:51			SUB OUT: BOWSER,RYANN
	09:51			SUB OUT: OLABODE,DAYO
	09:50			TURNOVER by COOKTAYLOR,IVONNE
STEAL by STINNETT,SARAH	09:49			
TURNOVER by HARRIS,KASSANDRA	09:42			
	09:09			TURNOVER by ROE,JAMIE
STEAL by STINNETT,SARAH	09:08			
GOOD! JUMPER by MOORE,MIRANDA [PNT]	09:07	33-25	H 8	
ASSIST by STINNETT,SARAH	09:07			
	08:42	36-25	H 11	GOOD! 3PTR by BROOKS,RAYVEN
	08:42			ASSIST by DEAN,JAPREECE
TURNOVER by HARRIS,KASSANDRA	08:27			
	08:25			STEAL by BROOKS,RAYVEN
	08:21	38-25	H 13	GOOD! LAYUP by DEAN,JAPREECE [FB/PNT]
FOUL by HARRIS,KASSANDRA	08:21			
	08:21			ASSIST by BROOKS,RAYVEN
FOUL by HARRIS,KASSANDRA	08:21			
	08:21	39-25	H 14	GOOD! FT by DEAN,JAPREECE
GOOD! LAYUP by STINNETT,SARAH [PNT]	08:07	39-27	H 12	
FOUL by HARRIS,KASSANDRA	07:55			
SUB IN: COOPER,JAYLYN	07:55			
SUB OUT: HARRIS,KASSANDRA	07:55			
	07:49			TURNOVER by DEAN,JAPREECE
STEAL by MARTINEZ,ELIZA	07:48			
MISSED JUMPER by MOORE,MIRANDA	07:45			
	07:45			BLOCK by COOKTAYLOR,IVONNE
REBOUND (OFF) by COOPER,JAYLYN	07:43			
GOOD! JUMPER by COOPER,JAYLYN	07:42	39-29	H 10	
	07:42			FOUL by BROOKS,RAYVEN
MISSED 3PTR by CONNOR,MIKAEHLA	07:36			
	07:36			REBOUND (DEF) by SANDERS,ZURI
	07:31	41-29	H 12	GOOD! LAYUP by GRANT,LEASHJA [FB/PNT]
FOUL by CONNOR,MIKAEHLA	07:31			
	07:31	42-29	H 13	GOOD! FT by SANDERS,ZURI
MISSED 3PTR by COOPER,JAYLYN	07:12			
	07:12			REBOUND (DEF) by COOKTAYLOR,IVONNE
	06:56	44-29	H 15	GOOD! JUMPER by COOKTAYLOR,IVONNE
TIMEOUT 30SEC	06:53			
MISSED JUMPER by STINNETT,SARAH	06:44			
REBOUND (OFF) by TEAM	06:44			
TURNOVER by MOORE,MIRANDA	06:31			
	06:12			MISSED 3PTR by BROOKS,RAYVEN
	06:12			REBOUND (OFF) by ROE,JAMIE
	06:10	46-29	H 17	GOOD! LAYUP by ROE,JAMIE [PNT]
MISSED JUMPER by CONNOR,MIKAEHLA	05:55			
	05:55			REBOUND (DEF) by SANDERS,ZURI
	05:43	48-29	H 19	GOOD! JUMPER by BROOKS,RAYVEN [FB/PNT]
	05:43			ASSIST by ROE,JAMIE
SUB IN: MCCLELLAND,JOHNA	05:38			
SUB OUT: MARTINEZ,ELIZA	05:38			
	05:38			SUB IN: BOWSER,RYANN

VISITORS: Eastern New Mexico	Time	Score	Margin	HOME: Texas Tech
	05:38			SUB IN: OLABODE,DAYO
	05:38			SUB OUT: DEAN,JAPREECE
	05:38			SUB OUT: ROE,JAMIE
	05:24			FOUL by SANDERS,ZURI
MISSED 3PTR by STINNETT,SARAH	05:08			
	05:08			REBOUND (DEF) by COOKTAYLOR,IVONNE
	05:04			TURNOVER by BOWSER,RYANN
TURNOVER by CONNOR,MIKAEHLA	04:51			
	04:50			STEAL by BOWSER,RYANN
	04:40			MISSED JUMPER by COOKTAYLOR,IVONNE
REBOUND (DEF) by MOORE,MIRANDA	04:40			
	04:32			FOUL by BOWSER,RYANN
TIMEOUT media	04:32			
MISSED FT by MOORE,MIRANDA	04:32			
REBOUND (DEADB) by TEAM	04:32			
MISSED FT by MOORE,MIRANDA	04:32			
	04:32			REBOUND (DEF) by GRANT,LEASHJA
	04:32			SUB IN: GRANT,LEASHJA
	04:32			SUB IN: ROE,JAMIE
	04:32			SUB OUT: COOKTAYLOR,IVONNE
	04:32			SUB OUT: SANDERS,ZURI
FOUL by MOORE,MIRANDA	04:26			
SUB IN: HOTCHKINS,JASMINE	04:26			
SUB OUT: MOORE,MIRANDA	04:26			
	04:19			TURNOVER by ROE,JAMIE
	04:08			FOUL by OLABODE,DAYO
GOOD! LAYUP by MCCLELLAND,JOHNA [PNT]	03:54	48-31	H 17	
ASSIST by CONNOR,MIKAEHLA	03:54			
	03:31	50-31	H 19	GOOD! JUMPER by BROOKS,RAYVEN
	03:31			ASSIST by BOWSER,RYANN
GOOD! JUMPER by MCCLELLAND,JOHNA	03:11	50-33	H 17	
ASSIST by CONNOR,MIKAEHLA	03:11			
	02:58			TURNOVER by BROOKS,RAYVEN
STEAL by COOPER,JAYLYN	02:57			
MISSED JUMPER by STINNETT,SARAH	02:54			
	02:54			REBOUND (DEF) by BROOKS,RAYVEN
FOUL by CONNOR,MIKAEHLA	02:51			
	02:51			MISSED FT by BROOKS,RAYVEN
	02:51			REBOUND (DEADB) by TEAM
	02:51	51-33	H 18	GOOD! FT by BROOKS,RAYVEN
SUB IN: LEEPER,JULIANNE	02:51			
SUB IN: WHITE,BRIANA	02:51			
SUB OUT: COOPER,JAYLYN	02:51			
SUB OUT: CONNOR,MIKAEHLA	02:51			
	02:51			SUB IN: SANDERS,ZURI
	02:51			SUB OUT: OLABODE,DAYO
GOOD! 3PTR by STINNETT,SARAH	02:41	51-36	H 15	
ASSIST by LEEPER,JULIANNE	02:41			
	02:32			TIMEOUT 30SEC
	02:20	53-36	H 17	GOOD! LAYUP by GRANT,LEASHJA [PNT]
	02:20			ASSIST by ROE,JAMIE
TURNOVER by HOTCHKINS,JASMINE	01:52			
	01:51			STEAL by SANDERS,ZURI
	01:32	55-36	H 19	GOOD! JUMPER by ROE,JAMIE
	01:26			ASSIST by BOWSER,RYANN
MISSED 3PTR by WHITE,BRIANA	01:19			
	01:19			REBOUND (DEF) by GRANT,LEASHJA
	00:55	57-36	H 21	GOOD! JUMPER by BROOKS,RAYVEN

VISITORS: Eastern New Mexico	Time	Score	Margin	HOME: Texas Tech
	00:55			ASSIST by ROE,JAMIE
TURNOVER by HOTCHKINS,JASMINE	00:45			
	00:44			STEAL by BROOKS,RAYVEN
	00:41	59-36	H 23	GOOD! LAYUP by BROOKS,RAYVEN [FB/PNT]
MISSED 3PTR by WHITE,BRIANA	00:27			
	00:27			REBOUND (DEF) by ROE,JAMIE
FOUL by STINNETT,SARAH	00:21			
	00:21	60-36	H 24	GOOD! FT by BROOKS,RAYVEN
	00:21	61-36	H 25	GOOD! FT by BROOKS,RAYVEN
SUB IN: GUTIERREZ,BRITTANY	00:21			
SUB IN: JOHNSON,DASIA	00:21			
SUB IN: COOPER,JORDYN	00:21			
SUB OUT: HOTCHKINS,JASMINE	00:21			
SUB OUT: STINNETT,SARAH	00:21			
SUB OUT: MCCLELLAND,JOHNA	00:21			
	00:21			SUB IN: OLABODE,DAYO
	00:21			SUB OUT: GRANT,LEASHJA
MISSED 3PTR by JOHNSON,DASIA	00:00			
REBOUND (DEADB) by TEAM	00:00			

Eastern New Mexico 43, Texas Tech 77

Period 3-only	In Paint	Off T/O	2nd Chance	Fast Break	Bench	
ENMU	6	6	2	0	6	Score tied - 0 times
TTU	12	9	2	8	8	Lead changed - 0 times

Eastern New Mexico vs Texas Tech
11/7/2015; 2:00 p.m. at Lubbock, Texas
Period 4 Play-By-Play

VISITORS: Eastern New Mexico	Time	Score	Margin	HOME: Texas Tech
SUB IN: JOHNSON,DASIA	10:00			
SUB IN: COOPER,JORDYN	10:00			
SUB IN: WHITE,BRIANA	10:00			
SUB IN: GUTIERREZ,BRITTANY	10:00			
SUB OUT: MOORE,MIRANDA	10:00			
SUB OUT: STINNETT,SARAH	10:00			
SUB OUT: CONNOR,MIKAEHLA	10:00			
SUB OUT: MARTINEZ,ELIZA	10:00			
	10:00			SUB IN: PARLIAMENT,PAIGE
	10:00			SUB IN: SANDERS,ZURI
	10:00			SUB OUT: BROOKS,RAYVEN
	10:00			SUB OUT: ROE,JAMIE
MISSED JUMPER by HARRIS,KASSANDRA	09:40			
	09:40			REBOUND (DEF) by OLABODE,DAYO
	09:21	64-36	H 28	GOOD! 3PTR by PARLIAMENT,PAIGE
MISSED JUMPER by WHITE,BRIANA	09:08			
	09:08			REBOUND (DEF) by SANDERS,ZURI
FOUL by GUTIERREZ,BRITTANY	09:00			
	08:58			MISSED JUMPER by OLABODE,DAYO
REBOUND (DEF) by GUTIERREZ,BRITTANY	08:58			
TURNOVER by HARRIS,KASSANDRA	08:48			
FOUL by HARRIS,KASSANDRA	08:48			
SUB IN: LEEPER,JULIANNE	08:48			
SUB OUT: HARRIS,KASSANDRA	08:48			
	08:30			MISSED JUMPER by COOKTAYLOR,IVONNE
REBOUND (DEF) by GUTIERREZ,BRITTANY	08:30			
MISSED 3PTR by GUTIERREZ,BRITTANY	08:20			
	08:20			REBOUND (DEF) by COOKTAYLOR,IVONNE
	08:08			MISSED JUMPER by SANDERS,ZURI
	08:08			REBOUND (OFF) by OLABODE,DAYO
	07:59			MISSED 3PTR by OLABODE,DAYO
	07:59			REBOUND (OFF) by PARLIAMENT,PAIGE
FOUL by WHITE,BRIANA	07:51			
	07:51			SUB IN: BROOKS,RAYVEN
	07:51			SUB OUT: COOKTAYLOR,IVONNE
	07:44			TURNOVER by BROOKS,RAYVEN
STEAL by COOPER,JORDYN	07:43			
MISSED JUMPER by JOHNSON,DASIA	07:40			
	07:40			REBOUND (DEF) by BROOKS,RAYVEN
	07:33			MISSED JUMPER by SANDERS,ZURI
REBOUND (DEF) by WHITE,BRIANA	07:33			
	07:32			FOUL by BOWSER,RYANN
TURNOVER by JOHNSON,DASIA	07:16			
	07:16			SUB IN: GRANT,LEASHJA
	07:16			SUB OUT: SANDERS,ZURI
	07:05			TURNOVER by BROOKS,RAYVEN
MISSED 3PTR by COOPER,JORDYN	06:55			
	06:55			REBOUND (DEF) by PARLIAMENT,PAIGE
FOUL by JOHNSON,DASIA	06:45			
	06:45	65-36	H 29	GOOD! FT by BROOKS,RAYVEN
	06:45			MISSED FT by BROOKS,RAYVEN
	06:45			REBOUND (OFF) by TEAM
	06:45			SUB IN: ROE,JAMIE

VISITORS: Eastern New Mexico	Time	Score	Margin	HOME: Texas Tech
	06:45			SUB OUT: BROOKS,RAYVEN
	06:42	67-36	H 31	GOOD! LAYUP by SANDERS,ZURI [PNT]
GOOD! 3PTR by WHITE,BRIANA	06:25	67-39	H 28	
	06:05			MISSED JUMPER by OLABODE,DAYO
	06:05			REBOUND (OFF) by GRANT,LEASHJA
FOUL by GUTIERREZ,BRITTANY	06:02			
	06:02			MISSED FT by GRANT,LEASHJA
	06:02			REBOUND (DEADB) by TEAM
	06:02	68-39	H 29	GOOD! FT by GRANT,LEASHJA
SUB IN: MOORE,MIRANDA	06:02			
SUB IN: COOPER,JAYLYN	06:02			
SUB IN: MARTINEZ,ELIZA	06:02			
SUB OUT: JOHNSON,DASIA	06:02			
SUB OUT: GUTIERREZ,BRITTANY	06:02			
SUB OUT: LEEPER,JULIANNE	06:02			
MISSED 3PTR by MARTINEZ,ELIZA	05:44			
REBOUND (OFF) by WHITE,BRIANA	05:44			
	05:43			FOUL by BOWSER,RYANN
MISSED JUMPER by COOPER,JAYLYN	05:23			
REBOUND (OFF) by MARTINEZ,ELIZA	05:23			
MISSED JUMPER by WHITE,BRIANA	05:09			
	05:09			REBOUND (DEF) by BOWSER,RYANN
	04:53			MISSED JUMPER by GRANT,LEASHJA
BLOCK by COOPER,JORDYN	04:53			
	04:53			REBOUND (OFF) by TEAM
	04:53			TIMEOUT MEDIA
	04:44			MISSED 3PTR by ROE,JAMIE
	04:44			REBOUND (OFF) by GRANT,LEASHJA
	04:39			MISSED JUMPER by GRANT,LEASHJA
BLOCK by WHITE,BRIANA	04:39			
REBOUND (DEF) by MARTINEZ,ELIZA	04:37			
MISSED 3PTR by MOORE,MIRANDA	04:25			
REBOUND (OFF) by MARTINEZ,ELIZA	04:25			
	04:06			FOUL by GRANT,LEASHJA
GOOD! FT by MARTINEZ,ELIZA	04:06	68-40	H 28	
GOOD! FT by MARTINEZ,ELIZA	04:06	68-41	H 27	
SUB IN: STINNETT,SARAH	04:06			
SUB IN: CONNOR,MIKAEHLA	04:06			
SUB OUT: COOPER,JORDYN	04:06			
SUB OUT: WHITE,BRIANA	04:06			
	04:06			SUB IN: SANDERS,ZURI
	04:06			SUB OUT: OLABODE,DAYO
FOUL by MOORE,MIRANDA	04:00			
	04:00			MISSED FT by BOWSER,RYANN
	04:00			REBOUND (DEADB) by TEAM
	04:00	69-41	H 28	GOOD! FT by BOWSER,RYANN
MISSED JUMPER by STINNETT,SARAH	03:49			
	03:49			REBOUND (DEF) by GRANT,LEASHJA
	03:40			MISSED LAYUP by ROE,JAMIE
REBOUND (DEF) by STINNETT,SARAH	03:40			
GOOD! JUMPER by STINNETT,SARAH [FB/PNT]	03:35	69-43	H 26	
	03:12	72-43	H 29	GOOD! 3PTR by PARLIAMENT,PAIGE
	03:05			ASSIST by BOWSER,RYANN
MISSED JUMPER by STINNETT,SARAH	03:02			
	03:02			REBOUND (DEF) by GRANT,LEASHJA
	02:52			MISSED 3PTR by PARLIAMENT,PAIGE
	02:52			REBOUND (OFF) by SANDERS,ZURI
	02:48			MISSED JUMPER by SANDERS,ZURI

VISITORS: Eastern New Mexico	Time	Score	Margin	HOME: Texas Tech
BLOCK by CONNOR,MIKAEHLA	02:48			
REBOUND (DEF) by MARTINEZ,ELIZA	02:47			
MISSED JUMPER by MOORE,MIRANDA	02:42			
REBOUND (OFF) by MOORE,MIRANDA	02:42			
	02:33			FOUL by PARLIAMENT,PAIGE
MISSED FT by STINNETT,SARAH	02:33			
REBOUND (DEADB) by TEAM	02:33			
MISSED FT by STINNETT,SARAH	02:33			
	02:33			REBOUND (DEF) by SANDERS,ZURI
	02:25			FOUL by SANDERS,ZURI
	02:25			SUB IN: OLABODE,DAYO
	02:25			SUB OUT: GRANT,LEASHJA
TURNOVER by STINNETT,SARAH	02:15			
	02:14			STEAL by PARLIAMENT,PAIGE
	01:54	75-43	H 32	GOOD! 3PTR by PARLIAMENT,PAIGE
MISSED 3PTR by STINNETT,SARAH	01:22			
	01:22			REBOUND (DEF) by SANDERS,ZURI
	01:02	77-43	H 34	GOOD! LAYUP by OLABODE,DAYO [PNT]
	01:02			ASSIST by ROE,JAMIE
TIMEOUT 30SEC	00:55			
SUB IN: MANZANAREZ,MARISSA	00:55			
SUB IN: TURNER,AUBREE	00:55			
SUB IN: MCCLELLAND,JOHNA	00:55			
SUB IN: DILLARD,TAYLOR	00:55			
SUB IN: MONTOYA,DANIELLE	00:55			
SUB OUT: MOORE,MIRANDA	00:55			
SUB OUT: COOPER,JAYLYN	00:55			
SUB OUT: STINNETT,SARAH	00:55			
SUB OUT: MARTINEZ,ELIZA	00:55			
SUB OUT: CONNOR,MIKAEHLA	00:55			
MISSED JUMPER by MCCLELLAND,JOHNA	00:45			
	00:45			REBOUND (DEF) by PARLIAMENT,PAIGE
	00:25			TURNOVER by SANDERS,ZURI
MISSED JUMPER by MCCLELLAND,JOHNA	00:18			
	00:18			REBOUND (DEF) by TEAM
	00:07			TURNOVER by PARLIAMENT,PAIGE
STEAL by MONTOYA,DANIELLE	00:06			
TURNOVER by MONTOYA,DANIELLE	00:03			
	00:02			STEAL by ROE,JAMIE

Eastern New Mexico 43, Texas Tech 77

Period 4-only	In Paint	Off T/O	2nd Chance	Fast Break	Bench	
ENMU	2	0	2	2	3	Score tied - 0 times
TTU	4	3	3	0	12	Lead changed - 0 times

Eastern New Mexico vs Texas Tech
11/7/2015; 2:00 p.m. at Lubbock, Texas
Scoring/Runs Reference

Period 1		Period 2	
Eastern New Mexico	Score	Eastern New Mexico	Score
	X	09:44 - STINNETT JUMPER	X
	X		X
09:29 - STINNETT TURN	TO		14-16 2 2P
	TO	08:59 - HARRIS FT	X
09:00 - MOORE JUMPER	X	08:59 - HARRIS FT	X
	TO		TO
08:41 - STINNETT JUMPER	2 2-0 -2	08:36 - HARRIS TURN	TO
	TO		14-18 4 2P
08:02 - MOORE LAYUP	X	08:06 - MOORE TURN	TO
07:39 - CONNOR LAYUP	X		X
	TO	07:45 - MOORE JUMPER	2 16-18 2
07:25 - STINNETT LAYUP	2PF 4-0 4		TO
	4-2 -2 2	07:14 - STINNETT JUMPER	X
06:59 - STINNETT TURN	TO		TO
	4-4 0 2P	06:52 - CONNOR 3PTR	X
06:28 - CONNOR FT	1 5-4 -1		16-20 4 2P
06:28 - CONNOR FT	1 6-4 -2	06:17 - COOPER JUMPER	X
	TO		X
06:09 - GUTIERREZ JUMPER	2PF 8-4 -4		TO
	TO	05:55 - STINNETT JUMPER	2 18-20 2
05:41 - HARRIS TURN	TO		18-22 4 2
	8-5 -3 1	05:15 - STINNETT JUMPER	X
	8-6 -2 1		X
05:07 - GUTIERREZ JUMPER	2 10-6 -4		18-24 6 2P
	10-8 -2 2	04:36 - COOPER JUMPER	X
04:42 - HOTCHKINS TURN	TO		X
	10-10 0 2PF		18-26 8 2P
04:17 - HOTCHKINS LAYUP	X	03:56 -	X
	TO	GUTIERREZ JUMPER	X
03:48 - WHITE JUMPER	2P 12-10 -2	03:51 - JOHNSON 3PTR	X
	X		X
03:19 - COOPER JUMPER	X	03:27 - JOHNSON 3PTR	X
	12-12 0 2P		TO
02:48 - WHITE JUMPER	X	02:53 - JOHNSON JUMPER	2P 20-26 6
	X		20-28 8 2P
02:18 - MOORE JUMPER	2P 14-12 -2	02:15 - GUTIERREZ LAYUP	X
	X	01:58 - WHITE TURN	TO
01:32 - STINNETT TURN	TO		X
	14-13 -1 1		20-31 11 3
	14-14 0 1	01:23 - COOPER 3PTR	3 23-31 8
00:59 - CONNOR TURN	TO		X
	X		X
00:36 - STINNETT JUMPER	X	00:42 - COOPER TURN	TO
	TO		23-33 10 2PF
	TO	00:30 - JOHNSON TURN	TO
	TO		X
	TO		X
Period 3		Period 4	
Eastern New Mexico	Score	Eastern New Mexico	Score
	TO	09:40 - HARRIS JUMPER	X

00:03 - MONTOYA TURN TO

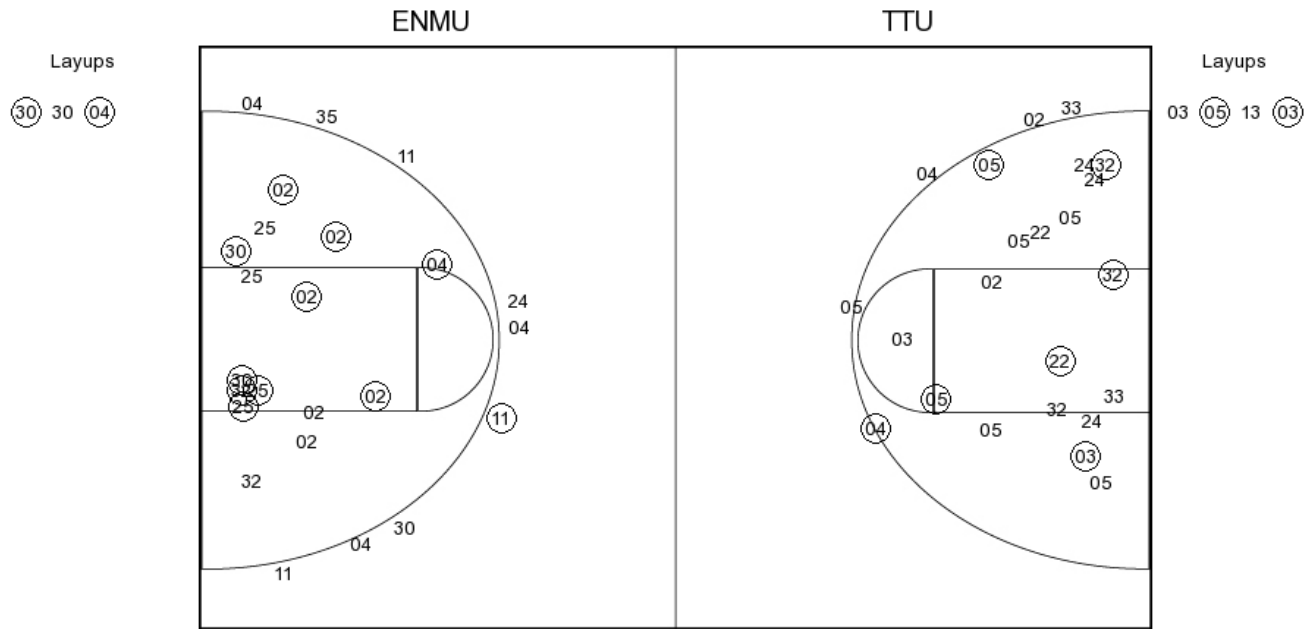
TO PARLIAMENT TURN - 0

Eastern New Mexico vs Texas Tech

OFFICIAL SHOT CHART

11/7/2015 at Lubbock, Texas

PERIOD 1



ENMU PERIOD 1

FG Made	10
FG Attempted	27
3PFG Made	1
3PFG Attempted	4

TTU PERIOD 1

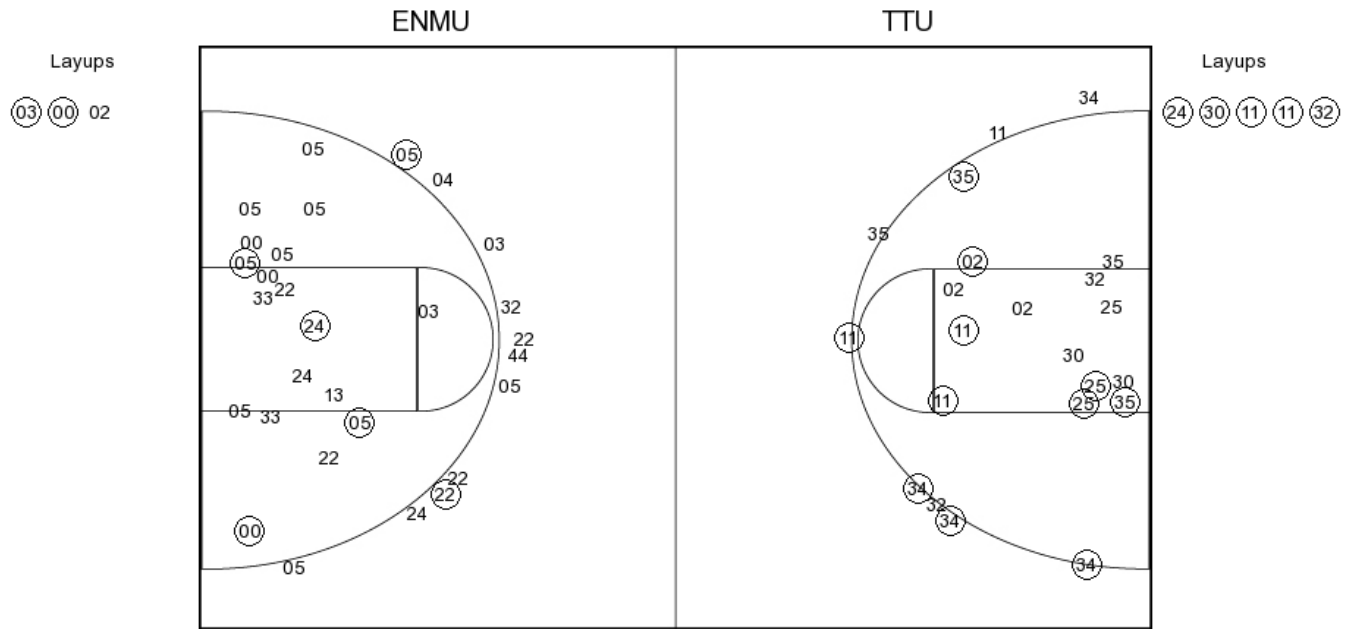
FG Made	14
FG Attempted	30
3PFG Made	1
3PFG Attempted	8

Eastern New Mexico vs Texas Tech

OFFICIAL SHOT CHART

11/7/2015 at Lubbock, Texas

PERIOD 2



ENMU PERIOD 2

- FG Made
- FG Attempted
- 3PFG Made
- 3PFG Attempted

TTU PERIOD 2

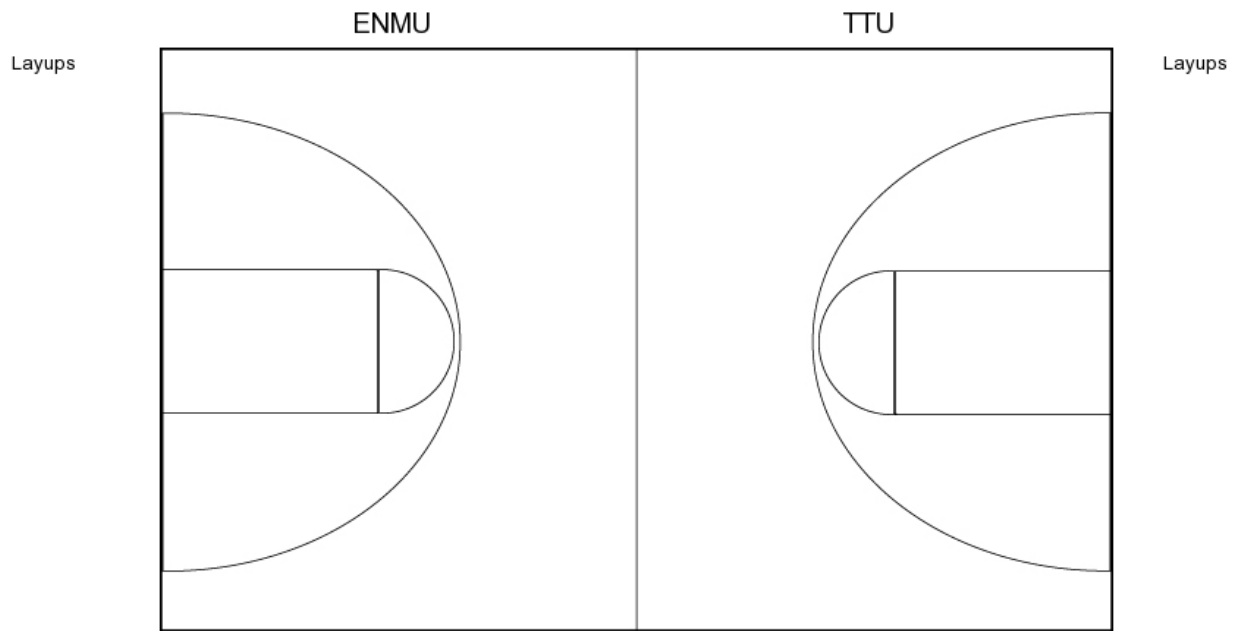
- FG Made
- FG Attempted
- 3PFG Made
- 3PFG Attempted

Eastern New Mexico vs Texas Tech

OFFICIAL SHOT CHART

11/7/2015 at Lubbock, Texas

PERIOD 3



ENMU PERIOD 3

FG Made	8
FG Attempted	33
3PFG Made	2
3PFG Attempted	13

TTU PERIOD 3

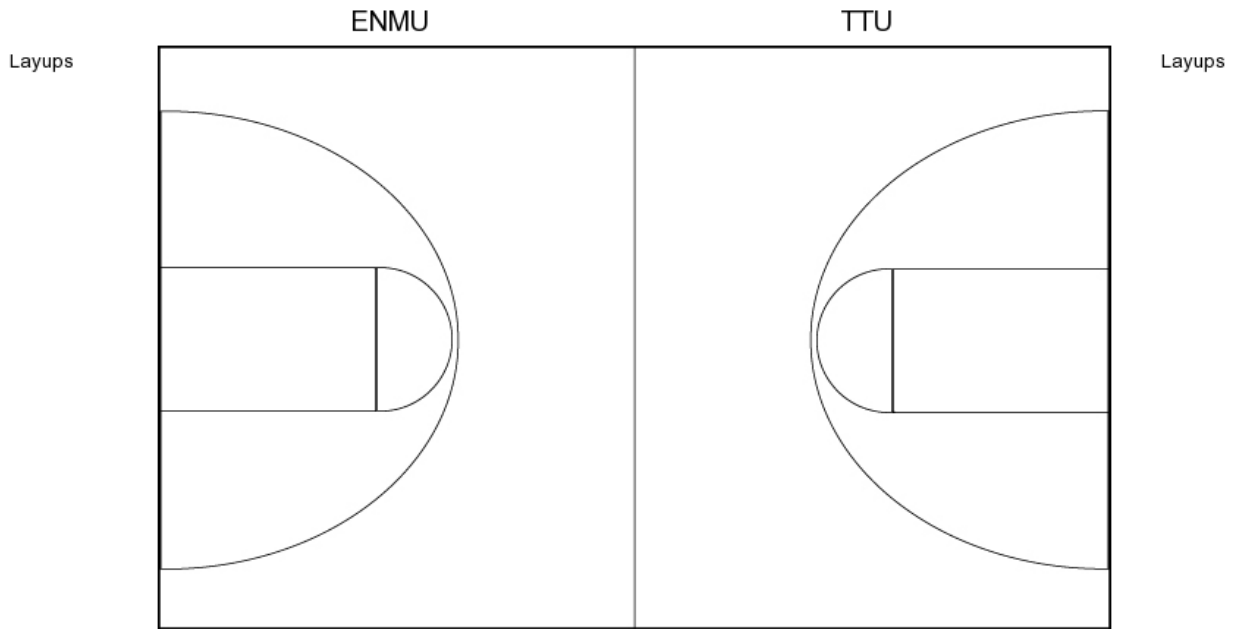
FG Made	16
FG Attempted	30
3PFG Made	4
3PFG Attempted	8

Eastern New Mexico vs Texas Tech

OFFICIAL SHOT CHART

11/7/2015 at Lubbock, Texas

PERIOD 4



ENMU PERIOD 4

FG Made
FG Attempted
3PFG Made
3PFG Attempted

TTU PERIOD 4

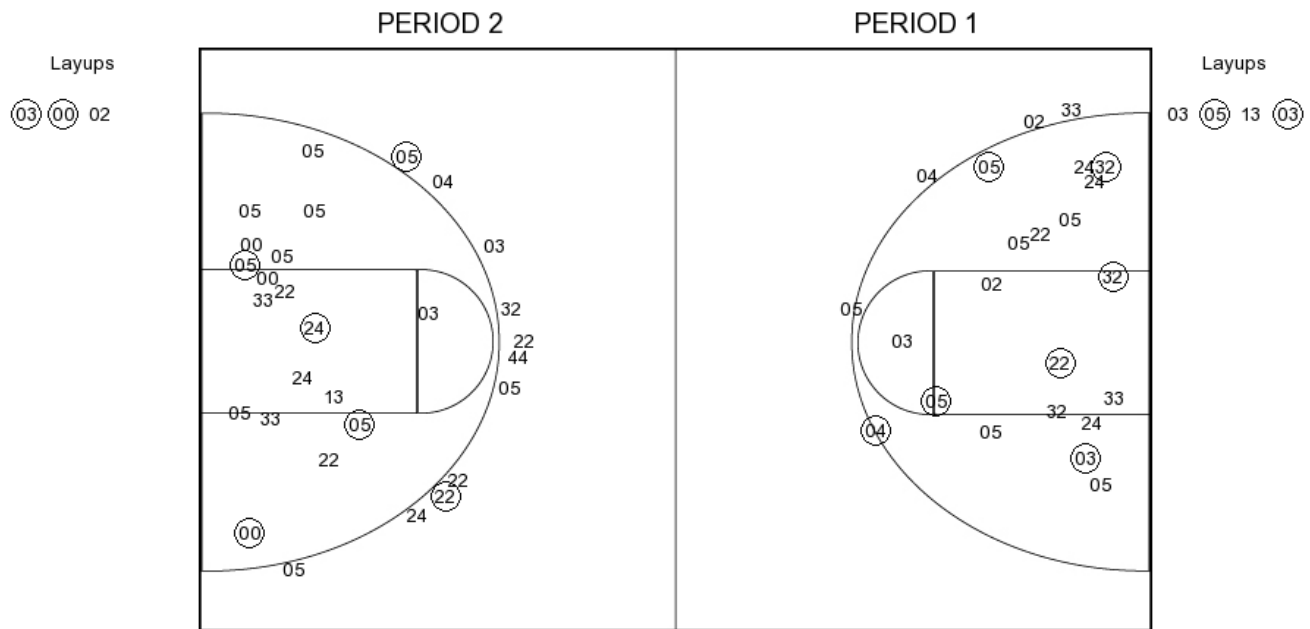
FG Made
FG Attempted
3PFG Made
3PFG Attempted

Eastern New Mexico vs Texas Tech

OFFICIAL SHOT CHART

11/7/2015 at Lubbock, Texas

Eastern New Mexico



ENMU PERIOD 1

FG Made 10
 FG Attempted 27
 3PFG Made 1
 3PFG Attempted 4

ENMU PERIOD 2

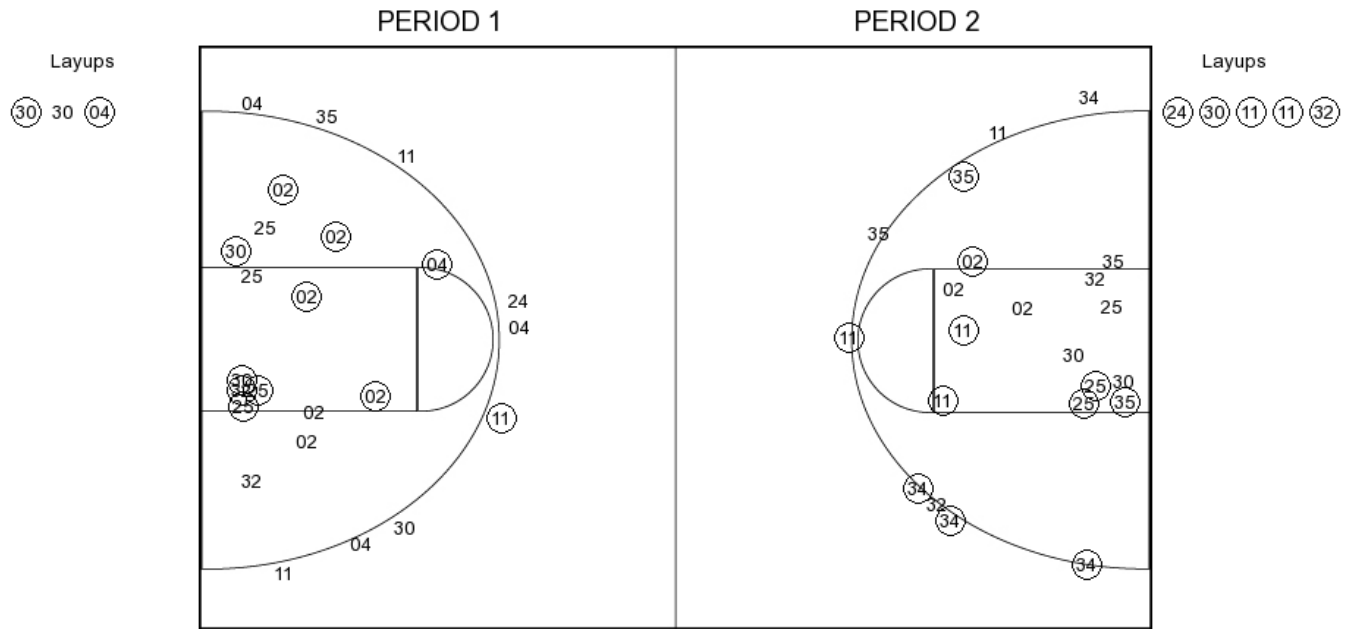
FG Made
 FG Attempted
 3PFG Made
 3PFG Attempted

Eastern New Mexico vs Texas Tech

OFFICIAL SHOT CHART

11/7/2015 at Lubbock, Texas

Texas Tech



TTU PERIOD 1

FG Made	14
FG Attempted	30
3PFG Made	1
3PFG Attempted	8

TTU PERIOD 2

FG Made	
FG Attempted	
3PFG Made	
3PFG Attempted	