

UTAH VALLEY VS. SEATTLE UNIVERSITY



2/27/2016

Orem, Utah - PE Building

FINAL STATS

Utah Valley
(15-13, 8-5)

79

Seattle University
(9-19, 3-10)

48

Start Time: 3pm MT

Officials: Shelley Russi, Paul Patterson, Kevin Kizewski

Attendance: 249

Official Basketball Box Score -- Game Totals -- Final Statistics

Seattle University vs Utah Valley

2/27/2016 3pm MT at Orem, Utah - PE Building

Seattle University 48 - 9-19, 3-10

##	Player	S	Total		3-Ptr		Rebounds			PF	TP	A	TO	Blk	Stl	Min
			FG	FGA	3PT	FGA	FT	FTA	Tot Reb							
02	BEST,KAYLEE	g	1	8	0	6	0	0	1 2 3	1	2	10	4	1	2	32
04	SHTIKEL,MASHA	g	2	9	1	3	2	2	2 1 3	2	7	0	2	0	3	34
15	SAHAR,TAL	g	2	7	0	1	1	2	4 2 6	0	5	0	1	1	1	27
31	ROSS,TAEOR	c	8	15	0	0	1	5	3 3 6	4	17	1	1	1	0	30
45	AFUNUGO,WILMA	f	3	7	0	0	4	5	2 1 3	0	10	0	0	0	1	19
00	HEREDIA,SHAYLIN		0	0	0	0	4	4	0 1 1	2	4	0	2	0	0	11
03	BECKLEY,JACINTA		1	4	0	3	0	0	1 0 1	1	2	1	3	0	0	16
21	PARRY,DELANIE		0	0	0	0	0	0	0 0 0	0	0	0	1	0	0	1
22	LEWEY,ASHLYN		0	1	0	0	1	2	0 0 0	1	1	0	0	1	1	13
25	CEBALLOS,CYDNEE		0	1	0	0	0	0	0 2 2	1	0	0	1	0	1	17
TEAM									2 1 3	0		0				
TOTALS			17	52	1	13	13	20	15 13 28	12	48	12	15	4	9	200

Deadball Rebounds: 3,1

FG %	1st Half: 8-27 29.6%	2nd Half: 9-25 36.0%	Game: 17-52 32.7%	4th Qtr	5-12	41.7%
	1st Qtr 1-14 07.1%	2nd Qtr 7-13 53.8%	3rd Qtr 4-13 30.8%			
3FG %	1st Half: 1-6 16.7%	2nd Half: 0-7 00.0%	Game: 1-13 07.7%	4th Qtr	0-2	00.0%
	1st Qtr 0-3 00.0%	2nd Qtr 1-3 33.3%	3rd Qtr 0-5 00.0%			
FT %	1st Half: 5-10 50.0%	2nd Half: 8-10 80.0%	Game: 13-20 65.0%	4th Qtr	3-5	60.0%
	1st Qtr 3-6 50.0%	2nd Qtr 2-4 50.0%	3rd Qtr 5-5 100.0%			

Utah Valley 79 - 15-13, 8-5

##	Player	S	Total		3-Ptr		Rebounds			PF	TP	A	TO	Blk	Stl	Min
			FG	FGA	3PT	FGA	FT	FTA	Tot Reb							
03	SEALS,MARIAH	g	9	14	6	8	0	0	0 3 3	0	24	4	4	1	2	37
12	MAWHINNEY,REBECCA	f	3	6	3	5	0	0	0 6 6	4	9	3	2	0	1	30
20	TOSTON,PATRICE	g	3	6	0	1	2	5	2 1 3	3	8	3	1	0	1	24
35	BLANKS,DEIJAH	g	4	7	2	3	2	2	0 3 3	0	12	1	3	0	0	19
40	LOGGINS,SAM	c	1	4	0	0	1	2	2 4 6	3	3	0	1	0	1	24
05	AGNEW,GEORGIA		4	9	3	4	4	4	6 3 9	1	15	8	3	0	3	34
13	NORRIS,KARLEE		1	3	0	0	0	0	1 1 2	3	2	1	1	0	0	13
22	GORDON,TAYLOR		2	3	2	2	0	0	1 2 3	0	6	1	0	0	2	13
25	PRECIADO,VERONICA		0	0	0	0	0	0	0 0 0	1	0	1	1	0	0	3
44	NIELSON,HADLEY		0	0	0	0	0	0	0 0 0	1	0	0	0	1	0	3
TEAM									1 0 1	0		1				
TOTALS			27	52	16	23	9	13	13 23 36	16	79	22	17	2	10	200

Deadball Rebounds: 2,1

FG %	1st Half: 17-32 53.1%	2nd Half: 10-20 50.0%	Game: 27-52 51.9%	4th Qtr	6-9	66.7%
	1st Qtr 7-15 46.7%	2nd Qtr 10-17 58.8%	3rd Qtr 4-11 36.4%			
3FG %	1st Half: 9-13 69.2%	2nd Half: 7-10 70.0%	Game: 16-23 69.6%	4th Qtr	5-6	83.3%
	1st Qtr 4-6 66.7%	2nd Qtr 5-7 71.4%	3rd Qtr 2-4 50.0%			
FT %	1st Half: 5-7 71.4%	2nd Half: 4-6 66.7%	Game: 9-13 69.2%	4th Qtr	1-2	50.0%
	1st Qtr 2-3 66.7%	2nd Qtr 3-4 75.0%	3rd Qtr 3-4 75.0%			

Officials: Shelley Russi, Paul Patterson, Kevin Kizewski

Technical Fouls: Seattle University- None. Utah Valley- None.

Attendance: 249

Score by periods	1st	2nd	3rd	4th	Total
Seattle University	5	17	13	13	48
Utah Valley	20	28	13	18	79

Points	In Paint	Off T/O	2nd 2nd Chance	Fast Fast Break	Bench
SU	30	10	18	4	7
UVU	22	18	18	8	23

Last FG - SU 4th-01:15, UVU 4th-00:49.

Largest lead - Seattle University by ; Utah Valley by 31 4th-00:49
SU led for 0:00. UVU led for 38:17. Game was tied for 1:43.

Score tied - 0 times
Lead changed - 0 times

Official Basketball Box Score -- Game Totals -- First Half Statistics
Seattle University vs Utah Valley
2/27/2016 3pm MT at Orem, Utah - PE Building

Seattle University, 22, 9-19, 3-10

##	Player	S	Total		3-Ptr		FT-FTA	Rebounds			PF	TP	A	T	O	Blk	Stl	Min
			FG	FGA	3PT	FG-FGA		Off	Def	Tot								
02	BEST, KAYLEE	g	0-3		0-2		0-0	0	1	1	1	0	6	2	0	0		17
04	SHTIKEL, MASHA	g	2-5		1-1		0-0	1	1	2	1	5	0	2	0	1		17
15	SAHAR, TAL	g	1-4		0-1		1-2	2	2	4	0	3	0	0	1	0		16
31	ROSS, TAEOR	c	3-9		0-0		0-2	2	2	4	2	6	0	1	0	0		14
45	AFUNUGO, WILMA	f	2-4		0-0		1-2	1	0	1	0	5	0	0	0	0		8
00	HEREDIA, SHAYLIN		0-0		0-0		2-2	0	1	1	1	2	0	2	0	0		5
03	BECKLEY, JACINTA		0-2		0-2		0-0	1	0	1	0	0	0	2	0	0		10
21	PARRY, DELANIE		0-0		0-0		0-0	0	0	0	0	0	0	0	0	0		0
22	LEWEY, ASHLYN		0-0		0-0		1-2	0	0	0	0	1	0	0	1	1		7
25	CEBALLOS, CYDNEE		0-0		0-0		0-0	0	2	2	1	0	0	0	0	0		6
TEAM								1	0	1	0			0				
Totals			8-27		1-6		5-10	8	9	17	6	22	6	9	2	2		100

FG % 1st Qtr 1-14 07.1% 2nd Qtr 7-13 53.8% Half: 8-27 29.6%
 3FG % 1st Qtr 0-3 00.0% 2nd Qtr 1-3 33.3% Half: 1-6 16.7%
 FT % 1st Qtr 3-6 50.0% 2nd Qtr 2-4 50.0% Half: 5-10 50.0%

Utah Valley, 48, 15-13, 8-5

##	Player	S	Total		3-Ptr		FT-FTA	Rebounds			PF	TP	A	T	O	Blk	Stl	Min
			FG	FGA	3PT	FG-FGA		Off	Def	Tot								
03	SEALS, MARIAH	g	6-9		4-5		0-0	0	3	3	0	16	4	2	0	1		20
12	MAWHINNEY, REBECCA	f	1-2		1-2		0-0	0	5	5	2	3	2	0	0	0		12
20	TOSTON, PATRICE	g	1-2		0-0		0-1	1	1	2	2	2	2	0	0	0		9
35	BLANKS, DEIJA	g	4-6		2-3		2-2	0	2	2	0	12	1	3	0	0		17
40	LOGGINS, SAM	c	1-2		0-0		1-2	1	1	2	2	3	0	0	0	1		13
05	AGNEW, GEORGIA		2-6		1-2		2-2	3	0	3	1	7	4	1	0	3		14
13	NORRIS, KARLEE		1-3		0-0		0-0	1	1	2	1	2	0	0	0	0		7
22	GORDON, TAYLOR		1-2		1-1		0-0	1	1	2	0	3	1	0	0	1		8
25	PRECIADO, VERONICA		0-0		0-0		0-0	0	0	0	0	0	0	0	0	0		0
44	NIELSON, HADLEY		0-0		0-0		0-0	0	0	0	0	0	0	0	0	0		0
TEAM								0	0	0	0			0				
Totals			17-32		9-13		5-7	7	14	21	8	48	14	6	0	6		100

FG % 1st Qtr 7-15 46.7% 2nd Qtr 10-17 58.8% Half: 17-32 53.1%
 3FG % 1st Qtr 4-6 66.7% 2nd Qtr 5-7 71.4% Half: 9-13 69.2%
 FT % 1st Qtr 2-3 66.7% 2nd Qtr 3-4 75.0% Half: 5-7 71.4%

Officials: Shelley Russi, Paul Patterson, Kevin Kizewski
 Technical Fouls: , Seattle University- None. , Utah Valley- None.

Score by periods	1st	2nd	3rd	4th	Total
Seattle University	5	17	13	13	48
Utah Valley	20	28	13	18	79

Points	In Paint	Off T/O	2nd 2nd Chance	Fast Fast Break	Bench
SU	12	1	5	2	3
	16	12	6	4	12

Last FG - SU 2nd-03:13, UVU 2nd-00:01.
 SU led for 0:00. UVU led for 18:17. Game was tied for 1:43.

Score tied - 0 times
 Lead changed - 0 times

Seattle University vs Utah Valley

2/27/2016; 3pm MT at Orem, Utah - PE Building

Period 1 Play-By-Play

VISITORS: Seattle University	Time	Score	Margin	HOME: Utah Valley
MISSED 3PTR by BEST,KAYLEE	09:32			
REBOUND (OFF) by ROSS,TAELORE	09:32			
MISSED LAYUP by AFUNUGO,WILMA	09:28			
	09:28			REBOUND (DEF) by BLANKS,DEIJAH
FOUL by SHTIKEL,MASHA	09:25			
	09:11			MISSED JUMPER by LOGGINS,SAM
	09:11			REBOUND (OFF) by LOGGINS,SAM
	09:00			TURNOVER by SEALS,MARIAH
MISSED LAYUP by AFUNUGO,WILMA	08:49			
	08:49			REBOUND (DEF) by MAWHINNEY,REBECCA
	08:33			MISSED 3PTR by MAWHINNEY,REBECCA
	08:33			REBOUND (OFF) by TOSTON,PATRICE
	08:17	2-0	H 2	GOOD! JUMPER by SEALS,MARIAH [PNT]
TURNOVER by BEST,KAYLEE	08:07			
	08:06			STEAL by LOGGINS,SAM
	07:47	5-0	H 5	GOOD! 3PTR by SEALS,MARIAH
	07:47			ASSIST by TOSTON,PATRICE
MISSED JUMPER by ROSS,TAELORE	07:23			
REBOUND (OFF) by SAHAR,TAL	07:23			
GOOD! LAYUP by SAHAR,TAL [PNT]	07:19	5-2	H 3	
	06:53	8-2	H 6	GOOD! 3PTR by BLANKS,DEIJAH
	06:53			ASSIST by TOSTON,PATRICE
MISSED JUMPER by ROSS,TAELORE	06:37			
	06:37			REBOUND (DEF) by SEALS,MARIAH
	06:31	10-2	H 8	GOOD! LAYUP by BLANKS,DEIJAH [FB/PNT]
	06:31			ASSIST by SEALS,MARIAH
TIMEOUT 30SEC	06:28			
SUB IN: LEWEY,ASHLYN	06:28			
SUB IN: BECKLEY,JACINTA	06:28			
SUB OUT: SAHAR,TAL	06:28			
SUB OUT: AFUNUGO,WILMA	06:28			
TURNOVER by SHTIKEL,MASHA	06:17			
	05:57			MISSED LAYUP by TOSTON,PATRICE
REBOUND (DEF) by ROSS,TAELORE	05:57			
MISSED JUMPER by SHTIKEL,MASHA	05:46			
REBOUND (OFF) by TEAM	05:46			
MISSED 3PTR by BEST,KAYLEE	05:42			
REBOUND (OFF) by ROSS,TAELORE	05:42			
MISSED LAYUP by ROSS,TAELORE	05:42			
	05:42			REBOUND (DEF) by MAWHINNEY,REBECCA
	05:11	13-2	H 11	GOOD! 3PTR by SEALS,MARIAH
	05:11			ASSIST by MAWHINNEY,REBECCA
	04:51			FOUL by TOSTON,PATRICE
MISSED FT by ROSS,TAELORE	04:51			
REBOUND (DEADB) by TEAM	04:51			
MISSED FT by ROSS,TAELORE	04:51			
	04:51			REBOUND (DEF) by BLANKS,DEIJAH
	04:51			SUB IN: NORRIS,KARLEE
	04:51			SUB OUT: LOGGINS,SAM
	04:40			TURNOVER by BLANKS,DEIJAH
STEAL by SHTIKEL,MASHA	04:38			
MISSED 3PTR by BECKLEY,JACINTA	04:33			
	04:33			REBOUND (DEF) by TOSTON,PATRICE

VISITORS: Seattle University	Time	Score	Margin	HOME: Utah Valley
FOUL by BEST,KAYLEE	04:07			
	04:07	14-2	H 12	GOOD! FT by BLANKS,DEIJAH
	04:07	15-2	H 13	GOOD! FT by BLANKS,DEIJAH
	04:07			SUB IN: AGNEW,GEORGIA
	04:07			SUB OUT: BLANKS,DEIJAH
MISSED JUMPER by ROSS,TAEOR	03:47			
	03:47			REBOUND (DEF) by MAWHINNEY,REBECCA
	03:28			MISSED LAYUP by NORRIS,KARLEE
	03:28			REBOUND (OFF) by AGNEW,GEORGIA
BLOCK by LEWEY,ASHLYN	03:26			
	03:26			MISSED LAYUP by AGNEW,GEORGIA
	03:25			REBOUND (OFF) by NORRIS,KARLEE
	03:15			TURNOVER by SEALS,MARIAH
SUB IN: SAHAR,TAL	03:15			
SUB IN: HEREDIA,SHAYLIN	03:15			
SUB IN: CEBALLOS,CYDNEE	03:15			
SUB OUT: BEST,KAYLEE	03:15			
SUB OUT: LEWEY,ASHLYN	03:15			
SUB OUT: ROSS,TAEOR	03:15			
	03:01			FOUL by AGNEW,GEORGIA
GOOD! FT by SAHAR,TAL	03:01	15-3	H 12	
MISSED FT by SAHAR,TAL	03:01			
	03:01			REBOUND (DEF) by MAWHINNEY,REBECCA
	02:45			MISSED LAYUP by SEALS,MARIAH
REBOUND (DEF) by HEREDIA,SHAYLIN	02:45			
MISSED JUMPER by SHTIKEL,MASHA	02:31			
REBOUND (OFF) by BECKLEY,JACINTA	02:31			
TURNOVER by BECKLEY,JACINTA	02:15			
	02:14			STEAL by AGNEW,GEORGIA
	01:52	17-3	H 14	GOOD! LAYUP by TOSTON,PATRICE [PNT]
	01:51			ASSIST by AGNEW,GEORGIA
FOUL by CEBALLOS,CYDNEE	01:50			
	01:50			MISSED FT by TOSTON,PATRICE
REBOUND (DEF) by ROSS,TAEOR	01:50			
SUB IN: ROSS,TAEOR	01:50			
SUB IN: BEST,KAYLEE	01:50			
SUB OUT: SHTIKEL,MASHA	01:50			
SUB OUT: CEBALLOS,CYDNEE	01:50			
	01:50			SUB IN: LOGGINS,SAM
	01:50			SUB OUT: NORRIS,KARLEE
MISSED JUMPER by SAHAR,TAL	01:38			
	01:38			REBOUND (DEF) by MAWHINNEY,REBECCA
	01:20	20-3	H 17	GOOD! 3PTR by MAWHINNEY,REBECCA
	01:20			ASSIST by SEALS,MARIAH
	01:06			FOUL by TOSTON,PATRICE
GOOD! FT by HEREDIA,SHAYLIN	01:06	20-4	H 16	
GOOD! FT by HEREDIA,SHAYLIN	01:06	20-5	H 15	
	01:06			SUB IN: BLANKS,DEIJAH
	01:06			SUB OUT: TOSTON,PATRICE
	00:59			TURNOVER by BLANKS,DEIJAH
MISSED JUMPER by SAHAR,TAL	00:39			
	00:39			REBOUND (DEF) by SEALS,MARIAH
	00:22			MISSED 3PTR by BLANKS,DEIJAH
REBOUND (DEF) by SAHAR,TAL	00:22			
TURNOVER by BEST,KAYLEE	00:06			
	00:05			STEAL by AGNEW,GEORGIA
	00:01			MISSED LAYUP by AGNEW,GEORGIA
REBOUND (DEADB) by TEAM	00:01			

Period 1-only	In Paint	Off T/O	2nd Chance	Fast Break	Bench	Score tied - 0 times
SU	2	1	2	0	2	Lead changed - 0 times
UVU	6	5	2	2	0	

Seattle University vs Utah Valley
2/27/2016; 3pm MT at Orem, Utah - PE Building
Period 2 Play-By-Play

VISITORS: Seattle University	Time	Score	Margin	HOME: Utah Valley
SUB IN: HEREDIA,SHAYLIN	10:00			
SUB IN: BECKLEY,JACINTA	10:00			
SUB IN: LEWEY,ASHLYN	10:00			
SUB OUT: SHTIKEL,MASHA	10:00			
SUB OUT: SAHAR,TAL	10:00			
SUB OUT: AFUNUGO,WILMA	10:00			
	10:00			SUB IN: AGNEW,GEORGIA
	10:00			SUB OUT: TOSTON,PATRICE
	09:58	22-5	H 17	GOOD! JUMPER by LOGGINS,SAM [PNT]
	09:58			ASSIST by AGNEW,GEORGIA
	09:48			FOUL by LOGGINS,SAM
TURNOVER by HEREDIA,SHAYLIN	09:29			
	09:29			STEAL by AGNEW,GEORGIA
FOUL by HEREDIA,SHAYLIN	09:29			
SUB IN: SHTIKEL,MASHA	09:29			
SUB OUT: HEREDIA,SHAYLIN	09:29			
	09:14	24-5	H 19	GOOD! LAYUP by BLANKS,DEIJAH [PNT]
	09:14			ASSIST by AGNEW,GEORGIA
GOOD! LAYUP by ROSS,TAELORE [PNT]	09:03	24-7	H 17	
ASSIST by BEST,KAYLEE	09:03			
	08:47	27-7	H 20	GOOD! 3PTR by AGNEW,GEORGIA
	08:47			ASSIST by MAWHINNEY,REBECCA
TIMEOUT 30SEC	08:40			
SUB IN: SAHAR,TAL	08:40			
SUB IN: AFUNUGO,WILMA	08:40			
SUB OUT: BECKLEY,JACINTA	08:40			
SUB OUT: LEWEY,ASHLYN	08:40			
MISSED LAYUP by ROSS,TAELORE	08:23			
REBOUND (OFF) by AFUNUGO,WILMA	08:23			
GOOD! LAYUP by AFUNUGO,WILMA [PNT]	08:20	27-9	H 18	
FOUL by ROSS,TAELORE	08:06			
	08:06	28-9	H 19	GOOD! FT by LOGGINS,SAM
	08:06			MISSED FT by LOGGINS,SAM
REBOUND (DEF) by SAHAR,TAL	08:06			
	07:57			FOUL by MAWHINNEY,REBECCA
	07:57			SUB IN: GORDON,TAYLOR
	07:57			SUB OUT: MAWHINNEY,REBECCA
MISSED JUMPER by ROSS,TAELORE	07:46			
	07:46			REBOUND (DEF) by LOGGINS,SAM
SUB IN: CEBALLOS,CYDNEE	07:18			
SUB OUT: AFUNUGO,WILMA	07:18			
	07:13			MISSED JUMPER by SEALS,MARIAH
REBOUND (DEF) by BEST,KAYLEE	07:13			
GOOD! JUMPER by ROSS,TAELORE	06:52	28-11	H 17	
ASSIST by BEST,KAYLEE	06:52			
	06:24			TURNOVER by BLANKS,DEIJAH
	06:23			SUB IN: MAWHINNEY,REBECCA
	06:23			SUB OUT: BLANKS,DEIJAH
TURNOVER by SHTIKEL,MASHA	06:13			
	06:11			STEAL by SEALS,MARIAH
	06:10	30-11	H 19	GOOD! LAYUP by SEALS,MARIAH [FB/PNT]
	05:59			FOUL by MAWHINNEY,REBECCA
	05:59			SUB IN: BLANKS,DEIJAH

VISITORS: Seattle University	Time	Score	Margin	HOME: Utah Valley
	05:59			SUB OUT: MAWHINNEY,REBECCA
GOOD! LAYUP by SHTIKEL,MASHA [PNT]	05:57	30-13	H 17	
ASSIST by BEST,KAYLEE	05:57			
	05:44			MISSED 3PTR by SEALS,MARIAH
	05:44			REBOUND (OFF) by GORDON,TAYLOR
	05:40			MISSED LAYUP by GORDON,TAYLOR
REBOUND (DEF) by CEBALLOS,CYDNEE	05:40			
TURNOVER by ROSS,TAELORE	05:30			
	05:19	33-13	H 20	GOOD! 3PTR by SEALS,MARIAH
	05:19			ASSIST by GORDON,TAYLOR
GOOD! JUMPER by ROSS,TAELORE [PNT]	05:08	33-15	H 18	
ASSIST by BEST,KAYLEE	05:08			
	04:47			MISSED 3PTR by AGNEW,GEORGIA
BLOCK by SAHAR,TAL	04:47			
	04:44			REBOUND (OFF) by AGNEW,GEORGIA
FOUL by ROSS,TAELORE	04:41			
	04:41	34-15	H 19	GOOD! FT by AGNEW,GEORGIA
	04:41	35-15	H 20	GOOD! FT by AGNEW,GEORGIA
SUB IN: AFUNUGO,WILMA	04:41			
SUB OUT: ROSS,TAELORE	04:41			
	04:17			FOUL by LOGGINS,SAM
GOOD! FT by AFUNUGO,WILMA	04:17	35-16	H 19	
MISSED FT by AFUNUGO,WILMA	04:17			
	04:17			REBOUND (DEF) by NORRIS,KARLEE
	04:17			SUB IN: NORRIS,KARLEE
	04:17			SUB OUT: LOGGINS,SAM
	03:55			MISSED JUMPER by AGNEW,GEORGIA
REBOUND (DEF) by CEBALLOS,CYDNEE	03:55			
GOOD! LAYUP by AFUNUGO,WILMA [FB/PNT]	03:48	35-18	H 17	
ASSIST by BEST,KAYLEE	03:48			
	03:25	38-18	H 20	GOOD! 3PTR by GORDON,TAYLOR
	03:25			ASSIST by SEALS,MARIAH
GOOD! 3PTR by SHTIKEL,MASHA	03:13	38-21	H 17	
ASSIST by BEST,KAYLEE	03:13			
	02:52	41-21	H 20	GOOD! 3PTR by BLANKS,DEIJAH
	02:52			ASSIST by SEALS,MARIAH
MISSED LAYUP by BEST,KAYLEE	02:38			
	02:38			REBOUND (DEF) by GORDON,TAYLOR
	02:31	44-21	H 23	GOOD! 3PTR by SEALS,MARIAH
	02:31			ASSIST by AGNEW,GEORGIA
TIMEOUT 30SEC	02:26			
SUB IN: LEWEY,ASHLYN	02:26			
SUB IN: BECKLEY,JACINTA	02:26			
SUB IN: HEREDIA,SHAYLIN	02:26			
SUB OUT: BEST,KAYLEE	02:26			
SUB OUT: AFUNUGO,WILMA	02:26			
SUB OUT: CEBALLOS,CYDNEE	02:26			
TURNOVER by HEREDIA,SHAYLIN	02:08			
	02:07			STEAL by GORDON,TAYLOR
	01:56			MISSED JUMPER by NORRIS,KARLEE
REBOUND (DEF) by SHTIKEL,MASHA	01:56			
TURNOVER by BECKLEY,JACINTA	01:34			
	01:34			TIMEOUT 30SEC
	01:11			TURNOVER by AGNEW,GEORGIA
STEAL by LEWEY,ASHLYN	01:10			
MISSED 3PTR by SAHAR,TAL	01:06			
	01:06			REBOUND (DEF) by SEALS,MARIAH
	00:41	46-21	H 25	GOOD! LAYUP by NORRIS,KARLEE [PNT]

VISITORS: Seattle University	Time	Score	Margin	HOME: Utah Valley
	00:41			ASSIST by BLANKS,DEIJAH
MISSED 3PTR by BECKLEY,JACINTA	00:26			
REBOUND (OFF) by SHTIKEL,MASHA	00:26			
MISSED LAYUP by SHTIKEL,MASHA	00:23			
REBOUND (OFF) by SAHAR,TAL	00:23			
	00:16			FOUL by NORRIS,KARLEE
MISSED FT by LEWEY,ASHLYN	00:16			
REBOUND (DEADB) by TEAM	00:16			
GOOD! FT by LEWEY,ASHLYN	00:16	46-22	H 24	
	00:16			SUB IN: MAWHINNEY,REBECCA
	00:16			SUB OUT: GORDON,TAYLOR
	00:06			MISSED JUMPER by BLANKS,DEIJAH
	00:06			REBOUND (OFF) by AGNEW,GEORGIA
	00:01	48-22	H 26	GOOD! LAYUP by AGNEW,GEORGIA [PNT]

Seattle University 22, Utah Valley 48

Period 2-only	In Paint	Off T/O	2nd Chance	Fast Break	Bench	****
SU	10	0	3	2	1	Score tied - 0 times
UVU	10	7	4	2	12	Lead changed - 0 times

Official Basketball Box Score -- Game Totals -- Second Half Statistics
Seattle University vs Utah Valley
2/27/2016 3pm MT at Orem, Utah - PE Building

Seattle University, 26, 9-19, 3-10

##	Player	S	Total		3-Ptr		FT-FTA	Rebounds			PF	TP	A	TO	Blk	Stl	Min
			FG	FGA	3PT	FG-FGA		Off Reb	Def Reb	Tot Reb							
02	BEST, KAYLEE	g	1	5	0	4	0-0	1	1	2	0	2	4	2	1	2	15
04	SHTIKEL, MASHA	g	0	4	0	2	2-2	1	0	1	1	2	0	0	0	2	17
15	SAHAR, TAL	g	1	3	0	0	0-0	2	0	2	0	2	0	1	0	1	11
31	ROSS, TAEOR	c	5	6	0	0	1-3	1	1	2	2	11	1	0	1	0	16
45	AFUNUGO, WILMA	f	1	3	0	0	3-3	1	1	2	0	5	0	0	0	1	11
00	HEREDIA, SHAYLIN		0	0	0	0	2-2	0	0	0	1	2	0	0	0	0	6
03	BECKLEY, JACINTA		1	2	0	1	0-0	0	0	0	1	2	1	1	0	0	6
21	PARRY, DELANIE		0	0	0	0	0-0	0	0	0	0	0	0	1	0	0	1
22	LEWEY, ASHLYN		0	1	0	0	0-0	0	0	0	1	0	0	0	0	0	6
25	CEBALLOS, CYDNEE		0	1	0	0	0-0	0	0	0	0	0	0	1	0	1	11
TEAM								1	1	2	0			0			
Totals			9	25	0	7	8-10	7	4	11	6	26	6	6	2	7	100

FG % 3rd Qtr 4-13 30.8% 4th Qtr 5-12 41.7% Half: 9-25 36.0%
 3FG % 3rd Qtr 0-5 00.0% 4th Qtr 0-2 00.0% Half: 0-7 16.7%
 FT % 3rd Qtr 5-5 100.0% 4th Qtr 3-5 60.0% Half: 8-10 80.0%

Utah Valley, 31, 15-13, 8-5

##	Player	S	Total		3-Ptr		FT-FTA	Rebounds			PF	TP	A	TO	Blk	Stl	Min
			FG	FGA	3PT	FG-FGA		Off Reb	Def Reb	Tot Reb							
03	SEALS, MARIAH	g	3	5	2	3	0-0	0	0	0	0	8	0	2	1	1	17
12	MAWHINNEY, REBECCA	f	2	4	2	3	0-0	0	1	1	2	6	1	2	0	1	18
20	TOSTON, PATRICE	g	2	4	0	1	2-4	1	0	1	1	6	1	1	0	1	15
35	BLANKS, DEIJAH	g	0	1	0	0	0-0	0	1	1	0	0	0	0	0	0	2
40	LOGGINS, SAM	c	0	2	0	0	0-0	1	3	4	1	0	0	1	0	0	11
05	AGNEW, GEORGIA		2	3	2	2	2-2	3	3	6	0	8	4	2	0	0	20
13	NORRIS, KARLEE		0	0	0	0	0-0	0	0	0	2	0	1	1	0	0	6
22	GORDON, TAYLOR		1	1	1	1	0-0	0	1	1	0	3	0	0	0	1	5
25	PRECIADO, VERONICA		0	0	0	0	0-0	0	0	0	1	0	1	1	0	0	3
44	NIELSON, HADLEY		0	0	0	0	0-0	0	0	0	1	0	0	0	1	0	3
TEAM								1	0	1	0			1			
Totals			10	20	7	10	4-6	6	9	15	8	31	8	11	2	4	100

FG % 3rd Qtr 4-11 36.4% 4th Qtr 6-9 66.7% Half: 10-20 50.0%
 3FG % 3rd Qtr 2-4 50.0% 4th Qtr 5-6 83.3% Half: 7-10 69.2%
 FT % 3rd Qtr 3-4 75.0% 4th Qtr 1-2 50.0% Half: 4-6 66.7%

Officials: Shelley Russi, Paul Patterson, Kevin Kizewski
 Technical Fouls: , Seattle University- None. , Utah Valley- None.

Score by periods	1st	2nd	3rd	4th	Total
Seattle University	5	17	13	13	48
Utah Valley	20	28	13	18	79

Points	In	Off	2nd	Fast	Bench
	Paint	Off T/O	2nd Chance	Fast Break	
SU	18	9	13	2	4
	6	6	5	4	11

Last FG - SU 4th-01:15, UVU 4th-00:49.
 SU led for 0:00. UVU led for 20:00. Game was tied for 0:00.

Score tied - 0 times
 Lead changed - 0 times

Seattle University vs Utah Valley

2/27/2016; 3pm MT at Orem, Utah - PE Building

Period 3 Play-By-Play

VISITORS: Seattle University	Time	Score	Margin	HOME: Utah Valley
	10:00			SUB IN: AGNEW,GEORGIA
	10:00			SUB OUT: BLANKS,DEIJAH
MISSED JUMPER by ROSS,TAELORE	09:47			
REBOUND (OFF) by SAHAR,TAL	09:47			
GOOD! LAYUP by ROSS,TAELORE [PNT]	09:40	48-24	H 24	
ASSIST by BEST,KAYLEE	09:40			
	09:15			TURNOVER by TOSTON,PATRICE
STEAL by BEST,KAYLEE	09:14			
MISSED LAYUP by SHTIKEL,MASHA	09:09			
REBOUND (OFF) by BEST,KAYLEE	09:09			
GOOD! LAYUP by AFUNUGO,WILMA [PNT]	08:59	48-26	H 22	
ASSIST by BEST,KAYLEE	08:59			
	08:59			FOUL by MAWHINNEY,REBECCA
GOOD! FT by AFUNUGO,WILMA	08:59	48-27	H 21	
	08:31			MISSED JUMPER by MAWHINNEY,REBECCA
	08:31			REBOUND (OFF) by LOGGINS,SAM
	08:26			TURNOVER by TEAM
GOOD! LAYUP by ROSS,TAELORE [PNT]	08:18	48-29	H 19	
ASSIST by BEST,KAYLEE	08:18			
	08:08			TIMEOUT 30SEC
	07:53			MISSED 3PTR by MAWHINNEY,REBECCA
	07:53			REBOUND (OFF) by AGNEW,GEORGIA
	07:30	50-29	H 21	GOOD! LAYUP by TOSTON,PATRICE [PNT]
MISSED LAYUP by AFUNUGO,WILMA	07:20			
	07:20			REBOUND (DEF) by LOGGINS,SAM
	06:55	53-29	H 24	GOOD! 3PTR by SEALS,MARIAH
	06:55			ASSIST by AGNEW,GEORGIA
TURNOVER by BEST,KAYLEE	06:40			
	06:40			STEAL by TOSTON,PATRICE
SUB IN: BECKLEY,JACINTA	06:33			
SUB OUT: SHTIKEL,MASHA	06:33			
	06:17			MISSED JUMPER by AGNEW,GEORGIA
REBOUND (DEF) by TEAM	06:17			
MISSED LAYUP by AFUNUGO,WILMA	05:54			
REBOUND (OFF) by AFUNUGO,WILMA	05:54			
GOOD! LAYUP by BECKLEY,JACINTA [PNT]	05:34	53-31	H 22	
ASSIST by ROSS,TAELORE	05:34			
	05:10			MISSED JUMPER by LOGGINS,SAM
	05:10			REBOUND (OFF) by AGNEW,GEORGIA
FOUL by ROSS,TAELORE	05:07			
	05:07	54-31	H 23	GOOD! FT by AGNEW,GEORGIA
	05:07	55-31	H 24	GOOD! FT by AGNEW,GEORGIA
SUB IN: CEBALLOS,CYDNEE	05:07			
SUB IN: SHTIKEL,MASHA	05:07			
SUB OUT: SAHAR,TAL	05:07			
SUB OUT: AFUNUGO,WILMA	05:07			
MISSED 3PTR by BEST,KAYLEE	04:41			
	04:41			REBOUND (DEF) by LOGGINS,SAM
	04:12			MISSED JUMPER by TOSTON,PATRICE
REBOUND (DEF) by ROSS,TAELORE	04:12			
MISSED 3PTR by BECKLEY,JACINTA	04:03			
	04:03			REBOUND (DEF) by AGNEW,GEORGIA
	03:56			MISSED LAYUP by SEALS,MARIAH

VISITORS: Seattle University	Time	Score	Margin	HOME: Utah Valley
BLOCK by BEST,KAYLEE	03:56			
	03:54			REBOUND (OFF) by TEAM
	03:53			TIMEOUT MEDIA
SUB IN: HEREDIA,SHAYLIN	03:53			
SUB IN: AFUNUGO,WILMA	03:53			
SUB OUT: BEST,KAYLEE	03:53			
SUB OUT: ROSS,TAELOR	03:53			
	03:53			SUB IN: NORRIS,KARLEE
	03:53			SUB OUT: LOGGINS,SAM
	03:52			TURNOVER by AGNEW,GEORGIA
STEAL by AFUNUGO,WILMA	03:51			
TURNOVER by BECKLEY,JACINTA	03:34			
	03:09			MISSED 3PTR by SEALS,MARIAH
	03:09			REBOUND (OFF) by TOSTON,PATRICE
FOUL by SHTIKEL,MASHA	03:02			
	03:02			MISSED FT by TOSTON,PATRICE
	03:02			REBOUND (DEADB) by TEAM
	03:02	56-31	H 25	GOOD! FT by TOSTON,PATRICE
SUB IN: LEWEY,ASHLYN	03:02			
SUB OUT: BECKLEY,JACINTA	03:02			
MISSED 3PTR by SHTIKEL,MASHA	02:35			
REBOUND (OFF) by SHTIKEL,MASHA	02:35			
	02:31			FOUL by NORRIS,KARLEE
GOOD! FT by SHTIKEL,MASHA	02:31	56-32	H 24	
GOOD! FT by SHTIKEL,MASHA	02:31	56-33	H 23	
	02:31			SUB IN: LOGGINS,SAM
	02:31			SUB OUT: NORRIS,KARLEE
	02:19			TURNOVER by SEALS,MARIAH
STEAL by CEBALLOS,CYDNEE	02:18			
	01:57			FOUL by LOGGINS,SAM
GOOD! FT by AFUNUGO,WILMA	01:57	56-34	H 22	
GOOD! FT by AFUNUGO,WILMA	01:57	56-35	H 21	
SUB IN: PARRY,DELANIE	01:57			
SUB OUT: HEREDIA,SHAYLIN	01:57			
	01:32	59-35	H 24	GOOD! 3PTR by AGNEW,GEORGIA
	01:32			ASSIST by TOSTON,PATRICE
TURNOVER by PARRY,DELANIE	01:20			
	01:18			STEAL by SEALS,MARIAH
	01:18	61-35	H 26	GOOD! LAYUP by SEALS,MARIAH [FB/PNT]
	00:50			FOUL by TOSTON,PATRICE
SUB IN: BEST,KAYLEE	00:50			
SUB OUT: PARRY,DELANIE	00:50			
MISSED 3PTR by SHTIKEL,MASHA	00:41			
	00:41			REBOUND (DEF) by AGNEW,GEORGIA
	00:10			TURNOVER by MAWHINNEY,REBECCA
MISSED 3PTR by BEST,KAYLEE	00:01			
	00:01			BLOCK by SEALS,MARIAH
	00:00			REBOUND (DEADB) by TEAM

Seattle University 48, Utah Valley 79

Period 3-only	In Paint	Off T/O	2nd Chance	Fast Break	Bench	****
SU	8	7	9	0	2	Score tied - 0 times
UVU	4	3	5	2	5	Lead changed - 0 times

Seattle University vs Utah Valley

2/27/2016; 3pm MT at Orem, Utah - PE Building

Period 4 Play-By-Play

VISITORS: Seattle University	Time	Score	Margin	HOME: Utah Valley
SUB IN: LEWEY,ASHLYN	10:00			
SUB OUT: SAHAR,TAL	10:00			
	10:00			SUB IN: AGNEW,GEORGIA
	10:00			SUB OUT: BLANKS,DEIJAH
FOUL by LEWEY,ASHLYN	09:45			
	09:45			MISSED FT by TOSTON,PATRICE
	09:45			REBOUND (DEADB) by TEAM
	09:45	62-35	H 27	GOOD! FT by TOSTON,PATRICE
MISSED LAYUP by LEWEY,ASHLYN	09:19			
	09:19			REBOUND (DEF) by LOGGINS,SAM
	09:13	64-35	H 29	GOOD! LAYUP by TOSTON,PATRICE [FB/PNT]
	09:13			ASSIST by AGNEW,GEORGIA
	08:54			FOUL by MAWHINNEY,REBECCA
MISSED FT by ROSS,TAELORE	08:54			
REBOUND (DEADB) by TEAM	08:54			
MISSED FT by ROSS,TAELORE	08:54			
	08:54			REBOUND (DEF) by BLANKS,DEIJAH
SUB IN: SAHAR,TAL	08:54			
SUB OUT: LEWEY,ASHLYN	08:54			
	08:54			SUB IN: BLANKS,DEIJAH
	08:54			SUB OUT: MAWHINNEY,REBECCA
	08:28			TURNOVER by LOGGINS,SAM
STEAL by SHTIKEL,MASHA	08:27			
MISSED LAYUP by SHTIKEL,MASHA	08:22			
	08:22			REBOUND (DEF) by AGNEW,GEORGIA
	08:16			MISSED LAYUP by LOGGINS,SAM
	08:16			REBOUND (OFF) by AGNEW,GEORGIA
	07:57			MISSED 3PTR by TOSTON,PATRICE
REBOUND (DEF) by AFUNUGO,WILMA	07:57			
MISSED LAYUP by SAHAR,TAL	07:50			
REBOUND (OFF) by ROSS,TAELORE	07:50			
GOOD! LAYUP by ROSS,TAELORE [PNT]	07:48	64-37	H 27	
TIMEOUT TEAM	07:46			
SUB IN: HEREDIA,SHAYLIN	07:46			
SUB IN: CEBALLOS,CYDNEE	07:46			
SUB OUT: SHTIKEL,MASHA	07:46			
SUB OUT: AFUNUGO,WILMA	07:46			
	07:46			SUB IN: NORRIS,KARLEE
	07:46			SUB OUT: LOGGINS,SAM
	07:20			MISSED JUMPER by BLANKS,DEIJAH
BLOCK by ROSS,TAELORE	07:20			
REBOUND (DEF) by BEST,KAYLEE	07:18			
GOOD! JUMPER by ROSS,TAELORE [PNT]	07:08	64-39	H 25	
ASSIST by BEST,KAYLEE	07:08			
	06:53			TURNOVER by SEALS,MARIAH
	06:53			SUB IN: MAWHINNEY,REBECCA
	06:53			SUB OUT: BLANKS,DEIJAH
MISSED JUMPER by SAHAR,TAL	06:44			
	06:44			REBOUND (DEF) by MAWHINNEY,REBECCA
	06:23			TURNOVER by MAWHINNEY,REBECCA
STEAL by BEST,KAYLEE	06:22			
GOOD! LAYUP by BEST,KAYLEE [FB/PNT]	06:18	64-41	H 23	
	05:47	67-41	H 26	GOOD! 3PTR by SEALS,MARIAH

VISITORS: Seattle University	Time	Score	Margin	HOME: Utah Valley
	05:47			ASSIST by NORRIS,KARLEE
TURNOVER by BEST,KAYLEE	05:23			
SUB IN: SHTIKEL,MASHA	05:21			
SUB OUT: SAHAR,TAL	05:21			
	05:21			SUB IN: GORDON,TAYLOR
	05:21			SUB OUT: TOSTON,PATRICE
	04:53			TURNOVER by NORRIS,KARLEE
STEAL by SHTIKEL,MASHA	04:52			
MISSED 3PTR by BEST,KAYLEE	04:26			
	04:26			REBOUND (DEF) by GORDON,TAYLOR
FOUL by HEREDIA,SHAYLIN	04:08			
SUB IN: BECKLEY,JACINTA	04:08			
SUB OUT: BEST,KAYLEE	04:08			
FOUL by ROSS,TAELORE	03:47			
	03:31	70-41	H 29	GOOD! 3PTR by MAWHINNEY,REBECCA
	03:31			ASSIST by AGNEW,GEORGIA
	03:18			FOUL by NORRIS,KARLEE
	03:18			SUB IN: PRECIADO,VERONICA
	03:18			SUB IN: NIELSON,HADLEY
	03:18			SUB OUT: SEALS,MARIAH
	03:18			SUB OUT: NORRIS,KARLEE
GOOD! JUMPER by ROSS,TAELORE [PNT]	03:13	70-43	H 27	
ASSIST by BECKLEY,JACINTA	03:13			
	03:12			FOUL by NIELSON,HADLEY
GOOD! FT by ROSS,TAELORE	03:12	70-44	H 26	
FOUL by BECKLEY,JACINTA	03:05			
	02:47	73-44	H 29	GOOD! 3PTR by AGNEW,GEORGIA
	02:47			ASSIST by MAWHINNEY,REBECCA
	02:35			FOUL by PRECIADO,VERONICA
GOOD! FT by HEREDIA,SHAYLIN	02:35	73-45	H 28	
GOOD! FT by HEREDIA,SHAYLIN	02:35	73-46	H 27	
SUB IN: SAHAR,TAL	02:35			
SUB IN: BEST,KAYLEE	02:35			
SUB OUT: BECKLEY,JACINTA	02:35			
SUB OUT: HEREDIA,SHAYLIN	02:35			
	02:17			TURNOVER by PRECIADO,VERONICA
TURNOVER by CEBALLOS,CYDNEE	02:05			
	02:05			STEAL by MAWHINNEY,REBECCA
	01:49	76-46	H 30	GOOD! 3PTR by MAWHINNEY,REBECCA
	01:49			ASSIST by PRECIADO,VERONICA
MISSED LAYUP by CEBALLOS,CYDNEE	01:27			
	01:27			BLOCK by NIELSON,HADLEY
REBOUND (OFF) by TEAM	01:25			
SUB IN: LEWEY,ASHLYN	01:25			
SUB OUT: CEBALLOS,CYDNEE	01:25			
GOOD! LAYUP by SAHAR,TAL [PNT]	01:15	76-48	H 28	
	00:49	79-48	H 31	GOOD! 3PTR by GORDON,TAYLOR
	00:49			ASSIST by AGNEW,GEORGIA
MISSED 3PTR by BEST,KAYLEE	00:37			
REBOUND (OFF) by SAHAR,TAL	00:37			
TURNOVER by SAHAR,TAL	00:31			
	00:30			STEAL by GORDON,TAYLOR
	00:01			TURNOVER by AGNEW,GEORGIA
STEAL by SAHAR,TAL	00:00			

Period 4-only	In Paint	Off T/O	2nd Chance	Fast Break	Bench	****	
SU	10	2	4	2	2		Score tied - 0 times
UVU	2	3	0	2	6		Lead changed - 0 times

Seattle University vs Utah Valley
2/27/2016; 3pm MT at Orem, Utah - PE Building
Scoring/Runs Reference

Period 1		
Seattle University	Score	Utah Valley
09:32 - BEST_3PTR	X	
09:28 - AFUNUGO_LAYUP	X	
		X LOGGINS,JUMPER - 09:11
		TO SEALS TURN -,09:00
08:49 - AFUNUGO_LAYUP	X	
		X MAWHINNEY_3PTR - 08:33
	0-2 2	2P SEALS,JUMPER,-,08:17
08:07,-,BEST TURN	TO	
	0-5 5	3 SEALS_3PTR,-,07:47
07:23 - ROSS,JUMPER	X	
07:19,-,SAHAR_LAYUP	2P 2-5 3	
	2-8 6	3 BLANKS_3PTR,-,06:53
06:37 - ROSS,JUMPER	X	
	2-10 8	2PF BLANKS_LAYUP,-,06:31
06:17,-,SHTIKEL TURN	TO	
		X TOSTON_LAYUP - 05:57
05:46 - SHTIKEL,JUMPER	X	
05:42 - BEST_3PTR	X	
05:42 - ROSS_LAYUP	X	
	2-13 11	3 SEALS_3PTR,-,05:11
04:51 - ROSS_FT	X	
04:51 - ROSS_FT	X	
		TO BLANKS TURN -,04:40
04:33 - BECKLEY_3PTR	X	
	2-14 12	1 BLANKS_FT,-,04:07
	2-15 13	1 BLANKS_FT,-,04:07
03:47 - ROSS,JUMPER	X	
		X NORRIS_LAYUP - 03:28
		X AGNEW_LAYUP - 03:26
		TO SEALS TURN -,03:15
03:01,-,SAHAR_FT	1 3-15 12	
03:01 - SAHAR_FT	X	

Period 2		
Seattle University	Score	Utah Valley
	5-22 17	2P LOGGINS,JUMPER,-,09:58
09:29,-,HEREDIA TURN	TO	
	5-24 19	2P BLANKS_LAYUP,-,09:14
09:03,-,ROSS_LAYUP	2P 7-24 17	
	7-27 20	3 AGNEW_3PTR,-,08:47
08:23 - ROSS_LAYUP	X	
08:20,-,AFUNUGO_LAYUP	2P 9-27 18	
	9-28 19	1 LOGGINS_FT,-,08:06
		X LOGGINS_FT - 08:06
07:46 - ROSS,JUMPER	X	
		X SEALS,JUMPER - 07:13
06:52,-,ROSS,JUMPER	2 11-28 17	
		TO BLANKS TURN -,06:24
06:13,-,SHTIKEL TURN	TO	
	11-30 19	2PF SEALS_LAYUP,-,06:10
05:57,-,SHTIKEL_LAYUP	2P 13-30 17	
		X SEALS_3PTR - 05:44
		X GORDON_LAYUP - 05:40
05:30,-,ROSS TURN	TO	
	13-33 20	3 SEALS_3PTR,-,05:19
05:08,-,ROSS,JUMPER	2P 15-33 18	
		X AGNEW_3PTR - 04:47
	15-34 19	1 AGNEW_FT,-,04:41
	15-35 20	1 AGNEW_FT,-,04:41
04:17,-,AFUNUGO_FT	1 16-35 19	
04:17 - AFUNUGO_FT	X	
		X AGNEW,JUMPER - 03:55
03:48,-,AFUNUGO_LAYUP	2PF 18-35 17	

			X	SEALS,LAYUP - 02:45
02:31 - SHTIKEL,JUMPER	X			
02:15,-,BECKLEY TURN	TO			
		3-17 14	2 ^P	TOSTON,LAYUP,- 01:52
			X	TOSTON,FT - 01:50
01:38 - SAHAR,JUMPER	X			
		3-20 17	3	MAWHINNEY,3PTR,- 01:20
01:06,-,HEREDIA,FT	1	4-20 16		
01:06,-,HEREDIA,FT	1	5-20 15		
		TO		BLANKS TURN - 00:59
00:39 - SAHAR,JUMPER	X			
			X	BLANKS,3PTR - 00:22
00:06,-,BEST TURN	TO		X	AGNEW,LAYUP - 00:01

		18-38 20	3	GORDON,3PTR,- 03:25
03:13,- ,SHTIKEL,3PTR	3	21-38 17		
		21-41 20	3	BLANKS,3PTR,- 02:52
02:38 - BEST,LAYUP	X			
		21-44 23	3	SEALS,3PTR,-,02:31
02:08,-,HEREDIA TURN	TO			
			X	NORRIS,JUMPER - 01:56
01:34,-,BECKLEY TURN	TO			
		TO		AGNEW TURN - 01:11
01:06 - SAHAR,3PTR	X			
		21-46 25	2 ^P	NORRIS,LAYUP,- 00:41
00:26 - BECKLEY,3PTR	X			
00:23 - SHTIKEL,LAYUP	X			
00:16 - LEWEY,FT	X			
00:16,-,LEWEY,FT	1	22-46 24		
			X	BLANKS,JUMPER - 00:06
		22-48 26	2 ^P	AGNEW,LAYUP,- 00:01

Seattle University	Score	Utah Valley
09:47 - ROSS,JUMPER	X	
09:40,- ,ROSS,LAYUP	2 ^P	24-48 24
	TO	TOSTON TURN -,09:15
09:09 - SHTIKEL,LAYUP	X	
08:59,- ,AFUNUGO,LAYUP	2 ^P	26-48 22
08:59,- ,AFUNUGO,FT	1	27-48 21
		X MAWHINNEY,JUMPER - 08:31
	TO	TEAM TURN -,08:26
08:18,- ,ROSS,LAYUP	2 ^P	29-48 19
		X MAWHINNEY,3PTR - 07:53
		29-50 21
		2 ^P TOSTON,LAYUP,- 07:30
07:20 - AFUNUGO,LAYUP	X	
		29-53 24
		3 SEALS,3PTR,-,06:55

Seattle University	Score	Utah Valley
		X TOSTON,FT - 09:45
		35-62 27
		1 TOSTON,FT,-,09:45
09:19 - LEWEY,LAYUP	X	
		35-64 29
		2 ^{PF} TOSTON,LAYUP,- 09:13
08:54 - ROSS,FT	X	
08:54 - ROSS,FT	X	
		TO LOGGINS TURN - 08:28
08:22 - SHTIKEL,LAYUP	X	
		X LOGGINS,LAYUP - 08:16
		X TOSTON,3PTR - 07:57
07:50 - SAHAR,LAYUP	X	
07:48,- ,ROSS,LAYUP	2 ^P	37-64 27
		X BLANKS,JUMPER - 07:20

06:40,-,BEST
TURN TO

X

05:54 -
AFUNUGO,LAYUP

05:34,-
,BECKLEY,LAYUP

X

X

04:41 - BEST,3PTR

04:03 -
BECKLEY,3PTR

X

03:34,-,BECKLEY
TURN TO

X

X

02:35 -
SHTIKEL,3PTR

02:31,-
,SHTIKEL,FT

02:31,-
,SHTIKEL,FT

TO SEALS TURN -,02:19

01:57,-
,AFUNUGO,FT

01:57,-
,AFUNUGO,FT

TO SEALS TURN -,01:32

01:20,-,PARRY
TURN TO

00:41 -
SHTIKEL,3PTR

TO MAWHINNEY TURN -
,00:10

00:01 - BEST,3PTR

X

AGNEW,JUMPER -
06:17

LOGGINS,JUMPER -
05:10

AGNEW,FT,-,05:07

AGNEW,FT,-,05:07

TOSTON,JUMPER -
04:12

SEALS,LAYUP - 03:56
TO AGNEW TURN -,03:52

SEALS,3PTR - 03:09

TOSTON,FT - 03:02

TOSTON,FT,-,03:02

07:08,-
,ROSS,JUMPER

06:44 -
SAHAR,JUMPER

TO MAWHINNEY TURN
-,06:23

06:18,-
,BEST,LAYUP

05:23,-,BEST
TURN TO

TO NORRIS TURN -
,04:53

04:26 - BEST,3PTR

03:13,-
,ROSS,JUMPER

03:12,-,ROSS,FT

02:35,-
,HEREDIA,FT

02:35,-
,HEREDIA,FT

TO PRECIADO TURN -
,02:17

02:05,-,CEBALLOS
TURN TO

01:27 -
CEBALLOS,LAYUP

01:15,-
,SAHAR,LAYUP

00:37 - BEST,3PTR

00:31,-,SAHAR
TURN TO

TO AGNEW TURN -
,00:01

MAWHINNEY,3PTR,-
,03:31

AGNEW,3PTR,-
,02:47

MAWHINNEY,3PTR,-
,01:49

GORDON,3PTR,-
,00:49

2^P 39-54
25

X

2^{PF} 41-64
23

41-67
26 3

41-70
29 3

2^P 43-70
27

1 44-70
26

44-73
29 3

1 45-73
28

1 46-73
27

46-76
30 3

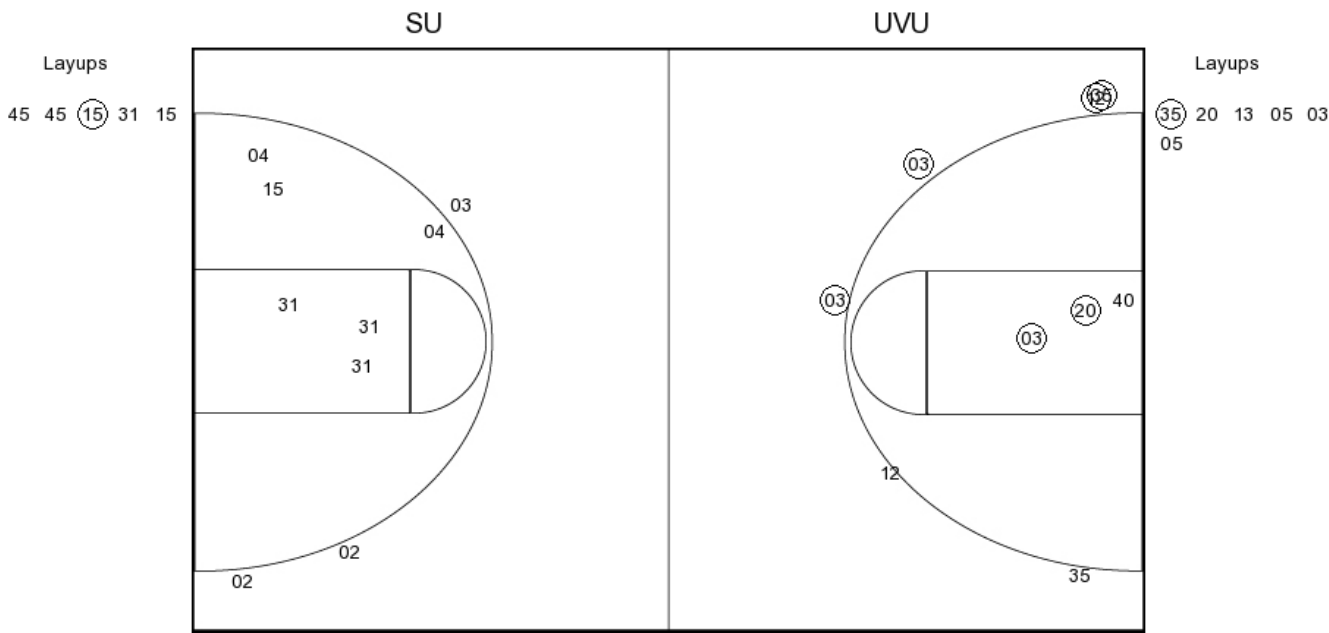
X

2^P 48-76
28

48-79
31 3

X

PERIOD 1



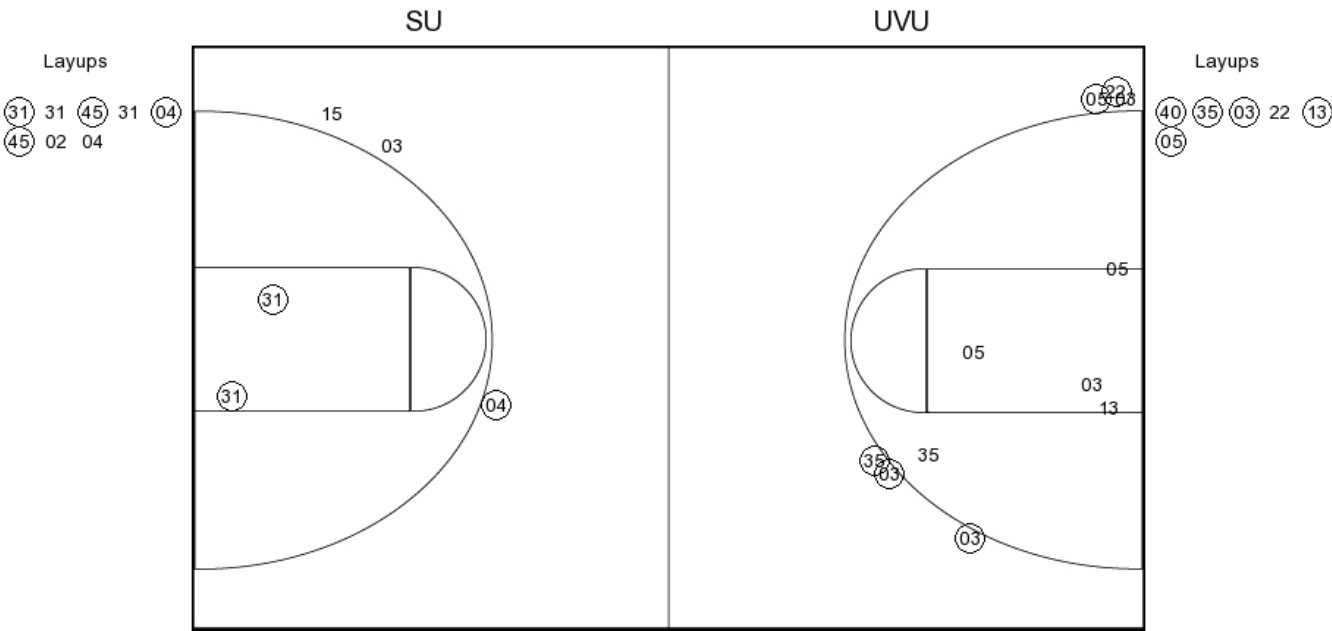
SU PERIOD 1

FG Made	8
FG Attempted	27
3PFG Made	1
3PFG Attempted	6

UVU PERIOD 1

FG Made	17
FG Attempted	32
3PFG Made	9
3PFG Attempted	13

PERIOD 2



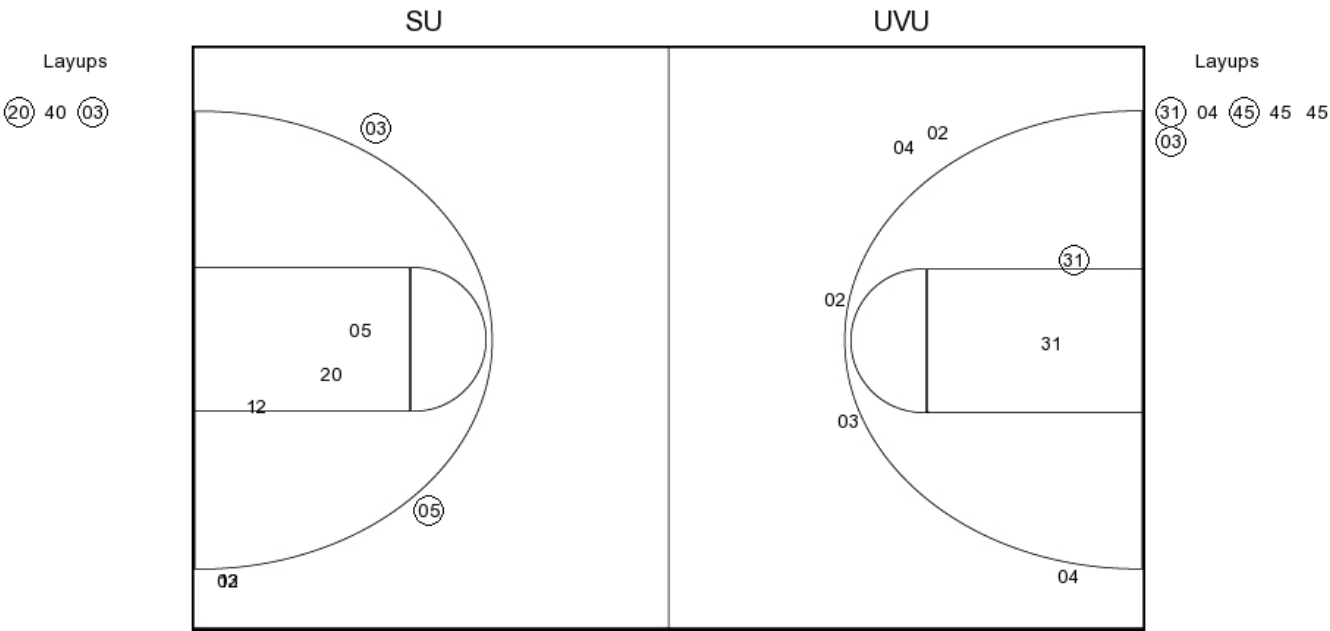
SU PERIOD 2

FG Made
FG Attempted
3PFG Made
3PFG Attempted

UVU PERIOD 2

FG Made
FG Attempted
3PFG Made
3PFG Attempted

PERIOD 3



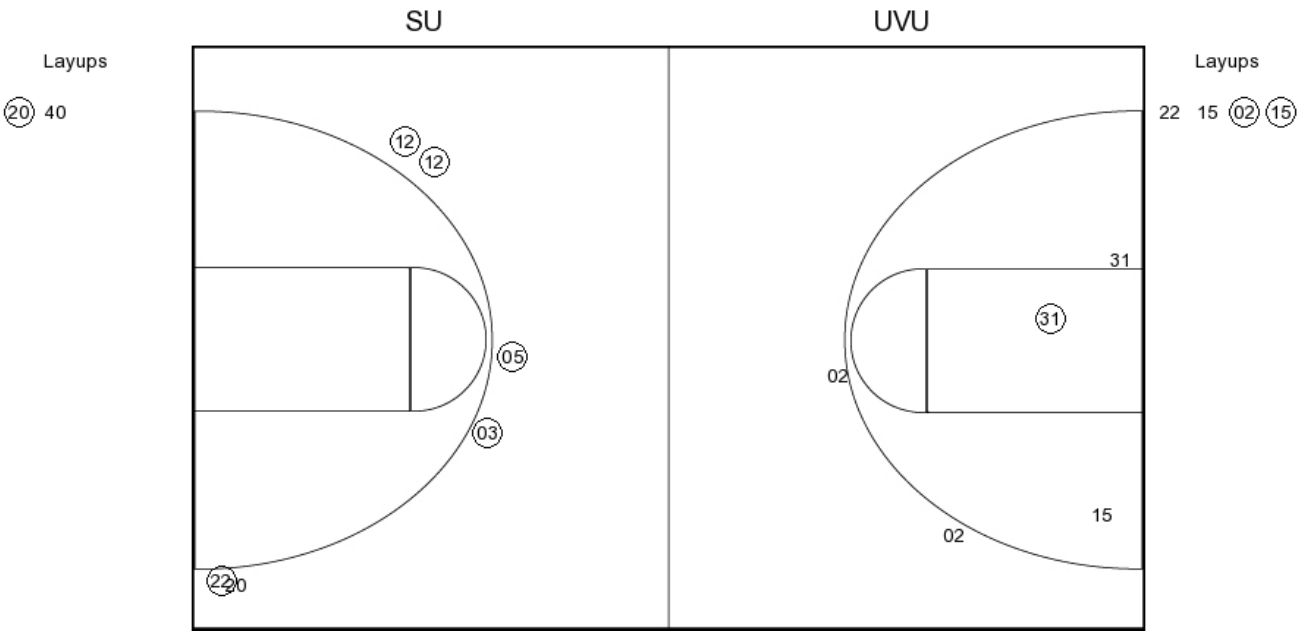
SU PERIOD 3

FG Made	9
FG Attempted	25
3PFG Made	0
3PFG Attempted	7

UVU PERIOD 3

FG Made	10
FG Attempted	20
3PFG Made	7
3PFG Attempted	10

PERIOD 4



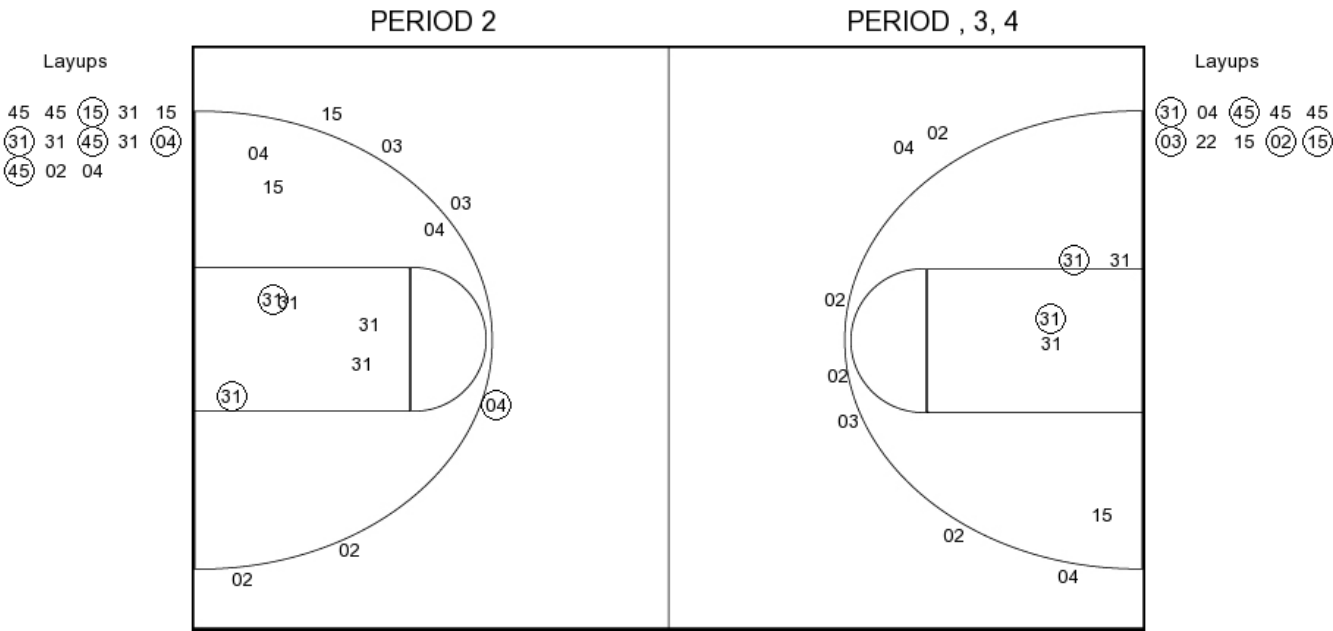
SU PERIOD 4

FG Made
FG Attempted
3PFG Made
3PFG Attempted

UVU PERIOD 4

FG Made
FG Attempted
3PFG Made
3PFG Attempted

Seattle University



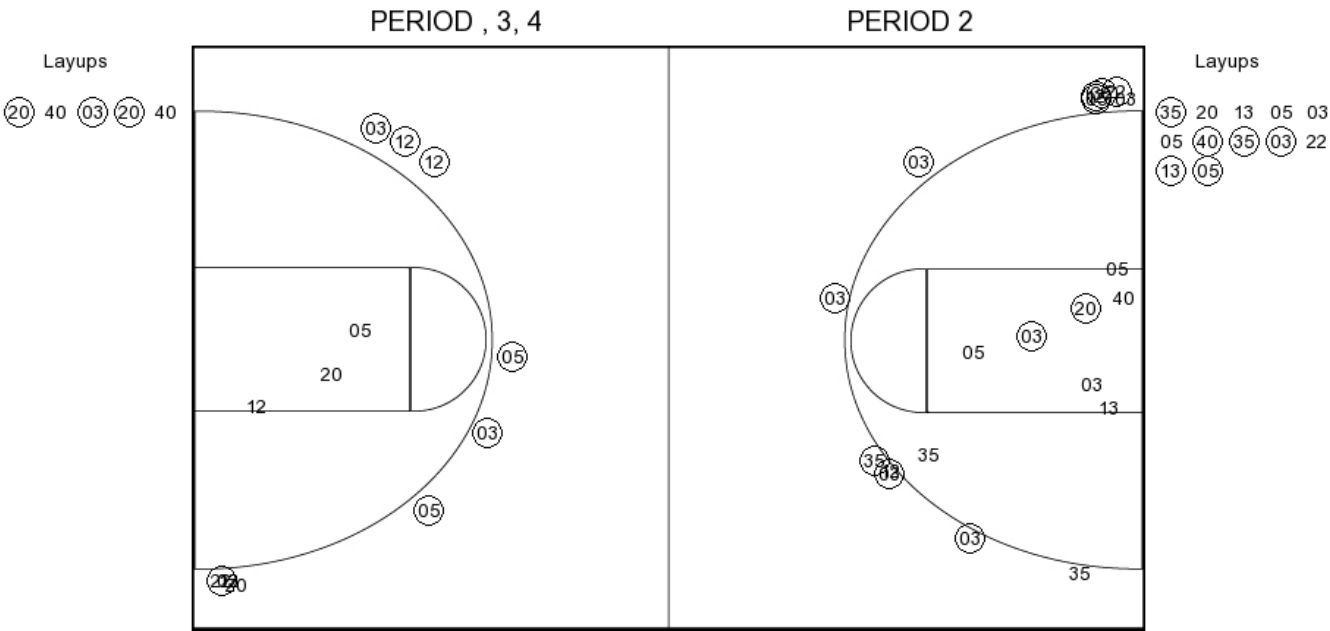
SU PERIOD 1

FG Made	8
FG Attempted	27
3PFG Made	1
3PFG Attempted	6

SU PERIOD 2

FG Made	
FG Attempted	
3PFG Made	
3PFG Attempted	

Utah Valley



UVU PERIOD 1

FG Made	17
FG Attempted	32
3PFG Made	9
3PFG Attempted	13

UVU PERIOD 2

FG Made	
FG Attempted	
3PFG Made	
3PFG Attempted	