



UTAH VALLEY VS. BAKERSFIELD

2/13/2016

Orem, Utah - PE Building

FINAL STATS

Utah Valley

(12-13, 5-5)

72

CSU Bakersfield

(8-17, 5-5)

53

Start Time: 3pm MT

Officials: Michol Murray, Kimberly Hobbs, Brad Schmidt

Attendance: 276

Official Basketball Box Score -- Game Totals -- Final Statistics
CSU Bakersfield vs Utah Valley
2/13/2016 3pm MT at Orem, Utah - PE Building

CSU Bakersfield 53 - 8-17, 5-5

| ## | Player | S | Total | | | Rebounds | | | PF | TP | A | TO | Blk | Stl | Min |
|--------|---------------------|---|--------|------|--------|----------|---------|---------|----|----|----|----|-----|-----|-----|
| | | | FG-FGA | 3PT | FG-FGA | FT-FTA | Off Reb | Def Reb | | | | | | | |
| 01 | SHANNON,ALYSSA | g | 3-8 | 0-3 | 0-2 | 0 | 0 | 0 | 2 | 6 | 6 | 2 | 0 | 0 | 36 |
| 11 | WALTERS,ADDI | g | 4-11 | 4-6 | 0-2 | 0 | 0 | 0 | 0 | 12 | 2 | 0 | 0 | 0 | 28 |
| 13 | VINES,DAJY | g | 1-4 | 1-4 | 1-2 | 0 | 0 | 0 | 0 | 4 | 0 | 2 | 0 | 0 | 18 |
| 15 | WILLIAMS,ERIKA | g | 2-5 | 1-3 | 0-0 | 2 | 3 | 5 | 3 | 5 | 1 | 1 | 0 | 1 | 31 |
| 21 | ZEMPARÉ,BATABÉ | f | 2-6 | 0-0 | 3-5 | 5 | 7 | 12 | 4 | 7 | 4 | 2 | 0 | 0 | 27 |
| 00 | FEARS,JERICE | | 0-1 | 0-1 | 0-0 | 0 | 1 | 1 | 0 | 0 | 0 | 0 | 0 | 0 | 5 |
| 02 | SIMS,BRITTANY | | 3-8 | 0-0 | 0-0 | 1 | 0 | 1 | 4 | 6 | 0 | 0 | 0 | 1 | 12 |
| 04 | TORRES-RODRIGUEZ,HE | | 1-1 | 1-1 | 0-0 | 0 | 0 | 0 | 0 | 3 | 0 | 0 | 0 | 0 | 2 |
| 10 | KLEIST,KERI | | 1-1 | 1-1 | 0-0 | 0 | 0 | 0 | 0 | 3 | 0 | 1 | 0 | 2 | 15 |
| 12 | GILBERT,ALEXXUS | | 0-1 | 0-0 | 0-0 | 0 | 0 | 0 | 1 | 0 | 1 | 0 | 0 | 0 | 13 |
| 22 | CARMON,AIRICA | | 1-2 | 0-1 | 0-0 | 0 | 0 | 0 | 0 | 2 | 0 | 1 | 0 | 0 | 2 |
| 23 | CARTER,TYLINN | | 2-6 | 0-1 | 1-2 | 1 | 0 | 1 | 3 | 5 | 0 | 2 | 0 | 0 | 11 |
| TEAM | | | | | | 1 | 1 | 2 | 0 | | 0 | | | | |
| TOTALS | | | 20-54 | 8-21 | 5-13 | 10 | 12 | 22 | 17 | 53 | 14 | 11 | 0 | 4 | 200 |

Deadball Rebounds: 5,0

| | | | | | | | | | | | | | |
|-------|----------------|-------|-----------------|-------|--------------|-------|--------------|-------|--|--|--|--|--|
| FG % | 1st Half: 9-27 | 33.3% | 2nd Half: 11-27 | 40.7% | Game: 20-54 | 37.0% | | | | | | | |
| | 1st Qtr 8-14 | 57.1% | 2nd Qtr 1-13 | 07.7% | 3rd Qtr 7-12 | 58.3% | 4th Qtr 4-15 | 26.7% | | | | | |
| 3FG % | 1st Half: 4-11 | 36.4% | 2nd Half: 4-10 | 40.0% | Game: 8-21 | 38.1% | | | | | | | |
| | 1st Qtr 3-6 | 50.0% | 2nd Qtr 1-5 | 20.0% | 3rd Qtr 2-4 | 50.0% | 4th Qtr 2-6 | 33.3% | | | | | |
| FT % | 1st Half: 1-2 | 50.0% | 2nd Half: 4-11 | 36.4% | Game: 5-13 | 38.5% | | | | | | | |
| | 1st Qtr 0-0 | 0% | 2nd Qtr 1-2 | 50.0% | 3rd Qtr 3-9 | 33.3% | 4th Qtr 1-2 | 50.0% | | | | | |

Utah Valley 72 - 12-13, 5-5

| ## | Player | S | Total | | | Rebounds | | | PF | TP | A | TO | Blk | Stl | Min |
|--------|-------------------|---|--------|------|--------|----------|---------|---------|----|----|----|----|-----|-----|-----|
| | | | FG-FGA | 3PT | FG-FGA | FT-FTA | Off Reb | Def Reb | | | | | | | |
| 03 | SEALS,MARIAH | g | 5-13 | 0-3 | 2-2 | 1 | 3 | 4 | 4 | 12 | 5 | 2 | 0 | 2 | 37 |
| 12 | MAWHINNEY,REBECCA | f | 3-3 | 2-2 | 2-2 | 1 | 8 | 9 | 2 | 10 | 1 | 2 | 0 | 1 | 35 |
| 20 | TOSTON,PATRICE | g | 5-9 | 1-3 | 3-3 | 0 | 1 | 1 | 2 | 14 | 0 | 2 | 0 | 3 | 26 |
| 35 | BLANKS,DEIJAH | g | 4-7 | 2-3 | 1-2 | 1 | 2 | 3 | 2 | 11 | 1 | 4 | 0 | 1 | 24 |
| 40 | LOGGINS,SAM | c | 3-6 | 0-0 | 4-4 | 4 | 5 | 9 | 3 | 10 | 0 | 1 | 5 | 0 | 34 |
| 05 | AGNEW,GEORGIA | | 5-5 | 1-1 | 2-2 | 1 | 3 | 4 | 1 | 13 | 3 | 4 | 0 | 0 | 32 |
| 13 | NORRIS,KARLEE | | 0-0 | 0-0 | 2-2 | 0 | 0 | 0 | 2 | 2 | 0 | 2 | 0 | 0 | 6 |
| 14 | PERRY,KENDALL | | 0-0 | 0-0 | 0-0 | 0 | 0 | 0 | 0 | 0 | 0 | 0 | 0 | 0 | 2 |
| 22 | GORDON,TAYLOR | | 0-0 | 0-0 | 0-0 | 0 | 1 | 1 | 0 | 0 | 0 | 0 | 0 | 0 | 2 |
| 25 | PRECIADO,VERONICA | | 0-1 | 0-0 | 0-0 | 0 | 1 | 1 | 1 | 0 | 0 | 1 | 0 | 0 | 2 |
| TEAM | | | | | | 0 | 2 | 2 | 0 | | 0 | | | | |
| TOTALS | | | 25-44 | 6-12 | 16-17 | 8 | 26 | 34 | 17 | 72 | 10 | 18 | 5 | 7 | 200 |

Deadball Rebounds: 0,1

| | | | | | | | | | | | | | |
|-------|-----------------|--------|-----------------|--------|-------------|--------|--------------|--------|--|--|--|--|--|
| FG % | 1st Half: 14-25 | 56.0% | 2nd Half: 11-19 | 57.9% | Game: 25-44 | 56.8% | | | | | | | |
| | 1st Qtr 8-11 | 72.7% | 2nd Qtr 6-14 | 42.9% | 3rd Qtr 6-9 | 66.7% | 4th Qtr 5-10 | 50.0% | | | | | |
| 3FG % | 1st Half: 3-7 | 42.9% | 2nd Half: 3-5 | 60.0% | Game: 6-12 | 50.0% | | | | | | | |
| | 1st Qtr 2-3 | 66.7% | 2nd Qtr 1-4 | 25.0% | 3rd Qtr 1-2 | 50.0% | 4th Qtr 2-3 | 66.7% | | | | | |
| FT % | 1st Half: 5-6 | 83.3% | 2nd Half: 11-11 | 100.0% | Game: 16-17 | 94.1% | | | | | | | |
| | 1st Qtr 2-2 | 100.0% | 2nd Qtr 3-4 | 75.0% | 3rd Qtr 9-9 | 100.0% | 4th Qtr 2-2 | 100.0% | | | | | |

Officials: Michol Murray, Kimberly Hobbs, Brad Schmidt
 Technical Fouls: CSU Bakersfield- None. Utah Valley- None.
 Attendance: 276

| Score by periods | 1st | 2nd | 3rd | 4th | Total |
|------------------|-----|-----|-----|-----|-------|
| CSU Bakersfield | 19 | 4 | 19 | 11 | 53 |
| Utah Valley | 20 | 16 | 22 | 14 | 72 |

| Points | In Paint | Off T/O | 2nd Chance | Fast Break | Bench |
|--------|----------|---------|------------|------------|-------|
| CSUB | 16 | 12 | 8 | 0 | 19 |
| UVU | 32 | 18 | 8 | 6 | 15 |

Last FG - CSUB 4th-00:51, UVU 4th-02:31.
 Largest lead - CSU Bakersfield by 5 1st-08:28; Utah Valley by 23 4th-03:25
 CSUB led for 6:41. UVU led for 33:00. Game was tied for 0:19.

Score tied - 0 times
 Lead changed - 3 times

Official Basketball Box Score -- Game Totals -- First Half Statistics
CSU Bakersfield vs Utah Valley
2/13/2016 3pm MT at Orem, Utah - PE Building

CSU Bakersfield, 23, 8-17, 5-5

| ## | Player | S | Total | | | Rebounds | | | PF | TP | A | TO | Blk | Stl | Min | | | |
|--------|---------------------|------|-------|---------|------|----------|-------|------|-------|----|----|----|-----|-----|-----|---------|---------|---------|
| | | | FG | FGA | 3PT | FG-FGA | FT | FTA | | | | | | | | Off Reb | Def Reb | Tot Reb |
| 01 | SHANNON,ALYSSA | g | 1 | 6 | 0 | 3 | 0 | 0 | 0 | 0 | 2 | 2 | 4 | 2 | 0 | 0 | 18 | |
| 11 | WALTERS,ADDI | g | 2 | 6 | 2 | 3 | 0 | 0 | 0 | 0 | 0 | 6 | 1 | 0 | 0 | 0 | 16 | |
| 13 | VINES,DAJY | g | 1 | 2 | 1 | 2 | 0 | 0 | 0 | 0 | 0 | 3 | 0 | 2 | 0 | 0 | 8 | |
| 15 | WILLIAMS,ERIKA | g | 1 | 3 | 0 | 2 | 0 | 0 | 1 | 1 | 2 | 0 | 2 | 0 | 0 | 0 | 14 | |
| 21 | ZEMPRE,BATABE | f | 1 | 4 | 0 | 0 | 1 | 2 | 3 | 5 | 8 | 1 | 3 | 2 | 1 | 0 | 0 | 16 |
| 00 | FEARS,JERICE | | 0 | 0 | 0 | 0 | 0 | 0 | 0 | 0 | 0 | 0 | 0 | 0 | 0 | 0 | 0 | |
| 02 | SIMS,BRITTANY | | 1 | 2 | 0 | 0 | 0 | 0 | 0 | 0 | 2 | 2 | 0 | 0 | 0 | 1 | 4 | |
| 04 | TORRES-RODRIGUEZ,HE | | 0 | 0 | 0 | 0 | 0 | 0 | 0 | 0 | 0 | 0 | 0 | 0 | 0 | 0 | 0 | |
| 10 | KLEIST,KERI | | 1 | 1 | 1 | 1 | 0 | 0 | 0 | 0 | 0 | 3 | 0 | 1 | 0 | 1 | 8 | |
| 12 | GILBERT,ALEXXUS | | 0 | 1 | 0 | 0 | 0 | 0 | 0 | 1 | 0 | 0 | 0 | 0 | 0 | 0 | 10 | |
| 22 | CARMON,AIRICA | | 0 | 0 | 0 | 0 | 0 | 0 | 0 | 0 | 0 | 0 | 0 | 0 | 0 | 0 | 0 | |
| 23 | CARTER,TYLINN | | 1 | 2 | 0 | 0 | 0 | 0 | 0 | 0 | 2 | 0 | 2 | 0 | 0 | 0 | 6 | |
| TEAM | | | | | | | | 0 | 1 | 1 | 0 | | 0 | | | | | |
| Totals | | | 9 | 27 | 4 | 11 | 1 | 2 | 4 | 7 | 11 | 6 | 23 | 7 | 8 | 0 | 2 | 100 |
| FG % | 1st Qtr | 8-14 | 57.1% | 2nd Qtr | 1-13 | 07.7% | Half: | 9-27 | 33.3% | | | | | | | | | |
| 3FG % | 1st Qtr | 3-6 | 50.0% | 2nd Qtr | 1-5 | 20.0% | Half: | 4-11 | 36.4% | | | | | | | | | |
| FT % | 1st Qtr | 0-0 | 0% | 2nd Qtr | 1-2 | 50.0% | Half: | 1-2 | 50.0% | | | | | | | | | |

Utah Valley, 36, 12-13, 5-5

| ## | Player | S | Total | | | Rebounds | | | PF | TP | A | TO | Blk | Stl | Min | | | |
|--------|-------------------|------|--------|---------|------|----------|-------|-------|-------|----|----|----|-----|-----|-----|---------|---------|---------|
| | | | FG | FGA | 3PT | FG-FGA | FT | FTA | | | | | | | | Off Reb | Def Reb | Tot Reb |
| 03 | SEALS,MARIAH | g | 3 | 9 | 0 | 2 | 0 | 0 | 1 | 1 | 2 | 1 | 6 | 2 | 2 | 0 | 1 | 19 |
| 12 | MAWHINNEY,REBECCA | f | 1 | 1 | 1 | 1 | 0 | 0 | 1 | 6 | 7 | 0 | 3 | 1 | 2 | 0 | 1 | 17 |
| 20 | TOSTON,PATRICE | g | 3 | 6 | 1 | 3 | 0 | 0 | 0 | 1 | 1 | 0 | 7 | 0 | 1 | 0 | 3 | 16 |
| 35 | BLANKS,DEIJAH | g | 3 | 4 | 1 | 1 | 1 | 2 | 0 | 1 | 1 | 0 | 8 | 1 | 2 | 0 | 1 | 12 |
| 40 | LOGGINS,SAM | c | 2 | 3 | 0 | 0 | 0 | 0 | 2 | 3 | 5 | 0 | 4 | 0 | 0 | 3 | 0 | 15 |
| 05 | AGNEW,GEORGIA | | 2 | 2 | 0 | 0 | 2 | 2 | 1 | 2 | 3 | 0 | 6 | 2 | 1 | 0 | 0 | 16 |
| 13 | NORRIS,KARLEE | | 0 | 0 | 0 | 0 | 2 | 2 | 0 | 0 | 0 | 2 | 2 | 0 | 2 | 0 | 0 | 5 |
| 14 | PERRY,KENDALL | | 0 | 0 | 0 | 0 | 0 | 0 | 0 | 0 | 0 | 0 | 0 | 0 | 0 | 0 | 0 | |
| 22 | GORDON,TAYLOR | | 0 | 0 | 0 | 0 | 0 | 0 | 0 | 0 | 0 | 0 | 0 | 0 | 0 | 0 | 0 | |
| 25 | PRECIADO,VERONICA | | 0 | 0 | 0 | 0 | 0 | 0 | 0 | 0 | 0 | 0 | 0 | 0 | 0 | 0 | 0 | |
| TEAM | | | | | | | | 0 | 1 | 1 | 0 | | 0 | | | | | |
| Totals | | | 14 | 25 | 3 | 7 | 5 | 6 | 5 | 15 | 20 | 3 | 36 | 6 | 10 | 3 | 6 | 100 |
| FG % | 1st Qtr | 8-11 | 72.7% | 2nd Qtr | 6-14 | 42.9% | Half: | 14-25 | 56.0% | | | | | | | | | |
| 3FG % | 1st Qtr | 2-3 | 66.7% | 2nd Qtr | 1-4 | 25.0% | Half: | 3-7 | 42.9% | | | | | | | | | |
| FT % | 1st Qtr | 2-2 | 100.0% | 2nd Qtr | 3-4 | 75.0% | Half: | 5-6 | 83.3% | | | | | | | | | |

Officials: Michol Murray, Kimberly Hobbs, Brad Schmidt
 Technical Fouls: CSU Bakersfield- None, Utah Valley- None.

| Score by periods | 1st | 2nd | 3rd | 4th | Total |
|------------------|-----|-----|-----|-----|-------|
| CSU Bakersfield | 19 | 4 | 19 | 11 | 53 |
| Utah Valley | 20 | 16 | 22 | 14 | 72 |

| Points | In Paint | Off T/O | 2nd 2nd Chance | Fast Fast Break | Bench |
|--------|----------|---------|----------------|-----------------|-------|
| CSUB | 8 | 7 | 3 | 0 | 7 |
| | 16 | 14 | 5 | 4 | 8 |

Last FG - CSUB 2nd-03:51, UVU 2nd-01:20.
 CSUB led for 6:41. UVU led for 13:00. Game was tied for 0:19.

Score tied - 0 times
 Lead changed - 3 times

CSU Bakersfield vs Utah Valley
2/13/2016; 3pm MT at Orem, Utah - PE Building
Period 1 Play-By-Play

| VISITORS: CSU Bakersfield | Time | Score | Margin | HOME: Utah Valley |
|-------------------------------------|-------|-------|--------|---------------------------------------|
| GOOD! 3PTR by VINES,DAJY | 09:41 | 0-3 | V 3 | |
| ASSIST by SHANNON,ALYSSA | 09:41 | | | |
| | 09:22 | | | MISSED JUMPER by BLANKS,DEIJAH |
| REBOUND (DEF) by WILLIAMS,ERIKA | 09:22 | | | |
| MISSED 3PTR by WALTERS,ADDI | 09:12 | | | |
| | 09:12 | | | REBOUND (DEF) by LOGGINS,SAM |
| FOUL by SHANNON,ALYSSA | 08:42 | | | |
| | 08:42 | | | TURNOVER by BLANKS,DEIJAH |
| GOOD! JUMPER by SHANNON,ALYSSA | 08:28 | 0-5 | V 5 | |
| | 08:10 | | | TURNOVER by SEALS,MARIAH |
| MISSED 3PTR by WILLIAMS,ERIKA | 08:02 | | | |
| | 08:02 | | | REBOUND (DEF) by SEALS,MARIAH |
| | 07:55 | 2-5 | V 3 | GOOD! LAYUP by BLANKS,DEIJAH [PNT] |
| | 07:55 | | | ASSIST by SEALS,MARIAH |
| TURNOVER by VINES,DAJY | 07:27 | | | |
| | 07:13 | 4-5 | V 1 | GOOD! JUMPER by LOGGINS,SAM [PNT] |
| | 07:13 | | | ASSIST by MAWHINNEY,REBECCA |
| MISSED LAYUP by WALTERS,ADDI | 06:57 | | | |
| REBOUND (OFF) by ZEMPARE,BATABE | 06:57 | | | |
| GOOD! LAYUP by ZEMPARE,BATABE [PNT] | 06:55 | 4-7 | V 3 | |
| | 06:32 | | | MISSED 3PTR by SEALS,MARIAH |
| | 06:32 | | | REBOUND (OFF) by LOGGINS,SAM |
| | 06:16 | | | TURNOVER by BLANKS,DEIJAH |
| SUB IN: KLEIST,KERI | 06:16 | | | |
| SUB OUT: VINES,DAJY | 06:16 | | | |
| TURNOVER by KLEIST,KERI | 06:01 | | | |
| | 06:00 | | | STEAL by BLANKS,DEIJAH |
| | 05:58 | 6-7 | V 1 | GOOD! LAYUP by BLANKS,DEIJAH [FB/PNT] |
| MISSED 3PTR by SHANNON,ALYSSA | 05:40 | | | |
| | 05:40 | | | REBOUND (DEF) by MAWHINNEY,REBECCA |
| FOUL by ZEMPARE,BATABE | 05:26 | | | |
| | 05:26 | | | SUB IN: AGNEW,GEORGIA |
| | 05:26 | | | SUB IN: NORRIS,KARLEE |
| | 05:26 | | | SUB OUT: BLANKS,DEIJAH |
| | 05:26 | | | SUB OUT: LOGGINS,SAM |
| | 05:15 | | | MISSED JUMPER by SEALS,MARIAH |
| | 05:15 | | | REBOUND (OFF) by SEALS,MARIAH |
| | 05:07 | 8-7 | H 1 | GOOD! LAYUP by SEALS,MARIAH [PNT] |
| GOOD! 3PTR by KLEIST,KERI | 04:56 | 8-10 | V 2 | |
| ASSIST by ZEMPARE,BATABE | 04:56 | | | |
| | 04:38 | | | TURNOVER by NORRIS,KARLEE |
| TIMEOUT MEDIA | 04:38 | | | |
| SUB IN: SIMS,BRITTANY | 04:36 | | | |
| SUB OUT: ZEMPARE,BATABE | 04:36 | | | |
| GOOD! LAYUP by WILLIAMS,ERIKA [PNT] | 04:34 | 8-12 | V 4 | |
| ASSIST by SHANNON,ALYSSA | 04:34 | | | |
| | 04:15 | | | TURNOVER by NORRIS,KARLEE |
| | 04:15 | | | FOUL by NORRIS,KARLEE |
| MISSED JUMPER by SIMS,BRITTANY | 04:05 | | | |
| | 04:05 | | | REBOUND (DEF) by MAWHINNEY,REBECCA |
| FOUL by SIMS,BRITTANY | 03:39 | | | |
| | 03:28 | | | TURNOVER by MAWHINNEY,REBECCA |
| STEAL by SIMS,BRITTANY | 03:28 | | | |

| VISITORS: CSU Bakersfield | Time | Score | Margin | HOME: Utah Valley |
|------------------------------------|-------|-------|--------|--|
| TURNOVER by SHANNON,ALYSSA | 03:16 | | | |
| | 03:14 | | | STEAL by MAWHINNEY,REBECCA |
| | 03:05 | 11-12 | V 1 | GOOD! 3PTR by MAWHINNEY,REBECCA |
| | 03:05 | | | ASSIST by AGNEW,GEORGIA |
| TURNOVER by SHANNON,ALYSSA | 02:51 | | | |
| | 02:51 | | | STEAL by TOSTON,PATRICE |
| | 02:49 | 13-12 | H 1 | GOOD! LAYUP by TOSTON,PATRICE [FB/PNT] |
| MISSED JUMPER by WALTERS,ADDI | 02:23 | | | |
| | 02:23 | | | REBOUND (DEF) by AGNEW,GEORGIA |
| | 02:00 | 16-12 | H 4 | GOOD! 3PTR by TOSTON,PATRICE |
| | 02:00 | | | ASSIST by SEALS,MARIAH |
| GOOD! 3PTR by WALTERS,ADDI | 01:34 | 16-15 | H 1 | |
| ASSIST by SHANNON,ALYSSA | 01:34 | | | |
| | 01:15 | 18-15 | H 3 | GOOD! JUMPER by SEALS,MARIAH |
| GOOD! LAYUP by SIMS,BRITTANY [PNT] | 00:54 | 18-17 | H 1 | |
| ASSIST by WALTERS,ADDI | 00:54 | | | |
| FOUL by SIMS,BRITTANY | 00:41 | | | |
| | 00:41 | 19-17 | H 2 | GOOD! FT by NORRIS,KARLEE |
| | 00:41 | 20-17 | H 3 | GOOD! FT by NORRIS,KARLEE |
| SUB IN: ZEMPALE,BATABE | 00:41 | | | |
| SUB IN: GILBERT,ALEXXUS | 00:41 | | | |
| SUB IN: CARTER,TYLINN | 00:41 | | | |
| SUB IN: VINES,DAJY | 00:41 | | | |
| SUB OUT: WALTERS,ADDI | 00:41 | | | |
| SUB OUT: KLEIST,KERI | 00:41 | | | |
| SUB OUT: WILLIAMS,ERIKA | 00:41 | | | |
| SUB OUT: SIMS,BRITTANY | 00:41 | | | |
| | 00:41 | | | SUB IN: BLANKS,DEIJAH |
| | 00:41 | | | SUB IN: LOGGINS,SAM |
| | 00:41 | | | SUB OUT: TOSTON,PATRICE |
| | 00:41 | | | SUB OUT: NORRIS,KARLEE |
| GOOD! LAYUP by CARTER,TYLINN [PNT] | 00:26 | 20-19 | H 1 | |
| ASSIST by SHANNON,ALYSSA | 00:26 | | | |
| | 00:03 | | | TURNOVER by SEALS,MARIAH |
| | 00:03 | | | FOUL by SEALS,MARIAH |

CSU Bakersfield 19, Utah Valley 20

| Period 1-only | In Paint | Off T/O | 2nd Chance | Fast Break | Bench | **** |
|---------------|----------|---------|------------|------------|-------|------------------------|
| CSUB | 8 | 4 | 2 | 0 | 7 | Score tied - 0 times |
| UVU | 10 | 9 | 2 | 4 | 2 | Lead changed - 2 times |

CSU Bakersfield vs Utah Valley
2/13/2016; 3pm MT at Orem, Utah - PE Building
Period 2 Play-By-Play

| VISITORS: CSU Bakersfield | Time | Score | Margin | HOME: Utah Valley |
|---------------------------------|-------|-------|--------|------------------------------------|
| SUB IN: GILBERT,ALEXXUS | 10:00 | | | |
| SUB IN: CARTER,TYLINN | 10:00 | | | |
| SUB OUT: WALTERS,ADDI | 10:00 | | | |
| SUB OUT: WILLIAMS,ERIKA | 10:00 | | | |
| | 10:00 | | | SUB IN: AGNEW,GEORGIA |
| | 10:00 | | | SUB OUT: MAWHINNEY,REBECCA |
| | 09:45 | | | MISSED LAYUP by LOGGINS,SAM |
| REBOUND (DEF) by ZEMPARE,BATABE | 09:45 | | | |
| MISSED 3PTR by SHANNON,ALYSSA | 09:25 | | | |
| | 09:25 | | | REBOUND (DEF) by LOGGINS,SAM |
| | 09:10 | 22-19 | H 3 | GOOD! JUMPER by LOGGINS,SAM |
| | 09:10 | | | ASSIST by BLANKS,DEIJAH |
| TURNOVER by CARTER,TYLINN | 08:44 | | | |
| | 08:43 | | | STEAL by TOSTON,PATRICE |
| | 08:39 | | | MISSED LAYUP by SEALS,MARIAH |
| REBOUND (DEF) by ZEMPARE,BATABE | 08:39 | | | |
| MISSED 3PTR by VINES,DAJY | 08:31 | | | |
| | 08:31 | | | REBOUND (DEF) by BLANKS,DEIJAH |
| | 08:00 | 24-19 | H 5 | GOOD! JUMPER by SEALS,MARIAH |
| TURNOVER by VINES,DAJY | 07:32 | | | |
| | 07:31 | | | STEAL by SEALS,MARIAH |
| | 07:17 | | | MISSED 3PTR by TOSTON,PATRICE |
| | 07:17 | | | REBOUND (OFF) by LOGGINS,SAM |
| FOUL by GILBERT,ALEXXUS | 06:59 | | | |
| | 06:59 | 25-19 | H 6 | GOOD! FT by BLANKS,DEIJAH |
| | 06:59 | | | MISSED FT by BLANKS,DEIJAH |
| REBOUND (DEF) by ZEMPARE,BATABE | 06:59 | | | |
| SUB IN: WILLIAMS,ERIKA | 06:59 | | | |
| SUB IN: WALTERS,ADDI | 06:59 | | | |
| SUB OUT: VINES,DAJY | 06:59 | | | |
| SUB OUT: CARTER,TYLINN | 06:59 | | | |
| | 06:59 | | | SUB IN: MAWHINNEY,REBECCA |
| | 06:59 | | | SUB OUT: SEALS,MARIAH |
| MISSED JUMPER by ZEMPARE,BATABE | 06:41 | | | |
| | 06:41 | | | REBOUND (DEF) by LOGGINS,SAM |
| | 06:27 | | | MISSED 3PTR by TOSTON,PATRICE |
| REBOUND (DEF) by ZEMPARE,BATABE | 06:27 | | | |
| MISSED LAYUP by SHANNON,ALYSSA | 06:07 | | | |
| | 06:07 | | | REBOUND (DEF) by AGNEW,GEORGIA |
| | 05:52 | 28-19 | H 9 | GOOD! 3PTR by BLANKS,DEIJAH |
| | 05:52 | | | ASSIST by AGNEW,GEORGIA |
| TIMEOUT 30SEC | 05:47 | | | |
| | 05:47 | | | SUB IN: NORRIS,KARLEE |
| | 05:47 | | | SUB IN: SEALS,MARIAH |
| | 05:47 | | | SUB OUT: TOSTON,PATRICE |
| | 05:47 | | | SUB OUT: LOGGINS,SAM |
| MISSED 3PTR by WILLIAMS,ERIKA | 05:26 | | | |
| REBOUND (OFF) by ZEMPARE,BATABE | 05:26 | | | |
| | 05:19 | | | FOUL by NORRIS,KARLEE |
| GOOD! FT by ZEMPARE,BATABE | 05:19 | 28-20 | H 8 | |
| MISSED FT by ZEMPARE,BATABE | 05:19 | | | |
| | 05:19 | | | REBOUND (DEF) by MAWHINNEY,REBECCA |
| | 05:19 | | | SUB IN: LOGGINS,SAM |

| VISITORS: CSU Bakersfield | Time | Score | Margin | HOME: Utah Valley |
|---------------------------------|-------|-------|--------|-------------------------------------|
| | 05:19 | | | SUB OUT: NORRIS,KARLEE |
| | 05:03 | 30-20 | H 10 | GOOD! JUMPER by AGNEW,GEORGIA [PNT] |
| MISSED 3PTR by SHANNON,ALYSSA | 04:46 | | | |
| REBOUND (OFF) by WILLIAMS,ERIKA | 04:46 | | | |
| MISSED LAYUP by SHANNON,ALYSSA | 04:36 | | | |
| | 04:36 | | | BLOCK by LOGGINS,SAM |
| | 04:35 | | | REBOUND (DEF) by TEAM |
| | 04:21 | | | TURNOVER by AGNEW,GEORGIA |
| GOOD! 3PTR by WALTERS,ADDI | 03:51 | 30-23 | H 7 | |
| ASSIST by ZEMPARE,BATABE | 03:51 | | | |
| | 03:33 | | | MISSED 3PTR by SEALS,MARIAH |
| REBOUND (DEF) by ZEMPARE,BATABE | 03:33 | | | |
| MISSED LAYUP by GILBERT,ALEXXUS | 03:21 | | | |
| | 03:21 | | | REBOUND (DEF) by MAWHINNEY,REBECCA |
| SUB IN: CARTER,TYLINN | 03:01 | | | |
| SUB OUT: GILBERT,ALEXXUS | 03:01 | | | |
| | 03:01 | | | SUB IN: TOSTON,PATRICE |
| | 03:01 | | | SUB OUT: BLANKS,DEIJAH |
| | 02:52 | | | TURNOVER by TOSTON,PATRICE |
| TURNOVER by ZEMPARE,BATABE | 02:43 | | | |
| | 02:18 | 32-23 | H 9 | GOOD! LAYUP by TOSTON,PATRICE [PNT] |
| MISSED JUMPER by WALTERS,ADDI | 01:55 | | | |
| | 01:55 | | | REBOUND (DEF) by MAWHINNEY,REBECCA |
| FOUL by SHANNON,ALYSSA | 01:40 | | | |
| | 01:40 | 33-23 | H 10 | GOOD! FT by AGNEW,GEORGIA |
| | 01:40 | 34-23 | H 11 | GOOD! FT by AGNEW,GEORGIA |
| SUB IN: GILBERT,ALEXXUS | 01:40 | | | |
| SUB IN: KLEIST,KERI | 01:40 | | | |
| SUB OUT: SHANNON,ALYSSA | 01:40 | | | |
| SUB OUT: WILLIAMS,ERIKA | 01:40 | | | |
| TURNOVER by CARTER,TYLINN | 01:26 | | | |
| | 01:26 | | | STEAL by TOSTON,PATRICE |
| | 01:22 | | | MISSED LAYUP by TOSTON,PATRICE |
| | 01:22 | | | REBOUND (OFF) by AGNEW,GEORGIA |
| | 01:20 | 36-23 | H 13 | GOOD! LAYUP by AGNEW,GEORGIA [PNT] |
| MISSED JUMPER by CARTER,TYLINN | 01:01 | | | |
| | 01:01 | | | REBOUND (DEF) by TOSTON,PATRICE |
| | 00:57 | | | TIMEOUT 30SEC |
| SUB IN: VINES,DAJY | 00:57 | | | |
| SUB OUT: CARTER,TYLINN | 00:57 | | | |
| | 00:41 | | | MISSED JUMPER by SEALS,MARIAH |
| | 00:41 | | | REBOUND (OFF) by MAWHINNEY,REBECCA |
| | 00:37 | | | TURNOVER by MAWHINNEY,REBECCA |
| STEAL by KLEIST,KERI | 00:36 | | | |
| MISSED LAYUP by ZEMPARE,BATABE | 00:24 | | | |
| | 00:24 | | | BLOCK by LOGGINS,SAM |
| REBOUND (OFF) by ZEMPARE,BATABE | 00:22 | | | |
| MISSED LAYUP by ZEMPARE,BATABE | 00:21 | | | |
| | 00:21 | | | BLOCK by LOGGINS,SAM |
| | 00:19 | | | REBOUND (DEF) by MAWHINNEY,REBECCA |
| | 00:02 | | | MISSED JUMPER by SEALS,MARIAH |
| REBOUND (DEF) by TEAM | 00:02 | | | |

| | In | Off | 2nd | Fast | Bench | **** |
|---------------|-------|-----|--------|-------|-------|------|
| Period 2-only | Paint | T/O | Chance | Break | Bench | **** |
| CSU | In | Off | 2nd | Fast | Bench | **** |
| UVU | 0 | 3 | 1 | 0 | 0 | **** |
| | Paint | T/O | Chance | Break | Bench | **** |
| | 6 | 5 | 3 | 0 | 6 | **** |

Score tied - 0 times
Lead changed - 0 times

Official Basketball Box Score -- Game Totals -- Second Half Statistics
CSU Bakersfield vs Utah Valley
2/13/2016 3pm MT at Orem, Utah - PE Building

CSU Bakersfield, 30, 8-17, 5-5

| ## | Player | S | Total | | | Rebounds | | | PF | TP | A | TO | Blk | Stl | Min |
|--------|---------------------|------|--------|------------|--------|----------|---------|---------|-------|----|---|----|-----|-----|-----|
| | | | FG-FGA | 3PT FG-FGA | FT-FTA | Off Reb | Def Reb | Tot Reb | | | | | | | |
| 01 | SHANNON,ALYSSA | g | 2-2 | 0-0 | 0-2 | 0 | 0 | 0 | 0 | 4 | 2 | 0 | 0 | 0 | 18 |
| 11 | WALTERS,ADDI | g | 2-5 | 2-3 | 0-2 | 0 | 0 | 0 | 0 | 6 | 1 | 0 | 0 | 0 | 12 |
| 13 | VINES,DAJY | g | 0-2 | 0-2 | 1-2 | 0 | 0 | 0 | 0 | 1 | 0 | 0 | 0 | 0 | 10 |
| 15 | WILLIAMS,ERIKA | g | 1-2 | 1-1 | 0-0 | 1 | 2 | 3 | 3 | 3 | 1 | 1 | 0 | 1 | 17 |
| 21 | ZEMPALE,BATABE | f | 1-2 | 0-0 | 2-3 | 2 | 2 | 4 | 3 | 4 | 2 | 1 | 0 | 0 | 11 |
| 00 | FEARS,JERICE | | 0-1 | 0-1 | 0-0 | 0 | 1 | 1 | 0 | 0 | 0 | 0 | 0 | 0 | 5 |
| 02 | SIMS,BRITTANY | | 2-6 | 0-0 | 0-0 | 1 | 0 | 1 | 2 | 4 | 0 | 0 | 0 | 0 | 8 |
| 04 | TORRES-RODRIGUEZ,HE | | 1-1 | 1-1 | 0-0 | 0 | 0 | 0 | 0 | 3 | 0 | 0 | 0 | 0 | 2 |
| 10 | KLEIST,KERI | | 0-0 | 0-0 | 0-0 | 0 | 0 | 0 | 0 | 0 | 0 | 0 | 0 | 1 | 7 |
| 12 | GILBERT,ALEXXUS | | 0-0 | 0-0 | 0-0 | 0 | 0 | 0 | 0 | 0 | 1 | 0 | 0 | 0 | 3 |
| 22 | CARMON,AIRICA | | 1-2 | 0-1 | 0-0 | 0 | 0 | 0 | 0 | 2 | 0 | 1 | 0 | 0 | 2 |
| 23 | CARTER,TYLINN | | 1-4 | 0-1 | 1-2 | 1 | 0 | 1 | 3 | 3 | 0 | 0 | 0 | 0 | 5 |
| TEAM | | | | | | 1 | 0 | 1 | 0 | | 0 | | | | |
| Totals | | | 11-27 | 4-10 | 4-11 | 6 | 5 | 11 | 11 | 30 | 7 | 3 | 0 | 2 | 100 |
| FG % | 3rd Qtr | 7-12 | 58.3% | 4th Qtr | 4-15 | 26.7% | Half: | 11-27 | 40.7% | | | | | | |
| 3FG % | 3rd Qtr | 2-4 | 50.0% | 4th Qtr | 2-6 | 33.3% | Half: | 4-10 | 36.4% | | | | | | |
| FT % | 3rd Qtr | 3-9 | 33.3% | 4th Qtr | 1-2 | 50.0% | Half: | 4-11 | 36.4% | | | | | | |

Utah Valley, 36, 12-13, 5-5

| ## | Player | S | Total | | | Rebounds | | | PF | TP | A | TO | Blk | Stl | Min |
|--------|-------------------|-----|--------|------------|--------|----------|---------|---------|--------|----|---|----|-----|-----|-----|
| | | | FG-FGA | 3PT FG-FGA | FT-FTA | Off Reb | Def Reb | Tot Reb | | | | | | | |
| 03 | SEALS,MARIAH | g | 2-4 | 0-1 | 2-2 | 0 | 2 | 2 | 3 | 6 | 3 | 0 | 0 | 1 | 18 |
| 12 | MAWHINNEY,REBECCA | f | 2-2 | 1-1 | 2-2 | 0 | 2 | 2 | 2 | 7 | 0 | 0 | 0 | 0 | 18 |
| 20 | TOSTON,PATRICE | g | 2-3 | 0-0 | 3-3 | 0 | 0 | 0 | 2 | 7 | 0 | 1 | 0 | 0 | 10 |
| 35 | BLANKS,DEIJAH | g | 1-3 | 1-2 | 0-0 | 1 | 1 | 2 | 2 | 3 | 0 | 2 | 0 | 0 | 12 |
| 40 | LOGGINS,SAM | c | 1-3 | 0-0 | 4-4 | 2 | 2 | 4 | 3 | 6 | 0 | 1 | 2 | 0 | 19 |
| 05 | AGNEW,GEORGIA | | 3-3 | 1-1 | 0-0 | 0 | 1 | 1 | 1 | 7 | 1 | 3 | 0 | 0 | 16 |
| 13 | NORRIS,KARLEE | | 0-0 | 0-0 | 0-0 | 0 | 0 | 0 | 0 | 0 | 0 | 0 | 0 | 0 | 1 |
| 14 | PERRY,KENDALL | | 0-0 | 0-0 | 0-0 | 0 | 0 | 0 | 0 | 0 | 0 | 0 | 0 | 0 | 2 |
| 22 | GORDON,TAYLOR | | 0-0 | 0-0 | 0-0 | 0 | 1 | 1 | 0 | 0 | 0 | 0 | 0 | 0 | 2 |
| 25 | PRECIADO,VERONICA | | 0-1 | 0-0 | 0-0 | 0 | 1 | 1 | 1 | 0 | 0 | 1 | 0 | 0 | 2 |
| TEAM | | | | | | 0 | 1 | 1 | 0 | | 0 | | | | |
| Totals | | | 11-19 | 3-5 | 11-11 | 3 | 11 | 14 | 14 | 36 | 4 | 8 | 2 | 1 | 100 |
| FG % | 3rd Qtr | 6-9 | 66.7% | 4th Qtr | 5-10 | 50.0% | Half: | 11-19 | 57.9% | | | | | | |
| 3FG % | 3rd Qtr | 1-2 | 50.0% | 4th Qtr | 2-3 | 66.7% | Half: | 3-5 | 42.9% | | | | | | |
| FT % | 3rd Qtr | 9-9 | 100.0% | 4th Qtr | 2-2 | 100.0% | Half: | 11-11 | 100.0% | | | | | | |

Officials: Michol Murray, Kimberly Hobbs, Brad Schmidt
 Technical Fouls: CSU Bakersfield- None, Utah Valley- None.

| Score by periods | 1st | 2nd | 3rd | 4th | Total |
|------------------|-----|-----|-----|-----|-----------|
| CSU Bakersfield | 19 | 4 | 19 | 11 | 53 |
| Utah Valley | 20 | 16 | 22 | 14 | 72 |

| Points | In Paint | Off T/O | 2nd 2nd Chance | Fast Fast Break | Bench |
|--------|----------|---------|----------------|-----------------|-------|
| CSUB | 8 | 5 | 5 | 0 | 12 |
| | 16 | 4 | 4 | 2 | 7 |

Last FG - CSUB 4th-00:51, UVU 4th-02:31.
 CSUB led for 0:00. UVU led for 20:00. Game was tied for 0:00.

Score tied - 0 times
 Lead changed - 0 times

CSU Bakersfield vs Utah Valley
2/13/2016; 3pm MT at Orem, Utah - PE Building
Period 3 Play-By-Play

| VISITORS: CSU Bakersfield | Time | Score | Margin | HOME: Utah Valley |
|-------------------------------------|-------|-------|--------|--|
| GOOD! 3PTR by WILLIAMS,ERIKA | 09:43 | 36-26 | H 10 | |
| ASSIST by SHANNON,ALYSSA | 09:43 | | | |
| FOUL by ZEMPARE,BATABE | 09:27 | | | |
| FOUL by ZEMPARE,BATABE | 09:27 | | | |
| SUB IN: SIMS,BRITTANY | 09:27 | | | |
| SUB OUT: ZEMPARE,BATABE | 09:27 | | | |
| | 09:17 | 39-26 | H 13 | GOOD! 3PTR by BLANKS,DEIJAH |
| | 09:17 | | | ASSIST by SEALS,MARIAH |
| MISSED JUMPER by SIMS,BRITTANY | 08:53 | | | |
| | 08:53 | | | REBOUND (DEF) by MAWHINNEY,REBECCA |
| | 08:34 | 41-26 | H 15 | GOOD! JUMPER by LOGGINS,SAM [PNT] |
| MISSED LAYUP by SIMS,BRITTANY | 08:02 | | | |
| | 08:02 | | | REBOUND (DEF) by SEALS,MARIAH |
| | 07:44 | | | MISSED LAYUP by TOSTON,PATRICE |
| REBOUND (DEF) by WILLIAMS,ERIKA | 07:44 | | | |
| | 07:29 | | | FOUL by TOSTON,PATRICE |
| GOOD! 3PTR by WALTERS,ADDI | 07:29 | 41-29 | H 12 | |
| ASSIST by WILLIAMS,ERIKA | 07:29 | | | |
| | 07:20 | | | SUB IN: AGNEW,GEORGIA |
| | 07:20 | | | SUB OUT: BLANKS,DEIJAH |
| FOUL by WILLIAMS,ERIKA | 06:59 | | | |
| | 06:36 | | | TURNOVER by TOSTON,PATRICE |
| | 06:36 | | | FOUL by TOSTON,PATRICE |
| GOOD! JUMPER by SIMS,BRITTANY | 06:07 | 41-31 | H 10 | |
| ASSIST by SHANNON,ALYSSA | 06:07 | | | |
| FOUL by SIMS,BRITTANY | 05:41 | | | |
| | 05:41 | 42-31 | H 11 | GOOD! FT by TOSTON,PATRICE |
| | 05:41 | 43-31 | H 12 | GOOD! FT by TOSTON,PATRICE |
| | 05:41 | | | SUB IN: NORRIS,KARLEE |
| | 05:41 | | | SUB OUT: LOGGINS,SAM |
| GOOD! LAYUP by SIMS,BRITTANY [PNT] | 05:27 | 43-33 | H 10 | |
| ASSIST by WALTERS,ADDI | 05:27 | | | |
| | 05:11 | | | TURNOVER by AGNEW,GEORGIA |
| STEAL by WILLIAMS,ERIKA | 05:10 | | | |
| TURNOVER by WILLIAMS,ERIKA | 05:05 | | | |
| | 05:04 | | | SUB IN: LOGGINS,SAM |
| | 05:04 | | | SUB OUT: NORRIS,KARLEE |
| | 04:47 | 45-33 | H 12 | GOOD! LAYUP by MAWHINNEY,REBECCA [PNT] |
| | 04:47 | | | ASSIST by SEALS,MARIAH |
| MISSED 3PTR by WALTERS,ADDI | 04:37 | | | |
| REBOUND (OFF) by SIMS,BRITTANY | 04:37 | | | |
| | 04:25 | | | FOUL by SEALS,MARIAH |
| TIMEOUT media | 04:25 | | | |
| SUB IN: CARTER,TYLINN | 04:25 | | | |
| SUB OUT: SIMS,BRITTANY | 04:25 | | | |
| GOOD! JUMPER by CARTER,TYLINN [PNT] | 04:20 | 45-35 | H 10 | |
| | 03:57 | 47-35 | H 12 | GOOD! LAYUP by TOSTON,PATRICE [PNT] |
| FOUL by CARTER,TYLINN | 03:57 | | | |
| | 03:57 | 48-35 | H 13 | GOOD! FT by TOSTON,PATRICE |
| SUB IN: GILBERT,ALEXXUS | 03:57 | | | |
| SUB OUT: WALTERS,ADDI | 03:57 | | | |
| MISSED JUMPER by CARTER,TYLINN | 03:43 | | | |
| REBOUND (OFF) by CARTER,TYLINN | 03:43 | | | |

| VISITORS: CSU Bakersfield | Time | Score | Margin | HOME: Utah Valley |
|-------------------------------------|-------|-------|--------|------------------------------------|
| SUB IN: SIMS,BRITTANY | 03:40 | | | |
| SUB OUT: WILLIAMS,ERIKA | 03:40 | | | |
| | 03:40 | | | SUB IN: BLANKS,DEIJAH |
| | 03:40 | | | SUB OUT: TOSTON,PATRICE |
| GOOD! LAYUP by SHANNON,ALYSSA [PNT] | 03:30 | 48-37 | H 11 | |
| FOUL by SIMS,BRITTANY | 03:11 | | | |
| | 03:11 | 49-37 | H 12 | GOOD! FT by MAWHINNEY,REBECCA |
| | 03:11 | 50-37 | H 13 | GOOD! FT by MAWHINNEY,REBECCA |
| SUB IN: ZEMPARE,BATABE | 03:11 | | | |
| SUB OUT: SIMS,BRITTANY | 03:11 | | | |
| | 03:00 | | | FOUL by BLANKS,DEIJAH |
| MISSED FT by CARTER,TYLINN | 03:00 | | | |
| REBOUND (DEADB) by TEAM | 03:00 | | | |
| GOOD! FT by CARTER,TYLINN | 02:59 | 50-38 | H 12 | |
| SUB IN: WILLIAMS,ERIKA | 02:59 | | | |
| SUB IN: FEARS,JERICE | 02:59 | | | |
| SUB OUT: VINES,DAJY | 02:59 | | | |
| SUB OUT: ZEMPARE,BATABE | 02:59 | | | |
| FOUL by WILLIAMS,ERIKA | 02:36 | | | |
| | 02:36 | 51-38 | H 13 | GOOD! FT by SEALS,MARIAH |
| | 02:36 | 52-38 | H 14 | GOOD! FT by SEALS,MARIAH |
| SUB IN: ZEMPARE,BATABE | 02:36 | | | |
| SUB IN: WALTERS,ADDI | 02:36 | | | |
| SUB OUT: GILBERT,ALEXXUS | 02:36 | | | |
| SUB OUT: FEARS,JERICE | 02:36 | | | |
| GOOD! LAYUP by ZEMPARE,BATABE [PNT] | 02:24 | 52-40 | H 12 | |
| | 02:23 | | | FOUL by LOGGINS,SAM |
| GOOD! FT by ZEMPARE,BATABE | 02:23 | 52-41 | H 11 | |
| SUB IN: FEARS,JERICE | 02:23 | | | |
| SUB OUT: ZEMPARE,BATABE | 02:23 | | | |
| | 02:01 | | | MISSED 3PTR by BLANKS,DEIJAH |
| | 02:01 | | | REBOUND (OFF) by BLANKS,DEIJAH |
| | 01:57 | | | MISSED LAYUP by BLANKS,DEIJAH |
| | 01:57 | | | REBOUND (OFF) by LOGGINS,SAM |
| FOUL by CARTER,TYLINN | 01:55 | | | |
| | 01:55 | 53-41 | H 12 | GOOD! FT by LOGGINS,SAM |
| | 01:55 | 54-41 | H 13 | GOOD! FT by LOGGINS,SAM |
| SUB IN: VINES,DAJY | 01:55 | | | |
| SUB IN: ZEMPARE,BATABE | 01:55 | | | |
| SUB OUT: FEARS,JERICE | 01:55 | | | |
| SUB OUT: CARTER,TYLINN | 01:55 | | | |
| MISSED 3PTR by VINES,DAJY | 01:44 | | | |
| | 01:44 | | | REBOUND (DEADB) by TEAM |
| SUB IN: FEARS,JERICE | 01:41 | | | |
| SUB OUT: VINES,DAJY | 01:41 | | | |
| | 01:14 | 56-41 | H 15 | GOOD! JUMPER by SEALS,MARIAH [PNT] |
| | 00:58 | | | FOUL by AGNEW,GEORGIA |
| MISSED FT by WALTERS,ADDI | 00:58 | | | |
| REBOUND (DEADB) by TEAM | 00:58 | | | |
| MISSED FT by WALTERS,ADDI | 00:58 | | | |
| | 00:58 | | | REBOUND (DEF) by LOGGINS,SAM |
| | 00:41 | 58-41 | H 17 | GOOD! LAYUP by AGNEW,GEORGIA [PNT] |
| | 00:26 | | | FOUL by SEALS,MARIAH |
| MISSED FT by SHANNON,ALYSSA | 00:26 | | | |
| REBOUND (DEADB) by TEAM | 00:26 | | | |
| MISSED FT by SHANNON,ALYSSA | 00:26 | | | |
| REBOUND (OFF) by ZEMPARE,BATABE | 00:26 | | | |
| | 00:24 | | | FOUL by LOGGINS,SAM |

| VISITORS: CSU Bakersfield | Time | Score | Margin | HOME: Utah Valley |
|-----------------------------|-------|-------|--------|---------------------------|
| MISSED FT by ZEMPARE,BATABE | 00:23 | | | |
| REBOUND (DEADB) by TEAM | 00:23 | | | |
| GOOD! FT by ZEMPARE,BATABE | 00:23 | 58-42 | H 16 | |
| SUB IN: CARMON,AIRICA | 00:23 | | | |
| SUB IN: KLEIST,KERI | 00:23 | | | |
| SUB OUT: WALTERS,ADDI | 00:23 | | | |
| SUB OUT: ZEMPARE,BATABE | 00:23 | | | |
| | 00:01 | | | TURNOVER by AGNEW,GEORGIA |
| STEAL by KLEIST,KERI | 00:01 | | | |

CSU Bakersfield 53, Utah Valley 72

| Period 3-only | In Paint | Off T/O | 2nd Chance | Fast Break | Bench | **** |
|---------------|-------------|------------|---------------|---------------|-------|------------------------|
| CSUB | 8 | 2 | 5 | 0 | 7 | Score tied - 0 times |
| UVU | 10 | 2 | 2 | 0 | 2 | Lead changed - 0 times |

CSU Bakersfield vs Utah Valley
2/13/2016; 3pm MT at Orem, Utah - PE Building
Period 4 Play-By-Play

| VISITORS: CSU Bakersfield | Time | Score | Margin | HOME: Utah Valley |
|---------------------------------|-------|-------|--------|--------------------------------------|
| SUB IN: KLEIST,KERI | 10:00 | | | |
| SUB IN: CARMON,AIRICA | 10:00 | | | |
| SUB OUT: WALTERS,ADDI | 10:00 | | | |
| SUB OUT: VINES,DAJY | 10:00 | | | |
| | 10:00 | | | SUB IN: AGNEW,GEORGIA |
| | 10:00 | | | SUB OUT: TOSTON,PATRICE |
| | 09:47 | 61-42 | H 19 | GOOD! 3PTR by AGNEW,GEORGIA |
| | 09:47 | | | ASSIST by SEALS,MARIAH |
| GOOD! JUMPER by CARMON,AIRICA | 09:26 | 61-44 | H 17 | |
| ASSIST by ZEMPARE,BATABE | 09:26 | | | |
| | 09:03 | | | TURNOVER by AGNEW,GEORGIA |
| TURNOVER by CARMON,AIRICA | 08:35 | | | |
| | 08:34 | | | STEAL by SEALS,MARIAH |
| | 08:32 | 63-44 | H 19 | GOOD! LAYUP by SEALS,MARIAH [FB/PNT] |
| MISSED 3PTR by CARMON,AIRICA | 08:13 | | | |
| | 08:13 | | | REBOUND (DEF) by TEAM |
| | 08:10 | | | TURNOVER by BLANKS,DEIJAH |
| | 08:10 | | | FOUL by BLANKS,DEIJAH |
| SUB IN: CARTER,TYLINN | 08:10 | | | |
| SUB IN: VINES,DAJY | 08:10 | | | |
| SUB OUT: KLEIST,KERI | 08:10 | | | |
| SUB OUT: CARMON,AIRICA | 08:10 | | | |
| | 08:03 | | | FOUL by MAWHINNEY,REBECCA |
| MISSED JUMPER by CARTER,TYLINN | 08:00 | | | |
| REBOUND (OFF) by WILLIAMS,ERIKA | 08:00 | | | |
| TURNOVER by ZEMPARE,BATABE | 07:49 | | | |
| | 07:38 | | | MISSED JUMPER by LOGGINS,SAM |
| REBOUND (DEF) by ZEMPARE,BATABE | 07:38 | | | |
| MISSED 3PTR by CARTER,TYLINN | 07:29 | | | |
| | 07:29 | | | REBOUND (DEF) by SEALS,MARIAH |
| FOUL by ZEMPARE,BATABE | 07:24 | | | |
| | 07:15 | | | MISSED LAYUP by SEALS,MARIAH |
| | 07:15 | | | REBOUND (OFF) by LOGGINS,SAM |
| FOUL by CARTER,TYLINN | 07:10 | | | |
| | 07:10 | 64-44 | H 20 | GOOD! FT by LOGGINS,SAM |
| | 07:10 | 65-44 | H 21 | GOOD! FT by LOGGINS,SAM |
| MISSED 3PTR by VINES,DAJY | 06:54 | | | |
| | 06:54 | | | REBOUND (DEF) by BLANKS,DEIJAH |
| | 06:34 | | | MISSED LAYUP by LOGGINS,SAM |
| REBOUND (DEF) by ZEMPARE,BATABE | 06:34 | | | |
| | 06:22 | | | FOUL by LOGGINS,SAM |
| GOOD! JUMPER by SHANNON,ALYSSA | 06:14 | 65-46 | H 19 | |
| TIMEOUT 30SEC | 06:10 | | | |
| SUB IN: WALTERS,ADDI | 06:10 | | | |
| SUB OUT: CARTER,TYLINN | 06:10 | | | |
| | 06:10 | | | SUB IN: TOSTON,PATRICE |
| | 06:10 | | | SUB OUT: BLANKS,DEIJAH |
| | 05:50 | | | TURNOVER by LOGGINS,SAM |
| MISSED LAYUP by WILLIAMS,ERIKA | 05:31 | | | |
| REBOUND (OFF) by ZEMPARE,BATABE | 05:31 | | | |
| MISSED LAYUP by ZEMPARE,BATABE | 05:27 | | | |
| | 05:27 | | | REBOUND (DEF) by LOGGINS,SAM |
| | 05:01 | 67-46 | H 21 | GOOD! LAYUP by AGNEW,GEORGIA [PNT] |

| VISITORS: CSU Bakersfield | Time | Score | Margin | HOME: Utah Valley |
|-----------------------------------|-------|-------|--------|-------------------------------------|
| | 04:46 | | | FOUL by SEALS,MARIAH |
| TIMEOUT media | 04:46 | | | |
| | 04:43 | | | FOUL by MAWHINNEY,REBECCA |
| MISSED FT by VINES,DAJY | 04:43 | | | |
| REBOUND (DEADB) by TEAM | 04:43 | | | |
| GOOD! FT by VINES,DAJY | 04:43 | 67-47 | H 20 | |
| SUB IN: KLEIST,KERI | 04:43 | | | |
| SUB OUT: VINES,DAJY | 04:43 | | | |
| FOUL by WILLIAMS,ERIKA | 04:23 | | | |
| | 04:01 | | | MISSED 3PTR by SEALS,MARIAH |
| REBOUND (DEF) by WILLIAMS,ERIKA | 04:01 | | | |
| MISSED JUMPER by WALTERS,ADDI | 03:50 | | | |
| | 03:50 | | | REBOUND (DEF) by MAWHINNEY,REBECCA |
| | 03:25 | 70-47 | H 23 | GOOD! 3PTR by MAWHINNEY,REBECCA |
| | 03:25 | | | ASSIST by AGNEW,GEORGIA |
| GOOD! 3PTR by WALTERS,ADDI | 03:07 | 70-50 | H 20 | |
| ASSIST by ZEMPARE,BATABE | 03:06 | | | |
| | 02:31 | 72-50 | H 22 | GOOD! LAYUP by TOSTON,PATRICE [PNT] |
| MISSED LAYUP by WALTERS,ADDI | 02:12 | | | |
| | 02:12 | | | BLOCK by LOGGINS,SAM |
| REBOUND (OFF) by TEAM | 02:11 | | | |
| SUB IN: FEARS,JERICE | 02:10 | | | |
| SUB IN: GILBERT,ALEXXUS | 02:10 | | | |
| SUB OUT: SHANNON,ALYSSA | 02:10 | | | |
| SUB OUT: WILLIAMS,ERIKA | 02:10 | | | |
| | 02:10 | | | SUB IN: PRECIADO,VERONICA |
| | 02:10 | | | SUB IN: PERRY,KENDALL |
| | 02:10 | | | SUB IN: BLANKS,DEIJAH |
| | 02:10 | | | SUB OUT: SEALS,MARIAH |
| | 02:10 | | | SUB OUT: MAWHINNEY,REBECCA |
| | 02:10 | | | SUB OUT: TOSTON,PATRICE |
| MISSED 3PTR by FEARS,JERICE | 01:57 | | | |
| | 01:57 | | | REBOUND (DEF) by AGNEW,GEORGIA |
| SUB IN: TORRES-RODRIGUEZ,HE | 01:52 | | | |
| SUB IN: SIMS,BRITTANY | 01:52 | | | |
| SUB OUT: WALTERS,ADDI | 01:52 | | | |
| SUB OUT: ZEMPARE,BATABE | 01:52 | | | |
| | 01:52 | | | SUB IN: GORDON,TAYLOR |
| | 01:52 | | | SUB OUT: AGNEW,GEORGIA |
| | 01:32 | | | MISSED LAYUP by PRECIADO,VERONICA |
| REBOUND (DEF) by FEARS,JERICE | 01:32 | | | |
| MISSED JUMPER by SIMS,BRITTANY | 01:21 | | | |
| | 01:21 | | | BLOCK by LOGGINS,SAM |
| | 01:19 | | | REBOUND (DEF) by PRECIADO,VERONICA |
| | 01:08 | | | TURNOVER by PRECIADO,VERONICA |
| | 01:08 | | | FOUL by PRECIADO,VERONICA |
| GOOD! 3PTR by TORRES-RODRIGUEZ,HE | 00:51 | 72-53 | H 19 | |
| ASSIST by GILBERT,ALEXXUS | 00:51 | | | |
| | 00:42 | | | TURNOVER by BLANKS,DEIJAH |
| MISSED LAYUP by SIMS,BRITTANY | 00:32 | | | |
| | 00:32 | | | REBOUND (DEF) by GORDON,TAYLOR |

CSU Bakersfield 53, Utah Valley 72

Period 4-only In Off 2nd Fast
 Paint T/O Chance Break Bench >>>>

| Period 4-only | In Paint | Off T/O | 2nd Chance | Fast Break | Bench | ''' |
|----------------------|---------------------|--------------------|-----------------------|-----------------------|--------------|------------------------|
| CSUB | 0 | 3 | 0 | 0 | 5 | Score tied - 0 times |
| UVU | 6 | 2 | 2 | 2 | 5 | Lead changed - 0 times |

CSU Bakersfield vs Utah Valley

2/13/2016; 3pm MT at Orem, Utah - PE Building

Scoring/Runs Reference

| CSU Bakersfield | Score | Utah Valley |
|-------------------------|---------------|-------------------------|
| 09:41 - VINES, 3PTR | 3 3-0 -3 | BLANKS, JUMPER - 09:22 |
| 09:12 - WALTERS, 3PTR | X | BLANKS TURN - 08:42 |
| 08:28 - SHANNON, JUMPER | 2 5-0 -5 | SEALS TURN - 08:10 |
| 08:02 - WILLIAMS, 3PTR | X | BLANKS, LAYUP - 07:55 |
| 07:27 - VINES TURN | 5-2 -3 2P | LOGGINS, JUMPER - 07:13 |
| 06:57 - WALTERS, LAYUP | X | |
| 06:55 - ZEMPARE, LAYUP | 2P 7-4 -3 | SEALS, 3PTR - 06:32 |
| 06:01 - KLEIST TURN | X | BLANKS TURN - 06:16 |
| 05:40 - SHANNON, 3PTR | 7-6 -1 2PF | BLANKS, LAYUP - 05:58 |
| 04:56 - KLEIST, 3PTR | 3 10-8 -2 | SEALS, JUMPER - 05:15 |
| 04:34 - WILLIAMS, LAYUP | 2P 12-8 -4 | SEALS, LAYUP - 05:07 |
| 04:05 - SIMS, JUMPER | X | NORRIS TURN - 04:38 |
| 03:16 - SHANNON TURN | 12-11 -1 3 | NORRIS TURN - 04:15 |
| 02:51 - SHANNON TURN | | MAWHINNEY TURN - 03:28 |
| | | MAWHINNEY, 3PTR - 03:05 |

| CSU Bakersfield | Score | Utah Valley |
|-------------------------|----------------|-------------------------|
| 09:25 - SHANNON, 3PTR | X | LOGGINS, LAYUP - 09:45 |
| 08:44 - CARTER TURN | 19-22 3 2 | LOGGINS, JUMPER - 09:10 |
| 08:31 - VINES, 3PTR | X | SEALS, LAYUP - 08:39 |
| 07:32 - VINES TURN | 19-24 5 2 | SEALS, JUMPER - 08:00 |
| 06:41 - ZEMPARE, JUMPER | X | TOSTON, 3PTR - 07:17 |
| 06:07 - SHANNON, LAYUP | X | BLANKS, FT - 06:59 |
| 05:26 - WILLIAMS, 3PTR | X | BLANKS, FT - 06:59 |
| 05:19 - ZEMPARE, FT | 1 19-25 6 1 | TOSTON, 3PTR - 06:27 |
| 05:19 - ZEMPARE, FT | X | BLANKS, 3PTR - 05:52 |
| 04:46 - SHANNON, 3PTR | X | AGNEW, JUMPER - 05:03 |
| 04:36 - SHANNON, LAYUP | X | |
| 03:51 - WALTERS, 3PTR | 3 23-30 7 | AGNEW TURN - 04:21 |
| 03:21 - GILBERT, LAYUP | X | SEALS, 3PTR - 03:33 |
| 02:43 - ZEMPARE TURN | | TOSTON TURN - 02:52 |
| 01:55 - WALTERS, JUMPER | X | TOSTON, LAYUP - 02:18 |

| | | | | |
|----------------------------|----------------|------------|-----------------|---------------------------|
| 02:23 - WALTERS, JUMPER | X | 12-13 1 | 2 ^{PF} | TOSTON, LAYUP - ,02:49 |
| 01:34 - , WALTERS, 3PTR | 3 | 12-16 4 | 3 | TOSTON, 3PTR - ,02:00 |
| 00:54 - , SIMS, LAYUP | 2 ^P | 15-16 1 | | SEALS, JUMPER - ,01:15 |
| 00:26 - , CARTER, LAYUP | 2 ^P | 15-18 3 | 2 | NORRIS, FT. - ,00:41 |
| | | 17-18 1 | | NORRIS, FT. - ,00:41 |
| | | 17-19 2 | 1 | |
| | | 17-20 3 | 1 | |
| | | 19-20 1 | | TO SEALS TURN - ,00:03 |

| | | | | |
|---------------------------|----|-------------|----------------|-----------------------------|
| 01:26 - TURN | TO | 23-33 10 | 1 | AGNEW, FT. - ,01:40 |
| | | 23-34 11 | 1 | AGNEW, FT. - ,01:40 |
| 01:01 - CARTER, JUMPER | X | | | TOSTON, LAYUP - 01:22 |
| 00:24 - ZEMPARE, LAYUP | X | 23-36 13 | 2 ^P | AGNEW, LAYUP - ,01:20 |
| 00:21 - ZEMPARE, LAYUP | X | | | SEALS, JUMPER - 00:41 |
| | | | | TO MAWHINNEY TURN ,00:37 |
| | | | | SEALS, JUMPER - 00:02 |

Period 3

| CSU Bakersfield | Score | Utah Valley |
|-----------------------------|----------------|-------------|
| 09:43 - , WILLIAMS, 3PTR | 3 | 26-36 10 |
| 08:53 - SIMS, JUMPER | X | 26-39 13 |
| 08:02 - SIMS, LAYUP | X | 3 |
| 07:29 - , WALTERS, 3PTR | 3 | 26-41 15 |
| 06:07 - , SIMS, JUMPER | 2 | 29-41 12 |
| 05:27 - , SIMS, LAYUP | 2 ^P | 31-42 11 |
| 05:05 - WILLIAMS TURN | TO | 31-43 12 |
| 04:37 - WALTERS, 3PTR | X | 33-43 10 |
| 04:20 - , CARTER, JUMPER | 2 ^P | 31-41 10 |
| 03:43 - CARTER, JUMPER | X | 31-42 11 |
| | | 31-43 12 |
| | | 33-43 10 |
| | | 35-45 10 |
| | | 35-47 12 |
| | | 35-48 13 |

Period 4

| CSU Bakersfield | Score | Utah Valley |
|------------------------------|-------|-----------------|
| 09:26 - , CARMON, JUMPER | 2 | 42-61 19 |
| 08:35 - CARMON TURN | TO | 3 |
| 08:13 - CARMON, 3PTR | X | 44-61 17 |
| 08:00 - CARTER, JUMPER | X | 44-63 19 |
| 07:49 - , ZEMPARE TURN | TO | 2 ^{PF} |
| 07:29 - CARTER, 3PTR | X | |
| 06:54 - VINES, 3PTR | X | |
| 06:14 - , SHANNON, JUMPER | 2 | 44-65 21 |
| 05:31 - WILLIAMS, LAYUP | X | 46-65 19 |

03:30 - ,SHANNON,LAYUP 2P 37-48 11

37-49 12 1 MAWHINNEY,FT,- ,03:11

37-50 13 1 MAWHINNEY,FT,- ,03:11

03:00 - CARTER,FT X

02:59 - ,CARTER,FT 1 38-50 12

38-51 13 1 SEALS,FT,-,02:36

38-52 14 1 SEALS,FT,-,02:36

02:24 - ,ZEMPARE,LAYUP 2P 40-52 12

02:23 - ,ZEMPARE,FT 1 41-52 11

X BLANKS,3PTR - 02:01

X BLANKS,LAYUP - 01:57

41-53 12 1 LOGGINS,FT,-,01:55

41-54 13 1 LOGGINS,FT,-,01:55

01:44 - VINES,3PTR X

41-56 15 2P SEALS,JUMPER,- ,01:14

00:58 - WALTERS,FT X

00:58 - WALTERS,FT X

41-58 17 2P AGNEW,LAYUP,- ,00:41

00:26 - SHANNON,FT X

00:26 - SHANNON,FT X

00:23 - ZEMPARE,FT X

00:23 - ,ZEMPARE,FT 1 42-58 16

TO AGNEW TURN - ,00:01

05:27 - ZEMPARE,LAYUP X

46-67 21 2P AGNEW,LAYUP,- ,05:01

04:43 - VINES,FT X

04:43 - ,VINES,FT 1 47-67 20

X SEALS,3PTR - 04:01

03:50 - WALTERS,JUMPER X

47-70 23 3 MAWHINNEY,3PTR,- ,03:25

03:07 - ,WALTERS,3PTR 3 50-70 20

50-72 22 2P TOSTON,LAYUP,- ,02:31

02:12 - WALTERS,LAYUP X

01:57 - FEARS,3PTR X

X PRECIADO,LAYUP - 01:32

01:21 - SIMS,JUMPER X

TO PRECIADO TURN - ,01:08

00:51 - ,TORRES-RODRIGUEZ,3PTR 3 53-72 19

TO BLANKS TURN - ,00:42

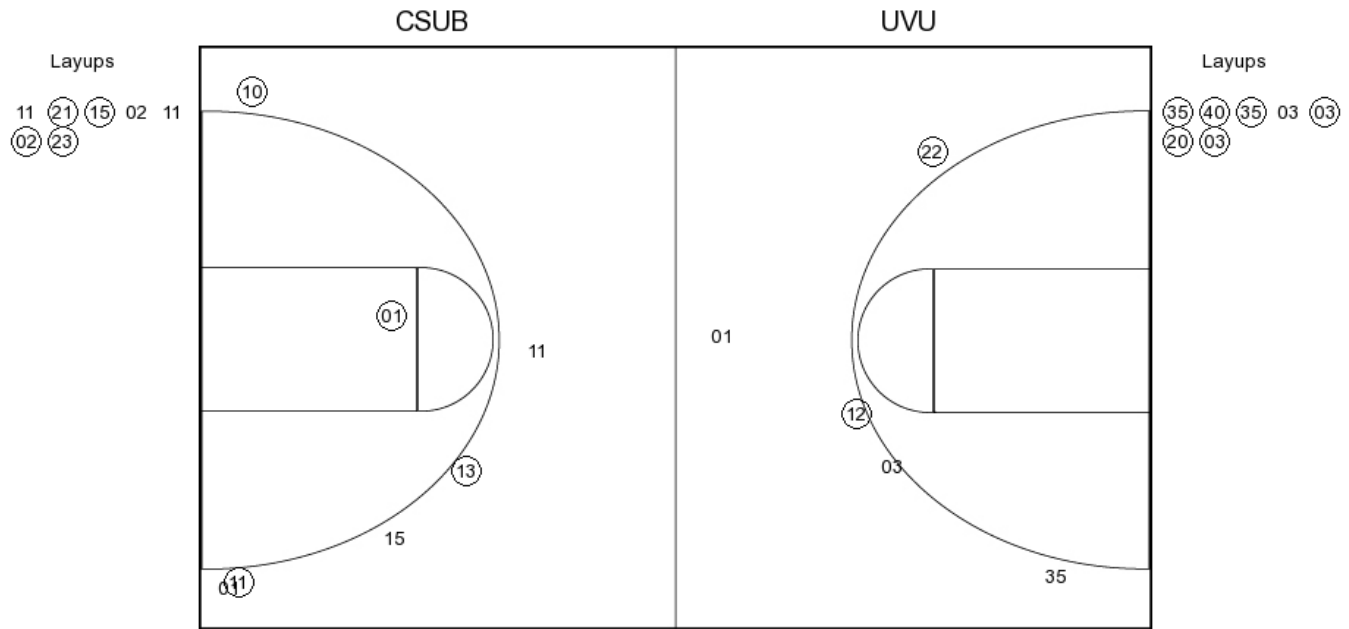
00:32 - SIMS,LAYUP X

CSU Bakersfield vs Utah Valley

OFFICIAL SHOT CHART

2/13/2016 at Orem, Utah - PE Building

PERIOD 1



CSUB PERIOD 1

| | |
|----------------|----|
| FG Made | 9 |
| FG Attempted | 27 |
| 3PFG Made | 4 |
| 3PFG Attempted | 11 |

UVU PERIOD 1

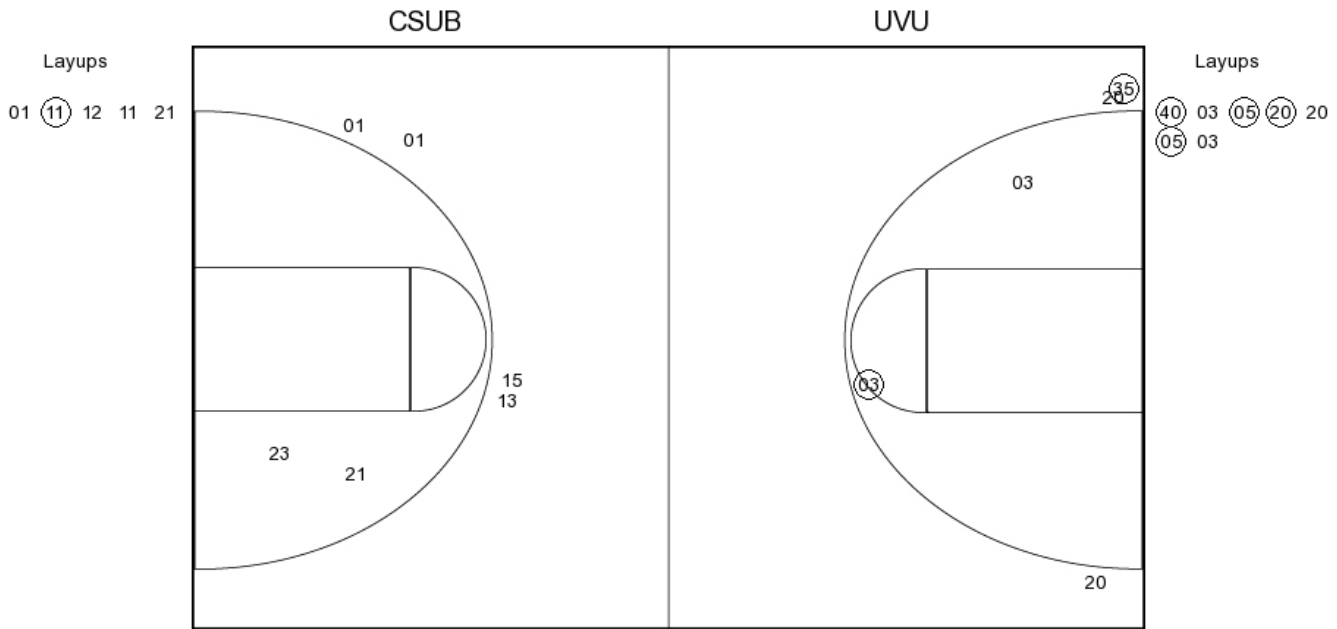
| | |
|----------------|----|
| FG Made | 14 |
| FG Attempted | 25 |
| 3PFG Made | 3 |
| 3PFG Attempted | 7 |

CSU Bakersfield vs Utah Valley

OFFICIAL SHOT CHART

2/13/2016 at Orem, Utah - PE Building

PERIOD 2



CSUB PERIOD 2

FG Made

FG Attempted

3PFG Made

3PFG Attempted

UVU PERIOD 2

FG Made

FG Attempted

3PFG Made

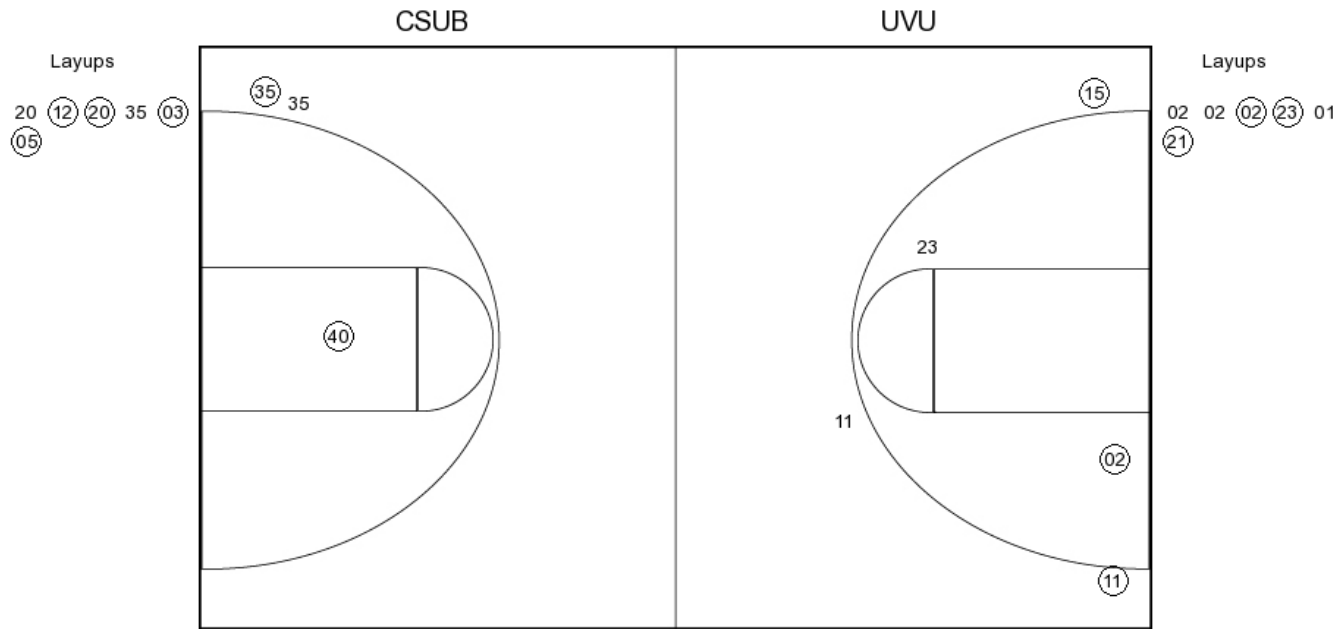
3PFG Attempted

CSU Bakersfield vs Utah Valley

OFFICIAL SHOT CHART

2/13/2016 at Orem, Utah - PE Building

PERIOD 3



CSUB PERIOD 3

| | |
|----------------|----|
| FG Made | 11 |
| FG Attempted | 27 |
| 3PFG Made | 4 |
| 3PFG Attempted | 10 |

UVU PERIOD 3

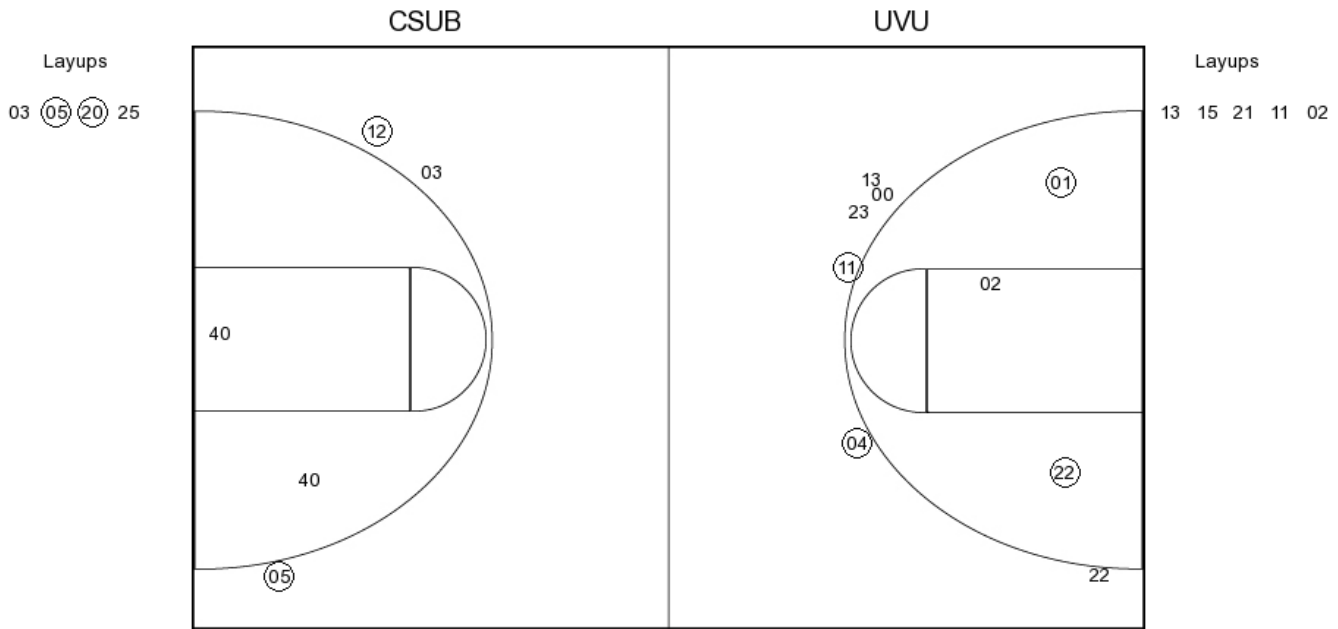
| | |
|----------------|----|
| FG Made | 11 |
| FG Attempted | 19 |
| 3PFG Made | 3 |
| 3PFG Attempted | 5 |

CSU Bakersfield vs Utah Valley

OFFICIAL SHOT CHART

2/13/2016 at Orem, Utah - PE Building

PERIOD 4



CSUB PERIOD 4

FG Made
FG Attempted
3PFG Made
3PFG Attempted

UVU PERIOD 4

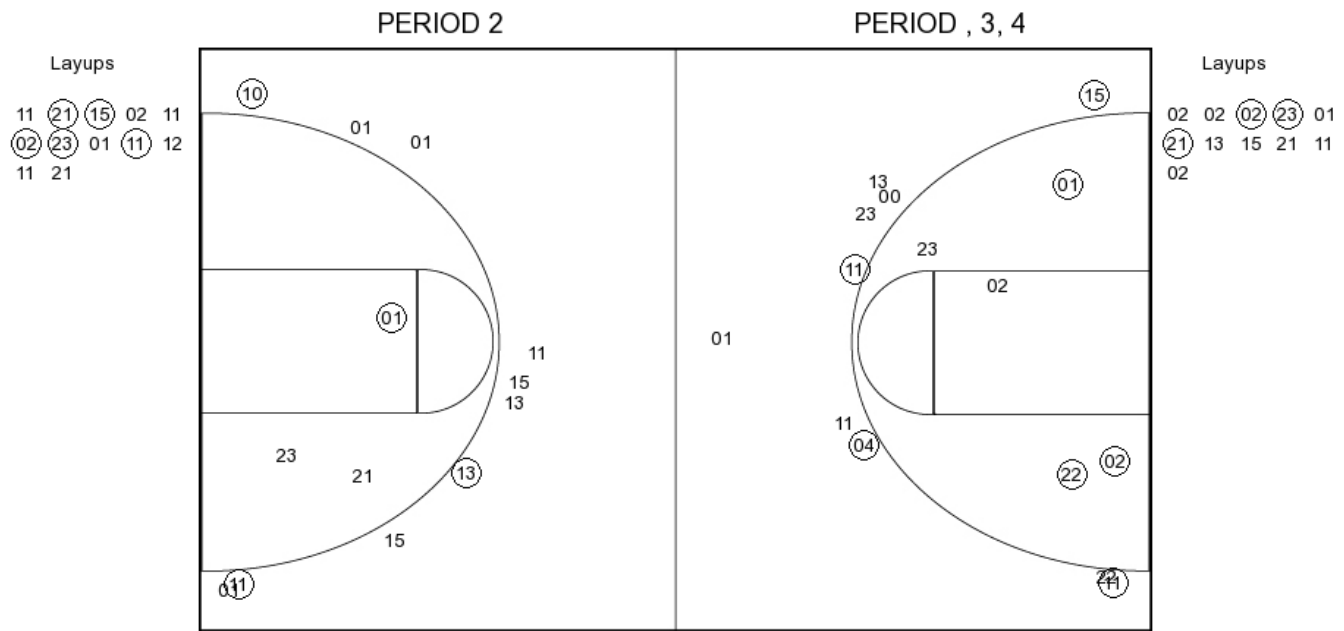
FG Made
FG Attempted
3PFG Made
3PFG Attempted

CSU Bakersfield vs Utah Valley

OFFICIAL SHOT CHART

2/13/2016 at Orem, Utah - PE Building

CSU Bakersfield



CSUB PERIOD 1

| | |
|----------------|----|
| FG Made | 9 |
| FG Attempted | 27 |
| 3PFG Made | 4 |
| 3PFG Attempted | 11 |

CSUB PERIOD 2

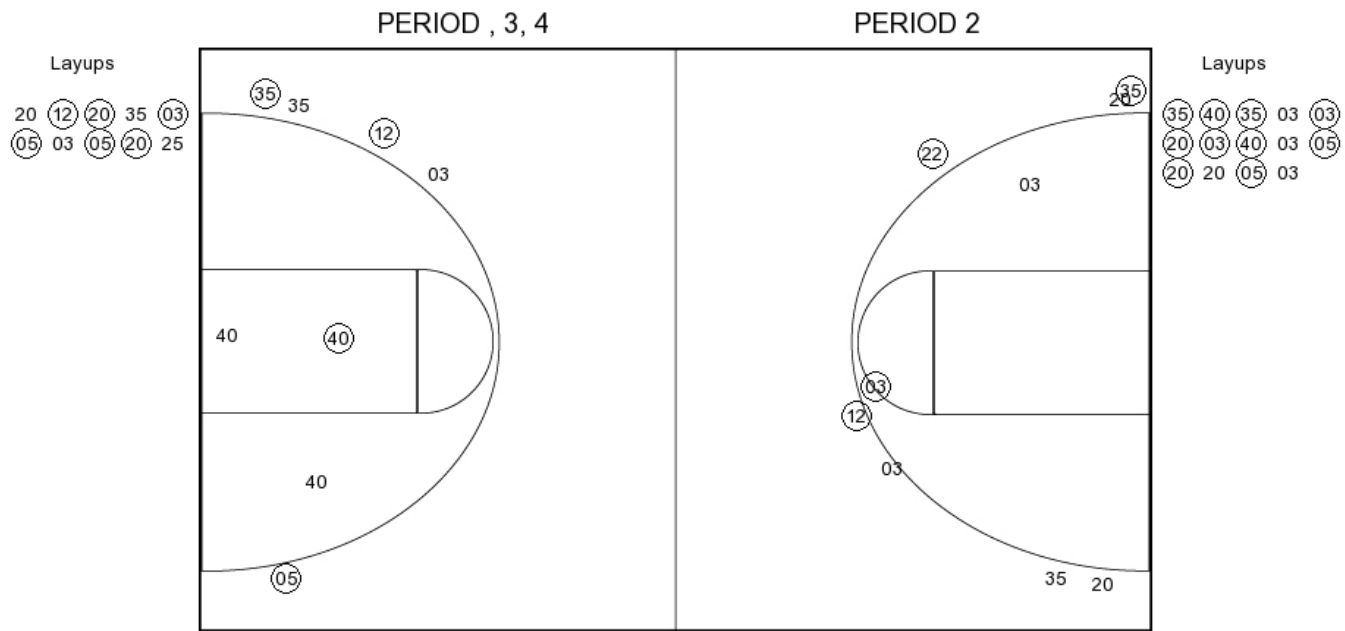
| | |
|----------------|--|
| FG Made | |
| FG Attempted | |
| 3PFG Made | |
| 3PFG Attempted | |

CSU Bakersfield vs Utah Valley

OFFICIAL SHOT CHART

2/13/2016 at Orem, Utah - PE Building

Utah Valley



UVU PERIOD 1

| | |
|----------------|----|
| FG Made | 14 |
| FG Attempted | 25 |
| 3PFG Made | 3 |
| 3PFG Attempted | 7 |

UVU PERIOD 2

| | |
|----------------|--|
| FG Made | |
| FG Attempted | |
| 3PFG Made | |
| 3PFG Attempted | |