

# UTAH VALLEY VS. NEW MEXICO STATE UNIVERSITY



2/6/2016

Orem, Utah (PE Building)

## FINAL STATS

**NM State**

*(20-3, 9-0 WAC)*

**59**

**Utah Valley**

*(11-13, 4-5 WAC)*

**53**

*Start Time: 3 p.m. MT*

*Officials: Shelley Russi, Ken Nash, Erick Thome*

*Attendance: 353*

# Official Basketball Box Score -- Game Totals -- Final Statistics

## NM State vs Utah Valley

2/6/2016 3 p.m. MT at Orem, Utah (PE Building)

### NM State 59 - 20-3, 9-0 WAC

##	Player	S	Total			Rebounds			PF	TP	A	TO	Blk	Stl	Min
			FG-FGA	3PT	FG-FGA	FT-FTA	Off Reb	Def Reb							
04	WEBER,SASHA	g	5-7	3-4	2-2	0	4	4	2	15	1	1	0	4	36
05	SALAS,BROOKE	g	1-7	1-3	0-0	0	1	1	4	3	2	2	0	0	18
11	DAVIS,SHANICE	g	2-10	0-4	0-0	0	0	0	0	4	3	4	1	3	35
21	WILLIAM,TAMERA	g	0-3	0-1	2-2	3	1	4	0	2	1	1	1	0	20
24	FREEMAN,BRIANNA	f	3-6	0-0	6-8	0	3	3	3	12	0	2	2	2	25
10	HARDIN,EMILY		0-0	0-0	0-0	0	0	0	0	0	0	1	0	1	4
12	WILLIAMS,ZAIRE		0-0	0-0	0-0	0	0	0	0	0	1	0	0	0	5
22	ELLIS,TYLER		2-4	0-0	1-2	2	3	5	3	5	0	0	1	0	15
23	SCOTT,ABBY		1-4	1-4	0-0	0	0	0	0	3	0	0	0	0	9
35	MACK,MORIAH		7-14	1-2	0-0	4	3	7	1	15	2	1	0	1	33
TEAM						3	3	6	0		0				
TOTALS			21-55	6-18	11-14	12	18	30	13	59	10	12	5	11	200

Deadball Rebounds: 0,0

FG %	1st Half: 11-25 44.0%	2nd Half: 10-30 33.3%	Game: 21-55 38.2%	4th Qtr: 6-16 37.5%
	1st Qtr: 6-13 46.2%	2nd Qtr: 5-12 41.7%	3rd Qtr: 4-14 28.6%	
3FG %	1st Half: 3-7 42.9%	2nd Half: 3-11 27.3%	Game: 6-18 33.3%	4th Qtr: 2-5 40.0%
	1st Qtr: 2-5 40.0%	2nd Qtr: 1-2 50.0%	3rd Qtr: 1-6 16.7%	
FT %	1st Half: 3-4 75.0%	2nd Half: 8-10 80.0%	Game: 11-14 78.6%	4th Qtr: 7-8 87.5%
	1st Qtr: 0-0 0%	2nd Qtr: 3-4 75.0%	3rd Qtr: 1-2 50.0%	

### Utah Valley 53 - 11-13, 4-5 WAC

##	Player	S	Total			Rebounds			PF	TP	A	TO	Blk	Stl	Min
			FG-FGA	3PT	FG-FGA	FT-FTA	Off Reb	Def Reb							
03	SEALS,MARIAH	g	3-10	1-5	0-0	0	2	2	1	7	2	7	0	2	40
12	MAWHINNEY,REBECCA	f	3-6	2-5	0-0	0	7	7	2	8	0	2	0	2	33
20	TOSTON,PATRICE	g	2-2	0-0	0-0	1	3	4	2	4	2	1	0	0	20
35	BLANKS,DEIJAH	g	2-7	0-3	0-0	2	4	6	1	4	5	4	0	2	32
40	LOGGINS,SAM	c	7-13	0-0	6-7	1	5	6	4	20	0	4	6	1	33
05	AGNEW,GEORGIA		1-4	0-0	0-0	0	2	2	0	2	2	2	0	0	27
13	NORRIS,KARLEE		2-2	0-0	2-2	1	0	1	2	6	0	0	0	0	7
22	GORDON,TAYLOR		1-1	0-0	0-0	1	0	1	1	2	1	0	0	0	8
TEAM						1	2	3	0		1				
TOTALS			21-45	3-13	8-9	7	25	32	13	53	12	21	6	7	200

Deadball Rebounds: 0,0

FG %	1st Half: 11-25 44.0%	2nd Half: 10-20 50.0%	Game: 21-45 46.7%	4th Qtr: 2-7 28.6%
	1st Qtr: 6-15 40.0%	2nd Qtr: 5-10 50.0%	3rd Qtr: 8-13 61.5%	
3FG %	1st Half: 0-8 00.0%	2nd Half: 3-5 60.0%	Game: 3-13 23.1%	4th Qtr: 0-1 00.0%
	1st Qtr: 0-6 00.0%	2nd Qtr: 0-2 00.0%	3rd Qtr: 3-4 75.0%	
FT %	1st Half: 5-6 83.3%	2nd Half: 3-3 100.0%	Game: 8-9 88.9%	4th Qtr: 2-2 100.0%
	1st Qtr: 1-1 100.0%	2nd Qtr: 4-5 80.0%	3rd Qtr: 1-1 100.0%	

Officials: Shelley Russi, Ken Nash, Erick Thome  
 Technical Fouls: NM State- None. Utah Valley- None.  
 Attendance: 353

Score by periods	1st	2nd	3rd	4th	Total
NM State	14	14	10	21	59
Utah Valley	13	14	20	6	53

Points	In Paint	Off T/O	2nd Chance	Fast Break	Bench
NMSU	20	28	10	4	23
UVU	34	17	10	4	10

Last FG - NMSU 4th-01:08, UVU 4th-00:28.

Largest lead - NM State by 6 1st-08:20; Utah Valley by 9 3rd-00:39

NMSU led for 16:29. UVU led for 20:52. Game was tied for 2:36.

Score tied - 3 times  
 Lead changed - 10 times

**Official Basketball Box Score -- Game Totals -- First Half Statistics**  
**NM State vs Utah Valley**  
**2/6/2016 3 p.m. MT at Orem, Utah (PE Building)**

**NM State, 28, 20-3, 9-0 WAC**

##	Player	S	Total			Rebounds			PF	TP	A	T	O	Blk	Stl	Min		
			FG	FGA	3PT	FG	FGA	FT									FTA	Off
04	WEBER, SASHA	g	3	5	2	3	0	0	0	3	3	1	8	0	1	0	1	17
05	SALAS, BROOKE	g	0	3	0	1	0	0	0	1	1	2	0	1	0	0	0	10
11	DAVIS, SHANICE	g	1	3	0	0	0	0	0	0	0	0	2	2	2	0	0	16
21	WILLIAM, TAMERA	g	0	1	0	0	0	0	1	1	2	0	0	1	0	0	0	7
24	FREEMAN, BRIANNA	f	3	4	0	0	3	4	0	1	1	2	9	0	1	1	0	13
10	HARDIN, EMILY		0	0	0	0	0	0	0	0	0	0	0	0	1	0	1	4
12	WILLIAMS, ZAIRE		0	0	0	0	0	0	0	0	0	0	0	1	0	0	0	4
22	ELLIS, TYLER		0	1	0	0	0	0	1	1	2	2	0	0	0	1	0	7
23	SCOTT, ABBY		1	3	1	3	0	0	0	0	0	0	3	0	0	0	0	6
35	MACK, MORIAH		3	5	0	0	0	0	1	2	3	0	6	1	1	0	1	16
TEAM									0	3	3	0		0				
Totals			11	25	3	7	3	4	3	12	15	7	28	6	6	2	3	100

FG %	1st Qtr	6-13	46.2%	2nd Qtr	5-12	41.7%	Half:	11-25	44.0%
3FG %	1st Qtr	2-5	40.0%	2nd Qtr	1-2	50.0%	Half:	3-7	42.9%
FT %	1st Qtr	0-0	0%	2nd Qtr	3-4	75.0%	Half:	3-4	75.0%

**Utah Valley, 27, 11-13, 4-5 WAC**

##	Player	S	Total			Rebounds			PF	TP	A	T	O	Blk	Stl	Min		
			FG	FGA	3PT	FG	FGA	FT									FTA	Off
03	SEALS, MARIAH	g	2	7	0	3	0	0	0	2	2	0	4	1	2	0	1	20
12	MAWHINNEY, REBECCA	f	0	3	0	3	0	0	0	3	3	0	0	0	0	0	2	17
20	TOSTON, PATRICE	g	1	1	0	0	0	0	0	1	1	0	2	0	0	0	0	13
35	BLANKS, DEIJAH	g	0	3	0	2	0	0	1	1	2	0	0	2	1	0	0	12
40	LOGGINS, SAM	c	4	7	0	0	3	4	1	3	4	1	11	0	1	1	1	14
05	AGNEW, GEORGIA		1	1	0	0	0	0	0	1	1	0	2	0	2	0	0	12
13	NORRIS, KARLEE		2	2	0	0	2	2	1	0	1	1	6	0	0	0	0	6
22	GORDON, TAYLOR		1	1	0	0	0	0	0	0	0	1	2	1	0	0	0	6
TEAM									0	1	1	0		0				
Totals			11	25	0	8	5	6	3	12	15	3	27	4	6	1	4	100

FG %	1st Qtr	6-15	40.0%	2nd Qtr	5-10	50.0%	Half:	11-25	44.0%
3FG %	1st Qtr	0-6	00.0%	2nd Qtr	0-2	00.0%	Half:	0-8	00.0%
FT %	1st Qtr	1-1	100.0%	2nd Qtr	4-5	80.0%	Half:	5-6	83.3%

Officials: Shelley Russi, Ken Nash, Erick Thome  
 Technical Fouls: NM State- None. Utah Valley- None.

Score by periods	1st	2nd	3rd	4th	Total
NM State	14	14	10	21	<b>59</b>
Utah Valley	13	14	20	6	<b>53</b>

	In	Off	2nd	Fast	
Points	Paint	Off	2nd	Fast	Bench
		T/O	Chance	Break	
NMSU	12	6	3	4	9
	22	8	6	2	10

Last FG - NMSU 2nd-01:50, UVU 2nd-02:28.  
 NMSU led for 12:56. UVU led for 5:43. Game was tied for 1:19.

Score tied - 1 times  
 Lead changed - 6 times

**NM State vs Utah Valley**  
**2/6/2016; 3 p.m. MT at Orem, Utah (PE Building)**  
**Period 1 Play-By-Play**

VISITORS: NM State	Time	Score	Margin	HOME: Utah Valley
MISSED JUMPER by FREEMAN,BRIANNA	09:49			
REBOUND (OFF) by WILLIAM,TAMERA	09:49			
MISSED LAYUP by WILLIAM,TAMERA	09:46			
	09:46			REBOUND (DEF) by MAWHINNEY,REBECCA
	09:29			MISSED JUMPER by LOGGINS,SAM
BLOCK by FREEMAN,BRIANNA	09:29			
REBOUND (DEF) by WILLIAM,TAMERA	09:28			
GOOD! 3PTR by WEBER,SASHA	09:17	0-3	V 3	
ASSIST by DAVIS,SHANICE	09:17			
	08:35			MISSED 3PTR by SEALS,MARIAH
REBOUND (DEF) by TEAM	08:35			
GOOD! 3PTR by WEBER,SASHA	08:20	0-6	V 6	
ASSIST by WILLIAM,TAMERA	08:20			
	07:50	2-6	V 4	GOOD! LAYUP by LOGGINS,SAM [PNT]
	07:50			ASSIST by BLANKS,DEIJAH
FOUL by SALAS,BROOKE	07:49			
	07:49	3-6	V 3	GOOD! FT by LOGGINS,SAM
TURNOVER by FREEMAN,BRIANNA	07:28			
	07:27			STEAL by MAWHINNEY,REBECCA
	07:04	5-6	V 1	GOOD! LAYUP by LOGGINS,SAM [PNT]
TURNOVER by DAVIS,SHANICE	06:48			
	06:29			MISSED 3PTR by BLANKS,DEIJAH
REBOUND (DEF) by FREEMAN,BRIANNA	06:29			
GOOD! JUMPER by FREEMAN,BRIANNA	06:15	5-8	V 3	
ASSIST by SALAS,BROOKE	06:15			
	05:55			TURNOVER by SEALS,MARIAH
SUB IN: MACK,MORIAH	05:55			
SUB OUT: WILLIAM,TAMERA	05:55			
MISSED 3PTR by SALAS,BROOKE	05:52			
REBOUND (OFF) by MACK,MORIAH	05:52			
MISSED LAYUP by DAVIS,SHANICE	05:48			
	05:48			BLOCK by LOGGINS,SAM
	05:43			REBOUND (DEF) by TOSTON,PATRICE
	05:30			MISSED 3PTR by MAWHINNEY,REBECCA
REBOUND (DEF) by TEAM	05:30			
	05:18			SUB IN: NORRIS,KARLEE
	05:18			SUB OUT: LOGGINS,SAM
GOOD! LAYUP by FREEMAN,BRIANNA [PNT]	05:08	5-10	V 5	
ASSIST by MACK,MORIAH	05:08			
	04:42			MISSED 3PTR by SEALS,MARIAH
	04:42			REBOUND (OFF) by BLANKS,DEIJAH
	04:24	7-10	V 3	GOOD! LAYUP by NORRIS,KARLEE [PNT]
	04:24			ASSIST by SEALS,MARIAH
MISSED JUMPER by SALAS,BROOKE	04:05			
	04:05			REBOUND (DEF) by MAWHINNEY,REBECCA
	03:51			MISSED LAYUP by SEALS,MARIAH
	03:51			REBOUND (OFF) by NORRIS,KARLEE
	03:28	9-10	V 1	GOOD! JUMPER by TOSTON,PATRICE [PNT]
GOOD! JUMPER by MACK,MORIAH	03:07	9-12	V 3	
	02:40			MISSED 3PTR by BLANKS,DEIJAH
REBOUND (DEF) by SALAS,BROOKE	02:40			
TURNOVER by MACK,MORIAH	02:13			
	02:12			STEAL by SEALS,MARIAH

VISITORS: NM State	Time	Score	Margin	HOME: Utah Valley
	02:10	11-12	V 1	GOOD! LAYUP by SEALS,MARIAH [FB/PNT]
MISSED 3PTR by WEBER,SASHA	01:59			
	01:59			REBOUND (DEF) by SEALS,MARIAH
FOUL by SALAS,BROOKE	01:42			
	01:42			TIMEOUT media
SUB IN: ELLIS,TYLER	01:42			
SUB IN: WILLIAMS,ZAIRE	01:42			
SUB IN: SCOTT,ABBY	01:42			
SUB OUT: SALAS,BROOKE	01:42			
SUB OUT: DAVIS,SHANICE	01:42			
SUB OUT: FREEMAN,BRIANNA	01:42			
	01:42			SUB IN: LOGGINS,SAM
	01:42			SUB IN: AGNEW,GEORGIA
	01:42			SUB IN: GORDON,TAYLOR
	01:42			SUB OUT: MAWHINNEY,REBECCA
	01:42			SUB OUT: TOSTON,PATRICE
	01:42			SUB OUT: NORRIS,KARLEE
	01:19			MISSED JUMPER by BLANKS,DEIJAH
REBOUND (DEF) by MACK,MORIAH	01:19			
MISSED 3PTR by SCOTT,ABBY	01:06			
	01:06			REBOUND (DEF) by AGNEW,GEORGIA
	00:53	13-12	H 1	GOOD! LAYUP by AGNEW,GEORGIA [PNT]
GOOD! LAYUP by MACK,MORIAH [PNT]	00:44	13-14	V 1	
ASSIST by WILLIAMS,ZAIRE	00:44			
	00:10			MISSED 3PTR by SEALS,MARIAH
REBOUND (DEF) by WEBER,SASHA	00:10			

NM State 14, Utah Valley 13

Period 1-only	In Paint	Off T/O	2nd Chance	Fast Break	Bench	****
NMSU	4	0	0	0	4	Score tied - 0 times
UVU	12	4	4	2	4	Lead changed - 2 times

**NM State vs Utah Valley**  
**2/6/2016; 3 p.m. MT at Orem, Utah (PE Building)**  
**Period 2 Play-By-Play**

VISITORS: NM State	Time	Score	Margin	HOME: Utah Valley
SUB IN: ELLIS, TYLER	10:00			
SUB IN: WILLIAMS, ZAIRE	10:00			
SUB IN: MACK, MORIAH	10:00			
SUB IN: SCOTT, ABBY	10:00			
SUB OUT: WEBER, SASHA	10:00			
SUB OUT: SALAS, BROOKE	10:00			
SUB OUT: DAVIS, SHANICE	10:00			
SUB OUT: FREEMAN, BRIANNA	10:00			
	10:00			SUB IN: AGNEW, GEORGIA
	10:00			SUB IN: GORDON, TAYLOR
	10:00			SUB OUT: TOSTON, PATRICE
	10:00			SUB OUT: BLANKS, DEIJAH
	09:33			MISSED 3PTR by MAWHINNEY, REBECCA
REBOUND (DEF) by MACK, MORIAH	09:33			
MISSED LAYUP by ELLIS, TYLER	09:19			
	09:19			REBOUND (DEF) by MAWHINNEY, REBECCA
	09:04			MISSED JUMPER by SEALS, MARIAH
REBOUND (DEF) by ELLIS, TYLER	09:04			
MISSED JUMPER by MACK, MORIAH	08:47			
	08:47			REBOUND (DEF) by LOGGINS, SAM
	08:36	15-14	H 1	GOOD! LAYUP by SEALS, MARIAH [PNT]
	08:22			FOUL by GORDON, TAYLOR
SUB IN: DAVIS, SHANICE	08:22			
SUB OUT: WILLIAMS, ZAIRE	08:22			
MISSED LAYUP by DAVIS, SHANICE	08:10			
REBOUND (OFF) by ELLIS, TYLER	08:10			
GOOD! 3PTR by SCOTT, ABBY	07:52	15-17	V 2	
ASSIST by DAVIS, SHANICE	07:52			
	07:16	17-17	T	GOOD! JUMPER by GORDON, TAYLOR [PNT]
TURNOVER by DAVIS, SHANICE	06:59			
	06:58			STEAL by MAWHINNEY, REBECCA
	06:40	19-17	H 2	GOOD! JUMPER by LOGGINS, SAM [PNT]
	06:40			ASSIST by GORDON, TAYLOR
FOUL by ELLIS, TYLER	06:39			
	06:39			MISSED FT by LOGGINS, SAM
REBOUND (DEF) by WEBER, SASHA	06:39			
SUB IN: WEBER, SASHA	06:39			
SUB OUT: WILLIAM, TAMERA	06:39			
MISSED JUMPER by WEBER, SASHA	06:23			
	06:23			REBOUND (DEF) by LOGGINS, SAM
	06:00			MISSED JUMPER by LOGGINS, SAM
BLOCK by ELLIS, TYLER	06:00			
REBOUND (DEF) by WEBER, SASHA	05:56			
MISSED 3PTR by SCOTT, ABBY	05:51			
	05:51			REBOUND (DEF) by TEAM
SUB IN: HARDIN, EMILY	05:45			
SUB OUT: SCOTT, ABBY	05:45			
	05:45			SUB IN: NORRIS, KARLEE
	05:45			SUB IN: TOSTON, PATRICE
	05:45			SUB OUT: GORDON, TAYLOR
	05:45			SUB OUT: LOGGINS, SAM
FOUL by ELLIS, TYLER	05:20			
	05:20	20-17	H 3	GOOD! FT by NORRIS, KARLEE

VISITORS: NM State	Time	Score	Margin	HOME: Utah Valley
	05:20	21-17	H 4	GOOD! FT by NORRIS,KARLEE
SUB IN: FREEMAN,BRIANNA	05:20			
SUB OUT: ELLIS, TYLER	05:20			
	05:20			SUB IN: BLANKS,DEIJAH
	05:20			SUB OUT: MAWHINNEY,REBECCA
	05:02			FOUL by NORRIS,KARLEE
GOOD! FT by FREEMAN,BRIANNA	05:02	21-18	H 3	
MISSED FT by FREEMAN,BRIANNA	05:02			
	05:02			REBOUND (DEF) by BLANKS,DEIJAH
	04:55			TURNOVER by BLANKS,DEIJAH
STEAL by WEBER,SASHA	04:54			
GOOD! LAYUP by WEBER,SASHA [FB/PNT]	04:53	21-20	H 1	
	04:23	23-20	H 3	GOOD! LAYUP by NORRIS,KARLEE [PNT]
	04:23			ASSIST by BLANKS,DEIJAH
TURNOVER by HARDIN,EMILY	04:03			
	04:03			TIMEOUT MEDIA
	04:03			SUB IN: LOGGINS,SAM
	04:03			SUB IN: MAWHINNEY,REBECCA
	04:03			SUB OUT: BLANKS,DEIJAH
	04:03			SUB OUT: NORRIS,KARLEE
FOUL by FREEMAN,BRIANNA	03:53			
FOUL by WEBER,SASHA	03:26			
FOUL by FREEMAN,BRIANNA	03:26			
	03:26	24-20	H 4	GOOD! FT by LOGGINS,SAM
	03:26	25-20	H 5	GOOD! FT by LOGGINS,SAM
	03:13			FOUL by LOGGINS,SAM
GOOD! FT by FREEMAN,BRIANNA	03:13	25-21	H 4	
GOOD! FT by FREEMAN,BRIANNA	03:13	25-22	H 3	
	03:02			TURNOVER by AGNEW,GEORGIA
STEAL by MACK,MORIAH	03:01			
GOOD! LAYUP by DAVIS,SHANICE [PNT]	02:55	25-24	H 1	
	02:30			MISSED LAYUP by LOGGINS,SAM
	02:30			REBOUND (OFF) by LOGGINS,SAM
	02:28	27-24	H 3	GOOD! LAYUP by LOGGINS,SAM [PNT]
GOOD! LAYUP by FREEMAN,BRIANNA [PNT]	02:11	27-26	H 1	
	01:53			TURNOVER by AGNEW,GEORGIA
STEAL by HARDIN,EMILY	01:53			
GOOD! LAYUP by MACK,MORIAH [FB/PNT]	01:50	27-28	V 1	
	01:21			TURNOVER by LOGGINS,SAM
SUB IN: SALAS,BROOKE	01:21			
SUB OUT: HARDIN,EMILY	01:21			
MISSED JUMPER by SALAS,BROOKE	01:05			
	01:05			REBOUND (DEF) by SEALS,MARIAH
	00:40			MISSED 3PTR by MAWHINNEY,REBECCA
REBOUND (DEF) by TEAM	00:40			
TIMEOUT 30SEC	00:37			
MISSED JUMPER by MACK,MORIAH	00:09			
	00:09			REBOUND (DEF) by LOGGINS,SAM
	00:05			TURNOVER by SEALS,MARIAH
TURNOVER by WEBER,SASHA	00:04			
	00:02			STEAL by LOGGINS,SAM

NM State 28, Utah Valley 27

Period 2-only      In    Off    2nd    Fast  
 Paint   T/O   Chance   Break   Bench   >>>>

<b>Period 2-only</b>	<b>In Paint</b>	<b>Off T/O</b>	<b>2nd Chance</b>	<b>Fast Break</b>	<b>Bench</b>	<b>'''</b>
NMSU	8	6	3	4	5	Score tied - 0 times
UVU	10	4	2	0	6	Lead changed - 4 times



**Official Basketball Box Score -- Game Totals -- Second Half Statistics**  
**NM State vs Utah Valley**  
**2/6/2016 3 p.m. MT at Orem, Utah (PE Building)**

**NM State, 31, 20-3, 9-0 WAC**

##	Player	S	Total			Rebounds			PF	TP	A	TO	Blk	Stl	Min
			FG-FGA	3PT FG-FGA	FT-FTA	Off Reb	Def Reb	Tot Reb							
04	WEBER, SASHA	g	2-2	1-1	2-2	0	1	1	1	7	1	0	0	3	19
05	SALAS, BROOKE	g	1-4	1-2	0-0	0	0	0	2	3	1	2	0	0	8
11	DAVIS, SHANICE	g	1-7	0-4	0-0	0	0	0	0	2	1	2	1	3	19
21	WILLIAM, TAMERA	g	0-2	0-1	2-2	2	0	2	0	2	0	1	1	0	13
24	FREEMAN, BRIANNA	f	0-2	0-0	3-4	0	2	2	1	3	0	1	1	2	12
10	HARDIN, EMILY		0-0	0-0	0-0	0	0	0	0	0	0	0	0	0	0
12	WILLIAMS, ZAIRE		0-0	0-0	0-0	0	0	0	0	0	0	0	0	0	1
22	ELLIS, TYLER		2-3	0-0	1-2	1	2	3	1	5	0	0	0	0	8
23	SCOTT, ABBY		0-1	0-1	0-0	0	0	0	0	0	0	0	0	0	3
35	MACK, MORIAH		4-9	1-2	0-0	3	1	4	1	9	1	0	0	0	17
TEAM						3	0	3	0		0				
Totals			10-30	3-11	8-10	9	6	15	6	31	4	6	3	8	100

FG %	3rd Qtr	4-14	28.6%	4th Qtr	6-16	37.5%	Half:	10-30	33.3%
3FG %	3rd Qtr	1-6	16.7%	4th Qtr	2-5	40.0%	Half:	3-11	42.9%
FT %	3rd Qtr	1-2	50.0%	4th Qtr	7-8	87.5%	Half:	8-10	80.0%

**Utah Valley, 26, 11-13, 4-5 WAC**

##	Player	S	Total			Rebounds			PF	TP	A	TO	Blk	Stl	Min
			FG-FGA	3PT FG-FGA	FT-FTA	Off Reb	Def Reb	Tot Reb							
03	SEALS, MARIAH	g	1-3	1-2	0-0	0	0	0	1	3	1	5	0	1	20
12	MAWHINNEY, REBECCA	f	3-3	2-2	0-0	0	4	4	2	8	0	2	0	0	16
20	TOSTON, PATRICE	g	1-1	0-0	0-0	1	2	3	2	2	2	1	0	0	7
35	BLANKS, DEIJAH	g	2-4	0-1	0-0	1	3	4	1	4	3	3	0	2	20
40	LOGGINS, SAM	c	3-6	0-0	3-3	0	2	2	3	9	0	3	5	0	19
05	AGNEW, GEORGIA		0-3	0-0	0-0	0	1	1	0	0	2	0	0	0	15
13	NORRIS, KARLEE		0-0	0-0	0-0	0	0	0	1	0	0	0	0	0	1
22	GORDON, TAYLOR		0-0	0-0	0-0	1	0	1	0	0	0	0	0	0	2
TEAM						1	1	2	0		1				
Totals			10-20	3-5	3-3	4	13	17	10	26	8	15	5	3	100

FG %	3rd Qtr	8-13	61.5%	4th Qtr	2-7	28.6%	Half:	10-20	50.0%
3FG %	3rd Qtr	3-4	75.0%	4th Qtr	0-1	00.0%	Half:	3-5	00.0%
FT %	3rd Qtr	1-1	100.0%	4th Qtr	2-2	100.0%	Half:	3-3	100.0%

Officials: Shelley Russi, Ken Nash, Erick Thome  
 Technical Fouls: NM State- None, Utah Valley- None.

Score by periods	1st	2nd	3rd	4th	Total
NM State	14	14	10	21	59
Utah Valley	13	14	20	6	53

Points	In Paint	Off T/O	2nd Chance	Fast Break	Bench
NMSU	8	22	7	0	14
	12	9	3	2	0

Last FG - NMSU 4th-01:08, UVU 4th-00:28.  
 NMSU led for 3:33. UVU led for 15:09. Game was tied for 1:17.

Score tied - 2 times  
 Lead changed - 4 times

**NM State vs Utah Valley**  
**2/6/2016; 3 p.m. MT at Orem, Utah (PE Building)**  
**Period 3 Play-By-Play**

VISITORS: NM State	Time	Score	Margin	HOME: Utah Valley
TURNOVER by SALAS,BROOKE	09:32			
FOUL by SALAS,BROOKE	09:32			
	09:18			MISSED 3PTR by BLANKS,DEIJAH
	09:18			REBOUND (OFF) by TOSTON,PATRICE
	09:04	30-28	H 2	GOOD! 3PTR by SEALS,MARIAH
	09:04			ASSIST by TOSTON,PATRICE
	08:54			FOUL by TOSTON,PATRICE
GOOD! FT by FREEMAN,BRIANNA	08:54	30-29	H 1	
MISSED FT by FREEMAN,BRIANNA	08:54			
	08:54			REBOUND (DEF) by MAWHINNEY,REBECCA
	08:44			TURNOVER by TEAM
GOOD! 3PTR by SALAS,BROOKE	08:41	30-32	V 2	
ASSIST by DAVIS,SHANICE	08:41			
	08:30			TURNOVER by SEALS,MARIAH
	08:30			FOUL by SEALS,MARIAH
MISSED JUMPER by SALAS,BROOKE	08:24			
	08:24			REBOUND (DEF) by MAWHINNEY,REBECCA
	08:08			MISSED LAYUP by LOGGINS,SAM
REBOUND (DEF) by WEBER,SASHA	08:08			
MISSED JUMPER by DAVIS,SHANICE	07:51			
	07:51			REBOUND (DEF) by LOGGINS,SAM
	07:35			TURNOVER by SEALS,MARIAH
STEAL by FREEMAN,BRIANNA	07:33			
MISSED 3PTR by DAVIS,SHANICE	07:24			
REBOUND (OFF) by WILLIAM,TAMERA	07:24			
TURNOVER by WILLIAM,TAMERA	07:18			
SUB IN: MACK,MORIAH	07:18			
SUB OUT: WEBER,SASHA	07:18			
	07:11	32-32	T	GOOD! LAYUP by TOSTON,PATRICE [PNT]
	06:44			FOUL by TOSTON,PATRICE
SUB IN: WEBER,SASHA	06:44			
SUB OUT: WILLIAM,TAMERA	06:44			
TURNOVER by SALAS,BROOKE	06:39			
FOUL by SALAS,BROOKE	06:39			
	06:23	34-32	H 2	GOOD! JUMPER by MAWHINNEY,REBECCA
	06:23			ASSIST by TOSTON,PATRICE
MISSED 3PTR by SALAS,BROOKE	06:13			
	06:13			REBOUND (DEF) by TOSTON,PATRICE
	05:55			MISSED LAYUP by LOGGINS,SAM
REBOUND (DEF) by FREEMAN,BRIANNA	05:55			
MISSED JUMPER by FREEMAN,BRIANNA	05:33			
	05:33			REBOUND (DEF) by TOSTON,PATRICE
	05:20			TURNOVER by TOSTON,PATRICE
SUB IN: SCOTT,ABBY	05:20			
SUB OUT: SALAS,BROOKE	05:20			
	05:20			SUB IN: AGNEW,GEORGIA
	05:20			SUB IN: GORDON,TAYLOR
	05:20			SUB IN: NORRIS,KARLEE
	05:20			SUB OUT: MAWHINNEY,REBECCA
	05:20			SUB OUT: TOSTON,PATRICE
	05:20			SUB OUT: LOGGINS,SAM
TURNOVER by DAVIS,SHANICE	05:08			
	05:07			STEAL by BLANKS,DEIJAH

VISITORS: NM State	Time	Score	Margin	HOME: Utah Valley
	04:41			MISSED JUMPER by AGNEW,GEORGIA
	04:41			REBOUND (OFF) by BLANKS,DEIJAH
	04:37			MISSED LAYUP by BLANKS,DEIJAH
BLOCK by FREEMAN,BRIANNA	04:37			
	04:36			REBOUND (OFF) by GORDON,TAYLOR
	04:19			TIMEOUT media
SUB IN: ELLIS,TYLER	04:19			
SUB OUT: FREEMAN,BRIANNA	04:19			
	04:19			SUB IN: LOGGINS,SAM
	04:19			SUB OUT: NORRIS,KARLEE
	04:15			TURNOVER by LOGGINS,SAM
	04:15			FOUL by LOGGINS,SAM
GOOD! JUMPER by DAVIS,SHANICE	04:02	34-34	T	
ASSIST by WEBER,SASHA	04:02			
	03:33	36-34	H 2	GOOD! LAYUP by LOGGINS,SAM [PNT]
	03:32			ASSIST by BLANKS,DEIJAH
MISSED 3PTR by SCOTT,ABBY	03:15			
	03:15			REBOUND (DEF) by LOGGINS,SAM
	02:57	38-34	H 4	GOOD! LAYUP by LOGGINS,SAM [PNT]
	02:57			ASSIST by BLANKS,DEIJAH
FOUL by ELLIS,TYLER	02:57			
	02:57	39-34	H 5	GOOD! FT by LOGGINS,SAM
SUB IN: WILLIAMS,ZAIRE	02:57			
SUB OUT: DAVIS,SHANICE	02:57			
	02:57			SUB IN: MAWHINNEY,REBECCA
	02:57			SUB OUT: GORDON,TAYLOR
MISSED 3PTR by MACK,MORIAH	02:43			
REBOUND (OFF) by TEAM	02:43			
MISSED JUMPER by MACK,MORIAH	02:26			
	02:26			REBOUND (DEF) by AGNEW,GEORGIA
	02:15	42-34	H 8	GOOD! 3PTR by MAWHINNEY,REBECCA
	02:15			ASSIST by AGNEW,GEORGIA
TIMEOUT 30SEC	02:04			
SUB IN: WILLIAM,TAMERA	02:04			
SUB IN: DAVIS,SHANICE	02:04			
SUB OUT: SCOTT,ABBY	02:04			
SUB OUT: WILLIAMS,ZAIRE	02:04			
GOOD! LAYUP by ELLIS,TYLER [PNT]	01:51	42-36	H 6	
	01:25	44-36	H 8	GOOD! JUMPER by BLANKS,DEIJAH [PNT]
	01:25			ASSIST by SEALS,MARIAH
MISSED LAYUP by WILLIAM,TAMERA	01:15			
	01:15			BLOCK by LOGGINS,SAM
REBOUND (OFF) by TEAM	01:14			
GOOD! JUMPER by ELLIS,TYLER [PNT]	01:04	44-38	H 6	
	00:39	47-38	H 9	GOOD! 3PTR by MAWHINNEY,REBECCA
	00:39			ASSIST by BLANKS,DEIJAH
MISSED 3PTR by DAVIS,SHANICE	00:05			
	00:05			REBOUND (DEF) by BLANKS,DEIJAH

NM State 59, Utah Valley 53

Period 3-only	In Paint	Off T/O	2nd Chance	Fast Break	Bench	****
NMSU	4	5	2	0	4	Score tied - 2 times
UVU	8	7	3	0	0	Lead changed - 2 times



**NM State vs Utah Valley**  
**2/6/2016; 3 p.m. MT at Orem, Utah (PE Building)**  
**Period 4 Play-By-Play**

VISITORS: NM State	Time	Score	Margin	HOME: Utah Valley
SUB IN: ELLIS,TYLER	10:00			
SUB IN: MACK,MORIAH	10:00			
SUB OUT: SALAS,BROOKE	10:00			
SUB OUT: FREEMAN,BRIANNA	10:00			
	10:00			SUB IN: AGNEW,GEORGIA
	10:00			SUB OUT: TOSTON,PATRICE
	09:51			TURNOVER by MAWHINNEY,REBECCA
STEAL by WEBER,SASHA	09:50			
MISSED LAYUP by ELLIS,TYLER	09:26			
	09:26			BLOCK by LOGGINS,SAM
REBOUND (OFF) by ELLIS,TYLER	09:26			
	09:24			FOUL by LOGGINS,SAM
GOOD! FT by ELLIS,TYLER	09:24	47-39	H 8	
MISSED FT by ELLIS,TYLER	09:24			
	09:24			REBOUND (DEF) by MAWHINNEY,REBECCA
	09:15			TURNOVER by SEALS,MARIAH
GOOD! LAYUP by MACK,MORIAH [PNT]	08:47	47-41	H 6	
	08:40			TURNOVER by BLANKS,DEIJAH
	08:38			TIMEOUT 30SEC
GOOD! 3PTR by WEBER,SASHA	08:20	47-44	H 3	
ASSIST by MACK,MORIAH	08:20			
	07:47			MISSED LAYUP by AGNEW,GEORGIA
BLOCK by WILLIAM,TAMERA	07:47			
	07:47			REBOUND (OFF) by TEAM
	07:44			MISSED 3PTR by SEALS,MARIAH
BLOCK by DAVIS,SHANICE	07:44			
REBOUND (DEF) by ELLIS,TYLER	07:41			
GOOD! JUMPER by WEBER,SASHA	07:13	47-46	H 1	
FOUL by WEBER,SASHA	07:03			
	06:50			MISSED LAYUP by SEALS,MARIAH
REBOUND (DEF) by ELLIS,TYLER	06:50			
MISSED 3PTR by WILLIAM,TAMERA	06:25			
	06:25			REBOUND (DEF) by BLANKS,DEIJAH
FOUL by MACK,MORIAH	06:21			
SUB IN: FREEMAN,BRIANNA	06:21			
SUB OUT: ELLIS,TYLER	06:21			
	06:13			MISSED LAYUP by AGNEW,GEORGIA
REBOUND (DEF) by FREEMAN,BRIANNA	06:13			
MISSED 3PTR by DAVIS,SHANICE	05:48			
REBOUND (OFF) by MACK,MORIAH	05:48			
MISSED LAYUP by MACK,MORIAH	05:45			
	05:45			BLOCK by LOGGINS,SAM
REBOUND (OFF) by MACK,MORIAH	05:42			
MISSED LAYUP by FREEMAN,BRIANNA	05:31			
	05:31			BLOCK by LOGGINS,SAM
	05:30			REBOUND (DEF) by TEAM
	05:15			TURNOVER by LOGGINS,SAM
STEAL by DAVIS,SHANICE	05:14			
MISSED JUMPER by MACK,MORIAH	05:07			
REBOUND (OFF) by WILLIAM,TAMERA	05:07			
MISSED 3PTR by DAVIS,SHANICE	04:58			
	04:58			REBOUND (DEF) by MAWHINNEY,REBECCA
	04:35			MISSED LAYUP by LOGGINS,SAM

VISITORS: NM State	Time	Score	Margin	HOME: Utah Valley
REBOUND (DEF) by MACK,MORIAH	04:35			
	04:23			FOUL by MAWHINNEY,REBECCA
	04:23			SUB IN: TOSTON,PATRICE
	04:23			SUB OUT: MAWHINNEY,REBECCA
TURNOVER by FREEMAN,BRIANNA	04:21			
	04:20			STEAL by BLANKS,DEIJAH
	04:18	49-46	H 3	GOOD! LAYUP by BLANKS,DEIJAH [FB/PNT]
MISSED LAYUP by DAVIS,SHANICE	03:54			
	03:54			REBOUND (DEF) by BLANKS,DEIJAH
FOUL by FREEMAN,BRIANNA	03:27			
	03:27	50-46	H 4	GOOD! FT by LOGGINS,SAM
	03:27	51-46	H 5	GOOD! FT by LOGGINS,SAM
SUB IN: SALAS,BROOKE	03:27			
SUB OUT: WILLIAM,TAMERA	03:27			
TURNOVER by DAVIS,SHANICE	03:08			
	03:08			STEAL by SEALS,MARIAH
	02:47			TURNOVER by LOGGINS,SAM
MISSED LAYUP by SALAS,BROOKE	02:35			
	02:35			BLOCK by LOGGINS,SAM
REBOUND (OFF) by TEAM	02:34			
TIMEOUT 30SEC	02:33			
	02:33			SUB IN: MAWHINNEY,REBECCA
	02:33			SUB OUT: TOSTON,PATRICE
GOOD! JUMPER by MACK,MORIAH	02:26	51-48	H 3	
	02:13			TURNOVER by SEALS,MARIAH
STEAL by DAVIS,SHANICE	02:10			
MISSED LAYUP by MACK,MORIAH	01:46			
REBOUND (OFF) by MACK,MORIAH	01:46			
GOOD! LAYUP by MACK,MORIAH [PNT]	01:45	51-50	H 1	
	01:34			TURNOVER by BLANKS,DEIJAH
STEAL by FREEMAN,BRIANNA	01:33			
GOOD! 3PTR by MACK,MORIAH	01:08	51-53	V 2	
ASSIST by SALAS,BROOKE	01:08			
	00:58			TURNOVER by BLANKS,DEIJAH
STEAL by WEBER,SASHA	00:57			
	00:30			FOUL by LOGGINS,SAM
GOOD! FT by FREEMAN,BRIANNA	00:30	51-54	V 3	
GOOD! FT by FREEMAN,BRIANNA	00:30	51-55	V 4	
	00:30			TIMEOUT 30SEC
	00:28	53-55	V 2	GOOD! LAYUP by LOGGINS,SAM [PNT]
	00:27			ASSIST by AGNEW,GEORGIA
	00:24			FOUL by BLANKS,DEIJAH
TIMEOUT TEAM	00:24			
SUB IN: WILLIAM,TAMERA	00:24			
SUB OUT: SALAS,BROOKE	00:24			
	00:24			SUB IN: TOSTON,PATRICE
	00:24			SUB IN: NORRIS,KARLEE
	00:24			SUB OUT: MAWHINNEY,REBECCA
	00:24			SUB OUT: LOGGINS,SAM
	00:22			FOUL by NORRIS,KARLEE
GOOD! FT by WILLIAM,TAMERA	00:22	53-56	V 3	
GOOD! FT by WILLIAM,TAMERA	00:22	53-57	V 4	
	00:22			SUB IN: MAWHINNEY,REBECCA
	00:22			SUB IN: LOGGINS,SAM
	00:22			SUB OUT: TOSTON,PATRICE
	00:22			SUB OUT: NORRIS,KARLEE
	00:13			TURNOVER by SEALS,MARIAH
STEAL by DAVIS,SHANICE	00:12			

VISITORS: NM State	Time	Score	Margin	HOME: Utah Valley
	00:09			FOUL by MAWHINNEY,REBECCA
GOOD! FT by WEBER,SASHA	00:09	53-58	V 5	
GOOD! FT by WEBER,SASHA	00:09	53-59	V 6	
	00:09			TIMEOUT TEAM
	00:09			TURNOVER by MAWHINNEY,REBECCA
STEAL by WEBER,SASHA	00:08			

NM State 59, Utah Valley 53

Period 4-only	In Paint	Off T/O	2nd Chance	Fast Break	Bench	****
NMSU	4	17	5	0	10	Score tied - 0 times
UVU	4	2	0	2	0	Lead changed - 2 times

**NM State vs Utah Valley**  
**2/6/2016; 3 p.m. MT at Orem, Utah (PE Building)**  
**Scoring/Runs Reference**

	Period 1		Utah Valley
NM State	Score		
09:49 - FREEMAN,JUMPER	X		
09:46 - WILLIAM,LAYUP	X		
		X	LOGGINS,JUMPER - 09:29
09:17,-,WEBER,3PTR	3	3-0 -3	
		X	SEALS,3PTR - 08:35
08:20,-,WEBER,3PTR	3	6-0 -6	
		6-2 -4	2 <sup>P</sup> LOGGINS,LAYUP,- ,07:50
		6-3 -3	1 LOGGINS,FT,-,07:49
07:28,-,FREEMAN TURN	TO		
		6-5 -1	2 <sup>P</sup> LOGGINS,LAYUP,- ,07:04
06:48,-,DAVIS TURN	TO		
		X	BLANKS,3PTR - 06:29
06:15,-,FREEMAN,JUMPER	2	8-5 -3	
		TO	SEALS TURN -,05:55
05:52 - SALAS,3PTR	X		
05:48 - DAVIS,LAYUP	X		
		X	MAWHINNEY,3PTR - 05:30
05:08,-,FREEMAN,LAYUP	2 <sup>P</sup>	10-5 -5	
		X	SEALS,3PTR - 04:42
		10-7 -3	2 <sup>P</sup> NORRIS,LAYUP,- ,04:24
04:05 - SALAS,JUMPER	X		
		X	SEALS,LAYUP - 03:51
		10-9 -1	2 <sup>P</sup> TOSTON,JUMPER,- ,03:28
03:07,-,MACK,JUMPER	2	12-9 -3	
		X	BLANKS,3PTR - 02:40
02:13,-,MACK TURN	TO		
		12-11 -1	2 <sup>PF</sup> SEALS,LAYUP,- ,02:10
01:59 - WEBER,3PTR	X		
		X	BLANKS,JUMPER - 01:19
01:06 - SCOTT,3PTR	X		
		12-13 1	2 <sup>P</sup> AGNEW,LAYUP,- ,00:53
00:44,-,MACK,LAYUP	2 <sup>P</sup>	14-13 -1	
		X	SEALS,3PTR - 00:10

	Period 2		Utah Valley
NM State	Score		
		X	MAWHINNEY,3PTR - 09:33
09:19 - ELLIS,LAYUP	X		
		X	SEALS,JUMPER - 09:04
08:47 - MACK,JUMPER	X		
		14-15 1	2 <sup>P</sup> SEALS,LAYUP,- ,08:36
08:10 - DAVIS,LAYUP	X		
07:52,-,SCOTT,3PTR	3	17-15 -2	
		17-17 0	2 <sup>P</sup> GORDON,JUMPER,- ,07:16
06:59,-,DAVIS TURN	TO		
		17-19 2	2 <sup>P</sup> LOGGINS,JUMPER,- ,06:40
		X	LOGGINS,FT - 06:39
06:23 - WEBER,JUMPER	X		
		X	LOGGINS,JUMPER - 06:00
05:51 - SCOTT,3PTR	X		
		17-20 3	1 NORRIS,FT,-,05:20
		17-21 4	1 NORRIS,FT,-,05:20
05:02,-,FREEMAN,FT	1	18-21 3	
05:02 - FREEMAN,FT	X		
		TO	BLANKS TURN - ,04:55
04:53,-,WEBER,LAYUP	2 <sup>PF</sup>	20-21 1	
		20-23 3	2 <sup>P</sup> NORRIS,LAYUP,- ,04:23
04:03,-,HARDIN TURN	TO		
		20-24 4	1 LOGGINS,FT,-,03:26
		20-25 5	1 LOGGINS,FT,-,03:26
03:13,-,FREEMAN,FT	1	21-25 4	
03:13,-,FREEMAN,FT	1	22-25 3	
		TO	AGNEW TURN - ,03:02
02:55,-,DAVIS,LAYUP	2 <sup>P</sup>	24-25 1	



LOGGINS,LAYUP - 02:30  
 LOGGINS,LAYUP - ,02:28  
 02:11,- ,FREEMAN,LAYUP 2<sup>P</sup> 26-27 1  
 TO AGNEW TURN - ,01:53  
 01:50,- ,MACK,LAYUP 2<sup>PF</sup> 28-27 -1  
 TO LOGGINS TURN - ,01:21  
 01:05 - SALAS,JUMPER X  
 MAWHINNEY,3PTR - 00:40  
 00:09 - MACK,JUMPER X  
 TO SEALS TURN - ,00:05  
 00:04,-,WEBER TURN TO

Period 3  
 NM State Score Utah Valley  
 09:32,-,SALAS TURN TO  
 X BLANKS,3PTR - 09:18  
 28-30 3 SEALS,3PTR,- ,09:04  
 08:54,- ,FREEMAN,FT 1 29-30 1  
 08:54 - FREEMAN,FT X  
 TO TEAM TURN - ,08:44  
 08:41,-,SALAS,3PTR 3 32-30 2  
 TO SEALS TURN - ,08:30  
 08:24 - SALAS,JUMPER X  
 X LOGGINS,LAYUP - 08:08  
 07:51 - DAVIS,JUMPER X  
 TO SEALS TURN - ,07:35  
 07:24 - DAVIS,3PTR X  
 07:18,-,WILLIAM TURN TO  
 32-32 2<sup>P</sup> TOSTON,LAYUP,- ,07:11  
 06:39,-,SALAS TURN TO  
 32-34 2 MAWHINNEY,JUMPER,- ,06:23  
 06:13 - SALAS,3PTR X  
 X LOGGINS,LAYUP - 05:55  
 05:33 - FREEMAN,JUMPER X  
 TO TOSTON TURN - ,05:20  
 05:08,-,DAVIS TURN TO  
 X AGNEW,JUMPER - 04:41

Period 4  
 NM State Score Utah Valley  
 09:26 - ELLIS,LAYUP X  
 09:24,-,ELLIS,FT 1 39-47 8  
 09:24 - ELLIS,FT X  
 TO SEALS TURN - ,09:15  
 08:47,- ,MACK,LAYUP 2<sup>P</sup> 41-47 6  
 TO BLANKS TURN - ,08:40  
 08:20,- ,WEBER,3PTR 3 44-47 3  
 X AGNEW,LAYUP - 07:47  
 X SEALS,3PTR - 07:44  
 07:13,- ,WEBER,JUMPER 2 46-47 1  
 X SEALS,LAYUP - 06:50  
 06:25 - WILLIAM,3PTR X  
 X AGNEW,LAYUP - 06:13  
 05:48 - DAVIS,3PTR X  
 05:45 - MACK,LAYUP X  
 05:31 - FREEMAN,LAYUP X  
 TO LOGGINS TURN - ,05:15  
 05:07 - MACK,JUMPER X

04:02,-  
 ,DAVIS,JUMPER

2	34-34 0	X	BLANKS,LAYUP - 04:37
			TO LOGGINS TURN -,04:15
	34-36 2	2 <sup>P</sup>	LOGGINS,LAYUP,- ,03:33

03:15 -  
 SCOTT,3PTR

X			
	34-38 4	2 <sup>P</sup>	LOGGINS,LAYUP,- ,02:57
	34-39 5	1	LOGGINS,FT,-,02:57

02:43 - MACK,3PTR  
 02:26 -  
 MACK,JUMPER

X			
X			
	34-42 8	3	MAWHINNEY,3PTR,- ,02:15

01:51,-  
 ,ELLIS,LAYUP

2 <sup>P</sup>	36-42 6		
	36-44 8	2 <sup>P</sup>	BLANKS,JUMPER,- ,01:25

01:15 -  
 WILLIAM,LAYUP

X			
---	--	--	--

01:04,-  
 ,ELLIS,JUMPER

2 <sup>P</sup>	38-44 6		
	38-47 9	3	MAWHINNEY,3PTR,- ,00:39

00:05 - DAVIS,3PTR

X			
---	--	--	--

04:58 - DAVIS,3PTR

X			
---	--	--	--

TO LOGGINS,LAYUP -  
 04:35

		X	
--	--	---	--

04:21,-,FREEMAN  
 TURN

	46-49 3	2 <sup>PF</sup>	BLANKS,LAYUP,- ,04:18

03:54 -  
 DAVIS,LAYUP

X			
	46-50 4	1	LOGGINS,FT,- ,03:27
	46-51 5	1	LOGGINS,FT,- ,03:27

03:08,-,DAVIS TURN TO

			TO LOGGINS TURN - ,02:47

02:35 -  
 SALAS,LAYUP

X			
---	--	--	--

02:26,-  
 ,MACK,JUMPER

2	48-51 3		
---	------------	--	--

TO SEALS TURN -  
 ,02:13

01:46 -  
 MACK,LAYUP

X			
---	--	--	--

01:45,-  
 ,MACK,LAYUP

2 <sup>P</sup>	50-51 1		
----------------	------------	--	--

TO BLANKS TURN -  
 ,01:34

01:08,-,MACK,3PTR

3	53-51 -2		
---	-------------	--	--

TO BLANKS TURN -  
 ,00:58

00:30,-  
 ,FREEMAN,FT

1	54-51 -3		
---	-------------	--	--

00:30,-  
 ,FREEMAN,FT

1	55-51 -4		
---	-------------	--	--

LOGGINS,LAYUP,-  
 ,00:28

	55-53 -2	2 <sup>P</sup>	
--	-------------	----------------	--

00:22,-,WILLIAM,FT

1	56-53 -3		
---	-------------	--	--

00:22,-,WILLIAM,FT

1	57-53 -4		
---	-------------	--	--

TO SEALS TURN -  
 ,00:13

00:09,-,WEBER,FT

1	58-53 -5		
---	-------------	--	--

00:09,-,WEBER,FT

1	59-53 -6		
---	-------------	--	--

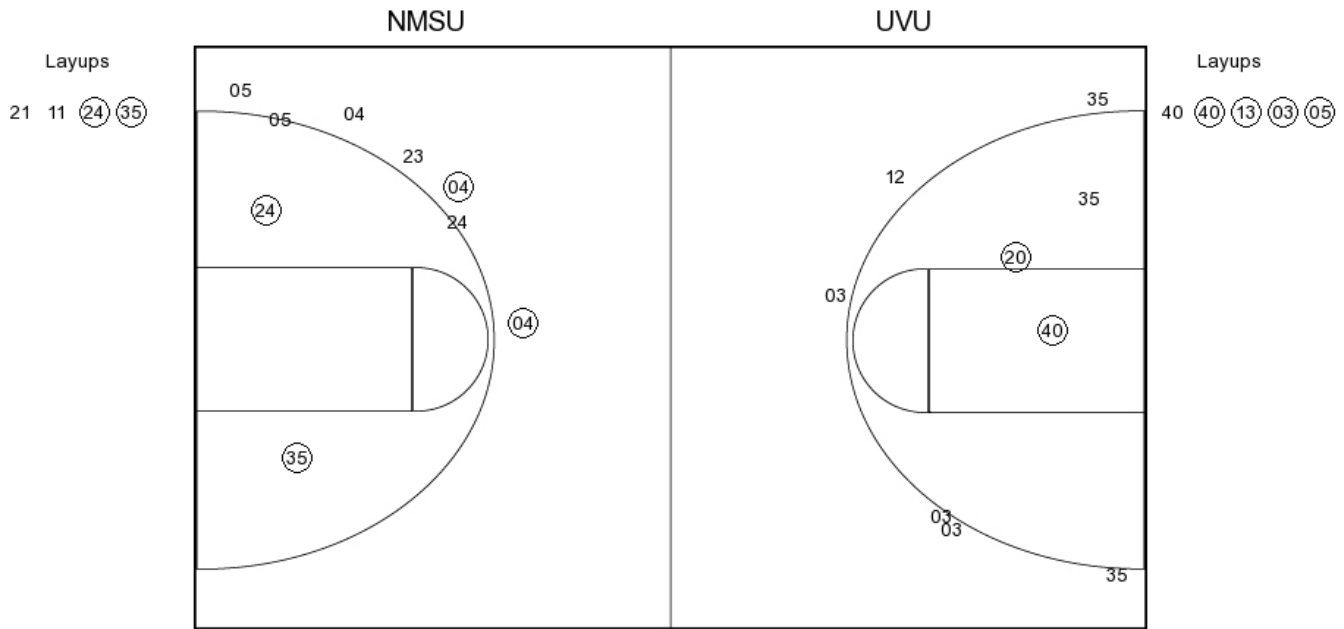
TO MAWHINNEY  
 TURN -,00:09

**NM State vs Utah Valley**

**OFFICIAL SHOT CHART**

2/6/2016 at Orem, Utah (PE Building)

**PERIOD 1**



**NMSU PERIOD 1**

FG Made	11
FG Attempted	25
3PFG Made	3
3PFG Attempted	7

**UVU PERIOD 1**

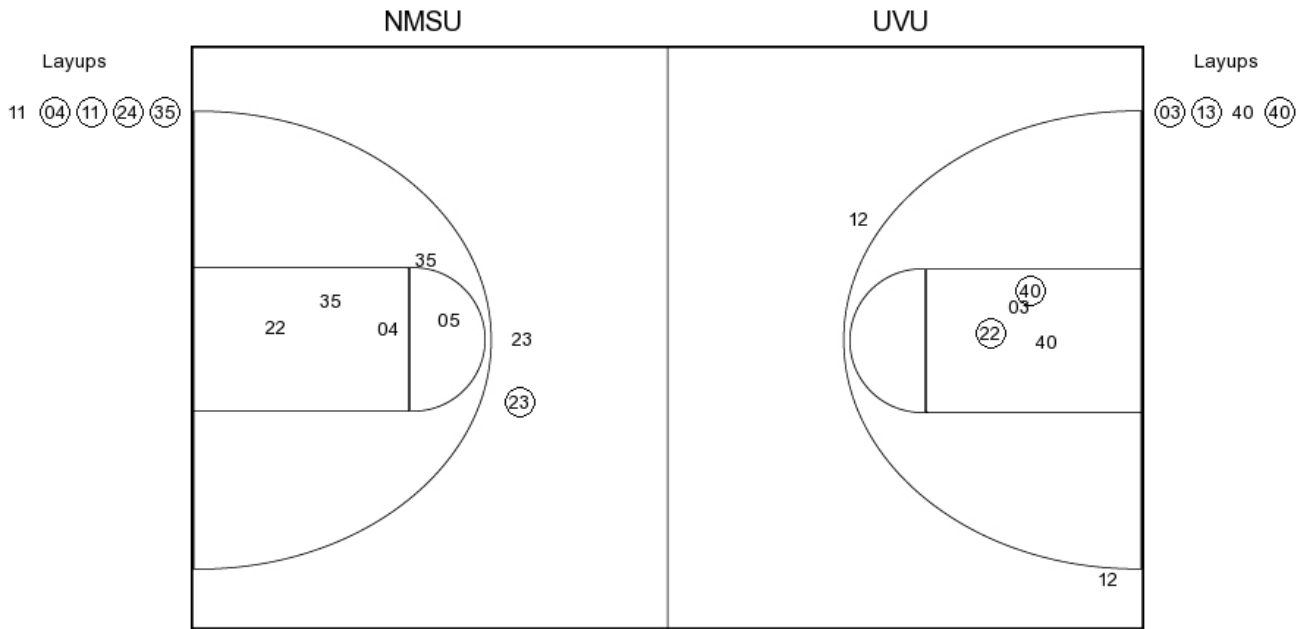
FG Made	11
FG Attempted	25
3PFG Made	0
3PFG Attempted	8

**NM State vs Utah Valley**

**OFFICIAL SHOT CHART**

2/6/2016 at Orem, Utah (PE Building)

**PERIOD 2**



**NMSU PERIOD 2**

- FG Made
- FG Attempted
- 3PFG Made
- 3PFG Attempted

**UVU PERIOD 2**

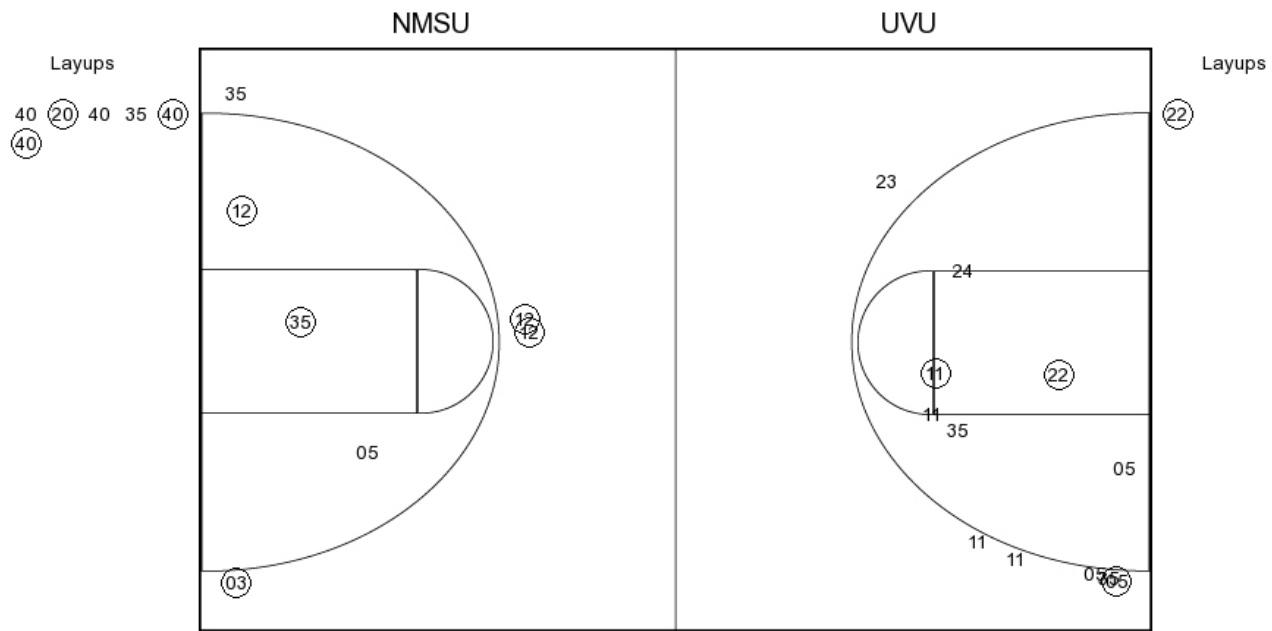
- FG Made
- FG Attempted
- 3PFG Made
- 3PFG Attempted

**NM State vs Utah Valley**

**OFFICIAL SHOT CHART**

2/6/2016 at Orem, Utah (PE Building)

**PERIOD 3**



**NMSU PERIOD 3**

FG Made	10
FG Attempted	30
3PFG Made	3
3PFG Attempted	11

**UVU PERIOD 3**

FG Made	10
FG Attempted	20
3PFG Made	3
3PFG Attempted	5

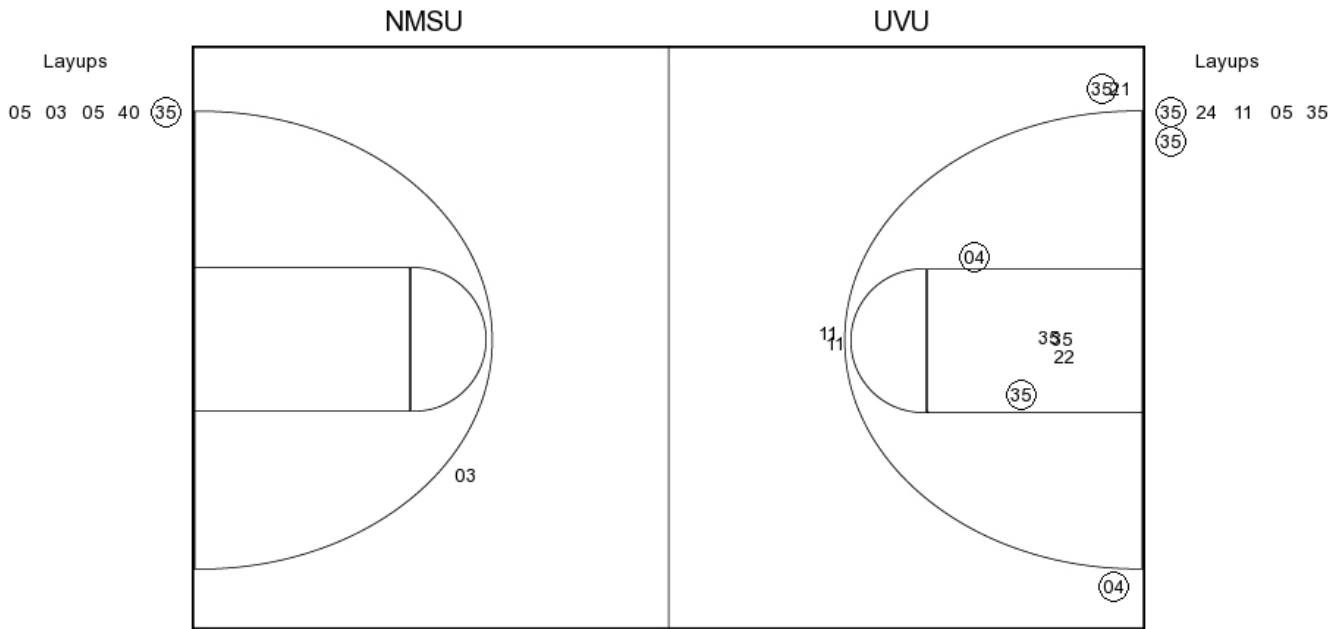
**NM State vs Utah Valley**

**OFFICIAL SHOT CHART**

2/6/2016 at Orem, Utah (PE Building)

---

**PERIOD 4**



**NMSU PERIOD 4**

FG Made  
FG Attempted  
3PFG Made  
3PFG Attempted

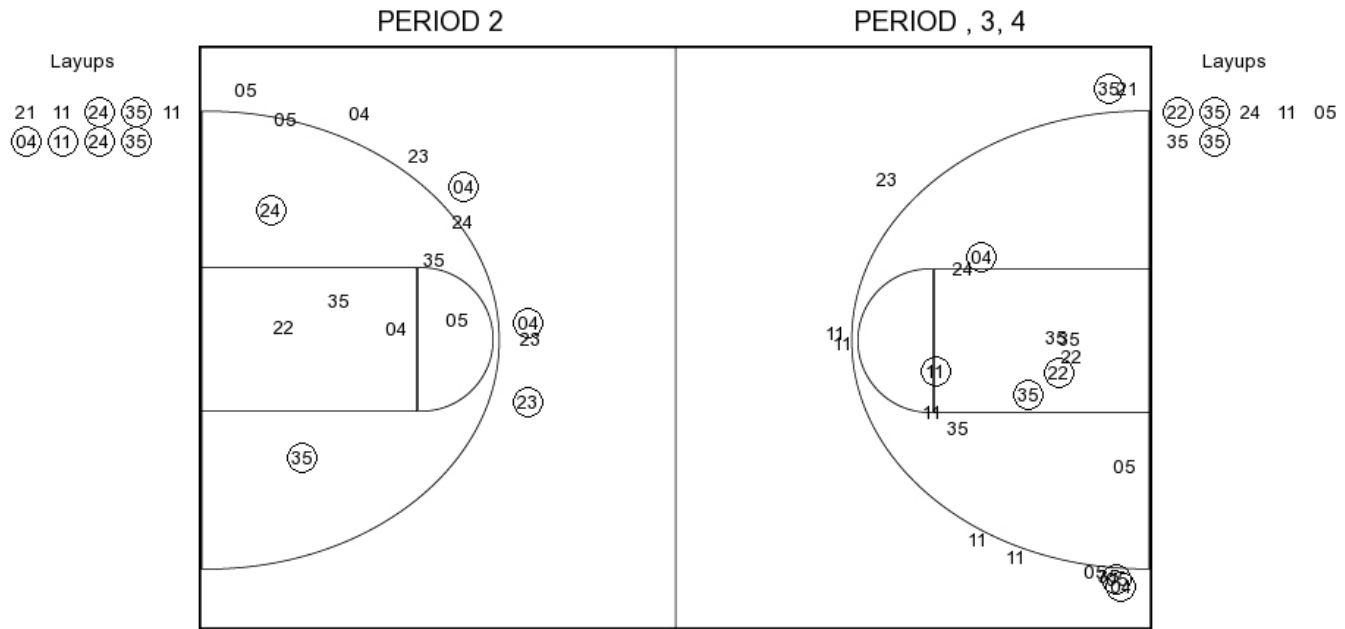
**UVU PERIOD 4**

FG Made  
FG Attempted  
3PFG Made  
3PFG Attempted

**NM State vs Utah Valley**  
**OFFICIAL SHOT CHART**

2/6/2016 at Orem, Utah (PE Building)

**NM State**



**NMSU PERIOD 1**

FG Made	11
FG Attempted	25
3PFG Made	3
3PFG Attempted	7

**NMSU PERIOD 2**

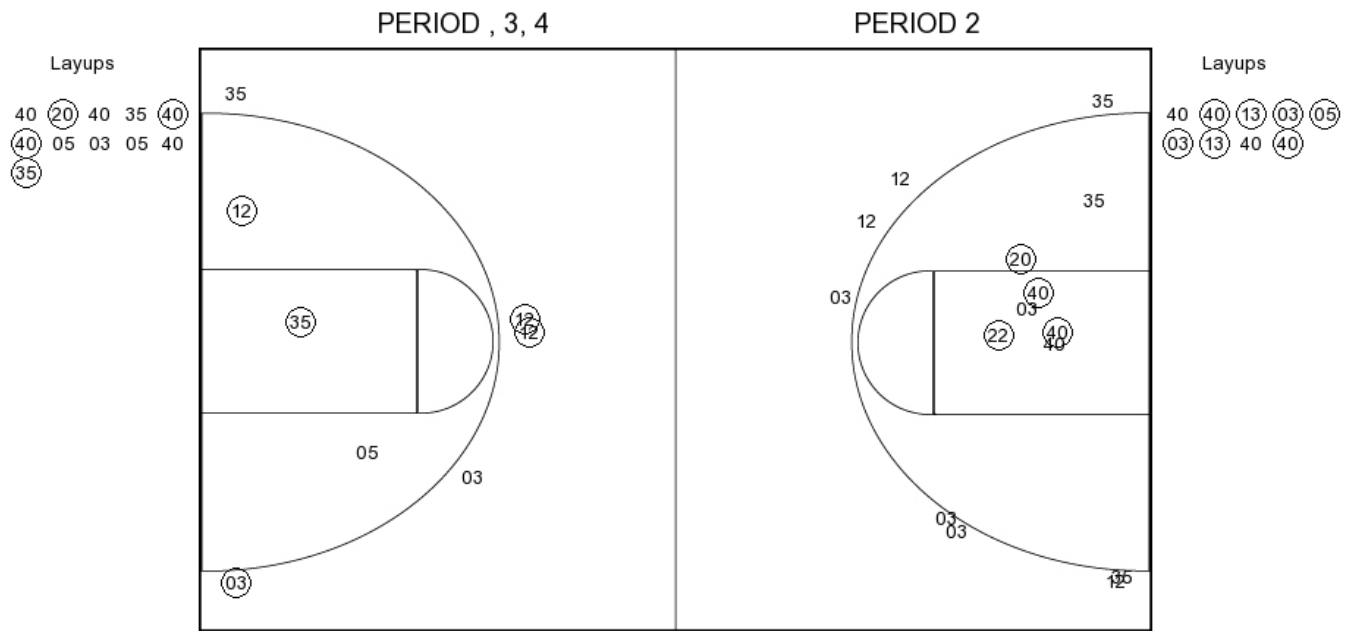
FG Made	
FG Attempted	
3PFG Made	
3PFG Attempted	

**NM State vs Utah Valley**

**OFFICIAL SHOT CHART**

2/6/2016 at Orem, Utah (PE Building)

**Utah Valley**



**UVU PERIOD 1**

FG Made	11
FG Attempted	25
3PFG Made	0
3PFG Attempted	8

**UVU PERIOD 2**

FG Made	
FG Attempted	
3PFG Made	
3PFG Attempted	