

UTAH VALLEY VS. CHICAGO STATE UNIVERSITY



1/23/2016

Orem, Utah (UCCU Center)

FINAL STATS

Utah Valley

(9-11, 2-3)

74

Chicago State

(2-18, 0-6)

46

Start Time: 3 pm MT

Officials: In'Fini Robinson, Evan Sharples, Esther Hsu

Attendance: 235

Official Basketball Box Score -- Game Totals -- Final Statistics
Chicago State vs Utah Valley
1/23/2016 3 pm MT at Orem, Utah (UCCU Center)

Chicago State 46 - 2-18, 0-6

##	Player	S	Total		3-Ptr		Rebounds			PF	TP	A	TO	Blk	Stl	Min
			FG-FGA	3PT FG-FGA	FT-FTA	Off Reb	Def Reb	Tot Reb								
10	ALLEN,KAYLEE	f	2-9	0-0	7-8	1	6	7	4	11	2	6	0	5	37	
11	HARRIS,KONNER	g	1-4	1-3	0-0	0	2	2	1	3	5	0	0	0	37	
14	SANDERS,SH'TOYA	f	3-10	0-0	0-3	3	2	5	4	6	0	0	4	5	23	
21	SANDERS,JASMINE	g	1-5	0-1	1-2	1	1	2	1	3	1	3	0	1	32	
30	CERDA,JESSICA	g	6-16	4-10	0-2	2	0	2	3	16	3	3	0	1	38	
20	NIX,CAITLIN		0-1	0-1	0-0	0	1	1	0	0	0	1	0	0	16	
33	WOOD,JASMINE		2-6	0-0	0-0	2	4	6	1	4	0	0	3	0	14	
50	BROWNE,RACHEL		1-2	0-0	1-2	0	0	0	0	3	0	0	0	1	3	
TEAM						0	0	0	0							
TOTALS			16-53	5-15	9-17	9	16	25	14	46	11	13	7	13	200	

Deadball Rebounds: 4,0

FG %	1st Half:	8-31	25.8%	2nd Half:	8-22	36.4%	Game:	16-53	30.2%					
	1st Qtr	4-11	36.4%	2nd Qtr	4-20	20.0%	3rd Qtr	5-13	38.5%	4th Qtr	3-9	33.3%		
3FG %	1st Half:	4-11	36.4%	2nd Half:	1-4	25.0%	Game:	5-15	33.3%					
	1st Qtr	2-5	40.0%	2nd Qtr	2-6	33.3%	3rd Qtr	1-4	25.0%	4th Qtr	0-0	0%		
FT %	1st Half:	5-9	55.6%	2nd Half:	4-8	50.0%	Game:	9-17	52.9%					
	1st Qtr	5-7	71.4%	2nd Qtr	0-2	00.0%	3rd Qtr	3-4	75.0%	4th Qtr	1-4	25.0%		

Utah Valley 74 - 9-11, 2-3

##	Player	S	Total		3-Ptr		Rebounds			PF	TP	A	TO	Blk	Stl	Min
			FG-FGA	3PT FG-FGA	FT-FTA	Off Reb	Def Reb	Tot Reb								
03	SEALS,MARIAH	g	5-9	1-4	1-2	1	3	4	2	12	4	2	0	2	23	
12	MAWHINNEY,REBECCA	f	3-6	3-6	2-2	1	14	15	0	11	2	1	0	1	36	
20	TOSTON,PATRICE	g	4-6	1-1	2-2	1	2	3	3	11	6	4	0	4	26	
35	BLANKS,DEIJAH	g	2-4	1-1	0-0	0	4	4	2	5	0	2	0	0	18	
40	LOGGINS,SAM	c	6-11	0-0	1-2	2	6	8	2	13	0	1	5	0	23	
05	AGNEW,GEORGIA		1-1	1-1	3-4	0	1	1	3	6	3	3	0	1	21	
13	NORRIS,KARLEE		3-6	0-0	2-2	1	0	1	0	8	0	1	1	0	13	
14	PERRY,KENDALL		0-1	0-0	0-0	0	0	0	0	0	1	0	0	0	8	
22	GORDON,TAYLOR		3-6	0-0	0-0	2	1	3	1	6	2	2	0	1	25	
25	PRECIADO,VERONICA		0-2	0-0	0-0	1	0	1	1	0	0	1	0	1	3	
44	NIELSON,HADLEY		1-3	0-0	0-0	1	0	1	2	2	0	0	0	0	4	
TEAM						3	1	4	0							
TOTALS			28-55	7-13	11-14	13	32	45	16	74	18	18	6	10	200	

Deadball Rebounds: 1,0

FG %	1st Half:	15-30	50.0%	2nd Half:	13-25	52.0%	Game:	28-55	50.9%					
	1st Qtr	8-14	57.1%	2nd Qtr	7-16	43.8%	3rd Qtr	8-12	66.7%	4th Qtr	5-13	38.5%		
3FG %	1st Half:	5-9	55.6%	2nd Half:	2-4	50.0%	Game:	7-13	53.8%					
	1st Qtr	4-4	100.0%	2nd Qtr	1-5	20.0%	3rd Qtr	2-3	66.7%	4th Qtr	0-1	00.0%		
FT %	1st Half:	3-4	75.0%	2nd Half:	8-10	80.0%	Game:	11-14	78.6%					
	1st Qtr	1-2	50.0%	2nd Qtr	2-2	100.0%	3rd Qtr	6-8	75.0%	4th Qtr	2-2	100.0%		

Officials: In'Fini Robinson, Evan Sharples, Esther Hsu
 Technical Fouls: Chicago State- TEAM; Utah Valley- None.
 Attendance: 235

Score by periods	1st	2nd	3rd	4th	Total
Chicago State	15	10	14	7	46
Utah Valley	21	17	24	12	74

Points	In Paint	Off T/O	2nd 2nd Chance	Fast Fast Break	Bench
CSU	16	11	7	2	7
UVU	38	17	7	4	22

Last FG - CSU 4th-00:47, UVU 4th-01:15.
 Largest lead - Chicago State by ; Utah Valley by 30 4th-01:15
 CSU led for 0:00. UVU led for 39:35. Game was tied for 0:08.

Score tied - 0 times
 Lead changed - 0 times

Official Basketball Box Score -- Game Totals -- First Half Statistics
Chicago State vs Utah Valley
1/23/2016 3 pm MT at Orem, Utah (UCCU Center)

Chicago State, 25, 2-18, 0-6

##	Player	S	Total			Rebounds			PF	TP	A	T	O	Blk	Stl	Min		
			FG	F	FGA	3PT	FG	F									FGA	Off
10	ALLEN, KAYLEE	f	1	6	0	0	4	5	1	3	4	0	6	2	0	0	2	19
11	HARRIS, KONNER	g	1	3	1	3	0	0	0	0	0	1	3	3	0	0	0	18
14	SANDERS, SH'TOYA	f	0	4	0	0	0	2	3	2	5	1	0	0	0	3	1	12
21	SANDERS, JASMINE	g	0	3	0	1	1	2	1	0	1	0	1	0	1	0	1	16
30	CERDA, JESSICA	g	4	9	3	6	0	0	1	0	1	1	11	1	1	0	0	18
20	NIX, CAITLIN		0	1	0	1	0	0	0	1	1	0	0	0	0	0	0	9
33	WOOD, JASMINE		2	5	0	0	0	0	2	3	5	0	4	0	0	2	0	8
50	BROWNE, RACHEL		0	0	0	0	0	0	0	0	0	0	0	0	0	0	0	0
TEAM									0	0	0	0		0				
Totals			8	31	4	11	5	9	8	9	17	3	25	6	2	5	4	100

FG %	1st Qtr	4-11	36.4%	2nd Qtr	4-20	20.0%	Half:	8-31	25.8%
3FG %	1st Qtr	2-5	40.0%	2nd Qtr	2-6	33.3%	Half:	4-11	36.4%
FT %	1st Qtr	5-7	71.4%	2nd Qtr	0-2	00.0%	Half:	5-9	55.6%

Utah Valley, 38, 9-11, 2-3

##	Player	S	Total			Rebounds			PF	TP	A	T	O	Blk	Stl	Min		
			FG	F	FGA	3PT	FG	F									FGA	Off
03	SEALS, MARIAH	g	3	7	0	3	0	0	1	1	2	2	6	4	1	0	1	16
12	MAWHINNEY, REBECCA	f	2	3	2	3	0	0	0	7	7	0	6	1	1	0	0	19
20	TOSTON, PATRICE	g	2	3	1	1	2	2	0	0	0	0	7	1	0	0	0	11
35	BLANKS, DEIJAH	g	1	1	1	1	0	0	0	1	1	2	3	0	1	0	0	6
40	LOGGINS, SAM	c	3	7	0	0	0	0	1	6	7	1	6	0	1	3	0	14
05	AGNEW, GEORGIA		1	1	1	1	1	2	0	0	0	2	4	1	0	0	0	13
13	NORRIS, KARLEE		2	5	0	0	0	0	1	0	1	0	4	0	1	1	0	7
14	PERRY, KENDALL		0	0	0	0	0	0	0	0	0	0	0	1	0	0	0	1
22	GORDON, TAYLOR		1	3	0	0	0	0	2	1	3	0	2	1	0	0	0	13
25	PRECIADO, VERONICA		0	0	0	0	0	0	0	0	0	0	0	0	0	0	0	0
44	NIELSON, HADLEY		0	0	0	0	0	0	0	0	0	0	0	0	0	0	0	0
TEAM									2	1	3	0		1				
Totals			15	30	5	9	3	4	7	17	24	7	38	9	6	4	1	100

FG %	1st Qtr	8-14	57.1%	2nd Qtr	7-16	43.8%	Half:	15-30	50.0%
3FG %	1st Qtr	4-4	100.0%	2nd Qtr	1-5	20.0%	Half:	5-9	55.6%
FT %	1st Qtr	1-2	50.0%	2nd Qtr	2-2	100.0%	Half:	3-4	75.0%

Officials: In'Fini Robinson, Evan Sharples, Esther Hsu
 Technical Fouls: , Chicago State- None. , Utah Valley- None.

Score by periods	1st	2nd	3rd	4th	Total
Chicago State	15	10	14	7	46
Utah Valley	21	17	24	12	74

Points	In Paint	Off T/O	2nd Chance	Fast Break	Bench
CSU	4	6	7	0	4
	20	5	8	0	10

Last FG - CSU 2nd-01:28, UVU 2nd-00:03.
 CSU led for 0:00. UVU led for 19:52. Game was tied for 0:08.

Score tied - 0 times
 Lead changed - 0 times

Chicago State vs Utah Valley
1/23/2016; 3 pm MT at Orem, Utah (UCCU Center)
Period 1 Play-By-Play

VISITORS: Chicago State	Time	Score	Margin	HOME: Utah Valley
	09:52	2-0	H 2	GOOD! LAYUP by SEALS,MARIAH [PNT]
TURNOVER by CERDA,JESSICA	09:31			
	09:12	5-0	H 5	GOOD! 3PTR by BLANKS,DEIJAH
	09:12			ASSIST by TOSTON,PATRICE
MISSED LAYUP by SANDERS,SH'TOYA	08:46			
	08:46			BLOCK by LOGGINS,SAM
	08:45			REBOUND (DEF) by LOGGINS,SAM
	08:35	8-0	H 8	GOOD! 3PTR by MAWHINNEY,REBECCA
	08:35			ASSIST by SEALS,MARIAH
TIMEOUT 30SEC	08:25			
MISSED JUMPER by SANDERS,JASMINE	08:10			
	08:10			REBOUND (DEF) by LOGGINS,SAM
	07:40			TURNOVER by BLANKS,DEIJAH
STEAL by ALLEN,KAYLEE	07:39			
MISSED 3PTR by SANDERS,JASMINE	07:27			
	07:27			REBOUND (DEF) by BLANKS,DEIJAH
	07:08	11-0	H 11	GOOD! 3PTR by TOSTON,PATRICE
	07:08			ASSIST by SEALS,MARIAH
	06:52			FOUL by SEALS,MARIAH
GOOD! FT by SANDERS,JASMINE	06:52	11-1	H 10	
MISSED FT by SANDERS,JASMINE	06:52			
	06:52			REBOUND (DEF) by LOGGINS,SAM
	06:28			TURNOVER by SEALS,MARIAH
STEAL by ALLEN,KAYLEE	06:27			
	06:21			FOUL by BLANKS,DEIJAH
MISSED FT by ALLEN,KAYLEE	06:21			
REBOUND (DEADB) by TEAM	06:21			
GOOD! FT by ALLEN,KAYLEE	06:21	11-2	H 9	
	06:21			SUB IN: NORRIS,KARLEE
	06:21			SUB OUT: LOGGINS,SAM
	06:12			TURNOVER by NORRIS,KARLEE
STEAL by SANDERS,SH'TOYA	06:11			
MISSED JUMPER by SANDERS,JASMINE	06:02			
	06:02			REBOUND (DEF) by SEALS,MARIAH
	05:43			MISSED LAYUP by TOSTON,PATRICE
	05:43			REBOUND (OFF) by NORRIS,KARLEE
	05:31	13-2	H 11	GOOD! LAYUP by NORRIS,KARLEE [PNT]
	05:31			ASSIST by SEALS,MARIAH
GOOD! 3PTR by CERDA,JESSICA	05:11	13-5	H 8	
ASSIST by HARRIS,KONNER	05:11			
	04:52			SUB IN: AGNEW,GEORGIA
	04:52			SUB IN: LOGGINS,SAM
	04:52			SUB OUT: MAWHINNEY,REBECCA
	04:52			SUB OUT: TOSTON,PATRICE
	04:39			MISSED JUMPER by SEALS,MARIAH
BLOCK by SANDERS,SH'TOYA	04:39			
	04:38			REBOUND (OFF) by SEALS,MARIAH
	04:34			TURNOVER by TEAM
GOOD! LAYUP by ALLEN,KAYLEE [PNT]	04:18	13-7	H 6	
	04:17			FOUL by BLANKS,DEIJAH
GOOD! FT by ALLEN,KAYLEE	04:17	13-8	H 5	
	04:17			SUB IN: MAWHINNEY,REBECCA
	04:17			SUB OUT: BLANKS,DEIJAH

VISITORS: Chicago State	Time	Score	Margin	HOME: Utah Valley
	03:54			MISSED LAYUP by NORRIS,KARLEE
BLOCK by SANDERS,SH'TOYA	03:54			
	03:54			REBOUND (OFF) by TEAM
	03:53			SUB IN: TOSTON,PATRICE
	03:53			SUB OUT: NORRIS,KARLEE
	03:50	15-8	H 7	GOOD! LAYUP by LOGGINS,SAM [PNT]
	03:50			ASSIST by AGNEW,GEORGIA
MISSED 3PTR by HARRIS,KONNER	03:24			
	03:24			REBOUND (DEF) by MAWHINNEY,REBECCA
	03:03			MISSED LAYUP by LOGGINS,SAM
BLOCK by SANDERS,SH'TOYA	03:03			
REBOUND (DEF) by SANDERS,SH'TOYA	03:03			
SUB IN: WOOD,JASMINE	03:03			
SUB OUT: SANDERS,SH'TOYA	03:03			
	03:03			SUB IN: GORDON,TAYLOR
	03:03			SUB OUT: SEALS,MARIAH
GOOD! 3PTR by HARRIS,KONNER	02:43	15-11	H 4	
ASSIST by CERDA,JESSICA	02:43			
	02:28			TURNOVER by MAWHINNEY,REBECCA
STEAL by SANDERS,JASMINE	02:27			
GOOD! JUMPER by WOOD,JASMINE	02:16	15-13	H 2	
ASSIST by HARRIS,KONNER	02:16			
	01:53	18-13	H 5	GOOD! 3PTR by MAWHINNEY,REBECCA
	01:53			ASSIST by GORDON,TAYLOR
MISSED JUMPER by CERDA,JESSICA	01:30			
	01:30			REBOUND (DEF) by MAWHINNEY,REBECCA
	01:14			MISSED LAYUP by LOGGINS,SAM
BLOCK by WOOD,JASMINE	01:14			
REBOUND (DEF) by ALLEN,KAYLEE	01:11			
MISSED 3PTR by CERDA,JESSICA	01:00			
	01:00			REBOUND (DEF) by LOGGINS,SAM
	00:44			MISSED JUMPER by GORDON,TAYLOR
	00:44			REBOUND (OFF) by LOGGINS,SAM
	00:41	20-13	H 7	GOOD! LAYUP by LOGGINS,SAM [PNT]
	00:14			FOUL by AGNEW,GEORGIA
GOOD! FT by ALLEN,KAYLEE	00:14	20-14	H 6	
GOOD! FT by ALLEN,KAYLEE	00:14	20-15	H 5	
SUB IN: SANDERS,SH'TOYA	00:14			
SUB IN: NIX,CAITLIN	00:14			
SUB OUT: ALLEN,KAYLEE	00:14			
SUB OUT: SANDERS,JASMINE	00:14			
	00:14			SUB IN: NORRIS,KARLEE
	00:14			SUB IN: SEALS,MARIAH
	00:14			SUB OUT: LOGGINS,SAM
	00:14			SUB OUT: TOSTON,PATRICE
FOUL by CERDA,JESSICA	00:02			
	00:02	21-15	H 6	GOOD! FT by AGNEW,GEORGIA
	00:02			MISSED FT by AGNEW,GEORGIA
REBOUND (DEF) by WOOD,JASMINE	00:02			

Chicago State 15, Utah Valley 21

Period 1-only	In Paint	Off T/O	2nd Chance	Fast Break	Bench	****
CSU	2	6	0	0	2	Score tied - 0 times
UVU	8	3	6	0	3	Lead changed - 0 times

Chicago State vs Utah Valley
1/23/2016; 3 pm MT at Orem, Utah (UCCU Center)
Period 2 Play-By-Play

VISITORS: Chicago State	Time	Score	Margin	HOME: Utah Valley
SUB IN: NIX,CAITLIN	10:00			
SUB OUT: SANDERS,JASMINE	10:00			
	10:00			SUB IN: NORRIS,KARLEE
	10:00			SUB IN: GORDON,TAYLOR
	10:00			SUB IN: AGNEW,GEORGIA
	10:00			SUB OUT: TOSTON,PATRICE
	10:00			SUB OUT: BLANKS,DEIJAH
	10:00			SUB OUT: LOGGINS,SAM
	09:43			MISSED 3PTR by SEALS,MARIAH
	09:37			REBOUND (OFF) by TEAM
	09:24	23-15	H 8	GOOD! JUMPER by SEALS,MARIAH [PNT]
MISSED JUMPER by ALLEN,KAYLEE	09:00			
	09:00			BLOCK by NORRIS,KARLEE
REBOUND (OFF) by SANDERS,SH'TOYA	08:58			
GOOD! 3PTR by CERDA,JESSICA	08:55	23-18	H 5	
ASSIST by ALLEN,KAYLEE	08:55			
	08:41			MISSED 3PTR by SEALS,MARIAH
	08:41			REBOUND (OFF) by GORDON,TAYLOR
	08:24			MISSED LAYUP by NORRIS,KARLEE
REBOUND (DEF) by SANDERS,SH'TOYA	08:24			
MISSED LAYUP by SANDERS,SH'TOYA	08:11			
	08:11			REBOUND (DEF) by MAWHINNEY,REBECCA
	08:00			SUB IN: LOGGINS,SAM
	08:00			SUB OUT: NORRIS,KARLEE
	07:41			MISSED 3PTR by MAWHINNEY,REBECCA
REBOUND (DEF) by ALLEN,KAYLEE	07:41			
GOOD! 3PTR by CERDA,JESSICA	07:22	23-21	H 2	
ASSIST by HARRIS,KONNER	07:22			
FOUL by HARRIS,KONNER	07:06			
	06:54	26-21	H 5	GOOD! 3PTR by AGNEW,GEORGIA
MISSED LAYUP by SANDERS,SH'TOYA	06:33			
	06:33			BLOCK by LOGGINS,SAM
	06:31			REBOUND (DEF) by MAWHINNEY,REBECCA
SUB IN: WOOD,JASMINE	06:26			
SUB OUT: SANDERS,SH'TOYA	06:26			
	06:15			MISSED JUMPER by GORDON,TAYLOR
REBOUND (DEF) by WOOD,JASMINE	06:15			
MISSED JUMPER by ALLEN,KAYLEE	06:01			
	06:01			REBOUND (DEF) by MAWHINNEY,REBECCA
	05:45			TURNOVER by LOGGINS,SAM
	05:45			FOUL by LOGGINS,SAM
SUB IN: SANDERS,JASMINE	05:45			
SUB OUT: HARRIS,KONNER	05:45			
MISSED 3PTR by CERDA,JESSICA	05:30			
	05:30			REBOUND (DEF) by GORDON,TAYLOR
	05:14			MISSED LAYUP by LOGGINS,SAM
BLOCK by WOOD,JASMINE	05:14			
REBOUND (DEF) by NIX,CAITLIN	05:13			
MISSED LAYUP by ALLEN,KAYLEE	05:03			
	05:03			REBOUND (DEF) by LOGGINS,SAM
	04:54	28-21	H 7	GOOD! LAYUP by GORDON,TAYLOR [PNT]
MISSED 3PTR by CERDA,JESSICA	04:35			
REBOUND (OFF) by WOOD,JASMINE	04:35			

VISITORS: Chicago State	Time	Score	Margin	HOME: Utah Valley
GOOD! LAYUP by WOOD,JASMINE [PNT]	04:32	28-23	H 5	
	04:17			MISSED LAYUP by LOGGINS,SAM
REBOUND (DEF) by ALLEN,KAYLEE	04:17			
MISSED LAYUP by CERDA,JESSICA	03:58			
REBOUND (OFF) by WOOD,JASMINE	03:58			
MISSED LAYUP by WOOD,JASMINE	03:56			
	03:56			BLOCK by LOGGINS,SAM
REBOUND (OFF) by SANDERS,JASMINE	03:54			
MISSED 3PTR by NIX,CAITLIN	03:45			
	03:45			REBOUND (DEF) by TEAM
	03:43			TIMEOUT MEDIA
SUB IN: HARRIS,KONNER	03:43			
SUB OUT: CERDA,JESSICA	03:43			
	03:43			SUB IN: NORRIS,KARLEE
	03:43			SUB OUT: LOGGINS,SAM
	03:33			MISSED 3PTR by SEALS,MARIAH
	03:33			REBOUND (OFF) by GORDON,TAYLOR
	03:15			MISSED LAYUP by NORRIS,KARLEE
REBOUND (DEF) by WOOD,JASMINE	03:15			
MISSED 3PTR by HARRIS,KONNER	03:03			
	03:03			REBOUND (DEF) by MAWHINNEY,REBECCA
	02:50	30-23	H 7	GOOD! LAYUP by NORRIS,KARLEE [PNT]
	02:50			ASSIST by MAWHINNEY,REBECCA
TURNOVER by SANDERS,JASMINE	02:23			
	02:22			STEAL by SEALS,MARIAH
	02:16	32-23	H 9	GOOD! LAYUP by SEALS,MARIAH [PNT]
MISSED JUMPER by WOOD,JASMINE	01:58			
REBOUND (OFF) by ALLEN,KAYLEE	01:58			
	01:55			FOUL by AGNEW,GEORGIA
SUB IN: CERDA,JESSICA	01:55			
SUB IN: SANDERS,SH'TOYA	01:55			
SUB OUT: WOOD,JASMINE	01:55			
SUB OUT: NIX,CAITLIN	01:55			
	01:55			SUB IN: TOSTON,PATRICE
	01:55			SUB IN: LOGGINS,SAM
	01:55			SUB OUT: NORRIS,KARLEE
	01:55			SUB OUT: AGNEW,GEORGIA
MISSED JUMPER by ALLEN,KAYLEE	01:48			
REBOUND (OFF) by SANDERS,SH'TOYA	01:48			
	01:32			FOUL by SEALS,MARIAH
MISSED FT by SANDERS,SH'TOYA	01:32			
REBOUND (DEADB) by TEAM	01:32			
MISSED FT by SANDERS,SH'TOYA	01:32			
REBOUND (OFF) by CERDA,JESSICA	01:32			
	01:32			SUB IN: PERRY,KENDALL
	01:32			SUB OUT: SEALS,MARIAH
GOOD! JUMPER by CERDA,JESSICA	01:28	32-25	H 7	
ASSIST by ALLEN,KAYLEE	01:28			
	01:16	34-25	H 9	GOOD! LAYUP by LOGGINS,SAM [PNT]
	01:16			ASSIST by PERRY,KENDALL
MISSED JUMPER by ALLEN,KAYLEE	01:04			
REBOUND (OFF) by SANDERS,SH'TOYA	01:04			
MISSED LAYUP by SANDERS,SH'TOYA	01:01			
	01:01			REBOUND (DEF) by LOGGINS,SAM
FOUL by SANDERS,SH'TOYA	00:37			
	00:37	35-25	H 10	GOOD! FT by TOSTON,PATRICE
	00:37	36-25	H 11	GOOD! FT by TOSTON,PATRICE
SUB IN: NIX,CAITLIN	00:37			

VISITORS: Chicago State	Time	Score	Margin	HOME: Utah Valley
SUB IN: WOOD,JASMINE	00:37			
SUB OUT: ALLEN,KAYLEE	00:37			
SUB OUT: SANDERS,SH'TOYA	00:37			
	00:37			SUB IN: NORRIS,KARLEE
	00:37			SUB OUT: LOGGINS,SAM
MISSED JUMPER by WOOD,JASMINE	00:15			
	00:15			REBOUND (DEF) by MAWHINNEY,REBECCA
	00:12			TIMEOUT 30SEC
	00:12			SUB IN: SEALS,MARIAH
	00:12			SUB IN: LOGGINS,SAM
	00:12			SUB OUT: PERRY,KENDALL
	00:12			SUB OUT: NORRIS,KARLEE
	00:03	38-25	H 13	GOOD! LAYUP by TOSTON,PATRICE [PNT]
	00:03			ASSIST by SEALS,MARIAH

Chicago State 25, Utah Valley 38

Period 2-only	In Paint	Off T/O	2nd Chance	Fast Break	Bench	****
CSU	2	0	7	0	2	Score tied - 0 times
UVU	12	2	2	0	7	Lead changed - 0 times

Official Basketball Box Score -- Game Totals -- Second Half Statistics
Chicago State vs Utah Valley
1/23/2016 3 pm MT at Orem, Utah (UCCU Center)

Chicago State, 21, 2-18, 0-6

##	Player	S	Total			Rebounds			PF	TP	A	TO	Blk	Stl	Min
			FG-FGA	3PT	FG-FGA	FT-FTA	Off Reb	Def Reb							
10	ALLEN, KAYLEE	f	1-3	0-0	3-3	0	3	3	4	5	0	6	0	3	18
11	HARRIS, KONNER	g	0-1	0-0	0-0	0	2	2	0	0	2	0	0	19	
14	SANDERS, SH'TOYA	f	3-6	0-0	0-1	0	0	0	3	6	0	0	1	11	
21	SANDERS, JASMINE	g	1-2	0-0	0-0	0	1	1	1	2	1	2	0	16	
30	CERDA, JESSICA	g	2-7	1-4	0-2	1	0	1	2	5	2	2	0	20	
20	NIX, CAITLIN		0-0	0-0	0-0	0	0	0	0	0	0	1	0	7	
33	WOOD, JASMINE		0-1	0-0	0-0	0	1	1	1	0	0	0	1	6	
50	BROWNE, RACHEL		1-2	0-0	1-2	0	0	0	0	3	0	0	0	3	
TEAM						0	0	0	0		0				
Totals			8-22	1-4	4-8	1	7	8	11	21	5	11	2	9	100
FG %	3rd Qtr	5-13	38.5%	4th Qtr	3-9	33.3%	Half:	8-22	36.4%						
3FG %	3rd Qtr	1-4	25.0%	4th Qtr	0-0	0%	Half:	1-4	36.4%						
FT %	3rd Qtr	3-4	75.0%	4th Qtr	1-4	25.0%	Half:	4-8	50.0%						

Utah Valley, 36, 9-11, 2-3

##	Player	S	Total			Rebounds			PF	TP	A	TO	Blk	Stl	Min
			FG-FGA	3PT	FG-FGA	FT-FTA	Off Reb	Def Reb							
03	SEALS, MARIAH	g	2-2	1-1	1-2	0	2	2	0	6	0	1	0	1	7
12	MAWHINNEY, REBECCA	f	1-3	1-3	2-2	1	7	8	0	5	1	0	0	1	17
20	TOSTON, PATRICE	g	2-3	0-0	0-0	1	2	3	3	4	5	4	0	4	15
35	BLANKS, DEIJAH	g	1-3	0-0	0-0	0	3	3	0	2	0	1	0	12	
40	LOGGINS, SAM	c	3-4	0-0	1-2	1	0	1	1	7	0	0	2	9	
05	AGNEW, GEORGIA		0-0	0-0	2-2	0	1	1	1	2	2	3	0	1	8
13	NORRIS, KARLEE		1-1	0-0	2-2	0	0	0	0	4	0	0	0	6	
14	PERRY, KENDALL		0-1	0-0	0-0	0	0	0	0	0	0	0	0	7	
22	GORDON, TAYLOR		2-3	0-0	0-0	0	0	0	1	4	1	2	0	1	12
25	PRECIADO, VERONICA		0-2	0-0	0-0	1	0	1	1	0	0	1	0	1	3
44	NIELSON, HADLEY		1-3	0-0	0-0	1	0	1	2	2	0	0	0	4	
TEAM						1	0	1	0		0				
Totals			13-25	2-4	8-10	6	15	21	9	36	9	12	2	9	100
FG %	3rd Qtr	8-12	66.7%	4th Qtr	5-13	38.5%	Half:	13-25	52.0%						
3FG %	3rd Qtr	2-3	66.7%	4th Qtr	0-1	00.0%	Half:	2-4	55.6%						
FT %	3rd Qtr	6-8	75.0%	4th Qtr	2-2	100.0%	Half:	8-10	80.0%						

Officials: In'Fini Robinson, Evan Sharples, Esther Hsu
 Technical Fouls: , Chicago State- TEAM; , Utah Valley- None.

Score by periods	1st	2nd	3rd	4th	Total
Chicago State	15	10	14	7	46
Utah Valley	21	17	24	12	74

Points	In Paint	Off T/O	2nd 2nd Chance	Fast Fast Break	Bench
CSU	12	5	0	2	3
	18	12	2	4	12

Last FG - CSU 4th-00:47, UVU 4th-01:15.
 CSU led for 0:00. UVU led for 19:43. Game was tied for 0:00.

Score tied - 0 times
 Lead changed - 0 times

Chicago State vs Utah Valley
1/23/2016; 3 pm MT at Orem, Utah (UCCU Center)
Period 3 Play-By-Play

VISITORS: Chicago State	Time	Score	Margin	HOME: Utah Valley
MISSED 3PTR by CERDA,JESSICA	09:51			
	09:51			REBOUND (DEF) by BLANKS,DEIJAH
FOUL by ALLEN,KAYLEE	09:47			
	09:34			TURNOVER by SEALS,MARIAH
STEAL by SANDERS,SH'TOYA	09:33			
TURNOVER by ALLEN,KAYLEE	09:27			
	09:27			STEAL by TOSTON,PATRICE
	09:24	40-25	H 15	GOOD! LAYUP by TOSTON,PATRICE [FB/PNT]
GOOD! JUMPER by SANDERS,SH'TOYA	09:04	40-27	H 13	
	08:32	42-27	H 15	GOOD! JUMPER by SEALS,MARIAH
MISSED JUMPER by ALLEN,KAYLEE	08:19			
	08:19			REBOUND (DEF) by SEALS,MARIAH
	08:07	44-27	H 17	GOOD! LAYUP by TOSTON,PATRICE [PNT]
MISSED 3PTR by CERDA,JESSICA	07:35			
	07:35			REBOUND (DEF) by SEALS,MARIAH
	07:26			TURNOVER by TOSTON,PATRICE
STEAL by ALLEN,KAYLEE	07:26			
	07:19			FOUL by LOGGINS,SAM
GOOD! FT by ALLEN,KAYLEE	07:19	44-28	H 16	
GOOD! FT by ALLEN,KAYLEE	07:19	44-29	H 15	
FOUL by SANDERS,SH'TOYA	07:11			
FOUL by ALLEN,KAYLEE	07:02			
	07:02			MISSED FT by LOGGINS,SAM
	07:02			REBOUND (DEADB) by TEAM
	07:02	45-29	H 16	GOOD! FT by LOGGINS,SAM
MISSED JUMPER by SANDERS,SH'TOYA	06:42			
	06:42			REBOUND (DEF) by MAWHINNEY,REBECCA
	06:26	48-29	H 19	GOOD! 3PTR by MAWHINNEY,REBECCA
	06:26			ASSIST by TOSTON,PATRICE
GOOD! 3PTR by CERDA,JESSICA	06:07	48-32	H 16	
ASSIST by SANDERS,JASMINE	06:07			
	05:49			MISSED JUMPER by BLANKS,DEIJAH
REBOUND (DEF) by SANDERS,JASMINE	05:49			
MISSED LAYUP by SANDERS,JASMINE	05:39			
	05:39			REBOUND (DEF) by MAWHINNEY,REBECCA
	05:23			MISSED LAYUP by LOGGINS,SAM
REBOUND (DEF) by HARRIS,KONNER	05:23			
GOOD! LAYUP by CERDA,JESSICA [PNT]	05:16	48-34	H 14	
ASSIST by HARRIS,KONNER	05:16			
	05:00			MISSED JUMPER by BLANKS,DEIJAH
REBOUND (DEF) by ALLEN,KAYLEE	05:00			
MISSED LAYUP by SANDERS,SH'TOYA	04:50			
	04:50			BLOCK by LOGGINS,SAM
	04:48			REBOUND (DEF) by BLANKS,DEIJAH
	04:31	51-34	H 17	GOOD! 3PTR by SEALS,MARIAH
TURNOVER by SANDERS,JASMINE	04:09			
	04:08			STEAL by SEALS,MARIAH
FOUL by SANDERS,JASMINE	04:05			
	04:05			TIMEOUT MEDIA
SUB IN: WOOD,JASMINE	04:05			
SUB IN: NIX,CAITLIN	04:05			
SUB OUT: SANDERS,SH'TOYA	04:05			
SUB OUT: SANDERS,JASMINE	04:05			

VISITORS: Chicago State	Time	Score	Margin	HOME: Utah Valley
	04:05			SUB IN: AGNEW,GEORGIA
	04:05			SUB IN: NORRIS,KARLEE
	04:05			SUB OUT: MAWHINNEY,REBECCA
	04:05			SUB OUT: LOGGINS,SAM
	03:57			TURNOVER by AGNEW,GEORGIA
MISSED 3PTR by CERDA,JESSICA	03:45			
	03:45			REBOUND (DEF) by AGNEW,GEORGIA
FOUL by ALLEN,KAYLEE	03:33			
	03:33	52-34	H 18	GOOD! FT by SEALS,MARIAH
	03:33			MISSED FT by SEALS,MARIAH
REBOUND (DEF) by WOOD,JASMINE	03:33			
TURNOVER by NIX,CAITLIN	03:12			
SUB IN: SANDERS,JASMINE	03:11			
SUB OUT: HARRIS,KONNER	03:11			
	03:11			SUB IN: GORDON,TAYLOR
	03:11			SUB OUT: SEALS,MARIAH
	02:53			TURNOVER by GORDON,TAYLOR
STEAL by ALLEN,KAYLEE	02:52			
GOOD! LAYUP by ALLEN,KAYLEE [FB/PNT]	02:49	52-36	H 16	
	02:48			FOUL by AGNEW,GEORGIA
GOOD! FT by ALLEN,KAYLEE	02:48	52-37	H 15	
	02:37	54-37	H 17	GOOD! LAYUP by NORRIS,KARLEE [PNT]
	02:37			ASSIST by TOSTON,PATRICE
TURNOVER by ALLEN,KAYLEE	02:13			
	02:12			STEAL by TOSTON,PATRICE
FOUL by WOOD,JASMINE	02:02			
	02:02	55-37	H 18	GOOD! FT by NORRIS,KARLEE
	02:02	56-37	H 19	GOOD! FT by NORRIS,KARLEE
	01:56			FOUL by TOSTON,PATRICE
TURNOVER by ALLEN,KAYLEE	01:52			
FOUL by ALLEN,KAYLEE	01:52			
SUB IN: HARRIS,KONNER	01:52			
SUB OUT: ALLEN,KAYLEE	01:52			
	01:52			SUB IN: MAWHINNEY,REBECCA
	01:52			SUB IN: LOGGINS,SAM
	01:52			SUB OUT: BLANKS,DEIJAH
	01:52			SUB OUT: NORRIS,KARLEE
	01:33	58-37	H 21	GOOD! LAYUP by LOGGINS,SAM [PNT]
	01:33			ASSIST by TOSTON,PATRICE
MISSED JUMPER by WOOD,JASMINE	01:04			
	01:04			REBOUND (DEF) by TOSTON,PATRICE
	00:46			MISSED 3PTR by MAWHINNEY,REBECCA
	00:46			REBOUND (OFF) by LOGGINS,SAM
FOUL by CERDA,JESSICA	00:28			
	00:28	59-37	H 22	GOOD! FT by AGNEW,GEORGIA
	00:28	60-37	H 23	GOOD! FT by AGNEW,GEORGIA
SUB IN: SANDERS,SH'TOYA	00:28			
SUB OUT: WOOD,JASMINE	00:28			
	00:28			SUB IN: BLANKS,DEIJAH
	00:28			SUB IN: NORRIS,KARLEE
	00:28			SUB OUT: MAWHINNEY,REBECCA
	00:28			SUB OUT: LOGGINS,SAM
GOOD! LAYUP by SANDERS,SH'TOYA [PNT]	00:14	60-39	H 21	
ASSIST by HARRIS,KONNER	00:14			
	00:14			FOUL by TOSTON,PATRICE
MISSED FT by SANDERS,SH'TOYA	00:14			
	00:14			REBOUND (DEF) by BLANKS,DEIJAH
	00:03	62-39	H 23	GOOD! JUMPER by GORDON,TAYLOR

Chicago State 46, Utah Valley 74

Period 3-only	In Paint	Off T/O	2nd Chance	Fast Break	Bench	****
CSU	6	5	0	2	0	Score tied - 0 times
UVU	8	6	2	2	8	Lead changed - 0 times

Chicago State vs Utah Valley
1/23/2016; 3 pm MT at Orem, Utah (UCCU Center)
Period 4 Play-By-Play

VISITORS: Chicago State	Time	Score	Margin	HOME: Utah Valley
SUB IN: NIX,CAITLIN	10:00			
SUB OUT: ALLEN,KAYLEE	10:00			
	10:00			SUB IN: GORDON,TAYLOR
	10:00			SUB IN: NORRIS,KARLEE
	10:00			SUB IN: AGNEW,GEORGIA
	10:00			SUB OUT: SEALS,MARIAH
	10:00			SUB OUT: TOSTON,PATRICE
	10:00			SUB OUT: LOGGINS,SAM
	09:33			TURNOVER by AGNEW,GEORGIA
STEAL by SANDERS,SH'TOYA	09:33			
SUB IN: ALLEN,KAYLEE	09:33			
SUB OUT: NIX,CAITLIN	09:33			
TURNOVER by SANDERS,JASMINE	09:18			
	09:17			STEAL by AGNEW,GEORGIA
	09:01	64-39	H 25	GOOD! LAYUP by BLANKS,DEIJAH [PNT]
	09:01			ASSIST by MAWHINNEY,REBECCA
GOOD! LAYUP by SANDERS,JASMINE [PNT]	08:38	64-41	H 23	
	08:23			TURNOVER by BLANKS,DEIJAH
MISSED JUMPER by SANDERS,SH'TOYA	08:08			
	08:08			REBOUND (DEF) by MAWHINNEY,REBECCA
	08:01	66-41	H 25	GOOD! LAYUP by GORDON,TAYLOR [FB/PNT]
	08:01			ASSIST by AGNEW,GEORGIA
GOOD! LAYUP by SANDERS,SH'TOYA [PNT]	07:29	66-43	H 23	
ASSIST by CERDA,JESSICA	07:29			
	07:10			TURNOVER by AGNEW,GEORGIA
STEAL by SANDERS,SH'TOYA	07:08			
MISSED JUMPER by CERDA,JESSICA	07:00			
	07:00			REBOUND (DEF) by MAWHINNEY,REBECCA
FOUL by SANDERS,SH'TOYA	06:42			
	06:42			SUB IN: PRECIADO,VERONICA
	06:42			SUB IN: LOGGINS,SAM
	06:42			SUB IN: PERRY,KENDALL
	06:42			SUB IN: TOSTON,PATRICE
	06:42			SUB OUT: GORDON,TAYLOR
	06:42			SUB OUT: NORRIS,KARLEE
	06:42			SUB OUT: BLANKS,DEIJAH
	06:42			SUB OUT: AGNEW,GEORGIA
	06:39			MISSED JUMPER by PRECIADO,VERONICA
BLOCK by SANDERS,SH'TOYA	06:39			
	06:37			REBOUND (OFF) by PRECIADO,VERONICA
	06:35			TURNOVER by PRECIADO,VERONICA
	06:35			FOUL by PRECIADO,VERONICA
TURNOVER by ALLEN,KAYLEE	06:32			
	06:28			STEAL by PRECIADO,VERONICA
	06:17	68-43	H 25	GOOD! LAYUP by LOGGINS,SAM [PNT]
	06:17			ASSIST by TOSTON,PATRICE
MISSED LAYUP by ALLEN,KAYLEE	06:00			
	06:00			BLOCK by LOGGINS,SAM
	05:58			REBOUND (DEF) by TOSTON,PATRICE
FOUL (TECH) by TEAM	05:58			
	05:58	69-43	H 26	GOOD! FT by MAWHINNEY,REBECCA
	05:58	70-43	H 27	GOOD! FT by MAWHINNEY,REBECCA
	05:58			SUB IN: GORDON,TAYLOR

VISITORS: Chicago State	Time	Score	Margin	HOME: Utah Valley
	05:58			SUB OUT: PRECIADO,VERONICA
	05:48			TURNOVER by TOSTON,PATRICE
STEAL by SANDERS,SH'TOYA	05:47			
MISSED JUMPER by HARRIS,KONNER	05:36			
REBOUND (OFF) by CERDA,JESSICA	05:36			
TURNOVER by CERDA,JESSICA	05:25			
	05:24			STEAL by MAWHINNEY,REBECCA
FOUL by SANDERS,SH'TOYA	05:10			
	05:08			MISSED 3PTR by MAWHINNEY,REBECCA
REBOUND (DEF) by HARRIS,KONNER	05:08			
TURNOVER by ALLEN,KAYLEE	04:56			
	04:55			STEAL by GORDON,TAYLOR
	04:41	72-43	H 29	GOOD! LAYUP by LOGGINS,SAM [PNT]
	04:41			ASSIST by TOSTON,PATRICE
	04:24			FOUL by TOSTON,PATRICE
TIMEOUT media	04:24			
MISSED FT by CERDA,JESSICA	04:24			
REBOUND (DEADB) by TEAM	04:24			
MISSED FT by CERDA,JESSICA	04:24			
	04:24			REBOUND (DEF) by MAWHINNEY,REBECCA
SUB IN: WOOD,JASMINE	04:24			
SUB OUT: SANDERS,SH'TOYA	04:24			
	04:24			SUB IN: NIELSON,HADLEY
	04:24			SUB OUT: LOGGINS,SAM
FOUL by CERDA,JESSICA	04:13			
	04:06			MISSED JUMPER by GORDON,TAYLOR
	04:06			REBOUND (OFF) by MAWHINNEY,REBECCA
	03:54			MISSED JUMPER by TOSTON,PATRICE
	03:54			REBOUND (OFF) by TEAM
	03:41			MISSED JUMPER by PERRY,KENDALL
	03:41			REBOUND (OFF) by TOSTON,PATRICE
	03:28			TURNOVER by TOSTON,PATRICE
STEAL by ALLEN,KAYLEE	03:27			
MISSED JUMPER by CERDA,JESSICA	03:16			
	03:16			REBOUND (DEF) by MAWHINNEY,REBECCA
	03:02			MISSED LAYUP by NIELSON,HADLEY
BLOCK by WOOD,JASMINE	03:02			
REBOUND (DEF) by ALLEN,KAYLEE	02:59			
TURNOVER by ALLEN,KAYLEE	02:50			
	02:50			STEAL by TOSTON,PATRICE
SUB IN: BROWNE,RACHEL	02:47			
SUB IN: NIX,CAITLIN	02:47			
SUB OUT: WOOD,JASMINE	02:47			
SUB OUT: SANDERS,JASMINE	02:47			
	02:36			TURNOVER by TOSTON,PATRICE
STEAL by BROWNE,RACHEL	02:35			
TURNOVER by CERDA,JESSICA	02:24			
	02:22			STEAL by TOSTON,PATRICE
	02:00			MISSED JUMPER by NIELSON,HADLEY
REBOUND (DEF) by ALLEN,KAYLEE	02:00			
	01:58			FOUL by GORDON,TAYLOR
	01:53			FOUL by NIELSON,HADLEY
	01:48			FOUL by NIELSON,HADLEY
MISSED FT by BROWNE,RACHEL	01:48			
REBOUND (DEADB) by TEAM	01:48			
GOOD! FT by BROWNE,RACHEL	01:48	72-44	H 28	
	01:48			SUB IN: PRECIADO,VERONICA
	01:48			SUB OUT: TOSTON,PATRICE

VISITORS: Chicago State	Time	Score	Margin	HOME: Utah Valley
	01:39			TURNOVER by GORDON,TAYLOR
STEAL by CERDA,JESSICA	01:39			
MISSED JUMPER by BROWNE,RACHEL	01:30			
	01:30			REBOUND (DEF) by MAWHINNEY,REBECCA
	01:15	74-44	H 30	GOOD! JUMPER by NIELSON,HADLEY [PNT]
	01:15			ASSIST by GORDON,TAYLOR
GOOD! JUMPER by BROWNE,RACHEL [PNT]	00:47	74-46	H 28	
ASSIST by CERDA,JESSICA	00:47			
	00:30			MISSED LAYUP by PRECIADO,VERONICA
	00:30			REBOUND (OFF) by NIELSON,HADLEY

Chicago State 46, Utah Valley 74

Period 4-only	In Paint	Off T/O	2nd Chance	Fast Break	Bench	****
CSU	6	0	0	0	3	Score tied - 0 times
UVU	10	6	0	2	4	Lead changed - 0 times

Chicago State vs Utah Valley

1/23/2016; 3 pm MT at Orem, Utah (UCCU Center)

Scoring/Runs Reference

Period 1			Period 2		
Chicago State	Score	Utah Valley	Chicago State	Score	Utah Valley
	0-2 2	SEALS, LAYUP - ,09:52		X	SEALS, 3PTR - 09:43
09:31 - CERDA TURN	TO			15-23 8	SEALS, JUMPER - ,09:24
	0-5 5	BLANKS, 3PTR - ,09:12	09:00 - ALLEN, JUMPER	X	
08:46 - SANDERS, LAYUP	X		08:55 - CERDA, 3PTR	3	18-23 5
	0-8 8	MAWHINNEY, 3PTR - ,08:35		X	SEALS, 3PTR - 08:41
08:10 - SANDERS, JUMPER	X			X	NORRIS, LAYUP - 08:24
	TO	BLANKS TURN - ,07:40	08:11 - SANDERS, LAYUP	X	
07:27 - SANDERS, 3PTR	X			X	MAWHINNEY, 3PTR - 07:41
	0-11 11	TOSTON, 3PTR - ,07:08	07:22 - CERDA, 3PTR	3	21-23 2
06:52 - , SANDERS, FT	1			21-26 5	3
06:52 - SANDERS, FT	X		06:33 - SANDERS, LAYUP	X	
	TO	SEALS TURN - ,06:28		X	GORDON, JUMPER - 06:15
06:21 - ALLEN, FT	X		06:01 - ALLEN, JUMPER	X	
06:21 - ALLEN, FT	1			TO	LOGGINS TURN - ,05:45
	TO	NORRIS TURN - ,06:12	05:30 - CERDA, 3PTR	X	
06:02 - SANDERS, JUMPER	X			X	LOGGINS, LAYUP - 05:14
		TOSTON, LAYUP - 05:43	05:03 - ALLEN, LAYUP	X	
	2-13 11	NORRIS, LAYUP - ,05:31		21-28 7	2 ^P
05:11 - , CERDA, 3PTR	3		04:35 - CERDA, 3PTR	X	
	5-13 8	SEALS, JUMPER - 04:39	04:32 - , WOOD, LAYUP	2 ^P	23-28 5
		TO		X	LOGGINS, LAYUP - 04:17
		TEAM TURN - ,04:34	03:58 - CERDA, LAYUP	X	
04:18 - , ALLEN, LAYUP	2 ^P			X	
04:17 - ALLEN, FT	1		03:56 - WOOD, LAYUP	X	
		NORRIS, LAYUP - 03:54	03:45 - NIX, 3PTR	X	
		LOGGINS, LAYUP - ,03:50			X
03:24 - HARRIS, 3PTR	X				X
		LOGGINS, LAYUP - 03:03	03:03 - HARRIS, 3PTR	X	
				23-30 7	2 ^P
02:43 - , HARRIS, 3PTR	3		02:23 - SANDERS TURN	TO	NORRIS, LAYUP - ,02:50
	11-15 4				

			TO MAWHINNEY TURN	
02:16,-	2	13-15 2	,02:28	
,WOOD,JUMPER				
		13-18 5	3 MAWHINNEY,3PTR,-	
			,01:53	
01:30 -	X			
CERDA,JUMPER				
			X LOGGINS,LAYUP -	
			01:14	
01:00 - CERDA,3PTR	X			
			X GORDON,JUMPER -	
			00:44	
		13-20 7	2P LOGGINS,LAYUP,-	
			,00:41	
00:14,-,ALLEN,FT	1	14-20 6		
00:14,-,ALLEN,FT	1	15-20 5		
		15-21 6	1 AGNEW,FT,-,00:02	
			X AGNEW,FT - 00:02	

		23-32 9	2P	SEALS,LAYUP,-	
				,02:16	
01:58 -	X				
WOOD,JUMPER					
01:48 -	X				
ALLEN,JUMPER					
01:32 - SANDERS,FT	X				
01:32 - SANDERS,FT	X				
01:28,-	2	25-32 7			
,CERDA,JUMPER					
		25-34 9	2P LOGGINS,LAYUP,-		
			,01:16		
01:04 -	X				
ALLEN,JUMPER					
01:01 -	X				
SANDERS,LAYUP					
		25-35 10	1 TOSTON,FT,-,00:37		
		25-36 11	1 TOSTON,FT,-,00:37		
00:15 -	X				
WOOD,JUMPER					
		25-38 13	2P TOSTON,LAYUP,-		
			,00:03		

		Period 3			
Chicago State	Score			Utah Valley	
09:51 - CERDA,3PTR	X				
			TO SEALS TURN -,		
			,09:34		
09:27,-,ALLEN TURN			TO		
		25-40 15	2PF	TOSTON,LAYUP,-	
				,09:24	
09:04,-	2	27-40 13			
,SANDERS,JUMPER					
		27-42 15	2	SEALS,JUMPER,-	
				,08:32	
08:19 -	X				
ALLEN,JUMPER					
		27-44 17	2P	TOSTON,LAYUP,-	
				,08:07	
07:35 - CERDA,3PTR	X				
				TO TOSTON TURN -	
				,07:26	
07:19,-,ALLEN,FT	1	28-44 16			
07:19,-,ALLEN,FT	1	29-44 15			
			X	LOGGINS,FT - 07:02	
		29-45 16	1	LOGGINS,FT,-,07:02	
06:42 -	X				
SANDERS,JUMPER					
		29-48 19	3	MAWHINNEY,3PTR,-	
				,06:26	
06:07,-	3	32-48 16			
,CERDA,3PTR					
			X	BLANKS,JUMPER -	
				05:49	
05:39 -	X				
SANDERS,LAYUP					
			X	LOGGINS,LAYUP -	
				05:23	

		Period 4			
Chicago State	Score			Utah Valley	
09:18,-,SANDERS				AGNEW TURN -	
TURN				,09:33	
			TO		
		39-64 25	2P	BLANKS,LAYUP,-	
				,09:01	
08:38,-	2P	41-64 23			
,SANDERS,LAYUP					
				TO BLANKS TURN -	
				,08:23	
08:08 -	X				
SANDERS,JUMPER					
		41-66 25	2PF	GORDON,LAYUP,-	
				,08:01	
07:29,-	2P	43-66 23			
,SANDERS,LAYUP					
				TO AGNEW TURN -	
				,07:10	
07:00 -	X				
CERDA,JUMPER					
				X PRECIADO,JUMPER	
				- 06:39	
				TO PRECIADO TURN -	
				,06:35	
06:32,-,ALLEN					
TURN					
		43-68 25	2P	LOGGINS,LAYUP,-	
				,06:17	
06:00 -	X				
ALLEN,LAYUP					
		43-69 26	1	MAWHINNEY,FT,-	
				,05:58	

05:16,-
 ,CERDA,LAYUP

2 ^P	34-48 14
----------------	-------------

X

 BLANKS,JUMPER -
 05:00

04:50 -
 SANDERS,LAYUP

X

34-51 17	3
-------------	---

 SEALS,3PTR,-,04:31

04:09,-,SANDERS
 TURN TO TO AGNEW TURN -
 ,03:57

03:45 - CERDA,3PTR

X

34-52 18	1
-------------	---

 SEALS,FT,-,03:33

X

 SEALS,FT - 03:33

03:12,-,NIX TURN TO TO GORDON TURN -
 ,02:53

02:49,-
 ,ALLEN,LAYUP

2 ^{PF}	36-52 16
-----------------	-------------

1	37-52 15
---	-------------

 NORRIS,LAYUP,-
 ,02:37

02:48,-,ALLEN,FT

1	37-54 17	2 ^P
---	-------------	----------------

 NORRIS,FT,-,02:02

1	37-56 19	1
---	-------------	---

 NORRIS,FT,-,02:02

02:13,-,ALLEN TURN TO TO LOGGINS,LAYUP,-
 ,01:33

01:52,-,ALLEN TURN TO TO TOSTON TURN -
 ,02:36

01:04 -
 WOOD,JUMPER

X

X

 MAWHINNEY,3PTR -
 00:46

37-59 22	1
-------------	---

 AGNEW,FT,-,00:28

37-60 23	1
-------------	---

 AGNEW,FT,-,00:28

00:14,-
 ,SANDERS,LAYUP

2 ^P	39-60 21
----------------	-------------

 GORDON,JUMPER,-
 ,00:03

00:14 - SANDERS,FT

X

39-62 23	2
-------------	---

 GORDON,JUMPER,-
 ,00:03

43-70
27 1 MAWHINNEY,FT,-
 ,05:58
 TO TOSTON TURN -
 ,05:48

05:36 -
 HARRIS,JUMPER

X

05:25,-,CERDA
 TURN TO TO MAWHINNEY,3PTR -
 05:08

04:56,-,ALLEN
 TURN TO TO LOGGINS,LAYUP,-
 ,04:41

04:24 - CERDA,FT

X

43-72 29	2 ^P
-------------	----------------

 GORDON,JUMPER -
 04:06

X

 TOSTON,JUMPER -
 03:54

X

 PERRY,JUMPER -
 03:41
 TO TOSTON TURN -
 ,03:28

03:16 -
 CERDA,JUMPER

X

 NIELSON,LAYUP -
 03:02

02:50,-,ALLEN
 TURN TO TO TOSTON TURN -
 ,02:36

02:24,-,CERDA
 TURN TO TO NIELSON,JUMPER -
 02:00

01:48 - BROWNE,FT

X

1	44-72 28
---	-------------

 GORDON TURN -
 ,01:39

01:48,-
 ,BROWNE,FT

1	44-72 28
---	-------------

 TO GORDON TURN -
 ,01:39

01:30 -
 BROWNE,JUMPER

X

44-74 30	2 ^P
-------------	----------------

 NIELSON,JUMPER,-
 ,01:15

00:47,-
 ,BROWNE,JUMPER

2 ^P	46-74 28
----------------	-------------

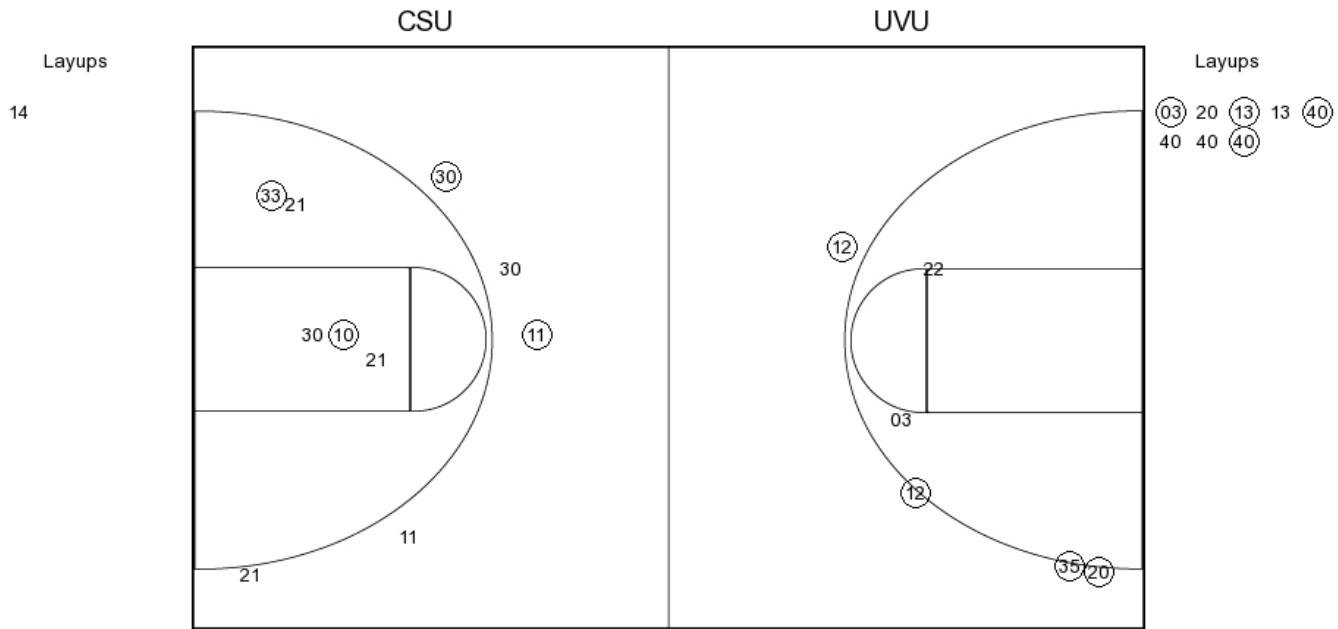
 PRECIADO,LAYUP -
 00:30

Chicago State vs Utah Valley

OFFICIAL SHOT CHART

1/23/2016 at Orem, Utah (UCCU Center)

PERIOD 1



CSU PERIOD 1

FG Made	8
FG Attempted	31
3PFG Made	4
3PFG Attempted	11

UVU PERIOD 1

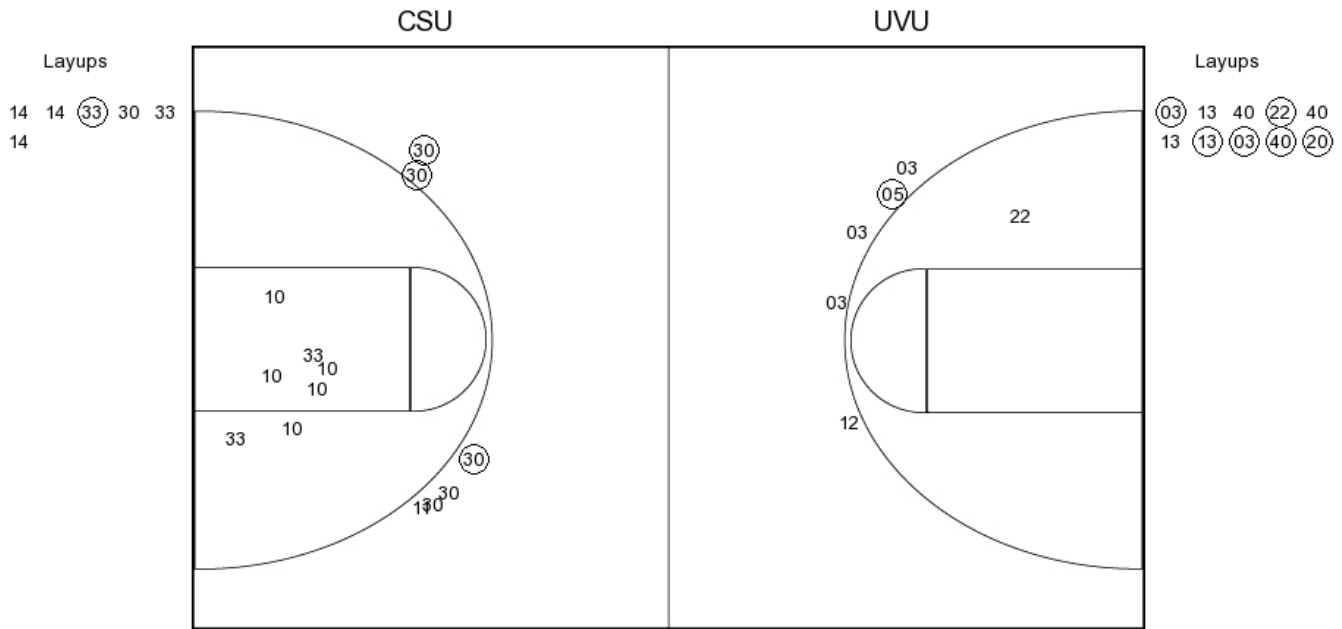
FG Made	15
FG Attempted	30
3PFG Made	5
3PFG Attempted	9

Chicago State vs Utah Valley

OFFICIAL SHOT CHART

1/23/2016 at Orem, Utah (UCCU Center)

PERIOD 2



CSU PERIOD 2

- FG Made
- FG Attempted
- 3PFG Made
- 3PFG Attempted

UVU PERIOD 2

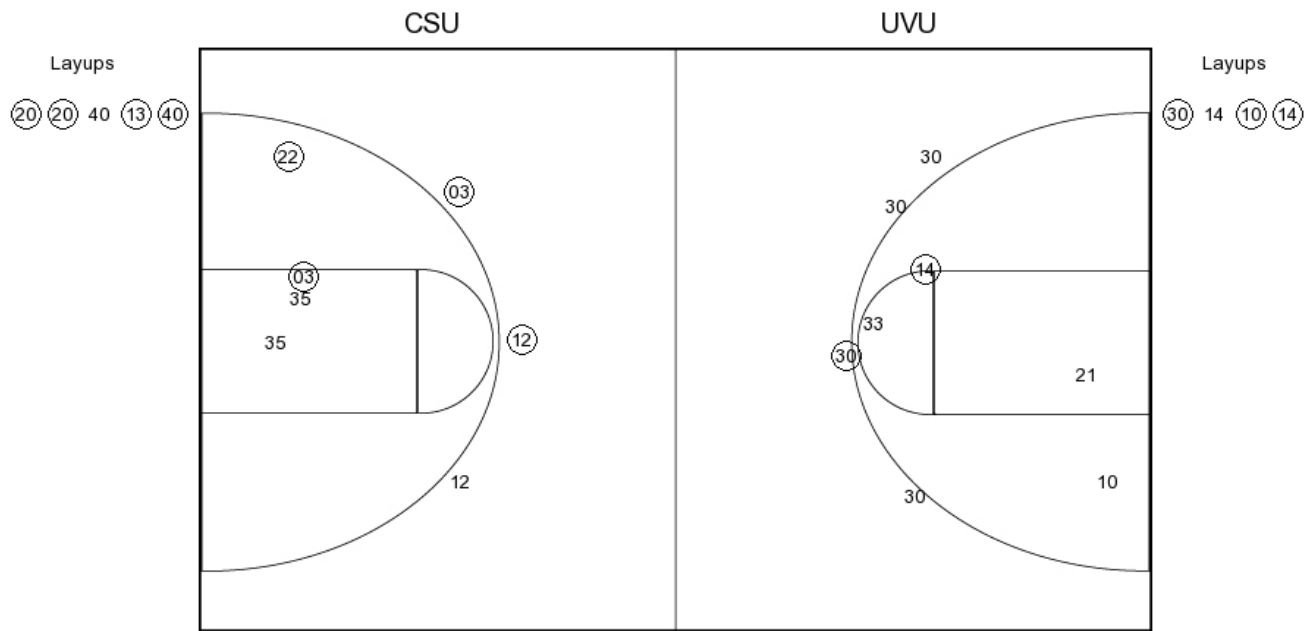
- FG Made
- FG Attempted
- 3PFG Made
- 3PFG Attempted

Chicago State vs Utah Valley

OFFICIAL SHOT CHART

1/23/2016 at Orem, Utah (UCCU Center)

PERIOD 3



CSU PERIOD 3

FG Made	8
FG Attempted	22
3PFG Made	1
3PFG Attempted	4

UVU PERIOD 3

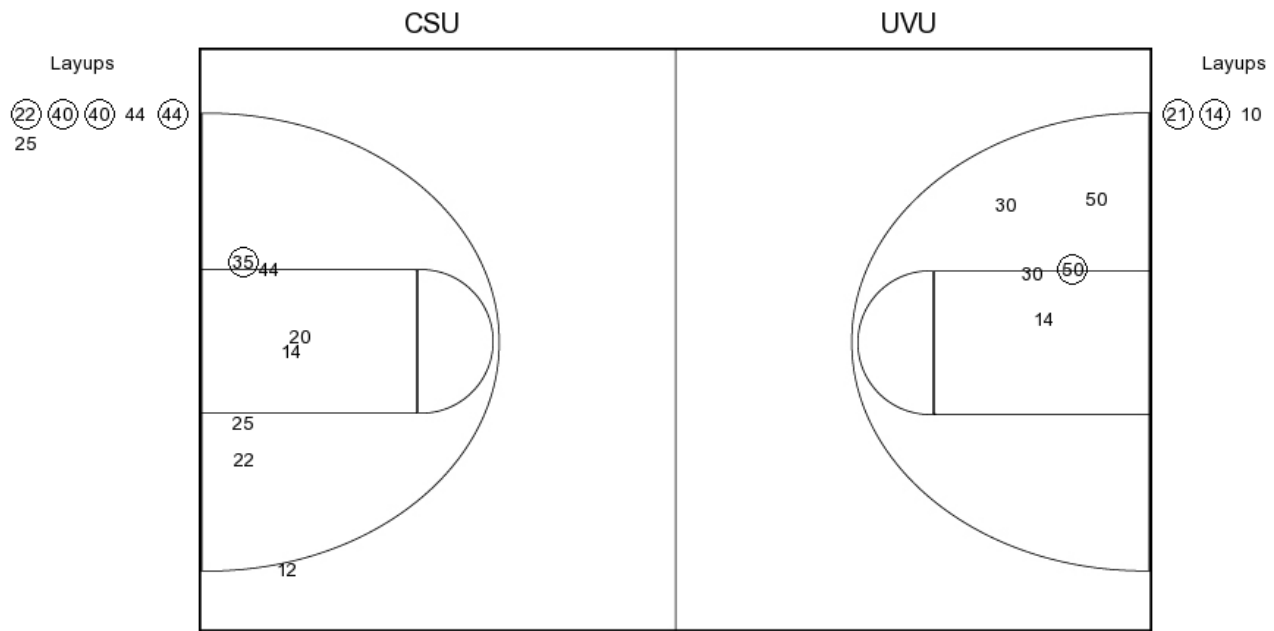
FG Made	13
FG Attempted	25
3PFG Made	2
3PFG Attempted	4

Chicago State vs Utah Valley

OFFICIAL SHOT CHART

1/23/2016 at Orem, Utah (UCCU Center)

PERIOD 4



CSU PERIOD 4

FG Made
FG Attempted
3PFG Made
3PFG Attempted

UVU PERIOD 4

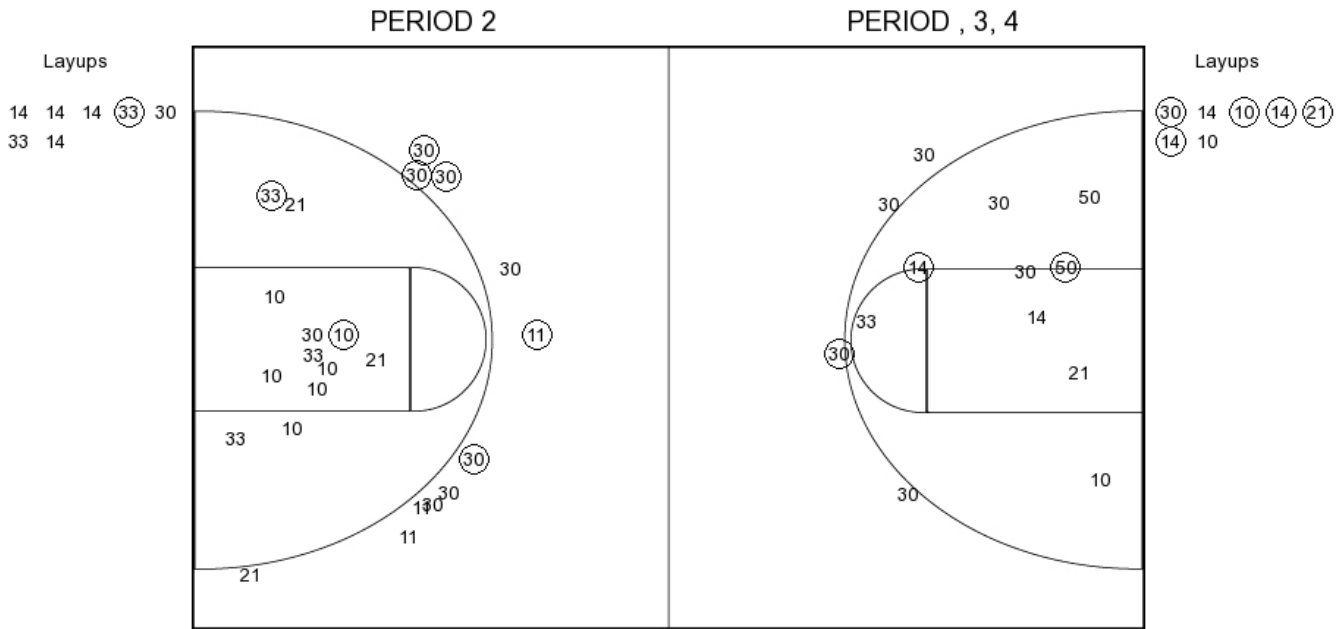
FG Made
FG Attempted
3PFG Made
3PFG Attempted

Chicago State vs Utah Valley

OFFICIAL SHOT CHART

1/23/2016 at Orem, Utah (UCCU Center)

Chicago State



CSU PERIOD 1

FG Made	8
FG Attempted	31
3PFG Made	4
3PFG Attempted	11

CSU PERIOD 2

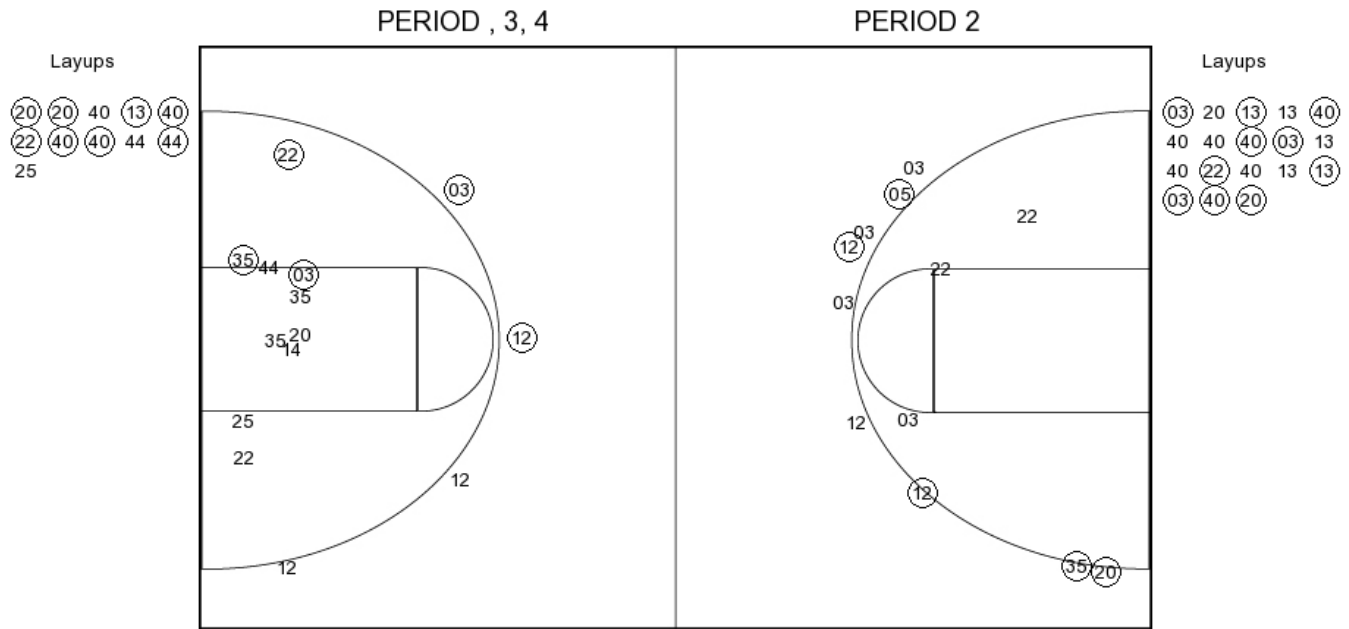
FG Made	
FG Attempted	
3PFG Made	
3PFG Attempted	

Chicago State vs Utah Valley

OFFICIAL SHOT CHART

1/23/2016 at Orem, Utah (UCCU Center)

Utah Valley



UVU PERIOD 1

FG Made	15
FG Attempted	30
3PFG Made	5
3PFG Attempted	9

UVU PERIOD 2

FG Made	
FG Attempted	
3PFG Made	
3PFG Attempted	