

UTAH VALLEY VS. UNIVERSITY OF MISSOURI - KANSAS CITY



1/21/2016

Orem, Utah (UCCU Center)

FINAL STATS

Utah Valley

(8-11, 1-3)

79

Missouri-Kansas City

(6-12, 1-4)

71

Start Time: 5 p.m. MT

Officials: Anita Ortega, Jack Jones, Darren Krzesnik

Attendance: 222

Official Basketball Box Score -- Game Totals -- Final Statistics
Missouri-Kansas City vs Utah Valley
1/21/2016 5 p.m. MT at Orem, Utah (UCCU Center)

Missouri-Kansas City 71 - 6-12, 1-4

##	Player	S	Total			Rebounds			PF	TP	A	TO	Blk	Stl	Min
			FG-FGA	3PT	FG-FGA	FT-FTA	Off Reb	Def Reb							
01	DILLARD,DAIJANE	g	0-2	0-1	0-0	0	1	1	1	0	3	3	0	1	26
10	WASHINGTON,ARIES	g	8-11	0-0	0-1	2	6	8	4	16	7	0	0	0	36
13	LEATHERS,TAYLOR	g	7-19	2-5	0-0	4	3	7	4	16	1	2	0	0	38
22	WALDRON,SAMANTHA	g	3-6	3-6	2-4	0	2	2	4	11	2	1	0	0	32
32	LAW,KIANA	f	6-10	0-0	4-5	3	4	7	3	16	0	1	0	1	30
02	MOORE,KRISTEN		1-1	0-0	0-0	0	1	1	1	2	0	1	0	0	6
03	BONE,SIERRA		0-0	0-0	0-0	0	1	1	0	0	3	4	1	0	10
12	BARRETT,KELSEY		3-5	2-4	0-0	0	1	1	2	8	1	0	0	0	14
15	COLEMAN,CEIDRA		0-1	0-0	0-0	0	0	0	1	0	0	1	0	0	2
23	PAUL,LADERICA		0-0	0-0	0-0	0	0	0	0	0	0	0	0	0	0
41	HUSA,PAIGE		1-3	0-0	0-0	0	3	3	2	2	0	0	1	0	6
TEAM						2	0	2	0		0				
TOTALS			29-58	7-16	6-10	11	22	33	22	71	17	13	2	2	200

Deadball Rebounds: 1,0

FG %	1st Half: 15-29	51.7%	2nd Half: 14-29	48.3%	Game: 29-58	50.0%	3rd Qtr: 6-11	54.5%	4th Qtr: 8-18	44.4%
	1st Qtr: 7-15	46.7%	2nd Qtr: 8-14	57.1%	Game: 7-16	43.8%	3rd Qtr: 3-5	60.0%	4th Qtr: 0-5	00.0%
3FG %	1st Half: 4-6	66.7%	2nd Half: 3-10	30.0%	Game: 6-10	60.0%	3rd Qtr: 6-9	66.7%	4th Qtr: 0-0	0%
	1st Qtr: 3-4	75.0%	2nd Qtr: 1-2	50.0%	Game: 6-10	60.0%	3rd Qtr: 6-9	66.7%	4th Qtr: 0-0	0%
FT %	1st Half: 0-1	00.0%	2nd Half: 6-9	66.7%	Game: 6-10	60.0%	3rd Qtr: 6-9	66.7%	4th Qtr: 0-0	0%
	1st Qtr: 0-0	0%	2nd Qtr: 0-1	00.0%	Game: 6-10	60.0%	3rd Qtr: 6-9	66.7%	4th Qtr: 0-0	0%

Utah Valley 79 - 8-11, 1-3

##	Player	S	Total			Rebounds			PF	TP	A	TO	Blk	Stl	Min
			FG-FGA	3PT	FG-FGA	FT-FTA	Off Reb	Def Reb							
03	SEALS,MARIAH	g	2-11	1-6	7-8	0	1	1	2	12	6	0	0	3	37
12	MAWHINNEY,REBECCA	f	6-9	4-6	4-5	0	4	4	1	20	2	0	0	1	35
20	TOSTON,PATRICE	g	6-13	2-4	0-0	1	1	2	2	14	1	1	0	3	28
35	BLANKS,DEIJAH	g	3-5	1-1	2-4	1	5	6	4	9	1	0	2	2	35
40	LOGGINS,SAM	c	6-9	0-0	5-6	1	4	5	2	17	0	4	2	0	31
05	AGNEW,GEORGIA		1-2	0-0	1-2	0	2	2	2	3	2	1	0	0	18
22	GORDON,TAYLOR		1-2	0-1	0-0	0	3	3	2	2	3	1	0	1	15
44	NIELSON,HADLEY		1-1	0-0	0-0	0	0	0	1	2	0	0	0	0	1
TEAM						3	1	4	0		0				
TOTALS			26-52	8-18	19-25	6	21	27	16	79	15	7	4	10	200

Deadball Rebounds: 4,0

FG %	1st Half: 13-29	44.8%	2nd Half: 13-23	56.5%	Game: 26-52	50.0%	3rd Qtr: 6-11	54.5%	4th Qtr: 7-12	58.3%
	1st Qtr: 6-14	42.9%	2nd Qtr: 7-15	46.7%	Game: 8-18	44.4%	3rd Qtr: 2-3	66.7%	4th Qtr: 2-4	50.0%
3FG %	1st Half: 4-11	36.4%	2nd Half: 4-7	57.1%	Game: 19-25	76.0%	3rd Qtr: 9-11	81.8%	4th Qtr: 9-12	75.0%
	1st Qtr: 2-4	50.0%	2nd Qtr: 2-7	28.6%	Game: 19-25	76.0%	3rd Qtr: 9-11	81.8%	4th Qtr: 9-12	75.0%
FT %	1st Half: 1-2	50.0%	2nd Half: 18-23	78.3%	Game: 19-25	76.0%	3rd Qtr: 9-11	81.8%	4th Qtr: 9-12	75.0%
	1st Qtr: 0-0	0%	2nd Qtr: 1-2	50.0%	Game: 19-25	76.0%	3rd Qtr: 9-11	81.8%	4th Qtr: 9-12	75.0%

Officials: Anita Ortega, Jack Jones, Darren Krzesnik
 Technical Fouls: Missouri-Kansas City- None. Utah Valley- None.
 Attendance: 222

Score by periods	1st	2nd	3rd	4th	Total
Missouri-Kansas City	17	17	21	16	71
Utah Valley	14	17	23	25	79

Points	In Paint	Off T/O	2nd 2nd Chance	Fast Break	Bench
UMKC	20	8	12	0	12
UVU	30	19	12	4	7

Last FG - UMKC 4th-00:15, UVU 4th-01:55.
 Largest lead - Missouri-Kansas City by 9 3rd-05:20; Utah Valley by 8 4th-00:46
 UMKC led for 25:52. UVU led for 10:55. Game was tied for 3:13.

Score tied - 5 times
 Lead changed - 4 times

Official Basketball Box Score -- Game Totals -- First Half Statistics
Missouri-Kansas City vs Utah Valley
1/21/2016 5 p.m. MT at Orem, Utah (UCCU Center)

Missouri-Kansas City, 34, 6-12, 1-4

##	Player	S	Total			Rebounds			PF	TP	A	T	O	Blk	Stl	Min
			FG	FGA	3PT	FG-FGA	FT	F-TA								
01	DILLARD,DAIJANE	g	0-1		0-0	0-0	0	1	1	0	0	2	1	0	0	13
10	WASHINGTON,ARIES	g	4-5		0-0	0-1	1	5	6	0	8	5	0	0	0	17
13	LEATHERS,TAYLOR	g	5-10		2-3	0-0	1	1	2	0	12	1	1	0	0	18
22	WALDRON,SAMANTHA	g	0-1		0-1	0-0	0	1	1	1	0	1	0	0	0	13
32	LAW,KIANA	f	3-6		0-0	0-0	0	2	2	1	6	0	0	0	1	13
02	MOORE,KRISTEN		0-0		0-0	0-0	0	1	1	1	0	0	1	0	0	4
03	BONE,SIERRA		0-0		0-0	0-0	0	1	1	0	0	2	3	1	0	7
12	BARRETT,KELSEY		2-2		2-2	0-0	0	1	1	0	6	1	0	0	0	8
15	COLEMAN,CEIDRA		0-1		0-0	0-0	0	0	0	1	0	0	1	0	0	2
23	PAUL,LADERICA		0-0		0-0	0-0	0	0	0	0	0	0	0	0	0	0
41	HUSA,PAIGE		1-3		0-0	0-0	0	2	2	1	2	0	0	0	0	5
TEAM							1	0	1	0		0				
Totals			15-29		4-6	0-1	3	15	18	5	34	12	7	1	1	100
FG %	1st Qtr	7-15	46.7%	2nd Qtr	8-14	57.1%	Half:	15-29	51.7%							
3FG %	1st Qtr	3-4	75.0%	2nd Qtr	1-2	50.0%	Half:	4-6	66.7%							
FT %	1st Qtr	0-0	0%	2nd Qtr	0-1	00.0%	Half:	0-1	00.0%							

Utah Valley, 31, 8-11, 1-3

##	Player	S	Total			Rebounds			PF	TP	A	T	O	Blk	Stl	Min
			FG	FGA	3PT	FG-FGA	FT	F-TA								
03	SEALS,MARIAH	g	1-5		1-4	0-0	0	1	1	1	3	1	0	0	1	17
12	MAWHINNEY,REBECCA	f	2-5		1-3	0-0	0	3	3	0	5	0	0	0	0	17
20	TOSTON,PATRICE	g	4-8		1-2	0-0	0	0	0	1	9	1	1	0	3	12
35	BLANKS,DEIJAH	g	2-3		1-1	1-2	0	1	1	0	6	1	0	1	2	17
40	LOGGINS,SAM	c	3-6		0-0	0-0	0	3	3	1	6	0	3	1	0	15
05	AGNEW,GEORGIA		0-0		0-0	0-0	0	1	1	1	0	2	0	0	0	11
22	GORDON,TAYLOR		1-2		0-1	0-0	0	2	2	1	2	2	1	0	1	11
44	NIELSON,HADLEY		0-0		0-0	0-0	0	0	0	0	0	0	0	0	0	0
TEAM							1	1	2	0		0				
Totals			13-29		4-11	1-2	1	12	13	5	31	7	5	2	7	100
FG %	1st Qtr	6-14	42.9%	2nd Qtr	7-15	46.7%	Half:	13-29	44.8%							
3FG %	1st Qtr	2-4	50.0%	2nd Qtr	2-7	28.6%	Half:	4-11	36.4%							
FT %	1st Qtr	0-0	0%	2nd Qtr	1-2	50.0%	Half:	1-2	50.0%							

Officials: Anita Ortega, Jack Jones, Darren Krzesnik
 Technical Fouls: Missouri-Kansas City- None. Utah Valley- None.

Score by periods	1st	2nd	3rd	4th	Total
Missouri-Kansas City	17	17	21	16	71
Utah Valley	14	17	23	25	79

Points	In Paint	Off T/O	2nd 2nd Chance	Fast Fast Break	Bench
UMKC	6	4	2	0	8
	16	10	2	2	2

Last FG - UMKC 2nd-00:51, UVU 2nd-00:00.
 UMKC led for 15:20. UVU led for 1:48. Game was tied for 2:52.

Score tied - 4 times
 Lead changed - 3 times

Missouri-Kansas City vs Utah Valley
1/21/2016; 5 p.m. MT at Orem, Utah (UCCU Center)
Period 1 Play-By-Play

VISITORS: Missouri-Kansas City	Time	Score	Margin	HOME: Utah Valley
TURNOVER by DILLARD,DAIJANE	09:51			
	09:50			STEAL by BLANKS,DEIJAH
	09:37	2-0	H 2	GOOD! JUMPER by LOGGINS,SAM [PNT]
	09:37			ASSIST by SEALS,MARIAH
GOOD! LAYUP by LAW,KIANA [PNT]	09:10	2-2	T	
ASSIST by WASHINGTON,ARIES	09:10			
	08:55	4-2	H 2	GOOD! LAYUP by TOSTON,PATRICE [PNT]
MISSED JUMPER by WASHINGTON,ARIES	08:37			
REBOUND (OFF) by WASHINGTON,ARIES	08:37			
GOOD! LAYUP by LAW,KIANA [PNT]	08:09	4-4	T	
ASSIST by WASHINGTON,ARIES	08:09			
	07:52			MISSED JUMPER by LOGGINS,SAM
REBOUND (DEF) by LAW,KIANA	07:52			
GOOD! 3PTR by LEATHERS,TAYLOR	07:23	4-7	V 3	
	07:01			TURNOVER by LOGGINS,SAM
	07:01			FOUL by LOGGINS,SAM
GOOD! JUMPER by WASHINGTON,ARIES	06:32	4-9	V 5	
FOUL by WALDRON,SAMANTHA	06:24			
SUB IN: BARRETT,KELSEY	06:24			
SUB IN: BONE,SIERRA	06:24			
SUB OUT: DILLARD,DAIJANE	06:24			
SUB OUT: WALDRON,SAMANTHA	06:24			
	06:16			TURNOVER by LOGGINS,SAM
TURNOVER by BONE,SIERRA	06:11			
	06:09			STEAL by TOSTON,PATRICE
	06:08			MISSED LAYUP by TOSTON,PATRICE
BLOCK by BONE,SIERRA	06:08			
REBOUND (DEF) by BARRETT,KELSEY	06:06			
MISSED JUMPER by LEATHERS,TAYLOR	05:55			
	05:55			REBOUND (DEF) by BLANKS,DEIJAH
	05:34			MISSED 3PTR by MAWHINNEY,REBECCA
REBOUND (DEF) by WASHINGTON,ARIES	05:34			
MISSED JUMPER by LAW,KIANA	05:20			
	05:20			REBOUND (DEF) by LOGGINS,SAM
	05:05			MISSED LAYUP by LOGGINS,SAM
REBOUND (DEF) by BONE,SIERRA	05:05			
GOOD! 3PTR by BARRETT,KELSEY	04:54	4-12	V 8	
ASSIST by BONE,SIERRA	04:54			
	04:35	7-12	V 5	GOOD! 3PTR by SEALS,MARIAH
	04:35			ASSIST by TOSTON,PATRICE
	04:14			FOUL by SEALS,MARIAH
TIMEOUT MEDIA	04:14			
SUB IN: MOORE,KRISTEN	04:14			
SUB IN: HUSA,PAIGE	04:14			
SUB OUT: LEATHERS,TAYLOR	04:14			
SUB OUT: LAW,KIANA	04:14			
	04:14			SUB IN: AGNEW,GEORGIA
	04:14			SUB IN: GORDON,TAYLOR
	04:14			SUB OUT: TOSTON,PATRICE
	04:14			SUB OUT: LOGGINS,SAM
GOOD! 3PTR by BARRETT,KELSEY	04:06	7-15	V 8	
ASSIST by WASHINGTON,ARIES	04:06			
	03:44			MISSED 3PTR by GORDON,TAYLOR

VISITORS: Missouri-Kansas City	Time	Score	Margin	HOME: Utah Valley
REBOUND (DEF) by HUSA,PAIGE	03:44			
MISSED LAYUP by HUSA,PAIGE	03:24			
	03:24			REBOUND (DEF) by MAWHINNEY,REBECCA
	03:14	10-15	V 5	GOOD! 3PTR by MAWHINNEY,REBECCA
	03:14			ASSIST by AGNEW,GEORGIA
GOOD! LAYUP by HUSA,PAIGE [PNT]	03:00	10-17	V 7	
ASSIST by BONE,SIERRA	03:00			
	02:37			MISSED LAYUP by BLANKS,DEIJAH
REBOUND (DEF) by WASHINGTON,ARIES	02:37			
MISSED LAYUP by HUSA,PAIGE	02:21			
	02:21			REBOUND (DEF) by MAWHINNEY,REBECCA
FOUL by HUSA,PAIGE	02:02			
SUB IN: WALDRON,SAMANTHA	02:02			
SUB IN: LEATHERS,TAYLOR	02:02			
SUB IN: DILLARD,DAIJANE	02:02			
SUB IN: COLEMAN,CEIDRA	02:02			
SUB OUT: BARRETT,KELSEY	02:02			
SUB OUT: WASHINGTON,ARIES	02:02			
SUB OUT: BONE,SIERRA	02:02			
SUB OUT: HUSA,PAIGE	02:02			
	02:01			MISSED LAYUP by MAWHINNEY,REBECCA
REBOUND (DEF) by MOORE,KRISTEN	02:01			
MISSED JUMPER by COLEMAN,CEIDRA	01:53			
REBOUND (OFF) by LEATHERS,TAYLOR	01:53			
MISSED JUMPER by LEATHERS,TAYLOR	01:40			
	01:40			REBOUND (DEF) by SEALS,MARIAH
	01:31			MISSED JUMPER by SEALS,MARIAH
REBOUND (DEF) by LEATHERS,TAYLOR	01:31			
MISSED 3PTR by WALDRON,SAMANTHA	01:12			
	01:12			REBOUND (DEF) by GORDON,TAYLOR
	00:54	12-17	V 5	GOOD! JUMPER by BLANKS,DEIJAH [PNT]
TURNOVER by COLEMAN,CEIDRA	00:32			
	00:30			STEAL by SEALS,MARIAH
FOUL by COLEMAN,CEIDRA	00:02			
	00:02	14-17	V 3	GOOD! LAYUP by MAWHINNEY,REBECCA [PNT]
	00:02			ASSIST by GORDON,TAYLOR
SUB IN: LAW,KIANA	00:02			
SUB OUT: MOORE,KRISTEN	00:02			
	00:02			SUB IN: LOGGINS,SAM
	00:02			SUB OUT: BLANKS,DEIJAH

Missouri-Kansas City 17, Utah Valley 14

Period 1-only	In Paint	Off T/O	2nd Chance	Fast Break	Bench	****
UMKC	6	2	2	0	8	Score tied - 4 times
UVU	8	4	0	0	0	Lead changed - 2 times

Missouri-Kansas City vs Utah Valley
1/21/2016; 5 p.m. MT at Orem, Utah (UCCU Center)
Period 2 Play-By-Play

VISITORS: Missouri-Kansas City	Time	Score	Margin	HOME: Utah Valley
	10:00			SUB IN: GORDON,TAYLOR
	10:00			SUB IN: AGNEW,GEORGIA
	10:00			SUB OUT: SEALS,MARIAH
	10:00			SUB OUT: BLANKS,DEIJAH
	09:48			TURNOVER by LOGGINS,SAM
MISSED JUMPER by LEATHERS,TAYLOR	09:26			
	09:26			REBOUND (DEF) by LOGGINS,SAM
	09:10			MISSED LAYUP by LOGGINS,SAM
REBOUND (DEF) by LAW,KIANA	09:10			
	08:52			FOUL by AGNEW,GEORGIA
GOOD! JUMPER by WASHINGTON,ARIES	08:44	14-19	V 5	
	08:43			FOUL by TOSTON,PATRICE
MISSED FT by WASHINGTON,ARIES	08:43			
	08:43			REBOUND (DEF) by AGNEW,GEORGIA
	08:32			MISSED JUMPER by TOSTON,PATRICE
	08:32			REBOUND (OFF) by TEAM
	08:13	16-19	V 3	GOOD! JUMPER by LOGGINS,SAM [PNT]
	08:13			ASSIST by GORDON,TAYLOR
MISSED LAYUP by LEATHERS,TAYLOR	07:40			
	07:40			REBOUND (DEF) by GORDON,TAYLOR
	07:24			TURNOVER by TOSTON,PATRICE
STEAL by LAW,KIANA	07:23			
GOOD! JUMPER by WASHINGTON,ARIES	07:18	16-21	V 5	
ASSIST by DILLARD,DAIJANE	07:18			
FOUL by LAW,KIANA	06:56			
SUB IN: BARRETT,KELSEY	06:56			
SUB IN: HUSA,PAIGE	06:56			
SUB IN: BONE,SIERRA	06:56			
SUB OUT: DILLARD,DAIJANE	06:56			
SUB OUT: WALDRON,SAMANTHA	06:56			
SUB OUT: LAW,KIANA	06:56			
	06:56			SUB IN: SEALS,MARIAH
	06:56			SUB IN: BLANKS,DEIJAH
	06:56			SUB OUT: GORDON,TAYLOR
	06:56			SUB OUT: MAWHINNEY,REBECCA
	06:37	19-21	V 2	GOOD! 3PTR by TOSTON,PATRICE
	06:37			ASSIST by AGNEW,GEORGIA
TURNOVER by BONE,SIERRA	06:28			
	06:27			STEAL by TOSTON,PATRICE
	06:25	21-21	T	GOOD! LAYUP by TOSTON,PATRICE [FB/PNT]
TURNOVER by BONE,SIERRA	06:06			
	06:04			STEAL by TOSTON,PATRICE
	05:39			MISSED 3PTR by TOSTON,PATRICE
REBOUND (DEF) by WASHINGTON,ARIES	05:39			
GOOD! JUMPER by LEATHERS,TAYLOR	05:22	21-23	V 2	
ASSIST by BARRETT,KELSEY	05:22			
	05:05	23-23	T	GOOD! JUMPER by TOSTON,PATRICE [PNT]
GOOD! JUMPER by LEATHERS,TAYLOR	04:40	23-25	V 2	
ASSIST by WASHINGTON,ARIES	04:40			
	04:15			MISSED JUMPER by TOSTON,PATRICE
REBOUND (DEF) by HUSA,PAIGE	04:15			
TIMEOUT 30SEC	04:12			
SUB IN: LAW,KIANA	04:12			

VISITORS: Missouri-Kansas City	Time	Score	Margin	HOME: Utah Valley
SUB IN: WALDRON,SAMANTHA	04:12			
SUB IN: MOORE,KRISTEN	04:12			
SUB IN: DILLARD,DAIJANE	04:12			
SUB OUT: WASHINGTON,ARIES	04:12			
SUB OUT: LEATHERS,TAYLOR	04:12			
SUB OUT: HUSA,PAIGE	04:12			
SUB OUT: BONE,SIERRA	04:12			
	04:12			SUB IN: GORDON,TAYLOR
	04:12			SUB IN: MAWHINNEY,REBECCA
	04:12			SUB OUT: TOSTON,PATRICE
	04:12			SUB OUT: LOGGINS,SAM
TURNOVER by MOORE,KRISTEN	04:09			
	04:07			STEAL by GORDON,TAYLOR
FOUL by MOORE,KRISTEN	03:59			
	03:59			MISSED FT by BLANKS,DEIJAH
	03:59			REBOUND (DEADB) by TEAM
	03:59	24-25	V 1	GOOD! FT by BLANKS,DEIJAH
SUB IN: LEATHERS,TAYLOR	03:58			
SUB OUT: MOORE,KRISTEN	03:58			
	03:55			FOUL by GORDON,TAYLOR
GOOD! JUMPER by LEATHERS,TAYLOR	03:51	24-27	V 3	
ASSIST by DILLARD,DAIJANE	03:51			
	03:28			TURNOVER by GORDON,TAYLOR
MISSED JUMPER by LAW,KIANA	03:12			
	03:12			REBOUND (DEF) by TEAM
SUB IN: WASHINGTON,ARIES	03:08			
SUB OUT: BARRETT,KELSEY	03:08			
	03:08			SUB IN: LOGGINS,SAM
	03:08			SUB OUT: AGNEW,GEORGIA
	02:58	26-27	V 1	GOOD! JUMPER by LOGGINS,SAM [PNT]
	02:58			ASSIST by BLANKS,DEIJAH
MISSED LAYUP by LAW,KIANA	02:41			
	02:41			BLOCK by LOGGINS,SAM
	02:38			REBOUND (DEF) by MAWHINNEY,REBECCA
	02:22	28-27	H 1	GOOD! JUMPER by GORDON,TAYLOR
GOOD! 3PTR by LEATHERS,TAYLOR	01:47	28-30	V 2	
ASSIST by WASHINGTON,ARIES	01:47			
	01:32			MISSED 3PTR by MAWHINNEY,REBECCA
REBOUND (DEF) by WASHINGTON,ARIES	01:32			
GOOD! JUMPER by LAW,KIANA	01:21	28-32	V 4	
ASSIST by LEATHERS,TAYLOR	01:21			
	01:04			MISSED 3PTR by SEALS,MARIAH
REBOUND (DEF) by WALDRON,SAMANTHA	01:04			
GOOD! JUMPER by WASHINGTON,ARIES	00:51	28-34	V 6	
ASSIST by WALDRON,SAMANTHA	00:51			
	00:42			MISSED 3PTR by SEALS,MARIAH
REBOUND (DEF) by WASHINGTON,ARIES	00:42			
MISSED LAYUP by DILLARD,DAIJANE	00:18			
	00:18			BLOCK by BLANKS,DEIJAH
REBOUND (OFF) by TEAM	00:17			
MISSED 3PTR by LEATHERS,TAYLOR	00:17			
	00:17			REBOUND (DEF) by LOGGINS,SAM
SUB IN: HUSA,PAIGE	00:17			
SUB OUT: LAW,KIANA	00:17			
	00:08			MISSED 3PTR by SEALS,MARIAH
REBOUND (DEF) by DILLARD,DAIJANE	00:08			
	00:02			SUB IN: TOSTON,PATRICE
	00:02			SUB IN: AGNEW,GEORGIA

VISITORS: Missouri-Kansas City	Time	Score	Margin	HOME: Utah Valley
	00:02			SUB OUT: LOGGINS,SAM
	00:02			SUB OUT: MAWHINNEY,REBECCA
TURNOVER by LEATHERS,TAYLOR	00:01			
	00:00			STEAL by BLANKS,DEIJAH
	00:00	31-34	V 3	GOOD! 3PTR by BLANKS,DEIJAH

Missouri-Kansas City 34, Utah Valley 31

Period 2-only	In Paint	Off T/O	2nd Chance	Fast Break	Bench	****
UMKC	0	2	0	0	0	Score tied - 0 times
UVU	8	6	2	2	2	Lead changed - 2 times

Official Basketball Box Score -- Game Totals -- Second Half Statistics
Missouri-Kansas City vs Utah Valley
1/21/2016 5 p.m. MT at Orem, Utah (UCCU Center)

Missouri-Kansas City, 37, 6-12, 1-4

##	Player	S	Total			Rebounds			PF	TP	A	T	O	Blk	Stl	Min
			FG-FGA	3PT	FG-FGA	FT-FTA	Off Reb	Def Reb								
01	DILLARD,DAIJANE	g	0-1	0-1	0-0	0	0	0	1	0	1	2	0	1	13	
10	WASHINGTON,ARIES	g	4-6	0-0	0-0	1	1	2	4	8	2	0	0	0	19	
13	LEATHERS,TAYLOR	g	2-9	0-2	0-0	3	2	5	4	4	0	1	0	0	20	
22	WALDRON,SAMANTHA	g	3-5	3-5	2-4	0	1	1	3	11	1	1	0	0	19	
32	LAW,KIANA	f	3-4	0-0	4-5	3	2	5	2	10	0	1	0	0	17	
02	MOORE,KRISTEN		1-1	0-0	0-0	0	0	0	0	2	0	0	0	0	2	
03	BONE,SIERRA		0-0	0-0	0-0	0	0	0	0	0	1	1	0	0	3	
12	BARRETT,KELSEY		1-3	0-2	0-0	0	0	0	2	2	0	0	0	0	6	
15	COLEMAN,CEIDRA		0-0	0-0	0-0	0	0	0	0	0	0	0	0	0	0	
23	PAUL,LADERICA		0-0	0-0	0-0	0	0	0	0	0	0	0	0	0	0	
41	HUSA,PAIGE		0-0	0-0	0-0	0	1	1	1	0	0	0	1	0	1	
TEAM						1	0	1	0		0					
Totals			14-29	3-10	6-9	8	7	15	17	37	5	6	1	1	100	
FG %	3rd Qtr	6-11	54.5%	4th Qtr	8-18	44.4%	Half:	14-29	48.3%							
3FG %	3rd Qtr	3-5	60.0%	4th Qtr	0-5	00.0%	Half:	3-10	66.7%							
FT %	3rd Qtr	6-9	66.7%	4th Qtr	0-0	0%	Half:	6-9	66.7%							

Utah Valley, 48, 8-11, 1-3

##	Player	S	Total			Rebounds			PF	TP	A	T	O	Blk	Stl	Min
			FG-FGA	3PT	FG-FGA	FT-FTA	Off Reb	Def Reb								
03	SEALS,MARIAH	g	1-6	0-2	7-8	0	0	0	1	9	5	0	0	2	20	
12	MAWHINNEY,REBECCA	f	4-4	3-3	4-5	0	1	1	1	15	2	0	0	1	18	
20	TOSTON,PATRICE	g	2-5	1-2	0-0	1	1	2	1	5	0	0	0	0	16	
35	BLANKS,DEIJAH	g	1-2	0-0	1-2	1	4	5	4	3	0	0	1	0	18	
40	LOGGINS,SAM	c	3-3	0-0	5-6	1	1	2	1	11	0	1	1	0	16	
05	AGNEW,GEORGIA		1-2	0-0	1-2	0	1	1	1	3	0	1	0	0	7	
22	GORDON,TAYLOR		0-0	0-0	0-0	0	1	1	1	0	1	0	0	0	4	
44	NIELSON,HADLEY		1-1	0-0	0-0	0	0	0	1	2	0	0	0	0	1	
TEAM						2	0	2	0		0					
Totals			13-23	4-7	18-23	5	9	14	11	48	8	2	2	3	100	
FG %	3rd Qtr	6-11	54.5%	4th Qtr	7-12	58.3%	Half:	13-23	56.5%							
3FG %	3rd Qtr	2-3	66.7%	4th Qtr	2-4	50.0%	Half:	4-7	36.4%							
FT %	3rd Qtr	9-11	81.8%	4th Qtr	9-12	75.0%	Half:	18-23	78.3%							

Officials: Anita Ortega, Jack Jones, Darren Krzesnik
 Technical Fouls: Missouri-Kansas City- None. Utah Valley- None.

Score by periods	1st	2nd	3rd	4th	Total
Missouri-Kansas City	17	17	21	16	71
Utah Valley	14	17	23	25	79

Points	In	Off	2nd	Fast	Bench
	Paint	Off T/O	2nd Chance	Fast Break	
UMKC	14	4	10	0	4
	14	9	5	2	5

Last FG - UMKC 4th-00:15, UVU 4th-01:55.
 UMKC led for 10:32. UVU led for 9:07. Game was tied for 0:21.

Score tied - 1 times
 Lead changed - 1 times

Missouri-Kansas City vs Utah Valley
1/21/2016; 5 p.m. MT at Orem, Utah (UCCU Center)
Period 3 Play-By-Play

VISITORS: Missouri-Kansas City	Time	Score	Margin	HOME: Utah Valley
FOUL by WASHINGTON,ARIES	09:36			
	09:36	32-34	V 2	GOOD! FT by LOGGINS,SAM
	09:36			MISSED FT by LOGGINS,SAM
REBOUND (DEF) by WASHINGTON,ARIES	09:36			
MISSED LAYUP by LEATHERS,TAYLOR	09:24			
	09:24			BLOCK by LOGGINS,SAM
REBOUND (OFF) by LEATHERS,TAYLOR	09:23			
GOOD! 3PTR by WALDRON,SAMANTHA	09:20	32-37	V 5	
ASSIST by DILLARD,DAIJANE	09:20			
	08:55			MISSED LAYUP by SEALS,MARIAH
REBOUND (DEF) by LAW,KIANA	08:55			
GOOD! 3PTR by WALDRON,SAMANTHA	08:35	32-40	V 8	
ASSIST by WASHINGTON,ARIES	08:35			
	08:12	34-40	V 6	GOOD! LAYUP by LOGGINS,SAM [PNT]
	08:12			ASSIST by MAWHINNEY,REBECCA
MISSED JUMPER by WASHINGTON,ARIES	07:49			
	07:49			REBOUND (DEF) by TOSTON,PATRICE
	07:41	37-40	V 3	GOOD! 3PTR by MAWHINNEY,REBECCA
	07:41			ASSIST by SEALS,MARIAH
FOUL by WASHINGTON,ARIES	07:37			
	07:37	38-40	V 2	GOOD! FT by MAWHINNEY,REBECCA
	07:37			SUB IN: AGNEW,GEORGIA
	07:37			SUB OUT: BLANKS,DEIJAH
	07:14			FOUL by TOSTON,PATRICE
GOOD! FT by LAW,KIANA	07:14	38-41	V 3	
MISSED FT by LAW,KIANA	07:14			
REBOUND (OFF) by LEATHERS,TAYLOR	07:14			
	07:13			FOUL by MAWHINNEY,REBECCA
GOOD! LAYUP by LAW,KIANA [PNT]	07:01	38-43	V 5	
	06:59			FOUL by LOGGINS,SAM
GOOD! FT by LAW,KIANA	06:59	38-44	V 6	
FOUL by LEATHERS,TAYLOR	06:45			
	06:33			TURNOVER by LOGGINS,SAM
STEAL by DILLARD,DAIJANE	06:32			
GOOD! JUMPER by LAW,KIANA [PNT]	06:16	38-46	V 8	
	06:01			MISSED LAYUP by SEALS,MARIAH
	06:01			REBOUND (OFF) by LOGGINS,SAM
FOUL by WALDRON,SAMANTHA	06:00			
SUB IN: BARRETT,KELSEY	05:59			
SUB OUT: WALDRON,SAMANTHA	05:59			
	05:59			SUB IN: BLANKS,DEIJAH
	05:59			SUB OUT: MAWHINNEY,REBECCA
FOUL by BARRETT,KELSEY	05:50			
	05:50			MISSED FT by AGNEW,GEORGIA
	05:50			REBOUND (DEADB) by TEAM
	05:50	39-46	V 7	GOOD! FT by AGNEW,GEORGIA
MISSED JUMPER by LAW,KIANA	05:39			
REBOUND (OFF) by TEAM	05:35			
	05:35			SUB IN: NIELSON,HADLEY
	05:35			SUB OUT: LOGGINS,SAM
	05:30			FOUL by BLANKS,DEIJAH
	05:30			SUB IN: GORDON,TAYLOR
	05:30			SUB OUT: TOSTON,PATRICE

VISITORS: Missouri-Kansas City	Time	Score	Margin	HOME: Utah Valley
	05:20			FOUL by NIELSON,HADLEY
GOOD! FT by LAW,KIANA	05:20	39-47	V 8	
GOOD! FT by LAW,KIANA	05:20	39-48	V 9	
	05:06	41-48	V 7	GOOD! JUMPER by NIELSON,HADLEY
	05:06			ASSIST by GORDON,TAYLOR
TURNOVER by LAW,KIANA	04:46			
	04:45			STEAL by SEALS,MARIAH
FOUL by DILLARD,DAIJANE	04:41			
	04:41			TIMEOUT MEDIA
	04:41	42-48	V 6	GOOD! FT by SEALS,MARIAH
	04:41	43-48	V 5	GOOD! FT by SEALS,MARIAH
SUB IN: WALDRON,SAMANTHA	04:41			
SUB IN: HUSA,PAIGE	04:41			
SUB OUT: WASHINGTON,ARIES	04:41			
SUB OUT: LAW,KIANA	04:41			
	04:41			SUB IN: LOGGINS,SAM
	04:41			SUB IN: TOSTON,PATRICE
	04:41			SUB OUT: AGNEW,GEORGIA
	04:41			SUB OUT: NIELSON,HADLEY
MISSED 3PTR by BARRETT,KELSEY	04:24			
	04:24			REBOUND (DEF) by GORDON,TAYLOR
	04:05			MISSED LAYUP by SEALS,MARIAH
BLOCK by HUSA,PAIGE	04:05			
REBOUND (DEF) by HUSA,PAIGE	04:03			
TURNOVER by DILLARD,DAIJANE	03:59			
	03:58			STEAL by SEALS,MARIAH
FOUL by HUSA,PAIGE	03:38			
	03:38	44-48	V 4	GOOD! FT by LOGGINS,SAM
	03:38	45-48	V 3	GOOD! FT by LOGGINS,SAM
SUB IN: MOORE,KRISTEN	03:38			
SUB IN: WASHINGTON,ARIES	03:38			
SUB OUT: BARRETT,KELSEY	03:38			
SUB OUT: HUSA,PAIGE	03:38			
	03:38			SUB IN: MAWHINNEY,REBECCA
	03:38			SUB OUT: LOGGINS,SAM
	03:35			FOUL by BLANKS,DEIJAH
GOOD! FT by WALDRON,SAMANTHA	03:35	45-49	V 4	
MISSED FT by WALDRON,SAMANTHA	03:35			
	03:35			REBOUND (DEF) by BLANKS,DEIJAH
	03:17			MISSED JUMPER by TOSTON,PATRICE
REBOUND (DEF) by WALDRON,SAMANTHA	03:17			
GOOD! JUMPER by MOORE,KRISTEN	02:51	45-51	V 6	
	02:31	47-51	V 4	GOOD! JUMPER by SEALS,MARIAH
	02:24			FOUL by GORDON,TAYLOR
MISSED FT by WALDRON,SAMANTHA	02:24			
REBOUND (DEADB) by TEAM	02:24			
GOOD! FT by WALDRON,SAMANTHA	02:24	47-52	V 5	
SUB IN: BONE,SIERRA	02:24			
SUB OUT: DILLARD,DAIJANE	02:24			
	02:01			MISSED 3PTR by SEALS,MARIAH
	02:01			REBOUND (OFF) by TOSTON,PATRICE
SUB IN: LAW,KIANA	01:39			
SUB OUT: MOORE,KRISTEN	01:39			
	01:39			SUB IN: LOGGINS,SAM
	01:39			SUB OUT: GORDON,TAYLOR
FOUL by LAW,KIANA	01:28			
	01:28	48-52	V 4	GOOD! FT by LOGGINS,SAM
	01:28	49-52	V 3	GOOD! FT by LOGGINS,SAM

VISITORS: Missouri-Kansas City	Time	Score	Margin	HOME: Utah Valley
GOOD! 3PTR by WALDRON,SAMANTHA	01:07	49-55	V 6	
ASSIST by BONE,SIERRA	01:07			
	00:48	51-55	V 4	GOOD! LAYUP by LOGGINS,SAM [PNT]
	00:48			ASSIST by SEALS,MARIAH
MISSED 3PTR by LEATHERS,TAYLOR	00:24			
	00:24			REBOUND (DEF) by MAWHINNEY,REBECCA
	00:02	54-55	V 1	GOOD! 3PTR by MAWHINNEY,REBECCA
	00:02			ASSIST by SEALS,MARIAH

Missouri-Kansas City 71, Utah Valley 79

Period 3-only	In Paint	Off T/O	2nd Chance	Fast Break	Bench	****
UMKC	4	2	8	0	2	Score tied - 0 times
UVU	4	4	3	0	3	Lead changed - 0 times

Missouri-Kansas City vs Utah Valley
1/21/2016; 5 p.m. MT at Orem, Utah (UCCU Center)
Period 4 Play-By-Play

VISITORS: Missouri-Kansas City	Time	Score	Margin	HOME: Utah Valley
SUB IN: BONE,SIERRA	10:00			
SUB OUT: DILLARD,DAIJANE	10:00			
GOOD! LAYUP by WASHINGTON,ARIES [PNT]	09:46	54-57	V 3	
	09:28	57-57	T	GOOD! 3PTR by TOSTON,PATRICE
TURNOVER by BONE,SIERRA	09:21			
SUB IN: DILLARD,DAIJANE	09:21			
SUB OUT: BONE,SIERRA	09:21			
FOUL by LEATHERS,TAYLOR	09:07			
	09:07			MISSED FT by MAWHINNEY,REBECCA
	09:07			REBOUND (DEADB) by TEAM
	09:07	58-57	H 1	GOOD! FT by MAWHINNEY,REBECCA
MISSED JUMPER by LEATHERS,TAYLOR	08:48			
	08:48			REBOUND (DEF) by BLANKS,DEIJAH
	08:37			MISSED JUMPER by TOSTON,PATRICE
REBOUND (DEF) by LEATHERS,TAYLOR	08:37			
TURNOVER by WALDRON,SAMANTHA	08:14			
	07:49			MISSED 3PTR by TOSTON,PATRICE
	07:49			REBOUND (OFF) by BLANKS,DEIJAH
	07:45	60-57	H 3	GOOD! LAYUP by MAWHINNEY,REBECCA [PNT]
TIMEOUT 30SEC	07:41			
	07:41			SUB IN: AGNEW,GEORGIA
	07:41			SUB OUT: TOSTON,PATRICE
MISSED LAYUP by LEATHERS,TAYLOR	07:26			
	07:26			REBOUND (DEF) by BLANKS,DEIJAH
	07:19	62-57	H 5	GOOD! LAYUP by BLANKS,DEIJAH [FB/PNT]
	07:19			ASSIST by SEALS,MARIAH
MISSED JUMPER by LEATHERS,TAYLOR	06:58			
REBOUND (OFF) by LAW,KIANA	06:58			
MISSED 3PTR by DILLARD,DAIJANE	06:50			
	06:50			REBOUND (DEF) by LOGGINS,SAM
	06:33			MISSED 3PTR by SEALS,MARIAH
REBOUND (DEF) by LAW,KIANA	06:33			
GOOD! JUMPER by LEATHERS,TAYLOR	06:12	62-59	H 3	
ASSIST by WASHINGTON,ARIES	06:12			
	05:53	64-59	H 5	GOOD! LAYUP by AGNEW,GEORGIA [PNT]
MISSED LAYUP by WASHINGTON,ARIES	05:24			
	05:24			BLOCK by BLANKS,DEIJAH
	05:22			REBOUND (DEF) by BLANKS,DEIJAH
	05:18			MISSED LAYUP by BLANKS,DEIJAH
	05:18			REBOUND (OFF) by TEAM
SUB IN: BARRETT,KELSEY	05:15			
SUB OUT: DILLARD,DAIJANE	05:15			
	05:15			SUB IN: GORDON,TAYLOR
	05:15			SUB IN: TOSTON,PATRICE
	05:15			SUB OUT: MAWHINNEY,REBECCA
	05:15			SUB OUT: BLANKS,DEIJAH
	04:57			MISSED JUMPER by AGNEW,GEORGIA
	04:57			REBOUND (OFF) by TEAM
	04:57			TIMEOUT media
	04:47			TURNOVER by AGNEW,GEORGIA
	04:47			SUB IN: BLANKS,DEIJAH
	04:47			SUB IN: MAWHINNEY,REBECCA
	04:47			SUB OUT: GORDON,TAYLOR

VISITORS: Missouri-Kansas City	Time	Score	Margin	HOME: Utah Valley
	04:47			SUB OUT: AGNEW,GEORGIA
MISSED 3PTR by WALDRON,SAMANTHA	04:22			
REBOUND (OFF) by LEATHERS,TAYLOR	04:22			
MISSED 3PTR by BARRETT,KELSEY	04:16			
REBOUND (OFF) by LAW,KIANA	04:16			
GOOD! LAYUP by BARRETT,KELSEY [PNT]	03:56	64-61	H 3	
	03:38	66-61	H 5	GOOD! LAYUP by LOGGINS,SAM [PNT]
	03:38			ASSIST by MAWHINNEY,REBECCA
GOOD! LAYUP by LAW,KIANA [PNT]	03:11	66-63	H 3	
	02:43	68-63	H 5	GOOD! LAYUP by TOSTON,PATRICE [PNT]
GOOD! JUMPER by WASHINGTON,ARIES	02:21	68-65	H 3	
ASSIST by WALDRON,SAMANTHA	02:21			
	01:55	71-65	H 6	GOOD! 3PTR by MAWHINNEY,REBECCA
	01:55			ASSIST by SEALS,MARIAH
	01:39			FOUL by BLANKS,DEIJAH
	01:39			SUB IN: AGNEW,GEORGIA
	01:39			SUB OUT: TOSTON,PATRICE
MISSED JUMPER by LEATHERS,TAYLOR	01:36			
REBOUND (OFF) by WASHINGTON,ARIES	01:31			
TURNOVER by LEATHERS,TAYLOR	01:21			
	01:21			STEAL by MAWHINNEY,REBECCA
FOUL by WALDRON,SAMANTHA	01:18			
FOUL by BARRETT,KELSEY	01:11			
FOUL by WASHINGTON,ARIES	01:10			
FOUL by LEATHERS,TAYLOR	01:06			
	01:06			MISSED FT by BLANKS,DEIJAH
	01:06			REBOUND (DEADB) by TEAM
	01:06	72-65	H 7	GOOD! FT by BLANKS,DEIJAH
SUB IN: DILLARD,DAIJANE	01:06			
SUB OUT: BARRETT,KELSEY	01:06			
	01:06			SUB IN: TOSTON,PATRICE
	01:06			SUB OUT: LOGGINS,SAM
MISSED 3PTR by WALDRON,SAMANTHA	00:58			
REBOUND (OFF) by LAW,KIANA	00:58			
TURNOVER by DILLARD,DAIJANE	00:50			
	00:50			TIMEOUT 30SEC
SUB IN: PAUL,LADERICA	00:50			
SUB OUT: DILLARD,DAIJANE	00:50			
	00:50			SUB IN: LOGGINS,SAM
	00:50			SUB OUT: TOSTON,PATRICE
FOUL by WASHINGTON,ARIES	00:46			
	00:46	73-65	H 8	GOOD! FT by SEALS,MARIAH
	00:46			MISSED FT by SEALS,MARIAH
REBOUND (DEF) by LEATHERS,TAYLOR	00:46			
SUB IN: DILLARD,DAIJANE	00:46			
SUB OUT: PAUL,LADERICA	00:46			
TIMEOUT 30SEC	00:44			
SUB IN: BONE,SIERRA	00:44			
SUB OUT: DILLARD,DAIJANE	00:44			
	00:44			SUB IN: TOSTON,PATRICE
	00:44			SUB OUT: LOGGINS,SAM
GOOD! LAYUP by WASHINGTON,ARIES [PNT]	00:39	73-67	H 6	
FOUL by LAW,KIANA	00:35			
	00:35	74-67	H 7	GOOD! FT by SEALS,MARIAH
	00:35	75-67	H 8	GOOD! FT by SEALS,MARIAH
TIMEOUT TEAM	00:35			
	00:34			FOUL by BLANKS,DEIJAH
	00:31			FOUL by SEALS,MARIAH

VISITORS: Missouri-Kansas City	Time	Score	Margin	HOME: Utah Valley
GOOD! LAYUP by WASHINGTON,ARIES [PNT]	00:26	75-69	H 6	
FOUL by WALDRON,SAMANTHA	00:21			
	00:21	76-69	H 7	GOOD! FT by MAWHINNEY,REBECCA
	00:21	77-69	H 8	GOOD! FT by MAWHINNEY,REBECCA
	00:18			FOUL by AGNEW,GEORGIA
GOOD! JUMPER by LEATHERS,TAYLOR	00:15	77-71	H 6	
FOUL by LEATHERS,TAYLOR	00:12			
	00:12	78-71	H 7	GOOD! FT by SEALS,MARIAH
	00:12	79-71	H 8	GOOD! FT by SEALS,MARIAH
MISSED 3PTR by LEATHERS,TAYLOR	00:04			
	00:04			REBOUND (DEF) by AGNEW,GEORGIA

Missouri-Kansas City 71, Utah Valley 79

Period 4-only	In Paint	Off T/O	2nd Chance	Fast Break	Bench	****
UMKC	10	2	2	0	2	Score tied - 0 times
UVU	10	5	2	2	2	Lead changed - 0 times

Missouri-Kansas City vs Utah Valley

1/21/2016; 5 p.m. MT at Orem, Utah (UCCU Center)

Scoring/Runs Reference

Period 1			Period 2		
Missouri-Kansas City	Score	Utah Valley	Missouri-Kansas City	Score	Utah Valley
09:51,-,DILLARD TURN	TO				LOGGINS TURN - ,09:48
		LOGGINS,JUMPER,- ,09:37			
09:10,-,LAW,LAYUP	2P		09:26 - LEATHERS,JUMPER	X	
		TOSTON,LAYUP,- ,08:55			LOGGINS,LAYUP - 09:10
08:37 - WASHINGTON,JUMPER	X		08:44,-,WASHINGTON,JUMPER	2	
08:09,-,LAW,LAYUP	2P		08:43 - WASHINGTON,FT	X	
		LOGGINS,JUMPER - 07:52			TOSTON,JUMPER - 08:32
07:23,-,LEATHERS,3PTR	3				LOGGINS,JUMPER,- ,08:13
		LOGGINS TURN - ,07:01	07:40 - LEATHERS,LAYUP	X	
06:32,-,WASHINGTON,JUMPER	2				TOSTON TURN - ,07:24
		LOGGINS TURN - ,06:16	07:18,-,WASHINGTON,JUMPER	2	
06:11,-,BONE TURN	TO	TOSTON,LAYUP - 06:08			TOSTON,3PTR,- ,06:37
			06:28,-,BONE TURN	TO	
05:55 - LEATHERS,JUMPER	X				TOSTON,LAYUP,- ,06:25
		MAWHINNEY,3PTR - 05:34	06:06,-,BONE TURN	TO	
05:20 - LAW,JUMPER	X				TOSTON,3PTR - 05:39
		LOGGINS,LAYUP - 05:05	05:22,-,LEATHERS,JUMPER	2	
04:54,-,BARRETT,3PTR	3				
		SEALS,3PTR,-,04:35			TOSTON,JUMPER,- ,05:05
04:06,-,BARRETT,3PTR	3		04:40,-,LEATHERS,JUMPER	2	
		GORDON,3PTR - 03:44			TOSTON,JUMPER - 04:15
03:24 - HUSA,LAYUP	X				
		MAWHINNEY,3PTR,- ,03:14	04:09,-,MOORE TURN	TO	
03:00,-,HUSA,LAYUP	2P				X BLANKS,FT - 03:59
		BLANKS,LAYUP - 02:37			BLANKS,FT,-,03:59
02:21 - HUSA,LAYUP	X		03:51,-,LEATHERS,JUMPER	2	
		MAWHINNEY,LAYUP - 02:01			GORDON TURN - ,03:28
01:53 - COLEMAN,JUMPER	X		03:12 - LAW,JUMPER	X	
01:40 - LEATHERS,JUMPER	X				LOGGINS,JUMPER,- ,02:58
		SEALS,JUMPER - 01:31	02:41 - LAW,LAYUP	X	
01:12 - WALDRON,3PTR	X				GORDON,JUMPER,- ,02:22
		BLANKS,JUMPER,-	01:47,-,LEATHERS,3PTR	3	
					MAWHINNEY,3PTR -

00:32,-,COLEMAN TURN TO

-5	-
----	---

 ,00:54

17-14	2P
-3	

 MAWHINNEY,LAYUP,- ,00:02

01:21,-,LAW,JUMPER

2	32-28
	-4

X

 SEALS,3PTR - 01:04
00:51,- ,WASHINGTON,JUMPER

2	34-28
	-6

X

 SEALS,3PTR - 00:42
00:18 - DILLARD,LAYUP

X

00:17 - LEATHERS,3PTR

X

00:01,-,LEATHERS TURN TO

34-31	3
-3	

 BLANKS,3PTR,- ,00:00

Period 3

Missouri-Kansas City Score Utah Valley

34-32	1
-2	

 LOGGINS,FT,-,09:36

X

 LOGGINS,FT - 09:36
09:24 - LEATHERS,LAYUP

X

09:20,-,WALDRON,3PTR

3	37-32
	-5

X

 SEALS,LAYUP - 08:55
08:35,-,WALDRON,3PTR

3	40-32
	-8

2P

 LOGGINS,LAYUP,- ,08:12
07:49 - WASHINGTON,JUMPER

X

40-37	3
-3	

 MAWHINNEY,3PTR,- ,07:41

40-38	1
-2	

 MAWHINNEY,FT,- ,07:37
07:14,-,LAW,FT

1	41-38
	-3

07:14 - LAW,FT

X

07:01,-,LAW,LAYUP

2P	43-38
	-5

06:59,-,LAW,FT

1	44-38
	-6

TO LOGGINS TURN - ,06:33
06:16,-,LAW,JUMPER

2P	46-38
	-8

X

 SEALS,LAYUP - 06:01

X

 AGNEW,FT - 05:50

46-39	1
-7	

 AGNEW,FT,-,05:50
05:39 - LAW,JUMPER

X

05:20,-,LAW,FT

1	47-39
	-8

05:20,-,LAW,FT

1	48-39
	-9

 NIELSON,JUMPER,- ,05:06
04:46,-,LAW TURN TO

48-42	1
-6	

 SEALS,FT,-,04:41

48-43	1
-5	

 SEALS,FT,-,04:41
04:24 - BARRETT,3PTR

X

X

 SEALS,LAYUP - 04:05
03:59,-,DILLARD TURN TO

48-44	1
-4	

 LOGGINS,FT,-,03:38

48-45	1
-5	

 LOGGINS,FT.-,03:38

Period 4

Missouri-Kansas City Score Utah Valley
09:46,- ,WASHINGTON,LAYUP

2P	57-54
	-3

57-57	3
0	

 TOSTON,3PTR,-,09:28
09:21,-,BONE TURN TO

X

 MAWHINNEY,FT - 09:07

57-58	1
1	

 MAWHINNEY,FT,- ,09:07
08:48 - LEATHERS,JUMPER

X

X

 TOSTON,JUMPER - 08:37
08:14,-,WALDRON TURN TO

X

 TOSTON,3PTR - 07:49

57-60	2P
3	

 MAWHINNEY,LAYUP,- ,07:45
07:26 - LEATHERS,LAYUP

X

57-62	2PF
5	

 BLANKS,LAYUP,- ,07:19
06:58 - LEATHERS,JUMPER

X

06:50 - DILLARD,3PTR

X

X

 SEALS,3PTR - 06:33
06:12,- ,LEATHERS,JUMPER

2	59-62
	3

59-64	2P
5	

 AGNEW,LAYUP,- ,05:53
05:24 - WASHINGTON,LAYUP

X

X

 BLANKS,LAYUP - 05:18

X

 AGNEW,JUMPER - 04:57
TO AGNEW TURN -,04:47
04:22 - WALDRON,3PTR

X

04:16 - BARRETT,3PTR

X

03:56,-,BARRETT,LAYUP

2P	61-64
	3

61-66	2P
5	

 LOGGINS,LAYUP,- ,03:38
03:11 - LAW,LAYUP

2P	63-66
	5

03:35,-, WALDRON, FT	1	49-45 -4		
03:35 - WALDRON, FT	X			
			X	TOSTON, JUMPER - 03:17
02:51,-, MOORE, JUMPER	2	51-45 -6		
		51-47 -4	2	SEALS, JUMPER,- ,02:31
02:24 - WALDRON, FT	X			
02:24,-, WALDRON, FT	1	52-47 -5		
			X	SEALS, 3PTR - 02:01
		52-48 -4	1	LOGGINS, FT,-, 01:28
		52-49 -3	1	LOGGINS, FT,-, 01:28
01:07,-, WALDRON, 3PTR	3	55-49 -6		
		55-51 -4	2 ^P	LOGGINS, LAYUP,- ,00:48
00:24 - LEATHERS, 3PTR	X			
		55-54 -1	3	MAWHINNEY, 3PTR,- ,00:02

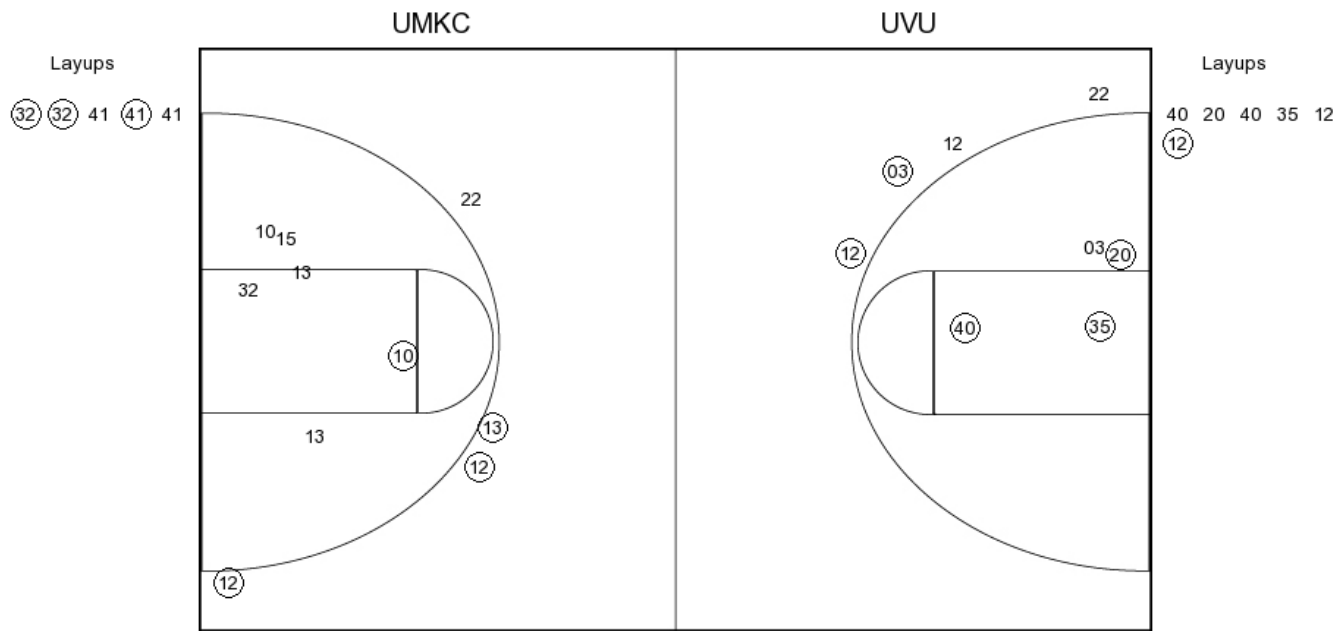
			63-68 5	2 ^P	TOSTON, LAYUP,- ,02:43
02:21,- , WASHINGTON, JUMPER	2	65-68 3			
		65-71 6	3	MAWHINNEY, 3PTR,- ,01:55	
01:36 - LEATHERS, JUMPER	X				
01:21,-, LEATHERS TURN TO					
				X	BLANKS, FT - 01:06
		65-72 7	1		BLANKS, FT,-, 01:06
00:58 - WALDRON, 3PTR	X				
00:50,-, DILLARD TURN TO					
		65-73 8	1		SEALS, FT,-, 00:46
				X	SEALS, FT - 00:46
00:39,- , WASHINGTON, LAYUP	2 ^P	67-73 6			
		67-74 7	1		SEALS, FT,-, 00:35
		67-75 8	1		SEALS, FT,-, 00:35
00:26,- , WASHINGTON, LAYUP	2 ^P	69-75 6			
		69-76 7	1		MAWHINNEY, FT,- ,00:21
		69-77 8	1		MAWHINNEY, FT,- ,00:21
00:15,- , LEATHERS, JUMPER	2	71-77 6			
		71-78 7	1		SEALS, FT,-, 00:12
		71-79 8	1		SEALS, FT,-, 00:12
00:04 - LEATHERS, 3PTR	X				

Missouri-Kansas City vs Utah Valley

OFFICIAL SHOT CHART

1/21/2016 at Orem, Utah (UCCU Center)

PERIOD 1



UMKC PERIOD 1

FG Made	15
FG Attempted	29
3PFG Made	4
3PFG Attempted	6

UVU PERIOD 1

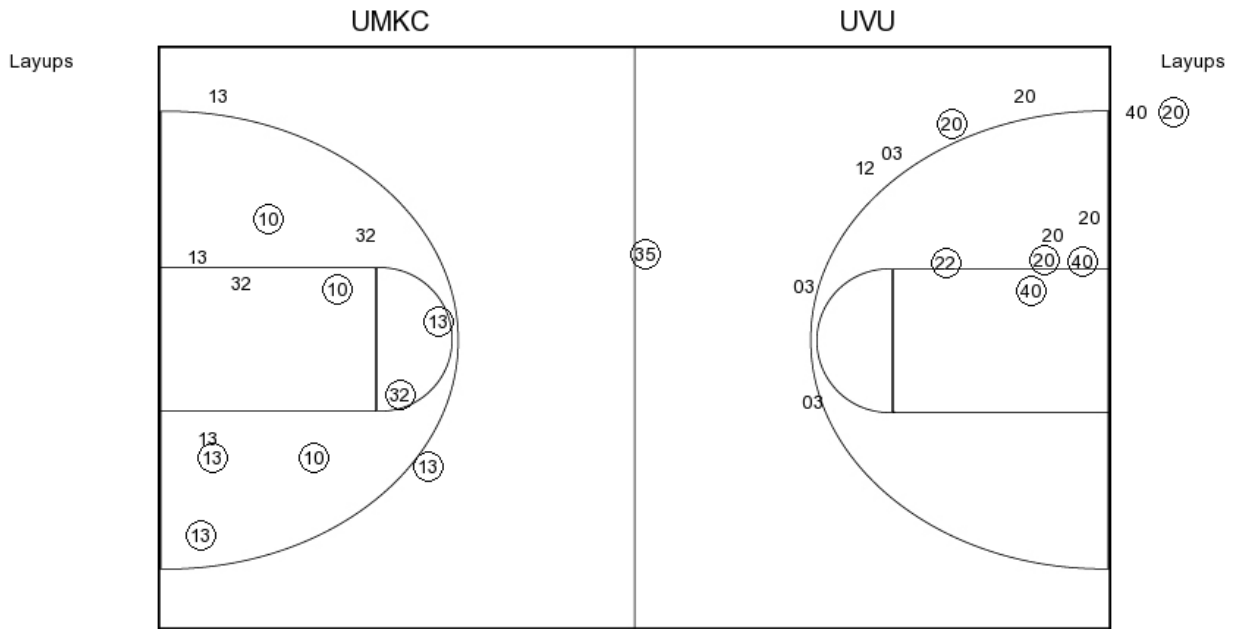
FG Made	13
FG Attempted	29
3PFG Made	4
3PFG Attempted	11

Missouri-Kansas City vs Utah Valley

OFFICIAL SHOT CHART

1/21/2016 at Orem, Utah (UCCU Center)

PERIOD 2



UMKC PERIOD 2

- FG Made
- FG Attempted
- 3PFG Made
- 3PFG Attempted

UVU PERIOD 2

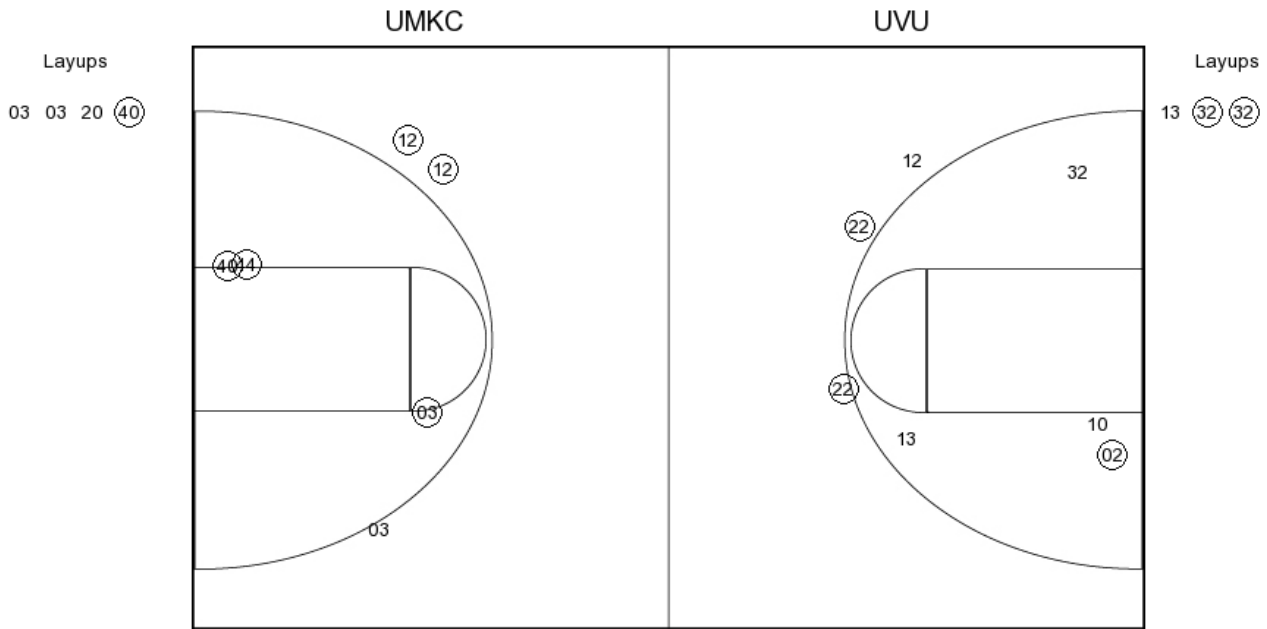
- FG Made
- FG Attempted
- 3PFG Made
- 3PFG Attempted

Missouri-Kansas City vs Utah Valley

OFFICIAL SHOT CHART

1/21/2016 at Orem, Utah (UCCU Center)

PERIOD 3



UMKC PERIOD 3

FG Made	14
FG Attempted	29
3PFG Made	3
3PFG Attempted	10

UVU PERIOD 3

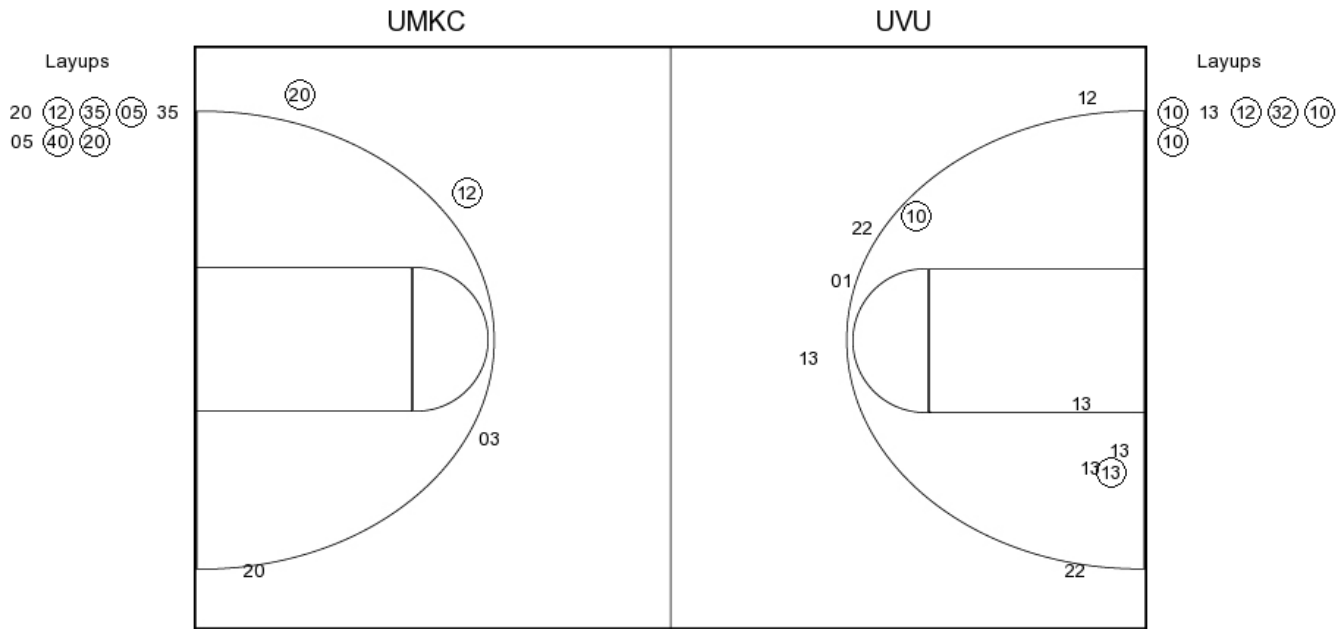
FG Made	13
FG Attempted	23
3PFG Made	4
3PFG Attempted	7

Missouri-Kansas City vs Utah Valley

OFFICIAL SHOT CHART

1/21/2016 at Orem, Utah (UCCU Center)

PERIOD 4



UMKC PERIOD 4

- FG Made
- FG Attempted
- 3PFG Made
- 3PFG Attempted

UVU PERIOD 4

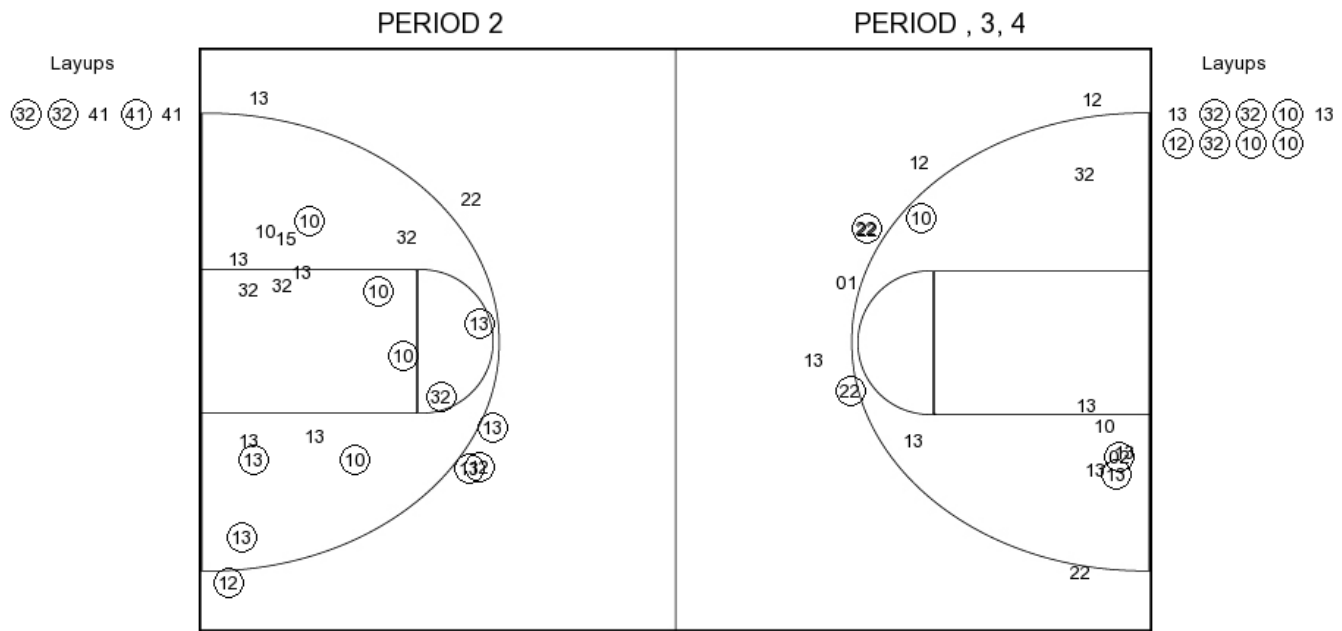
- FG Made
- FG Attempted
- 3PFG Made
- 3PFG Attempted

Missouri-Kansas City vs Utah Valley

OFFICIAL SHOT CHART

1/21/2016 at Orem, Utah (UCCU Center)

Missouri-Kansas City



UMKC PERIOD 1

FG Made	15
FG Attempted	29
3PFG Made	4
3PFG Attempted	6

UMKC PERIOD 2

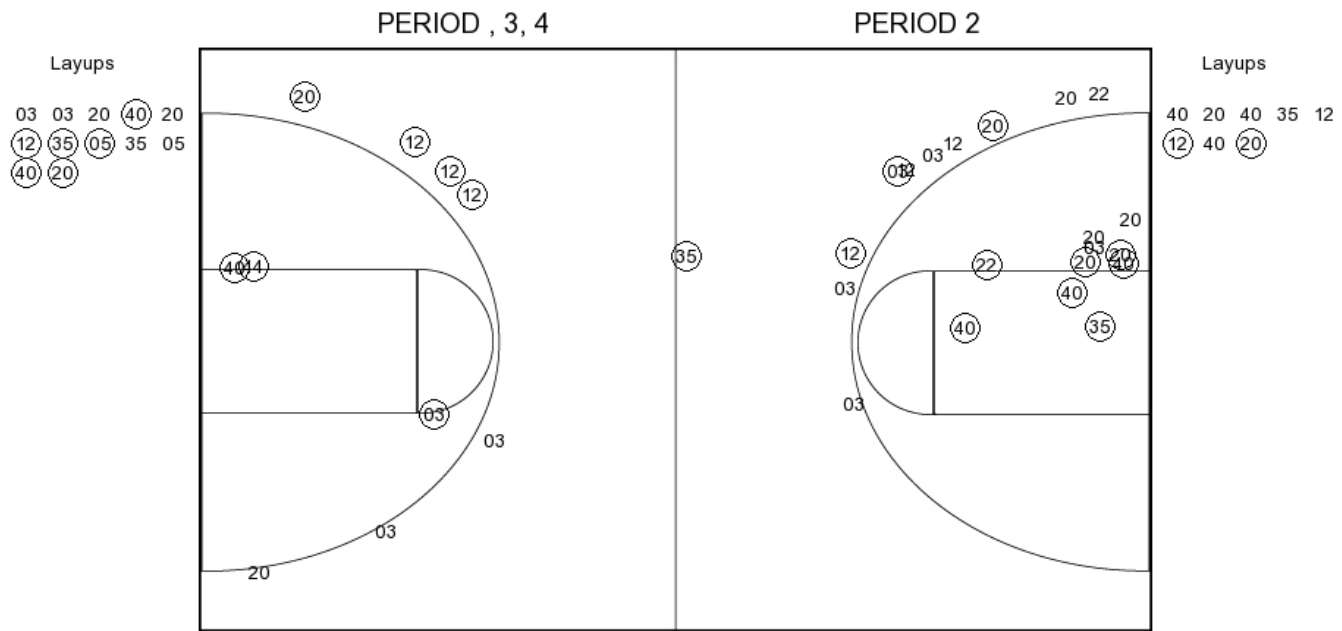
FG Made	
FG Attempted	
3PFG Made	
3PFG Attempted	

Missouri-Kansas City vs Utah Valley

OFFICIAL SHOT CHART

1/21/2016 at Orem, Utah (UCCU Center)

Utah Valley



UVU PERIOD 1

FG Made	13
FG Attempted	29
3PFG Made	4
3PFG Attempted	11

UVU PERIOD 2

FG Made	
FG Attempted	
3PFG Made	
3PFG Attempted	