



# TEXAS TECH VS. OKLAHOMA STATE

2/3/2016

Lubbock, TX (United Supermarkets Arena)

## FINAL STATS

**Texas Tech**

*(12-8 (2-6 B12))*

**63**

**Oklahoma State**

*(11-10 (2-6 B12))*

**61**

*Start Time: 8:05 p.m.*

*Officials: Tom Eades, Gary Maxwell, David Hall*

*Attendance: 0*

**Official Basketball Box Score -- Game Totals -- Final Statistics**  
**Oklahoma State vs Texas Tech**  
**2/3/2016 8:05 p.m. at Lubbock, TX (United Supermarkets Arena)**

**Oklahoma State 61 - 11-10 (2-6 B12)**

##	Player	S	Total			Rebounds			PF	TP	A	TO	Blk	Stl	Min
			FG-FGA	3PT FG-FGA	FT-FTA	Off Reb	Def Reb	Tot Reb							
01	EVANS,JAWUN	g	4-5	0-0	2-2	0	2	2	1	10	0	2	0	0	14
22	NEWBERRY,JEFF	g	5-12	2-5	1-3	1	1	2	0	13	1	1	1	4	39
23	HAMMONDS,LEYTON	f	4-9	2-4	4-4	2	8	10	4	14	0	3	0	3	38
30	CARROLL,JEFFREY	f	0-4	0-3	2-2	0	0	0	2	2	0	0	0	0	18
41	SOLOMON,MITCHELL	f	0-1	0-0	2-2	3	0	3	5	2	0	3	0	0	10
02	GRIFFIN,TYREE		1-6	0-3	2-2	2	2	4	2	4	2	3	0	0	38
04	BURTON,JOE		1-1	0-0	0-0	0	0	0	1	2	1	0	0	0	7
05	SHINE,TAVARIUS		1-3	0-2	1-2	1	3	4	4	3	1	1	1	1	26
31	OLIVIER,CHRIS		3-10	0-0	5-7	0	6	6	1	11	0	4	1	0	31
32	ALLEN,ANTHONY		0-1	0-0	0-0	2	1	3	1	0	0	1	2	0	4
TEAM						5	4	9	0			3			
TOTALS			19-52	4-17	19-24	16	27	43	21	61	5	21	5	8	225

Deadball Rebounds: 3,0

FG %	1st Half:	9-23	39.1%	2nd Half:	7-24	29.2%	OT:	3-5	60.0%	Game:	19-52	36.5%
	1st Qtr	9-23	39.1%	2nd Qtr	7-24	29.2%	3rd Qtr	3-5	60.0%	4th Qtr	-	0%
3FG %	1st Half:	2-9	22.2%	2nd Half:	2-7	28.6%	OT:	0-1	00.0%	Game:	4-17	23.5%
	1st Qtr	2-9	22.2%	2nd Qtr	2-7	28.6%	3rd Qtr	0-1	00.0%	4th Qtr	-	0%
FT %	1st Half:	11-12	91.7%	2nd Half:	6-8	75.0%	OT:	2-4	50.0%	Game:	19-24	79.2%
	1st Qtr	11-12	91.7%	2nd Qtr	6-8	75.0%	3rd Qtr	2-4	50.0%	4th Qtr	-	0%

**Texas Tech 63 - 12-8 (2-6 B12)**

##	Player	S	Total			Rebounds			PF	TP	A	TO	Blk	Stl	Min
			FG-FGA	3PT FG-FGA	FT-FTA	Off Reb	Def Reb	Tot Reb							
05	GRAY,JUSTIN	g	1-4	0-0	0-0	1	4	5	5	2	1	0	0	1	34
11	SMITH,ZACH	f	2-7	0-1	1-2	1	7	8	2	5	1	1	1	1	40
12	EVANS,KEENAN	g	2-7	0-1	3-4	0	0	0	1	7	1	3	1	3	25
20	GOTCHER,TODDRICK	g	4-7	4-6	6-6	1	1	2	3	18	1	1	1	1	35
34	TEMPLE,MATTHEW	c	1-4	0-0	1-2	3	0	3	3	3	0	1	1	0	10
00	WILLIAMS,DEVAUGNTAI		1-8	0-2	2-4	0	2	2	3	4	1	0	0	0	28
02	THOMAS,DEVON		1-4	0-0	0-0	0	0	0	0	2	2	2	0	3	11
03	WILLIAMSON,CJ		0-1	0-0	0-0	0	0	0	1	0	0	0	0	0	3
15	ROSS,AARON		6-13	4-8	6-6	2	5	7	3	22	2	3	0	0	35
21	ULVYDAS,ROKAS		0-0	0-0	0-0	0	0	0	2	0	0	0	0	0	1
22	JACKSON,JORDAN		0-0	0-0	0-0	0	0	0	0	0	0	0	0	0	4
TEAM						2	0	2	0			1			
TOTALS			18-55	8-18	19-24	10	19	29	23	63	9	12	4	9	226

Deadball Rebounds: 5,0

FG %	1st Half:	8-32	25.0%	2nd Half:	7-17	41.2%	OT:	3-6	50.0%	Game:	18-55	32.7%
	1st Qtr	8-32	25.0%	2nd Qtr	7-17	41.2%	3rd Qtr	3-6	50.0%	4th Qtr	-	0%
3FG %	1st Half:	2-8	25.0%	2nd Half:	4-7	57.1%	OT:	2-3	66.7%	Game:	8-18	44.4%
	1st Qtr	2-8	25.0%	2nd Qtr	4-7	57.1%	3rd Qtr	2-3	66.7%	4th Qtr	-	0%
FT %	1st Half:	5-6	83.3%	2nd Half:	12-16	75.0%	OT:	2-2	100.0%	Game:	19-24	79.2%
	1st Qtr	5-6	83.3%	2nd Qtr	12-16	75.0%	3rd Qtr	2-2	100.0%	4th Qtr	-	0%

Officials: Tom Eades, Gary Maxwell, David Hall  
 Technical Fouls: Oklahoma State- None. Texas Tech- None.  
 Attendance: 0

Score by periods	1st	2nd	3rd	Total
Oklahoma State	31	22	8	61
Texas Tech	23	30	10	63

Points	In Paint	Off T/O	2nd Chance	Fast Break	Bench
OSU	22	15	10	8	20
TTU	18	24	10	6	28

Last FG - OSU 3rd-00:59, TTU 3rd-00:01.  
 Largest lead - Oklahoma State by 12 1st-03:39; Texas Tech by 4 1st-15:58  
 OSU led for 35:48. TTU led for 2:26. Game was tied for 6:46.

Score tied - 4 times  
 Lead changed - 2 times

**Official Basketball Box Score -- Game Totals -- First Half Statistics**  
**Oklahoma State vs Texas Tech**  
**2/3/2016 8:05 p.m. at Lubbock, TX (United Supermarkets Arena)**

**Oklahoma State 31 • 11-10 (2-6 B12)**

##	Player	S	Total			Rebounds			PF	TP	A	TO	Blk	Stl	Min
			FG-FGA	3PT FG-FGA	FT-FTA	Off Reb	Def Reb	Tot Reb							
01	EVANS,JAWUN	g	4-5	0-0	2-2	0	2	2	1	10	0	2	0	0	14
22	NEWBERRY,JEFF	g	1-4	0-2	1-2	0	1	1	0	3	1	0	1	1	14
23	HAMMONDS,LEYTON	f	3-5	2-3	4-4	1	5	6	0	12	0	1	0	3	18
30	CARROLL,JEFFREY	f	0-2	0-2	0-0	0	0	0	1	0	0	0	0	0	11
41	SOLOMON,MITCHELL	f	0-1	0-0	0-0	0	0	0	2	0	0	2	0	0	3
02	GRIFFIN,TYREE		0-2	0-2	2-2	0	0	0	1	2	1	2	0	0	13
04	BURTON,JOE		0-0	0-0	0-0	0	0	0	0	0	0	0	0	0	2
05	SHINE,TAVARIUS		0-0	0-0	0-0	1	1	2	2	0	0	0	0	0	8
31	OLIVIER,CHRIS		1-3	0-0	2-2	0	3	3	0	4	0	2	0	0	14
32	ALLEN,ANTHONY		0-1	0-0	0-0	2	1	3	1	0	0	1	2	0	3
TEAM						3	4	7	0			1			
Totals			9-23	2-9	11-12	7	17	24	8	31	2	11	3	4	100

FG % Half: 9-23 39.1%  
 3FG % Half: 2-9 22.2%  
 FT % Half: 11-12 91.7%

**Texas Tech 23 • 12-8 (2-6 B12)**

##	Player	S	Total			Rebounds			PF	TP	A	TO	Blk	Stl	Min
			FG-FGA	3PT FG-FGA	FT-FTA	Off Reb	Def Reb	Tot Reb							
05	GRAY,JUSTIN	g	1-3	0-0	0-0	1	2	3	1	2	1	0	0	0	13
11	SMITH,ZACH	f	1-5	0-1	0-0	0	3	3	1	2	0	0	0	0	17
12	EVANS,KEENAN	g	2-5	0-0	3-4	0	0	0	0	7	1	1	0	2	10
20	GOTCHER,TODDRICK	g	0-2	0-1	2-2	1	0	1	1	2	0	1	0	1	11
34	TEMPLE,MATTHEW	c	0-2	0-0	0-0	2	0	2	1	0	0	0	0	0	5
00	WILLIAMS,DEVAUGNTAI		0-4	0-1	0-0	0	1	1	2	0	0	0	0	0	11
02	THOMAS,DEVON		1-4	0-0	0-0	0	0	0	0	2	2	2	0	3	11
03	WILLIAMSON,CJ		0-1	0-0	0-0	0	0	0	1	0	0	0	0	0	3
15	ROSS,AARON		3-6	2-5	0-0	0	2	2	1	8	1	1	0	0	14
21	ULVYDAS,ROKAS		0-0	0-0	0-0	0	0	0	2	0	0	0	0	0	1
22	JACKSON,JORDAN		0-0	0-0	0-0	0	0	0	0	0	0	0	0	0	4
TEAM						2	0	2	0			0			
Totals			8-32	2-8	5-6	6	8	14	10	23	5	5	0	6	100

FG % Half: 8-32 25.0%  
 3FG % Half: 2-8 25.0%  
 FT % Half: 5-6 83.3%

Officials: Tom Eades, Gary Maxwell, David Hall  
 Technical Fouls: Oklahoma State- None. Texas Tech- None.

Score by periods	1st	2nd	3rd	Total
Oklahoma State	31	22	8	61
Texas Tech	23	30	10	63

Points	In Paint	Off T/O	2nd Chance	Fast Break	Bench
OSU	8	6	4	4	6
TTU	10	11	4	6	10

Last FG - OSU 1st-05:44, TTU 1st-01:41.  
 OSU led for 14:34. TTU led for 2:25. Game was tied for 3:01.

Score tied - 0 times  
 Lead changed - 1 times

**Oklahoma State vs Texas Tech**  
**2/3/2016; 8:05 p.m. at Lubbock, TX (United Supermarkets Arena)**  
**Period 1 Play-By-Play**

VISITORS: Oklahoma State	Time	Score	Margin	HOME: Texas Tech
	19:45			MISSED LAYUP by GOTCHER,TODDRICK
REBOUND (DEF) by HAMMONDS,LEYTON	19:45			
TURNOVER by EVANS,JAWUN	19:36			
	19:34			STEAL by EVANS,KEENAN
	19:32			MISSED LAYUP by EVANS,KEENAN
	19:32			REBOUND (OFF) by TEAM
	19:27			MISSED LAYUP by EVANS,KEENAN
REBOUND (DEF) by HAMMONDS,LEYTON	19:27			
MISSED JUMPER by HAMMONDS,LEYTON	19:03			
	19:03			REBOUND (DEF) by SMITH,ZACH
	18:45			MISSED JUMPER by GRAY,JUSTIN
REBOUND (DEF) by TEAM	18:45			
FOUL by SOLOMON,MITCHELL	18:31			
TURNOVER by SOLOMON,MITCHELL	18:31			
	18:08			MISSED 3PTR by SMITH,ZACH
REBOUND (DEF) by TEAM	18:08			
MISSED LAYUP by SOLOMON,MITCHELL	17:38			
REBOUND (OFF) by TEAM	17:38			
MISSED LAYUP by EVANS,JAWUN	17:28			
REBOUND (OFF) by TEAM	17:28			
FOUL by SOLOMON,MITCHELL	17:26			
TURNOVER by SOLOMON,MITCHELL	17:26			
SUB IN: OLIVIER,CHRIS	17:26			
SUB OUT: SOLOMON,MITCHELL	17:26			
	17:15			MISSED 3PTR by GOTCHER,TODDRICK
	17:15			REBOUND (OFF) by GRAY,JUSTIN
	16:59	2-0	H 2	GOOD! LAYUP by EVANS,KEENAN [PNT]
	16:43			FOUL by SMITH,ZACH
MISSED LAYUP by OLIVIER,CHRIS	16:28			
	16:28			REBOUND (DEF) by SMITH,ZACH
	15:59			MISSED JUMPER by TEMPLE,MATTHEW
	15:59			REBOUND (OFF) by GOTCHER,TODDRICK
FOUL by CARROLL,JEFFREY	15:58			
	15:58			TIMEOUT media
	15:58	3-0	H 3	GOOD! FT by GOTCHER,TODDRICK
	15:58	4-0	H 4	GOOD! FT by GOTCHER,TODDRICK
SUB IN: SHINE,TAVARIUS	15:58			
SUB OUT: CARROLL,JEFFREY	15:58			
	15:58			SUB IN: ROSS,AARON
	15:58			SUB IN: WILLIAMS,DEVAUGNTAH
	15:58			SUB OUT: GOTCHER,TODDRICK
	15:58			SUB OUT: TEMPLE,MATTHEW
MISSED LAYUP by OLIVIER,CHRIS	15:47			
	15:47			REBOUND (DEF) by ROSS,AARON
	15:23			MISSED JUMPER by GRAY,JUSTIN
REBOUND (DEF) by HAMMONDS,LEYTON	15:23			
	15:08			FOUL by ROSS,AARON
GOOD! FT by OLIVIER,CHRIS	15:08	4-1	H 3	
GOOD! FT by OLIVIER,CHRIS	15:08	4-2	H 2	
SUB IN: GRIFFIN,TYREE	15:08			
SUB OUT: EVANS,JAWUN	15:08			
	15:08			SUB IN: THOMAS,DEVON
	15:08			SUB OUT: EVANS,KEENAN

VISITORS: Oklahoma State	Time	Score	Margin	HOME: Texas Tech
	14:51			MISSED JUMPER by SMITH,ZACH
REBOUND (DEF) by HAMMONDS,LEYTON	14:51			
GOOD! 3PTR by HAMMONDS,LEYTON	14:34	4-5	V 1	
ASSIST by GRIFFIN,TYREE	14:34			
	14:04			TURNOVER by ROSS,AARON
STEAL by NEWBERRY,JEFF	14:02			
GOOD! JUMPER by HAMMONDS,LEYTON [FB]	13:59	4-7	V 3	
ASSIST by NEWBERRY,JEFF	13:59			
	13:26			MISSED LAYUP by THOMAS,DEVON
REBOUND (DEF) by OLIVIER,CHRIS	13:26			
MISSED 3PTR by GRIFFIN,TYREE	13:20			
	13:20			REBOUND (DEF) by GRAY,JUSTIN
	13:12			MISSED 3PTR by ROSS,AARON
REBOUND (DEF) by SHINE,TAVARIUS	13:12			
TURNOVER by GRIFFIN,TYREE	12:50			
	12:49			STEAL by THOMAS,DEVON
	12:47	6-7	V 1	GOOD! LAYUP by GRAY,JUSTIN [FB/PNT]
	12:47			ASSIST by THOMAS,DEVON
GOOD! 3PTR by HAMMONDS,LEYTON	12:32	6-10	V 4	
	12:18	9-10	V 1	GOOD! 3PTR by ROSS,AARON
	12:18			ASSIST by GRAY,JUSTIN
TURNOVER by TEAM	11:42			
	11:42			TIMEOUT media
SUB IN: EVANS,JAWUN	11:42			
SUB IN: BURTON,JOE	11:42			
SUB OUT: GRIFFIN,TYREE	11:42			
SUB OUT: HAMMONDS,LEYTON	11:42			
	11:42			SUB IN: TEMPLE,MATTHEW
	11:42			SUB IN: GOTCHER,TODDRICK
	11:42			SUB OUT: GRAY,JUSTIN
	11:42			SUB OUT: SMITH,ZACH
	11:25			MISSED 3PTR by ROSS,AARON
	11:25			REBOUND (DEADB) by TEAM
	11:24			FOUL by TEMPLE,MATTHEW
GOOD! LAYUP by OLIVIER,CHRIS [PNT]	10:59	9-12	V 3	
	10:51			MISSED LAYUP by THOMAS,DEVON
	10:51			REBOUND (OFF) by TEMPLE,MATTHEW
	10:50			MISSED TIPIN by TEMPLE,MATTHEW
	10:50			REBOUND (OFF) by TEMPLE,MATTHEW
FOUL by SHINE,TAVARIUS	10:49			
	10:49			SUB IN: ULVYDAS,ROKAS
	10:49			SUB OUT: TEMPLE,MATTHEW
	10:48			MISSED JUMPER by WILLIAMS,DEVAUGNTAH
REBOUND (DEF) by OLIVIER,CHRIS	10:48			
GOOD! LAYUP by EVANS,JAWUN [PNT]	10:36	9-14	V 5	
	10:17			MISSED JUMPER by WILLIAMS,DEVAUGNTAH
REBOUND (DEF) by TEAM	10:17			
	10:16			SUB IN: SMITH,ZACH
	10:16			SUB OUT: ROSS,AARON
	10:00			FOUL by ULVYDAS,ROKAS
MISSED 3PTR by NEWBERRY,JEFF	09:57			
REBOUND (OFF) by TEAM	09:57			
	09:54			SUB IN: EVANS,KEENAN
	09:54			SUB OUT: THOMAS,DEVON
	09:44			FOUL by ULVYDAS,ROKAS
GOOD! FT by EVANS,JAWUN	09:44	9-15	V 6	
GOOD! FT by EVANS,JAWUN	09:44	9-16	V 7	
SUB IN: ALLEN,ANTHONY	09:44			

VISITORS: Oklahoma State	Time	Score	Margin	HOME: Texas Tech
SUB IN: HAMMONDS,LEYTON	09:44			
SUB OUT: BURTON,JOE	09:44			
SUB OUT: OLIVIER,CHRIS	09:44			
	09:44			SUB IN: GRAY,JUSTIN
	09:44			SUB OUT: ULVYDAS,ROKAS
FOUL by SHINE,TAVARIUS	09:31			
SUB IN: GRIFFIN,TYREE	09:31			
SUB IN: CARROLL,JEFFREY	09:31			
SUB OUT: NEWBERRY,JEFF	09:31			
SUB OUT: SHINE,TAVARIUS	09:31			
FOUL by EVANS,JAWUN	09:16			
	09:16	10-16	V 6	GOOD! FT by EVANS,KEENAN
	09:16			MISSED FT by EVANS,KEENAN
REBOUND (DEF) by HAMMONDS,LEYTON	09:16			
GOOD! JUMPER by EVANS,JAWUN	08:53	10-18	V 8	
	08:42			MISSED JUMPER by SMITH,ZACH
BLOCK by ALLEN,ANTHONY	08:42			
REBOUND (DEF) by EVANS,JAWUN	08:40			
GOOD! LAYUP by EVANS,JAWUN [FB/PNT]	08:38	10-20	V 10	
	08:24			MISSED JUMPER by WILLIAMS,DEVAUGNTAH
REBOUND (DEF) by TEAM	08:24			
	08:20			SUB IN: WILLIAMSON,CJ
	08:20			SUB OUT: WILLIAMS,DEVAUGNTAH
MISSED 3PTR by CARROLL,JEFFREY	08:04			
REBOUND (OFF) by ALLEN,ANTHONY	08:04			
FOUL by ALLEN,ANTHONY	07:59			
TURNOVER by ALLEN,ANTHONY	07:59			
	07:59			TIMEOUT MEDIA
	07:59			SUB IN: JACKSON,JORDAN
	07:59			SUB IN: ROSS,AARON
	07:59			SUB OUT: SMITH,ZACH
	07:59			SUB OUT: GOTCHER,TODDRICK
	07:39	13-20	V 7	GOOD! 3PTR by ROSS,AARON
	07:39			ASSIST by EVANS,KEENAN
MISSED 3PTR by CARROLL,JEFFREY	07:14			
REBOUND (OFF) by ALLEN,ANTHONY	07:14			
MISSED JUMPER by ALLEN,ANTHONY	07:09			
	07:09			REBOUND (DEF) by GRAY,JUSTIN
	07:00	15-20	V 5	GOOD! LAYUP by EVANS,KEENAN [PNT]
TIMEOUT 30SEC	06:58			
MISSED 3PTR by GRIFFIN,TYREE	06:44			
REBOUND (OFF) by HAMMONDS,LEYTON	06:44			
TURNOVER by HAMMONDS,LEYTON	06:35			
	06:34			STEAL by EVANS,KEENAN
	06:33			MISSED LAYUP by EVANS,KEENAN
BLOCK by NEWBERRY,JEFF	06:33			
	06:32			REBOUND (OFF) by TEAM
SUB IN: OLIVIER,CHRIS	06:32			
SUB OUT: ALLEN,ANTHONY	06:32			
	06:17			TURNOVER by EVANS,KEENAN
STEAL by HAMMONDS,LEYTON	06:15			
GOOD! LAYUP by EVANS,JAWUN [PNT]	06:12	15-22	V 7	
	05:59			MISSED 3PTR by ROSS,AARON
	05:59			REBOUND (DEADB) by TEAM
	05:56			FOUL by GRAY,JUSTIN
	05:56			SUB IN: SMITH,ZACH
	05:56			SUB IN: THOMAS,DEVON
	05:56			SUB OUT: GRAY,JUSTIN

VISITORS: Oklahoma State	Time	Score	Margin	HOME: Texas Tech
	05:56			SUB OUT: EVANS,KEENAN
GOOD! JUMPER by NEWBERRY,JEFF	05:44	15-24	V 9	
	05:29			MISSED JUMPER by SMITH,ZACH
REBOUND (DEF) by NEWBERRY,JEFF	05:29			
MISSED 3PTR by NEWBERRY,JEFF	05:09			
	05:09			REBOUND (DEF) by SMITH,ZACH
	04:50			MISSED JUMPER by WILLIAMSON,CJ
REBOUND (DEF) by EVANS,JAWUN	04:50			
	04:27			FOUL by WILLIAMSON,CJ
GOOD! FT by NEWBERRY,JEFF	04:27	15-25	V 10	
MISSED FT by NEWBERRY,JEFF	04:27			
	04:27			REBOUND (DEF) by WILLIAMS,DEVAUGNTAH
SUB IN: SHINE,TAVARIUS	04:27			
SUB OUT: EVANS,JAWUN	04:27			
	04:27			SUB IN: GOTCHER,TODDRICK
	04:27			SUB IN: WILLIAMS,DEVAUGNTAH
	04:27			SUB OUT: JACKSON,JORDAN
	04:27			SUB OUT: WILLIAMSON,CJ
	04:20			MISSED 3PTR by WILLIAMS,DEVAUGNTAH
REBOUND (DEF) by OLIVIER,CHRIS	04:20			
MISSED JUMPER by NEWBERRY,JEFF	03:53			
	03:53			REBOUND (DEF) by ROSS,AARON
	03:45			TURNOVER by THOMAS,DEVON
STEAL by HAMMONDS,LEYTON	03:44			
	03:39			FOUL by GOTCHER,TODDRICK
TIMEOUT MEDIA	03:39			
GOOD! FT by HAMMONDS,LEYTON	03:39	15-26	V 11	
GOOD! FT by HAMMONDS,LEYTON	03:39	15-27	V 12	
SUB IN: NEWBERRY,JEFF	03:39			
SUB IN: EVANS,JAWUN	03:39			
SUB OUT: SHINE,TAVARIUS	03:39			
SUB OUT: CARROLL,JEFFREY	03:39			
	03:23	17-27	V 10	GOOD! JUMPER by ROSS,AARON
	03:23			ASSIST by THOMAS,DEVON
TURNOVER by OLIVIER,CHRIS	02:56			
	02:55			STEAL by THOMAS,DEVON
	02:51	19-27	V 8	GOOD! DUNK by SMITH,ZACH [FB/PNT]
	02:51			ASSIST by ROSS,AARON
	02:30			FOUL by WILLIAMS,DEVAUGNTAH
GOOD! FT by GRIFFIN,TYREE	02:30	19-28	V 9	
GOOD! FT by GRIFFIN,TYREE	02:30	19-29	V 10	
	02:01			TURNOVER by GOTCHER,TODDRICK
TURNOVER by EVANS,JAWUN	01:44			
	01:43			STEAL by GOTCHER,TODDRICK
	01:41	21-29	V 8	GOOD! LAYUP by THOMAS,DEVON [FB/PNT]
SUB IN: SHINE,TAVARIUS	01:41			
SUB OUT: EVANS,JAWUN	01:41			
MISSED 3PTR by HAMMONDS,LEYTON	01:12			
REBOUND (OFF) by SHINE,TAVARIUS	01:12			
	00:50			FOUL by WILLIAMS,DEVAUGNTAH
GOOD! FT by HAMMONDS,LEYTON	00:50	21-30	V 9	
GOOD! FT by HAMMONDS,LEYTON	00:50	21-31	V 10	
SUB IN: CARROLL,JEFFREY	00:50			
SUB OUT: SHINE,TAVARIUS	00:50			
	00:50			SUB IN: EVANS,KEENAN
	00:50			SUB IN: GRAY,JUSTIN
	00:50			SUB OUT: GOTCHER,TODDRICK
	00:50			SUB OUT: WILLIAMS,DEVAUGNTAH

VISITORS: Oklahoma State	Time	Score	Margin	HOME: Texas Tech
FOUL by GRIFFIN, TYREE	00:34			
	00:34	22-31	V 9	GOOD! FT by EVANS, KEENAN
	00:34	23-31	V 8	GOOD! FT by EVANS, KEENAN
TURNOVER by GRIFFIN, TYREE	00:25			
	00:24			STEAL by THOMAS, DEVON
	00:20			TURNOVER by THOMAS, DEVON
STEAL by HAMMONDS, LEYTON	00:18			
TURNOVER by OLIVIER, CHRIS	00:16			
	00:16			TIMEOUT 30SEC
SUB IN: ALLEN, ANTHONY	00:16			
SUB OUT: OLIVIER, CHRIS	00:16			
	00:01			MISSED LAYUP by THOMAS, DEVON
BLOCK by ALLEN, ANTHONY	00:01			
REBOUND (DEF) by ALLEN, ANTHONY	00:01			

Oklahoma State 31, Texas Tech 23

Period 1-only	In Paint	Off T/O	2nd Chance	Fast Break	Bench	
OSU	8	6	4	4	6	Score tied - 0 times
TTU	10	11	4	6	10	Lead changed - 2 times



**Official Basketball Box Score -- Game Totals -- Second Half Statistics**  
**Oklahoma State vs Texas Tech**  
**2/3/2016 8:05 p.m. at Lubbock, TX (United Supermarkets Arena)**

**Oklahoma State 22 • 11-10 (2-6 B12)**

##	Player	S	Total			Rebounds			PF	TP	A	T	O	Blk	Stl	Min		
			FG	F	FGA	3PT	FG	F									FGA	Off
01	EVANS,JAWUN	g	0	0	0	0	0	0	0	0	0	0	0	0	0	0		
22	NEWBERRY,JEFF	g	4	8	2	3	0	1	0	10	0	1	0	3	20			
23	HAMMONDS,LEYTON	f	0	2	0	0	0	0	2	2	3	0	2	0	15			
30	CARROLL,JEFFREY	f	0	2	0	1	2	0	0	0	1	2	0	0	7			
41	SOLOMON,MITCHELL	f	0	0	0	0	2	3	0	3	3	2	0	0	7			
02	GRIFFIN,TYREE		0	2	0	1	0	2	1	3	1	0	1	0	20			
04	BURTON,JOE		1	1	0	0	0	0	0	0	1	2	1	0	5			
05	SHINE,TAVARIUS		0	2	0	2	1	0	1	1	2	1	1	1	13			
31	OLIVIER,CHRIS		2	7	0	0	1	0	3	3	1	5	0	0	12			
32	ALLEN,ANTHONY		0	0	0	0	0	0	0	0	0	0	0	0	1			
TEAM							1	0	1	0		2						
Totals			7	24	2	7	6	8	7	7	14	12	22	3	8	1	4	100

FG % Half: 7-24 29.2%  
 3FG % Half: 2-7 22.2%  
 FT % Half: 6-8 75.0%

**Texas Tech 30 • 12-8 (2-6 B12)**

##	Player	S	Total			Rebounds			PF	TP	A	T	O	Blk	Stl	Min		
			FG	F	FGA	3PT	FG	F									FGA	Off
05	GRAY,JUSTIN	g	0	0	0	0	0	0	1	1	3	0	0	0	1	18		
11	SMITH,ZACH	f	1	2	0	0	1	2	4	5	1	3	1	1	1	18		
12	EVANS,KEENAN	g	0	2	0	1	0	0	0	0	1	0	2	0	1	11		
20	GOTCHER,TODDRICK	g	2	3	2	3	4	4	0	1	2	10	1	0	1	19		
34	TEMPLE,MATTHEW	c	1	2	0	0	1	2	0	1	2	3	0	1	0	5		
00	WILLIAMS,DEVAUGNTAI		0	2	0	1	2	4	0	1	1	2	0	0	0	13		
02	THOMAS,DEVON		0	0	0	0	0	0	0	0	0	0	0	0	0	0		
03	WILLIAMSON,CJ		0	0	0	0	0	0	0	0	0	0	0	0	0	0		
15	ROSS,AARON		3	6	2	2	4	4	2	3	5	12	0	2	0	16		
21	ULVYDAS,ROKAS		0	0	0	0	0	0	0	0	0	0	0	0	0	0		
22	JACKSON,JORDAN		0	0	0	0	0	0	0	0	0	0	0	0	0	0		
TEAM								0	0	0	0		1					
Totals			7	17	4	7	12	16	4	10	14	11	30	2	7	3	3	100

FG % Half: 7-17 41.2%  
 3FG % Half: 4-7 25.0%  
 FT % Half: 12-16 75.0%

Officials: Tom Eades, Gary Maxwell, David Hall  
 Technical Fouls: Oklahoma State- None. Texas Tech- None.

Score by periods	1st	2nd	3rd	Total
Oklahoma State	31	22	8	61
Texas Tech	23	30	10	63

Points	In Paint	Off T/O	2nd Chance	Fast Break	Bench
OSU	10	9	4	4	8
TTU	6	11	6	0	14

Last FG - OSU 2nd-01:54, TTU 2nd-00:34.  
 OSU led for 18:58. TTU led for 0:00. Game was tied for 1:02.

Score tied - 2 times  
 Lead changed - 0 times

**Oklahoma State vs Texas Tech**  
**2/3/2016; 8:05 p.m. at Lubbock, TX (United Supermarkets Arena)**  
**Period 2 Play-By-Play**

VISITORS: Oklahoma State	Time	Score	Margin	HOME: Texas Tech
SUB IN: GRIFFIN,TYREE	20:00			
SUB OUT: EVANS,JAWUN	20:00			
FOUL by HAMMONDS,LEYTON	19:45			
TURNOVER by HAMMONDS,LEYTON	19:45			
	19:18			MISSED JUMPER by TEMPLE,MATTHEW
	19:18			REBOUND (OFF) by TEMPLE,MATTHEW
	19:14			TIMEOUT 30SEC
	19:06	25-31	V 6	GOOD! DUNK by TEMPLE,MATTHEW [PNT]
	19:06			ASSIST by GOTCHER,TODDRICK
TURNOVER by GRIFFIN,TYREE	18:49			
	18:48			STEAL by GRAY,JUSTIN
	18:37			TURNOVER by EVANS,KEENAN
STEAL by NEWBERRY,JEFF	18:36			
	18:35			FOUL by GRAY,JUSTIN
GOOD! LAYUP by NEWBERRY,JEFF [PNT]	18:11	25-33	V 8	
FOUL by HAMMONDS,LEYTON	17:47			
	17:47	26-33	V 7	GOOD! FT by TEMPLE,MATTHEW
	17:47			MISSED FT by TEMPLE,MATTHEW
REBOUND (DEF) by HAMMONDS,LEYTON	17:47			
MISSED 3PTR by CARROLL,JEFFREY	17:23			
	17:23			REBOUND (DEF) by SMITH,ZACH
	17:10	29-33	V 4	GOOD! 3PTR by GOTCHER,TODDRICK
MISSED JUMPER by CARROLL,JEFFREY	16:35			
REBOUND (DEADB) by TEAM	16:35			
	16:35			FOUL by TEMPLE,MATTHEW
SUB IN: SHINE,TAVARIUS	16:35			
SUB OUT: CARROLL,JEFFREY	16:35			
	16:35			SUB IN: WILLIAMS,DEVAUGNTAH
	16:35			SUB OUT: EVANS,KEENAN
MISSED JUMPER by NEWBERRY,JEFF	16:17			
REBOUND (OFF) by SOLOMON,MITCHELL	16:17			
	16:12			FOUL by TEMPLE,MATTHEW
	16:12			SUB IN: ROSS,AARON
	16:12			SUB OUT: TEMPLE,MATTHEW
FOUL by SOLOMON,MITCHELL	16:04			
TURNOVER by SOLOMON,MITCHELL	16:04			
SUB IN: OLIVIER,CHRIS	16:04			
SUB OUT: SOLOMON,MITCHELL	16:04			
FOUL by OLIVIER,CHRIS	15:52			
	15:52			TIMEOUT MEDIA
	15:52	30-33	V 3	GOOD! FT by GOTCHER,TODDRICK
	15:52	31-33	V 2	GOOD! FT by GOTCHER,TODDRICK
GOOD! LAYUP by OLIVIER,CHRIS [FB/PNT]	15:42	31-35	V 4	
	15:21			MISSED JUMPER by SMITH,ZACH
REBOUND (DEF) by SHINE,TAVARIUS	15:21			
MISSED JUMPER by OLIVIER,CHRIS	15:05			
	15:05			REBOUND (DEF) by SMITH,ZACH
	14:59			MISSED 3PTR by WILLIAMS,DEVAUGNTAH
REBOUND (DEF) by OLIVIER,CHRIS	14:59			
MISSED 3PTR by SHINE,TAVARIUS	14:51			
REBOUND (OFF) by TEAM	14:51			
	14:36			FOUL by GRAY,JUSTIN
	14:36			SUB IN: EVANS,KEENAN

VISITORS: Oklahoma State	Time	Score	Margin	HOME: Texas Tech
	14:36			SUB OUT: GRAY,JUSTIN
MISSED JUMPER by GRIFFIN,TYREE	14:08			
	14:08			REBOUND (DEF) by WILLIAMS,DEVAUGNTAH
FOUL by HAMMONDS,LEYTON	13:48			
FOUL by SHINE,TAVARIUS	13:41			
	13:41	32-35	V 3	GOOD! FT by GOTCHER,TODDRICK
	13:41	33-35	V 2	GOOD! FT by GOTCHER,TODDRICK
SUB IN: BURTON,JOE	13:41			
SUB OUT: HAMMONDS,LEYTON	13:41			
MISSED JUMPER by NEWBERRY,JEFF	13:12			
	13:12			REBOUND (DEF) by SMITH,ZACH
	13:03			MISSED LAYUP by ROSS,AARON
	13:03			REBOUND (OFF) by ROSS,AARON
	12:59			TURNOVER by ROSS,AARON
STEAL by SHINE,TAVARIUS	12:58			
GOOD! LAYUP by NEWBERRY,JEFF [FB/PNT]	12:55	33-37	V 4	
ASSIST by SHINE,TAVARIUS	12:55			
	12:26			MISSED JUMPER by ROSS,AARON
REBOUND (DEF) by OLIVIER,CHRIS	12:26			
GOOD! 3PTR by NEWBERRY,JEFF	12:07	33-40	V 7	
ASSIST by BURTON,JOE	12:07			
	11:51			TIMEOUT MEDIA
	11:51			SUB IN: GRAY,JUSTIN
	11:51			SUB OUT: WILLIAMS,DEVAUGNTAH
	11:32			MISSED 3PTR by EVANS,KEENAN
BLOCK by SHINE,TAVARIUS	11:32			
	11:30			REBOUND (DEADB) by TEAM
	11:30			TURNOVER by TEAM
TURNOVER by OLIVIER,CHRIS	11:07			
	11:05			STEAL by EVANS,KEENAN
FOUL by BURTON,JOE	10:52			
	10:52	34-40	V 6	GOOD! FT by ROSS,AARON
	10:52	35-40	V 5	GOOD! FT by ROSS,AARON
MISSED LAYUP by OLIVIER,CHRIS	10:29			
REBOUND (OFF) by GRIFFIN,TYREE	10:29			
GOOD! LAYUP by BURTON,JOE [PNT]	10:10	35-42	V 7	
FOUL by GRIFFIN,TYREE	09:45			
	09:45	36-42	V 6	GOOD! FT by ROSS,AARON
	09:45	37-42	V 5	GOOD! FT by ROSS,AARON
	09:45			SUB IN: TEMPLE,MATTHEW
	09:45			SUB OUT: SMITH,ZACH
MISSED JUMPER by OLIVIER,CHRIS	09:21			
	09:21			BLOCK by TEMPLE,MATTHEW
	09:20			REBOUND (DEF) by ROSS,AARON
	09:13	40-42	V 2	GOOD! 3PTR by ROSS,AARON
TIMEOUT 30SEC	09:10			
SUB IN: HAMMONDS,LEYTON	09:10			
SUB OUT: BURTON,JOE	09:10			
	08:56			FOUL by GOTCHER,TODDRICK
MISSED LAYUP by OLIVIER,CHRIS	08:51			
	08:51			REBOUND (DEF) by GRAY,JUSTIN
	08:34			MISSED JUMPER by EVANS,KEENAN
REBOUND (DEF) by OLIVIER,CHRIS	08:34			
MISSED JUMPER by HAMMONDS,LEYTON	08:09			
REBOUND (DEADB) by TEAM	08:09			
FOUL by SHINE,TAVARIUS	08:08			
SUB IN: SOLOMON,MITCHELL	08:08			
SUB OUT: OLIVIER,CHRIS	08:08			

VISITORS: Oklahoma State	Time	Score	Margin	HOME: Texas Tech
	08:08			SUB IN: SORRELLS,ANDREW
	08:08			SUB OUT: GRAY,JUSTIN
	08:07			TURNOVER by TEMPLE,MATTHEW
	08:07			SUB IN: SMITH,ZACH
	08:07			SUB OUT: TEMPLE,MATTHEW
	07:54			FOUL by GOTCHER,TODDRICK
TIMEOUT MEDIA	07:54			
SUB IN: CARROLL,JEFFREY	07:54			
SUB OUT: SHINE,TAVARIUS	07:54			
	07:54			SUB IN: WILLIAMS,DEVAUGNTAH
	07:54			SUB IN: GRAY,JUSTIN
	07:54			SUB OUT: SORRELLS,ANDREW
	07:54			SUB OUT: GOTCHER,TODDRICK
GOOD! 3PTR by NEWBERRY,JEFF	07:27	40-45	V 5	
ASSIST by GRIFFIN,TYREE	07:27			
	07:27			FOUL by WILLIAMS,DEVAUGNTAH
MISSED FT by NEWBERRY,JEFF	07:27			
REBOUND (OFF) by SOLOMON,MITCHELL	07:27			
TURNOVER by HAMMONDS,LEYTON	07:07			
	07:06			STEAL by SMITH,ZACH
	06:47			TURNOVER by EVANS,KEENAN
	06:32			FOUL by EVANS,KEENAN
GOOD! FT by CARROLL,JEFFREY	06:32	40-46	V 6	
GOOD! FT by CARROLL,JEFFREY	06:32	40-47	V 7	
	06:32			SUB IN: GOTCHER,TODDRICK
	06:32			SUB OUT: EVANS,KEENAN
FOUL by SOLOMON,MITCHELL	06:08			
	06:08			MISSED FT by SMITH,ZACH
	06:08			REBOUND (DEADB) by TEAM
	06:08	41-47	V 6	GOOD! FT by SMITH,ZACH
SUB IN: OLIVIER,CHRIS	06:08			
SUB OUT: SOLOMON,MITCHELL	06:08			
MISSED LAYUP by OLIVIER,CHRIS	05:43			
	05:43			BLOCK by SMITH,ZACH
REBOUND (OFF) by GRIFFIN,TYREE	05:41			
MISSED 3PTR by GRIFFIN,TYREE	05:38			
	05:38			REBOUND (DEF) by SMITH,ZACH
	05:37			TURNOVER by SMITH,ZACH
STEAL by NEWBERRY,JEFF	05:36			
TURNOVER by NEWBERRY,JEFF	05:33			
	05:19			MISSED LAYUP by WILLIAMS,DEVAUGNTAH
	05:19			REBOUND (OFF) by SMITH,ZACH
	05:17	43-47	V 4	GOOD! DUNK by SMITH,ZACH [PNT]
MISSED LAYUP by HAMMONDS,LEYTON	04:49			
	04:49			REBOUND (DEF) by ROSS,AARON
FOUL by CARROLL,JEFFREY	04:41			
	04:41			MISSED FT by WILLIAMS,DEVAUGNTAH
	04:41			REBOUND (DEADB) by TEAM
	04:41	44-47	V 3	GOOD! FT by WILLIAMS,DEVAUGNTAH
SUB IN: SHINE,TAVARIUS	04:41			
SUB OUT: CARROLL,JEFFREY	04:41			
MISSED JUMPER by NEWBERRY,JEFF	04:16			
	04:16			BLOCK by GOTCHER,TODDRICK
REBOUND (OFF) by NEWBERRY,JEFF	04:14			
TURNOVER by TEAM	04:10			
	03:53	47-47	T	GOOD! 3PTR by ROSS,AARON
	03:53			ASSIST by SMITH,ZACH
	03:25			FOUL by GRAY,JUSTIN

VISITORS: Oklahoma State	Time	Score	Margin	HOME: Texas Tech
TIMEOUT MEDIA	03:25			
GOOD! FT by SHINE,TAVARIUS	03:25	47-48	V 1	
MISSED FT by SHINE,TAVARIUS	03:25			
	03:25			REBOUND (DEF) by GOTCHER,TODDRICK
SUB IN: SOLOMON,MITCHELL	03:25			
SUB OUT: OLIVIER,CHRIS	03:25			
	03:06			MISSED JUMPER by ROSS,AARON
REBOUND (DEF) by GRIFFIN,TYREE	03:06			
MISSED 3PTR by SHINE,TAVARIUS	02:44			
REBOUND (OFF) by SOLOMON,MITCHELL	02:44			
	02:40			FOUL by SMITH,ZACH
GOOD! FT by SOLOMON,MITCHELL	02:40	47-49	V 2	
GOOD! FT by SOLOMON,MITCHELL	02:40	47-50	V 3	
	02:25			TIMEOUT 30SEC
FOUL by SOLOMON,MITCHELL	02:17			
	02:17	48-50	V 2	GOOD! FT by WILLIAMS,DEVAUGNTAH
	02:17			MISSED FT by WILLIAMS,DEVAUGNTAH
REBOUND (DEF) by HAMMONDS,LEYTON	02:17			
SUB IN: OLIVIER,CHRIS	02:17			
SUB OUT: SOLOMON,MITCHELL	02:17			
GOOD! LAYUP by OLIVIER,CHRIS [PNT]	01:54	48-52	V 4	
	01:54			FOUL by ROSS,AARON
GOOD! FT by OLIVIER,CHRIS	01:54	48-53	V 5	
SUB IN: ALLEN,ANTHONY	01:54			
SUB OUT: OLIVIER,CHRIS	01:54			
	01:32			MISSED 3PTR by GOTCHER,TODDRICK
	01:32			REBOUND (OFF) by ROSS,AARON
	01:28	50-53	V 3	GOOD! LAYUP by ROSS,AARON [PNT]
TIMEOUT TEAM	01:21			
SUB IN: OLIVIER,CHRIS	01:21			
SUB OUT: ALLEN,ANTHONY	01:21			
MISSED 3PTR by NEWBERRY,JEFF	00:59			
	00:59			REBOUND (DEF) by ROSS,AARON
	00:34	53-53	T	GOOD! 3PTR by GOTCHER,TODDRICK
TIMEOUT 30SEC	00:27			
TURNOVER by TEAM	00:03			
	00:03			TURNOVER by ROSS,AARON
STEAL by NEWBERRY,JEFF	00:03			
SUB IN: ALLEN,ANTHONY	00:03			
SUB OUT: OLIVIER,CHRIS	00:03			

Oklahoma State 53, Texas Tech 53

Period 2-only	In Paint	Off T/O	2nd Chance	Fast Break	Bench	
OSU	10	9	4	4	8	Score tied - 0 times
TTU	6	11	6	0	14	Lead changed - 0 times

**Oklahoma State vs Texas Tech**  
**2/3/2016; 8:05 p.m. at Lubbock, TX (United Supermarkets Arena)**  
**Period 3 Play-By-Play**

VISITORS: Oklahoma State	Time	Score	Margin	HOME: Texas Tech
SUB IN: OLIVIER,CHRIS	05:00			
SUB OUT: EVANS,JAWUN	05:00			
SUB OUT: CARROLL,JEFFREY	05:00			
SUB OUT: SOLOMON,MITCHELL	05:00			
	05:00			SUB OUT: EVANS,KEENAN
	05:00			SUB OUT: TEMPLE,MATTHEW
	04:39			MISSED LAYUP by WILLIAMS,DEVAUGNTAH
BLOCK by OLIVIER,CHRIS	04:39			
REBOUND (DEF) by HAMMONDS,LEYTON	04:36			
GOOD! LAYUP by HAMMONDS,LEYTON [PNT]	04:08	53-55	V 2	
	03:55			MISSED JUMPER by GRAY,JUSTIN
REBOUND (DEF) by GRIFFIN,TYREE	03:55			
	03:34			FOUL by ROSS,AARON
GOOD! FT by OLIVIER,CHRIS	03:34	53-56	V 3	
MISSED FT by OLIVIER,CHRIS	03:34			
	03:34			REBOUND (DEF) by GRAY,JUSTIN
	03:34			SUB IN: EVANS,KEENAN
	03:16	56-56	T	GOOD! 3PTR by GOTCHER,TODDRICK
	03:16			ASSIST by ROSS,AARON
TURNOVER by OLIVIER,CHRIS	02:52			
	02:29			MISSED 3PTR by ROSS,AARON
REBOUND (DEF) by SHINE,TAVARIUS	02:29			
MISSED 3PTR by HAMMONDS,LEYTON	02:07			
REBOUND (DEADB) by TEAM	02:07			
	02:04			FOUL by GRAY,JUSTIN
GOOD! FT by OLIVIER,CHRIS	02:04	56-57	V 1	
MISSED FT by OLIVIER,CHRIS	02:04			
REBOUND (OFF) by HAMMONDS,LEYTON	02:04			
	02:04			SUB IN: WILLIAMS,DEVAUGNTAH
	02:04			SUB OUT: GRAY,JUSTIN
MISSED LAYUP by GRIFFIN,TYREE	01:42			
	01:42			BLOCK by EVANS,KEENAN
REBOUND (OFF) by TEAM	01:42			
GOOD! LAYUP by SHINE,TAVARIUS [PNT]	01:38	56-59	V 3	
FOUL by HAMMONDS,LEYTON	01:28			
	01:28	57-59	V 2	GOOD! FT by ROSS,AARON
	01:28	58-59	V 1	GOOD! FT by ROSS,AARON
TIMEOUT TEAM	01:20			
GOOD! JUMPER by GRIFFIN,TYREE	00:59	58-61	V 3	
	00:40	61-61	T	GOOD! 3PTR by GOTCHER,TODDRICK
	00:40			ASSIST by WILLIAMS,DEVAUGNTAH
	00:40			TIMEOUT 30SEC
TURNOVER by SHINE,TAVARIUS	00:15			
	00:11			TIMEOUT TEAM
SUB IN: ALLEN,ANTHONY	00:11			
SUB OUT: OLIVIER,CHRIS	00:11			
	00:01	63-61	H 2	GOOD! LAYUP by WILLIAMS,DEVAUGNTAH [PNT]

Oklahoma State 61, Texas Tech 63

Period 3-only      In    Off    2nd    Fast  
 Paint   T/O   Chance   Break   Bench

<b>Period 3-only</b>	<b>In Paint</b>	<b>Off T/O</b>	<b>2nd Chance</b>	<b>Fast Break</b>	<b>Bench</b>	
OSU	4	0	2	0	6	Score tied - 0 times
TTU	2	2	0	0	4	Lead changed - 0 times

**Oklahoma State vs Texas Tech**  
**2/3/2016; 8:05 p.m. at Lubbock, TX (United Supermarkets Arena)**  
**Scoring/Runs Reference**

Period 1			Period 2		
Oklahoma State	Score	Texas Tech	Oklahoma State	Score	Texas Tech
		X GOTCHER LAYUP - 19:45	19:45 - HAMMONDS TURN TO		
19:36 - EVANS TURN TO		X EVANS LAYUP - 19:32		X	TEMPLE JUMPER - 19:18
		X EVANS LAYUP - 19:27	18:49 - GRIFFIN TURN TO	31-25 -6	2 <sup>P</sup> TEMPLE DUNK - 19:06
19:03 - HAMMONDS JUMPER X		X GRAY JUMPER - 18:45			TO EVANS TURN - 18:37
18:31 - SOLOMON TURN TO		X SMITH 3PTR - 18:08	18:11 - NEWBERRY LAYUP 2 <sup>P</sup>	33-25 -8	
17:38 - SOLOMON LAYUP X				33-26 -7	1 TEMPLE FT - 17:47
17:28 - EVANS LAYUP X			17:23 - CARROLL 3PTR X		X TEMPLE FT - 17:47
17:26 - SOLOMON TURN TO				33-29 -4	3 GOTCHER 3PTR - 17:10
		X GOTCHER 3PTR - 17:15	16:35 - CARROLL JUMPER X		
	0-2 2	2 <sup>P</sup> EVANS LAYUP - 16:59	16:17 - NEWBERRY JUMPER X		
16:28 - OLIVIER LAYUP X			16:04 - SOLOMON TURN TO		
		X TEMPLE JUMPER - 15:59		33-30 -3	1 GOTCHER FT - 15:52
		0-3 3 1 GOTCHER FT - 15:58	15:42 - OLIVIER LAYUP 2 <sup>PF</sup>	33-31 -2	1 GOTCHER FT - 15:52
		0-4 4 1 GOTCHER FT - 15:58		35-31 -4	X SMITH JUMPER - 15:21
15:47 - OLIVIER LAYUP X		X GRAY JUMPER - 15:23	15:05 - OLIVIER JUMPER X		
15:08 - OLIVIER FT 1	1-4 3				X WILLIAMS 3PTR - 14:59
15:08 - OLIVIER FT 1	2-4 2		14:51 - SHINE 3PTR X		
		X SMITH JUMPER - 14:51	14:08 - GRIFFIN JUMPER X		
14:34 - HAMMONDS 3PTR 3	5-4 -1			35-32 -3	1 GOTCHER FT - 13:41
		TO ROSS TURN - 14:04		35-33 -2	1 GOTCHER FT - 13:41
13:59 - HAMMONDS JUMPER 2 <sup>F</sup>	7-4 -3	X THOMAS LAYUP - 13:26	13:12 - NEWBERRY JUMPER X		
13:20 - GRIFFIN 3PTR X					X ROSS LAYUP - 13:03
		X ROSS 3PTR - 13:12			TO ROSS TURN - 12:59
12:50 - GRIFFIN TURN TO			12:55 - NEWBERRY LAYUP 2 <sup>PF</sup>	37-33 -4	
		7-6 -1 2 <sup>PF</sup> GRAY LAYUP - 12:47			X ROSS JUMPER - 12:26
12:32 - HAMMONDS 3PTR 3	10-6 -4		12:07 - NEWBERRY 3PTR 3	40-33 -7	
		10-9 -1 3 ROSS 3PTR - 12:18			X EVANS 3PTR - 11:32
11:42 - TEAM TURN TO					TO TEAM TURN - 11:30
		X ROSS 3PTR - 11:25	11:07 - OLIVIER TURN TO		
10:59 - OLIVIER LAYUP 2 <sup>P</sup>	12-9 -3			40-34 -6	1 ROSS FT - 10:52
		X THOMAS LAYUP - 10:51		40-35 -5	1 ROSS FT - 10:52
		X TEMPLE TIPIN - 10:50	10:29 - OLIVIER LAYUP X		
		X WILLIAMS JUMPER - 10:48	10:10 - BURTON LAYUP 2 <sup>P</sup>	42-35 -7	
10:36 - EVANS LAYUP 2 <sup>P</sup>	14-9 -5			42-36 -6	1 ROSS FT - 09:45
		X WILLIAMS JUMPER - 10:17	09:21 - OLIVIER JUMPER X	42-37 -5	1 ROSS FT - 09:45
09:57 - NEWBERRY 3PTR X				42-40 -2	3 ROSS 3PTR - 09:13
09:44 - EVANS FT 1	15-9 -6		08:51 - OLIVIER LAYUP X		
					X EVANS JUMPER - 08:34



09:44 - EVANS FT 

1	16-9 -7
	16-10 -6
	1
	X

 EVANS FT - 09:16  
EVANS FT - 09:16

08:53 - EVANS JUMPER 

2	18-10 -8
	X

 SMITH JUMPER - 08:42

08:38 - EVANS LAYUP 

2 <sup>PF</sup>	20-10 -10
	X

 WILLIAMS JUMPER - 08:24

08:04 - CARROLL 3PTR 

X
---

07:59 - ALLEN TURN TO

07:14 - CARROLL 3PTR 

X
---

07:09 - ALLEN JUMPER 

X
---

06:44 - GRIFFIN 3PTR 

X
---

06:35 - HAMMONDS TURN TO

06:12 - EVANS LAYUP 

2 <sup>P</sup>	22-15 -7
	X

 ROSS 3PTR - 05:59

05:44 - NEWBERRY JUMPER 

2	24-15 -9
	X

 SMITH JUMPER - 05:29

05:09 - NEWBERRY 3PTR 

X
---

04:27 - NEWBERRY FT 

1	25-15 -10
---	--------------

04:27 - NEWBERRY FT 

X
---

03:53 - NEWBERRY JUMPER 

X
---

03:39 - HAMMONDS FT 

1	26-15 -11
---	--------------

03:39 - HAMMONDS FT 

1	27-15 -12
---	--------------

02:56 - OLIVIER TURN TO

02:30 - GRIFFIN FT 

1	27-19 -8
---	-------------

2 <sup>PF</sup>
-----------------

 SMITH DUNK - 02:51

02:30 - GRIFFIN FT 

1	28-19 -9
---	-------------

02:30 - GRIFFIN FT 

1	29-19 -10
---	--------------

01:44 - EVANS TURN TO

01:12 - HAMMONDS 3PTR 

X
---

00:50 - HAMMONDS FT 

1	29-21 -8
---	-------------

2 <sup>PF</sup>
-----------------

 THOMAS LAYUP - 01:41

00:50 - HAMMONDS FT 

1	30-21 -9
---	-------------

00:50 - HAMMONDS FT 

1	31-21 -10
---	--------------

00:25 - GRIFFIN TURN TO

00:16 - OLIVIER TURN TO

00:16 - OLIVIER TURN TO 

X
---

 THOMAS LAYUP - 00:01

08:09 - HAMMONDS JUMPER 

X
---

07:27 - NEWBERRY 3PTR 

3	45-40 -5
---	-------------

07:27 - NEWBERRY FT 

X
---

07:07 - HAMMONDS TURN TO

06:32 - CARROLL FT 

1	46-40 -6
---	-------------

06:32 - CARROLL FT 

1	47-40 -7
---	-------------

06:32 - CARROLL FT 

X
---

06:08 - SMITH FT - 06:08

06:08 - SMITH FT - 06:08

05:43 - OLIVIER LAYUP 

X
---

05:38 - GRIFFIN 3PTR 

X
---

05:38 - GRIFFIN 3PTR TO

05:33 - NEWBERRY TURN TO

05:19 - WILLIAMS LAYUP - 05:19

05:17 - SMITH DUNK - 05:17

04:49 - HAMMONDS LAYUP 

X
---

04:49 - HAMMONDS LAYUP 

X
---

04:41 - WILLIAMS FT - 04:41

04:41 - WILLIAMS FT - 04:41

04:16 - NEWBERRY JUMPER 

X
---

04:10 - TEAM TURN TO

04:10 - TEAM TURN TO 

47-47 0	3
------------	---

03:53 - ROSS 3PTR - 03:53

03:25 - SHINE FT 

1	48-47 -1
---	-------------

03:25 - SHINE FT 

X
---

03:06 - ROSS JUMPER - 03:06

02:44 - SHINE 3PTR 

X
---

02:40 - SOLOMON FT 

1	49-47 -2
---	-------------

02:40 - SOLOMON FT 

1	50-47 -3
---	-------------

02:17 - WILLIAMS FT - 02:17

02:17 - WILLIAMS FT - 02:17

01:54 - OLIVIER LAYUP 

2 <sup>P</sup>	52-48 -4
----------------	-------------

01:54 - OLIVIER FT 

1	53-48 -5
---	-------------

01:54 - OLIVIER FT 

X
---

01:32 - GOTCHER 3PTR - 01:32

01:28 - ROSS LAYUP - 01:28

00:59 - NEWBERRY 3PTR 

X
---

00:59 - NEWBERRY 3PTR 

53-50 -3	2 <sup>P</sup>
-------------	----------------

00:34 - GOTCHER 3PTR - 00:34

00:03 - TEAM TURN TO

00:03 - TEAM TURN TO 

53-53 0	3
------------	---

00:03 - TEAM TURN TO TO ROSS TURN - 00:03

Period 3

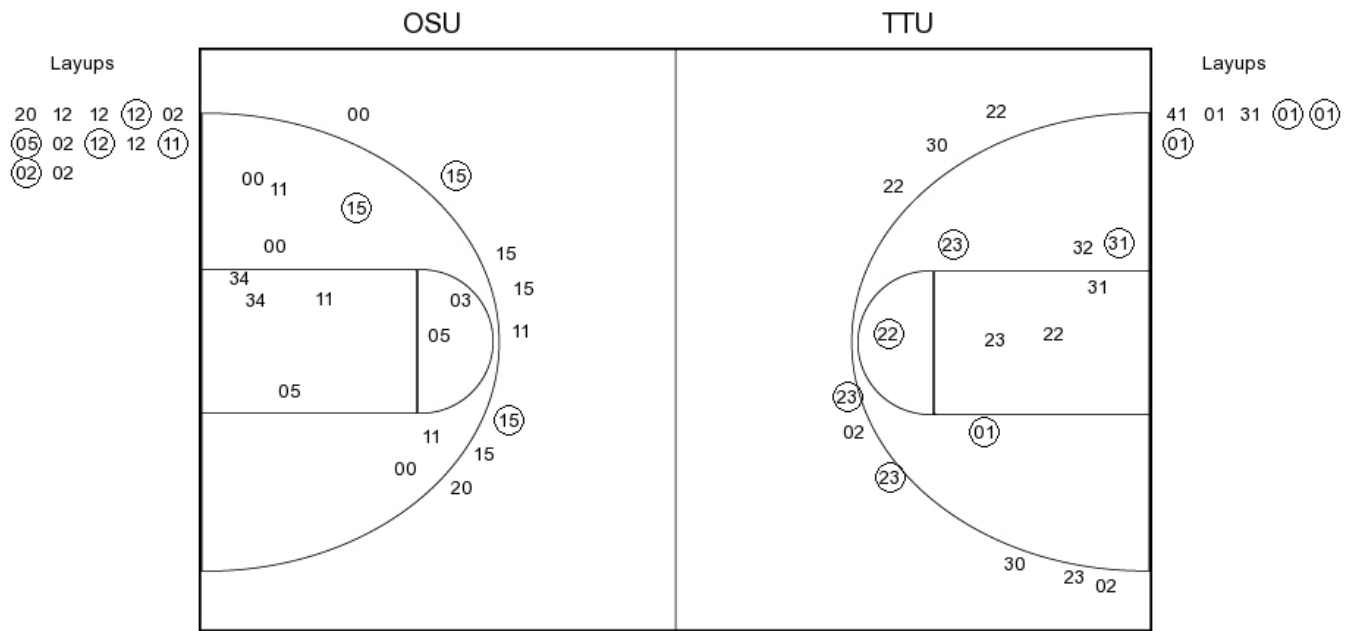
Oklahoma State	Score	Texas Tech
		X WILLIAMS LAYUP - 04:39
04:08 - HAMMONDS LAYUP	2 <sup>P</sup> 55-53 -2	
		X GRAY JUMPER - 03:55
03:34 - OLIVIER FT	1 56-53 -3	
03:34 - OLIVIER FT	X	
	56-56 0	3 GOTCHER 3PTR - 03:16
02:52 - OLIVIER TURN	TO	
		X ROSS 3PTR - 02:29
02:07 - HAMMONDS 3PTR	X	
02:04 - OLIVIER FT	1 57-56 -1	
02:04 - OLIVIER FT	X	
01:42 - GRIFFIN LAYUP	X	
01:38 - SHINE LAYUP	2 <sup>P</sup> 59-56 -3	
	59-57 -2	1 ROSS FT - 01:28
	59-58 -1	1 ROSS FT - 01:28
00:59 - GRIFFIN JUMPER	2 61-58 -3	
	61-61 0	3 GOTCHER 3PTR - 00:40
00:15 - SHINE TURN	TO	
	61-63 2	2 <sup>P</sup> WILLIAMS LAYUP - 00:01

Oklahoma State vs Texas Tech

OFFICIAL SHOT CHART

2/3/2016 at Lubbock, TX (United Supermarkets Arena)

PERIOD 1



**OSU PERIOD 1**

FG Made	9
FG Attempted	23
3PFG Made	2
3PFG Attempted	9

**TTU PERIOD 1**

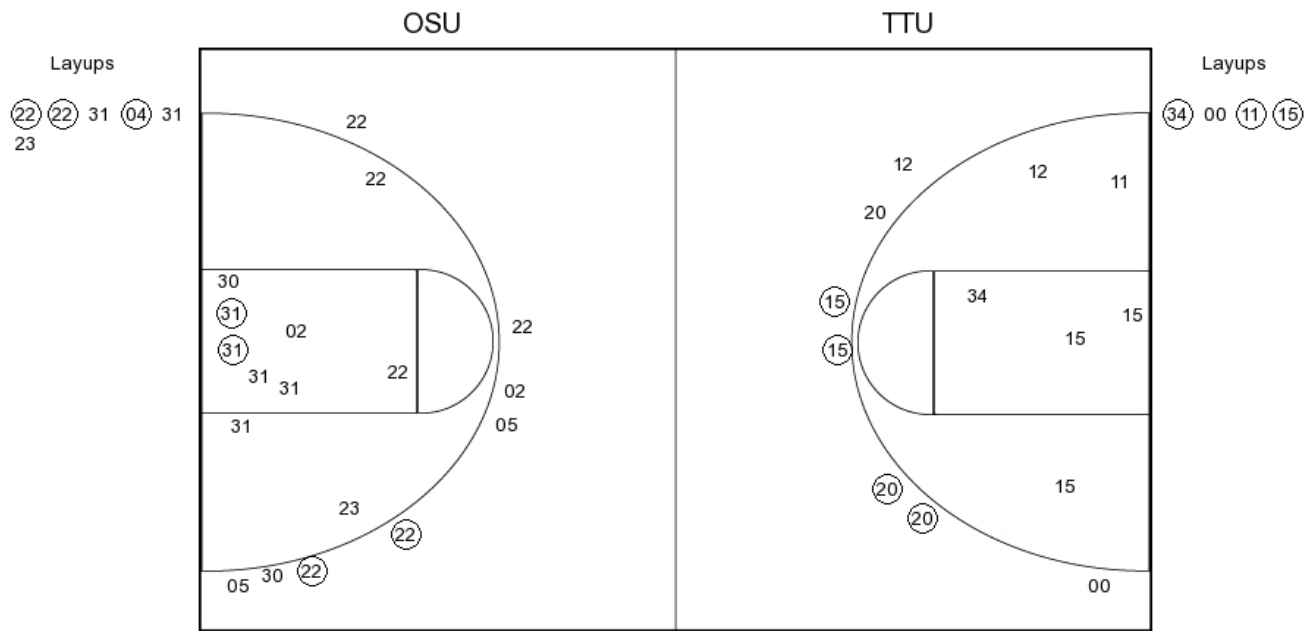
FG Made	8
FG Attempted	32
3PFG Made	2
3PFG Attempted	8

Oklahoma State vs Texas Tech

OFFICIAL SHOT CHART

2/3/2016 at Lubbock, TX (United Supermarkets Arena)

PERIOD 2



**OSU PERIOD 2**

FG Made	7
FG Attempted	24
3PFG Made	2
3PFG Attempted	7

**TTU PERIOD 2**

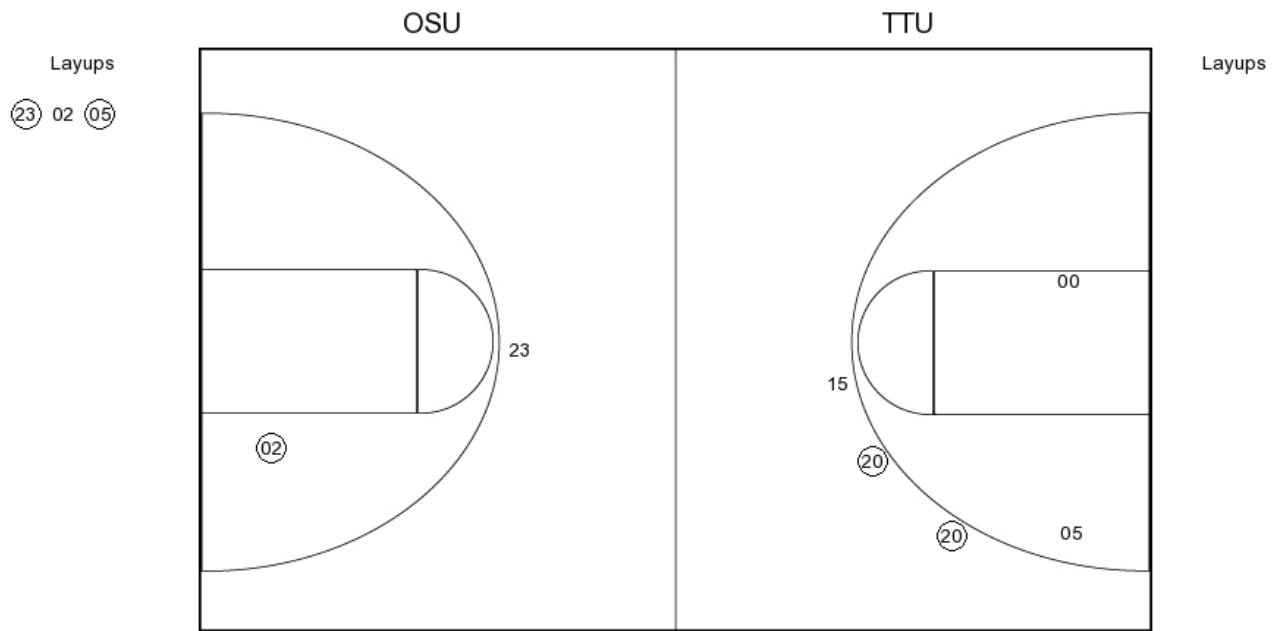
FG Made	7
FG Attempted	17
3PFG Made	4
3PFG Attempted	7

Oklahoma State vs Texas Tech

OFFICIAL SHOT CHART

2/3/2016 at Lubbock, TX (United Supermarkets Arena)

PERIOD 3



**OSU PERIOD 3**

- FG Made
- FG Attempted
- 3PFG Made
- 3PFG Attempted

**TTU PERIOD 3**

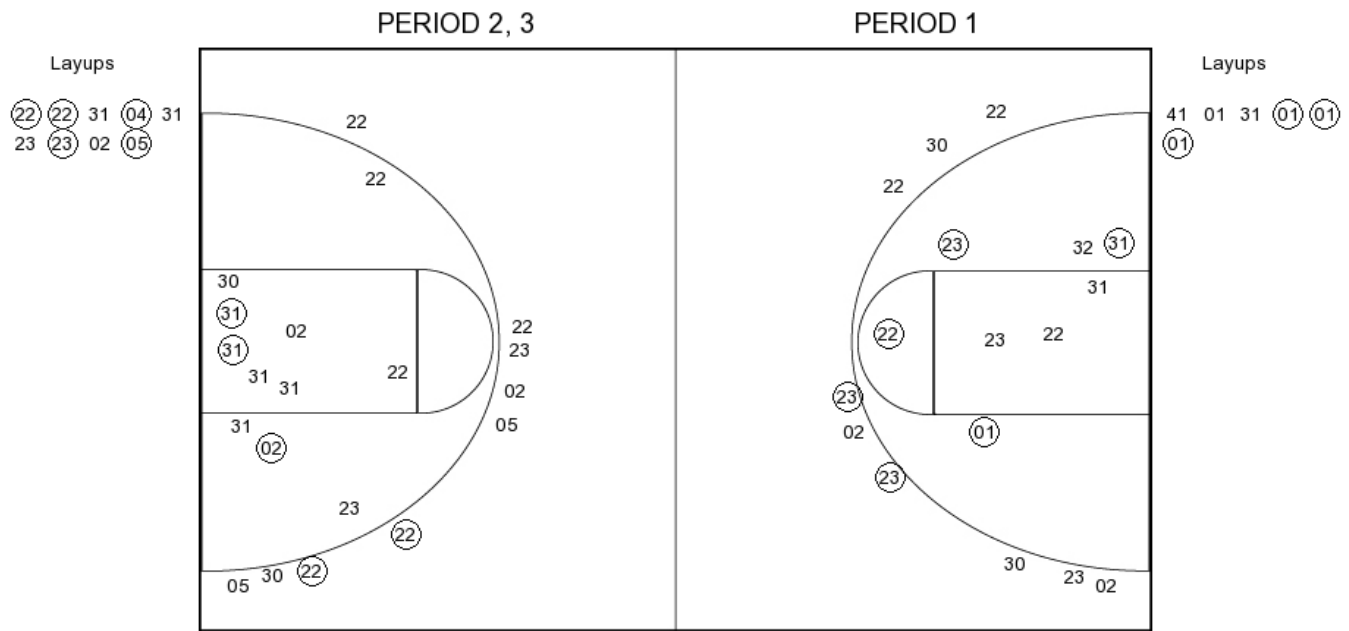
- FG Made
- FG Attempted
- 3PFG Made
- 3PFG Attempted

Oklahoma State vs Texas Tech

OFFICIAL SHOT CHART

2/3/2016 at Lubbock, TX (United Supermarkets Arena)

Oklahoma State



**OSU PERIOD 1**

FG Made	9
FG Attempted	23
3PFG Made	2
3PFG Attempted	9

**OSU PERIOD 2**

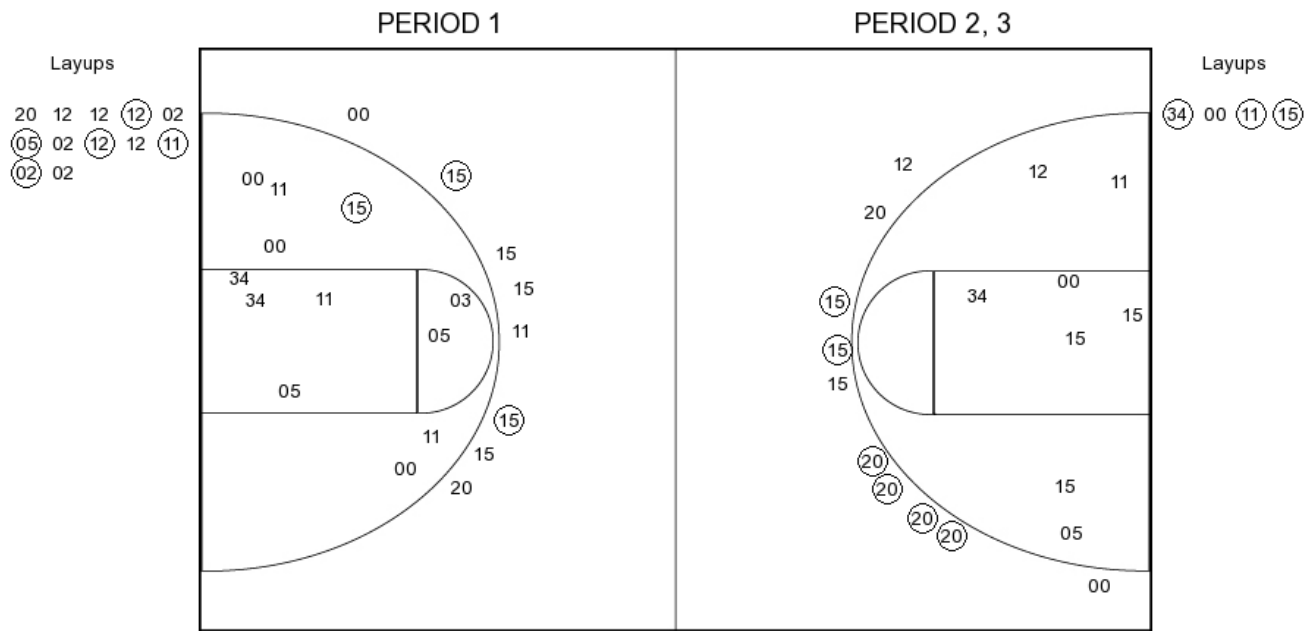
FG Made	7
FG Attempted	24
3PFG Made	2
3PFG Attempted	7

Oklahoma State vs Texas Tech

OFFICIAL SHOT CHART

2/3/2016 at Lubbock, TX (United Supermarkets Arena)

Texas Tech



**TTU PERIOD 1**

FG Made	8
FG Attempted	32
3PFG Made	2
3PFG Attempted	8

**TTU PERIOD 2**

FG Made	7
FG Attempted	17
3PFG Made	4
3PFG Attempted	7