



TEXAS TECH VS. KANSAS

1/9/2016

Lubbock, TX (United Supermarkets Arena)

FINAL STATS

Kansas

(14-1 (3-0 B12))

69

Texas Tech

(11-3 (1-2 B12))

59

Start Time: 8:05 p.m.

Officials: Gary Maxwell, Bert Smith, Michael Greenstein

Attendance: 14231

Official Basketball Box Score -- Game Totals -- Final Statistics
Kansas vs Texas Tech
1/9/2016 8:05 p.m. at Lubbock, TX (United Supermarkets Arena)

Kansas 69 - 14-1 (3-0 B12)

##	Player	S	Total	3-Ptr	FT-FTA	Rebounds			PF	TP	A	TO	Blk	Stl	Min
			FG-FGA	3PT FG-FGA		Off Reb	Def Reb	Tot Reb							
00	MASON III,FRANK	g	3-8	3-6	8-8	1	9	10	1	17	5	2	0	1	31
01	SELDEN JR.,WAYNE	g	4-13	1-7	0-0	0	2	2	2	9	2	1	0	1	33
04	GRAHAM,DEVONTE'	g	1-6	0-2	2-2	0	4	4	1	4	2	1	0	1	30
34	ELLIS,PERRY	f	7-16	1-1	0-0	5	5	10	1	15	2	3	1	0	31
42	MICKELSON,HUNTER	f	1-1	0-0	0-0	0	0	0	2	2	0	0	0	0	5
10	MYKHAILIUK,SVI		2-3	2-3	1-2	0	2	2	1	7	0	0	0	1	14
13	DIALLO,CHEICK		0-0	0-0	0-0	0	1	1	0	0	0	0	0	0	3
14	GREENE,BRANNEN		2-3	2-3	0-0	0	4	4	2	6	0	3	0	0	11
15	BRAGG JR.,CARLTON		2-3	0-0	0-0	2	1	3	2	4	0	3	0	0	14
31	TRAYLOR,JAMARI		0-1	0-0	0-0	0	2	2	3	0	0	2	1	0	12
33	LUCAS,LANDEN		1-1	0-0	3-4	1	1	2	3	5	2	0	1	0	16
TEAM						1	1	2	0			0			
TOTALS			23-55	9-22	14-16	10	32	42	18	69	13	15	3	4	200
Deadball Rebounds: 5,0															

FG %	1st Half:	9-31	29.0%	2nd Half:	14-24	58.3%	Game:	23-55	41.8%
3FG %	1st Half:	4-14	28.6%	2nd Half:	5-8	62.5%	Game:	9-22	40.9%
FT %	1st Half:	7-8	87.5%	2nd Half:	7-8	87.5%	Game:	14-16	87.5%

Texas Tech 59 - 11-3 (1-2 B12)

##	Player	S	Total	3-Ptr	FT-FTA	Rebounds			PF	TP	A	TO	Blk	Stl	Min
			FG-FGA	3PT FG-FGA		Off Reb	Def Reb	Tot Reb							
00	WILLIAMS,DEVAUGNTA'	g	1-8	0-2	2-4	0	0	0	1	4	1	1	0	0	25
11	SMITH,ZACH	f	2-7	0-3	1-4	2	4	6	1	5	0	0	1	2	31
12	EVANS,KEENAN	g	0-3	0-0	1-3	0	4	4	2	1	2	2	0	1	23
20	GOTCHER,TODDRICK	g	5-12	2-7	1-2	1	1	2	1	13	2	0	0	1	32
32	ODIASIE,NORENSE	c	7-11	0-0	0-1	0	3	3	2	14	1	2	0	0	29
02	THOMAS,DEVON		1-3	0-1	0-0	0	3	3	1	2	3	2	0	1	16
05	GRAY,JUSTIN		4-7	0-0	2-3	2	1	3	1	10	0	1	1	2	23
15	ROSS,AARON		2-3	1-2	2-2	0	0	0	4	7	1	0	1	0	12
34	TEMPLE,MATTHEW		1-2	1-1	0-0	1	1	2	2	3	0	0	0	0	9
TEAM						1	2	3	0			1			
TOTALS			23-56	4-16	9-19	7	19	26	15	59	10	9	3	7	200
Deadball Rebounds: 4,0															

FG %	1st Half:	9-29	31.0%	2nd Half:	14-27	51.9%	Game:	23-56	41.1%
3FG %	1st Half:	2-4	50.0%	2nd Half:	2-12	16.7%	Game:	4-16	25.0%
FT %	1st Half:	7-14	50.0%	2nd Half:	2-5	40.0%	Game:	9-19	47.4%

Officials: Gary Maxwell, Bert Smith, Michael Greenstein
 Technical Fouls: Kansas- None. Texas Tech- None.
 Attendance: 14231

Score by periods	1st	2nd	Total
Kansas	29	40	69
Texas Tech	27	32	59

Points	In Paint	Off T/O	2nd 2nd Chance	Fast Fast Break	Bench
KU	26	7	7	0	22
TTU	26	11	7	0	22

Last FG - KU 2nd-01:05, TTU 2nd-00:52.
 Largest lead - Kansas by 10 2nd-16:21; Texas Tech by 1 1st-13:07
 KU led for 35:42. TTU led for 0:52. Game was tied for 3:26.

Score tied - 6 times
 Lead changed - 2 times

Official Basketball Box Score -- Game Totals -- First Half Statistics
Kansas vs Texas Tech
1/9/2016 8:05 p.m. at Lubbock, TX (United Supermarkets Arena)

Kansas 29 • 14-1 (3-0 B12)

##	Player	S	Total		3-Ptr		Rebounds		PF	TP	A TO Blk Stl				Min
			FG	FGA	3PT	FG-FGA	FT	FTA			Off	Def	Tot	Reb	
00	MASON III,FRANK	g	1	5	1	4	4	4	1	7	2	1	0	1	14
01	SELLEN JR.,WAYNE	g	0	7	0	5	0	0	0	0	1	1	0	0	17
04	GRAHAM,DEVONTE'	g	0	3	0	1	0	0	1	0	1	1	0	1	17
34	ELLIS,PERRY	f	4	9	0	0	0	0	3	8	1	1	0	0	13
42	MICKELSON,HUNTER	f	1	1	0	0	0	0	0	2	0	0	0	0	5
10	MYKHAILIUK,SVI		1	1	1	1	0	0	0	3	0	0	0	1	7
13	DIALLO,CHEICK		0	0	0	0	0	0	0	0	0	0	0	0	3
14	GREENE,BRANNEN		2	3	2	3	0	0	2	6	0	2	0	0	5
15	BRAGG JR.,CARLTON		0	1	0	0	0	0	1	0	0	1	0	0	6
31	TRAYLOR,JAMARI		0	1	0	0	0	0	3	0	0	2	1	0	9
33	LUCAS,LANDEN		0	0	0	0	3	4	1	3	0	0	1	0	4
TEAM									1		0		1		
Totals			9	31	4	14	7	8	7	29	5	9	2	3	100
FG %			Half: 9-31		29.0%										
3FG %			Half: 4-14		28.6%										
FT %			Half: 7-8		87.5%										

Texas Tech 27 • 11-3 (1-2 B12)

##	Player	S	Total		3-Ptr		Rebounds		PF	TP	A TO Blk Stl				Min
			FG	FGA	3PT	FG-FGA	FT	FTA			Off	Def	Tot	Reb	
00	WILLIAMS,DEVAUGNTA'	g	1	5	0	0	2	4	0	4	0	0	0	0	17
11	SMITH,ZACH	f	1	3	0	0	1	2	2	3	0	0	1	2	16
12	EVANS,KEENAN	g	0	3	0	0	1	3	0	1	1	2	0	1	14
20	GOTCHER,TODDRICK	g	3	6	1	2	1	2	1	8	0	0	0	1	14
32	ODIASE,NORENSE	c	0	4	0	0	0	1	0	0	1	1	0	0	14
02	THOMAS,DEVON		0	0	0	0	0	0	0	0	0	2	0	0	5
05	GRAY,JUSTIN		2	4	0	0	0	0	0	4	0	0	1	1	10
15	ROSS,AARON		1	2	0	1	2	2	0	4	1	0	0	0	4
34	TEMPLE,MATTHEW		1	2	1	1	0	0	1	3	0	0	0	0	6
TEAM									1		2		3		
Totals			9	29	2	4	7	14	5	27	3	5	2	5	100
FG %			Half: 9-29		31.0%										
3FG %			Half: 2-4		50.0%										
FT %			Half: 7-14		50.0%										

Officials: Gary Maxwell, Bert Smith, Michael Greenstein
 Technical Fouls: Kansas- None. Texas Tech- None.

Score by periods	1st	2nd	Total
Kansas	29	40	69
Texas Tech	27	32	59

Points	In Paint	Off T/O	2nd Chance	Fast Break	Bench
KU	8	4	2	0	12
TTU	12	4	6	0	11

Last FG - KU 1st-04:16, TTU 1st-02:16.
 KU led for 15:55. TTU led for 0:52. Game was tied for 3:13.

Score tied - 5 times
 Lead changed - 2 times

Kansas vs Texas Tech
1/9/2016; 8:05 p.m. at Lubbock, TX (United Supermarkets Arena)
Period 1 Play-By-Play

VISITORS: Kansas	Time	Score	Margin	HOME: Texas Tech
	19:43			MISSED LAYUP by EVANS,KEENAN
REBOUND (DEF) by MASON III,FRANK	19:43			
GOOD! JUMPER by MICKELSON,HUNTER	19:26	0-2	V 2	
	18:59	2-2	T	GOOD! JUMPER by GOTCHER,TODDRICK [PNT]
MISSED JUMPER by ELLIS,PERRY	18:41			
REBOUND (DEADB) by TEAM	18:41			
FOUL by MICKELSON,HUNTER	18:39			
	18:18			MISSED LAYUP by WILLIAMS,DEVAUGNTAH
REBOUND (DEF) by GRAHAM,DEVONTE'	18:18			
GOOD! DUNK by ELLIS,PERRY [PNT]	18:05	2-4	V 2	
ASSIST by SELDEN JR.,WAYNE	18:05			
	17:49			MISSED JUMPER by WILLIAMS,DEVAUGNTAH
REBOUND (DEF) by MASON III,FRANK	17:49			
MISSED LAYUP by GRAHAM,DEVONTE'	17:43			
REBOUND (DEADB) by TEAM	17:43			
FOUL by MICKELSON,HUNTER	17:42			
SUB IN: LUCAS,LANDEN	17:42			
SUB OUT: MICKELSON,HUNTER	17:42			
	17:28			MISSED JUMPER by ODIASE,NORENSE
REBOUND (DEF) by SELDEN JR.,WAYNE	17:28			
MISSED LAYUP by MASON III,FRANK	17:16			
REBOUND (OFF) by ELLIS,PERRY	17:16			
MISSED JUMPER by ELLIS,PERRY	17:09			
	17:09			REBOUND (DEF) by TEAM
	16:50	4-4	T	GOOD! DUNK by WILLIAMS,DEVAUGNTAH [PNT]
	16:50			ASSIST by ODIASE,NORENSE
MISSED 3PTR by SELDEN JR.,WAYNE	16:35			
	16:35			REBOUND (DEF) by EVANS,KEENAN
	16:18			MISSED LAYUP by ODIASE,NORENSE
BLOCK by LUCAS,LANDEN	16:18			
	16:16			REBOUND (OFF) by GOTCHER,TODDRICK
	16:14			MISSED LAYUP by GOTCHER,TODDRICK
REBOUND (DEF) by ELLIS,PERRY	16:14			
MISSED 3PTR by SELDEN JR.,WAYNE	16:01			
	16:01			REBOUND (DEF) by EVANS,KEENAN
	15:54			MISSED JUMPER by SMITH,ZACH
REBOUND (DEF) by SELDEN JR.,WAYNE	15:54			
	15:49			FOUL by WILLIAMS,DEVAUGNTAH
TIMEOUT MEDIA	15:49			
	15:49			SUB IN: ROSS,AARON
	15:49			SUB IN: GRAY,JUSTIN
	15:49			SUB IN: TEMPLE,MATTHEW
	15:49			SUB OUT: WILLIAMS,DEVAUGNTAH
	15:49			SUB OUT: SMITH,ZACH
	15:49			SUB OUT: ODIASE,NORENSE
	15:40			FOUL by TEMPLE,MATTHEW
GOOD! FT by LUCAS,LANDEN	15:40	4-5	V 1	
MISSED FT by LUCAS,LANDEN	15:40			
	15:40			REBOUND (DEF) by TEMPLE,MATTHEW
FOUL by LUCAS,LANDEN	15:27			
	15:27	5-5	T	GOOD! FT by EVANS,KEENAN
	15:27			MISSED FT by EVANS,KEENAN
REBOUND (DEF) by LUCAS,LANDEN	15:27			

VISITORS: Kansas	Time	Score	Margin	HOME: Texas Tech
	15:09			FOUL by ROSS,AARON
GOOD! LAYUP by ELLIS,PERRY [PNT]	15:04	5-7	V 2	
FOUL by LUCAS,LANDEN	14:59			
SUB IN: GREENE,BRANNEN	14:59			
SUB IN: DIALLO,CHEICK	14:59			
SUB OUT: GRAHAM,DEVONTE'	14:59			
SUB OUT: LUCAS,LANDEN	14:59			
	14:36			MISSED 3PTR by ROSS,AARON
REBOUND (DEF) by MASON III,FRANK	14:36			
MISSED 3PTR by MASON III,FRANK	14:29			
REBOUND (OFF) by ELLIS,PERRY	14:29			
TURNOVER by MASON III,FRANK	14:13			
	14:12			STEAL by EVANS,KEENAN
FOUL by GREENE,BRANNEN	14:08			
	14:08	6-7	V 1	GOOD! FT by ROSS,AARON
	14:08	7-7	T	GOOD! FT by ROSS,AARON
	14:08			SUB IN: WILLIAMS,DEVAUGNTAH
	14:08			SUB OUT: GOTCHER,TODDRICK
GOOD! 3PTR by MASON III,FRANK	13:56	7-10	V 3	
ASSIST by ELLIS,PERRY	13:56			
FOUL by GREENE,BRANNEN	13:41			
SUB IN: GRAHAM,DEVONTE'	13:41			
SUB IN: MYKHAILIUK,SVI	13:41			
SUB OUT: SELDEN JR.,WAYNE	13:41			
SUB OUT: GREENE,BRANNEN	13:41			
	13:37	9-10	V 1	GOOD! JUMPER by GRAY,JUSTIN
	13:37			ASSIST by ROSS,AARON
MISSED JUMPER by GRAHAM,DEVONTE'	13:19			
	13:19			REBOUND (DEF) by TEAM
SUB IN: TRAYLOR,JAMARI	13:17			
SUB OUT: ELLIS,PERRY	13:17			
	13:17			SUB IN: THOMAS,DEVON
	13:17			SUB OUT: EVANS,KEENAN
	13:07	11-10	H 1	GOOD! LAYUP by ROSS,AARON [PNT]
MISSED 3PTR by MASON III,FRANK	12:39			
REBOUND (OFF) by MASON III,FRANK	12:39			
MISSED 3PTR by GRAHAM,DEVONTE'	12:33			
	12:33			REBOUND (DEF) by THOMAS,DEVON
	12:19			MISSED LAYUP by GRAY,JUSTIN
REBOUND (DEF) by DIALLO,CHEICK	12:19			
	12:15			FOUL by ROSS,AARON
GOOD! FT by MASON III,FRANK	12:15	11-11	T	
GOOD! FT by MASON III,FRANK	12:15	11-12	V 1	
SUB IN: BRAGG JR.,CARLTON	12:15			
SUB IN: SELDEN JR.,WAYNE	12:15			
SUB OUT: MASON III,FRANK	12:15			
SUB OUT: DIALLO,CHEICK	12:15			
	12:15			SUB IN: SMITH,ZACH
	12:15			SUB IN: ODIASE,NORENSE
	12:15			SUB OUT: ROSS,AARON
	12:15			SUB OUT: TEMPLE,MATTHEW
	11:56			MISSED JUMPER by GRAY,JUSTIN
REBOUND (DEF) by TRAYLOR,JAMARI	11:56			
GOOD! 3PTR by MYKHAILIUK,SVI	11:49	11-15	V 4	
ASSIST by GRAHAM,DEVONTE'	11:49			
	11:20			TURNOVER by THOMAS,DEVON
STEAL by MYKHAILIUK,SVI	11:19			
MISSED LAYUP by SELDEN JR.,WAYNE	11:16			

VISITORS: Kansas	Time	Score	Margin	HOME: Texas Tech
	11:16			BLOCK by GRAY,JUSTIN
REBOUND (OFF) by TEAM	11:16			
TIMEOUT MEDIA	11:16			
	11:16			SUB IN: GOTCHER,TODDRICK
	11:16			SUB IN: EVANS,KEENAN
	11:16			SUB OUT: GRAY,JUSTIN
	11:16			SUB OUT: THOMAS,DEVON
TURNOVER by SELDEN JR.,WAYNE	11:08			
	10:54			MISSED LAYUP by WILLIAMS,DEVAUGNTAH
BLOCK by TRAYLOR,JAMARI	10:54			
REBOUND (DEF) by MYKHAILIUK,SVI	10:51			
MISSED 3PTR by SELDEN JR.,WAYNE	10:48			
REBOUND (OFF) by BRAGG JR.,CARLTON	10:48			
	10:38			FOUL by EVANS,KEENAN
FOUL by BRAGG JR.,CARLTON	10:29			
TURNOVER by BRAGG JR.,CARLTON	10:29			
	10:17	13-15	V 2	GOOD! JUMPER by GOTCHER,TODDRICK [PNT]
	10:17			ASSIST by EVANS,KEENAN
TURNOVER by TRAYLOR,JAMARI	10:02			
	10:00			STEAL by GOTCHER,TODDRICK
	09:58			MISSED LAYUP by GOTCHER,TODDRICK
REBOUND (DEF) by GRAHAM,DEVONTE'	09:58			
MISSED DUNK by BRAGG JR.,CARLTON	09:42			
	09:42			REBOUND (DEF) by SMITH,ZACH
	09:34			MISSED LAYUP by WILLIAMS,DEVAUGNTAH
REBOUND (DEF) by GRAHAM,DEVONTE'	09:34			
TURNOVER by GRAHAM,DEVONTE'	09:34			
	09:33			STEAL by SMITH,ZACH
	09:20			TURNOVER by EVANS,KEENAN
STEAL by GRAHAM,DEVONTE'	09:20			
GOOD! LAYUP by ELLIS,PERRY [PNT]	09:15	13-17	V 4	
FOUL by TRAYLOR,JAMARI	09:15			
	09:15			MISSED FT by ODIASE,NORENSE
REBOUND (DEF) by GREENE,BRANNEN	09:15			
MISSED 3PTR by MASON III,FRANK	09:15			
	09:15			REBOUND (DEF) by ODIASE,NORENSE
	08:31			MISSED JUMPER by ODIASE,NORENSE
REBOUND (DEF) by TRAYLOR,JAMARI	08:31			
MISSED JUMPER by ELLIS,PERRY	08:20			
	08:20			REBOUND (DEF) by SMITH,ZACH
FOUL by MASON III,FRANK	08:05			
	08:05			MISSED FT by EVANS,KEENAN
REBOUND (DEF) by GREENE,BRANNEN	08:05			
SUB IN: MICKELSON,HUNTER	08:05			
SUB OUT: TRAYLOR,JAMARI	08:05			
GOOD! LAYUP by ELLIS,PERRY [PNT]	07:49	13-19	V 6	
	07:38	16-19	V 3	GOOD! 3PTR by GOTCHER,TODDRICK
MISSED LAYUP by ELLIS,PERRY	07:13			
	07:13			BLOCK by SMITH,ZACH
	07:12			REBOUND (DEF) by ODIASE,NORENSE
	07:05			MISSED LAYUP by EVANS,KEENAN
	07:05			REBOUND (OFF) by SMITH,ZACH
	07:03	18-19	V 1	GOOD! DUNK by SMITH,ZACH [PNT]
TURNOVER by GREENE,BRANNEN	06:37			
SUB IN: GREENE,BRANNEN	06:37			
SUB IN: ELLIS,PERRY	06:37			
SUB IN: MASON III,FRANK	06:37			
SUB OUT: BRAGG JR.,CARLTON	06:37			

VISITORS: Kansas	Time	Score	Margin	HOME: Texas Tech
SUB OUT: GRAHAM,DEVONTE'	06:37			
SUB OUT: MYKHAILIUK,SVI	06:37			
	06:37			SUB IN: TEMPLE,MATTHEW
	06:37			SUB OUT: ODIASE,NORENSE
	06:16			MISSED JUMPER by EVANS,KEENAN
REBOUND (DEF) by MASON III,FRANK	06:16			
TURNOVER by GREENE,BRANNEN	05:49			
	05:41			MISSED 3PTR by GOTCHER,TODDRICK
REBOUND (DEF) by MASON III,FRANK	05:41			
GOOD! 3PTR by GREENE,BRANNEN	05:30	18-22	V 4	
ASSIST by MASON III,FRANK	05:30			
	05:12			MISSED LAYUP by SMITH,ZACH
	05:12			REBOUND (OFF) by TEMPLE,MATTHEW
	05:09			MISSED TIPIN by TEMPLE,MATTHEW
	05:09			REBOUND (OFF) by TEAM
SUB IN: LUCAS,LANDEN	05:09			
SUB OUT: MICKELSON,HUNTER	05:09			
	05:09			SUB IN: GRAY,JUSTIN
	05:09			SUB OUT: WILLIAMS,DEVAUGNTAH
	05:00	21-22	V 1	GOOD! 3PTR by TEMPLE,MATTHEW
MISSED 3PTR by SELDEN JR.,WAYNE	04:40			
REBOUND (OFF) by LUCAS,LANDEN	04:40			
	04:36			FOUL by TEMPLE,MATTHEW
GOOD! FT by LUCAS,LANDEN	04:36	21-23	V 2	
GOOD! FT by LUCAS,LANDEN	04:36	21-24	V 3	
SUB IN: GRAHAM,DEVONTE'	04:36			
SUB OUT: SELDEN JR.,WAYNE	04:36			
	04:36			SUB IN: ODIASE,NORENSE
	04:36			SUB OUT: TEMPLE,MATTHEW
FOUL by GRAHAM,DEVONTE'	04:27			
	04:27			MISSED FT by GOTCHER,TODDRICK
	04:27			REBOUND (DEADB) by TEAM
	04:27	22-24	V 2	GOOD! FT by GOTCHER,TODDRICK
GOOD! 3PTR by GREENE,BRANNEN	04:16	22-27	V 5	
ASSIST by MASON III,FRANK	04:16			
	03:48			TURNOVER by EVANS,KEENAN
STEAL by MASON III,FRANK	03:47			
TIMEOUT media	03:39			
MISSED 3PTR by GREENE,BRANNEN	03:38			
REBOUND (DEADB) by TEAM	03:38			
FOUL by LUCAS,LANDEN	03:36			
	03:36	23-27	V 4	GOOD! FT by SMITH,ZACH
	03:36			MISSED FT by SMITH,ZACH
REBOUND (DEF) by GREENE,BRANNEN	03:36			
SUB IN: TRAYLOR,JAMARI	03:36			
SUB OUT: LUCAS,LANDEN	03:36			
	03:36			SUB IN: THOMAS,DEVON
	03:36			SUB IN: WILLIAMS,DEVAUGNTAH
	03:36			SUB OUT: GOTCHER,TODDRICK
	03:36			SUB OUT: EVANS,KEENAN
TURNOVER by TRAYLOR,JAMARI	03:25			
	03:23			STEAL by SMITH,ZACH
	03:09			TURNOVER by ODIASE,NORENSE
SUB IN: SELDEN JR.,WAYNE	03:09			
SUB OUT: GREENE,BRANNEN	03:09			
MISSED LAYUP by TRAYLOR,JAMARI	02:42			
	02:42			REBOUND (DEF) by SMITH,ZACH
	02:16	25-27	V 2	GOOD! LAYUP by GRAY,JUSTIN [PNT]

VISITORS: Kansas	Time	Score	Margin	HOME: Texas Tech
MISSED 3PTR by SELDEN JR.,WAYNE	01:54			
	01:54			REBOUND (DEF) by GRAY,JUSTIN
	01:36			MISSED JUMPER by ODIASE,NORENSE
	01:36			REBOUND (OFF) by SMITH,ZACH
FOUL by TRAYLOR,JAMARI	01:22			
	01:22			MISSED FT by WILLIAMS,DEVAUGNTAH
	01:22			REBOUND (DEADB) by TEAM
	01:22	26-27	V 1	GOOD! FT by WILLIAMS,DEVAUGNTAH
MISSED LAYUP by ELLIS,PERRY	01:08			
REBOUND (OFF) by ELLIS,PERRY	01:08			
TURNOVER by ELLIS,PERRY	01:07			
	01:07			STEAL by GRAY,JUSTIN
	00:40			TURNOVER by THOMAS,DEVON
TIMEOUT 30SEC	00:40			
	00:26			FOUL by ODIASE,NORENSE
GOOD! FT by MASON III,FRANK	00:26	26-28	V 2	
GOOD! FT by MASON III,FRANK	00:26	26-29	V 3	
	00:26			TIMEOUT 30SEC
	00:26			SUB IN: GOTCHER,TODDRICK
	00:26			SUB OUT: THOMAS,DEVON
FOUL by TRAYLOR,JAMARI	00:06			
	00:06	27-29	V 2	GOOD! FT by WILLIAMS,DEVAUGNTAH
	00:06			MISSED FT by WILLIAMS,DEVAUGNTAH
REBOUND (DEF) by ELLIS,PERRY	00:06			
SUB IN: BRAGG JR.,CARLTON	00:06			
SUB OUT: TRAYLOR,JAMARI	00:06			
	00:06			SUB IN: EVANS,KEENAN
	00:06			SUB OUT: ODIASE,NORENSE
MISSED LAYUP by SELDEN JR.,WAYNE	00:01			
REBOUND (DEADB) by TEAM	00:00			

Kansas 29, Texas Tech 27

Period 1-only	In Paint	Off T/O	2nd Chance	Fast Break	Bench	
KU	8	4	2	0	12	Score tied - 2 times
TTU	12	4	6	0	11	Lead changed - 2 times

Official Basketball Box Score -- Game Totals -- Second Half Statistics

Kansas vs Texas Tech

1/9/2016 8:05 p.m. at Lubbock, TX (United Supermarkets Arena)

Kansas 40 • 14-1 (3-0 B12)

##	Player	S	Total	3-Ptr	FT-FTA	Rebounds			PF	TP	A	TO	Blk	Stl	Min
			FG-FGA	FG-FGA		Off Reb	Def Reb	Tot Reb							
00	MASON III,FRANK	g	2-3	2-2	4-4	0	4	4	0	10	3	1	0	0	17
01	SELDEN JR.,WAYNE	g	4-6	1-2	0-0	0	0	0	2	9	1	0	0	1	16
04	GRAHAM,DEVONTE'	g	1-3	0-1	2-2	0	1	1	0	4	1	0	0	0	13
34	ELLIS,PERRY	f	3-7	1-1	0-0	2	3	5	1	7	1	2	1	0	18
42	MICKELSON,HUNTER	f	0-0	0-0	0-0	0	0	0	0	0	0	0	0	0	0
10	MYKHAILIUK,SVI		1-2	1-2	1-2	0	1	1	1	4	0	0	0	0	7
13	DIALLO,CHEICK		0-0	0-0	0-0	0	0	0	0	0	0	0	0	0	0
14	GREENE,BRANNEN		0-0	0-0	0-0	0	1	1	0	0	0	1	0	0	6
15	BRAGG JR.,CARLTON		2-2	0-0	0-0	1	1	2	1	4	0	2	0	0	8
31	TRAYLOR,JAMARI		0-0	0-0	0-0	0	0	0	0	0	0	0	0	0	3
33	LUCAS,LANDEN		1-1	0-0	0-0	0	0	0	0	2	2	0	0	0	12
TEAM						0	1	1	0		0				
Totals			14-24	5-8	7-8	3	12	15	5	40	8	6	1	1	100
FG %			Half:	14-24	58.3%										
3FG %			Half:	5-8	28.6%										
FT %			Half:	7-8	87.5%										

Texas Tech 32 • 11-3 (1-2 B12)

##	Player	S	Total	3-Ptr	FT-FTA	Rebounds			PF	TP	A	TO	Blk	Stl	Min
			FG-FGA	FG-FGA		Off Reb	Def Reb	Tot Reb							
00	WILLIAMS,DEVAUGNTA'	g	0-3	0-2	0-0	0	0	0	0	0	1	1	0	0	8
11	SMITH,ZACH	f	1-4	0-3	0-2	0	1	1	1	2	0	0	0	0	15
12	EVANS,KEENAN	g	0-0	0-0	0-0	0	2	2	1	0	1	0	0	0	9
20	GOTCHER,TODDRICK	g	2-6	1-5	0-0	0	1	1	1	5	2	0	0	0	18
32	ODIASSE,NORENSE	c	7-7	0-0	0-0	0	1	1	1	14	0	1	0	0	15
02	THOMAS,DEVON		1-3	0-1	0-0	0	2	2	1	2	3	0	0	1	11
05	GRAY,JUSTIN		2-3	0-0	2-3	2	0	2	1	6	0	1	0	1	13
15	ROSS,AARON		1-1	1-1	0-0	0	0	0	2	3	0	0	1	0	8
34	TEMPLE,MATTHEW		0-0	0-0	0-0	0	0	0	0	0	0	0	0	0	3
TEAM						0	0	0	0		1				
Totals			14-27	2-12	2-5	2	7	9	8	32	7	4	1	2	100
FG %			Half:	14-27	51.9%										
3FG %			Half:	2-12	50.0%										
FT %			Half:	2-5	40.0%										

Officials: Gary Maxwell, Bert Smith, Michael Greenstein
Technical Fouls: Kansas- None. Texas Tech- None.

Score by periods	1st	2nd	Total
Kansas	29	40	69
Texas Tech	27	32	59

Last FG - KU 2nd-01:05, TTU 2nd-00:52.
KU led for 19:47. TTU led for 0:00. Game was tied for 0:13.

Points	In	Off	2nd	Fast	Bench
	Paint	Off T/O	2nd Chance	Fast Break	
KU	18	3	5	0	10
TTU	14	7	5	0	11

Score tied - 1 times
Lead changed - 0 times

Kansas vs Texas Tech
1/9/2016; 8:05 p.m. at Lubbock, TX (United Supermarkets Arena)
Period 2 Play-By-Play

VISITORS: Kansas	Time	Score	Margin	HOME: Texas Tech
SUB IN: BRAGG JR.,CARLTON	20:00			
SUB OUT: MICKELSON,HUNTER	20:00			
GOOD! DUNK by BRAGG JR.,CARLTON [PNT]	19:49	27-31	V 4	
ASSIST by SELDEN JR.,WAYNE	19:49			
FOUL by ELLIS,PERRY	19:29			
	19:29			MISSED FT by SMITH,ZACH
	19:29			REBOUND (DEADB) by TEAM
	19:29			MISSED FT by SMITH,ZACH
REBOUND (DEF) by ELLIS,PERRY	19:29			
GOOD! LAYUP by SELDEN JR.,WAYNE [PNT]	19:16	27-33	V 6	
FOUL by BRAGG JR.,CARLTON	19:02			
	18:40	29-33	V 4	GOOD! JUMPER by ODIASE,NORENSE
	18:40			ASSIST by GOTCHER,TODDRICK
GOOD! LAYUP by SELDEN JR.,WAYNE [PNT]	18:22	29-35	V 6	
	18:02			MISSED LAYUP by WILLIAMS,DEVAUGNTAH
REBOUND (DEF) by ELLIS,PERRY	18:02			
MISSED LAYUP by GRAHAM,DEVONTE'	17:54			
	17:54			REBOUND (DEF) by EVANS,KEENAN
	17:48			MISSED 3PTR by WILLIAMS,DEVAUGNTAH
REBOUND (DEF) by ELLIS,PERRY	17:48			
	17:42			SUB IN: GRAY,JUSTIN
	17:42			SUB IN: TEMPLE,MATTHEW
	17:42			SUB OUT: WILLIAMS,DEVAUGNTAH
	17:42			SUB OUT: ODIASE,NORENSE
MISSED JUMPER by SELDEN JR.,WAYNE	17:32			
REBOUND (OFF) by BRAGG JR.,CARLTON	17:32			
GOOD! LAYUP by BRAGG JR.,CARLTON [PNT]	17:28	29-37	V 8	
	17:09	31-37	V 6	GOOD! JUMPER by SMITH,ZACH [PNT]
GOOD! LAYUP by ELLIS,PERRY [PNT]	16:56	31-39	V 8	
ASSIST by GRAHAM,DEVONTE'	16:56			
FOUL by SELDEN JR.,WAYNE	16:36			
	16:36	32-39	V 7	GOOD! FT by GRAY,JUSTIN
	16:36			MISSED FT by GRAY,JUSTIN
REBOUND (DEF) by BRAGG JR.,CARLTON	16:36			
	16:36			SUB IN: THOMAS,DEVON
	16:36			SUB OUT: EVANS,KEENAN
GOOD! 3PTR by ELLIS,PERRY	16:21	32-42	V 10	
ASSIST by MASON III,FRANK	16:21			
	16:02			FOUL by GRAY,JUSTIN
	16:02			TURNOVER by GRAY,JUSTIN
TURNOVER by MASON III,FRANK	15:55			
	15:55			TIMEOUT MEDIA
	15:36	35-42	V 7	GOOD! 3PTR by GOTCHER,TODDRICK
TURNOVER by ELLIS,PERRY	15:16			
	15:15			STEAL by THOMAS,DEVON
	15:08			MISSED 3PTR by GOTCHER,TODDRICK
REBOUND (DEF) by MASON III,FRANK	15:08			
TURNOVER by BRAGG JR.,CARLTON	14:59			
	14:32			MISSED 3PTR by SMITH,ZACH
REBOUND (DEF) by MASON III,FRANK	14:32			
	14:22			FOUL by THOMAS,DEVON
GOOD! FT by MASON III,FRANK	14:22	35-43	V 8	
GOOD! FT by MASON III,FRANK	14:22	35-44	V 9	

VISITORS: Kansas	Time	Score	Margin	HOME: Texas Tech
	14:22			SUB IN: ODIASE,NORENSE
	14:22			SUB IN: ROSS,AARON
	14:22			SUB OUT: SMITH,ZACH
	14:22			SUB OUT: TEMPLE,MATTHEW
	14:06			TURNOVER by ODIASE,NORENSE
STEAL by SELDEN JR.,WAYNE	14:05			
MISSED JUMPER by ELLIS,PERRY	13:46			
	13:46			REBOUND (DEF) by THOMAS,DEVON
	13:39	37-44	V 7	GOOD! JUMPER by GOTCHER,TODDRICK
TURNOVER by BRAGG JR.,CARLTON	13:16			
	13:15			STEAL by GRAY,JUSTIN
	13:06	39-44	V 5	GOOD! JUMPER by ODIASE,NORENSE
	13:06			ASSIST by THOMAS,DEVON
MISSED LAYUP by ELLIS,PERRY	12:41			
REBOUND (OFF) by ELLIS,PERRY	12:40			
	12:40			BLOCK by ROSS,AARON
TURNOVER by ELLIS,PERRY	12:37			
SUB IN: LUCAS,LANDEN	12:37			
SUB IN: TRAYLOR,JAMARI	12:37			
SUB OUT: MASON III,FRANK	12:37			
SUB OUT: ELLIS,PERRY	12:37			
	12:37			SUB IN: WILLIAMS,DEVAUGNTAH
	12:37			SUB OUT: GOTCHER,TODDRICK
	12:16			TURNOVER by WILLIAMS,DEVAUGNTAH
SUB IN: GREENE,BRANNEN	12:16			
SUB OUT: BRAGG JR.,CARLTON	12:16			
	12:16			SUB IN: GOTCHER,TODDRICK
	12:16			SUB OUT: WILLIAMS,DEVAUGNTAH
MISSED 3PTR by GRAHAM,DEVONTE'	11:54			
	11:54			REBOUND (DEF) by ODIASE,NORENSE
	11:24	42-44	V 2	GOOD! 3PTR by ROSS,AARON
	11:24			ASSIST by GOTCHER,TODDRICK
MISSED 3PTR by SELDEN JR.,WAYNE	10:57			
	10:57			REBOUND (DEF) by GOTCHER,TODDRICK
	10:23	44-44	T	GOOD! JUMPER by ODIASE,NORENSE [PNT]
TIMEOUT 30SEC	10:21			
SUB IN: MASON III,FRANK	10:21			
SUB IN: ELLIS,PERRY	10:21			
SUB IN: MYKHAILIUK,SVI	10:21			
SUB OUT: SELDEN JR.,WAYNE	10:21			
SUB OUT: GRAHAM,DEVONTE'	10:21			
SUB OUT: TRAYLOR,JAMARI	10:21			
	10:10			FOUL by ROSS,AARON
TIMEOUT MEDIA	10:10			
	10:10			SUB IN: SMITH,ZACH
	10:10			SUB OUT: ROSS,AARON
GOOD! LAYUP by LUCAS,LANDEN [PNT]	10:03	44-46	V 2	
ASSIST by ELLIS,PERRY	10:03			
	09:46			MISSED 3PTR by GOTCHER,TODDRICK
REBOUND (DEF) by MYKHAILIUK,SVI	09:46			
MISSED JUMPER by ELLIS,PERRY	09:34			
	09:34			REBOUND (DEF) by THOMAS,DEVON
	09:02			MISSED 3PTR by THOMAS,DEVON
REBOUND (DEF) by GREENE,BRANNEN	09:02			
GOOD! 3PTR by MASON III,FRANK	08:51	44-49	V 5	
	08:33			MISSED 3PTR by SMITH,ZACH
	08:33			REBOUND (DEADB) by TEAM
	08:31			FOUL by ODIASE,NORENSE

VISITORS: Kansas	Time	Score	Margin	HOME: Texas Tech
	08:31			SUB IN: WILLIAMS,DEVAUGNTAH
	08:31			SUB OUT: GOTCHER,TODDRICK
	08:30			SUB IN: EVANS,KEENAN
	08:30			SUB OUT: THOMAS,DEVON
MISSED 3PTR by MYKHAILIUK,SVI	08:11			
REBOUND (OFF) by ELLIS,PERRY	08:11			
GOOD! 3PTR by MYKHAILIUK,SVI	07:44	44-52	V 8	
ASSIST by MASON III,FRANK	07:44			
	07:26	46-52	V 6	GOOD! JUMPER by ODIASE,NORENSE
	07:26			ASSIST by WILLIAMS,DEVAUGNTAH
MISSED JUMPER by ELLIS,PERRY	07:09			
	07:09			REBOUND (DEF) by EVANS,KEENAN
	06:49			MISSED JUMPER by GRAY,JUSTIN
	06:49			REBOUND (OFF) by GRAY,JUSTIN
	06:45	48-52	V 4	GOOD! LAYUP by GRAY,JUSTIN [PNT]
TURNOVER by GREENE,BRANNEN	06:30			
	06:30			TIMEOUT MEDIA
SUB IN: SELDEN JR.,WAYNE	06:30			
SUB IN: GRAHAM,DEVONTE'	06:30			
SUB OUT: GREENE,BRANNEN	06:30			
	06:30			SUB IN: GOTCHER,TODDRICK
	06:30			SUB OUT: GRAY,JUSTIN
	06:13	50-52	V 2	GOOD! DUNK by ODIASE,NORENSE [PNT]
	06:13			ASSIST by EVANS,KEENAN
GOOD! DUNK by SELDEN JR.,WAYNE [PNT]	05:59	50-54	V 4	
ASSIST by LUCAS,LANDEN	05:59			
	05:23			TURNOVER by TEAM
GOOD! 3PTR by MASON III,FRANK	05:03	50-57	V 7	
	04:40			MISSED 3PTR by SMITH,ZACH
REBOUND (DEF) by MASON III,FRANK	04:40			
MISSED JUMPER by MASON III,FRANK	04:05			
	04:05			REBOUND (DEF) by SMITH,ZACH
FOUL by MYKHAILIUK,SVI	03:50			
	03:50			TIMEOUT MEDIA
	03:50			SUB IN: ROSS,AARON
	03:50			SUB IN: THOMAS,DEVON
	03:50			SUB OUT: WILLIAMS,DEVAUGNTAH
	03:50			SUB OUT: SMITH,ZACH
	03:37	52-57	V 5	GOOD! JUMPER by ODIASE,NORENSE
	03:37			ASSIST by THOMAS,DEVON
	03:20			FOUL by EVANS,KEENAN
MISSED FT by MYKHAILIUK,SVI	03:20			
REBOUND (DEADB) by TEAM	03:20			
GOOD! FT by MYKHAILIUK,SVI	03:20	52-58	V 6	
SUB OUT: MYKHAILIUK,SVI	03:20			
	03:20			SUB IN: SMITH,ZACH
	03:20			SUB OUT: EVANS,KEENAN
	02:56	54-58	V 4	GOOD! LAYUP by ODIASE,NORENSE [PNT]
	02:56			ASSIST by THOMAS,DEVON
GOOD! 3PTR by SELDEN JR.,WAYNE	02:24	54-61	V 7	
ASSIST by MASON III,FRANK	02:24			
	01:53			MISSED JUMPER by THOMAS,DEVON
BLOCK by ELLIS,PERRY	01:53			
REBOUND (DEF) by TEAM	01:53			
	01:52			SUB IN: GRAY,JUSTIN
	01:52			SUB OUT: ODIASE,NORENSE
GOOD! DUNK by ELLIS,PERRY [PNT]	01:40	54-63	V 9	
ASSIST by LUCAS,LANDEN	01:40			

VISITORS: Kansas	Time	Score	Margin	HOME: Texas Tech
	01:33			MISSED 3PTR by GOTCHER,TODDRICK
	01:33			REBOUND (OFF) by GRAY,JUSTIN
	01:31	56-63	V 7	GOOD! LAYUP by GRAY,JUSTIN [PNT]
FOUL by SELDEN JR.,WAYNE	01:31			
	01:31	57-63	V 6	GOOD! FT by GRAY,JUSTIN
GOOD! LAYUP by GRAHAM,DEVONTE' [PNT]	01:05	57-65	V 8	
	00:52	59-65	V 6	GOOD! LAYUP by THOMAS,DEVON [PNT]
	00:52			TIMEOUT 30SEC
	00:43			FOUL by SMITH,ZACH
SUB IN: MYKHAILIUK,SVI	00:43			
SUB OUT: LUCAS,LANDEN	00:43			
	00:38			FOUL by GOTCHER,TODDRICK
GOOD! FT by GRAHAM,DEVONTE'	00:38	59-66	V 7	
GOOD! FT by GRAHAM,DEVONTE'	00:38	59-67	V 8	
SUB IN: TRAYLOR,JAMARI	00:38			
SUB OUT: MYKHAILIUK,SVI	00:38			
	00:38			SUB IN: WILLIAMS,DEVAUGNTAH
	00:38			SUB OUT: THOMAS,DEVON
	00:29			MISSED 3PTR by WILLIAMS,DEVAUGNTAH
REBOUND (DEF) by MASON III,FRANK	00:29			
	00:28			FOUL by ROSS,AARON
GOOD! FT by MASON III,FRANK	00:28	59-68	V 9	
GOOD! FT by MASON III,FRANK	00:28	59-69	V 10	
	00:22			MISSED 3PTR by GOTCHER,TODDRICK
REBOUND (DEF) by GRAHAM,DEVONTE'	00:22			

Kansas 69, Texas Tech 59

Period 2-only	In Paint	Off T/O	2nd Chance	Fast Break	Bench	
KU	18	3	5	0	10	Score tied - 0 times
TTU	14	7	5	0	11	Lead changed - 0 times

Kansas vs Texas Tech
1/9/2016; 8:05 p.m. at Lubbock, TX (United Supermarkets Arena)
Scoring/Runs Reference

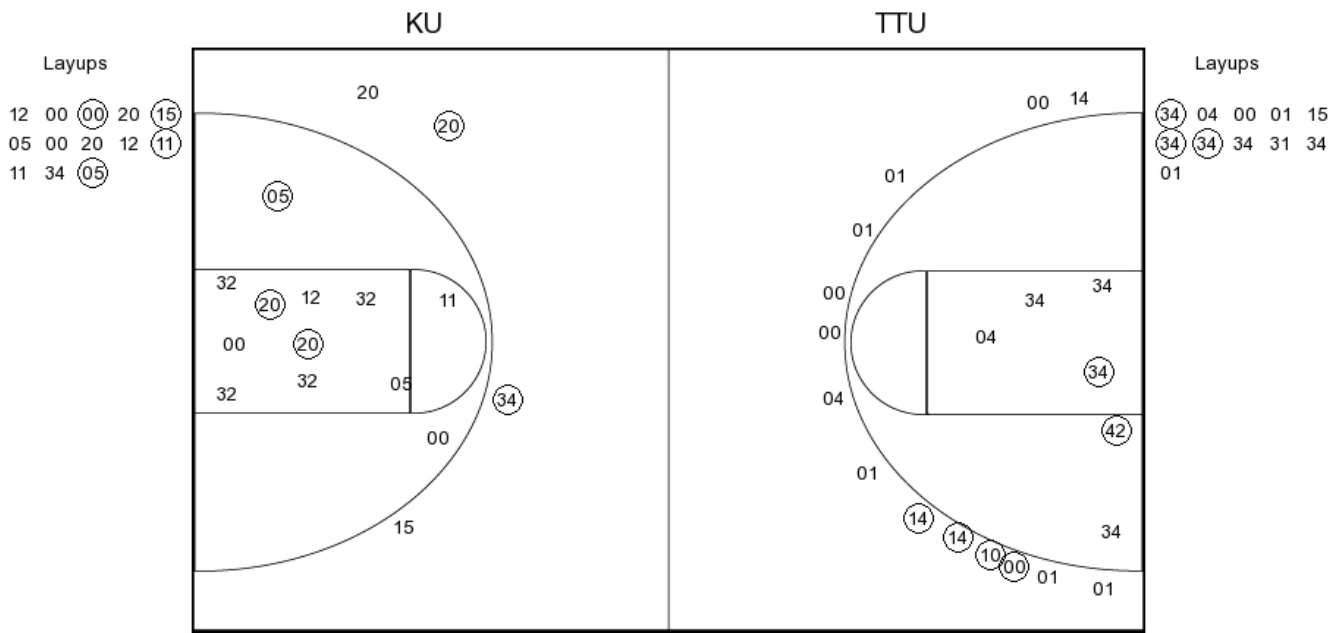
Period 1				Period 2			
Kansas	Score		Texas Tech	Kansas	Score		Texas Tech
		X	EVANS LAYUP - 19:43	19:49 - BRAGG JR. DUNK	2 ^P	31-27 -4	
19:26 - MICKELSON JUMPER	2	2-0 -2				X	SMITH FT - 19:29
		2-2 0	2 ^P GOTCHER JUMPER - 18:59			X	SMITH FT - 19:29
18:41 - ELLIS JUMPER	X			19:16 - SELDEN JR. LAYUP	2 ^P	33-27 -6	
		X	WILLIAMS LAYUP - 18:18			33-29 -4	2
18:05 - ELLIS DUNK	2 ^P	4-2 -2		ODIASSE JUMPER - 18:40			
		X	WILLIAMS JUMPER - 17:49	18:22 - SELDEN JR. LAYUP	2 ^P	35-29 -6	
17:43 - GRAHAM LAYUP	X					X	WILLIAMS LAYUP - 18:02
		X	ODIASSE JUMPER - 17:28	17:54 - GRAHAM LAYUP	X		
17:16 - MASON III LAYUP	X					X	WILLIAMS 3PTR - 17:48
17:09 - ELLIS JUMPER	X			17:32 - SELDEN JR. JUMPER	X		
		4-4 0	2 ^P WILLIAMS DUNK - 16:50	17:28 - BRAGG JR. LAYUP	2 ^P	37-29 -8	
16:35 - SELDEN JR. 3PTR	X					37-31 -6	2 ^P
		X	ODIASSE LAYUP - 16:18	16:56 - ELLIS LAYUP	2 ^P	39-31 -8	
		X	GOTCHER LAYUP - 16:14			39-32 -7	1
16:01 - SELDEN JR. 3PTR	X					X	GRAY FT - 16:36
		X	SMITH JUMPER - 15:54				GRAY FT - 16:36
15:40 - LUCAS FT	1	5-4 -1		16:21 - ELLIS 3PTR	3	42-32 -10	
15:40 - LUCAS FT	X					TO	GRAY TURN - 16:02
		5-5 0	1	15:55 - MASON III TURN	TO		
			X			42-35 -7	3
15:04 - ELLIS LAYUP	2 ^P	7-5 -2		GOTCHER 3PTR - 15:36			
		X	ROSS 3PTR - 14:36	15:16 - ELLIS TURN	TO		
14:29 - MASON III 3PTR	X					X	GOTCHER 3PTR - 15:08
14:13 - MASON III TURN	TO			14:59 - BRAGG JR. TURN	TO		
		7-6 -1	1			X	SMITH 3PTR - 14:32
		7-7 0	1	14:22 - MASON III FT	1	43-35 -8	
13:56 - MASON III 3PTR	3	10-7 -3		14:22 - MASON III FT	1	44-35 -9	
		10-9 -1	2			TO	ODIASSE TURN - 14:06
13:19 - GRAHAM JUMPER	X		GRAY JUMPER - 13:37	13:46 - ELLIS JUMPER	X		
		10-11 1	2 ^P ROSS LAYUP - 13:07			44-37 -7	2
12:39 - MASON III 3PTR	X			GOTCHER JUMPER - 13:39			
12:33 - GRAHAM 3PTR	X			13:16 - BRAGG JR. TURN	TO		
		X	GRAY LAYUP - 12:19			44-39 -5	2
12:15 - MASON III FT	1	11-11 0		ODIASSE JUMPER - 13:06			
12:15 - MASON III FT	1	12-11 -1		12:41 - ELLIS LAYUP	X		
		X	GRAY JUMPER - 11:56	12:37 - ELLIS TURN	TO		
11:49 - MYKHAILIUK 3PTR	3	15-11 -4				TO	WILLIAMS TURN - 12:16
		TO	THOMAS TURN - 11:20	11:54 - GRAHAM 3PTR	X		
11:16 - SELDEN JR. LAYUP	X					44-42 -2	3
11:08 - SELDEN JR. TURN	TO			10:57 - SELDEN JR. 3PTR	X		
		X	WILLIAMS LAYUP - 10:54			44-44 0	2 ^P
10:48 - SELDEN JR. 3PTR	X			10:03 - LUCAS LAYUP	2 ^P	46-44 -2	
10:29 - BRAGG JR. TURN	TO					X	GOTCHER 3PTR - 09:46
		15-13 -2	2 ^P GOTCHER JUMPER - 10:17	09:34 - ELLIS JUMPER	X		
						X	THOMAS 3PTR - 09:02
				08:51 - MASON III 3PTR	3	49-44 -5	

[illegible]

Kansas vs Texas Tech
OFFICIAL SHOT CHART

1/9/2016 at Lubbock, TX (United Supermarkets Arena)

PERIOD 1



KU PERIOD 1

FG Made	9
FG Attempted	31
3PFG Made	4
3PFG Attempted	14

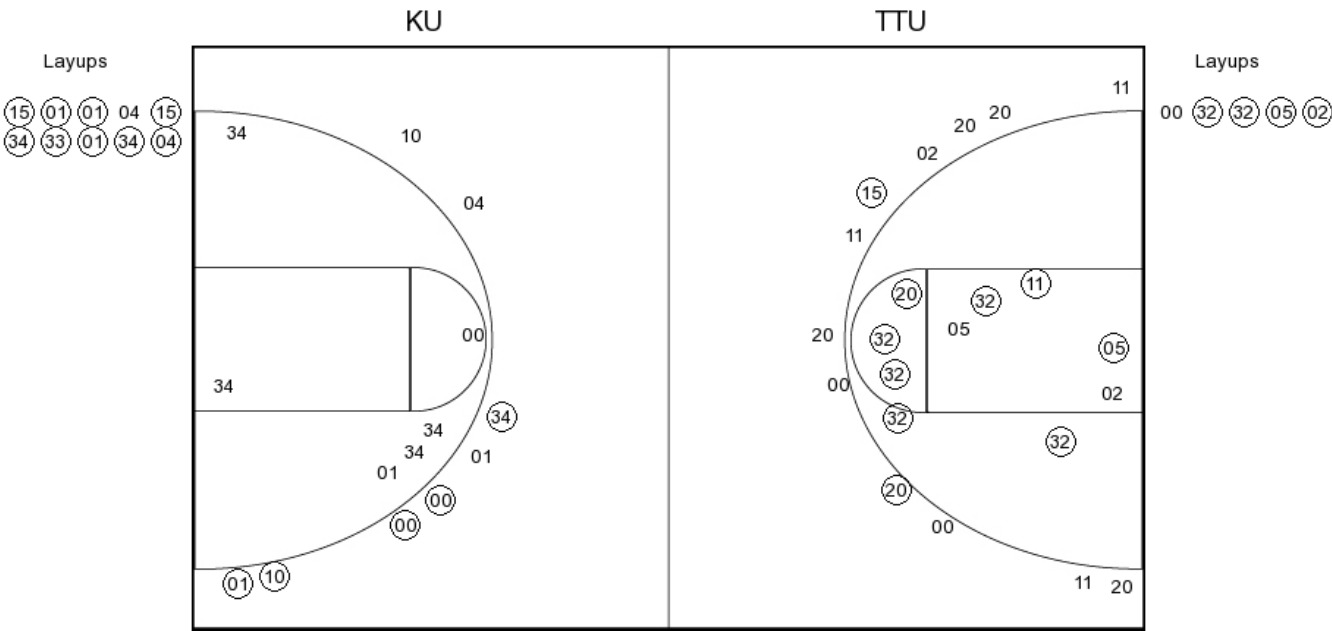
TTU PERIOD 1

FG Made	9
FG Attempted	29
3PFG Made	2
3PFG Attempted	4

Kansas vs Texas Tech
OFFICIAL SHOT CHART

1/9/2016 at Lubbock, TX (United Supermarkets Arena)

PERIOD 2



KU PERIOD 2

FG Made	14
FG Attempted	24
3PFG Made	5
3PFG Attempted	8

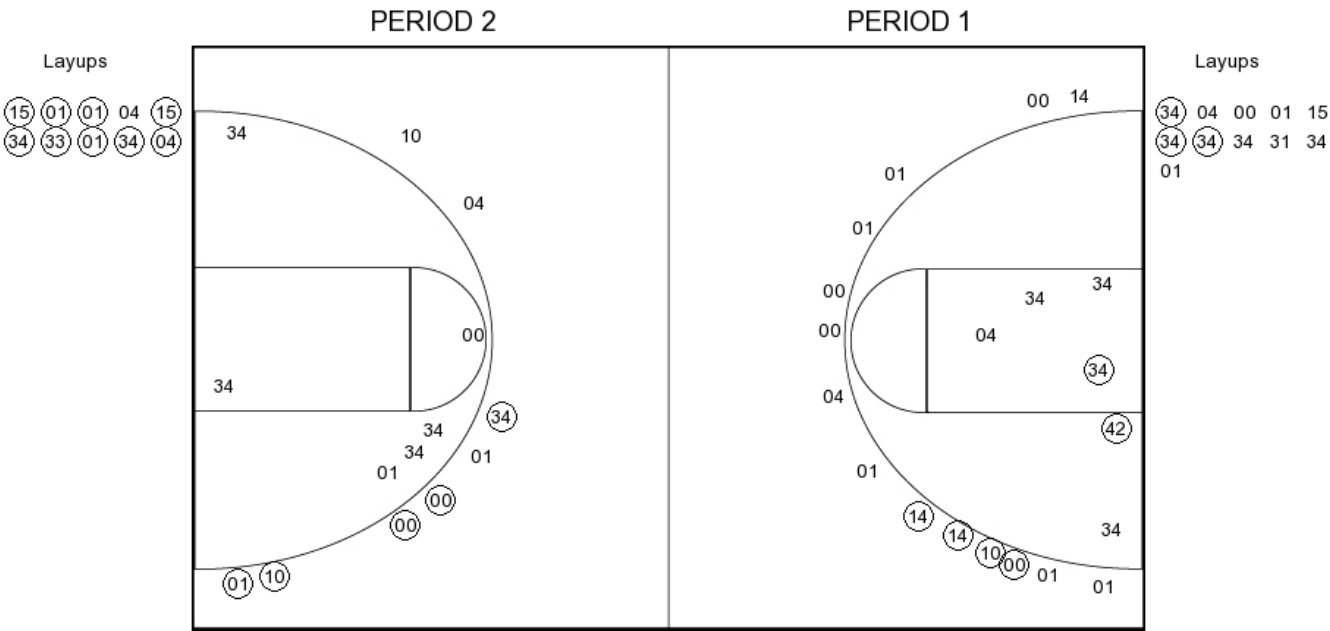
TTU PERIOD 2

FG Made	14
FG Attempted	27
3PFG Made	2
3PFG Attempted	12

Kansas vs Texas Tech
OFFICIAL SHOT CHART

1/9/2016 at Lubbock, TX (United Supermarkets Arena)

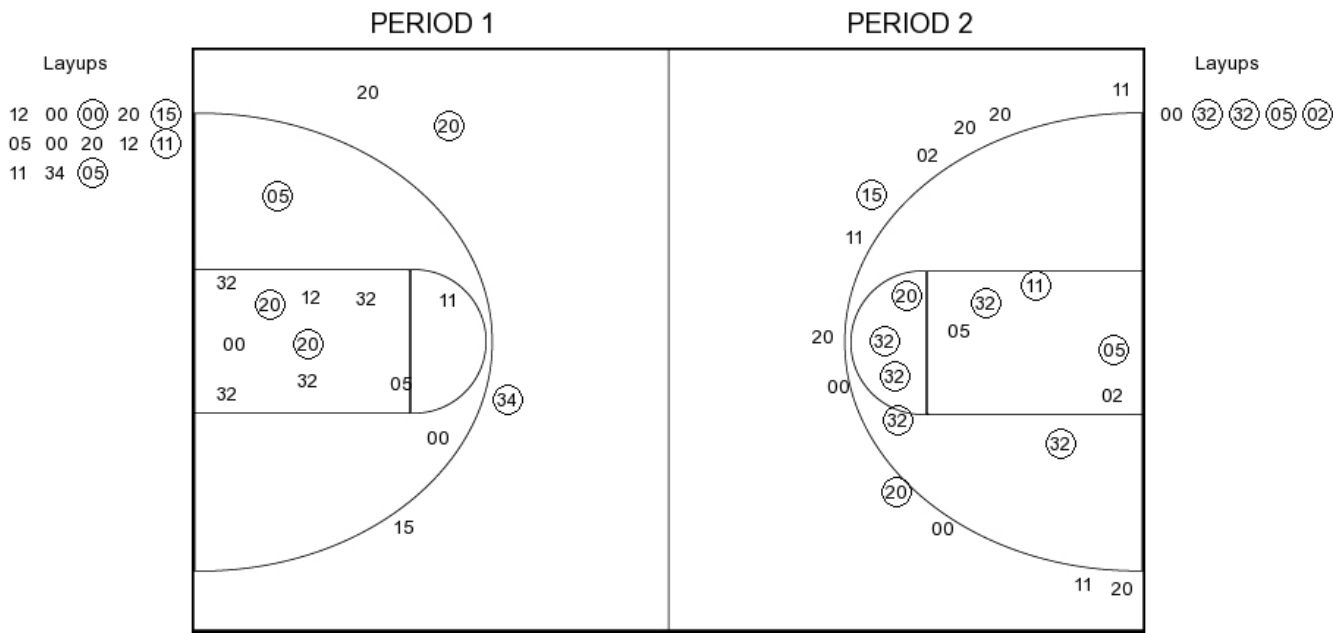
Kansas



Kansas vs Texas Tech
OFFICIAL SHOT CHART

1/9/2016 at Lubbock, TX (United Supermarkets Arena)

Texas Tech



TTU PERIOD 1

FG Made	9
FG Attempted	29
3PFG Made	2
3PFG Attempted	4

TTU PERIOD 2

FG Made	14
FG Attempted	27
3PFG Made	2
3PFG Attempted	12