

APPALACHIAN STATE AT GEORGIA SOUTHERN



2/25/2016

Statesboro, GA (Hanner Fieldhouse)

FINAL STATS

Appalachian State

(8-17, 5-11)

68

Georgia Southern

(7-19, 4-13)

62

Start Time: 5:00 PM

Officials:

Attendance: 0

Official Basketball Box Score -- Game Totals -- Final Statistics
Appalachian State vs Georgia Southern
2/25/2016 5:00 PM at Statesboro, GA (Hanner Fieldhouse)

Appalachian State 68 - 8-17, 5-11

##	Player	S	Total			Rebounds			PF	TP	A	TO	Blk	Stl	Min
			FG-FGA	3PT	FG-FGA	FT-FTA	Off Reb	Def Reb							
02	WOOD,FARRAHN	g	3-9	3-9	0-0	0	3	3	0	9	1	1	0	1	24
03	CARTER,BRIA	g	2-2	0-0	5-12	4	8	12	2	9	5	4	0	2	35
10	JONES,JOI	g	5-8	1-2	4-5	1	0	1	2	15	5	0	0	0	32
23	COOPER,KEKE	c	2-3	0-0	0-0	2	6	8	2	4	1	1	0	0	22
34	STORY,MADI	g	5-13	2-7	2-4	2	4	6	4	14	2	3	0	3	33
04	NORREGAARD,LIZ		1-2	1-2	0-0	0	0	0	1	3	0	0	0	0	3
11	CRAVEN,KAILA		2-10	2-8	0-0	0	1	1	1	6	4	1	0	4	26
20	DOUB,KATELYN		0-1	0-1	0-0	0	0	0	0	0	0	2	0	0	9
30	BASSETT-SMITH,ASHLE'		4-8	0-0	0-0	0	4	4	2	8	0	3	0	1	16
TEAM						3	0	3	0		0				
TOTALS			24-56	9-29	11-21	12	26	38	14	68	18	15	0	11	200

Deadball Rebounds: 6,0

FG %	1st Half: 13-29	44.8%	2nd Half: 11-27	40.7%	Game: 24-56	42.9%	4th Qtr	5-10	50.0%
	1st Qtr 7-18	38.9%	2nd Qtr 6-11	54.5%	3rd Qtr 6-17	35.3%			
3FG %	1st Half: 4-16	25.0%	2nd Half: 5-13	38.5%	Game: 9-29	31.0%	4th Qtr	2-5	40.0%
	1st Qtr 1-9	11.1%	2nd Qtr 3-7	42.9%	3rd Qtr 3-8	37.5%			
FT %	1st Half: 3-6	50.0%	2nd Half: 8-15	53.3%	Game: 11-21	52.4%	4th Qtr	8-13	61.5%
	1st Qtr 1-2	50.0%	2nd Qtr 2-4	50.0%	3rd Qtr 0-2	00.0%			

Georgia Southern 62 - 7-19, 4-13

##	Player	S	Total			Rebounds			PF	TP	A	TO	Blk	Stl	Min
			FG-FGA	3PT	FG-FGA	FT-FTA	Off Reb	Def Reb							
11	MCGOWAN,ANGEL	g	2-7	0-4	0-0	1	4	5	0	4	3	2	0	3	20
20	KIRKLAND,SIERRA	f	4-7	0-1	1-1	2	5	7	2	9	1	1	0	1	25
23	SAMS,ALEXIS	g	7-14	3-7	3-3	0	2	2	2	20	3	4	0	2	36
25	BUTLER,SIERRA	f	2-6	2-4	0-0	1	2	3	2	6	1	2	0	0	28
35	BUTLER,PATRICE	c	8-16	1-5	0-2	2	3	5	2	17	2	3	0	1	26
02	ENGLISH-LURRY,TRELL		1-4	0-1	0-2	0	1	1	2	2	3	2	0	0	29
05	FOULKES,ALEXIS		0-1	0-0	0-0	0	4	4	3	0	0	1	0	0	15
14	JONES,BRIANA		1-1	0-0	0-0	1	2	3	2	2	0	1	0	0	11
24	BEAMON,RHEIN		1-3	0-0	0-0	0	0	0	1	2	0	0	0	0	7
44	MARCUS,JESSICA		0-0	0-0	0-0	0	0	0	1	0	0	0	0	0	3
TEAM						2	1	3	0		0				
TOTALS			26-59	6-22	4-8	9	24	33	17	62	13	16	0	7	200

Deadball Rebounds: 2,0

FG %	1st Half: 13-32	40.6%	2nd Half: 13-27	48.1%	Game: 26-59	44.1%	4th Qtr	6-12	50.0%
	1st Qtr 5-12	41.7%	2nd Qtr 8-20	40.0%	3rd Qtr 7-15	46.7%			
3FG %	1st Half: 3-11	27.3%	2nd Half: 3-11	27.3%	Game: 6-22	27.3%	4th Qtr	1-4	25.0%
	1st Qtr 0-2	00.0%	2nd Qtr 3-9	33.3%	3rd Qtr 2-7	28.6%			
FT %	1st Half: 2-2	100.0%	2nd Half: 2-6	33.3%	Game: 4-8	50.0%	4th Qtr	2-6	33.3%
	1st Qtr 1-1	100.0%	2nd Qtr 1-1	100.0%	3rd Qtr 0-0	0%			

Officials:

Technical Fouls: Appalachian State- None. Georgia Southern- None.

Attendance: 0

Score by periods	1st	2nd	3rd	4th	Total
Appalachian State	16	17	15	20	68
Georgia Southern	11	20	16	15	62

Points	In Paint	Off T/O	2nd 2nd Chance	Fast Break	Bench
APP	18	20	8	4	17
GASOW	26	14	8	6	6

Last FG - APP 4th-01:57, GASOW 4th-01:34.

Largest lead - Appalachian State by 11 2nd-08:51; Georgia Southern by 6 3rd-04:08

APP led for 23:57. GASOW led for 8:51. Game was tied for 7:12.

Score tied - 6 times
Lead changed - 9 times

Official Basketball Box Score -- Game Totals -- First Half Statistics
Appalachian State vs Georgia Southern
2/25/2016 5:00 PM at Statesboro, GA (Hanner Fieldhouse)

Appalachian State, 33, 8-17, 5-11

##	Player	S	Total			Rebounds			PF	TP	A	T	O	Bk	Stl	Min
			FG-FGA	3PT FG-FGA	FT-FTA	Off Reb	Def Reb	Tot Reb								
02	WOOD,FARRAHN	g	1-5	1-5	0-0	0	1	1	0	3	0	0	0	1	11	
03	CARTER,BRIA	g	2-2	0-0	1-2	1	5	6	1	5	5	4	0	1	17	
10	JONES,JOI	g	2-2	1-1	0-0	0	0	0	2	5	1	0	0	0	13	
23	COOPER,KEKE	c	1-1	0-0	0-0	0	2	2	2	2	0	0	0	0	6	
34	STORY,MADI	g	2-5	0-3	2-4	2	1	3	1	6	1	2	0	2	19	
04	NORREGAARD,LIZ		1-2	1-2	0-0	0	0	0	1	3	0	0	0	0	3	
11	CRAVEN,KAILA		1-4	1-4	0-0	0	1	1	0	3	2	0	0	3	12	
20	DOUB,KATELYN		0-1	0-1	0-0	0	0	0	0	0	0	1	0	0	7	
30	BASSETT-SMITH,ASHLE'		3-7	0-0	0-0	0	3	3	0	6	0	1	0	1	12	
TEAM						2	0	2	0		0					
Totals			13-29	4-16	3-6	5	13	18	7	33	9	8	0	8	100	

FG %	1st Qtr	7-18	38.9%	2nd Qtr	6-11	54.5%	Half:	13-29	44.8%
3FG %	1st Qtr	1-9	11.1%	2nd Qtr	3-7	42.9%	Half:	4-16	25.0%
FT %	1st Qtr	1-2	50.0%	2nd Qtr	2-4	50.0%	Half:	3-6	50.0%

Georgia Southern, 31, 7-19, 4-13

##	Player	S	Total			Rebounds			PF	TP	A	T	O	Bk	Stl	Min
			FG-FGA	3PT FG-FGA	FT-FTA	Off Reb	Def Reb	Tot Reb								
11	MCGOWAN,ANGEL	g	2-5	0-2	0-0	1	3	4	0	4	3	1	0	2	17	
20	KIRKLAND,SIERRA	f	3-5	0-1	1-1	1	1	2	1	7	1	0	0	0	12	
23	SAMS,ALEXIS	g	2-6	1-3	1-1	0	1	1	0	6	2	2	0	0	16	
25	BUTLER,SIERRA	f	1-2	1-1	0-0	0	2	2	1	3	0	1	0	0	14	
35	BUTLER,PATRICE	c	4-9	1-3	0-0	2	1	3	0	9	2	3	0	1	13	
02	ENGLISH-LURRY,TRELL		1-3	0-1	0-0	0	1	1	0	2	0	1	0	0	12	
05	FOULKS,ALEXIS		0-1	0-0	0-0	0	2	2	1	0	0	0	0	0	6	
14	JONES,BRIANA		0-0	0-0	0-0	0	1	1	2	0	0	1	0	0	6	
24	BEAMON,RHEIN		0-1	0-0	0-0	0	0	0	0	0	0	0	0	0	4	
44	MARCUS,JESSICA		0-0	0-0	0-0	0	0	0	0	0	0	0	0	0	0	
TEAM						2	0	2	0		0					
Totals			13-32	3-11	2-2	6	12	18	5	31	8	9	0	3	100	

FG %	1st Qtr	5-12	41.7%	2nd Qtr	8-20	40.0%	Half:	13-32	40.6%
3FG %	1st Qtr	0-2	00.0%	2nd Qtr	3-9	33.3%	Half:	3-11	27.3%
FT %	1st Qtr	1-1	100.0%	2nd Qtr	1-1	100.0%	Half:	2-2	100.0%

Officials:

Technical Fouls: , Appalachian State- None. , Georgia Southern- None.

Score by periods	1st	2nd	3rd	4th	Total
Appalachian State	16	17	15	20	68
Georgia Southern	11	20	16	15	62

Points	In Paint	Off T/O	2nd 2nd Chance	Fast Fast Break	Bench
APP	14	11	2	4	12
	14	8	8	4	2

Last FG - APP 2nd-01:32, GASOW 2nd-00:34.
 APP led for 16:28. GASOW led for 2:52. Game was tied for 0:40.

Score tied - 1 times
 Lead changed - 1 times

Appalachian State vs Georgia Southern
2/25/2016; 5:00 PM at Statesboro, GA (Hanner Fieldhouse)
Period 1 Play-By-Play

VISITORS: Appalachian State	Time	Score	Margin	HOME: Georgia Southern
	09:42	2-0	H 2	GOOD! LAYUP by SAMS,ALEXIS [PNT]
FOUL by COOPER,KEKE	09:42			
	09:42	3-0	H 3	GOOD! FT by SAMS,ALEXIS
MISSED 3PTR by STORY,MADI	09:33			
	09:33			REBOUND (DEF) by KIRKLAND,SIERRA
	09:16			MISSED JUMPER by BUTLER,SIERRA
	09:16			REBOUND (OFF) by BUTLER,PATRICE
	09:12			TURNOVER by BUTLER,PATRICE
STEAL by WOOD,FARRAHN	09:11			
GOOD! JUMPER by COOPER,KEKE [PNT]	09:00	3-2	H 1	
ASSIST by CARTER,BRIA	09:00			
	08:44			TIMEOUT 30SEC
	08:34	5-2	H 3	GOOD! JUMPER by BUTLER,PATRICE
	08:34			ASSIST by MCGOWAN,ANGEL
MISSED 3PTR by WOOD,FARRAHN	08:14			
	08:14			REBOUND (DEF) by BUTLER,SIERRA
FOUL by COOPER,KEKE	08:11			
SUB IN: BASSETT-SMITH,ASHLEY	08:11			
SUB OUT: COOPER,KEKE	08:11			
	07:49			TURNOVER by MCGOWAN,ANGEL
STEAL by STORY,MADI	07:48			
GOOD! JUMPER by BASSETT-SMITH,ASHLEY	07:42	5-4	H 1	
	07:26			TURNOVER by SAMS,ALEXIS
STEAL by STORY,MADI	07:25			
TURNOVER by STORY,MADI	07:20			
	07:11			MISSED 3PTR by SAMS,ALEXIS
REBOUND (DEF) by BASSETT-SMITH,ASHLEY	07:11			
	07:08			FOUL by BUTLER,SIERRA
GOOD! JUMPER by BASSETT-SMITH,ASHLEY	06:50	5-6	V 1	
ASSIST by CARTER,BRIA	06:50			
	06:32			TURNOVER by BUTLER,PATRICE
STEAL by BASSETT-SMITH,ASHLEY	06:31			
MISSED 3PTR by WOOD,FARRAHN	06:26			
REBOUND (OFF) by TEAM	06:26			
MISSED JUMPER by BASSETT-SMITH,ASHLEY	06:22			
	06:22			REBOUND (DEF) by MCGOWAN,ANGEL
	06:13			MISSED 3PTR by BUTLER,PATRICE
	06:13			REBOUND (OFF) by TEAM
SUB IN: CRAVEN,KAILA	06:10			
SUB OUT: WOOD,FARRAHN	06:10			
	06:09			TURNOVER by SAMS,ALEXIS
STEAL by CRAVEN,KAILA	06:09			
GOOD! 3PTR by CRAVEN,KAILA	05:59	5-9	V 4	
ASSIST by STORY,MADI	05:59			
	05:47			TIMEOUT 30SEC
	05:31	7-9	V 2	GOOD! LAYUP by KIRKLAND,SIERRA [PNT]
	05:31			ASSIST by BUTLER,PATRICE
TURNOVER by BASSETT-SMITH,ASHLEY	05:15			
	05:14			STEAL by MCGOWAN,ANGEL
	05:13	9-9	T	GOOD! LAYUP by MCGOWAN,ANGEL [FB/PNT]
MISSED 3PTR by CRAVEN,KAILA	04:56			
REBOUND (OFF) by STORY,MADI	04:56			
	04:51			FOUL by KIRKLAND,SIERRA

VISITORS: Appalachian State	Time	Score	Margin	HOME: Georgia Southern
GOOD! FT by STORY,MADI	04:51	9-10	V 1	
MISSED FT by STORY,MADI	04:51			
	04:51			REBOUND (DEF) by BUTLER,PATRICE
SUB IN: DOUB,KATELYN	04:51			
SUB OUT: CARTER,BRIA	04:51			
FOUL by STORY,MADI	04:42			
	04:37			MISSED LAYUP by BUTLER,PATRICE
REBOUND (DEF) by BASSETT-SMITH,ASHLEY	04:37			
GOOD! JUMPER by STORY,MADI [PNT]	04:26	9-12	V 3	
	03:59	11-12	V 1	GOOD! LAYUP by BUTLER,PATRICE [PNT]
	03:59			ASSIST by KIRKLAND,SIERRA
MISSED 3PTR by DOUB,KATELYN	03:48			
REBOUND (OFF) by STORY,MADI	03:48			
MISSED JUMPER by BASSETT-SMITH,ASHLEY	03:37			
REBOUND (OFF) by TEAM	03:37			
SUB IN: CARTER,BRIA	03:35			
SUB OUT: BASSETT-SMITH,ASHLEY	03:35			
	03:35			SUB IN: ENGLISH-LURRY,TRELL
	03:35			SUB IN: JONES,BRIANA
	03:35			SUB IN: FOULKS,ALEXIS
	03:35			SUB OUT: KIRKLAND,SIERRA
	03:35			SUB OUT: SAMS,ALEXIS
	03:35			SUB OUT: BUTLER,PATRICE
MISSED 3PTR by CRAVEN,KAILA	03:28			
	03:28			REBOUND (DEF) by BUTLER,SIERRA
	02:58			MISSED JUMPER by FOULKS,ALEXIS
REBOUND (DEF) by CARTER,BRIA	02:58			
TURNOVER by CARTER,BRIA	02:50			
FOUL by CARTER,BRIA	02:50			
	02:26			TURNOVER by BUTLER,SIERRA
STEAL by CRAVEN,KAILA	02:24			
GOOD! LAYUP by JONES,JOI [FB/PNT]	02:21	11-14	V 3	
	02:07			TURNOVER by ENGLISH-LURRY,TRELL
STEAL by CARTER,BRIA	02:06			
GOOD! LAYUP by STORY,MADI [FB/PNT]	02:02	11-16	V 5	
ASSIST by CARTER,BRIA	02:02			
	01:52			TIMEOUT 30SEC
	01:52			SUB IN: BEAMON,RHEIN
	01:52			SUB OUT: BUTLER,SIERRA
	01:34			TURNOVER by JONES,BRIANA
STEAL by CRAVEN,KAILA	01:33			
MISSED 3PTR by STORY,MADI	01:22			
	01:22			REBOUND (DEF) by JONES,BRIANA
	01:11			MISSED JUMPER by BEAMON,RHEIN
REBOUND (DEF) by BASSETT-SMITH,ASHLEY	01:11			
	00:53			FOUL by JONES,BRIANA
SUB IN: WOOD,FARRAHN	00:53			
SUB OUT: JONES,JOI	00:53			
	00:53			SUB IN: BUTLER,SIERRA
	00:53			SUB OUT: JONES,BRIANA
MISSED JUMPER by BASSETT-SMITH,ASHLEY	00:35			
	00:35			REBOUND (DEF) by MCGOWAN,ANGEL
	00:17			MISSED LAYUP by SAMS,ALEXIS
REBOUND (DEF) by CARTER,BRIA	00:17			
MISSED 3PTR by CRAVEN,KAILA	00:04			
	00:04			REBOUND (DEF) by FOULKS,ALEXIS

Period 1-only	In Paint	Off T/O	2nd Chance	Fast Break	Bench	****
APP	8	11	1	4	7	Score tied - 0 times
GASOW	8	2	0	2	0	Lead changed - 2 times

Appalachian State vs Georgia Southern
2/25/2016; 5:00 PM at Statesboro, GA (Hanner Fieldhouse)
Period 2 Play-By-Play

VISITORS: Appalachian State	Time	Score	Margin	HOME: Georgia Southern
SUB IN: BASSETT-SMITH,ASHLEY	10:00			
SUB OUT: COOPER,KEKE	10:00			
	10:00			SUB IN: ENGLISH-LURRY,TRELL
	10:00			SUB IN: BEAMON,RHEIN
	10:00			SUB OUT: MCGOWAN,ANGEL
	10:00			SUB OUT: KIRKLAND,SIERRA
GOOD! 3PTR by JONES,JOI	09:32	11-19	V 8	
ASSIST by CARTER,BRIA	09:32			
	08:59			MISSED 3PTR by ENGLISH-LURRY,TRELL
REBOUND (DEF) by CARTER,BRIA	08:59			
GOOD! 3PTR by WOOD,FARRAHN	08:51	11-22	V 11	
ASSIST by JONES,JOI	08:51			
	08:21			TURNOVER by BUTLER,PATRICE
	08:21			SUB IN: MCGOWAN,ANGEL
	08:21			SUB IN: KIRKLAND,SIERRA
	08:21			SUB OUT: BEAMON,RHEIN
	08:21			SUB OUT: BUTLER,SIERRA
TURNOVER by CARTER,BRIA	08:07			
	08:06			STEAL by BUTLER,PATRICE
	08:03			MISSED LAYUP by SAMS,ALEXIS
REBOUND (DEF) by STORY,MADI	08:03			
MISSED JUMPER by BASSETT-SMITH,ASHLEY	07:57			
	07:57			REBOUND (DEF) by ENGLISH-LURRY,TRELL
FOUL by JONES,JOI	07:55			
SUB IN: DOUB,KATELYN	07:55			
SUB OUT: CARTER,BRIA	07:55			
	07:39			MISSED JUMPER by BUTLER,PATRICE
	07:39			REBOUND (OFF) by TEAM
	07:13			MISSED 3PTR by KIRKLAND,SIERRA
	07:13			REBOUND (OFF) by BUTLER,PATRICE
	07:08	13-22	V 9	GOOD! JUMPER by BUTLER,PATRICE [PNT]
MISSED 3PTR by WOOD,FARRAHN	06:51			
	06:51			REBOUND (DEF) by SAMS,ALEXIS
	06:42	15-22	V 7	GOOD! LAYUP by MCGOWAN,ANGEL [FB/PNT]
	06:42			ASSIST by SAMS,ALEXIS
TURNOVER by DOUB,KATELYN	06:22			
	06:20			STEAL by MCGOWAN,ANGEL
	06:19			MISSED LAYUP by ENGLISH-LURRY,TRELL
	06:19			REBOUND (OFF) by KIRKLAND,SIERRA
	06:16	17-22	V 5	GOOD! LAYUP by KIRKLAND,SIERRA [PNT]
FOUL by JONES,JOI	06:16			
	06:16	18-22	V 4	GOOD! FT by KIRKLAND,SIERRA
TIMEOUT 30SEC	06:16			
SUB IN: CRAVEN,KAILA	06:16			
SUB IN: CARTER,BRIA	06:16			
SUB IN: COOPER,KEKE	06:16			
SUB OUT: DOUB,KATELYN	06:16			
SUB OUT: JONES,JOI	06:16			
SUB OUT: BASSETT-SMITH,ASHLEY	06:16			
	06:16			SUB IN: JONES,BRIANA
	06:16			SUB OUT: BUTLER,PATRICE
MISSED 3PTR by STORY,MADI	05:58			
	05:58			REBOUND (DEF) by MCGOWAN,ANGEL

VISITORS: Appalachian State	Time	Score	Margin	HOME: Georgia Southern
	05:50	20-22	V 2	GOOD! JUMPER by ENGLISH-LURRY,TRELL
	05:50			ASSIST by MCGOWAN,ANGEL
GOOD! LAYUP by CARTER,BRIA [PNT]	05:37	20-24	V 4	
ASSIST by CRAVEN,KAILA	05:37			
	05:13			MISSED 3PTR by SAMS,ALEXIS
REBOUND (DEF) by WOOD,FARRAHN	05:13			
MISSED 3PTR by WOOD,FARRAHN	04:47			
REBOUND (OFF) by CARTER,BRIA	04:47			
	04:43			FOUL by JONES,BRIANA
MISSED FT by CARTER,BRIA	04:43			
REBOUND (DEADB) by TEAM	04:43			
GOOD! FT by CARTER,BRIA	04:43	20-25	V 5	
	04:26	22-25	V 3	GOOD! JUMPER by KIRKLAND,SIERRA
GOOD! LAYUP by CARTER,BRIA [PNT]	04:11	22-27	V 5	
	03:49			MISSED JUMPER by KIRKLAND,SIERRA
REBOUND (DEF) by COOPER,KEKE	03:49			
SUB IN: BASSETT-SMITH,ASHLEY	03:36			
SUB OUT: STORY,MADI	03:36			
	03:36			SUB IN: BUTLER,PATRICE
	03:36			SUB IN: BUTLER,SIERRA
	03:36			SUB OUT: MCGOWAN,ANGEL
	03:36			SUB OUT: JONES,BRIANA
TURNOVER by CARTER,BRIA	03:18			
SUB IN: NORREGAARD,LIZ	03:18			
SUB OUT: WOOD,FARRAHN	03:18			
	03:00			MISSED JUMPER by BUTLER,PATRICE
REBOUND (DEF) by COOPER,KEKE	03:00			
GOOD! 3PTR by NORREGAARD,LIZ	02:51	22-30	V 8	
ASSIST by CRAVEN,KAILA	02:51			
	02:37	25-30	V 5	GOOD! 3PTR by BUTLER,PATRICE
	02:37			ASSIST by SAMS,ALEXIS
TURNOVER by CARTER,BRIA	02:28			
SUB IN: STORY,MADI	02:28			
SUB OUT: COOPER,KEKE	02:28			
	02:28			SUB IN: FOULKS,ALEXIS
	02:28			SUB OUT: KIRKLAND,SIERRA
	02:11	28-30	V 2	GOOD! 3PTR by SAMS,ALEXIS
	02:11			ASSIST by BUTLER,PATRICE
	01:52			FOUL by FOULKS,ALEXIS
MISSED FT by STORY,MADI	01:52			
REBOUND (DEADB) by TEAM	01:52			
GOOD! FT by STORY,MADI	01:52	28-31	V 3	
	01:52			SUB IN: MCGOWAN,ANGEL
	01:52			SUB OUT: ENGLISH-LURRY,TRELL
	01:42			MISSED 3PTR by MCGOWAN,ANGEL
REBOUND (DEF) by CARTER,BRIA	01:42			
GOOD! LAYUP by BASSETT-SMITH,ASHLEY [PNT]	01:32	28-33	V 5	
ASSIST by CARTER,BRIA	01:32			
	01:07			MISSED LAYUP by MCGOWAN,ANGEL
REBOUND (DEF) by CARTER,BRIA	01:07			
MISSED 3PTR by NORREGAARD,LIZ	00:58			
	00:58			REBOUND (DEF) by FOULKS,ALEXIS
	00:48			MISSED 3PTR by BUTLER,PATRICE
	00:48			REBOUND (OFF) by MCGOWAN,ANGEL
FOUL by NORREGAARD,LIZ	00:45			
SUB IN: WOOD,FARRAHN	00:45			
SUB OUT: NORREGAARD,LIZ	00:45			
	00:34	31-33	V 2	GOOD! 3PTR by BUTLER,SIERRA

VISITORS: Appalachian State	Time	Score	Margin	HOME: Georgia Southern
	00:34			ASSIST by MCGOWAN,ANGEL
TURNOVER by STORY,MADI	00:22			
	00:02			MISSED 3PTR by MCGOWAN,ANGEL
REBOUND (DEF) by CRAVEN,KAILA	00:02			

Appalachian State 33, Georgia Southern 31

Period 2-only	In Paint	Off T/O	2nd Chance	Fast Break	Bench	****
APP	6	0	1	0	5	Score tied - 0 times
GASOW	6	6	8	2	2	Lead changed - 0 times

Official Basketball Box Score -- Game Totals -- Second Half Statistics
Appalachian State vs Georgia Southern
2/25/2016 5:00 PM at Statesboro, GA (Hanner Fieldhouse)

Appalachian State, 35, 8-17, 5-11

##	Player	S	Total			Rebounds			PF	TP	A	TO	Blk	Stl	Min
			FG-FGA	3PT FG-FGA	FT-FTA	Off Reb	Def Reb	Tot Reb							
02	WOOD,FARRAHN	g	2-4	2-4	0-0	0	2	2	0	6	1	1	0	0	13
03	CARTER,BRIA	g	0-0	0-0	4-10	3	3	6	1	4	0	0	0	1	18
10	JONES,JOI	g	3-6	0-1	4-5	1	0	1	0	10	4	0	0	0	19
23	COOPER,KEKE	c	1-2	0-0	0-0	2	4	6	0	2	1	1	0	0	16
34	STORY,MADI	g	3-8	2-4	0-0	0	3	3	3	8	1	1	0	1	14
04	NORREGAARD,LIZ		0-0	0-0	0-0	0	0	0	0	0	0	0	0	0	0
11	CRAVEN,KAILA		1-6	1-4	0-0	0	0	0	1	3	2	1	0	1	14
20	DOUB,KATELYN		0-0	0-0	0-0	0	0	0	0	0	0	1	0	0	2
30	BASSETT-SMITH,ASHLE'		1-1	0-0	0-0	0	1	1	2	2	0	2	0	0	4
TEAM						1	0	1	0		0				
Totals			11-27	5-13	8-15	7	13	20	7	35	9	7	0	3	100

FG %	3rd Qtr	6-17	35.3%	4th Qtr	5-10	50.0%	Half:	11-27	40.7%
3FG %	3rd Qtr	3-8	37.5%	4th Qtr	2-5	40.0%	Half:	5-13	25.0%
FT %	3rd Qtr	0-2	00.0%	4th Qtr	8-13	61.5%	Half:	8-15	53.3%

Georgia Southern, 31, 7-19, 4-13

##	Player	S	Total			Rebounds			PF	TP	A	TO	Blk	Stl	Min
			FG-FGA	3PT FG-FGA	FT-FTA	Off Reb	Def Reb	Tot Reb							
11	MCGOWAN,ANGEL	g	0-2	0-2	0-0	0	1	1	0	0	0	1	0	1	3
20	KIRKLAND,SIERRA	f	1-2	0-0	0-0	1	4	5	1	2	0	1	0	1	13
23	SAMS,ALEXIS	g	5-8	2-4	2-2	0	1	1	2	14	1	2	0	2	20
25	BUTLER,SIERRA	f	1-4	1-3	0-0	1	0	1	1	3	1	1	0	0	14
35	BUTLER,PATRICE	c	4-7	0-2	0-2	0	2	2	2	8	0	0	0	0	13
02	ENGLISH-LURRY,TRELL		0-1	0-0	0-2	0	0	0	2	0	3	1	0	0	17
05	FOULKS,ALEXIS		0-0	0-0	0-0	0	2	2	2	0	0	1	0	0	9
14	JONES,BRIANA		1-1	0-0	0-0	1	1	2	0	2	0	0	0	0	5
24	BEAMON,RHEIN		1-2	0-0	0-0	0	0	0	1	2	0	0	0	0	3
44	MARCUS,JESSICA		0-0	0-0	0-0	0	0	0	1	0	0	0	0	0	3
TEAM						0	1	1	0		0				
Totals			13-27	3-11	2-6	3	12	15	12	31	5	7	0	4	100

FG %	3rd Qtr	7-15	46.7%	4th Qtr	6-12	50.0%	Half:	13-27	48.1%
3FG %	3rd Qtr	2-7	28.6%	4th Qtr	1-4	25.0%	Half:	3-11	27.3%
FT %	3rd Qtr	0-0	0%	4th Qtr	2-6	33.3%	Half:	2-6	33.3%

Officials:

Technical Fouls: , Appalachian State- None. , Georgia Southern- None.

Score by periods	1st	2nd	3rd	4th	Total
Appalachian State	16	17	15	20	68
Georgia Southern	11	20	16	15	62

Points	In Paint	Off T/O	2nd 2nd Chance	Fast Fast Break	Bench
APP	4	9	6	0	5
	12	6	4	2	4

Last FG - APP 4th-01:57, GASOW 4th-01:34.

APP led for 7:29. GASOW led for 5:59. Game was tied for 6:32.

Score tied - 5 times
Lead changed - 8 times

Appalachian State vs Georgia Southern
2/25/2016; 5:00 PM at Statesboro, GA (Hanner Fieldhouse)
Period 3 Play-By-Play

VISITORS: Appalachian State	Time	Score	Margin	HOME: Georgia Southern
	09:41	33-33	T	GOOD! JUMPER by BUTLER,PATRICE
	09:41			ASSIST by BUTLER,SIERRA
MISSED JUMPER by STORY,MADI	09:26			
REBOUND (OFF) by CARTER,BRIA	09:26			
TURNOVER by WOOD,FARRAHN	09:09			
	09:09			STEAL by MCGOWAN,ANGEL
	08:51			MISSED 3PTR by MCGOWAN,ANGEL
REBOUND (DEF) by CARTER,BRIA	08:51			
MISSED 3PTR by WOOD,FARRAHN	08:44			
	08:44			REBOUND (DEF) by TEAM
	08:16			MISSED JUMPER by BUTLER,SIERRA
REBOUND (DEF) by COOPER,KEKE	08:16			
SUB IN: CRAVEN,KAILA	08:07			
SUB OUT: WOOD,FARRAHN	08:07			
	08:07			SUB IN: JONES,BRIANA
	08:07			SUB IN: MARCUS,JESSICA
	08:07			SUB OUT: BUTLER,SIERRA
	08:07			SUB OUT: BUTLER,PATRICE
MISSED 3PTR by CRAVEN,KAILA	07:46			
REBOUND (OFF) by CARTER,BRIA	07:46			
	07:42			FOUL by MARCUS,JESSICA
MISSED FT by CARTER,BRIA	07:42			
REBOUND (DEADB) by TEAM	07:42			
MISSED FT by CARTER,BRIA	07:42			
	07:42			REBOUND (DEF) by SAMS,ALEXIS
	07:34			MISSED 3PTR by MCGOWAN,ANGEL
REBOUND (DEF) by CARTER,BRIA	07:34			
MISSED JUMPER by JONES,JOI	07:17			
	07:17			REBOUND (DEF) by MCGOWAN,ANGEL
	07:11			TURNOVER by MCGOWAN,ANGEL
	07:11			SUB IN: ENGLISH-LURRY,TRELL
	07:11			SUB OUT: MCGOWAN,ANGEL
MISSED JUMPER by STORY,MADI	07:09			
	07:09			REBOUND (DEF) by FOULKS,ALEXIS
	06:47	35-33	H 2	GOOD! JUMPER by KIRKLAND,SIERRA
GOOD! 3PTR by STORY,MADI	06:29	35-36	V 1	
ASSIST by CRAVEN,KAILA	06:29			
	06:13			MISSED 3PTR by SAMS,ALEXIS
	06:13			REBOUND (OFF) by JONES,BRIANA
	06:08	37-36	H 1	GOOD! LAYUP by JONES,BRIANA [PNT]
MISSED 3PTR by CRAVEN,KAILA	05:53			
	05:53			REBOUND (DEF) by KIRKLAND,SIERRA
	05:41	39-36	H 3	GOOD! LAYUP by SAMS,ALEXIS [PNT]
MISSED 3PTR by STORY,MADI	05:26			
	05:26			REBOUND (DEF) by FOULKS,ALEXIS
	05:19			MISSED LAYUP by KIRKLAND,SIERRA
REBOUND (DEF) by STORY,MADI	05:19			
SUB IN: DOUB,KATELYN	05:10			
SUB IN: BASSETT-SMITH,ASHLEY	05:10			
SUB OUT: CARTER,BRIA	05:10			
SUB OUT: COOPER,KEKE	05:10			
	05:10			SUB IN: FOULKS,ALEXIS
	05:10			SUB IN: BUTLER,SIERRA

VISITORS: Appalachian State	Time	Score	Margin	HOME: Georgia Southern
	05:10			SUB OUT: KIRKLAND,SIERRA
	05:10			SUB OUT: MARCUS,JESSICA
TURNOVER by CRAVEN,KAILA	05:01			
FOUL by CRAVEN,KAILA	05:01			
	04:48			TURNOVER by SAMS,ALEXIS
	04:48			FOUL by SAMS,ALEXIS
TIMEOUT MEDIA	04:48			
TURNOVER by BASSETT-SMITH,ASHLEY	04:30			
	04:08	42-36	H 6	GOOD! 3PTR by BUTLER,SIERRA
	04:08			ASSIST by SAMS,ALEXIS
GOOD! JUMPER by STORY,MADI	03:48	42-38	H 4	
	03:39			MISSED JUMPER by ENGLISH-LURRY,TRELL
REBOUND (DEF) by STORY,MADI	03:39			
TURNOVER by DOUB,KATELYN	03:23			
	03:22			STEAL by SAMS,ALEXIS
	03:14			MISSED 3PTR by BUTLER,SIERRA
REBOUND (DEF) by BASSETT-SMITH,ASHLEY	03:14			
MISSED JUMPER by STORY,MADI	03:03			
	03:03			REBOUND (DEF) by JONES,BRIANA
FOUL by BASSETT-SMITH,ASHLEY	03:00			
SUB IN: COOPER,KEKE	03:00			
SUB IN: CARTER,BRIA	03:00			
SUB OUT: DOUB,KATELYN	03:00			
SUB OUT: BASSETT-SMITH,ASHLEY	03:00			
	03:00			SUB IN: BUTLER,PATRICE
	03:00			SUB OUT: JONES,BRIANA
	02:41			TURNOVER by SAMS,ALEXIS
STEAL by STORY,MADI	02:39			
MISSED LAYUP by JONES,JOI	02:35			
REBOUND (OFF) by COOPER,KEKE	02:35			
GOOD! JUMPER by JONES,JOI	02:29	42-40	H 2	
ASSIST by STORY,MADI	02:29			
TIMEOUT 30SEC	02:25			
	02:08	44-40	H 4	GOOD! LAYUP by BUTLER,PATRICE [PNT]
	02:08			ASSIST by ENGLISH-LURRY,TRELL
GOOD! 3PTR by STORY,MADI	01:45	44-43	H 1	
ASSIST by JONES,JOI	01:45			
	01:27			TURNOVER by FOULKS,ALEXIS
STEAL by CRAVEN,KAILA	01:26			
MISSED LAYUP by CRAVEN,KAILA	01:23			
REBOUND (OFF) by TEAM	01:23			
SUB IN: WOOD,FARRAHN	01:22			
SUB OUT: JONES,JOI	01:22			
	01:22			SUB IN: KIRKLAND,SIERRA
	01:22			SUB OUT: FOULKS,ALEXIS
GOOD! JUMPER by COOPER,KEKE	01:06	44-45	V 1	
ASSIST by WOOD,FARRAHN	01:06			
	00:40			MISSED 3PTR by BUTLER,SIERRA
REBOUND (DEF) by STORY,MADI	00:40			
GOOD! 3PTR by WOOD,FARRAHN	00:24	44-48	V 4	
ASSIST by CRAVEN,KAILA	00:24			
	00:03	47-48	V 1	GOOD! 3PTR by SAMS,ALEXIS
	00:03			ASSIST by ENGLISH-LURRY,TRELL
MISSED 3PTR by STORY,MADI	00:00			
REBOUND (DEADB) by TEAM	00:00			

Period 3-only	In Paint	Off T/O	2nd Chance	Fast Break	Bench	****
APP	0	4	4	0	0	Score tied - 0 times
GASOW	6	3	2	0	2	Lead changed - 4 times

Appalachian State vs Georgia Southern
2/25/2016; 5:00 PM at Statesboro, GA (Hanner Fieldhouse)
Period 4 Play-By-Play

VISITORS: Appalachian State	Time	Score	Margin	HOME: Georgia Southern
	10:00			SUB IN: BEAMON,RHEIN
	10:00			SUB IN: ENGLISH-LURRY,TRELL
	10:00			SUB OUT: MCGOWAN,ANGEL
	10:00			SUB OUT: BUTLER,SIERRA
MISSED 3PTR by JONES,JOI	09:40			
REBOUND (OFF) by COOPER,KEKE	09:40			
TURNOVER by COOPER,KEKE	09:35			
	09:34			STEAL by KIRKLAND,SIERRA
	09:16			MISSED LAYUP by BUTLER,PATRICE
REBOUND (DEF) by COOPER,KEKE	09:16			
	08:59			FOUL by BUTLER,PATRICE
MISSED FT by CARTER,BRIA	08:59			
REBOUND (DEADB) by TEAM	08:59			
GOOD! FT by CARTER,BRIA	08:59	47-49	V 2	
	08:51	49-49	T	GOOD! JUMPER by BEAMON,RHEIN
TURNOVER by STORY,MADI	08:34			
	08:24			MISSED 3PTR by BUTLER,PATRICE
	08:24			REBOUND (OFF) by KIRKLAND,SIERRA
FOUL by STORY,MADI	08:03			
	08:03			MISSED FT by BUTLER,PATRICE
	08:03			REBOUND (DEADB) by TEAM
	08:03			MISSED FT by BUTLER,PATRICE
REBOUND (DEF) by COOPER,KEKE	08:03			
	07:53			FOUL by ENGLISH-LURRY,TRELL
MISSED 3PTR by WOOD,FARRAHN	07:45			
	07:45			REBOUND (DEF) by BUTLER,PATRICE
FOUL by STORY,MADI	07:25			
SUB IN: CRAVEN,KAILA	07:25			
SUB OUT: STORY,MADI	07:25			
	07:22			MISSED JUMPER by BEAMON,RHEIN
REBOUND (DEF) by WOOD,FARRAHN	07:21			
	06:55			FOUL by BEAMON,RHEIN
GOOD! FT by CARTER,BRIA	06:55	49-50	V 1	
MISSED FT by CARTER,BRIA	06:55			
	06:55			REBOUND (DEF) by KIRKLAND,SIERRA
SUB IN: BASSETT-SMITH,ASHLEY	06:55			
SUB OUT: COOPER,KEKE	06:55			
FOUL by CARTER,BRIA	06:48			
	06:48			MISSED FT by ENGLISH-LURRY,TRELL
	06:48			REBOUND (DEADB) by TEAM
	06:48			MISSED FT by ENGLISH-LURRY,TRELL
REBOUND (DEF) by CARTER,BRIA	06:48			
	06:48			SUB IN: BUTLER,SIERRA
	06:48			SUB OUT: BUTLER,PATRICE
	06:42			FOUL by BUTLER,SIERRA
MISSED JUMPER by CRAVEN,KAILA	06:37			
REBOUND (OFF) by CARTER,BRIA	06:37			
	06:34			FOUL by KIRKLAND,SIERRA
MISSED FT by CARTER,BRIA	06:34			
REBOUND (DEADB) by TEAM	06:34			
MISSED FT by CARTER,BRIA	06:34			
	06:34			REBOUND (DEF) by KIRKLAND,SIERRA
	06:34			SUB IN: FOULKS,ALEXIS

VISITORS: Appalachian State	Time	Score	Margin	HOME: Georgia Southern
	06:34			SUB OUT: BEAMON,RHEIN
	06:27	51-50	H 1	GOOD! LAYUP by SAMS,ALEXIS [FB/PNT]
GOOD! 3PTR by CRAVEN,KAILA	06:03	51-53	V 2	
ASSIST by JONES,JOI	06:03			
	05:51			TURNOVER by KIRKLAND,SIERRA
TURNOVER by BASSETT-SMITH,ASHLEY	05:45			
	05:44			STEAL by SAMS,ALEXIS
	05:38	54-53	H 1	GOOD! 3PTR by SAMS,ALEXIS
	05:38			ASSIST by ENGLISH-LURRY,TRELL
GOOD! 3PTR by WOOD,FARRAHN	05:23	54-56	V 2	
ASSIST by JONES,JOI	05:23			
	05:04	56-56	T	GOOD! JUMPER by SAMS,ALEXIS
GOOD! JUMPER by BASSETT-SMITH,ASHLEY	04:44	56-58	V 2	
ASSIST by JONES,JOI	04:44			
FOUL by BASSETT-SMITH,ASHLEY	04:29			
	04:29			TIMEOUT MEDIA
SUB IN: COOPER,KEKE	04:29			
SUB IN: STORY,MADI	04:29			
SUB OUT: CARTER,BRIA	04:29			
SUB OUT: BASSETT-SMITH,ASHLEY	04:29			
	04:29			SUB IN: BUTLER,PATRICE
	04:29			SUB OUT: KIRKLAND,SIERRA
FOUL by STORY,MADI	04:14			
	04:14	57-58	V 1	GOOD! FT by SAMS,ALEXIS
	04:14	58-58	T	GOOD! FT by SAMS,ALEXIS
SUB IN: CARTER,BRIA	04:14			
SUB OUT: STORY,MADI	04:14			
MISSED 3PTR by CRAVEN,KAILA	03:54			
REBOUND (OFF) by JONES,JOI	03:54			
GOOD! LAYUP by JONES,JOI [PNT]	03:51	58-60	V 2	
	03:19			MISSED 3PTR by BUTLER,PATRICE
	03:19			REBOUND (OFF) by BUTLER,SIERRA
	02:56	60-60	T	GOOD! LAYUP by BUTLER,PATRICE [PNT]
MISSED JUMPER by COOPER,KEKE	02:45			
	02:45			REBOUND (DEF) by BUTLER,PATRICE
	02:21			TURNOVER by ENGLISH-LURRY,TRELL
	02:21			FOUL by ENGLISH-LURRY,TRELL
SUB IN: STORY,MADI	02:21			
SUB OUT: CRAVEN,KAILA	02:21			
GOOD! LAYUP by JONES,JOI [PNT]	01:57	60-62	V 2	
ASSIST by COOPER,KEKE	01:57			
	01:57			FOUL by FOULKS,ALEXIS
GOOD! FT by JONES,JOI	01:57	60-63	V 3	
SUB IN: CRAVEN,KAILA	01:57			
SUB OUT: STORY,MADI	01:57			
	01:34	62-63	V 1	GOOD! JUMPER by BUTLER,PATRICE [PNT]
	01:05			FOUL by FOULKS,ALEXIS
GOOD! FT by JONES,JOI	01:05	62-64	V 2	
GOOD! FT by JONES,JOI	01:05	62-65	V 3	
SUB IN: STORY,MADI	01:05			
SUB OUT: CRAVEN,KAILA	01:05			
	01:05			SUB IN: KIRKLAND,SIERRA
	01:05			SUB OUT: FOULKS,ALEXIS
	00:45			MISSED LAYUP by SAMS,ALEXIS
REBOUND (DEF) by COOPER,KEKE	00:45			
	00:18			FOUL by BUTLER,PATRICE
GOOD! FT by JONES,JOI	00:18	62-66	V 4	
MISSED FT by JONES,JOI	00:18			

VISITORS: Appalachian State	Time	Score	Margin	HOME: Georgia Southern
	00:18			REBOUND (DEF) by KIRKLAND,SIERRA
	00:17			TIMEOUT TEAM
	00:07			TURNOVER by BUTLER,SIERRA
STEAL by CARTER,BRIA	00:05			
	00:04			FOUL by SAMS,ALEXIS
GOOD! FT by CARTER,BRIA	00:04	62-67	V 5	
GOOD! FT by CARTER,BRIA	00:04	62-68	V 6	
	00:01			MISSED 3PTR by SAMS,ALEXIS
REBOUND (DEF) by WOOD,FARRAHN	00:01			

Appalachian State 68, Georgia Southern 62

Period 4-only	In Paint	Off T/O	2nd Chance	Fast Break	Bench	****
APP	4	5	2	0	5	Score tied - 0 times
GASOW	6	3	2	2	2	Lead changed - 4 times

03:37 - BASSETT-SMITH,JUMPER [X]
 03:28 - CRAVEN,3PTR [X]
 TO [X] FOULKS,JUMPER - 02:58
 02:50,-,CARTER TURN TO BUTLER TURN - ,02:26
 02:21,-,JONES,LAYUP [2PF] [14-11-3] TO ENGLISH-LURRY TURN -,02:07
 02:02,-,STORY,LAYUP [2PF] [16-11-5] TO JONES TURN -,01:34
 01:22 - STORY,3PTR [X] [X] BEAMON,JUMPER - 01:11
 00:35 - BASSETT-SMITH,JUMPER [X] [X] SAMS,LAYUP - 00:17
 00:04 - CRAVEN,3PTR [X]

02:28,-,CARTER TURN TO [30-28-2] [3] SAMS,3PTR,-,02:11
 01:52 - STORY,FT [X]
 01:52,-,STORY,FT [1] [31-28-3] [X] MCGOWAN,3PTR - 01:42
 01:32,-,BASSETT-SMITH,LAYUP [2P] [33-28-5] [X] MCGOWAN,LAYUP - 01:07
 00:58 - NORREGAARD,3PTR [X]
 [X] BUTLER,3PTR - 00:48
 [33-31-2] [3] BUTLER,3PTR,-,00:34
 00:22,-,STORY TURN TO [X] MCGOWAN,3PTR - 00:02

Appalachian State Period 3 Score Georgia Southern
 33-33 0 2 BUTLER,JUMPER,-,09:41
 09:26 - STORY,JUMPER [X]
 09:09,-,WOOD TURN TO [X] MCGOWAN,3PTR - 08:51
 08:44 - WOOD,3PTR [X] [X] BUTLER,JUMPER - 08:16
 07:46 - CRAVEN,3PTR [X]
 07:42 - CARTER,FT [X]
 07:42 - CARTER,FT [X] [X] MCGOWAN,3PTR - 07:34
 07:17 - JONES,JUMPER [X] TO MCGOWAN TURN -,07:11
 07:09 - STORY,JUMPER [X]
 [33-33-2] [2] KIRKLAND,JUMPER,-,06:47
 06:29,-,STORY,3PTR [3] [36-35-1] [X] SAMS,3PTR - 06:13

Appalachian State Period 4 Score Georgia Southern
 09:40 - JONES,3PTR [X]
 09:35,-,COOPER TURN TO [X] BUTLER,LAYUP - 09:16
 08:59 - CARTER,FT [X]
 08:59,-,CARTER,FT [1] [49-47-2] [49-49-0] [2] BEAMON,JUMPER,-,08:51
 08:34,-,STORY TURN TO [X] BUTLER,3PTR - 08:24
 [X] BUTLER,FT - 08:03
 [X] BUTLER,FT - 08:03
 07:45 - WOOD,3PTR [X] [X] BEAMON,JUMPER - 07:22
 06:55,-,CARTER,FT [1] [50-49-1]
 06:55 - CARTER,FT [X] [X] ENGLISH-LURRY,FT - 06:48
 [X] ENGLISH-LURRY,FT - 06:48
 06:37 - CRAVEN,JUMPER [X]
 06:34 - CARTER,FT [X]
 06:34 - CARTER,FT [X]
 [50-51-1] [2PF] SAMS,LAYUP,-,06:27

05:53 - CRAVEN,3PTR [X] [36-37
1] [2^P] JONES,LAYUP -,06:08
 05:26 - STORY,3PTR [X] [36-39
3] [2^P] SAMS,LAYUP -,05:41
 05:01 -, CRAVEN TURN [X] KIRKLAND,LAYUP - 05:19
 TO SAMS TURN -,04:48
 04:30 -, BASSETT-SMITH TURN [X] BUTLER,3PTR -,04:08
 TO ENGLISH-LURRY,JUMPER - 03:39
 03:48 -, STORY,JUMPER [2] [36-42
6] [3] BUTLER,3PTR -,04:08
 [38-42
4] [X] ENGLISH-LURRY,JUMPER - 03:39
 TO DOUB TURN [X] BUTLER,3PTR - 03:14
 03:03 - STORY,JUMPER [X] SAMS TURN -,02:41
 02:35 - JONES,LAYUP [X] BUTLER,LAYUP -,02:08
 02:29 -, JONES,JUMPER [2] [40-42
2] [2^P] BUTLER,LAYUP -,02:08
 [40-44
4] [3] FOLKES TURN -,01:27
 01:45 -, STORY,3PTR [3] [43-44
1] BUTLER,3PTR - 00:40
 TO CRAVEN,LAYUP [X] [45-44
-1] BUTLER,3PTR - 00:40
 01:06 -, COOPER,JUMPER [2] [48-44
-4] SAMS,3PTR -,00:03
 [48-47
-1] [3] SAMS,3PTR -,00:03
 00:24 -, WOOD,3PTR [3] [48-47
-1] [3] SAMS,3PTR -,00:03
 00:00 - STORY,3PTR [X]

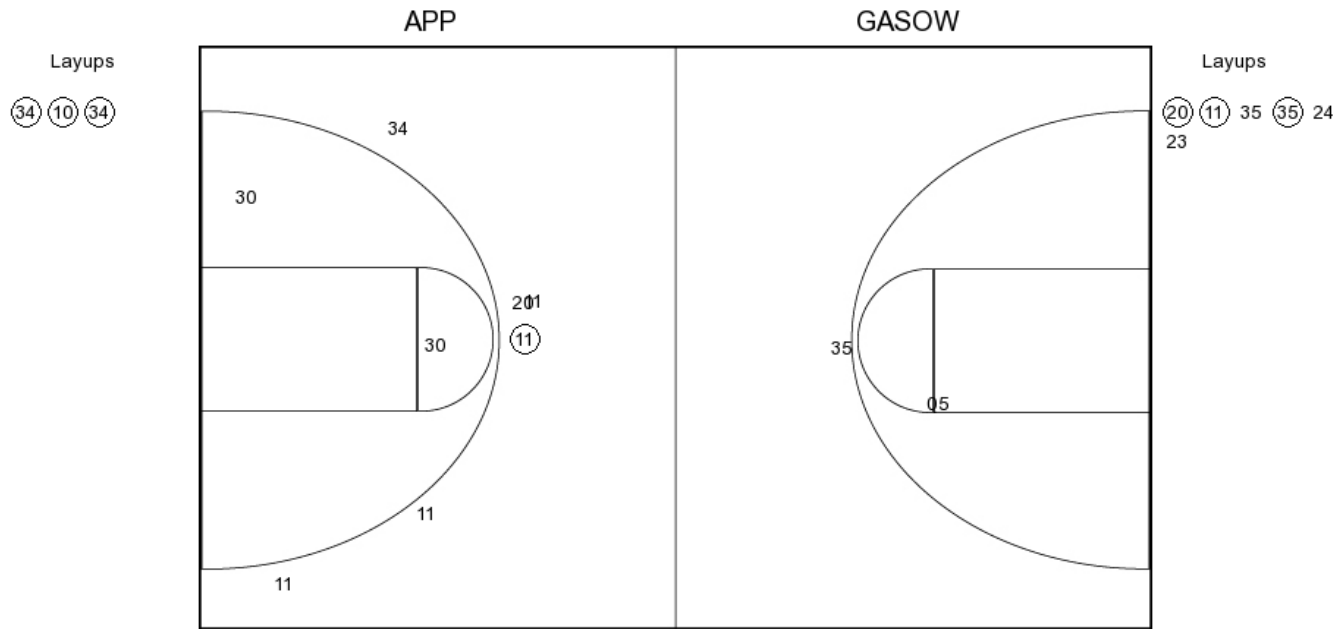
06:03 -, CRAVEN,3PTR [3] [53-51
2] KIRKLAND TURN -,05:51
 TO BASSETT-SMITH TURN [3] [53-54
1] [3] SAMS,3PTR -,05:38
 05:23 -, WOOD,3PTR [3] [56-54
-2] SAMS,JUMPER -,05:04
 [56-56
0] [2] SAMS,FT -,04:14
 04:44 -, BASSETT-SMITH,JUMPER [2] [58-56
-2] SAMS,FT -,04:14
 [58-57
-1] [1] SAMS,FT -,04:14
 [58-58
0] [1] SAMS,FT -,04:14
 03:54 - CRAVEN,3PTR [X] BUTLER,3PTR - 03:19
 03:51 -, JONES,LAYUP [2^P] [60-58
-2] BUTLER,LAYUP -,02:56
 [60-60
0] [2^P] BUTLER,LAYUP -,02:56
 02:45 - COOPER,JUMPER [X] ENGLISH-LURRY TURN -,02:21
 TO JONES,LAYUP [2^P] [62-60
-2] BUTLER,JUMPER -,01:34
 01:57 -, JONES,FT [1] [63-60
-3] BUTLER,JUMPER -,01:34
 [63-62
-1] [2^P] BUTLER,JUMPER -,01:34
 01:05 -, JONES,FT [1] [64-62
-2] SAMS,LAYUP - 00:45
 01:05 -, JONES,FT [1] [65-62
-3] SAMS,LAYUP - 00:45
 [X] SAMS,LAYUP - 00:45
 00:18 -, JONES,FT [1] [66-62
-4] BUTLER TURN -,00:07
 00:18 - JONES,FT [X] BUTLER TURN -,00:07
 TO CARTER,FT [1] [67-62
-5] SAMS,3PTR - 00:01
 00:04 -, CARTER,FT [1] [68-62
-6] SAMS,3PTR - 00:01
 [X] SAMS,3PTR - 00:01

Appalachian State vs Georgia Southern

OFFICIAL SHOT CHART

2/25/2016 at Statesboro, GA (Hanner Fieldhouse)

PERIOD 1



APP PERIOD 1

FG Made	13
FG Attempted	29
3PFG Made	4
3PFG Attempted	16

GASOW PERIOD 1

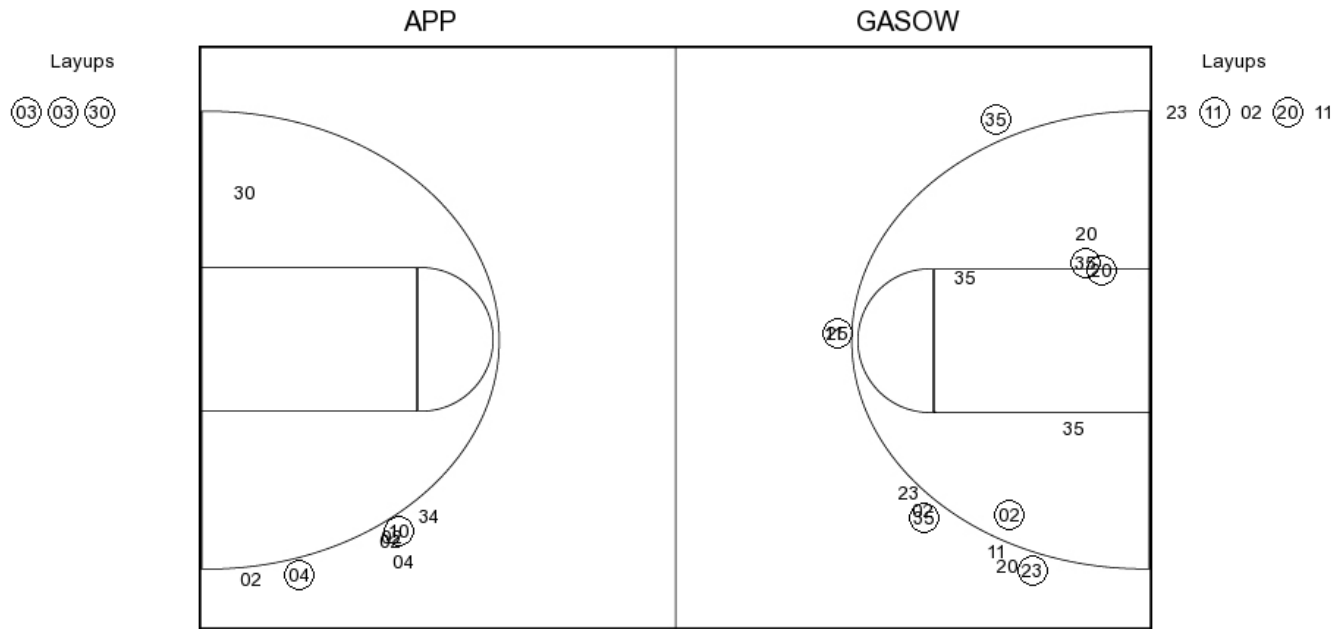
FG Made	13
FG Attempted	32
3PFG Made	3
3PFG Attempted	11

Appalachian State vs Georgia Southern

OFFICIAL SHOT CHART

2/25/2016 at Statesboro, GA (Hanner Fieldhouse)

PERIOD 2



APP PERIOD 2

- FG Made
- FG Attempted
- 3PFG Made
- 3PFG Attempted

GASOW PERIOD 2

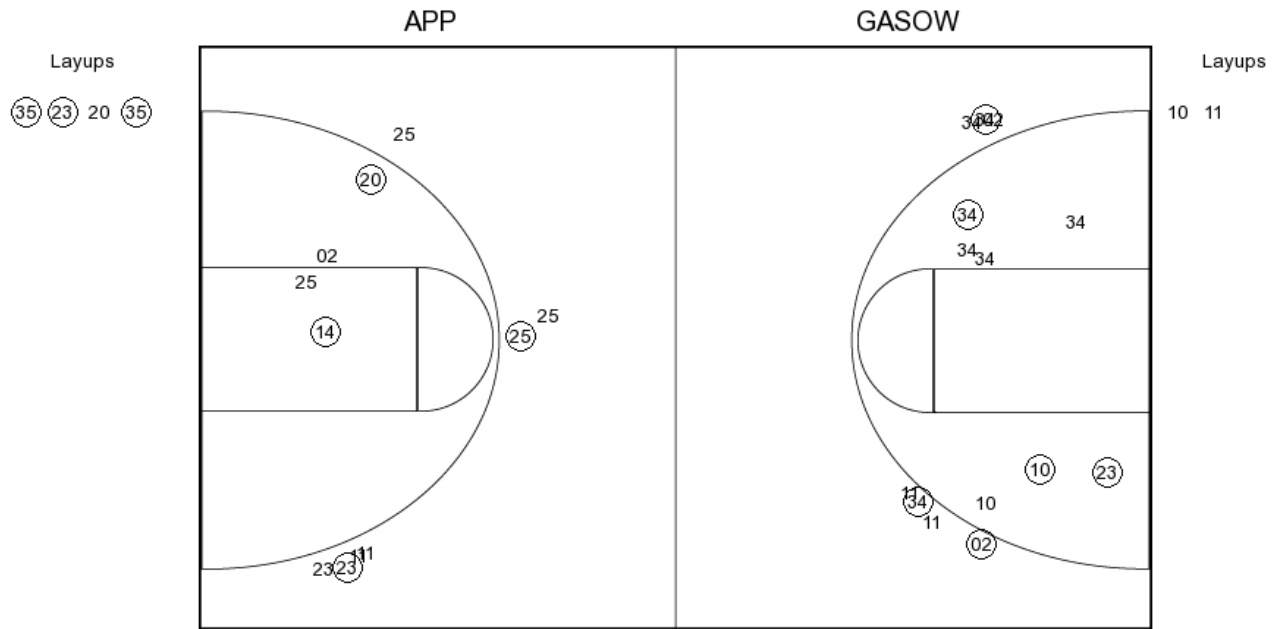
- FG Made
- FG Attempted
- 3PFG Made
- 3PFG Attempted

Appalachian State vs Georgia Southern

OFFICIAL SHOT CHART

2/25/2016 at Statesboro, GA (Hanner Fieldhouse)

PERIOD 3



APP PERIOD 3

FG Made	11
FG Attempted	27
3PFG Made	5
3PFG Attempted	13

GASOW PERIOD 3

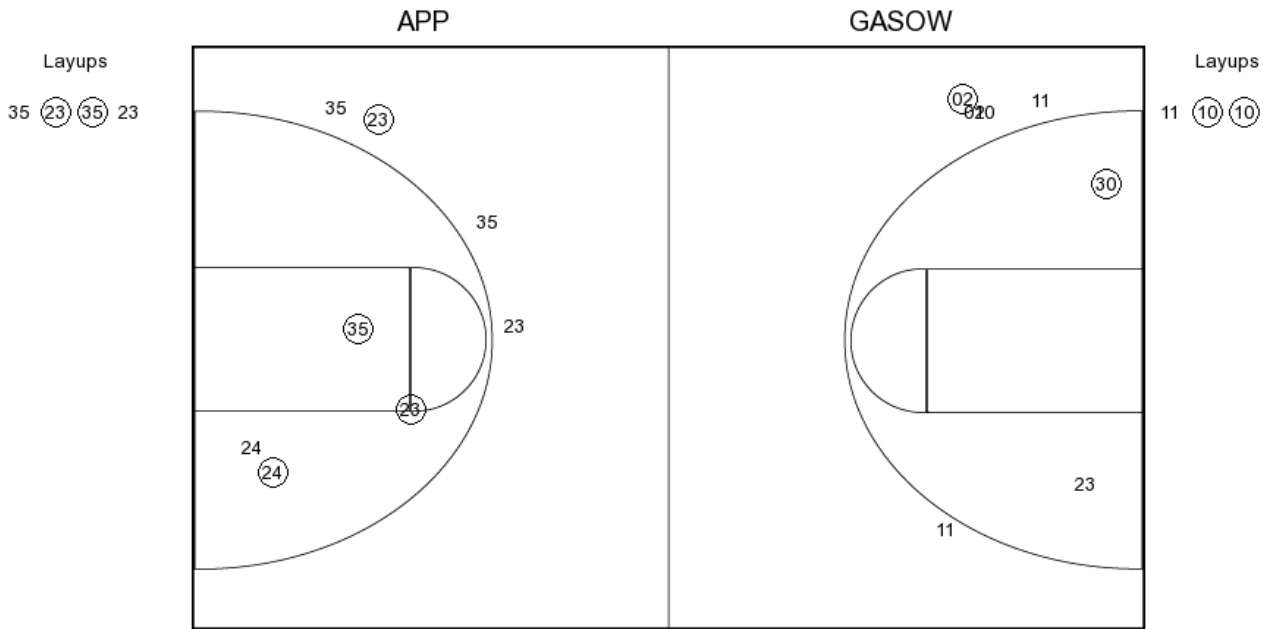
FG Made	13
FG Attempted	27
3PFG Made	3
3PFG Attempted	11

Appalachian State vs Georgia Southern

OFFICIAL SHOT CHART

2/25/2016 at Statesboro, GA (Hanner Fieldhouse)

PERIOD 4



APP PERIOD 4

- FG Made
- FG Attempted
- 3PFG Made
- 3PFG Attempted

GASOW PERIOD 4

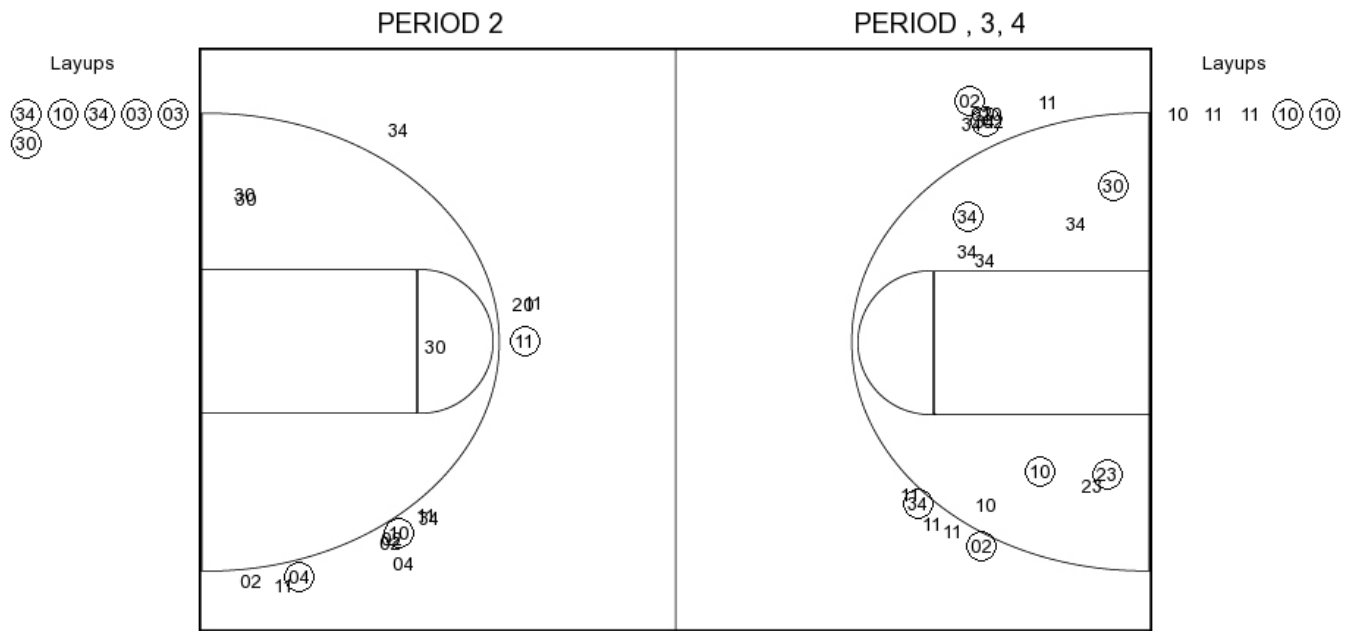
- FG Made
- FG Attempted
- 3PFG Made
- 3PFG Attempted

Appalachian State vs Georgia Southern

OFFICIAL SHOT CHART

2/25/2016 at Statesboro, GA (Hanner Fieldhouse)

Appalachian State



APP PERIOD 1

FG Made	13
FG Attempted	29
3PFG Made	4
3PFG Attempted	16

APP PERIOD 2

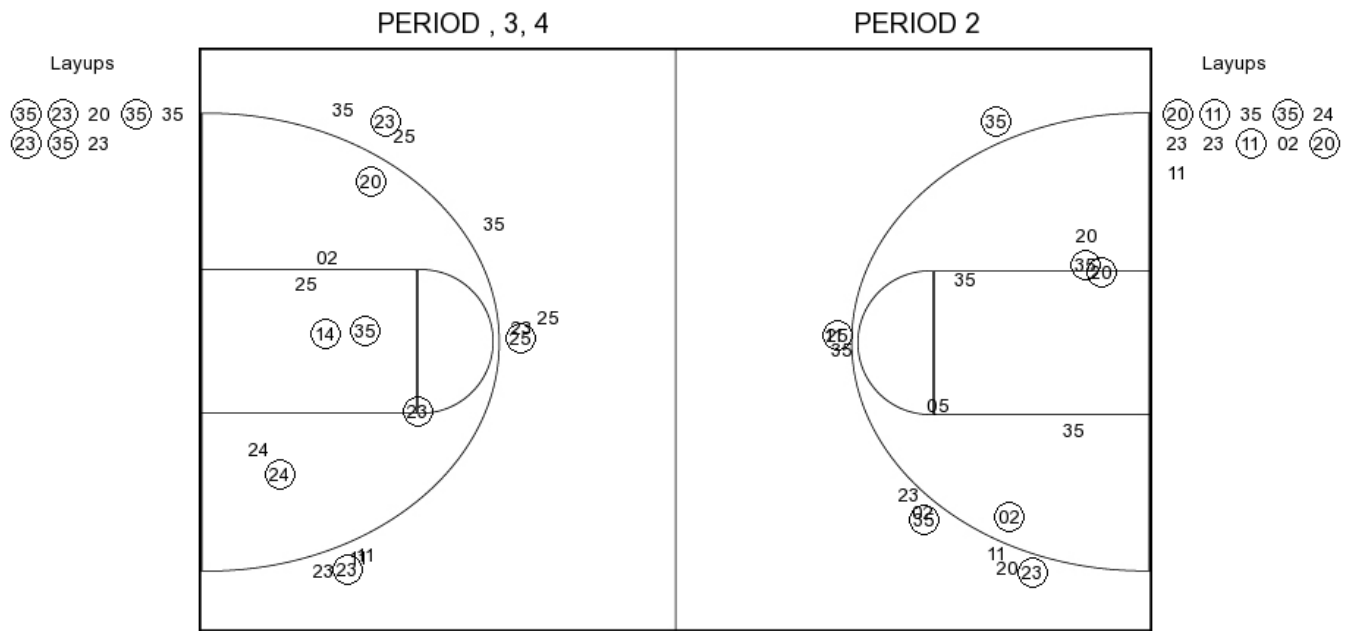
FG Made	
FG Attempted	
3PFG Made	
3PFG Attempted	

Appalachian State vs Georgia Southern

OFFICIAL SHOT CHART

2/25/2016 at Statesboro, GA (Hanner Fieldhouse)

Georgia Southern



GASOW PERIOD 1

FG Made	13
FG Attempted	32
3PFG Made	3
3PFG Attempted	11

GASOW PERIOD 2

FG Made	
FG Attempted	
3PFG Made	
3PFG Attempted	